

# 1 **The changing epidemiology of shigellosis in Australia, 2001-2019**

## 2 **Authors:**

3 Aaliya Ibrahim<sup>1,2</sup>, Kathryn Glass<sup>1</sup>, Deborah A Williamson<sup>3,4</sup>, Ben Polkinghorne<sup>1</sup>, Danielle J Ingle<sup>4</sup>, Rose  
4 Wright<sup>2</sup>, Martyn D Kirk<sup>1,2</sup>

5

6 <sup>1</sup> National Centre for Epidemiology and Population Health, Australian National University, Canberra,  
7 Australia

8 <sup>2</sup> Office of Health Protection and Response, Australian Government Department of Health, Canberra,  
9 Australia

10 <sup>3</sup> Department of Microbiology, Royal Melbourne Hospital, Melbourne, Australia

11 <sup>4</sup> Department of Microbiology and Immunology, The University of Melbourne at The Peter Doherty  
12 Institute for Infection and Immunity, Melbourne, Australia

## 13 **Corresponding author**

14 Aaliya Ibrahim, [aaliya.ibrahim@anu.edu.au](mailto:aaliya.ibrahim@anu.edu.au)

15

## 16 **Abstract**

17 Shigellosis is an increasing cause of gastroenteritis in Australia, including prolonged outbreaks in  
18 remote Aboriginal and Torres Strait Islander (hereafter “First Nations”) communities and among  
19 men who have sex with men (MSM) in major cities. To determine associations between *Shigella*  
20 species and demographic and geographic factors we used negative binomial regression to analyse  
21 national case notifications of shigellosis from 2001 to 2019.

22 *S. sonnei* and *S. flexneri* accounted for 42% and 29% of cases, respectively. Nationally, notification  
23 rates increased from 2001 to 2019 with yearly incidence rate ratios of 1.04 (95% CI 1.02-1.07) for *S.*  
24 *boydii*, 1.05 (95% CI 1.04-1.06) for *S. sonnei* and 1.04 (95% CI 1.04-1.06) for *S. flexneri*. Children aged  
25 0-4 years had the highest burden of infection for *S. flexneri*, *S. sonnei* and *S. boydii*; and males had a  
26 higher notification rate for *S. sonnei* (incidence rate ratio 1.24, 95% CI 1.15-1.33), reflecting  
27 transmission among MSM. First Nations Australians were disproportionately affected by shigellosis,  
28 with the notification rate in this population peaking in 2018 at 92.1 cases per 100,000. The findings  
29 of this study provide important insights into the epidemiological characteristics of shigellosis in  
30 Australia, and can be used to inform targeted public health prevention and control strategies.

## 31 **Introduction**

32 Shigellosis is caused by gram-negative *Shigella* spp. bacteria, which is primarily transmitted through  
33 the faecal-oral route by direct or indirect contact with faecal matter (1). There are four species of  
34 *Shigella* bacteria, characterised by their O antigen type and biochemical properties: *S. dysenteriae*,  
35 *S. flexneri*, *S. boydii* and *S. sonnei* (2). Shigellosis outbreaks have been associated with consumption  
36 of contaminated food and water; contact with an infected person, particularly in settings with poor  
37 hygiene, through sexual contact, or in substandard and crowded living conditions; and recreational  
38 contact with contaminated water supplies (3, 4). *Shigella* have a low infectious dose between 10 to  
39 100 organisms, and the clinical presentations of infection can vary from mild watery diarrhoea to  
40 severe dysentery (bloody diarrhoea) compounded by systemic complications such as electrolyte

41 imbalance, seizures, fever, nausea and haemolytic uraemic syndrome (5). While shigellosis is often a  
42 self-limiting disease, treatment with antibiotics may shorten the duration of the illness and prevent  
43 prolonged bacterial shedding, and is recommended for those with severe disease or who are  
44 immunocompromised (6, 7). As per Australian guidelines, treatment is also recommended to reduce  
45 transmission in key risk groups, including children under the age of six, healthcare workers, and  
46 people living or working in residential aged-care facilities, prisons, and other residential facilities (8).  
47 Globally, *Shigella* species are a leading cause of diarrhoeal mortality, causing an estimated 200,000  
48 deaths in 2016. (9). The greatest burden of shigellosis is in young children in low- and middle-income  
49 countries, where access to good nutrition, clean water, adequate sanitation and healthcare is limited  
50 (10). In contrast, the highest rates of shigellosis in high-income countries typically occur in MSM or in  
51 travellers returning from overseas (7). Australian national surveillance for shigellosis show a gradual  
52 increase in case numbers until 2019, when it more than doubled compared to the 5-year rolling  
53 mean (11). Outbreaks have also been reported in First Nations communities in central Australia and  
54 among MSM (12, 13).

55  
56 Stool culture resulting in the isolation of *Shigella* remains the gold-standard method for obtaining a  
57 definitive laboratory diagnosis of shigellosis. However, since 2013 there has been an increasing  
58 uptake of culture independent diagnostic testing (CIDT) methods such as multiplex polymerase chain  
59 reaction (PCR) tests (14). This change in testing practices has implications for public health  
60 surveillance of a wide range of enteric pathogens, including *Shigella*. Currently, PCR assays for  
61 detecting *Shigella* target the invasion plasmid antigen H (*ipaH*) gene, which is also common to  
62 entero-invasive *Escherichia coli* (EIEC) (15). This means that such tests are unable to differentiate  
63 between these two organisms, which are closely related and genetically constitute the same species,  
64 but typically manifest different symptoms, with EIEC being milder (16). Furthermore, *Shigella* can  
65 only be identified to the species and biotype level if an isolate is cultured. Therefore, while PCR  
66 testing to detect *Shigella* is more sensitive than traditional bacterial culture methods, the ability to

67 obtain more detailed information, such as antimicrobial susceptibility and epidemiological typing, is  
68 compromised. The increasing uptake of CIDT is likely to have implications on the number, accuracy  
69 and completeness (with respect to species/biotype data) of surveillance for shigellosis.

70 In this study, we describe trends in incidence of shigellosis from 2001 to 2019 to understand  
71 demographic and geographic factors, including sex, age group, Indigenous status and Australian  
72 states and territories. Additionally, we evaluate the impact of CIDT on national surveillance of  
73 shigellosis.

## 74 **Methods**

75 We analysed shigellosis case notifications made to the National Notifiable Diseases Surveillance  
76 System (NNDSS) from 2001 to 2019 by all Australian states and territories. Australia is comprised of  
77 eight jurisdictions: New South Wales (NSW), Queensland (QLD), South Australia (SA), Tasmania  
78 (TAS), Victoria (VIC) and Western Australia (WA); and two territories: the Australian Capital Territory  
79 (ACT) and Northern Territory (NT).

## 80 **Data Sources**

81 Shigellosis is a nationally notifiable disease in Australia, and states and territories report all  
82 confirmed and probable cases to the Australian Government Department of Health through the  
83 NNDSS. The national case definition requires that a confirmed case of shigellosis has *Shigella* species  
84 isolated from a clinical specimen; or that *Shigella* is detected by nucleic acid testing in combination  
85 with epidemiological evidence (17). The addition of ‘probable’ cases in the surveillance case  
86 definition, i.e. detection of *Shigella* by nucleic acid testing only, was implemented from 1 July 2018;  
87 prior to this, only confirmed cases were required to be notified. In this study, we did not include  
88 ‘probable’ cases.

89 New South Wales – Australia’s largest state – was the last Australian jurisdiction to make shigellosis  
90 reportable, which occurred in 2001. Therefore, we included de-identified data on all confirmed  
91 shigellosis case notifications reported to the NNDSS from 2001 to 2019 with the following variables:

92 state; sex; 5 year age-group; month and year of diagnosis; country of acquisition; organism;  
93 biotype/subtype; Indigenous status and laboratory diagnosis method. NNDSS data were provided by  
94 the Office of Health Protection, Department of Health, on behalf of the Communicable Diseases  
95 Network Australia. The month and year of diagnosis was calculated from the diagnosis date: a  
96 derived field representing the onset date of the illness or the earliest of the specimen collection  
97 date, the date of report, or the date of receipt at the state or territory health authority. Data on  
98 laboratory diagnostic method included several categories, including nucleic acid testing, culture,  
99 serology, antigen detection, microscopy and unknown. For the purposes of this study, the inputs in  
100 this field were consolidated into the following categories depending on whether culture and nucleic  
101 acid testing were reported as: PCR; culture; PCR and culture; unknown; and other (any combination  
102 of serology, antigen detection, or microscopy that did not also include culture or PCR).

### 103 Analysis

104 The primary aim of the analysis was to examine the trend in notification rates of shigellosis over  
105 time. Cases where sex, age-group and organism were unknown were excluded from the analysis.  
106 We calculated rates of illness per 100,000 population using mid-year residential population  
107 estimates from the Australian Bureau of Statistics for the years 2001 to 2019.

108  
109 We used a negative binomial regression model to estimate incidence rate ratios (IRR) by sex, age and  
110 state and territory, with significance defined as a p-value of less than 0.05. An interaction term was  
111 included in the model to analyse the trend over time for each state and territory, with diagnosis  
112 included as a continuous variable. As NSW is the most populous Australian jurisdiction, we applied it  
113 as the reference group for the jurisdictional analysis in the model. Due to low (<5) or no cases of *S.*  
114 *dysenteriae* in ACT, NT and TAS, these states were removed from the regression model for *S.*  
115 *dysenteriae*. Stata 15 and Excel 2016 were used for analysis.

## 116 Ethics

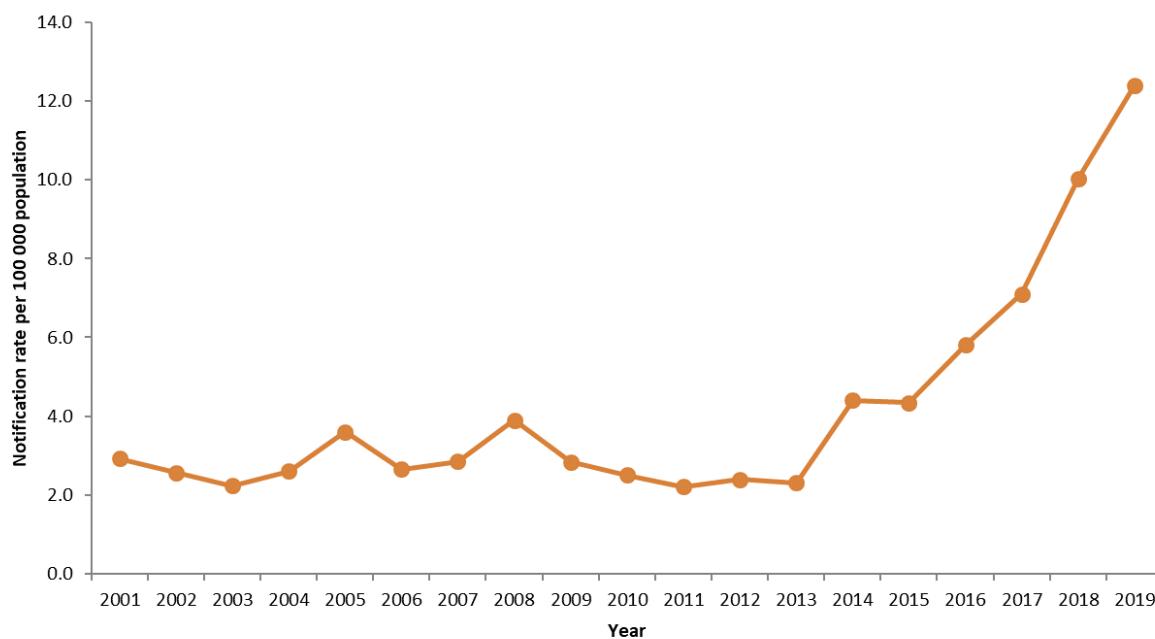
117 We obtained ethical approval for this study from the Australian National University Human Research  
118 Ethics Committee [protocol 2018/560] and the ACT Health Human Research Ethics Committee's Low  
119 Risk Sub-Committee [2018/ETH/00158].

## 120 Results

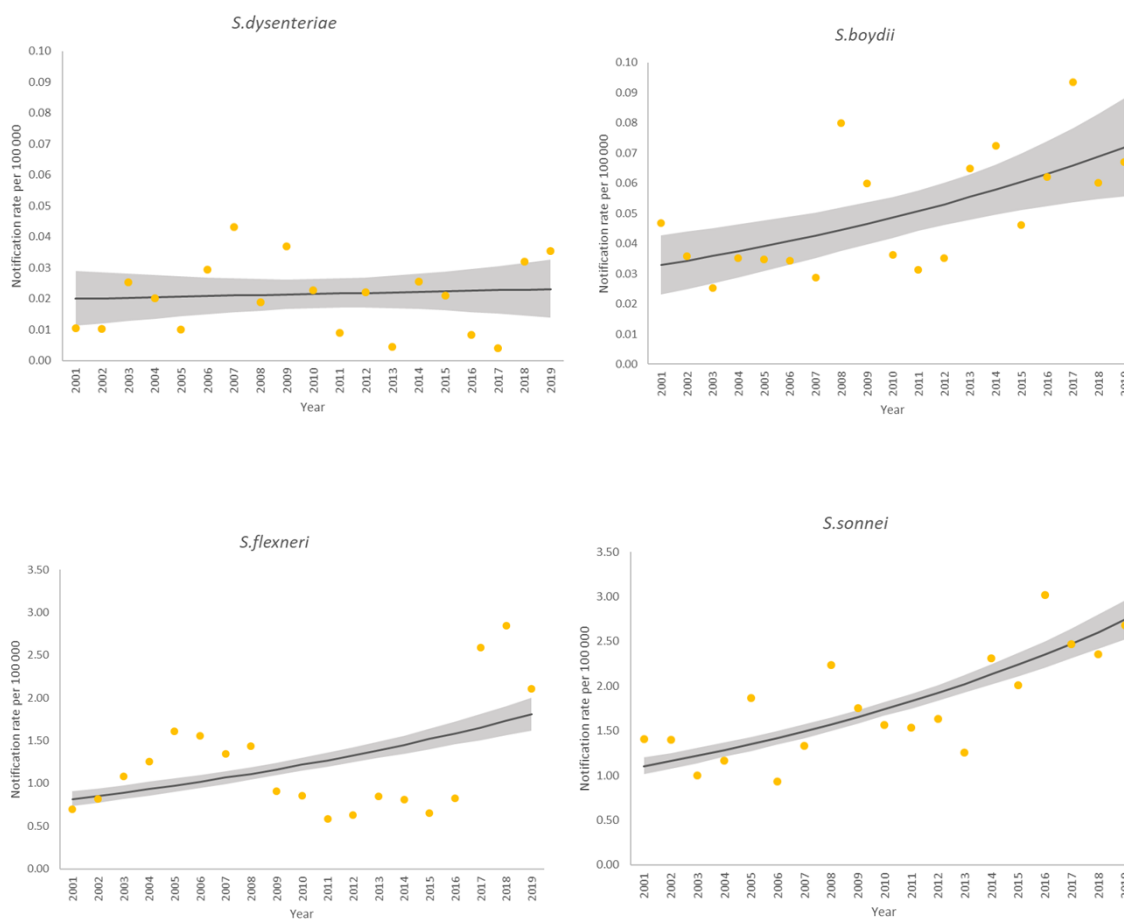
121 Between 2001 and 2019, Australian states and territories reported 18,363 shigellosis cases to the  
122 NNDSS, of which age, sex and organism information were available for >99% (18,327/18,363) cases.  
123 Of the cases included in the analysis, 42% (7,649/18,327) were *S. sonnei*, 29% (5,267/18,327) were *S.*  
124 *flexneri*, 1% (214/18,327) were *S. boydii*, and less than 1% (87/18,327) were *S. dysenteriae*. Species  
125 information was unknown for 28% (5,110/18,327) of cases, with 79% (4,024/5,110) of these  
126 unknown species occurring in the years 2016–2019.

127 Nationally, crude annual notification rates ranged from 2.2 cases per 100,000 in 2003 and 2011 to  
128 12.4 cases per 100,000 in 2019 (**Error! Reference source not found.**). Rates remained relatively  
129 stable between 2001 and 2013, while from 2013 to 2019 there was a greater than five-fold increase  
130 in the overall crude notification rate of shigellosis in Australia. Nationally, notification rates  
131 increased from 2001 to 2019 with yearly incidence rate ratios of 1.04 (95% CI 1.02-1.07) for *S. boydii*,  
132 1.05 (95% CI 1.04-1.06) for *S. sonnei* and 1.04 (95% CI 1.04-1.06) for *S. flexneri* (Figure 2). The  
133 regression model for *S. flexneri* did not fit the data well, which is likely due to outbreaks occurring in  
134 the latter years of surveillance in specific states. The IRR for *S. dysenteriae* indicated there was an  
135 increase in notification rates between 2001 and 2019, although there was less precision around the  
136 interval estimate (IRR 1.01; 95% CI 0.97-1.05).

137



138  
139 **Figure 1. Crude notification rate of shigellosis per 100,000 population, Australia, 2001-2019**



140

141

142 **Figure 2. Crude notification rates (dots) and negative binomial regression margins plots (lines with**  
 143 **95% CI) of *S. boydii*, *S. sonnei*, *S. flexneri* and *S. dysenteriae*, Australia 2001-2019. (Note the**  
 144 **differing scale of the y-axis for *S. boydii* and *S. dysenteriae*, compared to *S. sonnei* and *S. flexneri*).**

145 Males accounted for 54% (9,844/18,327) of cases. Over the 19-year period, the overall crude  
 146 notification rate was higher in males than females in the eastern states (ACT, NSW, QLD, and VIC);  
 147 while the western states and territories experienced higher rates in females (Figure S1). In the state  
 148 and territory regression model, there was a significantly higher notification rate in males than  
 149 females for *S. sonnei* (IRR 1.24; 95% CI 1.15-1.33); while there was no significant difference between  
 150 the sexes for the other species (Table 1).

151 **Table 1. Incidence rate ratios estimated using negative binomial regression of *S. flexneri*, *S. sonnei*,**  
 152 ***S. dysenteriae* and *S. boydii* by gender, age, state and time, 2001-2019.**

	<i>S.flexneri</i> IRR (95% CI)	<i>S.sonnei</i> IRR (95% CI)	<i>S.dysenteriae</i> IRR (95% CI)	<i>S.boydii</i> IRR (95% CI)
<b>Age groups (reference 0-4)</b>				
5-9	0.37 (0.30-0.45)	0.35 (0.29-0.42)	1.01 (0.20-5.02)	0.33 (0.16-0.67)
10-14	0.14 (0.11-0.18)	0.15 (0.12-0.18)	0.67 (0.11-4.03)	0.13 (0.05-0.38)
15-19	0.17 (0.13-0.21)	0.14 (0.12-0.18)	1.97 (0.49-7.94)	0.26 (0.12-0.56)
20-24	0.28 (0.23-0.35)	0.29 (0.24-0.35)	2.77 (0.74-10.3)	0.27 (0.13-0.56)
25-29	0.30 (0.24-0.37)	0.41 (0.35-0.49)	2.42 (0.64-9.19)	0.54 (0.31-0.96)
30-34	0.28 (0.23-0.35)	0.41 (0.34-0.49)	2.38 (0.63-9.04)	0.37 (0.20-0.72)
35-39	0.27 (0.22-0.34)	0.35 (0.29-0.42)	1.82 (0.45-7.32)	0.41 (0.22-0.78)
40-44	0.24 (0.19-0.30)	0.31 (0.26-0.38)	1.50 (0.36-6.31)	0.38 (0.20-0.73)
45-49	0.22 (0.17-0.27)	0.28 (0.23-0.34)	1.24 (0.28-5.59)	0.43 (0.23-0.80)
50-54	0.20 (0.16-0.25)	0.28 (0.24-0.34)	1.65 (0.39-6.94)	0.38 (0.20-0.75)
55-59	0.17 (0.14-0.22)	0.25 (0.20-0.30)	1.10 (0.22-5.46)	0.39 (0.19-0.77)
60-64	0.18 (0.14-0.23)	0.20 (0.16-0.24)	0.86 (0.14-5.18)	0.53 (0.28-1.01)
65-69	0.16 (0.12-0.21)	0.19 (0.16-0.24)	1.57 (0.31-7.81)	0.29 (0.12-0.70)
70-74	0.15 (0.11-0.21)	0.11 (0.08-0.15)	N/A	0.19 (0.06-0.61)
75-79	0.12 (0.08-0.18)	0.08 (0.06-0.12)	0.82 (0.08-7.91)	0.08 (0.01-0.58)
80-84	0.09 (0.05-0.14)	0.05 (0.03-0.08)	1.13 (0.12-10.9)	N/A
85+	0.07 (0.04-0.13)	0.06 (0.04-0.10)	N/A	0.36 (0.11-1.18)
<b>Jurisdiction (reference=NSW)</b>				
ACT	0.77 (0.29-2.06)	0.87 (0.48-1.55)	N/A	0.09 (0.00-57.5)
NT	82.0 (60.9-112.7)	21.9 (17.0-28.3)	N/A	3.38 (0.38-30.0)
QLD	1.02 (0.71-1.47)	0.80 (0.62-1.04)	1.44 (0.40-5.16)	0.51 (0.15-1.73)
SA	5.13 (3.64-7.24)	2.14 (1.61-2.86)	1.37 (0.23-8.25)	2.23 (0.75-6.59)
TAS	0.95 (0.42-2.11)	0.45 (0.22-0.91)	0 (N/A)	0.12 (0.00-27.3)



VIC	1.18 (0.84-1.64)	0.97 (0.76-1.24)	1.54 (0.48-5.01)	2.05 (0.94-4.50)
WA	10.3 (7.62-14.0)	2.54 (1.98-3.27)	2.39 (0.58-9.88)	0.72 (0.20-2.59)

**Trend over time by state and territory (2001-2017)**

ACT	1.04 (0.95-1.14)	1.05 (0.99-1.11)	N/A	1.19 (0.72-1.98)
NSW	1.06 (1.04-1.09)	1.06 (1.04-1.08)	1.01 (0.93-1.1)	1.07 (1.02-1.13)
NT	1.00 (0.98-1.03)	1.00 (0.98-1.02)	N/A	0.97 (0.77-1.22)
QLD	1.07 (1.04-1.10)	1.10 (1.08-1.12)	0.97 (0.87-1.08)	1.06 (0.96-1.17)
SA	0.97 (0.94-1.00)	0.99 (0.97-1.02)	0.97 (0.81-1.16)	1.02 (0.93-1.11)
TAS	1.01 (0.94-1.10)	1.02 (0.95-1.09)	N/A	1.14 (0.72-1.80)
VIC	1.08 (1.06-1.10)	1.08 (1.06-1.10)	0.96 (0.87-1.05)	1.01 (0.96-1.07)
WA	0.93 (0.91-0.96)	1.02 (1.00-1.04)	0.91 (0.78-1.05)	1.11 (1.01-1.22)

**Sex (reference=female)**

Male	1.04 (0.95-1.15)	1.18 (1.09-1.27)	1.03 (0.64-1.66)	1.22 (0.91-1.63)
------	------------------	------------------	------------------	------------------

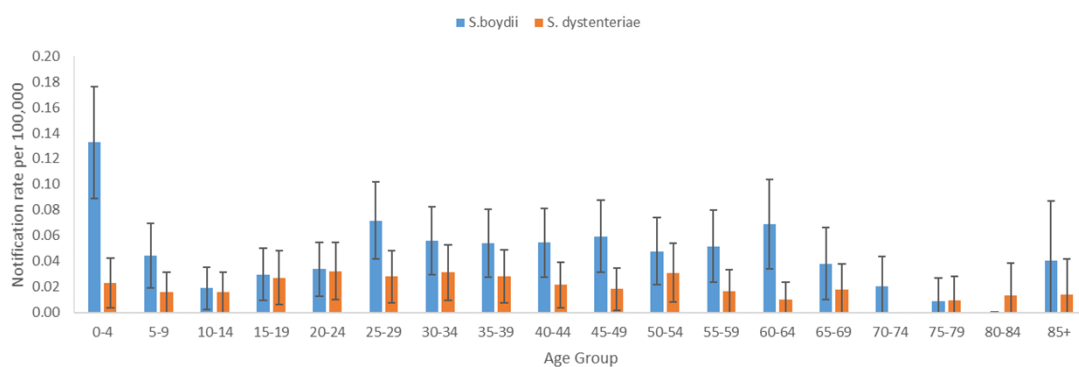
153

154 Nationally, notification rates of *S. boydii*, *S. flexneri* and *S. sonnei* peaked in children aged 0-4 years.

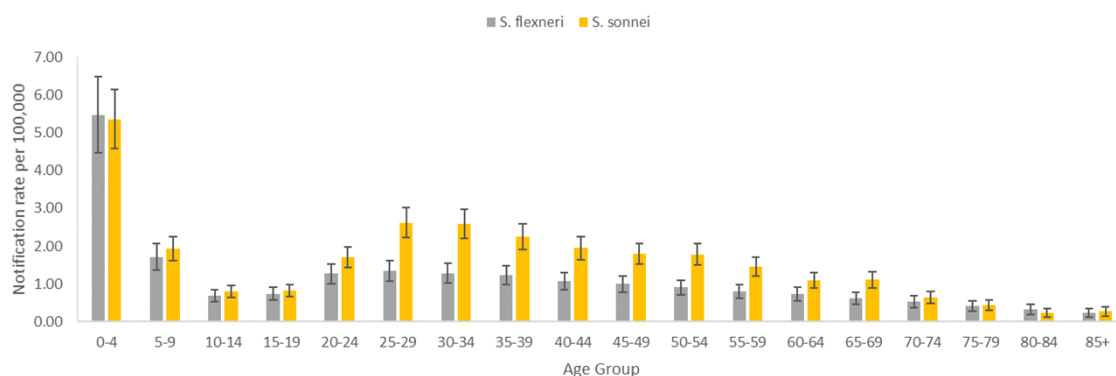
155 The highest rate of cases for *S. dysenteriae* occurred in those aged 20-24 years, however this was not  
 156 significantly different from the 0-4 year age reference group (IRR 1.40; 95% CI 0.49-3.99). Over the

157 study period, *S. sonnei* was the predominant species in all age groups except in those aged 0-4 years

158 and 80-84 years, where notification rates of *S. flexneri* were slightly higher (Figure 3).



159

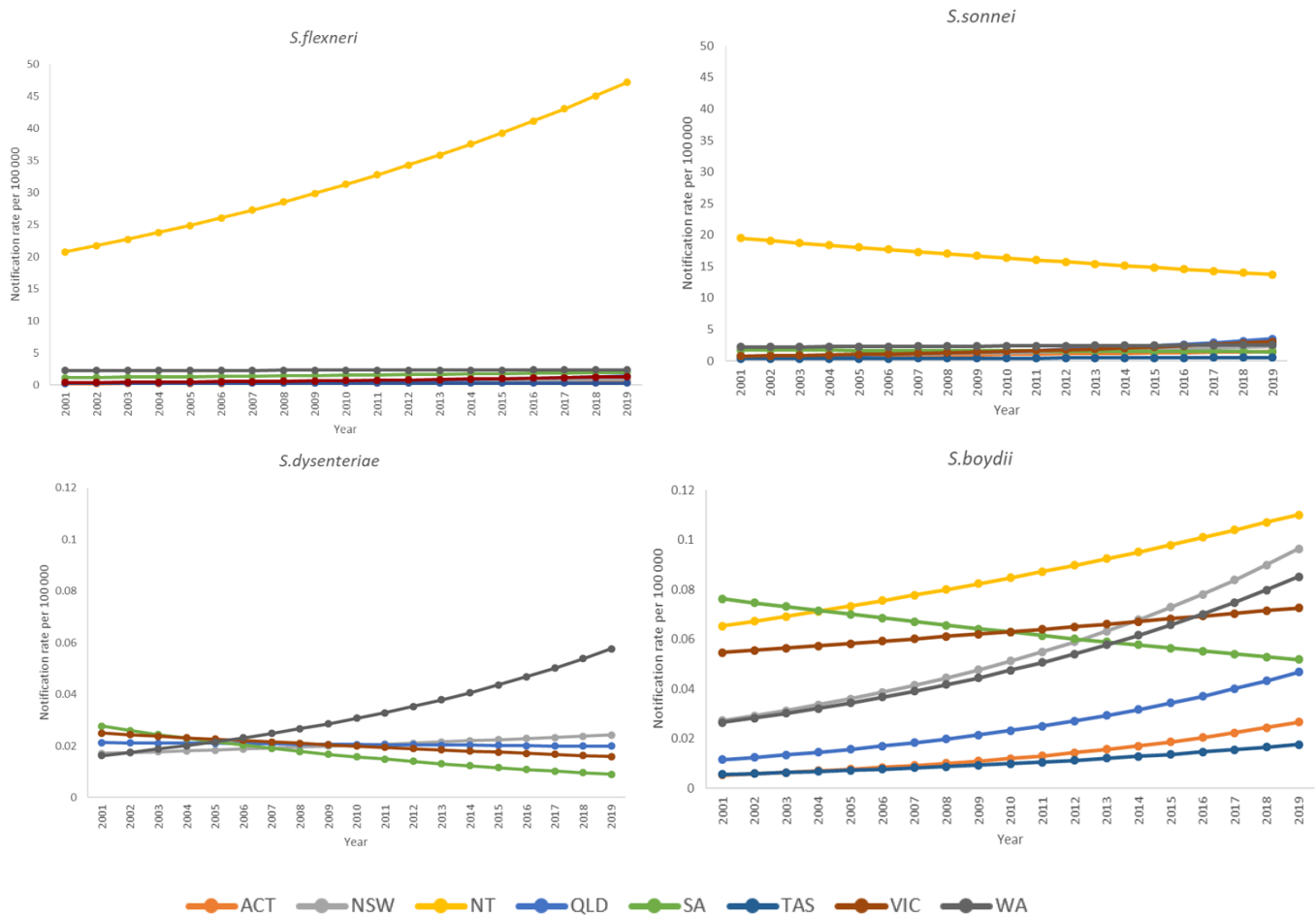


160

161 **Figure 3. Predicted notification rates of shigellosis per 100,000 with 95% CI, by 5 year age group**  
162 **and species, Australia, 2001-2019.** (Note the differing scale of the y-axis for *S. boydii* and *S.*  
163 *dysenteriae*, compared to *S. sonnei* and *S. flexneri*).

164 Notification rates varied by jurisdiction, with the NT having considerably higher rates than other  
165 states and territories. In 2019, the rate of shigellosis in the NT was 120.3 cases per 100,000  
166 population; nearly 17 times the overall national notification rate (7.1 cases per 100,000 population)  
167 (Figure S2). After the NT, in 2019, notification rates were highest in WA (14.8 cases per 100 000  
168 population), followed by NSW (10.6 cases per 100 000 population). At the start of the period,  
169 notification rates of *S. flexneri* were significantly higher in the states and territories in the west of  
170 Australia, that is NT (IRR 64.87; 95% CI 48.39-86.96), WA (IRR 7.07; 95% CI 5.30-9.44) and SA (IRR  
171 3.61; 95% CI 2.60-5.00), while rates were similar across the eastern states and territories. These  
172 western states and territories also had higher rates than the south eastern continental states and  
173 territories for *S. sonnei*. The notification rate of this species in TAS was significantly lower than the  
174 other jurisdictions (IRR 0.45; 95% CI 0.23-0.88). There was considerable uncertainty in results due to  
175 low case numbers making it difficult to conclude there was a difference in the notification rate  
176 between states and territories for *S. dysenteriae* and *S. boydii* (Figure 4). The NT, SA and VIC all had  
177 higher rates of *S. boydii*, although there was considerable imprecision in the IRR.

178 Looking at trends over time, from 2001 to 2019, NSW, NT, QLD, SA and VIC had a significant increase  
 179 in notification rates for *S. flexneri* (Table 1). Over the same period, notification rates of *S. sonnei*

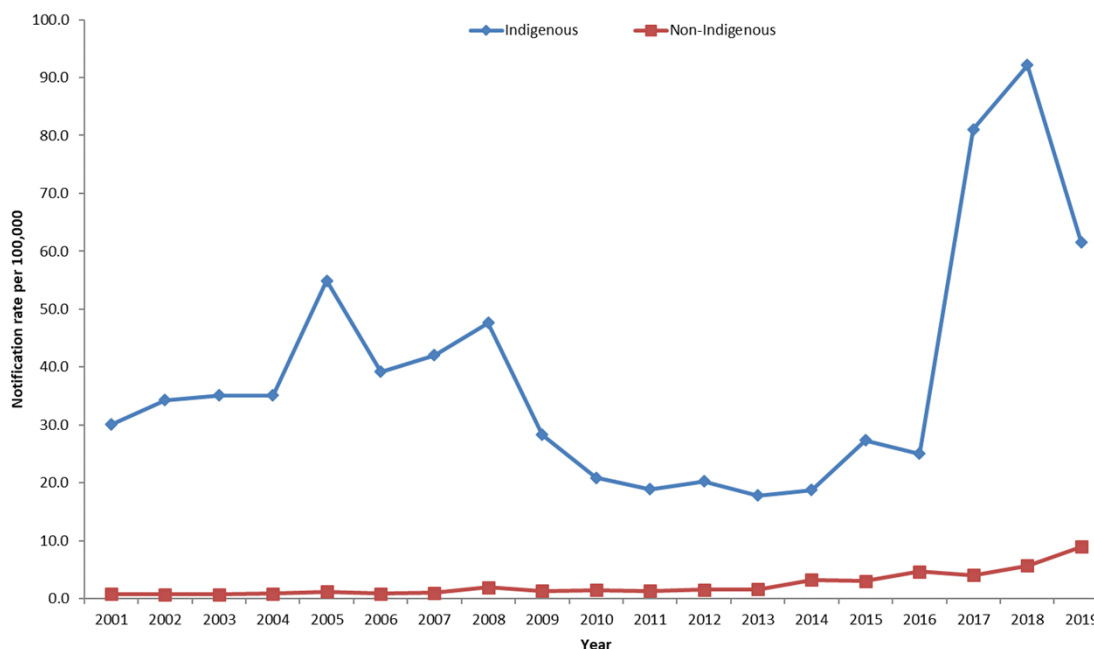


180 significantly increased in NSW, QLD and VIC, while rates decreased in NT. NSW also experienced a  
 181 significant increase in *S. boydii*, with an IRR of 1.07 (95% CI 1.03-1.12), along with other jurisdictions  
 182 although results were imprecise. There was no significant change in the notification rates of *S.*  
 183 *dysenteriae* for any state or territory over the 19 year period (Table 1). Regression lines plotted  
 184 against the crude notification rates for individual state and territories are available in Figure S3.

185 **Figure 4. Negative binomial regression margins plot of *S. flexneri*, *S. sonnei*, *S. dysenteriae* and *S.***  
 186 ***boydii* predicted notification rates by state and territory, Australia 2001-2019**

187 Indigenous status was available for 82% (15,529/18,327) of cases included in the analysis. There  
 188 were higher rates of shigellosis among First Nations Australians when compared to the non-

189 Indigenous population (Figure 5). Between 2016 and 2018 there was a greater than 3-fold increase  
190 in the notification rate in First Nations Australians, peaking at 92.1 cases per 100,000 in 2018.



191

192 **Figure 5. Notification rate of shigellosis per 100,000 population, by Indigenous status, Australia,**  
193 **2001-2019**

194 Information on laboratory diagnostic method was available for 87% of cases (16,004/18,327).

195 Between 2001 and 2013, most nationally notified cases of shigellosis were reported to be diagnosed

196 using culture only, peaking at 95% (786/829) of cases in 2008. From 2014 to 2019 there was a

197 decrease in the proportion of cases diagnosed via culture methods, ranging from 54% (554/1,033) in

198 2014 to 27% (835/3,142) in 2019 due to increasing use of CIDT methods. This led to increased report

199 of untyped *Shigella*, with >63-fold increase in cases of untyped *Shigella* from 2013 (n=30) to 2019

200 (n=1,902). At a jurisdictional level, all states and territories experienced a dramatic increase in

201 untyped *Shigella* in the past few years (Figure S4).

## 202 Discussion

203 Notification rates of shigellosis have increased considerably in Australia over the past 19 years  
204 (2001-2019), particularly since the introduction of CIDT. The reported rate of all species increased  
205 over the time period, except for *S. dysenteriae*. The most common species in Australia was *S. sonnei*  
206 (42% all cases), followed by *S. flexneri* (29% of cases), consistent with the reported global burden of  
207 shigellosis (10). While *S. flexneri* is traditionally linked to low and middle income countries and *S.*  
208 *sonnei* to high income countries, in recent years the expansion of *S. sonnei* has been documented in  
209 many economically transitional regions in Asia, Latin America and the Middle East (18). Globally,  
210 data on the epidemiology of *S. boydii* is limited, with this species being predominantly endemic in  
211 the Indian Subcontinent (19). The incidence of *S. dysenteriae* in Australia was very low compared to  
212 *S. sonnei* and *S. flexneri*, which is consistent with the reported incidence of this species mainly  
213 occurring in outbreak settings associated with civil unrest (20). *S. dysenteriae* serotype 1, which is  
214 the only *Shigella* species and serotype that expresses the Shiga toxin gene, has high epidemic  
215 potential and has been identified as a cause of several large scale outbreaks of dysentery (21-24).  
216 This strain is also notorious for developing drug resistance, with epidemic strains typically resistant  
217 to multiple antibiotics (25, 26). The epidemiology of *S. dysenteriae* is distinct from the other species  
218 of *Shigella*, with epidemics tending to disappear and then reappear years later, with few sporadic  
219 cases reported in between outbreaks (27, 28). While large scale outbreaks of *S. dysenteriae* serotype  
220 1 were prevalent in the second half of the twentieth century in Asia, Africa and Central America,  
221 there has been a drastic decline in the incidence of *S. dysenteriae* in the last few decades, which  
222 remains largely unexplained (5, 20, 29).

223 The relative importance of *Shigella* species in Australia varied by jurisdiction, with western  
224 jurisdictions, particularly the Northern Territory (NT) having higher rates across all years. In Australia,  
225 the incidence of shigellosis is higher in First Nations Australians than the non-Indigenous population,  
226 which was consistent throughout the period of surveillance. The disparity between the infection rate  
227 in First Nations Australians and the non-Indigenous population was particularly pronounced

228 between 2017–2019 due to an outbreak of *S. flexneri* 2b that occurred among First Nations  
229 communities in central Australia, predominantly in the NT (12). Antimicrobial resistance has also  
230 been reported in endemic strains of *Shigella* affecting First Nations Australians (30). An estimated  
231 18% of First Nations Australians are reported to live in overcrowded households, with the rates of  
232 overcrowding highest among those living in remote (26%) and very remote areas (51%) (31).  
233 Overcrowding and lack of safe removal and treatment of sewage has shown to be positively  
234 associated with gastrointestinal infections in First Nations Australian households (32). A multifaceted  
235 and preventative approach is needed to address the disproportional incidence of infectious diseases,  
236 including shigellosis, in First Nations communities.

237 Consistent with global trends, the burden of shigellosis in Australia was highest in children aged less  
238 than five years (22, 33) . Children in this age group have poor personal hygiene and are yet to have  
239 acquired immunity due to a lack of previous exposure (34, 35).

240 As shigellosis is typically a self-limiting disease, reported cases in NNDSS are likely to underrepresent  
241 the true incidence of disease. In general, notification data represent only those cases for which  
242 health care was sought, a test conducted, and a diagnosis made, followed by a notification to health  
243 authorities. Therefore, the higher incidence of shigellosis in children may also be due to children  
244 being overrepresented in the NNDSS dataset due to a higher chance of receiving medical care when  
245 unwell, compared to adults. Additionally, the low infectious dose of *Shigella* results in person-to-  
246 person transmission, which often occurs between children in childcare settings through close  
247 contact (5, 36). Transmission in these settings can also occur due to inadequate handwashing after  
248 nappy changing or defecation, or faecal contamination of play areas or nappy changing surfaces (34,  
249 36).

250 The eastern states of Australia had higher rates of shigellosis in males than females. This is likely to  
251 reflect ongoing transmission among MSM in these states with outbreaks occurring over several years  
252 in four of the most populous states (QLD, New South Wales, Victoria and South Australia) (37-41).

253 We identified higher rate of *S. sonnei* in males than females, which is the species responsible for  
254 several of the recent outbreaks among MSM in Australian communities. It is vital to control the  
255 spread of shigellosis amongst MSM due to the increasing occurrence of drug resistant strains such as  
256 multidrug resistant *S. sonnei* biotype G, resistant to all recommended oral antibiotics, which has  
257 been reported among MSM in NSW and SA (38, 39).

258 The shigellosis trends observed in the study are strongly influenced by changes in diagnostic testing  
259 methodologies over time. Since 2013, there has been an increase in cases of untyped *Shigella*,  
260 coinciding with increased use of culture independent testing methods for shigellosis diagnosis. CIDT  
261 are easy to perform, fast, sensitive and reliable, which makes them a valuable diagnostic tool.  
262 However, they are generally only able to identify the causative agent of an infection, without  
263 providing more granular level information such as pathogen strain, serotype or genotype, which is  
264 important to understand disease trends, detect outbreaks and monitor antimicrobial resistance  
265 patterns (42). Whole genome sequencing (WGS) allows public health agencies to obtain detailed  
266 epidemiological data for surveillance and investigation. WGS-based characterisation of *Shigella*  
267 species and serotypes provides higher-resolution and more accurate data than conventional  
268 biochemical and serological testing methods. The process to obtain this information is faster as WGS  
269 does not require the application of multiple subtyping methodologies (43). Additionally, WGS can  
270 differentiate between *Shigella* and EIEC, which have many biochemical properties and virulence  
271 genes in common (43, 44). It is important to note however that WGS can only be applied on cultured  
272 isolates, which highlights the importance of continuing culture until metagenomics approaches  
273 become more available.

274 Differences between states and territories in the collection of data presents several limitations for  
275 this study, particularly in making accurate comparisons between jurisdictions. For instance, the  
276 laboratory diagnostic method field in the NNDSS is applied inconsistently between jurisdictions, with  
277 some of these applications potentially resulting in an underestimation of cases diagnosed using CIDT

278 and others resulting in an overestimate of cases. Furthermore, prior to the implementation of the  
279 new case definition in July 2018, testing and notification practices varied by jurisdiction. The old  
280 shigellosis case definition defined laboratory definitive evidence as '*isolation or detection of Shigella*  
281 *species*'. Based on this, most states interpreted a PCR positive result as not a detection and waited  
282 for a positive result from reflex culture before making a notification. However, some states sent all  
283 these case notifications to the NNDSS marked as 'probable', which were recorded by the NNDSS  
284 system as 'confirmed' cases. Therefore, the observed increase in shigellosis cases since 2013 may be  
285 in part attributable to changes in testing (increased PCR uptake) and notification practices due to  
286 inconsistent interpretations of the case definition by states and territories. The differing testing  
287 practices between jurisdictions is evident when looking at the prevalence of untyped *Shigella*. For  
288 instance, VIC, NT and Tasmania all had a pronounced increase in the proportion of untyped *Shigella*  
289 from 2014 onwards, which is attributable to the uptake of PCR testing in these jurisdictions.

290 Returning travellers are a high risk group for shigellosis (40). To examine this trend on a national  
291 level, data on the place of acquisition of shigellosis cases was collected for this study. However the  
292 lack of completeness of this field limited its reliability for analysis and meaningful interpretation.

## 293 **Conclusion**

294 Since 2001, there has been an increasing incidence of shigellosis in Australia, with CIDT methods and  
295 persistent outbreaks in specific population groups responsible for much of the increase. This study  
296 has contributed to improving the understanding of the characteristics of shigellosis activity, including  
297 identifying high risk groups such as young children, MSM and First Nations Australians. The study  
298 also observed a considerable increase in untyped *Shigella* in recent years which coincided with an  
299 increased use of CIDT. This highlights the implications of culture independent testing on shigellosis  
300 surveillance, with CIDT leading to a reduction in the availability of species level information.

301 Enhancements in surveillance and laboratory practices, such as through the application of the  
302 revised surveillance case definition and use of WGS, will provide further insights into the



303 epidemiological features of shigellosis in Australia, thereby enabling the implementation of targeted  
304 and efficient prevention and control interventions.

## 305 References

- 306 1. Sur D, Ramamurthy T, Deen J, Bhattacharya SK. Shigellosis : challenges &  
307 management issues. Indian J Med Res. 2004;120(5):454-62.
- 308 2. Niyogi SK. Shigellosis. J Microbiol. 2005;43(2):133-43.
- 309 3. Sanford C, Jong E, Pottinger P. The Travel and Tropical Medicine Manual (Fifth  
310 Edition): Elsevier; 2017. 664 p.
- 311 4. Shen H, Chen J, Xu Y, Lai Z, Zhang J, Yang H, et al. An outbreak of shigellosis in  
312 a Children Welfare Institute caused by a multiple-antibiotic-resistant strain of  
313 *Shigella flexneri* 2a. J Infect Public Health. 2017;10(6):814-8.
- 314 5. Zaidi MB, Estrada-Garcia T. *Shigella*: A Highly Virulent and Elusive Pathogen.  
315 Curr Trop Med Rep. 2014;1(2):81-7.
- 316 6. Brown JD, Willcox SJ, Franklin N, Hazelton B, Howard P, Reinten T, et al.  
317 *Shigella* species epidemiology and antimicrobial susceptibility: the implications of  
318 emerging azithromycin resistance for guiding treatment, guidelines and breakpoints.  
319 J Antimicrob Chemother. 2017;72(11):3181-6.
- 320 7. Lane CR, Sutton B, Valcanis M, Kirk M, Walker C, Lalor K, et al. Travel  
321 Destinations and Sexual Behavior as Indicators of Antibiotic Resistant *Shigella*  
322 Strains—Victoria, Australia. Clinical Infectious Diseases. 2015;62(6):722-9.
- 323 8. Therapeutic Guidelines Ltd. *Shigella* enteritis (shigellosis) 2019 [updated July  
324 2021. Available from: <https://www.tg.org.au/>.
- 325 9. Khalil IA, Troeger C, Blacker BF, Rao PC, Brown A, Atherly DE, et al. Morbidity  
326 and mortality due to shigella and enterotoxigenic *Escherichia coli* diarrhoea: the  
327 Global Burden of Disease Study 1990-2016. The Lancet Infectious Diseases.  
328 2018;18(11):1229-40.
- 329 10. Baker S, The HC. Recent insights into *Shigella*: a major contributor to the  
330 global diarrhoeal disease burden. Curr Opin Infect Dis. 2018;31(5):449-54.
- 331 11. Australia CDN. National Communicable Diseases Surveillance Report Fortnight  
332 24, 2019, Summary Notes for Selected Diseases, 23 November to 06 December 2019.  
333 Department of Health. 2019.
- 334 12. Draper A, Markey P. *Shigella flexneri* 2b in the Northern Territory in 2017. The  
335 Northern Territory Disease Control Bulletin. 2017;24(4).
- 336 13. Health Protection NSW. MDR Shigellosis Alert: NSW Government; 2018 [cited  
337 2018 17 November]. Available from:  
338 [https://www.health.nsw.gov.au/Infectious/alerts/Documents/2018/mdr-shigellosis-](https://www.health.nsw.gov.au/Infectious/alerts/Documents/2018/mdr-shigellosis-clinician-alert-2018.pdf)  
339 [clinician-alert-2018.pdf](https://www.health.nsw.gov.au/Infectious/alerts/Documents/2018/mdr-shigellosis-clinician-alert-2018.pdf)
- 340 14. Tai AY, Easton M, Encena J, Rotty J, Valcanis M, Howden BP, et al. A review of  
341 the public health management of shigellosis in Australia in the era of culture-  
342 independent diagnostic testing. Aust N Z J Public Health. 2016;40(6):588-91.

- 343 15. Vu DT, Sethabutr O, Von Seidlein L, Tran VT, Do GC, Bui TC, et al. Detection of  
344 Shigella by a PCR assay targeting the ipaH gene suggests increased prevalence of  
345 shigellosis in Nha Trang, Vietnam. *J Clin Microbiol.* 2004;42(5):2031-5.
- 346 16. Chattaway MA, Schaefer U, Tewolde R, Dallman TJ, Jenkins C. Identification of  
347 *Escherichia coli* and *Shigella* Species from Whole-Genome Sequences. *J Clin*  
348 *Microbiol.* 2017;55(2):616-23.
- 349 17. Department of Health. Shigellosis Surveillance Case Definition Canberra:  
350 Australian Government 2018 [Available from:  
351 [http://www.health.gov.au/internet/main/publishing.nsf/Content/cda-surveil-nndss-](http://www.health.gov.au/internet/main/publishing.nsf/Content/cda-surveil-nndss-casedefs-cd_shigel.htm)  
352 [casedefs-cd\\_shigel.htm](http://www.health.gov.au/internet/main/publishing.nsf/Content/cda-surveil-nndss-casedefs-cd_shigel.htm).
- 353 18. Thompson CN, Duy PT, Baker S. The Rising Dominance of *Shigella sonnei*: An  
354 Intercontinental Shift in the Etiology of Bacillary Dysentery. *PLoS Negl Trop Dis.*  
355 2015;9(6):e0003708.
- 356 19. Yang F, Yang J, Zhang X, Chen L, Jiang Y, Yan Y, et al. Genome dynamics and  
357 diversity of *Shigella* species, the etiologic agents of bacillary dysentery. *Nucleic Acids*  
358 *Res.* 2005;33(19):6445-58.
- 359 20. Anderson M, Sansonetti PJ, Marteyn BS. *Shigella* Diversity and Changing  
360 Landscape: Insights for the Twenty-First Century. *Front Cell Infect Microbiol.*  
361 2016;6:45.
- 362 21. Faruque SM, Chowdhury N, Khan R, Hasan MR, Nahar J, Islam MJ, et al.  
363 *Shigella dysenteriae* type 1-specific bacteriophage from environmental waters in  
364 Bangladesh. *Appl Environ Microbiol.* 2003;69(12):7028-31.
- 365 22. von Seidlein L, Kim DR, Ali M, Lee H, Wang X, Thiem VD, et al. A multicentre  
366 study of *Shigella* diarrhoea in six Asian countries: disease burden, clinical  
367 manifestations, and microbiology. *PLoS Med.* 2006;3(9):e353.
- 368 23. World Health Organization. Guidelines for the control of shigellosis, including  
369 epidemics due to *Shigella dysenteriae* 1. Geneva, Switzerland 2005.
- 370 24. Kerneis S, Guerin PJ, von Seidlein L, Legros D, Grais RF. A look back at an  
371 ongoing problem: *Shigella dysenteriae* type 1 epidemics in refugee settings in Central  
372 Africa (1993-1995). *PLoS One.* 2009;4(2):e4494.
- 373 25. Bhattacharya S, Sur D. Shigellosis. In: Quah SR, editor. *International*  
374 *Encyclopedia of Public Health, Second Edition* Elsevier; 2017. p. 4470.
- 375 26. Wu T, Grassel C, Levine MM, Barry EM. Live attenuated *Shigella dysenteriae*  
376 type 1 vaccine strains overexpressing shiga toxin B subunit. *Infect Immun.*  
377 2011;79(12):4912-22.
- 378 27. Rohmer L, Jacobs MA, Brittnacher MJ, Fong C, Hayden HS, Hocquet D, et al.  
379 Genomic analysis of the emergence of 20th century epidemic dysentery. *BMC*  
380 *Genomics.* 2014;15:355.
- 381 28. Mattock E, Blocker AJ. How Do the Virulence Factors of *Shigella* Work  
382 Together to Cause Disease? *Front Cell Infect Microbiol.* 2017;7:64.
- 383 29. Njamkepo E, Fawal N, Tran-Dien A, Hawkey J, Strockbine N, Jenkins C, et al.  
384 Global phylogeography and evolutionary history of *Shigella dysenteriae* type 1. *Nat*  
385 *Microbiol.* 2016;1:16027.

- 386 30. Guglielmino CJD, Kakkanat A, Forde BM, Rubenach S, Merone L, Stafford R, et  
387 al. Outbreak of multi-drug-resistant (MDR) *Shigella flexneri* in northern Australia due  
388 to an endemic regional clone acquiring an IncFII plasmid. *Eur J Clin Microbiol Infect*  
389 *Dis.* 2021;40(2):279-86.
- 390 31. Welfare AloHa. Tier 2 - Determinants of health, 2.01 Housing 2021 [updated  
391 30 April 2021. Available from: [https://www.indigenoushpf.gov.au/measures/2-01-](https://www.indigenoushpf.gov.au/measures/2-01-housing#references)  
392 [housing#references](https://www.indigenoushpf.gov.au/measures/2-01-housing#references).
- 393 32. Ali SH, Foster T, Hall NL. The Relationship between Infectious Diseases and  
394 Housing Maintenance in Indigenous Australian Households. *Int J Environ Res Public*  
395 *Health.* 2018;15(12).
- 396 33. Kotloff KL, Winickoff JP, Ivanoff B, Clemens JD, Swerdlow DL, Sansonetti PJ, et  
397 al. Global burden of *Shigella* infections: implications for vaccine development and  
398 implementation of control strategies. *Bull World Health Organ.* 1999;77(8):651-66.
- 399 34. Gupta A, Polyak CS, Bishop RD, Sobel J, Mintz ED. Laboratory-confirmed  
400 shigellosis in the United States, 1989-2002: epidemiologic trends and patterns. *Clin*  
401 *Infect Dis.* 2004;38(10):1372-7.
- 402 35. Zhao L, Xiong Y, Meng D, Guo J, Li Y, Liang L, et al. An 11-year study of  
403 shigellosis and *Shigella* species in Taiyuan, China: Active surveillance, epidemic  
404 characteristics, and molecular serotyping. *J Infect Public Health.* 2017;10(6):794-8.
- 405 36. Genobile D, Gaston J, Tallis GF, Gregory JE, Griffith JM, Valcanis M, et al. An  
406 outbreak of shigellosis in a child care centre. *Commun Dis Intell Q Rep.*  
407 2004;28(2):225-9.
- 408 37. Queensland Health. *Shigella* infection (Shigellosis) 2018 [Available from:  
409 <https://www.health.qld.gov.au/cdcg/index/shigellosis>.
- 410 38. Koehler A. Multi-drug resistant shigella alert: SA Health; 2018 [22 October  
411 2019]. Available from:  
412 <https://www.sahealth.sa.gov.au/wps/wcm/connect/public+content/sa+health+inter>  
413 [net/protecting+public+health/alerts/health+alerts/multi+-](https://www.sahealth.sa.gov.au/wps/wcm/connect/public+content/sa+health+inter)  
414 [+drug+resistant+shigella+alert](https://www.sahealth.sa.gov.au/wps/wcm/connect/public+content/sa+health+inter).
- 415 39. NSW Government. MDR Shigellosis Alert. In: Health Do, editor. 2018.
- 416 40. Victorian Department of Health and Human Services. Shigellosis -  
417 management recommendations updates 2017 [Available from:  
418 <https://www2.health.vic.gov.au/about/news-and-events/healthalerts/advisory->  
419 [2019-shigellosis](https://www2.health.vic.gov.au/about/news-and-events/healthalerts/advisory-).
- 420 41. O'Sullivan B, Delpech V, Pontivivo G, Karagiannis T, Marriott D, Harkness J, et  
421 al. Shigellosis linked to sex venues, Australia. *Emerg Infect Dis.* 2002;8(8):862-4.
- 422 42. May FJ, Stafford RJ, Carroll H, Robson JM, Vohra R, Nimmo GR, et al. The  
423 effects of culture independent diagnostic testing on the diagnosis and reporting of  
424 enteric bacterial pathogens in Queensland, 2010 to 2014. *Commun Dis Intell Q Rep.*  
425 2017;41(3):E223-E30.
- 426 43. Wu Y, Lau HK, Lee T, Lau DK, Payne J. In Silico Serotyping Based on Whole-  
427 Genome Sequencing Improves the Accuracy of *Shigella* Identification. *Appl Environ*  
428 *Microbiol.* 2019;85(7).

429 44. van den Beld MJ, Reubsaet FA. Differentiation between Shigella,  
430 enteroinvasive Escherichia coli (EIEC) and noninvasive Escherichia coli. Eur J Clin  
431 Microbiol Infect Dis. 2012;31(6):899-904.

432