

1 **Solid fuel use in relation to dementia risk in middle-aged and older adults:**
2 **A prospective cohort study**

3
4 Fan Pu^{1#}, Yingying Hu^{2#}, Chenxi Li^{1#}, Xingqi Cao¹, Zhenqing Yang¹, Yi Liu⁶,
5 Jingyun Zhang¹, Xueqin Li¹, Yongli Yang³, Wei Wang⁴, Xiaoting Liu^{2,5}, Kejia Hu^{6*},
6 Yanan Ma^{7*}, Zuyun Liu^{1*}

7
8
9
10 ¹Department of Big Data in Health Science School of Public Health and Center for
11 Clinical Big Data and Analytics of the Second Affiliated Hospital, Zhejiang
12 University School of Medicine, Hangzhou 310058, Zhejiang, China

13
14 ²School of Public Affairs, Zhejiang University, Hangzhou 310058, Zhejiang, China

15
16 ³Department of Epidemiology and Biostatistics, College of Public Health, Zhengzhou
17 University, Zhengzhou 450001, Henan, China

18
19 ⁴Department of Occupational Health and Occupational disease, College of Public
20 Health, Zhengzhou University, Zhengzhou 450001, Henan, China

21
22 ⁵Institute of Wenzhou, Zhejiang University, Hangzhou, Zhejiang, China

23
24 ⁶Department of Big Data in Health Science School of Public Health, Zhejiang
25 University School of Medicine, Hangzhou 310058, Zhejiang, China

26
27 ⁷Department of Biostatistics and Epidemiology, School of Public Health, China
28 Medical University, Shenyang, Liaoning, China

29
30 [#]These authors contributed equally to this work.

31 ^{*}These authors contributed equally as the senior author.

32
33
34
35 ***Corresponding author:** Zuyun Liu, Professor, Department of Big Data in Health
36 Science School of Public Health and Center for Clinical Big Data and Analytics of the
37 Second Affiliated Hospital, Zhejiang University School of Medicine, 866 Yuhangtang
38 Rd, Hangzhou, 310058, Zhejiang, China. Telephone: +86-0571-87077127.
39 Email: Zuyun.liu@outlook.com or zuyunliu@zju.edu.cn

41 **Abstract**

42 **Objectives:** It remains unknown whether household air pollution is associated with
43 dementia risk. This study examined the associations between solid fuel use for
44 cooking and heating (the main source of household air pollution) and dementia risk.

45 **Methods:** This analysis included data on 11,352 participants (aged 45+ years) from
46 the 2011 wave of China Health and Retirement Longitudinal Study, with follow-up to
47 2018. Dementia risk was assessed by a risk score using the Rotterdam Study Basic
48 Dementia Risk Model (BDRM) and then standardized for analysis. Household fuel
49 types of cooking and heating were categorized as solid (e.g., coal, crop residue) and
50 clean (e.g., central heating, solar). Multivariable analyses were performed using
51 generalized estimating equations. Moreover, we examined the joint associations of
52 solid fuel use for cooking and heating with the BDRM score.

53 **Results:** We found an independent and significant association of solid (vs. clean) fuel
54 use for cooking and heating with a higher BDRM score after adjusting for potential
55 confounders (e.g., $\beta = 0.14$ for solid fuel for cooking; 95% CI: 0.12, 0.17).
56 Participants who used solid (vs. clean) fuel for both cooking and heating had the
57 highest BDRM score ($\beta = 0.20$; 95%CI: 0.16, 0.23). Subgroup analysis suggested
58 stronger associations in participants living in rural areas.

59 **Conclusions:** Solid fuel use for cooking and heating was independently associated
60 with increased dementia risk in Chinese middle-aged and older adults, particularly
61 among those living in rural areas. Our findings call for more efforts to facilitate
62 universal access to clean energy for dementia prevention.

63
64

65 **Keywords:** Solid fuel use; dementia risk; Rotterdam Study Basic Dementia Risk
66 Model; middle-aged and older adults

67

Abbreviations: LMICs, low- and middle-income countries; HICs, high-income countries; HAP, household air pollution; BDRM, Rotterdam Study Basic Dementia Risk Model; CHARLS, China Health and Retirement Longitudinal Study; BDSI, Brief Dementia Screening Indicator; SD, standard deviation; CI, confidence interval; CVD, cardiovascular disease; AD, Alzheimer's disease; GEE, generalized estimating equations.

68 **1. Introduction**

69 Dementia currently affects more than 50 million people worldwide, with the
70 number expected to reach 152 million by 2050. In the absence of definitive and
71 effective treatment for dementia, early prevention is a very important strategy for
72 reducing the dementia risk. This is an important issue especially for low- and
73 middle-income countries (LMICs), which have more patients (i.e., nearly two-thirds
74 of global patients) but fewer dementia-related medicare resources compared to
75 high-income countries (HICs). The identification and modification of risk factors
76 remain fundamental to developing primary and secondary prevention strategies, to
77 lower the incidence of dementia.

78 Prior studies have shown that ambient air pollutants, including CO, PM_{2.5}, NO_x,
79 and O₃, are associated with increased dementia risk (Chen et al. 2017; Jung et al. 2015;
80 Li et al. 2019; Oudin et al. 2016). However, in modern society, people spend 90% of
81 their lives indoors. Household air pollution (HAP) has been established to have a
82 more significant effect on health than outdoor air pollution (Apte and Salvi 2016;
83 Kurmi et al. 2012; Tran et al. 2020). As the main contributor to HAP, solid fuel use for
84 cooking and heating causes 4 million premature death per year globally (Daly and
85 Walton 2017). In China, solid fuels are the primary source of household energy for
86 over 700 million people (Banerjee et al. 2012; Smith et al. 2013). Moreover,
87 household solid fuel use has been linked to a variety of diseases, including cataracts
88 (Ravilla Thulasiraj et al. 2016), tuberculosis (Kolappan and Subramani 2009), and
89 cardiovascular disease (CVD) (Painschab et al. 2013). Dementia is highly prevalent in
90 an aging society. Nonetheless, the potential effects of HAP from the use of solid fuel
91 on dementia have not been evaluated yet.

92 To the end, we leverage survey data from China Health and Retirement
93 Longitudinal Study (CHARLS), a large and prospective nationally representative
94 cohort study of middle-aged and older adults, who are the most sensitive age groups
95 to both air pollution and dementia. The present study aimed to demonstrate the
96 associations of solid fuel use for cooking and heating with dementia risk, assessed
97 using a risk score based on the widely used Rotterdam Study Basic Dementia Risk
98 Model (BDRM) (Licher et al. 2019). We also evaluated whether the associations
99 differed by important socialdemographic characteristics such as age, sex, and
100 residence.

101

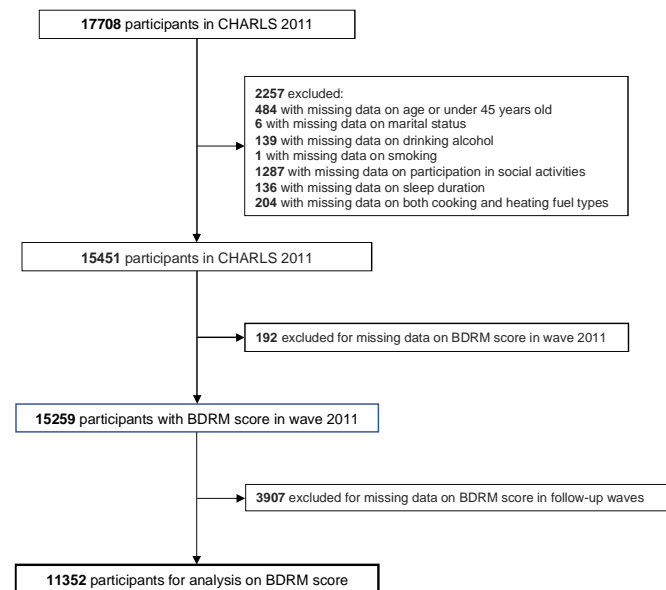
102 **2. Methods**

103 *2.1. Study design and participants*

104 This study used data from the 2011-2012, 2013-2014, 2015-2016, and 2018-2019
105 waves of the CHARLS. CHARLS is a national longitudinal cohort study covering 450
106 urban communities and rural areas in 28 provinces of China. The survey includes
107 participants' information on household demographics, health status, health care
108 utilization, insurance, and other variables. Data can be accessed through its official
109 website (charls.ccer.edu.cn/en). Additional details on study design regarding sampling,

110 response rates, and data quality assessment have been published previously (Zhao et
111 al. 2014). CHARLS was approved by Peking University's Ethical Review Committee
112 (IRB000001052-11015). All participants provided written informed consent prior to
113 participation.

114 The baseline survey was launched from 2011 to 2012 and recruited 17,708
115 participants. We excluded participants whose ages were under 45 years old (N = 484),
116 with missing data on demographics (N = 1,569) and household energy source (N =
117 204); then, we excluded participants with missing data on variables used to calculate
118 the BDRM score in 2011 wave (N = 192) and in all follow-up waves (N = 3907),
119 leaving 11,352 participants for the final analysis. Details of the flowchart are shown in
120 Figure 1.



121 **Fig. 1. Flow chart of the selection process of participants.**

122

123 2.2. Dementia risk measurement

124 Dementia risk was measured at the baseline and in follow-up waves using the
125 BDRM, a dementia risk prediction model developed in HICs and showed similar
126 discriminative ability when applied in LMICs (Stephan et al. 2020). The BDRM score
127 was quantified by weighing the following risk factors to predict dementia: age (1.09
128 points), history of stroke (1.82 points), subjective memory decline (1.31 points), and
129 need for assistance with finances or medication (1.46 points). The detailed scoring
130 algorithm is shown in Table S1. BDRM scores were first calculated and then z-score
131 standardized for the statistical analysis, with higher scores indicating greater dementia
132 risk.

133 *2.3. Household fuel types*

134 Household fuel types of cooking and heating were assessed by a structured
135 questionnaire with the following questions: “What is the main source of cooking fuel?
136 (1) Coal, (2) Natural gas, (3) Marsh gas, (4) Liquefied petroleum gas, (5) electric, (6)
137 Crop residue/Woodburning, (7) Other”, and “Does your residence have heating? (1)
138 Yes, (2) No’ and ‘What is the main heating energy source? (1) Solar, (2) Coal, (3)
139 Natural gas, (4) Liquefied petroleum gas, (5) electric, (6) Crop residue/Woodburning,
140 (7) Other”. Household fuel types of cooking and heating were categorized as solid
141 (i.e., coal, crop residue, wood) and clean (i.e., central heating, solar, natural gas,
142 liquefied petroleum gas, electric, or marsh gas). We excluded participants whose
143 answer was “other” as we could not precisely assess the type of fuel.

144

145 *2.4. Covariates*

146 Covariates including sociodemographic factors and health behaviors were
147 obtained at baseline. The sociodemographic variables including sex, educational level,
148 marital status, residence, and social activities were collected from the self-reported
149 questionnaire. Educational level was categorized into lower than middle school or
150 middle school and above. Marital status was categorized into currently married or
151 others (e.g., separated, divorced, widowed). The residence was categorized into rural
152 and urban. Individuals were considered to participate in social activities if they did
153 any of the following activities: interacted with friends; played mahjong, chess, or
154 cards, or visited a community club; supported family, friends, or neighbors; went to a
155 sport, social, or other kind of club; participated in a community-related organization;
156 did volunteer or charity work; cared for a sick or disabled adult; attended an
157 educational or training course; invested in stocks; surfed the Internet; and others.
158 Health behaviors include smoking, alcohol drinking status, sleep duration, and
159 number of chronic diseases. Smoking status was categorized into never smoker, ever
160 smoker, and current smoker. Alcohol drinking status was categorized into never
161 drinker and ever drinker. Chronic diseases included hypertension, diabetes or high
162 blood sugar, cancer or malignant tumor, chronic lung disease, heart problems, stroke,
163 kidney disease, stomach or other digestive diseases, arthritis or rheumatism, and
164 asthma. Number of chronic diseases was categorized into 0, 1, 2, and ≥ 3 .

165

166 *2.5. Statistical analyses*

167 *2.5.1 Descriptive statistics*

168 Distributions of the baseline characteristics were described by stratifying
169 household solid fuel. Means \pm standard deviations (SDs) and numbers (percentages)
170 were used to describe the continuous and categorical variables, respectively.
171 Mann-Whitney U test and Chi-square test were used to examine the differences in

172 continuous variables and categorical variables, respectively.

173 *2.5.2 Single exposure models*

174 Generalized estimating equations (GEEs) were used to separately examine the
175 associations of solid fuel use for cooking or heating with BDRM scores. In Model 1,
176 we adjusted for sex. In Model 2, we further adjusted for residence, marital status,
177 participation in social activities, alcohol drinking status, smoking status, sleep
178 duration, number of chronic diseases, and waves. We estimated the coefficients and
179 their 95% confidence intervals (CIs) for cooking or heating in the two GEE models.

180

181 *2.5.3 Co-exposure models*

182 In order to further compare the contributions of cooking and heating, we
183 examined the joint associations of solid fuel use for cooking and heating with BDRM
184 scores by adding two fuel types and their interaction in GEE models. Since no
185 significant interaction was observed, we removed it in the final models. Covariates in
186 two GEE models were the same as those in the single-exposure models. We reported
187 the coefficients and 95% CIs for cooking and heating in GEE models.

188 Additionally, we investigated the associations of BDRM score with the following
189 four exposure groups: group 1 (clean cooking fuel type & clean heating fuel type),
190 group 2 (solid cooking fuel type & clean heating fuel type), group 3 (clean cooking
191 fuel type & solid heating fuel type) and group 4 (solid cooking fuel type & solid
192 heating fuel type). Two GEE models using the above four groups as the exposure
193 variable were performed, adjusting for the same covariates as mentioned above. We
194 reported the coefficients and their 95% CIs for the four exposure groups in the two
195 GEE models.

196

197 *2.5.4 Subgroup analyses*

198 To examine whether the associations of solid fuel use for cooking and heating with
199 BDRM scores differed by subgroup, we stratified the single-exposure models by
200 baseline characteristics including age (≤ 65 years, > 65 years), sex (male, female),
201 residence (rural, urban), marital status (live with spouse, live without spouse),
202 participation in social activities (yes, not), alcohol drinking status (never drinker, ever
203 drinker), smoking status (never smoker, ever smoker, current smoker), sleep duration ($>$
204 4 and < 10 hours per night, ≤ 4 or ≥ 10 hours per night) (Ma et al. 2020), and number
205 of chronic disease ($0-1$, ≥ 2). We estimated the coefficients and their 95% CIs for
206 cooking or heating.

207 All statistical analyses were performed using R 4.1.3 (<http://www.R-project.org>).
208 The “geepack” packages were used for the GEE model (Hjsgaard et al. 2005). A
209 two-sided P value of <0.05 was considered statistically significant.

210

211

212 *2.5.5 Sensitivity analyses*

213 To test the robustness of our findings, we conducted the sensitivity analyses
 214 including: (1) excluding participants with extremely high (i.e., > mean + 2SD) BDRM
 215 scores at baseline; (2) using another dementia risk prediction model, BDSI (Brief
 216 Dementia Screening Indicator)(Barnes et al. 2014); (3) further adjusting for more
 217 covariates in Model 2.

218

219 **3. Results**

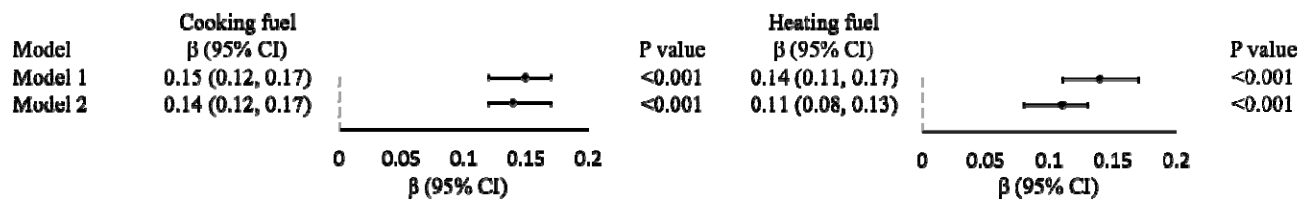
220 *3.1. Baseline characteristics of the study population*

221 Table1 shows the baseline characteristics of participants included in the
 222 prospective analysis. Participants who used solid (vs. clean) fuel tended to be older
 223 (e.g., for cooking, 59.91 vs 58.15 years), live in rural areas (e.g., for cooking, 77.9%
 224 vs 37.9%), lessly participate in social activities (e.g., for cooking, 44.7% vs 56.3%),
 225 and have more chronic diseases (e.g., for cooking, 1.36 vs 1.21). Moreover,
 226 participants who used solid (vs. clean) fuel had a significantly higher BDRM score.

227

228 *3.2. Association of solid fuel use for cooking and heating with BDRM scores*

229 Figure 2 presents the associations of solid fuel use for cooking and heating with
 230 BDRM scores from single-exposure models. Participants who used solid (vs. clean)
 231 fuel had significantly higher BDRM scores in all models. For instance, in fully
 232 adjusted Model 2, participants who used solid (vs. clean) fuel for cooking or heating
 233 had a 0.14 (95% CI: 0.12, 0.17, P < 0.001) and 0.11 (95% CI: 0.08, 0.13, P < 0.001)
 234 increase in BDRM scores, respectively.



235

236 **Fig. 2. Associations of solid fuel use for cooking and heating with BDRM scores**

237 Note: BDRM, Rotterdam Study Basic Dementia Risk Model; β, regression coefficient;
 238 CI, confidence interval.

239 Model 1 adjusted for sex. Model 2 adjusted for sex, residence, marital status,
 240 participation in social activities, alcohol drinking status, smoking status, sleep
 241 duration, number of chronic diseases and wave.

242

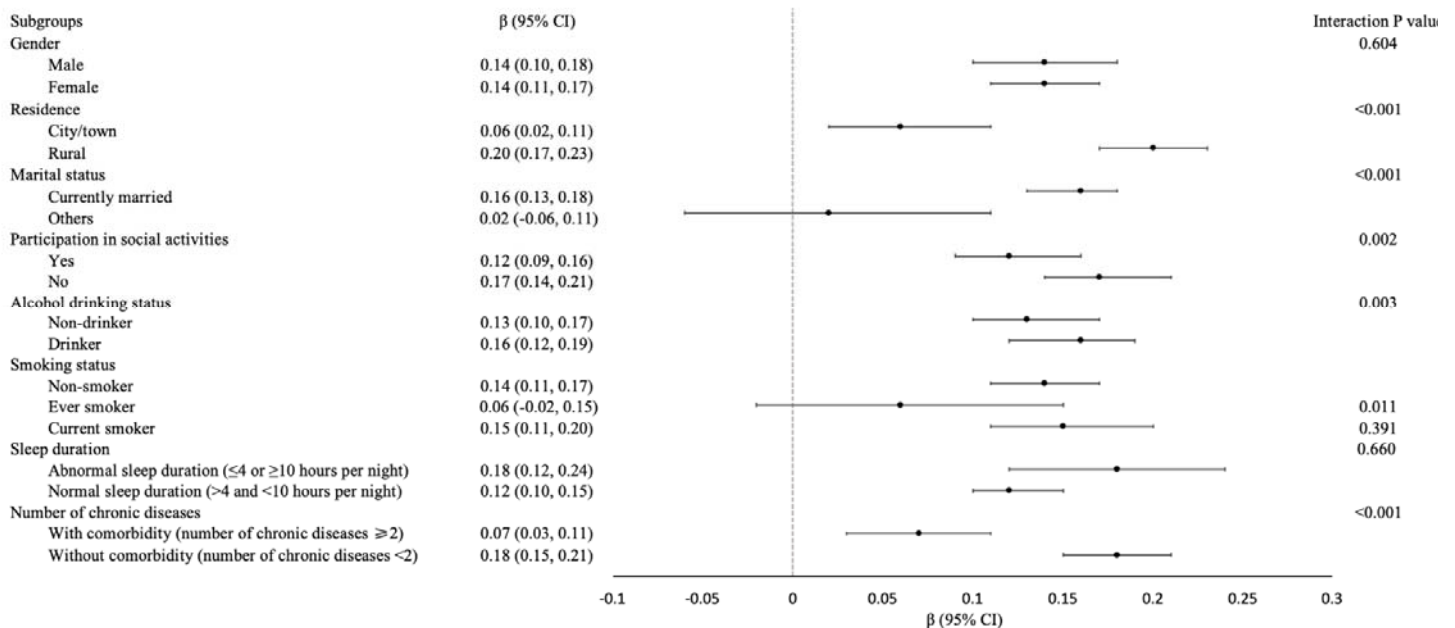
243 **3.3 Joint association of solid fuel use for cooking and heating with BDRM scores**

244 Table 2 shows the joint associations of solid fuel use for cooking and heating with
 245 BDRM scores from co-exposure models. We found that solid fuel use for both
 246 cooking and heating was independently associated with BDRM scores. For instance,
 247 in fully adjusted Model 2, participants who used solid fuel for cooking had a 0.16 (95%
 248 CI: 0.13, 0.19, $P < 0.001$) increase in BDRM scores and participants who used solid
 249 (vs. clean) fuel for heating had a 0.03 (95%CI: 0.00, 0.06, $P = 0.040$) increase in
 250 BDRM scores. Meanwhile, group 4 (solid cooking fuel & solid heating fuel) had the
 251 highest BDRM score, with a β of 0.20 (95% CI: 0.16, 0.23, $P < 0.001$), relative to
 252 group 1 (clean cooking fuel type & clean heating fuel type).

253

254 **3.4 Association of solid fuel use for cooking and heating with BDRM scores by**
 255 **subgroups**

256 The results of subgroup analyses are shown in Figures 3 and 4, respectively.
 257 Overall, the associations of solid fuel use for cooking and heating with BDRM scores
 258 were largely maintained in different subgroups. We observed the stronger associations
 259 in participants living in rural areas and without comorbidity. For instance, in rural
 260 areas, participants who used solid (vs. clean) fuel for cooking had a 0.20 (95% CI:
 261 0.17, 0.23) increase in BDRM score and in urban areas, the estimate was 0.06 (95%

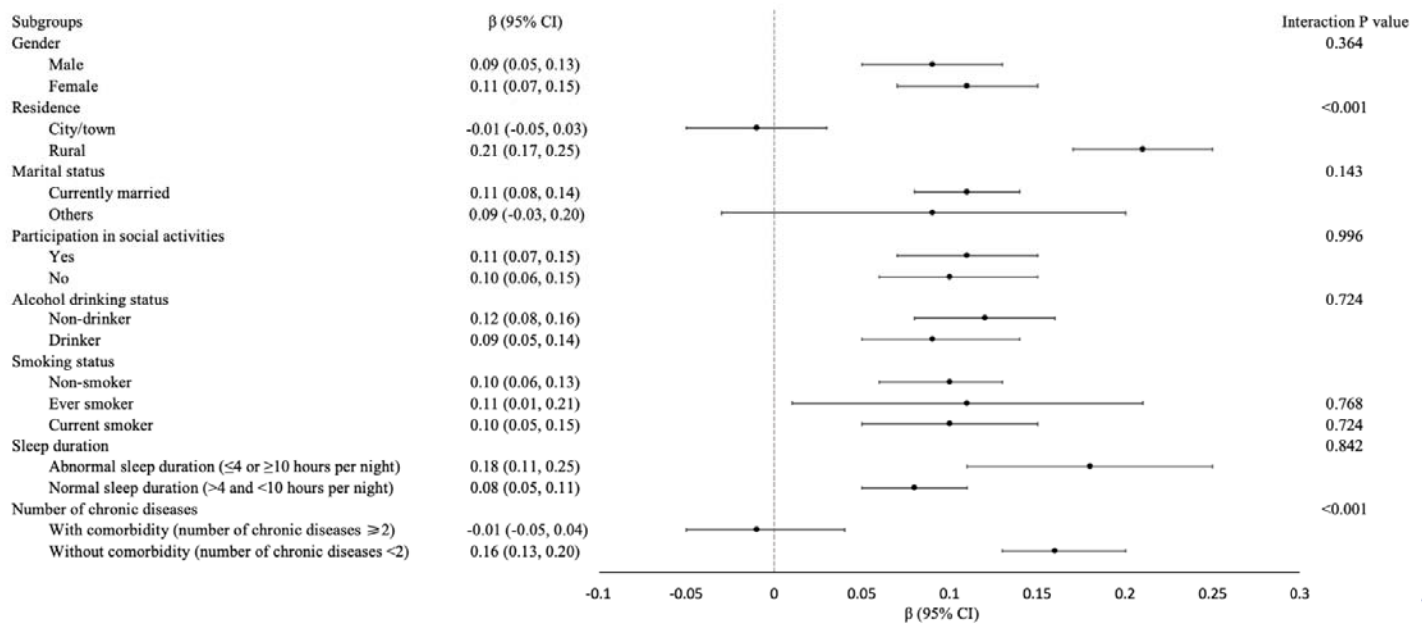


262 CI: 0.02, 0.11).

263 **Fig. 3. Subgroup analyses of associations of solid fuel use for cooking with**
 264 **BDRM scores**

265 Note: BDRM, Rotterdam Study Basic Dementia Risk Model; β , regression coefficient;

266 CI, confidence interval.



267 **Fig. 4. Subgroup analyses of associations of solid fuel use for heating with BDRM**
 268 **scores**

269 Note: Data: β (95% CI), Interaction p-value; outcome variable: dementia risk scores.
 270 BDRM, Rotterdam Study Basic Dementia Risk Model; β , regression coefficient; CI,
 271 confidence interval.

272

273 3.5. Sensitive analyses

274 First, excluding participants with an extremely high ($> \text{mean} + 2\text{SD}$) BDRM score
 275 at baseline did not alter the significant associations between solid fuel use and
 276 increased BDRM scores in all models (Table S1). Second, we found similar results
 277 using another dementia risk prediction model—BDSI (Table S2-S5 and Figure S1-S4).

278 For instance, as shown in Figure S2, in fully adjusted Model 2, participants who used
 279 solid fuel for cooking had a 0.23 (95% CI: 0.19, 0.28, $P < 0.001$) increase in BDSI
 280 scores and participants who used solid fuel for heating had a 0.16 (95% CI: 0.10, 0.21,
 281 $P < 0.001$) increase in BDSI scores. Third, the results were consistent with those from
 282 primary analyses after adjusting more covariates in Model 2 for BDSI and BDRM
 283 analysis, respectively (Table S7).

284

285 4. Discussion

286 Based on a large sample of middle-aged and older adults from a nationally
 287 representative cohort study, we found that solid fuel use for cooking and heating was

288 independently associated with higher BDRM scores (i.e., increased dementia risk),
289 and solid fuel use for cooking exhibited a greater effect on BDRM scores. The
290 associations were maintained in most subgroups and stronger in participants living in
291 rural areas. Our findings highlight the potential of using clean fuel indoors, especially
292 for cooking, for preventing dementia in rural areas.

293 Nearly three billion people use solid fuels worldwide which is the main reason for
294 HAP (Lim et al. 2012). In China, about one million people died prematurely because
295 of the solid fuel used indoors (Lertxundi et al. 2015). Meanwhile, China is
296 experiencing the highest growing number of people with dementia (Prince 2016). So
297 far, several studies have examined the association of solid fuel use with negative
298 health outcomes, including asthma (Thacher et al. 2013), lower respiratory tract
299 infections (Ezzati and Kammen 2001), chronic obstructive pulmonary disease,
300 all-cause mortality (Smith and Mehta 2003) and preeclampsia/eclampsia (Agrawal
301 and Yamamoto 2015). However, no studies have explored the association of solid fuel
302 use with dementia risk. For the first time, we demonstrated that solid fuel use for
303 cooking and heating was associated with increased dementia risk. Our findings
304 highlight an intriguing new avenue for dementia prevention and control, and calls for
305 more efforts to facilitate universal access to clean energy, especially in LMICs such as
306 China. In the Fourteenth Five Year Plan of Agriculture and Rural Area Modernization,
307 China is seeking for evidence to initiate a series of policies to promote the utilization
308 of clean energy, such as solar power and wind energy, and extend the construction of
309 clean heating facilities. Further studies would be applied to explore the improvement
310 of the cognitive function of people through the intervention of this clean energy
311 revolution in China.

312 Our results in subgroup analysis showed a stronger association of solid (vs. clean)
313 fuel use with increased dementia risk in participants who lived in rural areas. In China,
314 adults in rural areas are still heavily reliant on solid fuel (Chan et al. 2017). Moreover,
315 the prevalence of dementia in rural areas is higher than that in urban China (Hu et al.,
316 2021) (Hu et al. 2021). Adults in rural areas might be more vulnerable to air pollutants
317 caused by solid fuel use, due to their relatively poor health in comparison to their
318 counterparts in urban (Zhang 2017). Nonetheless, an increasing number of Chinese
319 people are willing to retire to the countryside, highlighting a critical intervention point
320 to raise awareness among this group about the benefits of using clean fuel rather than
321 solid fuel (Shen et al. 2021). Considering fewer dementia-related medicare resources
322 in rural areas, this could provide a useful approach for preventing dementia. We also
323 found a stronger association of solid (vs. clean) fuel use with a higher BDSI score in
324 females. This was consistent with Chen's study where solid fuel use was stronger
325 associated with cognitive function decline among females than males in China (Chen
326 et al. 2021). The plausible explanation is that females in China experience more
327 exposure to HAP from solid fuel use because they actively participate in domestic
328 activities such as cooking. Another possible explanation is that there was a sex
329 difference in the biological effect of solid fuel use on human health, given that PM2.5
330 has a greater adverse effect in females than in males (Eze et al. 2015; Kim et al. 2019).
331 The above findings may aid in the identification of vulnerable subgroups such as

332 those living in rural areas or females, and the development of precise prevention
333 programs for dementia.

334 The underlying biological mechanisms of the association observed are unclear.
335 Solid fuel use produces high levels of gaseous pollutants (e.g., CO, NO_x, O₃) and
336 particulate matters (e.g., PM_{2.5}) (Chen et al. 2016; Clark et al. 2013; Ni et al. 2016).
337 The particles could translocate to the brain through the circulation crossing the
338 blood-brain barrier (Block and Calderón-Garcidueñas 2009) or olfactory neurons
339 (Tonelli and Postolache 2010) and then cause neurotoxicity (Terzano et al. 2010). The
340 particles trigger dementia pathogenesis via multiple pathways (Akiyama et al. 2000;
341 Block et al. 2012; Calderón-Garcidueñas et al. 2002; Costa et al. 2014). First, particles
342 contribute to dementia pathogenesis by inducing neuroinflammation and oxidative
343 stress (Peters et al. 2006). The second plausible pathway involves the promotion or
344 aggravation of cardiovascular effects. PM_{2.5} and other pollutants (e.g., NO₂) have
345 been demonstrated to have adverse effects on cardiovascular health, a well-known
346 risk factor for cognitive decline and dementia (O'Brien 2006; Stampfer 2006).
347 Vascular disease may have an indirect effect, i.e., vascular injury in the brain may
348 produce conditions that predispose to neurodegeneration. Alternatively, vascular
349 factors may play a direct role in Alzheimer's disease (AD) progression by promoting
350 neuronal death and the formation of plaques and tangles (the hallmark pathology of
351 Alzheimer's disease) (Stampfer 2006). Further studies are needed to explore the
352 toxicological mechanisms of solid fuel use with dementia risk.

353 Our study has some strengths. First, this study conducted a comprehensive
354 analysis of the association between the use of solid fuel and dementia risk, using a
355 prospective cohort design and a relatively large sample size of middle-aged and older
356 adults. Second, we used two widely-used dementia risk models of BDSI and BDRM,
357 and the consistent results showed the robustness of our findings. Third, using
358 dementia risk as an outcome enables us to track and prevent dementia at an earlier
359 stage. However, the study has several limitations. First, data on solid fuel use was
360 self-reported; and thus, recall bias is possible. Second, data on detailed exposure
361 duration for solid fuel use were unavailable; and thus, we could not evaluate the effect
362 of exposure duration on dementia risk. Third, outdoor air pollution was not controlled,
363 and it may bias the results. Fourth, BDSI and BDRM are not developed originally in
364 China; however, the two models have been proved to show well discriminative ability
365 when used in LMICs (Stephan et al. 2020).

366

367 **5. Conclusions**

368 For the first time, this study demonstrated that solid fuel use for cooking and
369 heating was independently associated with increased dementia risk among Chinese
370 middle-aged and older adults, particularly among those living in rural areas. Our
371 findings call for more efforts to facilitate universal access to clean energy for
372 dementia prevention. Meanwhile, more studies are needed to disentangle the
373 toxicological mechanisms of solid fuel use with dementia risk.

374 **Acknowledgments**

375 This research was supported by a grant from a grant from the National Natural
376 Science Foundation of China (72004201), the Fundamental Research Funds for the
377 Central Universities (ZL), Key Laboratory of Intelligent Preventive Medicine of
378 Zhejiang Province (2020E10004), Zhejiang University Global Partnership Fund
379 (188170-11103), and a grant of Humanity and Social Science Youth Foundation of
380 Ministry of Education (20YJC840019). The funders had no role in the study design;
381 data collection, analysis, or interpretation; in the writing of the report; or in the
382 decision to submit the article for publication.
383

384 **Reference**

- 385 Akiyama, H.; Barger, S.; Barnum, S.; Bradt, B.; Bauer, J.; Cole, G.M.; Cooper, N.R.;
- 386 Eikelenboom, P.; Emmerling, M.; Fiebich, B.L.; Finch, C.E.; Frautschy, S.; Griffin,
- 387 W.S.T.; Hampel, H.; Hull, M.; Landreth, G.; Lue, L.F.; Mrak, R.; Mackenzie, I.R.;
- 388 McGeer, P.L.; O'Banion, M.K.; Pachter, J.; Pasinetti, G.; Plata-Salaman, C.; Rogers,
- 389 J.; Rydel, R.; Shen, Y.; Streit, W.; Strohmeyer, R.; Tooyoma, I.; Van Muiswinkel, F.L.;
- 390 Veerhuis, R.; Walker, D.; Webster, S.; Wegryzniak, B.; Wenk, G.; Wyss-Coray, T.
- 391 Inflammation and Alzheimer's disease. *Neurobiology of Aging* 2000;21:383-421.
- 392 [https://doi.org/https://doi.org/10.1016/S0197-4580\(00\)00124-X](https://doi.org/https://doi.org/10.1016/S0197-4580(00)00124-X)
- 393 Apte, K.; Salvi, S. Household air pollution and its effects on health. *F1000Res*
- 394 2016;5<https://doi.org/10.12688/f1000research.7552.1>
- 395 Banerjee, M.; Siddique, S.; Dutta, A.; Mukherjee, B.; Ranjan Ray, M. Cooking with biomass
- 396 increases the risk of depression in pre-menopausal women in India. *Social Science &*
- 397 *Medicine* 2012;75:565-572.
- 398 <https://doi.org/https://doi.org/10.1016/j.socscimed.2012.03.021>
- 399 Barnes, D.E.; Beiser, A.S.; Lee, A.; Langa, K.M.; Koyama, A.; Preis, S.R.; Neuhaus, J.;
- 400 McCammon, R.J.; Yaffe, K.; Seshadri, S.; Haan, M.N.; Weir, D.R. Development and
- 401 validation of a brief dementia screening indicator for primary care. *Alzheimer's &*
- 402 *Dementia* 2014;10:656-665.e651.
- 403 <https://doi.org/https://doi.org/10.1016/j.jalz.2013.11.006>
- 404 Block, M.L.; Calderón-Garcidueñas, L. Air pollution: mechanisms of neuroinflammation and
- 405 CNS disease. *Trends Neurosci* 2009;32:506-516.
- 406 <https://doi.org/10.1016/j.tins.2009.05.009>

- 407 Block, M.L.; Elder, A.; Auten, R.L.; Bilbo, S.D.; Chen, H.; Chen, J.C.; Cory-Slechta, D.A.;
408 Costa, D.; Diaz-Sanchez, D.; Dorman, D.C.; Gold, D.R.; Gray, K.; Jeng, H.A.;
409 Kaufman, J.D.; Kleinman, M.T.; Kirshner, A.; Lawler, C.; Miller, D.S.; Nadadur, S.S.;
410 Ritz, B.; Semmens, E.O.; Tonelli, L.H.; Veronesi, B.; Wright, R.O.; Wright, R.J. The
411 outdoor air pollution and brain health workshop. *Neurotoxicology* 2012;33:972-984.
412 <https://doi.org/10.1016/j.neuro.2012.08.014>
- 413 Calderón-Garcidueñas, L.; Azzarelli, B.; Acuna, H.; Garcia, R.; Gambling, T.M.; Osnaya, N.;
414 Monroy, S.; Tizapantzi, M.D.R.; Carson, J.L.; Villarreal-Calderon, A.; Rewcastle, B. Air
415 pollution and brain damage. *Toxicologic Pathology* 2002;30:373-389.
416 <https://doi.org/10.1080/01926230252929954>
- 417 Chan, K.H.; Lam, K.B.H.; Kumi, O.P.; Guo, Y.; Bennett, D.; Bian, Z.; Sherliker, P.; Chen, J.; Li,
418 L.; Chen, Z. Trans-generational changes and rural-urban inequality in household fuel
419 use and cookstove ventilation in China: A multi-region study of 0.5 million adults.
420 *International Journal of Hygiene and Environmental Health* 2017;220:1370-1381.
421 <https://doi.org/https://doi.org/10.1016/j.ijheh.2017.09.010>
- 422 Chen, H.; Chen, L.; Hao, G. Sex difference in the association between solid fuel use and
423 cognitive function in rural China. *Environ Res* 2021;195:110820.
424 <https://doi.org/10.1016/j.envres.2021.110820>
- 425 Chen, H.; Kwong, J.C.; Copes, R.; Hystad, P.; van Donkelaar, A.; Tu, K.; Brook, J.R.;
426 Goldberg, M.S.; Martin, R.V.; Murray, B.J.; Wilton, A.S.; Kopp, A.; Burnett, R.T.
427 Exposure to ambient air pollution and the incidence of dementia: A population-based
428 cohort study. *Environment International* 2017;108:271-277.

429 <https://doi.org/https://doi.org/10.1016/j.envint.2017.08.020>

430 Chen, Y.; Shen, G.; Liu, W.; Du, W.; Su, S.; Duan, Y.; Lin, N.; Zhuo, S.; Wang, X.; Xing, B.;

431 Tao, S. Field measurement and estimate of gaseous and particle pollutant emissions

432 from cooking and space heating processes in rural households, northern China.

433 Atmospheric Environment 2016;125:265-271.

434 <https://doi.org/https://doi.org/10.1016/j.atmosenv.2015.11.032>

435 Clark, M.L.; Peel, J.L.; Balakrishnan, K.; Breysse, P.N.; Chillrud, S.N.; Naeher, L.P.; Rodes,

436 C.E.; Vette, A.F.; Balbus, J.M. Health and household air pollution from solid fuel use:

437 the need for improved exposure assessment. Environ Health Perspect

438 2013;121:1120-1128. <https://doi.org/10.1289/ehp.1206429>

439 Costa, L.G.; Cole, T.B.; Coburn, J.; Chang, Y.C.; Dao, K.; Roque, P. Neurotoxicants are in the

440 air: Convergence of human, animal, and in vitro studies on the effects of air pollution

441 on the brain. BioMed Research International

442 2014;2014<https://doi.org/10.1155/2014/736385>

443 Daly, H.; Walton, M. Energy Access Outlook: from Poverty to Prosperity, World Energy

444 Outlook-2017 Special Report

445 Eze, I.C.; Hemkens, L.G.; Bucher, H.C.; Hoffmann, B.; Schindler, C.; Künzli, N.; Schikowski, T.;

446 Probst-Hensch, N.M. Association between ambient air pollution and diabetes mellitus

447 in Europe and North America: systematic review and meta-analysis. Environ Health

448 Perspect 2015;123:381-389. <https://doi.org/10.1289/ehp.1307823>

449 Ezzati, M.; Kammen, D.M. Quantifying the effects of exposure to indoor air pollution from

450 biomass combustion on acute respiratory infections in developing countries.

- 451 Environmental Health Perspectives 2001;109:481-488.
- 452 <https://doi.org/doi:10.1289/ehp.01109481>
- 453 Hjsgaard, S.; Yan, J.; Halekoh, U. The R package GEEPACK for generalized estimating
454 equations. *Journal of statistical software* 2005;15
- 455 Hu, F.F.; Cheng, G.R.; Liu, D.; Liu, Q.; Gan, X.G.; Li, L.; Wang, X.D.; Zhang, B.; An, L.N.;
456 Chen, C.; Zou, M.J.; Xu, L.; Ou, Y.M.; Chen, Y.S.; Li, J.Q.; Wei, Z.; Wang, Y.Y.; Wu,
457 Q.; Chen, X.X.; Yang, X.F.; Wu, Q.M.; Feng, L.; Zhang, J.J.; Xu, H.; Yu, Y.F.; Yang,
458 M.L.; Qian, J.; Lian, P.F.; Fu, L.Y.; Duan, T.T.; Tian, Y.; Cheng, X.; Li, X.W.; Yan, P.T.;
459 Huang, G.; Dong, H.; Ji, Y.; Zeng, Y. Population-attributable fractions of risk factors for
460 all-cause dementia in China rural and urban areas: a cross-sectional study. *J Neurol*
461 2021;<https://doi.org/10.1007/s00415-021-10886-y>
- 462 Jung, C.-R.; Lin, Y.-T.; Hwang, B.-F. Ozone, Particulate Matter, and Newly Diagnosed
463 Alzheimer's Disease: A Population-Based Cohort Study in Taiwan. *Journal of*
464 *Alzheimer's Disease* 2015;44:573-584. <https://doi.org/10.3233/JAD-140855>
- 465 Kim, H.; Noh, J.; Noh, Y.; Oh, S.S.; Koh, S.B.; Kim, C. Gender Difference in the Effects of
466 Outdoor Air Pollution on Cognitive Function Among Elderly in Korea. *Front Public*
467 *Health* 2019;7:375. <https://doi.org/10.3389/fpubh.2019.00375>
- 468 Kolappan, C.; Subramani, R. Association between biomass fuel and pulmonary tuberculosis: a
469 nested case-control study. *Thorax* 2009;64:705.
470 <https://doi.org/10.1136/thx.2008.109405>
- 471 Kurmi, O.P.; Lam, K.B.H.; Ayres, J.G. Indoor air pollution and the lung in low- and
472 medium-income countries. *European Respiratory Journal* 2012;40:239.

- 473 <https://doi.org/10.1183/09031936.00190211>
- 474 Lertxundi, A.; Baccini, M.; Lertxundi, N.; Fano, E.; Aranbarri, A.; Martínez, M.D.; Ayerdi, M.;
- 475 Álvarez, J.; Santa-Marina, L.; Dorronsoro, M.; Ibarluzea, J. Exposure to fine particle
- 476 matter, nitrogen dioxide and benzene during pregnancy and cognitive and
- 477 psychomotor developments in children at 15 months of age. *Environ Int*
- 478 2015;80:33-40. <https://doi.org/10.1016/j.envint.2015.03.007>
- 479 Li, C.-Y.; Li, C.-H.; Martini, S.; Hou, W.-H. Association between air pollution and risk of
- 480 vascular dementia: A multipollutant analysis in Taiwan. *Environment International*
- 481 2019;133:105233. <https://doi.org/https://doi.org/10.1016/j.envint.2019.105233>
- 482 Licher, S.; Leening, M.J.G.; Yilmaz, P.; Wolters, F.J.; Heeringa, J.; Bindels, P.J.E.; Vernooij,
- 483 M.W.; Stephan, B.C.M.; Steyerberg, E.W.; Ikram, M.K.; Ikram, M.A. Development and
- 484 Validation of a Dementia Risk Prediction Model in the General Population: An Analysis
- 485 of Three Longitudinal Studies. *Am J Psychiatry* 2019;176:543-551.
- 486 <https://doi.org/10.1176/appi.ajp.2018.18050566>
- 487 Lim, Y.-H.; Kim, H.; Kim, J.H.; Bae, S.; Park, H.Y.; Hong, Y.-C. Air Pollution and Symptoms of
- 488 Depression in Elderly Adults. *Environmental Health Perspectives*
- 489 2012;120:1023-1028. <https://doi.org/doi:10.1289/ehp.1104100>
- 490 Ma, Y.; Liang, L.; Zheng, F.; Shi, L.; Zhong, B.; Xie, W. Association Between Sleep Duration
- 491 and Cognitive Decline. *JAMA Netw Open* 2020;3:e2013573.
- 492 <https://doi.org/10.1001/jamanetworkopen.2020.13573>
- 493 Ni, K.; Carter, E.; Schauer, J.J.; Ezzati, M.; Zhang, Y.; Niu, H.; Lai, A.M.; Shan, M.; Wang, Y.;
- 494 Yang, X.; Baumgartner, J. Seasonal variation in outdoor, indoor, and personal air

495 pollution exposures of women using wood stoves in the Tibetan Plateau: Baseline
496 assessment for an energy intervention study. *Environ Int* 2016;94:449-457.
497 <https://doi.org/10.1016/j.envint.2016.05.029>

498 Oudin, A.; Forsberg, B.; Adolfsson, A.N.; Lind, N.; Modig, L.; Nordin, M.; Nordin, S.; Adolfsson,
499 R.; Nilsson, L.G. Traffic-Related Air Pollution and Dementia Incidence in Northern
500 Sweden: A Longitudinal Study. *Environ Health Perspect* 2016;124:306-312.
501 <https://doi.org/10.1289/ehp.1408322>

502 Painschab, M.S.; Davila-Roman, V.G.; Gilman, R.H.; Vasquez-Villar, A.D.; Pollard, S.L.; Wise,
503 R.A.; Miranda, J.J.; Checkley, W.; Group, C.C.S. Chronic exposure to biomass fuel is
504 associated with increased carotid artery intima-media thickness and a higher
505 prevalence of atherosclerotic plaque. *Heart* 2013;99:984.
506 <https://doi.org/10.1136/heartjnl-2012-303440>

507 Peters, A.; Veronesi, B.; Calderón-Garcidueñas, L.; Gehr, P.; Chen, L.C.; Geiser, M.; Reed,
508 W.; Rothen-Rutishauser, B.; Schürch, S.; Schulz, H. Translocation and potential
509 neurological effects of fine and ultrafine particles a critical update. *Part Fibre Toxicol*
510 2006;3:13. <https://doi.org/10.1186/1743-8977-3-13>

511 Prince, M., Comas-Herrera, A., Knapp, M., Guerchet, M., & Karagiannidou, M. World
512 Alzheimer report 2016: Improving healthcare for people living with dementia:
513 Coverage, quality and costs now and in the future.
514 <https://www.alz.co.uk/research/WorldAlzheimerReport2016.pdf> (accessed

515 Ravilla Thulasiraj, D.; Gupta, S.; Ravindran Ravilla, D.; Vashist, P.; Krishnan, T.; Maraini, G.;
516 Chakravarthy, U.; Fletcher Astrid, E. Use of Cooking Fuels and Cataract in a

- 517 Population-Based Study: The India Eye Disease Study. *Environmental Health*
- 518 *Perspectives* 2016;124:1857-1862. <https://doi.org/10.1289/EHP193>
- 519 Shen, S.; Luo, M.; Meng, X.; Deng, Y.; Cheng, S. All-Cause Mortality Risk Associated With
- 520 Solid Fuel Use Among Chinese Elderly People: A National Retrospective Longitudinal
- 521 Study. *Front Public Health* 2021;9:741637. <https://doi.org/10.3389/fpubh.2021.741637>
- 522 Smith, K.R.; Frumkin, H.; Balakrishnan, K.; Butler, C.D.; Chafe, Z.A.; Fairlie, I.; Kinney, P.;
- 523 Kjellstrom, T.; Mauzerall, D.L.; McKone, T.E.; McMichael, A.J.; Schneider, M. Energy
- 524 and Human Health. *Annual Review of Public Health* 2013;34:159-188.
- 525 <https://doi.org/10.1146/annurev-publhealth-031912-114404>
- 526 Stampfer, M.J. Cardiovascular disease and Alzheimer's disease: common links. *J Intern Med*
- 527 2006;260:211-223. <https://doi.org/10.1111/j.1365-2796.2006.01687.x>
- 528 Stephan, B.C.M.; Pakpahan, E.; Siervo, M.; Licher, S.; Muniz-Terrera, G.; Mohan, D.; Acosta,
- 529 D.; Rodriguez Pichardo, G.; Sosa, A.L.; Acosta, I.; Llibre-Rodriguez, J.J.; Prince, M.;
- 530 Robinson, L.; Prina, M. Prediction of dementia risk in low-income and middle-income
- 531 countries (the 10/66 Study): an independent external validation of existing models.
- 532 *Lancet Glob Health* 2020;8:e524-e535.
- 533 [https://doi.org/10.1016/s2214-109x\(20\)30062-0](https://doi.org/10.1016/s2214-109x(20)30062-0)
- 534 Terzano, C.; Di Stefano, F.; Conti, V.; Graziani, E.; Petroianni, A. Air pollution ultrafine
- 535 particles: toxicity beyond the lung. *Eur Rev Med Pharmacol Sci* 2010;14:809-821.
- 536 Thacher, J.D.; Emmelin, A.; Madaki, A.J.K.; Thacher, T.D. Biomass fuel use and the risk of
- 537 asthma in Nigerian children. *Respiratory Medicine* 2013;107:1845-1851.
- 538 <https://doi.org/10.1016/j.rmed.2013.09.009>

539 Tonelli, L.H.; Postolache, T.T. Airborne inflammatory factors: "from the nose to the brain".
540 Front Biosci (Schol Ed) 2010;2:135-152. <https://doi.org/10.2741/s52>

541 Tran, V.V.; Park, D.; Lee, Y.-C. Indoor Air Pollution, Related Human Diseases, and Recent
542 Trends in the Control and Improvement of Indoor Air Quality. International Journal of
543 Environmental Research and Public Health
544 2020;17<https://doi.org/10.3390/ijerph17082927>

545 Zhang, J. Low-Level Air Pollution Associated With Death: Policy and Clinical Implications.
546 Jama 2017;318:2431-2432. <https://doi.org/10.1001/jama.2017.18948>

547 Zhao, X.; Sun, Z.; Ruan, Y.; Yan, J.; Mukherjee, B.; Yang, F.; Duan, F.; Sun, L.; Liang, R.; Lian,
548 H.; Zhang, S.; Fang, Q.; Gu, D.; Brook, J.R.; Sun, Q.; Brook, R.D.; Rajagopalan, S.;
549 Fan, Z. Personal Black Carbon Exposure Influences Ambulatory Blood Pressure.
550 Hypertension 2014;63:871-877.
551 <https://doi.org/doi:10.1161/HYPERTENSIONAHA.113.02588>
552
553

554

Table 1

555

The baseline characteristics of participants by types of household fuels in CHARLS 2011.

Characteristic	Cooking fuel			Heating fuel		
	Clean	Solid	<i>P</i> value	Clean	Solid	<i>P</i> value
N (%)	6971 (45.7%)	8276 (54.3%)		2937 (26.0%)	8343 (74.0%)	
Age (mean±SD, years)	58.15 ± 9.61	59.91 ± 9.64	<0.001	57.91 ± 9.56	59.35 ± 9.57	<0.001
Males (N, %)	3323 (47.7%)	3963 (47.9%)	0.802	1409 (48.0%)	4004 (48.0%)	1.000
Marital status (currently married, N, %)	6114 (87.7%)	7189 (86.9%)	0.127	2596 (88.4%)	7242 (86.8%)	0.029
Residence (rural, N, %)	2641 (37.9%)	6446 (77.9%)	<0.001	1117 (38.0%)	6169 (73.9%)	<0.001
Participation in social activities (yes, N, %)	3926 (56.3%)	3697 (44.7%)	<0.001	1740 (59.2%)	3800 (45.5%)	<0.001
Smoking status (N, %)			<0.001			<0.001
Non-smoker	4352 (62.4%)	4874 (58.9%)		1860 (63.3%)	4887 (58.6%)	
Ex-smoker	626 (9.0%)	728 (8.8%)		251 (8.5%)	743 (8.9%)	
Current smoker	1992 (28.6%)	2674 (32.3%)		826 (28.1%)	2713 (32.5%)	
Alcohol drinking status (yes, N, %)	2696 (38.7%)	3241 (39.2%)	0.550	1195 (40.7%)	3255 (39.0%)	0.116
Sleep duration (mean±SD, hours per day)	6.45 ± 1.71	6.26 ± 2.03	<0.001	6.46 ± 1.75	6.30 ± 2.00	0.001
Number of chronic diseases (mean±SD)	1.21 ± 1.22	1.36 ± 1.30	<0.001	1.17 ± 1.18	1.36 ± 1.30	<0.001
Number of chronic diseases (N, %)			<0.001			<0.001
0	2407 (34.5%)	2507 (30.3%)		1000 (34.0%)	2554 (30.6%)	
1	2195 (31.5%)	2565 (31.0%)		993 (33.8%)	2543 (30.5%)	
2	1364 (19.6%)	1779 (21.5%)		567 (19.3%)	1774 (21.3%)	

≥ 3	1005 (14.4%)	1425 (17.2%)		377 (12.8%)	1472 (17.6%)	
BDRM score (mean \pm SD)	63.81 \pm 10.60	65.94 \pm 10.65	<0.001	63.53 \pm 10.54	65.30 \pm 10.59	<0.001
Z-score standardized	-0.11 \pm 0.99	0.09 \pm 1.00	<0.001	-0.13 \pm 0.99	0.03 \pm 0.99	<0.001
BDRM (mean \pm SD)						

556 Note: BDRM, Rotterdam Study Basic Dementia Risk Model; CHARLS, China Health and
557 Retirement Longitudinal Study; SD, standard deviation.

558 Data are shown as mean \pm standard deviation or numbers (percentages).

559

560 **Table 2**
 561 Joint associations of solid fuel use for cooking and heating with BDRM scores.

	β (95% CI)	P value
Exposure of solid cooking and solid heating		
Model 1		
Cooking	0.17 (0.14, 0.20)	<0.001
Heating	0.05 (0.02, 0.08)	0.003
Model 2		
Cooking	0.16 (0.13, 0.19)	<0.001
Heating	0.03 (0.00, 0.06)	0.040
Exposure of grouped clean/solid cooking and heating		
Model 1		
Group1: clean cooking fuel & clean heating fuel (reference)		
Group2: solid cooking fuel & clean heating fuel	0.18 (0.12, 0.25)	<0.001
Group3: clean cooking fuel & solid heating fuel	0.05 (0.02, 0.09)	0.007
Group4: solid cooking fuel & solid heating fuel	0.22 (0.19, 0.25)	<0.001
Model 2		
Group1: clean cooking fuel & clean heating fuel (reference)		
Group2: solid cooking fuel & clean heating fuel	0.20 (0.14, 0.26)	<0.001
Group3: clean cooking fuel & solid heating fuel	0.05 (0.01, 0.09)	0.010
Group4: solid cooking fuel & solid heating fuel	0.20 (0.16, 0.23)	<0.001

562 Note: BDRM, Rotterdam Study Basic Dementia Risk Model; β , regression coefficient; CI, confidence interval.

563
 564 Model 1 adjusted for sex. Model 2 adjusted for sex, residence, marital status, participation in
 565 social activities, alcohol drinking status, smoking status, sleep duration, number of chronic
 566 diseases and wave.