

Change in stroke presentations during COVID-19 pandemic in South-Western Sydney.

James Thomas^{1,3}, David Manser¹, Peter Thomas¹, Nicholas Moore^{2,3}, Paul Middleton^{2,3}, Dennis Cordato^{1,3}, Cecilia Cappelen-Smith^{1,3}, Alan McDougall^{1,3}

1. Department of Neurophysiology, Liverpool Hospital, Liverpool, Australia

2. Department of Emergency Medicine, Liverpool Hospital, Liverpool, Australia

3. South Western Sydney Clinical School, University of New South Wales, Liverpool, Australia

Abstract

Background: Australia managed relatively well during the global COVID-19 pandemic owing to our swift mandated public health response. During the NSW lockdown restrictions, we noted a decrease in acute stroke presentations at our institution, similar to what was subsequently reported worldwide.

Aims: We aimed to test our hypothesis that (i) the true numbers of ischaemic strokes did not change, however patients were presenting later and (ii) the proportion of TIAs decreased.

Methods: We conducted a retrospective audit of all stroke and TIA presentations in 2020 and compared these with data from 2019. We collected information about stroke subtype, severity, time from stroke/TIA onset to presentation and acute reperfusion therapies.

Results: Between January-February and April-March 2020, there was a 15% drop in acute stroke presentations (128 vs. 109). In the same period “stroke mimic” presentations dropped by 22%. The proportion of patients attending the emergency department within 4.5hrs was only 36% compared with 48% over the similar period in 2019.

Conclusions: Although the raw numbers of ischemic stroke presentations remained stable during NSW Covid lockdown, the proportion of patients presenting within time window for acute reperfusion therapies fell. The number of TIAs similarly fell suggesting COVID-19 discouraged patients from presenting to hospital which placed them at higher risk of disabling stroke. The opportunity cost of lockdown restrictions on stroke outcome should be considered in future policy directives.

Introduction

Stroke is the third highest cause of mortality in the Australian population and the tenth leading specific cause of disease burden. Ischaemic stroke, caused by occlusion of cerebral vasculature, accounts for approximately 80% of stroke presentations(1). In 2017-2018 there were approximately 40,000 acute care hospital admissions for stroke, at a rate of 133 per 100,000 of population(2). The healthcare expenditure attributed to stroke is approximately \$600 million per year. Estimates considering the long-term disability cost of stroke are up to \$54 billion per annum(3).

One of the most important factors in determining outcome following ischaemic stroke is timely medical assessment and access to therapies such as intravenous thrombolysis (IVT) or endovascular thrombectomy (EVT). The IST-3 trial showed that patients presenting to a primary or comprehensive stroke centre within 4.5hrs of ischaemic stroke onset benefit from intravenous thrombolysis(4). Further trials using advanced imaging techniques for patient selection have shown a potential benefit of intravenous thrombolysis up to 9hrs from ischaemic stroke onset however the benefit diminishes with increasing duration between onset to treatment(5,6). Patients with ischaemic stroke due to large vessel occlusion benefit from EVT if performed within 6 hours(7,8) . A subset of patients may benefit from treatment up to 24hrs (9–11). A number of strategies have been employed to minimise delays from symptom onset to reperfusion including but not limited to; public education initiatives to improve community awareness of stroke symptoms, pre-hospital triage and co-ordination, emergency department pathways and dedicated stroke teams. Access to inpatient stroke unit care, with specialist allied health providers and neurology trained nursing staff has been shown to further improve outcomes following acute stroke(12).

While timely treatment of stroke and inpatient stroke unit care have both been proven to improve outcomes following acute stroke, prevention of stroke is still far superior in preventing long term disability. Identification and treatment of individuals at high risk of stroke is a cornerstone of stroke prevention strategies. Transient ischaemic attacks (TIA) and/or minor strokes are well described to carry high risk of recurrent stroke (13). Timely

identification of these events along with investigation and treatment of underlying risk factors has a significant effect at reducing recurrent stroke(14).

During 2020, the COVID-19 pandemic had a significant impact on the global population. Both internationally, as well as in Australia, lockdown restrictions were enacted to reduce community spread of the virus. These included restrictions on visiting family members, unnecessary travel and encouraged working from home for non-essential workers. There was significant media coverage of disease outbreaks and a high level of community awareness.

There have been a number of reports demonstrating an association between COVID-19 infection and acute ischaemic stroke, particularly in younger patients (15–17) though this has not necessarily correlated with an overall increased incidence of stroke. Worldwide, particularly in countries that experienced a far higher burden on COVID-19 than Australia, there were reports of a significant change in the rates of acute stroke presentations to stroke centres. Several centres in the USA and Canada recorded a marked decrease in acute ischaemic stroke presentations (18–23). This trend was also seen in the UK, Italy, Norway and, to a lesser extent, in almost all countries with a developed stroke healthcare system (24–27). A similar trend was seen in Victoria, Australia, with a decrease in numbers of acute stroke presentations to the emergency department (28). While a decrease in acute stroke presentations or “code stroke” activations was universally reported, the rates of severe strokes, large vessel occlusions and reperfusion therapies offered varied significantly between sites. The majority of sites noticed a similar trend, that of reduced overall numbers of acute stroke presentations with a relative increase in the rates of ischaemic stroke due to large vessel occlusion (LVO), while the rates of minor stroke and TIA were reduced (18–20,22–27,29).

Several studies demonstrated a trend of increased time from onset of symptoms to ED presentation during the height of pandemic cases (18,29,30) though this data was not the case in a large cohort study from London (24), nor was this data reported in the Australian cohort.

In Liverpool Hospital, a comprehensive stroke centre in South-Western Sydney, we noted an apparent change in the numbers of stroke and TIA presentations through our emergency department, shortly after the announcement of lockdown measures in NSW.

Aims

We aimed to test the hypotheses: (i) that the numbers of acute ischaemic stroke presentations would remain constant while the proportion of mild strokes and TIAs would fall, (ii) that patients with acute ischaemic stroke would present later than they had done pre-pandemic.

Methods

We performed a retrospective analysis of all patients presenting to Liverpool Hospital with sudden onset neurological symptoms for whom the acute stroke team was activated in the Emergency Department (ED).

All patients presenting to Liverpool hospital ED with new onset neurological deficits are assessed in triage using the BE-FAST screening tool (31,32). Any patient with new onset balance issues; visual loss or diplopia; face, arm or leg weakness; and/or sensory change; either transient or persisting; with onset within the preceding 24hrs trigger the activation of a code-stroke for the acute stroke team. Demographic, imaging, treatment and time metric data are collected prospectively into a code stroke registry. We retrospectively reviewed all cases in the stroke registry and correlated this with the electronic medical record to obtain final diagnosis and discharge destination. To account for patients with milder symptoms or transient deficits who may not have been identified for acute stroke team activation at triage, we also included cases admitted under the neurology service with a diagnosis of transient ischaemic attack. Final diagnosis was recorded as either (i) acute stroke, including ischaemic and haemorrhagic strokes; (ii) transient ischaemic attack (TIA) or (iii) non-stroke neurological diagnosis, such as migraine, disorder of peripheral nerve, intracranial space occupying lesion, central nervous system inflammatory disorders and functional neurological disorders.

Liverpool Hospital, where the data was collected, is a metropolitan tertiary referral hospital and comprehensive stroke centre servicing a population of greater than 900,000 people. In addition to direct stroke presentations, we act as a 24/7 referral centre for endovascular clot retrieval as one of 3 centres within metropolitan Sydney. The local population is diverse

with a large culturally and linguistically diverse population. Approximately 36% of the population were born overseas and 50% speak a language other than English at home (33).

We compared stroke presentations from 2020 with historical data from 2019 and earlier in attempt to control for natural variation in stroke presentations over the year. The first case of COVID-19 in Australia was identified on the 25th of January 2020 and the first case of community spread were identified on 2nd March 2020. Social distancing restrictions and closure of non-essential businesses were first enacted in NSW on the 21st of March 2020. After cases subsided in June 2020, a “second wave”, originating in the South-Western Sydney region began in early July 2020. A confirmed transmission event occurred in our emergency department in August 2020.

Results

There were 847 acute stroke and/or TIA presentations in 2019 compared with 886 in 2020. The mean age was similar between years, 67.9 years in 2019 and 68.0 years in 2020. In 2019, 29% of patients were female compared to 47% in 2020. Between January-February and March-April 2020, there was a 15% reduction in stroke presentations (from n=128 to n=109). Stroke presentations rebounded by 77% to 193 in May-June 2020. (Fig. 1)

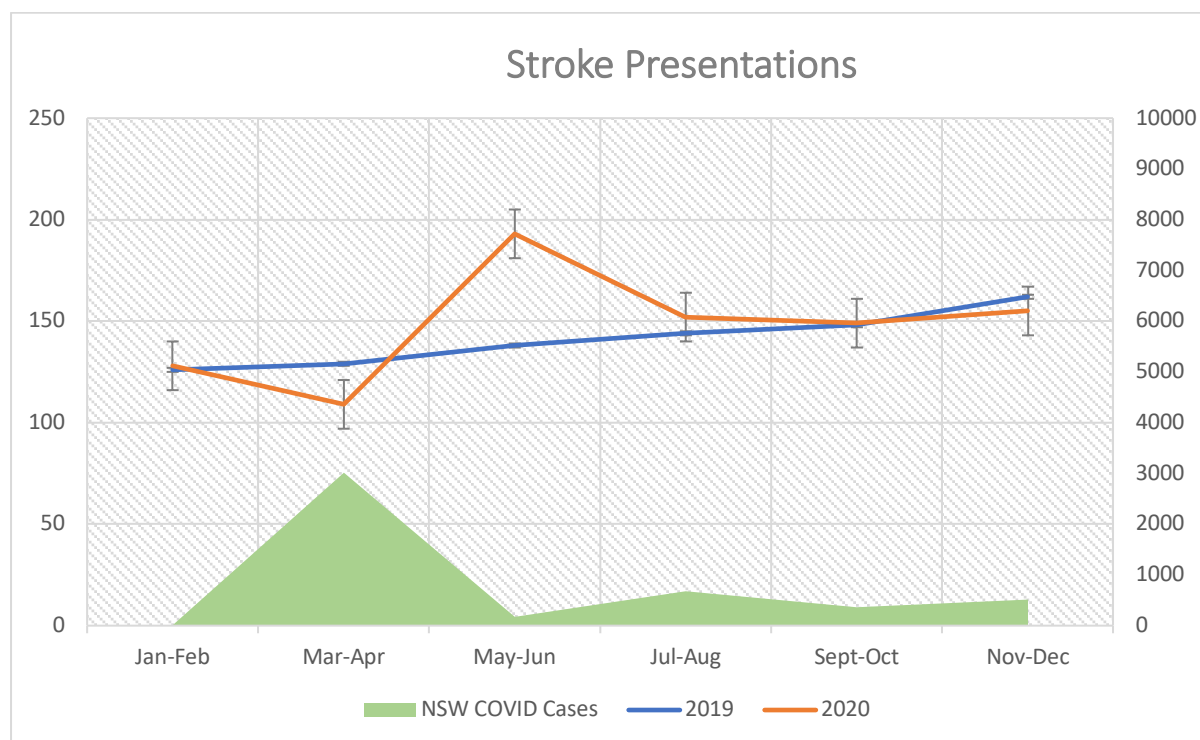


Figure 1 - Total stroke presentations vs. NSW reported COVID-19 cases. Error bars = standard deviation of monthly stroke cases

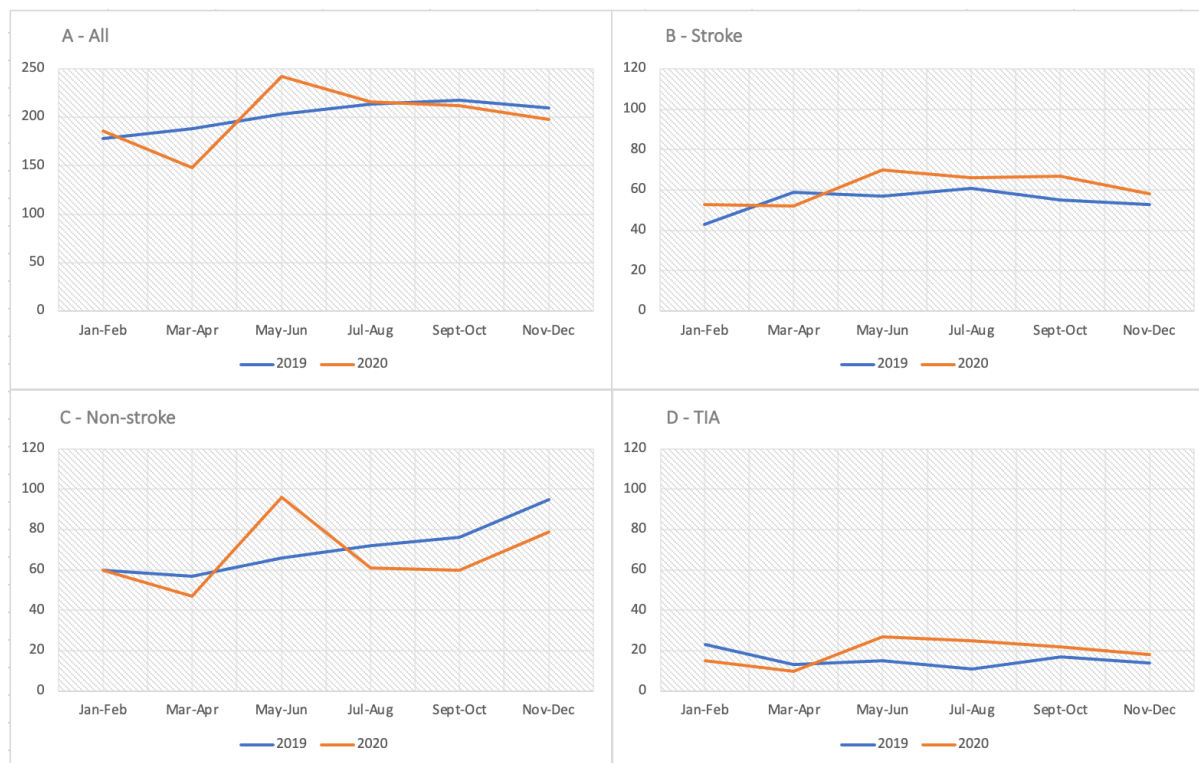


Figure 2 - "Code-Stroke" case numbers. a) total acute stroke presentations, b) final discharge diagnosis of stroke (ischaemic or haemorrhagic), c) final diagnosis of other neurological condition, d) final diagnosis of transient ischaemic attack

We reviewed the medical record for all patients who activated a code-stroke on arrival to ED and extracted their final discharge diagnosis. When classified by final diagnosis, the most significant difference in presentations was seen within the patients with a final diagnosis other than stroke or TIA. Examples of non-stroke activations include Bell's palsy, syncope, delirium, seizures and post-ictal states, migraine, and functional neurological disorders. (Fig.3) Between January-February and March-April, "non-stroke" stroke presentations fell by 22%. In May-June, the number of "non-stroke" presentations rose by 104%. TIA presentations saw a reduction from 15 to 10 (-33%) with a rebound to 27 (+170%) while strokes remained stable between January-February and March-April 53 to 52 (-2%) before increasing to 70 (+38%). (Fig. 2 & Fig. 4)

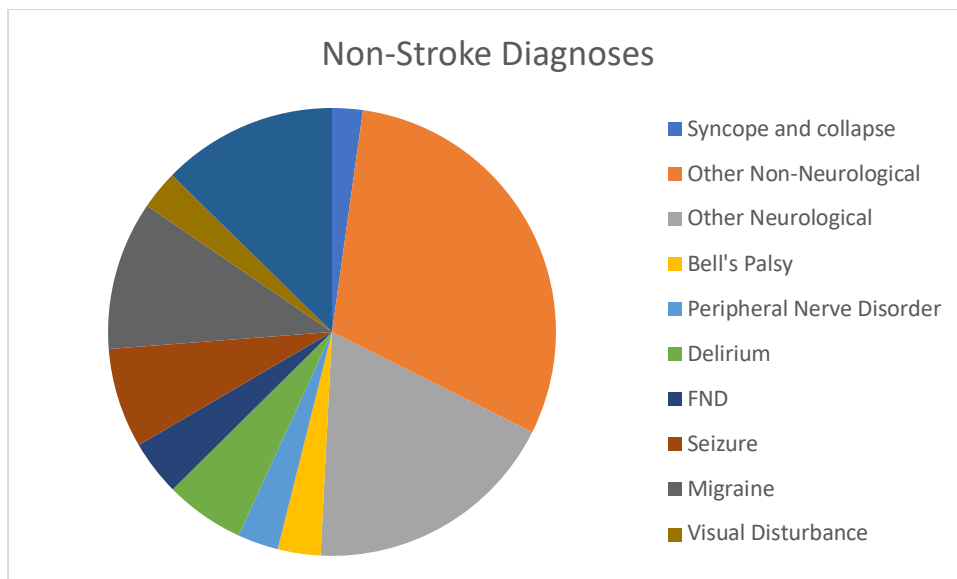


Figure 3 Final Diagnosis of Stroke Presentations other than stroke or TIA. (Non-stroke)

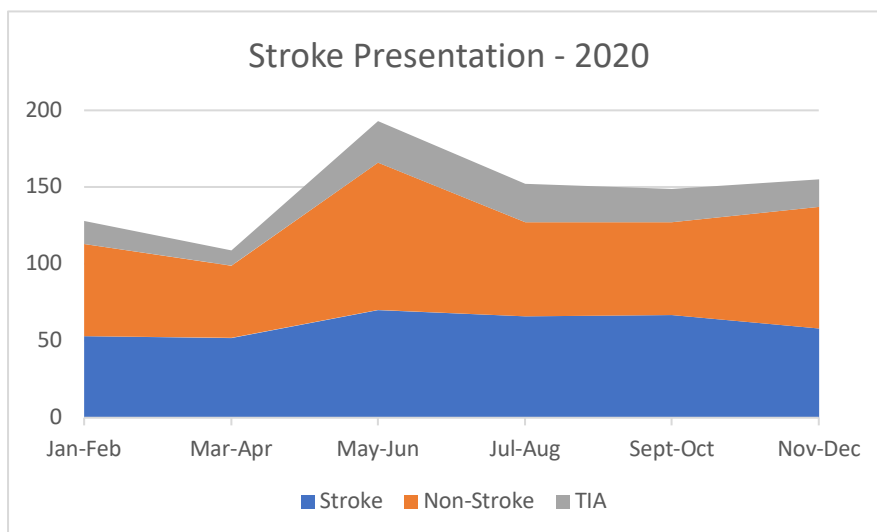
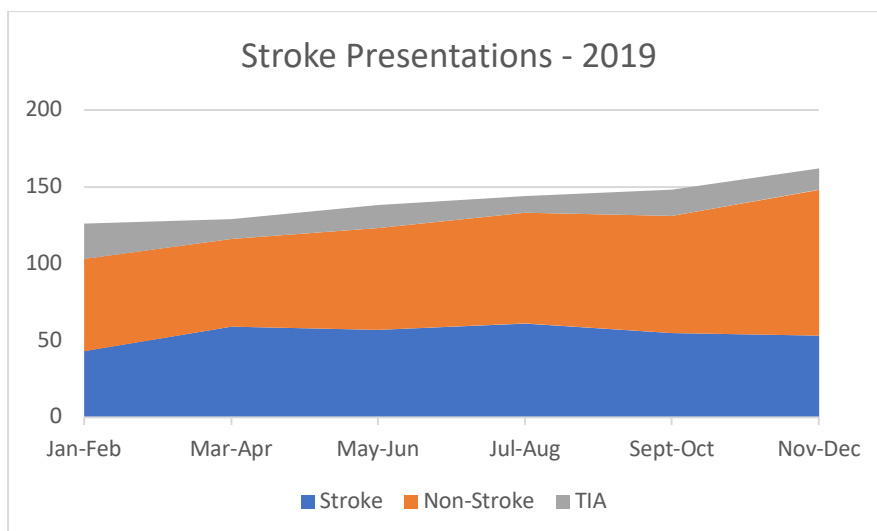


Figure 4 - Bimonthly breakdown of "Code-Stroke" activations by final diagnosis in 2019 and 2020

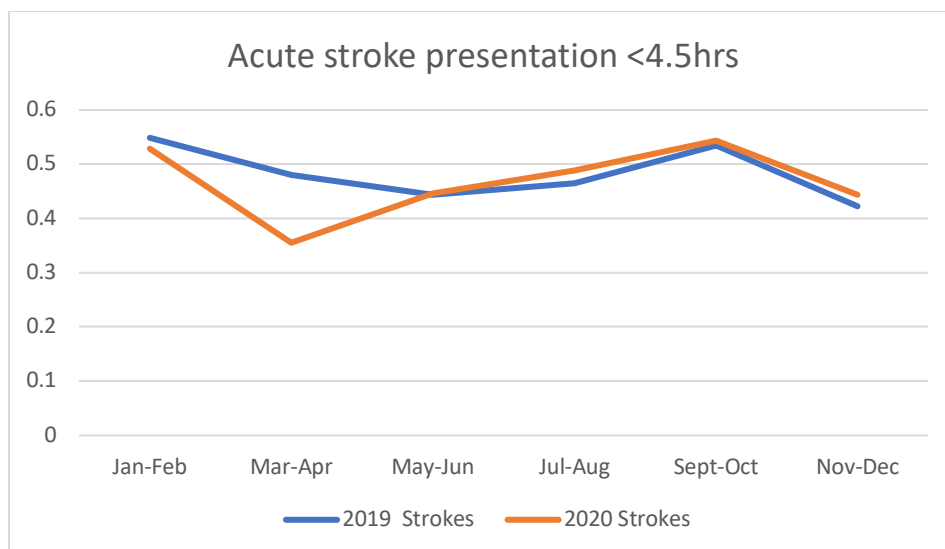


Figure 5 - Bimonthly proportion of strokes presenting within 4.5hrs of symptom onset in 2019 and 2020.

The proportion of patients presenting within 4.5hrs of symptom onset in March-April fell from 48% in 2019 to 36% in 2020. This rebounded to 44% in the period May-June 2020, a similar proportion to 2019. (Fig. 5)

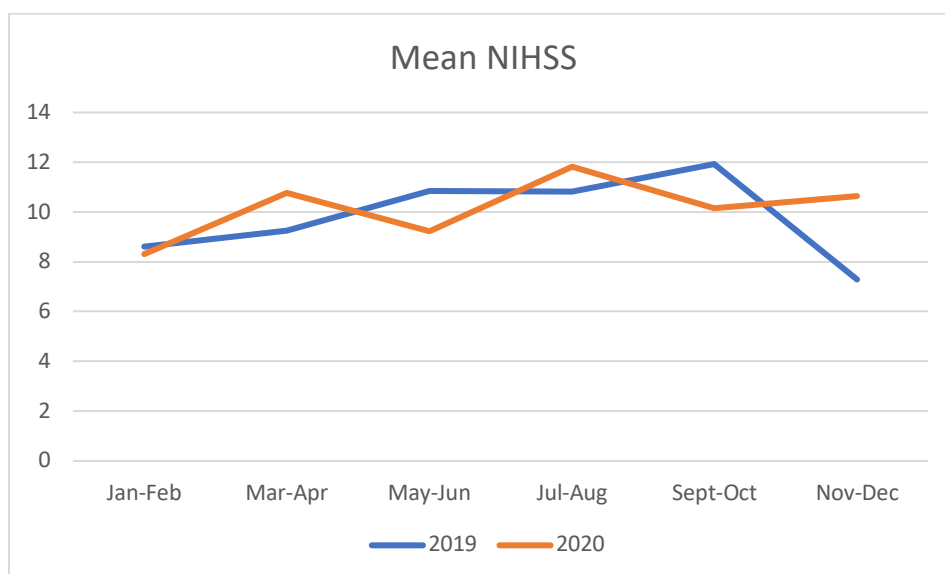


Figure 6 - Bimonthly mean NIH Stroke Scale for 2019 and 2020

The mean National Institute of Health Stroke Score (NIHSS) was 10 for both years. In April 2020, the mean NIHSS increased to 12 compared with 10 in April 2019. The mean NIHSS peaked at 13 in July 2020 compared with 11 in July 2019. (Fig. 6)

The average delay from presentation to intravenous thrombolysis was 71 minutes in 2019 and 77 minutes in 2020. There was similar month to month variability in both years. A

similar trend was seen in delay from door to arterial puncture in those eligible for endovascular clot retrieval with an average delay of 146 minutes in 2019 compared to 124 minutes in 2020. In 2020, 13% of all acute stroke presentations received either intravenous thrombolysis and/or endovascular clot retrieval, compared with 11% in 2019. The average length of stay was similar between years at 5 days.

Discussion

During the first wave of the COVID-19 pandemic many countries reported a dramatic decrease in acute stroke presentations. This change appeared to be driven, in part, by a decrease in numbers of mild strokes and/or TIA presenting to hospital. The cause for this reduction in stroke presentations remains unclear, particularly given evidence suggesting a causative relationship between acute COVID-19 infection and acute stroke. Australia had fewer cases of COVID-19 infection per capita compared with most other developed countries reporting this trend. We identified a similar pattern of stroke presentation in a region without significant strain on the health infrastructure by high numbers of COVID-19 infections.

In our centre, we retrospectively collated data from several electronic record sources to describe the pattern of acute stroke presentations before and after the onset of the first wave of the COVID-19 pandemic in New South Wales. We noted a modest decrease of acute stroke presentations during the two-month period March-April while COVID-19 cases were increasing in the community, and public health restrictions were being enacted. This decrease in acute presentations was driven by a reduction in presentations of acute neurological deficits that did not have a final diagnosis of ischaemic or haemorrhagic stroke. Presentations of TIA and stroke also fell, albeit to a lesser degree. The initial decrease in stroke presentations was followed by a rebound of 77% in the period May-June. The initial decrease in cases was like that reported in the literature (15,17–22,24–28,34–39). We saw a reduction in stroke presentations despite a relatively low incidence of SARS-CoV-2 infections compared to other centres internationally. This finding provides support for the assertion made by several authors (18,20,30,35,36,40,41) that the reduction in stroke presentations may be related to patient reluctance to seek medical attention for symptoms for fear of

contracting COVID-19 infection rather than external barriers to accessing health services such as hospitals and emergency medical services overwhelming their capacity.

The significant rebound following the lockdown period lifting was an unexpected finding and not one reported elsewhere. A concern expressed in several publications was that a reduction in mild stroke or TIA presentations would place people at increased risk of subsequent severe stroke as they would not receive adequate evaluation and management of modifiable stroke risk factors (15–17,21,37,40–43). This seems less likely to be the case in our cohort as the reduction in mild stroke and TIA presentations were far fewer than the excess in presentations in the post-lockdown period. The increase in stroke presentations following lockdown seen at our institution was also driven largely by an increase in non-stroke diagnoses. Stroke severity, as measured by mean NIHSS also did not differ significantly between pre and post lockdown periods.

Another of our findings was that the proportion of patients presenting within 4.5 hours of stroke onset fell significantly in the period of lockdown. This has great clinical significance as the period up to 4.5-hour post onset of stroke, sometimes referred to as the “golden hour”, represents the time in which acute reperfusion therapies such as intravenous thrombolysis have class 1 evidence for reducing long term disability from acute ischaemic stroke (44). Significant investment in patient education, pre-hospital infrastructure and ED protocols has been made to reduced delays in diagnosis and management of acute ischaemic stroke to increase access to reperfusion therapies. This finding of a decrease in stroke presentations within 4.5 hours may be attributed to several factors. As postulated earlier, concern about being exposed to COVID-19 may initially deter patients from seeking medical attention. Even if patients do seek attention, there may be an unnecessary delay between onset of symptoms and medical contact. Initial lockdown orders in NSW discouraged any movement outside the home, including visiting family members. Some stroke syndromes, particularly those involving the non-dominant cerebral hemisphere may have a significant element of anosognosia. These presentations rely heavily on family members identifying the symptoms of stroke and prompting evaluation. Many other stroke symptoms, such as hemiplegia or aphasia produce significant barriers in seeking medical attention without family or caregiver

support. To our knowledge, there were no significant procedural related delays relating to pre-hospital care and transport.

Our study was limited by its retrospective observational design at a single centre which prevents robust conclusions being able to be drawn about causation of this change to stroke presentations. Code-stroke activations, the basis for including patients in our analysis, are initiated after initial clinician assessment in the ED and are subject to some degree of bias towards more serious presentations. That is, patients with mild or transient symptoms may not trigger an initial code-stroke activation. We attempted to improve our capture of such patients by also reviewing all patients admitted under the neurology service. It is the policy at our institution that all patients with minor stroke and/or TIA are admitted for initial workup rather than triaged to an outpatient service. Another limitation of our study is that it was underpowered to identify significant differences in the stroke subgroups due to low numbers of strokes in a relatively short period of lockdown.

New South Wales is currently in the middle of a period of significant increase in COVID-19 transmission due to a local outbreak of the delta strain of the virus in Western and South Western Sydney. We plan to repeat our analysis on the new time period in order to increase our statistical power strengthen our results.

Conclusion

The pattern of acute stroke presentations in South Western Sydney, during a period of highly effective community lockdown restrictions highlights the potential downsides of strict lockdown regulations on non-COVID-19 health outcomes. While the initial lockdown measures in NSW were highly effective in rapidly reducing community spread of COVID-19, this may have been at the expense of inadvertently discouraging patients from seeking medical attention for time-critical conditions such as stroke. Future consideration should be taken to ensure patients are willing and able to access medical care in a timely manner, regardless of the situation in the community.

References

1. Donkor ES. Stroke in the 21st Century: A Snapshot of the Burden, Epidemiology, and Quality of Life [Internet]. Vol. 2018, Stroke Research and Treatment. Hindawi Limited; 2018 [cited 2021 Jul 5]. Available from: [/pmc/articles/PMC6288566/](#)
2. Stroke - Australian Institute of Health and Welfare [Internet]. [cited 2020 Jul 29]. Available from: <https://www.aihw.gov.au/reports/australias-health/stroke>
3. The economic impact of stroke in Australia National Stroke Foundation The economic impact of stroke in Australia [Internet]. 2013. Available from: www.deloitte.com/au/about
4. Sandercock P, Wardlaw JM, Lindley RI, Dennis M, Cohen G, Murray G, et al. The benefits and harms of intravenous thrombolysis with recombinant tissue plasminogen activator within 6 h of acute ischaemic stroke (the third international stroke trial [IST-3]): a randomised controlled trial. *The Lancet* [Internet]. 2012 Jun 23 [cited 2021 Jul 29];379(9834):2352–63. Available from: <http://www.thelancet.com/article/S0140673612607685/fulltext>
5. Ma H, Campbell BCV, Parsons MW, Churilov L, Levi CR, Hsu C, et al. Thrombolysis Guided by Perfusion Imaging up to 9 Hours after Onset of Stroke. <https://doi.org/10.1056/NEJMoa1813046> [Internet]. 2019 May 8 [cited 2021 Jul 7];380(19):1795–803. Available from: <https://www.nejm.org/doi/full/10.1056/NEJMoa1813046>
6. Thomalla G, Simonsen CZ, Boutitie F, Andersen G, Berthezene Y, Cheng B, et al. MRI-Guided Thrombolysis for Stroke with Unknown Time of Onset. <https://doi.org/10.1056/NEJMoa1804355> [Internet]. 2018 May 16 [cited 2021 Jul 7];379(7):611–22. Available from: <https://www.nejm.org/doi/full/10.1056/NEJMoa1804355>
7. Campbell BCV, Mitchell PJ, Kleinig TJ, Dewey HM, Churilov L, Yassi N, et al. Endovascular Therapy for Ischemic Stroke with Perfusion-Imaging Selection. <http://dx.doi.org/10.1056/NEJMoa1414792> [Internet]. 2015 Mar 11 [cited 2021 Aug 8];372(11):1009–18. Available from: <https://www.nejm.org/doi/full/10.1056/nejmoa1414792>
8. Berkhemer OA, Fransen PSS, Beumer D, van den Berg LA, Lingsma HF, Yoo AJ, et al. A Randomized Trial of Intraarterial Treatment for Acute Ischemic Stroke.

- <https://doi.org/10.1056/NEJMoa1411587> [Internet]. 2014 Dec 31 [cited 2021 Aug 8];372(1):11–20. Available from:
<https://www.nejm.org/doi/full/10.1056/nejmoa1411587>
9. Nogueira RG, Jadhav AP, Haussen DC, Bonafe A, Budzik RF, Bhuva P, et al. Thrombectomy 6 to 24 Hours after Stroke with a Mismatch between Deficit and Infarct. <https://doi.org/10.1056/NEJMoa1706442> [Internet]. 2017 Nov 11 [cited 2021 Aug 8];378(1):11–21. Available from:
<https://www.nejm.org/doi/full/10.1056/nejmoa1706442>
 10. Albers GW, Marks MP, Kemp S, Christensen S, Tsai JP, Ortega-Gutierrez S, et al. Thrombectomy for Stroke at 6 to 16 Hours with Selection by Perfusion Imaging. <http://dx.doi.org/10.1056/NEJMoa1713973> [Internet]. 2018 Jan 24 [cited 2021 Aug 8];378(8):708–18. Available from:
<https://www.nejm.org/doi/full/10.1056/nejmoa1713973>
 11. Goyal M, Menon BK, van Zwam WH, Dippel DWJ, Mitchell PJ, Demchuk AM, et al. Endovascular thrombectomy after large-vessel ischaemic stroke: A meta-analysis of individual patient data from five randomised trials. *The Lancet* [Internet]. 2016 Apr 23 [cited 2021 Apr 1];387(10029):1723–31. Available from: <https://pubmed-ncbi-nlm-nih-gov.wwwproxy1.library.unsw.edu.au/26898852/>
 12. Langhorne P, Ramachandra S. Organised inpatient (stroke unit) care for stroke: network meta-analysis. *Cochrane Database of Systematic Reviews* [Internet]. 2020 Apr 23 [cited 2020 Jul 29];(4). Available from:
<https://www.cochranelibrary.com/cdsr/doi/10.1002/14651858.CD000197.pub4/full>
 13. Wu CM, McLaughlin K, Lorenzetti DL, Hill MD, Manns BJ, Ghali WA. Early Risk of Stroke After Transient Ischemic Attack: A Systematic Review and Meta-analysis. *Archives of Internal Medicine* [Internet]. 2007 Dec 10 [cited 2021 Jul 29];167(22):2417–22. Available from:
<https://jamanetwork.com/journals/jamainternalmedicine/fullarticle/770035>
 14. Rothwell PM, Giles MF, Chandratheva A, Marquardt L, Geraghty O, Redgrave JN, et al. Effect of urgent treatment of transient ischaemic attack and minor stroke on early recurrent stroke (EXPRESS study): a prospective population-based sequential comparison. *The Lancet* [Internet]. 2007 Oct 20 [cited 2020 Jul 29];370(9596):1432–42. Available from: <https://linkinghub.elsevier.com/retrieve/pii/S0140673607614482>

15. Fuentes B, Alonso De Leciñana M, García-Madrona S, Díaz-Otero F, Aguirre C, Calleja P, et al. Stroke Acute Management and Outcomes during the COVID-19 Outbreak: A Cohort Study from the Madrid Stroke Network. *Stroke* [Internet]. 2021 [cited 2021 May 24];52(2):552–62. Available from: <https://pubmed.ncbi.nlm.nih.gov/33406872/>
16. Markus HS, Brainin M. COVID-19 and stroke—A global World Stroke Organization perspective. *International Journal of Stroke* [Internet]. 2020 Jun 1 [cited 2021 May 24];15(4):361–4. Available from: <https://pubmed.ncbi.nlm.nih.gov/32310017/>
17. Requena M, Olivé-Gadea M, Muchada M, García-Tornel Á, Deck M, Juega J, et al. COVID-19 and Stroke: Incidence and Etiological Description in a High-Volume Center. *Journal of Stroke and Cerebrovascular Diseases* [Internet]. 2020 Nov 1 [cited 2021 May 24];29(11). Available from: <https://pubmed.ncbi.nlm.nih.gov/33066917/>
18. Rameez F, Mccarthy P, Cheng Y, Packard LM, Davis AT, Wees N, et al. Impact of a Stay-at-Home Order on Stroke Admission, Subtype, and Metrics during the COVID-19 Pandemic. *Cerebrovascular Diseases Extra* [Internet]. 2020 Sep 1 [cited 2021 May 24];10(3):159–65. Available from: <https://pubmed.ncbi.nlm.nih.gov/33166950/>
19. Pasarikovski CR, da Costa L. The impact of the Covid-19 pandemic on stroke volume [Internet]. Vol. 47, *Canadian Journal of Neurological Sciences*. Cambridge University Press; 2020 [cited 2021 May 24]. p. 847–8. Available from: <https://pubmed.ncbi.nlm.nih.gov/32493522/>
20. Strasser S, Miskolczi L, Cunha J, Justynski L. COVID-19 Impact on Stroke Presentations. *Journal of Stroke and Cerebrovascular Diseases* [Internet]. 2020 Oct 1 [cited 2021 May 24];29(10). Available from: <https://pubmed.ncbi.nlm.nih.gov/32912524/>
21. Kansagra AP, Goyal MS, Hamilton S, Albers GW. Collateral Effect of Covid-19 on Stroke Evaluation in the United States. *New England Journal of Medicine* [Internet]. 2020 Jul 23 [cited 2021 May 24];383(4):400–1. Available from: <https://pubmed.ncbi.nlm.nih.gov/32383831/>

22. Bres Bullrich M, Fridman S, Mandzia JL, Mai LM, Khaw A, Vargas Gonzalez JC, et al. COVID-19: Stroke Admissions, Emergency Department Visits, and Prevention Clinic Referrals. *Canadian Journal of Neurological Sciences* [Internet]. 2020 Sep 1 [cited 2021 May 24];47(5):693–6. Available from: <https://pubmed-ncbi-nlm-nih-gov.wwwproxy1.library.unsw.edu.au/32450927/>
23. Desai SM, Guyette FX, Martin-Gill C, Jadhav AP. Collateral damage – Impact of a pandemic on stroke emergency services. *Journal of Stroke and Cerebrovascular Diseases* [Internet]. 2020 Aug 1 [cited 2021 May 24];29(8). Available from: <https://pubmed-ncbi-nlm-nih-gov.wwwproxy1.library.unsw.edu.au/32689650/>
24. Kwan J, Brown M, Bentley P, Brown Z, D’Anna L, Hall C, et al. Impact of COVID-19 Pandemic on a Regional Stroke Thrombectomy Service in the United Kingdom. *Cerebrovascular Diseases* [Internet]. 2020 Apr 1 [cited 2021 May 24];50(2). Available from: <https://pubmed-ncbi-nlm-nih-gov.wwwproxy1.library.unsw.edu.au/33311017/>
25. Hoyer C, Ebert A, Huttner HB, Puetz V, Kallmünzer B, Barlinn K, et al. Acute Stroke in Times of the COVID-19 Pandemic: A Multicenter Study. *Stroke* [Internet]. 2020 [cited 2021 May 24];51(7):2224–7. Available from: <https://pubmed-ncbi-nlm-nih-gov.wwwproxy1.library.unsw.edu.au/32516064/>
26. July J, Pranata R. Impact of the Coronavirus Disease Pandemic on the Number of Strokes and Mechanical Thrombectomies: A Systematic Review and Meta-Analysis. *Journal of Stroke and Cerebrovascular Diseases* [Internet]. 2020 Nov 1 [cited 2021 May 24];29(11). Available from: <https://pubmed-ncbi-nlm-nih-gov.wwwproxy1.library.unsw.edu.au/33066894/>
27. Kristoffersen ES, Jahr SH, Thommessen B, Rønning OM. Effect of COVID-19 pandemic on stroke admission rates in a Norwegian population. *Acta Neurologica Scandinavica* [Internet]. 2020 Dec 1 [cited 2021 May 24];142(6):632–6. Available from: <https://pubmed-ncbi-nlm-nih-gov.wwwproxy1.library.unsw.edu.au/32620027/>
28. Amukotuwa SA, Bammer R, Maingard J. Where have our patients gone? The impact of COVID-19 on stroke imaging and intervention at an Australian stroke center. *Journal of Medical Imaging and Radiation Oncology* [Internet]. 2020 Oct 1 [cited 2021 May 24];64(5):607–14. Available from: <https://pubmed-ncbi-nlm-nih-gov.wwwproxy1.library.unsw.edu.au/32820616/>

29. Teo KC, Leung WCY, Wong YK, Liu RKC, Chan AHY, Choi OMY, et al. Delays in Stroke Onset to Hospital Arrival Time during COVID-19. *Stroke* [Internet]. 2020 [cited 2021 May 24];51(7):2228–31. Available from: <https://pubmed-ncbi-nlm-nih-gov.wwwproxy1.library.unsw.edu.au/32432998/>
30. Schirmer CM, Ringer AJ, Arthur AS, Binning MJ, Fox WC, James RF, et al. Delayed presentation of acute ischemic strokes during the COVID-19 crisis. *Journal of NeuroInterventional Surgery* [Internet]. 2020 Jul 1 [cited 2021 May 24];12(7):639–42. Available from: <https://pubmed-ncbi-nlm-nih-gov.wwwproxy1.library.unsw.edu.au/32467244/>
31. Pickham D, Valdez A, Demeestere J, Lemmens R, Diaz L, Hopper S, et al. Prognostic Value of BEFAST vs. FAST to Identify Stroke in a Prehospital Setting. *Prehospital Emergency Care* [Internet]. 2019 Mar 4 [cited 2021 Jul 5];23(2):195–200. Available from: <https://www.tandfonline.com/action/journalInformation?journalCode=ipecc20>
32. el Ammar F, Ardelt A, del Brutto VJ, Loggini A, Bulwa Z, Martinez RC, et al. BE-FAST: A Sensitive Screening Tool to Identify In-Hospital Acute Ischemic Stroke. *Journal of Stroke and Cerebrovascular Diseases*. 2020 Jul 1;29(7):104821.
33. Bhaskar S, Thomas P, Cheng Q, Clement N, McDougall A, Hodgkinson S, et al. Trends in acute stroke presentations to an emergency department: Implications for specific communities in accessing acute stroke care services. *Postgraduate Medical Journal* [Internet]. 2019 May 1 [cited 2021 Jul 5];95(1123):258–64. Available from: <http://dx.doi.org/10.1136/postgradmedj-2019-136413>
34. Kristoffersen ES, Jahr SH, Faiz KW, Thommessen B, Rønning OM. Stroke admission rates before, during and after the first phase of the COVID-19 pandemic. *Neurological Sciences* [Internet]. 2021 Mar 1 [cited 2021 May 24];42(3):791–8. Available from: <https://pubmed-ncbi-nlm-nih-gov.wwwproxy1.library.unsw.edu.au/33428057/>
35. Dowlatshahi D, Stotts G, Bourgoin A, Gocan S, Dunn L, Powell J, et al. Decreased Stroke Presentation Rates at a Comprehensive Stroke Center during COVID-19. *Canadian Journal of Neurological Sciences* [Internet]. 2021 Jan 1 [cited 2021 May 24];48(1):118–21. Available from: <https://pubmed-ncbi-nlm-nih-gov.wwwproxy1.library.unsw.edu.au/32878659/>
36. Morelli N, Rota E, Terracciano C, Immovilli P, Spallazzi M, Colombi D, et al. The Baffling Case of Ischemic Stroke Disappearance from the Casualty Department in the

- COVID-19 Era [Internet]. Vol. 83, *European Neurology*. S. Karger AG; 2020 [cited 2021 May 24]. p. 213–5. Available from: <https://pubmed-ncbi-nlm-nih-gov.wwwproxy1.library.unsw.edu.au/32289789/>
37. Diegoli H, Magalhães PSC, Martins SCO, Moro CHC, França PHC, Safanelli J, et al. Decrease in Hospital Admissions for Transient Ischemic Attack, Mild, and Moderate Stroke During the COVID-19 Era. *Stroke* [Internet]. 2020 Jun 12 [cited 2020 Jul 29]; Available from: <http://ahajournals.org>
 38. Morelli N, Rota E, Terracciano C, Immovilli P, Spallazzi M, Colombi D, et al. The Baffling Case of Ischemic Stroke Disappearance from the Casualty Department in the COVID-19 Era. *European Neurology*. S. Karger AG; 2020.
 39. Thornton J. Stroke: “striking reductions” are seen in number of people with symptoms seeking help. *BMJ* [Internet]. 2020 Apr 6 [cited 2020 Jul 29];369:m1406. Available from: <http://www.bmj.com/lookup/doi/10.1136/bmj.m1406>
 40. John S, Hussain SI, Piechowski-Jozwiak B, Dibu J, Kesav P, Bayrlee A, et al. Clinical characteristics and admission patterns of stroke patients during the COVID 19 pandemic: A single center retrospective, observational study from the Abu Dhabi, United Arab Emirates. *Clinical Neurology and Neurosurgery* [Internet]. 2020 Dec 1 [cited 2021 May 24];199. Available from: <https://pubmed-ncbi-nlm-nih-gov.wwwproxy1.library.unsw.edu.au/33011516/>
 41. Song L, Ouyang M, Sun L, Chen C, Anderson CS. Impact of COVID-19 on Patient Behavior to Stroke Symptoms in China. *Cerebrovascular Diseases* [Internet]. 2020 Nov 1 [cited 2021 May 24];49(5):570–1. Available from: www.karger.com/ced
 42. Siegler JE, Zha AM, Czap AL, Ortega-Gutierrez S, Farooqui M, Liebeskind DS, et al. Influence of the COVID-19 Pandemic on Treatment Times for Acute Ischemic Stroke: The Society of Vascular and Interventional Neurology Multicenter Collaboration. *Stroke* [Internet]. 2021 [cited 2021 May 24];52(1):40–7. Available from: <https://pubmed-ncbi-nlm-nih-gov.wwwproxy1.library.unsw.edu.au/33250041/>
 43. Leira EC, Russman AN, Biller J, Brown DL, Bushnell CD, Caso V, et al. Preserving stroke care during the COVID-19 pandemic: Potential issues and solutions [Internet]. Vol. 95, *Neurology*. Lippincott Williams and Wilkins; 2020 [cited 2021 May 24]. p. 124–33. Available from: <https://pubmed-ncbi-nlm-nih-gov.wwwproxy1.library.unsw.edu.au/32385186/>

44. Wardlaw JM, Murray V, Berge E, Zoppo GJ del. Thrombolysis for acute ischaemic stroke. Cochrane Database of Systematic Reviews [Internet]. 2014 Jul 29 [cited 2021 Jul 29];2014(7). Available from: <https://www.cochranelibrary.com/cdsr/doi/10.1002/14651858.CD000213.pub3/full>