

1           **Effects of gender-affirming hormone therapy on gray matter**  
2           **density, microstructure and monoamine oxidase A levels**  
3           **in transgender subjects**

4  
5           Handschuh PA<sup>\*1</sup>, Reed MB<sup>\*1</sup>, Murgaš M<sup>1</sup>, Vraka C<sup>2</sup>, Kaufmann U<sup>3</sup>, Nics L<sup>2</sup>, Klöbl M<sup>1</sup>,  
6           Ozenil M<sup>2</sup>, Konadu ME<sup>1</sup>, Patronas EM<sup>2</sup>, Spurny-Dworak B<sup>1</sup>, , Hahn A<sup>1</sup>,  
7           Hacker M<sup>2</sup>, Spies M<sup>1</sup>, Baldinger-Melich P<sup>1</sup>, Kranz GS<sup>1,4</sup>, Lanzenberger R<sup>1#</sup>. (\*contributed equally)

8  
9           <sup>1</sup> Department of Psychiatry and Psychotherapy, Medical University of Vienna, Austria

10           <sup>2</sup> Department of Biomedical Imaging and Image-guided Therapy, Division of Nuclear Medicine,  
11           Medical University of Vienna, Austria.

12           <sup>3</sup> Department of Obstetrics and Gynecology, Medical University of Vienna, Austria

13           <sup>4</sup> Department of Rehabilitation Sciences, Hong Kong Polytechnic University, Hong Kong, China  
14

15           ***For submission to:***

16           ***Medrxiv***

17           ***Keywords: MRI, PET, gray matter, gender-affirming hormone therapy, sexual desire***

Word count	279	Abstract
	4516	Main section
Figures: 3, Tables: 1, References: 91		

18  
19           # Correspondence to:

20           Prof. Rupert Lanzenberger, MD, PD

21           Email: [rupert.lanzenberger@meduniwien.ac.at](mailto:rupert.lanzenberger@meduniwien.ac.at)

22           ORCID: <https://orcid.org/0000-0003-4641-9539>

23           Telephone: +43 (0)1 40400-35760  
24

## 25 **Highlights**

- 26 • Gender-affirming hormone therapy led to significant changes in gray matter density and  
27 microstructure in various brain regions
- 28 • Gray matter changes found after gender-affirming hormone therapy were not reflected  
29 by monoamine oxidase A density changes in the brain.
- 30 • Masculinizing gender-affirming hormone therapy resulted in increased sexual desire in  
31 transgender men.

32

## 33 **Abstract**

34 MAO-A catalyzes the oxidative degradation of monoamines and is thus implicated in sex-  
35 specific neuroplastic processes that influence gray matter (GM) density (GMD) and  
36 microstructure (GMM). Given the exact monitoring of plasma hormone levels and sex steroid  
37 intake, transgender individuals undergoing gender-affirming hormone therapy (GHT) represent  
38 a valuable cohort to potentially investigate sex steroid-induced changes of GM and  
39 concomitant MAO-A density. Here, we investigated the effects of long-term GHT over a median  
40 time period of 4.5 months on GMD and GMM as well as MAO-A distribution volume. To this  
41 end, 20 cisgender women, 11 cisgender men, 20 transgender women and 10 transgender men  
42 underwent two MRI scans in a longitudinal design. PET scans using [ $^{11}\text{C}$ ]harmine were  
43 performed before each MRI session in a subset of 35 individuals. GM changes determined by  
44 diffusion weighted imaging (DWI) metrics for GMM and voxel based morphometry (VBM) for  
45 GMD were estimated using repeated measures ANOVA. Regions showing significant changes  
46 of both GMM and GMD were used for the subsequent analysis of MAO-A density. These  
47 involved the fusiform gyrus, rolandic operculum, inferior occipital cortex, middle and anterior  
48 cingulum, bilateral insula, cerebellum and the lingual gyrus (post-hoc tests:  $p_{\text{FWE+Bonferroni}} <$   
49  $0.025$ ). In terms of MAO-A distribution volume, no significant effects were found. Additionally,  
50 the sexual desire inventory (SDI) was applied to assess GHT-induced changes in sexual  
51 desire, showing an increase of SDI scores among transmen. Changes in the GMD of the  
52 bilateral insula showed a moderate correlation to SDI scores ( $\rho = -0.62$ ,  $p_{\text{Bonferroni}} = 0.047$ ).  
53 The present results are indicative of a reliable influence of gender-affirming hormone therapy  
54 on 1) GMD and GMM following an interregional pattern and 2) sexual desire specifically among  
55 transmen.

56

## 57 Introduction

58 As pointed out in several reviews, meta- and mega-analyses that have been published over  
59 the last decades, a multitude of studies on sex-specific differences in brain structure point  
60 towards significant effects of sex steroids in terms of global, inter- and intra-regional brain  
61 morphology (1-5). On average, female brains are smaller than male ones (6). Significant  
62 differences between male and female brains were also found regarding gray (GM) and white  
63 matter (WM) volumes (7, 8). Nevertheless, some studies failed to detect such differences in  
64 GM volume on a global scale, despite adjustment for total brain size (9). Both region-of-interest  
65 (ROI)-based approaches as well as voxel-wise analyses allow for the examination and  
66 classification of highly specific cortical and subcortical regions, shedding light on a vast number  
67 of potential regional and/or local sex differences (3-5). However, a closer look to the current  
68 evidence reveals some inconsistent results, questioning the theory of a sexually dimorphic  
69 brain and pointing towards a lack of features found reliably at one end of the continuum  
70 between typically female and male brains (10).

71 Even though previous literature has reported conflicting results, it is known that sex hormones  
72 are centrally involved in the biological mechanisms that drive sex-specific differences in brain  
73 structure. Hence, ongoing research focusing on the interaction of cycling sex steroid levels  
74 with components of the central nervous system is essential. Sex steroids are known to have  
75 both transcriptional as well as non-genomic effects (11-13), modifying the brain throughout the  
76 lifespan (14-17). Thus, distributional differences in sex hormone receptors across the brain  
77 (18-20) as well as sex-specific differences in axonal characteristics (21), neuroplasticity (22)  
78 and neurogenesis (23) can be found. Additionally, sex steroids are known to directly interact  
79 with various neurotransmitters (24-26) and their metabolism, e.g., by modulating the activity of  
80 cerebral MAO-A activity. This has already been shown in a number of animal models (27-30)  
81 and selected human studies (31), however *in vivo* imaging data acquired via positron emission  
82 tomography (PET) remains scarce (32-34) and studies investigating the direct effects of  
83 exogenously administered sex hormones on cerebral MAO-A are specifically

84 underrepresented (35). A further gap in the literature that needs to be addressed is given by  
85 studies investigating the effect of MAOA gene polymorphisms that were shown to interact with  
86 GM changes – despite knowledge on the influence of MAOA VNTR polymorphism on brain  
87 structure volumes (36), cortical thickness (37) and gray matter (38), the association of MAO-A  
88 protein expression as measured in human *in vivo* studies and GM is insufficiently investigated.  
89 Taking into account the relevance of MAO-A density and subsequent neurotransmitter  
90 metabolism on neuroplastic effects (39-41) and thus GM characteristics in the brain, the link  
91 between MAO-A distribution and GM needs to be explored with multimodal imaging  
92 techniques. Taking into account the additional effect of sex steroids on both MAO-A density  
93 (32-34) as well as GM (7, 8), sex-specific interrelations of MAO-A density and GM might be of  
94 interest.

95 Individuals with gender dysphoria (GD) receiving gender-affirming hormone therapy (GHT)  
96 represent a unique cohort to investigate the direct effects of sex hormones on human brain  
97 structure. As described in the 5<sup>th</sup> edition of the Diagnostic and Statistical Manual of Mental  
98 Disorders (DSM-V), GD is defined as an incongruence between the biological sex assigned at  
99 birth and the experienced gender later in life (42). GHT basically involves the long-term  
100 administration of an estrogen and a type of androgen blocker in transgender women (TW),  
101 whereas the masculinization of transgender men (TM) can be supported by testosterone  
102 treatment (43). As summarized by Kranz and colleagues, structural changes of the brain were  
103 observed after GHT in a wide range of studies (44), with effects of testosterone treatment on  
104 total brain volume (45, 46), GM and WM density (47-49) as well as cortical thickness, showing  
105 controversial results in the latter (47, 50). In terms of estrogen and antiandrogen treatment, a  
106 decrease in cortical thickness (47), total brain (45) as well as total GM and WM volume (46)  
107 was shown. Changes in diffusivity as it was found after sex steroid treatment both in TM and  
108 TW might be traced back to changes in the organizational properties of neural fibers (e.g.,  
109 axon diameter, fiber density, myelin staining) (44). On a molecular level, high-dose  
110 testosterone treatment was shown to influence the distribution volume ( $V_T$ ) of MAO-A in  
111 transgender individuals (33). The structural and molecular effects of sex steroids on the brain

112 are also reflected by behavioral changes, e.g., in terms of sexual behavior. In a cross-sectional  
113 multi-centered transgender study, Garz et al. could show that masculinizing GHT was  
114 associated with increased sexual desire in transmen (51). This is in line with the findings of  
115 Defreyne et al. (52), who reported a long-lasting increase of sexual desire as measured by the  
116 sexual desire inventory (SDI) in TM after GHT, whereas in TW, multiple SDI subscores  
117 decreased during the first three months of GHT.

118 In this longitudinal study, we aimed to investigate changes to brain morphology and  
119 microstructure and further explore the corresponding effects on MAO-A binding in transgender  
120 individuals after long-term GHT. To reveal alterations in GM density (GMD) and microstructure  
121 (GMM) via MRI, voxel-based morphometry (VBM) and diffusion weighted imaging (DWI) were  
122 applied. In a subset of participants, PET imaging using [<sup>11</sup>C]harmine was conducted to uncover  
123 the effects of sex steroid treatment on cerebral MAO-A density and to elucidate potential  
124 interrelations between hormonally induced GM changes and alterations in MAO-A V<sub>T</sub>. In  
125 addition, we aimed to reveal the effect of GHT on sexual desire in both transmen and  
126 transwomen.

## 127 **Methods**

128 This study was performed according to the Declaration of Helsinki, taking into account all  
129 current revisions and good scientific practice guidelines of the Medical University of Vienna.  
130 The study protocol was approved by the Ethics Committee of the Medical University of Vienna  
131 (EC number 1104/2015) and registered at [clinicaltrials.gov](https://clinicaltrials.gov) (NCT02715232).

## 132 **Participants**

133 Twenty cisgender women (CW), 11 cisgender men (CM), 20 TW and 10 TM men were enrolled  
134 in the study. Transgender subjects were recruited at the Unit for Gender Identity Disorder at  
135 the Department of Obstetrics & Gynecology, Division of Gynecologic Endocrinology and  
136 Reproductive Medicine, Medical University of Vienna, Austria. Control subjects were recruited  
137 via designated message boards at the Medical University of Vienna and at other universities

138 in Vienna as well as via social media platforms. CW and CM were age and education level  
139 matched to TW and TM, respectively. Importantly, for transgender individuals, inclusion criteria  
140 comprised a diagnosis of gender dysphoria as defined in the Diagnostic and Statistical Manual  
141 for Mental Disorders), version 5 (DSM-5: 302.85) or the International Classification of  
142 Diseases, version 10 (ICD-10: F64.1). Moreover, the absence of severe psychiatric, neurologic  
143 or internal comorbidities was ensured in case of study enrollment based on medical history,  
144 physical examination, electrocardiogram, laboratory screening and structural clinical interview  
145 (SCID) for DSM-V. All subjects gave written informed consent to take part in this study and  
146 received financial compensation for their participation. Subjects were excluded in case of major  
147 neurological or internal illnesses, pregnancy, current substance abuse (excluding smoking),  
148 any kind of pathologic laboratory values, GHT or any other treatment with exogenous sex  
149 hormones within 6 months prior to study enrollment, MRI contraindications, current or past  
150 substance-related disorder or non-compliance (all subjects), any kind of current or prior  
151 psychiatric diagnosis (CW and CM) or severe DSM-V comorbidities (TW and TM) as well as  
152 current (TW and TM) or prior (CW and CM) treatment with psychotropic agents.

### 153 **Study design**

154 All subjects underwent two MRI scans separated by a median time period of 4.5 months  
155 following a longitudinal study design. Each MRI session included structural (T1- and diffusion-  
156 weighted), task-based and resting-state MRI as well as MR spectroscopy. For the current  
157 analyses, only structural MRI data was used. Thirty-five subjects (9 CW, 8 CM, 7 TW and 11  
158 TM), underwent PET scan(s) that were performed before MRI acquisition using the radiotracer  
159 [<sup>11</sup> C]harmine. After the baseline imaging sessions, transgender subjects received GHT.  
160 Plasma hormone levels were assessed via blood draw right before or after each baseline and  
161 follow-up imaging session. In addition, participants underwent the sexual desire inventory  
162 2(SDI-2) to assess potential effects of GHT on participants' interest in sexual activity.

163 **Medication**

164 The following GHT protocol was applied at the Department of Obstetrics & Gynecology,  
165 Division of Gynecologic Endocrinology and Reproductive Medicine, Medical University of  
166 Vienna, Austria: TM were treated with either 1000 mg testosterone undecanoat every 8-16  
167 weeks (Nebido 1000 mg / 4 ml i.m.), or up to 50 mg testosterone daily (Testogel 50 mg/day or  
168 Testavan 23 mg/pump 1-2 pumps/day or testosterone crème as a magistral formula 12,5  
169 mg/pump 3-4 pumps/day transdermally). If menstruation was still observed, transgender male  
170 participants received either lynestrenol (Orgametril 5 mg 2-3 tablets/day p.o.) or desogestrel  
171 (Moniq Gynial or Cerazette 0.075 mg/day p.o.). TW received cyproterone acetate daily  
172 (Androcur 50 mg/day) and either estradiol transdermally (Estramon 100 µg transdermal patch  
173 2x/week or Estrogel gel 0.75-1.5 mg/day transdermally) or oral estradiol (Estrofem 4 mg/day  
174 p.o.). In case of extensive hair loss, an alpha-5-reductase-inhibitor was prescribed (Finasterid  
175 2.5 mg/48h Actavis/Arcana/Aurobindo p.o.). Furthermore, selected participants were treated  
176 with GnRH-analogues like triptorelin (decapeptyl 0.1 mg/day subcutaneously).

177 **Sex steroid monitoring**

178 Levels of luteinizing hormone (LH), follicle-stimulating hormone (FSH), progesterone, estradiol,  
179 testosterone, sex hormone binding globulin (SHBG) and dehydroepiandrosterone sulfate were  
180 assessed via blood analysis at baseline and after a median time period of 4.5 months involving  
181 GHT in transgender subjects and no treatment in cisgender controls.

182 **Magnetic resonance imaging acquisition**

183 All MRI data were recorded using a Siemens Prisma 3T scanner and a 64-channel head coil.  
184 A whole-brain T1-weighted scan was acquired with the following parameters: TE / TR = 2.91 /  
185 2000 ms; inversion time = 900 ms; flip angle = 9°; matrix = 240 x 256, 176 slices; voxel size =  
186 1.0 mm<sup>3</sup>; acquisition time = 7:59 min. Diffusion weighted images contained 64 diffusion  
187 encoded images, with a b-value of 800 s/mm<sup>2</sup> along with 7 non-diffusion (b=0) images (TE /  
188 TR=76 / 9400 ms, slice thickness = 1.6 mm, resolution=1.6 x 1.6 mm, matrix size=128 x 128  
189 x 75, flip angle = 90°, acquisition time = 11:54 min). Subjects were instructed to stay awake



190 with eyes open and keep their head as still as possible during the entire scan to minimize  
191 movement artifacts.

## 192 **Positron emission tomography**

193 Synthesis and quality control of [<sup>11</sup>C]harmine, (7-[<sup>11</sup>C]methoxy-1-methyl-9H-pyrido[3,4-  
194 b]indole) were performed as previously published (53). All PET scans were performed using a  
195 GE Advance full-ring scanner (General Electric Medical Systems, Milwaukee, WI, USA) at the  
196 Department of Biomedical Imaging and Image-guided Therapy, Division of Nuclear Medicine,  
197 Medical University of Vienna (54-56). A 5 min transmission scan was done at the beginning of  
198 the scan for tissue attenuation correction. Data acquisition started simultaneously with an  
199 intravenous bolus injection of [<sup>11</sup>C]harmine (4.6 MBq/kg body weight). Ninety minutes of PET  
200 data were acquired in 3D mode and reconstructed using an iterative filtered backprojection  
201 algorithm, which was separated into 51 time frames with a spatial resolution of 4.36 mm with  
202 a FWHM of 1 cm next to the center of the field of view and reconstructed in 35 transaxial  
203 sectional volumes (128 × 128 matrix). Automatic arterial blood sampling was performed during  
204 the first 10 min at a rate of 4 ml/min (ALLOGG, Mariefred, Sweden) and manual samples were  
205 taken at 5, 6, 7, 8, 10, 20, 40, 60, and 80 min after bolus start (57). A gamma counter previously  
206 cross-calibrated to the PET scanner was used to measure radioactivity concentrations in both  
207 whole blood and plasma. Furthermore, samples at 6, 7 and 8 min were used for individual  
208 cross-calibration between manual and automated blood sampling. Fractions of radioactive  
209 metabolites and the parent compound were determined with HPLC as described previously  
210 (58).

## 211 **MRI data processing**

212 Voxel-based morphometric changes were calculated and processed in the CAT12 toolbox  
213 (<http://www.neuro.uni-jena.de/cat/>, version r1742) in MATLAB (version 9.8) using the  
214 longitudinal pipeline with default settings unless otherwise specified. Prior to preprocessing,  
215 raw data was visually inspected for potential artifacts. In short, the T1 images from both time  
216 points were co-registered, resampled and bias-corrected. Each scan was then skull stripped

217 and segmented into GM, white matter and cerebrospinal fluid, and resulting GMD was further  
218 used. Finally, GMD maps were normalized into MNI space and spatially smoothed using an 8-  
219 mm Gaussian kernel. Lastly, the CAT12 reports and data were visually controlled for  
220 registrations and segmentation errors.

221 As an estimate for GMM changes, DWI data was processed within the FMRIB software library  
222 (FSL, v. 6.0.05) (59) and unring (<https://bitbucket.org/reisert/unring>), ANTs  
223 (<https://github.com/ANTsX/ANTs>), MRtrix (<https://www.mrtrix.org/>) according to an optimized  
224 pipeline (60). All data was brain-masked, corrected for noise, movement, gradient, Gibbs  
225 ringing, bias field and eddy current distortions as well as for outliers in the form of signal  
226 dropouts (60). The diffusion tensors were fitted using the “dtifit” command as well as the rotated  
227 b-vectors and then smoothed using a 1 mm kernel (60). Mean diffusivity (MD) estimates were  
228 calculated and co-registered with the participant- and measurement-specific segmented GMD  
229 map. Thereafter, all images were normalized into MNI space and subsequently the GMD  
230 segmentation was thresholded and used to mask out non-GM voxels. Finally, the DWI MD  
231 estimates were smoothed using an 8 mm Gaussian kernel and masked again.

## 232 **PET data processing and MAO-A quantification**

233 MAO-A quantification was carried out using PMOD 3.509 (PMOD Technologies Ltd., Zurich,  
234 Switzerland; [www.pmod.com](http://www.pmod.com)). Whole blood data was fitted with the sum of three exponentials  
235 from the peak onward, plasma-to-whole blood ratio was fitted with a linear function and the  
236 parent fraction was modeled with a Watabe function. The arterial input function (AIF) was  
237 obtained by multiplying the fitted whole blood activity, plasma-to-whole blood ratio and the  
238 fraction of intact radioligand in plasma. The Logan plot was used to quantify voxel-wise MAO-  
239 A total  $V_T$  with the thalamus as high uptake region. Regional  $V_T$  were extracted using the  
240 activation map created from the overlap between GMD and DWI analyses.

## 241 **Statistics**

242 Structural changes determined by the MD DWI metric and GMD were estimated using 4 x 2  
243 (group x time) repeated measures ANOVA (rmANOVA) implemented in SPM12. Interactions

244 between group (TM, TW, CW, CM) by time (before and after min. 4 months of hormone  
245 therapy) were examined and further corrected for multiple testing using Gaussian random field  
246 theory as implemented in SPM12 and the threshold for significance was set at  $p \leq 0.025$  family-  
247 wise error (FWE)-corrected according to (61) at the cluster-level following  $P \leq 0.001$   
248 uncorrected at the voxel-level. Further post-hoc comparisons and number of DWI metrics were  
249 adjusted again using the Bonferroni method. To account for the individualized GHT treatment,  
250 progesterone, testosterone and estradiol were added to both rmANOVA models as covariates.  
251 Furthermore, the total intracranial volume was added as a covariate in the VBM model. For  
252 both the GMD and DWI models each covariate was standardized, and group mean centered.

253 To provide a robust identification of hormonally induced gray matter alterations, the different  
254 structural changes reflected by both the GMD and DWI analyses were combined. The  
255 significant effects from both models were binarized and a conjunction map across both imaging  
256 modalities was calculated as an intersection. The remaining brain regions included in this  
257 conjunction map were used for the subsequent MAO-A  $V_T$  analysis.

258 Interaction effects in MAO-A  $V_T$  before and after GHT for both cis- and transgender individuals  
259 were estimated using a linear mixed model in SPSS 25.0 (SPSS Inc., Chicago, Illinois;  
260 [www.spss.com](http://www.spss.com)). Here, the global model consisted of group, time and ROI (extracted from the  
261 conjunction map) as factors and MAO-A  $V_T$  as the dependent variable. The model was reduced  
262 in case of non-significance. Paired t-tests were used to estimate changes in SDI scores before  
263 and after GHT for both transmales and transfemales ( $p_{\text{Bonferroni}} < 0.025$ ). Finally, partial  
264 correlations between changes in SDI scores to GMD and GMM while correcting for the main  
265 influencing hormone were calculated to investigate a possible link between structural and  
266 behavioral changes after GHT ( $p_{\text{Bonferroni}} < 0.05$ ). The Bonferroni method was used to correct  
267 for multiple comparisons in all tests.

268

269

## 270 **Results**

271 Demographics and hormone levels are listed in table 1. Fewer TW and matched CM were  
272 recruited when compared to TM and CW. Due to irreversible damage to the PET imaging  
273 equipment, 35 participants partook in the PET part of the study, where only 17 completed both  
274 scans, see table 1 for a detailed breakdown of subgroups. Out of the 35 participants that  
275 underwent the PET scans, only 52 scans were suitable for further analysis.

### 276 **Structural and MAO-A changes after GHT**

277 For both the VBM and DWI analyses, significant 2-way (time-by-group) interaction effects were  
278 found. More widespread structural changes after a median of 4.5 months GHT using VBM  
279 were discovered, when compared to MD, see figure 1a + b. Combining the results from VBM  
280 and DWI analyses showed an overlap of changes in the fusiform gyrus, rolandic operculum,  
281 inferior occipital cortex, middle and anterior cingulum and insula, cerebellum and the lingual  
282 gyrus (figure 1c). Post-hoc tests revealed changes in GMD, see figure 2 and also for MD, figure  
283 3, ( $p_{FWE + Bonferroni} < 0.025$ ). An increase in GMD was found in the fusiform gyrus, cerebellum  
284 and lingual gyrus after GHT for transmen compared to both control groups. Transwomen  
285 contrastingly showed a decrease in GMD after GHT in the rolandic operculum, insula, posterior  
286 cingulum, cerebellum and lingual gyrus when compared to both cismales and cisfemales.

287 The opposite interaction effects were found in the MD of the fusiform and lingual gyrus for  
288 transmales compared to both cis control groups. An increase of MD in the insula was also  
289 found for transwomen after GHT when compared to both control groups.

290 When investigating regional changes in MAO-A  $V_T$ , no interaction and no main effects were  
291 significant.

### 292 **Behavioral changes after GHT**

293 An increase in the overall SDI scale (sum score) “desire with (t = 5.84,  $p_{Bonferroni} < 0.001$ ) and  
294 without interactions” (t = 3.4,  $p_{Bonferroni} = 0.01$ ) was found for TM after GHT. Furthermore, a

295 moderate negative correlation between changes in the SDI sum score of desire with interaction  
296 and GMD in the bilateral insula after GHT for the TM group was found ( $\rho = -0.62$ ,  $p_{\text{Bonferroni}} =$   
297  $0.047$ ). While other regions and sum score of desire without interaction also showed moderate  
298 correlations, no others survived the correction for multiple comparisons. Moreover, no  
299 significant correlations between GMM and any SDI sum scores were found,  $p > 0.12$ .

300

## 301 **Discussion**

302 The present study aimed to investigate potential changes to GM and MAO-A density induced  
303 by GHT over a median time period of 4.5 months in subjects with GD. To reveal robust changes  
304 in both GD, morphometric differences in GMD and microstructural alterations as reflects by  
305 GMM were combined and subsequently used for assessment of MAO-A  $V_T$ . Significant  
306 changes in GMD and GMM after GHT that will be discussed in the following section were found  
307 in nine distinct brain regions. Across these regions, no significant changes of MAO-A  $V_T$  were  
308 found. In an additional analysis we probed the effect of GHT on sexual desire as measured by  
309 the SDI and found an increase in the SDI sum scores “desire with” and “without interactions”  
310 for TM after GHT.

### 311 **Structural changes after GHT**

312 Significant 2-way (time-by-group) interaction effects induced by GHT, as reflected by both the  
313 VBM and DWI analyses, were found in the fusiform gyrus, rolandic operculum, inferior occipital  
314 cortex, middle and anterior cingulum, bilateral insula, cerebellum as well as the lingual gyrus.  
315 As discussed in the following section, our findings are in line with prior studies reporting  
316 significant changes in GMD and GMM. Moreover, in comparison to cross-sectional data (62-  
317 66), our longitudinal design allows for more accurate interpretation.

#### 318 *Fusiform gyrus:*

319 As various other regions presenting significant changes to GMD and GMM reported here, the  
320 fusiform gyrus is implicated in own-body perception in the context of self (49, 67) and is known  
321 to show different functional connectivity patterns in GD when compared to cisgender controls  
322 (49). These functionally different patterns might be reflected by structural differences as well.  
323 Here, we found a GHT-induced increase of GMD and decrease of MD (as a marker for GMM)  
324 in the fusiform gyrus of TM, potentially indicating anticatabolic effects of testosterone (44, 68).

#### 325 *Lingual gyrus, bilateral insula and posterior cingulum:*

326 After androgenization of TM, Zubiaurre-Elorza and colleagues found a significant increase of  
327 cortical thickness in multiple brain regions, e.g., the left lingual gyrus (47). This is in line with  
328 our finding, however in the present study, GMD of the lingual gyrus increased and MD  
329 decreased bilaterally across TM after high-dose testosterone treatment. Of note, the lingual  
330 gyrus is centrally involved in processing visual information and thus visuospatial functioning.  
331 As men, on average, perform better than women in visuospatial functioning, and testosterone  
332 has been suggested to directly influence visuospatial functioning both in men (69) as well as  
333 women (70), it could be hypothesized that advantages in this skill could partially be traced back  
334 to an interrelation of higher GMD and and lower and the influence of high-dose testosterone  
335 treatment. In addition, we found a significant decrease in GMD across the insula as well as the  
336 posterior cingulum of TW when compared to CW and CM. The insula belongs to the salience  
337 network (71), which plays a central role for interoceptive processes and own-body perception  
338 (67). Differences in functional connectivity were further shown in language and affective  
339 processing (72, 73) as well as in various neuropsychiatric conditions (74, 75). However, sex-  
340 based differences between cisgender men and women regarding the insula were not only  
341 shown in functional MRI, but also in structural analyses (3) and investigations of the GABAergic  
342 system in humans (76). Thus, changes to GMD might be seen as a marker for microstructural  
343 remodeling induced by estrogen and anti-androgen therapy, as it is needed for multifactorial  
344 adaptations that take place throughout GHT (49, 77). Our findings are in line with prior reports  
345 on decreased GMD, higher MD reflecting microstructural changes, and widespread cortical  
346 thinning in anti-androgen and estrogen treatment across TW (46, 47).

### 347 **Changes to MAO-A distribution**

348 In view of sexually dimorphic characteristics of multiple neuropsychiatric conditions, better  
349 understanding of how sex steroids interact with neurotransmitters on a molecular level, e.g.,  
350 as reflected by MAO-A density, is of major interest. In the present study, none of the subgroups  
351 showed significant changes to MAO-A  $V_T$  in any of the brain regions that were found to be  
352 different in terms of GMD and GMM after GHT. In contrast, in a prior analysis of MAO-A density  
353 after GHT performed by our group, we found statistically significant reductions of MAO-A  $V_T$  in

354 six of twelve previously defined regions of interest in TM after GHT for at least 4 months. These  
355 regions included the middle frontal cortex (-10%), anterior cingulate cortex (-9%), medial  
356 cingulate cortex (-10.5%), insula (-8%), amygdala (-9%) and hippocampus (-8.5%, all  
357  $p < 0.05$ ) (33). Of note, in the study by Kranz et al. regional MAOA  $V_T$  was estimated based on  
358 *a priori* defined regions-of-interest (ROIs) from a modified AAL atlas (33, 78), whereas here,  
359 MAO-A analysis was performed in regions that showed significant GMD and GMM changes  
360 after GHT.

### 361 **GHT effects on sexual desire**

362 The effect of GHT on sexual desire found here corroborates the findings of previous observations  
363 reporting increased sexual desire in TM after androgen treatment (51, 52, 79-82). Even though  
364 Defreyne et al. found that some sexual desire changes observed over the course of GHT might  
365 diminish over time, elevated total, dyadic, and solitary SDI scores in TM remained stable on  
366 the long-term (52). This is in line with our finding of elevated sexual desire in TM after a median  
367 time period of 4.5 months of GHT. Despite the effects quantified 4.5 months after GHT  
368 initiation, no further follow-up was performed in the present study. Therefore, a decrease of  
369 sexual desire after a longer therapeutic period cannot be ruled out completely. However, a  
370 follow-up period of 12 months has been performed by van Dijk and colleagues who reported  
371 the most pronounced changes in sexual desire across TM within the first 3 months of treatment  
372 which remained largely stable even after 12 months (81, 83). The increase in sexual desire  
373 among TM might be traced back to testosterone treatment per se (84) and higher androgen  
374 levels in general (85). However, many other factors could have influenced sexual drive, e.g.,  
375 more satisfactory sexual interactions and relationships due to transition or improvement in  
376 general well-being after GHT (82).

377 Interestingly, partial correlation analyses between changes in SDI scores and GMD/GMM  
378 revealed a significant negative correlation between changes in the SDI sum score of desire  
379 with interaction and GMD in the bilateral insula of TM individuals. This finding suggests a  
380 possible connection between structural GM changes in the insula and changes in sexual desire



381 after masculinizing GHT. Among many other functions, the insula is essential for the integration  
382 of external sensory stimuli via various neuronal pathways (86). Activation of the bilateral insula  
383 during sexual arousal and desire has been shown in several fMRI studies (87-89), indicating a  
384 link between insular activation and the processing of sexual stimuli. Although there have been  
385 multiple fMRI studies in this area, this is, to the best of our knowledge, the first study to link  
386 structural GM changes after long-term masculinizing GHT with changes in sexual desire.  
387 Moreover, the significance of a negative (rather than positive) correlation between structural  
388 GM changes and changes of sexual desire (found in subjects treated with testosterone) has  
389 yet to be evaluated. Nevertheless, the finding points to an influence of the hormone on both  
390 sexual desire and structural remodeling within cortical regions such as the insula.

391 Of note, also the neurotransmitter dopamine plays a key role in insular activation while  
392 processing sexual stimuli (90). Thus, the presence of mesolimbic dopaminergic projections  
393 reaching the insula and contributing to the processes taking place during sexual arousal and  
394 sexual desire should be considered in future neuroimaging studies in this field (91).

## 395 **Limitations**

396 Some limitations of the present study need to be addressed. First, subgroups were not  
397 sufficiently balanced due to recruitment difficulties, especially in case of subjects with gender  
398 dysphoria. Second, the subgroup that underwent PET imaging comprised only 17 individuals  
399 due to irreparable damages to the PET equipment. Therefore, it cannot be ruled out that  
400 potential GHT-induced changes in MAO-A  $V_T$  both on a global as could not be detected in the  
401 present analyses.

## 402 **Conclusion**

403 Long-term GHT seems to have a considerable impact on GMD and GMM in the brain of  
404 transgender individuals. Specific effects of either androgenizing or feminizing sex steroids  
405 must be taken into account in most regions, however, in selected structures both types of GHT  
406 affected GMD and GMM in the same way, pointing towards mechanisms that are induced by

407 GHT irrespective of whether feminizing or androgenizing steroids are used. The combined  
408 approach in analyzing structural MRI data has the potential to shed light on changes of GM as  
409 reflected by both morphometric as well as microstructural analyses after GHT in a longitudinal  
410 design and in comparison to cisgender individuals. Nevertheless, larger sample sizes are  
411 needed to detect reliable associations between GM and potential MAO-A density changes  
412 induced by GHT. In terms of sexual desire, our findings are consistent with the literature and  
413 supports evidence from previous observations of increased sexual desire in TM after  
414 masculinizing GHT.

## 415 **Acknowledgments**

416 This research was funded in whole, or in part, by the Austrian Science Fund (FWF) [Grant  
417 number KLI 504, PI: Rupert Lanzenberger]. M. Murgaš is funded by the Austrian Science Fund  
418 (FWF) [Grant number DOC 33-B27, Supervisor R. Lanzenberger]. MB. Reed and M. Klöbl are  
419 recipients of a DOC fellowship of the Austrian Academy of Sciences at the Department of  
420 Psychiatry and Psychotherapy, Medical University of Vienna. This project was performed with  
421 the support of the Medical Imaging Cluster of the Medical University of Vienna, and by the  
422 grant „Interdisciplinary translational brain research cluster (ITHC) with highfield MR" from the  
423 Federal Ministry of Science, Research and Economy (BMWFW), Austria. We thank the  
424 graduated team members and the diploma students of the Neuroimaging Lab (NIL, headed by  
425 R. Lanzenberger) as well as the clinical colleagues from the Department of Psychiatry and  
426 Psychotherapy of the Medical University of Vienna for clinical and/or administrative support. In  
427 particular, we would like to thank R. Seiger (MRI) and L. Rischka (PET) for technical and  
428 methodological support and V. Ritter for administrative help. We would also like to thank N.  
429 Berroterán-Infante, T. Balber, C. Philippe for assistance with radioligand synthesis, K. Rebhan  
430 for radioligand metabolite processing, I. Leitinger, H. Ibeschitz, V. Weiss for assistance with  
431 PET measurements, and V. Pichler, M. Mitterhauser, T. Traub-Weidinger and S. Kasper for  
432 project supervision.

433

## 434 **CRedit authorship contribution statement**

435 **Patricia A Handschuh**; conceptualization, investigation, visualization, writing – original draft,  
436 **Murray B Reed**; conceptualization, methodology, software, formal analysis, data curation,  
437 visualization, writing – original draft, **Matej Murgaš**; software, data curation, review & editing,  
438 **Crysoula Vraka**; review & editing, **Ulrike Kaufmann**; review & editing, investigation, **Lukas**  
439 **Nics**; review & editing, **Marius Ozenil**; review & editing, **Dr. Melisande E. Konadu**;  
440 investigation, review & editing, **Manfred Klöbl**; investigation, data curation, writing – review &

441 editing, **Eva-Maria Patronas**; review & editing, **Benjamin Spurny-Dworak**; review & editing,  
442 **Andreas Hahn**; software, supervision, writing – review & editing, **Marcus Hacker**; review &  
443 editing, **Marie Spies**; conceptualization, investigation, writing – review & editing, **Pia**  
444 **Baldinger-Melich**; review & editing, investigation, **Georg S. Kranz**; conceptualization, writing  
445 – review & editing, **Rupert Lanzenberger**; project administration, funding acquisition,  
446 supervision

## 447 **Conflict of Interest**

448 With relevance to this work there is no conflict of interest to declare. R. Lanzenberger received  
449 travel grants and/or conference speaker honoraria within the last three years from Bruker  
450 BioSpin MR, Heel, and support from Siemens Healthcare regarding clinical research using  
451 PET/MR. He is a shareholder of the start-up company BM Health GmbH since 2019. G.S.  
452 Kranz declares that he received conference speaker honorarium from Roche, AOP Orphan  
453 and Pfizer. P. Handschuh received authorship honoraria from MedMedia Verlag and a travel  
454 grant from Angelini Pharma. The other authors report no conflict of interest.

## 455 **Data availability statement**

456 Due to data protection laws processed data is available from the authors upon reasonable  
457 request. Please contact [rupert.lanzenberger@meduniwien.ac.at](mailto:rupert.lanzenberger@meduniwien.ac.at) with any questions or  
458 requests.

459

## 460 References

- 461 1. Cosgrove KP, Mazure CM, Staley JK. Evolving Knowledge of Sex Differences in Brain  
462 Structure, Function, and Chemistry. *Biological Psychiatry*. 2007;62(8):847-55.
- 463 2. Luders E, Kurth F. Structural differences between male and female brains. *Handbook*  
464 *of clinical neurology*. 2020;175:3-11.
- 465 3. Ruigrok AN, Salimi-Khorshidi G, Lai MC, Baron-Cohen S, Lombardo MV, Tait RJ, et al.  
466 A meta-analysis of sex differences in human brain structure. *Neuroscience and biobehavioral*  
467 *reviews*. 2014;39(100):34-50.
- 468 4. Kong X-Z, Mathias SR, Guadalupe T, Glahn DC, Franke B, Crivello F, et al. Mapping  
469 cortical brain asymmetry in 17,141 healthy individuals worldwide via the ENIGMA Consortium.  
470 *Proceedings of the National Academy of Sciences*. 2018;115(22):E5154-E63.
- 471 5. Guadalupe T, Mathias SR, vanErp TGM, Whelan CD, Zwiers MP, Abe Y, et al. Human  
472 subcortical brain asymmetries in 15,847 people worldwide reveal effects of age and sex. *Brain*  
473 *imaging and behavior*. 2017;11(5):1497-514.
- 474 6. Allen JS, Damasio H, Grabowski TJ. Normal neuroanatomical variation in the human  
475 brain: an MRI-volumetric study. *American journal of physical anthropology*. 2002;118(4):341-  
476 58.
- 477 7. Gur RC, Turetsky BI, Matsui M, Yan M, Bilker W, Hughett P, et al. Sex differences in  
478 brain gray and white matter in healthy young adults: correlations with cognitive performance.  
479 *The Journal of neuroscience : the official journal of the Society for Neuroscience*.  
480 1999;19(10):4065-72.
- 481 8. Luders E, Gaser C, Narr KL, Toga AW. Why Sex Matters: Brain Size Independent  
482 Differences in Gray Matter Distributions between Men and Women. *The Journal of*  
483 *Neuroscience*. 2009;29(45):14265.
- 484 9. Nopoulos P, Flaum M, O'Leary D, Andreasen NC. Sexual dimorphism in the human  
485 brain: evaluation of tissue volume, tissue composition and surface anatomy using magnetic  
486 resonance imaging. *Psychiatry research*. 2000;98(1):1-13.
- 487 10. Joel D, Berman Z, Tavor I, Wexler N, Gaber O, Stein Y, et al. Sex beyond the genitalia:  
488 The human brain mosaic. *Proceedings of the National Academy of Sciences*.  
489 2015;112(50):15468-73.
- 490 11. Singh M, Su C, Ng S. Non-genomic mechanisms of progesterone action in the brain.  
491 *Frontiers in neuroscience*. 2013;7:159.
- 492 12. Kawata M, Nishi M, Matsuda K, Sakamoto H, Kaku N, Masugi-Tokita M, et al. Steroid  
493 receptor signalling in the brain--lessons learned from molecular imaging. *Journal of*  
494 *neuroendocrinology*. 2008;20(6):673-6.
- 495 13. Simoncini T, Genazzani AR. Non-genomic actions of sex steroid hormones. *European*  
496 *journal of endocrinology*. 2003;148(3):281-92.
- 497 14. Koolschijn PCM, Peper JS, Crone EA. The influence of sex steroids on structural brain  
498 maturation in adolescence. *PloS one*. 2014;9(1):e83929.
- 499 15. Pike CJ. Sex and the development of Alzheimer's disease. *Journal of neuroscience*  
500 *research*. 2017;95(1-2):671-80.
- 501 16. Knickmeyer RC, Wang J, Zhu H, Geng X, Woolson S, Hamer RM, et al. Impact of sex  
502 and gonadal steroids on neonatal brain structure. *Cerebral cortex (New York, NY : 1991)*.  
503 2014;24(10):2721-31.
- 504 17. Mills KL, Lalonde F, Clasen LS, Giedd JN, Blakemore SJ. Developmental changes in  
505 the structure of the social brain in late childhood and adolescence. *Social cognitive and*  
506 *affective neuroscience*. 2014;9(1):123-31.
- 507 18. Österlund MK, Gustafsson J-Ak, Keller E, Hurd YL. Estrogen receptor  $\beta$  (ER $\beta$ )  
508 messenger ribonucleic acid (mRNA) expression within the human forebrain: distinct  
509 distribution pattern to ER $\alpha$  mRNA. *The Journal of Clinical Endocrinology & Metabolism*.  
510 2000;85(10):3840-6.
- 511 19. Brinton RD, Thompson RF, Foy MR, Baudry M, Wang J, Finch CE, et al. Progesterone  
512 receptors: Form and function in brain. *Frontiers in Neuroendocrinology*. 2008;29(2):313-39.

- 513 20. Fernández-Guasti A, Kruijver FP, Fodor M, Swaab DF. Sex differences in the  
514 distribution of androgen receptors in the human hypothalamus. *Journal of Comparative*  
515 *Neurology*. 2000;425(3):422-35.
- 516 21. Ibanez C, Shields SA, El-Etr M, Leonelli E, Magnaghi V, Li WW, et al. Steroids and the  
517 reversal of age-associated changes in myelination and remyelination. *Progress in*  
518 *Neurobiology*. 2003;71(1):49-56.
- 519 22. Baroncini M, Jissendi P, Catteau-Jonard S, Dewailly D, Pruvo J-P, Francke J-P, et al.  
520 Sex steroid hormones-related structural plasticity in the human hypothalamus. *NeuroImage*.  
521 2010;50(2):428-33.
- 522 23. Heberden C. Sex steroids and neurogenesis. *Biochemical pharmacology*.  
523 2017;141:56-62.
- 524 24. Di Paolo T. Modulation of brain dopamine transmission by sex steroids. *Reviews in the*  
525 *Neurosciences*. 1994;5(1):27-42.
- 526 25. Dubol M, Epperson CN, Sacher J, Pletzer B, Derntl B, Lanzenberger R, et al.  
527 Neuroimaging the menstrual cycle: A multimodal systematic review. *Frontiers in*  
528 *Neuroendocrinology*. 2021;60:100878.
- 529 26. Zheng P. Neuroactive steroid regulation of neurotransmitter release in the CNS: action,  
530 mechanism and possible significance. *Progress in neurobiology*. 2009;89(2):134-52.
- 531 27. Luine VN, McEwen BS. Effect of oestradiol on turnover of type A monoamine oxidase  
532 in brain. *Journal of neurochemistry*. 1977;28(6):1221-7.
- 533 28. Holschneider DP, Kumazawa T, Chen K, Shih JC. Tissue-specific effects of estrogen  
534 on monoamine oxidase A and B in the rat. *Life Sci*. 1998;63(3):155-60.
- 535 29. Smith LJ, Henderson JA, Abell CW, Bethea CL. Effects of ovarian steroids and  
536 raloxifene on proteins that synthesize, transport, and degrade serotonin in the raphe region of  
537 macaques. *Neuropsychopharmacology*. 2004;29(11):2035-45.
- 538 30. Bethea CL, Phu K, Kim A, Reddy AP. Androgen metabolites impact CSF amines and  
539 axonal serotonin via MAO-A and -B in male macaques. *Neuroscience*. 2015;301:576-89.
- 540 31. Klaiber EL, Broverman DM, Vogel W, Peterson LG, Snyder MB. Individual differences  
541 in changes in mood and platelet monoamine oxidase (MAO) activity during hormonal  
542 replacement therapy in menopausal women. *Psychoneuroendocrinology*. 1996;21(7):575-92.
- 543 32. Rekkas PV, Wilson AA, Lee VW, Yogalingam P, Sacher J, Rusjan P, et al. Greater  
544 monoamine oxidase a binding in perimenopausal age as measured with carbon 11-labeled  
545 harmine positron emission tomography. *JAMA Psychiatry*. 2014;71(8):873-9.
- 546 33. Kranz GS, Spies M, Vranka C, Kaufmann U, Klebermass E-M, Handschuh PA, et al.  
547 High-dose testosterone treatment reduces monoamine oxidase A levels in the human brain: A  
548 preliminary report. *Psychoneuroendocrinology*. 2021;133:105381.
- 549 34. Sacher J, Wilson AA, Houle S, Rusjan P, Hassan S, Bloomfield PM, et al. Elevated  
550 brain monoamine oxidase A binding in the early postpartum period. *Archives of general*  
551 *psychiatry*. 2010;67(5):468-74.
- 552 35. Kranz GS, Wadsak W, Kaufmann U, Savli M, Baldinger P, Gryglewski G, et al. High-  
553 Dose Testosterone Treatment Increases Serotonin Transporter Binding in Transgender  
554 People. *Biol Psychiatry*. 2015;78(8):525-33.
- 555 36. Wassink TH, Hazlett HC, Davis LK, Reiss AL, Piven J. Testing for association of the  
556 monoamine oxidase A promoter polymorphism with brain structure volumes in both autism and  
557 the fragile X syndrome. *Journal of neurodevelopmental disorders*. 2014;6(1):6.
- 558 37. Cerasa A, Cherubini A, Quattrone A, Gioia MC, Magariello A, Muglia M, et al.  
559 Morphological correlates of MAO A VNTR polymorphism: new evidence from cortical thickness  
560 measurement. *Behavioural brain research*. 2010;211(1):118-24.
- 561 38. Meyer-Lindenberg A, Buckholtz JW, Kolachana B, A RH, Pezawas L, Blasi G, et al.  
562 Neural mechanisms of genetic risk for impulsivity and violence in humans. *Proceedings of the*  
563 *National Academy of Sciences of the United States of America*. 2006;103(16):6269-74.
- 564 39. Naoi M, Maruyama W, Shamoto-Nagai M. Type A monoamine oxidase and serotonin  
565 are coordinately involved in depressive disorders: from neurotransmitter imbalance to impaired  
566 neurogenesis. *Journal of neural transmission (Vienna, Austria : 1996)*. 2018;125(1):53-66.

- 567 40. Godar SC, Bortolato M, Richards SE, Li FG, Chen K, Wellman CL, et al. Monoamine  
568 oxidase A is required for rapid dendritic remodeling in response to stress. *International Journal*  
569 *of Neuropsychopharmacology*. 2015;18(9):pyv035.
- 570 41. Soliman A, Udemgba C, Fan I, Xu X, Miler L, Rusjan P, et al. Convergent effects of  
571 acute stress and glucocorticoid exposure upon MAO-A in humans. *Journal of Neuroscience*.  
572 2012;32(48):17120-7.
- 573 42. Association AP, DSM-IV. APATFo. *Diagnostic and Statistical Manual of Mental*  
574 *Disorders, Fourth Edition: DSM-IV-TR®: American Psychiatric Association; 2000.*
- 575 43. Hembree WC, Cohen-Kettenis PT, Gooren L, Hannema SE, Meyer WJ, Murad MH, et  
576 al. Endocrine Treatment of Gender-Dysphoric/Gender-Incongruent Persons: An Endocrine  
577 Society\* Clinical Practice Guideline. *The Journal of Clinical Endocrinology & Metabolism*.  
578 2017;102(11):3869-903.
- 579 44. Kranz GS, Zhang BBB, Handschuh P, Ritter V, Lanzenberger R. Gender-affirming  
580 hormone treatment - A unique approach to study the effects of sex hormones on brain structure  
581 and function. *Cortex; a journal devoted to the study of the nervous system and behavior*.  
582 2020;129:68-79.
- 583 45. Pol HEH, Cohen-Kettenis PT, Van Haren NE, Peper JS, Brans RG, Cahn W, et al.  
584 Changing your sex changes your brain: influences of testosterone and estrogen on adult  
585 human brain structure. *European Journal of Endocrinology*. 2006;155(suppl\_1):S107-S14.
- 586 46. Kilpatrick LA, Holmberg M, Manzouri A, Savic I. Cross sex hormone treatment is linked  
587 with a reversal of cerebral patterns associated with gender dysphoria to the baseline of  
588 cisgender controls. *European Journal of Neuroscience*. 2019;50(8):3269-81.
- 589 47. Zubiaurre-Elorza L, Junque C, Gómez-Gil E, Guillamon A. Effects of Cross-Sex  
590 Hormone Treatment on Cortical Thickness in Transsexual Individuals. *The Journal of Sexual*  
591 *Medicine*. 2014;11(5):1248-61.
- 592 48. Kranz GS, Hahn A, Kaufmann U, Tik M, Ganger S, Seiger R, et al. Effects of  
593 testosterone treatment on hypothalamic neuroplasticity in female-to-male transgender  
594 individuals. *Brain Structure and Function*. 2018;223(1):321-8.
- 595 49. Burke SM, Manzouri AH, Dhejne C, Bergström K, Arver S, Feusner JD, et al.  
596 Testosterone Effects on the Brain in Transgender Men. *Cerebral Cortex*. 2017;28(5):1582-96.
- 597 50. Hahn A, Kranz GS, Sladky R, Kaufmann U, Ganger S, Hummer A, et al. Testosterone  
598 affects language areas of the adult human brain. *Human brain mapping*. 2016;37(5):1738-48.
- 599 51. Garz M, Schröder J, Nieder T, Becker I, Biedermann S, Hildebrandt T, et al. Body  
600 Image and Sexual Desire in the Context of Gender Affirming Therapy: Results of a Cross-  
601 sectional Multi-centered Transgender Study. *Journal of Sex & Marital Therapy*.  
602 2021;47(5):435-45.
- 603 52. Defreyne J, Elaut E, Kreukels B, Fisher AD, Castellini G, Staphorsius A, et al. Sexual  
604 desire changes in transgender individuals upon initiation of hormone treatment: Results from  
605 the longitudinal European Network for the Investigation of Gender Incongruence. *The Journal*  
606 *of Sexual Medicine*. 2020;17(4):812-25.
- 607 53. Philippe C, Zeilinger M, Mitterhauser M, Dumanic M, Lanzenberger R, Hacker M, et al.  
608 Parameter evaluation and fully-automated radiosynthesis of [<sup>11</sup>C]harmine for imaging of MAO-  
609 A for clinical trials. *Applied Radiation and Isotopes*. 2015;97:182-7.
- 610 54. Baldinger-Melich P, Gryglewski G, Philippe C, James GM, Vranka C, Silberbauer L, et  
611 al. The effect of electroconvulsive therapy on cerebral monoamine oxidase A expression in  
612 treatment-resistant depression investigated using positron emission tomography. *Brain*  
613 *stimulation*. 2019;12(3):714-23.
- 614 55. Spies M, James GM, Vranka C, Philippe C, Hienert M, Gryglewski G, et al. Brain  
615 monoamine oxidase A in seasonal affective disorder and treatment with bright light therapy.  
616 2018;8(1):198.
- 617 56. James GM, Baldinger-Melich P, Philippe C, Kranz GS, Vanicek T, Hahn A, et al. Effects  
618 of Selective Serotonin Reuptake Inhibitors on Interregional Relation of Serotonin Transporter  
619 Availability in Major Depression. *Frontiers in human neuroscience*. 2017;11:48.
- 620 57. Ginovart N, Meyer JH, Boovariwala A, Hussey D, Rabiner EA, Houle S, et al. Positron  
621 emission tomography quantification of [<sup>11</sup>C]-harmine binding to monoamine oxidase-A in the

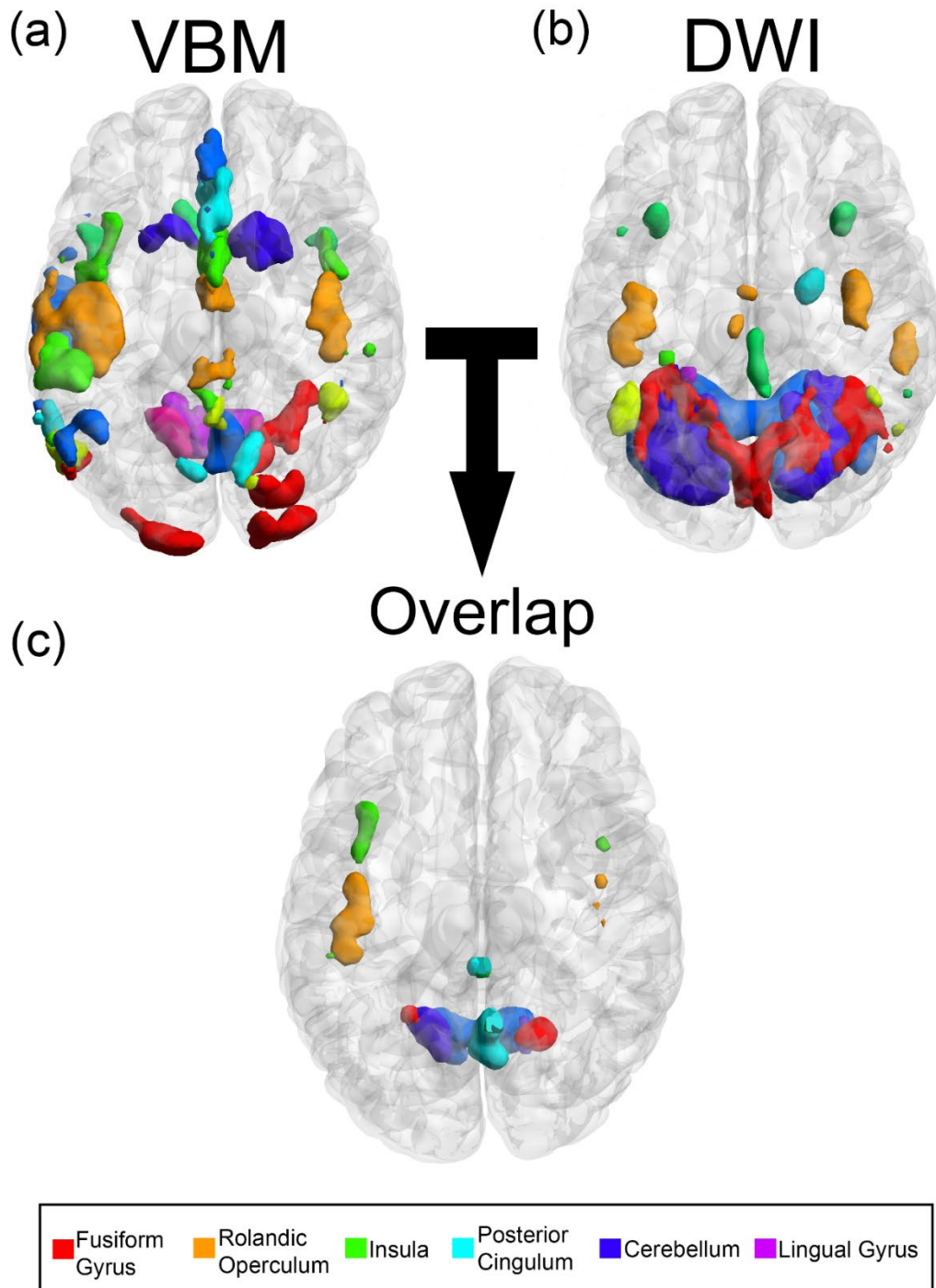
- 622 human brain. *Journal of cerebral blood flow and metabolism : official journal of the International*  
623 *Society of Cerebral Blood Flow and Metabolism*. 2006;26(3):330-44.
- 624 58. Hilton J, Yokoi F, Dannals RF, Ravert HT, Szabo Z, Wong DF. Column-switching HPLC  
625 for the analysis of plasma in PET imaging studies. *Nuclear medicine and biology*.  
626 2000;27(6):627-30.
- 627 59. Smith SM, Jenkinson M, Woolrich MW, Beckmann CF, Behrens TEJ, Johansen-Berg  
628 H, et al. Advances in functional and structural MR image analysis and implementation as FSL.  
629 *NeuroImage*. 2004;23:S208-S19.
- 630 60. Maximov II, Alnæs D, Westlye LT. Towards an optimised processing pipeline for  
631 diffusion magnetic resonance imaging data: Effects of artefact corrections on diffusion metrics  
632 and their age associations in UK Biobank. *Human brain mapping*. 2019;40(14):4146-62.
- 633 61. Chen G, Cox RW, Glen DR, Rajendra JK, Reynolds RC, Taylor PA. A tail of two sides:  
634 Artificially doubled false positive rates in neuroimaging due to the sidedness choice with t-tests.  
635 *Human brain mapping*. 2019;40(3):1037-43.
- 636 62. Mueller SC, Landré L, Wierckx K, T'Sjoen G. A Structural Magnetic Resonance Imaging  
637 Study in Transgender Persons on Cross-Sex Hormone Therapy. *Neuroendocrinology*.  
638 2017;105(2):123-30.
- 639 63. Simon L, Kozák LR, Simon V, Czobor P, Unoka Z, Szabó Á, et al. Regional grey matter  
640 structure differences between transsexuals and healthy controls--a voxel based morphometry  
641 study. *PLoS One*. 2013;8(12):e83947.
- 642 64. Hoekzema E, Schagen SE, Kreukels BP, Veltman DJ, Cohen-Kettenis PT, Delemarre-  
643 van de Waal H, et al. Regional volumes and spatial volumetric distribution of gray matter in the  
644 gender dysphoric brain. *Psychoneuroendocrinology*. 2015;55:59-71.
- 645 65. Luders E, Sánchez FJ, Gaser C, Toga AW, Narr KL, Hamilton LS, et al. Regional gray  
646 matter variation in male-to-female transsexualism. *Neuroimage*. 2009;46(4):904-7.
- 647 66. Zubiaurre-Elorza L, Junque C, Gómez-Gil E, Segovia S, Carrillo B, Rametti G, et al.  
648 Cortical thickness in untreated transsexuals. *Cerebral cortex (New York, NY : 1991)*.  
649 2013;23(12):2855-62.
- 650 67. Feusner JD, Lidström A, Moody TD, Dhejne C, Bookheimer SY, Savic I. Intrinsic  
651 network connectivity and own body perception in gender dysphoria. *Brain imaging and*  
652 *behavior*. 2017;11(4):964-76.
- 653 68. Guillamon A, Junque C, Gómez-Gil E. A Review of the Status of Brain Structure  
654 Research in Transsexualism. *Archives of Sexual Behavior*. 2016;45(7):1615-48.
- 655 69. O'Connor DB, Archer J, Hair WM, Wu FC. Activational effects of testosterone on  
656 cognitive function in men. *Neuropsychologia*. 2001;39(13):1385-94.
- 657 70. Aleman A, Bronk E, Kessels RPC, Koppeschaar HPF, van Honk J. A single  
658 administration of testosterone improves visuospatial ability in young women.  
659 *Psychoneuroendocrinology*. 2004;29(5):612-7.
- 660 71. Peters SK, Dunlop K, Downar J. Cortico-Striatal-Thalamic Loop Circuits of the Salience  
661 Network: A Central Pathway in Psychiatric Disease and Treatment. *Frontiers in Systems*  
662 *Neuroscience*. 2016;10.
- 663 72. Harrington GS, Farias ST. Sex differences in language processing: functional MRI  
664 methodological considerations. *Journal of magnetic resonance imaging : JMRI*.  
665 2008;27(6):1221-8.
- 666 73. Duerden EG, Arsalidou M, Lee M, Taylor MJ. Lateralization of affective processing in  
667 the insula. *Neuroimage*. 2013;78:159-75.
- 668 74. Klabunde M, Weems CF, Raman M, Carrion VG. The moderating effects of sex on  
669 insula subdivision structure in youth with posttraumatic stress symptoms. *Depression and*  
670 *anxiety*. 2017;34(1):51-8.
- 671 75. Eisenberger NI, Inagaki TK, Rameson LT, Mashal NM, Irwin MR. An fMRI study of  
672 cytokine-induced depressed mood and social pain: the role of sex differences. *Neuroimage*.  
673 2009;47(3):881-90.
- 674 76. Spurny-Dworak B, Handschuh P, Spies M, Kaufmann U, Seiger R, Klöbl M, et al.  
675 Effects of sex hormones on brain GABA and glutamate levels in a cis- and transgender cohort.  
676 *Psychoneuroendocrinology*. 2022;138:105683.



- 677 77. Lin CS, Ku HL, Chao HT, Tu PC, Li CT, Cheng CM, et al. Neural network of body  
678 representation differs between transsexuals and cissexuals. *PLoS One*. 2014;9(1):e85914.
- 679 78. Savli M, Bauer A, Mitterhauser M, Ding Y-S, Hahn A, Kroll T, et al. Normative database  
680 of the serotonergic system in healthy subjects using multi-tracer PET. *Neuroimage*.  
681 2012;63(1):447-59.
- 682 79. Holmberg M, Arver S, Dhejne C. Supporting sexuality and improving sexual function in  
683 transgender persons. *Nature reviews Urology*. 2019;16(2):121-39.
- 684 80. Van Dijk KR, Hedden T, Venkataraman A, Evans KC, Lazar SW, Buckner RL. Intrinsic  
685 functional connectivity as a tool for human connectomics: theory, properties, and optimization.  
686 *Journal of neurophysiology*. 2010;103(1):297-321.
- 687 81. Wierckx K, Van Caenegem E, Schreiner T, Haraldsen I, Fisher A, Toye K, et al. Cross-  
688 sex hormone therapy in trans persons is safe and effective at short-time follow-up: results from  
689 the European network for the investigation of gender incongruence. *The journal of sexual*  
690 *medicine*. 2014;11(8):1999-2011.
- 691 82. Wierckx K, Elaut E, Van Caenegem E, Van De Peer F, Dedeker D, Van Houdenhove  
692 E, et al. Sexual desire in female-to-male transsexual persons: exploration of the role of  
693 testosterone administration. *European Journal of Endocrinology*. 2011;165(2):331-7.
- 694 83. van Dijk D, Dekker M, Conemans EB, Wiepjes CM, de Goeij EGM, Overbeek KA, et al.  
695 Explorative Prospective Evaluation of Short-Term Subjective Effects of Hormonal Treatment  
696 in Trans People-Results from the European Network for the Investigation of Gender  
697 Incongruence. *J Sex Med*. 2019;16(8):1297-309.
- 698 84. Davis SR, Braunstein GD. Efficacy and Safety of Testosterone in the Management of  
699 Hypoactive Sexual Desire Disorder in Postmenopausal Women. *The Journal of Sexual*  
700 *Medicine*. 2012;9(4):1134-48.
- 701 85. van Anders SM. Testosterone and Sexual Desire in Healthy Women and Men. *Archives*  
702 *of Sexual Behavior*. 2012;41(6):1471-84.
- 703 86. Uddin LQ, Kinnison J, Pessoa L, Anderson ML. Beyond the tripartite cognition-emotion-  
704 interoception model of the human insular cortex. *J Cogn Neurosci*. 2014;26(1):16-27.
- 705 87. Bittoni C, Kiesner J. When the brain turns on with sexual desire: fMRI findings, issues,  
706 and future directions. *Sexual Medicine Reviews*. 2023;11(4):296-311.
- 707 88. Cacioppo S, Bianchi-Demicheli F, Frum C, Pfaus JG, Lewis JW. The Common Neural  
708 Bases Between Sexual Desire and Love: A Multilevel Kernel Density fMRI Analysis. *The*  
709 *Journal of Sexual Medicine*. 2012;9(4):1048-54.
- 710 89. Cera N, Castelhana J, Oliveira C, Carvalho J, Quinta Gomes AL, Peixoto MM, et al.  
711 The role of anterior and posterior insula in male genital response and in visual attention: an  
712 exploratory multimodal fMRI study. *Scientific Reports*. 2020;10(1):18463.
- 713 90. Oei NY, Rombouts SA, Soeter RP, van Gerven JM, Both S. Dopamine modulates  
714 reward system activity during subconscious processing of sexual stimuli.  
715 *Neuropsychopharmacology*. 2012;37(7):1729-37.
- 716 91. Calabrò RS, Cacciola A, Bruschetta D, Milardi D, Quattrini F, Sciarrone F, et al.  
717 Neuroanatomy and function of human sexual behavior: A neglected or unknown issue? *Brain*  
718 *Behav*. 2019;9(12):e01389.

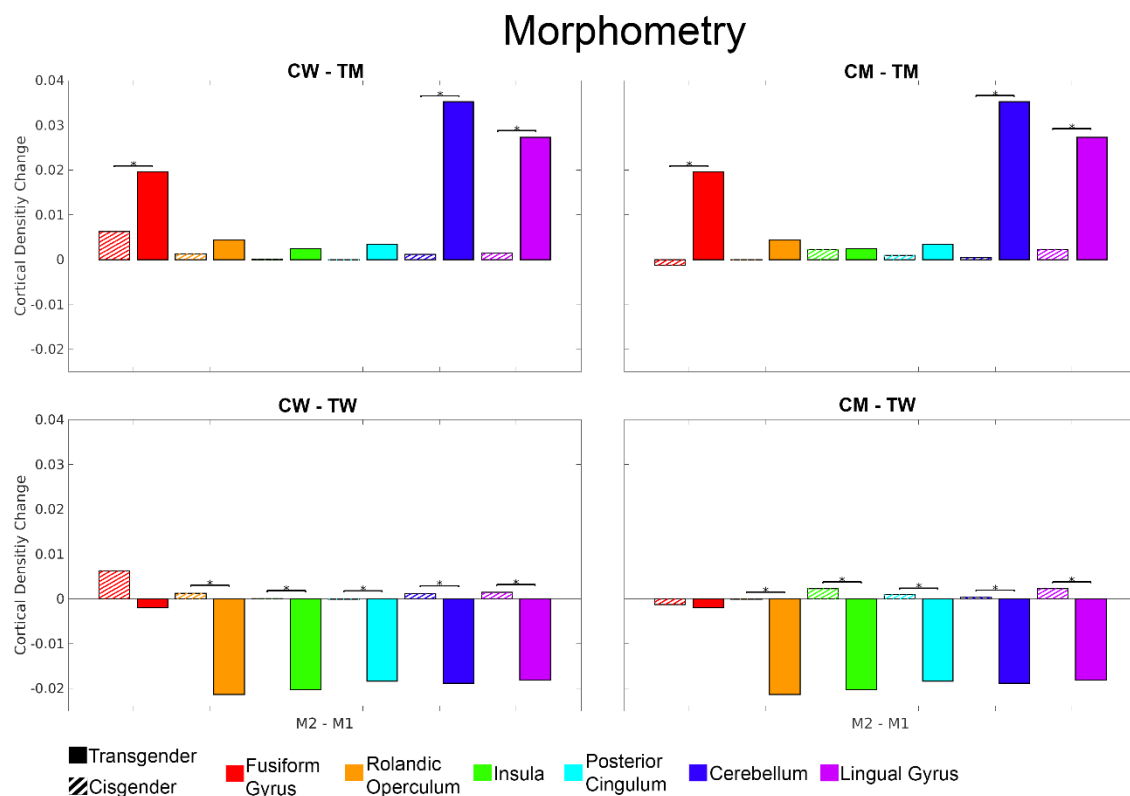
719

720



721

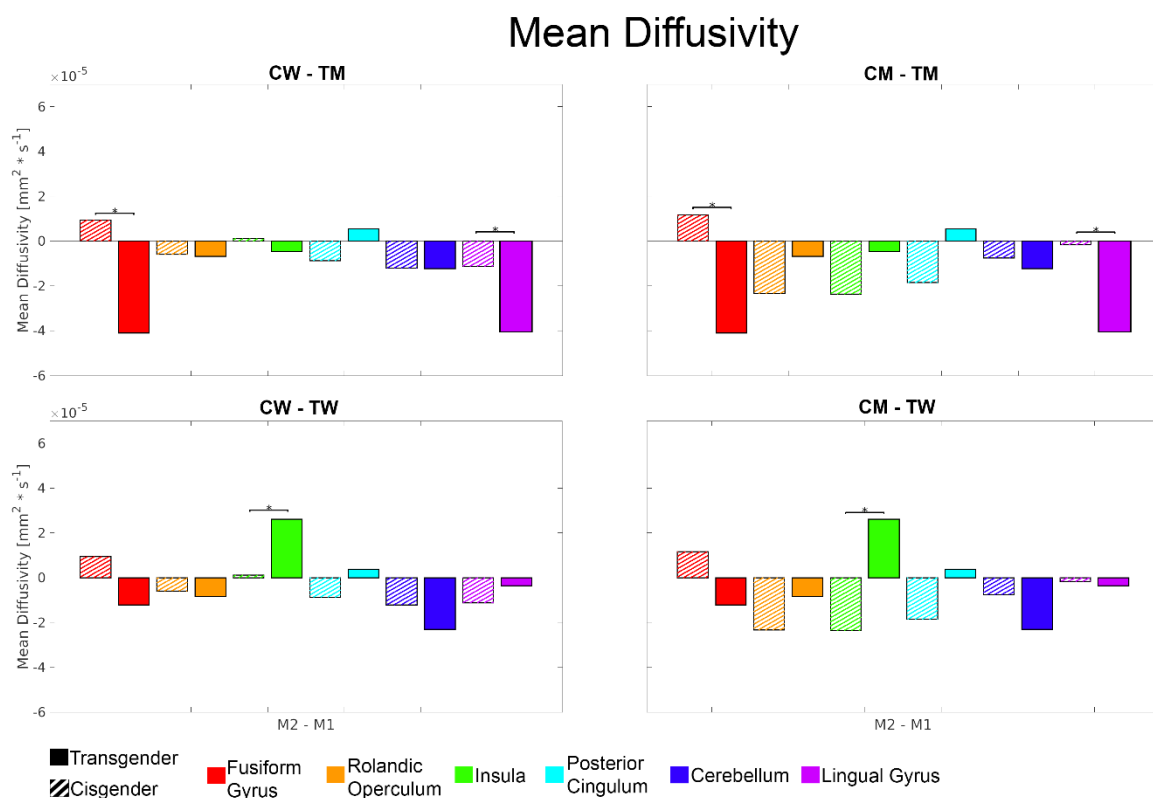
722 **Figure 1: Structural changes after gender-affirming hormone therapy.** (a) Shows the  
723 significant changes derived from the voxel based morphometry (VBM) analysis, whereas (b)  
724 shows the mean diffusivity changes in gray matter for all transgender and cisgender groups  
725 after a median of 4.5 months of gender-affirming hormone therapy. (c) Indicates the  
726 overlapping regions between the VBM and DWI analyses.



727

728 **Figure 2: Voxel based morphometry regional changes.** Each bar represents the change in  
 729 gray matter density (GMD) after 4 months of gender-affirming hormone therapy (GHT), where  
 730 the hatched bars represent the cisgender groups of male (CM) and female controls (CW) and  
 731 the solid bars the transgender groups, transmale (TM) and transfemale (TW). Here widespread  
 732 regional interactions can be found in the TW group when compared to both CM and CW,  
 733 whereas TM showed less regional interactions, however the significant interactions showed a  
 734 greater magnitude of change. An increase in GMD was found TM, whereas a decrease was  
 735 found in TW after a median of 4.5 months of GHT when compared to both CM and CW.  
 736 Significant group-by-time interactions are denoted with a \*.

737



738

739 **Figure 3: Mean diffusivity regional changes.** Each bar represents the average diffusivity  
 740 change reflective of microstructural alterations after 4 months of gender-affirming hormone  
 741 therapy, where the hatched bars represent the cisgender groups of male (CM) and female  
 742 controls (CW) and the solid bars the transgender groups, transmale (TM) and transfemale  
 743 (TW). Here, changes a decrease in both TM vs CW or CM and also TW vs CM were found.  
 744 Significant group-by-time interactions are denoted with a \*.

745

746

747

748

749

	cisgender women		cisgender men		transgender women		transgender men	
<b>N(VBM + DWI)</b>	20		11		20		10	
<b>Age [years]</b>	25.3 ± 6.7		26.5 ± 8.0		28.6 ± 9.3		24.75 ± 7.3	
<b>Completed</b>	<b>M1</b>	<b>M2</b>	<b>M1</b>	<b>M2</b>	<b>M1</b>	<b>M2</b>	<b>M1</b>	<b>M2</b>
<b>N(PET)</b>	9	3	8	3	7	5	11	6
	<b>Pre</b>	<b>Post</b>	<b>Pre</b>	<b>Post</b>	<b>Pre</b>	<b>Post</b>	<b>Pre</b>	<b>Post</b>
<b>DHEAS (µg/ml)</b>	3.2 ± 0.9	3.2 ± 1.0	3.8 ± 1.9	2.6 ± 1.3	3.9 ± 1.1	3.8 ± 1.3	3.2 ± 1.9	3.3 ± 1.9
<b>Estradiol (pg/ml)</b>	81.2 ± 56.7	112.1 ± 79.5	22.7 ± 10.3	22.9 ± 9.0	35.7 ± 16.6	290.0 ± 299.1	111.2 ± 74.9	59.3 ± 50.3
<b>FSH (µU/ml)</b>	4.9 ± 1.4	4.9 ± 2.8	3.8 ± 1.6	3.8 ± 1.5	3.3 ± 1.7	0.2 ± 0.1	4.5 ± 2.5	5.6 ± 3.6
<b>LH (µU/ml)</b>	9.8 ± 6.4	9.5 ± 6.9	5.8 ± 1.9	6.5 ± 2.3	6.5 ± 2.9	0.1 ± 0.1	9.6 ± 5.9	8.6 ± 8.8
<b>Progesterone (ng/ml)</b>	1.3 ± 1.3	4.9 ± 5.6	0.4 ± 0.3	0.3 ± 0.2	0.3 ± 0.2	0.8 ± 0.9	4.9 ± 6.4	0.3 ± 0.2
<b>SHBG (nmol/L)</b>	67.4 ± 28.5	69.6 ± 27.6	45.3 ± 25.0	43.2 ± 19.3	45.7 ± 21.5	70.2 ± 39.4	65.3 ± 36.3	36.3 ± 15.1
<b>Testosterone (ng/ml)</b>	0.4 ± 0.2	0.3 ± 0.1	5.6 ± 2.1	5.0 ± 1.2	5.7 ± 1.7	0.3 ± 0.2	0.4 ± 0.2	4.3 ± 2.1

750 **Table 1: Demographics of all participants for both DWI + VBM and PET analyses, each**  
751 *divided into their respective subgroups. Age is given from the inclusion date. Hormone levels*  
752 *for the pre-treatment assessment and cisgender participants are provided for comparison only*  
753 *and were not used as covariates in the statistical analyses.*

754