

Racial Disparities in Post-Transplant Stroke and Mortality Following Stroke in Adult Cardiac Transplant Recipients in the United States

Lathan Liou, MPhil^{1,2}
Elizabeth Mostofsky, ScD, MPH¹
Laura Lehman, MD^{1,3,4}
Soziema Salia, MD, MPH^{1,5}
Suruchi Gupta, MD, MPH^{1,3,6}
Francisco J. Barrera, MD¹
Murray A. Mittleman, MD, DrPH^{1,3,7}

liou.lathan@gmail.com
elm225@mail.harvard.edu
Laura.Lehman@childrens.harvard.edu
soziemasalia@hsph.harvard.edu
suruchigupta@hsph.harvard.edu
fbarreraflores@hsph.harvard.edu
mmittlem@hsph.harvard.edu

¹Department of Epidemiology, Harvard T.H. Chan School of Public Health, Boston, MA.

²Merck & Co., Merck Research Laboratories, Boston, MA

³Harvard Medical School, Boston, MA

⁴Department of Neurology, Boston Children's Hospital, Boston, MA

⁵Department of Internal Medicine, Cape Coast Teaching Hospital, Cape Coast, Ghana

⁶Division of Endocrinology, Diabetes, and Metabolism, Department of Medicine, Beth Israel Deaconess Medical Center, Boston, MA

⁷Division of Cardiovascular Medicine, Department of Medicine, Beth Israel Deaconess Medical Center, Boston, MA

Article Type: Original Research

Address for Correspondence

Murray A Mittleman
Harvard T.H. Chan School of Public Health
677 Huntington Ave, Kresge 505-D
Boston, MA 02215
E-mail: mmittlem@hsph.harvard.edu
Tel: (617) 432-2341
Fax: (617) 667-3150

Abbreviations: OR = odds ratio; HR = hazards ratio; CI = confidence interval; SRTR = Scientific Registry of Transplant Recipients; OPTN = Organ Procurement and Transplantation Network; BMI = body mass index; VAD = ventricular assist device; ECMO = extracorporeal membrane oxygenation; ICU = intensive care unit

Abstract word count: 255

Main body word count: 2797

Authorship

Lathan Liou designed the study, performed the data analysis, and wrote the manuscript. EM and MAM helped design the study and edit the manuscript. Laura Lehman, SS, SG, and FJB helped edit the manuscript.

Disclosure

The authors declare no conflicts of interest.

Funding

Elizabeth Mostofsky is funded by Grant # K01AA027831 from the National Institute on Alcohol Abuse and Alcoholism (NIAAA). The content is solely the responsibility of the authors and does not necessarily represent the official views of the funding organizations.

Data Availability Statement: Data is available by request from the SRTR.

ABSTRACT

Background

Black heart transplant recipients have a higher mortality rate than white recipients 6-12 months after transplant. Whether there are racial disparities in post-transplant stroke incidence and all-cause mortality following post-transplant stroke among cardiac transplant recipients is unknown.

Methods and Findings

Using a nationwide transplant registry, we assessed the association between race and incident post-transplant stroke using logistic regression and the association between race and mortality among adults who survived a post-transplant stroke using Cox proportional hazards regression. We found no evidence of an association between race and the odds of post-transplant stroke (OR = 1.00, 95% CI: 0.83 – 1.21). The median survival time of those with a post-transplant stroke in this cohort was 4.1 years (95% CI: 3.0, 5.4). There were 726 deaths among the 1139 patients with post-transplant stroke, including 127 deaths among 203 Black patients and 599 deaths among 936 white patients. Among post-transplant stroke survivors, Black transplant recipients experienced a 27% higher rate of mortality compared to white recipients (HR = 1.27, 95% CI: 1.03 – 1.57). This disparity is strongest in the period beyond the first 6 months and appears to be mediated by differences in the post-transplant setting of care between Black and white patients. The racial disparity in mortality outcomes was not evident in the past decade.

Conclusions

The improved survival of Black patients in the recent decade may reflect overall protocol improvements for heart transplant recipients irrespective of race, such as advancements in surgical techniques and immediate postoperative care as well as increased awareness about reducing racial disparities.

INTRODUCTION

Heart transplant is the most effective treatment for advanced heart failure, increasing survival and improving quality of life.¹ In the past 5 years, the number of total heart transplants performed annually in the United States has been increasing.² However, heart transplantation carries risks such as stroke. Although the annual incidence of ischemic (1.7%) and hemorrhagic stroke (0.7%) is lower among heart transplant recipients compared to that of those awaiting transplantation (ischemic: 6.8%, hemorrhagic: 2.6%),³ there is a higher mortality rate among those with a post-transplant stroke⁴, especially beyond the first six months following the transplant.⁵

In the general population, Black adults have a 3-4 times higher risk of dying from stroke than white adults⁶. Furthermore, among heart transplant recipients, Black adults have a higher mortality rate⁷ than patients from other racial/ethnic groups, particularly in the period beyond 6 months following transplant.⁵ Although mortality rates among transplant recipients have declined since 1987, the higher mortality rate among Black recipients has persisted⁸. However, whether there are racial disparities in post-transplant stroke incidence and/or long-term mortality following post-transplant stroke remains unknown. Therefore, we conducted a cohort study to examine whether there are disparities in post-transplant stroke incidence and/or long-term prognosis among heart transplant patients experiencing a post-transplant stroke using national data on cardiac transplant recipients.

METHODS

Data Source

We used data from the Scientific Registry of Transplant Recipients (SRTR), a national database that includes data on all donors, wait-listed candidates, and transplant recipients in the U.S. The SRTR contains information on deaths via linkage to the Social Security Master Death File. As described elsewhere⁹, members of the Organ Procurement and Transplantation Network (OPTN) submit the information, and the Health Resources and Services Administration, U.S. Department of Health and Human Services, provides oversight.

Study Population

This study includes 54,995 Black and white adult (>18 years) heart-only transplant recipients who received their first transplant between January 1, 1987, and December 31, 2018 with at least one recorded follow-up visit. We used the OPTN classifications of race, and we examined potential differences in disparities over time by defining three 10-year intervals: 1987-1999, 2000-2009, and 2010-2018 *a priori*. This study was reviewed and approved by the Institutional Review Board at Harvard T.H. Chan School of Public Health.

Statistical Analysis

We use the National Institute on Minority Health and Health Disparities (NIMHD) research framework and prior literature to guide our selection of mediating factors and interpretation of the association between race and outcome.¹⁰

Post-Transplant Stroke

We defined post-transplant stroke as a stroke occurring after the transplant procedure. We used conditional logistic regression stratified by transplant center to calculate odds ratios (OR) and 95% confidence intervals (95% CI) for the association between race and the incidence of post-transplant stroke. We adjusted for clinical and demographic factors identified by previous studies examining the association between race and mortality.^{11,12} These factors are age (continuous), sex, body mass index (BMI) [underweight (<18 kg/m²), normal (18-24.9 kg/m²), overweight (25-29.9 kg/m²), obese (>30 kg/m²)], cancer malignancy, diabetes, hypertension, etiology of heart disease (ischemic, non-ischemic dilated cardiomyopathy, other), smoking status (none, past/current, unknown), any prior ventricular assist device (VAD) use, extracorporeal membrane oxygenation (ECMO), life support use (none, life support device, life support without device, unknown), functional status (moribund/hospitalized/severely disabled, requires significant assistance, normal with minor/no symptoms), hospitalization status (intensive care unit [ICU], non-ICU hospitalization, not hospitalized), total ischemic time (minutes), systolic blood pressure (mm/Hg), number of HLA-AB mismatches, number of HLA-DR mismatches, panel reactive antibodies (PRA) above 10%, acute transplant rejection, waitlist time (days) and transplant era (categorical).

In secondary analyses, we further adjusted for education level (below high school, high school, college and above) and insurance type (Medicare, Medicaid, private, other) to explore whether socioeconomic factors were driving associations between race and outcome.

Post-transplant Mortality

We examined whether race was associated with post-transplant mortality among recipients who survived a post-transplant stroke. For this analysis, we used all person-time from the date of transplant until the date of death or administrative censoring on December 31, 2018. We also further adjusted for available post-stroke management covariates: any inotropic medication use (categorical), and setting of follow-up care (transplant center, non-transplant center, primary care physician [PCP], and other). We excluded recipients with no data on body mass index (1 Black patient and 12 white patients). We performed multiple imputation using chained equations (MICE)¹³ using the R package *mice* with default settings¹⁴. We included our model covariates to impute missing values for categorical variables that contained missing values: BMI (1.8%), malignancy (22%), hypertension (39%), cardiac etiology (10%), smoking status (32%), VAD (31%), life support status (0.2%), functional status (55%), hospitalization status (0.2%), PRA level (9%), education level (34%), insurance type (19%), and setting of follow up care (54%) and for continuous variables that contained missing values: ischemic time (4%), systolic blood pressure (24%), number of HLA-AB mismatches (23%), and number of HLA-DR mismatches (23%). We found that data were missing at random based on race and used the MAR assumption for multiple imputation.¹⁵ We did not conduct complete case analyses as a sensitivity analysis due to a substantial lack of power.

We used Cox proportional hazards models to calculate hazard ratios (HR) and 95% confidence intervals (95% CI) for the association between race and all-cause mortality among post-transplant stroke survivors adjusting for the covariates listed above. We tested the proportional hazards assumption of the fully adjusted Cox model across the full range of follow-up using the “cox.zph” function from the R *survival* package.

Based on previous literature showing potential non-proportional hazards 6 months post-transplant¹⁶, we examined the association between race and post-stroke mortality within 6 months of the transplant and beyond 6 months following the transplant. We first plotted Kaplan-Meier survival curves for both time windows, and we performed log-rank tests. For the analysis of the first 6 months, we set the index date as the date of discharge and followed patients until the time of death, last known follow-up, or 6 months, whichever came first. For the analysis beyond 6 months, we set the index date as 6-months following their date of discharge and a patient's status as dead, alive, or censored at the time of last known follow-up or December 31, 2018, whichever came first. We then fit fully adjusted Cox models for both timeframes and tested the proportional hazards assumption for each of these models.

To examine whether socioeconomic factors at least partially drive the association between race and post-transplant mortality, we constructed fully adjusted models using the covariates listed above and education level and insurance. As a sensitivity analysis, we explored models not adjusting for the setting of follow-up care as this may be influenced by race/ethnicity and therefore may be a potential mediator rather than a confounding factor. We also explored whether any association between race and post-stroke mortality differed across *a priori* defined 10-year transplant era intervals both within 6 months and beyond 6 months.

We performed all analyses using R, version 4.1.0, for macOS. All hypothesis tests were 2-sided, with statistical significance defined as $p < 0.05$.

RESULTS

Among 54,995 white and Black adult patients who received their first heart transplant in the United States between 1987 and 2018, 1,139 (2.1%) experienced a post-transplant stroke, among whom 726 died over follow-up. Baseline characteristics and clinical features for the primary analysis cohort are summarized in Table 1. Of those who experienced a post-transplant stroke, 203 were Black, and 936 were white. Black recipients were, on average, younger than white recipients. Black recipients had a higher prevalence of non-ischemic cardiomyopathy (68% vs. 34%), they were more likely to have a severely disabled functional status (41% vs. 32%), and they were more likely to be on life support (91% vs. 81%).

There was no difference in the incidence of post-transplant stroke between Black (2.1%) and white (2.1%) recipients, even after accounting for covariates (adjusted OR = 1.00, 95% CI: 0.83 – 1.21).

Among the 1,139 patients with post-transplant stroke, the median survival time was 4.1 years (95% CI: 3.0, 5.4) with a total of 4824 person-years of follow-up, and there was a total of 726 deaths, including 127 deaths among 203 Black patients and 599 deaths among 936 white patients. Over the full duration of the study, Black post-transplant stroke survivors had a 27% higher rate of mortality compared to their white counterparts after adjusting for covariates (HR = 1.27, 95% CI: 1.03 – 1.57; Table 2, Model 1). Further adjustment for education and insurance did not meaningfully change the association (HR = 1.25, 95% CI: 1.00 – 1.55; Model 2). Additionally adjusting for the setting of post-transplant care again did not substantially change the association (HR = 1.22, 95% CI: 0.99 – 1.52; Model 3).

As expected, the global Schoenfeld residuals test showed evidence of a violation of proportional hazards in the fully adjusted model ($p < 0.01$). *A priori* based on prior literature, we examined the association between race and post-stroke mortality separately for two timeframes: within 6 months and beyond 6 months. Global Schoenfeld residuals tests showed no violation of proportional hazards in the fully adjusted model within 6 months ($p = 0.12$) and beyond 6 months ($p = 0.40$). The Kaplan-Meier curves suggest that there were no apparent racial differences in mortality within 6 months of post-transplant stroke (log-rank $p = 0.98$). However, among those who survived the first 6 months, white post-transplant stroke survivors had a higher survival probability than Black post-transplant stroke survivors (log-rank $p = 0.04$) (Figure 1). In age- and sex-adjusted models, there was no evidence of racial disparities in mortality within 6 months of post-transplant stroke (HR = 0.99, 95% CI: 0.76 – 1.28) but beyond 6 months Black post-transplant stroke survivors had a 44% (HR = 1.44, 95% CI: 1.06 – 1.95) higher mortality rate than white post-transplant stroke survivors. Further adjusting for covariates strengthened this association (HR = 1.58, 95% CI: 1.13 – 2.19; Table 2, Model 1), but additionally adjusting for education and insurance did not change this association (HR = 1.59, 95% CI: 1.13 – 2.23; Model 2). Additionally including the setting of long-term post-transplant care as a covariate somewhat attenuated the association to 1.49 (95% CI: 1.06 – 2.08).

The higher mortality among Black stroke survivors compared to white stroke survivors beyond 6 months following a stroke decreased over time (HR₁₉₈₇₋₁₉₉₉ = 2.73, 95% CI: 1.53 – 4.86; HR₂₀₀₀₋₂₀₀₉ = 1.80, 95% CI: 0.94 – 3.46; HR₂₀₁₀₋₂₀₁₈ = 1.01, 95% CI: 0.53 – 1.91), with no apparent difference in the contemporary era (HR₂₀₁₀₋₂₀₁₈ = 1.01). Adjusting for education and insurance

slightly strengthened the association in earlier eras ($HR_{1987-1999} = 3.09$, $HR_{2000-2009} = 2.02$), and slightly decreased the association in the most recent era ($HR_{2010-2018} = 0.91$). After adjusting for the post-transplant care setting, the adjusted hazard ratio for mortality was attenuated in the earliest transplant era ($HR_{1987-1999} = 2.32$).

DISCUSSION

In this national registry study of adult heart transplant recipients, Black and white heart transplant recipients had a similar incidence of post-transplant stroke. Among cardiac transplant recipients who experienced a post-transplant stroke, there was a 25% higher rate of mortality among Black survivors than among white survivors over the full duration of follow-up, even after adjusting for clinical, demographic, and socioeconomic characteristics. This disparity is greatest beyond 6 months after the stroke, and the association appears to be strongly mediated by differences in the post-transplant setting of care between Black and white patients. In the contemporary transplant era, Black patients had similar survival as white patients ($HR_{2010-2018} = 1.01$, 95% CI: 0.53 – 1.91). This may reflect overall protocol improvements for heart transplant recipients irrespective of race, such as advancements in surgical techniques and immediate postoperative care¹⁷.

Our findings are consistent with previous studies^{7,8,12,18,19} reporting racial differences in mortality among heart transplant recipients. For instance, concordant with our findings among those with a post-transplant stroke, Maredia et. al. found that between January 1, 2005, and January 31, 2017, Black recipients had a 29% (95% CI: 1.20 – 1.38) higher mortality rate than non-Black recipients.

When we examined the association between post-transplant stroke and mortality separately for *a priori* windows of the first six months following stroke and beyond 6 months after stroke, Black post-transplant stroke survivors had a higher mortality rate than white survivors (HR = 1.58, 95% CI: 1.13 – 2.19; Table 2, Model 1), but there was no association between race and mortality (HR = 1.09, 95% CI: 0.83 – 1.44). Further adjusting for socioeconomic variables such as education and insurance did not attenuate these associations between Black race and mortality within 6 months (HR = 1.06, 95% CI: 0.80 – 1.40) or beyond 6 months (HR = 1.59, 95% CI: 1.13 – 2.23). Several other studies^{7,8,12} that used the same transplant registry and adjusted for education level and insurance type also did not report an attenuation of the association between Black race and mortality. There was no other socioeconomic information available in the SRTR registry, but we aimed to use such information to examine its role as a potential mediator rather than to explain the extent of racial differences by all components of socioeconomic status occurring later in life.²⁰ Although immunologic differences have been suggested as an explanation for the disparities¹⁹, adjusting for immunologic factors did not attenuate the higher mortality rate experienced by Black patients. This is consistent with findings from Maredia et. al.⁷

When we adjusted for the setting of long-term follow-up care, the association between race and mortality in post-transplant stroke survivors beyond 6 months was slightly attenuated. This suggests that differences in the setting of care for long-term follow-up may be at least partially responsible for the observed disparities. A study by Kilic et. al. showed that a substantial proportion (56% vs. 47% of white patients) of Black patients underwent transplant procedures at

lower performing centers, defined by higher observed-to-expected mortality ratios. Also, a higher proportion of deaths were attributed to lower treatment adherence in Black patients compared with white patients (1.% vs. 0.5%).¹² Future studies should investigate factors that may be related to improvement in systems-level access to post-transplant care, education, and other resources to improve long-term mortality outcomes in Black post-transplant stroke survivors. Specifically, further investigating the setting of care as a potentially modifiable mediating factor may suggest that changing the setting of follow-up care, advocating closer co-management with specialists, or enhancing continuing education among healthcare professionals part of the transplant care team could improve survival.

Lastly, the mortality rate beyond six months after stroke among Black patients compared to white patients was higher over the total duration of the study, but it is driven by racial differences in early years and there is no difference in the recent era. Several single-center studies have suggested that advances in transplant recipient selection, care of patients awaiting a heart transplant, and post-transplant care of transplant recipients have contributed to early survival improvements following transplantation for both white and Black patients.²¹⁻²³ A recent study using the UNOS database found that the historically poor survival of adult Black heart transplant recipients has gradually improved and became comparable to that of white transplant recipients.²⁴ General improvement in care, better compliance with the immunosuppression, reliable insurance coverage and increased awareness about reducing racial disparities in recent years could be contributing factors in improved survival of Black patients.²⁵ Another recent study using the UNOS database found that the one-year post-transplant survival for all adult transplant recipients improved in 2008-2017 compared to 2003-2007 despite the increased use of

hearts from donors with risk factors as defined by cocaine use, intravenous drug use, hepatitis C virus positive, and opioid overdose death.²

Our study has several limitations. The definition of racial categories in the SRTR transplant registry is, at best, a proxy for system factors that result in health care disparities.²⁶ The number of Black post-transplant stroke survivors resulted in limited statistical power to examine disparities in mortality following post-transplant stroke in subsets of the population. However, our findings are consistent with previous literature. To our knowledge, this is the largest study of cardiac transplant recipients who experienced a post-transplant stroke. Although there is some missing data on covariates, the SRTR registry includes detailed information on several clinical and demographic factors. Although some misclassification may have occurred, our analyses of all-cause mortality are based on reliable outcome data from the Social Security Death Master File that has been linked to the SRTR transplant registry. We did not have detailed information on the clinical presentation or the acute management of the stroke. However, we had extensive data on a robust set of clinical and demographic confounders, allowing for adjustment for differences in baseline characteristics in our multivariable-adjusted models.

In conclusion, we found that historically, the racial disparity in mortality is strongest in the period beyond the first 6 months and appears to have been mediated by differences between Black and white patients in the setting of long-term follow-up care. In the contemporary transplant era, the racial gap in mortality appears to have disappeared.

Figure Legends:

Figure 1. Kaplan Meier survival curves for post-transplant stroke survivors by transplant era, Scientific Registry of Transplant Recipients (SRTR), January 1, 1987 To December 31, 2018. (a) 1987-1999 (b) 2000-2009 (c) 2010-2018

Figure 2. Kaplan Meier survival curves for post-transplant stroke survivors, hazard ratios and 95% confidence intervals comparing mortality rates for Black post-transplant stroke survivors to mortality rates for white post-transplant stroke survivors according to era, Scientific Registry Of Transplant Recipients (SRTR), January 1, 1987 To December 31, 2018 (a) within 6 months of cardiac transplant and (b) beyond 6 months until last follow-up conditional on surviving beyond 6 months

REFERENCES

1. Fuchs M, Schibilsky D, Zeh W, Berchtold-Herz M, Beyersdorf F, Siepe M. Does the heart transplant have a future? *Eur J Cardiothorac Surg*. 2019 Jun 1;55(Suppl 1):i38–48.
2. Dharmavaram N, Hess T, Jaeger H, Smith J, Hermsen J, Murray D, et al. National Trends in Heart Donor Usage Rates: Are We Efficiently Transplanting More Hearts? *J Am Heart Assoc*. 2021 Aug 3;10(15):e019655.
3. Merkler AE, Chen ML, Parikh NS, Murthy SB, Yaghi S, Goyal P, et al. Association Between Heart Transplantation and Subsequent Risk of Stroke Among Patients With Heart Failure. *Stroke*. 2019 Mar;50(3):583–7.
4. Alnsasra H, Asleh R, Kumar N, Lopez C, Toya T, Kremers WK, et al. Incidence, Risk Factors, and Outcomes of Stroke Following Cardiac Transplantation. *Stroke*. 2021 Nov;52(11):e720–4.
5. van de Beek D, Kremers W, Daly RC, Edwards BS, Clavell AL, McGregor CGA, et al. Effect of neurologic complications on outcome after heart transplant. *Arch Neurol*. 2008 Feb;65(2):226–31.
6. Howard VJ, Kleindorfer DO, Judd SE, McClure LA, Safford MM, Rhodes JD, et al. Disparities in stroke incidence contributing to disparities in stroke mortality. *Ann Neurol*. 2011/03/17 ed. 2011 Apr;69(4):619–27.
7. Maredia H, Bowring MG, Massie AB, Bae S, Kernodle A, Oyetunji S, et al. Better Understanding the Disparity Associated With Black Race in Heart Transplant Outcomes. *Circ Heart Fail*. 2021 Feb 1;14(2):e006107.
8. Liu V, Bhattacharya J, Weill D, Hlatky MA. Persistent racial disparities in survival after heart transplantation. *Circulation*. 2011 Apr 19;123(15):1642–9.
9. Massie AB, Kucirka LM, Segev DL. Big data in organ transplantation: registries and administrative claims. *Am J Transplant*. 2014 Aug;14(8):1723–30.
10. Alvidrez J, Castille D, Laude-Sharp M, Rosario A, Tabor D. The National Institute on Minority Health and Health Disparities Research Framework. *Am J Public Health*. 2019 Jan 1;109(S1):S16–20.
11. Allen JG, Weiss ES, Arnaoutakis GJ, Russell SD, Baumgartner WA, Conte JV, et al. The impact of race on survival after heart transplantation: an analysis of more than 20,000 patients. *Ann Thorac Surg*. 2010 Jun;89(6):1956–63; discussion 1963–1964.
12. Kilic A, Higgins RSD, Whitson BA, Kilic A. Racial disparities in outcomes of adult heart transplantation. *Circulation*. 2015 Mar 10;131(10):882–9.
13. White IR, Royston P, Wood AM. Multiple imputation using chained equations: Issues and guidance for practice. *Stat Med*. 2011 Feb 20;30(4):377–99.

14. Zhang Z. Multiple imputation with multivariate imputation by chained equation (MICE) package. *Ann Transl Med*. 2016 Jan;4(2):30.
15. Nguyen CD, Carlin JB, Lee KJ. Model checking in multiple imputation: an overview and case study. *Emerg Themes Epidemiol*. 2017 Aug 23;14(1):8.
16. Singh TP, Almond CS, Gauvreau K. Improved survival in pediatric heart transplant recipients: have white, black and Hispanic children benefited equally? *Am J Transplant*. 2011 Jan;11(1):120–8.
17. Navas-Blanco JR, Modak RK. Perioperative care of heart transplant recipients undergoing non-cardiac surgery. *Ann Card Anaesth*. 2021;24(2):140–8.
18. Singh TP, Almond C, Givertz MM, Piercey G, Gauvreau K. Improved survival in heart transplant recipients in the United States: racial differences in era effect. *Circ Heart Fail*. 2011 Mar;4(2):153–60.
19. Morris AA, Kransdorf EP, Coleman BL, Colvin M. Racial and ethnic disparities in outcomes after heart transplantation: A systematic review of contributing factors and future directions to close the outcomes gap. *J Heart Lung Transpl*. 2016/02/12 ed. 2016 Aug;35(8):953–61.
20. VanderWeele TJ, Robinson WR. On the causal interpretation of race in regressions adjusting for confounding and mediating variables. *Epidemiol Camb Mass*. 2014 Jul;25(4):473–84.
21. Marelli D, Laks H, Kobashigawa JA, Bresson J, Ardehali A, Esmailian F, et al. Seventeen-year experience with 1,083 heart transplants at a single institution. *Ann Thorac Surg*. 2002 Nov;74(5):1558–66; discussion 1567.
22. John R, Rajasinghe HA, Chen JM, Weinberg AD, Sinha P, Mancini DM, et al. Long-term outcomes after cardiac transplantation: an experience based on different eras of immunosuppressive therapy. *Ann Thorac Surg*. 2001 Aug;72(2):440–9.
23. Kofler S, Bigdeli AK, Kaczmarek I, Kellerer D, Müller T, Schmoeckel M, et al. Long-term outcomes after 1000 heart transplantations in six different eras of innovation in a single center. *Transpl Int*. 2009 Dec;22(12):1140–50.
24. Trivedi JR, Pahwa SV, Whitehouse KR, Ceremuga BM, Slaughter MS. Racial disparities in cardiac transplantation: Chronological perspective and outcomes. *PLOS ONE*. 2022 Jan 26;17(1):e0262945.
25. Chin MH, Clarke AR, Nocon RS, Casey AA, Goddu AP, Keesecker NM, et al. A roadmap and best practices for organizations to reduce racial and ethnic disparities in health care. *J Gen Intern Med*. 2012 Aug;27(8):992–1000.
26. Kaufman JS, Cooper RS. Commentary: considerations for use of racial/ethnic classification in etiologic research. *Am J Epidemiol*. 2001 Aug 15;154(4):291–8.

Table 1. Heart Transplant Recipient Characteristics by Race and Post-transplant Stroke, Scientific Registry of Transplant Recipients (SRTR), January 1, 1987 to December 31, 2018; n (%) unless otherwise specified

	No Post-transplant Stroke		Post-transplant Stroke	
	White (N=44,264)	Black (N=9,592)	White (N=936)	Black (N=203)
Recipient Age				
Mean (SD)	53.8 (11.4)	49.0 (12.6)	55.4 (10.7)	50.7 (12.9)
Median [Min, Max]	56.1 [18.0, 78.6]	51 [18.0, 76.4]	57 [18.5, 79.0]	52 [18.7, 78.4]
Female	9317 (21.0%)	3238 (33.8%)	235 (25.1%)	71 (35.0%)
Education Level				
Below high school	794 (1.8%)	234 (2.4%)	27 (2.9%)	8 (3.9%)
High school	11727 (26.5%)	3613 (37.7%)	325 (34.7%)	79 (38.9%)
College and above	15601 (35.2%)	3504 (36.5%)	430 (45.9%)	89 (43.8%)
Insurance				
Medicare	2726 (6.2%)	1659 (17.3%)	64 (6.8%)	38 (18.7%)
Medicaid	9302 (21.0%)	2513 (26.2%)	258 (27.6%)	73 (36.0%)
Private	21110 (47.7%)	3849 (40.1%)	555 (59.3%)	87 (42.9%)
Other	1560 (3.5%)	494 (5.2%)	41 (4.4%)	5 (2.5%)
BMI Categories				
Underweight	797 (1.8%)	228 (2.4%)	12 (1.3%)	6 (3.0%)
Normal or health weight	16797 (37.9%)	3449 (36.0%)	348 (37.2%)	70 (34.5%)
Overweight	16337 (36.9%)	3227 (33.6%)	346 (37.0%)	71 (35.0%)
Obese	9492 (21.4%)	2565 (26.7%)	218 (23.3%)	55 (27.1%)
Malignancy				
No	31119 (70.3%)	7886 (82.2%)	825 (88.1%)	192 (94.6%)
Yes	2166 (4.9%)	456 (4.8%)	70 (7.5%)	9 (4.4%)
Smoker				
No	12299 (27.8%)	4156 (43.3%)	310 (33.1%)	109 (53.7%)
Yes	16624 (37.6%)	3409 (35.5%)	471 (50.3%)	75 (36.9%)
Hypertension				
No	15424 (34.8%)	2954 (30.8%)	370 (39.5%)	61 (30.0%)

	No Post-transplant Stroke		Post-transplant Stroke	
	White (N=44,264)	Black (N=9,592)	White (N=936)	Black (N=203)
Yes	11239 (25.4%)	3155 (32.9%)	322 (34.4%)	82 (40.4%)
Diabetes Mellitus				
No	36570 (82.6%)	7497 (78.2%)	696 (74.4%)	139 (68.5%)
Yes	7694 (17.4%)	2095 (21.8%)	240 (25.6%)	64 (31.5%)
Cardiovascular Etiology				
Ischemic	22291 (50.4%)	2112 (22.0%)	517 (55.2%)	47 (23.2%)
Non-ischemic	17527 (39.6%)	6776 (70.6%)	317 (33.9%)	138 (68.0%)
Other	4446 (10.0%)	704 (7.3%)	102 (10.9%)	18 (8.9%)
Transplant Era				
1/1/1987 - 12/31/1999	18589 (42.0%)	2364 (24.6%)	249 (26.6%)	30 (14.8%)
1/1/2000 - 12/31/2009	12734 (28.8%)	2861 (29.8%)	310 (33.1%)	59 (29.1%)
1/1/2010 - 12/31/2018	12941 (29.2%)	4367 (45.5%)	377 (40.3%)	114 (56.2%)
Hospitalization Status				
ICU	16392 (37.0%)	3493 (36.4%)	374 (40.0%)	74 (36.5%)
Hospitalized non-ICU	6297 (14.2%)	1573 (16.4%)	160 (17.1%)	34 (16.7%)
Not hospitalized	21489 (48.5%)	4517 (47.1%)	402 (42.9%)	95 (46.8%)
Functional Status				
Moribund/hospitalized/severely disabled	8848 (20.0%)	2905 (30.3%)	298 (31.8%)	84 (41.4%)
Requires significant assistance	6444 (14.6%)	1974 (20.6%)	163 (17.4%)	54 (26.6%)
Normal with minor/no symptoms	3121 (7.1%)	901 (9.4%)	44 (4.7%)	15 (7.4%)
Received VAD				
No	23208 (52.4%)	5582 (58.2%)	505 (54.0%)	102 (50.2%)
Yes	6190 (14.0%)	1923 (20.0%)	260 (27.8%)	69 (34.0%)
Received Life Support				
No	17136 (38.7%)	2456 (25.6%)	182 (19.4%)	19 (9.4%)
Yes	27043 (61.1%)	7125 (74.3%)	754 (80.6%)	184 (90.6%)
Received ECMO				
No	44096 (99.6%)	9553 (99.6%)	922 (98.5%)	199 (98.0%)
Yes	168 (0.4%)	39 (0.4%)	14 (1.5%)	4 (2.0%)

	No Post-transplant Stroke		Post-transplant Stroke	
	White (N=44,264)	Black (N=9,592)	White (N=936)	Black (N=203)
Total Ischemic Time (minutes)				
Mean (SD)	180 (62.2)	181 (61.1)	196 (65.8)	190 (69.3)
Median [Min, Max]	179 [14.0, 720]	180 [13.0, 720]	194 [23.0, 488]	189 [56.0, 524]
Systolic Blood Pressure (mmHg)				
Mean (SD)	41.7 (14.5)	44.0 (14.2)	42.1 (14.2)	42.4 (14.6)
Median [Min, Max]	40 [1.00, 175]	43 [5.00, 132]	41 [5.00, 85.0]	40 [9.00, 80.0]
Category of HLA-AB Mismatches				
0	59 (0.1%)	12 (0.1%)	2 (0.2%)	0 (0%)
1-3	5764 (13.0%)	799 (8.3%)	136 (14.5%)	13 (6.4%)
4-6	27631 (62.4%)	7242 (75.5%)	653 (69.8%)	164 (80.8%)
Number of HLA-DR Mismatches				
0	2013 (4.5%)	368 (3.8%)	52 (5.6%)	6 (3.0%)
1	14310 (32.3%)	3288 (34.3%)	349 (37.3%)	72 (35.5%)
2	17234 (38.9%)	4421 (46.1%)	394 (42.1%)	99 (48.8%)
Panel Reactive Antibodies (>10%)				
No	35187 (79.5%)	7004 (73.0%)	694 (74.1%)	150 (73.9%)
Yes	5088 (11.5%)	1742 (18.2%)	147 (15.7%)	40 (19.7%)
Received Inotropes				
No	27886 (63.0%)	5584 (58.2%)	563 (60.1%)	130 (64.0%)
Yes	16378 (37.0%)	4008 (41.8%)	373 (39.9%)	73 (36.0%)
Setting of Follow-up Care				
Transplant center	15011 (33.9%)	4177 (43.5%)	308 (32.9%)	81 (39.9%)
Non-transplant center specialist	436 (1.0%)	99 (1.0%)	15 (1.6%)	1 (0.5%)
PCP	203 (0.5%)	18 (0.2%)	5 (0.5%)	0 (0%)
Other	4308 (9.7%)	665 (6.9%)	31 (3.3%)	5 (2.5%)
Wait Time (Days)				
Mean (SD)	211 (329)	211 (337)	228 (354)	211 (275)
Median [Min, Max]	96.0 [0, 6410]	87.0 [0, 5150]	101 [0, 3880]	92.0 [0, 1410]

% of missing data can be calculated from the proportions displayed in this table

ECMO: extracorporeal membrane oxygenation

VAD: ventricular assist device

Table 2. Hazard Ratios and 95% Confidence Intervals Comparing Mortality Rates for Black Post-transplant Stroke Survivors to Mortality Rates for White Post-transplant Stroke Survivors According to Era, Scientific Registry of Transplant Recipients (SRTR), January 1, 1987 To December 31, 2018

Time Frame	Cases/Person-years		Model 1*	Model 2**	Model 3†
	Black	White			
Overall	127/655	599/4,169	1.27 (1.03, 1.57)	1.25 (1.00, 1.55)	1.22 (0.99, 1.52)
Within 6 Months					
All eras	73/71	335/330	1.09 (0.83, 1.44)	1.06 (0.80, 1.40)	1.07 (0.80, 1.42)
Jan 1, 1987 – Dec 31, 1999	11/11	97/84	1.16 (0.58, 2.31)	0.98 (0.48, 1.99)	0.90 (0.43, 1.88)
Jan 1, 2000 – Dec 31, 2009	25/19	119/106	1.05 (0.62, 1.77)	1.14 (0.67, 1.95)	1.17 (0.68, 2.02)
Jan 1, 2010 – Dec 31, 2018	37/42	119/140	1.12 (0.74, 1.67)	1.07 (0.70, 1.62)	1.07 (0.70, 1.63)
Beyond 6 Months					
All eras	54/583	264/3,836	1.58 (1.13, 2.19)	1.59 (1.13, 2.23)	1.49 (1.06, 2.08)
Jan 1, 1987 – Dec 31, 1999	19/106	115/1,448	2.73 (1.53, 4.86)	3.09 (1.68, 5.68)	2.32 (1.19, 4.50)
Jan 1, 2000 – Dec 31, 2009	20/249	95/1,698	1.80 (0.94, 3.46)	2.02 (1.02, 4.00)	2.03 (1.02, 4.01)
Jan 1, 2010 – Dec 31, 2018	15/228	54/689	1.01 (0.53, 1.91)	0.91 (0.46, 1.80)	0.86 (0.43, 1.72)

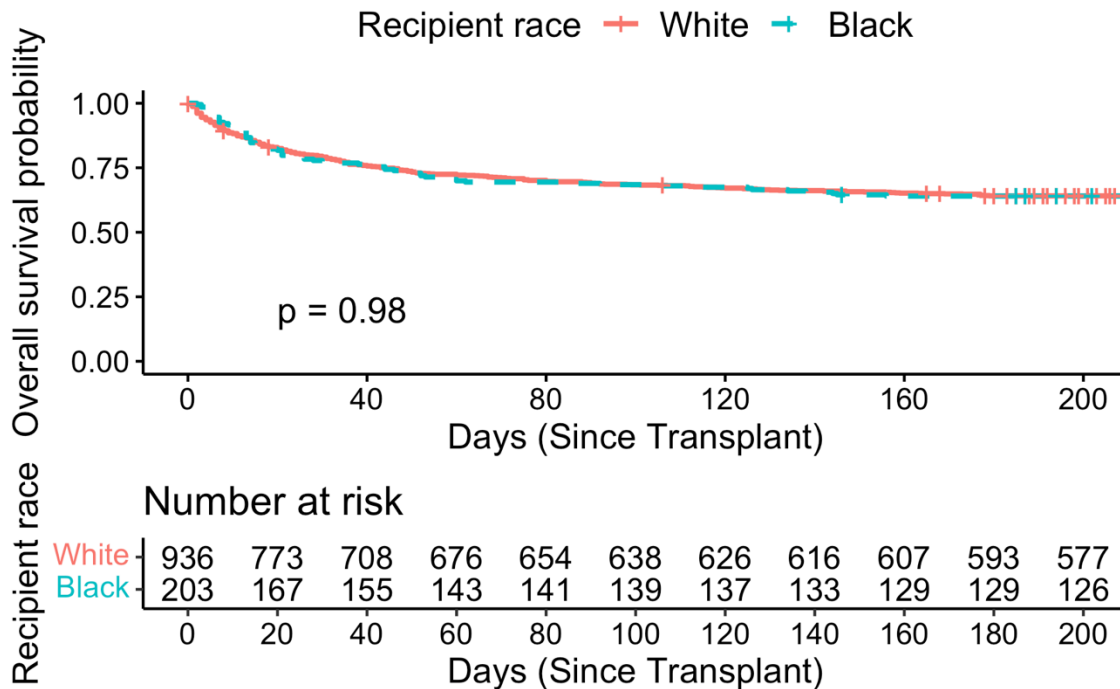
*Model 1: Adjusted for age, sex, body mass index, smoking status, cardiovascular etiology, malignancy, diabetes, hospital status, functional status, prior VAD, ECMO, life support status, total ischemic time, systolic blood pressure, inotropic medication usage, wait time, transplant era, HLA-AB mismatch, HLA-DR mismatch, PRA, and acute rejection

**Model 2: Adjusted for all covariates in Model 1 and education level and insurance type

†Model 3: Adjusted for all covariates in Model 2 and setting of post-transplant care

Figures

A. Within 6 Months



B. Beyond 6 Months

