

1 **Spatio-temporal dynamics of malaria in Zanzibar, 2015–2020**

2 *Donal Bisanzio,<sup>1</sup> Shabbir Lalji,<sup>2</sup> Faiza B. Abbas,<sup>3</sup> Mohamed H. Ali,<sup>3</sup> Wahida S. Hassan,<sup>3</sup> Humphrey R.*  
3 *Mkali,<sup>2</sup> Abdul-wahid Al-mafazy,<sup>2</sup> Joseph J. Joseph,<sup>2</sup> Ssanyu S. Nyinondi,<sup>1</sup> Chonge Kitojo,<sup>4</sup> Naomi*  
4 *Serbantez,<sup>4</sup> Erik Reaves,<sup>5</sup> Erin Eckert,<sup>1</sup> Jeremiah Ngondi,<sup>1</sup> Richard Reithinger<sup>1</sup>*

- 5  
6 **1.** RTI International, Washington, DC, USA  
7 **2.** RTI International, Dar es Salaam, United Republic of Tanzania  
8 **3.** Zanzibar Malaria Elimination Program, Ministry of Health, Zanzibar, United Republic of Tanzania.  
9 **4.** U.S. President’s Malaria Initiative<sup>4</sup>, U.S. Agency for International Development, Dar es Salaam,  
10 United Republic of Tanzania.  
11 **5.** U.S. President’s Malaria Initiative, U.S. Centers for Disease Control, Dar es Salaam, United Republic  
12 of Tanzania.

13  
14  
15  
16  
17  
18  
19  
20  
21  
22  
23  
24  
25  
26  
27  
28  
29  
30  
31  
32  
33  
34  
35

## Abstract

**Background:** Despite the continued high coverage of malaria interventions, malaria elimination in Zanzibar remains elusive, with the annual number of cases increasing gradually over the last 3 years. The aims of the analyses presented here were to (i) assess the spatio-temporal dynamics of malaria in Zanzibar between 2015 and 2020, and (ii) identify malaria hotspots that would allow Zanzibar to develop an epidemiological stratification for more effective and granular intervention targeting, thereby allowing for more effective programmatic resource allocations.

**Methods:** Data routinely collected by Zanzibar’s Malaria Case Notification (MCN) system were analyzed. The system collects detailed socio-demographic and epidemiological data from all malaria cases who are passively detected and reported at the islands’ 313 public and private health facilities (defined as primary index cases), as well as through case follow-up and reactive case detection (defined as secondary cases). Using these data, spatio-temporal analyses were performed to identify the spatial heterogeneity of case reporting at shehia (ward) level during transmission seasons and its correlation with 2015–2020 rainfall.

**Results:** From January 1, 2015, to April 30, 2020, 22,686 index cases were notified by health facilities and reported through the MCN system. Number of cases reported showed declining trends from 2015 to 2017, followed by an increase from 2018 to 2020. More than 40% of cases had a travel history outside Zanzibar in the month prior to testing positive for malaria. The proportion of followed-up index cases was approximately 70% for all years. Change point analysis identified 10 distinct periods of malaria transmission across the study period, and the seasonality of reported index cases was significantly correlated to the amount of precipitation that occurred during the previous rainy season. Out of Zanzibar’s 388 shehias, 79 (20.3%) were identified as malaria hotspots in any given year between 2015 and 2020; these hotspots reported 52% of all index cases during the study period. Of the 79 shehias identified as

36 hotspots, 12 (3% of all shehias) were hotspots in more than four years, i.e., considered temporally stable,  
37 reporting 14.5% of all index cases.

38 **Conclusions:** Our findings confirm that the scale-up of malaria interventions has greatly reduced malaria  
39 transmission in Zanzibar since 2006, with mean annual shehia incidence being 3.8 cases per 1,000 over  
40 the 2015–2020 study period. Spatio-temporal analyses identified hotspots, some of which were stable  
41 across multiple years. From a programmatic perspective, malaria efforts should progress from an  
42 approach that is based on universal coverage of interventions to an approach that is more tailored and  
43 nuanced, with resources prioritized and allocated to a select number of hotspot shehias.

## 44 **Background**

45 Malaria remains a major global public health concern, with an estimated 241 million malaria cases and  
46 627,000 deaths reported across 87 endemic countries in 2020.[1] From 2003 onwards, the Zanzibar  
47 Malaria Elimination Program (ZAMEP) gradually introduced and scaled-up rapid diagnostic tests  
48 (RDTs), artemisinin-combination based therapies (ACTs), intensive vector control (long-lasting  
49 insecticidal nets [LLINs] and indoor residual spraying [IRS]) and case-based surveillance, all of which  
50 resulted in a large decline of malaria cases and deaths. Thus, malaria prevalence in children under 5 years  
51 of age decreased from 40% before 2002 to less than 1% in 2007/8, and has remained at those low levels  
52 ever since.[2-4] Nonetheless, despite the continued high coverage of malaria interventions, malaria  
53 elimination in Zanzibar remains elusive. Thus, from 2015 to 2020, the annual number of reported malaria  
54 cases and malaria incidence have gradually increased, the annual number of severe malaria admissions  
55 increased from 89 to 606, and the annual number of malaria-related deaths increased from 1 to 20.[5] The  
56 reasons for this resurgence are likely due to a combination of factors, including residual transmission with  
57 more outdoor rather than indoor biting mosquito vectors;[6] asymptomatic (and undetected) malaria  
58 infections in the community that remain a possible source for local transmission;[7] insecticide resistance  
59 in mosquito vectors that affect the efficacy of LLINs and IRS; and a variability in environmental factors  
60 important for mosquito and parasite reproduction and survival.[4, 8]

61 As countries progress toward malaria elimination, strengthening malaria surveillance systems and  
62 using the data collected through these systems to better understand malaria transmission dynamics at a  
63 more granular spatio-temporal scale becomes increasingly important.[9] Spatio-temporal heterogeneity in  
64 transmission dynamics is likely to occur in elimination settings, with certain locations having no or very  
65 little transmission, and other locations (so-called “hotspots”) experiencing comparatively high  
66 transmission. Stresman et al. [10] defined malaria hotspots as areas “where transmission intensity exceeds  
67 the average level”, adding that hotspots are, typically,  $<1 \text{ km}^2$  in size and are often within a focus of  
68 active malaria transmission. Furthermore, they argued that a hotspot that is conducive of transmission

69 across both dry and rainy seasons is stable (rather than unstable), and thus should be able to be detected  
70 across time. It is assumed that these hotspots disproportionately contribute to maintaining ongoing  
71 transmission and that targeting them will achieve greater impact as well as maximize available resource  
72 allocation. Consequently, identifying hotspots and characterizing whether these hotspots persist over time  
73 may help in stratifying Zanzibar epidemiologically, to then determine the level and type of interventions,  
74 as well as the amount of programmatic and financial resources that are needed to progress towards  
75 malaria elimination.

76 The aims of the analyses presented here were (i) to describe the spatio-temporal dynamics of  
77 malaria in Zanzibar between 2015 and 2020, and (ii) identify malaria hotspots that would allow ZAMEP  
78 and stakeholders to develop an epidemiological stratification for more effective and granular targeting of  
79 malaria interventions, thereby maximizing programmatic resource allocations.

80

## 81 **Methods**

### 82 **Study setting**

83 The archipelago of Zanzibar is located between longitudes 39.19793 and latitudes -6.16394, 25–50  
84 kilometers off the east coast of the Tanzania mainland in the Indian Ocean. There are two main islands,  
85 Pemba and Unguja, which cover a total land area of 2,461 km<sup>2</sup> and have an estimated population of  
86 1,717,608 people. Zanzibar comprises 11 districts, which are subdivided into 387 shehias, 258 of which  
87 are on Unguja and 129 are on Pemba. Shehias are akin to wards and Zanzibar's lowest administrative  
88 unit, where many of the public services are planned, managed, and implemented, including for health and  
89 malaria.

90 Zanzibar's climate is characterized by two main rainfall seasons: a primary (March–May, called  
91 *masika*) and a secondary (November–January, called *vuli*) season; rainfall is at its lowest in July. Both

92 rainfall seasons are followed by peak malaria transmission seasons, with the highest malaria case count  
93 typically observed in the March–May rainfall season.

#### 94 **Data collection**

95 Data used in this study had been routinely collected by ZAMEP’s Malaria Case Notification (MCN)  
96 system between January 1, 2015, and April 30, 2020. The MCN system was established in 2012 to  
97 electronically collect detailed socio-demographic and epidemiological data from all malaria cases in  
98 Zanzibar in order to inform programmatic decision-making—both for cases passively diagnosed by  
99 microscopy or rapid diagnostic tests (RDTs) at health facility level (defined as primary index cases), as  
100 well as cases diagnosed by RDTs during case follow-up and reactive case detection (rACD) activities at  
101 household level (defined as secondary cases). By 2014, the system had been progressively scaled-up to  
102 cover all 189 public and 124 private health facilities on Pemba and Unguja.

103 Suspected malaria cases access health facilities, where they get tested for malaria. If confirmed as  
104 positive, the health provider prescribes ACTs as per national malaria diagnosis and treatment  
105 guidelines.[11] Within 24 hrs of the index case being detected at facility-level, the provider sends an  
106 unstructured supplementary service data (USSD) notification to a central ZAMEP computing server. The  
107 notification is forwarded to a District Malaria Surveillance Officer (DMSO), who visits the health facility  
108 to confirm the reported index case and collects additional information, including the patient’s contact  
109 details. Within 48 hrs of being notified, the DMSO then follows-up index cases at household-level,  
110 ensuring they are adhering to prescribed treatment and investigating case details that will inform case  
111 classification (e.g., whether the case was autochthonous versus possibly imported because of a travel  
112 history in the preceding 30 days). DMSOs then use RDTs (in most cases and years the SD Bioline®  
113 HRP2 / pLDH RDT from Standard Diagnostics, Giheung-ku, Republic of Korea, was used) to screen all  
114 of the index case’s additional household members; members with a positive RDT result (i.e., secondary  
115 cases) are treated with an ACT. Using an electronic, standardized questionnaire that is completed by the

116 DMSO, the case follow-up and reactive case detection (rACD) data, including for household-based  
117 screening and treatment (HSaT), are linked to each index case through the Coconut surveillance platform  
118 (<https://coconutsurveillance.org/>). The specific variables collected in the questionnaire are individual  
119 factors (i.e., contact information, age, sex, self-reported history of travel in the last 30 days, self-reported  
120 history of fever in the last two weeks, RDT positivity, and LLIN use the previous night); household  
121 factors (i.e., number of people residing in the household, number of household LLINs, and IRS  
122 application in the last 12 months); and geographical factors (i.e., household geolocation and weekly  
123 rainfall). During the 2015–2020 study period, rainfall data were obtained from 10 meteorological stations  
124 managed by Zanzibar’s Tanzania Meteorological Agency, with rainfall data measured in millimeters  
125 (mm) and recorded daily.

## 126 **Data analysis**

127 In Zanzibar, malaria transmission occurs throughout the year, and it is characterized by two high-  
128 transmission periods after the vuli and masika rainy seasons. The duration of each high-transmission  
129 season, as well as the following low-transmission season, varies among the years due to precipitation  
130 patterns. To identify the duration of each transmission season during the 2015–2020 study period, we  
131 used the change point analysis technique to analyze the weekly trend of malaria cases.[12]. This  
132 technique enables to divide times series by identifying those points in time (i.e., change points) when  
133 substantial changes occur in a data trend. The change points identified by the analysis were used to  
134 estimate the duration of each malaria transmission season throughout any given study year.

135 The spatial pattern of malaria index cases during each transmission season from 2015 to 2020  
136 was assessed using a hotspot analysis based on the Getis-Ord  $G_i^*$  local spatial clustering test.[13] The  
137 results of the  $G_i^*$  local spatial test were used to identify hotspot shehias; shehia was used as the  
138 geographic unit to define hotspots, since it is the lowest administrative unit at which programmatic  
139 decision-making occurs. The significance of the computed  $G_i^*$  was estimated by comparing observed  
140 values to the random case distribution (null hypothesis) by randomly re-assigning the weekly cases to the

141 shehias. The statistical significance calculation was based on 100,000 Monte Carlo randomizations  
142 ( $p < 0.05$ , with Bonferroni correction). A Kendall's concordance coefficient ( $W$ ) was calculated to  
143 investigate the spatio-temporal overlap of hotspots from 2015 to 2020.[14] Kendall's  $W$  measures  
144 concordance between two datasets, ranging from +1 (complete agreement) to -1 (no agreement). The  
145 relationship between reported cases and rainfall was evaluated using the auto-correlation function.[15]

#### 146 **Definition of indicators**

147 Based on the  $G_i^*$ , hotspot shehias were defined as shehias with a statistically significant higher number of  
148 malaria index cases compared to their neighboring shehias in any given transmission season. We defined  
149 hotspot shehias as temporally stable, if during the five-year study period, they were classified as hotspots  
150 either during the high or low transmission season for at least 4 out of the five study years. The probability  
151 of finding a positive secondary case (detection rate) was defined as the number of secondary cases  
152 detected through case follow-up and rACD of each primary index case. The probability to find a  
153 secondary case and its 95% confidence interval (95% CI) was estimated using a logistic regression.

#### 154 **Ethical approval**

155 Ethical clearance to undertake secondary analysis of the MCN surveillance data was granted by the  
156 Zanzibar Health Research Institute (ZAHRI) with reference number ZAHREC/03/AUG/2021/20. All  
157 personal identifiers were removed during data cleaning before analysis.

158

## 159 **Results**

### 160 **Index Cases**

161 From January 1, 2015, to April 30, 2020, 27,046 cases were notified by health facilities in Zanzibar, of  
162 which 22,686 were followed-up at health facility level by DMSOs and reported through the MCN system



163 (called [DMSO] index cases). The number of these index cases showed a declining trend from 2015 to  
164 2017, followed by an increase from 2018 to 2020 (Table 1; Figure 1 and Figure 2).

165 Median age of index cases was 21 (interquartile range [IQR]: 12–30) years, with 62.8% of cases  
166 being male; neither age nor sex ratio significantly varied across study years. Of index cases, 79.9% were  
167 reported in Unguja (range across years: 69.7–84.0%) (Table 1). Comparing index cases reported from  
168 January 1 to April 30 of each year from 2015 to 2020, 2019 showed the highest number of reported cases.  
169 The proportion of cases that was followed-up to household level was approximately 70% for all years,  
170 with 2016 being highest (79.7%) (Table 1).

171 Among reported index cases over the entire 2015–2020 study period, more than 40% had a travel  
172 history outside of Zanzibar in the month prior to testing positive for malaria. The proportion of cases who  
173 reported traveling outside of Zanzibar prior to confirmatory testing decreased from 2015 to 2017,  
174 increased in 2018 and 2019, before decreasing again in 2020.

### 175 **Secondary Cases**

176 The percentage of tested household members who were malaria positive (secondary cases) showed a  
177 declining trend from 2015 to 2018, before increasing in 2019 (Table 1). Comparing index cases reported  
178 from January 1 to April 30 of each year, 2020 showed the lowest number of tested household members  
179 who were malaria positive. The probability of finding a positive person (detection rate) after index case  
180 investigation was approximately 0.04 (i.e., 1 additional secondary case was detected for every 400  
181 investigated index cases) and was significantly higher during 2015 compared with the other years. The  
182 trend of the detection rate slightly declined from 0.041 in 2016 to 0.030 in 2020.

### 183 **Malaria Transmission Seasons and Precipitation**

184 Change point analysis identified 10 distinct periods of malaria transmission across the study period  
185 (Figure 2). Although these generally aligned with the expected peak transmission seasons following the  
186 masika and vuli rainy seasons, the analysis showed how variable the seasons were across years, both in

187 terms of onset as well as duration. From 2015 to 2018, precipitation during the vuli season tended to be  
188 lower compared to the masika rainy season. From 2017 to 2020, precipitation increased in both rainy  
189 seasons, and in 2019 precipitation during the vuli and masika rainy seasons were similar (Table 1). The  
190 seasonality of reported index cases was significantly correlated to the amount of precipitation that  
191 occurred during the previous rainy season (Figure 2 and Figure 3). Cross-correlation analyses showed that  
192 the number of index cases had the highest correlations with total precipitation in the 12th and 13th weeks  
193 prior to malaria case confirmation (Figure 3).

#### 194 **Spatio-temporal Dynamics and Identification of Hotspots**

195 During peak transmission seasons, Unguja reported more index cases than Pemba (Figures 1, 4, and 5).  
196 Additionally, the spatial pattern of the reported index cases in the two islands was different. Most of the  
197 index cases reported on Unguja were from shehias in the southern part of the island (Figures 1, 4, and 5).  
198 On Pemba, northern shehias reported more cases compared to the rest of the island (Figures 1, 4, and 5).  
199 Of all 387 shehias, 54 (14.0%) did not report any index cases during the study period.

200 The results from the analyses identified shehia hotspots in the north-eastern and the southern part of  
201 Unguja during the 2015–2020 study period; hotspot shehias on Pemba were located in the northern part of  
202 the island (Figures 4, 5, and 6). In 2019 and 2020, the spatial pattern of index cases reported during the  
203 peak transmission season after the masika and vuli rainy seasons (i.e., transmission seasons IX and X)  
204 were similar (Figures 4 and 5). In all other years, the transmission season after the masika rainy season  
205 was longer compared to the transmission seasons that occurred after the vuli rainy season (Figures 4 and  
206 5).

207         Across Unguja and Pemba shehias, 64 (24.8%) and 15 (11.6%) shehias were identified as a  
208 hotspot in any given year, respectively, i.e., reported malaria index cases in either transmission season  
209 were observed to significantly cluster spatially and temporally in those shehias. When the hotspot  
210 shehias' temporal stability was examined, it varied greatly between years. Of hotspot shehias, 12 (3.1%)  
211 were temporally stable, i.e., they were identified as hotspots either during the high or low transmission

212 season for at least 4 out of the five study years (Figure 6). The 12 hotspots shehias that were stable  
213 reported 3,294 (14.5%) of all reported index cases during the study period. Conversely, the 67 shehias  
214 that were identified as non-stable hotspots—that is, they were identified as hotspots for <4 years during  
215 2015–2020—contributed to 37.5% (8,519 cases) of reported index cases during the study period.

216

## 217 **Discussion**

218 Our analyses confirm the low level of malaria burden in Zanzibar,[2–4] with annual shehia incidence  
219 ranging between 0–54.5 cases per 1,000 population (mean equal to 3.8 cases per 1,000) over the 2015–  
220 2020 study period. Most of the cases in Zanzibar are passively detected at public or private facilities, with  
221 cases detected through rACD being comparatively low: over the entire study period, the proportion of all  
222 cases that were reported through rACD ranged between 6.5% and 29.4% between years, and the  
223 probability to detect such a secondary case during rACD ranged from 0.030 to 0.048. We also confirm  
224 previous analyses that show a significant correlation between monthly rainfall and confirmed malaria  
225 diagnosis,[2, 3, 8] as well as that a large proportion of cases (34.0–61.5% for the entire study period; up to  
226 69.0% in 2019, if reporting is limited to the January–April peak transmission period) have a reported  
227 history of travel outside of Zanzibar one month prior to testing positive for malaria infection.[16]

228         Studies analyzing the spatio-temporal distribution of malaria have traditionally relied on surveys  
229 of well-defined at-risk populations,[17–21] but increasingly—as countries’ health management  
230 information systems have been strengthened—studies have used routine PCD [17, 18, 20–25] to define  
231 clusters of malaria risk. These studies reported variable patterns of spatio-temporal clustering. Thus, some  
232 studies reported the existence of consistent hotspots [24, 26], while others suggest greater variability [17,  
233 18, 20, 21]. For example, in Ouagadougou, Burkina Faso, the location of clusters identified as high risk  
234 varied little across three transmission periods [24]. In contrast, in Kilifi county, Kenya, only two

235 temporally stable hotspots were identified over the 1-year study period, comprising 2.7% of all study  
236 households and contributing to 10.8% of all malaria cases confirmed by RDT.[27]

237         Using PCD, our findings support the hypothesis that—in an elimination setting such as  
238 Zanzibar—malaria tends to significantly cluster within certain hotspot geographic units.[17, 20, 21, 28,  
239 29, 30] Across Zanzibar’s shehias, 79 (20.4%) were identified as a hotspot in any given year, with malaria  
240 observed to significantly cluster spatially and temporally. These hotspot shehias contributed  
241 disproportionately to the number of reported malaria index cases, with 52% of all index cases during the  
242 study period being reported from there. Similarly, in the 12 stable hotspot shehias (i.e., 3% of all shehias),  
243 14.5% of all index cases were reported.

244         The use of routinely collected case data through the MCN system does offer the opportunity to  
245 detect malaria case clusters down to the shehia, village and household levels at an affordable cost.  
246 Interventions tailored and targeted to hotspots have been hypothesized to be highly efficient method in  
247 reducing malaria transmission not only inside these hotspots, but also in adjacent geographic areas.[10]  
248 While biologically plausible, so far there has been mixed evidence to support this concept. For example,  
249 in Rufiji District on mainland Tanzania, locally tailored and targeted interventions contributed to reduce  
250 malaria transmission in hotspot villages.[25] Similarly, on Sabang island, Indonesia, an intensified  
251 application of malaria diagnosis, ACTs, LLINs and IRS in hotspot areas contributed to a 30-fold  
252 reduction in malaria incidence from 3.18 to 0.13 per 1,000 population.[31] In contrast, a trial in western  
253 Kenya targeting hotspots with intensified interventions—larviciding, LLINs, IRS and mass drug  
254 administration—failed to result in any sustained reduction in malaria transmission in targeted hotspots  
255 and failed to impact malaria transmission outside of targeted areas.[32]

256         For Zanzibar, a number of more aggressive programmatic approaches to reduce malaria  
257 transmission in hotspots shehias could be envisaged, including screen and treat strategies, potentially  
258 using a more highly sensitive diagnostic test,[33–35] or targeted mass/focal drug administration.[36, 37]  
259 Since travel-related malaria represents a large proportion of detected cases, additional interventions

260 targeting travelers, especially prior to high transmission seasons should be considered, including  
261 chemoprophylaxis for anyone traveling from Zanzibar to mainland Tanzania, and mass screening and  
262 treatment or presumptive treatment of anyone arriving from the mainland to Zanzibar.[9, 38–40]

### 263 **Limitations**

264 A number of potential caveats of our analyses should be highlighted, most of which are due to the fact  
265 that we used routinely collected programmatic data from ZAMEP in our analyses and not data from a  
266 carefully controlled academic research study. First, malaria testing to identify cases is RDT-based, which  
267 in the context of Zanzibar is known to have—depending on infections’ parasite densities—low to  
268 moderate sensitivity:[41, 42] consequently, it is likely that low parasitemia, asymptomatic infections were  
269 missed. It is unlikely, however, that such infections would have clustered in a specific spatio-temporal  
270 pattern that is different from the findings we report here, and, thus, would unlikely change our findings  
271 and conclusions. Second, depending on the week, month and year, a range (e.g., between 65.6% and  
272 79.7% for any given year) of index cases were followed-up and investigated. Most often such variability  
273 in case follow-up and investigation is due to DMSO bandwidth availability resulting from a high  
274 incidence of malaria cases—the more index cases are detected and reported at health facilities, the more  
275 probable it is that DMSO will not be able to follow-up all index cases and visit their households. Third,  
276 we delineated our hotspots to the shehia boundaries, rather than a defined area size (e.g., 1 km<sup>2</sup>). This was  
277 done because shehias are the lowest administrative unit that plan, implement, and monitor malaria  
278 programming in Zanzibar; any response to an increase in cases would occur at shehia or—depending on  
279 the size of the increase—district level.

280

### 281 **Conclusions**

282 The scale-up of malaria interventions has greatly reduced malaria transmission in Zanzibar since 2006,  
283 with mean annual shehia incidence being 3.8 cases per 1,000 over the 2015–2020 study period. In our

284 analyses, we identified 79 (20.3%) of Zanzibar’s shehias as malaria hotspots in any given year between  
285 2015 and 2020; 12 of these shehias were considered temporally stable.

286 From a programmatic perspective, we recommend that malaria efforts should progress from an  
287 approach that is based on universal coverage of interventions to an approach that is more tailored and  
288 nuanced, with resources prioritized and allocated to a select number of geographic units, i.e., hotspot  
289 shehias. Continued, annual analysis of the MCN data should be able to assess the temporal stability of the  
290 hotspots so that—if needed—changes in such prioritized programming can be made; additionally, once  
291 adjustment is made for cases that have a reported travel history outside of Zanzibar, hotspots of residual  
292 transmission can be identified.

293 The findings presented here demonstrate that data collected through routine testing of febrile  
294 patients for malaria, as well as case follow-up and rACD, can help describe local malaria transmission  
295 dynamics at fine spatial scales. The challenge remains to develop programmatically affordable and  
296 scalable approaches using routine data that allow for the identification of local spatial heterogeneity to  
297 consider more tailored and targeted prevention and control efforts.

298

## 299 **Acknowledgements**

300 Financial support for this study was provided by the U.S. President's Malaria Initiative through the U.S.  
301 Agency for International Development *Okoa Maisha Dhibiti Malaria* Activity (Cooperative Agreement  
302 Number: 72062118CA-00002). The findings and conclusions in the manuscript are those of the authors  
303 and do not necessarily reflect the views of the President’s Malaria Initiative, the U.S. Agency for  
304 International Development, the U.S. Centers for Disease Control and Prevention, or other employing  
305 organizations or sources of funding.

## 306 **Authors’ contributions**

307 DB, SL, FBA, CK, NS, ER, EE, and RR conceptualized and designed the study. SL, HRM, AA, and JJJ  
308 managed and curated the data. DB conducted the data analyses. SL, FAB, SSN, EE and RR supervised  
309 the execution of the study. DB, ER and RR drafted the manuscript; all authors read and approved the  
310 final version of the manuscript.

## 311 **Funding**

312 Financial support for this study was provided by the U.S. President's Malaria Initiative through the U.S.  
313 Agency for International Development *Okoa Maisha Dhibiti Malaria* Activity (Cooperative Agreement  
314 Number: 72062118CA-00002).

## 315 **Competing interests**

316 The authors declare they have no competing interests.

317

## 318 **References**

319

- 320 1. World Health Organization. World Malaria Report 2021. Geneva: World Health Organization,  
321 2021.
- 322 2. Bhattarai A, Ali AS, Kachur SP, Mårtensson A, Abbas AK, Khatib R, Al-Mafazy AW, Ramsan  
323 M, Rotllant G, Gerstenmaier JF, Molteni F, Abdulla S, Montgomery SM, Kaneko A, Björkman  
324 A. Impact of artemisinin-based combination therapy and insecticide-treated nets on malaria  
325 burden in Zanzibar. *PLoS Med* 2007; 4: e309.
- 326 3. Björkman A, Shakely D, Ali AS, Morris U, Mkali H, Abbas AK, Al-Mafazy AW, Haji KA, Mcha  
327 J, Omar R, Cook J, Elfving K, Petzold M, Sachs MC, Aydin-Schmidt B, Drakeley C, Msellem M,  
328 Mårtensson A. From high to low malaria transmission in Zanzibar-challenges and opportunities  
329 to achieve elimination. *BMC Med* 2019; 17: 14.
- 330 4. ZAMEP. National Malaria Strategic Plan. Stone Town, Zanzibar: ZAMEP; 2020.
- 331 5. Ali MH, et al. ZAMEP Annual Report 2019-2020. Stone Town: ZAMEP, 2021.
- 332 6. Monroe A, Msaky D, Kiware S, Tarimo BB, Moore S, Haji K, Koenker H, Harvey S, Finda M,  
333 Ngowo H, Mihayo K, Greer G, Ali A, Okumu F. Patterns of human exposure to malaria vectors  
334 in Zanzibar and implications for malaria elimination efforts. *Malar J* 2020; 19: 212.
- 335 7. Björkman A, Morris U. Why Asymptomatic *Plasmodium falciparum* infections are common in  
336 low-transmission settings. *Trends Parasitol* 2020; 36: 898-905.

- 337 8. Thomson MC, Ukawuba I, Hershey CL, Bennett A, Ceccato P, Lyon B, Dinku T. Using rainfall  
338 and temperature data in the evaluation of national malaria control programs in Africa. *Am J Trop*  
339 *Med Hyg.* 2017; 97(3\_Suppl): 32-45.
- 340 9. WHO. A Framework for Malaria Elimination. Geneva, Switzerland: WHO, 2017.
- 341 10. Stresman G, Bousema T, Cook J. Malaria Hotspots: Is there epidemiological evidence for fine-  
342 scale spatial targeting of interventions? *Trends Parasitol* 2019; 35: 822-834.
- 343 11. ZAMEP. National Malaria Treatment Guidelines. Stone Town, Zanzibar, 2020.
- 344 12. Texier G, Farouh M, Pellegrin L, Jackson ML, Meynard J-B, Deparis X, Chaudet H. Outbreak  
345 definition by change point analysis: a tool for public health decision? *BMC Medical Inform Decis*  
346 *Mak* 2016; 16: 33.
- 347 13. Ord JK, Getis A. Local spatial autocorrelation statistics. Distributional issues and an application.  
348 *Geogr Anal* 1995; 27: 286–306.
- 349 14. Abdi H. The Kendall Rank Correlation Coefficient. In Encyclopedia of Measurement and  
350 Statistics (Salkind NJ, ed). Thousand Oaks: Sage Press, 2007.
- 351 15. Venables WN, Ripley BD. Modern Applied Statistics with S. Fourth Edition. New York:  
352 Springer-Verlag, 2002.
- 353 16. Ahmed S, Reithinger R, Kaptoge SK, Ngondi JM. Travel Is a Key Risk Factor for Malaria  
354 Transmission in pre-elimination settings in sub-Saharan Africa: a review of the literature and  
355 meta-analysis. *Am J Trop Med Hyg* 2020; 103: 1380-1387.
- 356 17. Bejon P, Williams TN, Nyundo C, Hay SI, Benz D, Gething PW, Otiende M, Peshu J, Bashraheil  
357 M, Greenhouse B, Bousema T, Bauni E, Marsh K, Smith DL, Borrmann S. A micro-  
358 epidemiological analysis of febrile malaria in Coastal Kenya showing hotspots within hotspots.  
359 *elife* 2014; 3: e02130.
- 360 18. Kangoye DT, Noor A, Midega J, Mwongeli J, Mkabili D, Mogeni P, Kerubo C, Akoo P,  
361 Mwangangi J, Drakeley C, Marsh K, Bejon P, Njuguna P. Malaria hotspots defined by clinical  
362 malaria, asymptomatic carriage, PCR and vector numbers in a low transmission area on the  
363 Kenyan Coast. *Malar J* 2016; 15: 213.
- 364 19. Mogeni P, Omedo I, Nyundo C, Kamau A, Noor A, Bejon P; Hotspot Group Authors. Effect of  
365 transmission intensity on hotspots and micro-epidemiology of malaria in sub-Saharan Africa.  
366 *BMC Med* 2017; 15: 121.
- 367 20. Rouamba T, Nakanabo-Diallo S, Derra K, Rouamba E, Kazienga A, Inoue Y, Ouédraogo EK,  
368 Waongo M, Dieng S, Guindo A, Ouédraogo B, Sallah KL, Barro S, Yaka P, Kirakoya-  
369 Samadoulougou F, Tinto H, Gaudart J. Socioeconomic and environmental factors associated with  
370 malaria hotspots in the Nanoro demographic surveillance area, Burkina Faso. *BMC Public Health*  
371 2019; 19: 249.
- 372 21. Hamre KES, Hodges JS, Ayodo G, John CC. Lack of consistent malaria incidence hotspots in a  
373 highland Kenyan area during a 10-year period of very low and unstable transmission. *Am J Trop*  
374 *Med Hyg* 2020; 103: 2198-2207.
- 375 22. Bisanzio D, Mutuku F, LaBeaud AD, Mungai PL, Muinde J, Busaidy H, Mukoko D, King CH,  
376 Kitron U. Use of prospective hospital surveillance data to define spatiotemporal heterogeneity of  
377 malaria risk in coastal Kenya. *Malar J* 2015; 14: 482.
- 378 23. Ndiath MM, Cisse B, Ndiaye JL, Gomis JF, Bathiery O, Dia AT, Gaye O, Faye B. Application of  
379 geographically-weighted regression analysis to assess risk factors for malaria hotspots in Keur  
380 Soce health and demographic surveillance site. *Malar J* 2015; 14: 463.
- 381 24. Ouedraogo B, Inoue Y, Kambiré A, Sallah K, Dieng S, Tine R, Rouamba T, Herbreteau V,  
382 Sawadogo Y, Ouedraogo LSLW, Yaka P, Ouedraogo EK, Dufour JC, Gaudart J Spatio-temporal  
383 dynamic of malaria in Ouagadougou, Burkina Faso, 2011-2015. *Malar J* 2018; 17: 138.
- 384 25. Mlacha YP, Wang D, Chaki PP, Gavana T, Zhou Z, Michael MG, Khatib R, Chila G, Msuya HM,  
385 Chaki E, Makungu C, Lin K, Tambo E, Rumisha SF, Mkude S, Mahende MK, Chacky F,  
386 Vounatsou P, Tanner M, Masanja H, Aregawi M, Hertzmark E, Xiao N, Abdulla S, Zhou XN.  
387 Effectiveness of the innovative 1,7-malaria reactive community-based testing and response (1, 7-



- 388 mRCTR) approach on malaria burden reduction in Southeastern Tanzania. *Malar J* 2020; 19:  
389 292.
- 390 26. Ernst KC, Adoka SO, Kowuor DO, Wilson ML, John CC. Malaria hotspot areas in a highland  
391 Kenya site are consistent in epidemic and non-epidemic years and are associated with ecological  
392 factors. *Malar J* 2006; 5: 78.
- 393 27. Kamau A, Mtanje G, Mataza C, Bejon P, Snow RW. Spatial-temporal clustering of malaria using  
394 routinely collected health facility data on the Kenyan Coast. *Malar J* 2021; 20:227.
- 395 28. Mirghani SE, Nour BY, Bushra SM, Elhassan IM, Snow RW, Noor AM. The spatial-temporal  
396 clustering of *Plasmodium falciparum* infection over eleven years in Gezira State, The Sudan.  
397 *Malar J* 2010; 9: 172.
- 398 29. Sturrock HJ, Novotny JM, Kunene S, Dlamini S, Zulu Z, Cohen JM, Hsiang MS, Greenhouse B,  
399 Gosling RD. Reactive case detection for malaria elimination: real-life experience from an  
400 ongoing program in Swaziland. *PLoS One* 2013; 8: e63830.
- 401 30. Stresman GH, Mwesigwa J, Achan J, Giorgi E, Worwui A, Jawara M, Di Tanna GL, Bousema T,  
402 Van Geertruyden JP, Drakeley C, D'Alessandro U. Do hotspots fuel malaria transmission: a  
403 village-scale spatio-temporal analysis of a 2-year cohort study in The Gambia. *BMC Med* 2018;  
404 16: 160.
- 405 31. Herdiana H, Fuad A, Asih PB, Zubaedah S, Arisanti RR, Syafruddin D, Kusnanto H, Sumiwi  
406 ME, Yuniarti T, Imran A, Rahmadyani R, Yani M, Kusriastuti R, Tarmizi SN, Laihad FJ, Hawley  
407 WA. Progress towards malaria elimination in Sabang Municipality, Aceh, Indonesia. *Malar J*  
408 2013; 12: 42.
- 409 32. Bousema T, Stresman G, Baidjoe AY, Bradley J, Knight P, Stone W, Osoti V, Makori E, Owaga  
410 C, Odongo W, China P, Shagari S, Doumbo OK, Sauerwein RW, Kariuki S, Drakeley C,  
411 Stevenson J, Cox J. The impact of hotspot-targeted interventions on malaria transmission in  
412 Rachuonyo South District in the Western Kenyan Highlands: A Cluster-Randomized Controlled  
413 Trial. *PLoS Med* 2016; 13: e1001993.
- 414 33. Morris U, Khamis M, Aydin-Schmidt B, Abass AK, Msellem MI, Nassor MH, González IJ,  
415 Mårtensson A, Ali AS, Björkman A, Cook J. Field deployment of loop-mediated isothermal  
416 amplification for centralized mass-screening of asymptomatic malaria in Zanzibar: a pre-  
417 elimination setting. *Malar J* 2015; 14: 205.
- 418 34. Aydin-Schmidt B, Morris U, Ding XC, Jovel I, Msellem MI, Bergman D, Islam A, Ali AS,  
419 Polley S, Gonzalez IJ, Mårtensson A, Björkman A. Field evaluation of a high throughput loop  
420 mediated isothermal amplification test for the detection of asymptomatic *Plasmodium* infections  
421 in Zanzibar. *PLoS One* 2017; 12: e0169037.
- 422 35. Slater HC, Ding XC, Knudson S, Bridges DJ, Moonga H, Saad NJ, De Smet M, Bennett A,  
423 Dittrich S, Slutsker L, Domingo GJ. Performance and utility of more highly sensitive malaria  
424 rapid diagnostic tests. *BMC Infect Dis* 2022; 22: 121.
- 425 36. Ali AS, Thawer NG, Khatib B, Amier HH, Shija J, Msellem M, Al-Mafazy AW, Garimo IA,  
426 Mkali H, Ramsan MM, Kafuko JM, Paxton LA, Reithinger R, Ngondi JM. Artemisinin  
427 combination therapy mass drug administration in a setting of low malaria endemicity:  
428 programmatic coverage and adherence during an observational study in Zanzibar. *Malar J* 2017;  
429 16: 332.
- 430 37. Morris U, Msellem MI, Mkali H, Islam A, Aydin-Schmidt B, Jovel I, Shija SJ, Khamis M, Ali  
431 SM, Hodzic L, Magnusson E, Poirot E, Bennett A, Sachs MC, Tarning J, Mårtensson A, Ali AS,  
432 Björkman A. A cluster randomised controlled trial of two rounds of mass drug administration in  
433 Zanzibar, a malaria pre-elimination setting-high coverage and safety, but no significant impact on  
434 transmission. *BMC Med* 2018; 16: 215.
- 435 38. Poirot E, Skarbinski J, Sinclair D, Kachur SP, Slutsker L, Hwang J. Mass drug administration for  
436 malaria. *Cochrane Database Syst Rev* 2013: CD008846.

- 437 39. World Health Organization. Mass Drug Administration, Mass Screening and Treatment and Focal  
438 Screening and Treatment for Malaria. Geneva, Switzerland: WHO, 2015.
- 439 40. Kim S, Luande VN, Rocklöv J, Carlton JM, Tozan Y. A systematic review of the evidence on the  
440 effectiveness and cost-effectiveness of mass screen-and-treat interventions for malaria control.  
441 *Am J Trop Med Hyg* 2021; D: tpmd210325.
- 442 41. Shakely D, Elfving K, Aydin-Schmidt B, Msellem MI, Morris U, Omar R, Weiping X, Petzold  
443 M, Greenhouse B, Baltzell KA, Ali AS, Björkman A, Mårtensson A. The usefulness of rapid  
444 diagnostic tests in the new context of low malaria transmission in Zanzibar. *PLoS One* 2013; 8:  
445 e72912.
- 446 42. Cook J, Xu W, Msellem M, Vonk M, Bergström B, Gosling R, Al-Mafazy AW, McElroy P,  
447 Molteni F, Abass AK, Garimo I, Ramsan M, Ali A, Mårtensson A, Björkman A. Mass screening  
448 and treatment on the basis of results of a Plasmodium falciparum-specific rapid diagnostic test did  
449 not reduce malaria incidence in Zanzibar. *J Infect Dis* 2015; 211: 1476-83.

450 **Tables & Figures**

451

452 **Table 1. Summary of reported index cases from January 1, 2015, to April 30, 2020, in Zanzibar.**

	<b>2015</b>	<b>2016</b>	<b>2017</b>	<b>2018</b>	<b>2019</b>	<b>2020<sup>a</sup></b>
Cases notified by health facilities	4,325	3,856	4,252	5,494	6,766	6,678
Number of index cases followed up to health facilities by DMSOs	3,745	2,596	2,940	3,647	5,747	4,011
Number of investigated index cases (%)	2,592 <sup>b</sup> (69.2%)	2096 (79.7%)	2081 (70.8%)	2736 (75.0%)	4259 (74.1%)	2,630 (65.6%)
Median age (years) of investigated index cases	20 (IQR: 11–29)	19 (IQR: 9–28)	21 (IQR: 13–29)	20 (IQR: 11–29)	22 (IQR: 13–31)	23 (IQR: 15–31)
Fraction of investigated index cases who were male	59.3%	57.6%	62.6%	59.3%	64.8%	69.8%
Fraction of investigated index cases reported in Unguja	81.6%	69.7%	84%	77.1%	82.9%	80.2%
Number of index cases with travel history outside Zanzibar (%)	1,926 (51.4%)	1,195 (46.0%)	1,223 (41.6%)	1,938 (53.1%)	3,536 (61.5%)	1,365 (34.0%)
Number of index cases with travel history within Zanzibar (%)	139 (3.7%)	87 (3.4%)	87 (3.0%)	154 (4.2%)	197 (3.4%)	220 (5.5%)
Fraction of index cases reported during January–April who have travel history outside Zanzibar	62.7%	51.0%	55.2%	58.6%	69.0%	35.1%
<sup>c</sup> Fraction of index cases reported during January–April who have travel history within Zanzibar	4.4%	4.9%	3.0%	4.6%	3.0%	5.7%
Weekly rainfall year in mm (median [IQR])	9.8 (1.9–30.7)	2.9 (0.0–18.3)	15.5 (3.1–72.6)	21.8 (6.9–63.5)	16.6 (2.4–88.9)	10.9 (6.0–12.9)
Weekly rainfall during the masika season in mm, mid-March–May (median [IQR])	52.4 (12.5–96.3)	19.8 (3.7–55.1)	125.6 (62.7–175.7)	56.3 (25.2–129.3)	43.3 (13.3–84.6)	–
Weekly rainfall during the vuli season in mm, November–mid January (median [IQR])	11.8 (4.5–43.8)	13.3 (2.6–19.3)	19.2 (9.1–66.3)	17.9 (9.9–24.8)	43.8 (15.7– 74.4)	–

453 <sup>a</sup>Time period January 1 to April 30; <sup>b</sup>data available from January 1 to September 16; <sup>c</sup>Calculated to make  
454 comparison among all years from 2015 to 2020

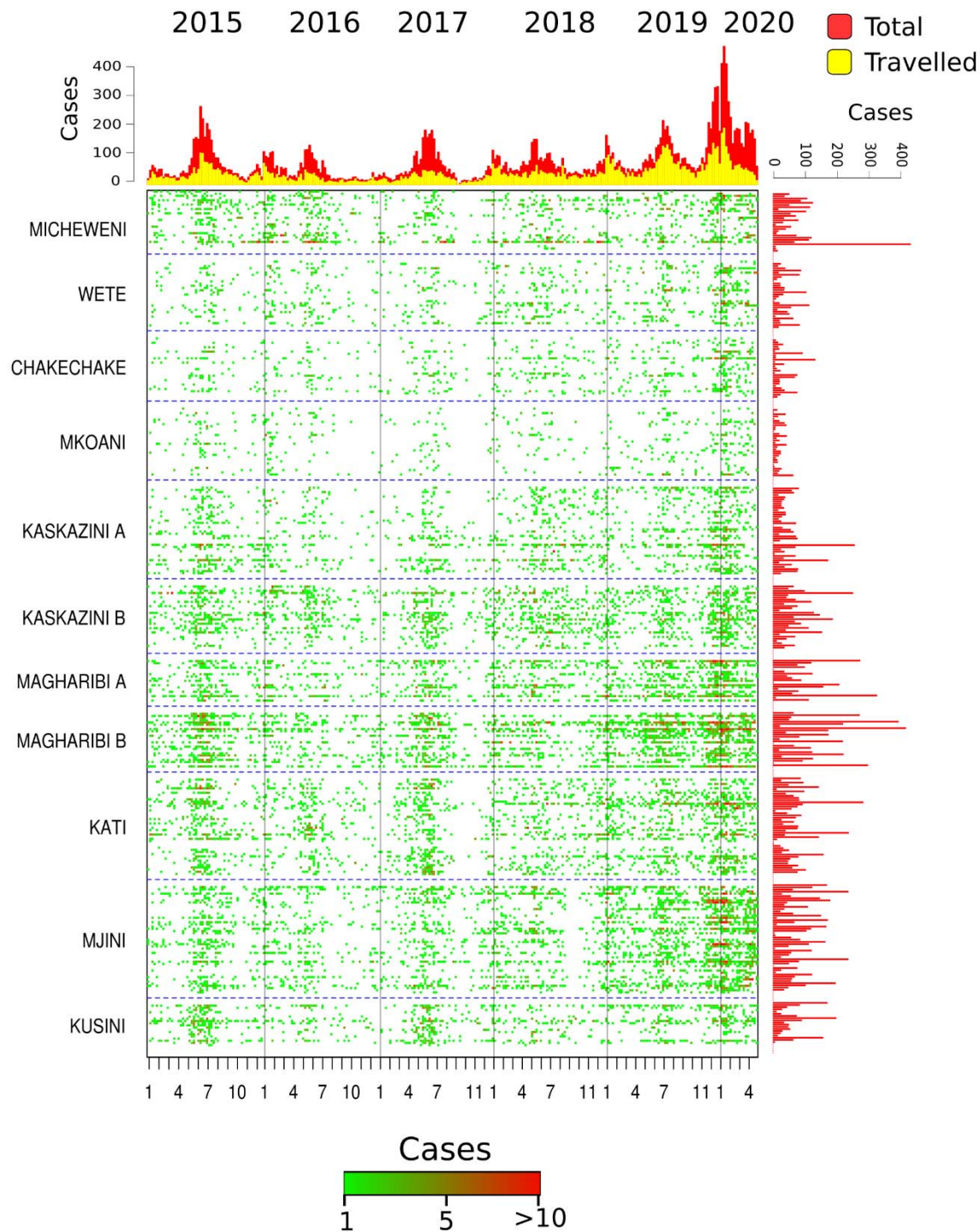
455

456 **Table 2. Summary of reported secondary cases from January 1, 2015, to April 30, 2020, in**  
 457 **Zanzibar.**

	2015	2016	2017	2018	2019	2020 <sup>a</sup>
Number of household members tested during index case investigation	11,601 <sup>b</sup>	8,479	7,638	10,782	14,963	8,511
Median age (years) of investigated index cases	-	15 (IQR: 7–25)	16 (IQR: 8–26)	16 (IQR: 7–25)	18 (IQR: 8–28)	17 (IQR: 8–26)
Fraction of index cases who are male	49.7%	41.6%	43.7%	47.4%	48.5%	53.0%
Number of positive investigated people (secondary cases) (%)	591 <sup>b</sup> (5.1%)	365 (4.3%)	319 (4.2%)	445 (4.1%)	544 (5.8%)	267 (3.7%)
Number of positive investigated people (secondary cases) performed from January–April (%)	169 (6.7%)	167 (4.9%)	74 (4.7%)	164 (4.8%)	177 (5.1%)	267 (3.7%)
Probability to find a secondary case during investigation (95% CI)	0.048 <sup>b</sup> (0.045–0.052)	0.041 (0.037–0.045)	0.040 (0.036–0.044)	0.040 (0.036–0.043)	0.035 (0.032–0.038)	0.030 (0.027–0.034)

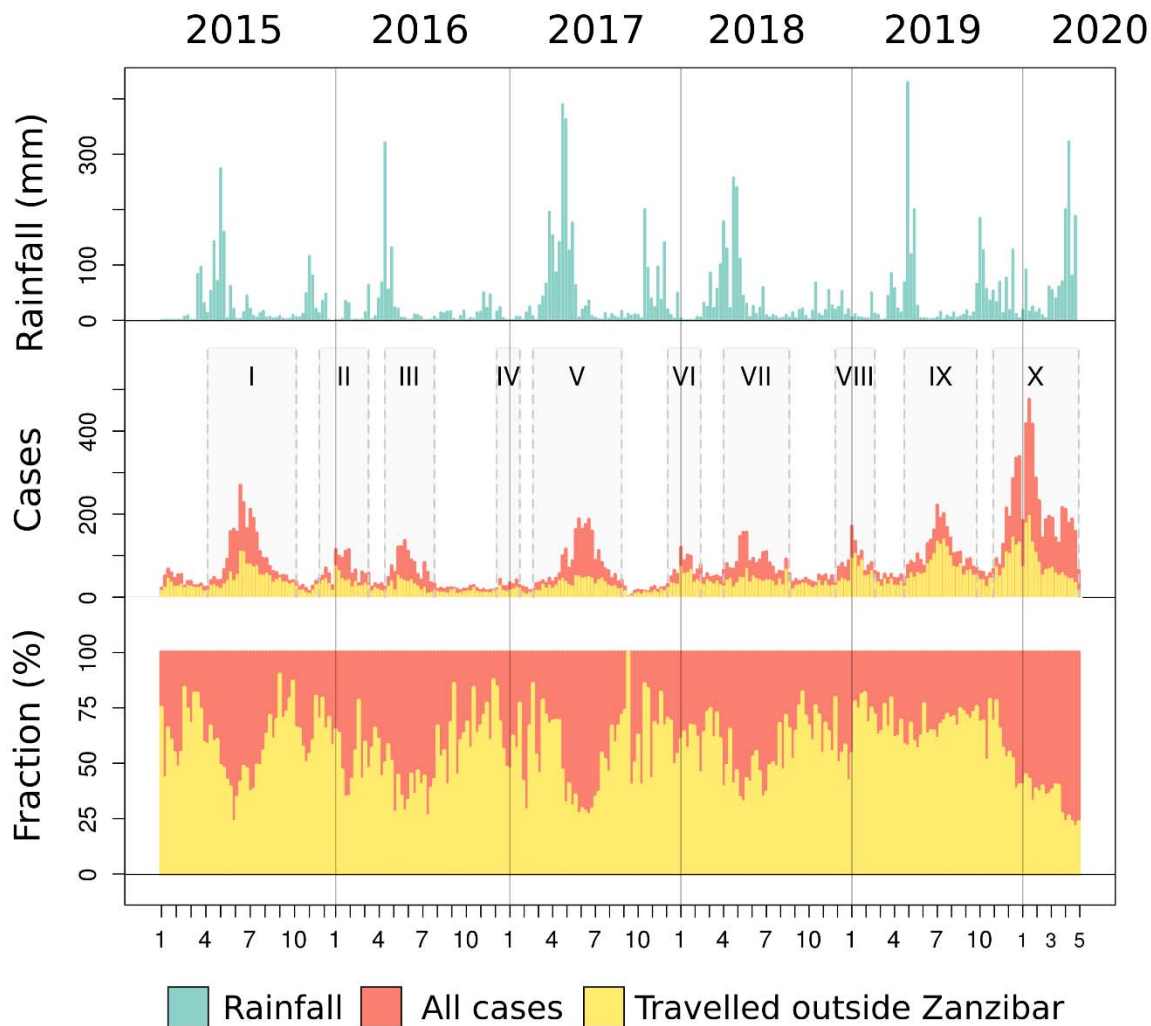
458

459 **Figure 1. Number of confirmed malaria cases per shehia from January 1, 2015, to April 30, 2020.**  
460 Each row of the plot represents the time series of reported index cases per week per shehia. The shehias  
461 were grouped by district ordered by latitude (from North to South). The image shows the cumulative  
462 number of index cases per year split by travel history (Top; horizontal) and cumulative number of cases  
463 per shehia during the 2015–2020 study period (Right; vertical).



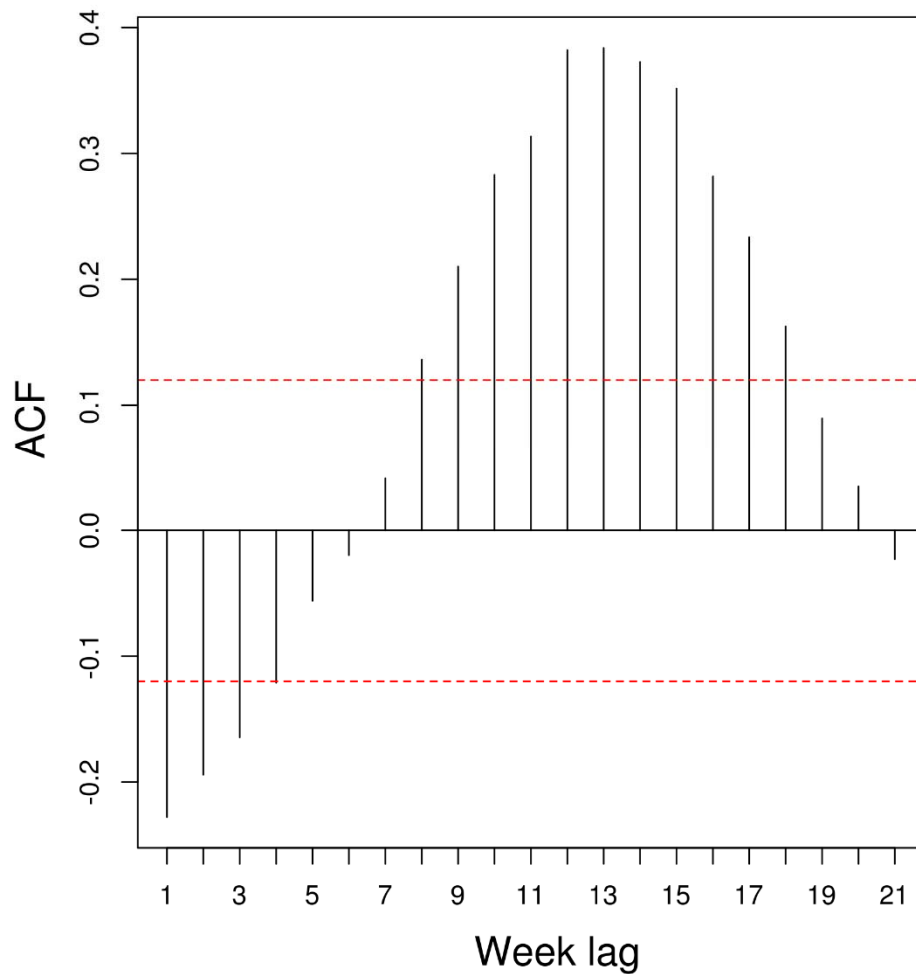
464

465 **Figure 2. Weekly rainfall and reported malaria index cases in Zanzibar from January 1, 2015, to**  
466 **April 30, 2020.** The figure also shows the number and fraction of index cases with travel history outside  
467 Zanzibar (yellow bars). The grey boxes indicate the ten high transmission seasons of the study period;  
468 transmission seasons were classified using Roman numerals.



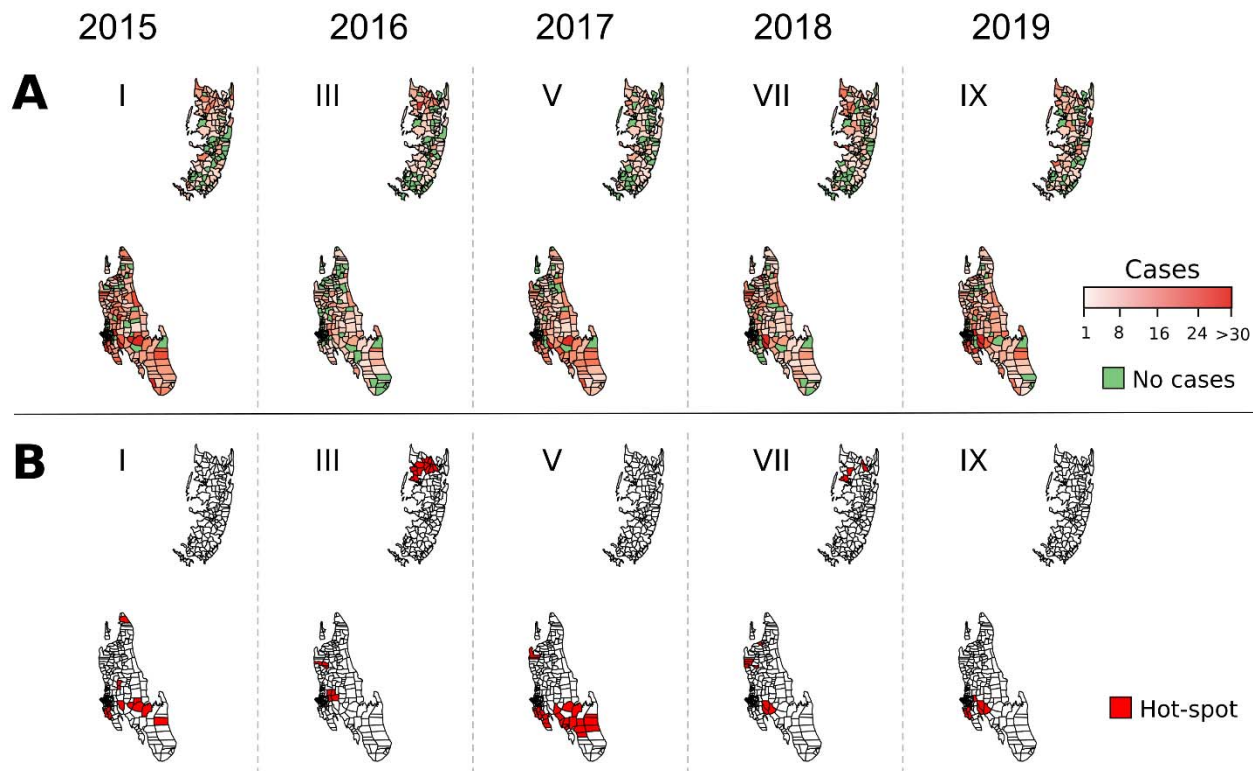
469

470 **Figure 3. Cross-correlation of weekly reported index cases and weekly precipitation.** The black lines  
471 passing the red dotted lines are significant correlations,  $p < 0.05$ .



472

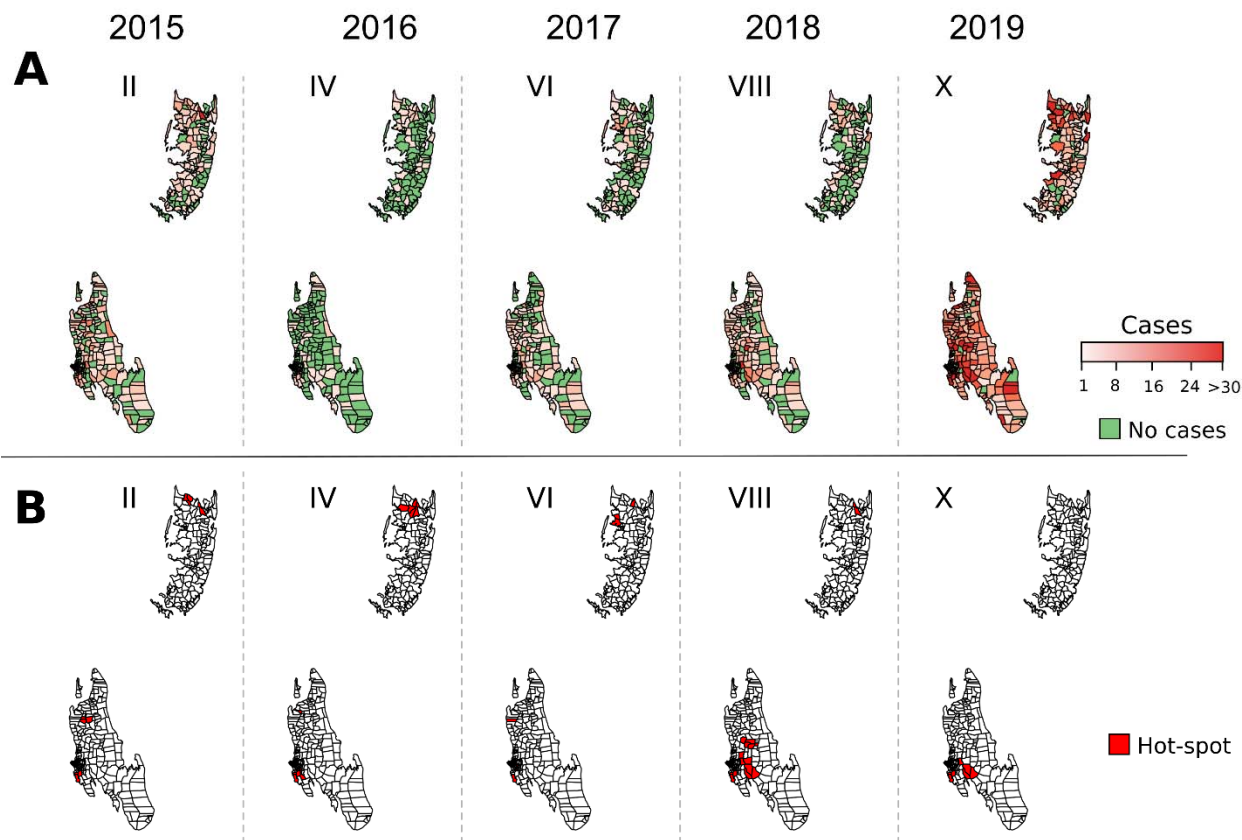
473 **Figure 4. Number of malaria index cases per shehia (A) and hotspot shehias (B) during the high**  
474 **transmission seasons after the masika season from January 1, 2015, to April 30, 2020.** The Roman  
475 numerals are the various transmission seasons as specified in Figure 2. Hotspots were considered  
476 significant when  $p < 0.05$  as per  $G_i^*$  local spatial clustering test.



477



478 **Figure 5. Number of malaria index cases per shehia (A) and hotspot shehias (B) report during high**  
479 **transmission seasons following the vuli season from January 1, 2015, to April 30, 2020.** The Roman  
480 numerals are the various transmission seasons as specified in Figure 2. Hotspots were considered  
481 significant when  $p < 0.05$  as per  $G_i^*$  local spatial clustering test.



482

483

484 **Figure 6. Number of years in which each shehia was identified as hotspot during peak transmission**  
485 **seasons following the masika (A) and vuli (B) rainy seasons from January 1, 2015, to April 30, 2020.**  
486 Non-highlighted shehias were not identified as hotspot during the study period as per local Moran's I.  
487



488