

# Risk of COVID-19 breakthrough infection and hospitalization in individuals with comorbidities

Peter D Smits, PhD<sup>1</sup>, Samuel Gratzl, PhD<sup>1</sup>, Michael Simonov, MD<sup>1,2</sup>, Senthil K Nachimuthu, MD, PhD<sup>1</sup>, Brianna M Goodwin Cartwright, MS<sup>1</sup>, Michael D Wang, MD<sup>1</sup>, Charlotte Baker, DrPH, MPH, CPH<sup>1</sup>, Patricia Rodriguez, PhD<sup>1</sup>, Mackenzie Bogiages<sup>1</sup>, Benjamin M. Althouse, PhD, ScM<sup>1,3,4</sup>, and Nicholas L Stucky, MD, PhD<sup>1</sup>

<sup>1</sup>Truveta, Inc, Bellevue, WA

<sup>2</sup>Yale School of Medicine, New Haven, CT

<sup>3</sup>University of Washington, Seattle, Washington

<sup>4</sup>New Mexico State University, Las Cruces, New Mexico

\*nicholass@truveta.com

## Abstract

**Background:** The successful development of multiple COVID-19 vaccines has led to a global vaccination effort to reduce severe COVID-19 infection and mortality. However, the effectiveness of the COVID-19 vaccines wane over time leading to breakthrough infections where vaccinated individuals experience a COVID-19 infection. Here we estimate the risks of breakthrough infection and subsequent hospitalization in individuals with common comorbidities who had completed an initial vaccination series.

**Methods:** Our study population included vaccinated patients between January 1, 2021 to March 31, 2022 who are present in the Truveta patient population. Models were developed to describe 1) time from completing primary vaccination series till breakthrough infection; and 2) if a patient was hospitalized within 14 days of breakthrough infection. We adjusted for age, race, ethnicity, sex, and year-month of vaccination.

**Results:** Of 1,192,135 patients in the Truveta Platform who had completed an initial vaccination sequence between January 1, 2021 and March 31, 2022, 2.84, 3.42, 2.76, and 2.89 percent of patients with CKD, chronic lung disease, diabetes, or are in an immunocompromised state experienced breakthrough infection, respectively, compared to 1.35 percent of the population without any of these four comorbidities. We found an increased risk of breakthrough infection and subsequent hospitalization in individuals with any of the four comorbidities when compared to individuals without these four comorbidities.

**Conclusions:** Vaccinated individuals with comorbidities experienced an increased risk of breakthrough COVID-19 infection and subsequent hospitalizations compared to the general population. Individuals with immunocompromising conditions and chronic lung disease were most at risk of breakthrough infection, while people with CKD were most at risk of hospitalization following breakthrough infection. Individuals with comorbidities should remain vigilant against infection even if vaccinated.

## 38 1 Introduction

39 The successful development of multiple COVID-19 vaccines has led to a global vaccination effort  
40 with the goal of reducing severe COVID-19 infection and mortality [1, 2]. The effectiveness of the  
41 COVID-19 vaccines, however, does wane over time and breakthrough infections have been reported  
42 since the beginning of the vaccination effort [3–10]. A breakthrough infection is defined as when  
43 an individual experiences a COVID-19 infection despite having completed their initial vaccination  
44 sequence (i.e., two doses plus an additional 2 weeks for an mRNA vaccine). This waning vaccine  
45 effectiveness, along with vaccine-variant mismatch, are the principal reasons behind the need for  
46 individuals to receive one or more booster doses of an mRNA vaccine [3, 11–14].

47 Prior studies of unvaccinated and vaccinated populations have shown more severe outcomes for  
48 COVID-19 infection for people with certain high-risk comorbidities such as diabetes, chronic kidney  
49 disease (CKD), lung disease, hypertension, or are immunocompromised (e.g., because of cancer,  
50 solid organ transplant, HIV, etc.) among many other conditions when compared to individuals  
51 without those conditions [6, 15–27]. However, most of the analyses surrounding breakthrough  
52 COVID-19 infection, and subsequent hospitalization, in vaccinated populations were not based on  
53 people in the United States (though see Embi et al. [24]), and instead focused on large populations  
54 in the United Kingdom [9, 19, 21].

55 Additionally, explicit interactions between comorbidities have not necessarily been analyzed, as  
56 previous work has tended to focus on one or two intrinsically related comorbidities [6, 7, 19, 24, 28,  
57 29] or are full omnibus analyses which focus on incidence rates of breakthrough and hospitalization  
58 [5, 9, 10, 20, 21, 23, 30, 31].

59 In order to better understand the risk of breakthrough infection and severe outcomes in high-  
60 risk populations, we used Truveta data [32] to ask whether vaccinated patients with chronic kidney  
61 disease, chronic lung disease, diabetes, or those who have immunocompromising conditions have  
62 a greater risk of breakthrough COVID-19 infection and greater odds of hospitalization following  
63 breakthrough infection than in those vaccinated but without the studied comorbidities. We chose  
64 these comorbidities to study based on their prevalence in the US population, association with  
65 impaired immune function, as well as previous literature on risk factors for COVID hospitalization  
66 in unvaccinated and vaccinated populations. [9, 11, 15, 21, 33–35].

## 67 2 Methods

### 68 2.1 Study population

69 The study population included a subset of the Truveta patient population who received a complete  
70 initial series of an mRNA vaccine for COVID-19 patients present in Truveta between 2021-01-01  
71 and 2022-03-31 [32]. We used the Truveta Studio to access the de-identified medical records used  
72 in this study on 2022-10-19. Truveta is a consortium of healthcare systems which have combined  
73 their electronic health record (EHR) data to enable medical research. Currently this consortium  
74 includes 25 members who provide patient care in over 20,000 clinics and 700 hospitals across 43  
75 states. Updated data is provided daily to Truveta. Similar data fields across systems are mapped  
76 though syntactic normalization to a common schema referred to as the Truveta Data Model (TDM).  
77 Once organized into common fields, values are then semantically normalized to common ontologies  
78 such as ICD-10-CM, SNOMED-CT, LOINC, RxNorm, CVX, etc. These normalization procedures  
79 employ an expert-led, artificial intelligence driven process to accomplish high-confidence modeling

80 at scale. The data are then de-identified by expert determination under the HIPAA Privacy Rule.  
81 Once de-identified, the data are then made available for analysis using Truveda Studio.

82 A patient was considered to have completed their primary vaccination series at two weeks  
83 after receiving a second mRNA vaccine dose (Moderna or Pfizer) based on the patient's medical  
84 records. Patients were excluded from our study population if they were missing sex or age at  
85 time of vaccination fields, experienced a COVID-19 infection prior to being completing their initial  
86 mRNA COVID-19 vaccination sequence (i.e., 14 days post second vaccine dose), were missing their  
87 date of being fully vaccinated, and were under 18 years of age at time of first vaccine dose. All  
88 vaccination events generally consisted of vaccinations that took place within the health system as  
89 well as vaccination records actively pulled from the health system's respective state's Immunization  
90 Information System. See the Supplemental Material for a list of CVX codes corresponding to these  
91 vaccines.

92 Our four comorbidities of interest (chronic kidney disease, chronic lung disease, diabetes, and  
93 immunocompromised) were defined using Elixhauser comorbidity ICD-10-CM diagnostic codes and  
94 related SNOMED-CT diagnostic codes [36], and patients were identified as having one or more of  
95 these comorbidities based on the presence of these diagnostic codes in a patient's medical record  
96 prior to their completion of a primary COVID-19 vaccination series. Patients who were diagnosed  
97 with a comorbidity after completing their initial dose sequence plus 14 days were excluded from  
98 analysis.

99 Our response variables of interest were 1) time from completing a COVID-19 primary vaccination  
100 series till breakthrough infection, and 2) if a patient who experienced a breakthrough infection was  
101 hospitalized within two-weeks of that infection. SARS-CoV-2 infection was defined as a patient's  
102 first diagnosis of COVID-19 using either diagnosis codes or laboratory results.

103 The code lists associated with all studied conditions were initially based on code lists published  
104 to the National Institute of Health's Value Set Authority Center website (<https://vsac.nlm.nih.gov/>).  
105 These value sets were then modified based on the expert opinion of the multiple clinical  
106 informaticists who are co-authors on this study. The complete lists of ICD-10-CM, SNOMED-CT,  
107 CVX, and LOINC codes for each of COVID-19 vaccination, COVID-19 diagnosis, COVID-19 test,  
108 and all considered comorbidities are presented in the Supplementary Material.

109 In addition to the four comorbidities stated above, we also included multiple demographic  
110 covariates in our models: race (White, Asian, Black or African American, American Indian or  
111 Alaska Native, Native Hawaiian or Other Pacific Islander, Unknown), ethnicity (Hispanic or Latino,  
112 Not Hispanic or Latino, and Unknown), sex, and person's age in years at time of completing a  
113 COVID-19 primary vaccine sequence. In all analyses described below, the effect of age in years  
114 was modeled using a natural cubic spline with five degrees of freedom. We also included the year-  
115 month when a patient completed their primary vaccine sequence as a categorical covariate. We  
116 consider this variable as a proxy for differences associated with COVID-19 variant and transmission  
117 "environment" experienced by that patient.

## 118 **2.2 Time from COVID-19 vaccination to breakthrough infection**

119 We used a Cox proportional hazards model to describe the relationship between the time from  
120 completing a COVID-19 primary vaccination series till breakthrough infection and the comorbidities  
121 of interest and other covariates listed above. The response variable for our analysis of time from  
122 completing a COVID-19 primary vaccination series (i.e., time of second dose plus 14 days) till  
123 breakthrough infection was defined as the minimum time among three potential events: time of

124 first COVID-19 infection, time of last encounter in EHR, and 180 days. If a patient did not  
125 experience a breakthrough infection they were considered right-censored at either 180 days or the  
126 time of their last encounter in the EHR, which ever was first. This censoring scheme assumes all  
127 censoring is uninformative and that any censored value less than 180 days indicates that a patient  
128 was lost to follow-up as of their last encounter in the EHR.

129 We hypothesized that, for patients with more than one of these four comorbidities, there may  
130 be an interaction effect influencing the chance of breakthrough infection. We developed four models  
131 of time till breakthrough infection, each allowing for a different degree of interactions. The base  
132 model assumes that the comorbidities have only an additive effect and there is no additional hazard  
133 associated having multiple comorbidities. We also considered all two-way interactions (i.e., any  
134 combination of 2 comorbidities), all two- and three- way interactions, and all two-, three-, and  
135 four-way interactions between the comorbidities.

136 We used AIC and AICc to compare the four different models of each outcome and then select  
137 the best model for each outcome. When comparing models of the same response, the model with  
138 the lowest AIC/AICc indicates which of those models does the best job balancing the complexity  
139 of the model and its likelihood [37–40]. This approach was chosen because we did not have a strong  
140 hypothesis as to the "correct" number of possible interactions, and we also wanted to balance the  
141 complexity of the model with the size of our data set.

142 The hazard ratio associated for individual comorbidities with no interaction terms is normally  
143 calculated as the exponentiated regression coefficients from the Cox regression model. However, as  
144 we are interested in the hazard ratios associated with a patient having one or more comorbidities  
145 in combination versus a patient with no comorbidities, we used the `emmeans` R package to calculate  
146 these hazard ratios [41].

### 147 **2.3 Odds of hospitalization following breakthrough infection**

148 We used a logistic regression model to describe the relationship between hospitalization following  
149 breakthrough COVID-19 infection and the comorbidities and other covariates listed above. Hos-  
150 pitalization following a breakthrough COVID-19 infection was defined as an inpatient encounter  
151 where the patient was hospitalized within 14 days of a positive SARS-CoV-2 test. We choose to  
152 analyze this outcome because we were specifically interested in the conversion probability from  
153 "infected with COVID-19" to "hospitalized" and not the time from vaccination till hospitalization  
154 nor time from breakthrough infection till hospitalization. This is a binary scenario describing a  
155 transition probability within the infected population for which this method is appropriate as we  
156 believe this analysis captures our research question well [42].

157 As with our analysis of time till breakthrough infection, we hypothesized that, for patients with  
158 more than one of these four comorbidities, there may be an interaction effect influencing the odds  
159 of hospitalization following breakthrough infection. We developed four models of hospitalization  
160 following breakthrough infection, each allowing for a different degree of interactions. The base  
161 model assumes that the comorbidities have only an additive effect and there is no additional hazard  
162 associated having multiple comorbidities. We also developed models which consisted of all two-way  
163 interactions (i.e., any combination of 2 comorbidities), all two- and three- way interactions, and all  
164 two-, three-, and four-way interactions. And as with the models of time till breakthrough infection,  
165 we used AIC and AICc to compare these models and select the best one among that group.

166 The odds ratio associated for individual comorbidities with no interaction terms is normally cal-  
167 culated as the exponentiated regression coefficients from the logistic regression model [42]. However,

168 as we are interested in the odds ratios associated with a patient having one or more comorbidities  
169 in combination versus a patient with no comorbidities, we used the `emmeans` R package to calculate  
170 these odds ratios [41].

171 Analysis was done using the R programming language (4.1.1) [43] along with the following  
172 packages: `arrow` [44], `broom` [45], `dplyr` [46], `emmeans` [41], `ggplot2` [47], `janitor` [48], `purrr` [49],  
173 `rlang` [50], `stringr` [51], `survival` [52], `table1` [53], `tibble` [54], and `tidyr` [55].

174 The R code used to run the analyses presented in this study is available at [https://github.c](https://github.com/Truveta/smits_et_al_covid_breakthrough_comorbidities)  
175 [om/Truveta/smits\\_et\\_al\\_covid\\_breakthrough\\_comorbidities](https://github.com/Truveta/smits_et_al_covid_breakthrough_comorbidities).

## 176 **3 Results**

### 177 **3.1 Study population**

178 1,192,135 patients on Truveta met the study inclusion and exclusion criteria of having completed  
179 a primary vaccination sequence between 2021-01-01 and 2022-03-31. Of the patients in our study,  
180 68,218 had chronic kidney disease, 138,752 had chronic lung disease, 133,829 had diabetes, 302,469  
181 were considered immunocompromised, and 756,178 had none of these four comorbidities (Table 1).  
182 Note that patients can have more than one comorbidity, and thus the sum of patients with each  
183 comorbidity will exceed the total of patients with comorbidities.

It is made available under a [CC-BY-NC-ND 4.0 International license](https://creativecommons.org/licenses/by-nc-nd/4.0/) .

	Chronic kidney disease (N=68218)	Chronic lung disease (N=138752)	Diabetes (N=133829)	Immunocompromised (N=302469)	Comorbidity free (N=756178)	Overall (N=1192135)
Sex						
Female	36215 (53.1%)	89783 (64.7%)	69772 (52.1%)	190711 (63.1%)	462136 (61.1%)	726128 (60.9%)
Male	32003 (46.9%)	48969 (35.3%)	64057 (47.9%)	111758 (36.9%)	294042 (38.9%)	466007 (39.1%)
Race						
White	52245 (76.6%)	109149 (78.7%)	94270 (70.4%)	238983 (79.0%)	520728 (68.9%)	855777 (71.8%)
Unknown	2806 (4.1%)	8139 (5.9%)	10429 (7.8%)	19073 (6.3%)	126038 (16.7%)	156050 (13.1%)
Black or African American	10911 (16.0%)	16442 (11.9%)	21093 (15.8%)	30649 (10.1%)	58856 (7.8%)	108672 (9.1%)
Asian	1944 (2.8%)	3947 (2.8%)	6945 (5.2%)	11869 (3.9%)	46302 (6.1%)	64462 (5.4%)
American Indian or Alaska Native	177 (0.3%)	737 (0.5%)	591 (0.4%)	1227 (0.4%)	2297 (0.3%)	4087 (0.3%)
Native Hawaiian or Other Pacific Islander	135 (0.2%)	338 (0.2%)	501 (0.4%)	668 (0.2%)	1957 (0.3%)	3087 (0.3%)
Ethnicity						
Not Hispanic or Latino	63629 (93.3%)	127182 (91.7%)	117799 (88.0%)	275847 (91.2%)	604305 (79.9%)	997342 (83.7%)
Hispanic or Latino	3234 (4.7%)	8308 (6.0%)	12509 (9.3%)	18759 (6.2%)	83532 (11.0%)	114298 (9.6%)
Unknown	1355 (2.0%)	3262 (2.4%)	3521 (2.6%)	7863 (2.6%)	68341 (9.0%)	80495 (6.8%)
Age (years)						
Mean (SD)	72.2 (12.6)	59.4 (18.0)	64.7 (13.6)	59.9 (17.0)	49.8 (17.7)	53.6 (18.1)
Median [Min, Max]	73.7 [18.2, 99.0]	62.4 [18.1, 99.0]	66.2 [18.1, 98.7]	62.4 [18.1, 99.0]	49.7 [18.1, 98.9]	54.9 [18.1, 99.0]
Age bracket						
[18,20)	26 (0.0%)	1843 (1.3%)	152 (0.1%)	2786 (0.9%)	16940 (2.2%)	20824 (1.7%)
[20,25)	105 (0.2%)	4843 (3.5%)	651 (0.5%)	7656 (2.5%)	49101 (6.5%)	59909 (5.0%)
[25,30)	230 (0.3%)	5020 (3.6%)	1161 (0.9%)	8721 (2.9%)	58187 (7.7%)	70527 (5.9%)
[30,35)	416 (0.6%)	5949 (4.3%)	1941 (1.5%)	11646 (3.9%)	65588 (8.7%)	81839 (6.9%)
[35,45)	1670 (2.4%)	13896 (10.0%)	8029 (6.0%)	31491 (10.4%)	129616 (17.1%)	173002 (14.5%)
[45,55)	4087 (6.0%)	18621 (13.4%)	17985 (13.4%)	44299 (14.6%)	128948 (17.1%)	192017 (16.1%)
[55,65)	9887 (14.5%)	26980 (19.4%)	32107 (24.0%)	61975 (20.5%)	131675 (17.4%)	222898 (18.7%)
[65,75)	21163 (31.0%)	33668 (24.3%)	41118 (30.7%)	75695 (25.0%)	115717 (15.3%)	226075 (19.0%)
[75,85)	20998 (30.8%)	21137 (15.2%)	24266 (18.1%)	44578 (14.7%)	47863 (6.3%)	112383 (9.4%)
[85,Inf]	9636 (14.1%)	6795 (4.9%)	6419 (4.8%)	13622 (4.5%)	12543 (1.7%)	32661 (2.7%)
Breakthrough COVID-19 infection						
Breakthrough COVID	1936 (2.8%)	4740 (3.4%)	3695 (2.8%)	8749 (2.9%)	10229 (1.4%)	22087 (1.9%)
No breakthrough	66282 (97.2%)	134012 (96.6%)	130134 (97.2%)	293720 (97.1%)	745949 (98.6%)	1170048 (98.1%)
Hospitalization following breakthrough						
Hospitalized	842 (1.2%)	1213 (0.9%)	1040 (0.8%)	1912 (0.6%)	775 (0.1%)	3233 (0.3%)
Not hospitalized	67376 (98.8%)	137539 (99.1%)	132789 (99.2%)	300557 (99.4%)	755403 (99.9%)	1188902 (99.7%)

Table 1: Overall summary statistics of our analyzed population of patients who have completed their primary COVID-19 vaccination sequence.

### 184 3.2 Time from COVID-19 vaccination to breakthrough infection

Model complexity	AIC	delta_AIC	AICc	delta_AICc
Four-way	601933.00	0.00	601933.32	0.00
Three-way	601936.72	3.73	601937.03	3.71
Two-way	601935.42	2.42	601935.67	2.35
Base	602032.80	99.80	602032.98	99.66

Table 2: Comparison between four candidate models of time till breakthrough COVID-19 infection each with varying degrees of interaction between comorbidities.

185 The model of time from COVID-19 primary sequence till breakthrough infection with a maxi-  
186 mum of four-way interactions between the comorbidities was considered "best" among the candidate  
187 models (Table 2). This means that specific interaction effects (e.g., changes to hazard ratios as-  
188 sociated with specific combinations of comorbidities) are estimated up to the maximum possible  
189 four-way interaction among the comorbidities. This result means that we have found evidence that  
190 while patients with one of these four comorbidities had an increased risk of breakthrough COVID-19  
191 infection compared to individuals without any of these comorbidities, patients with two or more of  
192 the comorbidities have further increased risk than would be expected by the independent effects of  
193 the comorbidities on odds of breakthrough infection.

194 Presented here (Fig.1) are the hazard ratios of breakthrough COVID-19 infection for a patient  
195 having one or more comorbidities versus a patient with none of the comorbidities. Our selected  
196 model included up to four-way interactions between comorbidities.

197 We find that persons with any of the studied comorbidities, in any combination, were associated  
198 with a greater risk of breakthrough COVID-19 infection than those persons without any comor-  
199 bidities after adjustment (Fig. 1; CKD HR 1.57 [CI 1.24, 2.00]; immunocompromised HR 1.86 [CI  
200 1.75, 1.99]; diabetes HR 1.67 [CI 1.50, 1.87]; chronic lung disease HR 1.91 [CI 1.73, 2.13]). See  
201 Supplemental Material for a full breakdown of the selected model's parameter estimates.

### 202 3.3 Odds of hospitalization following breakthrough infection

Model complexity	AIC	$\Delta$ AIC	AICc	$\Delta$ AICc
Four-way	17752.96	3.63	17753.28	3.78
Three-way	17751.35	2.02	17751.65	2.15
Two-way	17759.26	9.94	17759.52	10.01
Base	17749.33	0.00	17749.51	0.00

Table 3: Comparison between four candidate models of probability of hospitalization following breakthrough COVID-19 infection each with varying degrees of interaction between comorbidities.

203 The model of hospitalization following breakthrough COVID-19 infection with no interaction  
204 terms between the comorbidities was considered "best" among the candidate models (Table 3).  
205 While we are able to calculate the odds ratio for an arbitrary number of interactions, our model  
206 included no interaction effects among the comorbidities so the presented values are based on ad-  
207 ditive effects alone. While individuals with multiple of the comorbidities have an increased risk of

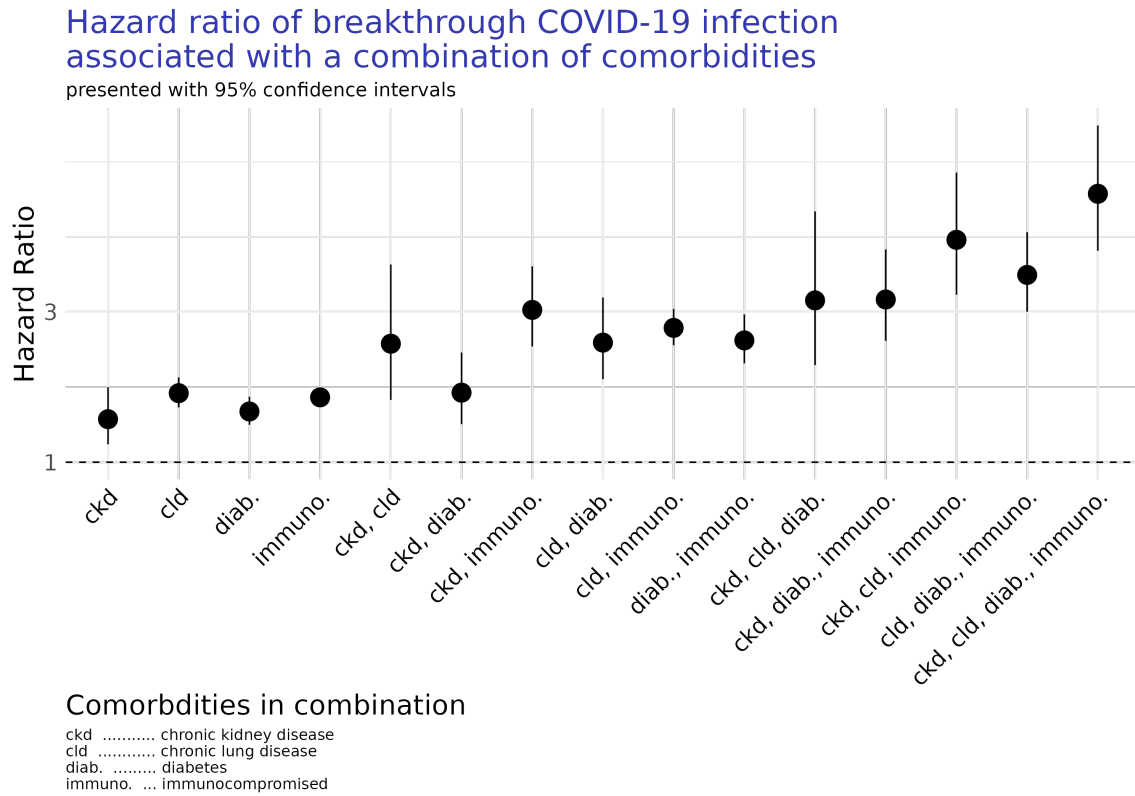


Figure 1: Estimated hazards-ratios of breakthrough COVID-19 infection associated with one or more comorbidity versus being comorbidity free. Hazards-ratios are estimated from a model which considers up to four-way interactions between comorbidities.



208 hospitalization following breakthrough infection, our model selection results are consistent with the  
209 comorbidities having independent additive effects on the odds of hospitalization.

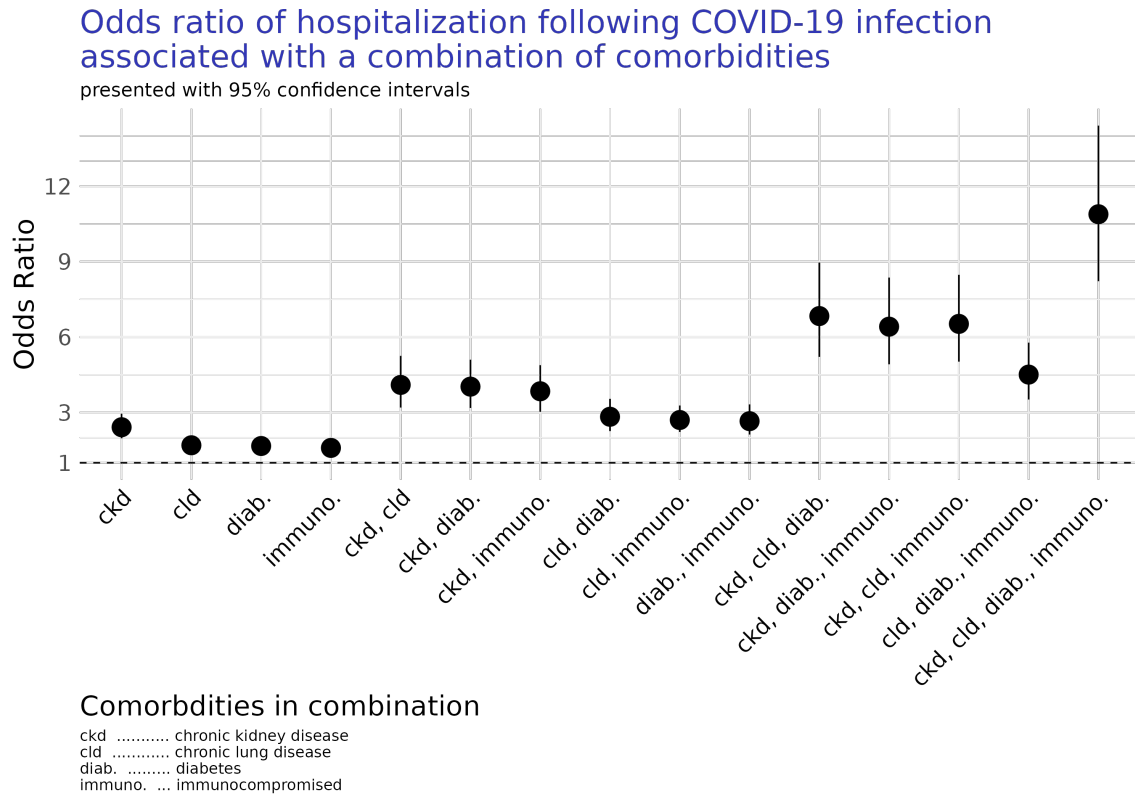


Figure 2: Estimated odds-ratios of breakthrough COVID-19 infection associated with one or more comorbidity versus being comorbidity free. Odds-ratios are estimated from a model which considers no interactions between comorbidities, and their combined effects do not reflect any explicit interaction effects between comorbidities.

210 Presented here (Fig.2) are the odds ratio of hospitalization following a breakthrough COVID-  
211 19 infection for a patient having one or more comorbidities versus a patient with none of the  
212 comorbidities. Our selected model does not include any interaction effects among the comorbidities,  
213 though we can calculate these odds ratios for any combination of comorbidities.

214 We find that all of the comorbidities were associated with an increased risk of hospitalization  
215 following breakthrough COVID-19 infection when compared to patients without any of the comor-  
216 bidities of interest after adjustment (Fig. 2; CKD OR 2.41 [CI 1.97, 2.95]; immunocompromised OR  
217 1.59 [CI 1.37, 1.85]; diabetes OR 1.66 [CI 1.41, 1.98]; chronic lung disease OR 1.70 [CI 1.45, 1.99]).  
218 See Supplemental Material for a full breakdown of the selected model's parameter estimates.

## 219 4 Discussion

220 Here we found that the risk of SARS-CoV-2 breakthrough infection and odds of subsequent hospi-  
221 talization following breakthrough infection were greater among vaccinated patients with diabetes,  
222 chronic lung disease, CKD, and with immunocompromising conditions when compared to the vac-  
223 cinated individuals without these conditions after adjusting for age, sex, race, ethnicity, and year-  
224 month of vaccination (Fig. 1). This is consistent with studies in unvaccinated and vaccinated people  
225 showing higher risk of infection and hospitalization in people with any of these comorbidities or sim-  
226 ilar high-risk conditions [5–7, 9, 10, 19–21, 23, 24, 26, 28–31]. We also found that while patients with  
227 one of these four comorbidities had an increased risk of breakthrough COVID-19 infection compared  
228 to individuals without any of these comorbidities, patients with two or more of the comorbidities  
229 have further increased risk than would be expected by the independent effects of the comorbidities  
230 on odds of breakthrough infection (Fig. 1, Table 2). In contrast, while individuals with multiple  
231 of the comorbidities have an increased risk of hospitalization following breakthrough infection, our  
232 model selection results are consistent with the comorbidities having independent effects on odds of  
233 hospitalization (Fig. 2, Table 3).

234 We identified chronic kidney disease as the highest risk individual comorbidity for hospitaliza-  
235 tion after adjustment for age and other demographic factors (Fig. 2). This result is consistent  
236 with previous work examining differences in COVID-19 breakthrough infection incident rates in  
237 the United Kingdom [19, 21]. These studies found that the effectiveness of the COVID-19 vaccines  
238 against breakthrough infection and subsequent hospitalization varied with the severity of chronic  
239 kidney disease. In contrast, a large study in male U.S. veterans did not show an elevated risk  
240 of severe outcomes in breakthrough infections in patients with diabetes, chronic lung disease, or  
241 CKD [27]. This discrepancy was possibly due to differences in study design where patients were  
242 matched by comorbidity burden which may reduce differences between health status and demo-  
243 graphics between groups and may limit the generalizability between patients in the Veterans Health  
244 Administration population and the other sample populations [56]. In contrast our study compared  
245 patients with any of the identified comorbidities in any combination as well as with patients who  
246 had none of these comorbidities, and did not exclude patients with multiple comorbidities.

247 Like all studies of EHR data, ours is subject to a variety of known limitations [57–62]. We are  
248 only able to identify events that are captured by the constituent health care systems that are a part  
249 of the Truveta member system. This means we will not capture COVID-19 infections which were  
250 reported or diagnosed by a health care system that is not a part of the Truveta. Similarly, we will  
251 not capture COVID-19 infections which were never reported to a health care system. This limitation  
252 means we patients with a precedent COVID-19 infection may be missed as part of our inclusion and  
253 exclusion criteria. Another example limitation is that a patient’s COVID-19 vaccination status may  
254 not captured in our data because only a limited number of member HCS reconcile their records with  
255 state health registries and other locations where many patients may have been vaccinated. Finally,  
256 a patients’ comorbidity status may be misclassified in our data set because their comorbidity status  
257 is captured in a different, non-member HCS or they are classified in the EHR using codes that were  
258 not present in our codesets. These are common and well understood limitations associated with  
259 using this kind of data. In the context of this study these inherent limitations will most likely lead  
260 to an underestimation of the size of the vaccinated population which will most likely lead to an  
261 underestimation of the effects of the comorbidities on risk of breakthrough COVID-19 infection and  
262 subsequent odds of hospitalization following breakthrough infection, especially in combination.

263 In addition to the limitations inherent in retrospective analysis of EHR data, there are other

264 limitations associated with our study. For example, we did not include certain risk factors such as  
265 hypertension and smoking status due to limitations of the Truveta Platform at the time of analysis.  
266 Additionally, we do not consider alternate outcomes or competing risks in our analysis of time from  
267 COVID-19 vaccination till breakthrough infection, and instead consider all censoring uninformative.  
268 A follow-up analysis should consider a large suite of demographic features and risk factors as well  
269 as more varied outcomes and the potential for competing risks.

270 Future work should also consider the effect of booster doses on time till breakthrough COVID-19  
271 infection and odds of hospitalization following breakthrough infection. The timing of the booster  
272 dose would most likely have to be accounted for as a time-varying covariate to account for the  
273 variation in time from completion of primary dose sequence till time of a booster dose. However,  
274 many individuals in our population were vaccinated well before booster doses were made available,  
275 meaning that booster doses may not be captured by the 180-day follow-up period. Similarly,  
276 additional subgroup analyses of differences breakthrough infection and hospitalization associated  
277 with severity level of CKD is warranted as recent analysis have found substantial differences in  
278 COVID-19 outcomes associated with severity of CKD [19, 21].

279 Overall, these findings complement prior studies which have shown worse outcomes following  
280 COVID-19 infection in people who have diabetes, CKD, chronic lung disease, or immunocompromising  
281 conditions [5–7, 9, 10, 15–17, 19–21, 23, 24, 28–31]. These results add additional support  
282 to the recommendation of booster vaccines for those with high-risk conditions given that these  
283 groups continue to fare worse than the general vaccinated population in terms of breakthrough  
284 infection and subsequent hospitalization rates. Those with comorbidities will most likely benefit  
285 from booster vaccinations to increase and improve their immune response to infection, as has been  
286 observed in people with chronic kidney disease [19].

287 As vaccinated people continue to make decisions about booster vaccinations, they will be look-  
288 ing for information regarding their personal risk of breakthrough COVID-19 infection and severe  
289 outcomes like hospitalization. The FDA and CDC have both made recommendations that people  
290 belonging to high-risk groups, such as those with immunocompromising conditions, should receive  
291 additional doses of the COVID-19 vaccines and at a faster rate than the general population. The  
292 findings of this study improve the evidence and support recommendations for people with comorbidities  
293 such as chronic kidney disease, chronic lung disease, diabetes or who have immunocompromising  
294 conditions to receive booster vaccinations.

## 295 Acknowledgements

296 We thank Ari Robicsek, Sarah Gilson, and Ryan H Lee for help with data definitions, as well  
297 as helpful comments which improved this analysis and manuscript. We would also thank our  
298 engineering partners at Truveta for assisting us with enabling this research, in particular Ian Davies,  
299 Grace Turner, David Nguyen, Mohan Dharmarajan, and George Joy. Finally, we thank the editor  
300 and three anonymous reviewers whose comments greatly improved the analysis and manuscript.

## 301 References

- 302 [1] Fernando P. Polack, Stephen J. Thomas, Nicholas Kitchin, Judith Absalon, Alejandra Gurt-  
303 man, Stephen Lockhart, John L. Perez, Gonzalo Pérez Marc, Edson D. Moreira, Cristiano  
304 Zerbini, Ruth Bailey, Kena A. Swanson, Satrajit Roychoudhury, Kenneth Koury, Ping Li,

- 305 Warren V. Kalina, David Cooper, Robert W. Frencik, Laura L. Hammitt, Özlem Türeci, Hay-  
306 lene Nell, Axel Schaefer, Serhat Ünal, Dina B. Tresnan, Susan Mather, Philip R. Dormitzer,  
307 Uğur Şahin, Kathrin U. Jansen, and William C. Gruber. Safety and efficacy of the BNT162b2  
308 mRNA covid-19 vaccine. *New England Journal of Medicine*, 383(27):2603–2615, dec 2020. doi:  
309 10.1056/nejmoa2034577. URL <https://doi.org/10.1056%2Fnejmoa2034577>.
- 310 [2] Lindsey R. Baden, Hana M. El Sahly, Brandon Essink, Karen Kotloff, Sharon Frey, Rick Novak,  
311 David Diemert, Stephen A. Spector, Nadine Rouphael, C. Buddy Creech, John McGettigan,  
312 Shishir Khetan, Nathan Segall, Joel Solis, Adam Brosz, Carlos Fierro, Howard Schwartz,  
313 Kathleen Neuzil, Lawrence Corey, Peter Gilbert, Holly Janes, Dean Follmann, Mary Marovich,  
314 John Mascola, Laura Polakowski, Julie Ledgerwood, Barney S. Graham, Hamilton Bennett,  
315 Rolando Pajon, Conor Knightly, Brett Leav, Weiping Deng, Honghong Zhou, Shu Han, Melanie  
316 Ivarsson, Jacqueline Miller, and Tal Zaks. Efficacy and safety of the mRNA-1273 SARS-CoV-2  
317 vaccine. *New England Journal of Medicine*, 384(5):403–416, feb 2021. doi: 10.1056/nejmoa20  
318 35389. URL <https://doi.org/10.1056%2Fnejmoa2035389>.
- 319 [3] Philip R Krause, Thomas R Fleming, Richard Peto, Ira M Longini, J Peter Figueroa, Jonathan  
320 A C Sterne, Alejandro Cravioto, Helen Rees, Julian P T Higgins, Isabelle Boutron, Hongchao  
321 Pan, Marion F Gruber, Narendra Arora, Fatema Kazi, Rogerio Gaspar, Soumya Swaminathan,  
322 Michael J Ryan, and Ana-Maria Henao-Restrepo. Considerations in boosting covid-19 vaccine  
323 immune responses. *The Lancet*, 398(10308):1377–1380, 2021. doi: 10.1016/s0140-6736(21)020  
324 46-8.
- 325 [4] Timothy A. Bates, Savannah K. McBride, Bradie Winders, Devin Schoen, Lydie Trautmann,  
326 Marcel E. Curlin, and Fikadu G. Tafesse. Antibody response and variant cross-neutralization  
327 after sars-cov-2 breakthrough infection. *JAMA*, 327(2):179–181, 2022. doi: 10.1001/jama.202  
328 1.22898.
- 329 [5] Prerak V Juthani, Akash Gupta, Kelly A Borges, Christina C Price, Alfred I Lee, Christine H  
330 Won, and Hyung J Chun. Hospitalisation among vaccine breakthrough covid-19 infections.  
331 *The Lancet*, 21(11):1485–1486, 2021. doi: 10.1016/s1473-3099(21)00558-2.
- 332 [6] A.L. Schmidt, C. Labaki, C.-Y. Hsu, Z. Bakouny, N. Balanchivadze, S.A. Berg, S. Blau, A. Da-  
333 her, T. El Zarif, C.R. Friese, E.A. Griffiths, J.E. Hawley, B. Hayes-Lattin, V. Karivedu, T. Latif,  
334 B.H. Mavromatis, R.R. McKay, G. Nagaraj, R.H. Nguyen, O.A. Panagiotou, A.J. Portuguese,  
335 M. Puc, M. Santos Dutra, B.A. Schroeder, A. Thakkar, E.M. Wulff-Burchfield, S. Mishra,  
336 D. Farmakiotis, Yu Shyr, J.L. Warner, T.K. Choueiri, T.K. Choueiri, N. Duma, D. Farmakio-  
337 tis, P. Grivas, G. de Lima Lopes, C.A. Painter, S. Peters, B.I. Rini, D.P. Shah, M.A. Thompson,  
338 and J.L. Warner. Covid-19 vaccination and breakthrough infections in patients with cancer.  
339 *Annals of Oncology*, 33(3):340–346, 2022. doi: 10.1016/j.annonc.2021.12.006.
- 340 [7] Norbert Stefan. Metabolic disorders, covid-19 and vaccine-breakthrough infections. *Nature*  
341 *Reviews Endocrinology*, 18:75–76, 2022. doi: 10.1038/s41574-021-00608-9.
- 342 [8] Noa Dagan, Noam Barda, Eldad Kepten, Oren Miron, Shay Perchik, Mark A. Katz, Miguel A.  
343 Hernán, Marc Lipsitch, Ben Reis, and Ran D. Balicer. Bnt162b2 mrna covid-19 vaccine in a  
344 nationwide mass vaccination setting. *The New England Journal of Medicine*, 384:1412–1423,  
345 2021. doi: 10.1056/nejmoa2101765.

- 346 [9] Utkarsh Agrawal, Srinivasa Vittal Katikireddi, Colin McCowan, Rachel H Mulholland, Amaya  
347 Azcoaga-Lorenzo, Sarah Amele, Adeniyi Francis Fagbamigbe, Eleftheria Vasileiou, Zoe Grange,  
348 Ting Shi, Steven Kerr, Emily Moore, Josephine L K Murray, Syed Ahmar Shah, Lewis Ritchie,  
349 Dermot O'Reilly, Sarah J Stock, Jillian Beggs, Antony Chuter, Fatemah Torabi, Ashley Ak-  
350 bari, Stuart Bedston, Jim McMenamin, Rachael Wood, Ruby S M Tang, Simon de Lusignan,  
351 F D Richard Hobbs, Mark Woolhouse, Colin R Simpson, Chris Robertson, and Aziz Sheikh.  
352 Covid-19 hospital admissions and deaths after bnt162b2 and chadox1 ncov-19 vaccinations in  
353 2.57 million people in scotland (eave ii): a prospective cohort study. *The Lancet Respiratory*  
354 *Medicine*, 9(12):1439–1449, 2021. doi: 10.1016/s2213-2600(21)00380-5.
- 355 [10] Veerle Stouten, Pierre Hubin, Freek Haarhuis, Joris A. F. van Loenhout, Matthieu Billuart,  
356 Ruben Brondeel, Toon Braeye, Herman Van Oyen, Chloé Wyndham-Thomas, and Lucy Cat-  
357 teau. Incidence and risk factors of covid-19 vaccine breakthrough infections: A prospective  
358 cohort study in belgium. *Viruses*, 14(4), 2022. ISSN 1999-4915. doi: 10.3390/v14040802. URL  
359 <https://www.mdpi.com/1999-4915/14/4/802>.
- 360 [11] Kathleen Dooling. Evidence to Recommendation Framework: Moderna & Janssen COVID-19  
361 Vaccine Booster Dose, 2021. URL [https://www.cdc.gov/vaccines/acip/meetings/downl](https://www.cdc.gov/vaccines/acip/meetings/downloads/slides-2021-10-20-21/11-COVID-Dooling-508.pdf)  
362 [oads/slides-2021-10-20-21/11-COVID-Dooling-508.pdf](https://www.cdc.gov/vaccines/acip/meetings/downloads/slides-2021-10-20-21/11-COVID-Dooling-508.pdf).
- 363 [12] Sara Oliver. Evidence to Recommendation Framework: Pfizer-BioNTech COVID-19 Booster  
364 Dose, 2021. URL [https://www.cdc.gov/vaccines/acip/meetings/downloads/slides-202](https://www.cdc.gov/vaccines/acip/meetings/downloads/slides-2021-9-23/03-COVID-Oliver.pdf)  
365 [1-9-23/03-COVID-Oliver.pdf](https://www.cdc.gov/vaccines/acip/meetings/downloads/slides-2021-9-23/03-COVID-Oliver.pdf).
- 366 [13] Arjun Puranik, Patrick J. Lenahan, Eli Silvert, Michiel J.M. Niesen, Juan Corchado-Garcia,  
367 John C. O'Horo, Abinash Virk, Melanie D. Swift, John Halamka, Andrew D. Badley, A.J.  
368 Venkatakrishnan, and Venky Soundararajan. Comparison of two highly-effective mRNA  
369 vaccines for COVID-19 during periods of Alpha and Delta variant prevalence. *medRxiv*,  
370 page 2021.08.06.21261707, January 2021. doi: 10.1101/2021.08.06.21261707. URL  
371 <http://medrxiv.org/content/early/2021/08/21/2021.08.06.21261707.abstract>.
- 372 [14] Jocelyn Keehner, Lucy E. Horton, Nancy J. Binkin, Louise C. Laurent, David Pride, Christo-  
373 pher A. Longhurst, Shira R. Abeles, and Francesca J. Torriani. Resurgence of SARS-CoV-2 In-  
374 fection in a Highly Vaccinated Health System Workforce. *The New England journal of medicine*,  
375 385(14):1330–1332, September 2021. ISSN 1533-4406 0028-4793. doi: 10.1056/NEJMc2112981.
- 376 [15] Michael W Fried, Julie M Crawford, Andrea R Mospan, Stephanie E Watkins, Breda Munoz,  
377 Richard C Zink, Sherry Elliott, Kyle Bursleson, Charles Landis, K Rajender Reddy, and  
378 Robert S Brown. Patient Characteristics and Outcomes of 11 721 Patients With Coronavirus  
379 Disease 2019 (COVID-19) Hospitalized Across the United States. *Clinical Infectious Diseases*,  
380 72(10):e558–e565, May 2021. ISSN 1058-4838, 1537-6591. doi: 10.1093/cid/ciaa1268. URL  
381 <https://academic.oup.com/cid/article/72/10/e558/5898276>.
- 382 [16] Arthur Eumann Mesas, Iván Caverro-Redondo, Celia Álvarez Bueno, Marcos Aparecido Sar-  
383 riá Cabrera, Selma Maffei de Andrade, Irene Sequí-Dominguez, and Vicente Martínez-Vizcaíno.  
384 Predictors of in-hospital COVID-19 mortality: A comprehensive systematic review and  
385 meta-analysis exploring differences by age, sex and health conditions. *PLOS ONE*, 15(11):  
386 e0241742, November 2020. ISSN 1932-6203. doi: 10.1371/journal.pone.0241742. URL  
387 <https://dx.plos.org/10.1371/journal.pone.0241742>.

- 388 [17] Ya Gao, Yamin Chen, Ming Liu, Shuzhen Shi, and Jinhui Tian. Impacts of immunosuppression and immunodeficiency on COVID-19: A systematic review and meta-analysis. *The Journal of Infection*, 81(2):e93–e95, August 2020. ISSN 1532-2742. doi: 10.1016/j.jinf.2020.05.017.
- 391 [18] Kamal S. Saini, Marco Tagliamento, Matteo Lambertini, Richard McNally, Marco Romano, Manuela Leone, Giuseppe Curigliano, and Evandro de Azambuja. Mortality in patients with cancer and coronavirus disease 2019: A systematic review and pooled analysis of 52 studies. *European Journal of Cancer (Oxford, England: 1990)*, 139:43–50, November 2020. ISSN 1879-0852. doi: 10.1016/j.ejca.2020.08.011.
- 396 [19] Edward PK Parker, Elsie MF Horne, William J Hulme, John Tazare, Bang Zheng, Edward J Carr, Fiona Loud, Susan Lyon, Viyaasan Mahalingasivam, Brian MacKenna, Amir Mehrkar, Miranda Scanlon, Shalini Santhakumaran, Retha Steenkamp, Ben Goldacre, Jonathan AC Sterne, Dorothea Nitsch, and Laurie A Tomlinson. Comparative effectiveness of two- and three-dose schedules involving azd1222 and bnt162b2 in people with kidney disease: a linked opensafely and uk renal registry cohort study. *medRxiv*, 2022. doi: 10.1101/2022.11.16.22282396. URL <https://www.medrxiv.org/content/early/2022/11/18/2022.11.16.22282396>.
- 403 [20] Elizabeth J. Williamson, Alex J. Walker, Krishnan Bhaskaran, Seb Bacon, Chris Bates, Caroline E. Morton, Helen J. Curtis, Amir Mehrkar, David Evans, Peter Inglesby, Jonathan Cockburn, Helen I. McDonald, Brian MacKenna, Laurie Tomlinson, Ian J. Douglas, Christopher T. Rentsch, Rohini Mathur, Angel Y. S. Wong, Richard Grieve, David Harrison, Harriet Forbes, Anna Schultze, Richard Croker, John Parry, Frank Hester, Sam Harper, Rafael Perera, Stephen J. W. Evans, Liam Smeeth, and Ben Goldacre. Factors associated with COVID-19-related death using OpenSAFELY. *Nature*, 584(7821):430–436, jul 2020. doi: 10.1038/s41586-020-2521-4. URL <https://doi.org/10.1038/s41586-020-2521-4>.
- 411 [21] Amelia Green, Helen Curtis, William Hulme, Elizabeth Williamson, Helen McDonald, Krishnan Bhaskaran, Christopher Rentsch, Anna Schultze, Brian MacKenna, Viyaasan Mahalingasivam, Laurie Tomlinson, Alex Walker, Louis Fisher, Jon Massey, Colm Andrews, Lisa Hopcroft, Caroline Morton, Richard Croker, Jessica Morley, Amir Mehrkar, Seb Bacon, David Evans, Peter Inglesby, George Hickman, Tom Ward, Simon Davy, Rohini Mathur, John Tazare, Rosalind Eggo, Kevin Wing, Angel Wong, Harriet Forbes, Chris Bates, Jonathan Cockburn, John Parry, Frank Hester, Sam Harper, Ian Douglas, Stephen Evans, Liam Smeeth, Ben Goldacre, and The OpenSAFELY Collaborative. Describing the population experiencing COVID-19 vaccine breakthrough following second vaccination in England: a cohort study from OpenSAFELY. *BMC Medicine*, 20(1):243, July 2022. ISSN 1741-7015. doi: 10.1186/s12916-022-02422-0. URL <https://doi.org/10.1186/s12916-022-02422-0>.
- 422 [22] Dave Singh, Alexander G. Mathioudakis, and Andrew Higham. Chronic obstructive pulmonary disease and covid-19: interrelationships. *Current Opinion in Pulmonary Medicine*, 28(2):76–83, 2022. doi: 10.1097/mcp.0000000000000834.
- 425 [23] Krishnan Bhaskaran, Christopher T. Rentsch, George Hickman, William J. Hulme, Anna Schultze, Helen J. Curtis, Kevin Wing, Charlotte Warren-Gash, Laurie Tomlinson, Chris J. Bates, Rohini Mathur, Brian MacKenna, Viyaasan Mahalingasivam, Angel Wong, Alex J. Walker, Caroline E. Morton, Daniel Grint, Amir Mehrkar, Rosalind M. Eggo, Peter Inglesby, Ian J. Douglas, Helen I. McDonald, Jonathan Cockburn, Elizabeth J. Williamson, David Evans,

- 430 John Parry, Frank Hester, Sam Harper, Stephen JW Evans, Sebastian Bacon, Liam Smeeth,  
431 and Ben Goldacre. Overall and cause-specific hospitalisation and death after COVID-19 hos-  
432 pitalisation in england: A cohort study using linked primary care, secondary care, and death  
433 registration data in the OpenSAFELY platform. *PLOS Medicine*, 19(1):e1003871, jan 2022. doi:  
434 10.1371/journal.pmed.1003871. URL <https://doi.org/10.1371%2Fjournal.pmed.1003871>.
- 435 [24] Peter J. Embi, Matthew E. Levy, Allison L. Naleway, Palak Patel, Manjusha Gaglani, Karthik  
436 Natarajan, Kristin Dascomb, Toan C. Ong, Nicola P. Klein, I-Chia Liao, Shaun J. Grannis,  
437 Jungmi Han, Edward Stenehjem, Margaret M. Dunne, Ned Lewis, Stephanie A. Irving, Suchi-  
438 tra Rao, Charlene McEvoy, Catherine H. Bozio, Kempapura Murthy, Brian E. Dixon, Nancy  
439 Grisel, Duck-Hye Yang, Kristin Goddard, Anupam B. Kharbanda, Sue Reynolds, Chandni  
440 Raiyani, William F. Fadel, Julie Arndorfer, Elizabeth A. Rowley, Bruce Fireman, Jill Ferdi-  
441 nands, Nimish R. Valvi, Sarah W. Ball, Ousseny Zerbo, Eric P. Griggs, Patrick K. Mitchell,  
442 Rachael M. Porter, Salome A. Kiduko, Lenee Blanton, Yan Zhuang, Andrea Steffens, Sarah E.  
443 Reese, Natalie Olson, Jeremiah Williams, Monica Dickerson, Meredith McMorro, Stephanie J.  
444 Schrag, Jennifer R. Verani, Alicia M. Fry, Eduardo Azziz-Baumgartner, Michelle A. Bar-  
445 ron, Mark G. Thompson, and Malini B. DeSilva. Effectiveness of 2-dose vaccination with  
446 mRNA COVID-19 vaccines against COVID-19-associated hospitalizations among immuno-  
447 compromised adults — nine states, january–september 2021. *MMWR. Morbidity and Mor-  
448 tality Weekly Report*, 70(44):1553–1559, nov 2021. doi: 10.15585/mmwr.mm7044e3. URL  
449 <https://doi.org/10.15585%2Fmmwr.mm7044e3>.
- 450 [25] Florian B. Mayr, Victor B. Talisa, Alexander D. Castro, Obaid S. Shaikh, Saad B. Omer, and  
451 Adeel A. Butt. COVID-19 disease severity in US veterans infected during omicron and delta  
452 variant predominant periods. *Nature Communications*, 13(1), jun 2022. doi: 10.1038/s41467-  
453 -022-31402-4. URL <https://doi.org/10.1038%2Fs41467-022-31402-4>.
- 454 [26] Adeel A. Butt, Saad B. Omer, Peng Yan, Obaid S. Shaikh, and Florian B. Mayr. SARS-CoV-2  
455 Vaccine Effectiveness in a High-Risk National Population in a Real-World Setting. *Annals of  
456 Internal Medicine*, 174(10):1404–1408, October 2021. ISSN 1539-3704. doi: 10.7326/M21-1577.
- 457 [27] Adeel A. Butt, Peng Yan, Obaid S. Shaikh, and Florian B. Mayr. Outcomes among patients  
458 with breakthrough SARS-CoV-2 infection after vaccination in a high-risk national population.  
459 *EClinicalMedicine*, 40:101117, October 2021. ISSN 25895370. doi: 10.1016/j.eclinm.2021.1011  
460 17. URL <https://linkinghub.elsevier.com/retrieve/pii/S2589537021003977>.
- 461 [28] Brian MacKenna, Nicholas A Kennedy, Amir Mehrkar, Anna Rowan, James Galloway,  
462 Julian Matthewman, Kathryn E Mansfield, Katie Bechman, Mark Yates, Jeremy Brown,  
463 Anna Schultze, Sam Norton, Alex J Walker, Caroline E Morton, David Harrison, Krish-  
464 nan Bhaskaran, Christopher T Rentsch, Elizabeth Williamson, Richard Croker, Seb Bacon,  
465 George Hickman, Tom Ward, Simon Davy, Amelia Green, Louis Fisher, William Hulme, Chris  
466 Bates, Helen J Curtis, John Tazare, Rosalind M Eggo, David Evans, Peter Inglesby, Jonathan  
467 Cockburn, Helen I McDonald, Laurie A Tomlinson, Rohini Mathur, Angel Y S Wong, Har-  
468 riet Forbes, John Parry, Frank Hester, Sam Harper, Ian J Douglas, Liam Smeeth, Charlie W  
469 Lees, Stephen J W Evans, Ben Goldacre, Catherine H Smith, and Sinéad M Langan. Risk  
470 of severe COVID-19 outcomes associated with immune-mediated inflammatory diseases and  
471 immune-modifying therapies: a nationwide cohort study in the OpenSAFELY platform. *The  
472 Lancet Rheumatology*, 4(7):e490–e506, jul 2022. doi: 10.1016/s2665-9913(22)00098-4. URL  
473 <https://doi.org/10.1016%2Fs2665-9913%2822%2900098-4>.

- 474 [29] Anna Schultze, Alex J Walker, Brian MacKenna, Caroline E Morton, Krishnan Bhaskaran,  
475 Jeremy P Brown, Christopher T Rentsch, Elizabeth Williamson, Henry Drysdale, Richard  
476 Croker, Seb Bacon, William Hulme, Chris Bates, Helen J Curtis, Amir Mehrkar, David Evans,  
477 Peter Inglesby, Jonathan Cockburn, Helen I McDonald, Laurie Tomlinson, Rohini Mathur,  
478 Kevin Wing, Angel Y S Wong, Harriet Forbes, John Parry, Frank Hester, Sam Harper, Stephen  
479 J W Evans, Jennifer Quint, Liam Smeeth, Ian J Douglas, and Ben Goldacre. Risk of COVID-19-  
480 related death among patients with chronic obstructive pulmonary disease or asthma prescribed  
481 inhaled corticosteroids: an observational cohort study using the OpenSAFELY platform. *The*  
482 *Lancet Respiratory Medicine*, 8(11):1106–1120, nov 2020. doi: 10.1016/s2213-2600(20)30415-x.  
483 URL <https://doi.org/10.1016%2Fs2213-2600%2820%2930415-x>.
- 484 [30] Linda Nab, Edward PK Parker, Colm D Andrews, William J Hulme, Louis Fisher, Jessica  
485 Morley, Amir Mehrkar, Brian MacKenna, Peter Inglesby, Caroline E Morton, Sebastian CJ  
486 Bacon, George Hickman, David Evans, Tom Ward, Rebecca M Smith, Simon Davey, Iain  
487 Dillingham, Steven Maude, Ben FC Butler-Cole, Thomas O’Dwyer, Catherine L Stables, Lucy  
488 Bridges, Christopher Bates, Jonathan Cockburn, John Parry, Frank Hester, Sam Harper, Bang  
489 Zheng, Elizabeth J Williamson, Rosalind M Eggo, Stephen Evans, Ben Goldacre, Laurie A  
490 Tomlinson, and Alex J Walker. Changes in covid-19-related mortality across key demographic  
491 and clinical subgroups: an observational cohort study using the opensafely platform on 18  
492 million adults in england. *medRxiv*, 2022. doi: 10.1101/2022.07.30.22278161. URL <https://www.medrxiv.org/content/early/2022/08/02/2022.07.30.22278161>.  
493
- 494 [31] Krishnan Bhaskaran, Sebastian Bacon, Stephen JW Evans, Chris J Bates, Christopher T  
495 Rentsch, Brian MacKenna, Laurie Tomlinson, Alex J Walker, Anna Schultze, Caroline E Mor-  
496 ton, Daniel Grint, Amir Mehrkar, Rosalind M Eggo, Peter Inglesby, Ian J Douglas, Helen I Mc-  
497 Donald, Jonathan Cockburn, Elizabeth J Williamson, David Evans, Helen J Curtis, William J  
498 Hulme, John Parry, Frank Hester, Sam Harper, David Spiegelhalter, Liam Smeeth, and Ben  
499 Goldacre. Factors associated with deaths due to COVID-19 versus other causes: population-  
500 based cohort analysis of UK primary care data and linked national death registrations within  
501 the OpenSAFELY platform. *The Lancet Regional Health - Europe*, 6:100109, jul 2021. doi:  
502 10.1016/j.lanepe.2021.100109. URL <https://doi.org/10.1016%2Fj.lanepe.2021.100109>.
- 503 [32] Truveta. Truveta Platform, 2022. URL <https://www.truveta.com/>.
- 504 [33] M. P. Moutschen, A. J. Scheen, and P. J. Lefebvre. Impaired immune responses in diabetes  
505 mellitus: analysis of the factors and mechanisms involved. Relevance to the increased suscep-  
506 tibility of diabetic patients to specific infections. *Diabete & Metabolisme*, 18(3):187–201, June  
507 1992. ISSN 0338-1684.
- 508 [34] David N. O’Dwyer, Robert P. Dickson, and Bethany B. Moore. The Lung Microbiome, Immu-  
509 nity, and the Pathogenesis of Chronic Lung Disease. *Journal of Immunology (Baltimore, Md.:*  
510 *1950)*, 196(12):4839–4847, June 2016. ISSN 1550-6606. doi: 10.4049/jimmunol.1600279.
- 511 [35] Nosratola D. Vaziri, Madeleine V. Pahl, Albert Crum, and Keith Norris. Effect of uremia on  
512 structure and function of immune system. *Journal of Renal Nutrition: The Official Journal*  
513 *of the Council on Renal Nutrition of the National Kidney Foundation*, 22(1):149–156, January  
514 2012. ISSN 1532-8503. doi: 10.1053/j.jrn.2011.10.020.



- 515 [36] A. Elixhauser, C. Steiner, D. R. Harris, and R. M. Coffey. Comorbidity measures for use  
516 with administrative data. *Medical Care*, 36(1):8–27, January 1998. ISSN 0025-7079. doi:  
517 10.1097/00005650-199801000-00004.
- 518 [37] Hirotugu Akaike. A new look at the statistical model identification. *IEEE transactions on*  
519 *automatic control*, 19(6):716–723, 1974.
- 520 [38] Joseph E Cavanaugh. Unifying the derivations for the akaike and corrected akaike information  
521 criteria. *Statistics & Probability Letters*, 33(2):201–208, 1997.
- 522 [39] Kenneth P. Burnham and David R., Anderson. *Model Selection and Multimodel Inference*.  
523 Springer, 2007. ISBN 978-0-387-22456-5.
- 524 [40] Mark J Brewer, Adam Butler, and Susan L Cooksley. The relative performance of aic, aicc  
525 and bic in the presence of unobserved heterogeneity. *Methods in Ecology and Evolution*, 7(6):  
526 679–692, 2016.
- 527 [41] Russell V. Lenth, Paul Buerkner, Maxime Herve, Maarten Jung, Jonathon Love, Fernando  
528 Miguez, Hannes Riebl, and Henrik Singmann. emmeans: Estimated Marginal Means, aka  
529 Least-Squares Means, September 2022. URL <https://CRAN.R-project.org/package=emmeans>.  
530 ns.
- 531 [42] Andrew Gelman, Jennifer Hill, and Aki Vehtari. *Regression and other stories*. Analytical  
532 methods for social research. Cambridge University Press, Cambridge New York, NY Port  
533 Melbourne, VIC New Delhi Singapore, 2021. ISBN 978-1-107-67651-0 978-1-107-02398-7. doi:  
534 10.1017/9781139161879.
- 535 [43] R Core Team. *R: A Language and Environment for Statistical Computing*. R Foundation for  
536 Statistical Computing, Vienna, Austria, 2022. URL <https://www.R-project.org/>.
- 537 [44] Neal Richardson, Ian Cook, Nic Crane, Dewey Dunnington, Romain François, Jonathan Keane,  
538 Dragoş Moldovan-Grünfeld, Jeroen Ooms, Javier Luraschi, Karl Dunkle Werner, Jeffrey Wong,  
539 and Apache Arrow. arrow: Integration to 'Apache' 'Arrow', October 2022. URL <https://CRAN.R-project.org/package=arrow>.  
540
- 541 [45] David Robinson, Alex Hayes, Simon Couch [aut, cre, RStudio, Indrajeet Patil, Derek Chiu,  
542 Matthieu Gomez, Boris Demeshev, Dieter Menne, Benjamin Nutter, Luke Johnston, Ben  
543 Bolker, Francois Briatte, Jeffrey Arnold, Jonah Gabry, Luciano Selzer, Gavin Simpson, Jens  
544 Preussner, Jay Hesselberth, Hadley Wickham, Matthew Lincoln, Alessandro Gasparini, Lukasz  
545 Komsta, Frederick Novometsky, Wilson Freitas, Michelle Evans, Jason Cory Brunson, Simon  
546 Jackson, Ben Whalley, Karissa Whiting, Yves Rosseel, Michael Kuehn, Jorge Cimentada, Erle  
547 Holgersen, Karl Dunkle Werner, Ethan Christensen, Steven Pav, Paul PJ, Ben Schneider,  
548 Patrick Kennedy, Medina, Jason Muhlenkamp, Matt Lehman, Bill Denney, Nic Crane, An-  
549 drew Bates, Vincent Arel-Bundock, Hideaki Hayashi, Luis Tobalina, Annie Wang, Wei Yang  
550 Tham, Clara Wang, Abby Smith, Jasper Cooper, E. Auden Krauska, Alex Wang, Malcolm Bar-  
551 rett, Charles Gray, Jared Wilber, Vilmantas Gegzna, Eduard Szoecs, Frederik Aust, Angus  
552 Moore, Nick Williams, Marius Barth, Bruna Wundervald, Joyce Cahoon, Grant McDermott,  
553 Kevin Zarca, Shiro Kuriwaki, Lukas Wallrich, James Martherus, Chuliang Xiao, Joseph Lar-  
554 marange, Max Kuhn, Michal Bojanowski, Hakon Malmedal, Clara Wang, Sergio Oller, Luke

- 555 Sonnet, Jim Hester, Cory Brunson, Ben Schneider, Bernie Gray, Mara Averick, Aaron Jacobs,  
556 Andreas Bender, Sven Templer, Paul-Christian Buerkner, Matthew Kay, Erwan Le Pennec,  
557 Johan Junkka, Hao Zhu, Benjamin Soltoff, Zoe Wilkinson Saldana, Tyler Littlefield, Charles T.  
558 Gray, Shabbh E. Banks, Serina Robinson, Roger Bivand, Riinu Ots, Nicholas Williams, Nina  
559 Jakobsen, Michael Weylandt, Lisa Lendway, Karl Hailperin, Josue Rodriguez, Jenny Bryan,  
560 Chris Jarvis, Greg Macfarlane, Brian Mannakee, Drew Tyre, Shreyas Singh, Laurens Gef-  
561 fert, Hong Ooi, Henrik Bengtsson, Eduard Szocs, David Hugh-Jones, Matthieu Stigler, Hugo  
562 Tavares, R. Willem Vervoort, Brenton M. Wiernik, Josh Yamamoto, Jasme Lee, Sanders,  
563 Daniel D. Sjoberg, and Alex Reinhart. broom: Convert Statistical Objects into Tidy Tibbles,  
564 August 2022. URL <https://CRAN.R-project.org/package=broom>.
- 565 [46] Hadley Wickham, Romain François, Lionel Henry, and Kirill Müller. dplyr: A Grammar of  
566 Data Manipulation, 2022. URL <https://CRAN.R-project.org/package=dplyr>.
- 567 [47] Hadley Wickham. ggplot2: Elegant Graphics for Data Analysis, 2016. URL <https://ggplot2.tidyverse.org>.
- 569 [48] Sam Firke, Bill Denney, Chris Haid, Ryan Knight, Malte Grosser, and Jonathan Zadra. janitor:  
570 Simple Tools for Examining and Cleaning Dirty Data, January 2021. URL <https://CRAN.R-project.org/package=janitor>.
- 572 [49] Lionel Henry, Hadley Wickham, and RStudio. purrr: Functional Programming Tools, October  
573 2022. URL <https://CRAN.R-project.org/package=purrr>.
- 574 [50] Lionel Henry, Hadley Wickham, mikefc (Hash implementation based on Mike’s xxhashlite),  
575 Yann Collet (Author of the embedded xxHash library), and RStudio. rlang: Functions for  
576 Base Types and Core R and ‘Tidyverse’ Features, September 2022. URL <https://CRAN.R-project.org/package=rlang>.
- 578 [51] Hadley Wickham and RStudio. stringr: Simple, Consistent Wrappers for Common String  
579 Operations, August 2022. URL <https://CRAN.R-project.org/package=stringr>.
- 580 [52] Terry M. Therneau, Thomas Lumley (original S.->R port and R. maintainer until 2009),  
581 Atkinson Elizabeth, and Crowson Cynthia. survival: Survival Analysis, August 2022. URL  
582 <https://CRAN.R-project.org/package=survival>.
- 583 [53] Benjamin Rich. *table1: Tables of Descriptive Statistics in HTML*, 2021. URL <https://CRAN.R-project.org/package=table1>. R package version 1.4.2.
- 585 [54] Kirill Müller, Hadley Wickham, Romain Francois, Jennifer Bryan, and RStudio. tibble: Simple  
586 Data Frames, July 2022. URL <https://CRAN.R-project.org/package=tibble>.
- 587 [55] Hadley Wickham, Maximilian Girlich, and RStudio. tidyr: Tidy Messy Data, September 2022.  
588 URL <https://CRAN.R-project.org/package=tidyr>.
- 589 [56] Edwin S. Wong, Virginia Wang, Chuan-Fen Liu, Paul L. Hebert, and Matthew L. Maciejewski.  
590 Do veterans health administration enrollees generalize to other populations? *Medical Care*  
591 *Research and Review*, 2015. doi: 10.1177/1077558715617382.

- 592 [57] William R. Hersh, Mark G. Weiner, Peter J. Embi, Judith R. Logan, Philip R.O. Payne,  
593 Elmer V. Bernstam, Harold P. Lehmann, George Hripcsak, Timothy H.artzog, James J.  
594 Cimino, and Joel H. Saltz. Caveats for the use of operational electronic health record data in  
595 comparative effectiveness research. *Medical Care*, 51:S30–S37, 2013. doi: 10.1097/mlr.0b013e  
596 31829b1dbd.
- 597 [58] J Marc Overhage and Lauren M Overhage. Sensible use of observational clinical data. *Statistical*  
598 *Methods in Medical Research*, 22(1):7–13, 2013. doi: 10.1177/0962280211403598.
- 599 [59] Clemens Scott Kruse, Anna Stein, Heather Thomas, and Harmander Kaur. The use of elec-  
600 tronic health records to support population health: A systematic review of the literature.  
601 *Journal of Medical Systems*, 42:214, 2018. doi: 10.1007/s10916-018-1075-6.
- 602 [60] Peter B. Jensen, Lars J. Jensen, and Søren Brunak. Mining electronic health records: towards  
603 better research applications and clinical care. *Nature Reviews Genetics*, 13:395–405, 2012. doi:  
604 10.1038/nrg3208.
- 605 [61] Suchitra Kataria and Vinod Ravindran. Electronic health records: A critical appraisal of  
606 strengths and limitations. *Journal of the Royal College of Physicians of Edinburgh*, 50(3):262–  
607 268, 2020. doi: 10.4997/jrcpe.2020.309. URL <https://doi.org/10.4997/jrcpe.2020.309>.  
608 PMID: 32936099.
- 609 [62] JANE M. CARRINGTON and JUDITH A. EFFKEN. Strengths and limitations of the elec-  
610 tronic health record for documenting clinical events. *CIN: Computers, Informatics, Nursing*,  
611 29(6):360–367, 2011. doi: 10.1097/ncn.0b013e3181fc4139.