

Long-COVID post-viral chronic fatigue syndrome and affective symptoms are associated with oxidative damage, lowered antioxidant defenses and inflammation: a proof of concept and mechanism study.

Hussein Kadhém Al-Hakeim <sup>a</sup>, Haneen Tahseen Al-Rubaye <sup>b</sup>, Dhurgham Shihab Al-Hadrawi <sup>c</sup>, Abbas F. Almulla <sup>d, e</sup>, Michael Maes <sup>e, f, g</sup> \*

<sup>a</sup> Department of Chemistry, College of Science, University of Kufa, Iraq. E-mail: headm2010@yahoo.com.

<sup>b</sup> College of Medical laboratory Techniques, Imam Ja'afar Al-Sadiq University, Najaf, Iraq. Email: haneent033@gmail.com

<sup>c</sup> Al-Najaf Center for Cardiac Surgery and Transcatheter Therapy, Najaf, Iraq. Email: durgham2512@gamil.com

<sup>d</sup> Medical Laboratory Technology Department, College of Medical Technology, The Islamic University, Najaf, Iraq. E-mail: abbass.chem.almulla1991@gmail.com

<sup>e</sup> Department of Psychiatry, Faculty of Medicine, Chulalongkorn University, Bangkok, Thailand, E-mail: dr.michaelmaes@hotmail.com.

<sup>f</sup> Department of Psychiatry, Medical University of Plovdiv, Plovdiv, Bulgaria

<sup>g</sup> Deakin University, IMPACT, the Institute for Mental and Physical Health and Clinical Translation, School of Medicine, Barwon Health, Geelong, Australia.

\* Corresponding Author:

Prof. Dr. Michael Maes, M.D., Ph.D.

Department of Psychiatry

Faculty of Medicine

NOTE: This preprint reports new research that has not been certified by peer review and should not be used to guide clinical practice.

King Chulalongkorn Memorial Hospital

Bangkok

Thailand

[\(4\) Michael Maes | Stats \(researchgate.net\)](#)

[Michael Maes - Google Scholar](#)

email: [dr.michaelmaes@hotmail.com](mailto:dr.michaelmaes@hotmail.com)

## Abstract

The immune-inflammatory response during the acute phase of COVID-19, as assessed using peak body temperature (PBT) and peripheral oxygen saturation (SpO<sub>2</sub>), predicts the severity of chronic fatigue, depression and anxiety (“physio-affective”) symptoms three to four months later. The present study was performed to characterize whether the effects of SpO<sub>2</sub> and PBT on the physio-affective phenome of Long COVID are mediated by immune, oxidative and nitrosative stress (IO&NS) pathways. This study assayed SpO<sub>2</sub> and PBT during acute COVID-19, and C-reactive protein (CRP), malondialdehyde (MDA), protein carbonyls (PCs), myeloperoxidase (MPO), nitric oxide (NO), zinc, and glutathione peroxidase (Gpx) in 120 Long COVID individuals and 36 controls. Cluster analysis showed that 31.7% of the Long COVID patients had severe abnormalities in SpO<sub>2</sub>, body temperature, increased oxidative toxicity (OSTOX) and lowered antioxidant defenses (ANTIOX), and increased total Hamilton Depression (HAMD) and Anxiety (HAMA) and Fibromyalgia-Fatigue (FF) scores. Around 60% of the variance in the physio-affective phenome of Long COVID (a factor extracted from HAMD, HAMA and FF scores) was explained by OSTOX/ANTIOX ratio, PBT and SpO<sub>2</sub>. Increased PBT predicted increased CRP and lowered ANTIOX and zinc levels, while lowered SpO<sub>2</sub> predicted lowered Gpx and increased NO production. Both PBT and SpO<sub>2</sub> strongly predict OSTOX/ATIOX during Long COVID. In conclusion, the impact of acute COVID-19 on the physio-affective symptoms of Long COVID is partly mediated by OSTOX/ANTIOX, especially lowered Gpx and zinc, increased MPO and NO production and lipid peroxidation-associated aldehyde formation. Post-viral physio-affective symptoms have an inflammatory origin and are partly mediated by neuro-oxidative toxicity.

**Keywords:** neuro-immune, major depression, chronic fatigue syndrome, psychiatry, affective disorders, neuroinflammatory disease

## Introduction

Patients who have recovered from SARS-CoV-2 infection and have been discharged from hospital or outpatient settings may continue to display symptoms considerably longer than predicted<sup>1-5</sup>. "Long COVID" is a blanket term that refers to people who have recovered from acute COVID-19 but are still experiencing symptoms for far longer periods than predicted<sup>6</sup>. Numerous other terms for post-COVID symptoms have been suggested, including post-acute COVID, protracted COVID, chronic post-COVID, and Long Haul COVID<sup>7, 8</sup>. The most often used definition is: symptoms persisting for more than three months from the onset of acute COVID-19<sup>9</sup>.<sup>10</sup> Extended symptoms have been classified as probably infection-related (up to 4–5 weeks), acute post-COVID symptoms (weeks 5–12), prolonged post-COVID symptoms (weeks 12–24), and chronic post-COVID symptoms (more than 24 weeks)<sup>7</sup>.

Following the acute phase of COVID-19, the presence of more than one symptom is quite prevalent, occurring in 74%<sup>11, 12</sup> to 87.4 percent of all infected patients<sup>12</sup>. Initially, patient concerns were dismissed as mental health problems, including worry or stress<sup>13</sup>, but later it became clear that people who suffer from long-term COVID have a wide range of physical and mental symptoms<sup>14-16</sup>. Among the various symptoms associated with Long COVID, the most frequently reported symptoms are fatigue and dyspnoea<sup>9, 11, 17, 18</sup>, post-traumatic stress symptoms<sup>19, 20</sup>, concentration and memory problems<sup>21, 22</sup>, and anxiety and depression<sup>4, 23</sup>. Within six months after the first COVID-19 symptom, almost a third of COVID-19 survivors had a neuropsychiatric diagnosis such as insomnia, anxiety and depression<sup>24</sup>.

Recently, we reported that not only the acute infectious phase<sup>25</sup> but also Long COVID<sup>26</sup> is characterized by concurrent elevations in key depression (depressed mood,

feelings of guilt, suicidal ideation, loss of interest), key anxiety (anxious mood, tension, fears, anxiety behavior at interview), chronic fatigue and physiosomatic symptoms including autonomic and gastrointestinal (GIS) symptoms, malaise and muscle pain. Additionally, in both the acute phase and Long COVID, a single latent vector could be derived from these physiosomatic and affective symptoms, demonstrating that these symptom profiles are the expression of a shared core, namely the COVID-19 and Long COVID "physio-affective phenome" <sup>25, 26</sup>.

We reported that in acute COVID-19, the physio-affective phenome was largely predicted by a latent factor derived from indicants of increased proinflammatory and immunoregulatory cytokines, chest computerized tomography scan abnormalities (CCTAs), including ground-glass opacities, crazy patterns and consolidation and lower oxygen saturation in peripheral blood (SpO2) <sup>25</sup>. Importantly, lowered SpO2 and increased peak body temperature during the acute phase of illness largely predict the severity of the physio-affective phenome of Long COVID <sup>26</sup>. Both lowered SpO2 <sup>26</sup> and increased peak body temperature <sup>27</sup> are indicants of the severity of the immune-inflammatory response of acute COVID-19, and both predict critical disease and mortality <sup>27, 28</sup>. Therefore, our findings indicate that the infectious-immune-inflammatory pathways during the acute phase of illness <sup>29</sup> largely predict the physio-affective core of Long COVID <sup>26</sup>. Nevertheless, there are no data on whether the biomarkers underpinning Long COVID are caused by the inflammatory responses during the acute phase.

Activated immune-inflammatory and oxidative and nitrosative stress (IO&NS) pathways may underpin the physio-affective symptoms of Long COVID because chronic fatigue syndrome, major depression and generalized anxiety disorder (GAD) are characterized by activated IO&NS pathways. Thus, these disorders are

accompanied by a) signs of a mild inflammatory response as indicated by increased levels of C-reactive protein (CRP); b) oxidative stress including increased activity of pro-oxidative enzymes including myeloperoxidase (MPO) and oxidative damage as indicated by elevated production of malondialdehyde (MDA), protein carbonyls and advanced protein oxidation products (AOPP); c) increased nitrosative stress as indicated by increased levels of nitric oxide (NO) metabolites and IgM directed to NO (nitroso) neoepitope adducts; and d) indicants of lowered total antioxidant capacity (TAC) of plasma, glutathione peroxidase (Gpx) and zinc levels <sup>30-34</sup>. In chronic fatigue syndrome, depression and GAD, the neurotoxicity theories conceptualize that the effects of neuro-oxidative stress toxicity (OSTOX) coupled with lowered antioxidant (ANTIOX) defenses cause increased neurotoxicity leading to physio-affective symptoms <sup>30, 31</sup>.

Likewise, SARS-Cov-2 infection and acute COVID-19 are accompanied by an inflammatory response <sup>29</sup>, increased MPO activity <sup>35</sup>, indicants of oxidative damage <sup>36-38</sup> and increased NO production including increased levels of nitrotyrosine <sup>39</sup>, and lowered antioxidant defenses as indicated by reduced TAC levels<sup>35, 39</sup>, Gpx <sup>40</sup> and zinc <sup>41</sup>. Nevertheless, there are no data on whether the effects of the immune-inflammatory processes during acute infection, as indicated by lowered SpO2 and increased body temperature on the physio-affective phenome, are mediated by activated immune and O&NS (IO&NS) pathways.

Hence, the present study was performed to delineate whether the effects of SpO2 and peak body temperature on the physio-affective phenome of Long COVID are mediated by IO&NS pathways, including CRP, the OSTOX/ANTIOX ratio and its indicators (MDA, AOPP, carbonyl proteins, NOx, nitrotyrosine, TAC, Gpx or zinc). In addition, the present work employs the precision nomothetic approach <sup>31</sup> to define a

Long COVID model which links the acute inflammation of COVID-19 with IO&NS pathways and the physio-affective phenome 3-4 months later. Moreover, we intended to construct an endophenotype class <sup>34</sup> that integrates all those biomarkers with the physio-affective phenome of Long-COVID. These findings are necessary to comprehend the biology of Long COVID and post-viral symptoms in general and may aid in predicting who will develop chronic fatigue syndrome and affective symptoms as a result of COVID-19 and viral infections in general.

## **Subjects and Methods**

### **Subjects**

We employed both a case-control research design (to explore differences between controls and Long COVID) and a retrospective cohort study design (to examine the effects of acute-phase biomarkers on Long COVID symptoms) in the current investigation. We recruited 120 patients in the last three months of 2021 who had at least two symptoms consistent with Long COVID and had previously been diagnosed and treated for acute COVID-19 infection. The patients were diagnosed using the WHO criteria of post-COVID (long COVID) <sup>42</sup>, namely: a) individuals having a history of proven SARS-CoV-2 infection, b) symptoms persisted beyond the acute phase of illness or manifested during recovery from acute COVID-19 infection, c) symptoms lasted at least two months and are present 3-4 months after the onset of COVID-19, and d) patients suffer from at least two symptoms that impair daily functioning including fatigue, memory or concentration problems, shortness of breath, chest pain, persistent cough, difficulty speaking, muscle aches, loss of smell or taste, affective symptoms, cognitive impairment, or fever <sup>42</sup>.



During the acute phase of the illness, all patients had been admitted to one of the official quarantine facilities in Al-Najaf city specialized in the treatment of acute COVID-19, including Al-Sader Medical City of Najaf, Al-Hakeem General Hospital, Al-Zahraa Teaching Hospital for Maternity and Pediatrics, Imam Sajjad Hospital, Hassan Halos Al-Hatmy Hospital for Transmitted Diseases, Middle Euphrates Center for Cancer, and Al-Na. Senior doctors and virologists made the diagnosis of SARS-CoV-2 infection and acute COVID 19 based on a) presence of an acute respiratory syndrome and the disease's standard symptoms of fever, breathing difficulties, coughing, and loss of smell and taste; b) positive reverse transcription real-time polymerase chain reaction findings (rRT-PCR); and c) positive IgM directed to SARS-CoV-2. All patients showed, upon recovery from the acute phase, a negative rRT-PCR result. We selected 36 controls from the same catchment area, who were either staff members or their family or friends. Additionally, we included controls who tested negative for rRT-PCR and exhibited no clinical indications of acute infection, such as dry cough, sore throat, shortness of breath, lack of appetite, flu-like symptoms, fever, night sweats, or chills. Nevertheless, we selected the controls so that about one-third of them had distress or adjustment symptoms as a result of lockdowns and social isolation to account for their confounding effects, which are also seen in Long COVID patients. Thus, one-third of the controls showed Hamilton Depression Rating Scale (HAMD) <sup>43</sup> values between 7 and 12. COVID patients and controls were excluded if they had a lifetime history of psychiatric axis-1 disorders, including major affective disorders such as major depression and bipolar disorder, dysthymia, generalized anxiety disorder and panic disorder, schizo-affective disorder, schizophrenia, psycho-organic syndrome, and substance use disorders, except tobacco use disorder (TUD). Moreover, we excluded patients and controls who suffered from neurodegenerative and neuroinflammatory

disorders, such as chronic fatigue syndrome <sup>44</sup>, Parkinson's or Alzheimer's disease, multiple sclerosis, stroke, or systemic (auto)immune diseases such as diabetes mellitus, psoriasis, rheumatoid arthritis, inflammatory bowel disease and scleroderma, and liver and renal disease. Additionally, pregnant and breastfeeding women were omitted from this study.

All controls and patients, or their parents/legal guardians, gave written informed permission before participation in the research. The research was approved by the University of Kufa's institutional ethics board (8241/2021) and the Najaf Health Directorate-Training and Human Development Center (Document No.18378/ 2021). The study was conducted following Iraqi and international ethical and privacy laws, including the World Medical Association's Declaration of Helsinki, The Belmont Report, the CIOMS Guideline, and the International Conference on Harmonization of Good Clinical Practice; our institutional review board adheres to the International Guidelines for Human Research Safety (ICH-GCP).

### *Clinical measurements*

A senior psychiatrist used a semi-structured interview to collect socio-demographic and clinical data from controls and Long COVID patients three to four months after the acute infectious phase of COVID-19 (mean  $\pm$ SD duration of illness was  $14.68 \pm 5.31$  weeks). Three to four months after the onset of acute COVID-19, a senior psychiatrist assessed the following rating scales: a) the 12-item Fibro-Fatigue (FF) scale to assess Chronic fatigue and fibromyalgia symptoms <sup>45</sup>; b) the HAMD to assess the severity of depression <sup>43</sup>; and c) the Hamilton Anxiety Rating Scale (HAMA) <sup>46</sup> to assess the severity of anxiety. Two HAMD subdomain scores were calculated: a) pure depressive symptoms (pure HAMD) as the sum of sad mood + feelings of guilt +

suicidal thoughts + loss of interest; and b) physiosomatic HAMD symptoms (Physiosom HAMD) as the sum of somatic anxiety + gastrointestinal (GIS) anxiety + genitourinary anxiety + hypochondriasis. Two HAMA subdomain scores were calculated: a) key anxiety symptoms (Key HAMA), which were defined as anxious mood + tension + fears + anxiety behavior during the interview; and b) physiosomatic HAMA symptoms (Physiosom HAMA), defined as somatic sensory + cardiovascular + GIS + genitourinary + autonomic symptoms (respiratory symptoms were not included in the sum). We calculated a single pure physiosom FF subdomain score as: muscular pain + muscle tension + fatigue + autonomous symptoms + gastrointestinal symptoms + headache + a flu-like malaise (thus excluding the cognitive and affective symptoms). To construct a composite score reflecting the severity of the physio-affective phenome, we extracted the first factor from the pure FF and pure and physiosom HAMA and HAMD scores, which reflect the physio-affective phenome<sup>25, 26</sup>. Additionally, we constructed z unit-based composite scores indicating autonomic symptoms, sleep problems, fatigue, gastro-intestinal symptoms, and cognitive symptoms using all relevant HAMD, HAMA, and FF items (z transformed). TUD was diagnosed using DSM-5 criteria. We determined the body mass index (BMI) by dividing the body weight in kilograms by the squared height in meters.

### *Assays*

Fasting blood samples were taken in the early morning between 7.30-9.00 a.m. after awakening and before having breakfast. Five milliliters of venous blood samples were drawn and transferred into clean plain tubes. Hemolyzed samples were rejected. After ten minutes, the clotted blood samples were centrifuged for five minutes at 3000 rpm, and then serum was separated and transported into three new Eppendorf tubes

until assay. Serum Gpx, NOx, MPO, MDA, AOPP, TAC, nitrotyrosine, and protein carbonyls were measured using ELISA kits supplied by Nanjing Pars Biochem Co., Ltd. (Nanjing, China). All kits were based on a sandwich technique and showed an inter-assay CV of less than 10%. Zinc in serum was measured spectrophotometrically using a ready for use kit supplied by Agappe Diagnostics Ltd., Cham, Switzerland. Consequently, we computed 3 composite scores: a) oxidative stress toxicity (OSTOX) as the sum of  $z$  MDA +  $z$  AOPP +  $z$  carbonyl proteins +  $z$  MPO +  $z$  NOx +  $z$  nitrotyrosine; b) antioxidant defenses (ANTIOX) as  $z$  TAC +  $z$  Gpx +  $z$  zinc; and c) the OSTOX/ANTIOX ratio as  $z$  OSTOX –  $z$  ANTIOX.

A well-trained paramedical specialist measured SpO2 using an electronic oximeter supplied by Shenzhen Jumper Medical Equipment Co. Ltd., and a digital thermometer was used to assess body temperature (sublingual until the beep). We collected these indicators from patient records and analyzed the lowest SpO2 and peak body temperature values recorded during the acute phase of illness. We created a new indicator based on these two evaluations that represent decreased SpO2 and increased peak body temperature as the  $z$  transformation of the latter ( $z$  body temperature) -  $z$  SpO2 (dubbed the "TO2 index"). We recorded the immunizations received by each participant, namely AstraZeneca, Pfizer, or Sinopharm.

### *Statistics*

Analysis of variance (ANOVA) was performed to determine if there were variations in scale variables across groups, and analysis of contingency tables was employed to determine connections between nominal variables. We used Pearson's product-moment correlation coefficients to examine relationships between ONS biomarkers and SpO2, peak body temperature, and clinical physio-affective

assessments. We employed a univariate general linear model (GLM) analysis to characterize the associations between classifications and biomarkers while accounting for confounding factors such as TUD, sex, age, BMI, and education. Additionally, we obtained model-generated estimated marginal means (SE) values and used protected pairwise comparisons between group means using Fisher's least significant difference. Multiple comparisons were examined using a p-correction for false discovery rate (FDR) <sup>47</sup>. Multiple regression analysis was used to determine the important IO&NS biomarkers or cofounders that predict physio-affective measures. We used an automated stepwise technique with a 0.05 p-value to enter and  $p=0.06$  to remove. We calculated the standardized beta coefficients for each significant explanatory variable using t statistics with exact p-value, as well as the model F statistics and total variance explained ( $R^2$ ). Additionally, we examined multicollinearity using the variance inflation factor and tolerance. We checked for heteroskedasticity using the White and modified Breusch-Pagan tests, and where necessary, we generated parameter estimates with robust errors. The tests were two-tailed, and statistical significance was defined as a p-value of 0.05. Using an effect size of 0.23, a p-value of 0.05, a power of 0.8, and three groups with up to five variables in an analysis of variance, the sample size should be around 151 participants. As a result, we enrolled 156 individuals, 36 controls and 120 Long COVID participants.

### *The precision nomothetic approach*

By integrating biomarker and clinical data, we hoped to create endophenotype classes for Long COVID patients (using cluster analysis) and novel pathway phenotypes (using factor analysis). We conducted two-step cluster analyses on categorical (e.g., diagnosis) and scale variables (e.g., all biomarkers) to define new

meaningful clusters of Long COVID patients. When the silhouette measure of cohesiveness and separation was more than 0.4, the cluster solution was deemed satisfactory. We conducted exploratory factor analysis (unweighted least-squares extraction, 25 iterations for convergence) and assessed factorability using the Kaiser-Meier-Olkin (KMO) sample adequacy metric (adequate when  $>0.7$ ). Additionally, when all loadings on the first factor were greater than 0.6, the variance explained by the first factor was greater than 50.0 percent, and the Cronbach alpha on the variables was greater than 0.7; the first factor was considered a validated latent construct underlying the variables. Canonical correlation analysis (CCA) was used to investigate the associations between two sets of variables, with symptoms three to four months following the acute phase serving as the dependent variable set and both biomarkers of the acute and Long COVID phases as the explanatory variable set. We calculated the variance explained by the canonical variables in both sets, and we accept the canonical sets as an overall measure of the underlying construct when the explained variance is  $> 0.50$  and all canonical loadings are  $> 0.5$ . Finally, we also compute the variance explained in the dependent clinical set by the biomarker set. All statistical analyses were conducted using IBM SPSS Windows, version 28.

Smart PLS analysis<sup>48</sup> was utilized to investigate the causal links between the lowest SpO2 and peak body temperature in the acute phase and the physio-affective phenome in Long COVID, whereby the effects of SpO2 and temperature are mediated by IO&NS biomarkers. All input variables were entered as single indicators, while the output variable was a latent vector extracted from pure FF and pure and physiosom HAMD and HAMA values. Complete PLS analysis was performed only when the inner and outer models met predefined quality criteria, namely: a) the output LV has high composite reliability  $>0.7$ , Cronbach's alpha  $>0.7$ , and rho A  $>0.8$  with an average

variance extracted (AVE) > 0.5, b) all LV loadings are > 0.6 at  $p < 0.001$ , c) the model fit is < 0.08 in terms of standardized root mean squared residual (SRMR), d) confirmatory tetrad analysis shows that the LV was not incorrectly specified as a reflective model, e) blindfolding shows that the construct's cross-validated redundancy is adequate, and f) the model's prediction ability as evaluated using PLSPredict is adequate. If the model quality data are adequate, we perform a complete PLS pathway analysis using 5000 bootstrap samples and compute the path coefficients with exact p-value, as well as specific and total indirect (mediated) effects and total effects.

## Results

### *Construction of an endophenotype class based on all biomarkers*

To discover new endophenotype classes of Long COVID patients, we used a two-step cluster analysis with the diagnosis (Long COVID versus controls as a category) and the acute COVID-19 biomarkers SpO<sub>2</sub> and body temperature and Long COVID biomarkers OSTOX, ANTIOX, OSTOX/ANTIOX and CRP as continuous variables. Nevertheless, the solution without CRP was much better, and, therefore, CRP was deleted from the solution. We found a three-group model with an adequate measure of cohesion and separation of 0.57, namely controls (n=36) and two patient clusters comprising 67 (cluster 1) and 51 (cluster 2) patients, respectively. Table 1 shows the socio-demographic and biomarker data of the three clusters. Cluster 2 patients showed lower SpO<sub>2</sub>, zinc, Gpx and ANTIOX levels and higher body temperature, OSTOX, OSTOX/ANTIOX, NO<sub>x</sub>, MPO, MDA and protein carbonyl levels as compared with cluster 1 patients. As such, the Long COVID group is divided into two clusters, one (cluster 2) with highly activated O&NS pathways (LC+O&NS) and one with less severe

aberrations (LC). The LC group was differentiated from controls by increased body temperature and CRP and lowered SpO<sub>2</sub>, Gpx and ANTIOX values.

**Table 1** demonstrates the socio-demographic data in Long COVID patients divided into LC and LC+O&NS. No significant differences among these study groups were detected in BMI, residency, employment, education, vaccination status, and TUD. Age was somewhat higher in the LC+O&NS group, and there were more males in the LC+O&NS group than in the LC group. The disease duration was somewhat higher in LC+O&NS as compared with LC.

#### *Associations between LC clusters and physio-affective symptoms of Long COVID*

**Table 2** shows the results of univariate GLM analysis examining the associations between diagnosis into controls, LC and LC+IO&NS and all clinical scores while controlling for the effects of age, sex, education years, and TUD (entered as covariates). We found that the total FF, HAMD and HAMA, pure FF, and pure and physiosom HAMD and HAMA scores, as well as the autonomic and GIS symptoms, were significantly different between the three classes and increased from controls → LC → LC+O&NS. Sleep disorders, chronic fatigue and cognitive disorders were significantly higher in Long Covid than in controls.

**Table 3** shows the intercorrelation matrix of the O&NS biomarkers, on the one hand, and SpO<sub>2</sub>, maximal body temperature, and clinical physio-affective ratings, on the other. OSTOX was significantly associated with SpO<sub>2</sub>, all physio-affective ratings, except cognitive impairment scores. There was no significant association between OSTOX and body temperature. ANTIOX was inversely correlated with all physio-affective ratings, including cognitive impairments and was positively associated with SpO<sub>2</sub>. The OSTOX /ANTIOX ratio was significantly associated with all physio-



affective scores, SpO2 and body temperature. There were no significant associations between CRP and the OSTOX/ANTIOX measurements. **Figure 1** shows the partial regression of the physio-affective phenome score on OSTOX/ANTIOX after adjusting for age, sex, BMI, education and TUD.

#### *Prediction of the physio-affective scores by IO&NS biomarkers*

**Table 4** shows the results of multiple regression analyses with physio-affective measurements as dependent variables and O&NS biomarkers and CRP as explanatory variables while allowing for the effects of age, sex, BMI, TUD, education and vaccination types. Regression #1 shows that 25.0% of the variance in the pure HAMD score could be explained by the regression on Gpx and education (inversely associated) and MDA, CRP and carbonyl proteins (positively associated). We found that 23.0% of the variance in the physiosom HAMD score (regression #2) was explained by the cumulative effects of lowered Gpx and zinc, increased NO and CRP and vaccination with AstraZeneca or Pfizer. Regression #3 shows that 13.1% of the variance in pure HAMA is explained by CRP, female sex and AstraZeneca vaccination. In Regression #4, 26.7% of the variance in physiosom HAMA was explained by the regression on CRP and NO (positively) and Gpx (inversely), female sex and vaccination with AstraZeneca or Pfizer. Regression #5 shows that 28.0% of the variance in pure FF was explained by NO, MDA, CRP (positively) and Gpx (inversely). Up to 30.2% of the variance in the severity of the physio-affective phenome score was explained by NO, MDA, CRP (positively), Gpx (inversely), female sex, and vaccination with AstraZeneca or Pfizer.

### *Prediction of physio-affective scores by IO&NS biomarkers, SpO2 and body temperature*

We have rerun the analyses shown in Table 4 and include the OSTOX, ANTIOX, OSTOX/ANTOX ratio, SpO2 and body temperature and the results are presented in **Table 5**. SpO2 was inversely associated with all 6 physio-affective scores (regressions #1 - #6), body temperature was positively associated with all scores, except pure HAMA, while IO&NS biomarkers had significant effects on all scores above and beyond the effects of SpO2 and body temperature (all except pure HAMA). Thus, OSTOX was associated with pure HAMD, NO with physiosom HAMD and HAMA and pure FF, MDA predicted pure FF and OSTOX/ANTIOX predicted the physio-affective phenome. The effects of CRP disappeared after considering the effects of the other explanatory variables.

In this Table, we also examine whether the OSTOX/ANTOX ratio and CRP are predicted by SpO2 and body temperature while allowing for the effects of confounders. Regressions #7 and 8 display that the OSTOX/ANTIOX ratio was predicted by SpO2 and CRP by body temperature and male sex. **Figures 2 and 3** show the partial regressions of the OSTOX/ANTIOX ratio on SpO2 and of CRP on body temperature, respectively (after adjusting for age, sex, BMI, and TUD).

### *Associations between physio-affective scores and all biomarkers combined*

To examine the association between the combined effects of SpO2, body temperature and the biomarkers of Long COVID, we performed two types of analyses: a) Pearson's correlation analyses between the physio-affective score and a new composite score computed as  $z \text{ body temperature} - z \text{ SpO2} + z \text{ OSTOX} - z \text{ ANTIOX}$  (dubbed the BTO2ONS index); and b) canonical correlation analyses with the physio-

affective scores as dependent variables and SpO2, body temperature and a Long COVID biomarker composite score ( $z \text{ OSTOX} + z \text{ CRP} - z \text{ ANTIOX}$ , dubbed the ONSCRP index) as explanatory variables.

Table 3 shows that the BTO2ONS index was significantly correlated with CRP and with all physio-affective scores in the total study group and the restricted study group of Long COVID patients (except for cognitive disorders). **Figure 4** shows the partial regression of the physio-affective score on the BTO2ONS composite score after controlling for age, sex, BMI, education and TUD.

**Table 6** shows the results of three canonical correlations with different sets of physio-affective scores as dependent variables. All CCAs showed that one canonical function was significant, while the other variates had no significant information about the variables. CCA #1 shows that the first canonical correlation between the biomarkers and total physio-affective scores was  $r=0.752$ . The first canonical variate based on SpO2, body temperature and the ONSCRP index explained 64.6% of the variance, indicating that this component is an overall measure of the adverse outcome pathways, and the first canonical variate based on the rating scale scores explained 89.4% of the variance indicating it is an overall measure of severity of the physio-affective phenome of Long COVID. Moreover, the amount of variance explained by the pathways in the total phenome was 50.6%. The same biomarker set explained 41.6% of the variance in a canonical variate extracted from pure FF and pure and physiosom HAMA and HAMD scores, and 39.1% in a canonical component based on autonomic and GIS symptoms, insomnia and chronic fatigue, while the canonical loading of cognitive disorder was lower (0.421).

*Results of PLS and construction of a new endophenotypic class and a pathway phenotype*

**Figure 5** shows a PLS model that examined whether the effects of SpO<sub>2</sub> and body temperature during the acute phase of the physio-affective phenome of Long COVID (a latent vector extracted from the 5 rating scale subdomains) are mediated by IO&NS biomarkers. Therefore, we entered all ONS biomarkers and CRP as single indicators that could be predicted by SpO<sub>2</sub> or body temperature, and whereby the ONS biomarkers, the overarching OSTOX/ANTIOX ratio and CRP were allowed to predict the physio-affective phenome, which was entered as a latent vector extracted from pure FF, and pure ad physiosom HAMA and HAMD scores. With an SRMR of 0.027, the model quality was adequate, and we found adequate values for construct reliability validity of the physio-affective phenome (AVE=0.731; composite reliability=0.931, Cronbach alpha=0.907, rho\_A=0.920, all loadings > 0.777). Blindfolding revealed appropriate construct cross-validated redundancy for the physio-affective phenome LV (0.424). Non-significant paths and non-significant indicators are deleted from the model. The following are the findings of the complete PLS analysis (bias-corrected and accelerated using 5000 bootstraps,) as shown in Figure 5: a large part of the variance in the physio-affective phenome (60.3%) is explained by female sex, body temperature, SpO<sub>2</sub> and OSTOX/ANTIOX ratio. The effects of SpO<sub>2</sub> on the phenome score are in part mediated by effects on Gpx ( $t=-2.21$ ,  $p=0.027$ ) and NO ( $t=-2.05$ ,  $p=0.041$ ) which contribute to the OSTOX/ANTIOX ratio. Body temperature ( $t=4.02$ ,  $p<0.001$ ), SpO<sub>2</sub> ( $t=-9.14$ ,  $p<0.001$ ), zinc ( $t=-2.74$ ,  $p=0.006$ ), TAC ( $t=-2.90$ ,  $p=0.004$ ), Gpx ( $t=-2.76$ ,  $p=0.006$ ), NO ( $t=2.75$ ,  $p=0.006$ ), MDA ( $t=2.85$ ,  $p=0.004$ ), and MPO ( $t=2.75$ ,  $p=0.006$ ), protein carbonyls ( $t=2.69$ ,  $p=0.007$ ) have significant total effects on the output latent vector.

Based on all variables entered in this model (except sex) and the latent physio-affective score, we have performed a two-step cluster analysis with COVID infection

as a categorical variable and all biomarkers as scale variables. **Figure 6** shows the features of the formed clusters. We discovered a three-cluster model with an appropriate measure of cohesiveness and separation of 0.52, consisting of a control cluster (n=36), patient cluster 1 (n=82) and patient cluster 2 (n=38). Figure 6 shows a clustered bar graph that was made using the significant indicators in the PLS analysis. Patient cluster 2 is a new endophenotype class of Long COVID characterized by very high body temperature, physio-affective scores, MDA, MPO, protein carbonyls and NO values, and very low SpO<sub>2</sub>, Gpx, zinc and TAC values as compared with cluster 1 (all p<0.01).

We also constructed a new pathway phenotype by extracting a factor from ONSCRP, SpO<sub>2</sub>, PBT, and the physio-affective phenome (KMO=0.782, all loadings >0.753, explained variance=68.5%, Cronbach alpha=0.822).

## Discussion

### *Oxidative stress and immune activation in Long COVID*

The current study's first major finding is that a) Long COVID is associated with decreased antioxidant defenses, including Gpx, and a mild inflammatory process; and b) 31.7 percent of Long COVID patients belong to a cluster characterized by decreased SpO<sub>2</sub>, antioxidant levels, zinc, and Gpx, and increased body temperature, CRP, and OSTOX (increased MPO, NO<sub>x</sub>, MDA, and protein carbonyls). To put it another way, Long COVID is associated with immune-inflammatory processes and decreased antioxidant defenses, while a subgroup of Long COVID patients additionally exhibits increased NO production, oxidative damage to proteins (protein carbonyls) and lipids with increased aldehyde formation (MDA), and immune-oxidative stress response (increased MPO and CRP).

Previous research found that between 1.8 and 24.5 percent of Long COVID patients had elevated CRP levels <sup>11, 49-52</sup>, which were operationalized as >10 mg/L or >2.9 mg/dL. Other authors found that median CRP levels varied between 0.6 and 2.9 mg/L <sup>4, 53-55</sup>. Nevertheless, in the present study, we detected that the patient group with Long COVID showed increased CRP levels compared with control levels, indicating a mild inflammatory response. Previously, a meta-analysis reported that 13 out of 14 studies showed increases in at least one measure of inflammation either in a subgroup of patients or throughout the whole post-COVID period <sup>56</sup>. In addition, more CD4+ T cells expressed interferon- $\gamma$  and interleukin (IL)-2, and increased plasma levels of IL-6, macrophage inflammatory protein 1, IL-1 $\beta$ , tumor necrosis factor- $\alpha$  and the soluble IL-1 receptor antagonist in the Long COVID patients <sup>49, 52, 53, 57-60</sup>, indicating activation of M1 macrophages and T helper (Th)-1 phenotypes <sup>33</sup>. Mehandru and Merad reviewed that Long COVID is accompanied by elevated neutrophils, lipid abnormalities, and reduced serum albumin <sup>61</sup>.

There are some data that acute COVID-19 infection is accompanied by signs of oxidative stress, including increased expression of ROS-response genes and glycolysis in peripheral blood mononuclear cells <sup>62</sup>, increased MDA (TBARS assay), F-isoprostane, 8-hydroxy-2'-deoxyguanosine, AOPP and nitrotyrosine levels, and lowered glutathione (GSH), -SH groups, selenium, zinc, TAC and vitamin D <sup>39, 63-69</sup>. Lage et al. reported that activation of the NLRP3 inflammasome, including increased mitochondrial superoxide production and lipid peroxidation, may persist after short-term patient recovery <sup>70</sup>.

As such, our work demonstrates that the oxidative stress biomarkers during Long COVID are quite similar to those found during the acute phase, except for AOPP, nitrotyrosine and TAC levels, which were altered in acute COVID-19 but not in Long

COVID. Nonetheless, our study demonstrates that a persistent imbalance between oxidative stress toxicity and reduced antioxidant defenses is a key component of Long COVID and that increased aldehyde, neutrophil-associated MPO, protein carbonyl, and NO production are the major neurotoxic pathways, which, when combined with decreased antioxidant defenses, may have a variety of detrimental effects as reviewed before <sup>71</sup>.

Given that the Long COVID group as a whole showed Gpx deficiency, while only a subset of patients demonstrated oxidative damage, we may infer that Gpx deficiency is the main cause of the consequent lipid and protein damage. Gpx has been shown to degrade lipid hydroperoxides to their respective alcohols and free hydrogen peroxide to water <sup>72, 73</sup>, hence reducing oxidative damage <sup>71</sup>. Due to their negative impact on the vascular endothelium and inflammatory processes, these activated oxidative stress pathways contribute to the pathophysiology of COVID-19 and Long COVID <sup>74-76</sup>. Additionally, MPO generated by neutrophils during inflammation may result in irreversible protein and lipid alterations and increased levels of oxidized low-density lipoprotein, thereby promoting atherogenesis <sup>77</sup>. Furthermore, the resulting chlorinative stress may lead to multiorgan damage in COVID-19 through various mechanisms, including oxygen competition for heme-binding sites, decreased oxygen saturation, hemoglobin-heme iron oxidation, heme degradation, and iron release <sup>78</sup>. Although NO production was enhanced considerably in Long COVID, nitrotyrosine levels were not altered, although increased nitrotyrosine indicates an increase in reactive nitrogen species with increased NO<sub>2</sub> binding to tyrosine, thereby forming an immunogenic neoepitope <sup>79</sup>. Nonetheless, future research should explore if the increased NO generation in Long COVID results in nitrosative stress associated with hypernitrosylation (increased NO or nitroso binding), which has a variety of neurotoxic

consequences<sup>80</sup>. It is critical to remember that low zinc levels have a wide impact on the immune system<sup>81, 82</sup> and that zinc itself may reduce viral replication, including SARS-CoV-2 replication<sup>83</sup>.

### *Biomarkers of acute COVID-19 predict IO&NS biomarkers of Long COVID*

The second major finding of this study is that decreased SpO2 levels during the acute phase of COVID-19 significantly predict oxidative toxicity, increased NO production, and decreased Gpx and antioxidant defenses, whereas increased peak body temperature levels during the acute phase predict increased CRP and decreased zinc and antioxidant levels in Long COVID. As a result, both decreased SpO2 and higher body temperature contribute to Long COVID's increased OSTOX/ANTIOX ratio.

As mentioned in the Introduction, both lowered SpO2 and increased body temperature are part of the immune-inflammatory response, predict critical illness and death, and are manifestations of the infectious-immune-inflammatory core of acute COVID-19<sup>84</sup>. SpO2 is often lowered in COVID-19, particularly in more severe instances and in the presence of CCTAs<sup>85, 86</sup>, and both CCTAs and decreased SpO2 are highly related to immunological activation<sup>25</sup>. COVID-19-associated microvascular damage, such as endothelitis, microthrombosis, capillary damage, damage to pericytes, and fluid buildup in the alveoli, results in hypoxia and reduced SpO2<sup>87</sup>. Prolonged systemic hypoxia has been shown to affect the redox equilibrium and induce oxidative stress<sup>88, 89</sup>. These effects drive inflammatory processes and nitro-oxidative pathways<sup>90</sup> and the resultant excess of reactive oxygen species may induce oxidative damage, aggravating systemic tissue damage and contributing to more severe COVID-19<sup>91</sup>. COVID-19 individuals who require invasive mechanical breathing, admission to an intensive care unit, or lengthy hospitalization are more likely to sustain long-term tissue



damage as a result of persistent symptoms<sup>92-94</sup>. As such, it appears that COVID-19 (and other viral infectious diseases) is accompanied by three different inflammatory phases: a) beneficial protective inflammation, which combats the infection and may mount a restorative repair, b) hyperinflammation, which may lead to a cytokine storm and critical disease or even death, and c) non-resolving inflammation resulting in a protracted mild inflammatory state<sup>95</sup> as observed in Long COVID. All in all, our results show that the severity of the infectious-immune-inflammatory response during acute COVID-19 may, at least in part, predict mild inflammation and increased nitro-oxidative damage in Long COVID.

#### *IO&NS biomarkers predict the physio-affective phenome of Long COVID*

The third and most noteworthy finding of this study is the discovery of a) a pathway phenotype comprising SpO<sub>2</sub>, body temperature, OSTOX, ANTIOX, CRP and the physio-affective phenome; and b) an endophenotype class of Long COVID patients (31.7%) who show simultaneously severe abnormalities in SpO<sub>2</sub> and peak body temperature during acute COVID-19, and an increased OSTOX/ANTIOX ratio, CRP and increased total HAMD, HAMA and FF total and subdomain scores during Long COVID. The changes in the rating scale scores indicate the presence of moderate depression and anxiety symptoms consistent with major depression and generalized anxiety disorder and the presence of a chronic fatigue syndrome (lasting 2-3 months), including chronic fatigue, insomnia, autonomic and gastro-intestinal symptoms, and, to a lesser extent, cognitive impairments. Additionally, approximately 60% of the variance in the severity of the physio-affective phenome is explained by the cumulative effects of decreased SpO<sub>2</sub> and increased peak body temperature (thus, the severity of the acute infectious phase) coupled with increased CRP and OSTOX/ANTIOX ratio.

Most notably was the impact of MDA and NO and decreased Gpx and zinc, although protein carbonyls and MPO, as well as decreased TAC, all contribute to the physiologic affective phenotype.

According to a recent meta-analysis, the percentage of people suffering chronic fatigue twelve weeks or more after exposure to COVID-19 was 0.32, whereas cognitive impairment was 0.22<sup>56</sup>. Additionally, a narrative synthesis indicated that a subgroup of Long COVID patients had elevated proinflammatory indicators and significant functional impairment. Another meta-analysis found that 80 percent of patients infected with SARS-CoV-2 had one or more long-term symptoms and that the top most typical symptoms were chronic fatigue (58%), headache (44%), attention problems (27%), hair loss (25%), and dyspnea (24%), although memory loss, anxiety, depression, insomnia, digestive disorders, and autonomic symptoms were also widespread (from 10-20 percent) 15–110 days after virus infection<sup>96</sup>. Mehandru and Merad reviewed the many clinical manifestations of long-haul COVID, including systemic and musculoskeletal manifestations (chronic fatigue and fibromyalgia symptoms), neuropsychiatric symptoms (insomnia, depression, anxiety, neurocognitive deficits), autonomic and cardio-vascular, GIS and renal and respiratory manifestations<sup>61</sup>. According to some other studies, 50 to 98 percent of the Long COVID patients complain of fatigue as the primary symptom<sup>1, 12, 97</sup>. Additionally, mood abnormalities are common<sup>2</sup>, particularly despair and anxiety<sup>23</sup>, whereas 58.4 percent of Long COVID patients have cognitive impairment and 34–51-78% have memory problems, particularly memory loss<sup>2, 18, 22, 94, 98</sup>. Additionally, other studies indicate that dyspnea, autonomic symptoms, post-traumatic stress and fibromyalgia symptoms (muscle aches, myalgia, and articular pain) are common<sup>99-101</sup>. Notably, the severity of acute COVID-19 infection affects the development of neuropsychiatric symptoms, with ICU survivors being more likely

(56%) than non-ICU survivors to develop a neuropsychiatric condition <sup>24</sup>. Most importantly, the results of our study show that chronic fatigue, depression and anxiety symptoms in Long COVID are all manifestations of the same physio-affective core, which is strongly associated with OSTOX/ANTIOX and inflammatory signs.

There is now evidence that major depression, generalized anxiety disorder and chronic fatigue syndrome are IO&NS-related disorders characterized by increased levels of inflammatory mediators, including CRP, oxidative damage to lipids with increased aldehyde formation, damage to proteins, increased NO production and hypernitrosylation and lowered antioxidant levels including zinc, GSH and Gpx and total antioxidant capacity <sup>28, 31, 71, 102</sup>. We have reviewed previously the mechanistic explanations of how these multiple IO&NS pathways cause neuroaffective toxicity and, consequently, the onset of chronic fatigue syndrome and physiosomatic and affective symptoms <sup>28, 31, 71, 102-104</sup>. All in all, the hyperinflammation that may accompany SARS-CoV-2 infection is not only associated with severe lung pathology <sup>105, 106</sup>, a poorer clinical outcome <sup>105, 107</sup> and higher mortality <sup>108</sup> but also with increased OSTOX/ANTIOX and physio-affective symptoms three to four months later. It should be stressed that only part of the variance in Long COVID physio-affective symptoms was explained by IO&NS pathways indicating that other mechanistic processes are involved. In this respect, it is plausible that autoimmune responses, which play a role in chronic fatigue syndrome and depression <sup>28, 109</sup> and Long COVID <sup>110</sup>, and pulmonary fibrosis with scarring and cardiac remodeling <sup>61</sup> contribute to the physio-affective phenome.

Finally, it is also important to note that vaccinations with AstraZeneca (viral vector, genetically modified virus vaccine) and Pfizer (mRNA vaccine), but not Sinopharm (inactivated virus vaccine), may aggravate the physio-affective phenome

and, in particular, the physiosomatic symptoms of the HAMA and HAMD subdomains. It is known that this type of corona vaccine may cause Long Covid-like symptoms, including anxiety, depression and fatigue, T cell activation, autoimmune responses, increased production of spike protein, and impairments in type 1 interferon signaling<sup>111, 112</sup>.

## Limitations.

This research would have been more interesting if we had also assayed the cytokine network, the NLRP3 inflammasome and biomarkers of hypernitrosylation. Follow-up studies should examine the same rating scales and biomarkers at later time points, including 6 months, one and two years after the acute infection, to delineate which patients show protracted chronic fatigue syndrome and GAD (which tend to be chronic disorders) and remitted depression (which most often comes in short-lasting episodes)<sup>44, 95</sup>.

## Conclusions

Around 60 percent of the variation in the physio-affective phenome of Long COVID is explained by OSTOX/ANTIOX, peak body temperature and SpO2. Lowered SpO2 predicts the alterations in Gpx and NO production during Long COVID, while increased body temperature predicts increased CRP and reduced ANTIOX and zinc levels in Long COVID. The impact of the immune-inflammatory response during acute COVID-19 on the physio-affective phenome of Long COVID is partially mediated by OSTOX/ANTIOX. Post-viral physio-affective symptoms have an inflammatory origin and are partially mediated by neuro-oxidative damage and lowered antioxidant defenses.

## **Author's contributions**

HTA and DSA recruited the patients and collected blood samples. HTA and HAH measured the serum biomarkers. MM performed the statistical analysis. All authors contributed to the drafting and editing of the manuscript, and all authors approved the final version of the manuscript.

## **ETHICS APPROVAL AND CONSENT TO PARTICIPATE**

The research was approved by the University of Kufa's institutional ethics board (8241/2021) and the Najaf Health Directorate-Training and Human Development Center (Document No.18378/ 2021).

## **HUMAN AND ANIMAL RIGHTS**

The study was conducted according to Iraq and international ethics and privacy laws and was conducted ethically following the World Medical Association Declaration of Helsinki. Furthermore, our IRB follows the International Guideline for Human Research protection as required by the Declaration of Helsinki, The Belmont Report, CIOMS Guideline and the International Conference on Harmonization in Good Clinical Practice (ICH-GCP).

## **CONSENT FOR PUBLICATION**

All participants gave written informed consent before participating in this study.

## **AVAILABILITY OF DATA AND MATERIALS**

The dataset generated during and/or analyzed during the current study will be available from the corresponding author (M.M.) upon reasonable request and once the dataset has been fully exploited by the authors.

## FUNDING

There was no specific funding for this specific study.

## Conflict of interest

The authors have no conflict of interest with any commercial or other association connected with the submitted article.

## Acknowledgments

We thank the staff of Al-Sadr Teaching Hospital and Al-Amal Specialized Hospital for Communicable Diseases in Najaf governorate-Iraq for their help in collecting samples. We also thank the high-skilled staff of the hospitals' internal labs for their help in estimating biomarkers levels.

## References

1. Dennis A, Wamil M, Alberts J, Oben J, Cuthbertson DJ, Wootton D *et al.* Multiorgan impairment in low-risk individuals with post-COVID-19 syndrome: a prospective, community-based study. *BMJ Open* 2021; **11**(3): e048391.
2. Lu Y, Li X, Geng D, Mei N, Wu PY, Huang CC *et al.* Cerebral Micro-Structural Changes in COVID-19 Patients - An MRI-based 3-month Follow-up Study. *EClinicalMedicine* 2020; **25**: 100484.
3. Miyazato Y, Morioka S, Tsuzuki S, Akashi M, Osanai Y, Tanaka K *et al.* Prolonged and Late-Onset Symptoms of Coronavirus Disease 2019. *Open Forum Infect Dis* 2020; **7**(11): ofaa507.
4. van den Borst B, Peters JB, Brink M, Schoon Y, Bleeker-Rovers CP, Schers H *et al.* Comprehensive Health Assessment 3 Months After Recovery From Acute Coronavirus Disease 2019 (COVID-19). *Clin Infect Dis* 2021; **73**(5): e1089-e1098.

5. Townsend L, Dowds J, O'Brien K, Sheill G, Dyer AH, O'Kelly B *et al.* Persistent Poor Health after COVID-19 Is Not Associated with Respiratory Complications or Initial Disease Severity. *Ann Am Thorac Soc* 2021; **18**(6): 997-1003.
6. Mahase E. Covid-19: What do we know about "long covid"? *BMJ* 2020; **370**: m2815.
7. Fernández-de-Las-Peñas C, Palacios-Ceña D, Gómez-Mayordomo V, Cuadrado ML, Florencio LL. Defining Post-COVID Symptoms (Post-Acute COVID, Long COVID, Persistent Post-COVID): An Integrative Classification. *Int J Environ Res Public Health* 2021; **18**(5).
8. Raveendran AV, Jayadevan R, Sashidharan S. Long COVID: An overview. *Diabetes Metab Syndr* 2021; **15**(3): 869-875.
9. Shah W, Hillman T, Playford ED, Hishmeh L. Managing the long term effects of covid-19: summary of NICE, SIGN, and RCGP rapid guideline. *BMJ* 2021; **372**: n136.
10. Yong SJ. Long COVID or post-COVID-19 syndrome: putative pathophysiology, risk factors, and treatments. *Infect Dis* 2021; **53**(10): 737-754.
11. Arnold DT, Hamilton FW, Milne A, Morley AJ, Viner J, Attwood M *et al.* Patient outcomes after hospitalisation with COVID-19 and implications for follow-up: results from a prospective UK cohort. *Thorax* 2021; **76**(4): 399-401.
12. Carfi A, Bernabei R, Landi F. Persistent Symptoms in Patients After Acute COVID-19. *JAMA* 2020; **324**(6): 603-605.
13. Rubin GJ, Smith LE, Melendez-Torres GJ, Yardley L. Improving adherence to 'test, trace and isolate'. *J R Soc Med* 2020; **113**(9): 335-338.
14. Miller A. COVID-19: not just an acute illness. *Trends Urol Men Health* 2020; **11**(6): 17-19.
15. Dani M, Dirksen A, Taraborrelli P, Torocastro M, Panagopoulos D, Sutton R *et al.* Autonomic dysfunction in 'long COVID': rationale, physiology and management strategies. *Clin Med (Lond)* 2021; **21**(1): e63-e67.
16. Macpherson K, Cooper K, Harbour J, Mahal D, Miller C, Nairn M. Experiences of living with long COVID and of accessing healthcare services: a qualitative systematic review. *BMJ open* 2022; **12**(1): e050979.
17. Cares-Marambio K, Montenegro-Jiménez Y, Torres-Castro R, Vera-Urbe R, Torralba Y, Alsina-Restoy X *et al.* Prevalence of potential respiratory symptoms in survivors of

- hospital admission after coronavirus disease 2019 (COVID-19): A systematic review and meta-analysis. *Chron Respir Dis* 2021; **18**: 14799731211002240.
18. Davis HE, Assaf GS, McCorkell L, Wei H, Low RJ, Re'em Y *et al*. Characterizing long COVID in an international cohort: 7 months of symptoms and their impact. *EClinicalMedicine* 2021; **38**: 101019.
  19. Simani L, Ramezani M, Darazam IA, Sagharichi M, Aalipour MA, Ghorbani F *et al*. Prevalence and correlates of chronic fatigue syndrome and post-traumatic stress disorder after the outbreak of the COVID-19. *J Neurovirol* 2021; **27**(1): 154-159.
  20. Bellan M, Soddu D, Balbo PE, Baricich A, Zeppegno P, Avanzi GC *et al*. Respiratory and psychophysical sequelae among patients with COVID-19 four months after hospital discharge. *JAMA network open* 2021; **4**(1): e2036142-e2036142.
  21. Cirulli ET, Schiabor Barrett KM, Riffle S, Bolze A, Neveux I, Dabe S *et al*. Long-term COVID-19 symptoms in a large unselected population. *medRxiv* 2020: 2020.2010.2007.20208702.
  22. Garrigues E, Janvier P, Kherabi Y, Le Bot A, Hamon A, Gouze H *et al*. Post-discharge persistent symptoms and health-related quality of life after hospitalization for COVID-19. *J Infect* 2020; **81**(6): e4-e6.
  23. Huang C, Huang L, Wang Y, Li X, Ren L, Gu X *et al*. 6-month consequences of COVID-19 in patients discharged from hospital: a cohort study. *Lancet* 2021; **397**(10270): 220-232.
  24. Taquet M, Geddes JR, Husain M, Luciano S, Harrison PJ. 6-month neurological and psychiatric outcomes in 236 379 survivors of COVID-19: a retrospective cohort study using electronic health records. *Lancet Psychiat* 2021; **8**(5): 416-427.
  25. Al-Jassas HK, Al-Hakeim HK, Maes M. Intersections between pneumonia, lowered oxygen saturation percentage and immune activation mediate depression, anxiety, and chronic fatigue syndrome-like symptoms due to COVID-19: A nomothetic network approach. *J Affect Disord* 2022; **297**: 233-245.
  26. Al-Hadrawi DS, Al-Rubaye HT, Almulla AF, Al-Hakeim HK, Maes MF. Lowered oxygen saturation and increased body temperature in acute COVID-19 largely predict chronic fatigue syndrome and affective symptoms due to LONG COVID: a precision nomothetic approach. *medRxiv* 2022.
  27. Tharakan S, Nomoto K, Miyashita S, Ishikawa K. Body temperature correlates with mortality in COVID-19 patients. *Crit Care* 2020; **24**(1): 298.



28. Maes M. Precision Nomothetic Medicine in Depression Research: A New Depression Model, and New Endophenotype Classes and Pathway Phenotypes, and A Digital Self. *J Pers Med* 2022; **12**(3): 403.
29. Pakorn Sagulkoo KP, Apichat Suratanee, Andrea Name Colado Simão, Edna Maria Vissoci Reiche, Michael Maes. Immunopathogenesis and immunogenetic variants in COVID-19. *Curr Pharmaceut Design* 2022; **in press**.
30. Maes M, Kubera M, Uytterhoeven M, Vrydags N, Bosmans E. Increased plasma peroxides as a marker of oxidative stress in myalgic encephalomyelitis/chronic fatigue syndrome (ME/CFS). *Med Sci Monit* 2011; **17**(4): Sc11-15.
31. Maes M, Rachayon M, Jirakran K, Sodsai P, Klinchanhom S, Gálecki P *et al*. The immune profile of Major Dysmood Disorder: Proof of concept and mechanism using the precision nomothetic psychiatry approach. *Cells* 2022; **11**(7): 1183.
32. Liu T, Zhong S, Liao X, Chen J, He T, Lai S *et al*. A Meta-Analysis of Oxidative Stress Markers in Depression. *PLoS One* 2015; **10**(10): e0138904.
33. Maes M, Carvalho AF. The Compensatory Immune-Regulatory Reflex System (CIRS) in Depression and Bipolar Disorder. *Mol Neurobiol* 2018; **55**(12): 8885-8903.
34. Maes M, Moraes JB, Bonifacio KL, Barbosa DS, Vargas HO, Michelin AP *et al*. Towards a new model and classification of mood disorders based on risk resilience, neuro-affective toxicity, staging, and phenome features using the nomothetic network psychiatry approach. *Metabol Brain Dis* 2021; **36**(3): 509-521.
35. Pincemail J, Cavalier E, Charlier C, Cheramy-Bien J-P, Brevers E, Courtois A *et al*. Oxidative Stress Status in COVID-19 Patients Hospitalized in Intensive Care Unit for Severe Pneumonia. A Pilot Study. *Antioxidants* 2021; **10**(2): 257.
36. Mehri F, Rahbar AH, Ghane ET, Souri B, Esfahani M. Changes in oxidative markers in COVID-19 patients. *Arch Med Res* 2021; **52**(8): 843-849.
37. Solis-Paredes J, Montoya-Estrada A, Cruz-Rico A, Reyes-Muñoz E, Perez-Duran J, Espino y Sosa S *et al*. Plasma Total Antioxidant Capacity and Carbonylated Proteins Are Increased in Pregnant Women with Severe COVID-19. *Viruses* 2022; **14**(723): 1-10.
38. Ducastel M, Chenevier-Gobeaux C, Ballaa Y, Meritet JF, Brack M, Chapuis N *et al*. Oxidative Stress and Inflammatory Biomarkers for the Prediction of Severity and ICU Admission in Unselected Patients Hospitalized with COVID-19. *Int J Mol Sci* 2021; **22**(14): 7462.

39. Soto ME, Guarner-Lans V, Díaz-Díaz E, Manzano-Pech L, Palacios-Chavarría A, Valdez-Vázquez RR *et al.* Hyperglycemia and Loss of Redox Homeostasis in COVID-19 Patients. *Cells* 2022; **11**(6): 932.
40. Taylor EW, Radding W. Understanding Selenium and Glutathione as Antiviral Factors in COVID-19: Does the Viral M(pro) Protease Target Host Selenoproteins and Glutathione Synthesis? *Front Nutr* 2020; **7**: 143.
41. Ghanei E, Baghani M, Moravvej H, Talebi A, Abdollahimajd F. Low serum levels of zinc and 25-hydroxyvitmain D as potential risk factors for COVID-19 susceptibility: a pilot case-control study. *Eur J Clin Nutr* 2022: 1-6.
42. WHO WHO. A clinical case definition of post COVID-19 condition by a Delphi consensus, 6 October 2021: World Health Organization; 2021.
43. Hamilton M. A rating scale for depression. *J Neurol Neurosurg Psychiatry* 1960; **23**(1): 56-62.
44. Morris G, Maes M. A neuro-immune model of Myalgic Encephalomyelitis/Chronic fatigue syndrome. *Metab Brain Dis* 2013; **28**(4): 523-540.
45. Zachrisson O, Regland B, Jahreskog M, Kron M, Gottfries CG. A rating scale for fibromyalgia and chronic fatigue syndrome (the FibroFatigue scale). *J Psychosom Res* 2002; **52**(6): 501-509.
46. Hamilton M. The assessment of anxiety states by rating. *Br J Med Psychol* 1959; **32**(1): 50-55.
47. Benjamini Y, Hochberg Y. Controlling the False Discovery Rate: A Practical and Powerful Approach to Multiple Testing. *J R Stat Soc Series B Stat Methodol* 1995; **57**(1): 289-300.
48. Ringle C, Da Silva D, Bido D. Structural equation modeling with the SmartPLS. *Braz J Market* 2015; **13**(2).
49. Sonnweber T, Sahanic S, Pizzini A, Luger A, Schwabl C, Sonnweber B *et al.* Cardiopulmonary recovery after COVID-19: an observational prospective multicentre trial. *Eur Respir J* 2021; **57**(4).
50. Evans RA, McAuley H, Harrison EM, Shikotra A, Singapuri A, Sereno M *et al.* Physical, cognitive, and mental health impacts of COVID-19 after hospitalisation (PHOSP-COVID): a UK multicentre, prospective cohort study. *Lancet Respir Med* 2021; **9**(11): 1275-1287.

51. Skala M, Svoboda M, Kopecky M, Kocova E, Hyrsi M, Homolac M *et al.* Heterogeneity of post-COVID impairment: interim analysis of a prospective study from Czechia. *Viral J* 2021; **18**(1): 1-5.
52. Santis L, Pérez-Camacho I, Sobrino B, González GE, Ruíz-Mesa JD, Plata A *et al.* Clinical and immunoserological status 12 weeks after infection with COVID-19: prospective observational study. 2020.
53. Zhou Y, Teng X, Han M, Shi J, Li C, Zhang X *et al.* The value of PCT, IL-6, and CRP in the early diagnosis and evaluation of COVID-19. *Eur Rev Med Pharmacol Sci* 2021; **25**(02): 1097-1100.
54. García-Abellán J, Padilla S, Fernández-González M, García JA, Agulló V, Andreo M *et al.* Long-term clinical, virological and immunological outcomes in patients hospitalized for COVID-19: antibody response predicts long COVID. *medRxiv* 2021.
55. Sykes DL, Holdsworth L, Jawad N, Gunasekera P, Morice AH, Crooks MG. Post-COVID-19 symptom burden: what is long-COVID and how should we manage it? *Lung* 2021; **199**(2): 113-119.
56. Ceban F, Ling S, Lui LMW, Lee Y, Gill H, Teopiz KM *et al.* Fatigue and cognitive impairment in Post-COVID-19 Syndrome: A systematic review and meta-analysis. *Brain, Behavior, and Immunity* 2022; **101**: 93-135.
57. Breton G, Mendoza P, Hägglöf T, Oliveira TY, Schaefer-Babajew D, Gaebler C *et al.* Persistent cellular immunity to SARS-CoV-2 infection. *Journal of Experimental Medicine* 2021; **218**(4).
58. Persistent symptoms and association with inflammatory cytokine signatures in recovered coronavirus disease 2019 patients. *Proceedings of the Open forum infectious diseases* 2021. Oxford University Press US.
59. Shuwa HA, Shaw TN, Knight SB, Wemyss K, McClure FA, Pearmain L *et al.* Alterations in T and B cell function persist in convalescent COVID-19 patients. *Med* 2021; **2**(6): 720-735. e724.
60. Fortini A, Torrigiani A, Sbaragli S, Lo Forte A, Crociani A, Cecchini P *et al.* COVID-19: persistence of symptoms and lung alterations after 3–6 months from hospital discharge. *Infection* 2021; **49**(5): 1007-1015.
61. Mehendru S, Merad M. Pathological sequelae of long-haul COVID. *Nat Immunol* 2022; **23**(2): 194-202.

62. Medini H, Zirman A, Mishmar D. Immune system cells from COVID-19 patients display compromised mitochondrial-nuclear expression co-regulation and rewiring toward glycolysis. *Isience* 2021; **24**(12): 103471.
63. Kumar DS, Hanumanram G, Suthakaran PK, Mohanan J, Nair LDV, Rajendran K. Extracellular Oxidative Stress Markers in COVID-19 Patients with Diabetes as Co-Morbidity. *Clin Pract* 2022; **12**(2): 168-176.
64. Kosanovic T, Sagic D, Djukic V, Pljesa-Ercegovac M, Savic-Radojevic A, Bukumiric Z *et al*. Time Course of Redox Biomarkers in COVID-19 Pneumonia: Relation with Inflammatory, Multiorgan Impairment Biomarkers and CT Findings. *Antioxidants (Basel)* 2021; **10**(7).
65. Skesters A, Kustovs D, Lece A, Moreino E, Petrosina E, Rainsford KD. Selenium, selenoprotein P, and oxidative stress levels in SARS-CoV-2 patients during illness and recovery. *Inflammopharmacology* 2022; **30**(2): 499-503.
66. Yaghoubi N, Youssefi M, Jabbari Azad F, Farzad F, Yavari Z, Zahedi Avval F. Total antioxidant capacity as a marker of severity of COVID-19 infection: Possible prognostic and therapeutic clinical application. *J Med Virol* 2021.
67. Jothimani D, Kailasam E, Danielraj S, Nallathambi B, Ramachandran H, Sekar P *et al*. COVID-19: Poor outcomes in patients with zinc deficiency. *Int J Infect Dis* 2020; **100**: 343-349.
68. Yasui Y, Yasui H, Suzuki K, Saitou T, Yamamoto Y, Ishizaka T *et al*. Analysis of the predictive factors for a critical illness of COVID-19 during treatment — relationship between serum zinc level and critical illness of COVID-19. *Int J Infect Dis* 2020; **100**: 230-236.
69. Lambadiari V, Mitrakou A, Kountouri A, Thymis J, Katogiannis K, Korakas E *et al*. Association of COVID-19 with impaired endothelial glycocalyx, vascular function and myocardial deformation 4 months after infection. *Eur J Heart Failure* 2021; **23**(11): 1916-1926.
70. Lage SL, Amaral EP, Hilligan KL, Laidlaw E, Rupert A, Namasivayan S *et al*. Persistent Oxidative Stress and Inflammasome Activation in CD14(high)CD16(-) Monocytes From COVID-19 Patients. *Front Immunol* 2021; **12**: 799558.
71. Maes M, Galecki P, Chang YS, Berk M. A review on the oxidative and nitrosative stress (O&NS) pathways in major depression and their possible contribution to the (neuro)degenerative processes in that illness. *Prog Neuropsychopharmacol Biol Psychiatry* 2011; **35**(3): 676-692.

72. El-Far MA, Bakr MA, Farahat SE, Abd El-Fattah EA. Glutathione peroxidase activity in patients with renal disorders. *Clin Exp Nephrol* 2005; **9**(2): 127-131.
73. Herbette S, Roeckel-Drevet P, Drevet JR. Seleno-independent glutathione peroxidases. *FEBS J* 2007; **274**(9): 2163-2180.
74. Chernyak B, Popova E, Prikhodko A, Grebenchikov O, Zinovkina L, Zinovkin R. COVID-19 and oxidative stress. *Biochemistry (Moscow)* 2020; **85**(12): 1543-1553.
75. Fodor A, Tiperciuc B, Login C, Orasan OH, Lazar AL, Buchman C *et al.* Endothelial Dysfunction, Inflammation, and Oxidative Stress in COVID-19—Mechanisms and Therapeutic Targets. *Oxid Med Cell Long* 2021; **2021**.
76. Forcados GE, Muhammad A, Oladipo OO, Makama S, Meseko CA. Metabolic Implications of Oxidative Stress and Inflammatory Process in SARS-CoV-2 Pathogenesis: Therapeutic Potential of Natural Antioxidants. *Front Cell Infect Microbiol* 2021; **11**: 654813.
77. Karahocagil MK, Aslan M, Ceylan MR, Cikman A, Sunnetcioglu M, Kucukoglu ME *et al.* Serum myeloperoxidase activity and oxidative stress in patients with acute brucellosis. *Clin Biochem* 2012; **45**(10-11): 733-736.
78. McGonagle D, Sharif K, O'Regan A, Bridgewood C. The Role of Cytokines including Interleukin-6 in COVID-19 induced Pneumonia and Macrophage Activation Syndrome-Like Disease. *Autoimmun Rev* 2020; **19**(6): 102537.
79. Moylan S, Berk M, Dean OM, Samuni Y, Williams LJ, O'Neil A *et al.* Oxidative & nitrosative stress in depression: why so much stress? *Neurosci Biobehav Rev* 2014; **45**: 46-62.
80. Morris G, Maes M. Oxidative and Nitrosative Stress and Immune-Inflammatory Pathways in Patients with Myalgic Encephalomyelitis (ME)/Chronic Fatigue Syndrome (CFS). *Curr Neuropsychopharmacol* 2014; **12**(2): 168-185.
81. Prasad AS. Discovery of human zinc deficiency: its impact on human health and disease. *Adv Nutr* 2013; **4**(2): 176-190.
82. Gammoh NZ, Rink L. Zinc in Infection and Inflammation. *Nutrients* 2017; **9**(6).
83. Kumar A, Kubota Y, Chernov M, Kasuya H. Potential role of zinc supplementation in prophylaxis and treatment of COVID-19. *Med Hypotheses* 2020; **144**: 109848.

84. Al-Hakeim HK, Al-Jassas HK, Morris G, Maes M. Increased ACE2, sRAGE, and immune activation, but lowered calcium and magnesium in COVID-19. *Recent Adv Inflamm Allergy Drug Discov* 2022.
85. Dai W-c, Zhang H-w, Yu J, Xu H-j, Chen H, Luo S-p *et al.* CT imaging and differential diagnosis of COVID-19. *Can Assoc Radiol J* 2020; **71**(2): 195-200.
86. Luks AM, Swenson ER. COVID-19 Lung Injury and High-Altitude Pulmonary Edema. A False Equation with Dangerous Implications. *Ann Am Thorac Soc* 2020; **17**(8): 918-921.
87. Sarkar M, Niranjana N, Banyal PK. Mechanisms of hypoxemia. *Lung India* 2017; **34**(1): 47-60.
88. Debevec T, Millet GP, Pialoux V. Hypoxia-Induced Oxidative Stress Modulation with Physical Activity. *Front Physiol* 2017; **8**: 84.
89. Pialoux V, Mounier R. Hypoxia-induced oxidative stress in health disorders. *Oxid Med Cell Longev* 2012; **2012**: 940121.
90. McGarry T, Biniecka M, Veale DJ, Fearon U. Hypoxia, oxidative stress and inflammation. *Free Radic Biol Med* 2018; **125**: 15-24.
91. Schönrich G, Raftery MJ, Samstag Y. Devilishly radical NETwork in COVID-19: Oxidative stress, neutrophil extracellular traps (NETs), and T cell suppression. *Adv Biol Reg* 2020; **77**: 100741.
92. Raman B, Cassar MP, Tunnicliffe EM, Filippini N, Griffanti L, Alfaro-Almagro F *et al.* Medium-term effects of SARS-CoV-2 infection on multiple vital organs, exercise capacity, cognition, quality of life and mental health, post-hospital discharge. *EClinicalMedicine* 2021; **31**: 100683.
93. Halpin SJ, McIlvor C, Whyatt G, Adams A, Harvey O, McLean L *et al.* Postdischarge symptoms and rehabilitation needs in survivors of COVID-19 infection: A cross-sectional evaluation. *J Med Virol* 2021; **93**(2): 1013-1022.
94. Taboada M, Cariñena A, Moreno E, Rodríguez N, Domínguez MJ, Casal A *et al.* Post-COVID-19 functional status six-months after hospitalization. *J Infect* 2021; **82**(4): e31-e33.
95. Maes M, Berk M, Goehler L, Song C, Anderson G, Gałeczki P *et al.* Depression and sickness behavior are Janus-faced responses to shared inflammatory pathways. *BMC Med* 2012; **10**: 66.

96. Lopez-Leon S, Wegman-Ostrosky T, Perelman C, Sepulveda R, Rebolledo PA, Cuapio A *et al.* More than 50 long-term effects of COVID-19: a systematic review and meta-analysis. *Sci Rep* 2021; **11**(1): 1-12.
97. Liang L, Yang B, Jiang N, Fu W, He X, Zhou Y *et al.* Three-month Follow-up Study of Survivors of Coronavirus Disease 2019 after Discharge. *J Korean Med Sci* 2020; **35**(47): e418.
98. Woo MS, Malsy J, Pöttgen J, Seddiq Zai S, Ufer F, Hadjilaou A *et al.* Frequent neurocognitive deficits after recovery from mild COVID-19. *Brain Commun* 2020; **2**(2): fcaa205.
99. Crook H, Raza S, Nowell J, Young M, Edison P. Long covid-mechanisms, risk factors, and management. *BMJ* 2021; **374**: n1648.
100. Stefano GB. Historical Insight into Infections and Disorders Associated with Neurological and Psychiatric Sequelae Similar to Long COVID. *Med Sci Monit* 2021; **27**: e931447.
101. Orrù G, Ciacchini R, Gemignani A, Conversano C. Psychological intervention measures during the COVID-19 pandemic. *Clin Neuropsychiat* 2020; **17**(2): 76.
102. Maes M, Bonifacio KL, Morelli NR, Vargas HO, Moreira EG, St Stoyanov D *et al.* Generalized Anxiety Disorder (GAD) and Comorbid Major Depression with GAD Are Characterized by Enhanced Nitro-oxidative Stress, Increased Lipid Peroxidation, and Lowered Lipid-Associated Antioxidant Defenses. *Neurotox Res* 2018; **34**(3): 489-510.
103. Leonard B, Maes M. Mechanistic explanations how cell-mediated immune activation, inflammation and oxidative and nitrosative stress pathways and their sequels and concomitants play a role in the pathophysiology of unipolar depression. *Neurosci Biobehav Rev* 2012; **36**(2): 764-785.
104. Morris G, Maes M. Oxidative and nitrosative stress and immune-inflammatory pathways in patients with myalgic encephalomyelitis (ME)/chronic fatigue syndrome (CFS). *Curr Neuropsychopharmacol* 2014; **12**(2): 168-185.
105. Huang C, Wang Y, Li X, Ren L, Zhao J, Hu Y *et al.* Clinical features of patients infected with 2019 novel coronavirus in Wuhan, China. *Lancet* 2020; **395**(10223): 497-506.
106. Hui DSC, Zumla A. Severe Acute Respiratory Syndrome: Historical, Epidemiologic, and Clinical Features. *Infect Dis Clin North Am* 2019; **33**(4): 869-889.
107. Qin C, Zhou L, Hu Z, Zhang S, Yang S, Tao Y *et al.* Dysregulation of Immune Response in Patients With Coronavirus 2019 (COVID-19) in Wuhan, China. *Clin Infect Dis* 2020; **71**(15): 762-768.

108. Wu C, Chen X, Cai Y, Xia J, Zhou X, Xu S *et al.* Risk Factors Associated With Acute Respiratory Distress Syndrome and Death in Patients With Coronavirus Disease 2019 Pneumonia in Wuhan, China. *JAMA Intern Med* 2020; **180**(7): 934-943.
  
109. Simeonova D, Stoyanov D, Leunis J-C, Murdjeva M, Maes M. Construction of a nitro-oxidative stress-driven, mechanistic model of mood disorders: A nomothetic network approach. *Nitric Oxide* 2021; **106**: 45-54.
  
110. Vojdani A, Vojdani E, Kharrazian D. Reaction of Human Monoclonal Antibodies to SARS-CoV-2 Proteins With Tissue Antigens: Implications for Autoimmune Diseases. *Front Immunol* 2020; **11**: 617089.
  
111. Seneff S, Nigh G, Kyriakopoulos AM, McCullough PA. Innate Immune Suppression by SARS-CoV-2 mRNA Vaccinations: The role of G-quadruplexes, exosomes and microRNAs. *Authorea Preprints* 2022.
  
112. Couzin-Frankel J, Vogel G. Vaccines may cause rare, Long Covid–like symptoms. *Science (New York, NY)* 2022; **375**(6579): 364-366.



**Table 1:** Socio-demographic and biomarkers data of controls and Long COVID (LC) patients divided into two groups one with highly increased body temperature, lowered SpO2 and high nitro-oxidative stress (LC+O&NS) versus another group with fewer changes in these biomarkers (LC).

Variables	Controls (n=36) <sup>A</sup>	Cluster 1 or LC (n=67) <sup>B</sup>	Cluster 2: LC + O&NS (n=51) <sup>C</sup>	F/ $\psi$ / $\chi^2$	df	p
Age (years)	30.9 $\pm$ 8.3	29.3 $\pm$ 7.2	33.1 $\pm$ 8.6	3.32	2/151	0.039
BMI (kg/m <sup>2</sup> )	26.34 $\pm$ 3.64	25.60 $\pm$ 3.97	26.65 $\pm$ 6.20	0.72	2/146	0.487
Sex (Female/Male)	6/30	25/42	8/43	9.02	2	0.012
Education (years)	15.8 $\pm$ 1.2 <sup>C</sup>	15.6 $\pm$ 1.6 <sup>C</sup>	15.5 $\pm$ 1.8 <sup>A,B</sup>	0.37	2/151	0.689
Single/married	22/14	34/33	15/36	9.56	2	0.008
TUD (No/Yes)	20/16	45/22	36/15	2.24	2	0.321
Residency (Urban/Rural)	7/29	7/60	12/39	3.75	2	0.166
Employment (No/Yes)	36	67	51	-	-	-
Vaccination (A/Pf/S)	11/14/11	23/30/14	20/19/12	1.83	4	0.768
Duration of Disease (weeks)	-	13.8 $\pm$ 3.7 <sup>C</sup>	15.8 $\pm$ 6.8 <sup>B</sup>	4.16	1/116	0.044
Peak body temperature (°C)	36.5 $\pm$ 0.1 <sup>B,C</sup>	38.8 $\pm$ 0.1 <sup>A,C</sup>	39.3 $\pm$ 0.1 <sup>A,B</sup>	163.99	2/142	<0.001
Lowest SpO2 (%)	96.6 $\pm$ 0.6 <sup>B,C</sup>	92.3 $\pm$ 0.4 <sup>A,C</sup>	87.5 $\pm$ 0.5 <sup>A,B</sup>	70.06	2/142	<0.001
zTO2 index (z scores)	-1.340 $\pm$ 0.091 <sup>B,C</sup>	0.143 $\pm$ 0.070 <sup>A,C</sup>	0.862 $\pm$ 0.079 <sup>A,B</sup>	170.24	2/142	<0.001
Gpx (ng/ml)	23.46 $\pm$ 0.97 <sup>B,C</sup>	21.57 $\pm$ 0.75 <sup>A,C</sup>	17.97 $\pm$ 0.84 <sup>A,B</sup>	9.84	2/142	<0.001
NO (uM)	20.81 $\pm$ 1.47 <sup>C</sup>	18.95 $\pm$ 1.13 <sup>C</sup>	28.19 $\pm$ 1.27 <sup>A,B</sup>	14.99	2/142	<0.001
Protein carbonyl (ng/ml)	11.38 $\pm$ 1.15 <sup>C</sup>	10.73 $\pm$ 0.89 <sup>C</sup>	14.43 $\pm$ 1.00 <sup>A,B</sup>	3.97	2/142	0.021
MPO (ng/ml)	12.87 $\pm$ 0.82 <sup>C</sup>	11.25 $\pm$ 0.63 <sup>C</sup>	15.84 $\pm$ 0.71 <sup>A,B</sup>	11.32	2/142	<0.001
MDA (nM)	1406.9 $\pm$ 97.9 <sup>C</sup>	1432.9 $\pm$ 75.5 <sup>C</sup>	1843.0 $\pm$ 84.6 <sup>A,B</sup>	8.02	2/142	<0.001
AOPP (uM)	4.84 $\pm$ 0.38	5.27 $\pm$ 0.29	5.87 $\pm$ 0.33	2.19	2/142	0.116
TAC (U/ml)	6.23 $\pm$ 0.48	5.23 $\pm$ 0.37	5.01 $\pm$ 0.41	2.09	2/142	0.128
Nitrotyrosine (nM)	33.44 $\pm$ 3.20	34.79 $\pm$ 2.46	32.72 $\pm$ 2.76	0.16	2/142	0.865

Zinc (ppm)	0.785 ±0.034 <sup>C</sup>	0.772 ±0.026 <sup>C</sup>	0.657 ±0.030 <sup>A,B</sup>	5.37	2/142	0.006
OSTOX (z scores)	-0.357 ±0.131 <sup>C</sup>	-0.512 ±0.101 <sup>C</sup>	0.882 ±0.113 <sup>A,B</sup>	45.19	2/142	<0.001
ANTIOX (z scores)	0.521 ±0.151 <sup>B,C</sup>	0.107 ±0.116 <sup>A,C</sup>	-0.580 ±0.130 <sup>A,B</sup>	16.17	2/142	<0.001
OSTOX / ANTIOX (z scores)	-0.575 ±0.129 <sup>A</sup>	-0.406 ±0.100 <sup>A</sup>	0.957 ±0.113 <sup>A,B</sup>	53.62	2/142	<0.001
CRP (mg/L)	5.42 (0.70) <sup>B,C</sup>	7.83 (0.55) <sup>A</sup>	9.11 (0.61) <sup>A</sup>	7.96	2/140	<0.001

All results are shown as mean (SD) or as ratios. <sup>A,B,C</sup> post-hoc comparisons among group means

BMI: body mass index, TUD: tobacco-use disorder, Vaccination A1,Pf,S: vaccination type either AstraZeneca (A), Pfizer-BioNTech (Pf), or Sinopharm (S).

zTO2: composite score reflecting combined aberrations in body temperature and SpO2, Gpx: glutathione peroxidase, NOx: nitric oxide, MPO: myeloperoxidase, MDA: malondialdehyde, AOPP: advances oxidation protein products, TAC: total antioxidant capacity.

**Table 2** Estimated marginal physio-affective mean scores in controls and Long COVID patients divided into two groups one with highly increased body temperature, lowered SpO2 and high nitro-oxidative stress (LC+O&NS) versus another group with fewer changes in these biomarkers (LC).

<b>Biomarkerse</b>	<b>Controls <sup>A</sup></b>	<b>Cluster 1 or LC (n=67)</b>	<b>Cluster 2: LC +O&amp;NS (n=51)</b>	<b>F</b>	<b>df</b>	<b>p</b>
Total HAMD	6.01 (0.82) <sup>B,C</sup>	15.24 (0.61) <sup>A,C</sup>	20.17 (0.70) <sup>A,B</sup>	88.39	2/147	<0.0001
Total HAMA	7.65 (1.27) <sup>B,C</sup>	17.78 (0.94) <sup>A,C</sup>	23.72 (1.08) <sup>A,B</sup>	46.95	2/147	<0.0001
Total FF	7.11 (1.66) <sup>B,C</sup>	23.30 (1.24) <sup>A,C</sup>	31.06 (1.42) <sup>A,B</sup>	61.66	2/147	<0.0001
Pure HAMD	1.65 (0.29) <sup>B,C</sup>	4.22 (0.21) <sup>A,C</sup>	5.85 (0.25) <sup>A,B</sup>	62.39	2/147	<0.0001
Psysiosom HAMD	1.65 (0.34) <sup>B,C</sup>	4.34 (0.26) <sup>A,C</sup>	5.92 (0.29) <sup>A,B</sup>	44.95	2/147	<0.0001
Pure HAMA	1.65 (0.33) <sup>B,C</sup>	3.38 (0.25) <sup>A</sup>	4.06 (0.28) <sup>A</sup>	16.26	2/147	<0.0001
Physiosom HAMA	3.17 (0.61) <sup>B,C</sup>	7.86 (0.46) <sup>A,C</sup>	11.52 (0.53) <sup>A,B</sup>	53.57	2/147	<0.0001
Pure FF	4.61 (1.01) <sup>B,C</sup>	15.69 (0.76) <sup>A,C</sup>	20.71 (0.87) <sup>A,B</sup>	74.64	2/147	<0.0001
Physio-affective phenome (z score)	-1.167 (0.118) <sup>B,C</sup>	0.043 (0.088) <sup>A,C</sup>	0.766 (0.101) <sup>A,B</sup>	77.78	2/147	<0.001
Autonomic symptoms (z score)	-1.157 (0.122) <sup>B,C</sup>	0.139 (0.091) <sup>A,C</sup>	0.623 (0.104) <sup>A,B</sup>	64.53	2/147	<0.0001
Sleep disorders (z score)	-0.936 (0.141) <sup>B,C</sup>	0.022 (0.105) <sup>A</sup>	0.591 (0.121) <sup>A</sup>	34.10	2/147	<0.0001
Fatigue (z score)	-1.036 (0.136) <sup>B,C</sup>	0.167 (0.102) <sup>A</sup>	0.519 (0.117) <sup>A</sup>	40.42	2/147	<0.0001
Gastro-intestinal symptoms (z score)	-0.915 (0.143) <sup>B,C</sup>	0.117 (0.107) <sup>A,C</sup>	0.474 (0.123) <sup>A,B</sup>	28.59	2/147	<0.0001
Cognitive disorders (z score)	-0.532 (0.163) <sup>B,C</sup>	0.074 (0.122) <sup>A</sup>	0.257 (0.140) <sup>A</sup>	7.22	2/147	0.002

All results are shown as mean (SD) or as ratios. <sup>A,B,C</sup> posthoc comparisons among group means

Physiosom: physiosomatic; FF: Fibro Fatigue scale; HAMD: Hamilton Depression Rating Scale; HAMA: Hamilton Anxiety Rating Scale;

Physio-affective phenome: z unit-based composete score based on FF, HAMD and HAMA scores

**Table 3.** Intercorrelations between oxidative stress toxicity (OSTOX), antioxidant defenses (ANTIOX), the OSTOX/ANTIOX ratio and oxygen saturation (SpO2), peak body temperature, C-reactive protein (CRP), and physio-affective rating scale scores

Variables	OSTOX	ANTIOX	OSTOX /ANTIOX	BTO2ONS index	
SpO2	-0.279	0.343	-0.405		
Body temperature	0.156 <sup>\$</sup>	-0.270	0.277		
CRP	0.088 <sup>\$</sup>	-0.102 <sup>\$</sup>	0.123 <sup>\$</sup>	0.432	0.391
Total HAMD	0.308	-0.287	0.388	0.710	0.516
Total HAMA	0.249	-0.341	0.384	0.677	0.495
Total FF	0.322	-0.318	0.417	0.705	0.502
Pure HAMD	0.344	-0.226	0.371	0.604	0.342
Psysiosom HAMD	0.293	-0.300	0.386	0.634	0.427
Pure HAMA	0.157 *	-0.223	0.248	0.472	0.270
Physiosom HAMA	0.286	-0.336	0.405	0.711	0.570
Pure FF	0.334	-0.306	0.417	0.732	0.535
Physio-affective phenome (z score)	0.330	-0.338	0.435	0.752	0.574
Autonomic symptoms (z score)	0.283	-0.313	0.388	0.713	0.515
Sleep disorders (z score)	0.247	-0.210	0.298	0.573	0.391
Fatigue (z score)	0.222	-0.364	0.382	0.622	0.392
GIS (z score)	0.177 *	-0.189	0.238	0.514	0.306
Cognitive disorders (z score)	0.136 <sup>\$</sup>	-0.224	0.234	0.338	0.202 <sup>\$</sup>
n	n=156	n=156	n=156	n=156	n=120

All at  $p < 0.01$ , except \*  $p < 0.05$  and <sup>\$</sup> nonsignificant. FF: Fibro Fatigue scale, HAMD: Hamilton Depression Rating Scale, HAMA: Hamilton Anxiety Rating Scale, GIS: gastrointestinal system, BTO2ONS: a z unit based composite score based on body temperature, SpO2, OSTOX and ANTIOX. The latter was computed in the total and the restricted sample of Long COVID patients.

**Table 4** Results of multiple regression analyses with physio-affective measurements as dependent variables and immune and oxidative and nitrosative stress biomarkers as explanatory variables

Regression	Explanatory variables	$\beta$	t	p	F model	df	p	R2
#1. Pure HAMD	<b>Model</b>				<b>10.01</b>	<b>5/150</b>	<b>&lt;0.001</b>	<b>0.250</b>
	Gpx	-0.203	-2.82	0.006				
	MDA	0.246	3.44	<0.001				
	CRP	0.248	3.47	<0.001				
	Education	-0.211	-2.94	0.004				
	Carbonyl proteins	0.175	2.44	0.016				
#2. Physiosomatic HAMD	<b>Model</b>				<b>8.96</b>	<b>5/150</b>	<b>&lt;0.001</b>	<b>0.230</b>
	Gpx	-0.209	-2.88	0.005				
	NO	0.216	3.00	0.003				
	CRP	0.223	3.11	0.002				
	Astra + Pfizer	0.185	2.56	0.011				
	Zinc	-0.146	-2.00	0.047				
#3. Pure HAMA	<b>Model</b>				<b>6.76</b>	<b>3/152</b>	<b>&lt;0.001</b>	<b>0.131</b>
	Astra	0.254	3.31	0.001				
	Female sex	0.243	-3.13	0.002				
	CRP	0.218	2.76	0.006				
#4. Physiosom HAMA	<b>Model</b>				<b>10.95</b>	<b>5/150</b>	<b>&lt;0.001</b>	<b>0.267</b>
	CRP	0.328	4.56	<0.001				
	Gpx	-0.235	-3.34	0.001				
	NO	0.220	3.15	0.002				
	Astra or Pfizer	0.193	2.76	0.006				
	Femal sex	0.150	2.08	0.039				
#5. Pure FF	<b>Model</b>				<b>14.65</b>	<b>4/151</b>	<b>&lt;0.001</b>	<b>0.280</b>
	Gpx	-0.268	-3.86	<0.001				
	CRP	0.288	4.17	<0.001				
	NO	0.229	3.30	0.001				

	MDA	0.199	2.86	0.005				
#6.Physio-Affective phenome score	<b>Model</b>				<b>10.73</b>	<b>6/1449</b>	<b>&lt;0.001</b>	<b>0.302</b>
	Gpx	-0.254	-3.67	<0.001				
	CRP	0.325	4.61	<0.001				
	NO	0.230	3.34	0.001				
	Astra + Pfizer	0.161	2.35	0.020				
	Female sex	0.153	2.17	0.032				
	MDA	0.144	2.08	0.039				

Gpx: Glutathione peroxidase, MDA: malondialdehyde, TAC: total antioxidant capacity, NO: nitric oxide, MPO: myeloperoxidase; OSTOX: index of oxidative stress; ANTIOX: index of antioxidant defenses; SpO2: peripheral oxygen saturation; FF: Fibro-Fatigue scale; HAMD: Hamilton Depression Rating scale; HAMA: Hamilton Anxiety Rating scale; Vaccination A,Pf,S: vaccination type either AstraZeneca (A), Pfizer-BioNTech (PF), and Sinopharm (S).

**Table 5** Results of multiple regression analyses with physio-affective measurements as dependent variables and oxidative stress toxicity (OSTOX) and antioxidant (ANTIOX) biomarkers as explanatory variables

Regression	Explanatory variables	$\beta$	t	p	F model	df	p	R <sup>2</sup>
#1. Pure HAMD	<b>Model</b>				<b>23.16</b>	<b>5/150</b>	<b>&lt;0.001</b>	<b>0.441</b>
	Body temperature	0.390	5.12	<0.001				
	OSTOX	2.37	3.70	<0.001				
	SpO2	-0.195	-2.49	0.014				
	Education	-0.161	-2.59	0.011				
	Age	-0.137	-2.21	0.028				
#2. Physiosom HAMD	<b>Model</b>				<b>30.59</b>	<b>4/151</b>	<b>&lt;0.001</b>	<b>0.448</b>
	SpO2	-0.427	-5.48	<0.001				
	Body temperature	0.238	3.14	0.002				
	Astra + Pfizer	0.158	2.57	0.011				
	NO	0.149	2.41	0.017				
#3. Pure HAMA	<b>Model</b>				<b>26.14</b>	<b>3/152</b>	<b>&lt;0.001</b>	<b>0.340</b>
	SpO2	-0.511	-7.64	<0.001				
	Female sex	0.223	-3.38	<0.001				
	Astra + Pfizer	0.133	1.99	0.048				
#4. Physiosom HAMA	<b>Model</b>				<b>41.14</b>	<b>5/150</b>	<b>&lt;0.001</b>	<b>0.578</b>
	SpO2	-0.533	-7.78	<0.001				
	Body temperature	0.241	3.61	<0.001				
	Astra + Pfizer	-0.134	2.50	0.014				
	NO	0.123	2.27	0.025				
	Femal sex	-0.114	-2.13	0.035				
#5. Pure FF	<b>Model</b>				<b>53.60</b>	<b>4/151</b>	<b>&lt;0.001</b>	<b>0.587</b>
	SpO2	-0.457	-6.84	<0.001				
	Body temperature	0.322	4.95	<0.001				
	NO	0.151	2.80	0.006				
	MDA	0.132	2.49	0.014				

#6. Physio-Affective phenome score	<b>Model</b>				<b>59.77</b>	<b>4/151</b>	<b>&lt;0.001</b>	<b>0.613</b>
	SpO2	-0.531	-8.02	<0.001				
	Body temperature	0.246	3.90	<0.001				
	OSTOX/ANTIOX	0.151	2.73	0.007				
	Female sex	0.111	2.19	0.030				
#7. OSTOX/ANTIOX	<b>Model</b>				<b>30.26</b>	<b>1/154</b>	<b>&lt;0.001</b>	<b>0.164</b>
	SpO2	-0.405	-5.50	<0.001				
#9. CRP	<b>Model</b>				<b>46.14</b>	<b>2/153</b>	<b>&lt;0.001</b>	<b>0.376</b>
	Body Temperature	0.568	8.90	<0.001				
	Male sex	0.245	3.83	<0.001				

Gpx: Glutathione peroxidase, MDA: malondialdehyde, NO, nitric oxide,,: SpO2: peripheral oxygen saturation, FF: Fibro-Fatigue scale, HAMD: Hamilton Depression Rating scale, HAMA: Hamilton Anxiety Rating scale, Vaccination A,Pf,S: vaccination type either AstraZeneca (A), Pfizer-BioNTech (Pf) or Sinopharm (S), CRP: C-reactive protein



**Table 6.** Results of canonical correlation analysis (CCA) with physio-somatic scores as dependent variables and biomarkers of acute and Long COVID-19 as explanatory variables

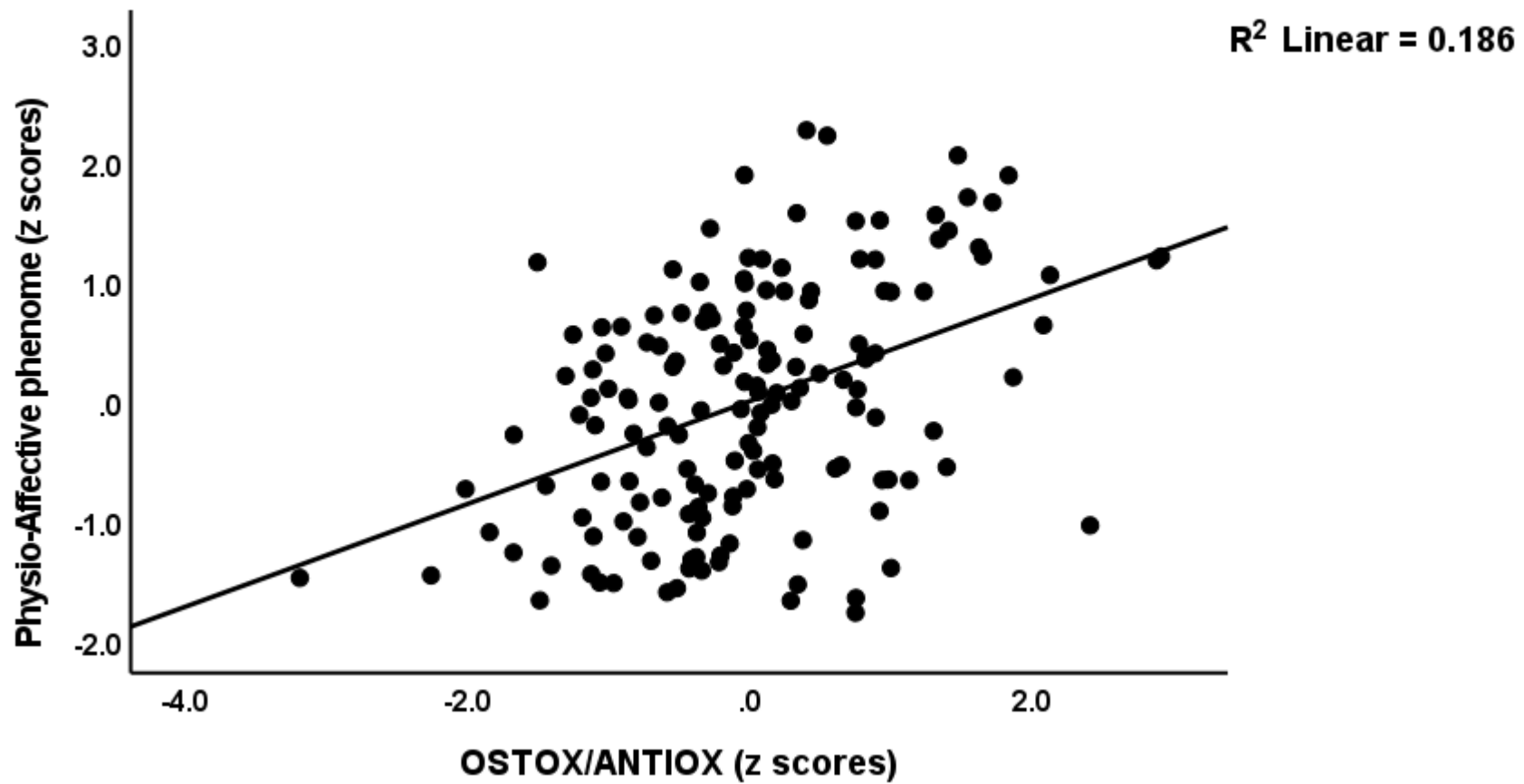
	<b>CCA #1. Total FF, HAMD, HAMA</b>		<b>CCA #2. Subdomains of FF, HAMA, HAMD</b>		<b>CCA #3. Physiosomatic symptoms</b>	
<b>Sets</b>	<b>Variables</b>	<b>C Loadings</b>	<b>variables</b>	<b>C Loadings</b>	<b>Variables</b>	<b>C Loadings</b>
<b>Set PA</b>	<b>FF total</b>	0.953	<b>Pure HAMD</b>	0.736	<b>Autonomic ss</b>	0.959
	<b>HAMA total</b>	0.934	<b>Physiosom HAMD</b>	0.808	<b>Sleep disorders</b>	0.788
	<b>HAMD total</b>	0.950	<b>Pure HAMA</b>	0.634	<b>Chronic fatigue</b>	0.817
			<b>Physiosom HAMA</b>	0.927	<b>GIS symptoms</b>	0.717
			<b>Pure FF</b>	0.941	<b>Cognitive symptoms</b>	-
<b>Set BM</b>	<b>SpO2</b>	-0.956	<b>SpO2</b>	-0.939	<b>SpO2</b>	-0.915
	<b>PBT</b>	0.793	<b>PBT</b>	0.817	<b>PBT</b>	0.854
	<b>ONSCRIP index</b>	0.629	<b>ONSCRIP index</b>	0.659	<b>ONSCRIP index</b>	0.668
<b>Statistics</b>	<b>F (df)</b>	17.32 (9/365)		12.88 (15/408)		14.42 (12/394)
	<b>p</b>	<0.001		<0.001		<0.001
	<b>Correlation</b>	0.752		0.764		0.758
	<b>Set PA / set BM</b>	0.506		0.416		0.391
	<b>Set PA by self</b>	0.894		0.669		0.681

	Set BM by self	0.646		0.661		0.671
--	----------------	-------	--	-------	--	-------

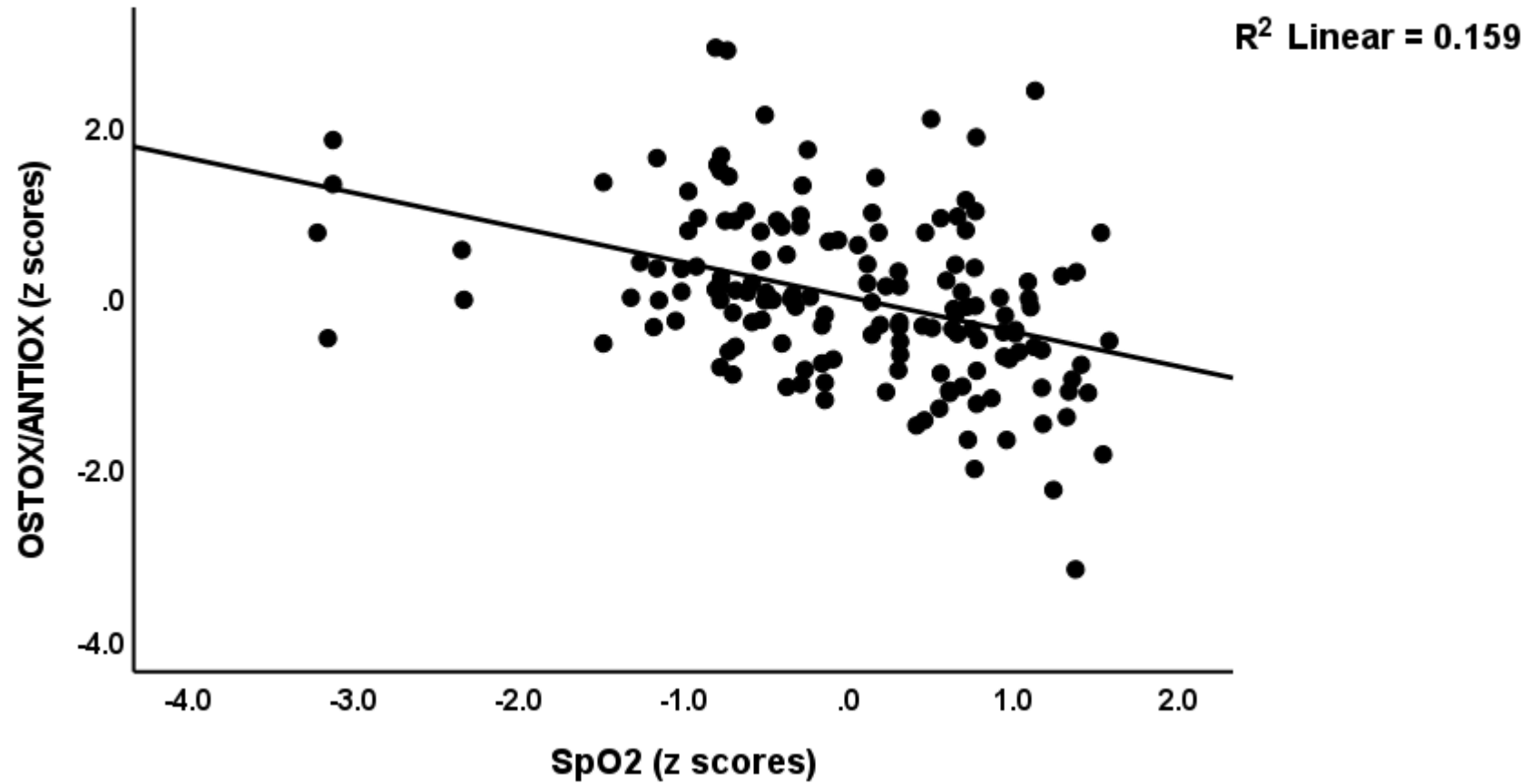
C Loadings: Canonical Loadings; Set PA: physio-affective set; Set BM: biomarker set

OSTOX: index of oxidative stress toxicity; ANTIOX: index of antioxidants; ONSCRP: composite based on OSTOX, ANTIOX and CRP (C-reactive protein); SpO2: peripheral oxygen saturation, PBT: peak body temperature

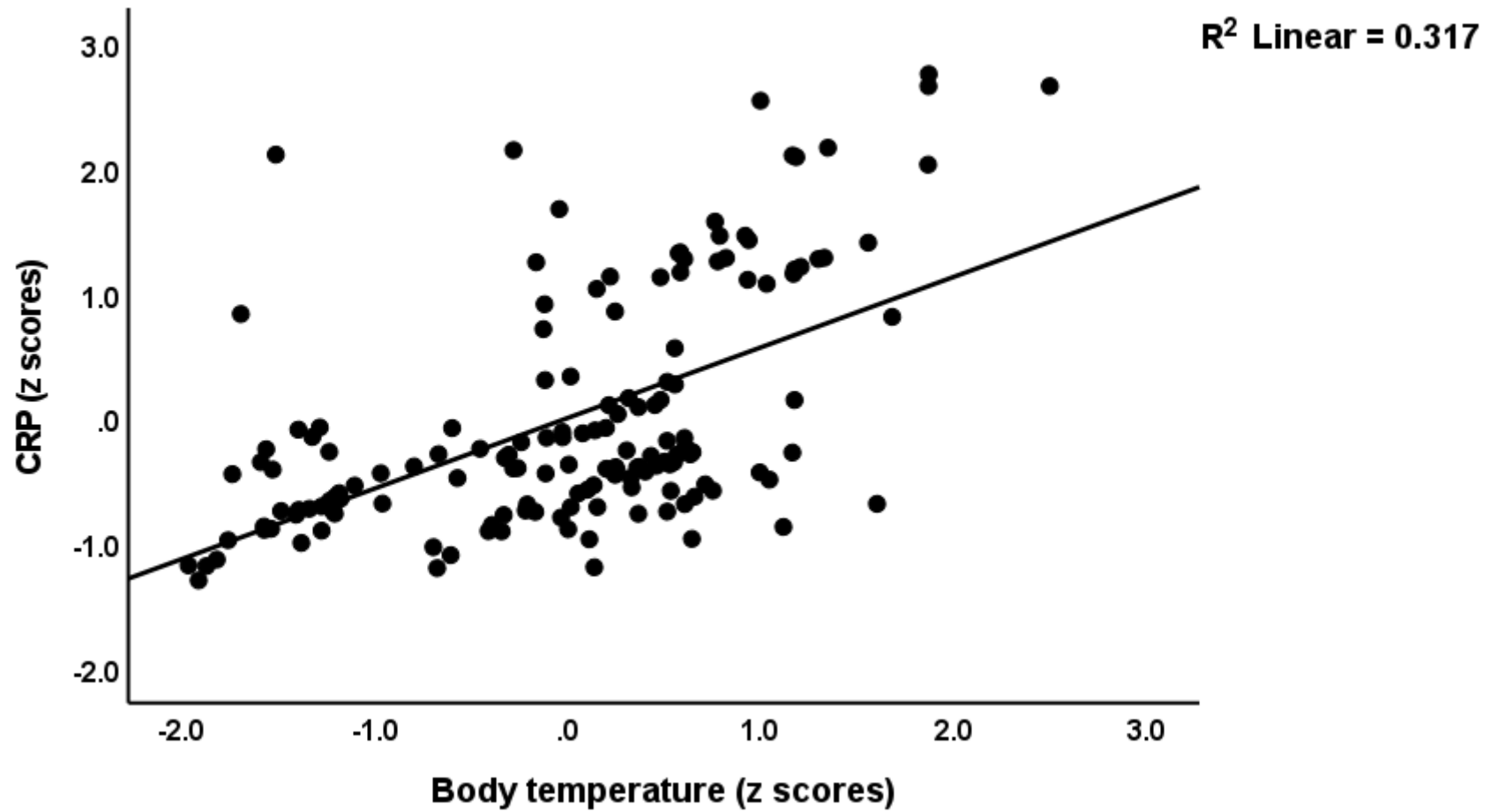
FF: Fibro Fatigue scale; HAMD: Hamilton Depression Rating scale; HAMA: Hamilton anxiety rating scale; GIS: gastrointestinal symptoms



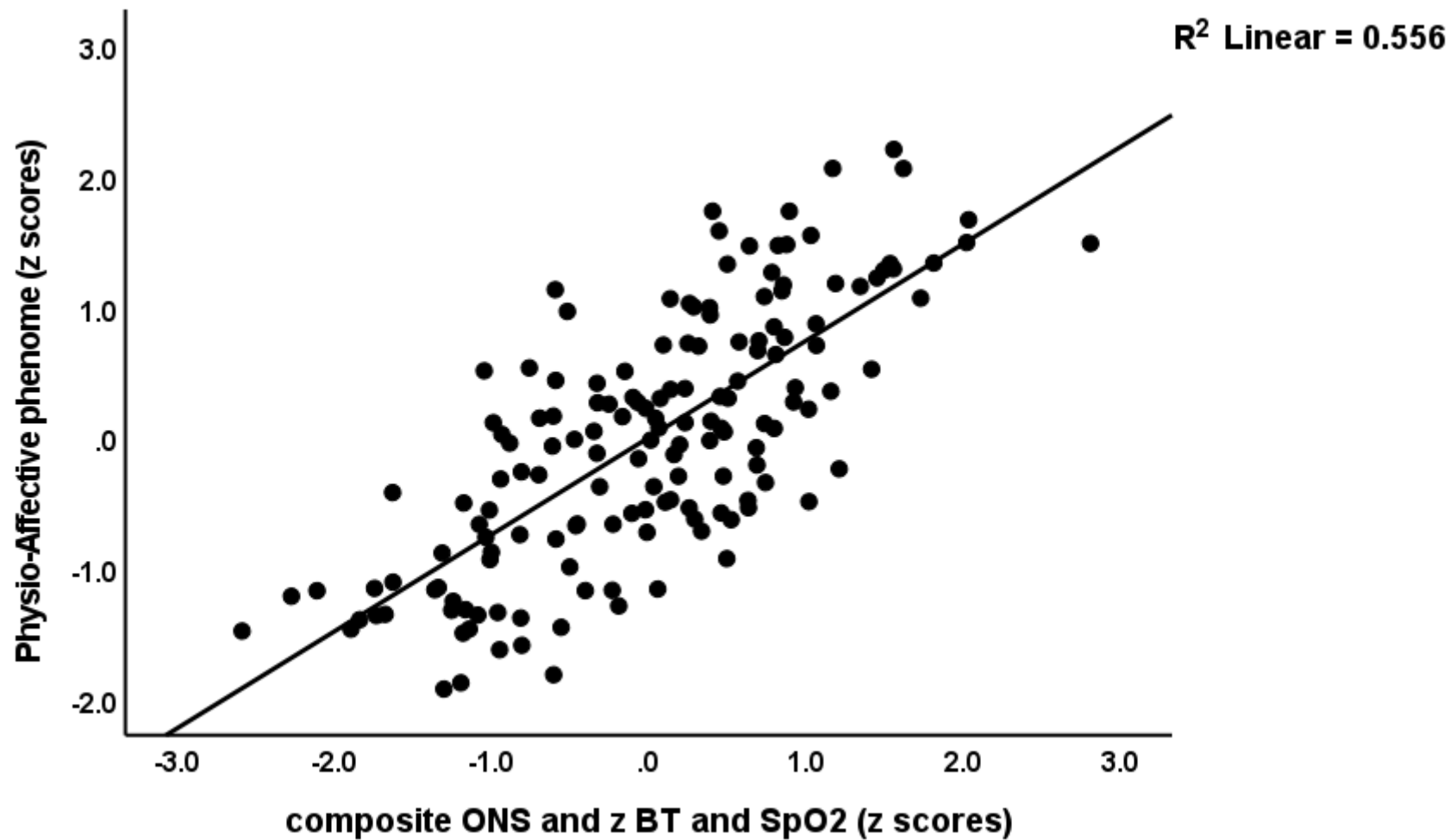
**Figure 1** Partial regression of the physio-affective phenome score on the oxidative stress toxicity / antioxidant (OSTOX/ANTIOX) ratio in patients with Long COVID



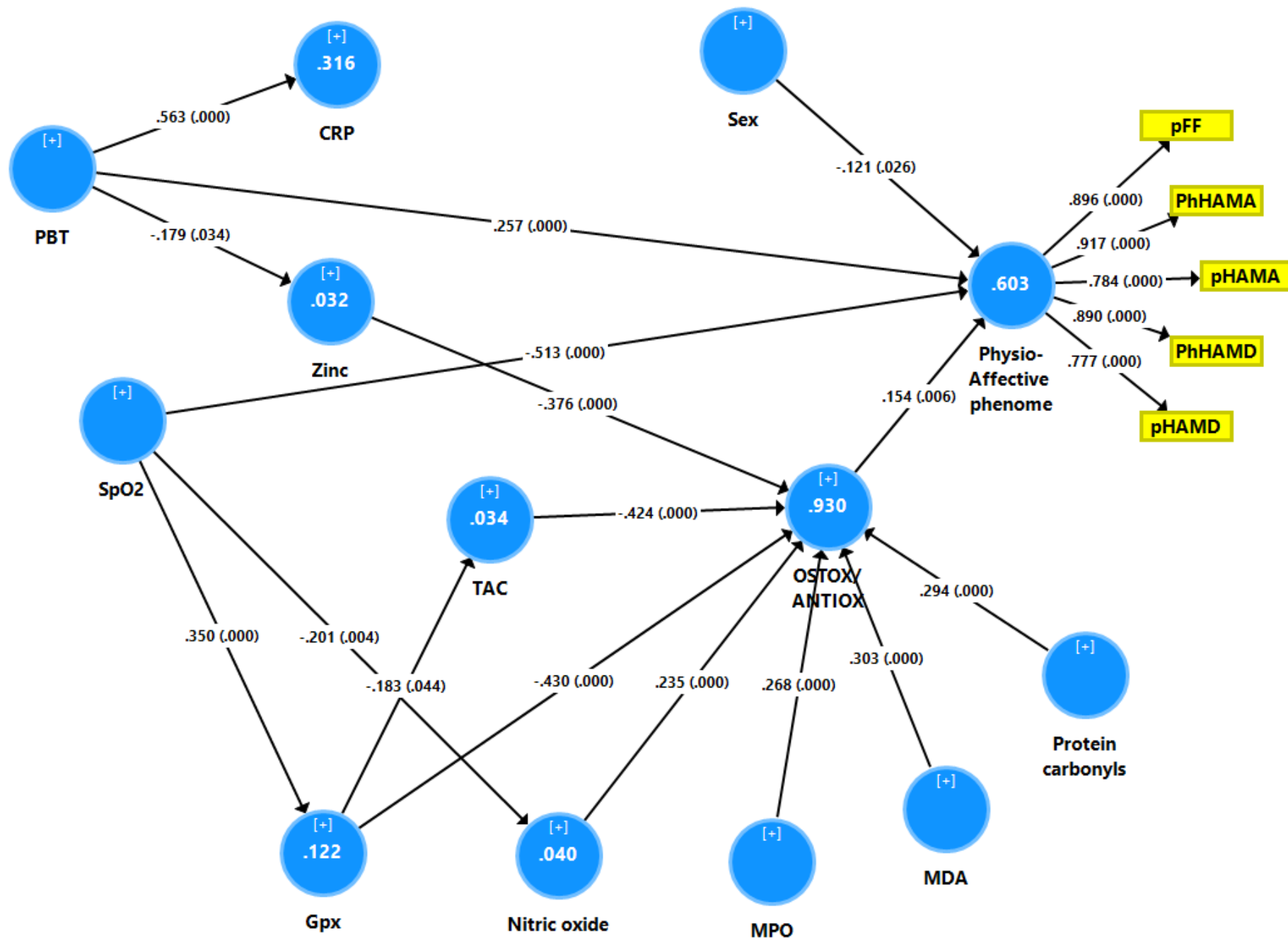
**Figure 2** Partial regression of the oxidative stress toxicity / antioxidant (OSTOX/ANTIOX) ratio in Long COVID patients on peripheral blood oxygen saturation (SpO2) during the acute phase of COVID-19



**Figure 3** Partial regression of serum C-reactive protein (CRP) in Long COVID patients on peak body temperature (BT) during the acute phase of COVID-19



**Figure 4** Partial regression of the physio-affective phenome score in Long COVID patients on a composite score based on increased oxidative stress toxicity and peak body temperature and reduced antioxidant defenses and peripheral oxygen saturation



**Figure 5** Results of Partial Least Squares (PLS) analysis which delineated that the effects of reduced oxygen saturation (SpO<sub>2</sub>) and increased peak body temperature (PBT) during the acute phase of COVID-19 on the physio-affective phenotype of Long COVID are in part mediated by increased oxidative stress toxicity and lowered antioxidant defenses.

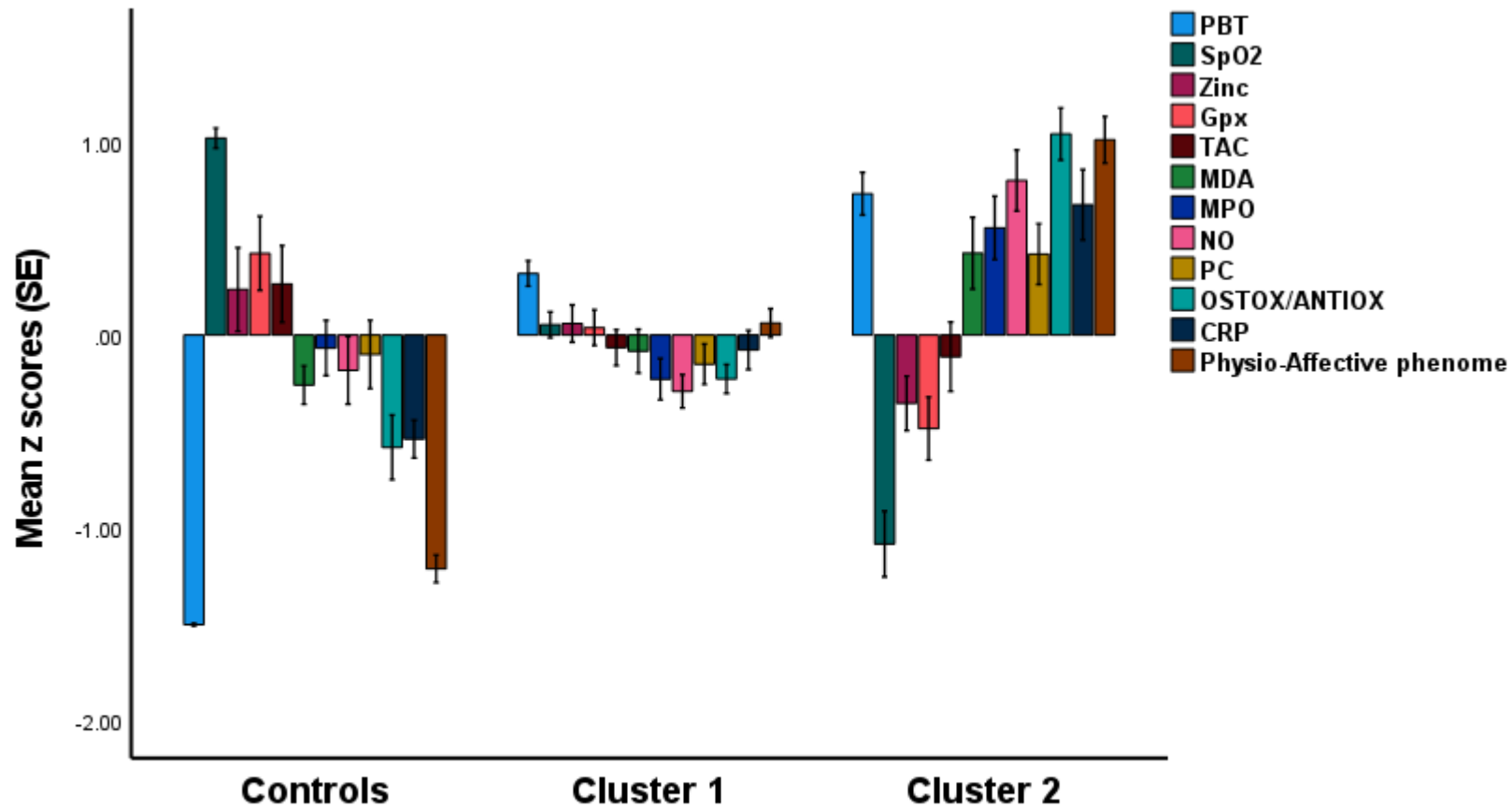
The physio-affective phenotype of Long COVID is entered as a latent vector extracted from subdomain scores on the Fibromyalgia-Fatigue (FF), Hamilton Depression (HAMD) and Anxiety (HAMA) rating scales.

pFF: pure physiosomatic FF symptoms; pHAMD and pHAMA: pure HAMD and HAMA scores, respectively; PhHAMD and PhHAMA: physiosomatic HAMD and HAMA symptom scores, respectively.

CRP: C-reactive protein; Gpx: glutathione peroxidase; TAC: total antioxidant capacity; MPO: myeloperoxidase; MDA: malondialdehyde.

Shown are path coefficients (with exact p values between brackets), loadings (with p-values) of the latent vector and explained variance (white figures in blue circles).





**Figure 6** Results of cluster analysis with the formation of a new endophenotype class of patients with Long COVID (cluster 2) which is characterized by increased PBT (peak body temperature) and lowered peripheral oxygen saturation (SpO2) during acute COVID-19, and lowered zinc, Gpx (glutathione peroxidase) and TAC (total antioxidant capacity), and increased MDA (malondialdehyde), MPO (myeloperoxidase), NO (nitric oxide), PC (protein carbonyls), OSTOX/ANTIOX (oxidative stress toxicity / antioxidant defenses) ratio, CRP (C-reactive protein) and severity of the physio-affective phenome three to four months after the acute phase (Long COVID).