

1 **Antibody response and intra-host viral evolution after plasma therapy in COVID-19**
2 **patients pre-exposed or not to B-cell depleting agents**

3

4 David Gachoud^{1,2}, Trestan Pillonel^{3,*}, Tsilimidos Gerasimos^{4,*}, Dunia Battola¹, Dominique
5 Dumas¹, Onya Opota³, Stefano Fontana^{5,6}, Peter Vollenweider¹, Oriol Manuel⁷, Gilbert
6 Greub^{3,7}, Claire Bertelli³, Nathalie Rufer^{8,9}

7

8 ¹Department of Internal Medicine, Lausanne University Hospital and University of Lausanne,
9 Lausanne, Switzerland

10 ²Medical Education Unit, School of Medicine, Faculty of Biology and Medicine, University
11 of Lausanne, Switzerland

12 ³Institute of Microbiology, Lausanne University Hospital and University of Lausanne,
13 Lausanne, Switzerland

14 ⁴Division of Hematology, Department of Oncology, Lausanne University Hospital and
15 University of Lausanne, Lausanne, Switzerland

16 ⁵Interregional Blood Transfusion SRC, Bern, Switzerland

17 ⁶Faculty of Biology and Medicine, University of Lausanne, Lausanne, Switzerland

18 ⁷Infectious Diseases Service and Transplantation Center, Department of Medicine, Lausanne
19 University Hospital and University of Lausanne, Lausanne

20 ⁸Interregional Blood Transfusion SRC, Epalinges, Switzerland

21 ⁹Department of Oncology, Lausanne University Hospital and University of Lausanne,
22 Epalinges, Switzerland

23 * co-equally contributed authors

24

25 **Corresponding authors:** Nathalie Rufer, e-mail: Nathalie.Rufer@unil.ch ; Gilbert Greub,
26 Gilbert.Greub@chuv.ch ; David Gachoud, e-mail: david.gachoud@chuv.ch

27 **Key words:** SARS-CoV-2, anti-CD20 therapy, immunocompromised patients, convalescent
28 plasma, RNA-based vaccine plasma, antibody kinetics, whole-genome sequencing, spike
29 mutations

30 **Running title:** B-cell depleted COVID-19 patient's follow-up after plasma therapy

31 **ABSTRACT**

32 **Background:** Administration of plasma therapy may contribute to viral control and survival
33 of COVID-19 patients receiving B-cell depleting agents that hinder the endogenous humoral
34 response. However, little is known on the impact of anti-CD20 pre-exposition and the use of
35 different sources of plasma (convalescent versus vaccinated) on the kinetics of SARS-CoV-2-
36 specific antibodies and viral evolution after plasma therapy.

37 **Methods:** Eligible COVID-19 patients (n = 36), half of them after anti-CD20 targeted
38 therapy, were treated with therapeutic plasma from convalescent (n = 17) or mRNA-
39 vaccinated (n = 19) donors. Each plasma-transfused patient was thoroughly monitored over
40 time by anti-S IgG quantification and whole-genome SARS-CoV-2 sequencing.

41 **Results:** The majority of anti-CD20 pre-exposed patients (15/18) showed progressive
42 declines of anti-S protein IgG titers following plasma therapy, indicating that they mostly
43 relied on the passive transfer of anti-SARS-CoV-2 antibodies. Such antibody kinetics
44 correlated with prolonged infection before virus clearance, contrasting with the endogenous
45 humoral response predominantly present in patients who had not received B-cell depleting
46 agents (15/18). No relevant differences were observed between patients treated with plasma
47 from convalescent and/or vaccinated donors. Finally, 4/30 genotyped patients showed
48 increased intra-host viral evolution and 3/30 included 1 to 4 spike mutations, potentially
49 associated to immune escape.

50 **Conclusions:** Convalescent and/or vaccinated plasma therapy may provide anti-SARS-CoV-2
51 antibodies and clinical benefit to B-cell depleted COVID-19 patients. Only a limited number
52 of patients acquired viral mutations prior to clinical recovery, yet our study further
53 emphasizes the need for long-term surveillance for intra-host variant evolution, to guide best
54 therapeutic strategies.

55 INTRODUCTION

56 Coronavirus disease 2019 (COVID-19) disproportionately affects immunocompromised
57 patients, in the context of their underlying disease, high prevalence of comorbidities, and/or
58 related treatment (1). Hematological malignancies and solid tumors have been consistently
59 associated with increased risk of COVID-19 complications and death (2-5). Repeated
60 administration of anti-CD20 monoclonal antibody (e.g. rituximab), an effective treatment for
61 B-cell cancers or inflammatory autoimmune diseases, which leads to B-cell lymphopenia and
62 hypogammaglobulinemia, is also marked by a more severe COVID-19 course (6-8) and
63 impaired anti-SARS-CoV-2 antibody response, elicited by infection or vaccination (9, 10).

64 Neutralizing antibodies represent an important correlate of recovery following SARS-CoV-2
65 infection (11). Consequently, convalescent plasma therapy (CP), obtained from donors who
66 have recovered from COVID-19 and containing anti-SARS-CoV-2 neutralizing antibodies,
67 has been under massive investigation as reported in large randomized controlled trials (12-
68 18). In immunocompetent COVID-19 patients with high-risk factors for severe disease
69 progression, treatment with CP has shown clinical benefit when given early (within 72 hours
70 after the onset of symptoms) and with high titers of neutralizing antibodies (12, 13). Similar
71 observations were made when REGN-COV2, a neutralizing monoclonal antibody (mAb)
72 cocktail was administered early in the disease course and in seronegative individuals (19).
73 Most of these trials, however, failed to demonstrate a therapeutic benefit of CP, once COVID-
74 19 patients were hospitalized with an already-established severe pneumonia (14-18).

75 The usefulness of plasma therapy is more substantial in immunodeficient patients. There is
76 growing evidence from cohort studies and case-series, that CP therapy in frail
77 immunosuppressed individuals, unable to mount effective anti-SARS-CoV-2 antibody
78 responses, reduces viral load and improves clinical symptoms, even when given late after
79 initial diagnosis (20-25). Accordingly, these findings suggest that the administration of
80 plasma with high neutralizing antibody titers is a safe and effective treatment for
81 immunosuppressed patients (3, 26, 27).

82 Patients with immunosuppression are also at specific risk for a protracted infection with
83 SARS-CoV-2 (28). In an initial report, Aydillo *et al.* showed no major changes in the
84 consensus sequences of the original virus strain from serial sample genomes of 11
85 immunosuppressed patients, including patients treated with CP (29). However, accumulation
86 of SARS-CoV-2 mutations have been documented in sporadic case-reports of long-term
87 infected immunocompromised hosts (30-34). While this phenomenon does not seem to be

88 very common (26, 35), prolonged viral replication in the context of an inadequate immune
89 response may facilitate the emergence of divergent escape variants (28).

90 A key issue of CP therapy relates to the wide heterogeneity of neutralizing antibody titers
91 found within CP units from recovered individuals (36). The rapid decay of circulating
92 antibody titers within 2 to 3 months after viral infection (37) strongly limits the window of
93 opportunity to collect high-dose anti-SARS-CoV-2 IgG titers from convalescent donor
94 plasma (38). For instance, the supply of CP from one center revealed that high titer
95 collections, as defined by the US Food and drug Administration (FDA), accounted for only
96 about 20% of plasma donations (39). In turn, SARS-CoV-2 antibody responses induced after
97 the second dose of mRNA vaccines are found to be similar to or even higher than the average
98 values from convalescent serum samples (40, 41). Moreover, planning plasmapheresis from
99 individuals who have scheduled their vaccination date is logistically easier than from
100 COVID-19 recovered donors. Assuming that the main criteria of plasma efficacy is to provide
101 the highest antiviral antibody titers, this argument supports the use of plasma from non-
102 COVID-19 healthy adults who had recently received the second dose of an mRNA-based
103 vaccine.

104 Here, we describe the long-term outcomes of 36 patients with acquired immunodeficiencies
105 (32/36; 89%) or high-risk factors (4/36; 11%) after treatment with convalescent plasma (CP, n
106 = 17) or vaccinated plasma (VP, n = 19), between November 2020 and July 2021. Half of the
107 patients (18/36) had received or were still under anti-CD20 therapy (e.g. rituximab,
108 obinutuzumab). The aims of this study were to determine (i) the feasibility of using different
109 sources of plasma (CP versus VP), (ii) the impact of anti-CD20 pre-exposition on anti-SARS-
110 CoV-2-specific antibody kinetics and (iii) the rate of viral evolution and immune escape after
111 plasma therapy in immunosuppressed patients. Therefore, each patient was thoroughly
112 monitored over time by anti-S IgG quantification and whole-genome SARS-CoV-2
113 sequencing.

114 **ETHICS STATEMENT**

115 The study protocol was reviewed and approved by the Medical Board Committee of the
116 Lausanne University Hospital (Lausanne, Switzerland) and the Cantonal Ethics Committee
117 for Clinical Research (CER-VD; Lausanne, Switzerland). Each patient or a legally authorized
118 representative provided informed consent prior to plasma transfusion and for the retrospective
119 data collection. Each donor gave written consent for plasma donation and collection of sera,
120 according to regulations of the Swiss Blood Transfusion Services.

121

122 **METHODOLOGY**

123 **Study design**

124 All patients described in this case series were treated with either CP (n = 17) or VP (n = 19)
125 between November 27, 2020 and July 28, 2021 under an experimental therapy protocol
126 available as compassionate use only, according to the Swiss Federal Law on Therapeutic
127 Products (LPT_h). Eligible patients (>18 years of age) had a PCR-confirmed diagnosis of
128 SARS-CoV-2 infection, a documented onco-hematological diagnostic (n = 22) or an
129 autoimmune disease (n = 5) and/or a solid organ transplant (n = 5) and/or active solid tumor
130 malignancy (n = 3) and were hospitalized with mild to severe COVID-19 according to the
131 WHO classification. We included 4 additional non-immunocompromised patients with high-
132 risk factors for severe COVID-19 and nosocomial infection < 72h post symptoms or diagnosis
133 (12). Patients included in this analysis were alive on day 7 after plasma transfusion.

134 **Plasma collection and preparation**

135 Convalescent plasma was collected from 32 male donors (CP), who had fully recovered for at
136 least 28 days after COVID-19 onset and presented an anti-S protein-specific IgG response,
137 ranging from 29.4-135.6 ratio, with an average ratio of 79 using an in-house developed
138 Luminex assay (42), correlating to neutralizing titers (43, 44). Due to the difficulties to obtain
139 high-titer plasma from convalescent donors, we collected from March, 1st, 2021 onwards,
140 plasma from 24 non-COVID-19 male donors (VP), who had received their second dose of an
141 mRNA-based vaccine (Moderna or Pfizer) and exhibited an anti-S protein IgG response
142 ranging from 73.3-143.7.6 ratio, with an average ratio of 118 by Luminex. Since June 2021,
143 we harvested plasma from convalescent male donors, boosted with an mRNA-based vaccine
144 (Moderna or Pfizer) after COVID-19 infection (CP/VP). In addition, anti-S IgG titers was
145 assessed in each donation by ELISA from EuroImmun (CP, [ranging from 1.34-10 S/CO,

146 average ratio of 5]; VP and CP/VP >8 S/CO). All plasma donors (18-65 years old) were
147 eligible for blood donation according to the requirements of the Blood Transfusion Services,
148 Swiss Red Cross. After apheresis collection, the leukocyte-depleted plasma was treated for
149 pathogen-inactivation (Intercept blood system, Cerus Corporation) and standard testing
150 according to the current regulations in Switzerland (Blood Transfusion Services CRS and
151 Swiss Federal Act on Medical Products). The plasma was further separated into three units
152 (200+/-20 ml each) within 24 hours and kept frozen at -25°C. Plasma recipients were
153 transfused either with four units of ABO-compatible CP (from ≥ 2 different donors), given on
154 two consecutive days or with two units of ABO-compatible VP or CP/VP (from 2 different
155 donors whenever possible), given on the same day. Each unit was administrated over a 45-
156 minute period, without any adverse event.

157 **Virus detection by qRT-PCR**

158 The SARS-CoV-2 RNA was detected in various clinical specimens by real-time PCR using
159 the different platforms available in our diagnostic laboratory, namely a fully automated
160 molecular diagnostic platform MDx platform, the Xpert platform (Cepheid, Ca, USA), the
161 cobas 6800 platform and the cobas Liat platform (Roche Basel, CH), as described in (45, 46).
162 All obtained Ct values were converted to viral loads based on plasmids positive controls, as
163 reported in (46).

164 **Anti-S-protein specific IgG titers by Luminex assay**

165 Sera from individuals at the time of plasma donations (CP versus VP) and sera from patients
166 at different time-points after plasma transfusion were collected and characterized for anti-
167 spike protein (S1) IgG titers using an in-house developed Luminex assay and performed as
168 previously described (42). MFI signal of each donor serum or plasma patient sample was
169 divided by the mean signal for the negative control samples yielding a MFI ratio (42).

170 **SARS-CoV-2 whole genome sequencing**

171 RNA from clinical samples (nasopharyngeal or mouth swabs) were extracted using
172 MagnaPure (Roche, Switzerland) and processed with the CleanPlex SARS-CoV-2 panel as
173 previously described (47). Briefly, the CleanPlex SARS-CoV-2 protocol generates 343
174 amplicons ranging from 116 to 196 bp (median, 149 bp), distributed into two pools. All
175 samples were sequenced using 150-bp paired-end protocol on a MiSeq (Illumina, USA).
176 Reads were processed using GENCOV (<https://github.com/metagenlab/GENCOV>), a
177 modified version of CoVpipe

178 (https://gitlab.com/RKIBioinformaticsPipelines/ncov_minipipe). Variant calling was
179 performed with Freebayes (parameters: `-min-alternate-fraction 0.1 -min-coverage 10 -min-`
180 `alternate-count 9`) (48). Positions covered by less than 10 reads were set to N (unknown) if
181 they were not identified as part of a short deletion by Freebayes. Only variants supported by
182 at least 70% of mapped reads were considered to build consensus genomes. The consensus
183 sequence was generated with bcftools (49), was checked using our in-house quality control
184 (50) and assigned to SARS-CoV-2 lineages with pangolin (51).

185 **Intra-host mutation rate and phylogenetic analyses**

186 Single nucleotide variants and indels supported by more than 10% of the reads were
187 compared between sequenced SARS-CoV-2 genomes of each patient. The mutation rate was
188 calculated as the total number of variants supported by >10% of reads present in one or
189 multiple sequenced genomes and absent from the other sequenced genome(s). In addition, the
190 rate of mutations reaching fixation was calculated as the total number of variants supported by
191 $\geq 70\%$ of the reads in the last sequenced sample and absent (or supported by $< 70\%$ of the
192 reads) from the first sequenced genome divided by the time interval (in days) between the
193 first and the last sample. Phylogenies were built using Nextstrain and the ncov workflow
194 (<https://github.com/nextstrain/ncov>, (52)) including publicly available genomes sequenced in
195 Switzerland (GISAID database version 2022-01-21;
196 [https://www.eurosurveillance.org/content/10.2807/1560-](https://www.eurosurveillance.org/content/10.2807/1560-7917.ES.2017.22.13.30494?crawler=true)
197 [7917.ES.2017.22.13.30494?crawler=true](https://www.eurosurveillance.org/content/10.2807/1560-7917.ES.2017.22.13.30494?crawler=true)). Sequencing reads were submitted to the
198 International Nucleotide Sequence Database Collaboration (INSDC), whereas consensus
199 genome sequences were submitted to GISAID and onto the Swiss Pathogen Surveillance
200 Platform.

201 RESULTS

202 Characteristics of patients treated with convalescent or vaccinated plasma

203 Seventeen patients (6 female/11 male) with acquired immunodeficiencies due to
204 hematological malignancy (88%) or autoimmune disease (12%) were treated with
205 convalescent plasma (CP) from November 27, 2020 to March 17, 2021 (**Supp. Table 1**).
206 Among them, 12 (71%) had received or still were under anti-CD20 therapy. As the Swiss
207 vaccination campaign started in early 2021, it became possible to collect plasma from SARS-
208 CoV-2 vaccinated regular blood donors without a previous history of SARS-CoV-2 infection.
209 Consequently, vaccinated plasma (VP) was administrated to 19 patients (9 female/10 male)
210 with hematological cancer (37%) or non-hematological disease (42%; autoimmune disease,
211 organ transplant or solid tumor) or with high-risk factors for severe COVID-19 progression
212 (21%), from March 09, 2021 to June 22, 2021 (**Supp. Table 1**). Patients treated with VP were
213 predominantly infected by the alpha variant B.1.1.7, the variant of concern spreading rapidly
214 in Switzerland at that time (from January to June 2021), in contrast to CP treated patients
215 ([CP, 2/17] versus [VP, 14/19], $p = 0.0002$, Mann-Whitney test) (**Fig. 1A**). Finally, fewer VP
216 recipients had or were receiving an anti-CD20 antibody treatment (6/19; 32%) and were
217 treated with corticosteroids, remdesivir and/or tocilizumab (47% versus 76%) (**Supp. Table**
218 **1**).

219 The majority of patients included in this study had a negative SARS-CoV-2 anti-IgG serology
220 (29/36; 81%) and were not vaccinated (32/36; 89%) (**Fig. 1A**). Most patients had B cell
221 lymphopenia and hypogammaglobulinemia (total IgG) at presentation, both of which were
222 more profound in CP than in VP patients (**Fig. 1B**). At the time of treatment, 11/17 (65%) CP
223 and 8/19 (42%) VP patients needed oxygen supplementation. Among them, 18 patients
224 required high-flow nasal cannula or non-invasive positive pressure ventilation and one patient
225 was intubated on mechanical ventilation support. The median time from diagnosis to plasma
226 treatment was 31 days [1-57 days range] for patients receiving CP treatment. This was
227 reduced to 4 days [1-170 days range] in the cohort of VP, thanks to the systematic diagnostic
228 screening established for every newly-hospitalized patient during the 3rd COVID-19 wave
229 (**Fig. 1B**). One patient had a transient increase in oxygen requirement of unlikely imputability
230 to plasma transfusion, otherwise no transfusion-related adverse events were documented (data
231 not shown). Since we investigated the durable effect of plasma transfusion on the serological
232 and viral evolution of each treated patient, only those patients alive at day 7 after plasma
233 transfusion were included in this study (i.e. 3 patients were censored).

234 **Anti-CD20 pre-exposition is associated with anti-S IgG titer decay following plasma**
235 **therapy**

236 B-cell depleting treatment such as anti-CD20 targeted therapies represents an important risk
237 factor for severe forms of COVID-19 (8), which may be related to the failure to mount an
238 efficient endogenous anti-SARS-CoV-2 antibody response. To address this hypothesis, we
239 assessed the anti-S IgG titers of each patient treated either with CP or VP at serial time-points
240 following plasma transfusion. While the antibody levels varied greatly between donors of
241 convalescent plasma, these titers were more homogeneous and in general higher in
242 individuals donating plasma after the 2nd mRNA-based vaccine injection than in unvaccinated
243 convalescent subjects (**Fig. 1C-F**, left panels; donor). This translated into higher levels of
244 anti-S IgG antibodies in patients receiving VP (**Fig. 1C**, middle panel), as compared to those
245 transfused with CP (**Fig. 1D**, middle panel) ([CP, median, ratio of 17] versus [VP, median,
246 ratio of 52], $p < 0.0001$, Mann-Whitney test).

247 Convalescent and vaccinated plasma recipients were further classified according to their
248 antibody kinetic pattern following transfusion. One-half (18/36) of the patients presented a
249 progressive decline in anti-S IgG levels, with a longer time-to-reach negative titers for VP
250 (median, 42 days [15-72]) than for CP (median, 25 days [6-58]; $p = 0.046$, Mann-Whitney
251 test) (**Fig. 1C and D**, right panels). Six of these patients (3 CP and 3 VP), who required
252 additional plasma transfusions due to insufficient clinical and microbiological responses,
253 exhibited an anti-S IgG antibody decline after each treatment. Interestingly, 15 of the 18
254 patients showing a decline in anti-S IgG levels, had been exposed to an anti-CD20 therapy
255 (10/10 CP patients and 5/8 VP patients). In contrast, the other patients (18/36) showed a
256 progressive increase in anti-S IgG titers following plasma transfusion (**Fig. 1E and F**), and
257 among whom only 3 had received an anti-CD20 treatment (CD20 pre-exposure; [Ab decline,
258 15/18] versus [Ab increase, 3/18], $p = 0.0002$, Mann-Whitney test). Together, our data
259 indicate that anti-CD20 pre-exposition is associated to a progressive decay in anti-S IgG titers
260 following plasma therapy (CP or VP).

261 **Patients with progressive decline in anti-S IgG titers following plasma therapy had**
262 **prolonged SARS-CoV-2 infection before complete virus clearance**

263 At the time of plasma transfusion, patients presented a range from mild to severe COVID-19,
264 according to the WHO classification (CP, mean score at 5, [2 to 9], with 1 mechanically
265 ventilated patient; VP, mean score at 5, [2 to 6]). Three additional patients required

266 mechanical ventilation support upon plasma treatment (2 CP; 1 VP). Clinical improvement in
267 COVID-19 symptoms within a follow-up period of 30 days [13-30 days] after plasma
268 transfusion was reported for 34 of the 36 patients (**Fig. 2A**). Specifically, low WHO scores,
269 between 0 to 1, were attributed for 12/17 (71%) CP patients and 15/19 (79%) VP patients.
270 Moreover, a favorable trend was generally observed for patients who presented an
271 endogenous serological response, compared to those with anti-S IgG antibody declines (**Fig.**
272 **2A**). Two patients died from SARS-CoV-2-related complications (1 CP; 1 VP) and 5 (2 CP; 3
273 VP) from their primary-evolutive malignancy.

274 Alongside, we observed a gradual decline in SARS-CoV-2 RNA levels from nasopharyngeal
275 swabs, with quantitative values ranging below 10E3 copies/ml in 11 (73%) out of 15 CP
276 patients and 13 (72%) of 18 VP patients (**Fig. 2B and C**). Three patients (2 CP, 1 VP) had
277 undetectable viral loads at D0 of plasma transfusion, but still presented clinical and/or
278 radiological signs of active COVID-19. The time-to-negativity was shorter in patients treated
279 with CP or VP, presenting an endogenous anti-SARS-CoV2 response (median, 26 days [13-
280 39]), compared to those with progressive anti-S IgG decline (median 38 days, [4-49], $p =$
281 0.0032, Mann-Whitney test). Three patients were treated twice, sequentially, either with the
282 same type of plasma or with the other type (CP to VP), allowing for complete viral clearance
283 (**Fig. 2B and C**, see arrows). Finally, three additional patients (CP-9, VP-9, VP-18), who
284 exhibited persistent SARS-CoV-2 shedding, received repeated transfusions (between 2 to 4-
285 times), including plasma from COVID-19 recovered donors boosted by an mRNA vaccine
286 (**Fig. 2D**), leading to the full undetectable SARS-CoV-2 RNA in nasopharyngeal swabs (**Fig.**
287 **2E**). Collectively, prolonged SARS-CoV-2 infection was generally observed in the subgroup
288 of patients displaying a progressive decline in anti-S IgG titers following plasma therapy,
289 including the six patients, receiving serial plasma transfusions. With the exception of three
290 patients (VP-7, VP-9 and VP-11), all were pre-treated with anti-CD20.

291 **Only a minority of patients, unable to mount an endogenous humoral response,**
292 **presented significant viral evolution following plasma therapy**

293 To investigate whether persistent SARS-CoV-2 infection was associated with intra-host
294 mutation rate following plasma treatment (**Fig. 3**), SARS-CoV-2 genome sequencing was
295 performed on 139 serial respiratory samples from 30 patients, pre- and post-plasma treatment,
296 with a studied interval of up to 182 days (CP, $n = 14$, [4-182 days]; VP, $n = 16$, [9-109 days]).
297 Twenty-six out of 30 patients showed one or more intra-host mutations in the viral
298 subpopulations (>10% reads) at any time-point (**Fig. 3A**), some of which reached fixation

299 (>70% reads) over time, supporting the constant within-host virus evolution. Large variations
300 were observed in the number of mutations. Four patients (CP-1, CP-13, VP-3 and VP-4)
301 retained identical viruses over 8 to 22 days, while three others (CP-9, VP-9 and VP-18), who
302 were all unable to mount an endogenous humoral response, presented 26 to 65 mutations,
303 including 20 to 50 that reached fixation for at least one sample time (**Fig. 3A, Supp. Table 2**).
304 Phylogenetic analyses with the most closely-related published genomes from Switzerland
305 supported the monophyletic origin of each strain documented in patients CP-9, VP-9 and VP-
306 18, hence excluding secondary infections with other circulating strains (**Supp. Fig. 1**). Further
307 supporting the persistence of the original virus, CP-9 was infected by B.1.177 until mid-July
308 2021 and VP-18 by B.1.160 until August 2021, while both variants had disappeared from
309 Switzerland in March 2021, being replaced by B.1.1.7 (alpha variant).

310 Patients who presented progressive declines in anti-S IgG titers after plasma therapy had
311 significantly higher mutation rates than those showing an endogenous anti-SARS-CoV2
312 response (**Fig. 3B**, Mann-Whitney U test; $p = 0.015$). Four patients (CP-2, CP-3, CP-8 and
313 VP-18), among which three had declining anti-S IgG titers, presented mutation rates over
314 twice the expected ~2 mutations per month (**Fig. 3C**) (53). CP-8 presented an exceptionally
315 high number of variants supported by 10-70% of the reads, many of whom reaching fixation
316 in subsequent samples and suggestive of the presence of a heterogeneous viral population
317 (**Fig. 3E**). Viral subpopulations tend to disappear at day 3 following VP treatment, but a very
318 high number of mutations supported by 10-70% of the reads were detected again at day 7.
319 VP-18 also presented an intriguing pattern of mutation acquisition and alternation over time
320 (**Fig. 3F**). In this patient, two distinct mutation profiles were observed alternatively at
321 different time-points (day 61/67/77/91/102 and 83/109), also supported by phylogenetic
322 analyses (**Supp. Fig. 1**). In spite of this viral diversification, consecutive plasma transfusion
323 from different donors, including convalescent vaccine-boosted plasma (CP/V), led to SARS-
324 CoV-2 infection control (**Fig. 2E**).

325 Only a limited number of spike mutations were globally observed during the follow-up (**Fig.**
326 **3D**) and were composed of amino-acid substitutions and several recurrent deletions within the
327 N-terminal domain of the spike protein (e.g. Δ L141-Y144, Δ Y145, Δ A243-L244) (**Supp.**
328 **Table 2**), in line with previous studies (54). Five mutations (S373L, D405N, D427Y, L452R,
329 S494L) were included in the receptor-binding domain (RBD). Patients CP-9 and VP-9
330 acquired 1 and 2 spike mutations, respectively, at late time-points following plasma treatment
331 (**Supp. Fig. 2 and 3**). Patient VP-18 presented up to 18 spike mutations, among which 10

332 appeared before plasma treatment (**Supp Table 2, Supp. Fig. 3**). Mutation L452R was
333 acquired on day 83, while Δ L141-Y144, Δ Y145 and Δ A243-L244 emerged before plasma
334 treatment (< day 64), yet all four play a potential role as immune escape mutations (54, 55).
335 Patient CP-5 developed 2 novel mutations, among which Δ Y145 likely contributes to immune
336 evasion (**Supp. Fig. 2 and 3**) (56). At that time, no second plasma treatment was given, due
337 to the transition to palliative care for her primary evolutive hematological malignancy.
338 Similarly, Δ L141-Y144 deletion, associated to immune resistance after convalescent plasma
339 (54), appeared in another treated patient (CP-14) (**Supp. Fig. 2 and 3**). Overall, our
340 observations indicate that only few immunosuppressed patients presented an accumulation of
341 many mutations over the course of the infection, some of which reached fixation. Patients
342 with progressive anti-S IgG antibody declines following plasma therapy were at highest risk
343 for enhanced viral evolution.

344 **DISCUSSION**

345 B-cell depleting strategies are broadly used for the treatment of B-cell lymphoid malignancies
346 or inflammatory auto-immune diseases. This study aimed at determining the impact of anti-
347 CD20 monoclonal antibodies (e.g. rituximab, obinutuzumab) on the antibody kinetics and
348 viral evolution upon plasma therapy in hospitalized COVID-19 patients (n = 18/36), in
349 comparison to patients without B-cell depleting treatment (n = 18/36). Patients were
350 transfused with therapeutic plasma from convalescent (CP) or RNA vaccinated (VP) donors.
351 For each patient, a comprehensive longitudinal follow-up (ranging from day 13 up to day
352 209) combining anti-S protein IgG titer measurements and whole genome sequencing was
353 performed. Our study revealed that the majority (15/18) of patients pre-exposed to anti-CD20
354 therapies were unable to mount an effective intrinsic humoral response. Nevertheless, 86% of
355 these patients showed viral titer reduction presumably due to the passively transferred
356 neutralizing antibodies. Owing to an insufficient clinical and microbiological response, six of
357 them received additional plasma transfusions but still presented after each treatment,
358 progressive declines in their anti-S IgG titer response. Conversely, a long-term rise in anti-S
359 IgG antibody titers was more frequently observed in non CD20-exposed patients (15/18), and
360 was indicative of an ongoing endogenous response (**Fig. 1**). Overall, 34 of 36 (94%) patients
361 had an improved WHO clinical score within 30 days after plasma therapy and among them,
362 87% (27/31, excluding 3 patients with undetectable viral loads before plasma transfusion)
363 presented no SARS-CoV-2 RNA detection by PCR (**Fig. 2**). Our results confirm the efficacy
364 of plasma therapy in this setting and may further support the key role of donor plasma
365 selected for enhanced anti-SARS-CoV-2 antibody titers in correcting humoral deficiency and
366 improving clinical outcomes for patients with B-cell depleting immunotherapy, in line with
367 previous reports, (3, 57).

368 The effectiveness of CP is likely influenced by the quantity of neutralizing antibodies
369 (correlating to the titers of anti-S IgG antibodies) present at the time of donation (13, 58).
370 Initially, Libster and coworkers (12) reported a dose-dependent effect relative to the antibody
371 titers after transfusion, with reduced COVID-19 progression. In early 2021, initiation of the
372 Swiss vaccine campaign further enabled collecting non-COVID-19 donor plasma enriched
373 with high and homogenous anti-S protein IgG titers post-second mRNA vaccination (**Fig. 1**)
374 (i.e. with high neutralizing titers (40, 41)). In the meantime, two doses of mRNA vaccines
375 were shown to remain highly effective against symptomatic SARS-CoV-2 infection and
376 severe outcomes with different variants of concern (59, 60). Moreover, a single immunization

377 can boost the neutralizing titers up to 1000-fold in COVID-19-recovered donors (61). When
378 administrated to immunosuppressed patients, comprising those who received an anti-CD20
379 pre-treatment, vaccinated plasma allowed the efficient transfer of anti-S IgG antibodies and
380 led to clinical and viral load recovery comparable to CP therapy (**Fig. 1 and 2**). In addition,
381 three cases presenting persistent SARS-CoV-2 infection were efficiently treated with
382 convalescent vaccine-boosted plasma (**Fig. 2**). Collectively, our data show that vaccine-based
383 plasma may represent an alternative treatment alongside to convalescent plasma, in the
384 management of COVID-19 patients with B-cell lymphopenia. Besides, the use of plasma
385 from vaccine-boosted convalescent individuals or from vaccinated ones boosted by a
386 breakthrough infection likely broadens the spectrum of anti-SARS-CoV-2 humoral response,
387 especially against variants such as Omicron to which convalescent- or vaccinated-only donors
388 have not been exposed (61-63) and is currently the only source of plasma.

389 Only a minority of the 30 genotyped patients displayed an increased viral mutation rate (**Fig.**
390 **3**), most of whom were unable to mount an intrinsic antibody response to SARS-CoV-2.
391 Likewise, whole-genome sequencing showed the emergence of a limited number of spike
392 mutations (e.g. Δ L141-Y144, Δ Y145 and L452R) potentially associated to immune escape, in
393 different patients (CP-14, CP-5 and VP-18, respectively) following plasma therapy (**Fig. 3**).
394 Patient VP-18 was exceptional as he presented many fixed mutations (20/52) after the initial
395 two months of infection, before plasma therapy. Moreover, the alternation of two mutation
396 patterns suggested the selection of undetected virus subpopulations at different time-points
397 possibly related to the serial plasma therapies administrated to this patient.

398 Thorough follow-up allowed identifying a few cases with prolonged viral shedding who
399 needed serial transfusion for a complete recovery. Our data is in line with a systematic review
400 by Focosi *et al.* (54), reporting that convalescent plasma may be associated to a lower risk of
401 emergence of resistant variants, contrasting with the documented immune escape after
402 treatment with monoclonal Abs. This may in part be explained by the polyclonal nature of the
403 transfused anti-SARS-CoV-2 antibodies. Moreover, escape variants associated to plasma
404 therapy exhibited recurrent amino acid deletions in the NTD region as well as single amino
405 acid changes throughout the spike protein (**Supp. Table 2**). Consistently, only 5 of the 31
406 identified spike mutations affected the RBD region. In line with these observations, escape
407 from polyclonal plasmas likely involves larger antigenic structural changes than escape from
408 monoclonal Abs, targeting single epitopes (54). As comparable viral evolution patterns were

409 found following transfusion with vaccine-based plasma, this also suggests that convalescent
410 and vaccinated plasma may share common mechanisms in antibody-mediated protection.

411 In summary, our case series extends on previous findings (3, 57), validating the concept that
412 immunosuppressed patients, particularly those who are pre-exposed to an anti-CD20
413 monoclonal antibody treatment, are unable to produce a potent anti-SARS-CoV-2 humoral
414 response and rely on the passive transfer of neutralizing antibodies. Such immunosuppressed
415 patients with a *de novo* SARS-CoV-2 infection should quickly be identified at the daily
416 clinical practice, since most of them require individualized clinical care and follow-up.
417 Moreover, B cell-depleted COVID-19 patients are at increased risk for long-term viral
418 replication, as compared to other vulnerable individuals who are still able to develop their
419 own endogenous antibody response. High mutation rate was only observed in few patients
420 with prolonged virus shedding. Yet, this observation emphasizes the need for long-term
421 surveillance for the emergence of new variants carrying mutations favoring escape to current
422 population immunity by regular SARS-CoV-2 viral load and genomic monitoring. Finally,
423 given the importance of the humoral immune response for clinical recovery (11), plasma
424 therapy from convalescent vaccine-boosted donors remains a rational option, since it is
425 unexpensive and logistically easy to organize, and contains high titers of neutralizing
426 antibodies against SARS-CoV-2 associated to a broad antigenic spectrum (61-63).

427 **AUTHOR CONTRIBUTIONS**

428 Study design and writing of the manuscript: DG, TP, NR. Patient care and acquisition of data:
429 DG, TG, DB, DD, PV, OM, NR. Analysis and interpretation of data: DG, TP, TG, GG, CB,
430 NR. Revision and approval of the manuscript: DG, TP, TG, OO, SF, PV, OM, GG, CB, NR.

431

432 **ACKNOWLEDGMENTS**

433 We are grateful to the patients who consented to the anonymous use of their clinical data for
434 this study and the blood donors for their dedicated collaboration in this study. We would like
435 to acknowledge all the clinicians for their participation in data collection: S. Frascarolo, M.
436 Monti, W. Bosshard, B. Guery, R. Stadelmann, and the participating medical and laboratory
437 teams of the Lausanne University Hospital (Lausanne, Switzerland). We thank H. Andreu-
438 Ullrich, B. Banwarth, S. Berger, M. Burgener, G. Canellini, J. Conne, C. Corisello, D.
439 Crettaz, N. Doegnitz, K. Eichler, M. Finger, E. Gagliarducci, M. Gavillet, M. Graziani, D.
440 Huber Marcantonio, M-L. Métrailler, V. Morin, C. Niederhauser, M. Prudent, C. Tinguely,
441 and I. Weigand, as well as the blood center teams of the Interregional Blood Transfusion SRC
442 (Bern-Vaud-Valais, Switzerland). We are thankful to Prof. Daniel E. Speiser for comments
443 and critical reading of the manuscript.

444

445 **FUNDING**

446 This study was supported by the Lausanne University Hospital and University of Lausanne
447 (Lausanne, Switzerland), and Interregional Blood Transfusion SRC (Bern, Switzerland).

448

449 **SUPPLEMENTARY INFORMATION**

450 Complementary clinical and methodological information for this case report can be found in
451 the **Supplementary Information**.

452 **FIGURE LEGENDS**

453 **Figure 1. Immune status-related information and serological response follow-up.** (A)
454 Patient characteristics (age), SARS-CoV-2 viral loads (copies/ml), anti-SARS-CoV-2 S
455 protein IgG antibody levels (ratio) before treatment with convalescent plasma (CP) or
456 vaccinated plasma (VP). Blue symbols represent patients infected by the alpha variant B.1.1.7.
457 (B) Absolute B cell counts (cell/mm³), total IgG antibody levels (g/l) and time-lapse from
458 diagnostic to treatment (days) before treatment with CP or VP. (C to F, left panels) Anti-
459 SARS-CoV-2 S protein IgG titers for each plasma donor post COVID-19 recovery (C, E) or
460 after the 2nd injection of an mRNA-based vaccine (D, F). (C to F, middle panels) Comparison
461 of anti-S IgG antibody titers before and after plasma treatment. The maximum reached value
462 for each patient is depicted. The *p* values are by Wilcoxon matched-pairs signed ranked test.
463 (C, D, right panels) Patients presenting anti-S IgG antibody declines following plasma
464 treatment with CP (C) or VP (D). Of note, anti-S IgG decline kinetic is depicted after each
465 treatment, including those patients who received serial plasma transfusion. (E, F, right panels)
466 Patients exhibiting anti-S IgG antibody increases following plasma treatment with CP (E) or
467 VP (F). (C to F, red panels). Proportion of patients (in percentage) pre-exposed to an anti-
468 CD20 antibody targeted treatment.

469

470 **Figure 2. Clinical and viral load recovery in immunocompromised individuals after**
471 **plasma therapy.** (A) Clinical status according to the WHO classification before and
472 following CP or VP treatment. Patients were further classified according to their anti-S IgG
473 antibody kinetics (decline versus increase). (B, C) Over-time follow-up of SARS-CoV-2
474 RNA detection in nasopharyngeal swabs (copies/ml) after treatment with CP (B) or VP (C).
475 Patients were classified according to their anti-S IgG antibody kinetics (decline versus
476 increase). Three patients had undetectable viral loads at D0 of plasma transfusion (2xneg CP,
477 1xneg VP). Arrows represent patients who received a second plasma treatment. One patient (*)
478 was sequentially treated with CP and VP. Patients who died from SARS-CoV-2 related
479 complications (©) or from their primary-evolutive malignancy (†) are depicted. (D) Anti-S
480 IgG antibody decline kinetics following convalescent vaccine-boosted plasma treatment
481 (CP/VP, n = 3)). (E) Sequential plasma treatments (CP and/or VP and CP/VP) of the 3
482 patients presenting a prolonged SARS-CoV-2 shedding. (A-E) CP, convalescent plasma; VP,
483 vaccinated plasma, CP/VP, convalescent vaccine-boosted plasma.

484

485 **Figure 3. Intra-host viral evolution in immunocompromised patients before and after**
486 **plasma therapy. (A)** Number of mutations supported by at least 10% of the reads that differ
487 between sequenced genomes of the same patient. **(B)** Mutation rate calculated as the number
488 of mutations supported by at least 10% of the reads divided by the interval between the first
489 and the last sequenced sample (in days). **(C)** The rate of mutations reaching fixation (>70% of
490 the reads) between the first and last sequenced samples was compared to the theoretical
491 SARS-CoV-2 mutation rate of approximately 25 mutations per year. Patients with a rate ratio
492 larger than one (horizontal red line) present more mutations than expected. **(D)** Number of
493 spike mutations supported by at least 70% of the reads. **(A-D)** Patients were classified
494 according to their anti-S IgG antibody kinetics (decline versus increase). **(E-F)** Overview of
495 identified non-synonymous mutations as compared to the reference Wuhan Hu-1 reference
496 genome, before and/or after plasma therapy for patients CP-8 **(E)** and VP-18 **(F)**. Cells
497 indicate the percentage of reads supporting each mutation (rows) in the different samples
498 (columns). Only variants supported by at least 10% of the reads are reported. For CP-8, the
499 sample from day 53 was sequenced twice to rule out a contamination during the sequencing
500 process. CP, convalescent plasma; VP, vaccinated plasma, CP-VP, convalescent vaccine-
501 boosted plasma.

502 **REFERENCES**

- 503 1. Williamson EJ, Walker AJ, Bhaskaran K, Bacon S, Bates C, Morton CE, et al. Factors associated
504 with COVID-19-related death using OpenSAFELY. *Nature*. 2020;584(7821):430-6.
- 505 2. Vijenthira A, Gong IY, Fox TA, Booth S, Cook G, Fattizzo B, et al. Outcomes of patients with
506 hematologic malignancies and COVID-19: a systematic review and meta-analysis of 3377
507 patients. *Blood*. 2020;136(25):2881-92.
- 508 3. Thompson MA, Henderson JP, Shah PK, Rubinstein SM, Joyner MJ, Choueiri TK, et al.
509 Association of Convalescent Plasma Therapy With Survival in Patients With Hematologic
510 Cancers and COVID-19. *JAMA Oncol*. 2021.
- 511 4. Pagano L, Salmanton-Garcia J, Marchesi F, Busca A, Corradini P, Hoenigl M, et al. COVID-19
512 infection in adult patients with hematological malignancies: a European Hematology Association
513 Survey (EPICOVIDEHA). *J Hematol Oncol*. 2021;14(1):168.
- 514 5. Russell B, Moss CL, Shah V, Ko TK, Palmer K, Sylva R, et al. Risk of COVID-19 death in
515 cancer patients: an analysis from Guy's Cancer Centre and King's College Hospital in London. *Br*
516 *J Cancer*. 2021;125(7):939-47.
- 517 6. Avouac J, Drumez E, Hachulla E, Seror R, Georgin-Lavialle S, El Mahou S, et al. COVID-19
518 outcomes in patients with inflammatory rheumatic and musculoskeletal diseases treated with
519 rituximab: a cohort study. *Lancet Rheumatol*. 2021;3(6):e419-e26.
- 520 7. Tepassee PR, Hafezi W, Lutz M, Kuhn J, Wilms C, Wiewrodt R, et al. Persisting SARS-CoV-2
521 viraemia after rituximab therapy: two cases with fatal outcome and a review of the literature. *Br J*
522 *Haematol*. 2020;190(2):185-8.
- 523 8. Dulery R, Lamure S, Delord M, Di Blasi R, Chauchet A, Hueso T, et al. Prolonged in-hospital
524 stay and higher mortality after Covid-19 among patients with non-Hodgkin lymphoma treated
525 with B-cell depleting immunotherapy. *Am J Hematol*. 2021;96(8):934-44.
- 526 9. Thakkar A, Gonzalez-Lugo JD, Goradia N, Gali R, Shapiro LC, Pradhan K, et al. Seroconversion
527 rates following COVID-19 vaccination among patients with cancer. *Cancer Cell*.
528 2021;39(8):1081-90 e2.
- 529 10. Cattaneo C, Cancelli V, Imberti L, Dobbs K, Sottini A, Pagani C, et al. Production and
530 persistence of specific antibodies in COVID-19 patients with hematologic malignancies: role of
531 rituximab. *Blood Cancer J*. 2021;11(9):151.
- 532 11. Seebacher NA. The antibody response of haematological malignancies to COVID-19 infection
533 and vaccination. *Br J Cancer*. 2022.
- 534 12. Libster R, Perez Marc G, Wappner D, Coviello S, Bianchi A, Braem V, et al. Early High-Titer
535 Plasma Therapy to Prevent Severe Covid-19 in Older Adults. *N Engl J Med*. 2021;384(7):610-8.
- 536 13. Joyner MJ, Carter RE, Senefeld JW, Klassen SA, Mills JR, Johnson PW, et al. Convalescent
537 Plasma Antibody Levels and the Risk of Death from Covid-19. *N Engl J Med*.
538 2021;384(11):1015-27.
- 539 14. Simonovich VA, Burgos Prax LD, Scibona P, Beruto MV, Vallone MG, Vazquez C, et al. A
540 Randomized Trial of Convalescent Plasma in Covid-19 Severe Pneumonia. *N Engl J Med*.
541 2021;384(7):619-29.
- 542 15. Menichetti F, Popoli P, Puopolo M, Spila Alegiani S, Tiseo G, Bartoloni A, et al. Effect of High-
543 Titer Convalescent Plasma on Progression to Severe Respiratory Failure or Death in Hospitalized
544 Patients With COVID-19 Pneumonia: A Randomized Clinical Trial. *JAMA Netw Open*.
545 2021;4(11):e2136246.
- 546 16. Group RC. Convalescent plasma in patients admitted to hospital with COVID-19 (RECOVERY):
547 a randomised controlled, open-label, platform trial. *Lancet*. 2021;397(10289):2049-59.
- 548 17. Begin P, Callum J, Jamula E, Cook R, Heddle NM, Timmouth A, et al. Convalescent plasma for
549 hospitalized patients with COVID-19: an open-label, randomized controlled trial. *Nat Med*.
550 2021;27(11):2012-24.
- 551 18. Writing Committee for the R-CAPI, Estcourt LJ, Turgeon AF, McQuilten ZK, McVerry BJ, Al-
552 Beidh F, et al. Effect of Convalescent Plasma on Organ Support-Free Days in Critically Ill
553 Patients With COVID-19: A Randomized Clinical Trial. *JAMA*. 2021;326(17):1690-702.
- 554 19. Weinreich DM, Sivapalasingam S, Norton T, Ali S, Gao H, Bhore R, et al. REGN-COV2, a
555 Neutralizing Antibody Cocktail, in Outpatients with Covid-19. *N Engl J Med*. 2021;384(3):238-
556 51.

- 557 20. Hueso T, Poudoux C, Pere H, Beaumont AL, Raillon LA, Ader F, et al. Convalescent plasma
558 therapy for B-cell-depleted patients with protracted COVID-19. *Blood*. 2020;136(20):2290-5.
559 21. Tremblay D, Seah C, Schneider T, Bhalla S, Feld J, Naymagon L, et al. Convalescent Plasma for
560 the Treatment of Severe COVID-19 Infection in Cancer Patients. *Cancer Med*. 2020;9(22):8571-
561 8.
562 22. Ljungquist O, Lundgren M, Iliachenko E, Mansson F, Bottiger B, Landin-Olsson M, et al.
563 Convalescent plasma treatment in severely immunosuppressed patients hospitalized with
564 COVID-19: an observational study of 28 cases. *Infect Dis (Lond)*. 2021:1-9.
565 23. Lang-Meli J, Fuchs J, Mathe P, Ho HE, Kern L, Jaki L, et al. Case Series: Convalescent Plasma
566 Therapy for Patients with COVID-19 and Primary Antibody Deficiency. *J Clin Immunol*. 2021.
567 24. Rodionov RN, Biener A, Spieth P, Achleitner M, Holig K, Aringer M, et al. Potential benefit of
568 convalescent plasma transfusions in immunocompromised patients with COVID-19. *Lancet*
569 *Microbe*. 2021;2(4):e138.
570 25. Kenig A, Ishay Y, Kharouf F, and Rubin L. Treatment of B-cell depleted COVID-19 patients
571 with convalescent plasma and plasma-based products. *Clin Immunol*. 2021;227:108723.
572 26. Focosi D, and Franchini M. Potential use of convalescent plasma for SARS-CoV-2 prophylaxis
573 and treatment in immunocompromised and vulnerable populations. *Expert Rev Vaccines*. 2021:1-
574 8.
575 27. Senefeld JW, Klassen SA, Ford SK, Senese KA, Wiggins CC, Bostrom BC, et al. Use of
576 convalescent plasma in COVID-19 patients with immunosuppression. *Transfusion*.
577 2021;61(8):2503-11.
578 28. Corey L, Beyrer C, Cohen MS, Michael NL, Bedford T, and Rolland M. SARS-CoV-2 Variants
579 in Patients with Immunosuppression. *N Engl J Med*. 2021;385(6):562-6.
580 29. Aydillo T, Gonzalez-Reiche AS, Aslam S, van de Guchte A, Khan Z, Obla A, et al. Shedding of
581 Viable SARS-CoV-2 after Immunosuppressive Therapy for Cancer. *N Engl J Med*.
582 2020;383(26):2586-8.
583 30. Choi B, Choudhary MC, Regan J, Sparks JA, Padera RF, Qiu X, et al. Persistence and Evolution
584 of SARS-CoV-2 in an Immunocompromised Host. *N Engl J Med*. 2020;383(23):2291-3.
585 31. Avanzato VA, Matson MJ, Seifert SN, Pryce R, Williamson BN, Anzick SL, et al. Case Study:
586 Prolonged Infectious SARS-CoV-2 Shedding from an Asymptomatic Immunocompromised
587 Individual with Cancer. *Cell*. 2020;183(7):1901-12 e9.
588 32. Kemp SA, Collier DA, Datir RP, Ferreira I, Gayed S, Jahun A, et al. SARS-CoV-2 evolution
589 during treatment of chronic infection. *Nature*. 2021;592(7853):277-82.
590 33. Truong TT, Ryutov A, Pandey U, Yee R, Goldberg L, Bhojwani D, et al. Increased viral variants
591 in children and young adults with impaired humoral immunity and persistent SARS-CoV-2
592 infection: A consecutive case series. *EBioMedicine*. 2021;67:103355.
593 34. Borges V, Isidro J, Cunha M, Cochicho D, Martins L, Banha L, et al. Long-Term Evolution of
594 SARS-CoV-2 in an Immunocompromised Patient with Non-Hodgkin Lymphoma. *mSphere*.
595 2021;6(4):e0024421.
596 35. Andreano E, Piccini G, Licastro D, Casalino L, Johnson NV, Paciello I, et al. SARS-CoV-2
597 escape from a highly neutralizing COVID-19 convalescent plasma. *Proc Natl Acad Sci U S A*.
598 2021;118(36).
599 36. Honjo K, Russell RM, Li R, Liu W, Stoltz R, Tabengwa EM, et al. Convalescent plasma-
600 mediated resolution of COVID-19 in a patient with humoral immunodeficiency. *Cell Rep Med*.
601 2021;2(1):100164.
602 37. Long QX, Liu BZ, Deng HJ, Wu GC, Deng K, Chen YK, et al. Antibody responses to SARS-
603 CoV-2 in patients with COVID-19. *Nat Med*. 2020;26(6):845-8.
604 38. Jabal KA, Wiegler KB, and Edelstein M. Convalescent plasma from people vaccinated after
605 COVID-19 infection. *Lancet Microbe*. 2021;2(5):e171-e2.
606 39. Katz LM. (A Little) Clarity on Convalescent Plasma for Covid-19. *N Engl J Med*.
607 2021;384(7):666-8.
608 40. Walsh EE, Frenck RW, Jr., Falsey AR, Kitchin N, Absalon J, Gurtman A, et al. Safety and
609 Immunogenicity of Two RNA-Based Covid-19 Vaccine Candidates. *N Engl J Med*.
610 2020;383(25):2439-50.

- 611 41. Jackson LA, Anderson EJ, Rouphael NG, Roberts PC, Makhene M, Coler RN, et al. An mRNA
612 Vaccine against SARS-CoV-2 - Preliminary Report. *N Engl J Med*. 2020;383(20):1920-31.
- 613 42. Fenwick C, Croxatto A, Coste AT, Pojer F, Andre C, Pellaton C, et al. Changes in SARS-CoV-2
614 Spike versus Nucleoprotein Antibody Responses Impact the Estimates of Infections in
615 Population-Based Seroprevalence Studies. *J Virol*. 2021;95(3).
- 616 43. Fenwick C, Turelli P, Pellaton C, Farina A, Campos J, Raclot C, et al. A high-throughput cell-
617 and virus-free assay shows reduced neutralization of SARS-CoV-2 variants by COVID-19
618 convalescent plasma. *Sci Transl Med*. 2021;13(605).
- 619 44. Zimmerli A, Monti M, Fenwick C, Eckerle I, Beigelman-Aubry C, Pellaton C, et al. Case Report:
620 Stepwise Anti-Inflammatory and Anti-SARS-CoV-2 Effects Following Convalescent Plasma
621 Therapy With Full Clinical Recovery. *Front Immunol*. 2021;12:613502.
- 622 45. Oputa O, Brouillet R, Greub G, and Jatton K. Comparison of SARS-CoV-2 RT-PCR on a high-
623 throughput molecular diagnostic platform and the cobas SARS-CoV-2 test for the diagnostic of
624 COVID-19 on various clinical samples. *Pathog Dis*. 2020;78(8).
- 625 46. Jacot D, Greub G, Jatton K, and Oputa O. Viral load of SARS-CoV-2 across patients and
626 compared to other respiratory viruses. *Microbes Infect*. 2020;22(10):617-21.
- 627 47. Kubik S, Marques AC, Xing X, Silvery J, Bertelli C, De Maio F, et al. Recommendations for
628 accurate genotyping of SARS-CoV-2 using amplicon-based sequencing of clinical samples. *Clin
629 Microbiol Infect*. 2021;27(7):1036 e1- e8.
- 630 48. Garrison E, Marth G. Haplotype-based variant detection from short-read sequencing. *arXiv
631 preprint arXiv:1207.3907 [q-bio.GN]* 2012.
- 632 49. Danecek P, Bonfield JK, Liddle J, Marshall J, Ohan V, Pollard MO, et al. Twelve years of
633 SAMtools and BCFtools. *Gigascience*. 2021;10(2).
- 634 50. Jacot D, Pillonel T, Greub G, and Bertelli C. Assessment of SARS-CoV-2 Genome Sequencing:
635 Quality Criteria and Low-Frequency Variants. *J Clin Microbiol*. 2021;59(10):e0094421.
- 636 51. O'Toole A, Scher E, Underwood A, Jackson B, Hill V, McCrone JT, et al. Assignment of
637 epidemiological lineages in an emerging pandemic using the pangolin tool. *Virus Evol*.
638 2021;7(2):veab064.
- 639 52. Hadfield J, Megill C, Bell SM, Huddleston J, Potter B, Callender C, et al. Nextstrain: real-time
640 tracking of pathogen evolution. *Bioinformatics*. 2018;34(23):4121-3.
- 641 53. Duchene S, Featherstone L, Haritopoulou-Sinanidou M, Rambaut A, Lemey P, and Baele G.
642 Temporal signal and the phylodynamic threshold of SARS-CoV-2. *Virus Evol*.
643 2020;6(2):veaa061.
- 644 54. Focosi D, Maggi F, Franchini M, McConnell S, and Casadevall A. Analysis of Immune Escape
645 Variants from Antibody-Based Therapeutics against COVID-19: A Systematic Review. *Int J Mol
646 Sci*. 2021;23(1).
- 647 55. Alkhatib M, Svicher V, Salpini R, Ambrosio FA, Bellocchi MC, Carioti L, et al. SARS-CoV-2
648 Variants and Their Relevant Mutational Profiles: Update Summer 2021. *Microbiol Spectr*.
649 2021;9(3):e0109621.
- 650 56. McCallum M, De Marco A, Lempp FA, Tortorici MA, Pinto D, Walls AC, et al. N-terminal
651 domain antigenic mapping reveals a site of vulnerability for SARS-CoV-2. *Cell*.
652 2021;184(9):2332-47 e16.
- 653 57. Hueso T, Godron AS, Lanoy E, Pacanowski J, Levi LI, Gras E, et al. Convalescent plasma
654 improves overall survival in patients with B-cell lymphoid malignancy and COVID-19: a
655 longitudinal cohort and propensity score analysis. *Leukemia*. 2022.
- 656 58. Korper S, Jahrsdorfer B, Corman VM, Pilch J, Wuchter P, Blasczyk R, et al. Donors for SARS-
657 CoV-2 Convalescent Plasma for a Controlled Clinical Trial: Donor Characteristics, Content and
658 Time Course of SARS-CoV-2 Neutralizing Antibodies. *Transfus Med Hemother*.
659 2021;48(3):137-47.
- 660 59. Lopez Bernal J, Andrews N, Gower C, Gallagher E, Simmons R, Thelwall S, et al. Effectiveness
661 of Covid-19 Vaccines against the B.1.617.2 (Delta) Variant. *N Engl J Med*. 2021;385(7):585-94.
- 662 60. Nasreen S, Chung H, He S, Brown KA, Gubbay JB, Buchan SA, et al. Effectiveness of COVID-
663 19 vaccines against symptomatic SARS-CoV-2 infection and severe outcomes with variants of
664 concern in Ontario. *Nat Microbiol*. 2022.

- 665 61. Stamatatos L, Czartoski J, Wan YH, Homad LJ, Rubin V, Glantz H, et al. mRNA vaccination
666 boosts cross-variant neutralizing antibodies elicited by SARS-CoV-2 infection. *Science*. 2021.
667 62. Evans JP, Zeng C, Carlin C, Lozanski G, Saif LJ, Oltz EM, et al. Neutralizing antibody responses
668 elicited by SARS-CoV-2 mRNA vaccination wane over time and are boosted by breakthrough
669 infection. *Sci Transl Med*. 2022:eabn8057.
670 63. Jahrsdorfer B, Fabricius D, Scholz J, Ludwig C, Grepels A, Lotfi R, et al. BNT162b2
671 Vaccination Elicits Strong Serological Immune Responses Against SARS-CoV-2 Including
672 Variants of Concern in Elderly Convalescents. *Front Immunol*. 2021;12:743422.
673

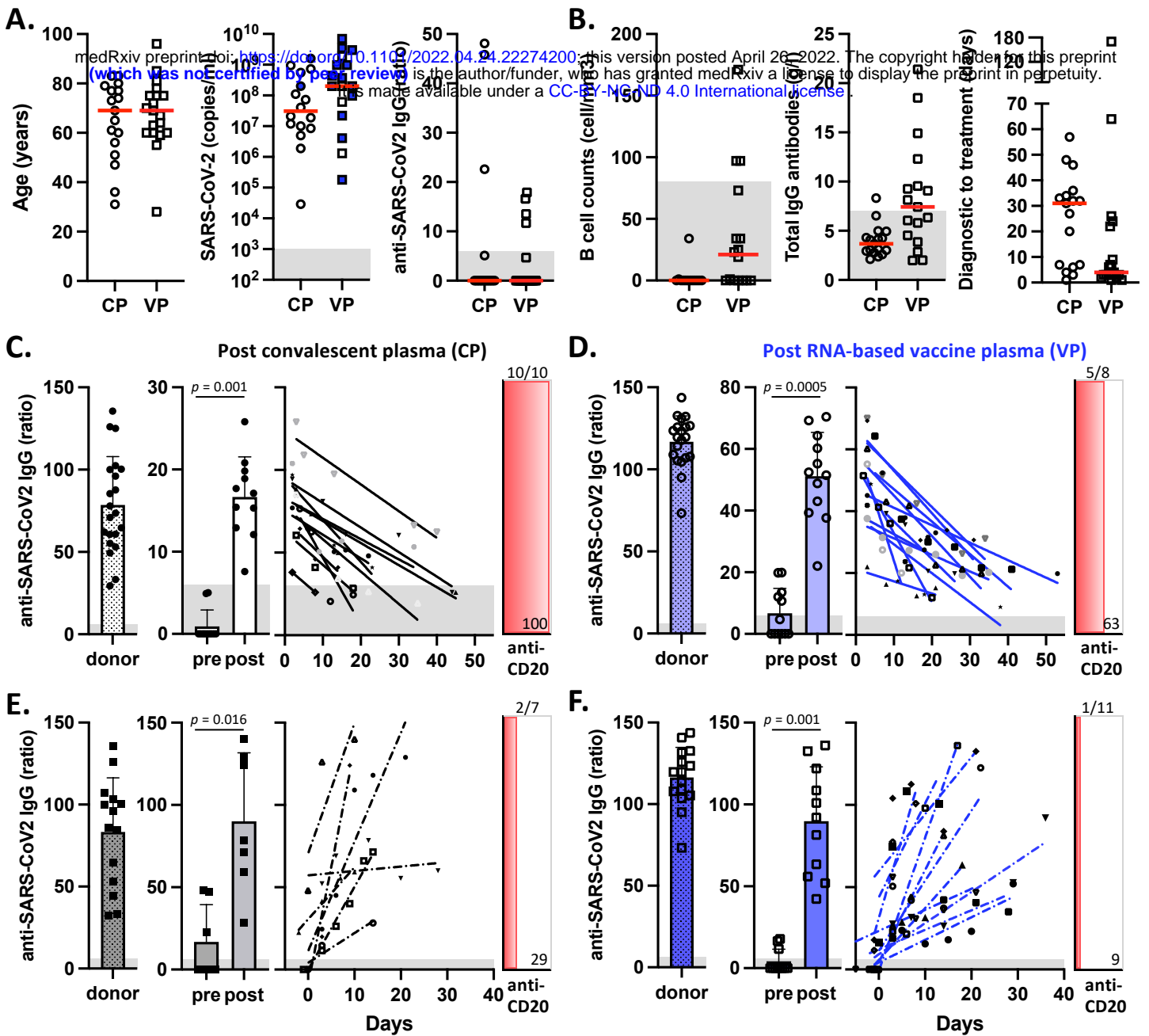


Figure 1 Gachoud et al.

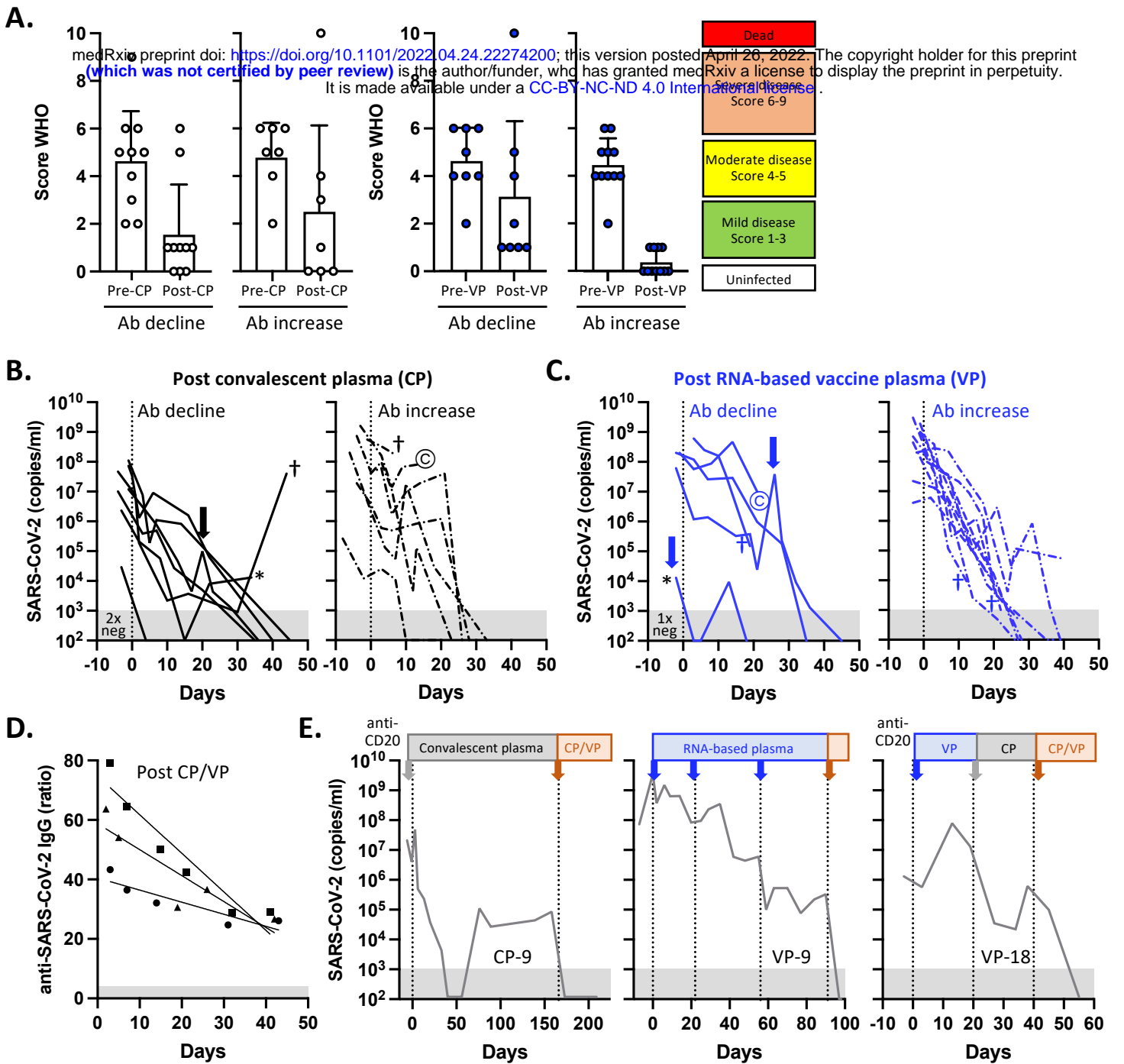


Figure 2

Gachoud et al.

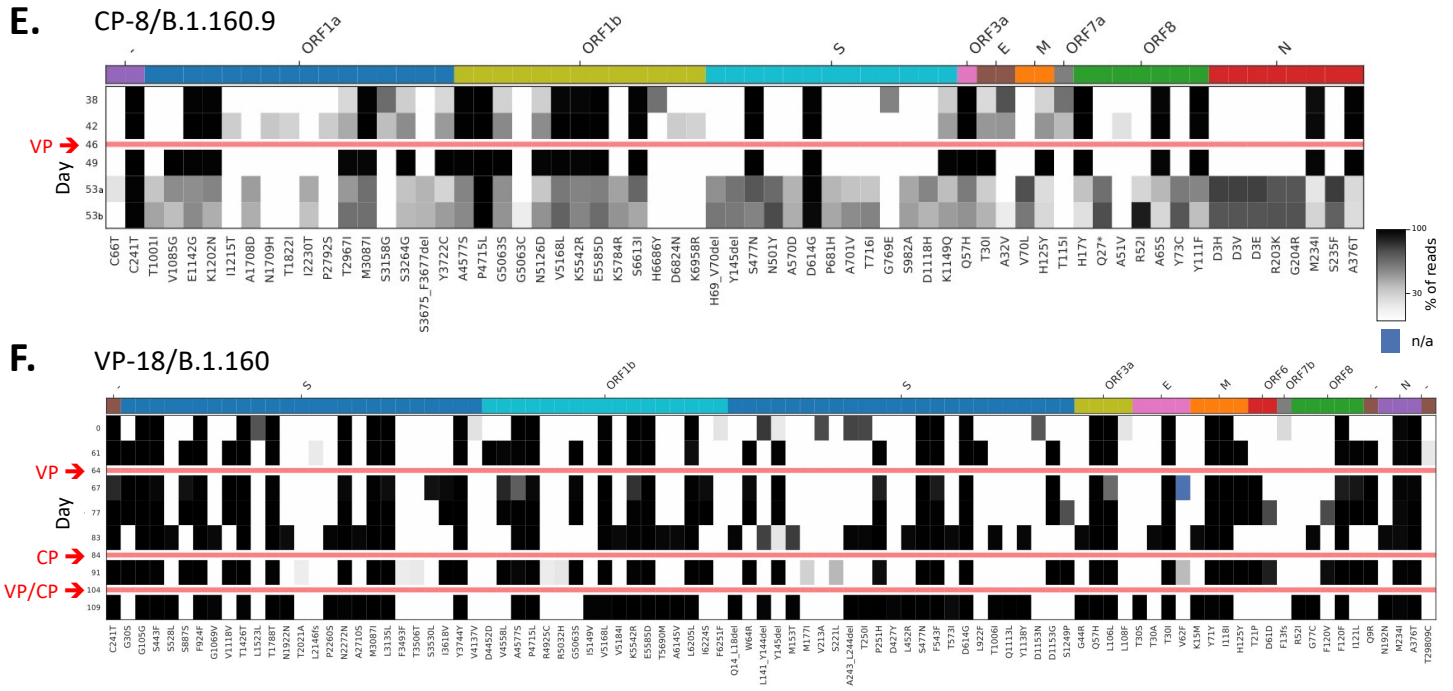
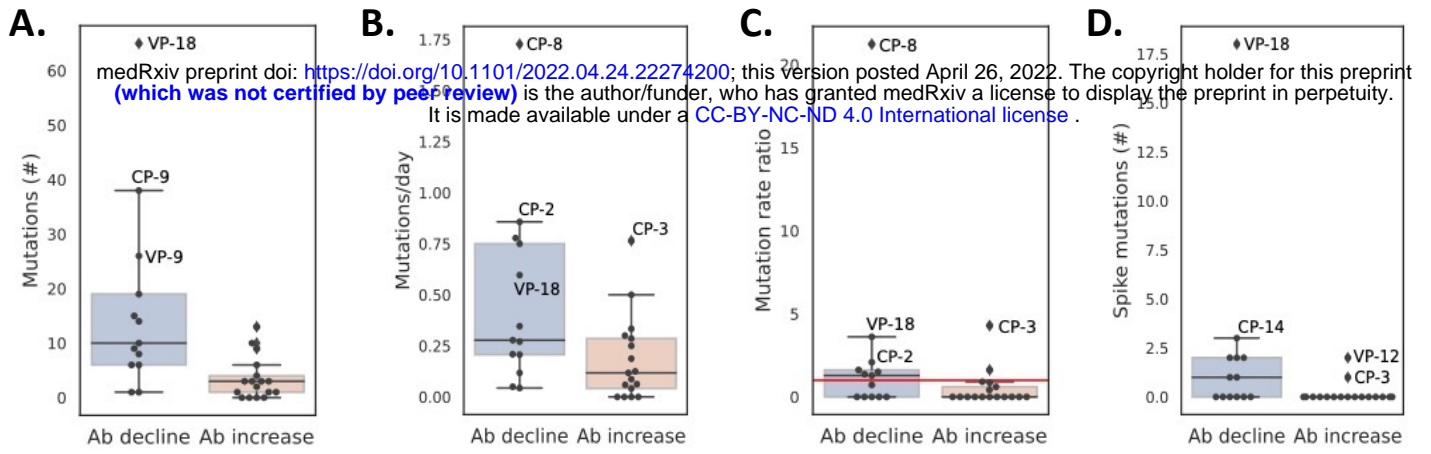


Figure 3