

Digging deeper into GWAS signal using GRIN implicates additional genes contributing to suicidal behavior

Kyle A. Sullivan¹, Matthew Lane², Mikaela Cashman¹, J. Izaak Miller¹, Mirko Pavicic¹, Angelica M. Walker², Ashley Cliff², Jonathon Romero², Xuejun Qin^{3,4}, Jennifer Lindquist³, Niamh Mullins^{5,6}, Anna Docherty⁷, Hilary Coon^{7,8}, Douglas M. Ruderfer^{9,10,11,12}, International Suicide Genetics Consortium, VA Million Veteran Program, MVP Suicide Exemplar Workgroup, Michael R. Garvin¹, John P. Pestian^{1,13}, Allison E. Ashley-Koch^{4,15}, Jean C. Beckham^{3,14,15}, Benjamin McMahon¹⁶, David W. Oslin^{17,18}, Nathan A. Kimbrel^{*3,4,15,19}, Daniel A. Jacobson^{*1}, and David Kainer^{*1}

Affiliations:

¹ Computational and Predictive Biology, Oak Ridge National Laboratory, Oak Ridge, TN, USA

² The Bredesen Center for Interdisciplinary Research and Graduate Education, University of Tennessee Knoxville, Knoxville, TN, USA

³ Durham Veterans Affairs Health Care System, Durham, NC, USA

⁴ Duke University School of Medicine, Duke University, Durham, NC, USA

⁵ Department of Genetics and Genomic Sciences, Icahn School of Medicine at Mount Sinai, New York City, NY, USA

⁶ Department of Psychiatry, Icahn School of Medicine at Mount Sinai, New York City, NY, USA

⁷ Department of Psychiatry, University of Utah School of Medicine, Salt Lake City, UT, USA

⁸ Huntsman Mental Health Institute, University of Utah School of Medicine, Salt Lake City, UT, USA

⁹ Division of Genetic Medicine, Vanderbilt University Medical Center, Nashville, TN, USA

¹⁰ Vanderbilt Genetics Institute, Vanderbilt University Medical Center, Nashville, TN, USA

¹¹ Department of Biomedical Informatics, Vanderbilt University Medical Center, Nashville, TN, USA

¹² Department of Psychiatry and Behavioral Sciences, Vanderbilt University Medical Center, Nashville, TN, USA

¹³ Cincinnati Children's Hospital Medical Center, University of Cincinnati, Cincinnati, OH, USA

¹⁴ Department of Psychiatry and Behavioral Sciences, Duke University Medical Center, Durham, NC, USA

¹⁵ VISN 6 Mid-Atlantic Mental Illness Research, Durham Veterans Affairs Health Care System, Durham, NC, USA

¹⁶ Theoretical Biology and Biophysics, Los Alamos National Laboratory, Los Alamos, NM, USA

¹⁷ VISN 4 Mental Illness Research, Education, and Clinical Center, Center of Excellence, Corporal Michael J. Crescenz VA Medical Center, Philadelphia, PA, USA

¹⁸ Department of Psychiatry, Perelman School of Medicine, University of Pennsylvania, PA, USA

¹⁹ VA Health Services Research and Development Center of Innovation to Accelerate Discovery and Practice Transformation, Durham, NC

* Correspondence: kainerd@ornl.gov, jacobsonda@ornl.gov, nathan.kimbrel@va.gov

This manuscript has been authored by UT-Battelle, LLC under Contract No. DE-AC05-00OR22725 with the U.S. Department of Energy. The United States Government retains and the publisher, by accepting the article for publication, acknowledges that the United States Government retains a non-exclusive, paid-up, irrevocable, world-wide license to publish or reproduce the published form of this manuscript, or allow others to do so, for United States Government purposes. The Department of Energy will provide public access to these results of federally sponsored research in accordance with the DOE Public Access Plan (<http://energy.gov/downloads/doe-public-access-plan>).

1 **Abstract**

2 Genome-wide association studies (GWAS) identify genetic variants underlying complex
3 traits but are limited by stringent genome-wide significance thresholds. Here we dramatically
4 relax GWAS stringency by orders of magnitude and apply GRIN (Gene set Refinement through
5 Interacting Networks), which increases confidence in the expanded gene set by retaining genes
6 strongly connected by biological networks from diverse lines of evidence. From multiple GWAS
7 summary statistics of suicide attempt, a complex psychiatric phenotype, GRIN identified
8 additional genes that replicated across independent cohorts and retained genes that were more
9 biologically interrelated despite a relaxed significance threshold. We present a conceptual model
10 of how these retained genes interact through neurobiological pathways to influence suicidal
11 behavior and identify existing drugs associated with these pathways that would not have been
12 identified under traditional GWAS thresholds. We demonstrate that GRIN is a useful community
13 resource for improving the signal to noise ratio of GWAS results.

14 **Introduction**

15 Genome-wide association studies (GWAS) can identify the genetic basis of complex
16 phenotypes but interpreting the results of these studies is often challenging. SNP-level results
17 from GWAS often need gene assignment for understanding downstream functions, but SNP-to-
18 gene assignment is challenging for intergenic SNPs¹⁻⁴. Moreover, while the resulting gene set
19 may contain genes that affect the phenotype, these “true positive” genes are often interspersed
20 with false positives as a consequence of confounding experimental factors and incorrect SNP-to-
21 gene assignments. False positive genes can mislead efforts to understand the genetic architecture
22 of a trait, so it is important that they are filtered out. This becomes even more crucial for GWAS

23 that produce few associated genes at traditional genome-wide significance (i.e., $p < 5e^{-8}$). For
24 these cases it is often necessary to investigate SNPs at less stringent p -value thresholds to find
25 relevant loci, at the risk of introducing false positives.

26 Polygenic traits are typically influenced by genes from multiple pathways working in
27 concert with each other within the broader biological system⁵. Given enough information from
28 diverse experimental sources, it should be possible to find functional lines of biological evidence
29 connecting any pair of truly causal genes to each other more strongly than pairs of random genes.
30 When considered as a set (e.g., from a GWAS or differential gene expression), the true positive
31 causal genes are very likely to be functionally connected to one another. Conversely, false
32 positive genes from a GWAS will likely be random and therefore far less functionally connected
33 to the other genes in the set. Given a gene set, one could conceivably determine which genes are
34 most likely to be false positives if the gene set can be parsed effectively by including thorough
35 gene interaction information.

36 To solve this important biological problem, we present GRIN – Gene set Refinement
37 through Interacting Networks – an approach that removes biologically disparate, false positive
38 genes in a gene set based upon biological network topology. GRIN uses a network representation
39 of system-wide gene-to-gene interactions from diverse experimental sources. Starting from a
40 user-defined gene set, GRIN explores the network topology to determine how strongly these
41 genes are interconnected. Next, GRIN compares the connectivity among these genes to the
42 connectivity found among random genes to determine which of the user’s genes are likely to be
43 false positives. We validated GRIN by testing its ability to separate well-characterized,
44 functionally related “gold standard” genes from random genes using a large multiplex network⁶.

45 We then applied GRIN to suicide attempt GWAS summary statistics, a complex
46 psychiatric phenotype. Even though heritability estimates range from 17-55%^{7,8}, this psychiatric
47 disorder has elicited few genome-wide significant variants to date⁸⁻¹¹. We analyzed independent
48 suicide attempt GWAS results from the Million Veteran Program (MVP¹¹) and the International
49 Suicide Genetics Consortium (ISGC⁹). As few variants were significant at traditional genome-
50 wide significance, we explored SNPs at a less stringent threshold and used multiple SNP-to-gene
51 assignment methods to elucidate the underlying mechanisms of the heritable components of
52 suicidality. GRIN identified genes with higher probability of contributing to suicide attempt
53 pathophysiology, reducing false positive genes. Thus, we demonstrate GRIN's utility in
54 identifying key biological mechanisms from GWAS signals, and subsequently identify putative
55 drug targets for future suicide prevention studies.

56 **Results**

57 **GRIN workflow.**

58 A summary of the GRIN workflow is presented in **Figure 1**. GRIN inputs include a gene
59 set and a previously generated multiplex network. In Stage 1, all experimentally-derived (*e.g.*,
60 GWAS) “seed” genes are ranked based upon biological network connectivity. GRIN also
61 performs this task on random gene sets of equivalent size to produce an empirical null rank
62 distribution. In Stage 2, a sliding window is used to compare the ordered ranks of
63 experimentally-derived genes to the equivalent ordered ranks within the null distribution using
64 the Mann-Whitney U test, and the *p*-value of the Mann-Whitney U test is plotted for each
65 window to form a curve. The elbow of this curve indicates the cutoff point at which the ranks are
66 equivalent between the seed gene set and the null distribution (indicating low functional
67 interrelatedness), and genes following this cutoff point are filtered out.

68

69 **GRIN accurately removes false positive genes as determined by benchmarking with**
70 **biologically interrelated, “gold standard” gene sets.**

71 We first tested GRIN on 30 biologically-interrelated, “gold standard” gene sets mixed
72 with an equivalent amount of randomly drawn genes (1:1 ratio), and repeated this 100 times per
73 gold standard gene set (**Fig. 2A, Supplementary Table 1**). GRIN Stage 1 ranked gold standard
74 genes more highly than most random genes in any given test set, achieving median area under
75 the receiver operating characteristic curve (AUROC) and median area under the precision-recall
76 curve (AUPRC) values of 0.950 ± 0.059 and 0.896 ± 0.084 respectively across the 30 gold
77 standard gene sets (**Fig. 2B-C**). This indicated highly accurate gene ranking in GRIN Stage 1,
78 which is necessary for successful outcomes at Stage 2. GRIN Stage 2 effectively classified true
79 and false positive genes at the cutoff point (median precision 0.810 ± 0.134 ; recall $0.914 \pm$
80 0.167 ; specificity 0.880 ± 0.197 ; **Fig. 2D, Supplementary Fig. 1**). On average, 46.0% of the
81 gene set was discarded as noise (0.460 ± 0.143), and less than 9% of true positive gold genes
82 were discarded (median recall 0.914).

83 Next, we tested GRIN’s ability to refine gene sets containing varying proportions of
84 random genes. When gold standard genes outnumbered random genes by 2:1, precision ($0.967 \pm$
85 0.060), recall (0.735 ± 0.331), and specificity (0.971 ± 0.088) were consistently high compared
86 to expected values from random classification (precision = 0.66, specificity = 0.66). Precision,
87 recall, and specificity values decreased as the ratio of gold genes to random genes in the gene
88 sets decreased (1:1, 1:2, 1:4) but were consistently better than random chance (**Fig. 2E,**
89 **Supplementary Fig. 2**).

90 Finally, we tested whether GRIN could retain multiple distinct functional groups when
91 mixed with random genes. This test case is important since a real-world gene set for a complex
92 trait is likely to contain multiple functional groups. When given gene sets with two distinctive
93 biological functions (“dopaminergic synaptic signaling” and “myelination”) at 1:1 or 2:1 ratios
94 of gold standard genes to random genes, GRIN generated much better precision and specificity
95 compared to random chance while retaining high values for recall (2:1 merged gold
96 standard:random – precision: 0.931 ± 0.042 , recall: 0.742 ± 0.141 , specificity: 0.891 ± 0.094 ;
97 1:1 merged gold standard:random – precision: 0.789 ± 0.103 , recall: 0.930 ± 0.116 , specificity:
98 0.767 ± 0.174 ; **Fig. 2F**).

99

100 **GRIN retains biologically interrelated genes from the Million Veteran Program (MVP)**
101 **suicide attempt GWAS at less stringent significance thresholds.**

102 After benchmarking GRIN on gold standard gene sets, we applied it to suicide attempt
103 GWAS summary statistics from the Million Veteran Program (MVP¹¹) to understand which
104 genes contribute to psychiatric pathophysiology in this military veteran population. We utilized
105 both conventional MAGMA⁴ and H-MAGMA¹ solely for gene assignment from SNPs at
106 different genome-wide significance thresholds (**Fig. 3A**). Only five SNPs were significant below
107 the traditional threshold of genome-wide significance ($p < 5e^{-8}$) which were assigned to three
108 total genes (*SPATA17*, *TSHZ2*, and *ENSG00000227705*; **Supplementary Tables 2 and 3**). In
109 order to explore additional genes contributing to suicide attempt pathophysiology, we explored
110 markedly less stringent p -value thresholds which expanded the GWAS-derived gene sets. We
111 only examined SNPs and resulting genes at the $p < 1e^{-5}$ threshold since the numbers of genes

112 obtained at less stringent thresholds became unwieldy to interpret in a unified context
113 **(Supplementary Table 2).**

114 MVP SNPs were assigned to 122 genes at $p < 1e^{-5}$ **(Supplementary Tables 2 and 4)**. We
115 applied GRIN to this gene set in order to limit the higher number of potential false positive genes
116 introduced at this threshold. GRIN retained 65 genes and removed 57 genes from the gene set
117 **(Fig. 3B-C, Supplementary Table 5)**. Next, to determine if GRIN successfully retained
118 biologically interrelated genes we used ToppGene¹² to compare a variety of gene set enrichments
119 **(Methods)** of MVP genes before and after GRIN. The 122 unfiltered genes were not
120 significantly enriched for any GO terms but were enriched for 203 combined drug and disease
121 enrichments, including “substance dependence” (DisGeNET C0038580; **Supplementary Table**
122 **6**). Intriguingly, after refining the gene set with GRIN, 1449 enrichments were significant from
123 65 retained genes, including 18 transcription factor binding sites and five GO molecular function
124 enrichments (*e.g.*, “adenyl ribonucleotide binding,” **Supplementary Table 7**). Conversely,
125 GRIN removed 57 genes that manifested no significant enrichments. Thus, filtering MVP genes
126 at a far less stringent GWAS significance threshold with GRIN resulted in a more functionally
127 enriched gene set by improving the signal-to-noise ratio.

128
129 **GRIN retains biologically interrelated genes from multiple International Suicide Genetics**
130 **Consortium (ISGC) GWAS at a less stringent significance threshold.**

131 We sought to identify which genes retained by GRIN from MVP were replicated in two
132 independent, civilian suicide attempt GWAS compiled by the International Suicide Genetics
133 Consortium (ISGC⁹). This study contained summary statistics from: 1) a European ancestry
134 GWAS of suicide attempt in civilians (SA-EUR) and 2) a GWAS of the SA-EUR population

135 conditioned by major depressive disorder (MDD) diagnosis status (SA-MDD). At a threshold of
136 $p < 5e^{-8}$, only seven SA-EUR genes and three SA-MDD genes were significantly associated
137 **(Supplementary Tables 2-3)**.

138 We then applied the same, less stringent significance threshold ($p < 1e^{-5}$) to identify
139 additional genes, and applied GRIN to remove potential false positives. Following SNP-to-gene
140 assignment, 252 genes were identified from SA-EUR and 62 genes were identified from SA-
141 MDD **(Supplementary Tables 2 and 4)**. Prior to GRIN, 25 genes were common to both SA-
142 EUR and SA-MDD **(Fig. 4)**. Following GRIN, 11 genes were commonly retained from both sets
143 of summary statistics, 8 genes were commonly removed, and 6 genes were removed or retained
144 from one set only **(Fig. 4; Supplementary Tables 8-9)**. Next, we compared ToppGene gene set
145 enrichments before and after GRIN to investigate if GRIN functionally refined these gene sets.
146 At $p < 1e^{-5}$, 243 enrichments were significant from the unfiltered SA-EUR gene set, including 33
147 transcription factor binding sites and 114 GO enrichments **(Supplementary Table 10)**. GRIN
148 retained highly interrelated genes from SA-EUR as demonstrated by 274 significant enrichments,
149 including 132 significantly enriched GO terms and 44 transcription factor binding sites
150 **(Supplementary Table 11)**. Conversely, only two enrichments were obtained from removed
151 SA-EUR genes, indicating little functional interrelatedness among these genes **(Supplementary**
152 **Table 12)**. Similarly, 65 enrichments were identified from SA-MDD before GRIN while 247
153 enrichments were identified in the GRIN retained gene set, including an enrichment for
154 “schizophrenia,” a mental health disorder which presents an increased risk of suicidality
155 (DisGeNET C0036341; **Supplementary Tables 13-14)**. Conversely, only 31 enrichments were
156 identified in the removed gene set **(Supplementary Table 15)**. This strongly indicated that

157 GRIN-filtered SA-EUR and SA-MDD gene sets contained highly interrelated genes that were
158 relevant to neurobiological pathways.

159

160 **GRIN retains a majority of genes from the union of the MVP and ISGC summary**
161 **statistics, enhancing functional gene set enrichment.**

162 In a process similar to a meta-analysis, we applied GRIN to the union of MVP and ISGC
163 genes to identify replicated genes across cohorts and identify unified biological mechanisms.
164 Prior to applying GRIN, at $p < 1e^{-5}$ one gene (*PDE4B*) was common among all results, three
165 genes were common to only MVP and SA-EUR, and 24 genes were common to only SA-EUR
166 and SA-MDD (**Fig. 5**). After applying GRIN to the union of all genes, 17 genes common to
167 multiple summary statistics were retained (over 50%), including *PDE4B*, 2 out of 3 common
168 genes between MVP and SA-EUR, and 14 out of 24 common genes between SA-EUR and SA-
169 MDD (**Fig. 5, Supplementary Table 16**). Conversely, 8 genes between SA-EUR and SA-MDD
170 and 1 gene between MVP and SA-EUR were commonly removed at this threshold (**Fig. 5,**
171 **Supplementary Table 16**).

172 Next, we assessed GRIN's ability to improve gene set enrichment analysis using genes
173 common to two or more sets of summary statistics. Prior to GRIN there were 1324 significant
174 enrichments from the 28 genes common to multiple data sets (**Fig. 6, Supplementary Tables**
175 **16-17**). Intriguingly, 1443 significant enrichments were obtained from the 17 genes commonly
176 retained by GRIN in multiple data sets, including 126 GO terms such as “dopaminergic synapse”
177 (**Fig. 6, Supplementary Table 18**). Conversely, only 358 enrichments were significant from the
178 11 intersecting genes removed by GRIN, indicating lower interrelatedness among these genes
179 compared to the retained set (**Supplementary Table 19**). In addition to introducing newly

180 enriched terms, GRIN improved the significance of the majority of enriched terms from the pre-
181 filtered gene set. Of the 1324 enrichments obtained from the unfiltered set of genes common to
182 multiple suicide attempt summary statistics, 1259 of these enrichments were retained; 1168 of
183 these retained enrichments were more significant following GRIN, strongly indicating that
184 retained genes constituted a more biologically cohesive set (**Fig. 6, Supplementary Tables 18-**
185 **19**).

186 Similarly, when applying GRIN to each set of summary statistics separately, 13
187 intersecting genes were commonly retained and 9 intersecting genes were commonly removed
188 (**Supplementary Fig. 3, Supplementary Table 20**). This resulted in more numerous and
189 statistically significant gene set enrichments using intersecting GRIN-retained genes compared to
190 the unfiltered gene set or GRIN-removed genes (**Supplementary Fig. 4, Supplementary Tables**
191 **21-22**).

192

193 **Retained genes from GRIN identify putative pathophysiological pathways involved in** 194 **suicide attempt, leading to drug repurposing/side effect candidates.**

195 Using genes retained by GRIN, we identified biological pathways implicated by suicide
196 attempt GWAS (**Fig. 7**). Only one of the three genes identified from MVP GWAS at $p < 5e^{-8}$
197 (*TSHZ2*) was retained by GRIN at $p < 1e^{-5}$. Multiple genes identified in both cohorts were
198 relevant to dopaminergic signaling, including the dopamine D2 receptor subunit (*DRD2*) and
199 phosphodiesterase 4-beta (*PDE4B*) as well as a protein kinase A subunit (*PRKAR2A*) from MVP,
200 which can subsequently modulate cAMP/CREB-mediated transcription of genes important for
201 synaptic plasticity¹³. Additionally, *SGIP1* was retained by GRIN in MVP and SA-EUR summary
202 statistics, which affects presynaptic vesicle release and emotional state^{14,15}. Furthermore, genes

203 involved in neurotransmitter release (*BRSKI*) and glutamatergic synapses (*CELSR3¹⁶*) were
204 identified along with *ICE2*, which is induced by NMDA receptor activity^{17,18}. *NCAMI* was also
205 retained by GRIN, which is a crucial mediator of synaptic plasticity and memory processes^{19,20}.
206 Multiple genes involved in cytoskeletal reorganization were also identified including
207 *CDC42BPB*, *MAP4*, and *MARK3*. Moreover, *TSHZ2*, *SMARCC1*, and *ZNF589* were retained by
208 GRIN and have been implicated in neurodevelopmental processes while *RCOR1* is important for
209 neural progenitor differentiation into neuronal and glial subtypes^{13,21–24}. Finally, a number of
210 genes involved in global translation processes were identified (*DALRD3*, *DHX30*, and *EIF5*),
211 two of which have been previously implicated in neurodevelopmental disorders arising from
212 missense variants^{25,26} (**Fig. 7**).

213 Finally, we identified drugs that may modulate suicidal behavior based on GWAS-
214 implicated genes retained by GRIN. Multiple drugs target the dopamine D2 receptor subunit,
215 including the FDA-approved drugs clozapine (used to prevent suicidal behavior in
216 schizoaffective individuals²⁷) and amisulpride (**Fig. 8, Supplementary Table 23**). Roflumilast
217 and a number of other molecular compounds also directly affect *PDE4B*. Furthermore,
218 fostamatinib is known to affect 8 genes implicated in both MVP and SA-EUR suicide attempt
219 GWAS. These drug-gene target links warrant future studies to ensure that they do not present
220 increased risk for suicidality as a side effect, and to evaluate candidates for drug repurposing for
221 suicide prevention.

222 **Discussion**

223 Here we introduced GRIN, a workflow based on networks of biological relationships to
224 enable the relaxing of GWAS thresholds while reducing the impact of false positives, thus

225 producing an expanded prioritized gene set compared to a GWAS using the standard significance
226 threshold. Genome-wide association studies are subject to statistical challenges that have
227 historically made it difficult to identify a large proportion of trait-relevant genes. In human
228 studies, genes that may contribute to disease have traditionally been identified from SNP
229 associations at a genome-wide significance threshold of $p < 5e^{-8}$, but for many traits GWAS
230 often fails to find a comprehensive signal at this stringent threshold, especially complex traits
231 controlled by many small-effect loci. Yet we know that much of the signal of heritability lies
232 below this threshold. Relaxing the stringency gives access to more SNPs (and hence more genes)
233 that may be associated with the trait, at the risk of introducing an increasing proportion of false
234 positives that will confound downstream analyses. GRIN operates on the concept that genes
235 affecting the same trait are likely to have some sort of functional relationship, even if based upon
236 minor and/or indirect effects. Given a set of genes from a GWAS, true positive genes should
237 therefore be functionally related to each other in some way, while false positive genes will be
238 functionally distant with respect to each other and with respect to the true positive genes. We
239 demonstrated that GRIN accurately partitions an input gene set into two subsets based on this
240 mechanism and used it to boost GWAS signals. In contrast to other network-based propagation
241 tools for enhancing GWAS (*e.g.*, NAGA²⁸, uKIN²⁹, GWAB³⁰), GRIN simultaneously enhances
242 GWAS sensitivity while reducing the risk of false positive genes from being included.

243 The first stage of GRIN requires a representation of known relationships between all
244 genes in a network format. Here we used a biological multiplex network which captures a wide
245 variety of relationship types across its 10 layers. One could instead use a pre-existing network
246 based on the species of interest, such as HumanNet³¹, YeastNet³², or AraNet³³. However,

247 GRIN's capacity to accurately refine gene sets is limited by the connectivity represented in the
248 network. A poor network lacking sufficient biological relationships would result in reduced
249 ability to distinguish between functionally related genes and random noise. We therefore
250 included various experimental data sources and generated a frontal cortex-specific predictive
251 gene expression network using an explainable-AI methodology (iRF-LOOP³⁴), which can define
252 relationships that were not present in the literature. This novel, tissue-specific weighted network
253 is a powerful community resource, as iRF-LOOP-derived networks can contain more informative
254 relationships compared to traditional gene co-expression networks by an order of magnitude³⁴.

255 Determining the functional relatedness between the genes in a GWAS gene set can be
256 performed by many algorithms that operate on a biological network. Network propagation
257 algorithms use information encoded in the topology of each layer simultaneously, providing a
258 systems-level view of gene-to-gene relationships. Utilizing one such algorithm (random walk
259 with restart, RWR), we achieved high AUROC, AUPRC, precision, recall, and specificity.
260 Future studies are warranted to explore which sources of experimental data (*e.g.*, protein-protein
261 interaction, transcription factor binding) are most influential for retaining biologically
262 interrelated genes with GRIN.

263 We demonstrated that GRIN works with simulated noisy gene sets similar to what is
264 obtained from a GWAS or differential gene expression experiment. GRIN successfully
265 partitioned curated gene sets spiked with random genes into signal and noise subsets, even when
266 given multiple functional groups or a high noise ratio. The results confirm that RWR indeed
267 ranks the functional group(s) of genes highly while random genes mostly receive poor rankings.
268 When applied to real-world data, it is up to GRIN's second stage to determine the optimal cutoff

269 point that divides functional genes from false positive genes. The strong simulated test results
270 provide confidence that when GRIN is applied to GWAS results, the true positive genes should
271 rise to the top of the rankings as long as they are more functionally related to each other than
272 random genes are, thus providing a retained set that has a higher signal-to-noise ratio than if
273 GRIN was not used at all.

274 After applying GRIN to expanded GWAS results at $p < 1e^{-5}$, we obtained more gene set
275 enrichments in the retained set with consistently higher levels of significance, despite this set
276 being considerably smaller. Thus, GRIN removed false positives that were diluting the functional
277 signal in the original gene set. The fact that the removed gene set was scarcely enriched supports
278 this argument. By separating a gene list into retained and removed subsets, the user can identify
279 additional biologically relevant pathways that may be missed by enrichment analyses on the
280 whole set alone due to dilution with noise.

281 While we demonstrated that GRIN achieves high accuracy using gold standard gene sets,
282 GRIN sometimes discarded true positive genes. This indicates that not all genes removed by
283 GRIN are necessarily irrelevant to the trait or disease, and the removed set should be considered
284 but with lower confidence than the retained set. It is also important to consider the possibility for
285 false positives and false negatives to be re-classified as new experimental data sources become
286 available. For example, some genes removed by GRIN currently have few experimental gene-
287 gene network relationships (*e.g.*, the non-coding RNA *RP11-839D17.3* and pseudogene
288 *MRPS21P1*). However, future experiments may identify their capacity to modulate
289 transcriptional or post-transcriptional processes with pathophysiological implications. Therefore,

290 GRIN output should be considered as guidance rather than a definitive determination of what is a
291 true or false positive.

292 Combined with multiple SNP-to-gene assignments, incorporating SNPs at a less stringent
293 significance threshold and applying GRIN elucidated additional suicide-associated genes and
294 pathways. In addition to conventional MAGMA, we leveraged frontal cortex-specific chromatin
295 accessibility and H-MAGMA which refined SNP-to-gene assignment. While certain variants
296 have been previously described (*e.g.*, variants in *DRD2*, *PDE4B*, and *SPATA17*^{8,9,11}), the present
297 study characterizes additional genes contributing to dendritic structure and multiple key
298 neurotransmitter pathways associated with suicidality. Among these additional genes, missense
299 variants in *CDC42BPB*³⁵, *DALRD3*²⁶, *DHX30*²⁵, *SMARCC1*²², and *ZNF589*³⁶ are known to
300 impair behavioral and neurodevelopmental processes. While the genetic variants in the present
301 study did not include these missense or loss-of function variants, it is possible that the variants
302 implicated in the present suicide attempt summary statistics may alter the transcription of these
303 genes. For example, the retained gene sets were enriched for multiple transcription factor binding
304 sites, including an NFAT transcription factor binding site enrichment common to each GWAS
305 based on different genes (TGGAAA, TRANSFAC NFAT_Q4_01; **Supplementary Tables 7,**
306 **11, and 14**). Variants leading to differential gene transcription may have downstream
307 developmental or behavioral consequences leading to increased impulsivity and ultimately an
308 increased risk of suicidality. In addition, multiple genes were implicated in cytoskeletal
309 reorganization. *CDC42BPB* encodes MRCKbeta, a protein kinase that is induced by long-term
310 potentiation in rodent models and mediates dendritic spinogenesis by actin-myosin filament
311 phosphorylation^{37,38}. *MAP4* is a microtubule-associated protein (MAP) and *MARK3* has been
312 shown to phosphorylate tau (*MAPT*), another MAP which accumulates in multiple

313 neurodegenerative disorders^{39,40}. Moreover, *RCOR1* is a subunit of the REST/CoREST complex
314 and has been shown to affect *CELSR3* and *SMARCC1* transcription in mouse models^{16,22}, and
315 *SMARCC1* has been implicated in autism as a core component of the SWI/SNF complex^{23,41}.
316 These findings point to the possible pleiotropic nature of these genes being associated with
317 multiple neurological disorders.

318 By lowering the significance threshold and applying GRIN to refine suicide GWAS gene
319 sets, we identified previously characterized drug targets (*DRD2*, *MARK3*, and *PDE4B*) and drug
320 repurposing/side effect candidates that would not have been detected otherwise. Notably, the
321 *DRD2* antagonist clozapine is the only FDA-approved drug with on-label use to prevent suicidal
322 behavior²⁷. Amisulpride is also a *DRD2* antagonist that has been shown to exhibit antipsychotic
323 and antidepressant activities⁴². Intriguingly, fostamatinib targets 8 genes implicated by suicide
324 attempt GWAS including *MARK3* and *PDE5B*, a different phosphodiesterase than the *PDE4B*
325 gene implicated in suicide attempt GWAS⁴³. Moreover, it is important to understand if drugs can
326 present adverse side effects modulating suicidal behavior. For example, the *PDE4B* inhibitor
327 roflumilast has a rare adverse side effect of increased suicidality in some individuals⁴⁴. Further
328 studies are warranted to understand how pharmacological manipulation of these GWAS-
329 implicated drug targets affect the propensity of suicidal behaviors in at-risk individuals.

330 GRIN is a powerful tool for identifying biologically interrelated genes and for identifying
331 true positive variants and associated genes from GWAS. In effect, GRIN synthesizes multiple
332 lines of evidence to determine which genes should be investigated further, automating a task that
333 researchers usually do manually post-GWAS. By applying this tool to multiple GWAS results,

334 we identify new genes involved in suicide pathophysiology that may lead to important clinical
335 insights.

336 **Acknowledgements and Disclosures**

337 This research used resources of the Oak Ridge Leadership Computing Facility at the Oak Ridge
338 National Laboratory, which is supported by the Office of Science of the U.S. Department of
339 Energy under Contract No. DE-AC05-00OR22725. GWAS summary statistics from the Million
340 Veteran Program used in this study will be made available on the NIH database of Genotypes
341 and Phenotypes (dbGaP) under accession ID phs001672.v1.p. Summary statistics from the
342 International Suicide Genetics Consortium are available at <https://tinyurl.com/ISGC2021>. The
343 authors declare no competing interests.

344 **Funding Sources**

345 This work was sponsored by MVP CHAMPION (DAJ), NIH grants DA041913 (DAJ),
346 DA051908 (DAJ), MH116269 (DMR), MH121455 (DMR), Brain & Behavior Research
347 Foundation (NARSAD Young Investigator Award No. 29551 [NM]), Department of Veterans
348 Affairs (VA) Clinical Science Research and Development (CSR&D) grants 1K6BX003777 (JCB,
349 NAK, DWO) and 1K6BX003777 (JCB), and the VA Million Veteran Program (MVP). This
350 publication does not represent the views of the VA or the United States Government. We also
351 thank and acknowledge MVP (Office of Research and Development, Veterans Health
352 Administration), the MVP Suicide Exemplar Workgroup, and the ISGC for their contributions to
353 this manuscript. A complete listing of contributors from the MVP, MVP Suicide Exemplar
354 Workgroup, and ISGC is provided in the Supplementary Materials.

355 **Author Contributions**

356 Conceptualization: KAS, DK, DAJ; Methodology: KAS, DK, DAJ; Software: KAS, ML, MCM,
357 JIM, AC, JR, DK; Formal analysis: KAS, DK; Investigation: KAS, DK, XQ, JL, NM, DAJ;
358 Resources: DR, XQ, DAJ; Writing - Original Draft: KAS, DK; Writing - Review & Editing:
359 KAS, ML, MP, AMW, NM, AD, HC, DMR, MRG, AEAK, JCB, BM, DWO, NAK, DK, DAJ;
360 Visualization: KAS, DK; Supervision: NAK, DAJ, DK; Project administration: AD, HC, DMR,
361 JPP, AEAK, JCB, BM, DWO, NAK, DAJ; Funding acquisition: DMR, DK, DAJ.
362

363 **Online Methods**

364 **Multiplex biological network generation.**

365 In order to capture biological relationships from diverse types of biological evidence, a
366 multiplex network was assembled from weighted network connections (edges) from a
367 combination of publicly available and newly generated monoplex (single layer) networks. A
368 multiplex network has an advantage over aggregate multilayer networks in that the unique
369 topology of each layer is maintained, resulting in generally higher functional predictive ability⁴⁵.
370 Multiple component networks from HumanNet v2³¹ were used (co-functional links by co-
371 citation, co-essentiality⁴⁶, co-expression, molecular pathway databases, gene neighborhood,
372 phylogenetic profile associations, and orthologous protein-protein interactions transferred from
373 model organisms [CC, CE, CX, DB, GN, PG, IL]), and a protein-protein interaction (PPI)
374 network was generated by merging the following networks into a single monoplex layer:
375 HumanNet v2 component PPI networks (HT, LC), and high-confidence physical protein-protein
376 interactions from STRING version 11.0⁴⁷ (taxa = 9606, protein.actions.v11.0, mode=binding,
377 min score = 700). A transcription factor-gene network layer was included based on a previously
378 published, human brain-specific transcription factor binding site network⁴⁸. Newly generated
379 Predictive Expression Networks (PENs) were obtained using the Iterative Random Forest -

380 Leave One Out Prediction (iRF-LOOP) method^{34,49} using individual-level RNA-seq expression
381 data from the Genotype-Tissue Expression (GTEx) project⁵⁰ from the frontal cortex (Brodmann
382 area 9). The resulting multiplex network was built using RWRtoolkit
383 (<https://github.com/dkainer/RWRtoolkit>), which incorporates command-line scripts and an R
384 library for generating multiplex networks and running the network exploration algorithm random
385 walk with restart (RWR) by building upon the RandomWalkRestartMH R package⁴⁵. The
386 multiplex network used for all analyses comprises 10 layers, 51,183 unique genes, and 3,419,975
387 edges using $\delta = 0.5$, where δ is the probability of the random walker remaining in the current
388 network layer or moving to a different layer. The multiplex network used for all analyses is
389 publicly available at
390 https://github.com/sullivanka/GRIN/tree/main/test/suicide_weighted_Multiplex_0.5Delta.RData.

391

392 **GRIN process.**

393 GRIN leverages the hypothesis that false positive genes in gene sets are likely to be
394 functionally random with respect to the rest of the gene set, while true positive genes are likely to
395 share function with other members of the gene set. Using this theory, GRIN partitions a gene set,
396 such as from differential gene expression analysis or SNP-to-gene assignment from GWAS, into
397 retained and removed genes in a two-stage process.

398 In Stage 1, every gene in the network is ranked according to how connected it is to the
399 genes in the user-specified gene set (*e.g.*, GWAS-derived genes). This includes ranking the user-
400 specified genes themselves by using leave-one-out cross-validation (LOOCV). GRIN can make
401 use of any network exploration algorithm that can provide gene rankings. We chose RWR for its
402 robustness, but other propagation methods (*e.g.*, PageRank, heat diffusion) can also achieve

403 this^{28,29,51}. RWR provides each gene with a rank that is a proxy for how easily each gene in the
404 network can be reached from the starting set of GWAS genes, including a rank for the GWAS
405 genes themselves. Genes with many paths and interactions to one or more of the GWAS genes
406 rank strongly, while genes that are isolated or distant from the GWAS genes rank poorly. In the
407 current implementation, this RWR-based ranking occurs based on network propagation of
408 probabilities of visiting a given gene in the multiplex network, which is based on a matrix
409 representation of the edge weights between genes in the multiplex network (i.e., the supra-
410 adjacency matrix composed of all intra- and inter-layer connections). Random walks are then
411 simulated many times by propagating the probability of the random walker exploring a given
412 gene beginning from the seed genes, and this process continues until the combined network
413 probabilities no longer change between simulated random walks by a given threshold ($1e^{-10}$),
414 thereby achieving convergence based upon an asymptotic number of simulated random walks.
415 The advantage of using a propagation algorithm like RWR is that genes that are not direct
416 neighbors of GWAS genes may still rank highly due to indirect paths. Additional parameters can
417 be used to tune RWR to favor certain network layers (τ) or adjust the probability of restart (r) at
418 seed genes. In all analyses in the present study, we used $r = 0.7$, equivalent τ values for all
419 network layers, and a multiplex network with $\delta = 0.5$ based on previous work that achieved good
420 performance using these parameters⁴⁵.

421 To obtain accurate rankings for each gene in a gene set of size n , we chose to implement
422 random walk with restart leave-one-out cross validation (RWR-LOOCV) n times, where in each
423 run one gene is left out and the other $n-1$ genes are used as seed genes (starting points) for the
424 random walker in the multiplex network. Each run of RWR-LOOCV generates a ranking of
425 every non-seed gene in the multiplex, including the left-out gene from the original seed gene set,

426 so that each gene in the user's obtains $n-1$ rank values after n runs. Stage 1 then orders the genes
427 in the set from best to worst according to their median rank values. GRIN also needs a
428 representation of what Stage 1 results should look like for purely random gene sets of size n .
429 This empirical null distribution is generated by running RWR-LOO for 100 gene sets, each
430 containing n randomly sampled genes from the multiplex. The median rank at each position in
431 the order from 1 to n thus represents the empirical null distribution of ranks for this specific
432 multiplex and gene set size.

433 In Stage 2, a cutoff C between 1 and n is determined below which all gene set members
434 are considered the equivalent of random and can be discarded. A two-sided Mann-Whitney U
435 test from the R stats base package ("wilcox.test") is performed over a sliding window of size
436 $winsize = 0.15 \times n$ to see if the RWR-LOOCV ranks for the gene set members come from the
437 same distribution as the null distribution RWR-LOOCV ranks. The expectation is that a gene set
438 window containing functional groups of genes will have a very different ranking distribution to
439 the random genes in the equivalent null window, resulting in very small (significant) p -values.
440 On the other hand, if the window contains genes with little functional relatedness, the ranking
441 distribution will appear to be drawn from the null distribution and the p -value tends towards 1.
442 This test is run for each window sliding by 1, producing a p -value vector of length $n-winsize$.
443 The cutoff C is chosen by finding an elbow in the p -values using the open source R package
444 "Knee Arrower" with the method = "first" parameter set
445 (<https://github.com/agentlans/KneeArrower>). The output is a *retained* gene set and a *removed*
446 gene set.

447

448 **Validation of GRIN using well-characterized gene sets.**

449 To determine the ability of GRIN to effectively remove noise genes from a gene set, we
450 obtained a variety of well-characterized (“gold”) biologically interrelated gene sets and spiked
451 them with random genes drawn from the full multiplex network. Given our application of this
452 method to suicide GWAS summary statistics, we chose 20 gene sets related to diverse brain
453 functions. We included an additional 10 gene sets related to other organ systems (lung and
454 kidney) in order to demonstrate that GRIN could be adapted to other biological contexts. These
455 thirty “gold standard” gene sets of functionally interrelated genes (see **Supplementary Table 1**),
456 ranging in size from 10 to 225 genes, were derived from the following sources: Gene Ontology
457 (GO⁵²); Online Mendelian Inheritance in Man (OMIM⁵³); and DisGENET⁵⁴. Random genes were
458 inserted into each gold set to create gene sets with a 1:1 signal-to-noise ratio (i.e. $N_{\text{gold}} : N_{\text{random}}$).
459 For each of the 30 gold sets we generated 100 test gene sets using varying samples of random
460 genes. GRIN was then used to filter out random genes from each test gene set and the
461 effectiveness of the filter was evaluated using receiver operator characteristics (ROC) and
462 precision/recall (PR) measured at every possible cutoff point, C , in each rank-ordered gene set.

463 For evaluation purposes, “true positive” genes were labeled as genes belonging to a gold
464 gene set that were correctly retained by GRIN; “true negative” genes were randomly added genes
465 that were correctly removed by GRIN; “false positive” genes were randomly added genes that
466 were incorrectly retained by GRIN; and “false negative” genes were gold genes that were
467 incorrectly removed by GRIN. ROC (false positive rate vs true positive rate), and PR curves
468 (precision vs recall) were generated and area under ROC (AUROC) and area under PRC
469 (AUPRC) values were calculated for each test gene set. Median AUROC and AUPRC were
470 calculated for each of the 30 gold standard gene sets to indicate whether Stage 1 of GRIN ranked

471 gold genes more highly than random genes in general. After estimating the optimal cutoff C at
472 Stage 2, precision, recall, and specificity (true negatives / true negatives + false positives) were
473 calculated for the genes removed and the genes retained by Stage 2. Median precision, recall, and
474 specificity values were calculated across the 100 test gene sets for each of the 30 gold standard
475 gene sets. Values are presented as median +/- interquartile range (IQR).

476 GRIN was also tested on unequal ratios of gold standard genes and random genes using
477 the dopaminergic synaptic signaling gene set from GO (GO:0001963) and Acute Kidney Failure
478 gene set from DisGeNET (C0022660) – 2:1 gold genes to random genes, 1:2 gold genes to
479 random genes, and 1:4 gold genes to random genes. For each ratio of gold standard genes to
480 noise, 100 test sets were generated. Notably as precision increases (reduction of false positives),
481 there is a compensatory decrease in recall, as there is the possibility of throwing out too many
482 true positives, leading to an increased number of false negatives. Since there is a higher precision
483 value at lower noise levels, there is an inverse trend of decreasing recall at lower noise levels.

484 Finally, to test whether GRIN could remove random genes from gene sets containing
485 multiple groups belonging to biological processes that were functionally distinct, multiple gold
486 gene sets were combined and random noise also added. Dopaminergic synaptic transmission
487 (GO:0001963; 23 genes) and central nervous system myelination (GO:0022010; 20 genes) were
488 mixed with two ratios of random to gold standard genes – 2:1 gold genes:noise and 1:1 gold
489 genes:noise. This process was repeated to generate 100 gene sets of gold standard and random
490 genes for each ratio examined.

491

492 **Million Veteran Program (MVP) suicide attempt genome wide association study (GWAS)**
493 **summary statistics.**

494 Suicide attempts were identified from United States veterans as described previously¹¹.
495 Suicide attempts were characterized by using a combination of Veterans Healthcare
496 Administration (VHA) databases from the VA: the Suicide Prevention Application Network
497 (SPAN) database, electronic health record (EHR) information from the VA Corporate Data
498 Warehouse (CDW), and the CDW Mental Health Domain survey. For the MVP diagnosis,
499 suicide attempt was determined by the presence of one or more of the following International
500 Statistical Classification of Diseases and Related Health Problems (ICD)-9 and ICD-10
501 diagnostic codes in a subject's EHR: ICD-9: E950-959; ICD-10: T14.91, X60-62, X64, X66-
502 X83, Y87.0, Z91.5. Control patients were obtained from veterans enrolled in MVP without a
503 history of suicide attempt or suicidal ideation as determined by a combination of SPAN survey,
504 Mental Health Domain survey, and ICD diagnostic codes in the CDW database (suicidal ideation
505 codes: ICD-9: V62.84; ICD-10: R45.851). A total of 410,464 controls from various ancestries
506 (African, Asian, European, and Hispanic) were included for genome-wide association along with
507 14,535 cases of non-fatal suicide attempt and 294 fatal attempts. Genome-wide association
508 analyses were conducted using DNA from whole blood samples from subjects enrolled in MVP
509 using a custom Affymetrix Biobank Array. Quality control and imputation was performed as
510 previously described¹⁰. All subjects provided informed consent and the activities used to
511 generate the GWAS summary statistics were approved by the VA Central Institutional Review
512 Board and all activities were approved by the Oak Ridge National Laboratory Institutional
513 Review Board.
514

515 **International Suicide Genetics Consortium (ISGC) suicide attempt GWAS summary**
516 **statistics.**

517 Suicide attempt summary statistics were analyzed from two sets of suicide attempt
518 summary statistics derived from civilian populations compiled by the ISGC⁹. SNPs were
519 included from a general population of European ancestry (SA-EUR) as 26,590 cases of suicide
520 attempt and 492,022 control subjects. Furthermore, additional summary statistics were derived
521 from this general population conditioned on diagnosis status for major depressive disorder (SA-
522 MDD) to generate an additional set of suicide attempt summary statistics. Thus, while the SA-
523 MDD summary statistics are not independent of the SA-EUR summary statistics as they are
524 comprised of the same set of controls and cases of suicide attempt, both SA-EUR and SA-MDD
525 summary statistics were analyzed in order to determine the overlap between these results and
526 results from the MVP cohort. All subjects involved in the ISGC provided informed consent and
527 the activities used to generate the GWAS summary statistics were approved by local institutional
528 review boards as previously described⁹ and by the Oak Ridge National Laboratory Institutional
529 Review Board.

530
531 **SNP to gene assignment.**

532 SNPs were assigned to genes using two separate methods. H-MAGMA¹ was used in
533 combination with publicly available Hi-C data from adult dorsolateral prefrontal cortex
534 (dlPFC)⁵⁵ to improve intergenic SNP-to-gene assignment based on three-dimensional chromatin
535 structure in this brain region. Adult prefrontal cortex Hi-C data was used as this brain region is
536 known to be involved in executive function and impulsivity processes, which are disrupted in
537 individuals with a history of suicide attempt^{56,57} Additionally, conventional MAGMA⁴ was used

538 as an alternate method of SNP-to-gene assignment. Thus, H-MAGMA and conventional
539 MAGMA were applied only as methods of assigning SNPs to genes only using SNPs at given
540 significance thresholds, rather than using these tools as gene-based tests on the entire set of
541 summary statistics.

542 SNPs were assigned to genes from MVP, SA-EUR, or SA-MDD summary statistics at
543 multiple thresholds ($p < 5e^{-8}$, $p < 1e^{-5}$, $p < 1e^{-4}$, $p < 1e^{-3}$, $p < 1e^{-2}$, and $p < 1e^{-1}$; **Supplementary**
544 **Table 2**). The union of conventional MAGMA and H-MAGMA-assigned genes (*i.e.*, all genes
545 assigned from either method) from MVP, SA-EUR, or SA-MDD suicide attempt summary
546 statistics were subsequently used as gene set inputs to GRIN at a threshold of $p < 1e^{-5}$ and were
547 filtered into retained and removed gene sets (**Supplementary Tables 5, 8, and 9**).

548

549 **Gene set enrichment analysis.**

550 Gene sets from MVP and ISGC summary statistics were tested for multiple enrichments
551 using the online ToppGene suite using ToppFun¹². Gene set enrichments were analyzed using the
552 following enrichment categories: GO: Molecular Function; GO: Biological Process; GO:
553 Cellular Component; Human Phenotype; Pathway (all databases selected); Transcription Factor
554 Binding Site (all databases selected); Drug (all databases selected); Disease (all databases
555 selected). Enrichments were considered significant using a Benjamini-Hochberg false discovery
556 rate (FDR)-adjusted p -value threshold < 0.05 .

557

558 **Drug to gene target networks for putative drug repurposing and side effect evaluation.**

559 Genes identified as contributing to suicide attempt pathophysiology from MVP and ISGC
560 summary statistics were used to construct drug to gene target networks from information derived

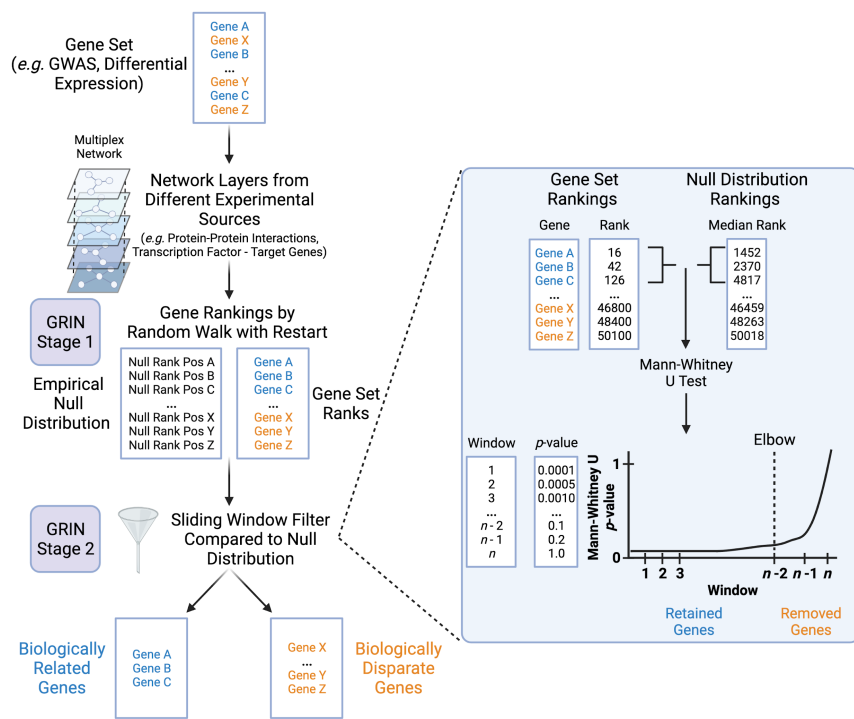
561 from DrugBank⁵⁸. Drug to gene target networks were visualized in Cytoscape⁵⁹ (version 3.8.2,
562 Cytoscape Consortium) to identify drugs known to target genes of interest from MVP and ISGC
563 summary statistics using GRIN-retained genes at $p < 1e^{-5}$ (**Supplementary Table 20**). ISGC
564 GWAS genes were compared to genes from the MVP cohort using Venn diagrams generated
565 from the open source R package Vennerable (<https://github.com/js229/Vennerable>).

566

567 **Software.**

568 GRIN is available as an open-source, command-line R script for public use. The code,
569 installation instructions, and user manual can be found at <https://github.com/sullivanka/GRIN>.

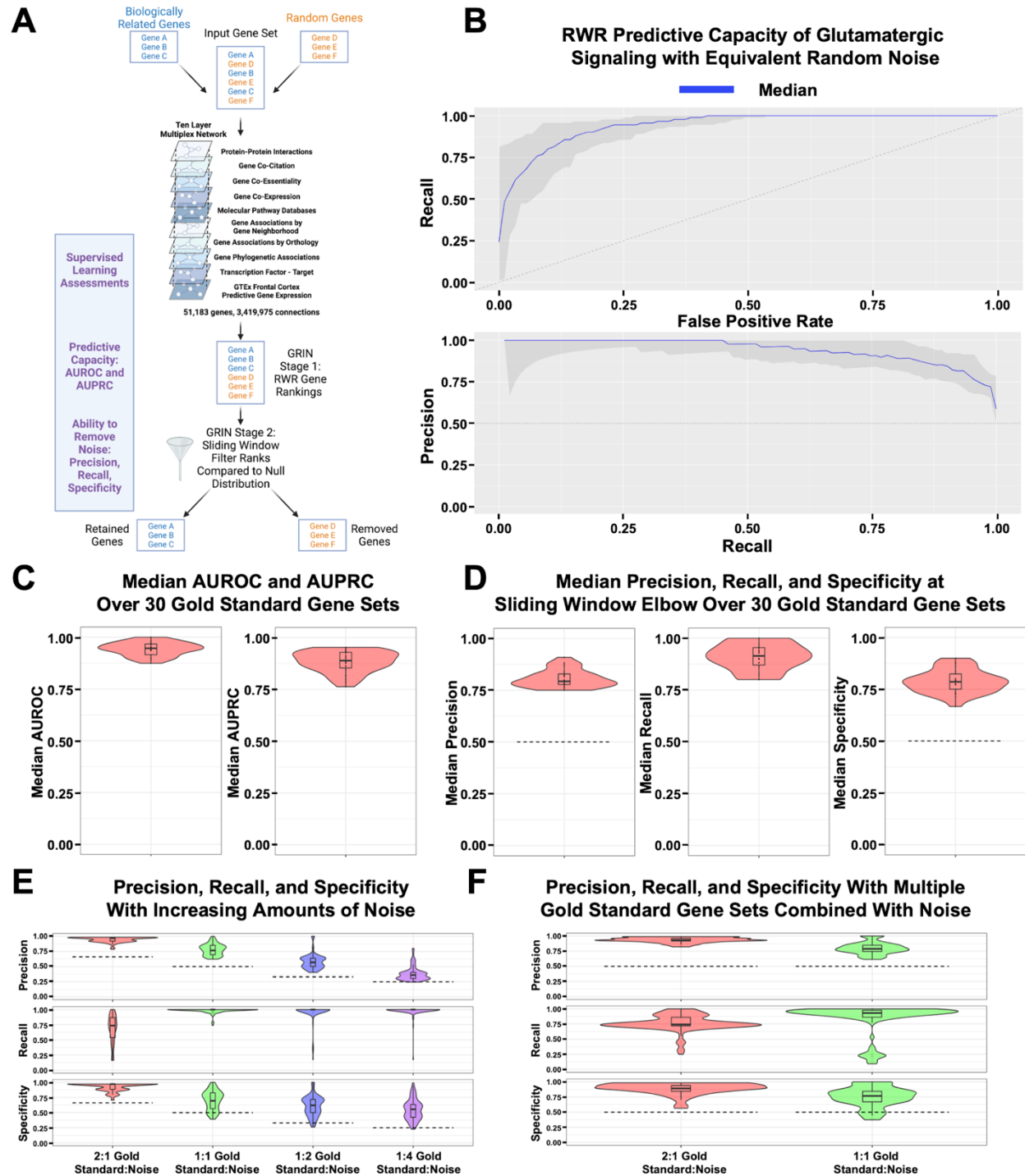
570 **Figures**



571

572 **Figure 1. Overview of GRIN – Gene set Refinement through Interacting Networks.**

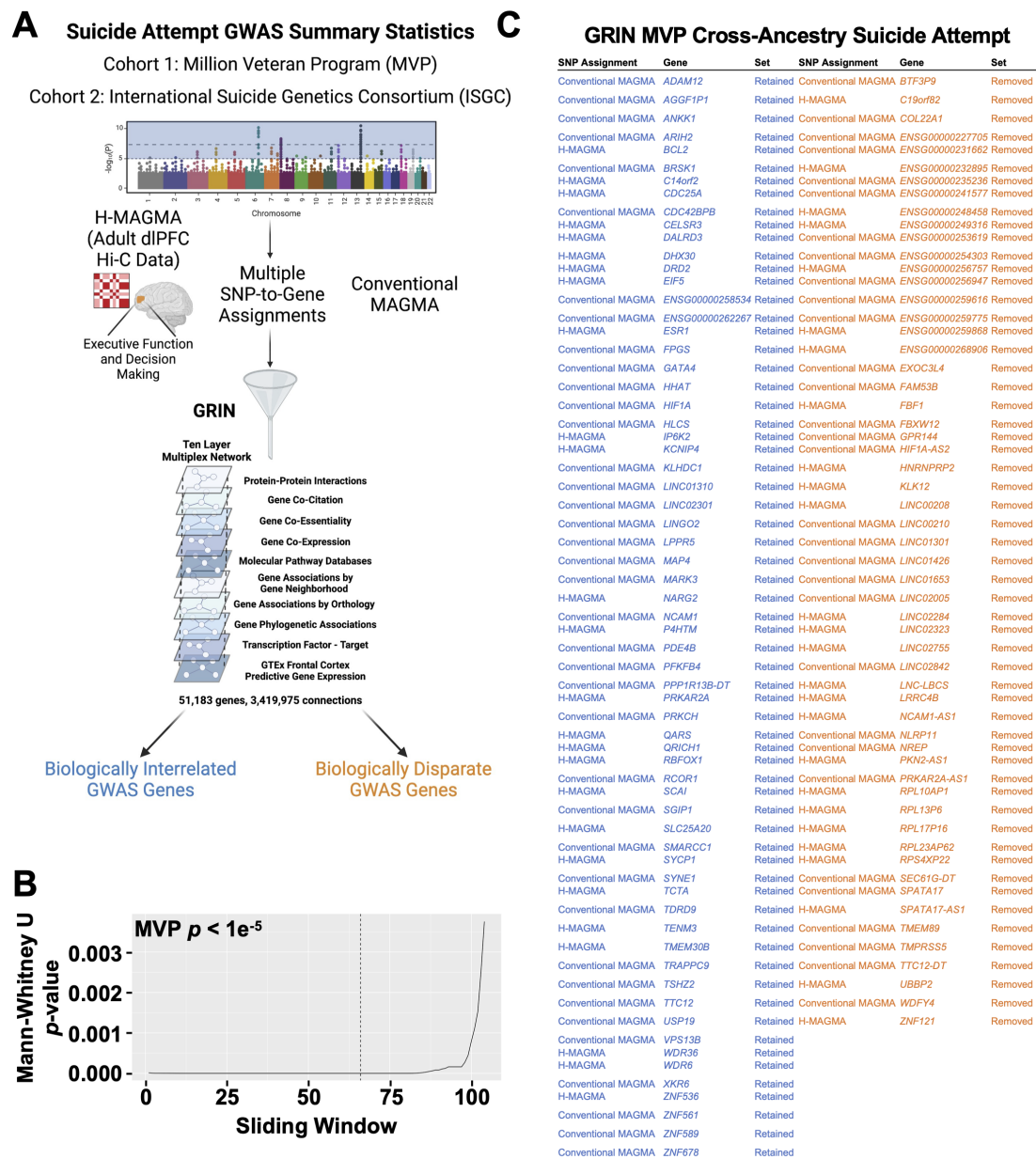
573 In stage 1, GRIN requires a network composed of gene-gene connections, preferably assembled
 574 from multiple experimental data sources. Next, the network is explored starting from all genes in
 575 the user’s gene set using the random walk with restart algorithm, resulting in a rank-ordered list
 576 of all genes in the network based on the frequency in which they were visited. The ordered ranks
 577 of the user’s genes are used for stage 2, where they are compared to ordered ranks obtained from
 578 running Stage 1 on 100 random gene sets of the same size (empirical null distribution). Using the
 579 Mann-Whitney U test, a window of the user’s gene set ranks is compared to the empirical null
 580 distribution of ranks to determine if the user’s gene rankings come from the same distribution as
 581 random genes’ rankings. After using a sliding window to compare the gene ranks in this manner,
 582 GRIN identifies a set of biologically related genes at the point at which the ranks of the user’s
 583 gene list begin to approximate the ranks of the null distribution (elbow point of the curve). Genes
 584 prior to the sliding window at the elbow point are retained as their ranks deviate from the null
 585 distribution, while genes beyond this point are removed.



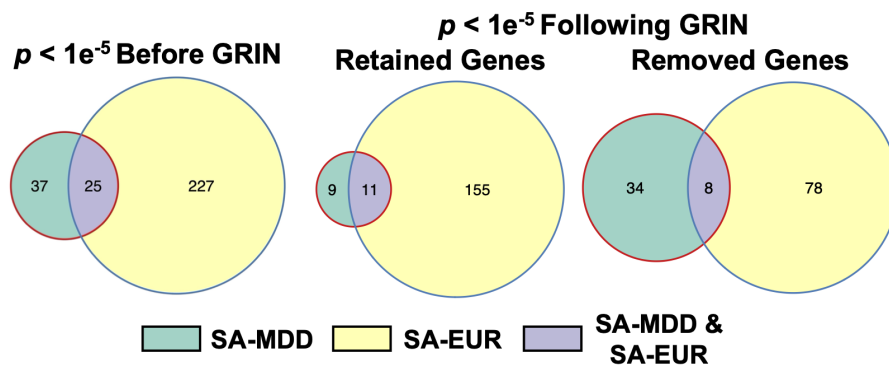
586 **Figure 2. GRIN retains biologically interrelated genes.**

587 **A.** Workflow for assessing the capacity of GRIN to identify biologically related genes from well-
 588 defined, “gold standard” gene sets (GO, OMIM, DisGeNET) mixed with random genes. Figure
 589 made with BioRender.com. **B.** Receiver-operating characteristic (ROC) curve and precision-
 590 recall curves (PRC) for GRIN. The blue line represents the mean of GRIN performance over 100
 591 sets of glutamatergic signaling genes (GO:0035249) intermixed with an equivalent number of
 592 random genes from the multiplex network. Gray values indicate maximum and minimum values

593 over 100 sets, and dotted lines indicate classification values based on random chance. **C.** Median
594 area under ROC (AUROC) and PRC (AUPRC) values for 100 sets of random genes intermixed
595 with a gold standard gene set for 30 distinct gold standard gene sets. **D.** Median precision, recall,
596 and specificity values for 100 sets of a gold standard gene set intermixed with an equivalent
597 number of random genes, repeated for 30 distinct gold standard gene sets. **E.** Violin and box
598 plots of precision, recall, and specificity values for 100 sets of dopaminergic synaptic signaling
599 (GO:0001963) gold standard genes intermixed with different ratios of random genes (Noise).
600 Median precision: 0.970 (2:1), 0.767 (1:1), 0.568 (1:2), 0.360 (1:4). Median recall: 0.735 (2:1),
601 1.00 (1:1), 1.00 (1:2), 1.00 (1:4). Median specificity: 0.970 (2:1), 0.696 (1:1), 0.620 (1:2), 0.554
602 (1:4) **F.** Precision, recall, and specificity values for 100 sets of dopaminergic synaptic signaling
603 (GO:0001963) and myelination (GO:0022010) gold standard genes mixed with a ratio of 50%
604 noise (2:1 Gold Std:Noise) or an equivalent ratio (1:1 Gold Std:Noise) of random genes.
605

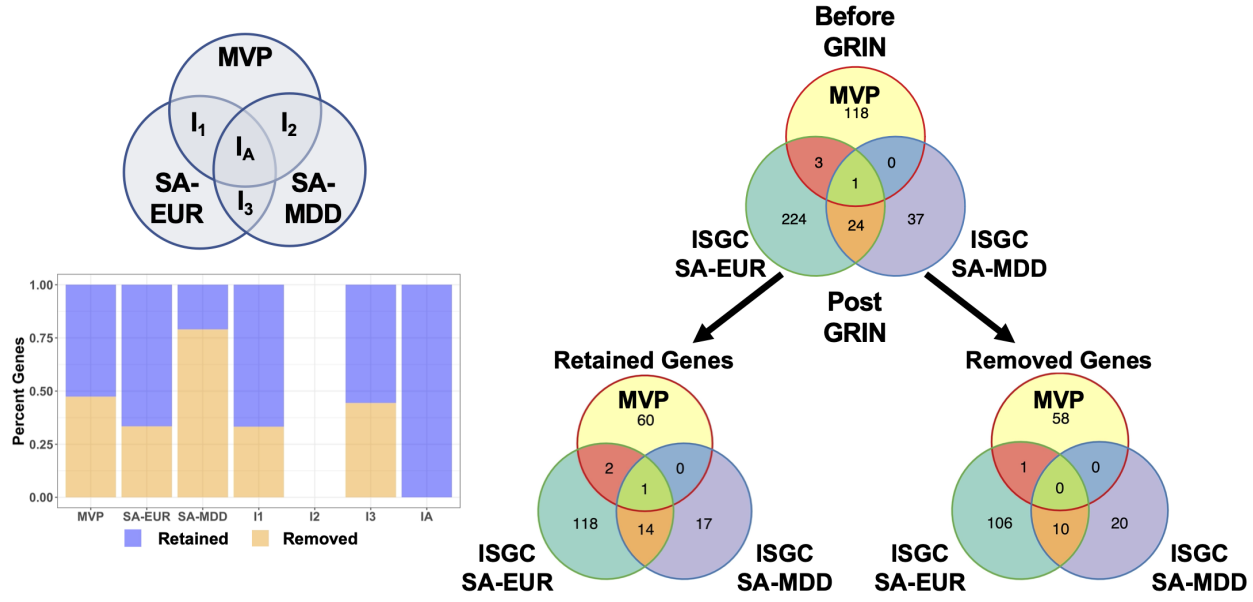


606
607 **Figure 3. GRIN identifies biologically interrelated genes from suicide attempt summary**
608 **statistics from United States veterans.**
609 **A.** Workflow for identifying biologically interrelated genes from genome-wide association study
610 (GWAS) summary statistics of suicide attempt from Million Veteran Program (MVP) and
611 International Suicide Genetics Consortium (ISGC) cohorts. Figure made with BioRender.com. **B.**
612 Sliding window p -values of Mann-Whitney U test for the union of H-MAGMA and conventional
613 MAGMA-assigned genes from MVP GWAS summary statistics using SNPs with a threshold of
614 $p < 1e^{-5}$. Dotted line indicates the elbow point of the curve used to determine which genes were
615 retained by GRIN. **C.** Gene lists of retained (blue) and removed (orange) genes from MVP
616 summary statistics as determined by GRIN based on H-MAGMA or conventional MAGMA
617 SNP-to-gene assignment.



618
619 **Figure 4. GRIN retains and removes genes common to two sets of civilian suicide attempt**
620 **summary statistics.**

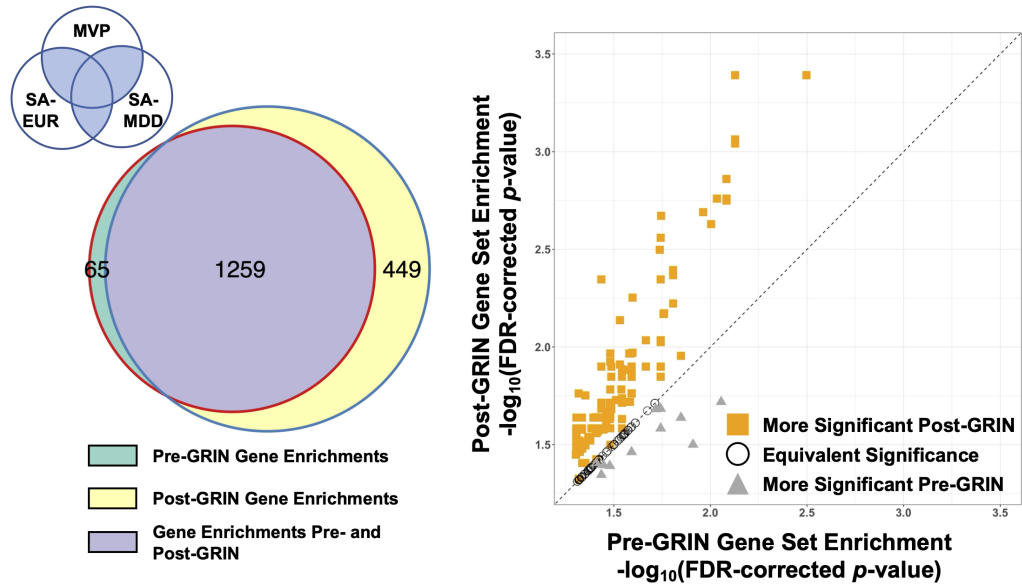
621 Venn diagrams of the number of genes before GRIN (left) and retained and removed genes
622 following GRIN from suicide attempt of general European population (SA-EUR) and
623 conditioned on major depressive disorder diagnosis (SA-MDD) at $p < 1e^{-5}$. A majority of the
624 retained genes from SA-MDD were also retained from the SA-EUR summary statistics.



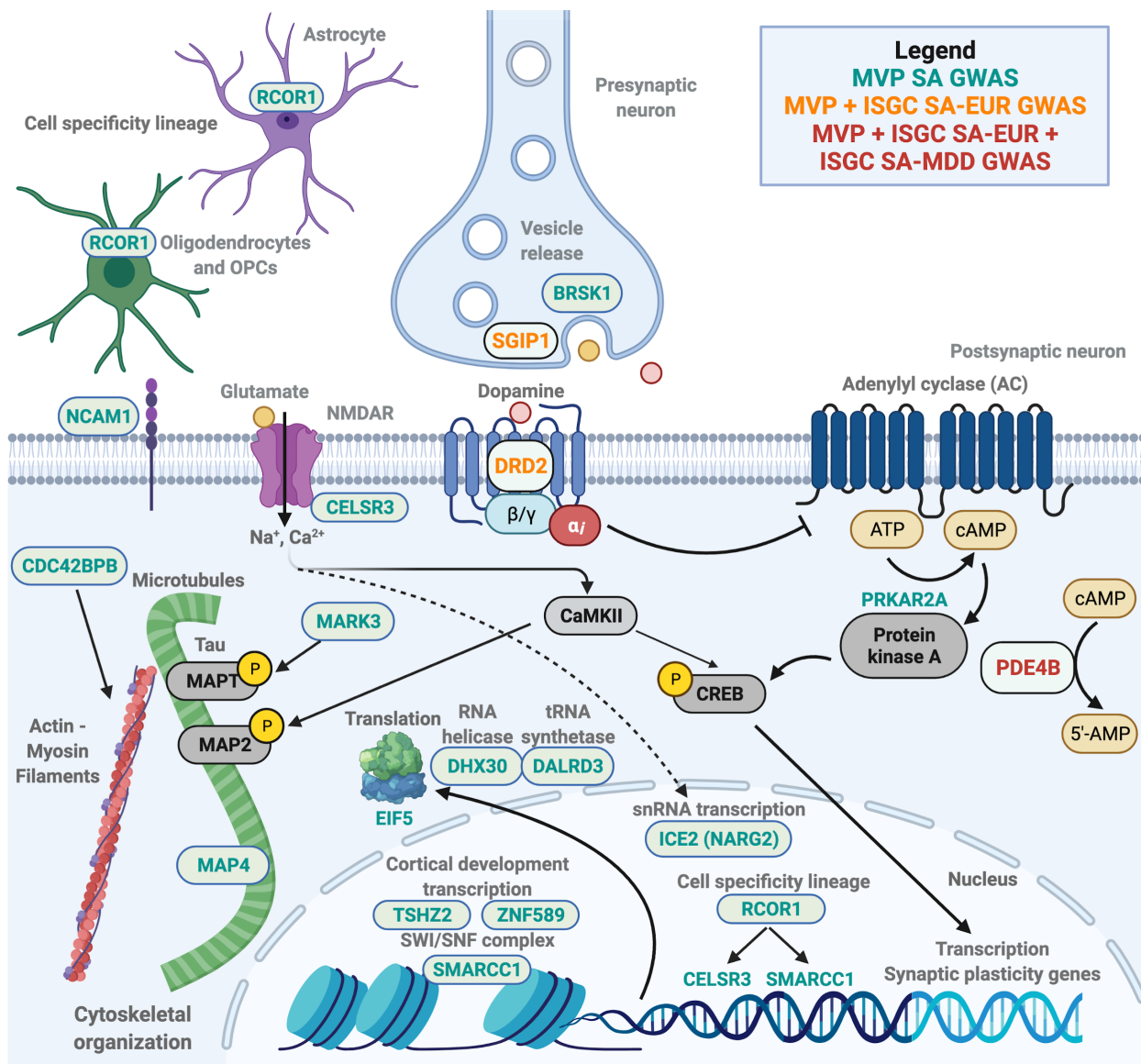
625
626
627
628
629
630
631
632
633
634

Figure 5. GRIN retains a majority of genes common among distinct suicide attempt summary statistics.

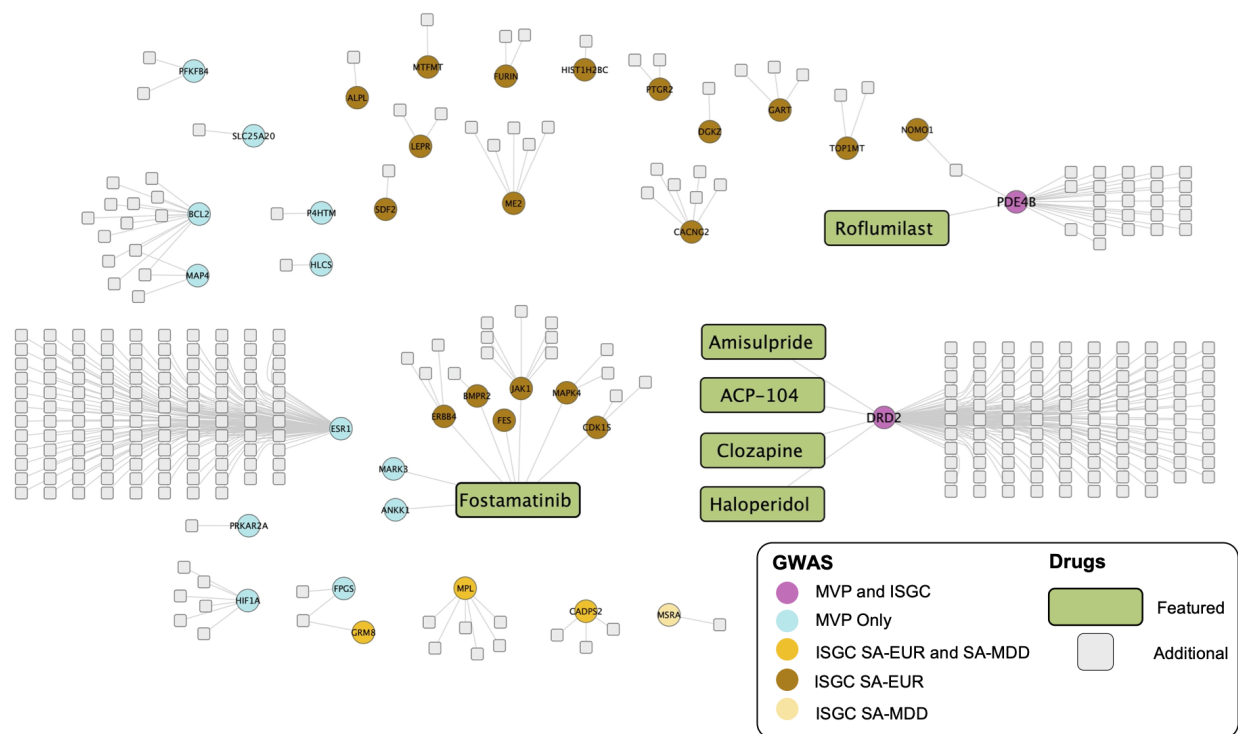
Venn diagrams of GRIN retained and removed genes from the union of MVP, SA-EUR, and SA-MDD suicide attempt summary statistics from genes assigned from SNPs at $p < 1e^{-5}$. Most genes common to multiple summary statistics were retained, as indicated by percentage of retained (orange) and removed (blue) genes in multiple sets of summary statistics. I_1 = overlapping genes between MVP and SA-EUR, I_2 = overlapping genes between MVP and SA-MDD, I_3 = overlapping genes between SA-EUR and SA-MDD, I_A = genes common to all summary statistics.



635
 636 **Figure 6. GRIN enhances gene set enrichment analysis.**
 637 Left: Using genes intersecting in two or more GWAS summary statistics (shaded blue region of
 638 Venn diagram) prior to GRIN resulted in 1324 enrichments. Intersecting genes retained by GRIN
 639 resulted in 1708 enrichments, 1259 of which were common prior to GRIN. Green: Enrichments
 640 using intersecting genes prior to GRIN; yellow: enrichments using intersecting genes from GRIN
 641 retained genes; purple: enrichments common to unfiltered and GRIN-retained genes. Right: Of
 642 the 1259 enrichments common before and after applying GRIN, these enrichments were likely to
 643 be more statistically significant (1048 enrichments, orange squares) compared to equivalent
 644 significance (205 enrichments, open circles) or less significance (gray triangles). Diagonal line
 645 indicates equivalent p -values before and after GRIN. Threshold for enrichment inclusion was –
 646 $\log_{10}(\text{FDR-corrected } p\text{-value}) > 1.30103$ (FDR-corrected p -value < 0.05).



647
 648 **Figure 7. Neurobiological mechanisms implicated in suicide attempt pathophysiology as**
 649 **determined by GWAS summary statistics and GRIN.**
 650 GRIN retained genes from MVP suicide attempt GWAS (cyan), MVP and ISGC general
 651 population GWAS (orange), and MVP and both ISGC suicide attempt summary statistics (red).
 652 A number of genes related to dopaminergic signaling (*DRD2*, *PRKAR2A*, and *PDE4B*) were
 653 identified, as well as presynaptic vesicle release (*BRSK1*, *SGIP1*), glutamatergic synapse
 654 formation (*CELSR3*), and synaptic plasticity (*NCAM1*). Genes related to cytoskeletal
 655 reorganization (*CDC42BPB*, *MAP4*, and *MARK3*) were also implicated in suicide attempt
 656 GWAS. Genes related to chromatin reorganization (*SMARCC1*), cortical development (*TSHZ2*,
 657 *ZNF589*), cell lineage (*RCOR1*), and translation processes (*DALRD3*, *DHX30*, and *EIF5*) were
 658 also retained by GRIN. Together, GRIN retained genes from multiple coincident biological
 659 processes underlying suicide pathophysiology. Figure made with BioRender.com.



660
 661 **Figure 8. Network association of drugs and drug targets identified by suicide attempt**
 662 **GWAS.**
 663 Network diagram of DrugBank drugs (featured drugs green, additional drugs gray) and drug
 664 target genes from genes retained by GRIN applied to MVP and ISGC suicide attempt summary
 665 statistics at $p < 1e^{-5}$ threshold. The dopamine D2 receptor (*DRD2*), phosphodiesterase 4B
 666 (*PDE4B*), and estrogen receptor 1 (*ESR1*) are targeted by many drugs, while fostamatinib targets
 667 8 genes implicated by suicide attempt GWAS followed by GRIN. Magenta: genes implicated in
 668 MVP and both SA-EUR and SA-MDD ISGC summary statistics; cyan: genes implicated in MVP
 669 only; orange: genes implicated in both SA-EUR and SA-MDD; brown: genes implicated in SA-
 670 EUR only; yellow: genes implicated in SA-MDD only.

671 References

- 672 1. Sey, N. Y. A. *et al.* A computational tool (H-MAGMA) for improved prediction of brain-
673 disorder risk genes by incorporating brain chromatin interaction profiles. *Nat. Neurosci.* **23**,
674 583–593 (2020).
- 675 2. Hall, M. A. *et al.* Novel EDGE encoding method enhances ability to identify genetic
676 interactions. *PLoS Genet.* **17**, e1009534 (2021).
- 677 3. Petersen, A., Alvarez, C., DeClaire, S. & Tintle, N. L. Assessing methods for assigning
678 SNPs to genes in gene-based tests of association using common variants. *PLoS One* **8**,
679 e62161 (2013).
- 680 4. de Leeuw, C. A., Mooij, J. M., Heskes, T. & Posthuma, D. MAGMA: generalized gene-set
681 analysis of GWAS data. *PLoS Comput. Biol.* **11**, e1004219 (2015).
- 682 5. Boyle, E. A., Li, Y. I. & Pritchard, J. K. An Expanded View of Complex Traits: From
683 Polygenic to Omnigenic. *Cell* **169**, 1177–1186 (2017).
- 684 6. Gosak, M. *et al.* Network science of biological systems at different scales: A review. *Phys.*
685 *Life Rev.* **24**, 118–135 (2018).
- 686 7. Voracek, M. & Loibl, L. M. Genetics of suicide: a systematic review of twin studies. *Wien.*
687 *Klin. Wochenschr.* **119**, 463–475 (2007).
- 688 8. Erlangsen, A. *et al.* Genetics of suicide attempts in individuals with and without mental
689 disorders: a population-based genome-wide association study. *Mol. Psychiatry* **25**, 2410–
690 2421 (2020).
- 691 9. Mullins, N. *et al.* Dissecting the Shared Genetic Architecture of Suicide Attempt,
692 Psychiatric Disorders, and Known Risk Factors. *Biol. Psychiatry* (2021)
693 doi:10.1016/j.biopsych.2021.05.029.

- 694 10. Kimbrel, N. A. *et al.* A genome-wide association study of suicide attempts and suicidal
695 ideation in U.S. military veterans. *Psychiatry Res.* **269**, 64–69 (2018).
- 696 11. Kimbrel, N. A. *et al.* A genome-wide association study of suicide attempts in the million
697 veterans program identifies evidence of pan-ancestry and ancestry-specific risk loci. *Mol.*
698 *Psychiatry* (2022) doi:10.1038/s41380-022-01472-3.
- 699 12. Chen, J., Bardes, E. E., Aronow, B. J. & Jegga, A. G. ToppGene Suite for gene list
700 enrichment analysis and candidate gene prioritization. *Nucleic Acids Res.* **37**, W305–11
701 (2009).
- 702 13. Wang, H., Xu, J., Lazarovici, P., Quirion, R. & Zheng, W. cAMP Response Element-
703 Binding Protein (CREB): A Possible Signaling Molecule Link in the Pathophysiology of
704 Schizophrenia. *Front. Mol. Neurosci.* **11**, 255 (2018).
- 705 14. Dvorakova, M. *et al.* SGIP1 is involved in regulation of emotionality, mood, and
706 nociception and modulates in vivo signalling of cannabinoid CB1 receptors. *Br. J.*
707 *Pharmacol.* **178**, 1588–1604 (2021).
- 708 15. Trevaskis, J. *et al.* Src homology 3-domain growth factor receptor-bound 2-like (endophilin)
709 interacting protein 1, a novel neuronal protein that regulates energy balance. *Endocrinology*
710 **146**, 3757–3764 (2005).
- 711 16. Thakar, S. *et al.* Evidence for opposing roles of Celsr3 and Vangl2 in glutamatergic synapse
712 formation. *Proc. Natl. Acad. Sci. U. S. A.* **114**, E610–E618 (2017).
- 713 17. Sugiura, N., Patel, R. G. & Corriveau, R. A. N-methyl-D-aspartate receptors regulate a
714 group of transiently expressed genes in the developing brain. *J. Biol. Chem.* **276**, 14257–
715 14263 (2001).
- 716 18. Takahashi, H. *et al.* MED26 regulates the transcription of snRNA genes through the

- 717 recruitment of little elongation complex. *Nat. Commun.* **6**, 5941 (2015).
- 718 19. Vukojevic, V. *et al.* Evolutionary conserved role of neural cell adhesion molecule-1 in
719 memory. *Transl. Psychiatry* **10**, 217 (2020).
- 720 20. Walmod, P. S., Kolkova, K., Berezin, V. & Bock, E. Zippers make signals: NCAM-
721 mediated molecular interactions and signal transduction. *Neurochem. Res.* **29**, 2015–2035
722 (2004).
- 723 21. Monaghan, C. E. *et al.* REST corepressors RCOR1 and RCOR2 and the repressor INSM1
724 regulate the proliferation-differentiation balance in the developing brain. *Proc. Natl. Acad.*
725 *Sci. U. S. A.* **114**, E406–E415 (2017).
- 726 22. Abrajano, J. J. *et al.* Differential deployment of REST and CoREST promotes glial subtype
727 specification and oligodendrocyte lineage maturation. *PLoS One* **4**, e7665 (2009).
- 728 23. Sokpor, G., Xie, Y., Rosenbusch, J. & Tuoc, T. Chromatin Remodeling BAF (SWI/SNF)
729 Complexes in Neural Development and Disorders. *Front. Mol. Neurosci.* **10**, 243 (2017).
- 730 24. Caubit, X., Tiveron, M.-C., Cremer, H. & Fasano, L. Expression patterns of the three
731 Teashirt-related genes define specific boundaries in the developing and postnatal mouse
732 forebrain. *J. Comp. Neurol.* **486**, 76–88 (2005).
- 733 25. Lessel, D. *et al.* De Novo Missense Mutations in DHX30 Impair Global Translation and
734 Cause a Neurodevelopmental Disorder. *Am. J. Hum. Genet.* **101**, 716–724 (2017).
- 735 26. Lentini, J. M., Alsaif, H. S., Faqeih, E., Alkuraya, F. S. & Fu, D. DALRD3 encodes a
736 protein mutated in epileptic encephalopathy that targets arginine tRNAs for 3-
737 methylcytosine modification. *Nat. Commun.* **11**, 2510 (2020).
- 738 27. Meltzer, H. Y. *et al.* Clozapine treatment for suicidality in schizophrenia: International
739 Suicide Prevention Trial (InterSePT). *Arch. Gen. Psychiatry* **60**, 82–91 (2003).

- 740 28. Carlin, D. E. *et al.* A Fast and Flexible Framework for Network-Assisted Genomic
741 Association. *iScience* **16**, 155–161 (2019).
- 742 29. Hristov, B. H., Chazelle, B. & Singh, M. uKIN Combines New and Prior Information with
743 Guided Network Propagation to Accurately Identify Disease Genes. *Cell Syst* **10**, 470–
744 479.e3 (2020).
- 745 30. Shim, J. E. *et al.* GWAB: a web server for the network-based boosting of human genome-
746 wide association data. *Nucleic Acids Res.* **45**, W154–W161 (2017).
- 747 31. Hwang, S. *et al.* HumanNet v2: Human gene networks for disease research. *Nucleic Acids*
748 *Res.* **47**, D573–D580 (2019).
- 749 32. Kim, H. *et al.* YeastNet v3: a public database of data-specific and integrated functional gene
750 networks for *Saccharomyces cerevisiae*. *Nucleic Acids Res.* **42**, D731–6 (2014).
- 751 33. Lee, T. *et al.* AraNet v2: an improved database of co-functional gene networks for the study
752 of *Arabidopsis thaliana* and 27 other nonmodel plant species. *Nucleic Acids Res.* **43**, D996–
753 1002 (2015).
- 754 34. Cliff, A. *et al.* A High-Performance Computing Implementation of Iterative Random Forest
755 for the Creation of Predictive Expression Networks. *Genes* **10**, (2019).
- 756 35. Chilton, I. *et al.* De novo heterozygous missense and loss-of-function variants in
757 CDC42BPB are associated with a neurodevelopmental phenotype. *Am. J. Med. Genet. A*
758 **182**, 962–973 (2020).
- 759 36. Agha, Z. *et al.* Exome sequencing identifies three novel candidate genes implicated in
760 intellectual disability. *PLoS One* **9**, e112687 (2014).
- 761 37. Wang, X.-X. *et al.* MRCK β links *Dasm1* to actin rearrangements to promote dendrite
762 development. *J. Biol. Chem.* **296**, 100730 (2021).

- 763 38. Li, L. *et al.* Protein kinases paralleling late-phase LTP formation in dorsal hippocampus in
764 the rat. *Neurochem. Int.* **76**, 50–58 (2014).
- 765 39. Lund, H. *et al.* MARK4 and MARK3 associate with early tau phosphorylation in
766 Alzheimer’s disease granulovacuolar degeneration bodies. *Acta Neuropathol Commun* **2**, 22
767 (2014).
- 768 40. Doki, C. *et al.* Microtubule elongation along actin filaments induced by microtubule-
769 associated protein 4 contributes to the formation of cellular protrusions. *J. Biochem.* **168**,
770 295–303 (2020).
- 771 41. Neale, B. M. *et al.* Patterns and rates of exonic de novo mutations in autism spectrum
772 disorders. *Nature* **485**, 242–245 (2012).
- 773 42. Rehni, A. K., Singh, T. G. & Chand, P. Amisulpride-induced seizurogenic effect: a potential
774 role of opioid receptor-linked transduction systems. *Basic Clin. Pharmacol. Toxicol.* **108**,
775 310–317 (2011).
- 776 43. Rolf, M. G. *et al.* In vitro pharmacological profiling of R406 identifies molecular targets
777 underlying the clinical effects of fostamatinib. *Pharmacol Res Perspect* **3**, e00175 (2015).
- 778 44. Pinner, N. A., Hamilton, L. A. & Hughes, A. Roflumilast: a phosphodiesterase-4 inhibitor
779 for the treatment of severe chronic obstructive pulmonary disease. *Clin. Ther.* **34**, 56–66
780 (2012).
- 781 45. Valdeolivas, A. *et al.* Random walk with restart on multiplex and heterogeneous biological
782 networks. *Bioinformatics* **35**, 497–505 (2019).
- 783 46. Wang, T. *et al.* Gene Essentiality Profiling Reveals Gene Networks and Synthetic Lethal
784 Interactions with Oncogenic Ras. *Cell* **168**, 890–903.e15 (2017).
- 785 47. Szklarczyk, D. *et al.* STRING v11: protein–protein association networks with increased

- 786 coverage, supporting functional discovery in genome-wide experimental datasets. *Nucleic*
787 *Acids Res.* **47**, D607–D613 (2018).
- 788 48. Pearl, J. R. *et al.* Genome-Scale Transcriptional Regulatory Network Models of Psychiatric
789 and Neurodegenerative Disorders. *Cell Syst* **8**, 122–135.e7 (2019).
- 790 49. Basu, S., Kumbier, K., Brown, J. B. & Yu, B. Iterative random forests to discover predictive
791 and stable high-order interactions. *Proc. Natl. Acad. Sci. U. S. A.* **115**, 1943–1948 (2018).
- 792 50. GTEx Consortium. The Genotype-Tissue Expression (GTEx) project. *Nat. Genet.* **45**, 580–
793 585 (2013).
- 794 51. Di Nanni, N., Bersanelli, M., Milanesi, L. & Mosca, E. Network Diffusion Promotes the
795 Integrative Analysis of Multiple Omics. *Front. Genet.* **11**, 106 (2020).
- 796 52. Harris, M. A. *et al.* The Gene Ontology (GO) database and informatics resource. *Nucleic*
797 *Acids Res.* **32**, D258–61 (2004).
- 798 53. Amberger, J. S., Bocchini, C. A., Schiettecatte, F., Scott, A. F. & Hamosh, A. OMIM.org:
799 Online Mendelian Inheritance in Man (OMIM®), an online catalog of human genes and
800 genetic disorders. *Nucleic Acids Res.* **43**, D789–98 (2015).
- 801 54. Piñero, J. *et al.* DisGeNET: a comprehensive platform integrating information on human
802 disease-associated genes and variants. *Nucleic Acids Res.* **45**, D833–D839 (2017).
- 803 55. Wang, D. *et al.* Comprehensive functional genomic resource and integrative model for the
804 human brain. *Science* **362**, (2018).
- 805 56. Zhang, H. *et al.* Aberrant White Matter Microstructure in Depressed Patients with
806 Suicidality. *J. Magn. Reson. Imaging* (2021) doi:10.1002/jmri.27927.
- 807 57. Cao, J. *et al.* The Association Between Resting State Functional Connectivity and the Trait
808 of Impulsivity and Suicidal Ideation in Young Depressed Patients With Suicide Attempts.

- 809 *Front. Psychiatry* **12**, 567976 (2021).
- 810 58. Wishart, D. S. *et al.* DrugBank: a knowledgebase for drugs, drug actions and drug targets.
- 811 *Nucleic Acids Res.* **36**, D901–6 (2008).
- 812 59. Shannon, P. *et al.* Cytoscape: a software environment for integrated models of biomolecular
- 813 interaction networks. *Genome Res.* **13**, 2498–2504 (2003).
- 814
- 815