

1 **From menarche to menopause: the impact of reproductive factors**  
2 **on the metabolic profile of over 65,000 women**

3  
4 Gemma L Clayton<sup>1,2\*</sup>, Maria Carolina Borges<sup>1,2\*</sup>, Deborah A Lawlor<sup>1,2,3</sup>

5 \*Joint first authors

6 <sup>1</sup> MRC Integrative Epidemiology Unit, University of Bristol, Bristol, UK.

7 <sup>2</sup> Population Health Sciences, Bristol Medical School, University of Bristol, Bristol, UK.

8 <sup>3</sup> NIHR Bristol Biomedical Research Centre, Bristol, UK.

9  
10 **Corresponding Author**

11 [gemma.clayton@bristol.ac.uk](mailto:gemma.clayton@bristol.ac.uk)

12 University of Bristol,

13 Oakfield House, Dr Gemma L Clayton

14

15 Oakfield Road,

16 Bristol,

17 BS8 2BN

18

19 **Word count:**

20 **Figures:** 4

21 **Tables:** 1

22

**NOTE: This preprint reports new research that has not been certified by peer review and should not be used to guide clinical practice.**

23 **Abstract (155)**

24

25 We explored the relation between age at menarche, parity and age at natural menopause with  
26 249 metabolic traits, measured using nuclear magnetic resonance (NMR), in up to 65,487 UK  
27 Biobank women using multivariable regression (MV), Mendelian randomization (MR) and a  
28 male negative control (parity only). Older age of menarche was related to a less atherogenic  
29 metabolic profile in MV and MR, which was largely attenuated when accounting for adult body  
30 mass index. In MV, higher parity related to complex changes in lipoprotein-related traits; these  
31 were not observed in male negative controls and were imprecisely estimated in MR. In MV  
32 and MR, older age at natural menopause was related to lower concentrations of inflammation  
33 markers, but inconsistent results were observed for LDL-related traits due to chronological  
34 age-specific effects. Our findings support a role of reproductive traits on later life metabolic  
35 profile and provide insights into identifying novel markers for the prevention of adverse  
36 cardiometabolic outcomes in women.

37

## 38 Introduction

39

40 Markers of women's reproductive health, such as age at menarche, parity and age at  
41 menopause, have been associated with several common chronic conditions, including  
42 cardiometabolic diseases<sup>1-6</sup> and breast, ovarian and endometrial cancer<sup>7-12</sup>. Some attempts  
43 have been made to explore the extent to which these associations are causal, as opposed to  
44 explained by residual confounding, using approaches such as Mendelian randomization (MR)  
45 and negative control designs, which are less prone to bias by key confounders from  
46 conventional observational studies. MR studies suggest a direct positive effect of age at  
47 menarche on breast cancer and an indirect inverse effect via body mass index (BMI)<sup>13</sup>, as  
48 well as a possible bidirectional relationship between age at menarche and BMI<sup>13,14</sup>. MR also  
49 supports a protective effect of older age at first birth on type 2 diabetes and cardiovascular  
50 diseases<sup>15</sup> and lower mean levels of BMI, fasting insulin and triglycerides in women and men  
51<sup>16</sup>, while a partner negative control study provides some evidence of a 'J-shaped' effect of  
52 parity on coronary heart disease risk<sup>5</sup>. In addition, evidence from MR studies indicate that  
53 older age at menopause increases the risk of breast, endometrial and ovarian cancer, reduces  
54 the risk of bone fractures and type 2 diabetes, and do not substantially affect BMI or  
55 cardiovascular diseases risk<sup>17</sup>.

56 Metabolites could act as mediators of the relationship of reproductive markers, and  
57 related hormonal changes, with chronic diseases<sup>18-20</sup>. Determining the effect of women's  
58 reproductive markers on multiple metabolites would be the first step to exploring this and could  
59 provide crucial insights into mechanisms underlying women's long-term health. We have  
60 previously shown marked changes in metabolites, such as lipids, fatty acids, amino acids and  
61 inflammatory markers during pregnancy<sup>20</sup>, through the menopausal transition<sup>21</sup>, and among  
62 women on hormonal contraceptives containing estrogen<sup>22</sup>. Many of these same metabolic  
63 measures are also related to cardiovascular diseases<sup>19</sup> and some cancers<sup>23-26</sup>. The aim of  
64 this paper is to explore the extent to which women's reproductive markers have a causal effect  
65 on 249 metabolic measures (covering lipids, fatty acids, amino acids, glycolysis, ketone bodies  
66 and an inflammatory marker). We focus on three reproductive traits that represent key events  
67 in women's reproductive lives: (i) age at menarche, a marker of puberty timing, (ii) parity, a  
68 marker of repeated exposure to the physiological challenges of pregnancy, and (iii) age at  
69 menopause, a marker of reproductive aging. We explore the causal relationships between  
70 reproductive markers and metabolic measures by triangulating evidence<sup>27</sup> across  
71 multivariable regression, a negative control design (for parity only), and MR (**Figure 1**). Given  
72 each of these approaches has unique strengths and limitations, results that agree across them  
73 are less likely to be spurious<sup>27</sup>.

## 74 Results

75 We used data from 65,699 UK Biobank female participants with 249 metabolic  
76 measures quantified by nuclear magnetic resonance (NMR). Self-reported age at menarche  
77 (in years), parity (in number of live born children) and age at menopause (in years) were  
78 reported at baseline when participants mean age was 56 years old (range: 37 to 73). NMR  
79 metabolites were measured on blood samples taken at baseline or first repeat assessment  
80 (more details in methods). The characteristics of these participants are shown in **Table 1** (and  
81 split by each of our reproductive markers (categorized) in **Supplementary Tables 1-3**). At  
82 recruitment (baseline) women were aged (mean) 56 (SD=8.0) years, 21% drank three or four  
83 times a week and 40% were previous/currents smokers. 81% of women had one or more live  
84 births whilst the mean age of menarche was 13 years (SD=1.3). 59% (37, 428) women  
85 reported they went through a natural menopause with a mean age of menopause of 49.7 years  
86 (SD=5.1). **Supplementary Table 4** shows the distribution of NMR metabolic measures among  
87 UK Biobank females. The proportion of women with missing data across metabolic measures  
88 ranged from 0.3% to 6.1%.

89 We used three approaches relying on different assumptions to explore the causal role  
90 of women's reproductive markers on later life metabolic profile. For the first approach  
91 ('multivariable regression'), we used linear regression models to estimate the association of  
92 reproductive markers with metabolic measures after adjusting for age at baseline, education  
93 and body composition at age 10. In sensitivity analyses, for the 55 non-derived metabolites,  
94 we categorised age at menarche, parity and age at natural menopause, tested for a linear  
95 trend and, where there was evidence of non-linearity, fit restricted cubic splines. For the  
96 second approach ('negative control design' – only applicable for parity), we used linear  
97 regression models to test whether number of live born children in men was associated with  
98 their metabolic measures; given men do not experience the repeated physiological stress of  
99 pregnancy, but are likely to demonstrate the same associations of confounders (eg.  
100 socioeconomic position, BMI, smoking) with number of live births, similar associations of  
101 number of live births with metabolic measures between men and women would indicate bias  
102 (e.g. due to confounding) rather than a causal effect of being exposed to the physiological  
103 stress of pregnancy on women's metabolic profile. For the third approach ('MR'), we selected  
104 single nucleotide polymorphisms (SNPs) as genetic instruments for each reproductive marker  
105 from previous genome-wide association studies (GWAS) and performed two-sample MR to  
106 estimate the effect of reproductive markers on metabolic measures using the standard inverse  
107 variance weighted (IVW) method. For both multivariable and MR analyses, we adopted P-  
108 value < 0.00093, which accounts for the approximate number of independent tests as detailed  
109 in 'Statistical analyses'.

110

111 Age at menarche

112

113 In the main multivariable regression analyses (adjusting for age at baseline, education and  
114 body composition at age 10), older age at menarche was associated with higher concentration  
115 of glutamine, glycine, albumin, apolipoprotein A1, cholines, phosphatidylcholines, and  
116 sphingomyelins but lower concentration of alanine, branched-chain amino acids (isoleucine,  
117 leucine and valine), aromatic amino acids (phenylalanine and tyrosine), fatty acids  
118 (monounsaturated fatty acids (MUFA), omega-3 polyunsaturated fatty acids (PUFA), and  
119 saturated fatty acids (SFA)), glycolysis-related metabolites (glucose, lactate, pyruvate),  
120 acetoacetate, and glycoprotein acetyls (GlycA) ( $P < 0.00093$ ) (**Figure 2A** and **Supplementary**  
121 **Table 5**). Older age at menarche was also associated with numerous lipoprotein-related traits  
122 at  $P < 0.00093$ , particularly with higher number of particles, size, and lipid content in high-  
123 density lipoproteins (HDL) and lower number of particles, size, and lipid content in very low-  
124 density lipoproteins (VLDL) (**Figure 2A**). The associations of age at menarche with HDL-  
125 related traits were mostly due to larger HDL subclasses (i.e. medium, large and very large  
126 particles), while associations with VLDL-related traits were observed across VLDL subclasses  
127 (**Supplementary Figure 1** and **Supplementary Table 5**). In sensitivity analyses with further  
128 adjustments for BMI, smoking and alcohol status at baseline, findings for an association of  
129 older age at menarche were largely or completely attenuated towards the null for most  
130 metabolic measures with few exceptions, such as glutamine, glycine, omega-3 PUFA,  
131 pyruvate, lactate, and acetoacetate (**Supplementary Figure 2**). There was evidence of non-  
132 linearity between categories of age at menarche (<13, 13-14, >14 years) and 17 metabolites  
133 (**Supplementary Table 6** and **Supplementary Figure 3**). Restricted cubic spline models (with  
134 3 knots at ages 11, 13, and 15 years) generally showed an increase in albumin, apolipoprotein  
135 A1, cholines, DHA, LA, and phosphatidylcholines with older age at menarche until  
136 approximately age 13, in line with our linear association, and then began to flatten and/or  
137 decrease (**Supplementary Table 7** and **Supplementary Figure 4**). Whilst older age at  
138 menarche was related to an increase in GlycA until ~13 years and then began to flatten.

139 For the MR analyses, we selected 389 SNPs as instruments for age at menarche,  
140 which explained 7.4% of its phenotypic variance with a corresponding mean F statistic of 63  
141 (**Supplementary Table 8**). Overall, MR estimates using IVW were in agreement with  
142 multivariable regression estimates in direction and magnitude (**Figures 2A** and  
143 **Supplementary Figure 1**); however, due to the higher degree of uncertainty for IVW  
144 estimates, no result passed our threshold for multiple testing correction ( $P < 0.00093$ ).  
145 Following reviewer's comments, we repeated the IVW analyses for a larger sample of women  
146 ( $N=216,514-241,244$ ) for the eight biomarkers assayed using clinical chemistry techniques

147 that matched measures in the NMR metabolomics platform — i.e. albumin, apolipoprotein A1,  
148 apolipoprotein B, glucose, HDL-cholesterol, LDL-cholesterol, total cholesterol, and  
149 triglycerides. These results provided further evidence of older age at menarche being related  
150 to higher albumin, apolipoprotein A1, HDL-cholesterol, and lower triglycerides ( $P < 0.00093$ )  
151 (**Figure 3**). Given the a priori evidence of bidirectional effects between age at menarche and  
152 BMI, we also performed multivariable IVW accounting for adult BMI to estimate the direct  
153 effects of age at menarche on metabolic measures, which resulted in estimates partly or  
154 completely attenuated to the null for most metabolic measures with few exceptions, such as  
155 glutamine and glycine (**Supplementary Figure 5 and 6**).

156

157 Parity

158

159 In the main multivariable regression analyses (adjusting for age at baseline, education  
160 and body composition at age 10), higher parity was related to higher concentrations of glycine  
161 and leucine, but lower concentrations of histidine, fatty acids (docosahexaenoic acid (DHA),  
162 Omega 3, Omega 6 PUFA), pyruvate, ketone bodies (acetate, acetoacetate, acetone and  $\beta$ -  
163 hydroxybutyrate), and apolipoprotein A1 ( $P < 0.00093$ ) (**Figures 2B** and **Supplementary**  
164 **Table 9**). Higher parity was also associated with numerous lipoprotein-related measures at  $P$   
165  $< 0.00093$ , particularly with lower and higher number of particles, size, and lipid content for  
166 HDL and VLDL, respectively, as well as lower size of LDL particles (**Figure 2B**). The  
167 associations of parity with lipoprotein-related measures were observed across most VLDL and  
168 HDL subclasses, whereas associations with LDL-related measures were mostly driven by  
169 larger LDL particles (**Supplementary Figure 7** and **Supplementary Table 9**). In sensitivity  
170 analyses with further adjustments for BMI, smoking and alcohol status at baseline, higher  
171 parity associations were consistent for glycine, histidine, fatty acids, pyruvate, ketone bodies,  
172 apolipoprotein A1, and partly attenuated towards the null for VLDL- and HDL-related traits  
173 (**Supplementary Figure 8**). There was some evidence of non-linearity between parity  
174 (0,1,2,3+) and 28 metabolites (**Supplementary Table 6** and **Supplementary Figure 9**).  
175 However, restricted cubic spline models (with knots at 1, 2, and 3) generally showed  
176 monotonic relationships for those with no to four pregnancies, consistent with the main  
177 analysis models (**Supplementary Table 10** and **Supplementary Figure 10**).

178 We used males as a negative control since men cannot experience the effects of being  
179 exposed to the stress test of pregnancy. Therefore, similar results between men and women  
180 would be indicative of bias, such as due to confounding by sociodemographic (e.g. education  
181 attainment) and biological (e.g. infertility) factors, rather than by an effect of repeated exposure  
182 to pregnancy. When using number of children in males as a negative control, we observed  
183 that associations for leucine, histidine, pyruvate, and ketone bodies were similar between men

184 and women (i.e. directionally consistent, similar effect estimates and 95% confidence intervals  
185 overlapped between male and female estimates). On the other hand, association estimates  
186 for fatty acids, apolipoprotein A1, and lipoprotein-related traits were weaker or consistent with  
187 the null, and glycine was in opposite direction, in males compared to females (**Figure 4**). For  
188 the MR analyses, we selected 32 SNPs as instruments for parity, which explained 0.2% of its  
189 phenotypic variance with a corresponding mean F statistic of 31 (**Supplementary Table 8**). It  
190 is unclear whether estimates from multivariable regression and MR analyses are consistent  
191 with each other due to the high level of uncertainty in the latter (**Figures 2B** and  
192 **Supplementary Figure 7**), which persisted even when using the larger sample of women with  
193 selected biomarkers assayed by clinical chemistry (**Figure 3**).

194

195 Age at natural menopause

196

197 In the main multivariable regression analyses (adjusting for age at baseline, education  
198 and body composition at age 10), older age at menopause was related to higher glycine, PUFA  
199 (e.g. DHA and LA), albumin, apolipoprotein B and sphingomyelins, but lower concentration of  
200 MUFA, pyruvate, acetoacetate, creatinine and GlycA ( $P < 0.00093$ ) (**Figures 2C** and  
201 **Supplementary Table 11**). Older age at menopause was also associated with numerous  
202 lipoprotein-related traits at  $P < 0.00093$ , particularly with higher number of particles and lipid  
203 content in LDL, larger size of HDL particles, and lower size of VLDL particles (**Figure 2C**). The  
204 associations between age at menopause and LDL-related traits were observed across LDL  
205 subclasses (i.e. from small to large), whereas associations with HDL-related traits were mostly  
206 driven by larger HDL particles (**Supplementary Figure 11**). In sensitivity analyses with further  
207 adjustments for BMI, smoking and alcohol status at baseline, associations between older age  
208 at natural menopause and metabolites remained similar, except for associations with HDL-  
209 related traits which were partly attenuated (**Supplementary Figure 12**). There was evidence  
210 of non-linearity across 24 metabolites (**Supplementary Table 6** and **Supplementary Figure**  
211 **13**) in the multivariable regression when menopause was categorised (<49, 49-50, 51-53, >53  
212 years). Restricted cubic spline models (with 4 knots) were generally consistent with the main  
213 analysis (assuming a linear association) until age at menopause ~55 years when most  
214 metabolites decreased (**Supplementary Table 12** and **Supplementary Figure 14**).

215 For the MR analyses, we selected 290 SNPs as instruments for age at natural  
216 menopause, which explained 8.2% of its phenotypic variance with a corresponding mean F  
217 statistic of 141 (**Supplementary Table 8**). Estimates from multivariable regression and MR  
218 analyses were inconsistent in direction for many metabolic measures (**Figure 2C**). In  
219 particular, in contrast to results from multivariable regression, MR analyses indicated older  
220 age at menopause to be related to lower concentration of fatty acids (e.g. LA), albumin,

221 apolipoprotein B, as well as lower number of particles, lipid content and size of LDL across  
222 subtypes (from small to large) (**Figure 2C** and **Supplementary Figure 11**). For some  
223 metabolites, such as GlycA and HDL-related traits, results were consistent in direction  
224 between multivariable regression and MR. For alanine, glutamine and glucose, MR analysis  
225 suggested older age of menopause to be related to lower circulating metabolite levels, which  
226 had not been observed in multivariable regression analysis (**Figures 2C** and **Supplementary**  
227 **Table 11**). As expected, there was more uncertainty in MR estimates and only results for  
228 glutamine and some LDL- and VLDL-related measures passed the threshold for multiple test  
229 correction ( $P < 0.00093$ ). Repeating the MR analyses in the larger sample of women  
230 ( $N=216,514-241,244$ ) with selected biomarkers assayed by clinical chemistry confirmed that  
231 older age at natural menopause was related to lower albumin, LDL-cholesterol, and total  
232 cholesterol at  $P < 0.00093$  (**Figure 3**).

233 We performed further analyses to investigate reasons underlying discrepant findings  
234 between multivariable and MR estimates for some metabolic measures. These analyses were  
235 restricted to the eight clinical chemistry biomarkers matching measures in the NMR platform  
236 to maximise statistical power since they have been measured in the full UK Biobank sample.  
237 First, we hypothesised that discrepant findings were related to differences in the sample used  
238 for multivariable regression, which excludes women with missing data on age at menopause  
239 (hereafter 'selected sample'), and two-sample MR, which includes women even if they are  
240 missing data on age at natural menopause (hereafter 'full sample'). To test that, we compared  
241 estimates from multivariable regression on the selected sample to MR on both the selected  
242 sample and full sample. In agreement with our hypothesis, multivariable regression and MR  
243 estimates for LDL-cholesterol and related traits (i.e. apolipoprotein B and total cholesterol) are  
244 comparable when restricting to the selected sample. In contrast, for albumin, discrepant  
245 results were related to differences between multivariable regression and MR rather than  
246 between selected and full sample (**Supplementary Figure 15**). Second, given women with  
247 missing data at age at menopause are typically pre-menopausal and younger, we explored  
248 age-stratified multivariable and MR estimates, which revealed a strong effect modification by  
249 chronological age on the association of age at menopause with LDL-c and related traits – e.g.  
250 older age at menopause is related to substantially lower LDL-cholesterol in younger women  
251 ( $\leq 50$  y) (e.g. MV:  $-0.018$  SD, 95%CI:  $-0.021, -0.015$ ), but slightly higher LDL-cholesterol in  
252 older women ( $> 63$  y) (e.g. MV:  $0.004$  SD, 95%CI:  $0.003, 0.006$ ) (**Supplementary Figure 15**).  
253 Differences related to chronological age at baseline were also observed for other biomarkers,  
254 such as albumin. This age patterned results were largely similar when excluding women using  
255 statins at baseline or with a history of using hormone replacement therapy (HRT)  
256 (**Supplementary Figure 16**).



257

258 Exploring the plausibility of MR assumptions

259

260 We conducted a series of sensitivity analyses to explore the plausibility of key MR  
261 assumptions, required for the method to provide a valid test of the presence of a causal effect.

262 First, we tested whether MR findings are likely to be biased by population stratification,  
263 assortative mating and indirect genetic effects of parents using two approaches: (i) performing  
264 two-sample MR analyses using (sex-combined) data from a recent within-siblings GWAS, and  
265 (ii) conducting two-sample MR on negative control outcomes (i.e. skin colour and skin tanning  
266 ability). Two-sample MR estimates for the effect of genetic susceptibility for older age at  
267 menarche, parity, and age at natural menopause on five available biomarkers was broadly  
268 consistent when estimated among unrelated individuals or between siblings. Results for age  
269 at menarche were slightly overestimated for triglycerides and underestimated for glycated  
270 haemoglobin in unrelated individuals, while results for a positive relation between age at  
271 natural menopause and HDL-cholesterol was supported by analyses between siblings but not  
272 among unrelated individuals (**Supplementary Figure 17**). We did not observe an association  
273 of genetically-predicted reproductive markers with skin colour or tanning (**Supplementary**  
274 **Table 13**). Taken together, these sensitivity analyses indicate that our main MR estimates are  
275 unlikely to be substantially biased by population stratification, assortative mating and indirect  
276 genetic effects of parents.

277 Second, we explored the presence of bias due to pleiotropic variants by using MR  
278 methods other than IVW: the weighted median estimator and MR-Egger. These methods can  
279 provide valid tests for the presence of a causal effect under different (and weaker)  
280 assumptions about the nature of the underlying horizontal pleiotropy compared to IVW.  
281 Estimates from IVW and weighted median were consistent in direction for most relationships  
282 between reproductive markers and metabolic measures. In most instances, estimates from  
283 MR-Egger method were uninformative given the high degree of uncertainty (**Supplementary**  
284 **Figures 18, 19, 20**).

285 Third, we assessed potential bias due to sample overlap from including UK Biobank  
286 individuals in genetic association estimates for both exposures and outcomes. This was  
287 achieved by using data from previous GWAS that did not include UK Biobank, available for  
288 age at menarche and age at natural menopause, to select SNPs (and genetic associations  
289 estimates with exposures) for two-sample MR analyses (**Supplementary Table 14**). When  
290 using SNPs selected from previous GWASes that did not include UK Biobank participants,  
291 results for of age at menarche and age at natural menopause were largely consistent, although

292 less precise, compared to estimates from the main analyses using data with overlapping  
293 samples (**Supplementary Figure 21 and 22**).

294

## 295 **Discussion**

296

297 Our findings indicate that reproductive markers across women's lifespan are  
298 associated with distinct metabolic signatures in later life. Age at menarche, parity and age at  
299 natural menopause were related to numerous metabolic measures, representing multiple  
300 dimensions of metabolism, including amino acids, fatty acids, glucose, ketone bodies, and  
301 lipoprotein metabolism (see **Summary box** for key findings).

### 302 *Age at menarche*

303 Age at menarche is frequently used as a proxy of puberty onset among females in  
304 epidemiological studies <sup>2,28</sup>. Our findings for the relation of age at menarche with metabolic  
305 measures were broadly concordant between multivariable regression and MR analyses, and  
306 were supportive of older puberty onset being related to a less atherogenic metabolic profile  
307 among adult women.

308 Both multivariable regression and MR estimates were markedly attenuated when  
309 accounting for adult BMI for most metabolic measures with few exceptions (e.g. glutamine and  
310 glycine), suggesting that the effect of age at menarche on adult metabolites are largely  
311 explained by adult BMI. There is evidence of a bi-directional relationship between puberty  
312 timing and adiposity, where pre-pubertal adiposity influences puberty timing, which in turn  
313 influences post-pubertal adiposity <sup>13,28,29</sup>. In addition, genetic variants influencing age at  
314 menarche are known to influence BMI before and after puberty <sup>28,29</sup>.

315 The complex relationship between puberty timing and adiposity complicates inferences  
316 of the effect of age at menarche on the metabolic profile or disease risk in adulthood since the  
317 observed associations could reflect adult BMI mediating the effect of early age at menarche  
318 on metabolic measures or a confounding path from pre-puberty BMI. A previous one-sample  
319 MR study <sup>28</sup> investigating the effect of age at menarche on NMR metabolic measures reported  
320 that results were largely attenuated when accounting for BMI at 8 years old, which suggests  
321 that the estimated effect of age at menarche on the metabolic profile is largely confounded by  
322 pre-pubertal adiposity, though larger MR studies with repeat BMI and metabolic profiles before  
323 and after menarche are needed to rule out a potential causal mediated effect. In our study,  
324 accounting for self-reported adiposity in childhood in multivariable regression models did not  
325 substantially change effect estimates. This discrepancy might be related to residual

326 confounding in our study (e.g. due to higher measurement error in our measure of childhood  
327 adiposity) or different age distributions between ours (mean=55 years) and this previous study  
328 (mean=18 years).

### 329 *Parity*

330 Pregnant women undergo marked changes in physiology (e.g. lipid/glucose  
331 metabolism, adiposity, vascular function, hormone levels, and inflammatory response) and  
332 lifestyle (e.g. diet and physical activity<sup>30</sup>), most of which return to their pre-pregnancy state  
333 after delivery<sup>20,30</sup>. However, there are concerns that some of these changes might persist and  
334 accumulate over multiple pregnancies, impacting women's cardiovascular health in the future,  
335 or that pregnancy acts as a stress test, unmasking an underlying high risk for cardiovascular  
336 disease<sup>30,31</sup>. We used parity as a marker of being exposed to the physiological stress of  
337 multiple pregnancies.

338 In multivariable regression analyses, we found that higher parity, proxied by number of  
339 children ever born, was associated with both favorable (e.g. less LDL particles) and  
340 unfavorable (e.g. higher number of particles and lipid content in VLDL) changes in the  
341 metabolic profile. Evidence from MR analyses is uncertain due to the high imprecision in effect  
342 estimates. Using males as a negative control, we showed that the associations between  
343 number of children ever born and metabolic measures among men were largely null for  
344 lipoprotein-related measures or in opposite direction for glycine compared to females. This  
345 inconsistency between female and male findings reinforces that the metabolic signature  
346 associated with parity among females largely reflects a causal effect of parity on the  
347 metabolome rather than spurious results due to confounding or selection bias (assuming  
348 confounding structures and selection mechanisms are similar between men and women). A  
349 possible mechanism is that higher parity leads to greater insulin resistance in pregnant women  
350 and subsequently increases the production and secretion of hepatic triglycerides, which can  
351 lead to an increased lipid content in VLDL particles.

352 In line with our findings, other studies have reported that higher parity is related to  
353 higher cardiovascular disease risk in women<sup>32</sup>. Negative control analyses (comparing  
354 associations of number of children in women and men) have been conducted previously in  
355 two UK cohorts, with one suggesting that associations with lipids and body composition in  
356 women may be due to confounding (as associations are similar in women and men)<sup>33,34</sup> and  
357 the second, the largest of these studies to date, and the only one to look at disease end points,  
358 finding evidence of a stronger association for risk factors and coronary heart disease in women  
359 than men suggesting parity itself has some influence on cardiovascular disease risk<sup>5</sup>,

360 Furthermore, studies in women only that are able to control for pre-pregnancy measures,  
361 suggest pregnancy and parity have a potentially lasting effect on adverse lipid profiles <sup>35,36</sup>.

### 362 *Age at natural menopause*

363 Previous conventional observational studies suggested older age at natural  
364 menopause to be associated with lower risk of cardiometabolic diseases <sup>37</sup> over and above  
365 the underlying age trajectory <sup>21,38</sup>. In our study, estimates for VLDL- and LDL-related traits  
366 were inconsistent between multivariable regressions and MR; the former suggests older age  
367 at menopause to be related to a more atherogenic profile, while the latter indicates the  
368 opposite. On the other hand, both multivariable regression and MR estimates suggested older  
369 age at menopause to be related to higher lipid content in HDL particles and lower systemic  
370 inflammation, as proxied by GlycA. Consistent with Auro et al <sup>39</sup>, a recent multivariable  
371 analysis of 218 Finnish women going through the menopause transition found that menopause  
372 was similarly associated with a higher lipid content in HDL particles and lower systemic  
373 inflammation <sup>40</sup>. Whilst a recent longitudinal study of up to 3892 women with up to 12 CVD risk  
374 factors measured as they went through the menopausal transitional also found higher HDL  
375 and non-HDL associations, stronger effects of chronological rather than reproductive aging  
376 were observed <sup>41</sup>.

377 Findings from our multivariable regression analyses for age at natural menopause  
378 should be interpreted with caution given 40% of women were excluded from these analyses  
379 as they had not experienced a natural menopause and 7% of the women had experienced  
380 menopause less than two years before study recruitment (when blood samples for NMR  
381 metabolomics were collected). In follow-up analyses, we have shown that discrepancy in  
382 findings between multivariable and MR for LDL-related traits were related to the exclusion of  
383 younger pre-menopausal women in multivariable regression. In addition, age-stratified  
384 analyses revealed that age at menopause is related to lower LDL-cholesterol in younger  
385 women but slightly higher LDL-cholesterol in older women. These results did not seem to be  
386 explained by higher intake of statins or HRT among older women, although such analyses  
387 should be interpreted with caution given the potential for collider stratification bias. Previous  
388 longitudinal studies indicated that LDL-cholesterol <sup>41</sup> and related traits increase sharply  
389 through the menopause transition and early postmenopausal years and then plateau with  
390 increasing postmenopausal years <sup>42</sup>. In our cross-sectional analyses, we observed a non-  
391 linear pattern for several metabolites, such that mean metabolite levels increase linearly with  
392 age at menopause until 50-55 years old and then decline. Taken together, we speculate that  
393 these findings explain the pattern by chronological age in the association between timing of  
394 menopause and LDL-related traits. However, larger longitudinal studies with longer follow-up

395 are needed to tease apart the complex nature, and possible time-varying, effect of  
396 reproductive aging on the metabolome.

397 The largest two-sample MR analysis to date indicate that older age at menopause is  
398 related to lower risk of type 2 diabetes in females, but no difference in risk of cardiovascular  
399 disease or dyslipidemia (data combining males and females)<sup>43</sup>. This is in agreement with our  
400 analyses suggesting older age at natural menopause is related to lower glucose, and with  
401 evidence from randomized controlled trials of estrogen therapy pointing to a protective effect  
402 on type 2 diabetes but no change in risk of cardiovascular diseases<sup>44-46</sup>. The mechanisms  
403 underlying the putative protective effect of older menopause on the risk of metabolic diseases  
404 in MR studies is unclear, but might reflect an effect of prolonged exposure to sex hormones  
405 or of slower cell aging, given genetic variants associated with age at natural menopause are  
406 highly enriched for genes in DNA damage response pathways<sup>43,47</sup>. The consistent results  
407 between MR of age at menopause and randomized controlled trials of estrogen therapy for  
408 type 2 diabetes indicates that prolonged exposure to sex hormones is likely to be involved.  
409 Moreover, the lipid metabolism is regulated by estrogen, meaning that lower levels of estrogen  
410 during menopause can cause an increase in lipids, particularly LDL, HDL, and triglycerides.

#### 411 *Strengths and limitations*

412 To the best of our knowledge, this is the largest study to examine the long-term impact  
413 of key events in reproductive life on the multiple metabolic measures in women. The use of  
414 large-scale metabolomics data and the integration of multiple analytical approaches are key  
415 strengths of our study as these allowed us to strengthen the inference of the causal impact of  
416 these reproductive markers on the metabolic health of females.

417 It is important to note that the validity of our findings rely on the plausibility of the  
418 assumptions underlying each analytical approach. For multivariable regression, we cannot  
419 exclude the possibility of bias due to residual confounding, especially given we were unable  
420 to adjust for key confounders in multivariable regression as measures of these were not  
421 available at or before the exposure to reproductive factors. For the use of negative controls,  
422 we rely on the unverifiable assumption that residual confounding and selection bias is similar  
423 in females and males analyses. It is plausible that factors relating to metabolites, such as age,  
424 ethnicity, socioeconomic position, and BMI, relate similarly to number of children in females  
425 and males and hence that confounding structures are similar. For MR, we have conducted  
426 extensive sensitivity analyses supporting the validity of our results; however, we cannot rule  
427 out the possibility of bias due to violations of the core instrumental variable assumptions. In  
428 addition, MR analyses for parity was uninformative given the low proportion of phenotypic  
429 variance explained by the genetic instruments.

430 When assessing non-linearity, our multivariable regression results were generally  
431 consistent between the main analysis model (assuming a linear relationship) and categories  
432 for most metabolites. For metabolites that showed evidence of non-linearity, many seemed to  
433 plateau and decrease with older ages of menarche and menopause and similarly with higher  
434 parity (however, this was also where we had the least amount of data, which could be driving  
435 some of the non-linearity). We were unable to fit non-linear associations in an MR framework  
436 given this would require much larger sample sizes; future studies with larger sample sizes  
437 should be better powered to examine potential non-linear effects using MR and contrast those  
438 found in the multivariable regression.

439 Whilst some key sources of bias may remain in each method, a key strength of our  
440 study is exploring and focusing on results that are consistent across the different methods. As  
441 the sources of bias differ between the methods causal inference is strengthened where there  
442 is consistency, as we see for example in associations between multivariable regression and  
443 MR for age at menarche, multivariable regression and negative control analyses for parity and  
444 multivariable regression and MR for age at natural menopause in relation to HDL-related  
445 measures and GlycA (but not LDL-related and other measures).

446 Across all analytical approaches, we cannot discard the presence of selection biases  
447 from using UK Biobank data given the low recruitment rate of the study (5%) and inclusion of  
448 healthier/wealthier individuals compared to the general UK population<sup>48</sup>. In addition, the  
449 metabolic traits measured by the NMR metabolomics platform cover a limited set of metabolic  
450 pathways<sup>49</sup>, and, therefore, future studies including data from more sensitive metabolomics  
451 techniques, such as mass spectrometry, may improve coverage of the metabolome and  
452 provide insights into additional biological processes related to reproductive events.  
453 Triangulating results across different methods is useful for causal inference and where there  
454 are discrepant results it is important to explore these. We have found that the discrepant  
455 results between MR and multivariable regression for the association of age at menopause with  
456 some of the metabolites (notably LDL-c and related metabolites) are due to the exclusion of  
457 women with missing data on age at menopause in multivariable regression and a potential  
458 effect modification by chronological age in the association between age at menopause and  
459 some metabolic measures. However, we acknowledge we lack power to fully explore the  
460 mechanisms for this given the current number of UK Biobank participants with NMR data.

461

## 462 *Conclusions*

463 Overall, older age at menarche/menopause were related to a more favorable metabolic  
464 profile, while a mixed pattern was observed for higher parity. Evidence supporting a relation

465 between later pubertal timing and a less atherogenic metabolic profile was largely explained  
466 by adult BMI, while findings supporting a relation between slower reproductive aging and a  
467 less atherogenic metabolic profile was mostly observed among younger women. These results  
468 could contribute to identifying novel markers for the prevention of adverse cardiometabolic  
469 outcomes in women and/or methods for accurate risk prediction.

470

## 471 **Methods**

472

### 473 *Study participants*

474 UK Biobank is a population-based cohort consisting of approximately 500,000 men  
475 and women recruited between 2006 and 2010 from across the UK (age range at recruitment:  
476 38 years to 73 years old)<sup>50</sup>. UK Biobank participants have provided a range of information via  
477 questionnaires and interviews, including on sociodemographic, lifestyle, health, and  
478 reproductive factors; as well as biological samples and physical measures (data available at  
479 [www.ukbiobank.ac.uk](http://www.ukbiobank.ac.uk)). A subset of approximately 20,000 were selected for repeat  
480 assessment between 2012 and 2013. A full description of the study design, participants and  
481 quality control (QC) methods have been described in detail previously<sup>51</sup>. UK Biobank received  
482 ethical approval from the Research Ethics Committee (REC reference for UK Biobank is  
483 11/NW/0382). The current work was approved under UK Biobank Project 30418 and 81499.

484

### 485 *Reproductive traits*

486 Women were asked a detailed set of questions about their reproductive health via a  
487 self-reported questionnaire. Parity was based on the number of live births reported whilst in  
488 men number of children were reported. Age at menarche and age at natural menopause were  
489 reported in years. Age at natural menopause therefore excluded women who had not yet gone  
490 through the menopause or who had a surgical menopause. Those who had not gone through  
491 a natural menopause (N=25,70) had either (i) not yet gone through the menopause (15,418,  
492 60%) (ii) had a surgical menopause or other (10,322, 40%) (**Table 1, Supplementary Table**  
493 **3**).

494

### 495 *NMR metabolic measures*

496 Metabolic traits were measured using a targeted high-throughput NMR metabolomics  
497 (Nightingale Health Ltd; biomarker quantification version 2020)<sup>52</sup>. This platform provides  
498 simultaneous quantification of 249 metabolic measures, consisting of concentrations of 165

499 metabolic measures and 84 derived ratios, encompassing routine lipids, lipoprotein subclass  
500 profiling (including lipid composition within 14 subclasses), fatty acid composition, and various  
501 low-molecular weight metabolites such as amino acids, ketone bodies and glycolysis  
502 metabolites. Technical details and epidemiological applications have been previously  
503 reviewed <sup>18,53</sup>. Pre-release data from a random subset of 126,846 non-fasting plasma samples  
504 collected at baseline or first repeat assessment were made available to early access analysts.  
505 121,577 samples were retained for analyses after removing duplicates and observations not  
506 passing quality control (QC) (i.e. sample QC flag “Low protein”, biomarker QC flag “Technical  
507 error”, or samples with insufficient material). All metabolic measures were standardised and  
508 normalised prior to analyses using rank-based inverse normal transformation.

509

### 510 *Clinical chemistry measures*

511 We used data on the eight biomarkers assayed using clinical chemistry techniques, as  
512 previously described <sup>54</sup>, that matched measures in the NMR metabolomics platform — i.e.  
513 albumin, apolipoprotein A1, apolipoprotein B, glucose, HDL-cholesterol, LDL-cholesterol, total  
514 cholesterol, and triglycerides. These measures are available in most UK Biobank participants  
515 and were used in Mendelian randomization analyses, as described under ‘Statistical  
516 analyses’, to increase statistical power and check agreement with results from NMR metabolic  
517 measures. All biomarkers were standardised and normalised prior to analyses using rank-  
518 based inverse normal transformation.

519

### 520 *Summary data on genetic associations with metabolic measures*

521 Genotype data was available for 488,377 UK Biobank participants, of which 49,979  
522 were genotyped using the UK BiLEVE array and 438,398 using the UK Biobank axiom array.  
523 Pre-imputation QC, phasing and imputation are described elsewhere <sup>55</sup>. Genotype imputation  
524 was performed using IMPUTE2 algorithms <sup>56</sup> to a reference set combining the UK10K  
525 haplotype and HRC reference panels <sup>57</sup>. Post-imputation QC was performed as described in  
526 the “UK Biobank Genetic Data: MRC-IEU Quality Control” documentation <sup>58</sup>. Genetic  
527 association data for metabolic measures was generated using the MRC IEU UK Biobank  
528 GWAS pipeline <sup>59</sup>. Briefly, we restricted the sample to individuals of ‘European’ ancestry as  
529 defined by the largest cluster in an in-house k-means cluster analysis performed using the first  
530 4 principal components provided by UK Biobank in the statistical software environment R  
531 (n=464,708). Genome-wide association analysis (GWAS) was conducted using linear mixed  
532 model (LMM) association method as implemented in BOLT-LMM (v2.3) <sup>60</sup>. Population  
533 structure was modelled using 143,006 directly genotyped SNPs (MAF > 0.01; genotyping rate



534 > 0.015; Hardy-Weinberg equilibrium p-value < 0.0001 and LD pruning to an  $r^2$  threshold of  
535 0.1 using PLINKv2.00). Models were adjusted for genotyping array and fasting time and were  
536 restricted to the subsample of women.

537

### 538 *Covariables*

539 For multivariable analyses, confounders were defined a priori based on them being  
540 known or plausible causal factors for reproductive traits and cardiovascular risk via  
541 higher/lower metabolites. A minimal set of adjustments were made in the main multivariable  
542 regression analyses as most confounders were not assessed prior to or around when the  
543 reproductive traits occurred. Specifically, we adjusted for education as a categorical variable  
544 (University, A-levels, O levels (or equivalent) or other), age at baseline and retrospectively  
545 reported body size at age 10 (average, thinner, plumper) in all regression analyses. In  
546 additional analyses we also partially adjusted for the full set of defined confounders using  
547 baseline measurements (mostly after the occurrence of exposures) as correlates of the before  
548 exposure measures (see below in statistical analyses).

549

### 550 *Statistical analyses*

551 We used multiple approaches (i.e. multivariable regression, negative control and MR)  
552 relying on different assumptions to explore the causal role of reproductive traits on later life  
553 metabolic profile. All analysis was conducted using Stata16 (StataCorp, College Station, TX)  
554 or R 4.1.1 (R Foundation for Statistical Computing, Vienna, Austria) and results presented as  
555 differences in means for each metabolic trait in standard deviation (SD) units per 1 child  
556 difference for number of children and per 1 year difference for age at menarche and age at  
557 menopause, facilitating the comparison of results from different methods.

558 For both multivariable and MR analyses, we corrected for multiple testing using the  
559 Bonferroni method considering  $3 \times 18 = 54$  independent tests ( $P = 0.05/54 \approx 0.00093$ ). This was  
560 based on the three exposures included in our analyses (i.e. age at menarche, parity, and age  
561 at natural menopause) and the 18 independent features explaining over 95% of variance in  
562 the highly correlated NMR metabolic measures in our dataset as estimated by principal  
563 component analysis<sup>61</sup>.

564

#### 565 (a) Multivariable regression

566 In the main analyses we used linear regression, with three sets of models: (1) no  
567 adjustments, (2) adjusted for education, age at baseline and body composition at age 10 and

568 (3) model (2) additionally adjusted for baseline variables collected at the first assessment at  
569 (mean) age 56 years (SD=8) including BMI, smoking and alcohol status. By adjusting for the  
570 baseline variables at the first assessment we can either block the confounding path or create  
571 bias if these variables are mediators. If the results change between model (2) and (3) it is hard  
572 to distinguish whether its correct adjustment for confounding or whether it is a mediated path.  
573 Because of this we considered model (2) to be the best causal estimate and present models  
574 (1) and (3) in supplementary material. For age at menarche, education will have been  
575 measured after the exposure. However, as it is influenced by parental education, income and  
576 occupation (occurring before menarche) unlikely to be determined by age at menarche, we a  
577 priori considered a proxy of early life <sup>62</sup>. In sensitivity analyses we assessed whether there  
578 was a non-linear relationship between each reproductive trait and 55 non-derived metabolites.  
579 For ease of presentation, we excluded measures that were derived (eg ratios) or related to  
580 lipoprotein subfractions as these are highly correlated with one or more of the 55 non-derived  
581 metabolites. We compared the categorised reproductive trait entered into the model as a  
582 categorical variable and as a continuous variable using a likelihood ratio test. Age at menarche  
583 and age at menopause were categorised into tertiles (<13, 13-14, >14 years) and quartiles  
584 (<49, 49-50, 51-53, >53 years), respectively. Parity was categorised as 0, 1, 2, and 3+. Results  
585 were plotted against the first reference category and the p-value for linear trend reported. For  
586 any metabolites that showed evidence of non-linearity, restricted cubic splines (with either 3,  
587 4, or 5 knots placed at percentiles as suggested by Harrell<sup>63</sup> for each reproductive trait) were  
588 fit and compared to the main analysis model (assuming a linear association) using AIC (BIC  
589 and root mean square error also shown).

590

#### 591 (b) Negative control analyses

592 Negative control analyses aim to emulate a condition that cannot involve the  
593 hypothesized causal mechanism but is likely to have similar sources of bias that may have  
594 been present in the association of interest <sup>5,27</sup>. We used males as negative controls to assess  
595 potential biases in the association between parity (proxied by number of live births) and  
596 metabolic measures in women. If associations between number of live births and metabolic  
597 measures in women reflect a causal effect of parity on women's metabolic health, one would  
598 expect number of live births to be associated with metabolic measures in women but not in  
599 men given men do not experience pregnancy. Similar to the multivariable regression analyses,  
600 we test the association between number of children (men) and their measured metabolites  
601 and present three sets of models: (1) with no adjustments, (2) adjusted for education, age at  
602 baseline and retrospectively self-reported body composition at age 10 and (3) model (2)

603 additionally adjusted for baseline variables collected at the first assessment at (mean) age 56  
604 years (SD=8) including BMI, smoking and alcohol status.

605

606 (c) Mendelian randomization

607 We used two-sample MR to explore the effect of older age at menarche, higher parity, and  
608 older age at natural menopause on women's metabolic profile. Publicly available GWAS  
609 summary data were used for SNP-reproductive traits associations (sample 1) and UK Biobank  
610 summary GWAS data for SNP-metabolite associations (sample 2). This approach does not  
611 require all participants to have data on both exposure and outcome, and, therefore, allows us  
612 to retain the largest possible sample sizes, meaning that power to detect a causal effect is  
613 increased <sup>64</sup>.

614

615 *Selection of genetic instruments*

616

617 Age at menarche

618 Genetic instruments were selected from a GWAS of age at menarche, which included  
619 329,345 women of European ancestry (**Supplementary Table 14**) <sup>65</sup>. Linear regression  
620 models were used to estimate the association between genetic variants and age at menarche  
621 (in years) adjusting for age at study visit and study-specific covariables. For our analyses, we  
622 selected the 389 independent SNPs reported by the GWAS to be strongly associated with age  
623 at menarche (P-value <  $5 \times 10^{-8}$ ) in the discovery metanalyses. Given the age at menarche  
624 GWAS included UK Biobank participants (maximum estimated sample overlap: ~20%), we  
625 have also selected an additional set of age at menarche-associated genetic variants (N = 68  
626 SNPs) using data from a previous GWAS that did not including UK Biobank (details in  
627 'Sensitivity analyses' below and **Supplementary Table 14**) <sup>66</sup>.

628

629 Parity

630 Genetic instruments were selected from a GWAS of number of children ever born , as  
631 a proxy of parity, which included 785,604 men and women of European ancestry from 45  
632 studies (**Supplementary Table 14**) <sup>67</sup>. Number of children ever born was treated as a  
633 continuous measure and included both parous and nulliparous women. Linear regression  
634 models were used to estimate the association between genetic variants and number of  
635 children ever born adjusting for principal components of ancestry, birth year, its square and  
636 cubic, to control for non-linear birth cohort effects. Family-based studies controlled for family

637 structure or excluded relatives. The sex-combined metanalysis also included interactions of  
638 birth year and its polynomials with sex. For our analyses, we used the 32 independent SNPs  
639 reported by the GWAS to be strongly associated with number of children ever born (P-value  
640  $< 5 \times 10^{-8}$ ) in either the sex-combined (28 SNPs) or female-specific (4 SNPs) metanalyses and  
641 summary association data from the female-specific metanalyses. The GWAS included UK  
642 Biobank (maximum estimated sample overlap: 14%).

643

#### 644 Age at natural menopause

645 Genetic instruments were selected from a GWAS of age at natural menopause  
646 conducted in 201,323 women of European ancestry (**Supplementary Table 14**)<sup>17</sup>. Linear  
647 regression models were used to estimate the association between genetic variants and age  
648 at natural menopause (in years). For our analyses, we selected 290 SNPs reported by the  
649 GWAS to be strongly associated with age at natural menopause (P-value  $< 5 \times 10^{-8}$ ). Where  
650 available, we used association data from the sample combining discovery and replication  
651 stages (N = 496,151). Given the age at menarche GWAS included UK Biobank participants  
652 (maximum estimated sample overlap: 13% considering the GWAS combined discovery and  
653 replication samples), we have also selected an additional set of age at natural menopause-  
654 associated genetic variants (N = 42 SNPs) using data from a previous GWAS that did not  
655 include UK Biobank (details in 'Sensitivity analyses' below and **Supplementary Table 14**)<sup>68</sup>.

656

#### 657 *Main analyses*

658 We used a standard two-sample MR method, the inverse variance weighted (IVW)  
659 estimator, to explore the effect of age at menarche, parity and age at natural menopause on  
660 women's metabolic profile by combining genetic association estimates for reproductive traits  
661 (extracted from published GWASes data) with genetic association estimates for the metabolic  
662 measures (generated from UK Biobank data). Given a priori evidence of a potential  
663 bidirectional relationship between age at menarche and BMI, we also used multivariable IVW  
664 to test the effect of age at menarche on metabolic measures accounting for adult BMI. For  
665 multivariable IVW analysis, apart from the data previously described, we used summary  
666 genetic association data for BMI extracted from the 2015 metanalysis by the GIANT  
667 consortium (N = 339,224 individuals not including UK Biobank participants)<sup>69</sup>.

668

#### 669 *Sensitivity analyses*

670 Several sensitivity analyses were conducted to explore the plausibility of the three core  
671 MR assumptions, which are required for the method to provide a valid test of the presence of  
672 a causal effect.

673

674 Assumption 1: the genetic instrument must be associated with the reproductive trait

675 We selected genetic variants reported to be strongly associated with reproductive in  
676 the largest available GWAS and estimated the proportion of phenotypic variance explained  
677 ( $R^2$ ) and F-statistics for the association of SNPs with reproductive traits among females as an  
678 indicator of instrument strength.

679

680 Assumption 2: the association between genetic instrument and outcome is unconfounded

681 One of the main motivations for using MR is to avoid unmeasured confounding.  
682 However, there is growing evidence that, in some instances, MR studies can be confounded  
683 when using data from unrelated individuals due to population stratification, assortative mating  
684 and indirect genetic effects of parents<sup>70,71</sup>. We used two approaches to explore whether these  
685 were likely to bias our main results. First, we used sex-combined data from a recent within-  
686 sibship GWAS, including up to 159,701 siblings from 17 cohorts, to test the effect of genetic  
687 susceptibility to higher age at menarche, parity and age at menopause on metabolic markers  
688 (i.e. LDL-cholesterol, triglycerides, HDL-cholesterol, C-reactive protein, and glycated  
689 haemoglobin)<sup>70</sup>. C-reactive protein and glycated haemoglobin were used as proxies for  
690 inflammation and hyperglycaemia, respectively, given GlycA and glucose were not available.  
691 Within-sibling MR designs control for variation in parental genotypes, and so should not be  
692 affected by population stratification, assortative mating and indirect genetic effects of parents  
693<sup>70-72</sup>. Second, we performed IVW on negative control outcomes (i.e. skin colour and skin  
694 tanning ability) since these could not conceivably be affected by the exposures and any  
695 evidence for an association between reproductive traits and, these negative control outcomes  
696 would be indicative of residual population stratification in the exposure GWAS<sup>73</sup>.

697

698 Assumption 3: the genetic instrument does not affect the outcome except through its possible  
699 effect on the exposure

700 A key violation of this assumption is known as horizontal pleiotropy, where genetic  
701 variants influence the outcome through pathways that are not mediated by the exposure<sup>74</sup>.  
702 We explored the presence of bias due to horizontal pleiotropy by using other MR methods:  
703 the weighted median estimator and MR-Egger. These methods can provide valid tests of a  
704 causal effect under different (and weaker) assumptions about the nature of the underlying  
705 horizontal pleiotropy. The weighted median estimator requires that at least 50% of the weight  
706 in the analysis stems from valid instruments. The MR-Egger estimator assumes that the  
707 instrument strength is independent of its the direct effects on the outcome (i.e. INSIDE  
708 assumption).

709

710            In addition to the core assumptions, the two-sample MR approach assumes that  
711 genetic associations with exposure and outcome were estimated from two comparable but  
712 non-overlapping samples. We restricted our analyses to European adult individuals to ensure  
713 that samples were comparable. We assessed potential bias due to sample overlap by  
714 conducting MR using SNPs selected from previous GWAS of age at menarche and age at  
715 natural menopause that did not include UK Biobank (**Supplementary Table 14**).  
716

## 717 **Acknowledgements**

718 We are extremely grateful to Nightingale for the use of their data and for their helpful  
719 discussions throughout. We want to acknowledge participants and investigators from UK  
720 Biobank and the multiple large-scale GWAS consortia which made summary data available.  
721 This work used the computational facilities of the Advanced Computing Research Centre,  
722 University of Bristol - <http://www.bristol.ac.uk/acrc/>. The current analysis was approved under  
723 UK Biobank Project 30418 and 81499. We are also grateful to Professor Kate Tilling  
724 (University of Bristol), Prof Zoltan Kutalik, and Leona Knusel (University of Lausanne) who  
725 helped us with additional analyses undertaken to explore discrepant results between  
726 multivariable regression and two sample MR for the association of age at natural menopause  
727 with biomarkers.

## 728 **Availability of data and materials**

729 Analysis scripts and the analysis plan can be found on the following GitHub page:  
730 [https://github.com/gc13313/nmr\\_repro](https://github.com/gc13313/nmr_repro).

## 731 **Ethical approval and consent to participate**

732 UK Biobank received ethical approval from the Research Ethics Committee (REC reference  
733 for UK Biobank is 11/NW/0382). The current analysis was approved under UK Biobank Project  
734 30418 and 81499.

## 735 **Funding**

736 This research is supported by the University of Bristol and UK Medical Research Council  
737 (MRC) (MC\_UU\_00011/6, all authors), the European Union's Horizon 2020 research and  
738 innovation programme under grant agreement No 733206 LifeCycle (GLC and DAL), a  
739 University of Bristol Vice-Chancellor's Fellowship (MCB), the British Heart Foundation  
740 (AA/18/7/34219, MCB and DAL and CH/F/20/90003, DAL) and the UK National Institute of  
741 Health Research (NF-0616-10102, DAL).

742 The funders had no role in study design, data collection and analysis, decision to publish, or  
743 preparation of the manuscript. For the purpose of Open Access, the author has applied a CC  
744 BY public copyright licence to any Author Accepted Manuscript version arising from this  
745 submission.

746 This publication is the work of the authors and all authors will serve as guarantors for the  
747 contents of this paper.

## 748 **Author contributions**

749 DAL conceived the study. DAL, MCB and GLC designed the study. MCB and GLC performed  
750 the analyses. MCB and GLC wrote the original draft of the manuscript with input from DAL. All  
751 authors were involved in the interpretation of results, helped refine the manuscript, and  
752 approved its final version.

753

## 754 **Declarations of Interest**

755 DAL reports receiving support from several national and international government and charity  
756 research funders, and grants from Roche Diagnostics and Medtronic Ltd for work unrelated to  
757 that presented here. GLC and MCB declare that they have no competing interests.

758

## 759 **Abbreviations**

Ala	Alanine
ApoA1	Apolipoprotein A1
ApoB	Apolipoprotein B
ApoB_by_ApoA1	Ratio of apolipoprotein B to apolipoprotein A1
Cholines	Total cholines
Clinical_LDL_C	Clinical LDL cholesterol
DHA	Docosahexaenoic acid
DHA_pct	Ratio of docosahexaenoic acid to total fatty acids
Gln	Glutamine
Gly	Glycine
GlycA	Glycoprotein acetyls
HDL_C	HDL cholesterol
HDL_CE	Cholesteryl esters in HDL
HDL_FC	Free cholesterol in HDL
HDL_L	Total lipids in HDL
HDL_P	Concentration of HDL particles
HDL_PL	Phospholipids in HDL
HDL_TG	Triglycerides in HDL
HDL_size	Average diameter for HDL particles
His	Histidine
IDL_C	Cholesterol in IDL
IDL_CE	Cholesteryl esters in IDL
IDL_CE_pct	Cholesteryl esters to total lipids ratio in IDL
IDL_C_pct	Cholesterol to total lipids ratio in IDL
IDL_FC	Free cholesterol in IDL
IDL_FC_pct	Free cholesterol to total lipids ratio in IDL
IDL_L	Total lipids in IDL
IDL_P	Concentration of IDL particles
IDL_PL	Phospholipids in IDL
IDL_PL_pct	Phospholipids to total lipids ratio in IDL
IDL_TG	Triglycerides in IDL
IDL_TG_pct	Triglycerides to total lipids ratio in IDL
Ile	Isoleucine
LA	Linoleic acid



LA_pct	Ratio of linoleic acid to total fatty acids
LDL_C	LDL cholesterol
LDL_CE	Cholesteryl esters in LDL
LDL_FC	Free cholesterol in LDL
LDL_L	Total lipids in LDL
LDL_P	Concentration of LDL particles
LDL_PL	Phospholipids in LDL
LDL_TG	Triglycerides in LDL
LDL_size	Average diameter for LDL particles
L_HDL_C	Cholesterol in large HDL
L_HDL_CE	Cholesteryl esters in large HDL
L_HDL_CE_pct	Cholesteryl esters to total lipids ratio in large HDL
L_HDL_C_pct	Cholesterol to total lipids ratio in large HDL
L_HDL_FC	Free cholesterol in large HDL
L_HDL_FC_pct	Free cholesterol to total lipids ratio in large HDL
L_HDL_L	Total lipids in large HDL
L_HDL_P	Concentration of large HDL particles
L_HDL_PL	Phospholipids in large HDL
L_HDL_PL_pct	Phospholipids to total lipids ratio in large HDL
L_HDL_TG	Triglycerides in large HDL
L_HDL_TG_pct	Triglycerides to total lipids ratio in large HDL
L_LDL_C	Cholesterol in large LDL
L_LDL_CE	Cholesteryl esters in large LDL
L_LDL_CE_pct	Cholesteryl esters to total lipids ratio in large LDL
L_LDL_C_pct	Cholesterol to total lipids ratio in large LDL
L_LDL_FC	Free cholesterol in large LDL
L_LDL_FC_pct	Free cholesterol to total lipids ratio in large LDL
L_LDL_L	Total lipids in large LDL
L_LDL_P	Concentration of large LDL particles
L_LDL_PL	Phospholipids in large LDL
L_LDL_PL_pct	Phospholipids to total lipids ratio in large LDL
L_LDL_TG	Triglycerides in large LDL
L_LDL_TG_pct	Triglycerides to total lipids ratio in large LDL
L_VLDL_C	Cholesterol in large VLDL
L_VLDL_CE	Cholesteryl esters in large VLDL
L_VLDL_CE_pct	Cholesteryl esters to total lipids ratio in large VLDL
L_VLDL_C_pct	Cholesterol to total lipids ratio in large VLDL
L_VLDL_FC	Free cholesterol in large VLDL
L_VLDL_FC_pct	Free cholesterol to total lipids ratio in large VLDL
L_VLDL_L	Total lipids in large VLDL
L_VLDL_P	Concentration of large VLDL particles
L_VLDL_PL	Phospholipids in large VLDL
L_VLDL_PL_pct	Phospholipids to total lipids ratio in large VLDL
L_VLDL_TG	Triglycerides in large VLDL
L_VLDL_TG_pct	Triglycerides to total lipids ratio in large VLDL
Leu	Leucine
MUFA	Monounsaturated fatty acids
MUFA_pct	Ratio of monounsaturated fatty acids to total fatty acids
M_HDL_C	Cholesterol in medium HDL
M_HDL_CE	Cholesteryl esters in medium HDL
M_HDL_CE_pct	Cholesteryl esters to total lipids ratio in medium HDL
M_HDL_C_pct	Cholesterol to total lipids ratio in medium HDL
M_HDL_FC	Free cholesterol in medium HDL
M_HDL_FC_pct	Free cholesterol to total lipids ratio in medium HDL
M_HDL_L	Total lipids in medium HDL

M_HDL_P	Concentration of medium HDL particles
M_HDL_PL	Phospholipids in medium HDL
M_HDL_PL_pct	Phospholipids to total lipids ratio in medium HDL
M_HDL_TG	Triglycerides in medium HDL
M_HDL_TG_pct	Triglycerides to total lipids ratio in medium HDL
M_LDL_C	Cholesterol in medium LDL
M_LDL_CE	Cholesteryl esters in medium LDL
M_LDL_CE_pct	Cholesteryl esters to total lipids ratio in medium LDL
M_LDL_C_pct	Cholesterol to total lipids ratio in medium LDL
M_LDL_FC	Free cholesterol in medium LDL
M_LDL_FC_pct	Free cholesterol to total lipids ratio in medium LDL
M_LDL_L	Total lipids in medium LDL
M_LDL_P	Concentration of medium LDL particles
M_LDL_PL	Phospholipids in medium LDL
M_LDL_PL_pct	Phospholipids to total lipids ratio in medium LDL
M_LDL_TG	Triglycerides in medium LDL
M_LDL_TG_pct	Triglycerides to total lipids ratio in medium LDL
M_VLDL_C	Cholesterol in medium VLDL
M_VLDL_CE	Cholesteryl esters in medium VLDL
M_VLDL_CE_pct	Cholesteryl esters to total lipids ratio in medium VLDL
M_VLDL_C_pct	Cholesterol to total lipids ratio in medium VLDL
M_VLDL_FC	Free cholesterol in medium VLDL
M_VLDL_FC_pct	Free cholesterol to total lipids ratio in medium VLDL
M_VLDL_L	Total lipids in medium VLDL
M_VLDL_P	Concentration of medium VLDL particles
M_VLDL_PL	Phospholipids in medium VLDL
M_VLDL_PL_pct	Phospholipids to total lipids ratio in medium VLDL
M_VLDL_TG	Triglycerides in medium VLDL
M_VLDL_TG_pct	Triglycerides to total lipids ratio in medium VLDL
Omega_3	Omega-3 fatty acids
Omega_3_pct	Ratio of omega-3 fatty acids to total fatty acids
Omega_6	Omega-6 fatty acids
Omega_6_by_Omega_3	Ratio of omega-6 fatty acids to omega-3 fatty acids
Omega_6_pct	Ratio of omega-6 fatty acids to total fatty acids
PUFA	Polyunsaturated fatty acids
PUFA_by_MUFA	Ratio of polyunsaturated fatty acids to monounsaturated fatty acids
PUFA_pct	Ratio of polyunsaturated fatty acids to total fatty acids
Phe	Phenylalanine
Phosphatidylc	Phosphatidylcholines
Phosphoglyc	Phosphoglycerides
Remnant_C	Remnant cholesterol (non-HDL, non-LDL -cholesterol)
SFA	Saturated fatty acids
SFA_pct	Ratio of saturated fatty acids to total fatty acids
S_HDL_C	Cholesterol in small HDL
S_HDL_CE	Cholesteryl esters in small HDL
S_HDL_CE_pct	Cholesteryl esters to total lipids ratio in small HDL
S_HDL_C_pct	Cholesterol to total lipids ratio in small HDL
S_HDL_FC	Free cholesterol in small HDL
S_HDL_FC_pct	Free cholesterol to total lipids ratio in small HDL
S_HDL_L	Total lipids in small HDL
S_HDL_P	Concentration of small HDL particles
S_HDL_PL	Phospholipids in small HDL
S_HDL_PL_pct	Phospholipids to total lipids ratio in small HDL
S_HDL_TG	Triglycerides in small HDL
S_HDL_TG_pct	Triglycerides to total lipids ratio in small HDL

S_LDL_C	Cholesterol in small LDL
S_LDL_CE	Cholesteryl esters in small LDL
S_LDL_CE_pct	Cholesteryl esters to total lipids ratio in small LDL
S_LDL_C_pct	Cholesterol to total lipids ratio in small LDL
S_LDL_FC	Free cholesterol in small LDL
S_LDL_FC_pct	Free cholesterol to total lipids ratio in small LDL
S_LDL_L	Total lipids in small LDL
S_LDL_P	Concentration of small LDL particles
S_LDL_PL	Phospholipids in small LDL
S_LDL_PL_pct	Phospholipids to total lipids ratio in small LDL
S_LDL_TG	Triglycerides in small LDL
S_LDL_TG_pct	Triglycerides to total lipids ratio in small LDL
S_VLDL_C	Cholesterol in small VLDL
S_VLDL_CE	Cholesteryl esters in small VLDL
S_VLDL_CE_pct	Cholesteryl esters to total lipids ratio in small VLDL
S_VLDL_C_pct	Cholesterol to total lipids ratio in small VLDL
S_VLDL_FC	Free cholesterol in small VLDL
S_VLDL_FC_pct	Free cholesterol to total lipids ratio in small VLDL
S_VLDL_L	Total lipids in small VLDL
S_VLDL_P	Concentration of small VLDL particles
S_VLDL_PL	Phospholipids in small VLDL
S_VLDL_PL_pct	Phospholipids to total lipids ratio in small VLDL
S_VLDL_TG	Triglycerides in small VLDL
S_VLDL_TG_pct	Triglycerides to total lipids ratio in small VLDL
TG_by_PG	Ratio of triglycerides to phosphoglycerides
Total_BCAA	Total concentration of branched-chain amino acids (leucine + isoleucine + valine)
Total_C	Total cholesterol
Total_CE	Total esterified cholesterol
Total_FA	Total fatty acids
Total_FC	Total free cholesterol
Total_L	Total lipids in lipoprotein particles
Total_P	Total concentration of lipoprotein particles
Total_PL	Total phospholipids in lipoprotein particles
Total_TG	Total triglycerides
Tyr	Tyrosine
Unsaturation	Degree of unsaturation
VLDL_C	VLDL cholesterol
VLDL_CE	Cholesteryl esters in VLDL
VLDL_FC	Free cholesterol in VLDL
VLDL_L	Total lipids in VLDL
VLDL_P	Concentration of VLDL particles
VLDL_PL	Phospholipids in VLDL
VLDL_TG	Triglycerides in VLDL
VLDL_size	Average diameter for VLDL particles
Val	Valine
XL_HDL_C	Cholesterol in very large HDL
XL_HDL_CE	Cholesteryl esters in very large HDL
XL_HDL_CE_pct	Cholesteryl esters to total lipids ratio in very large HDL
XL_HDL_C_pct	Cholesterol to total lipids ratio in very large HDL
XL_HDL_FC	Free cholesterol in very large HDL
XL_HDL_FC_pct	Free cholesterol to total lipids ratio in very large HDL
XL_HDL_L	Total lipids in very large HDL
XL_HDL_P	Concentration of very large HDL particles
XL_HDL_PL	Phospholipids in very large HDL

XL_HDL_PL_pct	Phospholipids to total lipids ratio in very large HDL
XL_HDL_TG	Triglycerides in very large HDL
XL_HDL_TG_pct	Triglycerides to total lipids ratio in very large HDL
XL_VLDL_C	Cholesterol in very large VLDL
XL_VLDL_CE	Cholesteryl esters in very large VLDL
XL_VLDL_CE_pct	Cholesteryl esters to total lipids ratio in very large VLDL
XL_VLDL_C_pct	Cholesterol to total lipids ratio in very large VLDL
XL_VLDL_FC	Free cholesterol in very large VLDL
XL_VLDL_FC_pct	Free cholesterol to total lipids ratio in very large VLDL
XL_VLDL_L	Total lipids in very large VLDL
XL_VLDL_P	Concentration of very large VLDL particles
XL_VLDL_PL	Phospholipids in very large VLDL
XL_VLDL_PL_pct	Phospholipids to total lipids ratio in very large VLDL
XL_VLDL_TG	Triglycerides in very large VLDL
XL_VLDL_TG_pct	Triglycerides to total lipids ratio in very large VLDL
XS_VLDL_C	Cholesterol in very small VLDL
XS_VLDL_CE	Cholesteryl esters in very small VLDL
XS_VLDL_CE_pct	Cholesteryl esters to total lipids ratio in very small VLDL
XS_VLDL_C_pct	Cholesterol to total lipids ratio in very small VLDL
XS_VLDL_FC	Free cholesterol in very small VLDL
XS_VLDL_FC_pct	Free cholesterol to total lipids ratio in very small VLDL
XS_VLDL_L	Total lipids in very small VLDL
XS_VLDL_P	Concentration of very small VLDL particles
XS_VLDL_PL	Phospholipids in very small VLDL
XS_VLDL_PL_pct	Phospholipids to total lipids ratio in very small VLDL
XS_VLDL_TG	Triglycerides in very small VLDL
XS_VLDL_TG_pct	Triglycerides to total lipids ratio in very small VLDL
XXL_VLDL_C	Cholesterol in chylomicrons and extremely large VLDL
XXL_VLDL_CE	Cholesteryl esters in chylomicrons and extremely large VLDL
XXL_VLDL_CE_pct	Cholesteryl esters to total lipids ratio in chylomicrons and extremely large VLDL
XXL_VLDL_C_pct	Cholesterol to total lipids ratio in chylomicrons and extremely large VLDL
XXL_VLDL_FC	Free cholesterol in chylomicrons and extremely large VLDL
XXL_VLDL_FC_pct	Free cholesterol to total lipids ratio in chylomicrons and extremely large VLDL
XXL_VLDL_L	Total lipids in chylomicrons and extremely large VLDL
XXL_VLDL_P	Concentration of chylomicrons and extremely large VLDL particles
XXL_VLDL_PL	Phospholipids in chylomicrons and extremely large VLDL
XXL_VLDL_PL_pct	Phospholipids to total lipids ratio in chylomicrons and extremely large VLDL
XXL_VLDL_TG	Triglycerides in chylomicrons and extremely large VLDL
XXL_VLDL_TG_pct	Triglycerides to total lipids ratio in chylomicrons and extremely large VLDL
bOHbutyrate	3-Hydroxybutyrate
non_HDL_C	Total cholesterol minus HDL-C

760

## 761 **References**

762

- 763 1 Ness, R. B., Schotland, H. M., Flegal, K. M. & Shofer, F. S. Reproductive History and Coronary  
764 Heart Disease Risk in Women. *Epidemiologic Reviews* **16**, 298-314 (1994).  
765 [https://doi.org:10.1093/oxfordjournals.epirev.a036155](https://doi.org/10.1093/oxfordjournals.epirev.a036155)
- 766 2 Canoy, D. *et al.* Age at Menarche and Risks of Coronary Heart and Other Vascular Diseases in  
767 a Large UK Cohort. *Circulation* **131**, 237-244 (2015).  
768 [https://doi.org:10.1161/CIRCULATIONAHA.114.010070](https://doi.org/10.1161/CIRCULATIONAHA.114.010070)
- 769 3 Cooper, G. S. *et al.* Menstrual and Reproductive Risk Factors for Ischemic Heart Disease.  
770 *Epidemiology* **10**, 255-259 (1999).

- 771 4 Green, A., Beral, V. & Moser, K. Mortality in women in relation to their childbearing history.  
772 *British Medical Journal* **297**, 391 (1988). [https://doi.org:10.1136/bmj.297.6645.391](https://doi.org/10.1136/bmj.297.6645.391)
- 773 5 Lawlor Debbie, A. *et al.* Is the Association Between Parity and Coronary Heart Disease Due to  
774 Biological Effects of Pregnancy or Adverse Lifestyle Risk Factors Associated With Child-  
775 Rearing? *Circulation* **107**, 1260-1264 (2003).  
776 [https://doi.org:10.1161/01.CIR.0000053441.43495.1A](https://doi.org/10.1161/01.CIR.0000053441.43495.1A)
- 777 6 Colditz, G. A. *et al.* A PROSPECTIVE STUDY OF AGE AT MENARCHE, PARITY, AGE AT FIRST  
778 BIRTH, AND CORONARY HEART DISEASE IN WOMEN. *American Journal of Epidemiology* **126**,  
779 861-870 (1987). [https://doi.org:10.1093/oxfordjournals.aje.a114723](https://doi.org/10.1093/oxfordjournals.aje.a114723)
- 780 7 Kelsey, J. L., Gammon, M. D. & John, E. M. Reproductive Factors and Breast Cancer.  
781 *Epidemiologic Reviews* **15**, 36-47 (1993).  
782 [https://doi.org:10.1093/oxfordjournals.epirev.a036115](https://doi.org/10.1093/oxfordjournals.epirev.a036115)
- 783 8 Lambe, M. *et al.* Parity, age at first and last birth, and risk of breast cancer: A population-  
784 based study in Sweden. *Breast Cancer Research and Treatment* **38**, 305-311 (1996).  
785 [https://doi.org:10.1007/BF01806150](https://doi.org/10.1007/BF01806150)
- 786 9 Gong, T.-T., Wu, Q.-J., Vogtmann, E., Lin, B. & Wang, Y.-L. Age at menarche and risk of  
787 ovarian cancer: a meta-analysis of epidemiological studies. *Int J Cancer* **132**, 2894-2900  
788 (2013). [https://doi.org:10.1002/ijc.27952](https://doi.org/10.1002/ijc.27952)
- 789 10 Whiteman, D. C., Siskind, V., Purdie, D. M. & Green, A. C. Timing of Pregnancy and the Risk of  
790 Epithelial Ovarian Cancer. *Cancer Epidemiology Biomarkers & Prevention* **12**, 42  
791 (2003).
- 792 11 Adami, H. O. *et al.* Parity, age at first childbirth, and risk of ovarian cancer. *The Lancet* **344**,  
793 1250-1254 (1994). [https://doi.org:https://doi.org/10.1016/S0140-6736\(94\)90749-8](https://doi.org:https://doi.org/10.1016/S0140-6736(94)90749-8)
- 794 12 Dossus, L. *et al.* Reproductive risk factors and endometrial cancer: the European Prospective  
795 Investigation into Cancer and Nutrition. *Int J Cancer* **127**, 442-451 (2010).  
796 <https://doi.org:https://doi.org/10.1002/ijc.25050>
- 797 13 Burgess, S. *et al.* Dissecting Causal Pathways Using Mendelian Randomization with  
798 Summarized Genetic Data: Application to Age at Menarche and Risk of Breast Cancer.  
799 *Genetics* **207**, 481-487 (2017). [https://doi.org:10.1534/genetics.117.300191](https://doi.org/10.1534/genetics.117.300191)
- 800 14 Mumby, H. S. *et al.* Mendelian Randomisation Study of Childhood BMI and Early Menarche.  
801 *Journal of Obesity* **2011**, 180729 (2011). [https://doi.org:10.1155/2011/180729](https://doi.org/10.1155/2011/180729)
- 802 15 Mills, M. C. *et al.* Identification of 370 loci for age at onset of sexual and reproductive  
803 behaviour, highlighting common aetiology with reproductive biology, externalizing  
804 behaviour and longevity. *bioRxiv*, 2020.2005.2006.081273 (2020).  
805 [https://doi.org:10.1101/2020.05.06.081273](https://doi.org/10.1101/2020.05.06.081273)
- 806 16 Barban, N. *et al.* Genome-wide analysis identifies 12 loci influencing human reproductive  
807 behavior. *Nature genetics* **48**, 1462-1472 (2016). [https://doi.org:10.1038/ng.3698](https://doi.org/10.1038/ng.3698)
- 808 17 Ruth, K. S. *et al.* Genetic insights into the biological mechanisms governing human ovarian  
809 ageing. *medRxiv*, 2021.2001.2011.20248322 (2021).  
810 [https://doi.org:10.1101/2021.01.11.20248322](https://doi.org/10.1101/2021.01.11.20248322)
- 811 18 Wurtz, P. *et al.* Quantitative Serum Nuclear Magnetic Resonance Metabolomics in Large-  
812 Scale Epidemiology: A Primer on -Omic Technologies. *Am J Epidemiol* **186**, 1084-1096 (2017).  
813 [https://doi.org:10.1093/aje/kwx016](https://doi.org/10.1093/aje/kwx016)
- 814 19 Würtz, P. *et al.* Metabolite profiling and cardiovascular event risk: a prospective study of 3  
815 population-based cohorts. *Circulation* **131**, 774-785 (2015).  
816 [https://doi.org:10.1161/CIRCULATIONAHA.114.013116](https://doi.org/10.1161/CIRCULATIONAHA.114.013116)
- 817 20 Wang, Q. *et al.* Metabolic profiling of pregnancy: cross-sectional and longitudinal evidence.  
818 *BMC Medicine* **14**, 205 (2016). [https://doi.org:10.1186/s12916-016-0733-0](https://doi.org/10.1186/s12916-016-0733-0)
- 819 21 Wang, Q. *et al.* Metabolic characterization of menopause: cross-sectional and longitudinal  
820 evidence. *BMC medicine* **16**, 17-17 (2018). [https://doi.org:10.1186/s12916-018-1008-8](https://doi.org/10.1186/s12916-018-1008-8)

- 821 22 Wang, Q. *et al.* Effects of hormonal contraception on systemic metabolism: cross-sectional  
822 and longitudinal evidence. *International journal of epidemiology* **45**, 1445-1457 (2016).  
823 [https://doi.org:10.1093/ije/dyw147](https://doi.org/10.1093/ije/dyw147)
- 824 23 Lane, A. N., Higashi, R. M. & Fan, T. W. M. NMR and MS-based Stable Isotope-Resolved  
825 Metabolomics and Applications in Cancer Metabolism. *Trends Analyt Chem* **120**, 115322  
826 (2019). [https://doi.org:10.1016/j.trac.2018.11.020](https://doi.org/10.1016/j.trac.2018.11.020)
- 827 24 Johnson, K. E. *et al.* The relationship between circulating lipids and breast cancer risk: A  
828 Mendelian randomization study. *PLoS medicine* **17**, e1003302-e1003302 (2020).  
829 [https://doi.org:10.1371/journal.pmed.1003302](https://doi.org/10.1371/journal.pmed.1003302)
- 830 25 Chen, W., Wang, S., Lv, W. & Pan, Y. Causal associations of insulin resistance with coronary  
831 artery disease and ischemic stroke: a Mendelian randomization analysis. *BMJ Open Diabetes*  
832 *Research & Care* **8**, e001217 (2020). [https://doi.org:10.1136/bmjdr-2020-001217](https://doi.org/10.1136/bmjdr-2020-001217)
- 833 26 Xu, L., Borges, M. C., Hemani, G. & Lawlor, D. A. The role of glycaemic and lipid risk factors in  
834 mediating the effect of BMI on coronary heart disease: a two-step, two-sample Mendelian  
835 randomisation study. *Diabetologia* **60**, 2210-2220 (2017). [https://doi.org:10.1007/s00125-](https://doi.org/10.1007/s00125-017-4396-y)  
836 [017-4396-y](https://doi.org/10.1007/s00125-017-4396-y)
- 837 27 Lawlor, D. A., Tilling, K. & Davey Smith, G. Triangulation in aetiological epidemiology.  
838 *International Journal of Epidemiology* **45**, 1866-1886 (2016).  
839 [https://doi.org:10.1093/ije/dyw314](https://doi.org/10.1093/ije/dyw314)
- 840 28 Bell, J. A. *et al.* Influence of puberty timing on adiposity and cardiometabolic traits: A  
841 Mendelian randomisation study. *PLoS medicine* **15**, e1002641-e1002641 (2018).  
842 [https://doi.org:10.1371/journal.pmed.1002641](https://doi.org/10.1371/journal.pmed.1002641)
- 843 29 Kirkpatrick, R. M., McGue, M., Iacono, W. G., Miller, M. B. & Basu, S. Results of a “GWAS  
844 Plus:” General Cognitive Ability Is Substantially Heritable and Massively Polygenic. *PLOS ONE*  
845 **9**, e112390 (2014). [https://doi.org:10.1371/journal.pone.0112390](https://doi.org/10.1371/journal.pone.0112390)
- 846 30 Rich-Edwards, J. W., Fraser, A., Lawlor, D. A. & Catov, J. M. Pregnancy Characteristics and  
847 Women's Future Cardiovascular Health: An Underused Opportunity to Improve Women's  
848 Health? *Epidemiologic Reviews* **36**, 57-70 (2014). [https://doi.org:10.1093/epirev/mxt006](https://doi.org/10.1093/epirev/mxt006)
- 849 31 Sattar, N. & Greer, I. A. Pregnancy complications and maternal cardiovascular risk:  
850 opportunities for intervention and screening? *BMJ (Clinical research ed.)* **325**, 157-160  
851 (2002). [https://doi.org:10.1136/bmj.325.7356.157](https://doi.org/10.1136/bmj.325.7356.157)
- 852 32 Li, W., Ruan, W., Lu, Z. & Wang, D. Parity and risk of maternal cardiovascular disease: A  
853 dose–response meta-analysis of cohort studies. *European Journal of Preventive Cardiology*  
854 **26**, 592-602 (2019). [https://doi.org:10.1177/2047487318818265](https://doi.org/10.1177/2047487318818265)
- 855 33 Hardy, R., Lawlor, D. A., Black, S., Wadsworth, M. E. J. & Kuh, D. Number of children and  
856 coronary heart disease risk factors in men and women from a British birth cohort. *BJOG: An*  
857 *International Journal of Obstetrics & Gynaecology* **114**, 721-730 (2007).  
858 [https://doi.org:https://doi.org/10.1111/j.1471-0528.2007.01324.x](https://doi.org/https://doi.org/10.1111/j.1471-0528.2007.01324.x)
- 859 34 Bridger Staatz, C. & Hardy, R. Number of children and body composition in later life among  
860 men and women: Results from a British birth cohort study. *PLOS ONE* **14**, e0209529 (2019).  
861 [https://doi.org:10.1371/journal.pone.0209529](https://doi.org/10.1371/journal.pone.0209529)
- 862 35 Gunderson, E. P. *et al.* Childbearing is associated with higher incidence of the metabolic  
863 syndrome among women of reproductive age controlling for measurements before  
864 pregnancy: the CARDIA study. *American Journal of Obstetrics and Gynecology* **201**,  
865 177.e171-177.e179 (2009). [https://doi.org:https://doi.org/10.1016/j.ajog.2009.03.031](https://doi.org/https://doi.org/10.1016/j.ajog.2009.03.031)
- 866 36 Markovitz, A. R. *et al.* Does pregnancy alter life-course lipid trajectories? Evidence from the  
867 HUNT Study in Norway. *Journal of lipid research* **59**, 2403-2412 (2018).  
868 [https://doi.org:10.1194/jlr.P085720](https://doi.org/10.1194/jlr.P085720)
- 869 37 Okoth, K. *et al.* Association between the reproductive health of young women and  
870 cardiovascular disease in later life: umbrella review. *BMJ* **371**, m3502 (2020).  
871 [https://doi.org:10.1136/bmj.m3502](https://doi.org/10.1136/bmj.m3502)

- 872 38 de Kat, A. C. *et al.* Unraveling the associations of age and menopause with cardiovascular  
873 risk factors in a large population-based study. *BMC Medicine* **15**, 2 (2017).  
874 <https://doi.org/10.1186/s12916-016-0762-8>
- 875 39 Auro, K. *et al.* A metabolic view on menopause and ageing. *Nature Communications* **5**, 4708  
876 (2014). <https://doi.org/10.1038/ncomms5708>
- 877 40 Karppinen, J. E. *et al.* Menopause modulates the circulating metabolome: evidence from a  
878 prospective cohort study. *medRxiv*, 2021.2012.2017.21266891 (2021).  
879 <https://doi.org/10.1101/2021.12.17.21266891>
- 880 41 Clayton, G. L. *et al.* Cardiovascular health in the menopause transition: a longitudinal study  
881 of up to 3892 women with up to four repeated measures of risk factors. *BMC Medicine* **20**,  
882 299 (2022). <https://doi.org/10.1186/s12916-022-02454-6>
- 883 42 Matthews, K. A. *et al.* Are Changes in Cardiovascular Disease Risk Factors in Midlife Women  
884 Due to Chronological Aging or to the Menopausal Transition? *Journal of the American*  
885 *College of Cardiology* **54**, 2366-2373 (2009).  
886 <https://doi.org/https://doi.org/10.1016/j.jacc.2009.10.009>
- 887 43 Ruth, K. S. *et al.* Genetic insights into biological mechanisms governing human ovarian  
888 ageing. *Nature* **596**, 393-397 (2021). <https://doi.org/10.1038/s41586-021-03779-7>
- 889 44 Salpeter, S. R. *et al.* Meta-analysis: effect of hormone-replacement therapy on components  
890 of the metabolic syndrome in postmenopausal women. *Diabetes, Obesity and Metabolism* **8**,  
891 538-554 (2006). <https://doi.org/https://doi.org/10.1111/j.1463-1326.2005.00545.x>
- 892 45 Manson, J. E. *et al.* Menopausal Hormone Therapy and Health Outcomes During the  
893 Intervention and Extended Poststopping Phases of the Women's Health Initiative  
894 Randomized Trials. *JAMA* **310**, 1353-1368 (2013). <https://doi.org/10.1001/jama.2013.278040>
- 895 46 Gartlehner, G. *et al.* *U.S. Preventive Services Task Force Evidence Syntheses, formerly*  
896 *Systematic Evidence Reviews* (Agency for Healthcare Research and Quality (US), Rockville  
897 (MD), 2017).
- 898 47 Day, F. R. *et al.* Large-scale genomic analyses link reproductive aging to hypothalamic  
899 signaling, breast cancer susceptibility and BRCA1-mediated DNA repair. *Nature Genetics* **47**,  
900 1294-1303 (2015). <https://doi.org/10.1038/ng.3412>
- 901 48 Munafò, M. R., Tilling, K., Taylor, A. E., Evans, D. M. & Davey Smith, G. Collider scope: when  
902 selection bias can substantially influence observed associations. *International Journal of*  
903 *Epidemiology* **47**, 226-235 (2018). <https://doi.org/10.1093/ije/dyx206>
- 904 49 Soinen, P., Kangas, A. J., Würtz, P., Suna, T. & Ala-Korpela, M. Quantitative Serum Nuclear  
905 Magnetic Resonance Metabolomics in Cardiovascular Epidemiology and Genetics.  
906 *Circulation: Cardiovascular Genetics* **8**, 192-206 (2015).  
907 <https://doi.org/10.1161/CIRCGENETICS.114.000216>
- 908 50 Allen, N. E., Sudlow, C., Peakman, T., Collins, R. & Biobank, U. K. UK biobank data: come and  
909 get it. *Sci Transl Med* **6**, 224ed224 (2014). <https://doi.org/10.1126/scitranslmed.3008601>
- 910 51 Collins, R. What makes UK Biobank special? *Lancet* **379**, 1173-1174 (2012).  
911 [https://doi.org/10.1016/S0140-6736\(12\)60404-8](https://doi.org/10.1016/S0140-6736(12)60404-8)
- 912 52 Julkunen, H., Cichonska, A., Slagboom, P. E., Wurtz, P. & Nightingale Health, U. K. B. I.  
913 Metabolic biomarker profiling for identification of susceptibility to severe pneumonia and  
914 COVID-19 in the general population. *Elife* **10** (2021). <https://doi.org/10.7554/eLife.63033>
- 915 53 Soinen, P., Kangas, A. J., Wurtz, P., Suna, T. & Ala-Korpela, M. Quantitative serum nuclear  
916 magnetic resonance metabolomics in cardiovascular epidemiology and genetics. *Circ*  
917 *Cardiovasc Genet* **8**, 192-206 (2015). <https://doi.org/10.1161/CIRCGENETICS.114.000216>
- 918 54 Daniel Fry, R. A., Stewart Moffat, Mark Gordon & Parmesh Singh. *UK Biobank Biomarker*  
919 *Project Companion Document to Accompany Serum Biomarker Data*,  
920 [https://biobank.ndph.ox.ac.uk/showcase/showcase/docs/serum\\_biochemistry.pdf](https://biobank.ndph.ox.ac.uk/showcase/showcase/docs/serum_biochemistry.pdf) (2019).
- 921 55 Bycroft, C. *et al.* The UK Biobank resource with deep phenotyping and genomic data. *Nature*  
922 **562**, 203-209 (2018). <https://doi.org/10.1038/s41586-018-0579-z>

- 923 56 Howie, B., Marchini, J. & Stephens, M. Genotype imputation with thousands of genomes. *G3 (Bethesda)* **1**, 457-470 (2011). <https://doi.org/10.1534/g3.111.001198>
- 924
- 925 57 Huang, J. *et al.* Improved imputation of low-frequency and rare variants using the UK10K
- 926 haplotype reference panel. *Nat Commun* **6**, 8111 (2015).
- 927 <https://doi.org/10.1038/ncomms9111>
- 928 58 Mitchell, R., Hemani, G., Dudding, T., Corbin, L., Harrison, S., Paternoster, L. UK Biobank
- 929 Genetic Data: MRC-IEU Quality Control, version 2 - Datasets - data.bris. data.bris. (2018).
- 930 <https://doi.org/10.5523/bris.1ovaau5sxunp2cv8rcy88688v>
- 931 59 Mitchell R, E. B., Raistrick CA, Paternoster L, Hemani G, Gaunt TR. MRC IEU UK Biobank
- 932 GWAS pipeline version 2. (2019). <https://doi.org/10.5523/bris.pnoat8cxo0u52p6ynfaekeigi>
- 933 60 Loh, P. R. *et al.* Efficient Bayesian mixed-model analysis increases association power in large
- 934 cohorts. *Nat Genet* **47**, 284-290 (2015). <https://doi.org/10.1038/ng.3190>
- 935 61 Kettunen, J. *et al.* Genome-wide study for circulating metabolites identifies 62 loci and
- 936 reveals novel systemic effects of LPA. *Nat Commun* **7**, 11122 (2016).
- 937 <https://doi.org/10.1038/ncomms11122>
- 938 62 Bruna, G., Mary, S., Debbie, A. L., John, W. L. & George Davey, S. Indicators of socioeconomic
- 939 position (part 1). *Journal of Epidemiology and Community Health* **60**, 7 (2006).
- 940 <https://doi.org/10.1136/jech.2004.023531>
- 941 63 Harrell, J. F. E. & SpringerLink. Regression Modeling Strategies : With Applications to Linear
- 942 Models, Logistic and Ordinal Regression, and Survival Analysis. 1 online resource (XXV, 582 p.
- 943 157 illus., 553 illus. in color.) (2015).
- 944 64 Lawlor, D. A. Commentary: Two-sample Mendelian randomization: opportunities and
- 945 challenges. *Int J Epidemiol* **45**, 908-915 (2016). <https://doi.org/10.1093/ije/dyw127>
- 946 65 Day, F. R. *et al.* Genomic analyses identify hundreds of variants associated with age at
- 947 menarche and support a role for puberty timing in cancer risk. *Nat Genet* **49**, 834-841
- 948 (2017). <https://doi.org/10.1038/ng.3841>
- 949 66 Perry, J. R. *et al.* Parent-of-origin-specific allelic associations among 106 genomic loci for age
- 950 at menarche. *Nature* **514**, 92-97 (2014). <https://doi.org/10.1038/nature13545>
- 951 67 Mathieson, I. *et al.* Genome-wide analysis identifies genetic effects on reproductive success
- 952 and ongoing natural selection at the *FADS* locus. *bioRxiv*,
- 953 2020.2005.2019.104455 (2020). <https://doi.org/10.1101/2020.05.19.104455>
- 954 68 Day, F. R. *et al.* Large-scale genomic analyses link reproductive aging to hypothalamic
- 955 signaling, breast cancer susceptibility and BRCA1-mediated DNA repair. *Nat Genet* **47**, 1294-
- 956 1303 (2015). <https://doi.org/10.1038/ng.3412>
- 957 69 Locke, A. E. *et al.* Genetic studies of body mass index yield new insights for obesity biology.
- 958 *Nature* **518**, 197-206 (2015). <https://doi.org/10.1038/nature14177>
- 959 70 Howe, L. J. *et al.* Within-sibship GWAS improve estimates of direct genetic effects. *bioRxiv*,
- 960 2021.2003.2005.433935 (2021). <https://doi.org/10.1101/2021.03.05.433935>
- 961 71 Davies, N. M. *et al.* Within family Mendelian randomization studies. *Hum Mol Genet* **28**,
- 962 R170-R179 (2019). <https://doi.org/10.1093/hmg/ddz204>
- 963 72 Morris, T. T., Davies, N. M., Hemani, G. & Smith, G. D. Population phenomena inflate genetic
- 964 associations of complex social traits. *Sci Adv* **6**, eaay0328 (2020).
- 965 <https://doi.org/10.1126/sciadv.aay0328>
- 966 73 Sanderson, E., Richardson, T. G., Hemani, G. & Davey Smith, G. The use of negative control
- 967 outcomes in Mendelian randomization to detect potential population stratification. *Int J*
- 968 *Epidemiol* (2021). <https://doi.org/10.1093/ije/dyaa288>
- 969 74 Zheng, J. *et al.* Recent Developments in Mendelian Randomization Studies. *Curr Epidemiol*
- 970 *Rep* **4**, 330-345 (2017). <https://doi.org/10.1007/s40471-017-0128-6>

971



## **Main tables and figures**

Contents page

### **Figure 1**

Infographic summarising the different approaches taken to assess associations between reproductive traits and metabolites

### **Figure 2A**

Multivariable regression and Mendelian randomization estimates for the associations between older age at menarche and metabolic measures.

Results are presented as standard unit changes in metabolic measure per 1 year increase in age at menarche. Circles denote point estimates and indicate p-value < 0.00093 (closed circle) or  $\geq$  0.00093 (open circles). Horizontal bars denote 95% confidence intervals. Multivariable regression models were adjusted for age at recruitment, body size at age 10 and education. Mendelian randomization models were estimated using the inverse variance weighted method. Abbreviations for Figures 2A-C and 4 are given in 'Abbreviations' at the end of the manuscript.

### **Figure 2B**

Multivariable regression and Mendelian randomization estimates for the associations between higher parity and metabolic measures.

Mendelian randomization estimates for the associations between reproductive traits (i.e. older age at menarche, higher parity, and older age at natural menopause) and metabolic measures

Results are presented as standard unit changes in metabolic measure per 1 additional birth. Circles denote point estimates and indicate p-value < 0.00093 (closed circle) or  $\geq$  0.00093 (open circles). Horizontal bars denote 95% confidence intervals. Multivariable regression models were adjusted for age at recruitment, body size at age 10 and education. Mendelian randomization models were estimated using the inverse variance weighted method. Abbreviations for Figures 2A-C and 4 are given in 'Abbreviations' at the end of the manuscript.

### **Figure 2C**

Multivariable regression and Mendelian randomization estimates for the associations between older age at natural menopause and metabolic measures.

Results are presented as standard unit changes in metabolic measure per 1 year increase in age at natural menopause. Circles denote point estimates and indicate p-value < 0.00093 (closed circle) or  $\geq$  0.00093 (open circles). Horizontal bars denote 95% confidence intervals. Multivariable regression models were adjusted for age at recruitment, body size at age 10 and

education. Mendelian randomization models were estimated using the inverse variance weighted method. Abbreviations for Figures 2A-C and 4 are given in 'Abbreviations' at the end of the manuscript.

### **Figure 3**

**Mendelian randomization estimates for the relation between reproductive traits and metabolic measures among females assayed using NMR metabolomics (black) or clinical chemistry methods (pink)**

Results are presented as standard unit changes in metabolic measure per 1 year increase in age at menarche, 1 additional birth, or 1 year increase in age at natural menopause. Circles denote point estimates and indicate p-value < 0.00093 (closed circle) or  $\geq$  0.00093 (open circles). Horizontal bars denote 95% confidence intervals.

### **Figure 4**

**Multivariable regression estimates for the associations of parity (women) or number of children (men) with metabolic measures: negative control analyses**

Results are presented as standard unit changes in metabolic measure per 1 additional birth/child. Circles denote point estimates and indicate p-value < 0.00093 (closed circle) or  $\geq$  0.00093 (open circles). Horizontal bars denote 95% confidence intervals. Multivariable regression models were adjusted for age at recruitment, body size at age 10 and education. Abbreviations for Figures 2A, 2B and 4 are given in 'Abbreviations'

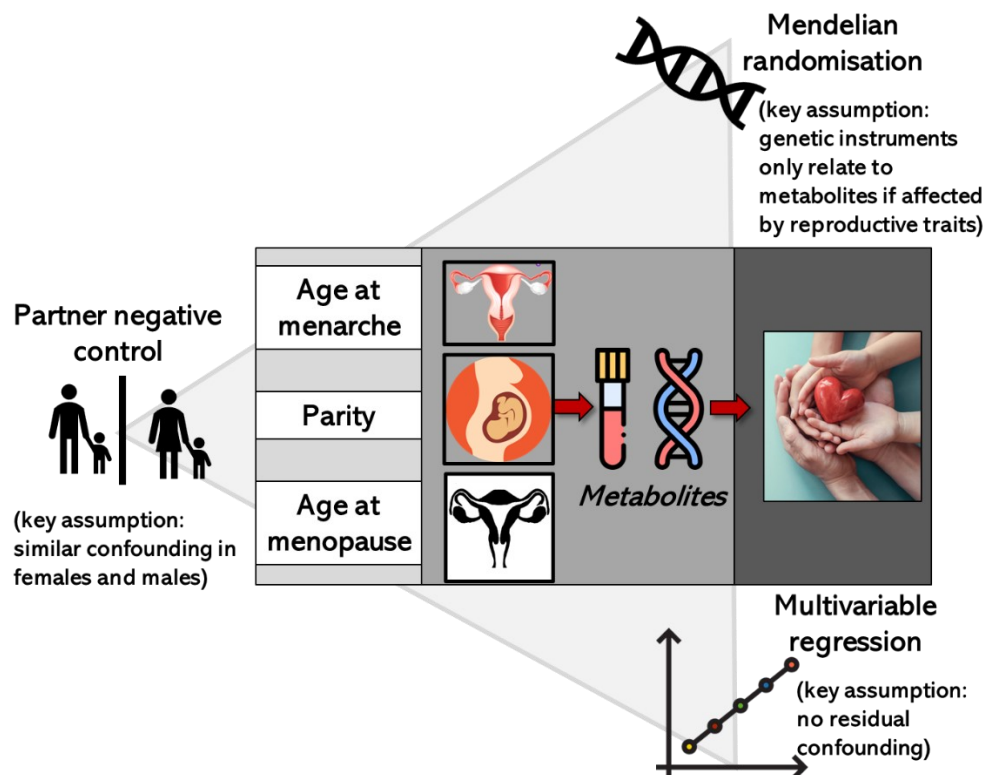
### **Table 1**

**Distribution of characteristics of UK Biobank participants with NMR metabolomics data**

### **Summary box**

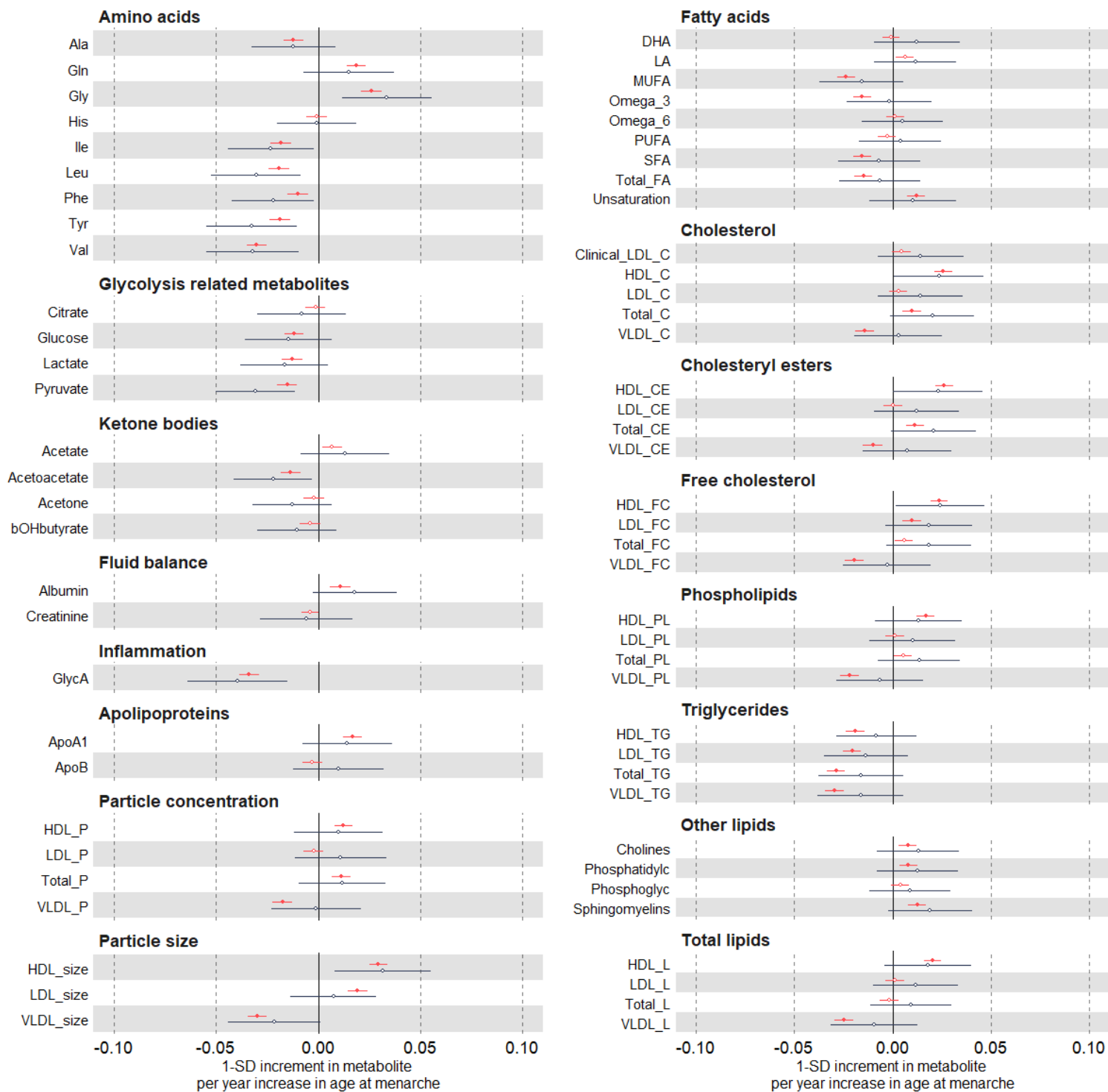
**Summary of key findings**

Fig 1. Overview of study design: key assumptions and biases

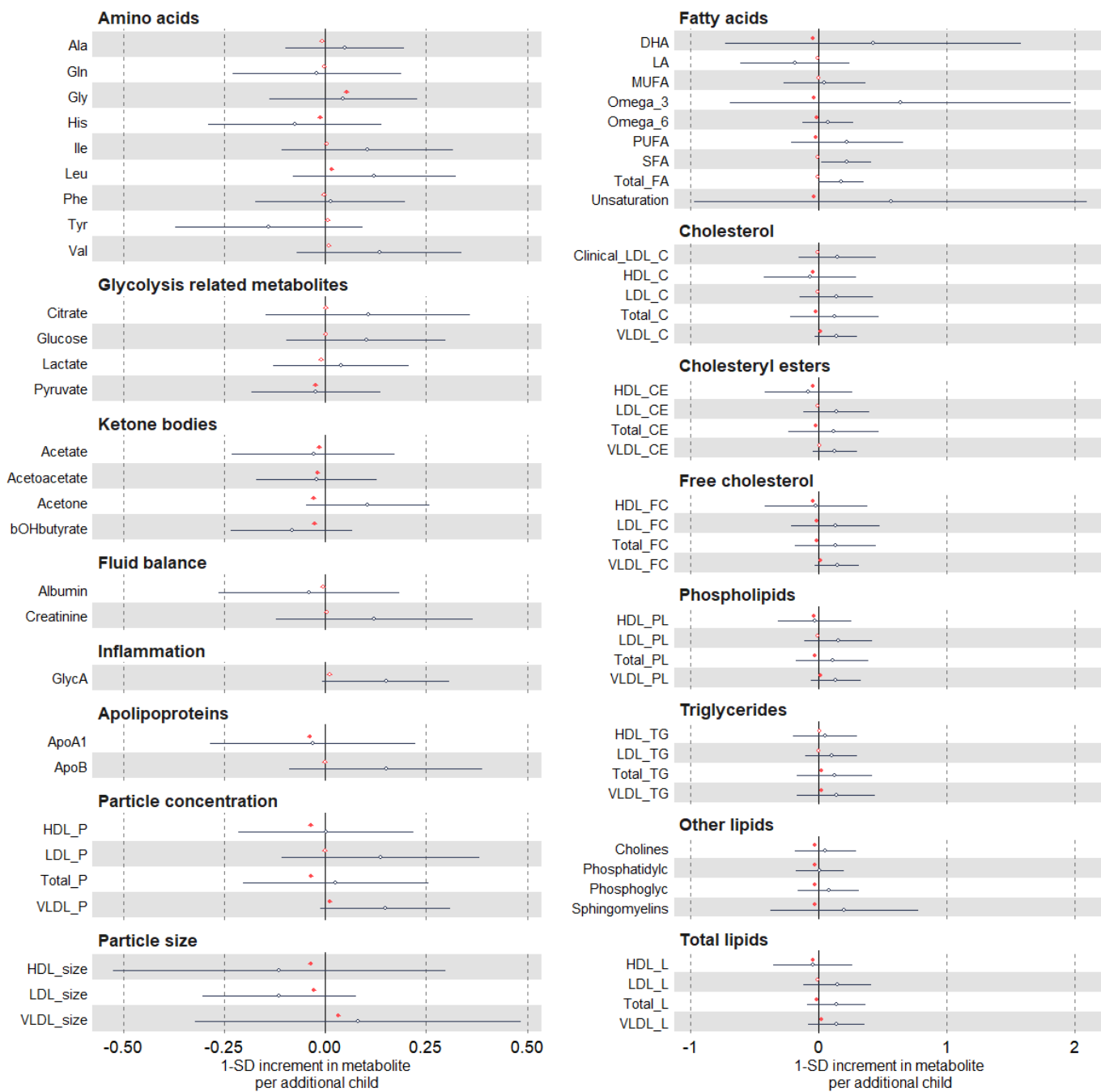


The figure illustrates key assumptions and sources of bias for each method (and differences across methods) in the context of our study. An exhaustive review of assumptions/biases for each method is outside the scope of this work. However, we acknowledge that there are other potential sources of biases that could affect findings such as selection bias related to the low response in UKB.

**Figure 2A.** Multivariable regression and Mendelian randomization estimates for the associations between older age at menarche and metabolic measures.

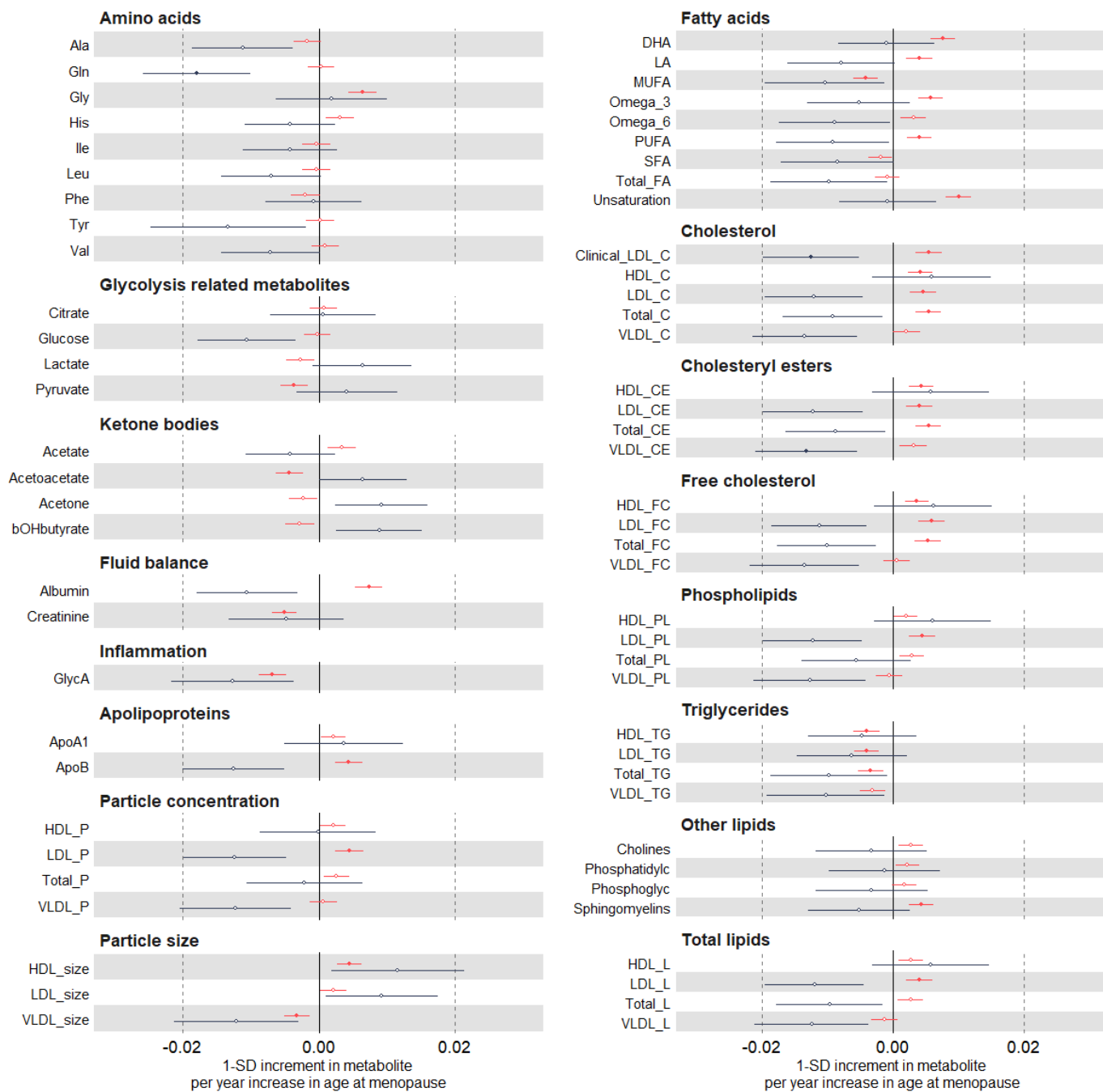


**Figure 2B.** Multivariable regression and Mendelian randomization estimates for the associations between higher parity and metabolic measures.



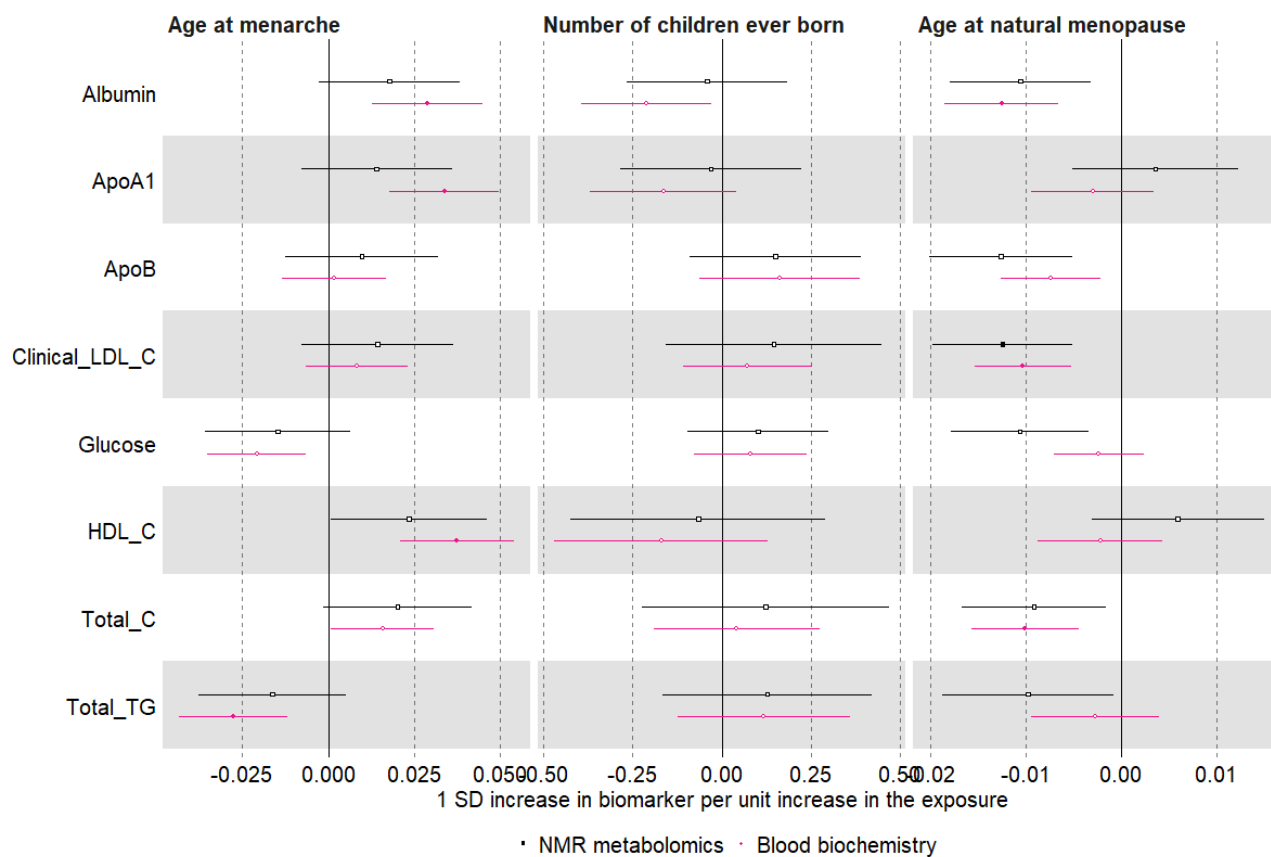
• MV • MR

**Figure 2C.** Multivariable regression and Mendelian randomization estimates for the associations between older age at natural menopause and metabolic measures.

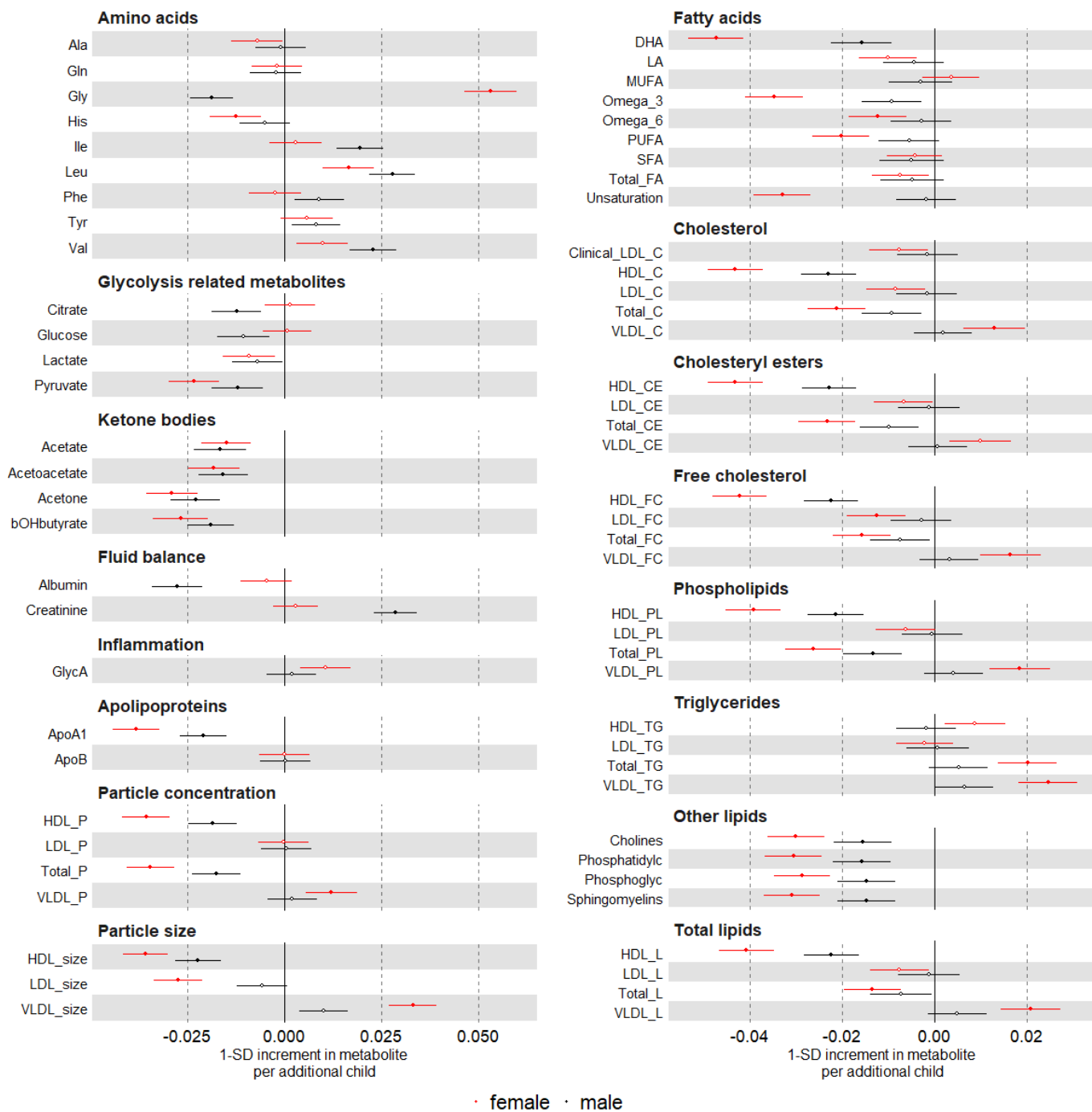


• MV • MR

**Figure 3.** Mendelian randomization estimates for the relation between older age at menarche and metabolic measures among females measured using NMR metabolomics (black) or clinical chemistry methods (pink)



**Figure 4.** Multivariable regression estimates for the associations of parity (women) or number of children (men) with metabolic measures: negative control analyses Models adjusted for age at baseline, education, and body composition at age 10.





**Table 1.** Distribution of characteristics of UK Biobank participants (females only) with NMR metabolomics data

	N=65699
Age when attended assessment centre, mean (sd)	56.4 (8.0)
Age in 5-y groups, n (%)	
40-	6623 (10.1)
45-	8781 (13.4)
50-	10378 (15.8)
55-	12299 (18.7)
60-	16089 (24.5)
65-	11529 (17.5)
Ethnic background, n (%)	
White	62063 (94.8)
Mixed	420 (0.6)
Asian	1069 (1.6)
Black	1059 (1.6)
Chinese	220 (0.3)
Others	609 (0.9)
Qualifications, n (%)	
None of the above	10955 (16.9)
O level or CSEs or other	25619 (39.4)
A level	7626 (11.7)
College/ university	20749 (31.9)
Townsend deprivation index at recruitment, mean (sd)	-1.4 (3.0)
Comparative body size at age 10, n (%)	
Average	32767 (50.7)
Thinner	20416 (31.6)
Plumper	11435 (17.7)
Body mass index (BMI), mean (sd)	27.1 (5.2)
Alcohol intake frequency., n (%)	
Daily or almost daily	10516 (16.0)
Three or four times a week	13712 (20.9)
Once or twice a week	16872 (25.7)
One to three times a month	8655 (13.2)
Special occasions only	9630 (14.7)
Never	6186 (9.4)
Smoking status, n (%)	
Never	38915 (59.5)
Previous	20609 (31.5)
Current	5834 (8.9)
Age when periods started (menarche), mean (sd)	13.0 (1.6)
Categories of age at menarche, n (%)	
<13 years	24811 (39.0)
13-14 years	28057 (44.1)
>14	10762 (16.9)
Number of live births, n (%)	
0	12367 (18.9)

1	8900 (13.6)
2	28526 (43.5)
3+	15767 (24.0)
Had menopause, n (%)	
Premenopausal	15418 (24.5)
Postmenopausal	37248 (59.1)
Surgical	7564 (12.0)
Other	2758 (4.4)
Age at menopause (last menstrual period), mean (sd)	49.7 (5.1)
Categories of age at menopause, n (%)	
<40	1520 (4.1)
40-44	3378 (9.1)
45-49	8903 (23.9)
50-51	8740 (23.4)
52-54	9144 (24.5)
55+	5606 (15.0)
Statin use - Nurses int., n (%)	
No Statins	58279 (88.7)
Statins	7420 (11.3)
Ever used hormone-replacement therapy (HRT), n (%)	
No	40330 (61.7)
Yes	25036 (38.3)
Years on HRT, n (%)	
Never	40330 (64.8)
0-2	6294 (10.1)
3-6	5504 (8.8)
7-10	5192 (8.3)
>10	4908 (7.9)

---

\*Age at natural menopause therefore excluded women who had not yet gone through the menopause or who had a surgical menopause or who answered 'other'.

## **Summary box**

### **What is new?**

- Markers of women's reproductive health are associated with several common chronic conditions. Whilst some attempts have been made to explore the extent to which these associations are causal, metabolites could act as mediators of the relationship between reproductive markers and chronic diseases.
- Older age of menarche was related to a less atherogenic metabolic profile in multivariable regression and Mendelian randomization, however, this was largely attenuated when accounting for adult body mass index.
- In multivariable regression, higher parity related to complex changes in lipoprotein-related traits. Whilst these were not observed in male negative controls, suggesting a potential causal effect in females, they were not replicated in the Mendelian randomization, possibly due to imprecise estimates.
- Older age at natural menopause was related to lower concentrations of inflammation markers in both multivariable regression and Mendelian randomization. Consistent results were observed for LDL-related traits when stratified by chronological age.

### **Implications**

- Given that the age at menarche results were largely attenuated to the null when accounting for adult BMI, it is likely that age at menarche itself may not causally relate to the metabolic profile.
- These results, particularly for parity and age at menopause, could contribute to identifying novel markers for the prevention of adverse cardiometabolic outcomes in women and/or methods for accurate risk prediction. For example, consistent with other studies, higher parity was associated with unfavourable (e.g. higher number of particles and lipid content in VLDL and higher glycine) changes in the metabolic profile. Similarly, older age at menopause was related to higher lipid content in HDL particles and lower systemic inflammation, as proxied by GlycA.