

1 **Association between breastfeeding, host genetic factors, and calicivirus gastroenteritis in a**
2 **Nicaraguan birth cohort**

3 Nadja A. Vielot,^{1*}; Ruthly François^{2*}; Fredman González³, Yaoska Reyes³; Emilya Huseynova⁴; Lester
4 Gutierrez³; Johan Nordgren⁵; Christian Toval-Ruiz³; Samuel Vilchez³; Jan Vinjé⁶; Sylvia Becker-
5 Dreps^{1,4†}; Filemon Bucardo^{3†}

6 **Affiliations**

- 7 1. Department of Family Medicine, University of North Carolina at Chapel Hill, Chapel Hill, North
8 Carolina, USA
9 2. School of Medicine, University of North Carolina at Chapel Hill, Chapel Hill, North Carolina, USA
10 3. Department of Microbiology and Parasitology, National Autonomous University of Nicaragua –
11 León, León, Nicaragua
12 4. Department of Epidemiology, University of North Carolina at Chapel Hill, Chapel Hill, North
13 Carolina, USA
14 5. Department of Biomedical and Clinical Sciences, Linköping University, Linköping, Sweden
15 6. Division of Viral Diseases, Centers for Disease Control and Prevention, Atlanta, Georgia, USA

16 *Co-first author

17 †Co-senior author

18

19 **Conflicts of Interest:** The author have no conflicts of interest to declare.

20 **Funding Sources:** This study was supported by award R01AI127845 from the National Institute of
21 Allergy and Infectious Diseases (NIAID). SBD is supported by K24AI141744 from NIAID; FG, YR, and
22 LG are supported by an international research capacity-building award from the NIH-Fogarty
23 International Center, D43TW010923.

24 **ABSTRACT**

25 **Background:** Norovirus and sapovirus are important causes of childhood acute gastroenteritis (AGE).
26 Breastfeeding prevents AGE generally; however, it is unknown if breastfeeding prevents AGE caused
27 specifically by norovirus and sapovirus.

28 **Methods:** We investigated the association between breastfeeding and norovirus or sapovirus AGE
29 episodes in a birth cohort. Weekly data on breastfeeding and AGE episodes were captured during the first
30 year of life. Stools were collected from children with AGE and tested by RT-qPCR for norovirus and
31 sapovirus. Time-dependent Cox models estimated associations between weekly breastfeeding and time to
32 first norovirus or sapovirus AGE.

33 **Findings:** From June 2017 to July 2018, 444 newborns were enrolled in the study. In the first year of life,
34 69 and 34 children experienced a norovirus and a sapovirus episode, respectively. Exclusive breastfeeding
35 lasted a median of 2 weeks, and any breastfeeding lasted a median of 42 weeks. Breastfeeding in the last
36 week did not prevent norovirus (HR: 1.09, 95% CI: 0.62, 1.92) or sapovirus (HR: 1.00, 95% CI: 0.82,
37 1.21) AGE in a given week, adjusting for household sanitation, consumption of high-risk foods, and
38 mother's and child's histo-blood group phenotypes. Maternal secretor-positive phenotype was protective
39 against norovirus AGE, whereas child's secretor-positive phenotype was a risk factor for norovirus AGE.

40 **Interpretation:** Exclusive breastfeeding in this population was short-lived, and no conclusions could be
41 drawn about its potential to prevent norovirus or sapovirus AGE. Non-exclusive breastfeeding did not
42 prevent norovirus or sapovirus AGE in the first year of life. However, maternal secretor-positive
43 phenotype was associated with a reduced hazard of norovirus AGE.

44

45

46

47 **WHAT IS KNOWN**

- 48 - Breastfeeding prevents acute gastroenteritis (AGE) in nursing infants.
- 49 - It is unknown if breastfeeding prevents AGE caused by norovirus or sapovirus, which are leading
- 50 causes of childhood AGE worldwide.
- 51 - Host genetic factors can influence AGE risk, and the mediating effects of breastfeeding are
- 52 unclear.

53 **WHAT IS NEW**

- 54 - Exclusive breastfeeding was rare, and breastfeeding did not prevent norovirus (hazard ratio 1.09,
- 55 95% CI: 0.62, 1.92) or sapovirus (hazard ratio 1.00, 95% CI: 0.82, 1.21) AGE.
- 56 - Secretor-positive phenotype of the child and the mother may be more important than
- 57 breastfeeding in determining norovirus and sapovirus AGE risk in this setting.

58

59 **KEYWORDS**

60 Norovirus, sapovirus, breastfeeding, acute gastroenteritis, diarrhea, Nicaragua, infants, histo-blood group

61 antigens.

62 INTRODUCTION

63 Acute gastroenteritis (AGE) is a common cause of morbidity and mortality worldwide, with the
64 greatest burden among children in developing countries.¹ Human caliciviruses, which include norovirus
65 and sapoviruses, are a leading cause of AGE in both outbreak and endemic settings.^{2,3} Although people of
66 all ages are susceptible to norovirus infections, the highest morbidity and mortality is among young
67 children and the elderly.² Sapovirus is increasingly recognized as an important etiology of AGE among
68 young children, with the prevalence ranging from 5 – 17% depending upon the country, age group
69 studied, and laboratory methods used.⁴⁻⁷ In the MAL-ED multi-site cohort study, sapovirus has been
70 recognized as the second highest attributable incidence of AGE in children under 24 months of age.⁸

71 The protective effect of breastfeeding against childhood AGE is well established.⁹ However, few
72 studies have investigated the association between breastfeeding and specific causes of AGE, such as from
73 norovirus and sapovirus infections. The current evidence from the published literature shows mixed
74 results for norovirus and sapovirus; some studies have shown that breastfeeding is associated with a
75 decreased odds of infection, while others have shown no reduction.¹⁰⁻¹³ Moreover, when breastfeeding
76 was assessed in these studies, there were inconsistencies and lack of clarity in how breastfeeding
77 frequency and exclusivity were treated as analytic variables.

78 Along with breastfeeding, child and mother's secretor phenotype affects individuals'
79 susceptibility to enteric infections. More specifically, the mother's secretor phenotype can alter breastmilk
80 composition,^{14,15} and the child's secretor phenotype can increase or decrease the risk for diarrheal diseases
81 of specific etiology, including norovirus genogroups.^{16,17} However, limited evidence exists on the
82 association between detailed breastfeeding history, child and mother's histo-blood group antigens
83 (HBGAs) phenotypes and the risk of norovirus or sapovirus AGE.¹⁸

84 Our research investigated the protective association between breastfeeding and incidence of first
85 norovirus and sapovirus AGE episodes during the first 12 months of life in a longitudinal birth cohort

86 study (SAGE) in León, Nicaragua. The SAGE birth cohort employs a rigorous follow-up approach and a
87 platform to study the weekly impact of breastfeeding on the incidence and severity of norovirus and
88 sapovirus infections. A secondary goal of the study was to understand the combined impacts of child and
89 maternal genetic factors on norovirus and sapovirus AGE risk, and whether these influence the benefits of
90 breastfeeding on AGE prevention.

91

92 **METHODS**

93 **Study design**

94 The Sapovirus Associated GastroEnteritis (SAGE) study is a population-based birth cohort in
95 León, Nicaragua that aims to investigate the natural history, immunity, and transmission patterns of
96 sapovirus and 13 other enteric pathogens associated with pediatric gastroenteritis. The target sample size
97 to detect a three-fold risk of sapovirus infection with 90% power among children with an infected
98 household member was 400. During the recruitment period between June 2017 and July 2018, 991
99 expected births were identified from exhaustive pregnancy registries maintained by public health centers,
100 which were highly representative of the full population of León. A total of 742 mothers were contact in
101 their homes, of whom 585 were eligible to participate and 444 agreed to participate (recruitment rate:
102 76%). Newborns were enrolled between birth and 14 days of age and were followed weekly for up to 36
103 months. Ten fieldworkers underwent training in administering surveys and collecting biological samples,
104 then conducted in-person household visits to collect baseline data on sociodemographic factors; weekly
105 data on breastfeeding behavior, supplemental feeding, and incidence of AGE episodes; and monthly data
106 on environmental and behavioral risk factors for AGE. Fieldworkers participated in biweekly meetings to
107 review study protocols and update trainings.

108 **Measures**

109 The main outcome was the first episode of AGE in which norovirus or sapovirus was detected in
110 the stool. AGE surveillance occurred weekly, and an AGE episode was characterized by diarrhea, defined
111 as ≥ 3 stools that were loose or looser than normal in a 24-hour period, including notable changes to the
112 stool, such as presence of blood or excessive liquid; and/or vomiting. This analysis was restricted to the
113 first detected episode of norovirus or sapovirus. Breastfeeding practice was ascertained using a weekly
114 questionnaire administered to the mothers. Children for whom the answer to the question “Did you
115 breastfeed your child yesterday?” was “Yes” were considered breastfed. The child was considered to be
116 exclusively breastfed until the first week the mother answered “Yes” to question “In the past week, has
117 your child received any food, formula, or liquids, including water or tea or liquid in a bottle, in addition to
118 breast milk?”; the child was considered non-exclusively breastfed thereafter. Children were considered to
119 have “any breastfeeding” if they received either exclusive or mixed breastfeeding at any point in the first
120 12 months of the study.

121 Severity of norovirus and sapovirus episodes were summarized on a scale of 0-15 based on the
122 presence of the following symptoms and treatment-seeking behaviors: diarrhea lasting 1-2 days = 1 point,
123 3-4 days = 2 points, 5+ days = 3 points; vomiting lasting 1-2 days = 1 point, 3-4 days = 2 points, 5+ days
124 = 3 points (0 points if no vomiting); maximum of 4-5 stools per day = 1 point, 6-7 stools = 2 points, 8+
125 stools = 3 points (0 points if no diarrhea); presence of fever = 3 points; intravenous fluid received for
126 dehydration = 3 points. This severity score was based on the method described by Lee, *et al*, though we
127 did not collect temperature when fever was reported.¹⁹

128 Risk factors for AGE included socioeconomic status, nutrition, and secretor and Lewis
129 phenotype. The presence of a toilet in the household at enrollment was a surrogate measure for household
130 income. On a monthly basis, mothers were asked if their child ate any food that is associated with
131 increased AGE risk, including seafood (any kind), raw fruits or vegetables (any kind), or any food outside
132 of the home. Considering the increasing evidence of the importance of host genetic factors in modifying
133 susceptibility to infections, including in a prior study conducted in the same birth cohort,¹⁷ we adjusted

134 for the child's secretor and Lewis phenotypes. Due to the additional potential for mother's HBGAs
135 phenotypes to be associated with AGE risk,¹⁶ we also adjusted for mother's secretor and Lewis
136 phenotypes.

137 **Sample collection and laboratory methods**

138 Stool samples were collected from children with AGE within 10 days of the onset of symptoms.
139 Specimens were collected from a plastic container or a soiled diaper retrieved from the household within
140 two hours of defecation and transported at 4°C to the Microbiology Department of UNAN-León for
141 analysis. A 10% (wt/vol) suspension of stool was prepared using phosphate-buffered saline (pH=7.2). The
142 samples were tested for norovirus and sapovirus within 24 hours of collection.

143 Viral RNA extraction was performed on collected stool samples using the QIAamp Viral RNA
144 Mini Kit (Qiagen, Hilden, Germany), according to manufacturer's instructions. Extracted viral RNA from
145 stool suspensions was analyzed by reverse transcriptase quantitative polymerase chain reaction (RT-
146 qPCR) for norovirus as previously described.²⁰ Sapovirus infection was detected by RT-qPCR in stools as
147 previously described.⁷ Briefly, RT-qPCR was performed with the AgPath-ID OneStep RT-qPCR Kit
148 (Thermo Fisher Scientific, Waltham, MA, USA) using the ABI 7500 Real-Time PCR System. A sample
149 was considered positive for norovirus or sapovirus if the Ct value was ≤ 35 . HBGA phenotypes were
150 determined by analysis of saliva samples collected from cohort children at 6 months of age. If the result
151 was indeterminate, we tested the samples collected at 12 or 24 months of age. Saliva samples from
152 mothers were collected at the end of the study and tested for HBGAs phenotypes.²¹

153 **Data analysis**

154 Breastfeeding exclusivity and duration, based on weekly household surveys, and incidence of
155 norovirus and sapovirus AGE episodes were summarized using descriptive statistics. Crude and adjusted
156 hazard ratios (HR) for the association between breastfeeding and norovirus and sapovirus AGE were
157 estimated using time-dependent Cox proportional hazard models. Breastfeeding behavior was measured

158 weekly based on mothers' reports. All children were followed from baseline until 12 months of age, until
159 they experienced a norovirus or sapovirus AGE episode, or until they were lost to follow-up. This
160 analysis is restricted to the first episode reported for each child. Hazard ratios were adjusted for
161 potentially confounding factors, including socioeconomic factors, nutritional factors, and the child's and
162 mother's secretor and Lewis phenotypes (positive or negative). Data were analyzed using SAS version 9.4
163 (Cary, North Carolina) and Stata 14 (College Station, Texas).

164 This study was approved by Institutional Review Boards at the University of North Carolina
165 School of Medicine (IRB #: 20-0698), the National Autonomous University of Nicaragua (UNAN)-León
166 (IRB #: 00003342) and CDC (Research determination: 0900f3eb81c526a7).

167

168 **RESULTS**

169 **Study population characteristics**

170 Of 444 children recruited in the study, 443 (99.8%) completed at least one weekly follow-up visit
171 and were included in the analysis. By the 12-month visit, 375 children (84.6%) remained enrolled in the
172 study and 68 had withdrawn. Mothers of all 443 children reported having breastfed their children at least
173 once in the first 12 months of life. Half of the children received exclusive breastfeeding at some point
174 during the study (Table 1). The median duration of exclusive breastfeeding was 2 weeks (IQR: 1-4
175 weeks), and the median duration of any breastfeeding was 43 weeks (IQR: 18-49 weeks) (Table 1). Sixty-
176 nine children (15.6%) experienced an AGE episode associated with norovirus genogroups GI and GII,
177 and 34 children (7.8%) experienced a sapovirus AGE episode in the first year of life. The median age at
178 first norovirus or sapovirus infection was approximately 8 months (Figure 1).

179 **Severity of norovirus and sapovirus infections**

180 Norovirus and sapovirus episodes were of moderate severity, having severity scores of 5 and 4.5,
181 respectively, on a scale of 0-15. Four of the 69 norovirus AGE episodes (5.8%) and three of the 34
182 sapovirus AGE episodes were associated with diarrhea lasting more than 14 days. Only norovirus
183 episodes were associated with hospitalization (n=4), three of which required intravenous rehydration.

184 **Maternal and child histo-blood group antigen profiles**

185 Secretor phenotype was available for 312 mothers, 244 (78.5%) of whom were secretors, and for
186 442 children, 395 (89.4%) of whom were secretors (Table 2). Most norovirus episodes occurred among
187 secretor positive (98.6%) and Lewis positive (85.5%) children, as did most of the 34 sapovirus episodes
188 (88.2% each for secretor and Lewis positive) (Table 2). Approximately three-quarters of norovirus and
189 sapovirus cases occurred among children with secretor-positive or Lewis-positive mothers.

190 **Relative hazard of norovirus and sapovirus AGE by breastfeeding frequency**

191 The model adjusted for socioeconomic factors, nutrition factors, and child's and mother's genetic
192 phenotypes showed no protective association of breastfeeding against norovirus episodes (HR: 1.09, 95%
193 CI: 0.62, 1.92) (Table 3). In this model, child secretor-positive phenotype was the strongest risk factor for
194 norovirus AGE (HR: 11.02, 95% CI: 1.50, 80.80), whereas mother secretor-positive phenotype was the
195 strongest protective factor for norovirus AGE (HR: 0.55, 95% CI: 0.29, 1.05). Lewis-positive phenotype
196 of the child or the mother was not significantly associated with protection against norovirus AGE. For
197 sapovirus, adjusted estimates showed no protective association of breastfeeding (HR: 1.00, 95% CI: 0.82,
198 1.21). For both norovirus and sapovirus, having a toilet in the household tended to confer some protection
199 against clinical disease, as did consumption of high-risk foods (seafood, raw fruits or vegetables) and
200 food outside the household (Table 3).

201 Our study sample had a higher proportion of children who were secretor-positive compared to
202 mothers, which was unexpected given that this salivary phenotype is inherited as a dominant Mendelian
203 trait. When the analysis was restricted to mothers of secretor-positive children, the protective association

204 between mother secretor-positive phenotype showed slightly greater protection against norovirus AGE
205 (HR: 0.52, 95% CI: 0.27, 1.00).

206 In a post-hoc analysis, we estimated the association between breastfeeding and severity of AGE
207 episodes among children who experienced symptomatic norovirus (n=69) and sapovirus (n=34)
208 infections. We used the median severity score (norovirus: 5; sapovirus: 4.5) as the cutoff for severe versus
209 non-severe episodes. Because of the reduced number of outcomes in this analysis, the HR estimates were
210 highly imprecise and did not suggest a definitive association between breastfeeding and AGE severity for
211 norovirus (adjusted HR: 1.56, 95% CI: 0.65, 3.73) or sapovirus (adjusted HR: 1.46, 95% HR: 0.27, 7.85).

212

213 **DISCUSSION**

214 Breastfeeding was predominantly non-exclusive among the mother-infant pairs in this Nicaraguan
215 birth cohort and was not associated with protection against norovirus and sapovirus AGE episodes.
216 Child's secretor-positive phenotype was a strong risk factor for norovirus AGE,¹⁷ whereas mother's
217 secretor-positive phenotype tended to be protective against norovirus AGE in their children. These
218 influences of secretor status were not observed for sapovirus AGE.

219 The most recent World Health Organization (WHO) guidelines for infant and young child feeding
220 recommend exclusive breastfeeding for the first six months of life and list protection against
221 gastrointestinal infections among one of the chief benefits of exclusive breastfeeding.¹⁴ Most mothers in
222 the cohort (98%) reported ever breastfeeding at enrollment. However, the duration of exclusive
223 breastfeeding in our study was short, which prevented us from arriving at definitive conclusions regarding
224 the association between exclusive breastfeeding and norovirus and sapovirus AGE. According to
225 UNICEF, many Latin American countries, including Nicaragua, have suboptimal breastfeeding practices,
226 with only 32% of children younger than six months being exclusively breastfed.²² A prior study of
227 breastfeeding practices in León found only 12.7% exclusive breastfeeding for six months, and indicated

228 that travel time to a health center greater than one hour was associated with exclusive breastfeeding in the
229 first six months of life.²³ In León, most women have access to a health post in their neighborhood,
230 suggesting that exclusive breastfeeding is more common among women living in remote or rural areas.

231 Children experienced their first norovirus and sapovirus episodes at approximately 8 months of
232 age, long after most mothers had stopped breastfeeding exclusively and began introducing supplementary
233 foods, suggesting that some maternally-acquired immunity prevented infections in early infancy.
234 However, Nicaraguan women are guaranteed eight weeks of paid maternity leave after delivery, which
235 may preclude exclusive breastfeeding for the recommended six months as mothers return to the work
236 force.²⁴ Cultural and social factors may also impact breastfeeding practices among young mothers in
237 urban areas, as they are uncomfortable breastfeeding in public or believe that prolonged breastfeeding
238 will negatively affect breast shape or volume. Given the limited duration of exclusive breastfeeding in our
239 population (median 2 weeks), future studies should be conducted in a different population where
240 exclusive breastfeeding is practiced more widely and for longer duration, or as part of a clinical trial that
241 provided lactation support personnel who would constantly advise and encourage new mothers enrolled in
242 the study to continue exclusive breastfeeding. These studies would allow us to better understand the
243 association between norovirus and sapovirus AGE and exclusive breastfeeding.

244 We were also surprised that consumption of high-risk foods and eating food outside of the home
245 were associated with protection against sapovirus AGE. We found that consumption of seafood and fresh
246 fruits and vegetables were positively associated with having piped water in the home, which is a marker
247 of higher socioeconomic status. If nutritional practices were associated with other factors that were
248 protective against sapovirus AGE, the relationship between high-risk foods and sapovirus AGE could be
249 confounded.

250 Our study, like others, shows that a higher risk of norovirus AGE in the first year of life is
251 associated with child's secretor-positive phenotype but not with Lewis-positive phenotype.^{16,17,25}
252 However, an important finding in our study is the protective association of mother's secretor-positive

253 phenotype on norovirus AGE, unlike other studies which have found fewer norovirus infections among
254 children of non-secretor mothers,²⁶ an enhanced protection against all-cause diarrhea in breastfed children
255 of non-secretor mothers,²⁷ or no effect on norovirus infections.¹⁶ The protective effect of mother's
256 secretor-positive phenotype noted in our study might be explained by higher concentrations of specific
257 human milk oligosaccharides (HMO) and HBGAs in breastmilk, which in turn can inhibit norovirus
258 binding to the infant's intestinal epithelium.²⁸⁻³⁰ It is also possible that breastmilk from secretor-positive
259 mothers contains higher titers of norovirus-specific IgA that can neutralize norovirus in the infant's
260 gut.^{26,31,32} Another possible explanation is that secretor-positive mothers might transfer higher titers of
261 norovirus-specific IgG antibodies with broader specificity to their children through the placenta, and such
262 maternal antibodies contribute to limited infections very early in life; the protective effect of maternal
263 antibodies on norovirus disease have not been extensively explored.³³ Future studies should further
264 investigate these associations to better understand the role of maternal secretor status on risk of norovirus
265 and sapovirus AGE.

266 A limitation of this study was the limited duration of exclusive breastfeeding, which precluded
267 making valid inferences regarding the association between exclusive breastfeeding and norovirus or
268 sapovirus AGE. Furthermore, 30% of mothers had missing data for the secretor and Lewis phenotypes,
269 and we did not impute missing data for this covariate. Thus, these mothers were excluded from the
270 adjusted analyses and the statistical power was decreased. In addition, our study may be subject to social
271 desirability bias, as mothers may be more likely to report exclusive breastfeeding in accordance with
272 Ministry of Health recommendations. We did not assess routinely-collected stools for asymptomatic
273 calicivirus infections, nor did we test all AGE stools for a wide panel of enteric infections. Thus, we
274 cannot conclude that symptoms were caused by norovirus and sapovirus infections specifically. It is
275 possible that breastfeeding is associated with protection against other enteric pathogens that we did not
276 assess in the current analysis.

277 Despite these limitations, our study is one of the few studies to focus on breastfeeding as a
278 primary exposure to understand its association with norovirus and sapovirus AGE. In contrast to previous
279 studies that explored breastfeeding as a fixed variable, our study provides more granular insight into
280 breastfeeding treated as a weekly varying exposure, an approach that closely mirrors actual practices. Our
281 findings reinforce the importance of continuing to study the protective benefits of breastfeeding and the
282 mechanisms by which breastfeeding can prevent early childhood infections. Our findings also suggest that
283 breastfeeding, especially non-exclusive breastfeeding, may not be sufficient to reduce AGE associated
284 with all enteric pathogens, and that combinations of interventions to reduce childhood AGE are
285 warranted.

286

287 **ACKNOWLEDGMENTS**

288 We greatly appreciate the participation of the parents of the children contributing to the SAGE cohort,
289 and recognize the immense efforts of the laboratory and fieldwork team: Merling Balmaceda, Vanessa
290 Bolaños, Nancy Corea, Jhosselyng Delgado, Marvel Fuentes, Yadira Hernández, Llurvin Madríz, Patricia
291 Mendez, Yuvielka Martínez, María Mendoza, Ruth Neira, Xiomara Obando, Verónica Pravia, Yorling
292 Picado, Aura Scott, and Mileydis Soto. The authors are grateful for support from the local Ministry of
293 Health office in León, and we thank the personnel from the Perla María Norori Health Center for their
294 administrative support in recruitment of study participants. The findings and conclusions in this article are
295 those of the authors and do not necessarily represent the official position of the Centers for Disease
296 Control and Prevention.

297

298

299 **REFERENCES**

- 300 1. Bányai K, Estes MK, Martella V, Parashar UD. Viral gastroenteritis. *Lancet*.
301 2018;392(10142):175–86.
- 302 2. De Graaf M, Van Beek J, Koopmans MPG. Human norovirus transmission and evolution in a
303 changing world. *Nat Rev Microbiol*. 2016;14:421–433.
- 304 3. Becker-Dreps S, Bucardo F, Vinje. Sapovirus: an important cause of acute gastroenteritis in
305 children. *Lancet Child Adolesc Heal*. 2019;3(11):758–9.
- 306 4. O’Brien KL, Grant LR, Reid R, Santosham M, Goklish N, Parashar U, et al. Norovirus and
307 Sapovirus Epidemiology and Strain Characteristics among Navajo and Apache Infants. *PLoS One*.
308 2017;12(1):e0169491.
- 309 5. Vielot NA, Butler AM, Brookhart MA, Becker-Dreps S, Smith JS. Patterns of Use of Human
310 Papillomavirus and Other Adolescent Vaccines in the United States. *J Adolesc Heal*.
311 2017;61(3):281–7.
- 312 6. Johnsen CK, Midgley S, Böttiger B. Genetic diversity of sapovirus infections in Danish children
313 2005-2007. *J Clin Virol*. 2009;46(3):265–9.
- 314 7. Kirkwood CD, Clark R, Bogdanovic-Sakran N, Bishop RF. A 5-year study of the prevalence and
315 genetic diversity of human caliciviruses associated with sporadic cases of acute gastroenteritis in
316 young children admitted to hospital in Melbourne, Australia (1998-2002). *J Med Virol*.
317 2005;77(1):96–101.
- 318 8. Platts-Mills JA, Liu J, Rogawski ET, Kabir F, Lertsethtakarn P, Siguas M, et al. Use of
319 quantitative molecular diagnostic methods to assess the aetiology, burden, and clinical
320 characteristics of diarrhoea in children in low-resource settings: a reanalysis of the MAL-ED
321 cohort study. *Lancet Glob Heal*. 2018;6(12):e1309–18.

- 322 9. North K, Gao M, Allen G, Lee AC. Breastfeeding in a Global Context: Epidemiology, Impact, and
323 Future Directions. *Clin Ther* [Internet]. 2021;In press. Available from:
324 <https://doi.org/10.1016/j.clinthera.2021.11.017>.
- 325 10. Olson D, Lamb M, Zacarias A, Lopez MR, Paniagua A, Samayoa-Reyes G, et al. Burden of
326 Norovirus Disease and Risk factors for Infection Among Children in Rural Guatemala. *Open*
327 *Forum Infect Dis*. 2016;3(suppl_1).
- 328 11. Saito M, Goel-Apaza S, Espetia S, Velasquez D, Cabrera L, Loli S, et al. Multiple Norovirus
329 Infections in a Birth Cohort in a Peruvian Periurban Community. *Clin Infect Dis*. 2014;(58):483–
330 91.
- 331 12. Bucardo F, Nordgren J, Carlsson B, Paniagua M, Lindgren PE, Espinoza F, et al. Pediatric
332 norovirus diarrhea in Nicaragua. *J Clin Microbiol*. 2008;46(8):2573–80.
- 333 13. Knee J, Sumner T, Adriano Z, Berendes D, de Bruijn E, Schmidt WP, et al. Risk factors for
334 childhood enteric infection in urban Maputo, Mozambique: A cross-sectional study. *PLoS Negl*
335 *Trop Dis*. 2018;12(11).
- 336 14. Cabrera-Rubio R, Kunz C, Rudloff S, García-Mantrana I, Crehuá-Gaudiza E, Martínez-Costa C, et
337 al. Association of Maternal Secretor Status and Human Milk Oligosaccharides with Milk
338 Microbiota: An Observational Pilot Study. *J Pediatr Gastroenterol Nutr*. 2019;68(2).
- 339 15. Totten SM, Zivkovic AM, Wu S, Ngyuen U, Freeman SL, Ruhaak LR, et al. Comprehensive
340 profiles of human milk oligosaccharides yield highly sensitive and specific markers for
341 determining secretor status in lactating mothers. *J Proteome Res*. 2012;11(12):6124–33.
- 342 16. Colston JM, Francois R, Pisanic N, Peñataro Yori P, McCormick BJJ, Olortegui MP, et al. Effects
343 of Child and Maternal Histo-Blood Group Antigen Status on Symptomatic and Asymptomatic
344 Enteric Infections in Early Childhood. *J Infect Dis*. 2019;220(1):151–62.

- 345 17. Reyes Y, González F, Gutierrez L, Blandon P, Centeno E, Zepeda O, et al. Secretor status strongly
346 influences the incidence of symptomatic norovirus infection in a genotype-dependent manner in a
347 Nicaraguan birth cohort. *J Infect Dis.* 2021 Jun;
- 348 18. Bucardo F, Carlsson B, Nordgren J, Larson G, Blandon P, Vilchez S, et al. Susceptibility of
349 children to sapovirus infections Nicaragua, 2005-2006. *Emerg Infect Dis.* 2012;18(11):1875–8.
- 350 19. Platts-Mills JA, Babji S, Bodhidatta L, Gratz J, Haque R, Havt A, et al. Pathogen-specific burdens
351 of community diarrhoea in developing countries: A multisite birth cohort study (MAL-ED).
352 *Lancet Glob Heal.* 2015;3(9):e564–75.
- 353 20. Liu J, Kabir F, Manneh J, Lertsethtakarn P, Begum S, Gratz J, et al. Development and assessment
354 of molecular diagnostic tests for 15 enteropathogens causing childhood diarrhoea: A multicentre
355 study. *Lancet Infect Dis.* 2014;
- 356 21. Bucardo F, Nordgren J, Reyes Y, Gonzalez F, Sharma S, Svensson L. The Lewis A phenotype is a
357 restriction factor for Rotateq and Rotarix vaccine-take in Nicaraguan children. *Sci Rep.* 2018
358 Jan;8(1):1502.
- 359 22. UNICEF. Breastfeeding [Internet]. 2021 [cited 2022 Mar 8]. Available from:
360 <https://data.unicef.org/topic/nutrition/breastfeeding/>
- 361 23. Kiani SN, Rich KM, Herkert D, Safon C, Pérez-Escamilla R. Delivery mode and breastfeeding
362 outcomes among new mothers in Nicaragua. *Matern Child Nutr.* 2018;14(e12474):1–10.
- 363 24. La Asamblea Nacional de la Republica de Nicaragua. Código del Trabajo (con sus reformas,
364 adiciones, e interpretación autentica) [Internet]. 1996 [cited 2022 Mar 7]. Available from:
365 [https://www.ilo.org/dyn/travail/docs/2190/Labour Code.pdf](https://www.ilo.org/dyn/travail/docs/2190/Labour%20Code.pdf)
- 366 25. Nordgren J, Svensson L. Genetic susceptibility to human norovirus infection: An update. *Viruses.*
367 2019;11(3).

- 368 26. Labayo HKM, Pajuelo MJ, Tohma K, Ford-Siltz LA, Gilman RH, Cabrera L, et al. Norovirus-
369 specific immunoglobulin A in breast milk for protection against norovirus-associated diarrhea
370 among infants. *EClinicalMedicine*. 2020 Oct;27.
- 371 27. Muthumuni D, Miliku K, Wade KH, Timpson NJ, Azad MB. Enhanced Protection against
372 Diarrhea among Breastfed Infants of Nonsecretor Mothers. *Pediatr Infect Dis J*. 2021;40(3):260–3.
- 373 28. Schroten H, Hanisch F-G, Hansman GS. Human Norovirus Interactions with Histo-Blood Group
374 Antigens and Human Milk Oligosaccharides. *J Virol*. 2016;90(13):5855–9.
- 375 29. Ray C, Kerketta JA, Rao S, Patel S, Dutt S, Arora K, et al. Human Milk Oligosaccharides: The
376 Journey Ahead. *Int J Pediatr (United Kingdom)*. 2019;2019.
- 377 30. Shang J, Piskarev VE, Xia M, Huang P, Jiang X, Likhoshesterov LM, et al. Identifying human milk
378 glycans that inhibit norovirus binding using surface plasmon resonance. *Glycobiology*.
379 2013;23(12):1491–8.
- 380 31. Makita K, Hayakawa Y, Okame M, Homma K, Phan TG, Okitsu S, et al. First detection of IgA
381 against norovirus in breast milk. *Clin Lab*. 2007;53(3–4):125–8.
- 382 32. Khodayar-Pardo P, Martínez-Costa C, Carmona-Vicente N, Buesa J. Norovirus GII.4 antibodies in
383 breast milk and serum samples: Their role preventing virus-like particles binding to their
384 receptors. *Pediatr Infect Dis J*. 2014;33(6):554–9.
- 385 33. Blazevic V, Malm M, Honkanen H, Knip M, Hyöty H, Vesikari T. Development and maturation
386 of norovirus antibodies in childhood. *Microbes Infect*. 2016;18(4):263–9.

Table 1. Characteristics associated with risk of acute gastroenteritis among children in a Nicaraguan birth cohort (n=443)

Variable	n (%) or median (Interquartile Range)
Sex	
Male	226 (51.0)
Female	217 (48.9)
Baseline Risk factors	
Presence of a toilet in the household	323 (72.9)
Child secretor-positive (n=443)	395 (89.4)
Mother secretor-positive (n=312)	244 (78.5)
Child Lewis positive (n=443)	373 (84.2)
Mother Lewis positive (n=312)	225 (72.4)
Breastfeeding	
Number of children who received exclusive breastfeeding for any duration	224 (50.6)
Median weeks of exclusive breastfeeding (IQR)	2 (1-4)
Median weeks any breastfeeding (IQR)	43 (18-49)
Norovirus and sapovirus episodes	
Sapovirus AGE episodes in first 12 months of life	34 (7.7)
Median age of child at first sapovirus AGE episode	8.4 (6.5-9.4)
Norovirus AGE episodes in first 12 months of life	69 (15.6)
Median age of child at first norovirus AGE episode	8.1 (5.7, 9.9)

Table 2. Child and maternal host genetic factors and incidence of norovirus and sapovirus

Child's HBGA profile (n=443)	N (%)
Secretor positive (<i>1 missing</i>)	395 (89.4)
Lewis positive ¹	373 (84.2)
Mother's HBGA profile (n=312)	
Secretor positive	244 (78.5)
Lewis positive	225 (72.4)
Child's HBGA profile as percent of norovirus cases (n=69)	
Secretor positive	68 (98.6)
Lewis positive	59 (85.5)
Mother's HBGA profile as percent of norovirus cases (n=61)	
Secretor positive	46 (75.4)
Lewis positive	45 (73.8)
Child's HBGA profile as percent of sapovirus cases (n=34)	
Secretor positive	30 (88.2)
Lewis positive	30 (88.2)
Mother's HBGA profile as percent of sapovirus cases (n=25)	
Secretor positive	18 (72.0)
Lewis positive	19 (76.0)

¹Lewis positive includes Lewis A and Lewis B phenotypes

Table 3. Crude and adjusted relative hazards between breastfeeding and norovirus and sapovirus AGE in first 12 months of life

	Norovirus AGE (n=69)		Sapovirus AGE (n=34)	
	Crude HR	Adjusted HR ¹	Crude HR	Adjusted HR ¹
Breastfeeding in the last week				
Any vs. none	1.31 (0.78, 2.21)	1.09 (0.62, 1.92)	0.99 (0.84, 1.17)	1.00 (0.82, 1.21)
Household sanitation				
Toilet vs. latrine or no sanitation	0.56 (0.35, 0.91)	0.66 (0.38, 1.12)	0.58 (0.29, 1.16)	0.46 (0.21, 1.02)
Consumption of high-risk foods in the last month				
Any vs. none	0.53 (0.29, 0.98)	0.69 (0.34, 1.41)	0.35 (0.16, 0.78)	0.36 (0.14, 0.90)
Child's HBGA profile				
Secretor+ vs. Secretor-	9.60 (1.33, 69.15)	11.02 (1.50, 80.80)	0.92 (0.32, 2.60)	1.71 (0.39, 7.51)
Lewis+ vs Lewis-	0.97 (0.49, 1.89)	0.88 (0.40, 1.94)	1.28 (0.45, 3.62)	1.63 (0.36, 7.27)
Mother's HBGA profile				
Secretor+ vs. Secretor-	0.81 (0.45, 1.44)	0.55 (0.29, 1.05)	0.68 (0.28, 1.62)	0.46 (0.36, 7.27)
Lewis+ vs Lewis-	1.11 (0.63, 1.97)	1.27 (0.66, 2.46)	1.22 (0.49, 3.06)	1.60 (0.55, 4.68)

HR=Hazard ratio

¹Hazard ratios adjusted for all other variables in the table



medRxiv preprint doi: <https://doi.org/10.1101/2022.04.14.22273890>; this version posted April 17, 2022. The copyright holder for this preprint (which was not certified by peer review) is the author/funder, who has granted medRxiv a license to display the preprint in perpetuity. It is made available under a [CC-BY 4.0 International license](https://creativecommons.org/licenses/by/4.0/).

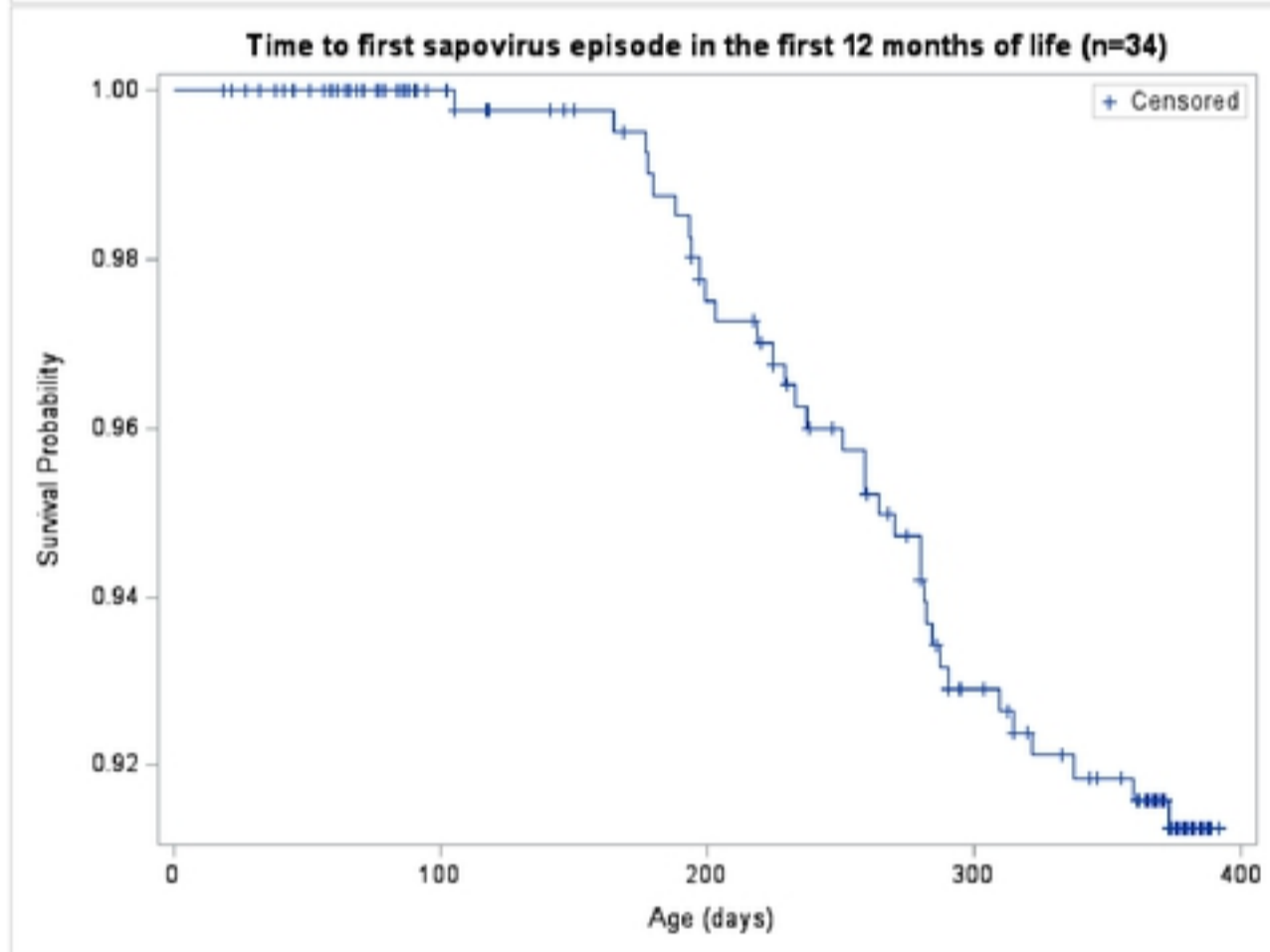


Figure 1. Kaplan-Meier survival curves depicting age at first occurrence of norovirus and sapovirus in the first 12 months of life.