

1 **Comprehensive analyses reveal the impacts of vaccination status and**
2 **physiological variables in early infection on viral persistence in**
3 **COVID-19 patients: a retrospective single-center cohort study**

4 Xiangxiang Tian^{1,2,3,†}, Yifan Zhang^{1,2,3,†}, Wanhai Wang³, Fang Fang⁴,
5 Wenhong Zhang^{2,5}, Yanmin Wan^{2,5,6,*}, Zhaoqin Zhu^{1,*}

6
7 ¹ Department of Laboratory Medicine, Shanghai Public Health Clinical Center,
8 Fudan University, Shanghai, China; ² Department of Infectious Diseases,
9 Shanghai Key Laboratory of Infectious Diseases and Biosafety Emergency
10 Response, National Medical Center for Infectious Diseases, Huashan Hospital,
11 Fudan University, Shanghai, China; ³ Clinical Laboratory, The First Affiliated
12 Hospital of Zhengzhou University, Key Laboratory of Laboratory Medicine of
13 Henan Province, Zhengzhou, China; ⁴ Shanghai Public Health Clinical Center,
14 Fudan University, Shanghai, China; ⁵ Department of radiology, Shanghai
15 Public Health Clinical Center, Fudan University, Shanghai, China; ⁶ State Key
16 Laboratory of Genetic Engineering, School of Life Science, Fudan University,
17 Shanghai, China.

18 [†]These authors contribute equally to this work.

19 *Address correspondence to: Y.W., #12 Middle Wulumuqi Road, Shanghai
20 200040, China; e-mail: yanmin_wan@fudan.edu.cn. Z.Z., #2901 Caolang
21 Road, Shanghai 201508, China; e-mail: zhaoqinzhu@163.com.

22 **Keywords:** COVID-19, inactivated vaccine, mRNA vaccine, laboratory
23 variables, viral RNA shedding

24
25 **Running head:** Host factors can predict SARS-CoV-2 persistence

26 **Abstract**

27 **BACKGROUND:** Viral persistence is a crucial factor that influences the
28 communicability of SARS-CoV-2 infection. However, the impacts of
29 vaccination status and physiological variables on viral RNA shedding have not
30 been adequately clarified.

31 **METHODS:** In this study, we retrospectively collected the clinical records of
32 377 hospitalized COVID-19 patients, which contained unvaccinated patients
33 and patients received two doses of an inactivated vaccine or an mRNA vaccine.
34 Firstly, we analyzed the impacts of vaccination on disease severity and viral
35 RNA persistence. Next, to clarify the impacts of physiological variables on viral
36 RNA shedding in COVID-19 patients, we retrieved 49 laboratory variables and
37 analyzed their correlations with the duration of viral RNA shedding. Finally, we
38 established a multivariate regression model to predict the duration of viral RNA
39 shedding.

40 **RESULTS:** Our results showed that both inactivated and mRNA vaccines
41 significantly reduced the rate of moderate cases, while the vaccine related
42 shortening of viral RNA shedding were only observed in moderate patients.
43 Correlation analysis showed that 10 significant laboratory variables were
44 shared by the unvaccinated mild patients and mild patients inoculated with an
45 inactivated vaccine, but not by the mild patients inoculated with an mRNA
46 vaccine. Moreover, we demonstrated that a multivariate regression model
47 established based on the variables correlating with viral persistence in
48 unvaccinated mild patients could predict the duration of viral shedding for all
49 groups of patients.

50 **CONCLUSIONS:** Vaccination contributed limitedly to the clearance viral RNA
51 in COVID-19 patients. While, laboratory variables in early infection could
52 predict the persistence of viral RNA.

53

54

55

56 **Introduction**

57 Real world studies suggest that the implementing of vaccination have
58 dramatically reduced the rates of SARS-CoV-2 infection and SARS-CoV-2
59 related hospitalization, admission to intensive care unit and death (1-3). In
60 addition, retrospective estimations have also suggested that vaccines were
61 effective at preventing the transmission of both the Alpha (4, 5) and the Delta
62 variants (6). It is believed that the vaccine mediated reduction of transmission
63 relies on the prevention of infection, while the effect of vaccines in preventing
64 onward transmission after breakthrough infections has not been adequately
65 clarified.

66 It is postulated that vaccines may help to restrain the onward transmission of
67 SARS-CoV-2 (7) based on observations that COVID-19 vaccination can
68 reduce viral loads in nasal mucosa (8-10). However, contradictory evidence
69 showed that the viral loads of breakthrough infections after full vaccination
70 were similar with those in unvaccinated individuals (11, 12). More recently, a
71 preprint study carried out in a prison demonstrated that there was no
72 significant difference in the duration of RT-PCR positivity and the kinetics of Ct
73 values between fully vaccinated participants and those not fully vaccinated
74 (13).

75 Given that the duration of virus shedding may have crucial impact on the
76 onward transmission of SARS-CoV-2, in this study, we retrieved the clinical
77 records of 377 hospitalized COVID-19 patients and analyzed the impacts of
78 vaccination status and physiological variables in early infection on the duration
79 of viral RNA shedding. Comparisons between fully vaccinated and
80 unvaccinated patients showed that vaccination shortened the duration of viral
81 RNA shedding among moderate COVID-19 patients, while showed no effect in
82 constraining the duration of viral RNA shedding among mild COVID-19
83 patients. Furthermore, we showed that vaccination status impacted the
84 association between individual physiological parameters and the duration of
85 viral RNA shedding. Nonetheless, multivariate regression analyses showed

86 that variables correlated with viral persistence in unvaccinated mild patients
87 could predict the duration of viral RNA shedding for all groups of patients.

88

89 **Materials and methods**

90 **Ethics statement**

91 This study was approved by the Research Ethics Review Committee (Ethics
92 Approval Number: YJ-2020-S080-02) of the Shanghai Public Health Clinical
93 Center Affiliated to Fudan University.

94

95 **Study design and participants**

96 377 COVID-19 patients hospitalized in Shanghai Public Health Clinical Center
97 during the period from January 2020 to mid-January 2022 were included in this
98 study. The diagnosis and clinical management of COVID-19 patients were
99 conducted following the Diagnosis and Treatment Protocol for Novel
100 Coronavirus Pneumonia released by National Health Commission & National
101 Administration of Traditional Chinese Medicine (14). The demographic and
102 COVID-19 vaccination information was depicted in [Table 1](#). 49 laboratory
103 variables detected at the immediate early stage of infection and the duration of
104 viral RNA shedding were shown in [Supplemental table 1](#). The duration of viral
105 RNA shedding was defined as the period from the initial nasal swab RT-PCR
106 positivity to the final nasal swab RT-PCR positivity. Patients with identified
107 comorbidities were excluded from this study.

108

109 **SARS-CoV-2 viral RNA detection**

110 Viral RNA extraction was performed using an automatic nucleic acid extractor
111 (Bioperfectus technologies Co., LTD., Jiangsu, China). 2019-nCoV nucleic
112 acid detection kit (Bioperfectus technologies Co., LTD., Jiangsu, China) and
113 ABI 7500 real-time fluorescence quantitative PCR (qPCR) instrument (Thermo
114 Fisher Technology Co., LTD., Shanghai, China) were used to detect
115 SARS-CoV-2 genomic RNA. When the Ct values of both ORF1ab and N gene

116 of 2019-nCoV are ≤ 37 and the amplification curve is “S-shaped”, the result is
117 defined as positive. When the Ct values of both genes are > 40 or
118 undetermined, the result is defined as negative. When the Ct value is between
119 37~40, the sample would be re-examined.

120

121 **Laboratory measurements**

122 All the laboratory tests were carried out following manufacturers` instructions
123 in the department of laboratory medicine of Shanghai Public Health Clinical
124 Center. All the tests had passed the ISO15189 accreditation. In this study, we
125 retrospectively retrieved the values of 49 laboratory variables ([Supplemental](#)
126 [table 1](#)) for each patient, which were measured at a median of 3 days post
127 diagnosis.

128

129 **Statistical analysis**

130 Quantitative data were examined for normality using the Shapiro–Wilk test
131 before all downstream analyses except the Chi square test. Means for
132 variables with a normal distribution were compared using the two-tailed
133 parametric t-test and with the two-tailed non-parametric t-test when
134 distributions of data departed from normality. Pearson correlation was used for
135 correlation analyses of normally distributed data and Spearman correlation
136 was used for analyses of non-normally distributed data. Multivariate regression
137 analyses were performed for variables with statistical significance by the
138 correlation analysis. $P \leq 0.05$ was considered as statistically significant. All the
139 statistical analyses were conducted using Graphpad Prism 9 (GraphPad
140 Software, USA).

141

142 **Results**

143 **Vaccines reduced the proportion of the moderate cases and shortened**
144 **the duration of viral RNA shedding among moderate COVID-19 patients**

145 In this study, we retrospectively retrieved the clinical records of 377 COVID-19

146 patients hospitalized in Shanghai Public Health Clinical Center during the
147 period from January 2020 to mid-January 2022. Among these patients, 165
148 received two doses of an inactivated vaccine, 41 received two doses of an
149 mRNA vaccine and 171 were not vaccinated (W/O vaccination) (Table 1). The
150 median age was similar across all groups ($P=0.5651$), and the mean
151 time-since-vaccination of patients inoculated with an inactivated vaccine was
152 comparable with that of patients inoculated with an mRNA vaccine ($P=0.1183$)
153 (Table 1). The gender composition of patients inoculated with an mRNA
154 vaccine was significantly different from the other two groups, which contained
155 more female ($P = 0.0011$) (Table 1), but it did not impact the duration of viral
156 RNA shedding and the severity of disease (Supplemental figure 1).
157 Compared with unvaccinated patients, patients inoculated with either an
158 inactivated vaccine (19.4% vs 35.7%, $P=0.0002$) or an mRNA vaccine (7.3%
159 vs 35.7%, $P=0.0001$) significantly reduced the incidence of moderate cases
160 (Figure 1A). More interestingly, we found that patients inoculated with an
161 inactivated vaccine showed significantly shorter duration of viral RNA shedding
162 in moderate patients compared with unvaccinated patients (17, IQR
163 12.25-19.5 vs 19, IQR 12-24.5, $P=0.0382$) and patients inoculated with an
164 mRNA vaccine (17, IQR 12.25-19.5 vs 22.33 ± 4.163 , $P=0.0385$) (Figure 1B).
165 However, the vaccines showed no effect in constraining the duration of viral
166 RNA shedding in mild COVID-19 patients (Figure 1C).

167

168 **Common variables that correlated with the duration of viral RNA**
169 **shedding were found in unvaccinated mild patients and mild patients**
170 **inoculated with an inactivated vaccine, but not in those inoculated with**
171 **an mRNA vaccine**

172 As aforementioned, the vaccines failed to constrain the duration of viral RNA
173 shedding in mild COVID-19 patients (Figure 1C), which implies that vaccine
174 induced immune responses might not play a pivotal role in determining viral
175 persistence in these patients. To identify physiological variables that are

176 relevant to the duration of viral RNA shedding in the mild COVID-19 patients,
177 we performed correlation analyses between the duration of viral RNA shedding
178 and 49 laboratory variables detected at the immediate early stage of infection.
179 Our data showed that 16 variables in unvaccinated patients (Figure 2A) and 15
180 variables in patients inoculated with an inactivated vaccine (Figure 2B)
181 correlated with the duration of viral RNA shedding, respectively. Of note, 10
182 variables were shared by these two groups of mild patients, including 3
183 positively correlated variables (Fibrinogen, Monocyte and IL-17) and 7
184 negatively correlated variables (Neutrophil, Eosinophil, Basophil, CD4, CD8,
185 CD19 and CD16CD56 cell counts). In contrast, in patients inoculated with an
186 mRNA vaccine, only eGFR (estimated glomerular filtering rate) was found to
187 correlate negatively with the duration of viral RNA shedding (Figure 2C). Next,
188 we compared the laboratory variables among the three groups of mild
189 COVID-19 patients and found that inoculations with an inactivated vaccine or
190 an mRNA vaccine influenced the laboratory parameters differentially
191 (Supplemental table 1). Patients inoculated with an mRNA vaccine mounted
192 highest median IL-8 and IL-17 responses at the immediate early stage of
193 infection (Supplemental table 1).

194

195 **Variables correlating with the duration of viral RNA shedding in**
196 **unvaccinated mild patients could predict the duration of viral RNA**
197 **shedding in all groups of patients**

198 Although multiple individual parameters were found to correlate significantly
199 with the duration of viral RNA shedding, the correlation coefficients were low
200 ($|r| < 0.5$) (Figure 2), suggesting that the correlations were relatively weak.
201 This notion was supported by the results of univariate logistic regression
202 analyses, which showed that no individual variable could reliably discriminate
203 between short duration of viral RNA shedding (≤ 14 days) from long shedding
204 duration (> 14 days) in unvaccinated mild patients ($AUC < 0.80$) (Supplemental
205 figure 2). The count of CD19⁺ B cell is of the highest discriminating efficiency

206 (AUC=0.7556) followed by the count of CD4⁺ T cell (AUC=0.7261)
207 ([Supplemental figure 2](#)). To further characterize the relationships between host
208 factors and viral persistence, we performed multivariate logistic regression
209 analyses leveraging the significant factors identified in the correlation analyses
210 for unvaccinated mild patients. Our results showed that the selected laboratory
211 variables discriminated between the short (≤ 14 days) and long (> 14 days) viral
212 RNA shedding duration quite well for all the three groups of mild COVID-19
213 patients. The area under the ROC curve (AUC) for unvaccinated patients,
214 patients inoculated with an inactivated vaccine and patients inoculated with an
215 mRNA vaccine were 0.9231, 0.8365 and 0.9508, respectively ([Figure](#)
216 [3](#)). Moreover, we found that this multivariate regression model could also
217 predict the duration of viral RNA shedding in moderate COVID-19 patients.
218 The AUC for unvaccinated moderate patients and moderate patients
219 inoculated with an inactivated vaccine were 0.9110 and 0.9514, respectively
220 ([Figure 4](#)). Due the limited sample size (only three patients), the multivariate
221 regression analysis could not be applied to moderate patients inoculated with
222 an mRNA vaccine.

223

224 **Discussion**

225 An important factor that influences the transmission of SARS-CoV-2 is the
226 period of communicability, which may be influenced by many factors. To
227 identify these factors, detections of live virus and viral RNA are frequently used
228 as indicators of communicability, of which the live virus culture is thought to be
229 more relevant to the communicability of SARS-CoV-2 infections ([15-17](#)).
230 However, the culture of live viruses is time-consuming and might be affected
231 by specimen quality and the sensitivities of laboratory methods. Hence, as an
232 alternative solution, the measurement of viral RNA shedding remains to be an
233 important criterion for the diagnosis of COVID-19 and the discharge of
234 hospitalized patients ([18](#)).

235 Multiple factors have been found to associate with prolonged viral RNA

236 shedding in previous studies, such as old age (19), compromised immune
237 status (20), treatment with corticosteroids (21-23) and disease severity (24,
238 25). Meanwhile, biological sex and comorbidities, such as hypertension and
239 diabetes, were found not to associate with the viral RNA shedding (26-28).
240 Unlike most previous works, our current study investigated the impacts of
241 vaccination status and multiple laboratory variables in early infection on the
242 duration of viral RNA shedding.

243 First of all, we compared the ratios of moderate COVID-19 cases among
244 unvaccinated patients and patients fully vaccinated with either an inactivated
245 vaccine or an mRNA vaccine. Our data showed that both the inactivated and
246 the mRNA vaccines significantly reduced the incidence of moderate cases,
247 which is in consistence with the observation of a previous real-world study (29).
248 Next, we compared the duration of viral RNA shedding between unvaccinated
249 and fully vaccinated patients. Quite unexpectedly, our results showed that
250 vaccination significantly shortened the duration of virus shedding in moderate
251 patients but not in mild patients, suggesting that vaccine induced specific
252 immune responses did not contribute significantly to constraining viral
253 persistence in mild patients. We were not able to elaborate the underlying
254 mechanism in this retrospective study. However, as previous studies
255 suggested that more severe COVID-19 could usually evoke stronger host
256 immune responses (30, 31), we speculate that the memory immune responses
257 established by vaccination could be more efficiently activated in moderate
258 patients, which may control the in vivo virus replication better.

259 Next, to characterize host factors that may affect viral persistence in mild
260 COVID-19 patients, we retrieved 49 laboratory variables which were detected
261 at the immediate early stage after infection (at a median of 3 days post
262 diagnosis). Correlation analyses showed that the plasma levels of IL-17,
263 fibrinogen and the counts of peripheral leucocytes were associated with the
264 duration of viral RNA shedding in both unvaccinated patients and patients
265 inoculated with an inactivated vaccine. Elevated levels of proinflammatory

266 cytokines and lymphopenia have been demonstrated to be associated with
267 prolonged viral RNA shedding by previous studies (32-34). Here, we further
268 showed that the counts of T, B, NK, neutrophil and eosinophil were negatively
269 associated with the duration of viral RNA shedding, while the count of
270 monocyte was positively associated with the duration of viral RNA shedding.
271 More intriguingly, our data showed that all the significant individual variables
272 identified in unvaccinated patients and patients inoculated with an inactivated
273 vaccine were not significantly associated with the duration of viral RNA
274 shedding in patients inoculated with an mRNA vaccine. This phenomenon
275 implies that the mRNA vaccine may have unique impacts on host responses
276 after break through infection. And these impacts might be deleterious, because
277 the median duration of viral RNA shedding of patients inoculated with an
278 mRNA vaccine tended to be longer than those of unvaccinated patients and
279 patients inoculated with an inactivated vaccine. Insight into the underlying
280 mechanisms will help to improve our understanding of the biological effect of
281 mRNA vaccine.

282 At the end of this study, we established a multivariate regression model using
283 the individual factors correlating with the duration of viral RNA shedding in
284 unvaccinated mild patients and found that the model could be applied to all
285 groups of patients, including the mild patients inoculated with an mRNA
286 vaccine and the moderate patients. This finding suggests that despite of the
287 impacts of vaccination status and the difference of disease severity, the
288 combined effect of host factors on viral persistence remains stable.

289 Several limitations of the present study should be noted. First, antigen-specific
290 immune responses were not detected in this retrospective work. Nonetheless,
291 we speculate that the vaccine induce immunities might not be able to constrain
292 viral RNA shedding in mild COVID-19 patients, since both an inactivated
293 vaccine and an mRNA vaccine failed to shorten the duration of viral RNA
294 shedding in these patients. Second, although a previous study showed that
295 viral RNA load ($>10^7$ copies/ml) is an independent risk factor for live virus

296 shedding (35), the detection viral RNA might not always indicate the presence
297 of live viruses. Further investigations are necessitated to characterize host
298 factors that associate with the shedding of viable viruses. Third, most cases
299 enrolled in this study were infected by either the D614G variant or the Delta
300 variant, but we were not able to define the infected variant for each case.
301 Therefore, the impact of viral factor on the duration of viral RNA shedding is
302 out-of-scope for this study.

303 Despite of these limitations, our study showed for the first time that COVID-19
304 vaccines contributed to the clearance viral RNA in moderate cases, while failed
305 to shorten the duration of viral RNA shedding in mild patients. Moreover, we
306 identified a set of laboratory variables in early infection that could predict the
307 persistence of viral RNA. These findings may serve as a rationale to optimize
308 the control measures for COVID-19 pandemic.

309

310 **Author contributions:** *All authors confirmed they have contributed to*
311 *the intellectual content of this paper and have met the following*
312 *4 requirements: (a) significant contributions to the conception and*
313 *design, acquisition of data, or analysis and interpretation of data; (b)*
314 *drafting or revising the article for intellectual content; (c) final approval of the*
315 *published article; and (d) agreement to be accountable for*
316 *all aspects of the article thus ensuring that questions related to the accuracy or*
317 *integrity of any part of the article are appropriately investigated*
318 *and resolved.*

319 ZZ and YW designed and supervised the study; XT and YZ collected the data;
320 YW, XT and YZ analyzed the data; XT and YZ drafted the manuscript; YW, ZZ
321 and WZ revised the manuscript. The underlying data have been verified by FF,
322 ZZ and YW.

323

324 **Authors' Disclosures or Potential Conflicts of Interest:** *Upon manuscript*
325 *submission, all authors completed the author disclosure form.*

326 *Disclosures and/or potential conflicts of interest:*

327 **Employment or Leadership:** None declared.

328 **Consultant or Advisory Role:** None declared.

329 **Stock Ownership:** None declared.

330 **Honoraria:** None declared.

331 **Research Funding:** This work was partly supported by a grant from the
332 National Natural Science Foundation of China (81971559), a grant from the
333 major project of Study on Pathogenesis and Epidemic Prevention Technology
334 System (2021YFC2302500) by the Ministry of Science and Technology of
335 China and a grant from the Science and Technology Commission of Shanghai
336 Municipality (21NL2600100).

337 **Expert Testimony:** None declared.

338 **Patents:** None declared.

339 **Role of Sponsor:** The funding organizations played no role in the design of
340 study, choice of enrolled patients, review and interpretation of data,
341 preparation of manuscript, or final approval of manuscript.

342

343 **Acknowledgments**

344 We thank Dr. Liqiu Jia and Ms. Jing Wang for their help in retrieving the clinical
345 records of the COVID-19 patients.

346

347 **References**

- 348 1. Liu Q, Qin C, Liu M, Liu J. Effectiveness and safety of SARS-CoV-2 vaccine in real-world
349 studies: a systematic review and meta-analysis. *Infect Dis Poverty* 2021;10:132.
- 350 2. Zheng C, Shao W, Chen X, Zhang B, Wang G, Zhang W. Real-world effectiveness of
351 COVID-19 vaccines: a literature review and meta-analysis. *Int J Infect Dis*
352 2022;114:252-60.
- 353 3. Hungerford D, Cunliffe NA. Real world effectiveness of covid-19 vaccines.
354 2021;374:n2034.
- 355 4. Shah ASV, Gribben C, Bishop J, Hanlon P, Caldwell D, Wood R, et al. Effect of Vaccination
356 on Transmission of SARS-CoV-2. *N Engl J Med* 2021;385:1718-20.
- 357 5. Harris RJ, Hall JA, Zaidi A, Andrews NJ, Dunbar JK, Dabrera G. Effect of Vaccination on

- 358 Household Transmission of SARS-CoV-2 in England. *N Engl J Med* 2021;385:759-60.
- 359 6. Eyre DW, Taylor D, Purver M, Chapman D, Fowler T, Pouwels KB, et al. The impact of
360 SARS-CoV-2 vaccination on Alpha & Delta variant transmission. Preprint at
361 <https://www.medrxiv.org/content/10.1101/2021.09.28.21264260v1> (2021).
- 362 7. Vitiello A, Ferrara F, Troiano V, La Porta R. COVID-19 vaccines and decreased
363 transmission of SARS-CoV-2. *Inflammopharmacology* 2021;29:1357-60.
- 364 8. Callaway E. Delta coronavirus variant: scientists brace for impact. *Nature* 2021;595:17-8.
- 365 9. Levine-Tiefenbrun M, Yelin I, Katz R, Herzel E, Golan Z, Schreiber L, et al. Initial report of
366 decreased SARS-CoV-2 viral load after inoculation with the BNT162b2 vaccine. *Nat Med*
367 2021;27:790-2.
- 368 10. Levine-Tiefenbrun M, Yelin I, Alapi H, Katz R, Herzel E, Kuint J, et al. Viral loads of
369 Delta-variant SARS-CoV-2 breakthrough infections after vaccination and booster with
370 BNT162b2. *Nat Med* 2021;27:2108-10.
- 371 11. Pouwels KB, Pritchard E, Matthews PC, Stoesser N, Eyre DW, Vihta K-D, et al. Impact of
372 Delta on viral burden and vaccine effectiveness against new SARS-CoV-2 infections in
373 the UK. Preprint at <https://www.medrxiv.org/content/10.1101/2021.08.18.21262237v1>
374 (2021).
- 375 12. Riemersma KK, Grogan BE, Kita-Yarbro A, Halfmann PJ, Segaloff HE, Kocharian A, et al.
376 Shedding of Infectious SARS-CoV-2 Despite Vaccination. Preprint at
377 <https://www.medrxiv.org/content/10.1101/2021.07.31.21261387v2> (2021).
- 378 13. Salvatore PP, Lee CC, Sleweon S, McCormick DW, Nicolae L, Knipe K, et al. Transmission
379 potential of vaccinated and unvaccinated persons infected with the SARS-CoV-2 Delta
380 variant in a federal prison, July—August 2021. Preprint at
381 <https://www.medrxiv.org/content/10.1101/2021.11.12.21265796v1> (2021).
- 382 14. Diagnosis and Treatment Protocol for Novel Coronavirus Pneumonia (Trial Version 7).
383 *Chin Med J* 2020;133:1087-95.
- 384 15. Manzulli V, Scioscia G, Giganti G, Capobianchi MR, Lacedonia D, Pace L, et al. Real Time
385 PCR and Culture-Based Virus Isolation Test in Clinically Recovered Patients: Is the Subject
386 Still Infectious for SARS-CoV2? *J Clin Med* 2021;10:309.
- 387 16. Huang CG, Lee KM, Hsiao MJ, Yang SL, Huang PN, Gong YN, et al. Culture-Based Virus

- 388 Isolation To Evaluate Potential Infectivity of Clinical Specimens Tested for COVID-19. J
389 Clin Microbiol 2020;58:e01068-e20.
- 390 17. Jefferson T, Spencer EA, Brassey J, Heneghan C. Viral Cultures for Coronavirus Disease
391 2019 Infectivity Assessment: A Systematic Review. Clin Infect Dis 2021;73:e3884-e99.
- 392 18. Jin YH, Zhan QY, Peng ZY, Ren XQ, Yin XT, Cai L, et al. Chemoprophylaxis, diagnosis,
393 treatments, and discharge management of COVID-19: An evidence-based clinical
394 practice guideline (updated version). Mil Med Res 2020;7:41.
- 395 19. Cevik M, Tate M, Lloyd O, Maraolo AE, Schafers J, Ho A. SARS-CoV-2, SARS-CoV, and
396 MERS-CoV viral load dynamics, duration of viral shedding, and infectiousness: a
397 systematic review and meta-analysis. Lancet Microbe 2021;2:e13-e22.
- 398 20. Zhu L, Gong N, Liu B, Lu X, Chen D, Chen S, et al. Coronavirus Disease 2019 Pneumonia
399 in Immunosuppressed Renal Transplant Recipients: A Summary of 10 Confirmed Cases in
400 Wuhan, China. Eur Urol 2020;77:748-54.
- 401 21. Hu F, Yin G, Chen Y, Song J, Ye M, Liu J, et al. Corticosteroid, oseltamivir and delayed
402 admission are independent risk factors for prolonged viral shedding in patients with
403 Coronavirus Disease 2019. Clin Respir J 2020;14:1067-75.
- 404 22. Liu W, Liu Y, Xu Z, Jiang T, Kang Y, Zhu G, et al. Clinical characteristics and predictors of
405 the duration of SARS-CoV-2 viral shedding in 140 healthcare workers. J Intern Med
406 2020;288:725-36.
- 407 23. Qi L, Yang Y, Jiang D, Tu C, Wan L, Chen X, et al. Factors associated with the duration of
408 viral shedding in adults with COVID-19 outside of Wuhan, China: a retrospective cohort
409 study. Int J Infect Dis 2020;96:531-7.
- 410 24. Park M, Pawliuk C, Nguyen T, Griffitt A, Dix-Cooper L, Fourik N, et al. Determining the
411 period of communicability of SARS-CoV-2: A rapid review of the literature. Preprint at
412 <https://www.medrxiv.org/content/10.1101/2020.07.28.20163873v1>
- 413 25. Fontana LM, Villamagna AH, Sikka MK, McGregor JC. Understanding viral shedding of
414 severe acute respiratory coronavirus virus 2 (SARS-CoV-2): Review of current literature.
415 Infect Control Hosp Epidemiol 2021;42:659-68.
- 416 26. Stehlik P, Alcorn K, Jones A, Schlebusch S, Wattiaux A, Henry DA. Repeat testing for
417 SARS-CoV-2: persistence of viral RNA is common, and clearance is slower in older

- 418 people. *Med J Aust* 2021;214:468-70.
- 419 27. Xu K, Chen Y, Yuan J, Yi P, Ding C, Wu W, et al. Factors Associated With Prolonged Viral
420 RNA Shedding in Patients with Coronavirus Disease 2019 (COVID-19). *Clin Infect Dis*
421 2020;71:799-806.
- 422 28. Zhou C, Zhang T, Ren H, Sun S, Yu X, Sheng J, et al. Impact of age on duration of viral
423 RNA shedding in patients with COVID-19. *Aging (Albany NY)* 2020;12:22399-404.
- 424 29. Tenforde MW, Self WH, Adams K, Gaglani M, Ginde AA, McNeal T, et al. Association
425 Between mRNA Vaccination and COVID-19 Hospitalization and Disease Severity. *Jama*
426 2021;326:2043-54.
- 427 30. Mariën J, Ceulemans A, Michiels J, Heyndrickx L, Kerkhof K, Foque N, et al. Evaluating
428 SARS-CoV-2 spike and nucleocapsid proteins as targets for antibody detection in severe
429 and mild COVID-19 cases using a Luminex bead-based assay. *J Virol Methods*
430 2021;288:114025.
- 431 31. Reynolds CJ, Swadling L, Gibbons JM, Pade C, Jensen MP, Diniz MO, et al. Discordant
432 neutralizing antibody and T cell responses in asymptomatic and mild SARS-CoV-2
433 infection. *Sci Immunol* 2020;5:eabf3698.
- 434 32. Gao C, Zhu L, Jin CC, Tong YX, Xiao AT, Zhang S. Proinflammatory cytokines are
435 associated with prolonged viral RNA shedding in COVID-19 patients. *Clin Immunol*
436 2020;221:108611.
- 437 33. Hao S, Lian J, Lu Y, Jia H, Hu J, Yu G, et al. Decreased B Cells on Admission Associated
438 With Prolonged Viral RNA Shedding From the Respiratory Tract in Coronavirus Disease
439 2019: A Case-Control Study. *J Infect Dis* 2020;222:367-71.
- 440 34. Mondì A, Lorenzini P, Castilletti C, Gagliardini R, Lalle E, Corpolongo A, et al. Risk and
441 predictive factors of prolonged viral RNA shedding in upper respiratory specimens in a
442 large cohort of COVID-19 patients admitted to an Italian reference hospital. *Int J Infect*
443 *Dis* 2021;105:532-9.
- 444 35. van Kampen JJA, van de Vijver D, Fraaij PLA, Haagmans BL, Lamers MM, Okba N, et al.
445 Duration and key determinants of infectious virus shedding in hospitalized patients with
446 coronavirus disease-2019 (COVID-19). *Nat Commun* 2021;12:267.

447 **Table 1** Demographical characteristics of COVID-19 patients

448

449

450

451

452

453

454

455

456

457

458

459

460

461

462

463

464

465

466

467

468

	Inactivated vaccine (N=165)	mRNA vaccine (N=41)	Without vaccination (N=171)	P value
Gender (n)				
Male	126	21	105	0.0011
Female	39	20	66	
Age, Median (IQR) (Years)	35.0 (25.0-44.0)	30.0 (25.0-46.5)	32.0 (24.0-44.0)	0.5651
Time-since-vaccination (Mean±SD) (Days)	175.5±90.83	146.0±63.63	-	0.1183

Note: All the vaccinated patients received two doses of either an inactivated vaccine or an mRNA vaccine. Time-since-vaccination is defined as the period from the second dose of vaccination to the diagnosis of COVID-19.

469 **Figure legends**

470 **Figure 1 The impacts of vaccination on COVID-19 clinical manifestation**
471 **and the duration of viral RNA shedding**

472 (A) The proportions of mild and moderate COVID-19 cases were compared
473 among unvaccinated patients and patients inoculated with an inactivated
474 vaccine or an mRNA vaccine. (B) Comparisons of the duration of viral RNA
475 shedding among moderate COVID-19 patients. (C) Comparisons of the
476 duration of viral RNA shedding among mild COVID-19 patients. Statistical
477 analyses were performed by the method of non-parametric t-test.

478

479 **Figure 2 Correlation analyses between multiple laboratory variables and**
480 **the duration of viral RNA shedding in different groups of mild COVID-19**
481 **patients**

482 Data of 49 laboratory variables tested at the immediate early stage of infection
483 were retrieved and correlations between each individual variable and the
484 duration of viral RNA shedding were analyzed in unvaccinated mild patients
485 (A), and mild patients inoculated with either an inactivated vaccine (B) or an
486 mRNA vaccine (C), respectively. Variables that significantly correlated the
487 duration of viral shedding ($P < 0.05$) were shown in red. Correlation analyses
488 were done using Pearson correlation for normally distributed data and
489 Spearman correlation for non-normally distributed data. Volcano plots were
490 constructed using an online software (<http://www.bioinformatics.com.cn>).

491

492 **Figure 3 Variables correlating with viral persistence in unvaccinated mild**
493 **patients could discriminate between short (≤ 14 days) and long (> 14 days)**
494 **duration of viral RNA shedding for all mild COVID-19 patients**

495 Multivariate regression model constructed using significant factors identified in
496 unvaccinated mild patients discriminated between short and long duration of
497 viral RNA shedding for unvaccinated mild patients (A) and mild patients
498 inoculated with an inactivated vaccine (B) or an mRNA vaccine (C). NPV,

499 negative predictive value; PPV, positive predictive value.

500

501 **Figure 4 Variables correlating with viral persistence in unvaccinated mild**
502 **patients could discriminate between short (≤ 14 days) and long (> 14 days)**
503 **duration of viral RNA shedding for moderate COVID-19 patients**

504 Multivariate regression model constructed using significant factors identified in
505 unvaccinated mild patients discriminated between short and long duration of
506 viral RNA shedding for unvaccinated moderate patients (**A**) and moderate
507 patients inoculated with an inactivated patients (**B**).

508

509

Figure 1 The impacts of vaccination on COVID-19 clinical manifestation and the duration of viral RNA shedding

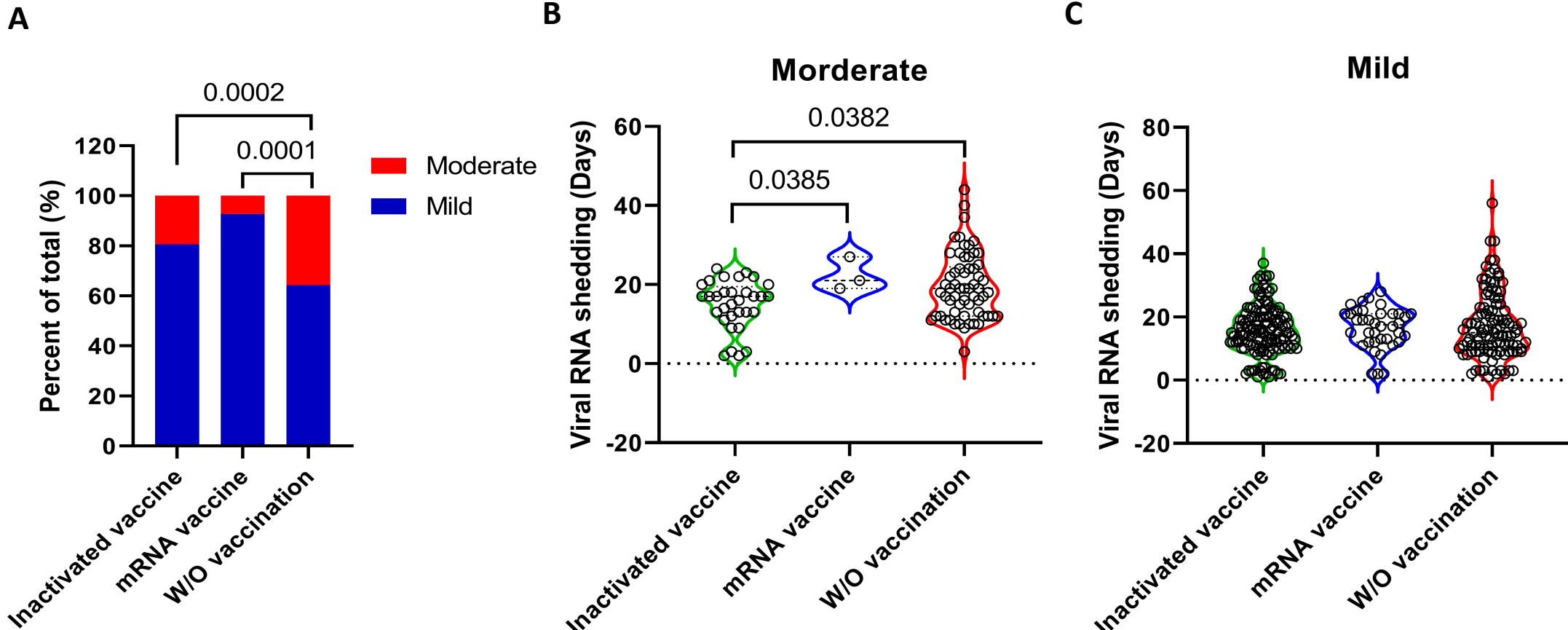
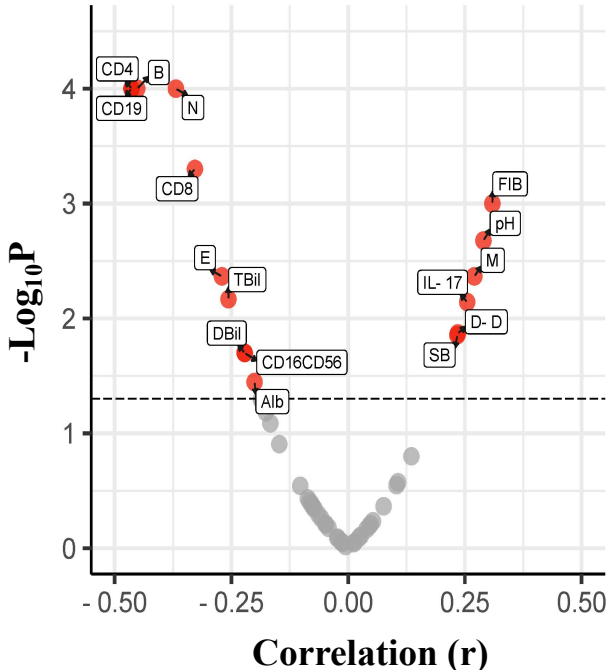


Figure 2 Correlation analyses between multiple laboratory variables and the duration of viral RNA shedding in different groups of mild COVID-19 patients

A

W/O vaccination

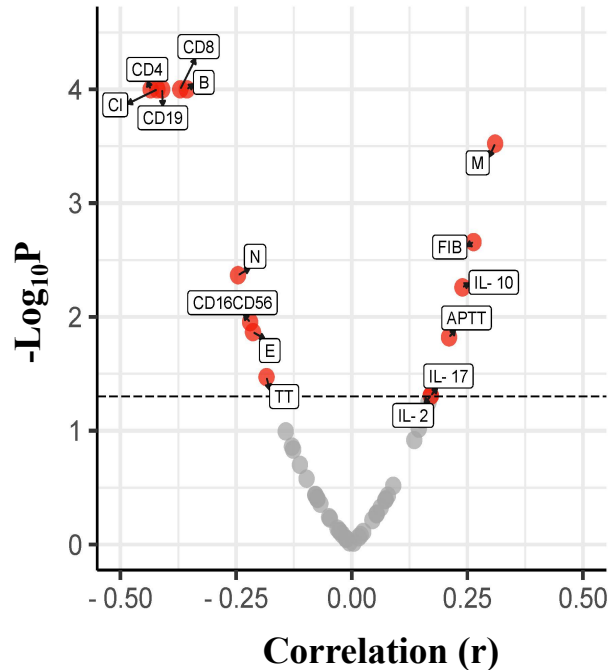
● no correlation ● correlation



B

Inactivated vaccine

● no correlation ● correlation



C

mRNA vaccine

● no correlation ● correlation

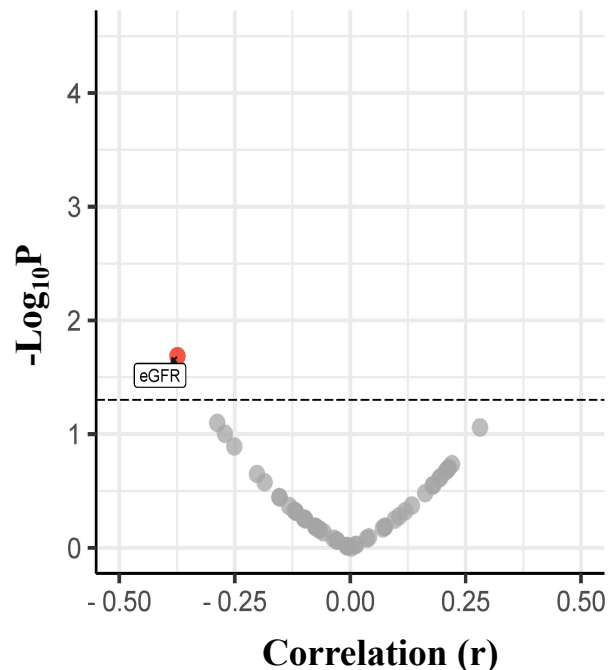


Figure 3 Variables correlating with viral persistence in unvaccinated mild patients could discriminate between short (≤ 14 days) and long (> 14 days) duration of viral RNA shedding for all mild COVID-19 patients

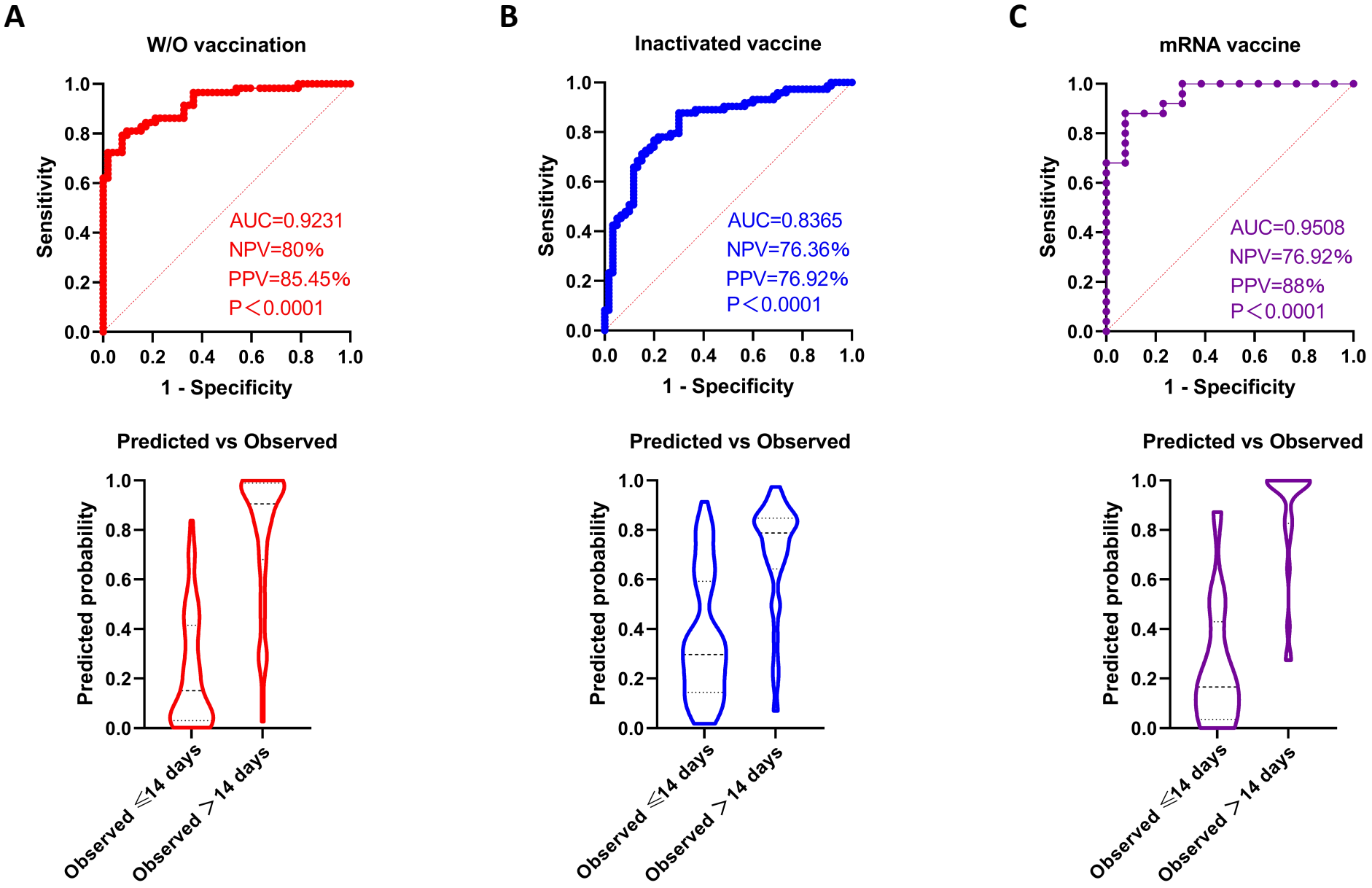
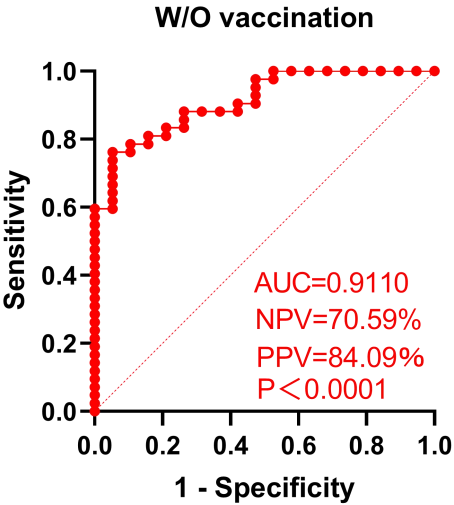
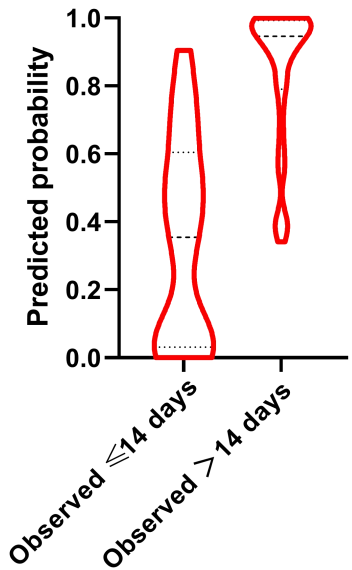


Figure 4 Variables correlating with viral persistence in unvaccinated mild patients could discriminate between short (≤ 14 days) and long (> 14 days) duration of viral RNA shedding for moderate COVID-19 patients

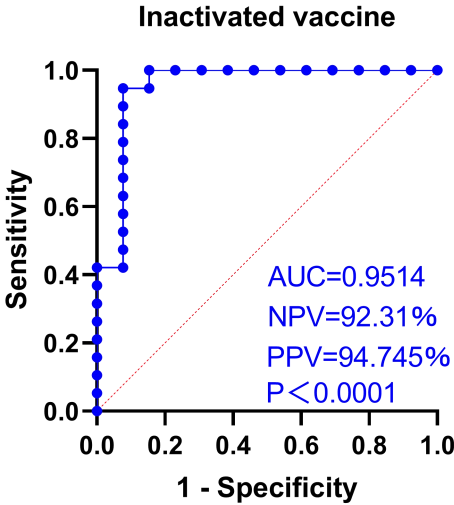
A



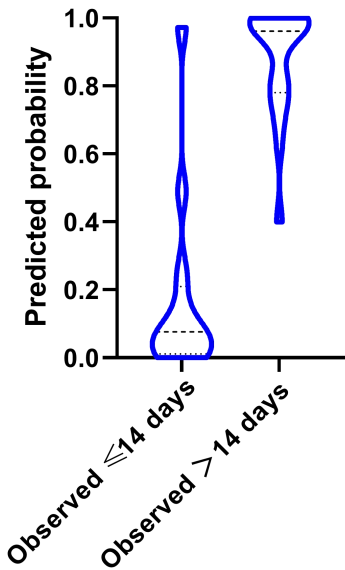
Predicted vs Observed

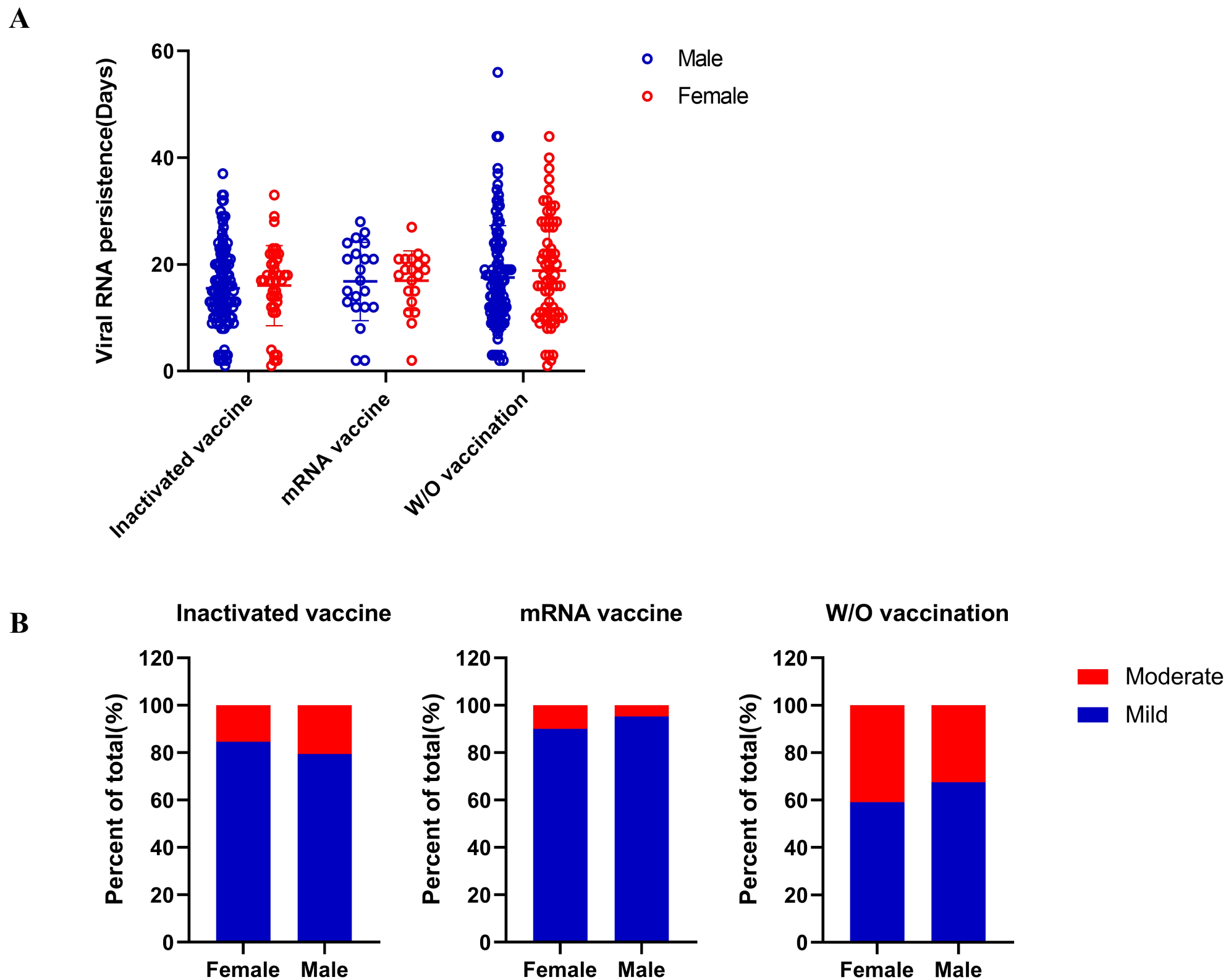


B



Predicted vs Observed





Supplementary figure 1 The average duration of viral RNA shedding and proportions of mild and moderate COVID-19 cases were similar between male and female patients. (A) The average duration of viral RNA shedding of male patients was similar with that of female patients. (B) The proportions of mild and moderate cases in male patients were comparable with those in female patients.



Supplementary figure 2 Individual variables could not reliably discriminate between short (≤ 14 days) and long (> 14 days) duration of viral RNA shedding for unvaccinated mild COVID-19 patients. Univariate regression analyses showed that each of the significant variables identified in the correlation analyses could not confidently discriminate between short (≤ 14 days) and long (> 14 days) duration of viral RNA shedding for the unvaccinated mild COVID-19 patients.

Supplementary table 1 Comparisons of demographical and laboratory variables among mild COVID-19 patients received the inactivated vaccine, the mRNA vaccine or no vaccine

Variables	Normal range	(A) Inactivated vaccine (N=133)	(B) mRNA vaccine (N=38)	(C) W/O vaccination (N=110)	P value (A) vs (C)	P value (B) vs (C)	P value (A) vs (B)
Age (years)	-	34.0 (24.0-43.0)	29.0 (25.0-44.5)	31.0 (23-42.3)	0.2228	0.7206	0.5906
Gender (n)							
Male	-	100	20	71	0.0901	0.2461	0.0094
Female	-	33	18	39			
Time-since-vaccination (Days)	-	170.7±92.51	149.4±62.42	-	-	-	0.2778
Duration of virus shedding (Days)	-	15 (11-20)	17.5 (12-21)	15 (9.75-23)	0.8236	0.5911	0.6551
Sampling timepoint (Days post diagnosis)	-	3 (2-3)	3 (2-4)	3 (2-3)	0.9769	0.1001	0.0670
Biochemistry							
ALT (U/L)	7-40	18 (13-27)	16 (12-26.75)	17.5 (12-28)	0.6663	0.9068	0.6321
AST (U/L)	13-35	18 (15-23.5)	18.5 (16.75-24)	18 (16-21)	0.5972	0.3879	0.6472
ALP (U/L)	35-100	67 (54.5-81.5)	60.5 (55-70.5)	65 (53-60)	0.5150	0.4316	0.1434
L-γ-GGT (U/L)	7-45	20 (15-35)	20.5 (13-33)	20.5 (14-30.25)	0.5125	0.5942	0.2686
LDH (U/L)	120-250	181 (159-205)	190.6±48.38	177 (157.8-201)	0.4230	0.3417	0.6914
TBil (µmol/L)	3.4-20.5	7.8 (5.65-11.1)	6.5 (4.75-8.15)	7.6 (5.675-10.48)	0.7469	0.0229	0.0098
DBil (µmol/L)	0-8.6	4.1 (3.2-5.7)	3.5 (2.975-4.3)	3.7 (3-4.925)	0.0254	0.4444	0.0155
Alb (g/L)	40-55	45 (43-47)	44.24±2.765	44.89±3.237	0.7724	0.2695	0.1526
Glb (g/L)	20-40	30 (27-33)	29.16±4.290	28.79±4.182	0.0123	0.6438	0.0962

A/G (%)	1.2-2.4	1.5 (1.375-1.655)	1.546±0.2328	1.591±0.2536	0.0383	0.3409	0.5021
K (mmol/L)	3.5-5.3	3.875±0.2996	3.961±0.3796	3.9 (3.7-4.125)	0.0758	0.8492	0.1475
Na (mmol/L)	137-147	140.2±1.885	141 (140-142)	139.9±1.812	0.1460	0.0042	0.0896
Cl (mmol/L)	99-110	104.3±1.946	104.3±1.927	104.7±2.379	0.2555	0.3616	0.8335
Urea (mmol/L)	2.6-7.5	4 (3.3-4.65)	3.766±0.8438	3.98 (3.4-4.605)	0.9671	0.0619	0.0729
SCr (µmol/L)	41-73	76.07±15.62	70.22±13.58	70.87±13.49	0.0065	0.7999	0.0379
Glu (mmol/L)	3.9-6.1	5.77 (5.14-6.38)	5.565 (5.208-6.218)	5.535 (4.948-6.553)	0.4672	0.5734	0.8831
UA (µmol/L)	150-350	342.8±91.94	313.1±98.38	333.1±86.62	0.4024	0.2392	0.0862
eGFR (mL/ (min*1.73m²))	>90	104.2±17.67	104.2 (95.29-113.3)	111.1±19.51	0.0044	0.1141	0.4159
Mb(ng/mL)	<25	7.890 (5.325-10.32)	8.620 (6.210-13.25)	8.495 (5.555-11.97)	0.2868	0.6174	0.2159
NT-proBNP (pg/mL)	0-500	69.30 (61.45-181.5)	64.65 (60.83-96.38)	70.51 (60.7-178.9)	0.8380	0.2436	0.1946
CK Isoenzyme (ng/mL)	<5	0.46 (0.3-1.1)	0.7195±0.5253	1.21 (0.6-1.82)	<0.0001	0.0002	0.4459
Blood coagulation							
INR	0.8-1.3	0.94 (0.91-0.98)	0.9368±0.0599	0.96 (0.91-1.013)	0.1000	0.0774	0.5193
PTA (%)	75-100	111.5±13.62	109.5 (105-122.5)	108 (96-118.3)	0.0623	0.0803	0.5817
PT(S)	11-14.3	12.6 (12.2-13)	12.52±0.6475	12.8 (12.3-13.43)	0.0348	0.0157	0.3332
APTT(S)	32-43	39.56±4.245	40.38±4.284	40 (37.43-43.30)	0.5022	0.1611	0.2979
FIB (g/L)	2-4	3.097±0.6709	3.31 (2.875-3.95)	2.88 (2.553-3.258)	0.0555	0.0003	0.0134
FDP (µg/mL)	0-5	1.5 (1.13-2.185)	1.295 (0.9975-1.615)	1.620 (0.6425-3.130)	0.7372	0.2508	0.0246
D-D (µg/mL)	0-0.5	0.2000 (0.16-0.295)	0.2100 (0.18-0.235)	0.2200 (0.17-0.2725)	0.6326	0.5744	0.9049
TT (S)	14-21	16 (15.35-16.95)	15.6 (14.68-16)	16.15 (15.5-16.6)	0.7475	0.0003	0.0023
ESR (mm/h)	0-20	7 (4-13)	8.5 (4-19.75)	10 (5-22)	0.0008	0.2571	0.2900
Cytokine							
IL-2 (pg/mL)	<7.5	1.38 (0.27-3.41)	2.19 (0.52-4.118)	0.235 (0-0.9725)	<0.0001	<0.0001	0.1063

IL-8 (pg/mL)	<20.6	12.77 (0-60.27)	55.5 (0-165.5)	0.115 (0-2.01)	<0.0001	<0.0001	0.0286
IL-10 (pg/mL)	<12.9	1.51 (0.42-2.475)	1.135 (0.4475-2.488)	0.78 (0.3125-1.623)	0.0005	0.0627	0.6751
IL-17 (pg/mL)	<21.4	3.52 (1.48-56.29)	57.68 (2.698-71.63)	1.065 (0.1925-2.505)	0.0005	<0.0001	0.0016
Leucocyte count							
N (×10⁹/L)	1.8-6.3	3.59 (2.7-4.675)	3.848±1.379	3.828±1.486	0.7770	0.9411	0.7468
E (×10⁹/L)	0.02-0.52	0.070 (0.03-0.13)	0.070 (0.02-0.1525)	0.070 (0.02-0.13)	0.6821	0.5316	0.7789
B (×10⁹/L)	0-0.06	0.0200 (0.01-0.03)	0.0200 (0.01-0.03)	0.0200 (0.01-0.03)	0.9393	0.5578	0.5792
M (×10⁹/L)	0.1-0.6	0.57 (0.435-0.705)	0.525 (0.438-0.745)	0.54 (0.42-0.66)	0.3459	0.3953	0.8106
CD4 (cell/μL)	410-1590	496.5 (365.1-735.5)	582.4±235	600.5 (404.5-824.1)	0.0601	0.4985	0.5421
CD8 (cell/μL)	190-1140	388.4 (239.6-526.1)	381.0 (285.6-492.3)	371.6 (257.4-583.5)	0.4456	0.8143	0.7625
CD19 (cell/μL)	107-698	152.3 (99.97-267.2)	187±92.56	193.7 (111.3-303.9)	0.0218	0.2723	0.5324
CD16CD56 (cell/μL)	95-640	254.0 (166-356)	276.7±158.7	229.0 (145-342.5)	0.2926	0.5310	0.9256
CD4/CD8	0.9-3.6	1.480 (1.12-1.85)	1.350 (1.088-1.633)	1.452 (1.167-1.86)	0.7462	0.2349	0.3016
Arterial blood gas							
pH	7.35-7.45	7.37 (7.34-7.39)	7.36 (7.348-7.38)	7.38 (7.36-7.4)	0.0694	0.0230	0.3442
pCO₂ (KPa)	4.3-6	5.952±0.6798	6.005 (5.718-6.323)	5.685±0.5314	0.0009	0.0005	0.4094
pO₂ (KPa)	10-14	13.60 (12.2-14.9)	14.04±2.162	13.45 (12.48-15.03)	0.9175	0.3166	0.2090
SB (mmol/L)	21.3-24.8	24.30 (23.2-25)	24.28±1.030	24.10 (23.1-24.83)	0.2988	0.1956	0.5894
SpO₂(%)	91.9-99	98.10 (97.15-98.75)	98.35 (97.85-98.8)	98.10 (97.4-98.7)	0.4967	0.3560	0.1641
AB (mmol/L)	22-29	25.43±1.825	25.8 (25.03-26.7)	25 (24.08-25.8)	0.0105	0.0036	0.4427

Note: Data conforming to the normal distribution are shown as mean ± standard deviation (SD), and data not conforming to the normal distribution are shown as the median (IQR).

Abbreviations: ALT, glutamic pyruvic transaminase; AST, glutamic oxalo-acetic transaminase; ALP, alkaline phosphatase; L-γ-GGT, gamma glutamyl transferase; LDH, lactate dehydrogenase; TBil, total bilirubin; DBil, Direct Bilirubin; Alb, albumin; globulin; SCr, serum creatinine; Glu, glucose; UA, uric acid; eGFR, estimated glomerular filtering rate; INR, international normalized ratio; PTA, prothrombin activity prothrombin time activity; PT, Prothrombin

time; APTT, activated partial thromboplastin time; FIB, Fibrinogen; FDP, fibrin/fibrinogen degradation products; D-D, D-dimer; TT, thrombin time; Mb, myoglobin; NT-proBNP, N terminal pro B type natriuretic peptide; CK Isoenzyme, creatine kinase isoenzyme; ESR, erythrocyte sedimentation rate; N, neutrophil; E, eosinophil; B, basophil; M, monocyte; SB, standard bicarbonate; AB, actual bicarbonate.