

32 ABSTRACT

33

34 **Background:**

35 Cell-free (cf)-DNA, from cellular sources, including Neutrophil Extracellular Traps (NETs), is
36 found in the circulation of COVID-19 patients and may contribute to immune dysregulation.
37 This study determined whether pulmonary administration of the endonuclease, dornase
38 alfa, reduced systemic inflammation by degrading local and systemic cf-DNA.

39 **Methods:**

40 Eligible patients were randomized (3:1) to receive twice-daily nebulised dornase alfa in
41 addition to best available care (BAC) or BAC alone for seven days or until discharge. A 2:1
42 ratio of matched contemporary controls (CC-BAC) provided additional comparators. The
43 primary endpoint was improvement in C-reactive protein (CRP) over time, analysed using a
44 repeated-measures mixed model, adjusted for baseline factors.

45

46 **Results:** Between June 2020-October 2021 we recruited 39 evaluable patients: 30
47 randomised to dornase alfa (R-BAC+DA); 9 randomised to BAC (R-BAC); with the addition of
48 60 CC-BAC participants. Dornase alfa was well tolerated and reduced CRP by 33% compared
49 to combined BAC groups (T-BAC). Least squares (LS) mean post-dexamethasone CRP fell
50 from 101.9mg/L to 23.23 mg/L in the BAC+ dornase alfa group versus a fall from 99.5mg/L
51 to 34.82 mg/L in the T-BAC group at 7 days; $P=0.01$. This effect of dornase alfa on CRP was
52 confirmed with subgroup and sensitivity analyses that mitigated potential biases associated
53 with the use of the CC-BAC group. Dornase alfa increased the chance of live discharge by
54 63% (HR 1.63, 95% CI 1.01 to 2.61, $P=0.03$), increased lymphocyte counts (LS mean: 1.08 vs
55 0.87, $P=0.02$) and reduced circulating cf-DNA and the coagulopathy marker D-dimer (LS
56 mean: 570.78 vs 1656.96 $\mu\text{g}/\text{mL}$, $P=0.004$).

57 **Conclusions:** We provide proof-of-concept evidence that dornase alfa reduces pathogenic
58 inflammation in hospitalised patients with COVID-19 pneumonia, suggesting that best
59 available care can be improved by the inclusion of anti-inflammatory treatments that target
60 damage-associated molecules.

61

62

63 **Key words:** COVID-19, SARS-CoV-2, endonuclease, Dornase, DNA, virus, infection,
64 pneumonia, anti-inflammatory, DNase, NETs, neutrophil, neutrophil extracellular traps.

65 INTRODUCTION

66 SARS-CoV-2 pneumonia can lead to hyperinflammation, coagulopathy, respiratory
67 failure, and death (Siddiqi and Mehra, 2020; Zhou et al., 2020), even with less pathogenic
68 variants and in immunised patients (2000). In severe COVID-19 neutrophil activation drives
69 neutrophil extracellular trap (NET) formation (Radermecker et al., 2020; Zuo et al., 2020).
70 NETs, are composed of DNA-histone complexes and have been associated with
71 coagulopathy and endothelial dysfunction (Papayannopoulos, 2018). Moreover,
72 extracellular histones promote inflammation, immune dysfunction and lethality in sepsis
73 (Ioannou et al., 2022; Tsurouktsoglou et al., 2020; Xu et al., 2011; Xu et al., 2009).
74 Digestion of chromatin DNA by endonucleases suppresses the proinflammatory activity of
75 histones and enables their clearance from the circulation (Ioannou et al., 2022;
76 Tsurouktsoglou et al., 2020). Consistently, DNase I treatment reduces pathology in murine
77 pulmonary viral infections (Cortjens et al., 2018; Pillai et al., 2016). Endogenous DNase
78 activity and NET clearance capacity are defective in severe COVID-19 pneumonia, and the
79 extent of these defects correlates with mortality (Aramburu et al., 2022). Hence,
80 supplementation with exogenous DNases may facilitate extracellular chromatin degradation
81 and increase survival.

82 Pulmozyme, dornase alfa, is a recombinant human DNAase approved since 1993 for
83 patients with cystic fibrosis (CF) (Konstan and Ratjen, 2012; Lazarus and Wagener†, 2019).
84 Dornase alfa solubilizes NETs, reduces inflammation and improves pulmonary function in
85 chronic and acute exacerbations of CF (Konstan and Ratjen, 2012; Papayannopoulos et al.,
86 2011). Pulmozyme is safe and well-tolerated in children and adults with CF at doses up to
87 10mg BD. Nebulized pulmozyme does not increase circulating endonucleases. Hence, it
88 remained unclear whether the degradation of extracellular chromatin in the lungs would
89 reduce circulating chromatin and systemic hyper-inflammation.

90 To probe the effectiveness of DNase I as an anti-inflammatory therapy in severe
91 COVID-19 pneumonia, we measured as our primary endpoint C-reactive protein (CRP). CRP
92 is a reliable marker of systemic inflammation in severe infection (McArdle et al., 2004). In
93 patients infected with COVID-19, a high CRP of ≥ 40 mg/L carried a poor prognosis with a
94 lower cut-off of ≥ 35 mg/L in the elderly (Villoteau et al., 2021), particularly when combined
95 with lymphopenia and coagulopathy marked by elevated D-dimer (Fisher et al., 2022; Liu et
96 al., 2020; Luo et al., 2020; Smilowitz et al., 2021; Tornling et al., 2021; Ullah et al., 2020).

97 Poor outcomes are associated with an early rise (Mueller et al., 2020), higher peak and
98 delayed reduction in CRP (Cui et al., 2021). Moreover, elevated IL-6 and CRP can predict the
99 need for mechanical ventilation (Herold et al., 2020). In addition, CRP correlated well with
100 levels of DNase and NET degradation activity in COVID-19 patient plasma suggesting a link
101 between CRP and the capacity to degrade cf-DNA in the circulation (Aramburu et al., 2022).
102 CRP became a reliable primary endpoint in subsequent trials demonstrating the
103 effectiveness of other systemic therapies such as namilumab or infliximab that target
104 inflammatory cytokines (Fisher et al., 2022).

105 In this proof-of-concept study we evaluated the effect of dornase alfa on
106 inflammation, as measured by the impact on circulating CRP in patients with COVID-19,
107 compared with best available care (BAC). The trial was initiated in June 2020 and was
108 completed in October 2021. At the start of the trial only dexamethasone had been proven
109 to benefit hospitalized COVID-19 pneumonia patients and was thus included in both arms of
110 the trial. To increase the chance of reaching significance under challenging constraints in
111 patient access, we opted to increase our sample size by using a combination of randomized
112 individuals in the BAC group (R-BAC) and the dornase alfa treated arm (R-BAC+DA) with
113 available CRP data from matched contemporary controls (CC-BAC) hospitalized at the same
114 site at UCL but not recruited to a trial and using the same selection criteria as the
115 randomised group to minimise potential biases. In the analysis framework we compared
116 treated R-BAC-DA participants to both R-BAC and CC-BAC groups individually or combined
117 (T-BAC). These approaches demonstrated that when combined with dexamethasone,
118 nebulized DNase treatment was an effective anti-inflammatory treatment in randomized
119 individuals with or without the implementation of CC-BAC data.

120

121

122 **METHODS**

123 **Sponsor and location**

124 The trial was sponsored by University College London (UCL) and carried out at
125 University College London Hospital UCLH with ethical (REC: 20/SC/0197, Protocol: 132333,
126 RAS ID:283091) and UK MHRA approvals. All randomized participants provided informed
127 consent. Consent for CC-BAC participants was covered by Health Service (Control of
128 Participant Information) Regulations 2002. Safety and data integrity were overseen by the
129 Trial Monitoring Group and Data Monitoring Committee. All data was collected at UCLH.
130 Additional CRP data is reported from the Pa-COVID-19 study, Charité Universitätsmedizin
131 Berlin with ethical approval, Berlin (EA2/066/20). Both Pa-COVID-19 and COVASE studies
132 were carried out according to the Declaration of Helsinki and the principles of Good Clinical
133 Practice (ICH 1996).

134

135 **Trial design**

136 The COVASE trial was a single-site, randomised, controlled, parallel, open-label
137 investigation. The primary endpoint was change in CRP. Screening was performed within 24
138 hours prior to the administration of dornase alfa (**Figure 1A**). Eligible, consented participants
139 were randomly assigned (3:1) to either BAC plus nebulised dornase alfa (R-BAC+DA) or R-
140 BAC group alone. On Day 1 a baseline sample was collected. From Day 1-7 participants
141 randomised to active arm received 2.5mg BD nebulised dornase alfa in addition to BAC. In
142 all cases BAC included dexamethasone (6 mg/day) for 10 days or until discharge, whichever
143 was shorter as per RECOVERY (Group et al., 2021). Participants received additional
144 treatments at the discretion of their physicians. The primary analysis was performed on
145 samples up to Day 7. The final trial visit occurred at day 35.

146 In addition to the recruited randomised group, we included CC-BAC participants to
147 increase the sample size due to practical difficulties in recruiting patients in the UK. For
148 every COVASE participant randomised to active treatment, 2 matched CC-BAC participants
149 were included. CC-BAC participants were admitted to UCLH over the same time as
150 randomised patients and treated with the same BAC, including dexamethasone. CC-BAC
151 participants fulfilled the inclusion and exclusion criteria of the COVASE study and were

152 matched for age, gender, BMI, comorbidities and CRP. CRP matching was based either on
153 admission CRP, or matched based on the first CRP reading after starting dexamethasone.

154

155 **Eligibility**

156 Trial participant inclusion criteria

157 Male and female participants, aged ≥ 18 years, who were hospitalised for suspected
158 Coronavirus (SARS-CoV)-2 infection confirmed by polymerase chain reaction (PCR) test and
159 optionally with radiological confirmation with chest CT. Participants with stable oxygen
160 saturation ($\geq 94\%$) on supplementary oxygen and a CRP ≥ 30 mg/L. Participants that
161 provided written informed consent to participate in the study and were able to comply with
162 instructions and the use of a nebuliser.

163 Exclusion criteria

164 Females who were pregnant, planning pregnancy or breastfeeding. Concurrent and/or
165 recent involvement in other research or use of another experimental investigational
166 medicinal product that was likely to interfere with the study medication within 3 months of
167 study enrolment. Serious condition meeting either respiratory distress with respiratory rate
168 ≥ 40 breaths/min, or an oxygen saturation $\leq 93\%$ on high-flow oxygen. Participants who
169 required mechanical invasive or non-invasive ventilation at screening or had concurrent
170 severe respiratory disease such as asthma, COPD and/or ILD, or any major disorder that in
171 the opinion of the Investigator would interfere with the evaluation of the results or
172 constitute a health risk for the trial participant. Participants with terminal disease and life
173 expectancy < 12 months without COVID-19, known allergies to dornase alfa and excipients,
174 or participants who were unable to inhale or exhale orally throughout the entire
175 nebulisation period.

176 **Participants**

177 Adults (≥ 18 years of age) admitted to UCLH with confirmed SARS-Cov2 infection by
178 RT-PCR and radiologically confirmed COVID-19 pneumonia on chest radiograph or CT-scan;
179 oxygen saturation $< 94\%$ requiring supplemental oxygen; and evidence of
180 hyperinflammation (CRP ≥ 30 mg/L, after administration of dexamethasone) were eligible.
181 While all participants had CRP > 30 mg/L at screening, on two occasions the baseline CRP

182 concentrations fell below 30 mg/L after the patients had already agreed to participate. For
183 full inclusion and exclusion criteria see Protocol in the Supplementary Material.

184

185 **Outcomes**

186 The primary outcome was the least square (LS) mean CRP up to 7 days or at hospital
187 discharge whichever was sooner. Data beyond 7 days was included in the model to
188 estimate the slope. Subsequently, the estimated slope in each group was used in order to
189 calculate the LS mean at 7 days. Pre-specified secondary outcomes included days on oxygen;
190 time to hospital discharge; mortality by day 35; and changes in clinically relevant biomarkers
191 including lymphocyte count and D-dimer levels. Day 35 was chosen as being likely to include
192 most early mortality due to COVID-19 being 4 weeks after completion of a week of
193 treatment. (i.e. d7 of treatment +28 (4 x 7 days)).

194 Efficacy assessments of primary and secondary outcomes in the intention-to-treat
195 (ITT) population were performed on all randomised participants who had received at least
196 one dose of dornase alfa if randomized to treatment. For full details see Statistical Analysis
197 Plan. The ITT was adjusted to mitigate the following protocol violations where one
198 participant in the R-BAC arm and one in the R-BAC+DA arm withdrew before they received
199 treatment and provided only a baseline CRP measurement available. The participant in the
200 DA arm was replaced with an additional recruited patient. Exploratory endpoints were only
201 available in randomised participants and not in the CC-BAC. In this case, a *post hoc* within
202 group analysis was conducted to compare baseline and post-baseline measurements.

203 **Sample size calculation**

204 Size calculations were produced using the proc power function in SAS Version 9.4.
205 These were conducted to achieve 80% power to detect difference in the active arm versus
206 the control group at 5% level of significance. Based on a mean of 99mg/L in the control
207 group and a common standard deviation of 62mg/L derived from the literature (Han et al.,
208 2020; Zhou, 2020), a total sample size of 90 participants would provide sufficient power to
209 detect a greater than a 40% relative difference for CRP in the dornase alfa group compared
210 to the control group.

211 This study used existing data collected at UCLH from CC-BAC participants admitted
212 with COVID-19. This gave a ratio of active versus comparator of 1:2. The required power,
213 would result in 30 participants in the active treatment group and at least 60 in the control
214 group. An additional 10 randomised control participants were recruited for exploratory
215 objectives and to compare the characteristics of enrolled participants with CC-BAC
216 participants. Therefore, a total of 40 participants were enrolled in the study and 60 CC-BAC
217 participants were included.

218 **Randomisation**

219 A closed envelope method was implemented to randomize the participants into the control
220 and active treatment groups.

221

222

223

224

225

226 RESULTS

227 Patient characteristics

228 From June 2020–October 2021, 41 participants were recruited and randomised, with
229 1 participant in R-BAC group discharged before a second CRP measurement who was
230 excluded from all analyses except for safety (CONSORT Diagram: **Figure 1B and S1**). One
231 participant withdrew consent prior to receiving dornase alfa and was replaced and excluded
232 from all analyses. 39 participants were included in the ITT analysis set, 30 R-BAC+DA and 9
233 R-BAC. One participant withdrew due to side-effects. This participant was removed from the
234 per protocol population (PPP). All 39 participants were followed up for 35 days or death
235 whichever was sooner. Two participants were excluded from the PPP and one from R-BAC
236 as this was the only patient in whom randomisation occurred prior to dexamethasone being
237 widely used in COVID-19 and a second participant who withdrew after one dose of dornase
238 alfa (**Figure 1B and S1**). The trial ended when 40 eligible participants had been recruited,
239 although thereafter 1 had participant in the R-BAC arm had to be excluded from the primary
240 and secondary endpoint analysis.

241 Baseline characteristics were well balanced across groups (**Table 1**). Selection of 60
242 matched CC-BAC participants via propensity score matching was successful in ensuring the
243 means of the characteristics included in propensity score matching were similar (**Table 1**
244 and **Figure S2**). The overall mean age was 56.8 years (56.8 years R-BAC+DA, 56.8 years T-
245 BAC). The percentage of males was 75.8% (76.7% R-BAC+DA, 75.4% T-BAC). The most
246 prevalent ethnicity was “White British”, with 30.3% of participants identifying in that
247 category (33.3% BAC+DA, 29.0% T-BAC). The mean BMI was 28.0kg/m² (27.8kg/m² R-
248 BAC+DA, 28.2kg/m² T-BAC). The mean baseline CRP (post dexamethasone) was 100.2mg/L
249 (101.9mg/L R-BAC+DA, 99.5mg/L T-BAC). The proportion of participants with a comorbidity,
250 defined as one or more of hypertension, diabetes, or cardiovascular disease, was 52.5%
251 (46.7% R-BAC+DA, 55.1% T-BAC). All randomised participants, except one, received
252 dexamethasone prior to randomisation. In addition, 48 of the total 99 participants also
253 received remdesivir or tocilizumab in addition to dexamethasone within the first 7 days. The
254 average duration of dexamethasone treatment prior to dornase alfa was 1.13±/− 0.79 days
255 (**Table S1**). The last pre-dexamethasone CRP was also similar between groups with a mean of
256 125.0mg/L (128.1mg/L R-BAC+DA, 122.7mg/L T-BAC). The number of days between
257 dexamethasone initiation and baseline was 1.2 days (0.7 days R-BAC+DA, 1.3 days T-BAC).

258 There were imbalances noted at baseline between the groups in white blood cell count,
259 neutrophil count, procalcitonin count and D-dimer (**Table 1**).

260

261 **Clinical outcomes**

262 *Longitudinal CRP correlates with disease outcomes*

263 To ascertain the clinical value of CRP as the COVASE trial's primary endpoint, we first
264 examined the correlation of CRP with mortality in a cohort of 63 hospitalized patients with
265 severe COVID-19 (Aramburu et al., 2022; Kurth et al., 2020; Messner et al., 2020). All
266 participants who reached a WHO severity ordinance scale 7 were recruited at the Charité
267 Hospital in Berlin in spring 2020 and did not receive anti-inflammatory therapies such as
268 dexamethasone or anti-IL-6 antibody treatments. Plasma CRP measurements in 465 samples
269 were segregated by disease outcome. This analysis revealed that deceased participants had
270 significantly higher CRP than participants in the survivor group (**Figure 2A**). Clustering the 63
271 participants according to their longitudinal average CRP indicated that the frequency of
272 mortality increased as the average CRP per patient increased (**Figure 2B**). Consistently,
273 Mantel Cox survival analysis of the participants segregated into three groups with average
274 longitudinal CRP ranges of 0-100 mg/L, 100-200 mg/L and 200-450 mg/L, showed that
275 survival decreased significantly as the average CRP increased (**Figure 2C**). These results
276 highlighted the strong correlation between CRP and survival in hospitalized individuals with
277 severe COVID-19 pneumonia, suggesting that the blood CRP concentration was a strong
278 predictor of clinical outcomes such as the probability of survival.

279

280 *Primary outcome*

281 Next, we analysed the results from our COVASE participants. The individual CRP
282 traces over time are shown in **Figure S3A**. Blood collection for both R-BAC and R-BAC+DA
283 groups occurred at similar times and comparable frequencies (**Figure S3B**). In the
284 participants who were randomised into the COVASE trial, excluding the CC-BAC participants
285 the LS mean Ln (CRP) over 7 days follow-up was 3.10 (95% confidence interval [CI] 2.84 to
286 3.35) R-BAC+DA (n=30), and 3.59 (95% CI, 3.13 to 4.06) in R-BAC (n=9) (**Table 2 and Figure**
287 **3A**). Moreover, in the ITT group which included randomised and CC-BAC groups, the LS
288 mean Ln (CRP) over 7 days follow-up was 3.15 (95% confidence interval [CI] 2.87 to 3.42) R-
289 BAC+DA (n=30), and 3.55 (95% CI, 3.35 to 3.75) in T-BAC (n=69) (**Table 2 and Figure 3A**),

290 $p=0.01$. This indicates a reduction in mean CRP of approximately 33% in the R-BAC+DA
291 (23.23 mg/mL) compared to T-BAC (34.82 mg/mL) at mean follow-up over 7 days. The
292 suppressive effect of dornase alfa on CRP was confirmed in various other subgroup analyses:
293 the per-modified-protocol population only; participants who were randomised to BAC+DA in
294 the COVASE trial, and CC-BAC participants alone excluding those randomised to BAC (**Table**
295 **2**). In addition, to ensure that the CC-BAC participants did not have a significantly different
296 CRP trajectory to those randomised to BAC, we compared participants who were
297 randomised to BAC (R-BAC) with the CC-BAC group by excluding those randomised to R-
298 BAC+DA and found no significant differences (**Table 2**). Sensitivity analyses supported the
299 observed effect on CRP. These included the Ln(CRP) as an area under the curve; the CC-BAC
300 matched for the last pre-dexamethasone CRP measurement as opposed to their first CRP
301 after starting dexamethasone; and the effect of remdesivir or tocilizumab (**Table 2**). A daily
302 mean Ln CRP measurement chart is also provided (**Table 3**).

303 To better understand the effects of dornase alfa on the CRP of the treated
304 population we also performed a frequency distribution analysis of the change in CRP over
305 time. Instead of fitting a slope on the CRP values of the individual samples of each
306 participant, we plotted the fraction between the CRP measurement of the baseline and final
307 sample collected for each participant during the 7 day treatment period. We then plotted
308 the distribution of participants within the different ranges of change in CRP (**Figure 3B**).
309 Compared to T-BAC, the R-BAC+DA treatment group exhibited a higher CRP reduction
310 distribution with fewer participants that did not respond to treatment as indicated by an
311 increase in CRP concentrations. Therefore, the addition of dornase alfa to dexamethasone
312 resulted in a significant and sustained reduction in CRP in a greater number of COVID-19-
313 infected participants compared to treatment with dexamethasone alone.

314

315 *Secondary outcomes*

316 The length of hospitalisation was analysed as a time-to-event outcome of alive
317 discharge from the hospital censored at 35 days. The hazard ratio observed in the Cox
318 proportional hazards model was 1.63 (95% CI, 1.01 to 2.61), $p=0.03$ (**Figure 3C and S3C**).
319 Showing that throughout 35 days follow-up, there was a 63% higher chance of discharge
320 alive at any given time-point in R-BAC+DA compared to T-BAC. Although the rate of
321 discharge was similar in 50% of patients, 80% discharge occurred by 8 days in R-BAC+DA

322 whereas, whereas the same proportion was reached at 30 days in T-BAC. This trend was also
323 seen when only the randomised R-BAC participants were considered, although not powered
324 to reach significance and with a smaller HR of 1.18 (95% CI, 0.52-2.69), $p=0.62$, (**Table S2**
325 **and Figure S3C**).

326 Over 7 days of follow up there was no significant difference between R-BAC+DA and
327 T-BAC in either the fraction of participants admitted to ICU (23.3% versus 21.74%), $p=0.866$,
328 or the length of ICU stay, LS mean 21.25 (95% CI, 4.65 to 37.84) hours versus 19.85 (95% CI,
329 8.00 to 31.70) hours, $p=0.883$. The same was seen over 35-day follow-up, LS mean 55.21
330 95% CI, -23.59 to 134.00) hours versus 60.60 (95% CI, 4.34 to 116.86) hours, $p=0.905$. At any
331 point during the 35 days follow-up, 23% of R-BAC+DA were admitted to ICU compared to
332 23.19% T-BAC, $p=0.983$ (**Table S3**). Similarly, there was no significant difference in the time
333 requiring oxygen between the two groups (R-BAC-DA vs T BAC), at either 7 days, LS mean
334 94.32 (95% CI, 72.8 to 115.79) hours, versus 88.96 (95% CI, 73.64 to 104.29) hours, $p=0.662$,
335 or 35 days, LS mean 133.22 (95% CI, 52.01 to 214.43) hours versus 156.35 (95% CI, 98.36,
336 214.33) hours, $p=0.618$. At 35 days follow up, there were only 9 randomised participants to
337 evaluate, but mean oxygen use exhibited a reduction of 123 hours in R-BAC+DA participants,
338 versus 241 hours for the T-BAC group, $p=0.187$ (**Table S3**).

339 The time to event data was censored at 28 days post last dose (up to d35) for the
340 randomised participants (R-BAC and R-BAC+DA) and at the date of the last electronic record
341 for the CC-BAC group. Over 35 days follow up, 1 person amongst the 30 patients in the R-
342 BAC+DA group died, compared to 8 of the 69 T-BAC participants. The hazard ratio observed
343 in the Cox proportional hazards model was 0.47 (95% CI, 0.06 to 3.86), indicating a trend
344 towards a reduced chance of death at any given time-point in R-BAC+DA compared to T-
345 BAC, but this did not reach significance $p=0.460$ (**Figure 3D and S3C**). The hazard ratio
346 observed in the Cox proportional hazards model (95% CI) was 0.47 (0.06, 3.86), which
347 estimates that throughout 35 days follow-up, there was a 53% reduced chance of death at
348 any given timepoint in the R-BAC+DA group compared to the T-BAC group. However, the
349 confidence intervals are wide due to the small number of events and consequently the p -
350 value from a log-rank test was 0.460, which does not reach statistical significance.

351 There was no significant difference at either 7- or 35-days follow-up, in the number
352 of participants that required mechanical ventilation in R-BAC+DA compared with T-BAC
353 (16.67% vs 13.04%), $p=0.628$. Amongst participants that were ventilated, the mean length of

354 mechanical ventilation at 7 days follow-up in R-BAC+DA participants was 76.8 hours,
355 compared to 88.78 in the T-BAC group. At 35 days follow-up, the mean length of mechanical
356 ventilation in BAC+DA was 76.8 hours compared to 411.17 hours in T-BAC participants
357 (**Table S3**). There was no significant difference in superadded bacterial pneumonia at either
358 7 or 35 days follow-up: 7 days, 1 (3.33%) participant in BAC+DA compared to 3 (4.35%)
359 participants in T-BAC, $p=0.934$; 35 days, 2 (6.67%) R-BAC+DA participants had bacterial
360 pneumonia, compared to 3 (4.35%) T-BAC participants, $p=0.548$ (**Table S3**).

361 Blood analysis with no adjustment for multiple testing showed a significant
362 treatment effect in the BAC+DA vs. T-BAC group comparison for three parameters:
363 lymphocyte counts, D-dimer, and procalcitonin (PCT). First, R-BAC+DA exhibited higher
364 lymphocyte counts with LS mean of 0.87 (95% CI, 0.76-0.98) in the T-BAC group vs. 1.08
365 (95% CI, 0.92-1.27) in R-BAC+DA participants, $p=0.02$ (**Figure 4A, Table S2**). Amongst
366 individuals with lymphopenia at baseline ($<1 \times 10^9$ lymphocytes/L), the R-BAC+DA group
367 exhibited a greater increase in blood lymphocyte numbers compared to the T-BAC group
368 throughout the entire length of treatment. Furthermore, D-dimer levels were lower in R-
369 BAC+DA participants compared to T-BAC participants, with LS mean D-dimer difference of
370 1657 (95% CI, 3131-877) (**Figure 4B and S4A**). R-BAC+DA participants also exhibited lower
371 levels of PCT, mean 0.18 ng/mL (95% CI, -0.2-0.56) compared to the T-BAC group, mean 1.31
372 ng/mL (95% CI, 0.56-2.05), $p=0.005$. Repeat analysis excluding the CC-BAC population
373 replicated these results, and changes in all 3 parameters were significant (**Table S2**).

374

375 *Exploratory outcomes*

376 Given the potential role of circulating cf-DNA in pathology, we examined whether
377 the pulmonary administration of dornase alfa influenced cf-DNA levels circulating in plasma.
378 Compared to anonymized healthy donor volunteers at the Francis Crick institute (HD), cf-
379 DNA levels were elevated in the plasmas of all R-BAC and R-BAC-DA randomised COVASE
380 participants. There was no difference in baseline plasma cf-DNA levels between the two
381 randomised participant groups. Notably, during the treatment period plasma cf-DNA was
382 reduced in R-BAC+DA compared to R-BAC participants (**Figure 4C and Figure S4B**).
383 Moreover, there was a positive correlation between the levels of cf-DNA in the final sample
384 collected during the treatment period and the magnitude of CRP reduction measured as the
385 ratio of final over baseline CRP ($CRP_{final}/CRP_{baseline}$) (**Figure 4D**). Moreover, samples with cf-

386 DNA >100µg/mL exhibited significantly higher D-dimer levels compared to samples with cf-
387 DNA levels <100µg/mL (**Figure 4E**). Hence, dornase alfa treatment was associated with a
388 suppression of circulating cf-DNA that correlated with a reduced risk for coagulopathy and a
389 more sustained reduction in CRP.

390

391 *Safety*

392 Dornase alfa was well tolerated with no systemic side-effects which is consistent
393 with its short half-life *in vivo* (**Table S4**). Overall, there were 10 reported adverse events
394 (AEs) in the study, in 9 R-BAC and 30 R-BAC+DA participants (**Table S5**). Of these, one was
395 reported by the clinical team as definitely related and one as unlikely to be related to
396 dornase alfa. No treatment-related serious AEs were reported.

397

398

399

400 DISCUSSION

401 Our findings show that nebulised dornase alfa significantly reduced systemic
402 inflammation as measured by plasma CRP concentrations in patients with severe COVID-19
403 pneumonia even when already receiving dexamethasone. Dornase alfa exhibited a robust
404 anti-inflammatory effect as assessed with several sensitivity analyses including analysis of
405 only randomised participants, excluding CC-BAC participants. These findings confirm the
406 usefulness of CRP as a sensitive readout to monitor the impact of anti-inflammatory agents
407 in small cohorts. Improvements in care were also indicated by other biomarkers and
408 secondary endpoints when both randomised and CC-BAC participants were considered.
409 Moreover, despite not being formally powered for length of stay, dornase alfa reduced time
410 to discharge over 35 days.

411 During the pandemic, the identification of novel and repurposed treatments
412 effective for COVID-19 was hampered by patient recruitment to competing studies during
413 pandemic. This resulted in small studies with inconclusive or contrary findings. Our study
414 design took advantage of frequent repeated measures of CRP in each patient, to allow a
415 smaller sample size to determine efficacy. CRP was also a primary readout in CATALYST
416 (Fisher et al., 2022) and ATTRACT studies (Tornling et al., 2021). In addition, we used
417 contemporary controls as additional comparators to use limited resources more efficiently.

418 Following the RECOVERY trial, dexamethasone became the standard care in patients
419 with COVID-19 pneumonitis requiring oxygen. We recruited participants with CRP \geq 30
420 mg/L, on the day after receiving dexamethasone to minimise steroid-dependent effects on
421 CRP. The finding that dornase alfa can significantly reduce CRP in participants receiving
422 dexamethasone suggests a complementary mechanism of action with significant
423 improvement in existing standard anti-inflammatory care. Moreover, dornase alfa may be a
424 treatment choice for patients with mild COVID-19 pneumonia not requiring oxygen, in
425 whom dexamethasone may be harmful (Group et al., 2021).

426 The primary endpoint effect was consistently reflected in secondary outcomes.
427 Dornase alfa increased the chance of live discharge by 63% at any time up to 35 days,
428 reduce overall hospital stay. The reduction in hospital occupancy during the COVID-19
429 pandemic proved critical in sustaining life-saving treatment availability. In addition, dornase
430 alfa significantly increased lymphocyte counts and reduced D-dimer. In addition to the
431 increased mortality data we provide here, CRP levels are associated with venous

432 thromboembolic disease in COVID-19 with the worst outcomes seen in patients with high
433 CRP and D-dimers (Smilowitz et al., 2021). In a metanalysis of 32 studies involving 107491
434 COVID-19 patients, elevated CRP (OR 4.37, $p < 0.00001$), lymphopenia (3.33, $p < 0.00001$),
435 elevated D-dimer (3.39 ($p < 0.00001$) and elevated PCT (6.33, $p < 0.00001$) were independent
436 markers of poor outcomes (Malik et al., 2021).

437 Our study design offered a solution to the early screening of compounds for
438 inclusion in larger platform trials. The study took advantage of frequent repeated measures
439 of quantifiable CRP in each patient, to enable the determination of efficacy using a smaller
440 sample size to than if powered were based on clinical outcomes. We applied a CRP-based
441 approach that was similar to the CATALYST and ATTRACT studies (Fisher et al., 2022;
442 Tornling et al., 2021). CATALYST showed in much smaller groups (usual care, 54, namilumab,
443 57 and infliximab, 35) that the GM-CSF-blocking antibody namilumab reduced CRP even in
444 participants treated with dexamethasone whereas infliximab that targets TNF- α had no
445 significant effect on CRP. This led to a suggestion that namilumab should be considered as
446 an agent to be prioritised for further investigation in the RECOVERY trial. A direct
447 comparison of our results with CATALYST is difficult due to the different nature of the
448 modelling employed in the two studies. Nevertheless, dornase alfa exhibited comparable
449 significance in the reduction in CRP compared to standard of care as described for
450 namilumab at a fraction of the cost. Furthermore, endonuclease therapies may prove safer
451 and more applicable than cytokine-blocking monotherapies, as they are unlikely to increase
452 the risk for microbial co-infections which are a risk factor associated with antibody therapies
453 that neutralize inflammatory cytokines that are critical for immune defence such as IL-1 β , IL-
454 6 or GM-CSF.

455 In addition, dornase alfa reduced circulating cf-DNA levels, suggesting that lung
456 administration of the enzyme exerts systemic effects on circulating chromatin. The
457 reduction in plasma cf-DNA levels suggests that by stripping the DNA from chromatin,
458 dornase alfa suppresses the proinflammatory properties of histones and potentiates their
459 degradation (Papayannopoulos et al., 2011; Tsourouktsoglou et al., 2020). The inverse
460 correlation between final circulating cf-DNA and the reduction in CRP during treatment is
461 consistent with link between circulating chromatin and systemic inflammation observed in
462 animal models (Ioannou et al., 2022). The correlation between d-dimer and cf-DNA as well
463 as the reduction in D-dimer after dornase alfa treatment is consistent with the reported pro-

464 thrombotic role of NETs in the alveoli (Radermecker et al., 2020). Moreover, the
465 improvement in the recovery rates of lymphopenia support the link between extracellular
466 chromatin and lymphocyte death during sepsis that we also detected in individuals with
467 severe COVID-19 pneumonia (Aramburu et al., 2022; Ioannou et al., 2022). Another reason
468 why recombinant endonuclease treatment may be warranted in severe COVID-19 and
469 microbial sepsis infections is the significant reduction in endogenous NET chromatin
470 degradation capacity that strongly correlates with a high risk for mortality in these
471 conditions (Aramburu et al., 2022).

472 Nebulized dornase alfa treatment has several advantages. Whilst immunisation has
473 reduced COVID-19 hospital admissions, viral evolution and immune escape may still cause
474 substantial mortality and other symptoms associated with long-COVID. Hence, there will
475 always be a need for virally agnostic therapies that retain efficacy as viruses mutate.
476 Importantly, nebulised dornase alfa has the potential to control immune pathology in a
477 range of infections. Moreover, it can be administered safely and effectively in its nebulized
478 form, outside the health-care setting. Three other small trials of dornase alfa (totalling 18
479 patients) in COVID-19 have reported improved oxygenation (Holliday et al., 2021; Okur et
480 al., 2020; Weber et al., 2020). One small study indicated improvements in plasma and
481 sputum proteomic profiles (Fisher et al., 2021). Despite differing study designs, patient
482 populations and endpoints, there is a consensus for improvement in clinical outcomes.

483 Yet, there are a few limitations in this study. This single centre open-label study was
484 designed to powerfully report futility or efficacy despite including just under 40 randomised
485 patients and 60 CC-BAC. However, the trial was not powered to report mortality nor to
486 overcome confounders, such as the use of antivirals and tocilizumab, an IL-6 inhibitor
487 recognised to reduce CRP (Galvan-Roman et al., 2021), or the impact of an open-label study
488 on influencing other therapeutic/ discharge decisions. Although underpowered, we
489 demonstrate a trend to a reduction in CRP with dornase alfa in participants that had
490 received tocilizumab and/or remdesivir, and those that had not. Moreover, the open-label
491 nature of the study could potentially introduce a placebo effect bias. Nevertheless, we tried
492 to minimize this by applying a standard testing schedule and discharge criteria.

493 In conclusion, we demonstrate that nebulised dornase alfa significantly reduces
494 inflammation in hospitalised patients with severe COVID-19 pneumonia leading to improved
495 clinical profiles and earlier discharge from hospital. These results confirm the role of cf-DNA

496 in promoting systemic inflammation, coagulopathy and immune dysfunction in acute
497 respiratory infections and suggest that recombinant endonucleases provide an additional
498 mode of action that can broaden the effectiveness and sustainability of anti-inflammatory
499 regimens. These encouraging data warrant further investigation in other serious respiratory
500 infections characterized by hyperinflammation, cell lysis and NET formation.
501

502 **Acknowledgements**

503 We thank the patients, caregivers, and families who participated in the trial; and
504 acknowledge the help of the following: Additional BRC Contributors: Margaret Duku, Gulten
505 Geneci, Farah Islam, Ciprian-Ionut Matei, Marta Merida, Eleni Nastouli, Marivic Ricamara,
506 Anisa Tariq. Pharmacy: Matthew Baker, Nina Bason, Chi Yee Chung, Zoila Gilham-Fernandez,
507 Temi Olusi. Sponsors/UCL: Liam Banks, Helen Cadiou, Novin Fard, Farhat Gilani, Vince
508 Greaves, Yusuf Jaami, Pushpsen Joshi, Misha Ladva, David Lomas, Catherine Maidens,
509 Anthea Mo, Anisha Nayar, Nick McNally, Samim Patel. Data Monitoring Committee: Balaji
510 Ganeshan, Maria Leandro, Kay Roy. COVID Clinical Consultants: Diana Ayoola, Robin Bailey,
511 David Brealey, Mike Brown, Anna Checkley, Charlie Coughlan, Philip Gothard, Robert
512 Heyderman, Sarah Logan, Nicky Longley, Jessica Manson, Michael Marks, David Moore, Neil
513 Stone, Emma Wall. T8 Nursing Staff: Adam Cureton-Griffiths, Amy Mann, Laura Nichols,
514 Pantelis Savvides. NOCRI Respiratory Translational Research Collaboration: Chris Brightling,
515 Jane Davies, Ratko Djukanovic, Liam Heeney, Ling-Pei Ho, Alex Horsley, Tracy Hussell, Stefan
516 Marciniak, Lorcan McGarvey, Thomas Wilkinson. Pari/Roche Products Limited/LifeArc: Mal
517 Apter, Ruth Davies, Ciara O'Brien, Pauline Stasiak, Davia Viellec.

518

519 **Funding**

520 This work was supported by LifeArc (UCL-UCLH132333), UCL, Breathing Matters and the
521 Francis Crick Institute which receives its core funding from the UK Medical Research Council
522 (FC0010129), Cancer Research UK (FC0010129) and the Wellcome Trust (FC0010129). The
523 study was undertaken at UCLH/UCL who received a proportion of funding from the
524 Department of Health's NIHR Biomedical Research Centres funding scheme. VJS and DB are
525 funded by the NIHR University College London Hospitals Biomedical Research Centre. I.V.A
526 was funded by an EMBO LTF (ALTF 113-2019). Dornase alfa was provided by Roche Products
527 Limited and nebulizers were donated by PARI. Disclosure forms provided by the authors are
528 available with the full text of the published article.

529

530 **Author contributions:**

531 VP conceived the study. JCP, JI, ED, BW, AF, PTL, VB and VP contributed to the concept and
532 design of the study. JCP, VJS, ED, RE, MIT, NDV, IVA, DH, DB, TC, JG, AW, HE, VJ, AL, TR, VP
533 contributed to the acquisition of data. ETH, LL, FK designed and directed the Berlin Pa-

534 COVID-19 study. JCP, JI, AF and VP contributed to analysis, and/or interpretation of data or
535 the creation of new software used in the work. JCP, JI, PTL and VP drafted the
536 manuscript. VP graphed and compiled figures and handled revisions. All authors have
537 approved the submitted version (and any substantially modified version that involves the
538 author's contribution to the study); and to have agreed both to be personally accountable
539 for the author's own contributions and to ensure that questions related to the accuracy or
540 integrity of any part of the work, even ones in which the author was not personally involved,
541 are appropriately investigated, resolved, and the resolution documented in the literature.
542 Roche Products Ltd conducted a factual accuracy check on the final version but any decision
543 to incorporate comments was made solely at the discretion of the authors.

544

545 The authors declare no conflicts of interest.

546

547

548 **References:**

- 549 (2000). American Thoracic Society. Idiopathic pulmonary fibrosis: diagnosis and treatment.
550 International consensus statement. American Thoracic Society (ATS), and the European Respiratory
551 Society (ERS). *Am J Respir Crit Care Med* 161, 646-664.
- 552 Aramburu, I.V., Hoving, D., Vernardis, S.I., Tin, M.C.F., Ioannou, M., Temkin, M.I., De Vasconcelos,
553 N.M., Demichev, V., Helbig, E.T., Lippert, L., *et al.* (2022). Functional proteomic profiling links
554 deficient DNA clearance with increased mortality in individuals with severe COVID-19 pneumonia.
555 *Immunity* 55, 2436-2453 e2435.
- 556 Cortjens, B., de Jong, R., Bonsing, J.G., van Woensel, J.B.M., Antonis, A.F.G., and Bem, R.A. (2018).
557 Local dornase alfa treatment reduces NETs-induced airway obstruction during severe RSV infection.
558 *Thorax* 73, 578-580.
- 559 Cui, Z., Merritt, Z., Assa, A., Mustehsan, H., Chung, E., Liu, S., Kumthekar, A., Ayesha, B., McCort, M.,
560 Palaiodimos, L., *et al.* (2021). Early and Significant Reduction in C-Reactive Protein Levels After
561 Corticosteroid Therapy Is Associated With Reduced Mortality in Patients With COVID-19. *J Hosp Med*
562 16, 142-148.
- 563 Fisher, B.A., Veenith, T., Slade, D., Gaskell, C., Rowland, M., Whitehouse, T., Scriven, J., Parekh, D.,
564 Balasubramaniam, M.S., Cooke, G., *et al.* (2022). Namilumab or infliximab compared with standard
565 of care in hospitalised patients with COVID-19 (CATALYST): a randomised, multicentre, multi-arm,
566 multistage, open-label, adaptive, phase 2, proof-of-concept trial. *Lancet Respir Med* 10, 255-266.
- 567 Fisher, J., Mohanty, T., Karlsson, C.A.Q., Khademi, S.M.H., Malmstrom, E., Frigyesi, A., Nordenfelt, P.,
568 Malmstrom, J., and Linder, A. (2021). Proteome Profiling of Recombinant DNase Therapy in Reducing
569 NETs and Aiding Recovery in COVID-19 Patients. *Mol Cell Proteomics* 20, 100113.
- 570 Galvan-Roman, J.M., Rodriguez-Garcia, S.C., Roy-Vallejo, E., Marcos-Jimenez, A., Sanchez-Alonso, S.,
571 Fernandez-Diaz, C., Alcaraz-Serna, A., Mateu-Albero, T., Rodriguez-Cortes, P., Sanchez-Cerrillo, I., *et*
572 *al.* (2021). IL-6 serum levels predict severity and response to tocilizumab in COVID-19: An
573 observational study. *J Allergy Clin Immunol* 147, 72-80 e78.
- 574 Group, R.C., Horby, P., Lim, W.S., Emberson, J.R., Mafham, M., Bell, J.L., Linsell, L., Staplin, N.,
575 Brightling, C., Ustianowski, A., *et al.* (2021). Dexamethasone in Hospitalized Patients with Covid-19.
576 *The New England journal of medicine* 384, 693-704.
- 577 Herold, T., Jurinovic, V., Arnreich, C., Lipworth, B.J., Hellmuth, J.C., von Bergwelt-Baildon, M., Klein,
578 M., and Weinberger, T. (2020). Elevated levels of IL-6 and CRP predict the need for mechanical
579 ventilation in COVID-19. *The Journal of allergy and clinical immunology* 146, 128-136 e124.
- 580 Holliday, Z.M., Earhart, A.P., Alnijoumi, M.M., Krvavac, A., Allen, L.H., and Schrum, A.G. (2021). Non-
581 Randomized Trial of Dornase Alfa for Acute Respiratory Distress Syndrome Secondary to Covid-19.
582 *Front Immunol* 12, 714833.
- 583 Ioannou, M., Hoving, D., Aramburu, I.V., Temkin, M.I., De Vasconcelos, N.M., Tsourouktsoglou, T.D.,
584 Wang, Q., Boeing, S., Goldstone, R., Vernardis, S., *et al.* (2022). Microbe capture by splenic
585 macrophages triggers sepsis via T cell-death-dependent neutrophil lifespan shortening. *Nature*
586 *communications* 13, 4658.
- 587 Konstan, M.W., and Ratjen, F. (2012). Effect of dornase alfa on inflammation and lung function:
588 potential role in the early treatment of cystic fibrosis. *J Cyst Fibros* 11, 78-83.
- 589 Kurth, F., Roenefarth, M., Thibeault, C., Corman, V.M., Muller-Redetzky, H., Mittermaier, M.,
590 Ruwwe-Glosenkamp, C., Heim, K.M., Krannich, A., Zvorc, S., *et al.* (2020). Studying the
591 pathophysiology of coronavirus disease 2019: a protocol for the Berlin prospective COVID-19 patient
592 cohort (Pa-COVID-19). *Infection* 48, 619-626.
- 593 Lazarus, R.A., and Wagenert, J.S. (2019). Recombinant Human Deoxyribonuclease I. In
594 *Pharmaceutical Biotechnology: Fundamentals and Applications*, D.J.A. Crommelin, R.D. Sindelar, and
595 B. Meibohm, eds. (Cham: Springer International Publishing), pp. 471-488.
- 596 Liu, F., Li, L., Xu, M., Wu, J., Luo, D., Zhu, Y., Li, B., Song, X., and Zhou, X. (2020). Prognostic value of
597 interleukin-6, C-reactive protein, and procalcitonin in patients with COVID-19. *J Clin Virol* 127,
598 104370.

- 599 Luo, X., Zhou, W., Yan, X., Guo, T., Wang, B., Xia, H., Ye, L., Xiong, J., Jiang, Z., Liu, Y., *et al.* (2020).
600 Prognostic Value of C-Reactive Protein in Patients With Coronavirus 2019. *Clin Infect Dis* *71*, 2174-
601 2179.
- 602 Malik, P., Patel, U., Mehta, D., Patel, N., Kelkar, R., Akrmah, M., Gabrilove, J.L., and Sacks, H. (2021).
603 Biomarkers and outcomes of COVID-19 hospitalisations: systematic review and meta-analysis. *BMJ*
604 *Evid Based Med* *26*, 107-108.
- 605 McArdle, P.A., McMillan, D.C., Sattar, N., Wallace, A.M., and Underwood, M.A. (2004). The
606 relationship between interleukin-6 and C-reactive protein in patients with benign and malignant
607 prostate disease. *Br J Cancer* *91*, 1755-1757.
- 608 Messner, C.B., Demichev, V., Wendisch, D., Michalick, L., White, M., Freiwald, A., Textoris-Taube, K.,
609 Vernardis, S.I., Egger, A.S., Kreidl, M., *et al.* (2020). Ultra-High-Throughput Clinical Proteomics
610 Reveals Classifiers of COVID-19 Infection. *Cell Syst* *11*, 11-24 e14.
- 611 Mueller, A.A., Tamura, T., Crowley, C.P., DeGrado, J.R., Haider, H., Jezmir, J.L., Keras, G., Penn, E.H.,
612 Massaro, A.F., and Kim, E.Y. (2020). Inflammatory Biomarker Trends Predict Respiratory Decline in
613 COVID-19 Patients. *Cell Rep Med* *1*, 100144.
- 614 Okur, H.K., Yalcin, K., Tastan, C., Demir, S., Yurtsever, B., Karakus, G.S., Kancagi, D.D., Abanuz, S.,
615 Seyis, U., Zengin, R., *et al.* (2020). Preliminary report of in vitro and in vivo effectiveness of dornase
616 alfa on SARS-CoV-2 infection. *New Microbes New Infect* *37*, 100756.
- 617 Papayannopoulos, V. (2018). Neutrophil extracellular traps in immunity and disease. *Nat Rev*
618 *Immunol* *18*, 134-147.
- 619 Papayannopoulos, V., Staab, D., and Zychlinsky, A. (2011). Neutrophil elastase enhances sputum
620 solubilization in cystic fibrosis patients receiving DNase therapy. *PloS one* *6*, e28526.
- 621 Pillai, P.S., Molony, R.D., Martinod, K., Dong, H., Pang, I.K., Tal, M.C., Solis, A.G., Bielecki, P.,
622 Mohanty, S., Trentalange, M., *et al.* (2016). Mx1 reveals innate pathways to antiviral resistance and
623 lethal influenza disease. *Science* *352*, 463-466.
- 624 Radermecker, C., Detrembleur, N., Guiot, J., Cavalier, E., Henket, M., d'Emal, C., Vanwinge, C.,
625 Cataldo, D., Oury, C., Delvenne, P., and Marichal, T. (2020). Neutrophil extracellular traps infiltrate
626 the lung airway, interstitial, and vascular compartments in severe COVID-19. *J Exp Med* *217*.
- 627 Siddiqi, H.K., and Mehra, M.R. (2020). COVID-19 illness in native and immunosuppressed states: A
628 clinical-therapeutic staging proposal. *J Heart Lung Transplant* *39*, 405-407.
- 629 Smilowitz, N.R., Kunichoff, D., Garshick, M., Shah, B., Pillinger, M., Hochman, J.S., and Berger, J.S.
630 (2021). C-reactive protein and clinical outcomes in patients with COVID-19. *Eur Heart J* *42*, 2270-
631 2279.
- 632 Tornling, G., Batta, R., Porter, J.C., Williams, B., Bengtsson, T., Parmar, K., Kashiva, R., Hallberg, A.,
633 Cohrt, A.K., Westergaard, K., *et al.* (2021). Seven days treatment with the angiotensin II type 2
634 receptor agonist C21 in hospitalized COVID-19 patients; a placebo-controlled randomised multi-
635 centre double-blind phase 2 trial. *EclinicalMedicine* *41*, 101152.
- 636 Tsourouktsoglou, T.D., Warnatsch, A., Ioannou, M., Hoving, D., Wang, Q., and Papayannopoulos, V.
637 (2020). Histones, DNA, and Citrullination Promote Neutrophil Extracellular Trap Inflammation by
638 Regulating the Localization and Activation of TLR4. *Cell Rep* *31*, 107602.
- 639 Ullah, W., Basyal, B., Tariq, S., Almas, T., Saeed, R., Roomi, S., Haq, S., Madara, J., Boigon, M., Haas,
640 D.C., and Fischman, D.L. (2020). Lymphocyte-to-C-Reactive Protein Ratio: A Novel Predictor of
641 Adverse Outcomes in COVID-19. *J Clin Med Res* *12*, 415-422.
- 642 Villoteau, A., Asfar, M., Otekpo, M., Loison, J., Gautier, J., Annweiler, C., and group, G.-C.s. (2021).
643 Elevated C-reactive protein in early COVID-19 predicts worse survival among hospitalized geriatric
644 patients. *PloS one* *16*, e0256931.
- 645 Weber, A.G., Chau, A.S., Egeblad, M., Barnes, B.J., and Janowitz, T. (2020). Nebulized in-line
646 endotracheal dornase alfa and albuterol administered to mechanically ventilated COVID-19 patients:
647 a case series. *Mol Med* *26*, 91.
- 648 Xu, J., Zhang, X., Monestier, M., Esmon, N.L., and Esmon, C.T. (2011). Extracellular histones are
649 mediators of death through TLR2 and TLR4 in mouse fatal liver injury. *J Immunol* *187*, 2626-2631.

650 Xu, J., Zhang, X., Pelayo, R., Monestier, M., Ammollo, C.T., Semeraro, F., Taylor, F.B., Esmon, N.L.,
651 Lupu, F., and Esmon, C.T. (2009). Extracellular histones are major mediators of death in sepsis. *Nat*
652 *Med* 15, 1318-1321.
653 Zhou, F., Yu, T., Du, R., Fan, G., Liu, Y., Liu, Z., Xiang, J., Wang, Y., Song, B., Gu, X., *et al.* (2020). Clinical
654 course and risk factors for mortality of adult inpatients with COVID-19 in Wuhan, China: a
655 retrospective cohort study. *Lancet* 395, 1054-1062.
656 Zuo, Y., Yalavarthi, S., Shi, H., Gockman, K., Zuo, M., Madison, J.A., Blair, C., Weber, A., Barnes, B.J.,
657 Egeblad, M., *et al.* (2020). Neutrophil extracellular traps in COVID-19. *JCI Insight* 5.

658

659

660 **MAIN FIGURE LEGENDS**

661 **Figure 1. Trial design and Consort diagram**

662 A. COVASE Trial Design.

663 B. Consort diagram summary. Numbers not in parentheses indicate the participants in the
664 ITT population and the numbers in parentheses indicate the number of participants in the
665 per-protocol population. A complete consort diagram is shown in Supplementary figure 1.

666

667 **Figure 2. Longitudinal CRP predicts survival probability in severe COVID-19 pneumonia.**

668 A. Individual CRP concentrations in 465 plasmas from 63 participants with maximum WHO
669 severity grade 7 COVID-19 pneumonia segregated into survivor and deceased groups,
670 extracted from the Berlin COVID-19 study.

671 B. Participants ordered by their longitudinal average CRP concentrations shown in the left
672 column. Mortality is depicted in yellow in the right column.

673 C. Kaplan Meier survival probabilities (left panel) and numbers at risk (right panel) for
674 patients segregated into three categories of longitudinal average CRP ranges: 0-100, 100-
675 200, and 200-450 mg / L. Statistical significance (P), Hazard ratios (HR) and 95% confidence
676 intervals (95% CI) for group 1 against group 3 and group 2 against group 3 are shown below
677 the survival plot.

678 Statistics by Mann-Whitney and Mantel-Cox log rank tests.

679

680 **Figure 3. Analysis of primary and clinical endpoints**

681 A. Fitted mean (95% confidence interval) from mixed model of natural log (CRP) over 7 days
682 follow-up as the outcome. (Left panel) randomised participants only: Blue: participants
683 randomised to R-BAC, N=9; Pink: participants randomised to R-BAC+DA, N=30. (Right panel)
684 ITT population: Blue: T-BAC (CC-BAC and R-BAC) N=69; Pink: R-BAC+DA, N=30. Results were
685 adjusted for natural log baseline CRP, age, sex, BMI, serious comorbidity (Diabetes,
686 Cardiovascular disease or hypertension), time and a treatment × time interaction. P-value
687 generated by comparing least-square means between arms.

688 B. Distribution of participants based on the change in CRP measured as a ratio of the final
689 CRP reading within the 7-day treatment period over the baseline CRP reading per patient.
690 Statistical analysis by Fisher's test.

691 C. Kaplan-Meier plot showing time to discharge from hospital from baseline. Hazard ratio
692 from Cox proportional hazards model adjusted for baseline CRP, age, sex, BMI, serious
693 comorbidity (diabetes, cardiovascular disease of hypertension). P-value from log-rank test.
694 (Blue: CC-BAC and participants randomised to R-BAC, N=69. Pink: participants randomised
695 to R-BAC+DA, N=30).

696 D. Kaplan-Meier plot showing time to death over 35 days follow up. Hazard ratio from Cox
697 proportional hazards model adjusted for baseline CRP, age, sex, BMI, serious comorbidity
698 (Diabetes, Cardiovascular disease of hypertension). P-value from log-rank test.

699

700 **Figure 4. Analysis of secondary and exploratory endpoints in blood**

701 A. Difference between the lymphocyte count for each day of the treatment period and the
702 baseline in each ITT participant who exhibited lymphopenia at baseline ($<1 \times 10^9$
703 lymphocytes/mL). Mean and 95%CI interval is shown with statistical analysis by two-way
704 Anova.

705 B. Mean D-dimer levels per day in randomised R-BAC (blue) and R-BAC+DA (pink)
706 participants with error bars depicting 95% CI. Statistical difference by mixed effects Anova
707 analysis.

708 C. Mean cf-DNA levels per day in randomised R-BAC (blue) and R-BAC+DA (pink)
709 participants, with error bars depicting standard deviation. Statistical analysis by mixed
710 effects Anova.

711 D. Correlation between the final cf-DNA levels and ratio of CRP at day-7 normalized to the
712 baseline CRP ($CRP_{final}/CRP_{baseline}$) per randomised participant. Fitting by non-linear
713 regression.

714 E. Correlation between D-dimer and cf-DNA levels in the blood of participants randomised
715 to R-BAC (blue) or to R-BAC+DA (DA) (pink), where samples were segregated depending on

716 whether the corresponding levels of cf-DNA were below or above 100 µg/mL. Statistical
717 analysis by unpaired parametric t-test.
718

719 **Table 1. Patient baseline characteristics**

| | R-BAC+DA | R-BAC | CC-BAC | T-BAC | Total |
|-----------------------------------|-----------------|--------------|---------------|---------------|---------------|
| | (N=30) | (N=9) | (N=60) | (N=69) | (N=99) |
| Age (years) | | | | | |
| Mean | 56.8 | 53.3 | 57.3 | 56.8 | 56.8 |
| SD | 12.5 | 13.7 | 14.5 | 14.3 | 13.7 |
| Median | 58.0 | 53.0 | 57.0 | 57.0 | 57.0 |
| Min | 32.0 | 31.0 | 23.0 | 23.0 | 23.0 |
| Max | 77.0 | 76.0 | 86.0 | 86.0 | 86.0 |
| Gender | | | | | |
| Female N (%) | 7 (23.3) | 2 (22.2) | 15 (25.0) | 17 (24.6) | 24 (24.2) |
| Male N (%) | 23 (76.7) | 7 (77.8) | 45 (75.0) | 52 (75.4) | 75 (75.8) |
| BMI (kg/m²) | | | | | |
| Mean | 27.8 | 30.8 | 27.8 | 28.2 | 28.0 |
| SD | 4.7 | 7.8 | 5.6 | 6.0 | 5.6 |
| Median | 26.5 | 28.9 | 27.9 | 28.2 | 27.7 |
| Min | 20.7 | 22.6 | 16.3 | 16.3 | 16.3 |
| Max | 41.7 | 48.4 | 43.8 | 48.4 | 48.4 |
| Baseline CRP | | | | | |
| (mg/L) | | | | | |
| Mean | 101.9 | 91.9 | 100.7 | 99.5 | 100.2 |
| SD | 52.2 | 68.1 | 68.3 | 67.8 | 63.3 |
| Median | 86.3 | 74.6 | 75.8 | 75.3 | 79.6 |
| Min | 25.2 | 18.9 | 30.8 | 18.9 | 18.9 |
| Max | 261.5 | 221.6 | 336.4 | 336.4 | 336.4 |
| Comorbidity | | | | | |
| No N (%) | 16 (53.3) | 3 (33.3) | 28 (46.7) | 31 (44.9) | 47 (47.5) |
| Yes N (%) | 14 (46.7) | 6 (66.7) | 32 (53.3) | 38 (55.1) | 52 (52.5) |
| WHO ordinal severity score | | | | | |
| Mean | 5.0 | 5.0 | 4.63 | - | - |
| SD | 0.0 | 0.5 | 1.33 | - | - |
| Median | 5.0 | 5.0 | 5 | - | - |
| Min | 5.0 | 4.0 | 3 | - | - |
| Max | 5.0 | 6.0 | 7 | - | - |

WBC count

($\times 10^9/L$)

| | | | | | |
|--------|------|------|------|------|------|
| N | 30 | 9 | 60 | 69 | 99 |
| Mean | 6.7 | 7.0 | 10.6 | 10.2 | 9.1 |
| SD | 2.5 | 2.7 | 9.2 | 8.7 | 7.6 |
| Median | 6.5 | 7.0 | 9.5 | 8.9 | 7.9 |
| Min | 3.1 | 1.8 | 1.8 | 1.8 | 1.8 |
| Max | 12.9 | 10.3 | 72.6 | 72.6 | 72.6 |

Neutrophil count ($\times 10^9/L$)

| | | | | | |
|--------|------|-----|------|------|------|
| N | 30 | 9 | 60 | 69 | 99 |
| Mean | 5.7 | 5.6 | 9.1 | 8.7 | 7.8 |
| SD | 2.3 | 2.6 | 8.8 | 8.4 | 7.2 |
| Median | 5.3 | 5.8 | 7.9 | 7.9 | 6.7 |
| Min | 2.4 | 1.2 | 1.2 | 1.2 | 1.2 |
| Max | 10.9 | 8.6 | 69.5 | 69.5 | 69.5 |

Lymphocyte

count ($\times 10^9/L$)

| | | | | | |
|--------|-----|-----|-----|-----|-----|
| N | 30 | 9 | 60 | 69 | 99 |
| Mean | 0.7 | 0.9 | 0.9 | 0.9 | 0.9 |
| SD | 0.3 | 0.4 | 0.5 | 0.5 | 0.5 |
| Median | 0.5 | 0.9 | 0.8 | 0.8 | 0.7 |
| Min | 0.2 | 0.4 | 0.1 | 0.1 | 0.1 |
| Max | 1.5 | 1.5 | 3.7 | 3.7 | 3.7 |

Monocyte

count ($\times 10^9/L$)

| | | | | | |
|--------|-----|-----|-----|-----|-----|
| N | 30 | 9 | 60 | 69 | 99 |
| Mean | 0.4 | 0.4 | 0.5 | 0.5 | 0.4 |
| SD | 0.2 | 0.3 | 0.3 | 0.3 | 0.3 |
| Median | 0.3 | 0.3 | 0.4 | 0.4 | 0.4 |
| Min | 0.1 | 0.1 | 0.1 | 0.1 | 0.1 |
| Max | 0.9 | 0.8 | 1.7 | 1.7 | 1.7 |

Eosinophil

count ($\times 10^9/L$)

| | | | | | |
|--------|-----|-----|-----|-----|-----|
| N | 30 | 9 | 60 | 69 | 99 |
| Mean | 0.0 | 0.0 | 0.0 | 0.0 | 0.0 |
| SD | 0.1 | 0.0 | 0.1 | 0.1 | 0.1 |
| Median | 0.0 | 0.0 | 0.0 | 0.0 | 0.0 |
| Min | 0.0 | 0.0 | 0.0 | 0.0 | 0.0 |

| | | | | | |
|-------------------------------------|--------|--------|--------|--------|--------|
| Max | 0.2 | 0.1 | 0.6 | 0.6 | 0.6 |
| Basophil count | | | | | |
| ($\times 10^9/L$) | | | | | |
| N | 30 | 9 | 60 | 69 | 99 |
| Mean | 0.0 | 0.0 | 0.0 | 0.0 | 0.0 |
| SD | 0.0 | 0.0 | 0.0 | 0.0 | 0.0 |
| Median | 0.0 | 0.0 | 0.0 | 0.0 | 0.0 |
| Min | 0.0 | 0.0 | 0.0 | 0.0 | 0.0 |
| Max | 0.2 | 0.1 | 0.1 | 0.1 | 0.2 |
| Procalcitonin | | | | | |
| count (ng/ml) | | | | | |
| N | 27 | 8 | 1 | 9 | 36 |
| Mean | 0.3 | 0.3 | 19.3 | 2.4 | 0.8 |
| SD | 0.4 | 0.3 | - | 6.3 | 3.2 |
| Median | 0.1 | 0.2 | 19.3 | 0.2 | 0.2 |
| Min | 0.1 | 0.1 | 19.3 | 0.1 | 0.1 |
| Max | 1.8 | 0.8 | 19.3 | 19.3 | 19.3 |
| D-dimer (ug/L) | | | | | |
| FEU | | | | | |
| N | 30 | 9 | 15 | 24 | 54 |
| Mean | 885.0 | 909.1 | 1059.3 | 1003.0 | 937.4 |
| SD | 1154.5 | 1054.1 | 1115.0 | 1071.8 | 1109.6 |
| Median | 545.0 | 570.0 | 600.0 | 585.0 | 570.0 |
| Min | 190.0 | 1.9 | 280.0 | 1.9 | 1.9 |
| Max | 6580.0 | 3570.0 | 4460.0 | 4460.0 | 6580.0 |

720

721

722

723 Table 2. Primary endpoint and sensitivity analysis

| CRP (mg/L) | BAC+DA | BAC | Difference | p-value* |
|---|------------------|------------------|-------------------|-----------------|
| ITT population (R-BAC+ DA, R-BAC, CC-BAC) | | | | |
| N | 30 | 69 | | |
| LS means log(CRP)* | 3.15 | 3.55 | -0.4 | 0.010 |
| (95% CI) | (2.87 to 3.42) | (3.35 to 3.75) | (-0.71 to -0.10) | |
| LS means CRP ** | 23.23 | 34.82 | 0.67 | |
| (95% CI) | (17.71 to 30.46) | (28.55 to 42.47) | (0.49 to 0.91) | |
| Sensitivity Analyses | | | | |
| PP population (R-BAC+DA, R-BAC, CC-BAC) | | | | |
| N | 29 | 68 | | |
| LS means log(CRP)* | 3.12 | 3.55 | -0.43 | 0.006 |
| (95% CI) | (2.85 to 3.39) | (3.36 to 3.74) | (-0.73 to -0.13) | |
| LS means CRP** | 22.64 | 34.82 | 0.65 | |
| (95% CI) | (17.35 to 29.54) | (27.7 to 42.21) | (0.48 to 0.88) | |
| ITT population (R-BAC+DA, R-BAC) | | | | |
| N | 30 | 9 | | |
| LS means log(CRP)* | 3.1 | 3.59 | -0.5 | 0.041 |
| (95% CI) | (2.84 to 3.35) | (3.13 to 4.06) | (-0.97 to -0.02) | |
| LS means CRP** | 22.12 | 36.34 | 0.61 | |
| (95% CI) | (17.16 to 28.5) | (22.79 to 57.94) | (0.38 to 0.98) | |
| ITT population (R-BAC+DA, CC-BAC) | | | | |
| N | 30 | 60 | | |
| LS means log(CRP)* | 3.18 | 3.56 | -0.37 | 0.019 |
| (95% CI) | (2.91 to 3.45) | (3.35 to 3.76) | (-0.68 to -0.06) | |
| LS means CRP** | 24.09 | 35.03 | 0.69 | |
| (95% CI) | (18.36 to 31.6) | (28.44 to 43.15) | (0.5 to 0.94) | |
| ITT population (R-BAC, CC-BAC) | | | | |
| N | 9 | 60 | | |
| LS means log(CRP)* | 3.78 | 3.53 | 0.24 | 0.386 |
| (95% CI) | (3.23 to 4.33) | (3.3 to 3.77) | (-0.32 to 0.8) | |
| LS means CRP** | 43.69 | 34.23 | 1.28 | |
| (95% CI) | (25.18 to 75.8) | (27.11 to 43.24) | (0.73 to 2.23) | |
| Area under the log(CRP), standardised by days followed up, over 7 days follow-up | | | | |
| ITT population (R-BAC+DA, R-BAC, CC-BAC) | | | | |
| N | 30 | 69 | | |
| LS means area ^a | 3.45 | 3.72 | -0.27 | 0.043 |

| | | | | |
|---|-------------------|------------------|------------------|-------|
| (95% CI) | (3.22 to 3.68) | (3.55 to 3.88) | (-0.53 to -0.01) | |
| ITT population (R-BAC+DA, R-BAC, CC-BAC) including last pre-Dexamethasone CRP value | | | | |
| N | 30 | 69 | | |
| LS means log(CRP)* | 3.16 | 3.69 | -0.53 | 0.007 |
| (95% CI) | (2.83 to 3.5) | (3.44 to 3.93) | (-0.91 to -0.14) | |
| LS means CRP** | 23.57 | 39.92 | 0.59 | |
| (95% CI) | (16.85 to 32.970) | (31.32 to 50.89) | (0.4 to 087) | |
| ITT population (R-BAC+DA, R-BAC, CC-BAC) stratified by BAC treatment | | | | |
| No Remdesivir or Tocilizumab | | | | |
| N | 12 | 39 | | |
| LS means log(CRP)* | 3.29 | 3.75 | -0.45 | 0.079 |
| (95% CI) | (2.83 to 3.76) | (3.45 to 4.04) | (-0.96 to 0.05) | |
| LS means CRP** | 26.97 | 42.35 | 0.64 | |
| (95% CI) | (16.87 to 43.11) | (31.44 to 57.04) | (0.38 to 1.06) | |
| Remdesivir no Tocilizumab | | | | |
| N | 16 | 23 | | |
| LS means log(CRP)* | 3.16 | 3.5 | -0.35 | 0.123 |
| (95% CI) | (2.79 to 3.53) | (3.18 to 3.83) | (-0.79 to 0.1) | |
| LS means CRP** | 23.53 | 33.26 | 0.71 | |
| (95% CI) | (16.29 to 33.99) | (23.97 to 46.15) | (0.45 to 1.1) | |
| Tocilizumab no Remdesivir | | | | |
| N | 1 | 5 | | |
| Remdesivir and Tocilizumab | | | | |
| N | 1 | 2 | | |
| * From linear repeated measures model, adjusted for natural log(baseline CRP, age, sex, BMI, serious condition, time, treatment, a treatment*time interaction, and subject as a random effect. Least squares means compared at mean follow-up time. | | | | |
| ** Antilog of estimates from *. Ratio of BAC + dorna-alfa: BAC shown in the difference column. | | | | |
| ^a From linear model, adjusted for natural log(baseline CRP, age, sex, BMI, serious condition, and treatment). | | | | |

724
725
726
727
728
729
730
731
732
733
734

735 Table 3. Primary endpoint by day

736

737 Mean Ln CRP over 7 days follow-up by treatment: ITT population including all individuals (R-BAC+DA, R-
738 BAC & CC-BAC).

739

| Days from baseline | Mean | | N | Mean | SD BAC | N |
|-----------------------|-------------|----------------|-------------|-------|--------|----|
| | BAC + DA | SD BAC + DA | BAC + DA | BAC | | |
| 1 | 4.058 | 0.591 | 21 | 4.029 | 0.734 | 42 |
| 2 | 3.538 | 0.658 | 33 | 3.852 | 0.937 | 52 |
| 3 | 3.332 | 0.816 | 24 | 3.839 | 1.037 | 53 |
| 4 | 2.917 | 1.017 | 17 | 3.573 | 1.132 | 37 |
| 5 | 2.52 | 1.118 | 15 | 3.872 | 1.157 | 24 |
| 6 | 3.059 | 1.508 | 12 | 3.547 | 1.516 | 26 |
| 7 | 3.386 | 1.824 | 9 | 3.504 | 1.451 | 27 |
| 8 | 3.428 | - | 1 | 2.478 | 1.393 | 9 |

740

741

742

Figure 1

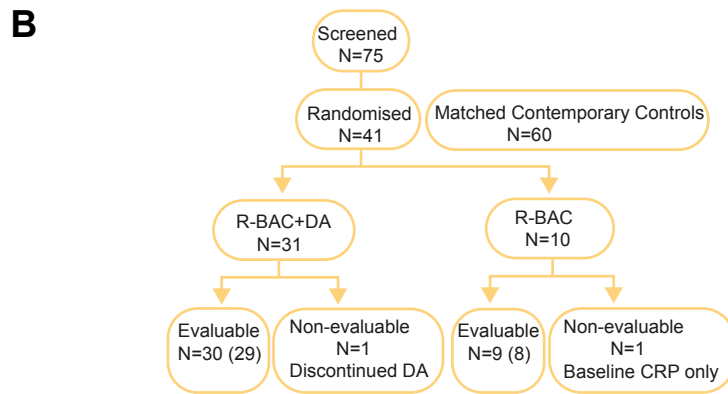
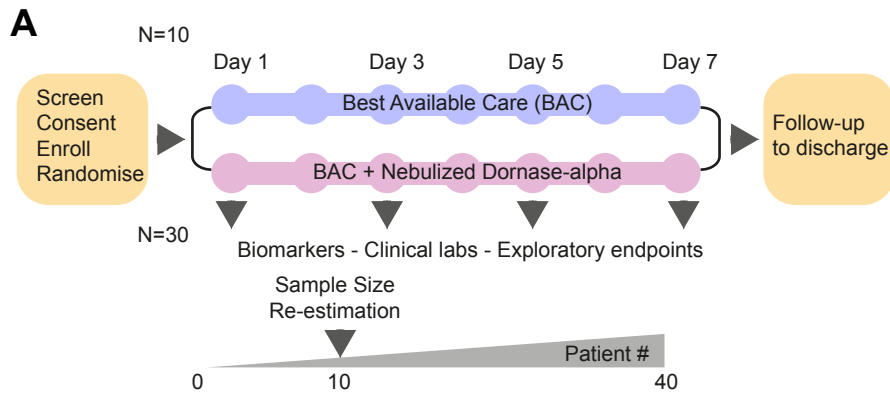


Figure 2

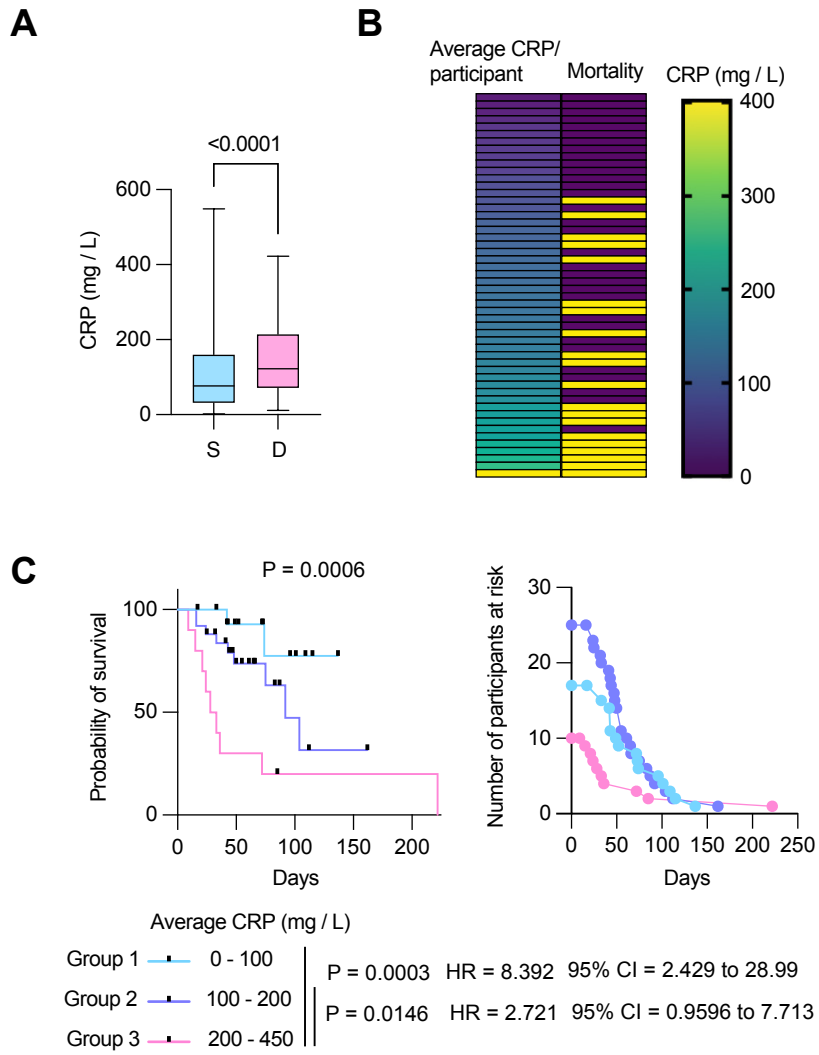


Figure 3

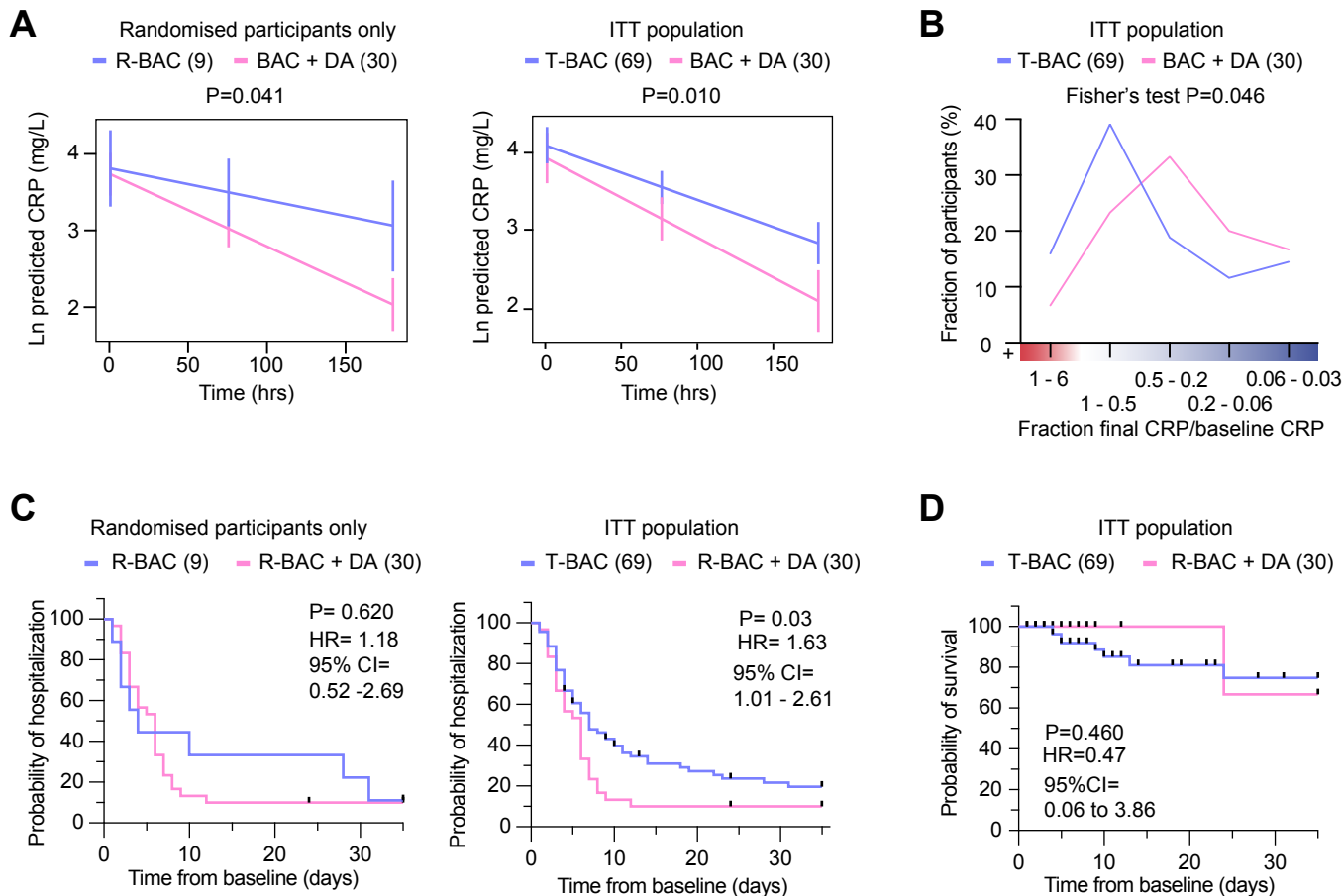


Figure 4

