

1 Triangulating evidence in health sciences with 2 Annotated Semantic Queries

3 Yi Liu^{1,*} and Tom R Gaunt^{1,2,*}

4 ¹MRC Integrative Epidemiology Unit, Bristol Medical School, University of Bristol, Bristol, UK

5 ²NIHR Bristol Biomedical Research Centre, University of Bristol, Bristol, UK

6 *corresponding authors

7 ABSTRACT

Integrating information from data sources representing different study designs has the potential to strengthen evidence in population health research. However, this concept of evidence “triangulation” presents a number of challenges for systematically identifying and integrating relevant information. We present ASQ (Annotated Semantic Queries), a natural language query interface to the integrated biomedical entities and epidemiological evidence in EpiGraphDB, which enables users to extract
8 “claims” from a piece of unstructured text, and then investigate the evidence that could either support, contradict the claims, or offer additional information to the query. This approach has the potential to support the rapid review of pre-prints, grant applications, conference abstracts and articles submitted for peer review. ASQ implements strategies to harmonize biomedical entities in different taxonomies and evidence from different sources, to facilitate evidence triangulation and interpretation. ASQ is openly available at <https://asq.epigraphdb.org>.

9 Compiled at 2022-04-12 16:38.

10 1 Introduction

11 Researchers in health sciences are encouraged to seek multiple strands of complementary ev-
12 idence to minimise the risk of bias creating false positives. This has been referred to as the
13 *triangulation*¹ of evidence, which may combine results from different study designs with differ-
14 ent sources of bias, including from established findings in the literature. Platforms which offer
15 a portal to integrated heterogeneous data such as Open Targets² and EpiGraphDB³ are highly
16 valuable sources which have the potential to support evidence triangulation by integrating evi-
17 dence with relevant information from a range of dedicated data providers, including biomedical
18 ontologies^{4,5}, genetic associations⁶ and literature-derived evidence⁷. One of the main objec-
19 tives for the web interface of such integrated data platforms is to present users with focused in-
20 formation from various integrated sources in order to facilitate the fast navigation and discovery
21 of evidence. However, there is a need to improve accessibility of such complex data resources
22 for less experienced users and to improve the interpretability of data, transforming source data
23 into comprehensible evidence and knowledge regarding a research question. There are several
24 challenges in order for these issues to be addressed, such as: how can a research question be
25 represented so that evidence can be retrieved for triangulation, how should we integrate biomed-
26 ical entities from different taxonomies and their relationships, and what strategies should we use
27 to form larger *evidence* groups from heterogeneous source data and methods to prioritise the
28 retrieved evidence?

29 We approach the above-mentioned challenges by developing a scientific claim query plat-
30 form Annotated Semantic Queries (ASQ; <https://asq.epigraphdb.org>) on top of the in-
31 tegrated biomedical knowledge and evidence of the EpiGraphDB³ data and ecosystem, where
32 users are able to investigate the various groups of evidence that support / contradict a claim,
33 and assist their further investigation into the source data that relates to that claim. Scientific
34 claims from a query text (e.g. the abstract of a pre-print) are parsed into claim triples (in the
35 form of `Subject PREDICATE Object`) in ASQ, where the subject and object terms are an-
36 notated with ontology terms and then mapped to evidence entities in an *entity harmonization*
37 process, by a combination of high-dimensional text embeddings and sequence classification
38 methods. Evidence from difference sources are then retrieved and harmonized into two groups
39 – a *triple and literature* evidence group comprised of literature and literature-derived evidence,
40 and an *association* evidence group comprised of statistical association results from systematic
41 analyses. Evidence items are then assigned with scores that reflect their strength as well as
42 their relevance to the claim, so that ASQ is able to present evidence which would be of poten-
43 tial high value to the user in order for them to assess and triangulate the evidence regarding a
44 scientific claim. Here we discuss the implementation of the ASQ platform and components and
45 demonstrate its use for systematic analysis of claims derived from MedRxiv⁸ submissions from
46 2020 to 2021.

47 2 Results

48 2.1 The EpiGraphDB-ASQ platform

49 [Figure 1 here]

50 The ASQ platform is developed as a natural language interface component to the epidemi-
51 ological evidence integrated in EpiGraphDB database and ecosystem (Figure 1), with the aim
52 of allowing users to access EpiGraphDB knowledge and triangulate the evidence using a sim-
53 ple scientific claim of interest as a starting point. For example, instead of relying on bespoke
54 topic-specific web queries that are restricted to several entities or meta-entities or via struc-
55 tural queries to the database, ASQ presents the integrated evidence from EpiGraphDB as in-
56 trospectable evidence items that “fact-check” a claim “glucose can be used to treat diabetes”
57 (Figure 2) or a short piece of text containing multiple such claims.

58 [Figure 2 here]

59 Various components of epidemiological evidence from EpiGraphDB are incorporated into
60 the ASQ platform as two **evidence groups** (Table 1):

- 61 1. A *triple and literature* evidence group which consists of both the semantic triples derived
62 from literature sources that are integrated from SemMedDB⁷ and the source literature
63 articles from PubMed from which the triples are derived (Supplementary tables 1 and
64 2). Typically an evidence item in this group is comprised of a semantic triple in the form
65 of `Subject-PREDICATE-Object` (e.g. “Obesity CAUSES Asthma”) and the multiple
66 source literature items containing specific context details in the literature title and abstract
67 text. SemMedDB imports parsed entities and triples from SemRep⁹ which normalizes
68 terms mentioned in a text document into UMLS Metathesaurus entities¹⁰ and predicate
69 relationships into Semantic Network relationships¹¹.

70 2. An *association* evidence group which consists of various sources of curated systematic
71 statistical association analysis studies using systematic Mendelian Randomization analy-
72 ses (the [MR_EVE_MR]¹² relationships in EpiGraphDB data; see Supplementary Table 4
73 for notation conventions), genetic correlations (the [GEN_COR]¹³ relationships), and poly-
74 genic risk score associations (the [PRS]¹⁴ relationships), where the analyses are con-
75 ducted between two human traits for which genome-wide association study (GWAS) data
76 are curated by OpenGWAS⁶ (the (Gwas) nodes in EpiGraphDB). ASQ incorporates the
77 common properties of *effect size*, *standard error*, *P-Value*, as well as *source/target* GWAS
78 traits from the source analysis data as the common quantitative/qualitative information of
79 the evidence items, and additional detailed source-specific properties are also retrieved
80 for users' own investigation.

81 [Table 1 here]

82 On the web interface, the main entry point for a user to interact with the platform is to input
83 short paragraphs of scientific text (e.g. the abstract of a journal article or pre-print). From this in-
84 put we use SemRep⁹ as the query parser to derive **query claim triples** from the text in the form
85 of Subject-PREDICATE-Object (e.g. "Obesity CAUSES Asthma"). The user is then asked
86 to select a specific triple of interest as the target of the downstream stages of entity harmoniza-
87 tion and evidence retrieval. Alternatively, users can either directly input a query claim in the
88 query triple view (<https://asq.epigraphdb.org/triple>), or start from the MedRxiv sys-
89 tematic analysis summary results (<https://asq.epigraphdb.org/medrxiv-analysis>).

90 In the following *entity harmonization* stage, ASQ harmonizes the biomedical entities from
91 the claim triple with the Experimental Factor Ontology (EFO⁵) entities, with the EFO ontology
92 serving as the anchor to connect the query entities and any evidence entities (Section 4.1). By
93 default ASQ attempts to retrieve entities that are semantically highly related (but not exclusively
94 identical) to the query entities to allow for exploratory discovery about further evidence of po-
95 tential interest. This can be adjusted to more restrictive (specific) or more liberal (sensitive)
96 mapping.

97 In the *evidence retrieval* stage, evidence items from the two evidence groups are retrieved
98 based on the biomedical entities harmonized in the previous stage, as well as on the **predi-
99 cate direction group** ("directional" and "non-directional") of the claim triple. Evidence items
100 are then categorised into several **evidence types** (Section 4.2): (a) supports the query claim
101 ("supporting"), (b) contradicts with the query claim with retrieved items indicating evidence in
102 the opposite direction to the claim ("reversal"), (c) fail to meet the required evidence threshold
103 to be supporting or contradictory ("insufficient") or (d) could be of additional information ("addi-
104 tional") to the claim. Retrieved individual evidence item and groups of items are then measured
105 with a score to reflect both the proximity of the involved entity to the query claim as well as
106 the strength of the evidence (Section 4.3). For triple and literature evidence the strength of the
107 evidence item is calculated based on the number of literature sources, whereas for associa-
108 tion evidence the strength is calculated based on the standardized effect size. The evidence
109 strength score is then adjusted by a mapping score measuring the semantic similarities between
110 the subject/object terms of the evidence item and those of the query claim.

111 ASQ provides comprehensive information (Figure 3) regarding the status of entity harmo-
112 nization with summary diagrams describing the mapped ontology entities and harmonization
113 metrics linking the evidence entities to the original query claim. For triple and literature evi-

114 dence, users can further introspect the context detail from which the semantic triples are de-
115 rived, and for association evidence, ASQ displays the statistical results on forest plots as quan-
116 titative comparisons. In addition to the default interactive session on the web interface, ASQ
117 offers programmatic access via the API (See “Code availability” section) which allows for batch
118 processing and analysis (e.g. Section 2.2).

119 [Figure 3 here]

120 **2.2 Systematic analysis of MedRxiv submissions**

121 **2.2.1 Study design**

122 We demonstrate the use of ASQ by systematically analysing the preprint submissions on MedRxiv
123 in the sample period from 2020-01-01 to 2021-12-31 (Figure 4). We will further discuss the tech-
124 nical details and the relevant terminology covered here in Section 4. Using the MedRxiv/BioRxiv
125 API, we identified 28,846 unique submissions in the period (in the case of multiple versions in
126 a submission we kept only the initial version) and retrieved their abstracts as candidate text
127 documents containing multiple scientific claims to be parsed in SemRep. Out of all the candi-
128 date documents, 13,999 documents were successfully parsed by SemRep to contain coherent
129 semantic triples at sentence level, and 6,870 documents were identified to contain suitable pred-
130 icates for analysis in ASQ. In total we extracted 13,295 document-triples (14,436 claim triples)
131 as the sample dataset.

132 Each claim triple was processed through ASQ programmatically to map with EFO and ev-
133 idence entities in the entity harmonization stage using a set of parameters which are equiv-
134 alent to the default settings used in the web interface (see Supplementary Table 5 for con-
135 figuration of parameters), with 1,446 document-triples identified to be valid and associated
136 with entities in EpiGraphDB. Amongst these document-triples, we found that “Disease or Syn-
137 drome” is the most numerous semantic group (888 query terms, 7,831 EFO entities), followed
138 by “Mental or Behavioral Dysfunction” (125 query terms, 1,708 EFO entities), and “Neoplas-
139 tic Process” (138 query terms, 1,516 EFO entities) (Supplementary Table 7). In order to
140 avoid the document-triple dataset for analysis being too large we used the intersection sub-
141 set where a document-triple must contain at least one type of evidence in both the *triple*
142 *and literature evidence* group and the *association evidence* group (Supplementary Table 6
143 reports the summary statistics). The final dataset consisted of 412 claim triples (337 sub-
144 mission abstracts, and 386 document-triples) where each claim is associated with retrieved
145 evidence from multiple evidence types across the evidence groups, and can be accessed via
146 <https://asq.epigraphdb.org/medrxiv-analysis> with the option to adjust settings for
147 individual query cases.

148 [Figure 4 here]

149 **2.2.2 Systematic results from entity harmonization and evidence retrieval**

150 In the entity harmonization stage of the systematic analysis, the retrieval of EFO entities is
151 determined by an initial stage where EFO candidates are retrieved by the semantic similarities
152 between the EFO candidates and the query subject/object terms by their encoded text vectors,
153 and a subset is subsequently selected based on proximity of the query term and the candidates
154 in the EFO graph as indicated by the identity scores, which then gets mapped to evidence
155 entities via semantic similarities (See Section 4.1). Figure 5 shows the distribution of score

156 metrics for the entity harmonization process where query terms are mapped to EFO entities
157 and Supplementary Figure 1 shows the distribution of scores for mappings of evidence entities
158 to the original query terms. For selected entities which have identity scores below the threshold
159 in the automated process, they would also be semantically closer to the query terms than the
160 rest of the retrieved candidates (with mean semantic similarity scores above 0.9), and therefore
161 from a systematic scale ASQ is able to select a set of corresponding EFO entities that have high
162 association to the query terms of interest as the basis for further retrieving evidence entities
163 related to these query terms. Similar automated approach applies in the interactive session,
164 and users are able to optionally override the automated processing of entity harmonization with
165 manual selection of EFO entities of interest or re-adjust the entity selection afterwards.

166 [Figure 5 here]

167 Figure 6 shows the distribution of the evidence scores and their constituent scores in the
168 evidence retrieval process, and further details are available in the supplementary materials on
169 group specific distributions (Supplementary Figures 4 and 5), as well as on summary statistics
170 (Supplementary Table 8). The mean mapping score for retrieved evidence is around 0.5 to 0.7,
171 with a typical scenario where the retrieved entities have about 0.85 to 0.92 in semantic similarity
172 to its upstream entities. The mean strength score for *triple and literature evidence* is around 1,
173 i.e. on average a triple evidence item was identified in only 1 source literature item, though
174 there is a long upper tail with many cases of 10 to 20 source literature items associated with a
175 triple (i.e. strength scores around 2 to 2.3). Association evidence items are required to have
176 sufficient strength of effect size in order to qualify into the “supporting” type or the “reversal”
177 type (otherwise they would be of “insufficient” evidence), and therefore the strength scores for
178 “supporting” and “reversal” types are markedly higher than items in the “insufficient” type. In
179 general, the evidence scores for “supporting” and “reversal” *association evidence* are found to
180 be distributed around the baseline score of 1. In addition, as constituent scores the mapping
181 scores and strength scores contribute to the evidence scores in roughly linear relationships
182 (Supplementary Figures 2 and 3).

183 [Figure 6 here]

184 **2.2.3 Top cases of research areas**

185 Whilst results from the systematic analysis reflect the availability of evidence in ASQ and
186 EpiGraphDB in various areas, they also show the popular research topics and themes reflected
187 from MedRxiv submissions in 2020-2021. Figure 7 shows several clusters of research areas
188 with central terms as measured in Table 2, and example claim triples can be found in Sup-
189 plementary Table 9. In addition to research associated with the COVID-19 pandemic (“Coro-
190 navirus infections”), the two areas with highest research submissions and retrieved evidence
191 are regarding obesity and associated diseases (“Obesity”, “Diabetes”, “Diabetes Mellitus, Non-
192 Insulin-Dependent”, “Chronic Kidney Diseases”, etc.) and mental health (“Depressive disorder”,
193 “Parkinson Disease”, “Alzheimer’s Disease”, “Schizophrenia”, etc.). Notably when SemRep fails
194 to recognize a more specific term it will fall back to more general terms, and therefore the term
195 “Disease” is prominent in the list of top terms. Examples in Supplementary Table 9 suggest
196 claims involving predicates “CAUSES”, “AFFECTS” and “COEXISTS_WITH” are the most popu-
197 lar claims that can be derived from submitted abstracts, which is similar to the summarised
198 results in all cases in Supplementary Table 8 where these predicates are the ones with most
199 retrieved evidence items.

200

[Table 2 here]

201

[Figure 7 here]

202 **2.2.4 Individual case**

203 Here we showcase an example in demonstrating the use of ASQ for researchers in triangulating
204 evidence regarding epidemiological research questions. From the systematic dataset, ASQ
205 extracted a claim triple “Obesity CAUSES Heart failure” from a preprint abstract regarding a
206 Mendelian randomization analysis investigating causal relationships between body mass index
207 and heart failure risk¹⁵, derived from the context “About 40% of the excess risk of HF due to
208 adiposity is driven by SBP, AF, DM and CHD”, where “HF” is recognised as heart failure and “adi-
209 posity” as obesity. These results can be found on ASQ ([https://asq.epigraphdb.org/
210 triple?subject=Obesity&object=Heart%20failure&predicate=CAUSES&analysis](https://asq.epigraphdb.org/triple?subject=Obesity&object=Heart%20failure&predicate=CAUSES&analysis)
211). The query subject “Obesity” and object “Heart failure” were mapped to their corresponding on-
212 tology counterparts then to evidence entities, from which ASQ then identified suitable evidence
213 items. At aggregate level for *triple and literature evidence* there are more supporting evidence
214 items (11) with higher aggregated scores (12.80) compared to reversal evidence items (6) with
215 lower aggregated scores (5.46), similarly there are 5 supporting *association evidence* items
216 with an aggregated score of 5.11 with no reversal evidence identified. Users are able to further
217 investigate the literature that either associate with the claim triple (e.g.¹⁶ and¹⁷) or the rever-
218 sal claim that heart failure might cause obesity (e.g.¹⁸), viewing the surrounding context from
219 the abstract directly in the ASQ interface, or clicking a link to access the original paper. For
220 *association evidence* ASQ identified several individual findings from the pairwise Mendelian
221 randomization studies with sufficient statistical significance as supporting evidence. ASQ also
222 identified a range of findings that are insufficient in statistical significance to qualify as support-
223 ing evidence, which are useful both in showing the scope of evidence identification but also in
224 determining the cause of a lack of reversal evidence. In this case, the lack of reversal evidence
225 was due to absence of results from the MR-EvE data source (as there were no retrieved in-
226 sufficient counterparts to reversal evidence items). In addition, ASQ identified several findings
227 from the PRS Atlas data source, and since the identified trait term “Target heart rate achieved”
228 was not directly equivalent to the query object “Heart failure” ASQ would assign low evidence
229 scores to these findings in the context of the original claim. In general ASQ is able to assist
230 researchers in investigating research questions in epidemiology both at aggregate level to have
231 an overview of the evidence categories regarding the question, as well as at individual level for
232 researchers to further investigate the evidence items in literature or statistical findings with their
233 expert knowledge.

234 **3 Discussions**

235 We developed the Annotated Semantic Queries (ASQ) platform as an approach to improve the
236 accessibility of the EpiGraphDB data and ecosystem for users through the implementation of a
237 natural language interface (whilst also enhancing programmatic access). There is an intrinsic
238 problem with integrated data platforms containing rich and complex data: experienced users
239 wish to be presented with flexible access to the data in order to navigate to the elements they
240 want, yet new users can find this complexity overwhelming (even if well documented). From
241 this perspective ASQ provides an accessible natural language query interface for such users to
242 find the evidence relating to a specific claim/question e.g. “Can obesity cause asthma?”, which

243 can either be parsed from a short piece of text containing scientific claims, or directly input as
244 a claim triple of `Subject PREDICATE Object`. In addition to providing a more accessible
245 interface to EpiGraphDB this approach provides a novel way to systematically evaluate a piece
246 of text (such as a pre-print abstract) to identify whether claims within that text are supported
247 by other data. Heterogeneous knowledge types are harmonized in ASQ into intuitive evidence
248 groups making triangulation of evidence in different groups more accessible, without either the
249 need to navigate to various area-specific topics or the need to formulate complex queries. As
250 we have demonstrated with our systematic analysis, the evidence retrieved by ASQ can be
251 of high value and relevance to a wide range of researchers epidemiology and health science
252 to assist the triangulation of evidence in their research. This is a generalisable approach that
253 could be applied to a wider array of knowledge graphs and evidence sources to support the
254 development of tools for rapid “semi-automated” (assisted) review of pre-prints.

255 Recent advances in deep learning modelling have contributed to a significant improvement
256 in natural language processing, and ASQ applies our previous method development¹⁹ in com-
257 bining sequence classification Transformer models with text vector embeddings for the harmo-
258 nization of entities in different taxonomies. ASQ is able to combine the functionalities of parsing
259 free text to generate structural claims with the harmonization of heterogeneous entities and
260 evidence to enable claims to be mapped to with evidence both from literature and semantic
261 knowledge as well as evidence from systematic association analysis. As part of the ASQ plat-
262 form we developed a scoring mechanism to prioritise the retrieved evidence item, accounting
263 for the semantic relevance of entities to the query of interest, as well as the strength of the
264 evidence item per se. This score enables users to rapidly evaluate a wide range of evidence,
265 whilst at the same time being able to assess the value of individual evidence items or evidence
266 groups to the query to enable prioritisation.

267 On the other hand, it is worth pointing out that users should not be relying on metrics
268 (whether they are ranking metrics, P-Values, or discrete categories of “accepting” / “incon-
269 clusive” / “rejecting”) as sole criteria when assessing evidence or as a substitute for detailed
270 investigation, not just in ASQ but also interacting with data platforms. The nature of the hetero-
271 geneous source data means we strongly recommend users spend time investigating individual
272 evidence sources using links provided by ASQ, as well understanding the various harmoniza-
273 tion strategies in ASQ’s documentation, since data harmonization in itself is an opinionated way
274 of data retrieval which might not be aligned with individual use cases. We seek to continue
275 the development of ASQ in various aspects to improve the robustness of evidence retrieval and
276 entity harmonization, as well as accessibility of evidence triangulation for researchers.

277 Whilst the ASQ platform offers a novel and accessible approach to querying a knowledge
278 graph, there are some important limitations. The extraction of claims from a piece of text is
279 rarely perfect, and genuine claims may be missed and others misinterpreted. The literature
280 knowledge based represented by SemMedDB is also subject to the same limitations (using the
281 same tool: SemRep), the triples extracted by SemRep are not context-specific (i.e. there is
282 no information about which section of an abstract these come from, so may reflect hypothesis
283 rather than conclusions) and in addition, literature evidence is subject to publication bias. The
284 association evidence in EpiGraphDB is constrained to a subset of published GWAS datasets
285 in OpenGWAS, and may omit important entities relating to claims in a query text. The ASQ
286 approach should therefore be considered as a support tool that aids evidence identification to
287 assess a claim, but not a comprehensive “fact-checker”.

288 4 Methods

289 4.1 Entity harmonization

290 Here we denote a **taxonomy** as a catalogue of terms in a specific domain, and an **ontology**
291 as a tree representing the taxonomy terms in a hierarchical order (e.g. parent terms that are
292 more generic versus descendant terms with more specific meanings; Figure 3B). In that sense,
293 EFO is the ontology which ASQ uses to infer relationships between biomedical terms from the
294 taxonomies of UMLS and GWAS traits. This is because EpiGraphDB incorporates semantic
295 terms/triples in UMLS, but not its ontological hierarchies (since SemMedDB primarily curates
296 derived triples with mechanistic predicates such as “CAUSES” but not comprehensive ontolo-
297 gies), and the GWAS traits are phenotypic trait names from genetic studies collated in the
298 OpenGWAS platform. An **entity** is then defined as a member of a taxonomy, i.e. a biomedical
299 concept can be represented in a taxonomy as one of its predefined members with an identifier
300 and a label (e.g. UMLS term `C1305855` “Body mass index”) to various degrees of semantic
301 affinity. Conceptually we refer to the process of resolving the mapping of terms from the claim
302 triple with those from EpiGraphDB evidence as **entity harmonization**, as it harmonizes entities
303 from different taxonomies into a unifying structure in the ontology (i.e. Figure 2). Our objective
304 is to retrieve entities from EpiGraphDB that are semantically similar and ontologically meaning-
305 ful with respect to the query terms, while ensuring broader relevant terms are retrieved by not
306 restricting to identical token-level resemblance (which can also be achieved in ASQ by setting
307 very high semantic similarity thresholds). To this end ASQ retrieves EFO entities that would
308 sufficiently represent the query terms in the ontology hierarchy, then retrieve evidence entities
309 that are semantically similar to the selected EFO entities.

310 In ASQ we measure the proximity between two entities in the semantic space by the **se-**
311 **mantic similarity** of their labels, which is calculated as the cosine similarity ($[0, 1]$) between
312 the text embedding vectors of the labels. Specifically, ontology terms from the `(Efo)` nodes,
313 UMLS terms from the `(LiteratureTerm)` nodes, and GWAS traits from the `(Gwas)` nodes
314 are pre-encoded by ScispaCy²⁰ (`en_core_sci_lg-0.4.0`) into high-dimensional embed-
315 ding vectors in an Elasticsearch vector store (Figure 1 left), which allows for fast retrieval of
316 candidate entities via a k-nearest neighbour (kNN) search of the pre-computed vectors against
317 the on-the-fly encoded vector of the query terms. On the one hand, entity representation via
318 fast text embeddings is a naive approach on its own and candidate retrieval based on cosine
319 similarity search can be highly sensitive to minor changes of the threshold, and on the other
320 hand, sophisticated classification of entity relationships requires real-time inferencing between
321 a large volume of candidate pairs using a dedicated classification model which is computa-
322 tionally resource-heavy. Thus for entity harmonization we implemented a two-stage approach
323 that in the first stage the query terms are mapped to a handful of their close ontological repre-
324 sentations in EFO, where simple semantic similarity measures are augmented by a dedicated
325 ontology classification process (discussed below), and in the second stage greater number of
326 evidence entities are retrieved for the corresponding EFO entities with kNN from the vector
327 store. This enables robust and efficient retrieval of entities and evidence by ASQ.

328 The entity harmonization process starts with the retrieval of candidate EFO entities that
329 semantically resemble the query terms, where ASQ attempts to select EFO entities that would
330 qualify as either identical ontological representations of the query terms or as closely associated
331 members in the hierarchy based on their **identity score** ($[0, +\infty)$) with the query terms. The
332 identity score is produced by BLUEBERT-EFO¹⁹ which we trained on the term mappings of EFO-

333 EFO terms and GWAS-EFO terms to infer the distance (number of steps/nodes) between a
334 query term and an EFO term in the ontology tree. An identity score of 0 suggests the two terms
335 are equivalent in the ontology, whereas a score of 1 suggests that the term of interest can be
336 considered as either a direct parent term or a direct descendant term of the reference ontology
337 term (in practice this can be relaxed to 1.5 as the inference model produces a *regression* score
338 rather than a *classification* score) and scores above 2 suggest greater distance between the
339 two terms. In previous research on the performance of entity retrieval by various methods¹⁹
340 we showed that BLUEBERT-EFO as a task-specific bespoke model is able to retrieve candidate
341 terms that are closer to a term of interest in the semantic rankings, than naive embeddings from
342 general purpose models (e.g. ScispaCy, BioSentVec²¹, etc.). The retrieval of EFO candidates
343 is also augmented with a pre-filtering step to remove ontology candidate terms that are overly
344 generic to mitigate scenarios where retrieved evidence entities in subsequent steps are less
345 relevant to query terms due to these evidence entities being mapped to generic ontology terms
346 (such as an ontology term “disease”). This is done via the pre-computed **information content**
347 **(IC) score** of EFO terms using a scaled Sanchez Information Content²² ([0, 1]) score where
348 terms closer to an end node of the EFO tree have scores closer to 1 and terms closer to the
349 origin have scores closer to 0. In both the interactive session and batch analysis mode, ASQ
350 by default (identity score ≤ 1.5) seeks to select EFO candidates that would be either equivalent
351 in the ontology to the query term, or a first-degree neighbour of it, as the basis for evidence
352 identification, and in the interactive session users are able to further finetune the selection with
353 the rest of the retrieved EFO candidates.

354 4.2 Evidence retrieval

355 As discussed in Section 2.1, epidemiological knowledge in EpiGraphDB is represented as two
356 **evidence groups** in ASQ, i.e. the *triple and literature* group and the *association* group. From
357 another perspective, the claim triple as well as evidence items in the two evidence groups are
358 categorised by the **predicate group** according to whether for the claim or the evidence there is
359 an indication of direction or not. Claims with predicates in the set “AFFECTS”, “CAUSES”, “PRO-
360 DUCES” and “TREATS” parsed from SemRep are *directional* claims whereas predicates in the
361 set “ASSOCIATED_WITH”, “COEXISTS_WITH”, and “INTERACTS_WITH” are *non-directional*
362 claims. The set of included predicates are determined by the availability of corresponding pred-
363 icates in the `(LiteratureTriple)` component of EpiGraphDB (Table 1). Similarly statistical
364 results of association evidence are retrieved with predefined rules of predicate directions as
365 well (Table 3). When the query claim is directional, directional results from `[MR_EVE_MR]` are
366 retrieved as the basis of *supporting/reversal/insufficient* evidence types, and non-directional
367 results from `[PRS]` and `[GEN_COR]` are retrieved as the *additional* evidence type. When
368 the query claim is non-directional, results from all three sources are retrieved for the *support-*
369 *ing/insufficient* evidence types.

370 The **evidence types** for each of the **evidence groups** and **predicate groups** are defined
371 as below and summarised in Table 1:

- 372 • **Supporting** evidence items are those that provide sufficient evidence in support of the
373 query claim. For *triple and literature* evidence, evidence from mapped literature terms
374 which share the same predicate with the claim triple are *supporting* evidence. For *as-*
375 *sociation* evidence, for *directional* claims, evidence from MR-EvE with strong statistical
376 evidence (using P-Value as the parameter and default to $P\text{-Value} \leq 1e - 2$) are identified

- 377 as the *supporting* evidence, whereas for *non-directional* claims, evidence is identified from
378 MR-EvE, PRS, and GEN_COR with strong statistical evidence.
- 379 • **Reversal** evidence items are those that could sufficiently contradict the claim with iden-
380 tified evidence from the reverse direction, and therefore is only applicable to *directional*
381 predicates. In other words, for a claim “Obesity CAUSES Asthma” evidence that would
382 support a claim “Asthma CAUSES Obesity” would be considered as a *reversal* evidence
383 item, because it reverses the direction. For both *triple and literature* evidence group and
384 *association* group, evidence item where its *source node* is a mapped *evidence object*
385 entity and its *target node* is a mapped *evidence subject* entity is identified as a reversal
386 evidence item. For *association* evidence the statistical threshold for supporting evidence
387 also applies.
 - 388 • **Insufficient** evidence items are identified as candidates for supporting evidence and re-
389 versal evidence (when applicable) which fail to meet the desired strength of evidence. This
390 only applies to association evidence, for which P-Value is a quantitative measure. The aim
391 of identifying insufficient evidence is to provide findings on the existence of systematic re-
392 sults, i.e. to determine whether the lack of evidence for a claim of interest is due to the
393 absence of evidence (e.g. not curated by EpiGraphDB), or due to existing results failing
394 to support/contradict a claim with sufficient strength.
 - 395 • **Additional** evidence items are identified as evidence that could be of potential interest
396 to users for further investigation, but which may not be sufficiently specific to inform the
397 acceptance or rejection of a claim. For *association* evidence, when the claim is *direc-*
398 *tional*, non-directional evidence from PRS and GEN_COR are candidates for *additional*
399 evidence.

400 [Table 3 here]

401 4.3 Score metrics to measure retrieved evidence

402 We introduce scores for the retrieved evidence in order to facilitate the assessment of individual
403 evidence items and provide a simple way to compare between evidence items and groups.
404 However as naive assessment metrics they should be used for simple comparisons and should
405 not replace the actual investigation into specific evidence details.

406 The mapping score P_{mapping} ($[0, 1]$; Equation 1) of retrieved evidence measures the overall
407 deviation in terms of semantic similarity (S) between the retrieved evidence entities and the orig-
408 inal query claim terms, which is a product of semantic similarity scores of associated entities in
409 the entity harmonization stage. A high score indicates that the retrieved evidence is of high se-
410 mantic proximity to the query claim of interest, whereas a low score suggests that the semantic
411 relevance of the retrieved entity to the claim is low and therefore the relevance of the evidence
412 to the query should be discounted by the low semantic relevance. If multiple j EFO entities
413 are identified for a query term, but these map to the same evidence entity, the route with the
414 highest score value is chosen as the basis for mapping score calculation. In addition, for triple
415 entities the query terms are added as *pseudo*-ontology entities as they share the same UMLS
416 taxonomy.

$$P_{\text{mapping}} = \prod_i \max_j \left(S_{\text{query} \rightarrow \text{EFO}_j} \times S_{\text{EFO}_j \rightarrow \text{evidence}} \right), i \in [\text{subject}, \text{object}] \quad (1)$$

417 For *triple and literature* evidence, the strength of the evidence $P_{T\&L}$ ($[1, +\infty)$; Equation 2a)
418 is measured by the number of source literature items containing the semantic triple evidence.
419 The baseline for the evidence score is 1 where the semantic triple is associated with 1 source
420 literature article. Therefore the *evidence score* for *triple and literature* evidence $E_{T\&L}$ ($[0, +\infty)$;
421 Equation 2b) is a product of the evidence strength and mapping score, where in a typical sce-
422 nario when there is an exact mapping (mapping score 1) of the involved entities and there is 1
423 source literature article the individual evidence item will have a baseline score of 1.

$$P_{T\&L} = 1 + \log_{10} N_{\text{literature}} \quad (2a)$$

$$E_{T\&L} = P_{\text{mapping}} \times P_{T\&L} \quad (2b)$$

424 For *association* evidence, the strength of the evidence $P_{\text{Assoc.}}$ ($[0, +\infty)$; Equation 3a) is mea-
425 sured with the standardized effect size of the statistical results where a unit absolute stan-
426 dardized effect size produces a score of 1 as the baseline. Similarly the evidence score for
427 *association* evidence $E_{\text{Assoc.}}$ ($[0, +\infty)$; Equation 3b) is the product of the mapping status and the
428 association evidence strength.

$$P_{\text{Assoc.}} = \max \left(0, 1 + \log_{10} \left| \frac{\beta}{\sigma} \right| \right) \quad (3a)$$

$$E_{\text{Assoc.}} = P_{\text{mapping}} \times P_{\text{Assoc.}} \quad (3b)$$

429 ASQ calculates the aggregate score and average score for each of the evidence groups
430 and evidence types. Simple comparisons could be made (but should not be the substitute
431 for further investigations) in cases such as between the supporting evidence group and rever-
432 sal evidence group of a claim, as well as between two supporting evidence items. However
433 comparisons between the supporting evidence group and the insufficient/additional evidence
434 groups via quantitative measures are not appropriate as insufficient/additional evidence types
435 by definition do not assess the query claim by metrics, and should instead be interpreted by
436 the user based on their own knowledge. Similarly comparisons between the *triple and literature*
437 group and the *association* group by metrics is not appropriate as they do not share a common
438 measurement unit for their scores.

439 Code availability

440 Source code for the ASQ platform and relevant analysis scripts can be found via [https://](https://github.com/mrcieu/epigraphdb-asq)
441 github.com/mrcieu/epigraphdb-asq. Tutorial on programmatically accessing the ASQ
442 platform can be found via this Jupyter notebook [https://github.com/MRCIEU/epigraphdb-asq/](https://github.com/MRCIEU/epigraphdb-asq/blob/master/analysis/notebooks/programmatic-access.ipynb)
443 [blob/master/analysis/notebooks/programmatic-access.ipynb](https://github.com/MRCIEU/epigraphdb-asq/blob/master/analysis/notebooks/programmatic-access.ipynb).

444 Funding

445 This work was supported by the UK Medical Research Council Integrative Epidemiology Unit
446 [MC_UU_00011/4] and the University of Bristol.

447 Conflicts of interest

448 T.R.G. receives funding from Biogen for unrelated research.

References

- 449
- 450 1. Lawlor, D. A., Tilling, K. & Davey Smith, G. Triangulation in aetiological epidemiology.
451 *Int. J. Epidemiol.* **45**, 1866–1886, [10.1093/ije/dyw314](https://doi.org/10.1093/ije/dyw314) (2017). [https://academic.oup.com/ije/](https://academic.oup.com/ije/article-pdf/45/6/1866/32531204/dyw314.pdf)
452 [article-pdf/45/6/1866/32531204/dyw314.pdf](https://academic.oup.com/ije/article-pdf/45/6/1866/32531204/dyw314.pdf).
- 453 2. Ochoa, D. *et al.* Open targets platform: supporting systematic drug–target identification
454 and prioritisation. *Nucleic Acids Res.* **49**, D1302–D1310 (2021).
- 455 3. Liu, Y. *et al.* EpiGraphDB: a database and data mining platform for health data science.
456 *Bioinformatics* **37**, 1304–1311, [10.1093/bioinformatics/btaa961](https://doi.org/10.1093/bioinformatics/btaa961) (2020). [https://academic.oup.](https://academic.oup.com/bioinformatics/article-pdf/37/9/1304/38575106/btaa961.pdf)
457 [com/bioinformatics/article-pdf/37/9/1304/38575106/btaa961.pdf](https://academic.oup.com/bioinformatics/article-pdf/37/9/1304/38575106/btaa961.pdf).
- 458 4. Shefchek, K. A. *et al.* The monarch initiative in 2019: an integrative data and analytic
459 platform connecting phenotypes to genotypes across species. *Nucleic acids research* **48**,
460 D704–D715 (2020).
- 461 5. Malone, J. *et al.* Modeling sample variables with an experimental factor ontology. *Bioinfor-*
462 *matics* **26**, 1112–1118 (2010).
- 463 6. Elsworth, B. *et al.* The MRC IEU OpenGWAS data infrastructure. *bioRxiv* [10.1101/2020.08.](https://doi.org/10.1101/2020.08.10.244293)
464 [10.244293](https://doi.org/10.1101/2020.08.10.244293) (2020). <https://www.biorxiv.org/content/early/2020/08/10/2020.08.10.244293.full.pdf>.
- 465 7. Kilicoglu, H., Shin, D., Fiszman, M., Rosemlat, G. & Rindflesch, T. C. Semmeddb: a
466 pubmed-scale repository of biomedical semantic predications. *Bioinformatics* **28**, 3158–
467 3160 (2012).
- 468 8. Medrxiv.org - the preprint server for health sciences.
- 469 9. Kilicoglu, H., Rosemlat, G., Fiszman, M. & Shin, D. Broad-coverage biomedical relation
470 extraction with semrep. *BMC bioinformatics* **21**, 1–28 (2020).
- 471 10. Schuyler, P. L., Hole, W. T., Tuttle, M. S. & Sherertz, D. D. The umls metathesaurus: repre-
472 senting different views of biomedical concepts. *Bull. Med. Libr. Assoc.* **81**, 217 (1993).
- 473 11. *UMLS Reference Manual*, chap. Semantic Network (National Library of Medicine, 2009).
- 474 12. Hemani, G. *et al.* Automating mendelian randomization through machine learning to con-
475 struct a putative causal map of the human phenome. *bioRxiv* [10.1101/173682](https://doi.org/10.1101/173682) (2017).
476 <https://www.biorxiv.org/content/early/2017/08/23/173682.full.pdf>.
- 477 13. Abbot, L., Neale, B. & Palmer, D. Genetic correlation between traits and disorders in the
478 UK biobank. Tech. Rep., Neale Lab, Analytical and Translation Genetics Unit (2020).
- 479 14. Richardson, T. G., Harrison, S., Hemani, G. & Smith, G. D. An atlas of polygenic risk score
480 associations to highlight putative causal relationships across the human phenome. *Elife* **8**,
481 e43657 (2019).
- 482 15. Lumbers, R. T. *et al.* Body mass index and heart failure risk: a cohort study in 1.5 million
483 individuals and mendelian randomisation analysis. *medRxiv* [10.1101/2020.09.23.20200360](https://doi.org/10.1101/2020.09.23.20200360)
484 (2020). <https://www.medrxiv.org/content/early/2020/09/25/2020.09.23.20200360.1.full.pdf>.
- 485 16. Sardu, C., De Lucia, C., Wallner, M. & Santulli, G. Diabetes mellitus and its cardiovascular
486 complications: new insights into an old disease (2019).
- 487 17. Baena-Díez, J. M. *et al.* Obesity is an independent risk factor for heart failure: Zona franca
488 cohort study. *Clin. cardiology* **33**, 760–764 (2010).

- 489 **18.** Goncalves, G. K., de Oliveira, T. H. C. & de Oliveira Belo, N. Cardiac hypertrophy and brain
490 natriuretic peptide levels in an ovariectomized rat model fed a high-fat diet. *Med. Sci. Monit.*
491 *Basic Res.* **23**, 380 (2017).
- 492 **19.** Elsworth, B., Liu, Y. & Gaunt, T. R. Using language models and ontology topology to
493 perform semantic mapping of traits between biomedical datasets. *medRxiv* (Forthcoming).
- 494 **20.** Neumann, M., King, D., Beltagy, I. & Ammar, W. ScispaCy: Fast and Robust Models for
495 Biomedical Natural Language Processing. In *Proceedings of the 18th BioNLP Workshop*
496 *and Shared Task*, 319–327, [10.18653/v1/W19-5034](https://doi.org/10.18653/v1/W19-5034) (Association for Computational Linguistics, Florence, Italy, 2019). [arXiv:1902.07669](https://arxiv.org/abs/1902.07669).
- 498 **21.** Chen, Q., Peng, Y. & Lu, Z. Biosentvec: creating sentence embeddings for biomedical
499 texts. In *2019 IEEE International Conference on Healthcare Informatics (ICHI)*, 1–5 (IEEE,
500 2019).
- 501 **22.** Sánchez, D. & Batet, M. A new model to compute the information content of concepts from
502 taxonomic knowledge. *Int. J. Semantic Web Inf. Syst.* **8**, 34–50 (2012).

503 **Figures & Tables**

504 **Tables**

Table 1. Integration of epidemiological evidence in EpiGraphDB

Distribution of the EpiGraphDB *knowledge* triples which are the *source* evidence in this study, harmonized into the two evidence categories. Column “Triples” and column “Literature” report respectively the number of literature triples and number of associated source literature articles in a triple and literature evidence group, and column “Associations” report the number of statistical associations in an association evidence group. For example, there are 37,423 literature triples in the form of *Term 1* AFFECTS *Term 2* where *Term 1* and *Term 2* are from the term types of *aapp* (“Amino Acid, Peptide, or Protein”), *dsyn* (“Disease or Syndrome”), *gngm* (“Gene or Genome”) (a UMLS term can have multiple associated types), and there are 57,928 source literature articles from which the 37,423 literature triples are derived. Similarly, there are 8,966,440 statistical associations from the MR-EvE study¹² between GWAS-es in the UKBiobank categories (*ukb-a*, *ukb-b*, etc.) of OpenGWAS⁶. A UMLS term can have multiple associated semantic types and the label descriptions on UMLS semantic types are available in Supplementary Table 1.

Triple and literature evidence				
Direction	UMLS Predicate	UMLS term type	Triples	Literature
Directional	AFFECTS	<i>aapp</i> , <i>dsyn</i> , <i>gngm</i>	37,243	57,928
	AFFECTS	<i>dsyn</i>	29,167	58,753
	CAUSES	<i>dsyn</i>	85,231	222,462
	CAUSES	<i>aapp</i> , <i>dsyn</i> , <i>gngm</i>	49,178	100,681
	TREATS	<i>phsu</i> , <i>dsyn</i> , <i>orch</i>	82,263	274,589
	TREATS	<i>phsu</i> , <i>dsyn</i>	47,416	238,636
	PRODUCES	<i>aapp</i> , <i>gngm</i>	69,691	106,862
	PRODUCES	<i>phsu</i> , <i>aapp</i> , <i>gngm</i>	12,706	26,122
Non-directional	ASSOCIATED_WITH	<i>aapp</i> , <i>dsyn</i> , <i>gngm</i>	188,961	423,727
	ASSOCIATED_WITH	<i>phsu</i> , <i>aapp</i> , <i>dsyn</i> , <i>gngm</i>	29,425	86,176
	INTERACTS_WITH	<i>aapp</i> , <i>gngm</i>	393,759	673,470
	COEXISTS_WITH	<i>aapp</i> , <i>gngm</i>	224,098	332,834
	COEXISTS_WITH	<i>dsyn</i>	150,166	385,349
	INTERACTS_WITH	<i>aapp</i> , <i>enzy</i> , <i>gngm</i>	72,194	140,836
Association evidence				
Direction	Association type	GWAS categories	Associations	
Directional	MR_EVE_MR	<i>ukb</i> , <i>ukb</i>	8,966,440	
	MR_EVE_MR	<i>prot</i> , <i>ukb</i>	5,028,904	
	MR_EVE_MR	<i>ubm</i> , <i>ukb</i>	3,833,948	
	MR_EVE_MR	<i>prot</i> , <i>prot</i>	3,109,406	
	MR_EVE_MR	<i>prot</i> , <i>ubm</i>	1,974,611	
Non-directional	GEN_COR	<i>ukb-b</i> , <i>ukb-b</i>	453,752	
	GEN_COR	<i>ukb-a</i> , <i>ukb-b</i>	286,536	
	GEN_COR	<i>ukb-a</i> , <i>ukb-a</i>	180,536	
	GEN_COR	<i>ukb-b</i> , <i>ukb-d</i>	133,554	
	GEN_COR	<i>ukb-a</i> , <i>ukb-d</i>	84,266	
	GEN_COR	<i>ukb-d</i> , <i>ukb-d</i>	38,908	
	PRS	<i>ieu-a</i> , <i>ukb-a</i>	70,926	
	PRS	<i>ukb-b</i> , <i>ieu-a</i>	45,394	
	PRS	<i>ukb-a</i> , <i>ukb-a</i>	2,198	
	PRS	<i>ukb-b</i> , <i>ukb-a</i>	704	

Table 2. Systematic analysis results: top claim terms by retrieved evidence

Top claim terms sorted by the number of cases where the query claim triple is associated with both triple and literature evidence as well as association evidence (“T&L. + Assoc.”). For example, there are 41 claim triples involving the term “Disease” as either a subject term or an object term where these claim triples are identified with *both* supporting evidence in triple and literature evidence (“T&L.”) and association evidence (“Assoc.”) groups, 74 cases identified with supporting triple evidence, 44 cases identified with supporting association evidence, 77 cases identified with any evidence types (“Any”; See Section 4.2 and Table 3 for all evidence types), and 715 cases from the triples in the initial claim parsing stage dataset (“Init.”; Figure 4) after parsing from source abstracts regardless of results in the downstream stages.

Claim term	Supporting			Any	Init.
	T&L. + Assoc.	T&L.	Assoc.		
Disease	41	74	44	77	715
Obesity	20	25	25	30	125
Diabetes	17	19	18	20	87
Depressive disorder	14	20	16	26	100
Parkinson Disease	13	13	13	13	111
Diabetes Mellitus, Non-Insulin-Dependent	10	12	12	15	84
Alzheimer’s Disease	8	10	8	10	111
Schizophrenia	8	11	8	11	32
C-reactive protein	7	7	9	10	24
Malignant Neoplasms	7	8	15	19	100
Chronic Kidney Diseases	6	9	6	9	35
Chronic disease	5	6	5	6	44
Fatigue	5	5	6	6	25
Sleep	5	5	6	6	21
Atrial Fibrillation	5	6	6	9	57
Pain	4	4	6	6	30
Glucose	4	5	4	6	20
Blood Glucose	4	5	4	5	15
Hypertensive disease	4	12	4	13	90
Mental disorders	4	8	4	10	42
Cardioembolic stroke	3	3	3	3	14
Testosterone	3	5	3	6	21
Diabetes Mellitus	3	4	5	6	25
Triglycerides	3	4	4	5	16
Heart Diseases	3	3	3	3	10
Unipolar Depression	3	4	3	4	32
Myocardial Infarction	3	4	5	6	15
Malignant neoplasm of prostate	3	4	3	4	18
Enthesitis-Related Arthritis	3	4	3	4	25
Behavior	3	3	3	4	13

Table 3. Classification of retrieved evidence

Summary of how retrieved evidence items are classified based on the **predicate direction group**, **evidence group**, and **evidence type**. The notation $S-P \rightarrow O$ means a Subject PREDICATE Object triple where the predicate is directional (e.g. a “CAUSES” predicate versus a non-directional predicate “ASSOCIATED_WITH”) and the notation $S-P-O$ means a triple with non-directional predicate.

	Supporting	Reversal	Insufficient	Additional
Directional predicates				
CAUSES, TREATS, PRODUCES, AFFECTS				
Triple and literature Association	$S-P \rightarrow O$ $S-P \rightarrow O, P_p-Value < \pi$	$O-P \rightarrow S$ $O-P \rightarrow S, P_p-Value < \pi$	N/A $S-P \rightarrow O, P_p-Value \geq \pi$	N/A non-directional $S-P-O$
Non-directional predicates				
INTERACTS_WITH, COEXISTS_WITH, ASSOCIATED_WITH				
Triple and literature Association	$S-P-O$ $S-P-O, P_p-Value < \pi$	N/A N/A	N/A $S-P-O, P_p-Value \geq \pi$	N/A N/A

505 **Figures**

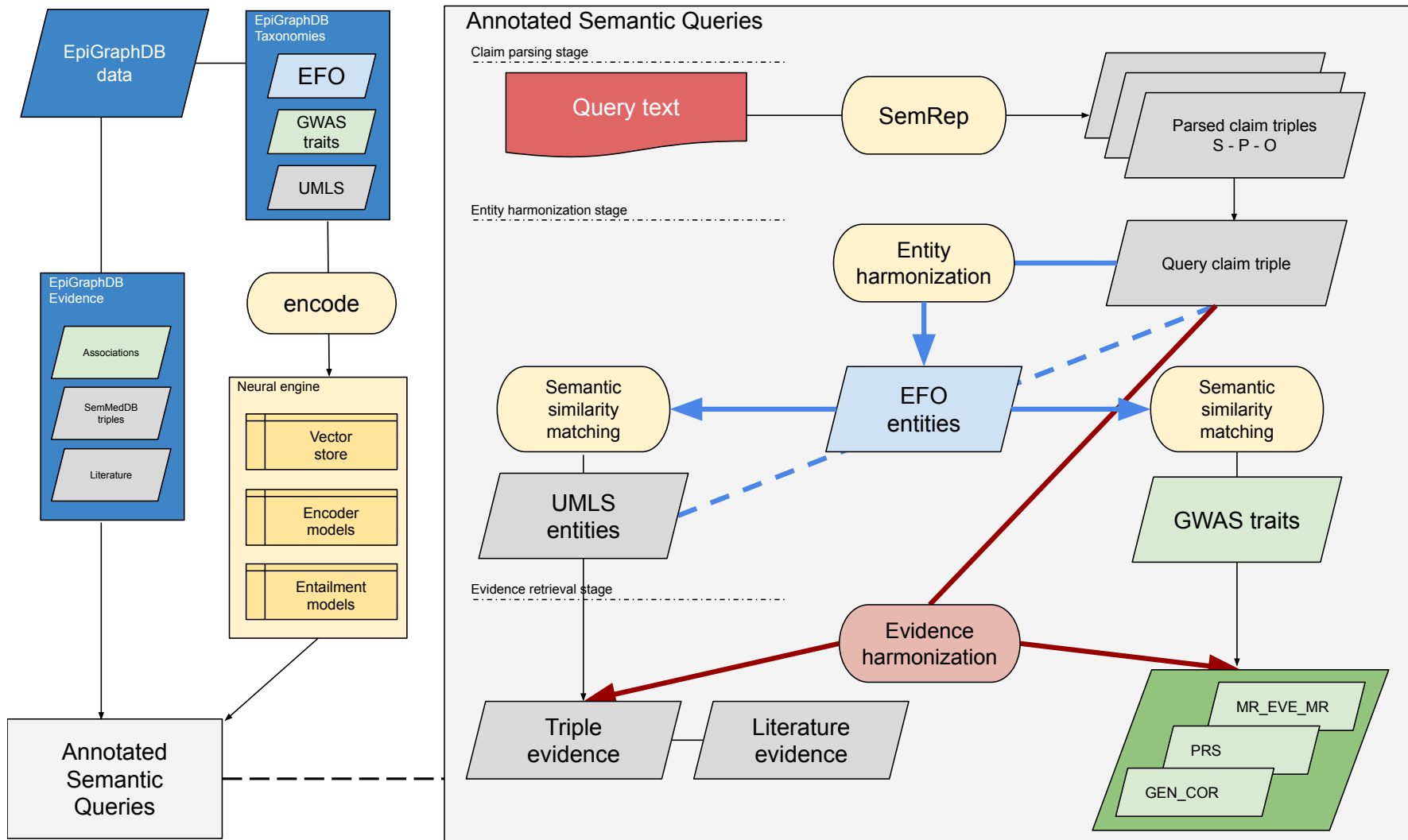


Figure 1. Architecture of the EpiGraphDB-ASQ platform

Overall architecture design of the EpiGraphDB-ASQ platform and its associated components in the EpiGraphDB ecosystem. **Left:** EpiGraphDB's biomedical entities (in the form of graph nodes) from different taxonomies are encoded into vector representations which allows for fast information retrieval against the query of interest. Epidemiological evidence (in the form of graph edges) are incorporated into ASQ as harmonized evidence groups. **Right:** Internal processing workflow of the EpiGraphDB-ASQ platform by the three stages: the claim parsing stage, the entity harmonization stage, and the evidence retrieval stage.

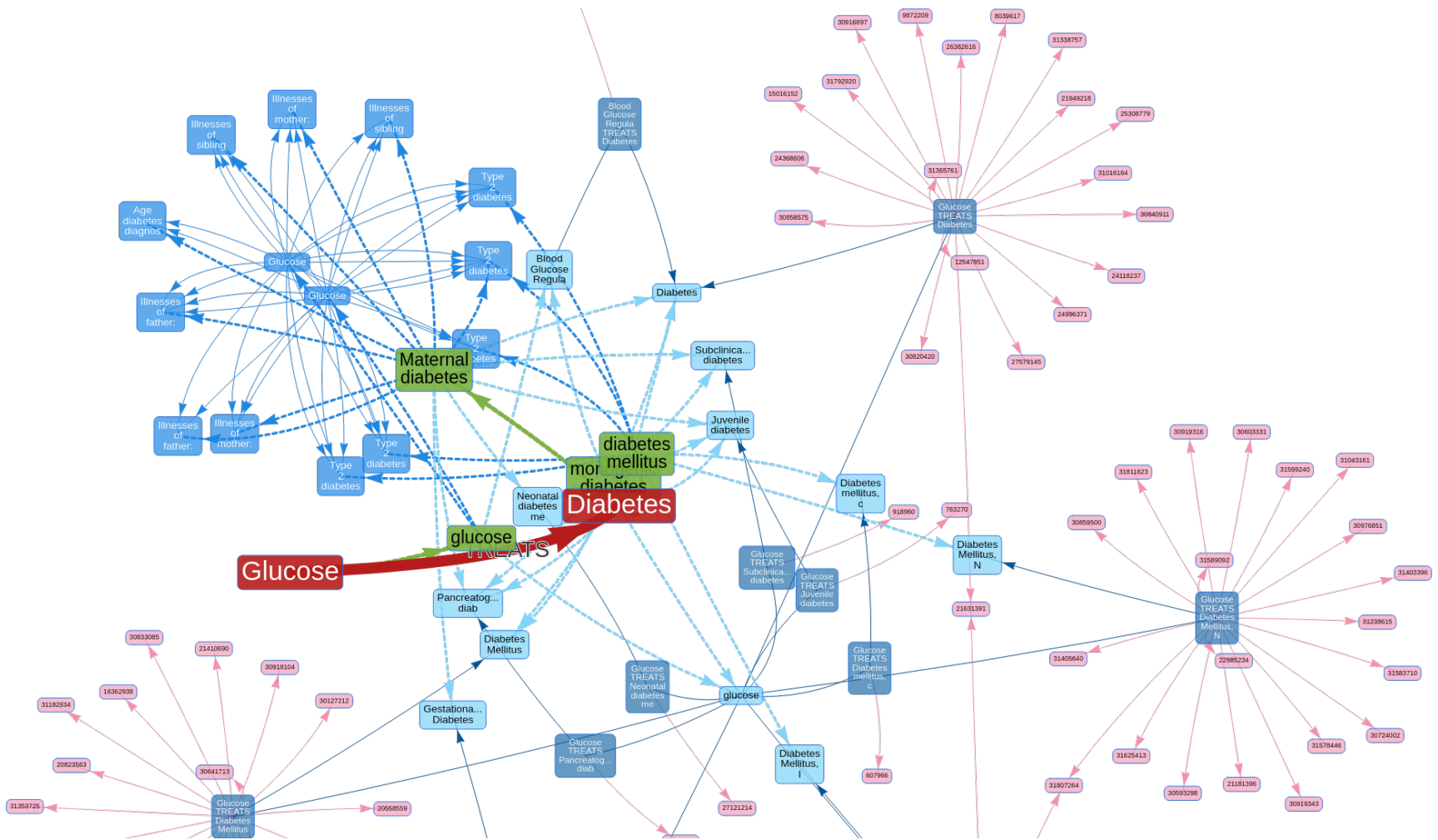
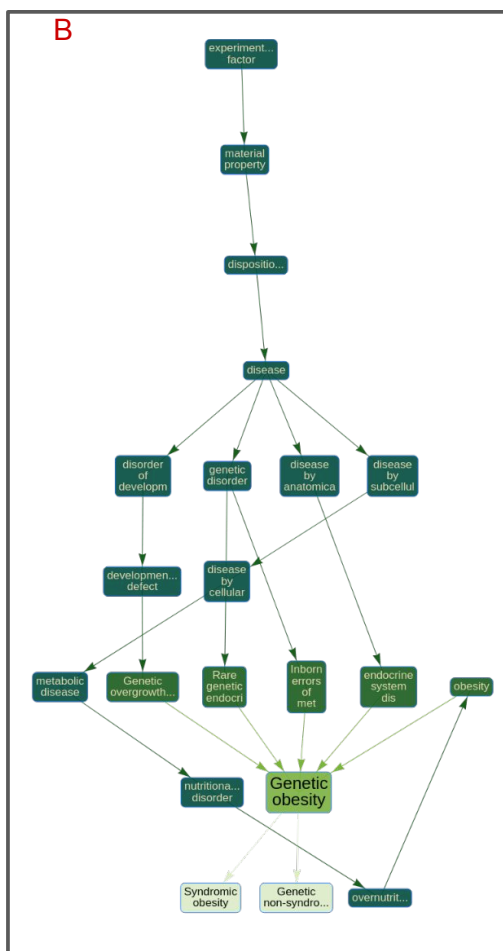
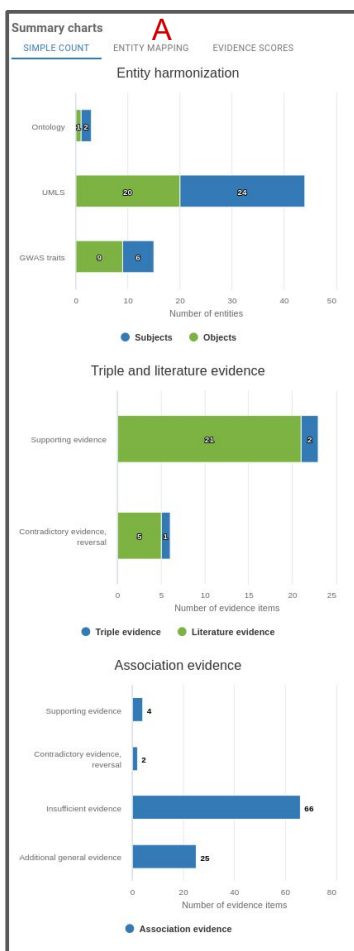


Figure 2. Evidence triangulation regarding scientific claims

A summary network diagram on the retrieved entities and evidence from the ASQ platform regarding a claim “Glucose TREATS Diabetes”. The subject and object terms of the query claim are represented as nodes in red, and the predicate as a directed edge. The ontology term (green nodes) “glucose” is identified as the mapped term for the claim subject, and ontology terms “diabetes mellitus”, “monogenic diabetes”, “Maternal diabetes” are identified as the mapped terms for the claim object in the default setting (which can be adjusted at an interactive session or updated after initial results). Triple and literature evidence are represented as semantic triples (deep blue nodes) formed by UMLS Metathesaurus terms (light blue nodes), which are linked to source literature findings (pink nodes). For association evidence, statistical association results on GWAS traits (blue nodes) are represented as edges between them. Edges in dashed lines represent mappings between taxonomies, and edges in solid lines represent evidence items.



C

Literature detail: Obesity CAUSES Asthma

#	Article	Year	FULLSCREEN
0	DOI: 10.1016/j.jaci.2011.06.009 Effects of obesity and bariatric surgery on airway hyperresponsiveness, asthma control, and inflammation.	2011	Full Screen
1	DOI: 10.1097/ACI.0b0000000000000494 Asthma, obesity and targeted interventions: an update.	2018	Full Screen
2	DOI: 10.1097/ACI.0b0000000000000497 Innate lymphoid cells in asthma: pathophysiological insights from murine models to human asthma phenotypes.	2018	Full Screen
3	DOI: 10.1097/ACI.0b0000000000000204 Mechanisms of obesity in asthma.	2014	Full Screen
4	DOI: 10.1016/j.jacr.2019.07.002 Obesity-induced asthma: Role of free fatty acid receptors.	2019	Full Screen
5	DOI: 10.1016/j.gimn.2019.101333 Immunologic mechanisms in asthma.	2019	Full Screen
6	DOI: 10.1111/jpo.277 Longitudinal associations between asthma and general and abdominal weight status among Norwegian adolescents and young adults: the HUNT Study.	2016	Full Screen
7	DOI: 10.3349/ymj.2013.54.6.1490 Effects of diet-induced mild obesity on airway hyperactivity and lung inflammation in mice.	2014	Full Screen
8	DOI: 10.1038/s41598-019-51648-1 Empagliflozin and Dulaglutide are Effective against Obesity-induced Airway Hyperresponsiveness and Fibrosis in A Murine Model.	2020	Full Screen
9	DOI: 10.1038/sj.ima.2017.97 Rapid adiposity growth increases risks of new-onset asthma and airway inflammation in children.	2017	Full Screen

Rows per page: 10 1-10 of 23

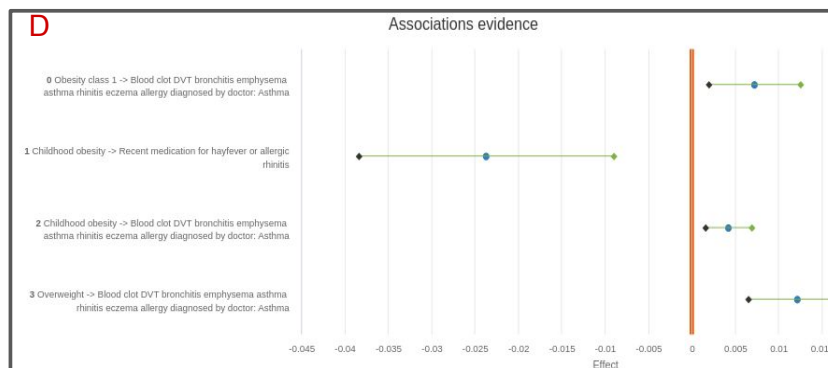


Figure 3. Overview of web interface

Overview of the web interface functionalities of EpiGraphDB-ASQ. **A**: Summary of harmonized entities and retrieved evidence regarding the query claim. **B**: Sub-graph representation of a retrieved ontology entity in the EFO graph. **C**: Summarised literature information and context details for a retrieved semantic triple “Obesity CAUSES Asthma”. **D**: Forest plot on the statistical association evidence regarding the query claim.

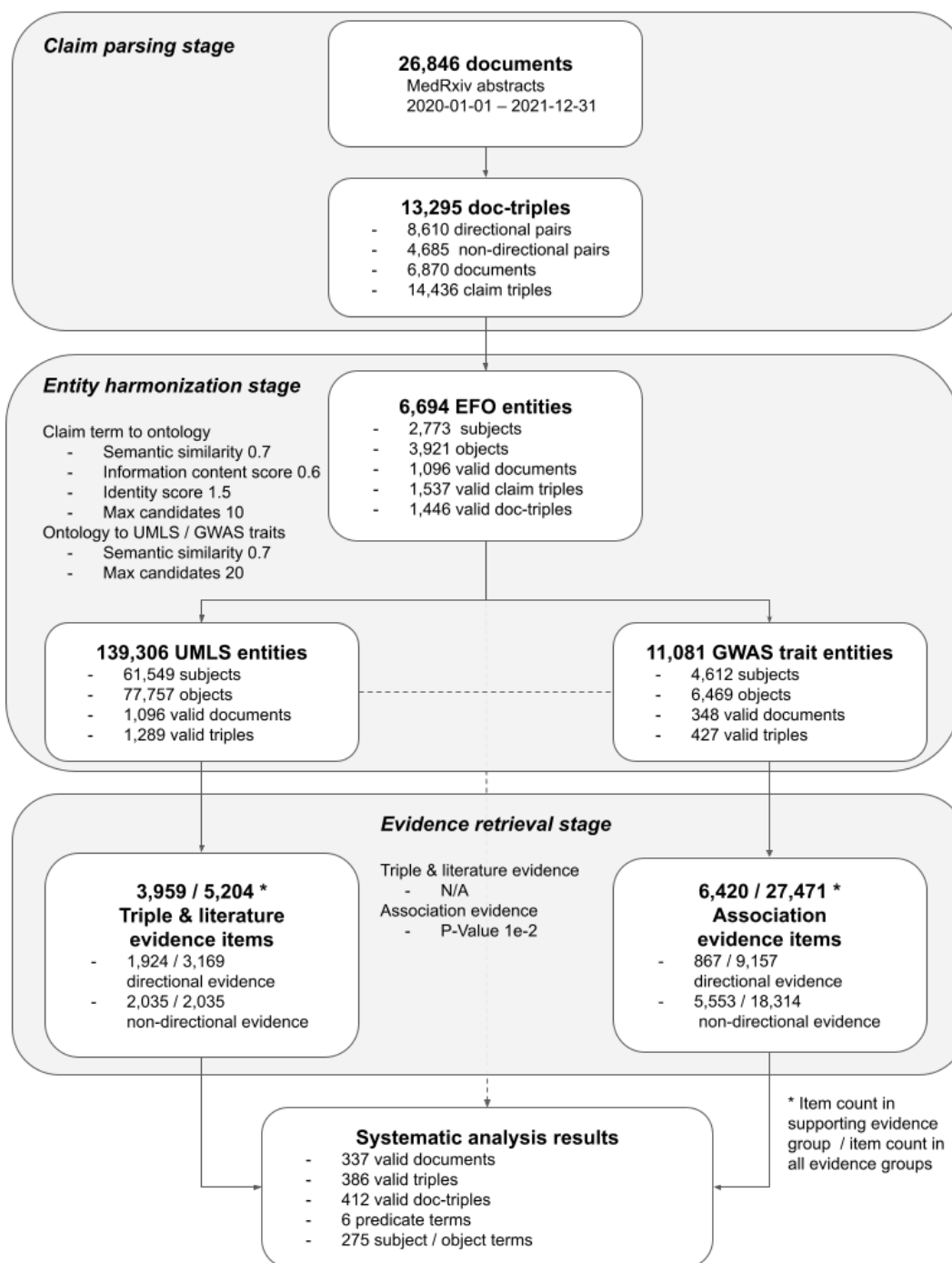


Figure 4. Study design of the systematic analysis and result metrics

Overview diagram on the systematic analysis results and the primary metrics in the various stages discussed in Section 2.2. This figure complements Figure 1 regarding an individual case with the aspect of systematic scale. Further discussions on the parameter configuration as shown in each of the stages are available in Supplementary Table 5.

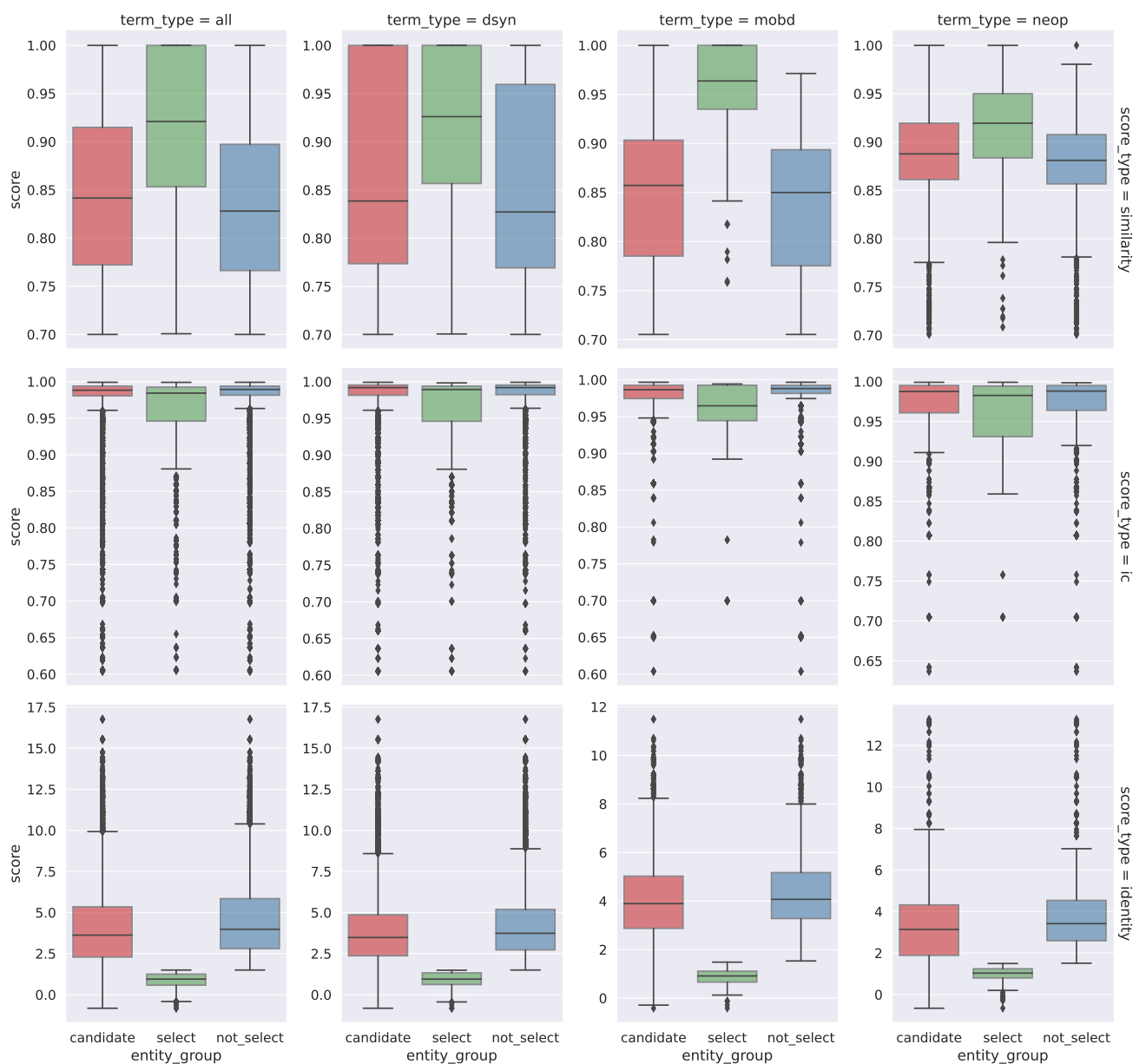


Figure 5. Entity harmonization stage: distribution of score metrics of retrieved EFO entities

Distribution of semantic similarity scores, information content scores, and identity scores for retrieved EFO entities in the process of mapping with query UMLS terms, categorised by the semantic type of the UMLS term (“term_type”) and score metrics (“score_type”) in the retrieval process.

Category type: “candidate” for entities retrieved as a candidate, “select” for candidates that are selected in the automated process (Section 4.1), and “not_select” for candidates that are not selected.

Left (“all”): Distribution across all semantic types. **Middle 1 (“dsyn”):** In the “Disease or Syndrome” group. **Middle 2 (“mobd”):** In the “Mental or Behavioral Dysfunction” group. **Right (“neop”):** In the “Neoplastic Process” group. This figure reports distributions in the top 3 semantic type groups by entity count (Supplementary Table 7 reports entity counts of all semantic types).

Top (“similarity”): By semantic similarity score to measure similarity of term embedding vectors. **Center (“ic”):** By information content score to measure the concreteness of the term in EFO. **Bottom (“identity”):** By identity score to measure the inferred relative distance of the UMLS term. The roles of the score metrics take in the harmonization retrieval process are discussed in detail in Section 4.1. Supplementary figure 1 reports the distribution of score metrics for retrieved UMLS and trait entities.

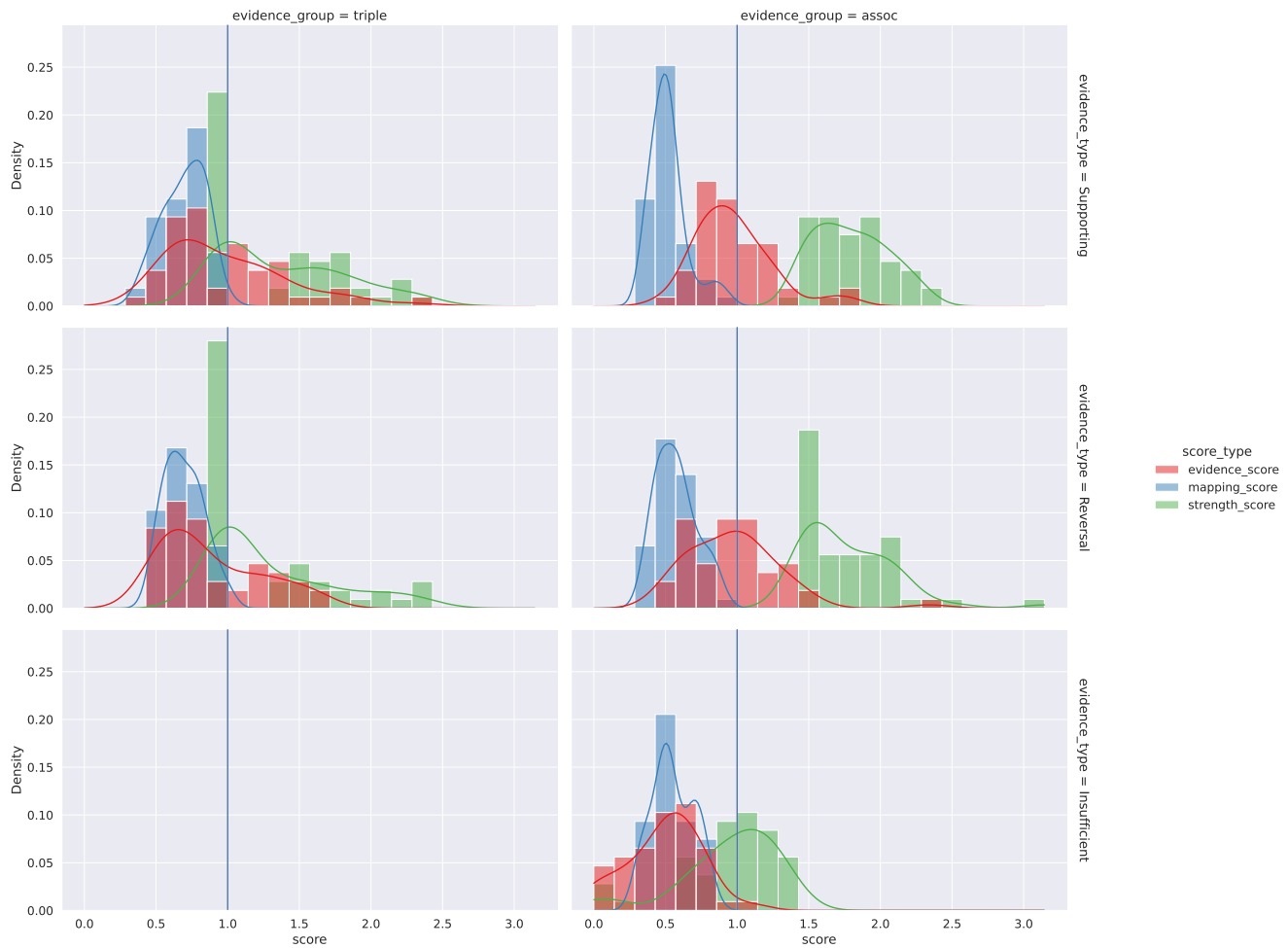


Figure 6. Evidence retrieval stage: distribution of evidence scores and constituent scores

Distribution of evidence scores and its constituent scores (entity mapping scores and evidence strength scores), for the “supporting”, “reversal”, and “insufficient” evidence types (by rows) in the triple and literature evidence group and the association evidence group (by columns). This figure reports aggregated distributions across directional and non-directional predicate groups, and Supplementary Tables 4 and 5 report detailed distributions by evidence groups, evidence types, and predicate groups. Note an “insufficient” evidence type is only applicable to the association (“assoc”) evidence group and not the triple and literature (“triple”) evidence group.

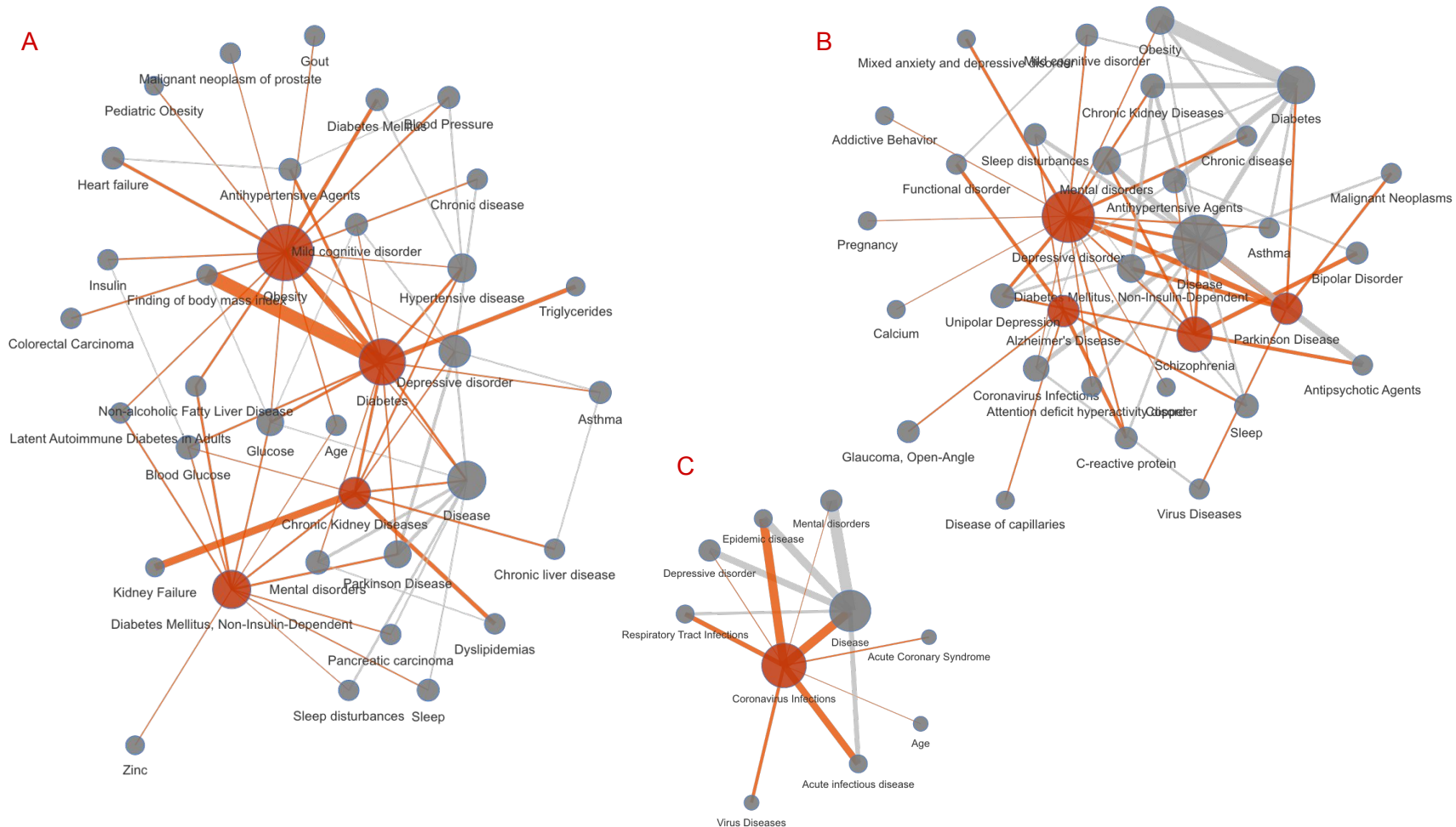


Figure 7. Systematic analysis results: evidence clusters of topic terms

Clusters representing research interests as parsed from the MedRxiv abstract sample from 2020-01-01 to 2021-12-31 as well as their corresponding evidence retrieved from EpiGraphDB-ASQ as network diagrams. Nodes coloured in red correspond to the primary claim terms (Table 2) and edges coloured in red correspond to relationships involving a primary claim term. **A**: Obesity cluster with primary terms “Obesity”, “Diabetes”, “Diabetes Mellitus, Non-Insulin-Dependent”, “Chronic Kidney Diseases”; **B**: Mental illness cluster with primary terms “Depressive disorder”, “Alzheimer’s Disease”, “Schizophrenia”, “Parkinson Disease”; **C**: COVID-19 cluster with primary terms “Coronavirus infections”; The diagrams are generated by retrieving first-degree neighbour nodes for each of the top term nodes, where node size corresponds to term count, and edge width correspond to aggregated supporting evidence scores between nodes. Interactive diagram is available on <https://asq.epigraphdb.org/medrxiv-analysis>.