

Estimation of the morbidity and mortality of congenital Chagas disease: a systematic review and meta-analysis

Sarah Matthews^{1¶}; Ayzsa F. Tannis^{1¶*}; Karl Philipp Puchner²; Maria Elena Bottazzi^{3,4}; Maria Luisa Cafferata^{5,6}; Daniel Comandé⁵; Pierre Buekens¹

¹ Tulane University School of Public Health and Tropical Medicine, New Orleans, Louisiana, USA

² German Leprosy and TB Relief Association, Würzburg, Germany

³ National School of Tropical Medicine, Baylor College of Medicine, Baylor, Texas, USA

⁴ Department of Pediatrics and Molecular Virology and Microbiology and Texas Children's Hospital Center for Vaccine Development, Baylor College of Medicine, Baylor, Texas, USA

⁵ Instituto de Efectividad Clínica y Sanitaria, Buenos Aires, Argentina

⁶ Unidad de Investigación Clínica y Epidemiológica Montevideo (UNICEM), Montevideo, Uruguay

*Corresponding author

E-mail: atannis@tulane.edu (AFT)

¶These authors contributed equally to this work.

1 **Abstract**

2 Chagas disease is caused by the parasite *Trypanosoma cruzi* which can be transmitted from
3 mother to baby during pregnancy. There is no consensus on the proportion of infected infants that
4 become symptomatic for congenital Chagas disease (cCD). The objective of this systematic review is
5 to determine the burden of cCD.

6 Articles from journal inception to 2020 reporting morbidity and mortality associated with
7 cCD were retrieved from academic search databases. Observational studies, randomized-control trials,
8 and studies of babies diagnosed with cCD were included. Studies were excluded if they were case
9 reports or series, without original data, case-control without cCD incidence estimates, and/or did not
10 report number of participants. Two reviewers screened articles for inclusion. To determine pooled
11 proportion of symptomatic infants with cCD, individual symptoms, and case-fatality, random effects
12 meta-analysis was performed.

13 We identified 4,531 records and reviewed 4,301, including 47 articles in the narrative
14 summary and analysis. 28.3% (95% confidence interval (CI) = 19.0%, 38.5%); of cCD infants were
15 symptomatic and 2.2% of infants died (95% CI = 1.3%, 3.5%). The proportion of infected infants
16 with hepatosplenomegaly was 12.5%, preterm birth 6.0%, low birth weight 5.8%, anemia 4.9%, and
17 jaundice 4.7%. Although most studies did not include a comparison group of non-infected infants, the
18 proportion of infants with cCD symptomatic at birth are comparable to those with congenital
19 toxoplasmosis (10.0%-30.0%) and congenital cytomegalovirus (10.0%-15.0%).

20 We conclude that cCD burden appears significant, but more studies comparing infected
21 mother-infant dyads to non-infected ones are needed to determine an association of this burden to
22 cCD infection.

23 **Author summary**

24 Chagas disease is caused by the parasite *Trypanosoma cruzi*, which can be passed from
25 mother to infant. It is estimated that one million women of reproductive age are infected with *T. cruzi*.

26 Prior to our work, the proportion of infants infected with *T. cruzi* congenitally presenting with clinical
27 symptoms was unknown. After systematically searching for and identifying studies that collected
28 information on infants with congenital Chagas disease, we summarized and analyzed 47 studies. Our
29 pooled analysis of these studies estimated that 28.3% of infants with congenital Chagas disease were
30 symptomatic and 2.2% died. Prior work has shown that transmission of *T. cruzi* from mother to child
31 occurs in 5% of cases. Other studies have shown that this transmission is preventable through
32 treatment of women prior to conception, and infants can be cured if shown to be infected at birth. Our
33 estimated proportion of 28.3% of infants diagnosed with cCD at birth presenting with clinical
34 symptoms are comparable to infants diagnosed with congenital toxoplasmosis presenting with clinical
35 symptoms (10.0%-30.0%) and congenital cytomegalovirus (10.0%-15.0%). More studies comparing
36 infected mother-infant dyads to non-infected mother-infant dyads are needed to determine an
37 association of this burden to cCD infection.

38 **Introduction**

39 **Background**

40 Chagas disease, caused by the protozoan parasite *Trypanosoma cruzi*, is estimated to infect
41 6.5 million globally, including 1.7 million women of reproductive age [1, 2]. As of 2019, an
42 estimated 172,000 additional people were infected, and 52,000 of these were women of
43 reproductive age [1]. *T. cruzi* is primarily transmitted when the triatomine insect vector transfers the
44 parasite after biting and defecating on its host through its infected feces entering via bite wound or
45 mucosal membrane [2]. However, it can also be transmitted through blood transfusion, organ
46 transplant, via oral consumption of contaminated food with triatomine feces, and through vertical
47 transmission from mother to infant during pregnancy [3, 4].

48 Vertical transmission of *T. cruzi*, or congenital Chagas disease (cCD) occurs in an
49 estimated 4.7% of infants born to infected mothers, increasing to 5.0% in endemic countries [3]. *T.*

50 *cruzi* infected infants may present with severe morbidity at birth and be at a higher risk of mortality.

51 If left untreated, infants can develop chronic Chagas disease later in life [4].

52

53 **Signs and symptoms of congenital Chagas disease**

54 Signs and symptoms in cCD infected infants range from mild to severe. Signs attributable
55 to cCD include low Apgar score (<7 at 1 minute and/or at 5 minutes) [5], premature rupture of
56 membranes [6], preterm birth, and low birth weight [7], intra-uterine growth restriction [8], small
57 for gestational age [9], and neonatal intensive care unit (ICU) admission [10]. Mortality attributed
58 to cCD is associated with severe morbidity symptoms, including meningoencephalitis and
59 myocarditis [2]. Reported symptoms attributable to cCD are hepatomegaly, splenomegaly,
60 respiratory distress syndrome, certain neurologic signs, anasarca, petechiae, abnormal
61 electrocardiographic findings, anemia, meningoencephalitis, myocarditis, congestive heart failure,
62 digestive and/or central nervous system lesions, parasites in various tissues [2], subependymal
63 hemorrhage [11], and cardiomegaly [6].

64

65 **Clinical pathway**

66 Infants exposed in-utero to *T. cruzi* are susceptible to congenital transmission [12].
67 Screening programs to diagnose and treat pregnant women and infants infected with *T. cruzi* have
68 been implemented in endemic countries and countries with large migrant populations from endemic
69 regions since the early 1990s [13, 14]. The gold standard for diagnosing acute and chronic infection
70 uses at least two conventional serological tests (e.g., indirect hemagglutination assay, indirect
71 immunofluorescence assay, ELISA) [12, 15]. Other tests, such as molecular tests and rapid
72 diagnostic tests can also confirm infection but are only recommended to complement or confirm
73 aforementioned assays [12, 15].

74

75 Confirmation of cCD in infants born to *T. cruzi* infected mothers occurs at birth or in the
76 first weeks afterward by viewing parasites in an umbilical cord blood sample or venous infant
77 blood, or after 8-10 months when maternal antibodies have waned using serological assays to
78 confirm infant *T. cruzi* IgG antibodies [4, 12]. Gold standard diagnosis of cCD requires at birth,
79 parasitological examination using microhematocrit or microstrout testing methods, and if negative
80 repeated examination one month later, and at 10 months two serological tests [12]. Molecular
81 methods of diagnosis can detect infection early on but are not part of the gold standard diagnosis
82 given lack of standardization, low and often fluctuating parasitemia in patients with chronic Chagas
83 disease and lack of quality control programs [16].

84 Evidence shows that if women are treated for Chagas disease before pregnancy, future
85 congenital transmission of *T. cruzi* is preventable [4]. Treatment during pregnancy is not
86 recommended given unknown effects of antiparasitic drugs on prenatal development. Treatment of
87 *T. cruzi* infected infants with benznidazole or nifurtimox is effective when administered within the
88 first year of life [17].

89 **Rationale**

90 In 2010, its estimated that between 158,000 to 214,000 infants were born to *T. cruzi*
91 infected mothers in endemic countries, of which 8,000 to 10,700 would be congenitally infected
92 [18]. Around 1/5 of annual new Chagas cases are attributed to congenital infection [16]. The Global
93 Burden of Disease project used data from vital registration databases, surveillance, surveys/census,
94 and other population-based sources to estimate the burden of Chagas disease among neonates and
95 infants, including number of deaths, disability-adjusted life years, years lived with disability, and
96 years of life lost [19]. However, it is likely that the data used to estimate the burden of Chagas
97 disease are incomplete given issues in diagnosing cCD, including low sensitivity of parasitological
98 screening at birth and loss to follow-up with serological screening 8-10 months postpartum [18].
99 Given this, there is no accurate burden estimate for cCD and no consensus on how many infants are

100 symptomatic [2]. The objective of this systematic review is to determine the morbidity and
101 mortality of cCD.

102 **Methods**

103 A systematic review and meta-analysis were performed according to the guidelines of the
104 Meta-Analysis of Observational Studies in Epidemiology (MOOSE) and the Preferred Reporting
105 Items for Systematic reviews and Meta-Analysis (PRISMA) [20, 21]. The protocol was registered
106 on PROSPERO [22].

107 **Criteria for considering studies**

108 **Types of studies.** Studies that reported morbidity or mortality associated with cCD infection were
109 considered, including observational studies and randomized-control trials. Studies excluded were case
110 reports and series, studies not including original data were excluded, case-control studies without
111 neonatal incidence estimates of cCD, and studies not reporting the number of infected neonates.

112 **Types of participants.** Studies about diagnosed neonates and infants with cCD were included.

113 **Types of outcomes.** Articles including original data of morbidity or mortality among infants with
114 cCD were included. Mortality was defined as the recorded death of a *T. cruzi* infected fetus or
115 infant. Morbidity was defined as any adverse outcome presenting in a *T. cruzi* infected infant, with
116 all symptoms extracted available in the **S1 File**. Mortality causes included stillbirth, miscarriage,
117 abortion, intrauterine death, and fetal death.

118

119 **Search strategy**

120 A medical librarian developed and applied a comprehensive and sensitive search strategy (available
121 in **S2 File**) using terms related to cCD in PubMed, EMBASE, CINAHL, LILACS, and Academic
122 Search databases. No language restrictions were applied, and grey literature was not searched.

123

124 **Data collection and analysis**

125 **Selection of studies.** Authors AT and SM independently screened study titles and abstracts and then
126 the remaining full text articles for eligibility. All disagreements were resolved by discussion and, if
127 necessary, a third author (KP) was consulted as an arbitrator. Covidence systematic review software
128 was used to facilitate the screening process [23]. For duplicate studies, the one with the largest sample
129 size was included. The decision-making algorithm consideration is available in **S3 File**.

130 **Data extraction and management.** Authors AT and SM independently extracted data using a
131 form designed and piloted with studies a priori. Extracted data included study, maternal, and infant
132 characteristics, diagnostic information for mothers and infants, and morbidity and mortality of
133 congenital cases. A summary of extracted data can be found in **S4 File** and the data extraction form in
134 **S1 Dataset**.

135 Data extraction discrepancies were resolved by discussion and, if necessary, a third author
136 (KP) was consulted. The inter-observer reviewer agreement for full text screening was assessed
137 using the Kappa statistic.

138 **Assessment of risk of bias.** A risk of bias assessment tool was developed through adaptation of
139 the NIH Study Quality Assessment Tools and the STROBE (Strengthening the Reporting of
140 Observational studies in Epidemiology) checklist of essential items for observational studies [24, 25].
141 Authors AT and SM piloted the tool on five studies, subsequently adapted the tool and then
142 independently assessed included studies' risk of bias of the included studies (**S5 File**). Six domains
143 were considered: 1) participant selection methods, 2) exposure and outcome variable measurement, 3)
144 confounding control methods, 4) reporting of results, 5) statistical methods, and 6) declaration of
145 conflict and ethical statements. Two algorithms were developed to summarize within-domain and
146 summary risk of bias (**S5 File**).

147 **Statistical analysis and data synthesis.** Included study frequencies of congenital transmission,
148 symptoms, mortality causes (including those not originally listed in **S1 File**), infant mortality and/or

149 case-fatality rates, and proportion of asymptomatic and symptomatic cCD was narratively
150 summarized.

151 A meta-analysis of proportions was performed to estimate the pooled proportion of
152 symptomatic fetuses and infants with cCD. The Freeman-Tukey double arcsine method was used to
153 account for overdispersion of proportions and stabilize the variance [26, 27]. Stuart-Ord inverse
154 variance weight were applied to transformed proportions, avoiding underestimation of true variance
155 using its conservative weight [28]. The pooled proportion and its 95% confidence interval (CI) were
156 estimated using the DerSimonian-Laird random effects model to take into consideration the high
157 likelihood of between-study heterogeneity. Results were quantified and represented in a forest plot
158 [28, 29]. The proportion of symptomatic cCD cases was defined as the number of infants with cCD
159 displaying symptom(s) and/or death divided by the total number of infants with cCD. We also
160 performed a meta-analysis of proportions for the pooled proportion of death due to cCD. If a study
161 reported cCD symptoms and/or mortality frequency but did not provide a frequency for every
162 outcome outlined in **S1 File** and/or death, missing values were assumed to be non-events and a
163 value of 0 was imputed [30]. All analyses were performed using SAS Version 9.4, Stats-Direct, and
164 StataIC 12 software.

165 **Assessment of heterogeneity.** The I^2 statistic was calculated to measure the proportion of total
166 variability attributable to heterogeneity between studies [31]. Three subgroup analyses defined a priori
167 were performed by: cCD diagnostic method, geographic region, and individual symptom displayed in
168 fetus/infant. Studies were excluded for the subgroup analysis of symptom frequency if no clear
169 definition of each symptom displayed in individual infants was reported. A subgroup of co-infection
170 with other non-Chagas related infections was planned; however, data was insufficient. Detailed results
171 are described in **S6 File**.

172 **Sensitivity analyses.** Two sensitivity analyses were conducted to assess the potential effect review
173 decisions held on robustness of results. These analyses were to exclude studies with high risk of bias
174 and exclude studies where Chagas disease gold standard diagnosis of the mother was not employed
175 (15). An ad-hoc sensitivity analysis was performed using the Miller back-transformation [32] for the

176 primary meta-analyses of proportion of cCD morbidity and mortality. Detailed results are described in

177 **S6 File.**

178 **Assessment of publication bias.** The effect of publication bias was evaluated for all analyses

179 using Egger's statistical test to determine asymmetry of the funnel plot [33].

180 **Results**

181 A total of 4,531 records were identified through database search, 4,301 were screened based
182 on title and abstract, and 293 full text articles assessed for eligibility, and 47 articles were included for
183 narrative summary and meta-analysis.

184 **Narrative summary**

185 Study publication year ranged from 1962 to 2019, with 18 studies published before 2000, 10
186 between 2000 to 2010, and 18 between 2011 and 2019. Study duration ranged from under one year to
187 15 years, with six studies under one year, 31 studies one to four years, and eight studies five to 15
188 years, with two studies missing data on this factor. 12 studies were conducted in Europe and 35 in the
189 Latin American and Caribbean region (Mexico, Central and South America). Most studies (n=38)
190 were conducted in urban/semi-urban hospital(s), with one conducted in a rural hospital, four in both
191 rural and urban hospitals, one conducted in primary care institutions, and three with missing
192 information. In regard to study design, three were case-control, 13 cross-sectional, 28 prospective
193 cohorts, two retrospective cohorts, and one a mixed cohort. Study population size varied from eight to
194 4,355 infants. 15 studies had less than 100 infants, 14 had between 100 and 999 infants, and 10 had
195 over 1,000 infants, with five studies missing data. 28 studies used gold standard diagnosis for
196 mothers, 16 used an alternative, and three studies did not provide information. 13 studies diagnosed
197 infants with cCD using the gold standard, 32 used an alternative, and two did not provide information.
198 **Table 1** summarizes all study characteristics.

199 The number of cCD infected infants in studies ranged from one to 267, with a median of five.

200 There were 25 studies with five or less cCD infected infants, six with six to 10 infected infants, 11

201 with 11 to 50 infected infants, four with 50 to 100 infected infants, and one with over 100 infected
202 infants. The percentage of symptomatic infected infants among all infected infants ranged from 0.0%
203 to 100.0%, with a median of 26.0%. 16 studies reported a percentage of 0.0%, five reported 1.0% to
204 25.0%, 12 reported 26.0% to 50.0%, four reported 51.0% to 99.0%, and seven reported 100.0%
205 symptomatic. Symptoms of cCD by study, including their reported frequency, are in **S1 Table**. Eight
206 studies reported infant mortality for cCD, three citing Chagas as cause of death, with other causes
207 being stillbirth, Down's syndrome, congenital cardiopathy, respiratory distress, severe neurological
208 damage, gastroenteritis and dehydration, pneumonia, and secondary septicaemia and pneumococcal
209 meningitis. One study reported four deaths, four studies each reported two infant deaths, and the
210 remaining three reported one infant death. Time of death ranged from birth to 14 months. cCD
211 mortality characteristics are in **S2 Table**.

212
213

Table 1: Study Characteristics

<i>Study characteristics</i>					<i>Maternal characteristics</i>			<i>Infant characteristics</i>				
Study	Country-city	Study period	Study setting	Study design	#	# infected	Method diagnosis	#	# Infected	Method diagnosis	# Asymp (%)	# Symp (%)
Apt 2013 [34]	Chile-Salamanca Chile-Illapel Chile-Los Vilos Chile-Canela	2005-2009	Rural hospitals	Prospective cohort	4831	147	Gold	147	6	Other	3 (50.0)	3 (50.0)
Arcavi 1993 [35]	Argentina - CABA	01/1990 - 02/1991	Urban/semiurban hospital	Prospective cohort	729	62	Gold	62	2	Other	2 (100.0)	0 (0.0)
Bahamonde 2002 [36]	Chile - Antofagasta	11/1996 - 10/1997	Urban/semiurban hospital	Prospective cohort	Not specified	Not specified	Gold	1987	5	Other	5 (100.0)	0 (0.0)
Barona - Vilar 2012 [37]	Spain - Valencia	2009 – 2010	Urban/semiurban hospitals	Cross sectional	1975	226	Gold	Not specified	8	Gold	7 (87.5)	1 (12.5)
Barousse 1978 [38]	Argentina - CABA	07/1976 - 07/1977	Not specified	Prospective cohort	4220	186	Other	186	1	Other	0 (0.0)	1 (100.0)
Basile 2019 [39]	Spain - Catalonia	2010 – 2015	Mixed urban/rural hospitals	Prospective cohort	33469	818	Gold	812	28	Gold	24 (85.7)	4 (14.3)
Bern 2009 [40]	Bolivia - Santa Cruz	11/2006 - 06/2007	Urban/semiurban hospital	Prospective cohort	530	154	Gold	138	10 *7 with data	Gold	4 (57.1)	3 (42.9)
Bisio 2011 [41]	Argentina - CABA	2002 – 2007	Urban/semiurban hospital	Prospective cohort	104	104	Gold	83	3	Gold	3 (100.0)	0 (0.0)
Bittencourt 1985 [42]	Brazil - Salvador	01/1981 - 08/1982	Urban/semiurban hospitals	Prospective cohort	2651	226	Gold	186	3	Not specified	1 (33.3)	2 (66.7)
Buekens 2018 [43]	Argentina - San Miguel de Tucuman Mexico - Merida Honduras - Santa Barbara Honduras - Intibuca	2011 - 2013	Urban/semiurban hospitals	Prospective cohort	28145	347	Gold	503	11	Gold	7 (63.6)	4 (36.4)

Cardoso 2012 [44]	Mexico - Santiago Pinotepa Nacional Mexico - Potchutla Mexico - Guadalajara Mexico - Mexico City	09/2006 - 06/2008	Urban/semiurban hospitals	Prospective cohort	1448	106	Other	106	15	Other	14 (93.3)	1 (6.7)
Castillo 1984 [45]	Chile - Antofagasta Chile - Calama	08/1983 - 06/1984	Urban/semiurban hospitals	Cross sectional	1952	35	Other	1961	31	Other	29 (93.6)	2 (6.5)
Contreras 1999 [46]	Argentina - General Guemes	08/1996 - 12/1996	Not specified	Cross sectional	276	34	Gold	34	3	Other	3 (100.0)	0 (0.0)
Cucunuba 2012 [47]	Colombia - Arauca Colombia - Boyaca Colombia - Casanare Colombia - Meta Colombia - Santander	01/2010 - 12/2011	Other	Cross sectional	4417	119	Gold	47	5	Other	5 (100.0)	0 (0.0)
De Rissio 2010 [48]	Argentina - CABA Argentina - Buenos Aires Metropolitan Area	10/1994 - 12/2004	Urban/semiurban hospital	Prospective cohort	6204	265	Gold	4355	267	Gold	267 (100.0)	0 (0.0)
Flores - Chavez 2011 [49]	Spain - Madrid	01/2008 - 12/2010	Urban/semiurban hospitals	Retrospective cohort	3839	152	Other	152	4	Other	3 (75.0)	1 (25.0)
Francisco - Gonzales 2018 [50]	Spain - Madrid	01/2012 - 09/2016	Urban/semiurban hospitals	Retrospective cohort	122	122	Gold	125	3	Other	2 (66.7)	1 (33.3)
Freilij 1995 [51]	Argentina - CABA	1987 - 1993	Urban/semiurban hospital	Mixed cohort	Not specified	1116	Not specified	1118 ^a	71	Other	46 (64.8)	25 (35.2)

Fumado 2014 [52]	Spain - Barcelona	03/2003 - 09/2008	Urban/semiurban hospital	Prospective cohort	Not specified	Not specified	Not specified	72 ^b	5	Other	5 (100.0)	0 (0.0)
Gimenez 2010 [53]	Spain - Valencia	06/2007 - 10/2009	Urban/semiurban hospital	Prospective cohort	574	35	Gold	35	3	Other	2 (66.7)	1 (33.3)
Iglesias 1985 [54]	Chile - Santiago	01/1985 - 06/1985	Urban/semiurban hospital	Cross sectional	1000	11	Other	1000	9	Not specified	9 (100.0)	0 (0.0)
Mallimaci 2010 [55]	Argentina - Ushuaia	02/2001 - 12/2002	Urban/semiurban hospital	Prospective cohort	61	61	Gold	68	3	Gold	3 (100.0)	0 (0.0)
Martinez de Tejada 2009 [56]	Switzerland - Geneva	2008	Urban/semiurban hospitals	Prospective cohort	305	6	Other	8	2	Other	1 (50.0)	1 (50.0)
Mayer 2010 [57]	Argentina - CABA	2000 – 2005	Urban/semiurban hospital	Case-control	Not specified	Not specified	Gold	1058	18	Other	9 (50.0)	9 (50.0)
Mendoza 2014 [58]	Spain - Barcelona	07/2010 - 12/2013	Urban/semiurban hospital	Prospective cohort	1717	81	Other	81	5	Gold	5 (100.0)	0 (0.0)
Mendoza 1983 [59]	Chile - Copiapo	10/1982 - 06/1983	Urban/semiurban hospital	Cross sectional	869	31	Other	875	30	Other	30 (100.0)	0 (0.0)
Messenger 2017 [60]	Bolivia - Santa Cruz de la Sierra Bolivia - Camiri	2010 – 2014	Urban/semiurban hospitals	Prospective cohort	1851	476	Gold	487	38	Gold	27 (71.1)	11 (29.0)
Munoz 2009 [61]	Spain - Barcelona	03/2005 - 09/2007	Urban/semiurban hospitals	Prospective cohort	1350	46	Other	46	3	Gold	3 (100.0)	0 (0.0)
Munoz 1982 [62]	Chile - Santiago	05/1979 - 11/1979	Urban/semiurban hospital	Prospective cohort	402	11	Other	402	2	Other	0 (0.0)	2 (100.0)
Murcia 2017 [63]	Spain - Murcia	01/2007 - 05/2016	Urban/semiurban hospital	Case-control	144	144	Gold	160	16	Gold	13 (81.3)	3 (18.8)
Nisida 1999 [64]	Brazil - Sao Paulo City	Not specified	Urban/semiurban hospitals	Cross sectional	57	57	Gold	58	4	Other	0 (0.0)	4 (100.0)
Oritz 2012 [65]	Chile - Region IV Choapa	2006 - 2010	Not specified	Prospective cohort	110	110	Gold	100	3	Other	3 (100.0)	0 (0.0)
Otero 2012 [66]	Spain - Barcelona	04/2008 - 05/2010	Urban/semiurban hospital	Prospective cohort	633	22	Gold	22	1	Gold	0 (0.0)	1 (100.0)

Rodari 2018 [67]	Italy - Bergamo	01/2014 - 12/2016	Mixed urban/rural hospitals	Prospective cohort	376	28	Gold	29	1	Gold	0 (0.0)	1 (100.0)
Rubio 1962 [68]	Chile - Santiago	1959	Urban/semiurban hospitals	Cross sectional	100	3	Other	50	1	Other	0 (0.0)	1 (100.0)
Salas 2007 [69]	Bolivia - Yacuiba	05/2003 - 09/2004*	Urban/semiurban hospital	Prospective cohort	2712	1144	Gold	2742	58	Other	43 (74.1)	15 (25.9)
Sasagawa 2015 [70]	El Salvador - Santa Isabel El Salvador - Ishuatan El Salvador - Armenia El Salvador - San Antonio del Monte El Salvador - Guaymango	03/2009 - 02/2010 09/2009 - 05/2010	Mixed urban/rural hospitals	Prospective cohort	943	36	Other	36	1	Other	1 (100.0)	0 (0.0)
Sosa - Estani 2009 [71]	Argentina - Las Lomitas	01/2005 - 06/2006*	Urban/semiurban hospital	Prospective cohort	271	79	Gold	108	8	Other	6 (75.0)	2 (25.0)
Streiger 1995 [72]	Argentina - Santa Fe	1976 - 1991	Urban/semiurban hospitals	Prospective cohort	6123	Not specified	Gold	341	9	Other	3 (33.3)	6 (66.7)
Tello 1982 [73]	Chile - Santiago	05/1981 - 07/1982	Urban/semiurban hospital	Cross sectional	1000	27	Other	100	3	Other	3 (100.0)	0 (0.0)
Torrico 2004 [6]	Bolivia - Cochabamba	11/1992 - 07/1994 02/1999 - 11/2001	Urban/semiurban hospital	Prospective cohort	Not specified	Not specified	Gold	Not specified	71	Other	35 (49.3)	36 (50.7)
Valenzuela 1984 [74]	Chile - Rancagua Chile - San Fernando Chile - Santa Cruz	04/1984 - 12/1984	Mixed urban/rural hospitals	Cross sectional	2135	23	Other	2146	11	Other	7 (63.6)	4 (36.4)
Valperga 1992 [75]	Argentina - San Miguel de Tucuman	05/1990 - 06/1991	Urban/semiurban hospitals	Cross sectional	1434	Not specified	Not specified	1496	4	Other	1(25.0)	3 (75.0)
Vicco 2016 [76]	Bolivia - Yacuiba	Not specified	Urban/semiurban hospital	Cross sectional	183	64	Gold	172	4	Other	4 (100.0)	0 (0.0)

Villablanca 1984 [77]	Chile - San Felipe Chile - Los Andes	04/1983 - 12/1984	Urban/semiurban hospitals	Cross sectional	2099	62	Other	2104	61	Other	36 (59.0)	25 (41.0)
Zaidenberg 1993 [78]	Argentina - Salta	1981 - 1985	Urban/semiurban hospital	Cross sectional	937	149	Gold	929	12	Other	0 (0.0)	12 (100.0)

^aChildren recruited at various ages: 733 <6 months, 532 >6 months

^bOnly reporting the number of children in the study under the age of 1 year.

*Indicates a study whose follow-up ended past the end date: Salas 2007 ended follow-up in 2005, and Sosa-Estani 2009 ended follow-up in 2007.

214
215
216
217

218 **Primary analyses**

219 Results from the primary analyses can be found in **Table 2**. The primary meta-analysis of the
 220 proportion of symptomatic cCD infected infants to all cCD infected infants revealed a pooled
 221 proportion of 28.3% (95% CI = 19.0%, 38.5%). This estimate had a I^2 inconsistency statistic of 88.6%
 222 (95% CI = 86.0%, 90.5%), suggesting considerable heterogeneity between studies for morbidity. The
 223 Egger's bias statistic was statistically significant ($P < 0.0001$), suggesting that publication bias
 224 influenced these results. The forest plot and Egger's bias plot can be viewed in **Figs 1 and 2**.

225
 226
 227

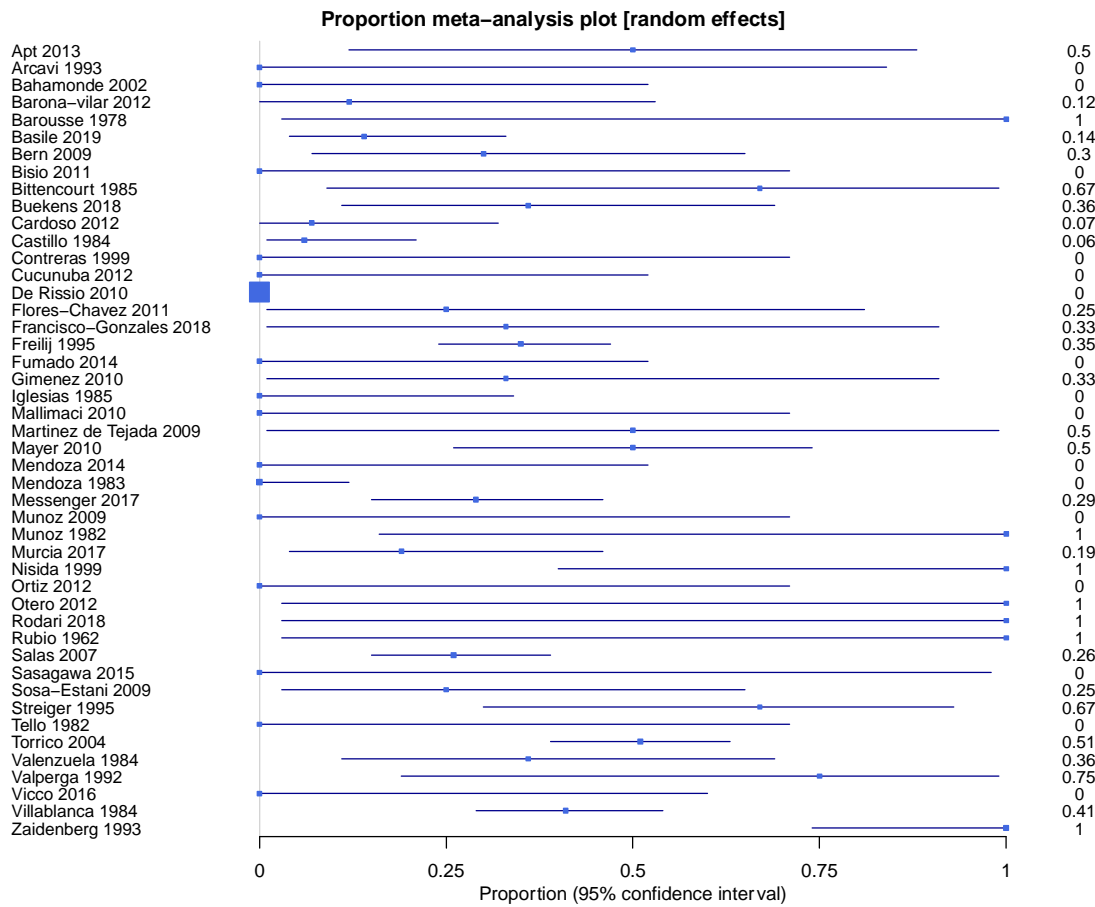
Table 2. Primary Analyses and Subgroup Analyses

	Pooled Proportion %	95% CI	I^2 (%)	95% CI	Egger's Bias	P-Value*
Primary Analyses (N=47)						
Morbidity	28.3	19.0,38.5	88.6	86.0,90.5	2.5	<0.0001
Mortality	2.2	1.3,3.5	9.6	0.0,37.5	0.3	0.01
Subgroup 1 (N=45)						
Infant gold (n=13)	18.7	6.1,36.1	86.8	79.2,90.8	1.8	0.00
Infant other (n=32)	32.5	23.0,42.9	78.9	70.5,84.1	1.8	0.08
Subgroup 2 (N=47)						
Europe (n=12)	20.0	11.4,30.2	10.2	0.0,54.8	2.3	0.04
Latin America and the Caribbean (n=35)	29.4	18.3,41.8	91.3	89.3,92.7	2.9	<0.0001
Subgroup 3 (N=47)						
Hepatosplenomegaly	12.5	6.6,19.9	85.8	82.2,88.4	1.4	0.003
Preterm birth	6.0	3.3,9.5	61.2	44.5,71.1	0.8	0.0003
Low birth weight	5.8	3.2,9.1	60.7	43.8,70.8	0.7	0.0008
Anemia	4.9	2.4,8.2	64.1	49.2,73.1	0.6	0.0155
Jaundice	4.7	2.4,7.7	59.9	42.4,70.3	0.4	0.0394

228 *Egger's Bias plot statistical significance for asymmetry

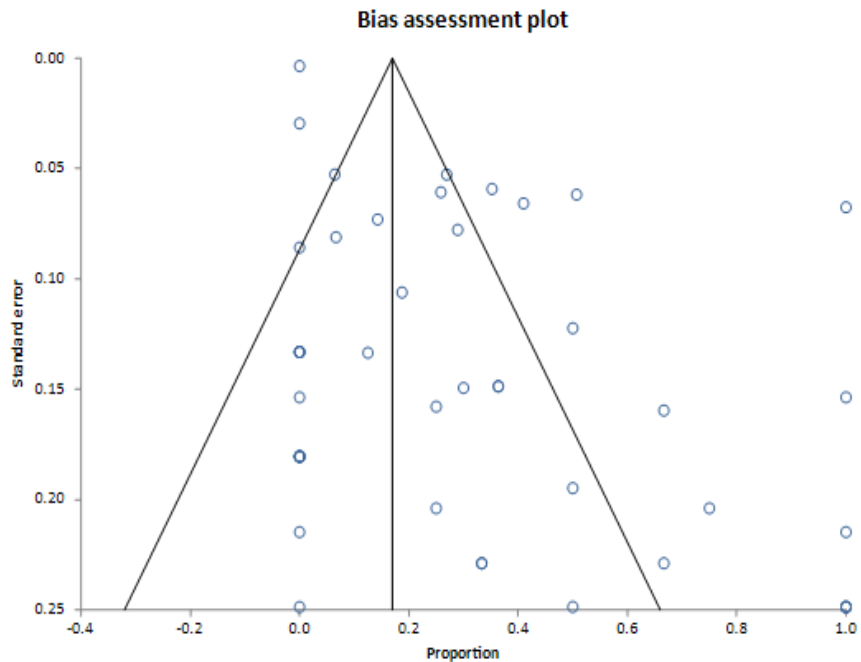
229
 230
 231
 232
 233
 234
 235
 236
 237
 238
 239
 240
 241
 242
 243
 244
 245
 246

247 **Fig 1. Morbidity Forest plot**



248
249
250
251
252
253
254
255
256
257
258
259
260
261
262
263
264
265
266
267
268
269
270
271
272

273 **Fig 2. Morbidity Egger's Bias plot**
274
275

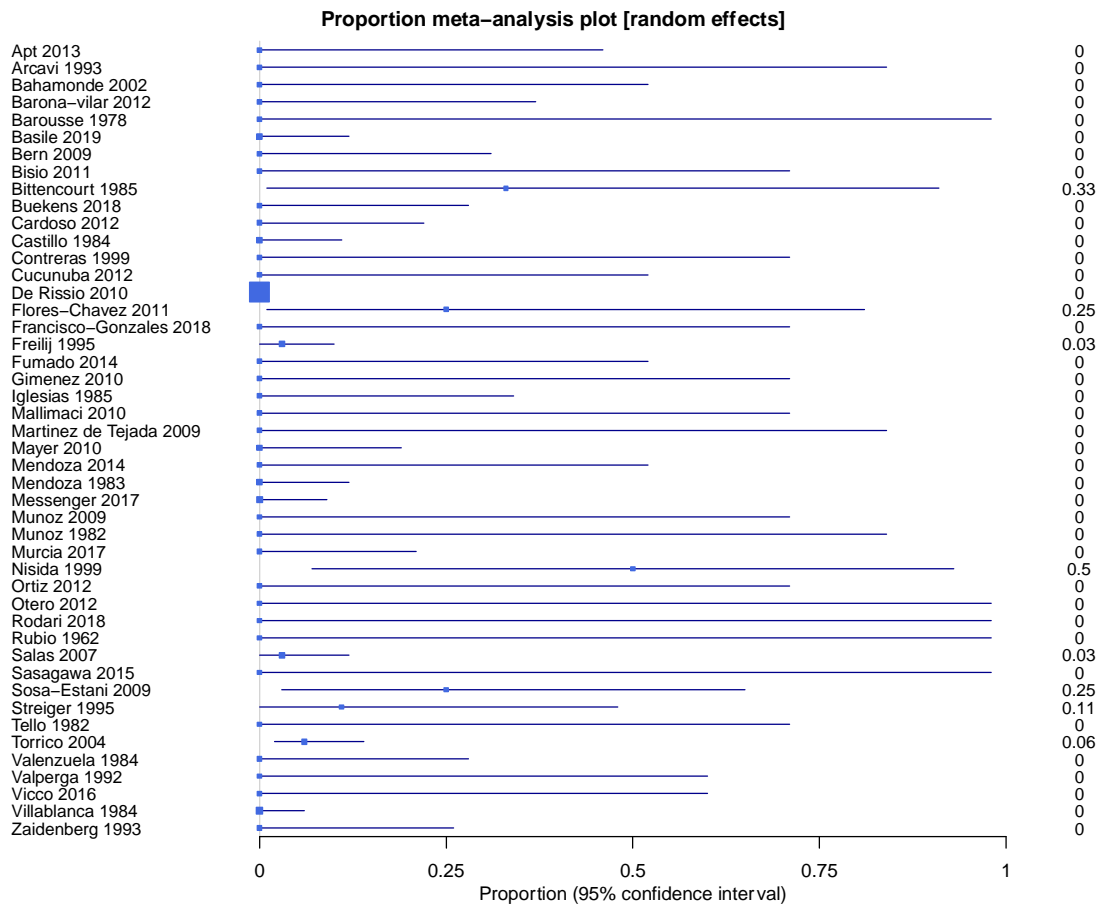


288

289 The pooled proportion of cCD infected infants that died to all infected infants was 2.2% (95%
290 CI = 1.3%, 3.5%) (**Fig 3**). The I^2 inconsistency statistic was 9.6% (95% CI = 0% to 37.5%),
291 suggesting between-study heterogeneity did not influence mortality. The 0.26 Egger's bias statistic
292 (**Fig 4**) was statistically significant ($P = 0.0084$), suggesting publication bias influenced results.

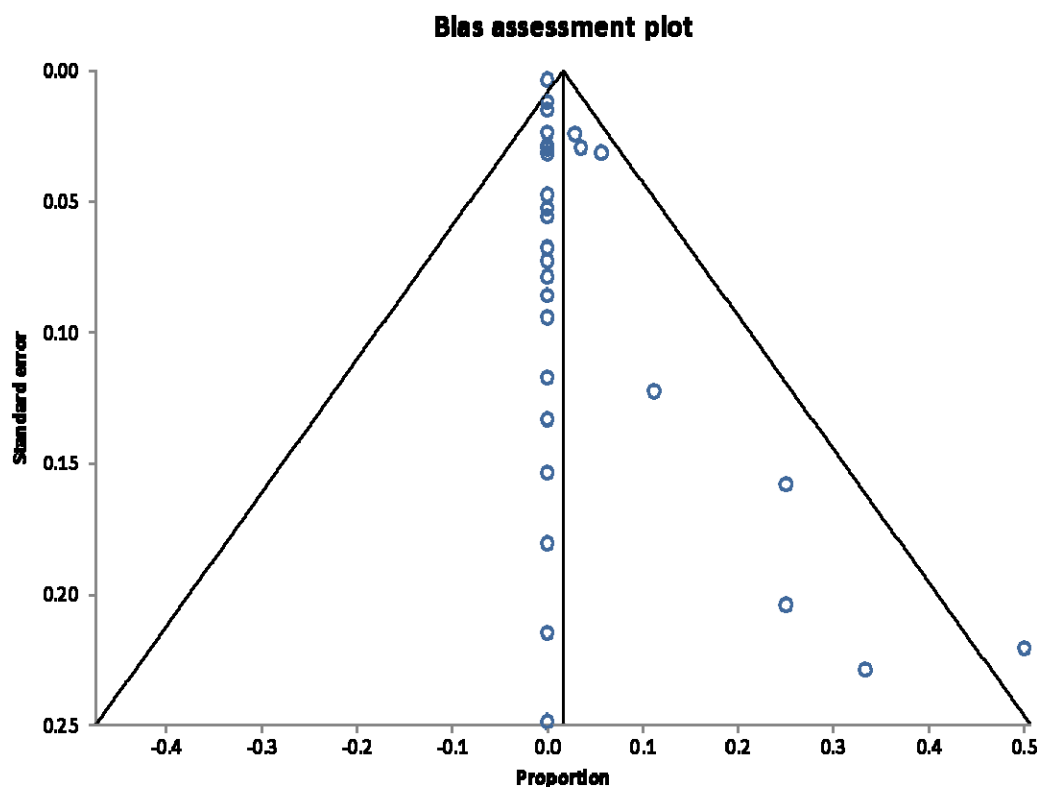
293
294
295
296
297
298
299
300
301
302
303
304
305
306
307
308
309
310
311

312 **Fig 3. Morbidity Forest plot**



313
314
315
316
317
318
319
320
321
322
323
324
325
326
327
328
329
330
331
332
333
334
335
336
337

338 Fig 4. Morbidity Egger's Bias plot



339
340

341

342 Subgroup analyses

343 Subgroup analysis results are in **Table 2**. Subgroup 1 analysed 45 studies with available
344 information by whether gold standard diagnosis was used for cCD. The pooled proportion of
345 symptomatic infants with cCD diagnosed with the gold standard was 18.7% (95% CI 6.1%, 36.1%),
346 versus 32.5% (95% CI 23.0%, 42.9%) among infants diagnosed with an alternative.

347

348 Subgroup 2 analysed the proportion of symptomatic infants with cCD by geographic region in
349 47 studies. European studies (n=12) had a pooled proportion of 20.0% (95% CI 11.4%, 30.2%) versus
350 29.4% (95% CI 18.3%, 41.8%) in Latin American and Caribbean studies (n=35).

351

352 Subgroup 3 analysed the proportion of symptomatic infants with cCD by symptom to
353 determine frequency of each symptom. Hepatosplenomegaly, reported as either hepatomegaly,
354 splenomegaly, or hepatosplenomegaly, occurred most frequently, with a pooled proportion of 12.5%
355 (95% CI 6.6%,19.9%). The following symptoms occurred the most frequently after
356 hepatosplenomegaly: preterm birth with a pooled proportion of 6.0% (95% CI 3.3%, 9.5%), LBW
357 5.8% (95% CI 3.2%, 9.1%), anemia 4.9% (95% CI 2.4%, 8.2), and jaundice 4.7% (95% CI 2.4%,
358 7.7%).

359

360 Discussion

361 Main findings

362 Our primary meta-analysis of the proportion of symptomatic cCD infected infants to all cCD
363 infected infants revealed a pooled proportion of 28.3% across 47 included studies. The pooled
364 proportion of mortality cases among all cCD infected infants was estimated at 2.2%. Sensitivity
365 analyses were conducted to determine robustness of results based on review decisions. Sources of
366 heterogeneity were investigated based on infant characteristics and study characteristics across three
367 subgroups. Detailed results and interpretations are described in **S6 File**.

368 Interpretation

369 Our study expands on the body of work surrounding cCD and to our knowledge is the first
370 to estimate its burden using an exhaustive search strategy that identified 47 studies for meta-
371 analysis. Prior global estimates of the burden of cCD were likely underestimated given the
372 influence of cited issues in diagnosing cCD on population-based data sources [18, 19]. Other
373 estimations have been based on the results of individual observational studies [79, 80]. Our meta-
374 analysis of observational studies allows for a more robust estimation of the burden of cCD in
375 comparison to population-based data sources to describe the global burden of Chagas disease. A
376 previous systematic review estimated that the pooled cCD transmission rate was 4.7% (95% CI:

377 3.9-5.6%) [3]. Our study suggests that of these cCD cases, 28.3% might present with morbidity and
378 2.2% with mortality. Compared to other congenital infections, about 10.0-30.0% of infants with
379 congenital toxoplasmosis present with clinical symptoms at birth [81] and estimates from a study in
380 Brazil suggest that 11.1% of congenital infections will result in fetal death [82]. In addition, 10.0-
381 15.0% of infants born with congenital cytomegalovirus are symptomatic at birth with a mortality
382 rate of <5% [83].

383 This study has raised concerns about the quality of studies that are conducted on cCD and
384 their ability to attribute symptoms to the disease. Only two eligible studies compared symptoms in
385 infected to non-infected mother-infant dyads [6, 60]. Torrico et al. revealed statistically significant
386 increase in premature rupture of membranes and statistically significant decrease in birth weight
387 and gestational age in infected dyads compared to non-infected dyads [6]. Similarly, Messenger et
388 al. showed that *T. cruzi* infected infants were 2.7 times as likely to be low birthweight compared to
389 non-infected infants (OR = 2.7, 95% CI 1.1, 5.8) [60]. Despite low risk of bias in these two studies,
390 most other included studies were found to be moderate or high risk of bias. Coupled with a lack of
391 comparison group, these studies have limited capability of attributing infected infants' signs and
392 symptoms to *T. cruzi* infection. Higher quality observational studies of cCD are needed.

393 There are various barriers to improving quality of cCD research. First, given that Chagas is
394 defined as a neglected tropical disease (NTD) by the World Health Organization (WHO) and
395 primarily affects impoverished populations, few resources have been dedicated to addressing the
396 disease [84]. Disease control efforts historically have focused on vector control [85] historically
397 leaving health systems unprepared to address cCD [86]. This is reflected in poor quality of studies
398 published prior to major regional efforts in Latin America and the Caribbean (2017) [87]. The
399 World Heart Federation has identified gaps in efforts to reduce cCD including ill-prepared
400 healthcare personnel and lack of pregnancy screening programs [86]. The control strategies to close
401 these gaps are cost-effective and reduce direct and indirect costs due to disease complications and
402 death [88-90]. Despite this, the body of cCD literature still lacks in quality and further investment is
403 needed.

404 We identified moderate to high risk of bias in over half of the included studies in reporting of
405 results (71%), exposure and outcome measurement (65%), statistical methods (61%), and declaration
406 of conflict and ethical statements (56%). Studies performed poorly in cCD diagnosis and reporting of
407 these results, which has been cited as an issue due to limited access to and performance of the gold
408 standard diagnostic algorithm, and the subsequent estimated 50% loss to follow-up of at-risk infants
409 [3, 18]. In regard to outcome measurement, some studies only report signs and symptoms displayed,
410 making it possible some may have been missed if studies did not explicitly evaluate for them.
411 Furthermore, certain symptoms were not reported frequently enough to be analyzed such as intensive
412 care unit (ICU) admission rate and low Apgar score. Four cases across three studies reported a low
413 Apgar score (below 7 at 1 minute), and seven cases across three studies were admitted to the ICU.
414 Low reporting frequency may be due to limitations in studies method of reporting; however, these
415 symptoms are an important proxy for clinical severity. Furthermore, the proportion of infants
416 presenting with low birth weight was 6.0%, lower than the rate in Latin America and the Caribbean
417 (8.7%), North America, Europe, Australia, and New Zealand (7.0%), and globally (14.6%) [91]. This
418 number is lower than expected and may be due to issues in outcome measurement and low-quality
419 reporting of results. Given that previous literature has identified signs and symptoms of cCD through
420 individual studies [2, 6-8, 10, 11, 79], the exhaustive list of signs and symptoms identified in this
421 study can improve clinical surveillance and guide outcome measurement in future observational
422 research.

423 The burden of cCD may increase as untreated children grow older and become chronic
424 cases that may develop cardiac and/or gastrointestinal symptoms [18]. cCD is almost 100% curable
425 in infants less than 1 year old and treatments are tolerated well [18]. In addition, treating infected
426 women and girls before they bear children can prevent vertical transmission of *T. cruzi* [92, 93]. As
427 such, our estimated proportion of 28.3% of cCD cases that present with symptoms may be
428 preventable through increased screening and treatment. Despite this, an analysis of the 2010 Global
429 Burden of Disease project data revealed that the decrease in Chagas' burden of disease in DALYs
430 was lower than that of other NTDs from 1990 to 2010 [94]. Given this burden is preventable, more
431 investment in disease control and our understanding of its burden is needed.

432 **Strengths and limitations**

433 This study has several strengths. First, to our knowledge there exists no other study that
434 provides a pooled proportion of symptomatic cCD infected infants. This study employed a
435 comprehensive search strategy, employed on databases that include those primarily focused on
436 Latin American research, without language restrictions. Additionally, estimates produced were
437 precise, as shown by narrow confidence intervals. The subgroup analysis focused on geographic
438 region allowed for informed analyses of how this factor influences the proportion of symptomatic
439 cCD infected infants. The mortality proportions estimates had low heterogeneity, suggesting studies
440 are similar enough to combine and confidently interpret their results. The subgroup analysis of
441 method of diagnosis informs how using a gold standard diagnosis influences the proportion of
442 symptomatic cCD infected infants. Lastly, subgroup analysis by symptoms displayed provides
443 further insight on the symptoms that are indicative of cCD in infants.

444 This study also has several limitations. First, grey literature was not searched, and given the
445 statistical significance of the Egger's bias estimate, this study is vulnerable to the effects of
446 publication bias and ultimately its generalizability and validity. Additionally, most included studies
447 did not compare morbidity or mortality in infected and non-infected mother-infant dyads. Without
448 the comparison to a non-infected control group, this limits ability to associate signs and symptoms
449 to cCD. The subgroup analysis of geographic region did not allow for disaggregation of results
450 further than Latin American and Caribbean region due to a small sample size of studies from
451 Mexico and Central America to analyse separately. Certain mortalities such as abortion and
452 stillbirth may be underreported as these cases were only included in this analysis if the fetus has
453 been diagnosed with Chagas disease post-mortem. Apgar scores were only collected at 1 minute as
454 the majority of studies did not report scores at 5 minutes. Additionally, the majority of I^2 estimates
455 for morbidity proportions displayed considerable heterogeneity between studies, suggesting
456 inconsistencies between studies are not due to chance alone and thus caution should be used when
457 interpreting results. The risk of bias assessment revealed that overall, 34(72.3%) of included articles
458 had a high risk of bias, 10 (21.3%) of articles had a moderate risk of bias, and only 3(6.4%) of

459 articles had low risk of bias. This, in combination with a significant difference between the
460 sensitivity analysis results excluding those studies with high risk of bias, suggests that the risk of
461 bias influencing the results is high. Lastly, there was a large portion of studies with missing data for
462 certain symptoms and missing values were assumed to be 0. Although this method likely meets the
463 assumption that studies only reported symptoms that were displayed and all other values were zero,
464 there is a chance this assumption was not met, and bias may have been introduced into these
465 subgroup results due to this imputation.

466 **Conclusion**

467 Among 47 included studies, the pooled proportion of symptomatic infections of cCD
468 among all infected fetuses and infants was 28.3%; the pooled proportion of mortality for cCD
469 among all cCD infected fetuses and infants was 2.2%. Caution should be used when interpreting
470 estimated morbidity proportions, as there was considerable heterogeneity between studies.
471 Furthermore, sensitivity analyses revealed that excluding studies with a high risk of bias was
472 significantly lower than the overall proportion (16.6%). Mortality proportions had low
473 heterogeneity between studies and may be interpreted confidently. Studies comparing infected and
474 non-infected mother-infant dyads are needed to determine the morbidity and mortality associated
475 with cCD.

476

477 **Acknowledgements**

478 The authors would like to thank Agustín Ciapponi and Luz Gibbons for their support and advice
479 during this study.

480 **Disclosure of interests**

481 All authors declare that there are no financial, personal, political, intellectual, or religious conflicts
482 of interest. The author's views expressed in this publication do not necessarily reflect the views of
483 their affiliated organizations.

484

485 **Contribution to authorship**

486 **Conceptualization:** AFT, SM, PB, KPP, MEB, MC

487 **Study conduction, data collection and data analysis:** AFT, SM, PB, KPP, MEB, MC, DC

488 **Drafting of first manuscript:** AFT, SM

489 **Review and approval of final manuscript:** AFT, SM, PB, KP, MEB, MC, DC

490

491

492

493 **References**

- 494 1. Institute for Health Metrics and Evaluation. GBD results tool. Seattle, WA: University of
495 Washington.
- 496 2. Oliveira I, Torrico F, Munoz J, Gascon J. Congenital transmission of Chagas disease: a clinical
497 approach. *Expert Rev Anti Infect Ther.* 2010;8(8):945-56.
- 498 3. Howard EJ, Xiong X, Carlier Y, Sosa-Estani S, Buekens P. Frequency of the congenital
499 transmission of *Trypanosoma cruzi*: a systematic review and meta-analysis. *Bjog.*
500 2014;121(1):22-33.
- 501 4. Dumonteil E, Herrera C, Buekens P. A therapeutic preconceptional vaccine against Chagas
502 disease: A novel indication that could reduce congenital transmission and accelerate vaccine
503 development. *PLoS Negl Trop Dis.* 2019;13(1):e0006985-e.
- 504 5. The Apgar Score. *Pediatrics.* 2015;136(4):819-22.
- 505 6. Torrico F, Alonso-Vega C, Suarez E, Rodriguez P, Torrico MC, Dramaix M, et al. Maternal
506 *Trypanosoma cruzi* infection, pregnancy outcome, morbidity, and mortality of congenitally
507 infected and non-infected newborns in Bolivia. *Am J Trop Med Hyg.* 2004;70(2):201-9.
- 508 7. Torrico F, Vega CA, Suarez E, Tellez T, Brutus L, Rodriguez P, et al. Are maternal re-infections
509 with *Trypanosoma cruzi* associated with higher morbidity and mortality of congenital Chagas
510 disease? *Trop Med Int Health.* 2006;11(5):628-35.
- 511 8. Kemmerling U, Osuna A, Schijman AG, Truyens C. Congenital transmission of *Trypanosoma*
512 *cruzi*: A review about the interactions between the parasite, the placenta, the maternal and
513 the fetal/neonatal immune responses. *Frontiers in Microbiology.* 2019;10.
- 514 9. Cevallos AM, Hernández R. Chagas' disease: pregnancy and congenital transmission. *Biomed*
515 *Res Int.* 2014;2014:401864.

- 516 10. Carlier Y, Sosa-Estani S, Luquetti AO, Buekens P. Congenital Chagas disease: an update. Mem
517 Inst Oswaldo Cruz. 2015;110(3):363-8.
- 518 11. Flores-Chavez M, Faez Y, Olalla JM, Cruz I, Garate T, Rodriguez M, et al. Fatal congenital
519 Chagas' disease in a non-endemic area: a case report. Cases J. 2008;1(1):302.
- 520 12. Carlier Y, Altchek J, Angheben A, Freilij H, Luquetti AO, Schijman AG, et al. Congenital Chagas
521 disease: Updated recommendations for prevention, diagnosis, treatment, and follow-up of
522 newborns and siblings, girls, women of childbearing age, and pregnant women. PLoS Negl
523 Trop Dis. 2019;13(10):e0007694.
- 524 13. Basile L, Oliveira I, Ciruela P, Plasencia A, working group for developing the Catalanian
525 Screening Programme for congenital transmission of Chagas disease. The current screening
526 programme for congenital transmission of Chagas disease in Catalonia, Spain.
527 Eurosurveillance. 2011;16(38):19972.
- 528 14. Pan American Health Organization. EMTCT Plus, Framework for elimination of mother-to
529 child transmission of HIV, Syphilis, Hepatitis B, and Chagas. 2017.
- 530 15. World Health Organization. Control of Chagas disease: second report of the WHO expert
531 committee. Geneva: World Health Organization; 2002.
- 532 16. Chatelain E. Chagas disease research and development: Is there light at the end of the
533 tunnel? Comput Struct Biotechnol J. 2017;15:98-103.
- 534 17. Carlier Y, Torrico F, Sosa-Estani S, Russomando G, Luquetti A, Freilij H, et al. Congenital
535 Chagas disease: recommendations for diagnosis, treatment and control of newborns,
536 siblings and pregnant women. PLoS Negl Trop Dis. 2011;5(10):e1250-e.
- 537 18. Picado A, Cruz I, Redard-Jacot M, Schijman AG, Torrico F, Sosa-Estani S, et al. The burden of
538 congenital Chagas disease and implementation of molecular diagnostic tools in Latin
539 America. BMJ Global Health. 2018;3(5):e001069.

- 540 19. Vos T, Lim SS, Abbafati C, Abbas KM, Abbasi M, Abbasifard M, et al. Global burden of 369
541 diseases and injuries in 204 countries and territories, 1990-2019: a systematic analysis for
542 the Global Burden of Disease Study 2019. *The Lancet*. 2020;396(10258):1204-22.
- 543 20. Liberati A, Altman DG, Tetzlaff J, Mulrow C, Gotzsche PC, Ioannidis JP, et al. The PRISMA
544 statement for reporting systematic reviews and meta-analyses of studies that evaluate
545 healthcare interventions: explanation and elaboration. *BMJ*. 2009;339:b2700.
- 546 21. Stroup DF, Berlin JA, Morton SC, Olkin I, Williamson GD, Rennie D, et al. Meta-analysis of
547 observational studies in epidemiology: a proposal for reporting. Meta-analysis Of
548 Observational Studies in Epidemiology (MOOSE) group. *JAMA*. 2000;283(15):2008-12.
- 549 22. Tannis A, Matthews S, Puchner K, Bottazzi ME, Cafferata ML, Comandé D, et al. Estimation of
550 the morbidity and mortality of congenital Chagas disease: a systematic review and meta-
551 analysis. PROSPERO. 2020.
- 552 23. Veritas Health Innovation. Covidence systematic review software. Melbourne, Australia.
- 553 24. von Elm E, Altman DG, Egger M, Pocock SJ, Gøtzsche PC, Vandenbroucke JP. The
554 Strengthening the Reporting of Observational Studies in Epidemiology (STROBE) statement:
555 guidelines for reporting observational studies. *The Lancet*. 2007;370(9596):1453-7.
- 556 25. National Heart Lung and Blood Institute. Study Quality Assessment Tools.
- 557 26. Freeman MF, Tukey JW. Transformations related to the angular and the square root. *The*
558 *Annals of Mathematical Statistics*. 1950:607-11.
- 559 27. Jerrold H. Biostatistical analysis fourth edition. Englewood Cliffs, NJ: Prentice Hall; 1998.
- 560 28. Stuart A, Arnold S, Ord JK, O'Hagan A, Forster J. Kendall's advanced theory of statistics:
561 Wiley; 1994.

- 562 29. DerSimonian R, Laird N. Meta-analysis in clinical trials. *Controlled Clinical Trials*.
563 1986;7(3):177-88.
- 564 30. Deeks JJ, Higgins JP, Altman DG, Group CSM. Analysing data and undertaking
565 meta - analyses. *Cochrane handbook for systematic reviews of interventions*. 2019:241-84.
- 566 31. Higgins JP, Thompson SG. Quantifying heterogeneity in a meta-analysis. *Stat Med*.
567 2002;21(11):1539-58.
- 568 32. Miller JJ. The inverse of the Freeman–Tukey double arcsine transformation. *The American*
569 *Statistician*. 1978;32(4):138-.
- 570 33. Egger M, Smith GD, Schneider M, Minder C. Bias in meta-analysis detected by a simple,
571 graphical test. *BMJ*. 1997;315(7109):629-34.
- 572 34. Apt W, Zulantay I, Arnello M, Oddó D, González S, Rodríguez J, et al. Congenital infection by
573 *Trypanosoma cruzi* in an endemic area of Chile: a multidisciplinary study. *Transactions of the*
574 *Royal Society of Tropical Medicine and Hygiene*. 2013;107(2):98-104.
- 575 35. Arcavi M, Orfus G, Griemberg G. Incidence of Chagas infection in pregnant women and
576 newborn infants in a non-endemic area. *Medicina*. 1993;53(3):217-22.
- 577 36. Bahamonde MI, Baeza M, Chambel C, Ramirez C, Goycolea M, Cáceres J. Prevalencia de la
578 infección transplacentaria por *Trypanosoma cruzi* en el Hospital de Calama, II Región-Chile.
579 *Revista de Patología Tropical/Journal of Tropical Pathology*. 2002;31(1):87-96.
- 580 37. Barona-Vilar C, Gimenez-Marti MJ, Fraile T, Gonzalez-Steinbauer C, Parada C, Gil-Brusola A,
581 et al. Prevalence of *Trypanosoma cruzi* infection in pregnant Latin American women and
582 congenital transmission rate in a non-endemic area: the experience of the Valencian Health
583 Programme (Spain). *Epidemiol Infect*. 2012;140(10):1896-903.

- 584 38. Barousse A, Eposto M, Mandel S, Martínez F. Congenital Chagas' disease in a non-endemic
585 area. *Medicina*. 1978;38(6 Pt 1):611-5.
- 586 39. Basile L, Ciruela P, Requena-Méndez A, Vidal MJ, Dopico E, Martín-Nalda A, et al.
587 Epidemiology of congenital Chagas disease 6 years after implementation of a public health
588 surveillance system, Catalonia, 2010 to 2015. *Eurosurveillance*. 2019;24(26):1900011.
- 589 40. Bern C, Verastegui M, Gilman RH, Lafuente C, Galdos-Cardenas G, Calderon M, et al.
590 Congenital *Trypanosoma cruzi* transmission in Santa Cruz, Bolivia. *Clin Infect Dis*.
591 2009;49(11):1667-74.
- 592 41. Bisio M, Seidenstein ME, Burgos JM, Ballering G, Risso M, Pontoriero R, et al. Urbanization of
593 congenital transmission of *Trypanosoma cruzi*: prospective polymerase chain reaction study
594 in pregnancy. *Trans R Soc Trop Med Hyg*. 2011;105(10):543-9.
- 595 42. Bittencourt ACL, Mota E, Ribeiro Filho R, Fernandes LG, Almeida PRCd, Sherlock ÍRda, et al.
596 Incidence of congenital Chagas' disease in Bahia, Brazil. 1985.
- 597 43. Buekens P, Cafferata ML, Alger J, Althabe F, Belizán JM, Bustamante N, et al. Congenital
598 transmission of *Trypanosoma cruzi* in Argentina, Honduras, and Mexico: an observational
599 prospective study. *The American Journal of Tropical Medicine and Hygiene*. 2018;98(2):478-
600 85.
- 601 44. Cardoso EJ, Valdéz GC, Campos AC, de la Luz Sanchez R, Mendoza CR, Hernández AP, et al.
602 Maternal fetal transmission of *Trypanosoma cruzi*: a problem of public health little studied in
603 Mexico. *Experimental Parasitology*. 2012;131(4):425-32.
- 604 45. Castillo S, Mardones C, Hormazábal G, Cubillos R, Barahona N, Zepeda S, et al. Chagas'
605 disease in Chile. Urban sectors. VI. Frequency of Chagas' infection in blood donors and in
606 mothers and newborn infants of the cities of Antofagasta and Calama. II Region (1983-1984).
607 *Boletín Chileno de Parasitología*. 1984;39(1-2):28-32.

- 608 46. Contreras S, Fernández MR, Agüero F, Dese Dese J, Orduna T, Martino O. Congenital
609 Chagas-Mazza disease in Salta, Argentina. *Rev Soc Bras Med Trop.* 1999;32(6):633-6.
- 610 47. Cucunuba Z, Valencia C, Flórez C, León C, Castellanos Y, Cardenas A, et al. Pilot program for
611 surveillance of congenital Chagas disease in Colombia 2010-2011. *International Journal of*
612 *Infectious Diseases.* 2012;16:e343.
- 613 48. De Rissio AM, Riarte AR, Garcia MM, Esteva MI, Quaglino M, Ruiz AM. Congenital
614 *Trypanosoma cruzi* infection. Efficacy of its monitoring in an urban reference health center in
615 a non-endemic area of Argentina. *Am J Trop Med Hyg.* 2010;82(5):838-45.
- 616 49. Flores-Chavez MD, Merino FJ, García-Bujalance S, Martin-Rabadan P, Merino P, Garcia-
617 Bermejo I, et al. Surveillance of Chagas disease in pregnant women in Madrid, Spain, from
618 2008 to 2010. *Euro Surveill.* 2011;16(38).
- 619 50. Francisco-González L, Gastañaga-Holguera T, Montero BJ, Pérez ZD, Ramos MI, Amador PM,
620 et al. Seroprevalence and vertical transmission of Chagas disease in a cohort of Latin-
621 American pregnant women in a tertiary hospital in Madrid. *Anales de Pediatría (English*
622 *Edition).* 2018;88(3):122-6.
- 623 51. Freilij H, Altchek J. Congenital Chagas' disease: diagnostic and clinical aspects. *Clinical*
624 *Infectious Diseases.* 1995;21(3):551-5.
- 625 52. Fumado V, Juncosa T, Posada E, Fisa R, Gallego M, Gascon J. Paediatric Chagas in a non-
626 endemic area. *Enfermedades infecciosas y microbiología clinica.* 2014;32(5):293-6.
- 627 53. Giménez MJ, Gómez-Ruiz MD, Calabuig A, Perez-Tamarit A, Otero MC, Fernández-Silveira J,
628 et al., editors. Congenital transmission of Chagas' disease in Latin American immigrants in a
629 health department of Valencia, Spain. *European Congress of Clinical Microbiology and*
630 *Infectious Diseases; 2010; Vienna, AT: Clinical Microbiology and Infection.*

- 631 54. Iglesias J, Schenone S, Contreras M, Danitz A, Pineda C, Badulli A, et al. Chagas' disease in
632 Chile. Urban sections. IX. Frequency of Chagas' disease in mothers and newborn infants of
633 the Eastern Section of the Metropolitan area, Chile, 1985. Boletin chileno de parasitologia.
634 1985;40(1-2):30-3.
- 635 55. Mallimaci MC, Sosa-Estani S, Russomando G, Sánchez Z, Sijvarger C, Alvarez IM, et al. Early
636 diagnosis of congenital *Trypanosoma cruzi* infection, using shed acute phase antigen, in
637 Ushuaia, Tierra del Fuego, Argentina. Am J Trop Med Hyg. 2010;82(1):55-9.
- 638 56. Martínez de Tejada B, Jackson Y, Paccolat C, Irion O. Congenital Chagas disease in Geneva:
639 diagnostic and clinical aspects. Revue Medicale Suisse. 2009;5(222):2091-2, 4.
- 640 57. Mayer JP, Biancardi M, Altchek J, Freilij H, Weinke T, Liesenfeld O. Congenital infections with
641 *Trypanosoma cruzi* or *Toxoplasma gondii* are associated with decreased serum
642 concentrations of interferon- γ and interleukin-18 but increased concentrations of
643 interleukin-10. Annals of Tropical Medicine & Parasitology. 2010;104(6):485-92.
- 644 58. Mendoza C, Ruiz S, Maya S, Del Río M, Rodríguez E. Vertical transmission of *T. cruzi*: Our
645 experience at a secondary hospital in Barcelona. The Journal of Maternal-Fetal & Neonatal
646 Medicine. 2014;27(sup1):1-437.
- 647 59. Mendoza J, Longa E, Contreras M, Sandoval L, Amigo C. Chagas' disease in Chile. Urban
648 sections. III. Frequency of Chagasic infection in mothers and newborns from the Hospital of
649 Copiapo (III Region, Chile). Boletin Chileno de parasitologia. 1983.
- 650 60. Messenger LA, Gilman RH, Verastegui M, Galdos-Cardenas G, Sanchez G, Valencia E, et al.
651 Toward improving early diagnosis of congenital Chagas disease in an endemic setting. Clin
652 Infect Dis. 2017;65(2):268-75.

- 653 61. Munoz J, Coll O, Juncosa T, Verges M, del Pino M, Fumado V, et al. Prevalence and vertical
654 transmission of *Trypanosoma cruzi* infection among pregnant Latin American women
655 attending 2 maternity clinics in Barcelona, Spain. Clin Infect Dis. 2009;48(12):1736-40.
- 656 62. Munoz P, Lorca M, Thiermann E, Astorga B, Arias A, Pino S. Transmisión congénita del
657 *Trypanosoma cruzi*: Investigación en la maternidad del Hospital San Juan de Dios, de
658 Santiago. Revista Chilena de Pediatría. 1982;53(1-6):22-7.
- 659 63. Murcia L, Simón M, Carrilero B, Roig M, Segovia M. Treatment of infected women of
660 childbearing age prevents congenital *Trypanosoma cruzi* infection by eliminating the
661 parasitemia detected by PCR. The Journal of infectious diseases. 2017;215(9):1452-8.
- 662 64. Nisida IVV, Amato Neto V, Braz LMA, Duarte MIS, Umezawa ES. A survey of congenital
663 Chagas' disease, carried out at three Health Institutions in São Paulo City, Brazil. Revista do
664 Instituto de Medicina Tropical de São Paulo. 1999;41(5):305-11.
- 665 65. Ortiz S, Zulantay I, Solari A, Bisio M, Schijman A, Carlier Y, et al. Presence of *Trypanosoma*
666 *cruzi* in pregnant women and typing of lineages in congenital cases. Acta tropica.
667 2012;124(3):243-6.
- 668 66. Otero S, Sulleiro E, Molina I, Espiau M, Suy A, Martin-Nalda A, et al. Congenital transmission
669 of *Trypanosoma cruzi* in non-endemic areas: evaluation of a screening program in a tertiary
670 care hospital in Barcelona, Spain. Am J Trop Med Hyg. 2012;87(5):832-6.
- 671 67. Rodari P, Angheben A, Gennati G, Trezzi L, Bargiggia G, Maino M, et al. Congenital Chagas
672 disease in a non-endemic area: Results from a control programme in Bergamo province,
673 Northern Italy. Travel Medicine and Infectious Disease. 2018;25:31-4.
- 674 68. Rubio M, Ebensperger I, Howard J, Knierim F, Naquira F. Search for Chagas' disease in 100
675 mothers of premature infants, with the finding of a case of congenital Chagas' disease.
676 Boletin Chileno de Parasitologia. 1962;17:13-6.

- 677 69. Salas NA, Cot M, Schneider D, Mendoza B, Santalla JA, Postigo J, et al. Risk factors and
678 consequences of congenital Chagas disease in Yacuiba, south Bolivia. *Trop Med Int Health*.
679 2007;12(12):1498-505.
- 680 70. Sasagawa E, Aiga H, Soriano EYC, Marroquín BLC, Ramírez MAH, de Aguilar AVG, et al.
681 Mother-to-child transmission of chagas disease in El Salvador. *The American Journal of*
682 *Tropical Medicine and Hygiene*. 2015;93(2):326-33.
- 683 71. Sosa-Estani S, Dri L, Touris C, Abalde S, Dell'arciprete A, Braunstein J. Vectorial and
684 congenital transmission of *Trypanosoma cruzi* in Las Lomitas, Formosa. *Medicina (B Aires)*.
685 2009;69(4):424-30.
- 686 72. Streiger M, Fabbro D, del Barco M, Beltramino R, Bovero N. Congenital Chagas disease in the
687 city of Santa Fe. *Diagnosis and treatment. Medicina (B Aires)*. 1995;55(2):125-32.
- 688 73. Tello P, Fernández P, Sandoval L, Ampuero G, Pizarro T, Schenone H. *Trypanosoma cruzi*
689 infection in mother and child from the north section of Santiago, Chile. *Boletin Chileno de*
690 *Parasitología*. 1982;37(1/2):23-4.
- 691 74. Valenzuela M, Pinto M, Contreras M, Sandoval L, Silva M, Cerda G, et al. Enfermedad de
692 Chagas en Chile. Sectores urbanos. VIII. Frecuencia de la infeccion por *Trypanosoma cruzi* en
693 donantes de sangre en madres y recién nacidos de las ciudades de Rancagua, San Fernando
694 y Santa Cruz. VI Region, 1983-1984. *Bol Chil Parasitol*. 1984:75-7.
- 695 75. Valperga SM, Castagnaro AE, Ovejero de Valperga GJ, Mirabella de Miotti MG, Arnau Enrico
696 SC, Alonso BE, et al. Prevalencia de Chagas congénito: segundo estudio en Tucumán,
697 Argentina. *Cienc Méd(San Miguel de Tucumán)*. 1992:137-55.
- 698 76. Vicco MH, Rodeles L, Capovilla GS, Perrig M, Choque AGH, Marcipar I, et al. IgG
699 autoantibodies induced by *T. cruzi* during pregnancy: Correlation with gravidity

- 700 complications and early outcome assessment of the newborns. *Maternal and Child Health*
701 *Journal*. 2016;20(10):2057-64.
- 702 77. Villablanca E, Osorio L, Salinas P. Chagas' disease in Chile. Urban sections. VII. Frequency of
703 Chagasic infection in blood donors and mothers and newborns from the cities of San Felipe
704 and Los Andes. V Region, 1983-1984. *Bol Chil Parasitol*. 1984;39(3-4):72-4.
- 705 78. Zaidenberg M, Segovia A. Congenital Chagas' disease in Salta, Argentina. *Revista do Instituto*
706 *de Medicina Tropical de São Paulo*. 1993;35(1):35-43.
- 707 79. Cevallos AM, Hernández R. Chagas' Disease: Pregnancy and congenital transmission.
708 2014;2014:1-10.
- 709 80. Messenger LA, Bern C. Congenital Chagas disease. *Current Opinion in Infectious Diseases*.
710 2018;31(5):415-21.
- 711 81. Guerina NG, Marquez L, Weisman LE. Congenital toxoplasmosis: Clinical features and
712 diagnosis. *UpToDate UpToDate*, Waltham, MA. 2019.
- 713 82. Bragheto M, Murata FHA, Spegorin L, Pereira-Chioccola VL, de Mattos L, Mattos CCBd. Fetal
714 death caused by *Toxoplasma gondii* infection. *International Journal of Infectious Diseases*
715 2019; **79**: 82.
- 716 83. Boppana SB, Ross SA, Fowler KB. Congenital cytomegalovirus infection: clinical outcome.
717 *Clinical infectious diseases: an official publication of the Infectious Diseases Society of*
718 *America*. 2013;57 Suppl 4(Suppl 4):S178-S81.
- 719 84. World Health Organization. Accelerating work to overcome the global impact of neglected
720 tropical diseases. World Health Organization Geneva, Switzerland; 2012.
- 721 85. Dumonteil E, Herrera C. Ten years of Chagas disease research: Looking back to
722 achievements, looking ahead to challenges. *PLoS Negl Trop Dis*. 2017;11(4):e0005422.

- 723 86. Echeverría LE, Marcus R, Novick G, Sosa-Estani S, Ralston K, Zaidel EJ, et al. WHF IASC
724 Roadmap on Chagas Disease. *Glob Heart*. 2020;15(1):26-.
- 725 87. Crudo F, Piorno P, Krupitzki H, Guilera A, López-Albizu C, Danesi E, et al. How to implement
726 the framework for the elimination of mother-to-child transmission of HIV, syphilis, hepatitis
727 B and Chagas (EMTCT Plus) in a disperse rural population from the Gran Chaco region: A
728 tailor-made program focused on pregnant women. *PLoS Negl Trop Dis*.
729 2020;14(5):e0008078.
- 730 88. Imaz-Iglesia I, Miguel LG, Ayala-Morillas LE, García-Pérez L, González-Enríquez J, Blasco-
731 Hernández T, et al. Economic evaluation of Chagas disease screening in Spain. *Acta Trop*.
732 2015;148:77-88.
- 733 89. Sicuri E, Muñoz J, Pinazo MJ, Posada E, Sanchez J, Alonso PL, et al. Economic evaluation of
734 Chagas disease screening of pregnant Latin American women and of their infants in a non
735 endemic area. *Acta Trop*. 2011;118(2):110-7.
- 736 90. Billot C, Torrico F, Carlier Y. Cost effectiveness study of a control program of congenital
737 Chagas disease in Bolivia. *Revista da Sociedade Brasileira de Medicina Tropical*. 2005;38
738 Suppl 2:108-13.
- 739 91. Blencowe H, Krasevec J, de Onis M, Black RE, An X, Stevens GA, et al. National, regional, and
740 worldwide estimates of low birthweight in 2015, with trends from 2000: a systematic
741 analysis. *The Lancet Global Health*. 2019;7(7):e849-e60.
- 742 92. Fabbro DL, Danesi E, Olivera V, Codebó MO, Denner S, Heredia C, et al. Trypanocide
743 treatment of women infected with *Trypanosoma cruzi* and its effect on preventing
744 congenital Chagas. *PLoS Negl Trop Dis*. 2014;8(11):e3312.

- 745 93. Álvarez MG, Vigliano C, Lococo B, Bertocchi G, Viotti R. Prevention of congenital Chagas
746 disease by Benznidazole treatment in reproductive-age women. An observational study.
747 Acta Tropica. 2017;174:149-52.
- 748 94. Stolk WA, Kulik MC, le Rutte EA, Jacobson J, Richardus JH, de Vlas SJ, et al. Between-country
749 inequalities in the neglected tropical disease burden in 1990 and 2010, with projections for
750 2020. PLoS Negl Trop Dis. 2016;10(5):e0004560-e.

751

752 **Supporting information**

753 **S1 File.** Morbidity signs and symptoms of congenital Chagas disease

754 **S2 File.** Search strategy

755 **S3 File.** Hierarchy for consideration of full-text articles

756 **S4 File.** Summary of extracted data

757 **S5 File.** Risk of bias algorithms, summary within-domain risk of bias, and results

758 **S6 File.** Sensitivity analyses results and assessment of heterogeneity

759 **S1 Dataset.** Data extraction form

760 **S1 Table.** Congenital cases morbidity characteristics

761 **S2 Table.** Congenital cases mortality characteristics

762

763