

1 **Universal two-dimensional labelled probe-mediated melting curve**
2 **analysis based on multiplex PCR for rapid typing of plasmodium in a**
3 **single closed tube**

4 **Short title:** Rapid malaria detection method

5 **Authors:**

6 Haipo Xu,^{1,2,4} Xiaolong Liu,^{1,2,4*} and Jingfeng Liu^{1,3*}

7 **Affiliations:**

8 ¹ College of Biological Science and Engineering, Fuzhou University, Fuzhou 350116,
9 P. R. China;

10 ² The United Innovation of Mengchao Hepatobiliary Technology Key Laboratory of
11 Fujian Province, Mengchao Hepatobiliary Hospital of Fujian Medical University,
12 Fuzhou 350025, P. R. China;

13 ³ Fujian Cancer Hospital & Fujian Medical University Cancer Hospital, Fuzhou,
14 350014, P. R. China;

15 ⁴ Mengchao Med-X Center, Fuzhou University, Fuzhou 350116, P. R. China;

16 **Corresponding authors:**

17 **Xiaolong Liu**, Mengchao Hepatobiliary Hospital of Fujian Medical University,
18 Fuzhou, 350025, P. R. China.

19 Tel: 0591-83705927; Fax: 0591-83705927 E-mail: xiaoloong.liu@gmail.com

20 **Jingfeng Liu**, Mengchao Hepatobiliary Hospital of Fujian Medical University,
21 Fuzhou, 350025, P. R. China.

22 Tel: 0591-83705927; Fax: 0591-83705927 E-mail: drjingfeng@126.com

23 **Funding:**

24 Supported by Natural Science Foundation of Fujian Province (Grant No.
25 2021J011279), Scientific Foundation of Fujian Health Department (Grant No.
26 2019-1-87), Scientific Foundation of Fuzhou Science and Technology Department

27 NOTE: This preprint reports new research that has not been certified by peer review and should not be used to guide clinical practice.

28 University (Grant No. 2019QH1299).

29

30 **Key words**

31 Nucleic acid detection, multiplex PCR, melting curve analysis, plasmodium, malaria

32

33 **Abstract**

34 Nowadays, malaria is still one of the major public health problems which commonly
35 caused by four plasmodium species, especially in the epidemic of COVID-19
36 harboring similar symptoms of fever or fatigue, which easily result in misdiagnosis.
37 The disadvantages of previous traditional detection methods, such as time-consuming,
38 costly, complicated operation, strong professionalism, indistinguishable typing and so
39 on, lead to the dilemma of difficulty to meet the clinical requirements of rapid, easy
40 and accurate typing of common plasmodiums. Herein, we developed and maximally
41 optimized a universal two-dimensional labelled probe-mediated melting curve
42 analysis (UP-MCA) assay based on multiplex PCR for rapid and accurate typing of
43 five plasmodiums, including novel human plasmodium, *Plasmodium knowlesi* (Pk), in
44 a single closed tube following genome extraction. The assay showed the limit of
45 detection (LOD) of 10 copies per reaction and can accurately distinguish plasmodium
46 species from intra-plasmodium and other pathogens. In addition, we also proposed
47 and verified different methods of fluorescence-quenching and two dimensional
48 labelled tag for probes that are suitable for UP-MCA assay. Furthermore, its clinical
49 performance was evaluated by 184 samples and showed sensitivity of 100% (164/164)
50 and specificity of 100% (20/20) at 99% confidence interval, respectively, with the
51 microscopy method as gold standard. Taken together, the UP-MCA system showed
52 excellent sensitivity, specificity and accuracy for genotyping of plasmodium, and it
53 meets the requirements of rapidity and convenience for plasmodium detection in
54 clinical routine and has great potential for clinical translation.

55

56 **Introduction**

57 Malaria is a life-threatening disease caused by protozoan parasites, belong to the
58 *Plasmodium* genus, which are transmitted to people through the bites of infected
59 female anopheles mosquitoes. Approximately 229 million malaria cases were reported
60 worldwide according to World Malaria Report 2020, causing an estimated 409,000
61 deaths in 2019. Although claim of local malaria elimination from some regions or
62 countries authenticated by World Health Organization (WHO), there is still a great
63 risk of imported malaria with the development of economy globalization and the
64 aggravation of population immigration and emigration across regions or countries.

65 Commonly, there are four parasite species of plasmodium genus known to cause
66 human malaria, including *Plasmodium vivax* (Pv), *Plasmodium falciparum* (Pf),
67 *Plasmodium ovale* (Po), and *Plasmodium malariae* (Pm). Additionally, *Plasmodium*
68 *knowlesi* (Pk) derived from macaques was considered as the fifth species of
69 Plasmodium causing malaria in humans(1) since large focus and description in
70 2004(2). Clinically, different treatments and monitoring patterns would be taken after
71 the judgment of different plasmodium species(3). Therefore, timely, easy and accurate
72 typing of plasmodium is very important for countries or coastal cities of happening
73 transactions or population mobility frequently over the world, especially imported
74 malaria from plasmodium high-burden regions.

75 Traditionally, microscopy, known as the gold standard for the diagnosis of clinical
76 malaria, is professional interpretative and time-consuming, requires expertise gained
77 by strict training and experience, and cannot effectively support large studies. Also, it
78 is difficult in distinguishing *P. knowlesi* from *P. malariae* because of their
79 morphological similarities(2, 4), while *P. knowlesi* results in severe and deadly
80 malaria. Rapid diagnostic tests (RDTs) based on immune-chromatographic antigen
81 detection have been implemented in some diagnostic laboratories as a supplement to
82 microscopy(5). Although they are rapid, simple, and easy to interpret, RDTs target
83 proteins specific to *P. falciparum* or *P. vivax* or those common to all plasmodium
84 species and cannot specifically differ *P. malariae*, *P. ovale*, and *P. knowlesi*(5, 6).
85 Furthermore, diagnostic sensitivity (e.g., lacking sensitivity for some strains of *P.*
86 *falciparum* and up to 50% of *P. knowlesi*)(7) and specificity (e.g., *P. vivax* in patients

87 with co-infections and high *P. falciparum* parasitemia levels) are variable widely for
88 commercially available RDTs.

89 Conversely, molecular detection methods offer an attractive alternative approach.
90 Commonly, PCR is a heat-dependent cycle amplification reaction that harbors ability
91 of exponential amplification for original genome used as one of most important
92 nucleic acid test method(8-10). Conventional PCR assays require post-handling,
93 time-consuming and risk of cross-contamination. Although some real-time PCR
94 assays have been described(11, 12), they cannot distinguish multiple plasmodium
95 species in one-pot reaction mainly as a result of low fluorescent channel and
96 throughput, with similarly limited evaluation of one or two plasmodium species
97 samples. Additionally, clinical performance of specificity cannot be ensured since
98 blood samples from patients with plasmodium are difficult to be obtained and
99 infrequently tested. Recently, Plasmodium species detection assay based on
100 isothermal amplification, such as loop-mediated isothermal amplification
101 (LAMP)(13-16), recombinase polymerase amplification (RPA)(17-19) etc, showed a
102 great convenience for point-of-care diagnosis, especially for resource-limited setting,
103 but it lacks of detection throughput and sensitivity in field diagnosis, especially
104 appearance of false positive or negative results. CRISPR based diagnostic platform
105 (CRISPR-Dx) as a new emerging nucleic acid detection technology used for
106 point-of-care diagnosis, such as Cas12a mediated plasmodium detection assay(20),
107 showed great sensitivity and specificity, but it requires expensive Cas protein from
108 commercial corporation and it is difficult to achieve multiple objects detection in a
109 single closed tube.

110 Herein, we proposed a Universal two-dimensional labelled Probe-mediated Melting
111 Curve Analysis (UP-MCA) assay based on multiplex PCR within four fluorescence
112 channels at real-time PCR instrument for malaria genotyping. It is a rapid, sensitive,
113 specific, low cost and high throughput detection strategy for five plasmodium species,
114 including *Plasmodium falciparum*, *Plasmodium vivax*, *Plasmodium malariae*,
115 *Plasmodium ovale*, and *Plasmodium knowlesi*, with *human ribonuclease P* (RNase P)
116 gene as the internal control in state of one-pot and closed tube following introduction

117 of genome extract. Moreover, the assay was validated by detection of clinical malaria
118 samples and showed as a good alternative tool for clinical malaria diagnosis.

119

120 **Materials and Method**

121 *Collection and genome extraction for clinical samples*

122 Clinical blood samples were collected from Mengchao Hepatobiliary Hospital of
123 Fujian Medical University from July 2016 to March 2020 with one sample came from
124 one person, including patients with signs and symptoms of, such as fever, fatigue etc.
125 which is similar to malaria. And genome extraction of 200 microliters whole blood for
126 these samples were prepared by Ex-DNA whole blood extraction kit using automated
127 nucleic acid extraction equipment (NP968-C, Xi'an Tianlong Science and Technology
128 Co., Ltd, China) and 80 microliters nucleic acid extract were left over and measured
129 by Nanodrop 2000 (Thermo Fisher Scientific, USA). They were stored at -20 °C until
130 used.

131

132 *Principle of species-specific plasmodium detection assay*

133 Although real-time PCR based on sequence specific probe shows higher sensitivity
134 and specificity than that using saturated or unsaturated dye, such as SYBR Green or
135 Eva Green, the amount of detected objects are limited because of limited fluorescent
136 channels of real-time PCR equipment. So, in order to achieve more objects detection
137 in one reaction, we proposed that universal two-dimensional labelled probe-mediated
138 melting curve analysis based on multiplex PCR (UP-MCA) assay for reliable
139 detection of five common species-specific plasmodium in one-pot reaction. This
140 method combines multiplex PCR with melting curve analysis, which is mediated by
141 universal fluorescent probe corresponding to specific fluorescent channel and
142 annealing temperature (T_m) produced for hybridization with homology tag that
143 carried in plasmodium species-specific primer. Its process involves that polymerase
144 mediated asymmetric amplification using target specific primers for tag mark of
145 specific amplicon and fluorescent detection depending on hybridization between

146 homology tag and non-target sequence dependent universal fluorescent probe.
147 Different T_m values brought out by variable degrees of hybridization analyzed by
148 melting curve analysis are used for detection of specific plasmodium candidates in
149 addition to difference of fluorescent channel (Figure.1). According to the previous
150 research, this two dimensional label method can achieve detection of dozens of
151 objects in one reaction under different fluorescence and elaborate T_m value
152 representing detailed detection object(21).

153

154 ***Design and synthesis of plasmodium species-specific primers and universal probe***

155 Initially, the amplification targets for *P. falciparum*, *P. vivax*, *P. malariae*, *P. ovale* and
156 *P. knowlesi* based on previous studies(10, 11, 20, 22-24) and available gene sequences
157 in GenBank were analyzed. Following that, nuclear small subunit (SSU) rRNA gene
158 was confirmed as plasmodium detection target and used for the design of plasmodium
159 species-specific primers as a result of the availability of its sufficient copies and
160 conservative and species-specific sequences for plasmodium detection. Hence, we
161 further blasted the sequences of SSU rRNA gene in *P. falciparum* (GenBank accession
162 no. M19172), *P. vivax* (GenBank accession no. X13926), *P. ovale* (GenBank
163 accession no. L48987), *P. malariae* (GenBank accession no. M54897), and *P. knowlesi*
164 (GenBank accession no. AY327550) using the software ClustalX and selected one
165 sequence region existing great difference, also existing high homology for
166 plasmodium genus for the availability of number of primers reduction. Following that,
167 homology and difference sequences were selected for the design of plasmodium
168 UP-MCA assay of abundant forward primer (AF primer) and limiting reverse primer
169 (LR primer), respectively. All primers and fluorescent probes were synthesized from
170 Sunya Biotech (Fuzhou) Co., Ltd and Sangon Biotech (Shanghai) Co., Ltd. And DNA
171 plasmid standards of different plasmodium species-specific and conservative
172 fragments of SSU rRNA gene and fragments of human RNaseP gene were constructed
173 by General Biosystems (Anhui) Co. Ltd.

174 Universal fluorescent probes and tags for species-specific plasmodium detection were
175 chosen from previous research(21). Furthermore, variable degrees of hybridization

176 between homology tag and universal fluorescent probe determine the detail T_m value
177 resulted from their effective hybridization length and base pairing degree. So we
178 inferred and verified that homologous tags of certain length used for real
179 hybridization with universal probe can also result in different T_m values
180 corresponding to different candidate.

181

182 ***Establishment of Universal two-dimensional labelled probe-mediated melt curve***
183 ***analysis (UP-MCA) for species-specific plasmodium detection assay***

184 DNA standards of SSU rRNA gene from species-specific plasmodium were prepared
185 before establishment of detection assay (Table. S1). In order to achieve better
186 performance of plasmodium detection, optimizations were implemented by the assay
187 of polymerase enzymes (Taq DNA Polymerase, TaKaRa Taq HS, Vent[®] (exo-) DNA
188 Polymerase, Klenow Fragment (3'→5'exo-), all of initial concentration are 5 U/ μ l),
189 buffers (Taq buffer, Taq HS buffer, buffer A, buffer M, buffer 6 and PCR buffer, initial
190 concentrations of all are 10 \times), temperature (54~66 °C) and concentration of Mg²⁺
191 (3~6 mM) and primers. Furthermore, Extreme Thermostable Single-Stranded DNA
192 Binding Protein (ET SSB) is a single-stranded DNA binding protein used for
193 stabilization of ssDNA structure and improvement of the processivity of DNA
194 polymerase following that increasing the yield and specificity of PCR. Therefore, we
195 also took ET SSB into consideration for assay optimization.

196 For single-plex assay, the reaction volume of twenty-five microliter including 1 \times Taq
197 HS buffer, 1.5 U TaKaRa Taq HS (5 U/ μ l), 4 mM MgCl₂, 200 μ M dNTP (A/G/C/T),
198 0.2 μ M universal fluorescence probe, 0.8 μ M abundant forward primer, 0.04 μ M
199 limiting reverse primer with homologous tag, 2 μ L template. The assay was
200 performed at the standard two-step PCR protocol with initial denaturation at 95 °C for
201 3 min followed by 50 cycles of denaturation at 95 °C for 15 s, annealing / extension at
202 60 °C for 45 s, then addition of melting curve analysis from 35 °C to 85 °C before
203 sufficient denaturation at 95 °C for 1 min and hybridization at 30 °C for 2 min.
204 Parameter replacement of annealing / extension at 64 °C and addition of 4 ng/uL ET
205 SSB were used for multiplex species-specific plasmodium detection assay. The

206 different channel fluorescence (FAM or HEX or FAM and HEX) can be only
207 collected during the process of melting curve analysis, not for amplification process.
208 The reaction was occurred by the fluorescence PCR equipment (Applied Biosystems
209 7500 Real-Time PCR System in this study; Thermo Fisher Scientific).
210 As defined herein, the determination of detected result was taken by the fluorescence
211 channel and preset T_m value. And positive result of sample for one subject was
212 refined as the $-d(\text{RFU})/dT$ value of melt peak height was 1.5 times more than that of
213 negative control which RNase-free water or non-plasmodium DNA or RNA serve as
214 reaction template.

215

216 ***Performance evaluation of UP-MCA assay (including sensitivity, specificity,***
217 ***selectivity and clinical performance) for plasmodium detection***

218 For evaluation of the sensitivity of UP-MCA for species-specific plasmodium assay,
219 the preparation of reaction template was used by a series of gradient dilution
220 concentration of various plasmodium plasmids from 10^5 copies / μL to 10^1 copies / μL .
221 Various concentrations of different plasmodium plasmids served as template were run
222 at least in triplex wells. The selection of some pathogens of similar clinical symptoms
223 or blood-borne diseases, including *Babesia*, *Borrelia burgdorferi*, *Chikungunya virus*,
224 human immunodeficiency virus, Hepatitis B virus, Hepatitis C virus and *Novel*
225 *coronavirus (2019)* was applied for the assessment of the specificity of this UP-MCA
226 assay. For examination of the selection and distinction ability of species-specific
227 plasmodium detection assay, two neighboring objects at the same fluorescence
228 channel, *Plasmodium falciparum* and *Plasmodium vivax*, were taken into observation
229 of accurate detection of plasmodium species. Furthermore, negative control of
230 RNase-free water or non-plasmodium genome served as template for plasmodium
231 assay was taken for above three tests.

232 Practically, the performance evaluation of species-specific plasmodium detection
233 assay was carried out by multiplex UP-MCA fluorescence system using a total of 184
234 clinical blood samples mentioned above, including 164 microscopy-positive of
235 malaria and 20 microscopy-negative of blood-borne diseases with similar signs and

236 symptoms consistent with malaria. Before they tested, all microscopy results of
237 clinical blood samples were blind for the tester of the assay. And various plasmid
238 standards of objects containing internal control human *RNaseP* gene under the
239 concentration of 100 copies / μL were served as positive control for the assay and the
240 RNase-free water was used as negative control.

241

242 ***Data analysis***

243 As the analysis of the performance of our UP-MCA assay, we considered microscopy
244 as the gold standard analysis. The discordance of result was considered for samples of
245 which UP-MCA assay detection results did not agree with microscopy results.
246 Discordant samples were retested with alternative multiplex qPCR method based on
247 Taqman probe recommended by World Health Organization(11). Then we considered
248 samples with identical results as true-positive PCR results, since assigning a species is
249 not always possible with microscopy. Moreover, all data were analyzed with
250 GraphPad Prism software. Each experiment was repeated at least three duplicates for
251 each sample.

252

253 **Results**

254 ***Principle of UP-MCA detection assay for species-specific plasmodium***

255 UP-MCA detection assay is a method that uses asymmetric PCR to achieve the
256 enrichment of two-dimensional labelled products, and combines probe mediated
257 melting curve analysis technology to achieve specific detection of targets with
258 non-target sequence dependent universal fluorescent probes. With regards to
259 asymmetric PCR and melting curve analysis, the difference in the proportion of
260 forward and reverse primers will be introduced into amplification and
261 two-dimensional label should be integrated into amplicon, respectively. Moreover, to
262 further simplify primer design and minify optimization of assay for specificity
263 improvement, we adopted asymmetric PCR of plasmodium genus forward primer
264 which serves as abundant primer, and plasmodium specie-specific reverse primer with
265 homologous tag at the 5' end representing specific T_m value produced by

266 hybridization with universal probe, which serves as limiting primer for multiplex
267 UP-MCA plasmodium detection (Table 1). These primers were based on target SSU
268 rRNA gene of plasmodium, which its copy number range from 4 to 8 and known to be
269 highly conserved regions suitable for molecular detection of human malaria parasites.
270 This method was also helpful to improve the stability of T_m value of melting curve
271 analysis and avoid the false negative caused by low hybridization between amplicons
272 and specific probes, such as Taqman probe, that are susceptible to mutations of target.
273 For universal fluorescent probe, we proved different kinds of probe quenching method,
274 such as base-quenching and self-quenching, can be used for UP-MCA analysis
275 (Figure.2A). Furthermore, we speculated and also confirmed that different effective
276 lengths of tag could be used for hybridization with probe which was inspired by
277 different T_m value produced by variable degrees of hybridization (via mutations)
278 between homologous tag and fluorescent probe (Figure.2B and Table 1). It seems to
279 be easy to design probes and tags which can simplify a large number of optimization
280 of predicted T_m value via hybrid simulation and synthesis of primer with tag for be
281 tried out. This will help to homogenize temperature range of melting curve analysis
282 and improve detection throughput within a limited temperature range.

283

284 ***Optimization of UP-MCA assay for species-specific plasmodium detection***

285 To improve reaction efficiency, the possible influencing factors were optimized via
286 different enzymes, buffers, reaction temperature and concentration of Mg²⁺. We found
287 that hot-start enzyme of TaqHS and the corresponding buffer or buffer M were the
288 main influencing factors for species-specific plasmodium UP-MCA assay (Figure.3),
289 and the assay obtained higher signal to noise (also difference of melt peak height
290 between positive and negative control) at the parameter of 4 mM Mg²⁺ and 63 °C
291 annealing temperature (Figure.S1 A and B) using the same concentration of target for
292 multiplex plasmodium detection. Interestingly, it seems that ET SSB served as an
293 enhancer of specificity of amplification was not functioned in the multiplex
294 species-specific plasmodium UP-MCA assay (Figure.S1 C).

295

296 ***Performance of plasmodium UP-MCA detection assay (including sensitivity,***
297 ***specificity, selectivity)***

298 To evaluate the sensitivity of the UP-MCA plasmodium detection assay, a series of
299 gradient concentration of diluted plasmids of plasmodium species and human gene
300 (RNase P, internal control) as reaction template were tested. The results showed that
301 the melt peak height representing negative derivative of fluorescence value with
302 temperature (-d(RFU)/dT) of each object decreases gradually with the decrease of
303 concentration of plasmids, and the LOD for each object was 10 copies / μ L (in
304 addition to Pm, 100 copies / μ L) (Figure.4A) that nearly access to within the LOD
305 required by WHO.

306 To assess the specificity of the UP-MCA plasmodium detection assay, genome of
307 samples from a panel of homologous pathogens and that of blood-borne diseases
308 having similar clinical symptoms or signs to malaria were tested. Three duplicates
309 were performed, and 100 copies of species-specific plasmodium standards were used
310 as templates of positive control for each reaction. Consequently, there were no
311 positive results from the tested pathogens except for the DNA standards of
312 species-specific plasmodium (Figure.4B), indicating that the high specificity of
313 species-specific plasmodium UP-MCA assay for detecting plasmodium of detailed
314 genotype.

315 To investigate the selectivity of the UP-MCA plasmodium detection assay,
316 *Plasmodium falciparum* and its adjacent *Plasmodium vivax* at the same fluorescent
317 channel were selected to test the accuracy of the UP-MCA detection assay.
318 Specifically, different ratios of Pf and Pv plasmid standards under the 100 copies
319 concentration range from 0:100, 1:99, 3:97, 5:95, 10:90, 20:80, 50:50, 80:20, 90:10,
320 95:5, 97:3, 99:1, 100:0 were prepared and performed by the multiplex plasmodium
321 detection assay. The result showed that the assay exactly detect different kinds of
322 dosage ratios of adjacent detected objects from the same fluorescence channel
323 (Figure.4C). The assay method has excellent discrimination ability of detection.

324

325 ***Results of clinical sample via UP-MCA detection assay for plasmodium***

326 To evaluate the clinical diagnosis performance of the plasmodium UP-MCA detection
327 assay, 184 patients samples (164 positive-result and 20 negative-result for
328 plasmodium microscopy), which had been confirmed by microscopy served as the
329 gold standard method for malaria, were tested by detector covered microscopical
330 results above. There were 164 plasmodium-positive samples and 20
331 plasmodium-negative samples detecting by the plasmodium UP-MCA assay which
332 were all consistent to the results of plasmodium microscopy. Compared with the gold
333 standard detection method, the plasmodium UP-MCA assay showed the sensitivity
334 and specificity of both 100% (Table 2).

335

336 **Discussion**

337 PCR, as one of the most widely used molecular biology detection methods, has the
338 great advantages of high sensitivity and specificity, simplicity and rapidity, and low
339 cost, especially for real-time quantitative PCR. It has been used in many fields
340 including pathogen detection, tumor marker detection, and genetic identification and
341 so on. We demonstrated universal two-dimensional labelled probe-mediated melting
342 curve analysis (UP-MCA) assay based on multiplex PCR for malaria that are sensitive
343 and specific for detection of the 5 major plasmodium species as well as the human
344 *RNase P* gene as an internal reference control with the employment of two
345 fluorescence channel. The multiplex plasmodium PCR assay can be performed
346 rapidly (nearly 3 hours, including 1 hour for genome extraction and 2 hours for
347 amplification and detection) in a single closed tube, and the 384-well or 96-well
348 format both achieve high detection throughput, which is required for large clinical
349 sample detection and epidemiologic studies of imported malaria.

350 We rigorously investigated the plasmodium target gene based on its inherent
351 characteristics (including conservation, specificity and copy number etc.) and
352 previous published studies. The nuclear small subunit (SSU) rRNA gene of
353 plasmodium harboring four to eight copy numbers was carefully defined as target
354 gene for the reason that not only that is known to be highly conserved regions suitable
355 for plasmodium-genus primers selection, but also its existence of plasmodium-species

356 region for specific primers design. Less optimization can be conducted by one
357 abundant primer selected from conservative region and numbers of limiting primers
358 designed from species-specific region for multiplex and asymmetric PCR detection
359 for plasmodium. Furthermore, many optimizations for detection efficiency
360 improvement were rigorously carried out, including main factors of specific primers,
361 enzymes and best matching buffer etc.

362 For the UP-MCA assay, engineered fluorescent probes were not directly specific for
363 target sequence, but it was dependent on species-specific limiting primer used in
364 asymmetric PCR resulting in abundant single-strand DNA products with specific tag
365 for special hybridization. It is helpful to improve the resistance of mutations or SNP
366 existed in probe hybridization region and theoretically increase sensitivity of the
367 plasmodium detection assay. Moreover, in addition to mutation existing in
368 homologous tag, our experiment showed different effect hybridization length between
369 tag and fluorescent probe also can be applied in two-dimensional label design
370 strategies for universal probe. It was great advantage for difficulty reduction of
371 two-dimensional label design and throughput improvement of detection target
372 following homogenization of melting temperature, unfortunately lacking of further
373 more detection objects in one-pot to be validated.

374 Limitations were also demonstrated in the plasmodium UP-MCA detection assay.
375 Firstly, there should be more targets to be validated for detection throughput
376 improvement used in plasmodium UP-MCA assay, and less detection objects and
377 numbers of primers may be the reason of ET SSB seldom seems to be functioned. But,
378 in other words, primers designed and used in the assay were adequately specific for
379 species-specific plasmodium. Secondly, the UP-MCA assay was one of
380 half-quantitative multiplex method that could not accurately achieve to quantitative
381 plasmodium species. Furthermore, more clinical samples collected from multicenter
382 should be incorporated into the assay for clinical performance validation.

383 In summary, we developed one plasmodium species-specific detection assay for
384 greatly enhancing sensitivity and specificity that was important for import malaria
385 derived from regions or cities of frequent communications for economy or population

386 emigration and immigration. It can be rapidly and accurately genotype 5 plasmodium
387 species and great helpful to increase the ability of eliminating imported malaria.

388 In summary, the developed plasmodium UP-MCA assay exhibited excellent
389 sensitivity, specificity and selectivity for plasmodium species-specific detection. It is
390 helpful to rapid and sensitive genotyping of 5 species-specific plasmodiums in a
391 single closed tube under malaria control plan accordingly proposed by World Health
392 Organization.

393

394 Reference

- 395 1. White NJ. 2008. Plasmodium knowlesi: the fifth human malaria parasite. Clin Infect Dis
396 46:172-3.
- 397 2. Singh B, Kim Sung L, Matusop A, Radhakrishnan A, Shamsul SS, Cox-Singh J, Thomas A,
398 Conway DJ. 2004. A large focus of naturally acquired Plasmodium knowlesi infections in
399 human beings. Lancet 363:1017-24.
- 400 3. Organization WHJW. 2015. Guidelines for the Treatment of Malaria. Third Edition (PDF).
- 401 4. Singh B, Daneshvar C. 2013. Human infections and detection of Plasmodium knowlesi. Clin
402 Microbiol Rev 26:165-84.
- 403 5. Wilson ML. 2012. Malaria rapid diagnostic tests. Clin Infect Dis 54:1637-41.
- 404 6. Erdman LK, Kain KC. 2008. Molecular diagnostic and surveillance tools for global malaria
405 control. Travel Med Infect Dis 6:82-99.
- 406 7. Barber BE, William T, Grigg MJ, Piera K, Yeo TW, Anstey NM. 2013. Evaluation of the
407 sensitivity of a pLDH-based and an aldolase-based rapid diagnostic test for diagnosis of
408 uncomplicated and severe malaria caused by PCR-confirmed Plasmodium knowlesi,
409 Plasmodium falciparum, and Plasmodium vivax. J Clin Microbiol 51:1118-23.
- 410 8. Putaporntip C, Buppan P, Jongwutiwes S. 2011. Improved performance with saliva and urine
411 as alternative DNA sources for malaria diagnosis by mitochondrial DNA-based PCR assays.
412 Clin Microbiol Infect 17:1484-91.
- 413 9. Canier L, Khim N, Kim S, Sluydts V, Heng S, Dourng D, Eam R, Chy S, Khean C, Loch K, Ken M,
414 Lim H, Siv S, Tho S, Masse-Navette P, Gryseels C, Uk S, Van Roey K, Grietens KP, Sokny M,
415 Thavrin B, Chuor CM, Deubel V, Durnez L, Coosemans M, Ménard D. 2013. An innovative tool
416 for moving malaria PCR detection of parasite reservoir into the field. Malar J 12:405.
- 417 10. Komaki-Yasuda K, Vincent JP, Nakatsu M, Kato Y, Ohmagari N, Kano S. 2018. A novel
418 PCR-based system for the detection of four species of human malaria parasites and
419 Plasmodium knowlesi. PLoS One 13:e0191886.
- 420 11. Rougemont M, Van Saanen M, Sahli R, Hinrikson HP, Bille J, Jatou K. 2004. Detection of four
421 Plasmodium species in blood from humans by 18S rRNA gene subunit-based and
422 species-specific real-time PCR assays. J Clin Microbiol 42:5636-43.
- 423 12. Dos Santos EH, Yamamoto L, Domingues W, di Santi SM, Kanunfre KA, Okay TS. 2020. A new
424 Real Time PCR with species-specific primers from Plasmodium malariae/P. brasilianum

- 425 mitochondrial cytochrome b gene. *Parasitol Int* 76:102069.
- 426 13. Piera KA, Aziz A, William T, Bell D, González IJ, Barber BE, Anstey NM, Grigg MJ. 2017.
427 Detection of *Plasmodium knowlesi*, *Plasmodium falciparum* and *Plasmodium vivax* using
428 loop-mediated isothermal amplification (LAMP) in a co-endemic area in Malaysia. *Malar J*
429 16:29.
- 430 14. Hashimoto M, Sakamoto H, Ido Y, Tanaka M, Yatsushiro S, Kajimoto K, Kataoka M. 2018. In
431 situ loop-mediated isothermal amplification (LAMP) for identification of *Plasmodium* species
432 in wide-range thin blood smears. *Malar J* 17:235.
- 433 15. Nolasco O, Montoya J, Rosales Rosas AL, Barrientos S, Rosanas-Urgell A, Gamboa D. 2021.
434 Multicopy targets for *Plasmodium vivax* and *Plasmodium falciparum* detection by
435 colorimetric LAMP. *Malar J* 20:225.
- 436 16. Tambo M, Auala JR, Sturrock HJ, Kleinschmidt I, Bock R, Smith JL, Gosling R, Mumbengegwi
437 DR. 2018. Evaluation of loop-mediated isothermal amplification as a surveillance tool for
438 malaria in reactive case detection moving towards elimination. *Malar J* 17:255.
- 439 17. Lalremruata A, Nguyen TT, McCall MBB, Mombo-Ngoma G, Agnandji ST, Adegnika AA, Lell B,
440 Ramharther M, Hoffman SL, Kremsner PG, Mordmüller B. 2020. Recombinase Polymerase
441 Amplification and Lateral Flow Assay for Ultrasensitive Detection of Low-Density *Plasmodium*
442 *falciparum* Infection from Controlled Human Malaria Infection Studies and Naturally Acquired
443 Infections. *J Clin Microbiol* 58.
- 444 18. Lai MY, Lau YL. 2020. Detection of *Plasmodium knowlesi* using recombinase polymerase
445 amplification (RPA) combined with SYBR Green I. *Acta Trop* 208:105511.
- 446 19. Lai MY, Ooi CH, Lau YL. 2018. Recombinase Polymerase Amplification Combined with a Lateral
447 Flow Strip for the Detection of *Plasmodium knowlesi*. *Am J Trop Med Hyg* 98:700-703.
- 448 20. Lee RA, Puig H, Nguyen PQ, Angenent-Mari NM, Donghia NM, McGee JP, Dvorin JD,
449 Klapperich CM, Pollock NR, Collins JJ. 2020. Ultrasensitive CRISPR-based diagnostic for
450 field-applicable detection of *Plasmodium* species in symptomatic and asymptomatic malaria.
451 *Proc Natl Acad Sci U S A* 117:25722-25731.
- 452 21. Zhan Y, Zhang J, Yao S, Luo G. 2020. High-Throughput Two-Dimensional Polymerase Chain
453 Reaction Technology. *Anal Chem* 92:674-682.
- 454 22. Reller ME, Chen WH, Dalton J, Lichay MA, Dumler JS. 2013. Multiplex 5' nuclease quantitative
455 real-time PCR for clinical diagnosis of malaria and species-level identification and
456 epidemiologic evaluation of malaria-causing parasites, including *Plasmodium knowlesi*. *J Clin*
457 *Microbiol* 51:2931-8.
- 458 23. Nuin NA, Tan AF, Lew YL, Piera KA, William T, Rajahram GS, Jelip J, Dony JF, Mohammad R,
459 Cooper DJ, Barber BE, Anstey NM, Chua TH, Grigg MJ. 2020. Comparative evaluation of two
460 commercial real-time PCR kits (QuantiFast™ and abTES™) for the detection of *Plasmodium*
461 *knowlesi* and other *Plasmodium* species in Sabah, Malaysia. *Malar J* 19:306.
- 462 24. Lee PC, Chong ET, Anderios F, Al Lim Y, Chew CH, Chua KH. 2015. Molecular detection of
463 human *Plasmodium* species in Sabah using PlasmoNex™ multiplex PCR and hydrolysis probes
464 real-time PCR. *Malar J* 14:28.

465

466 **Table.1 Probes and Primers sequence of UP-MCA assay for plasmodium**
467 **genotyping**

Species	Name	Sequence
Plasmodium genus	Forward primer	5'-ACGATCAGATACCGTCGTAATCTT-3'
<i>P. falciparum</i>	Reverse primer 1	5'- <u>CCATTAGAACCCTTAAGCTACTCCAC</u> CGGTACT GAAGGAAGCAATCTAAAAGTCA-3'
	Reverse primer 2	5'- <u>CCATTACAACCCAAAAAAAAAAAAAAAAA</u> GG TACTGAAGGAAGCAATCTAAAAGTCA-3'
<i>P. vivax</i>	Reverse primer 1	5'- <u>CCATTACTTGCCTTATACTACTCCAC</u> CAATCT AAGAATAAACTCCGAAGAGAAAATT-3'
	Reverse primer 2	5'- <u>CCATTACAACCCTTATAAAAAAAAAAAAA</u> CAA TCTAAGAATAAACTCCGAAGAGAAAATT-3'
<i>P. malariae</i>	Reverse primer 1	5'- <u>CCATTACTACCCTTATACTACTCCAC</u> CGGAAGC TATCTAAAAGAAACACTCATATATAAGAAT-3'
	Reverse primer 2	5'- <u>CCATTACAACCCTTATACTAAAAAAAAA</u> GGGA AGCTATCTAAAAGAAACACTCATATATAAGAAT-3'
<i>P. ovale</i>	Reverse primer 1	5'- <u>CCTATCTCTTAACCTCCACTGCTTTCAC</u> CAAT CTAAGAAATTTCCCRAAAGGAATT-3'
	Reverse primer 2	5'- <u>CCATTACAACCCTTATACTACTCAAAAA</u> CAA TCTAAGAAATTTCCCRAAAGGAATT-3'
<i>P. knowlesi</i>	Reverse primer 1	5'- <u>CCTATCTCGTAACCTCCACCCCTTTCAC</u> CCTAA GAGTTCTAATCTCCGGAGAGAAAAGAA-3'
	Reverse primer 2	5'- <u>CCATTACAACCCTTATACTACTCCACAA</u> ACTA AGAGTTCTAATCTCCGGAGAGAAAAGAA-3'
<i>RNase P</i>	Forward primer	5'-CCATCAACCACGCCATCAACAT-3'
	Reverse primer 1	5'- <u>CCTATCTCTCAACCTCCACCCCTTTCAC</u> TTGG GTGTGACCCTGAAGACTC-3'
	Reverse primer 2	5'- <u>CCATTACAACCCTTATACTACTCCACCC</u> ATTG GGTGTGACCCTGAAGACTC-3'
-	Universal probe 1	5'-FAM-CCATTACAACCCTTATACTACTCCAC-P or -BHQ1-3'
-	Universal probe 2	5'-HEX-CCTATCTCTCAACCTCCACCCCTTTCAC-P or -BHQ1-3'
-	Universal probe 3	5'-FAM-CCATTACAACCCTTATACTACTCCACCCA-P -3'

468 * Reverse primer 1 and 2 were used in the final plasmodium UP-MCA assay and the
469 assay used universal probe depend on Tm values of effective length of hybridization
470 between tag and probe. The parts of underlined and bold were tag sequence. P
471 represents phosphate group.

472

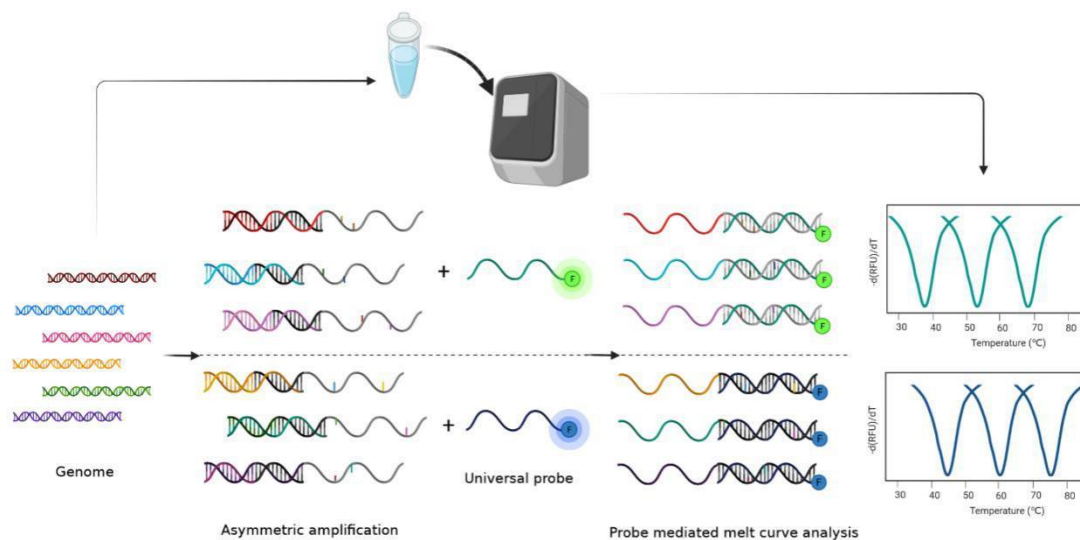
473 **Table.2 Results of UP-MCA assay & microscopy for plasmodium detection**

Reference method	Results	UP-MCA assay		Total
		Positive	Negative	
Microscopy	Positive	164	0	164
	Negative	0	20	20
Total		164	20	184

474

475 **Figure Legends**

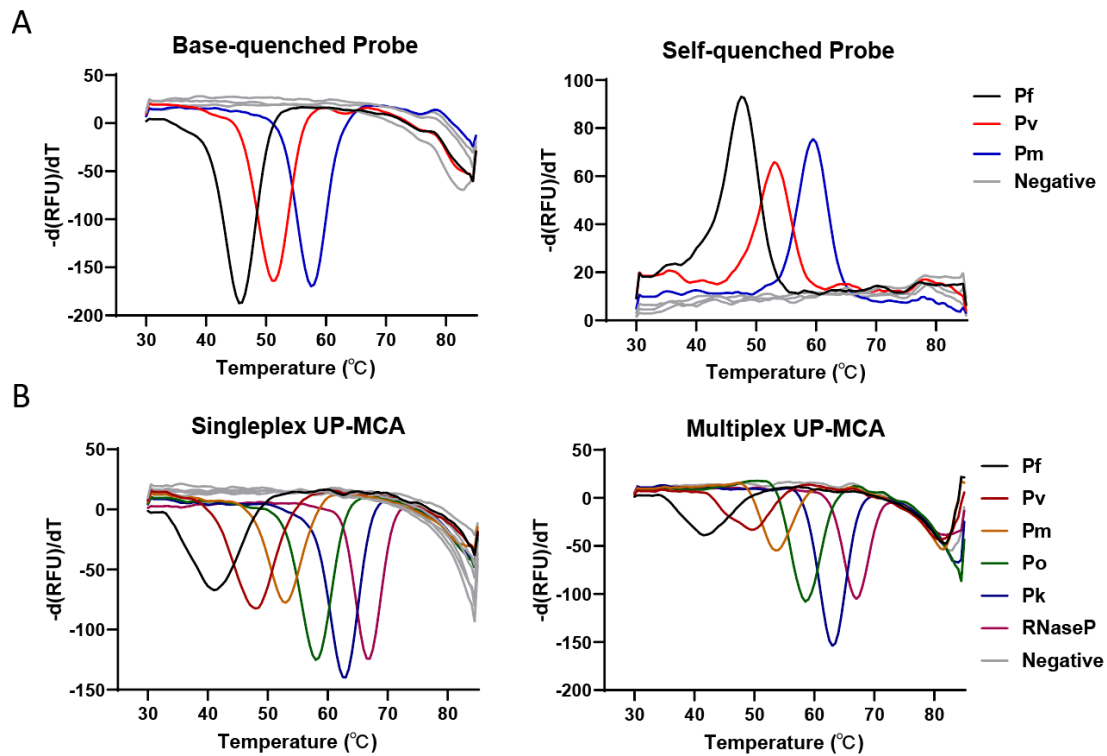
476 **Figure 1. Schematic diagram of universal two-dimensional labelled probe**
477 **mediated melting curve analysis (UP-MCA) based on multiplex PCR assay for**
478 **plasmodium species genotyping.** Genome of clinical plasmodium sample was put
479 into multiplex PCR reaction for asymmetric amplification and universal fluorescence
480 probe mediated melting curve analysis. The detailed object was judged by
481 fluorescence channel and specific T_m value from melt peak automatically analyzed by
482 instrument software (BioRad CFX Manager software in this paper).



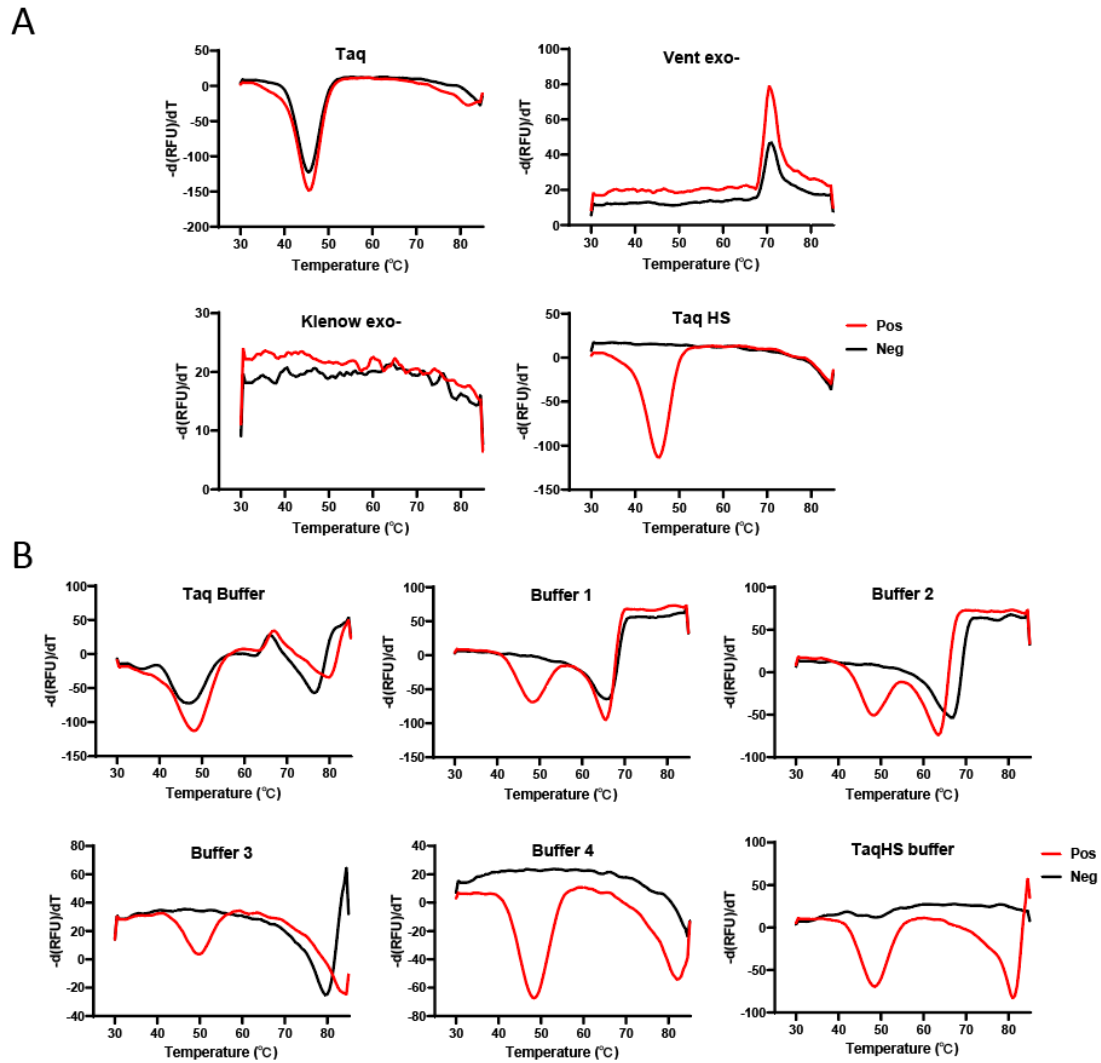
483

484

485 **Figure 2. Performance of different kinds of quenched method probe and effective**
486 **length of hybridization between tag and probe determined T_m value.**
487 Performance of base-quenched probe and self-quenched probe for UP-MCA assay.
488 (A). Only one universal probe (universal probe 3) depends on effective length of
489 hybridization between tag and probe for six object UP-MCA detection at a single
490 fluorescence (B).

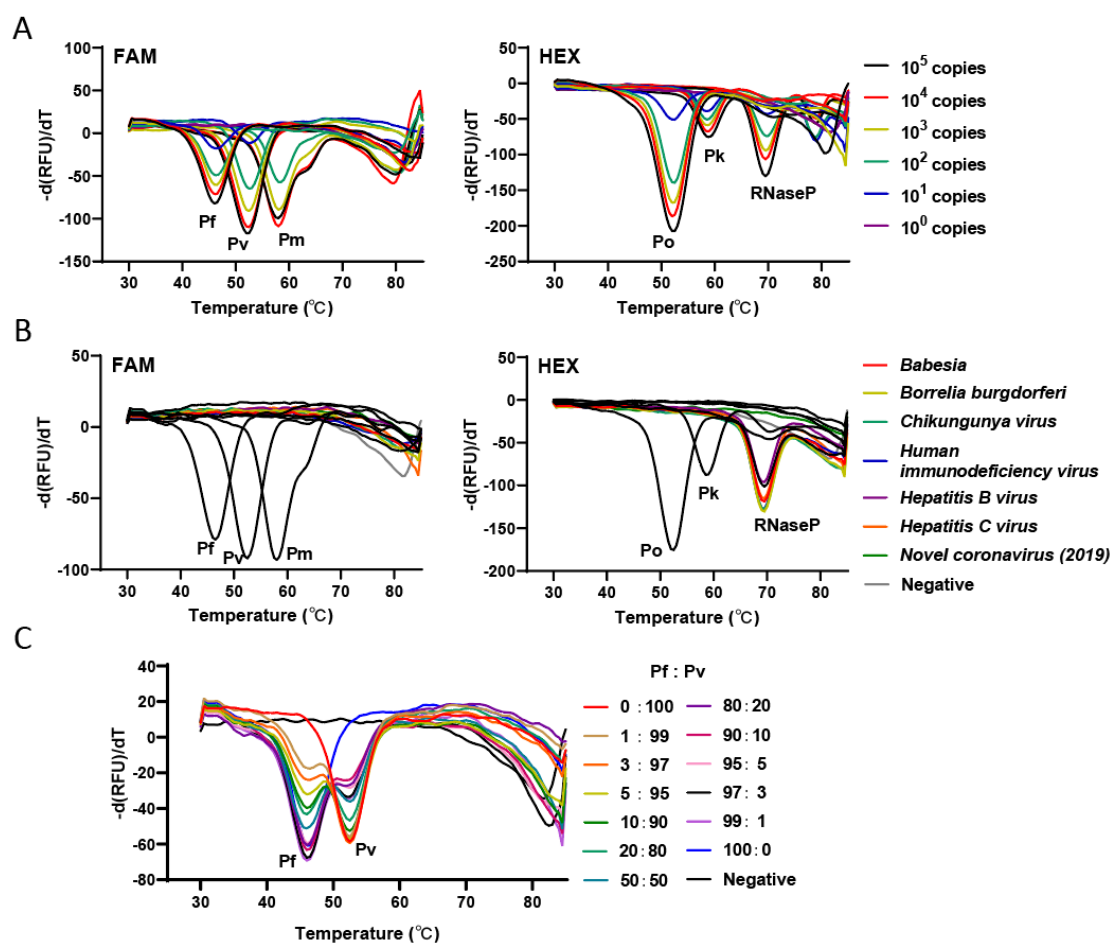


493 **Figure 3. Optimizations of plasmodium UP-MCA assay.** Performance of enzymes
494 used for plasmodium UP-MCA assay (A). Performance of different buffers used for
495 plasmodium UP-MCA assay (B).



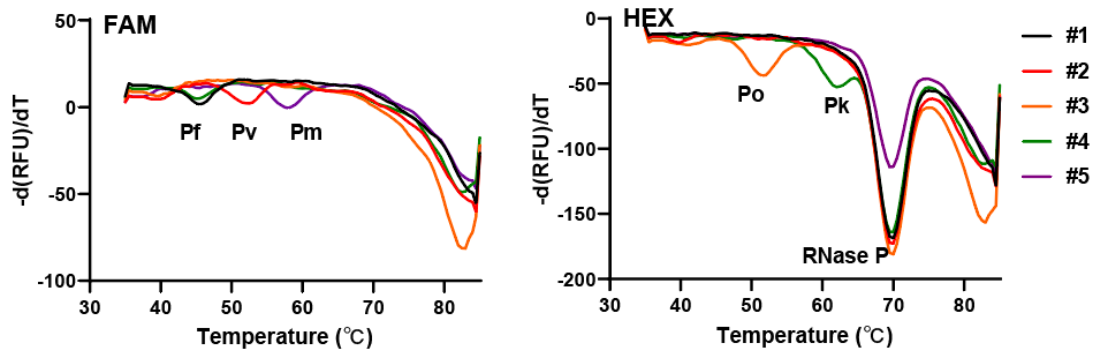
496
497

498 **Figure 4. Performance of plasmodium UP-MCA assay.** The sensitivity of
 499 plasmodium species in the plasmodium UP-MCA assay (A). The specificity of
 500 plasmodium UP-MCA assay. The objects used for specificity investigation including
 501 Babesia, Borrelia burgdorferi, Chikungunya virus, Human immunodeficiency virus,
 502 Hepatitis B virus, Hepatitis C virus, Novel coronavirus (2019) and plasmodium
 503 species (B). The selectivity of Plasmodium falciparum and plasmodium vivax in the
 504 established plasmodium UP-MCA detection assay (C).



505
 506

507 **Figure 5. The clinical sample detection example of plasmodium UP-MCA assay.**



508

509

510 **Supplemental file**

511 **Table.S1 Nucleic acid sequence of SSU rRNA gene from species-specific**
 512 **plasmodium or *human ribonuclease P* gene embedded in PUC57 vector for**
 513 **plasmid standards.**

Name	Sequence
Plasmodium falciparum	5'-CTTTTTTCTTATTTTGGCTTAGTT ACGATTAATAGGAGTAGCTTGGGGA CATTTCGTATTCAGATGTCAGAGGTG AAATTCCTTAGATTTTCTGGAGACGA ACAACTGCGAAAGCATTGTCTAA AATACTTCCATTAATCAAGAACGAA AGTTAAGGGAGTGAAGACGATCAG ATACCGTCGTAATCTTAACCATAAA CTATGCCGACTAGGTGTTGGATGAA AGTGTTAAAAATAAAAGTCATCTTT CGAGGTGACTTTTAGATTGCTTCCT TCAGTACCTTATGAGAAATCAAAGT CTTTGGGTTCTGGGGCGAGTATTCG CGCAAGCGAGAAAGTTAAAAGAAT TGACGGAAGGGCACCACCAGGCGT GGAGCTTGCGGCTTAATTTGACTCA ACACGGGGAAACTCACTAG-3'
Plasmodium vivax	5'-TGGCTTAGTTACGATTAATAGGA GTAGCTTGGGGGCATTTGTATTCAG ATGTCAGAGGTGAAATTCTTAGATT TTCTGGAGACAAACAACCTGCGAAA GCATTTGCCTAAAATACTTCCATTAA TCAAGAACGAAAGTTAAGGGAGTG AAGACGATCAGATACCGTCGTAATC

	<p>TTAACATAAACTATGCCGACTAGG CTTTGGATGAAAGATTTTAAAATAA GAATTTTCTCTTCGGAGTTTATTCTT AGATTGCTTCCTTCAGTGCCTTATG AGAAATCAAAGTCTTTGGGTTCTG GGGCGAGTATTCGCGCAAGCGAGA AAGTAAAAGAATTCGGAAGGGCA CCACCAGGCGTGGAGCTTGCGGCT TAATTTGACTCAACACGGGAAAAC TCACTAGTTTAAGACAAGA-3'</p>
Plasmodium ovale	<p>5'-TCTTATTTTGGCTTAGTTACGATT AATAGGAGTAGCTTGGAGGCATTTG TATTCAGATGTCAGAGGTGAAATTC TTAGATTTTCTGGAGACAAACA ACT GCGAAAGCATTTCCTAAAATACTT CCATTAATCAAGAACGAAAGTTAA GGGAGTGAAGACGATCAGATACCG TCGTAATCTTAACCATAAACTATGCC GACTAGGTTTTGGATGAAAGATTTT TAAATAAGAAAATTCCTTTCGGGGA AATTTCTTAGATTGCTTCCTTCAGTA CCTTATGAGAAATCAAAGTCTTTGG GTTCTGGGGCGAGTATTCGCGCAA GCGAGAAAGTTAAAAGAATTGACG GAAGGGCACCACCAGGCGTGGAGC TTGCGCTTAATTTGACTCAACACGG GGAACTCACTAGTTTA-3'</p>
Plasmodium malariae	<p>5'-AATAGGAGTAGCTTGGGGGCATT TGTATTCAGATGTCAGAGGTGAAAT</p>

	TCTTAGATTTTCTGGAGACAAGCAA CTGCGAAAGCATTTCCTAAAATAC TTCCATTAATCAAGAACGAAAGTTA AGGGAGTGAAGACGATCAGATACC GTCGTAATCTTAACCATAAACTATG CCGACTAGGTGTTGGATGATAGAGT AAAAAATAAAAGAGACATTCATATA TATGAGTGTTTCTTTTAGATAGCTTC CTTCAGTACCTTATGAGAAATCAAA GTCTTTGGGTTCTGGGGCGAGTATT CGCGCAAGCGAGAAAGTTAAAAGA ATTGACGGAAGGGCACCACCAGGC GTGGAGCTTGCGGCTTAATTTGACT CAACACGGGGAAACTCACTAGTTT AAGACAAGAGTAGGATTG-3'
Plasmodium knowlesi	5'-GGGGGCATTTGTATTCAGATGTC AGAGGTGAAATTCTTAGATTTTCTG GAGACAAACAACCTGCGAAAGCATT TGCCTAAAATACTTCCATTAATCAA GAACGAAAGTTAAGGGAGTGAAG ACGATCAGATACCGTCGTAATCTTA ACCATAAACTATGCCGACTAGGCTT TGGATGAAAGATTTTAAAATAAGAG TTTTTCTTTTCTCTCCGGAGATTAG AACTCTTAGATTGCTTCCTTCAGTG CCTTATGAGAAATCAAAGTCTTTGG GTTCTGGGGCGAGTATTCGCGCAA GCGAGAAAGTTAAAAGAATTGACG GAAGGGCACCACCAGGCGTGGAGC

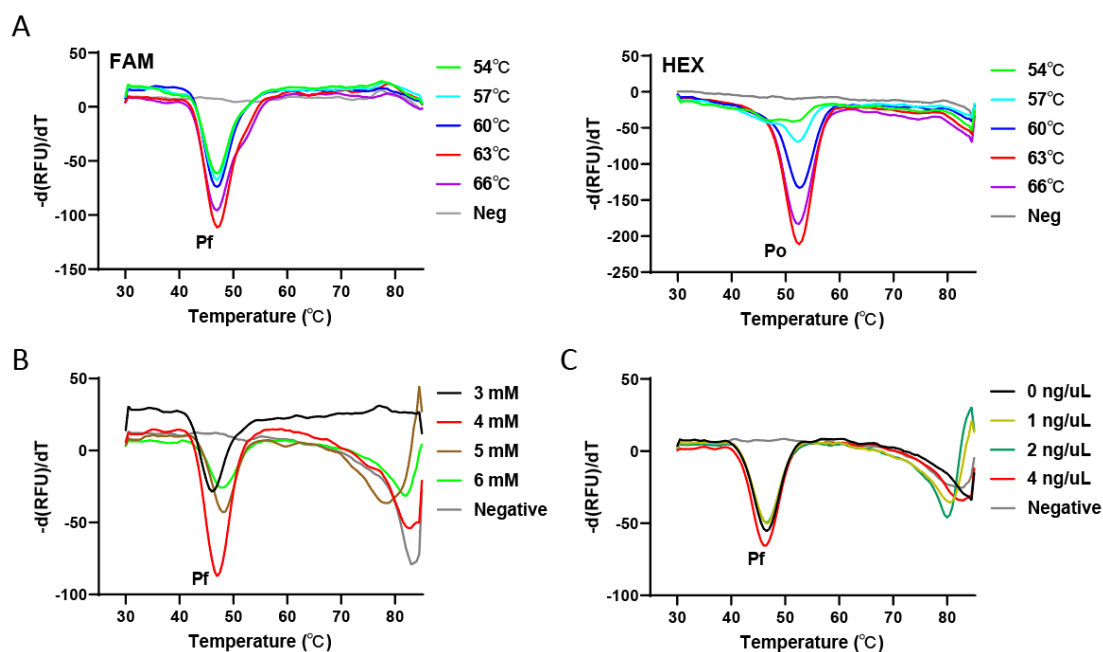
	TTGCGGCTTAATTTGACTCAACACG GGAAACTCACTAGTTTAAGACAA GAGTAG-3'
<i>human ribonuclease P gene (RNase P)</i> sepecific sequence	5'-GGGTCAGAACGCGTGCTCTGAG ATCTACATTCACGGCTTGGGCCTGG CCATCAACCACGCCATCAACATCGC GCTGCAGCTGCAGGCGGGCAGCTT CGGGTCCTTGCAGGTGGCTGCCAAT ACCTCCACCGTGGAGCTTGTTGATG AGCTGGAGCCAGAGACCGACACAC GGGAGCCACTGACTCGGATCCGCA ACAATCAGCCATCCACATCCGAGT CTTCAGGGTCACACCCAAGTAATTG AAAAGACACTCCTCCAGAATTCGG CACGAGGTGGGACTTCAGCATGGC GGTGTTTGCAGATTTGGACCTGCGA GCGGGTTCTGACCTGAAGGCTCTG CGCGGACTTGTGGAGACAGCCGCT CACCTTGGCTATTCAGTTGTTGCTAT CAATCATAT-3'

514

515 **Figure Legends**

516 **Figure.S1 Optimizations of plasmodium UP-MCA assay.** Detection performance of
517 plasmodium UP-MCA assay at different annealing temperature (A). The efficiency of
518 plasmodium UP-MCA assay at different concentration of Mg ion (3 mM, 4 mM, 5
519 mM, 6 mM) (B). The amplification efficiency for plasmodium UP-MCA detection
520 assay at different concentration of ET SSB (C).

521



522