

1 **The effect of neoadjuvant therapy on PD-L1 expression and**
2 **CD8 lymphocyte density in non-small cell lung cancer**

3 Philipp Zens^{a,b}, Corina Bello^{a,1}, Amina Scherz^c, Michael von Gunten^d, Adrian
4 Ochsenbein^c, Ralph A Schmid^e, Sabina Berezowska^{a,f}

5 ^a Institute of Pathology, University of Bern, Bern, Switzerland

6 ^b Graduate School for Health Science, University of Bern, Bern, Switzerland

7 ^c Department of Medical Oncology, Inselspital, Bern University Hospital, Bern,
8 Switzerland

9 ^d Pathology Länggasse, Bern, Switzerland

10 ^e Department of General Thoracic Surgery, Inselspital, Bern University Hospital,
11 Bern, Switzerland

12 ^f Department of Laboratory Medicine and Pathology, Institute of Pathology, Lausanne
13 University Hospital and Lausanne University, Lausanne, Switzerland

14 ¹ Present address: Department for anesthesiology, Hospital Grabs, Spitalstrasse 44,
15 CH-9472 Grabs, Switzerland

16 **Running title:** PD-L1 and TILs in NSCLC after neoadjuvant therapy

17 **Corresponding Author**

18 Prof. Dr. Sabina Berezowska

19 Department of Laboratory Medicine and Pathology, Institute of Pathology, Lausanne
20 University Hospital and Lausanne University

21 Rue du Bugnon 25, 1011 Lausanne, Switzerland

22 Email: sabina.berezowska@chuv.ch

23 Phone: +41 (0)21 314 72 11

24 ORCID ID: 0000-0001-5442-9791

25

26 Preliminary results have been presented at the World Conference on Lung Cancer,
27 September 7th – 10th 2019 in Barcelona, Spain.

28

29 **Competing Interests**

30 SB has served as compensated consultant for Basilea, Eli Lilly, MSD and Roche
31 (payment to institution) and has received research funding from Roche outside of the
32 current project. The other authors declare no conflict of interest.

33 **Abstract**

34 PD-L1 expression is the routine clinical biomarker for the selection of patients to
35 receive immunotherapy in non-small cell lung cancer (NSCLC). However, the
36 application and best timing of immunotherapy in the resectable setting is still under
37 investigation. We aimed to study the effect of chemotherapy on PD-L1 expression
38 and tumor infiltrating lymphocytes (TIL), which is to date still poorly understood.
39 This retrospective, single-centre study cohort comprised 96 consecutive patients with
40 NSCLC resected in 2000-2016 after neoadjuvant therapy, including paired chemo-
41 naïve specimens in 57 cases. A biologically matched control cohort of 114 primary
42 resected cases was included. PD-L1 expression, CD8+ TIL density and tertiary
43 lymphoid structures were assessed on whole slides and correlated with clinico-
44 pathological characteristics and survival.
45 Seven/57 and 12/57 cases had lower respectively higher PD-L1 expressions after
46 neoadjuvant therapy. Most cases (n = 38) had no changes in PD-L1 expression and
47 the majority of these showed PD-L1 < 1% in both samples (23/38 [60.5%]). CD8+
48 TILs density was significantly higher after chemotherapy ($p = 0.031$) in paired
49 resections. Neoadjuvant cases showed no difference in PD-L1 expression or CD8+
50 TILs density compared to the chemotherapy naïve control cohort. In univariable
51 analyses, higher CD8+ TILs density, higher numbers of tertiary lymphoid structures
52 but not PD-L1 expression were significantly associated with better survival. Increased
53 PD-L1 expression after neoadjuvant chemotherapy was visually associated with
54 worse 5-year survival, lacking statistical significance probably due to the low number
55 of cases.

56 PD-L1 expression is mostly unchanged after neoadjuvant chemotherapy. However,
57 an increase of PD-L1 expression after neoadjuvant therapy could be associated with
58 worse survival.

59 **Introduction**

60 Lung cancer is the deadliest cancer worldwide, mainly explainable by the late
61 diagnosis due to presentation in advanced stages (UICC/AJCC TNM stage III/IV) (1).
62 For early-stage non-small cell lung cancer (NSCLC), surgery still offers the best
63 chance of cure (2). However, especially in nodal-positive patients, there is a high risk
64 of recurrence and death. Since randomized trials have shown that additional
65 neoadjuvant or adjuvant chemotherapy leads to better outcomes compared to
66 resection only, it is generally accepted that patients with lymph node metastatic
67 NSCLC should not receive surgery as a stand-alone treatment (3, 4). Adjuvant
68 platinum-based chemotherapy offers a modest 5-year survival benefit of about 5%
69 and is recommended for patients with completely resected early-stage, high-risk
70 NSCLC – weighing the benefits and risks (5). Perioperative therapeutic approaches
71 are a hotly debated topic, with immunotherapy-based combinations and targeted
72 treatments – in EGFR mutated NSCLC – dominating the current trial landscape.
73 According to surgical outcomes from the phase III CheckMate 816 trial, the
74 neoadjuvant combination of nivolumab and chemotherapy showed considerably
75 lower rates of residual tumor compared with chemotherapy alone (6). Primary results
76 of the phase III global IMpower010 trial demonstrated a significant improvement in
77 disease-free survival (DFS) comparing atezolizumab with best supportive care after
78 adjuvant chemotherapy for resected stage IB – IIIA NSCLC. The greatest benefit was
79 observed in patients with a tumoral programmed cell death 1 ligand 1 (PD-L1)
80 expression (TPS) $\geq 1\%$ (7).

81 Programmed cell death protein 1 (PD1) and its ligand PD-L1 belong to the
82 costimulatory pathway of the adapted immune system (8). Extensive studies have
83 explained the hijacking of this regulatory pathway by different tumor entities including

84 lung cancer (8). PD1 is expressed on the surface of T cells, mediating inhibitory and
85 stimulatory signals (8). The overexpression of PD-L1 on the surface of tumor cells
86 leads to evasion of an appropriate tumor-induced response of the immune system by
87 T cell apoptosis and exhaustion (8). The combination of immune checkpoint blockade
88 and chemotherapy seems to be beneficial especially in patients with low levels of
89 PD-L1 expressing tumor cells and ongoing trials are reporting positive results of this
90 regimen in patients with resectable lung cancer (6, 9). However, the selection of
91 appropriate patients is currently based only on PD-L1 expression in tumor tissue prior
92 to medication, which is a suboptimal biomarker. More selective tools or, conceivably,
93 a combination of multiple tumor immunity markers such as tumor mutational burden
94 or CD8+ tumor infiltrating lymphocytes (TILs) are needed to predict response to
95 treatment. This is highlighted by recent examples of immune checkpoint blockade
96 (ICB) benefit irrespective of tumoral PD-L1 expression (10). Furthermore, it is still
97 unclear how classic neoadjuvant chemotherapy influences the tumor
98 microenvironment and if it could promote therapeutic ICB. Regarding the
99 neoadjuvant setting, several studies have reported dynamic changes, though without
100 a clear trend of altered PD-L1 expression after chemotherapy (Table 1) (11-22).
101 These results contrast preclinical data substantiating an immunogenic effect to some
102 chemotherapeutic agents and functional studies reporting the mechanisms involved
103 in chemotherapy resistance and PD-L1 upregulation (14, 19, 23).
104 Here, we aimed to assess PD-L1 expression and CD8+ TILs density and their
105 prognostic importance in a real-life cohort of patients with NSCLC resected after
106 neoadjuvant chemo(radio)therapy compared to paired diagnostic samples and a
107 biologically matched control cohort with primary resected advanced NSCLC.

108 **Material and Methods**

109 *Study population*

110 This retrospective single center study was conducted on consecutive patients with
111 NSCLCs, resected between January 2000 and December 2016 in the Department of
112 thoracic surgery of the Inselspital and diagnosed at the Institute of Pathology,
113 University of Bern as previously described (24). It includes a study cohort of cases
114 resected after neoadjuvant therapy and a biologically matched control cohort of
115 primary resected cases of lung squamous cell carcinoma (LUSC) and lung
116 adenocarcinoma (LUAD) at a locally advanced stage, defined by the presence of
117 mediastinal lymph-node metastases (pN2) (25). The cases were included according
118 to pathology reports, validated and expanded by considering the clinical files of the
119 Inselspital Bern (clinical data), cantonal cancer registry of Bern (survival data) and by
120 contacting the general practitioners (clinical and survival data).

121 The initial study cohort consisted of 131 cases and was reduced to 119 cases
122 corresponding to 118 patients after excluding tumors with neuroendocrine histology
123 and patients not treated with neoadjuvant intention. Finally, 22/118 patients were
124 excluded due to insufficient residual tumor in any of the diagnostic blocks resulting in
125 96 patients included for evaluation of tumoral PD-L1 expression and CD8+ TILs and
126 95 patients for evaluation of tertiary lymphoid structures (TLS). Regarding pre-
127 neoadjuvant therapy specimens, 86/118 patients had available diagnostic biopsies or
128 cytology specimens, in 57 cases with sufficient tumor content for PD-L1 assessment
129 and in 36 cases with adequate material for CD8+ TILs evaluation, excluding
130 cytologies and lymph node biopsies without desmoplastic reaction. TLS were not
131 evaluated in the pretherapeutic specimens.

132 The initial control cohort consisted of 115 cases including 60 patients with LUAD and
133 55 patients with LUSC. One case was excluded from further evaluation because of
134 insufficient tumor present in the diagnostic blocks. Finally, 114 patients were included
135 for PD-L1 evaluation and 111 patients for CD8 and TLS evaluation (3 patients
136 missing due to repeatedly insufficient scanning quality).

137 For harmonization, all cases were pathologically re-evaluated by SB and PZ and re-
138 staged according to the current 8th edition of the UICC TNM classification (25).

139 Additionally, the predominant growth pattern was assessed for primary resected
140 LUAD cases according to the current 2021 World Health Organization criteria (26).

141 Table 2 summarizes the baseline characteristics of the cohorts.

142 This study was carried out according to the REMARK criteria and approved by the
143 Cantonal Ethics Commission of the Canton of Bern (KEK 2017-00830), which waived
144 the requirement for written informed consent (27).

145 *Survival Analyses*

146 We restricted the survival analyses to five years after initial diagnosis to account for
147 the multimorbidity of older patients. Overall survival (OS) was defined as the period
148 from the beginning of treatment to death of any cause. DFS was defined as the
149 period from the beginning of treatment to clinically reported relapse or death of any
150 cause. The beginning of treatment was defined by the start of neoadjuvant therapy in
151 the study cohort or the date of resection in the control cohort and in 2 cases with
152 missing information about the starting date of neoadjuvant therapy. Patients with
153 stage IV disease (n = 14), missing survival information (n = 7), non-curative resection
154 (n = 2) or last follow-up information within 30 days after surgery (n = 12) were
155 excluded from survival analyses resulting in 175 patients included (study cohort n =
156 83, control cohort n = 92). Median OS was 35 (95% CI 29 – NA) months and 87

157 events were observed (Supplementary figure 1A). Median DFS was 18 (95% CI 15 –
158 25) months and 118 events were observed (Supplementary figure 1B). There was no
159 significant difference of survival between the study cohort and the control cohort
160 (Supplementary figure 1C/1D).

161 *Immunohistochemical staining and scanning*

162 For immunohistochemical staining appropriate tissue blocks were selected after
163 screening all available H&E slides. PD-L1 staining was effectuated in a closed
164 system using the Ventana SP263 assay (Roche Diagnostics International AG,
165 Rotkreuz, Switzerland) on the fully automated immunostainer BenchMark ULTRA
166 (Roche Diagnostics International AG) following the manufacturer's instructions. The
167 sections were pre-processed using CC1 buffer at 100°C for 64 minutes, followed by
168 antibody incubation at 37°C for 16 minutes and visualization with DAB. CD8 staining
169 was effectuated on a fully automated immunostainer BOND III (Leica Biosystems,
170 Muttenz, Switzerland) using C8/144B (Agilent, Santa Clara, CA, United States). The
171 sections were pre-processed with ER2 buffer at 100°C for 20 minutes, followed by
172 incubation of the diluted antibody (1:200) for 15 minutes and visualization with DAB.
173 Selected slides were digitized using the Panoramic P250 Flash III (3DHistech,
174 Budapest, Hungary) in multiple runs at a resolution of 0.2431 µm/pixel.

175 The tissue had been obtained during the routine diagnostic workflow and the
176 formalin-fixed paraffin-embedded tissue had been stored at the Institute of Pathology
177 Bern according to the recommendation of the Swiss Society of Pathology (28). There
178 was no evidence of time-dependent staining bias with similar distributions of PD-L1
179 or CD8 expression along the period of observation (Supplementary figure 2A/2B).

180 *PD-L1 assessment*

181 Specimens with at least 100 tumor cells were eligible. PD-L1 expression was
182 assessed by PZ and reviewed on a double-headed microscope together with SB. In
183 cases of discordant assessment consensus was achieved. PD-L1 expression was
184 assessed as the tumor proportional score (TPS), defined by the proportion of PD-L1
185 positive tumor cells of all tumor cells. PD-L1 positive tumor cells were defined as
186 showing membranous staining of any intensity. TPS was assessed as a continuous
187 parameter in 1% increments up to 10% and 5% increments in cases showing >10%
188 expression. For statistical analyses, cases were assigned to the three clinically
189 relevant bins of TPS <1%, 1 – 49% or ≥50%. PD-L1 positive cases were defined by
190 TPS ≥1% and strong expressing cases were defined as TPS ≥50%.

191 *Assessment of CD8 positive tumor infiltrating lymphocytes and tertiary*
192 *lymphoid structures*

193 For the assessment of CD8+ TILs, only biopsies of non-lymph nodes or lymph nodes
194 with desmoplastic reaction were eligible. We evaluated CD8+ TILs per mm² applying
195 a semi-automated approach using the open-source software QuPath (Supplementary
196 figure 3) (29). First, we manually annotated regions of interest following
197 recommendations of the International Immuno-Oncology Biomarkers Working Group
198 (30, 31). Thus, only TILs within the borders of the invasive front of tumors were
199 evaluated and smaller satellite nodules without desmoplastic reaction were not
200 included in the assessment. In neoadjuvant cases with extensive fibrotic areas, only
201 the stroma adjacent to the tumor nests was included for analyses. Next, cells in the
202 annotated regions were segmented using the threshold-based watershed detection
203 of QuPath followed by the application of a series of object classifiers for exclusion of

204 anthracotic pigments and artefacts before classification and counting of CD8
205 negative and positive cells (technical manuscript in preparation). The performance of
206 this automated detection and classification was compared in 22 cases using 5000 x
207 5000 px wide squares against manual counting of one observer (PZ, Supplementary
208 table 1).

209 Regarding the evaluation of TLS, the digitized H&E sections were used for manual
210 assessment of the number and activity (presence of germinal centers) of TLS in the
211 resection specimens by PZ (32). In 44 cases, another block than used for PD-L1 or
212 CD8 assessment was evaluated due to the presence of larger areas of adjacent
213 normal lung tissue. All nodular aggregates of lymphocytes in the tumor region and
214 within 7 mm of the tumor border were counted (32). In cases of densely infiltrated
215 tumoral stroma, only nodular aggregates apparent on low magnification were
216 included.

217 *Statistics*

218 All analyses were conducted using R software (version 4.0.5, [https://cran.r-](https://cran.r-project.org/)
219 [project.org/](https://cran.r-project.org/)) with suitable packages. For comparison of naturally ordered categorical
220 variables or continuous variables, we used the Wilcoxon rank-sum or Kruskal-Wallis
221 test and for comparison of other categorical variables the Fisher's exact test.
222 Correlation was assessed using the Spearman test. Survival analyses were
223 conducted using the Log-rank test and univariable cox proportional hazard models.
224 Kaplan-Meier plots were used for the representation of survival curves. Multivariable
225 cox proportional hazard models were used for correction for confounders, which were
226 selected based on a significance level of $p \leq 0.1$. CD8 density was included as binary
227 variable (low vs. high) in all survival models. It was dichotomized using maximally

228 selected rank statistics based on Log-rank scores as test statistic and the
229 approximation by Hothorn and Lausen for small sample sizes (33).

230 **Results**

231 *No upregulation of PD-L1 expression by neoadjuvant therapy*

232 After neoadjuvant therapy, PD-L1 expression was <1% in 43/96 (44.8%) cases, 1 -
233 49% in 31/96 (32.3%) cases and ≥50% in 22/96 (22.9%) cases. In the primary
234 resected cohort, PD-L1 expression was <1% in 40/114 (35.1%) cases, 1 - 49% in
235 47/114 (41.2) cases and ≥50% in 27/114 (23.7%) cases. There was no significant
236 difference in PD-L1 expression between the neoadjuvant cohort and the primary
237 resected control cohort also after adjusting for histology.

238 Except for smoking status (active smoker vs. former-/ never smoker) none of the
239 clinico-pathological parameters was associated with higher PD-L1 expression. In the
240 neoadjuvant cohort, active smoking was associated with a higher PD-L1 TPS ($p =$
241 0.013). Active smokers in both cohorts had a significantly higher frequency of PD-L1
242 positive tumors ($p_{\text{neoadjuvant}} = 0.02$, $p_{\text{control}} = 0.026$, Supplementary table 2).

243 PD-L1 expression was not significantly altered comparing paired pre-/post-
244 neoadjuvant samples. Overall, 7/57 (12.3%) tumors had lower PD-L1 expression and
245 12/57 (21.1%) had higher PD-L1 expression in the resection specimen, as assessed
246 regarding the clinically significant cut-offs of 1% and 50% (Figure 1, Supplementary
247 table 3). Four/7 cases showed lowed PD-L1 expression regarding the 50% cut-off
248 and 5/7 regarding the 1% cut-off (2 cases changed from ≥50% to <1%). A positive or
249 negative change of PD-L1 could not be associated with response to neoadjuvant
250 therapy (major pathological response [MPR] yes/no), patients' sex, tumor histology or
251 change of CD8 TILs density (Supplementary table 4).

252 *Higher CD8 TILs density is associated with higher PD-L1 expression*

253 After neoadjuvant therapy, mean CD8 TILs density within the tumor region was
254 242.45 (IQR 73.11 – 290.32) cells/mm². In the cohort of primary resected cases,
255 mean CD8 TILs density was 252.1 (IQR 98.37 – 314.73) cells/mm². CD8 TILs
256 density was similar between the neoadjuvant and primary resected cohort. After
257 neoadjuvant therapy, a median of 10 (IQR 4 – 21.5) TLS were counted on the
258 selected whole slides. In the primary resected cohort, a median of 9 (IQR 4.5 – 19)
259 TLS were counted. After subgrouping according to histology, the median number of
260 TLS was comparable between histological tumor types and groups. However, there
261 were only 4 cases with active TLS in the neoadjuvant cohort compared to 13 cases in
262 the primary resected control cohort. A higher number of active TLS comparing the
263 cohorts was observed regardless of histological tumor type.

264 A higher CD8 TILs count was statistically significantly associated with LUAD
265 histology ($p_{\text{neoadjuvant}} = 0.001$, $p_{\text{control}} = 0.017$) and a higher PD-L1 expression
266 ($p_{\text{neoadjuvant}} = 0.027$ $R_s = 0.23$, $p_{\text{control}} = 0.003$ $R_s = 0.28$, Figure 2A). However, when
267 subgrouping according to histological tumor type, PD-L1 expression did no longer
268 significantly correlate with CD8 TILs density in LUAD after neoadjuvant treatment.
269 Similar results were observed when applying the clinical cut-offs at 1% or 50% PD-L1
270 expression (Figure 2B-C). Among the primary resected cases, PD-L1 positive cases
271 showed a higher CD8 TILs density. After neoadjuvant therapy, this remained true
272 only for non-LUAD tumors. Strong PD-L1 expression correlated with CD8 TILs
273 density in LUAD or non-LUAD tumors in both cohorts. In primary resected cases,
274 tumor size inversely correlated with CD8 TILs density ($R_s = -0.24$, $p = 0.011$),
275 whereas in cases after neoadjuvant treatment, higher numbers of TLS correlated with
276 higher CD8 TILs density ($R_s = 0.27$, $p = 0.009$).

277 CD8 TILs density was significantly lower before neoadjuvant therapy comparing
278 paired samples ($p = 0.031$, Figure 1, Supplementary figure 4). We performed
279 subgroup analyses to check whether changes of CD8 TILs density were associated
280 with changes in PD-L1 expression. However, changes of CD8 TILs density were only
281 significant in the subgroups of cases with no change of PD-L1 expression regarding
282 the three-fold classification of cut-offs (Supplementary figure 5), presumably due to
283 insufficient sample size in the other subgroups. Furthermore, higher CD8 density
284 before or after neoadjuvant therapy was not associated with an increase of PD-L1
285 expression.

286 *Prognostic significance of immune related biomarkers*

287 In the entire study population, PD-L1 expression assessed in resection specimens
288 had no prognostic significance, neither for OS nor for DFS, neither using 1% nor 50%
289 as cut-offs (Supplementary figure 6). In subgroup analyses including only cases after
290 neoadjuvant therapy or primary resected cases, PD-L1 positivity was a prognostic
291 marker for longer OS in the cohort of primary resected NSCLC ($p = 0.029$, HR
292 0.5255, 95% CI 0.2924 – 0.9444, Figure 3). Regarding PD-L1 as a dynamic marker,
293 patients with increased PD-L1 expression seemed to have worse 5-year OS,
294 however, not statistically significant (Figure 4).

295 We used maximally selected rank statistic to determine the adequate cutoff for CD8
296 TILs density at 283.18 cells/mm² in the entire study population. Overall, higher CD8
297 TILs numbers were associated with longer OS ($p = 0.014$, HR 0.5373, 95% CI 0.3251
298 – 0.888, Figure 5A) and longer DFS ($p = 0.008$, HR 0.5707, 95% CI 0.3762 – 0.8656,
299 Figure 5D). In the subgroup analyses, however, it was a positive prognostic factor for
300 OS only in the cohort of neoadjuvant cases ($p = 0.029$, HR 0.4332, 95% CI 0.1997 –

301 0.9397, Figure 5B) and for DFS only in the cohort of primary resected cases (p =
302 0.048, HR 0.5513, 95% CI 0.3043 – 0.9986, Figure 5F).

303 The number of TLS was considered as a continuous variable and it was a prognostic
304 marker considering the entire study population (p = 0.045, HR 0.9833, 95% CI
305 0.9673 – 0.9996) but not in the sub cohorts ($p_{\text{neoadjuvant}} = 0.15$, $p_{\text{control}} = 0.15$).

306 We investigated the validity of the prognostic significance only in the overall
307 population to achieve sufficient sample size and number of events. As the three
308 immune markers PD-L1 expression, CD8 TILs and TLS correlated significantly, we
309 performed a cox regression analysis for each marker. PD-L1 expression was
310 included using the TPS 1% cut-off only. None of the immune markers was prognostic
311 in the multivariable model for OS ($p_{\text{PD-L1}} = 0.241$, $p_{\text{CD8}} = 0.368$, $p_{\text{TLS}} = 0.246$) or DFS
312 ($p_{\text{PD-L1}} = 0.054$, $p_{\text{CD8}} = 0.098$, $p_{\text{TLS}} = 0.407$) but age and pT4 were consistent
313 prognostic factors in the multivariable models (Supplementary figure 7).

314 **Discussion**

315 In this study on immune related biomarkers in locally advanced resectable NSCLC,
316 CD8 TILs and TLS were prognostic factors but did not yield additional information to
317 age and TNM in multivariable analyses. CD8 TILs density correlated with PD-L1
318 expression. PD-L1 expression was not consistently upregulated after neoadjuvant
319 chemotherapy, in line with some, but not all previous studies.(13, 16, 19-22)

320 The effect of chemotherapy on PD-L1 expression in the resectable setting has been
321 previously investigated as summarized in Table 1 (11-22). Most studies reported an
322 increased PD-L1 expression after chemotherapy when assessing paired samples.

323 The importance of the PI3K/ALK pathway in PD-L1 upregulation after chemotherapy
324 was demonstrated in *in vitro* and *in vivo* functional assays (14, 19). Conversely, some
325 studies showed no change or even a decreased PD-L1 expression following

326 chemotherapy (11, 12, 15, 17, 18). In fact, when reassessing the positive studies and
327 considering the absolute number of cases per category (*decrease, no change,*
328 *increase*), most cases did not change. Of the four studies conducted using an FDA
329 approved antibody, only one concluded an increased PD-L1 expression post-
330 chemotherapy (15, 17, 18, 20). Thus, our study results are in line with previous
331 reports for FDA approved antibodies and suggest that dynamic changes in PD-L1
332 expression due to chemotherapy are observed only in a minority of tumors. In the
333 majority of our cases (38/57) PD-L1 expression was stable and most of them were
334 negative (23/38 cases) in both the biopsy/cytology specimens and the resection after
335 neoadjuvant therapy. Considering these and previously reported results, it seems
336 unlikely that neoadjuvant chemotherapy induces PD-L1 expression.

337 Chemotherapy is deemed to improve immunosurveillance by different effects
338 (antigenicity, immunogenicity, susceptibility) (34). This would suggest an upregulation
339 of PD-L1 in tumor cells to evade a strong antitumor response. A potential explanation
340 for the lack of consistent upregulation in clinical samples could be the influence of
341 chemotherapy on the immune microenvironment. Two larger studies have
342 investigated such effects in detail by applying multiplex immunofluorescence and a
343 multiomics approach (16, 35). Both studies describe an increase of immune cells in
344 specimens after neoadjuvant therapy and point out that different subgroups of
345 immune cells are increased depending on the underlying histological tumor type (16,
346 35). However, the multiomics approach indicated no increase of T-cell receptor
347 richness and clonality, thus failed to suggest increased antigenicity or susceptibility
348 (35). Importantly, these studies did not include paired samples and, especially the
349 study using multiomics, included only few samples in their analyses (n = 10 - 72
350 depending on experiment) (35).

351 In order to account for the immune microenvironment, we assessed the CD8 TILs
352 density and number and state of TLS. By applying a semiautomatic approach, we
353 were able to count CD8 TILs in the entire tumor region of the slides used for PD-L1
354 assessment, in contrast to the published studies usually performing hot spot analysis.
355 Although we confirmed published results indicating an increase of TILs in tumors
356 resected after neoadjuvant therapy, we cannot conclude that chemotherapy
357 increases CD8 TILs densities due to (a) no significant difference in CD8 density
358 between cases resected after neoadjuvant therapy and primary resected cases, (b)
359 biopsies covering much smaller tissue areas than whole slides (thus being more
360 prone to sampling error due to heterogeneity), and (c) higher variance in post-
361 neoadjuvant therapy specimens leading to higher median ranks and means due to
362 outliers (implications for statistical testing).

363 Another explanation, comparing preclinical and clinical studies, could be the
364 heterogeneity of applied chemotherapeutic regimens, inherent in our real-life cohort
365 approach. Although, most cytotoxic agents have immunosurveillance enhancing
366 effects, these differ considerably (34). Thus, while oxaliplatin and gemcitabine have
367 been shown to promote immunogenic cell death especially via exposure of
368 calreticulin, others do not without addition of radiotherapy (e.g. cisplatin) (34, 36).

369 Furthermore, although Zhang et al. and Fournel et al. suggest an upregulation of PD-
370 L1 via the PI3K/ALK pathway, earlier studies support rather the downregulation of
371 suppressive checkpoints via the STAT pathway (14, 19, 36). In our study, the
372 majority of patients (n = 54) received cisplatin and docetaxel, but only 12/54 received
373 additional radiotherapy (36). On the other hand, the few patients who had received
374 gemcitabine and had available paired samples (n = 2) showed PD-L1-upregulation
375 despite the lack of neoadjuvant radiotherapy, and only 3/11 cases were PD-L1
376 negative in the resection specimens.

377 The prognostic power of PD-L1 expression as a double-edged sword has already
378 been described exhaustively in advanced NSCLC and a high PD-L1 expression does
379 not seem to be consistently associated with worse survival (37). Likewise, most
380 studies including tumors after neoadjuvant therapy reported no prognostic
381 importance of PD-L1 expression (11, 15, 18, 20-22). In this study, static PD-L1
382 expression, evaluated only in the resection specimens, was not prognostic. However,
383 when looking at the dynamic changes, increased PD-L1 expression seemed to
384 confer worse survival, in accordance with previous studies (12, 14, 15, 21). This
385 effect can be explained by PD-L1 expression potentially conveying chemoresistance
386 and promoting proliferation and epithelial to mesenchymal transition (14, 38). High
387 CD8 TILs were always associated with improved OS. This seems to be true even
388 when applying different cut-offs, as most of the published studies used the median,
389 thus a cohort specific cut-off (11, 15, 18, 22, 39). Furthermore, the prognostic impact
390 of a higher CD8 TILs density is a possible explanation for the prognostic benefit of
391 PD-L1 positivity in primary LUSC, due to the positive correlation of PD-L1 expression
392 and CD8 TILs. In our cohort, however, CD8 TILs lost its prognostic relevance in
393 multivariable analyses including age and the pT denominator of the TNM
394 classification. Thus, we cannot confirm the importance of the immune pattern as a
395 complementary factor for survival prediction, as proposed by Remark and colleagues
396 (11).

397 This retrospective study assessed the impact of chemotherapy on biomarkers for ICB
398 in a real-life cohort resected after neoadjuvant therapy over a period of 16 years. The
399 availability of paired samples for 57 patients is comparable to prior studies but the
400 addition of a matching cohort of primary resected locally advanced NSCLC allowed
401 the validation of identified effects. In contrast to most published studies, we evaluated
402 PD-L1 expression according to the current diagnostic recommendations and using an

403 FDA-approved antibody assay for companion diagnostics (40-42). Furthermore, we
404 included the impact on the immune microenvironment by evaluating CD8 TILs and
405 TLS. By applying new techniques enabled by digital pathology approaches, we could
406 reliably assess CD8 TILs in the same area as the PD-L1 expression and were not
407 restricted to hotspot analyses.

408 Nevertheless, our study has limitations inherent to its retrospective and “real-life”
409 character. Especially compared to clinical studies investigating the effect of radio-
410 chemotherapy, patients with different chemotherapeutic regimens were included (15,
411 18). Although patients with changed PD-L1 expression after neoadjuvant therapy did
412 not differ regarding duration of neoadjuvant therapy or therapy free interval between
413 the last cycle of neoadjuvant therapy and resection, especially these differences in
414 duration of therapy and therapy free interval need to be accounted for when
415 interpreting our results.

416 In conclusion, our results support the hypothesis of dynamic effects of neoadjuvant
417 chemotherapy on PD-L1 expression and CD8 TILs. Overall, the majority of our cases
418 were PD-L1 negative and showed no increase in PD-L1 expression after neoadjuvant
419 therapy. Nevertheless, in those cases with increased PD-L1 expression after
420 neoadjuvant therapy, 5-year OS was shorter compared to patients with no change or
421 decreased PD-L1 expression. This result could be visually appreciated, but lacked
422 statistical significance, most probably due to the very low number of cases.

423 Subsequent clinical trials are warranted in order to determine if PD-L1 retesting
424 should be performed after neoadjuvant therapy due to therapeutic implications of an
425 altered PD-L1 expression.

426 **Additional Information**

427 *Acknowledgment*

428 The authors are very thankful for the expert technical support of the Translational
429 Research Unit of the Institute of Pathology, University of Bern. We acknowledge the
430 Cancer registry Bern for acquiring extensive follow-up data of the patients.

431 *Authors' contribution*

432 Philipp Zens: Conceptualization, Data curation, Formal analyses, Funding
433 acquisition, Methodology, Visualization, Writing – original draft, Writing – Review &
434 Editing; Corina Bello: Data Curation, Writing – Review & Editing; Amina Scherz: Data
435 Curation, Writing – Review & Editing; Michael von Gunten: Resources, Writing –
436 Review & Editing; Adrian Ochsenbein: Resources, Writing – Review & Editing; Ralph
437 A. Schmid: Resources, Writing – Review & Editing; Christina Neppl: Resources,
438 Writing – Review & Editing; Sabina Berezowska: Conceptualization, Data curation,
439 Formal analyses, Funding acquisition, Methodology, Project administration,
440 Resources, Supervision, Writing – original draft, Writing – Review & Editing

441 *Ethics approval and consent to participate*

442 This study was approved by the Cantonal Ethics Committee of the canton of Bern
443 waiving the requirement of informed consent (KEK 2017-00830). The study was
444 performed in accordance with the Declaration of Helsinki.

445 *Data availability*

446 Anonymized detailed clinico-pathological data and the R-Script used for data analysis
447 are available upon request to the authors.

448 *Competing Interests*

449 SB has served as compensated consultant for Basilea, Eli Lilly, MSD and Roche
450 (payment to institution) and has received research funding from Roche outside of the
451 current project. The other authors declare no conflict of interest.

452 *Funding information*

453 The study was supported by grants from the Stiftung zur Krebsbekämpfung
454 (SKB425) and Cancer Research Switzerland (KFS-4694-02-2019) to SB. PZ is
455 supported by a MD-PhD scholarship of Cancer Research Switzerland (MD-PhD-
456 5088-06-2020). The funding agencies had no role in study design, in the collection,
457 analysis and interpretation of data, in the writing of the report or in the decision to
458 submit the article for publication. Open Access funding provided by the University of
459 Lausanne.

460

References

- 462 1. Sung H, Ferlay J, Siegel RL, Laversanne M, Soerjomataram I, Jemal A, et al.
463 Global cancer statistics 2020: GLOBOCAN estimates of incidence and mortality
464 worldwide for 36 cancers in 185 countries. *CA Cancer J Clin.* 2021.
- 465 2. Howington JA, Blum MG, Chang AC, Balekian AA, Murthy SC. Treatment of
466 stage I and II non-small cell lung cancer: Diagnosis and management of lung cancer,
467 3rd ed: American College of Chest Physicians evidence-based clinical practice
468 guidelines. *Chest.* 2013;143(5 Suppl):e278S-e313S.
- 469 3. Souquet PJ, Geriniere L. The role of chemotherapy in early stage of non-small
470 cell lung cancer. *Lung Cancer.* 2001;34 Suppl 2:S155-8.
- 471 4. Postmus PE, Kerr KM, Oudkerk M, Senan S, Waller DA, Vansteenkiste J, et
472 al. Early and locally advanced non-small-cell lung cancer (NSCLC): ESMO Clinical
473 Practice Guidelines for diagnosis, treatment and follow-up. *Ann Oncol.*
474 2017;28(suppl_4):iv1-iv21.
- 475 5. Pignon JP, Tribodet H, Scagliotti GV, Douillard JY, Shepherd FA, Stephens
476 RJ, et al. Lung adjuvant cisplatin evaluation: a pooled analysis by the LACE
477 Collaborative Group. *J Clin Oncol.* 2008;26(21):3552-9.
- 478 6. Spicer J, Wang C, Tanaka F, Saylor GB, Chen K-N, Liberman M, et al.
479 Surgical outcomes from the phase 3 CheckMate 816 trial: Nivolumab (NIVO) +
480 platinum-doublet chemotherapy (chemo) vs chemo alone as neoadjuvant treatment
481 for patients with resectable non-small cell lung cancer (NSCLC). *Journal of Clinical
482 Oncology.* 2021;39(15_suppl):8503-.
- 483 7. Wakelee HA, Altorki NK, Zhou C, Csósz T, Vynnychenko IO, Goloborodko O,
484 et al. IMpower010: Primary results of a phase III global study of atezolizumab versus
485 best supportive care after adjuvant chemotherapy in resected stage IB-IIIa non-small
486 cell lung cancer (NSCLC). *Journal of Clinical Oncology.* 2021;39(15_suppl):8500-.
- 487 8. Wei SC, Duffy CR, Allison JP. Fundamental Mechanisms of Immune
488 Checkpoint Blockade Therapy. *Cancer Discov.* 2018;8(9):1069-86.
- 489 9. Dafni U, Tsourti Z, Vervita K, Peters S. Immune checkpoint inhibitors, alone or
490 in combination with chemotherapy, as first-line treatment for advanced non-small cell
491 lung cancer. A systematic review and network meta-analysis. *Lung Cancer.*
492 2019;134:127-40.
- 493 10. Camidge DR, Doebele RC, Kerr KM. Comparing and contrasting predictive
494 biomarkers for immunotherapy and targeted therapy of NSCLC. *Nat Rev Clin Oncol.*
495 2019;16(6):341-55.
- 496 11. Remark R, Lupo A, Alifano M, Biton J, Ouakrim H, Stefani A, et al. Immune
497 contexture and histological response after neoadjuvant chemotherapy predict clinical
498 outcome of lung cancer patients. *Oncoimmunology.* 2016;5(12):e1255394.
- 499 12. Sheng J, Fang W, Yu J, Chen N, Zhan J, Ma Y, et al. Expression of
500 programmed death ligand-1 on tumor cells varies pre and post chemotherapy in non-
501 small cell lung cancer. *Sci Rep.* 2016;6:20090.
- 502 13. Song Z, Yu X, Zhang Y. Altered expression of programmed death-ligand 1
503 after neo-adjuvant chemotherapy in patients with lung squamous cell carcinoma.
504 *Lung Cancer.* 2016;99:166-71.
- 505 14. Zhang P, Ma Y, Lv C, Huang M, Li M, Dong B, et al. Upregulation of
506 programmed cell death ligand 1 promotes resistance response in non-small-cell lung
507 cancer patients treated with neo-adjuvant chemotherapy. *Cancer Sci.*
508 2016;107(11):1563-71.

- 509 15. Fujimoto D, Uehara K, Sato Y, Sakanoue I, Ito M, Teraoka S, et al. Alteration
510 of PD-L1 expression and its prognostic impact after concurrent chemoradiation
511 therapy in non-small cell lung cancer patients. *Sci Rep.* 2017;7(1):11373.
- 512 16. Parra ER, Villalobos P, Behrens C, Jiang M, Pataer A, Swisher SG, et al.
513 Effect of neoadjuvant chemotherapy on the immune microenvironment in non-small
514 cell lung carcinomas as determined by multiplex immunofluorescence and image
515 analysis approaches. *J Immunother Cancer.* 2018;6(1):48.
- 516 17. Rojko L, Reiniger L, Teglas V, Fabian K, Pipek O, Vagvolgyi A, et al.
517 Chemotherapy treatment is associated with altered PD-L1 expression in lung cancer
518 patients. *J Cancer Res Clin Oncol.* 2018;144(7):1219-26.
- 519 18. Choe EA, Cha YJ, Kim JH, Pyo KH, Hong MH, Park SY, et al. Dynamic
520 changes in PD-L1 expression and CD8(+) T cell infiltration in non-small cell lung
521 cancer following chemoradiation therapy. *Lung Cancer.* 2019;136:30-6.
- 522 19. Fournel L, Wu Z, Stadler N, Damotte D, Lococo F, Boulle G, et al. Cisplatin
523 increases PD-L1 expression and optimizes immune check-point blockade in non-
524 small cell lung cancer. *Cancer Lett.* 2019;464:5-14.
- 525 20. Guo L, Song P, Xue X, Guo C, Han L, Fang Q, et al. Variation of Programmed
526 Death Ligand 1 Expression After Platinum-based Neoadjuvant Chemotherapy in
527 Lung Cancer. *J Immunother.* 2019;42(6):215-20.
- 528 21. Shin J, Chung JH, Kim SH, Lee KS, Suh KJ, Lee JY, et al. Effect of Platinum-
529 Based Chemotherapy on PD-L1 Expression on Tumor Cells in Non-small Cell Lung
530 Cancer. *Cancer Res Treat.* 2019;51(3):1086-97.
- 531 22. Yoneda K, Kuwata T, Kanayama M, Mori M, Kawanami T, Yatera K, et al.
532 Alteration in tumoural PD-L1 expression and stromal CD8-positive tumour-infiltrating
533 lymphocytes after concurrent chemo-radiotherapy for non-small cell lung cancer. *Br J*
534 *Cancer.* 2019;121(6):490-6.
- 535 23. Pfirschke C, Engblom C, Rickelt S, Cortez-Retamozo V, Garris C, Pucci F, et
536 al. Immunogenic Chemotherapy Sensitizes Tumors to Checkpoint Blockade Therapy.
537 *Immunity.* 2016;44(2):343-54.
- 538 24. Zens P, Bello C, Scherz A, Koenigsdorf J, Pollinger A, Schmid RA, et al. A
539 prognostic score for non-small cell lung cancer resected after neoadjuvant therapy in
540 comparison with the tumor-node-metastases classification and major pathological
541 response. *Mod Pathol.* 2021.
- 542 25. Brierley JD GM, Wittekind C. International Union Against Cancer (UICC): TNM
543 Classification of Malignant Tumours. 8 ed. Oxford: Wiley-Blackwell; 2017.
- 544 26. WHO Classification of Tumours. Thoracic Tumours. 5 ed. Lyon: International
545 Agency for Research on Cancer; 2021.
- 546 27. McShane LM, Altman DG, Sauerbrei W, Taube SE, Gion M, Clark GM, et al.
547 Reporting recommendations for tumor marker prognostic studies (REMARK). *J Natl*
548 *Cancer Inst.* 2005;97(16):1180-4.
- 549 28. Dirnhofer S, Bubendorf L, Lehr H-A, Landau B, Zenklusen H-R.
550 *Qualitätsrichtlinien SGPath.* 2011(1.).
- 551 29. Bankhead P, Loughrey MB, Fernandez JA, Dombrowski Y, McArt DG, Dunne
552 PD, et al. QuPath: Open source software for digital pathology image analysis. *Sci*
553 *Rep.* 2017;7(1):16878.
- 554 30. Hendry S, Salgado R, Gevaert T, Russell PA, John T, Thapa B, et al.
555 Assessing Tumor-infiltrating Lymphocytes in Solid Tumors: A Practical Review for
556 Pathologists and Proposal for a Standardized Method From the International
557 Immunooncology Biomarkers Working Group: Part 1: Assessing the Host Immune
558 Response, TILs in Invasive Breast Carcinoma and Ductal Carcinoma In Situ,

559 Metastatic Tumor Deposits and Areas for Further Research. *Adv Anat Pathol.*
560 2017;24(5):235-51.

561 31. Hendry S, Salgado R, Gevaert T, Russell PA, John T, Thapa B, et al.
562 Assessing Tumor-Infiltrating Lymphocytes in Solid Tumors: A Practical Review for
563 Pathologists and Proposal for a Standardized Method from the International Immuno-
564 Oncology Biomarkers Working Group: Part 2: TILs in Melanoma, Gastrointestinal
565 Tract Carcinomas, Non-Small Cell Lung Carcinoma and Mesothelioma, Endometrial
566 and Ovarian Carcinomas, Squamous Cell Carcinoma of the Head and Neck,
567 Genitourinary Carcinomas, and Primary Brain Tumors. *Adv Anat Pathol.*
568 2017;24(6):311-35.

569 32. Silina K, Soltermann A, Attar FM, Casanova R, Uckeley ZM, Thut H, et al.
570 Germinal Centers Determine the Prognostic Relevance of Tertiary Lymphoid
571 Structures and Are Impaired by Corticosteroids in Lung Squamous Cell Carcinoma.
572 *Cancer Res.* 2018;78(5):1308-20.

573 33. Hothorn T, Lausen B. On the exact distribution of maximally selected rank
574 statistics. *Computational Statistics & Data Analysis.* 2003;43(2):121-37.

575 34. Zitvogel L, Galluzzi L, Smyth MJ, Kroemer G. Mechanism of action of
576 conventional and targeted anticancer therapies: reinstating immunosurveillance.
577 *Immunity.* 2013;39(1):74-88.

578 35. Gaudreau PO, Negrao MV, Mitchell KG, Reuben A, Corsini EM, Li J, et al.
579 Neoadjuvant Chemotherapy Increases Cytotoxic T Cell, Tissue Resident Memory T
580 Cell, and B Cell Infiltration in Resectable NSCLC. *J Thorac Oncol.* 2021;16(1):127-
581 39.

582 36. Hato SV, Khong A, de Vries IJ, Lesterhuis WJ. Molecular pathways: the
583 immunogenic effects of platinum-based chemotherapeutics. *Clin Cancer Res.*
584 2014;20(11):2831-7.

585 37. Takada K, Toyokawa G, Shoji F, Okamoto T, Maehara Y. The Significance of
586 the PD-L1 Expression in Non-Small-Cell Lung Cancer: Trenchant Double Swords as
587 Predictive and Prognostic Markers. *Clin Lung Cancer.* 2018;19(2):120-9.

588 38. Shimoji M, Shimizu S, Sato K, Suda K, Kobayashi Y, Tomizawa K, et al.
589 Clinical and pathologic features of lung cancer expressing programmed cell death
590 ligand 1 (PD-L1). *Lung Cancer.* 2016;98:69-75.

591 39. Chen L, Cao MF, Zhang X, Dang WQ, Xiao JF, Liu Q, et al. The landscape of
592 immune microenvironment in lung adenocarcinoma and squamous cell carcinoma
593 based on PD-L1 expression and tumor-infiltrating lymphocytes. *Cancer Med.*
594 2019;8(17):7207-18.

595 40. Tsao MS, Kerr KM, Dacic S, Yatabe Y, Hirsch FR. IASLC Atals of PD-L1
596 immunohistochemistry testing in lung cancer. 2017.

597 41. Naito T, Udagawa H, Sato J, Horinouchi H, Murakami S, Goto Y, et al. A
598 Minimum Of 100 Tumor Cells in a Single Biopsy Sample Is Required to Assess
599 Programmed Cell Death Ligand 1 Expression in Predicting Patient Response to
600 Nivolumab Treatment in Nonsquamous Non-Small Cell Lung Carcinoma. *J Thorac*
601 *Oncol.* 2019;14(10):1818-27.

602 42. Twomey JD, Zhang B. Cancer Immunotherapy Update: FDA-Approved
603 Checkpoint Inhibitors and Companion Diagnostics. *AAPS J.* 2021;23(2):39.
604

605

606 **Figure legends**

607 **Figure 1:** Immunohistochemical slides of two cases in the study cohort with altered
608 PD-L1 expression and TILs density after neoadjuvant therapy. Pre-neoadjuvant and
609 post-neoadjuvant sections stained for CD8 and PD-L1 are represented. Patient 002
610 changed from 40% TPS to 100% TPS and CD8+ TILs density doubled in the
611 resection specimen. Patient 060 changed from 100% TPS to <1% TPS and CD8+
612 TILs density halved in the resection specimen. Objective magnification 20x, scalebar
613 50 μm .

614 **Figure 2:** CD8+ TILs density according to PD-L1 expression using the (A) threefold
615 classification, (B) 1% TPS cutoff and (C) 50% TPS cutoff.

616 **Figure 3:** Kaplan-Meier plots of PD-L1 expression as a prognostic biomarker in the
617 (A, C) study cohort and (B, D) control cohort according to the (A, B) 1% TPS cutoff
618 and (C, D) 50% TPS cutoff.

619 **Figure 4:** Prognostic importance of the dynamic of PD-L1 change based on the
620 three-fold classification when considering all (A) possibilities or differentiating only
621 between increase and others (B).

622 **Figure 5:** Kaplan-Meier plots of CD8 TILs density as a prognostic biomarker
623 regarding (A-C) OS and (D-F) DFS in the (A, D) entire study population, (B, E) the
624 study cohort and (C, F) the control cohort.

Table 1: Currently published studies investigating the effect of neoadjuvant regimens on PD-L1 expression and the immune microenvironment.

study	year	number of patients	histology	paired samples (pre-/post-neoadjuvant)	neoadjuvant treatment	PD-L1 clone	PD-L1 evaluation	PD-L1 change	negative/no change	CD8 clone	CD8 evaluation	CD8 change
Remark [11]	2016	21	LUSC/LUAD/LCC	yes	chemotherapy	E1L3N	Semi-quantitative	no change	-	SP16	manually	no change
Sheng [12]	2016	32	LUSC/LUAD	yes	chemotherapy	E1L3N	Semi-quantitative	decrease	-	-	-	-
Song [13]	2016	76	LUSC	yes	chemotherapy	PD-L1	Semi-quantitative	increase	31/65	-	-	-
Zhang [14]	2016	30	LUSC/LUAD	yes	chemotherapy	Abcam	Semi-quantitative	-	-	-	-	-
Fujimoto [15]	2017	35	LUSC/LUAD	yes	chemoradiotherapy	28-8	TPS	decrease	11/15	C8/144B	Semi-quantitative	increase
Parra [16]	2018	112	LUSC/LUAD	no	chemotherapy	E1L3N*	automated	increase	-	C8/144B (fluorescent)	automated	no change
Rojko [17]	2018	41	LUSC/LUAD/NSCLC/SCLC	yes	chemotherapy	SP142	Semi-quantitative	no change	-/29	H&E	Semi-quantitative	no change
Choe [18]	2019	33	LUSC/LUAD	yes	chemoradiotherapy	22C3 SP263	TPS	no change	13/16	C8/144B	Semi-quantitative	increase
Fournel [19]	2019	39	LUSC/LUAD/LCNEC	yes	chemotherapy	E1L3N	TPS	increase	-/8	SP16	automated	no change
Guo [20]	2019	63	LUSC/LUAD/LCNEC	yes	chemotherapy	22C3	TPS	increase	-/40	-	-	-
Shin [21]	2019	86	LUSC/LUAD	yes	chemotherapy	E1L3N	TPS	increase	15/40	-	-	-

Yoneda [22]	2019	41	LUSC/LUAD	yes	Chemotherapy, chemoradiotherapy	E1L3N	TPS	increase (CCRT), no change (CT) no change (CT)	-	C8/144B	manually	increase
----------------	------	----	-----------	-----	------------------------------------	-------	-----	---	---	---------	----------	----------

LUSC, lung squamous cell carcinoma; LUAD, lung adenocarcinoma; LCC, large cell carcinoma; NSCLC, non-small cell lung carcinoma; CCRT, concurrent chemoradiotherapy; CT, chemotherapy ; *, fluorescent

Table 2: Baseline characteristics of the study and control cohort.

	Study Cohort (n = 96)	Control Cohort (n = 114)	p value
age (median [IQR])	63.50 [55.75, 70.00]	63.50 [58.00, 70.00]	0.418°
sex (%)	n = 96 (%)	n = 114 (%)	0.553*
female	28 (29.2)	38 (33.3)	
male	68 (70.8)	76 (66.7)	
smoking status (%)	n = 83 (%)	n = 90 (%)	0.429*
never/ex-smoker	56 (67.5)	55 (61.1)	
active smoker	27 (32.5)	35 (38.9)	
histology (%)	n = 96 (%)	n = 114 (%)	0.678*
LUSC	46 (47.9)	54 (47.4)	
LUAD	47 (49.0)	60 (52.6)	
other	3 (3.1)		
tumor size (median [IQR])	3.20 [2.00, 4.85]	4.75 [3.00, 6.07]	<0.001°
Major pathological response (%)	n = 96 (%)		
MPR	33 (34.4)		
No MPR	63 (65.6)		
(y)pT (%)	n = 96 (%)	n = 114 (%)	0.027°
(y)pT0	1 (1.0)		
(y)pT1	32 (33.3)	17 (14.9)	
(y)pT2	22 (22.9)	37 (32.5)	
(y)pT3	20 (20.8)	31 (27.2)	
(y)pT4	21 (21.9)	29 (25.4)	
stage (%)	n = 96 (%)	n = 114 (%)	
I	17 (17.7)		
II	25 (26.0)		
III	50 (52.1)	104 (91.2)	
IV	4 (4.2)	10 (8.8)	
growth pattern (%)		n = 58 (%)	
acinar/papillary		15 (25.9)	
solid		28 (48.3)	
micropapillary		15 (25.9)	
type of resection (%)	n = 96 (%)	n = 114 (%)	0.486*
wedge		3 (2.6)	
lobectomy	53 (55.2)	62 (54.4)	
bilobectomy	5 (5.2)	8 (7.0)	
pneumonectomy	38 (39.6)	41 (36.0)	
neoadjuvant therapy (%)	n = 94 (%)		
Cisplatin + Docetaxel	54 (57.4)		
Carboplatin + Paclitaxel	5 (5.3)		
Cisplatin + Pemetrexed	13 (13.8)		
Cisplatin + Gemcitabine	8 (8.5)		

Cisplatin + Vinorelbine	5 (5.3)		
Cisplatin + Etoposide	1 (1.1)		
Other	8 (8.5)		
adjuvant therapy (%)	n = 88 (%)	n = 99 (%)	<0.001*
no	65 (73.9)	32 (32.3)	
yes	23 (26.1)	67 (67.7)	

No statistical comparison of stage, growth patterns, residual tumor and neoadjuvant therapy due to inherent differences.

* Fisher's exact test, ° Wilcoxon rank-sum test. Main variable names and p-values are bold. Statistically significant p-values are red.

PID 002

PID 060

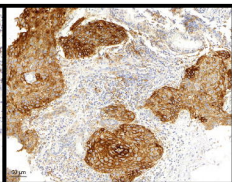
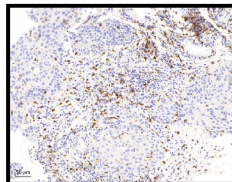
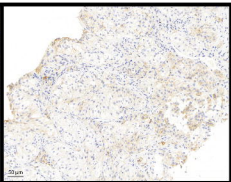
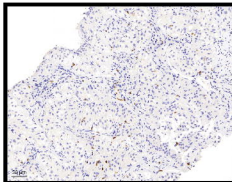
CD8

PD-L1

CD8

PD-L1

biopsy



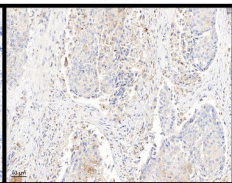
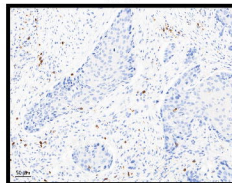
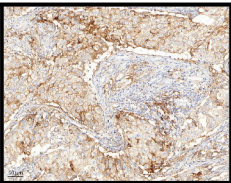
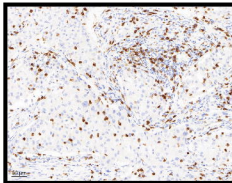
CD8

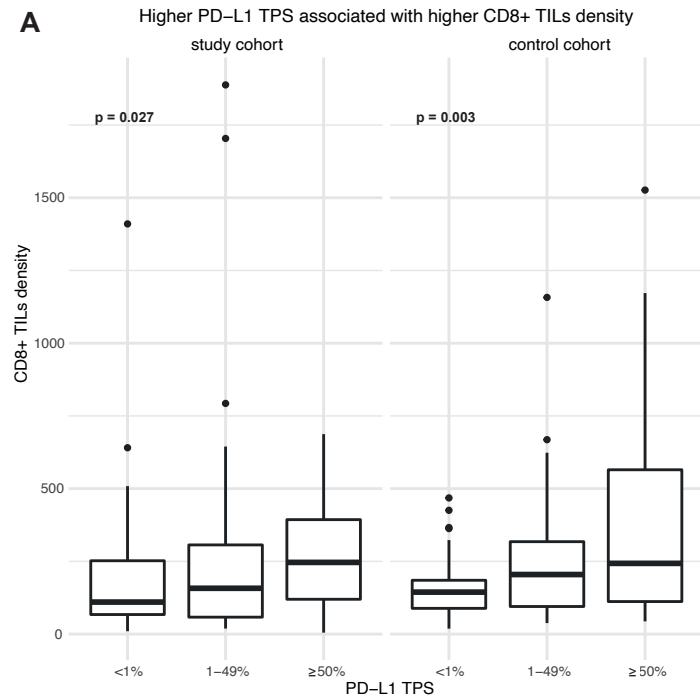
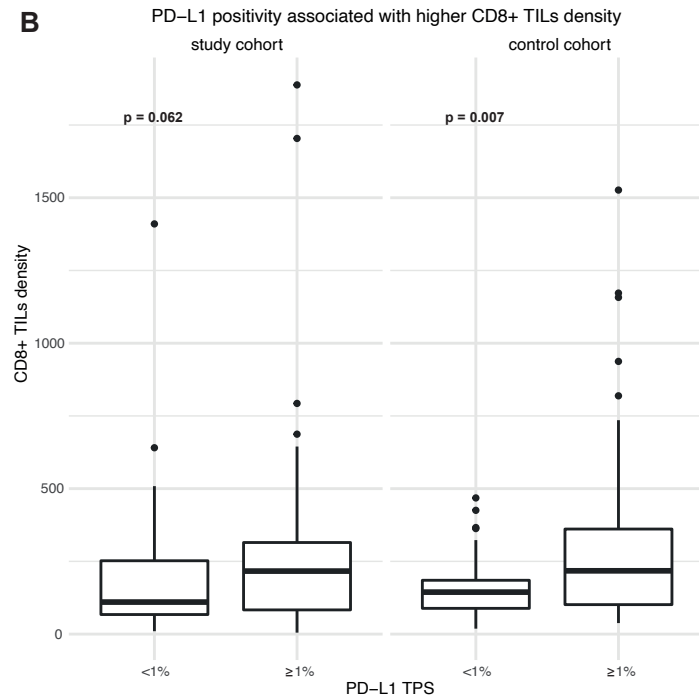
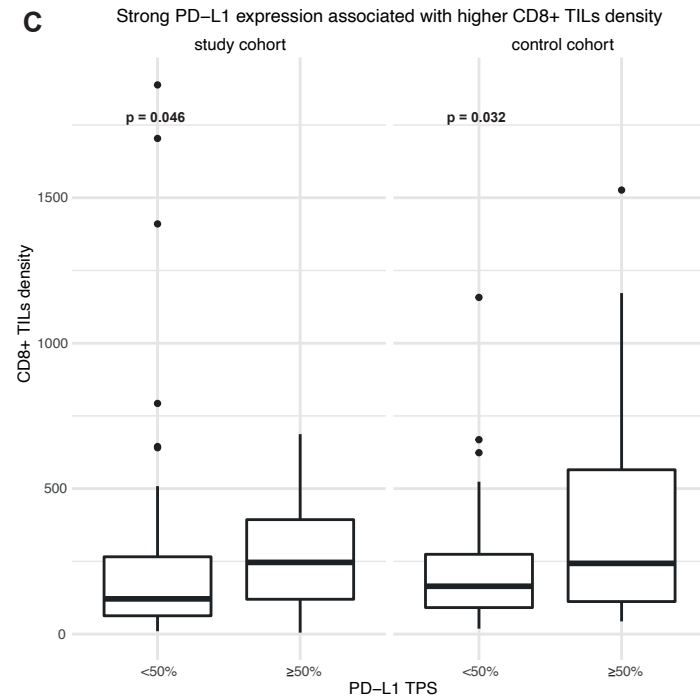
PD-L1

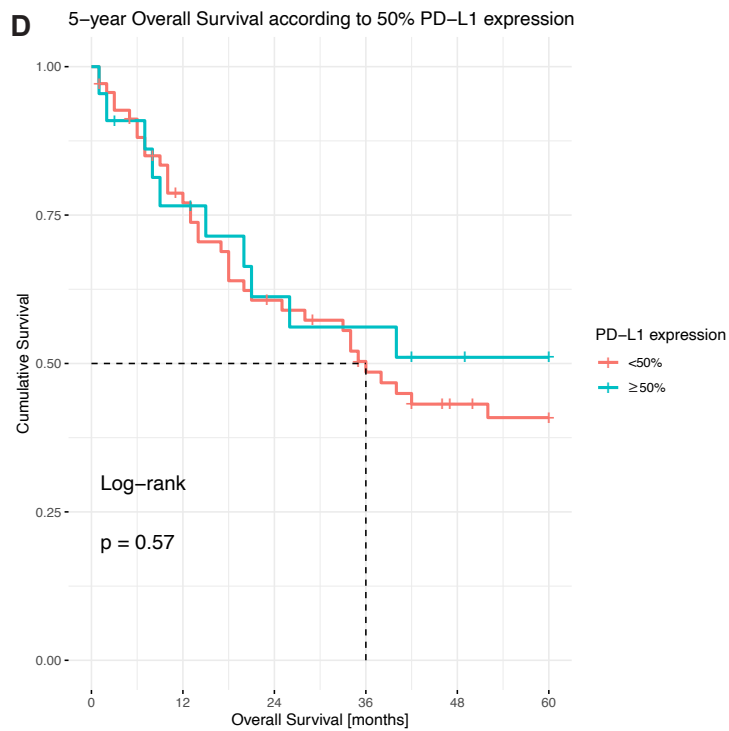
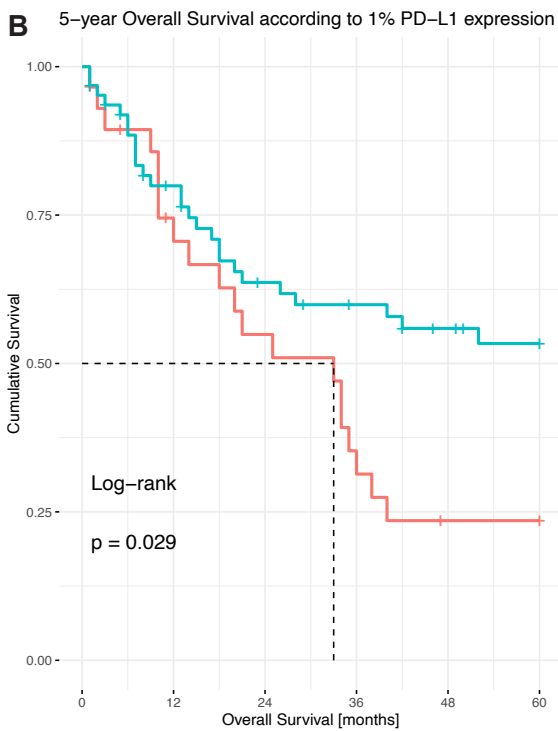
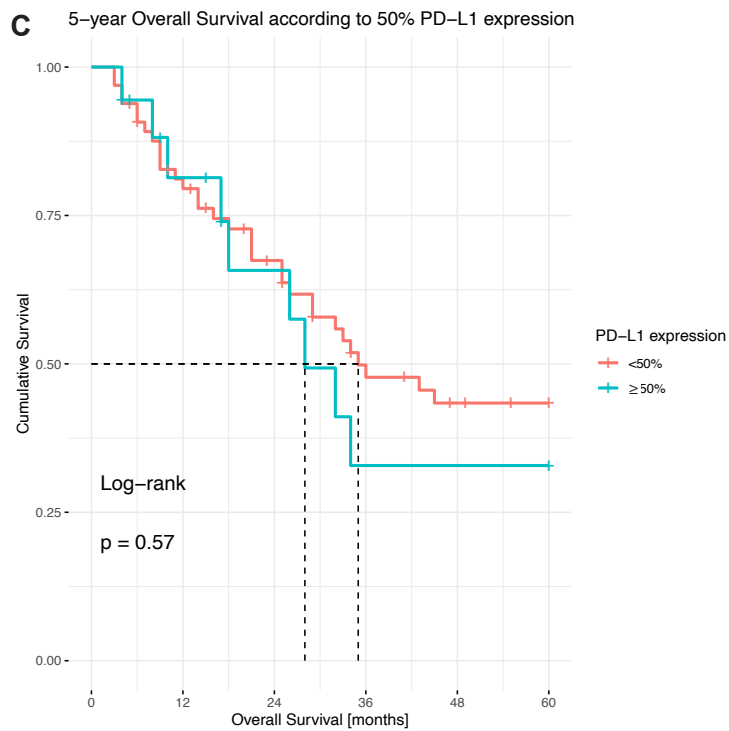
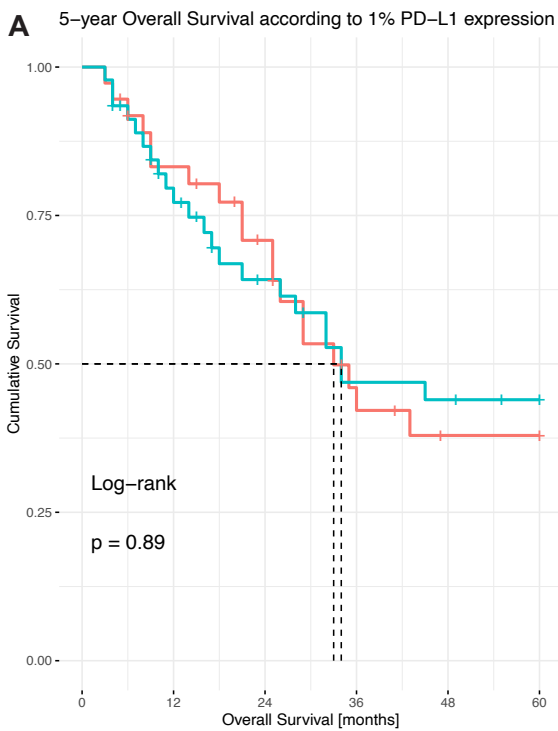
CD8

PD-L1

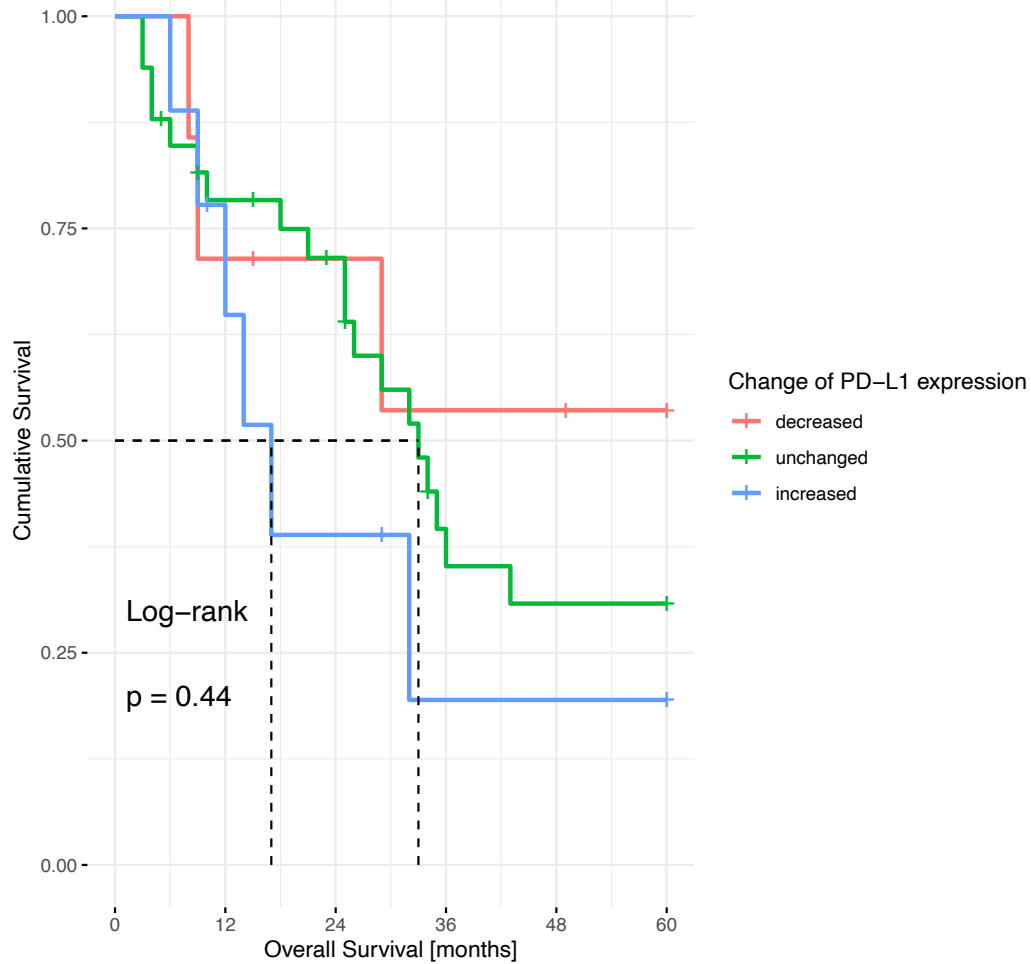
resection



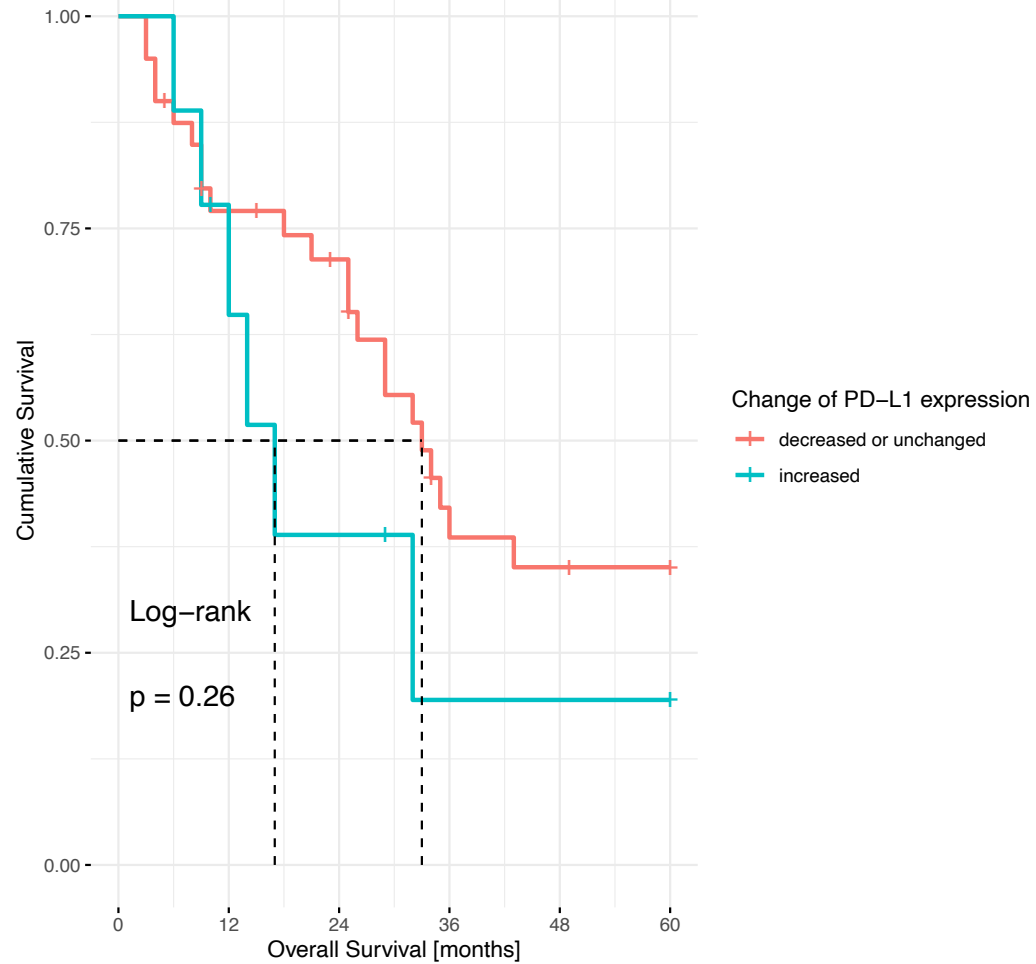
A**B****C**



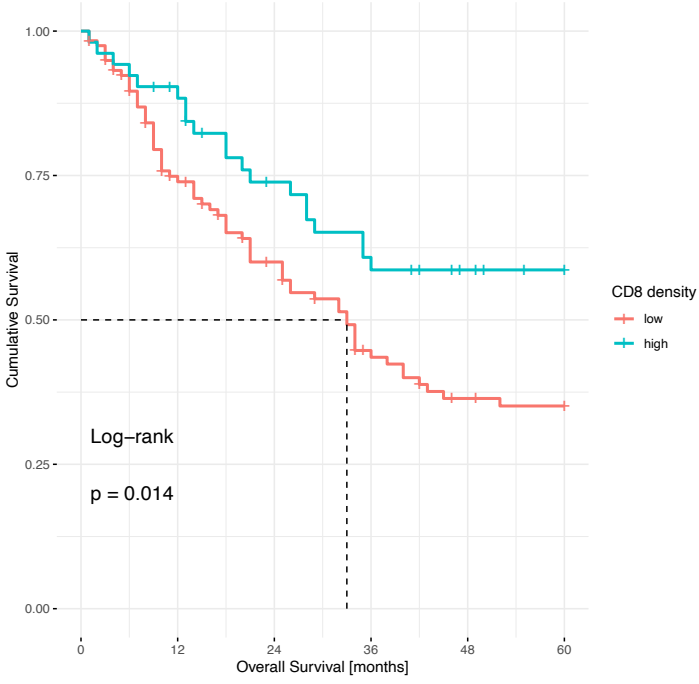
A 5-year Overall Survival according to the dynamic change of PD-L1 expression



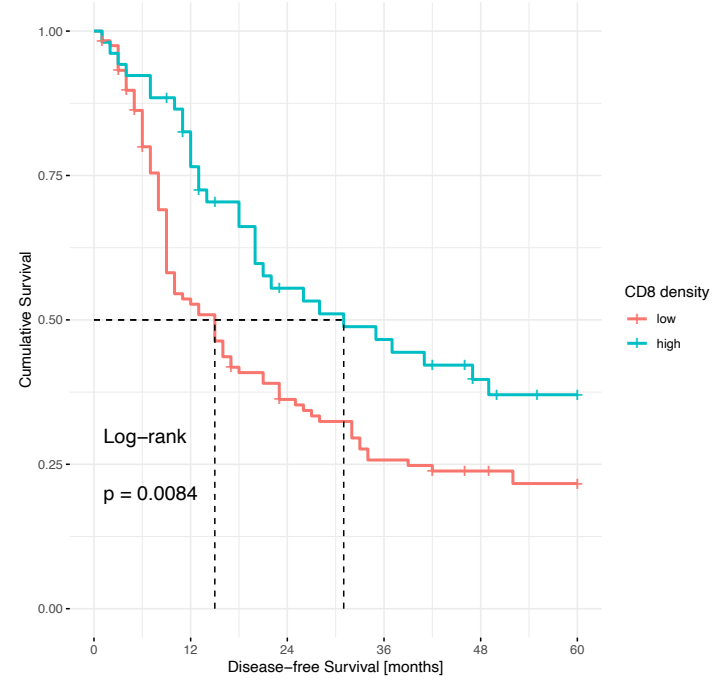
B 5-year Overall Survival according to the dynamic change of PD-L1 expression



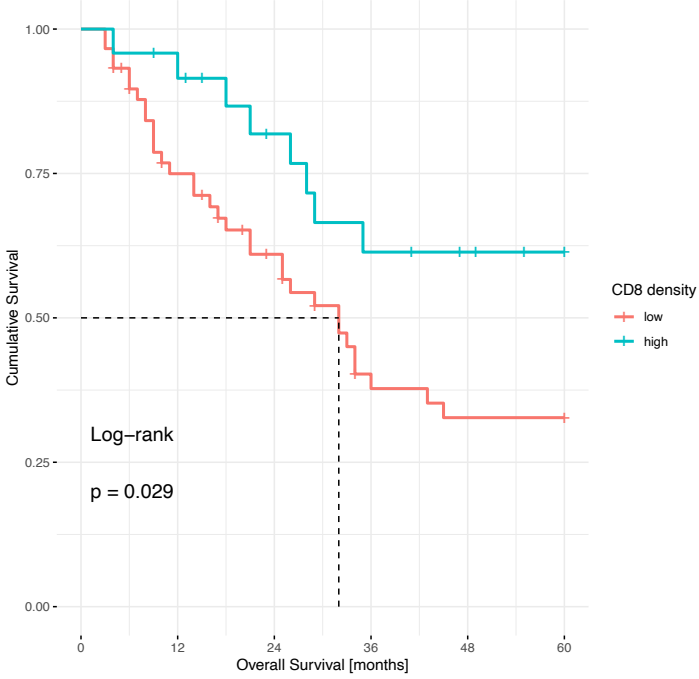
A 5-year Overall Survival according CD8 density



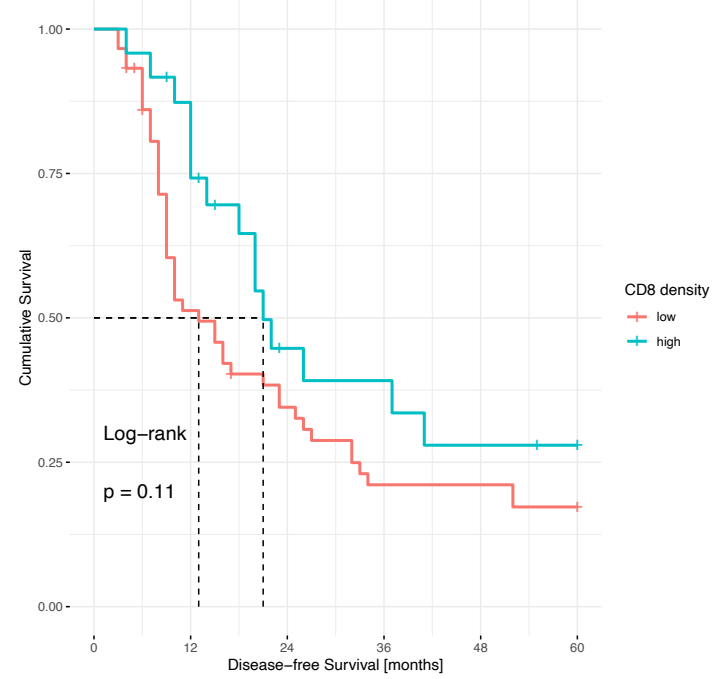
D 5-year Disease-free Survival according CD8 density



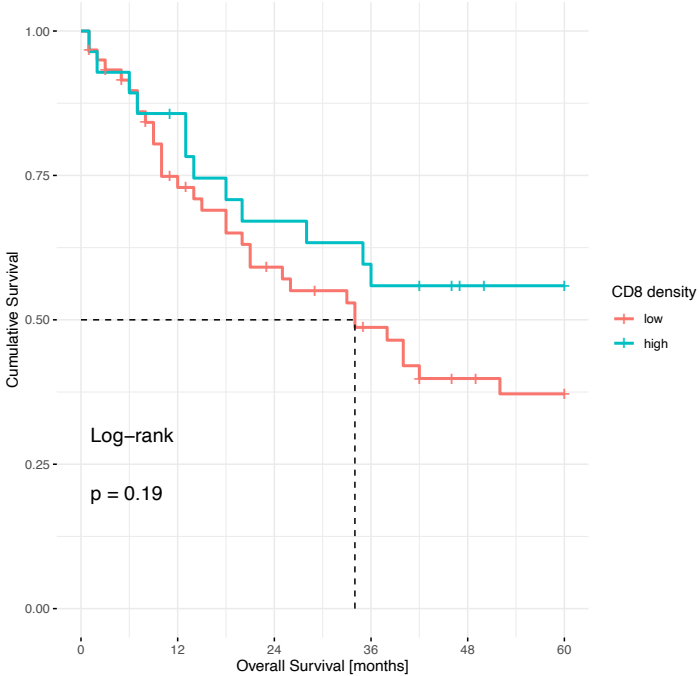
B 5-year Overall Survival according CD8 density in the study cohort



E 5-year Disease-free Survival according CD8 density in the study cohort



C 5-year Overall Survival according CD8 density in the control cohort



F 5-year Disease-free Survival according CD8 density in the control cohort

