

Original Article

# Influence of immunosuppressive regimen on diffusivity and oxygenation of kidney transplants – analysis of functional MRI data from the randomized ZEUS trial

Laila-Yasmin Mani<sup>1\*</sup>, Jasna Cotting<sup>2</sup>, Bruno Vogt<sup>1</sup>, Ute Eisenberger<sup>3,4</sup> and Peter Vermathen<sup>2</sup>

<sup>1</sup> Department of Nephrology and Hypertension, Inselspital, Bern University Hospital, University of Bern, Bern, Switzerland

<sup>2</sup> Departments of Biomedical Research and Radiology, University of Bern, Bern, Switzerland

<sup>3</sup> University Hospital Essen, Department of Nephrology, University Hospital Essen, University of Duisburg-Essen, Essen, Germany

<sup>4</sup> Nephrological Centre Lower Saxony; Hospital Hann. Münden; Hann. Münden, Germany

\* Correspondence: Laila.Mani@insel.ch; Tel.: 00 41 31 632 31 90

**Abstract:** The ZEUS study was a multi-center randomized controlled trial investigating the effect of an early conversion from ciclosporin-based to an everolimus-based regimen on graft function twelve months post-transplantation. In this investigator-initiated sub-study, functional magnetic resonance imaging (fMRI) of kidney grafts was prospectively performed to non-invasively assess differences in graft oxygenation, diffusion and perfusion between groups and time-points using diffusion-weighted imaging (DWI) and blood oxygen level-dependent (BOLD)-MRI. Sixteen patients underwent DWI and BOLD-MRI at months 4.5 and 12 post-transplantation on a 3 Tesla and 1.5 Tesla (n=3) MR scanner. After exclusion due to image quality, outlier values or missing data, DWI was analyzed in ten, BOLD in eight subjects. The diffusion coefficient  $ADC_D$  decreased in the CsA-group over time, whereas it increased in the EVE-group ( $p=0.046$ , medulla). The change in  $ADC_D$  from month 4.5 to 12 significantly differed between groups in cortex ( $p=0.033$ ) and medulla ( $p=0.019$ ). In BOLD, cortico-medullary transverse relaxation rate  $R2^*$  increased (decreased tissue oxygen) in the CsA-treated and decreased in the EVE-treated group over time. Similarly,  $R2^*$  values at month 12 were higher in the CsA- vs. EVE-treated group. There was no significant difference for the perfusion fraction  $F_P$ . In conclusion, this prospective sub-study of the ZEUS trial suggests an impact of immunosuppressive regimen on fMRI parameters of the kidney graft.

**Keywords:** kidney transplantation; functional MRI; diffusion-weighted imaging (DWI); blood oxygen level-dependent (BOLD); intravoxel incoherent motion imaging (IVIM); ZEUS study; Cyclosporin; Everolimus; calcineurin inhibitors; mTOR inhibitors

**Citation:** Lastname, F.; Lastname, F.; Lastname, F. Title. *J. Clin. Med.* 2022, 11, x. <https://doi.org/10.3390/xxxxx>

Academic Editor: Firstname Lastname

Received: date

Accepted: date

Published: date

**Publisher's Note:** MDPI stays neutral with regard to jurisdictional claims in published maps and institutional affiliations.



**Copyright:** © 2022 by the authors. Submitted for possible open access publication under the terms and conditions of the Creative Commons Attribution **CC BY** license (<https://creativecommons.org/licenses/by/4.0/>).

## 1. Introduction

Kidney transplantation is the treatment of choice for patients with end-stage kidney disease prolonging survival [1]. Thanks to highly efficient immunosuppressive therapies, a dramatic reduction in the risk of allograft rejection has been achieved since its early period. Until now, the mainstay of post-transplant immunosuppressive regimens are calcineurin inhibitors acting on T cell and T cell-dependent B cell activation. However, major adverse effects including nephrotoxicity, arterial hypertension and de novo diabetes mellitus limit their usefulness in kidney transplant recipients [2]. Hence, existing efforts target therapeutic strategies maximally limiting the exposition to calcineurin inhibitors either by dose reduction, by shortening of administration period or by replacement by other drugs [3–5].

The ZEUS study was a multi-center open-label randomized controlled trial designed to investigate the effect of an early conversion from a calcineurin inhibitor-based immunosuppression with ciclosporin (CsA) to a mammalian-target-of-rapamycin inhibitor-based regimen with everolimus (EVE) on graft function twelve months post-transplantation [6]. An improvement of the estimated glomerular filtration rate (eGFR) at twelve months was demonstrated in the EVE-treated as compared to the CsA-treated group, which persisted five years post-transplant, despite a non-significantly higher number of rejection episodes [6, 7].

Functional magnetic resonance imaging (fMRI) techniques represent an attractive diagnostic tool for renal investigations allowing the non-invasive simultaneous assessment of several aspects of kidney function such as tissue structure, perfusion and oxygenation in addition to morphological imaging, without need for contrast media [8, 9]. Diffusion-weighted imaging (DWI) evaluates organ diffusivity and microperfusion, while blood oxygen level dependent (BOLD)-MRI assesses tissue oxygenation. Whereas DWI has been investigated as a non-invasive marker of kidney function, BOLD has proven particularly useful to study acute and chronic effects of various interventions [9-12].

The purpose of this investigator-initiated local sub-study of the ZEUS trial was the evaluation of additional aspects of kidney graft function according to the immunosuppressive regimen using fMRI methods. With the exception of one study performing BOLD after acute intake of ciclosporin, this question had not been addressed so far to the best of our knowledge [13]. Due to the known acute and chronic effects of calcineurin inhibitor nephrotoxicity including vasoconstriction of afferent arterioles and development of interstitial fibrosis and tubular atrophy (IFTA), we hypothesized that diffusivity and microperfusion as measured by DWI as well as tissue oxygenation measured by BOLD-MRI of kidney grafts differ between patients treated with ciclosporin as opposed to everolimus [14]. The results show an improvement of graft diffusivity and a tendency for ameliorated tissue oxygenation after switch to everolimus as compared to patients maintained on ciclosporin.

## 2. Materials and Methods

The protocol of the present investigator-initiated prospective single-center sub-study of the ZEUS trial was approved by the local ethics committee (Canton of Bern, Switzerland, approval number 2004/213) and conducted in accordance with the Declarations of Helsinki and Istanbul [15, 16].

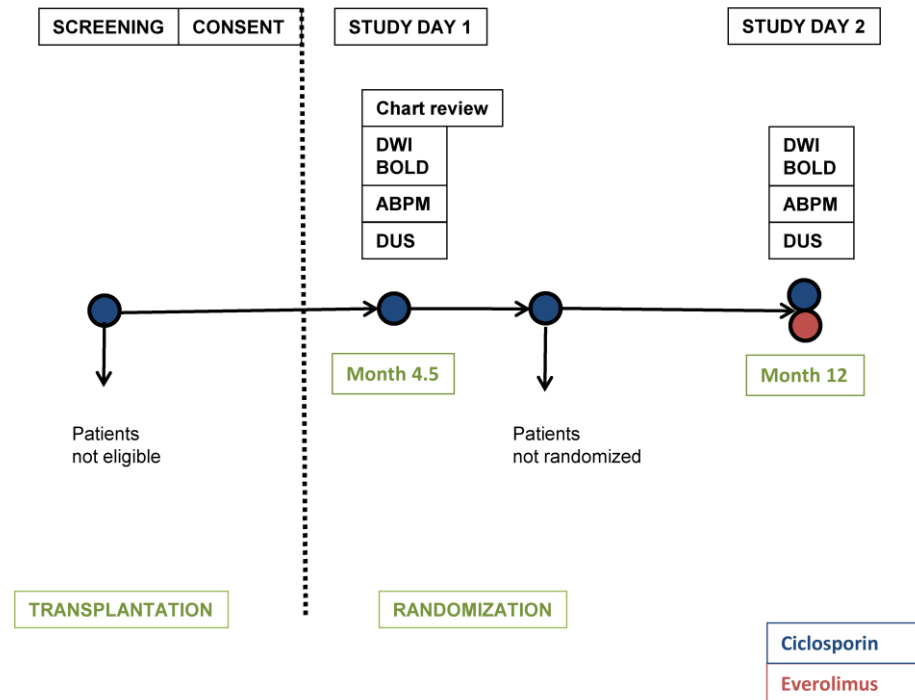
### 2.1. Study population

All kidney transplant recipients included in the ZEUS trial from our study center were eligible for the current study [6]. Specific exclusion criteria were lack of consent to participate in the sub-study, body weight >200 kg, classical contraindications to MRI as well as implanted metallic material without prior 3T-MRI after implantation. Among the 300 study participants of the ZEUS study, 37 patients had been enrolled from our center and represented the screening population for this sub-study.

### 2.2. Study design

The ZEUS study was a 12-month multi-center randomized controlled parallel-group trial, the protocol of which has been published previously [6]. Patients were screened among participants of the ZEUS trial before randomization at the outpatient University Clinic for Nephrology and Hypertension in Bern (Figure 1). Written informed consent was obtained from each participant prior to inclusion. The two study visits took place at baseline (4.5 months after transplantation, before randomization within the ZEUS trial) as well as at month 12 after transplantation. A light meal was allowed on the study day.

Laboratory tests including serum creatinine, serum urea, CsA trough levels and urinary protein as well as ambulatory blood pressure measurement (ABPM), duplex ultrasound scan and functional MRI of the kidney graft were performed at both visits. Baseline clinical characteristics based on medical chart review and EVE trough level were determined at baseline- and 12 month-visits respectively. In addition, protocol transplant biopsies were performed at baseline and 12 months as part of this study amendment.



**Figure 1. Study design.** DWI (diffusion-weighted imaging); BOLD (blood oxygen level dependent-MRI); ABPM (ambulatory blood pressure measurement); DUS (duplex ultrasound scan).

### 2.3. MRI protocol

MRI data were acquired on a 3.0 T whole body MR Scanner (Tim Trio®; Siemens Healthcare, Erlangen, Germany) for all subjects but three who underwent MRI on a 1.5 T MR scanner (Sonata®; Siemens Healthcare, Erlangen, Germany). During each of the two MRI sessions anatomical MRI, DWI and BOLD-MRI were performed.

Intravoxel incoherent motion (IVIM)-DWI yielded the perfusion-cleared apparent diffusion coefficient  $ADC_D$  and the perfusion fraction  $F_p$ . Coronal multisection echoplanar DWI was performed with the following parameters: 11 slices (thickness: 5mm, intersection gap: 1mm), field of view (FOV)=400x400mm<sup>2</sup>, matrix=128x128, six averages, bandwidth=2300Hz/pixel and partial Fourier 6/8. Ten diffusion gradient b-values were applied (in sec/mm<sup>2</sup>): b=0, 10, 20, 50, 100, 180, 300, 420, 550, and 700. The gradients were applied in three orthogonal directions and subsequently averaged, minimizing effects of diffusion anisotropy. Parallel imaging (iPAT, mSENSE) with a reduction factor of 2 was applied. A TE of 64msec was used. Acquisition time for DWI was 8:06min.

BOLD-MRI takes advantage of deoxygenated hemoglobin as an endogenous contrast agent, which influences the relaxation time  $T_2^*$  yielding the transverse relaxation rate  $R_2^*$  (equal to  $1/T_2^*$ ) which correlates to tissue oxygen content provided that confounding factors such as blood volume or hydration state are excluded [8, 9]. For BOLD-MRI, a

multiple gradient recalled echo sequence (mGre) was used. Four to six coronal slices were acquired with a slice thickness of 5mm and an intersection gap of 1mm, a FOV of 400x400mm<sup>2</sup>, a matrix size of 256x256, on average. Other parameters were: TR of 65msec, TE of 6–52msec, inter-echo spacing time of 4.2msec, flip angle of 30°, and bandwidth was 330Hz/pixel. Twelve T2\*-weighted images, corresponding to 12 different echoes, were acquired for each slice within a single breath-hold of 17 sec.

A maximum of three regions of interest (ROIs) traced in medulla and cortex were analyzed in every slice (BOLD: 4-6, DWI: 4 slices) for each medulla and cortex. ROIs were manually defined by the same blinded investigator on images handed over in a random fashion. ROIs were traced in the medulla and cortex. Data were analyzed using in-house custom-scripts written in IDL® and MATLAB®. The obtained values were read into MS Excel® for further statistical processing. GraphPad Prism 9® was used for figure preparation.

#### 2.4. Duplex ultrasound scan

Duplex ultrasound scan was performed at both study visits by the same experienced nephrologist on a Siemens Acuson Sequoia 512 machine. Recorded parameters were resistive indices (RI) measured at intralobar arteries (as a mean of superior, median and lower).

#### 2.5. Ambulatory blood pressure measurement

Ambulatory blood pressure measurement was performed at both study visits using a Profimat II® device (Disetronic Medical Systems, Burgdorf, Switzerland). Recorded variables were the overall mean arterial systolic, diastolic and mean pressures and dipping effect (in mmHg).

#### 2.6. Laboratory analyses

Laboratory analyses were performed according to the ZEUS study protocol as specified in section 2.2 in the central laboratory of the Bern University Hospital. Glomerular filtration rate was estimated (eGFR) according to chronic kidney disease epidemiology 2021 formula.

#### 2.7. Histopathological analysis of kidney grafts

Histopathological analysis of renal tissue obtained from protocol graft biopsies was performed according to clinical routine in the department of pathology of the University of Bern. Biopsy reports were retrospectively assessed for the presence of IFTA, arteriolar hyalinosis and rejection in a semi-quantitative manner.

#### 2.8. Outcome measures

Primary outcome were the difference between the CsA-treated vs EVE-treated patient groups in ADC<sub>D</sub>, F<sub>P</sub>, R2\* and cortico-medullary ratios (MCR) MCR ADC<sub>D</sub>, MCR F<sub>P</sub> and MCR R2\* at month 12 as well as in the change of ADC<sub>D</sub>, F<sub>P</sub> and R2\* and the MCR from month 4.5 to month 12. Secondary outcomes were the change in ADC<sub>D</sub>, F<sub>P</sub>, R2\* and cortico-medullary ratios from month 4.5 to month 12 in each medication group; the difference in mean RI and overall mean systolic, diastolic and mean blood pressure and dipping values between time-points for medication groups and the difference in changes from baseline to month 12 between groups; the correlation of fMRI parameters and their changes over time across and within medication groups with eGFR, RI, overall mean systolic, diastolic and mean blood pressure as well as dipping values.

#### 2.9. Statistical analysis

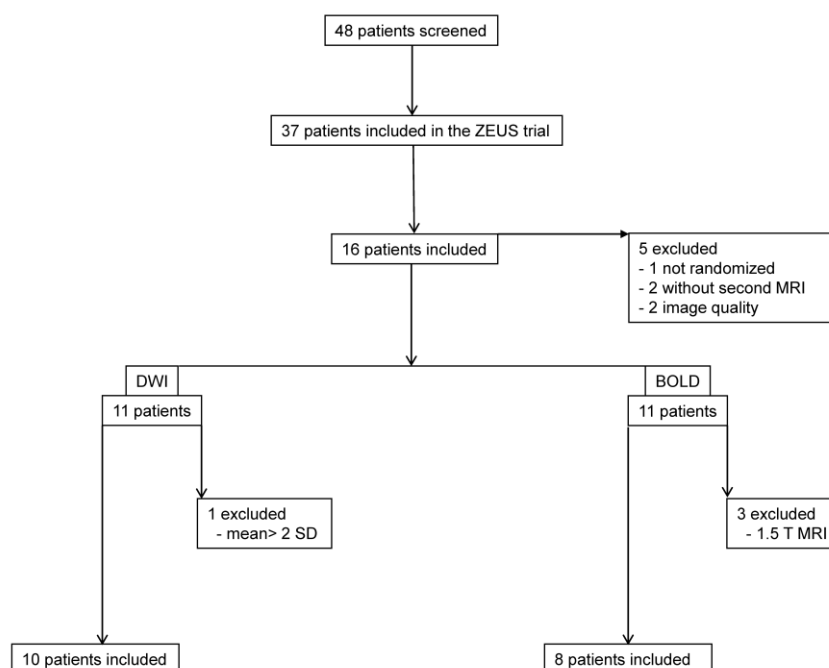
Continuous variables were expressed as means with standard deviation (SD) or medians with range between minimal and maximal value. Wilcoxon-signed-rank-test was used for cortico-medullary differences and longitudinal changes in fMRI, RI and ABPM parameters within groups. Mann-Whitney-U-test was performed for comparisons across groups of absolute fMRI, RI and ABPM values as well as of longitudinal changes in these parameters. Correlations between fMRI absolute values, changes over time and differences across groups with eGFR, medication levels, RI and ABPM were determined by Kendall's Tau correlation coefficient analysis. Data were analyzed using IBM SPSS Statistics 24® and MS Office 2007®.

### 3. Results

#### 3.1. Study population

##### 3.1.1. Patient enrolment

From September 2005 until December 2006, 70 patients received a kidney transplant in our center and were screened at the outpatient University Clinic for Nephrology and Hypertension in Bern for participation in the ZEUS trial and the MRI substudy. A total of 37 subjects were enrolled in the ZEUS trial, 16 of which were included in the current study and underwent MR measurements. One patient was subsequently excluded because of lack of randomization (Figure 2).



**Figure 2. Flow chart.** Patient screening and data exclusion. DWI (diffusion-weighted imaging); BOLD (blood oxygen level dependent-MRI).

##### 3.1.2. Patient characteristics

Baseline clinical characteristics are shown in Table 1. All of the patients were of Caucasian origin and mostly first transplant recipients with relatively preserved transplant function. Seven and nine subjects were randomized to the CsA and EVE groups respectively. There were more female subjects in the CsA group whereas living donor type was more frequent in the EVE group. Other variables were homogeneously distributed among medication groups.



**Table 1.** Baseline characteristics of the subjects (n=16).

	CsA group (n=7)	EVE group (n=9)
Age at transplantation (years)	48±9 (52; 30-54)	47±12 (47; 29-62)
Female gender (%)	57	33
Living donor (%)	0	23
Transplant episode (%)		
- first	71	78
eGFR (ml/min/1.73 m <sup>2</sup> )	61±8 (65; 45-69)	66±27 (57; 35-109)
24 hour-blood pressure (mmHg)		
- systolic	121±10	121±14
- diastolic	77±8	80±13
- mean	100±9	101±13
Time to MR scan (months)		
- baseline MR	3.8±0.7	3.7±0.5
- second MR	11±0.5	11.9±0.6

Values are expressed as mean ± standard deviation (median; range) or as percentage of patients, as appropriate. n (number); CsA (cyclosporin); EVE (everolimus); eGFR (estimated glomerular filtration rate) estimated according to chronic kidney disease epidemiology collaboration formula; MR (magnetic resonance).

### 3.2. Data quality

The MRI protocol including morphological sequences, DWI and BOLD could be performed in all of the patients at baseline and in 13 patients on study day 2. Subjects without second measurement were not included in the analysis (Figure 2). Data of two patients had to be excluded due to poor image quality resulting in analyzable data for 11 patients in each MR modality. In DWI, one patient had to be excluded because of outlier values (deviation >mean ± 2 SD); in BOLD, three patients were excluded due to field strength (1.5 T). A mean scanning time of one hour was met per session. DWI- and BOLD-derived mean values and SD ranges were roughly in line with previously reported values (Table 2) [17-20]. Low SD values confirmed measurement stability.

**Table 2.** Overall mean values and standard deviations of diffusion-weighted imaging (DWI)- and blood oxygen level dependent (BOLD)-MRI-derived parameters.

	Medulla	Cortex
ADC <sub>D</sub>	204.4 ± 15.0	203.0 ± 16.1
F <sub>P</sub>	13.0 ± 4.0	14.6 ± 3.1
R2*	26.1 ± 3.0	17.5 ± 2.7

ADC<sub>D</sub> (diffusion coefficient); F<sub>P</sub> (perfusion fraction); R2\* (transverse relaxation rate).

### 3.3. Diffusion-weighted imaging

#### 3.3.1. Diffusion coefficient ADC<sub>D</sub>

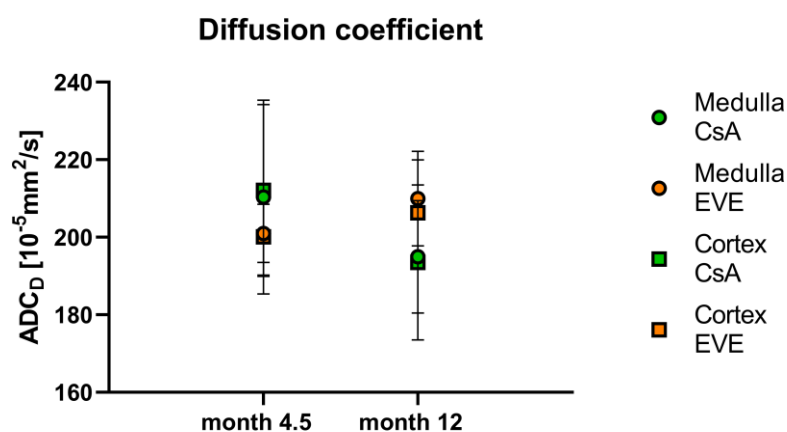
Mean overall medullary and cortical values for the apparent diffusion coefficient ADC<sub>D</sub> as a marker of pure diffusion are shown in Table 2 and Table 3. No cortico-medullary difference of the ADC<sub>D</sub> was noted ( $p=0.65$  at month 4.5,  $p=0.51$  at month 12). In the CsA-treated group, medullary and cortical ADC<sub>D</sub> values decreased in all but one subject from month 4.5 to month 12 ( $p=0.14$  and  $p=0.14$ ), whereas in the EVE-treated group, medullary and cortical ADC<sub>D</sub> values increased from month 4.5 to month 12, reaching statistical significance for the medulla ( $p=0.046$  and  $p=0.12$ , respectively). At baseline, there was a tendency for higher ADC<sub>D</sub> values in the group randomized to CsA as compared to the group randomized to EVE. In contrast, at month 12, ADC<sub>D</sub> values were higher by trend in the EVE-treated group vs. the CsA-treated group (Table 3, Figure 3). This was the result of a significant difference of the mean change in ADC<sub>D</sub> from month 4.5 to month 12 over time, which was negative in the CsA-treated group and positive in the EVE-treated group

(Table 3, Figure 4). There were no differences in MCR ADC<sub>D</sub> between time-points ( $p=0.47$  for CsA-group;  $p=0.17$  for EVE-group) or medication groups.

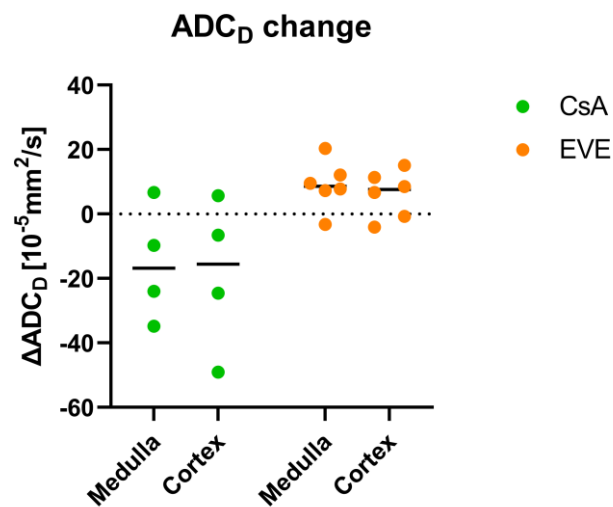
**Table 3.** DWI-derived pure diffusion coefficient according to medication group and time-point.

	CsA (n=4)	EVE (n=6)	<i>p</i> -value <sup>1</sup>
<b>Month 4.5</b>			
ADC <sub>D</sub> medulla	210.4±25.0	201.0±7.5	0.26
ADC <sub>D</sub> cortex	212.1±22.2	201.1±10.0	0.26
MCR ADC <sub>D</sub>	0.99±0.02	1.01±0.03	0.87
<b>Month 12</b>			
ADC <sub>D</sub> medulla	195±14.5	210.0±12.2	0.17
ADC <sub>D</sub> cortex	193.5±20.0	206.3±13.7	0.26
MCR ADC <sub>D</sub>	1.01±0.05	1.02±0.04	0.78
<b>Change month 4.5-12</b>			
ΔADC <sub>D</sub> medulla	-15.4±18	9.0±7.6	0.019
ΔADC <sub>D</sub> cortex	-18.6±23.8	6.2±7.3	0.038
ΔMCR ADC <sub>D</sub>	0.02±0.04	0.01±0.03	0.54

<sup>1</sup> Mann-Whitney U-test. Values are expressed as mean ± standard deviation. CsA (ciclosporin); EVE (everolimus); ADC<sub>D</sub> (diffusion coefficient) in 10<sup>-5</sup>mm<sup>2</sup>/s.



**Figure 3.** DWI-derived diffusion coefficient ADC<sub>D</sub>. Diffusion coefficient ADC<sub>D</sub> according to medication group and time-point. CsA (ciclosporin); EVE (everolimus); ADC<sub>D</sub> (diffusion coefficient).



**Figure 4. Change in DWI-derived diffusion coefficient.** Change in diffusion coefficient  $ADC_D$  from month 4.5 to month 12. CsA (ciclosporin); EVE (everolimus);  $ADC_D$  (diffusion coefficient).

### 3.3.2. Perfusion fraction $F_P$

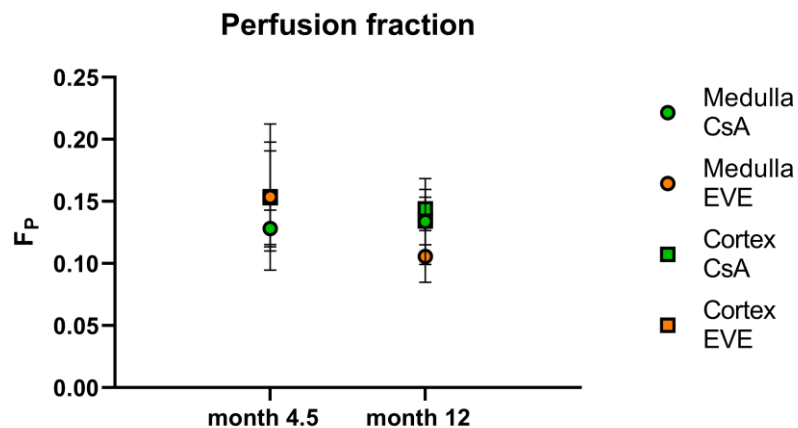
Mean medullary and cortical values for the fraction of perfusion  $F_P$  are shown in Table 2 and Table 4. As with  $ADC_D$ , no significant cortico-medullary differences were found for  $F_P$  at both time-points ( $p=0.58$  at month 4.5,  $p=0.059$  at month 12). There was no difference in  $F_P$  or  $MCRF_P$  between medication groups at baseline nor at twelve months. Furthermore, no difference in the change over time of  $F_P$  or  $MCRF_P$  according to medication group was noted. Overall, no change was seen from baseline to month 12 across nor within medication groups in  $F_P$  in medulla ( $p=0.17$  for both groups;  $p=0.72$  for the CsA-group;  $p=0.12$  for the EVE-group), in cortex ( $p=0.29$  for both groups;  $p=0.72$  for the CsA-group;  $p=0.35$  for the EVE-group) nor in  $MCRF_P$  ( $p=0.45$  for both groups;  $p=0.47$  for the CsA-group;  $p=0.25$  for the EVE-group).

**Table 4.** DWI-derived perfusion fraction according to medication group and time-point.

	CsA (n=4)	EVE (n=6)	p-value <sup>1</sup>
<b>Month 4.5</b>			
$F_P$ medulla	12.8±1.5	15.4±5.9	0.26
$F_P$ cortex	15.3±3.8	15.4±4.4	1.00
MCR $F_P$	0.9±0.3	1.0±0.2	0.87
<b>Month 12</b>			
$F_P$ medulla	13.4±3.5	10.6±2.1	0.17
$F_P$ cortex	14.4±1.5	13.4±1.9	0.48
MCR $F_P$	0.9±0.3	0.8±0.1	0.28
<b>Change month 4.5-12</b>			
$\Delta F_P$ medulla	0.6±2.5	-4.8±7.1	0.17
$\Delta F_P$ cortex	-0.9±4.0	-2.0±4.4	0.76
$\Delta MCR F_P$	0.05±0.36	-0.2±0.3	0.34

<sup>1</sup> Mann-Whitney U-test. Values are expressed as mean ± standard deviation. CsA (ciclosporin); EVE (everolimus);  $F_P$  (perfusion fraction) in %.





**Figure 5. DWI-derived perfusion fraction.** Perfusion fraction  $F_P$  according to medication group and time-point. CsA (ciclosporin); EVE (everolimus);  $F_P$  (perfusion fraction). 261 262 263

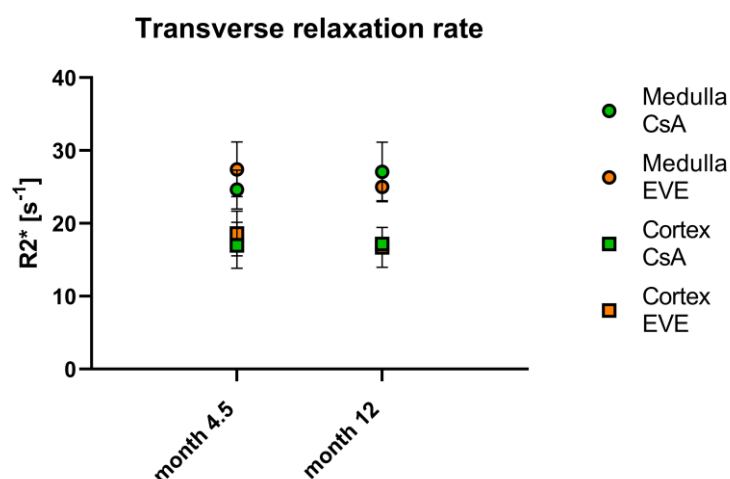
### 3.4. Blood oxygen level dependent-imaging 264

Mean medullary and cortical values for the transverse relaxation rate  $R2^*$  are shown 265 in Table 2 and Table 5. As expected, significant cortico-medullary differences were shown 266 at both time-points ( $p=0.012$ ) with lower cortical  $R2^*$  values, compatible with the known 267 relative medullary hypoxia. Inverse trends were noted according to medication assign- 268 ment including increasing medullary  $R2^*$  values (i.e. reduced tissue oxygenation) in all of 269 the CsA-treated vs. decreasing medullary and cortical  $R2^*$  values in five and four of six 270 EVE-treated patients respectively (Figure 6). However, the number and distribution of 271 cases across groups at month 12 precluded formal statistical analysis. No changes in me- 272 dullo-cortical distribution were seen between medication groups or time-points. 273

**Table 5. BOLD-derived transverse relaxation rate according to medication group and time-point.** 274

	CsA (n=2)	EVE (n=6)
<b>Month 4.5</b>		
$R2^*$ medulla	24.7±2.7	27.4±3.7
$R2^*$ cortex	17.0±3.2	18.6±3.1
MCR $R2^*$	1.5±0.1	1.5±0.1
<b>Month 12</b>		
$R2^*$ medulla	27.1±4.1	25.0±1.9
$R2^*$ cortex	17.2±0.3	16.7±2.7
MCR $R2^*$	1.6±0.3	1.5±0.3
<b>Change month 4.5-12</b>		
$\Delta R2^*$ medulla	2.4±1.4	-2.4±3.5
$\Delta R2^*$ cortex	0.2±3.5	-1.9±3.3
$\Delta$ MCR $R2^*$	0.1±0.4	0.1±0.3

Values are expressed as mean ± standard deviation. CsA (ciclosporin); EVE (everolimus);  $R2^*$  275 (transverse relaxation rate) in  $s^{-1}$ . 276 277



**Figure 6. BOLD-derived transverse relaxation rate.** Transverse relaxation rate R2\* according to medication group and time-point. CsA (cyclosporin); EVE (everolimus); R2\* (transverse relaxation rate). 278 279 280 281

### 3.5. Resistive indices 282

Mean resistive indices as measured by duplex ultrasound scan are shown in Table 6. 283  
 Baseline RI values 4.5 months after transplantation corresponded to reference values in 284  
 kidney grafts [21]. At baseline, measured RI were by trend higher in the group random- 285  
 ized to CsA than in the group randomized to EVE. At month 12 however, the difference 286  
 reached statistical significance due to a tendency to greater increase of RI over time in the 287  
 CsA-treated vs the EVE-treated group. No change was seen separately in the groups of 288  
 CsA- and EVE-treated patients over time ( $p=0.35$  and  $p=0.80$  respectively). 289

**Table 6.** Mean resistive indices measured by duplex ultrasound according to medication group and 290  
 time-point. 291

	CsA (n=6)	EVE (n=8)	p-value <sup>1</sup>
RI month 4.5	70.3±4.5	65.0±8.2	0.18
RI month 12	71.7±4.5	65.8±7.3	0.04
ΔRI (month 4.5-12)	1.4±3.7	0.8±4.5	0.76

<sup>1</sup> Mann-Whitney U-test. Values are expressed as mean ± standard deviation. CsA (cyclosporin); EVE 292  
 (everolimus); RI (resistive index). 293

### 3.6. Ambulatory blood pressure measurement 294

Mean ABPM-derived blood pressure values are shown in Table 7. There was a trend 295  
 for increase in blood pressure from months 4.5 to 12 in the CsA-treated group whereas 296  
 blood pressure values in the EVE-treated groups showed no evident change even though 297  
 formal statistical analysis was not possible due to the number and distribution of cases at 298  
 month 12. Conversely, nocturnal blood pressure dipping showed an increasing trend in 299  
 the CsA-treated vs the EVE-treated group. 300

**Table 7.** Mean ABPM-derived blood pressure profile according to medication group and time-point. 301

	CsA (n=7) <sup>1</sup>	EVE (n=8)
<b>Month 4.5</b>		
BP sys	121.3±10.3	120.9±13.5
BP dia	77.1±7.6	79.9±12.8
BP mean	99.6±8.6	100.9±13.2
Dipping (sys/dia/mean)	1±6.9/5±9.1/2.7±7.3	7.3±12.1/9.5±12.9/8.9±12.9

<b>Month 12</b>		
BP sys	121.0±1.0	122.1±8.1
BP dia	77.3±2.1	79.8±4.8
BP mean	99.7±1.5	101.1±6.2
Dipping (sys/dia/mean)	4.3±10.2/6.3±11.4/5.0±10.6	3.5±11.9/9.3±11/6.0±11.1
<b>Change month 4.5-12</b>		
ΔBP sys	9.7±7.4	1.25±13.5
ΔBP dia	6.3±6.8	-0.1±13.2
ΔBP mean	8±6.9	0.3±13.2
ΔDipping (sys/dia/mean)	3.7±16.7/0.3±22.6/2.0±18.5	-3.8±10.0/-0.3±13.2/-2.9±10.9

<sup>1</sup>n=3 at month 12. Values are expressed as mean ± standard deviation. ABPM (ambulatory blood pressure monitoring); CsA (cyclosporin); EVE (everolimus); BP (blood pressure) in mmHg.

### 3.7. Laboratory parameters of graft function

Mean serum creatinine values and estimated glomerular filtration rates are shown in Table 8. At baseline, there was a tendency for lower eGFR in the group randomized to CsA. Whereas graft function was stable in the EVE-treated patients over time, it worsened by trend in the CsA-treated group. However, values at twelve months as well as changes from month 4.5 were not significantly different between medication groups.

**Table 8.** Mean serum creatinine values and estimated glomerular filtration rate according to medication group and time-point.

	<b>CsA (n=7)</b>	<b>EVE (n=8)</b>	<b>p-value<sup>1</sup></b>
<b>Month 4.5</b>			
Serum creatinine	112.0±21.0	12.01±40.0	0.46
eGFR	60.9±8.1	65.6±26.8	0.61
<b>Month 12</b>			
Serum creatinine	118.9±25.6	117±35.0	1.00
eGFR	57.1±11.0	65.5±19.7	0.40
<b>Change month 4.5-12</b>			
ΔSerum creatinine	6.9±17.2	-4.4±22.3	0.46
ΔeGFR	-3.7±10.3	-0.1±16.5	0.87

<sup>1</sup> Mann-Whitney U-test. Values are expressed as mean ± standard deviation. CsA (cyclosporin); EVE (everolimus); eGFR (estimated glomerular filtration rate) according to chronic kidney disease epidemiology formula. Serum creatinine in μmol/l.

### 3.8. Protocol biopsies

The number of available biopsies was six and five at baseline as well as five and five at month 12 in the groups randomized to CsA and EVE respectively. No difference in the degree of IFTA (reaching from none to mild) or arteriolar hyalinosis (reaching from none to severe) was revealed between nor across medication groups (data not shown).

### 3.9. Correlation of fMRI parameters

To investigate medication-induced changes in fMRI parameters as well as correlations of fMRI parameters with selected clinical, biological and histological parameters, exploratory correlation testing was performed.

Changes in ADC<sub>D</sub> over time were not correlated with changes in eGFR or histological parameters. Cortical ADC<sub>D</sub> at twelve months correlated negatively with the resistive indices measured by DUS ( $\tau=-0.511$ ,  $p=0.040$ ).

The perfusion fraction F<sub>P</sub> correlated positively with eGFR at twelve months ( $\tau=0.629$ ,  $p=0.012$ ). A negative correlation was found between F<sub>P</sub> and the diastolic and mean blood pressure by ABPM ( $\tau=-0.584$ ,  $p=0.020$  and  $\tau=-0.523$ ,  $p=0.038$  respectively).

No correlation of R2\* with blood pressure, RI or graft function was noted.

#### 4. Discussion

In this investigator-initiated study, we tested the hypothesis that diffusivity and perfusion as well as tissue oxygenation as measured by fMRI techniques differ between kidney transplant recipients included in the ZEUS trial randomized to continuing ciclosporin or to being switched to everolimus. The main findings are the following: (1) The mean change in medullary and cortical  $ADC_D$  significantly differed between both medication groups showing increase in EVE-treated patients while decreasing in CsA-treated patients. (2) Medullary  $ADC_D$  significantly increased after switch to everolimus. (3) Medullary and cortical  $R2^*$  values showed inverse trends in medications groups with increasing values (i.e. reduced tissue oxygenation) in the CsA-treated group and decreasing values in the EVE-treated group.

First,  $ADC_D$  as a marker of perfusion-free diffusion decreased in patients maintained on CsA whereas it increased in patients converted to everolimus. The  $ADC_D$  has previously been shown to be reduced in various states of acute and chronic kidney diseases and to correlate to biological kidney function markers and interstitial fibrosis [9, 18, 22-25]. This course parallels the improvement of eGFR in EVE-treated patients reported in the ZEUS trial, which was by trend also observed in our sub-study population. Further, the decrease in diffusivity in CsA-treated patients might point to changes of tissue structure, possibly due to chronic nephrotoxicity patterns of calcineurin inhibitors with development of IFTA. Review of performed protocol biopsies did however not suggest increased proportion or severity of IFTA in the CsA-treated group even though the number of biopsies available was low and a sampling error cannot be excluded. In addition, the reversibility after 4.5 months of CsA treatment in the intervention group might suggest early injury or alternative, potentially functional mechanisms. Furthermore, an influence of the higher proportion of recipients of living donor kidneys in the EVE-treated group cannot be excluded.

Second,  $R2^*$  values as marker of tissue oxygenation -if confounding factors are excluded- increased (lower tissue oxygenation) in CsA-maintained patients whereas it decreased (higher tissue oxygenation) in EVE-treated patients. This may suggest ameliorated graft tissue oxygenation under everolimus as compared to ciclosporin, possibly due to the expected vasoconstrictor effect of calcineurin inhibitors [14]. However, hematocrit represents a major confounding factor for BOLD-MRI with anemia leading to falsely-low  $R2^*$  values and being expected as part of the everolimus side effect profile [26]. Despite lower hemoglobin values in the core as well as the current study in EVE-treated patients, hemoglobin values were not significantly different between both medication groups at both time-points [6].

The DWI-derived fraction of perfusion  $F_P$  showed no significant changes over time nor between medication groups. Studies in kidney grafts have suggested lower  $F_P$  values in cases of decreased graft function and acute rejection as well as to correlate to chronic tubulo-interstitial damage [18, 24, 27]. In our study, the number of cases might have prevented a significant finding.  $F_P$  correlated positively with eGFR at month 12, which corresponds to previous reports [18].

In this study, no cortico-medullary differences were found for  $ADC_D$  and  $F_P$ . This is in accordance with previous studies from our center showing a loss of cortico-medullary differentiation over time in transplanted kidneys from living donors [18, 22, 23].

Other relevant findings include significantly higher resistive indices as measured by DUS in the CsA-treated group as compared to the EVE-treated group at month 12, possibly in the context of calcineurin vasculopathy. However, this difference, albeit non-significant, was present at baseline as well. In addition, higher resistive indices were associated with

lower cortical ADC<sub>D</sub> values at month 12. Similarly and expectedly, mean blood pressure values as measured by ABPM increased by trend in the CsA-treated group over time while remaining stable in the EVE-treated group.

There are important limitations to our study: First, the number of subjects available for final analysis was limited precluding formal statistical analysis of the BOLD data as well as multivariate analysis of clinical correlations. Second, for technical reasons, three patients underwent MRI at 1.5T as opposed to 3T for the other patients. These data were therefore excluded for BOLD-MRI. Lastly, post hoc correction for multiple comparisons was not carried out in this exploratory analysis of clinical correlations.

In conclusion, this prospective sub-study of the ZEUS trial suggests an impact of immunosuppressive regimen on fMRI parameters of the renal allograft.

**Author Contributions:** Conceptualization, U.E. and L.M.; methodology, P.V. and U.E.; software, P.V.; validation, P.V., J.C. and L.M.; formal analysis, J.C., P.V. and L.M.; investigation, U.E., P.V.; resources, U.E. and P.V.; data curation, U.E. and P.V.; writing—original draft preparation, L.M.; writing—review and editing, J.C., P.V., U.E., B.V.; visualization, J.C. and L.M.; supervision, B.V.; project administration, U.E.; funding acquisition, U.E. and P.V. All authors have read and agreed to the published version of the manuscript.

**Funding:** This research was funded by the SWISS NATIONAL SCIENCE FOUNDATION, grant number 320000-111959.

**Institutional Review Board Statement:** The study was conducted in accordance with the Declaration of Helsinki, and approved by the Ethics Committee of the Canton of Bern, Switzerland (protocol code 2004/213).

**Informed Consent Statement:** Informed consent was obtained from all subjects involved in the study.

**Data Availability Statement:** The data presented in this study are available on request from the corresponding author. The data are not publicly available due to privacy reasons.

**Acknowledgments:** We thank all patients who participated in this study. The results of this study have been presented at the 57<sup>th</sup> Congress of the European Renal Association-European Dialysis and Transplant Association.

**Conflicts of Interest:** U.E. received honoraria from Astellas, Biotest, Chiesi and Novartis, not related to the presented data. The other authors declare no conflict of interest. The funders had no role in the design of the study; in the collection, analyses, or interpretation of data; in the writing of the manuscript, or in the decision to publish the results.

## References

1. Wolfe, R. A.; Ashby, V. B.; Milford, E. L.; Ojo, A. O.; Ettenger, R. E.; Agodoa, L. Y.; Held, P. J.; Port, F. K., Comparison of mortality in all patients on dialysis, patients on dialysis awaiting transplantation, and recipients of a first cadaveric transplant. *The New England journal of medicine* **1999**, *341* (23), 1725-30. doi: 10.1056/NEJM199912023412303
2. Halloran, P. F., Immunosuppressive drugs for kidney transplantation. *The New England journal of medicine* **2004**, *351* (26), 2715-29. 10.1056/NEJMra033540
3. Ekberg, H.; Tedesco-Silva, H.; Demirbas, A.; Vitko, S.; Nashan, B.; Gurkan, A.; Margreiter, R.; Hugo, C.; Grinyo, J. M.; Frei, U.; Vanrenterghem, Y.; Daloz, P.; Halloran, P. F.; Study, E. L.-S., Reduced exposure to calcineurin inhibitors in renal transplantation. *The New England journal of medicine* **2007**, *357* (25), 2562-75. 10.1056/NEJMoa067411
4. Webster, A. C.; Lee, V. W.; Chapman, J. R.; Craig, J. C., Target of rapamycin inhibitors (TOR-I; sirolimus and everolimus) for primary immunosuppression in kidney transplant recipients. *The Cochrane database of systematic reviews* **2006**, (2), CD004290. 10.1002/14651858.CD004290.pub2



5. Masson, P.; Henderson, L.; Chapman, J. R.; Craig, J. C.; Webster, A. C., Belatacept for kidney transplant recipients. *The Cochrane database of systematic reviews* **2014**, (11), CD010699. 10.1002/14651858.CD010699.pub2 434-435
6. Budde, K.; Becker, T.; Arns, W.; Sommerer, C.; Reinke, P.; Eisenberger, U.; Kramer, S.; Fischer, W.; Gschaidmeier, H.; Pietruck, F.; Investigators, Z. S., Everolimus-based, calcineurin-inhibitor-free regimen in recipients of de-novo kidney transplants: an open-label, randomised, controlled trial. *Lancet* **2011**, 377 (9768), 837-47. 10.1016/S0140-6736(10)62318-5 436-438
7. Budde, K.; Lehner, F.; Sommerer, C.; Reinke, P.; Arns, W.; Eisenberger, U.; Wuthrich, R. P.; Muhlfield, A.; Heller, K.; Porstner, M.; Veit, J.; Paulus, E. M.; Witzke, O.; Investigators, Z. S., Five-year outcomes in kidney transplant patients converted from cyclosporine to everolimus: the randomized ZEUS study. *American journal of transplantation : official journal of the American Society of Transplantation and the American Society of Transplant Surgeons* **2015**, 15 (1), 119-28. 10.1111/ajt.12952 439-442
8. Prasad, P. V., Functional MRI of the kidney: tools for translational studies of pathophysiology of renal disease. *American journal of physiology. Renal physiology* **2006**, 290 (5), F958-74. doi: 10.1152/ajprenal.00114.2005 443-444
9. Mani, L.-Y.; Vogt, B.; Vermathen, P., Functional Magnetic Resonance Imaging of the Kidney. In *Current Progress in Nephrology*, Ponticelli, C.; Visweswaran, R. K., Eds. TreeLife Media (A Div of Kothari Medical): Maharashtra India, 2022; pp 23-48. 445-446
10. Caroli, A.; Schneider, M.; Friedli, I.; Ljimini, A.; De Seigneux, S.; Boor, P.; Gullapudi, L.; Kazmi, I.; Mendichovszky, I. A.; Notohamiprodjo, M.; Selby, N. M.; Thoeny, H. C.; Grenier, N.; Vallee, J. P., Diffusion-weighted magnetic resonance imaging to assess diffuse renal pathology: a systematic review and statement paper. *Nephrology, dialysis, transplantation : official publication of the European Dialysis and Transplant Association - European Renal Association* **2018**, 33 (suppl\_2), ii29-ii40. 10.1093/ndt/gfy163 447-451
11. Pruijm, M.; Mendichovszky, I. A.; Liss, P.; Van der Niepen, P.; Textor, S. C.; Lerman, L. O.; Krediet, C. T. P.; Caroli, A.; Burnier, M.; Prasad, P. V., Renal blood oxygenation level-dependent magnetic resonance imaging to measure renal tissue oxygenation: a statement paper and systematic review. *Nephrology, dialysis, transplantation : official publication of the European Dialysis and Transplant Association - European Renal Association* **2018**, 33 (suppl\_2), ii22-ii28. 10.1093/ndt/gfy243 452-455
12. Mani, L.-Y.; Seif, M.; Nikles, F.; Tshering Vogel, D. W.; Diserens, G.; Martirosian, P.; Burnier, M.; Vogt, B.; Vermathen, P., Hip Position Acutely Affects Oxygenation and Perfusion of Kidney Grafts as Measured by Functional Magnetic Resonance Imaging Methods-The Bent Knee Study. *Frontiers in medicine* **2021**, 8, 697055. 10.3389/fmed.2021.697055 456-458
13. Hofmann, L.; Simon-Zoula, S.; Nowak, A.; Giger, A.; Vock, P.; Boesch, C.; Frey, F. J.; Vogt, B., BOLD-MRI for the assessment of renal oxygenation in humans: acute effect of nephrotoxic xenobiotics. *Kidney international* **2006**, 70 (1), 144-50. 10.1038/sj.ki.5000418 459-461
14. Naesens, M.; Kuypers, D. R.; Sarwal, M., Calcineurin inhibitor nephrotoxicity. *Clinical journal of the American Society of Nephrology : CJASN* **2009**, 4 (2), 481-508. 10.2215/CJN.04800908 462-463
15. World Medical Association, World Medical Association Declaration of Helsinki: ethical principles for medical research involving human subjects. *JAMA : the journal of the American Medical Association* **2013**, 310 (20), 2191-4. doi: 10.1001/jama.2013.281053 464-465
16. Steering Committee of the Istanbul Summit, Organ trafficking and transplant tourism and commercialism: the Declaration of Istanbul. *Lancet* **2008**, 372 (9632), 5-6. doi: 10.1016/S0140-6736(08)60967-8 466-467
17. Seif, M.; Mani, L. Y.; Lu, H.; Boesch, C.; Reyes, M.; Vogt, B.; Vermathen, P., Diffusion tensor imaging of the human kidney: Does image registration permit scanning without respiratory triggering? *Journal of magnetic resonance imaging : JMRI* **2016**, 44 (2), 327-34. 10.1002/jmri.25176 468-470
18. Eisenberger, U.; Thoeny, H. C.; Binsler, T.; Gugger, M.; Frey, F. J.; Boesch, C.; Vermathen, P., Evaluation of renal allograft function early after transplantation with diffusion-weighted MR imaging. *European radiology* **2010**, 20 (6), 1374-83. 10.1007/s00330-009-1679-9 471-473



19. Vermathen, P.; Binsler, T.; Boesch, C.; Eisenberger, U.; Thoeny, H. C., Three-year follow-up of human transplanted kidneys by diffusion-weighted MRI and blood oxygenation level-dependent imaging. *Journal of magnetic resonance imaging : JMRI* **2012**, *35* (5), 1133-8. 10.1002/jmri.23537
20. Seif, M.; Eisenberger, U.; Binsler, T.; Thoeny, H. C.; Krauer, F.; Rusch, A.; Boesch, C.; Vogt, B.; Vermathen, P., Renal Blood Oxygenation Level-dependent Imaging in Longitudinal Follow-up of Donated and Remaining Kidneys. *Radiology* **2016**, *279* (3), 795-804. 10.1148/radiol.2015150370
21. Jakobsen, J. A.; Brabrand, K.; Egge, T. S.; Hartmann, A., Doppler examination of the allografted kidney. *Acta radiologica (Stockholm, Sweden : 1987)* **2003**, *44* (1), 3-12.
22. Thoeny, H. C.; Zumstein, D.; Simon-Zoula, S.; Eisenberger, U.; De Keyzer, F.; Hofmann, L.; Vock, P.; Boesch, C.; Frey, F. J.; Vermathen, P., Functional evaluation of transplanted kidneys with diffusion-weighted and BOLD MR imaging: initial experience. *Radiology* **2006**, *241* (3), 812-21. doi: 10.1148/radiol.2413060103
23. Eisenberger, U.; Binsler, T.; Thoeny, H. C.; Boesch, C.; Frey, F. J.; Vermathen, P., Living renal allograft transplantation: diffusion-weighted MR imaging in longitudinal follow-up of the donated and the remaining kidney. *Radiology* **2014**, *270* (3), 800-8. 10.1148/radiol.13122588
24. Sulkowska, K.; Palczewski, P.; Wojcik, D.; Cizek, M.; Sanko-Resmer, J.; Wojtowicz, J.; Leszkiewicz, M.; Golebiowski, M., Intravoxel incoherent motion imaging in monitoring the function of kidney allograft. *Acta radiologica (Stockholm, Sweden : 1987)* **2019**, *60* (7), 925-932. 10.1177/0284185118802598
25. Hueper, K.; Khalifa, A. A.; Bräsen, J. H.; Vo Chieu, V. D.; Gutberlet, M.; Wintterle, S.; Lehner, F.; Richter, N.; Peperhove, M.; Tewes, S.; Weber, K.; Haller, H.; Wacker, F.; Gwinner, W.; Gueler, F.; Hartung, D., Diffusion-Weighted imaging and diffusion tensor imaging detect delayed graft function and correlate with allograft fibrosis in patients early after kidney transplantation. *Journal of magnetic resonance imaging : JMRI* **2016**, *44* (1), 112-21. 10.1002/jmri.25158
26. Niendorf, T.; Pohlmann, A.; Arakelyan, K.; Flemming, B.; Cantow, K.; Hentschel, J.; Grosenick, D.; Ladwig, M.; Reimann, H.; Klix, S.; Waiczies, S.; Seeliger, E., How bold is blood oxygenation level-dependent (BOLD) magnetic resonance imaging of the kidney? Opportunities, challenges and future directions. *Acta physiologica* **2015**, *213* (1), 19-38. 10.1111/apha.12393
27. Poynton, C. B.; Lee, M. M.; Li, Y.; Laszik, Z.; Worters, P. W.; Mackenzie, J. D.; Courtier, J., Intravoxel incoherent motion analysis of renal allograft diffusion with clinical and histopathological correlation in pediatric kidney transplant patients: A preliminary cross-sectional observational study. *Pediatric Transplantation* **2017**, *21* (6), e12996. <https://doi.org/10.1111/ptr.12996>