

Intellectual enrichment and genetic modifiers of cognitive function in Huntington's disease

Marina Papoutsis(1,2), Michael Flower(1), Davina Hensman(1), Peter Holmans(3), Carlos Estevez-Fraga(1), Eileanor Johnson(1), Rachael I. Scahill(1), Geraint Rees(4, 5), Douglas Langbehn(6), Sarah J. Tabrizi(1,7), and the Track-HD Investigators

(1) UCL Huntington's Disease Centre, Queen Square Institute of Neurology, University College London, UK, (2) Ixico plc, London UK, (3)MRC Centre for Neuropsychiatric Genetics and Genomics, Cardiff University, UK, (4) Wellcome Centre for Human Neuroimaging, Queen Square Institute of Neurology, University College London, UK, (5) Institute of Cognitive Neuroscience, University College London, UK, (6) Carver College of Medicine, University of Iowa, USA, (7) UK Dementia Research Institute at University College London, UK

Corresponding author: Dr Marina Papoutsis
Email: m.papoutsis@ucl.ac.uk
Address: UCL Huntington's disease centre,
Russell Square House,
10-12 Russell Square,
London, WC1B 5EH, UK

Running Title: Modifiers of cognitive function in Huntington's disease

Abbreviations:

BDNF: brain-derived neurotrophic factor

CFI: comparative fit index

CI: confidence interval

COMT: catechol-O-methyl transferase

CSF: cerebrospinal fluid

DART: Dutch adult reading test

DARTEL: diffeomorphic anatomical registration through exponentiated lie algebra

DBS: disease burden score

DF: degrees of freedom

FAN1: fancd2- and fanci-associated nuclease 1

FWE: family-wise error

FWHM: full-width at half maximum

GM: gray matter

HADS: hospital anxiety and depression scale

HD: Huntington's disease

HTT: Huntingtin

IQ: intelligence quotient

ISCED: international standard classification of education

MAPT: microtubule-associated protein tau

MIDAS: medical image display and analysis software

ML: maximum likelihood

MPRAGE: magnetization-prepared rapid acquisition with gradient echo

MSH3: MutS homolog 3

(A)NART: (American) national adult reading test

RMSEA: root mean square error of approximation

SD: standard deviation

SDMT: symbol digit modalities test

SE: standard error

SEM: structural equation modelling

SNP: single nucleotide polymorphism

SPM: statistical parametric mapping

SRMR: standardised root mean residual

TIV: total intracranial volume

TREM2: triggering receptor expressed on myeloid cells 2

UHDRS TMS: unified Huntington's disease rating scale total motor score

VBM: voxel-based morphometry

Abstract

An important step towards the development of treatments for cognitive impairment in ageing and neurodegenerative diseases is to identify genetic and environmental modifiers of cognitive function and understand the mechanism by which they exert an effect. In Huntington's disease, the most common autosomal dominant dementia, a small number of studies have identified intellectual enrichment, i.e. a cognitively stimulating lifestyle, and genetic polymorphisms as potential modifiers of cognitive function. The aim of our study was to further investigate the relationship and interaction between genetic factors and intellectual enrichment on cognitive function and brain atrophy in Huntington's disease. For this purpose, we analysed data from Track-HD, a multi-centre longitudinal study in Huntington's disease gene-carriers, and focused on the role of intellectual enrichment (estimated at baseline) and the genes *FAN1*, *MSH3*, *BDNF*, *COMT* and *MAPT* in predicting cognitive decline and brain atrophy. We found that carrying the 3a allele in the *MSH3* gene had a positive effect on global cognitive function and brain atrophy in multiple cortical regions, such that 3a allele carriers had a slower rate of cognitive decline and atrophy compared to non-carriers, in agreement with its role in somatic expansion instability. No other genetic predictor had a significant effect on cognitive function and the effect of *MSH3* was independent of intellectual enrichment. Intellectual enrichment also had a positive effect on cognitive function; participants with higher intellectual enrichment, ie. those who were better educated, had higher verbal IQ and performed an occupation that was intellectually engaging, had better cognitive function overall, in agreement with previous studies in Huntington's disease and other dementias. We also found that intellectual enrichment interacted with the *BDNF* gene, such that the positive effect of intellectual enrichment was greater in Met66 allele carriers than non-carriers. A similar relationship was also identified for changes in whole brain and caudate volume; the positive effect of intellectual enrichment was greater for Met66 allele carriers, rather than non-carriers. In summary, our study provides additional evidence for the beneficial role of intellectual enrichment and carrying the 3a allele in *MSH3* in cognitive function in Huntington's disease and their mechanism of action.

Introduction

Huntington's disease is a genetic, neurodegenerative disorder caused by an abnormal CAG repeat expansion in the *HTT* gene. It is characterised by a triad of symptoms, motor, psychiatric and

cognitive. All Huntington's disease gene-carriers will eventually develop dementia¹, but there is substantial variability in its onset and severity, which cannot be explained fully by CAG repeat length and age. Cognitive impairment is present in Huntington's disease gene-carriers many years before predicted disease onset and in the absence of motor symptoms². However, research on the genetic and environmental factors that contribute to this variability in cognitive impairment in Huntington's disease is still limited.

Individual differences in cognitive function and rate of decline have been studied extensively in ageing and Alzheimer's disease. One prominent hypothesis is that of brain maintenance³, according to which the primary determinant of preserved cognitive function is lower levels of pathology and slower rate of neurodegeneration. However, it has also been observed that individual differences in cognitive impairment exist despite similar levels of neurodegeneration, which led to the theory of cognitive reserve⁴. Although the genetic and environmental factors that support brain maintenance and cognitive reserve in ageing and dementia are not all known, lifelong participation in intellectual activities, also known as intellectual enrichment⁵, as well as genetic polymorphisms⁶, have been associated with preserved cognitive function and mechanisms of brain maintenance and cognitive reserve. Genetic factors and intellectual enrichment have also been shown to interact and enhance their effect on brain structure and cognition⁷⁻⁹.

In Huntington's disease, a small number of studies have so far examined the role of genetic polymorphisms and lifestyle factors on individual differences in cognitive function. More specifically, education and participation in lifelong intellectual activities¹⁰⁻¹², as well as a number of genes, including *FANI*¹³, *COMT*¹⁴, *MSH3*¹⁵ and *MAPT*¹⁶, predict cognitive function. Two of these studies have also provided preliminary evidence that intellectual enrichment is associated with less striatal atrophy^{11,12}, suggesting that it supports greater brain maintenance.

The aim of our work was to provide evidence regarding the effect of intellectual enrichment and genetic factors on cognitive function and brain structure in Huntington's disease. For this purpose, we retrospectively analysed data from a multi-centre, longitudinal study, Track-HD¹⁷⁻²⁰, that measured change in behaviour and brain structure over 3-years in individuals with the Huntington's disease gene mutation in pre-manifest (maximum 15 years from predicted onset) and early stages of the disease. We quantified lifetime intellectual enrichment using level of education, premorbid IQ and occupational cognitive demands¹¹ measured at baseline. In terms of genetic

polymorphisms, we selected common polymorphisms that have been previously associated with cognitive function in Huntington's disease (*COMT*, *BDNF*, *FAN1*, *MSH3* and *MAPT*).

Materials and Methods

Participants

Track-HD is a multi-centre, 4-year observational study in Huntington's disease gene-carriers and matched controls. A full description of the Track-HD study has been previously reported¹⁷⁻²⁰. In summary, 243 Huntington's disease gene-carriers (both manifest and pre-manifest) and 123 matched controls were recruited across four sites (London, UK; Paris, France; Leiden, The Netherlands, and Vancouver, Canada). Local ethics committees approved the study at each site and all participants provided written informed consent according to the Declaration of Helsinki.

The Track-HD study included detailed measures of brain structure, cognitive and motor function, in addition to information regarding education, pre-morbid IQ and profession. Blood for DNA analyses was also collected. Table 1 shows details of the measures that were used in this study and the number of participants included (split by visit for longitudinal measures). Data from all Huntington's disease gene-carriers with at least one follow-up visit (n = 229), irrespective of disease diagnosis, were used for the analyses. Data from the matched control group were only used to create standardized scores of cognitive performance in the gene-carrier group (demographic information on the control group is provided in Supplementary Table 1).

Global Cognitive Function

To quantify cognitive function and change over three years we created a composite score from the available cognitive measures. This composite score represents global cognitive function and is comprised of the following measures from the Track-HD cognitive battery¹⁷: number correct in 90s from the Symbol Digit Modality Test (SDMT) (a measure of processing speed), number correct in 45s from the Stroop word reading test (a measure of psychomotor speed), number correct adjusted for guessing (greater than 0 means better than chance) for the five items condition from the Spot the Change task (a measure of working memory), number correct for negative emotions

from the Emotion Recognition task (a measure of facial emotion recognition), and variability in inter-tap interval in a paced tapping task at 3Hz (a measure of temporal precision). These tasks were included in all four visits, in addition to the Circle Tracing task. However, that task was excluded from the composite score because of large practice effects that persisted across all visits²¹. The remaining five measures were then used to create a composite score of global cognitive function.

To calculate the composite score, raw values were transformed to z-scores using the mean and standard deviation of the control group at baseline and then summed. In the paced tapping task, the reciprocal of the variance in inter-tap interval was used, such that a higher value indicated better performance (i.e. lower variability), consistent with all other measures. Therefore, higher values in the composite score indicate better performance. When computing the composite score, if one or two measures were missing, they were replaced by the mean z-score of the existing measures. This was the case for 21 participants in visit one, seven participants in visit two, three participants in visit three, and 16 participants in visit four respectively. If a participant had less than three out of five measures available for a visit, then we did not compute a composite score for that visit and therefore this participant-visit was not included in the analyses with cognitive function as a variable.

Genetic Polymorphisms

Track-HD subjects were genotyped using Illumina Omni2.5v1.1 arrays²² and genotypes were extracted using PLINK²³. Because the main outcome measure was cognitive function, we focused on SNPs that had been previously associated with cognitive and psychomotor function in Huntington's disease. Based on previous literature we therefore selected the following SNPs: rs4680 on chromosome 22¹⁴ in *COMT*, which relates to dopamine metabolism, rs9468 on chromosome 17¹⁶ in *MAPT*, which relates to tau protein production, rs2140734 on chromosome 15 near *FANI*^{13,24}, which is involved in DNA repair, and a polymorphic repeat expansion in exon 1 on chromosome 5 of *MSH3*^{15,22,25,26}, which is involved in DNA mismatch repair. In addition, we tested another polymorphism, rs6265 (Val66Met) on chromosome 11 in *BDNF*, which encodes the Val66Met polymorphism and regulates BDNF expression. Although the role of the Val66Met polymorphism in Huntington's disease remains unknown, it has been consistently associated with

cognitive function in ageing and dementia^{6,27–29} and *BDNF* expression maybe affected by Huntington's disease pathology^{30,31}. It also interacts with intellectual enrichment factors to predict cognitive function^{7,32}: it was therefore relevant to our research question.

A previous study showed that the gene *TREM2* (rs75932628) has a role in cognitive function in Huntington's disease³³. However, the minor allele frequency is very low in the population (0.005% in Europeans in 1000 Genomes project data phase 3) and therefore we did not include it in our analyses.

All genetic predictors were coded as having a binary, dominant effect, similar to the approach of Vuono et al.¹⁶. Supplementary Table 2 shows how each binary predictor was coded. In more detail, the *MSH3* predictor was coded for the presence of the three-repeat allele (3a)²⁵. The rs2140734 (*FANI*) predictor was coded for the presence of the minor allele G. It is also important to highlight that this SNP is in complete linkage disequilibrium with minor allele C in rs3512. The latter has been more widely examined in other studies and shown to be associated with age of onset and disease progression in Huntington's disease^{22,24,34}. The *MAPT* predictor distinguished between H1 haplotype homozygotes and H2 carriers. Carrying the minor allele C in rs9468 tags for the H2 haplotype, whereas carrying the allele T tags for the H1 haplotype³⁵. The *COMT* (rs4680) predictor variable distinguished Met158 homozygotes from carriers of the Val158 allele¹⁴. The *BDNF* (rs6265) predictor variable distinguished carriers from noncarriers of the detrimental allele, Met66.

For completion we also repeated the analyses coding the variables by the number of minor alleles for all genes except *BDNF*, because there was insufficient number of cases (see Table 1 for the number of participants per number of minor allele).

Intellectual Enrichment

Education, bilingualism, leisure and professional intellectual activities are some of the activities associated with a protective effect against cognitive decline³⁶. Track-HD recorded main profession, education level using the ISCED scale, and pre-morbid IQ using vocabulary tests. Because different tests were used in each country, pre-morbid IQ was standardized within country (NART-2 in the UK, ANART in Canada, DART in the Netherlands and Mill Hill in France). Occupational cognitive requirements³⁷ were estimated from the main profession recorded for each participant

(see supplementary methods). These three measures were then standardized and summed to create a composite score of intellectual enrichment¹¹. A higher value in the intellectual enrichment score means higher level of education, a more cognitively demanding profession and higher level of estimated pre-morbid IQ.

Measures of Disease Pathology

Predicted disease severity at the time of recruitment was measured using the CAG by age product (disease burden score (DBS) = age x (CAG – 35.5)³⁸). This is a commonly used model of predicted exposure to disease pathology describing the well-established relationship between age and CAG repeat number of the longer allele. The larger the CAG repeat length, the earlier the predicted age of disease onset³⁹.

Pathology at baseline and rate of change was quantified using structural MRI measures of caudate volume and total gray matter (GM) volume, which are robust and well-defined markers of brain atrophy in Huntington's disease¹⁷⁻²⁰. Measures of white matter integrity using diffusion weighted imaging, were only introduced at visit 4 in Track-HD, therefore we only focused on GM volume in our study. Whole brain T1-weighted 3D MPRAGE images were acquired at 3T at all four visits (for details of the imaging protocol see¹⁷). Caudate volume at baseline and longitudinal change was measured using MIDAS' semi-automated segmentation and the boundary shift integral respectively^{19,40,41}. Total GM volume at baseline was measured using SPM12. Longitudinal change was measured using a non-linear fluid registration method in MIDAS which produced whole-brain voxel compression maps measuring change from baseline⁴². Voxel compression maps were then convolved with SPM-derived GM maps to generate change in total GM over time. The measures of caudate volume and total GM volume used in all the analyses were transformed to percent of total intracranial volume (TIV), in order to adjust for differences in brain size. TIV was measured at baseline using MIDAS.

In addition to caudate and total GM volume, we also performed exploratory whole-brain analyses using VBM⁴³. The GM probability maps at baseline and voxel-compression maps of change from baseline were normalized to a group template space using DARTEL. Normalized images were

then smoothed using an 8mm FWHM gaussian kernel. Full details of the MRI methods used have been published previously⁴⁴.

Statistical Analyses

Statistical analyses were performed using R version 3.6.3 (<http://www.r-project.org/>) and the packages lmerTest (version 3.1-1) and lme4 (version 1.1-21).

To examine the relationship between cognitive function and brain volume with our predictors of interest, we used linear mixed models. Our predictors of interest were intellectual enrichment and genetic polymorphisms. All models were fitted using maximum likelihood estimation (ML) and correlated random intercept and slope. All models included as covariates age, DBS and study site, and their interaction with visit, as well as sex (main effect only, because the sex by visit interaction term did not improve model fit and was therefore dropped). Models with cognitive function as outcome also included the use of antipsychotic medication as a covariate (see supplementary methods). Time was modelled in years of follow-up as approximated by annual visit number. Based on previously published analyses of the Track-HD data²¹ we included quadratic effects of time in models with cognitive function and total GM volume as the outcome. Age and DBS were mean-centered (Table 1).

Our hypotheses tested whether our variables of interest significantly predicted cognitive function or brain volume at baseline and change over time. We used likelihood ratio tests to assess the covariate-adjusted significance of predictors on the outcome variables. We also tested for the significance of the interaction of genetic predictors with intellectual enrichment in the same way. In all the analyses, we visually inspected model residual distributions to assess plausible normality. No outliers were identified. Significance was established using 2-sided p-values and applying Bonferroni correction to control type I error rate when multiple measures were used to test a hypothesis.

For VBM analyses a binary GM mask was created using the mean normalized images from all Huntington's disease gene-carriers. This was used in all analyses. Statistical maps were thresholded at two-tailed $p < 0.001$ uncorrected at voxel-level and $p < 0.05$ family-wise error (FWE) corrected at cluster-level.

Data Availability

Track-HD data are available upon request after appropriate data use agreements are signed from the study funder, the CHDI Foundation. Please direct inquiries to info@chdifoundation.org.

Results

Intellectual enrichment

Previous research showed that participants with early stage Huntington's disease with higher intellectual enrichment have better cognitive performance than those with lower intellectual enrichment¹². Furthermore amongst pre-manifest gene-carriers who are closer to predicted disease onset those with high intellectual enrichment have slower rate of cognitive decline than those with low intellectual enrichment¹¹.

In our cohort of participants with pre-manifest and early stage Huntington's disease, intellectual enrichment predicted mean global cognitive function and there was also a significant three-way interaction between intellectual enrichment, DBS and time (i.e. annual visit number) on global cognitive function (both $p < 0.001$; Table 2 and Supplementary Table 3). In agreement with previous studies, the estimate for the main effect of intellectual enrichment was positive such that participants with high intellectual enrichment had better cognitive function than those with lower intellectual enrichment. More specifically, for average DBS and age, the mean estimates (95% CI) were -3.14 SD (-3.66, -2.62) and -5.57 (-6.10, -5.04) for high (1SD above mean) and low (1SD below mean) intellectual enrichment respectively. The contrast estimate (SE) for high vs low = 2.43 SD (0.36), $t\text{-value}(229) = 6.744$, $p\text{-value} < 0.001$.

The estimate for the three-way interaction between DBS, intellectual enrichment and time was in the opposite direction from the main effect; in individuals with low DBS those with high intellectual enrichment declined slower than those with low intellectual enrichment, however in individuals with high DBS, those with high intellectual enrichment declined faster than those

with lower intellectual enrichment, despite having better performance at baseline (Figure 1A and Supplementary Figure 1). More specifically, for participants with low DBS (1 SD below mean) those with high intellectual enrichment declined slower than those with lower intellectual enrichment (for 258.9 DBS slope estimate (95% CI) = 0.141 (-0.007, 0.289) and -0.102 (-0.268, 0.065) for high and low intellectual enrichment respectively; contrast estimate (SE) for high vs low intellectual enrichment was 0.243 (0.119), t -value(224) = 2.043, p -value = 0.042). In contrast, an individual with 407.4 DBS (1SD above mean) and 1SD above mean intellectual enrichment had faster cognitive decline than an individual with the same DBS, but 1SD below mean intellectual enrichment (slope estimate (95% CI) = -0.741 (-0.917, -0.565) and -0.413 (-0.556, -0.270) for high and low intellectual enrichment respectively; contrast estimate (SE) high vs low = -0.327 (0.110), t -value(247) = -2.971, p -value = 0.003). To aid with interpretation of this finding we repeated the same analysis replacing DBS with group as an ordered factor, coding for manifest and pre-manifest individuals. There was a significant main effect of intellectual enrichment, however the group by visit by intellectual enrichment interaction was not significant in this case (Supplementary Table 4). Our results therefore show that there is a strong positive effect of intellectual enrichment on global cognitive function at baseline. It is unclear what is driving the significant 3-way interaction between intellectual enrichment, DBS and visit and whether it is a reliable finding. The lack of a significant 3-way interaction with group suggests that it may not be driven by disease stage.

To further understand the mechanism by which intellectual enrichment influences global cognitive function, we next examined its relationship with brain volume, measured by caudate and total GM volume over 3 years. There was a significant interaction between intellectual enrichment and DBS on caudate volume at baseline ($p_{\text{bon}} = 0.024$; Supplementary Table 5 and Supplementary Table 6), such that intellectual enrichment had a positive association with caudate volume in Huntington's disease gene-carriers far from predicted disease onset (i.e. low DBS), but this effect was attenuated or reversed as the disease progressed (Supplementary Figure 2A). More specifically, a participant with 258.9 DBS (1SD below mean) and high intellectual enrichment had larger caudate volume at baseline compared to a participant with the same DBS, but low intellectual enrichment (mean estimate (95% CI) = 0.0645 (0.0464, 0.0826) and 0.0291 (0.0097, 0.0486) for high and low intellectual enrichment respectively; contrast estimate (SE) high vs low = 0.0354 (0.0139), t -value(215) = 2.534, p -value = 0.012). However, there was no

difference in participants with high DBS (for 407.4 DBS contrast estimate (SE) for high vs low intellectual enrichment was -0.0141 (0.135), t -value(215) = -1.044, p -value = 0.298). As previously we repeated the same analysis replacing DBS with group as an ordered factor, coding for manifest vs pre-manifest individuals. There was no significant group by intellectual enrichment interaction on caudate volume at baseline (Supplementary Table 7). It is therefore unclear what is driving the intellectual enrichment by DBS interaction and whether it is reliable. There were no significant main effects or interactions with total GM volume (all $p_{\text{bon}} > 0.1$; Supplementary Table 5 and Supplementary Figure 2B).

Lastly, we performed exploratory, whole-brain analyses using VBM to identify whether there are specific brain regions that showed an effect of intellectual enrichment or an interaction between intellectual enrichment and DBS. There was no significant main effect of intellectual enrichment on volume or volume change anywhere in the brain, but there was a significant interaction with DBS. Participants with low DBS and high intellectual enrichment had larger GM volume at baseline in the right putamen, the thalamus and the right superior temporal gyrus compared to individuals with similar DBS but low intellectual enrichment (Supplementary Table 8 and Supplementary Figure 3). In addition, the rate of GM atrophy over 3 years was faster in individuals with high intellectual enrichment and high DBS in a cluster extending from the right post-central gyrus to the right superior temporal gyrus ventrally and to the superior parietal lobe and the right precuneus caudally (Figure 1B and Supplementary Table 8). As previously we repeated the same analyses replacing DBS with group. There were no brain regions that showed a significant interaction between intellectual enrichment and group for baseline volume or 3 year change.

Genetic polymorphisms

We next examined the relationship between cognitive function and five genetic polymorphisms linked to genes known to affect cognitive function in Huntington's disease: *MSH3*, *FAN1*, *MAPT*, *BDNF* and *COMT*. We did not find a significant association between *FAN1*, *MAPT*, *BDNF* and *COMT* variants and global cognitive function at baseline or change over time after Bonferroni correction for five multiple comparisons (all $p_{\text{bon}} > 0.068$; Table 3). In agreement with previous analyses of disease progression in the same cohort²⁵ and recent research¹⁵, *MSH3* was a significant

predictor of global cognitive function at baseline and change (both $p_{\text{bon}} = 0.045$; Table 3 and Supplementary Table 9). More specifically, participants with one or more 3a alleles in *MSH3* had better cognitive function at baseline and slower cognitive decline compared to non-carriers of 3a alleles (for average age and DBS slope (95% CI) = -0.329 (-0.434, -0.223) and -0.118 (-0.241, 0.004) for non-carriers and carriers respectively; contrast estimate (SE) non-carriers vs carriers = -0.21 (0.081), t -value(213) = -2.587, p -value = 0.010; Figure 2A and Supplementary Figure 4). We repeated the analyses coding for the number of alleles in the genes *MSH3*, *FAN1*, *COMT* and *MAPT*. There was no change in the results (see Supplementary Table 10), i.e. only *MSH3* was a significant predictor of cognitive function at baseline and change over time.

We next examined the relationship between *MSH3* polymorphisms and brain volume to further understand the mechanism by which *MSH3* may influence global cognitive function. *MSH3* had a significant effect on total GM volume rate of change (i.e. *MSH3* by Visit interaction; $p_{\text{bon}} = 0.001$; Supplementary Table 5, Supplementary Table 11 and Supplementary Figure 5).

Huntington's disease gene carriers with one or more 3a alleles in *MSH3* had slower rate of total GM atrophy over 3 years compared to non-carriers (for average age and DBS slope (95% CI) = -0.181 (-0.202, -0.160) and -0.122 (-0.148, -0.097) for non-carriers and carriers respectively; contrast estimate (SE) for non-carriers vs carriers = -0.0586 (0.0168), t -value(196) = -3.486, $p < 0.001$).

Exploratory VBM analyses examined the main effect of *MSH3* on GM volume across the whole-brain. There was a significant effect of *MSH3* on GM volume at baseline in the right middle temporal gyrus, the right inferior occipital gyrus and the left post-central gyrus (Supplementary Table 8 and Supplementary Figure 6). There was also a significant effect of *MSH3* on GM volume change in the fusiform gyrus bilaterally, the inferior frontal gyrus bilaterally, the right middle frontal gyrus and the left precuneus (Supplementary Table 8 and Figure 2B). Lastly there was an interaction between *MSH3* and DBS on GM volume change in the left inferior frontal gyrus, the left supplementary motor area and the right superior temporal gyrus (Supplementary Table 8 and Supplementary Figure 7). The effect of *MSH3* was positive in all cases such that 3a allele carriers (across all participants or for those with high DBS) had higher volume and slower rate of GM atrophy compared to non-carriers. Our results therefore suggest that carrying the 3a

allele in *MSH3* supported preserved cognitive function and was associated with a slower rate of neurodegeneration.

Gene-environment interaction

Previous research in ageing and dementia has shown that environmental factors, including intellectual enrichment, interact with genetic polymorphisms in order to predict cognitive function^{7,8}. To test this hypothesis in our study we examined the interaction between all five genetic polymorphisms and intellectual enrichment on cognitive function and decline. *BDNF* was the only gene which significantly interacted with intellectual enrichment to predict global cognitive function at baseline ($p_{\text{bon}} = 0.031$ corrected for five tests; Table 3 and Supplementary Table 12). There was a positive interaction between *BDNF* and intellectual enrichment on global cognitive function at baseline, such that the effect of intellectual enrichment on cognitive function was stronger for Met66 allele carriers than non-carriers. More specifically, the estimates for Met66 allele carriers with low (1SD below mean) and high intellectual enrichment (1SD above mean) were: estimate (95% CI) = -6.31 (-7.20, -5.42) and -2.57 (-3.41, -1.73) respectively; contrast estimate (SE) for high vs low intellectual enrichment = 3.74 (0.598), t-value(216) = 6.249, p-value < 0.001. Similarly, for Met66 allele non-carriers, with low (1SD below mean) and high intellectual enrichment (1SD above mean) estimate (95% CI) = -5.08 (-5.75, -4.42) and -3.40 (-4.10, -2.71) respectively; contrast estimate (SE) for high vs low intellectual enrichment = 1.68 (0.483), t-value(214) = 3.486, p-value < 0.001. The difference between high and low intellectual enrichment was greater for Met66 allele carriers than non-carriers suggesting that the Met66 allele moderates the effect of intellectual enrichment on cognitive function (contrast estimate (SE) = -2.06 (0.768) , t-value(215) = -2.678, p-value = 0.008; Figure 3).

To understand the mechanism by which *BDNF* interacts with intellectual enrichment to impact cognitive function, we examined the interaction between *BDNF* and intellectual enrichment on brain volume. The effect of the interaction of *BDNF* with intellectual enrichment was significant, but small, on both caudate and total GM volume rate of change (both $p_{\text{bon}} < 0.03$ corrected for two tests; Supplementary Table 13-15). The difference in rate of volume change between individuals with high and low intellectual enrichment was positive in Met66 allele carriers, but

negative for non-carriers. In more detail, for Met66 allele carriers with high (1SD above mean) and low intellectual enrichment (1SD below mean) estimate (95% CI) = -0.0094 (-0.0105, -0.0082) and -0.0110 (-0.0123, -0.0097) respectively; contrast estimate (SE) = 0.0017 (0.0009), t -value(228) = 1.900, p -value = 0.059. For Met66 allele non-carriers with high (1SD above mean) and low intellectual enrichment (1SD below mean) estimate (95% CI) = -0.0103 (-0.0112, -0.0094) and -0.0094 (-0.0102, -0.0085) respectively; contrast estimate (SE) = -0.0010 (0.0007), t -value(205) = -1.480, p -value = 0.140. The difference between high and low intellectual enrichment was positive for Met66 allele carriers, but negative for non-carriers, suggesting that the Met66 allele moderates the effect of intellectual enrichment on caudate atrophy rate (contrast estimate (SE) = -0.0026 (0.0011), t -value(221) = -2.406, p -value = 0.017; Supplementary Figure 8).

This was similar for total GM volume. For Met66 allele carriers with high (1SD above mean) and low intellectual enrichment (1SD below mean) estimate (95% CI) = -0.129 (-0.167, -0.090) and -0.206 (-0.248, -0.1635) respectively; contrast estimate (SE) = 0.0769 (0.0289), t -value(214) = 2.658, p -value = 0.008. For Met66 allele non-carriers with high (1SD above mean) and low intellectual enrichment (1SD below mean) estimate (95% CI) = -0.179 (-0.209, -0.1484) and -0.132 (-0.161, -0.1020) respectively; contrast estimate (SE) = -0.0469 (0.0218), t -value(192) = -2.154, p -value = 0.0324. The difference between high and low intellectual enrichment was positive for Met66 allele carriers, but negative for non-carriers, suggesting that the Met66 allele moderates the effect of intellectual enrichment on total GM atrophy rate (contrast estimate (SE) = -0.124 (0.0362), t -value(207) = -3.421, p -value = 0.008; Supplementary Figure 9).

Exploratory whole-brain VBM analyses examined the interaction between *BDNF* and intellectual enrichment on GM volume at baseline and change over time, but we did not identify any significant clusters.

Discussion

The aim of our study was to examine the role of intellectual enrichment and genetic polymorphisms on cognitive function and brain structure in Huntington's disease. Our results highlight the complexity of the interplay between environmental and genetic factors on behaviour and brain structure. Intellectual enrichment and genetic variation in *MSH3* are independently

associated with global cognitive function and brain structure, whereas intellectual enrichment interacts with *BDNF* to attenuate the deleterious effect of the Met66 polymorphism.

In more detail, we replicated previous findings showing that intellectual enrichment was associated with better global cognitive function¹¹. In the present work, we further show that in participants with high DBS (in our study mean DBS was 333.2) those with high intellectual enrichment had faster rate of decline over 3 years (0.36 SD annualized change in global cognitive function), than those with lower intellectual enrichment (Figure 1A). The faster rate of decline in participants with high DBS narrowed the difference in baseline cognitive performance between individuals with low and high intellectual enrichment. Similarly, we found that high intellectual enrichment predicted accelerated atrophy in posterior cortical regions of the right hemisphere in participants with high DBS. Therefore, it appears that as DBS increases the protective effect of intellectual enrichment on cognition decreases. However, when replacing DBS with group the 3-way interaction between intellectual enrichment, group and visit was not significant in relation to cognitive function or brain volume. Given the very strong association between DBS and group, it is therefore unclear what is driving the significant interaction between intellectual enrichment and DBS and whether it is a reliable finding.

Further insights regarding the mechanism by which intellectual enrichment affects cognitive function are provided by the interaction between intellectual enrichment and *BDNF* gene variation. The difference in cognitive function between individuals with low and high intellectual enrichment was greater in Met66 allele carriers, than non-carriers. Comparing the blood expression levels of *BDNF* between 22 controls and 62 manifest gene carriers from this cohort using RNAseq, we previously found the HD gene-carriers had lower levels of *BDNF* expression than controls (p-value = 0.04266⁴⁵). Post-mortem studies have also identified reduced BDNF levels in the striatum of Huntington's disease patients. However, it is unclear whether this is due to defects in the delivery of cortical BDNF⁴⁶ or to the response in the striatum³¹. It is possible that carrying the Met66 allele exacerbates existing defects in the BDNF pathway. Previous research in animal models of Huntington's disease showed that such defects can be rescued by environmental enrichment⁴⁷. Our results are in broad agreement with these findings and suggest that intellectual enrichment potentially counteracts the detrimental effect of the Met66 allele in both cognitive function and brain structure (striatum and total GM). Our findings are also in agreement with

previous studies in ageing showing a significant interaction between intellectual enrichment and *BDNF* to predict cognitive function and decline in healthy older adults^{7,32}.

Intellectual enrichment did not interact with any of the other genetic polymorphisms we examined, whereas the only genetic predictor with a significant effect on cognitive function was variation in *MSH3*. A recent study¹⁵ has identified *MSH3* as a modifier of cognitive function in HD, while we have previously shown in this cohort that variation in *MSH3*, specifically carrying a 3a allele, has a protective effect on a composite score of disease progression which included cognitive and psychomotor function^{22,25}. It is currently hypothesized that *MSH3* is introducing an expansion of the *HTT* CAG repeat in the process of repair. Greater expansion is associated with earlier disease onset and faster progression^{48,49}, whereas carrying the 3a allele is associated with reduced expression of *MSH3* and therefore reduced somatic expansion and slower progression²⁵. In agreement with this finding, in the present work we further show that carrying the 3a allele in *MSH3* was associated with slower GM atrophy across different regions in the cortex, including the inferior temporal and inferior frontal gyri. The absence of a significant effect in the striatum is notable given previous work which showed that there is large somatic expansion in both the cortex (temporal, occipital and prefrontal cortex) and the striatum⁵⁰. This finding could be explained by the fact that all analyses were adjusted for differences in DBS and suggest that carrying the 3a allele does not explain additional variance in striatal atrophy. Lastly, it is important to note that the protective effect of carrying the 3a allele in *MSH3* is a result of reducing the expression of *MSH3*, and there is no evidence that it supports neuroprotective mechanisms. The effect of *MSH3* on cognitive function and brain volume cannot therefore be interpreted as brain maintenance.

Similar to *MSH3*, variation in *FANI* (rs3512) has also been implicated in somatic expansion instability⁴⁹ and has been previously shown to predict delayed age of onset in Huntington's disease^{24,34}. *FANI* overexpression reduces CAG repeat expansion in human cell modes⁵¹, however in our study there was no significant effect of rs2140734 (or rs3512) on cognitive function. The reason for the contradictory findings is unclear. It could be due to lack of statistical power given the relatively small sample size, however recent work suggests a differential effect of *FANI* on motor rather than cognitive function¹⁵.

Lastly, in contrast to previous studies in Huntington's disease, we did not find any evidence for an association between the genes *COMT* and *MAPT* and cognitive function. A previous study¹⁴

showed that *COMT* Val158 allele carriers had slower cognitive decline compared to Met158 homozygotes in manifest Huntington's disease patients. The number of Met158 homozygotes was low in our cohort (43 out of 229; 19%) and our cohort included both pre-manifest and patients at early stages of the disease, which could explain the contradictory findings. Variation in the *MAPT* gene has also been previously shown to predict cognitive decline in Huntington's disease¹⁶, such that H1 homozygotes had slower decline in cognitive function compared to H2 carriers. However, this effect was opposite to what has been previously reported for Parkinson's disease⁵², and had a small effect size ($r = -0.14$). In our study we did not find strong evidence for an association between *MAPT* and cognitive function, it is therefore currently unclear whether *MAPT* plays a role in cognitive function in Huntington's disease.

In summary, we have shown that cognitive function in Huntington's disease is affected by an interplay between genetic and environmental factors. Cognitive decline is slower in carriers of the 3a allele in the gene *MSH3*, supported by the slowing of GM volume atrophy in the cortex, in agreement with the role of *MSH3* in somatic expansion instability. Intellectual enrichment also appears to have a protective effect on cognitive function at baseline independent of disease stage. Importantly, we also observed a significant interaction between intellectual enrichment and the *BDNF* gene polymorphism, whereby intellectual enrichment counteracted the detrimental effect of carrying the Met66 allele on cognitive function and brain structure, in agreement with the role of intellectual enrichment in enhancing brain trophic support. Future research is now needed to develop and evaluate intellectual enrichment interventions in Huntington's disease and measure its impact in both behaviour and brain structure.

Acknowledgements

TRACK-HD investigators

Peter Kraus, Rainer Hoffman, Alan Tobin, Beth Borowsky, S. Keenan, Kathryn B. Whitlock, Sarah Queller, Colin Campbell, Chiachi Wang, Eric Axelson, Hans Johnson, Tanka Acharya, Dave

M. Cash, Chris Frost, Rebecca Jones, Caroline Jurgens, Ellen P. 't Hart, Jeroen van der Grond, Marie-Noelle N. Witjes-Ane, Raymund A.C. Roos, Eve M. Dumas, Simon J.A. van den Bogaard, Cheryl Stopford, David Craufurd, Jenny Callaghan, Natalie Arran, Diana D. Rosas, S. Lee, W Monaco, Alison O'Regan, Cassie Milchman, Ellen Frajman, Izelle Labuschagne, Julie Stout, Melissa Campbell, Sophie C. Andrews, Natalie Bechtel, Ralf Reilmann, Stefan Bohlen, Chris Kennard, Claire Berna, Stephen Hicks, Alexandra Durr, Cristophe Pourchot, Eric Bardinnet, Kevin Nigaud, Romain Valabrègue, Stephane Lehericy, Cecilia Marelli, Celine Jauffret, Damian Justo, Blair Leavitt, Joji Decolongon, Aaron Sturrock, Alison Coleman, Rachelle Dar Santos, Aakta Patel, Claire Gibbard, Daisy Whitehead, Ed Wild, Gail Owen, Helen Crawford, Ian Malone, Nayana Lahiri, Nick C. Fox, Nicola Z. Hobbs, Roger Ordidge, Tracey Pepple, Joy Read, Miranda J. Say, Bernhard Landwehrmeyer

Funding Information

This work was supported by an HDSA Human Biology fellowship award to MP. SJT's work is supported by the UK Dementia Research Institute which receives its funding from DRI Ltd, funded by the UK Medical Research Council, Alzheimer's Society and Alzheimer's Research UK. The Track-HD study was funded by the CHDI Foundation.

Competing Interests

None declared.

References

1. Snowden JS. The Neuropsychology of Huntington's Disease. *Arch Clin Neuropsychol*. 2017;32(7):876-887. doi:10.1093/arclin/acx086
2. Duff K, Paulsen J, Mills J, et al. Mild cognitive impairment in prediagnosed Huntington disease. *Neurology*. 2010;75(6):500-507. doi:10.1212/WNL.0b013e3181eccfa2
3. Nyberg L, Lövdén M, Riklund K, Lindenberger U, Bäckman L. Memory aging and brain maintenance. *Trends Cogn Sci*. 2012;16(5):292-305. doi:10.1016/j.tics.2012.04.005

4. Stern Y. Cognitive reserve. *Neuropsychologia*. 2009;47(10):2015-2028. doi:10.1016/j.neuropsychologia.2009.03.004
5. Vemuri P, Lesnick TG, Przybelski SA, et al. Association of Lifetime Intellectual Enrichment With Cognitive Decline in the Older Population. *JAMA Neurol*. 2014;71(8):1017-1024. doi:10.1001/jamaneurol.2014.963
6. Harris SE, Deary IJ. The genetics of cognitive ability and cognitive ageing in healthy older people. *Trends Cogn Sci*. 2011;15(9):388-394. doi:10.1016/j.tics.2011.07.004
7. Ward DD, Summers MJ, Saunders NL, Ritchie K, Summers JJ, Vickers JC. The BDNF Val66Met polymorphism moderates the relationship between cognitive reserve and executive function. *Transl Psychiatry*. 2015;5(6):e590-e590. doi:10.1038/tp.2015.82
8. Premi E, Grassi M, van Swieten J, et al. Cognitive reserve and TMEM106B genotype modulate brain damage in presymptomatic frontotemporal dementia: a GENFI study. *Brain*. 2017;140(6):1784-1791. doi:10.1093/brain/awx103
9. Gazzina S, Grassi M, Premi E, et al. Education modulates brain maintenance in presymptomatic frontotemporal dementia. *J Neurol Neurosurg Psychiatry*. 2019;90(10):1124-1130. doi:10.1136/jnnp-2019-320439
10. Trembath MK, Horton ZA, Tippett L, et al. A retrospective study of the impact of lifestyle on age at onset of Huntington disease. *Mov Disord*. 2010;25(10):1444-1450. doi:10.1002/mds.23108
11. Bonner-Jackson A, Long JD, Westervelt H, Tremont G, Aylward E, Paulsen JS. Cognitive Reserve and Brain Reserve in Prodromal Huntington's Disease. *J Int Neuropsychol Soc*. 2013;19(07):739-750. doi:10.1017/S1355617713000507
12. Garcia-Gorro C, Garau-Rolandi M, Escrichs A, et al. An active cognitive lifestyle as a potential neuroprotective factor in Huntington's disease. *Neuropsychologia*. 2019;122:116-124. doi:10.1016/j.neuropsychologia.2018.10.017
13. Long JD, Lee JM, Aylward EH, et al. Genetic Modification of Huntington Disease Acts Early in the Prediagnosis Phase. *Am J Hum Genet*. 2018;103(3):349-357. doi:10.1016/j.ajhg.2018.07.017
14. Diego-Balaguer R de, Schramm C, Rebeix I, et al. COMT Val158Met Polymorphism Modulates Huntington's Disease Progression. *PLOS ONE*. 2016;11(9):e0161106. doi:10.1371/journal.pone.0161106
15. Lee JM, Huang Y, Orth M, et al. Genetic modifiers of Huntington's disease differentially influence motor and cognitive domains. Published online January 5, 2022:2022.01.03.22268687. doi:10.1101/2022.01.03.22268687
16. Vuono R, Winder-Rhodes S, de Silva R, et al. The role of tau in the pathological process and clinical expression of Huntington's disease. *Brain*. 2015;138(7):1907-1918. doi:10.1093/brain/awv107

17. Tabrizi SJ, Langbehn DR, Leavitt BR, et al. Biological and clinical manifestations of Huntington's disease in the longitudinal TRACK-HD study: cross-sectional analysis of baseline data. *Lancet Neurol.* 2009;8(9):791-801. doi:10.1016/S1474-4422(09)70170-X
18. Tabrizi SJ, Scahill RI, Durr A, et al. Biological and clinical changes in premanifest and early stage Huntington's disease in the TRACK-HD study: the 12-month longitudinal analysis. *Lancet Neurol.* 2011;10:31-42. doi:10.1016/S1474-4422(10)70276-3
19. Tabrizi SJ, Reilmann R, Roos RA, et al. Potential endpoints for clinical trials in premanifest and early Huntington's disease in the TRACK-HD study: analysis of 24 month observational data. *Lancet Neurol.* 2012;11(1):42-53. doi:10.1016/S1474-4422(11)70263-0
20. Tabrizi SJ, Scahill RI, Owen G, et al. Predictors of phenotypic progression and disease onset in premanifest and early-stage Huntington's disease in the TRACK-HD study: analysis of 36-month observational data. *Lancet Neurol.* 2013;12(7):637-649. doi:10.1016/S1474-4422(13)70088-7
21. Langbehn DR, Stout JC, Gregory S, et al. Association of CAG Repeats With Long-term Progression in Huntington Disease. *JAMA Neurol.* Published online August 12, 2019. doi:10.1001/jamaneurol.2019.2368
22. Hensman Moss DJ, Pardiñas AF, Langbehn D, et al. Identification of genetic variants associated with Huntington's disease progression: a genome-wide association study. *Lancet Neurol.* 2017;16(9):701-711. doi:10.1016/S1474-4422(17)30161-8
23. Purcell S, Neale B, Todd-Brown K, et al. PLINK: A Tool Set for Whole-Genome Association and Population-Based Linkage Analyses. *Am J Hum Genet.* 2007;81(3):559-575. doi:10.1086/519795
24. Genetic Modifiers of Huntington's Disease (GeM-HD) Consortium. Identification of Genetic Factors that Modify Clinical Onset of Huntington's Disease. *Cell.* 2015;162(3):516-526. doi:10.1016/j.cell.2015.07.003
25. Flower M, Lomeikaite V, Ciosi M, et al. MSH3 modifies somatic instability and disease severity in Huntington's and myotonic dystrophy type 1. *Brain.* 2019;142(7):1876-1886. doi:10.1093/brain/awz115
26. Genetic Modifiers of Huntington's Disease (GeM-HD) Consortium. CAG Repeat Not Polyglutamine Length Determines Timing of Huntington's Disease Onset. *Cell.* 2019;178(4):887-900.e14. doi:10.1016/j.cell.2019.06.036
27. Buchman AS, Yu L, Boyle PA, Schneider JA, De Jager PL, Bennett DA. Higher brain BDNF gene expression is associated with slower cognitive decline in older adults. *Neurology.* 2016;86(8):735. doi:10.1212/WNL.0000000000002387
28. Lim YY, Hassenstab J, Cruchaga C, et al. BDNF Val66Met moderates memory impairment, hippocampal function and tau in preclinical autosomal dominant Alzheimer's disease. *Brain.* 2016;139(10):2766-2777. doi:10.1093/brain/aww200
29. Lim YY, Hassenstab J, Goate A, et al. Effect of BDNF Val66Met on disease markers in dominantly inherited Alzheimer's disease. *Ann Neurol.* 2018;84(3):424-435. doi:10.1002/ana.25299

30. Zuccato C, Cattaneo E. Role of brain-derived neurotrophic factor in Huntington's disease. *Prog Neurobiol.* 2007;81(5):294-330. doi:10.1016/j.pneurobio.2007.01.003
31. Plotkin JL, Day M, Peterson JD, et al. Impaired TrkB Receptor Signaling Underlies Corticostriatal Dysfunction in Huntington's Disease. *Neuron.* 2014;83(1):178-188. doi:10.1016/j.neuron.2014.05.032
32. Ward DD, Andel R, Saunders NL, et al. The BDNF Val66Met polymorphism moderates the effect of cognitive reserve on 36-month cognitive change in healthy older adults. *Alzheimers Dement Transl Res Clin Interv.* 2017;3(3):323-331. doi:10.1016/j.trci.2017.04.006
33. Vuono R, Kouli A, Legault EM, et al. Association Between Toll-Like Receptor 4 (TLR4) and Triggering Receptor Expressed on Myeloid Cells 2 (TREM2) Genetic Variants and Clinical Progression of Huntington's Disease. *Mov Disord.* 2020;35(3):401-408. doi:https://doi.org/10.1002/mds.27911
34. Bettencourt C, Hensman-Moss D, Flower M, et al. DNA repair pathways underlie a common genetic mechanism modulating onset in polyglutamine diseases. *Ann Neurol.* 2016;79(6):983-990. doi:https://doi.org/10.1002/ana.24656
35. Stefansson H, Helgason A, Thorleifsson G, et al. A common inversion under selection in Europeans. *Nat Genet.* 2005;37(2):129-137. doi:10.1038/ng1508
36. Valenzuela MJ, Sachdev P. Brain reserve and dementia: a systematic review. *Psychol Med.* 2006;36(4):441-454. doi:10.1017/S0033291705006264
37. Pool LR, Weuve J, Wilson RS, Bültmann U, Evans DA, Mendes de Leon CF. Occupational cognitive requirements and late-life cognitive aging. *Neurology.* 2016;86(15):1386-1392. doi:10.1212/WNL.0000000000002569
38. Penney JB, Vonsattel JP, Macdonald ME, Gusella JF, Myers RH. CAG repeat number governs the development rate of pathology in Huntington's disease. *Ann Neurol.* 1997;41(5):689-692. doi:10.1002/ana.410410521
39. Langbehn D, Brinkman R, Falush D, Paulsen J, Hayden M, on behalf of an International Huntington's Disease Collaborative Group. A new model for prediction of the age of onset and penetrance for Huntington's disease based on CAG length. *Clin Genet.* 2004;65(4):267-277. doi:10.1111/j.1399-0004.2004.00241.x
40. Freeborough PA, Fox NC, Kitney RI. Interactive algorithms for the segmentation and quantitation of 3-D MRI brain scans. *Comput Methods Programs Biomed.* 1997;53(1):15-25. doi:10.1016/S0169-2607(97)01803-8
41. Hobbs NZ, Henley SMD, Wild EJ, et al. Automated quantification of caudate atrophy by local registration of serial MRI: Evaluation and application in Huntington's disease. *NeuroImage.* 2009;47(4):1659-1665. doi:10.1016/j.neuroimage.2009.06.003
42. Freeborough PA, Fox NC. Modeling Brain Deformations in Alzheimer Disease by Fluid Registration of Serial 3D MR Images. *J Comput Assist Tomogr.* 1998;22(5):838-843. Accessed December 22, 2021.

https://journals.lww.com/jcat/Abstract/1998/09000/Modeling_Brain_Deformations_in_Alzheimer_Disease.31.aspx

43. Ashburner J, Friston KJ. Voxel-Based Morphometry—The Methods. *NeuroImage*. 2000;11(6):805-821. doi:10.1006/nimg.2000.0582
44. Johnson EB, Byrne LM, Gregory S, et al. Neurofilament light protein in blood predicts regional atrophy in Huntington disease. *Neurology*. 2018;90(8):e717. doi:10.1212/WNL.0000000000005005
45. Hensman Moss DJ, Flower MD, Lo KK, et al. Huntington's disease blood and brain show a common gene expression pattern and share an immune signature with Alzheimer's disease. *Sci Rep*. 2017;7(1):44849. doi:10.1038/srep44849
46. Zuccato C, Cattaneo E. Brain-derived neurotrophic factor in neurodegenerative diseases. *Nat Rev Neurol*. 2009;5(6):311-322. doi:10.1038/nrneurol.2009.54
47. Spires TL, Grote HE, Varshney NK, et al. Environmental Enrichment Rescues Protein Deficits in a Mouse Model of Huntington's Disease, Indicating a Possible Disease Mechanism. *J Neurosci*. 2004;24(9):2270-2276. doi:10.1523/JNEUROSCI.1658-03.2004
48. Swami M, Hendricks AE, Gillis T, et al. Somatic expansion of the Huntington's disease CAG repeat in the brain is associated with an earlier age of disease onset. *Hum Mol Genet*. 2009;18(16):3039-3047. doi:10.1093/hmg/ddp242
49. Ciosi M, Maxwell A, Cumming SA, et al. A genetic association study of glutamine-encoding DNA sequence structures, somatic CAG expansion, and DNA repair gene variants, with Huntington disease clinical outcomes. *EBioMedicine*. 2019;48:568-580. doi:10.1016/j.ebiom.2019.09.020
50. Mouro Pinto R, Arning L, Giordano JV, et al. Patterns of CAG repeat instability in the central nervous system and periphery in Huntington's disease and in spinocerebellar ataxia type 1. *Hum Mol Genet*. 2020;29(15):2551-2567. doi:10.1093/hmg/ddaa139
51. Goold R, Flower M, Moss DH, et al. FAN1 modifies Huntington's disease progression by stabilizing the expanded *HTT* CAG repeat. *Hum Mol Genet*. 2019;28(4):650-661. doi:10.1093/hmg/ddy375
52. Williams-Gray CH, Evans JR, Goris A, et al. The distinct cognitive syndromes of Parkinson's disease: 5 year follow-up of the CamPaIGN cohort. *Brain*. 2009;132(11):2958-2969. doi:10.1093/brain/awp245

Variable	Missing data No (% All participants)							
					Baseline	Visit 2	Visit 3	Visit 4
Total number of participants	229				-			
Male, No (%)	104 (45%)				0			
Age at baseline, mean (SD)	44.9 (10.2)				0			
CAG, median (min – max)	43 (39 – 59)				0			
DBS at baseline, mean (SD)	333.2 (74.2)				0			
Clinical Status at baseline, No (%)	Pre-Manifest 115 (50%)		Motor Manifest 114 (50%)		0			
Education Level, median (min - max)	4 (1, 6)				0			
Occupational Cognitive Demands, Mean (SD)	3.70 (0.87)				10 (4%)			
Verbal IQ, median (min – max)	UK: 33 (4 – 47), CA: 34 (11 – 48) FR: 34 (19 – 43), NL: 39 (16 - 48)				0			
Composite cognitive score, Mean (SD) per visit	-3.85 (3.89)	-3.79 (4.42)	-4.10 (4.52)	-4.23 (4.57)	0	2 (1%)	12 (5%)	35 (15%)
Total GM volume Mean (SD) per visit	0.052 (3.9)	-0.13 (3.9)	-0.17 (3.9)	-0.30 (4.1)	19 (8%)	27 (12%)	54 (24%)	77 (34%)
Caudate Volume Mean (SD) per visit	-0.0012 (0.09)	-0.0070 (0.09)	-0.0114 (0.09)	-0.0231 (0.09)	14 (6%)	22 (10%)	47 (21%)	52 (23%)
UHDRS TMS at baseline median (min – max)	6 (0 - 52)				0			
Visit from baseline (years) mean (SD)	0	0.96 (0.08)	1.99 (0.08)	3.03 (0.10)	0	2 (0.9%)	10 (4%)	28 (12%)
MSH3	Number of participants with 0 3a alleles: 126 1 3a alleles: 71 2 3a alleles: 18		3a allele non carriers: 126 (55%) 3a allele carriers: 89 (39%)		14 (6%)			
FANI	Number of participants with 0 G alleles: 89 1 G alleles: 107 2 G alleles: 17		G carriers (rs2140734) Non carriers: 89 (39%) Carriers: 124 (54%)		16 (7%)			
BDNF	Number of participants with 0 Met66 alleles: 136 1 Met66 alleles: 73		Met66 Non-carriers: 136 (59%) Met66 Carriers: 77 (34%)		16 (7%)			

	2 <i>Met66</i> alleles: 4		
<i>COMT</i>	<i>Number of participants with</i> 0 <i>Met158</i> alleles: 57 1 <i>Met158</i> alleles: 113 2 <i>Met158</i> alleles: 43	Val158 carriers: 170 (74%) Met158 homozygotes: 43 (19%)	16 (7%)
<i>MAPT</i>	<i>Number of participants with</i> 0 <i>H2</i> alleles: 120 1 <i>H2</i> alleles: 78 2 <i>H2</i> alleles: 15	H1 homozygotes: 120 (52%) H2 carriers: 93 (41%)	16 (7%)

Table 1: HD gene-carrier demographics and clinical characteristics

Table 2: Association between intellectual enrichment with cognitive function

Model	Df	AIC	Chisq	P-value
Intellectual Enrichment				
Null model	20	3151.6		
+ Intellectual Enrichment	21	3112.3	41.3	<0.001
+ Intellectual Enrichment by Visit	22	3113.7	0.6	0.452
+ Intellectual Enrichment by DBS	23	3111.9	3.8	0.050
+ Intellectual Enrichment by DBS by Visit	24	3101.4	12.5	<0.001

The null model for intellectual enrichment included age at baseline, site (3 dummy variables) and DBS at baseline with their interaction with Visit, and main effects of sex and use of antipsychotic medication. A quadratic term was also included for Visit, as well as its interaction with DBS.

Table 3: Association between genetic polymorphisms and cognitive function

Model	Df	AIC	Chisq	P-value	P-value Bonferroni cor.
MSH3					
Null model	20	3139.0			
+ MSH3	21	3134.2	6.8	0.009	0.045
+ MSH3 by Visit	22	3129.3	6.8	0.009	0.045
+ MSH3 by DBS	23	3131.1	0.2	0.649	1
+ MSH3 by DBS by Visit	24	3133.1	0.0	0.850	1
FAN1					
Null model	20	3109.3			
+ FAN1	21	3110.7	0.6	0.4223	1
+ FAN1 by Visit	22	3112.6	0.0	0.895	1
+ FAN1 by DBS	23	3113.1	1.6	0.213	1
+ FAN1 by DBS by Visit	24	3113.4	1.7	0.193	0.964
MAPT					
Null model	20	3109.3			
+ MAPT	21	3108.8	2.6	0.110	0.550
+ MAPT by Visit	22	3110.8	0.0	0.988	1
+ MAPT by DBS	23	3107.2	5.5	0.019	0.094
+ MAPT by DBS by Visit	24	3109.2	0.0	0.947	1
COMT					
Null model	20	3109.3			
+ COMT	21	3110.8	0.5	0.488	1
+ COMT by Visit	22	3111.2	1.6	0.201	1
+ COMT by DBS	23	3112.6	0.5	0.462	1
+ COMT by DBS by Visit	24	3112.2	2.4	0.120	0.601
BDNF					
Null model	20	3109.3			
+ BDNF	21	3111.2	0.1	0.706	1
+ BDNF by Visit	22	3107.1	6.1	0.014	0.068
+ BDNF by DBS	23	3109.0	0	0.889	1
+ BDNF by DBS by Visit	24	3110.9	0.1	0.741	1

The null model included age at baseline, site (3 dummy variables), DBS at baseline with their interaction with Visit, sex and use of antipsychotic medication. A quadratic term was also included for Visit, as well as its interaction with DBS. P-values were corrected for 5 independent comparisons using Bonferroni correction.

Table 4: Interaction between intellectual enrichment and genetic polymorphisms on cognitive function

Model	Df	AIC	Chisq	P-value	P-value Bonferroni cor.
MSH3					
Null model	24	2931.8			
+ MSH3 by Intellectual Enrichment	25	2933.1	0.7	0.404	1
+ MSH3 by Intellectual Enrichment by Visit	26	2933.9	1.1	0.286	1
FAN1					
Null model	24	2910.6			
+ FAN1 by Intellectual Enrichment	25	2912.4	0.2	0.679	1
+ FAN1 by Intellectual Enrichment by Visit	26	2914.4	0.0	0.833	1
MAPT					
Null model	24	2911.5			
+ MAPT by Intellectual Enrichment	25	2913.5	0.0	0.895	1
+ MAPT by Intellectual Enrichment by Visit	26	2915.5	0.0	0.894	1
COMT					
Null model	24	2910.2			
+ COMT by Intellectual Enrichment	25	2912.2	0.0	0.960	1
+ COMT by Intellectual Enrichment by Visit	26	2914.0	0.2	0.630	1
BDNF					
Null model	24	2907.6			
+ BDNF by Intellectual Enrichment	25	2902.1	7.5	0.006	0.031
+ BDNF by Intellectual Enrichment by Visit	26	2903.8	0.2	0.627	1

The null model included intellectual enrichment, the genetic polymorphism, age at baseline, site (3 dummy variables), DBS at baseline with their interaction with Visit, sex and use of antipsychotic medication. A quadratic term was also included for Visit, as well as its interaction with DBS. P-values were corrected for 5 independent comparisons using Bonferroni correction.

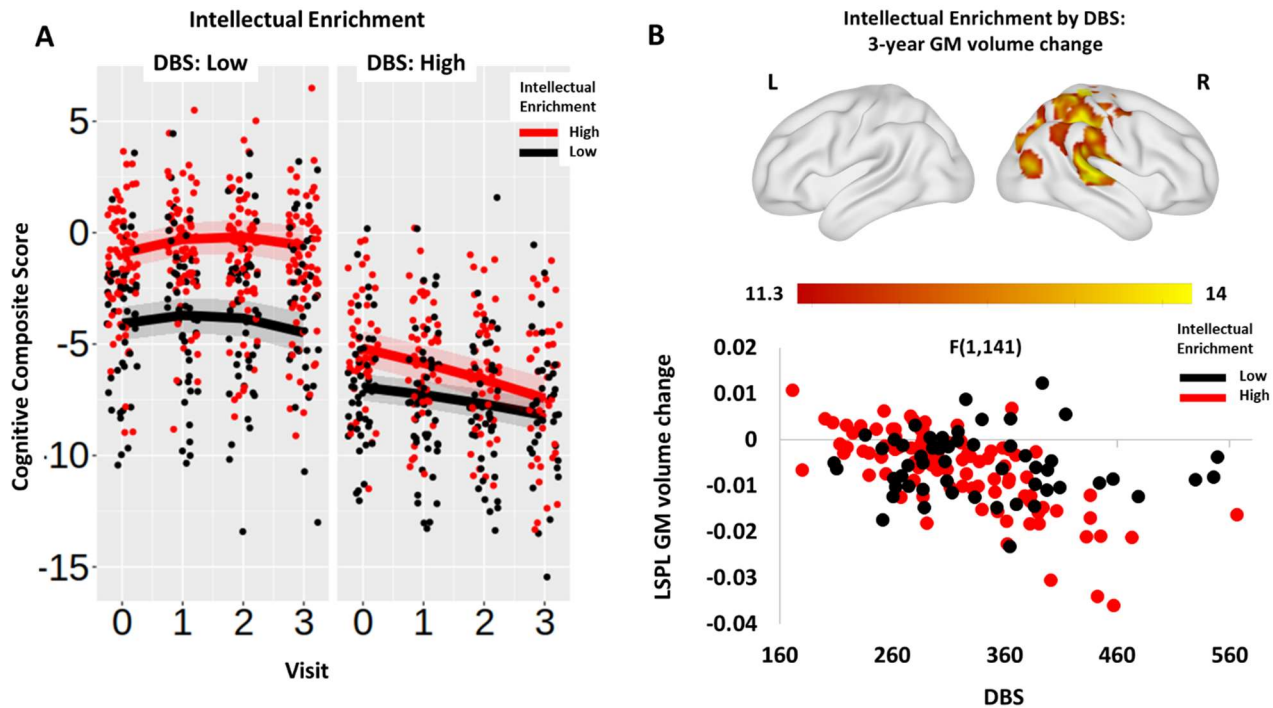


Figure 1: Association between intellectual enrichment and DBS with global cognitive function (A) and 3-year GM volume change (B). In (A) regression lines are generated from the model at high (1SD above mean; red) and low (1SD below mean; black) intellectual enrichment. For visualization purposes results are split into high (above mean) and low (below mean) DBS. Bands around the regression lines are 95% confidence intervals. Datapoints show the raw data residualized against age, site, sex and use of antipsychotic medication, and have been jittered to minimize overlap. In (B) significant clusters are overlaid on the ICBM152 template mesh (top). Maps are thresholded at $p < 0.001$ uncorrected at voxel level and $p < 0.05$ family-wise error (FWE) corrected at cluster-level. Shown in a scatter plot (bottom) are the extracted values averaged across the significant cluster. For visualization purposes data are grouped by high (above mean - red) and low (below mean - black) intellectually enrichment. Datapoints show the raw data residualized against age, DBS, site, sex and TIV. LSPL = left superior parietal lobe.

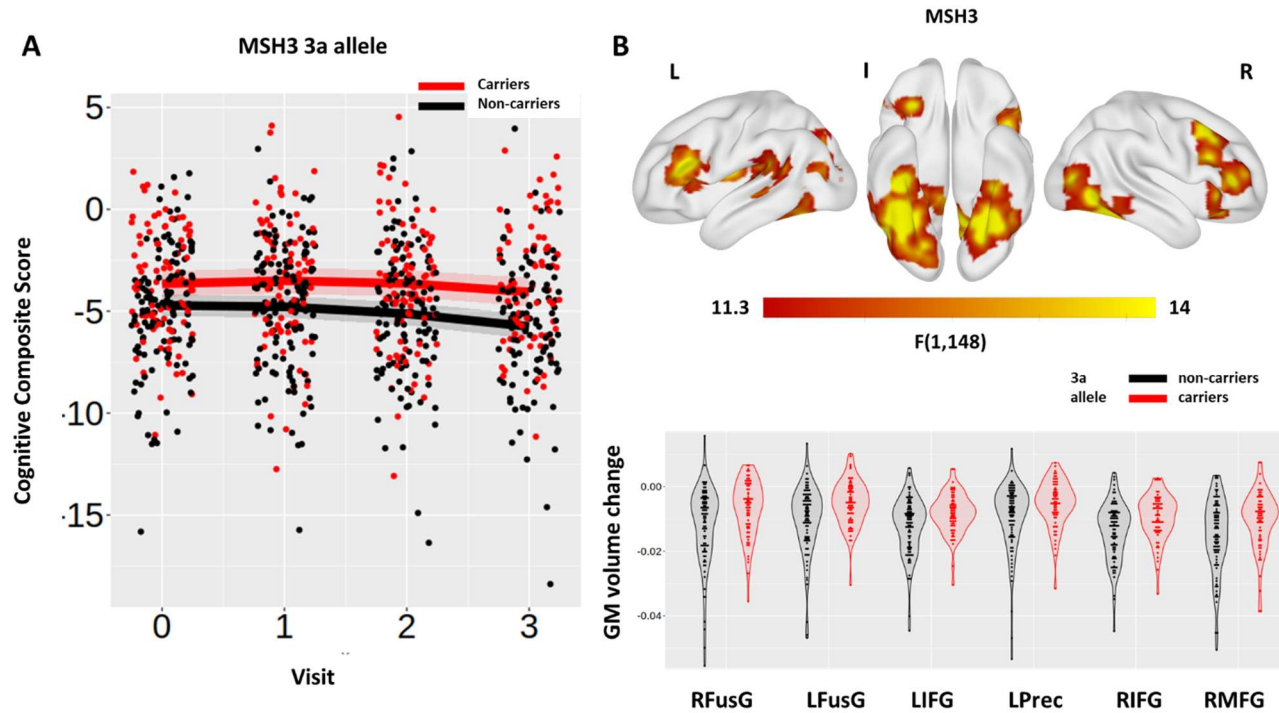


Figure 2: Association between the *MSH3* predictor with global cognitive function (A) and 3-year GM volume change (B). In (A) regression lines show the predicted effect of carrying (red) and not carrying (black) the 3a allele. Bands around the regression lines are 95% confidence intervals. Datapoints show the raw data residualized against age, site, sex and use of antipsychotic medication, and have been jittered to minimize overlap. In (B) significant clusters are overlaid on the ICBM152 template mesh (top). Maps are thresholded at $p < 0.001$ uncorrected at voxel level and $p < 0.05$ family-wise error (FWE) corrected at cluster-level. Shown in violin plots (bottom) are the extracted values averaged across the significant clusters for carriers (red) and non-carriers (black) of the 3a allele. Individual datapoints are shown in black dots. Datapoints show the raw data residualized against age, DBS, site, sex and TIV. RFusG and LFusG= right and left fusiform gyrus; LIFG and RIFG= left and right inferior frontal gyrus; LPrec = left precuneus; RMFG = right middle frontal gyrus.

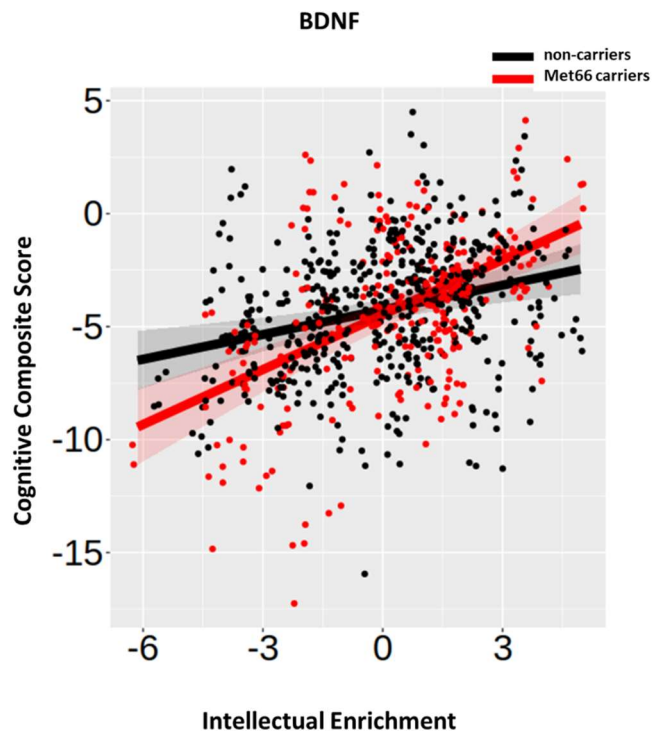


Figure 3: Association between the *BDNF* predictor and intellectual enrichment with global cognitive function. Regression lines show the predicted effect of carrying (red) and not carrying (black) the Met66 allele. Bands around the regression lines are 95% confidence intervals. Datapoints show the raw data residualized against age, site, sex and use of antipsychotic medication.

STROBE statement: Reporting guidelines checklist for cohort, case-control and cross-sectional studies

SECTION	ITEM NUMBER	CHECKLIST ITEM	REPORTED ON PAGE NUMBER:
TITLE AND ABSTRACT			
	1a	Indicate the study's design with a commonly used term in the title or the abstract	4
	1b	Provide in the abstract an informative and balanced summary of what was done and what was found	4
INTRODUCTION			
Background and objectives	2	Explain the scientific background and rationale for the investigation being reported	5
	3	State specific objectives, including any pre-specified hypotheses	5
METHODS			
Study design	4	Present key elements of study design early in the paper	6
Setting	5	Describe the setting, locations, and relevant dates, including periods of recruitment, exposure, follow-up, and data collection	6
Participants	6a	Cohort study—Give the eligibility criteria, and the sources and methods of selection of participants. Describe methods of follow-up Case-control study—Give the eligibility criteria, and the sources and methods of case ascertainment and control selection. Give the rationale for the choice of cases and controls Cross-sectional study—Give the eligibility criteria, and the sources and methods of selection of participants	6
	6b	Cohort study—For matched studies, give matching criteria and number of exposed and unexposed Case-control study—For matched studies, give matching criteria and the number of controls per case Variables	
Variables	7	Clearly define all outcomes, exposures, predictors, potential confounders, and effect modifiers. Give diagnostic criteria, if applicable	6-10
Data sources/measurements	8*	For each variable of interest, give sources of data and details of methods of assessment	6-10

SECTION	ITEM NUMBER	CHECKLIST ITEM	REPORTED ON PAGE NUMBER:
		(measurement). Describe comparability of assessment methods if there is more than one group.	
Bias	9	Describe any efforts to address potential sources of bias.	NA
Study size	10	Explain how the study size was arrived at	NA
Quantitative variables	11	Explain how quantitative variables were handled in the analyses. If applicable, describe which groupings were chosen and why.	6-10
Statistical methods	12a	Describe all statistical methods, including those used to control for confounding	10
	12b	Describe any methods used to examine subgroups and interactions	10
	12c	Explain how missing data were addressed	6-7, 10
	12d	Cohort study—If applicable, explain how loss to follow-up was addressed Case-control study—If applicable, explain how matching of cases and controls was addressed Cross-sectional study—If applicable, describe analytical methods taking account of sampling strategy	NA
	12e	Describe any sensitivity analyses	NA
RESULTS			
Participants	13a	Report numbers of individuals at each stage of study—eg numbers potentially eligible, examined for eligibility, confirmed eligible, included in the study, completing follow-up, and analysed	Table 1
	13b	Give reasons for non-participation at each stage	NA
	13c	Consider use of a flow diagram	NA
Descriptive Data	14a	Give characteristics of study participants (eg demographic, clinical, social) and information on exposures and potential confounders	Table 1
	14b	Indicate number of participants with missing data for each variable of interest	Table 1
	14c	Cohort study—Summarise follow-up time (eg, average and total amount)	Table 1
Outcome Data	15*	Cohort study—Report numbers of outcome events or summary measures over time Case-control study—Report numbers in each exposure category, or summary measures of exposure Cross-sectional study—Report numbers of outcome events or summary measures	11-16

SECTION	ITEM NUMBER	CHECKLIST ITEM	REPORTED ON PAGE NUMBER:
Main Results	16a	Give unadjusted estimates and, if applicable, confounder-adjusted estimates and their precision (e.g. 95% confidence interval). Make clear which confounders were adjusted for and why they were included	11-16, Supplement 4-17
	16b	Report category boundaries when continuous variables were categorized	NA
	16c	If relevant, consider translating estimates of relative risk into absolute risk for a meaningful time period	NA
	16d	Report results of any adjustments for multiple comparisons	10-16
Other Analyses	17a	Report other analyses done—e.g. analyses of subgroups and interactions, and sensitivity analyses	10-16
	17b	If numerous genetic exposures (genetic variants) were examined, summarize results from all analyses undertaken	11-16
	17c	If detailed results are available elsewhere, state how they can be accessed	NA
DISCUSSION			
Key Results	18	Summarise key results with reference to study objectives	16-19
Limitations	19	Discuss limitations of the study, taking into account sources of potential bias or imprecision. Discuss both direction and magnitude of any potential bias	16-19
Interpretation	20	Give a cautious overall interpretation of results considering objectives, limitations, multiplicity of analyses, results from similar studies, and other relevant evidence	16-19
Generalisability	21	Discuss the generalisability (external validity) of the study results Other information	16-19
FUNDING			
	22	Give the source of funding and the role of the funders for the present study and, if applicable, for the original study on which the present article is based	20

*Give information separately for cases and controls in case-control studies and, if applicable, for exposed and unexposed groups in cohort and cross-sectional studies.

Supplementary Methods

Occupational cognitive requirements

As a measure of occupational intellectual activity we used the occupational cognitive requirements of an individual's main occupation. We used the approach developed by Pool and colleagues¹ using O*NET scores, which was shown to predict cognitive function in healthy older adults. Primary occupation at the Visit of assessment or main occupation, if an individual had retired, was matched to O*NET-SOC occupation titles (version 23.2²). We then created a measure of occupational requirements by averaging the scores from the 10 cognitive related O*NET items: processing information, thinking creatively, judging the qualities of things, services or people, evaluating information to determine compliance with standards, analyzing data or information, making decisions and solving problems, updating and using relevant knowledge, developing objectives and strategies, scheduling work and activities, organizing, planning and prioritizing. Higher scores indicate higher cognitive requirements. Non-paid occupations such as housewife or students are not included in O*NET and were not given a score. They were 3 such cases in our cohort. In 7 cases it was not possible to find a clear match with O*NET occupation titles, because the occupation recorded was unclear, e.g. financial expert. These cases were therefore excluded for the analyses.

Control risk factors

The use of antipsychotic medication has been associated with cognitive impairment³. In our cohort, there were 34 (14.8%) participants on antipsychotic medication on their baseline visit. The antipsychotic medication they were prescribed were: olanzapine, risperidone, aripiprazole, quetiapine, sulpiride, tiapride, amisulpride, tetrabenazine, paliperidone, clozapine and pimozide. The use of antipsychotic medication had a negative effect on cognitive function in our cohort ($p < 0.001$; parameter estimate (95% CI) = -0.855 (-1.30, -0.41); supplementary table 15). We therefore included it as a control variable in all the models with cognitive function as an outcome measure.

The presence of depression has also been associated with impaired cognitive function⁴. There were 28 (12.6%) participants who scored greater than 7 on the HADS⁵, indicating the

presence of depression, whereas for 6 participants there was no data on the HADS. The presence of depression was not a significant predictor of cognitive function in our cohort ($p > 0.05$; see supplementary table 15).

Lastly, we examined ApoE to test for concurrent risk of Alzheimer's dementia (AD) in e4 allele carriers in our cohort⁶. To determine APoE alleles in the Track-HD cohort rs429358 and rs7412 were imputed in Minimac4 using HRC.r1-1.GRCh37. A binary variable was created contrasting carriers and non-carriers of the detrimental e4 allele. There were 5 ambiguous cases in our cohort, which were either e2/e4 or e1/e3, and 16 participants with missing data. These were excluded from our analyses. In total, there were 60 (28.8%) e4 allele carriers in our cohort. Analyses testing for the effect of carrying the e4 allele on cognitive function in our cohort showed that it was not a significant predictor ($p > 0.09$; supplementary Table 15) and was therefore not included in any analyses.

Supplementary Tables

Supplementary Table 1: Control group demographics

Characteristic	
Total number at baseline	123
Male, No (%)	55 (45%)
Age at baseline, mean (SD)	46.1 (10.3)
Education Level, median (min - max)	4 (1, 6)
Verbal IQ, median (min – max)	38 (9 – 50)
SDMT at baseline median (min – max)	54 (30– 78)

Supplementary Table 2: Coding of binary genetic predictors

Variant	Gene being tagged	Homozygote minor allele and predictor code	Heterozygote and predictor code	Homozygote major allele and predictor code
rs2140734	<i>FANI</i>	GG: 1	TG: 1	TT: 0
	<i>MSH3</i>	3a3a: 1	3aXa: 1	XaXa:0
rs9468	<i>MAPT</i>	CC (H2H2): 1	CT (H2H1): 1	TT (H1H1): 0
rs4680	<i>COMT</i>	AA (Met158Met): 1	AG (Val158Met): 0	GG (Val158Val): 0
rs6265	<i>BDNF</i>	TT (Met66Met): 1	TC (Met66Val): 1	CC (Val66Val): 0

Table showing how the different genetic predictors coded the different combination of alleles. Xa: stands for 6a, 7a or 8a alleles.

Supplementary Table 3: Regression coefficients for intellectual enrichment and DBS model with cognitive function as outcome variable

Parameter	Estimate	SE	DF	T-value	P-value
Intercept	-4.19400	0.37410	220.9	-11.212	<0.001
Visit	0.23080	0.12320	604.9	1.873	0.061
Visit ²	-0.14450	0.03317	425.0	-4.357	<0.001
DBS	-0.02394	0.00246	232.8	-9.746	<0.001
Age	-0.13680	0.01735	221.4	-7.889	<0.001
Site - London	1.33400	0.48640	217.2	2.742	0.007
Site - Paris	0.19150	0.49300	221.7	0.388	0.698
Site - Vancouver	0.59340	0.48070	217.6	1.234	0.218
Sex - Male	-0.58060	0.35320	217.4	-1.644	0.102
Antipsychotic medication	-0.84600	0.21840	742.8	-3.874	<0.001
Intellectual Enrichment	0.52510	0.07620	217.7	6.890	<0.001
Intellectual Enrichment by DBS	-0.00207	0.00101	217.9	-2.052	0.041
Visit by Intellectual Enrichment	-0.01167	0.01713	213.4	-0.681	0.497
Visit by Intellectual Enrichment by DBS	-0.00083	0.00023	225.1	-3.596	<0.001
Visit by Age	-0.00588	0.00376	201.8	-1.562	0.120
Visit by DBS	-0.00802	0.00143	525.8	-5.626	<0.001
Visit by Site - London	-0.19400	0.10720	205.7	-1.810	0.072
Visit by Site - Paris	-0.01218	0.10760	203.7	-0.113	0.910
Visit by Site - Vancouver	-0.21800	0.10620	212.0	-2.053	0.041
Visit ² by DBS	0.00141	0.00045	429.9	3.119	0.002

Supplementary Table 4: Regression coefficients for model with intellectual enrichment and group terms, with cognitive function as outcome variable

Parameter	Estimate	SE	DF	T-value	P-value
Intercept	-3.947837	0.353470	222.5	-11.169	<0.001
Visit	0.307414	0.125318	602.5	2.453	<0.001
Visit ²	-0.152926	0.033323	427.9	-4.589	<0.001
Group	-3.009590	0.269153	234.1	-11.182	<0.001
Age	-0.052558	0.018763	219.1	-2.801	0.006
Site - London	1.466529	0.466580	218.4	3.143	0.002
Site - Paris	0.430566	0.474181	222.7	0.908	0.365
Site - Vancouver	0.380672	0.459623	218.7	0.828	0.408
Sex - Male	-0.820579	0.338105	218.8	-2.427	0.016
Antipsychotic medication	-0.865641	0.218431	747.2	-4.589	<0.001
Intellectual Enrichment	0.507534	0.074440	218.7	6.818	<0.001
Intellectual Enrichment by Group	0.010694	0.103148	218.4	0.104	0.918
Visit by Intellectual Enrichment	-0.009345	0.018207	217.7	-0.513	0.608
Visit by Intellectual Enrichment by Group	-0.004113	0.025552	216.4	-0.161	0.872
Visit by Age	0.003780	0.004437	205.9	0.852	0.395
Visit by Group	-0.580852	0.152329	550.1	-3.813	<0.001
Visit by Site - London	-0.201426	0.112600	212.0	-1.789	0.075
Visit by Site - Paris	0.001570	0.113417	210.6	0.014	0.989
Visit by Site - Vancouver	-0.269283	0.110897	217.8	-2.428	0.016
Visit ² by Group	0.067339	0.047191	428.4	1.427	0.154

Supplementary Table 5: Association between intellectual enrichment and *MSH3* with brain volume

Model	Df	AIC	Chisq	P-value	P-value Bonferroni cor.
Intellectual Enrichment					
Outcome measure: Caudate Volume					
Null model	17	-4395.5			
+ Intellectual Enrichment	18	-4394.6	1.1	0.293	0.586
+ Intellectual Enrichment by Visit	19	-4392.6	0.0	0.975	1
+ Intellectual Enrichment by DBS	20	-4397.0	6.4	0.012	0.024
+ Intellectual Enrichment by DBS by Visit	21	-4395.8	0.8	0.357	0.714
Outcome measure: Total GM volume					
Null model	19	639.3			
+ Intellectual Enrichment	20	641.3	0.0	0.913	1
+ Intellectual Enrichment by Visit	21	643.2	0.0	0.907	1
+ Intellectual Enrichment by DBS	22	642.6	2.6	0.106	0.212
+ Intellectual Enrichment by DBS by Visit	23	640.8	3.8	0.051	0.102
MSH3					
Outcome measure: Caudate Volume					
Null model	17	-4613.6			
+ MSH3	18	-4614.0	2.4	0.119	0.239
+ MSH3 by Visit	19	-4616.2	4.2	0.041	0.082
+ MSH3 by DBS	20	-4614.4	0.2	0.641	1
+ MSH3 by DBS by Visit	21	-4612.4	0.0	0.940	1
Outcome measure: Total GM volume					
Null model	19	654.6			
+ MSH3	20	656.4	0.2	0.650	1
+ MSH3 by Visit	21	646.5	11.8	<0.001	0.001
+ MSH3 by DBS	22	648.1	0.4	0.520	1
+ MSH3 by DBS by Visit	23	646.5	3.6	0.058	0.117

The null model included age at baseline, DBS at baseline, site (3 dummy variables), with their interaction with Visit, and the main effect of sex. The total GM volume models also included a quadratic term for Visit, as well as its interaction with DBS. P-values were Bonferroni corrected for two independent comparisons.

Supplementary Table 6: Regression coefficients for intellectual enrichment and DBS model with caudate volume as outcome variable

Parameter	Estimate	SE	DF	T-value	P-value
Intercept	-0.01627	0.00970	205.1	-1.676	0.095
Visit	-0.01023	0.00050	193.9	-20.469	<0.001
DBS	-0.00070	0.00010	205.0	-10.848	<0.001
Age	-0.00281	0.00050	205.0	-6.083	<0.001
Site - London	0.02763	0.01260	205.0	2.189	0.030
Site - Paris	0.05614	0.01300	205.0	4.323	<0.001
Site - Vancouver	-0.00268	0.01270	205.0	-0.210	0.834
Sex - Male	-0.02350	0.00930	204.9	-2.559	0.012
Intellectual Enrichment	0.00208	0.00200	205.0	1.041	0.299
Intellectual Enrichment by DBS	-0.00007	0.00003	205.0	-2.552	0.011
Visit by Intellectual Enrichment	0.000003	0.00010	195.0	0.031	0.975
Visit by Age	0.00016	0.00003	190.0	6.254	<0.001
Visit by DBS	-0.00002	0.000003	187.0	-6.255	<0.001
Visit by Site - London	0.00111	0.00070	186.3	1.619	0.107
Visit by Site – Paris	0.00076	0.00070	189.0	1.059	0.291
Visit by Site - Vancouver	-0.00055	0.00070	192.2	-0.789	0.431

Supplementary Table 7: Regression coefficients for intellectual enrichment and group model with caudate volume as outcome variable

Parameter	Estimate	SE	DF	T-value	P-value
Intercept	0.04489	0.01089	205.6	4.123	<0.001
Visit	-0.00860	0.00056	188.0	-15.329	<0.001
Group	-0.10450	0.01057	205.0	-9.884	<0.001
Age	-0.00072	0.00054	205.1	-1.346	0.180
Site - London	0.03067	0.01304	205.0	2.353	0.020
Site - Paris	0.06290	0.01343	205.0	4.683	<0.001
Site - Vancouver	-0.01060	0.01309	205.1	-0.810	0.419
Sex - Male	-0.03177	0.00410	204.8	-3.357	<0.001
Intellectual Enrichment	0.00288	0.00314	206.5	0.916	0.360
Intellectual Enrichment by Group	-0.00160	0.00410	205.1	-0.389	0.698
Visit by Intellectual Enrichment	0.00008	0.00011	194.3	0.066	0.947
Visit by Age	0.00021	0.00003	187.4	7.337	<0.001
Visit by Group	-0.00296	0.00057	184.4	-5.192	<0.001
Visit by Site - London	0.00121	0.00071	186.3	1.703	0.090
Visit by Site – Paris	0.00091	0.00073	188.4	1.237	0.217
Visit by Site - Vancouver	-0.00088	0.00072	191.3	-1.231	0.220

Supplementary Table 8: VBM results for intellectual enrichment and *MSH3*

Region with most cluster voxels	Cluster Peak MNI Coordinates			Cluster Peak z-value	No. of Voxels in Cluster	Cluster P-value FWE-corrected
	<i>x</i>	<i>y</i>	<i>z</i>			
Intellectual Enrichment by DBS: baseline						
Left Superior Temporal Gyrus	-50	-36	16	4.42	739	0.027
Thalamus bilaterally	6	-8	4	4.04	1075	0.005
Right Putamen	22	16	-10	3.63	860	0.015
Intellectual Enrichment by DBS: change						
Right Precuneus	18	-62	41	4.63	5080	<0.001
Right Superior Temporal Gyrus	55	-29	9			
Right Postcentral Gyrus	37	-26	40			
Right Superior Parietal Lobe	24	-48	58			
<i>MSH3</i>: baseline						
Right Middle Temporal Gyrus	56	-32	-3	4.75	2156	<0.001
Left Post-Central Gyrus	-44	-30	45	4.33	844	0.015
Right Post-Central Gyrus	57	-18	38	4.25	625	0.048
<i>MSH3</i>: change						
Right Fusiform Gyrus	37	-55	-16	5.18	3700	<0.001
Left Fusiform Gyrus	-32	-55	-14	4.54	3011	<0.001
Left Inferior Frontal Gyrus	-44	27	13	4.51	1520	<0.001
Left Precuneus	-15	-62	37	4.44	1211	0.002
Right Inferior Frontal Gyrus	26	29	-11	4.04	981	0.005
Right Middle Frontal Gyrus	40	18	45	4.16	526	0.049
<i>MSH3</i> by DBS: change						
Left supplementary motor area	-5	14	49	4.43	3897	<0.001
Left inferior frontal gyrus	-40	-26	13	4.39		
Right superior temporal gyrus	52	-10	-6	4.23	1386	0.001

Significant clusters were identified using a threshold $p < 0.001$ voxel-uncorrected; $p < 0.05$ family-wise error (FEW) cluster-corrected. Region labels based on the AAL atlas⁷ using the WFU Pickatlas⁸.

Supplementary Table 9: Regression coefficients for *MSH3* model with cognitive function as outcome variable

Parameter	Estimate	SE	DF	T-value	P-value
Intercept	-4.80200	0.04485	217.3	-10.707	<0.001
Visit	0.21170	0.13120	576.5	1.613	0.107
Visit ²	-0.14060	0.03371	419.8	-4.169	<0.001
DBS	-0.02637	0.00276	229.1	-9.546	<0.001
Age	-0.12280	0.01939	216.2	-6.333	<0.001
Site - London	1.49100	0.55050	213.6	2.708	0.007
Site - Paris	0.70900	0.55300	217.4	1.282	0.201
Site - Vancouver	0.75470	0.55430	213.8	1.362	0.175
Sex - Male	-0.23600	0.39550	214.0	-0.597	0.551
Antipsychotic medication	-1.07000	0.24260	714.5	-4.412	<0.001
<i>MSH3</i> - 3a allele carriers	1.06500	0.39950	215.7	2.666	0.008
Visit by <i>MSH3</i>	-0.21030	0.07973	198.7	2.637	0.009
Visit by Age	-0.00725	0.00389	200.6	-1.865	0.064
Visit by DBS	-0.00747	0.00147	516.9	-5.095	<0.001
Visit by Site - London	-0.23530	0.11170	202.4	-2.107	0.036
Visit by Site - Paris	-0.07850	0.11060	199.9	-0.710	0.479
Visit by Site - Vancouver	-0.22820	0.11260	208.2	-2.028	0.044
Visit ² by DBS	0.00144	0.00046	418.9	3.106	0.002

Supplementary Table 10: Regression coefficients for *MSH3*, *FAN1*, *MAPT* and *COMT* models coding for the number of alleles with cognitive function as outcome variable

Model	Df	AIC	Chisq	P-value	P-value Bonferroni cor.
MSH3					
Null model	20	3139.0			
+ MSH3	21	3135.3	5.7	0.017	0.084
+ MSH3 by Visit	22	3130.6	6.7	0.010	0.049
+ MSH3 by DBS	23	3131.7	0.9	0.337	1
+ MSH3 by DBS by Visit	24	3133.7	0.0	0.855	1
FAN1					
Null model	20	3109.3			
+ FAN1	21	3110.4	0.9	0.936	1
+ FAN1 by Visit	22	3112.2	0.2	0.203	1
+ FAN1 by DBS	23	3113.6	0.6	0.580	1
+ FAN1 by DBS by Visit	24	3110.7	4.9	0.027	0.135
MAPT					
Null model	20	3109.3			
+ MAPT	21	3108.8	2.5	0.114	0.568
+ MAPT by Visit	22	3110.8	0.0	0.926	1
+ MAPT by DBS	23	3109.1	3.7	0.054	0.269
+ MAPT by DBS by Visit	24	3111.1	0.0	0.881	1
COMT					
Null model	20	3109.3			
+ COMT	21	3111.2	0.1	0.789	1
+ COMT by Visit	22	3112.7	0.5	0.461	1
+ COMT by DBS	23	3113.6	1.1	0.299	1
+ COMT by DBS by Visit	24	3115.4	0.2	0.691	1

Supplementary Table 11: Regression coefficients for *MSH3* model with total GM volume as outcome variable

Parameter	Estimate	SE	DF	T-value	P-value
Intercept	0.99730	0.44610	222.5	2.236	0.026
Visit	-0.07065	0.01983	360.1	-3.562	<0.001
Visit ²	-0.03044	0.00385	368.1	-7.914	<0.001
DBS	-0.01376	0.00280	206.0	-4.907	<0.001
Age	-0.20420	0.02022	205.0	-10.100	<0.001
Site - London	-0.75250	0.56470	204.6	-1.333	0.184
Site - Paris	-0.65440	0.56400	205.2	-1.160	0.247
Site - Vancouver	-0.11330	0.58070	206.7	-0.195	0.846
Sex - Male	-1.58400	0.35710	206.6	-4.436	<0.001
<i>MSH3</i> - 3a allele carriers	0.17100	0.36380	209.1	0.470	0.639
Visit by Age	-0.00438	0.00085	197.8	-5.135	<0.001
Visit by DBS	-0.00049	0.00019	535.3	-2.565	0.011
Visit by Site - London	0.00604	0.02316	194.7	0.261	0.795
Visit by Site - Paris	-0.01008	0.02335	199.3	-0.432	0.667
Visit by Site - Vancouver	-0.01087	0.02427	202.9	-0.448	0.655
Visit ² by DBS	-0.00014	0.00005	365.7	-2.544	0.011

Supplementary Table 12: Regression coefficients for *BDNF* and intellectual enrichment model with cognitive function as outcome variable

Parameter	Estimate	SE	DF	T-value	P-value
Intercept	-4.14600	0.41450	204.8	-10.003	<0.001
Visit	0.31950	0.13200	549.9	2.421	0.016
Visit ²	-0.13430	0.03418	398.2	-3.930	<0.001
DBS	-0.02267	0.00259	216.8	-8.764	<0.001
Age	-0.12860	0.01844	205.3	-6.974	<0.001
Site - London	1.49100	0.49980	202.0	2.984	0.003
Site - Paris	0.38720	0.51440	205.8	0.753	0.452
Site - Vancouver	0.58970	0.50400	202.2	1.170	0.243
Sex - Male	-0.49460	0.36980	202.3	-1.337	0.183
Antipsychotic medication	-0.96160	0.23710	686.7	-4.056	<0.001
Intellectual Enrichment	0.36410	0.10160	202.2	3.583	<0.001
<i>BDNF</i> – Met66 allele carriers	-0.21460	0.37470	202.3	-0.573	0.568
Intellectual Enrichment by <i>BDNF</i>	0.44540	0.16140	203.5	2.760	0.006
Visit by age	-0.00492	0.00410	189.7	-1.201	0.231
Visit by Site - London	-0.23570	0.11290	192.0	-2.088	0.0381
Visit by Site – Paris	-0.27030	0.11450	189.0	-0.236	0.814
Visit by Site - Vancouver	-0.21070	0.11390	196.5	-1.850	0.065
Visit by DBS	-0.00767	0.00150	494.2	-5.098	<0.001
Visit ² by DBS	0.00142	0.00047	397.9	2.998	0.003
Visit by Intellectual Enrichment	-0.01213	0.01836	199.9	-0.661	0.510
Visit by <i>BDNF</i>	-0.18340	0.08423	190.5	-2.177	0.031

Supplementary Table 13: Interaction between intellectual enrichment and *BDNF* on brain volume

Model	Df	AIC	Chisq	P-value	P-value Bonferroni cor.
Caudate volume					
Null model	21	-4335.9			
+ <i>BDNF</i> by Intellectual Enrichment	22	-4334.1	0.2	0.654	1
+ <i>BDNF</i> by Intellectual Enrichment by Visit	23	-4338.1	6.0	0.014	0.029
Total GM volume					
Null model	23	645.7			
+ <i>BDNF</i> by Intellectual Enrichment	24	646.9	0.8	0.376	0.751
+ <i>BDNF</i> by Intellectual Enrichment by Visit	25	637.0	11.9	<0.001	0.001

The null model included intellectual enrichment, *BDNF*, age at baseline, site (3 dummy variables), DBS at baseline with their interaction with Visit, and sex. For the model with total GM volume as outcome measure a quadratic term was also included for Visit, as well as its interaction with DBS. P-values were corrected for 2 independent comparisons using Bonferroni correction.

Supplementary Table 14: Regression coefficients for the *BDNF* and intellectual enrichment model with caudate volume as outcome variable

Parameter	Estimate	SE	DF	T-value	P-value
Intercept	-0.01151	0.01066	203.2	-1.079	0.2818
Visit	0.01023	0.00053	187.3	-19.405	<0.001
DBS	-0.00067	0.00007	203.0	-10.203	<0.001
Age	0.00272	0.00047	203.0	-5.749	<0.001
Site - London	0.02705	0.01290	203.0	2.097	0.037
Site - Paris	0.05544	0.01320	203.0	4.199	<0.001
Site - Vancouver	-0.00426	0.01301	203.0	-0.327	0.744
Sex - Male	-0.02385	0.00953	202.9	-2.502	0.013
Intellectual Enrichment	0.00143	0.00262	203.0	0.546	0.585
<i>BDNF</i> – Met66 allele carriers	-0.00541	0.00967	203.0	-0.560	0.5762
Intellectual Enrichment by <i>BDNF</i>	0.00247	0.00416	203.0	0.595	0.553
Visit by Age	0.00016	0.00003	188.2	6.395	<0.001
Visit by DBS	-0.00002	0.000004	186.2	-6.539	<0.001
Visit by Site - London	0.00123	0.00068	185.6	1.801	0.073
Visit by Site – Paris	0.00090	0.00071	187.8	1.272	0.205
Visit by Site - Vancouver	-0.00056	0.00069	191.0	-0.811	0.419
Visit by Intellectual Enrichment	-0.00021	0.00014	187.7	-1.518	0.131
Visit by <i>BDNF</i>	-0.00038	0.00052	191.8	-0.727	0.468
Visit by Intellectual Enrichment by <i>BDNF</i>	0.00057	0.00023	203.8	2.466	0.015

Supplementary Table 15: Regression coefficients for the *BDNF* and intellectual enrichment model with total GM volume as outcome variable

Parameter	Estimate	SE	DF	T-value	P-value
Intercept	1.12900	0.47320	207.1	2.387	0.018
Visit	-0.07176	0.02103	332.0	-3.412	0.001
Visit ²	-0.03101	0.00406	347.5	-7.645	<0.001
DBS	-0.01205	0.00298	197.2	-4.042	<0.001
Age	-0.21060	0.02171	198.2	-9.700	<0.001
Site - London	-0.69290	0.58020	197.1	-1.194	0.234
Site - Paris	-0.64750	0.59370	197.3	-1.091	0.277
Site - Vancouver	-0.10070	0.59790	198.8	-0.168	0.866
Sex - Male	-1.48000	0.37870	194.5	-3.909	<0.001
Intellectual Enrichment	-0.04635	0.11830	199.2	-0.392	0.696
<i>BDNF</i> – Met66 allele carriers	-0.26430	0.43790	198.3	-0.603	0.547
Intellectual Enrichment by <i>BDNF</i>	0.16480	0.18900	197.8	0.872	0.384
Visit by Age	-0.00460	0.00088	186.9	-5.204	<0.001
Visit by DBS	-0.00042	0.00020	503.9	-2.075	0.039
Visit by Site - London	0.01646	0.02304	183.8	0.714	0.476
Visit by Site – Paris	-0.00322	0.02381	187.2	-0.135	0.893
Visit by Site - Vancouver	-0.00675	0.02426	190.5	-0.278	0.781
Visit by Intellectual Enrichment	-0.01016	0.00459	178.6	-2.212	0.028261
Visit by <i>BDNF</i>	-0.01294	0.01752	187.0	-0.738	0.461
Visit by Intellectual Enrichment by <i>BDNF</i>	0.02680	0.00763	193.0	3.511	<0.001
Visit ² by DBS	-0.00015	0.00006	347.7	-2.701	0.007253

Supplementary Table 15: Association between control risk factors and cognitive function

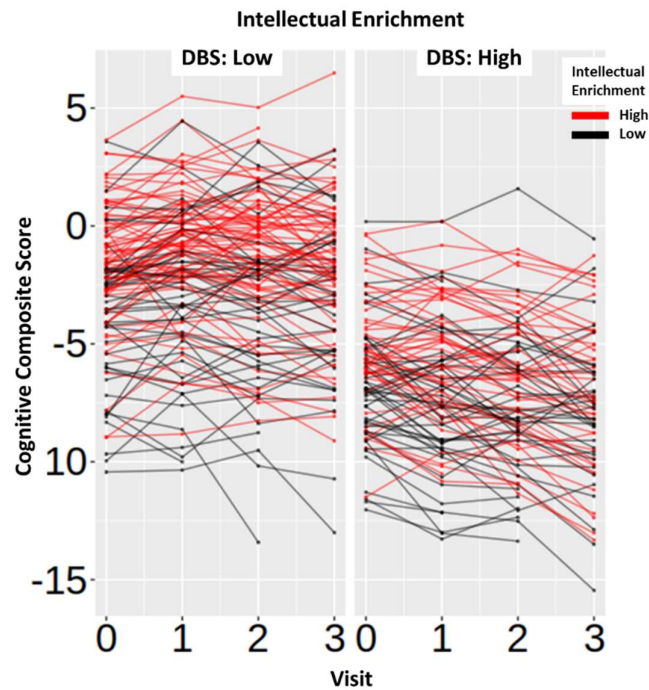
Model	Df	AIC	Chisq	P-value
Antipsychotic medication				
Null model	19	3328.3		
+ Antipsychotic medication	20	3316.2	14.1	<0.001
+ Antipsychotic medication by Visit	21	3316.6	1.6	0.200
Depression				
Null model	19	3242.3		
+ Depression	20	3240.6	3.8	0.052
+ Depression by Visit	21	3242.5	0.0	0.913
ApoE e3 allele carriers				
Null model	19	3046.3		
+ Intellectual Enrichment	20	3048.3	0.1	0.794
+ Intellectual Enrichment by Visit	21	3047.4	2.8	0.092

The null model included age at baseline, DBS at baseline, site (3 dummy variables) with their interaction with Visit, and sex. A quadratic term was also included for Visit, as well as its interaction with DBS.

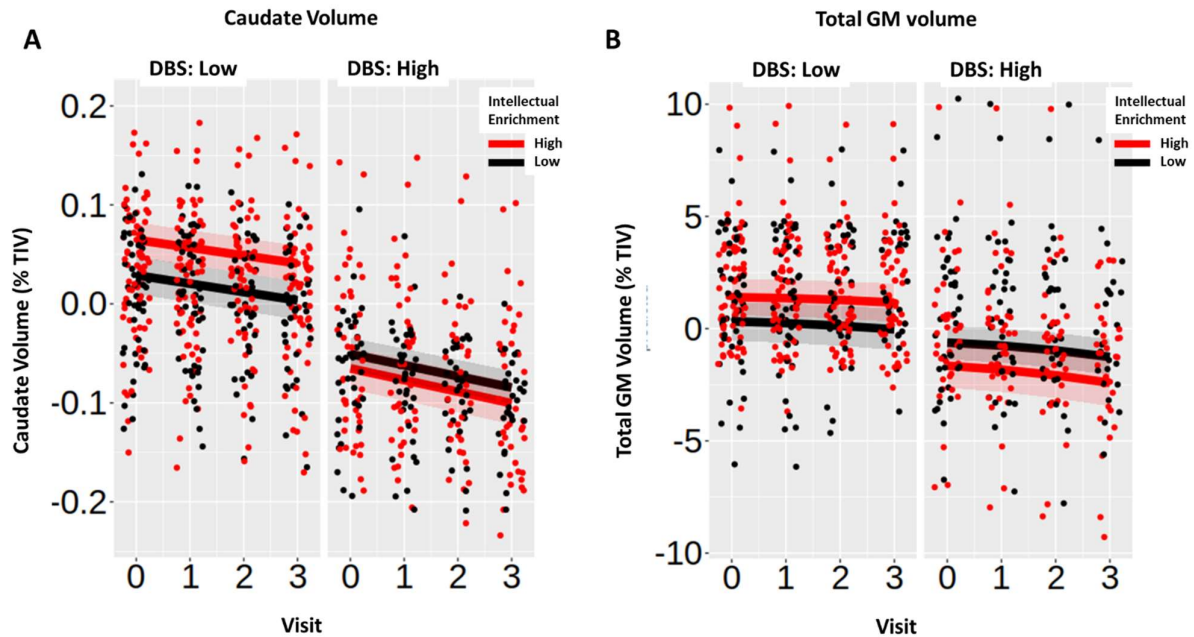
References

1. Pool LR, Weuve J, Wilson RS, Bültmann U, Evans DA, Mendes de Leon CF. Occupational cognitive requirements and late-life cognitive aging. *Neurology*. 2016;86(15):1386-1392. doi:10.1212/WNL.0000000000002569
2. Peterson NG, Mumford MD, Borman WC, Jeanneret PR, Fleishman EA, eds. *An Occupational Information System for the 21st Century: The Development of O*NET*. American Psychological Association; 1999:xii, 336. doi:10.1037/10313-000
3. Vigen CLP, Mack WJ, Keefe RSE, et al. Cognitive Effects of Atypical Antipsychotic Medications in Patients With Alzheimer's Disease: Outcomes From CATIE-AD. *Am J Psychiatry*. 2011;168(8):831-839. doi:10.1176/appi.ajp.2011.08121844
4. Smith MM, Mills JA, Epping EA, Westervelt HJ, Paulsen JS. Depressive Symptom Severity is Related to Poorer Cognitive Performance in Prodromal Huntington Disease. *Neuropsychology*. 2012;26(5):664-669. doi:10.1037/a0029218
5. Zigmond AS, Snaith RP. The Hospital Anxiety and Depression Scale. *Acta Psychiatr Scand*. 1983;67(6):361-370. doi:10.1111/j.1600-0447.1983.tb09716.x
6. Harris SE, Deary IJ. The genetics of cognitive ability and cognitive ageing in healthy older people. *Trends Cogn Sci*. 2011;15(9):388-394. doi:10.1016/j.tics.2011.07.004
7. Tzourio-Mazoyer N, Landeau B, Papathanassiou D, et al. Automated Anatomical Labeling of Activations in SPM Using a Macroscopic Anatomical Parcellation of the MNI MRI Single-Subject Brain. *NeuroImage*. 2002;15(1):273-289. doi:10.1006/nimg.2001.0978
8. Maldjian JA, Laurienti PJ, Kraft RA, Burdette JH. An automated method for neuroanatomic and cytoarchitectonic atlas-based interrogation of fMRI data sets. *NeuroImage*. 2003;19(3):1233-1239. doi:10.1016/S1053-8119(03)00169-1

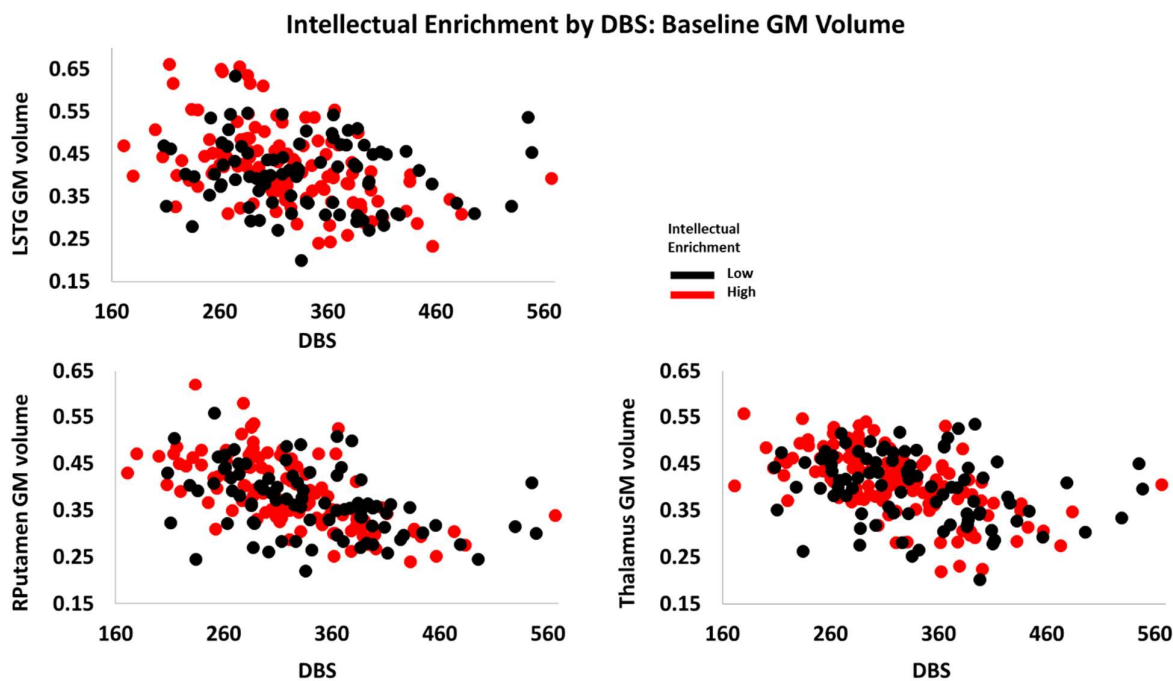
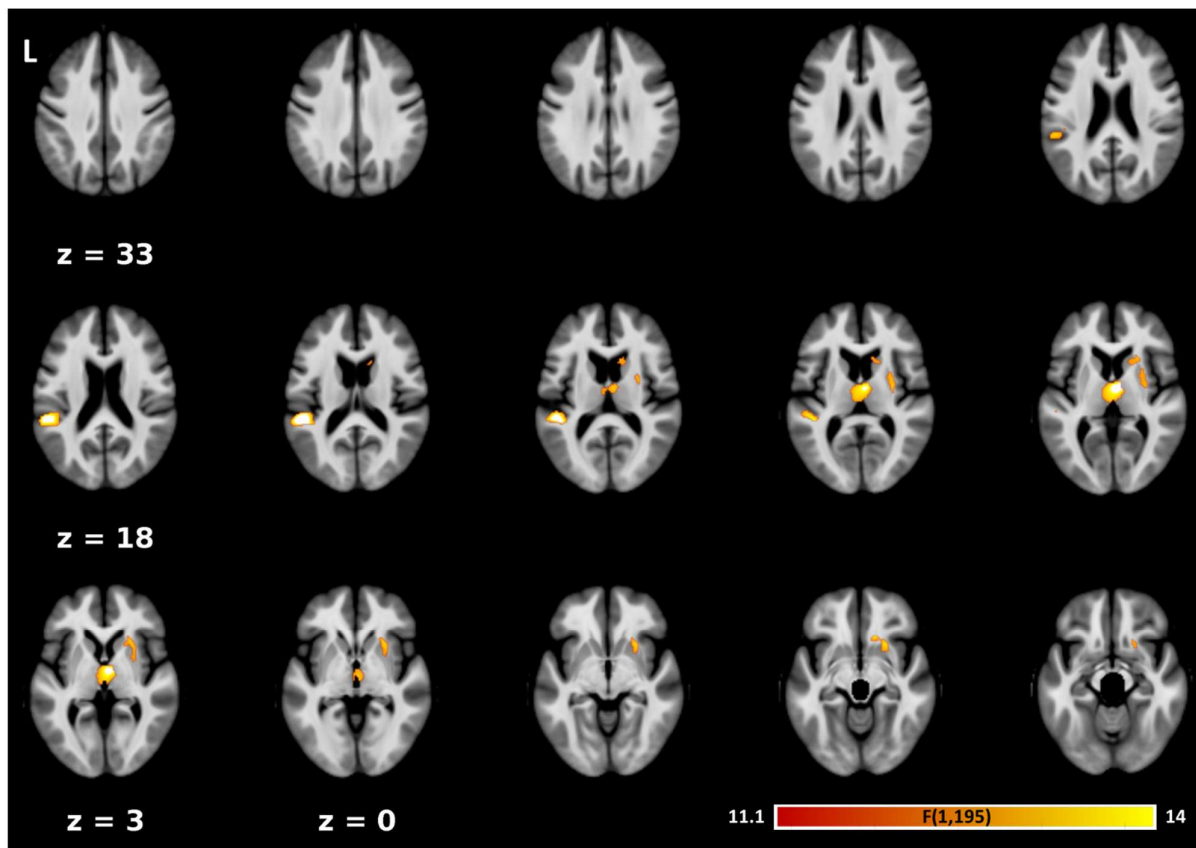
Supplementary Figures



Supplementary Figure 1: Association between intellectual enrichment, DBS and global cognitive function. For visualization purposes results are split into high (above mean) and low (below mean) DBS. Individual lines are drawn for each participant and colour coded for high (above mean; red) and low (below mean; black) intellectual enrichment. Datapoints show the raw data residualized against age, site, sex and use of antipsychotic medication.

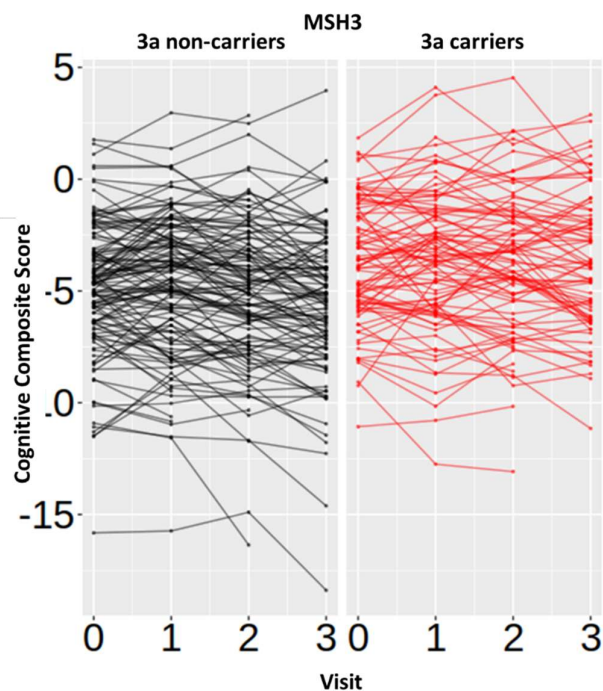


Supplementary Figure 2: Association between intellectual enrichment and DBS with caudate volume (A) and total GM volume (B) as percent of total intracranial volume (TIV). For visualization purposes results are split into high (above mean) and low (below mean) DBS. Regression lines are generated from the mixed linear model at high (1SD above mean; red) and low (1SD below mean; black) intellectual enrichment. Bands around the regression lines are 95% confidence intervals. Datapoints show the raw data residualized against age, site, sex and use of antipsychotic medication, and have been jittered to minimize overlap.

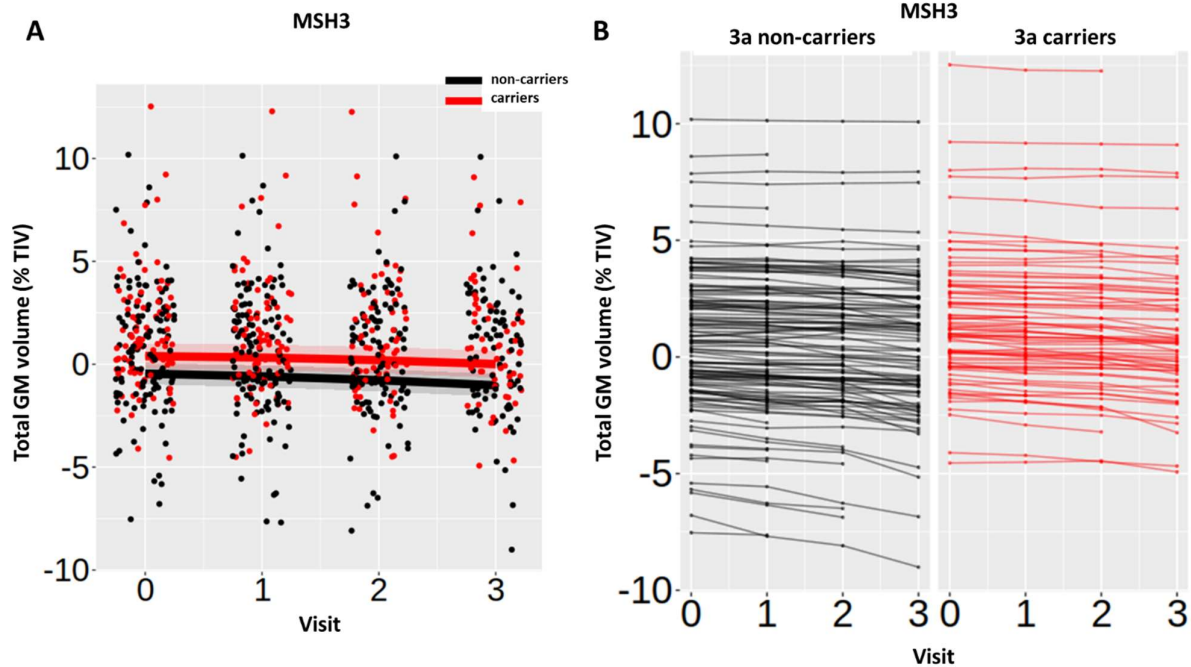


Supplementary Figure 3: Association between intellectual enrichment and DBS with baseline GM volume. Shown on top are significant clusters overlaid on the group template. Maps are thresholded at $p < 0.001$ uncorrected at voxel level and $p < 0.05$ family-wise error (FWE)

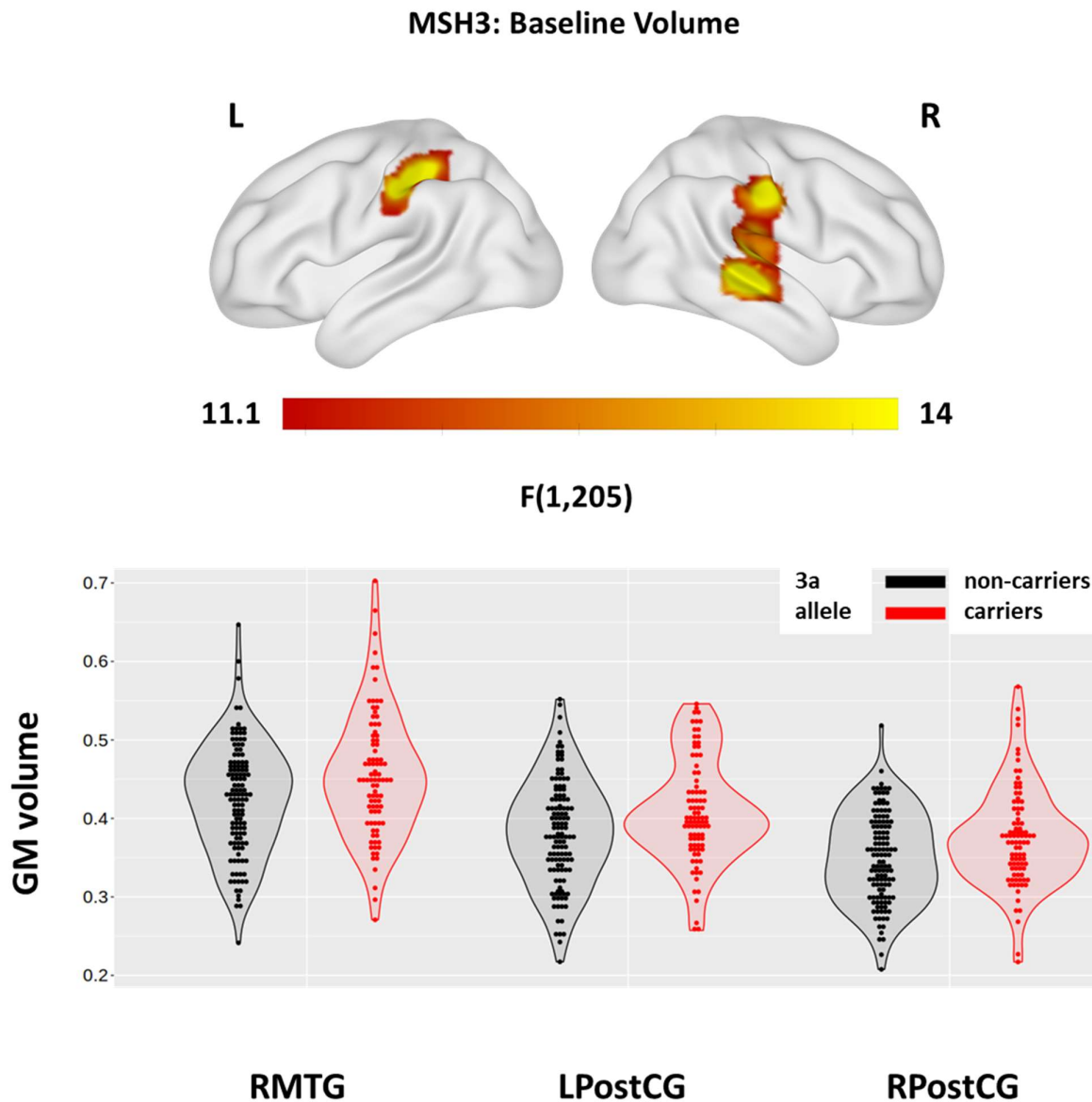
corrected at cluster-level. Shown in a scatter plots (bottom) are the extracted values averaged across the 3 significant clusters. For visualization purposes data are grouped by high (above mean - red) and low (below mean - black) intellectually enrichment. Data have been adjusted for age, site, sex and TIV. LSTG = left superior temporal gyrus.



Supplementary Figure 4: Association between the MSH3 predictor with global cognitive function. For visualization purposes results are shown in separate panels for carriers (right, red) and non-carriers (left, black) of the 3a allele. Individual lines are drawn for each participant. Datapoints show the raw data residualized against age, DBS, site, sex and use of antipsychotic medication.

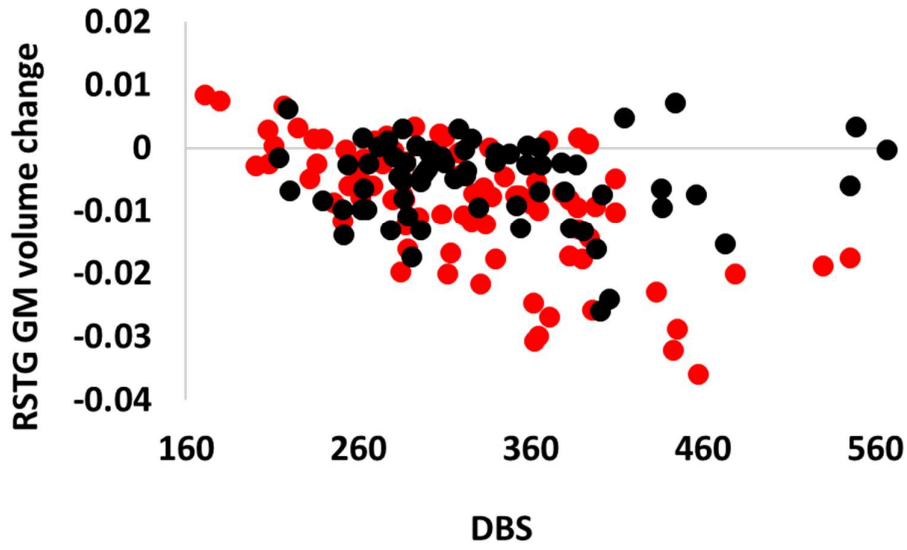
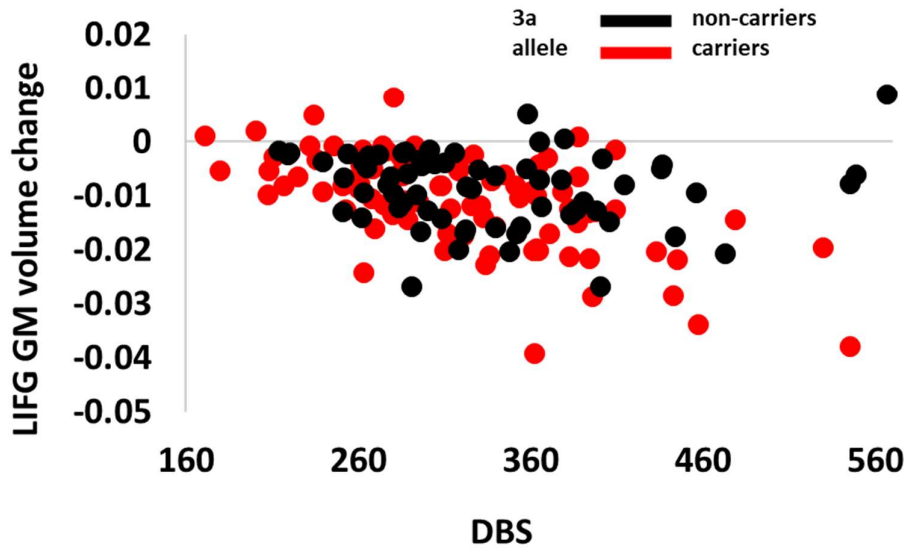
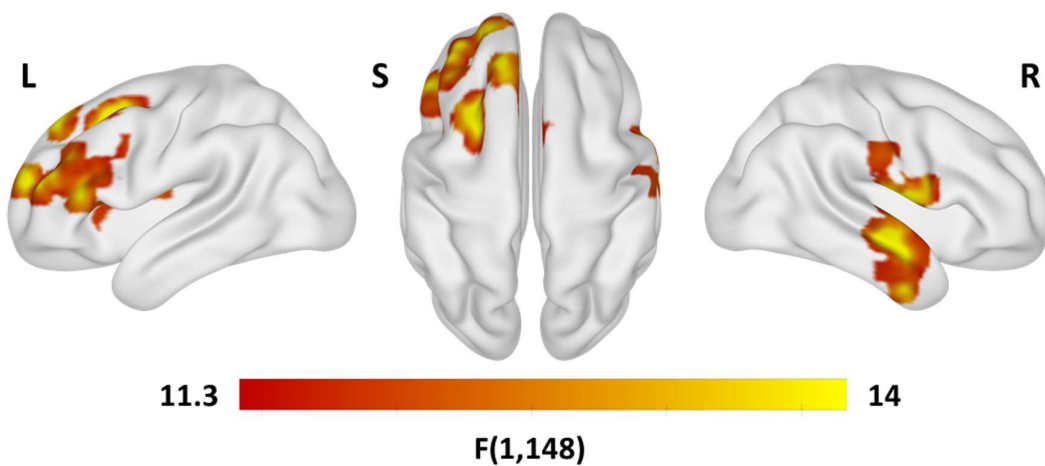


Supplementary Figure 5: Association between the MSH3 predictor with total GM volume as percent TIV. In (A) regression lines are generated from the mixed linear model for carriers (red) and non-carriers (black) of the 3a allele. Bands around the regression lines are 95% confidence intervals. Datapoints have been jittered to minimize overlap. In (B) individual lines are drawn for each participant and colour coded for carriers (right, red) and non-carriers (left, black) of the 3a allele. Datapoints show the raw data residualized against age, DBS, site and sex.

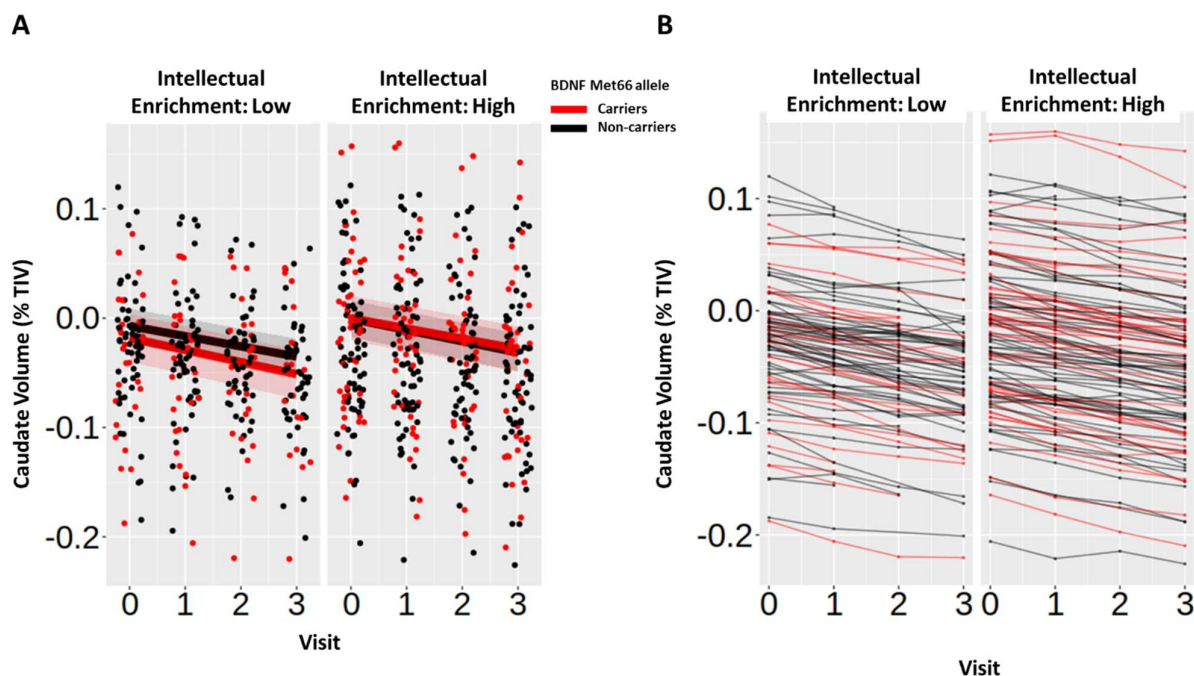


Supplementary Figure 6: Association between the *MSH3* predictor with baseline GM volume. Significant clusters are overlaid on the ICBM152 template mesh (top). Maps are thresholded at $p < 0.001$ uncorrected at voxel level and $p < 0.05$ family-wise error (FWE) corrected at cluster-level. Shown in violin plots (bottom) are the extracted values averaged across the 3 significant clusters for carriers (red) and non-carriers (black) of the 3a allele. Individual datapoints are shown in black dots. Datapoints show the raw data residualized against age, DBS, site, sex and TIV. RMTG = right middle temporal gyrus; LPostCG and RPostCG= left and right postcentral gyrus.

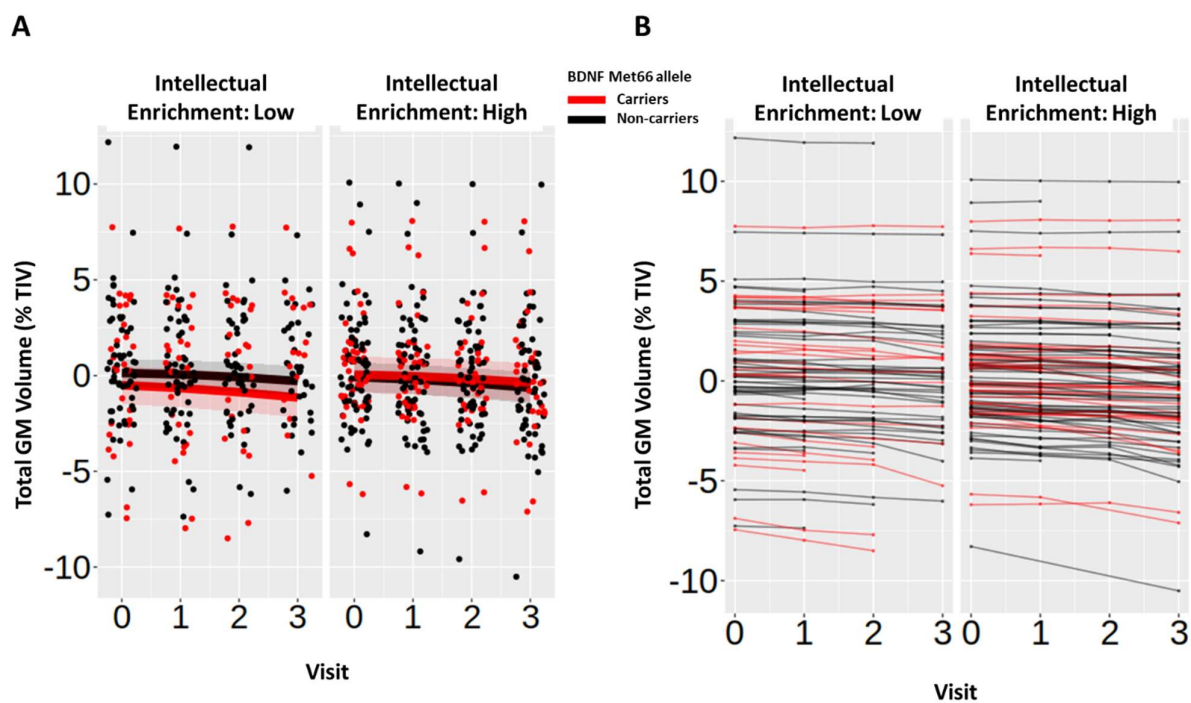
MSH3 by DBS: GM Volume Change



Supplementary Figure 7: Association between the *MSH3* predictor and DBS with 3-year GM volume change (B). Significant clusters are overlaid on the ICBM152 template mesh (top). Maps are thresholded at $p < 0.001$ uncorrected at voxel level and $p < 0.05$ family-wise error (FWE) corrected at cluster-level. Shown in scatter plots (bottom) are the extracted values averaged across the significant clusters for carriers (red) and non-carriers (black) of the 3a allele. Datapoints show the raw data residualized against age, DBS, site, sex and TIV. RSTG = right superior temporal gyrus; LIFG = left and right inferior frontal gyrus.



Supplementary Figure 8: Association between intellectual enrichment and *BDNF* with caudate volume as percent TIV. For visualization purposes results are split into high (above mean) and low (below mean) intellectual enrichment. In (A) regression lines are generated from the mixed linear model for *BDNF* Met66 allele carriers (red) and non-carriers (black). Bands around the regression lines are 95% confidence intervals. Data have been jittered to minimize overlap. In (B) individual lines are drawn for each participant and colour coded for carriers (red) and non-carriers (black) of the Met66 allele. Datapoints in both plots show the raw data residualized against age, DBS, site and sex.



Supplementary Figure 9: Association between intellectual enrichment and *BDNF* with total GM volume as percent TIV. For visualization purposes results are split into high (above mean) and low (below mean) intellectual enrichment. In (A) regression lines are generated from the mixed linear model for *BDNF* Met66 allele carriers (red) and non-carriers (black). Bands around the regression lines are 95% confidence intervals. Data have been jittered to minimize overlap. In (B) individual lines are drawn for each participant and colour coded for carriers (red) and non-carriers (black) of the Met66 allele. Datapoints in both plots show the raw data residualized against age, DBS, site and sex.