

1 **Safety and effectiveness of RBD-specific polyclonal equine F(ab')₂ fragments for the**
2 **treatment of hospitalized patients with severe Covid-19 disease: a retrospective cohort study.**

3 **Diego H. Farizano Salazar^{1¶}, Fernando Achinelli^{1¶}, Mariana Colonna², Lucía Perez³, Analía**
4 **A. Giménez¹, Maria Alejandra Ojeda¹, Susana N. Miranda Puente¹, Lía Sánchez Negrette¹,**
5 **Florencia Cañete¹, Ornela I. Martelotte Ibarra¹, Santiago Sanguinetti², Linus Spatz²,**
6 **Fernando A. Goldbaum^{2,4,5,6}, Carolina Massa², Marta Rivas², Mariana Pichel², Yanina**
7 **Hiriart^{2,4}, Vanesa Zylberman^{2,4}, Sandra Gallego^{4,7}, Brenda Konigheim^{4,7}, Francisco**
8 **Fernandez⁸, Matías Deprati⁸, Ian Roubicek², Diego H. Giunta^{3,4}, Esteban Nannini^{4,9}, Gustavo**
9 **Lopardo^{10,11} and Waldo H. Belloso^{3*}, on behalf of EPIC Study Group ^.**

10 **Affiliations**

11 ^{1.} Hospital de Campaña Escuela Hogar, Corrientes, Corrientes, Argentina

12 ^{2.} Inmunova S.A., Gral. San Martín, Buenos Aires, Argentina

13 ^{3.} Department of Research, Hospital Italiano de Buenos Aires. Ciudad Autónoma de Buenos
14 Aires, Buenos Aires, Argentina.

15 ^{4.} Consejo Nacional de Investigaciones Científicas y Técnicas (CONICET).

16 ^{5.} Fundación Instituto Leloir, IIBBA-CONICET. Ciudad Autónoma de Buenos Aires, Argentina.

17 ^{6.} CRIP - Centro de Rediseño e Ingeniería de Proteínas UNSAM Campus Miguelete. Gral. San
18 Martín, Buenos Aires, Argentina.

19 ^{7.} Instituto de Virología Dr. José María Vanella, Universidad Nacional de Córdoba, Córdoba,
20 Argentina.

21 ^{8.} Laboratorio Elea Phoenix S.A., Los Polvorines, Buenos Aires, Argentina

22 ^{9.} Departamento de Enfermedades Infecciosas, Sanatorio Británico, Rosario, Santa Fe, Argentina.

23 ^{10.} Hospital Municipal Dr. Bernardo Houssay, Florida, Provincia de Buenos Aires, Argentina.

24 ^{11.} Fundación del Centro de Estudios Infectológicos (FUNCEI), Ciudad Autónoma de Buenos
25 Aires, Buenos Aires, Argentina.

26

27 ***Corresponding author** email: waldo.belloso@hospitalitaliano.org.ar (WHB). ORCID ID 0000-
28 0002-7048-7841

29 ^Additional members of this group are listed in Supplementary Appendix.

30 ¶ These authors contributed equally to this work. Author order was determined by mutual
31 agreement.

32

33 **Abstract**

34 Passive immunotherapy has been evaluated as a therapeutic alternative for patients with COVID-
35 19 disease. Equine polyclonal immunotherapy for COVID-19 (EPIC) showed adequate safety and
36 potential efficacy in a clinical trial setting and obtained emergency use authorization in Argentina.

37 We studied its utility in a real world setting with a larger population.

38 *Methods:* We conducted a retrospective cohort study at "Hospital de Campaña Escuela-Hogar" in
39 Corrientes, Argentina, to assess safety and effectiveness of EPIC in hospitalized adults with severe
40 COVID-19 pneumonia. Primary endpoints were 28-days all-cause mortality and safety. Mortality
41 and improvement in modified WHO clinical scale at 14 and 21 days were secondary endpoints.
42 Potential confounder adjustment was made by logistic regression weighted by the inverse of the
43 probability of receiving the treatment (IPTW) and doubly robust approach.

44 *Results:* Clinical records of 395 exposed (EPIC) and 446 non-exposed (Controls) patients admitted
45 between November 2020 and April 2021 were analyzed. Median age was 58 years and 56.8% were
46 males. Mortality at 28 days was 15.7% (EPIC) vs. 21.5% (Control). After IPTW adjustment the
47 OR was 0.66 (95 % CI: 0.46 - 0.96), P= 0.03. The effect was more evident in the subgroup who
48 received two EPIC doses (complete treatment, n=379), OR: 0.58 (95% CI 0.39 to 0.85), P=0.005.
49 Overall and serious adverse events were not significantly different between groups.

50 *Importance:* In this retrospective cohort study, EPIC showed adequate safety and effectiveness in
51 the treatment of hospitalized patients with severe SARS-CoV-2 disease.

52

53

54

55 **1. Introduction**

56

57 From the beginning of the Severe Acute Respiratory Syndrome Coronavirus-2 (SARS-CoV-2)
58 pandemic, different therapeutic approaches have been assessed in randomized controlled trials
59 (RCT) (1). After more than 2 years of pandemic, for hospitalized patients, dexamethasone,
60 remdesivir, tocilizumab, tofacitinib, and baricitinib have shown efficacy in adequately powered
61 clinical trials (2-8). Passive immunotherapy has been widely studied, particularly for patients who
62 have not yet established their specific immune response. To date, convalescent plasma (CP) has
63 shown no effect in the treatment of patients with severe pneumonia. Among ambulatory patients
64 with mild to moderate COVID-19 at high risk for progression to severe disease, neutralizing
65 monoclonal antibodies such as bamlanivimab/etesevimab, casirivimab/imdevimab, and
66 sotrovimab are also included as therapeutic options likewise the administration of
67 nirmatrelvir/ritonavir, 3-day treatment with remdesivir, and molnupiravir (9-12). However, access
68 to these treatments is certainly limited and the appearance and prevalence of the B.1.1.529 variant
69 (Omicron) has threatened the efficacy of most monoclonal antibodies studied to date (13).
70 Effective interventions for the treatment of patients with COVID-19 infection are still urgently
71 needed.

72

73 It has been previously shown that the Receptor Binding Domain (RBD) from the viral spike
74 glycoprotein elicits high titers of neutralizing antibodies (NAbs) against SARS-CoV-2 when used
75 as immunogen in horses (14). Equine polyclonal antibodies (EpAbs) represent a practical and
76 efficient source of NAbs. EpAbs are composed of F(ab')₂ fragments generated by pepsin digestion.
77 We have formerly described the development of an “Equine Polyclonal Immunotherapy for

78 COVID-19” (EPIC) based on equine anti-RBD F(ab[′])₂ fragments, known as INM005 (15). EPIC
79 showed a very high serum neutralization titer against SARS-CoV-2 and its format, devoid of Fc
80 domains, may prove preferable for its capacity to avoid serum sickness reactions and Fc-triggered
81 side effects (15). The EPIC effect was evaluated in a double-blind, randomized, placebo-controlled
82 trial among hospitalized 241 adults with moderate and severe COVID-19 pneumonia in Argentina
83 (16). Even though the primary endpoint (improvement in at least two categories in WHO ordinal
84 clinical scale at day 28) was not achieved (odds ratio [OR]: 1.61%, 95% confidence interval
85 [95%CI]: 0.71 to 3.63, P=0.34), several secondary endpoints were reached: variation in ordinal
86 clinical status during the follow-up period favored EPIC: A) improvement in at least two categories
87 was significantly higher in the EPIC group at days 14 (OR: 0.52, 95% CI: 0.29 to 0.96, P=0.03),
88 and 21 (OR: 0.54, 95% CI: 0.30 to 0.99, P=0.05); B) a significant difference was noted in time to
89 improvement in at least two ordinal categories or hospital discharge: 14.2 (± 0.7) days in the EPIC
90 group and 16.3 (± 0.7) days in the placebo group (hazard ratio: 1.31, 95% CI: 1.0 to 1.74, P=0.05).
91 Mortality at day 28 was 6.8% in the EPIC group and 11.4% in the placebo group (OR 0.57, 95%
92 IC: 0.24 to 1.37). Pre-specified subgroup analyses showed a more pronounced effect of the
93 intervention among severe patients lacking antibody response at baseline.
94 With those findings, the Argentinean National Administration of Drugs, Food, and Medical
95 Technology (ANMAT), approved EPIC for the treatment of moderate or severe SARS-CoV-2
96 hospitalized patients, under special conditions on December 22, 2020 (Provision 9175/20) (17).
97 As required by this approval, the sponsor initiated a prospective nationwide registry of patients
98 with SARS-CoV-2 infection treated with EPIC that has already included more than 10,000
99 patients. Since data were collected on an ongoing basis, we decided to conduct a retrospective
100 cohort analysis in a dedicated COVID-19 hospital that used the product regularly, including
101 patients admitted to the same hospital before EPIC was available for historical comparison.

102 Therefore, the aim of this study was to evaluate the effectiveness and safety of EPIC administration
103 in hospitalized patients with severe COVID-19 in a real-world setting.

104

105 **2. Objectives**

106 The objectives of the study were to compare all-cause mortality at 28 days and the proportion of
107 serious and total adverse events during hospitalization between the exposed and unexposed groups.

108

109 **3. Study Design and location**

110 A retrospective cohort study was performed including adult patients hospitalized for severe
111 pneumonia with confirmed diagnosis of SARS-CoV-2. The date of hospital admission was
112 considered as the date of admission into the cohort for both groups. All patients were evaluated in
113 a structured manner at days 14, 21 and 28 from inclusion.

114 All cohort participants were enrolled at the “Hospital de Campaña Escuela-Hogar” (HCEH), a
115 single monovalent site established as a reference center for the diagnosis and treatment of patients
116 with COVID-19 for the whole province in Corrientes city, located in the northeastern region of
117 Argentina. HCEH is a paper-free facility with 723 beds, 300 of which are equipped for critical
118 care.

119

120 The study cohort subjects were divided in two groups: those “exposed to EPIC or EPIC group”
121 that received treatment with purified equine anti-RBD F(ab')₂ fragments (EPIC, CoviFab®) and
122 those “Non-exposed or Control group” that never received that intervention.

123 Following ANMAT's approval, issued on January 27th, 2021, EPIC was adopted as standard of
124 care for patients with COVID-19 within the HCEH. Therefore, we selected that date to divide the
125 cohort groups in exposed cases onward from that date to April 17th, 2021, and non-exposed cohort
126 group backward from January 21st, 2021 to November 25th, 2020 in order to increase
127 comparability, and also to avoid the possibility of a learning curve period for the treatment of
128 patients with COVID-19 close to the beginning of operations at HCEH.

129 The study protocol was approved by the Institutional Review Boards from both the HCEH and the
130 "Hospital Italiano" of Buenos Aires city, Argentina. The protocol was registered in
131 ClinicalTrials.gov with the number NCT04954235. All data extracted from the electronic clinical
132 records was anonymized at completion of the structured study forms and remained in that way for
133 the whole analysis process.

134

135 **4. Methods**

136 **Population**

137 Adult patients with confirmed diagnosis of SARS-CoV-2 severe pneumonia hospitalized at HCEH
138 between November 25th, 2020 until April 17th, 2021, meeting the study selection criteria.

139

140 **Exposure**

141 Patients were labeled as exposed (EPIC) if they received at least one of 2 doses of 4 mg/Kg of
142 EPIC in intravenous infusion of 100 ml of saline over a period of fifty minutes (with an interval of
143 48 hours between doses). The control group was recruited among hospitalized patients that did not
144 receive that intervention because they were hospitalized before EPIC was available.

145

146 **Selection criteria**

147 Patients were included in the study if had between 18 and 79 years old, COVID-19 diagnosis
148 confirmed by SARS-CoV-2 antigen test or reverse-transcriptase-polymerase-chain reaction (qRT-
149 PCR -GeneDX Co, Ltd or similar) or positive anti SARS-CoV-2 IgM antibodies, had severe
150 disease defined as: respiratory rate of more than 30/min, or oxygen saturation <94% on room air
151 at sea level, or a ratio of arterial partial pressure of oxygen to fraction of inspired oxygen
152 (PaO₂/FiO₂) <300 mm Hg, or lung compromise of more than 50%.

153 Exclusion criteria were: SARS-CoV-2 disease other than severe (asymptomatic, mild, moderate or
154 critical), pregnant women or during lactation period, patients already admitted to intensive care
155 unit (ICU), confirmation of microbiological cause of pneumonia other than SARS-CoV-2, patients
156 with therapeutic limitation or patients with history of anaphylaxis or severe allergic reaction to
157 equine sera or to contact or exposure to horse proteins. A detailed description of the disease severity
158 categories is provided in the Supplementary Appendix.

159

160 **Data collection**

161 Data capture was performed through ACTide-eCRF, an electronic case report form based on a
162 multi-platform interface that was previously reviewed by ANMAT and used for the registry of all
163 patients receiving EPIC in accordance with Provision 4622/12 regarding “Authorization under
164 Special Conditions”. This platform was in full agreement with current regulations regarding
165 validation, compliance and certification of computing systems (e.g., CFR 21 Part 11, EU GMP

166 Annex 11, GAMP5, GDPR and HIPAA). A specific allowance system was implemented for the
167 study based upon personnel roles.

168 Patients from the exposed group provided written informed consent for the administration of EPIC.

169 A team of physicians trained on data collection retrieved the required information for each selected
170 patient at baseline, and at days 14, 21, and 28 using specifically designed structured forms.

171 Patients from the non-exposed group were identified through a systematic review of the electronic
172 clinical records from HCEH, and their data was retrieved by the same data collection team using
173 the same structured forms.

174 **Variables**

175 Structured forms used for both cohort groups included demographic variables (age in years, gender
176 at birth and body mass index-BMI), comorbidities (hypertension, diabetes, obesity, cancer, chronic
177 obstructive pulmonary disease, chronic hepatic insufficiency, chronic renal insufficiency and
178 cardiovascular disease), use of convalescent plasma since 30 days prior to hospital admission,
179 Charlson Score as a measure of comorbidity prognosis, clinical variables at baseline (diagnostic
180 method, time from symptoms onset, respiratory rate, oxygen saturation, PaO₂/FiO₂, requirement
181 of supplementary oxygen and National Early Warning Score-NEWS), and variables related to
182 clinical outcomes including WHO-modified 6-points ordinal clinical scale (18-20). Further details
183 of variable operationalization are provided in the Supplementary Appendix.

184

185 **Outcomes**

186 Primary outcome was all-cause mortality between cohort groups at day 28 since cohort admission.

187 Secondary outcomes included mortality between groups at day 14 and 21 since cohort admission,

188 WHO-modified 6-points ordinal clinical scale (1 non-hospitalized with full restitution of physical

189 functions, 2 non hospitalized without complete restitution of physical functions, 3 hospitalized
190 without oxygen requirement, 4 hospitalized requiring supplemental oxygen, 5 invasive ventilatory
191 support and 6 death) measured at days 14, 21 and 28, the proportion of patients discharged from
192 hospital at same intervals, time (in days) between cohort admission and hospital discharge,
193 proportion of patients transferred to ICU, time (in days) since cohort admission to discharge from
194 ICU, proportion of patients requiring mechanical ventilation, and time (in days) since cohort
195 admission to start of mechanical ventilation (21).

196 Safety outcomes included the percentage of patients suffering from any type and/or serious adverse
197 events. For all adverse events the following data was captured: start and end date, severity,
198 causality assessment, and treatment. The Adverse Event table was organized according to the
199 MedDRA SOC (System Organ Class).

200

201 **Sample size**

202 Based upon a prior experience with the use of EPIC in the context of a clinical trial, an estimated
203 mortality of 24% for the “non-exposed” patients was assumed. As such, a reduction in mortality
204 of at least 8% (e.g., 16% for exposed and 24% for non-exposed patients) was considered clinically
205 meaningful. With these assumptions, a minimal inclusion of 392 exposed and 392 non-exposed
206 patients (784 patients in total) was required for a two-tailed test with an α error of 5% and 80% of
207 statistical power. We aimed to include a sample size of 800 patients (1:1 ratio with 400 in each
208 cohort group).

209

210 **Statistical methods and bias management**

211 We used absolute and relative frequencies (percentages) to describe categorical variables, mean
212 and standard deviation (SD), or median and interquartile range (IQR: 25th centile and 75th centile)
213 to describe quantitative variables. We used Chi-square test or Fisher's exact test for categorical
214 variables and T test or Wilcoxon rank sum test to compare the exposed and non-exposed
215 characteristics.

216 Effectiveness estimates for treatment might be confounded by indication as a result of treatment
217 decisions based on observed characteristics. Given the observational nature of the study, we use
218 an inverse probability of treatment weighting (IPTW) approach to estimate the causal association
219 -also referred as average treatment effect- of EPIC considering potential confounders (22). This
220 method, which is an extension of the propensity score, is particularly helpful in the estimation of
221 causal associations when a randomized clinical trial is unfeasible. The IPTW approach generates
222 weighted cohorts removing the differences in relevant observed confounders (23).

223 We estimated the propensity score (PS) of EPIC exposure using a logistic regression model with
224 EPIC exposure as dependent variable and the following potential predictors of treatment: gender
225 at birth, age, clinical parameters at cohort admission (respiratory rate, heart rate, body temperature,
226 oxygen saturation), requirement of supplementary oxygen or non-invasive ventilation, Charlson's
227 Score, National Early Warning Score (NEWS), time from symptoms onset, prior use of angiotensin
228 converting enzyme inhibitors, non-steroidal antiinflammatory agents, corticosteroids, heparin,
229 immunosuppressants, ivermectin or statins; presence and number of comorbidities: obesity,
230 cardiovascular disease, stroke, hemiplegia, hypertension, chronic lung disease, chronic renal

231 disease, dementia, peptic ulcer, diabetes with or without target organ damage, solid organ tumor
232 or leukemia. With this propensity score we calculated the stabilized IPTW. The weights were
233 truncated at percentile 1% and 99% to avoid extreme figures.

234 We used Cox's proportional hazards regression model to estimate the hazard ratio (HR) for
235 calculation of the primary endpoint. We also informed the OR between cohort groups calculated
236 with a logistic regression model. The effect of EPIC on the distribution of the modified WHO-
237 clinical ordinal scale at 14, 21 and 28 days was accessed with an ordinal logistic regression model
238 and presented as proportional Odds Ratio using Brant test (parallel regression assumption test)
239 (pOR) (24-28). We used conventional logistic regression models to estimate the Odds Ratio (OR)
240 of the exposure to EPIC on the comparison of the proportion of hospital discharge at 14, 21 and
241 28 days, and the proportion of adverse effects. We use Fine and Gray's regression model to
242 estimate the subhazard ratio (sHR) for the association between EPIC and the requirement of
243 mechanical ventilation using death as a competing event (29).

244 For the primary analysis we estimated the causal association between EPIC exposure and primary
245 or secondary outcomes using regression models weighted by the inverse of the probability of
246 receiving treatment, considering EPIC exposure as the independent variable (IPTW). In addition,
247 we presented the data with a conventional adjustment for potential confounders either with the raw
248 data and with the IPTW-treated data, in a doubly robust approach. Variables included in this
249 adjustment included: gender at birth, age, respiratory rate at cohort entry, oxygen saturation,
250 requirement of supplementary oxygen or non-invasive ventilation, Charlson's Score, NEWS, time
251 from symptoms onset, obesity, cancer and chronic lung disease. We presented all data with 95%
252 confidence interval (95% CI). To assess the balance in potential confounders between exposure
253 groups, we used standardized differences before and after IPTW adjusting. We considered

254 balanced covariates all those who had standardized differences lower than 10% after IPTW
255 adjusting (30). We presented the balance diagnosis of IPTW in a Love plot according to Austin
256 and Stuart (31).

257 We performed predefined subgroup analysis of primary outcomes considering gender at birth, age
258 category groups (less than 65, or between 65 and 79 years old), time from symptoms initiation
259 (less than 3 days, between 3 and 5, between 5 and 10 or more than 10), obesity, presence and
260 number of main comorbidities (immunosuppression, diabetes, hypertension, cardiovascular
261 disease) and number of doses of EPIC (one versus two). We also performed a sensitivity analysis
262 considering the patients from the “Control” group that did or did not receive convalescent plasma.

263 The detailed statistical analysis plan is provided in the Supplementary Appendix. All tests were
264 two-sided, and a P value <0.05 was considered statistically significant. All statistical analysis was
265 performed using STATA statistical software version 15.1 MP - Parallel Edition (Copyright 1985-
266 2017 StataCorp LLC - StataCorp. 4905 Lakeway Drive, College Station, Texas 77845 USA).

267

268 **5. Results**

269 **Patients**

270 Following protocol’s approval, data collection from both cohort groups started on May 27th, 2021.
271 During the pre-specified -backward and onward- collection times, from 1352 clinical records
272 reviewed, 395 patients met the inclusion criteria for the EPIC group and 446 patients were included
273 in the Control group, for a total cohort of 841 patients. Fig. 1 depicts the complete patient
274 disposition.

275 Median age was 58 years old (interquartile range 48 to 69), and 57.9% were male. Body mass

276 index was 31.1 (interquartile range 28.1 to 36) in the EPIC group and 28.6 (interquartile range 26
277 to 33.2) in the Control group, with 117 and 235 patients in the EPIC group, and 194 and 176
278 patients in the Control group reaching the standard definition for overweight and obesity,
279 respectively. Standard and modified Charlson's scores at cohort entry were similar between
280 groups.

281 At cohort admission the median time from symptoms initiation was 7 days (interquartile range 5
282 to 8) for the EPIC group and 6 days (interquartile range 3 to 9) for the Control group.

283 While most patients had at least one identified comorbidity, significantly more patients had no
284 comorbidities in the Control group than in the EPIC Group: 67 (15%) vs. 36 (9.1%), respectively,
285 $p=0.009$. Obesity -235 patients (59.5%) and 176 (39.5%), $P=<0.001$ - along with hypertension -
286 228 (57.7%) and 242 (54.3%)-, and diabetes -111 (28.1%) and 110 (24.7%) in EPIC and Control
287 groups, respectively, were the most prevalent coexisting conditions.

288 No statistically significant differences were found in body temperature, and heart and respiratory
289 rates between cohort groups, whereas oxygen saturation at cohort entry was 92% (interquartile
290 range 89 to 93%) for EPIC group and 90.5% (interquartile range 88 to 93) for the Control group,
291 ($P<0.0001$). Accordingly, the modified NEWS score at cohort admission was significantly
292 different between groups ($P=0.006$).

293 A total of 46.3% of the cohort patients (179 in EPIC group and 211 in the Control group) were
294 receiving antihypertensive drug treatment (angiotensin converting enzyme inhibitors and
295 angiotensin receptor blockers) at admission, while a minority of patients received other drugs as
296 immunosuppressants, statins, anticoagulants, ivermectin, and corticosteroids, none of them being
297 statistically different between groups. A more detailed description of the baseline patient
298 conditions and comparison between cohort groups is shown in Table 1.

299 During the cohort follow up time 395 patients (100%) in the EPIC group and 406 patients (91%)
300 in the Control group received corticosteroids, 392 (99%) and 410 (91.9%) received heparin, 274
301 (69.4%) and 321 (72%) received antibiotics, respectively, while 317 (71.19%) in the Control group
302 received convalescent plasma (exclusion criterion for EPIC group). A complete description of
303 concomitant treatment interventions during cohort follow up is shown in Table 2.

304

305 Intervention

306 No patients in the Control group received polyclonal specific hyperimmune serum against SARS-
307 CoV-2. All three hundred and ninety-five patients in the EPIC group received one dose of
308 hyperimmune serum and 379 patients (96%) completed the two-dose pre-specified treatment.
309 Reasons for failure in completing the intervention included admission to UCI and staff refusal to
310 continue treatment (10 cases), adverse events (2 cases), patient voluntary discharge from Hospital
311 (1 case), patient refusal (1 case) and other reasons (2 cases).

312

313 Primary outcome

314 Overall mortality at 28 days was significantly lower for patients in the EPIC group than for patients
315 in the Control group. The OR was 0.66 (95% CI 0.46 to 0.96 $p=0.03$) and the HR for the IPTW-
316 adjusted data was 0.70 (95% CI 0.50-0.98 $p=0.037$). The doubly robust approaches provided
317 similar results (Table 3, Fig. 2).

318

319 Secondary outcomes

320 Overall mortality at 21 and 14 days were not statistically different between cohort groups (OR for

321 the IPTW-adjusted data and for the doubly robust approach were 0.72 [95% CI 0.49 to 1.06] and
322 0.73 [95% CI 0.48 to 1.10], and 0.81 [95% CI 0.52 to 1.26] and 0.86 [95% CI 0.53 to 1.39],
323 respectively.

324 WHO-modified 6 points ordinal clinical scale results were significantly better for the EPIC group
325 than for the Control group at 14 days (proportional OR 0.71 [95% CI 0.53 to 0.95] for IPTW-
326 adjusted and proportional OR 0.68 [95% CI 0.50 to 0.94] for the doubly robust approach), while
327 no significant differences were noted at days 21 and 28 between groups (Table 3, Fig. S2).

328 Hospital discharge rate was also significantly higher for the EPIC group than for the Control group
329 at 14 days (OR 1.46 [95% CI 1.07 to 1.98] for IPTW-adjusted and OR 1.49 [95% CI 1.07 to 2.09]
330 for the doubly robust approach), while no differences were found between cohort groups at days
331 21 and 28.

332 No significant differences were found between groups in median time to hospital discharge,
333 proportion of patients requiring admission to ICU, median time until discharge from ICU,
334 proportion of patients requiring mechanical ventilation or median time until initiation of
335 mechanical ventilation. Complete results for secondary outcomes are shown in Table S2 and Fig.
336 S3, S4 and S5.

337

338 Safety outcomes

339 Safety outcomes included the percentage of patients with any type and/or serious adverse events,
340 and the comparison of total and serious adverse events (AE) during hospital admission between
341 EPIC and Control groups.

342 EPIC was overall well tolerated, 98 patients (24.8%) in the EPIC group and 121 (27.1%) in the

343 Control group had at least one adverse event, being respiratory, thoracic and mediastinal disorders
344 (20.3% in EPIC group and 26% in Control group), and administration site complications (11.6%
345 in EPIC and 9.6% in Control group) the most frequently observed, with no statistical difference
346 between cohort groups. Two patients out of 395 in the EPIC group did not receive the second dose
347 of the study product due to adverse events, i.e., a cutaneous rash and a hypotension event, both of
348 which resolved satisfactorily.

349
350 Serious adverse events (SAE) were frequently observed among cohort patients, probably due to
351 the population characteristics, although no significant difference between groups was observed.
352 SAE occurred in 78 patients (19.7%) in the EPIC group and in 106 (23.8%) in the Control group.
353 Six AEs were considered probable or possibly related to EPIC.

354 No anaphylaxis event was reported, and no death episodes were considered by the investigators to
355 be related to the investigational product. Table 4 and Table S4 show a more detailed description
356 of the AE between cohort groups.

357
358 **6. Discussion**

359
360 In this retrospective study, the administration of at least one infusion of EPIC for hospitalized
361 patients with severe COVID-19 significantly reduced the 28-day mortality by 34% (15.7% vs
362 21.5%) compared with a group of patients treated at the same hospital before EPIC was available.
363 This effect was more evident in patients receiving the two infusions of the investigational product
364 (28-day mortality of 14% vs 21.5%), resulting in 13 patients needed to treat in order to prevent
365 one additional death. During the trial, EPIC-related adverse events were minimal and non-serious.

366 Currently, no virus directed therapy has shown to reduce mortality among hospitalized patients
367 with severe SARS-CoV-2 infection; only agents decreasing the inflammatory response such as
368 dexamethasone, baricitinib (or tofacitinib), and tocilizumab (or sarilumab) were able to reduce the
369 mortality rate in this setting (3, 7, 32, 33).

370 Administration of different types of immunotherapy has been explored as a therapeutic approach
371 for patients with severe COVID-19 disease with variable results. Recent data from three
372 randomized clinical trials studies comparing anti-spike mAbs (bamlanivimab, VIR-7831, and the
373 combination BRII-196/198) with placebo were terminated due futility after randomization of 314,
374 344 and 343 patients, respectively (34, 35).

375 However and as expected, most of the clinical benefits obtained from passive immunotherapies
376 might be observed in patients lacking specific anti-SAR-CoV-2 antibodies due to a delayed
377 response or to immunocompromise. In this regard, among patients randomized to placebo in the
378 Recovery trial, the 28-day mortality was significantly higher in the baseline seronegative group
379 (30%) than in the seropositive one (15%). Even more, in those lacking specific antibodies at
380 baseline, the mortality was 24% and 30% in the mAbs combination and placebo arm, respectively
381 (rate ratio 0.80) (36).

382 The positive impact of polyclonal equine anti-RBD F(ab')₂ fragments described here might follow
383 the findings reported in the Recovery clinical trial. Given the observational nature of this study,
384 baseline anti-SARS-CoV-2 immune status could not be determined. Lacking this information
385 forbidden us to identify a subgroup of seronegative patients who might have benefited the most
386 from this type of therapy. Remarkably, a significant effect on the primary outcome was observed
387 for the entire population while in the Recovery trial that enrolled 9785 patients, a decrease in the
388 28-day mortality was seen only in those with no baseline antibodies (36).

389 It should be noted that, in a double-blind randomized clinical trial, the treatment of EPIC was
390 associated with a 45% non-statistically significant decrease in mortality among the subgroup of
391 severe patients hospitalized with COVID-19 disease (16) (13.6% in the EPIC group vs 24.5% in
392 the placebo group, OR: 0.52). It is likely that this outcome did not reach statically significance
393 because of the low number of severe patients enrolled. Moreover, EPIC showed a statistically
394 significant difference in the WHO-modified 6 points ordinal clinical scale at 14 days. This was
395 correlated with also a statistically significant difference at hospital discharge rate at 14 days. These
396 effects were not observed neither at day 21 nor at day 28 (16).

397 In regard to safety results, these findings were as expected in patients with COVID-19 severe
398 disease as adverse events observed were mainly related to disease progression and complications
399 such as multiorgan failure and in similar proportions in both groups. EPIC showed a good safety
400 profile similar to the one observed in the RCT. All related events were treated and resolved
401 satisfactorily within the same date. In this real-world experience only in 2 of the 395 patients
402 treated with EPIC the second dose was not infused due to adverse events during the first dose.
403 These findings are aligned with the adverse event reporting rate observed through the Argentinean
404 EPIC registry of 10.728 patients where hypersensitivity events were reported in a frequency of 1-
405 2% through the period December 2020 and August 2021 (37).

406 The main limitation of the study is the non-randomized design; however, data collection included
407 structured forms applied for subjects enrolled in both cohort groups and at the same Hospital. Even
408 more, all hospitalized subjects with COVID-19 were evaluated and enrolled in the study in a
409 consecutive manner. Another existing limitation is that patients were included in one clinical site,
410 missing the generalizability observed in multicenter trials. Of note, the results shown here should
411 not be extrapolated to the vaccinated population nor to those with prior COVID-19 disease since

412 only one participant had received a COVID-19 vaccine and a history of SARS-CoV-2 infection
413 was an exclusion criterion.

414 Although this was not fully studied, it can be speculated that most of the patients enrolled in this
415 study were probably infected with the Gamma or P.1 variant due to the epidemiological situation
416 of Argentina at the time of study. Nevertheless, being of polyclonal nature, EPIC has a broader
417 recognition of epitopes on RBD Spike protein than mAbs, making this immunotherapy more robust
418 against viral scape mutations. Interestingly, EPIC showed high neutralizing activity against
419 Gamma and Delta variants of concern and was also capable of neutralizing Omicron, although
420 with less efficiency (Gallego S. et al., unpublished data). Therefore, the clinical benefit observed
421 in this study could be extrapolated to patients infected with any of the above-mentioned variants
422 of concern.

423

424 **7. Conclusion**

425 After proper adjustment by confounders, this retrospective study in a real-world setting suggests a
426 favorable effect of EPIC on the 28-day mortality rate in patients with severe SARS-CoV-2
427 infection admitted to a monovalent hospital site in Argentina, with an adequate safety profile.

428

429 **Funding**

430 Funded by Inmunova SA. and Laboratorio Elea Phoenix S.A.

431

432 **7. References**

433 1. Thoguluva Chandrasekar V, Venkatesalu B, Patel HK, Spadaccini M, Manteuffel J, Ramesh

- 434 M. 2021. Systematic review and meta-analysis of effectiveness of treatment options against
435 SARS-CoV-2 infection. *J Med Virol* 93:775–785.
- 436 2. Sterne JAC, Murthy S, Diaz J V., Slutsky AS, Villar J, Angus DC, Annane D, Azevedo
437 LCP, Berwanger O, Cavalcanti AB, Dequin P-F, Du B, Emberson J, Fisher D, Giraudeau
438 B, Gordon AC, Granholm A, Green C, Haynes R, Heming N, Higgins JPT, Horby P, Jüni
439 P, Landray MJ, Le Gouge A, Leclerc M, Lim WS, Machado FR, McArthur C, Meziani F,
440 Møller MH, Perner A, Petersen MW, Savovic J, Tomazini B, Veiga VC, Webb S, Marshall
441 JC. 2020. Association Between Administration of Systemic Corticosteroids and Mortality
442 Among Critically Ill Patients With COVID-19. *JAMA* 324:1330.
- 443 3. RECOVERY Collaborative Group. 2021. Dexamethasone in Hospitalized Patients with
444 Covid-19. *N Engl J Med* 384:693–704.
- 445 4. Beigel JH, Tomashek KM, Dodd LE, Mehta AK, Zingman BS, Kalil AC, Hohmann E, Chu
446 HY, Luetkemeyer A, Kline S, Lopez de Castilla D, Finberg RW, Dierberg K, Tapson V,
447 Hsieh L, Patterson TF, Paredes R, Sweeney DA, Short WR, Touloumi G, Lye DC,
448 Ohmagari N, Oh M, Ruiz-Palacios GM, Benfield T, Fätkenheuer G, Kortepeter MG, Atmar
449 RL, Creech CB, Lundgren J, Babiker AG, Pett S, Neaton JD, Burgess TH, Bonnett T, Green
450 M, Makowski M, Osinusi A, Nayak S, Lane HC. 2020. Remdesivir for the Treatment of
451 Covid-19 — Final Report. *N Engl J Med* 383:1813–1826.
- 452 5. Goldman JD, Lye DCB, Hui DS, Marks KM, Bruno R, Montejano R, Spinner CD, Galli M,
453 Ahn M-Y, Nahass RG, Chen Y-S, SenGupta D, Hyland RH, Osinusi AO, Cao H, Blair C,
454 Wei X, Gaggar A, Brainard DM, Towner WJ, Muñoz J, Mullane KM, Marty FM, Tashima
455 KT, Diaz G, Subramanian A. 2020. Remdesivir for 5 or 10 Days in Patients with Severe
456 Covid-19. *N Engl J Med* 383:1827–1837.
- 457 6. Spinner CD, Gottlieb RL, Criner GJ, Arribas López JR, Cattelan AM, Soriano Viladomiu

- 458 A, Ogbuagu O, Malhotra P, Mullane KM, Castagna A, Chai LYA, Roestenberg M, Tsang
459 OTY, Bernasconi E, Le Turnier P, Chang S-C, SenGupta D, Hyland RH, Osinusi AO, Cao
460 H, Blair C, Wang H, Gaggar A, Brainard DM, McPhail MJ, Bhagani S, Ahn MY, Sanyal
461 AJ, Huhn G, Marty FM. 2020. Effect of Remdesivir vs Standard Care on Clinical Status at
462 11 Days in Patients With Moderate COVID-19. *JAMA* 324:1048.
- 463 7. RECOVERY Collaborative Group. 2021. Tocilizumab in patients admitted to hospital with
464 COVID-19 (RECOVERY): a randomised, controlled, open-label, platform trial. *Lancet*
465 (London, England) 397:1637–1645.
- 466 8. Kalil AC, Patterson TF, Mehta AK, Tomashek KM, Wolfe CR, Ghazaryan V, Marconi VC,
467 Ruiz-Palacios GM, Hsieh L, Kline S, Tapson V, Iovine NM, Jain MK, Sweeney DA, El
468 Sahly HM, Branche AR, Regalado Pineda J, Lye DC, Sandkovsky U, Luetkemeyer AF,
469 Cohen SH, Finberg RW, Jackson PEH, Taiwo B, Paules CI, Arguinchona H, Erdmann N,
470 Ahuja N, Frank M, Oh M-D, Kim E-S, Tan SY, Mularski RA, Nielsen H, Ponce PO, Taylor
471 BS, Larson L, Roupheal NG, Saklawi Y, Cantos VD, Ko ER, Engemann JJ, Amin AN,
472 Watanabe M, Billings J, Elie M-C, Davey RT, Burgess TH, Ferreira J, Green M, Makowski
473 M, Cardoso A, de Bono S, Bonnett T, Proschan M, Deye GA, Dempsey W, Nayak SU,
474 Dodd LE, Beigel JH, ACTT-2 Study Group Members. 2021. Baricitinib plus Remdesivir
475 for Hospitalized Adults with Covid-19. *N Engl J Med* 384:795–807.
- 476 9. ACTIV-3/TICO LY-CoV555 Study Group, Lundgren JD, Grund B, Barkauskas CE,
477 Holland TL, Gottlieb RL, Sandkovsky U, Brown SM, Knowlton KU, Self WH, Files DC,
478 Jain MK, Benfield T, Bowdish ME, Leshnowar BG, Baker J V, Jensen J-U, Gardner EM,
479 Ginde AA, Harris ES, Johansen IS, Markowitz N, Matthay MA, Østergaard L, Chang CC,
480 Davey VJ, Goodman A, Higgs ES, Murray DD, Murray TA, Paredes R, Parmar MKB,
481 Phillips AN, Reilly C, Sharma S, Dewar RL, Teitelbaum M, Wentworth D, Cao H, Klekotka

- 482 P, Babiker AG, Gelijns AC, Kan VL, Polizzotto MN, Thompson BT, Lane HC, Neaton JD.
483 2021. A Neutralizing Monoclonal Antibody for Hospitalized Patients with Covid-19. *N*
484 *Engl J Med* 384:905–914.
- 485 10. Chen P, Nirula A, Heller B, Gottlieb RL, Boscia J, Morris J, Huhn G, Cardona J, Mocherla
486 B, Stosor V, Shawa I, Adams AC, Van Naarden J, Custer KL, Shen L, Durante M, Oakley
487 G, Schade AE, Sabo J, Patel DR, Klekotka P, Skovronsky DM. 2021. SARS-CoV-2
488 Neutralizing Antibody LY-CoV555 in Outpatients with Covid-19. *N Engl J Med* 384:229-
489 237.
- 490 11. Weinreich DM, Sivapalasingam S, Norton T, Ali S, Gao H, Bhore R, Musser BJ, Soo Y,
491 Rofail D, Im J, Perry C, Pan C, Hosain R, Mahmood A, Davis JD, Turner KC, Hooper AT,
492 Hamilton JD, Baum A, Kyratsous CA, Kim Y, Cook A, Kampman W, Kohli A, Sachdeva
493 Y, Graber X, Kowal B, DiCioccio T, Stahl N, Lipsich L, Braunstein N, Herman G,
494 Yancopoulos GD, Trial Investigators. 2021. REGN-COV2, a Neutralizing Antibody
495 Cocktail, in Outpatients with Covid-19. *N Engl J Med* 384:238–251.
- 496 12. Gupta A, Gonzalez-Rojas Y, Juarez E, Crespo Casal M, Moya J, Falci DR, Sarkis E, Solis
497 J, Zheng H, Scott N, Cathcart AL, Hebner CM, Sager J, Mogalian E, Tipple C, Peppercorn
498 A, Alexander E, Pang PS, Free A, Brinson C, Aldinger M, Shapiro AE. 2021. Early
499 Treatment for Covid-19 with SARS-CoV-2 Neutralizing Antibody Sotrovimab. *N Engl J*
500 *Med* 385:1941–1950.
- 501 13. VanBlargan LA, Errico JM, Halfmann PJ, Zost SJ, Crowe JE, Purcell LA, Kawaoka Y,
502 Corti D, Fremont DH, Diamond MS. 2022. An infectious SARS-CoV-2 B.1.1.529 Omicron
503 virus escapes neutralization by therapeutic monoclonal antibodies. *Nat Med*
504 <https://doi.org/10.1038/s41591-021-01678-y>.
- 505 14. Boyer L, Degan J, Ruha A-M, Mallie J, Mangin E, Alagón A. 2013. Safety of intravenous

- 506 equine F(ab')₂: Insights following clinical trials involving 1534 recipients of scorpion
507 antivenom. *Toxicon* 76:386–393.
- 508 15. Zylberman V, Sanguineti S, Pontoriero A V, Higa S V, Cerutti ML, Morrone Seijo SM,
509 Pardo R, Muñoz L, Acuña Intriери ME, Alzogaray VA, Avaro MM, Benedetti E, Berguer
510 PM, Bocanera L, Bukata L, Bustelo MS, Campos AM, Colonna M, Correa E, Cragnaz L,
511 Dattero ME, Dellafiore M, Foscaldi S, González J V, Guerra LL, Klinke S, Labanda MS,
512 Lauché C, López JC, Martínez AM, Otero LH, Peyric EH, Ponziani PF, Ramondino R,
513 Rinaldi J, Rodríguez S, Russo JE, Russo ML, Saavedra SL, Seigelchifer M, Sosa S, Vilariño
514 C, López Biscayart P, Corley E, Spatz L, Baumeister EG, Goldbaum FA. 2020.
515 Development of a hyperimmune equine serum therapy for COVID-19 in Argentina.
516 *Medicina (B Aires)* 80 Suppl 3:1–6.
- 517 16. Lopardo G, Belloso WH, Nannini E, Colonna M, Sanguineti S, Zylberman V, Muñoz L,
518 Dobarro M, Lebersztein G, Farina J, Vidiella G, Bertetti A, Crudo F, Alzogaray MF,
519 Barcelona L, Teijeiro R, Lambert S, Scublinsky D, Iacono M, Stanek V, Solari R, Cruz P,
520 Casas MM, Abusamra L, Luciardi HL, Cremona A, Caruso D, de Miguel B, Lloret SP,
521 Millán S, Kilstein Y, Pereiro A, Sued O, Cahn P, Spatz L, Goldbaum F. 2021. RBD-specific
522 polyclonal F(ab')₂ fragments of equine antibodies in patients with moderate to severe
523 COVID-19 disease: A randomized, multicenter, double-blind, placebo-controlled, adaptive
524 phase 2/3 clinical trial. *EClinicalMedicine* 34:100843.
- 525 17. Argentinean National Administration of Drugs, Food, and Medical Technology
526 (ANMAT). 2012. Disposition 4622.
527 http://www.anmat.gov.ar/boletin_anmat/agosto_2012/Dispo_4622-12.pdf.
- 528 18. Charlson ME, Pompei P, Ales KL, MacKenzie CR. 1987. A new method of classifying
529 prognostic comorbidity in longitudinal studies: development and validation. *J Chronic Dis*

- 530 40:373–83.
- 531 19. Salvi F, Miller MD, Grilli A, Giorgi R, Towers AL, Morichi V, Spazzafumo L, Mancinelli
532 L, Espinosa E, Rappelli A, DessÃ–Fulgheri P. 2008. A Manual of Guidelines to Score the
533 Modified Cumulative Illness Rating Scale and Its Validation in Acute Hospitalized Elderly
534 Patients. *J Am Geriatr Soc* 56:1926–1931.
- 535 20. Royal College of Physicians. 2017. [https://www.rcplondon.ac.uk/projects/outputs/national-](https://www.rcplondon.ac.uk/projects/outputs/national-early-warning-score-news-2)
536 [early-warning-score-news-2](https://www.rcplondon.ac.uk/projects/outputs/national-early-warning-score-news-2).
- 537 21. Marshall JC, Murthy S, Diaz J, Adhikari NK, Angus DC, Arabi YM, Baillie K, Bauer M,
538 Berry S, Blackwood B, Bonten M, Bozza F, Brunkhorst F, Cheng A, Clarke M, Dat VQ, de
539 Jong M, Denholm J, Derde L, Dunning J, Feng X, Fletcher T, Foster N, Fowler R, Gobat
540 N, Gomersall C, Gordon A, Glueck T, Harhay M, Hodgson C, Horby P, Kim Y, Kojan R,
541 Kumar B, Laffey J, Malvey D, Martin-Loeches I, McArthur C, McAuley D, McBride S,
542 McGuinness S, Merson L, Morpeth S, Needham D, Netea M, Oh M-D, Phyu S, Piva S, Qiu
543 R, Salisu-Kabara H, Shi L, Shimizu N, Sinclair J, Tong S, Turgeon A, Uyeki T, van de
544 Veerdonk F, Webb S, Williamson P, Wolf T, Zhang J. 2020. A minimal common outcome
545 measure set for COVID-19 clinical research. *Lancet Infect Dis* 20:e192–e197.
- 546 22. Katz MH. 2011. *Multivariate analysis: A Practical Guide for Clinicians and Public Health*
547 *Researchers*. Cambridge University Press.
- 548 23. Matschinger H, Heider D, König H-H. 2020. A Comparison of Matching and Weighting
549 Methods for Causal Inference Based on Routine Health Insurance Data, or: What to do If
550 an RCT is Impossible. *Das Gesundheitswes* 82:S139–S150.
- 551 24. Peduzzi P, Concato J, Kemper E, Holford TR, Feinstein AR. 1996. A simulation study of
552 the number of events per variable in logistic regression analysis. *J Clin Epidemiol* 49:1373–
553 1379.

- 554 25. McCullagh P. 1980. Regression Models for Ordinal Data. *J R Stat Soc Ser B* 42:109–127.
- 555 26. Williams R. 2016. Understanding and interpreting generalized ordered logit models. *J Math*
556 *Sociol* 40:7–20.
- 557 27. University of California Los Angeles. Ordered logistic regression | Stata annotated output.
558 <https://stats.idre.ucla.edu/stata/output/ordered-logistic-regression/>. Retrieved 17 July 2021.
- 559 28. Brant R. 1990. Assessing Proportionality in the Proportional Odds Model for Ordinal
560 Logistic Regression. *Biometrics* 46:1171.
- 561 29. Fine JP, Gray RJ. 1999. A Proportional Hazards Model for the Subdistribution of a
562 Competing Risk. *J Am Stat Assoc* 94:496–509.
- 563 30. Ho DE, Imai K, King G, Stuart EA. 2007. Matching as Nonparametric Preprocessing for
564 Reducing Model Dependence in Parametric Causal Inference. *Polit Anal* 15:199–236.
- 565 31. Austin PC, Stuart EA. 2015. Moving towards best practice when using inverse probability
566 of treatment weighting (IPTW) using the propensity score to estimate causal treatment
567 effects in observational studies. *Stat Med* 34:3661–3679.
- 568 32. REMAP-CAP Investigators. 2021. Interleukin-6 Receptor Antagonists in Critically Ill
569 Patients with Covid-19. *N Engl J Med* 384:1491–1502.
- 570 33. Marconi VC, Ramanan A V, de Bono S, Kartman CE, Krishnan V, Liao R, Piruzeli MLB,
571 Goldman JD, Alatorre-Alexander J, de Cassia Pellegrini R, Estrada V, Som M, Cardoso A,
572 Chakladar S, Crowe B, Reis P, Zhang X, Adams DH, Ely EW, Ahn M-Y, Akasbi M,
573 Alatorre-Alexander J, Altclas JD, Ariel F, Ariza HA, Atkar C, Bertetti A, Bhattacharya M,
574 Briones ML, Budhraj A, Burza A, Camacho Ortiz A, Caricchio R, Casas M, Cevoli Recio
575 V, Choi WS, Cohen E, Comulada-Rivera A, Cook P, Cornejo Juarez DP, Daniel C, Degrecci
576 Relvas LF, Dominguez Cherit JG, Ellerin T, Enikeev D, Erico Tanni Minamoto S, Estrada
577 V, Fiss E, Furuichi M, Giovanni Luz K, Goldman JD, Gonzalez O, Gordeev I, Gruenewald

578 T, Hamamoto Sato VA, Heo EY, Heo JY, Hermida M, Hirai Y, Hutchinson D, Iastrebnier
579 C, Ioachimescu O, Jain M, Juliani Souza Lima MP, Khan A, Kremer AE, Lawrie T,
580 MacElwee M, Madhani-Lovely F, Malhotra V, Martínez Resendez MF, McKinnell J,
581 Milligan P, Minelli C, Moran Rodriguez MA, Parody ML, Paulin P, Pellegrini R de C, Pemu
582 P, Procopio Carvalho AC, Puoti M, Purow J, Ramesh M, Rea Neto A, Rea Neto A, Robinson
583 P, Rodrigues C, Rojas Velasco G, Saraiva JFK, Scheinberg M, Schreiber S, Scublinsky D,
584 Sevciovic Grumach A, Shawa I, Simon Campos J, Sofat N, Som M, Spinner CD, Sprinz E,
585 Stienecker R, Suarez J, Tachikawa N, Tahir H, Tiffany B, Vishnevsky A, Westheimer
586 Cavalcante A, Zirpe K. 2021. Efficacy and safety of baricitinib for the treatment of
587 hospitalised adults with COVID-19 (COV-BARRIER): a randomised, double-blind,
588 parallel-group, placebo-controlled phase 3 trial. *Lancet Respir Med* 9:1407–1418.

589 34. ACTIV-3/TICO LY-CoV555 Study Group. 2021. A Neutralizing Monoclonal Antibody
590 for Hospitalized Patients with Covid-19. *N Engl J Med* 384:905–914.

591 35. National Institute of Health. 2021. [https://www.nih.gov/news-events/news-releases/nih-](https://www.nih.gov/news-events/news-releases/nih-sponsored-activ-3-clinical-trial-closes-enrollment-into-two-sub-studies)
592 [sponsored-activ-3-clinical-trial-closes-enrollment-into-two-sub-studies](https://www.nih.gov/news-events/news-releases/nih-sponsored-activ-3-clinical-trial-closes-enrollment-into-two-sub-studies).

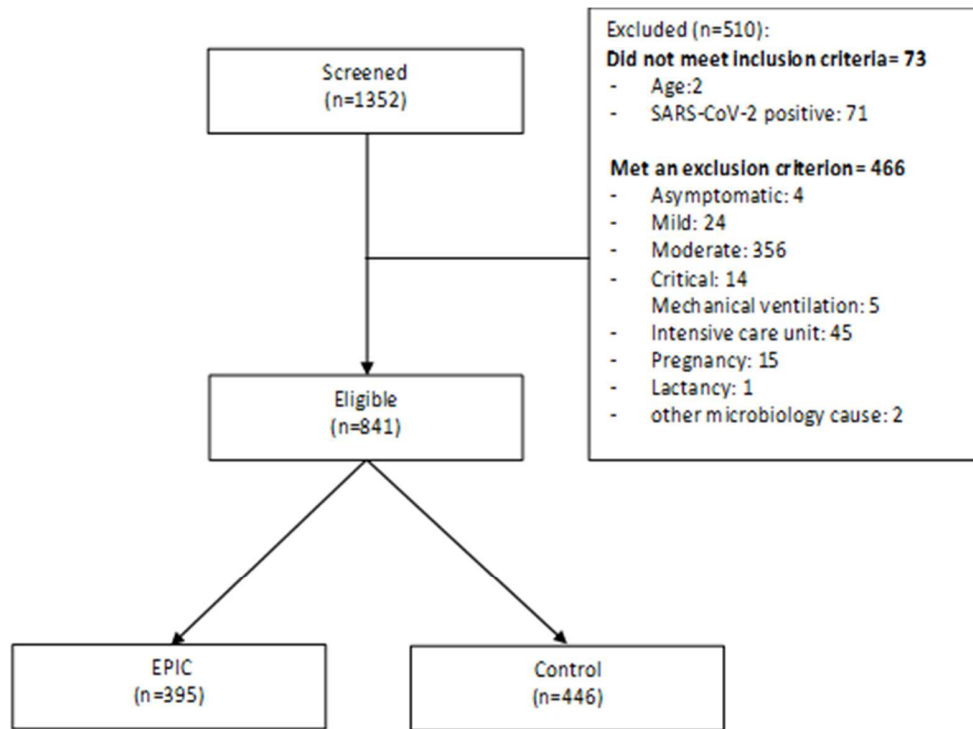
593 36. RECOVERY Collaborative Group. 2022. Casirivimab and imdevimab in patients admitted
594 to hospital with COVID-19 (RECOVERY): a randomised, controlled, open-label, platform
595 trial. *Lancet (London, England)* 399:665–676.

596 37. Argentinean National Administration of Drugs, Food, and Medical Technology (ANMAT).
597 2022. https://www.argentina.gob.ar/sites/default/files/dispo_0951-22_covifab_reins.pdf.
598
599
600

601 **Tables and Figures**

602

603



604

605 **FIG 1.** Cohort patient disposition

606

607

608

609

610

611

612

613

614

	EPIC (N=395)	Control (N=446)	P value
Characteristics			
Age, years#	57 (48-67)	59 (48-69)	0.1881†
Male sex	60.3 (238)	55.8 (249)	0.195
BMI**			
Median (Interquartile range)#	31.1 (28 - 36)	28.6 (26-33.2)	<0.0001†
Normal	10.9 (43)	12.6 (56)	<0.001
Overweight	29.6 (117)	43.5 (194)	
Obesity	59.5 (235)	39.5 (176)	
Coexisting conditions			
Charlson score	0 (0 - 2)	0 (0 - 2)	0.9982†
Number of comorbidities#	2 (1 - 3)	1 (1 - 3)	0.0003†
None	9.1 (36)	15.0 (67)	0.009
Hypertension	57.7 (228)	54.3 (242)	0.313
Diabetes	28.1 (111)	24.7 (110)	0.258
Obesity	59.5 (235)	40.6 (181)	<0.001
Lung disease	7.1 (28)	10.5 (47)	0.080
Baseline characteristics at time of hospital admission			
Days from symptoms onset to hospital admission#	7 (5 - 8)	6 (3 - 9)	0.0014†

Hospitalized, requiring supplemental oxygen	95.2 (376)	93.5 (418)	0.355
Hospitalized, receiving noninvasive mechanical ventilation or high-flow oxygen devices	0 (0)	0.7 (3)	0.252‡
Oxygen saturation on room at cohort entry	92 (89 - 93)	90.5 (88 - 93)	0.0014†
Respiratory frequency	20 (20 - 21)	20 (20 - 22)	0.3096†
Heart rate	89 (80 - 100)	90 (78 - 102)	0.3703†
Temperature	36.3 (36 - 37)	36.2 (36 - 36.9)	0.4612†
NEWS			
Low	36.0 (142)	28.3 (126)	0.006
Medium-low	19.8 (78)	19.3 (86)	
Medium	34.7 (137)	35.4 (158)	
High	9.6 (38)	17.0 (76)	
Concomitant medications prior to cohort admission			
ACE inhibitors / AIIRA	45.3 (179)	47.3 (211)	0.563
NSAIDs	17.0 (67)	15.3 (68)	0.499
Immunosuppressors	1.5 (6)	2.2 (10)	0.444
Statins	8.9 (35)	8.1 (36)	0.681
Ivermectin	6.3 (25)	3.4 (15)	0.044
Anticoagulants	3.8 (15)	4.0 (18)	0.859
Corticosteroids	8.6 (34)	11.0 (49)	0.248

615 ** Data was missing from 20 patients in Control Group

616 All data are % (n), except for: # Data are in median (interquartile range _{25:75})

617 All p values are for Chi2 except † for Wilcoxon rank-sum (Mann-Whitney) test, and ‡ for Fisher's exact test

618

619 **TABLE 1.** Demographic and clinical characteristics of the patients at baseline

	EPIC (N=395)	Control (N=446)	P value
Concomitant medication during hospitalization			
None	0 (0)	0.7 (3)	0.252‡
Corticoids	100 (395)	91 (406)	<0.001
Heparin	99.2 (392)	91.9 (410)	<0.001
Convalescent plasma	0 (0)	71.1 (317)	<0.001
Monoclonal antibodies	0.3 (1)	0 (0)	0.470‡
Antibiotics	69.4 (274)	72 (321)	0.407
Ivermectin	0 (0)	0.2 (1)	1.000‡
Tocilizumab	0 (0)	0.2 (1)	1.000‡
Colchicine	0 (0)	0.2 (1)	1.000‡
Remdesivir	0.3 (1)	0 (0)	0.470‡

620 All data are % (n)

621 All P values are for Chi2 except † for Wilcoxon rank-sum (Mann-Whitney) test, and ‡ for Fisher's exact test

622

623 **TABLE 2. COVID-19 treatment intervention during hospitalization**

624

625

626

627

628

Outcomes	EPIC (N=395)	Control (N=446)	Estimator	Crude	IPTW†	Doubly robust adjustment‡
Primary outcome						
Overall mortality at day 28 since hospital admission	15.7 (62)	21.5 (96)	OR	0.68 (95%CI 0.48-0.97) p 0.031	0.66 (95%CI 0.46 - 0.96) p 0.030	0.65 (95%CI 0.44-0.98) p 0.038
			HR	0.72 (95%CI 0.52 - 0.99) p 0.041	0.70 (95%CI 0.50-0.98) p 0.037	0.72 (95%CI 0.50-1.01) p 0.060
Secondary outcomes						
Overall mortality at day 21 since hospital admission	14.9 (59)	19.3 (86)	OR	0.73 (95%CI 0.51 - 1.05) p 0.094	0.72 (95%CI 0.49 - 1.06) p 0.093	0.73 (95%CI 0.48 - 1.10) p 0.127
Overall mortality at day 14 since hospital admission	11.1 (44)	13.5 (60)	OR	0.80 (95%CI 0.53 - 1.21) p 0.304	0.81 (95%CI 0.52 - 1.26) p 0.346	0.86 (95%CI 0.53 - 1.39) p 0.533
Status in WHO 6-points ordinal scale:						
WHO 6-points ordinal scale at day 28			Proportional	0.75 (95%CI 0.55 - 1.02) p 0.07	0.74 (95%CI 0.54 - 1.03) p 0.071	0.71 (95%CI 0.50 - 1) p 0.054
1 Full restitution	76.5 (302)	71.2 (31)	OR			
2 Incomplete restitution	2 (8)	4.5 (20)				
3 Hospitalized NO oxygen	1.3 (5)	0.4 (2)				
4 Hospitalized with oxygen	0.5 (2)	0.4 (2)				
5 Invasive ventilatory	4.1 (16)	1.8 (8)				
6 Death	15.7 (62)	21.5 (96)				
WHO 6-points ordinal scale at day 21			Proportional	0.79 (95%CI 0.58 - 1.06) p 0.117	0.79 (95%CI 0.57 - 1.08) p 0.133	0.75 (95%CI 0.54 - 1.06) p 0.101
1 Full restitution	74.2 (293)	69.3 (31)	OR			

2 Incomplete restitution	2 (8)	3.6 (16)				
3 Hospitalized NO oxygen	1.3 (5)	0.2 (1)				
4 Hospitalized with oxygen	2.8 (11)	4.3 (19)				
5 Invasive ventilatory	4.8 (19)	3.1 (14)				
6 Death	14.9 (59)	19.3 (86)				
WHO 6-points ordinal scale at day 14			Proportional	0.73	0.71 (95%CI 0.53	0.68 (95%CI 0.50
			OR	(95%CI 0.55 -	- 0.95)	- 0.94)
				0.96)	p 0.021	p 0.019
1 Full restitution	68.6 (271)	60.3 (27)		p 0.026		
2 Incomplete restitution	2.3 (9)	2.7 (12)				
3 Hospitalized NO oxygen	2.3 (9)	2.5 (11)				
4 Hospitalized with oxygen	7.1 (28)	12.3 (55)				
5 Invasive ventilatory	8.6 (34)	8.5 (38)				
6 Death	11.1 (44)	13.5 (60)				
Proportion of adverse events	24.8 (98)	27.1 (121)	OR	0.86	0.82	0.81
				(95%CI 0.63 -	(95%CI 0.59 -	(95%CI 0.57 -
				1.18)	1.13)	1.16)
				p 0.349	p 0.227	p 0.257

629

630 All data are % (n), except for: #: Data are in median (interquartile range _{25:75})

631 OR: odds ratio, HR: hazard ratio, SHR:sub-hazard ratio

632 †IPTW ‡Doubly robust adjustment

633 **TABLE 3. Clinical Outcomes in EPIC and control groups**

634

635

636

637

638

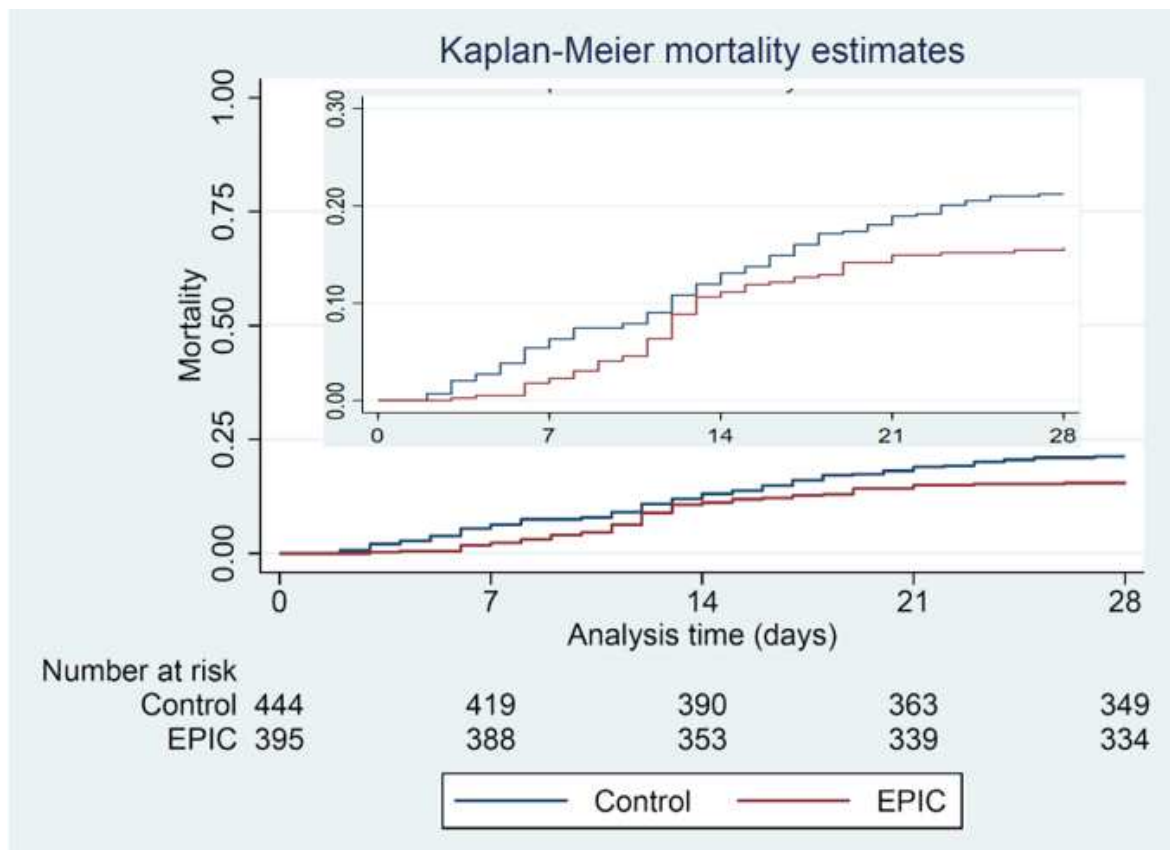
639

	EPIC (N=395)	Control (N=446)
Any patient with an adverse event	24.8 (98)	27.1 (121)
Total of adverse events	145	168
Type		
Mild AE	1.8 (7)	0.2 (1)
Moderate AE	2.3 (9)	1.6 (7)
Severe AE	12.9 (51)	12.1 (54)
Serious adverse events	19.7 (78)	23.8 (106)
Relatedness		
Not related AE	35.2 (139)	NA
Possible related AE	0.8 (3)	NA
Probable related AE	0.8 (3)	NA
Association		
Associated to concomitant disease	22 (87)	18.4 (82)
Associated to concomitant medication	0.5 (2)	0
Associated to COVID-19	33.4 (132)	35.6 (159)

640 NA: Not applicable

641 **TABLE 4.** Review of safety outcomes

642



643

644

645 **FIG 2.** Overall mortality at day 28 since cohort admission

646

647

648