

## **Risk factors for severe COVID-19 in hospitalized children in Canada: A national prospective study from March 2020–May 2021**

Daniel S. Farrar MPH<sup>1</sup>, Olivier Drouin MDCM<sup>2,3</sup>, Charlotte Moore Hepburn MD<sup>4,5</sup>, Krista Baerg MD<sup>6,7</sup>, Kevin Chan MD<sup>8-10</sup>, Claude Cyr MD<sup>11</sup>, Elizabeth J. Donner MD<sup>12</sup>, Joanne E. Embree MD<sup>13,14</sup>, Catherine Farrell MD<sup>15</sup>, Sarah Forgie MD<sup>16,17</sup>, Ryan Giroux MD<sup>18</sup>, Kristopher T. Kang MD<sup>19</sup>, Melanie King BA<sup>20</sup>, Melanie Laffin Thibodeau BCom<sup>20</sup>, Julia Orkin MD<sup>4,21</sup>, Naïm Ouldali<sup>22</sup>, Jesse Papenburg MD<sup>23,24</sup>, Catherine M. Pound MD<sup>25</sup>, Victoria E. Price MBChB<sup>26</sup>, Jean-Philippe Proulx-Gauthier MD<sup>27</sup>, Rupeena Purewal MD<sup>6,28</sup>, Christina Ricci MPH<sup>29</sup>, Manish Sadarangani BM BCh<sup>19,30</sup>, Marina I. Salvadori MD<sup>31</sup>, Roseline Thibeault MD<sup>32</sup>, Karina A. Top MD<sup>33</sup>, Isabelle Viel-Thériault MD<sup>32</sup>, Fatima Kakkar MD<sup>22\*</sup>, Shaun K. Morris MD<sup>1,8,34,35\*</sup>

Author positions 4 (KB) through 27 (IVT) are in alphabetical order. \* indicates co-senior authors.

<sup>1</sup>Centre for Global Child Health, The Hospital for Sick Children, Toronto, Canada

<sup>2</sup>Division of General Pediatrics, Department of Pediatrics, CHU Sainte-Justine, Montreal, Canada

<sup>3</sup>Department of Social and Preventive Medicine, School of Public Health, Université de Montréal, Montréal, Canada

<sup>4</sup>Division of Paediatric Medicine, The Hospital for Sick Children, Toronto, Canada

<sup>5</sup>Institute of Health Policy, Management and Evaluation, University of Toronto, Toronto, Canada

<sup>6</sup>Department of Pediatrics, University of Saskatchewan, Saskatoon, Canada

<sup>7</sup>Division of General Pediatrics, Jim Pattison Children's Hospital, Saskatchewan Health Authority, Saskatoon, Canada

<sup>8</sup>Department of Pediatrics, Temerty Faculty of Medicine, University of Toronto, Toronto, Canada

<sup>9</sup>Department of Children's and Women's Health, Trillium Health Partners, Mississauga, Canada

<sup>10</sup>Institute for Better Health, Trillium Health Partners, Mississauga, Canada

<sup>11</sup>Service de Soins Intensifs Pédiatriques, Centre Hospitalier Universitaire de Sherbrooke, Sherbrooke, Canada

<sup>12</sup>Division of Neurology, The Hospital for Sick Children, Toronto, Canada

<sup>13</sup>Department of Paediatrics and Child Health, University of Manitoba, Winnipeg, Canada

<sup>14</sup>Department of Medical Microbiology and Infectious Diseases, University of Manitoba, Winnipeg, Canada

<sup>15</sup>Division of Paediatric Intensive Care, Department of Pediatrics, CHU Sainte-Justine, Montréal, Canada

<sup>16</sup>Division of Infectious Diseases, Department of Pediatrics, University of Alberta, Edmonton, Canada

<sup>17</sup>Stollery Children's Hospital, Edmonton, Canada

<sup>18</sup>Women's and Children's Health Program, St. Michael's Hospital, Unity Health Toronto, Toronto, Canada

<sup>19</sup>Department of Pediatrics, University of British Columbia, Vancouver, Canada

<sup>20</sup>Canadian Paediatric Surveillance Program, Canadian Paediatric Society, Ottawa, Canada

<sup>21</sup>Child Health Evaluative Sciences, The Hospital for Sick Children, Toronto, Canada

<sup>22</sup>Division of Infectious Diseases, CHU Sainte-Justine, Montreal, Canada

<sup>23</sup>Division of Pediatric Infectious Diseases, Department of Pediatrics, Montreal Children's Hospital, Montréal, Canada

<sup>24</sup>Division of Microbiology, Department of Clinical Laboratory Medicine, McGill University Health Centre, Montréal, Canada

<sup>25</sup>Division of Consulting Pediatrics, Department of Pediatrics, Children's Hospital of Eastern Ontario, Ottawa, Canada

<sup>26</sup>Division of Paediatric Hematology/Oncology, Department of Pediatrics, Dalhousie University, Halifax, Canada

<sup>27</sup>Division of Pediatric Rheumatology, Department of Pediatrics, CHU de Québec-Université Laval, Québec City, Canada

<sup>28</sup>Division of Paediatric Infectious Diseases, Jim Pattison Children's Hospital, Saskatchewan Health Authority, Saskatoon, Canada

<sup>29</sup>Centre for Surveillance and Applied Research, Public Health Agency of Canada, Ottawa, Canada

<sup>30</sup>Vaccine Evaluation Center, BC Children's Hospital Research Institute, Vancouver, Canada

<sup>31</sup>Public Health Agency of Canada, Ottawa, Canada

<sup>32</sup>Division of Infectious Diseases, Department of Pediatrics, CHU de Québec-Université Laval, Québec City, Canada

<sup>33</sup>Department of Pediatrics, Dalhousie University, Halifax, Canada

<sup>34</sup>Division of Infectious Diseases, The Hospital for Sick Children, Toronto, Canada

<sup>35</sup>Clinical Public Health, Dalla Lana School of Public Health, University of Toronto, Toronto, Canada

### **Corresponding authors:**

Fatima Kakkar

Division of Infectious Diseases, Centre Hospitalier Universitaire Sainte-Justine  
3175 Chemin Cote Sainte-Catherine, Montreal, QC, H3T 1C5, Canada

[fatima.kakkar@umontreal.ca](mailto:fatima.kakkar@umontreal.ca)

Shaun K. Morris

Division of Infectious Diseases, The Hospital for Sick Children  
555 University Ave, Toronto, ON, M5G 1X8, Canada

[shaun.morris@sickkids.ca](mailto:shaun.morris@sickkids.ca)

**Word count (Abstract):** 298

**Word count (Body):** 3497

## ABSTRACT

**Background:** Children living with chronic comorbid conditions are at increased risk for severe COVID-19, though there is limited evidence regarding the risks associated with specific conditions and which children may benefit from targeted COVID-19 therapies. The objective of this study was to identify factors associated with severe disease among hospitalized children with COVID-19 in Canada.

**Methods:** We conducted a national prospective study on hospitalized children with microbiologically confirmed SARS-CoV-2 infection via the Canadian Paediatric Surveillance Program from April 2020–May 2021. Cases were reported voluntarily by a network of >2800 paediatricians. Hospitalizations were classified as COVID-19-related, incidental infection, or infection control/social admissions. Severe disease (among COVID-19-related hospitalizations only) was defined as disease requiring intensive care, ventilatory or hemodynamic support, select organ system complications, or death. Risk factors for severe disease were identified using multivariable Poisson regression, adjusting for age, sex, concomitant infections, and timing of hospitalization.

**Findings:** We identified 544 children hospitalized with SARS-CoV-2 infection, including 60.7% with COVID-19-related disease and 39.3% with incidental infection or infection control/social admissions. Among COVID-19-related hospitalizations (n=330), the median age was 1.9 years (IQR 0.1–13.3) and 43.0% had chronic comorbid conditions. Severe disease occurred in 29.7% of COVID-19-related hospitalizations (n=98/330), most frequently among children aged 2-4 years (48.7%) and 12-17 years (41.3%). Comorbid conditions associated with severe disease included technology dependence (adjusted risk ratio [aRR] 2.01, 95% confidence interval [CI] 1.37-2.95), neurologic conditions (e.g. epilepsy and select chromosomal/genetic conditions)

(aRR 1.84, 95% CI 1.32-2.57), and pulmonary conditions (e.g. bronchopulmonary dysplasia and uncontrolled asthma) (aRR 1.63, 95% CI 1.12-2.39).

**Interpretation:** While severe outcomes were detected at all ages and among patients with and without comorbidities, neurologic and pulmonary conditions as well as technology dependence were associated with increased risk of severe COVID-19. These findings may help guide vaccination programs and prioritize targeted COVID-19 therapies for children.

**Funding:** Financial support for the CPSP was received from the Public Health Agency of Canada.

## 1 BACKGROUND

2 Infection with severe acute respiratory syndrome coronavirus 2 (SARS-CoV-2) is typically mild  
3 or asymptomatic in children as compared to adults, however, severe outcomes including  
4 hospitalization and death due to coronavirus disease 2019 (COVID-19) have been reported.<sup>1,2</sup>  
5 Chronic comorbid conditions are an important prognostic factor for disease progression,  
6 associated with odds of severe disease two to four times higher than children without these  
7 conditions.<sup>3,4</sup> Evidence regarding risk associated with specific conditions remains limited, though  
8 diabetes, neurologic and respiratory conditions, and multiple comorbidities have emerged as  
9 conditions associated with high risk of severe COVID-19.<sup>5-7</sup> Age-based estimates of risk have  
10 been mixed and are often subject to jurisdictional differences in admission thresholds,  
11 heterogeneous definitions of severity, and may be complicated by the inclusion of patients with  
12 multisystem inflammatory syndrome in children (MIS-C).<sup>6,8-10</sup> Robust estimates of specific risk  
13 factors in children are needed to inform evidence-based decision-making by clinicians,  
14 policymakers, and families.

15  
16 In Canada, more than 1.3 million laboratory-confirmed cases of SARS-CoV-2 infection across  
17 all ages were reported as of May 31, 2021, including successive waves of the original SARS-  
18 CoV-2 strain, Alpha (B.1.1.7) variant, and early cases of the Delta (B.1.617.2) variant.<sup>11</sup>  
19 COVID-19 vaccination and booster programs have since been introduced, including stepwise  
20 approvals for children aged  $\geq 16$  years, 12-15 years, and 5-11 years.<sup>12</sup> Select treatments have also  
21 been shown to decrease the morbidity and mortality burden of COVID-19 in adults, including  
22 corticosteroids and other immunomodulators as well as novel therapies (e.g. remdesivir,  
23 nirmatrelvir, and monoclonal antibodies). However, indications guiding the use of these agents

24 in children are less clear.<sup>13,14</sup> Age-specific baseline indicators of COVID-19 severity including  
25 hospitalization, intensive care unit (ICU) admission, and respiratory support requirements are  
26 therefore needed to a) evaluate severity trends amidst ongoing vaccination strategies, and b)  
27 guide the use of targeted COVID-19 therapies in children.

28  
29 In this study, we present final findings from a nationally representative prospective surveillance  
30 study of hospitalized children with microbiologically confirmed SARS-CoV-2 infection in  
31 Canada, prior to emergence of the Omicron variant and the approval of SARS-CoV-2 vaccines  
32 for use in children. The primary objectives were to 1) identify specific comorbid conditions  
33 associated with severe COVID-19 among hospitalized Canadian children and 2) describe  
34 severity within specific paediatric age groups.

35  
36 **METHODS**

### 37 **Study design and procedures**

38 The Canadian Paediatric Surveillance Program (CPSP) is a public health surveillance network  
39 which actively collects national, population-based data regarding rare childhood disorders, and is  
40 jointly operated by the Canadian Paediatric Society (CPS) and Public Health Agency of Canada  
41 (PHAC).<sup>15</sup> This network includes >2,800 paediatricians and paediatric subspecialists across  
42 Canada who report cases to CPSP on a voluntary basis. The CPSP COVID-19 study launched on  
43 April 8, 2020 and asked all participating physicians to report any incident cases on a weekly  
44 basis using online case reporting via the Canadian Network for Public Health Intelligence. Cases  
45 of children <18 years of age and hospitalized with microbiologically-confirmed SARS-CoV-2  
46 infection between the onset of the COVID-19 pandemic until May 31, 2021 were eligible to be

47 reported. For this analysis, we excluded cases meeting criteria for MIS-C who tested positive by  
48 polymerase chain reaction (PCR) during their hospital stay. A preliminary analysis of cases  
49 occurring from March–December 2020 has previously been published.<sup>16</sup> The protocol and case  
50 report form for the study can be found at <https://cpsp.cps.ca/surveillance/study-etude/covid-19>.

51  
52 For all cases, participating physicians were asked to report on demographic characteristics,  
53 SARS-CoV-2 testing and exposures, chronic comorbid conditions, clinical features including the  
54 reason for hospitalization and presenting symptoms, and outcomes including level of care  
55 required and supports/treatments administered. Participants could consent to follow-up from the  
56 study team for clarification in case of incomplete or discrepant data elements, and consent was  
57 provided for 96% of reported cases. Real-time data management including record de-duplication,  
58 cleaning, and participant follow-up was conducted throughout the study period.

59  
60 **Study definitions**

61 The reason for hospitalization was physician-reported as either a) COVID-19-related (any child  
62 whose presentation was clinically consistent with symptomatic COVID-19 and who required  
63 admission because of those symptoms); or b) not related to COVID-19 (any child admitted for  
64 another condition in whom SARS-CoV-2 was detected upon routine screening, or a child  
65 admitted for isolation/infection control or social reasons, and whose SARS-CoV-2 symptoms  
66 would not otherwise have warranted hospitalization). For each case, at least two study  
67 investigators (OD, CMH, FK, or SKM) reviewed all available clinical details to ensure  
68 consistency in the physician-reported categories, with any discrepancies in interpretation  
69 resolved via consensus discussion. Among patients hospitalized for COVID-19, disease severity

70 was then assigned using an algorithm adapted from the World Health Organization<sup>17</sup> and cases  
71 were categorized as either mild disease (symptomatic COVID-19 not requiring supplemental  
72 oxygen or targeted therapy); moderate disease (requiring oxygen above baseline home needs or  
73 targeted therapy such as remdesivir or corticosteroids); or severe disease (admitted to intensive  
74 care, requiring non-invasive or mechanical ventilation or vasopressors, experiencing respiratory,  
75 neurologic, or cardiac organ complications, or any recorded death); (Appendix 1). Disease  
76 severity was then analyzed as a binary outcome whereby mild and moderate disease were  
77 aggregated as ‘non-severe’ disease.

78  
79 Chronic comorbid conditions were first analyzed as specific conditions or subcategories and  
80 included: chronic renal disease, congenital heart disease, diabetes mellitus, gastrointestinal  
81 disease, hematologic disease, immunosuppression, malignancies, metabolic disease, neurologic  
82 or neurodevelopmental disorders, obesity, psychiatric disorders, pulmonary diseases, technology  
83 dependence, and transplant recipients. Immunosuppression was defined as any  
84 immunosuppressing medications (including active chemotherapy), primary or secondary  
85 immunodeficiency, or chronic rheumatologic or autoimmune disorders. Technology dependence  
86 included presence of tracheostomy and/or requirements for home oxygen, parenteral nutrition, or  
87 dialysis. Obesity was categorized using body mass index-for-age Z-scores (BMIZ) according to  
88 the WHO Child Growth Standards.<sup>18</sup>

89  
90 To assess overall medical complexity, we assigned patients to one of three mutually exclusive  
91 categories using a definition informed by prior literature.<sup>19,20</sup> For this indicator, ‘complex chronic  
92 disease’ includes a) patients with two or more comorbid conditions occurring in multiple body



93 systems, or b) patients with a single comorbid condition which impacts multiple body systems,  
94 has technology dependence requirements, or is associated with a shorter than average lifespan;  
95 ‘non-complex chronic disease’ includes all other patients with comorbid conditions; and  
96 ‘none/unknown’ includes patients with no known or confirmed comorbid conditions.

97  
98 Child age was categorized as <6 months, 6-23 months, 2-4 years, 5-11 years, and 12-17 years.  
99 Timing of hospitalization was categorized as first wave (March–August 2020), second wave  
100 (September 2020–February 2021), or third wave (March–May 2021). Summaries of all  
101 radiologic findings were reviewed by investigators (as above) and categorized as either  
102 abnormal, abnormal but not related to SARS-CoV-2, non-specific, or normal.

103

#### 104 **Statistical analysis**

105 Demographic and clinical characteristics were summarized using frequencies, percentages,  
106 medians, and interquartile ranges (IQR). Due to CPSP privacy policies, frequencies between one  
107 and four were masked and reported as ‘<5’ while some larger frequencies were presented as  
108 ranges to prevent back-calculation. Subgroup comparisons were analyzed using  $\chi^2$  tests, Fisher’s  
109 exact tests, and Wilcoxon rank-sum tests, as appropriate. Analysis of risk factors and severity  
110 outcomes was restricted to patients hospitalized with COVID-19-related disease. Multivariable  
111 Poisson regression with robust standard errors was used to identify risk factors for severe  
112 COVID-19, reported using adjusted risk ratios (aRR). The primary adjusted model, defined *a*  
113 *priori*, included age, sex, concomitant infections, timing of hospitalization, and chronic  
114 conditions (categorized as none, non-complex, or complex). Child age was entered as a  
115 continuous variable using a restricted cubic spline with four knots at evenly-spaced percentiles.

116 To assess the role of specific conditions, the chronic comorbid condition variable was substituted  
117 with each individual condition or subcategory and analyzed as described above. A separate  
118 model was conducted among children <1 year only to assess very young age (i.e. <1 month  
119 versus 1-11 months) and premature births (vs. term births), adjusting only for those variables due  
120 to a smaller available sample size. Minimum population-based incidence proportions were  
121 calculated by dividing the number of age-specific hospitalizations and severe COVID-19 cases  
122 by 2020 midyear population denominators from Statistics Canada.<sup>21</sup> Confidence intervals (CI)  
123 were computed by assuming a Poisson distribution. Data analysis was conducted in Stata version  
124 17.0, using a statistical significance threshold of  $\alpha=0.05$ .<sup>22</sup>

125

#### 126 **Ethical approval**

127 The CPSP operates under the authority derived from Section 4 of the Department of Health Act  
128 and Section 3 of the PHAC act. Approval was obtained from Research Ethics Boards at Health  
129 Canada-PHAC (REB #2020-002P), the Hospital for Sick Children (REB #1000070001), the  
130 Centre Hospitalier Universitaire Sainte-Justine (IRB #MP-21-2021-2901), and at individual sites  
131 as required by local policies.

132

#### 133 **Role of the funding source**

134 The CPSP is governed by an independent Scientific Steering Committee (SSC) comprised of  
135 individuals from both CPS and PHAC (the funder). Members of the SSC reviewed and approved  
136 the study design. Individuals from PHAC, CPS, and the SSC participated in interpretation of the  
137 data. The final report was provided to PHAC for review, however the study team maintained

138 scientific independence and the authors were under no obligation to accept or incorporate  
139 changes to the manuscript.

## 140 **RESULTS**

141 During the fifteen-month study period, 544 children hospitalized with SARS-CoV-2 infection  
142 met this study's inclusion criteria (Figure S1). Among these cases, 330 (60.7%) were  
143 hospitalized with COVID-19-related disease, while the remainder were incidental cases admitted  
144 for unrelated care (n=201, 36.9%) or admitted for infection control or social purposes (n=13,  
145 2.4%). Overall, 15.3% of cases were hospitalized during the first pandemic wave (peaking in  
146 April 2020), 50.0% during the second wave (peaking in January 2021), and 34.7% during the  
147 third wave (peaking in April 2021; Figure S2). Hospitalizations were reported from all regions  
148 across Canada, most commonly from the most populous provinces of Ontario (n=229; 42.1%)  
149 and Quebec (n=194; 35.7%).

150

151 Of the 330 COVID-19-related hospitalizations, 70.3% (n=232) met criteria for non-severe  
152 disease while 29.7% (n=98) met criteria for severe disease (Table 1). The median age at  
153 admission was 1.9 years (IQR 0.1–13.3) and was lower among patients with non-severe COVID-  
154 19 (0.8 years, IQR 0.1–9.7) than those with severe COVID-19 (6.5 years, IQR 1.5–14.8;  
155  $p<0.001$ ). Accounting for underlying population size, study period incidence proportions for  
156 COVID-19 hospitalization and severe COVID-19 were highest among children <1 year of age  
157 (37.9 hospitalizations and 5.4 severe cases per 100,000 population) and lowest among children 5-  
158 11 years of age (1.0 hospitalizations and 0.4 severe cases per 100,000 population; Table 2).  
159 Concomitant infections were reported among 8.2% of cases (n=27), including most commonly

160 urinary tract infections (n=10). Among 140 patients <1 year old, 12.9% (n=18) were born at <37  
161 weeks gestation.

162

163 Children living with comorbid conditions comprised 43.0% of COVID-19 hospitalizations  
164 (n=142), including 23.9% (n=79) classified as non-complex conditions and 19.1% (n=63)  
165 classified as complex conditions (Table 1). Neurologic and neurodevelopmental disorders were  
166 most common (n=46, 13.9%) and included epilepsy (n=20), chronic encephalopathies (n=19  
167 including 8 with cerebral palsy), and chromosomal/genetic disorders (n=9 including <5 with  
168 trisomy 21, Table 3). Forty-four patients (13.3%) were obese, all aged  $\geq 5$  years, with a median  
169 BMIZ of 2.9 (among 22 obese patients with reported height and weight data, IQR 2.3–3.3).  
170 Pulmonary conditions were reported in 34 patients (10.3%), including asthma most commonly  
171 (n=16; 8 using daily controller medications and 8 not using daily controller medications). There  
172 were few reported with immunosuppression (n=19, 5.8%; including 14 with immunosuppressing  
173 medications), hematologic disorders (n=17, 5.2%; including 14 with sickle cell disease),  
174 congenital heart disease (n=14, 4.2%), gastrointestinal/liver disease (n=10, 3.0%), diabetes (n=8  
175 including 7 who were insulin dependent), and malignancies (n=8, 2.4%; including 6 with  
176 leukemia). Finally, 16 patients (4.8%) had pre-existing technology dependence requirements  
177 including 12 requiring parenteral nutrition and seven with either tracheostomy or home oxygen  
178 requirements. Compared to patients hospitalized for other reasons, children hospitalized for  
179 COVID-19 were more likely to be obese (13.3% vs. 3.7%,  $p<0.001$ ) and have pulmonary  
180 conditions (10.3% vs. 3.3%,  $p=0.002$ ) but less likely to have psychiatric disorders (<1.5% vs.  
181 4.2%,  $p=0.001$ ; Table S1).

182

183 Among COVID-19-related hospitalizations, 60 (18.2%) children were admitted to the ICU for a  
184 median duration of four days (IQR 2–7, Table 4). Including patients admitted to the ward and  
185 ICU, nearly one-third (n=108) required respiratory or hemodynamic support, including 19.1%  
186 (n=63) who required support greater than low-flow oxygen. Mechanical ventilation was required  
187 for 7.6% of children (n=25), while few (n=8, 2.4%) required vasopressors and none required  
188 extracorporeal membrane oxygenation. Among children requiring mechanical ventilation, 11/25  
189 had no known chronic comorbid conditions (including 5/10 children aged 2-4 years). Five  
190 children died due to complications of acute COVID-19, at a mean age of 8.1 years (standard  
191 deviation 7.3 years). Children aged 2-4 years experienced the highest proportion of severe  
192 disease (48.7%, n=19/39), followed by those aged 12-17 years (41.3%, n=38/92), 5-11 years  
193 (36.7%, n=11/30), 6-23 months (28.3%, n=13/46), and finally <6 months (13.8%, n=17/123).  
194 Children aged 2-4 years were more often admitted to ICU (33.3%, n=13/39) while children aged  
195 12-17 years more often required any respiratory or hemodynamic support (51.1%, n=47/92). The  
196 proportion of children with chronic comorbid conditions by age group is described in Table S2,  
197 while severity and treatment outcomes by pandemic wave is described in Table S3.

198  
199 There was a significant nonlinear relationship between age and severe COVID-19 (Figure 1),  
200 whereby children <1 year had significantly lower risk of severe disease while risk was highest  
201 for children aged 2-5 and 16-<18 years. In a separate model among children <1 year only,  
202 children aged <1 month had 2.55 times higher risk of severe disease (95% CI 1.15–5.64) than  
203 those aged 1-11 months. Several comorbid conditions were significantly associated with severe  
204 disease including any pulmonary condition (vs. none, aRR 1.63, 95% CI 1.12–2.39), any  
205 neurologic condition (vs. none, aRR 1.84, 95% CI 1.32–2.57), and any technology dependence

206 requirements (vs. none, aRR 2.01, 95% CI 1.37–2.95; Figure 2). Bronchopulmonary dysplasia  
207 and epilepsy were the strongest risk factors for severe disease (aRR 2.39 [1.37–4.18] and 2.08  
208 [1.44–2.99], respectively). Associations between asthma and COVID-19 severity were modified  
209 by the use of controller medications, as those with controlled asthma were not at higher risk of  
210 severe disease (aRR 0.33, 95% CI 0.05–2.20) while those with uncontrolled asthma were (aRR  
211 2.24, 95% CI 1.54–3.27). Neurologic and pulmonary conditions as well as technology  
212 dependence requirements were often clustered together in the same patients with severe COVID-  
213 19 (Figure S3). Among children with obesity, only those with known BMIZ >3 had higher risk  
214 of severe disease (aRR 1.90, 95% CI 1.10–3.28). Immunosuppression (aRR 0.43, 95% CI 0.16–  
215 1.16) and malignancies (aRR 0.65, 95% CI 0.22–1.90) were not associated with higher risk of  
216 severe COVID-19. Among patients <1 year old, prematurity increased the risk of severe disease  
217 by 3.47 times that of term-born children (95% CI 1.69–7.09). Notably, when analyzed as a single  
218 variable, non-complex conditions (aRR 1.10, 95% CI 0.71–1.69) and complex conditions (aRR  
219 1.35, 95% CI 0.89–2.04) were not associated with higher risk of severe COVID-19 when  
220 compared to children with no known comorbid conditions.

221

## 222 **DISCUSSION**

223 In this national prospective surveillance study, we described risk factors for disease severity and  
224 outcomes among 544 children hospitalized with SARS-CoV-2 infection (and without MIS-C)  
225 across Canada prior to emergence of the Omicron variant and the approval of paediatric COVID-  
226 19 vaccines. Overall, the CPSP voluntary reporting system captured 58% of children <18 years  
227 of age hospitalized with SARS-CoV-2 infection in Canada from March 2020–May 2021  
228 (unpublished data; source: case information received by PHAC from provinces and territories).

229 While severe outcomes were rare in absolute terms, among COVID-19-related hospitalizations,  
230 one in three patients required respiratory or hemodynamic support (including one in five  
231 requiring greater than low-flow oxygen) while one in five required ICU admission, and five  
232 patients reported to the study died from their infection. Severe outcomes were identified across  
233 all age groups and among patients both with and without comorbid conditions. We estimated a  
234 lower proportion of severe COVID-19 than interim CPSP analyses (29.7% here vs. 50.0% in our  
235 prior report<sup>16</sup>). This was in part due to a change in definition from initial criteria adapted from  
236 Dong et al<sup>23</sup> to modified WHO<sup>17</sup> severity criteria, as application of the Dong criteria included  
237 subjective reports of organ involvement such as non-specific respiratory distress, coagulopathy,  
238 and minimal supplemental oxygen requirements (Table S4). Our results are similar to a US study  
239 of hospitalized patients with a primary diagnosis of COVID-19 (20.7% with severe disease), but  
240 the proportion with severe disease remained higher than most studies which included incidental  
241 cases in their study denominators (e.g. 4.1–15.4%).<sup>24–26</sup> These differences may also be  
242 attributable to heterogeneous definitions of COVID-19 severity.

243  
244 Child age was an important predictor of severe disease. After multivariable adjustment,  
245 hospitalized infants (i.e. children <1 year of age) had significantly lower risk of severe disease  
246 compared to older children, yet population-based incidence proportions of severe COVID-19 for  
247 this age group were between 3–18 times higher than older age groups. Lower in-hospital risk of  
248 severe disease is likely a result of lower thresholds for admission for febrile infants, in particular  
249 those <90 days old.<sup>27</sup> Unlike most prior literature<sup>8,10</sup>, children aged 2-4 years in Canada exhibited  
250 the highest risk of severe disease, including 33% admitted to ICU and 26% requiring ventilation.

251 These findings may inform vaccination strategies and use of COVID-19 therapies in this age  
252 group.

253  
254 Chronic comorbid conditions associated with the neurologic or pulmonary systems had increased  
255 risk of severe disease roughly 1.5–2.5 times that of all other children. Epilepsy is now a well-  
256 established risk factor for severe disease amongst children, and may be caused by increased risk  
257 of seizures during infection as well as associated respiratory complications such as aspiration,  
258 and warrants dedicated study of specific epileptic subgroups.<sup>5,28</sup> Technology dependence, most  
259 notably patients requiring home oxygen, tracheostomy, or gastrostomy tubes were at particularly  
260 high risk for severe COVID-19, consistent with past studies of other childhood respiratory viral  
261 infections such as influenza and respiratory syncytial virus.<sup>29,30</sup> Notably, complex conditions as a  
262 single category were not significantly associated with severe COVID-19 risk, suggesting greater  
263 focus should be paid on specific conditions rather than broad categories as is often the case in  
264 risk stratification guidelines.<sup>31,32</sup>

265  
266 Previous studies have shown mixed evidence of asthma as a risk factor for severe COVID-  
267 19.<sup>5,7,10,24</sup> In this study, we demonstrate that controller medications may act as an effect modifier,  
268 whereby a lack of daily controller medications significantly increased the risk of severe disease.  
269 This finding suggests that asthma controllers may be protective against respiratory  
270 complications, and children lacking these medications may experience reduced access to care or  
271 be less likely to be actively followed in a clinical setting. This is supported by a recent  
272 population-based study that showed a marked increase in risk of SARS-CoV-2 hospitalization  
273 among school-aged children with poorly-controlled asthma.<sup>33</sup>



274  
275 Unlike previous studies, diabetes was not associated with an increased risk of severe COVID-  
276 19.<sup>5,10,26</sup> In this study, ten patients with diabetes (median age 12.6 years, IQR 4.6–14.7) were  
277 admitted for reasons other than COVID-19 including seven with diabetic ketoacidosis and it  
278 remains possible that SARS-CoV-2 infection precipitated or exacerbated these presentations.<sup>34</sup>  
279 Confirming results from our interim analyses, children with suppressed immune systems  
280 including those with leukemia and other malignancies, sickle cell disease, and other  
281 immunocompromising conditions were not at higher risk of severe disease, consistent with case  
282 series of these specific disease groups.<sup>35,36</sup>

283  
284 This study has several limitations. First, case reporting to CPSP is conducted on a voluntary  
285 basis and not all SARS-CoV-2 hospitalizations were identified. Reporting fatigue towards the  
286 end of the study period may have biased case reporting in favour of more severe cases and  
287 therefore, severity outcomes may be overestimated. Moreover, testing indications may have  
288 varied by jurisdiction throughout the study period, such that not all admissions may have been  
289 tested for SARS-CoV-2 at all times. The reported minimum incidence proportions are therefore  
290 underestimates, but may still be useful to compare age-specific rates of hospitalization. Second,  
291 indications for ICU transfer may differ by centre and some children may have been admitted to  
292 ICU for precautionary purposes only. In this study, nine (of 98) children met criteria for severe  
293 disease because of their ICU admission and otherwise lacked features of severe COVID-19 (e.g.  
294 respiratory support requirements beyond low-flow oxygen or organ system involvement). Third,  
295 as the pandemic progressed, the case report form could not be amended to include variables such  
296 as SARS-CoV-2 lineage, length of hospital stay, and maternal immunization status. Fourth, our

297 analysis of risk factors was conducted within hospitalized patients only, and therefore may differ  
298 from risk factors of severe disease among all children with COVID-19. Analyses of risk factors  
299 could not be conducted within age strata and for example, effects of obesity may not be  
300 generalizable to children <5 years of age.<sup>37</sup> Finally, population group of the child was reported  
301 by physicians and not by families, and therefore these variables could not be included in  
302 multivariable models.

303  
304 In this national prospective surveillance study, severe COVID-19 was detected across all age  
305 groups and in children with and without comorbid conditions. Neurologic and pulmonary  
306 conditions, as well as technology dependence requirements were associated with higher risk of  
307 severe COVID-19. These findings may be used to inform vaccination and booster campaigns,  
308 prioritize allocation of COVID-19 therapies, and guide family and policymaker decision-making  
309 as the pandemic continues.

310 **RESEARCH IN CONTEXT**

311

312 **Evidence before this study**

313

314 We searched Medline and PubMed for published materials and medRxiv for pre-print  
315 publications between January 1, 2020 and February 28, 2022. Search terms used included the  
316 following combination of words and did not include language limitations: “COVID-19” OR  
317 “SARS-CoV-2” OR “coronavirus”; “children” OR “pediatric” OR “adolescent” OR “youth”;  
318 “hospitalized” or “admitted”; “severe” OR “critical” OR “intensive care” OR “complications”  
319 OR “mortality” OR “death” OR “risk factors”. We identified numerous descriptive studies  
320 describing clinical characteristics and outcomes of hospitalized children and youth, including  
321 analyses of single or multi-centre studies and population-based databases. Fewer studies (n=10)  
322 included multivariable analysis of severe COVID-19 risk factors. Chronic comorbid conditions  
323 were commonly associated with severe outcomes, including diabetes, neurologic conditions, and  
324 respiratory conditions. Age was frequently associated with COVID-19 severity, though with  
325 conflicting results particularly regarding younger children (i.e. <1 year).

326

327 **Added value of this study**

328

329 The Canadian Paediatric Surveillance Program collected detailed data on clinical presentations  
330 and chronic comorbid conditions among nearly 60% of all paediatric SARS-CoV-2  
331 hospitalizations in Canada between March 2020–May 2021. A large available sample size  
332 (n=330 COVID-19-related hospitalizations) permitted multivariable analysis of specific  
333 comorbid conditions. We confirm neurologic and pulmonary conditions as risk factors for severe  
334 disease, including specifically epilepsy, bronchopulmonary dysplasia, and uncontrolled asthma.  
335 We also identify greater risk among children with technology dependence requirements, as well  
336 as children aged 2–4-years and 16–<18-years.

337

338 **Implications of all the available evidence**

339

340 Children at all ages and both with and without comorbid conditions may experience severe  
341 COVID-19 outcomes. Conditions associated with medical complexity, including neurologic and  
342 pulmonary conditions as well as technology dependence, are at heightened risk of severe disease.  
343 Children <5 years remain a key unvaccinated group both in Canada and globally. These findings  
344 may help inform clinical practice, including the use of targeted COVID-19 therapies to reduce  
345 further morbidity and mortality.

346

347 **AUTHOR CONTRIBUTIONS**

348 The study was conceived by DSF, OD, CMH, FK, and SKM. DSF conducted statistical analysis  
349 and wrote the first draft of the manuscript. All authors had access to the data, and DSF, CMH,  
350 MLT, MK, and SKM have accessed and verified the data underlying the study. All authors  
351 contributed to data collection, reviewed the study results and manuscript, and approved of the  
352 final manuscript.

353

354 **ACKNOWLEDGEMENTS**

355 The authors wish to thank the paediatricians, paediatric subspecialists, and health professionals  
356 who voluntarily respond to CPSP surveys. The authors are also grateful to the staff and managers  
357 of the CPSP for their commitment to this study, as well as members of the CPSP Scientific  
358 Steering Committee who serve as stewards of the program. They also thank the members and  
359 leadership of the Paediatric Inpatient Research Network for cases reported and their dedication to  
360 the CPSP.

361

362 **DECLARATION OF INTERESTS**

363 Krista Baerg has received royalties from Brush Education, and provided contracted services to  
364 the College of Medicine, University of Saskatchewan and Saskatchewan Health Authority –  
365 Saskatoon. She also served on the Board of Directors of the Saskatchewan Pain Society Inc., and  
366 as Saskatchewan Branch President of the Federation of Medical Women of Canada. Kevin Chan  
367 is Chair of the Acute Care Committee of the Canadian Paediatric Society, and served on the  
368 billing/finance committee of the Pediatric Section of the Ontario Medical Association. Catherine  
369 Farrell is Chair of the Scientific Steering Committee for the Canadian Paediatric Surveillance

370 Program and member of the Board of Directors of the Canadian Critical Care Society. She has  
371 received funding from Health Canada and the Canadian Institutes of Health Research, as well as  
372 an honorarium for a presentation at a continuing education conference from the Université de  
373 Sherbrooke. Sarah Forgie is the President of the Association of Medical Microbiology and  
374 Infectious Disease Canada, and received an honorarium for participation in the Senior Medical  
375 Advisory Committee at Ryerson Medical School. Fatima Kakkar has received salary support for  
376 protected time from the FRQS Chercheur Boursiers Program, and received honoraria for  
377 presentations given to the Association des Pédiatres du Québec. She has also served on the  
378 Quebec COVID-19 maternal-child health advisory committee, and received grants from FRQS  
379 Réseau SIDA Maladies Infectieuses and Foundation of Stars. Charlotte Moore Hepburn is the  
380 Director of Children’s Mental Health of Ontario, and the Director of medical affairs for the  
381 Canadian Paediatric Society and the Canadian Paediatric Surveillance Program. Shaun Morris  
382 has received honouraria for lectures from GlaxoSmithKline. He was a member of an ad hoc  
383 advisory boards for Pfizer Canada and Sanofi Pasteur. Jesse Papenburg has received consultant  
384 fees from Merck, honouraria from Astra-Zeneca and Seegene, and is a voting member of the  
385 National Advisory Committee on Immunization. He is also site principal investigator for  
386 industry trials by MedImmune, Merck, Astra-Zeneca, and Sanofi, and is Medical Lead of the  
387 Study Steering Committee for AbbVie. Rupeena Purewal is a consultant for Verity  
388 Pharmaceuticals. Christina Ricci and Marina Salvadori are employees of the Public Health  
389 Agency of Canada. Manish Sadarangani has been an investigator on projects, unrelated to the  
390 current work, funded by GlaxoSmithKline, Merck, Moderna, Pfizer, Sanofi-Pasteur, Seqirus,  
391 Symvivo and VBI Vaccines. He is also Chair/Deputy Chair of Data Safety Monitoring Boards

392 for two COVID-19 vaccine trials. Karina Top received a grant from GlaxoSmithKline to her  
393 institution outside the submitted work. No other competing interests were declared.

## REFERENCES

- 1 Liguoro I, Pilotto C, Bonanni M, *et al.* SARS-COV-2 infection in children and newborns: a systematic review. *Eur J Pediatr* 2020; **179**: 1029–46.
- 2 Shekerdemian LS, Mahmood NR, Wolfe KK, *et al.* Characteristics and Outcomes of Children With Coronavirus Disease 2019 (COVID-19) Infection Admitted to US and Canadian Pediatric Intensive Care Units. *JAMA Pediatr* 2020; **174**: 868–73.
- 3 Tsankov BK, Allaire JM, Irvine MA, *et al.* Severe COVID-19 Infection and Pediatric Comorbidities: A Systematic Review and Meta-Analysis. *Int J Infect Dis* 2021; **103**: 246–56.
- 4 Harwood R, Yan H, Talawila Da Camara N, *et al.* Which children and young people are at higher risk of severe disease and death after hospitalisation with SARS-CoV-2 infection in children and young people: A systematic review and individual patient meta-analysis. *eClinicalMedicine* 2022; **44**: 101287.
- 5 Kompaniyets L, Agathis NT, Nelson JM, *et al.* Underlying Medical Conditions Associated With Severe COVID-19 Illness Among Children. *JAMA Netw Open* 2021; **4**: e2111182.
- 6 Woodruff RC, Campbell AP, Taylor CA, *et al.* Risk Factors for Severe COVID-19 in Children. *Pediatrics* 2021; : e2021053418.
- 7 Armann J, Doenhardt M, Hufnagel M, *et al.* Risk factors for hospitalization, disease severity and mortality in children and adolescents with COVID-19: Results from a nationwide German registry [pre-print]. *medRxiv* 2021; published online June 13. DOI:<https://doi.org/10.1101/2021.06.07.21258488>.
- 8 Götzinger F, Santiago-García B, Noguera-Julián A, *et al.* COVID-19 in children and adolescents in Europe: a multinational, multicentre cohort study. *Lancet Child Adolesc Health* 2020; **4**: 653–61.
- 9 Feldstein LR, Tenforde MW, Friedman KG, *et al.* Characteristics and Outcomes of US Children and Adolescents With Multisystem Inflammatory Syndrome in Children (MIS-C) Compared With Severe Acute COVID-19. *JAMA* 2021; **325**: 1074–87.
- 10 Graff K, Smith C, Silveira L, *et al.* Risk Factors for Severe COVID-19 in Children. *Pediatr Infect Dis J* 2021; **40**: e137–45.
- 11 Government of Canada. COVID-19 daily epidemiology update. 2021 <https://health-infobase.canada.ca/covid-19/epidemiological-summary-covid-19-cases.html> (accessed Dec 17, 2021).
- 12 Government of Canada. Drug and vaccine authorizations for COVID-19: List of applications received. 2021 <https://www.canada.ca/en/health-canada/services/drugs-health-products/covid19-industry/drugs-vaccines-treatments/authorization/applications.html> (accessed Dec 17, 2021).

- 13 Ali K, Azher T, Baqi M, *et al.* Remdesivir for the treatment of patients in hospital with COVID-19 in Canada: a randomized controlled trial. *CMAJ* 2022; : cmaj.211698.
- 14 Comité de pharmacologie – CHU Sainte-Justine. Prises de position COVID-19 - Guide clinique. 2021; published online Dec 23. <https://www.chusj.org/CORPO/files/0e/0e06fbc3-e372-4c3d-9764-a51f75ce9f53.pdf> (accessed Feb 7, 2022).
- 15 Canadian Paediatric Surveillance Program. About the CPSP. <https://cpsp.cps.ca/about-apropos>.
- 16 Drouin O, Hepburn CM, Farrar DS, *et al.* Characteristics of children admitted to hospital with acute SARS-CoV-2 infection in Canada in 2020. *CMAJ* 2021; **193**: E1483–93.
- 17 WHO Working Group on the Clinical Characterisation and Management of COVID-19 infection. A minimal common outcome measure set for COVID-19 clinical research. *Lancet Infect Dis* 2020; **20**: e192–7.
- 18 WHO Multicentre Growth Reference Study Group. WHO Child Growth Standards based on length/height, weight and age. *Acta Paediatr Suppl* 2006; **450**: 76–85.
- 19 Cohen E, Kuo DZ, Agrawal R, *et al.* Children with medical complexity: an emerging population for clinical and research initiatives. *Pediatrics* 2011; **127**: 529–38.
- 20 Simon TD, Cawthon ML, Stanford S, *et al.* Pediatric medical complexity algorithm: a new method to stratify children by medical complexity. *Pediatrics* 2014; **133**: e1647-1654.
- 21 Statistics Canada. Population estimates on July 1st, by age and sex. DOI:10.25318/1710000501-ENG.
- 22 StataCorp. Stata Statistical Software: Release 17. College Station, TX: StataCorp LLC, 2021.
- 23 Dong Y, Mo X, Hu Y, *et al.* Epidemiology of COVID-19 Among Children in China. *Pediatrics* 2020; **145**: e20200702.
- 24 Antoon JW, Grijalva CG, Thurm C, *et al.* Factors Associated With COVID-19 Disease Severity in US Children and Adolescents. *J Hosp Med* 2021; **16**: 603–10.
- 25 Uka A, Buettcher M, Bernhard-Stirnemann S, *et al.* Factors associated with hospital and intensive care admission in paediatric SARS-CoV-2 infection: a prospective nationwide observational cohort study. *Eur J Pediatr* 2021; published online Nov 29. DOI:10.1007/s00431-021-04276-9.
- 26 Ward JL, Harwood R, Smith C, *et al.* Risk factors for PICU admission and death among children and young people hospitalized with COVID-19 and PIMS-TS in England during the first pandemic year. *Nat Med* 2021; published online Dec 20. DOI:10.1038/s41591-021-01627-9.
- 27 Burstein B, Gravel J, Aronson PL, Neuman MI, Pediatric Emergency Research Canada (PERC). Emergency department and inpatient clinical decision tools for the management of



febrile young infants among tertiary paediatric centres across Canada. *Paediatr Child Health* 2019; **24**: e142–54.

28 Cabezudo-García P, Ciano-Petersen NL, Mena-Vázquez N, Pons-Pons G, Castro-Sánchez MV, Serrano-Castro PJ. Incidence and case fatality rate of COVID-19 in patients with active epilepsy. *Neurology* 2020; **95**: e1417–25.

29 Antoon JW, Hall M, Herndon A, *et al.* Prevalence, Risk Factors, and Outcomes of Influenza-Associated Neurologic Complications in Children. *The Journal of Pediatrics* 2021; **239**: 32-38.e5.

30 Lim A, Butt ML, Dix J, Elliott L, Paes B. Respiratory syncytial virus (RSV) infection in children with medical complexity. *Eur J Clin Microbiol Infect Dis* 2019; **38**: 171–6.

31 Government of Canada. Vulnerable populations and COVID-19. 2020; published online Oct 1. <https://www.canada.ca/en/public-health/services/publications/diseases-conditions/vulnerable-populations-covid-19.html> (accessed Jan 18, 2022).

32 Centers for Disease Control and Prevention. People with Certain Medical Conditions. 2021 <https://www.cdc.gov/coronavirus/2019-ncov/need-extra-precautions/people-with-medical-conditions.html> (accessed Jan 18, 2022).

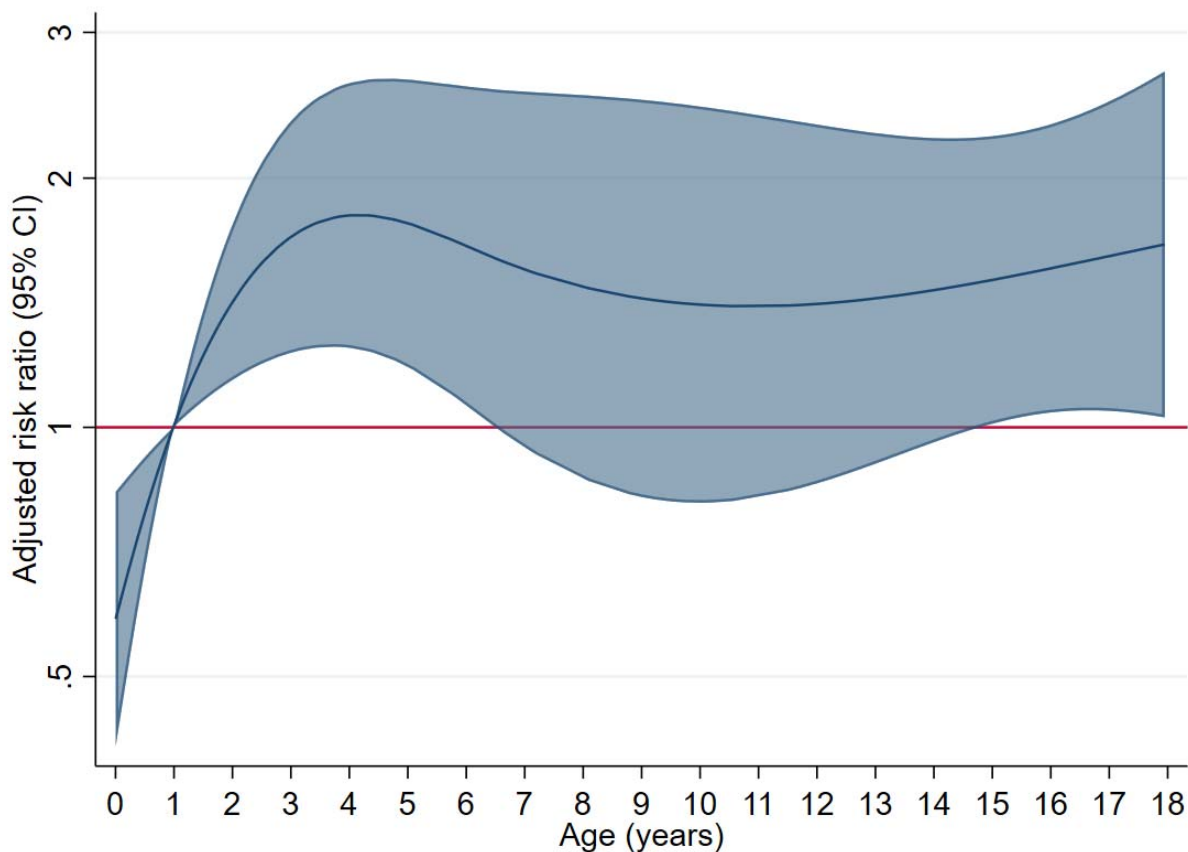
33 Shi T, Pan J, Katikireddi SV, *et al.* Risk of COVID-19 hospital admission among children aged 5-17 years with asthma in Scotland: a national incident cohort study. *Lancet Respir Med* 2022; **10**: 191–8.

34 Rubino F, Amiel SA, Zimmet P, *et al.* New-Onset Diabetes in Covid-19. *N Engl J Med* 2020; **383**: 789–90.

35 Arlet J-B, de Luna G, Khimoud D, *et al.* Prognosis of patients with sickle cell disease and COVID-19: a French experience. *Lancet Haematol* 2020; **7**: e632–4.

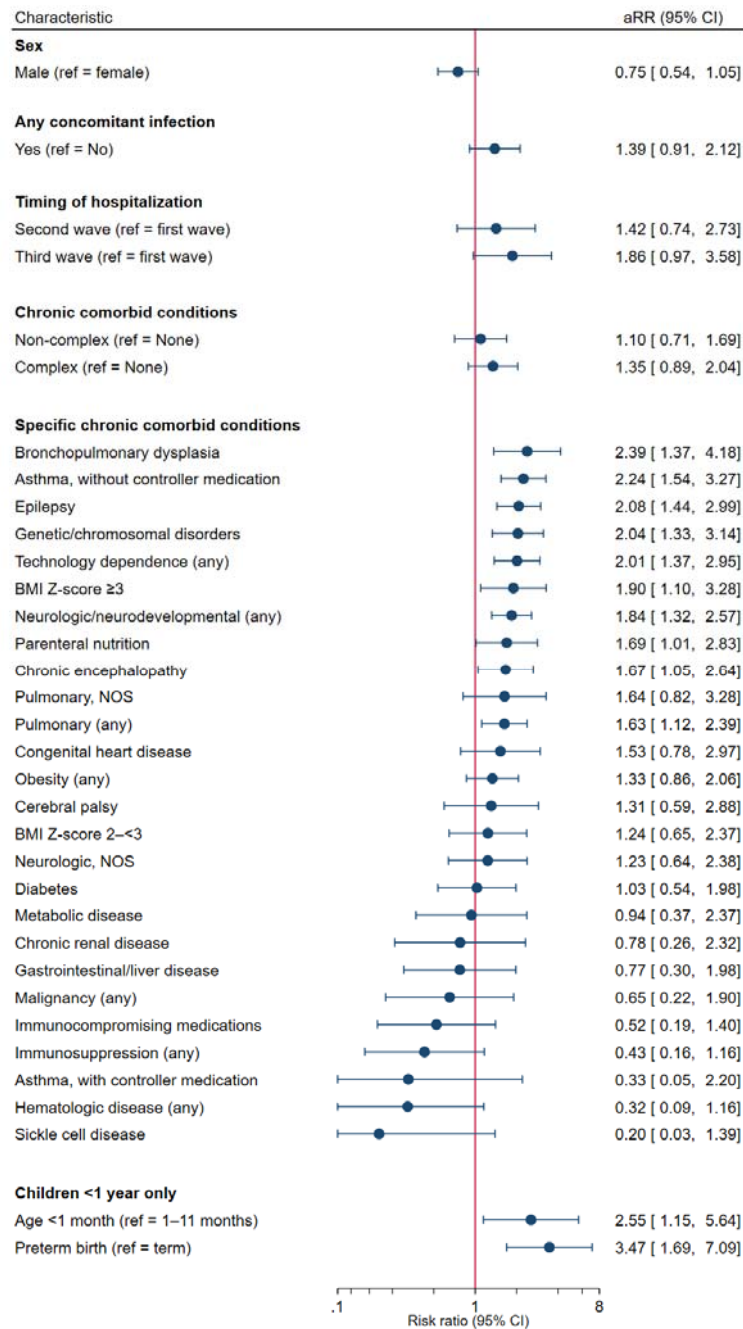
36 Millen GC, Arnold R, Cazier J-B, *et al.* Severity of COVID-19 in children with cancer: Report from the United Kingdom Paediatric Coronavirus Cancer Monitoring Project. *Br J Cancer* 2021; **124**: 754–9.

37 Guzman BV, Elbel B, Jay M, Messito MJ, Curado S. Age-dependent association of obesity with COVID-19 severity in paediatric patients. *Pediatr Obes* 2022; **17**: e12856.



**Figure 1. Risk ratios for severe COVID-19 by continuous child age.**

Age was analyzed using Poisson regression with robust standard errors, where age was entered into the model as a restricted cubic spline with four knots. Predicted probabilities of severe disease were then exponentiated to visualize continuous risk ratios. The analysis adjusted for sex, comorbid conditions (categorized as none, non-complex, or complex), concomitant infections (any vs. none), and timing of hospitalization (first, second, or third wave).



**Figure 2. Risk ratios for severe COVID-19 by sex, concomitant infections, timing of hospitalization, and chronic conditions.**

Adjusted risk ratios (aRR) were calculated using Poisson regression with robust standard errors. The x-axis depicts risk ratios by factors of two (i.e. 2-4-6-8 and 1/2-1/4-1/6-1/8-1/10). The primary model included continuous age (as analyzed in Figure 1), sex, concomitant infections, timing of hospitalization, and chronic condition category (i.e. none/unknown, non-complex, complex). Separate models were then run for each specific chronic condition, by substituting the overall chronic condition category with only the condition of interest. Finally, age <1 month and prematurity status were assessed in a separate model containing only children <1 year old (n=140, including 20 severe cases), and did not adjust for additional variables due to a smaller available sample size.

**Table 1. Characteristics of children hospitalized with SARS-CoV-2 infection in Canada until May 31, 2021.**

Characteristic	All Cases	Hospitalized due to COVID-19-related disease		P value	Disease severity (COVID-19-related cases only)		P value
		No <sup>1</sup>	Yes		Non-severe	Severe	
<b>Number of hospitalizations, N</b>	544	214	330	---	232	98	---
<b>Age (years), median (IQR)<sup>2</sup></b>	2.8 (0.3–13.5)	6.0 (0.9–13.8)	1.9 (0.1–13.3)	<0.001	0.8 (0.1–9.7)	6.5 (1.5–14.8)	<0.001
<b>Age, n (%)<sup>2</sup></b>				<0.001			<0.001
<6 months	164 (30.3)	41 (19.3)	123 (37.3)		106 (45.7)	17 (17.3)	
6–23 months	79 (14.6)	33 (15.6)	46 (13.9)		33 (14.2)	13 (13.3)	
2–4 years	65 (12.0)	26 (12.3)	39 (11.8)		20 (8.6)	19 (19.4)	
5–11 years	68 (12.5)	38 (17.9)	30 (9.1)		19 (8.2)	11 (11.2)	
12–17 years	166 (30.6)	74 (34.9)	92 (27.9)		54 (23.3)	38 (38.8)	
<b>Sex, n (%)<sup>2</sup></b>				0.29			0.02
Female	248 (45.8)	103 (48.6)	145 (43.9)		92 (39.7)	53 (54.1)	
Male	294 (54.2)	109 (51.4)	185 (56.1)		140 (60.3)	45 (45.9)	
<b>Population group<sup>3</sup>, n (%)</b>							
White	120 (22.1)	45 (21.0)	75 (22.7)	0.64	56 (24.1)	19 (19.4)	0.35
Black	66 (12.1)	27 (12.6)	39 (11.8)	0.78	26 (11.2)	13 (13.3)	0.60
South Asian	60 (11.0)	20 (9.3)	40 (12.1)	0.31	27 (11.6)	13 (13.3)	0.68
Arab/West Asian	53 (9.7)	14 (6.5)	39 (11.8)	0.04	29 (12.5)	10 (10.2)	0.55
Indigenous	52 (9.6)	24 (11.2)	28 (8.5)	0.29	16 (6.9)	12 (12.2)	0.11
East/Southeast Asian	28 (5.1)	10 (4.7)	18 (5.5)	0.69	10 (4.3)	8 (8.2)	0.16
Latin American	11 (2.0)	6 (2.8)	5 (1.5)	0.36	<5 (<2.2)	<5 (<5.1)	>0.99
Unknown	163 (30.0)	71 (33.2)	92 (27.9)	0.19	68 (29.3)	24 (24.5)	0.37
<b>Chronic conditions, n (%)</b>				0.60			<0.001
None/Unknown	312 (57.4)	124 (57.9)	188 (57.0)		148 (63.8)	40 (40.8)	
Non-complex	135 (24.8)	56 (26.2)	79 (23.9)		51 (22.0)	28 (28.6)	
Complex	97 (17.8)	34 (15.9)	63 (19.1)		33 (14.2)	30 (30.6)	
<b>Concomitant infections, n (%)</b>							
Bacterial	59 (10.8)	40 (18.7)	19 (5.8)	<0.001	11 (4.7)	8 (8.2)	0.22
Other	14 (2.6)	6 (2.8)	8 (2.4)	0.78	<5 (<2.2)	<5 (<5.2)	0.24
<b>Premature birth, n / N cases &lt;1-year (%)<sup>4</sup></b>	35/199 (17.6)	17/59 (28.8)	18/140 (12.9)	0.007	11/120 (9.2)	7/20 (35.0)	0.005
Gestational age (weeks), median (IQR) <sup>4</sup>	33.4 (29.8–35.5)	32.4 (29.8–35.3)	34.1 (30.0–35.5)	0.33	35.0 (33.6–35.4)	31.0 (26.7–36.0)	0.51
<b>Timing of hospitalization, n (%)</b>				0.002			0.06
First wave (Mar–Aug 2020)	83 (15.3)	46 (21.5)	37 (11.2)		30 (12.9)	7 (7.1)	
Second wave (Sep 2020–Feb 2021)	272 (50.0)	107 (50.0)	165 (50.0)		121 (52.2)	44 (44.9)	
Third wave (Mar–May 2021)	189 (34.7)	61 (28.5)	128 (38.8)		81 (34.9)	47 (48.0)	

<sup>1</sup>Includes patients hospitalized with incidental infection or admitted for infection control or social purposes. <sup>2</sup>Continuous age missing for 9 cases (5 not hospitalized for COVID-19 disease, 3 non-severe COVID-19, 1 severe COVID-19). Categorical age and sex missing for 2 cases (2 not hospitalized for COVID-19 disease). <sup>3</sup>Physicians could report multiple population groups. East/Southeast includes Chinese, Filipino, Japanese, Korean, and Southeast Asian. Indigenous includes First Nations, Inuit, and Métis. <sup>4</sup>Premature birth is defined as a gestational age at birth <37 weeks. Data was not available for 3 cases <1-year of age (1 not hospitalized for COVID-19 disease and 2 non-severe COVID-19). Continuous gestational age was described among premature births only.

**Table 2. Minimum population-based incidence of SARS-CoV-2 and COVID-19-related outcomes from March 2020–May 2021 in Canada.**

Category	Minimum incidence, Mar 2020–May 2021 (per 100,000 population; 95% CI) <sup>1</sup>
<b>All SARS-CoV-2 hospitalizations</b>	
<1 year	53.9 (46.7–61.9)
1–4 years	7.0 (5.8–8.5)
5–11 years	2.4 (1.8–3.0)
12–17 years	6.8 (5.8–7.9)
<b>COVID-19-related hospitalizations</b>	
<1 year	37.9 (31.9–44.7)
1–4 years	4.4 (3.4–5.6)
5–11 years	1.0 (0.7–1.5)
12–17 years	3.8 (3.0–4.6)
<b>Severe COVID-19</b>	
<1 year	5.4 (3.3–8.4)
1–4 years	1.9 (1.3–2.7)
5–11 years	0.4 (0.2–0.7)
12–17 years	1.6 (1.1–2.1)

<sup>1</sup>Minimum incidence was calculated using age band-specific midyear population denominators for 2020, retrieved from Statistics Canada. Confidence intervals (CI) were calculated using the Poisson distribution.

**Table 3. Chronic comorbid conditions among COVID-19-related hospitalizations.**

Chronic comorbid conditions, n (%)	All COVID-19 related cases	Disease severity		P value
		Non-severe	Severe	
<b>Number of hospitalizations, N</b>	330	232	98	---
<b>Neurologic/neurodevelopmental disorder, any<sup>1</sup></b>	46 (13.9)	18 (7.8)	28 (28.6)	<0.001
Epilepsy	20 (6.1)	5 (2.2)	15 (15.3)	<0.001
Chronic encephalopathy (e.g. cerebral palsy)	19 (5.8)	7 (3.0)	12 (12.2)	0.001
Chromosomal/genetic disorders	9 (2.7)	<5 (<2.2)	5–8 (5.1–8.2)	0.004
Neurologic, NOS	12 (3.6)	7 (3.0)	5 (5.1)	0.35
<b>Obesity<sup>2</sup></b>	44 (13.3)	21 (9.1)	23 (23.5)	<0.001
<b>Pulmonary, any<sup>1</sup></b>	34 (10.3)	16 (6.9)	18 (18.4)	0.002
Asthma	16 (4.8)	8 (3.4)	8 (8.2)	0.09
Bronchopulmonary dysplasia	9 (2.7)	<5 (<2.2)	5–8 (5.1–8.2)	0.02
Pulmonary, NOS	10 (3.0)	5 (2.2)	5 (5.1)	0.17
<b>Immunosuppression, any<sup>1,3</sup></b>	19 (5.8)	15–18 (6.5–7.8)	<5 (<5.1)	0.17
Immunocompromising medications	14 (4.2)	10–13 (4.3–5.6)	<5 (<5.1)	0.77
<b>Hematologic disease, any<sup>1</sup></b>	17 (5.2)	13–16 (5.6–6.9)	<5 (<5.1)	0.10
Sickle cell disease	14 (4.2)	10–13 (4.3–5.6)	<5 (<5.1)	0.07
<b>Technology dependence, any<sup>1,4</sup></b>	16 (4.8)	5 (2.2)	11 (11.2)	0.001
Parenteral nutrition	12 (3.6)	5 (2.2)	7 (7.1)	0.047
Respiratory technology dependence	7 (2.1)	0 (0.0)	7 (7.1)	<0.001
<b>Congenital heart disease</b>	14 (4.2)	7 (3.0)	7 (7.1)	0.13
<b>Gastrointestinal/liver disease</b>	10 (3.0)	6–9 (2.6–3.9)	<5 (<5.1)	>0.99
<b>Chronic renal disease</b>	9 (2.7)	5–8 (2.2–3.4)	<5 (<5.1)	0.73
<b>Diabetes mellitus</b>	8 (2.4)	<5 (<2.2)	<5 (<5.1)	0.24
<b>Malignancy</b>	8 (2.4)	5–7 (2.2–3.0)	<5 (<5.1)	>0.99
<b>Metabolic disease</b>	8 (2.4)	5–7 (2.2–3.0)	<5 (<5.1)	0.70
<b>Bone diseases</b>	<5 (<1.5)	DNS	DNS	---
<b>Other perinatal conditions</b>	<5 (<1.5)	DNS	DNS	---
<b>Psychiatric disorder</b>	<5 (<1.5)	DNS	DNS	---
<b>Transplant recipient</b>	<5 (<1.5)	DNS	DNS	---

DNS = Data not shown due to <5 frequencies across multiple subgroups; NOS = Not otherwise specified.

<sup>1</sup>Multiple specific conditions could be reported (e.g. two or more neurologic conditions) and therefore may not sum to category total.

<sup>2</sup>Obesity was physician-reported and could not be confirmed for children missing height and weight data (n=22).

<sup>3</sup>Defined as immunocompromising medications, primary or secondary immunodeficiency otherwise specified, or chronic rheumatologic or autoimmune disorder.

<sup>4</sup>Defined as parenteral nutrition, respiratory technology requirements (i.e. home oxygen or tracheostomy), or dialysis.

**Table 4. Severity and treatment outcomes of children hospitalized with COVID-19 in Canada, by age group.**

Characteristics	All Cases	Child age				
		<6 months	6–23 months	2–4 years	5–11 years	12–17 years
<b>COVID-19-related hospitalizations, N</b>	330	123	46	39	30	92
<b>COVID-19 severity, n (%)</b>						
Mild/moderate illness	232 (70.3)	106 (86.2)	33 (71.7)	20 (51.3)	19 (63.3)	54 (58.7)
Severe illness	98 (29.7)	17 (13.8)	13 (28.3)	19 (48.7)	11 (36.7)	38 (41.3)
<b>Admitted to ICU, n (%)</b>	60 (18.2)	12 (9.8)	7 (15.2)	13 (33.3)	7 (23.3)	21 (22.8)
Length of ICU stay, median (IQR)	4 (2–7)	3 (3–10)	4 (3–6)	2 (2–4)	2 (1–9)	6 (3–8)
<b>Respiratory/hemodynamic support required, n (%)<sup>1</sup></b>	108 (32.7)	20 (16.3)	15 (32.6)	17 (43.6)	9 (30.0)	47 (51.1)
Low-flow oxygen	58 (17.6)	13 (10.6)	8 (17.4)	6 (15.4)	6 (20.0)	25 (27.2)
High-flow nasal cannula	33 (10.0)	5 (4.1)	<5 (<10.9)	5 (12.8)	<5 (<16.7)	15 (16.3)
Non-invasive ventilation (e.g. CPAP or BiPAP)	14 (4.2)	<5 (<4.1)	<5 (<10.9)	<5 (<12.8)	<5 (<16.7)	5 (5.4)
Conventional mechanical ventilation	25 (7.6)	<5 (<4.1)	<5 (<10.9)	10 (25.6)	0 (0.0)	8 (8.7)
Vasopressors	8 (2.4)	0 (0.0)	<5 (<10.9)	<5 (<12.8)	0 (0.0)	<5 (<5.4)
<b>Clinical presentation, n (%)</b>						
Fever	241 (73.0)	90 (73.2)	40 (87.0)	31 (79.5)	20 (66.7)	60 (65.2)
Upper respiratory tract infection	202 (61.2)	71 (57.7)	29 (63.0)	19 (48.7)	15 (50.0)	68 (73.9)
Gastrointestinal	125 (37.9)	37 (30.1)	16 (34.8)	14 (35.9)	14 (46.7)	44 (47.8)
Hematologic disorder	90 (27.3)	26 (21.1)	11 (23.9)	10 (25.6)	10 (33.3)	33 (35.9)
Pneumonia	84 (25.5)	9 (7.3)	13 (28.3)	9 (23.1)	10 (33.3)	43 (46.7)
Coagulation dysfunction	22 (6.7)	<5 (<4.1)	<5 (<10.9)	<5 (<12.8)	<5 (<16.7)	13 (14.1)
Seizure(s)	22 (6.7)	<5 (<4.1)	<5 (<10.9)	9 (23.1)	<5 (<16.7)	6 (6.5)
Acute respiratory distress syndrome	18 (5.5)	<5 (<4.1)	<5 (<10.9)	<5 (<12.8)	0 (0.0)	12 (13.0)
Bronchiolitis	18 (5.5)	11 (8.9)	7 (15.2)	0 (0.0)	0 (0.0)	0 (0.0)
Hypotension	15 (4.6)	0 (0.0)	<5 (<10.9)	<5 (<12.8)	<5 (<16.7)	6 (6.5)
Hepatitis	14 (4.2)	<5 (<4.1)	<5 (<10.9)	<5 (<12.8)	<5 (<16.7)	7 (7.6)
Renal dysfunction	14 (4.2)	0 (0.0)	<5 (<10.9)	<5 (<12.8)	<5 (<16.7)	7 (7.6)
Acute cardiac dysfunction	6 (1.8)	DNS	DNS	DNS	DNS	DNS
Cytokine storm/MAS	5 (1.5)	DNS	DNS	DNS	DNS	DNS
Coma	<5 (<1.5)	DNS	DNS	DNS	DNS	DNS
Encephalopathy	<5 (<1.5)	DNS	DNS	DNS	DNS	DNS
<b>Abnormal CXR, n / cases with imaging (%)</b>	100/224 (44.6)	13/74 (17.6)	14/30 (46.7)	14/28 (50.0)	9/21 (42.9)	48/71 (67.6)
<b>COVID-19-related therapies, n (%)</b>						
Steroids	88 (26.7)	5 (4.1)	14 (30.4)	11 (28.2)	11 (36.7)	47 (51.1)
Anticoagulation	37 (11.2)	0 (0.0)	<5 (<10.9)	<5 (<12.8)	<5 (<16.7)	28 (30.4)
Remdesivir	32 (9.7)	<5 (<4.1)	<5 (<10.9)	6 (15.4)	<5 (<16.7)	18 (19.6)
Biologics	7 (2.1)	DNS	DNS	DNS	DNS	DNS
Immunoglobulin	5 (1.5)	DNS	DNS	DNS	DNS	DNS
<b>Child died, n (%)</b>	5 (1.5)	DNS	DNS	DNS	DNS	DNS

BiPAP=Bilevel positive airway pressure; CPAP=Continuous positive airway pressure; CXR = Chest x-ray; DNS = Data not shown due to <5 frequencies across multiple subgroups; ICU=Intensive care unit; IQR=Interquartile range; MAS=Macrophage activating syndrome. <sup>1</sup>Multiple supports could be reported and therefore specific supports do not sum to any supports.