

1 **Title: Molecular identification of species of family Chaetomiaceae**
2 **(Sordariomycetes, Ascomycota) from soil, dung and water in Sudan**

3

4

5 **Authors:**

6 Najwa A Mhmoud¹ *

7

8 ¹ Faculty of Medical Laboratory Sciences, Department of Medical Microbiology and
9 Immunology. University of Khartoum. Khartoum .Sudan

10

11

12 .

13

14 Number of words in abstract: 258

15 Number of words in text: 4467

16

17

18

19

20

21

22

23 * Corresponding author. Mailing address: Dr. Najwa A Mhmoud, Faculty of Medical
24 Laboratory Sciences , Department of Medical Microbiology and Immunology
25 University of Khartoum. Khartoum .Sudan . P.O. Box 102, Khartoum, Sudan. Fax:
26 +249-83-383590. E-mail: Infkogodaster@gmail.com

27

28 Abbreviations used in this paper: The ribosomal DNA (rDNA) internal transcribed
29 spacer gene ; ITS, the first β -tubulin locus; BT2, the second β -tubulin locus; TUB,
30 partial sequences of the actin ;ACT1 , DNA-dependent RNA polymerase II largest
31 subunit; RPB1, second largest subunit; RPB2 and elongation factor 1 α genes ;
32 TEF1.

33

34

35

36 **Abstract**

37 Species of Chaetomiaceae family are ubiquitous filamentous fungi, that responsible
38 for a wide range of opportunistic human infections. To date, it encompasses more
39 than 300 species have been described in genus Chaetomium. It have been globally
40 reported as being are capable of colonizing various substrates. Due to the lack of
41 genetic studies on the species belonging to this genus in Sudan, This work aimed
42 to investigate the environmental fungal occurrence within the family Chaetomiaceae
43 by using morphological characters and molecular sequencing.

44 A total of 260 environmental samples from soil, animal dung and water were
45 collected from six different states in Sudan in two ecozones: .desert or semis
46 desert ecozones (Dongola in Northern sudan, El-Obeid in western sudan); a low
47 rainfall woodland savanna ecozone (Gazira, El Geteina and Khartoum from central
48 Sudan and AlQadarif in eastern Sudan).

49 During a study of environmental fungi in Sudan , 119 isolates were identified as
50 members of Chaetomiaceae after the ITS sequencing combined with an
51 examination of the macro- and micromorphology. Out of 63 Chaetomium strains
52 obtained from soil, animal dung and water samples , 25 were obtained from soil ,
53 22 from animal dung and 16 from water. 56 additional strains isolated from other
54 genus within the Chaetomiaceae family, such as (*Amesia*, *Collariella*, *Ovatospora*
55 ,*Subramaniula* and *Thielavia*) were recorded for the first time in Sudan.

56 In conclusion: Sequence-based identification of fungal isolates is often considered
57 to be the most reliable and accurate identification method.

58 Key words: Chaetomiaceae, Indoor species, Morphological diversity, Phylogeny.

59 Introduction

60 The genus, *Chaetomium*, which belongs to *Chaetomiaceae* family and Sordariales
61 order (class Sordariomycetes in Ascomycota) was first recognized and established
62 in 1817, with *Chaetomium globosum*, the type species of the genus, was first
63 described by Kunze [1]. Then after that the taxonomy of *Chaetomium* has been
64 studied by several authors [2-11]. To date, it encompasses more than 300 species
65 have been described in genus *Chaetomium*. It have been globally reported as
66 being are capable of colonizing various substrates and are well-known for their
67 ability to degrade cellulose and to produce a variety of bioactive metabolites [12-
68 15]. As cellulose-degrading fungi they possess the ability to degrade cellulosic
69 building materials such as wood, plastics and drywall [16]. These had adverse
70 effects not only on the buildings but also to their occupants [17]. It can cause minor
71 disorders such as allergic sinusitis, asthma [18]. onychomycosis [19-26] ,
72 superficial skin mycosis [24], cerebral mycosis [27–29] and recently can cause
73 eumycetoma [30].

74 The genus *Chaetomium* is generally characterized by superficial rounded, ovoid,
75 ostiolate ascomata covered with characteristic hairs. Ascomatal hairs can be straight
76 (seta-like), flexible, curved, wavy, circulating, spirally curled, or otherwise branched in
77 various morphologies. Asci are clavate or fusiform with 8 biseriate or irregularly
78 arranged ascospores . Ascospores are limoniform to globose, or irregular in a few
79 species, bilaterally flattened, brown or gray –brown (never opaque or black) [10].

80 The first well classification system of *Chaetomium* based on both the morphological
81 characters (ascogonia, asci, ascospores and anamorphs) and physiological

82 requirements (temperature, nutritional requirements, growth and fruiting rate) was
83 established by Dreyfuss In 1976 [31]

84 Among several attempts to accommodate Chaetomium in a higher-rank taxonomy,
85 Winter (1885) was the first to include the genus in family Chaetomiaceae (Sordariales,
86 Sordariomycetes), a placement that has hold out all critical tests [32]. Then great effort
87 has been made to classify, identify, and accurately grouping different species of
88 *Chaetomium*, based on DNA sequencing [18]. Chaetomium and other members of the
89 Chaetomiaceae were studied with 18S and 28S rDNA sequences individually [33, 34]
90 (or in combination with tef and rbp2 genes [35] These studies have supported the
91 monophyly of the Chaetomiaceae, occupying a sister relationship to other families of
92 Sordariales, especially Lasiosphaeriacea. Some *Chaetomium* species are reported to
93 be associated with *Acremonium*, *Botryotrichum*, *Humicola*, *Paecilomyces*, and
94 *Scopulariopsis* [36]. In addition to that the distinctions among Achaetomium,
95 chaetomidium, chaetomium and thielavia were un clear [37]. Therefore additional
96 molecular studies on this genus are necessary [18]. Due to the lack of genetic studies
97 on the species belonging to this genus in Sudan, This work aimed to investigate the
98 environmental fungal occurrence within the family Chaetomiaceae by using
99 morphological characters and molecular sequencing.

100

101 **MATERIALS AND METHODS**

102 **Sample collection**

103 A total of 260 environmental samples from soil, animal dung and water were
104 collected from six different states in Sudan from two ecozones: .desert or semis

105 desert ecozones (Dongola in Northern Sudan, El-Obeid in western Sudan); and a
106 low rainfall woodland savanna ecozone (Gazira, El Geteina and Khartoum from
107 central Sudan and AlQadarif in eastern Sudan) (figure-1).

108 Dongola is the capital of the state of Northern Sudan, on the banks of the Nile. It
109 has an area of 348,765 km².(figure-1A). .El-Obeid is the capital of the North
110 Kordofan states. It has an area of 130 km² (figure-1B). Gezira state lies between
111 the Blue Nile and the White Nile in the east-central region of the country. It has an
112 area of 23,373 km² (figure-1C). El Geteina is a small town located in the state of the
113 White Nile Sudan. It has an area of 6602 km² (figure-1D) .Khartoum city is located
114 in the heart of Sudan at the confluence of the White Nile and the Blue Nile, where
115 the two rivers unite to form the River Nile. It has an area of 28165 km² (figure-1E).
116 AlQadarif is the capital of the state. It has an area of 75,263 km² (Figure-1F).

117 **Soil samples collection:** Approximately 150-200 g was collected from each soil
118 sample at a depth of 0-10 cm after scraping and removing leaves and other plant
119 debris on the soil surface (Figure-1k and L). A total of one hundred and twenty Soil
120 samples were collected and were put in clean bags.

121 **Animal dung collection:** A total of ninety dung samples were collected from horse,
122 donkey, sheep and cow manure(Figure-1J). The samples are placed in sterile
123 sealed containers .

124 **Water samples collection:** Fifty water samples have been randomly collected in
125 sterile bottles (500ml) from surface river water (Figure-1H), drinking water (Figure-
126 1I) , sewage water and animal drinking water(Figure-1G). .

127 All the samples were then transferred to the laboratory, and maintained at 4°C until
128 further use.

129 **Measurements of Physicochemical Parameters**

130 We employed the Sudan Soil Information System (SUSIS) digital soil map of the
131 Sudan from Land and Water Research Centre -Agricultural Research Corporation
132 Sudan Webadmin@susis.sd as a reference on the type of soil where the species
133 occurred. Soil important characteristics, Soil texture, salinity, pH and nitrogen,
134 carbon, calcium carbonate potassium and phosphorus concentrations were
135 retrieved from SUSIS database (Figure-2, 3 and 4).

136 **Isolation of fungi**

137 The fungi within the family Chaetomiaceae were isolated from soil using the plate
138 dilution method [38]. Briefly, from each soil sample a total of 10 g was suspended in
139 100ml sterile distilled water and shaking for 10 min at 25C° and 120 rpm. The
140 suspensions of soil were serial diluted in sterile distilled water up to 10⁻⁶
141 approximately 1ml was removed by pipette and streaked.

142 For primary isolation, potato dextrose agar (PDA; Hi media, India), Sabouraud
143 dextrose agar (SDA; Hi media, India) and oatmeal agar (OA; Hi media, India)
144 supplemented with the antibiotic chloramphenicol (50 mg/L) were used with three
145 replicates. All the dishes were incubated at 25 °C, 37 °C and 45 °C in the dark for 7-
146 14 days. All distinct colonies were subjected to additional purification by sub
147 culturing onto PDA and Malt extract agar, (MEA 2%; Merck, Germany), and the
148 plates were incubated for 5–7 days at 25 °C, 37 °C and 45 °C in the dark until
149 growth of fungal colonies was observed. Morphologically distinct colonies were

150 selected and further purified by sub-culturing on PDA and MEA. The pure cultures
151 were preserved on 20% glycerol stock at 4°C for further studies.

152 For animals dung , the alcohol treatment technique was used to isolate fungi from
153 the dung samples. This technique was undertaken to stimulate ascospore
154 germination on agar media [39]. Each 1 g sample was soaked in 9 ml of 65% ethyl
155 alcohol in a test tube and incubated at 25°C and 30°C for 15 min. Samples were
156 mixed thoroughly and then spread onto PDA , SDA and OA supplemented with the
157 antibiotic chloramphenicol (50 mg/L) were used with three replicates. All the dishes
158 were incubated at 25 °C, 37 °C and 45 °C in the dark for 7-14 days.

159 Furthermore strains were isolated from water samples using filtration technique
160 [40]. One hundred milliliters of each water sample was filtered through membrane
161 filters (pore diameter 0.45 µm), followed by incubation of the membrane filters on
162 PDA, SDA and OA supplemented with the antibiotic chloramphenicol (50 mg/L)
163 were used with three replicates. All the dishes were incubated at 25 °C, 37 °C and
164 45 °C in the dark for 7-14 days.

165 **Morphological characterization**

166 Morphological characteristics of isolates were studied on PDA,OA ,MEA, and SDA.
167 After incubation, the diameters of the colonies on each agar media were measured.
168 Colony color (obverse and reverse sides) and the degree of sporulation were also
169 observed. Appropriate keys were used for the phenotypic identification of the
170 isolated fungi [18] Mounted needle was used to pick ascomata, which were placed
171 on slides using lactophenol cotton blue as the mounting medium and then

172 examined under Olympus microscope (Olympus Optical Co., Ltd., Tokyo, Japan)
173 connected with digital camera (KOPTIC Korea Optics, Seoul, Korea) `

174 **DNA extraction and phylogenetic identification**

175 Genomic DNA was extracted from a fresh culture grown on MEA plates using the
176 cetyltrimethyl ammonium bromide (CTAB) protocol of Möller et al. [41]. The
177 ribosomal DNA (rDNA) internal transcribed spacer (ITS) gene and partial
178 sequences of the actin(ACT1), β -tubulin(tub2), DNA-dependent RNA polymerase II
179 largest subunit (RPB1) and second largest subunit (RPB2). and elongation factor
180 1 α (TEF1) genes, as well as the 18S rDNA gene (small subunit [SSU]) and 28S
181 rDNA gene (large subunit [LSU]), were amplified and sequenced. Primers used for
182 amplification and sequencing are according to de Hoog et al. [37] .The PCR
183 conditions were the same as those described by Wang et al. [18] .

184 **Alignment and phylogenetic analyses**

185 Consensus sequences from forward and reverse primers were generated using
186 Seqman assembly programme from Lasergene software package (DNASTAR,
187 Madison, WI, U.S.A.). These sequences were compared to the GenBank sequence
188 database using nucleotide BLAST tool. Besides the sequences generated in this
189 study, additional 25 sequences were retrieved from GenBank, along with the
190 outgroup CBS24975 *Collariella gracilis* (figure-5).

191 The ITS region was used to initially screen the collection of fungi from the
192 environments in order to select members of the Chaetomiaceae. The tub2 gene
193 region was used to recognize the species diversity within the indoor
194 Chaetomiaceae isolates. The phylogenetic placement of the environments isolates

195 was determined using four loci (ITS, partial LSU, tub2 and partial rpb2) on the basis
196 of the evaluation in a previous study [18], and representatives of related species
197 and genera in the Chaetomiaceae were included as references from the gene bank
198 in the final phylogenetic analyses.

199 Phylogenetic analyses were based on Bayesian inference (BI), Maximum
200 Likelihood (ML) and Maximum Parsimony (MP) as described previously [18]. Gaps
201 and missing data were deleted .For BI, the best evolutionary model for each locus
202 was determined using MrModeltest v. 2.0 [42]. Confidence values were assessed
203 from 1000 bootstrap replicates of the original data. Bootstrap values below 50%
204 were removed from tree.

205 **RESULTS**

206 **Geology of the study area**

207 The characteristic of the soil from collection area was divided geographically into
208 two categories. These are the sandy soils of the northern and west central areas in
209 desert or semis desert ecozones, the clay soils of the central region in savanna
210 ecozone (figure-1).

211 **Isolate**

212 Chaetomiaceae were successfully isolated from different Sudanese environment.
213 A total of 119 isolates (Table-1and figure-5 in bold font) were identified as members
214 of Chaetomiaceae after the ITS sequencing combined with an examination of the
215 macro- and micromorphology. Out of 63 Chaetomium strains obtained from soil,
216 animal dung and water samples , 25 were obtained from soil , 22 from animal
217 dung and 16 from water.

218 56 additional strains isolated from other genus within the Chaetomiaceae family,
219 such as (*Amesia*, *Collariella*, *Ovatospora* ,*Subramaniula* and *Thielavia*) were
220 recorded for the first time in Sudan. Namely, *Amesia nigricolor*, *Collariella*
221 *causiiformis*, *Ovatospora medusarum*, *Subramaniula asteroides*, *Subramaniula*
222 *irregularis* *Thielavia arenaria* and *Thielavia terrestris*.

223 **Phylogeny:**

224 The phylogenetic relationships of Chaetomium species were studied using
225 combined sequences of four-locus alignment (ITS, partial LSU, tub2 and partial
226 rpb2) on the basis of a dataset consisting of 25 representative indoor isolates and
227 representative isolates of related genera and species (figure-5)`. The concatenated
228 alignment consisted of 3 570 characters (including alignment gaps).

229 The concatenated phylogenetic analyses revealed the *Chaetomium globosum*
230 species complex and seven other monophyletic clades. In the backbone tree, most
231 species can be clearly distinguished from each other, and the species clearly
232 grouped in 12 phylogenetic groups which showed a certain correspondence with
233 their morphology profiles (figure-5). Our phylogenetic analyses also showed that the
234 119 strains isolated from Sudan in this study belonged to 22 species . In our
235 collection, 52.9% of the indoor isolates with nine species cluster with members of
236 the *Chaetomium globosum* species complex, included : *Chaetomium globosum* ,
237 *Chaetomium subglobosum*, *Chaetomium pseudoglobosum*, *Chaetomium elatum* ,
238 *Chaetomium tenue* , *Chaetomium homopilatum* , *Chaetomium subaffine* ,
239 *Chaetomium megalocarpum* , *Chaetomium cervicola*. The other indoor species
240 fall into seven known genera were supported: *Achaetomium* including the type

241 species *Achaetomium. macrosporum*: *Amesia* with four indoor species *Amesia*
242 *nigricolor* (= *Chaetomium nigricolor*) five species of *Amesia atrobrunneum* ,
243 (= *Chaetomium atrobrunneum*), *Collariella* with one indoor species *Collariella*
244 *causiiformis*, and *Ovatospora* with one indoor species *Ovatospora medusarum* and
245 four species of *Ovatospora brasiliense* (= *Chaetomium brasiliense*). Two isolates
246 *Thielavia arenaria* and *Thielavia terrestris* . Three species of *Dichotomopilus* .
247 *funicola*(= *Chaetomium funicola*) and *Dichotomopilus fuscum* (= *Chaetomium*
248 *fuscum*) , Two species of *Dichotomopilus indicum*,(= *Chaetomium indicum*) and
249 *Dichotomopilus erectum* (= *Chaetomium erectum*), one species of *Dichotomopilus*
250 *arxii* (= *Chaetomidium arxii*) *Subramaniula* is including two indoor species
251 *Subramaniula asteroids*, *Subramaniula irregularis*.

252 According to this study, *Chaetomium homopilatum* is the most abundant
253 Chaetomiaceae indoor species (31/119), followed by *Subramaniula asteroids*
254 (27/119) and *Chaetomium globosum* (17/119).

255 To our knowledge all these species were recorded for the first time in Sudan and
256 the morphological diversity of some indoor Chaetomiaceae are described below:

257 **Taxonomy**

258 ***Achaetomium macrosporum***

259 *Achaetomium macrosporum* J.N. Rai, K. Wadhvani & J.P.Tewari, *Indian Phytopath.*
260 23 : 54 (1970).

261 *Achaetomiella macrospora* (Rai et al.) v. Arx, *Proc. Konink. Nederl. Akad. Wet.*
262 *Amsterdam, ser, C*, 76: 292 (1973).

263 **Microscopy:** Hyphae 1-6 μm diameter, hyaline to mid brown, septate, frequently
264 branched, sometimes nodulated, the older hyphae with a conspicuous brown
265 gelatinous coating up to 2, μm thick, sometimes producing reddish soluble exudates.
266 Ascomata composed of dark brown textura intricata with irregular hyphae to 3 μm
267 diameter, sometimes with an inner layer of dark brown textura epidermoidea with
268 cells 3-8 μm diameter. 140-290 x 110-210 μm , ellipsoidal to pyriform, *Asci* 55-80 x
269 12-19 μm , clavate, fairly long-stalked, very thin-walled, without apical structures,
270 evanescent, 8-spored. *Ascospores* arranged biserially, 16.5-21.5 x 10-13.5 x 9-11
271 μm , limoniform, flattened on two opposite lateral faces, sometimes curved along the
272 longitudinal axis, the apices sometimes umbonate, dark chocolate brown, aseptate,
273 rather thick walled, with a single apical germ pore 0.5- 0.75 μm diameter.

274 **Culture characteristic:** colonies on MEA at 25° 70-75 mm diameter after 7 days
275 Submerged mycelium hyaline, inconspicuous. Aerial mycelium very sparse, hyaline,
276 lanose. Ascomata developing after about two weeks, covered in yellowish-green
277 hypha-like hairs, scattered over the plate . On OA at 25° colonies 75-80 mm
278 diameter after 7 days Submerged mycelium obscured. Aerial mycelium copious,
279 hyaline, floccose. Ascomata developing after about 2 weeks, scattered over the
280 agar surface, greenish yellow, eventually turning dark brown . On PDA at 25°
281 colonies 70-75 mm diam after 7 days . Submerged mycelium inconspicuous,
282 hyaline . Aerial mycelium hyaline, sparse, lanose. Ascomata developing abundantly
283 after about 2 weeks, greenish yellow to beige, scattered over the agar surface,
284 eventually turning dark brown.

285 **Material examined:** This fungus was isolated from one soil samples taken from El
286 -Geteina .

287 ***Amesia***

288 *Type species: Amesia atrobrunnea (=Cheatomium atrobrunneum) (Ames) X. Wei*
289 *Wang & Samson Stud. Mycol. 84: 158 (2016a).*

290 **Microscopy:** Mycelium composed of hyaline to subhyaline, septate, smooth
291 hyphae, 9.0–9.4 µm diameter .Superficial, ostiolate ovate, or subglobose ascomata
292 with dimensions of 75-165 µm × 70-140 µm , black in color. The wall of the
293 ascomata was black to dark brown in color. The hairs were flexuous, smooth, and
294 septate and were 2.3-3.5 µm in diameter near the base. Had eight ascospores and
295 clavate, evanescent, 9-22 µm-long asci. The ascospores were fusiform or elongate
296 and turned dark brown when they matured7.5-10× 4-5.5µm.

297 **Culture characteristics:** Colonies on OA with an entire edge, about 41–47 mm
298 diameter in 7 days at 25 °C, fuscous black to black, with fawn to greyish sepia
299 exudates diffusing into the medium, reverse greyish sepia to black. Colonies on
300 PDA with an entire edge, about 39–45 mm diameter in 7 days at 25 °C, translucent,
301 vinaceous buff and floccose due to ascomata mixed with aerial hyphae, without
302 coloured exudates; reverse uncoloured. Colonies on MEA with an entire edge,
303 about 36–42 mm diameter in 7 days at 25 °C, with greyish white and floccose
304 mycelium, looser and white to pale olivaceous buff texture in the central part due to
305 ascomata mixed with aerial hyphae, reverse ochraceous.

306 **Material examined:** This fungus was isolated from three soil samples, one sewage
307 water sample and one donkey dung sample taken from El-Obeid and Dongola
308 state

309 ***Amesia nigricolor*** (= *Cheatomium nigricolor*) (Ames) X. Wei Wang & Samson,
310 comb..Basionym: *Chaetomium nigricolor* Ames, *Mycologia* 42: 654.1950..

311 **Microscopy :** Hyphae hyaline , septate, smooth hyphae, 9.5–9.9 μm diameter
312 Ascomata superficial, ostiolate, olivaceous grey in color. Ascomatal hairs,
313 subglobose to ovate, 140–300 μm high, 100–255 μm diam. Ascomatal wall brown .
314 Terminal hairs undulate to loosely coiled with erect or flexuous lower part,
315 conspicuously rough (granulate), greyish sepia to brown, septate, 3–4.5 μm
316 diameter in the undulate or coiled upper portion. Lateral hairs flexuous, un-
317 or apically circinate. Asci fasciculate, clavate to fusiform, spore-bearing part 13.5–
318 21 \times 7.5–10.5 μm , stalks 6–11.5 μm long, with 8 irregularly-arranged ascospores,
319 evanescent. Asco-spores olivaceous brown when mature, ovate, (5.5–) 6–7(–7.5) \times
320 4–5(–5.5) μm , with an apical germ pore at the attenuated end.

321 **Culture characteristics:** Colonies on OA with entire edge, about 42–48 mm
322 diameter in 7days at 25 °C, with sparse white aerial hyphae, with ochraceous to
323 fulvous exudates diffusing into the medium, reverse pale luteous to amber.
324 Colonies on PDA with entire edge, about 35–41 mm diameter in 7 days at 25 °C,
325 with sparse white to pale buff aerial hyphae; reverse uncoloured. Colonies on MEA
326 with entire edge, about 47–53 mm diameter in 7 days at 25 °C, with white floccose
327 aerial mycelium, reverse sienna with pale edge.

328 **Material examined:** This fungus was isolated from one soil samples and one river
329 water sample and two sewage water samples taken from El-Obeid and Dongola
330 state

331 ***Chaetomium***

332 *Type species: Chaetomium globosum Chaetomium globosum* Kunze, Mykol.
333 Hefte 1: 16. 1817

334
335 **Microscopy:** Hyphae hyaline, partially converting to dark brown or black, Ascomata
336 superficial, ostiolate, greenish olivaceous , or slightly dark olivaceous buff to grey ,
337 or dull green in color. Ascomatal hairs sulphur yellow lower parts or appear as
338 sulphur yellow to yellow , sub-globose, ovate or obovate, 140–270 µm high, 100–
339 240 µm diameter. Ascomatal wall brown.. Terminal hairs finely warty, brown,
340 undulate to loosely coiled with erect or flexuous lower part, tapering and fading
341 towards the tips, 2–5 µm diameter near the base. Lateral hairs brown, flexuous,
342 fading and tapering towards the tips. Asci fasciculate, fusiform or clavate, spore-
343 bearing part 19–38 × 12–17 µm, stalks 22–48 µm long with 8 irregularly-arranged
344 ascospores, evanescent. Ascospores brown when mature, limoniform, usually
345 biapiculate, bilaterally flattened, 8.5–11(–12) × 7–8.5(–9.5) × 5.5–7 µm.

346 **Culture characteristics:** Colonies on OA with an entire edge, spreading rapidly,
347 over 70 mm diameter in 7days at 25 °C, with sparse white to olivaceous buff aerial
348 hyphae when young, then without aerial hyphae and becoming citrine green,
349 yellow, greenish olivaceous to grey olivaceous owing to the aggregation of
350 ascomata, with olivaceous to olivaceous grey exudates diffusing into the medium;
351 reverse grey olivaceous to olivaceous. Colonies on PDA translucent, usually with a

352 more or less lobate edge, about 39–48 mm diameter in 7 days at 25 °C, without or
353 with very sparse and floccose, pale yellow aerial hyphae, without coloured
354 exudates; reverse uncoloured. Colonies on MEA with an entire edge, spreading
355 rapidly, over 70 mm diameter in 7 days at 25 °C, honey to
356 olivaceous buff in color, reverse fulvous, orange to sienna with exudates diffusing
357 into the medium (figure-6)..

358 **Material examined:** This fungus was isolated from seven soil samples, two sewage
359 water samples, one drinking water sample, one river water sample, two cow dung
360 samples, two Sheep dung samples, and two horse dung samples taken from El-
361 Obeid, Dongola, El Geteina, Gazira and Khartoum state.

362 ***Chaetomium elatum*** : *Chaetomium elatum* Kunze, Deutsche Schwämme 8: 3,
363 No. 184. 1818.

364 **Microscopy:** Hyphae hyaline, partially converting to dark brown or black. Ascomata
365 superficial, ostiolate often covered by sparse white or buff aerial hyphae, grey
366 olivaceous to isabelline, globose or obovate, 280–440 µm high, 255–380 µm
367 diameter. Ascomatal wall brown. Terminal hairs verrucose or warty, dark brown,
368 tapering and fading towards the tips, erect or flexuous in the lower part, 3–5 µm
369 diameter near the base, erect to flexuous terminal branches tapering and fading
370 towards the tips. Lateral hairs brown, erect or flexuous, occasionally undulate,
371 tapering towards the tips. Asci fasciculate, clavate or fusiform, spore-bearing part
372 36–49 × 12.5–16.5 µm, stalks 24–55 µm long, with 8 biseriate ascospores,
373 evanescent. Asco-spores brown when mature, limoniform, biapiculate or umbonate,
374 bilaterally flattened, (10–)11.5–13.5(–16) × (8–) 8.5–10(–11) × (6.5–)7–8 µm..

375 **Culture characteristics:** Colonies on OA with entire edge and spreading rapidly,
376 over 70 mm diameter in 7 days at 25 °C, with sparse, honey to greenish olivaceous
377 aerial hyphae, without coloured exudates when young, or with greyish yellow-green,
378 olivaceous buff to honey exudates diffusing into the medium, reverse honey to
379 greenish olivaceous. Colonies on PDA pale luteous to luteous, with irregularly deep
380 lobate edge, about 52–61 mm diameter in 7 days at 25 °C, aerial hyphae sparse
381 and honey, with luteous exudates diffusing into the medium; reverse pale luteous to
382 amber. Colonies on MEA forming pale honey, citrine green to citrine and floccose
383 mycelium with entire edge, about 58–66 mm diameter in 7 days at 25 °C, reverse
384 citrine green to citrine.

385 **Material examined:** This fungus was isolated from one soil sample taken from
386 Khartoum state

387 ***Chaetomium homopilatum*** Omvik, Mycologia 47(5): 749.1955.

388 Ascomata 150–206 × 84–120 µm, superficial, membranous, solitary, hairy, ovoid,
389 brown; terminal hairs forming a dense tuft around the ostiole, up to 4 µm wide at
390 base, septate, verrucose, tapering at apex, light brown; lateral hairs shorter, up to 4
391 µm wide at base and randomly distributed over the perithecium, light brown.
392 Peridium composed of angular cells. Paraphyses not observed. Asci not observed.
393 Ascospores 6–7 × 4.5–6 µm, discharged as a cirrus, smooth, aseptate, rather thin-
394 walled, broadly oval, apiculate at both ends with a brown germ pore (figure-7).

395 **Material examined:** This fungus was isolated from ten soil samples, six sewage
396 water samples, two animal drinking water, three donkey samples, two cow dung

397 samples, four Sheep dung samples, and four horse dung samples taken from EI
398 Geteina and Gazira state

399 ***Chaetomium subaffine*** *Chaetomium subaffine* Sergeeva, Not. Syst. sect. Crypt.
400 Inst. Bot. Acad. Sci. 14: 148. 1961.

401 **Microscopy:** Hyphae hyaline, partially converting to dark brown or black.
402 Superficial, dark, obovate, or ovate ascomata with dimensions of 220-410 μm
403 \times 180-340 μm , olivaceous or dark . The ascomatal wall was brown. The hairs were
404 erect to flexuous, septate, verrucose, generally unbranched and tapering towards
405 the tips, and 2.6-4.2 μm in diameter near the base. Had eight ascospores within
406 clavate and sometimes slightly fusiform evanescent, 17-36 μm -long asci. The
407 ascospores were bilaterally flattened limoniform, and usually biapiculate, when
408 mature become brown, 11.5-13.5 (-14) μm \times 8-10 μm \times 6-8.2 μm in size.

409 **Colony morphology:** Colonies exhibited good growth and matured within 7-10
410 days on OA medium at 25 °C. They were nearly 45-50 mm in diameter, black, and
411 had abundant white aerial hyphae. They were uncolored in reverse.

412 **Material examined:** This fungus was isolated from one soil sample taken from EI-
413 Obeid.

414 ***Collariella***

415 ***Collariella causiiformis*** :*Collariella causiiformis* (Ames) X. Wei Wang & Samson,
416 comb. Basionym: *Chaetomium causiiforme* Mycologia 41: 644. 1949.

417 **Microscopy:**

418 Hyphae hyaline, partially converting to dark brown or black. Ascomata superficial,
419 usually forming a layer on the surface of OA medium. Ascomatal hairs hazel to

420 olivaceous in reflected light due to ascomatal hairs, globose or subglobose,
421 ostiolate, 70–140 µm high (including the darkened collar), 60–120 µm diameter,
422 apically black due to a darkened collar in 10–24 µm high and 32–65 µm wide
423 around the ostiolar pore. Ascomatal wall translucent, ochraceous, textura angularis
424 in surface view. Asci fasciculate, fusiform, sometimes clavate, spore-bearing portion
425 15–22 × 8–13 µm, stalks 6–13 µm long, with 8 irregularly-arranged ascospores,
426 evanescent. Asco-spores olivaceous when mature, broad limoniform or ovate,
427 bilaterally flattened, (5–)5.5–6.5 × (4.5–)5–5.5(–6) × (3.5–) 4–5 µm.

428 **Culture characteristics:** Colonies on OA translucent at the beginning, with entire
429 edge, 27–33 mm diameter in 7 days at 25 °C, without aerial hyphae, without
430 coloured exudates, reverse uncoloured. Colonies on PDA translucent, with entire
431 edge and lobate and relatively thicker texture in the centre, about
432 24–30 mm diameter in 7 days at 25 °C, without aerial hyphae, without coloured
433 exudates; reverse uncoloured. Colonies on MEA translucent and membranous, with
434 entire edge, about 20–26 mm diameter in 7 days at 25 °C, forming radiating and
435 luteous or fulvous furrows, non-sporulating; reverse uncoloured.

436 **Material examined:** This fungus was isolated from one soil sample taken from El-
437 Obeid .

438 ***Dichotomopilus***

439 ***Dichotomopilus funicola*** :*Dichotomopilus funicola* (*Chaetomium funicola*) (Cooke)

440 X. Wei Wang & Samson & Crous.

441 *Basionym:* *Chaetomium funicola* Cooke, Grevillea 1: 176. 1873.

442 *Synonym:* *Chaetomium cancroideum* Tschudy, Am. J. Bot. 24: 478. 1937.

443 **Microscopy:**

444 Hyphae hyaline, partially converting to dark brown or black. *Ascomata* superficial,
445 ostiolate, greenish olivaceous to grey olivaceous, subglobose to ellipsoid or ovate,
446 195–255 µm high, 180–240 µm diameter. *Ascomatal wall* composed of brown,
447 irregular or elongate cells. *Terminal hairs* either to be wider, dark brown and erect,
448 4–5.5 µm diameter near the base, tapering and fading towards tips, dichotomously
449 branched profusely at acute angles starting from the upper half part, punctulate; or
450 thinner, luteous to brown, 2–3.5 µm diameter near the base, dichotomously
451 branched at wide to acute angles starting near the base; the terminal branches
452 relatively short, erect, incurved or reflexed, often in dense clusters. *Lateral hairs*
453 simply branched or seta-like, tapering and fading towards tips. *Asci* fasciculate, with
454 8 irregularly-arranged ascospores, clavate, pyriform to ovate, spore-bearing portion
455 11–18 × 7–11.5 µm, stalks 6–10 µm long, evanescent quickly. *Ascospores*
456 olivaceous when mature, ovate to slightly elongate ovate, bilaterally flattened, 5–6 ×
457 3.5–4.8 × 3–3.8 µm.

458 **Culture characteristics:** Colonies on OA with an entire edge, spreading rapidly,
459 over 70 mm diameter in 7 days at 25 °C, with pale yellow, sparse and floccose
460 aerial hyphae, producing greenish olivaceous to citrine exudates diffusing into the
461 medium; reverse ochraceous to cinnamon. Colonies on PDA olivaceous buff to
462 greenish olivaceous with irregularly crenated edge, spreading rapidly, over 70 mm
463 diameter in 7 days at 25 °C, without coloured exudates; reverse olivaceous buff to
464 greenish olivaceous. Colonies on MEA with entire edge, about 57–63 mm diameter

465 in 7 days at 25 °C, forming profuse and pale yellow mycelium and then greenish
466 olivaceous without coloured exudates, reverse ochraceous.

467 **Material examined:** This fungus was isolated from one soil sample, one animal
468 drinking water sample and one cow dung sample taken from Gazira state

469 ***Dichotomopilus indicus***

470 ***Dichotomopilus indicus*** (*Chaetomium indicum*) (Corda) X. Wei Wang & Samson.

471 *Basionym:* *Chaetomium indicum* Corda, Icon. Fung. 4: 38. 1840.

472 **Microscopy;** Hyphae hyaline, partially converting to dark brown or black. *Ascomata*
473 superficial, ostiolate, greenish olivaceous to grey olivaceous in reflected light,
474 subglobose or ovate, 160–310 µm high, 140– 275 µm diameter. *Ascomatal wall*
475 composed of brown, irregular or elongate cells. *Terminal hairs* composed of one
476 type: dark brown and erect, 3–5.5 µm diameter near the base, dichotomously
477 branched at acute to wide angles starting from the upper half part, verrucose,
478 tapering and fading towards tips. *Lateral hairs* unbranched, seta-like, tapering and
479 fading towards tips. *Asci* fasciculate, with 8 irregularly-arranged ascospores visible,
480 clavate, broadly clavate, fusiform to pyriform, spore-bearing portion 11–25.5×6.5–
481 13.5 µm, stalks 6–15 µm long, evanescent quickly. *Ascospores* olivaceous when
482 mature, ovate to slightly elongate ovate, bilaterally flattened, 5.5–6.5 × 3.5–4.5 ×
483 2.5–3 µm.

484 **Culture characteristics:** Colonies on OA with entire edge, about 20–48 mm
485 diameter in 7 days at 25 °C, with sparse buff, pale yellow to pale primrose aerial
486 hyphae, without coloured exudates at the beginning, and then producing pale
487 luteous, amber, ochraceous to cinnamon exudates diffusing into the medium,

488 reverse buff, pale luteous, luteous, ochraceous to cinnamon. Colonies on PDA
489 usually with entire, slightly undulate, or irregularly crenated edge, about 25–54 mm
490 diameter in 7 days at 25 °C, olivaceous buff, pale yellow to greenish olivaceous
491 without coloured exudates; reverse olivaceous buff, pale yellow to greenish
492 olivaceous. Colonies on MEA with entire or slightly lobate edge, about 36–53 mm
493 diameter in 7 days at 25 °C, forming thick yellowish white to pale yellow mycelium,
494 sometimes with radiating furrows, reverse pale luteous to ochraceous.

495 **Material examined:** This fungus was isolated from two soil samples taken from
496 Gazira state

497 ***Ovatospora*** X. Wei Wang, Samson & Crous.

498 ***Ovatospora brasiliensis*** : *Ovatospora brasiliensis* (Batista & Pontual) Wang &
499 Samson, comb. nov., Stud. Mycol. 84: 207 (2016a).

500 Basionym: *Chaetomium brasiliense* Batista & Pontual, Bol. Agr. Com. Pernambuco
501 15: 70. 1948.

502 **Microscopy:** Hyphae hyaline, partially converting to dark brown or black.
503 Superficial, pale gray, subglobose, or globose ascomata 85-135 µm × 72-115 µm in
504 size, pale olivaceous gray in reverse light. The ascomatal wall was brown. The
505 hairs were loosely coiled or undulate in the upper part and erect in the lower part
506 and obviously rough, septate, grayish to brown in color, and 2-3.7 µm in diameter in
507 the upper part. The asci cylindrical, evanescent, 34-42 µm-long with eight
508 ascospores . The ascospores were ovate, bilaterally flattened, turned brown when
509 mature, 6.5-7.7 µm × 5.3-6.2 µm × 5-6.7 µm in size.

510 **Culture characteristics:** Colonies were matured within 7 days on OA medium at
511 25 °C. They were nearly 40-50 mm in diameter, pale gray to pale olivaceous gray,
512 and black in reverse. Colonies on PDA translucent, with entire edge, about 36–42
513 mm diameter in 7 days at 25 °C, with olivaceous buff and floccose aerial hyphae
514 mixed with ascomata, without coloured exudates; reverse olivaceous or olivaceous
515 grey. Colonies on MEA with slightly undulate edge, about 32–38 mm diameter in 7
516 days at 25 °C, with floccose, concentric and buff to white aerial mycelium, with
517 pigmented hyphae immersed in medium, without coloured exudates, reverse black
518 with pale edge.

519 **Material examined:** The examined materials were isolated from two soil samples
520 and two river water samples collected from Dongola state.

521

522

523 ***Subramaniula*** Arx, Proc. Indian Acad. Sci., Plant Sci. 94: 344. 1985.

524 ***Subramaniula asteroides*** :*Subramaniula asteroides* S.A. Ahmed, Z. U. Khan, X.

525 Wang & de Hoog, sp. nov. Fungal Diversity (2016) 76:11–26.

526 **Microscopy:** Hyphae broad, septate, hyaline, turning dark brown with age,
527 verruculose; part of the hyphae convert to dark brown or black, thick walled
528 chlamydospore-like structures. Cellular clumps irregular, black 58–100×44–71 µm,
529 consisting of aggregates of dark brown, thick-walled cells 7–12 × 7–9 µm. Conidia
530 hyaline 2–4×1.5– 2.0 µm, unicellular, obovoidal or ellipsoidal

531 **Culture characteristics:** Colonies on OA medium at 25 °C, felty, yellowish green
532 or fuscous at the centre becoming faint toward the margin; some isolates showing

533 dark, waxy colonies covered with black bulbils with age. Colonies on MEA radially
534 folded, yellow green, turning dark greyish green with age; reverse dark grey.

535 **Material examined:** This fungus was isolated from ten soil samples, five sewage
536 water samples, four animal drinking water samples, six sheep dung samples and
537 two donkey dung samples taken from El Geteina and Gazira state.

538 ***Thielavia***

539 ***Thielavia terrestris***

540 *Thermothielavioides terrestris* (Apinis) X. Wei Wang & Hou-braken, comb. nov.

541 Basionym: *Allescheria terrestris* Apinis, Nova Hedwigia 5: 68. 1963.

542 Synonym: *Thielavia terrestris* (Apinis) Malloch & Cain, Canad. J. Bot. 50: 66. 1972.

543 **Microscopy:** Ascomata superficial or covered by aerial mycelium, solitary to
544 aggregated, non-ostiolate, lead black in reflected light, globose or subglobose, 80–
545 270 μm diameter. Ascomatal wall brown, non-translucent or semi-translucent,
546 composed of irregular, angular or elongated cells. Ascomatal hairs brown, septate,
547 flexuous, verrucose, tapering and fading to hyaline towards tips, 2–3.5 μm diameter
548 near base. Asci ellipsoidal to ovoid, spore-bearing part 13.5–20.5 \times 6–8 μm , with
549 stalks 4.5–11.5 μm long, containing eight biseriate or irregularly arranged
550 ascospores, evanescent. Ascospores 1-celled, olivaceous brown when mature,
551 smooth, ellipsoidal or ovoid, 4–6.5(–7) \times (3–)3.5–4.5(–5) μm . Conidiogenous cells
552 arising laterally from aerial hyphae, hyaline, phialidic, occasionally branched, (6.5–
553)9–24(–33) \times (1–)1.5–3.5 μm . Conidia in basipetal chains, hyaline, aseptate,
554 smooth, obovoid to clavate, usually with a truncated base and a rounded apex, (3–
555)3.5–5(–5.5) \times 1.5–2.5(–3) μm .

556 **Culture characteristics:** On OA with an entire edge, 53–59 mm diameter in 7 days
557 at 25 °C, texture thick floccose, obverse white to pale smoke grey, or rosy buff to
558 hazel, reverse cinnamon to hazel. On PDA similar to those on OA. On MEA with an
559 entire edge, 39–45 mm diameter in 7 days at 25 °C, texture thick floccose,
560 obverse white, reverse fawn. On PDA with an entire edge,
561 41–47 mm diameter in 7 days at 25 °C, with sparse aerial mycelium, producing
562 ascomata when growing on cellophane membrane covering the surface of the
563 medium, obverse white to smoke grey, reverse smoke grey.

564 **Material examined:** This fungus was isolated from isolated from one sheep dung
565 sample collected from Gazira state.

566 **DISCUSSION**

567 Members of the family *Chaetomiaceae* have been globally reported as being are
568 capable of colonizing various substrates and are well-known for their ability to
569 degrade cellulose and to produce a variety of bioactive metabolites [12-15]. They
570 distribute widely in the diverse climates from the tropics to temperate regions. In
571 spite of huge differences among geographical and ecological factors in the
572 distribution area, the taxonomic position of *Chaetomiaceae* is uncertain due to
573 limited number of morphological and developmental characters.

574 This family is characterized by the formation of ascospores in asci inside perithecia.
575 Phenotypic identification of species in *Chaetomiaceae* mostly depends on the
576 shape of ascomatal hairs, ascoma pigmentation and ascospore shape [4, 9].

577 In this study , during a survey of *Chaetomium* and *Chaetomium* like fungi in soils ,
578 dung and water from various places in Sudan , several isolates were collected and
579 identified based on morphological and molecular analysis.

580 Like many sub-Saharan African countries, including Sudan, have considerably
581 diverse soils, such as clay in the east-central area and desert in the west and north,
582 all with variable climatic conditions [43,44] . A range of isolates from these soil types
583 with different state were noticed.

584 Our result showed that the dominant species in this study was *Chaetomium*
585 *homopilatum* and *Chaetomium globosum* in both state, Gezira and El Geteina.
586 While the genus *Subramaniula* with *Subramaniula asteroids* species was found to
587 be the second most common isolate in the indoor environments. Similar to our
588 result; in previous study *Chaetomium homopilatum* was found on different
589 substrates, such as dung, leaves, wood, and soil in terrestrial habitats [10]. In
590 Brazil, this species was found on *Saccharum officinarum* [45] and from freshwater
591 habitats [46].

592 The presence of the of these fungi in the dung , soil and all water types is due to
593 the fact that The Gezira and El Geteina state local villages are characterized by an
594 abundance of cattle, goats, sheep, horse and donkeys [47] Most inhabitants live on
595 cattle and sheep husbandry and agriculture [48] (figure-1 D and J).they are built
596 their house from muddy bricks and cement material made of soil, animals dungs
597 and parts of the bushed in the villages that are rich of organisms [47].

598 The role of mammal dung and dung-enriched soil is one of the prime ecological
599 niches for the species in *Chaetomiaceae* [35] . Multiple *Chaetomium* and *Thielavia*

600 species have been isolated in East Africa from different kinds of dung, ranging from
601 cow and horse to more exotic types of dung such as of elephant and wildebeest
602 [49]. *Thielavia* was known as the second largest genus in the family [18] .The
603 genus *Thielavia* is morphologically defined by having non-ostiolate ascomata with a
604 thin peridium composed of textura epidermoidea, and smooth, single- celled,
605 pigmented ascospores with one germ pore [18].

606 Contamination soil and dung with *Chaetomium* is predisposing factor for
607 opportunistic infection .It is recommended to use building material not containing
608 animals dungs and soil, and if that proved to be mandatory for socioeconomic
609 factors, then they should be burn properly to destroy these causative organisms.

610 It has been demonstrated that the presence of *Chaetomium. globosum* in the indoor
611 environment is one of the important contributors to the development of symptoms of
612 rhinitis, asthma and other health problems [18] This species is also the most
613 common human pathogen mainly associated with onychomycosis [19-26] In
614 addition, some other indoor chaetomium-like species were also reported in clinical
615 cases, such as *Dichotomopilus. funicola* (= *Chaetomium funicola*) [50] , *Ovatospora*
616 *brasiliensis* (= *Chaetomium brasiliense*) [24], and *Amesia atrobrunnea*
617 (= *Chaetomium atrobrunneum*) [30,37,51]. These species, which grow in our living
618 and working environment, deserve more attention in future.

619 In our result *Chaetomium funicola* was isolated from cow dung, soil and animal
620 drinking water. in literature *Chaetomium funicola* is a widespread species and has
621 been found as an endophyte of grass [52] , an opportunistic fungus causing
622 cutaneous lesions [53], a plant pathogen [54], as a decomposer on plant debris in

623 soil [55], and in dung of various animals [4]. Although *Chaetomium funicola* is
624 common in terrestrial habitats, it has been previously reported from wood in fresh
625 water from North America [56] and in a mangrove swamp from India [57].

626 Most members of the Chaetomiaceae lack anamorph sporulation, or some
627 scattered, undiagnostic phialides are present at most [9]. Thus, if strains lose the
628 ability to produce their elaborate ascomata, they cannot be recognized as a
629 *Chaetomium* species by morphological means. Most of the environmental
630 *Chaetomium* strains analyzed in this study produced ascomata in culture, except
631 *Chaetomium cervicicola* remained sterile

632 The genus *Subramaniula* was described by von Arx (1985) [7] to mark the 60th
633 birthday of Professor C. V. Subramanian. *Subramaniula* was distinguished from
634 *Chaetomium* by its urniform and nearly glabrous pale ascomata with wide apical
635 openings surrounded by a hyaline collar [7,10]. Our result showed that
636 *Subramaniula asteroides* is second common environmental fungi isolated from soil
637 ,animal dung and water while only one species *Subramaniula irregularis* was
638 isolated from sheep dung . *Subramaniula thielavioides* has been isolated from a
639 dung sample from India, whereas . *Subramaniula irregularis* is only known from
640 soil in South Africa [8,58].

641 *Achaetomium*, a genus in the Chaetomiaceae was described by Rai *et al.* (1964)
642 for fungi which were similar to *Chaetomium* Kunze but which were ' devoid of hairy
643 ornamentation. The separation of *Achaetomium* from *Chaetomium* was reported
644 by Rai *et al.* (1970) [59] who described a six species of the genus *Achaetomium*
645 from India [60-65] A further species were described from mangrove swamps in

646 eastern India [57]. A further species were described from arid soil in Egypt[66]
647 Japan [67,68] and Nepal [69] Then in our study from El Geteina soil A single
648 species of *Achaetomium macrosporum* was isolated. The species placed in this
649 genus are now known from a wide range of countries in Africa, Asia and
650 Australasia. Now a day It comprises 10 species that produce similar cleistothecial
651 ascomata with a membranous, mostly pilose, peridium. included, *Achaetomium*
652 *globosum*, *Achaetomium thermophilum*, *Achaetomium cristalliferum*, *Achaetomium*
653 *luteum* *Achaetomium umbonatum*, *Achaetomium lippiae*, *Achaetomium aegilopsis*,
654 *Achaetomium sphaerocarpum*, *Achaetomium thielavioides*, *Achaetomium*
655 *macrosporum* . Although none of the species described by these authors have well-
656 developed hairs typical of the genus *Chaetomium*, they all in fact have strongly
657 tomentose ascomata. The genus can most easily be distinguished from
658 *Chaetomium* by the colour of the ascospores, which are dark chocolate brown in
659 *Achaetomium* and pale to mid brown or olivaceous in *Chaetomium*. In many
660 species the colour does not develop fully until the ascospores are released from the
661 fruit body, so care must be taken not to base observation of this character on
662 immature specimens. The species of *Achaetomium* also appear to lack periphyses,
663 whereas at least most species of *Chaetomium* possess them, and *Achaetomium*
664 ascomata are thick-walled, and composed at least partially of loosely knit textura
665 intricata, while in *Chaetomium* they are relatively thin-walled, and composed of well-
666 ordered textura intricata or angularis.

667 The name of this genus *Ovatospora* came from the ovate to broadly ovate
668 ascospores of all of its species [18]. This species was previously isolated from

669 moist jute cloth and from dried freshwater fish, prawns, and shrimps [18,70] . To our
670 knowledge, this is the first record of *Ovatospora brasiliensis* from desert soil From
671 Dongla in this study. *Ovatospora. brasiliensis* is of medical interest considering that
672 it was isolated from a patient with spinocellular carcinoma, which is a case of otitis
673 externa [24]

674 These results implied an active differentiation of morphology within these species
675 lineages. This makes it very complicated to identify these species only based on
676 morphology. A molecular based identification will help to solve this problem.
677 Several Chaetomiaceae species share ITS sequences, and for routine
678 identification, β -tubulin (tub2) is recommended. On the other hand, it needs to be
679 noted that not all species are represented with tub2 sequences in the public
680 databases and future studies should aim to complete this omission.

681 In conclusion, this study was the first study for the family Chaetomiaceae in Sudan
682 that relied on molecular analysis. The species within this family having diverse
683 morphological characteristics, so the identification of these fungi depending on
684 morphological characters is not enough and must be supported by modern
685 phylogenetic techniques. Sequence-based identification of fungal isolates is often
686 considered to be the most reliable and accurate identification method.

687 **Declarations**

688 **Acknowledgements** We would like to thank all health centers' staff for their kind
689 collaboration and assistance. And also great thanks to all participants contributed to
690 this work.

691 **Authors' contributions:** NAM was provided conceptual framework for the project,

692 participated in data collection and analysis , participated in the molecular

693 performance and writing the manuscript

694 **Funding:** Not applicable.

695 **Availability of data and materials:** The datasets used and/or analyzed during the

696 current study are available from the corresponding author on reasonable request

697 **Ethics approval and consent to participate:** Not applicable.

698 **Consent to publish:** Not applicable.

699 **Competing interests:** The authors declare that they have no competing interests

700 **References**

- 701 1. Kunze G, Schmidt JK (1817). Mykologische Hefte, : 1. Germany, Leipzig.
702 Lagace J, Cellier E . A case report of a mixed *Chaetomium globosum*/
703 *Trichophyton mentagrophytes* onychomycosis. *Medical Mycology Case*
704 *Reports* 2012 ; 1: 76–78.
705
- 706 2. Corda ACJ (1840). Icones fungorum hucusque cognitorum. Vol. 4. Praha.
707 Cunningham CW . Can three incongruency tests predict when data should
708 be combined? *Molecular Biology and Evolution* 1997; 14: 733–740.
709
- 710 3. Chivers AH . A monograph of the genera *Chaetomium* and *Ascotricha*.
711 *Memoirs of the Torrey Botanical Club* 1915;14: 155–240.
712
- 713 4. Ames LM . A monograph of the Chaetomiaceae. U.S. Army Research and
714 Development 1963; Series 2. 125pp.
715
- 716 5. Carter A. A taxonomyic study of the ascomycete genus *Chaetomium* Kunze.
717 Ph.D. dissertation. University of Toronto, Canada.1982
718
- 719 6. Carter A. Three new species in the genus *Chaetomium*. *Canadian Journal of*
720 *Botany* 1983;61: 2603–2607.
721
- 722 7. Von Arx JA. On *Achaetomium* and a new genus *Subramaniula*
723 (*Ascomycota*). *Proc Indiana Acad Sci* 1985; 94:341–345.
724
- 725 8. Von Arx JA, Mukerji KG, Singh N. A new coprophilous ascomycete from
726 India. *Persoonia* 1978; 10:144–146.
727

- 728 9. Von Arx JA, Dreyfuss M, Müller E. A revaluation of *Chaetomium* and
729 *Chaetomiaceae*. *Persoonia* 1984; 12:169–179
730
- 731 10. Von Arx JA, Guarro J, Figueras MJ. The ascomycete genus *Chaetomium*.
732 *Beih Nova Hedwig* 1986; 84:1–162.
733
- 734 11. Wang XW, Lombard L, Groenewald JZ, Li J, Videira SI, Samson RA, et al.
735 Phylogenetic reassessment of the *Chaetomium globosum* species complex.
736 *Persoonia*. 2015; 36: 83-133.
737
- 738 12. Gonianakis M, Neonakis I, Darivianaki E, Gonianakis I , Bouros D ,Kontou-
739 Fili K. Airborne Ascomycotina on the island of Crete: seasonal patterns
740 based on an 8-year volumetric survey. *Aerobiologia* 2005; 21: 69–74.
741
- 742 13. Samson RA, Houbraken J, Thrane U, Frisvad JC, Andersen B. Food and
743 indoor fungi. In: CBS Laboratory Manual Series 2. CBS-KNAW Fungal
744 Biodiversity Centre, Utrecht, The Netherland. 2010.
745
- 746 14. Sekita S, Yoshihira K, Natori S, Udagawa S, Muroi T, Sugiyama Y, et al.
747 Mycotoxin production by *Chaetomium* spp. and related fungi. *Canadian*
748 *Journal of Microbiology* 1981; 27: 766–772.
749
- 750 15. Seth HK. A monograph of the genus *Chaetomium*. *Beihefte zur Nova*
751 *Hedwigia* 1970; 37: 1–133.
752
- 753 16. Andersen B, Frisvad JC, Søndergaard Ilb S. Rasmussen I S. Larsen L S.
754 Associations between fungal species and water-damaged building materials.
755 *Applied and Environmental Microbiology* 2011; 77: 4180–4188.
756
- 757 17. Salo J.M , Kedves O , Mikkola R , Kredics L., Andersson, M.A, Kurnitski, J.;
758 et al. Detection of *Chaetomium globosum*, *Ch. cochliodes* and *Ch.*
759 *rectangulare* during the diversity tracking of mycotoxin-producing
760 *Chaetomium*-like isolates obtained in buildings in Finland. *Toxins* 2020, 12,
761 443.
762
- 763 18. Wang X.W, Houbraken J , Groenewald JZ ,Meijer M , Andersen B, Nielsen
764 KF, Crous PW, Samson RA. Diversity and taxonomy of *Chaetomium* and
765 *Chaetomium*-like fungi from indoor environments. *Stud. Mycol.* 2016, 84,
766 145–224.
767
- 768 19. Stiller MJ, Rosenthal S Summerbell RC., Pollack J., Chan A.
769 Onychomycosis of the toenails caused by *Chaetomium globosum*. *J. Am.*
770 *Acad. Dermatol.* 1992, 26, 775–776.
771

- 772 20. Aspiroz C, Gené J, Rezusta A, Charlez L, Summerbell RC. First Spanish
773 case of onychomycosis caused by *Chaetomium globosum*. *Med. Mycol.*
774 2007, 45, 279–282.
775
- 776 21. Hwang S.M, Suh MK, Ha GY. Onychomycosis due to nondermatophytic
777 molds. *Ann. Dermatol.* 2012, 24, 175–180.
778
- 779 22. Kim DM, Lee MH, Suh MK., Ha GY, Kim H, Choi JS. Onychomycosis
780 caused by *Chaetomium globosum*. *Ann. Dermatol.* 2013, 25, 232–236.
781
- 782 23. Shi D, Lu G, Mei H, de Hoog G.S., Zheng H, Liang G., et al.
783 Onychomycosis due to *Chaetomium globosum* with yellowish black
784 discoloration and periungual inflammation. *Med. Mycol. Case Rep.* 2016, 13,
785 12–16
786
- 787 24. Hubka V, Mencil K., Skorepova M, Lyskova P, Zalabska E.
788 Phaeohyphomycosis and onychomycosis due to *Chaetomium* spp., including
789 the first report of *Chaetomium brasiliense* infection. *Med. Mycol.* 2011, 49,
790 724–733.
791
- 792 25. Lagace J, Cellier E. A case report of a mixed *Chaetomium globosum*/
793 *Trichophyton mentagrophytes* onychomycosis. *Medical Mycology Case*
794 *Reports* 2012 ; 1: 76–78.
795
- 796 26. Latha R, Sasikala R, Muruganandam N, Shiva Prakash MR.
797 Onychomycosis due to ascomycete *Chaetomium globosum*: a case report.
798 *Indian Journal of Pathology and Microbiology* 2010; 53: 566–567.
799
- 800 27. Abbott SP, Sigler L, McAleer R, McGough DA, Rinaldi MG, Mizell G.
801 Fatal cerebral mycoses caused by the ascomycete *Chaetomium strumarium*.
802 *J. Clin. Microbiol.* 1995, 33, 2692–2698.
803
- 804 28. Thomas C, Mileusnic D., Carey RB, Kampert M, Anderson D. Fatal
805 *Chaetomium* cerebritis in a bone marrow transplant patient. *Hum. Pathol.*
806 1999, 874–879.
807
- 808 29. Barron MA, Sutton DA, Veve R, Guarro J., Rinaldi M, Thompson E, et al. .
809 Invasive mycotic infections caused by *Chaetomium perlucidum*, a new agent
810 of cerebral phaeohyphomycosis. *J. Clin. Microbiol.* 2003, 41, 5302–5307.
811
- 812 30. Mhmoud NA, Santona A, Fiamma M, Siddig EE, Deligios M, Bakhiet SM, et
813 al. *Chaetomium atrobrunneum* causing human eumycetoma: The first report.
814 *PLoS Negl Trop Dis* 2019; 13(5): e0007276. <https://doi.org/10.1371/journal>.
815

- 816 31. Dreyfuss M.. Taxonomische Untersuchungen innerhalb der Gattung
817 Chaetomium. *Sydowia* 1976; 28:50–133.
818
- 819 32. Winter G. Pilze Ascomyceten. In: Rabenh Krypt Fl, 2nd ed (Leipzig) 1884–1887;
820 1(2):I–VI, 1–928.
821
- 822 33. Lee SJ, Hanlin RT. Phylogenetic relationships of Chaetomium and similar genera
823 based on ribosomal DNA sequences. *Mycologia* 1999; 91:434–442,
824 doi:10.2307/3761344.
825
- 826 34. Untereiner WA, De'bois V, Naveau FA. Molecular systematics of the
827 ascomycete genus *Farrowia* (Chaetomiaceae). *Can J Bot* 2001; 79:321–333,
828 doi:10.1139/cjb-79-3-321
829
- 830 35. Zhang N, Castlebury LA, Miller AN, Huhndorf SM, Schoch CL, Seifert KA, et al.
831 An overview of the systematics of the Sordariomycetes based on four-gene
832 phylogeny. *Mycologia* 2006; 98: 1076– 1087, doi:10.3852/mycologia.98.6.1076
833
- 834 36. Wang X, Zheng RY. *Chaetomium acropullum* sp. nov. (Chaetomiaceae,
835 Ascomycota), a new psychrotolerant, mesophilic species from China. *Nova*
836 *Hedwigia* 2005;80:413-7.
837
- 838 37. de Hoog GS, Ahmed SA, Najafzadeh MJ, Sutton DA, Keisari MS, Fahal AH,
839 *et al* . Phylogenetic findings suggest possible new habitat and routes of
840 infection of human eumycetoma. *PLoS Neglected Tropical Diseases* 2013 ; 7:
841 e2229. <http://dx.doi.org/10.1371/journal.pntd.0002229>.
842
- 843 38. Davet P, Rouxel F. Detection and isolation of soil fungi. Enfield (NH):
844 Science Publishers; 2000.
845
- 846 39. Warcup JH, Baker K.F . Occurrence of dormant ascospores in soil. *Nature*
847 1963; 197, 1317e1318.
848
- 849 40. Gunde-Cimerman N, Zalar P, Hoog GS de, Plemenitaš A . Hypersaline water
850 in salterns – natural ecological niches for halophilic black yeasts. *FEMS*
851 *Microbiology Ecology* 2000; 32: 235–240. Haubold EM, Aronson JF, Cowan
852 DF, McGinnis
853
- 854 41. Möller EM, Bahnweg G, Sandermann H, Geiger HH . A simple and efficient
855 protocol for isolation of high molecular weight DNA from filamentous fungi,
856 fruit bodies, and infected plant tissues. *Nucleic Acids Res* 1992 ; 20:6115–
857 6116
858
- 859 42. Nylander JAA . MrModeltest v. 2. Programme distributed by the author.
860 Evolutionary Biology Centre, Uppsala University.2004.
861

- 862 43. Burgess ND., Hales JD, Underwood E, Dinerstein E. Terrestrial Ecoregions
863 of Africa and Madagascar: A Conservation Assessment; Island Press:
864 Washington, DC, USA, 2004.
865
- 866 44. Pasternak Z., Al-Ashhab A, Gatica J, Gafny R, Avraham S, Minz D., *et*
867 *al* . Spatial and temporal biogeography of soil microbial communities in arid
868 and semiarid regions. *PLoS ONE* 2013, 8, e69705.
869
- 870 45. Silva M, Minter DW. Fungi from Brazil recorded by Batista and co-workers.
871 *Mycological Papers* 1995; 169: 1–585.
872
- 873 46. Flavia R. Barbosa , Huzefa A. Raja , Carol A. Shearer , Luis F. P. Gusmão.
874 Three *Chaetomium* species (Chaetomiaceae, Ascomycota) from the
875 semiarid region of Brazil. *Sitientibus série Ciências Biológicas* 2012; 12(1):
876 115–118.
877
- 878 47. Kulneff C A. Comparative Study of Urban and Rural Dairy Management
879 Systems in Sudan. Uppsala.2006.
880
- 881 48. Brausch G. Change and Continuity in the Gezira Region of the Sudan. *Int*
882 *Social Science J* 1964; 16:340–356.
883
- 884 49. Carter A, Khan RS. New and interesting *Chaetomium* species from East
885 Africa. *Can J Bot* 1982; 60:1253–1262.
886
- 887 50. Koch HA, Haneke H. *Chaetomium funiculum* Cooke als möglicher Erreger
888 einer tiefen Mykose. *Mkosen* 1965; 9: 23–28.
889
- 890 51. Guppy KH, Thomas C, Thomas K, Anderson D. Cerebral fungal infections in
891 the immunocompromised host: a literature review and a new pathogen
892 *Chaetomium atrobrunneum*: case report. *Neurosurgery* 1998; 43:1463–1469.
893
- 894 52. Márquez SS, Bills GF, Zabalgoageazcoa I. The endophytic mycobiota of
895 the grass *Dactylis glomerata* *Fungal Diversity* 2007; 27: 171–195.
896
- 897 53. Piepenbring M, Mendez O.A.C, Espinoza A.A.E , Kirschner R , Schofer H.
898 Chromoblastomycosis caused by *Chaetomium funicola*: a case report from
899 Western Panama. *British Journal of Dermatology* 2007; 157: 1025–1029.
900
- 901 54. Swarup G, Hansing ED, Rogerson CT. Fungi associated with sorghum
902 seed in Kansas. *Transactions of the Kansas Academy of Science* 1962;
903 65(2): 120–137.
904
- 905 55. Matsushima T. *Microfungi of the Solomon Islands and Papua-New Guinea*.
906 Publish by the author, Kobe.1971.

907

908 56. Shearer CA, Crane JL. Illinois fungi XII. Fungi and Myxomycetes from wood
909 and leaves submerged in southern Illinois swamps. *Mycotaxon* 1986; 25:
910 527–538.

911

912 57. Rai JN, Garg K, Jaitly AK. . Saprophytic fungi isolated from woods in
913 mangrove swamps and their wood- decaying capability. *Transactions of the*
914 *Mycological Society of Japan* 1981; 22(1): 65–74.

915

916 58. Cannon PF. A revision of *Achaetomium*, *Achaetomiella* and *Subramaniula*,
917 and some similar species of *Chaetomium*. *Trans Br Mycol Soc* 1986; 87:45–
918 76.

919

920 59. Rai JN, Wadhvani K., Tewari JP. *Achaetomium macrosporum* spec.nov. with
921 notes on the genus *Achaetomium*. *Indian Phytopathology* 23, 54-57. Ranga
922 Rao, V. & Mukerji, K. G. (1971a). Cytology of the ascus in *Achaetomium*
923 *globosum* and *A. luteum*. *Journal of General and Applied Microbiology* 1970;
924 97, 311-318.

925

926 60. Rai JN, Chowdhery HJ. *Achaetomium uniapiculatum* sp.nov., a new
927 species of the genus *Achaetomium*. *Current Science* 1971; 40, 412-413..

928

929 61. Rai JN. ,Chowdhery HJ . Cytology of the ascus and ascocarp development
930 in *Achaetomium uniapiculatum*. *Journal of General and Applied Microbiology*
931 1973; 19, 481-49.

932

933 62. Rai JN, Chowdhery HJ. Studies in the genus *Achaetomium* : two new
934 species, *A. sphaerocarpus* and *A. macrocarpus*. *Kavaka* t, 1974a; 29-36.

935

936 63. Rai JN, Chowdhery HJ . *Achaetomium fuisporus* spec.nov, and *A.*
937 *sulphureus* spec.nov. : two new species of the genus *Achaetomium* from
938 Indian 'Usar' (alkaline) soils. *Journal of the Indian Botanical Society* S2,
939 1974b; 309-312.

940

941 64. Rai J.N. Chowdhery HJ . *Achaetomium indicum* Rai et Chowdhery
942 spec.nov.: a new species of the genus *Achaetomium* from Indian 'usar' soils.
943 *Current Science* 1978; 47, 23-24.

944

945 65. Rai JN , Saxena A. Cytology of the ascus and ascocarp development in
946 *Achaetomiella megaspore* (Sorgel) D. Hawksw. *Caryologia* 1979; 32, 45-52

947

948 66. Locquin-Linard M. *Achaetomium cristalliferum* Faurel et Locquin-Linard.
949 Nouvelle espece d'Ascornycete (Achaetomiaceae) isolee d'un sol aride.
950 *Cryptogamie, Mycologie* 1980; 1, 235-240.

951

- 952 67. Udagawa S. A taxonomic study on the Japanese species of *Chaetomium*.
 953 *Journal of General and Applied Microbiology* 1960; 6, 223-251.
 954
 955 68. Udagawa S. A new species of *Achaetomium*. *Transactions of the*
 956 *Mycological Society of Japan* 1982; 23, 287-291.
 957
 958 69. Udagawa, S, Sugiyama, Y. New records and new species of ascomycetous
 959 fungi from Nepal, a preliminary report on the expedition of 1980. *Reports on*
 960 *the Cryptogamic Study in Nepal, March 1982 (Miscellaneous Publication of*
 961 *the National Science Museum, Tokyo)* 1982; 11-46.
 962
 963 70. Ara I, Sultana R, Chanda IF, Alam N. First report on *Ovatospora brasiliensis*
 964 from freshwater dried shrimp and prawn in Bangladesh. *Int J Fauna Biol*
 965 *Stud* 2020; 7: 43-47.

966

967 Table 1 A list of all the strains isolated in this study

No	Species	Groups	Source	Site of collection
1.	<i>Chaetomium globosum</i>	<i>Chaetomium globosum complex</i>	Soil	Dongola
2.	<i>Chaetomium globosum</i>		Soil	El-Obeid
3.	<i>Chaetomium globosum</i>		Soil	El-Obeid
4.	<i>Chaetomium globosum</i>		Drinking water	El Geteina
5.	<i>Chaetomium globosum</i>		sewage water	Gazira
6.	<i>Chaetomium globosum</i>		sewage water	El-Obeid
7.	<i>Chaetomium globosum</i>		River water	Gazira
8.	<i>Chaetomium globosum</i>		Horse dung	Gazira
9.	<i>Chaetomium globosum</i>		Horse dung	El Geteina
10.	<i>Chaetomium globosum</i>		Soil	Dongola
11.	<i>Chaetomium globosum</i>		Soil	Khartoum
12.	<i>Chaetomium globosum</i>		Soil	Gazira
13.	<i>Chaetomium globosum</i>		Soil	El Geteina
14.	<i>Chaetomium globosum</i>		Cow dung	Gazira
15.	<i>Chaetomium globosum</i>		Cow dung	El Geteina
16.	<i>Chaetomium globosum</i>		Sheep dung	Gazira
17.	<i>Chaetomium globosum</i>		Sheep dung	Gazira
18.	<i>Chaetomium subglobosum</i>		Donkey dung	Gazira
19.	<i>Chaetomium subglobosum</i>		Cow dung	Khartoum
20.	<i>Chaetomium subglobosum</i>		Soil	Khartoum
21.	<i>Chaetomium tenue</i>		River water	Gazira
22.	<i>Chaetomium tenue</i>		Soil	Khartoum
23.	<i>Chaetomium tenue</i>		Soil	El Geteina
24.	<i>Chaetomium tenue</i>		Soil	Gazira

25.	<i>Chaetomium pseudoglobosum</i>		River water	Gazira
26.	<i>Chaetomium homopilatum</i>		Soil	El Geteina
27.	<i>Chaetomium homopilatum</i>		Soil	El Geteina
28.	<i>Chaetomium homopilatum</i>		Soil	Gazira
29.	<i>Chaetomium homopilatum</i>		Soil	Gazira
30.	<i>Chaetomium homopilatum</i>		Soil	Gazira
31.	<i>Chaetomium homopilatum</i>		Soil	Gazira
32.	<i>Chaetomium homopilatum</i>		Soil	Gazira
33.	<i>Chaetomium homopilatum</i>		Soil	Gazira
34.	<i>Chaetomium homopilatum</i>		Cow dung	El Geteina
35.	<i>Chaetomium homopilatum</i>		Cow dung	Gazira
36.	<i>Chaetomium homopilatum</i>		Donkey dung	Gazira
37.	<i>Chaetomium homopilatum</i>		Sheep dung	El Geteina
38.	<i>Chaetomium homopilatum</i>		Sheep dung	Gazira
39.	<i>Chaetomium homopilatum</i>		Sheep dung	Gazira
40.	<i>Chaetomium homopilatum</i>		Sheep dung	Gazira
41.	<i>Chaetomium homopilatum</i>		Donkey dung	Gazira
42.	<i>Chaetomium homopilatum</i>		Donkey dung	El Geteina
43.	<i>Chaetomium homopilatum</i>		Horse dung	El Geteina
44.	<i>Chaetomium homopilatum</i>		Horse dung	El Geteina
45.	<i>Chaetomium homopilatum</i>		Horse dung	Gazira
46.	<i>Chaetomium homopilatum</i>		Horse dung	Gazira
47.	<i>Chaetomium homopilatum</i>		sewage water	El Geteina
48.	<i>Chaetomium homopilatum</i>		sewage water	El Geteina
49.	<i>Chaetomium homopilatum</i>		sewage water	El Geteina
50.	<i>Chaetomium homopilatum</i>		sewage water	Gazira
51.	<i>Chaetomium homopilatum</i>		sewage water	Gazira
52.	<i>Chaetomium homopilatum</i>		sewage water	Gazira
53.	<i>Chaetomium homopilatum</i>		Soil	Gazira
54.	<i>Chaetomium homopilatum</i>		Soil	Gazira
55.	<i>Chaetomium homopilatum</i>		animal drinking water	El Geteina
56.	<i>Chaetomium homopilatum</i>		animal drinking water	Gazira
57.	<i>Chaetomium elatum</i>		Soil	Khartoum
58.	<i>Chaetomium megalocarpum</i>		sewage water	AlQadarif
59.	<i>Chaetomium megalocarpum</i>		River water	AlQadarif
60.	<i>Chaetomium megalocarpum</i>		Horse dung	AlQadarif
61.	<i>Chaetomium megalocarpum</i>		Soil	El Geteina
62.	<i>Chaetomium cervicicola</i>		Soil	El-Obeid
63.	<i>Chaetomium subaffine</i>		Soil	El-Obeid
64.	<i>Chaetomium brasiliense</i>	Ovatospora	Soil	Dongola
65.	<i>Chaetomium brasiliense</i>		Soil	Dongola
66.	<i>Chaetomium brasiliense</i>		River water	Dongola
67.	<i>Chaetomium brasiliense</i>		River water	Dongola
68.	<i>Ovatospora medusarum.</i>		Soil	Dongola

69.	<i>Chaetomium fuscum</i>	Dichotomopilus	Soil	Gazira	
70.	<i>Chaetomium fuscum</i>		Donkey dung	El Geteina	
71.	<i>Chaetomium fuscum</i>		Cow dung	El Geteina	
72.	<i>Chaetomium funicola</i>		Cow dung	Gazira	
73.	<i>Chaetomium funicola</i>		Soil	Gazira	
74.	<i>Chaetomium funicola</i>		animal drinking water.	Gazira	
75.	<i>Chaetomidium arxii</i>		Sheep dung	AlQadarif	
76.	<i>Chaetomium indicum</i>		Soil	Gazira	
77.	<i>Chaetomium indicum</i>		Soil	Gazira	
78.	<i>Chaetomium erectum</i>		Soil	AlQadarif	
79.	<i>Chaetomium erectum</i>		Sheep dung	AlQadarif	
80.	<i>Chaetomium atrobrunneum</i>		Amesia	Soil	Dongola
81.	<i>Chaetomium atrobrunneum</i>			Soil	Dongola
82.	<i>Chaetomium atrobrunneum</i>	Soil		El-Obeid	
83.	<i>Chaetomium atrobrunneum</i>	Sewage water		El-Obeid	
84.	<i>Chaetomium atrobrunneum</i>	Donkey dung		El-Obeid	
85.	<i>Chaetomium nigricolor</i>	River water		Dongola	
86.	<i>Chaetomium nigricolor</i>	Soil		El-Obeid	
87.	<i>Chaetomium nigricolor</i>	Sewage water		El-Obeid	
88.	<i>Chaetomium nigricolor</i>	Sewage water		El-Obeid	
89.	<i>Achaetomium macrosporum</i>	Achaetomium		Soil	El Geteina
90.	<i>Subramaniula asteroides</i>		Soil	El Geteina	
91.	<i>Subramaniula asteroides</i>	Subramaniula	Soil	El Geteina	
92.	<i>Subramaniula asteroides</i>		Soil	El Geteina	
93.	<i>Subramaniula asteroides</i>		Soil	El Geteina	
94.	<i>Subramaniula asteroides</i>		Soil	Gazira	
95.	<i>Subramaniula asteroides</i>		Soil	Gazira	
96.	<i>Subramaniula asteroides</i>		Soil	Gazira	
97.	<i>Subramaniula asteroides</i>		Soil	Gazira	
98.	<i>Subramaniula asteroides</i>		Soil	Gazira	
99.	<i>Subramaniula asteroides</i>		Soil	Gazira	
100.	<i>Subramaniula asteroides</i>		Donkey dung	El Geteina	
101.	<i>Subramaniula asteroides</i>		Donkey dung	El Geteina	
102.	<i>Subramaniula asteroides</i>		Sewage water	El Geteina	
103.	<i>Subramaniula asteroides</i>		Sewage water	El Geteina	
104.	<i>Subramaniula asteroides</i>	Sewage water	Gazira		
105.	<i>Subramaniula asteroides</i>	Sewage water	Gazira		
106.	<i>Subramaniula asteroides</i>	Sewage water	Gazira		
107.	<i>Subramaniula asteroides</i>	animal drinking water	El Geteina		
108.	<i>Subramaniula asteroides</i>	animal drinking water	El Geteina		
109.	<i>Subramaniula asteroides</i>	animal drinking water	Gazira		
110.	<i>Subramaniula asteroides</i>	animal drinking water	Gazira		
111.	<i>Subramaniula asteroides</i>	Sheep dung	El Geteina		
112.	<i>Subramaniula asteroides</i>	Sheep dung	El Geteina		
113.	<i>Subramaniula asteroides</i>	Sheep dung	Gazira		

114.	<i>Subramaniula asteroides</i>		Sheep dung	Gazira
115.	<i>Subramaniula asteroides</i>		Sheep dung	Gazira
116.	<i>Subramaniula irregularis</i>		Sheep dung	Gazira
117.	<i>Thielavia arenaria</i>	Thielavia	Soil	Gazira
118.	<i>Thielavia terrestris</i>		Sheep dung	Gazira
119.	<i>Collariella causiiformis</i>	Collariella	Soil	El-Obeid

968

969

970 The Legends

971 Figure-1: Sampling location in Sudan States : A. Dongola in Northern Sudan cover
 972 by Yermosol (Desert sand); B El-Obeid in Sahelian Acacia savanna zone with
 973 Arenosols (Stabilized sand dunes with silt or clay soil); C. Gezira state in Sahelian
 974 Acacia savanna zone with Vertisols (Black clay soil); D. El Geteina city in Sahelian
 975 Acacia savanna zone with Yermosols (Flat gravel silt loam with clay soil ; E.
 976 Khartoum city in Sahelian Acacia savanna zone with Yermosols (Flat gravel silt
 977 loam with clay soil); F. AlQadarif in East Sudanian savanna with Vertisols (Black
 978 clay) ; G, Animal drinking water; H. Surface river water sample; I. Drinking water
 979 sample; J. Animal manure K. loamy soil sample; L. Clay soil sample.

980

981 Figure -2: Soil characteristic of Dongola and Khartoum state : A. Soil texture; B.
 982 Soil salinity; C. Soil pH.; D. Carbon concentrations, ;E. Nitrogen concentrations F.
 983 Calcium carbonate concentrations, G. Soil potassium ; H. phosphorus
 984 concentrations. Figure was created for this publication using from Sudan Soil
 985 Information System (SUSIS) digital soil map of the Sudan from Land and Water
 986 Research Centre -Agricultural Research Corporation Sudan Webadmin@susis.sd

987

988 Figure -3: Soil characteristic of El-Obeid the capital of the North Kordofan states :
 989 A. Soil texture; B. Soil salinity; C. Soil pH.; D. Carbon concentrations, ;E. Nitrogen
 990 concentrations F. Calcium carbonate concentrations, G. Soil potassium ; H.
 991 phosphorus concentrations. Figure was created for this publication using from
 992 Sudan Soil Information System (SUSIS) digital soil map of the Sudan from Land
 993 and Water Research Centre -Agricultural Research Corporation Sudan
 994 Webadmin@susis.sd

995 Figure -4: Soil characteristic of AlQadarif region El Geteina city and Gezira states:
 996 A. Soil texture; B. Soil salinity; C. Soil pH.; D. Carbon concentrations, ;E. Nitrogen
 997 concentrations F. Calcium carbonate concentrations, G. Soil potassium ; H.
 998 phosphorus concentrations. Figure was created for this publication using from
 999 Sudan Soil Information System (SUSIS) digital soil map of the Sudan from Land

1000 and Water Research Centre -Agricultural Research Corporation Sudan
1001 Webadmin@susis.sd

1002 Figure -5 :Phylogenetic tree of Chaetomiaceae family with closely related taxa
1003 from GenBank and their accession numbers generated from maximum likelihood
1004 (ML) analysis based on the combined dataset of ITS, partial LSU, tub2 and partial
1005 rpb2 sequences. with CBS24975 *Collariella gracilis* as outgroup. Bootstrap values >
1006 50% (1000 replicates)

1007 .

1008 Figure -6: *Chaetomium globosum* : A., Colonies on PDA after 7 days incubation
1009 from Surface side and B from reverse side C. Mature ascomata

1010

1011 Figure -7:*Chaetomium homopilatum*: A., Colonies on PDA after 7 days incubation
1012 from Surface side; B Mature ascomata, showing terminal coiled terminal hairs; C.
1013 Asci

1014

1015 Figure-1



1016

1017

1018

1019

1020

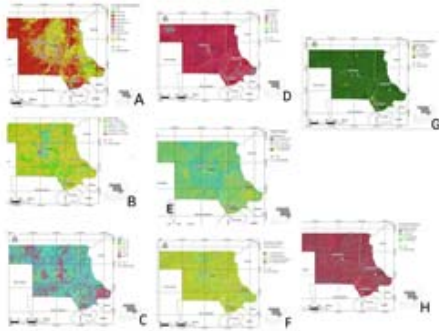
1021

1022

1023

1024

1025 Figure-2



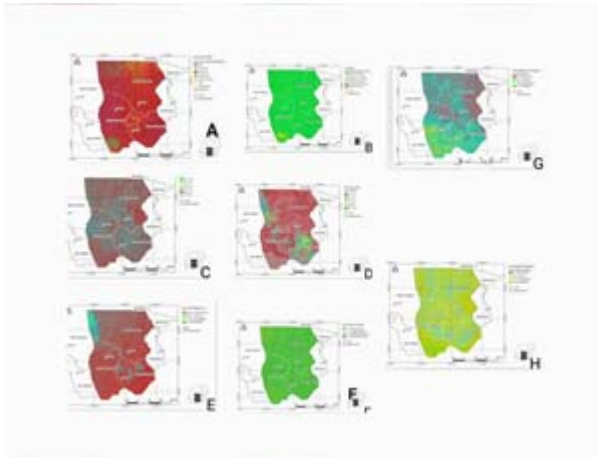
1026

1027

1028

1029 Figure-3

1030

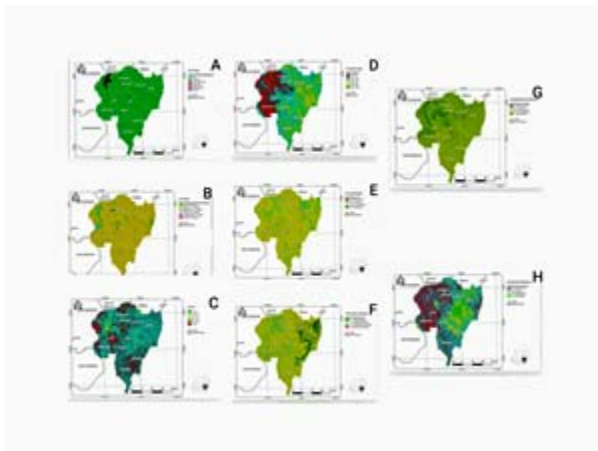


1031

1032

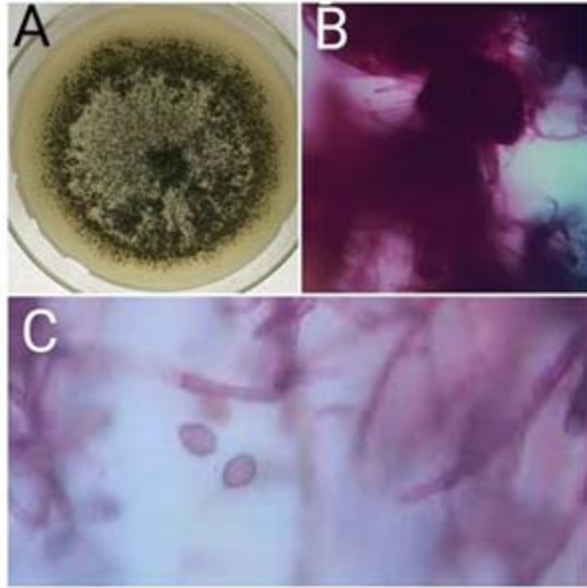
1033 Figure-4

1034



1035

1036



1047