

# 1 **Ambient Temperature and Dengue Hospitalisation in Brazil:** 2 **A 10-year period two-stage case-design time series analysis**

3 Rafael Lopes<sup>1,2</sup>, Xavier Basagaña<sup>2</sup>, Leonardo S. L. Bastos<sup>3</sup>, Fernando A. Bozza<sup>4</sup>, Otavio T.  
4 Ranzani<sup>2,5</sup>

5

6 1 - Instituto de Física Teórica - IFT, UNESP, São Paulo, Brazil

7 2 - Barcelona Institute for Global Health, Universitat Pompeu Fabra, CIBER Epidemiología y  
8 Salud Pública, Barcelona, Spain

9 3 - Department of Industrial Engineering (DEI), Pontifical Catholic University of Rio de Janeiro  
10 (PUC-Rio), Rio de Janeiro, RJ, Brazil

11 4 - National Institute of Infectious Disease Evandro Chagas (INI), Oswaldo Cruz Foundation  
12 (FIOCRUZ), Rio de Janeiro, RJ, Brazil

13 5 - Pulmonary Division, Heart Institute (InCor), HCFMUSP, Faculdade de Medicina da  
14 Universidade de São Paulo, Brazil

15

16

17 **Corresponding author:**

18 Otavio T. Ranzani ([otavio.ranzani@isglobal.org](mailto:otavio.ranzani@isglobal.org))

19 ISGlobal, Dr. Aiguader, 88, 08003 Barcelona, Spain

20

21

22 **Conflicts of interest:** None.

23 **Word count:** 3,492

24 **Keywords:** Dengue; severe Dengue; temperature; heatwave; hospital; temperature

25

26 **Abstract** (270/300 words)

27  
28 Climate factors are known to influence seasonal patterns of dengue transmission. However, little  
29 is known about the effect of extremes of temperature on the severity of dengue infection, such as  
30 hospital admission. We aimed to quantify the effect of ambient temperature on dengue  
31 hospitalisation risk in Brazil. We retrieved daily dengue hospitalisation counts by each of 5,565  
32 municipalities across the 27 states of Brazil from 1st of January 2010 to 31st of December 2019,  
33 from the Brazilian Public Hospital Admission System (“SIH”). We obtained average daily  
34 ambient temperature for each municipality from the ERA5-land product reanalysis. We  
35 combined distributed lag non-linear models with time stratified design model framework to pool  
36 a relative risk (RR) estimate for dose-response and lag-response structures for the association of  
37 temperature and Dengue hospitalisation. We estimate the overall dengue hospitalisation RR for  
38 the whole country as well for each of the five macro-regions by meta-analysing state level  
39 estimates. 579,703 hospital admissions due to dengue occurred over the 10 years’ period of 2010  
40 to 2019. We observed a positive association between high temperatures and high risk of  
41 hospitalisation for Brazil. The overall RR for dengue hospitalisation was 2.185 (95% CI 1.457-  
42 3.276) at the 50th percentile of temperature and 2.385 (95% CI 1.556-3.655) at 95th percentile of  
43 temperature for Brazil. We also found lag effects of heat on hospitalisation, particularly an  
44 immediate augmented risk to hospitalisation, both at the 50th percentile and 95th. High  
45 temperatures are associated with an increase in the risk of hospitalisation by dengue. These  
46 findings may guide preparedness and mitigation policies during dengue season outbreaks,  
47 particularly on the health-care demand.

48  
49  
50  
51

## 52 1. Introduction

53 Dengue fever has been a major global seasonal endemic disease, present largely in the tropics,  
54 with an estimated burden over ~390 million infections per year (Bhatt et al., 2013; Guzman and  
55 Harris, 2015). Approximately one quarter of these infections manifest as clinical or subclinical  
56 disease (Bhatt et al., 2013). Brazil is one of the most affected countries by dengue, that has  
57 caused over ~20.9 millions cases of infections in the last 20 years, since the compulsory  
58 universal notification to the Brazilian health systems (Godói et al., 2018; Lowe et al., 2021).  
59 Additionally, it is estimated that the Brazilian Universal Health system (SUS) spent more than  
60 USD 159 millions in the treatment and assistance to dengue cases and USD 10 million on severe  
61 dengue between 2000 and 2015 (Godói et al., 2018). The impressive burden of dengue in Brazil  
62 is also observed in several others low-income and middle-income countries (Suaya et al., 2009).  
63  
64 Dengue incidence is influenced by climate variables, particularly with temperature and rainfall,  
65 due to mosquito life cycle and human behaviour changes, resulting in increased transmission risk  
66 (Bhatt et al., 2013; Campbell et al., 2015; Colón-González et al., 2021; Lee et al., 2021; Lowe et  
67 al., 2021; Suaya et al., 2009; Wibawa et al., 2024). A systematic review and meta-analysis  
68 published in 2023 pooled 106 studies evaluating the association between high temperature and  
69 heatwaves with dengue incidence (Damtew et al., 2023). There was sufficient evidence to show  
70 increased relative risk for high temperatures (pooled RR 1.13 (95% CI, 1.11-1.16, for 1°C  
71 increase in temperature), however limited evidence for heatwave events (pooled RR 1.08, 95%  
72 CI, 0.95-1.23). The majority of articles used a monthly time resolution of the exposure, usually  
73 exploring lag effects up to one year. The magnitude of the association reported seemed to depend  
74 on the climate zone, showing a greater incidence risk in the tropical monsoon and humid

75 subtropical climate zones (Damtew et al., 2023). In this scenario, projections show that dengue  
76 incidence, as well as other mosquito-borne diseases such as Zika, can have increased epidemic  
77 potential with the global rising temperature due to climate change (Colón-González et al., 2021;  
78 Van Wyk et al., 2023).

79 Dengue fever can present with increasing severity, requiring hospital admission and the support  
80 of vital organs (Paz-Bailey et al., 2024). The main mechanisms involved in dengue severity  
81 comprises dehydration and coagulation disorders (Burattini et al., 2016; Paz-Bailey et al., 2024;  
82 Werneck et al., 2018), both conditions which can be aggravated by ambient temperature (Kenney  
83 et al., 2014; Schneider et al., 2017). Although the literature is clear regarding the association  
84 between temperature and dengue transmission, there is a lack of evidence regarding the  
85 association between ambient temperature and dengue severity. Based on the reported association  
86 of short-term extremes of temperature and all-cause hospitalizations (Martínez-Solanas and  
87 Basagaña, 2019; Pudpong and Hajat, 2011; Vaidyanathan et al., 2019), we hypothesised that  
88 short-term ambient temperature has a positive association with the risk of hospitalisation due to  
89 dengue. We aimed to evaluate the association between ambient temperature and dengue  
90 hospitalisation in Brazil, analysing the period from 2010 to 2019.

91

## 92 **2. Methods**

### 93 **2.1 Study design**

94 We conducted a two-stage case-design time series analysis to evaluate the association between  
95 ambient temperature and dengue hospitalisation in Brazil. The unit of analysis was municipality  
96 of residence.

97

## 98 2.2 Study area

99 Brazil is located in South America and has ~211 million inhabitants distributed over an area of  
100 8.5 million km<sup>2</sup>. The country is divided into 26 states and the country capital, a federal district  
101 (Brazilian Institute of Geography and Statistics - IBGE, n.d.). These 27 states are grouped in 5  
102 administrative macro-regions: North (7 states), Northeast (9 states), Center-West (4 states),  
103 Southeast (4 states) and South (3 states). The country is located in a tropical region and has 3  
104 main Köppen climate types and 12 subtypes (Alvares et al., 2013).

105

## 106 2.3 Outcome and covariates

107 Our outcome is a dengue hospitalization event. We used the Brazilian Hospital Admission  
108 System (SIH), a nationwide database that comprises individual level data of all hospitalizations  
109 covered by the Universal Healthcare System (SUS) in Brazil. We defined a dengue  
110 hospitalisation by the following ICD-10 codes: 'A90', 'A91', 'A97', 'A970', 'A971', 'A972', 'A979'  
111 (Coelho et al., 2016). We build daily time series aggregating the number of events by date of  
112 hospitalisation for each municipality of residence.

113 We used the number of dengue cases as a covariate. We used the National Dengue Surveillance  
114 System (SINAN-Dengue), that receives any notification for a suspected or confirmed dengue  
115 case. We selected the confirmed cases of dengue and build daily times times series aggregating  
116 the number of cases by date of symptoms onset at each municipality. To add this covariate in the  
117 model in a sensitivity analysis, we derived the 7-days moving average of the dengue cases series,  
118 an estimated time of progression from symptoms to hospitalization.

119 Both databases are publicly accessible and following ethically agreed principles on open data,  
120 the use of this data did not require ethical approval in Brazil, according to the Brazilian Ethics  
121 Resolution n° 510/2016.

## 122 **2.4 Temperature exposure assessment**

123 Our exposure of interest is the daily average temperature at each Brazilian municipality. To  
124 derive it, we used the hourly 2-metres temperature (gridded 0.1° x 0.1°) from reanalysis products  
125 (ERA5-Land), freely available by the Copernicus Climate Service through the Climate data Store  
126 (Muñoz-Sabater et al., 2021). We estimated the daily mean temperature for each municipality by  
127 calculating the mean daily temperature of each grid cell and weighting it to the municipality area.  
128 All these weighted mean areas were done with the ‘exactextractr’ R package (Baston, Daniel,  
129 2023).

130 Regarding the performance of the temperature estimated from ERA5-Land reanalysis in Brazil,  
131 one study evaluated the agreement between ERA5-Land and monitoring stations for monthly  
132 temperature averages, using 12 automatic stations for the period 2011-2020 from one Brazilian  
133 state in the Northeast region (Pernambuco state - PE), with an average R-square of 0.92 (Araújo  
134 et al., 2022). For this study, we performed a validation comparing the daily average of  
135 temperature from monitoring stations at the municipal level with the ERA5-Land estimates  
136 described before. We used data from 389 stations (269 automatic and 120 manual) from the  
137 National Institute of Meteorology (National Institute of Meteorology (INMET), 2024), with at  
138 least 90% of days with complete data during the period. The analysis of 340 municipalities  
139 covering the 27 states and approximately 65 million individuals showed a Pearson correlation  
140 coefficient of 0.94, R-square of 0.90 and RMSE of 1.54°C. Further information is available in

141 the supplementary material.

142

## 143 2.5 Data Analysis

144 We used a two-stage approach in the times-series analysis. At the first stage, we fitted

145 Conditional Poisson Models for each Brazilian state (Armstrong et al., 2014; Gasparrini, 2021).

146 At the second stage, we pooled the 27 estimates using a multivariate meta-analysis (Gasparrini et

147 al., 2012; Gasparrini and Armstrong, 2013; Jackson et al., 2011).

148

### 149 2.5.1 First-stage analysis

150

151 At the first-stage, we run the following model for each state:

$$152 \quad g[E(Y_{ijt})] = \xi_{ijs} + f(x_{tij}, l, \theta_j) + \sum_{k=1}^J s_k(t; \gamma_j)$$

153 Where  $Y_{ijt}$  is the daily count of cases by the  $j$ -th state on the  $i$ -th municipality,  $\xi_{ijs}$  the month-

154 municipality strata term conditioned out,  $f(x_{tij}, l, \theta_j)$  is the bi-dimensional exposure-lag-response

155 distributed lag non-linear cross-basis for the mean temperature on the  $j$ -th state by each day of

156 delay, until 21 days of lags (Gasparrini et al., 2015; Martínez-Solanas and Basagaña, 2019). The

157 cross-basis is parametrized with natural splines, with 2 knots equally spaced on the dose-

158 response structure and 3 knots equally spaced on the log transformed scale for the lag-response

159 structure. The last term is the long-term trend model choice for temperature trend along the

160 whole period, a natural spline with 7 degrees of freedom for each year over the whole period.

161

## 162 2.5.2. Second-stage analysis

163

164 We ran a multivariate meta-analysis with random effects, so from the  $j$ -th state-level study,  $\theta_j$ , we  
165 have the following equation:

$$172 \quad \theta_i | u_i \sim N_k(\theta_i + u_i, S_i), u_i \sim N_k(0, \psi)$$

166 Where  $\theta$  is the study to estimate, with  $u_i$  the random effects for the coefficients of this study  
167 together with  $S_j$  covariance matrix of intra state studies and  $\psi$  covariance matrix of between  
168 states studies. We run one meta-analysis for the whole country and another for each of the macro  
169 administrative regions separately. For the whole country meta-analysis, the  $\theta$  studies were taken  
170 from all the 27 states, and for the macro regions meta-analyses,  $\theta$  was only taken from states  
171 pertaining to the same macro region.

## 173 2.5.3 Sensitivity analyses

174 We ran three sensitivity analyses to explore the DLNM parametrization and to account for the  
175 number of dengue cases. On the first sensitivity analysis, we parameterized the cross-basis with 3  
176 knots equally spaced on the dose-response structure and, as in the main analysis, 3 knots equally  
177 spaced on the log transformed scale for the lag-response structure. The second sensitivity  
178 analysis we parameterized the cross-basis with 2 knots equally spaced on the dose-response  
179 structure as the main analysis, however with 4 knots placed on the days 1, 2, 7, 14 for the lag-  
180 response structure. On the third sensitivity analysis we adjusted the first stage models adding the  
181 7-days moving average of the times series of confirmed dengue cases, considering the average  
182 time between incubation period and time to hospitalization.

## 183 2.5.4 Reporting



184 We report the overall cumulative relative risk (RR) compared to the Minimum Hospitalisation  
185 Temperature (MHT) point. MHT is defined as the temperature which has an overall RR equal to  
186 1. We also report RR for the lag effects up to 21 days at the 50th and 95th percentiles of the  
187 temperature distribution.

188 All the analyses were run on R Software, version 4.1.2.

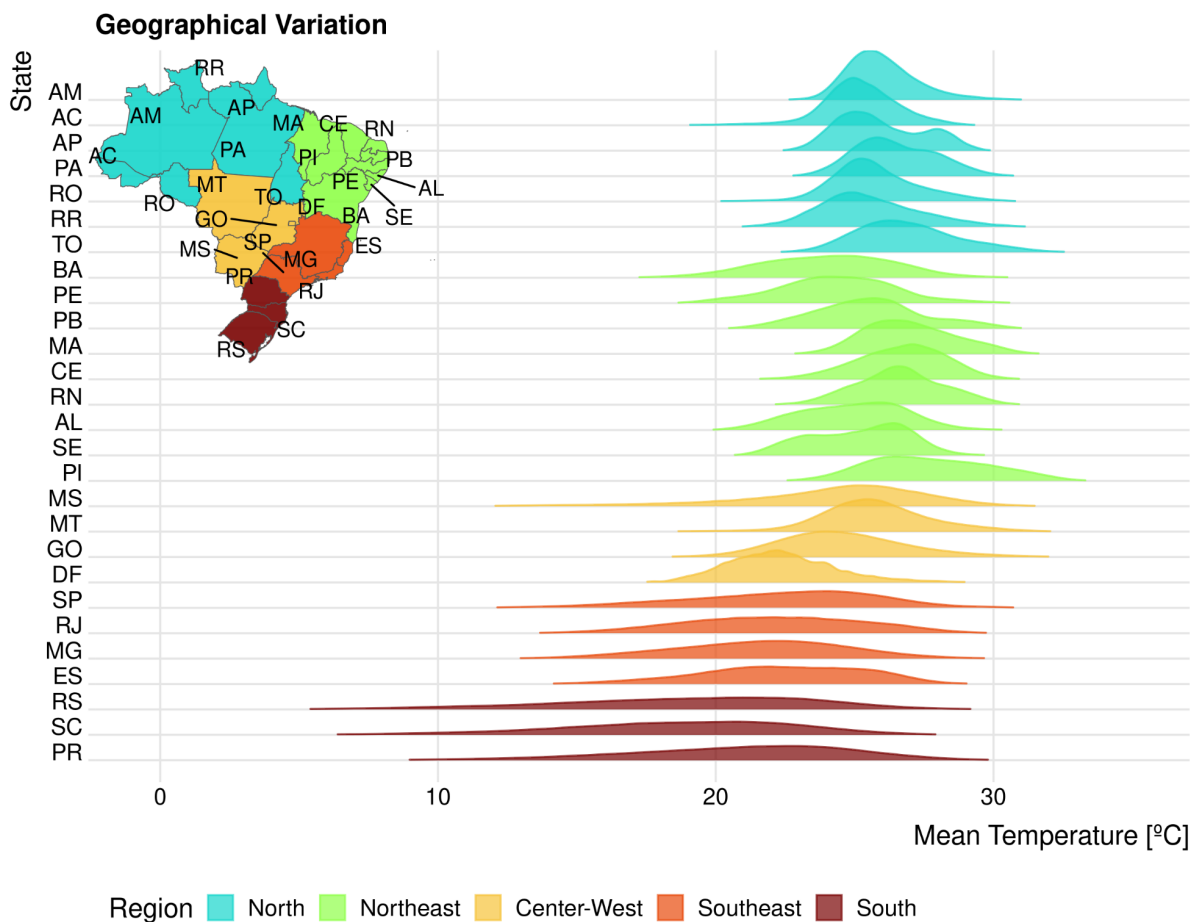
### 189 3. Results

190

#### 191 3.1 Climate data description

192 A descriptive table (**Table S1**) of the mean daily temperature for each state, macro regions and  
193 the whole country over the ten years period is shown in the supplementary material. For the  
194 whole period of ten years, it varied from -0.09 °C to 34.8 °C. **Figure 1** gives the daily mean  
195 temperature distribution across all states.

196



197

198 **Figure 1. Mean temperature density distribution over each state.** On y-axis is each of the  
199 state acronyms and on x-axis is the range of mean temperature in degree Celsius. The height of  
200 each curve is the cumulative density of mean temperature at that specific degree. The colours are  
201 given by each macro administrative region. The inset map gives the location of each of the state  
202 code at Brazilian geography.

203 Table 1. Characteristics description of Dengue Hospitalisation data

Variables	N	Brazil (N=579,703)	North (N=75,304)	Northeast (N=224,085)	Center-West (N=100,056)	Southeast (N=155,405)	South (N=24,853)
<b>Mean Age (IQR), years</b>	579,703	30 (15, 49)	27 (15, 44)	25 (12, 45)	36 (20, 53)	34 (17, 54)	37 (21, 55)
<b>Age Categories, n (%) years</b>	579,703						
0 to 1		8,752 (1.5%)	1,309 (1.7%)	4,457 (2.0%)	1,058 (1.1%)	1,726 (1.1%)	202 (0.8%)
1 to 9		73,507 (13%)	9,401 (12%)	37,354 (17%)	8,438 (8.4%)	16,620 (11%)	1,694 (6.8%)
10 to 17		91,786 (16%)	12,562 (17%)	41,991 (19%)	12,155 (12%)	22,171 (14%)	2,907 (12%)
18 to 39		192,819 (33%)	29,153 (39%)	72,769 (32%)	34,330 (34%)	48,009 (31%)	8,558 (34%)
40 to 59		126,059 (22%)	14,863 (20%)	39,640 (18%)	26,825 (27%)	38,268 (25%)	6,463 (26%)
60 to 79		71,395 (12%)	6,737 (8.9%)	22,314 (10.0%)	14,656 (15%)	23,494 (15%)	4,194 (17%)
80+		15,385 (2.7%)	1,279 (1.7%)	5,560 (2.5%)	2,594 (2.6%)	5,117 (3.3%)	835 (3.4%)
<b>Self-Reported Race, n (%)</b>	396,624						
Black		12,467 (3.1%)	1,042 (2.3%)	3,946 (2.7%)	1,187 (1.9%)	5,760 (4.9%)	532 (2.6%)
Pardo		244,869 (62%)	39,925 (87%)	120,476 (81%)	34,973 (55%)	45,113 (38%)	4,382 (21%)
Indigenous		1,092 (0.3%)	306 (0.7%)	116 (<0.1%)	595 (0.9%)	62 (<0.1%)	13 (<0.1%)
White		129,031 (33%)	3,893 (8.5%)	19,700 (13%)	24,396 (39%)	65,746 (55%)	15,296 (74%)
Asian		9,165 (2.3%)	700 (1.5%)	4,003 (2.7%)	2,116 (3.3%)	1,991 (1.7%)	355 (1.7%)
(Missing)		183,079	29,438	75,844	36,789	36,733	4,275
<b>Sex, n (%)</b>	579,703						
Female		310,308 (54%)	38,225 (51%)	121,175 (54%)	54,916 (55%)	82,550 (53%)	13,442 (54%)
Male		269,395 (46%)	37,079 (49%)	102,910 (46%)	45,140 (45%)	72,855 (47%)	11,411 (46%)
<b>Duration of Hospitalisation, median (IQR), days</b>	579,703	3 (2, 4)	2 (2, 3)	3 (2, 4)	2 (2, 3)	3 (2, 4)	2 (2, 3)
<b>In-hospital mortality, n (%)</b>	579,703	3,436 (0.6%)	281 (0.4%)	958 (0.4%)	548 (0.5%)	1,510 (1.0%)	139 (0.6%)

## 205 3.2 Dengue hospitalization data description

206 We excluded dengue hospitalizations from five small municipalities (e.g, small islands), because  
207 there was no ambient temperature for them. This filtering resulted in a loss of 153 (0.03%)  
208 hospitalized cases, for the whole period of the 10 years. The final time series aggregation by  
209 municipalities encompasses a total of 579,703 hospital admissions due to dengue over the 10  
210 years' period of 2010 to 2019 in 5,565 municipalities.

211 **Table 1** gives a characterization of the data summarised by each macro administrative region.

212 Overall, the mean age for a hospitalisation by dengue was 30 years old. Between regions it can  
213 be seen a difference of 12 years old to the mean age of hospitalisation, being the mean age of  
214 hospitalisation of 37 years old for the South region and 25 years old for the Northeast region.

215 The sex ratio is typically representative of the sex ratio estimates from the national statistics. The  
216 crude in-hospital mortality in general is low, with mortality rate of 0.6% of the total  
217 hospitalizations, and there are some discrepancies between regions. The Southeast has a rate of  
218 1.0% of the hospitalizations with the highest death outcome rate. The North and Northeast with  
219 lowest rate of mortality with an average of 0.4% rate of deaths to the total hospitalizations.

220 **Figure S1** gives a visual description of the time series for dengue hospitalisation for each region.

221

## 222 3.4 First-stage Results

223 The cumulative RR over all lags compared to the MHT on each state level, for the whole period  
224 of analysis, 2010 to 2019 are given in the supplementary material (**Figure S2**).

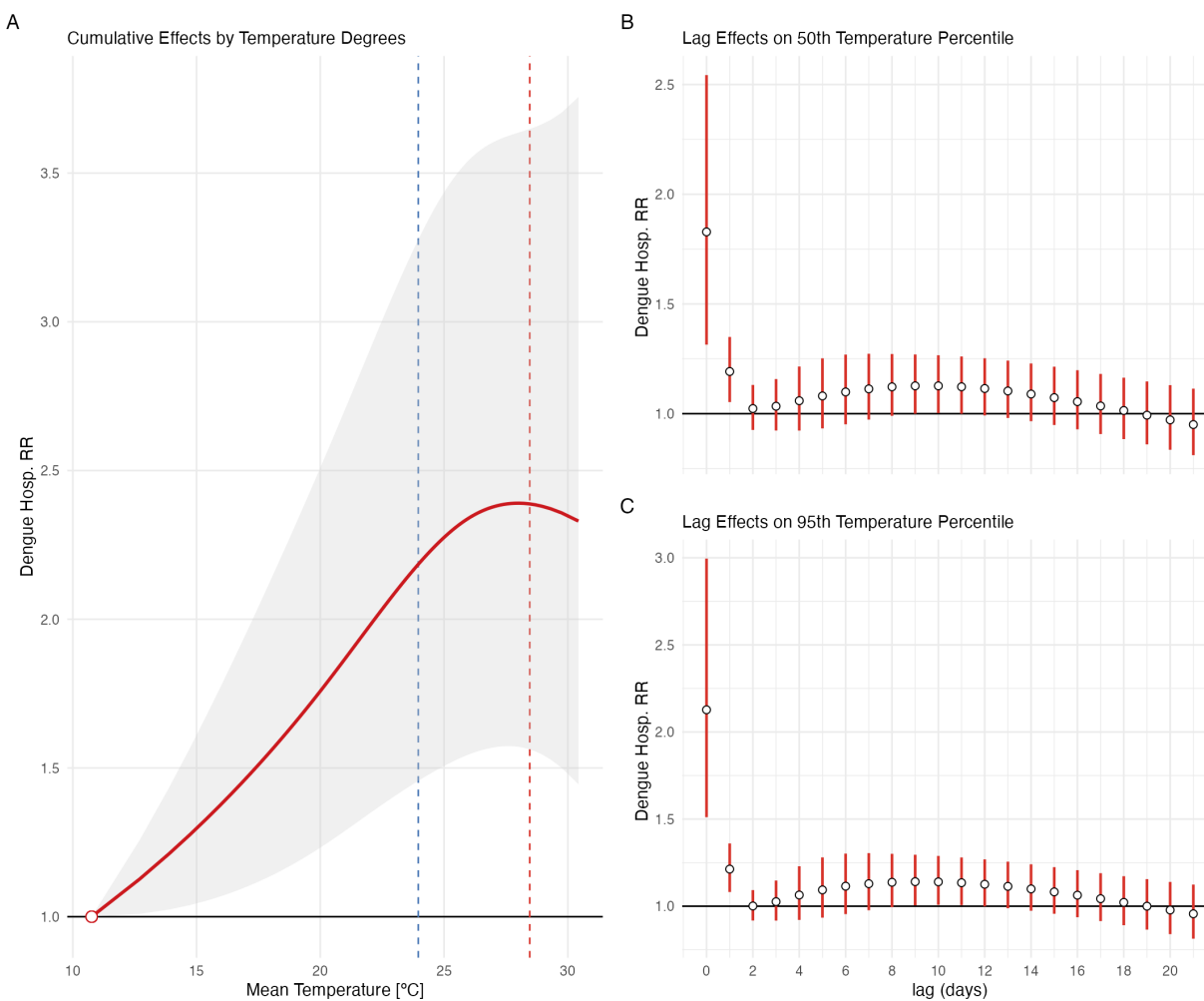
225

## 226 3.5 Second-stage Results

227 **Figure 2** and **3**, presents the cumulative RR over all lags compared to the MHT derived from the

228 meta-analysis, for the whole country and for each macro-region. **Figure 2B** and **2C**, presents the  
229 lag effects for the 50th (23.96° C) and 95th (28.68° C) percentiles of mean temperature  
230 distribution for Brazil. The lag effects for each macro-region is shown on supplementary  
231 material, **Figure S3, S4, S5, S6** and **S7**. A summary of the RR and MHT for Brazil and each  
232 macro-region is shown in **Table 2**.  
233

234



235

236 **Figure 2. Pooled cumulative relative risk for the whole country meta-analysis. A)**

237 Cumulative RR over all lags for a Dengue hospitalisation relative to the MHT. Vertical traced

238 lines mark the 50th (Blue) and 95th (Red) percentile of the temperature distribution. The grey

239 shade ribbon is 95% confidence interval derived from the meta-analysis. B) Lag effect to the RR

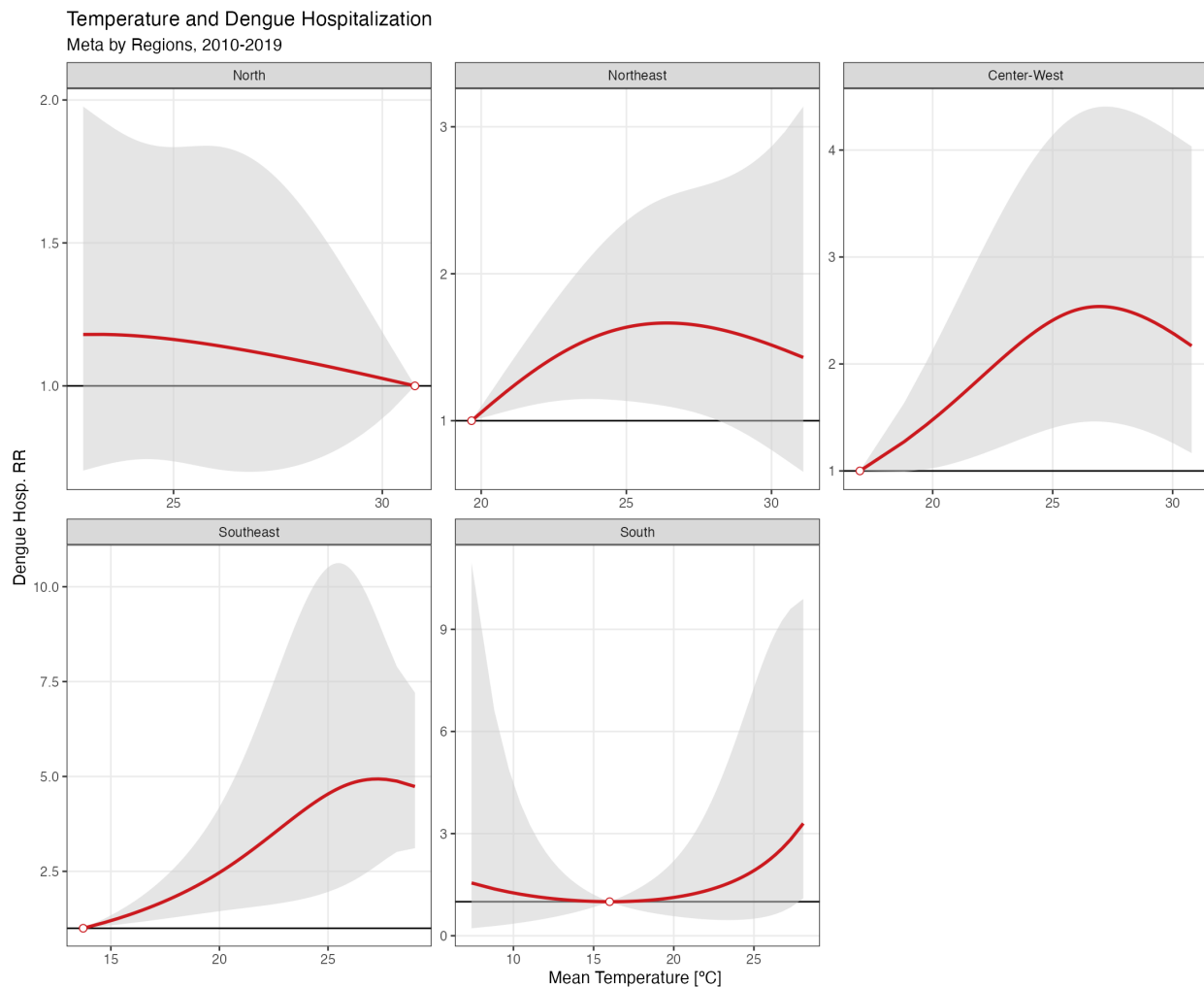
240 to the MHT of Hospitalisation due to Dengue at the 50th (23.96° C) percentile of temperature. C)

241 Lag effect to the RR to the MHT of hospitalisation due to Dengue on the 95th (28.68° C)

242 percentile of temperature. MHT: Minimum Hospitalisation Temperature; RR: relative risk.

243

244



245

246 **Figure 3. Pooled cumulate relative risk to each of the macro region meta-analysis.**

247 Cumulative overall lags RR to the MHT curves to temperature by region. Each panel is given by

248 a meta-analysis model run over all the states coefficients and covariance matrices that pertains to

249 a given macro administrative region. Order by region is given by latitude extent. MHT:

250 Minimum Hospitalisation Temperature; RR: relative risk.

251

252

253 Table 2. **Dengue hospitalisation relative risk (RR) over Brazil and each macro-region**

Unit	MHT (°C)	RR (IC 95%) 50th (23·96° C)	RR (IC 95%) 95th (28·68° C)
Brazil	10.8	2.185 (1.457-3.276)	2.385 (1.556-3.655)
North	30.8	1.139 (0.707-1.836)	1.048 (0.811-1.355)
Northeast	19.7	1.660 (1.116-2.468)	1.547 (0.860-2.784)
Center-West	17	2.393 (1.394-4.110)	2.420 (1.365-4.289)
Southeast	13.7	3.335 (1.605-6.929)	4.930 (2.567-9.468)
South	16	1.119 (0.580-2.159)	2.253 (0.592-8.569)

254 RR: Relative Risk to the Minimum Hospitalisation Temperature of hospitalisation due Dengue

255 MHT: Minimum Hospitalisation Temperature, on Celsius degree

### 256 3.6 Sensitivity analyses

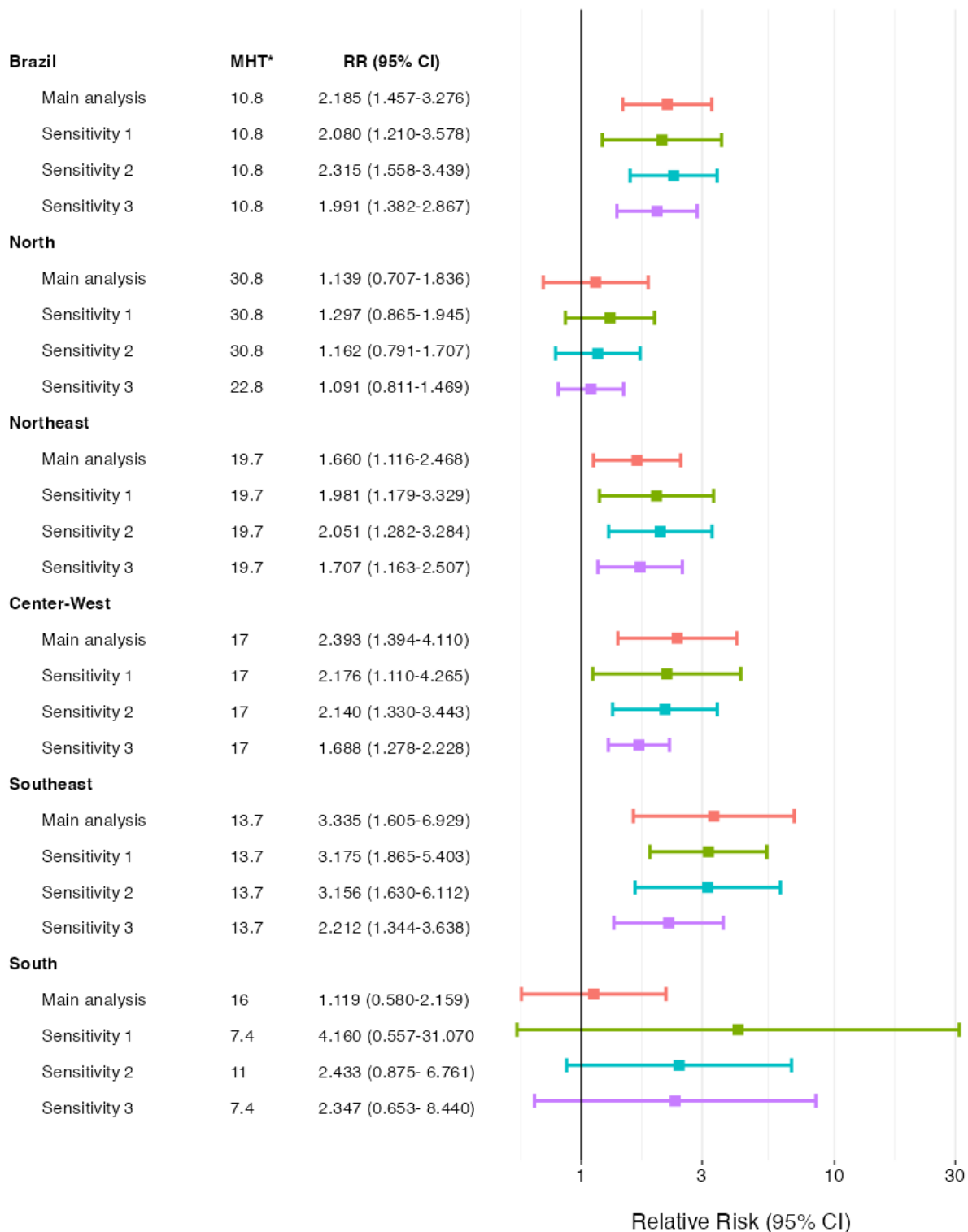
257 From the meta-analyses, on the 50th percentile for whole Brazil the RR was 2.080 (95% CI  
258 1.210-3.578) and 2.315 (95% CI 1.558-3.439), for the first and second sensitivity analyses  
259 parametrizations, respectively. After adjusting for the number of dengue cases (third sensitivity  
260 analysis), the RR on the 50th percentile for whole Brazil was 1.991 (95% CI 1.382-2.867).

261 Overall, the sensitivity analyses result for each macro-region were comparable with the main  
262 analysis at the 50<sup>th</sup> percentile (**Figure 4**) and at the 95th percentile (Figure S8), except for the  
263 South region. There was an increased risk for dengue hospitalization in the South in the three  
264 sensitivity analyses, particularly for the 95th percentile, although with high imprecision (RR  
265 4.830, 95% CI, 1.34617.331). Additional results are shown on **Table S2** and **Figures S9, S10,**  
266 **S11,** and **S12**, in the supplementary material.

267



268 **Figure 4. Dengue hospitalization relative risk by Brazil and each macro-region: main and**  
 269 **sensitivity analyses at 50th percentile of temperature**



270

271 \*MHT: Minimum Hospitalisation Temperature, on Celsius degree; RR: relative risk

272

273

274 **4. Discussion**

275

276 We ran a two-stage time stratified design study to the association between ambient temperature  
277 and hospitalisation due to Dengue. Our main finding is an increased risk of being hospitalised by  
278 Dengue as the temperature increases. In a quantitative way, in general for Brazil, above 20  
279 degrees Celsius, the RR to the MHT is 1.2x higher. This is the cumulative effects of lags up to 21  
280 days before the date of hospitalisation. We found a stronger immediate effect on the RR to the  
281 hospitalisation. We found the same patterns for each macro region of Brazil, but the North and  
282 South regions.

283

284 In comparison with the literature, we see that, in general, higher temperature is related to an  
285 augmented RR of all-cause and cause-specific hospitalisation and mortality (Jacobson et al.,  
286 2021; Martínez-Solanas and Basagaña, 2019; Pudpong and Hajat, 2011; Silveira et al., 2019;  
287 Wang et al., 2021; Zhao et al., 2019). There is scarce literature on the association between  
288 temperatures and hospitalisation by an infectious disease. Our study is the first, to our  
289 knowledge, to measure an association between temperature and hospitalisation caused by  
290 dengue. Interestingly, we did not observe a typical U-shape curve increase on the risk for  
291 hospitalization, as commonly observed for studies looking for all-cause and cause-specific  
292 hospitalisations, except for the South region, where the association was unclear. The pattern we  
293 observed has been reported for non-infectious causes in the US and China (Vaidyanathan et al.,  
294 2019; Wang et al., 2021). Some specific features of dengue could explain this difference. First,  
295 its progression to severe disease is highly linked with factors that would be aggravated as the  
296 temperature increases, such dehydration and capillary leak syndrome. Second, the incidence of

297 the dengue disease, of any severity, is much lower during cold months, therefore limiting the  
298 power to observe a potential effect of cold temperatures on Dengue hospitalizations. This reflects  
299 an additional challenge when studying climate variables and vector-borne infectious diseases  
300 severity, among others (Imai et al., 2015).

301 Overall, in the country and each of the macro regions, the extreme heat (above 20 Celsius  
302 degrees) has an effect of increasing the severity of cases, which evolves to a necessity of a  
303 hospitalisation. The association for the North and South regions are unclear and a direct  
304 comparison between regions is not straightforward because of regional disparities as well as  
305 climate disparities. Although Brazil has a universal access health system, SUS has great  
306 disparities over geographical distribution (Noronha et al., 2020). Thus, we might expect that  
307 regions with more hospital beds per population, such as South and Southeast, would hospitalise  
308 milder cases compared with regions with fewer hospital beds. This is also important during  
309 massive dengue outbreaks, where the threshold for hospitalisation might change according to  
310 beds availability and age distribution of cases.

311 Several mechanisms can play a role in the observed overall association and lag effects. The  
312 immediate effect generating the first peak on lag-0 is expected and observed in the majority of  
313 studies evaluating temperature and heat waves and hospitalizations and deaths (Morral-Puigmal  
314 et al., 2018; Pudpong and Hajat, 2011; Royé et al., 2020; Saha et al., 2014; Schwartz et al., 2004;  
315 Vaidyanathan et al., 2019). It reflects an immediate worsening of the clinical condition due to  
316 high temperature over the course of an infection. This sharp increase on lag-0 reinforces that our  
317 results is a direct effect of ambient temperature on hospitalisation risk, rather than the indirect  
318 effect of temperature on mosquito activity which increases risk of dengue infection, association  
319 usually present in the scale of months (Lowe et al., 2021). Even though, the sensitivity analysis

320 when adding the 7-day rolling mean of mild cases as a covariate in the model shows that the  
321 effect of temperature on our model is reduced from 2.185 to 1.991 at the 50<sup>th</sup> and from 2.385 to  
322 2.221 at the 95<sup>th</sup> percentile of temperature (**Table S2**). This sensitivity analysis suggests, as  
323 before, that the augmented risk for hospitalization by dengue with increased temperature it is a  
324 direct effect of heat on individuals already infected by dengue. This finding shows that high  
325 temperature seems have a short- and a long-term effect on dengue burden, being the first  
326 particularly on severity and the second on infection.

327  
328 We hypothesize that the natural evolution of 1 to 3 days of incubation period from an infection,  
329 plus 5 to 7 days to the complete clearance of the viral infection, can be affected by heat exposure  
330 based on the lagged effects observed in our results. If an individual is exposed to higher  
331 temperatures during the viral infection evolution this can lead to more severe infection, as seen  
332 on lagged-effect around 5 to 7 days before hospitalization. Additionally, the RR decrease right  
333 after the lag0-1 effect could be explained by depletion of susceptibles (“harvesting effect”) (Saha  
334 et al., 2014; Schwartz et al., 2004). This mechanism is reported for the lag between temperature  
335 and deaths, but also has been hypothesised in another study evaluating temperature and other  
336 seasonal infectious diseases such as hand, foot and mouth disease (Yi et al., 2020). Importantly,  
337 the lag-effect varies over regions, for instance, the South region has a greater delayed lag-effect  
338 than other regions. However, when varying the knots placement in a sensitivity analysis, lag-  
339 effects were less prominent, increasing the likelihood of collinearity explaining this finding  
340 (Basagaña and Barrera-Gómez, 2022).

341  
342 Our study has some strengths. We evaluated a nationwide database providing a 10-year time-

343 series of dengue hospitalizations in a LMIC exposed to a wide temperature range. We used  
344 ambient temperature from reanalysis products from ERA5-Land (Royé et al., 2020), which might  
345 increase the generalizability of our results to many other LMIC countries as countries in the  
346 regions which dengue has been expanding during last years. Finally, we used the DLNM  
347 approach, accounting for dose-response and lag-response structures and correlated daily data on  
348 temperature (De Schrijver et al., 2022; Gasparrini, 2021).

349 Our study has limitations to be mentioned. We did not evaluate other factors that could modify  
350 the high temperature effects, such as green space, urbanisation and relative humidity . In the  
351 same extension, we did not evaluate individual factors, such as age and sex, that could show  
352 different effects of temperature and risk of dengue hospitalization in vulnerable populations.  
353 Second, we obtained estimates for 27 states and pooled them for Brazil and each corresponding  
354 macro-regions. States from the same macro-region will have similar climate as well as a similar  
355 dengue incidence. This choice of aggregation allows to comparing states with probably similar  
356 transmission conditions to the mosquito as well hospitalizations conditions (Lee et al., 2021).  
357 However, this may introduce bias to the analysis and do not allow for generalizations to some  
358 municipalities within each state or to border line areas. Finally, we might have exposure  
359 misclassification by using the ERA-5-land reanalysis, particularly for the North region based on  
360 our validation. Nevertheless, the use of daily average temperature from ERA5-Land reanalysis  
361 has been applied in several epidemiological analysis (Alahmad et al., 2023; Kephart et al., 2022),  
362 with two studies showing minimal differences in estimates when comparing the exposure from  
363 ERA5-Land reanalysis with the observed weather station data for mortality (Mistry et al., 2022;  
364 Royé et al., 2020). One of these studies included 18 municipalities from Brazil in the period  
365 1997-2011, with comparable estimates of excess mortality due to cold (2.83, 95% CI, 2.29-3.38

366 for station versus 2.90, 95% CI, 2.07-3.69 for ERA5-Land) and to heat (0.73, 95% CI, 0.47-0.99  
367 for station versus 0.70, 95% CI, -0.14-1.50 for ERA5-Land) (Mistry et al., 2022). Thus, we did  
368 not expect meaningful impact on the results due to the potential exposure misclassification.

369

## 370 5. Conclusion

371 In conclusion, we observed an association between high temperature and increased risk of  
372 dengue hospitalization in Brazil. That association is mainly driven by an immediate effect of  
373 heat, and varied over the five Brazilian macro-regions, being unclear at the North and South  
374 regions. This study adds to the gap in knowledge showing a short-term effect of temperature on  
375 dengue severity, in addition to the well-known association between long-term temperature and  
376 dengue infection reported in the literature.

377

378

379 **Acknowledgements:**

380 The authors also thank the research funding agencies: the Coordenação de Aperfeiçoamento de  
381 Pessoal de Nível Superior -- Brazil (Finance Code 001 to RLPS), Conselho Nacional de  
382 Desenvolvimento Científico e Tecnológico -- Brazil (grant number: 141698/2018-7 to RLPS).  
383 OTR is funded by a Sara Borrell fellowship (CD19/00110) from the Instituto de Salud Carlos III.  
384 We acknowledge support from the grant CEX2018-000806-S funded by MCIN/AEI/  
385 10.13039/501100011033, and support from the Generalitat de Catalunya through the CERCA  
386 Program. The funding agencies had no role in the conceptualization of the study.

387 **Data Availability Statement:**

388 All data used in this study are publicly available. Hospitalisation data is available at  
389 <http://sihd.datasus.gov.br/principal/index.php>, and temperature at  
390 <https://cds.climate.copernicus.eu/#!/home>. The code to reproduce this analysis is available at:  
391 [https://github.com/rafalopespx/dengue\\_t2m\\_severity\\_paper](https://github.com/rafalopespx/dengue_t2m_severity_paper)

392

393 **Author Contribution Statement:**

394 **Rafael Lopes:** Conceptualization, Data curation, Formal analysis, Funding acquisition,  
395 Methodology, Software, Visualization, Writing – original draft

396 **Xavier Basagaña:** Methodology, Supervision, Validation, Writing - review & editing

397 **Leonardo S. L. Bastos:** Data curation, Writing - review & editing

398 **Fernando A. Bozza:** Writing - review & editing

399 **Otavio T. Ranzani:** Conceptualization, Data curation, Formal analysis, Funding acquisition,  
400 Methodology, Supervision, Validation, Writing - review & editing

## 401 References

- 402 Alahmad, B., Khraishah, H., Royé, D., Vicedo-Cabrera, A.M., Guo, Y., Papatheodorou, S.I.,  
403 Achilleos, S., Acquavita, F., Armstrong, B., Bell, M.L., Pan, S.-C., De Sousa Zanotti  
404 Stagliorio Coelho, M., Colistro, V., Dang, T.N., Van Dung, D., De' Donato, F.K.,  
405 Entezari, A., Guo, Y.-L.L., Hashizume, M., Honda, Y., Indermitte, E., Itiguez, C.,  
406 Jaakkola, J.J.K., Kim, H., Lavigne, E., Lee, W., Li, S., Madureira, J., Mayvaneh, F., Orru,  
407 H., Overcenco, A., Ragetti, M.S., Rytty, N.R.I., Saldiva, P.H.N., Scovronick, N., Seposo,  
408 X., Sera, F., Silva, S.P., Stafoggia, M., Tobias, A., Garshick, E., Bernstein, A.S.,  
409 Zanobetti, A., Schwartz, J., Gasparrini, A., Koutrakis, P., 2023. Associations Between  
410 Extreme Temperatures and Cardiovascular Cause-Specific Mortality: Results From 27  
411 Countries. *Circulation* 147, 35–46.  
412 <https://doi.org/10.1161/CIRCULATIONAHA.122.061832>
- 413 Alvares, C.A., Stape, J.L., Sentelhas, P.C., De Moraes Gonçalves, J.L., Sparovek, G., 2013.  
414 Köppen's climate classification map for Brazil. *metz* 22, 711–728.  
415 <https://doi.org/10.1127/0941-2948/2013/0507>
- 416 Araújo, C.S.P.D., Silva, I.A.C.E., Ippolito, M., Almeida, C.D.G.C.D., 2022. Evaluation of air  
417 temperature estimated by ERA5-Land reanalysis using surface data in Pernambuco,  
418 Brazil. *Environ Monit Assess* 194, 381. <https://doi.org/10.1007/s10661-022-10047-2>
- 419 Armstrong, B.G., Gasparrini, A., Tobias, A., 2014. Conditional Poisson models: a flexible  
420 alternative to conditional logistic case cross-over analysis. *BMC Med Res Methodol* 14,  
421 122. <https://doi.org/10.1186/1471-2288-14-122>
- 422 Basagaña, X., Barrera-Gómez, J., 2022. Reflection on modern methods: visualizing the effects of  
423 collinearity in distributed lag models. *International Journal of Epidemiology* 51, 334–  
424 344. <https://doi.org/10.1093/ije/dyab179>
- 425 Baston, Daniel, 2023. exactextractr: Fast Extraction from Raster Datasets using Polygons. R  
426 package.
- 427 Bhatt, S., Gething, P.W., Brady, O.J., Messina, J.P., Farlow, A.W., Moyes, C.L., Drake, J.M.,  
428 Brownstein, J.S., Hoen, A.G., Sankoh, O., Myers, M.F., George, D.B., Jaenisch, T., Wint,  
429 G.R.W., Simmons, C.P., Scott, T.W., Farrar, J.J., Hay, S.I., 2013. The global distribution  
430 and burden of dengue. *Nature* 496, 504–507. <https://doi.org/10.1038/nature12060>
- 431 Brazilian Institute of Geography and Statistics - IBGE, n.d. 2010 Population Census. [WWW  
432 Document]. URL [https://www.ibge.gov.br/en/statistics/social/income-expenditure-and-](https://www.ibge.gov.br/en/statistics/social/income-expenditure-and-consumption/18391-2010-population-census.html?edicao=19720&t=sobre)  
433 [consumption/18391-2010-population-census.html?edicao=19720&t=sobre](https://www.ibge.gov.br/en/statistics/social/income-expenditure-and-consumption/18391-2010-population-census.html?edicao=19720&t=sobre) (accessed  
434 4.27.21).
- 435 Burattini, M.N., Lopez, L.F., Coutinho, F.A.B., Siqueira, J.B., Homsani, S., Sarti, E., Massad, E.,  
436 2016. Age and regional differences in clinical presentation and risk of hospitalization for  
437 dengue in Brazil, 2000-2014. *Clinics* 71, 455–463.  
438 [https://doi.org/10.6061/clinics/2016\(08\)08](https://doi.org/10.6061/clinics/2016(08)08)
- 439 Campbell, K.M., Haldeman, K., Lehnig, C., Munayco, C.V., Halsey, E.S., Laguna-Torres, V.A.,  
440 Yagui, M., Morrison, A.C., Lin, C.-D., Scott, T.W., 2015. Weather Regulates Location,  
441 Timing, and Intensity of Dengue Virus Transmission between Humans and Mosquitoes.  
442 *PLoS Negl Trop Dis* 9, e0003957. <https://doi.org/10.1371/journal.pntd.0003957>
- 443 Coelho, G.E., Leal, P.L., Cerroni, M.D.P., Simplicio, A.C.R., Siqueira, J.B., 2016. Sensitivity of  
444 the Dengue Surveillance System in Brazil for Detecting Hospitalized Cases. *PLoS Negl*  
445 *Trop Dis* 10, e0004705. <https://doi.org/10.1371/journal.pntd.0004705>



- 446 Colón-González, F.J., Sewe, M.O., Tompkins, A.M., Sjödin, H., Casallas, A., Rocklöv, J.,  
447 Caminade, C., Lowe, R., 2021. Projecting the risk of mosquito-borne diseases in a  
448 warmer and more populated world: a multi-model, multi-scenario intercomparison  
449 modelling study. *The Lancet Planetary Health* 5, e404–e414.  
450 [https://doi.org/10.1016/S2542-5196\(21\)00132-7](https://doi.org/10.1016/S2542-5196(21)00132-7)
- 451 Damtew, Y.T., Tong, M., Varghese, B.M., Anikeeva, O., Hansen, A., Dear, K., Zhang, Y.,  
452 Morgan, G., Driscoll, T., Capon, T., Bi, P., 2023. Effects of high temperatures and  
453 heatwaves on dengue fever: a systematic review and meta-analysis. *eBioMedicine* 91,  
454 104582. <https://doi.org/10.1016/j.ebiom.2023.104582>
- 455 De Schrijver, E., Bundo, M., Ragetti, M.S., Sera, F., Gasparrini, A., Franco, O.H., Vicedo-  
456 Cabrera, A.M., 2022. Nationwide Analysis of the Heat- and Cold-Related Mortality  
457 Trends in Switzerland between 1969 and 2017: The Role of Population Aging. *Environ*  
458 *Health Perspect* 130, 037001. <https://doi.org/10.1289/EHP9835>
- 459 Gasparrini, A., 2021. The Case Time Series Design. *Epidemiology* 32, 829–837.  
460 <https://doi.org/10.1097/EDE.0000000000001410>
- 461 Gasparrini, A., Armstrong, B., 2013. Reducing and meta-analysing estimates from distributed lag  
462 non-linear models. *BMC Med Res Methodol* 13, 1. [https://doi.org/10.1186/1471-2288-](https://doi.org/10.1186/1471-2288-13-1)  
463 [13-1](https://doi.org/10.1186/1471-2288-13-1)
- 464 Gasparrini, A., Armstrong, B., Kenward, M.G., 2012. Multivariate meta-analysis for non-linear  
465 and other multi-parameter associations. *Stat Med* 31, 3821–3839.  
466 <https://doi.org/10.1002/sim.5471>
- 467 Gasparrini, A., Guo, Y., Hashizume, M., Lavigne, E., Zanobetti, A., Schwartz, J., Tobias, A.,  
468 Tong, S., Rocklöv, J., Forsberg, B., Leone, M., De Sario, M., Bell, M.L., Guo, Y.-L.L.,  
469 Wu, C., Kan, H., Yi, S.-M., De Sousa Zanotti Stagliorio Coelho, M., Saldiva, P.H.N.,  
470 Honda, Y., Kim, H., Armstrong, B., 2015. Mortality risk attributable to high and low  
471 ambient temperature: a multicountry observational study. *The Lancet* 386, 369–375.  
472 [https://doi.org/10.1016/S0140-6736\(14\)62114-0](https://doi.org/10.1016/S0140-6736(14)62114-0)
- 473 Godói, I.P., Da Silva, L.V.D., Sarker, A.R., Megiddo, I., Morton, A., Godman, B., Alvarez-  
474 Madrazo, S., Bennie, M., Guerra-Junior, A.A., 2018. Economic and epidemiological  
475 impact of dengue illness over 16 years from a public health system perspective in Brazil  
476 to inform future health policies including the adoption of a dengue vaccine. *Expert*  
477 *Review of Vaccines* 17, 1123–1133. <https://doi.org/10.1080/14760584.2018.1546581>
- 478 Guzman, M.G., Harris, E., 2015. Dengue. *The Lancet* 385, 453–465.  
479 [https://doi.org/10.1016/S0140-6736\(14\)60572-9](https://doi.org/10.1016/S0140-6736(14)60572-9)
- 480 Imai, C., Armstrong, B., Chalabi, Z., Mangtani, P., Hashizume, M., 2015. Time series regression  
481 model for infectious disease and weather. *Environmental Research* 142, 319–327.  
482 <https://doi.org/10.1016/j.envres.2015.06.040>
- 483 Jackson, D., Riley, R., White, I.R., 2011. Multivariate meta-analysis: potential and promise. *Stat*  
484 *Med* 30, 2481–2498. <https://doi.org/10.1002/sim.4172>
- 485 Jacobson, L.D.S.V., Oliveira, B.F.A.D., Schneider, R., Gasparrini, A., Hacon, S.D.S., 2021.  
486 Mortality Risk from Respiratory Diseases Due to Non-Optimal Temperature among  
487 Brazilian Elderlies. *IJERPH* 18, 5550. <https://doi.org/10.3390/ijerph18115550>
- 488 Kenney, W.L., Craighead, D.H., Alexander, L.M., 2014. Heat Waves, Aging, and Human  
489 Cardiovascular Health. *Medicine & Science in Sports & Exercise* 46, 1891–1899.  
490 <https://doi.org/10.1249/MSS.0000000000000325>
- 491 Kephart, J.L., Sánchez, B.N., Moore, J., Schinasi, L.H., Bakhtsiyarava, M., Ju, Y., Gouveia, N.,

- 492 Caiaffa, W.T., Dronova, I., Arunachalam, S., Diez Roux, A.V., Rodríguez, D.A., 2022.  
493 City-level impact of extreme temperatures and mortality in Latin America. *Nat Med* 28,  
494 1700–1705. <https://doi.org/10.1038/s41591-022-01872-6>
- 495 Lee, S.A., Economou, T., De Castro Catão, R., Barcellos, C., Lowe, R., 2021. The impact of  
496 climate suitability, urbanisation, and connectivity on the expansion of dengue in 21st  
497 century Brazil. *PLoS Negl Trop Dis* 15, e0009773.  
498 <https://doi.org/10.1371/journal.pntd.0009773>
- 499 Lowe, R., Lee, S.A., O'Reilly, K.M., Brady, O.J., Bastos, L., Carrasco-Escobar, G., De Castro  
500 Catão, R., Colón-González, F.J., Barcellos, C., Carvalho, M.S., Blangiardo, M., Rue, H.,  
501 Gasparrini, A., 2021. Combined effects of hydrometeorological hazards and urbanisation  
502 on dengue risk in Brazil: a spatiotemporal modelling study. *The Lancet Planetary Health*  
503 5, e209–e219. [https://doi.org/10.1016/S2542-5196\(20\)30292-8](https://doi.org/10.1016/S2542-5196(20)30292-8)
- 504 Martínez-Solanas, È., Basagaña, X., 2019. Temporal changes in the effects of ambient  
505 temperatures on hospital admissions in Spain. *PLoS ONE* 14, e0218262.  
506 <https://doi.org/10.1371/journal.pone.0218262>
- 507 Mistry, M.N., Schneider, R., Masselot, P., Royé, D., Armstrong, B., Kyselý, J., Orru, H., Sera,  
508 F., Tong, S., Lavigne, È., Urban, A., Madureira, J., García-León, D., Ibarreta, D., Ciscar,  
509 J.-C., Feyen, L., De Schrijver, E., De Sousa Zanotti Stagliorio Coelho, M., Pascal, M.,  
510 Tobias, A., Multi-Country Multi-City (MCC) Collaborative Research Network, Alahmad,  
511 B., Abrutzky, R., Saldiva, P.H.N., Correa, P.M., Orteg, N.V., Kan, H., Osorio, S.,  
512 Indermitte, E., Jaakkola, J.J.K., Rytty, N., Schneider, A., Huber, V., Katsouyanni, K.,  
513 Analitis, A., Entezari, A., Mayvaneh, F., Michelozzi, P., de'Donato, F., Hashizume, M.,  
514 Kim, Y., Diaz, M.H., De La Cruz Valencia, C., Overcenco, A., Houthuijs, D., Ameling,  
515 C., Rao, S., Seposo, X., Nunes, B., Holobaca, I.-H., Kim, H., Lee, W., Íñiguez, C.,  
516 Forsberg, B., Åström, C., Ragettli, M.S., Guo, Y.-L.L., Chen, B.-Y., Colistro, V.,  
517 Zanobetti, A., Schwartz, J., Dang, T.N., Van Dung, D., Guo, Y., Vicedo-Cabrera, A.M.,  
518 Gasparrini, A., 2022. Comparison of weather station and climate reanalysis data for  
519 modelling temperature-related mortality. *Sci Rep* 12, 5178.  
520 <https://doi.org/10.1038/s41598-022-09049-4>
- 521 Morral-Puigmal, C., Martínez-Solanas, È., Villanueva, C.M., Basagaña, X., 2018. Weather and  
522 gastrointestinal disease in Spain: A retrospective time series regression study.  
523 *Environment International* 121, 649–657. <https://doi.org/10.1016/j.envint.2018.10.003>
- 524 Muñoz-Sabater, J., Dutra, E., Agustí-Panareda, A., Albergel, C., Arduini, G., Balsamo, G.,  
525 Boussetta, S., Choulga, M., Harrigan, S., Hersbach, H., Martens, B., Miralles, D.G., Piles,  
526 M., Rodríguez-Fernández, N.J., Zsoter, E., Buontempo, C., Thépaut, J.-N., 2021. ERA5-  
527 Land: a state-of-the-art global reanalysis dataset for land applications. *Earth Syst. Sci.*  
528 *Data* 13, 4349–4383. <https://doi.org/10.5194/essd-13-4349-2021>
- 529 National Institute of Meteorology (INMET), 2024. Meteorological database, INMET. [WWW  
530 Document]. URL <https://bdmep.inmet.gov.br/#> (accessed 2.19.24).
- 531 Noronha, K.V.M.D.S., Guedes, G.R., Turra, C.M., Andrade, M.V., Botega, L., Nogueira, D.,  
532 Calazans, J.A., Carvalho, L., Servo, L., Ferreira, M.F., 2020. Pandemia por COVID-19  
533 no Brasil: análise da demanda e da oferta de leitos hospitalares e equipamentos de  
534 ventilação assistida segundo diferentes cenários. *Cad. Saúde Pública* 36, e00115320.  
535 <https://doi.org/10.1590/0102-311x00115320>
- 536 Paz-Bailey, G., Adams, L.E., Deen, J., Anderson, K.B., Katzelnick, L.C., 2024. Dengue. *The*  
537 *Lancet* 403, 667–682. [https://doi.org/10.1016/S0140-6736\(23\)02576-X](https://doi.org/10.1016/S0140-6736(23)02576-X)

- 538 Pudpong, N., Hajat, S., 2011. High temperature effects on out-patient visits and hospital  
539 admissions in Chiang Mai, Thailand. *Science of The Total Environment* 409, 5260–5267.  
540 <https://doi.org/10.1016/j.scitotenv.2011.09.005>
- 541 Royé, D., Íñiguez, C., Tobías, A., 2020. Comparison of temperature–mortality associations using  
542 observed weather station and reanalysis data in 52 Spanish cities. *Environmental*  
543 *Research* 183, 109237. <https://doi.org/10.1016/j.envres.2020.109237>
- 544 Saha, M.V., Davis, R.E., Hondula, D.M., 2014. Mortality Displacement as a Function of Heat  
545 Event Strength in 7 US Cities. *American Journal of Epidemiology* 179, 467–474.  
546 <https://doi.org/10.1093/aje/kwt264>
- 547 Schneider, A., Ruckerl, R., Breitner, S., Wolf, K., Peters, A., 2017. Thermal Control, Weather,  
548 and Aging. *Curr Envir Health Rpt* 4, 21–29. <https://doi.org/10.1007/s40572-017-0129-0>
- 549 Schwartz, J., Samet, J.M., Patz, J.A., 2004. Hospital Admissions for Heart Disease: The Effects  
550 of Temperature and Humidity. *Epidemiology* 15, 755–761.  
551 <https://doi.org/10.1097/01.ede.0000134875.15919.0f>
- 552 Silveira, I.H., Oliveira, B.F.A., Cortes, T.R., Junger, W.L., 2019. The effect of ambient  
553 temperature on cardiovascular mortality in 27 Brazilian cities. *Science of The Total*  
554 *Environment* 691, 996–1004. <https://doi.org/10.1016/j.scitotenv.2019.06.493>
- 555 Suaya, J.A., Shepard, D.S., Siqueira, J.B., Martelli, C.T., Lum, L.C.S., Tan, L.H., Kongsin, S.,  
556 Jiamton, S., Garrido, F., Montoya, R., Armien, B., Huy, R., Castillo, L., Caram, M., Sah,  
557 B.K., Sughayyar, R., Tyo, K.R., Halstead, S.B., 2009. Cost of dengue cases in eight  
558 countries in the Americas and Asia: a prospective study. *Am J Trop Med Hyg* 80, 846–  
559 855.
- 560 Vaidyanathan, A., Saha, S., Vicedo-Cabrera, A.M., Gasparrini, A., Abdurehman, N., Jordan, R.,  
561 Hawkins, M., Hess, J., Elixhauser, A., 2019. Assessment of extreme heat and  
562 hospitalizations to inform early warning systems. *Proc. Natl. Acad. Sci. U.S.A.* 116,  
563 5420–5427. <https://doi.org/10.1073/pnas.1806393116>
- 564 Van Wyk, H., Eisenberg, J.N.S., Brouwer, A.F., 2023. Long-term projections of the impacts of  
565 warming temperatures on Zika and dengue risk in four Brazilian cities using a  
566 temperature-dependent basic reproduction number. *PLoS Negl Trop Dis* 17, e0010839.  
567 <https://doi.org/10.1371/journal.pntd.0010839>
- 568 Wang, B., Chai, G., Sha, Y., Zha, Q., Su, Y., Gao, Y., 2021. Impact of ambient temperature on  
569 cardiovascular disease hospital admissions in farmers in China’s Western suburbs.  
570 *Science of The Total Environment* 761, 143254.  
571 <https://doi.org/10.1016/j.scitotenv.2020.143254>
- 572 Werneck, G.L., Macias, A.E., Mascarenas, C., Coudeville, L., Morley, D., Recamier, V.,  
573 Guergova-Kuras, M., Puentes-Rosas, E., Baurin, N., Toh, M.-L., 2018. Comorbidities  
574 increase in-hospital mortality in dengue patients in Brazil. *Mem. Inst. Oswaldo Cruz* 113.  
575 <https://doi.org/10.1590/0074-02760180082>
- 576 Wibawa, B.S.S., Wang, Y.-C., Andhikaputra, G., Lin, Y.-K., Hsieh, L.-H.C., Tsai, K.-H., 2024.  
577 The impact of climate variability on dengue fever risk in central java, Indonesia. *Climate*  
578 *Services* 33, 100433. <https://doi.org/10.1016/j.cliser.2023.100433>
- 579 Yi, X., Chang, Z., Zhao, X., Ma, Y., Liu, F., Xiao, X., 2020. The temporal characteristics of the  
580 lag-response relationship and related key time points between ambient temperature and  
581 hand, foot and mouth disease: A multicity study from mainland China. *Science of The*  
582 *Total Environment* 749, 141679. <https://doi.org/10.1016/j.scitotenv.2020.141679>
- 583 Zhao, Q., Li, S., Coelho, M.S.Z.S., Saldiva, P.H.N., Hu, K., Huxley, R.R., Abramson, M.J., Guo,

584 Y., 2019. The association between heatwaves and risk of hospitalization in Brazil: A  
585 nationwide time series study between 2000 and 2015. PLoS Med 16, e1002753.  
586 <https://doi.org/10.1371/journal.pmed.1002753>

587

588

# Supplementary Material

## Ambient Temperature and Dengue Hospitalisation in Brazil: A 10-year period two-stage case-design time series analysis

Lopes R, et al.

### Table of Contents

ERA5-Land validation .....	3
Table S1. Descriptive distribution of 2m height Mean Temperature .....	5
Figure S1. Time series of Dengue hospitalisation by macro administrative region of Brazil. Colour by year, the data covers a period of 10 years, from the whole epidemiological year of 2010 to the whole epidemiological year of 2019.....	6
Figure S2. Cumulative relative risk over all the lags compared to the MHT on each state level, for the whole period of analysis, 2010 to 2019 (First stage, Main Analysis).....	7
Figure S3. A) Cumulative relative risk over all lags for a Dengue hospitalisation compared to the MHT at the North Region. B) Lag effect of the RR on the 50th percentile of temperature. C) Lag effect of the RR on the 95th percentile of temperature (Main analysis).....	8
Figure S4. A) Cumulative relative risk over all lags for a Dengue hospitalisation compared to the MHT at the Northeast Region. B) Lag effect of the RR on the 50th percentile of temperature. C) Lag effect of the RR on the 95th percentile of temperature (Main analysis) ..	9
Figure S5. A) Cumulative relative risk over all lags for a Dengue hospitalisation compared to the MHT at the Center-West Region. B) Lag effect of the RR on the 50th percentile of temperature. C) Lag effect of the RR on the 95th percentile of temperature (Main analysis) .	10
Figure S6. A) Cumulative relative risk over all lags for a Dengue hospitalisation compared to the MHT at the Southeast Region. B) Lag effect of the RR on the 50th percentile of temperature. C) Lag effect of the RR on the 95th percentile of temperature (Main analysis) .	11
Figure S7. A) Cumulative relative risk over all lags for a Dengue hospitalisation compared to the MHT at the South Region. B) Lag effect of the RR on the 50th percentile of temperature. C) Lag effect of the RR on the 95th percentile of temperature (Main analysis).....	12
Table S2. Dengue hospitalisation relative risk by Brazil and each macro-region: main and sensitivity analyses.....	13

**Figure S9. A) Cumulative relative risk over all lags for a Dengue hospitalisation compared to the MHT in Brazil. B) Lag effect of the RR on the 50th percentile of temperature. C) Lag effect of the RR on the 95th percentile of temperature (Sensitivity Analysis 1).....15**

**Figure S10. A) Cumulative relative risk over all lags for a Dengue hospitalisation compared to the MHT in Brazil. B) Lag effect of the RR on the 50th percentile of temperature. C) Lag effect of the RR on the 95th percentile of temperature (Sensitivity Analysis 2).....16**

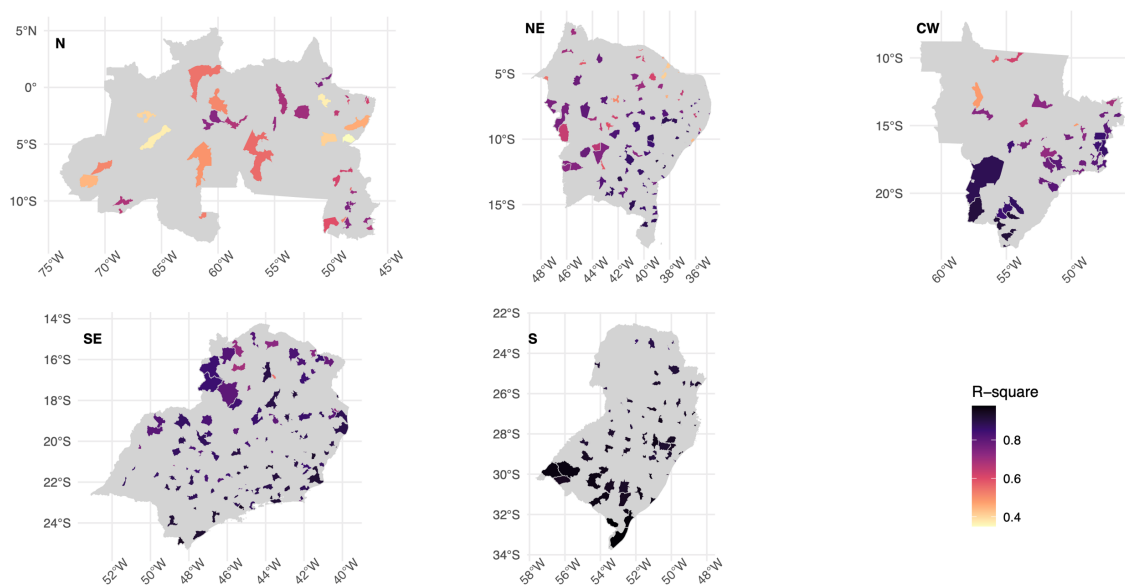
**Figure S11. A) Cumulative relative risk over all lags for a Dengue hospitalisation compared to the MHT in Brazil. B) Lag effect of the RR on the 50th percentile of temperature. C) Lag effect of the RR on the 95th percentile of temperature (Sensitivity Analysis 3).....17**

## ERA5-Land validation

We performed a validation comparing the daily average of temperature from monitoring stations at the municipal level with the ERA5-Land estimates. We used data from 389 stations (269 automatic and 120 manual) from the National Institute of Meteorology (INMET), with at least 90% of days with complete data during the period. This validation has a total of 1,221,051 days evaluated, from 340 municipalities covering the 27 states and the 5 macro-regions of Brazil.

	<b>R-Pearson</b>	<b>R-square</b>	<b>RMSE</b>
Overall	0.94	0.90	1.54
Distribution across 340 municipalities			
Mean $\pm$ SD	0.89 $\pm$ 0.1	0.81 $\pm$ 0.1	1.02 $\pm$ 0.3
Median [p25-p75]	0.92 [0.86-0.95]	0.85 [0.74-0.90]	1.01 [0.85-1.17]

Spatial distribution of R-square for each of the 340 municipalities. The shade areas are the municipality areas. N stands for North (n=39), NE for Northeast (n=95), CW for Center-West (n=42), SE for Southeast (n=103) and S for South (n=61).



Spatial distribution of RMSE for each of the 340 municipalities. The shade areas are the municipality areas. N stands for North (n=39), NE for Northeast (n=95), CW for Center-West (n=42), SE for Southeast (n=103) and S for South (n=61).

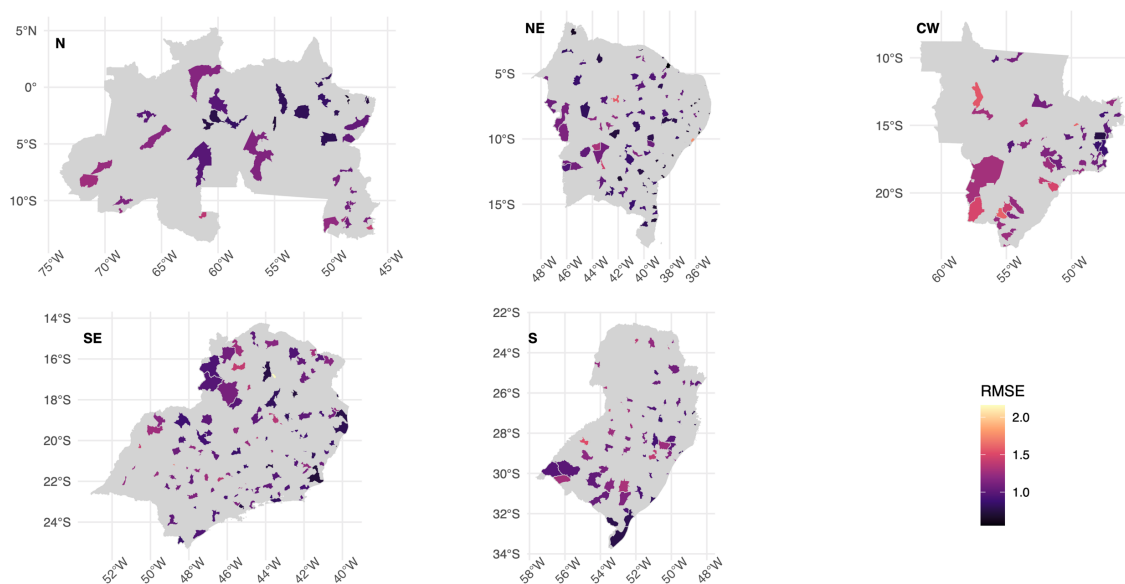




Table S1. Descriptive distribution of 2m height Mean Temperature

Brazil, Region, State	Minimum	5th	25th	50th	75th	95th	Maximum
Brazil	-0.09	15.39	20.92	23.96	26.08	28.68	34.8
North	13.99	23.91	25.15	26.13	27.39	29.32	34.32
AC	13.99	22.81	24.35	25.13	26.01	27.49	31.01
AM	17.98	24.18	25.09	25.81	26.68	28.39	33.06
AP	21.98	23.72	24.73	25.65	27.14	28.59	30.5
PA	21.7	24.24	25.38	26.31	27.53	28.99	32.59
RO	14.11	23.34	24.67	25.52	26.6	28.59	31.61
RR	20.04	22.88	24.29	25.33	26.67	28.82	32.24
TO	19.6	24.17	25.58	26.71	28.03	30.27	34.32
Northeast	14.04	21.49	24.16	25.8	27.24	29.54	34.39
AL	18.6	21.76	23.52	25.02	26.32	27.9	32.78
BA	14.04	19.99	22.31	24.08	25.73	27.8	33.99
CE	19.09	23.82	25.58	26.77	27.81	29.16	32.41
MA	21.75	24.53	25.79	26.84	28.09	29.89	33.29
PB	19.17	22.36	24.19	25.49	26.74	29.15	32.08
PE	17.59	20.77	22.95	24.35	25.76	27.84	32.71
PI	20.71	24.44	26.07	27.55	29.3	31.41	34.39
RN	20.18	24.02	25.56	26.6	27.66	29.29	31.86
SE	19.77	22.17	23.74	25.35	26.53	27.77	32.25
Center-West	6.09	20.68	23.34	24.88	26.41	28.96	34.3
DF	15.96	19.42	21.01	22.23	23.54	25.87	29.58
GO	11.3	20.99	22.97	24.4	26	28.76	34.18
MS	6.09	16.95	22.42	24.71	26.46	28.81	34.26
MT	10.6	22.55	24.46	25.61	26.89	29.31	34.3
Southeast	4.69	16.13	19.7	22.13	24.31	27.03	34.8
ES	10.78	17.22	20.39	22.49	24.66	26.82	31.46
MG	6.71	16.15	19.47	21.76	23.82	26.62	34.54
SP	4.69	15.88	19.96	22.66	24.83	27.45	34.8
RJ	9.78	16.75	19.79	22.12	24.45	27.2	32.25
South	-0.09	11.03	16.52	19.92	22.76	26.02	33.03
PR	0.67	13.25	18.19	21.27	23.78	26.78	32.42
RS	0.77	9.99	15.71	19.33	22.35	25.7	33.03
SC	-0.09	10.8	15.86	18.98	21.73	24.89	31.13

Figure S1. Time series of Dengue hospitalisation by macro administrative region of Brazil. Colour by year, the data covers a period of 10 years, from the whole epidemiological year of 2010 to the whole epidemiological year of 2019.

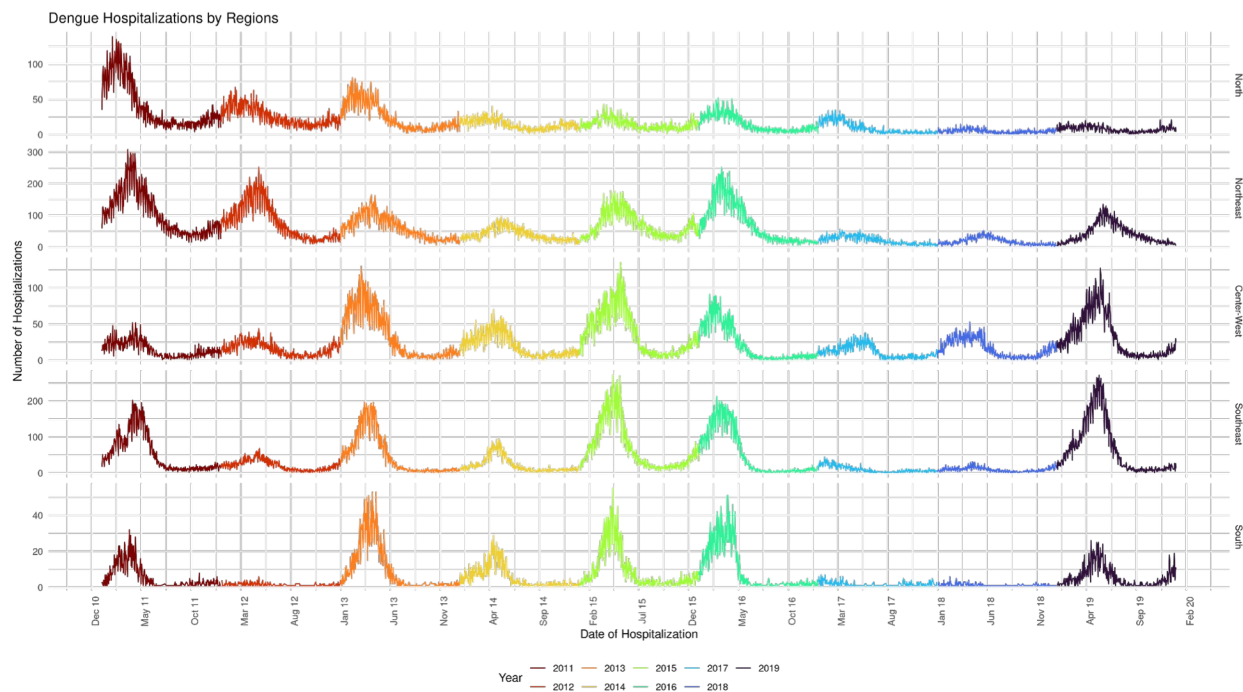
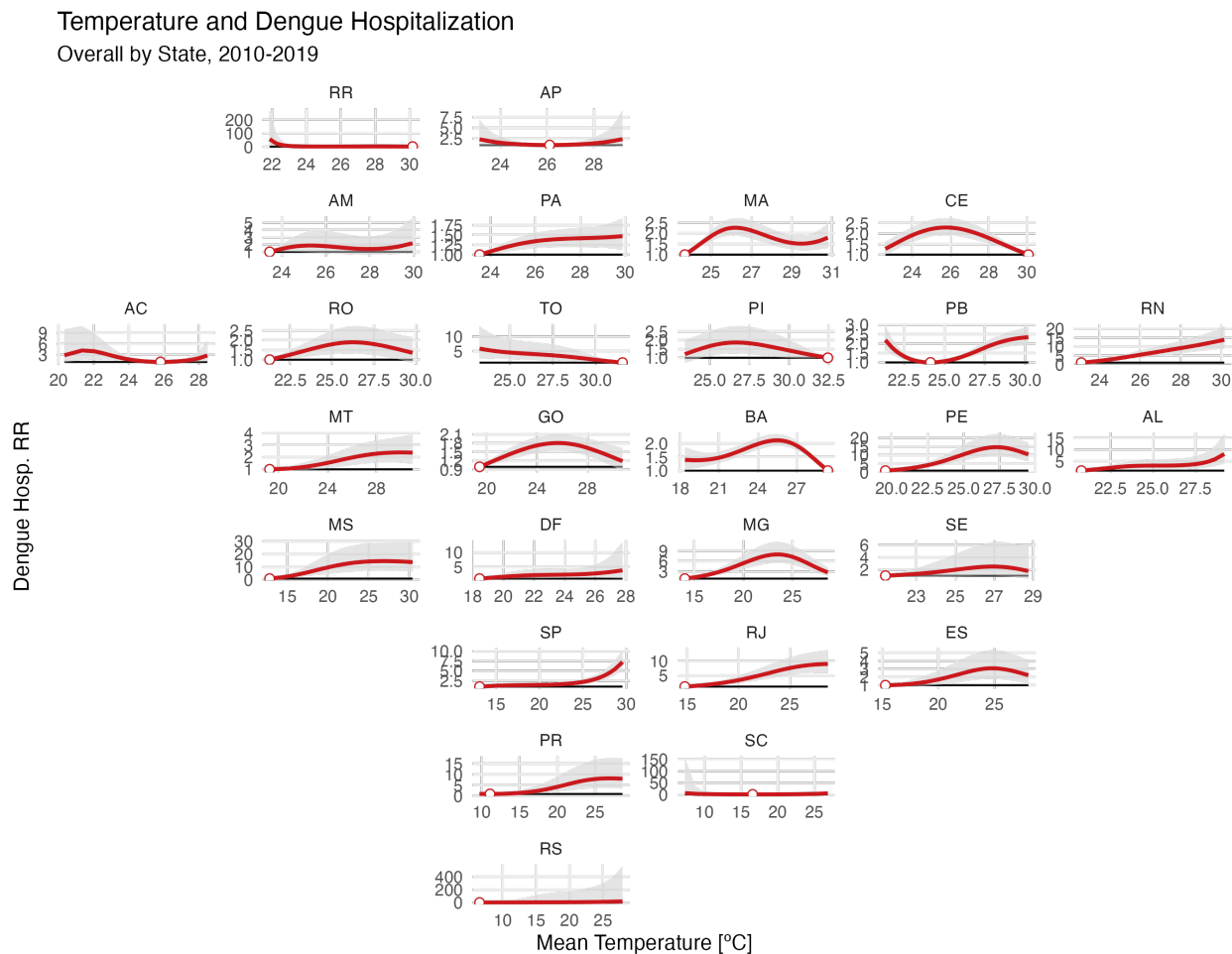


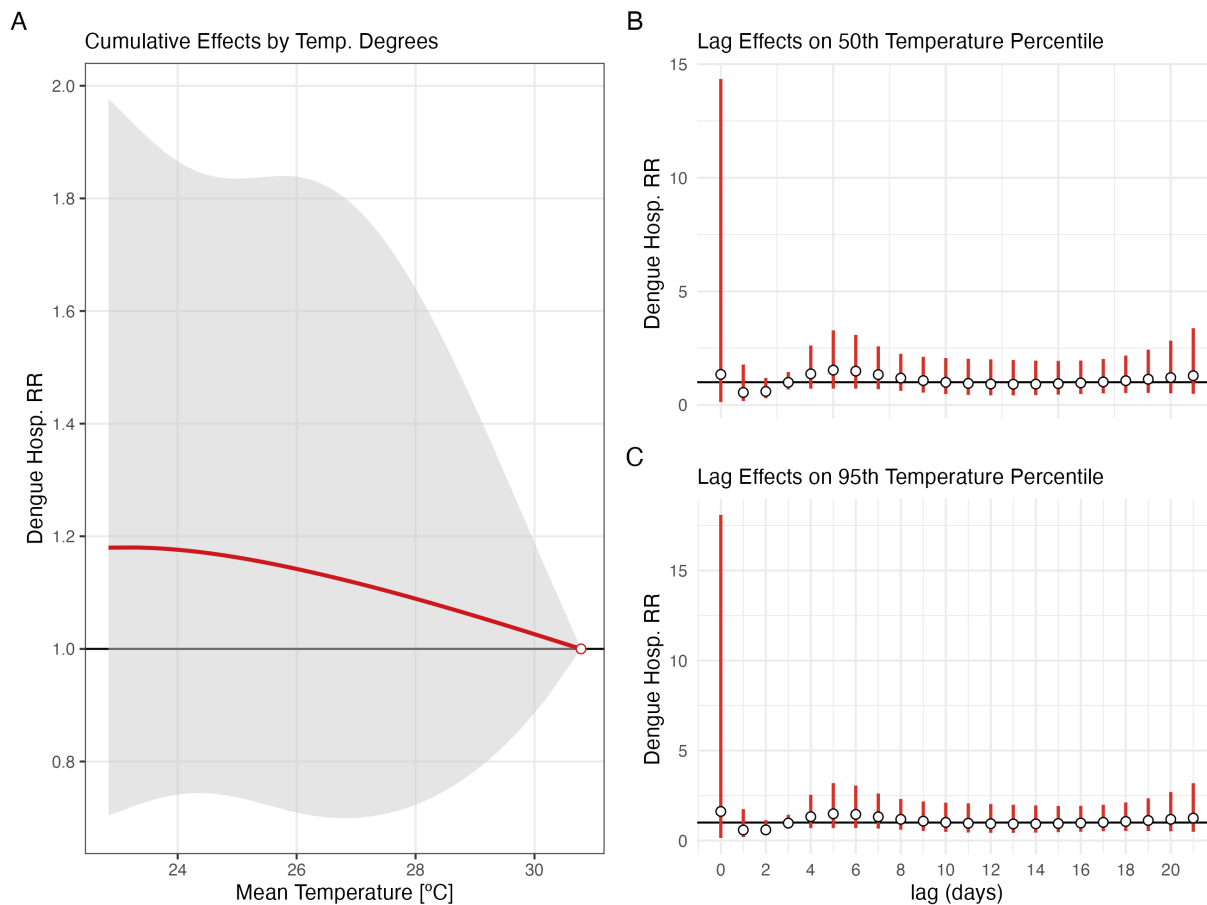
Figure S2. Cumulative relative risk over all the lags compared to the MHT on each state level, for the whole period of analysis, 2010 to 2019 (First stage, Main Analysis)



The curve is plotted in red lines and the 95% confidence interval generated from the fitted model is given by the grey shaded ribbon around it. The title of each subplot is the abbreviations for the name of each state.

Figure S3. A) Cumulative relative risk over all lags for a Dengue hospitalisation compared to the MHT at the North Region. B) Lag effect of the RR on the 50th percentile of temperature. C) Lag effect of the RR on the 95th percentile of temperature (Main analysis)

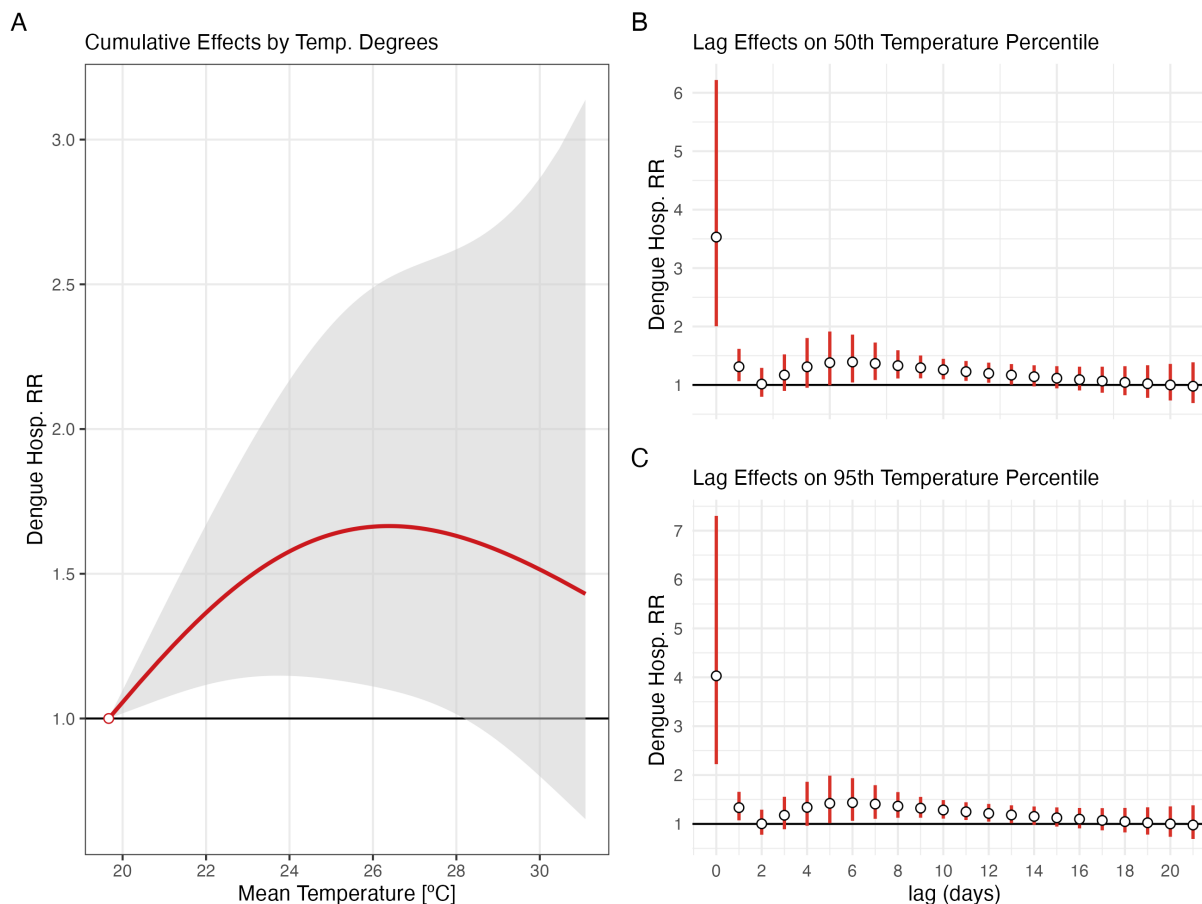
Meta-analysis Results, North Region



The grey shade (A) is 95% confidence interval, as the error bars (B and C), derived from the meta-analysis.

Figure S4. A) Cumulative relative risk over all lags for a Dengue hospitalisation compared to the MHT at the Northeast Region. B) Lag effect of the RR on the 50th percentile of temperature. C) Lag effect of the RR on the 95th percentile of temperature (Main analysis)

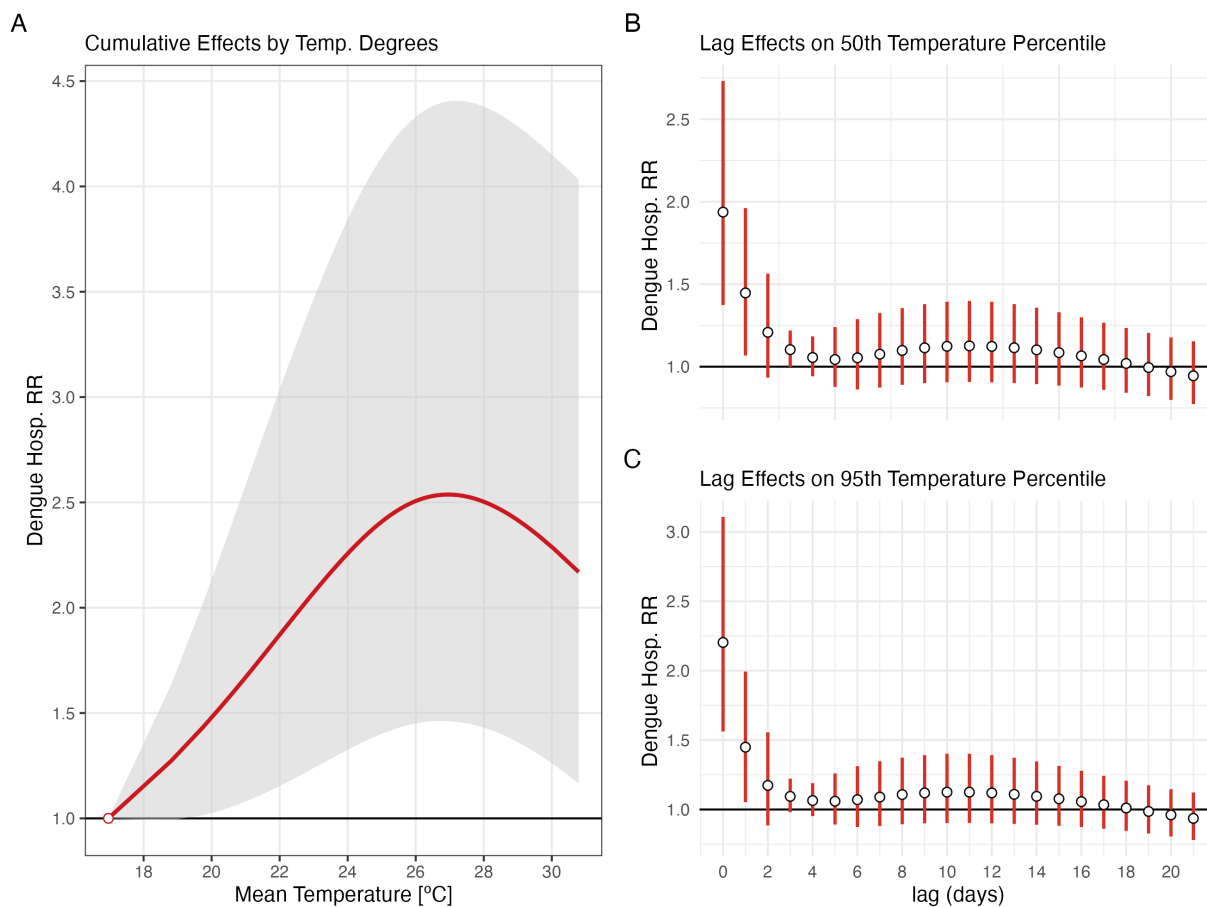
Meta-analysis Results, Northeast Region



The grey shade (A) is 95% confidence interval, as the error bars (B and C), derived from the meta-analysis.

Figure S5. A) Cumulative relative risk over all lags for a Dengue hospitalisation compared to the MHT at the Center-West Region. B) Lag effect of the RR on the 50th percentile of temperature. C) Lag effect of the RR on the 95th percentile of temperature (Main analysis)

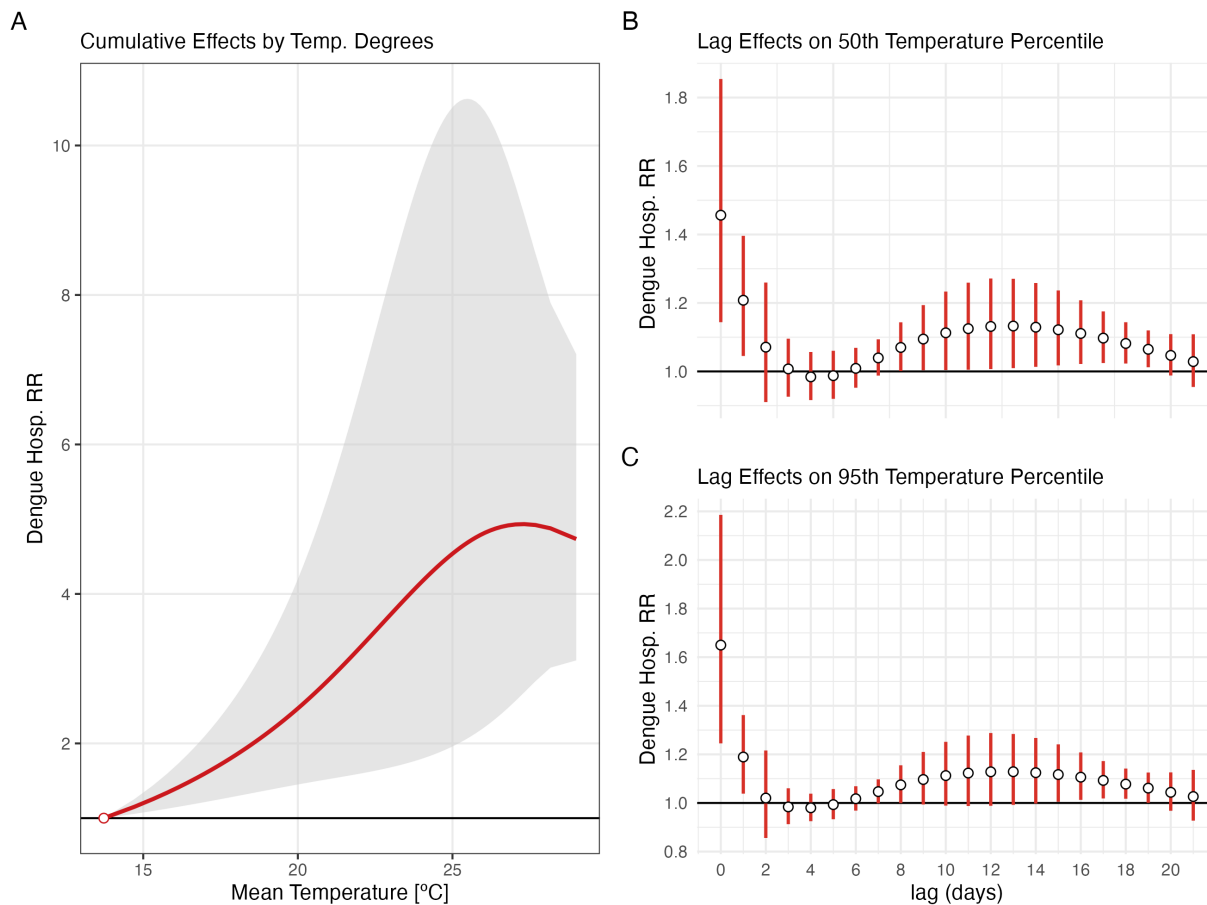
Meta-analysis Results, Center-West Region



The grey shade (A) is 95% confidence interval, as the error bars (B and C), derived from the meta-analysis.

Figure S6. A) Cumulative relative risk over all lags for a Dengue hospitalisation compared to the MHT at the Southeast Region. B) Lag effect of the RR on the 50th percentile of temperature. C) Lag effect of the RR on the 95th percentile of temperature (Main analysis)

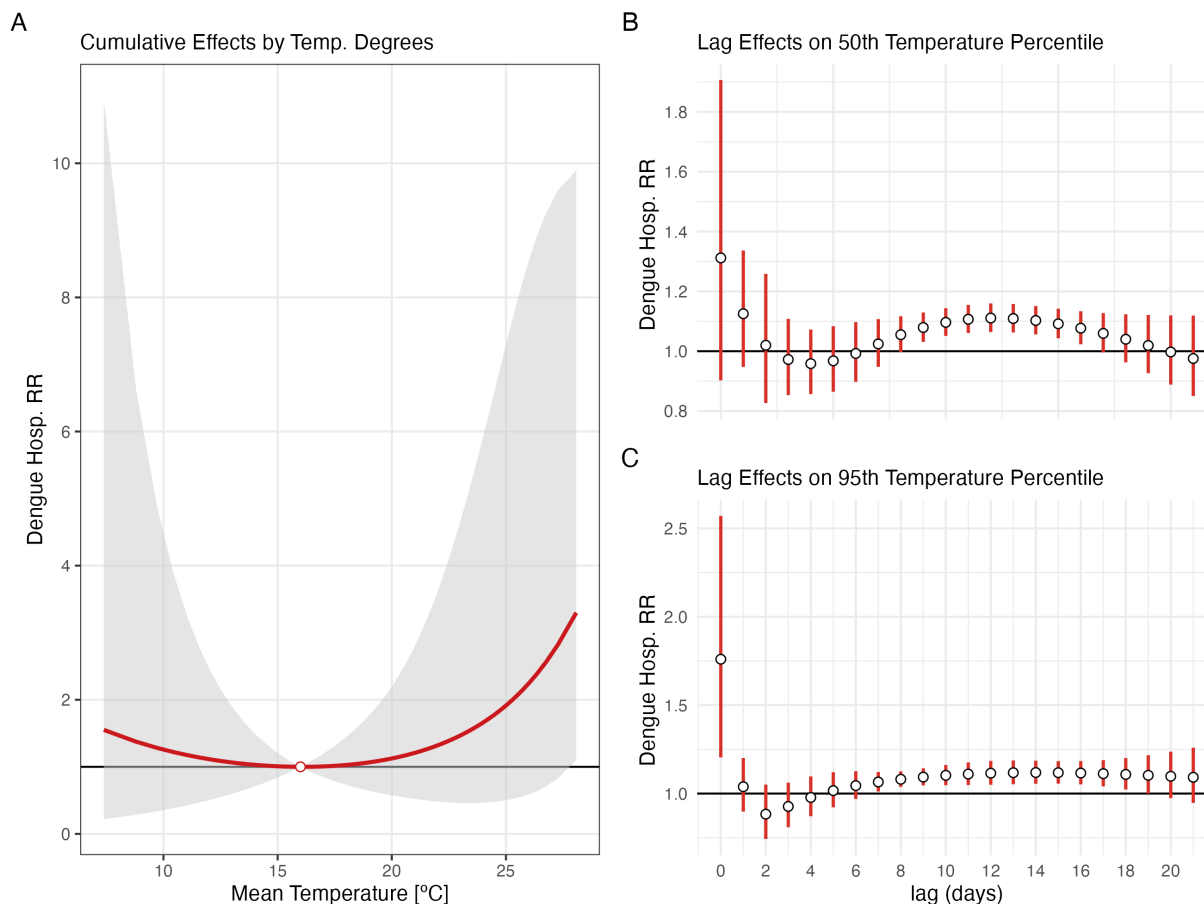
Meta-analysis Results, Southeast Region



The grey shade (A) is 95% confidence interval, as the error bars (B and C), derived from the meta-analysis.

Figure S7. A) Cumulative relative risk over all lags for a Dengue hospitalisation compared to the MHT at the South Region. B) Lag effect of the RR on the 50th percentile of temperature. C) Lag effect of the RR on the 95th percentile of temperature (Main analysis)

Meta-analysis Results, South Region



The grey shade (A) is 95% confidence interval, as the error bars (B and C), derived from the meta-analysis.

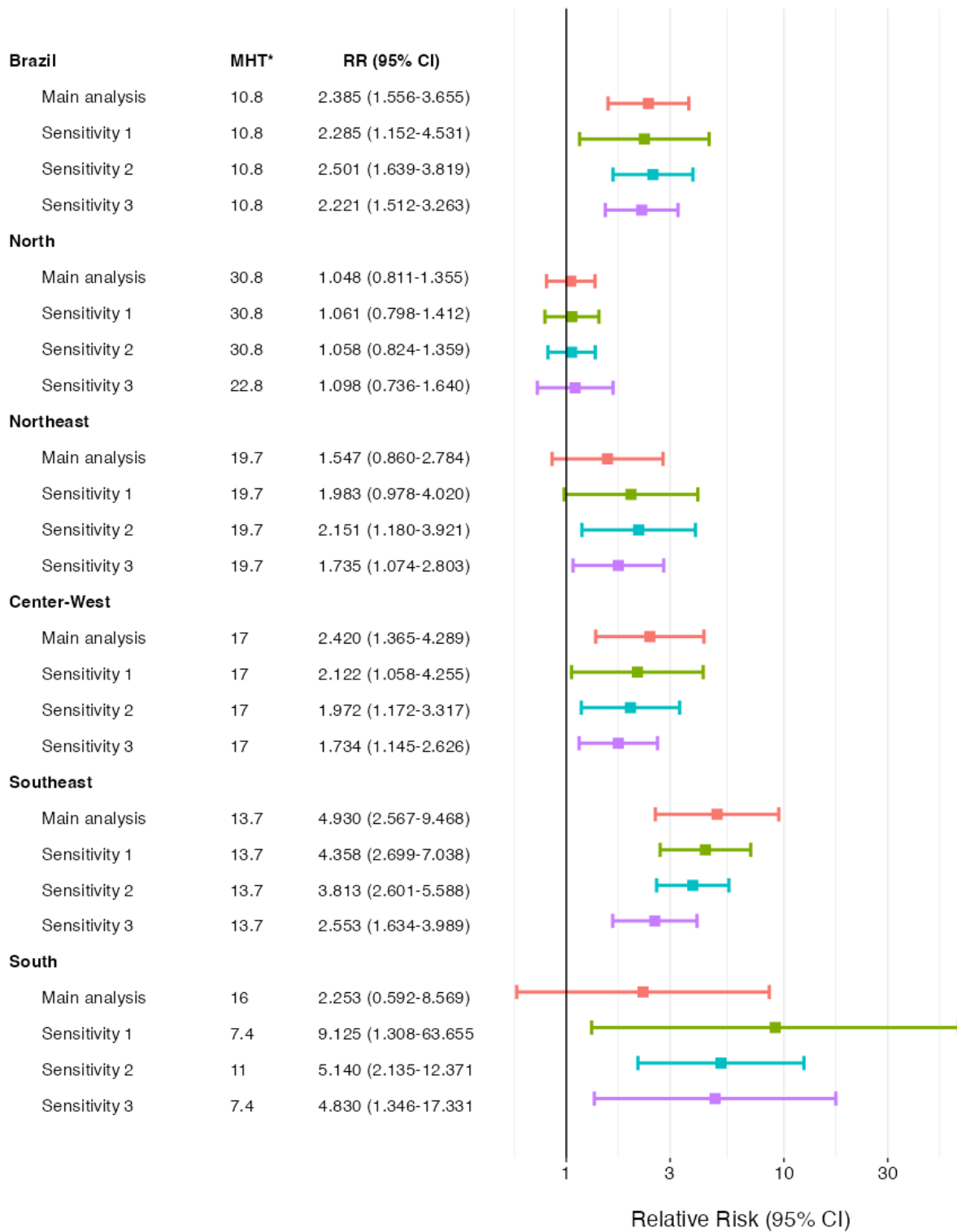


Table S2. Dengue hospitalisation relative risk by Brazil and each macro-region: main and sensitivity analyses

	MHT (°C)	RR (95% CI), 50th	RR (95% CI), 95th
<b>Main analysis</b>			
Brazil	10.8	2.185 (1.457-3.276)	2.385 (1.556-3.655)
North	30.8	1.139 (0.707-1.836)	1.048 (0.811-1.355)
Northeast	19.7	1.660 (1.116-2.468)	1.547 (0.860-2.784)
Center-West	17	2.393 (1.394-4.110)	2.420 (1.365-4.289)
Southeast	13.7	3.335 (1.605-6.929)	4.930 (2.567-9.468)
South	16	1.119 (0.580-2.159)	2.253 (0.592-8.569)
<b>Sensitivity analysis 1</b>			
Brazil	10.8	2.080 (1.210-3.578)	2.285 (1.152-4.531)
North	30.8	1.297 (0.865-1.945)	1.061 (0.798-1.412)
Northeast	19.7	1.981 (1.179-3.329)	1.983 (0.978-4.020)
Center-West	17	2.176 (1.110-4.265)	2.122 (1.058-4.255)
Southeast	13.7	3.175 (1.865-5.403)	4.358 (2.699-7.038)
South	7.4	4.160 (0.557-31.070)	9.125 (1.308-63.655)
<b>Sensitivity analysis 2</b>			
Brazil	10.8	2.315 (1.558-3.439)	2.501 (1.639-3.819)
North	30.8	1.162 (0.791-1.707)	1.058 (0.824-1.359)
Northeast	19.7	2.051 (1.282-3.284)	2.151 (1.180-3.921)
Center-West	17	2.140 (1.330-3.443)	1.972 (1.172-3.317)
Southeast	13.7	3.156 (1.630-6.112)	3.813 (2.601-5.588)
South	11	2.433 (0.875- 6.761)	5.140 (2.135-12.371)
<b>Sensitivity analysis 3</b>			
Brazil	10.8	1.991 (1.382-2.867)	2.221 (1.512-3.263)
North	22.8	1.091 (0.811-1.469)	1.098 (0.736-1.640)
Northeast	19.7	1.707 (1.163-2.507)	1.735 (1.074-2.803)
Center-West	17	1.688 (1.278-2.228)	1.734 (1.145-2.626)
Southeast	13.7	2.212 (1.344-3.638)	2.553 (1.634-3.989)
South	7.4	2.347 (0.653- 8.440)	4.830 (1.346-17.331)

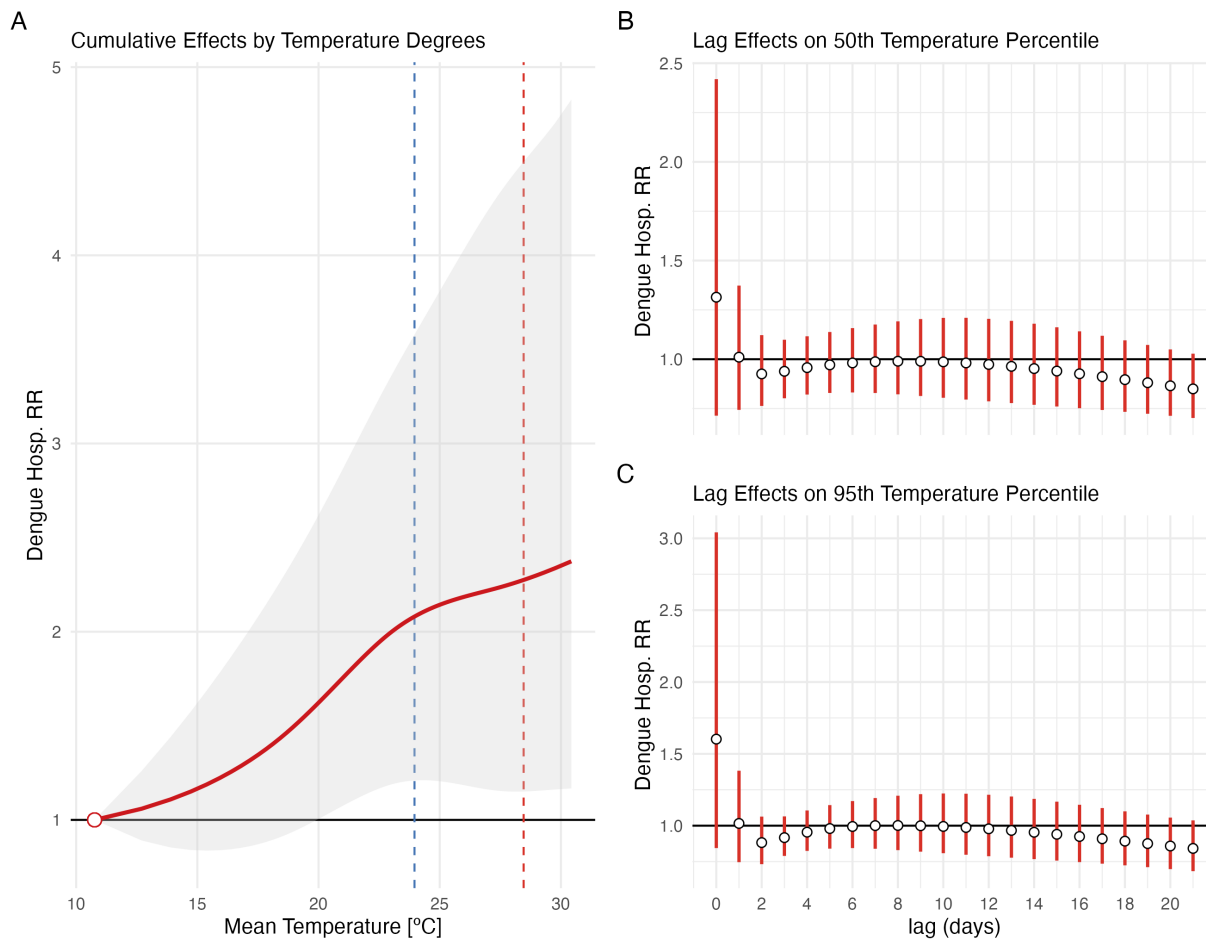
RR: Relative Risk to the Minimum Hospitalisation Temperature of hospitalisation due Dengue  
MHT: Minimum Hospitalisation Temperature, on Celsius degree

Figure S8. Dengue hospitalisation relative risk by Brazil and each macro-region: main and sensitivity analyses forest plot at 95<sup>th</sup> percentile of temperature



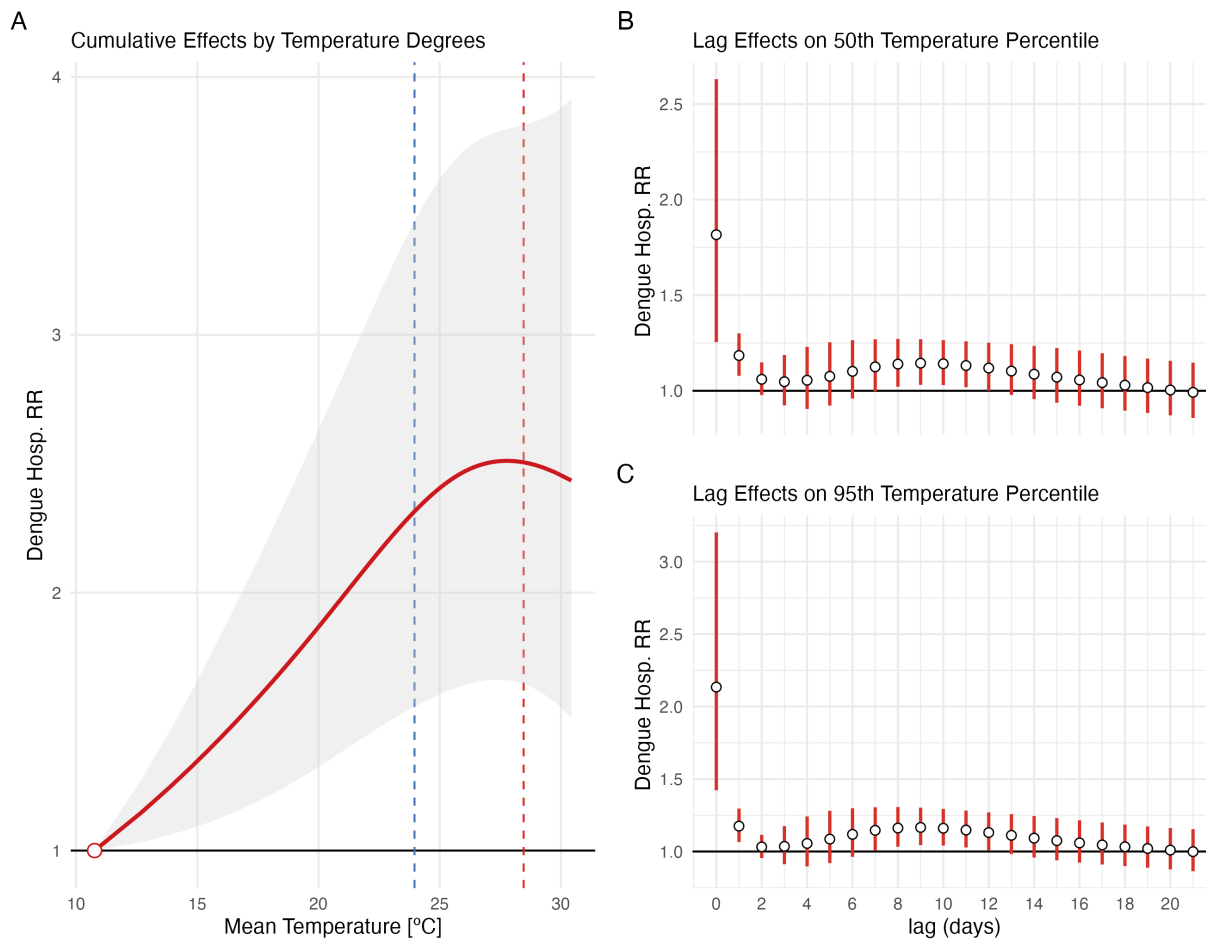
\*MHT: Minimum Hospitalisation Temperature, on Celsius degree

Figure S9. A) Cumulative relative risk over all lags for a Dengue hospitalisation compared to the MHT in Brazil. B) Lag effect of the RR on the 50th percentile of temperature. C) Lag effect of the RR on the 95th percentile of temperature (Sensitivity Analysis 1)



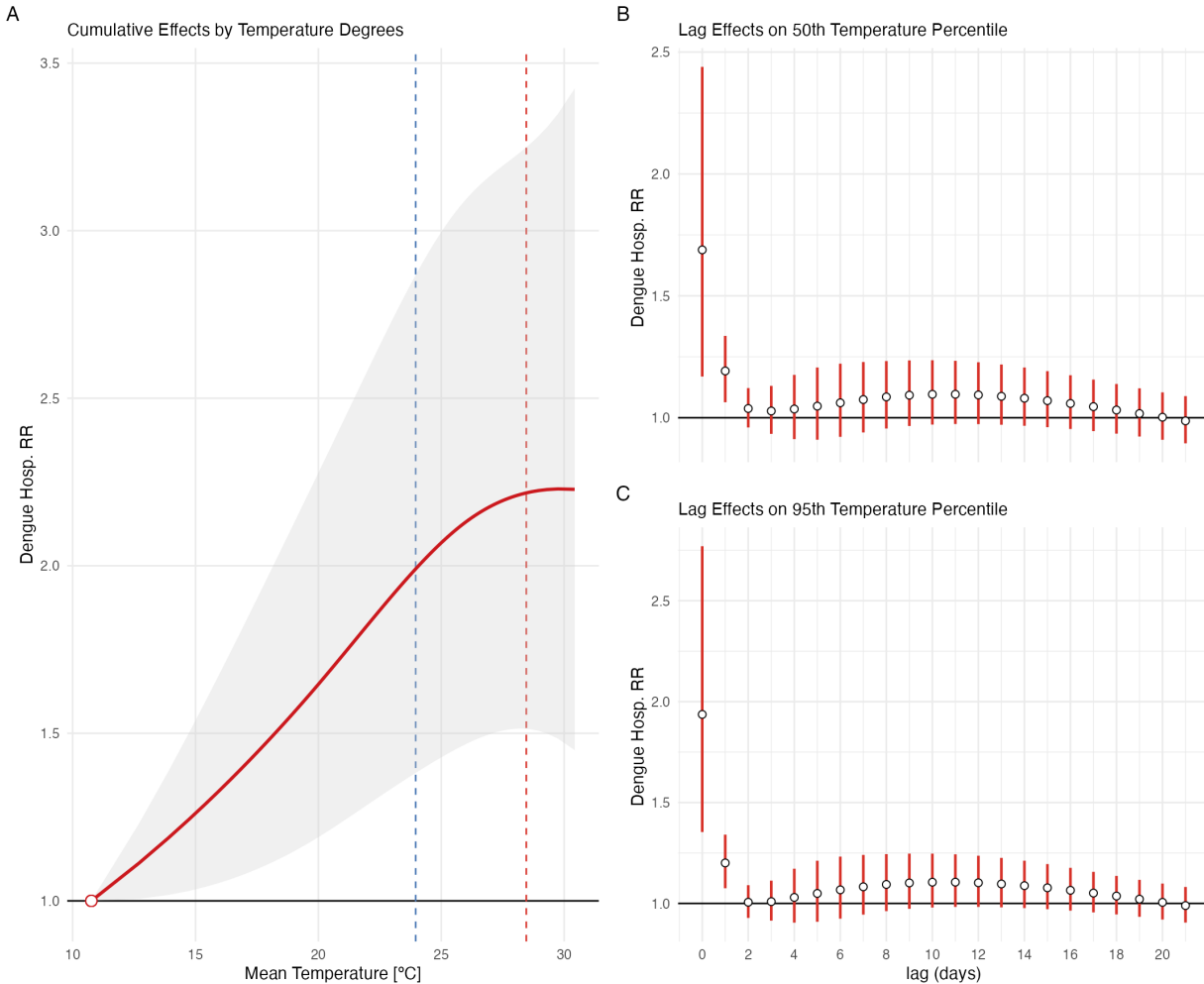
Sensitivity Analysis 1: parametrization of dose-response: 3 knots equally spaced; lag-response: 3 knots equally spaced at the log-scale. Vertical traced lines mark the 50th (Blue) and 95th (Red) percentile of the temperature distribution. The grey shade (A) is 95% confidence interval, as the error bars (B and C), derived from the meta-analysis.

Figure S10. A) Cumulative relative risk over all lags for a Dengue hospitalisation compared to the MHT in Brazil. B) Lag effect of the RR on the 50th percentile of temperature. C) Lag effect of the RR on the 95th percentile of temperature (Sensitivity Analysis 2)



Sensitivity Analysis 2: parametrization of dose-response: 2 knots equally spaced; lag-response: 4 knots at days 1, 2, 7 and 14 from date of hospitalization. Vertical traced lines mark the 50th (Blue) and 95th (Red) percentile of the temperature distribution. The grey shade (A) is 95% confidence interval, as the error bars (B and C), derived from the meta-analysis.

Figure S11. A) Cumulative relative risk over all lags for a Dengue hospitalisation compared to the MHT in Brazil. B) Lag effect of the RR on the 50th percentile of temperature. C) Lag effect of the RR on the 95th percentile of temperature (Sensitivity Analysis 3)



Sensitivity Analysis 3: parametrization of dose-response: 2 knots equally spaced; lag-response: lag-response: 3 knots equally spaced at the log-scale; covariate: 7-day moving average of confirmed dengue cases. Vertical traced lines mark the 50th (Blue) and 95th (Red) percentile of the temperature distribution. The grey shade (A) is 95% confidence interval, as the error bars (B and C), derived from the meta-analysis.