

Age acquired skewed X Chromosome Inactivation is associated with adverse health outcomes in humans

Amy L. Roberts^{1,*}, Alessandro Morea^{1,2,3}, Ariella Amar², Antonino Zito^{1,4}, Julia S. El-Sayed Moustafa¹, Max Tomlinson^{1,2}, Ruth C. E. Bowyer¹, Xinyuan Zhang¹, Colette Christiansen¹, Ricardo Costeira¹, Claire J. Steves¹, Massimo Mangino^{1,5}, Jordana T. Bell¹, Chloe C.Y. Wong⁶, Timothy J. Vyse², Kerrin S. Small^{1,*}

¹Department of Twin Research & Genetic Epidemiology, King's College London, London, UK

²Department of Medical and Molecular Genetics, King's College London, London, UK

³Current Address: The FIRC Institute of Molecular Oncology, Italian Foundation for Cancer Research, Milan, Italy

⁴Current Address: Department of Molecular Biology, Massachusetts General Hospital, Boston, USA; Department of Genetics, Harvard Medical School, Boston, USA

⁵NIHR Biomedical Research Centre, Guy's and St Thomas' Foundation Trust, London, UK

⁶Social, Genetic & Developmental Psychiatry Centre, Institute of Psychiatry, Psychology & Neuroscience, King's College London, London, UK

*Corresponding Authors:

Kerrin S. Small

Department of Twin Research & Genetic Epidemiology,
St Thomas' Hospital Campus, 3rd Floor South Wing Block D
Westminster Bridge Road, London SE1 7EH

kerrin.small@kcl.ac.uk

+44 20 7188 6765

Amy L. Roberts

Department of Twin Research & Genetic Epidemiology,
St Thomas' Hospital Campus, 3rd Floor South Wing Block D
Westminster Bridge Road, London SE1 7EH

amy.roberts@kcl.ac.uk

+44 20 7188 6765

NOTE: This preprint reports new research that has not been certified by peer review and should not be used to guide clinical practice.

1 **Abstract**

2 **Background**

3 Ageing is a heterogenous process characterised by cellular and molecular hallmarks, including
4 changes to haematopoietic stem cells, and is a primary risk factor for chronic diseases. X
5 chromosome inactivation (XCI) randomly transcriptionally silences either the maternal or
6 paternal X in each cell of XX,46 females to balance the gene expression with XY,46 males.
7 Age acquired XCI-skew describes the preferential inactivation of one X chromosome across a
8 tissue, which is particularly prevalent in blood tissues of ageing females and yet its clinical
9 consequences are unknown.

10

11 **Methods**

12 We assayed XCI in 1,575 females from the TwinsUK population cohort and employed
13 prospective, cross-sectional, and intra-twin designs to characterise the relationship of XCI-
14 skew with molecular, cellular, and organismal measures of ageing, and cardiovascular disease
15 risk and cancer diagnosis.

16

17 **Results**

18 We demonstrate that XCI-skew is independent of traditional markers of biological ageing and
19 is associated with a haematopoietic bias towards the myeloid lineage. Using an atherosclerotic
20 cardiovascular disease risk score, which captures traditional risk factors, XCI-skew is
21 associated with an increased cardiovascular disease risk both cross-sectionally and within XCI-
22 skew discordant twin pairs. In a prospective 10-year follow-up study, XCI-skew is predictive
23 of future cancer incidence.

24

25 **Conclusions**

26 Our study demonstrates that age acquired XCI-skew captures changes to the haematopoietic
27 stem cell population and has clinical potential as a unique biomarker of chronic disease risk.

28

29 **Funding**

30 KSS acknowledges funding from the Medical Research Council (MR/M004422/1 and
31 MR/R023131/1). JTB acknowledges funding from the ESRC (ES/N000404/1). MM
32 acknowledges funding from the National Institute for Health Research (NIHR)-funded
33 BioResource, Clinical Research Facility and Biomedical Research Centre based at Guy's and
34 St Thomas' NHS Foundation Trust in partnership with King's College London. TwinsUK is

35 funded by the Wellcome Trust, Medical Research Council, European Union, Chronic Disease
36 Research Foundation (CDRF), Zoe Global Ltd and the National Institute for Health Research
37 (NIHR)-funded BioResource, Clinical Research Facility and Biomedical Research Centre
38 based at Guy's and St Thomas' NHS Foundation Trust in partnership with King's College
39 London.

40

41 **Introduction**

42 Ageing is a heterogenous process characterised by cellular and molecular hallmarks and can
43 manifest clinically as frailty and multimorbidity(Clegg et al., 2013; López-Otín et al., 2013).
44 Ageing is a primary risk factor for diseases such as cardiovascular disease and cancer, and a
45 better understanding of the biomarkers of ageing promises to reduce the burden of chronic
46 disease which significantly impacts the human healthspan(López-Otín et al., 2013).

47

48 X chromosome inactivation (XCI) evolved in placental mammals to compensate for the
49 differences in size between the X and Y sex chromosomes. XCI transcriptionally silences either
50 the maternal or paternal X in each cell to equalise the gene expression between XX,46 females
51 and XY,46 males(Lyon, 1961). The selection of which X is silenced is a random process that
52 occurs during development, with the XCI status then clonally inherited by all daughter cells.
53 Therefore, mammalian female tissues are mosaics with respect to XCI status, with an expected
54 ratio of 1:1. However, non-random patterns of XCI are observed, particularly in ageing
55 individuals with up to 40% of females over 60 years old presenting preferential silencing across
56 a tissue(Busque et al., 1996; Gale et al., 1997). This is termed age acquired XCI-skew and is
57 highly prevalent in mitotically active blood tissue(Zito et al., 2019). XCI-skew has previously
58 been linked to autoimmunity, which presents with a stark sex-imbalance(Chabchoub et al.,
59 2009), as well as breast and ovarian cancers, albeit with inconsistent findings(Kristiansen et
60 al., 2002; Lose et al., 2008; Manoukian et al., 2013; Struewing et al., 2006).

61

62 The stability of XCI-skew in blood has been demonstrated over 18-24 months and is thought
63 to be a gradual process affecting the whole haematopoietic stem cell population rather than
64 representing fluctuations in the active stem cell pool(Tonon et al., 1998; van Dijk et al., 2002).
65 Therefore, though XCI-skew is a sex-specific measurable phenotype, it is a potential marker
66 of stem cell depletion or polyclonal clonal expansion of haematopoietic stem cells, which are
67 age-associated traits irrespective of chromosomal sex(Busque et al., 1996, 2012; Gale et al.,
68 1997). Clonal expansion of haematopoietic stem cells is also measurable by somatic mutations

69 shared across blood cells, indicating a common stem cell precursor(Xie et al., 2014). Clonal
70 haematopoiesis of indeterminate potential (CHIP) is a cellular phenotype describing a pre-
71 malignant state in which $\geq 4\%$ of blood cells harbour the same somatic mutation(Jaiswal &
72 Ebert, 2019), thus representing monoclonal expansion, and CHIP is robustly associated with
73 all-cause mortality(Jaiswal et al., 2014), haematological cancers(Genovese et al., 2014), and
74 cardiovascular disease(Jaiswal et al., 2017).

75

76 Given XCI-skew is potentially tagging changes to the haematopoietic stem cell pool, we
77 hypothesised that XCI-skew may be a marker of biological ageing and a risk factor for chronic
78 disease. We tested this hypothesis by assaying XCI-skew in 1,575 females from the TwinsUK
79 cohort and employed prospective, cross-sectional, and intra-twin designs, to characterise the
80 relationship of XCI with molecular, cellular, and organismal measures of ageing, and
81 cardiovascular disease and cancer risk.

82

83 **Results**

84 **XCI-skew is associated with chronological age and increases over the life course**

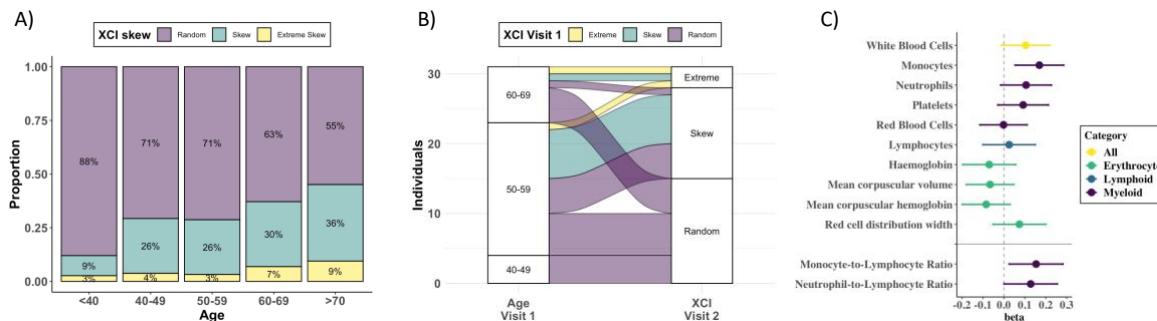
85 We measured XCI in blood-derived DNA from 1,575 participants (median age = 61) unselected
86 for chronic disease status from the TwinsUK population cohort(Verdi et al., 2019), which
87 comprised of 423 MZ pairs, 257 DZ pairs, and 215 singletons. Using the normalised
88 distribution of XCI, we derive a categorical variable in which XCI-skew equated to $\geq 75\%$ XCI,
89 and extreme XCI-skew equated to $\geq 91\%$ XCI. We date-matched the XCI data with existing
90 phenotypes from TwinsUK (e.g., blood count data, molecular markers) in the subsets of
91 individuals on whom each phenotype was available (**Supplementary Fig. 1**).

92

93 We assessed changes in frequency of XCI-skew across increasing age and identified 12% (9 of
94 75) of individuals under 40 years old (yrs) displaying XCI-skew ($\geq 75\%$ XCI), 28% (183 of
95 652) of 40-59yrs; 37% (185 of 498) of 60-69yrs; and 44% (132 of 303) of those over 70yrs
96 (**Fig. 1A**). Proportions of individuals displaying extreme XCI-skew ($\geq 91\%$ XCI) remains
97 consistent at $\sim 3\text{-}4\%$ below the age of 60 but increases to 7% of 60-69yrs and 9% of those over
98 70yrs. These results suggest a stepwise increase in prevalence of XCI-skew happening after 40
99 years of age, then again after 60 years of age, where we also see the first increase in prevalence
100 of extreme XCI-skew (**Fig. 1A**). After controlling for relatedness and zygosity, we find a

101 significant positive association between age and XCI skewing, as expected ($P=2.8 \times 10^{-9}$,
 102 $N=1,575$, **Table 1**).

103



104

105 **Fig. 1 Age acquired XCI-skew across age groups and time, and associations with whole**
 106 **blood count data.**

107 A) Proportions of XCI-skew categories across increasing age groups. B) Sankey plot showing
 108 longitudinal changes to XCI. Colours indicate XCI at visit 1, axis 1 displays the age group of
 109 individuals at visit 1, and axis 2 displays XCI at visit 2. C) Forest plot of associations with
 110 Complete Blood Count data (top) and myeloid ratios (bottom). Measures are grouped by
 111 myeloid, lymphoid, or erythrocyte measures. Points represent the effect size of the association
 112 and lines mark the lower and upper confidence intervals.

113

114 We assessed change in XCI-skew over time using 31 individuals who had a second sample
 115 available 15-17 years prior to the main study (**Fig. 1B**, median age at visit 1 = 55.5; median
 116 age at visit 2 = 72.1). The two individuals who had extreme XCI-skew at visit 1 still displayed
 117 extreme XCI-skew at visit 2. Of the eight individuals who had XCI-skew at visit 1, seven
 118 remained skewed and one progressed to extreme XCI-skew at visit 2. Of the 21 who had a
 119 random pattern of XCI at visit 1, 15 (71.4%) remained the same, and 6 (28.6%) progressed to
 120 XCI-skew at visit 2. These longitudinal data indicate that XCI-skew categorisation persists
 121 over extended periods of time and increases over the life course.

122

123 XCI-skew is independent of known markers of biological ageing

124 Ageing is a heterogenous process in which an individual's biological age can differ from their
 125 chronological age. Smoking and obesity are risk factors for accelerated ageing (Tam et al.,
 126 2020). Accelerated ageing can be estimated through measures of frailty (Clegg et al., 2013;
 127 Leng et al., 2014), and on a molecular level using measures of leukocyte telomere length (LTL)

128 shortening(Blackburn et al., 2006) and epigenetic ageing clocks such as DNA methylation
129 (DNAm) GrimAge(Lu et al., 2019); all these measures are associated with adverse health
130 outcomes(Blackburn et al., 2006; Hewitt et al., 2020; Lu et al., 2019).

131

132 Given the robust association with chronological age, we sought to establish whether XCI-skew
133 was associated with biological ageing using measures taken within one year of XCI DNA
134 sample (**Table 1**). We observed no association with smoking status ($P=0.94$, $N=1,552$) nor
135 obesity ($P=0.88$, $N=891$). We also found no association with LTL shortening ($P=0.9$, $N = 390$)
136 nor DNAm GrimAge acceleration ($P=0.22$, $N=137$). Finally, we see no association with a
137 robust frailty index ($P=0.59$, $N=611$). Together, these data, ranging from the molecular to
138 organismal level, suggest age acquired XCI-skew is independent of many known markers of
139 biological ageing and is potentially a unique biomarker with unexplored utility.

140

141 **Table 1: Chronological and biological age associations with XCI-skew**

142 All data matched for year of XCI DNA sample. Bold represents significant associations after
143 Bonferroni correction applied across 6 tests

144

| Phenotype | N | P-value |
|----------------------------|----------|--|
| Chronological Age | 1,575 | 2.8×10^{-9} |
| Smoking Status | 1,552 | 0.94 |
| Obesity (BMI ≥ 30) | 891 | 0.88 |
| Frailty Index | 611 | 0.59 |
| Telomere Length Shortening | 390 | 0.9 |
| GrimAge Acceleration | 137 | 0.22 |

145

146 **XCI-skew is associated with increased monocyte abundance and decreased IL-10 levels**

147 Changes in blood cell composition can be indicative of ill health or systemic
148 inflammation(Kabat et al., 2017; Madjid et al., 2004; Patel et al., 2009), and a haematopoietic
149 stem cell bias towards the myeloid lineage is observed with ageing(Pang et al., 2011). We
150 tested for associations between XCI-skew and whole blood count data, including white cell
151 differentials, in a subset of individuals with matched data ($N=611$, median age = 63). XCI-
152 skew is association with increased monocyte abundance after multiple testing correction
153 ($P=0.0038$), and we observed nominal increases in abundance across other myeloid cells (**Fig.**
154 **1B**). We next tested the hypothesis that XCI-skew was associated with a myeloid lineage bias
155 using the Monocyte-to-Lymphocyte Ratio (MLR)(Chen et al., 2019) and Neutrophil-to-

156 Lymphocyte Ratio (NLR)(Arbel et al., 2012), and detect an association between XCI-skew and
157 MLR ($P=0.019$), and a nominal association with NLR ($P=0.042$) (**Fig. 1B**).

158

159 “Inflammageing” is the chronic pro-inflammatory phenotype observed in ageing and is
160 considered an altered state of intercellular communication(López-Otín et al., 2013). Markers
161 of inflammageing include cytokines produced by immune cells and C-reactive protein (CRP)
162 produced by liver cells(Salminen et al., 2012). We tested for associations with serum levels of
163 CRP and cytokines interleukin (IL)-6, IL-1B, IL-10, and TNF, in samples date-matched with
164 the XCI DNA sample and see no association with primary markers of inflammageing
165 (**Supplementary Table S1**). However, we observe a strong negative association with IL-10
166 ($P=0.0008$, $N=27$; **Supplementary Table S1**). IL-10 is a broadly expressed anti-inflammatory
167 cytokine which can inhibit the proinflammatory responses of both innate and adaptive immune
168 cells(Saraiva & O’Garra, 2010). Together with the blood count data which demonstrate a
169 myeloid lineage bias, these data suggest detectable systemic changes in individuals with XCI-
170 skew.

171

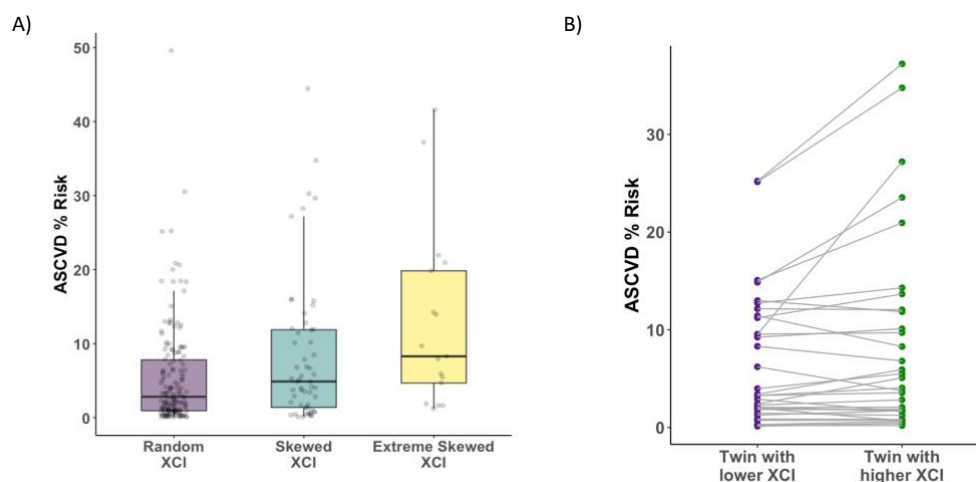
172 **Atherosclerotic cardiovascular disease risk is increased in individuals with XCI-skew**

173 Cardiovascular disease (CVD) is the leading cause of death worldwide, and monocytes are an
174 innate immune cell type known to be mediators in CVD disease progression and are found in
175 atherosclerotic lesions(Libby et al., 2016). Given the association of XCI-skew with increased
176 monocyte abundance, and the association of CHIP with CVD, we hypothesised that XCI-skew
177 could also be associated with CVD. The atherosclerotic cardiovascular disease (ASCVD) risk
178 score(Goff et al., 2014) (see Methods) captures traditional risk factors and gives a predicted
179 risk of a major CVD event in the next 10 years, with an ASCVD risk score $>7.5\%$ representing
180 intermediate risk, and an ASCVD risk score $>20\%$ representing high risk. In a cross-sectional
181 study of 231 individuals (median age = 62) with matched health data available, XCI-skew was
182 associated with increased ASCVD risk score after controlling for BMI and monocyte
183 abundance ($P=0.01$, **Fig. 2A**). 23.5% (4 of 17) and 35.3% (6 of 17) of individuals with extreme
184 XCI-skew have high and intermediate ASCVD risk, respectively, compared to 4.5% (7 of 155)
185 and 21.9% (34 of 155) of individuals with random XCI.

186

187 To ensure the observed association wasn’t spuriously driven by the age component of the
188 ASCVD risk score (see Methods), we took age matched MZ and DZ twin pairs ($n_{\text{pairs}}=34$)
189 discordant for their XCI-skew status and tested intra-twin ASCVD risk scores. The intra-twin

190 analysis validated the association between higher XCI-skew and increased ASCVD risk score
191 (one-sided paired samples Wilcoxon test $P=0.025$; **Fig. 2B**), adding further support to the
192 finding.
193



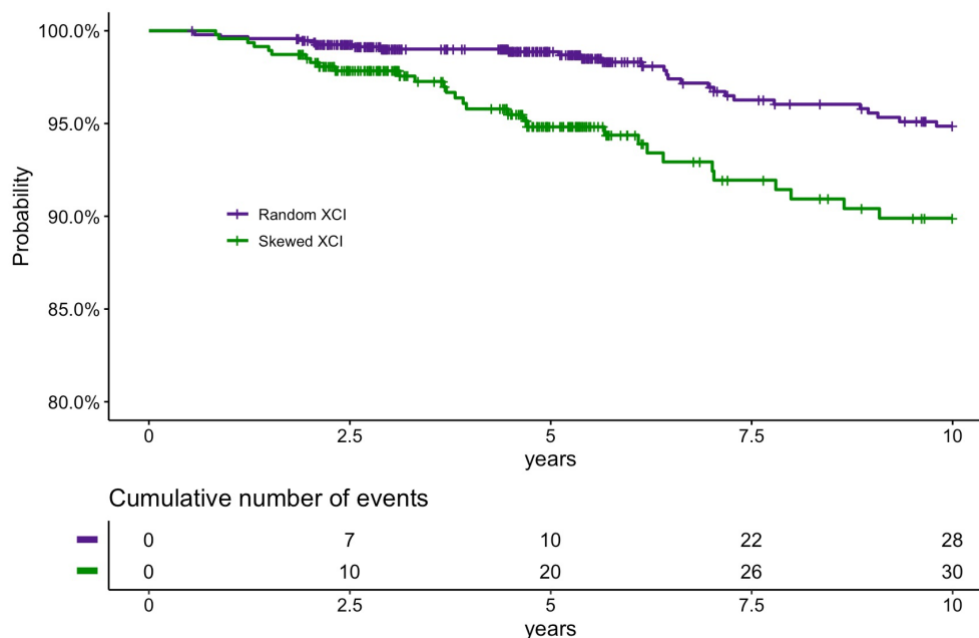
194
195 **Fig. 2 Age acquired XCI-skew and cardiovascular disease risk score**
196 XCI-skew is associated with increased atherosclerotic cardiovascular disease risk score A)
197 cross-sectionally after controlling for BMI and monocyte count (Linear mixed model; $P=0.01$),
198 and B) within twin pairs discordant for their XCI-skew status (Wilcoxon paired t-test;
199 $P=0.025$).

200
201 **XCI-skew is predictive of future cancer diagnosis in 10-year follow-up**
202 The association of XCI-skew with cancer has largely been assessed in case-control studies
203 focusing on cancers of female reproductive organs, with limited replicated findings (Buller et
204 al., 1999; Kristiansen et al., 2002; Struwing et al., 2006). We conducted a prospective 10-year
205 follow-up study (median follow-up time 5.65 years) from time of DNA sampling in 1,417
206 individuals (median age = 60) who were cancer-free at baseline to assess the association
207 between XCI-skew and future cancer diagnoses (cancer events = 58; **Supplementary Table**
208 **S2**). Using multivariate Cox regression analysis controlling for age, XCI-skew was associated
209 with increased probability of cancer diagnosis ($P=0.012$; Hazard Ratio (HR) = 1.95 (95%
210 Confidence Interval (CI) = 1.16-3.28); **Fig. 3**).

211
212 It has been suggested that XCI-skew could have a protective effect against all-cause mortality
213 in cohorts selected for longevity (Mengel-From et al., 2012). However, in our 10-year follow-
214 up study in a population cohort (median follow-up time = 5.71 years; deaths = 41), we see a

215 non-statistically significant trend towards a positive association with all-cause mortality
 216 (P=0.29; HR = 1.39 (0.75-2.58)).

217



218

219

220 **Fig. 3 Prospective study of XCI-skew and future cancer diagnosis**

221 Kaplan-Meier plot (top) and cumulative events (bottom) of cancer diagnosis in individuals
 222 with XCI-skew and random XCI in 10-year follow-up. XCI-skew is predictive of future
 223 cancer incidence (Cox regression, P=0.012; HR=1.95).

224

225

226 **Discussion**

227 The age association of XCI-skew in blood tissue has long been established, with increased
 228 prevalence of females displaying XCI-skew after middle age, which is a critical time for the
 229 development of chronic disease(Busque et al., 1996; Gale et al., 1997; Zito et al., 2019).
 230 Although XCI-skew is measurable in a sex-specific manner, age acquired XCI-skew is
 231 potentially a marker of stem cell depletion or clonal expansion of haematopoietic stem
 232 cells(Busque et al., 1996, 2012; Gale et al., 1997; van Dijk et al., 2002), and could therefore
 233 have a role in age-related chronic disease, which has been robustly established for
 234 CHIP(Jaiswal & Ebert, 2019). In our cross-sectional study of 1,575 females, we identify
 235 associations of age acquired XCI-skew with an increased atherosclerotic cardiovascular disease
 236 risk score and increased probability of future cancer diagnosis.

237

238 Intriguingly, XCI-skew appears independent of other known markers of biological ageing,
239 from molecular markers of leukocyte telomere length shortening and accelerated epigenetic
240 ageing, to cytokine measures of inflammaging, and a robust measure of frailty, making XCI-
241 skew a unique biomarker with clinical potential. Importantly, we also demonstrate that
242 smoking and obesity are not risk factors for age acquired XCI-skew, and with a limited
243 longitudinal dataset, that XCI-skew persists and increases over extended periods of time
244 (median 16 years).

245

246 We find an association with increased probability of future cancer diagnosis in a 10-year
247 follow-up study, with a greater risk in those 60 years or younger at study entry. Previous studies
248 assessing the role of XCI-skew in cancer have typically used case-control studies of breast and
249 ovarian cancers and have not been robustly replicated. The lack of replication is potentially
250 explained by the heterogeneity in study design, including age-of-onset and therapy
251 timing(Kristiansen et al., 2002; Struewing et al., 2006), *BRCA1* mutation
252 stratification(Kristiansen et al., 2005; Lose et al., 2008; Manoukian et al., 2013), and threshold
253 level for definition of XCI-skew(Buller et al., 1999). We controlled for potential confounding
254 effects of cancer treatment on blood cells by excluding all individuals with a cancer diagnosis
255 prior to study entry. Due to limited cancer events, our Cox regression analysis combined all
256 individuals with XCI-skew ($\geq 75\%$ XCI) and extreme XCI-skew ($\geq 91\%$ XCI) which suggests
257 even modest levels of skewing represents a greater risk of cancer. Follow-up studies are needed
258 to assess the risk of cancer of specific tissues.

259

260 We also present an association with increased atherosclerotic cardiovascular disease risk score,
261 which captures traditional risk factors and estimates the risk of developing CVD in the next 10
262 years(Goff et al., 2014). We were also able to utilise the powerful discordant twin design to
263 validate this finding, thus excluding the possibility that the cross-sectional association was
264 driven by the age component of the ASCVD risk score. Ascertaining whether XCI-skew is
265 associated with incident CVD warrants further study.

266

267 On a cellular level, we observe that increased abundance of monocytes correlates with
268 increased XCI-skew, which is of particular interest given that monocytes/macrophages are
269 involved in the inflammatory pathophysiology of CVD(Libby et al., 2016). It is important to

270 note however that changes in monocyte counts alone do not explain the observed levels of XCI-
271 skew. Monocytes account for ~10% of white blood cells whereas XCI-skew is defined here as
272 $\geq 25\%$ shift in cell mosaicism. Furthermore, age acquired XCI-skew has previously been shown
273 across isolated neutrophils, monocytes, and T cells, with correlations between these
274 fractions (Tonon et al., 1998; van Dijk et al., 2002). Instead, XCI-skew is likely associated with
275 the age-related haematopoietic bias toward the myeloid lineage (Pang et al., 2011), as we see
276 nominal associations across other myeloid cell types in addition to the monocyte- and
277 neutrophil-to-lymphocyte ratios. Our study also demonstrates an association of reduced levels
278 of IL-10 with increased XCI-skew. IL-10 is an anti-inflammatory cytokine produced by a broad
279 range of immune cells (Saraiva & O'Garra, 2010) and subsets of monocytes differ in their
280 capacities to secrete IL-10 (Skrzeczyńska-Moncznik et al., 2008). Follow-up work on
281 inflammatory profiles linked to XCI-skew may reveal mechanistic insights.

282 We derived our threshold for XCI-skew from the normalised distribution of the continuous
283 XCI values across the cohort, and defined XCI-skew as measures 1s.d. from the mean,
284 corresponding to XCI score $\geq 75\%$, and extreme XCI-skew as measures 2s.d. from the mean,
285 corresponding to XCI score $\geq 91\%$. These values are very similar to thresholds used in the
286 literature (Busque et al., 1996; Gale et al., 1997; Zito et al., 2019), but allow us to test for linear
287 associations across the increasing thresholds of XCI-skew and demonstrates that individuals
288 with lower levels of XCI-skew, which affects $>37\%$ of females over 60, are still at elevated
289 risk of ASCVD and future cancer diagnosis. To avoid Type I error inflation, we did not run
290 additional tests to compare the extreme XCI-skew group with the random XCI group.

291 There are some limitations to our study. Despite the high sample size of individuals with
292 measured XCI, analyses are carried out in subsets of these individuals where date-matched
293 phenotype data were available. In particular, the cytokine analyses have a low sample size and
294 though we detect significant associations with IL-10, we may be underpowered to rule out the
295 possibility of detecting a weaker association with other cytokines, and this also restricted our
296 ability to control for cell type composition. Also, with only 41 deaths across the cohort, our all-
297 cause mortality analysis is underpowered. A higher-powered study able to focus on specific
298 causes of mortality is warranted. Sample sizes also limited the possibilities of running analyses
299 on specific mortalities or cancer types, and these future studies are warranted.

300 In summary, we demonstrate XCI-skew is a highly prevalent cellular phenotype in females and
301 is associated with elevated cardiovascular disease risk and predictive of future cancer
302 incidence. Further investigations are needed to translate the biological value of XCI-skew into
303 clinical applications for studying the association of age-related haematopoietic changes and
304 chronic disease associations, regardless of chromosomal sex. Understanding the mechanisms
305 underlying this phenomenon, whether XCI-skew is reflective of other ageing markers that
306 increase disease risk, and whether it is therapeutically actionable, are areas of particular
307 interest.

308 **Methods**

309 **TwinsUK Cohort**

310 Archival blood-derived DNA samples (collected 1997-2017) were selected from individuals of
311 the TwinsUK population cohort (Verdi et al., 2019). Twin pairs were date matched and the final
312 dataset of 1,575 samples comprised 423 monozygotic (MZ) twin pairs ($n_{\text{individuals}} = 846$), 257
313 dizygotic (DZ) twin pairs ($n_{\text{individuals}} = 514$), and 215 singletons (**Supplementary Fig. 1**). The
314 age range of the XCI cohort is 19-99, with a median age of 61. Favourable ethical opinion was
315 granted by the formerly known St. Thomas' Hospital Research Ethics Committee (REC).
316 Following restructure and merging of REC, subsequent amendments were approved by the
317 NRES Committee London—Westminster (TwinsUK, REC ref: EC04/015, 1 November 2011).

318

319 **Human Androgen Receptor Assay (HUMARA)**

320 XCI was measured in 2,382 samples using the HUMARA (Cutler Allen et al., 1992) method
321 which combines methylation-sensitive restriction enzyme digest and amplification of a highly
322 polymorphic (CAG) n repeat in the first exon of the X-linked *AR* gene, allowing for the
323 differentiation of the active and inactive chromosomes in heterozygous individuals. 625ng of
324 genomic DNA was divided into three aliquots and incubated for 30 minutes at 37°C with i) the
325 methylation-sensitive enzyme *HpaII*, ii) the methylation-insensitive enzyme *MspI*, or iii) water
326 (mock digest). The *HpaII* digest was followed by an additional 20 minutes at 80°C to avoid
327 residual enzymatic activity. Digested DNA was amplified with FAM, VIC, NED, or VIC
328 fluorescently labelled primers flanking the polymorphic site (Forward primer 5'-dye-
329 GCTGTGAAGGTTGCTGTTCCCTCAT-3', Reverse primer 5'-
330 TCCAGAATCTGTTCCAGAGCGTGC-3'). Mock and *HpaII* digested DNA were amplified
331 in triplicate (FAM, VIC and NED), and the *MspI* digest, used as control of digestion efficiency,
332 was amplified once (PET). To minimize technical bias and batch effects, the labelled amplified

333 products were diluted 1:15 with nuclease-free ddH₂O and pooled together with the GeneScan
334 500 LIZ size standard and analysed on an ABI 3730xl. Twin pairs were assayed on the same
335 plate and plates contained a mix of both MZ and DZ pairs. Two replicates were included on
336 each plate and a within-plate correlation of 0.99 was measured. The assay failed in 194 samples,
337 and 601 samples were homozygous for the CAG repeat and were therefore uninformative
338 (**Supplementary Fig. 1**).

339

340 **Calculation of XCI**

341 Data were analysed using the Microsatellite Analysis Software available on the Thermo Fisher
342 Cloud. The XCI status was calculated in each of the triplicates as follows:

343

- 344 • Allele Ratio Mock Digestion (R_m)= allele 1 peak height / allele 2 peak height
- 345 • Allele Ratio *HpaII* Digestion (R_h)= allele 1 peak height / allele 2 peak height
- 346 • Normalized Ratio (R_n)= R_h/R_m
- 347 • XCI percentage =[R_n/(R_n+1)] * 100

348

349 A coefficient of variation (CV) was calculated across the triplicates and samples with CV>0.15
350 were excluded from downstream analysis (n=12; **Supplementary Fig. 1**). A mean XCI
351 percentage (0-100%) was calculated, where 50% is perfectly balanced XCI. The XCI
352 percentage data were normalised, and absolute values of the normalised distribution were taken
353 (XCI score) because the directionality of XCI away from 50% is uninformative (e.g., both 0%
354 and 100% are considered equal).

355

356 **XCI-skew Categorical Variable**

357 The categorical XCI-skew variable was created from the normalised distribution as follows:
358 standard deviation (s.d.) <1 from the mean = random XCI (0); 1 < s.d. <2 = skewed XCI (1);
359 and s.d.>2 = extreme skew (2). As such, XCI-skew equated to ≥75% XCI, and extreme XCI-
360 skew equated to ≥91% XCI. These thresholds are very similar to previous studies(Busque et
361 al., 1996; Gale et al., 1997), and allowed for linear associations to be tested using the XCI-
362 skew categorical variable.

363

364 **Statistical Analysis**

365 In all regression models, a linear mixed effects model was used with relatedness and family
366 structure fitted with a random intercept using the lme4 package(Bates et al., 2015). The relevant
367 fixed effects are described in each section below and were specific to each test. All analyses
368 were carried out using R version 4.1.1 and all plots were generated using ggplot(Wickham H,
369 2016).

370

371 **Chronological and biological ageing**

372 Datasets were matched to be within 1 year of XCI DNA sample and the significance threshold
373 after Bonferroni correction was $P < 0.007$ to account for multiple testing across the 7 tests in
374 this section. Chronological age was calculated at time of DNA sampling and the association
375 was tested using XCI score as the dependent variable. Body Mass Index (BMI) measures were
376 taken during clinical visits and obesity was defined as $BMI \geq 30$. Smoking status was classified
377 based on longitudinal questionnaire answers(Christiansen et al., 2021). The associations were
378 tested with XCI score as the dependent variable and obesity (obese/not obese) or smoking
379 (ever/never smoker) as the independent variable, controlling for age as a fixed effect. A Frailty
380 Index(Searle et al., 2008) was calculated based on longitudinal questionnaire data and used as
381 the dependent variable, with XCI-skew as the independent variable and age and BMI as fixed
382 effects. Leukocyte Telomere Length was measured using qPCR as previously described(Codd
383 et al., 2010), and the normalised measures were used as the dependent variable and XCI-skew
384 as the independent variable, with age and smoking as fixed effects. DNA methylation (DNAm)
385 GrimAge was calculated using 450K methylation data and GrimAge epigenetic age
386 acceleration measures were obtained from regressing epigenetic age on chronological
387 age(Costeira et al., 2021). GrimAge Acceleration was used as the dependent variable and XCI-
388 skew as the independent variable, with no additional covariates included in the model.

389

390 **Whole blood count data**

391 Automated whole blood count data were date-matched to the XCI DNA sample and each of
392 the 10 blood count variables were normalised. The significance threshold after Bonferroni
393 correction was $P < 0.005$ to account for multiple testing across the 10 tests. In addition,
394 Monocyte-to-Lymphocyte Ratio (MLR) and Neutrophil-to-Lymphocyte Ratio (NLR) were
395 calculated by dividing the total monocyte or neutrophil count, respectively, by total lymphocyte
396 count. Associations were tested with XCI-skew as an independent variable after controlling for
397 age, BMI, seasonality, and smoking status as fixed effects in a linear mixed effects model.

398

399 **Cytokines levels and C-reactive protein**

400 Serum IL-1 β , IL-10, IL-6, and TNF- α were measured simultaneously using the bead-based
401 high sensitivity human cytokine kit (HSCYTO-60SK, Linco-Millipore) according to the
402 manufacturers' instructions. CRP concentrations from serum were measured with the Human
403 Cardiovascular Disease Panel 2 LINCOpex Kit (HCVD2-67BK, Linco-Millipore) and with
404 the Extracellular Protein Buffer Reagent Kit (LHB0001, Invitrogen). CRP concentrations were
405 diluted 1:2000 prior to analysis and assayed in duplicate, as previously described(Ligthart et
406 al., 2018). Data were normalised and associations were assessed using linear mixed models
407 controlling for seasonality and age as fixed effects. The significance threshold after Bonferroni
408 correction was $P < 0.01$ to account for multiple testing across 5 tests.

409

410 **Atherosclerosis and Cardiovascular Disease (ASCVD) Risk Score**

411 The ASCVD risk score was calculated for a subset of 231 individuals with date-matched data
412 on age, total cholesterol, HDL cholesterol, smoking, diabetes, systolic blood pressure, and
413 hypertension medication, as previously described(Goff et al., 2014). A linear mixed model was
414 used to control for BMI and monocyte abundance as fixed effects(Madjid et al., 2004). Twin
415 pairs discordant for XCI-skew but matched for date of visit and age (n=34 pairs) were used for
416 the intra-twin study, and ASCVD risk scores were compared using a one-sided paired samples
417 Wilcoxon test.

418

419 **Cancer and all-cause mortality**

420 Anonymised data were obtained from the National Disease Registration Service. Study entry
421 was the date of DNA sampling and follow-up occurred through to January 2020. For the cancer
422 analysis, individuals who had not experienced the event were censored at 10 years, study end
423 date, or date-of-death. All participants with a history of cancer before sampling, or within 6
424 months of sampling, were excluded from analyses, and reports of non-melanoma skin cancer
425 were filtered, leaving a sample size of 1,417. For all-cause mortality, individuals who had not
426 experienced the event were censored at 10 years or study end date. For both analyses, age and
427 family structure and zygosity were controlled for in the Cox regression model using R package
428 Survival(Therneau T, 2021). Proportional hazards assumptions were assessed using the
429 `cox.zph` function of the Survival package. Kaplan-Meier plots were used for graphical
430 representation of years until diagnosis. XCI-skew and extreme XCI-skew groups were
431 combined due to the limited number of events.

432 **Availability of data and materials**

433 Data on TwinsUK participants are available to bona fide researchers under managed access
434 due to governance and ethical constraints. Raw data should be requested via our website
435 (<https://twinsuk.ac.uk/resources-for-researchers/access-our-data/>) and requests are reviewed
436 by the TwinsUK Resource Executive Committee (TREC) regularly.

437

438 **Competing Interests**

439 CJS is a consultant for Zoe Ltd. All other authors declare they have no competing interests
440

441 **Funding**

442 KSS acknowledges funding from the Medical Research Council (MR/M004422/1 and
443 MR/R023131/1). JTB acknowledges funding from the ESRC (ES/N000404/1). MM
444 acknowledges funding from the National Institute for Health Research (NIHR)-funded
445 BioResource, Clinical Research Facility and Biomedical Research Centre based at Guy's and
446 St Thomas' NHS Foundation Trust in partnership with King's College London. TwinsUK is
447 funded by the Wellcome Trust, Medical Research Council, European Union, Chronic Disease
448 Research Foundation (CDRF), Zoe Global Ltd and the National Institute for Health Research
449 (NIHR)-funded BioResource, Clinical Research Facility and Biomedical Research Centre
450 based at Guy's and St Thomas' NHS Foundation Trust in partnership with King's College
451 London.

452

453 **Author Contributions**

454 A.L.R. performed the research, analyzed and interpreted the data, performed statistical
455 analysis, and wrote the manuscript. A.M. performed research, analyzed the data, and wrote the
456 manuscript. A.A. performed research. A.Z. and J.S.E.M. collected and interpreted data. M.T.,
457 R.C.E.B., R.C., C.C., and X.Z. collected and analyzed data. C.J.S., M.M., and J.T.B., collected
458 data. C.C.Y.W. and T.J.V. interpreted data. K.S.S designed the research, collected data, and
459 wrote the manuscript.

460

461 **Acknowledgements**

462 The authors acknowledge use of the research computing facility at King's College London,
463 *Rosalind* (<https://rosalind.kcl.ac.uk>), which is delivered in partnership with the National
464 Institute for Health Research (NIHR) Biomedical Research Centres at South London &
465 Maudsley and Guy's & St. Thomas' NHS Foundation Trusts, and part-funded by capital

466 equipment grants from the Maudsley Charity (award 980) and Guy's & St. Thomas' Charity
467 (TR130505). This work uses data that has been provided by patients and collected by the NHS
468 as part of their care and support. The data are collated, maintained and quality assured by the
469 National Disease Registration Service, which is part of NHS Digital.

470

471 **References**

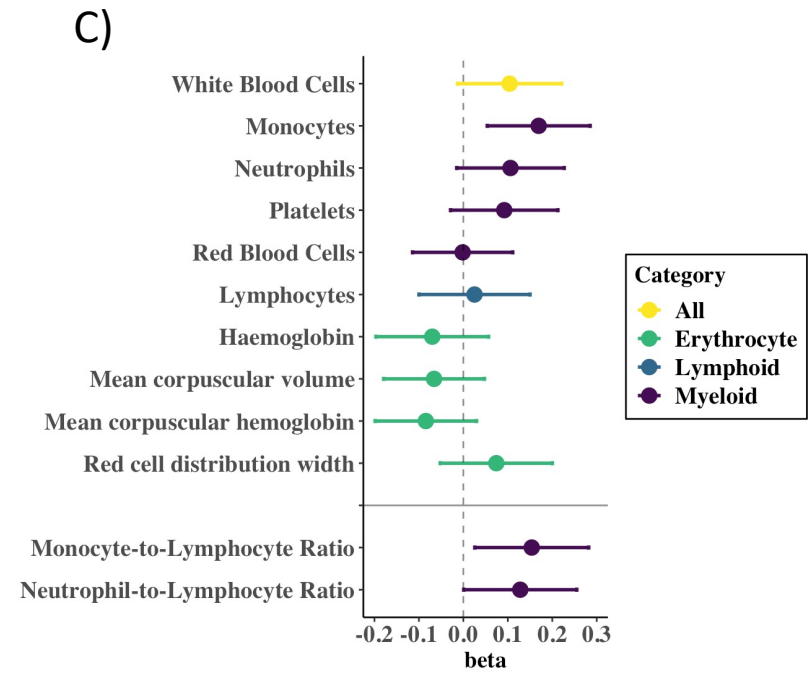
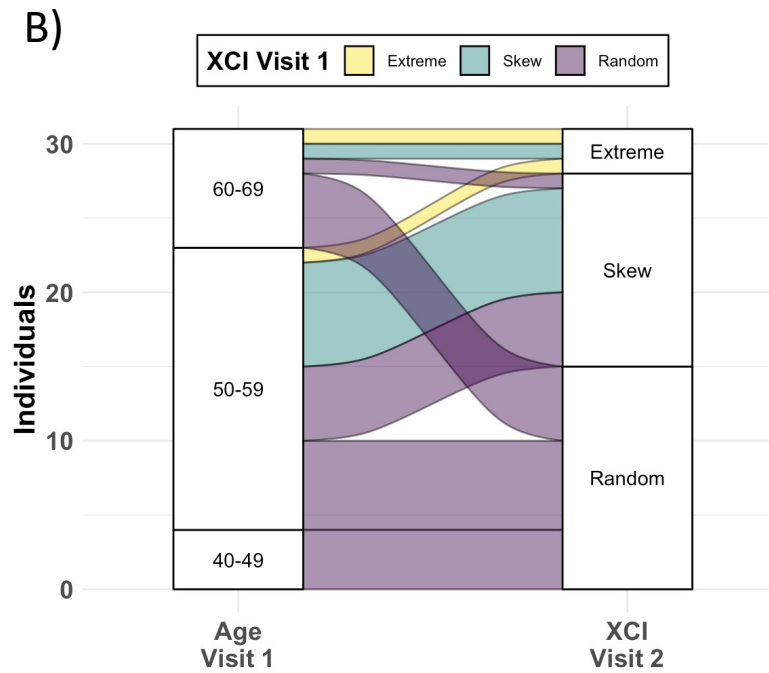
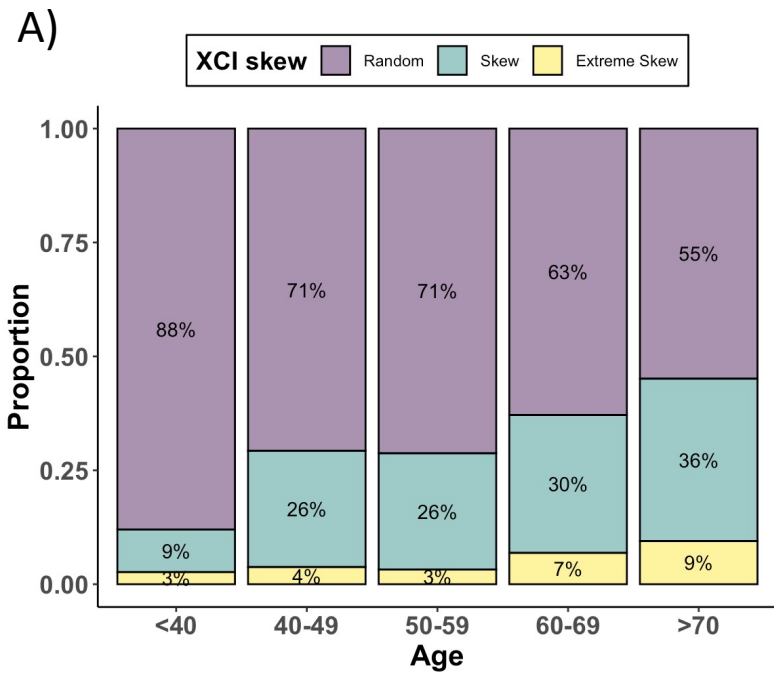
- 472 Arbel, Y., Finkelstein, A., Halkin, A., Birati, E. Y., Revivo, M., Zuzut, M., Shevach, A.,
473 Berliner, S., Herz, I., Keren, G., & Banai, S. (2012). Neutrophil/lymphocyte ratio is
474 related to the severity of coronary artery disease and clinical outcome in patients
475 undergoing angiography. *Atherosclerosis*, *225*(2), 456–460.
476 <https://doi.org/10.1016/j.atherosclerosis.2012.09.009>
- 477 Bates, D., Mächler, M., Bolker, B., & Walker, S. (2015). Fitting Linear Mixed-Effects
478 Models Using **lme4**. *Journal of Statistical Software*, *67*(1).
479 <https://doi.org/10.18637/jss.v067.i01>
- 480 Blackburn, E. H., Greider, C. W., & Szostak, J. W. (2006). Telomeres and telomerase: the
481 path from maize, Tetrahymena and yeast to human cancer and aging. *Nature Medicine*,
482 *12*(10), 1133–1138. <http://www.nature.com/naturemedicine>
- 483 Buller, R. E., Sood, A. K., Lallas, T., Buekers, T., & Skilling, J. S. (1999). Association
484 Between Nonrandom X-Chromosome Inactivation and BRCA1 Mutation in Germline
485 DNA of Patients With Ovarian Cancer. *Journal of the National Cancer Institute*, *91*(4),
486 339–346. <https://academic.oup.com/jnci/article/91/4/339/2543931>
- 487 Busque, L., Mio, R., Mattioli, J., Brais, E., Blais, N., Lalonde, Y., Maragh, M., & Gilliland,
488 D. G. (1996). Nonrandom X-Inactivation Patterns in Normal Females: Lyonization
489 Ratios Vary With Age. *Blood*, *88*(1), 59–65.
- 490 Busque, L., Patel, J. P., Figueroa, M. E., Vasanthakumar, A., Provost, S., Hamilou, Z.,
491 Mollica, L., Li, J., Viale, A., Heguy, A., Hassimi, M., Socci, N., Bhatt, P. K., Gonen,
492 M., Mason, C. E., Melnick, A., Godley, L. A., Brennan, C. W., Abdel-Wahab, O., &
493 Levine, R. L. (2012). Recurrent somatic TET2 mutations in normal elderly individuals
494 with clonal hematopoiesis. *Nature Genetics*, *44*(11), 1179–1181.
495 <https://doi.org/10.1038/ng.2413>
- 496 Chabchoub, G., Uz, E., Maalej, A., Mustafa, C. A., Rebai, A., Mnif, M., Bahloul, Z., Farid,
497 N. R., Ozcelik, T., & Ayadi, H. (2009). Analysis of skewed X-chromosome inactivation
498 in females with rheumatoid arthritis and autoimmune thyroid diseases. *Arthritis*
499 *Research and Therapy*, *11*(4). <https://doi.org/10.1186/ar2759>
- 500 Chen, H., Li, M., Liu, L., Dang, X., Zhu, D., & Tian, G. (2019). Monocyte/lymphocyte ratio
501 is related to the severity of coronary artery disease and clinical outcome in patients with
502 non-ST-elevation myocardial infarction. *Medicine (United States)*, *98*(26).
503 <https://doi.org/10.1097/MD.00000000000016267>
- 504 Christiansen, C., Castillo-Fernandez, J. E., Domingo-Relloso, A., Zhao, W., El-Sayed
505 Moustafa, J. S., Tsai, P. C., Maddock, J., Haack, K., Cole, S. A., Kardía, S. L. R.,
506 Molokhia, M., Suderman, M., Power, C., Relton, C., Wong, A., Kuh, D., Goodman, A.,
507 Small, K. S., Smith, J. A., ... Bell, J. T. (2021). Novel DNA methylation signatures of
508 tobacco smoking with trans-ethnic effects. *Clinical Epigenetics*, *13*(1).
509 <https://doi.org/10.1186/s13148-021-01018-4>
- 510 Clegg, A., Young, J., Iliffe, S., Rikkert, M. O., & Rockwood, K. (2013). Frailty in elderly
511 people. *The Lancet*, *381*(9868), 752–762. [https://doi.org/10.1016/S0140-](https://doi.org/10.1016/S0140-6736(12)62167-9)
512 [6736\(12\)62167-9](https://doi.org/10.1016/S0140-6736(12)62167-9)

- 513 Codd, V., Mangino, M., van der Harst, P., Braund, P. S., Kaiser, M., Beveridge, A. J., Rafelt,
514 S., Moore, J., Nelson, C., Soranzo, N., Zhai, G., Valdes, A. M., Blackburn, H., Leach, I.
515 M., de Boer, R. A., Goodall, A. H., Ouwehand, W., van Veldhuisen, D. J., van Gilst, W.
516 H., ... Samani, N. J. (2010). Common variants near TERC are associated with mean
517 telomere length. *Nature Genetics*, 42(3), 197–199. <https://doi.org/10.1038/ng.532>
- 518 Costeira, R., Lee, K. A., Murray, B., Christiansen, C., Castillo-Fernandez, J., Lochlainn, M.
519 N., Pujol, J. C., Macfarlane, H., Kenny, L. C., Buchan, I., Wolf, J., Rymer, J., Ourselin,
520 S., Steves, C. J., Spector, T. D., Newson, L. R., & Bell, J. T. (2021). Estrogen and
521 COVID-19 symptoms: Associations in women from the COVID Symptom Study. *PLoS*
522 *ONE*, 16(9 September). <https://doi.org/10.1371/journal.pone.0257051>
- 523 Cutler Allen, R., Zoghbi, H. Y., Annemarie Moseley, I. B., Rosenblatt, H. M., & Belmont, J.
524 W. (1992). Methylation of HpaII and HhaI Sites Near the Polymorphic CAG Repeat in
525 the Human Androgen-Receptor Gene Correlates with X Chromosome Inactivation. *Am.*
526 *J. Hum. Genet.*, 51, 1229–1239.
- 527 Gale, R. E., Fielding, A. K., Harrison, C. N., & Linch, D. C. (1997). Acquired skewing of X-
528 chromosome inactivation patterns in myeloid cells of the elderly suggests stochastic
529 clonal loss with age. *British Journal of Haematology*, 98, 512–519.
- 530 Genovese, G., Kähler, A. K., Handsaker, R. E., Lindberg, J., Rose, S. A., Bakhoun, S. F.,
531 Chambert, K., Mick, E., Neale, B. M., Fromer, M., Purcell, S. M., Svantesson, O.,
532 Landén, M., Höglund, M., Lehmann, S., Gabriel, S. B., Moran, J. L., Lander, E. S.,
533 Sullivan, P. F., ... McCarroll, S. A. (2014). Clonal Hematopoiesis and Blood-Cancer
534 Risk Inferred from Blood DNA Sequence. *New England Journal of Medicine*, 371(26).
535 <https://doi.org/10.1056/NEJMoa1409405>
- 536 Goff, D. C., Lloyd-Jones, D. M., Bennett, G., Coady, S., D'Agostino, R. B., Gibbons, R.,
537 Greenland, P., Lackland, D. T., Levy, D., O'Donnell, C. J., Robinson, J. G., Schwartz, J.
538 S., Shero, S. T., Smith, S. C., Sorlie, P., Stone, N. J., & Wilson, P. W. F. (2014). 2013
539 ACC/AHA guideline on the assessment of cardiovascular risk: A report of the American
540 college of cardiology/American heart association task force on practice guidelines. In
541 *Circulation* (Vol. 129, Issue 25 SUPPL. 1). Lippincott Williams and Wilkins.
542 <https://doi.org/10.1161/01.cir.0000437741.48606.98>
- 543 Hewitt, J., Carter, B., Vilches-Moraga, A., Quinn, T. J., Braude, P., Verduri, A., Pearce, L.,
544 Stechman, M., Short, R., Price, A., Collins, J. T., Bruce, E., Einarsson, A., Rickard, F.,
545 Mitchell, E., Holloway, M., Hesford, J., Barlow-Pay, F., Clini, E., ... Guaraldi, G.
546 (2020). The effect of frailty on survival in patients with COVID-19 (COPE): a
547 multicentre, European, observational cohort study. *The Lancet Public Health*, 5(8),
548 e444–e451. [https://doi.org/10.1016/S2468-2667\(20\)30146-8](https://doi.org/10.1016/S2468-2667(20)30146-8)
- 549 Jaiswal, S., & Ebert, B. L. (2019). Clonal hematopoiesis in human aging and disease. In
550 *Science* (Vol. 366, Issue 6465). American Association for the Advancement of Science.
551 <https://doi.org/10.1126/science.aan4673>
- 552 Jaiswal, S., Fontanillas, P., Flannick, J., Manning, A., Grauman, P. v., Mar, B. G., Lindsley,
553 R. C., Mermel, C. H., Burt, N., Chavez, A., Higgins, J. M., Moltchanov, V., Kuo, F. C.,
554 Kluk, M. J., Henderson, B., Kinnunen, L., Koistinen, H. A., Ladenvall, C., Getz, G., ...
555 Ebert, B. L. (2014). Age-Related Clonal Hematopoiesis Associated with Adverse
556 Outcomes. *New England Journal of Medicine*, 371(26), 2488–2498.
557 <https://doi.org/10.1056/nejmoa1408617>
- 558 Jaiswal, S., Natarajan, P., Silver, A. J., Gibson, C. J., Bick, A. G., Shvartz, E., McConkey,
559 M., Gupta, N., Gabriel, S., Ardissino, D., Baber, U., Mehran, R., Fuster, V., Danesh, J.,
560 Frossard, P., Saleheen, D., Melander, O., Sukhova, G. K., Neuberg, D., ... Ebert, B. L.
561 (2017). Clonal Hematopoiesis and Risk of Atherosclerotic Cardiovascular Disease. *New*
562 *England Journal of Medicine*, 377(2), 111–121. <https://doi.org/10.1056/nejmoa1701719>

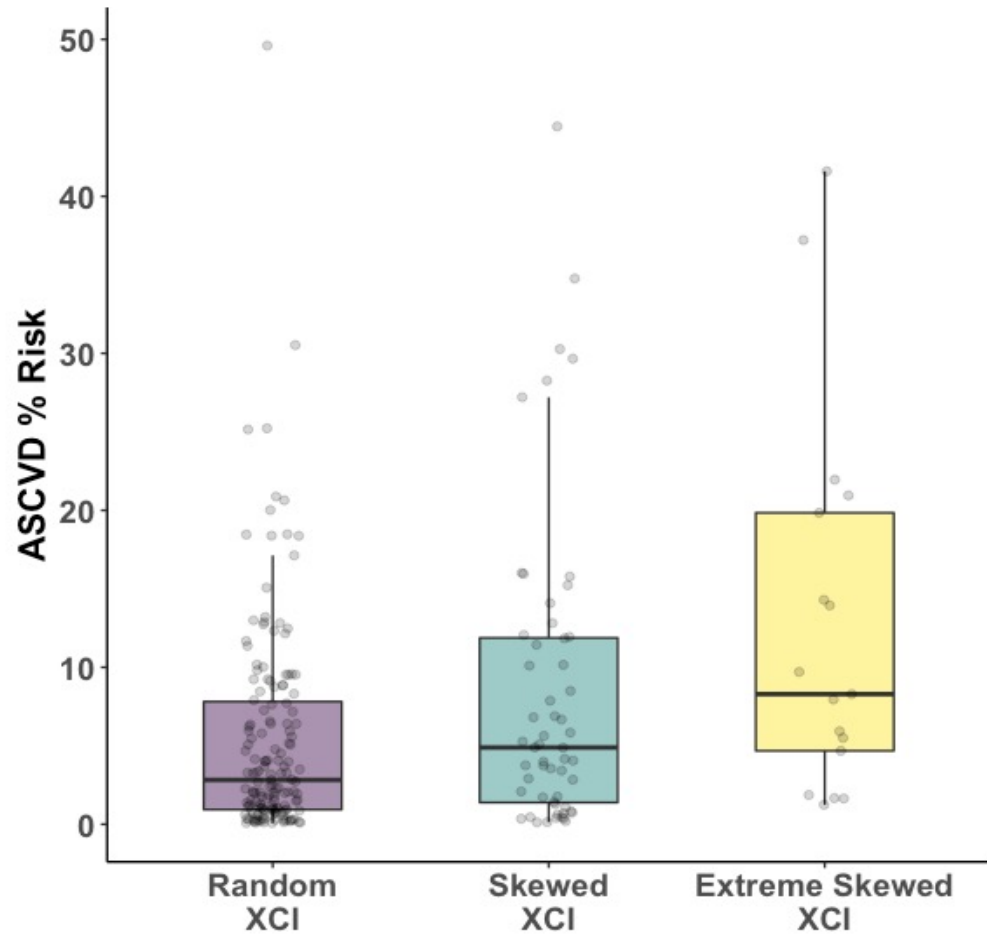
- 563 Kabat, G. C., Kim, M. Y., Manson, J. A. E., Lessin, L., Lin, J., Wassertheil-Smoller, S., &
564 Rohan, T. E. (2017). White Blood Cell Count and Total and Cause-Specific Mortality in
565 the Women's Health Initiative. *American Journal of Epidemiology*, *186*(1), 63–72.
566 <https://doi.org/10.1093/aje/kww226>
- 567 Kristiansen, M., Knudsen, G. P. S., Maguire, P., Margolin, S., Pedersen, J., Lindblom, A., &
568 Ørstavik, K. H. (2005). High incidence of skewed X chromosome inactivation in young
569 patients with familial non-BRCA1/BRCA2 breast cancer. *Journal of Medical Genetics*,
570 *42*(11), 877–880. <https://doi.org/10.1136/jmg.2005.032433>
- 571 Kristiansen, M., Langerød, A., Knudsen, G. P., Weber, B. L., & Børresen-Dale, A.-L. (2002).
572 High frequency of skewed X inactivation in young breast cancer patients. *Journal of*
573 *Medical Genetics*, *39*, 30–33. www.jmedgenet.com
- 574 Leng, S., Chen, X., & Mao, G. (2014). Frailty syndrome: an overview. *Clinical Interventions*
575 *in Aging*, *433*. <https://doi.org/10.2147/cia.s45300>
- 576 Libby, P., Nahrendorf, M., & Swirski, F. K. (2016). THE PRESENT AND FUTURE
577 STATE-OF-THE-ART REVIEW Leukocytes Link Local and Systemic Inflammation in
578 Ischemic Cardiovascular Disease. *Coll Cardiol*, *67*, 1091–1103.
- 579 Ligthart, S., Vaez, A., Vösa, U., Stathopoulou, M. G., de Vries, P. S., Prins, B. P., van der
580 Most, P. J., Tanaka, T., Naderi, E., Rose, L. M., Wu, Y., Karlsson, R., Barbalic, M., Lin,
581 H., Pool, R., Zhu, G., Macé, A., Sidore, C., Trompet, S., ... Alizadeh, B. Z. (2018).
582 Genome Analyses of >200,000 Individuals Identify 58 Loci for Chronic Inflammation
583 and Highlight Pathways that Link Inflammation and Complex Disorders. *American*
584 *Journal of Human Genetics*, *103*(5), 691–706.
585 <https://doi.org/10.1016/j.ajhg.2018.09.009>
- 586 López-Otín, C., Blasco, M. A., Partridge, L., Serrano, M., & Kroemer, G. (2013). The
587 hallmarks of aging. In *Cell* (Vol. 153, Issue 6, p. 1194). Elsevier B.V.
588 <https://doi.org/10.1016/j.cell.2013.05.039>
- 589 Lose, F., Duffy, D. L., Kay, G. F., Kedda, M. A., Spurdle, A. B., Bowtell, D., Chenevix-
590 Trench, G., Green, A., Webb, P., DeFazio, A., Gertig, D., Traficante, N., Moore, S.,
591 Hung, J., Fereday, S., Harrap, K., Sadkowsky, T., Mellon, A., Robertson, R., ... Zeps,
592 N. (2008). Skewed X chromosome inactivation and breast and ovarian cancer status:
593 Evidence for X-linked modifiers of BRCA1. *Journal of the National Cancer Institute*,
594 *100*(21), 1519–1529. <https://doi.org/10.1093/jnci/djn345>
- 595 Lu, A. T., Quach, A., Wilson, J. G., Reiner, A. P., Aviv, A., Raj, K., Hou, L., Baccarelli, A.
596 A., Li, Y., Stewart, J. D., Whitsel, E. A., Assimes, T. L., Ferrucci, L., & Horvath, S.
597 (2019). DNA methylation GrimAge strongly predicts lifespan and healthspan. *Aging*,
598 *11*(2), 303–327. www.aging-us.com
- 599 Lyon, M. F. (1961). Gene Action in the X-chromosome of the Mouse. *Nature*, *190*, 372–373.
- 600 Madjid, M., Awan, I., Willerson, J. T., & Casscells, S. W. (2004). Leukocyte count and
601 coronary heart disease: Implications for risk assessment. In *Journal of the American*
602 *College of Cardiology* (Vol. 44, Issue 10, pp. 1945–1956).
603 <https://doi.org/10.1016/j.jacc.2004.07.056>
- 604 Manoukian, S., Verderio, P., Tabano, S., Colapietro, P., Pizzamiglio, S., Grati, F. R.,
605 Calvello, M., Peissel, B., Burn, J., Pensotti, V., Allemani, C., Sirchia, S. M., Radice, P.,
606 & Miozzo, M. (2013). X chromosome inactivation pattern in BRCA gene mutation
607 carriers. *European Journal of Cancer (Oxford, England : 1990)*, *49*(5).
608 <https://doi.org/10.1016/j.ejca.2012.10.013>
- 609 Mengel-From, J., Thinggaard, M., Christiansen, L., Vaupel, J. W., Ørstavik, K. H., &
610 Christensen, K. (2012). Skewed X inactivation and survival: A 13-year follow-up study
611 of elderly twins and singletons. *European Journal of Human Genetics*, *20*(3), 361–364.
612 <https://doi.org/10.1038/ejhg.2011.215>

- 613 Pang, W. W., Price, E. A., Sahoo, D., Beerman, I., Maloney, W. J., Rossi, D. J., Schrier, S.
614 L., & Weissman, I. L. (2011). Human bone marrow hematopoietic stem cells are
615 increased in frequency and myeloid-biased with age. *Proceedings of the National*
616 *Academy of Sciences of the United States of America*, 108(50), 20012–20017.
617 <https://doi.org/10.1073/pnas.1116110108>
- 618 Patel, K. v., Ferrucci, L., Ershler, W. B., Longo, D. L., & Gurainik, J. M. (2009). Red blood
619 cell distribution width and the risk of death in middle-aged and older adults. *Archives of*
620 *Internal Medicine*, 169(5), 515–523. <https://doi.org/10.1001/archinternmed.2009.11>
- 621 Salminen, A., Kaarniranta, K., & Kauppinen, A. (2012). Inflammaging: disturbed interplay
622 between autophagy and inflammasomes. *Aging*, 4(3).
623 <https://doi.org/10.18632/aging.100444>
- 624 Saraiva, M., & O’Garra, A. (2010). The regulation of IL-10 production by immune cells. In
625 *Nature Reviews Immunology* (Vol. 10, Issue 3, pp. 170–181).
626 <https://doi.org/10.1038/nri2711>
- 627 Searle, S. D., Mitnitski, A., Gahbauer, E. A., Gill, T. M., & Rockwood, K. (2008). A standard
628 procedure for creating a frailty index. *BMC Geriatrics*, 8(1).
629 <https://doi.org/10.1186/1471-2318-8-24>
- 630 Skrzeczyńska-Moncznik, J., Bzowska, M., Loseke, S., Grage-Griebenow, E., Zembala, M., &
631 Pryjma, J. (2008). Peripheral blood CD14^{high} CD16⁺ monocytes are main producers of
632 IL-10. *Scandinavian Journal of Immunology*, 67(2), 152–159.
633 <https://doi.org/10.1111/j.1365-3083.2007.02051.x>
- 634 Struewing, J. P., Pineda, M. A., Sherman, M. E., Lissowska, J., Brinton, L. A., Peplonska, B.,
635 Bardin-Mikolajczak, A., & Garcia-Closas, M. (2006). Skewed X chromosome
636 inactivation and early-onset breast cancer. *Journal of Medical Genetics*, 43(1), 48–53.
637 <https://doi.org/10.1136/jmg.2005.033134>
- 638 Tam, B. T., Morais, J. A., & Santosa, S. (2020). Obesity and ageing: Two sides of the same
639 coin. In *Obesity Reviews* (Vol. 21, Issue 4). Blackwell Publishing Ltd.
640 <https://doi.org/10.1111/obr.12991>
- 641 Therneau T. (2021). *A Package for Survival Analysis in R*. [https://CRAN.R-](https://CRAN.R-project.org/package=survival)
642 [project.org/package=survival](https://CRAN.R-project.org/package=survival).
- 643 Tonon, L., Bergamaschi, G., Dellavecchia, C., Rosti, V., Lucotti, C., Malabarba, L., Novella,
644 A., Vercesi, E., Frassoni, F., & Cazzola, M. (1998). Unbalanced X-chromosome
645 inactivation in haemopoietic cells from normal women. *British Journal of Haematology*,
646 102, 996–1003.
- 647 van Dijk, J. P., Heuver, L., Stevens-Linders, E., Jansen, J. H., Mensink, E., Raymakers, R., &
648 de Witte, T. (2002). Acquired skewing of Lyonization remains stable for a prolonged
649 period in healthy blood donors. *Leukemia*, 16, 362–367.
650 <https://doi.org/10.1038/sj/leu/2402379>
- 651 Verdi, S., Abbasian, G., Bowyer, R. C. E., Lachance, G., Yarand, D., Christofidou, P.,
652 Mangino, M., Menni, C., Bell, J. T., Falchi, M., Small, K. S., Williams, F. M. K.,
653 Hammond, C. J., Hart, D. J., Spector, T. D., & Steves, C. J. (2019). TwinsUK: The UK
654 Adult Twin Registry Update. *Twin Research and Human Genetics*, 22(6), 523–529.
655 <https://doi.org/10.1017/thg.2019.65>
- 656 Wickham H. (2016). *ggplot2: Elegant Graphics for Data Analysis*.
657 <https://ggplot2.tidyverse.org>.
- 658 Xie, M., Lu, C., Wang, J., McLellan, M. D., Johnson, K. J., Wendl, M. C., McMichael, J. F.,
659 Schmidt, H. K., Yellapantula, V., Miller, C. A., Ozenberger, B. A., Welch, J. S., Link,
660 D. C., Walter, M. J., Mardis, E. R., Dipersio, J. F., Chen, F., Wilson, R. K., Ley, T. J., &
661 Ding, L. (2014). Age-related mutations associated with clonal hematopoietic expansion

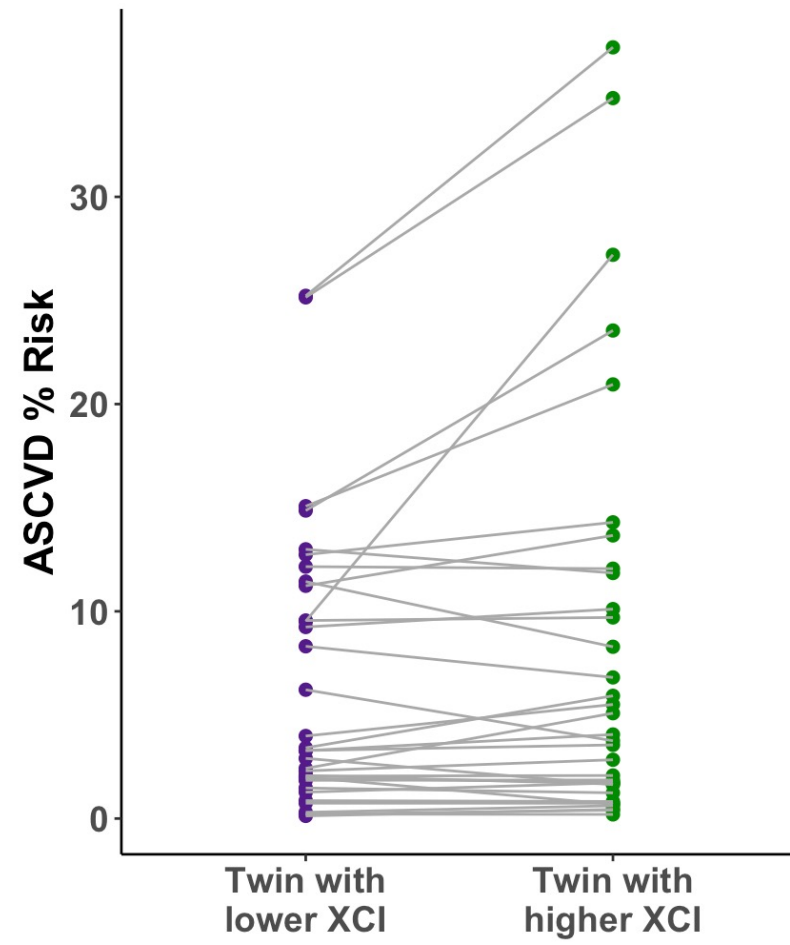
662 and malignancies. *Nature Medicine*, 20(12), 1472–1478.
663 <https://doi.org/10.1038/nm.3733>
664 Zito, A., Davies, M. N., Tsai, P. C., Roberts, S., Andres-Ejarque, R., Nardone, S., Bell, J. T.,
665 Wong, C. C. Y., & Small, K. S. (2019). Heritability of skewed X-inactivation in female
666 twins is tissue-specific and associated with age. *Nature Communications*, 10(1).
667 <https://doi.org/10.1038/s41467-019-13340-w>
668

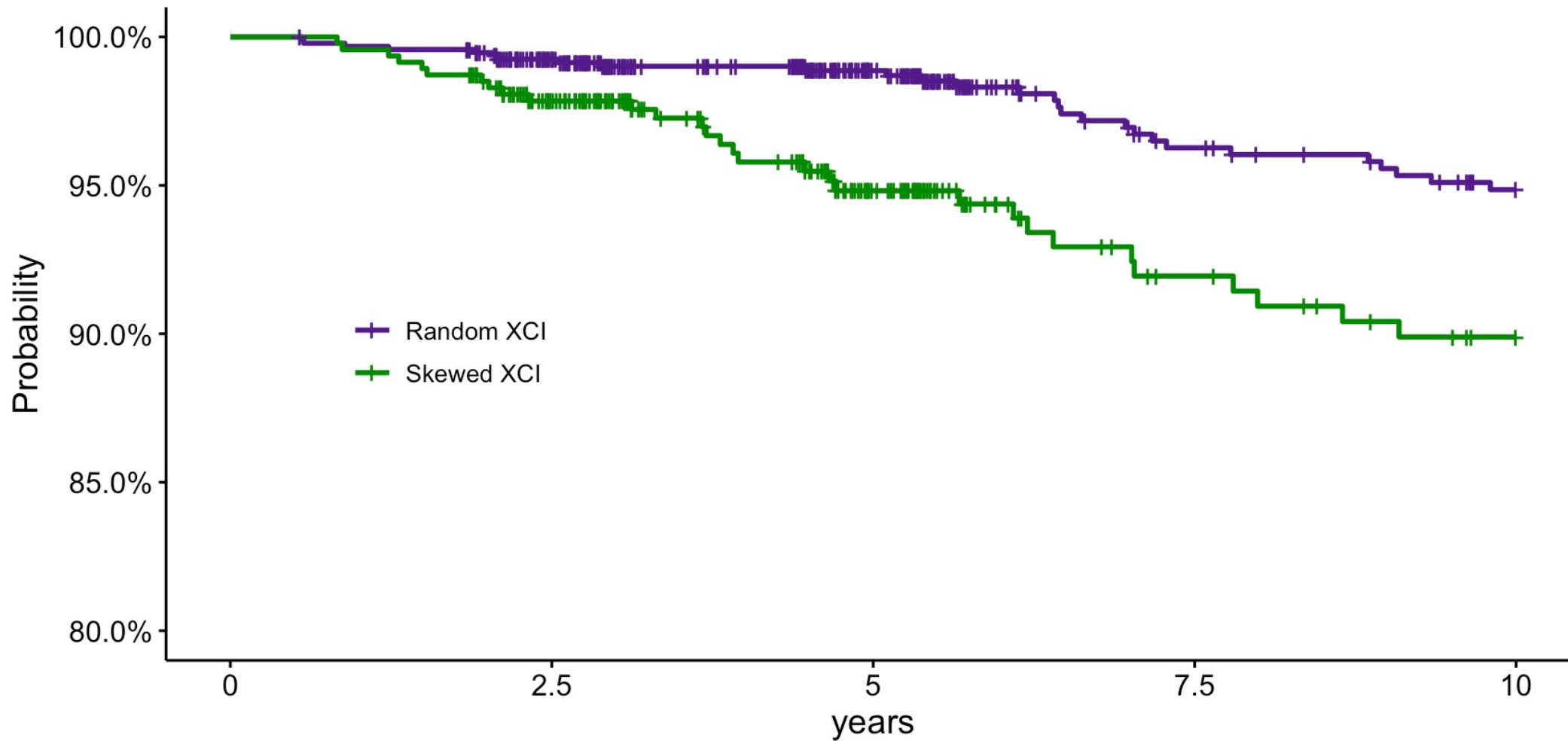


A)



B)





Cumulative number of events

| | | | | | |
|--|-------|-----|----|-----|----|
| | 0 | 7 | 10 | 22 | 28 |
| | 0 | 10 | 20 | 26 | 30 |
| | 0 | 2.5 | 5 | 7.5 | 10 |
| | years | | | | |