

The spatial-temporal risk profiling of *Clonorchis sinensis* infection in South Korea: A geostatistical modeling study

Hai-Yan Xiao,¹ Jong-Yil Chai², Yue-Yi Fang³, Ying-Si Lai,^{1,4*}

¹Department of Medical Statistics, School of Public Health, Sun Yat-sen University, Guangzhou, Guangdong, People's Republic of China.

²Department of Parasitology and Tropical Medicine, Seoul National University College of Medicine, and Institute of Endemic Diseases, Seoul National University Medical Research Center, Seoul 110-799, South Korea

³Institute of Parasitic Diseases, Guangdong Provincial Center for Disease Control and Prevention, Guangzhou, Guangdong, People's Republic of China

⁴Sun Yat-sen Global Health Institute, Sun Yat-sen University, Guangzhou, Guangdong, People's Republic of China.

*Correspondence to: Dr Ying-Si Lai, Department of Medical Statistics, School of Public Health, Sun Yat-sen University, Guangzhou, Guangdong 510080, China. laiys3@mail.sysu.edu.cn

Abstract

Clonorchiasis is one of the major parasitic diseases in South Korea. Spatially explicit estimates of the infection risk are important for control and intervention. We did a systematic review of collected prevalence data on *Clonorchis sinensis* infection in South Korea. Data of potential influencing factors (e.g., environmental and social-economic factors) was obtained from open-access databases. Bivariate Bayesian geostatistical joint modeling approaches were applied to analyze disease data, within a logit regression in combination of potential influencing factors and spatial-temporal random effects. We identified surveys of *C. sinensis* infection done at 1362 unique locations, and presented the first spatial-temporal risk maps at high spatial resolution (5×5km) in South Korea. High infection risk areas shrunk significantly from 1970 to 2017. The overall risk decreased since the start of the national deworming program in 1969, and then slightly increased since the year 1995 when the program suspended, and maintained stable since 2005 when the Clonorchiasis Eradication Program begun. The population-weighted prevalence was estimated as 3.87% (95% BCI: 3.04-4.82%) in 2017, accounting to 1.92 (95% BCI: 1.51-2.40) million infected people. Although the prevalence over the country has been low, *C. sinensis* infection was still endemic in areas of eastern and southern regions, particularly the five major river basins. We also defined factors significantly correlated, such as, distance to the nearest open water bodies, annual precipitation, and land surface temperature at night. All findings above provide important information on spatial-targeting control and preventive strategies of *C. sinensis* infection in South Korea.

[Key Words] *Clonorchis sinensis*; South Korea; Bayesian spatial-temporal joint model; high-resolution risk map

Introduction

Clonorchiasis, caused by infection with *Clonorchis sinensis*, is one of the most important food-borne trematodiasis in humans (Na *et al.*, 2020; Qian *et al.*, 2016). Ingestion of raw or undercooked freshwater fish infected with *C. sinensis* metacercaria is the main way for humans to be infected (Qian *et al.*, 2020; Qian and Zhou, 2021). The parasite can damage the liver and biliary systems, which may lead to cholelithiasis, cholangitis, or even fatal cholangiocarcinoma (Na *et al.*, 2020; Qian *et al.*, 2012; Qian *et al.*, 2016). Preventive chemotherapy, information, education, and communication (IEC), environmental modification and the possible combinations of the three are considered as major control measures of the disease (Huang *et al.*, 2020; Qian *et al.*, 2016). The infection is endemic mainly in Asia, and countries reporting the disease including China, South Korea, Vietnam and Russia (Fürst *et al.*, 2012; Qian and Zhou, 2021; Rim, 2005). Particularly, clonorchiasis is one of the major parasitic diseases in South Korea, the total medical expense of which was approximately 222 million won in 2018, ranking the fourth among all parasitic diseases in the country (Kim *et al.*, 2019).

According to the results of the national surveys, the raw prevalence of *C. sinensis* infection in

South Korea were 4.6%, 1.8%, 2.6%, 2.7%, 2.2%, 1.4%, 2.9% and 1.9% in the year 1971, 1976, 1981, 1986, 1992, 1997, 2004 and 2012, respectively (*The Ministry of Health and Social Affairs and The Korean Association of parasite Eradication, 1971; The Ministry of Health and Social Affairs and The Korean Association of parasite Eradication, 1976; The Ministry of Health and Social Affairs and The Korea Association of Parasite Eradication, 1982; The Ministry of Health and Social Affairs and The Korea Association of Health, 1986; The Ministry of Health and Social Affairs and The Korea Association of Health, 1993; The Ministry of Health and Welfare and Korea Association of Health Promotion, 1997; Korea Association of Health Promotion, 2004; Korea Centers for Disease Control and Prevention and Korea National Institute of Health, 2013*), suggesting a relatively low overall prevalence of the disease in the country.

However, the distribution of the infection shows diversity in space and time. Residents living in river basins have higher prevalence compared to those living elsewhere (*Lee et al., 2020; Shin et al., 2017*). Besides, as shown in surveys of *C. sinensis* conducted in the five major river basins of South Korea, there was an overall decline in prevalence over years, however, the prevalence in different river basins differed considerably, with different degrees and trends of decline (*Chai, 1990; Cho et al., 2016; Jeong et al., 2016; June, 2009; June et al., 2013; Kim et al., 2016; Kim et al., 2010; Shin et al., 2020*). Since the national survey in 2012 (*Korea Centers for Disease Control and Prevention and Korea National Institute of Health, 2013*), surveys on *C. sinensis* infection were mainly focused on the endemic areas around the five major river basins (*Jeong et al., 2016; Kim et al., 2016; Lee et al., 2020; Shin et al., 2017*). Understanding the spatial-temporal distribution of *C. sinensis* infection at high resolution is of great importance for spatial-targeting control and preventive strategies in the country. However, to our knowledge, high-resolution spatial-temporal risk maps of *C. sinensis* infection haven't been produced in South Korea, and simple statistical description of the historical survey data is not enough to obtain this information.

Bayesian geostatistical modeling is one of the most rigorous approaches to produce high-resolution disease risk maps (*Karagiannis-Voules et al., 2015*). It has been applied in various studies to food-borne trematodiasis or other neglected tropical diseases in many regions around the world, such as clonorchiasis in China, opisthorchiasis in Southeast Asia, schistosomiasis in Africa and soil-transmitted helminthiasis in South Asia (*Lai et al., 2015; Lai et al., 2019; Lai et al., 2017; Zhao et al., 2021*). This approach usually models point-referenced disease data with potential risk factors (e.g., socioeconomic and environmental factors) and spatial-temporal random effects, thus estimates disease risk in areas without observed (*Gelfand and Banerjee, 2017; Lai et al., 2015*). Recently, more advanced Bayesian geostatistical models were developed to deal with data heterogeneities, such as jointly analyzing diseases data at both point- and areal levels (*Moraga et al., 2017; Smith et al., 2008*), and joint modeling of disease data which is partially missed the total number examined (*Zhao et al., 2021*)

In this study, we aimed to understand the spatial-temporal distribution of *C. sinensis* infection in

South Korea. We collected available disease survey data and data of potential influenced factors, based on which, a Bayesian geostatistical joint model was built and yearly risk maps of *C. sinensis* infection in South Korea at 5×5 km² were produced.

Results

Data summaries

The data selection flow diagram is presented in Figure 1. A total of 2448 records were identified through databases, while an additional 4 records were stemmed from government reports 112 records remained according to the inclusion and exclusion criteria, resulting in 57 surveys at 15 ADM1-level divisions, 226 surveys at 185 ADM2-level divisions, and 1,404 surveys at 1184 point-referenced locations. According to the quality assessment checklist, 96.43% of the included records showed good quality, with scores no less than 6 (Figure 2, Supplementary Table 1). Figure 4 shows the geographic distribution of locations and observed prevalence of *C. sinensis* infection. Table 1 provides an overview of survey characteristics, categorized by different periods (i.e., 1970-1976, 1977-1984, 1985-1992, 1993-2000, 2001-2008, and 2009-2017). Large proportion of surveys (23.59%) were conducted during the period 2001 to 2008 and the less proportion (8.36%) during 1970 to 1976. Around 96.32% of surveys are community based. Kato-Katz method was the most commonly used diagnostic method (76.11%), followed by Formalin-ether sedimentation technique (FE). The mean prevalence, calculated directly from all survey data, was 7.43%.

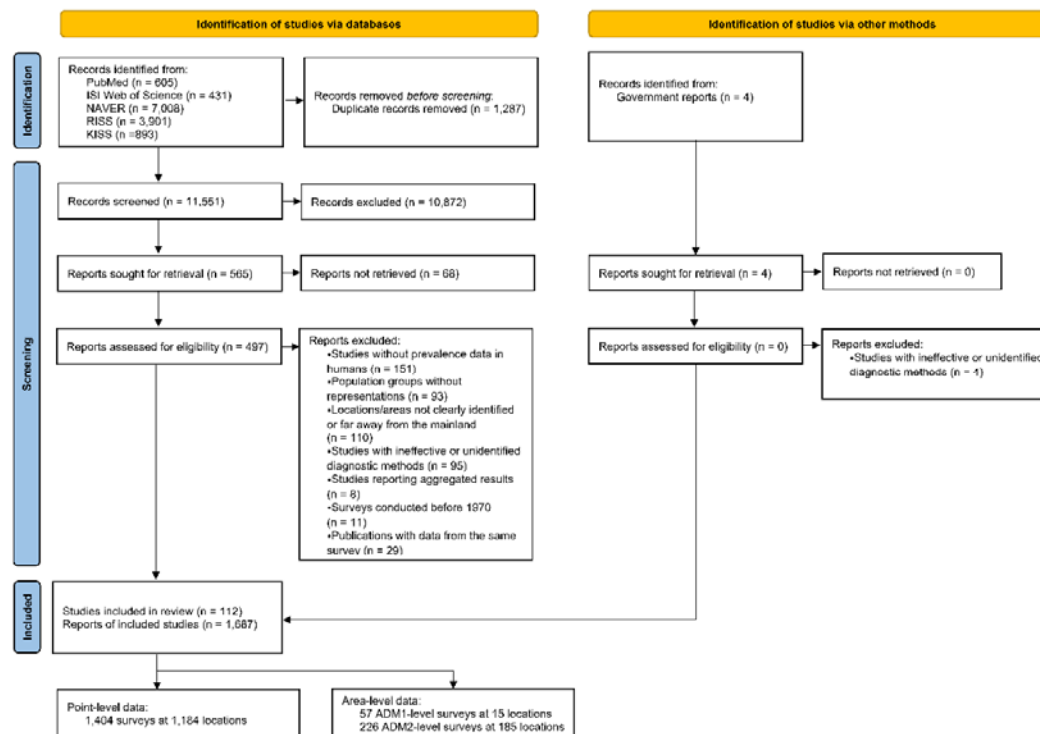


Figure 1. Data selection flow chart.

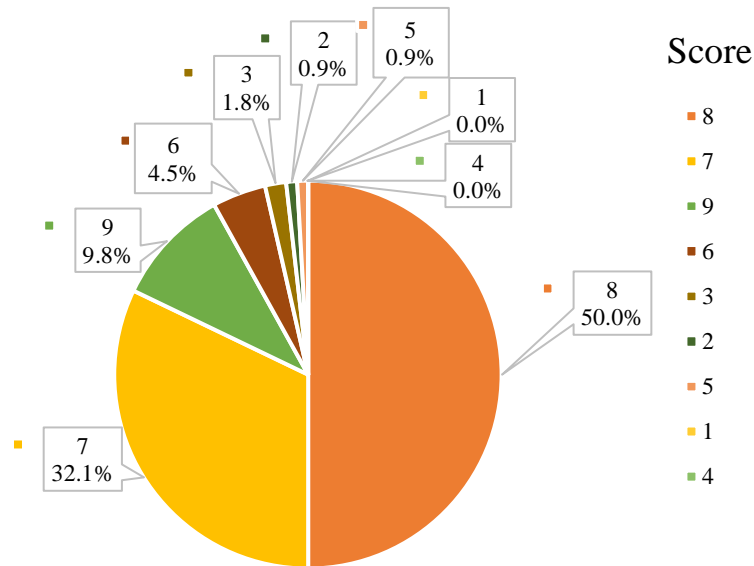


Figure 2. The quality assessment of eligible studies. Each piece represents the number and proportion of studies under the corresponding quality score.

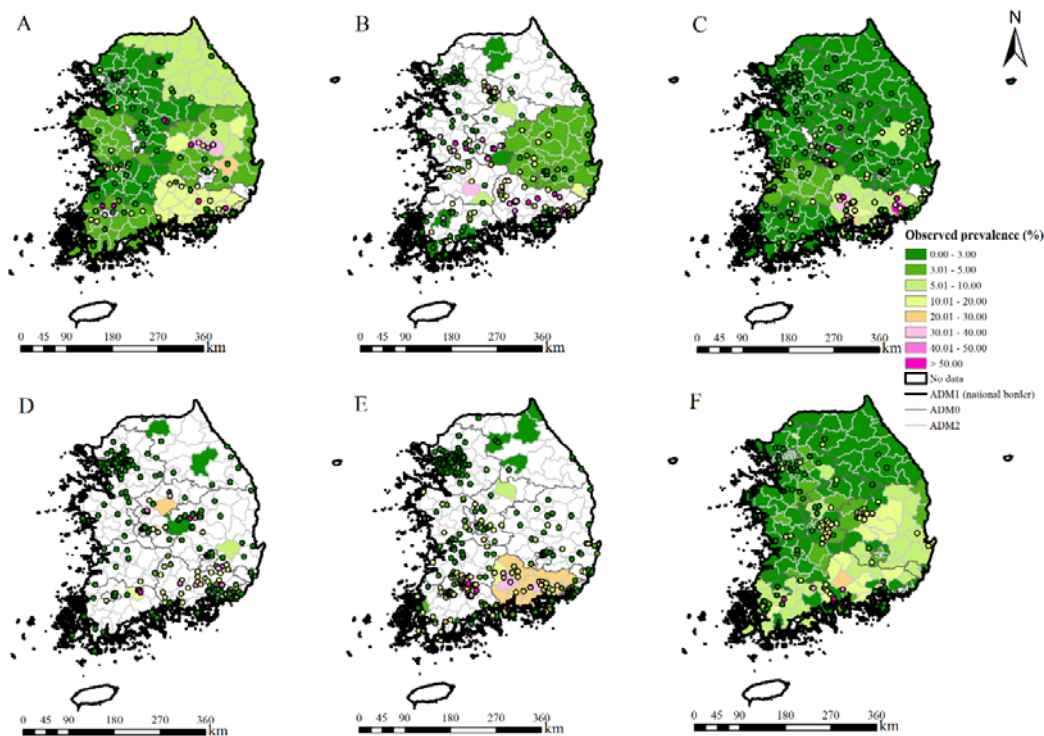


Figure 3. Survey locations and observed prevalence of *C. sinensis* infection in South Korea. (A) 1970–1976, (B) 1977–1984, (C) 1985–1992, (D) 1993–2000, (E) 2001–2008, (F) 2009–2017.

Table 1 Overview of *C. sinensis* infection survey data in South Korea

Year of survey	1970- 1976	1977- 1984	1985- 1992	1993- 2000	2001- 2008	2009- 2017	Total
Number of articles	14	34	16	22	21	9	112
Number of surveys/locations ^a	141/140	247/232	279/261	295/277	398/395	327/292	1687/1362
Location type ^a							
ADM1	11/10	8/4	28/14	0/0	1/1	9/9	57/15
ADM2	7/7	14/12	9/9	6/6	10/9	180/179	226/185
Points	123/123	225/216	242/238	289/271	387/385	138/104	1404/1184
Survey type ^a							
Community	139/138	220/207	275/259	278/263	388/385	325/291	1625/1314
School	2/2	27/27	4/4	17/17	10/10	2/2	62/59
Stool test ^a							
Kato-Katz	109/108	209/199	245/230	214/214	295/295	212/211	1284/1084
FE ^b	32/32	27/26	12/11	39/37	91/89	115/81	316/266
FE and Kato-Katz ^c	0/0	11/10	22/22	42/40	12/12	0/0	87/81
Average prevalence (%)	8.12	10.85	6.86	6.91	7.50	5.41	7.43

^aPresented as surveys/locations.

^bFE: formalin-ether concentration technique.

^cReporting results based on both FE and Kato-Katz.

Modeling fitting

After variable selection, a total of seven variables (i.e., human influence index, annual precipitation, distance to the nearest open water bodies, land surface temperature at night, soil moisture, normalized difference vegetation index and travel time to the nearest big city) were selected for the final geostatistical model (Table 2). The infection risk was 4.30 (95% BCI: 3.32-5.60) times in the community as much as that in school-aged children. The risk of *C. sinensis* infection was lower in people living in urban areas compared to those living in rural areas. A negative association was found for the infection risk with the distance to the nearest open water bodies and annual precipitation, whereas a positive relationship was identified with land surface temperature at night and normalized difference vegetation index.

Table 2. Posterior summaries of model parameters for *C. sinensis* infection

Variable	Estimated median	OR	Prob (%)^a
-----------------	-------------------------	-----------	-----------------------------

	(95% BCI)		
Intercept	-5.41(-5.98, -4.85) ^b	0.005(0.003, 0.01)	<0.01
Survey type (Community) ^c			
School	1.46(1.20, 1.72) ^b	4.30(3.32, 5.60)	>99.99
Urban extents (Rural) ^c			
Urban	-0.53(-0.83, -0.24) ^b	0.59(0.44, 0.79)	<0.01
Land surface temperature in the daytime ($\leq 17.0^{\circ}\text{C}$) ^c			
17.0-18.5	0.13(-0.12, 0.39)	1.14(0.88, 1.47)	80.40
> 18.5	0.24(-0.12, 0.61)	1.27(0.88, 1.84)	89.20
Annual precipitation ($\leq 1266\text{mm}$) ^c			
1263-1366	-0.46(-0.82, -0.09) ^b	0.63(0.44, 0.91)	0.40
> 1366	-0.51(-0.98, -0.04) ^b	0.60(0.38, 0.96)	1.20
Elevation ($\leq 56\text{m}$) ^c			
56-129	0.04(-0.19, 0.28)	1.04(0.82, 1.32)	53.40
> 129	-0.18(-0.50, 0.15)	0.84(0.61, 1.16)	20.00
Distance to the nearest open water bodies (km)	-0.51(-0.65, -0.38) ^b	0.60(0.52, 0.69)	<0.01
Land surface temperature at night (\square)	0.19(0.003, 0.39) ^b	1.21(1.00, 1.47)	96.60
Nighttime light	-0.06(-0.30, 0.18)	0.94(0.74, 1.19)	59.40
Normalized difference vegetation index	0.24(0.06, 0.43) ^b	1.28(1.06, 1.54)	99.60
Range (km)	45.60(38.60, 53.66)	-	
Spatial variance (σ_{ϕ}^2)	7.61(6.33, 9.19)	-	
Non-spatial variance (σ_{nonsp}^2)	0.64(0.50, 0.81)	-	
Temporal correlation coefficient (ρ)	0.04(-0.13, 0.20)	-	
Variance of beta-likelihood (σ_{β}^2)	0.01(0.01, 0.02)	-	

^aPosterior probability of OR > 1.

^bImportant effect based on 95% Bayesian credible interval (BCI).

^cIn brackets, baseline values are reported.

Validation of model

Model validation showed that the model was able to correctly estimate 79.60% of locations within the 95% BCI, and the AUC of ROC was 0.86, suggesting a reasonable capacity of prediction accuracy of our model. The ME, MAE and MSE were 0.88%, 5.00%, and 1.06%, respectively, in the final Bayesian model.

Risk maps and estimates of number of people infected

Figure 4 presents the model-based estimated risk maps of *C. sinensis* infection in selected years (i.e., 1970, 1977, 1985, 1993, 2001, 2009 and 2017) in South Korea. Overall, high infection risk (with prevalence >20%) areas shrunk across the study period, but temporal variance was shown in different areas. There was an obvious decrease of infection risk in the central region (e.g., Chungcheongbuk-do and the western part of Gyeongsangbuk-do), which was once the highest-risk region. The southern areas (e.g., Gyeongsangnam-do, Jeollanam-do, Gwangju Gwangyeoksi, Ulsan Gwangyeoksi, and Busan Gwangyeoksi) firstly showed a trend down from 1970 to 1993, then a moderate increase until 2001, which was followed by a gradual decline since then. The infection risk of *C. sinensis* in the eastern region (e.g., The central and eastern parts of Gyeongsangbuk-do) was estimated to be on a downward trend until around 2009, followed by a slight upward trend, and several areas remained moderate risk (with prevalence between 5% and 20%) in recent years. Most areas in the western and northern regions (e.g., Chungcheongnam-do, Gangwon-do, and Gyeonggi-do) showed stably low infection risk (<5%). Particularly, the moderate to high infection risk areas distributed mainly along river basins. High estimation uncertainty was presented in several areas of the central, the southern and the eastern regions of the country (Figure 5).

The overall estimated infection prevalence across the country showed an obvious decrease trend until around 1991 (with the lowest estimated prevalence as 1.95%, 95% BCI 1.58-2.41%), followed by a slight increase until around 2005, and maintained stable ever since (Figure 6). In 2017, the population-adjusted estimated prevalence and the number of individuals infected with *C. sinensis* were 3.87% (95% BCI: 3.04-4.82%) and 1.92 million (95% BCI: 1.51-2.40 million), respectively.

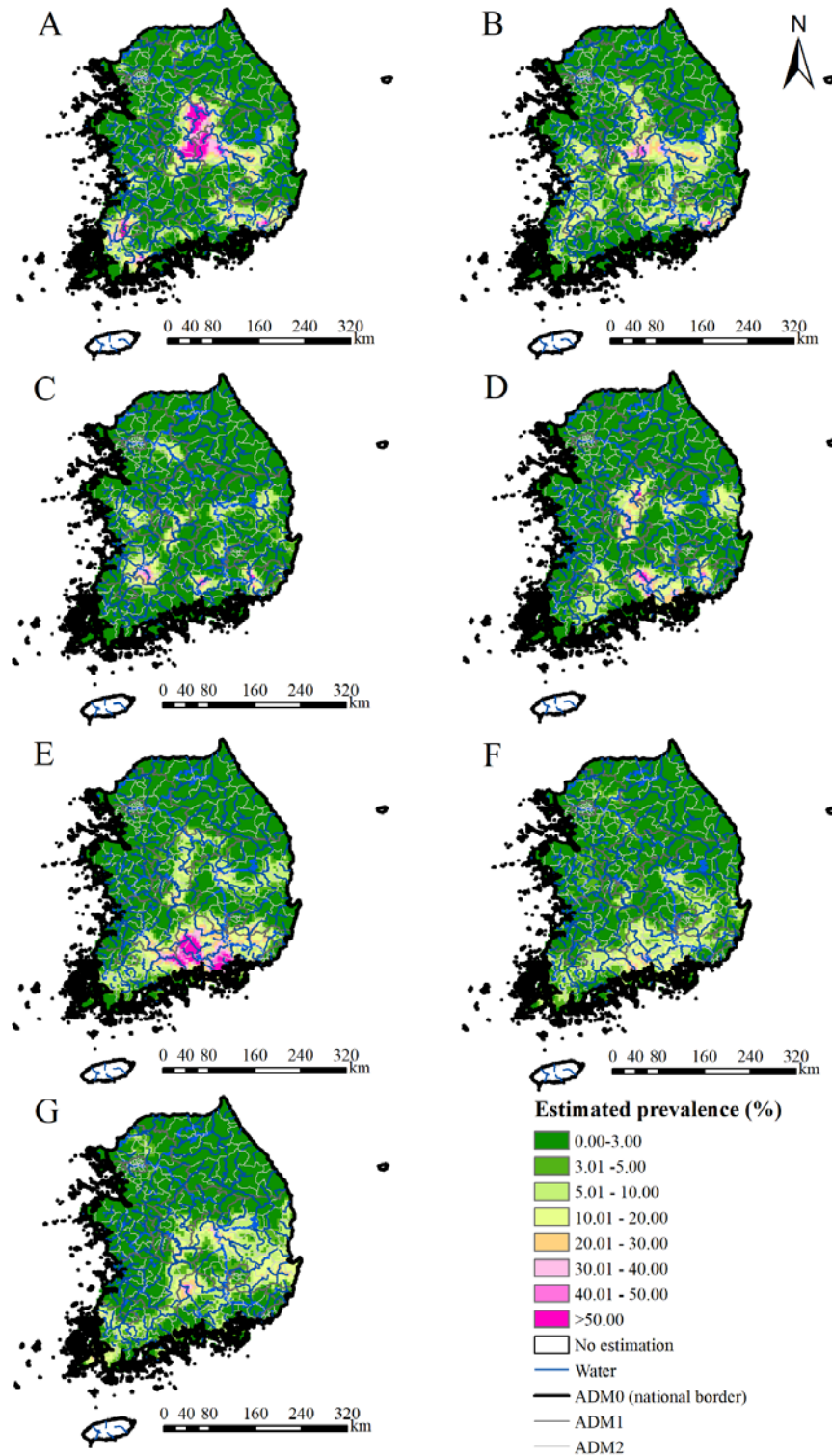


Figure 4. Model-based estimated risk maps of *C. sinensis* infection across South Korea in selected years. Estimated prevalence was based on the median of the posterior estimated distribution of infection risk in (A) 1970, (B) 1977, (C) 1985, (D) 1993, (E) 2001, (F) 2009, and (G) 2017.

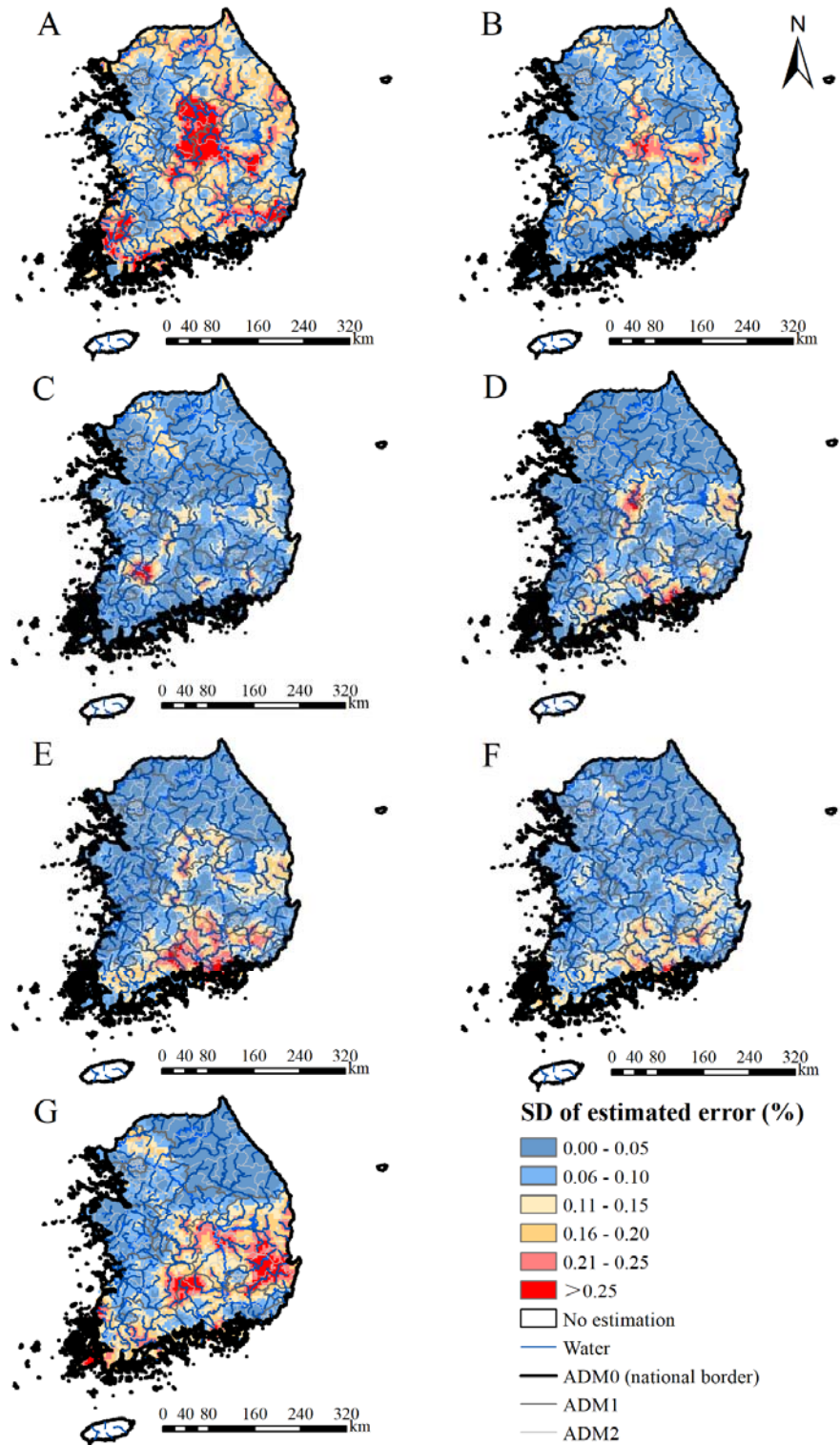


Figure 5. The estimation uncertainty in selected years. Results were based on the standard deviation of the posterior estimated distribution of infection risk in (A) 1970, (B) 1977, (C) 1985, (D) 1992, (E) 2001, (F) 2009, and (G) 2017.

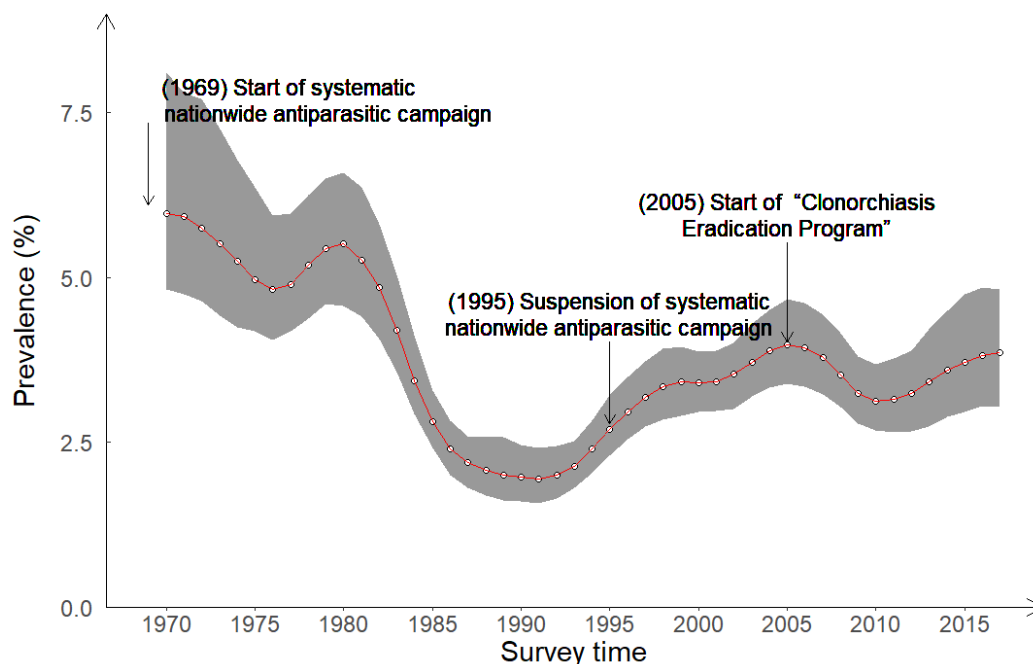


Figure 6. Trends in estimated prevalence of *C. sinensis* infection in South Korea.

Discussion

To our knowledge, we presented the first spatial-temporal risk maps of *C. sinensis* infection at spatial high-resolution ($5 \times 5 \text{ km}^2$) in South Korea, using rigorous Bayesian geostatistical joint modelling approach with available disease survey data and potential influencing predictors. Our study identifies high risk areas in different periods and presents the trend of infection risk with time in different areas, which provides an important reference for understanding the risk of *C. sinensis* infection in South Korea in the last 50 years and may provide valuable information for spatially targeting intervention.

Our findings on an obvious decline of the overall infection risk from 1970 to 1995 across the country suggested the effective control of *C. sinensis* infection in the period, which may be largely attributed to the nationwide biannual school-based mass fecal screening and anthelmintic-administration program implemented by the Korea Association of Health Promotion from 1969 to 1995 (Hong and Yong, 2020; Park, 2008). There was an increase of the risk from 1996 to 2004, probably due to the fact that the nationwide antiparasitic campaign was suspended and no large-scale control and prevention measures carried out in this period, with the exception of some small-scale interventions (Lee et al., 2002). For effective control of *C. sinensis* infection, the Korea Centers for Disease Control and Prevention launched the Clonorchiasis Eradication Program (CEP) in 2005, with the goal to reduce the infection rate by diagnosing, treating, and educating residents in endemic areas and the elderly (Hong and Yong, 2020; Jo, 2013; Park, 2008). Of note, CEP seemed effective in certain sense, at least the overall infection risk did not increase but

remain stable since 2005. In practice, the CEP started in different times across different areas with different intensity of implementation, which may lead to different local trends of infection risk (*Jeong et al., 2017*).

Compared with results from the eight national surveys, we estimated comparable or slightly higher *C. sinensis* infection prevalence (Supplementary Table 2). The national surveys mainly reported raw overall prevalence by calculating the proportion of positive individuals among all examined ones (*Korea Centers for Disease Control and Prevention and Korea National Institute of Health, 2013*), which may be influenced by sampling framework (*Mitani et al., 2021; Zhao et al., 2021*). Differently, our estimates relied on rigorous Bayesian geostatistical modeling of all available geo-referenced disease survey data along with important environmental and socioeconomic predictors, thus was able to take into account high-resolution spatial heterogeneous of both disease infection risk and population density across the country when compiling country-level prevalence (*Lai et al., 2019; Zhao et al., 2021*). We did not provide estimates of infection risk for islands Jeju-do and Ulleung-gun, as sparse geo-referenced data were obtained, and they are quite a distance away from the continent of South Korea. It is improper to combine island data and continent data for geostatistical modeling, due to spatial discontinuity (*Santafé et al., 2021*). Though, previous surveys suggested very low prevalence of *C. sinensis* infection in the two islands (0%~0.58% in the previous national surveys for Jeju-do from 1971 to 2012, and 0.4% in a survey in 1973 for Ulleung-gun) (*The Ministry of Health and Social Affairs and The Korean Association of parasite Eradication, 1971; The Ministry of Health and Social Affairs and The Korean Association of parasite Eradication, 1976; The Ministry of Health and Social Affairs and The Korea Association of Parasite Eradication, 1982; The Ministry of Health and Social Affairs and The Korea Association of Health, 1986; The Ministry of Health and Social Affairs and The Korea Association of Health, 1993; The Ministry of Health and Welfare and Korea Association of Health Promotion, 1997; Korea Association of Health Promotion, 2004; Korea Centers for Disease Control and Prevention and Korea National Institute of Health, 2013; Chai, 1990; Cho et al., 1973; Kim et al., 1971; Se et al., 1972; Shim et al., 1982*).

We identified several socioeconomic and environmental predictors significantly related with *C. sinensis* infection, which may provide insights in prevention and control of the disease. We found that community-based surveys were tended to report higher prevalence than that in schoolchildren, in line with the results of previous studies (*Lee et al., 1994a, 1994b; Min et al., 2002; Zhao et al., 2021*). Some studies suggested that the youth eat raw fish far less frequently than the elderly, resulting in a generally lower prevalence among the youth (*June et al., 2013; Lee et al., 2020*). The prevention *C. sinensis* infection may more focus on the elderly (*June et al., 2013; Lee et al., 2020*), though should not ignore the youth. Our results showed that the infection risk was higher in rural areas comparing to that in urban areas, similar with findings from other studies (*Kim, 1983; Moon et al., 1981; Song et al., 1981*). People living in rural areas may be weaker in personal hygiene awareness and with poor sanitation conditions, probably due to less

education or economic disadvantage (*Kim, 1983; Song et al., 1981*). In addition, the culturally rooted habits of eating raw or insufficiently cooked freshwater fish seemed more common in rural (*Moon et al., 1981*). This suggested that the prevention *C. sinensis* infection in rural areas should not be neglected. We found that distance to the nearest water bodies had a negative effect with *C. sinensis* infection, consistent with knowledge that inhabitants living closer to waterbodies had more chance of freshwater fish consumption (*Jeong et al., 2017; Lai et al., 2017*). The above finding suggested the rural elderly population in the river basins should be prioritized for effective control and prevention of *C. sinensis* infection. In addition, we found that environmental factors, such as land surface temperature at night, normalized difference vegetation index, and precipitation, were associated with infection risk, possibly due to the fact that environmental factors may influence the survival and reproduction of fish, snails, caecilians, etc., and thus affect the risk in the corresponding areas (*Lai et al., 2017*).

Frankly, there are several limitations in our study. As we collected all available survey data through a systematic review, the survey locations seemed unevenly distributed across the study region, that is a greater number of surveys were from both the high and the low endemic areas while fewer surveys were from moderate endemic areas. Thus, preferential sampling may exist (*Zhao et al., 2021*). However, current approaches handling preferential sampling issue targets just on “one-way preference”, that is more samples were draw from higher or lower risk areas, different from our “two-way” situation that more samples were from both higher and lower risk areas. Thus, these approaches were not proper to solve the current issue (*Krainski et al., 2019*). Nevertheless, our model performance was good, with prediction accuracy 79.60% within 95% BCI and AUC under ROC 0.86, suggesting that our results were reliable. We are currently developing models handling the “two-way” preferential sampling issue. Secondly, age and sex were found significantly associated with *C. sinensis* infection risk (*Park, 2007; Park et al., 2014*). However, as most surveys didn’t report sex- and age-specific infection prevalence, we were not able to consider these factors in the modeling analysis. Nevertheless, we considered the survey type (i.e., community- and school-based) in the models, thus partially taking into account the potential influencing effect of age on infection risk. Thirdly, we included surveys with different diagnostic techniques (with Kato-Katz and FE the major techniques adopted). Hong et al’s study suggested that there was no significant difference in diagnostic ability between Kato-Katz and FE (*Hong et al., 2003*), while Li et al’s results showed less sensitivity of Kato-Katz than FE (*Cho et al., 1969; Uga et al., 2010*). Regarding the diagnostic abilities of different methods, the results of those studies above were inconsistent. Due to lack of more powerful studies on the diagnostic abilities of different techniques, we didn’t take into account the effect of different diagnostic methods in the final model. Nevertheless, sensitivity analysis was conducted to evaluate the effect. Similar estimated posterior distribution of parameters and consistent patterns of risk maps (Supplementary Table 3, Supplementary Figure 1) were found between the model without considering the diagnostic techniques and that with adjusting the sensitivity of surveys according

to Li et al's study (*Li et al., 1998*), suggesting that our final results were reliable. Additionally, fecal examination, especially Kato-Katz, has been widely used in mass examinations in South Korea (*Korea Centers for Disease Control and Prevention and Korea National Institute of Health, 2013; Jeong et al., 2016*), but it is difficult for inexperienced researchers to identify the eggs of *C. sinensis*, *Metagonimus yokogawai*, *Metagonimus miyatai*, and *Metagonimus takahashii* by microbiological methods alone without using molecular diagnostic methods such as PCR (*Jeon et al., 2012; Xu et al., 2019*). The high prevalence of *C. sinensis* infection in Hadong-gun and Gokseong-gun, two countys with high prevalence of *M. yokogawai* infection previously (*Bahk et al., 2018; Chai et al., 2015; Kim et al., 1979*), may be caused by the absence of differential diagnosis. In addition, as seven surveys only reported the intervals of prevalence instead of the exact observed values, there may be a potential bias resulted from assigning the midpoint values of the intervals as observations (*Korea Centers for Disease Control and Prevention and Korea National Institute of Health, 2013; Cho et al., 2016; Ju et al., 2005*). Nevertheless, the sensitivity analysis suggested that this effect was ignorable, as our final estimated posterior distribution of parameters and patterns of risk maps were similar with those assigning the lower or upper bounds of the intervals as observations in these surveys (Supplementary Table 4, Supplementary Figure 2). In conclusion, we present the first temporal risk maps of *C. sinensis* infection at high-resolution across 50 years in South Korea. The overall trend in the prevalence suggested the national deworming programs from 1969 and the Clonorchiasis Eradication Program from 2005 were effective. Even though low average level of infection risk in the country, the risk maps suggested that several areas in the eastern and southern regions especially in the five major river basins were still in moderate to high infection risk, which should be prioritized for control and intervention. All findings provide important information on spatial-targeting control and preventive strategies on *C. sinensis* infection in South Korea.

Methods

Ethics statement

This work was based on survey data of clonorchiasis, which was derived from peer-reviewed published literatures. Statements of ethics approval were included in the original sources. All data in this study were aggregated at point- or area-level and did not contain any identifiable information at the individual or household levels. So, there are no specific ethical issues warranted.

Disease data

We did a systematic review to collect data related to prevalence of *C. sinensis* infection in South Korea (registered in the International Prospective Register of Systematic Reviews No. CRD42021234803), and reported it following the PRISMA guidelines (Supplementary File 1,

Supplementary File 2) (*Page et al., 2021*). Two general databases (PubMed and ISI Web of Science) and three South Korea databases (NAVER, KISS and RISS) were searched from inception to June 4, 2020, with search terms “(Liver fluke* OR Clonorchis*) AND Korea” and ““간흡충” OR “간디스토마” OR “*Clonorchis sinensis*” OR “Clonorchiasis””, respectively.

There were no restrictions on publication time, language and study design in our search strategy. Additionally, we considered other potential literatures, such as reports from governments or Ministry of Health, documents from research groups, relevant books and theses. The literatures obtained from different sources was pooled together and duplicated ones were removed.

A protocol is listed in Supplementary Figure 3, with clear criteria for inclusion, exclusion and extraction of data. In brief, we included prevalence-related surveys (i.e., with information on number of examined and number of positive, or information on prevalence) conducted from 1970 onwards, reporting at provincial level and below, such as administrative divisions of level one (ADM1: province, special city, etc.), level two (ADM2: city, county, etc.) and at point-level (village, school, etc.). Studies were excluded if they were in-vitro investigations, or absence of human studies, or with specific study designs (e.g., case-control studies) or specific population groups (e.g., patients), or with study locations/areas not clearly identified, or with ineffective or unidentified diagnostic methods (e.g., direct smear, salt water flotation, serum diagnostics, intradermal test, etc.), or reporting aggregated results of both community and school populations, or with small sample size (less than 10).

Two independent reviewers assessed the quality of each included literature using an adapted nine-point quality assessment checklist (*Zhao et al., 2021*) (Supplementary File 3). We followed the GATHER checklist (Supplementary File 4) for the data extraction. All included data were georeferenced by Google Maps (<https://www.google.com/maps/>) and entered into a database with detailed information (e.g., literature information, survey information, location information and disease-related data). For surveys reported intervals of prevalence instead of exact observed values, we assigned the midpoints of the intervals as the observed prevalence. If studies adopted multiple diagnostic methods and reported the observed prevalence accordingly, the one with the most sensitive diagnostic method was extracted. If survey year was missing, we approximated it with the public year minus three.

Socioeconomic, environmental and demographic data

Potential influencing data, including the socioeconomic data (i.e., nighttime light, human influence index, urban extents, and travel time to the nearest big city) and environmental data (i.e., distance to the nearest open water bodies, soil moisture, annual precipitation, elevation, land cover, land surface temperature in the daytime and at night, and normalized difference vegetation index), and the demographic data were obtained from open accessible data sources, as listed in

Supplementary Table 5 and Supplementary Figure 4. Data were integrated to a regular grid of 5×5 km² spatial resolution. To simplify the variable selection process, similar classes of land cover were re-grouped into five categories, that is (i) forests, (ii) grasslands and shrub, (iii) wetlands and water bodies, (iv) croplands, and (v) buildings and barren land. As the demographic data at high-spatial resolution were only available from 2000 onwards, population for previous years were estimated based on the available population data of the nearest year and the population growth rates accessed from the WHO official website (<https://population.un.org/wpp/Download/Standard/Population/>) with formula $P_m = P_n * e^{(m-n)*rate}$ where P_m and P_n are the population counts in year n and year m, respectively.

Statistical analysis

We transformed multi-categorical predictors into dummy variables and standardized continuous ones with mean zero and standard deviation one. To avoid collinearity, Pearson's correlation between each pair of continuous predictors was calculated. If correlation coefficients greater than 0.8, we chose the ones more meaningful or with better data quality among pairs. To build a parsimonious model, Bayesian variable selection was adopted to find the best set of predictors. First, to identify the best functional form (continuous or categorical) of continuous predictors, we converted them to three-level categorical ones according to preliminary, exploratory, graphical analysis (*Lai et al., 2017*). Bayesian geostatistical models was built with either form as the independent variable. The one with the lowest log score was selected as the best functional form. Second, we considered all possible combinations of potential predictors with their best functional forms, and fitted Bayesian geostatistical models with each combination. The one with the lowest log score was selected as the final model. To be noted, survey type (community- or school-based) was kept in all combinations, according to the previous studies suggesting infection risk different between community population and school-aged children (*Lee et al., 1993; Lee et al., 1994a, 1994b; Min et al., 2002; Song et al., 1983*).

We adopted a bivariate Bayesian geostatistical joint modeling approach proposed by Zhao Tingting and colleagues, to analyze the point- and areal level survey data together (*Moraga et al., 2017; Utazi et al., 2019*), and include disease survey data reporting both the number of examined and positive, and those only reporting prevalence (*Zhao et al., 2021*). In brief, we assumed a binomial distribution for disease data reported both the number of examined and positive, and a beta distribution for those with only prevalence reported. A logit scale of prevalence was modelled with a linear combination of fixed effect predictors, spatial-temporal random effect and exchangeable non-spatial random effect. For areal level survey data, the average values of predictors and the average spatial-temporal random effects of pixels within the corresponding areas were assigned. We assumed the spatial-temporal random effect arising from a zero-mean Gaussian distribution, with the covariance matrix the Kronecker product of a spatial matrix and a

temporal one. The former was assumed following a stationary Matérn covariance function and the latter with auto-regressive order 1 (AR1). In addition, regular temporal knots were set and latent spatial-temporal random fields were approximated by employing the B-spline basis function, to reduce the computational burden. The models were built under a Bayesian framework and INLA-SPDE approach was used for model fitting (*Cameletti et al., 2013; Krainski et al., 2019*). More details were shown in Supplementary File 5.

We used the 5-fold out-of-sample cross-validation approach for model validation. To evaluate the model performance, we calculated mean error (ME), mean absolute error (MAE), mean square error (MSE), the percentage of observations covered by 95% Bayesian credible intervals (BCIs) of posterior estimated prevalence, and the area under the receiver-operating characteristic (ROC) curve (AUC) (*Brooker et al., 2001; Lai et al., 2015; Zhao et al., 2021*). More details on the model validation were shown in Supplementary File 6. In addition, sensitivity analysis was conducted to assess the effect of using the midpoint values of intervals as the observed prevalence, and the effect of different diagnostic methods (Supplementary File 7, Supplementary File 8).

A regular grid of 5×5 km² spatial resolution was overlay across South Korea, resulting in 5,946 pixels. The infection risk for each pixel each year from 1970-2017 was estimated using Bayesian kriging. All the statistical process was done in R (version 4.0.4) and risk maps were produced using ArcGIS (version 10.2). The country-level infection prevalence was calculated with population-weighted pixel-level infection risk.

Additional information

Funding

Funder	Grant reference number	Author
The National Natural Science Foundation of China	81703320	Ying-Si Lai
The National Natural Science Foundation of China	82073665	Ying-Si Lai

The funders had no role in study design, data collection and interpretation, or the decision to submit the work for publication.

Author contributions

HYX and YSL made substantial contributions to the study concept and design. HYX and YYZ made substantial contributions to data collection. TTZ and YSL made substantial contributions to data analysis, and interpretation. HYX, and YSL were in charge of the manuscript draft. JYC and YSL made substantial revisions to the manuscript.

Acknowledgments

We are grateful to TTZ for providing very good suggestions for the data collection.

Competing interests

The authors declare that no competing interests exist.

References

- The Ministry of Health and Social Affairs, The Korean Association of parasite Eradication. *Status of the first Korean intestinal parasite infection*. The Ministry of Health and Social Affairs, The Korean Association of parasite Eradication; 1971.
- The Ministry of Health and Social Affairs, The Korean Association of parasite Eradication. *Prevalence of Intestinal Parasitic Infections in Korea-The 2nd Report*. The Ministry of Health and Social Affairs, The Korean Association of parasite Eradication; 1976.
- The Ministry of Health and Social Affairs, The Korea Association of Parasite Eradication. *Prevalence of Intestinal Parasitic Infections in Korea-The Third Report*. The Ministry of Health and Social Affairs, The Korea Association of Parasite Eradication; 1982.
- The Ministry of Health and Social Affairs, The Korea Association of Health. *Prevalence of Intestinal Parasitic Infections in Korea-The Fourth Report*. The Ministry of Health and Social Affairs, The Korea Association of Health; 1986.
- The Ministry of Health and Social Affairs, The Korea Association of Health. *Prevalence of Intestinal Parasitic Infections in Korea-The Fifth Report*. The Ministry of Health and Social Affairs, The Korea Association of Health; 1993.
- The Ministry of Health and Welfare, Korea Association of Health Promotion. *Prevalence of intestinal parasitic infections in Korea-The Sixth Report*. The Ministry of Health and Welfare, Korea Association of Health Promotion; 1997.
- Korea Association of Health Promotion. *Prevalence of Intestinal Parasitic Infections in Korea-The 7th Report*. Korea Association of Health Promotion; 2004.
- Korea Centers for Disease Control and Prevention, Korea National Institute of Health. *National survey of the prevalence of Intestinal Parasitic Infections in Korea, the 8th Report*. Korea Centers for Disease Control and Prevention, Korea National Institute of Health; 2013.
- Bahk YY, Park YK, Na BK, Sohn WM, Hong SJ, Chai JY, Kim TS. Survey on Intestinal Helminthic Infection Status of Students in Two Counties, Hadong-gun and Goseong-gun, Korea. *the Korean Journal of Parasitology*. 2018; 56: 335-339. doi:10.3347/kjp.2018.56.4.335.
- Brooker S, Hay SI, Issae W, Hall A, Kihamia CM, Lwambo NJ, Wint W, Rogers DJ, Bundy DA. Predicting the distribution of urinary schistosomiasis in Tanzania using satellite sensor data. *Tropical Medicine & International Health*. 2001; 6: 998-1007. doi:10.1046/j.1365-3156.2001.00798.x.
- Cameletti M, Lindgren F, Simpson D, Rue H. Spatio-temporal modeling of particulate matter concentration through the SPDE approach. *AStA Advances in Statistical Analysis*. 2013; 97: 109-131. doi:10.1007/s10182-012-0196-3.
- Chai JY. Effective management of hepatic flukes is centered around river basins. *Health News*. 1990; 14: 30-33.
- Chai JY, Jung BK, Kim DG, Kim JL, Lim H, Shin EH, Lee KH, Kim MR, Han SJ, Yeom JH, Park SM, Hwang JS. Heterophyid trematodes recovered from people residing along the Boseong River, South Korea. *Acta Tropica*. 2015; 148: 142-146. doi:10.1016/j.actatropica.2015.04.025.

- Cho KM, Chang JK, Chang SJ, Rhee YS. Prevalence of Intestinal Parasites in Ullung-do Island. *YONSEI REPORTS ON TROPICAL MEDICINE*. 1973; 4: 50-58.
- Cho SH, Shin HE, Lee SE, Park MY. Survey on the Prevalence of Intestinal Parasitic Infections in Korea, 2014. *Public Health Weekly Report*. 2016; 9: 118-124.
- Cho SY, Lee SH, Rim HJ, Seo BS. An Evaluation Of Cellophane Thick Smear Technique For Mass Stool Examination. *the Korean Journal of Parasitology*. 1969; 7: 48-52. doi:10.3347/kjp.1969.7.1.48.
- Fürst T, Keiser J, Utzinger J. Global burden of human food-borne trematodiasis: a systematic review and meta-analysis. *The Lancet Infectious Diseases*. 2012; 12: 210-221. doi:10.1016/s1473-3099(11)70294-8.
- Gelfand AE, Banerjee S. Bayesian Modeling and Analysis of Geostatistical Data. *Annual Review of Statistics and Its Application*. 2017; 4: 245-266. doi:10.1146/annurev-statistics-060116-054155.
- Hong ST, Choi MH, Kim CH, Chung BS, Ji Z. The Kato-Katz method is reliable for diagnosis of Clonorchis sinensis infection. *Diagnostic Microbiology and Infectious Disease* 2003; 47: 345-347. doi:10.1016/s0732-8893(03)00113-5.
- Hong ST, Yong TS. Review of Successful Control of Parasitic Infections in Korea. *Infection & Chemotherapy*. 2020; 52: 427-440. doi:10.3947/ic.2020.52.3.427.
- Huang XH, Qian MB, Zhu GH, Fang YY, Hao YT, Lai YS. Assessment of control strategies against Clonorchis sinensis infection based on a multi-group dynamic transmission model. *PLoS Neglected Tropical Diseases*. 2020; 14: e0008152. doi:10.1371/journal.pntd.0008152.
- Jeon HK, Lee D, Park H, Min DY, Rim HJ, Zhang H, Yang Y, Li X, Eom KS. Human infections with liver and minute intestinal flukes in Guangxi, China: analysis by DNA sequencing, ultrasonography, and immunoaffinity chromatography. *the Korean Journal of Parasitology*. 2012; 50: 391-394. doi:10.3347/kjp.2012.50.4.391.
- Jeong JY, Lee JY, Chung BS, Choi Y, Alley AB, Kim HJ. A new method for estimating the prevalence of clonorchiasis in Korea A proposal to replace arbitrary riverside sampling. *Medicine (Baltimore)*. 2017; 96: e6536. doi:10.1097/md.0000000000006536.
- Jeong YI, Shin HE, Lee SE, Cheun HI, Ju JW, Kim JY, Park MY, Cho SH. Prevalence of Clonorchis sinensis Infection among Residents along 5 Major Rivers in the Republic of Korea. *the Korean Journal of Parasitology*. 2016; 54: 215-219. doi:10.3347/kjp.2016.54.2.215.
- Jo SH. Development of Monitoring System and Prevention of High Risk Population for Clonorchiasis Elimination of Korean Main Riverside Area. *Public Health Weekly Report*. 2013; 6: 125-131.
- Ju YH, Oh JK, Kong HJ, Sohn WM, Kim JI, Jung KY, Kim YG, Shin HR. Epidemiologic study of Clonorchis sinensis infestation in a rural area of Kyongsangnam-do, South Korea. *Journal of Preventive Medicine & Public Health* 2005; 38: 425-430.
- June KJ. 2009. Clonorchiasis Prevention Program Development for High Risk Population at 5 Big Rivers in Korea. <https://scienceon.kisti.re.kr/srch/selectPORSrchReport.do?cn=TRKO201300000190> [Accessed January 3, 2022]

- June KJ, Cho SH, Lee WJ, Kim C, Park KS. Prevalence and Risk Factors of Clonorchiasis among the Populations Served by Primary Healthcare Posts along Five Major Rivers in South Korea. *Osong Public Health and Research Perspectives*. 2013; 4: 21-26. doi:10.1016/j.phrp.2012.12.002.
- Karagiannis-Voules DA, Biedermann P, Ekpo UF, Garba A, Langer E, Mathieu E, Midzi N, Mwinzi P, Polderman AM, Raso G, Sacko M, Talla I, Tchuenté LA, Touré S, Winkler MS, Utzinger J, Vounatsou P. Spatial and temporal distribution of soil-transmitted helminth infection in sub-Saharan Africa: a systematic review and geostatistical meta-analysis. *The Lancet Infectious Diseases*. 2015; 15: 74-84. doi:10.1016/s1473-3099(14)71004-7.
- Kim C, June KJ, Cho SH, Park KS, Lee HS, Park JY. Prevalence and Related Factors of Clonorchiasis among Five Major Riverside Residents in South Korea. *Journal of Korean Academy of Community Health Nursing*. 2016; 27: 346-357. doi:10.12799/jkachn.2016.27.4.346.
- Kim CH, Park CH, Kim HJ, Chun HB, Min HK, Koh TY, Soh CT. Prevalence Of Intestinal Parasites In Korea. *the Korean Journal of Parasitology*. 1971; 9: 25-38. doi:10.3347/kjp.1971.9.1.25.
- Kim DC, Lee OY, Jeong EB. Epidemiological conditions of *Metagonimus yokogawai* infection in Hadong Gun, Gyeongsang Nam Do. *the Korean Journal of Parasitology*. 1979; 17: 51-59. doi:10.3347/kjp.1979.17.1.51.
- Kim GJ. *Research on status of helminthic Infection in chunnam: Centering on Gwangju city and sinan Kun*. 1983; Gwangju.
- Kim HK, Cheun HI, Cheun BS, Lee KY, Kim TS, Lee SE, Lee WJ, Cho SH. Prevalence of *Clonorchis sinensis* Infections Along the Five Major Rivers in Republic of Korea, 2007. *Osong Public Health and Research Perspectives*. 2010; 1: 43-49. doi:10.1016/j.phrp.2010.12.010.
- Kim JY, Yi MH, Yong TS. Parasitic infections and medical expenses according to Health Insurance Review Assessment claims data in South Korea, 2011-2018. *Plos One*. 2019; 14: e0225508. doi:10.1371/journal.pone.0225508.
- Krainski E, Gómez-Rubio V, Bakka H, Lenzi A, Castro-Camilo D, Simpson D, Lindgren F, Rue H. *Advanced Spatial Modeling with Stochastic Partial Differential Equations Using R and INLA*. Boca Raton: CRC Press, Taylor & Francis Group; 2019.
- Lai YS, Biedermann P, Ekpo UF, Garba A, Mathieu E, Midzi N, Mwinzi P, N'Goran EK, Raso G, Assaré RK, Sacko M, Schur N, Talla I, Tchuenté LA, Touré S, Winkler MS, Utzinger J, Vounatsou P. Spatial distribution of schistosomiasis and treatment needs in sub-Saharan Africa: a systematic review and geostatistical analysis. *The Lancet Infectious Diseases*. 2015; 15: 927-940. doi:10.1016/s1473-3099(15)00066-3.
- Lai YS, Biedermann P, Shrestha A, Chammartin F, N ÀP, Montresor A, Mistry NF, Utzinger J, Vounatsou P. Risk profiling of soil-transmitted helminth infection and estimated number of infected people in South Asia: A systematic review and Bayesian geostatistical Analysis. *PLoS Neglected Tropical Diseases*. 2019; 13: e0007580. doi:10.1371/journal.pntd.0007580.
- Lai YS, Zhou XN, Pan ZH, Utzinger J, Vounatsou P. Risk mapping of clonorchiasis in the People's Republic of China: A systematic review and Bayesian geostatistical analysis. *PLoS Neglected Tropical Diseases*. 2017; 11: e0005239. doi:10.1371/journal.pntd.0005239.

- Lee GS, Cho IS, Lee YH, Noh HJ, Shin DW, Lee SG, Lee TY. Epidemiological study of clonorchiasis and metagonimiasis along the Geum-gang (River) in Okcheon-gun (County), Korea. *the Korean Journal of Parasitology*. 2002; 40: 9-16. doi:10.3347/kjp.2002.40.1.9.
- Lee JS, Lee WJ, Kim TS, In TS, Kim WS, Kim SK. Current status and the changing pattern of the prevalence of clonorchiasis in the inhabitants in Sanchong-gun, Kyongsangnam-do, Korea. *the Korean Journal of Parasitology*. 1993; 31: 207-213. doi:10.3347/kjp.1993.31.3.207.
- Lee JS, Lee WJ, Ko WG, Kim DS, In TS, Choi KS, Song CY. Transition of endemicity of clonorchiasis in main riverside areas in Korea 1. Endemicity in Yechon and Sangju areas of upper Naktong-gang. *The Report National Institute of Health*. 1994a; 31: 172-182.
- Lee JS, Lee WJ, Ko WG, Kim DS, In TS, Choi KS, Song CY. Transition of endemicity of clonorchiasis in main riverside areas in Korea 2. Current status and changing pattern of the prevalence in the inhabitants in Kimhae areas of lower Naktong-gang. *The Report National Institute of Health*. 1994b; 31: 183-192.
- Lee SE, Shin HE, Lee MR, Kim YH, Cho SH, Ju JW. Risk Factors of Clonorchis sinensis Human Infections in Endemic Areas, Haman-Gun, Republic of Korea: A Case-Control Study. *the Korean Journal of Parasitology*. 2020; 58: 647-652. doi:10.3347/kjp.2020.58.6.647.
- Li GS, Yang L, Nong CY, Huang J, Wu QH. Comparison of the detection rate of helminth eggs by Kato-Katz method and Formalin-ether concentration technique method *Guangxi Preventive Medicine*. 1998; 04: 60.
- Min DY, Ryu JS, Ahn MH, Choi HK, Kang SI, Shin MH. Present status of human paragonimiasis and intestinal parasitic infection in Bokildo (Islet), Korea. *Infection and Chemotherapy*. 2002; 34: 230-234.
- Mitani AA, Mercaldo ND, Haneuse S, Schildcrout JS. Survey design and analysis considerations when utilizing misclassified sampling strata. *BMC Medical Research Methodology*. 2021; 21: 145. doi:10.1186/s12874-021-01332-8.
- Moon JG, Kim JJ, Moon CS, Chung JH. A Study on the Status of Helminthic Infecetion in Urban and Rural Areas: Centering on Gwang-ju City and Bong-hwang Myun, Na-ju Gun. *The Medical Journal of Chosun University*. 1981; 6: 247-259.
- Moraga P, Cramb SM, L. MK, Pagano M. A geostatistical model for combined analysis of point-level and area-level data using INLA and SPDE. *Spatial Statistics*. 2017; 21: 27-41. doi:10.1016/j.spasta.2017.04.006.
- Na BK, Pak JH, Hong SJ. Clonorchis sinensis and clonorchiasis. *Acta Tropica*. 2020; 203: 105309. doi:10.1016/j.actatropica.2019.105309.
- Page MJ, McKenzie JE, Bossuyt PM, Boutron I, Hoffmann TC, Mulrow CD, Shamseer L, Tetzlaff JM, Akl EA, Brennan SE, Chou R, Glanville J, Grimshaw JM, Hróbjartsson A, Lalu MM, Li T, Loder EW, Mayo-Wilson E, McDonald S, McGuinness LA, Stewart LA, Thomas J, Tricco AC, Welch VA, Whiting P, Moher D. The PRISMA 2020 statement: an updated guideline for reporting systematic reviews. *British Medical Journal*. 2021; 372: n71. doi:10.1136/bmj.n71.
- Park DS. Current Status of Clonorchis Sinensis Infection & Its Related Factors among the Residents of Rural Communities. *Korean Academy of Rural Health Nursing*. 2007; 2: 33-42. doi:10.22715/JKARHN.2007.2.1.033.

- Park DS. Parasitic Disease Control Service of PHCP. *Korean Academy of Rural Health Nursing*. 2008; 3: 88-95. doi:10.22715/JKARHN.2008.3.2.088.
- Park DS, Na SJ, Cho SH, June KJ, Cho YC, Lee YH. Prevalence and Risk Factors of Clonorchiasis among Residents of Riverside Areas in Muju-gun, Jeollabuk-do, Korea. *the Korean Journal of Parasitology*. 2014; 52: 391-397. doi:10.3347/kjp.2014.52.4.391.
- Qian MB, Chen YD, Liang S, Yang GJ, Zhou XN. The global epidemiology of clonorchiasis and its relation with cholangiocarcinoma. *Infectious Diseases of Poverty*. 2012; 1: 4. doi:10.1186/2049-9957-1-4.
- Qian MB, Jiang ZH, Zhou CH, Ge T, Wang X, Zhou XN. Familial assimilation in transmission of raw-freshwater fish-eating practice leading to clonorchiasis. *PLoS Neglected Tropical Diseases*. 2020; 14: e0008263. doi:10.1371/journal.pntd.0008263.
- Qian MB, Utzinger J, Keiser J, Zhou XN. Clonorchiasis. *the Lancet*. 2016; 387: 800-810. doi:10.1016/s0140-6736(15)60313-0.
- Qian MB, Zhou XN. Clonorchis sinensis. *Trends Parasitol*. 2021; 37: 1014-1015. doi:10.1016/j.pt.2021.05.011.
- Rim HJ. Clonorchiasis: an update. *Journal of Helminthology*. 2005; 79: 269-281. doi:10.1079/joh.2005300.
- Santafé G, Adin A, Lee D, Ugarte MAD. Dealing with risk discontinuities to estimate cancer mortality risks when the number of small areas is large. *Statistical Methods in Medical Research*. 2021; 30: 6-21. doi:10.1177/0962280220946502.
- Se BS, Rim HJ, Cho SY, Ahn JH, Kwak JW, Lee JW, Kang SC. The prevalence of intestinal helminthes in inhabitants of Cheju Do. *the Korean Journal of Parasitology*. 1972; 10: 100-108. doi:10.3347/kjp.1972.10.2.100.
- Shim JG, Joo KH, Lee JS. The Prevalence of Intestinal Parasites in Inhabitants and Swine Pen Human Latrine System in Cheju Do. *Journal of Agricultural Medicine & Community Health*. 1982; 7: 50-56.
- Shin HE, Lee MR, Bahk SO, Lee YJ, Ju JW, Lee HI. The current status of the elimination project on intestinal parasitic diseases in 2019. *Public Health Weekly Report*. 2020; 13: 2141-2148.
- Shin HE, Lee MR, Ju JW, Jeong BS, Park MY, Lee KS, Cho SH. Epidemiological and Clinical Parameters Features of Patients with Clonorchiasis in the Geum River Basin, Republic of Korea. *Interdisciplinary Perspectives on Infectious Diseases*. 2017; 2017: 7415301. doi:10.1155/2017/7415301.
- Smith BJ, Yan J, Cowles MK. Unified geostatistical modeling for data fusion and spatial heteroskedasticity with R package ramps. *Journal of Statistical Software*. 2008; 25: 1-21. doi:10.18637/JSS.V025.I10.
- Song HB, Kang MS, Park JS, Yoon SR, Choi BR, Choi TY. *Distribution of parasites and pathogenic intestinal bacterial infections in Ebne-ri residents*. 1981; Jeonbuk.

- Song IC, Lee JS, Rim HJ. Epidemiological studies on the distribution of *Clonorchis sinensis* infection in Korea. *Korea University Medical School Magazine*. 1983; 20: 165-190.
- Uga S, Tanaka K, Iwamoto N. Evaluation and modification of the formalin-ether sedimentation technique. *Tropical Biomedicine*. 2010; 27: 177-184.
- Utazi CE, Thorley J, Alegana VA, Ferrari MJ, Nilsen K, Takahashi S, Metcalf C, Lessler J, Tatem AJ. A spatial regression model for the disaggregation of areal unit based data to high-resolution grids with application to vaccination coverage mapping. *Statistical Methods in Medical Research*. 2019; 28: 3226-3241. doi:10.1177/0962280218797362.
- Xu M, Yin JH, Cao SK, Zhang XF, Shen YJ. Comparison of efficiency of Kato-Katz technique and PCR assay for detecting *Clonorchis sinensis* infection. *Chinese Journal of Schistosomiasis Control*. 2019; 31: 165-168. doi:10.16250/j.32.1374.2018233.
- Zhao TT, Feng YJ, Doanh PN, Sayasone S, Khieu V, Nithikathkul C, Qian MB, Hao YT, Lai YS. Model-based spatial-temporal mapping of opisthorchiasis in endemic countries of Southeast Asia. *Elife*. 2021; 10: e59755. doi:10.7554/eLife.59755.