

1 **Associations of current and childhood socioeconomic status and health outcomes**  
2 **amongst patients with knee or hip osteoarthritis in a Mexico City family-practice**  
3 **setting.**

4 Julio Pisanty-Alatorre, MD<sup>1,2</sup>; Omar Yaxmehen Bello-Chavolla<sup>3</sup>; Eduardo Vilchis-  
5 Chaparro, PhD<sup>1</sup>, María Victoria Goycochea-Robles, MS<sup>4</sup>

6 1. Instituto Mexicano del Seguro Social. Mexico City, Mexico.

7 2. Department of Public Health. Facultad de Medicina, Universidad Nacional Autónoma de  
8 México. Mexico City, Mexico.

9 3. Division of Research. Instituto Nacional de Geriatria. Mexico City, Mexico.

10 4. Cochrane-UNAM Group. Facultad de Medicina, Universidad Nacional Autónoma de  
11 México. Mexico City, Mexico.

12 Address for correspondence:

13 Insurgentes sur 1194-503

14 Col Del Valle CP 03100 Mexico City

15 [mavis.goycochea@gmail.com](mailto:mavis.goycochea@gmail.com)

16 Phone +52 (55) 3040-3211

17

18 **Abstract**

19 *Objectives:* To examine the association of current and childhood socioeconomic status  
20 (SES) with patient-reported functional status, quality of life and disability in patients with  
21 knee osteoarthritis (OA)

22 *Methods:* We conducted a cross-sectional study amongst individuals seeking care for any  
23 medical reason in a primary care family-practice clinic in Mexico City. We included  
24 individuals with self-reported doctor-diagnosed arthritis and administered a survey using  
25 validated Spanish language versions of the Western Ontario and McMaster Universities  
26 Osteoarthritis Index (WOMAC), the Osteoarthritis of Lower Limbs and Quality of Life  
27 (AMICAL), and the Stanford Health Assessment Questionnaire-Disability Index (HAQ-  
28 DI). To estimate current and childhood SES, we used a validated tool to estimate  
29 income quintile, as well as education level and occupation type, for both the patient and  
30 their parents.

31 *Results:* We recruited 154 patients and excluded 8 patients. Estimated income and  
32 education levels were correlated with WOMAC, AMICAL and HAQ-DI scores, and  
33 significant differences were found in all scores by occupation type. The association for  
34 estimated income and all scores remained significant independently of age, sex, BMI, and  
35 presence of diabetes or hypertension. Maternal education was best correlated with

36 AMICAL scores, though its effect seemed largely mediated by its association with current  
37 SES measures.

38 *Conclusions* Current and – to a lesser extent – childhood Socioeconomic Status impacts  
39 functional status, quality of life and disability amongst OA patients in Mexico City.  
40 Awareness of life-course SES can help identify patients at risk for worse outcomes.

41

## 42 **Introduction**

43 Socioeconomic Status (SES) has attracted increasing interest as a determinant of both  
44 prevalence and outcomes for chronic health conditions, including osteoarthritis (OA) and  
45 other musculoskeletal disorders.(1,2) A large body of research shows the deleterious impact  
46 on health of low SES measured through the proxies of occupation, education and income,  
47 (3) which have been shown to be equal or better predictors of health outcomes than other  
48 compound measures of SES.(4)

49 Life-course epidemiology has identified lower SES during childhood as an important  
50 predictor of adult health, even independently of adult SES. In particular, the so-called  
51 pathway model proposes that low childhood SES sets individuals on a life trajectory in  
52 which a series of deleterious exposures are likely to occur, with SES at later stages of life  
53 mediating the harmful effect of low childhood SES.(5)

54 Various studies have examined the relationship between SES and OA prevalence, with the  
55 vast majority indicating higher prevalence rates amongst lower-SES groups.(6–8)  
56 Similarly, a growing number of studies are now painting a clear picture of a relationship  
57 between lower SES and worse OA outcomes.(9–12)

58 Similarly, a growing body of evidence shows an association between low childhood SES  
59 and increased prevalence of arthritis and of musculoskeletal pain (of which knee and hip  
60 OA probably play a large part). This relationship is partially mediated by adult SES.(13,14)  
61 Only one study has directly examined the relationship of childhood SES with arthritis  
62 outcomes. It found that low childhood SES is associated with higher disability and worse  
63 physical health amongst patients with arthritis (of whom most suffered from OA), after  
64 adjusting for current SES, age, sex, race, Body Mass Index (BMI) and comorbidities.(11)  
65 Few studies have examined the relationship of life course SES and OA outcomes in  
66 developing countries and, in particular, in Latin America, where exposure to low SES  
67 throughout the life-course is thought to be higher.(15)

68 The aim of this study was to examine the association of current and childhood SES with  
69 patient-reported functional status, quality of life and disability in a sample of patients with  
70 self-reported doctor-diagnosed primary knee or hip osteoarthritis seeking care in a family  
71 practice setting in Mexico City.

## 72 **2. Methods**

### 73 *2.1 Study design and population*

74 We conducted a cross-sectional study amongst individuals seeking care for any medical  
75 reason in a primary care family-practice clinic belonging to the Mexican Social Security  
76 Institute (IMSS) in Mexico City. We included adult patients with self-reported doctor-  
77 diagnosed knee or hip OA who signed informed consent. We excluded patients suffering  
78 from rheumatoid arthritis or other rheumatic conditions susceptible to causing secondary  
79 OA, as well as those who did not complete the general patient data questionnaire or  
80 withdrew consent after completion of questionnaires.

## 81 *2.2 Measurements*

82 We assessed functional status, quality of life and disability using validated Spanish  
83 language versions of the Western Ontario and McMaster Universities Osteoarthritis Index  
84 (WOMAC),(16) the Osteoarthritis of Lower Limbs and Quality of Life (AMICAL),(17)  
85 and the Stanford Health Assessment Questionnaire-Disability Index (HAQ-DI).(18)

86 We asked patients to complete a general data questionnaire including questions on level of  
87 education and occupation type for both themselves and their parents. To measure income,  
88 we administered Gutiérrez *et al*'s questionnaire, which has been shown to reliably estimate  
89 income quintile in the general Mexican population. (19)

## 90 *2.3 Statistical Analysis*

91 We used descriptive statistics for all variables. For ordinal variables education level,  
92 paternal and maternal education, and income quintile, we measured the correlation with the  
93 patient-reported outcomes by calculating Spearman coefficients ("rho"). For categorical  
94 variables occupation type, paternal and maternal occupation we used Kruskal-Wallis tests  
95 to identify differences in health outcomes, with post-hoc pairwise comparisons using Dunn  
96 tests with Bonferroni correction for comparisons against a specified group (Managerial  
97 office work).

98 In a post-hoc exploratory analysis, we dichotomized maternal education (high=elementary  
99 school or higher vs. low), and income (high= 4<sup>th</sup>-5<sup>th</sup> income quintiles vs low). We then used  
100 these dichotomized variables to construct multiple linear regression models, entering the  
101 variables first separately and then concurrently, adjusting for age, sex, BMI and presence of  
102 Diabetes and Hypertension. Finally, we constructed SES trajectories defined by maternal  
103 education and current income, and constructed multiple linear regression models with this  
104 compound variable. All statistical analyses were done using R software version 4.1.0, with  
105 a chosen significance threshold value of  $p < 0.05$ .

## 106 **Results**

### 107 *Participants*

108 We recruited 154 patients and excluded 8 patients (5 with rheumatoid arthritis, 1 with  
109 undifferentiated arthritis and 2 who withdrew consent), leaving a total of 146 patients for  
110 final analysis. Relevant patient characteristics are shown in Table 1. A majority (80%) of  
111 patients were female, with a mean age of 69.4 years. Because only 3% of patients had an

112 estimated income in the lowest quintile, we grouped them with patients with estimated  
113 income in the second-lowest quintile.

#### 114 *Current and childhood SES and outcomes*

115 Analysis of current SES variables showed that all three outcome scores were inversely  
116 correlated with both estimated current income quintile and higher education level. In  
117 general, there were significant differences in all three outcome scores according to patients'  
118 occupation. However, subgroup analysis showed that compared to patients with managerial  
119 office work, only patients dedicated to manual labor had significantly higher scores (Figure  
120 1).

121 Regarding childhood SES, both maternal and paternal education were inversely correlated  
122 with AMICAL scores, but not WOMAC or HAQ-DI scores. There were significant  
123 differences in AMICAL, but not WOMAC or HAQ-DI scores, by maternal occupation  
124 type, and no significant differences in any score by paternal occupation type  
125 (Supplementary Figure 1)

#### 126 *Interaction between current and childhood SES and with co-variates*

127 Linear regression models demonstrated that current income significantly affects WOMAC,  
128 AMICAL and HAQ-DI scores independently of age, sex, BMI, and presence of diabetes or  
129 hypertension (Figure 2A). After adjusting for these same variables, maternal education had  
130 no effect on any outcome scores (Supplementary Figure 2A).

131 In mutually adjusted models, current income had a significant effect on all outcome scores,  
132 while maternal education did not (Supplementary Figure 2B). Finally, linear regression  
133 models of SES trajectories showed that outcome scores were influenced by these  
134 trajectories, although the effect appears to be driven particularly by current income level  
135 (Figure 2B).

#### 136 **Discussion**

137 Our results are generally consistent with a relationship of lower current and childhood SES  
138 with worse functional status and quality of life and more disability. As discussed by Luong  
139 *et al.*,<sup>(1)</sup> both socioeconomic behavioral patterns and – more importantly – harmful  
140 exposures associated with lower SES through the life course may explain the worse  
141 functional status and disability scores, while psychosocial factors may add on to these to  
142 influence quality of life.<sup>(11)</sup> Social-to-biological pathways, such as increased systemic  
143 inflammation amongst people of lower SES<sup>(20)</sup> may well play a role in explaining our  
144 results, which are also in line with studies reporting more musculoskeletal pain and  
145 generally worse quality of life with decreasing SES.

146 Important strengths of our study include being, to our knowledge, the first study to examine  
147 the relationship between childhood SES and OA outcomes in a Latin American context,  
148 and one of few studies to do so worldwide. Major limitations include its cross-sectional  
149 nature, small sample size and inherent limitations of measuring a complex construct such as

150 Socioeconomic Status, forcing gross approximations through proxy variables such as  
151 income, education and occupation type. Similarly, we were limited by the small number of  
152 people in the lowest income groups included in the study, which was due to the fact that our  
153 Social Security clinic serves only the families of people with formal employment in a  
154 middle to upper-middle class neighborhood.

155 Taken together with previously mentioned studies showing associations of lower childhood  
156 and current SES with higher prevalence and worse outcomes of OA, our study adds to the  
157 evidence base for social determinants of health theory and the life course approach within  
158 it. While further research is needed to elucidate the influence of socioeconomic life-course  
159 trajectories on both OA incidence and outcomes, and the pathways that mediate this  
160 relationship, we believe this study joins others in calling for action on social determinants  
161 to reduce health disparities.

## 162 **Key Messages**

163 *What is already known about this subject?*

164 Socioeconomic Status (SES) is an important contributor to osteoarthritis (OA) prevalence  
165 and outcomes. This has been primarily shown in developed countries.

166 *What does this study add?*

167 Current lower SES, as measured by income, education and occupation type is associated  
168 with worse functional status and quality of life and more disability amongst patients with  
169 knee and/or hip OA. Childhood SES is associated with worse quality of life amongst these  
170 patients, in part mediated through current SES. Ours study adds evidence from a Latin  
171 American context.

172 *How might this impact on clinical practice or future developments*

173 Our results indicate that awareness of patients' life course socioeconomic status could help  
174 reach those at risk for worse outcomes, as well as the need for policy interventions that  
175 reduce economic disparities.

## 176 **Ethics statement**

177 The study was approved by the local research board under protocol number R-2019-3605-  
178 011.

## 179 **Funding**

180 This work received no specific funding

## 181 **Competing interests**

182 None declared

## 183 **Data availability statement**

184 Data are available upon reasonable request to the authors. The R code for the statistical  
185 analysis can be found at <https://github.com/julpisanty/OA/blob/main/SES-OA-github.R>

## 186 **Patient and public involvement statement**

187 Patients and/or the public were not involved in the design, or conduct, or reporting or  
188 dissemination plans of this research.

189

## 190 **References**

- 191 1. Luong M-LN, Cleveland RJ, Nyrop KA, Callahan LF. Social determinants and  
192 osteoarthritis outcomes. *Aging Health*. 2012;8(4):413–37.
- 193 2. Callahan LF, Cleveland RJ, Allen KD, Golightly Y. Racial/Ethnic, Socioeconomic,  
194 and Geographic Disparities in the Epidemiology of Knee and Hip Osteoarthritis.  
195 *Rheum Dis Clin North Am*. 2021 Feb;47(1):1–20.
- 196 3. Lago S, Cantarero D, Rivera B, Pascual M, Blázquez-Fernández C, Casal B, et al.  
197 Socioeconomic status, health inequalities and non-communicable diseases: a  
198 systematic review. *J Public Health*. 2018;26(1):1–14.
- 199 4. Duncan GJ, Daly MC, McDonough P, Williams DR. Optimal Indicators of  
200 Socioeconomic Status for Health Research. *Am J Public Health*. 2002;92(7):1151–7.
- 201 5. Chittleborough CR, Baum FE, Taylor AW, Hiller JE. A life-course approach to  
202 measuring socioeconomic position in population health surveillance systems. *J*  
203 *Epidemiol Community Health*. 2006;60(11):981–92.
- 204 6. Callahan LF, Cleveland RJ, Shreffler J, Schwartz TA, Schoster B, Randolph R, et al.  
205 Associations of educational attainment, occupation and community poverty with knee  
206 osteoarthritis in the Johnston County (North Carolina) osteoarthritis project. *Arthritis*  
207 *Res Ther*. 2011;13(5):R169.
- 208 7. Brennan SL, Turrell G. Neighborhood disadvantage, individual-level socioeconomic  
209 position, and self-reported chronic arthritis: A cross-sectional multilevel study:  
210 Multilevel Study of Social Disadvantage and Arthritis. *Arthritis Care Res*. 2012  
211 May;64(5):721–8.
- 212 8. Reyes C, Garcia-Gil M, Elorza JM, Mendez-Boo L, Hermosilla E, Javaid MK, et al.  
213 Socio-economic status and the risk of developing hand, hip or knee osteoarthritis: a  
214 region-wide ecological study. *Osteoarthritis Cartilage*. 2015 Aug;23(8):1323–9.
- 215 9. Cleveland RJ, Luong M-LN, Knight JB, Schoster B, Renner JB, Jordan JM, et al.  
216 Independent associations of socioeconomic factors with disability and pain in adults  
217 with knee osteoarthritis. *BMC Musculoskelet Disord* [Internet]. 2013 Dec;14(1).  
218 Available from:



- 219 [http://bmcmusculoskeletdisord.biomedcentral.com/articles/10.1186/1471-2474-14-](http://bmcmusculoskeletdisord.biomedcentral.com/articles/10.1186/1471-2474-14-297)  
220 297
- 221 10. Knight JB, Callahan LF, Luong M-LN, Shreffler J, Schoster B, Renner JB, et al. The  
222 Association of Disability and Pain with Individual and Community Socioeconomic  
223 Status in People with Hip Osteoarthritis. *Open Rheumatol J.* 2011;5:51.
- 224 11. Baldassari AR, Cleveland RJ, Callahan LF. Independent Influences of Current and  
225 Childhood Socioeconomic Status on Health Outcomes in a North Carolina Family  
226 Practice Sample of Arthritis Patients: Influence of Current and Childhood SES on  
227 Health Outcomes. *Arthritis Care Res.* 2013 Aug;65(8):1334–42.
- 228 12. Peters TJ, Sanders C, Dieppe P, Donovan J. Factors associated with change in pain  
229 and disability over time: a community-based prospective observational study of hip  
230 and knee osteoarthritis. *Br J Gen Pract.* 2005;55(512):205–11.
- 231 13. Baldassari AR, Cleveland RJ, Callahan LF. Independent associations of childhood and  
232 current socioeconomic status with risk of self-reported doctor-diagnosed arthritis in a  
233 family-medicine cohort of North-Carolinians. *BMC Musculoskelet Disord* [Internet].  
234 2013 Dec;14(1). Available from:  
235 [http://bmcmusculoskeletdisord.biomedcentral.com/articles/10.1186/1471-2474-14-](http://bmcmusculoskeletdisord.biomedcentral.com/articles/10.1186/1471-2474-14-327)  
236 327
- 237 14. Antony B, Jones G, Jin X, Ding C. Do early life factors affect the development of  
238 knee osteoarthritis in later life: a narrative review. *Arthritis Res Ther.* 2016;18(1):202.
- 239 15. Rodríguez-Amado J, Moreno-Montoya J, Alvarez-Nemegyei J, Goycochea-Robles  
240 MV, Sanin LH, Burgos-Vargas R, et al. The Social Gap Index and the prevalence of  
241 osteoarthritis in the community: a cross-sectional multilevel study in Mexico. *Clin*  
242 *Rheumatol.* 2015;35(1):175–82.
- 243 16. López Alonso SR, Martínez Sánchez CM, Romero Cañadillas AB, Navarro Casado F,  
244 González Rojo J. Propiedades métricas del cuestionario WOMAC y de una versión  
245 reducida para medir la sintomatología y la discapacidad física. *Aten Primaria.* 2009  
246 Nov;41(11):613–20.
- 247 17. Espinoza-Cuervo G, Guillermin F, Rat A-C, Duarte-Salazar C, Alemán-Hernández S-  
248 I, Vergara-Álvarez Y, et al. Transculturización y validación al español del  
249 Cuestionario específico de artrosis de miembros inferiores y calidad de vida  
250 AMICAL: Arthrose des Membres Inférieurs et Qualité de vie AMIQUAL. *Reumatol*  
251 *Clínica.* 2014;10(4):201–74.
- 252 18. González VM, Stewart A, Ritter PL, Lorig K. Translation and validation of arthritis  
253 outcome measures into Spanish. *Arthritis Rheum.* 1995;38(10):1429–46.
- 254 19. Gutiérrez JP, Díaz-Acosta R, Shiba-Matsumoto AR. Medición simplificada del nivel  
255 socioeconómico en encuestas breves: propuesta a partir de acceso a bienes y servicios.  
256 *Salud Pública México.* 2015 Jul 8;57(4):298.

257 20. Berger E, Castagné R, Chadeau-Hyam M, Bochud M, d’Errico A, Gandini M, et al.  
 258 Multi-cohort study identifies social determinants of systemic inflammation over the  
 259 life course. Nat Commun. 2019;10(1):773.

260

261 **Table 1. Patient characteristics**

	<b>Mean ± SD</b>	
<b>Age, years</b>	69.5 ± 10.2	
<b>Body Mass Index, kg/m<sup>2</sup></b>	28.4 ± 4.9	
<b>WOMAC Score</b>	44.6 ± 20.3	
<b>AMICAL Score</b>	235.6 ± 73.8	
<b>HAQ-DI Score</b>	1.14 ± 0.65	
	<b>n</b>	<b>%</b>
<b>Sex, female</b>	117	80
<b>Smoking history, pack years</b>		
0	93	64
>0, ≤ 5	25	17
>5, ≤ 10	7	5
>10, ≤ 15	4	3
≥15	17	11
<b>Diabetes</b>	41	28
<b>Hypertension</b>	76	52
<b>Education</b>		
Less than elementary (<6 years)	25	17
Elementary school (6 years)	29	20
Middle-school (9 years)	31	21
High-school (9 years)	39	27
College level or above	22	15
<b>Occupation type</b>		
Manual labor	67	47
Non-managerial office work	30	21
Managerial	22	15
Home	25	17
<b>Estimated income quintile</b>		
I or II	21	14
III	30	21
IV	31	21
V	64	44
<b>Paternal education</b>		
Less than elementary (<6 years)	48	36
Elementary school (6 years)	55	41
Middle-school (9 years)	12	9
High-school (9 years)	7	5
College level or above	13	9
<b>Maternal education</b>		



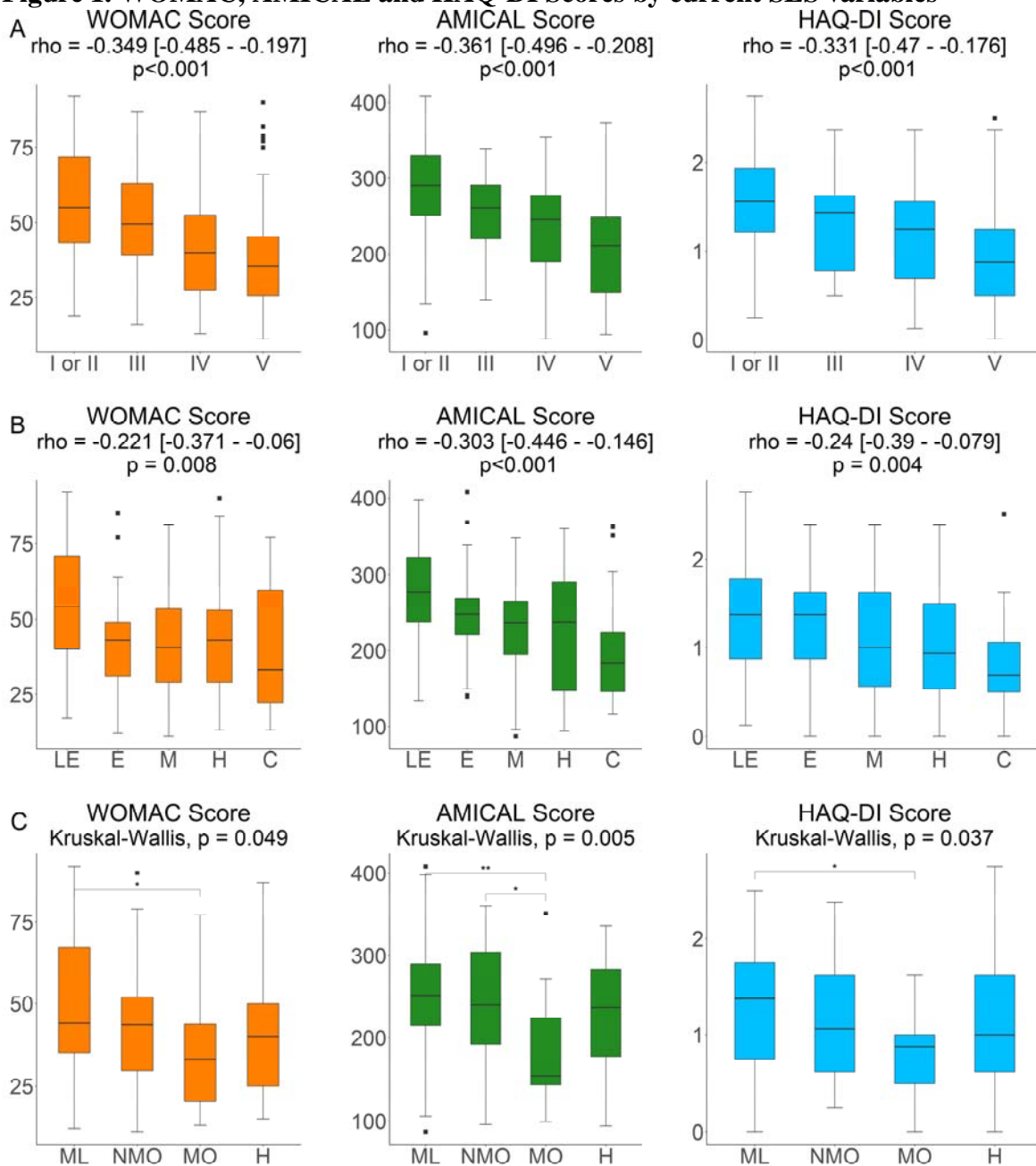
Less than elementary (<6 years)	66	45
Elementary school (6 years)	53	36
Middle-school (9 years)	7	5
High-school (9 years)	11	8
College level or above	4	3
<b>Paternal occupation</b>		
Manual labor	111	79
Non-managerial office work	10	7
Managerial	20	14
<b>Maternal occupation</b>		
Manual labor	36	25
Non-managerial office work	9	6
Managerial	4	3
Home	94	66

262 SD: Standard Deviation; kg/m<sup>2</sup>: kilograms per meter squared; WOMAC: Western Ontario and MacMaster  
263 Universities Osteoarthritis Index; AMICAL: Osteoarthritis of Lower Limbs and Quality of Life; Health  
264 Assessment Questionnaire Disability Index

265

266

**Figure 1. WOMAC, AMICAL and HAQ-DI Scores by current SES variables**



267

268

269

270

Outcome scores by A) Estimated Income Quintile B) Education level and C) Occupation type. Spearman analysis for trend was conducted for A and B. Kruskal-Wallis testing was conducted for C, with post-hoc Dunn tests with Bonferroni correction.

271

272

WOMAC: Western Ontario and MacMaster Universities Osteoarthritis Index; AMICAL: Osteoarthritis of Knee and Hip and Quality of Life; HAQ-DI: Stanford Health Assessment Questionnaire Disability Index.

273

274

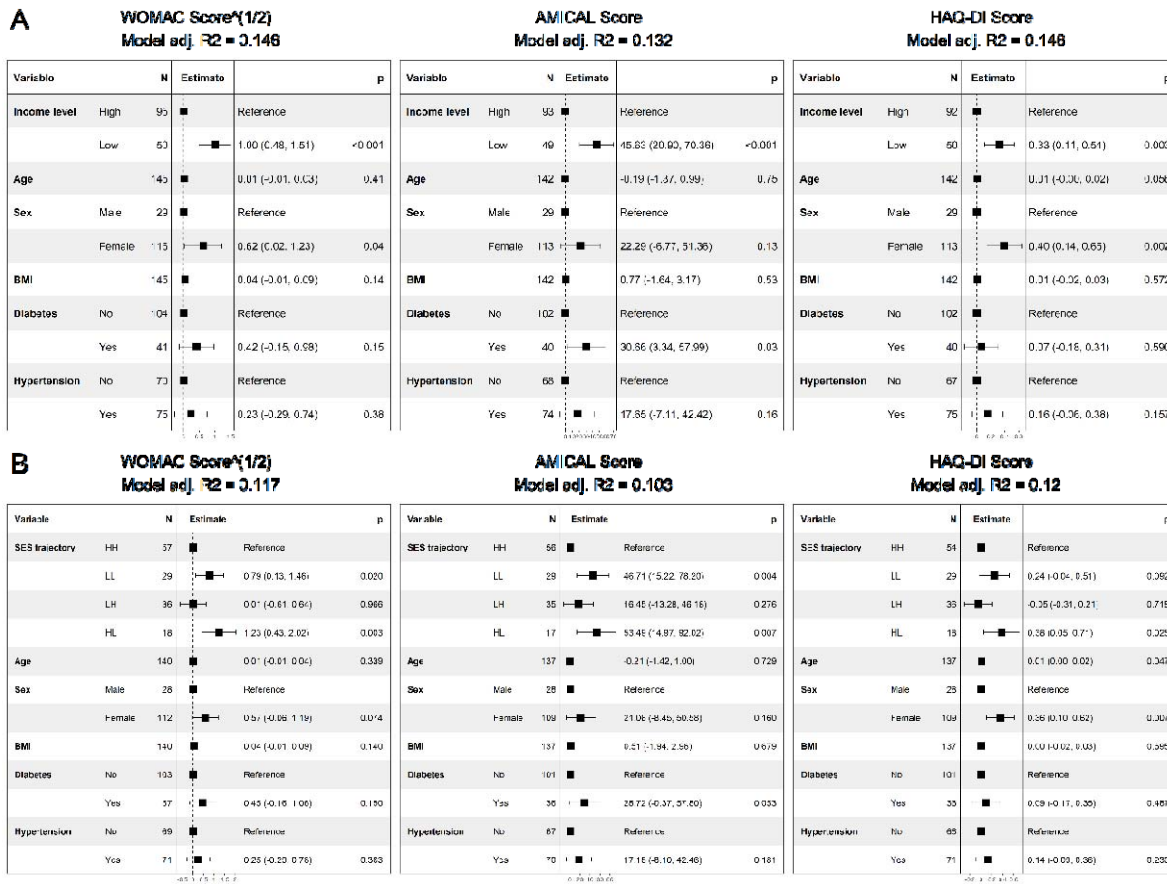
275

For education level, LE: less than elementary (<6 yr), E: elementary (6 years), M: Middle-school (9 years), H: High-school (12 years), C: College-level or higher (>12 years). For occupation type, H: Home, ML: Manual Labor, NMO: Non-managerial office work, MO: Managerial office work.

276

\*Significant at the p<0.05 level; \*\* Significant at the p<0.01 level

277 **Figure 2. Linear regression models of effect of current income level and SES**  
 278 **Trajectory on WOMAC, AMICAL and HAQ-DI scores**



279  
280

A) Beta coefficients of regression models only including current income level.  
 B) Beta coefficients of regression models including Socio-Economic Status (SES) Trajectory

281  
282  
283  
284  
285  
286

HH: High Maternal Education/ High Income; LL: Low Maternal Education/ Low Income; LH: Low Maternal Education/ High Income; HL: High Maternal Education/ Low Income

287 WOMAC: Western Ontario and MacMaster Universities Osteoarthritis Index; AMICAL: Osteoarthritis of  
 288 Knee and Hip and Quality of Life; HAQ-DI: Stanford Health Assessment Questionnaire Disability Index;  
 289 SES: Socio-Economic Status; BMI: Body Mass Index (kg/m<sup>2</sup>)

290