

1 **PLOS ONE**

2 **Changes in Apolipoprotein A1 and B, Glucose Metabolism, and Skeletal Muscle Mass in**  
3 **Peripheral Artery Disease after Endovascular Treatment: A Pilot Study**

4

5 Takeshi Ikeda<sup>1</sup>, Hidenori Komiyama<sup>2\*</sup>, Tomoyo Miyakuni<sup>1</sup>, Masamichi Takano<sup>1</sup>, Masato  
6 Matsushita<sup>1</sup>, Nobuaki Kobayashi<sup>1</sup>, Kuniya Asai<sup>1</sup>, Wataru Shimizu<sup>3</sup> and Yasushi Miyauchi<sup>1</sup>

7

8 <sup>1</sup> Cardiovascular Medicine, Medical School Chiba Hokusoh Hospital, 270-1613 Chiba, Japan.

9

10 <sup>2</sup> Cardiovascular Medicine, Nippon Medical School Musashikosugi Hospital, 211-8533

11 Kanagawa, Japan.

12

13 <sup>3</sup> Cardiovascular Medicine, Nippon Medical School, Tokyo 113-8603, Japan.

14

15 \* Corresponding author

16 E-mail: [h-komiyama0317@nms.ac.jp](mailto:h-komiyama0317@nms.ac.jp)

17

18

19

**NOTE: This preprint reports new research that has not been certified by peer review and should not be used to guide clinical practice.**

## 20 **Abstract**

21           Peripheral artery disease impairs walking and physical activity, resulting in further  
22 loss of skeletal muscle. However, peripheral artery disease can be treated with endovascular  
23 treatment. The thigh muscle has been shown to correlate with systemic skeletal muscle  
24 volume. We assessed the changes in the metabolism of apolipoproteins A1 and B, blood  
25 glucose, and thigh muscle mass after endovascular treatment in above-the-knee peripheral  
26 artery disease where vessels supply the thigh muscle. Mid-thigh muscle volume was  
27 measured with computed tomography before and at 6 months after endovascular treatment.  
28 Apolipoproteins A1 and B, fasting blood glucose, post-load (75 g oral glucose tolerance test)  
29 2 h-blood glucose, and glycated hemoglobin A1c (HbA1c) levels were measured  
30 concomitantly. The relationships between changes in apolipoproteins A1, apolipoproteins B,  
31 blood glucose, post-oral glucose tolerance test 2 h-blood glucose, Rutherford classification,  
32 and gain or loss of thigh muscle were investigated. Thigh muscle mass did not correlate with  
33 changes in apolipoproteins A1, B, fasting glucose, post-oral glucose tolerance test 2 h-blood  
34 glucose, HbA1c, and Rutherford classification. Among patients with muscle gain post-  
35 endovascular treatment, apolipoproteins A1 increased significantly, while apolipoproteins B  
36 levels were similar. Post-oral glucose tolerance test 2 h-blood glucose levels decreased.  
37 Preferable metabolic changes were observed in patients with skeletal muscle gain contrasted  
38 with muscle loss.

39

40 **Keywords:** Apolipoproteins; Endovascular treatment; Glucose metabolism; Peripheral artery  
41 disease; Risk factors; Skeletal Muscle

42

## 43 **Introduction**

44 Skeletal muscles modulate lipid and glucose metabolism, while lipids and glucose  
45 regulate skeletal muscles and vice versa [1,2]. Accordingly, lipids and glucose contribute to  
46 the development and progression of atherosclerosis; thus, the gain or loss of skeletal muscle  
47 is associated with the patients' vulnerability to cardiovascular events and all-cause mortality  
48 [3].

49 Using skeletal muscles to maintain physical activity [4] influences lipid metabolism [1,2].  
50 Moreover, when receiving statins, the blood levels of apolipoprotein A1 (Apo A1) and B  
51 (Apo B) are reportedly significant predictors of myocardial infarction and all-cause mortality  
52 among patients with known coronary artery disease. Therefore, these markers may be more  
53 suitable for cardiovascular risk assessment [5]. Among atherosclerotic lipid and glucose  
54 parameters, glycated hemoglobin A1c (HbA1c) / A1 [6] and Apo A1 / B [7] have emerged as  
55 markers used to evaluate the atherosclerotic status of patients.

56 Among the atherosclerotic factors, glucose tolerance impairment carries a high risk of all-  
57 cause mortality and cardiovascular events [8]. Glucose tolerance is usually evaluated by  
58 measuring blood glucose levels 2 h after loading 75 g of glucose, an examination otherwise  
59 known as the oral glucose tolerance test (OGTT). The association between impaired OGTT  
60 and atherosclerosis is reportedly stronger than that between fasting blood glucose (FBG) or  
61 HbA1c level and atherosclerosis [9]. Since skeletal muscles regulate the storage and delivery  
62 of glucose [10], gain or loss of skeletal muscle may be linked to glucose metabolism.

63 Additionally, Apo A1 reportedly increases glucose consumption in skeletal muscles and  
64 improves glucose uptake, leading to amelioration of glucose tolerance [11,12]. In contrast,

65 high blood glucose down-regulates apolipoprotein M expression, influencing Apo A1 levels  
66 [13,14]. Thus, Apo A1 and diabetes correlate bidirectionally, leading to a vicious cycle [15].

67 A previous report demonstrated that the volume of ischemic skeletal thigh muscle among  
68 patients with above-the-knee peripheral artery disease (PAD) changes before and after  
69 revascularization of occlusive iliofemoral arteries supplying thigh muscle after endovascular  
70 treatment (EVT) [16]. PAD limits blood flow during ambulation, manifesting as intermittent  
71 claudication (IC). In addition, PAD impairs the patients' physical activity, thereby  
72 predisposing them to a sedentary lifestyle. A sedentary lifestyle is linked to further blood  
73 sugar elevation and skeletal muscle loss through the inflammatory cascade [17,18]. PAD can  
74 be treated by ameliorating IC and promoting physical activity after EVT [19]. IC is generally  
75 classified according to the Rutherford classification [20]. However, the association between  
76 metabolic parameters and skeletal muscle mass in PAD remains unclear.

77 This study aimed to investigate the relationships between Apo A1 and B levels, glucose  
78 metabolism, changes in symptoms according to Rutherford classification, and gain or loss of  
79 skeletal muscle mass among patients with above-the-knee PAD following EVT. The findings  
80 in this pilot study would pave the way for an enhanced understanding of the relationship  
81 between lipid and glucose metabolism in relation to skeletal muscle mass after EVT in a  
82 clinical setting.

## 83 **Materials and Methods**

### 84 **Study design**

85 This was a single-center, prospective, observational pilot study. Patients (14 with  
86 ipsilateral and eight with bilateral lesions) with consecutive lower extremity above-the-knee

87 iliofemoral PAD with symptomatic IC classified according to the Rutherford criteria were  
88 prospectively registered between 2016 and 2020. All patients were scheduled to undergo  
89 elective EVT for iliofemoral lesions. To exclude and minimize the drug effects, prescribed  
90 drug treatment was started at least 1 month before their enrollment in the study and  
91 maintained throughout the remaining duration of the study.

92 Patients undergoing maintenance hemodialysis and critical ischemia were excluded from this  
93 study because these factors are related to excessive skeletal muscle loss [21,22]. The  
94 institutional review board of the Nippon Medical School Chiba Hokusoh Hospital approved  
95 this study (IRB number: 504) on April 25, 2016. The study was conducted in accordance with  
96 the tenets of the Declaration of Helsinki. Signed informed consent was obtained from all the  
97 patients. Fig 1 shows a flowchart of the study design.

98 **Fig 1. Study design flowchart.**

99 A total of 22 patients with lower extremity PAD with iliofemoral lesions were enrolled.  
100 Blood tests, 75-g OGTTs, and computed tomography (CT) scans of the mid-thigh level of the  
101 legs were performed upon admission and at 6 months after EVT.

## 102 **Endovascular treatment**

103 Patients intolerant to medications or contrast agents did not participate in the study.  
104 All patients were administered dual antiplatelet therapy for at least 7 days before EVT. At the  
105 start of the procedure, weight-adjusted intravenous heparin was administered with a target  
106 activated clotting time of more than 300 s. After crossing the guidewire through the target  
107 lesions, lesions were dilated using a suitable-sized balloon. The operator decided the size of  
108 the balloon. The stent diameter would exceed the reference diameter by approximately 1 mm.  
109 Post-dilatation was performed using a balloon shorter than the stent to avoid causing stent

110 edge dissection. Stent placement was performed if the flow limitation or residual stenosis was  
111 more than 30% of the elastic recoil remaining in the target vessels. EPIC stents (Boston  
112 Scientific, Massachusetts) and SMART stents (Cordis Co, Florida) were used during the  
113 above procedure. Although efforts were made to complete the procedure with single stent  
114 placement, up to multiple stents were placed as governed by the necessity to achieve at least  
115 30% of residual stenosis in the target lesions. Vascular patency after endovascular treatment  
116 was evaluated by the ankle-brachial index (ABI) value, which would remain throughout the  
117 study.

## 118 **Measurement of the thigh muscle area**

119 The skeletal muscles were assessed using the cross-sectional single-slice CT, which  
120 measured the muscle volume [23]. A 64-slice CT scan, using the Toshiba Aquilion 64 system  
121 (Toshiba Medical Systems, Otawara, Japan), of the legs was performed before EVT and six  
122 months following the procedure. The cross-sectional area of the mid-thigh of both legs,  
123 between the pubic symphysis and the inferior condyle of the femur, was measured [24]. The  
124 thigh muscle area was measured using a commercial workstation (SYNAPSE; Fujifilm,  
125 Tokyo, Japan) (Fig 2). Patients were further divided into skeletal muscle gain or loss groups  
126 according to the change in the skeletal muscle area before and six months after EVT to  
127 explore the impact of muscle on metabolisms.

128 **Fig 2. Measurement of the mid-thigh muscle area.** The thigh muscle area was measured at the mid-point  
129 cross-sections of 1 and 2. ① Upper edge: mid-point of the upper margin of the greater trochanter and the lower  
130 margin of the femoral condyles. ② Lower edge: mid-point of the upper margin of the patella and the lower  
131 margin of the patella

## 132 **Measurement of Apo A1 and B**

133 Serum concentrations of Apo A1 and Apo B were analyzed using immune  
134 nephelometry (Sekisui Medical Ltd., Tokyo, Japan) and measured on admission and at 6  
135 months after EVT. The numeric values of HbA1c/Apo A1 and Apo B/Apo A1 were  
136 calculated according to the measured values.

## 137 **OGTT and glycated HbA1c**

138 Glycated HbA1c levels (normal limit <6.5%, 47 mmol/mol) were measured to  
139 evaluate glucose control. OGTT was performed to assess glucose tolerance. OGTT was  
140 performed in the morning upon breaking an overnight fast of 8–14 h. Blood samples were  
141 taken before consuming 75 g of glucose dissolved in 250–300 mL of water and at 30 min, 60  
142 min, and 120 min after. OGTT was performed at the time of admission and 6 months after  
143 EVT.

## 144 **ABI measurement**

145 The ABI was measured using a Colin Wave-form analyzer (BP-203RPE III; Omron  
146 Colin, Tokyo, Japan), according to the recommendations of the American Heart Association  
147 [25]. The ABI was measured on admission and at 6 months after discharge.

## 148 **Statistical analyses**

149 Binary or categorical data are presented as frequencies or percentages. Continuous  
150 variables are expressed as means  $\pm$  standard deviations or medians with interquartile ranges  
151 (IQRs). The Shapiro–Wilk test was used to assess whether variables were normally

152 distributed, while the chi-square test was used to assess dichotomous variables. The possible  
153 correlation analyses were performed with Spearman correlation analysis among the changes  
154 in the thigh muscle area after EVT, Apo A1 and B, fasting glucose (FBG), post 2 h-blood  
155 glucose (OGTT-2hrBG), HbA1c, Rutherford classification, and the muscle areas in the mid-  
156 thigh before and 6 months after EVT. The graphical correlation matrix displaying the positive  
157 and negative correlations between the changes in variables was obtained using the R package  
158 “Corrplot” (<https://github.com/taiyun/corrplot>). The concentrations of apolipoproteins and  
159 glucose, along with the metrics of atherosclerotic parameters, were compared using a single-  
160 tailed paired t-test. The PWR (Basic Functions for Power Analysis) package was used to  
161 analyze statistical power [26]. The statistical analyses were performed using the R software  
162 (ver 3.6.2; The R Foundation for Statistical Computing, Vienna, Austria). P-values less than  
163 0.05 were considered statistically significant.

## 164 **Results**

165 The clinical characteristics of the patients are summarized in Table 1. The mean age  
166 of the patients was  $72.4 \pm 7.4$  years. Most patients were male (91%), and characteristics such  
167 as hypertension (82%) and dyslipidemia (86%) were prevalent. Baseline clinical symptoms  
168 were classified according to the Rutherford classification of PAD, which included the  
169 following categories: category 1 (n = 11, 50.00%), category 2 (n = 10, 45.45%), and category  
170 3 (n = 1, 4.55%). All patients received dual antiplatelet therapy before EVT. The location and  
171 characteristics of the lesions are summarized in Table 2. There was no significant difference  
172 between gain and loss of skeletal muscle. Clinical symptoms improved after EVT, which was  
173 sustained during the study period. Six months after EVT, 82% (n = 18) of the patients were  
174 classified as category 0 and 18% (n = 4) as category 1. All patients were successfully  
175 discharged the day after EVT without complications. Vascular patency was maintained



176 throughout the study period and verified based on the ABI value after EVT (30 ischemic  
 177 lower limbs: before EVT  $0.79 \pm 0.14$ , 6 months after EVT;  $1.06 \pm 0.16$ , 14 non-ischemic  
 178 lower limbs: before EVT  $1.01 \pm 0.10$ , 6 months after EVT;  $1.05 \pm 0.14$ ).

179 **Table 1. Baseline characteristics of the enrolled patients.**

	All	Gain of skeletal muscle	Loss of skeletal muscle	P-value
Number of patients	22	12	10	
Age (years)	$72.4 \pm 7.4$	$69.7 \pm 7.5$	$75.6 \pm 6.2$	0.06
Male	20 (91)	12 (100)	8 (80)	N. S
Hypertension	18 (82)	10 (83)	8 (80)	N. S
Dyslipidemia	19 (86)	10 (83)	8 (80)	N. S
Diabetes	10 (45)	6 (50)	4 (40)	N. S
HbA1c (%)	$6.1 \pm 0.7$	$5.8 \pm 0.4^*$	$6.5 \pm 0.8^*$	0.0175*
BMI	$24.4 \pm 3.5$	$25.1 \pm 2.6$	$23.5 \pm 4.4$	N. S
Past smoker	10 (45)	6 (50)	4 (40)	N. S
Rutherford classification	$1.5 \pm 0.6$	$1.6 \pm 0.5$	$1.5 \pm 0.7$	N. S
Medications				
Dual antiplatelet therapy	22 (100)	12 (100)	10 (100)	N. S
Aspirin	19 (86)	10 (83)	9 (90)	N. S
Clopidogrel	9 (41)	5 (42)	4 (40)	N. S
Cilostazol	6 (27)	2 (8)	4 (40)	N. S
Prasugrel	6 (27)	4 (33)	2 (20)	N. S
Statin	21 (95)	11 (92)	10 (100)	N. S
ACE-I / ARB	22 (100)	12 (100)	10 (100)	N. S

β-blocker 15 (68) 8 (67) 7 (70) N. S

180 Data are presented as numbers (%). p \* < 0.05, p \*\* < 0.01, Not significant (N. S). ACE-I, angiotensin-  
 181 converting enzyme inhibitor; ARB, angiotensin II receptor blocker. Statin regimen is listed in Supplementary  
 182 Table 1

183 **Table 2. Location and characteristics of lesions.**

Variables	All	Gain of skeletal muscle	Loss of skeletal muscle	p-value
Location of lesions	N = 30	N = 17	N = 13	
Unilateral lesion	14 (64)	7 (58)	7 (70)	N.S
Bilateral lesions	8 (36)	5 (42)	3 (30)	
Iliac artery	16 (53)	10 (59)	6 (46)	N.S
Superficial femoral artery	9 (30)	6 (35)	5 (38)	N.S
Common femoral artery	1 (3)	0 (0)	1 (8)	N.S
Popliteal artery	3 (13)	1 (6)	0 (0)	N.S
Superficial + popliteal artery	1 (5)	0 (0)	1 (8)	N.S
TASC II classification				
Type A	17 (58)	10 (59)	7 (54)	N.S
Type B	6 (20)	3 (18)	3 (23)	N.S
Type C	2 (6)	0 (0)	2 (15)	N.S
Type D	5 (16)	4 (23)	1 (8)	N.S
Stent implantation	24 (80)	15 (88)	9 (70)	N.S

184 Data are presented as numbers (%). N.S, Not significant; TASC, Trans-Atlantic Intersociety Consensus

## 185 **Thigh muscle area before and after EVT**

186           The thigh muscle area of each patient changed after EVT (delta muscle area:  $2.5 \pm 8.1$   
187  $\text{cm}^2$ ,  $n = 22$ ). Twelve patients gained skeletal muscle (delta thigh muscle area was positive:  
188  $8.4 \pm 5.9 \text{ cm}^2$ ), and 10 patients lost skeletal muscle (delta thigh muscle area was negative: -  
189  $4.7 \pm 2.4 \text{ cm}^2$ ) according to the change in the skeletal muscle area before and six months after  
190 EVT (Table 3).

191

192

193 **Table 3. Change in muscle area, Apolipoprotein A1, Apolipoprotein B, glucose metabolism, and Rutherford classification.**

All (n=22)	Before	After 6 months	P-value	Delta value
Muscle area (cm <sup>2</sup> )	239.8 ± 34.8	243.1 ± 40.8	0.21	2.5 ± 8.1
Apo A1 (mg/dl)	119.0 ± 17.4 **	129.6 ± 19.6 **	0.0027	10.7 ± 14.7
Apo B (mg/dl)	76.3 ± 17.3 *	81.3 ± 17.7 *	0.0404	5.0 ± 9.4
HbA1c (%)	6.1 ± 0.7	6.2 ± 0.8	0.74	0.073 ± 0.517
Apo B/Apo A1	0.65 ± 0.16	0.64 ± 0.16	0.11	-0.012 ± 0.081
HbA1c/Apo A1	0.053 ± 0.011 *	0.049 ± 0.011 *	0.0489	0.073 ± 0.517
Fasting Blood Glucose (mg/dl)	110.8 ± 20.4	116.6 ± 24.1	0.24	5.9 ± 22.5
2 hr-OGTT Blood Glucose (mg/dl)	193.5 ± 78.9	182.5 ± 79.6	0.29	-11.0 ± 48.0
Rutherford classification	1.5 ± 0.6	0.2 ± 0.4	p < 0.001	-1.4 ± 0.8

194

195

196

	Gain of skeletal muscle n = 12			Loss of skeletal muscle n = 10		
	before	6 months	P-value	before	6 months	P-value
Delta muscle area (cm <sup>2</sup> )	NA	8.41 ± 5.93	NA	NA	-4.67±2.41	NA
Apo A1 (mg/dl)	121.8 ± 15.1 **	136.5 ± 19.5 **	p < 0.001	115.6 ± 20.1	121.4 ± 17.1	0.32
Apo B (mg/dl)	76.4 ± 19.2	80.5 ± 17.0	0.10	78.6 ± 19.8	82.3 ± 19.3	0.24
HbA1c (%)	5.8 ± 0.4	6.0 ± 0.4	0.97	6.5 ± 0.8	6.5 ± 1.1	0.50
Apo B/Apo A1	0.64 ± 0.17	0.60 ± 0.17	0.069	0.69 ± 0.19	0.68 ± 0.16	0.66
HbA1c/Apo A1	0.049 ± 0.007 **	0.045 ± 0.008 **	0.007	0.058 ± 0.004	0.054 ± 0.004	0.37
Fasting Blood Glucose (mg/dl)	110.2 ± 16.8	111.4 ± 22.2	0.83	111.5 ± 16.8	122.9 ± 25.9	0.094
2 hr-OGTT Blood Glucose (mg/dl)	189.7 ± 67.5	170.6 ± 69.7	0.075	198.1 ± 94.4	196.7 ± 91.8	0.93
Rutherford classification	1.6 ± 0.5 ***	0.3 ± 0.5 ***	p < 0.001	1.5 ± 0.7 ***	0.1 ± 0.3 ***	p < 0.001

197 p \*<0.05, p \*\*<0.01, p \*\*\* < 0.001 Not Applicable (NA).

198 **Correlation analysis among the change in Apo A1, B, glucose**  
199 **metabolism, intermittent claudication symptom, and skeletal**  
200 **muscle mass**

201 The analyses were performed to investigate possible correlations among changes in  
202 the delta values of Apo A1 and B, fasting glucose, post 2 h-blood glucose, HbA1c,  
203 Rutherford classification, and delta thigh muscle area after EVT. Delta muscle area and delta  
204 value of each parameter were not significantly correlated (Figure 3). Equivalent correlation  
205 analyses were performed in muscle gain and muscle loss patients (Supplementary Figures).  
206 Among the measured parameters, delta Apo A1 correlated with delta HbA1c/Apo A1 (R = -  
207 0.76,  $p < 0.01$ ) and delta B (R = -0.58,  $p = 0.005$ ); delta Apo B correlated with B/A1 (R =  
208 0.43,  $p=0.005$ ); delta HbA1c correlated with HbA1c/Apo A1 (R = 0.58,  $p < 0.01$ ); delta  
209 HbA1c/Apo A1 correlated with delta Apo B/A1 (R = 0.45,  $p = 0.038$ ) and delta Rutherford  
210 classification (R = 0.51,  $p = 0.015$ ); delta FBG correlated with delta OGTT-2hr BG (R =  
211 0.49,  $p = 0.019$ ) and Rutherford classification (R = 0.45,  $p = 0.034$ ) (Fig 3).

212

213 **Fig 3. Correlation matrix between delta values of Apo A1, B, fasting glucose, post 2 h-blood glucose,**  
214 **HbA1c, Rutherford classification, and delta thigh muscle area after EVT.**

215 A correlation matrix between delta values is drawn based on Spearman correlation analysis.  
216 Correlation coefficients are colored according to the value combined with significant values,  
217 and  $p$ -values  $\geq 0.05$  were considered insignificant and have been crossed out.

## 218 **Glucose control and glucose tolerance before and after EVT**

219 Overall, blood glucose levels did not change while fasting (pre:  $110.8 \pm 20.4$  mg/dL,  
220 6 months:  $116.6 \pm 24.1$  mg/dL) and 2 h after OGTT (pre:  $193.5 \pm 78.9$  mg/dL; 6 months:  
221  $182.5 \pm 79.6$  mg/dL) (Figure 4). HbA1c did not change either (pre:  $6.1 \pm 0.4\%$ , 6 months:  $6.2$   
222  $\pm 0.4\%$ ) and was similar among patients with skeletal muscle gain (pre:  $5.8 \pm 0.4\%$ ,  
223  $\pm 0.4\%$ ) and loss (pre:  $6.5 \pm 0.8\%$ , 6 months:  $6.5 \pm 1.1\%$ ) (Table 2).  
224

226

227 **Fig 4. Results of the 75-g OGTT.** 4A: In all the patients, the blood glucose level did not change during fasting  
228 (pre:  $110.8 \pm 20.4$  mg/dL, 6 months:  $116.6 \pm 24.1$  mg/dL), 30 min after OGTT (pre:  $182.3 \pm 38.4$  mg/dL, 6  
229 months:  $181.3 \pm 41.2$  mg/dL), 60 min after OGTT (pre:  $210.5 \pm 59.5$  mg/dL, 6 months:  $205.2 \pm$   
230  $56.6$  mg/dL), and 2 h after OGTT (pre:  $193.5 \pm 78.9$  mg/dL, 6 months:  $182.5 \pm 79.6$  mg/dL). 4B: In  
231 patients with gain of skeletal muscle, the blood glucose level did not change during fasting (pre:  $110.2 \pm 16.8$   
232 mg/dL, 6 months:  $111.4 \pm 22.2$  mg/dL), 30 min after OGTT (pre:  $184.2 \pm 40.0$  mg/dL, 6 months:  $178.5 \pm 47.7$   
233 mg/dL), and 60 min after OGTT (pre:  $210.2 \pm 65.7$  mg/dL, 6 months:  $205.8 \pm 67.7$  mg/dL) but decreased 2 h  
234 after OGTT (pre:  $189.7 \pm 67.5$  mg/dL, 6 months:  $170.6 \pm 69.7$  mg/dL,  $p = 0.0754$ ). 4C: In patients with loss of  
235 skeletal muscle, the fasting glucose level was increased (pre:  $111.5 \pm 16.8$  mg/dL, 6 months:  $122.9 \pm 25.9$   
236 mg/dL,  $p = 0.0939$ ), but there was no alteration in 30 min after OGTT (pre:  $180.1 \pm 38.5$  mg/dL, 6 months:  
237  $184.7 \pm 34.1$  mg/dL), 60 min after OGTT (pre:  $211.0 \pm 54.7$  mg/dL, 6 months:  $204.5 \pm 43.3$  mg/dL), and 2 h  
238 after OGTT (pre:  $198.1 \pm 94.4$  mg/dl, 6 months:  $196.7 \pm 91.8$  mg/dl).  
239  
240

241 In patients with skeletal muscle gain, the glucose level did not change during fasting (pre:  
242  $110.2 \pm 25.0$  mg/dL, 6 months:  $111.4 \pm 22.2$  mg/dL) but tended to decrease 2 h after OGTT  
243 (pre:  $189.7 \pm 67.5$  mg/dL, 6 months:  $170.6 \pm 69.7$  mg/dL,  $p = 0.0754$ ) (Figure 4B). In patients  
244 with loss of skeletal muscle, their fasting glucose level tended to increase (pre:  $111.5 \pm 16.8$   
245 mg/dl, 6 months:  $122.9 \pm 25.9$  mg/dl,  $p = 0.0939$ ), and their blood glucose levels 2 h after

246 OGTT remained unaltered (pre:  $198.1 \pm 94.4$  mg/dL, 6 months:  $196.7 \pm 91.8$  mg/dL) (Figure  
247 4C).

## 248 **Change of Apo A1 and B before and after EVT**

249 Overall, Apo A1 levels increased after EVT (pre:  $119.0 \pm 17.4$  mg/dL, 6 months:  
250  $129.6 \pm 19.6$  mg/dL,  $p = 0.0027$ ). Apo A1 levels significantly increased in patients with  
251 skeletal muscle gain (pre:  $121.8 \pm 15.1$  mg/dL, 6 months:  $136.5 \pm 19.5$  mg/dL,  $p < 0.001$ )  
252 (Table 2). Apo B levels did not change in patients with either skeletal muscle gain (pre:  $76.4 \pm$   
253  $19.2$  mg/dL, 6 months:  $80.5 \pm 4.9$  mg/dL) or skeletal muscle loss (pre:  $78.6 \pm 19.8$  mg/dL, 6  
254 months:  $82.3 \pm 19.3$  mg/dL) (Table 2).

## 255 **Atherosclerotic metrics of Apo B/Apo A1 and HbA1c/Apo A1**

256 Overall, Apo B/Apo A1 levels (pre:  $0.66 \pm 0.18$ , 6 months:  $0.64 \pm 0.16$ ) decreased in  
257 patients with skeletal muscle gain (pre:  $0.64 \pm 0.18$ , 6 months:  $0.60 \pm 0.17$ ,  $p = 0.0693$ ) but  
258 did not change significantly in those with skeletal muscle loss (pre:  $0.69 \pm 0.19$ , 6 months:  
259  $0.68 \pm 0.16$ ). In addition, HbA1c/Apo A1 significantly decreased (pre:  $0.053 \pm 0.011$ , 6  
260 months:  $0.049 \pm 0.011$ ,  $p = 0.0489$ ) (Table 2). However, the decrease was only significant  
261 among patients with skeletal muscle gain (pre:  $0.049 \pm 0.007$ , 6 months:  $0.045 \pm 0.008$ ,  $p =$   
262  $0.0070$ ) but not in those with skeletal muscle loss (pre:  $0.058 \pm 0.013$ , 6 months:  $0.054 \pm$   
263  $0.012$ ) (Table 2).

## 264 **Discussion**

265 The major findings in this study are as follows: first, there was no significant correlation  
266 between change in muscle area and Apo A1 and Apo B levels, glucose metabolism, and  
267 Rutherford classification. The change in Apo A1 levels negatively correlated with HbA1c/A1



268 and B/A1 changes. Second, when the patients were categorized as having muscle gain or loss  
269 based on the thigh muscle CT after EVT, Apo A1 levels were significantly increased in  
270 patients with skeletal muscle gain after EVT. Additionally, Apo B levels did not change in  
271 patients with skeletal muscle gain or loss. Third, glucose tolerance improved muscle gain,  
272 while fasting glucose levels decreased in patients with muscle loss.

## 273 **Changes in Apo A1 and B, glucose metabolism, intermittent** 274 **claudication symptom, and skeletal muscle mass**

275 While there was no significant correlation between delta muscle area and delta values  
276 of Apo A1 and B, glucose metabolisms, and Rutherford classification, Apo A1 levels were  
277 significantly increased in patients with skeletal muscle gain. Since exercise would increase  
278 Apo A1 levels [27], successful EVT can promote physical activity in patients with PAD,  
279 which is associated with the increase in Apo A1 levels in the present study. While no specific  
280 exercise was implemented in this study, only a modest change in physical activity of walking  
281 after EVT can modify the metabolism to anti-atherosclerotic [28,29]. Apo B levels did not  
282 change significantly in patients with skeletal muscle gain or loss since all the enrolled  
283 patients with PAD underwent statin therapy, which might explain why there was no change.

284 According to the current clinical practice guidelines, initiation of statin therapy is  
285 recommended to prevent subsequent cardiovascular events in established cardiovascular  
286 disorders [30]. The efficacy of statin therapy has been well established in numerous studies.  
287 The statin on-treatment blood level of Apo A1 and Apo B were significant predictors of  
288 myocardial infarction and all-cause mortality in patients with known coronary artery disease  
289 and might be more suitable for assessing cardiovascular risk [5]. Apo A1 functions as a major  
290 component of the high-density lipoprotein complex to clear cholesterol from white blood

291 cells inside the artery walls [31]. WBCs are less likely to become lipid overloaded, transform  
292 into foam cells, and die, contributing to the progression of atherosclerosis [31]. Additionally,  
293 among patients treated with statins, an increase in Apo A1 levels was associated with a  
294 reduced risk of major cardiovascular events, while high-density lipoprotein (HDL)  
295 cholesterol was not [32]. Conversely, Apo B particles are atherogenic and entrapped within  
296 the arterial walls. They initiate and cause persistent inflammation, thus resulting in advanced  
297 atherosclerosis [33].

298 We previously demonstrated that skeletal muscle mass increases after EVT, specifically in  
299 patients with normoglycemic control ( $HbA1c < 6.5$ ) before EVT [34]. Thus, if the PAD  
300 patients were grouped based on skeletal muscle volume gain or loss, patients with skeletal  
301 muscle gain would be considered closer to normoglycemia than those with loss of skeletal  
302 muscle. HbA1c is clinically used to monitor glycemic control among diabetic patients [35].  
303 None of the patients in the present study were obliged to cut caloric intake or seek dietary  
304 guidance, as apparent from the unchanged HbA1c values [36]. Glucose tolerance was  
305 measured among enrolled patients with 75-g OGTT. Blood glucose levels 2 h after 75-g  
306 OGTT have been associated with atherosclerosis more than fasting glucose or HbA1c levels  
307 [9]. Blood glucose is regulated by glucose transporters (GLUTs). Among glucose  
308 transporters, GLUT4 plays a central role in glucose homeostasis [37]. In rodent models,  
309 target disruption of glucose transporters in muscles causes insulin resistance and glucose  
310 intolerance [38]. Additionally, glucose transporters in the thigh muscle are upregulated by  
311 exercise, which improves glucose tolerance [39]. Therefore, muscles function as organs that  
312 control serum glucose levels. In the present study, there was no correlation between the  
313 change in skeletal muscle volume and glucose metabolism; however, PAD patients with  
314 skeletal muscle gain tended to show improved glucose tolerance, while those with skeletal  
315 muscle loss had a deteriorated fasting glucose level. Additionally, while Apo A1 improves

316 glucose tolerance [11,12], high blood glucose levels downregulate Apo A1 expression. In  
317 patients with skeletal muscle gain, Apo A1 levels increased significantly, and glucose  
318 tolerance tended to improve, while blood glucose levels were high in patients with muscle  
319 loss. The results of this study are consistent with those of previous reports [11,12].

## 320 **Metrics of atherosclerosis: HbA1c/Apo A1 and Apo B/Apo A1**

321 Apolipoproteins may be atherogenic or anti-atherogenic and serve as biological  
322 markers. A recent study has shown that the ratio of HbA1c/A1 after myocardial infarction  
323 helps predict all-cause mortality and major adverse cardiac events, including nonfatal  
324 myocardial infarction, cardiac death, and revascularization [6]. In addition, numerous studies  
325 have demonstrated that the Apo B/Apo A1 ratio can be used as a parameter of atherosclerotic  
326 conditions [5]. Recent studies have shown that Apo B/Apo A1 are inadequate to assess the  
327 recurrent risk of cardiovascular events among on-statin-treated patients [40,41]. In the present  
328 study, although there was no significant correlation between changes in skeletal muscle and  
329 delta HbA1c/Apo A1 and Apo B/Apo A1, delta Apo A1 significantly correlated with delta  
330 HbA1c/Apo A1 and Apo B/Apo A1. Accordingly, Apo A1 modified the metrics of  
331 atherosclerosis (HbA1c/Apo A1 and Apo B/Apo A1). Thus, the change in Apo A1 after EVT  
332 would impact atherosclerotic conditions. Additionally, HbA1c/A1 was significantly  
333 decreased among patients with muscle gain after EVT. However, the previous studies lacked  
334 a consecutive long-term follow-up [5,6], and long-term changes should be further studied.

## 335 **Study limitations**

336 This study has several limitations. First, even though the calculated statistical power  
337 was adequate in this preliminary study, recruitment of a larger number of participants  
338 estimated based on the data from this pilot study would strengthen the results further. Second,

339 the observational period was six months, which was relatively short. Observation for a more  
340 extended period is needed to assess whether the multifaceted favorable effect of EVT  
341 continues. Third, we recruited patients with PAD with mild claudication and excluded  
342 patients with below-the-knee lesions, hemodialysis treatment, and critical limb ischemia.  
343 Recent research has revealed that patients with PAD are more likely diabetic, frequently  
344 undergoing hemodialysis treatment, and mostly older than patients with coronary artery  
345 disease, suggesting that patients with PAD visit clinicians only when cardiovascular  
346 pathology has already advanced [42]. The early detection of PAD, as in this study, can confer  
347 significant benefits and delay atherosclerotic progression [43]. Fourth, we did not recruit  
348 patients with neuropathic muscle atrophy, which was common in patients with diabetic  
349 neuropathy [44] or lumbar disc herniation [45], as their presentations could partially overlap  
350 with PAD. Including patients with typical IC would exclude such subsets of patients. Fifth,  
351 we did not implement duplex ultrasound assessment on vascular patency, which represents a  
352 more accurate diagnostic test than resting ABI assessment. Sixth, we did not implement a  
353 specific exercise regimen among the PAD cohort due to institutional limitations. The effect  
354 of supervised exercise after EVT will be explored in a future study. Finally, we did not  
355 objectively evaluate the patient's normal and subsequent physical activity levels. Levels of  
356 physical activity are associated with changes in metabolism after EVT, which were only  
357 based on the Rutherford criteria in this study and were derived from subjective symptoms. To  
358 date, physical activity assessment is largely derived from questionnaires and interviews [46,  
359 47]. Capturing and incorporating the patients' objective baseline physical activity and  
360 changes during the study with new technology such as wearable monitoring devices [48]  
361 would reveal the confounding factor influencing the impact of EVT on the metabolism of  
362 patients with PAD in the upcoming clinical trials [49].

## 363 **Conclusions**

364 This study revealed the unidentified relationships between metabolic parameters and  
365 skeletal muscle mass in clinical settings. EVT had a positive impact on apolipoproteins and  
366 glucose metabolisms in patients with PAD. Notably, in patients with skeletal muscle gain  
367 after EVT, an increase in anti-atherosclerotic apolipoprotein Apo A1 levels and possible  
368 improvement in glucose tolerance are expected. Extended studies are needed to fill the  
369 knowledge gap regarding the regulation of metabolism and skeletal muscle mass.

## 370 **Acknowledgments**

371 We would like to express our overflowing gratitude to all the staff of Nippon Medical  
372 School, Chiba Hokusoh Hospital Cardiovascular Centre, for their valuable therapeutic and  
373 technical support.

## 374 **Author Contributions**

375 TI: HK: conception and design, analysis, interpretation of data, and drafting of  
376 manuscript. TM, MT, MM, NK, KA, MM, HT, WS, and YM: conception and design, critical  
377 revision of manuscript. All authors have read and approved the final manuscript.

378

## 379 **References**

- 380 1. Lipina C, Hundal HS. Lipid modulation of skeletal muscle mass and function. *Journal of*  
381 *cachexia, sarcopenia and muscle*. 2017;8:190-201.
- 382 2. Wang Y, Xu D. Effects of aerobic exercise on lipids and lipoproteins. *Lipids in health and disease*.  
383 2017;16:1-8.
- 384 3. Cruz-Jentoft AJ, Sayer AA. Sarcopenia. *The Lancet*. 2019;393:2636-2646.

- 385 4. Fletcher GF, Landolfo C, Niebauer J, Ozemek C, Arena R, Lavie CJ. Promoting physical activity  
386 and exercise: JACC health promotion series. *Journal of the American College of Cardiology*.  
387 2018;72:1622-1639.
- 388 5. Sniderman A, Furberg C, Keech A, et al. Apolipoproteins versus lipids as indices of coronary  
389 risk and as targets for statin treatment. *The Lancet*. 2003;361:777-780.
- 390 6. Song F, Zhou Y, Zhang K, Liang Y-F, He X, Li L. The role of the plasma glycosylated  
391 hemoglobin A1c/Apolipoprotein AI ratio in predicting cardiovascular outcomes in acute  
392 coronary syndrome. *Nutrition, Metabolism and Cardiovascular Diseases*. 2021;31:570-578.
- 393 7. Bodde MC, Hermans MP, Jukema JW, et al. Apolipoproteins A1, B, and apoB/apoA1 ratio are  
394 associated with first ST-segment elevation myocardial infarction but not with recurrent events  
395 during long-term follow-up. *Clinical Research in Cardiology*. 2019;108:520-538.
- 396 8. Cai X, Zhang Y, Li M, et al. Association between prediabetes and risk of all cause mortality and  
397 cardiovascular disease: updated meta-analysis. *bmj*. 2020;370.
- 398 9. Temelkova-Kurktschiev TS, Koehler C, Henkel E, Leonhardt W, Fuecker K, Hanefeld M.  
399 Postchallenge plasma glucose and glycemic spikes are more strongly associated with  
400 atherosclerosis than fasting glucose or HbA1c level. *Diabetes Care*. 2000;23:1830-1834.
- 401 10. Das DK, Graham ZA, Cardozo CP. Myokines in skeletal muscle physiology and metabolism:  
402 recent advances and future perspectives. *Acta Physiologica*. 2020;228:e13367.
- 403 11. Tang S, Tabet F, Cochran BJ, et al. Apolipoprotein AI enhances insulin-dependent and insulin-  
404 independent glucose uptake by skeletal muscle. *Scientific reports*. 2019;9:1-9.
- 405 12. Fritzen AM, Domingo-Espín J, Lundsgaard A-M, et al. ApoA-1 improves glucose tolerance by  
406 increasing glucose uptake into heart and skeletal muscle independently of AMPK $\alpha$ 2. *Molecular*  
407 *metabolism*. 2020;35:100949.
- 408 13. Christoffersen C, Nielsen LB, Axler O, Andersson A, Johnsen AH, Dahlbäck B. Isolation and  
409 characterization of human apolipoprotein M-containing lipoproteins. *Journal of lipid research*.  
410 2006;47:1833-1843.
- 411 14. Zhang X, Jiang B, Luo G, Nilsson-Ehle P, Xu N. Hyperglycemia down-regulates apolipoprotein  
412 M expression in vivo and in vitro. *Biochimica et Biophysica Acta (BBA)-Molecular and Cell*  
413 *Biology of Lipids*. 2007;1771:879-882.

- 414 15. Xepapadaki E, Nikdima I, Sagiadinou EC, Zvintzou E, Kypreos KE. HDL and type 2 diabetes:  
415 the chicken or the egg? *Diabetologia*. 2021;64:1917-1926.
- 416 16. Miyakuni T, Komiyama H, Takano M, et al. A preliminary pilot study investigating the impact  
417 of endovascular treatment on leg muscle volume in peripheral artery disease and its relation to  
418 baseline glycemic control. *Nutrition, Metabolism and Cardiovascular Diseases*. 2021;31:269-276.
- 419 17. MacDonald TL, Pattamaprapanont P, Pathak P, et al. Hyperglycaemia is associated with  
420 impaired muscle signalling and aerobic adaptation to exercise. *Nature Metabolism*. 2020;2:902-  
421 917.
- 422 18. Hirata Y, Nomura K, Senga Y, et al. Hyperglycemia induces skeletal muscle atrophy via a  
423 WWP1/KLF15 axis. *JCI insight*. 2019;4.
- 424 19. Muscella A, Stefàno E, Marsigliante S. The effects of exercise training on lipid metabolism and  
425 coronary heart disease. *American Journal of Physiology-Heart and Circulatory Physiology*.  
426 2020;319:H76-H88.
- 427 20. Hardman RL, Jazaeri O, Yi J, Smith M, Gupta R. Overview of classification systems in  
428 peripheral artery disease. *Seminars in interventional radiology*. Vol 31: Thieme Medical  
429 Publishers; 2014:378-388.
- 430 21. Kittiskulnam P, Carrero JJ, Chertow GM, Kaysen GA, Delgado C, Johansen KL. Sarcopenia  
431 among patients receiving hemodialysis: weighing the evidence. *Journal of cachexia, sarcopenia  
432 and muscle*. 2017;8:57-68.
- 433 22. Pizzimenti M, Meyer A, Charles AL, et al. Sarcopenia and peripheral arterial disease: a  
434 systematic review. *Journal of Cachexia, Sarcopenia and Muscle*. 2020;11:866-886.
- 435 23. Ma KF, Berends B, Vedder IR, et al. Quantification of muscle mass in the legs of patients with  
436 peripheral arterial occlusive disease: associations between volumetric and cross-sectional single-  
437 slice measurements for identification of atrophy and focal sarcopenia. *J Cardiovasc Surg  
438 (Torino)*. 2019;60:672-678.
- 439 24. Bernard S, LeBlanc P, Whittom F, et al. Peripheral muscle weakness in patients with chronic  
440 obstructive pulmonary disease. *Am J Respir Crit Care Med*. 1998;158:629-634.
- 441 25. Greenland P, Abrams J, Aurigemma GP, et al. Prevention Conference V: Beyond secondary  
442 prevention: identifying the high-risk patient for primary prevention: noninvasive tests of  
443 atherosclerotic burden: Writing Group III. *Circulation*. 2000;101:E16-22.



- 444 26. Champely S, Ekstrom C, Dalgaard P, Gill J, Weibelzahl S, Anandkumar A, et al. Package ‘pwr’.  
445 R package version. 2018:1-2.
- 446 27. Schwartz RS. Effects of exercise training on high density lipoproteins and apolipoprotein AI in  
447 old and young men. *Metabolism-Clinical and Experimental*. 1988;37:1128-1133.
- 448 28. Fletcher GF, Landolfo C, Niebauer J, Ozemek C, Arena R, Lavie CJ. Promoting Physical  
449 Activity and Exercise: JACC Health Promotion Series. *J Am Coll Cardiol*. 2018;72:1622-1639.
- 450 29. Moghetti P, Balducci S, Guidetti L, et al. Walking for subjects with type 2 diabetes: A systematic  
451 review and joint AMD/SID/SISMES evidence-based practical guideline. *Nutr Metab Cardiovasc*  
452 *Dis*. 2020;30:1882-1898.
- 453 30. Ridker PM, Danielson E, Fonseca FA, et al. Reduction in C-reactive protein and LDL cholesterol  
454 and cardiovascular event rates after initiation of rosuvastatin: a prospective study of the  
455 JUPITER trial. *The Lancet*. 2009;373:1175-1182.
- 456 31. Vanags LZ, Wong NKP, Nicholls SJ, Bursill CA. High-Density Lipoproteins and Apolipoprotein  
457 A-I Improve Stent Biocompatibility. *Arterioscler Thromb Vasc Biol*. 2018;38:1691-1701.
- 458 32. Boekholdt SM, Arsenault BJ, Hovingh GK, et al. Levels and changes of HDL cholesterol and  
459 apolipoprotein AI in relation to risk of cardiovascular events among statin-treated patients: a  
460 meta-analysis. *Circulation*. 2013:CIRCULATIONAHA. 113.002670.
- 461 33. Sniderman AD, Thanassoulis G, Glavinovic T, et al. Apolipoprotein B Particles and  
462 Cardiovascular Disease: A Narrative Review. *JAMA Cardiol*. 2019;4:1287-1295.
- 463 34. Miyakuni T, Komiyama H, Takano M, et al. A preliminary pilot study investigating the impact  
464 of endovascular treatment on leg muscle volume in peripheral artery disease and its relation to  
465 baseline glycemic control. *Nutr Metab Cardiovasc Dis*. 2021;31:269-276.
- 466 35. Care D. 6. Glycemic targets: standards of medical care in diabetes—2019. *Diabetes Care*.  
467 2019;42:S61-70.
- 468 36. O'Connor S, Turcotte A-F, Gagnon C, Rudkowska I. Increased Dairy Product Intake Modifies  
469 Plasma Glucose Concentrations and Glycated Hemoglobin: A Systematic Review and Meta-  
470 Analysis of Randomized Controlled Trials. *Advances in Nutrition*. 2019;10:262-279.
- 471 37. Huang S, Czech MP. The GLUT4 glucose transporter. *Cell metabolism*. 2007;5:237-252.
- 472 38. Zisman A, Peroni OD, Abel ED, et al. Targeted disruption of the glucose transporter 4 selectively  
473 in muscle causes insulin resistance and glucose intolerance. *Nat Med*. 2000;6:924-928.



- 474 39. Hughes VA, Fiatarone MA, Fielding RA, et al. Exercise increases muscle GLUT-4 levels and  
475 insulin action in subjects with impaired glucose tolerance. *Am J Physiol.* 1993;264:E855-862.
- 476 40. Liem A, van De Woestijne A, Roeters van Lennep H, Zwinderman A, van der Steeg W, Jukema  
477 J. ApoB/A1 and LDL-C/HDL-C and the prediction of cardiovascular risk in statin-treated  
478 patients. *Current medical research and opinion.* 2008;24:359-364.
- 479 41. Hermans M, Jukema J, Schaliij M, et al. Apolipoprotein A1, B and apoB/apoA1 ratio are  
480 associated with first ST-segment elevation myocardial infarction but not with recurrent events  
481 during long term follow-up. *Optimization of secondary prevention and risk stratification in patients  
482 with coronary heart disease.* 2019;108:59.
- 483 42. Takahara M, Iida O, Kohsaka S, et al. Diabetes mellitus and other cardiovascular risk factors in  
484 lower-extremity peripheral artery disease versus coronary artery disease: an analysis of  
485 1,121,359 cases from the nationwide databases. *Cardiovasc Diabetol.* 2019;18:155.
- 486 43. Boulton AJ, Armstrong DG, Albert SF, et al. Comprehensive foot examination and risk  
487 assessment: a report of the task force of the foot care interest group of the American Diabetes  
488 Association, with endorsement by the American Association of Clinical Endocrinologists.  
489 *Diabetes Care.* 2008;31:1679-1685.
- 490 44. Volpato S, Bianchi L, Lauretani F, et al. Role of muscle mass and muscle quality in the  
491 association between diabetes and gait speed. *Diabetes Care.* 2012;35:1672-1679.
- 492 45. Grovle L, Haugen AJ, Natvig B, Brox JI, Grotle M. The prognosis of self-reported paresthesia  
493 and weakness in disc-related sciatica. *Eur Spine J.* 2013;22:2488-2495.
- 494 46. Washburn RA, Smith KW, Jette AM, Janney CA. The Physical Activity Scale for the Elderly  
495 (PASE): development and evaluation. *Journal of clinical epidemiology.* 1993;46:153-162.
- 496 47. Spertus JA, Winder JA, Dewhurst TA, et al. Development and evaluation of the Seattle Angina  
497 Questionnaire: a new functional status measure for coronary artery disease. *Journal of the  
498 American College of Cardiology.* 1995;25:333-341.
- 499 48. Bayoumy K, Gaber M, Elshafeey A, et al. Smart wearable devices in cardiovascular care: where  
500 we are and how to move forward. *Nature Reviews Cardiology.* 2021:1-19.
- 501 49. Polonsky TS, McDermott MM. Lower Extremity Peripheral Artery Disease Without Chronic  
502 Limb-Threatening Ischemia: A Review. *JAMA.* 2021;325:2188-2198.

503

504 **Supporting Information**

505 **S1 Fig. The correlational matrix between delta values of Apo A1, B, fasting glucose, post 2 h-blood**  
506 **glucose, HbA1c, Rutherford classification, and delta thigh muscle area after EVT in skeletal muscle gain**  
507 **patients .**

508 **S2 Fig. The correlational matrix between delta values of Apo A1, B, fasting glucose, post 2 h-blood**  
509 **glucose, HbA1c, Rutherford classification, and delta thigh muscle area after EVT in skeletal muscle loss**  
510 **patients.**

511 **S1 Table. Statin regimen of the study cohort.**

Figure 1.

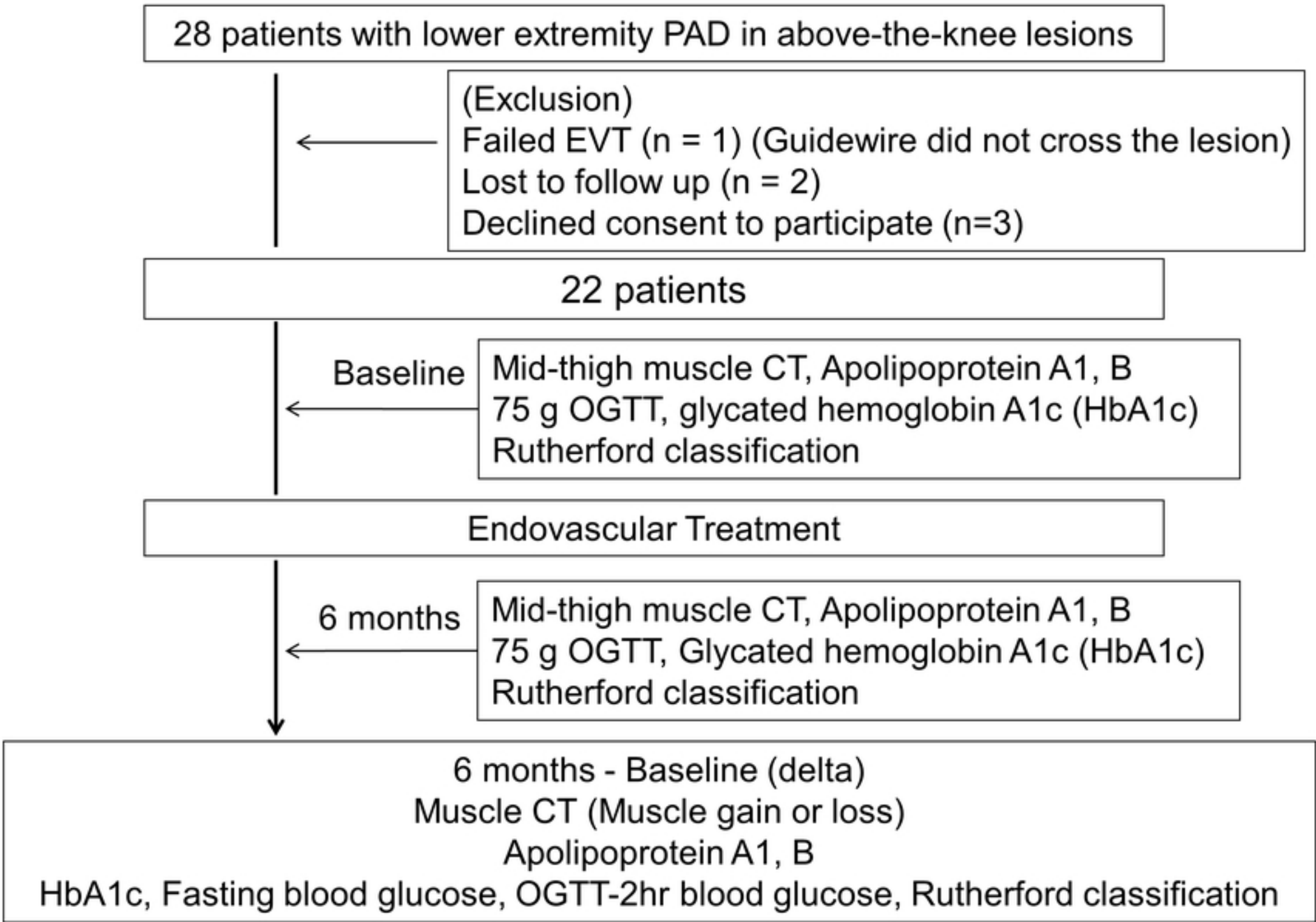


Figure 1

Figure 2.

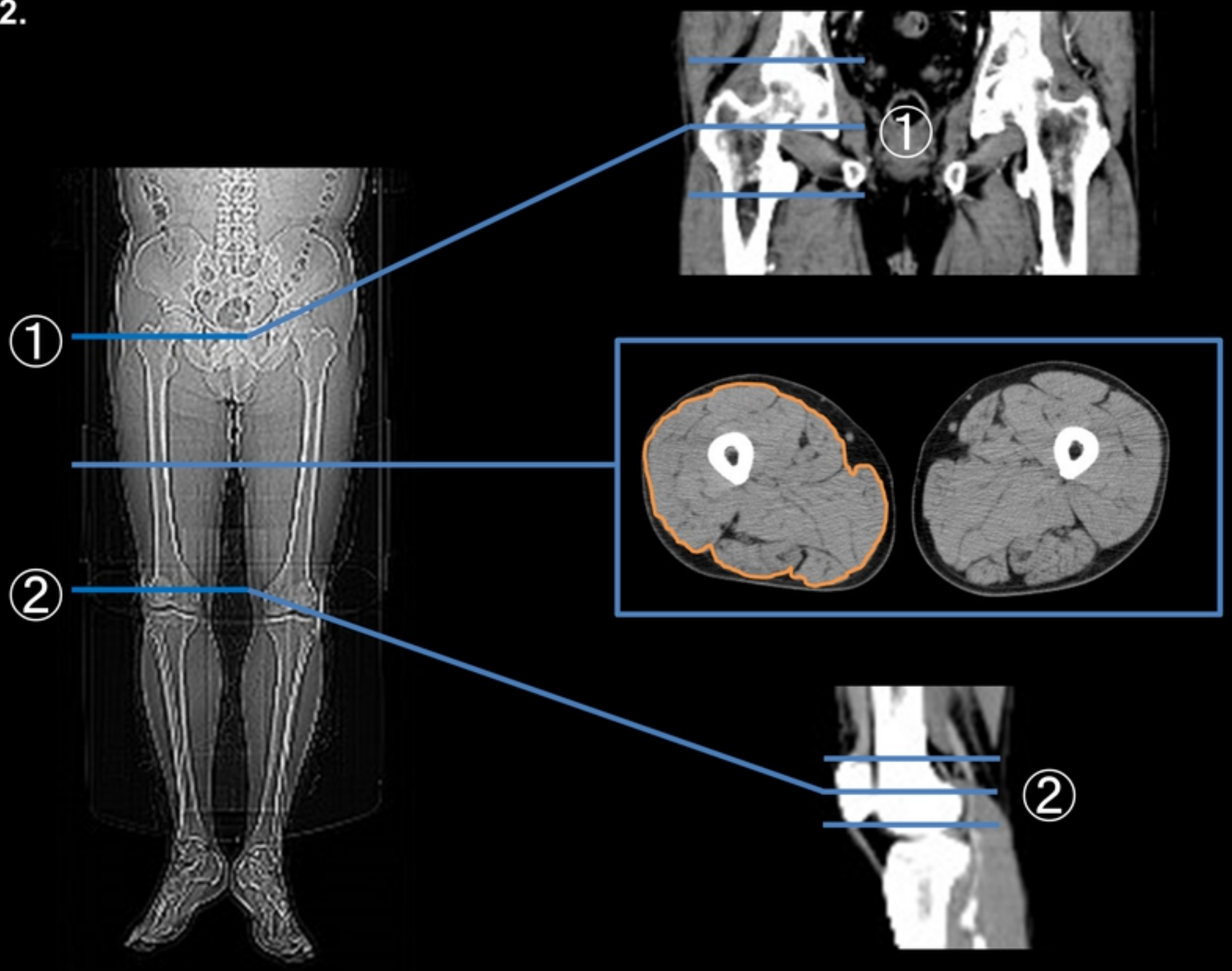


Figure2

Figure 3.

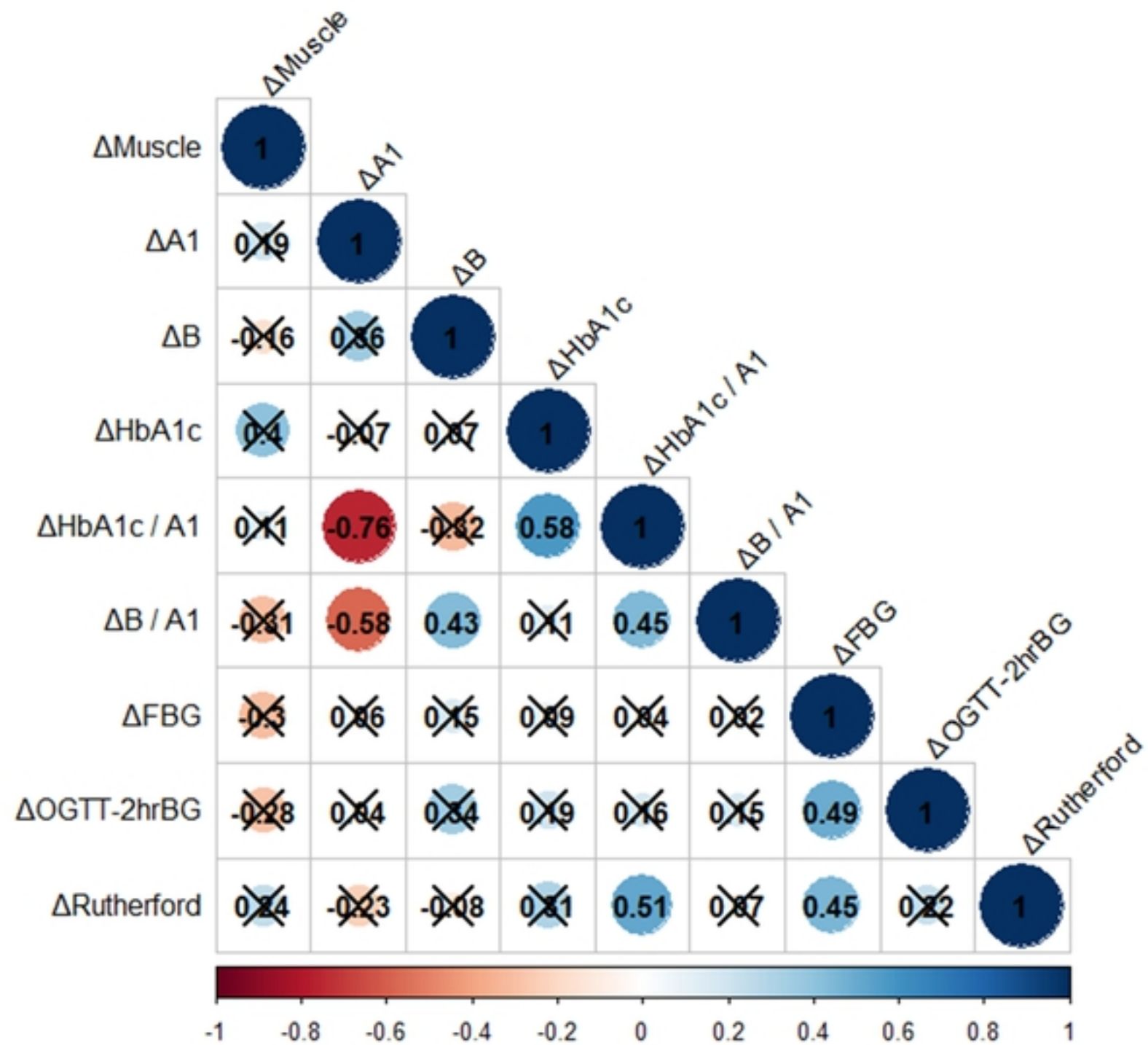


Figure3

Figure 4.

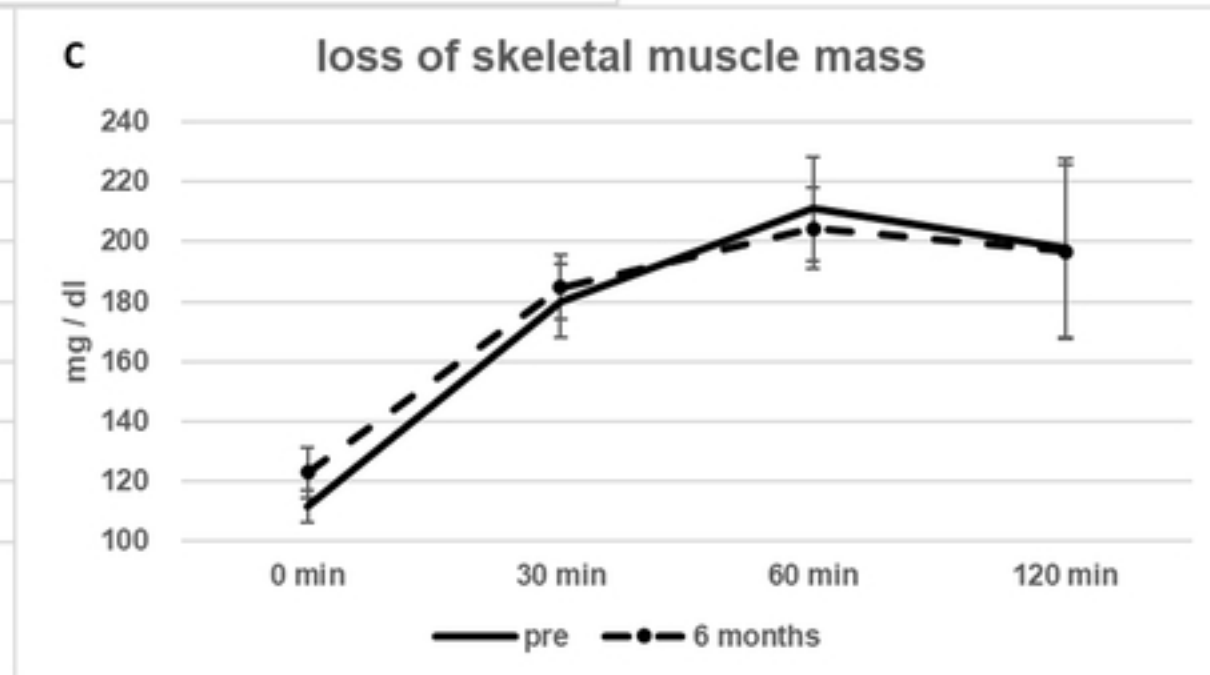
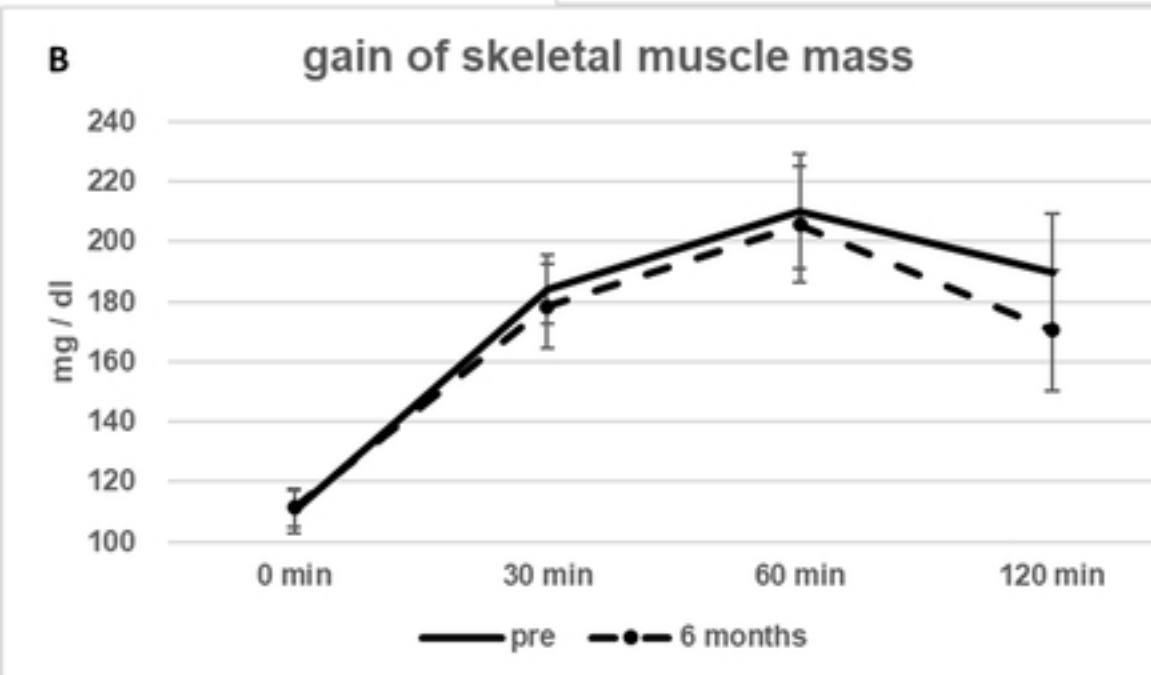
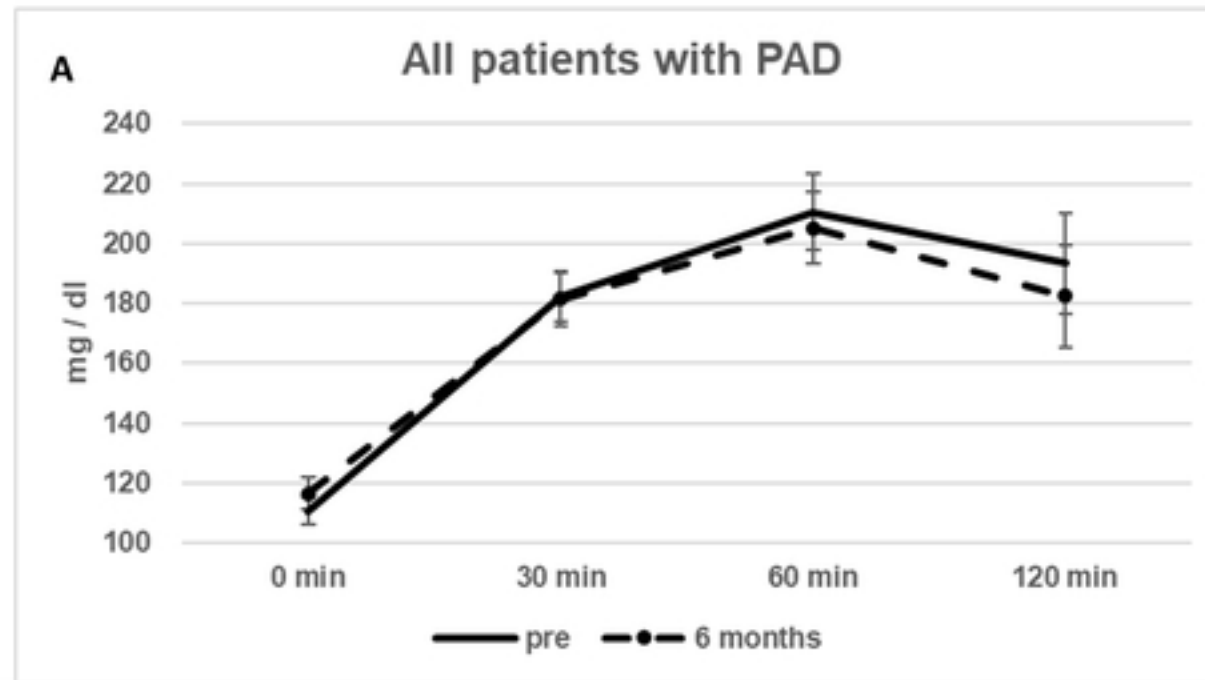


Figure4