

1 Immunogenicity and reactogenicity of SARS-CoV-2 vaccines in people living 2 with HIV: a nationwide prospective cohort study in the Netherlands

3 Kathryn S. Hensley¹, Marlou J. Jongkees^{1¶}, Daryl Geers^{2¶}, Corine H. GeurtsvanKessel², Yvonne M.
4 Mueller³, Virgil A.S.H. Dalm^{3,4}, Grigorios Papageorgiou⁵, Hanka Steggink⁶, Alicja Gorska¹, Susanne
5 Bogers², Jan G. den Hollander⁷, Wouter F.W. Bierman⁸, Luc B.S. Gelinck⁹, Emile F. Schippers^{10,11}, Heidi
6 S.M. Ammerlaan¹², Marc van der Valk^{13,14}, Marit G.A. van Vonderen¹⁵, Corine E. Delsing¹⁶, Elisabeth H.
7 Gisolf¹⁷, Anke H.W. Bruns¹⁸, Fanny N. Lauw¹⁹, Marvin A.H. Berrevoets²⁰, Kim C.E. Sigaloff²¹, Robert
8 Soetekouw²², Judith Branger²³, Quirijn de Mast²⁴, Adriana J.J. Lammers²⁵, Selwyn H. Lowe²⁶, Rory D. de
9 Vries², Peter D. Katsikis³, Bart J.A. Rijnders¹, Kees Brinkman⁶, Anna H.E. Roukens^{11&}, Casper Rokx^{1&*}

- 10 1. Department of Internal Medicine, Section Infectious Diseases, and Department of Medical
11 Microbiology and Infectious Diseases, Erasmus University Medical Centre, Rotterdam
- 12 2. Department of Viroscience, Erasmus University Medical Centre, Rotterdam
- 13 3. Department of Immunology, Erasmus University Medical Centre, Rotterdam
- 14 4. Department of Internal Medicine, Division of Allergy & Clinical Immunology, Erasmus University
15 Medical Centre, Rotterdam
- 16 5. Department of Biostatistics, Erasmus University Medical Centre, Rotterdam
- 17 6. Department of Internal Medicine and Infectious Diseases, OLVG Hospital, Amsterdam
- 18 7. Department of Internal Medicine, Maastad Hospital, Rotterdam
- 19 8. Department of Internal Medicine, Section Infectious Diseases, University of Groningen, Groningen
- 20 9. Department of Internal Medicine and Infectious Diseases, Haaglanden Medical Centre, The Hague
- 21 10. Department of Internal Medicine, Haga Teaching Hospital, The Hague
- 22 11. Department of Infectious Diseases, Leiden University Medical Centre, Leiden
- 23 12. Department of Internal Medicine, Catharina Hospital, Eindhoven
- 24 13. Department of Internal Medicine and Infectious Diseases, DC Klinieken, Amsterdam

NOTE: This preprint reports new research that has not been certified by peer review and should not be used to guide clinical practice.

- 25 14. Department of Infectious Diseases, Amsterdam Infection & Immunity Institute, Amsterdam
26 University Medical Centres, University of Amsterdam, Amsterdam
- 27 15. Department of Internal Medicine, Medical Centre Leeuwarden, Leeuwarden
- 28 16. Department of Internal Medicine and Infectious Diseases, Medisch Spectrum Twente, Enschede
- 29 17. Department of Internal Medicine and Infectious Diseases, Rijnstate Hospital, Arnhem
- 30 18. Department of Internal Medicine and Infectious Diseases, University Medical Centre Utrecht,
31 Utrecht
- 32 19. Department of Internal Medicine and Infectious Diseases, Medical Centre Jan van Goyen,
33 Amsterdam
- 34 20. Department of Internal Medicine, Elisabeth-Tweesteden Hospital, Tilburg
- 35 21. Department of Internal Medicine, Division of Infectious Diseases, Amsterdam Infection &
36 Immunity Institute, Amsterdam UMC, VU University, Amsterdam
- 37 22. Department of Internal Medicine and Infectious Diseases, Spaarne Gasthuis, Haarlem
- 38 23. Department of Internal Medicine, Flevo Hospital, Almere
- 39 24. Department of Internal Medicine, Radboud Centre for Infectious Diseases, Radboud University
40 Medical Centre, Nijmegen
- 41 25. Department of Internal Medicine and Infectious Diseases, Isala Hospital, Zwolle
- 42 26. Department of Internal Medicine and Infectious Diseases, Maastricht University Medical Centre,
43 Maastricht
- 44 All in the Netherlands

45 *** Corresponding author**

46 Dr. C. Rokx, c.rokx@erasmusmc.nl (C)

47

48 ¶¶These authors contributed equally to this work.

49 & These authors also contributed equally to this work.

50

51 **Abstract**

52 **Background**

53 Vaccines can be less immunogenic in people living with HIV (PLWH), but for SARS-CoV-2 vaccinations
54 this is unknown.

55 **Methods and Findings**

56 A prospective cohort study to examine the immunogenicity of BNT162b2, mRNA-1273, ChAdOx1-S and
57 Ad26.COVS vaccines in adult PLWH, without prior COVID-19, compared to HIV-negative controls. The
58 primary endpoint was the anti-spike SARS-CoV-2 IgG response after mRNA vaccination. Secondary
59 endpoints included the serological response after vector vaccination, anti-SARS-CoV-2 T-cell response
60 and reactogenicity.

61 Between February-September 2021, 1154 PLWH (median age 53 [IQR 44-60], 86% male) and 440
62 controls (median age 43 [IQR 33-53], 29% male) were included. 884 PLWH received BNT162b2, 100
63 mRNA-1273, 150 ChAdOx1-S, and 20 Ad26.COVS. 99% were on antiretroviral therapy, 98% virally
64 suppressed, and the median CD4+T-cell count was 710 cells/ μ L [IQR 520-913]. 247 controls received
65 mRNA-1273, 94 BNT162b2, 26 ChAdOx1-S and 73 Ad26.COVS. After mRNA vaccination, geometric
66 mean concentration was 1418 BAU/mL in PLWH (95%CI 1322-1523), and after adjustment for age,
67 sex, and vaccine type, HIV-status remained associated with a decreased response (0.607, 95%CI
68 0.508-0.725). In PLWH vaccinated with mRNA-based vaccines, higher antibody responses were
69 predicted by CD4+T-cell counts 250-500 cells/ μ L (2.845, 95%CI 1.876-4.314) or >500 cells/ μ L (2.936,
70 95%CI 1.961-4.394), whilst a viral load >50 copies/mL was associated with a reduced response
71 (0.454, 95%CI 0.286-0.720). Increased IFN- γ , CD4+, and CD8+T-cell responses were observed after
72 stimulation with SARS-CoV-2 spike peptides in ELISpot and activation induced marker assays,
73 comparable to controls. Reactogenicity was generally mild without vaccine-related SAE.

74 **Conclusion**

75 After vaccination with BNT162b2 or mRNA-1273, anti-spike SARS-CoV-2 antibody levels were reduced
76 in PLWH. To reach and maintain the same serological responses and vaccine efficacy as HIV-negative
77 controls, additional vaccinations are probably required.

78 Keywords: *SARS-CoV-2 vaccines; HIV infection; COVID-19; COVID-19 vaccination; PLWH; BNT162b2;*
79 *mRNA-1273; ChAdOx1-S; Ad26.COV2.S*

80

81 Introduction

82 At the end of 2019, severe acute respiratory syndrome coronavirus 2 (SARS-CoV-2) emerged and the
83 ensuing and ongoing pandemic led to the loss of millions of lives. Highly effective vaccines were quickly
84 implemented, and mass vaccination campaigns have become the cornerstone to prevent fatal
85 Coronavirus Disease (COVID-19) to quell this pandemic, four of which are currently approved for use
86 in the Netherlands [1-5].

87 After the SARS-CoV-2 vaccine registration trials, vaccinations were rolled out globally. However, people
88 with immune deficiencies were only sporadically included in the original phase three SARS-CoV-2
89 vaccination trials. Subsequent reports indicated markedly diminished responses in solid organ
90 transplant recipients, and lower responses in haemodialysis patients, stem cell recipients or patient
91 groups on specific immunosuppressant drugs for immune disorders [6-9].

92 HIV infection is associated with worse COVID-19 outcomes although the underlying mechanism is not
93 yet clear [10]. In most countries, people living with HIV (PLWH) were therefore prioritised for SARS-
94 CoV-2 vaccination. PLWH show diminished responses to a wide variety of vaccines such as hepatitis B,
95 and seasonal influenza vaccines compared to HIV-uninfected individuals [11, 12]. This might also hold
96 true for SARS-CoV-2 vaccines. Indicative of potential lower responses to SARS-CoV-2 vaccines could be
97 that after SARS-CoV-2 infection, lower IgG concentrations and neutralising antibody titres were found
98 in PLWH compared to controls [13]. Data are scarce on SARS-CoV-2 vaccination responses in PLWH.
99 Small studies using the ChAdOx1-S vaccine in the UK and South Africa in relatively young PLWH with
100 high CD4+ T-cell counts gave comparable responses to controls [14, 15]. As for BNT162b2, similar
101 results were shown in a limited number of PLWH [16-18]. The identification of risk factors for a reduced
102 response to SARS-CoV-2 vaccines in PLWH is important as it will help to improve vaccination strategies
103 in PLWH. A good understanding of vaccination response in PLWH becomes even more important now
104 that variants of concern (VOC) continue to arise and partially escape vaccine induced immunity [19].

105 In this study we investigated the immunogenicity and reactogenicity of SARS-CoV-2 vaccinations in
106 PLWH with the vaccines currently approved in the Netherlands; BNT162b2, mRNA-1273, ChAdOx1-S,
107 or Ad26.COVS.S.

108

109 **Methods**

110 **Study design and participants**

111 We performed a prospective observational cohort study in 22 of the 24 HIV treatment centres in the
112 Netherlands. Participants were recruited via treating physicians or nurses specialised in HIV-care. To
113 be eligible for participation, a subject had to be 18 years or older, had a confirmed HIV infection and
114 was invited for SARS-CoV-2 vaccination by Dutch public health services. Participants with a history of
115 previous SARS-CoV-2 infection demonstrated by PCR or detectable SARS-CoV-2 antibodies in serum
116 before vaccination were excluded. Inclusion was stratified and monitored to best represent represents
117 the Dutch population of PLWH (S1 appendix) [20].

118 Participants received either BNT162b2, mRNA-1273, ChAdOx1-S, or Ad26.COV2.S according to
119 manufacturer's regulations as part of the Dutch SARS-CoV-2 vaccination campaign (S1 appendix).
120 Vaccination response data from HIV-negative controls were obtained from two separate concurrent
121 studies (n=440; S1 appendix) [21].

122 **Clinical procedures**

123 Blood samples were collected up to six weeks before vaccination (T0) and four to six weeks after the
124 completed vaccination schedule (T2). In a subgroup, additional blood samples were collected, 21 days
125 (+/- three days) after the first vaccination for serology (T1) or peripheral blood mononuclear cells
126 (PBMCs) at any of the study visits. Participants are scheduled for longitudinal blood sampling for
127 additional analyses during two years which will be reported separately.

128 Study variables were collected in an electronic case record file (S1 appendix) . Participants received a
129 paper diary or a link to an online questionnaire to enter adverse events (AE) from a predefined list and
130 medication use for AE the seven days following each vaccination.

131 **Laboratory procedures**

132 All serum samples were collected via venepuncture at participating centres. Serum samples before
133 vaccination were analysed at the laboratory of the individual treating centres with the available SARS-
134 CoV-2 antibody test (S1 appendix) . Serum samples post-vaccination were transported for testing at
135 the department of Viroscience, Erasmus Medical Centre, the Netherlands. The presence of binding
136 antibodies against the SARS-CoV-2 Spike (S1) were quantified with a validated IgG Trimeric
137 chemiluminescence immunoassay (DiaSorin Liaison) with a lower limit of detection at 4.81 binding
138 antibody units per millilitre (BAU/mL).

139 PBMCs were isolated by density gradient centrifugation (Ficoll-Hypaque, GE Healthcare life sciences)
140 and collected in RPMI-1640 (Life Technologies) supplemented with 3% foetal bovine serum (FBS).
141 PBMCs were washed three times, frozen in freezing media (90% FBS, 10% dimethyl sulfoxide (DMSO))
142 and stored in liquid nitrogen until use.

143 We used enzyme linked immune absorbent spots (ELISpot) to quantify interferon (IFN)- γ secretion in
144 response to SARS-CoV-2 peptides. ELISpot assays were performed on cryopreserved PBMCs using a
145 commercial double colour kit (ImmunoSpot[®], Cellular Technology Limited) including peptide pools
146 containing spike and nucleocapsid protein (S1 appendix) . Results are expressed as spot forming cells
147 (SFCs) per million PBMCs, calculated by subtracting mean response after MOG stimulation.

148 T-cell responses were further characterised by activation induced marker (AIM) assay. PBMCs were
149 incubated with SARS-CoV-2 peptide pools covering the entire S-protein of the WuhanHu1 (wild-type)
150 or B.1.617.2 (delta) variant. Following stimulation, cells were stained and measured by flow cytometry
151 (FACSLyric, BD; S1 appendix). SARS-CoV-2-reactive T-cells were identified as CD137+OX40+ for CD4+
152 subtype or CD137+CD69+ for CD8+ subtype. On average, 300,000 cells were measured. The gating
153 strategy can be found in S1 Fig.

154 **Outcomes**

155 The primary outcome was the height of the anti-spike SARS-CoV-2 IgG response in PLWH 4-6 weeks
156 after the completed vaccination schedule with BNT162b2 or mRNA-1273. This endpoint was chosen
157 because primarily mRNA vaccines were allocated to PLWH in the Netherlands. Secondary outcomes
158 included the antibody response in PLWH after the completed vaccination schedule with ChAdOx1-S
159 and Ad26.COVS.2, and variables associated with the height of antibody level (S1 appendix) . Variables
160 associated with hyporesponse and non-response were also analysed (S1 appendix) . We defined a
161 hyporesponse as 50-300 BAU/mL and non-response as <50 BAU/mL, based on previous studies which
162 showed correlation of antibody concentration of 300 BAU/mL with a neutralising capacity of 1:40.[9,
163 22] In the subgroup, anti-spike SARS-CoV-2 specific T-cell response, and antibody response 21 days
164 after the first vaccine dose were evaluated. Lastly, we evaluated the tolerability of the vaccines by
165 monitoring vaccine-related AE (S1 appendix) .

166 **Sample size and statistical analysis plan**

167 When the study started, we did not have a confirmed availability of a control group due to the rapid
168 initiation of the national immunisation campaign. We justified the sample size by calculating that 556
169 PLWH receiving mRNA vaccines would be sufficient to detect a serological response rate of 90% or
170 lower compared to a hypothetical 95% response rate in controls with >80% power. When the control
171 group was confirmed, and before the data lock and endpoint analyses, we amended the protocol to
172 update the sample size calculation. Accounting for the imbalance in the number of controls versus
173 PLWH with BNT162b2 and mRNA-1273 vaccinations, we found that 286 controls were sufficient to
174 detect a 20% lower antibody response in PLWH with >80% power and alpha 5%.

175 Median (interquartile range (IQR)), or n (%) for descriptive data were used. A multivariable linear
176 regression model was used for the analysis of the anti-spike SARS-CoV-2 IgG. The outcome was
177 transformed using the natural logarithm plus one unit: $\ln(\text{anti-spike SARS-CoV-2 IgG}+1)$ in order to

178 meet the model assumptions. All patients of which the sample was received in the central laboratory
179 for testing who completed the vaccination scheme were included in the analysis (per protocol). The
180 difference between PLWH and controls was captured by the corresponding regression coefficient and
181 95%CI. The model was further adjusted for differences in vaccine type, age, and sex. A multivariable
182 linear regression model was also used to quantify the difference in $\ln(\text{anti-spike SARS-CoV-2 IgG+1})$
183 between PLWH versus controls for the subset in the sample vaccinated with vector vaccines. A similar
184 model was used to quantify the effect of age, sex, vaccine type, most recent CD4+ T-cell count, and
185 antibody concentration in PLWH. In addition, multivariable logistic regression models were used to
186 calculate odds ratios with 95%CI for the effects of sex, age, nadir CD4+ T-cell count, most recent CD4+
187 T-cell count, HIV-RNA viral load, and vaccine group in PLWH on having a hyporesponse or a non-
188 response. In subgroup participants we evaluated differences from baseline to T1 and T1 to T2, as well
189 as AIM data comparing T0 and T2 time points, by Wilcoxon matched-pairs signed rank test. ELISpot T0
190 to T2 data and AIM data comparing PLWH and controls were analysed by Mann-Whitney-U tests.

191 Data were analysed using IBM SPSS Statistics 25, R (v. 4.1.2), and GraphPad Prism 8. Flow cytometry
192 data were analysed using FlowJo software version 10.8.1.

193 **Role of the funding source**

194 The funder of the study had no role in study design, data collection, data analysis, data interpretation,
195 or writing of the report.

196 **Ethical considerations**

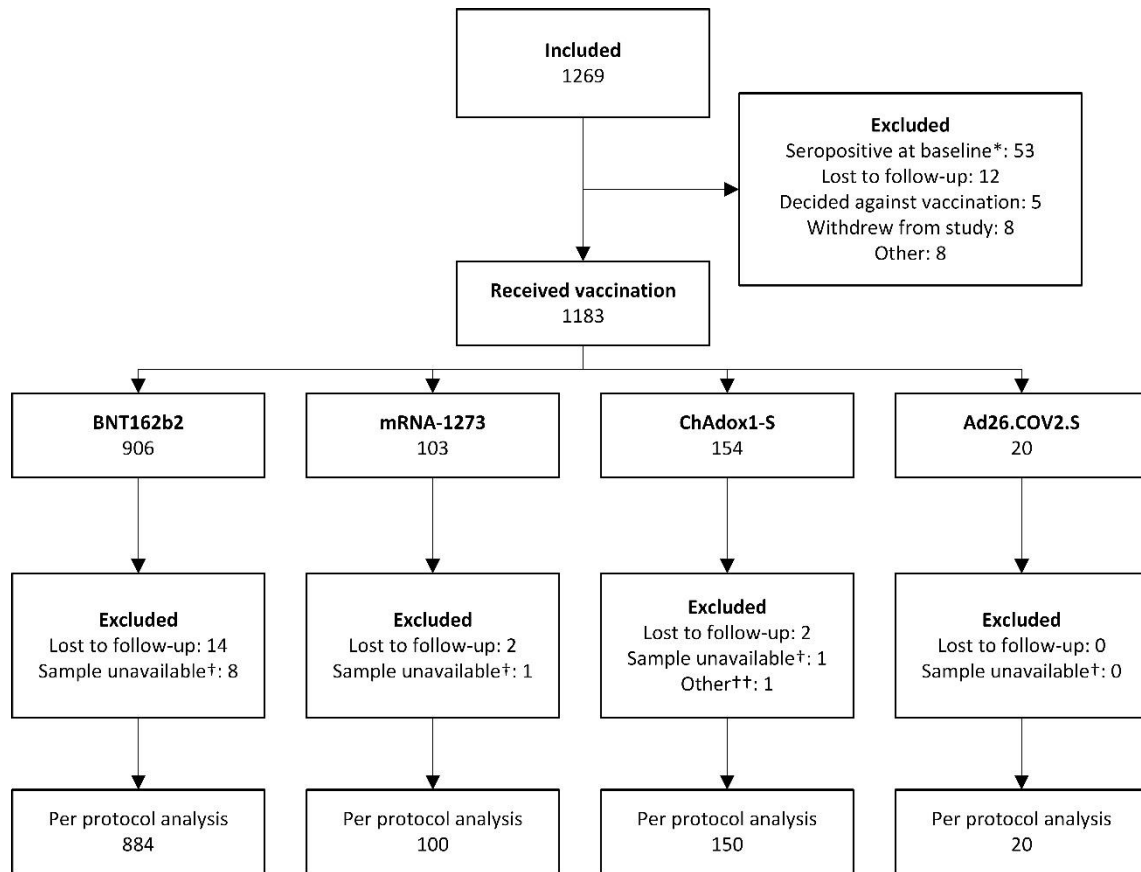
197 The trial was performed in accordance with the principles of the Declaration of Helsinki, Good Clinical
198 Practice guidelines, and in accordance with the Dutch Medical Research Involving Human Subjects Act
199 (WMO). Written informed consent was obtained from all participants. The trial was reviewed and
200 approved by the Medical research Ethics Committees United Nieuwegein (MEC-U, reference 20.125).
201 The trial was registered in the Netherlands Trial Register (NL9214).

202 Results

203 Baseline characteristics

204 Between 14 February and 7 September 2021, 1269 PLWH were enrolled (Fig 1.). At sampling before
205 vaccination, 53 (4.2%) PLWH had antibodies against SARS-CoV-2 above test cut-off and were excluded.
206 Overall, 30 PLWH were lost to follow-up (2.4%), five decided against vaccination after inclusion (0.4%),
207 eight withdrew from the study (0.6%), and ten samples were not stored adequately or not received in
208 the central laboratory for testing (0.8%). One participant was excluded from the final analysis because
209 they received two different vaccines (ChAdox1-S and BNT162b2). In the final analysis, 76.6% PLWH
210 received BNT162b2, 8.7% mRNA-1273, 13.0% ChAdOx1-S and 1.7% Ad26.COVS.S. Included PLWH had
211 a median age of 53 [IQR 44-60], 85.5% were men and had a median CD4+ T-cell count before
212 vaccination of 710 cells/ μ L [IQR 520-913] (Table 1). The vast majority (99.0%) was on cART and had a
213 suppressed plasma HIV-RNA (97.7% <50 copies/mL). The control group consisted of 440 people of
214 which 94 were vaccinated with BNT162b2 (21.4%), 247 with mRNA-1273 (56.1%), 26 ChAdOx1-S (5.9%)
215 and 73 Ad26.COVS.S (16.6%). Their median age was 43 [IQR 33-53] and 28.6% were men. The age
216 distribution across groups differed, with the majority of PLWH receiving ChAdOx1-S being 55-65 years
217 of age compared to 15-25% for the other vaccines (S1 Table). Age differences were also seen between
218 groups, with less participants of older ages in the control group. Between the control group and PLWH,
219 there was also a difference in inclusion of sex. All other factors were similar across groups. In the
220 subgroup of PLWH, baseline characteristics reflected the characteristics of included PLWH, with most
221 participants receiving the BNT162b2 vaccine (66.0-95.3%) and being male (76.6-85.7%) (S2 Table).

222 **Fig 1. Flow chart of inclusions of PLWH** *Participants that tested positive for SARS-CoV-2 antibodies in
223 serum at baseline measurement were excluded from further participation †Samples were not stored
224 adequately or sent to be analysed in the central laboratory at the Erasmus MC †† One participant
225 received a combination ChAdOx1-S and BNT162b2 vaccines and was therefore not included in the per
226 protocol analysis. PLWH: people living with HIV



227

228

229 **Table 1: Baseline characteristics of HIV negative controls and PLWH.**

	HIV negative participants			People living with HIV		
	Overall N = 440	mRNA vaccines ¹ N = 341 (77.5%)	Vector vaccines ² N = 99 (22.5%)	Overall N = 1154	mRNA vaccines ¹ N = 984 (85.3%)	Vector vaccines ² N = 170 (14.7%)
Sex assigned at birth						
Male	126 (28.6%)	104 (30.5%)	22 (22.2%)	987 (85.5%)	839 (85.2%)	148 (87.1%)
Female	314 (71.4%)	237 (69.5%)	77 (77.8%)	167 (14.5%)	145 (14.8%)	22 (12.9%)
Age category						
18-55 years	352 (80.0%)	284 (83.3%)	68 (68.7%)	703 (60.9%)	674 (68.5%)	29 (17.1%)
56-65 years	74 (16.8)	43 (12.6%)	31 (31.3%)	291 (25.2%)	157 (16.0%)	134 (79.3%)
65+ years	14 (3.2%)	14 (4.1%)	0	160 (13.9%)	153 (15.6%)	7 (4.1%)
On cART						
Yes	NA	NA	NA	1142 (99.0%)	972 (98.8%)	170 (100%)
No	NA	NA	NA	12 (1.0%)	12 (1.2%)	0
Most recent plasma HIV viral load						
<50 copies/mL	NA	NA	NA	1127 (97.7%)	960 (97.6%)	167 (98.2%)
≥50 copies/mL	NA	NA	NA	27 (2.3%)	24 (2.4%)	3 (1.8%)
Most recent CD4+ T-cell count						
<250 cells/μL	NA	NA	NA	41 (3.6%)	35 (3.6%)	6 (3.5%)
250-500 cells/μL	NA	NA	NA	224 (19.4%)	189 (19.2%)	35 (20.6%)
>500 cells/μL	NA	NA	NA	889 (77.0%)	760 (77.2%)	129 (75.9%)
Nadir CD4+ T-cell count						
<250 cells/μL	NA	NA	NA	443 (38.4%)	365 (37.1%)	78 (45.9%)
250-500 cells/μL	NA	NA	NA	376 (32.6%)	330 (33.5%)	46 (27.1%)
>500 cells/μL	NA	NA	NA	152 (13.2%)	133 (13.5%)	19 (11.2%)
Unknown	NA	NA	NA	183 (15.9%)	156 (15.9%)	27 (15.9%)
Days between doses*	28 (25-28)	28 (25-28)	56 (56-70)	35 (35-36)	35 (35-36)	70 (49-77)

230 Data are n (%) or median (IQR). 1BNT162b2, mRNA-1273. 2ChAdOx1-S, Ad26.COVS.S *Does not apply

231 for Ad26.COVS.S. NA: not applicable, PLWH: people living with HIV, IQR: interquartile range, cART:

232 combination antiretroviral therapy

233 Humoral responses

234 In all vaccines investigated, antibody concentrations were lower in PLWH compared to controls (Fig 2).

235 In participants vaccinated with an mRNA vaccine, the geometric mean concentration (GMC) was 1418

236 BAU/mL in PLWH (95%CI 1322-1523) and 3560 BAU/mL in controls (95%CI 3301-3840). With regard to

237 the primary endpoint, after adjusting for age, vaccine, and sex, HIV infection remained associated with

238 a 39.35% lower antibody concentration in PLWH compared to controls receiving an mRNA vaccine

239 (0.607, 95%CI 0.508-0.725). The estimated effect of having an HIV infection was larger than the

240 estimated effects of male sex (23.05% (0.769 95%CI 0.667-0.888)) or age >65 years (35.47% (0.645

241 95%CI 0.544-0.765)), which were all significantly associated with a worse vaccine response ($p < 0.001$

242 for all).

243 **Fig 2: Antibody concentration in PLWH and controls after vaccination**

244 Anti-spike SARS-CoV-2 binding antibodies after BNT162b2, mRNA-1273, ChAdOx1-S or Ad526.COV2.S

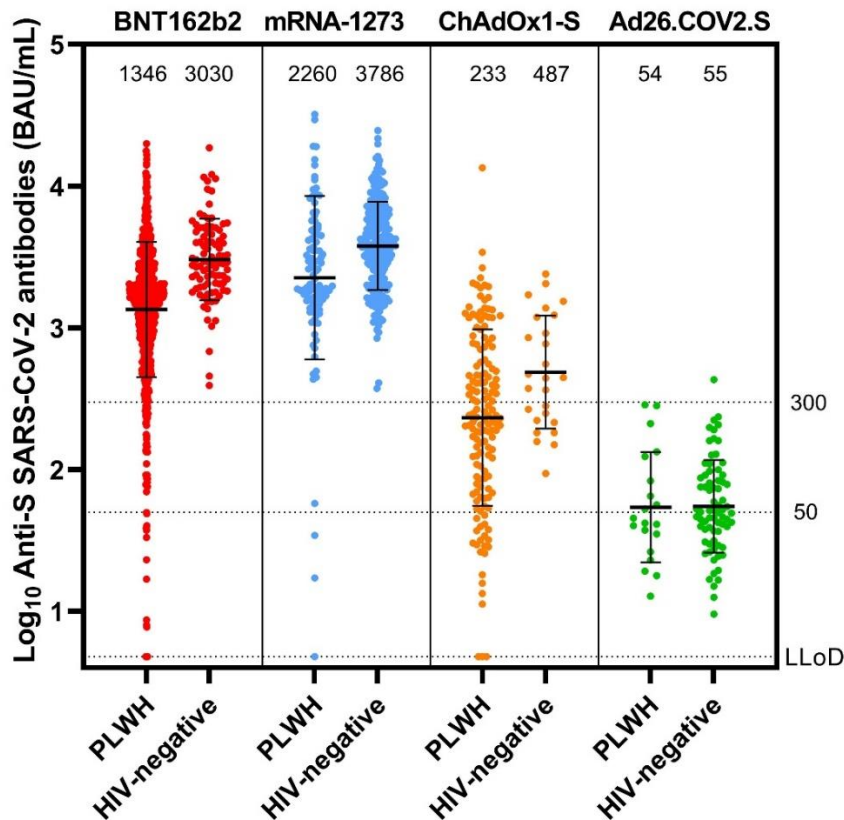
245 vaccination in PLWH and HIV-negative control group. The horizontal bar shows the geometric mean

246 concentration, also indicated above the graphs, with error bars showing geometric standard deviation.

247 The dotted lines show the lower limit of detection of the performed test (4.81 BAU/mL), non-response

248 cut-off (50 BAU/mL) and hyporesponse cut-off (300 BAU/mL). S: spike, BAU/mL: binding antibodies per

249 millilitre, PLWH: people living with HIV, LLoD: lower limit of detection



250

251 Regarding factors possibly related to antibody responses in PLWH who received mRNA vaccines,
 252 receiving mRNA-1273 was associated with a 57.15% higher response (1.572, 95%CI 1.225-2.018,
 253 $p < 0.001$). Male sex (0.693 95%CI 0.555-0.865, $p = 0.001$) and age over 65 years (0.654 95%CI 0.526-
 254 0.814, $p < 0.001$) were associated with lower responses of 30.72%, and 34.56% respectively. We found
 255 no association between nadir CD4+ T-cell count and antibody responses, but found a significant effect
 256 of 54.62% lower antibodies when the HIV-RNA level was over 50 copies/mL (0.454, 95%CI 0.286-0.720,
 257 $p = 0.001$). The largest effect on antibody levels was associated with current CD4+ T-cell counts between
 258 250 and 500 cells/ μ L (2.845 95%CI 1.876-4.314) and over 500 cells/ μ L (2.936 95%CI 1.961-4.394) (both
 259 $p < 0.001$) with increased antibody concentrations of 184.34% and 193.59% respectively.

260 In participants receiving vector vaccines, after adjustment, HIV was significantly associated with a
 261 39.47% lower antibody response, comparable to that in mRNA vaccines (0.605 95%CI 0.387-0.945,
 262 $p = 0.027$). Within this group of PLWH receiving vector vaccines, unlike mRNA vaccines, age, sex, and a
 263 detectable viral load were not associated with antibody responses, but receiving Ad26.COVS.2.S was

264 associated with a 87.67% lower response (0.123 95%CI 0.051-0.300, $p<0.001$) and a recent CD4+ T-cell
265 count of 250 to 500 or over 500 cells/ μ L were associated with better responses (both $p<0.001$).

266 Hyporesponse and nonresponse percentages were lower for every vaccine group in PLWH compared
267 to controls (S1 Table). In PLWH, after adjustment, receiving a vector vaccine ($p<0.001$, OR 0.036), age
268 over 65 ($p<0.001$, OR 0.282) and a viral load over 50 copies/mL ($p=0.017$, OR 0.266) were associated
269 with an antibody response under 300 BAU/mL. Most recent CD4+ T-cell count between 250 and 500
270 cells/ μ L or over 500 cells/ μ L were significantly associated with an antibody response of 300 BAU/mL
271 or higher (both $p<0.001$ OR 8.143 and 9.177 respectively). Sex and nadir CD4+ T-cell count were not
272 associated. When looking at non-response in PLWH, receiving a vector vaccine ($p<0.001$, OR 0.034)
273 was associated with an antibody response <50 BAU/mL. Being 56 to 65 years of age ($p=0.025$, OR
274 2.919) and most recent CD4+ T-cell count between 250 and 500 cells/ μ L or over 500 cells/ μ L (both
275 $p<0.001$ OR 7.810 and 15.853 respectively) were significantly associated with an antibody response of
276 more than 50 BAU/mL. Sex, viral load and nadir CD4+ T-cell count were not associated.

277 In the subgroup of PLWH in whom extra sampling was performed 21 days after the first vaccination
278 ($n=43$, 95.3% with BNT162b2), we found response rates of 83.3% with a GMC of 148 BAU/ml at T1 and
279 1952 BAU/mL at T2 (S2 Fig).

280 Cellular responses

281 In the ELISpot assay, spike-specific T-cell responses measured as IFN- γ , after deduction of MOG,
282 increased from a median of 27.5 SFCs per million PBMCs before vaccination to 152.5 SFC post-
283 vaccination ($p=0.0023$) (Fig 3A). In PLWH, stimulating PBMC with the negative control peptide pool
284 MOG already induced a IFN- γ -response, resulting in high background (S3 Fig). No responses in
285 nucleocapsid were seen after subtraction of MOG. Additionally, CD4+ and CD8+ T-cell responses were
286 assessed in an AIM assay. SARS-CoV-2 specific CD4+ T-cell (CD137+OX40+) and CD8+ T-cell responses
287 (CD137+CD69+) both increased compared to baseline following vaccination and after correction for

288 DMSO ($p=0.0049$ and $p=0.0078$ respectively) (Fig 3C and 3D). CD4+ and CD8+ T cell responses in PLWH
289 against the delta variant were similar before and after vaccination. Importantly, both CD4+ and CD8+
290 T-cell responses were of similar magnitude between PLWH and HIV negative individuals.

291 **Fig 3: Cellular immune responses against SARS-CoV-2 in subgroup participants (PLWH)**

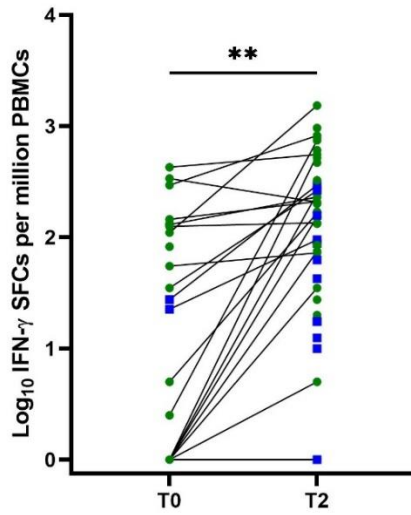
292 **A** Cellular immune response to wild type spike by ELISpot assay (T0 $n=23$, T2 $n=45$), IFN- γ SFC after
293 subtraction of MOG. Statistics performed using Mann Whitney test $p=0.0023$

294 **B** Cellular immune response to wild type and delta spike in AIM assay ($n=14$), percentage of CD4+
295 CD137+ OX40+ T-cells after subtraction of DMSO. Dotted line shows the LLoD at 0.001%. Statistics
296 between T0 and T2 WT in PLWH performed using Wilcoxon matched-pairs sign rank test ($p=0.0049$),
297 T0 and T2 delta: ns. Statistics between PLWH and controls with Mann Whitney test: ns.

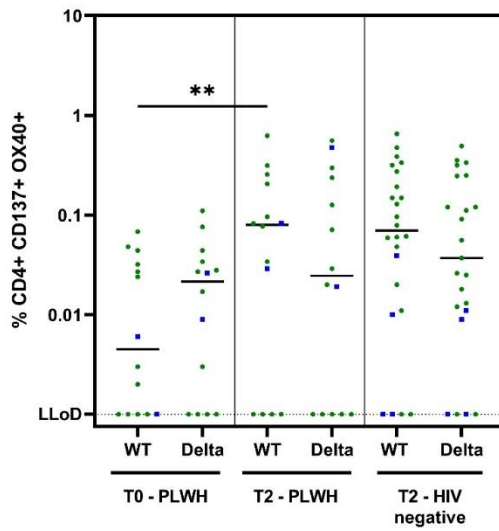
298 **C** Cellular immune response to wild type and delta spike in AIM assay ($n=14$), percentage of CD8+
299 CD137+ CD69+ T-cells after subtraction of DMSO. Dotted line shows the LLoD at 0.001%. Statistics
300 performed using Wilcoxon matched-pairs sign rank test ($p=0.0078$), T0 and T2 delta: ns. Statistics
301 between PLWH and controls with Mann Whitney test: ns.

302 Green circles: mRNA vaccines, Blue squares: vector based vaccines. T0: before vaccination, T2: 4-6
303 weeks after second vaccination, PLWH: people living with HIV, IFN: interferon, SFC: spot forming cells,
304 PBMCs: peripheral blood mononuclear cells, MOG: myelin- oligodendrocyte glycoprotein, ELISpot:
305 enzyme-linked immune absorbent spot, AIM: activation induced marker, DMSO: dimethyl sulfoxide,
306 WT: wildtype, ns: not significant LLoD: lower limit of detection

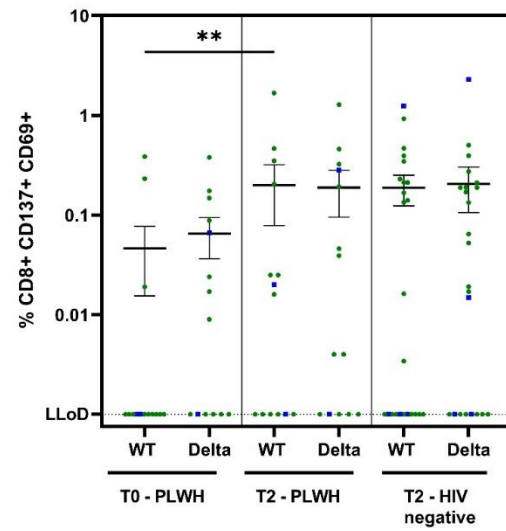
A



B



C



308 **Reactogenicity**

309 In PLWH, the questionnaire was completed 1039 (90.0%) times after the first vaccination and 1026
310 (90.4%) after the second vaccination. Overall, more than half (52.4%) of the participants reported
311 any AE (Table 2). For those who received two dosages, the frequency of AE did not increase after the
312 second vaccination (from 55.2% to 49.6% respectively). AE after first and second vaccination were for
313 BNT162b2 55.2% and 48.0%, mRNA-1273 62.2% and 70.1%, ChAdOx1-S 51.8% and 46.0%, and after
314 the single Ad26.COVS vaccination 47.4%. The most commonly reported local reaction was pain at
315 the injection site (44.4%). The most common systemic reactions were myalgia (13.0%) and headache
316 (18.3%). When AE occurred, most were mild 1159 (65.2%) or moderate 523 (29.4%) in severity and
317 self-limiting (Fig 4). Analgesic or antipyretic drug use was necessary in 346 (16.8%) of all participants,
318 for a cumulative 769 AE, of which 400 (52.0%) were moderate and 57 (7.4%) severe AE. Paracetamol
319 (81.2%) was most commonly used. Ten SAE were reported and all considered unrelated. One
320 participant visited the emergency department three days after vaccination with pain in the arm and
321 chest and shortness of breath in whom a pulmonary embolism was excluded and symptoms
322 resolved. Two participants were admitted for a chronic obstructive pulmonary disease exacerbation.
323 The seven other SAE were elective heart surgery, intestinal perforation after infection,
324 *Campylobacter jejuni* infection, bicycle accident, pyloric stenosis, a hip fracture after a fall and one
325 person died due to a cardiac arrest. There was no discontinuation of the vaccination series due to
326 vaccine related AE.

327

328 **Table 2: Reactogenicity in PLWH.**

Adverse event	Overall N=2065	BNT162b2 N=1593 (77.1%)		mRNA-1273 N=177 (8.6%)		ChAdOx1-S N=276 (13.4%)		Ad26.COVS.2.S N=19 (0.9%)
		1 st dose 791 (49.7%)	2 nd dose 802 (50.3%)	1 st dose 90 (50.8%)	2 nd dose 87 (49.2%)	1 st dose 139 (50.4%)	2 nd dose 137 (49.6%)	
Any AE	1083 (52.4%)	437 (55.2%)	358 (48.0%)	56 (62.2%)	61 (70.1%)	72 (51.8%)	63 (46.0%)	9 (47.4%)
Local AE								
Pain at the injection site	917 (44.4%)	393 (49.7%)	325 (40.5%)	52 (57.8%)	57 (65.5%)	51 (36.7%)	32 (23.4%)	7 (36.8%)
Redness at the injection site	83 (4.0%)	27 (3.4%)	29 (3.6%)	5 (5.6%)	7 (8.0%)	7 (5.0%)	8 (5.8%)	0
Systemic AE								
Generalised myalgia	269 (13.0%)	84 (10.6%)	107 (13.3%)	15 (16.7%)	26 (29.9%)	21 (15.1%)	13 (9.5%)	3 (15.8%)
Fever	72 (3.5%)	14 (1.8%)	26 (3.2%)	4 (4.4%)	15 (17.2%)	8 (5.8%)	5 (3.6%)	0
Headache	377 (18.3%)	126 (15.9%)	134 (16.7%)	20 (22.2%)	28 (32.2%)	41 (29.5%)	24 (17.5%)	4 (21.1%)
Rash other than injection site	19 (0.9%)	12 (1.5%)	2 (0.2%)	1 (1.1%)	3 (3.4%)	0	0	1 (5.3%)
Lymph-adenopathy	41 (2.0%)	13 (1.6%)	18 (2.2%)	2 (2.2%)	5 (5.7%)	0	3 (2.2%)	0
Medication use								
Any medication	346 (16.8%)	116 (14.7%)	120 (15.0%)	19 (21.1%)	26 (29.9%)	34 (24.5%)	23 (16.8%)	2 (10.5%)
Paracetamol	281 (81.2%)	95 (81.9%)	97 (80.8%)	16 (84.2%)	22 (84.6%)	30 (88.2%)	21 (91.3%)	2 (100%)
NSAID	34 (9.8%)	13 (11.2%)	13 (10.8%)	3 (15.8%)	4 (15.4%)	2 (5.9%)	1 (4.3%)	0
Other	31 (9.0%)	8 (6.9%)	10 (8.3%)	0	0	2 (5.9%)	1 (4.3%)	0

329 Reactogenicity after vaccine administration occurring within seven days after each dose in PLWH.

330 Data are n (%)*Does not apply for Ad26.COV2.S. AE: adverse events, NSAID: non-steroidal anti-

331 inflammatory drug, PLWH: people living with HIV

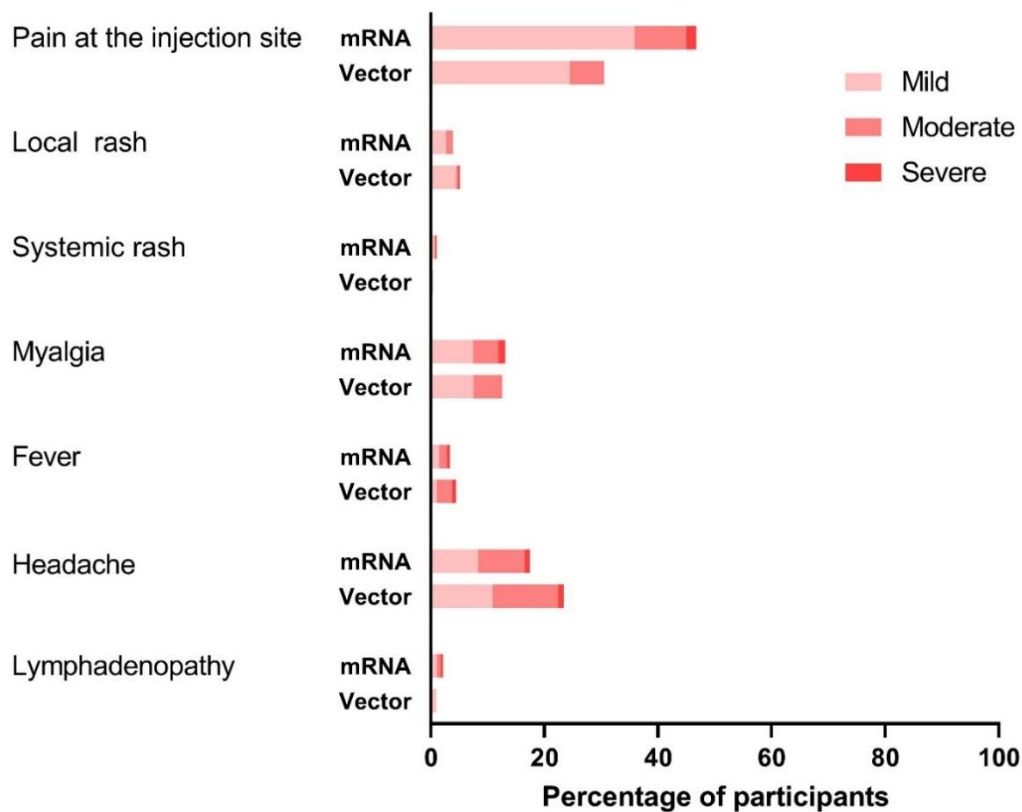
332

333 **Fig 4: Severity of adverse events**

334 Severity of AE present in the seven days after vaccination in PLWH comparing mRNA (BNT162b2,

335 mRNA-1273) and vector (ChAdOx1-S, Ad26.COV2.S) vaccines shown as a percentage (%).

336 AE: adverse events, PLWH: people living with HIV



337

338

339 Conclusion

340 Limited data exist on SARS-CoV-2 vaccination responses in PLWH. Here, we show that mRNA induces
341 lower SARS-CoV-2 S1-specific IgG levels in PLWH compared to controls, even after correction for age,
342 sex, and vaccine type. PLWH receiving a vector vaccine, of an older age, and with lower CD4+ T-cell
343 counts have more impaired antibody responses. As expected, the SARS-CoV-2 vaccines were well
344 tolerated in PLWH without vaccine related discontinuations or SAE.

345 Our primary result analysis in participants receiving mRNA vaccines contrasts with most of the small
346 cohort studies performed in PLWH where the authors found similar responses as in controls [16-18].
347 With regard to vector vaccines in our study, similar effects were seen as for mRNA vaccines, with lower
348 antibody concentrations in PLWH compared to controls. This differs from previously published results
349 on ChAdOx1-S where no differences were seen between PLWH and HIV-negative participants [14, 15].
350 Most, if not all, of the previous studies had not been powered to detect a predefined size of the impact
351 of HIV on vaccination response. Therefore, this discrepancy is probably a type two error of the previous
352 much smaller studies. Other reasons that may explain why some of the previous studies did not find a
353 lower response in PLWH may be the use of qualitative rather than quantitative antibody responses
354 and the inclusion of younger and more female participants. In contrast to the phase three trials, we
355 observed a lower response in male participants [1, 2]. However, this was observed in other vaccination
356 studies in PLWH previously [23]. Additionally, age is also known to influence the immune response to
357 SARS-CoV-2. Our results confirm this in PLWH, in whom more immunosenescence is seen compared
358 to HIV-negative controls [24, 25].

359 Overall, we found an increase in T-cell responses both on activation of CD4+ and CD8+ T-cells, and
360 cytokine production when exposed to SARS-CoV-2 spike protein. There were still a relevant proportion
361 of PLWH in whom T-cell responses after stimulation could not be measured. However, in the AIM assay
362 this was also observed in controls. Low-response or non-response has also been seen in ELISPOT assays
363 performed previously on healthy participants after vaccination [26]. We observed a relevant IFN- γ

364 production in the negative control stimulation in the PLWH group. Chronic immune activation and
365 persistent inflammation has been reported before in chronic HIV patients, and could explain these
366 results [27].

367 Adverse events occurred in just over half of all cases. When looking at BNT162b2, the overall incidence
368 of AE did not increase after the second vaccination although the type of AE differed somewhat (e.g.
369 systemic events occurred more often after the second). Overall, AE patterns in PLWH were mild and
370 similar to phase three trials, both in type and frequency [1-3, 5].

371 This study was performed at 22 of total 24 HIV treatment sites in the Netherlands. Our recruitment
372 strategy resulted in a large group of PLWH, with reasonable representation of female, as well as elderly
373 and those with lower CD4+ T-cell count. This reflected the HIV demographic in the Netherlands, in
374 which the 90-90-90 goals were already reached in 2018 [28].

375 Several limitations are noteworthy. Because provision of vaccinations was decided by the Dutch
376 National Institute for Public Health and the Environment, we could not fully control the distribution of
377 the available vaccines across age, sex, and CD4+ T-cell strata. Furthermore, there were some
378 differences in age and sex between the PLWH and controls, which we corrected for in our multivariate
379 analyses. We can also not fully guarantee that all participants with an antecedent COVID-19 infection
380 were excluded as antibodies may become undetectable over time. Finally, few PLWH with a very low
381 CD4+ T-cell count were enrolled and even fewer with a viral load >50 copies/ml.

382 The COVID-19 landscape continues to change rapidly as new VOC are emerging. Recent studies have
383 shown immune escape of the Omicron variant from humoral immunity induced by infection as well as
384 vaccination [26]. However, at least in HIV-negative people, this can be overruled by a booster
385 vaccination [21]. Additionally, higher antibody levels are associated with greater protection against
386 symptomatic disease [29, 30]. This highlights the importance that additional vaccinations can play in
387 controlling the pandemic. Based on the results of this study, we decided to give all participating PLWH
388 with an antibody response below 300 BAU/ml the opportunity to receive an additional mRNA-1273

389 vaccination. Furthermore, given the safety of the mRNA vaccines, the overall lower vaccine inducible
390 antibody response observed in PLWH, the observed waning of serum antibody levels over time, and
391 immune escape by VOC, we think that providing additional vaccinations to all PLWH may optimise
392 protection. An argument can be made for a more targeted approach in for example older PLWH, those
393 with lower CD4+ T-cells, or based on measured antibody responses and neutralisation capacity after
394 vaccination, however, we consider this too impractical.

395 In conclusion, vaccination against SARS-CoV-2 of PLWH resulted in a lower antibody response
396 compared to HIV-negative controls. Additional vaccinations may therefore be required in order to
397 compensate for this reduced antibody response.

398 **Acknowledgements**

399 Foremost, we would like to thank all participants of the study to help advancing science. We also want
400 to thank the following people who helped in the recruitment of participants: Aniek Adams, A. Boonstra,
401 Marjolein van Broekhuizen, Margo van der Burg-van der Plas, A. Cents-Bosma, Willemien Dorama, T.
402 Duijf, S. Faber, Natasja van Holten, Astrid van Hulzen, L.M. Kampschreur, Annemarie van der Kraan,
403 Inge de Kroon, Laura Laan, Eliane Leyten, Vera Maas, P.A. der Meulen, Femke Mollema, Suzanne de
404 Munnik, Hans-Erik Nobel, Vincent Peters, Simone Phaf, M. Pietersma, Frank Pijnappel, Leontine M.M.
405 van der Pijlt, Linda Scheiberlich, Jasmijn Steiner, Jolanda M. van der Swaluw, Maartje Wagemaker,
406 Annouschka Weijssenveld, Marc van Wijk, Sieds Wildenbeest and Sabine van Winden. We would like to
407 thank all our colleague internist-infectious diseases specialists in the Netherlands who helped with the
408 patient recruitment. Finally, we would like to thank Alessandro Sette and Alba Grifoni (La Jolla Institute
409 for Immunology, La Jolla, San Diego, USA) for providing the peptide pools used in the AIM assay.

410

411 References

- 412 1. Polack FP, Thomas SJ, Kitchin N, Absalon J, Gurtman A, Lockhart S, et al. Safety and Efficacy of
413 the BNT162b2 mRNA Covid-19 Vaccine. *N Engl J Med.* 2020;383(27):2603-15.
- 414 2. Baden LR, El Sahly HM, Essink B, Kotloff K, Frey S, Novak R, et al. Efficacy and Safety of the
415 mRNA-1273 SARS-CoV-2 Vaccine. *N Engl J Med.* 2021;384(5):403-16.
- 416 3. Voysey M, Clemens SAC, Madhi SA, Weckx LY, Folegatti PM, Aley PK, et al. Safety and efficacy
417 of the ChAdOx1 nCoV-19 vaccine (AZD1222) against SARS-CoV-2: an interim analysis of four
418 randomised controlled trials in Brazil, South Africa, and the UK. *Lancet.* 2021;397(10269):99-111.
- 419 4. Ramasamy MN, Minassian AM, Ewer KJ, Flaxman AL, Folegatti PM, Owens DR, et al. Safety
420 and immunogenicity of ChAdOx1 nCoV-19 vaccine administered in a prime-boost regimen in young
421 and old adults (COV002): a single-blind, randomised, controlled, phase 2/3 trial. *Lancet.*
422 2021;396(10267):1979-93.
- 423 5. Sadoff J, Gray G, Vandebosch A, Cardenas V, Shukarev G, Grinsztejn B, et al. Final Analysis of
424 Efficacy and Safety of Single-Dose Ad26.COV2.S. *N Engl J Med.* 2022;386(9):847-60.
- 425 6. Boekel L, Steenhuis M, Hooijberg F, Besten YR, van Kempen ZLE, Kummer LY, et al. Antibody
426 development after COVID-19 vaccination in patients with autoimmune diseases in the Netherlands: a
427 substudy of data from two prospective cohort studies. *Lancet Rheumatol.* 2021.
- 428 7. Le Bourgeois A, Coste-Burel M, Guillaume T, Peterlin P, Garnier A, Bene MC, et al. Safety and
429 Antibody Response After 1 and 2 Doses of BNT162b2 mRNA Vaccine in Recipients of Allogeneic
430 Hematopoietic Stem Cell Transplant. *JAMA Netw Open.* 2021;4(9):e2126344.
- 431 8. Carr EJ, Wu M, Harvey R, Wall EC, Kelly G, Hussain S, et al. Neutralising antibodies after
432 COVID-19 vaccination in UK haemodialysis patients. *Lancet.* 2021;398(10305):1038-41.
- 433 9. Oosting SF, van der Veldt AAM, GeurtsvanKessel CH, Fehrmann RSN, van Binnendijk RS,
434 Dingemans AC, et al. mRNA-1273 COVID-19 vaccination in patients receiving chemotherapy,

- 435 immunotherapy, or chemoimmunotherapy for solid tumours: a prospective, multicentre, non-
436 inferiority trial. *Lancet Oncol.* 2021;22(12):1681-91.
- 437 10. Boffito M, Waters L. More evidence for worse COVID-19 outcomes in people with HIV. *Lancet*
438 *HIV.* 2021;8(11):e661-e2.
- 439 11. Catherine FX, Piroth L. Hepatitis B virus vaccination in HIV-infected people: A review. *Hum*
440 *Vaccin Immunother.* 2017;13(6):1-10.
- 441 12. Pallikkuth S, De Armas LR, Pahwa R, Rinaldi S, George VK, Sanchez CM, et al. Impact of aging
442 and HIV infection on serologic response to seasonal influenza vaccination. *AIDS.* 2018;32(9):1085-94.
- 443 13. Spinelli MA, Lynch KL, Yun C, Glidden DV, Peluso MJ, Henrich TJ, et al. SARS-CoV-2
444 seroprevalence, and IgG concentration and pseudovirus neutralising antibody titres after infection,
445 compared by HIV status: a matched case-control observational study. *Lancet HIV.* 2021;8(6):e334-
446 e41.
- 447 14. Frater J, Ewer KJ, Ogbe A, Pace M, Adele S, Adland E, et al. Safety and immunogenicity of the
448 ChAdOx1 nCoV-19 (AZD1222) vaccine against SARS-CoV-2 in HIV infection: a single-arm substudy of a
449 phase 2/3 clinical trial. *Lancet HIV.* 2021.
- 450 15. Madhi SA, Koen AL, Izu A, Fairlie L, Cutland CL, Baillie V, et al. Safety and immunogenicity of
451 the ChAdOx1 nCoV-19 (AZD1222) vaccine against SARS-CoV-2 in people living with and without HIV in
452 South Africa: an interim analysis of a randomised, double-blind, placebo-controlled, phase 1B/2A
453 trial. *Lancet HIV.* 2021;8(9):e568-e80.
- 454 16. Levy I, Wieder-Finesod A, Litchevsky V, Biber A, Indenbaum V, Olmer L, et al. Immunogenicity
455 and safety of the BNT162b2 mRNA COVID-19 vaccine in people living with HIV-1. *Clin Microbiol*
456 *Infect.* 2021.
- 457 17. Woldemeskel BA, Karaba AH, Garliss CC, Beck EJ, Wang KH, Laeyendecker O, et al. The
458 BNT162b2 mRNA Vaccine Elicits Robust Humoral and Cellular Immune Responses in People Living
459 with HIV. *Clin Infect Dis.* 2021.

- 460 18. Heftdal LD, Knudsen AD, Hamm SR, Hansen CB, Moller DL, Pries-Heje M, et al. Humoral
461 response to two doses of BNT162b2 vaccination in people with HIV. *J Intern Med*. 2021.
- 462 19. Flemming A. Omicron, the great escape artist. *Nat Rev Immunol*. 2022;22(2):75.
- 463 20. van Sighem AI, Wit FWNM, Boyd A, Smit C, Matser A, Reiss P. Monitoring Report 2019.
464 Human Immunodeficiency Virus (HIV) Infection in the Netherlands. Amsterdam: Stichting HIV
465 Monitoring; 2020.
- 466 21. GeurtsvanKessel CH, Geers D, Schmitz KS, Mykytyn AZ, Lamers MM, Bogers S, et al. Divergent
467 SARS CoV-2 Omicron-reactive T- and B cell responses in COVID-19 vaccine recipients. *Sci Immunol*.
468 2022:eabo2202.
- 469 22. van Kampen JJA, van de Vijver D, Fraaij PLA, Haagmans BL, Lamers MM, Okba N, et al.
470 Duration and key determinants of infectious virus shedding in hospitalized patients with coronavirus
471 disease-2019 (COVID-19). *Nat Commun*. 2021;12(1):267.
- 472 23. Barte H, Horvath TH, Rutherford GW. Yellow fever vaccine for patients with HIV infection.
473 *Cochrane Database Syst Rev*. 2014(1):CD010929.
- 474 24. Ripa M, Chiappetta S, Tambussi G. Immunosenescence and hurdles in the clinical
475 management of older HIV-patients. *Virulence*. 2017;8(5):508-28.
- 476 25. Collier DA, Ferreira I, Kotagiri P, Datir RP, Lim EY, Touizer E, et al. Age-related immune
477 response heterogeneity to SARS-CoV-2 vaccine BNT162b2. *Nature*. 2021;596(7872):417-22.
- 478 26. Liu J, Chandrashekar A, Sellers D, Barrett J, Jacob-Dolan C, Lifton M, et al. Vaccines Elicit
479 Highly Conserved Cellular Immunity to SARS-CoV-2 Omicron. *Nature*. 2022.
- 480 27. Hoenigl M, Kessler HH, Gianella S. Editorial: HIV-Associated Immune Activation and Persistent
481 Inflammation. *Front Immunol*. 2019;10:2858.
- 482 28. Stichting HIV Monitoring. PRESS RELEASE: The Netherlands on course to reaching UNAIDS
483 2020 fast-track targets [updated 22 November 2018. Available from: [https://www.hiv-](https://www.hiv-monitoring.nl/en/news/news-press-releases/press-release-hiv-diagnoses-continue-decline-netherlands-1)
484 [monitoring.nl/en/news/news-press-releases/press-release-hiv-diagnoses-continue-decline-](https://www.hiv-monitoring.nl/en/news/news-press-releases/press-release-hiv-diagnoses-continue-decline-netherlands-1)
485 [netherlands-1](https://www.hiv-monitoring.nl/en/news/news-press-releases/press-release-hiv-diagnoses-continue-decline-netherlands-1).

- 486 29. Gilbert PB, Montefiori DC, McDermott AB, Fong Y, Benkeser D, Deng W, et al. Immune
487 correlates analysis of the mRNA-1273 COVID-19 vaccine efficacy clinical trial. *Science*.
488 2022;375(6576):43-50.
- 489 30. Khoury DS, Cromer D, Reynaldi A, Schlub TE, Wheatley AK, Juno JA, et al. Neutralizing
490 antibody levels are highly predictive of immune protection from symptomatic SARS-CoV-2 infection.
491 *Nat Med*. 2021;27(7):1205-11.
- 492
- 493

494 **Supporting Information**

495 **S1 Appendix**

496 **Study Design and Participants**

497 Inclusion was stratified according to vaccine type (mRNA, vector), sex assigned at birth, age (18-55, 56-
498 65 and >65), and most recent CD4+ T-cell count (<350 and \geq 350 cells/ μ L). In order to recruit a study
499 population that best represents the Dutch population of PLWH, we continuously monitored
500 recruitment across these strata and strata were closed for enrolment when a sufficient number had
501 been recruited [1].

502 All adult inhabitants of the Netherlands received an invitation for voluntary first round of vaccination
503 with either BNT162b2, mRNA-1273, ChAdOx1-S (AZD1222), or Ad26.COVS.2 between January and
504 August 2021. The type of vaccination offered in the Netherlands was decided by the National Institute
505 for Public Health and the Environment and was dependent on vaccine availability, employment in
506 healthcare, age, and comorbidities. The government started vaccinating all healthcare workers and
507 people above 65 years old with BNT162b2 from the end of January 2021. Subsequently, from the
508 middle of February, all people between 60 and 64 years were invited for vaccination with ChAdOx1-S.
509 From March onwards, all people with a medical indication, which included PLWH, between 18 and 60
510 years old were invited for vaccination with either BNT162b2, ChAdOx1-S or mRNA-1273. However, on
511 the 8th of April the Governmental Dutch Health council suspended vaccination with ChAdOx1-S in
512 people under the age of 60 due to the possibility of blood clots with low levels of platelets. The interval
513 between the BNT162b2 vaccines was six weeks and between the mRNA-1273 vaccines five weeks. Up
514 to 20 May 2021 the interval between the ChAdOx1-S vaccines was 12 weeks, after which the interval
515 was changed to between four and 12 weeks. The Ad26.COVS.2 vaccine was administered only once.

516 Vaccination response data from HIV-negative controls were obtained from two separate concurrent
517 studies. The first cohort consisted of health care workers from the Erasmus Medical Centre in

518 Rotterdam who were enrolled in a prospective cohort study (n=385). Health care workers received
519 BNT162b2, mRNA-1273, ChAdOx1-S, or Ad26.COV2.S according to national regulations as described
520 above. The second group consisted of participants who served as non-immunocompromised controls
521 in the Vaccination Against COVID-19 in Primary Immune Deficiencies (VACOVID) study investigating
522 the mRNA-1273 vaccine in people with inborne errors of immunity (IEI) (n=55). They received two
523 mRNA-1273 vaccines four weeks apart with blood sampling four weeks after the second vaccination.
524 None of the controls had a history of COVID-19.

525 **Clinical Procedures**

526 Study variables that were collected included year of birth, sex assigned at birth, current use of
527 combination antiretroviral therapy (cART), most recent plasma HIV-RNA (copies/mL), most recent
528 CD4+ T-cell count (cells/ μ L), and nadir CD4+ T-cell count (cells/ μ L).

529 **Laboratory Procedures**

530 Serum samples before vaccination were analysed at the laboratory of the individual treating centres
531 using either Wantai SARS-CoV-2 total Ig and IgM ELISAs (Beijing Wantai Biological Pharmacy Enterprise
532 Co., Ltd. China), Abbott ARCHITECT SARS-CoV-2 IgG (Abbott Park, Illinois, U.S.A.), Siemens Atellica-IM
533 IgG (sCOVG) SARS-CoV-2 Serology Assay (Siemens Healthineers Nederland B.V.), or Liaison by DiaSorin
534 (Saluggia, Italy), depending on local availability and according to the manufacturer's instructions.

535 ELISpot assays were performed on cryopreserved PBMCs using a commercial double colour kit (Cellular
536 Technology Limited). ImmunoSpot plates were coated with capture antibodies and kept overnight at
537 4°C. The plates were washed one of the following overlapping peptide pools were added as stimuli to
538 the appropriate wells, with culture media (CTL-Test® medium with 1% L-Glutamine): spike
539 glycoprotein (S, PM-WCPV-S1), nucleocapsid (N) protein (PM-WCPV-NCAP-1), myelin-oligodendrocyte
540 glycoprotein (MOG) (PM-MOG, negative control), and CEFX (PM-CEFX-2, positive control) (all from
541 JPT) at a concentration of 2 μ g/ml. PBMCs were plated at 200,000 cells per well and incubated 72 hours

542 (9% CO₂). Cells were removed, detection antibodies and enzymes for visualisation of the cytokines
543 were added, after which plates were air dried in the dark prior to counting with the ImmunoSpot Image
544 Analyzer.

545 Activation induced marker (AIM) assays were also performed on cryopreserved PBMCs. 1x10⁶ PBMCs
546 were incubated with SARS-CoV-2 peptide pools (1µg/mL) and incubated at 37°C for 20 hours. SARS-
547 CoV-2 peptide pools consist of 15-mers with 10 amino acid overlaps covering the entire S-protein of
548 the WuhanHu1 (wild-type) (in PLWH) and D614G (wild-type) (in HIV-negative controls) or B.1.617.2
549 (delta) variant. PBMCs were stimulated with an equimolar amount DMSO as negative control or a
550 combination of PMA (50 µg/mL) and Ionomycin (500 µg/mL) as positive control. Following stimulation,
551 cells were stained and measured by flow cytometry (FACSLyric, BD). PBMC were stained at 4°C for 15
552 minutes with the following antibodies and dilutions: anti-CD3^{PerCP} (Clone SK7, BD, 1:25), anti-CD4^{V50}
553 (Clone L200, BD, 1:50), anti-CD8^{FITC} (Clone DK25, Dako, 1:25), anti-CD45RA^{PE-Cy7} (Clone L48, BD, 1:50),
554 anti-CCR7^{BV711}, anti-CD69^{APC-H7} (Clone FN50, BD, 1:50), anti-CD137^{PE} (Clone 4B4-1, Miltenyi, 1:50), and
555 anti-OX40^{BV605} (Clone L106, BD, 1:25). LIVE/DEAD™ Fixable Aqua Dead Cell staining was included
556 (AmCyan, Invitrogen, 1:100).

557 **Outcomes**

558 Analysed variables associated with the height of antibody level; vaccine type (BNT162b2, mRNA-1273,
559 ChAdOx1-S, or Ad26.COV2.S), sex assigned at birth (male or female), age (birth year subgroups 1965-
560 2002, 1964-1955 and <1954), nadir CD4+ T-cell count (<250, 250-500 and >500 cells/µL), and most
561 recent CD4+ T-cell count (<250, 250-500 and >500 cells/µL).

562 Analysed variables associated with hyporesponse and non-response; vaccine group (mRNA or vector),
563 sex at birth (male or female), age group (birth year subgroups 1965-2002, 1964-1955 and <1954), nadir
564 CD4+ T-cell count (<250, 250-500 and >500 cells/µL), and most recent CD4+ T-cell count (<250, 250-
565 500 and >500 cells/µL).

566 We evaluated the tolerability of the administered vaccines by monitoring local and systemic vaccine
567 related adverse events. Severity of reactogenicity was measured as mild (symptoms present but no
568 functional impairment or medication needed), moderate (necessitating medication, no functional
569 impairment) or severe (impairing in daily functioning). Severe adverse events (SAE) were assessed for
570 likeliness of association with vaccination by the participating site principal investigator and physician.

571

572

573 **Supplementary References**

574 1. van Sighem AI, Wit FWNM, Boyd A, Smit C, Matser A, Reiss P. Monitoring Report 2019. Human

575 Immunodeficiency Virus (HIV) Infection in the Netherlands. 2020. www.hiv-monitoring.nl.

576

577 **S1 Table: Baseline characteristics of HIV negative participants and PLWH per vaccine**

	HIV negative participants					People living with HIV				
	Overall N= 440	BNT162b2 N= 94 (21.4%)	mRNA- 1273 N= 247 (56.1%)	ChAdOx1- S N= 26 (5.9%)	Ad26.COVS N=73 (16.6%)	Overall N= 1154	BNT162b2 N=884 (76.6%)	mRNA- 1273 N= 100 (8.7%)	ChAdOx1-S N=150 (13.0%)	Ad26.COVS N=20 (1.7%)
Sex assigned at birth										
Male	126 (28.6%)	31 (33%)	73 (29.6%)	9 (34.6%)	13 (17.8%)	987 (85.5%)	751 (85.0%)	88 (88.0%)	133 (88.7%)	15 (75.0%)
Female	314 (71.4%)	63 (67.0%)	174 (70.4%)	17 (65.4%)	60 (82.2%)	167 (14.5%)	133 (15.0%)	12 (12.0%)	17 (11.3%)	5 (25.0%)
Age category										
18-55 yr.	352 (80.0%)	81 (86.2%)	203 (82.2%)	1 (3.8%)	67 (91.8%)	703 (60.9%)	590 (66.7%)	84 (84.0%)	12 (8.0%)	17 (85.0%)
56-65 yr.	74 (16.8)	13 (13.8%)	30 (12.1%)	25 (96.2%)	9 (8.2%)	291 (25.2%)	141 (16.0%)	16 (16.0%)	131 (87.3%)	3 (15.0%)
65+ yr.	14 (3.2%)	0	14 (5.7%)	0	0	160 (13.9%)	153 (17.3%)	0	7 (4.7%)	0
On Cart										
Yes	NA	NA	NA	NA	NA	1142 (99.0%)	873 (98.8%)	99 (99.0%)	150 (100%)	20 (100%)
No	NA	NA	NA	NA	NA	12 (1.0%)	11 (1.2%)	1 (1.0%)	0	0
Most recent plasma HIV viral load										
<50 copies/mL	NA	NA	NA	NA	NA	1127 (97.7%)	862 (97.5%)	98 (98.0%)	147 (98.0%)	20 (100%)
≥50 copies/mL	NA	NA	NA	NA	NA	26 (2.3%)	22 (2.5%)	2 (2.0%)	3 (2.0%)	0
Most recent CD4+ T-cell count										
<250 cells/μL	NA	NA	NA	NA	NA	41 (3.6%)	32 (3.6%)	3 (3.0%)	5 (3.3%)	1 (5.0%)
250-500 cells/μL	NA	NA	NA	NA	NA	224 (19.4%)	168 (19.0%)	21 (21.0%)	33 (22.0%)	2 (10.0%)
>500 cells/μL	NA	NA	NA	NA	NA	889 (77.0%)	684 (77.4%)	76 (76.0%)	112 (74.7%)	17 (85.0%)
CD4 T-cell count nadir										

<250 cells/μL	NA	NA	NA	NA	NA	443 (38.4%)	331 (37.4%)	34 (34.0%)	71 (47.3%)	7 (35.0%)
250-500 cells/μL	NA	NA	NA	NA	NA	376 (32.6%)	296 (33.5%)	34 (34.0%)	40 (26.7%)	6 (30.0%)
>500 cells/μL	NA	NA	NA	NA	NA	152 (13.2%)	114 (12.9%)	19 (19.0%)	17 (11.3%)	2 (10.0%)
Unknown	NA	NA	NA	NA	NA	183 (15.9%)	143 (16.2%)	13 (13.0%)	22 (14.7%)	5 (25.0%)
Days between doses	28 (25-28)	21 (21-23)	28 (28-28)	56 (56-70)	NA	35 (35-36)	35 (35-36)	35 (34.75-35)	71.5 (57-77)	NA
Hyporesponse (50-300 BAU/mL)	36 (8.2%)	0	0	0	36 (49.3%)	76 (6.5%)	42 (4.8%)	1 (1.0%)	22 (14.7%)	11 (57.9%)
Nonresponse (<50 BAU/mL)	46 (10.5%)	0	0	10 (38.5%)	36 (49.3%)	89 (7.7%)	17 (1.9%)	3 (3.0%)	60 (40.0%)	9 (42.1%)

578

Data are n (%) or median (IQR). NA: not applicable, PLWH: people living with HIV, IQR: interquartile range, BAU/mL: binding antibodies per millilitre

579 **S2 Table: Subgroup patient characteristics**

	Serology	ELISpot*	AIM	
	People living with HIV N=43	People living with HIV N=47	People living with HIV N=14	HIV negative participants N=24
Vaccine type				
BNT162b2	43 (95.3%)	31 (66.0%)	12 (85.7%)	5 (20.8%)
mRNA-1273	0	4 (8.5%)	0	15 (62.5%)
ChAdOx1-S	2 (4.7%)	12 (25.5%)	2 (14.3%)	4 (16.7%)
Ad26.COV2.S	0	0	0	0
Sex assigned at birth				
Male	52 (77.6%)	36 (76.6%)	12 (85.7%)	5 (20.8%)
Female	15 (22.4%)	11 (23.4%)	2 (14.3%)	19 (79.2%)
Age category				
18-55 yr.	31 (72.1%)	26 (55.3%)	7 (50.0%)	19 (79.2%)
56-65 yr.	9 (20.9%)	17 (36.2%)	5 (35.7%)	5 (20.8%)
65+ yr.	3 (7.0%)	4 (8.5%)	2 (14.3%)	0
On cART				
Yes	42 (97.7%)	47 (100%)	14 (100%)	NA
No	1 (2.3%)	0	0	NA
Most recent plasma HIV viral load				
<50 copies/mL	42 (97.7%)	47 (100%)	14 (100%)	NA
≥50 copies/mL	1 (2.3%)	0	0	NA
Most recent CD4+ T-cell count				
<250 cells/μL	3 (7.0%)	3 (6.4%)	3 (21.4%)	NA
250-500 cells/μL	5 (11.6%)	6 (12.8%)	4 (28.6%)	NA
>500 cells/μL	35 (81.4%)	38 (80.9%)	7 (50.0%)	NA
CD4 T-cell count nadir				
<250 cells/μL	14 (32.6%)	18 (38.3%)	7 (50.0%)	NA
250-500 cells/μL	15 (34.9%)	14 (29.8%)	3 (21.4%)	NA
>500 cells/μL	7 (16.3%)	5 (10.6%)	1 (7.1%)	NA
Unknown	7 (16.3%)	10 (21.3%)	3 (21.4%)	NA

580 *ELISpot: before vaccination n= 23, after vaccination n=45 Data are n (%)

581 NA: not applicable, IQR: interquartile range, ELISpot: enzyme-linked immune absorbent spot, AIM:

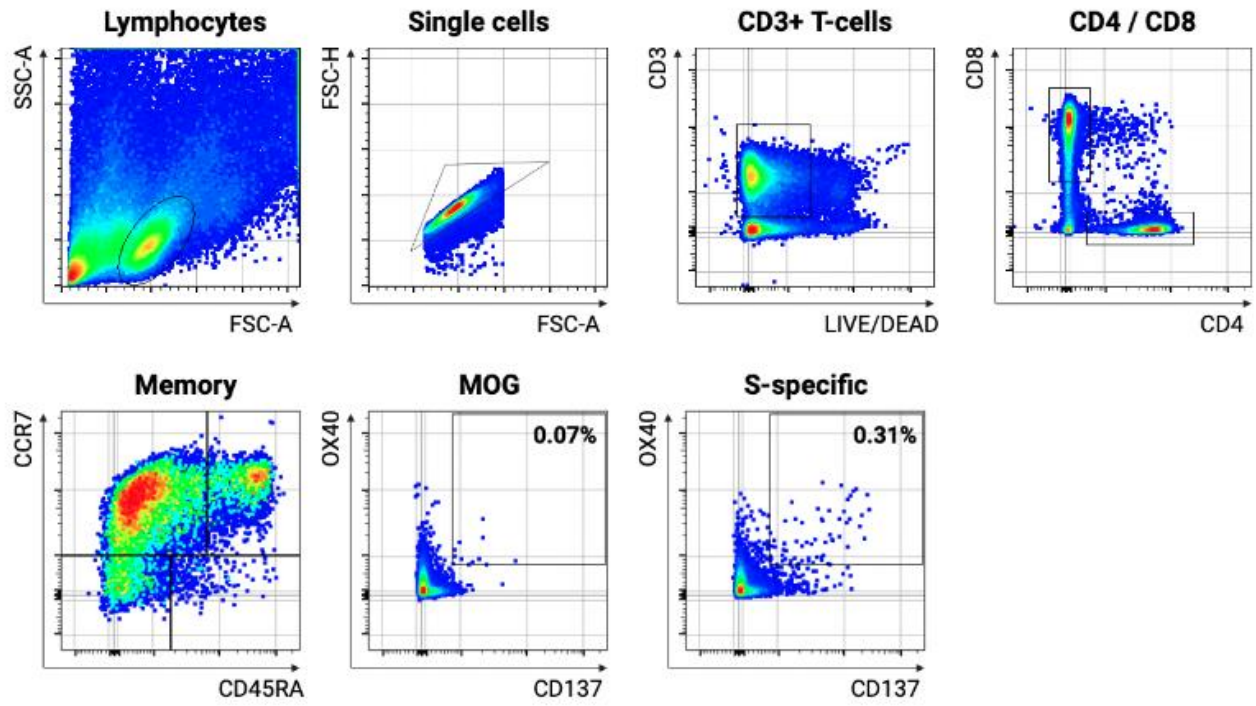
582 activation induced marker

583

584 **S1 Fig: Gating strategy**

585 Gating strategy for Flow Cytometry in AIM assay.

586 AIM: activation induced marker, MOG: myelin-oligodendrocyte glycoprotein



587

588

589 **S2 Fig: Serologic responses after vaccination in PLWH**

590 T0: before vaccination, T1: 21 (+/-3) days after first vaccination, T2: 4-6 weeks after second vaccination

591 Antibody concentration measured as S-specific binding antibodies per millilitre (BAU/ml) in the

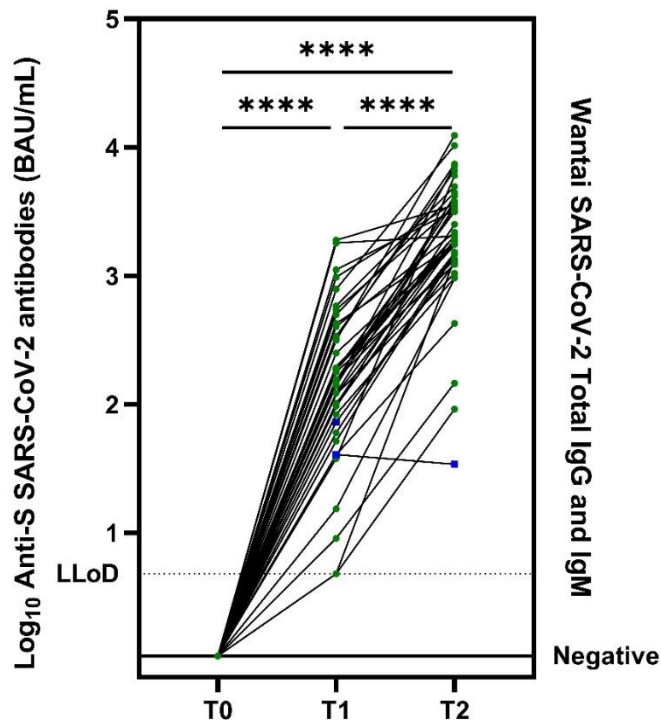
592 subgroup participants (n=43) (T0 is Wantai, all negative). Green circles: PLWH who received mRNA

593 vaccines, Blue squares: PLWH who received vector based vaccines. The dotted line shows the lower

594 limit of detection (4.81 BAU/ml), statistics performed with Wilcoxon matched-pairs signed rank test

595 (**** p<0.0001). S: spike, BAU/ml: binding antibodies per millilitre, PLWH: people living with HIV,

596 LLoD: lower limit of detection

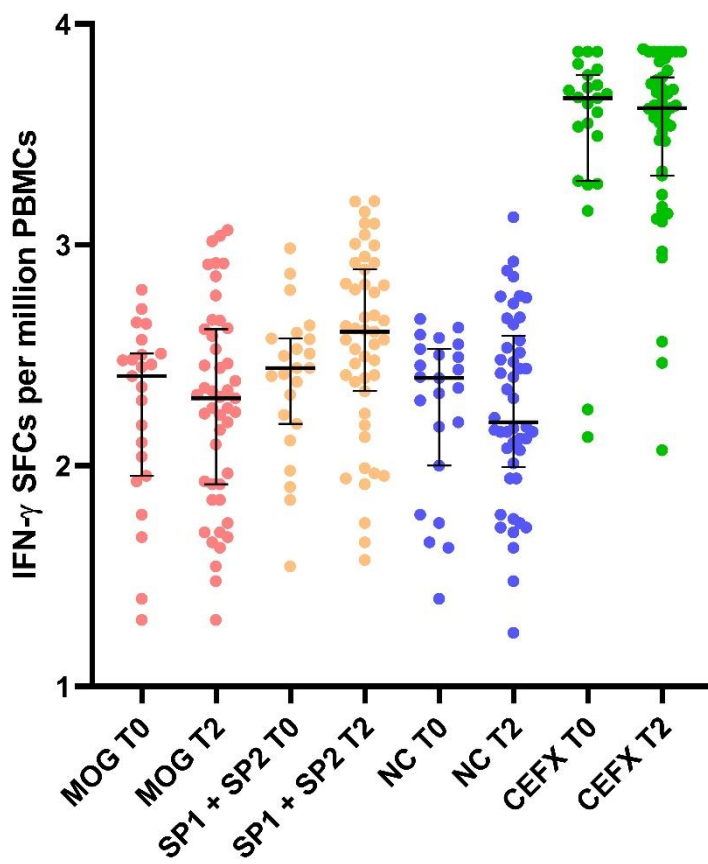


597

598 **S3 Fig: ELISPOT results in subgroup participants (PLWH)**

599 T0: before vaccination, T2: 4-6 weeks after second vaccination

600 All ELISpot assay results shown as IFN- γ SFC. MOG: myelin-oligodendrocyte glycoprotein, SP1: spike
601 protein 1, SP2: spike protein 2, NC: nucleocapsid, PLWH: people living with HIV, IFN: interferon, SFC:
602 spot forming cells, PBMCs: peripheral blood mononuclear cells, ELISPot: enzyme-linked immune
603 absorbent spot



604