

1 **The complex relationship of air pollution and neighborhood socioeconomic deprivation**  
2 **and their association with cognitive decline**

3 Grace Christensen<sup>1</sup>, Zhenjiang Li<sup>2</sup>, John Pearce<sup>3</sup>, Michele Marcus<sup>1,2</sup>, James J. Lah<sup>4</sup>, Lance A.  
4 Waller<sup>2,5</sup>, Stefanie Ebel<sup>1,2</sup>, Anke Huels<sup>1,2</sup>

5 <sup>1</sup> Department of Epidemiology, Rollins School of Public Health, Emory University, Atlanta, GA,  
6 USA,

7 <sup>2</sup> Gangarosa Department of Environmental Health, Rollins School of Public Health, Emory  
8 University, Atlanta, GA, USA

9 <sup>3</sup> Department of Public Health Sciences, College of Medicine, Medical University of South  
10 Carolina, Charleston, SC, USA

11 <sup>4</sup> Department of Neurology, School of Medicine, Emory University, Atlanta, GA, USA

12 <sup>5</sup> Department of Biostatistics and Bioinformatics, Rollins School of Public Health, Emory  
13 University, Atlanta, GA, USA

14

15 **Corresponding author:**

16 Anke Huels, PhD

17 Rollins School of Public Health, Emory University

18 1518 Clifton Road, Atlanta, GA 30322

19 E-mail: [anke.huels@emory.edu](mailto:anke.huels@emory.edu)

20

21 **Sources of support:** This work was based on information from the Emory Healthy Aging study,  
22 supported by HERCULES Pilot Project via National Institute of Environmental Health Sciences  
23 (NIEHS) P30ES019776 (PI: Anke Huels) and National Institute on Aging (NIA) R01AG070937  
24 (PI: James J. Lah). Research reported in this publication was supported by the National Institute  
25 of Environmental Health under Award Number 5T32ES12870 (Trainee: Grace M. Christensen).

26

27 **Conflicts of interest:** *The authors declare they have nothing to disclose.*

28 **Abstract**

29 *Background:* Air pollution and neighborhood socioeconomic status (nSES) have been shown to  
30 affect cognitive decline in older adults. In previous studies, nSES acts as both a confounder and  
31 an effect modifier between air pollution and cognitive decline.

32 *Objectives:* This study aims to examine the individual and joint effects of air pollution and nSES  
33 on cognitive decline on adults 50 years and older in Metro Atlanta, USA.

34 *Methods:* Perceived memory and cognitive decline was assessed in 11,897 participants aged  
35 50+ years from the Emory Healthy Aging Study (EHAS) using the cognitive function instrument  
36 (CFI). Three-year average air pollution concentrations for 12 pollutants and 16 nSES  
37 characteristics were matched to participants using census tracts. Individual exposure linear  
38 regression and LASSO models explore individual exposure effects. Environmental mixture  
39 modeling methods including, self-organizing maps (SOM), Bayesian kernel machine regression  
40 (BKMR), and quantile-based G-computation explore joint effects, and effect modification  
41 between air pollutants and nSES characteristics on cognitive decline.

42 *Results:* Participants living in areas with higher air pollution concentrations and lower nSES  
43 experienced higher CFI scores (beta: 0.121; 95% CI: 0.076, 0.167) compared to participants  
44 living in areas with low air pollution and high nSES. Additionally, the BKMR model showed a  
45 significant overall mixture effect on cognitive decline, indicating synergy between air pollution  
46 and nSES. These joint effects explain protective effects observed in single-pollutant linear  
47 regression models, even after adjustment for confounding by nSES (e.g., an IQR increase in  
48 CO was associated with a 0.038-point decrease (95% CI: -0.06, -0.01) in CFI score).

49 *Discussion:* Observed protective effects of single air pollutants on cognitive decline can be  
50 explained by joint effects and effect modification of air pollutants and nSES. Researchers must  
51 consider nSES as an effect modifier if not a co-exposure to better understand the complex  
52 relationships between air pollution and nSES in urban settings.

53

54 299/300 words

55

## 56 Introduction

57 Exposure to ambient air pollution, particularly fine particulate matter (PM<sub>2.5</sub>), in adulthood has  
58 been associated with cognitive decline and dementias like Alzheimer's disease (Paul et al.,  
59 2019; Peters et al., 2019; Power et al., 2016; Weuve et al., 2021). Animal models suggest that  
60 air pollution affects the central nervous system through pathways involving inflammation and  
61 oxidative stress (Costa et al., 2020; Hahad et al., 2020). Though exposure to air pollutants  
62 occurs as a mixture of correlated pollutants, it is not treated as such in most epidemiological  
63 studies, including those that have assessed cognitive decline, which often rely on the use of  
64 single pollutant models (Dominici et al., 2010). Consideration of neighborhood socioeconomic  
65 status (nSES) is also important to understand the full impact of air pollution on cognitive decline.

66 It is well known that individuals living in disadvantaged neighborhoods are often exposed to  
67 higher concentrations of air pollution than individuals living in more socioeconomically  
68 advantaged neighborhoods (Landrigan et al., 2018; Maantay, 2002). Additionally, air pollution  
69 and social vulnerability are hypothesized to interact leading to impaired health outcomes,  
70 including cognitive decline (J. A. Ailshire & Clarke, 2015). Social stressors that occur in  
71 disadvantaged neighborhoods are an integral part of the 'triple jeopardy' of environmental  
72 injustice. The triple jeopardy hypothesis examines how low nSES communities experience  
73 higher exposure to air pollution and increased susceptibility to poor health due to increased  
74 psychosocial stressors among other factors, resulting in health disparities (Hajat et al., 2015).  
75 Exposure to both neighborhood social stressors and air pollution may jointly affect cognitive  
76 decline in older adults through various biological pathways, but these interactions are poorly  
77 understood. Toxicology studies suggest that social stressors may lower the brain's threshold for  
78 neurotoxicity, thus making those living in disadvantaged neighborhoods more vulnerable to the  
79 harmful effects of air pollution (Lupien et al., 2009; McEwen & Tucker, 2011).

80 Despite the importance and relevance of the concept of environmental injustice for cognitive  
81 health, few epidemiologic studies on air pollution and cognition have considered nSES as a  
82 confounder (J. A. Ailshire & Crimmins, 2014; Bowe et al., 2019; Cullen et al., 2018; Li et al.,  
83 2021) or effect modifier (J. Ailshire et al., 2017; Li et al., 2021). One study treated nSES as an  
84 effect modifier and found the association between PM<sub>2.5</sub> and cognitive errors was stronger in  
85 older adults living in high stress neighborhoods (J. Ailshire et al., 2017). Another study found  
86 that nSES was both a confounder and an effect modifier of the association of air pollution and  
87 cognitive decline (Li et al., 2021). These studies show that it is imperative to include  
88 socioeconomic context of participants in studies of air pollution and cognitive decline. One  
89 methodologic challenge of analyses related to environmental injustice is the high correlation  
90 between environmental and social stressors. Previous studies have evaluated interactions and  
91 effect modifications of air pollutants and nSES by including interaction terms or conducting  
92 stratified linear regression models (J. Ailshire et al., 2017; Li et al., 2021). Modeling  
93 environmental exposures, including pollutants and socioeconomic contexts of the population, as  
94 a mixture is a necessary next step to describe the associations between environmental  
95 pollutants and health effects and understand their joint and potentially synergistic effects (Carlin  
96 et al., 2013; Taylor et al., 2016).

97 Recently, statistical methods to evaluate individual, joint, and interaction effects of  
98 environmental mixtures have been developed (Bobb et al., 2015; Carlin et al., 2013; Keil et al.,  
99 2020; Pearce et al., 2016). These methods all evaluate the complex problem of environmental  
100 mixtures. However, since they each address slightly different aspects of how mixtures affect

101 health, multiple methods must be used for a holistic assessment of the mixture effects,  
102 particularly in diverse urban settings. Mixture methods developed to investigate individual  
103 effects of highly correlated exposure variables include Bayesian Kernel Machine Regression  
104 (BKMR), Least Absolute Shrinkage and Selection Operator (LASSO) and quantile-based G-  
105 computation. BKMR and quantile-based G-computation further allow estimation of the joint  
106 effects of the mixture as a whole and BKMR can estimate interactions between a limited number  
107 of exposure mixtures. Self-organizing maps (SOM) utilize a different strategy for analysis of joint  
108 effects by identifying pertinent types of multipollutant combinations that jointly affect health.  
109 However, the application of these mixture methods has been limited to environmental  
110 exposures and none of these methods have been used to quantify the complex relationship  
111 between air pollution and nSES in the context of environmental injustice on cognitive decline.

112 This study aims to use these mixture methods to 1) identify the most harmful air pollutants and  
113 nSES indicators in relation to cognitive decline; 2) estimate the joint effects of air pollution and  
114 nSES on cognitive decline; and 3) estimate effect modification of air pollutants and nSES  
115 characteristics on cognitive decline in adults 50 years and older in Atlanta, GA.

## 116 **Methods**

### 117 *Study Population*

118 The Emory Healthy Aging Study (EHAS) is a large gerontology-based ongoing research study  
119 focusing on diseases of older adults, starting in 2015. Enrollment is open to anyone over age  
120 18, living in the US, and sufficiently fluent in English. Recruitment in the Metro-Atlanta area  
121 focused on individuals receiving health services at Emory Healthcare as well as their spouses,  
122 family members, and associated non-relatives. Enrollment, consent, and all questionnaires were  
123 completed online and described elsewhere (Goetz et al., 2019). EHAS participants that enrolled  
124 during the 2015 – 2020 period, were 50 years and older at baseline, and living in the Metro-  
125 Atlanta area were included in this analysis. The EHAS includes a Health History Questionnaire  
126 at enrollment where participants are asked demographic questions, such as age and self-  
127 reported race/ethnicity, and health information as well as an assessment of perceived memory  
128 and cognitive decline. All participants complete an online consent process prior to enrollment,  
129 and the study was approved by the Emory University Institutional Review Board.

### 130 *Exposure Assessment*

131 Average ambient air pollution concentrations for the 2008-2010 period were derived from the  
132 Community Multiscale Air Quality (CMAQ) chemical transport model for twelve pollutants,  
133 Nitrogen Oxides (NO<sub>x</sub>), nitrogen Dioxide (NO<sub>2</sub>), Nitrate (NO<sub>3</sub>), Sulfur Dioxide (SO<sub>2</sub>), Ozone (O<sub>3</sub>),  
134 carbon Monoxide (CO), Ammonium (NH<sub>4</sub>), Particulate matter with a diameter 10 microns or less  
135 and 2.5 microns or less (PM<sub>10</sub>, PM<sub>2.5</sub>), Sulfate (SO<sub>4</sub>), Elemental Carbon (EC), and Organic  
136 Carbon (OC) at a grid resolution of 4-kilometers (Senthilkumar et al., 2019). For the main  
137 analysis, participants were assigned CMAQ pollutant concentrations based on their census tract  
138 of residence. Specifically, the center of each CMAQ grid cell was geospatially matched to the  
139 closest census tract, which was then connected to each participant based on their residential  
140 street address at enrollment. Exposures assigned based on residential census tract, as  
141 opposed to street address, were used in the main analysis to facilitate the application of certain  
142 mixture methods (i.e., Self-Organizing Maps, which require all inputs (i.e., air pollution and  
143 nSES) to be at the same spatial resolution) and thus to facilitate comparison of results across  
144 mixture methods. In a sensitivity analysis, CMAQ grid cell exposures were assigned to

145 participants based on their residential street address to ensure that there was no bias caused by  
146 the broader census tract matching.

147 Neighborhood socioeconomic characteristics (nSES) were obtained for each Metro-Atlanta  
148 census tract from United States Census Bureau's American Community Survey for the years  
149 2013-2018. The 5-year average estimates were obtained through the R package *tidycensus*.  
150 Sixteen nSES indicators representing the six domains poverty/income, racial composition,  
151 education, employment, occupation, housing properties, were chosen to represent a mixture of  
152 exposures to nSES (Messer et al., 2006). The nSES characteristic median home value was  
153 multiplied by -1 to be in line with the other nSES characteristics, meaning that an increasing  
154 value indicates lower nSES. Additionally, an indicator for residential stability (the percentage of  
155 households that moved into their current residence before 2010) was used to control for  
156 confounding due to residential mobility in analyses.

### 157 *Assessment of Cognitive Decline*

158 Cognitive decline was measured using the cognitive function instrument (CFI), where higher  
159 scores indicate increased perceived memory decline and cognitive decline (Amariglio et al.,  
160 2015). The CFI was self-administered and consists of 14 questions that probe subjective  
161 cognitive concerns occurring in daily life of older adults. The CFI score is predictive of cognitive  
162 decline in older adults, and can reliably track early changes in cognitive function in patients  
163 without clinical impairment. Subjective experiences of cognitive decline occur at the late stage of  
164 the preclinical, cognitively unimpaired phase of the Alzheimer's disease continuum and are  
165 therefore often considered as the first symptom of dementia (Jack et al., 2018). Unlike other  
166 methods to assess cognitive impairment, the CFI does not require an in-person interview and  
167 review by a physician (Amariglio et al., 2015). Total CFI score was calculated by scoring the  
168 responses to each question (Yes = 1, No = 0, and Maybe = 0.5) to create an instrument ranging  
169 from 0 to 14, where higher scores indicate a higher degree of cognitive decline. Total CFI score  
170 was right skewed in our sample, and was therefore log-transformed for all analyses.

### 171 *Statistical Analysis*

172 To model individual and joint effects of air pollution exposures and nSES characteristics multiple  
173 exposure mixture modeling techniques were used. Statistical approaches were selected based  
174 on the research question (e.g. individual effect, effect modification, joint effect), and at this time  
175 there is no one method appropriate for all exposure mixture research (Taylor et al., 2016).  
176 Furthermore, analyses with multiple methods can allow researchers to examine the  
177 relationships between environmental mixtures and health outcomes from different perspectives  
178 to come to a more comprehensive understanding of the relationships under study.

179 A directed acyclic graph (DAG) was used to select confounders for the effect of air pollution and  
180 nSES on cognitive decline (Figure S1). Potential confounders under consideration included  
181 individual age, race/ethnicity, education, and residential stability of the census tract. These  
182 potential confounders were used in all adjusted analyses. For the assessment of effects of  
183 individual air pollutants, models were additionally adjusted for nSES. As most of the 16 nSES  
184 variables are highly correlated (Figure S2B), principal components (PCs) were derived from  
185 nSES characteristics that account for 80% of the total variance in nSES. The uncorrelated nSES  
186 variables were then included as confounding variables in the association analyses, following the  
187 work in Li et al., (2021). For the assessment of joint effects, air pollution and nSES were  
188 considered as co-exposures.

## 189 *Individual Effects*

190 First, we considered individual linear regression models for each air pollutant and nSES  
191 characteristic adjusted for individual age, race/ethnicity, education, and residential stability of  
192 the census tract. Associations with air pollution exposures were additionally adjusted for PCs of  
193 nSES characteristics. These single-exposure models illustrated how each exposure associates  
194 with cognitive decline when not accounting for other co-exposures.

195 Second, using the R package *glmnet*, multi-pollutant models via LASSO regression were  
196 conducted to determine which mixture components (16 nSES and 12 air pollutants) most  
197 contribute to the mixture effect on the natural log of CFI ( $\ln(\text{CFI})$ ), while accounting for the other  
198 co-exposures. LASSO regression is a supervised regression analysis method that selects  
199 variables most influential on the outcome and shrinks the effect estimates of the variables that  
200 are not influential on the outcome (Tibshirani, 1996). This method performs variable selection  
201 while controlling for co-exposures and confounding.

202 BKMR estimates individual effects of each of the exposures and determines which mixture  
203 components contribute to the mixture's effect on the outcome, while accounting for the other  
204 exposures in the mixture (Bobb et al., 2018). BKMR uses a specified kernel function to model  
205 the exposure mixture's effect on an outcome, adjusting for confounders. This method allows for  
206 non-linear relationships between exposure and outcome, and can additionally model both the  
207 total mixture effect and the individual effect of each component accounting for collinearity (Bobb  
208 et al., 2015, 2018). BKMR analyses were done using the *bkmr* package in R (ver. 3.6.1). BKMR  
209 results are based on 20,000 iterations and were adjusted for confounders as described above.

210 Quantile-based G-computation provides another method to estimate relative contributions of the  
211 exposure mixture components to the mixtures effect on cognitive decline (Keil et al., 2020).  
212 Quantile-based G-computation uses G-computation to estimate the total mixture effect on the  
213 outcome as a one quantile increase in all mixture components at the same time. Additionally,  
214 the weight of each exposure in the mixture effect estimate is calculated, providing the proportion  
215 of the partial effect due to a specific exposure (Keil et al., 2020). All analyses were done using  
216 the *qgcomp* package in R (ver. 3.6.1). The adjusted model was fitted for four quantiles of  
217 exposure and 500 bootstrap samples.

## 218 *Effect Modification by nSES*

219 To investigate how associations between air pollution and cognitive decline were modified by  
220 specific nSES characteristics, we included interaction terms for the pollutant and those nSES  
221 characteristics with the most robust associations with cognitive decline in the individual air  
222 pollutant linear regression models. These models were adjusted for the same factors as the  
223 models above.

## 224 *Joint Effects*

225 We applied the SOM algorithm in order to identify clusters of census tracts with similar air  
226 pollution and nSES characteristics (Pearce et al., 2014, 2016). The number of clusters identified  
227 by the SOM algorithm was determined by identifying group structure using within cluster sum of  
228 squares and between cluster sum of squares statistics, as well as visual inspection of the  
229 cluster star plot. These methods identify clusters with exposure levels homogenous within the  
230 cluster and heterogenous between clusters. Census tract clusters were next matched to EHAS  
231 participants using the census tract of the participant's address. Once participants were assigned

232 a SOM exposure cluster, adjusted linear regression models estimated the effect of exposure  
233 cluster on CFI score. The reference cluster for the linear regression model was the cluster with  
234 highest nSES and lowest air pollution concentrations. The result is a model describing the joint  
235 effect of observed mixture combinations of air pollution and nSES characteristics on CFI. All  
236 SOM analyses were performed using R version 3.6.1 (R Core Team, Vienna, Austria) using  
237 code within the *ECM* package available at: <https://github.com/johnlpearce/ECM>.

238

## 239 **Results**

### 240 *Population Characteristics*

241 The final study sample contained 11,897 individuals, 50 years and older, living in the Metro-  
242 Atlanta area. These participants had a median age of 65 years, and were majority white race  
243 (81.9%). Participants of EHAS were well educated, with 73.3% having a bachelor's degree or  
244 higher. The median CFI score was 1.5 (IQR: 2.5) (Table 1), and the CFI distribution was right  
245 skewed.

246 Air pollutants were positively correlated with one another, except for O<sub>3</sub> and PM<sub>10</sub>, which had  
247 negative correlation with other air pollutants (Figure S2). Similarly, nSES characteristics were  
248 positively correlated with one another, with the exception of median home value, for which  
249 higher values correspond to higher nSES leading to a negative correlation with most other  
250 nSES characteristics. In order to make the results of the association analyses easier to  
251 interpret, we multiplied the median home value by (-1) for all subsequent analyses. This way  
252 higher values of all nSES characteristics correspond to lower nSES. Air pollutants and nSES  
253 characteristics were not highly correlated with each other, though percent with no car, and  
254 percent rented homes were positively correlated with most air pollutants, except for O<sub>3</sub> and  
255 PM<sub>10</sub>. Average median home value had a small positive correlation with most air pollutants,  
256 except for OC, PM<sub>10</sub> and PM<sub>2.5</sub>.

### 257 *Individual Exposure Effects*

258 In contrast to our hypothesis, individual adjusted linear regression models showed mainly  
259 protective effects for air pollutants (Figure 1A, Supplementary Table S1). An IQR increase in  
260 any of CO, EC, NH<sub>4</sub>, NO<sub>2</sub>, NO<sub>3</sub>, NO<sub>x</sub>, OC, and PM<sub>2.5</sub> each showed either null effects or  
261 significant protective effects on cognitive decline, even when adjusted for PCs of nSES  
262 characteristics and individual level confounders. The pollutant with the largest protective effect  
263 was CO, in the adjusted model an IQR increase in CO resulted in a 0.038-point decrease in  
264 ln(CFI) score (95% CI: -0.06, -0.01) indicating less cognitive decline. NO<sub>2</sub> and EC had similar  
265 effects, beta estimates of -0.034 (95% CI: -0.06, -0.01) and -0.031 (95% CI: -0.05, -0.01),  
266 respectively (figure 1A, supplementary table 1).

267 In line with our hypothesis, an IQR increase in almost all nSES characteristics (indicate lower  
268 nSES) showed significant harmful effects on cognitive decline when adjusted for individual level  
269 confounders. The magnitude of an IQR increase in any of the nSES characteristic's effects on  
270 ln(CFI) were also relatively small, all less than 0.01. An IQR increase in percent of rented  
271 homes in the census tract resulted in a 0.066-point (95% CI: 0.04, 0.09) increase in ln(CFI)  
272 score, indicating increased cognitive decline in adjusted linear regression models. Similarly,  
273 negative median home value (median home value x (-1)) showed harmful effects per IQR  
274 increase (beta: 0.053; 95% CI: 0.03, 0.07) (figure 1A, supplementary table 1).

275 The adjusted LASSO regression model showed similar trends as the linear regression models  
276 (Figure 1B, Supplementary Table S1). Among the air pollutants, the strongest observed  
277 associations were found for CO (beta: -0.0252), NO<sub>2</sub> (beta: -0.0841), O<sub>3</sub> (beta: -0.0501), PM<sub>10</sub>  
278 (beta: -0.0306), and SO<sub>2</sub> (beta: 0.0282). Other effect estimates were shrunk close or exactly to  
279 zero. An IQR increase in CO, NO<sub>2</sub>, O<sub>3</sub>, PM<sub>10</sub>, and PM<sub>2.5</sub> showed a protective effect against  
280 cognitive decline, whereas an IQR increase in SO<sub>2</sub> showed harmful effects. In contrast to the  
281 linear regression models (Figure 1A), for nSES characteristics, an IQR increase in percent not  
282 in labor force, and percent of households without a car showed protective effects, though their  
283 effect estimates were shrunk close to 0. Percent of rented homes (beta: 0.074), percent of  
284 female headed households (beta: 0.0222), percent on public assistance (beta: 0.0213), and  
285 negative median home value (beta: 0.0321) showed harmful effects on cognitive decline, which  
286 is in line with the results from the linear regression analysis. Remaining estimates were shrunk  
287 close or exactly to 0 (Figure 1B, Supplementary Table S1).

288 Using address-based matching for CMAQ air pollutant exposures did not meaningfully change  
289 the results of the linear or LASSO regressions (Figure S3). For example, NO<sub>2</sub> had the strongest  
290 observed association with cognitive decline in both the census tract and address matched  
291 LASSO models (Beta:-0.0841 vs. -0.0882, respectively; Table S1.) In the linear regression  
292 models, census tract matched exposures were similar to address matched exposures. For  
293 example, the effect estimate of an IQR increase in CO was -0.038 in the census tract matched  
294 model, compared to -0.04 in the address matched model (Table S1). Given these results, we  
295 proceeded with the census tract matched models to make exposure assessment comparable  
296 across models.

297 Using the adjusted BKMR model, individual effects of the mixture components on ln(CFI) score  
298 can be determined, while controlling for co-exposures and confounding. Figure 2A shows the  
299 individual effects of each mixture component on ln(CFI) score with all other mixture components  
300 are fixed to the 50th percentile, adjusted for confounders. Most mixture components had null  
301 estimated effects on ln(CFI) score. CO was negatively associated with the ln(CFI) score and  
302 SO<sub>2</sub>, percent of rented homes, and negative median home value in the census tract were  
303 positively associated with ln(CFI), which is in line with the linear regression and LASSO  
304 regression results reported above.

305 Quantile-based G-computation results suggest a lack of directional homogeneity with respect to  
306 air pollutant and nSES characteristic mixture component effects, agreeing with the linear  
307 regression analysis and the lasso regression results. In Figure 1C positive weights indicate a  
308 positive, or harmful, effect of the mixture component on ln(CFI) score. Conversely, a negative  
309 weight would indicate a protective effect of the mixture component on ln(CFI) score. In the  
310 adjusted model, SO<sub>2</sub> (weight: 0.1658), and percent of rented homes (weight: 0.1726) had the  
311 most harmful estimated effects, which is in line with the results of the single pollutant models  
312 and BKMR. Conversely, SO<sub>4</sub> and CO had the most protective estimated effects in adjusted  
313 models. However, the total mixture effect was not statistically significant (psi: 0.074; p-value:  
314 0.062).

315 Across methods, CO, NO<sub>2</sub>, and O<sub>3</sub> showed small protective estimated effects against increased  
316 CFI scores, while SO<sub>2</sub> was the only air pollutant that had a consistently harmful estimated effect  
317 on CFI score. For the nSES characteristics, all nSES indicators had harmful estimated effects  
318 across models, particularly, percent of rented homes and negative average median home value  
319 of the census tract.



320 To explore potential explanations for the protective effects of air pollutants on ln(CFI) which we  
321 found in the individual exposure models, we investigated interactions and joint effects between  
322 exposures.

### 323 *Effect Modifications and Joint Exposure Effects*

324 We analyzed whether associations between air pollution and cognitive decline were modified by  
325 nSES using linear regression models with an interaction term. Percent of rented homes and  
326 negative median home value were selected as nSES characteristics for the effect modification  
327 analyses because they showed the strongest associations with CFI in the BKMR model (Figure  
328 2A, Table S3). We found significant estimated effect modification by percent of rented homes for  
329 the association between EC and ln(CFI) score (interaction estimate: 0.058; 95% CI: 0.015,  
330 0.101) (Figure S4A); suggesting that the effects of EC and high percent rented homes are  
331 synergistic and ln(CFI) score is higher (increase in cognitive decline) for those with both high EC  
332 and high percent rented homes in the census tract. Additionally, the estimated effect  
333 modification by negative median home value was significant for the association between PM<sub>10</sub>  
334 and ln(CFI) score (interaction estimate: 0.063; 95% CI: 0.015, 0.110) was significant, showing  
335 that high PM<sub>10</sub> and low home values act together in increasing the ln(CFI) score (Figure S4B).  
336 Associations with other air pollutants were not significantly modified by percent rented homes or  
337 median home value (Table S3).

338 Next, we investigated the joint effects of air pollution and nSES using BKMR, quantile-based G-  
339 computation and SOM. BKMR analysis showed significant overall mixture effects (Figure 2B).  
340 The ln(CFI) score showed a significant increase when all mixture components were above their  
341 median compared to when all mixture components were at the median level. This trend  
342 suggests a linearly increasing effect estimate at all quantiles of the exposure mixture above the  
343 median. Additionally, there is also a significant decrease in the overall mixture effect on ln(CFI)  
344 when mixture components are below the median, compared to when all mixture components  
345 are at the median level. However, the 95% credible interval for the 25<sup>th</sup> percentile of exposure  
346 compared to the median is not significant. Similar to earlier results, quantile-based G-  
347 computation also found a positive association between increasing values of the mixture and  
348 ln(CFI), though the total mixture effect was not statistically significant (psi: 0.074; p-value:  
349 0.062).

350 Next, we used the SOM approach to investigate observed patterns of exposure mixtures in  
351 association with ln(CFI). The SOM identified 6 clusters (Figure 3A, Table 1), based on the air  
352 pollution and nSES characteristics of the census tracts. Participants were not evenly distributed  
353 across clusters, a majority of participants experiencing pollution and nSES values within in  
354 cluster 4 (n=4,694; 39.46%), while comparatively few experience the combinations of pollutants  
355 and nSES variables found in clusters 2 (n=582; 4.89%) and 3 (n=378; 3.18%). All clusters had  
356 similar median ages. Cluster 4 has the lowest concentrations of most air pollutants and highest  
357 nSES, though it has highest O<sub>3</sub> and PM<sub>10</sub>. Conversely, cluster 3 has the highest concentrations  
358 for most air pollutants and lowest nSES. In the map of Metro-Atlanta (Figure 3B), census tracts  
359 are color coded based on their SOM cluster assignment. Cluster 4, the low pollution and high  
360 nSES cluster, seen on the map in black, primarily appears in the northern half of Metro-Atlanta  
361 outside of the City of Atlanta. Clusters 1, 2, and 3 appear primarily in the City of Atlanta around  
362 highways (black lines on map). These three clusters also have the highest proportions of rented  
363 homes. In line with Atlanta's historical segregation policies, clusters 3 and 6, located in

364 southern Atlanta, contain census tracts with the highest proportions of non-Hispanic Black  
365 residents. A majority of Black EHAS participants live in cluster 6.

366 In the adjusted linear regression model using indicators of SOM cluster membership as  
367 exposure, cluster 4 was used as the reference group because it had the lowest air pollution and  
368 highest nSES. Compared to cluster 4, all other clusters exhibit increased  $\ln(\text{CFI})$  scores,  
369 indicating increased cognitive decline (Figure 3C, Supplementary Table S2). Clusters 2 and 3,  
370 which have the highest air pollution concentrations and lowest nSES, also have the highest  
371 increase in  $\ln(\text{CFI})$  compared to cluster 4, adjusting for individual age, race/ethnicity, and  
372 residential stability of the census tract. These results provide effect estimates based on  
373 observed contrasts in exposure mixtures and suggest synergistic effects of air pollution and  
374 nSES. These findings are in line with interaction results reported earlier.

375 The high  $\text{O}_3$  concentrations in cluster 4, the highest nSES cluster and cluster with the largest  
376 number of participants (39.46%), may be driving the estimated protective effect of  $\text{O}_3$  observed  
377 in the single pollutant models (Figure 3) because high SES potentially protects participants from  
378 the harmful effects of air pollution.  $\text{NO}_2$  and CO concentrations, which are highly correlated  
379 (Figure 3), are highest in clusters 1, 2, and 3, all located along highways (Figure 2B). Cluster 1  
380 is the second largest cluster with 25.38% of participants and has the second highest nSES. The  
381 large proportion of participants in cluster 1, compared to clusters 2 (4.89%) and 3 (3.18%) may  
382 drive the estimated protective effects of  $\text{NO}_2$  and CO (Table 1) observed throughout the results  
383 in this analysis. Individuals within cluster 1 have higher SES that can potentially protect them  
384 from the harmful effects of air pollution, while participants with low SES in clusters 2 and 3 do  
385 not have that same protection.

## 386 Discussion

387 In this study of 11,897 individuals 50 years and older from Metro Atlanta, we observed  
388 significant joint effects of air pollution and nSES on cognitive decline. Using analysis techniques  
389 accounting for multiple exposures, we disentangle the seemingly protective estimated effects of  
390 air pollution found in the individual exposure models. Air pollution and nSES exposure profiles  
391 were generated using the joint SOM model report estimated significant associations between  
392 exposure profile and cognitive decline. These associations between exposure profiles and  
393 cognitive decline yield evidence of the harmful joint effect of lower nSES and air pollution.  
394 Additionally, the BKMR model provided insight into which air pollutants and nSES  
395 characteristics most influence cognitive decline, as well as estimates of synergistic effects of the  
396 exposure mixture. These analyses reveal how imperative interaction and mixture analyses are  
397 to gain a more accurate and holistic picture of how air pollution and nSES jointly affect cognitive  
398 decline.

399 Previous research has shown harmful associations between air pollutants and cognitive decline  
400 (Peters et al., 2019); as well as harmful associations between nSES and cognitive decline  
401 (Besser et al., 2017; Luo et al., 2019; Steptoe & Zaninotto, 2020). While nSES and air pollution  
402 may affect cognitive decline separately, it is difficult to separate their effects because they are  
403 often highly correlated. A global review found that in North America lower SES communities  
404 experience higher levels of air pollution (Hajat et al., 2015). These correlations between air  
405 pollution and nSES are frequently observed in the environmental justice literature. However,  
406 previous epidemiologic studies have mainly focused on analyzing individual exposures without  
407 controlling for co-exposures to other environmental and social stressors. In diverse cities like  
408 Atlanta, where gentrification, high levels of car traffic, and other factors often lead to high nSES

409 neighborhoods with high air pollution, the relationship between air pollution and nSES can be  
410 more complicated. Ignoring these complicated relationships can lead to the seemingly protective  
411 effects of air pollution on cognitive decline observed in the simpler, individual air pollutant  
412 analyses. We see this complicated relationship in the overall low correlation between air  
413 pollutants and nSES characteristics, with only the nSES characteristics percent with no car and  
414 percent rented homes being positively correlated with most air pollutants, except O<sub>3</sub> and PM<sub>10</sub>.

415 To the best of our knowledge, this paper is the first to use cutting edge environmental mixture  
416 methods to study air pollution and nSES characteristics in relation to cognitive decline. Previous  
417 studies of the effect of air pollution on cognitive decline have treated nSES as a confounder or  
418 effect modifier, not a co-exposure (J. Ailshire et al., 2017; J. A. Ailshire & Crimmins, 2014; Bowe  
419 et al., 2019; Cullen et al., 2018; Li et al., 2021). Utilizing multiple mixtures method approaches  
420 such as, SOM, BKMR, and quantile-based G-computation supports a comprehensive  
421 examination of the relationship between the exposure mixtures and outcomes (Taylor et al.,  
422 2016). The SOM analysis revealed that participants in census tract clusters with high air  
423 pollution and low nSES had the largest decline in cognitive function, compared to census tracts  
424 with lower air pollution or higher nSES. SOM analyses, and other clustering methods, can lend  
425 insight into joint effects of exposure mixtures by identifying real-world contrasts to examine. Our  
426 results build upon those of another study analyzing EHAS data in Metro Atlanta, which identifies  
427 nSES as an effect modifier of the association between air pollution and cognitive decline  
428 suggesting a significantly harmful association between air pollutant levels and cognitive decline  
429 in low nSES neighborhoods (Li et al., 2021).

430 BKMR analysis also reveals the overall effect of increasing the mixture of high air pollution  
431 exposure and low nSES (nSES characteristics are coded to be increasing value is lower SES)  
432 significantly increases ln(CFI) score. While the quantile-based G-computation analysis did not  
433 show a significant association between the air pollution and nSES exposure mixture and ln(CFI)  
434 score, this could be due to non-linearity of the association between the exposure mixture and  
435 the outcome. The quantile-based G-computation method can handle non-linear and non-  
436 additive exposure effects, but non-linear terms need to be pre-defined by the user (Keil et al.,  
437 2020), in contrast to the data-driven investigation of non-linearity in BKMR, which does not  
438 require a priori knowledge of the relationship. BKMR can handle non-linear associations in the  
439 exposure/outcome relationship without specifically adding non-linear terms into the model (Bobb  
440 et al., 2015, 2018). The BKMR analysis illustrates that SO<sub>2</sub>, percent rented homes, and negative  
441 median home value have non-linear relationships with ln(CFI) score (Figure 3A). Future studies  
442 using these methods can use the results from BKMR to inform modeling using other methods.

443 Our results illustrate the importance of analyzing air pollution and socioeconomic exposures as  
444 a mixture. In our study, single air pollutant linear regression models estimate protective effects  
445 of air pollution exposure, counter to biological plausibility. Using methods that examine effect  
446 modifications and joint effects in linear, non-linear and spatial analyses, it was possible to  
447 disentangle the more nuanced and complicated underlying relationships between exposure to  
448 air pollution and nSES and cognitive decline in Metro Atlanta. Additionally, using multiple  
449 methods to model the effect of the exposure mixture on the outcome allowed for analysis of  
450 different aspects of the relationship between the exposure mixture and cognitive decline (Taylor  
451 et al., 2016).

452 A strength of this study is its large sample size from a diverse city. The large sample size of the  
453 EHAS cohort and its spatial distribution across Metro Atlanta allowed for higher precision and

454 power than smaller studies, especially in mixture modeling analyses. The diversity of Atlanta  
455 also allowed the SOM clustering algorithm to define a variety of profiles of the exposure mixture.  
456 An additional strength of our results is the use of modeling techniques that examine individual  
457 and joint effects of air pollutants and nSES characteristics. Use of the CFI to determine  
458 cognitive decline strengthens the impact of this analysis because subjective cognitive decline is  
459 considered to be one the of first signs of progression to dementia (Amariglio et al., 2015;  
460 Jessen, 2014).

461 The interpretation of the results above is limited by the cross-sectional nature of our data. While  
462 air pollution measurements are from 2008-2010 which is before the EHAS enrollment window of  
463 2015-2020, participants were asked their address to connect to the air pollution and nSES at the  
464 same time as the outcome assessment. There is possible exposure misclassification based on  
465 participants moving prior to their enrollment in EHAS, though this is likely to be non-differential  
466 by CFI score. An additional limitation in the exposure assessment is the grid size of the CMAQ  
467 chemical transport model. The CMAQ chemical transport model has 4 km resolution grids,  
468 which may not capture all of the variation in air pollution levels when looking at Metro-Atlanta.  
469 However, another study using air pollution exposure models with a 250m resolution did report  
470 similar harmful effects of air pollutants on cognitive decline (Li et al., 2021). Additionally, EHAS  
471 is not a population-based sample, and the majority of participants are White and live in high  
472 nSES areas and are of high SES individually which is not the case in the Atlanta general  
473 population. There may be limitations to the generalizability of these results.

474 Our results reveal how imperative it is to include nSES into analyses of air pollution and  
475 cognitive decline, not just as a confounder of environmental pollution levels but as a co-  
476 exposure with environmental pollution. Future studies examining such co-exposures should  
477 include longitudinal measurements of air pollution and cognition to move further toward causal  
478 inference for these joint associations.

479

## 480 **Acknowledgements**

481 Research reported in this publication was supported by the National Institute of  
482 Environmental Health under Award Number 5T32ES12870. The content is solely the  
483 responsibility of the authors and does not necessarily represent the official views of the  
484 National Institutes of Health.

485 This work was based on information from the Emory Healthy Aging study, supported by  
486 HERCULES Pilot Project via National Institute of Environmental Health Sciences (NIEHS)  
487 P30ES019776 (PI: Anke Huels) and National Institute on Aging (NIA) R01AG070937 (PI: James  
488 J. Lah).

489

## References

- Ailshire, J. A., & Clarke, P. (2015). Fine Particulate Matter Air Pollution and Cognitive Function Among U.S. Older Adults. *The Journals of Gerontology Series B: Psychological Sciences and Social Sciences*, *70*(2), 322–328. <https://doi.org/10.1093/geronb/gbu064>
- Ailshire, J. A., & Crimmins, E. M. (2014). Fine Particulate Matter Air Pollution and Cognitive Function Among Older US Adults. *American Journal of Epidemiology*, *180*(4), 359–366. <https://doi.org/10.1093/aje/kwu155>
- Ailshire, J., Karraker, A., & Clarke, P. (2017). Neighborhood Psychosocial Stressors, Air Pollution, and Cognitive Function among Older U.S. Adults. *Social Science & Medicine* (1982), *172*, 56–63. <https://doi.org/10.1016/j.socscimed.2016.11.019>
- Amariglio, R. E., Donohue, M. C., Marshall, G. A., Rentz, D. M., Salmon, D. P., Ferris, S. H., Karantzoulis, S., Aisen, P. S., Sperling, R. A., & Alzheimer's Disease Cooperative Study. (2015). Tracking early decline in cognitive function in older individuals at risk for Alzheimer disease dementia: The Alzheimer's Disease Cooperative Study Cognitive Function Instrument. *JAMA Neurology*, *72*(4), 446–454. <https://doi.org/10.1001/jamaneurol.2014.3375>
- Besser, L. M., McDonald, N. C., Song, Y., Kukull, W. A., & Rodriguez, D. A. (2017). Neighborhood Environment and Cognition in Older Adults: A Systematic Review. *American Journal of Preventive Medicine*, *53*(2), 241–251. <https://doi.org/10.1016/j.amepre.2017.02.013>
- Bobb, J. F., Claus Henn, B., Valeri, L., & Coull, B. A. (2018). Statistical software for analyzing the health effects of multiple concurrent exposures via Bayesian kernel machine regression. *Environmental Health*, *17*(1), 67. <https://doi.org/10.1186/s12940-018-0413-y>
- Bobb, J. F., Valeri, L., Claus Henn, B., Christiani, D. C., Wright, R. O., Mazumdar, M., Godleski, J. J., & Coull, B. A. (2015). Bayesian kernel machine regression for estimating the health

effects of multi-pollutant mixtures. *Biostatistics (Oxford, England)*, 16(3), 493–508.

<https://doi.org/10.1093/biostatistics/kxu058>

Bowe, B., Xie, Y., Yan, Y., & Al-Aly, Z. (2019). Burden of Cause-Specific Mortality Associated With PM<sub>2.5</sub> Air Pollution in the United States. *JAMA Network Open*, 2(11), e1915834.

<https://doi.org/10.1001/jamanetworkopen.2019.15834>

Carlin, D. J., Rider, C. V., Woychik, R., & Birnbaum, L. S. (2013). Unraveling the Health Effects of Environmental Mixtures: An NIEHS Priority. *Environmental Health Perspectives*,

121(1), a6–a8. <https://doi.org/10.1289/ehp.1206182>

Costa, L. G., Cole, T. B., Dao, K., Chang, Y.-C., Coburn, J., & Garrick, J. M. (2020). Effects of air pollution on the nervous system and its possible role in neurodevelopmental and neurodegenerative disorders. *Pharmacology & Therapeutics*, 210, 107523.

<https://doi.org/10.1016/j.pharmthera.2020.107523>

Cullen, B., Newby, D., Lee, D., Lyall, D. M., Nevado-Holgado, A. J., Evans, J. J., Pell, J. P., Lovestone, S., & Cavanagh, J. (2018). Cross-sectional and longitudinal analyses of outdoor air pollution exposure and cognitive function in UK Biobank. *Scientific Reports*,

8(1), 12089. <https://doi.org/10.1038/s41598-018-30568-6>

Dominici, F., Peng, R. D., Barr, C. D., & Bell, M. L. (2010). Protecting Human Health from Air Pollution: Shifting from a Single-Pollutant to a Multi-pollutant Approach. *Epidemiology (Cambridge, Mass.)*, 21(2), 187–194. <https://doi.org/10.1097/EDE.0b013e3181cc86e8>

Goetz, M. E., Hanfelt, J. J., John, S. E., Bergquist, S. H., Loring, D. W., Quyyumi, A., Clifford, G. D., Vaccarino, V., Goldstein, F., Johnson Nd, T. M., Kuerston, R., Marcus, M., Levey, A. I., & Lah, J. J. (2019). Rationale and Design of the Emory Healthy Aging and Emory Healthy Brain Studies. *Neuroepidemiology*, 53(3–4), 187–200.

<https://doi.org/10.1159/000501856>

Hahad, O., Lelieveld, J., Birklein, F., Lieb, K., Daiber, A., & Münzel, T. (2020). Ambient Air Pollution Increases the Risk of Cerebrovascular and Neuropsychiatric Disorders through

- Induction of Inflammation and Oxidative Stress. *International Journal of Molecular Sciences*, 21(12), 4306. <https://doi.org/10.3390/ijms21124306>
- Hajat, A., Hsia, C., & O'Neill, M. S. (2015). Socioeconomic Disparities and Air Pollution Exposure: A Global Review. *Current Environmental Health Reports*, 2(4), 440–450. <https://doi.org/10.1007/s40572-015-0069-5>
- Jack, C. R., Bennett, D. A., Blennow, K., Carrillo, M. C., Dunn, B., Haeberlein, S. B., Holtzman, D. M., Jagust, W., Jessen, F., Karlawish, J., Liu, E., Molinuevo, J. L., Montine, T., Phelps, C., Rankin, K. P., Rowe, C. C., Scheltens, P., Siemers, E., Snyder, H. M., & Sperling, R. (2018). NIA-AA Research Framework: Toward a biological definition of Alzheimer's disease. *Alzheimer's & Dementia: The Journal of the Alzheimer's Association*, 14(4), 535–562. <https://doi.org/10.1016/j.jalz.2018.02.018>
- Jessen, F. (2014). Subjective and objective cognitive decline at the pre-dementia stage of Alzheimer's disease. *European Archives of Psychiatry and Clinical Neuroscience*, 264 Suppl 1, S3-7. <https://doi.org/10.1007/s00406-014-0539-z>
- Keil, A. P., Buckley, J. P., O'Brien, K. M., Ferguson, K. K., Zhao, S., & White, A. J. (2020). A Quantile-Based g-Computation Approach to Addressing the Effects of Exposure Mixtures. *Environmental Health Perspectives*, 128(4). <https://doi.org/10.1289/EHP5838>
- Landrigan, P. J., Fuller, R., Acosta, N. J. R., Adeyi, O., Arnold, R., Basu, N. (Nil), Baldé, A. B., Bertollini, R., Bose-O'Reilly, S., Boufford, J. I., Breyse, P. N., Chiles, T., Mahidol, C., Coll-Seck, A. M., Cropper, M. L., Fobil, J., Fuster, V., Greenstone, M., Haines, A., ... Zhong, M. (2018). The Lancet Commission on pollution and health. *The Lancet*, 391(10119), 462–512. [https://doi.org/10.1016/S0140-6736\(17\)32345-0](https://doi.org/10.1016/S0140-6736(17)32345-0)
- Li, Z., Christensen, G. M., Lah, J. J., Marcus, M., Russell, A. G., Ebelt, S., Waller, L. A., & Huels, A. (2021). *Environmental injustice—Neighborhood characteristics as confounders and effect modifiers for the association between air pollution exposure and cognitive function* (p. 2021.10.19.21265212). <https://doi.org/10.1101/2021.10.19.21265212>

- Luo, Y., Zhang, L., & Pan, X. (2019). Neighborhood Environments and Cognitive Decline Among Middle-Aged and Older People in China. *The Journals of Gerontology: Series B*, 74(7), e60–e71. <https://doi.org/10.1093/geronb/gbz016>
- Lupien, S. J., McEwen, B. S., Gunnar, M. R., & Heim, C. (2009). Effects of stress throughout the lifespan on the brain, behaviour and cognition. *Nature Reviews Neuroscience*, 10(6), 434–445. <https://doi.org/10.1038/nrn2639>
- Maantay, J. (2002). Mapping environmental injustices: Pitfalls and potential of geographic information systems in assessing environmental health and equity. *Environmental Health Perspectives*, 110(Suppl 2), 161–171.
- McEwen, B. S., & Tucker, P. (2011). Critical Biological Pathways for Chronic Psychosocial Stress and Research Opportunities to Advance the Consideration of Stress in Chemical Risk Assessment. *American Journal of Public Health*, 101(Suppl 1), S131–S139. <https://doi.org/10.2105/AJPH.2011.300270>
- Messer, L. C., Laraia, B. A., Kaufman, J. S., Eyster, J., Holzman, C., Culhane, J., Elo, I., Burke, J. G., & O'Campo, P. (2006). The development of a standardized neighborhood deprivation index. *Journal of Urban Health: Bulletin of the New York Academy of Medicine*, 83(6), 1041–1062. <https://doi.org/10.1007/s11524-006-9094-x>
- Paul, K. C., Haan, M., Mayeda, E. R., & Ritz, B. R. (2019). Ambient Air Pollution, Noise, and Late-Life Cognitive Decline and Dementia Risk. *Annual Review of Public Health*, 40, 203–220. <https://doi.org/10.1146/annurev-publhealth-040218-044058>
- Pearce, J. L., Waller, L. A., Chang, H. H., Klein, M., Mulholland, J. A., Sarnat, J. A., Sarnat, S. E., Strickland, M. J., & Tolbert, P. E. (2014). Using self-organizing maps to develop ambient air quality classifications: A time series example. *Environmental Health*, 13, 56. <https://doi.org/10.1186/1476-069X-13-56>
- Pearce, J. L., Waller, L. A., Sarnat, S. E., Chang, H. H., Klein, M., Mulholland, J. A., & Tolbert, P. E. (2016). Characterizing the spatial distribution of multiple pollutants and populations



at risk in Atlanta, Georgia. *Spatial and Spatio-Temporal Epidemiology*, 18, 13–23.

<https://doi.org/10.1016/j.sste.2016.02.002>

Peters, R., Ee, N., Peters, J., Booth, A., Mudway, I., & Anstey, K. J. (2019). Air Pollution and Dementia: A Systematic Review. *Journal of Alzheimer's Disease*, 70(Suppl 1), S145–S163. <https://doi.org/10.3233/JAD-180631>

Power, M. C., Adar, S. D., Yanosky, J. D., & Weuve, J. (2016). Exposure to air pollution as a potential contributor to cognitive function, cognitive decline, brain imaging, and dementia: A systematic review of epidemiologic research. *Neurotoxicology*, 56, 235–253. <https://doi.org/10.1016/j.neuro.2016.06.004>

R Core Team. (n.d.). *R: A Language and Environment for Statistical Computing*. R Foundation for Statistical Computing. <https://www.R-project.org/>

Senthilkumar, N., Gilfether, M., Metcalf, F., Russell, A. G., Mulholland, J. A., & Chang, H. H. (2019). Application of a Fusion Method for Gas and Particle Air Pollutants between Observational Data and Chemical Transport Model Simulations Over the Contiguous United States for 2005–2014. *International Journal of Environmental Research and Public Health*, 16(18), 3314. <https://doi.org/10.3390/ijerph16183314>

Stephens, A., & Zaninotto, P. (2020). Lower socioeconomic status and the acceleration of aging: An outcome-wide analysis. *Proceedings of the National Academy of Sciences of the United States of America*, 117(26), 14911–14917. <https://doi.org/10.1073/pnas.1915741117>

Taylor, K. W., Joubert, B. R., Braun, J. M., Dilworth, C., Gennings, C., Hauser, R., Heindel, J. J., Rider, C. V., Webster, T. F., & Carlin, D. J. (2016). Statistical Approaches for Assessing Health Effects of Environmental Chemical Mixtures in Epidemiology: Lessons from an Innovative Workshop. *Environmental Health Perspectives*, 124(12), A227–A229. <https://doi.org/10.1289/EHP547>

Tibshirani, R. (1996). Regression Shrinkage and Selection via the Lasso. *Journal of the Royal Statistical Society. Series B (Methodological)*, 58(1), 267–288.

Weuve, J., Bennett, E. E., Ranker, L., Gianattasio, K. Z., Pedde, M., Adar, S. D., Yanosky, J. D., & Power, M. C. (2021). Exposure to Air Pollution in Relation to Risk of Dementia and Related Outcomes: An Updated Systematic Review of the Epidemiological Literature. *Environmental Health Perspectives*, 129(9), 096001. <https://doi.org/10.1289/EHP8716>

## Tables

**Table 1.** A. Emory Healthy Aging Study (EHAS) study population characteristics by Self-Organized Map (SOM) cluster. B. Air pollution measurements by SOM cluster. C. Neighborhood Socioeconomic Status (NSES) indicators by SOM cluster.

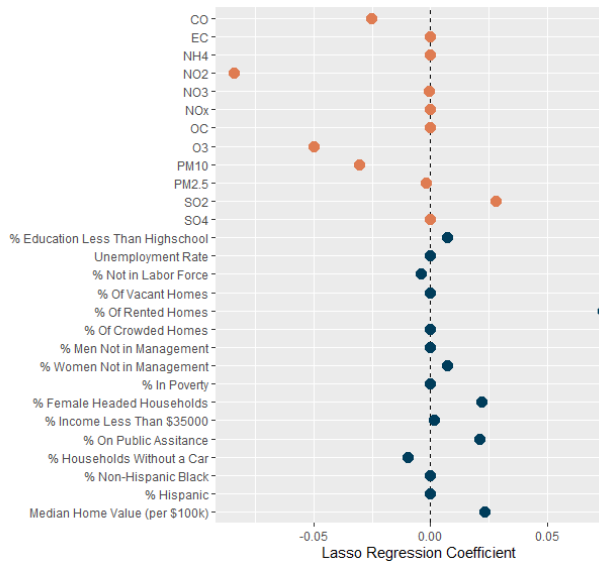
|   | Total       | SOM Cluster  |             |             |              |              |              |
|---|-------------|--------------|-------------|-------------|--------------|--------------|--------------|
|   |             | 1            | 2           | 3           | 4            | 5            | 6            |
| <b>A. Study Population Characteristics</b>          |             |              |             |             |              |              |              |
| N (%)   | 11897 (100) | 3020 (25.38) | 582 (4.89)  | 378 (3.18)  | 4694 (39.46) | 1971 (16.57) | 1252 (10.52) |
| Median CFI (IQR)                                    | 1.5 (2.5)   | 1.5 (2.5)    | 2.0 (3.0)   | 2.0 (3.0)   | 1.5 (2.5)    | 2.0 (2.5)    | 2.0 (2.5)    |
| Median Age (IQR)                                    | 65 (13)     | 65 (14)      | 65 (13)     | 63 (12)     | 65 (12)      | 64 (12)      | 65 (11)      |
| % Residents moved in before 2010 (IQR)              | 21.0 (18.9) | 13.6 (12.2)  | 13.7 (12.5) | 16.0 (14.7) | 27.9 (21.2)  | 21.6 (16.0)  | 25.4 (19.4)  |
| Race (%)  |             |              |             |             |              |              |              |
| White   | 9753 (81.9) | 2715 (89.9)  | 472 (81.2)  | 147 (38.9)  | 4292 (91.4)  | 1658 (84.1)  | 469 (37.5)   |
| Black   | 1574 (13.2) | 167 (5.5)    | 70 (12.1)   | 216 (57.1)  | 178 (3.8)    | 214 (10.9)   | 729 (58.2)   |
| Other   | 570 (4.8)   | 138 (4.6)    | 40 (6.9)    | 15 (3.9)    | 224 (4.8)    | 99 (5.0)     | 54 (4.3)     |
| Hispanic (%)  | 386 (3.2)   | 105 (3.5)    | 21 (3.6)    | 10 (2.7)    | 145 (3.1)    | 74 (3.8)     | 34 (2.7)     |
| Education (%)                                       |             |              |             |             |              |              |              |
| Associates Degree                                   | 858 (7.2)   | 144 (4.8)    | 56 (9.6)    | 37 (9.8)    | 285 (6.1)    | 220 (11.2)   | 114 (9.1)    |
| Less than Bachelor's Degree                         | 473 (3.9)   | 58 (1.9)     | 31 (5.3)    | 37 (9.8)    | 140 (2.9)    | 134 (6.8)    | 73 (5.8)     |
| Some College, but no Degree                         | 1851 (15.6) | 296 (9.8)    | 114 (19.6)  | 79 (20.9)   | 633 (13.5)   | 463 (23.5)   | 266 (21.3)   |
| Bachelor's Degree                                   | 4036 (33.9) | 1065 (35.3)  | 195 (33.5)  | 114 (30.2)  | 1714 (36.5)  | 562 (28.5)   | 386 (30.8)   |
| Master's Degree                                     | 3078 (25.9) | 890 (29.5)   | 137 (23.5)  | 79 (20.9)   | 1282 (27.3)  | 386 (19.6)   | 304 (24.3)   |
| Professional or Doctorate Degree                    | 1603 (13.5) | 567 (18.8)   | 49 (8.4)    | 32 (8.5)    | 640 (13.6)   | 206 (10.5)   | 109 (8.7)    |
| <b>B. Air Pollution Measurements - Median (IQR)</b> |             |              |             |             |              |              |              |
| CO (ppm)  | 0.5 (0.3)   | 0.7 (0.2)    | 0.7 (0.3)   | 0.7 (0.2)   | 0.5 (0.2)    | 0.3 (0.2)    | 0.5 (0.2)    |
| EC ( $\mu\text{g}/\text{m}^3$ )                     | 0.9 (0.6)   | 1.1 (0.2)    | 1 (0.4)     | 1.3 (0.5)   | 0.8 (0.4)    | 0.5 (0.3)    | 1 (0.3)      |
| NH <sub>4</sub> (l)                                 | 1 (0.1)     | 1.1 (0.1)    | 1.1 (0.1)   | 1.1 (0.1)   | 1 (0.1)      | 1 (0.1)      | 1 (0.1)      |
| NO <sub>2</sub> (ppb)                               | 21.5 (11.1) | 25.7 (4.3)   | 24.8 (7.3)  | 27.5 (5.8)  | 19.9 (8.8)   | 13.5 (7.5)   | 22.1 (4.2)   |
| NO <sub>3</sub> (ppb)                               | 0.6 (0.1)   | 0.6 (0)      | 0.6 (0)     | 0.6 (0)     | 0.6 (0.1)    | 0.6 (0.1)    | 0.6 (0)      |
| NO <sub>x</sub> (ppm)                               | 38.9 (26.6) | 50 (15.6)    | 49 (21.2)   | 55.6 (20.2) | 34.9 (20.5)  | 21.4 (14.9)  | 40.9 (11.6)  |
| OC ( $\mu\text{g}/\text{m}^3$ )                     | 2.8 (0.3)   | 2.8 (0.1)    | 2.9 (0.4)   | 2.9 (0.2)   | 2.8 (0.2)    | 2.7 (0.3)    | 3 (0.2)      |
| O <sub>3</sub> (ppm)                                | 41.8 (1.3)  | 41.3 (1.8)   | 41.1 (1.5)  | 40.9 (1.6)  | 42.1 (0.9)   | 42 (0.8)     | 41.5 (1.1)   |
| PM <sub>10</sub> ( $\mu\text{g}/\text{m}^3$ )       | 21 (0.2)    | 20.9 (0.1)   | 21 (0.1)    | 21 (0.1)    | 21 (0.1)     | 21.1 (0.1)   | 21 (0.2)     |
| PM <sub>2.5</sub> ( $\mu\text{g}/\text{m}^3$ )      | 12.6 (0.6)  | 12.7 (0.5)   | 12.8 (0.8)  | 12.8 (0.7)  | 12.5 (0.4)   | 12.4 (0.8)   | 12.8 (0.5)   |
| SO <sub>2</sub> (ppb)                               | 7.8 (3.5)   | 9 (1.9)      | 8.8 (3.4)   | 8.7 (2.6)   | 7.8 (3.2)    | 6 (3.4)      | 7.1 (1.5)    |
| SO <sub>4</sub> (ppb)                               | 2.9 (0.1)   | 3 (0.1)      | 3 (0.1)     | 3 (0.2)     | 2.9 (0.1)    | 2.9 (0.1)    | 2.9 (0.1)    |

| <b>C. nSES Indicators - Median (IQR)</b> |               |             |              |             |               |              |              |
|--|---------------|-------------|--------------|-------------|---------------|--------------|--------------|
| % Education less than high school        | 10.9 (11.7)   | 4.1 (4.9)   | 28.5 (14.2)  | 17.8 (9.7)  | 3.9 (3.8)     | 13 (7.6)     | 11.5 (6.3)   |
| Unemployment rate                        | 8 (5.6)       | 5.7 (3.9)   | 8.2 (4)      | 16.4 (7.1)  | 5.4 (2.7)     | 7.9 (3.5)    | 12.5 (5.2)   |
| % Not in labor force                     | 26.2 (10.4)   | 18.6 (9.4)  | 20.4 (12)    | 34.4 (14.2) | 23.9 (7.1)    | 28.1 (8.4)   | 28.9 (7.6)   |
| % Homes vacant                           | 9.6 (7.9)     | 10.3 (7.3)  | 11.7 (5.5)   | 20.2 (12.8) | 4.9 (4.2)     | 8.6 (5.1)    | 12 (5.3)     |
| % Homes rented                           | 31.2 (37.4)   | 54.8 (23.9) | 61.4 (25)    | 68.5 (19.4) | 12.2 (10.8)   | 23 (15.5)    | 32.1 (16.5)  |
| % Homes crowded                          | 1.7 (2.9)     | 1.3 (1.8)   | 6.4 (5)      | 3.3 (2.6)   | 0.3 (1)       | 1.7 (2)      | 1.9 (2.3)    |
| Median home value (\$ in thousands)      | 162.7 (122.6) | 265 (126.4) | 118.1 (56.3) | 91.1 (39.4) | 287.6 (153.6) | 153.8 (43.3) | 112.3 (45.4) |
| % Male not in management                 | 68.4 (26.8)   | 41.7 (15.6) | 82.2 (11.8)  | 82.6 (13.2) | 46.5 (18.2)   | 71.8 (10.6)  | 74.1 (13.5)  |
| % Female not in management               | 58.4 (18.9)   | 41.2 (17.5) | 74 (14.7)    | 73.7 (11.6) | 43.6 (11.9)   | 61.1 (8.6)   | 61.2 (11.7)  |
| % In poverty                             | 9.7 (12.7)    | 6.4 (6.2)   | 20.8 (10.6)  | 30.9 (12.5) | 3.3 (3)       | 9.4 (6.2)    | 14.1 (9.1)   |
| % Female headed households               | 7.2 (7.1)     | 4.2 (4.9)   | 10.3 (5.2)   | 15.2 (6.5)  | 3.7 (2.7)     | 6.6 (3.9)    | 11.7 (6.2)   |
| % Income less than \$35,000              | 27.6 (21.2)   | 23.7 (11.8) | 44.1 (10.1)  | 57.1 (11.5) | 13.1 (6.2)    | 27 (10.5)    | 33.4 (14.6)  |
| % On public assistance                   | 1.4 (1.9)     | 0.7 (0.9)   | 1.8 (1.9)    | 3.1 (2.7)   | 0.6 (0.8)     | 1.7 (1.6)    | 2 (1.6)      |
| % No car                                 | 14.2 (12.3)   | 21.3 (7.2)  | 21.4 (6.4)   | 30.5 (8.3)  | 7.6 (4.1)     | 10.9 (4.7)   | 16.3 (7.5)   |
| % Non-Hispanic Black                     | 21.3 (42.1)   | 18.5 (15.6) | 24.8 (17.9)  | 87.4 (26.4) | 6.8 (9.4)     | 13.9 (19.9)  | 73.3 (31.5)  |
| % Hispanic                               | 6.4 (8.8)     | 6.3 (6)     | 37.8 (22.3)  | 3.3 (7.2)   | 4.9 (4)       | 7.6 (8.9)    | 4.8 (6.5)    |

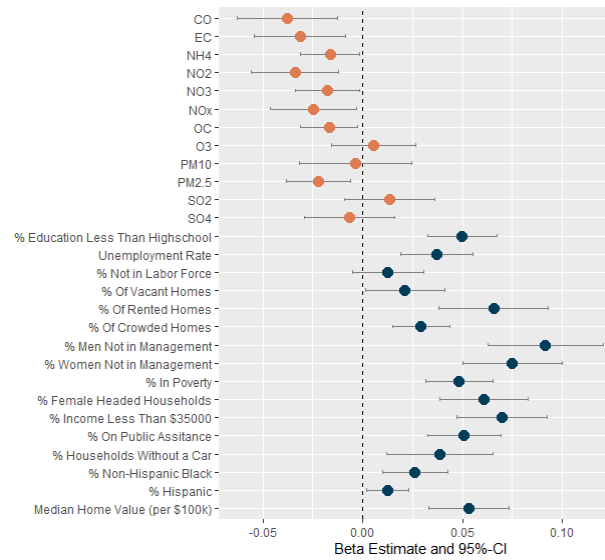
Acronym: CFI, cognitive function instrument; IQR, interquartile range; EC, elemental carbon, OC, organic carbon.

## Figures

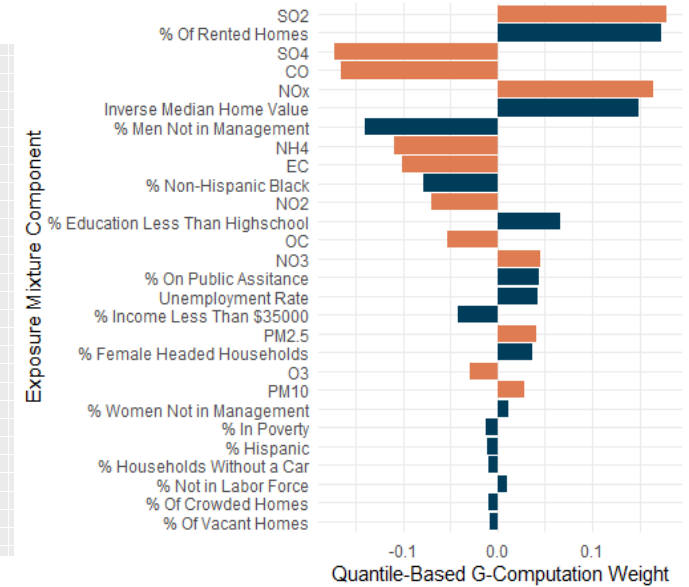
A.



B.

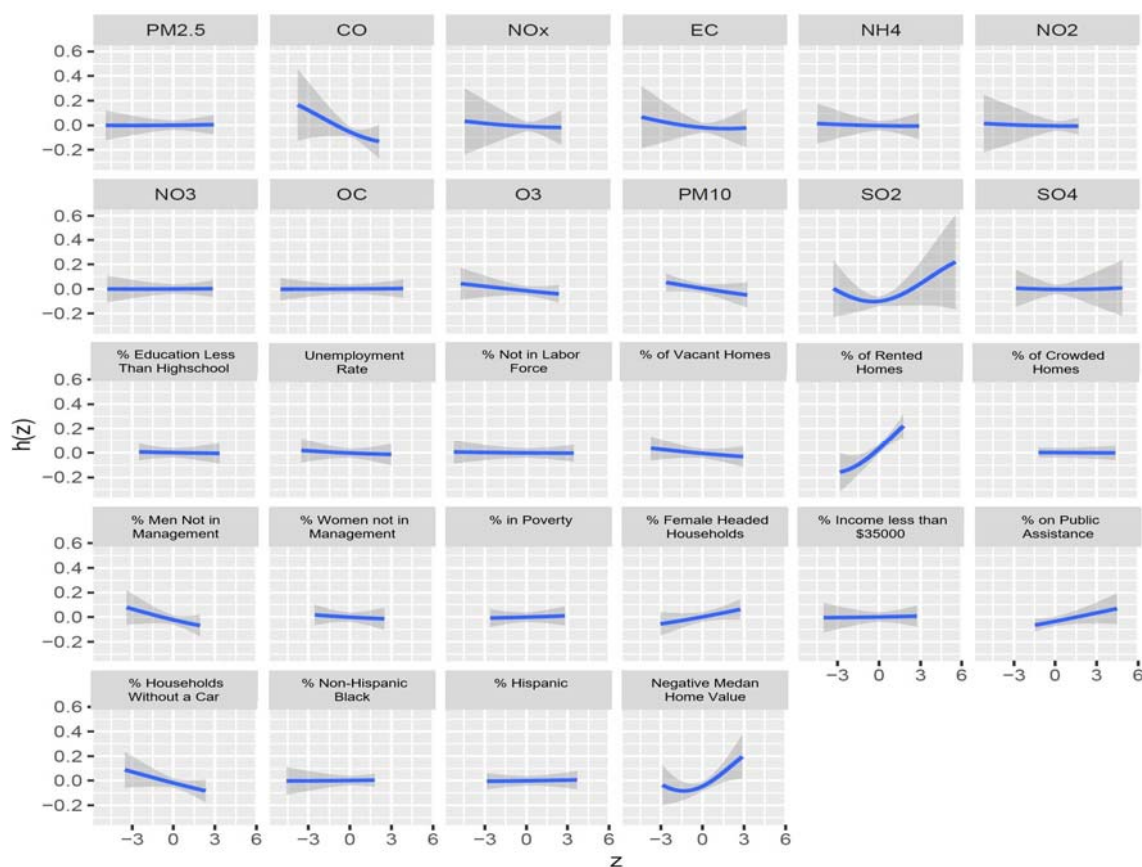


C.

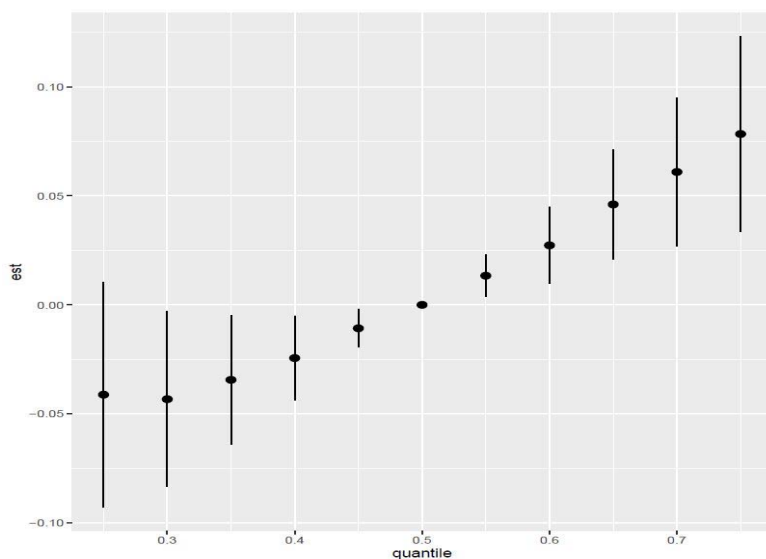


**Figure 1.** The effect of an IQR increase in air pollution and neighborhood socio-economic status (nSES) exposures on  $\ln(\text{CFI})$  score. Air pollution exposure measurements were taken from the CMAQ chemical transport model in 2008-2010, and neighborhood socio-economic status exposures are census tract averages from 2013-2018. Median home value was multiplied by -1 so that a high value was the same nSES direction as other nSES characteristics. **A.** Lasso regression coefficients of air pollutants and nSES characteristics adjusted for individual age, race/ethnicity, education, and residential stability of the census tract. **B.** Linear regression models were adjusted for individual age, race/ethnicity, education, and residential stability of the census tract, air pollution exposure models were additionally adjusted for principal components of nSES characteristics and nSES clusters. **C.** Quantile-Based g-computation weights, census tract matched air pollutant measurements. Bar lengths are comparable in magnitude among each side only. Orange bars represent air pollutants while blue bars represent nSES characteristics.

A.



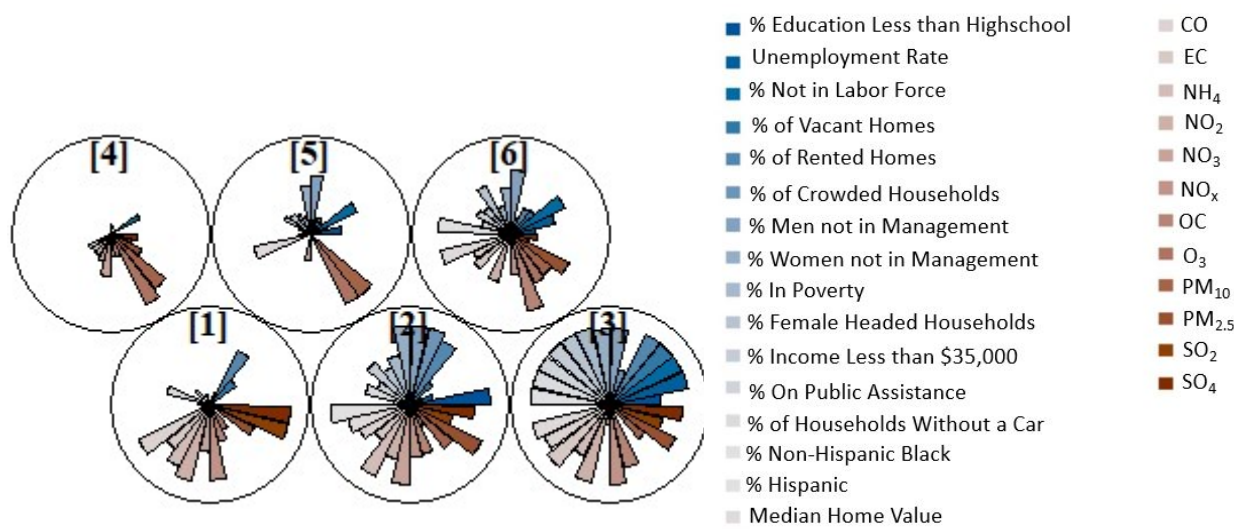
B.



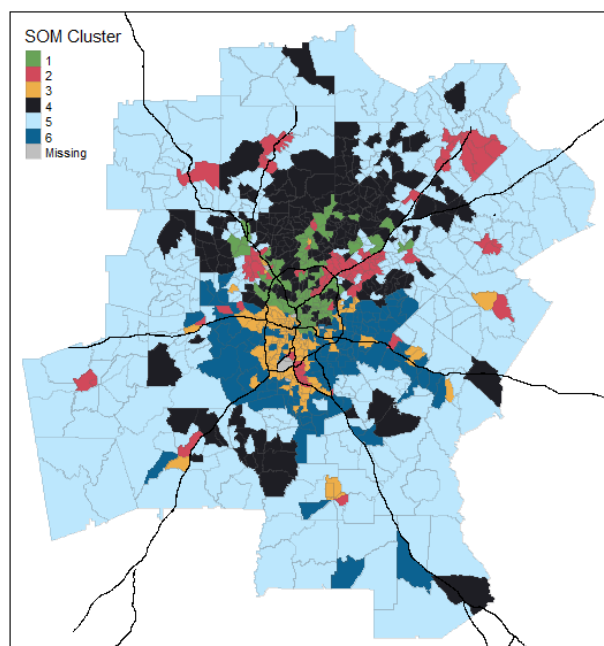
**Figure 2.** A. BKMR exposure mixture individual effects plot. The effect of each exposure holding all other exposures at their median and controlling for confounders. The y-axis for each plot represents the exposure response function ( $h$ ), while the x-axis represents the centered

exposure level. B. BKMR exposure mixture overall effects plot. The effect of all exposures in the mixture at each quantile compared to the effect of all exposures in the mixture at the median.

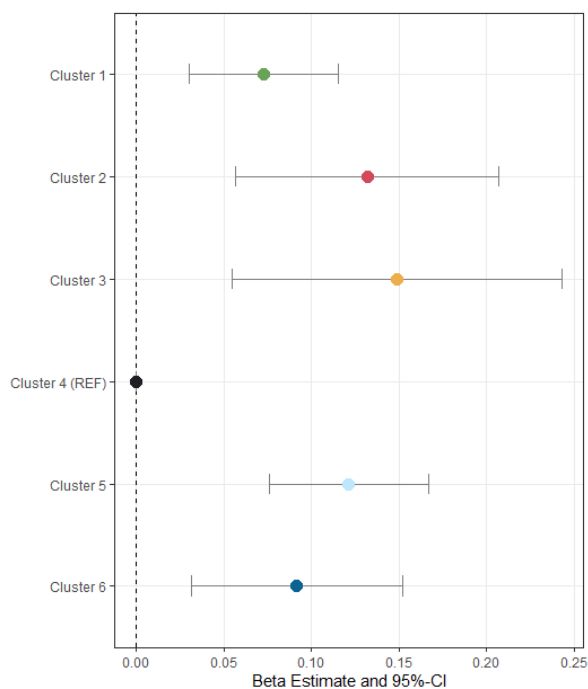
A.



B.



C.



**Figure 3.** Associations between air pollution and neighborhood socio-economic status (nSES) indicators for cognitive functioning. Median home value was multiplied by -1 so that a high value was the same nSES direction as other nSES characteristics **A.** SOM cluster star plot, slices represent median values of a mixture component, each circle is a SOM cluster. Blue slices correspond with nSES indicators, while red slices correspond with air pollutants **B.** Map of census tracts in Metro-Atlanta by cluster. Black lines represent major highways. **C.** Results of linear regression model estimating SOM cluster effect on ln(CFI) score. Cluster 4, the highest nSES cluster, was used as the reference group. Model adjusted for individual age, race/ethnicity, education, and residential stability of the census tract.