

## **Identification of Global DNA Methylation Signatures in Patients of High Altitude Induced Venous Thrombo-Embolism (HA-VTE)**

**Authors:** Swati Srivastava<sup>1\*</sup>, Iti Garg<sup>1</sup>, Babita Kumari<sup>1</sup>, UdayYanamandra<sup>2</sup>, Jasjit Singh<sup>3</sup>, Lilly Ganju<sup>1</sup>, Rajeev Varshney<sup>1</sup>

**Affiliation:** <sup>1</sup>Defence Institute of Physiology and allied Sciences (DIPAS), Defence Research and Development Organization (DRDO), Lucknow Road, Timarpur, Delhi-110054, India; <sup>2</sup>Army Hospital Research & Referral, New Delhi, India;<sup>3</sup>Western Command Hospital, Chandimandir, Chandigarh, India.

**Address of correspondence:** Dr. Swati Srivastava\*, Genomics Division, Defence Institute of Physiology and Allied Sciences (DIPAS), Defence Research and Development Organization (DRDO), Lucknow Road, Timarpur, Delhi-110054. Email: [sri\\_swati@rediffmail.com](mailto:sri_swati@rediffmail.com)

**Running Title:** DNA methylation in high altitude venous thrombosis

**Keywords:** Epigenetic, Methylation, hyper-methylated, hypo-methylated, venous thrombosis, high altitude

## Abstract

*Background:* Pathophysiology of venous thrombo-embolism (VTE) depends upon several acquired, inherited and environmental risk factors, including high altitude (HA) exposure. The present study aims to gain insights into pathophysiological mechanism(s) of high altitude induced VTE (HA-VTE) by studying global methylation signatures.

*Methodology:* Blood samples were collected from Indian Army volunteers divided into four study groups; sea level control (SLC), sea level VTE patients (SL-VTE), high altitude control (HAC) and high altitude VTE patients (HA-VTE). Methylation patterns were studied using whole genome bisulfate sequencing. Differentially methylated genes and pathways were identified by comparing percentage methylation.

*Results:* Highest DM was observed in SL-VTE (1162 gene) compared to SLC where in hyper methylation was predominant (62.9%) compared to hypo methylation (37.05%). A reverse trend was observed in HA-VTE, where hypo methylation (61.69%) was predominant over hyper methylation (38.30%) in a total of 296 DM genes. Differential hypomethylation of genes involved in cell adhesion/platelet activity (CADM1, PTPRK, PDGFA) and immune response (CXCL12, IL4, IRF4, NLRP1) was observed in HA-VTE whereas genes encoding transcription factors (GSC, RPSKA1), trans membrane receptor (NOTCH2) and growth factor (TGFB2) were hypermethylated in comparison to SL-VTE. Methylation pattern of HA-VTE compared to HAC showed hypomethylation in genes involved in oxidative phosphorylation (CPOX), immune response and stress response (NDRG1), while those involved in signaling mechanisms (KALRN), neurotransmitter release (TMPRSS2) and transcription factor (ELF1) were hyper-methylated.

*Conclusions:* Our study for the first time reveals genome wide methylation pattern in HA-VTE group where in differential hypo methylation in cell adhesion and inflammation genes was observed.

## Introduction

Thrombo-Embolic Disorders (TED) comprising of both venous and arterial thrombosis together results in significant morbidity and mortality every year worldwide. Thrombosis is the third most common underlying pathology of major cardiovascular complications like ischemic heart disease and stroke, and remains a major contributor to the global disease burden (Raskob et al., 2014). The etiology of venous thrombo-embolism (VTE) is considered multi factorial, as the genetic and acquired risk factors individually or together commence the thrombus formation. VTE encompasses two clinically interrelated conditions; deep vein thrombosis (DVT) and pulmonary embolism (PE), the later one being potentially fatal. DVT most commonly starts in the leg, although it rarely also occurs in other veins such a supper extremities, liver , cerebral sinus, retina and mesenteric. The thrombus or blood clots might dislodge from the site of origin and travel through blood to lodge itself into lungs, leading to PE. One in every three patient of VTE manifests PE, together with DVT; while two in every three patient manifest only DVT (White, 2003). Several independent studies have established the role of genetic risk factors in VTE pathophysiology. These include, gene involved in fibrinolytic pathway such as tissue-type plasminogen activator (t-PA) and plasminogen activator inhibitor-1 (PAI-1) (Asselbergs et al.2007); deficiencies of natural anticoagulants as well as elevated levels of certain coagulation factors such as factor VIII and factor XI (Ageno et al. 2008, Cushman et al. 2009, Ryland et al.2012, Ota et al. 2011). Limited studies have been conducted on gene expression changes in VTE under hypoxic conditions (Jha et al. 2018, Srivastava et al. 2020).

'Hypoxia 'as encountered at high altitude (HA environment is associated to low oxygen bio availability and decreased ambient pressure along with other environmental stressors like cold, radiation and compromised physiological conditions. Increasing evidence has demonstrated that environmental conditions prevailing at HA such as hypoxia, dehydration, heme concentration, use of constrictive clothing and enforced stasis because of severe weather may result in VTE event (Cancienne et al. 2017). Un-acclimatized rapid ascent to HA modulates coagulation parameters and hemostatic profiles (Singh et al., 1972, Doughty et al., 1994) and incidences of DVT and PE are reportedly higher in sojourns travelling to HA and soldiers posted at HA without any other co-existent risk factor (Kumar 2006, Anand et al. 2001, Khalil et al.2010, Rathi et al. 2012).

Epigenetic modifications such as DNA methylation, histone modification and small non-coding RNA regulate gene expression by altering chromatin structure and accessibility, as well as interacting with DNA binding proteins on the regulatory regions. Gene expression is thus affected on account of the hindrance caused on the promoters/enhancers for the binding of transcriptional factors, activators/repressors (Chamberlain et al., 2014). DNA methylation marks the interface between genetic and environmental risk factors of complex human diseases. Cells are programmed to respond towards environmental stimuli, one of

which is hypoxia. Various evidences suggest that regulation of gene expression by hypoxia has epigenetic basis, especially DNA methylation. It is a dynamic epigenetic modification and crucial for regulating gene expression, genomic imprinting and is the defensive mechanism against chromatin instability (Putiri et al. 2011, Suzuki et al. 2008). Tumor hypoxia is suggested to be a novel regulator of DNA methylation as tumour suppressor gene promoters in tissue from cancer patients were found to be highly methylated in hypoxia (Thienpont et al., 2016). Also, the data strongly suggest that up to half of hyper methylation events were attributable to hypoxia (Thienpont et al., 2016). Hypoxia induced decrease in gene transcription has epigenetic basis as reviewed by Perez-Perri and coworkers. They further provided multiple compelling evidences to demonstrate chromatin changes such as DNA methylation and histone modifications during HIF activation under hypoxic conditions (Perez-Perri et al. 2011).

Systematic assessment and analysis of global methylation pattern can help in better understanding of effect of changing environment in VTE pathophysiology. Environmental and stress related challenge such as life style habits, air pollutants etc. alter another wise un-methylated chromosomal region and changes the DNA methylation pattern (Baccarelli et al., 2009; Bollati et al., 2010; McGowan et al., 2009). Substantial evidence demonstrates that DNA methylation is associated to hypoxia as well as cardiovascular diseases. Aberrant promoter hyper methylation is documented in atherosclerosis, coronary artery disease etc. (Friso et al. 2012, Yamada et al., 2018), however, the role of global DNA methylation in HA induced coagulation as well as in DVT is yet to be explored. DNA methylation marks were found to be strongly associated with coagulation factor V Leiden (FVL) mutation (Aissi et al., 2014). Moreover, DNA methylation patterns have been found by global DNA methylation analysis of anti phospholipid syndrome patients, suggesting its stronger link to thrombotic disorders (Kim et al. 2012).

In summary, whether hypoxia has an underlying methylation mechanism to modulate thrombotic propensity is yet to be elucidated. No direct evidence is available on alteration of DNA methylation machinery during VTE event under influence of hypoxia. Present study has been conducted on Human subjects in order to understand the role of aberrant DNA methylation, regulating thrombotic events during high altitude exposure. Our objective was to gain insights into global DNA methylation status of patients of high altitude induced venous thromboembolism in relation to patients at sea level.

## **Methodology**

### *Study subjects*

The present study involved Human volunteers and was conducted in accordance with the ethical guidelines of Indian council of Medical Research after approval from institutional human ethical committee. All volunteers recruited for the study signed an informed consent for their participation. Venous thrombosis patients were from Indian Army Soldiers and their samples were collected from the Army

Research and Referral Hospital (R & R), Delhi, India (sea level VTE patients) and the Western Command Hospital, Chandi Mandir, Chandigarh (high altitude VTE patients). Patients with history of pre-existing systemic disease, any prior surgery, vasculitis and malignancy were excluded from our study. Also, clinical profile of patients, time and site of venous thrombosis (VT) episode along with the presence of predisposing factors (such as surgery, trauma, prolonged immobilization, hypertension, diabetes, familial history of bleeding) were documented at the time of sample collection. Diagnosis of VTE was confirmed for all patients by at least one of the radiological imaging methods such as colour Doppler/contrast-enhanced computed tomography/computed tomography angiography/magnetic resonance imaging. Samples from age and sex matched healthy Army soldiers posted at Delhi and those deployed at high altitude region (Leh, Ladakh) were taken as controls. The persons with history of any VTE incident were excluded from the control group.

#### *Case-Control Study: Subject groups and sample collection*

A total of 18 study subjects were divided into four groups; high altitude VTE patients (HA-VTE<sub>n</sub>=5), high altitude controls (HAC <sub>n</sub>=5), sea level VTE patients (SL-VTE <sub>n</sub>=4) and sea level controls (SLC <sub>n</sub>=4).

Sodium bisulfate sequencing was used for quantitative DNA methylation measurements. Approximately 1 ml of blood from each volunteer was collected in EDTA tube. Demographic data recording for each subject was also done at the time of sample collection.

#### *DNA isolation and quantitation*

Genomic DNA was isolated from peripheral blood using QIAamp DNA isolation kit (Qiagen, Germany), according to manufacturer's instructions. Quantitative analysis of high molecular weight DNA was done using DNA/RNA nano drop 2000 spectrophotometer (Thermo fisher, USA). DNA was also assessed qualitatively on 0.7% agarose gel containing ethidium bromide. 100 ng of DNA was loaded in each well and run on 50V for 30 min and visualized under UV.

#### *Library preparation and Bisulfite sequencing*

For library preparation, DNA samples were fragmented and specialized adapters were added to each end. These adapters contain complementary sequences that allow the DNA fragments to bind to the flow cell (Illumina methylation kit). Bisulfite conversion changed unmethylated cytosines to uracil during library preparation. In bisulfite sequencing (BS-Seq), denatured DNA was subjected to bisulfite treatment, which converted cytosine (C) residues to uracil (U), but left 5-methyl cytosine residues unaffected. Converted bases were identified (after PCR) as thymine

(T) in the sequencing data. These DNA fragments were then amplified and purified. The DNA library was loaded onto the flow cell and placed on a

sequencer (service obtained from M/s Sandor Life sciences Pvt. Ltd.).

### *Sequencing and alignment*

Bisulfite conversion of genomic DNA followed by next generation sequencing (BS-seq) is most widely accepted technique for measuring methylation state of whole genome at single base resolution. Paired end sequencing (150nt) was done using Illumina HiSeq platform. All 150 base pair, paired end reads were quality checked for low quality bases and adapter sequences. After processing of raw reads, quality check was done using Perl scripts. Because of C to T conversion, bisulfite sequence reads are not complementary to the reference genome and thus the processing of sequencing data is very challenging. Thus special alignment tool, Bismark was used for alignment of reads to reference genome. This tool completed the process in three steps;

(i) Genome preparation, (ii) Alignment and (iii) Methylation extractor. Bismark performed alignments of bisulfate treated reads to reference genome and cytosine methylation calling simultaneously. Mapping of bisulfate treated reads was done using short read aligner Bowtie 2. Sequence reads were first transformed into fully bisulfite-converted forward (C->T) and reverse (G->A) reads, before they were aligned to similarly converted versions of the genome (also C->T and G->A converted). Sequence reads that produced a unique best alignment from the four alignment processes against the bisulfite genomes were then compared to the normal genomic sequence and the methylation state of all cytosine positions in the read are inferred. A read was considered to be aligned uniquely if an alignment had a unique best alignment score. If a read produced several alignments with the same number of mismatches or with the same alignment score, then it was discarded altogether.

### *Methylation analysis*

Data obtained from methylation calling was used to calculate differential methylation (DM). Fisher's exact test was used to calculate p-values. Differentially methylated regions/bases were then subjected to gene annotation using genomation package. In this package, the gene annotation from a BED file was read and annotated differentially methylated regions with that information using genomation functions. This detailed the exact percentage of differentially methylated regions on promoters/introns/exons/intergenic region. This was followed by comparative group analysis of hyper-methylated and hypo-methylated regions amongst HA-VTE and SL-VTE patients with respective controls followed by pathway analysis and gene enrichment analysis.

The complete study work flow has been depicted in figure1.

## **Results**

### **DNA methylation features and Genomic features of DMR and DMS**

Mapping efficiency of paired end reads was in between 78-80%. We studied DNA

methylation widely in CpG (5'—Cytosine—phosphate—Guanine—3') context as more than 80% of methylation events occurred at CpG sites. Methylation in CHG and CHH (where H correspond to A, T or C) context was only in between 0.1-0.2%. DM was studied in both differentially methylated regions (DMR) and differentially methylated sites (DMS). Percentage of methylation across different samples were observed based on those occurring in CpG islands, CpG shores, CpG shelves, transcription factor binding sites (TFBS) and in DNaseI hypersensitive sites (as detailed in figure 2a and 2b). Largest fraction of DMR and DMS was observed in DNase I hypersensitive sites (~0.5 in DMR and 0.13-0.2 in DMS). TFBS has the next highest methylation proportion (0.3-0.4 in DMR and 0.07-0.09 in DMS). We observed a very small fraction of methylation in CpG shelves and CpG shores and least in CpG islands.

Regarding the genomic distribution of DMR and DMS, the percentage of methylation was studied in promoter regions, 3' end, exonic region and intronic region of gene and those occurring in intergenic region. We observed that 80-90% of methylation changes occurred in intergenic and intronic regions of the genes. A very small proportion of total differentially methylated regions/sites belonged to Exonic, 3'-region and promoter region of the genes (figure 2c and 2d).

### **Identification of differentially methylated genes**

Four types of comparative analysis was done amongst the different study groups; (i) HA-VTE vs SL-VTE; (ii) SL-VTE vs SLC; (iii) HAC vs SLC; (iv) HA-VTE vs HAC. Criteria for DM were  $\geq +25\%$  for hyper methylation score and  $\leq -25\%$  for hypo methylation score. Highest number of CpG regions and CpG sites were observed in SL-VTE in comparison to SLC (figure 2e). SL-VTE vs SLC had highest number of hyper methylated and hypo methylated genes, wherein the component of hypermethylation was more (n=731) compared hypomethylation (n=431). In contrast, VTE patients at high altitude showed higher component of hypo methylation (n=183 genes) compared to hyper methylation (n=113 genes) in comparison to SL-VTE group. In case of HA exposed healthy controls (HAC) in comparison to SLC, number of hypo methylated genes were more (n=312) than hyper methylated genes (n=216). Least number of genes showed DM when HA-VTE were compared to HAC, only 78 genes showed hyper methylation whereas, 42 genes were hypo methylated (figure 2f). A very small percentage of the methylation changes were observed in promoter region of genes. The distribution of DM in different genomic regions is illustrated in figure 3(a) and 3(b) using <https://scatterplot.online/>.

### **Comparison of hypo-methylated and hyper-methylated genes across different study groups and Pathway analysis**

Hypo methylated and hyper methylated genes from each comparison were compared with the help of Venn diagram (Figure 4a and 3b) (Heberle et al. 2015, <http://www.interactivenn.net/>). Maximum number of common

differentially methylated genes was seen in SL-VTE vs SLC and HAC vs SLC (82 common hypo methylated genes and 80 common hyper methylated genes). These genes are detailed in figure 4c and 4d. Most of the genes common in other comparisons were either un-characterized or non protein coding. Protein coding differentially methylated genes for high altitude patients (as obtained from two comparisons; HA-VTE vs SL-VTE and HA-VTE vs HAC) and sea level patients (as obtained from comparison (SL-VTE vs SLC) are depicted in Figure 4.

Pathway analysis was done using PANTHER pathways (<http://pantherdb.org/tools/index.jsp>) (Mietal.,2010) and REACTOME (<https://reactome.org/PathwayBrowser/>)(Croftetal.2014,Fabregatetal.2018) database. Differentially methylated (DM) pathways in HA-VTE in comparison to SL-VTE and HAC included AP-1 transcription factor network,  $\beta$ 1 integrin cell surface interactions, endothelin signaling pathway, PDGF receptor signaling pathway, VEGF signaling, Thrombin/ protease activated receptor, urokinase-type plasminogen activator (uPA) and uPAR mediated signaling etc., which included both hypo methylated and hyper methylated genes (supplementary table 1and2). Apart from these, some hypo-methylated genes in HA-VTE attributed to EPO signaling pathway, HIF-1 $\alpha$  transcription factor network, inflammasomes, heme biosynthesis, lipid metabolism etc. Amongst unique hyper methylated pathways were potassium channels, toll receptor cascades, Angiopoietin receptor or Tie1 mediated signaling, e-cadherin signaling events and GABA synthesis etc (Figure 5).

Number of DM pathways in SL-VTE was much more compared to HA-VTE. These included pathways with both hyper- and hypo- methylated genes viz., adaptive immune system, AP1 transcription factor network, apoptosis,  $\beta$ -1integrin cell surface interactions, complement cascade, endothelin signaling, FGF signaling, GABA receptor activation, hemostasis, HIF-1  $\alpha$  transcription factor, complement triggering, integrin family, cell surface interactions, platelet signaling, VEGF signaling ,thrombin /protease-activated receptor signaling pathway etc. Significant unique pathways with only hypo-methylated genes in SL-VTE included NOS activation and regulation, heme biosynthesis, NCAM1 inteactions, platelet degranulation and response to elevated platelet cytosolic  $Ca^{2+}$ .On the other hand, uniquely hypermethylated pathways included  $Ca^{2+}$  activated  $K^+$  channels, extrinsic pathway, fatty acid activation, FGFR ligand binding and activation, formation of fibrin clot, GP1b-IX-V activation signaling, inflammasomes, platelet activation, NLRP3 inflammasome etc (Figure 5). (Supplementary table 3).

### **Gene Enrichment analysis of hypo-methylated and hyper-methylatedgenes**

The differentially methylated gene lists obtained for sea levelVTE patients and high altitude VTE patients were subjected to gene ontology analysis using ShinyGOv.0.61 (<http://bioinformatics.sdstate.edu/go/>). Most significantly enriched biological pathways included cell communication, signa ltransduction, cell growth/maintenance, transport, metabolism, Immune response, cell adhesion,



apoptosis, lipid metabolism, regulation of cell cycle etc. Topbiological processes enriched in HA-VTE and SL-VTE group are depicted in Figure 6. Enriched cellular component included Plasma membrane, Cytoplasm, nucleus, exosomes, cell surface, centrosome, mitochondrion, actin cytoskeleton, lysosome, Voltage-gated potassium channel complex etc.; whereas molecular function included Cell adhesion molecule activity, Transporter activity, G-protein coupled receptor activity. Transcription factor activity, Receptor signaling complex scaffold activity, Voltage-gated ion channel activity, Oxido reductase activity, Calcium ion binding, Cyto skeletal anchoring activity Protein serine/threonine kinase activity.

## Discussion

Aberrant DNA methylation on promoter affects gene expression and hinders promoter accessibility, and has been linked to multiple pathologies like variety of cancers, skin diseases, and cardiovascular diseases (Jelinek et al., 2011, Wang et al. 2018). Increased risk of thrombotic complications in high altitude climbers has been well documented. High altitude environment resulting in a hyper coagulable state, is considered as an independent risk factor for VTE development (Kumar 2006, Damodar et al. 2018, Dutta et al. 2018). The rear every limited studies so far on DNA methylation in humans at high altitude (Childebayeva et al. 2019, Basak et al. 2017). Also, very scanty literature is available on methylation change during VTE event and blood coagulation (Aissi et al.2014, Ward-caviness et al. 2018, Noro et al. 2019). Global DNA methylation signatures in HA-VTE have not been studied so far! Infact, exact etiopathology of VTE in humans in terms of epigenetic modulation (methylation) has not been elucidated. There are two separate lines of evidence; one is that hypoxic environment induces hyper-coagulation and another proves that hypoxia is associated with DNA methylation. However despite this, the interrelated studies on role of hypoxia induced DNA methylation changes in human VTE patients have not been documented so far. In the present study, we attempted to understand the role of methylation in high altitude hypoxia induced VTE.

The acute response to hypoxia involves changes in homeostatic regulation which is inturn controlled by large number of genes. Epigenetic modifications are plastic in nature and occur in response to the change in the environmental conditions (Bollati and Baccarelli, 2010). The present study utilizes gold standard method of sodium bisulphate sequencing technique to decipher epigenetic methylation changes during HA-VTE event.

### *Differential methylation (DM) in High altitude VTE patients and Sea level VTE patients Hypo methylation in high altitude patients*

Component of hypo methylation in high altitude patients compared to sea level patients included genes involved in cell adhesion and regulation, cell adhesion molecule 1 (CADM1), receptor-type tyrosine-protein phosphatase kappa (PTPRK); platelet derived growth factor (PDGFA),inflammation and immune response, C-X-C motif chemokine ligand 12 (CXCL12), immune surveillance,

interleukin 18 (IL18), interleukin 4 (IL4), interferon regulatory factor 4 (IRF4) and nucleotide-binding oligomerization domain, leucine rich repeat and pyrin domain containing 1(NLRP1). Inflammation is reportedly higher upon exposure to high altitude (Hartman et al.2000) and platelets play a very important role in vascular homeostasis (Gupta et al. 2020), the hypo methylated (over-expressed) genes of inflammation and platelets activity may play an important role in predisposition towards HA-VTE. Apart from these, other hypo methylated genes in HAP were Proteasome 26S Subunit, Non-ATPase 14 (PSMD14) and Cullin 1 (CUL1) involved in ubiquitination and degradation of intra cellular proteins involved in cell cycle regulation and signal transduction and MutS Homolog 2 (MSH2) involved in DNA mismatch repair. Hypomethylated genes in HAP in comparison to HAC revealed oxygen-dependent coproporphyrinogen-III oxidase, mitochondrial gene (CPOX), involved in biosynthetic pathway of heme ,which might be in response to hypoxic conditions (Grek et al. 2011); N-Myc downstream-regulated gene 1 protein (NDRG1) which belongs to alpha/beta hydrolase and is reportedly involved in cell growth, immune and stress response and also negatively correlated with cancer progression (Fanget al. 2014, Kovacevic et al. 2016); and sphingomyelin synthase 1(SGMS1). The differential methylation in the said genes was mostly observed in the intergenic region and intronic regions, except IL18 with methylation in promoter region.

#### *Hyper methylation in High altitude patients*

Hyper methylated genes in HAP in comparison to SLP included a transcription factor (GSC), Ribosomal protein S6 kinase alpha1 gene (RPS6KA1), which is a serine/threonine-protein kinase which signals and mediates mitogenic and stress induced activation of transcription factor. Amongst the other hyper-methylated genes were, transforming growth factor beta-2 (TGFB2), trans membrane receptor (NOTCH2), potassium voltage gated channel (KCND2), Toll-like receptor (TLR4) which activates intracellular signaling of NFκB, Rho-associated protein kinase (ROCK1) which is a key regulator of actin–myosin contraction, stability and cell polarity and zinc finger protein (ZFYVE16). Other hyper-methylated genes in high altitude patients in comparison to respective controls (HAC) were cell adhesion molecule (Cadherin, CDH5), ETS domain transcription factor (ELF1), Kalirin (KALRN), which is involved in inducing various signaling mechanisms, Neuro trophic tyrosine kinase, receptor type2 (NTRK2), Src kinase (SKAP2), which plays a role in activation of immune system, t-SNARE (SNAP25) involved in molecular regulation of neuro transmitter release and trans membrane serine protease (TMPRSS2) involved in tissue remodeling, blood coagulation and inflammatory response etc. Except for the KALRN, all other hyper methylated genes in this category showed DM in intergenic and intronic regions.

#### *Hypo methylation in sea level patients*

The percentage of DM was much higher in case of sea level patients compared to high altitude patients. The differentially methylated genes belonged to various

biological pathways (as mentioned in supplementary table 3), we have enlisted 41 hypo-methylated and 76 hyper-methylated genes amongst them which were found to be significantly involved in multiple pathways.

Amongst the 41 hypo methylated genes, a large number of genes belonged to (1) immune response pathway such as ELMO1 (engulfment and cell motility protein 1), IL18 (interleukin 18, pro-inflammatory cytokine involved in T-helper cell, natural killer cell and cell immune response), MBL2 (mannose Binding lectin 2, an important element of innate immune response), RIPK2 (receptor-interacting serine/threonine-protein kinase involved in innate and adaptive immune response), ICOS (Inducible T-cell co-stimulator, an immune check point protein belonging to CD28 and CTLA-4 cell surface receptor family); (2) Transcriptional activation like BCL9 (B-cell lymphoma 9, a transcriptional co-activator), CREM (cAMP responsive element modulator which is involved in transcriptional response to stress, MDFIC (MyoD family inhibitor domain-containing protein, a transcriptional activator of repressor), MYOCD (Myo Cardin), KDM3A (Lysine demethylase 3A, has DNA binding transcription factor activity), TCF7L2 (transcription factor 7 like 2, plays a key role in Wnt signaling pathway and implicated in blood glucose homeostasis, RUNX1 (Runt-related transcription factor for development of normal hematopoiesis; (3) genes involved in cell/platelet adhesion such as CD226 (cell adhesion molecule mediating adhesion of platelets and megakaryocytes to vascular endothelial cells), DCC (Deleted in colorectal carcinoma, a trans membrane protein and member of immunoglobulin super family of cell adhesion molecules, ST8S1A4 (Sialyl transferase, modulator of adhesive properties on nCAM1); (4) membrane receptors and regulatory proteins viz., CXCR4 (C-X-C motif chemokine receptor 4, a G-protein coupled receptor for protein ubiquitination), DUSP6 (Dual specificity phosphatase 6), GNAL (G-protein alpha subunit), GRIP2 (Glutamate receptor interaction protein 2), PPP3R1 (protein phosphatase 3 regulatory subunit B, alpha, calcium stimulated) and PRKAR1B (cAMP dependent protein kinase type 1-beta regulatory protein, involved in cAMP signaling in cells). Besides these major sub classes, other differentially hypo methylated genes in this category included those involved in maintaining cytoskeletal integrity such as COL11A1 (Collagen type XI A1 chain, a constituent of extracellular matrix structure and playing an important role in fibrillogenesis by controlling growth of collagen fibrils) and TLN1 (Talin1, forming connection of major cytoskeletal structures to the plasma membrane); channel proteins such as KCNC2 (voltage gated potassium channel) and TRPC7 (Transient receptor potential cation channel subfamily, member 7) and genes involved in oxidative phosphorylation like NDUFAF2 (NADPH: ubiquinone oxidoreductase complex assembly factor 2, which acts as molecular chaperon for mitochondria complex I and has role in electron transfer from NADH to the respiratory chain and CPOX (Cytochrome c oxidase, which is a mitochondrial enzyme involved in production of heme molecule). Histidine-rich glycoprotein (HRG) gene was also found to be hypo methylated. This gene has diverse functions, it binds to number of ligands such as heme, heparin,

thrombospondin, plasminogen etc and regulates processes such as immune system, pathogen clearance, cell adhesion, angiogenesis, coagulation and fibrinolysis. Another interesting hypo-methylated gene was IQGAP1 (IQ Motif containing GTPase activating protein1), which interacts with components of cytoskeletal system, cell adhesion molecules and also with several signaling molecules to regulate cell morphology and motility. KDM3 A gene was hypo methylated in exonic region, CD226 in promoter region and all others in respective intergenic and intronic regions.

#### *Hypomethylation in sea level patients*

Several transcription factors were hyper-methylated in sea level patients such as BCL3 (B-cell lymphoma 3 encoded protein, a transcriptional co-activator), DDX58 (Dead box family of RNA helicases, a transcriptional repressor), ETV1 (ETS variant transcription factor 1), PBX1 (pre-B-cell leukemia transcription factor 1), TLE1 (transducin-like enhancer protein 1, a transcriptional co-repressor that binds to a number of transcription factors like NFκB) and SPI1 (transcription factor PU.1, a transcriptional activator involved in activation of macrophages or B-cells). Although increased platelet activity and fibrinogen levels collectively account for pro-thrombotic state (Kotwaletal.2007), many genes involved in platelet activation and coagulation pathway showed hyper methylation (down-regulation) including CD36 (collagen type1 receptor or thrombospondin receptor, a major glycoprotein of platelet surface), F3, also known as tissue factor (TF) which facilitates blood coagulation by forming a complex with circulating factor VII or VIIa, which in turn activates factor X (Owens et al. 2010), PDGFA and PDGFRA (Platelet-derived growth factor -subunit A and -receptor alpha, respectively), TFPI (tissue factor pathway inhibitor, a kunitz-type serine protease inhibitor that regulates TF-dependent blood coagulation) and MASP1 (Mannose-binding lectin associated serine protease 1) that functions as a component of lectin pathway of complement activation, complement pathway and plays an essential role in immune response and coagulation) Hyper methylation in tissue factor F3 is somehow counter balanced by hyper methylation in TFPI. Hypermethylated genes SLP also included genes encoding for proteins involved in cell adhesion or focal adhesion such as ARAP2 (ArfGAP with Rho GAP domain), CD44 (a cell surface glycoprotein), CDH2 (Cadherin 2, another cell surface glycoprotein), DSG1 (Desmoglin 1- cadherin-like transmembrane glycoprotein that form a major component of desmosomes), LPP (Lipoma-preferred partner, playing a structural role at the sites of cell adhesion thus maintain cell shape and motility), PAK1 (Serine/threonine kinase, involved in intracellular signaling and plays an important role in cytoskeleton dynamics and cell adhesion) and SORBS1 (Sorbin 1 and SH3 domain containing protein involved in formation of actin stress fibers and focal adhesion). Hyper methylated growth factors included FGF10 (fibroblast growth factor10), GAB2 (growth factor receptor bound protein 2), GF1 (growth factor independence1, a transcriptional repressor), IGF1 (insulin like growth factor 1), IGF1R (insulin like growth factor receptor), TGB1 (transforming growth factor

beta1), TGFBR3 (transforming growth factor beta receptor 3). Hyper methylation of genes involved in immune-regulatory and inflammatory processes included CCL26 (C-C motif chemokine ligand L6), CD200R1 (C-C motif chemokine receptor L6) and PRDM1 (PR domain zinc finger protein 1, a transcription factor that mediates innate and adaptive immune response). Other genes of interest in this category included EDN1 (endothelin 1), which is an endothelium derived vasoconstrictor and EGLN3 (Prolyl hydroxylase), which is an important isozyme in limiting physiological activation of Hypoxia inducible factor (HIF) in hypoxia. Besides DDX58 gene which showed hypermethylation in 3'-region, all others were hypermethylated in intronic and intergenic regions.

Our findings give global DNA methylation patterns in Indian population, in an event of venous thrombosis for the first time, both at high altitude as well as sea level. Further studies with more number of samples would be helpful in validating and generalizing present findings.

### **Summary**

To the best of our knowledge, hypoxia as encountered at high altitude and associated venous thrombosis phenotype, has never been discussed and appreciated in perspective of DNA methylation. Present study identified differential hypo methylation in cell adhesion and inflammation genes and hypermethylation of certain transcription factors and channel proteins in high altitude VTE patients. A distinct pattern of methylation was observed in HA-VTE patients and SL-VTE patients. Overall, the work primarily provides robust data demonstrating that hypoxia reinforces global methylation events.

### **Limitation of the study**

Blood samples from subjects with mixed ethnic backgrounds, have been collected at different time points, as and when available. The methylation pattern of an individual changes with change in altitude, environment and even lifestyle habits. In the present study, these factors have not been taken into account. Also, due to technical reasons/sample unavailability, we could study only a limited number of subjects in each group.

### **Acknowledgement**

The authors are extremely thankful to all the Indian Army volunteers who participated in the study. We are also grateful to our co-investigators at Army R & R hospital, Delhi and Western command hospital, Chandimandir, who facilitated us with sample collection. We express our sincere thanks to ex Director, DIPAS, Dr. Rajiv Varshney, for logistic support and guidance.

### **Author's Contribution**

SS: Performed the Experiments, analyzed data and wrote the manuscript, IG:

Manuscript writing and Editing BK: Assisted in performing the experiments and sample collection, UY and JS: Collection of samples, L Gand RV: Logistic support and manuscript proof reading.

### **Conflict of Interest**

No potential conflict of interest.

### **Funding**

Defence Institute of Physiology and Allied Sciences (DIPAS), Defence Research and Development organization (DRDO) (Project: DIP-263).

### **References**

1. Ageno W, Becattini C, Brighton T, Selby R, Kamphuisen PW. Cardiovascular risk factors and venous thrombo-embolism: a meta-analysis. *Circulation* 2008; 117(1):93-102.
2. Aissi, D.,J. Dennis, M. Ladouceur,V.Truong, N.Z wingerman, A. Rocanin-Arjo, M. Germain, et al. "Genome-Wide Investigation of DNA Methylation Marks Associated with F v Leiden Mutation." *PLoS One* 9, no. 9 (2014): e108087.
3. Anand AC, Jha SK,Saha A, SharmaV, Adya CM. Thrombosis as a complication of extended stay at high altitude. *Nat I Med J India*. 2001;14(4):197-201.
4. Asselbergs FW, Williams SM, Hebert PR, Coffey CS, Hillege HL, Snieder H, Navis G,Vaughan DE, van Gilst WH, Moore JH. The effects of polymorphisms in genes from the renin-angiotensin, bradykinin and fibrinolytic systems on plasma t-PA and PAI-1 levels are dependent on environmental context. *Hum Genet* 2007; 122, 275–281.
5. Baccarelli, A.,R.O. Wright,V. Bollati, L.Tarantini, A. A. Litonjua, H. H. Suh, A. Zanobetti, et al. Rapid DNA Methylation Changes after Exposure to Traffic Particles. *Am J Respir Crit Care Med*, 2009, 179: 572-8.
6. Basak, Nipa; Nizamuddin, Sheikh; Thangaraj, Kumarasamy. Epigenetic signatures of high altitude adaptation in Tibetan population. *Can J Biotech* 2017, Volume 1, Special Issue, Page 113.
7. Bollati V, Baccarelli A Environmental epigenetics. *Heredity (Edinb)*. 2010 Jul; 105(1):105-12.
8. Bollati V, Baccarelli A, Sartori S, Tarantini L, Motta V, Rota F, Costa G. Epigenetic Effects of Shift workon Blood DNA Methylation. *Chronobio II nt* 27,2010: 1093-104.
9. Cancienne JM, Burrus MT, Diduch DR, Werner BC, High altitude is an independent risk factor for venous thrombo-embolism following arthroscopic rotator cuff repair: a matchedcase-control study in Medicare patients, *J. Shoulder Elb. Surg.* 26 (1) (2017) 7–13.
10. Chamberlain, A. A., M. Lin, R. L. Lister, A. A. Maslov, Y. Wang, M. Suzuki,

- B. Wu, et al. DNA Methylation Is Developmentally Regulated for Genes Essential for Cardiogenesis. *J Am Heart Assoc* 3, no. 3, 2014: e000976.
11. Childebayeva A, Jones TR, Goodrich JM, Leon-Velarde F, Rivera-Chira M, Kiyamu M, Brutsaert TD, Dolinoy DC, Bigham AW. LINE-1 and EPAS1 DNA methylation association with high-altitude exposure, *Epigenetics*, 2019, 14:1, 1-15
  12. Croft D, Mundo AF, Haw R, Milacic M, Weiser J, Wu G, Caudy M, Garapati P, Gillespie M, Kamdar MR, Jassal B, Jupe S, Matthews L, May B, Palatnik S, Rothfels K, Shamovsky V, Song H, Williams M, Birney E, Hermjakob H, Stein L, D' Eustachio P. The Reactome pathway knowledge base. *Nucleic Acids Res.* 2014, 42, D472–D477.
  13. Cushman M, O' Meara ES, Folsom AR, Heckbert SR. Coagulation factors IX through XIII and the risk of future venous thrombosis: the Longitudinal Investigation of Thromboembolism Etiology. *Blood*. 2009; 114(14):2878–2883.
  14. Damodar D, Donnally CJ 3rd, Sheu JI, Law TY, Roche MW, Hernandez VH. A Higher Altitude Is an Independent Risk Factor for Venous Thromboembolisms After Total Hip Arthroplasty. *J Arthroplasty*. 2018, 33(8):2627-2630. doi: 10.1016/j.arth. 2018.03.045. Epub 2018 Mar 27. PMID: 29691178.
  15. Doughty HA, C. Beardmore. Bleeding Time at Altitude. *J R Soc Med* 87, no. 6, 1994: 317-9.
  16. Dutta V, Singh R, Kumar S, Aggarwal N, Hari Kumar KVS. Profile of pulmonary embolism in service personnel posted at high-altitude area. *Indian Heart J*, 2018, 70(3).
  17. Fabregat A, Jupe S, Matthews L, Sidiropoulos K, Gillespie M, Garapati P, et al. The Reactome pathway knowledgebase. *Nucleic Acids Res.* 2018; 46 (D1):D649-D655.
  18. Fang BA, Kovačević Ž, Park KC, Kalinowski DS, Jansson PJ, Lane DJ, et al. Molecular functions of their on-regulated metastasis suppressor, NDRG1, and its potential as a molecular target for cancer therapy. *Biochimica et Biophysica Acta (BBA) - Reviews on Cancer*. 2014, 1845(1):1–19.
  19. Friso S, Lotto V, Choi SW, Girelli D, Pinotti M, Guarini P, U daliSetal. Promoter Methylation in Coagulation F7 Gene Influences Plasma Fvii Concentrations and Relates to Coronary Artery Disease. *J Med Genet* 49, no. 3 (Mar 2012): 192-9.
  20. Grek CL, Newton DA, Spyropoulo sDD, Baatz JE. Hypoxia up-regulates expression of hemoglobin in alveolar epithelial cells. *Am J Respir Cell Mol Biol*. 2011;44(4):439-447. doi:10.1165/rcmb.2009-0307OC.
  21. Gupta S, Konradt C, Corken A, Ware J, Nieswandt B, Paola JD, Yu M, Wang, Marvin T, Nieman D, Whiteheart SW, Brass LF. Hemostasis vs. homeostasis: Platelets are essential for preserving vascular barrier function in the absence of injury or inflammation. *PNAS* 2020, 117 (39)24316-24325.

22. Hartmann G, Tschöp M, Fischer R, Bidlingmaier C, Riepl R, Tschöp K, Hautmann H, Endres S, Toepfer M. High altitude increases circulating interleukin-6, interleukin-1 receptor antagonist and C-reactive protein .Cytokine. 2000 Mar;12(3):246-52.
23. Heberle H, Meirelles GV, da Silva FR, Telles GP, Minghim R. Interacti Venn: a web-based tool for the analysis of sets through Venn diagrams .BMC Bioinformatics 16:169(2015).
24. Jelinek J, Gharibyan V, Estecio MR, Kondo K, He R, Chung W, Lu Y, et al. "Aberrant DNAMethylation Is Associated with Disease Progression, Resistance to Imatinib and Shortened Survival in Chronic Myelogenous Leukemia." PLoS One 6, no.7 (2011): e22110.
25. Jha PK, Sahu A, Prabhakar A, Tyagi T, Chatterjee T, Arvind P, Nair J, Gupta N, Kumari B, Nair V, Bajaj N, Shanker J, Sharma M, Kumar B, Ashraf MZ. Genome-Wide Expression Analysis Suggests Hypoxia-Triggered Hyper-Coagulation Leading to Venous Thrombosis at High Altitude. Thromb Haemost. 2018; 118(7):1279-1295.
26. Khalil KF, Saeed W. Pulmonary embolism in soldiers serving at high altitude. J Coll Physicians Surg Pak. 2010; 20(7):468-471. doi:07.2010/JCPSP.468471
27. Kim Ji-Yoon, Lee Jae-Hee, Choi Yong- Mook. DNA Methylation Pattern Analyses in Patients with Anti phospholipid Syndrome: Screening Study. Blood, 2012, 120 (21): 5138. <https://doi.org/10.1182/blood.V120.21.5138.5138>
28. Kotwal J, Apte CV, Kotwal A, Mukherjee B, Jayaram J. High altitude: a hyper coagulable state: results of a prospective cohort study, Thromb. Res. 120 (2007), 391–397
29. Kovacevic Z, Menezes SV, Sahni S, Kalinowski DS, Bae DH, Lane DJ, Richardson DR. The Metastasis Suppressor, N-MY C Downstream-regulated Gene-1(NDRG1), Down-regulates the ErbB Family of Receptors to Inhibit Downstream Oncogenic Signaling Pathways. The Journal of Biological Chemistry. 2016, 291 (3): 1029–52.
30. Kumar S, High altitude induced deep venous thrombosis: a study of 28 cases, Indian J. Sur. 68(2) (2006) 84–88.
31. Mc Gowan PO, Sasaki A, D'Alessio AC, Dymov S, Labonte B, Szyf M, Turecki G, Meaney MJ. Epigenetic Regulation of the Glucocorticoid Receptor in Human Brain Associates with Childhood Abuse. Nat Neurosci 12, no. 3, 2009: 342-8.
32. Mi H, Dong Q, Muruganujan A, Gaudet P, Lewis S, Thomas PD. PANTHER version 7: improved phylogenetic trees, orthologs and collaboration with the Gene Ontology Consortium. Nucleic Acids Res. 2010, 38, D 204–D210.
33. Noro, F., Gianfagna, F., Gialluisi, A. et al. ZBTB12 DNA methylation is associated with coagulation- and inflammation-related blood cell parameters: findings from the Moli-family cohort. Clin Epigenet 11,74, 2019.
34. Ortel TL. Antiphospholipid syndrome: laboratory testing and diagnostic strategies. Am J Hematol. 2012; 87 Suppl 1(Suppl 1):S75-S81. doi:10.1002/ajh.23196



35. Ota S, Yamada N, Ogihara Y, Tsuji A, Ishikura K, Nakamura M, Wada H, Ito M. High plasma level of factor VIII: an important risk factor for venous thromboembolism. *Circ J*.2011; 75(6):1472–1475.
36. Owens AP 3rd, Mackman N. Tissue factor and thrombosis: The clot starts here. *ThrombHaemost*.2010; 104(3):432-439.
37. Perez-Perri JI, Acevedo JM, Wappner P. Epigenetics: New Questions on the Response to Hypoxia. [In eng]. *Int J Mol Sci*12, no. 7 (2011): 4705-21.
38. Putiri EL, Robertson KD. Epigenetic Mechanisms and Genome Stability. *Clin Epigenetics* 2,no.2 (2011): 299-314.
39. Raskob, GE, Angchaisuksiri P, Blanco AN, Buller H, Gallus A, Hunt BJ, Hylek EM, et al. Thrombosis: A Major Contributor to Global Disease Burden. *Semin Thromb Hemost* 40, no.7,2014: 724-35.
40. Rathi KR, Uppal V, Bewal NM, Sen D, Khanna A. D-dimer in the diagnostic work up of suspected pulmonary thrombo-embolism at high altitude. *Med J Armed Forces India*. 2012;68(2):142-144.
41. Ryland JK, Lawrie AS, Mackie IJ, Machin SJ. Persistent high factor VIII activity leading to increased thrombin generation - a prospective cohort study. *Thromb Res*. 2012; 129(4):447–452.
42. Singh I, Chohan IS. Abnormalities of Blood Coagulation at High Altitude. *Int J Biometeorol* 16, no.3,1972: 283-97.
43. Singh I, Chohan IS. Blood Coagulation Changes at High Altitude Predisposing to Pulmonary Hypertension. *Br Heart J*34, no. 6,1972):611-7.
44. Srivastava S, Kumari B, Garg I, Rai C, Kumar V, Yanamandra U, Singh J, Panjawani U, Bansal A, Kumar B. Targeted gene expression study using TaqMan low density array to gain insights into venous thrombo-embolism (VTE) pathogenesis at high altitude. *Blood cells, molecules and diseases* Volume 82, May 2020, 102421
45. Suzuki MM, Bird A. DNA Methylation Landscapes: Provocative Insights from Epigenomics. *Nat Rev Genet* 9, no. 6,2008: 465-76.
46. Thienpont B, Steinbacher J, Zhao H, D'Anna F, Kuchnio A, Ploumaki A, Ghesquière B, Van Dyck L, Boeckx B, Schoonjans L, Hermans E, Amant F, Kristensen VN, Peng Koh K, Mazzone M, Coleman M, Carell T, Carmeliet P, Lambrechts D. Tumour hypoxia causes DNA hypermethylation by reducing TET activity. *Nature*.2016;537(7618):63-68.
47. Wang X, Liu AH, Jia ZW, Pu K, Chen KY, Guo H. Genome-Wide DNA Methylation Patterns in Coronary Heart Disease. *Herz* 43, no. 7, 2018, 656-62.
48. Ward-Caviness CK, Huffman JE, Everett K, et al. DNA methylation age is associated with an altered hemostatic profile in a multi ethnic meta-analysis. *Blood*. 2018; 132(17):1842-1850.
49. White RH. The Epidemiology of Venous Thromboembolism. *Circulation* 107, no. 23 Supp 11,2003:I4-8.
50. Yamada Y, Horibe H, Oguri M, Sakuma J, Takeuchi I, Yasukochi Y, Kato K, Sawabe M. Identification of Novel Hyper- or Hypomethylated CpG Sites and Genes Associated with Atherosclerotic Plaque Using an Epigenome-Wide

Association Study. Int J Mol Med 41, no.5,2018:2724-32.

# NGS Methylation Experimental Methodology

High Altitude Patients  
(HA-VTE)

Sea level Patients  
(SL-VTE)

High altitude Control  
(HAC)

Sea level Controls  
(SLC)

Collection of blood samples: Isolation of DNA using QIAamp DNA Blood Midi Kit

Qualitative and quantitative analysis of DNA

DNA fragmentation and library preparation: Ligation to adaptors that contain 5mCs

Bisulfite sequencing: Fragmented DNA is treated with Sodium bisulfite: to convert all un-methylated cytosines to uracil.

Sequencing was done using Illumina HiSeq: 150nt Paired end sequencing

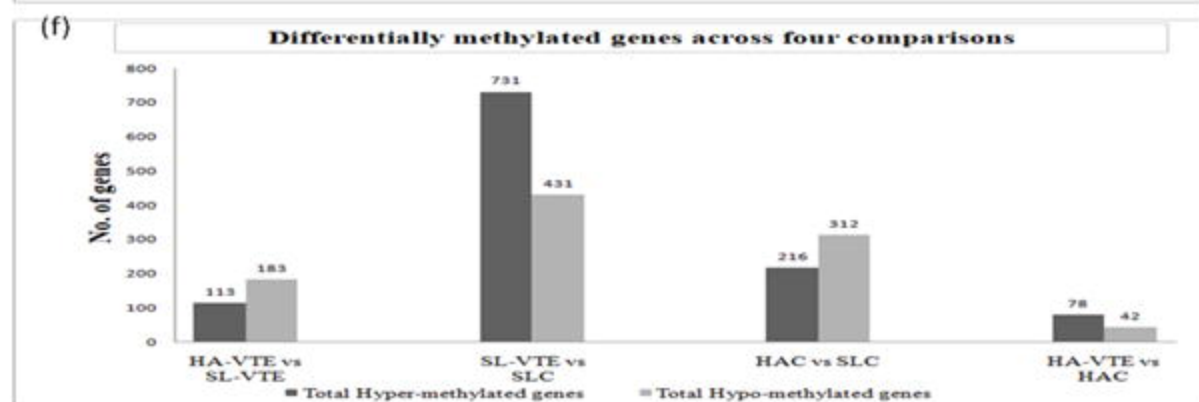
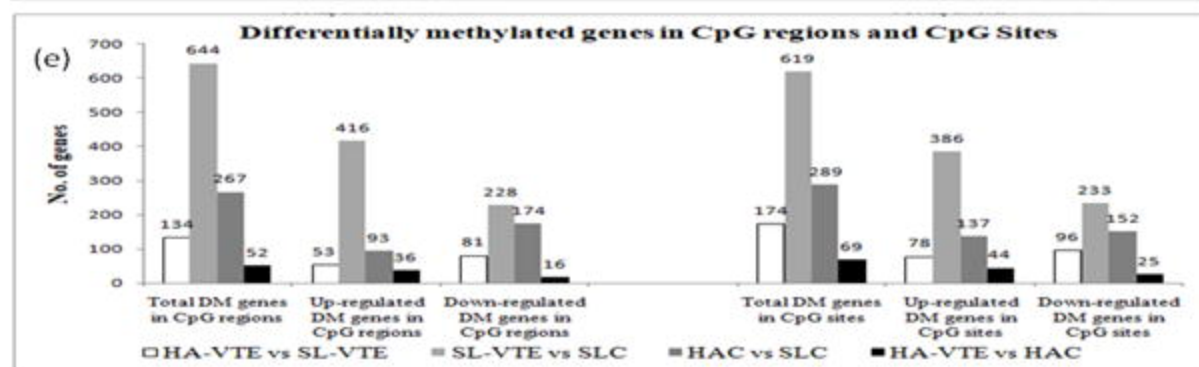
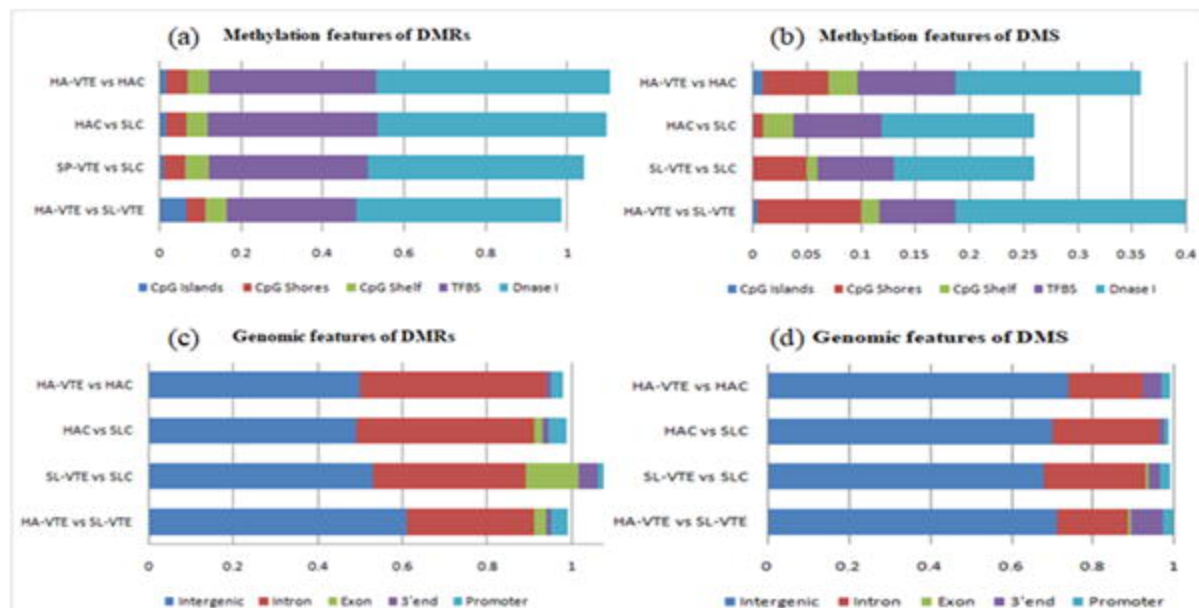
150 bp paired end raw reads from Illumina HiSeq Sequencer were quality checked for low quality bases: Using Perl Scripts

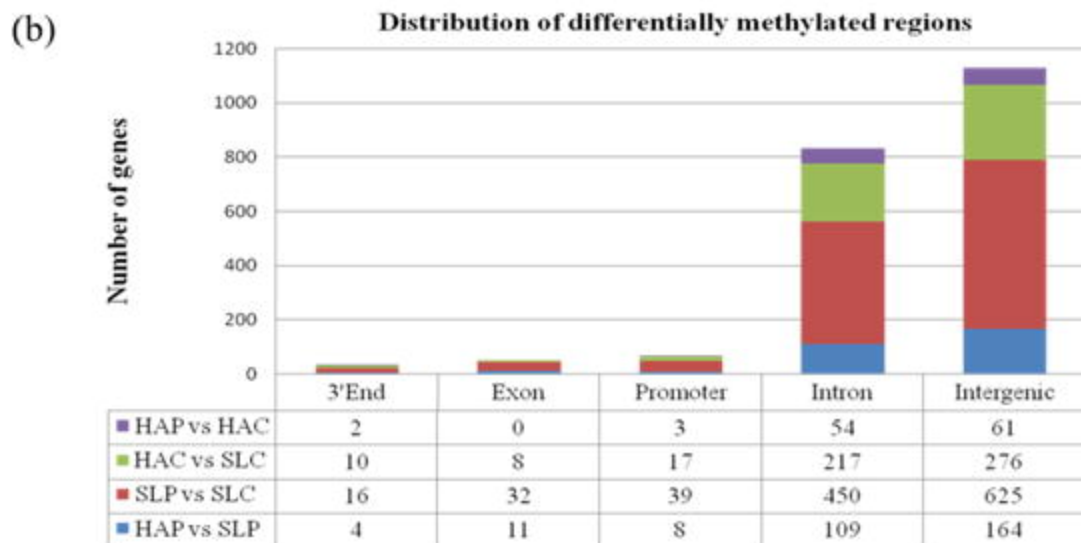
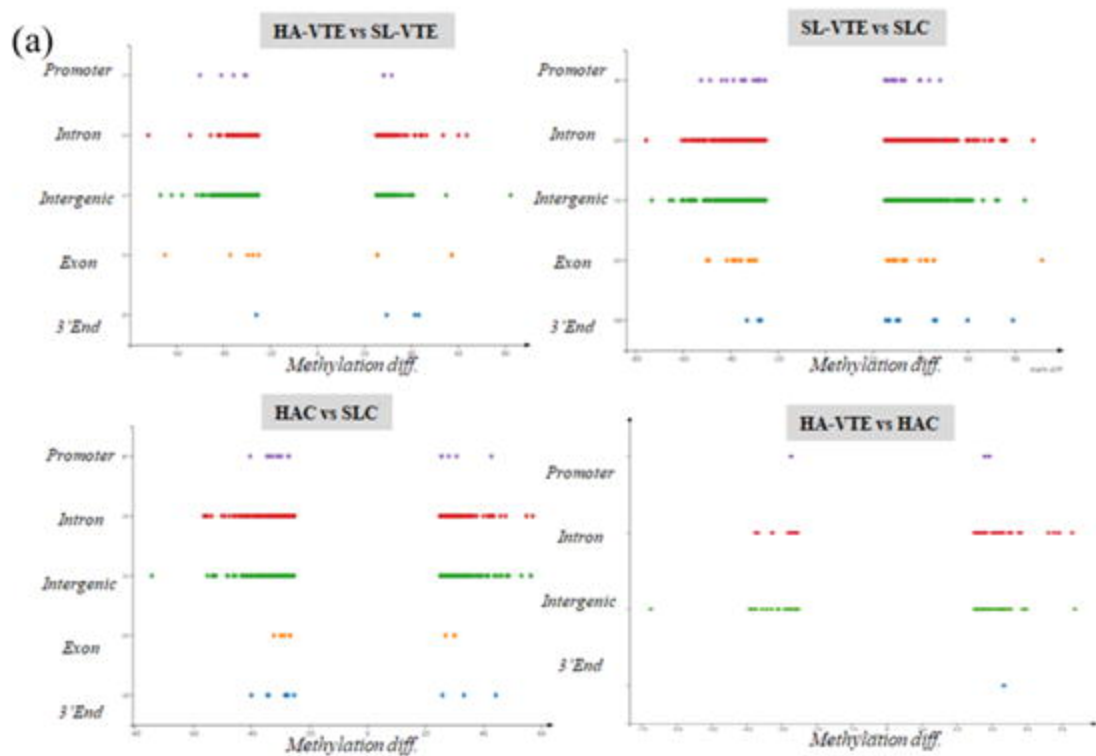
Alignment of reads to reference genome (Bismark tool): (1) Alignment of bisulfite treated reads to reference genome (Mapping using Bowtie 2 tool; (2) Cytosine methylation calling

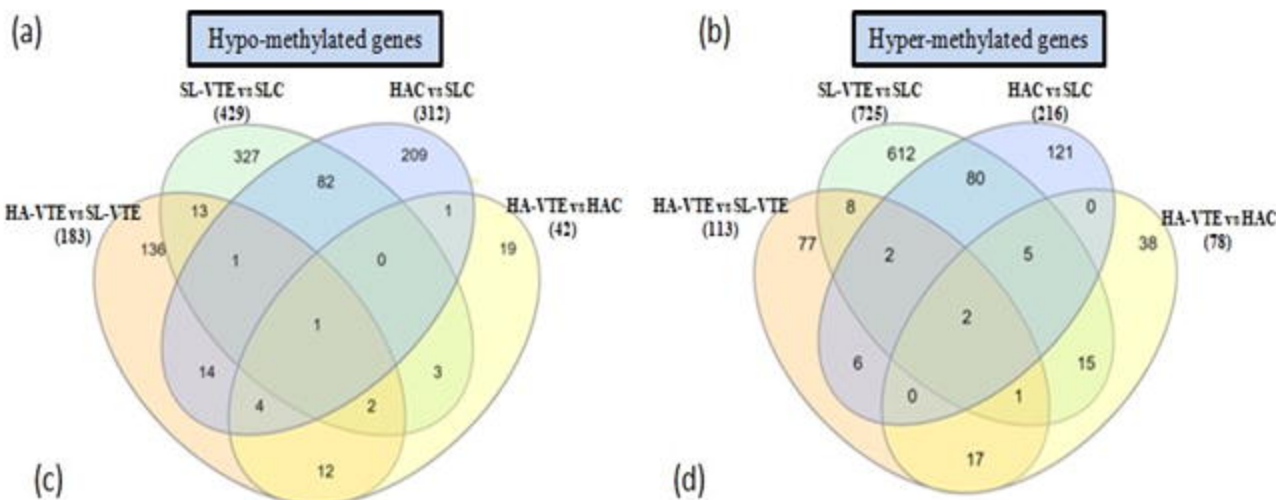
Methylation state of all cytosine positions are read and inferred

Identification of hyper-methylated and hypo-methylated regions and sites on the basis of methylation percentage

Hyper- and Hypo- methylated genes: Comparative study of groups, Pathway analysis, Gene Enrichment analysis







(c) **Common Hypo-methylated Genes**

<b>HAC vs SLC; HAP vs HAC; HAP vs SLP; SLP vs SLC (1)</b> DQ579969
<b>HAC vs SLC; HAP vs SLP; SLP vs SLC (1)</b> PPP3R1
<b>HAP vs HAC; HAP vs SLP; SLP vs SLC (2)</b> DPYD Mir_548
<b>HAC vs SLC; HAP vs HAC; HAP vs SLP (4)</b> CPA6 ANKRD26P1 TEX29 CSMD1
<b>HAP vs SLP; SLP vs SLC (13)</b> ACTR3BP2 PCGEM1 VNN1 HACE1 BC042451 MSH2 AKG10876 JF934746 GRM7 LOC100129138 IL18 CNTNS PNM2
<b>HAC vs SLC; HAP vs SLP (14)</b> PTPRK LOC100130954 HPCAL1 CXCL12 DQ576041 PRIM2 ZNF733P ACTR3BP5 IFLTD1 POTE4 TMEM132D CWH43 AK126852 AK311573
<b>HAP vs HAC; HAP vs SLP (12)</b> BC094873 ANKRD308P2 BAGE3 DEF8115 U6 NDUFAF6 BAGE CELF5 AX748388 DQ590126 H19 SGMS1
<b>HAC vs SLC; SLP vs SLC (82)</b> LOC401397 LOC100506393 SORCS1 LOC643542 ANO4 C14orf9 LOC728342 LINC00469 BCC2 LINC00442 CABP1 LOC727982 BC033837 KIFAP3 GALNTL6 MYT1L IQGAP1 OR4E2 LOC1720 CEACAM22P HERC2P3 RBFOX1 SKP1P2 CADM2 EML4 DNAH11 SNORD112 TTF1 CLEC17A RGS22 SPG20 NID2 TRPC7 FBXL17 SPRY2 RIPK2 CELF2 EML5 JAZF1-AS1 PRKAR1B FSTL5 NBPF1 HRH2 RORB SMPD1 EMR3 SRGAP3 DDIX60L MIR2054 MIR548A3 BC048982 TCF7L2 GORASP2 NRCAM MIR3687 SYT14 LRRICB KCNC2 JA429839 IRX1 SGOL2 TRNA_Pseudo BC045767 LOC653513 5S_rRNA LOC644649 BC041439 SLC01B1 ELL2 CTSN LINC00886 GSTA7P JA611272 MIR143HG GPM6A SPATA16 CPED1 EPHB1 CREM LOC643339 MIR4675 AVL9
<b>HAP vs HAC; SLP vs SLC (3)</b> MIR4472-1 CPOX LPPRS
<b>HAC vs SLC; HAP vs HAC (1)</b> HCN1

(d) **Common Hyper-methylated Genes**

<b>HAC vs SLC; HAP vs HAC; HAP vs SLP; SLP vs SLC (2)</b> abParts CR936796
<b>HAC vs SLC; HAP vs SLP; SLP vs SLC (2)</b> PTPRN2 Mir_584
<b>HAP vs HAC; HAP vs SLP; SLP vs SLC (1)</b> KMT2C
<b>HAC vs SLC; HAP vs HAC; SLP vs SLC (5)</b> 7SK LOC399744 HAVCR1P1 NA LOC441666
<b>HAP vs SLP; SLP vs SLC (8)</b> LOC100288142 NSUN6 ROBO2 GPR158 NBPF9 RNU6-76P TRNA_Lys TRNA
<b>HAC vs SLC; HAP vs SLP (6)</b> MIR4472-1 HTR1B RNF219-AS1 KCND2 TMEM41B ABCA13
<b>HAP vs HAC; HAP vs SLP (17)</b> CCDC25 AK125749 EFS37580 SORL1 CABP1 PYDN AK001558 METTL15 NTM MIR3687 BC043543 FLJ45079 CPNE9 HERC2P4 KAT5A HSD17B14 KCNP1
<b>HAC vs SLC; SLP vs SLC (80)</b> FAM219A LOC340107 CNBD1 NBAS CCDC162P MCCC1 KIF26A UNCX MYOM2 LOC152742 CAND1 GPR97 Metazoa_SRP GUCY1A2 PPAR2 LOC152225 BAGE3 NDUFS4 DEF8115 U6 TPK1 DHRSX NLGN1 BC041900 JARID2 ZNF716 GZMB DBF4B ZBED1 CEOR7 BAGE BC131768 EU250752 SCAMP1 LOC644669 PRSS35 MYO16 FAM55B SRC C6orf165 ZNF396 SOK6 EMP1 THUMP2 SNRPD2P2 CCDC168 LOC339535 PCBD1 PCDH9 TPTE HMB5898 LINC00955 FJ997633 AK748388 DQ590126 RBM26 PSG6 Y_rRNA PRR5-ARHGAP8 TFS3TG3 H19 DUSP16 BF1B-AS1 MIR4278 RNF49 B3GALNT2 VARS2 LINC00477 IGL2 C9orf92 LOC100505776 MIR4275 SLC35A1 LINC00410 KCNQ1 RYBP TFS3TG3B CCDC129 ARHGAP8 PTPRC
<b>HAP vs HAC; SLP vs SLC (15)</b> GG511 ZNF684 ALG10B ASS1 DQ579288 PRIM2 DTNB ZNF733P ACTR3BP5 KALRN MIR4454 AK310441 CWH43 BC087857 AK311573

**\*High altitude Patients vs Sea level patients  
(HA-VTE vs SL-VTE) &  
\*\*High altitude Patients vs High altitude controls  
(HA-VTE vs HAC)**

*Differentially enriched pathways*

Adherens junctions interactions, AP-1 transcription factor network, Angiotensin receptor Tie2-mediated signaling, Apoptosis, Beta1 integrin cell surface interactions, Biological oxidations, Cell-Cell communication, Endothelins, E-cadherin signaling events, EPO signaling pathway, GABA synthesis, release, and degradation, HIF-1-alpha transcription factor network, Heme biosynthesis, IGF1 pathway, Immune System, Inflammation, Integrin family cell surface protein, Metabolism of lipids and lipoproteins, PDGFR-beta signaling pathway, PDGF receptor signaling network, p53 pathway, p53-Independent DNA Damage Response, Potassium Channels, Signaling events mediated by VEGFR1 and VEGFR2, Signaling events mediated by focal adhesion kinase, Urokinase-type plasminogen activator (uPA) and uPAR-mediated signaling, Notch signaling pathway, Thrombin/protease-activated receptor (PAR) pathway, Toll Receptor Cascades

**Hypo-methylated genes**

•\*CADM1; CUL1; CXCL12; CYP4F11; IL18; IL4R; IRF4; IRS2; ITSN1; MSH2; NLRP1; PDGFA; PPP3R1; PSMD14; PTPRK (n=15)  
•\*\*CPOX, NDRG1, SGMS1 (n=3)

**Hyper-methylated genes**

•\*GSC; KCND2; NOTCH2; ROCK1; RPS6KA1; TGFB2; TLR4; ZFYVE16 (n=8)  
•\*\*CDH5, ELF1, KALRN, NTRK2, SKAP2, SNAP25, TMPRSS2 (n=7)

**Sea Level Patients vs Sea level controls  
(SL-VTE vs SLC)**

*Differentially enriched pathways*

Adaptive Immune System, AP-1 transcription factor network, Apoptosis, Beta1 integrin cell surface interactions, Complement cascade, Endothelins, FGF signaling pathway, GABA receptor activation, Hemostasis, heparan sulfate biosynthesis, HIF-1-alpha transcription factor network, Immune System, Initial triggering of complement, Innate Immune System, Integrin family cell surface network, Platelet activation, signaling and aggregation, Platelet homeostasis, Signaling by EGFR, Signaling events mediated by focal adhesion kinase, Signaling events mediated by VEGFR1 and VEGFR2, Thrombin/protease-activated receptor (PAR) pathway, Urokinase-type plasminogen activator (uPA) and uPAR-mediated signaling, Voltage gated Potassium channels, eNOS activation and regulation, Heme biosynthesis, NCAM1 interactions, Ca<sup>2+</sup> activated K<sup>+</sup> channels, Extrinsic Pathway, Formation of Fibrin Clot (Clotting Cascade), GPIIb-IX-V activation signaling, NLRP3 inflammasome, citric acid (TCA) cycle and respiratory electron transport, VEGF ligand-receptor interactions

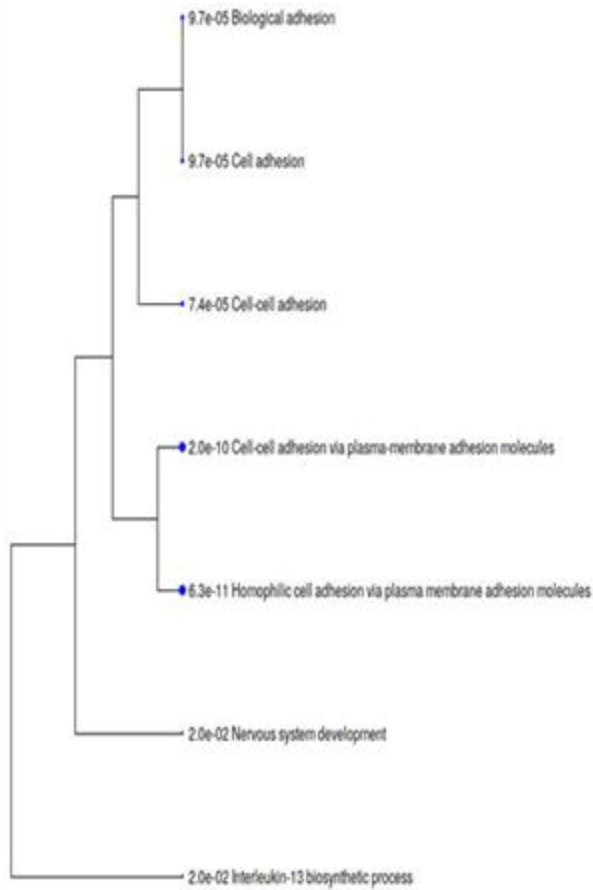
**Hypo-methylated genes**

•ABCC4; ADCY8; BCL9; CD226; COL11A1; CPOX; CREM; CXCR4; DCC; DUSP6; ELMO1; GABRB2; GCH1; GNAL; GRIP2; HRG; HS3ST3A1; ICOS; IL18; IQGAP1; KCNC2; KDM3A; KIFAP3; MBL2; MDR1; MSH2; MYOCD; NDUFAF2; NEDD4; PPARGC1A; PPP3R1; PRKAR1B; RIPK2; RUNX1; SPRY2; ST8SIA4; TCF7L2; TLN1; TRPC7; WEE1; ZFYVE16 (n=41)

**Hyper-methylated genes**

•ACSL1; ARAP2; BCL3; CCL26; CD200R1; CD36; CD44; CDH2; DAPK1; DCN; DDIT3; DGRD; DIAPH3; DSG1; DUSP16; EDN1; EGLN3; ERC1; ETV1; F3; FADD; FGF10; GAB2; GABRR1; GABRR2; GABRG3; GF1; GNA15; GNG4; GNGT1; GUCY1A2; GZMB; IGF1; IGF1R; IL10; NSR; TGB1; KALRN; KCNA1; KCNA6; KCNB2; KCNN3; KCNQ1; KCNV1; LAMA2; LPP; LRRC16A; MAP2K4; MAP3K7; MASP1; NDST3; NDUFA4; NDUFA5; NRP1; OPRM1; PAK1; PANX1; PEX1; PDGFA; PDGFRA; PKP1; PLCB1; PRDM1; PSMB1; PTPRC; RBL2; ROBO1; SORBS1; SPI1; SRC; STXB4; TFF1; TGFB3; TLE1; YWHAH (n=76)

## (a) HA-VTE



## (b) SL-VTE

