

1 **Title:** Plasma cell-free DNA as a prognostic biomarker in small cell lung cancer  
2 patients

3

4 **Authors:**

5 Patricia Mondelo-Macía<sup>1,2</sup>, Jorge García-González<sup>3,4,5</sup>, Alicia Abalo<sup>1</sup>, Manuel  
6 Mosquera-Presedo<sup>2</sup>, Rafael López-López<sup>3,4,5</sup>, Luis León-Mateos<sup>\*3,4,5</sup>, Laura Muínelo-  
7 Romay<sup>\*1,5</sup>, and Roberto Díaz-Peña<sup>\*1,6</sup>.

8

9 **Affiliations:**

10 <sup>1</sup> Liquid Biopsy Analysis Unit, Translational Medical Oncology (Oncomet),  
11 Health Research Institute of Santiago (IDIS), Santiago de Compostela, Spain.

12 <sup>2</sup> Universidade de Santiago de Compostela (USC), Santiago de Compostela,  
13 Spain.

14 <sup>3</sup> Department of Medical Oncology, Complejo Hospitalario Universitario de  
15 Santiago de Compostela (SERGAS), Santiago de Compostela, Spain.

16 <sup>4</sup> Translational Medical Oncology (Oncomet), Health Research Institute of  
17 Santiago (IDIS), Santiago de Compostela, Spain.

18 <sup>5</sup> Centro de Investigación Biomédica en Red de Cáncer (CIBERONC), Madrid,  
19 Spain.

20 <sup>6</sup> Facultad de Ciencias de la Salud, Universidad Autónoma de Chile, Talca, Chile

21

22 \*These authors contributed equally to this work.

23

24

25 **Correspondence:**

26 Luis León-Mateos, MD (luis.Angel.Leon.Mateos@sergas.es, ORCID: 0000-0002-0742-  
27 1209), Laura Muínelo-Romay, PhD (lmuirom@gmail.com, ORCID: 0000-0002-7456-  
28 7531), Roberto Díaz Peña, PhD (roberto.diaz.pena@sergas.es, ORCID: 0000-0002-  
29 0114-2292). Address: Complejo Hospitalario Universitario de Santiago de Compostela,  
30 Travesía da Choupana s/n; 15706, Santiago de Compostela, Spain

31 **Keywords:** Small cell lung cancer; liquid biopsy; cell free DNA; circulating tumor  
32 cells; prognostic biomarkers.

33

34 **ABSTRACT**

35 Background: Lack of biomarkers for treatment selection and monitoring in small-cell  
36 lung cancer (SCLC) patients with the limited therapeutic options, result in poor  
37 outcomes. Therefore, new prognostic biomarkers are needed to improve their  
38 management. The prognostic value of cell-free DNA (cfDNA) and circulating tumor  
39 cells (CTCs) have been less explored in SCLC.

40 Methods: We quantified cfDNA in 46 SCLC patients at different times during therapy.  
41 Moreover, CTCs were analyzed in 21 patients before therapy onset using CellSearch®  
42 system. Both biomarkers were associated with patients' outcomes and a prognostic  
43 model was developed.

44 Results: High cfDNA levels before therapy were associated with shorter progression-  
45 free survival and overall survival. Furthermore, changes in cfDNA levels between  
46 baseline and 3 weeks and cfDNA levels at progression disease were also associated with  
47 patients' outcomes. Multivariate analyses confirmed the independence of cfDNA levels  
48 as a prognostic biomarker. Finally, the three-risk category prognostic model developed  
49 included ECOG Performance Status, gender and baseline cfDNA levels was associated  
50 with a higher risk of progression and death.

51 Conclusions: We confirmed the prognostic utility of cfDNA in SCLC patients before  
52 and during therapy. Our novel risk prognostic model in clinical practice will allow to  
53 identify patients who could benefit with actual therapies.

54

## 55 INTRODUCTION

56 Small-cell lung cancer (SCLC), which accounts for 15% of all lung cancer cases, is  
57 characterized by its aggressiveness, its strong association with tobacco and the poor  
58 outcome. About 70% of patients present extensive disease (ED-SCLC) where only 2%  
59 survive 5 years after diagnosis (1–3). For many years, chemotherapy was the unique  
60 option to treat this tumor type. However, the scenario has changed in the last years (3).  
61 New therapies, such as immunotherapy, have been recently incorporated into the  
62 management of SCLC patients and, although some survival improvements have been  
63 reported in the patients with ED-SCLC (4–8), the majority of them do not benefit from  
64 this new treatment (9). The genomic profile of SCLC is characterized by extensive  
65 chromosomal rearrangements and a high mutational burden, including in nearly all,  
66 inactivation of the tumor suppressor genes *TP53* and *RBI* (10). However, nowadays the  
67 selection of treatment in SCLC patients is not dependent on the characteristics of the  
68 tumor (11), and the criteria to stratify patients is not clear, since no predictive  
69 biomarkers have been validated for the clinical practice (12). In this context, the use of  
70 liquid biopsies as a tool to guide treatment and/or for monitoring the patients' response  
71 represent a valuable alternative (13).

72 Circulating tumor DNA (ctDNA), derived from tissue tumor cells, has demonstrated its  
73 clinical utility and represents a promising tool for guiding precision medicine in several  
74 cancer types (14,15). In SCLC, different studies have investigated the importance and  
75 the clinical value of analyzing ctDNA levels. However, driver mutations known in  
76 SCLC are limited to *RBI* and *TP53* genes (16). In contrast, total cell-free DNA  
77 (cfDNA) consists of a heterogeneous and complex DNA fraction released in body fluids  
78 by any cell type through cell death mechanisms (17,18). The short half-life of cfDNA

79 enables real-time monitoring for response or relapse, being an easy-to-implement  
80 biomarker to monitor cancer evolution and response to therapy (19).

81 Circulating tumor cells (CTCs) are another frequent circulating biomarker investigated  
82 in cancer. As a high metastatic tumor type, SCLC is characterized by a strong release of  
83 CTCs, with detection rates of 60.2%-94% (16), suggesting that CTCs could be  
84 employed as a disease surrogate in SCLC. The analysis of CTCs originated from the  
85 primary or metastatic sites (20) as a prognostic biomarker has been reported in different  
86 cancer types (21–23) including SCLC. However, the prognostic threshold in SCLC has  
87 been not well established (24–28). Despite their different nature, the combined analysis  
88 of total cfDNA and CTCs in patients with SCLC could provide complementary  
89 information for improving SCLC patients' management.

90 In this study, we hypothesized that total cfDNA levels can serve as a useful biomarker  
91 for prognostic and follow-up of SCLC patients under first line of therapy. For this  
92 purpose, we analyzed the total cfDNA levels in a cohort of 46 patients with SCLC prior  
93 to the start of therapy, at 3 weeks after the first dose, and at the time of progression of  
94 the disease. The additional value of CTCs was investigated in our cohort in order to  
95 provide a more complete view of the disease dynamics. To our knowledge, this study is  
96 the first to examine the possible role of total cfDNA levels as a prognostic and follow-  
97 up biomarker in SCLC patients.

98

## 99 **METHODS**

### 100 **Patients and blood sample collection**

101 Forty-six patients with new diagnosed SCLC who received first-line treatment between  
102 June 2017 and June 2021, at the Department of Medical Oncology of Complejo  
103 Hospitalario Universitario de Santiago de Compostela were enrolled in the study. In  
104 total 111 blood samples were collected at different time points: before therapy onset  
105 (baseline) (n=46), 3 weeks after therapy start (n=40) and at the progression of the  
106 disease (n=25). A control cohort of 20 healthy individuals was also included in order to  
107 select the better assay to quantify total cfDNA. All individuals signed informed consent  
108 forms approved by Santiago de Compostela and Lugo Ethics Committee (Ref:  
109 2017/538) prior to enrolling in the study and could withdraw their consent at any time.  
110 The study was performed in accordance with the Declaration of Helsinki.

### 111 **Clinical endpoints**

112 Progression-free survival (PFS) was defined as the time from the date of initial  
113 treatment until the date of progression disease, death or last follow-up, whichever  
114 occurred first. Progression date was defined as the date of disease progression based on  
115 RECIST (v.1.1), or the date of clinical progression if the patient discontinued the  
116 treatment due to clinical deterioration despite not meeting criteria for RECIST  
117 progression. Overall survival (OS) was defined as the time from the date of initial  
118 treatment to the date of death or the last date of follow-up.

### 119 **Sample processing and cell free DNA isolation**

120 Peripheral blood was obtained by direct venepuncture in CellSave tubes (Menarini,  
121 Silicon Biosystems, Bologna, Italy) and processed within 96 hours after blood  
122 collection. Plasma and cellular components were separated by centrifugation at 1,600 g  
123 for 10 minutes at room temperature. Plasma was centrifugated a second time at 5,500 g

124 for 10 minutes at room temperature in order to remove any remaining cellular debris  
125 and aliquoted for storage at -80 °C until the time of cfDNA extraction. cfDNA was  
126 isolated from 3 mL of plasma using the QIAamp Circulating Nucleic Acid Kit (Qiagen,  
127 Hilden, Germany) using a vacuum pump, according to the manufacturer's instructions  
128 and eluted in LoBind<sup>®</sup> tubes (Eppendorf AG, Hamburg, Germany).

### 129 **Total cell free DNA quantification**

130 CfDNA levels were quantified using two different approaches: Qubit 4 Fluorometer  
131 (ThermoFisher Scientific, Waltham, MA, USA) and quantitative PCR (qPCR) method  
132 by analyzing the telomerase reverse transcriptase (*hTERT*) single-copy gene (Thermo  
133 Fisher Scientific, Waltham, MA, USA).

134 2 µL of the sample were employed to quantify by the fluorometric instrument Qubit 4  
135 using the Qubit dsDNA HS Assay Kit (ThermoFisher Scientific, Waltham, MA, USA).

136 In the other hand, samples were quantified by a qPCR assay, described previously (29).  
137 Briefly, each qPCR reaction was carried out in a final volume of 20 µL: 10 µL of  
138 TaqMan Universal Mastermix (Thermo Fisher Scientific, Waltham, MA, USA), 1 µL of  
139 *hTERT* hydrolysis probe and 2 µL of the sample. Each sample was analysed in  
140 duplicate. In addition, each plate included a calibration curve and negative controls. The  
141 calibration curve calculated based on a dilution series of a commercial standard human  
142 genomic DNA (Roche Diagnostics, Mannheim, Germany), was fragmented in 184 bp  
143 using Covaris<sup>®</sup> E220 Focused-ultrasonicator (Covaris, Massachusetts, USA) using the  
144 following protocol: 430s duration, peak incident power of 175 Watts, duty factor of  
145 10% and 200 cycles per burst. Fragments size were then determined using a  
146 TapeStation 4700 (Agilent, Santa Clara, CA, USA) and the High Sensitivity DNA  
147 ScreenTape<sup>®</sup> (Agilent, Santa Clara, CA, USA). Amplification was performed under the  
148 following cycling conditions using a QuantStudio<sup>™</sup> 3 real-time PCR system (Thermo

149 Fisher Scientific, Waltham, MA, USA): 50 °C for 2 min; 95 °C for 10 min; 40 cycles of  
150 95 °C 15 s; and 60 °C for 1 min. Data were analyzed with QuantStudio™ Design &  
151 Analysis software, version 2.5.1 (Thermo Fisher Scientific, Waltham, MA, USA).

152 The final concentration of each sample was calculated by interpolation of the mean of  
153 cycle quantification values (Cq) with the calibration curve. Values with a Cq confidence  
154 interval less than 0.95 were discarded. Moreover, only assays with R<sup>2</sup> values greater  
155 than 0.98 for the standard curve and with an efficiency ≥ 88.8% were used. Results  
156 obtained from both approaches (Qubit vs *hTERT* qPCR) were compared.

### 157 **CTC detection and enumeration**

158 Circulating tumor cell analyses were performed using the CellSearch® system  
159 (Menarini, Silicon Biosystems, Bologna, Italy). Peripheral whole blood of each patient  
160 was collected in CellSave preservative tubes (Menarini, Silicon Biosystems, Bologna,  
161 Italy), stored at room temperature and processed within 96 hours after the blood was  
162 drawn.

163 Briefly, 7.5mL of whole blood were mixed with 6mL of buffer and centrifugated at 800  
164 g for 10 minutes at room temperature. Next, samples were processed in the CellTracks  
165 Autoprep system using the Circulating Tumor Cell Kit (Menarini, Silicon Biosystems,  
166 Bologna, Italy). The kit consists of ferrofluids coated with epithelial cell-specific anti-  
167 EpCAM antibodies to immunomagnetically enrich epithelial cells; a mixture of  
168 antibodies directed to cytokeratins (CKs) 8, 18, and 19 conjugated to phycoerythrin  
169 (PE); an antibody to CD45 conjugated to allophycocyanin (APC); nuclear dye 4',6-  
170 diamidino-2-phenylindole (DAPI) to fluorescently label the cells as well as buffers to  
171 fix, permeabilize, wash and resuspend the cells. Finally, samples were analyzed with the  
172 CellTracks Analyzer II according to the manufacturer's instructions. The CTCs were

173 identified as round or oval cells with an intact nucleus (DAPI<sup>+</sup>), CK positive and CD45  
174 negative.

### 175 **Statistical analysis**

176 Continuous data were summarized as mean, median and range whereas frequency and  
177 percentage were presented for categorical variables. Categorical variables were  
178 compared using the chi-square test or Fisher's exact test. Swimmer plot was provided to  
179 visualize the times of sample collection, every patient's therapy and clinical outcomes.  
180 Pearson test was used to evaluate a pairwise correlation between the different strategies  
181 to quantify the cfDNA, by fluorometry and qPCR. The Mann–Whitney–Wilcoxon U-  
182 Test was used to compare continuous variables between groups. Receiver operating  
183 characteristics (ROC) curves were computed based on cfDNA levels of SCLC patients  
184 and healthy controls, representing the area under the curve (AUC) values and  
185 computing the confidence intervals (CI) at 95% confidence levels. ROC curves were  
186 also constructed to evaluate the thresholds of baseline cfDNA levels for PFS and OS  
187 analyses. Kaplan-Meier method was used to plot the survival curves applying the log-  
188 rank test. Univariate and multivariate Cox regression analyses were used to evaluate  
189 factors independently associated with PFS and OS. A final prognostic model for PFS  
190 and OS was developed. Comparisons of Cox proportional hazard regression models  
191 were made using the Akaike information criterion (AIC) technique (30), with a smaller  
192 AIC value indicating the better model. All statistical analyses were performed using R  
193 version 4.1.1. The following R packages were used: survival (31), survminer, ggplot2  
194 (32), pROC (33), gtsummary (34), swimplot, stats, rstatix.

195

196

197



## 198 **RESULTS**

### 199 **Patient characteristics and sample collection**

200 Forty-six SCLC patients were included in the study. Their clinicopathological  
201 characteristics are presented in Table 1. The median age was 67 (range 47-83) years, all  
202 the patients were current or former smokers, and most were males (84.78%) and stage  
203 IV tumors (89.13%). The Eastern Cooperative Oncology Group Performance Status  
204 (ECOG PS) <2 accounted for 67.39% of cases and 52.17% of patients had a number of  
205 metastases  $\geq 2$ . The median number of chemotherapy or chemotherapy/immunotherapy  
206 treatment cycles was 5 (range 1–11). At the time of analysis, 41 of the 46 (89.13%)  
207 evaluable patients had experienced disease progression and 38 of the 46 (82.6%)  
208 evaluable patients had died. Sample collection was performed before therapy onset, 3  
209 weeks after initiation of therapy and at the time of progression disease (Figure 1).  
210 Median PFS and OS were 174 (range 4-483) and 229 (range 4-748) days, respectively.

### 211 **CfDNA levels are specifically increased in SCLC patients**

212 In order to determine the better method to quantify the total cfDNA in patients with  
213 SCLC, we compared the Qubit 4 Fluorometer (ThermoFisher Scientific, Waltham, MA,  
214 USA) versus the qPCR method by analyzing the *hTERT* single-copy gene (Thermo  
215 Fisher Scientific, Waltham, MA, USA). A good correlation between both approaches at  
216 different times of therapy (baseline, 3 weeks, and progression disease) was found ( $R^2$   
217 =0.959) (Figure 2A). In addition, 20 healthy controls were included in order to compare  
218 their cfDNA levels with our patient cohort using both approaches. Total cfDNA levels  
219 in healthy controls were statistically lower than in those found in the SCLC cohort  
220 (Wilcoxon test  $p=1.2 \times 10^{-08}$  and  $p=1.5 \times 10^{-11}$ , using both fluorometer method and qPCR  
221 assay, respectively) (Figure 2B-C). Our qPCR assay showed an AUC=0.95 (specificity  
222 95% and sensibility 85%) whereas the fluorometer method presented an AUC=0.94

223 (specificity 100% and sensibility 80%) (Figure 2D-E). These results evidenced that  
224 cfDNA levels were increased as a result of the malignant disease in SCLC patients and  
225 reinforced their interest as a potential biomarker to follow-up the disease evolution. In  
226 addition, the PCR-based strategy was prioritized to quantify the cfDNA since this  
227 method appears as a more robust option than fluorometric quantification.

### 228 **Clinical interest of cfDNA analysis at baseline**

229 Total cfDNA was quantified by qPCR assay at different time points in our patient  
230 cohort with the goal to evaluate its potential as a monitoring tool (Supplementary Table  
231 1). CfDNA levels at baseline were significantly higher in patients with stage IV cancer,  
232 poor performance status, an elevated number of sites of metastasis and presence of liver  
233 metastases ( $P \text{ value} \leq 0.05$ ) (Table 1). There was no statistically significant association  
234 with respect to age, gender, smoking status, presence of bone metastasis, presence of  
235 lymph node metastases and the treatment used.

236 In addition, the possible role of cfDNA as a prognostic biomarker before therapy in  
237 SCLC was investigated. Thus, the cfDNA levels were log-transformed and the patients  
238 were dichotomized into high and low cfDNA level groups based on ROC analysis  
239 (Supplementary Table 2). The thresholds of baseline log cfDNA levels were chosen at  
240 7.650 (~2100.65 copies in hG/mL plasma) and 8.077 (~3219.56 copies in hG/mL  
241 plasma) for PFS and OS analyses, respectively. We found that patients with high levels  
242 of total cfDNA at baseline presented shorter PFS (long rank  $p=0.0005$ , hazard ratio,  
243 5.06; 95% CI 1.89–13.6) and OS (long rank  $p=0.0005$ , hazard ratio, 3.32; 95% CI 1.50-  
244 7.37) than those with low levels of total cfDNA (Figure 3A-B). The median PFS of  
245 patients in the low baseline cfDNA group was 350 days versus 156 days in the high  
246 baseline cfDNA group, whereas the median OS was 426 and 210 days in the two  
247 respective groups (low vs high baseline total cfDNA levels). Univariate and

248 multivariate Cox regression analyses of PFS and OS were performed considering  
249 various clinical and demographic variables (ECOG PS, sex, age, stage, number of  
250 metastases, presence of liver metastasis and smoking status) (Table 2). Multivariate  
251 regression analyses confirmed the value of the cfDNA levels at baseline as an early  
252 independent predictor biomarker for PFS and OS (hazard ratio, 46.0; 95% CI, 3.16-672;  
253  $p$ -value =0.005 and hazard ratio, 32.4; 95% CI, 3.05-344;  $p$ -value =0.004, respectively).

#### 254 **Longitudinal analysis of total cfDNA levels during therapy**

255 To determine whether cfDNA levels can be employed to monitor patients' evolution  
256 during therapy, we quantified longitudinal cfDNA levels at 3 weeks after initiation of  
257 treatment (n=40) and at progression disease (n=25). We found that levels of total  
258 cfDNA were significantly higher before therapy than at 3 weeks after therapy onset  
259 (Wilcoxon test  $p$ = 0.002; Supplementary Figure 1), suggesting clearance of cfDNA  
260 after therapy start which impact on cfDNA levels. However, no significant differences  
261 between cfDNA levels at baseline and at progression disease were found  
262 (Supplementary Figure 1).

263 To analyze the possible prognostic role of cfDNA monitoring during therapy, cfDNA  
264 levels were also log-transformed and the patients were dichotomized into high and low  
265 cfDNA level groups based on ROC analysis (Supplementary Table 2) in each sample  
266 time. Thus, the possible prognostic role of monitoring cfDNA levels at 3 weeks after  
267 initiation of treatment was investigated. We divided our cohort into groups after  
268 considering their changes in cfDNA levels: Favorable group (patients with low cfDNA  
269 levels at baseline and at 3 weeks + patients with high cfDNA levels at baseline but low  
270 levels at 3 weeks; n=18) and unfavorable group (patients with low cfDNA levels at  
271 baseline but high cfDNA levels at 3 weeks + patients with high cfDNA at baseline and  
272 at 3 weeks; n=22). Patients for the unfavorable group showed a shorter PFS (long rank

273  $p < 0.0005$ , hazard ratio, 3.5; 95% CI 1.69-7.23) and OS (long rank  $p < 0.0005$  hazard  
274 ratio, 3.67; 95% CI 1.72-7.82) (Figure 3C-D) than the favorable group. Multivariate  
275 regression analyses confirm the independence of the cfDNA changes between baseline  
276 and 3 weeks as a prognostic biomarker of PFS and OS (hazard ratio, 3.49.0; 95% CI,  
277 1.50-8.12;  $p$ -value =0.004 and hazard ratio, 4.35; 95% CI, 1.68-11.3;  $p$ -value =0.002,  
278 respectively) (Table 2).

279 Finally, cfDNA quantification at the time of progression disease was performed in 25  
280 SCLC patients. Our results reported that patients with high cfDNA levels at this time  
281 point survive fewer days than patients with low cfDNA levels (long rank  $p < 0.0001$ ,  
282 hazard ratio, 15.2; 95% CI 3.28-70.7; 426 days in the high cfDNA levels group versus  
283 214 days in the low cfDNA levels group) (Figure 3E).

#### 284 **Circulating tumor cells analyses and prognostic value**

285 CTCs analyses were performed in 21 patients with SCLC before starting the treatment.  
286 85.71% of patients (18 of 21 patients) presented at least 1 CTC with a median of 26  
287 CTCs (range 0 – 4796) (Supplementary Figure 2A-B). CTCs number at baseline was  
288 significantly higher in patients with extensive disease (stage IV) and with poor  
289 performance status (Supplementary Figure 3A-J). Also, the presence of CTCs and high  
290 cfDNA levels were significantly associated (Supplementary Figure 3K), indicating that  
291 both markers are reflecting the tumor burden.

292 In another hand, different cut-offs were analyzed in order to determine the possible  
293 prognostic value of CTCs (Supplementary Table 3). We found that the presence of  $\geq 150$   
294 CTCs/7.5mL of blood was significantly associated with shorter PFS rates (long rank  
295  $p = 0.02$ , hazard ratio, 4.66; 95% CI 1.11-19.6) in our cohort (Supplementary Table 3;  
296 Supplementary Figure 2C). In multivariate analysis CTCs did not show value as an  
297 independent predictive biomarker of PFS and OS.

## 298 **Prognostic model for PFS and OS**

299 An independent prognostic model for both PFS and OS was developed. Three variables  
300 were retained in the final prognostic model: cfDNA levels (high vs. low levels), ECOG  
301 PS (<2 vs.  $\geq 2$ ) and sex (male vs. female). The detailed results of the multivariate  
302 analyses are shown in Figure 4A. Subsequently, we segregated patients into three risk  
303 categories: patients with all adverse prognostic factors were classified in the poor-risk  
304 category (high cfDNA levels, ECOG PS $\geq 2$  and male gender), patients with two adverse  
305 prognostic factors were classified in the intermediate-risk category, and patients with  
306 one or none adverse prognostic factor were classified in the favorable-risk category. The  
307 Kaplan–Meier curves representing the three risk categories and median PFS and OS are  
308 presented in Figure 4B-C. Median PFS ranged from 124 to 289 days based on the  
309 number of adverse prognostic factors present before therapy. Median OS ranged from  
310 115 to 514 days.

311 Going up from a lower category (favorable) to upper categories (intermediate and poor),  
312 the progression model quintuples the risk of disease recurrence (HR= 5.37, 95% CI,  
313 2.32-12.4; p-value=  $3 \times 10^{-5}$ ) and six folds the risk of death (HR= 6.02, 95% CI, 2.66-  
314 13.6; p-value=  $3 \times 10^{-6}$ ) (Supplementary Table 4).

315

## 316 **DISCUSSION**

317 Precision medicine has the objective of optimizing the selection of the best therapy for  
318 each patient. In this context, liquid biopsy has emerged as a promising and minimally  
319 invasive tool for this due to its ability to provide a total image of primary and metastatic  
320 tumors at different times across therapy (35). Recently, the management of SCLC has  
321 changed and new therapies, such as immunotherapy among others, are being investigated  
322 and approved for clinical use (16,36,37). Nevertheless, the necessity to find a prognostic

323 biomarker for helping to select the therapy prescribed and to monitor the evolution of  
324 the disease during the treatment, remains a challenge in SCLC patients. In this study, we  
325 report for the first time the possibility to employ the cfDNA and its quantification as a  
326 prognostic biomarker in SCLC prior to starting therapy and at different time points. Our  
327 analyses allow us to identify a group of low-risk patients characterized by low cfDNA  
328 levels at baseline who probably will benefit from both: chemotherapy in monotherapy  
329 or the combination of immunotherapy and chemotherapy. The study of another common  
330 circulating biomarker, CTCs, also provided us information for the prognostic of patients  
331 before starting therapy, although the results were less clear. We found a significant  
332 association between presence of a high number of CTCs ( $\geq 150$  CTCs) and worse PFS.  
333 Total cfDNA refers to a heterogeneous and complex DNA fraction free released in body  
334 fluids by any cell type (not only tumoral) through several cell death mechanisms such as  
335 secretion, apoptosis and necrosis (17,18). In line with our results, it's well reported that  
336 cancer patients present higher cfDNA levels than healthy controls (38,39) but few  
337 studies have investigated the possible prognostic and predictive value of total cfDNA  
338 quantification in patients with SCLC. In contrast, the ctDNA, the tumor-derived fraction  
339 of this cfDNA, has been reported as a prognostic and predictive biomarker in several  
340 works (40–44). Almodovar et al. reported that changes in the mutant allele frequencies  
341 on ctDNA were associated with response to treatment and relapse. Twenty-seven  
342 patients with SCLC were analysed by next-generation sequencing (NGS) custom panel,  
343 however, the lack of driver mutations known in SCLC, limited the number of genes  
344 analyzed (40). In another work, Devarakonda et al analyzed 564 patients using a larger  
345 NGS panel, including 73 genes, and, according to previous results into the bibliography,  
346 *RBI* and *TP53* were the most frequent mutant, however, any prognostic or predictive  
347 value was reported in this study.

348 In this way, total cfDNA quantification allows to detect the total DNA released from  
349 normal and also tumor cells into the blood. Thus, despite the few known driver  
350 mutations found in SCLC, cfDNA quantification allows to quantify the total levels  
351 before treatment and monitor the changes during therapy. Recently, our group  
352 demonstrated the feasibility to quantify cfDNA levels in non-small cell lung cancer  
353 patients and its association with patients' outcomes (45), suggesting its possible utility  
354 in SCLC.

355 Thus, in the present work, we quantified total cfDNA levels using two different  
356 technologies, a fluorometric assay Qubit and a more specific assay, the qPCR assay  
357 analyzing the *hTERT* gene. CfDNA levels quantified by both technologies showed good  
358 concordance. Furthermore, the concordance of cfDNA levels at any time point of  
359 therapy using both methods also showed a good concordance. Therefore, both methods  
360 could be used to robustly measure the cfDNA content. However, to complete our study  
361 we chose the qPCR assay, which is a high sensitive and specific assay for cfDNA  
362 quantification in SCLC patients, and was previously employed in studies focused on  
363 non-small cell lung cancer (45–48).

364 Regarding the clinical meaning of cfDNA content, we found that high levels were  
365 significantly associated with shorter PFS and OS before therapy onset, being a robust  
366 independent prognostic biomarker in newly diagnosed SCLC patients. Also, cfDNA  
367 levels at baseline were higher in patients with stage IV that could be a consequence of  
368 more aggressive disease. This can be partially explained by an increase of ctDNA levels  
369 released from the tumor cells to the bloodstream, increasing the total cfDNA fraction.  
370 Moreover, analyses showed that changes of cfDNA levels between baseline and 3  
371 weeks are associated with patients' outcomes, being those patients with high values in  
372 both sample points, the ones with the worst prognosis. In addition, high cfDNA levels at

373 the time of disease recurrence were associated with a higher risk of death. Of note,  
374 multivariate analyses showed the independence of cfDNA levels at 3 weeks and at  
375 progression disease as a prognostic biomarker. These results suggest that cfDNA  
376 monitoring could provide valuable information for the management of SCLC as our  
377 group previously reported in non-small cell lung cancer (NSCLC) (29). Thus, in  
378 clinical practice, in those SCLC patients with high levels of cfDNA at the time of  
379 disease recurrence, the selection of a more aggressive therapy or the intensification of  
380 clinical visits would be considered.

381 Besides cfDNA levels, we investigated the prognostic value of additional biomarkers  
382 such as CTCs and clinical characteristics. CTCs were analyzed in a cohort of 21 SCLC  
383 patients using the CellSearch® system, the only Food and Drug Administration (FDA)-  
384 approved device for CTC enumeration in prostate, breast and colorectal cancer.  
385 According to previous studies (16), a detection rate of 85.71% was found in our study.  
386 Moreover, the CTC count at baseline determined using the CellSearch® system was  
387 significantly associated with PFS and OS (24,27,28,49,50). For example, Naito et al.  
388 reported that the presence of  $\geq 8$  CTCs/7.5mL of blood was associated with worse OS  
389 (24), however, another study employed 50 CTCs as cut-off for PFS and OS (28). In fact,  
390 a consensus regarding the optimal cut-off of CTCs and the prognostic value remains a  
391 challenge (16). In this work, we found a discrete association between the presence of  
392  $\geq 150$  CTCs and a shorter PFS, however multivariate analyses did not show independent  
393 value for the CTC count. Interestingly, high cfDNA levels and the presence of CTCs at  
394 baseline were significantly associated, reporting the clear association between both  
395 circulating biomarkers. CTCs release in the bloodstream is related to the intravasation  
396 process of potentially metastatic cancer cells. Nevertheless, cfDNA is released by any  
397 cell type including tumoral and normal cells, however, how cfDNA release relates to



398 tumor biology is currently unknown. Finally, we evaluate several factors that could  
399 influence the patients' outcomes. Thus, we proposed a simple model to segregate  
400 patients into three categories based on risk of progression and death (taking into account  
401 the cfDNA levels, ECOG and gender of patients). We found that patients with one or  
402 less adverse prognostic factors were classified in the favorable-risk category and present  
403 a longer PFS and OS. Thinking about the clinical relevance of these results, some  
404 limitations in our design should be considered. First, the sample size of our CTC cohort  
405 was relatively small and CTC monitoring during therapy could provide more valuable  
406 information. Finally, a validation study of our prognostic model in a larger cohort of  
407 patients can arise more robust conclusions.

408 In conclusion, we describe an important potential role of cfDNA levels as a prognostic  
409 biomarker in newly diagnosed SCLC patients and also could provide useful information  
410 about disease evolution. In addition, a prognostic model employing cfDNA levels and  
411 some clinical characteristics (ECOG and gender) allow us to stratify patients and detect  
412 those who particularly could benefit from treatment.

413

414

415 **Acknowledgments**

416 This project never could be possible without the kindly collaboration of all patients.

417 **Author's contributions**

418 All authors agreed to submit this manuscript. L.L-M., L.M-R., R.L-L and R.D-P.  
419 designed and supervised the project. M.M-P., J.G-G. and L.L-M. contributed clinical  
420 samples and patient characteristics. P.M-M and A.A performed experiments. P.M-M.  
421 and R.D-P analyzed the data. P.M-M. and R.D-P prepared the manuscript. L.M-R. and  
422 L.L-M supervised the manuscript. All the authors read and approved the final  
423 manuscript.

424 **Ethics approval and consent to participate**

425 The present study was approved by the ethic committee of Santiago de Compostela and  
426 Lugo Ethics Committee (Ref: 2017/538). Written informed content was obtained from  
427 every participant prior to enrolling in the study and could withdraw their consent at any  
428 time. The study was performed in accordance with the Declaration of Helsinki.

429 **Consent for publication**

430 Not applicable.

431 **Data availability**

432 The data that support the findings of this study are available from the corresponding  
433 author upon reasonable request.

434 **Competing interest**

435 Jorge García-González reports personal fees from AstraZeneca, Boehringer-Ingelheim,  
436 Novartis, Pierre Fabre, Rovi and Sanofi; and personal fees and non-financial support  
437 from Bristol-Myers Squibb, Lilly, MSD and Roche, outside the submitted work. Luis  
438 León-Mateos reports personal fees from AstraZeneca, Boehringer-Ingelheim, Novartis,

439 Jansen, Astellas and Sanofi; and personal fees and non-financial support from Bristol-  
440 Myers Squibb, Lilly, MSD and Roche, outside the submitted work. Rafael López-López  
441 reports grants and personal fees from Roche, Merck, AstraZeneca, Bayer, Pharmamar,  
442 Leo, and personal fees and non-financial support from Bristol-Myers Squibb and  
443 Novartis, outside of the submitted work. The other authors declare no competing  
444 interests.

445 **Funding information**

446 This study was financed by all the donors who participated in the Liquid Biopsy  
447 Crowdfunding campaign in 2017. LMR is funded by a contract “Miguel Servet” from  
448 ISCIII (CP20/00120). RDP is funded by a contract “Miguel Servet” from ISCIII  
449 (CP21/00003).

450

451 **References**

- 452 1. Rudin CM, Brambilla E, Faivre-Finn C, Sage J. Small-cell lung cancer. *Nat Rev*  
453 *Dis Prim.* 2021 Dec 14;7(1):3.
- 454 2. Thai AA, Solomon BJ, Sequist L V., Gainor JF, Heist RS. Lung cancer. *Lancet.*  
455 2021;398(10299):535–54.
- 456 3. Gazdar AF, Bunn PA, Minna JD. Small-cell lung cancer: What we know, what  
457 we need to know and the path forward. *Nat Rev Cancer.* 2017;17(12):725–37.
- 458 4. Esposito G, Palumbo G, Carillio G, Manzo A, Montanino A, Sforza V, et al.  
459 Immunotherapy in Small Cell Lung Cancer. *Cancers (Basel).* 2020 Sep 4 [cited  
460 2020 Oct 15];12(9):2522.
- 461 5. Facchinetti F, Di Maio M, Tiseo M. Adding PD-1/PD-L1 inhibitors to  
462 chemotherapy for the first-line treatment of extensive stage small cell lung cancer  
463 (Sclc): A meta-analysis of randomized trials. Vol. 12, *Cancers.* MDPI AG; 2020.  
464 p. 1–18.
- 465 6. Horn L, Mansfield AS, Szczęśna A, Havel L, Krzakowski M, Hochmair MJ, et  
466 al. First-Line Atezolizumab plus Chemotherapy in Extensive-Stage Small-Cell  
467 Lung Cancer. *N Engl J Med.* 2018 Dec;379(23):2220–9.
- 468 7. Paz-Ares L, Dvorkin M, Chen Y, Reinmuth N, Hotta K, Trukhin D, et al.  
469 Durvalumab plus platinum–etoposide versus platinum–etoposide in first-line  
470 treatment of extensive-stage small-cell lung cancer (CASPIAN): a randomised,  
471 controlled, open-label, phase 3 trial. *Lancet [Internet].* 2019 Nov  
472 23;394(10212):1929–39.
- 473 8. Rudin CM, Awad MM, Navarro A, Gottfried M, Peters S, Csőszi T, et al.  
474 Pembrolizumab or Placebo Plus Etoposide and Platinum as First-Line Therapy  
475 for Extensive-Stage Small-Cell Lung Cancer: Randomized, Double-Blind, Phase

- 476 III KEYNOTE-604 Study. *J Clin Oncol*. 2020 Jul 20;38(21):2369–79.
- 477 9. Dumoulin DW, Dingemans AMC, Aerts JGJV, Remon J, de Ruyscher DKM,  
478 Hendriks LEL. Immunotherapy in small cell lung cancer: One step at a time: A  
479 narrative review. *Transl Lung Cancer Res*. 2021;10(6):2970–87.
- 480 10. George J, Lim JS, Jang SJ, Cun Y, Ozretić L, Kong G, et al. Comprehensive  
481 genomic profiles of small cell lung cancer. *Nature*. 2015 Aug;524(7563):47–53.
- 482 11. Kalemkerian GP, Loo BW, Akerley W, Attia A, Bassetti M, Bumber Y, et al.  
483 NCCN guidelines® insights: Small cell lung cancer, version 2.2018 featured  
484 updates to the NCCN guidelines. *JNCCN J Natl Compr Cancer Netw*.  
485 2018;16(10):1171–82.
- 486 12. Ortega-Franco A, Ackermann C, Paz-Ares L, Califano R. First-line immune  
487 checkpoint inhibitors for extensive stage small-cell lung cancer: clinical  
488 developments and future directions. *ESMO Open*. 2021;6(1):100003.
- 489 13. Blackhall F, Frese KK, Simpson K, Kilgour E, Brady G, Dive C. Will liquid  
490 biopsies improve outcomes for patients with small-cell lung cancer? *Lancet*  
491 *Oncol*. 2018 Sep 1;19(9):e470–81.
- 492 14. Cheng ML, Pectasides E, Hanna GJ, Parsons HA, Choudhury AD, Oxnard GR.  
493 Circulating tumor DNA in advanced solid tumors: Clinical relevance and future  
494 directions. *CA Cancer J Clin*. 2021;71(2):176–90.
- 495 15. Bettgowda C, Sausen M, Leary RJ, Kinde I, Wang Y, Agrawal N, et al.  
496 Detection of circulating tumor DNA in early- and late-stage human malignancies.  
497 *Sci Transl Med*. 2014 Feb;6(224):224ra24.
- 498 16. Mondelo-Macía P, García-González J, León-Mateos L, Castillo-García A, López-  
499 López R, Muínelo-Romay L, et al. Current status and future perspectives of  
500 liquid biopsy in small cell lung cancer. *Biomedicines*. 2021;9(1):1–22.

- 501 17. Keller L, Belloum Y, Wikman H, Pantel K. Clinical relevance of blood-based  
502 ctDNA analysis: mutation detection and beyond. *Br J Cancer*. 2020.
- 503 18. Aucamp J, Bronkhorst AJ, Badenhorst CPS, Pretorius PJ. The diverse origins of  
504 circulating cell-free DNA in the human body: a critical re-evaluation of the  
505 literature. *Biol Rev*. 2018;93(3):1649–83.
- 506 19. Kustanovich A, Schwartz R, Peretz T, Grinshpun A. Life and death of circulating  
507 cell-free DNA. *Cancer Biol Ther*. 2019;20(8):1057–67.
- 508 20. Pantel K, Speicher MR. The biology of circulating tumor cells. *Oncogene*.  
509 2016;35(10):1216–24.
- 510 21. Cristofanilli M, Budd GT, Ellis MJ, Stopeck A, Matera J, Miller MC, et al.  
511 Circulating tumor cells, disease progression, and survival in metastatic breast  
512 cancer. *N Engl J Med*. 2004;351(8):781–91.
- 513 22. Cohen SJ, Punt CJA, Iannotti N, Saidman BH, Sabbath KD, Gabrail NY, et al.  
514 Relationship of circulating tumor cells to tumor response, progression-free  
515 survival, and overall survival in patients with metastatic colorectal cancer. *J Clin*  
516 *Oncol Off J Am Soc Clin Oncol*. 2008 Jul;26(19):3213–21.
- 517 23. de Bono JS, Scher HI, Montgomery RB, Parker C, Miller MC, Tissing H, et al.  
518 Circulating tumor cells predict survival benefit from treatment in metastatic  
519 castration-resistant prostate cancer. *Clin cancer Res an Off J Am Assoc Cancer*  
520 *Res*. 2008 Oct;14(19):6302–9.
- 521 24. Naito T, Tanaka F, Ono A, Yoneda K, Takahashi T, Murakami H, et al.  
522 Prognostic impact of circulating tumor cells in patients with small cell lung  
523 cancer. *J Thorac Oncol*. 2012;7(3):512–9.
- 524 25. Igawa S, Gohda K, Fukui T, Ryuge S, Otani S, Masago A, et al. Circulating  
525 tumor cells as a prognostic factor in patients with small cell lung cancer. *Oncol*

- 526 Lett. 2014 May;7(5):1469–73.
- 527 26. Cheng Y, Liu XQ, Fan Y, Liu YP, Liu Y, Liu Y, et al. Circulating tumor cell  
528 counts/change for outcome prediction in patients with extensive-stage small-cell  
529 lung cancer. *Futur Oncol.* 2016;12(6):789–99.
- 530 27. Salgia R, Weaver RW, McCleod M, Stille JR, Yan SB, Roberson S, et al.  
531 Prognostic and predictive value of circulating tumor cells and CXCR4 expression  
532 as biomarkers for a CXCR4 peptide antagonist in combination with carboplatin-  
533 etoposide in small cell lung cancer: exploratory analysis of a phase II study.  
534 *Invest New Drugs.* 2017;35(3):334–44.
- 535 28. Aggarwal C, Wang X, Ranganathan A, Torigian D, Troxel A, Evans T, et al.  
536 Circulating tumor cells as a predictive biomarker in patients with small cell lung  
537 cancer undergoing chemotherapy. *Lung Cancer.* 2017 Oct;112:118–25.
- 538 29. Mondelo-Macía P, García-González J, León-Mateos L, Anido U, Aguin S,  
539 Abdulkader I, et al. Clinical potential of circulating free DNA and circulating  
540 tumour cells in patients with metastatic non-small-cell lung cancer treated with  
541 pembrolizumab. *Mol Oncol.* 2021;15(11):2923–40.
- 542 30. Akaike H. A New Look at the Statistical Model Identification. In 1974. p. 215–  
543 22.
- 544 31. Therneau TM, Grambsch PM. *Modeling Survival Data: Extending the Cox*  
545 *Model.* New York: Springer; 2000.
- 546 32. Hadley W. *Ggplot2: Elegant graphics for data analysis.* Springer; 2016.
- 547 33. Robin X, Turck N, Hainard A, Tiberti N, Lisacek F, Sanchez J-C, et al. pROC:  
548 an open-source package for R and S+ to analyze and compare ROC curves. *BMC*  
549 *Bioinformatics.* 2011 Dec 17;12(1):77.
- 550 34. Sjoberg, Daniel D, Whiting K, Curry M, Lavery, Jessica A, Larmarange J.

- 551            Reproducible Summary Tables with the gtsummary Package. R J.  
552            2021;13(1):570.
- 553    35.    Oliveira KCS, Ramos IB, Silva JMC, Barra WF, Riggins GJ, Palande V, et al.  
554            Current Perspectives on Circulating Tumor DNA, Precision Medicine, and  
555            Personalized Clinical Management of Cancer. Mol Cancer Res. 2020  
556            Apr;18(4):517–28.
- 557    36.    Schwendenwein A, Megyesfalvi Z, Barany N, Valko Z, Bugyik E, Lang C, et al.  
558            Molecular profiles of small cell lung cancer subtypes: therapeutic implications.  
559            Mol Ther - Oncolytics. 2021;20(March):470–83.
- 560    37.    Yang S, Zhang Z, Wang Q. Emerging therapies for small cell lung cancer. J  
561            Hematol Oncol. 2019 May;12(1):47.
- 562    38.    Leon SA, Shapiro B, Sklaroff DM, Yaros MJ. Free DNA in the serum of cancer  
563            patients and the effect of therapy. Cancer Res. 1977 Mar;37(3):646–50.
- 564    39.    van der Drift MA, Hol BEA, Klaassen CHW, Prinsen CFM, van Aarssen  
565            YAWG, Donders R, et al. Circulating DNA is a non-invasive prognostic factor  
566            for survival in non-small cell lung cancer. Lung Cancer. 2010 May;68(2):283–7.
- 567    40.    Almodovar K, Iams WT, Meador CB, Zhao Z, York S, Horn L, et al.  
568            Longitudinal cell-free DNA analysis in patients with small cell lung cancer  
569            reveals dynamic insights into treatment efficacy and disease relapse.  
570            2018;13(1):112–23.
- 571    41.    Nong J, Gong Y, Guan Y, Yi X, Yi Y, Chang L, et al. Circulating tumor DNA  
572            analysis depicts subclonal architecture and genomic evolution of small cell lung  
573            cancer. Nat Commun. 2018;9(1):1–8.
- 574    42.    Du M, Thompson J, Fisher H, Zhang P, Huang CC, Wang L. Genomic alterations  
575            of plasma cell-free DNAs in small cell lung cancer and their clinical relevance.



- 576 Lung Cancer. 2018;120:113–21.
- 577 43. Mohan S, Foy V, Ayub M, Leong HS, Schofield P, Sahoo S, et al. Profiling of  
578 Circulating Free DNA Using Targeted and Genome-wide Sequencing in Patients  
579 with SCLC. *J Thorac Oncol*. 2020;15(2):216–30.
- 580 44. Iams WT, Kopparapu PR, Yan Y, Muterspaugh A, Zhao Z, Chen H, et al. Blood-  
581 Based Surveillance Monitoring of Circulating Tumor DNA From Patients With  
582 SCLC Detects Disease Relapse and Predicts Death in Patients With Limited-  
583 Stage Disease. *JTO Clin Res Reports*. 2020;1(2):100024.
- 584 45. Mondelo-Macía P, García-González J, León-Mateos L, Anido U, Aguin S,  
585 Abdulkader I, et al. Clinical potential of circulating free DNA and circulating  
586 tumour cells in patients with metastatic non-small cell lung cancer treated with  
587 pembrolizumab. *Mol Oncol*. 2021;
- 588 46. Alama, Coco, Genova, Rossi, Fontana, Tagliamento, et al. Prognostic Relevance  
589 of Circulating Tumor Cells and Circulating Cell-Free DNA Association in  
590 Metastatic Non-Small Cell Lung Cancer Treated with Nivolumab. *J Clin Med*.  
591 2019;8(7):1011.
- 592 47. Sirera R, Bremnes RM, Cabrera A, Jantus-Lewintre E, Sanmartín E, Blasco A, et  
593 al. Circulating DNA is a useful prognostic factor in patients with advanced non-  
594 small cell lung cancer. *J Thorac Oncol Off Publ Int Assoc Study Lung Cancer*.  
595 2011 Feb;6(2):286–90.
- 596 48. Paci M, Maramotti S, Bellesia E, Formisano D, Albertazzi L, Ricchetti T, et al.  
597 Circulating plasma DNA as diagnostic biomarker in non-small cell lung cancer.  
598 *Lung Cancer*. 2009 Apr;64(1):92–7.
- 599 49. Hou JM, Greystoke A, Lancashire L, Cummings J, Ward T, Board R, et al.  
600 Evaluation of circulating tumor cells and serological cell death biomarkers in

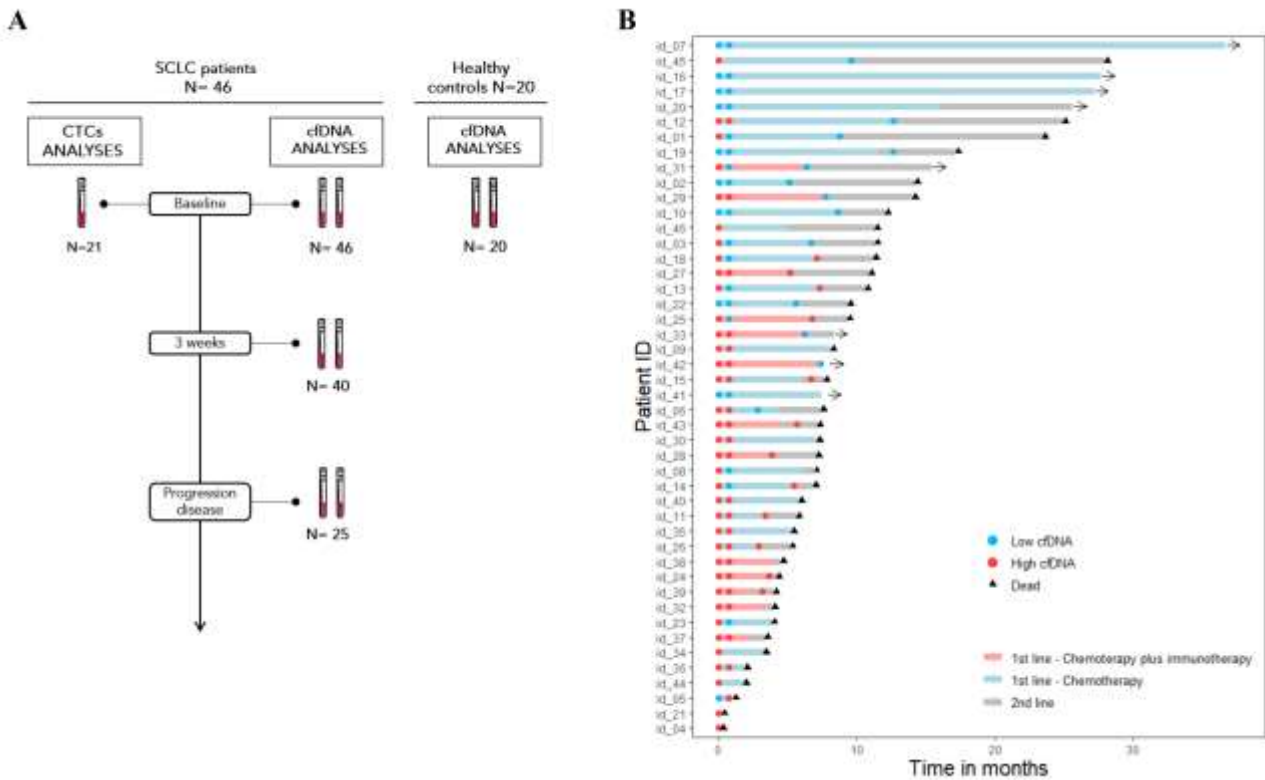
601           small cell lung cancer patients undergoing chemotherapy. *Am J Pathol.*  
602           2009;175(2):808–16.  
603    50.   Hou JM, Krebs MG, Lancashire L, Sloane R, Backen A, Swain RK, et al.  
604           Clinical significance and molecular characteristics of circulating tumor cells and  
605           circulating tumor microemboli in patients with small-cell lung cancer. *J Clin*  
606           *Oncol.* 2012;30(5):525–32.  
607  
608

609 **FIGURES**

610

611 **Figure 1.** Study schema and clinical course of all patients included in the study. (A)  
612 Study sampling points and cohorts. (B) Swimmers' plot showing each patient therapy  
613 and the different times of sample collection. The total length of each bar indicates the  
614 duration of survival from the diagnoses. Abbreviations: SCLC, small-cell lung cancer;  
615 CTCs, circulating tumor cells; cfDNA: cell free DNA.

616



620

629

630

631

632

633

634

635

636

637

638 **Figure 2.** (A) Correlation between cfDNA levels using Qubit method and qPCR assay  
639 at different times of therapy (baseline, 3 weeks and progression disease). (B-C) Total  
640 cfDNA levels in healthy controls and patients with SCLC. (D-E) ROC curves for Qubit  
641 method (D) and qPCR assay (E) show high sensitivity and specificity to discriminate  
642 healthy controls and SCLC patients. Abbreviations: cfDNA, cell free DNA; GE,  
643 genomic equivalents; AUC, area under the curve; CI, confidence interval.

644

645

646

647

648

649

650

651

652

653

654

655

656

657

658

659

660

661

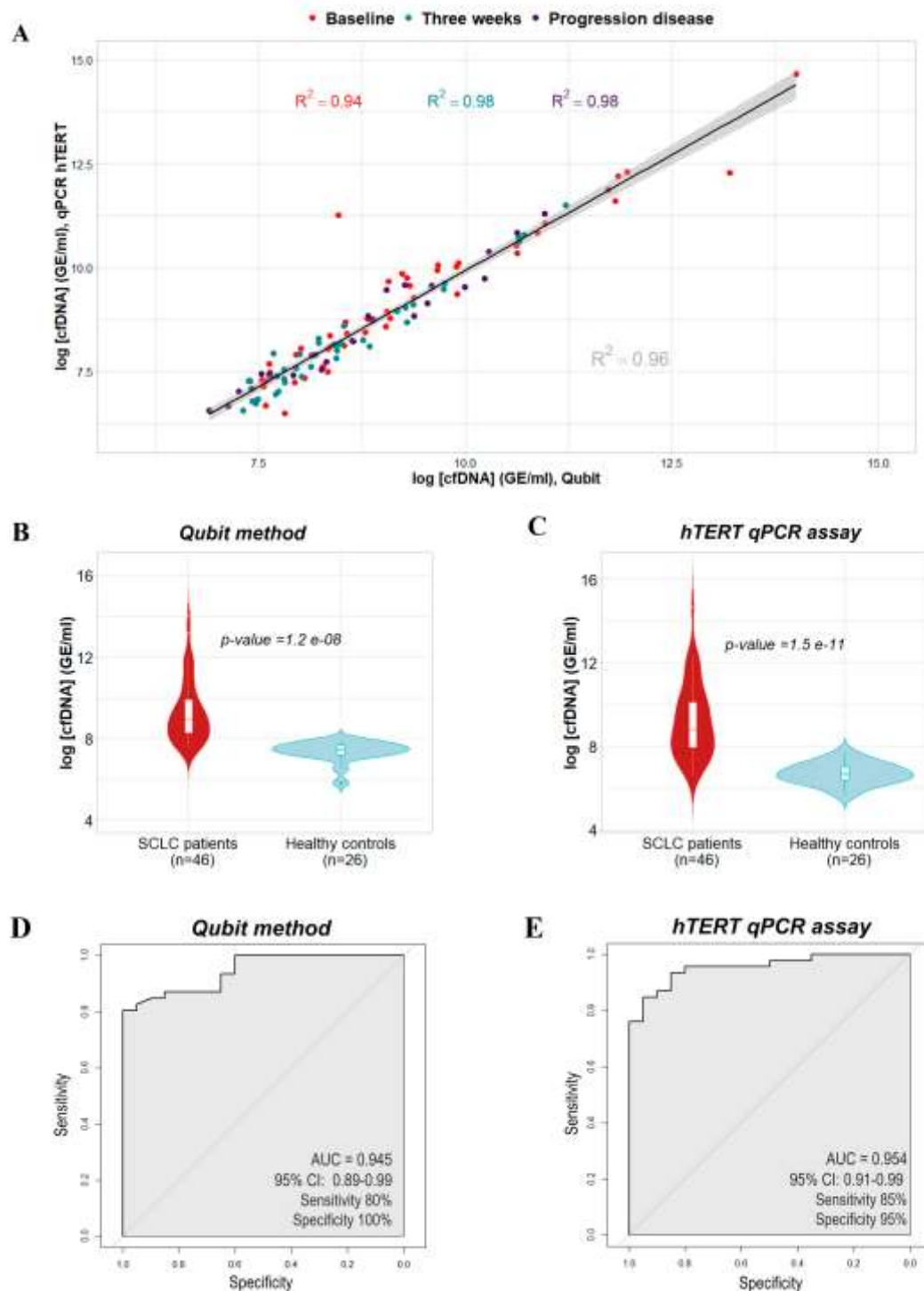
662

663

664

665

666



667 **Figure 3.** CfDNA levels as a prognostic biomarker at different time points of therapy.  
 668 (A-B) Kaplan-Meier survival analysis of cfDNA levels at baseline for PFS (A) and OS  
 669 (B). (C-D) Kaplan-Meier survival analysis of cfDNA levels at 3 weeks for PFS (C) and  
 670 OS (D). (E) Kaplan-Meier survival analysis of cfDNA levels at progression disease for  
 671 OS. Abbreviations: cfDNA, cell free DNA; OS, overall survival; PFS, progression-free  
 672 survival; PD: progression disease.

673

674

675

676

677

678

679

680

681

682

683

684

685

686

687

688

689

690

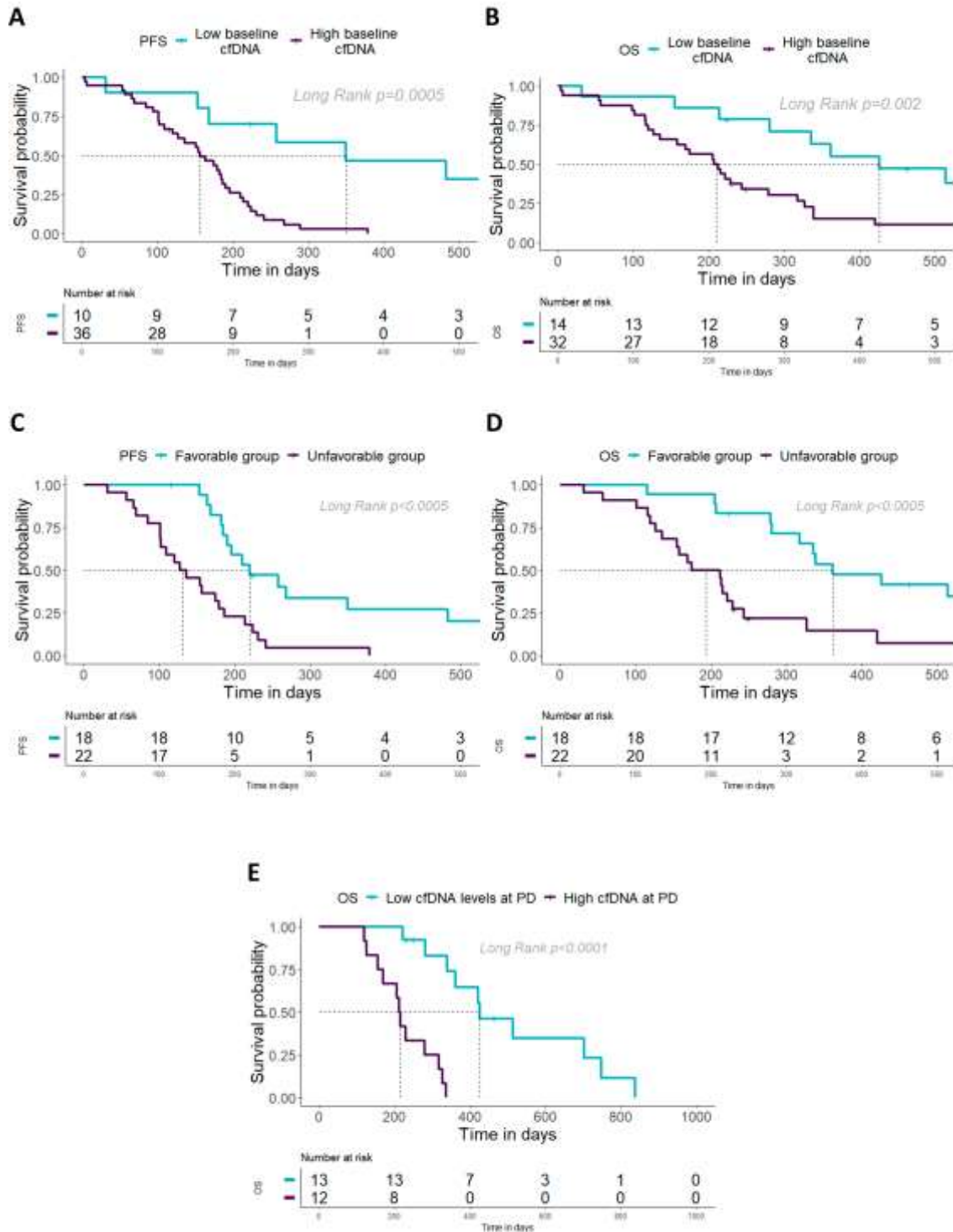
691

692

693

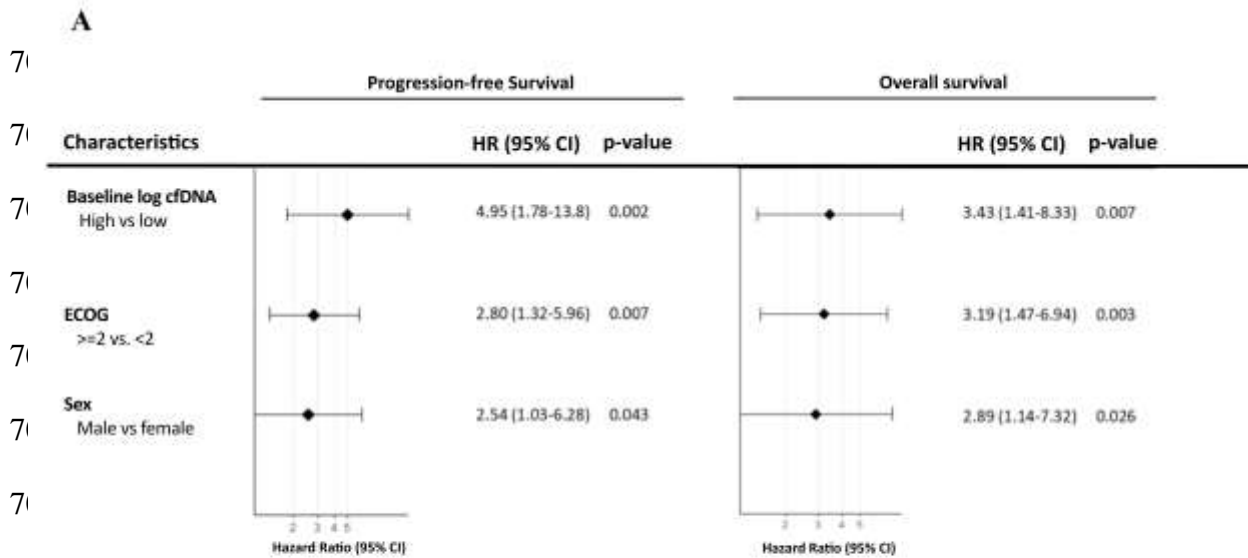
694

695

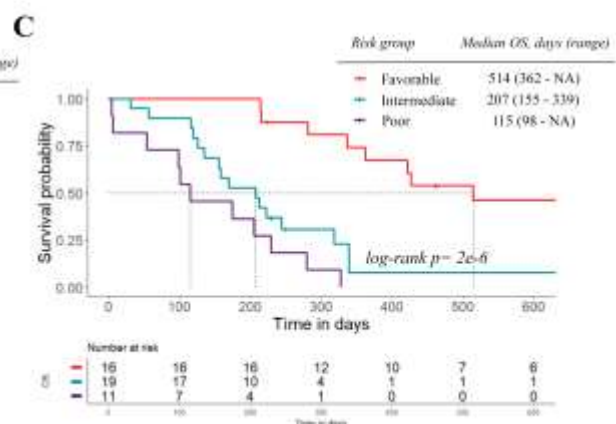
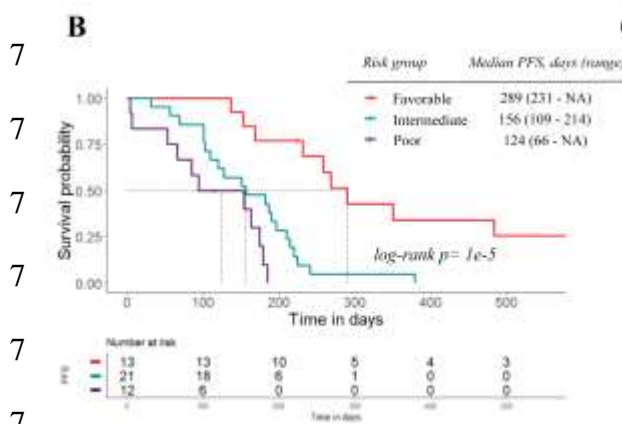


696 **Figure 4.** (A) Final multivariate Cox regression prognostic model for PFS and OS. (B-  
697 C) Kaplan-Meier survival analysis according to risk-group for PFS and OS.  
698 Abbreviations: cfDNA, cell free DNA; ECOG, Eastern Cooperative Oncology Group  
699 Performance Score, PFS, progression-free survival; OS, overall survival; HR, hazard  
700 ratio; CI, confidence interval.

701



702



717

718

719

720

721

722 **TABLES**

723

724 **Table 1.** Association between patients' demographics/clinical characteristics and  
725 baseline cfDNA levels.

<b>Characteristics</b>	<b>Baseline cfDNA, median (GE/ml)</b>	<b><i>p</i>-value</b>
<b><i>Age,</i></b> 67, 66.83 ± 8.1, 47-83 ( <i>Median, Mean age ± SD, range</i> )		
Bellow median, n=24 (52.17%)	6488.23	0.79
Above median, n=22 (47.82%)	8403.79	
<b><i>Gender</i></b>		
Male, n=39 (84.78%)	6130.59	0.61
Female, n=7 (15.22%)	15699.93	
<b><i>Stage</i></b>		
III, n=5 (10.87%)	1409.11	0.031
IV, n=41 (89.13%)	7658.99	
<b><i>ECOG PS</i></b>		
< 2, n=31 (67.39%)	4652.13	0.025
≥ 2, n=15 (32.61%)	22459.61	
<b><i>Smoking</i></b>		
Smoker, n=26 (56.52%)	6488.23	0.94
Former smoker, n=20 (43.48%)	6155.56	
<b><i>Number of metastasis</i></b>		
≤ 2, n=22 (47.82%)	4563.83	0.05
> 2, n=24 (52.17%)	12973.33	
<b><i>Liver metastases</i></b>		
No, n=23 (50.0%)	3355.91	2.20x10 <sup>-4</sup>

Yes, n=23 (50.0%) 24759.83

---

***Bone metastases***

---

No, n=18 (39.13%) 3265.055 0.17

Yes, n=28 (60.87%) 3355.91

---

***Lymph node metastases***

---

No, n=10 (21.74%) 4563.83 0.12

Yes, n=36 (78.26%) 7658.99

---

***Treatment***

---

Chemotherapy, n=33 (71.74%) 6130.59 0.36

Chemotherapy plus Immunotherapy, n=13 (28.26%) 10676.99

---

726 Abbreviations: cfDNA: cell-free DNA; GE: genomic equivalents; SD: standard  
727 deviation; ECOG PS: Eastern Cooperative Oncology Group Performance Status.

728

729

730

731

732

733

734

735

736

737

738

739

740

741

742

743

744

745

746

747

748

749

750

751

752

753



754 **Table 2.** Univariate and multivariate Cox regression analyses of cfDNA levels, CTC  
755 counts and clinical parameters.

Variable	Univariate		Multivariate	
	p-value	HR (95% CI)	p-value	HR (95% CI)
<b><i>PFS</i></b>				
Baseline log cfDNA (high vs. low cfDNA)	0.001	5.06 (1.89-13.6)	0.005	46.0 (3.16-672)
Baseline CTC count, CellSearch ( $\geq 150$ vs. $< 150$ )	0.028	3.47 (1.14-10.6)		
ECOG ( $\geq 2$ vs. $< 2$ )	$< 0.001$	3.57 (1.72-7.40)	0.04	17.9 (1.11-289)
Sex (male vs. female)	0.2	1.76 (0.74-4.22)		
Age (continue)	0.5	1.01 (0.97-1.05)		
Stage (IV vs. III)	0.07	3.00 (0.91-9.91)		
Number of metastasis ( $> 2$ vs. $\leq 2$ )	0.1	1.70 (0.90-3.19)		
Liver metastasis (yes vs. no)	0.08	1.74 (0.93-3.23)		
Smoking (smoker vs. former smoker)	0.8	0.92 (0.49-1.70)		
3 weeks log cfDNA (high vs. low cfDNA)*	$< 0.0001$	3.50 (1.69-7.23)	0.004	3.49 (1.50-8.12)
<b><i>OS</i></b>				
Baseline log cfDNA (high vs. low cfDNA)	0.003	3.32 (1.50-7.37)	0.004	32.4 (3.05-344)
Baseline CTC count, CellSearch ( $\geq 150$ vs. $< 150$ )	0.07	2.71 (0.93-7.88)		
ECOG ( $\geq 2$ vs. $< 2$ )	$< 0.001$	4.54 (2.13-9.68)		
Sex (male vs. female)	0.2	1.80 (0.75-4.36)		
Age (continue)	0.5	1.01 (0.97-1.06)		

Stage (IV vs. III)	0.08	2.86 (0.86-9.47)		
Number of metastasis (>2 vs. ≤2)	0.5	1.23 (0.65-2.33)		
Liver metastasis (yes vs. no)	0.3	1.45 (0.77-2.76)		
Smoking (smoker vs. former smoker)	0.5	0.82 (0.43-1.55)		
<hr/>				
3 weeks log cfDNA (high vs. low cfDNA)*	<0.001	3.67 (1.72-7.82)	0.002	4.35 (1.68-11.3)
PD log cfDNA (high vs. low cfDNA)*	<0.001	15.2 (3.28-70.7)	0.001	19.5 (3.30-115)

756

757 \*Multivariate Cox regression model including sex, age, Eastern Cooperative Oncology  
758 Group Performance Score, stage, number of metastases, presence of liver metastasis and  
759 smoking status. The levels of cfDNA were determined as low (<cut-off) or high (≥cut-  
760 off) based on the cut-off obtained from the ROC curve analyses. Abbreviations: cfDNA,  
761 cell free DNA; CTC, circulating tumor cell; ECOG, Eastern Cooperative Oncology  
762 Group Performance Score; PFS, progression-free survival; OS, overall survival; HR,  
763 hazard ratio; CI, confidence interval.  
764  
765