

1 **COVID-19 outcomes associated with clinical and demographic characteristics in patients**
2 **hospitalized with severe and critical disease in Peshawar**

3 Muhammad Imran¹, Azharuddin¹, Muhammad Yousaf², Sajjad Khan³, Abdul Jalil Khan⁴, Zafar
4 Iqbal^{1*}, RahmanUllah Jan², Shahid Khan⁵ Muhammad Salman Khan⁶

5 ¹MTI, Lady Reading Hospital, Peshawar, Pakistan

6 ²COVID-19 Hospital, Nishterabad, Peshawar, Pakistan

7 ³Indiana University (IU) School of Public Health, IU, Bloomington, USA

8 ⁴Khyber Medical University, Peshawar, Pakistan

9 ⁵Health Sector Reforms Unit, Health Secretariat, Peshawar, Pakistan

10 ⁶Northwest General Hospital and Research Center, Peshawar, Pakistan

11 **Short title:** COVID-19 outcomes associated with clinical and demographic characteristics

12 ***Corresponding Author**

13 Dr Zafar Iqbal (MBBS, FCPS)

14 Assistant Professor, Pulmonology

15 Lady Reading Hospital, Peshawar

16 25000, Pakistan.

17 E-mail: drzafariqbalpulmo@gmail.com (ZI)

18

19 **Abstract**

20 **Background:** As a novel disease, understanding the relationship between the clinical and
21 demographic characteristics of coronavirus disease 2019 (COVID-19) patients and their outcome
22 is critical. We investigated this relationship in hospitalized patients in a tertiary healthcare
23 setting.

24 **Aims/objectives:** To study COVID-19 severity and outcomes in relation to clinical and
25 demographic characteristics of in admitted patients

26 **Methodology:** In this cross-sectional study, medical records for 1087 COVID-19 patients were
27 reviewed to extract symptoms, comorbidities, demographic characteristics, and outcomes data.
28 Statistical analyses included the post-stratification chi-square test, independent sample t-test,
29 multivariate logistic regression, and time-to-event analysis.

30 **Results:** The majority of the study participants were >50 years old (67%) and male (59%) and
31 had the following symptoms: fever (96%), cough (95%), shortness of breath (73%), loss of taste
32 (77%), and loss of smell (77%). Regarding worst outcome, multivariate regression analysis
33 showed that these characteristics were statistically significant: shortness of breath (adjusted odds
34 ratio [aOR] 31.3; 95% CI, 11.87–82.53; $p < 0.001$), intensive care unit (ICU) admission (aOR
35 28.3; 95% CI, 9.0–89.6; $p < 0.001$), diabetes mellitus (aOR 5.1; 95% CI, 3.2–8.2; $p < 0.001$),
36 ischemic heart disease (aOR 3.4; 95% CI, 1.6–7; $p = 0.001$), nausea and vomiting (aOR 3.3; 95%
37 CI, 1.7–6.6; $p = 0.001$), and prolonged hospital stay (aOR 1.04; 95% CI, 1.02–1.08; $p = 0.001$),
38 while patients with rhinorrhea were significantly protected (aOR 0.3; 95% CI, 0.2–0.5; $p <$

39 0.001). A Kaplan–Meier curve showed that the symptoms of shortness of breath, ICU admission,
40 fever, nausea and vomiting, and diarrhea increased the risk of mortality.

41 **Conclusion:** Increasing age, certain comorbidities and symptoms, and direct admission to the
42 ICU increased the risk of worse outcomes. Further research is needed to determine risk factors
43 that may increase disease severity and devise a proper risk-scoring system to initiate timely
44 management.

45

46 **Keywords:** COVID-19, SARS-CoV-2, clinico-demographic characteristics, mortality, outcomes

47

48

49

50 **Introduction**

51 Severe acute respiratory syndrome coronavirus 2 (SARS-CoV-2) is the cause of coronavirus
52 disease 2019 (COVID-19), a member of the coronavirus family that was responsible for the 2003
53 SARS epidemic [1]. The World Health Organization (WHO) declared the outbreak to be a Public
54 Health Emergency of International Concern on January 30, 2020, and declared it to be a global
55 pandemic on March 11, 2020 [2]. The virus has affected almost every country, every nation, and
56 all races worldwide. The WHO has reported 269.2 million confirmed cases of COVID-19 and
57 5.30 million deaths internationally as of December 10, 2021 [3]. Although 8.42 billion vaccine
58 doses were administered worldwide by December 10, only a little more than 64 million doses
59 have been administered in low-income countries [3]. With the emergence of the Omicron
60 variant, the disease is surging again in various parts of the world, thereby posing a challenge to
61 vaccination measures [3]. At the time of this writing, the total number of COVID-19 infections
62 in Pakistan is 1.28 million, with slightly less than 30,000 deaths [4]. Although the vaccination
63 drive was initially slow in Pakistan, its pace is quickening. As of December 8, 2021, 130 million
64 vaccine doses have been administered throughout Pakistan, whereas only 54 million people have
65 been fully vaccinated, defined as having either completed the single-dose vaccine or both doses
66 of the two-dose vaccine [4].

67 The clinical presentation of COVID-19 is variable [5]. It ranges from asymptomatic infection or
68 mild upper respiratory symptoms in most cases to severe viral pneumonia with respiratory failure
69 [6]. In most infected individuals, no symptoms or only minimal symptoms appear [7].
70 Symptomatic patients present with variable symptoms. The most common are fever, cough,
71 generalized body aches, shortness of breath, anosmia, and loss of taste. The uncommon

72 symptoms are headache, nausea, and diarrhea [6]. Fever is the most prevalent reported symptom
73 [8]. Continuous fever, shortness of breath, and presence of respiratory and gastrointestinal
74 symptoms make a patient prone to develop severe disease. Moreover, the likelihood of intensive
75 care unit (ICU) admission, mechanical ventilation (invasive and non-invasive), and death is high
76 in such patients. In a study by Rongchen [9] et al., gastrointestinal symptoms were more strongly
77 linked with worse outcomes. In Nigeria, Akin Abayomi [10] et al. found that cough, high-grade
78 fever, and shortness of breath were the most common presenting symptoms. Symptom severity
79 was the most important predictor of death. Among all other symptoms, shortness of breath had a
80 worse prognostic value in terms of mortality. In contrast, isolated loss of the sense of smell and
81 sense of taste was not linked with the development of critical disease and thus had good
82 prognostic value.

83 Significant risk factors associated with worse outcomes are chronic illness, older age, and
84 genetic predisposition [11]. In a study by Elizabeth [12] et al., older age was the most significant
85 risk factor for death, followed by hematologic malignancies, immunosuppressive drugs, organ
86 transplantation, uncontrolled diabetes mellitus, black race, and obesity. A study from Pakistan by
87 Ambreen Chaudhry [13] et al. found that the risk factors responsible for worse outcomes, defined
88 as ICU admission, invasive mechanical ventilation (IMV), and death, were older age and the
89 presence of comorbidities.

90 Several studies have reported different mortality rates for patients admitted to different hospital
91 departments, such as the ICU, high-dependency unit, and general ward. Mortality is highest for
92 patients receiving IMV, followed by those managed with continuous positive airway
93 pressure/non-invasive ventilation, high-flow nasal cannula, and oxygen administered via other

94 devices such as a simple face mask and nasal prongs [14]. The outcomes are good for patients
95 who do not require supplemental oxygen and hospital admission [15].

96 The objective of the current study is to understand the demographic and clinical characteristics of
97 patients with COVID-19 and the associated severity of illness and outcomes. We sought to
98 perform an in-depth analysis of the various factors related to mortality, morbidity, and recovery
99 from COVID-19. In Pakistan, data are very limited on the clinical and demographic
100 characteristics of patients with COVID-19. Therefore, the results of this study will help us tailor
101 our management and preparedness response to the COVID-19 pandemic.

102 This article was previously presented as an abstract at the 14th Biennial Chest Conference
103 arranged by the Pakistan Chest Society at Karachi, Pakistan, on 4 December, 2021.

104

105

106 **Material and Methods**

107 This cross-sectional study was conducted from July 15, 2020, to July 3, 2021 in Peshawar,
108 Khyber Pakhtunkhwa, Pakistan. All patients admitted to the study hospital were included in our
109 study. Patients who were referred to another hospital or left without medical advice were
110 excluded from our study. Informed written consent was obtained from all patients at admission
111 to the hospital. The analysis was performed using SPSS, version 25 (IBM, Armonk, NY, USA)
112 [16]

113 The association of various characteristics with mortality was analyzed. We used the post-
114 stratification chi-square test and independent sample t-test to check the statistical significance of
115 qualitative and quantitative characteristics, respectively. A value of $p \leq 0.05$ was considered
116 statistically significant. To assess the adjusted association, we used multivariate logistic
117 regression, with mortality as a dependent variable. These predictor variables were included in the
118 final multivariate regression model, with a value of $p \leq 0.25$ on the univariate model as the
119 dependent variable. In the final multivariate model, a value of $p \leq 0.05$ was considered
120 significant. Time-to-event analysis was conducted to check for the difference in mortality across
121 various groups.

122 Results

123 This study assessed a total of 1087 patients, of whom 449 (41%) were female and 731 (67%)
124 were older than 50 years (Table 1). Most had a fever (96.4%), cough (95.3%), shortness of
125 breath (72.7%), loss of taste (76.6%), and loss of smell (76.5%). Patients presented relatively less
126 commonly with headache (28.1%), rhinorrhea (32.8%), nausea and vomiting (12.8%), and
127 diarrhea (12.1%). Among comorbid conditions, hypertension (29.7%) and diabetes mellitus
128 (24.4%) were more common compared with ischemic heart disease (9%) and end-stage renal
129 disease (1.3%). The average length of hospital stay was 8.33 days. The overall mortality rate was
130 24.4% (268 patients) and was highest among those admitted directly to the ICU (49 of 56
131 patients, 88%) versus those admitted directly to the high-dependency unit (210 of 546 patients,
132 38%) and the general ward (9 of 485, 1.8%).

133 Table 1. Frequency of various characteristics of study participants (n = 1087).

Characteristics	No.	%	
Age			
	Below 50 years	356	33%
	Above 50 years	731	67%
Gender			
	Female	449	41%
	Male	638	59%
Fever			
	No	39	4%
	Yes	1048	96%
Cough			
	No	51	5%
	Yes	1036	95%
Headache			
	No	782	72%
	Yes	305	28%
Shortness of Breath			
	No	297	27%
	Yes	790	73%
Rhinorrhoea			

	No	730	67%
	Yes	357	33%
Loss of taste			
	No	254	23%
	Yes	833	77%
Diarrhea			
	No	955	88%
	Yes	132	12%
Nausea and Vomiting			
	No	948	87%
	Yes	139	13%
Loss of Smell			
	No	255	23%
	Yes	831	77%
Diabetes Mellitus			
	No	822	76%
	Yes	265	24%
Hypertension			
	No	764	70%
	Yes	323	30%
Ischemic Heart Disease			
	No	989	91%
	Yes	98	9%
End-Stage Renal Disease			
	No	1073	99%
	Yes	14	1%
Days of Hospitalization			
	mean (SD)	8.33 (7.94)	
Severity Level			
	Moderate	146	13%
	Severe	941	87%
Unit of Admission			
	HDU / Isolation ward	1031	95%
	ICU	56	5%
Mortality			
	Recovered	819	63%
	Died	268	24%

134

135 Simple stratification (Table 2) showed that mortality was significantly higher in patients older

136 than 50 years (37% vs. 11%) and in those with shortness of breath (41% vs. 2%), diarrhea (60%

137 vs. 24%), nausea and vomiting (60% vs. 23%), diabetes mellitus (62% vs. 16%), hypertension
 138 (53% vs. 18%), ischemic heart disease (74% vs. 24%), high level of disease severity (33% vs.
 139 0%), and ICU admission (92% vs. 25%). Although mortality was also higher in female patients
 140 (31% vs. 27%) and in those with fever (29% vs. 16%), and end-stage renal disease (100% vs.
 141 28%), the association was not statistically significant. Some characteristics showed a statistically
 142 significant protective effect from mortality, such as rhinorrhea (12% vs. 37%), loss of taste (2%
 143 vs. 100%), and loss of smell (2% vs. 100%). Length of stay was also significantly higher in
 144 patients who died compared with those who survived (11.43 vs. 7.63 days).

145

146 **Table 2. Association of various characteristics with mortality.**

Characteristics		Mortality				*p-value
		Died		Recovered		
		No.	%	No.	%	
Age						
	Below 50 years	35	11%	277	89%	< 0.001
	Above 50 years	233	37%	394	63%	
Gender						
	Female	118	31%	266	69%	0.217
	Male	150	27%	405	73%	
Fever						
	No	6	16%	31	84%	0.090
	Yes	262	29%	640	71%	

Cough						
	No	16	32%	34	68%	0.578
	Yes	252	28%	637	72%	
Headache						
	No	197	29%	480	71%	0.543
	Yes	71	27%	191	73%	
Shortness of Breath						
	No	5	2%	290	98%	< 0.001
	Yes	263	41%	381	59%	
Rhinorrhea						
	No	232	37%	394	63%	< 0.001
	Yes	36	12%	277	88%	
Loss of taste						
	No	254	100%	0	0%	< 0.001
	Yes	14	2%	671	98%	
Diarrhea						
	No	191	24%	620	76%	< 0.001
	Yes	77	60%	51	40%	
Nausea and Vomiting						
	No	186	23%	617	77%	< 0.001
	Yes	82	60%	54	40%	
Loss of Smell						

	No	255	100%	0	0%	< 0.001
	Yes	12	2%	671	98%	
Diabetes Mellitus						
	No	113	16%	577	84%	< 0.001
	Yes	155	62%	94	38%	
Hypertension						
	No	116	18%	535	82%	< 0.001
	Yes	152	53%	136	47%	
Ischemic Heart Disease						
	No	201	24%	647	76%	< 0.001
	Yes	67	74%	24	26%	
End-Stage Renal Disease						
	No	264	28%	671	72%	-
	Yes	4	100%	0	0%	
Days of Hospitalization						
	mean (SD)	11.43 (10.28)		7.63 (6.64)		< 0.001 ^a
Severity Level						
	Moderate	0	0%	136	100%	< 0.001
	Severe	268	33%	535	67%	
Unit of Admission at Arrival						
	HDU / isolation ward	219	25%	667	75%	< 0.001

	ICU	49	92%	4	8%	
--	-----	----	-----	---	----	--

147 * p-value represents results of chi-square test

148 ^a p-value represents results of independent samples t-test

149

150 On multivariate regression (Table 3), several characteristics were statistically significant, as
 151 follows: shortness of breath (adjusted odds ratio [aOR] 31.3; 95% CI, 11.87–82.53; $p < 0.001$),
 152 ICU admission (aOR 28.3; 95% CI, 9.0–89.6; $p < 0.001$), diabetes mellitus (aOR 5.1; 95% CI,
 153 3.2–8.2; $p < 0.001$), ischemic heart disease (aOR 3.4; 95% CI, 1.6–7; $p = 0.001$), nausea and
 154 vomiting (aOR 3.3; 95% CI, 1.7–6.6; $p = 0.001$) and prolonged hospital stay (aOR 1.04; 95% CI,
 155 1.02–1.08; $p = 0.001$). These findings that the odds of shortness of breath was 31.3 times, ICU
 156 admission was 28.3 times, diabetes mellitus was 5.1 times, ischemic heart disease was 3.4 times,
 157 nausea and vomiting was 3.3 times, and prolonged hospital stay was four times higher in patients
 158 who died compared with those who survived. Patients with rhinorrhea were significantly
 159 protected on a multivariate model (aOR 0.3; 95% CI, 0.2–0.5; $p < 0.001$).

160

161

162 **Table 3. Multivariate logistic regression analysis of various characteristics.**

Characteristics		aOR ^a	95% CIs		p-value
			Lower	Upper	
Gender					
	Female	Ref			

	Male	0.725	0.483	1.086	0.119
*Fever					
	No	Ref			
	Yes	5.526	1.442	21.174	0.013
*Shortness of Breath					
	No	Ref			
	Yes	31.302	11.873	82.525	< 0.001
*Rhinorrhea					
	No	Ref			
	Yes	0.302	0.183	0.500	< 0.001
Diarrhea					
	No	Ref			
	Yes	1.262	0.633	2.515	0.509
*Nausea and Vomiting					
	No	Ref			
	Yes	3.347	1.688	6.639	0.001
*Diabetes Mellitus					
	No	Ref			
	Yes	5.079	3.153	8.179	< 0.001
Hypertension					
	No	Ref			
	Yes	1.546	0.963	2.481	0.071
*Ischemic Heart Disease					

	No	Ref			
	Yes	3.369	1.628	6.969	0.001
	*Days of Hospitalization	1.048	1.020	1.077	0.001
	*Unit of Admission				
	HDU / Isolation ward	Ref			
	ICU	28.330	8.955	89.631	< 0.001

163 * p-value represents results of chi-square test

164 ^a p-value represents results of independent samples t-test

165

166 The survival analysis comprised 1087 patients. Our analysis observed a cumulated total risk time
 167 of 9184 days. The Kaplan–Meier survival plots for the sociodemographic and medical factors
 168 that were statistically significant are presented in Figure 1. As can be inferred from the plots,
 169 patients with fever (Fig 1A), shortness of breath (Fig 1B), ischemic heart disease (Fig 1C),
 170 nausea and vomiting (Fig 1D), diabetes mellitus (Fig 1E), and ICU admission (Fig 1F) were
 171 more likely to die compared with patients who did not have these signs and symptoms.

172 **Fig 1 Title: K-M Curves for various characteristics**

173 **Fig 1 Legend:** As shown, patients with fever (A), shortness of breath (B), ischemic heart disease
 174 (C), nausea and vomiting (D), diarrhea (E), and ICU admission (F) were more likely to encounter
 175 the worst outcome as compared with patients who did not have these characteristics.

176

177 **Discussion**

178 The severity of any given disease depends on the population's demographic and clinical
179 characteristics [17]. Therefore, we aimed to study these factors to understand COVID-19 in
180 detail. This study will help us improve the management steps to prevent severe disease
181 outcomes. Clinicians and scientists are performing many kinds of studies to understand this
182 novel disease, which has killed millions of people. Many studies have already been conducted,
183 but with several drawbacks, such as a small sample size. Although this current investigation is a
184 single-site study, the hospital is an ideal location to examine the COVID-19 cohort because it
185 serves as a referral center for most of the province. This study included 1087 patients with
186 COVID-19 from a single tertiary care institution. Our hospital had an overall mortality rate of
187 24%, which is comparable with that of most nearby tertiary care hospitals. In a multi-center
188 study conducted by Zia Ul Haq [18] et al. in Peshawar, Pakistan, the inpatient mortality rate in a
189 cohort of 179 patients was 29.1%.

190 The findings show that certain clinical and demographic factors may predispose patients to
191 worse outcomes. Severe shortness of breath (OR 31) and admission to the ICU on presentation
192 (OR 28), for example, were the strongest predictors of worse outcomes in our analysis, in favor
193 of mortality. Direct admission to the ICU indicates that the patient's condition is rapidly
194 deteriorating or that the patient arrived at the hospital very late and in critical condition.
195 Furthermore, symptoms such as nausea and vomiting (OR 3.9), fever (OR 3.5), and diarrhea,
196 (OR 1.52) predispose one to worse outcomes as well. In contrast, our study found that rhinorrhea
197 indicated a higher likelihood of recovery, which has not been reported previously. In a survey by

198 Nausheen Nasir [19] et al. in Karachi, Pakistan, disease severity was associated with age older
199 than 60 years (OR 1.92) and having shortness of breath (OR 4.43). In another study, Darbaz A
200 [20] et al. in the United States found that patients presenting with gastrointestinal symptoms had
201 higher hospitalization rates, ICU admission, and intubation. In contrast, Preethi Ramachandran
202 [21] et al. compared the outcomes in two groups of patients with or without gastrointestinal
203 symptoms and discovered that mortality did not differ between cases and controls (41.9% vs.
204 37.8%; $p = 0.68$). Secondary outcomes, such as length of stay (7.8 vs. 7.9 days; $p = 0.87$) and
205 need for mechanical ventilation (29% vs. 26.9%; $p = 0.82$), also showed no statistically
206 significant differences.

207 Many studies have found that the presence of comorbidities such as diabetes, hypertension,
208 ischemic heart disease, and end-stage renal disease increases the severity of the disease [22, 23].
209 In our research, we came to a similar conclusion. According to the survival analysis in our study,
210 patients with diabetes mellitus, hypertension, and ischemic heart disease had a lower chance of
211 survival when admitted to the hospital with COVID-19 than patients without any of these
212 comorbidities. Due to the small sample size, the findings could not be statistically tested because
213 most patients who developed end-stage renal disease in our study were referred to other hospitals
214 with dialysis services. Other authors have reported similar results. Naila Shoaib [24] et al. in
215 Pakistan discovered a link between the severity of COVID-19 and the number and type of
216 comorbidities. As the number of comorbidities increased, so did the disease severity. Patients
217 who were older, had diabetes, or had high blood pressure were more likely to have a poor
218 outcome.

219 Our study was conducted at a tertiary care hospital with a large sample size for one hospital. The
220 study sample was diverse because the patients were referred from throughout the province to this
221 tertiary care hospital. We evaluated both demographic and clinical characteristics to perform an
222 in-depth analysis.

223 The limitations of this study are that we did not include patients from other hospitals for
224 comparative analysis. Furthermore, we did not include the response to various treatments, and
225 lastly, the patient's social characteristics, such as local residence, occupation, and income, were
226 not included in this analysis.

227 Further research is needed to develop a comprehensive scoring system for COVID-19. The
228 system for scoring should be practical and straightforward to predict the disease severity and the
229 management steps for COVID-19. Both prospective and retrospective analyses from the global
230 north and the global south are needed to identify the critical factors in managing this disease.

231

232 **Conclusions**

233 Our findings showed that older age, comorbidities, and direct admission to the ICU increase the
234 risk of worse outcomes. Furthermore, shortness of breath, fever, and gastrointestinal symptoms
235 also increase the risk of worse outcomes. In contrast, patients with isolated upper respiratory
236 symptoms have a lower mortality rate. More research is needed to determine risk factors that
237 increase the risk of disease severity and to devise a proper risk scoring system to initiate timely
238 management.

239

240 Acknowledgments:

241 **Ethical Approval:** Ethical approval for the study was taken from Ethics Committee, Office of

242 Research Innovation & Commercialization (ORIC), Khyber Medical University, Peshawar,

243 bearing number DIR/KMU-EB/DO000667.

244 Informed written consent was taken from all the participants.

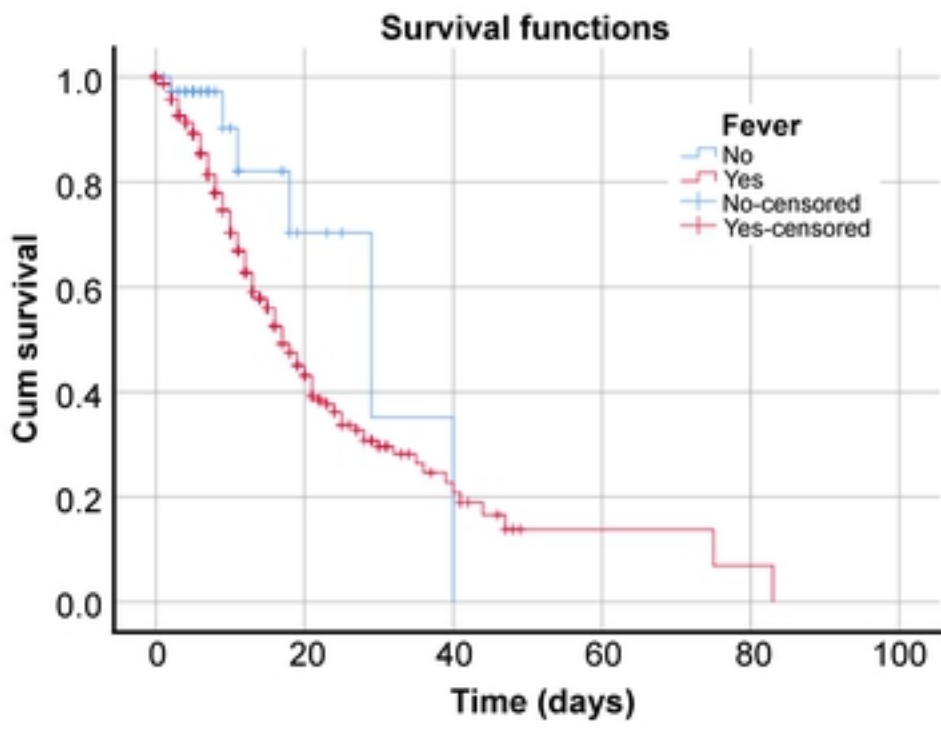
245 **References:**

- 246 1. Zheng J. SARS-CoV-2: An emerging coronavirus that causes a global threat. *Int J Biol*
247 *Sci.* 2020;16(10): 1678-1685. doi: [10.7150/ijbs.45053](https://doi.org/10.7150/ijbs.45053).
- 248 2. Detail. Who.int. 2020 [cited Dec 13, 2021]. Available from:
249 [https://www.who.int/director-general/speeches/detail/who-director-general-s-opening-remarks-](https://www.who.int/director-general/speeches/detail/who-director-general-s-opening-remarks-at-the-media-briefing-on-covid-19---11-march-2020)
250 [at-the-media-briefing-on-covid-19---11-march-2020](https://www.who.int/director-general/speeches/detail/who-director-general-s-opening-remarks-at-the-media-briefing-on-covid-19---11-march-2020).
- 251 3. Mathieu E, Ritchie H, Ortiz-Ospina E, Roser M, Hasell J. Coronavirus pandemic
252 (COVID-19). Our World Data. 2020 [cited Dec 14, 2021]. Available from:
253 <https://ourworldindata.org/covid-cases>.
- 254 4. National command operation center: national command operation center. 2021 [cited Dec
255 13, 2021]. Available from: <https://ncoc.gov.pk/covid-vaccination-en.php>.
- 256 5. da Rosa Mesquita R, Francelino Silva Junior LC, Santos Santana FM, Farias de Oliveira
257 T, Campos Alcântara R, et al. Clinical manifestations of COVID-19 in the general population:
258 systematic review. *Wien Klin Wochenschr.* 2021;133(7-8): 377-382. doi: [10.1007/s00508-020-](https://doi.org/10.1007/s00508-020-01760-4)
259 [01760-4](https://doi.org/10.1007/s00508-020-01760-4).
- 260 6. Vihta KD, Pouwels KB, Peto T, Pritchard E, Eyre DW, House T, et al. Symptoms and
261 SARS-CoV-2 positivity in the general population in the UK. *Clin Infect Dis.* 2021. doi:
262 [10.1093/cid/ciab945](https://doi.org/10.1093/cid/ciab945).
- 263 7. Alene M, Yismaw L, Assemie MA, Ketema DB, Mengist B, Kassie B, et al. Magnitude
264 of asymptomatic COVID-19 cases throughout the course of infection: A systematic review and
265 meta-analysis. *PLOS ONE.* 2021;16(3): e0249090. doi: [10.1371/journal.pone.0249090](https://doi.org/10.1371/journal.pone.0249090).

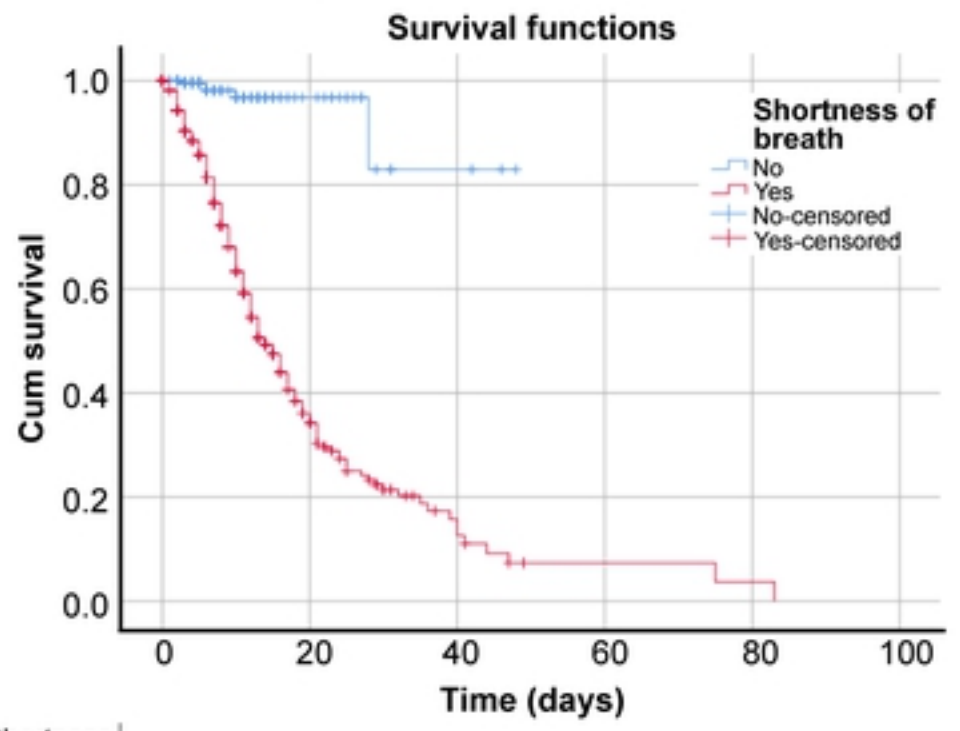
- 266 8. Islam MA, Kundu S, Alam SS, Hossan T, Kamal MA, Hassan R. Prevalence and
267 characteristics of fever in adult and paediatric patients with coronavirus disease 2019 (COVID-
268 19): A systematic review and meta-analysis of 17515 patients. PLOS ONE. 2021;16(4):
269 e0249788. doi: [10.1371/journal.pone.0249788](https://doi.org/10.1371/journal.pone.0249788).
- 270 9. Chen R, Yu YL, Li W, Liu Y, Lu JX, Chen F, et al. Gastrointestinal symptoms associated
271 with unfavorable prognosis of COVID-19 patients: A retrospective study. Front Med (Lausanne).
272 2020;7: 608259. doi: [10.3389/fmed.2020.608259](https://doi.org/10.3389/fmed.2020.608259).
- 273 10. Talavera B, García-Azorín D, Martínez-Pías E, Trigo J, Hernández-Pérez I, Valle-
274 Peñacoba G, et al. Anosmia is associated with lower in-hospital mortality in COVID-19.
275 J Neurol Sci. 2020;419: 117163. doi: [10.1016/j.jns.2020.117163](https://doi.org/10.1016/j.jns.2020.117163).
- 276 11. Liu X, Yue X, Liu F, Wei L, Chu Y, Bao H, et al. Analysis of clinical features and early
277 warning signs in patients with severe COVID-19: A retrospective cohort study. PLOS ONE.
278 2020;15(6): e0235459. doi: [10.1371/journal.pone.0235459](https://doi.org/10.1371/journal.pone.0235459).
- 279 12. Williamson EJ, Walker AJ, Bhaskaran K, Bacon S, Bates C, Morton CE, et al. Factors
280 associated with COVID-19-related death using OpenSAFELY. Nature. 2020;584(7821): 430-
281 436. doi: [10.1038/s41586-020-2521-4](https://doi.org/10.1038/s41586-020-2521-4).
- 282 13. Chaudhry A, Ikram A, Baig MA, Salman M, Ghafoor T, Zakir H, et al. Mortality analysis
283 of COVID-19 confirmed cases in Pakistan. medRxiv [preprint]. 2020 Jan 1. doi:
284 [10.1101/2020.06.07.20121939](https://doi.org/10.1101/2020.06.07.20121939).
- 285 14. Rahim F, Amin S, Noor M, Bahadur S, Gul H, Mahmood A, et al. Mortality of patients
286 with severe COVID-19 in the Intensive Care Unit: An observational study from a major COVID-
287 19 receiving hospital. Cureus. 2020;12(10): e10906. doi: [10.7759/cureus.10906](https://doi.org/10.7759/cureus.10906).

- 288 15. Banerjee J, Canamar CP, Voyageur C, Tangraphaphorn S, Lemus A, Coffey C, et al.
289 Mortality and Readmission Rates Among Patients With COVID-19 After Discharge From Acute
290 Care Setting With Supplemental Oxygen. *JAMA Netw Open*. 2021;4(4):e213990. doi:
291 10.1001/jamanetworkopen.2021.3990.
- 292 16. Booth A, Reed AB, Ponzio S, Yassaee A, Aral M, Plans D, et al. Population risk factors
293 for severe disease and mortality in COVID-19: A global systematic review and meta-analysis.
294 *PLOS ONE*. 2021;16(3): e0247461. doi: [10.1371/journal.pone.0247461](https://doi.org/10.1371/journal.pone.0247461).
- 295 17. Az A, Sogut O, Akdemir T, Ergenc H, Dogan Y, Cakirca M. Impacts of demographic and
296 clinical characteristics on disease severity and mortality in patients with confirmed COVID-19.
297 *Int J Gen Med*. 2021;14: 2989-3000. doi: [10.2147/IJGM.S317350](https://doi.org/10.2147/IJGM.S317350).
- 298 18. UIHaq Z, Shahzad M, Khattak MI, Fazid S, Ullah N, Shireen A, et al. Clinical
299 Characteristics, Mortality and Associated risk factors in COVID-19 patients reported in ten
300 major hospitals of Khyber Pakhtunkhwa, Pakistan. *J Ayub Med Coll Abbottabad JAMC*.
301 2020;32 [Suppl: 1] (4): S633-S639.
- 302 19. Nasir N, Habib K, Khanum I, Khan N, Muhammad ZA, Mahmood SF. Predictors of
303 severity and mortality of COVID-19 at a tertiary care center in a Lower-middle income country.
304 *Authorea Preprints*. 2020 Oct 1.
- 305 20. Adnan D, Deshmukh AA, Khan SR, Rempert T, Dhana K, Mahdavinia M, et al.. S1358
306 gastrointestinal symptoms predict the outcomes of COVID-19 infection. *Am J Gastroenterol*.
307 2020;115(1): S685-S686. doi: [10.14309/01.ajg.0000707480.23480.66](https://doi.org/10.14309/01.ajg.0000707480.23480.66).

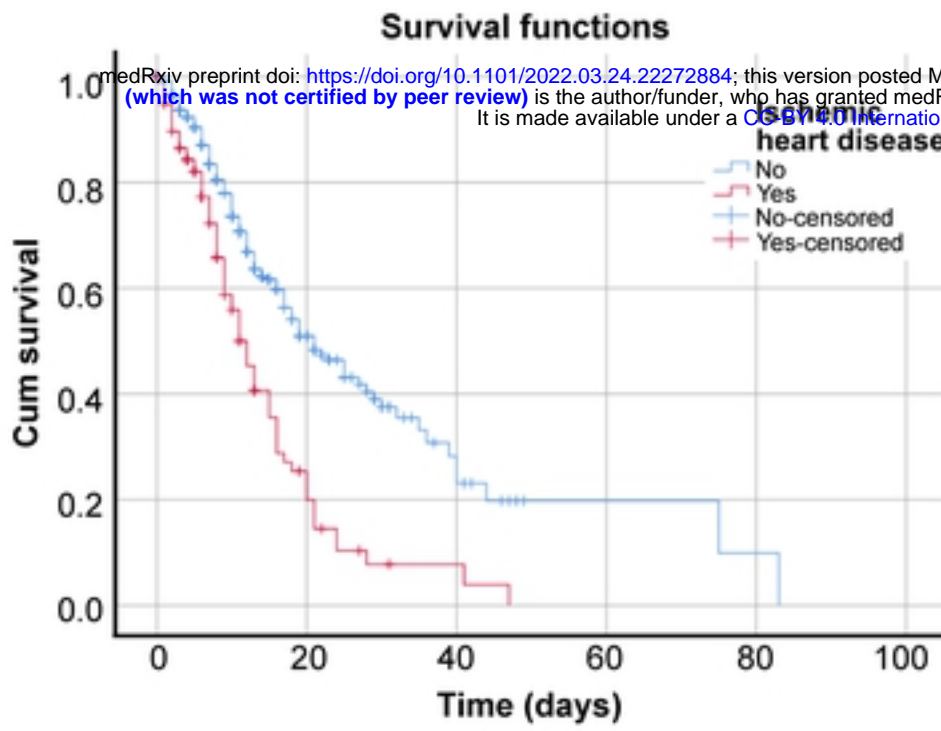
- 308 21. Ramachandran P, Onukogu I, Ghanta S, Gajendran M, Perisetti A, Goyal H, et al.
309 Gastrointestinal symptoms and outcomes in hospitalized coronavirus disease 2019 patients. Dig
310 Dis. 2020;38(5): 373-379.
- 311 22. Sanyaolu A, Okorie C, Marinkovic A, Patidar R, Younis K, Desai P, et al. Comorbidity
312 and its impact on patients with COVID-19. SN Compr Clin Med. 2020;2(8): 1069-1076. doi:
313 [10.1007/s42399-020-00363-4](https://doi.org/10.1007/s42399-020-00363-4).
- 314 23. Ali I. Syndemics at play: Chronic kidney disease, diabetes and COVID-19 in Pakistan.
315 Ann Med. 2021;53(1): 581-586. doi: [10.1080/07853890.2021.1910335](https://doi.org/10.1080/07853890.2021.1910335).
- 316 24. Shoaib N, Noureen N, Munir R, Shah FA, Ishtiaq N, Jamil N, et al. COVID-19 severity:
317 Studying the clinical and demographic risk factors for adverse outcomes. PLOS ONE.
318 2021;16(8): e0255999. doi: [10.1371/journal.pone.0255999](https://doi.org/10.1371/journal.pone.0255999).

(A) Fever

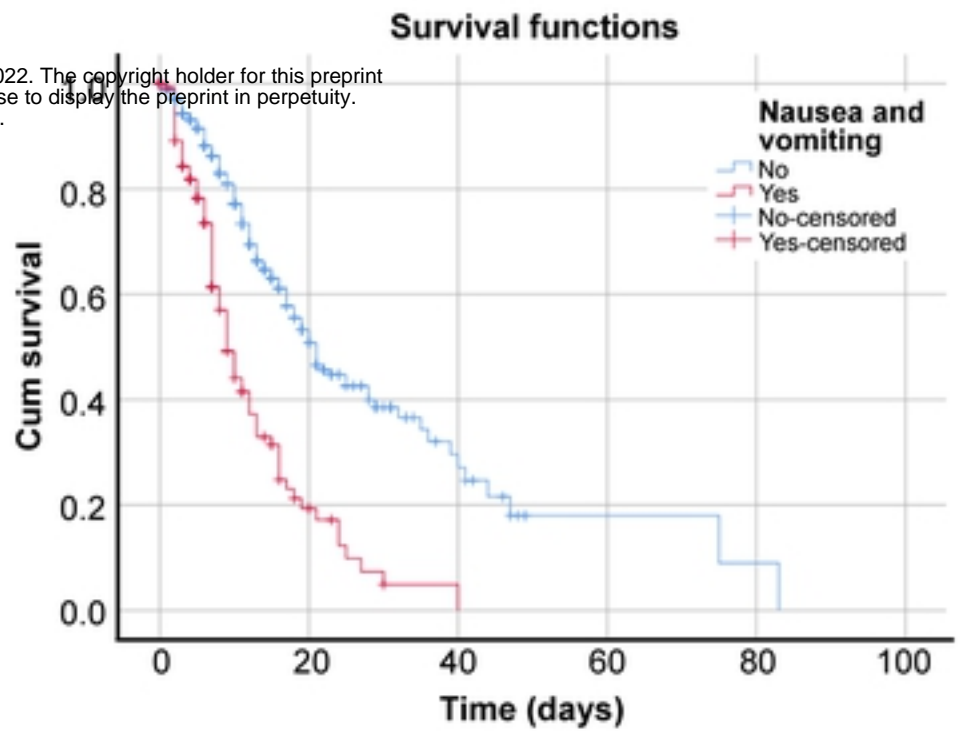
Fever	Number at risk					
No	39	4	0	0	0	0
Yes	1048	65	11	11	1	0
	0	20	40	60	80	100

(B) Shortness of breath

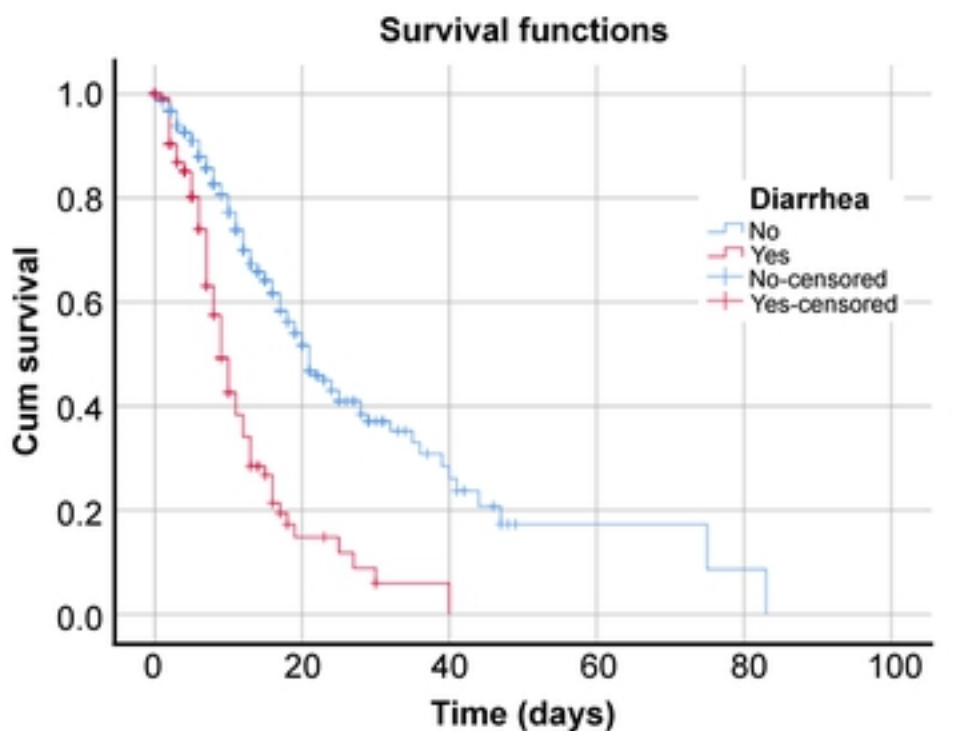
Shortness of breath	Number at risk					
No	297	17	3	0	0	0
Yes	790	52	8	2	1	0
	0	20	40	60	80	100

(C) Ischemic heart disease

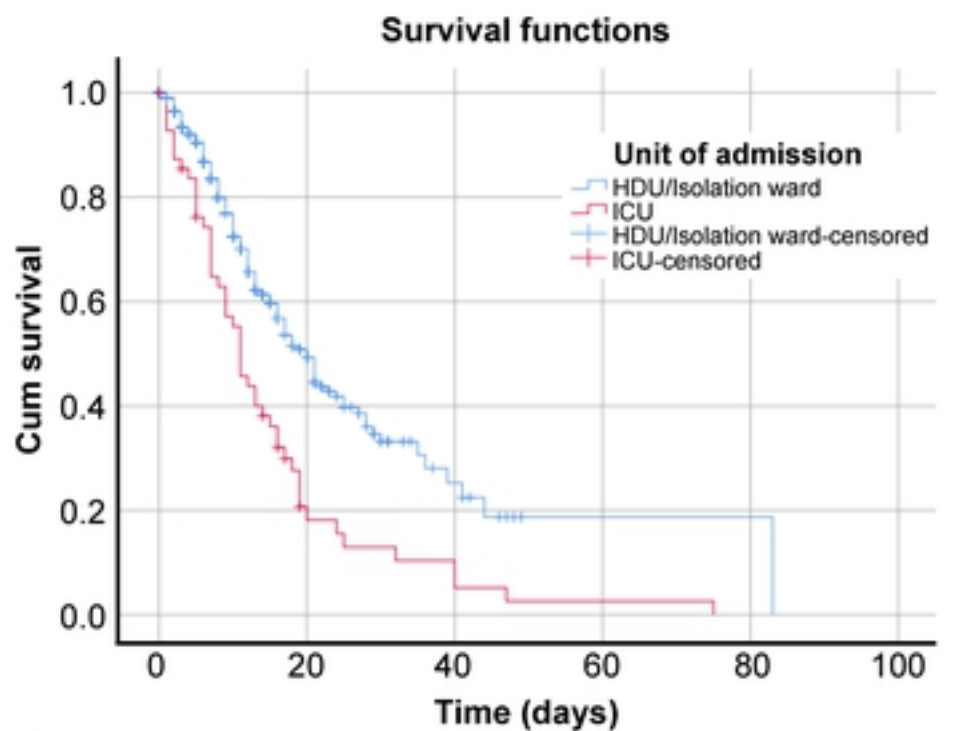
Ischemic heart disease	Number at risk					
No	989	58	9	2	1	0
Yes	98	11	2	0	0	0
	0	20	40	60	80	100

(D) Nausea & Vomiting

Nausea & vomiting	Number at risk					
No	948	60	11	2	1	0
Yes	139	9	0	0	0	0
	0	20	40	60	80	100

(E) Diarrhea

Diarrhea	Number at risk					
No	955	63	11	2	1	0
Yes	132	6	0	0	0	0
	0	20	40	60	80	100

(F) Unit of admission

Unit of admission	Number at risk					
HDU / Isolation ward	1031	62	9	1	1	0
ICU	56	7	3	1	0	0
	0	20	40	60	80	100

Figure