

Prognostic factors for mortality, ICU and hospital admission due to SARS-CoV-2: A systematic review and meta-analysis of cohort studies in Europe

Constantine I. Vardavas^{1,2}, Alexander G. Mathioudakis^{3,4}, Katerina Nikitara¹, Kimon Stamatelopoulos⁵, Georgios Georgiopoulos⁵, Revati Phalkey^{6,7}, Jo Leonardi-Bee⁶, Esteve Fernandez⁸, Dolores Carnicer-Pont^{8,9}, Jørgen Vestbo^{3,4}, Jan C. Semenza¹⁰, Charlotte Deogan¹⁰, Jonathan E. Suk¹⁰, Piotr Kramarz¹⁰, Favelle Lamb¹⁰ Pasi Penttinen¹⁰

1: School of Medicine, University of Crete, Heraklion, Crete, Greece

2: Department of Oral Health Policy and Epidemiology, Harvard School of Dental Medicine, Harvard University, Boston, MA, USA

3: Division of Infection, Immunity and Respiratory Medicine, School of Biological Sciences, The University of Manchester, Manchester, UK

4: North West Lung Centre, Wythenshawe Hospital, Manchester University NHS Foundation Trust, Manchester Academic Health Science Centre, Manchester, UK

5: Department of Clinical Therapeutics, National and Kapodistrian University of Athens, Athens, Greece

6: Centre for Evidence Based Healthcare, Division of Epidemiology and Public Health, School of Medicine, University of Nottingham, UK

7: Heidelberg Institute of Global Health, University of Heidelberg, Germany

8: Catalan Institute of Oncology, Barcelona, Spain

9: Institut d'Investigació Biomèdica de Bellvitge (IDIBELL), Barcelona, Spain

10: European Centre for Disease Prevention and Control (ECDC), Sweden

ABSTRACT

Background: As mortality from COVID-19 is strongly age-dependent, we aimed to identify population subgroups at an elevated risk for adverse outcomes from COVID-19 using age/gender-adjusted data from European cohort studies with the aim to identify populations that could potentially benefit from booster vaccinations.

Methods: We performed a systematic literature review and meta-analysis to investigate the role of underlying medical conditions as prognostic factors for adverse outcomes due to SARS-CoV-2, including death, hospitalisation, Intensive Care Unit (ICU) admission, and mechanical ventilation within three separate settings (community, hospital and ICU). Cohort studies that reported at least age and gender-adjusted data from Europe were identified through a search of peer-reviewed articles published until 11th June 2021 in Ovid Medline and Embase. Results are presented as Odds Ratios (ORs) with 95% confidence intervals (95%C.I.) and absolute risk differences (RD) in deaths per 1,000 COVID-19 patients.

Findings: We included 88 cohort studies with age/gender adjusted data from 6,653,207 SARS-CoV-2 patients from Europe. Hospital-based mortality was associated with high and moderate certainty evidence for solid organ tumours, diabetes mellitus, renal disease, arrhythmia, ischemic heart disease, liver disease, and obesity, while a higher risk, albeit with low certainty, was noted for chronic obstructive pulmonary disease and heart failure. Community-based mortality was associated with a history of heart failure, stroke, diabetes, and end-stage renal disease. Evidence of high/moderate certainty revealed a strong association between hospitalisation for COVID-19 and solid organ transplant recipients, sleep apnoea, diabetes, stroke, and liver disease.

Interpretation: The results confirmed the strong association between specific prognostic factors and mortality and hospital admission. Prioritisation of booster vaccinations and the implementation of non-pharmaceutical protective measures for these populations may contribute to a reduction in COVID-19 mortality, ICU and hospital admissions.

Funding: European Centre for Disease Prevention and Control (ECDC) under specific contract No. 10 ECD.11843 within Framework contract ECDC/2019/001 Lot 1B.

MAIN TEXT

INTRODUCTION

The COVID-19 pandemic has led to detrimental consequences for society, the global economy, and public health. Health care systems worldwide continue to face high pressure, particularly at peaks of transmission waves. After a period of decrease during the European summer months of 2021, an increase in the number of cases, hospital and Intensive Care Unit (ICU) admissions have been noted from October 2021 in most of the European Union and European Economic Area (EU/EEA) countries (1). According to the European Centre for Disease Prevention and Control (ECDC)'s most recent risk assessment, this rise was mainly attributed to the newly emerging variants of SARS-CoV-2, such as the Delta variant (B.1.617.2) and the Omicron variant (B.1.1.529), the loosening of non-pharmaceutical interventions (NPIs) across Europe and inadequate vaccination coverage (2).

In an effort to stratify patients with SARS-CoV-2 for better management of economic and human resources, particular attention has been paid to the determination of risk factors that predispose to adverse outcomes related to COVID-19, including hospitalisation and ICU admission or the need for ventilatory support, or death. Consistent evidence demonstrates a high risk of severe COVID-19 manifestations in older individuals, especially in combination with pre-existing medical conditions (3-5). Population-level data have indicated that COVID-19 older patients with comorbidities such as chronic cardiac, non-asthmatic chronic pulmonary, chronic kidney and liver diseases, and obesity have higher mortality in hospitals (6-8). Although the European Surveillance System (TESSy) has noted through the use of population data, that COVID-19 patients with cardiac disorders (25.7%), diabetes (15.5%), and cancers (9.9%) have the highest case-fatality rates in the European population (9), and while previous systematic reviews have separately assessed several clinical indicators or comorbidities, they lack age/gender-adjusted analyses and stratification by patient setting (4).

As mortality from COVID-19 is strongly age-dependent, a meta-analysis of pooled age-adjusted estimates from available cohort studies is needed to determine which comorbidities should classify patients into high-risk groups for adverse COVID-19 outcomes. Such evidence would be of interest to clinicians to better manage patient flow and to policymakers when planning forthcoming public health measures, such as booster vaccination strategies and personal NPIs in coming phases of the pandemic.

METHODS

The systematic review as conducted adhered to the PRISMA (Preferred Reporting Items for Systematic Reviews and Meta-Analysis) (10) and MOOSE (Meta-analyses Of Observational Studies in Epidemiology) guidelines (11). The protocol of this systematic review was pre-reviewed by the European Centre for Disease Prevention and Control (ECDC). The protocol was not pre-registered in any database for systematic reviews.

Cohort studies were considered eligible provided (i) they evaluated patients with clinically diagnosed or laboratory-confirmed COVID-19 in one of the following settings, each reflecting different disease stages or severity: community, hospitalised patients, intensive care unit (ICU); (ii) they were conducted in Europe, including EU/EEA countries, the United Kingdom (UK) and Switzerland; (iii) they assessed the association between underlying clinical conditions and the primary adverse outcomes of COVID-19; iv) Any underlying clinical condition described in original studies was considered acceptable for inclusion in the meta-analysis, however the statistical analysis presented had to be at least age and gender-adjusted. The primary outcomes of our meta-analyses were mortality, hospital admission and ICU admission. For the secondary outcomes, we also assessed the use of mechanical ventilatory support and a composite outcome comprising admission to the ICU and/or death and/or hospice care (e.g., “Death or ICU admission”). The latter secondary outcome was considered crucial to account for the bias introduced by excluding patients from higher levels of care due to their poor baseline status or severe comorbidities.

Relevant peer-reviewed studies published in English were identified within Medline (OVID) and EMBASE (OVID) until the 11th of June 2021. Subject headings relating to COVID-19 and epidemiological study design terms were used to develop a comprehensive search strategy presented in **Appendix 1**. Reference lists of all included studies and identified reviews were also screened to identify additional relevant studies. Full texts of potentially eligible studies were evaluated independently by two reviewers. Disagreements or uncertainties in screening stages were resolved through discussion and consensus.

An ad hoc designed structured form was used for extracting relevant data from each eligible study, including details on the study design, baseline characteristics of the participants and relevant outcome data. For accuracy, each study's data were extracted by one reviewer, with each study cross-checked by a second reviewer. Adequate information was extracted to allow us to identify overlapping populations. In the case of overlapping populations, we prioritised including data from the study with the larger population and a more rigorously described methodology.

The methodological quality of each included study was evaluated independently by two reviewers using the Joanna Briggs Institute (JBI) standardised critical appraisal tool for the appropriate design (8). Disagreements were resolved with discussion and, when necessary, adjudication by a third reviewer.

The certainty of the evidence

The Grading of Recommendations Assessment, Development and Evaluation (GRADE) methodology was used for evaluating the certainty in the body of evidence for each meta-analysis (12). In line with GRADE recommendations for the assessment of evidence about prognostic factors, we initially ascribed high certainty for all our findings which were subsequently rated down in cases of study limitations of the included studies, inconsistency, indirectness or imprecision of the results, or evidence of publication bias. Moreover, certainty was rated up in cases of large observed effects. Results that were of high or moderate certainty are primarily reported in the text of the current article.

Statistical Analysis

In anticipation of significant clinical and methodological heterogeneity in the meta-analyses, we fitted logistic regression models with random effects. All outcome data were adjusted at least for gender and age. All variables analysed were dichotomous and analysed as Odds Ratios (OR) with corresponding 95% confidence intervals (95% C.I.). Heterogeneity was quantified using the I^2 statistics. We considered values above 75% to represent considerable heterogeneity. To facilitate interpretability of the results and in line with recommendations by GRADE (12), we also present the absolute Risk Differences (RD) per 1,000 COVID-19 patients with corresponding 95% C.I. The median prevalence of the evaluated risk factors and the median incidence rate of each adverse outcome in each recruitment setting were used for calculating the absolute RDs.

RESULTS

We included 88 studies, involving 6,653,207 cases with COVID-19 in the review (**PRISMA flowchart: Figure 1**). Recruitment dates ranged from January 1st, 2020, to April 30th, 2021, but were primarily based in 2020. There were 69 cohort studies that assessed 6,029,126 patients in the hospital setting (13-81), 13 cohort studies involving 621,792 patients in the community setting -of which ten were based solely in the community (82-91) while three combined community/hospital recruitment (92-94), and six cohort studies involving 2,289 patients were based in the ICU setting (95-100). Details on the characteristics of the included cohort studies are presented in **Appendix 2**, while the assessment of the risk of bias according to the JBI critical appraisal tool is provided in **Appendix 3**.

As per our inclusion criteria, all cohort studies were based in Europe and included 23 studies from Spain (14, 16, 17, 22, 28, 29, 32, 33, 35, 50, 54, 57-59, 64, 67, 70, 80, 89, 92, 96, 97, 101), 22 studies from Italy(13, 19, 21, 23, 25, 30, 38, 39, 45, 47, 48, 55, 56, 61, 62, 68, 71, 77, 79, 90, 91, 93), 15 studies from France (20, 24, 27, 31, 40, 41, 43, 53, 60, 63, 65, 74, 76, 86, 99), ten studies from the UK (26, 34, 44, 49, 52, 66, 72, 75, 87, 98), four included patients from more than one country (69, 73, 88, 94), three from Germany (46, 51, 78), two studies from Sweden(36, 100), two from Denmark (42, 83) and one study from Belgium (81), Finland (5), the

Netherlands (18), Norway (85) and Poland (37). The diagnosis of COVID-19 was made mainly with a PCR test, except for in five studies in which the diagnosis was made with the ICD Classification (20, 24, 27, 42, 102).

Underlying medical conditions as prognostic factors of mortality due to COVID-19

While all meta-analyses findings are presented with both adjusted OR (aOR) and absolute risk differences (RD) in **Figures 2a-b**, below, we primarily present key results supported by evidence of moderate or high certainty as assessed using the GRADE approach.

The presence of any cardiovascular disease posed an increased risk for mortality in the hospital setting (51 [17-85] more deaths per 1,000 cases; high certainty). Additionally, stroke (35 [3-75] more deaths per 1,000 cases; high certainty) and heart failure (57 [13-144] more deaths per 1,000 cases; moderate certainty) were associated with increased mortality risk in the community setting, while ischaemic heart disease (IHD) was estimated to increase the risk of death in hospitalised patients with COVID-19 by 187 [11-385] more deaths per 1,000 cases (moderate certainty). Diabetes mellitus was associated with increased mortality in the hospital setting as 57 [31-84] (high certainty) additional deaths were observed for every 1,000 patients recruited with COVID-19 and diabetes mellitus. Arrhythmia was associated with increased mortality in the hospital setting (174 [28-338]; moderate certainty). A history of solid organ transplant receipt was associated with increased mortality in the community setting (163 [124-206] more deaths per 1,000 cases; high certainty). Patients with neurological disease were also at an elevated risk of death within both the hospital (133 [17-264] more deaths per 1,000 cases; moderate certainty) and the community setting (34 [7-67] more deaths per 1,000 cases; moderate certainty). Similarly, COVID-19 patients with any respiratory disease were found to have increased mortality risk in the community (142 [16-339] more deaths per 1,000 cases; moderate certainty) and in ICU (94 [13-176] more deaths per 1,000 cases; moderate certainty) setting.

Other factors associated with an increased mortality in the hospital setting were renal disease (91 [25-163]; moderate certainty); dementia (99 [4-209]; moderate certainty); cancer (121 [78-166]; high certainty); liver disease (239 [53-441]; moderate certainty); and male gender (68 [50-86]; high certainty). Male gender was found to be associated with increased death also in the ICU setting (96 [22-166]; moderate certainty). Data regarding the presence of other comorbid diseases with COVID-19 mortality were less consistent or of lower certainty.

Hospital and ICU admission

Figure 3 presents the Forest plot that summarises the available evidence presented as aOR and absolute RDs regarding the association between COVID-19 and hospital admission within the community setting. Increased hospitalisation per 1,000 COVID-19 patients was noted for the history of solid organ transplant [320; 276-360] and sleep apnoea [262; 5-457], supported by evidence of high certainty. Moreover, other

prognostic factors were associated with hospital admission with evidence of moderate certainty and included any cardiovascular disease [156; 67-242]; heart failure [291; 190-379]; any respiratory disease [278; 157-380]; diabetes [129; 73-185] and male gender [137; 81-192]. **Figure 4** presents the available evidence of the association between prognostic factors and ICU admission within the hospital setting due to COVID-19. Supported by evidence of moderate certainty, the presence of asthma and neurological diseases was significantly associated with ICU admission, other factors were supported by evidence of lower certainty or indicated non statistically significant results.

Composite outcome of death or ICU admission

As a supplementary analysis, we assessed the prognostic factors related to the composite adverse outcome of combined death and/or ICU admission in **Appendix 4** for the community (**Appendix 4a**) and the hospital setting (**Appendix 4b**). Among hospitalised patients, the presence of COPD [252; 115-383]; dyslipidaemia [95;4-190]; hypertension [91;27-153]; diabetes [71;47-95] and any cardiovascular disease [76; 1-153] was associated with this composite outcome supported by evidence of high certainty. Moreover, obesity [143;94-192]; heart failure [141;39-246] and male gender [144; 98-188] were significantly associated with this composite outcome in the hospital setting, supported by evidence of moderate certainty. Diabetes [33; 4-66] and male gender [33; 12-54] were also estimated to increase the risk for ICU admission or death in the community setting with evidence of moderate certainty.

Mechanical ventilation

Appendix 5 presents the assessment of the need for mechanical ventilation, as a secondary outcome, for both the hospital setting (**Appendix 5a**) and the ICU setting (**Appendix 5b**). Obesity was associated with an increased need for mechanical ventilation in both the hospital [169 (162-176); high certainty] and ICU setting [128 (67-176); low certainty]. Moreover, data of high certainty indicated an increased risk for mechanical ventilation in hospitalised COVID-19 patients with asthma [18; 2-35], while male gender was associated with higher odds of mechanical ventilation need in both hospital [108 (48-164); high certainty] and ICU setting [172 (3-321); moderate certainty].

DISCUSSION

Based on quantitative age and gender-adjusted data extracted from 88 cohort studies conducted in Europe, reporting on 6,653,207 patients with COVID-19, this systematic review and meta-analyses strengthen the understanding of prognostic factors for adverse outcomes of infection that would set the base for the identification of high-risk populations in order to support public health decision making regarding booster vaccinations and personal non-pharmaceutical interventions as societies re-open across Europe.

Extensive research has confirmed the strong association of age and gender with mortality and hospital admissions (103-107) hence it is important to take these factors into account in meta-analyses, particularly given the strong association of COVID-19 outcomes with age, which likely leads to an overestimation of the risk posed by ageing-associated diseases, such as congestive heart disease, COPD, or dementia. Hence, in contrast to previous meta-analyses, our approach evaluated the weight of evidence for factors that were at least age/gender adjusted to overcome the issue. Notably, male gender was identified as a strong predisposing factor across multiple analyses even after adjusting for patient age.

Hospital and ICU Mortality

In our age/gender-adjusted analyses, increased hospital mortality was noted among patients with COPD, arrhythmia, IHD, heart failure, cancer, renal disease, liver disease, obesity and diabetes. Previous systematic reviews had identified COPD, cardiovascular disease, hypertension, diabetes, chronic renal disease and chronic liver disease as factors associated with mortality in the hospital setting, however within these reviews, substantial heterogeneity was noted, and their results were unadjusted (107-110). With regards to ICU mortality, our meta-analysis of adjusted data for ICU mortality due to COVID-19 indicated that male gender and the presence of respiratory disease was associated with mortality. However, unadjusted meta-analyses showed associations with several comorbidities, such as COPD and renal disease – results also identified in a recent meta-analysis of unadjusted data on ICU patients which identified hypertension, COPD and cardiovascular disease as prognostic factors of mortality (111). Whilst obesity has been identified in previous meta-analyses to be strongly associated with mortality (112), within our meta-analyses, the data available for obesity were heterogeneous due to different classifications used within each study. Obesity was associated with overall hospital mortality, supported however only by very low quality of evidence.

Hospital and ICU admission

Our meta-analysis focusing only on European data and evaluating ICU admission indicated that in age/gender-adjusted analyses, asthma, neurological diseases and autoimmune diseases were associated with an increased likelihood of the need for ICU admission. Furthermore, the need for mechanical ventilation was higher among patients with asthma, liver disease and obesity. These results are different from other ICU cohort data, which may be attributable to our analyses being age/gender adjusted (113), although previous research has also indicated that ICU outcomes may be better predicted by frailty than either age or comorbidity (114). Notably, our analyses noted that several comorbidities associated with an increased risk of death or hospital admission were not typically associated with an increased incidence of ICU admission or mechanical ventilation. This is not unexpected since patients with pre-existing severe comorbidities may not be offered ICU admission or mechanical ventilation as therapeutic options during times of unprecedentedly high pressure on healthcare systems, leading to strict triage criteria (115, 116).

COVID-19, during the first wave of the pandemic, was managed heterogeneously worldwide, especially in resource-constrained countries, where the health systems have often had less capacity and resources to face the unfolding pandemic (117). However, even in the selected high-income countries, ICUs were under unprecedented pressure, and strict criteria for selecting patients were applied based on the patients' short-term prognosis (118).

The above results indicate populations of high risk for adverse outcomes and could possibly benefit from potential booster vaccinations, as a preventive measure to reduce their elevated risk for adverse COVID-19 outcomes. However, our analyses can also assist informing planning of patient flows in the health care settings. Notably, outcomes and prognostic factors in different settings were often different, a factor which may be attributable to several factors. It is possible that the fact that the majority of those contracting SARS-CoV-2 experience a mild or asymptomatic disease, and only a minority progresses to the development of pneumonitis, which may warrant hospital admission (119). Another potential explanation may be the variability of the impact of different comorbidities on disease progression or clinician bias to the presence of specific comorbidities among patients triaged and on the threshold of hospital admission (e.g., a patient with COVID and concomitant COPD is more likely to be admitted than a patient without COPD), indicating a type of selection bias by the clinicians during triage.

Strengths and limitations

Several strengths of our meta-analysis increase our confidence in our findings. The inclusion of only age/gender adjusted cohort study data allowed us to control for the primary factor associated with adverse outcomes, which is the patient's age, hence allowing us to assess the independent effect of each prognostic factor (106). Moreover, we performed separate analyses by clinical setting that allowed us to both quantify the incidence of adverse outcomes, as separate endpoints, which may assist in managing patient flows and triaging. As we applied the GRADE methodology for assessing the evidence about prognostic factors, we rigorously evaluated the certainty of the evidence behind each meta-analysis. Some limitations of our study should also be acknowledged as our results reflect the status quo in Europe during the first waves of the pandemic when the alpha and beta variants were most dominant and with the EU population largely unvaccinated, hence further research is needed to assess how subsequent vaccination would impact patient mortality. We restricted our inclusion criteria to Europe, to enhance the comparability of the results and utility for European clinicians and policymakers, as they have similar healthcare resources, acknowledging that our results may not be generalisable to other areas of the globe. However, similar results are noted in different geographical areas (107). Furthermore, there was evidence of heterogeneity as the definition of specific prognostic factors, such as hypertension, obesity, and dyslipidaemia, were ambiguous in some of the included studies and variability in the definitions may have also contributed to the observed variability.

Given that a direct comparison among different risk factors was not performed and similar effect sizes were found, no conclusions can be drawn on the comparative ranking or cumulative/synergistic effect of specific prognostic factors leading to COVID-related adverse outcomes. Nevertheless, conclusions on the individual impact of specific comorbidities can be drawn.

CONCLUSION

The results of this systematic literature review and meta-analysis of European cohort age/gender adjusted data indicate that COPD, arrhythmia, IHD, heart failure, cancer, renal disease, liver disease, obesity and diabetes were associated with hospital mortality while male gender and respiratory diseases were associated with ICU mortality. COPD, dyslipidaemia, hypertension, diabetes, cardiovascular disease, obesity, heart failure and male gender were associated with the composite outcome of death and/or ICU admission. With regards to patient management, factors that were associated with hospital admission included solid organ transplant, sleep apnoea, cardiovascular disease, diabetes, heart failure, respiratory disease and male gender while obesity, asthma and male gender were associated with the need for mechanical ventilation. Taking the above into account, the prioritisation of preventive public health measures, such as potential booster vaccinations and use of personal NPIs, could be further refined by accounting for underlining pre-existing conditions as societies and health care systems across Europe continues to face pressure from COVID-19.

FUNDING - ACKNOWLEDGEMENTS

Funding: This report was commissioned by the European Centre for Disease Prevention and Control (ECDC) to the PREP-EU Consortium, coordinated by Dr Constantine Vardavas (School of Medicine, University of Crete) under specific contract No. 10 ECD.11843 within Framework contract ECDC/2019/001 Lot 1B.

Role of the Funding Agency: The funder contributed to the definition of the scope of the review and commented on the protocol and draft manuscript and was not involved in the conduct of the systematic review. ECDC provided intellectual input throughout the project and arranged for an internal peer review of the final manuscript prior to submission. The lead author has full access to the data and has the responsibility for submission.

Contributors: CV, JL-B, RP and JES designed the study. KN, DC-P and AGM undertook the literature review and extracted the data. JL-B and RP developed the search code. AGM, JV, KS and KN analysed and interpreted the data. EF and GG participated in data evaluation and interpretation along with CV, JL-B, RP, JES, KN, KS, and AGM. CV wrote the first draft of the manuscript with input from all authors. JS, CD, PK, FV and PP along with all other authors reviewed and revised subsequent drafts.

Acknowledgements: We would like to thank Katerina Papathanasaki (UoC), Chrysa Chatzopoulou (UoC) and Konstantinos Skouloudakis (UoC) for their assistance in data archiving. We acknowledge the bravery and dedication of healthcare professionals everywhere during these most challenging times.

Data sharing statement: Data sharing is not applicable to this article as no new data were created or analysed in this study. All data were extracted from peer-reviewed studies, which were identified from the literature and have been appropriately referenced within the article.

Declaration of interests: The authors declare that they have no known competing financial interests or personal relationships that could have appeared to influence the work reported in this paper. AGM and JV are supported by the NIHR Manchester Biomedical Research Centre (NIHR Manchester BRC).

REFERENCES

1. COVID-19 situation update worldwide [Internet]. 2020 [cited 02/12/2020]. Available from: <https://www.ecdc.europa.eu/en/geographical-distribution-2019-ncov-cases>.
2. ECDC. Latest risk assessment: further spread and potential impact of the SARS-CoV-2 Omicron variant of concern in the EU/EEA 2022 [Available from: <https://www.ecdc.europa.eu/en/current-risk-assessment-novel-coronavirus-situation>].
3. Wolff D, Nee S, Hickey NS, Marschollek M. Risk factors for Covid-19 severity and fatality: a structured literature review. *Infection*. 2021;49(1):15-28.
4. Li J, Huang DQ, Zou B, Yang H, Hui WZ, Rui F, et al. Epidemiology of COVID-19: A systematic review and meta-analysis of clinical characteristics, risk factors, and outcomes. *Journal of Medical Virology*. 2021;93(3):1449-58.
5. Alizadehsani R, Alizadeh Sani Z, Behjati M, Roshanzamir Z, Hussain S, Abedini N, et al. Risk factors prediction, clinical outcomes, and mortality in COVID-19 patients. *Journal of Medical Virology*. 2021;93(4):2307-20.
6. Team CC-R. Preliminary Estimates of the Prevalence of Selected Underlying Health Conditions Among Patients with Coronavirus Disease 2019 — United States, February 12–March 28, 2020. *Morbidity and Mortality Weekly Report*. 2020;69(13).
7. Docherty AB, Harrison EM, Green CA, Hardwick HE, Pius R, Norman L, et al. Features of 20133 UK patients in hospital with covid-19 using the ISARIC WHO Clinical Characterisation Protocol: prospective observational cohort study. *BMJ*. 2020:m1985.
8. Williamson EJ, Walker AJ, Bhaskaran K, Bacon S, Bates C, Morton CE, et al. Factors associated with COVID-19-related death using OpenSAFELY. *Nature*. 2020;584(7821):430-6.
9. ECDC. The European Surveillance System (TESSy) 2021 [Available from: <https://www.ecdc.europa.eu/en/publications-data/european-surveillance-system-tessy>].
10. Moher D, Liberati A, Tetzlaff J, Altman DG, Group P. Preferred reporting items for systematic reviews and meta-analyses: the PRISMA statement. *BMJ*. 2009;339:b2535.
11. Stroup DF, Berlin JA, Morton SC, Olkin I, Williamson GD, Rennie D, et al. Meta-analysis of observational studies in epidemiology: a proposal for reporting. *Jama*. 2000;283(15):2008-12.
12. Goldet G, Howick J. Understanding GRADE: an introduction. *Journal of Evidence-Based Medicine*. 2013;6(1):50-4.
13. Ponziani FR, Del Zompo F, Nesci A, Santopaolo F, Ianiro G, Pompili M, et al. Liver involvement is not associated with mortality: results from a large cohort of SARS-CoV-2-positive patients. *Aliment Pharmacol Ther*. 2020;52(6):1060-8.
14. Fresan U, Guevara M, Trobajo-Sanmartin C, Burgui C, Ezpeleta C, Castilla J. Hypertension and Related Comorbidities as Potential Risk Factors for COVID-19 Hospitalization and Severity: A Prospective Population-Based Cohort Study. *J Clin Med*. 2021;10(6).
15. Dirim AB, Demir E, Yadigar S, Garayeva N, Parmaksiz E, Safak S, et al. COVID-19 in chronic kidney disease: a retrospective, propensity score-matched cohort study. *Int Urol Nephrol*. 2021;53(10):2117-25.
16. Pablos JL, Galindo M, Carmona L, Lledo A, Retuerto M, Blanco R, et al. Clinical outcomes of hospitalised patients with COVID-19 and chronic inflammatory and autoimmune rheumatic diseases: a multicentric matched cohort study. *Ann Rheum Dis*. 2020;79(12):1544-9.
17. Diez C, Del Romero-Raposo J, Mican R, Lopez JC, Blanco JR, Calzado S, et al. COVID-19 in hospitalized HIV-positive and HIV-negative patients: A matched study. *HIV Med*. 2021;22(9):867-76.
18. Blomaard LC, van der Linden CMJ, van der Bol JM, Jansen SWM, Polinder-Bos HA, Willems HC, et al. Frailty is associated with in-hospital mortality in older hospitalised COVID-19 patients in the Netherlands: the COVID-OLD study. *Age Ageing*. 2021;50(3):631-40.
19. Biscarini S, Colaneri M, Ludovisi S, Seminari E, Pieri TC, Valsecchi P, et al. The obesity paradox: Analysis from the SMAtteo COvid-19 REgistry (SMACORE) cohort. *Nutr Metab Cardiovasc Dis*. 2020;30(11):1920-5.

20. Fond G, Pauly V, Leone M, Llorca PM, Orleans V, Loundou A, et al. Disparities in Intensive Care Unit Admission and Mortality Among Patients With Schizophrenia and COVID-19: A National Cohort Study. *Schizophr Bull.* 2021;47(3):624-34.
21. Galiero R, Pafundi PC, Simeon V, Rinaldi L, Perrella A, Vetrano E, et al. Impact of chronic liver disease upon admission on COVID-19 in-hospital mortality: Findings from COVOCA study. *PLoS One.* 2020;15(12):e0243700.
22. Cabezon Villalba G, Amat-Santos IJ, Duenas C, Lopez Otero D, Catala P, Aparisi A, et al. Impact of the presence of heart disease, cardiovascular medications and cardiac events on outcome in COVID-19. *Cardiol J.* 2021;28(3):360-8.
23. Ciardullo S, Zerbini F, Perra S, Muraca E, Cannistraci R, Lauriola M, et al. Impact of diabetes on COVID-19-related in-hospital mortality: a retrospective study from Northern Italy. *J Endocrinol Invest.* 2021;44(4):843-50.
24. Bernard A, Cottenet J, Bonniaud P, Piroth L, Arveux P, Tubert-Bitter P, et al. Comparison of Cancer Patients to Non-Cancer Patients among COVID-19 Inpatients at a National Level. *Cancers (Basel).* 2021;13(6).
25. Fadini GP, Morieri ML, Boscaro F, Fioretto P, Maran A, Busetto L, et al. Newly-diagnosed diabetes and admission hyperglycemia predict COVID-19 severity by aggravating respiratory deterioration. *Diabetes Res Clin Pract.* 2020;168:108374.
26. McGurnaghan SJ, Weir A, Bishop J, Kennedy S, Blackburn LAK, McAllister DA, et al. Risks of and risk factors for COVID-19 disease in people with diabetes: a cohort study of the total population of Scotland. *The Lancet Diabetes & Endocrinology.* 2021;9(2):82-93.
27. Mallet V, Beeker N, Bouam S, Sogni P, Pol S, Demosthenes research g. Prognosis of French COVID-19 patients with chronic liver disease: A national retrospective cohort study for 2020. *J Hepatol.* 2021;75(4):848-55.
28. San Roman JA, Uribarri A, Amat-Santos IJ, Aparisi A, Catala P, Gonzalez-Juanatey JR. The presence of heart disease worsens prognosis in patients with COVID-19. *Rev Esp Cardiol (Engl Ed).* 2020;73(9):773-5.
29. Guerra Veloz MF, Cordero Ruiz P, Rios-Villegas MJ, Del Pino Bellido P, Bravo-Ferrer J, Galves Cordero R, et al. Liver manifestations in COVID-19 and the influence of pre-existing liver disease in the course of the infection. *Rev Esp Enferm Dig.* 2021;113(2):103-9.
30. Angeli F, Marazzato J, Verdecchia P, Balestrino A, Bruschi C, Ceriana P, et al. Joint effect of heart failure and coronary artery disease on the risk of death during hospitalization for COVID-19. *Eur J Intern Med.* 2021;89:81-6.
31. Chavarot N, Gueguen J, Bonnet G, Jdidou M, Trimaille A, Burger C, et al. COVID-19 severity in kidney transplant recipients is similar to nontransplant patients with similar comorbidities. *Am J Transplant.* 2021;21(3):1285-94.
32. Belarte-Tornero LC, Valdivielso-More S, Vicente Elcano M, Sole-Gonzalez E, Ruiz-Bustillo S, Calvo-Fernandez A, et al. Prognostic Implications of Chronic Heart Failure and Utility of NT-proBNP Levels in Heart Failure Patients with SARS-CoV-2 Infection. *J Clin Med.* 2021;10(2).
33. Miarons M, Larrosa-Garcia M, Garcia-Garcia S, Los-Arcos I, Moreso F, Berastegui C, et al. COVID-19 in Solid Organ Transplantation: A Matched Retrospective Cohort Study and Evaluation of Immunosuppression Management. *Transplantation.* 2021;105(1):138-50.
34. Geretti AM, Stockdale AJ, Kelly SH, Cevik M, Collins S, Waters L, et al. Outcomes of Coronavirus Disease 2019 (COVID-19) Related Hospitalization Among People With Human Immunodeficiency Virus (HIV) in the ISARIC World Health Organization (WHO) Clinical Characterization Protocol (UK): A Prospective Observational Study. *Clin Infect Dis.* 2021;73(7):e2095-e106.
35. Sarmiento-Monroy JC, Espinosa G, Londono MC, Meira F, Caballol B, Llufrui S, et al. A multidisciplinary registry of patients with autoimmune and immune-mediated diseases with symptomatic COVID-19 from a single center. *J Autoimmun.* 2021;117:102580.
36. Xu H, Garcia-Ptacek S, Annetorp M, Bruchfeld A, Cederholm T, Johnson P, et al. Acute kidney injury and mortality risk in older adults with COVID-19. *J Nephrol.* 2021;34(2):295-304.

37. Neumann-Podczaska A, Chojnicki M, Karbowski LM, Al-Saad SR, Hashmi AA, Chudek J, et al. Clinical Characteristics and Survival Analysis in a Small Sample of Older COVID-19 Patients with Defined 60-Day Outcome. *Int J Environ Res Public Health*. 2020;17(22).
38. Maddaloni E, D'Onofrio L, Alessandri F, Mignogna C, Leto G, Pascarella G, et al. Cardiometabolic multimorbidity is associated with a worse Covid-19 prognosis than individual cardiometabolic risk factors: a multicentre retrospective study (CoViDiab II). *Cardiovasc Diabetol*. 2020;19(1):164.
39. Bellan M, Patti G, Hayden E, Azzolina D, Pirisi M, Acquaviva A, et al. Fatality rate and predictors of mortality in an Italian cohort of hospitalized COVID-19 patients. *Sci Rep*. 2020;10(1):20731.
40. Kaeuffer C, Le Hyaric C, Fabacher T, Mootien J, Dervieux B, Ruch Y, et al. Clinical characteristics and risk factors associated with severe COVID-19: prospective analysis of 1,045 hospitalised cases in North-Eastern France, March 2020. *Eurosurveillance*. 2020;25(48).
41. Sutter W, Duceau B, Vignac M, Bonnet G, Carlier A, Roussel R, et al. Association of diabetes and outcomes in patients with COVID-19: Propensity score-matched analyses from a French retrospective cohort. *Diabetes Metab*. 2021;47(4):101222.
42. Kjeldsen J, Nielsen J, Ellingsen T, Knudsen T, Nielsen RG, Larsen MD, et al. Outcome of COVID-19 in hospitalized patients with chronic inflammatory diseases. A population based national register study in Denmark. *J Autoimmun*. 2021;120:102632.
43. Czernichow S, Beeker N, Rives-Lange C, Guerot E, Diehl JL, Katsahian S, et al. Obesity Doubles Mortality in Patients Hospitalized for Severe Acute Respiratory Syndrome Coronavirus 2 in Paris Hospitals, France: A Cohort Study on 5,795 Patients. *Obesity (Silver Spring)*. 2020;28(12):2282-9.
44. Joharatnam-Hogan N, Hochhauser D, Shiu KK, Rush H, Crolley V, Wilson W, et al. Outcomes of the 2019 novel coronavirus in patients with or without a history of cancer: a multi-centre North London experience. *Ther Adv Med Oncol*. 2020;12:1758835920956803.
45. De Giorgi A, Fabbian F, Greco S, Di Simone E, De Giorgio R, Passaro A, et al. Prediction of in-hospital mortality of patients with SARS-CoV-2 infection by comorbidity indexes: an Italian internal medicine single center study. *Eur Rev Med Pharmacol Sci*. 2020;24(19):10258-66.
46. Siepmann T, Sedghi A, Barlinn J, de With K, Mirow L, Wolz M, et al. Association of history of cerebrovascular disease with severity of COVID-19. *J Neurol*. 2021;268(3):773-84.
47. Vena A, Giacobbe DR, Di Biagio A, Mikulska M, Taramasso L, De Maria A, et al. Clinical characteristics, management and in-hospital mortality of patients with coronavirus disease 2019 in Genoa, Italy. *Clin Microbiol Infect*. 2020;26(11):1537-44.
48. De Rosa FG, Palazzo A, Rosso T, Shbaklo N, Mussa M, Boglione L, et al. Risk Factors for Mortality in COVID-19 Hospitalized Patients in Piedmont, Italy: Results from the Multicenter, Regional, CORACLE Registry. *J Clin Med*. 2021;10(9).
49. Khawaja SA, Mohan P, Jabbour R, Bampouri T, Bowsher G, Hassan AMM, et al. COVID-19 and its impact on the cardiovascular system. *Open Heart*. 2021;8(1).
50. Galvez-Barron C, Arroyo-Huidobro M, Minarro A, Ananos G, Chamero A, Martin M, et al. COVID-19: Clinical Presentation and Prognostic Factors of Severe Disease and Mortality in the Oldest-Old Population: A Cohort Study. *Gerontology*. 2021:1-14.
51. Anastasiou OE, Korth J, Herbstreit F, Witzke O, Lange CM. Mild versus Severe Liver Injury in SARS-CoV-2 Infection. *Dig Dis*. 2020;39(1):52-7.
52. Forlano R, Mullish BH, Mukherjee SK, Nathwani R, Harlow C, Crook P, et al. In-hospital mortality is associated with inflammatory response in NAFLD patients admitted for COVID-19. *PLoS One*. 2020;15(10):e0240400.
53. Al-Salameh A, Lanoix JP, Bennis Y, Andrejak C, Brochot E, Deschasse G, et al. Characteristics and outcomes of COVID-19 in hospitalized patients with and without diabetes. *Diabetes Metab Res Rev*. 2021;37(3):e3388.
54. Varela Rodriguez C, Arias Horcajadas F, Martin-Arriscado Arroba C, Combarro Ripoll C, Juanes Gonzalez A, Esperesate Pajares M, et al. COVID-19-Related Neuropsychiatric Symptoms in Patients With Alcohol Abuse Conditions During the SARS-CoV-2 Pandemic: A Retrospective Cohort Study Using Real World Data From Electronic Health Records of a Tertiary Hospital. *Front Neurol*. 2021;12:630566.

55. Orsucci D, Trezzi M, Anichini R, Blanc P, Barontini L, Biagini C, et al. Increased Creatine Kinase May Predict A Worse COVID-19 Outcome. *J Clin Med.* 2021;10(8).
56. Vanni G, Materazzo M, Dauri M, Farinaccio A, Buonomo C, Portarena I, et al. Lymphocytes, Interleukin 6 and D-dimer Cannot Predict Clinical Outcome in Coronavirus Cancer Patients: LyNC1.20 Study. *Anticancer Res.* 2021;41(1):307-16.
57. Rodriguez-Gonzalez CG, Chamorro-de-Vega E, Valerio M, Amor-Garcia MA, Tejerina F, Sancho-Gonzalez M, et al. COVID-19 in hospitalised patients in Spain: a cohort study in Madrid. *Int J Antimicrob Agents.* 2021;57(2):106249.
58. Linares L, Cofan F, Diekmann F, Herrera S, Marcos MA, Castel MA, et al. A propensity score-matched analysis of mortality in solid organ transplant patients with COVID-19 compared to non-solid organ transplant patients. *PLoS One.* 2021;16(3):e0247251.
59. Rey JR, Caro-Codon J, Rosillo SO, Iniesta AM, Castrejon-Castrejon S, Marco-Clement I, et al. Heart failure in COVID-19 patients: prevalence, incidence and prognostic implications. *Eur J Heart Fail.* 2020;22(12):2205-15.
60. Vanhems P, Gustin MP, Elias C, Henaff L, Dananche C, Grisi B, et al. Factors associated with admission to intensive care units in COVID-19 patients in Lyon-France. *PLoS One.* 2021;16(1):e0243709.
61. De Vito A, Geremia N, Fiore V, Princic E, Babudieri S, Madeddu G. Clinical features, laboratory findings and predictors of death in hospitalized patients with COVID-19 in Sardinia, Italy. *Eur Rev Med Pharmacol Sci.* 2020;24(14):7861-8.
62. Cipriani A, Capone F, Donato F, Molinari L, Ceccato D, Saller A, et al. Cardiac injury and mortality in patients with Coronavirus disease 2019 (COVID-19): insights from a mediation analysis. *Intern Emerg Med.* 2021;16(2):419-27.
63. Al-Salameh A, Lanoix JP, Bennis Y, Andrejak C, Brochot E, Deschasse G, et al. The association between body mass index class and coronavirus disease 2019 outcomes. *International Journal of Obesity (Lond).* 2021;45 (3):700-5.
64. Gomez-Belda AB, Fernandez-Garces M, Mateo-Sanchis E, Madrazo M, Carmona M, Piles-Roger L, et al. COVID-19 in older adults: What are the differences with younger patients? *Geriatr Gerontol Int.* 2021;21(1):60-5.
65. Smati S, Tramunt B, Wargny M, Caussy C, Gaborit B, Vatier C, et al. Relationship between obesity and severe COVID-19 outcomes in patients with type 2 diabetes: Results from the CORONADO study. *Diabetes Obes Metab.* 2021;23(2):391-403.
66. Livingston G, Rostamipour H, Gallagher P, Kalafatis C, Shastri A, Huzzey L, et al. Prevalence, management, and outcomes of SARS-CoV-2 infections in older people and those with dementia in mental health wards in London, UK: a retrospective observational study. *The Lancet Psychiatry.* 2020;7(12):1054-63.
67. Abadia Otero J, Briongos Figuero LS, Gabella Mattin M, Usategui Martin I, Cubero Morais P, Cuellar Olmedo L, et al. The nutritional status of the elderly patient infected with COVID-19: the forgotten risk factor? *Curr Med Res Opin.* 2021;37(4):549-54.
68. Marengoni A, Zucchelli A, Grande G, Fratiglioni L, Rizzuto D. The impact of delirium on outcomes for older adults hospitalised with COVID-19. *Age Ageing.* 2020;49(6):923-6.
69. Welch C. Age and frailty are independently associated with increased COVID-19 mortality and increased care needs in survivors: results of an international multi-centre study. *Age Ageing.* 2021;50(3):617-30.
70. García-Guimaraes M, Mojón D, Calvo A, Izquierdo A, Belarte-Tornero L, Salvatella N, et al. Influence of cardiovascular disease and cardiovascular risk factors in COVID-19 patients. Data from a large prospective Spanish cohort. *REC: CardioClinics.* 2021;56(2):108-17.
71. Novelli Luca RF, Ghirardi Arianna, Pellegrini Dario, Capodanno Davide, Sotgiu Giovanni, Guagliumi Giulio, Senni Michele, Russo Filippo M, Lorini Ferdinando L, Rizzi Marco, Barbui Tiziano, Rambaldi Alessandro, Cosentini Roberto, et al., HPG23 COVID-19 Study Group. At the peak of COVID-19 age and disease severity but not comorbidities are predictors of mortality: COVID-19 burden in Bergamo, Italy. *Int J Obes (Lond)* 2021
72. Bloom CI, Drake TM, Docherty AB, Lipworth BJ, Johnston SL, Nguyen-Van-Tam JS, et al. Risk of adverse outcomes in patients with underlying respiratory conditions admitted to hospital with COVID-19: a

national, multicentre prospective cohort study using the ISARIC WHO Clinical Characterisation Protocol UK. *The Lancet Respiratory Medicine*. 2021;9(7):699-711.

73. Bonifazi M, Mei F, Skrami E, Latini LL, Amico D, Balestro E, et al. Predictors of Worse Prognosis in Young and Middle-Aged Adults Hospitalized with COVID-19 Pneumonia: A Multi-Center Italian Study (COVID-UNDER50). *J Clin Med*. 2021;10(6).
74. Grandbastien M, Piotin A, Godet J, Abessolo-Amougou I, Ederle C, Enache I, et al. SARS-CoV-2 Pneumonia in Hospitalized Asthmatic Patients Did Not Induce Severe Exacerbation. *J Allergy Clin Immunol Pract*. 2020;8(8):2600-7.
75. Kolhe NV, Fluck RJ, Selby NM, Taal MW. Acute kidney injury associated with COVID-19: A retrospective cohort study. *PLoS Med*. 2020;17(10):e1003406.
76. Maquet J, Lafaurie M, Sommet A, Moulis G. Thrombocytopenia is independently associated with poor outcome in patients hospitalized for COVID-19. *British Journal of Haematology*. 2020;190(5).
77. Spinoni EG, Mennuni M, Rognoni A, Grisafi L, Colombo C, Lio V, et al. Contribution of Atrial Fibrillation to In-Hospital Mortality in Patients With COVID-19. *Circ Arrhythm Electrophysiol*. 2021;14(2):e009375.
78. Hugo C, Stecher M, Dolff S, Nattermann J, Vehreschild J, Hippchen T, et al. Solid organ transplantation is not a risk factor for COVID-19 disease outcome. *Transpl Int*. 2021;34(2):378-81.
79. Rottoli M, Bernante P, Belvedere A, Balsamo F, Garelli S, Giannella M, et al. How important is obesity as a risk factor for respiratory failure, intensive care admission and death in hospitalised COVID-19 patients? Results from a single Italian centre. *European Journal of Endocrinology*. 2020;183(4):389-97.
80. David García-Azorín EM-P, Javier Trigo, Isabel Hernández-Pérez, Gonzalo Valle-Peñacoba, Blanca Talavera, Paula Simón-Campo, Mercedes de Lera, Alba Chavarría-Miranda, Cristina López-Sanz, María Gutiérrez-Sánchez, Elena Martínez-Velasco, María Pedraza, Álvaro Sierra, Beatriz Gómez-Vicente, Ángel Guerrero, David Ezpeleta, María Jesús Peñarrubia, Jose Ignacio Gómez-Herreras, Elena Bustamante-Munguira, Cristina Abad-Molina, Antonio Orduña-Domingo, Guadalupe Ruiz-Martin, María Isabel Jiménez-Cuenca, Santiago Juarros, Carlos del Pozo-Vegas, Carlos Dueñas-Gutierrez, Jose María Prieto de Paula, Belén Cantón-Álvarez, Jose Manuel Vicente and Juan Francisco Arenillas. Neurological Comorbidity Is a Predictor of Death in Covid-19 Disease: A Cohort Study on 576 Patients. 2020.
81. Moonen H, van Zanten FJL, Driessen L, de Smet V, Slingerland-Boot R, Mensink M, et al. Association of bioelectric impedance analysis body composition and disease severity in COVID-19 hospital ward and ICU patients: The BIAC-19 study. *Clin Nutr*. 2021;40(4):2328-36.
82. Oetjens MT, Luo JZ, Chang A, Leader JB, Hartzel DN, Moore BS, et al. Electronic health record analysis identifies kidney disease as the leading risk factor for hospitalization in confirmed COVID-19 patients. *PLoS One*. 2020;15(11):e0242182.
83. Attaoui M, Seidelin JB, Felding OK, Wewer MD, Vinther Arp LK, Sarikaya MZ, et al. Coronavirus disease 2019, immune-mediated inflammatory diseases and immunosuppressive therapies - A Danish population-based cohort study. *J Autoimmun*. 2021;118:102613.
84. Strausz S, Kiiskinen T, Broberg M, Ruotsalainen S, Koskela J, Bachour A, et al. Sleep apnoea is a risk factor for severe COVID-19. *BMJ Open Respiratory Research*. 2021;8(1):e000845.
85. Telle KE, Grosland M, Helgeland J, Haberg SE. Factors associated with hospitalization, invasive mechanical ventilation treatment and death among all confirmed COVID-19 cases in Norway: Prospective cohort study. *Scand J Public Health*. 2021;49(1):41-7.
86. Yordanov Y, Dinh A, Bleibtreu A, Mensch A, Lescure FX, Debuc E, et al. Clinical characteristics and factors associated with hospital admission or death in 43 103 adult outpatients with coronavirus disease 2019 managed with the Covidom telesurveillance solution: a prospective cohort study. *Clin Microbiol Infect*. 2021;27(8):1158-66.
87. Hamer M, Gale CR, Kivimaki M, Batty GD. Overweight, obesity, and risk of hospitalization for COVID-19: A community-based cohort study of adults in the United Kingdom. *Proc Natl Acad Sci U S A*. 2020;117(35):21011-3.

88. Götzinger F, Santiago-García B, Noguera-Julían A, Lanaspá M, Lancelli L, Calò Carducci F, et al. COVID-19 in children and adolescents in Europe: a multinational, multicentre cohort study. *The Lancet Child & Adolescent Health*. 2020;4(9):653-61.
89. Poblador-Plou B, Carmona-Pérez J, Ioakeim-Skoufa I, Poncel-Falcó A, Bliet-Bueno K, Cano-Del Pozo M, et al. Baseline Chronic Comorbidity and Mortality in Laboratory-Confirmed COVID-19 Cases: Results from the PRECOVID Study in Spain. *International Journal of Environmental Research and Public Health*. 2020;17(14):5171.
90. Deiana G, Azara A, Dettori M, Delogu F, Vargiu G, Gessa I, et al. Deaths in SARS-Cov-2 Positive Patients in Italy: The Influence of Underlying Health Conditions on Lethality. *International Journal of Environmental Research and Public Health*. 2020;17(12):4450.
91. Bravi F, Flacco ME, Carradori T, Volta CA, Cosenza G, De Togni A, et al. Predictors of severe or lethal COVID-19, including Angiotensin Converting Enzyme inhibitors and Angiotensin II Receptor Blockers, in a sample of infected Italian citizens. *PLOS ONE*. 2020;15(6):e0235248.
92. Siso-Almirall A, Kostov B, Mas-Heredia M, Vilanova-Rotllan S, Sequeira-Aymar E, Sans-Corrales M, et al. Prognostic factors in Spanish COVID-19 patients: A case series from Barcelona. *PLoS One*. 2020;15(8):e0237960.
93. Trapani S, Masiero L, Puoti F, Rota MC, Del Manso M, Lombardini L, et al. Incidence and outcome of SARS-CoV-2 infection on solid organ transplantation recipients: A nationwide population-based study. *Am J Transplant*. 2021;21(7):2509-21.
94. Waldman M, Soler MJ, Garcia-Carro C, Lightstone L, Turner-Stokes T, Griffith M, et al. Results from the IRoc-GN international registry of patients with COVID-19 and glomerular disease suggest close monitoring. *Kidney Int*. 2021;99(1):227-37.
95. Parikh R, Garcia MA, Rajendran I, Johnson S, Mesfin N, Weinberg J, et al. ICU outcomes in Covid-19 patients with obesity. *Ther Adv Respir Dis*. 2020;14:1753466620971146.
96. Pineiro GJ, Molina-Andujar A, Hermida E, Blasco M, Quintana LF, Rojas GM, et al. Severe acute kidney injury in critically ill COVID-19 patients. *J Nephrol*. 2021;34(2):285-93.
97. B Lobo-Valbuena MG-A, R B Pérez, D V Delgado, F Gordo Characteristics of critical patients with COVID-19 in a Spanish second-level hospital. 2021.
98. Thomson RJ, Hunter J, Dutton J, Schneider J, Khosravi M, Casement A, et al. Clinical characteristics and outcomes of critically ill patients with COVID-19 admitted to an intensive care unit in London: A prospective observational cohort study. *PLoS One*. 2020;15(12):e0243710.
99. Simonnet A, Chetboun M, Poissy J, Raverdy V, Noulette J, Duhamel A, et al. High Prevalence of Obesity in Severe Acute Respiratory Syndrome Coronavirus-2 (SARS-CoV-2) Requiring Invasive Mechanical Ventilation. *Obesity*. 2020;28(7):1195-9.
100. Chew MS, Bliet PJ, Ahman R, Engerstrom L, Andersson H, Berggren RK, et al. National outcomes and characteristics of patients admitted to Swedish intensive care units for COVID-19: A registry-based cohort study. *Eur J Anaesthesiol*. 2021;38(4):335-43.
101. Fresan U, Guevara M, Elia F, Albeniz E, Burgui C, Castilla J, et al. Independent Role of Severe Obesity as a Risk Factor for COVID-19 Hospitalization: A Spanish Population-Based Cohort Study. *Obesity (Silver Spring)*. 2021;29(1):29-37.
102. Strausz S, Kiiskinen T, Broberg M, Ruotsalainen S, Koskela J, Bachour A, et al. Sleep apnoea is a risk factor for severe COVID-19. *BMJ Open Respir Res*. 2021;8(1).
103. Pérez-López FR, Tajada M, Savirón-Cornudella R, Sánchez-Prieto M, Chedraui P, Terán E. Coronavirus disease 2019 and gender-related mortality in European countries: A meta-analysis. *Maturitas*. 2020;141:59-62.
104. Pijls BG, Jolani S, Atherley A, Derckx RT, Dijkstra JIR, Franssen GHL, et al. Demographic risk factors for COVID-19 infection, severity, ICU admission and death: a meta-analysis of 59 studies. *BMJ Open*. 2021;11(1):e044640.
105. Peckham H, De Grujter NM, Raine C, Radziszewska A, Ciurtin C, Wedderburn LR, et al. Male sex identified by global COVID-19 meta-analysis as a risk factor for death and ITU admission. *Nature Communications*. 2020;11(1).

106. Romero Starke K, Reissig D, Petereit-Haack G, Schmauder S, Nienhaus A, Seidler A. The isolated effect of age on the risk of COVID-19 severe outcomes: a systematic review with meta-analysis. *BMJ Glob Health*. 2021;6(12).
107. Booth A, Reed AB, Ponzo S, Yassaee A, Aral M, Plans D, et al. Population risk factors for severe disease and mortality in COVID-19: A global systematic review and meta-analysis. *PLoS One*. 2021;16(3):e0247461.
108. Tian W, Jiang W, Yao J, Nicholson CJ, Li RH, Sigurslid HH, et al. Predictors of mortality in hospitalized COVID-19 patients: A systematic review and meta-analysis. *Journal of Medical Virology*. 2020;92(10):1875-83.
109. Dorjee K, Kim H, Bonomo E, Dolma R. Prevalence and predictors of death and severe disease in patients hospitalized due to COVID-19: A comprehensive systematic review and meta-analysis of 77 studies and 38,000 patients. *PLOS ONE*. 2020;15(12):e0243191.
110. Dessie ZG, Zewotir T. Mortality-related risk factors of COVID-19: a systematic review and meta-analysis of 42 studies and 423,117 patients. *BMC Infect Dis*. 2021;21(1):855.
111. Chang R, Elhousseiny KM, Yeh Y-C, Sun W-Z. COVID-19 ICU and mechanical ventilation patient characteristics and outcomes—A systematic review and meta-analysis. *PLOS ONE*. 2021;16(2):e0246318.
112. Huang Y, Lu Y, Huang YM, Wang M, Ling W, Sui Y, et al. Obesity in patients with COVID-19: a systematic review and meta-analysis. *Metabolism*. 2020;113:154378.
113. Taylor EH, Marson EJ, Elhadi M, Macleod KDM, Yu YC, Davids R, et al. Factors associated with mortality in patients with COVID-19 admitted to intensive care: a systematic review and meta-analysis. *Anaesthesia*. 2021;76(9):1224-32.
114. Hewitt J, Carter B, Vilches-Moraga A, Quinn TJ, Braude P, Verduri A, et al. The effect of frailty on survival in patients with COVID-19 (COPE): a multicentre, European, observational cohort study. *Lancet Public Health*. 2020;5(8):e444-e51.
115. Truog RD, Mitchell C, Daley GQ. The Toughest Triage — Allocating Ventilators in a Pandemic. *New England Journal of Medicine*. 2020;382(21):1973-5.
116. Gristina GR, Piccinni M. COVID-19 pandemic in ICU. Limited resources for many patients: approaches and criteria for triaging. *Minerva Anestesiol*. 2021;87(12):1367-79.
117. Liu X, Li X, Sun T, Qin H, Zhou Y, Zou C, et al. East-West differences in clinical manifestations of COVID-19 patients: A systematic literature review and meta-analysis. *Journal of Medical Virology*. 2020.
118. Sciences SAOM. COVID-19 pandemic: triage for intensive-care treatment under resource scarcity (3rd, updated version). *Swiss Medical Weekly*. 2020.
119. Polak SB, Van Gool IC, Cohen D, Von Der Thüsen JH, Van Paassen J. A systematic review of pathological findings in COVID-19: a pathophysiological timeline and possible mechanisms of disease progression. *Modern Pathology*. 2020;33(11):2128-38.
120. Hamer M, Gale CR, Kivimäki M, Batty GD. Overweight, obesity, and risk of hospitalization for COVID-19: A community-based cohort study of adults in the United Kingdom. *Proceedings of the National Academy of Sciences*. 2020;117(35):21011-3.
121. Spinoni EG, Mennuni M, Rognoni A, Grisafi L, Colombo C, Lio V, et al. Contribution of Atrial Fibrillation to In-Hospital Mortality in Patients With COVID-19. *Circulation: Arrhythmia and Electrophysiology*. 2021;14(2).
122. Hugo C, Stecher M, Dolff S, Nattermann J, Vehreschild J, Hippchen T, et al. Solid organ transplantation is not a risk factor for COVID-19 disease outcome. *Transplant International*. 2021;34(2):378-81.

MANUSCRIPT FIGURES

Figure 1. PRISMA Flowchart of the included studies

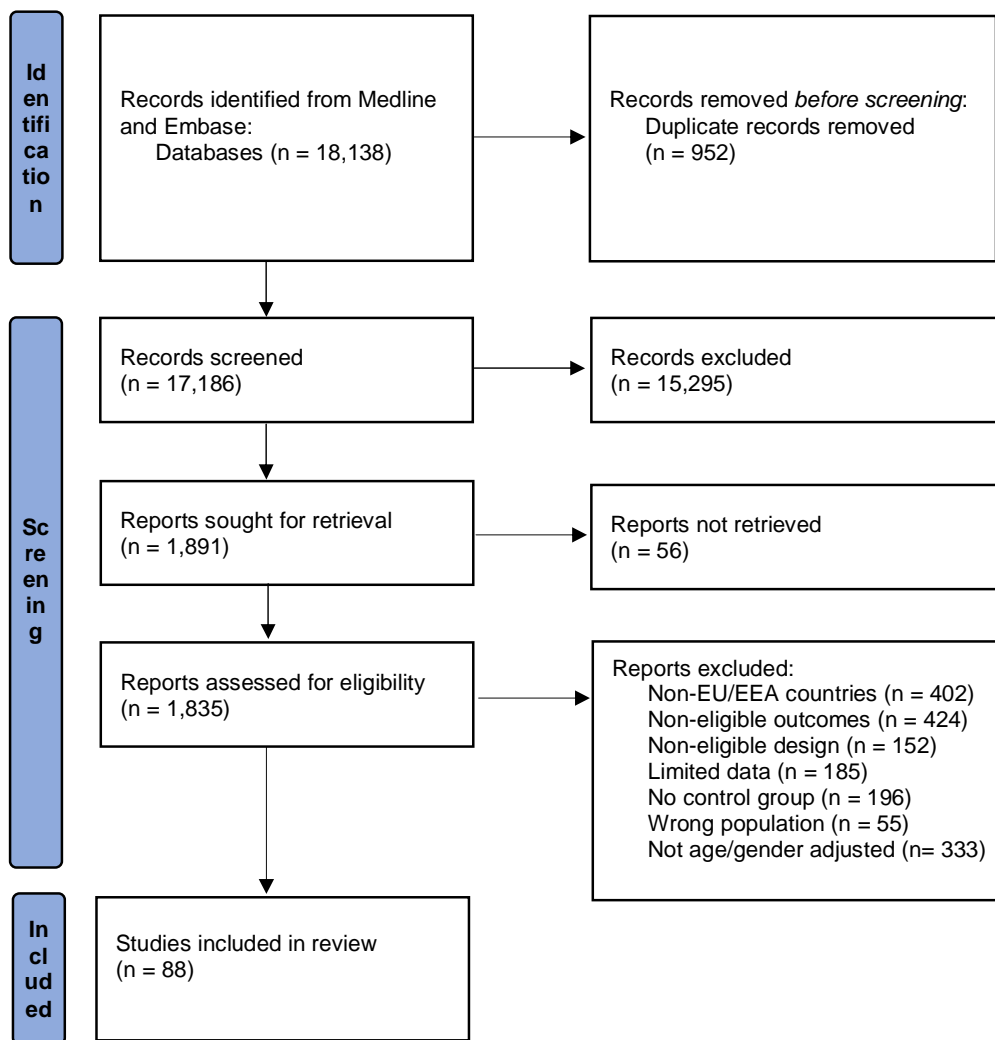
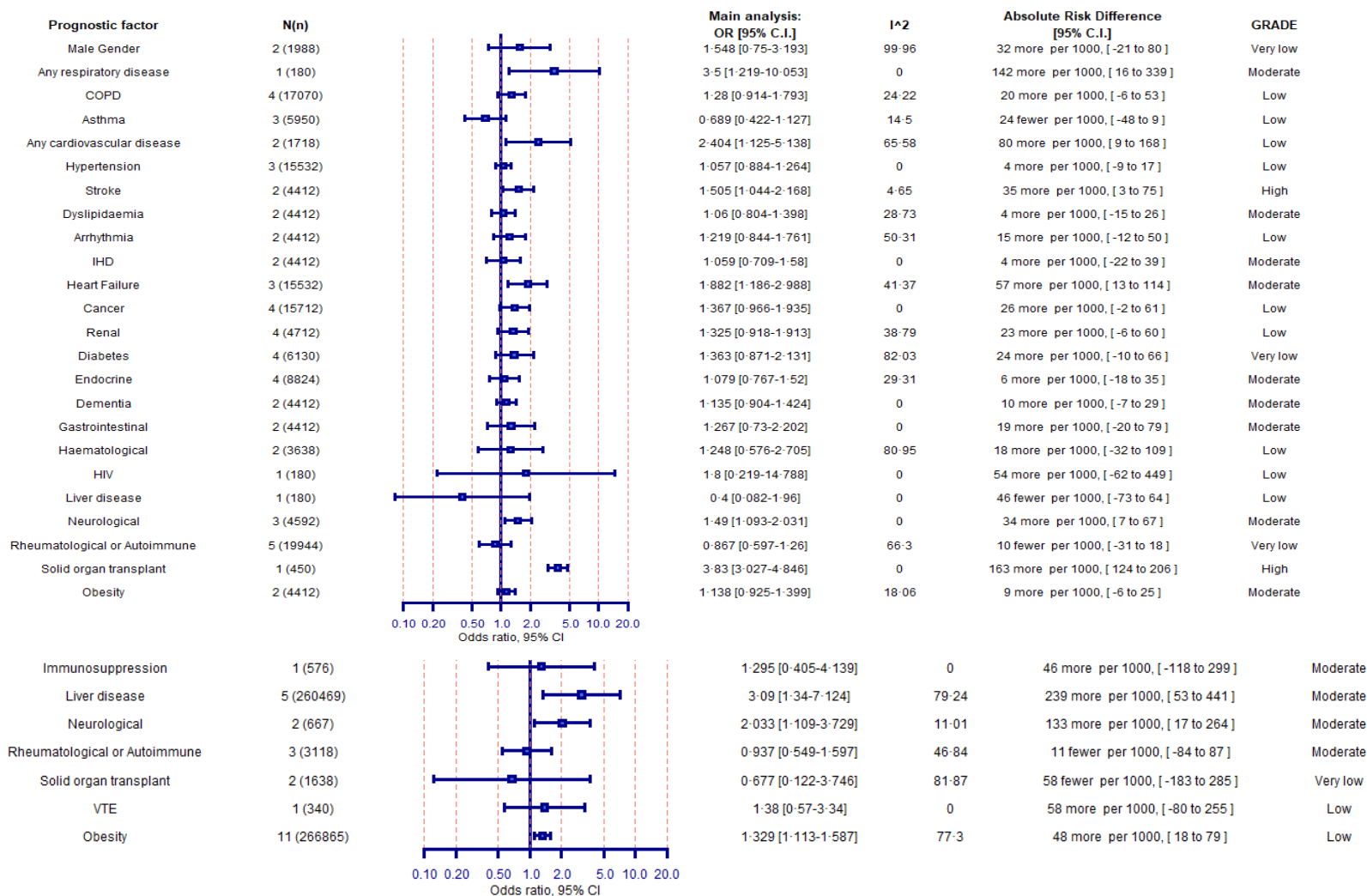


Figure 2: Association between prognostic factors and mortality among COVID-19 cases within the community (2a), hospital (2c) and ICU settings (2d). Odds ratios (95% confidence intervals), I² test for heterogeneity, absolute risk differences (95% confidence intervals) and the GRADE assessment are presented

2.a Prognostic factors and mortality among COVID-19 cases within the community



2.b

Prognostic factors and mortality among COVID-19 cases within the hospital setting

2.c Prognostic factors and mortality among COVID-19 cases within the ICU setting

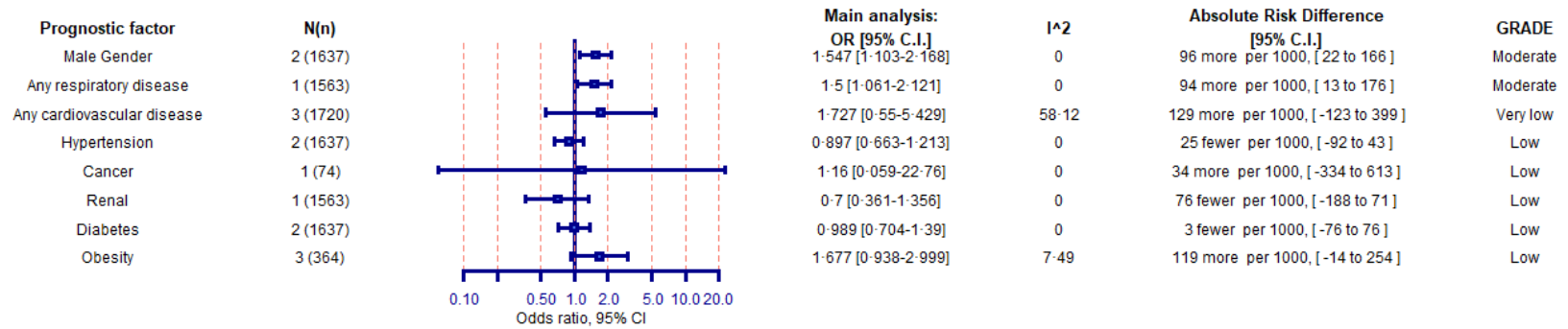


Figure 3. Association between prognostic factors and hospital admission among COVID-19 cases within the community setting. Odds ratios (95% confidence intervals), I² test for heterogeneity, absolute risk differences (95% confidence intervals) and the GRADE assessment are presented for all studies

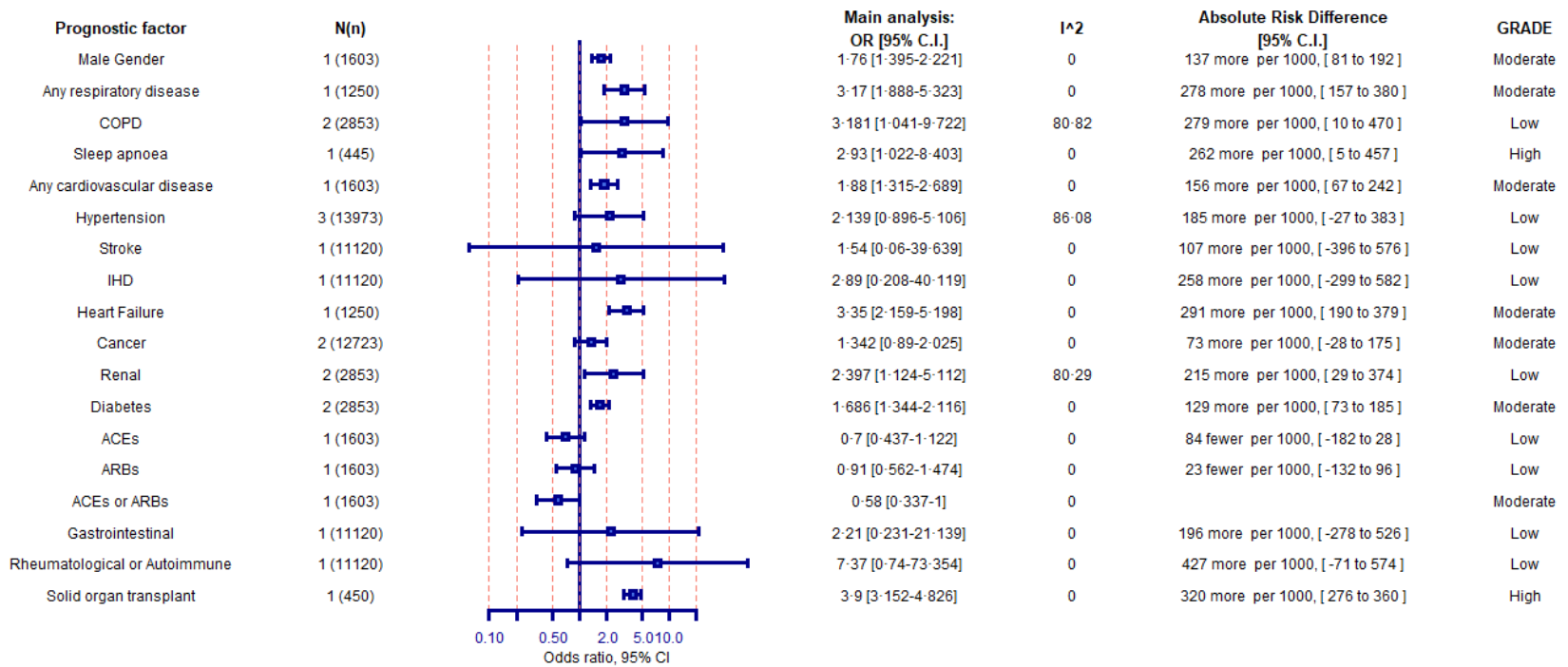
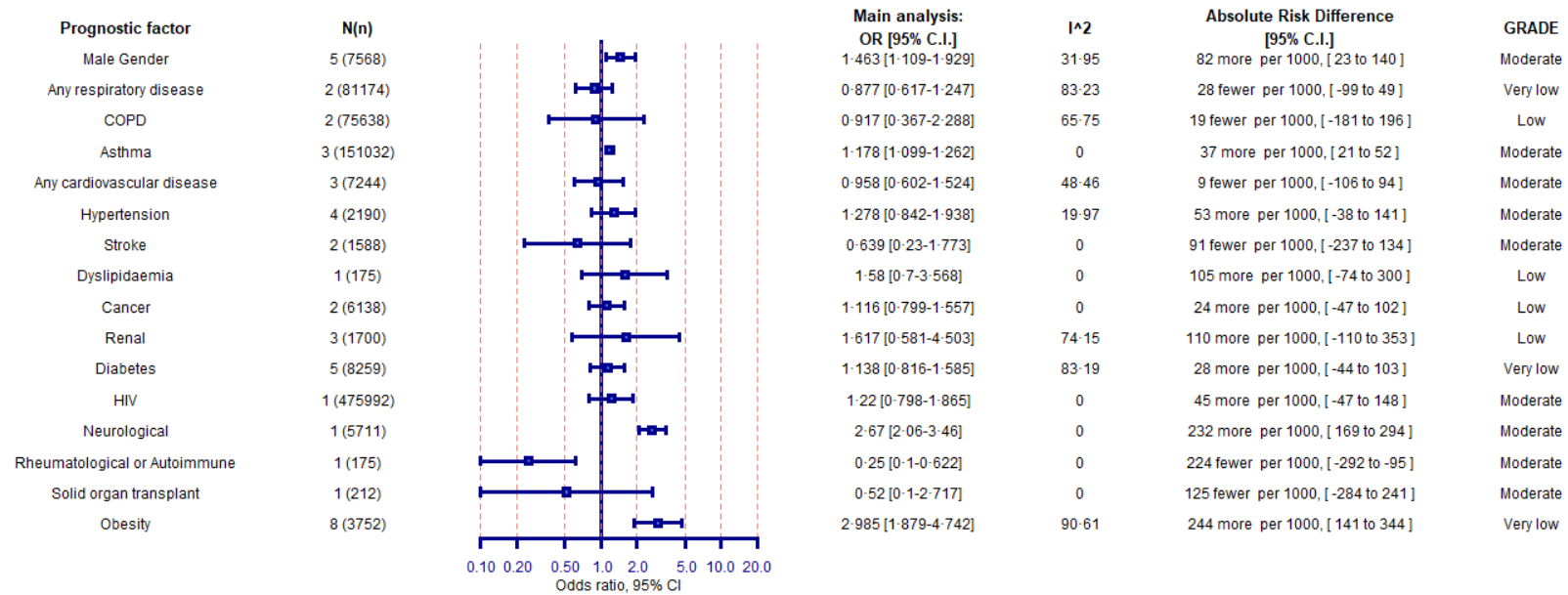


Figure 4. Association between prognostic factors and ICU admission among COVID-19 cases within the hospital setting. Odds ratios (95% confidence intervals), I^2 test for heterogeneity, absolute risk differences (95% confidence intervals) and the GRADE assessment are presented for all studies



APPENDIXES

Appendix 1: Search strategies for identifying studies

Database: Ovid MEDLINE(R) ALL <1946 to July 30, 2020>

1	exp Coronavirus/ (22658)
2	exp Coronavirus Infections/ (22921)
3	(Coronavir* or nCov or covid or covid-19 or Middle East Respiratory Syndrome or MERS or Severe Acute Respiratory Syndrome or SARS).ti,ab,kf. (55932)
4	1 or 2 or 3 (60790)
5	(case control study or case control studies or clinical study or cohort analysis or cohort studies or correlational study or cross sectional studies or cross sectional study or epidemiologic studies or family study or follow up or followup studies or follow up studies or hospital based case control study or longitudinal studies or longitudinal study or observational study or population based case control study or prospective studies or prospective study or retrospective studies or retrospective study).sh. (2511702)
6	((((case or crosssectional or cross sectional or epidemiologic\$ or observational) adj (study or studies)) or (case adj (control\$ or report\$)) or cohort\$1 or cross sectional or followup\$ or follow up\$ or followed or longitudinal\$ or prospective\$ or retrospective\$).tw. (4120613)
7	5 or 6 (4920523)
8	4 and 7 (7716)
9	8 (7716)
10	limit 9 to humans (3617)
11	limit 10 to yr="2020 -Current" (1815)

12 11 (1815)

13 limit 12 to english language (1660)

Database: Embase <1974 to 2020 July 30>

1 exp coronavirus/ (16784)

2 exp coronavirus infections/ (17165)

3 (Coronavir* or nCov or covid or Middle East Respiratory Syndrome or MERS or Severe Acute Respiratory Syndrome or SARS).ti,ab,tw. (58730)

4 1 or 2 or 3 (65543)

5 (case control study or case control studies or clinical study or cohort analysis or cohort studies or correlational study or cross sectional studies or cross sectional study or epidemiologic studies or family study or follow up or followup studies or follow up studies or hospital based case control study or longitudinal studies or longitudinal study or observational study or population based case control study or prospective studies or prospective study or retrospective studies or retrospective study).sh. (3757320)

6 (((case or crosssectional or cross sectional or epidemiologic\$ or observational) adj (study or studies)) or (case adj (control\$ or report\$)) or cohort\$1 or cross sectional or followup\$ or follow up\$ or followed or longitudinal\$ or prospective\$ or retrospective\$).tw. (6016403)

7 5 and 6 (2977800)

8 4 and 7 (4206)

9 limit 8 to human (4027)

10 limit 9 to yr="2020 -Current" (2879)

11 limit 10 to english language (2776)

Appendix 2: Characteristics of the included studies

Study ID	Area, Country	Setting at Enrollment	Study Design	Recruitment Dates	Covid Diagnosis	Follow-up Duration
Ponziani et al, 2020 (13)	Italy, Rome	Hospital	Retrospective cohort	06/03 – 16/04/20	Nasopharyngeal Swab/RT-PCR	Hospitalisation
Chew et al, 2021 (100)	Sweden, Multicenter	ICU	Registry based cohort	06/03 – 06/05/20	PCR	30-day
Fresan et al, 2021 (14)	Spain, Navarra	Hospital	Cohort study	03 – 05/20	PCR/Antibody Test	30-day
Dirim et al, 2021 (15)	Instabul, Turkey	Hospital	Propensity-matched cohort	01/02 & 14/05/20	PCR	Hospitalisation
Parikh et al, 2020 (95)	US, Boston	ICU	Cohort study	01/03 – 01/05/20	PCR	Hospitalisation
Pablos et al, 2020 (16)	Spain, Multicenter	Hospital	Matched cohort study	Up to 17/04/20	PCR	Hospitalisation
Diez et al, 2021 (17)	Spain, Multicenter	Hospital	Retrospective cohort	Up to 30/06/20	PCR	Hospitalisation
Pineiro et al, 2021 (96)	Spain, Barcelona	ICU	Cohort	25/03 – 21/04/20	PCR	35.5 days
Blomaard et al, 2021 (18)	Netherlands, Multicenter	Hospital	Cohort	Between 02/20 & 05/20	Clinical criteria or PCR	Hospitalisation
Biscarini et al, 2020 (19)	Italy, Milan	Hospital	Retrospective cohort	21/02 & 31/03/20	PCR	30-day

Fond et al, 2021 (20)	France, nationwide	Hospital	population-based cohort study	01/02 & 09/06/20	ICD Classification	Hospitalisation
Galiero et al, 2020 (21)	Italy, Campania Region	Hospital	Cohort	03 – 06/20	PCR	Hospitalisation
Villalba et al, 2021 (22)	Spain, Multicenter	Hospital	Retrospective cohort	15/03 – 14/04	PCR	Hospitalisation
Thomson et al, 2020 (98)	UK, London	ICU	Cohort	03/20 – 05/20	PCR	At least 28-days
Ciardullo et al, 2021 (23)	Italy, Lombardy	Hospital	Cohort	22/02 & 15/05/20	PCR	Hospitalisation
Bernard et al, 2021 (24)	France, Nationwide	Hospital	Cohort	01/03 – 30/04/20	ICD Classification	Hospitalisation
Fadini et al, 2020 (25)	Italy, Padova	Hospital	Cohort	21/02 & 20/04/20	PCR	Hospitalisation
McGurnaghan et al, 2021 (26)	Scotland, Nationwide	Hospital	Cohort	01/03 -31/07/20	PCR and/or ICD Classification	Hospitalisation
Mallet et al, 2021 (27)	France, Nationwide	Hospital	Registry based cohort	01/01 – 31/12/20	ICD Classification	30 days
San Roman et al, 2020 (28)	Spain, Valladolid	Hospital	Cohort	Between 15/03 & 11/04/20	Rt-PCR	Hospitalisation
Oetjens et al, 2020 (82)	USA, Pennsylvania	Community	Registry based cohort	Between 07/03 & 19/05/20	PCR	
Guerra Veloz et al, 2021 (29)	Spain, Sevilla	Hospital	Cohort	23/03 – 30/04/20	RT-PCR	Hospitalisation

Angeli et al, 2021 (30)	Italy, Lombardy	Hospital	Cohort	23/02 – 22/05/20	PCR	Hospitalisation
Chavarot et al, 2021 (31)	France, 3 centers	Hospital	Case control	09/03/20 & 02/05/20	PCR	30-day
Valdivielso-More et al, 2021 (32)	Spain, Barcelona	Hospital	Case control	02 – 04/20	PCR	30-day
Miarons et al, 2021 (33)	Spain, Barcelona	Hospital	Case control	11/03 - 25/04/20	PCR	28-day
Geretti et al, 2021 (34)	UK, 207	Hospital	Cohort	04/06 – 18/06/20	PCR	28-day
Sarmiento-Monroy et al, 2021 (35)	Spain, Barcelona-Hospital clinic	Hospital	Cohort study	1/03 – 29/05/20	PCR or Probable COVID	Hospitalisation
Xu et al, 2021 (36)	Sweden, Stocholm	Hospital	Cohort study	01/03 – 15/06/20	PCR or Symptoms/CT	Hospitalisation
Neumann-Podczaska et al, 2020 (37)	Poland, Poznan	Hospital	Cohort study	12/03 – 05/04/20	PCR	60-day
Maddaloni et al, 2020 (38)	Italy, Rome	Hospital	Retrospective cohort	15/05/20	PCR	Hospitalisation
Bellan et al, 2020 (39)	Italy, Eastern Piedmont (4 centers)	Hospital	Cohort	01/03 -28/04/20	PCR	Hospitalisation
Kaeuffer et al, 2020 (40)	France, Stasbourg	Hospital	Prospective cohort	03/20	PCR	7 days

Sutter et al, 2021 (41)	France, 24 centers	Hospital	Retrospective cohort	26/02 – 20/04/20	PCR	Hospitalisation
Kjeldsen et al, 2021 (42)	Denmark, National registry	Hospital	Retrospective cohort	01/03 – 30/10/20	ICD Classification	30-day
Czernichow et al, 2020 (43)	France, Paris	Hospital	Cohort	01/02 – 30/04/20	PCR	30-day
Attaoui et al, 2021 (83)	Denmark, National Registry	Community	Population based cohort	28/01 -15/09/20	PCR	Median 5.1 months
Joharatnam-Hogan et al, 2020 (44)	UK, London	Hospital	Case control from 2 cohorts	01/03 – 30/04/20	PCR	Hospitalisation
De Giorgi et al, 2020 (45)	Italy, Ferrara	Hospital	Retrospective cohort	15/03 – 15/04/20	PCR	
Strausz et al, 2021 (84)	Finland, Nationwide	Community	Retrospective cohort	Until 30/10/20	ICD Classification	
Siepmann et al, 2021 (46)	Germany, Multicenter	Hospital	Retrospective cohort	01/03 – 15/04/20	PCR	
Vena et al, 2020 (47)	Italy, Genoa	Hospital	Retrospective cohort	25/02 – 25/03/20	PCR	25 days
De Rosa et al, 2021 (48)	Italy, Piedmont	Hospital	Retrospective registry based cohort	27/02 – 25/06/20	PCR	7 days
Telle et al, 2021 (85)	Norway, Nationwide	Community/Hospital	Registry base cohort	01/01 – 20/06/20	PCR	Hospitalisation
Khawaja et al,	UK, London,	Hospital	Retrospective	03/20 – 07/04/20	PCR	Hospitalisation

2021 (49)	Multicenter		cohort			
Gálvez-Barrón et al, 2021 (50)	Spain, Barcelona, Multicenter	Hospital	Prospective cohort	12/03 – 02/05/20	PCR	Hospitalisation
Anastasiou et al, 2020 (51)	Germany, Essen	Hospital	Prospective cohort	03/03 – 14/05/20	PCR	Hospitalisation
Forlano et al, 2020 (52)	UK, London	Hospital	Retrospective cohort	25/02 – 05/04/20	PCR	60 days
Al-Salameh et al, 2021 (53)	France, Amiens	Hospital	Prospective cohort	Until 21/04/20	PCR	Hospitalisation or until 1st May
Varela Rodriguez et al, 2021 (54)	Spain, Madrid	Hospital	Retrospective cohort	25/02 & 04/09/20	PCR	February 25th and September 4th, 2020
Orsucci et al, 2021 (55)	Italy, Tuscany	Hospital	Retrospective cohort	03 – 05/20	PCR or Clinicoradiological	
Vanni et al, 2021 (56)	Italy, Rome	Hospital	Retrospective cohort	01/03 – 30/04/20	PCR or High Likely	
Rodriguez-Gonzalez et al, 2021 (57)	Spain, Madrid	Community/Hospital	Prospective cohort	1–24/03/20	PCR	Until 10 May
Siso-Almirall et al, 2020 (92)	Spain, Barcelona, Multicenter	Community/Hospital	Retrospective observational study	29/02 – 04/04/20	PCR	
Linares et al, 2021 (58)	Spain, Barcelona	Spain, Barcelona	Prospective cohort	06/03 – 24/05/20	PCR	68 days
Rey et al, 2020	Spain, Madrid	Spain, Madrid	Prospective	01/03 -20/04/20	PCR	59 days

(59)			cohort			
Vanhems et al, 2021 (60)	France, Lyon	Hospital	Prospective cohort	08/02 – 24/04/20	PCR	
De Vito et al, 2020 (61)	Italy, Sardinia	Hospital	Retrospective cohort	08/03 – 08/04/20	PCR	30 days
Cipriani et al, 2021 (62)	Italy, Padova	Hospital	Prospective cohort	26/02 – 21/03/20	PCR	
Al-Salameh et al, 2021 (63)	France, Amiens	Hospital	Retrospective cohort	Until 21/04/20	PCR	until May 1, 2020.
Gómez-Belda et al, 2021 (64)	Spain, Valencia	Hospital	Retrospective cohort	11/03 – 28/04/20	PCR or Serology	Hospitalisation
Smati et al, 2021 (65)	France, Multicenter Mationwide	Hospital	Retrospective cohort	10/03 – 10/04/20	PCR or Clinicoradiological	7 days
Fresan et al, 2021 (101)	Spain, Navarra	Community	Cohort study	03/20 – 31/04/20	PCR or Serology	Hospitalisation
Livingston et al, 2020 (66)	UK, London Multicenter	Hospital	Retrospective observational study	01/03 & 30/04/20	PCR or High Likely	Hospitalisation
Otero et al, 2021 (67)	Spain, Valladolid	Hospital	Prospective cohort	01/04 – 31/04/20	PCR	28 days
Marengoni et al, 2020 (68)	Italy, Brescia	Hospital	Retrospective cohort	08/03 – 17/04/20	PCR	Hospitalisation
Welch et al, 2021 (69)	International, Multicenter	Hospital	Prospective cohort		PCR or Clinicoradiological	Hospitalisation

Yordanov et al, 2021 (86)	France, Paris	Community	Prospective cohort	09/03 - 11/08/20	PCR or High Likely	30 days
García-Guimaraes et al, 2021 (70)	Spain, Barcelona	Hospital	Prospective cohort	27/02 – 07/04/20	PCR	28 days
Trapani et al, 2021 (93)	Italy, National	Community/Hospital	Registry based cohort	21/02 – 22/06/20	PCR	90 days
Novelli et al, 2021 (71)	Italy, Bergamo	Hospital	Retrospective cohort	23/02 & 14/03/20	PCR	28 days
Waldman et al, 2021 (94)	International, Multicenter	Community/Hospital	Registry based cohort	20/04-20/08/20	PCR or Clinicoradiological	17 days
Bloom et al, 2021 (72)	UK, Nationwide	Hospital	Registry based cohort	17/01 & 03/08/20	PCR or High Likely	Hospitalisation
Bonifazi et al, 2021 (73)	International, Multicenter	Hospital	Retrospective cohort	28/02 & 15/05/20	PCR or Clinicoradiological	Hospitalisation
Grandbastien et al, 2020 (74)	France, Stasbourg	Hospital	Retrospective cohort	04/03/20 & 06/04/20	PCR or Clinicoradiological	Hospitalisation
Kolhe et al, 2020 (75)	UK, Multicenter	Hospital	Retrospective cohort	5/03/20 & 12/05/20	PCR	up to 67 days
Maquet et al, 2020 (76)	France, Toulouse	Hospital	Prospective + retrospective cohort	11/03 – 20/04/20	PCR	14 days
Hamer et al, 2020 (120)	UK, Nationwide	Community	Registry based cohort	16/03/20 up to 26/04/20	PCR	
Spironi et al, 2021 (121)	Italy, Novara	Hospital		02/20 -05/20	PCR	30 days

Hugo et al, 2021 (122)	Germany, Multicenter	Hospital		Until 31/5/20	PCR	Hospitalisation
Götzinger et al, 2020 (88)	Europe(Austria, Belgium, Bulgaria, Croatia, Denmark, Estonia, Germany, Greece, Hungary, Ireland, Italy, Lithuania, Norway, Portugal, Slovakia, Slovenia, Spain, Sweden, Switzerland, Turkey and the UK	82 Participating health-care institutions (The Pediatric Tuberculosis Network European Trials Group)	Cohort	1/4 - 24/4/20	PCR	Unclear
De Smet et al, 2021 (81)	Bonheiden, Belgium	Imelda Hospital, Bonheiden, Belgium	Retrospective cohort	12/3 - 30/4/21	PCR	Not reported
Rottoli et al, 2020 (79)	Bologna, Italy		Retrospective cohort	1/3 - 20/4/20	PCR	At least 7 days
Poblador-Plou et al, 2020 (89)	Aragon, Spain		Retrospective cohort	4/3 - 17/4/20	PCR	≥ 30 days

Simonnet et al, 2020 (99)	Lille, France		Cohort	27/2 - 5/4/20	PCR	>= 1 day
Deiana et al, 2020 (90)	Sardinia, Italy		Retrospective cohort	Up to 21/4/20	Unclear	Not reported
Bravi et al, 2020 (91)	Italy		Retrospective cohort	2/4 - 24/4/20	PCR	median: 24 days
García-Azorín et al, 2020 (80)	Valladolid, Spain	Clinic University Hospital, Valladolid, Spain	Retrospective cohort	8/3 – 11/4/20	PCR	>= 10 days
Lobo Valbuena et al, 2021 (97)	Spain, Madrid	ICU	Retrospective cohort	05/03 & 07/05/20	PCR	Hospitalization

Appendix 3. Risk of Bias and Quality appraisal

The JBI critical appraisal tool for cohort studies consists of eleven questions evaluating the appropriateness of the sample used in each study, the recruitment methods, the measurements of exposures and outcomes, the identification and managing strategies for confounding factors, the follow up process and the statistical analysis. For the purposes of this study, we accepted as accurate exposures (e.g., age, sex, comorbidities) and outcome measures documented by the treated clinician or captured from health databases. We considered age, gender and recruitment setting (a surrogate measure of baseline COVID-19 severity) the most important confounding factors. All the included studies clearly grouped patients based on the recruitment setting. Therefore, we scored high risk of bias for studies that were not at least age and gender adjusted (Q5). Moreover, since the aim of our study is to assess the risk factors for adverse COVID-19 outcomes among people who may contract the disease in the future, we considered that adjustment for presenting clinical characteristics associated with COVID-19 (e.g., symptoms, oxygen saturation etc) would be a source confounding in our study. Therefore, in such cases, we scored high risk of bias in the last domain of the instrument (Q11).

Studies that provided appropriately adjusted analyses for some but not all variables were judged to be at low risk of bias for confounding. However, we noted which variables were adjusted and conducted a sensitivity analysis only including adjusted variables, the results of which are presented in the main text of the manuscript. Finally, we considered 2 weeks to be adequate follow-up to capture the outcomes of interest, as the median length of hospital stay varied between 5-13 days within the included studies, and the median length of ICU admission between 7-9 days. Therefore, 2 weeks of follow-up would suffice to capture the outcomes of significantly more than half of the participants. Studies only including patients that were discharged or deceased were also judged to be at low risk of bias.

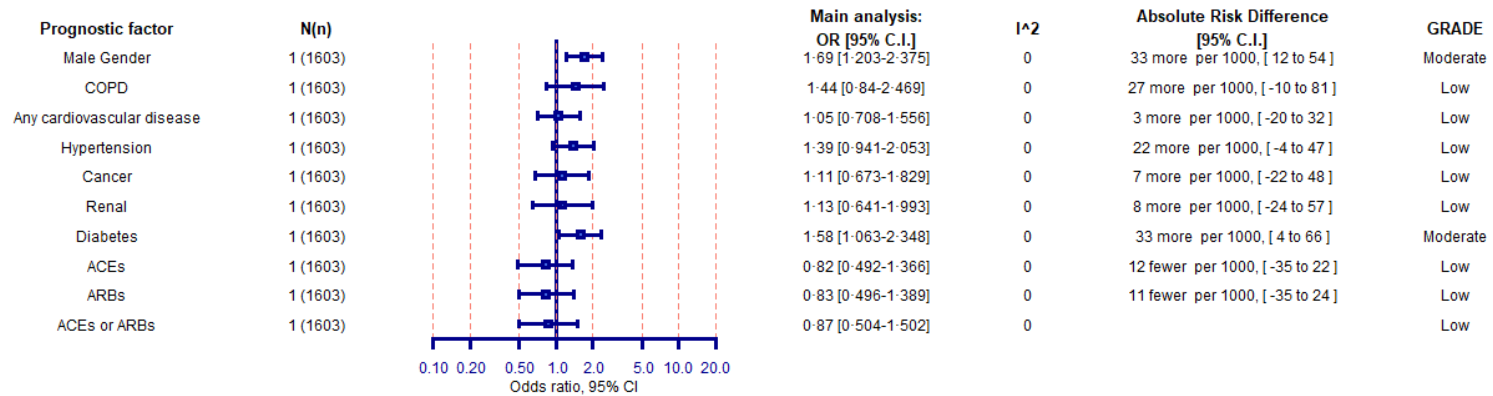
JBI critical appraisal tool for cohort studies

Q1	Were the two groups similar and recruited from the same population?
Q2	Were the exposures measured similarly to assign people to both exposed and unexposed groups?
Q3	Was the exposure measured in a valid and reliable way?
Q4	Were confounding factors identified?
Q5	Were strategies to deal with confounding factors stated?
Q6	Were the groups/participants free of the outcome at the start of the study (or at the moment of exposure)?
Q7	Were the outcomes measured in a valid and reliable way?
Q8	Was the follow up time reported and sufficient to be long enough for outcomes to occur?
Q9	Was follow up complete, and if not, were the reasons to loss to follow up described and explored?
Q10	Were strategies to address incomplete follow up utilized?
Q11	Was appropriate statistical analysis used?

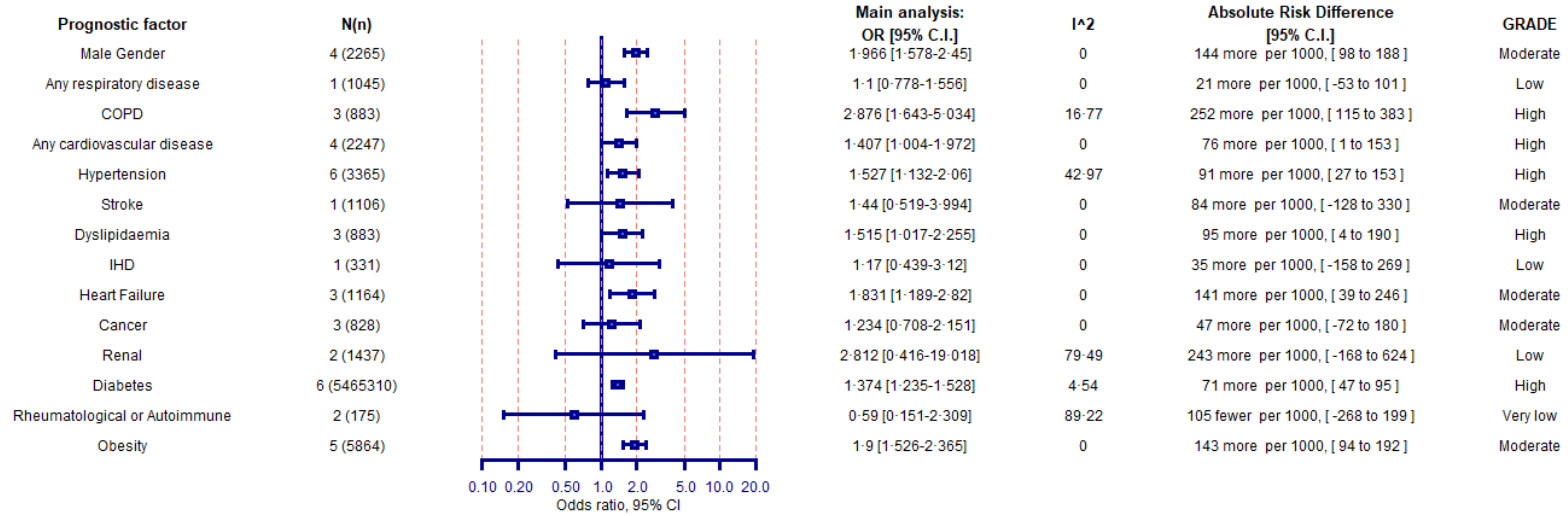
Appendix 4

Figure 4a-b. Forest plot showing the summary of available evidence regarding the association between prognostic factors and the composite outcome death or ICU admission due to COVID-19 within the community (a), and hospital setting (b).

4.a Prognostic factors related to the composite outcome of Death or ICU admission within the community setting



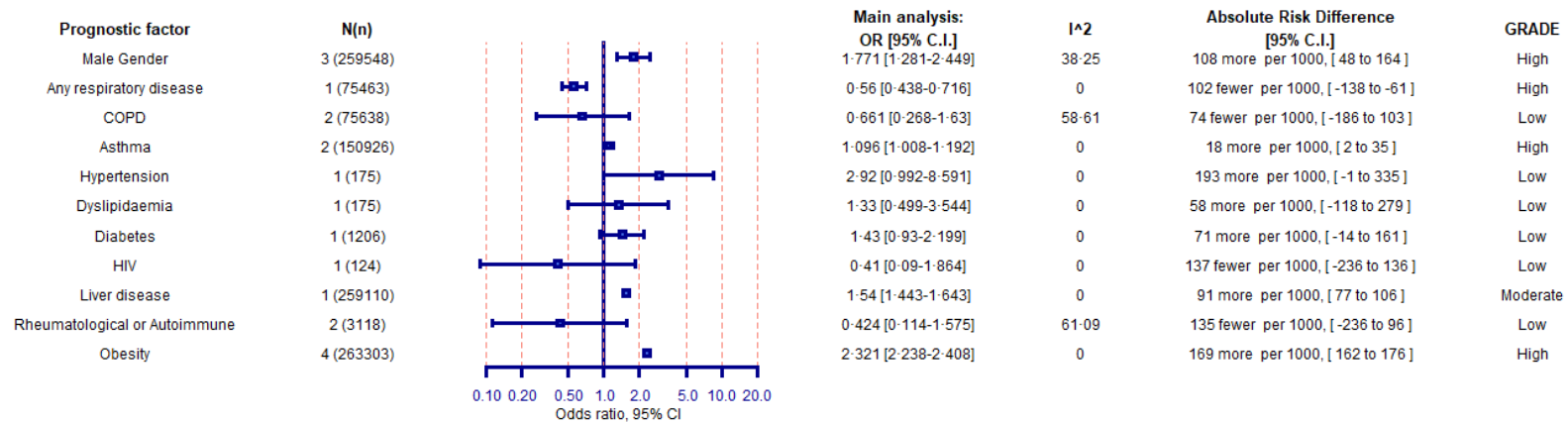
4.b Prognostic factors related to the composite outcome of death or ICU admission within the hospital setting



Appendix 5

Figure 5a-b. Forest plot showing the summary of available evidence regarding the association between prognostic factors for mechanical ventilation due to COVID-19 among those from within the hospital (6a) and ICU (6b) setting.

5a. Prognostic factors and mechanical ventilation within the hospital setting



5b. Prognostic factors and mechanical ventilation within the ICU setting

