

1 **Title:** The relationship between wild-type transthyretin amyloid load and ligamentum flavum
2 thickness in lumbar stenosis patients

3
4 **Authors:** Andy Y. Wang, A.B.^a; Harleen Saini, M.S.^a; Joseph N. Tingen, B.S.^a; Vaishnavi
5 Sharma, B.A.^a; Alexandra Flores, B.S.^a; Diang Liu, M.S.^a; Michelle Olmos, B.A.^a; Ellen D.
6 McPhail, M.D.^b; Mina G. Safain, M.D.^a; James Kryzanski, M.D.^a; Knarik Arkun, M.D.^{c,a}; Ron I.
7 Riesenburger, M.D.^a

8
9 **Affiliations:** ^aDepartment of Neurosurgery, Tufts Medical Center, Boston, Massachusetts, USA
10 ^bDepartment of Laboratory Medicine and Pathology, Mayo Clinic, Rochester, Minnesota, USA
11 ^cDepartment of Pathology and Laboratory Medicine, Tufts Medical Center, Boston,
12 Massachusetts, USA

13
14 **Corresponding author:**

15 Ron I. Riesenburger
16 Department of Neurosurgery
17 Tufts Medical Center
18 800 Washington St, Boston, MA 02111, USA
19 Email: rriesenburger@tuftsmedicalcenter.org

20
21 **Key words:** wild-type transthyretin amyloid; lumbar ligamentum flavum burden; ligamentum
22 flavum; thickness; amyloid load; machine learning; Trainable Weka Segmentation

23 **Short title:** Amyloid and ligamentum flavum thickness

24 **ABSTRACT**

25 **Background:** One key contributor to lumbar stenosis is thickening of the ligamentum flavum
26 (LF), a process still poorly understood. Wild-type transthyretin amyloid (ATTRwt) has been
27 found in the LF of patients undergoing decompression surgery, suggesting that amyloid may play
28 a role. However, it is unclear whether within patients harboring ATTRwt, the amount of amyloid
29 is associated with LF thickness.

30 **Methods:** From an initial cohort of 324 consecutive lumbar stenosis patients whose LF
31 specimens from decompression surgery were sent for analysis (2018-2019), 33 patients met the
32 following criteria: (1) Congo red-positive amyloid in the LF; (2) ATTRwt by mass spectrometry-
33 based proteomics; and (3) an available preoperative MRI. Histological specimens were digitized,
34 and amyloid load quantified through Trainable Weka Segmentation (TWS) machine learning. LF
35 thicknesses were manually measured on axial T2-weighted preoperative MRI scans at each
36 lumbar level, L1-S1. The sum of thicknesses at every lumbar LF level (L1-S1) equals “lumbar
37 LF burden.”

38 **Results:** Patients had a mean age of 72.7 years (range 59-87), were mostly male (61%) and white
39 (82%); and predominantly had surgery at L4-L5 levels (73%). Amyloid load was positively
40 correlated with LF thickness ($R=0.345$, $p=0.0492$) at the levels of surgical decompression.
41 Furthermore, amyloid load was positively correlated with lumbar LF burden ($R=0.383$,
42 $p=0.0279$).

43 **Conclusions:** Amyloid load is positively correlated with LF thickness and lumbar LF burden
44 across all lumbar levels, in a dose-dependent manner. Further studies are needed to validate these
45 findings, uncover the underlying pathophysiology, and pave the way towards using therapies that
46 slow LF thickening.

47

48 **Keywords:** wild-type transthyretin amyloid; lumbar ligamentum flavum burden; ligamentum
49 flavum; thickness; amyloid load; machine learning; Trainable Weka Segmentation

50

51

52 **INTRODUCTION**

53 Lumbar stenosis is one of the most common spine disorders afflicting older patients, and one key
54 pathophysiological contributor is thickening of the ligamentum flavum (LF). Despite the
55 ubiquity of lumbar stenosis, the underlying pathophysiological process is still poorly
56 understood.¹ There has been increasing interest in the role of amyloid, misfolded protein
57 aggregates that commonly deposit in the ligamentum flavum of older individuals.^{2, 3} The amyloid
58 deposited in LF is almost exclusively wild-type transthyretin amyloid (ATTRwt), a type derived
59 from wild-type transthyretin precursor protein. ATTRwt is also found as a form of systemic
60 amyloidosis. Many diagnosed ATTRwt patients present with heart failure due to cardiac
61 amyloidosis, and many of these patients have an antecedent history of carpal tunnel syndrome.⁴
62 Recent research has suggested that patients with ATTRwt amyloidosis may also present with an
63 antecedent history of lumbar stenosis, with amyloid deposition in the LF hypothesized as
64 possibly leading to its thickening.^{3, 5-8} As ATTRwt is found in the LF of many older individuals
65 who ultimately do not develop cardiac amyloidosis, it may be of interest outside of systemic
66 amyloidosis as a factor in the pathophysiology of lumbar stenosis.

67

68 Our group has previously reported that lumbar stenosis patients harboring ATTRwt in their LF
69 have thicker LF at the symptomatic level that required surgery, when compared to stenosis

70 patients without ATTRwt.⁹ Subsequent analysis inclusive of asymptomatic lumbar levels also
71 revealed an increased LF thickness in all lumbar levels when harboring ATTRwt.¹⁰ This total
72 sum of lumbar LF thicknesses is termed lumbar LF burden. These studies demonstrate that the
73 presence of ATTRwt in the LF is associated with an increase in LF thickness, when compared to
74 lumbar stenosis patients who do not harbor ATTRwt. However, it is still unclear whether within
75 patients harboring ATTRwt, whether the amount of amyloid is associated with a dose-dependent
76 increase in thickness. Only one previous paper studied this, reporting a strong relationship
77 between the transthyretin amyloid load and LF thickness.⁸ However, their method of quantifying
78 amyloid deposits in histological specimens of ligamentum flavum acquired from lumbar
79 decompression was not explained.

80

81 In this study, we aim to explore the relationship between transthyretin amyloid load and LF
82 thickness in lumbar stenosis patients harboring ATTRwt through a precise machine learning
83 quantification method. We have previously described this method as superior to existing
84 methods that are subjective and non-reproducible.¹¹ Through exploring the relationship between
85 amyloid load and LF thickness, we hope to elucidate the role that ATTRwt deposition in LF has
86 in LF thickening and lumbar stenosis.

87

88 **MATERIALS AND METHODS**

89 *Patient selection*

90 Between 2018–2019, we investigated 324 consecutive patients who underwent decompression
91 surgery for lumbar stenosis. Inclusion in the study required meeting the following criteria: (1) LF
92 specimen that contained Congo red-positive amyloid; (2) ATTRwt amyloid by mass

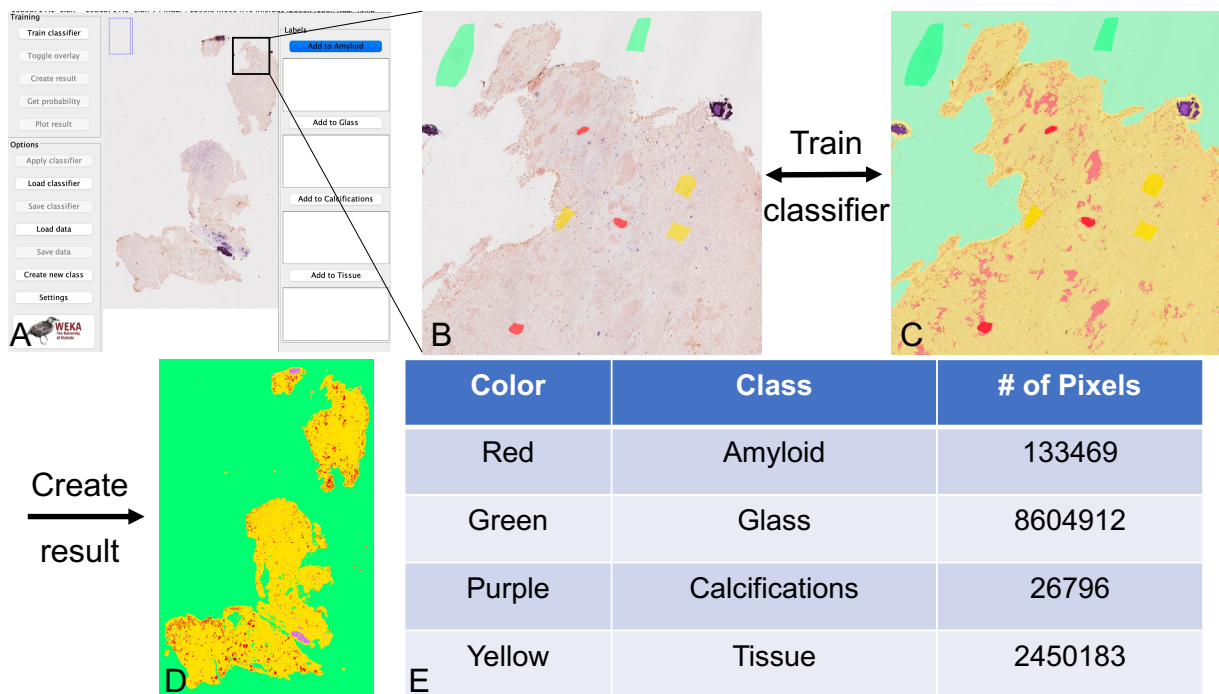
93 spectrometry-based proteomics; and (3) an available preoperative MRI. Each LF specimen was
94 stained with Congo red for apple-green birefringence under polarized light. The Congo red-
95 positive amyloid deposits were typed by liquid chromatography tandem mass spectrometry (LC-
96 MS/MS, Mayo Clinic Laboratories, Rochester, MN, USA) using previously published
97 methods.¹² By LC-MS/MS, all specimens were of ATTR type, and all lacked mutant peptides
98 indicative of pathogenic mutations and thus were consistent with ATTRwt. Out of this entire
99 cohort, 33 patients met the above criteria. Since some patients had multiple specimens stained,
100 we include 46 LF histology slides in this paper. Congo red stained slides were scanned and
101 digitized using VENTANA DP 200 slide scanner (Roche Diagnostics, Rotkreuz, Switzerland) at
102 a 20x magnification and 1 focus layer.

103

104 *Amyloid Quantification*

105 Amyloid deposits were quantified through the Trainable Weka Segmentation (TWS) plugin
106 through Fiji/ImageJ as previously described.¹¹ This machine learning segmentation method
107 utilized small sets of human-directed annotations to learn and recognize characteristics of
108 amyloid deposits. Classes of interest were selected to include amyloid, glass slide, calcifications,
109 and tissue (Figure 1A). User-directed annotations on the digital specimens provided training data
110 provided training data for TWS to build a classifier to recognize each of these classes,
111 particularly the amyloid deposits (Figure 1B, 1C). The classifier was trained on 15 total
112 specimens, each building upon the previous set of training data. Any additional annotation was
113 added due to suboptimal amyloid recognition from application of the previous classifier. The
114 final trained classifier was then applied all specimens without further annotations, including the
115 initial specimens used to train the classifier. The TWS segmentation results were visually

116 inspected for appropriate fit to the original images by three researchers. To calculate amyloid
117 load in each sample, the amyloid pixel count was divided by the sum of the amyloid,
118 calcifications, and tissue pixel counts (Figure 1E). When a patient had multiple specimens, the
119 amyloid load of all available slides was quantified, and the arithmetic mean reported.
120



121
122 **Figure 1. Quantification with TWS.** A) A digitized image of the ligamentum flavum specimen
123 is imported into Fiji and opened within the TWS graphical user interface. B) Manual annotations
124 are drawn that correspond to each class of interest. C) The classifier is then trained to learn the
125 characteristics of each class through these annotations and segments the rest of the image. An
126 overlay is generated for the user to inspect the fit of the segmentation to the original image.
127 Additional annotations may be added or prior annotations removed, re-training the algorithm as
128 necessary until reaching desired fit. D) After satisfactory fit with the overlay, a final image is

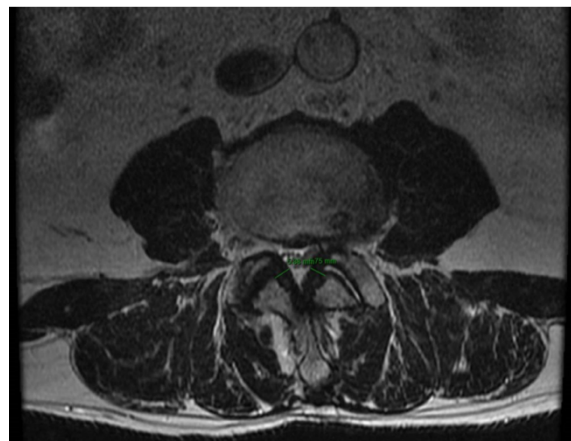
129 generated that assigns the pixels of each class to different colors. E) Calculation of the numbers
130 of pixels in each class then allows for quantification of the total area of each component.

131

132 *Ligamentum flavum thickness measurements*

133 Preoperative axial T2-weighted MRI scans were used to measure LF thickness at all lumbar
134 levels (L1-S1). A sagittal view was used to localize the lumbar level involved, and LF thickness
135 was measured in the MRI viewer at the facet joint of the lumbar level as previously described in
136 Sakamaki et al.¹³ An example of how we quantified LF thickness is illustrated in Figure 2,
137 showing perpendicular measurements at the edge of the inferior articular process of the facet
138 joint. LF thickness was measured bilaterally at each level by measuring tools within the MRI
139 viewer, and the arithmetic mean was recorded. Lumbar LF burden is calculated as the sum of
140 mean LF thicknesses across all lumbar levels from L1-L2 to L5-S1. Two reviewers (who were
141 uninvolved in the histological assessment of amyloid load) manually measured all specimens and
142 were unaware of amyloid status. To assess inter-observer reliability, we generated an intraclass
143 coefficient (ICC).¹⁴ Sample sizes for inter-rater reliability were determined using Walter et al.
144 and Zou methods for estimations with $\rho_0 = 0.6$ assumed for minimal acceptable value of
145 reliability,^{15, 16} and calculations were carried out using a subset of 34 measurements. The ICC
146 was found to be 0.89 ($p < 0.0001$, 95% CI 0.80–0.93), using ICC3. This finding is consistent
147 with good inter-rater reliability (good: 0.75–0.9; excellent: > 0.9).

148



149

150 **Figure 2.** Example of LF thickness measurement on preoperative T2-weighted MRI.

151

152 *Statistical Analysis*

153 Statistical analysis was conducted using R version 4.1.1 and figures were produced using the
154 package *ggpubr*. Pearson correlation assessed the correlation between amyloid load and
155 ligamentum flavum thickness, as well as between amyloid load and lumbar LF burden. A p-value
156 < 0.05 was considered statistically significant.

157

158 **RESULTS**

159 Baseline patient characteristics are listed in Table 1. The mean age of patients was 72.7 years
160 old, with a standard deviation of 7.2 years (range 59-87). There was a preponderance of males
161 (20 males vs 13 females). Most patients were white (82%). The level of decompression surgery,
162 which could involve more than one level, showed a predominance at L4-L5 (73%).

163

164

Table 1. Baseline characteristics

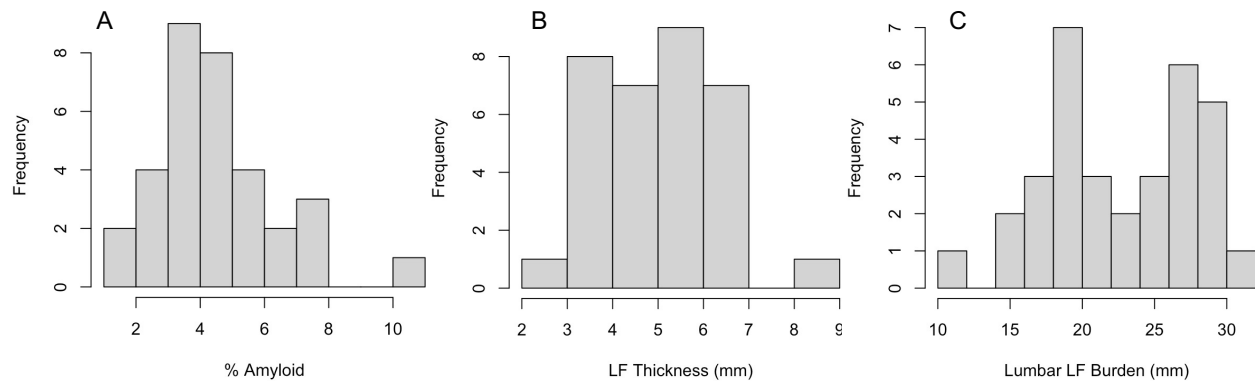
Variable	Patients N = 33 ¹
Age	72.7 (7.2)
Sex	
F	13 (39%)
M	20 (61%)
BMI	29.7 (5.1)
Level of Surgery	
L1-L2	4 (12%)
L2-L3	8 (24%)
L3-L4	13 (39%)
L4-L5	24 (73%)
L5-S1	5 (15%)
Race	
Asian	4 (12%)
African American	1 (3.0%)
Hispanic	1 (3.0%)
White	27 (82%)

¹Mean (SD); n (%)

165

166 The percentage of amyloid load was calculated for each specimen, with a unimodal distribution
167 and a peak between 3-4% (Figure 3A). LF thickness at the operative level was measured for each
168 patient on preoperative MRIs, with the majority of thicknesses at similar levels between 3-7 mm
169 (Figure 3B). The sum of all lumbar LF thicknesses, or “lumbar LF burden,” was calculated for
170 each patient, and shown to have a bimodal distribution with peaks between 18-20 mm and
171 between 26-28 mm (Figure 3C).

172



173

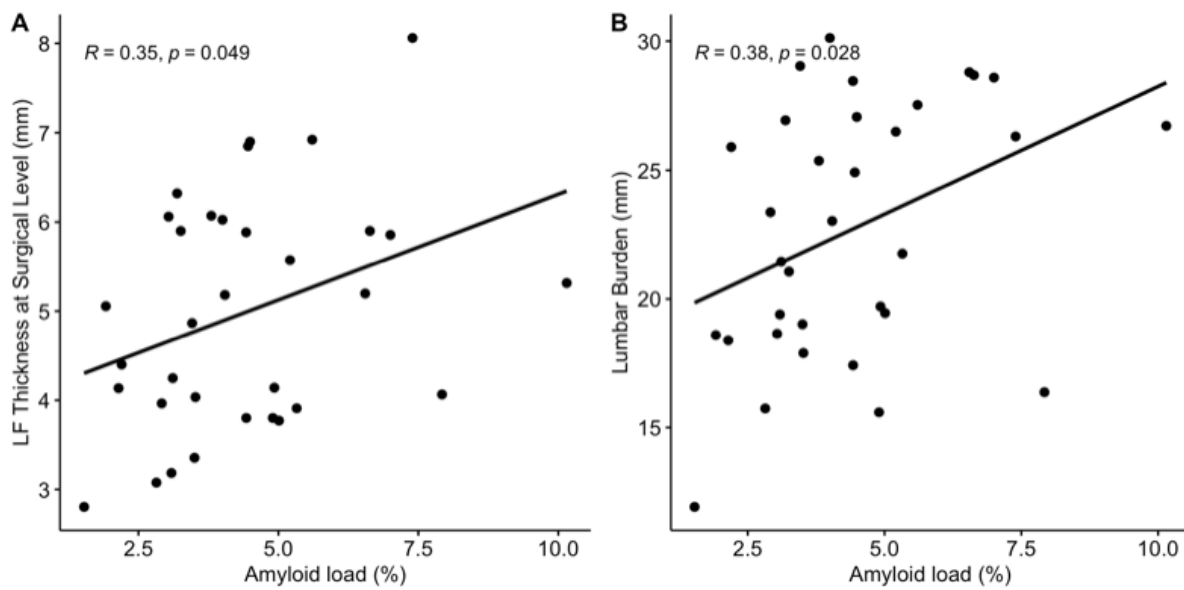
174 **Figure 3.** Histograms of A) amyloid load, B) LF thickness at the operative level, and C) lumbar
175 LF burden.

176

177 A scatter plot of amyloid load and LF thickness at the surgical level is presented in Figure 4A.

178 Amyloid load was shown to be positively correlated with LF thickness, achieving statistical
179 significance ($R = 0.345$, $p = 0.0492$). Ligamentum flavum thickness was also measured between
180 all lumbar levels L1-S1 including non-symptomatic and non-operative levels. A scatter plot of
181 amyloid load and lumbar LF burden is presented in Figure 4B. Amyloid load was shown to be
182 positively correlated with lumbar LF burden, achieving statistical significance ($R = 0.383$, $p =$
183 0.0279).

184



185

186 **Figure 4. Scatter plots of amyloid load with surgical level LF thickness and lumbar LF**

187 **burden.** A) Amyloid load versus surgical level of LF thickness, positive correlation with p-value

188 = 0.049. B). Amyloid load versus lumbar LF burden, positive correlation with p-value = 0.028.

189

190 DISCUSSION

191 There is a positive and dose-dependent relationship between amyloid load and LF thickness at
192 the surgical level as well as between amyloid load and lumbar LF burden. Lumbar LF burden is
193 the sum of the LF thicknesses at all lumbar levels, and this positive association implies that the
194 average LF thickness at each level is significantly correlated with amyloid load. These findings
195 support a previous study by Yanagisawa et al. that analyzed 43 patients, finding positive
196 correlation between amyloid load and lumbar LF thickness ($r = 0.54$, p-value < 0.0005).⁸ A
197 limitation of that study was the methodology for obtaining amyloid deposit measurements, only
198 reporting it was obtained with ImageJ without further detail. Other publications assessing
199 amyloid load through computational methods have used the color thresholding function in
200 ImageJ, which we have previously shown to be suboptimal.¹¹ Our method utilizes powerful and

201 precise machine learning quantification to measure amyloid load, which outperforms color
202 thresholding. While the results shown in this paper are statistically significant, our p-values were
203 not as low as those in the study by Yanagisawa et al. However, these p-values cannot be
204 compared to each other as these are completely different studies. Furthermore, there may be a
205 more complex relationship between the amount of amyloid and LF thickness in patients
206 harboring ATTRwt in their LF and perhaps a larger sample size is needed for increased statistical
207 power to better assess this relationship.

208
209 Our results suggest that amyloid may not simply be a bystander to LF thickening, but rather a
210 direct contributor in a dose-dependent manner. The mechanism by which LF thickening occurs
211 has yet to be fully understood. Currently, studies have identified TGF- β as part of the pathway in
212 LF thickening, responsible for transforming fibroblasts to myofibroblasts and leading to
213 increased collagen production.¹⁷ IL-6 is another implicated biomarker, associated with increased
214 fibrosis and expression of collagen type I and III.¹⁸ TGF- β in the presence of IL-6 has been
215 shown to induce an inflammatory response.¹⁹ Specifically, transforming growth factor beta
216 (TGF- β) and interleukin 6 (IL-6) promote the differentiation of Th17 cells, leading to cytokine
217 release. Additionally, the misfolding of amyloid itself could be another mechanism, with the
218 normally buried hydrophobic residues now exposed to the environment.²⁰ Future studies should
219 focus on biochemical pathways of amyloid load within the ligamentum flavum in order to
220 understand how amyloid specifically leads to LF thickening.

221
222 The study has several limitations. The presence of ATTRwt in one specimen was used to infer
223 positivity at all levels, as the presence of amyloid cannot be confirmed at asymptomatic levels

224 without further resection. There may also be sampling bias due to what the surgeon sends as a LF
225 specimen. Some patients may have had previous spinal decompression surgeries at other levels
226 prior to this study, underestimating the lumbar LF burden. Another limitation could be using a
227 Congo red stain from a single block to extrapolate amyloid density throughout the specimen, as
228 there may be variation in amyloid density in different blocks from the same specimen. Lastly,
229 this study only includes patients undergoing decompressive surgery. Thus, there may be collider
230 bias, also known as index event bias, which is when studies select patients based on an index
231 event, in this case spinal surgery.²¹ This type of bias tends to shift study results towards the null,
232 underestimating contributions as may be seen in this study.

233

234 In addition to understanding biochemical pathways, future studies may explore the potential of
235 drug therapy for halting the progression of LF thickening in patients with amyloid. For ATTRwt,
236 several therapies exist to reduce its production, stabilize ATTRwt, and remove fibrils, studied in
237 the context of cardiac amyloidosis.²² Tafamidis is a well-known example that is FDA-approved
238 for cardiomyopathy of wild-type or hereditary TTR-mediated amyloidosis.²³ Although not yet
239 studied in the context of LF thickening, tafamidis may potentially help reduce the buildup of
240 ATTRwt in the LF and slow its thickening. This study lays the foundation for possible
241 intervention studies such as a longitudinal study of patients on tafamidis, or even a clinical trial.

242

243 **CONCLUSIONS**

244 The data from this study suggest that amyloid load is positively correlated with LF thickness in a
245 dose-dependent manner in patients with ATTRwt. Further studies may investigate the

246 biochemical pathways involved in this process, as well as potential drug targets for reducing LF
247 thickening.

248

249 **Acknowledgments:** We would also like to thank Joanna R. O'Brien from the Tufts Pathology
250 department for retrieving and scanning the histological slides of ligamentum flavum.

251

252 **Sources of support:** Andy Y. Wang was supported by the National Center for Advancing
253 Translational Sciences, National Institutes of Health, Award Number TL1TR002546. The
254 content is solely the responsibility of the authors and does not necessarily represent the official
255 views of the NIH.

256

257 **Conflict of interest:** All authors report no conflict of interest.

258

259 **References**

- 260 1. Sun C, Zhang H, Wang X, Liu X. Ligamentum flavum fibrosis and hypertrophy:
261 Molecular pathways, cellular mechanisms, and future directions. *FASEB J*. Aug 2020;34(8):9854-
262 9868. doi:10.1096/fj.202000635R
- 263 2. Sueyoshi T, Ueda M, Jono H, et al. Wild-type transthyretin-derived amyloidosis in
264 various ligaments and tendons. *Hum Pathol*. Sep 2011;42(9):1259-64.
265 doi:10.1016/j.humpath.2010.11.017
- 266 3. Westermark P, Westermark GT, Suhr OB, Berg S. Transthyretin-derived amyloidosis:
267 probably a common cause of lumbar spinal stenosis. *Ups J Med Sci*. Aug 2014;119(3):223-8.
268 doi:10.3109/03009734.2014.895786

- 269 4. Siddiqi OK, Ruberg FL. Cardiac amyloidosis: An update on pathophysiology, diagnosis,
270 and treatment. *Trends Cardiovasc Med*. Jan 2018;28(1):10-21. doi:10.1016/j.tcm.2017.07.004
- 271 5. Godara A, Riesenburger RI, Zhang DX, et al. Association between spinal stenosis and
272 wild-type ATTR amyloidosis. *Amyloid*. Jul 15 2021;1-8. doi:10.1080/13506129.2021.1950681
- 273 6. Aus dem Siepen F, Hein S, Prestel S, et al. Carpal tunnel syndrome and spinal canal
274 stenosis: harbingers of transthyretin amyloid cardiomyopathy? *Clin Res Cardiol*. Dec
275 2019;108(12):1324-1330. doi:10.1007/s00392-019-01467-1
- 276 7. Eldhagen P, Berg S, Lund LH, Sorensson P, Suhr OB, Westermark P. Transthyretin
277 amyloid deposits in lumbar spinal stenosis and assessment of signs of systemic amyloidosis. *J*
278 *Intern Med*. Jun 2021;289(6):895-905. doi:10.1111/joim.13222
- 279 8. Yanagisawa A, Ueda M, Sueyoshi T, et al. Amyloid deposits derived from transthyretin
280 in the ligamentum flavum as related to lumbar spinal canal stenosis. *Mod Pathol*. Feb
281 2015;28(2):201-7. doi:10.1038/modpathol.2014.102
- 282 9. George KM, Hernandez NS, Breton J, et al. Increased thickness of lumbar spine
283 ligamentum flavum in wild-type transthyretin amyloidosis. *J Clin Neurosci*. Feb 2021;84:33-37.
284 doi:10.1016/j.jocn.2020.11.029
- 285 10. George KM, Hernandez NS, Breton J, et al. Lumbar ligamentum flavum burden:
286 Evaluating the role of ATTRwt amyloid deposition in ligamentum flavum thickness at all lumbar
287 levels. *Clin Neurol Neurosurg*. Jul 2021;206:106708. doi:10.1016/j.clineuro.2021.106708
- 288 11. Wang AY, Sharma V, Saini H, et al. Machine Learning Quantification of Amyloid
289 Deposits in Histological Images of Ligamentum Flavum. *Journal of Pathology Informatics*.
290 2022/01/01/ 2022;13:100013. doi:<https://doi.org/10.1016/j.jpi.2022.100013>

- 291 12. Vrana JA, Gamez JD, Madden BJ, Theis JD, Bergen HR, 3rd, Dogan A. Classification of
292 amyloidosis by laser microdissection and mass spectrometry-based proteomic analysis in clinical
293 biopsy specimens. *Blood*. Dec 3 2009;114(24):4957-9. doi:10.1182/blood-2009-07-230722
- 294 13. Sakamaki T, Sairyō K, Sakai T, Tamura T, Okada Y, Mikami H. Measurements of
295 ligamentum flavum thickening at lumbar spine using MRI. *Arch Orthop Trauma Surg*. Oct
296 2009;129(10):1415-9. doi:10.1007/s00402-009-0849-1
- 297 14. Shrout PE, Fleiss JL. Intraclass correlations: uses in assessing rater reliability. *Psychol*
298 *Bull*. Mar 1979;86(2):420-8. doi:10.1037//0033-2909.86.2.420
- 299 15. Walter SD, Eliasziw M, Donner A. Sample size and optimal designs for reliability
300 studies. *Stat Med*. Jan 15 1998;17(1):101-10. doi:10.1002/(sici)1097-
301 0258(19980115)17:1<101::aid-sim727>3.0.co;2-e
- 302 16. Zou GY. Sample size formulas for estimating intraclass correlation coefficients with
303 precision and assurance. *Stat Med*. Dec 20 2012;31(29):3972-81. doi:10.1002/sim.5466
- 304 17. Hur JW, Bae T, Ye S, et al. Myofibroblast in the ligamentum flavum hypertrophic
305 activity. *Eur Spine J*. Aug 2017;26(8):2021-2030. doi:10.1007/s00586-017-4981-2
- 306 18. Sun C, Wang Z, Tian JW, Wang YH. Leptin-induced inflammation by activating IL-6
307 expression contributes to the fibrosis and hypertrophy of ligamentum flavum in lumbar spinal
308 canal stenosis. *Biosci Rep*. Apr 27 2018;38(2)doi:10.1042/bsr20171214
- 309 19. Prud'homme GJ. Pathobiology of transforming growth factor beta in cancer, fibrosis and
310 immunologic disease, and therapeutic considerations. *Lab Invest*. Nov 2007;87(11):1077-91.
311 doi:10.1038/labinvest.3700669
- 312 20. Kim MJ, Baek D, Truong L, Ro JY. Pathologic Findings of Amyloidosis: Recent
313 Advances. *IntechOpen*. 2019;doi:10.5772/intechopen.84268

- 314 21. Dahabreh IJ, Kent DM. Index event bias as an explanation for the paradoxes of
315 recurrence risk research. *Jama*. Feb 23 2011;305(8):822-3. doi:10.1001/jama.2011.163
- 316 22. Ruberg FL, Grogan M, Hanna M, Kelly JW, Maurer MS. Transthyretin Amyloid
317 Cardiomyopathy: JACC State-of-the-Art Review. *J Am Coll Cardiol*. Jun 11 2019;73(22):2872-
318 2891. doi:10.1016/j.jacc.2019.04.003
- 319 23. Park J, Egolum U, Parker S, Andrews E, Ombengi D, Ling H. Tafamidis: A First-in-
320 Class Transthyretin Stabilizer for Transthyretin Amyloid Cardiomyopathy. *Ann Pharmacother*.
321 May 2020;54(5):470-477. doi:10.1177/1060028019888489
- 322