

Running title: SCENTinel 1.1

# SCENTinel 1.1 rapidly screens for COVID-19 related olfactory disorders

Stephanie R. Hunter<sup>1†</sup>, Mackenzie E. Hannum<sup>1†</sup>, Robert Pellegrino<sup>1</sup>, Maureen A. O’Leary<sup>1</sup>, Nancy E. Rawson<sup>1</sup>, Danielle R. Reed<sup>1</sup>, Pamela H. Dalton<sup>1</sup>, Valentina Parma<sup>1,2A</sup>

<sup>1</sup> Monell Chemical Senses Center, Philadelphia, PA

<sup>2</sup> Department of Psychology, Temple University, Philadelphia, PA

† Equal contributions

## <sup>A</sup>Correspondence:

Valentina Parma, PhD  
Monell Chemical Senses Center  
3500 Market Street  
Philadelphia, PA 19143  
Email: [vparma@monell.org](mailto:vparma@monell.org)

**Keywords:** Anosmia, hyposmia, parosmia, phantosmia, prediction, smell test, quantitative olfactory disorder, qualitative olfactory disorder

Running title: SCENTinel 1.1

## Abstract

The COVID-19 pandemic has increased the prevalence of people suffering from olfactory disorders. In the absence of quick, population-wide olfactory tests, we developed SCENTinel, a rapid, inexpensive smell test to assess odor detection, intensity, and identification ability, which can discriminate anosmia (e.g., total smell loss) from normosmia (e.g., normal sense of smell) using a single odor. A new version, SCENTinel 1.1, extends the original test with one of four possible odors and a hedonic subtest (“how pleasant is the odor”). The purpose of this study was to determine if SCENTinel 1.1 can discriminate other types of olfactory disorders common to COVID-19, such as hyposmia (e.g., reduced sense of smell), parosmia (e.g., distorted odor perception), and phantosmia (e.g., odor sensation without an odor source). Participants (N=381) were divided into three groups based on their self-reported olfactory function: quantitative smell disorder (anosmia or hyposmia, N=135), qualitative smell disorder (parosmia and/or phantosmia; n=86), and normosmia (N=66). SCENTinel 1.1 classifies anosmia and normosmia groups with high sensitivity (AUC=0.94), similar to SCENTinel 1.0 (AUC=0.95). SCENTinel 1.1 also accurately discriminates quantitative from qualitative (AUC=0.76), and normosmia (AUC=0.84), and normosmia from qualitative (AUC=0.73) groups. We also considered a subset of participants who only reported one type of olfactory disorder. SCENTinel 1.1 discriminates hyposmia from parosmia (AUC=0.89), and anosmia (AUC=0.78); as well as parosmia from anosmia (AUC=0.82). Participants with parosmia had a significantly lower hedonic score than those without parosmia, indicating odor distortions are unpleasant. SCENTinel 1.1 is a rapid smell test that can discriminate quantitative (anosmia, hyposmia) and qualitative (parosmia, phantosmia) olfactory disorders, and it is among the only direct tests to rapidly screen for parosmia.

Running title: SCENTinel 1.1

## Introduction

Prior to March 2020, a nationally representative survey in 3,603 individuals reported more than 20% of individuals experienced olfactory disorders over the course of their lifetime (1). These olfactory disorders, broadly classified, include quantitative and qualitative olfactory disorders, which can occur in isolation or together (2,3). Quantitative olfactory disorders are those where the perceived intensity of the odor is diminished and include anosmia (e.g., total smell loss) and hyposmia (e.g., reduced sense of smell). Qualitative olfactory disorders are disorders where the perceived quality or identity of an odor is changed, including parosmia (e.g., distorted odor perception with a known source) and phantosmia (e.g., odor sensation without an odor source). These olfactory disorders have a large negative impact on overall quality of life (4).

The prevalence of quantitative olfactory disorders has increased dramatically due to the COVID-19 pandemic, where sudden loss of smell is a specific symptom (5). As of March 2022, there have been more than 79 million reported cases of COVID-19 in the United States alone (6). Of those who contract COVID-19, about 50% self-report losing their sense of smell (7). While most of these individuals fully recover their sense of smell within three weeks (8–11), about 10-15% have persistent smell loss for more than one month (8,12). Thus, millions of Americans are now at risk of experiencing chronic smell loss due to COVID-19. These prevalence estimates of smell loss from COVID-19 remain uncertain, however, because of symptomatic differences in SARS-CoV-2 variants (e.g., smell loss is not as prevalent with the omicron variant compared to the previous variants) (7,13,14). Furthermore, people are generally not proficient at subjectively assessing their smell ability (1,7,15–18). Prior research has shown that directly testing olfactory function provides a better representation of the prevalence of smell loss compared to self-report (7). Currently validated smell tests, such as UPSIT (16,19–24), Sniffin' Sticks (25–27), or the NIH Toolbox Odor Identification Test (28), among others, are sensitive at accurately identifying quantitative olfactory disorders, including anosmia and hyposmia. However, these tests lack suitability for population-wide surveillance of smell function, especially during the COVID-19 pandemic, due to their odor delivery method, increased cost and time to execute, and/or because the test cannot be self-administered.

To address these shortcomings in olfactory testing, we created the SCENTinel Rapid Smell Test (29). The first version of the test, SCENTinel 1.0, is a self-administered test that uses flower as a target odor to assess odor detection ("select the odor that is the strongest"), odor intensity ("rate the intensity of the odor" using a visual analog scale from 1-100), and odor identification ("identify the odor" when given four options). To enable the use of SCENTinel as a rapid screener of smell function, accuracy criteria were established: odor detection and odor identification answers are coded as correct or incorrect and odor intensity uses a cutoff of 20 to determine normal smell function (i.e., normosmia), based on a previous study by Gerkin et al (5). These three subtests are then combined to create an overall score, which was previously found to differentiate between people self-reporting anosmia from normosmia (29).

Many of the direct approaches to assess olfactory function only focus on quantitative smell disorders and there remains a dearth of direct tests that screen for qualitative olfactory disorders, including parosmia and phantosmia. Often, qualitative olfactory disorders are diagnosed through subjective ratings from questionnaires and/or patient history obtained

## Running title: SCENTinel 1.1

through interviews (30–35). This reliance on self-report leaves estimates of qualitative olfactory disorders likely underrepresented, only diagnosed when individuals consult specialists. However, even with subjective reports, qualitative olfactory disorders are present in more than half of those reporting smell impairment (36–38), and distinct features of parosmia and phantosmia are beginning to surface (31). Parosmia encompasses distortions of a known odor, often experiencing pleasant odors as unpleasant or vice versa (39), so one way to assess parosmia directly is to have participants rate the pleasantness of two oppositely valenced odors (i.e., a pleasant and unpleasant odor). This procedure creates a hedonic score, such that those with parosmia have a lower hedonic score than those with normosmia, assuming those with parosmia would rate the pleasant odor as unpleasant. Liu and colleagues successfully employed this technique to classify two patients with parosmia (27). Directly testing for parosmia may still prove difficult, because parosmia reports are not consistent across all odors. Odors that are frequently associated with parosmia include coffee, meats, onion, garlic, and chocolate (2,31,40), yet the direct cause for the odor-specificity remains to be understood. Individuals with odor-specific parosmia may only be detected with direct smell tests if the distorted odor is used in the test, and therefore, multiple odor versions are needed. Overall, there is an imminent need to directly measure quantitative and qualitative olfactory disorders in a fast and inexpensive way to enable a better assessment of the magnitude of smell impairments in the population. These tests can help to diagnose diseases where smell loss is a symptom (including head trauma (41–43), neurodegenerative diseases (44–46), and viral illness (47), and help evaluate the impact of treatments and therapies for those living with olfactory disorders.

Here, we extended SCENTinel 1.0 to a new version, SCENTinel 1.1 to screen for both quantitative and qualitative olfactory disorders. Using the rationale from Liu et al. (27), we included a hedonic score subtest to screen for qualitative olfactory disorders population-wide. Specifically, after participants complete the odor detection, intensity, and identification subtests, they will rate the pleasantness of two oppositely valenced odors (the actual odor on the SCENTinel test received, and a universally unpleasant odor) to create a hedonic score to directly measure parosmia and phantosmia. Using two odors enables a common anchor between the hedonic scores to account for varying scale usage. Additionally, SCENTinel 1.1 now includes additional target odor versions: flower (the same as SCENTinel 1.0), bubblegum, coffee, and caramel popcorn, enabling us to allow for repeat testing (12 different odor/placement combinations) and to capture potential odor-specific olfactory symptoms.

In the present study, we sought to test the ability of SCENTinel 1.1 to screen for different smell disorders through three aims. First, we aim to validate SCENTinel 1.1's accuracy to discriminate between those with normosmia and anosmia, now with multiple target odors, based on the original model developed with SCENTinel 1.0 (29). We hypothesized that participants with normosmia will meet the accuracy criteria for SCENTinel 1.1 similarly to that reported in SCENTinel 1.0.

Second, we aim to determine SCENTinel 1.1's accuracy in distinguishing between quantitative (anosmia and hyposmia) and qualitative (parosmia and phantosmia) olfactory disorders. Specifically, we expect those with quantitative olfactory disorders will rate the odor intensity as low or absent and may not be able to distinguish the odor stimulus, therefore unable to meet the accuracy criteria for odor detection and intensity. Those with qualitative olfactory disorders can still smell intensely, but the quality of some odors is distorted, so we hypothesized

Running title: SCENTinel 1.1

that they would perform better overall on SCENTinel 1.1 compared to quantitative, but their odor identification ability might be jeopardized.

Finally, we aim to explore the hedonic score of the target odors for participants with qualitative olfactory disorders compared to those without. Experiencing distorted odors is often reported as an unpleasant experience (39), therefore we hypothesized that those with qualitative olfactory disorders (e.g., parosmia) would report a lower hedonic score for common odorants included in SCENTinel 1.1 than those without distortion (e.g., people with hyposmia or normosmia).

## Materials & Methods

The materials, procedures, hypotheses, and pre-analysis plan were pre-registered and are publicly available in the Open Science Framework Repository (48).

### **SCENTinel 1.1**

The SCENTinel 1.1 test card contains three patches created with Liff'nSmell technology (Scentisphere, Carmel, NY), of which only one patch contains a target odor and the other two are blank. SCENTinel 1.1 includes four subtests: odor detection accuracy (correct/incorrect); odor intensity (above/below a cutoff of 20, or continuous value depending on the analysis); odor identification among 4 given options (correct/incorrect) or, if the first response is incorrect, among the 3 remaining options (correct/incorrect); and a hedonic score (pleasantness rating of an unpleasant imagined odor (vomit) - pleasantness rating of the target odor on the SCENTinel test; procedure outlined in Supplementary Figure 1). The target odor on SCENTinel 1.1 is one of four different odors, such that participants received a SCENTinel 1.1 test with either a flower, a coffee, a bubblegum, or a caramel popcorn target odor. All odors were from Givaudan (Cincinnati, OH; see Supplementary Table 1 for catalog numbers) and were designed to be iso-intense at an intensity of 80 on a scale of 0 to 100, confirmed via pilot testing. Target odor type and placement were randomized and balanced across participants and within smell groups.

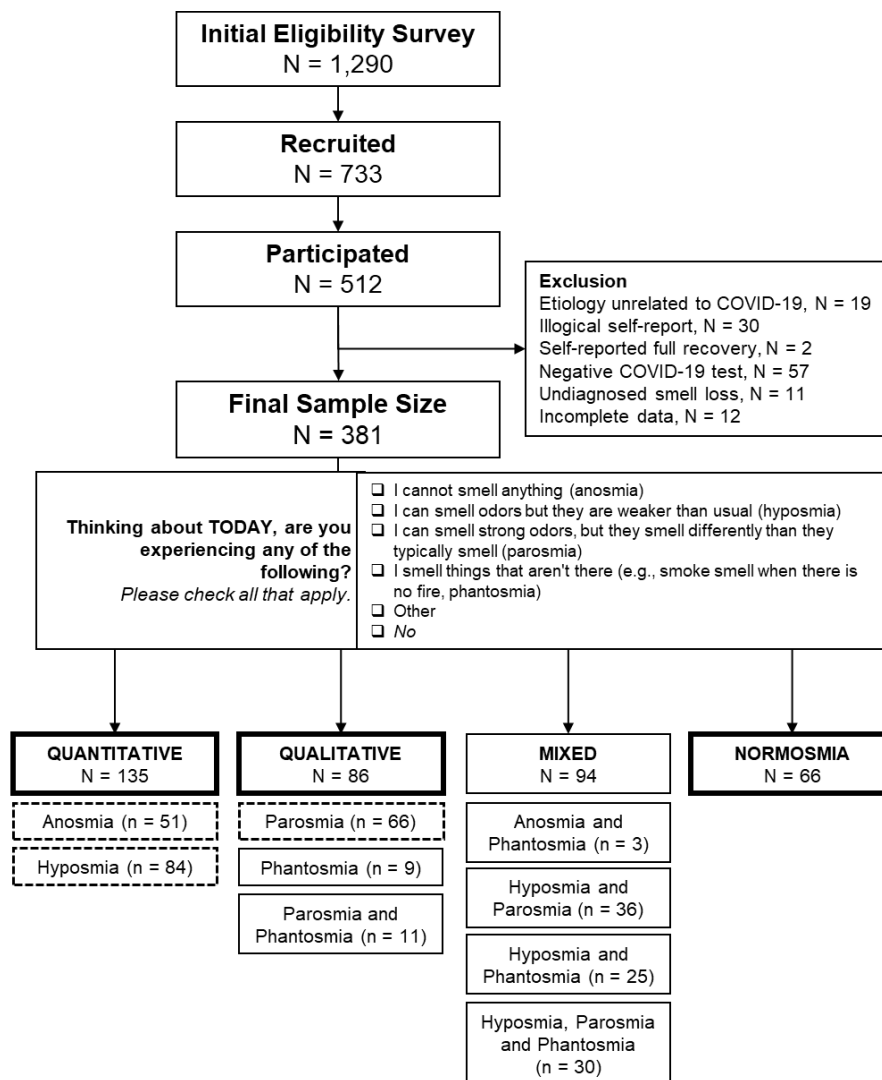
### **Participants**

Participants were recruited through two exclusive Facebook groups ("Covid-19 Smell and Taste Loss" and "AbScent Parosmia and Phantosmia Support" hosted by AbScent, a charity serving individuals with smell and taste disorders based in the UK), which were open to those suffering from olfactory disorders due to COVID-19 and their family and friends. Interested participants were instructed to complete an online survey to determine eligibility. Those who reside in the United States, between 18-75 years old, and have access to a smart device or computer were eligible for this study.

Of the 1290 individuals who completed the eligibility survey, 733 were eligible and were mailed a SCENTinel 1.1 test on a first-come, first-served basis, and 512 participants completed the test (response rate: 70%; see Figure 1 for a schematic overview). Participants were excluded if they reported smell loss unrelated to COVID-19 (n=19), illogical self-reported olfactory disorders (e.g., selected both anosmia and hyposmia or anosmia and parosmia; n=30), self-reported full recovery at the time of the SCENTinel test (n=2), a negative COVID-19 test (i.e., no confirmed COVID-19 diagnosis; n=57), undiagnosed smell loss (i.e., reported having a current olfactory disorder other than anosmia, hyposmia, parosmia, or phantosmia;

Running title: SCENTinel 1.1

n=11), or incomplete data (n=12). Ultimately, 381 participants with laboratory-confirmed COVID-19 were included in the final analyses. Participants were assigned to smell groups based on their response to the question outlined in Figure 1: 135 participants had only anosmia or hyposmia (quantitative olfactory disorder, herein referred to as **quantitative group**), 86 had only parosmia or phantosmia (qualitative olfactory disorder, herein referred to as **qualitative group**), and 94 reported having both quantitative and qualitative olfactory disorders (mixed), and 33 participants indicated that they did not have any issues with their sense of smell (normosmia). Because there was only a small population with normosmia in the Facebook groups, as expected given the nature of the group, we added a convenience sample of 33 participants with normosmia who completed SCENTinel 1.1 for a separate study, recruited via fliers around the Philadelphia, PA area.



**Figure 1.** Summary of participants in the current study. Final smell group classifications (quantitative, qualitative, mixed, and normosmia) were based on the self-report answers to the question stated. Quantitative smell disorders are classified as those with a change in the perceived intensity of odors. Qualitative smell disorders encompass those where the perceptual quality or identity of an odor has changed. Thick-lined and dashed boxes are used in the final analyses.

Running title: SCENTinel 1.1

## **Procedure**

This study was approved by the University of Pennsylvania Institutional Review Board (protocol no. 844425) and complied with the Declaration of Helsinki. Eligible participants were mailed one SCENTinel 1.1 test. Upon receiving the SCENTinel 1.1 test, participants scanned a QR code or entered a URL into a web browser that brought them to a REDCap survey (49). Participants first provided consent using the approved online consent form. They then answered demographic information (age, gender, race, and ethnicity) and indicated whether they had issues with their smell or taste at the time of taking the test. If they answered yes, they indicated in a check-all-that-apply question (Figure 1) whether they 1) cannot smell anything (anosmia), 2) can smell some odors but they are weaker than usual (hyposmia), 3) can smell strong odors but they smell differently than they typically smell (parosmia), 4) smell things that are not there, such as smoke when there is no fire (phantosmia), 5) other. Participants were then instructed to lift and smell each patch on the SCENTinel 1.1 card, one at a time, from left to right, and 1) select which patch smells the strongest (odor detection), 2) rate how intense the odor was on a 100-point visual analog scale (odor intensity), and 3) identify the odor out of four possible options (odor identification). If they identified the odor incorrectly the first time, they were given a second chance (three alternative-forced choice paradigm). Binary responses (correct/incorrect) to these subtests (note: odor intensity subtest had a cut off of 20 out of 100) were used to calculate participants' overall score specified in a previous publication (29). Participants then rated the pleasantness of the odor on the card and the pleasantness of the smell of vomit (by imagining the smell) using a 100-point visual analog scale anchored with "Very Unpleasant" at 0 and "Very Pleasant" at 100. These pleasantness ratings were used to calculate a hedonic score [from -100 to 100] by subtracting the rating of the pleasantness of the odor on the card from the rating of the pleasantness of imagined vomit. The hedonic score was not included in the overall SCENTinel 1.1 score. Participants also rated the frequency at which they experienced distorted or phantom odors in the past week using a 100-point visual analog scale from 0 - "Never" to 100 - "All the time". These questions were similar to those used to measure parosmia in Liu et al (27).

## **Data Analysis**

This cross-sectional design included the between-subject factor "smell function" group (quantitative, qualitative, normosmia; Figure 1) and the following within-subject factors: meeting the accuracy criteria within SCENTinel 1.1 subtests (odor detection, intensity, identification), overall score, as well as the new subtest, hedonic score. The intensity subtest had a cut-off of 20 (out of 100) when calculating SCENTinel 1.1 overall score, but was analyzed as a continuous measure (0-100) in the Bayes analysis and prediction model (described below) to benefit from the full-scale variability of the ratings. This design, in accordance with the preregistration (48), originally included a "mixed" group in the between-subject factor smell ability (Figure 1), but this group showed no coherent pattern (similar to a recent study (31)) and was therefore removed from the main analysis (see Supplementary Table 2). Demographics included in the analyses were sex (male, female), race (white, non-white), and age (continuous). Due to the unequal distribution of data across categories, we binarized race as white and non-white, which included those who were American Indian or Alaska Native, Asian, Black or African American, Hispanic or Latino, Native Hawaiian or Other Pacific Islander, and other.

## Running title: SCENTinel 1.1

The linear discriminant model (LDA), which discriminated those with anosmia from normosmia in SCENTinel 1.0 (29), was used here to validate in SCENTinel 1.1. Participants with anosmia (N = 51) and normosmia (N = 66) from SCENTinel 1.1 were predicted with the prior model features - demographic variables (gender, age, ethnicity) as well as the original SCENTinel 1.0 item scores (odor detection, intensity, identification). The receiver operating characteristic (ROC) area under the curve (AUC) was calculated for the SCENTinel 1.1 data and compared to the prediction from SCENTinel 1.0 data in the previous paper (AUC = 0.95) (29).

A sequential Bayes factor design (SBFD) with maximal N, as suggested by Schönbrodt et al. (50) was used to compare group performance between individual subtests of SCENTinel 1.1. This SBFD design requires on average half the sample size compared with the optimal null hypothesis testing fixed-n design, with comparable error rates (50). The desired grade of relative evidence for the alternative ( $H_1$ ) versus the null ( $H_0$ ) hypothesis is set at the following:  $BF_{10} > 100$  (extreme evidence),  $100 > BF_{10} > 30$  (very strong evidence),  $30 > BF_{10} > 10$  (strong evidence),  $10 > BF_{10} > 3$  (substantial evidence), and  $3 > BF_{10} > 1$  (anecdotal evidence). Based on a Cohen's  $d = 0.5$ , we have specified a minimum sample size per group of  $n_0 = 43$ . To assess the differences in accuracy among subtests, we have employed Bayesian and parametric tests for equality of proportions with or without continuity correction. Planned contrasts were additionally done among the broad smell groups (i.e., quantitative, qualitative, normosmia), and among individual specific groups within each broad group (i.e., anosmia, hyposmia, parosmia). Phantosmia was not included in the specific group assessment given the reduced number of people with phantosmia, in line with the current prevalence estimates (31). Results from the SBFD planned contrasts can be found in Supplementary Table 3.

Machine learning classification algorithms were applied to predict the ability of SCENTinel 1.1 to discriminate quantitative, qualitative, and normosmia groups of individuals greater than chance. Data were preprocessed using the procedures in our previous publication (29). Multiclass models using random forest, linear, and radial small vector machine, regularized linear regression (Elastic net), and LDA were optimized with their respective tuning parameters using cross-validation. Cross-validation (number = 10, repeat = 5) was performed on the training set (80% of the sample), and validation was completed on the remaining, withheld data (20%). The model that provided the best classification multi-class AUC on the withheld data was LDA, which we report and discuss in the text. To look at specific olfactory disorders within quantitative and qualitative, a separate LDA model was fit to predict those with parosmia, hyposmia, and anosmia.

We conducted an exploratory analysis to further investigate the hedonic ratings among those with and without parosmia. Welch's two-sample t-test assessed differences in hedonic score across the individual smell groups (i.e., hyposmia, normosmia, parosmia). Participants were collapsed into two groups depending on their self-reports: parosmia and no parosmia. Pearson's product-moment correlation assessed the relationship between the reported frequency of parosmia events and the reported hedonic range for those with parosmia. A 2-way ANOVA (independent variables: odor and parosmia group; random variable: participants) was conducted to investigate if the hedonic score was different across the four odors used in SCENTinel 1.1. Lastly, Welch's two-sample t-test assessed the overall difference in the odor and vomit rating across parosmia groups.



Running title: SCENTinel 1.1

All statistical analyses were conducted in the R Environment for Statistical Computing (51). The data and analysis script will be publicly available on OSF upon peer-reviewed publication (48).

## Results

### Enhancements to SCENTinel 1.1 maintain accurate performance

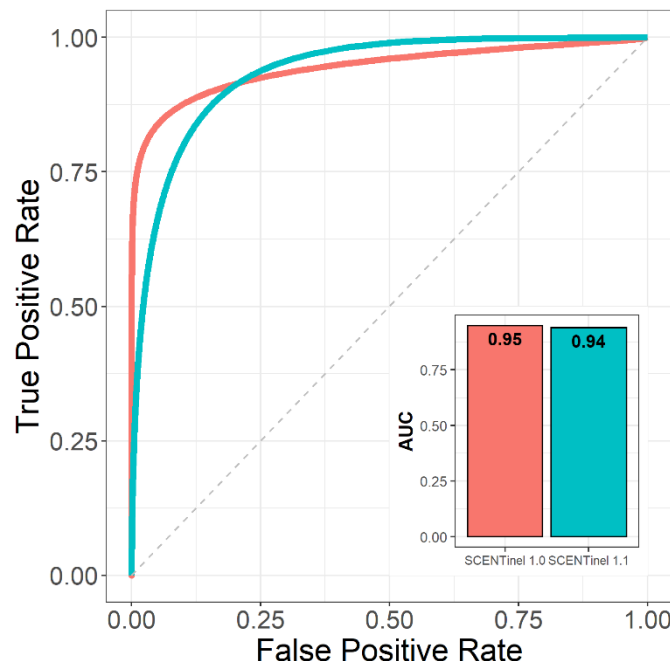
SCENTinel 1.1 is able to discriminate between participants with normosmia and anosmia with a similarly high degree of accuracy (AUC=0.94) as SCENTinel 1.0 (AUC=0.95; Figure 2). Furthermore, we did not find any differences in the average intensity ratings ( $BF_{10} = 0.19$ ) or the overall score ( $BF_{10} = 0.19$ ) across the four target odors used in SCENTinel 1.1. These consistent results across the different study populations in SCENTinel 1.0 and SCENTinel 1.1 confirm that the enhancements made on SCENTinel 1.1 (e.g., multiple target odors) still accurately screen for normosmia and anosmia.

### SCENTinel 1.1 discriminates between self-reported normosmia, and quantitative and qualitative olfactory disorders.

SCENTinel 1.1 overall score discriminates quantitative and normosmia groups (Figure 3A) with a high degree of accuracy (AUC=0.84), followed by qualitative and quantitative groups (AUC=0.76; Figure 3B) and normosmia and qualitative groups at rates significantly better than chance (AUC=0.73; Figure 3C). The SCENTinel 1.1 subtest that discriminated normosmia, quantitative, and qualitative groups the best differed depending on the group comparison. The only subtest that discriminated between quantitative and qualitative groups greater than chance was odor intensity (AUC=0.73; Figure 3B), where a greater percentage of the qualitative group (88%) rated the odor intensity >20 compared to the quantitative group (70%; Supplementary Table 2). Normosmia and quantitative groups could be discriminated by odor intensity (AUC=0.84) and odor identification (AUC=0.76) subtests (Figure 3A). The odor identification (AUC=0.73), hedonic score (AUC=0.71), and odor detection (AUC=0.70) subtests all discriminated normosmia and qualitative groups (Figure 3C).

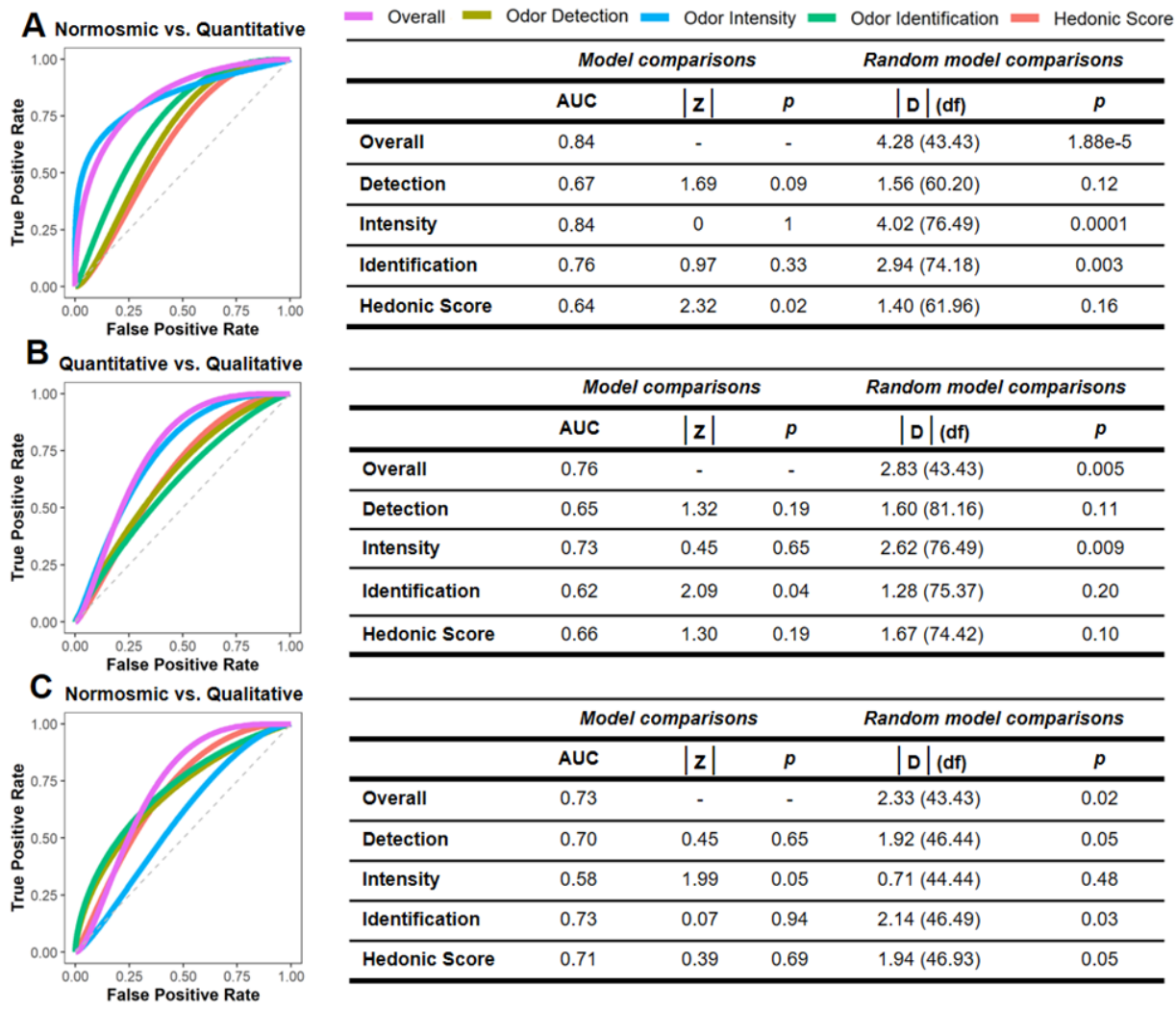
As hypothesized, a greater percentage of those with normosmia met the accuracy criteria for the SCENTinel 1.1 overall score (86%) compared to the quantitative (61%) and qualitative (59%) groups (Supplementary Table 2). Furthermore, odor intensity was rated higher in the normosmia ( $70.59 \pm 19.93$ ) and qualitative ( $67.41 \pm 27.43$ ) groups than the quantitative

**Figure 2.** SCENTinel 1.0 classification model discriminated those with anosmia from normosmia in the SCENTinel 1.1 COVID-19-related population. Melon refers to the validation in SCENTinel 1.0; Teal refers to the present validation in SCENTinel 1.1.



Running title: SCENTinel 1.1

group ( $44.33 \pm 29.96$ ), and a greater percentage of the normosmia (83%) and quantitative groups (76%) could accurately identify the odor on the SCENTinel 1.1 test compared to the qualitative group (63%). However, the percent of participants within the qualitative and quantitative groups that met the accuracy criteria for the odor detection subtest of SCENTinel 1.1 did not significantly differ.



**Figure 3.** Receiver operating characteristic (ROC) curves and statistics on SCENTinel 1.1 scores overall and for single subtests across groups based on the linear discriminant analysis algorithm: (A) individuals with quantitative dysfunction versus normosmia; (B) individuals with quantitative dysfunction versus qualitative dysfunction; (C) individuals with qualitative dysfunction versus normosmia. Quantitative dysfunction encompasses individuals with anosmia or hyposmia; qualitative dysfunction includes individuals with parosmia and/or phantosmia. Intensity and hedonics are continuous. AUC, area under the curve; p, p-value; D, DeLong's test for 2 ROC curves; df, degrees of freedom.

**SCENTinel 1.1 discriminates between self-reported anosmia, hyposmia, parosmia and normosmia.**

## Running title: SCENTinel 1.1

Both quantitative and qualitative groups are inherently heterogeneous, and individual olfactory disorders within each group can perform differently on the SCENTinel 1.1 overall score and subtests. For example, within the quantitative group, individuals can have a reduced sense of smell (hyposmia) or total smell loss (anosmia). Those with hyposmia are still likely to accurately detect and identify the odor in the SCENTinel 1.1 test but report a lower odor intensity, whereas those with anosmia would likely not be able to accurately detect or identify an odor on SCENTinel 1.1 without guessing. Given these inherent differences, we determined how SCENTinel 1.1 differentiated the three most common olfactory disorders in our sample: hyposmia, anosmia, and parosmia. The SCENTinel 1.1 overall score predicts group classification with a high degree of accuracy - discriminating hyposmia from parosmia (AUC=0.89) better than anosmia from parosmia (AUC=0.82), followed by hyposmia from anosmia (AUC=0.78). A greater percentage of participants with hyposmia (76%) met the accuracy criteria for the SCENTinel 1.1 overall score compared with those with parosmia (56%) and anosmia (37%; Supplementary Table 2). Participants with parosmia rated the odor as more intense ( $70.38 \pm 26.29$ ) than those with hyposmia ( $57.29 \pm 26.44$ ) and anosmia ( $22.98 \pm 22.32$ ). Significantly more participants with hyposmia accurately identified the odor on SCENTinel 1.1 (80%) compared with those with parosmia (58%), but not those with anosmia (69%). The hedonic score was higher in those with hyposmia ( $43.76 \pm 38.42$ ) compared to those with parosmia ( $25.77 \pm 35.10$ ). There were no differences in odor detection accuracy between those with hyposmia (79%), anosmia (73%), or parosmia (61%).

### **Self-reported parosmia as captured by SCENTinel 1.1.**

We only assessed differences in the hedonic score between those with hyposmia, normosmia, and parosmia. Participants with anosmia were not included in this analysis since rating the pleasantness of an odor that is not perceived is illogical. As expected, the hedonic score was lowest for those with parosmia compared to those with hyposmia ( $t = 3.42$ ,  $p < 0.001$ ) and normosmia ( $t = 2.06$ ,  $p = 0.04$ ; Figure 4A). There was no difference in hedonic score between those with hyposmia and normosmia ( $t=0.48$ ,  $p = 0.64$ ). Among those who had parosmia, the majority of participants experienced odor distortions most of the time (Figure 4B). Nevertheless, hedonic score and parosmia frequency were negatively correlated ( $R = -0.21$ ,  $p < 0.0001$ ), such that individuals who experienced parosmia more frequently had a lower hedonic score compared to those who experience parosmia less frequently (Figure 4B). Given that there was no difference in the hedonic score between those with hyposmia and normosmia, and to isolate the effects of parosmia, we combined those with hyposmia and normosmia into one group to compare the hedonic score between those with parosmia and those without parosmia. Coffee is the only odor in SCENTinel 1.1 that is frequently reported to be distorted with parosmia (35,40). Therefore, we assessed whether there was an effect of the odor used in SCENTinel 1.1 on the hedonic score. There was a significant group effect such that participants with parosmia had lower hedonic scores compared to those without parosmia ( $F_{3,285} = 13.78$ ,  $p < 0.001$ ), but this did not differ between the four odors used in SCENTinel 1.1 ( $F_{3,285} = 0.05$ ,  $p = 0.99$ ; Figure 4C). Differences in the hedonic score were primarily driven by a lower pleasantness rating of the odor on the SCENTinel 1.1 test in those with parosmia ( $t = 4.43$ ,  $p < 0.001$ ), as opposed to the

Running title: SCENTinel 1.1

imagined pleasantness rating of vomit which did not differ between those with and without parosmia ( $t = -0.57$ ,  $p = 0.57$ ; Figure 4D).

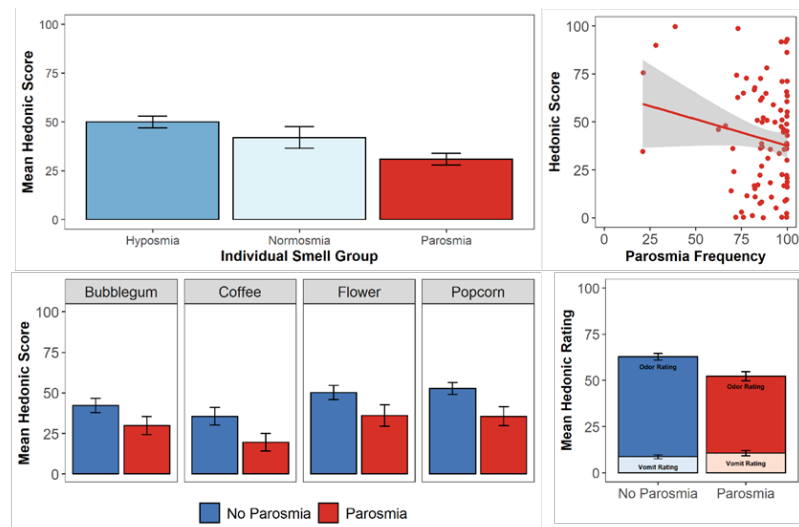
## Discussion

Recently created for population surveillance of smell function, SCENTinel, a rapid smell test, can accurately discriminate olfactory disorders. This study used SCENTinel 1.1, an extended version of SCENTinel 1.0, to screen for self-reported quantitative (anosmia or hyposmia) and qualitative (parosmia and/or phantosmia) olfactory disorders. Using one of four odors, SCENTinel 1.1 measures odor detection, intensity, identification, and odor pleasantness. The goal of this study was to, first, validate SCENTinel 1.1 in a different population of participants with normosmia and anosmia using

the original model from SCENTinel 1.0. The second goal of this study was to investigate whether SCENTinel 1.1 can distinguish between quantitative and qualitative olfactory disorders. The third goal of this study was to assess the ability of the hedonic score to identify parosmia.

Overall, SCENTinel 1.1 can accurately discriminate between self-reported quantitative, qualitative, and normosmia groups. Participants were grouped based on a common trait of their self-reported olfactory disorder. Those experiencing diminished perceived odor intensity, like people with anosmia and hyposmia, were grouped as people with quantitative olfactory disorders. Those having distorted odor perceptions, like people with parosmia and phantosmia, were grouped as people with qualitative olfactory disorders. However, we noticed heterogeneity and complexity in SCENTinel 1.1 performance, both in the overall score and on each subtest, within each broad classification of quantitative and qualitative. For example, a larger than expected percent of participants in the quantitative group accurately detected the odor on the SCENTinel 1.1 test, which may reflect the quantitative group predominantly having hyposmia (62%). Despite the heterogeneity, the overall score and subtests of SCENTinel 1.1 still accurately discriminated between normosmia, quantitative, and qualitative groups with acceptable sensitivity ( $AUC > 0.7$ ).

To reduce the heterogeneity, when we assessed how well individual smell groups performed on SCENTinel 1.1, we found that SCENTinel 1.1 can discriminate between those with anosmia, hyposmia, and parosmia. Despite the smaller sample size, SCENTinel 1.1 was



**Figure 4.** Investigation of the hedonic score across individuals with or without parosmia. A) Comparison of average hedonic score across individual smell groups. B) Relationship between hedonic score and frequency of parosmia events (determined via participant's response to "How often have you experienced smells being distorted or don't smell like they used to?"). C) Comparison of average hedonic score per odor across those with and without parosmia. D) Comparison of average hedonic rating and vomit rating across those with and without parosmia. Individuals who provided a vomit hedonic rating  $> 80$  were removed.

## Running title: SCENTinel 1.1

more sensitive at discriminating between anosmia, hyposmia, and parosmia groups than the broad quantitative and qualitative group classifications, likely because the individual smell groups are less heterogeneous classifications. Phantosmia was not included because of the limited sample size ( $n=12$ ). Different SCENTinel 1.1 subtests were able to discriminate between different groups. There was no difference in odor detection, but odor intensity was able to discriminate anosmia from hyposmia, and parosmia. Odor identification and the hedonic score discriminated between hyposmia and parosmia. The present study highlights the complexity of classifying individual olfactory disorders, both quantitative and qualitative alike, with a rapid, self-administered smell test. While we only included individuals with a single olfactory disorder in our analyses, individuals can have a quantitative and qualitative olfactory disorder simultaneously (e.g., hyposmia *and* parosmia), and it is rare to have a single qualitative olfactory disorder alone (3). One area of future research is to explore these complexities to better classify olfactory disorders using SCENTinel.

The SCENTinel 1.1 overall score consistently discriminated between groups at rates significantly better than chance, with a similar or higher accuracy than any subtest. Many other smell tests only use one olfactory function (e.g., summed performance from odor identification) to classify olfactory disorders (19,28). However, our results show that different olfactory disorders have divergent results among the SCENTinel 1.1 subtests (e.g., detection, intensity, identification, hedonic score) which provides more information about their comprehensive olfactory function than a single subtest alone (e.g., only identification). Measuring different olfactory functions can also reveal response patterns commonly associated with different etiologies of olfactory disorders (52). For example, in a group of individuals with hyposmia from various etiologies who completed the Sniffin' Sticks test battery, those with hyposmia from Parkinson's disease performed well on odor threshold tests, but had reduced odor detection and identification ability, likely because of impaired central processing. Those with hyposmia from sinonasal disease performed well on odor detection and identification, but had poor olfactory thresholds, likely because of anatomical obstruction, or inflammation and edema (52). Thus, each SCENTinel 1.1 subtest can provide potential information regarding olfactory function and etiology, and these can comprehensively be summed into an overall score.

Including the hedonic score in SCENTinel 1.1 was successful in identifying parosmia. As hypothesized, participants with parosmia reported a lower hedonic score compared to participants without parosmia, driven by a lower hedonic rating of the target odor on the SCENTinel card, as the hedonic rating of the imagined vomit odor was not different between participants with and without parosmia. This finding supports reports of individuals with parosmia often finding odors to be unpleasant (39). However, less commonly, some patient reports have shown a valence flip - in addition to pleasant odors smelling unpleasant, reporting odors typically experienced as foul are now pleasant (31,53,54). To test this valence flip theory, an actual unpleasant target odor may need to be experienced to capture the less-common negative-to-positive hedonic experience as our use of an imagined unpleasant odor was not adequate. Furthermore, specific distortions have been reported, coffee being prominently reported in interviews with patients who have parosmia (2,40). However, we did not find any significant difference in hedonic scores between the flower, coffee, bubblegum, or caramel popcorn odors used in SCENTinel 1.1. Notably, we did not assess individual parosmia triggers in the participants with parosmia, therefore it is unknown if coffee was a specific odor distortion

## Running title: SCENTinel 1.1

in our current sample. Someone with parosmia may still be able to guess the identity of an odor if they know what their distortion is triggered by (for example, if coffee typically smells like gasoline, and they smell gasoline on the smell test, they might accurately identify the odor as coffee because of the association). Therefore, a hedonic score that assesses pleasantness circumvents this issue of accurately identifying odors that are known distortions. Overall, our findings partially support the rationale to use the hedonic score proposed by Liu et al (27), capturing positive odors smelling negative. However, unlike Sniffin' Sticks used in the study by Liu et al with two patients, we confirm in a group of 66 individuals with parosmia, that SCENTinel 1.1 is a rapid, self-administered smell test that can screen for parosmia.

Although SCENTinel 1.1 can accurately discriminate between self-reported olfactory disorders, there is no set criterion (e.g., whether certain groups are correct or incorrect on specific subtests) that can a priori determine what kind of olfactory disorder a person has based on their SCENTinel 1.1 responses. Further research to classify olfactory disorders based on SCENTinel criterion is necessary and ongoing to be useful in research or clinical settings (3,31). Additionally, more research is needed to account for the impact of varying etiologies of olfactory disorders. Presently, SCENTinel 1.1 accurately predicted group classification in participants who experienced olfactory disorders as a result of COVID-19, which supports the use of SCENTinel 1.1 to understand COVID-19 olfactory symptoms. It also supports the use of SCENTinel 1.1 as a tool to help detect and monitor sudden loss of smell, which is a symptom of COVID-19 (5,55), as well as parosmia, an evolving symptom of COVID-19 (31,36,37). Early diagnosis of olfactory impairment is critical for establishing successful outcomes to treatment regimes like olfactory training (56) which has recently shown effectiveness with patients with parosmia (57).

### *Limitations*

Participants were grouped based on their self-reported olfactory disorders. It is possible that participants did not accurately classify their olfactory disorder (7,58). To limit inaccurate data, we asked specific questions describing their smell loss (Figure 1) and excluded participants whose self-reported olfactory disorder did not fit conventional categories (i.e. someone who reported having both anosmia and hyposmia). An area of future research is to directly screen for smell function with another validated smell test to classify participants' smell function more accurately to better understand how they perform differently on SCENTinel test versions. Granted, there are no direct, validated tests that diagnose parosmia aside from SCENTinel 1.1. Until then, in-depth interviews would be necessary. Another limitation of this study is that COVID-19 test results were also self-reported. However, participants in this study were recruited from a Facebook group specifically for those with smell loss from COVID-19, and specific questions describing the cause of their smell loss (*In your opinion, what might have been the cause of your smell loss? Selected "COVID-19"*), and their COVID-19 test results (What was the test result? 1) Selected "Positive Lab Test (COVID+)") were included to eliminate participants who had smell loss unrelated to COVID-19 and reduce heterogeneity. Nevertheless, SCENTinel 1.1 was designed to screen for olfactory disorders regardless of the etiology; thus inaccurate reports of COVID-19 diagnosis are not expected to alter the results. However, this is another area where future studies are needed. Finally, SCENTinel 1.1 uses one of four different odors in each test. Including more odor options, particularly unpleasant

Running title: SCENTinel 1.1

odors, may help to better measure and understand parosmia. Not all odors are equally distorted in those who experience parosmia (40). The four odors used in SCENTinel 1.1 may not have been odors that were distorted in the participants with parosmia.

## Conclusion

Screening for various olfactory disorders is complex and due to the heterogeneity between and within olfactory disorders, often takes time and specialty expertise. Despite being a rapid, inexpensive, self-administered test, SCENTinel 1.1 can discriminate between those with self-reported normosmia and quantitative (i.e., anosmia or hyposmia), and qualitative (i.e., parosmia and/or phantosmia) olfactory disorders with a high degree of accuracy. By assessing hedonics, SCENTinel is a direct smell test that can rapidly capture self-reported parosmia. SCENTinel may serve as a useful tool in many clinical and research settings to assess smell function.

### Conflict of interest

On behalf of the authors of this manuscript, the Monell Chemical Senses Center and Temple University have applied for patent protection (US patent application no. 17/111114) on SCENTinel and this patent application has been licensed to Ahersla Health, Inc. The authors may benefit financially through their institution's patent policy.

### Author contributions

SRH: manuscript writing and reviewing; MEH: conceptualization, pre-registration, data collection, data analysis, manuscript writing and reviewing; RP: data analysis, manuscript writing and reviewing; MAO: conceptualization, revision; NER: revision; DRR: conceptualization, revision; PED: conceptualization, revision; VP: conceptualization, pre-registration, revision.

### Funding

We acknowledge support from the National Institutes of Health as part of the RADx-rad initiative (U01 DC019578 to PHD and VP). MEH was supported by NIH T32 (DC000014) and F32 (DC020100) funding during this work; RP was supported by NIH T32 funding (DC000014) and F32 (DC020380).

### Acknowledgements

This work would not be possible without people who are willing to participate in the research. We are extremely grateful to Chrissi Kelly for bridging researchers and the community of patients with smell loss through the UK-based charity AbScent. With her gracious support, we were able to recruit from AbScent's social media pages. We also wholeheartedly thank the participants - people living with olfactory disorders and allies - for their contribution to the development of SCENTinel, a tool that we hope to put at the service of the whole population.

Running title: SCENTinel 1.1

## References

1. Rawal S, Hoffman HJ, Bainbridge KE, Huedo-Medina TB, Duffy VB. Prevalence and Risk Factors of Self-Reported Smell and Taste Alterations: Results from the 2011-2012 US National Health and Nutrition Examination Survey (NHANES). *Chem Senses*. 2016 Jan;41(1):69–76.
2. Bonfils P, Avan P, Faulcon P, Malinvaud D. Distorted odorant perception: analysis of a series of 56 patients with parosmia. *Arch Otolaryngol Head Neck Surg*. 2005 Feb;131(2):107–12.
3. Hummel T, Whitcroft KL, Andrews P, Altundag A, Cinghi C, Costanzo RM, et al. Position paper on olfactory dysfunction. *Rhinology*. 2016 Jan 31;56(1):1–30.
4. Croy I, Nordin S, Hummel T. Olfactory disorders and quality of life--an updated review. *Chem Senses*. 2014 Mar;39(3):185–94.
5. Gerkin RC, Ohla K, Veldhuizen MG, Joseph PV, Kelly CE, Bakke AJ, et al. Recent smell loss is the best predictor of COVID-19 among individuals with recent respiratory symptoms. *Chem Senses* [Internet]. 2020 Dec 25 [cited 2021 Feb 11];(bjaa081). Available from: <https://doi.org/10.1093/chemse/bjaa081>
6. CDC. COVID Data Tracker [Internet]. Centers for Disease Control and Prevention. [cited 2022 Mar 16]. Available from: <https://covid.cdc.gov/covid-data-tracker/#datatracker-home>
7. Hannum ME, Ramirez VA, Lipson SJ, Herriman RD, Toskala AK, Lin C, et al. Objective Sensory Testing Methods Reveal a Higher Prevalence of Olfactory Loss in COVID-19–Positive Patients Compared to Subjective Methods: A Systematic Review and Meta-Analysis. *Chem Senses*. 2020 Nov 1;45(9):865–74.
8. Chiesa-Estomba CM, Lechien JR, Radulesco T, Michel J, Sowerby LJ, Hopkins C, et al. Patterns of smell recovery in 751 patients affected by the COVID-19 outbreak. *Eur J Neurol*. 2020/08/05 ed. 2020 Nov;27(11):2318–21.
9. Sakalli E, Temirbekov D, Bayri E, Alis EE, Erdurak SC, Bayraktaroglu M. Ear nose throat-related symptoms with a focus on loss of smell and/or taste in COVID-19 patients. *Am J Otolaryngol*. 2020/06/23 ed. 2020;41(6):102622–102622.
10. Vaira LA, Hopkins C, Petrocelli M, Lechien JR, Chiesa-Estomba CM, Salzano G, et al. Smell and taste recovery in coronavirus disease 2019 patients: a 60-day objective and prospective study. *J Laryngol Otol*. 2020 Aug;134(8):703–9.
11. Reiter ER, Coelho DH, Kons ZA, Costanzo RM. Subjective smell and taste changes during the COVID-19 pandemic: Short term recovery. *Am J Otolaryngol*. 2020 Dec;41(6):102639.
12. Moein ST, Hashemian SM, Tabarsi P, Doty RL. Prevalence and reversibility of smell dysfunction measured psychophysically in a cohort of COVID-19 patients. *Int Forum Allergy Rhinol*. 2020 Oct;10(10):1127–35.
13. Vihta K-D, Pouwels KB, Peto TE, Pritchard E, House T, Studley R, et al. OMICRON-ASSOCIATED CHANGES IN SARS-COV-2 SYMPTOMS IN THE UNITED KINGDOM. *medRxiv*. 2022 Jan 1;2022.01.18.22269082.
14. Ben Killingley, Alex Mann, Mariya Kalinova, Alison Boyers, Niluka Goonawardane, Jie Zhou, et al. Safety, tolerability, and viral kinetics during SARS-CoV-2 human challenge. *Nat Portf* [Internet]. 2022 Feb 28; Available from: <https://doi.org/10.21203/rs.3.rs-1121993/v1>
15. Oleszkiewicz A, Kunkel F, Larsson M, Hummel T. Consequences of undetected olfactory loss for human chemosensory communication and well-being. *Philos Trans R Soc Lond B Biol Sci*. 2020 Jun 8;375(1800):20190265.
16. Rawal S, Hoffman HJ, Honda M, Huedo-Medina TB, Duffy VB. The Taste and Smell Protocol in the 2011–2014 US National Health and Nutrition Examination Survey (NHANES): Test–Retest Reliability and Validity Testing. *Chemosens Percept*. 2015



Running title: SCENTinel 1.1

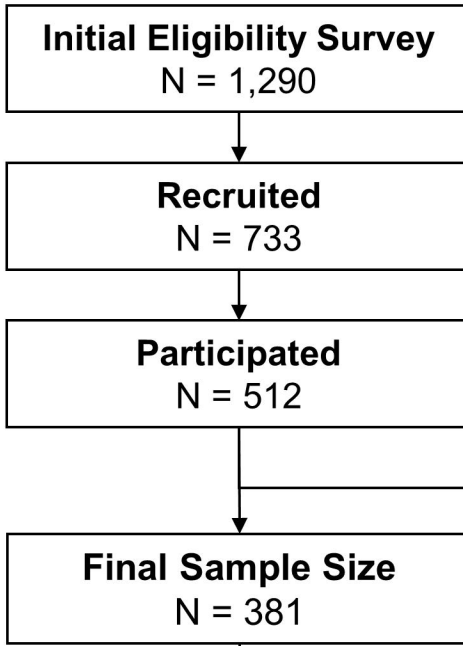
- Sep;8(3):138–48.
17. Dalton P, Hummel T. Chemosensory function and response in idiopathic environmental intolerance. *Occup Med Phila Pa.* 2000 Sep;15(3):539–56.
  18. Lötsch J, Hummel T. A machine-learned analysis suggests non-redundant diagnostic information in olfactory subtests. *IBRO Rep.* 2019 Jun;6:64–73.
  19. Doty RL, Shaman P, Dann M. Development of the University of Pennsylvania Smell Identification Test: a standardized microencapsulated test of olfactory function. *Physiol Behav.* 1984 Mar;32(3):489–502.
  20. Doty RL, Marcus A, Lee WW. Development of the 12-Item Cross-Cultural Smell Identification Test(CC-SIT). *The Laryngoscope.* 1996;106(3):353–6.
  21. Kondo H, Matsuda T, Hashiba M, Baba S. A study of the relationship between the T&T olfactometer and the University of Pennsylvania Smell Identification Test in a Japanese population. *Am J Rhinol.* 1998 Oct;12(5):353–8.
  22. Duff K, McCaffrey RJ, Solomon GS. The Pocket Smell Test. *J Neuropsychiatry Clin Neurosci.* 2002 May 1;14(2):197–201.
  23. Choudhury ES, Moberg P, Doty RL. Influences of Age and Sex on a Microencapsulated Odor Memory Test. *Chem Senses.* 2003 Nov 1;28(9):799–805.
  24. Jackman AH, Doty RL. Utility of a three-item smell identification test in detecting olfactory dysfunction. *The Laryngoscope.* 2005 Dec;115(12):2209–12.
  25. Hummel T, Sekinger B, Wolf SR, Pauli E, Kobal G. ‘Sniffin’ Sticks’: Olfactory Performance Assessed by the Combined Testing of Odor Identification, Odor Discrimination and Olfactory Threshold. *Chem Senses.* 1997 Feb 1;22(1):39–52.
  26. Croy I, Zehner C, Larsson M, Zucco GM, Hummel T. Test–Retest Reliability and Validity of the Sniffin’ TOM Odor Memory Test. *Chem Senses.* 2015 Mar 1;40(3):173–9.
  27. Liu DT, Welge-Lüssen A, Besser G, Mueller CA, Renner B. Assessment of odor hedonic perception: the Sniffin’ sticks parosmia test (SSParoT). *Sci Rep.* 2020 Oct 22;10(1):18019.
  28. Dalton P, Doty RL, Murphy C, Frank R, Hoffman HJ, Maute C, et al. Olfactory assessment using the NIH Toolbox. *Neurology.* 2013 Mar 12;80(Issue 11, Supplement 3):S32–6.
  29. Parma V, Hannum ME, O’Leary M, Pellegrino R, Rawson NE, Reed DR, et al. SCENTinel 1.0: development of a rapid test to screen for smell loss. *Chem Senses.* 2021 Mar 27;
  30. Landis BN, Frasnelli J, Croy I, Hummel T. Evaluating the clinical usefulness of structured questions in parosmia assessment. *The Laryngoscope.* 2010 Aug;120(8):1707–13.
  31. Pellegrino R, Mainland JD, Kelly CE, Parker JK, Hummel T. Prevalence and correlates of parosmia and phantosmia among smell disorders. *Chem Senses.* 2021 Jan 1;46:bjab046.
  32. Nordin S, Brämerson A, Millqvist E, Bende M. Prevalence of parosmia: the Skövde population-based studies. *Rhinology.* 2007 Mar;45(1):50–3.
  33. Leopold D. Distortion of olfactory perception: diagnosis and treatment. *Chem Senses.* 2002 Sep;27(7):611–5.
  34. Frasnelli J, Landis BN, Heilmann S, Hauswald B, Hüttenbrink KB, Lacroix JS, et al. Clinical presentation of qualitative olfactory dysfunction. *Eur Arch Oto-Rhino-Laryngol Off J Eur Fed Oto-Rhino-Laryngol Soc EUFOS Affil Ger Soc Oto-Rhino-Laryngol - Head Neck Surg.* 2004 Aug;261(7):411–5.
  35. Keller A, Malaspina D. Hidden consequences of olfactory dysfunction: a patient report series. *BMC Ear Nose Throat Disord.* 2013 Jul 23;13:8.
  36. Ohla K, Veldhuizen MG, Green T, Hannum ME, Bakke AJ, Moein ST, et al. Increasing incidence of parosmia and phantosmia in patients recovering from COVID-19 smell loss. *medRxiv.* 2021 Jan 1;2021.08.28.21262763.
  37. Tognetti A, Thunell E, Olsson MJ, Greilert N, Havervall S, Thålin C, et al. High prevalence of olfactory disorders 18 months after contracting COVID-19. *medRxiv.* 2022 Jan 1;2022.01.20.22269490.
  38. Said M, Luong T, Jang SS, Davis ME, DeConde AS, Yan CH. Clinical factors associated

Running title: SCENTinel 1.1

- with lower health scores in COVID-19–related persistent olfactory dysfunction. *Int Forum Allergy Rhinol* [Internet]. 2022 Jan 15 [cited 2022 Feb 4];n/a(n/a). Available from: <https://doi.org/10.1002/alr.22978>
39. Deems DA, Doty RL, Settle RG, Moore-Gillon V, Shaman P, Mester AF, et al. Smell and Taste Disorders, A Study of 750 Patients From the University of Pennsylvania Smell and Taste Center. *Arch Otolaryngol Neck Surg*. 1991 May 1;117(5):519–28.
  40. Parker JK, Kelly CE, Smith B, Hopkins C, Gane SB. An analysis of patients' perspectives on qualitative olfactory dysfunction using social media. *JMIR Form Res*. 2021;
  41. Callahan CD, Hinkebein JH. Assessment of anosmia after traumatic brain injury: performance characteristics of the University of Pennsylvania Smell Identification Test. *J Head Trauma Rehabil*. 2002 Jun;17(3):251–6.
  42. Callahan CD, Hinkebein J. Neuropsychological significance of anosmia following traumatic brain injury. *J Head Trauma Rehabil*. 1999 Dec;14(6):581–7.
  43. Bratt M, Skandsen T, Hummel T, Moen KG, Vik A, Nordgård S, et al. Frequency and prognostic factors of olfactory dysfunction after traumatic brain injury. *Brain Inj*. 2018;32(8):1021–7.
  44. Albers MW, Tabert MH, Devanand DP. Olfactory dysfunction as a predictor of neurodegenerative disease. *Curr Neurol Neurosci Rep*. 2006 Sep;6(5):379–86.
  45. Barresi M, Cieurleo R, Giacoppo S, Foti Cuzzola V, Celi D, Bramanti P, et al. Evaluation of olfactory dysfunction in neurodegenerative diseases. *J Neurol Sci*. 2012 Dec 15;323(1–2):16–24.
  46. Dintica CS, Marseglia A, Rizzuto D, Wang R, Seubert J, Arfanakis K, et al. Impaired olfaction is associated with cognitive decline and neurodegeneration in the brain. *Neurology*. 2019 Feb 12;92(7):e700–9.
  47. Lee DY, Lee WH, Wee JH, Kim J-W. Prognosis of Postviral Olfactory Loss: Follow-up Study for Longer than One Year. *Am J Rhinol Allergy*. 2014 Sep 1;28(5):419–22.
  48. Hannum M, Parma V, Pellegrino R, Dalton P, Reed D. Distinguishing qualitative smell disorders from quantitative using the SCENTinel test. 2021 Jan 21 [cited 2021 Mar 18]; Available from: <https://osf.io/twu4e>
  49. Harris PA, Taylor R, Minor BL, Elliott V, Fernandez M, O'Neal L, et al. The REDCap consortium: Building an international community of software platform partners. *J Biomed Inform*. 2019 Jul 1;95:103208.
  50. Schönbrodt FD, Zehetleitner M, Wagenmakers E-J, Perugini M. Sequential Hypothesis Testing With Bayes Factors: Efficiently Testing Mean Differences. *Psychol Methods*. 2017;22(2):322–39.
  51. R Core T. R: A language and environment for statistical computing. 2021;
  52. Whitcroft KL, Cuevas M, Haehner A, Hummel T. Patterns of olfactory impairment reflect underlying disease etiology. *The Laryngoscope*. 2017 Feb;127(2):291–5.
  53. Parker JK, Kelly CE, Gane SB. Molecular Mechanism of Parosmia [Internet]. *Otolaryngology*; 2021 Feb [cited 2021 May 13]. Available from: <http://medrxiv.org/lookup/doi/10.1101/2021.02.05.21251085>
  54. Landis BN, Frasnelli J, Hummel T. Euosmia: A rare form of parosmia. *Acta Otolaryngol (Stockh)*. 2006 Jan 1;126(1):101–3.
  55. Menni C, Valdes AM, Freidin MB, Sudre CH, Nguyen LH, Drew DA, et al. Real-time tracking of self-reported symptoms to predict potential COVID-19. *Nat Med*. 2020 Jul 1;26(7):1037–40.
  56. Kattar N, Do TM, Unis GD, Migneron MR, Thomas AJ, McCoul ED. Olfactory Training for Postviral Olfactory Dysfunction: Systematic Review and Meta-analysis. *Otolaryngol--Head Neck Surg Off J Am Acad Otolaryngol-Head Neck Surg*. 2021 Feb;164(2):244–54.
  57. Aldundag A, Yilmaz E, Kesimli MC. Modified Olfactory Training Is an Effective Treatment Method for COVID-19 Induced Parosmia. *The Laryngoscope* [Internet]. 2022 Mar 7 [cited

Running title: SCENTinel 1.1

- 2022 Mar 15];n/a(n/a). Available from: <https://doi.org/10.1002/lary.30101>
58. Lechien JR, Cabaraux P, Chiesa-Estomba CM, Khalife M, Hans S, Calvo-Henriquez C, et al. Objective olfactory evaluation of self-reported loss of smell in a case series of 86 COVID-19 patients. *Head Neck*. 2020 Jul;42(7):1583–90.



**Exclusion**  
 Etiology unrelated to COVID-19, N = 19  
 Illogical self-report, N = 30  
 Self-reported full recovery, N = 2  
 Negative COVID-19 test, N = 57  
 Undiagnosed smell loss, N = 11  
 Incomplete data, N = 12

**Thinking about TODAY, are you experiencing any of the following?**  
*Please check all that apply.*

- I cannot smell anything (anosmia)
- I can smell odors but they are weaker than usual (hyposmia)
- I can smell strong odors, but they smell differently than they typically smell (parosmia)
- I smell things that aren't there (e.g., smoke smell when there is no fire, phantosmia)
- Other
- No

**QUANTITATIVE**  
 N = 135

Anosmia (n = 51)

Hyposmia (n = 84)

**QUALITATIVE**  
 N = 86

Parosmia (n = 66)

Phantosmia (n = 9)

Parosmia and Phantosmia (n = 11)

**MIXED**  
 N = 94

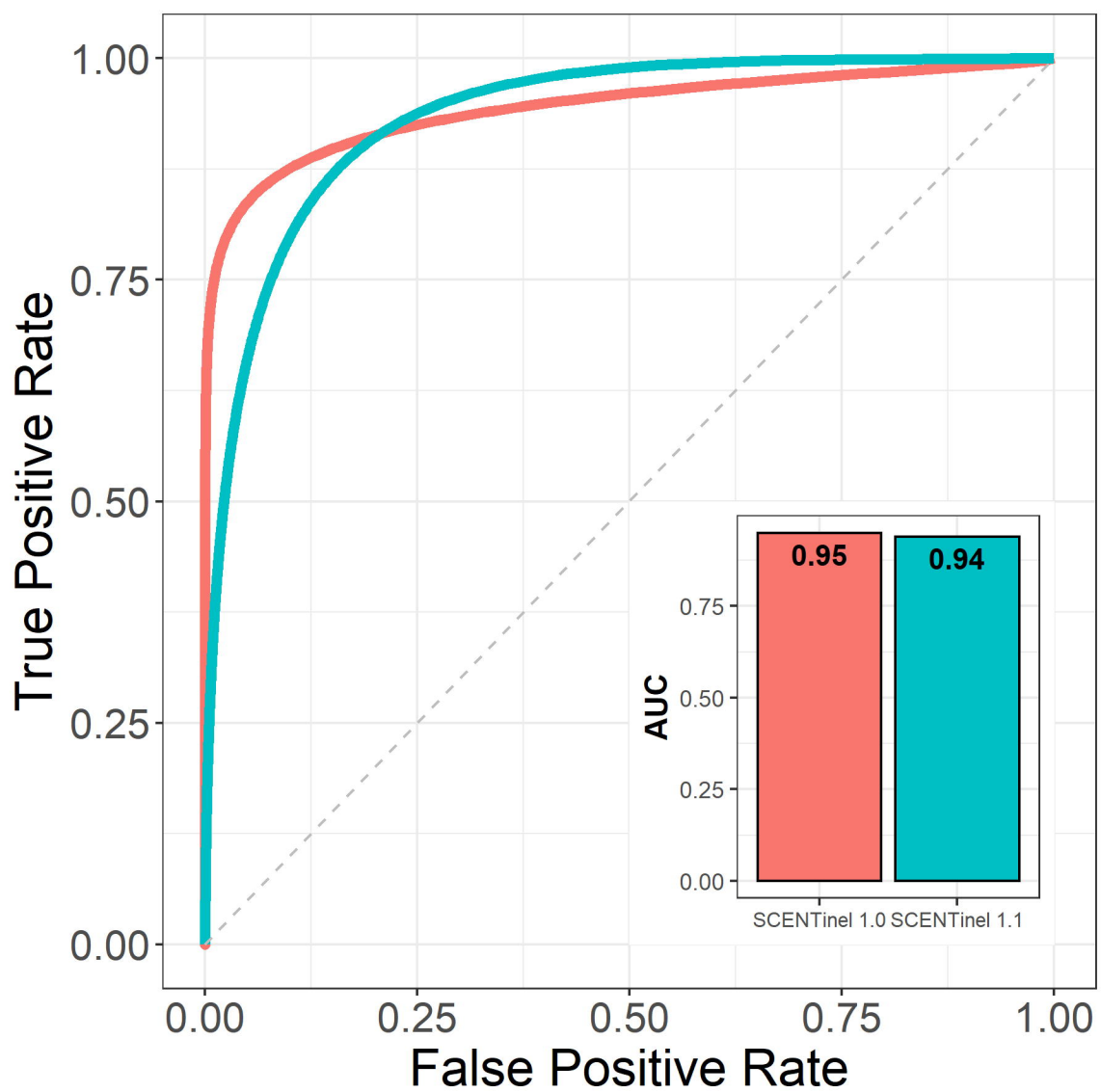
Anosmia and Phantosmia (n = 3)

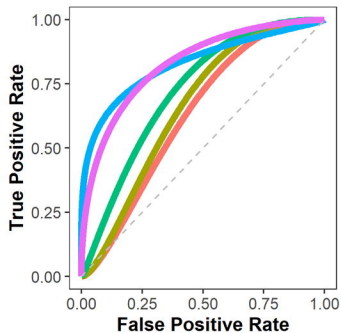
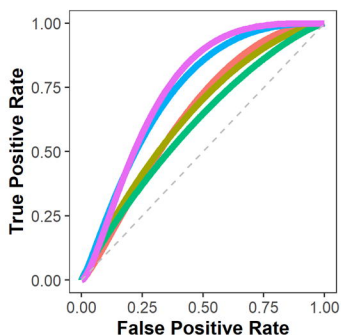
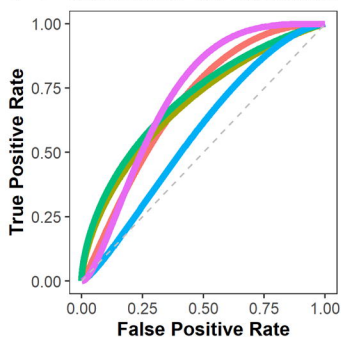
Hyposmia and Parosmia (n = 36)

Hyposmia and Phantosmia (n = 25)

Hyposmia, Parosmia and Phantosmia (n = 30)

**NORMOSMIA**  
 N = 66



**(A) Normosmic vs. Quantitative****(B) Quantitative vs. Qualitative****(C) Normosmic vs. Qualitative**

Overall Odor Detection Odor Intensity Odor Identification Hedonic Score

	<i>Model comparisons</i>			<i>Random model comparisons</i>	
	AUC	Z	p	D  (df)	p
<b>Overall</b>	0.84	-	-	4.28 (43.43)	1.88e-5
<b>Detection</b>	0.67	1.69	0.09	1.56 (60.20)	0.12
<b>Intensity</b>	0.84	0	1	4.02 (76.49)	0.0001
<b>Identification</b>	0.76	0.97	0.33	2.94 (74.18)	0.003
<b>Hedonic Score</b>	0.64	2.32	0.02	1.40 (61.96)	0.16

	<i>Model comparisons</i>			<i>Random model comparisons</i>	
	AUC	Z	p	D  (df)	p
<b>Overall</b>	0.76	-	-	2.83 (43.43)	0.005
<b>Detection</b>	0.65	1.32	0.19	1.60 (81.16)	0.11
<b>Intensity</b>	0.73	0.45	0.65	2.62 (76.49)	0.009
<b>Identification</b>	0.62	2.09	0.04	1.28 (75.37)	0.20
<b>Hedonic Score</b>	0.66	1.30	0.19	1.67 (74.42)	0.10

	<i>Model comparisons</i>			<i>Random model comparisons</i>	
	AUC	Z	p	D  (df)	p
<b>Overall</b>	0.73	-	-	2.33 (43.43)	0.02
<b>Detection</b>	0.70	0.45	0.65	1.92 (46.44)	0.05
<b>Intensity</b>	0.58	1.99	0.05	0.71 (44.44)	0.48
<b>Identification</b>	0.73	0.07	0.94	2.14 (46.49)	0.03
<b>Hedonic Score</b>	0.71	0.39	0.69	1.94 (46.93)	0.05

