

1 **Name of Journal:** World Journal of Psychiatry

2

3 **Manuscript NO:**

4

5 **Manuscript Type:** ORIGINAL ARTICLE

6

7

8 **Systematic Review and Meta-analysis of Mental Health Impact on BAME**
9 **Populations with Preterm Birth**

10

11

12 **Running title:** *Mental health impact on BAME women with preterm birth*

13

14

15 Delanerolle G^{1,2}, Zeng Y², *Phiri P^{4,5}, Phan T³, Tempest N^{3,6}, Busuulwa P^{3,6}, Shetty A⁷, Raymont V⁸,
16 Rathod S⁴, Shi JQ^{2,9}, Hapangama DK^{3,6}

17

18

19

20 **Affiliations**

21

22 ¹Nuffield Department of Primary Care Health Sciences, University of Oxford, OX3 7JX, Oxford, UK

23

24 ²Southern University of Science and Technology, Shenzhen, 518055, China

25

26 ³Department of Women's & Children's Health, University of Liverpool, L7 8TX, Liverpool, UK

27

28 ⁴Psychology Department, Faculty of Environmental and Life Sciences, University of Southampton,
29 SO17 1BJ, Southampton, UK

30

31 ⁵Southern Health NHS Foundation Trust, SO40 2RZ, UK

32

33 ⁶Gynaecology directorate and Hewitt Centre for Reproductive Medicine, Liverpool Women's NHS
34 Foundation, L8 7SS, Liverpool, UK

35

36 ⁷University College London Hospitals NHS Foundation Trust, W1T 4AJ, London, UK

37

38 ⁸Department of Psychiatry, University of Oxford, OX3 7JX, Oxford, UK

39

40 ⁹The Alan Turing Institute, NW1 2DB, London, UK

41

42

43

44

45 ***Corresponding author: Dr Peter Phiri, BSc, PhD, RN, Director of Research & Innovation/
46 Visiting Fellow**, Research & Innovation Department, Southern Health NHS Foundation Trust, Clinical
47 Trials Facility, Tom Rudd Unit Moorgreen Hospital, Botley Road, West End, Southampton SO30 3JB,
48 United Kingdom. peter.phiri@southernhealth.nhs.uk

45 **Declarations**

46

47 **Funding**

48 The work presented in this manuscript was not funded by any specific grants. However, the authors
49 GD and PP are supported by the Sponsor Southern Health NHS Foundation Trust.

50

51 **Conflicts of interest**

52 PP has received research grant from Novo Nordisk, and other, educational from Queen Mary
53 University of London, other from John Wiley & Sons, other from Otsuka, outside the submitted work.
54 SR reports other from Janssen, Lundbeck and Otsuka outside the submitted work. All other authors
55 report no conflict of interest. The views expressed are those of the authors and not necessarily those
56 of the NHS, the National Institute for Health Research, the Department of Health and Social Care or
57 the Academic institutions.

58

59 **Availability of data and material**

60 All data used within this study has been publicly available. The authors will consider sharing the
61 dataset gathered upon request.

62

63 **Code availability**

64 Not applicable.

65

66 **Author contributions**

67 GD and DKH developed the systematic review protocol and embedded this within the ELEMI project's
68 evidence synthesis phase. GD,YZ,TP,JQZ and DKH wrote the first draft of the manuscript. GD, TP,
69 YZ, DKH, JS and PP shared database searches, study selection and extraction for analysis. YZ, JS
70 and GD conducted the analysis. All authors critically appraised and commented on previous versions
71 of the manuscript. All authors read and approved the final manuscript.

72

73 **Ethics approval**

74 Not applicable.

75

76 **Consent to participate**

77 Not applicable.

78

79 **Consent for publication**

80 Not applicable.

81

82 **Acknowledgements**

83 The authors acknowledge support from Southern Health NHS Foundation Trust, University College
84 London and Liverpool Women's hospital. We would like to acknowledge Mrs Nyla Haque who inspired
85 the discussion of BAME groups within the context of this study.

86

87 This paper is part of the multifaceted ELEMI project that is sponsored by Southern Health NHS
88 Foundation Trust and in collaboration with the University of Liverpool, Liverpool Women's Hospital,
89 University College London, University College London NHS Foundation Trust, University of
90 Southampton, Robinson Institute-University of Adelaide, Ramaiah Memorial Hospital (India),
91 University of Geneva and Manchester University NHS Foundation Trust.

92

93 Words: 4994

94

95

96

97 **Abstract**

98

99 *Background:*

100 Preterm birth (PTB) is one of the main causes of neonatal deaths globally, with approximately 15
101 million infants are born preterm. Therefore, the mental health (MH) impact experienced by mothers
102 experiencing a PTB is important, especially within the Black, Asian and Minority Ethnic (BAME)
103 populations.

104

105 *Aim*

106 The aims of the study were to determine the prevalence of MH conditions among BAME women with
107 PTB as well as the MH assessments used to characterise the MH outcomes.

108

109

110 *Methods:*

111 A systematic methodology was developed and published as a protocol in PROSPERO
112 (CRD42020210863). Multiple databases were used to extract relevant data. I^2 and Egger's tests were
113 used to detect the heterogeneity and publication bias. A *Trim and fill* method was used to
114 demonstrate the influence of publication bias and the credibility of conclusions.

115

116 *Results:*

117 Thirty-nine studies met the eligibility criteria from a possible 3526. The prevalence rates of depression
118 among PTB-BAME mothers were significantly higher than full-term mothers with a standard median
119 deviation (SMD) of 1.5 and a 95% confidence interval (CI) 29-74%. The subgroup analysis indicated,
120 depressive symptoms to be time sensitive. Women within the *very PTB* category demonstrated a
121 significantly higher prevalence of depression than those categorised as *non-very* PTB. The
122 prevalence rates of anxiety and stress among PTB-BAME mothers were significantly higher than full-
123 term mothers (OR of 88% and 60% with a CI of 42%-149% and 24-106%, respectively).

124
125 *Conclusion:*

126 BAME women with PTB suffers with MH conditions. Many studies did not report on BAME population
127 specific MH outcomes. Therefore, the impact of PTB is not accurately represented in this population,
128 and thus could negatively influence the quality of maternity services.

129
130 **Key words**

131 Preterm Labor, Preterm birth, BAME, Mental Health, Women's Health and Wellbeing

132

133

134

135

136

137

138

139

140

141

142

143

144

145

146

147

148

149

150

151

152

153

154

155

156

157

158

159

160

161

162

163

164

165

166

167

Core Tip

This study demonstrates the mental health impact due to preterm birth among the Black, Asian and Ethnic minority women. There is minimal research available at present around this subject matter, and potential disease sequelae.

1. Introduction

Preterm birth (PTB) is a multi-etiological condition and a leading cause of perinatal mortality and morbidity [1]. PTB can be categorized as per the World Health Organisation (WHO) classification methods as extreme preterm (gestational age <28 weeks), very preterm (gestational age of 28-32 weeks) and moderately preterm (32-37 weeks). Most preterm infants are at risk of developing respiratory and gastrointestinal complications [2]. The PTB rates are higher in most developed regions of the world despite advances in medicine. PTB are at the highest level in the US for between 12-15% and 5-9% in Europe. In comparison, PTB rates in China range between 4.7-18.9% (1987-2006) and Taiwan 8.2-9.1% [3]. The prevalence of PTB increased from 9.8% in 2000 to 10.6% by 2014 and has become a global public health issue [1]. However, the mental health (MH) impact associated with PTB is not extensively examined, despite it potentially may exacerbate the patient's experience of a distressing birth. Furthermore, clearly pronounced risk of PTB among Black women have been reported in studies from US or UK [4,5], with limited data on the risk among other ethnic groups. While health disparities, social deprivation are recognised risk factors for PTB that are also frequently associated with Black Asian Minority Ethnic (BAME) populations, the available data on ethnic disparities associated with PTB remains limited.

In the UK alone, health disparities within Caribbean and West African populations demonstrate a significant risk of very PTB in comparison to Caucasians. Similar risks within the South Asian community appear to be less consistent in comparison to Caucasian PTB women [11]. In the UK, National Health Service (NHS) England reports improvements to maternity services are a priority as

168 part of the NHS 10-year plan [12]. As per the 2018 Public Health England report on maternity
169 services, 1 in 4 of all births within Wales and England were to mothers born outside the UK [12].
170 Additionally, 13% of all infants born between 2013-2017 are from the BAME population [12].
171 Importantly, Black women were 5 times more at risk of death during parturition and Asian babies are
172 73% more likely to result in neonatal death compared to Caucasian women [12], therefore, the MH
173 impact experienced by PTB mothers is vital to evaluate particularly in the BAME population. A number
174 of socio-economic, genetic and obstetric causes have been proposed to explain MH disorders among
175 PTB women, but these theories do not fully explain the aetiology. Furthermore, they also exclude the
176 bidirectional relationship between PTB, and MH conditions demonstrated by some studies [13]
177 [18][19].

178
179 This available evidence demonstrates a need to explore the MH impact on BAME women with PTB.
180 We believe that gathering this evidence would inform the forthcoming evidence-based women's
181 health strategy in the UK to explore both the physical and MH components, and to be inclusive using
182 cultural adaptations where appropriate.

183

184

185 **2. Materials & Methods**

186

187 An evidence synthesis methodology was developed using a systematic protocol that was developed
188 and published on PROSPERO (CRD42020210863). The aims of the study were to determine the
189 prevalence of MH conditions among BAME women with PTB as well as the MH assessments used to
190 characterise the MH outcomes.

191

192 *2.1 Data searches*

193

194 Multiple databases were used, including PubMed, EMBASE, Science direct, and The Cochrane
195 Central Register of Controlled trials for the data extraction process. Searches were carried out using
196 multiple keywords and MeSH terms such as *Depression, Anxiety, Mood disorders, PTSD,*
197 *Psychological distress, Psychological stress, Psychosis, Bipolar, Mental Health, Unipolar, self-harm,*
198 *BAME, Preterm birth, Maternal wellbeing and Psychiatry disorders.* These terms were then expanded
199 using the 'snow-ball' method and the fully developed methods are in the supplementary section (supp.
200 methods 1).

201

202 *2.2 Eligibility criteria and study selection*

203

204 All eligible randomised controlled trials (RCTs) and non-RCTs published in English were included.
205 The final dataset was reviewed independently. Multiple MH variables were used alongside of the 2
206 primary variables of PTB and BAME.

207

208 *2.3 Data extraction and Analysis*

209

210 The extraction and eligibility has been demonstrated using a PRISMA diagram [Supplementary
211 PRISMA Diagram].

212

213 The data was collected using Endnote and Microsoft excel. Stata 16.1 was used as a way to complete
214 the final statistical analysis. Standardized Mean Difference (SMD) and 95% Confidence Interval (CI)
215 were extracted for analysis. Heterogeneity was assessed by way of funnel plots, χ^2 -test (P-value)
216 and I^2 . A sub-group analysis was conducted to determine the MH symptomatology identified and
217 the geographical location.

218

219 Due to the unified use of MH assessments, in order to standardize the mean differences reported
220 within each study, the following mathematical method was used [25-27]:

$$\widehat{g}_k = \left(1 - \frac{3}{4n_k - 9}\right) \frac{\widehat{u}_{ek} - \widehat{u}_{ck}}{\sqrt{((n_{ek} - 1)s_{ek}^2 + (n_{ck} - 1)s_{ck}^2)/(n_k - 2)}}$$
$$\widehat{Var}(\widehat{g}_k) = \frac{n_k}{n_{ek} \cdot n_{ck}} + \frac{\widehat{g}_k^2}{2(n_k - 3.94)}$$

221 where $n_k = n_{ek} + n_{ck}$, n_{ek} , \widehat{u}_{ek} , s_{ek} are the number, mean and standard variation of exposed group
222 and n_{ck} , \widehat{u}_{ck} , s_{ck} are the number, mean and standard variation of control group. Then we can obtain
223 the 95% confidence interval by

$$\widehat{g}_k \pm 1.96 * S.E. (\widehat{g}_k)$$

224 where $S.E. (\widehat{g}_k) = \sqrt{\widehat{Var}(\widehat{g}_k)}$.

225

226 2.4 Meta-regression and sub-group analysis

227

228 To eliminate heterogeneity, a meta-regression and sub-group analyses were conducted by MH
229 assessment timepoints and country.

230

231 2.5 Sensitivity analysis

232

233 To further analyse the heterogeneity of studies reporting depression and anxiety, a sensitivity analysis
234 was conducted.

235

236 2.6 Risk of bias quality assessment

237

238 Studies included within this study were critically appraised individually using MH variables. All studies
239 appraised for methodological quality and risk of bias based on the Newcastle-Ottawa-Scale (NOS),
240 which is commonly used for cross-sectional and/or cohort studies as demonstrated by Wells et al.
241 [76]. These could be further modified using the adapted NOS version as reported by Modesti et al.
242 [77] and colleagues. The NOS scale includes 8 items within 3 specific quality parameters of selection,
243 outcome and comparability. The quality of these studies was reported as good, fair or poor based on
244 the details below;

245

- 246 • Good quality score of 3 or 4 stars were awarded in selection, 1 or 2 in comparability and 2 or
247 3 stars in outcomes
- 248 • Fair quality score of 2 stars were awarded in selection, 1 or 2 stars in comparability and 2 or 3
249 stars in outcomes
- 250 • Poor quality score was allocated 0 or 1 star in selection, 0 stars in comparability and 0 or 1
251 star in outcomes

252

253 2.7 Outcomes

254

255 The following outcomes were included within the meta-analysis;

256

- 257 • Prevalence of anxiety, depression, PTSD and stress
- 258 • Clinical significance of the data identified
- 259 • Critical interpretive synthesis of common MH reported outcomes

260

261 Outcomes such as PPD could not be synthesised for the meta-analysis. Therefore, these aspects
262 have been included in the narrative analysis only.

263

264 2.8 Publication bias

265

266 Publication bias is a concern to the validity of conclusion of a meta-analysis. As a result, several
267 methods could be used to assess this aspect. An egger's test was used to report on publication bias.
268 Additionally, a *trim and fill* (TAF) method was used to analyse the influence of publication bias. TAF
269 estimates any missing studies due to publication bias within the funnel plot to adjust the overall effect
270 estimate.

271

272 *2.9 Patient and public involvement*

273

274 A representative from a patient-public focus group associated with a multi-morbid project investigating
275 women's physical and mental health sequelae was invited to review the protocol and the resulting
276 paper. This is a vital facet of developing and delivering an authentic evidence synthesis to reduce the
277 gap between evidence production, development of solutions to address the identified gaps and the
278 implementation of the solutions into practice as well as their acceptability by patients.

279

280 **3. Results**

281

282 *3.1 Meta-analysis*

283

284 Of the 3526 studies, 39 met the eligibility criteria. All 39 studies reported the MH status of BAME
285 women with PTB although it remained unclear if they reported MH symptoms or clinical diagnoses.
286 Figure 1 shows the PRISMA diagram. The MH assessments and frequency of the data gathering
287 varied across studies. The 39 studies primarily reported stress, anxiety and depression and the key
288 characteristics (Table 1) and the keys features of the MH assessments (Table 2 and Supplementary
289 information) used within these studies are demonstrated in Tables 1 and 2.

290

291 *Depression*

292

293 Of the 39 studies, 36 primarily reported an association between the prevalence of depression and
294 PTB. Fifteen studies only examined the differences of non-depressive symptoms as well other factors
295 such as race, ethnicity, plurality across multiple assessment timepoints although, they were not
296 compared to full-term birth mothers of BAME decent. The overall SMD was 0.4 and 95%CI of a range
297 of 0.25-0.56, indicating the prevalence of depression in PTB mothers to be significantly higher than
298 mothers who delivered at term. $I^2=82.69\%$ indicated high heterogeneity among the depression group.

299

300 Shaw and colleagues [44] focused on the association between depression symptoms and the
301 efficiency of Edinburgh Postnatal Depression Scale (EPDS), although the specificity of EPDS to the
302 BAME population was not demonstrated. Since most of the studies reported mean and SD, we pooled
303 mean differences and its 95% CI. Seven of the studies lacked information about mean score and SD,
304 thus, were excluded from the meta-analysis. Gray and colleagues [28,29] used the same dataset in
305 two papers, therefore one of these was included into the meta-analysis. Therefore, a total of 12
306 studies were included in the meta-analysis as indicated by Table 3. Additionally, Gueron-Sela [30]
307 studied two ethnicities, therefore it was used twice as reported in Table 3. Therefore, 13 items were
308 reported in the meta-analysis for depression. The meta-analyses for anxiety and stress had 5 studies
309 each, as demonstrated in Table 4 and 5.

310

311 *Anxiety*

312

313 The 12 studies reporting anxiety utilised EDPS, the State-Trait Anxiety Inventory (STAI), Hospital
314 Anxiety and Depression Scale (HADS-A), Centre for Epidemiological Studies Depression (CES-D),
315 Beck's Depression Inventory (BDI) and Profile of Mood States (POMS) as their assessment tool. The
316 total scores of these scales are different, and the mean difference of the studies are not compatible.

317 Four studies reported on anxiety using STAI and HADS-A as their MH assessment of choice. The
318 overall SMD of Anxiety was 0.63 with 95%CI of 0.35-0.91. $I^2=86.83\%$ also indicated high
319 heterogeneity among anxiety group.

320

321 *Stress and Parent stress index*

322

323 Studies reporting stress used the Parent Stress Index (PSI) assessment on three separate timepoints
324 along with the Professional Personality Questionnaire (PPQ) and the Perceived Stress Measure
325 (PSM). The total scores of these scales in each meta-analysis are different, and the mean difference
326 of the studies are not compatible. The overall SMD of Stress was 0.47 with 95%CI 0.22-0.72.
327 $I^2=77.55\%$ indicated high heterogeneity among stress group.

328

329 *PTSD*

330

331 Suttora et al [36] was the only study reporting on PTSD. The reported mean and SD of the symptoms
332 of PTSD were transformed to SMD. The SMD was 1.12 with a 95%CI of 0.84-1.40 indicated
333 significantly high PTSD symptoms among BAME PTB women than the term mothers.

334

335 Assessment of MH at differing timepoints for depression, anxiety and stress were evaluated between
336 full term and PTB mothers. Different mean scores and SD values were reported across the included
337 studies. The dataset was unified with converting the mean difference to the standardised mean
338 difference (SMD) and demonstrated in the forest plots (Figures 2, 3 and 4).

339

340 This meta-analysis identified depression to be a primary MH outcome among PTB mothers and
341 significantly higher prevalence rates of depression was reported in PTB mothers compared with full-
342 term mothers.

343

344 *3.2 Meta-regression analysis*

345

346 Of the 16 studies included within the meta-regression analysis for depression, 5 reported mean
347 scores and SD of the MH questionnaires used at parturition. Four studies recorded the mean and SD
348 at 1-month post-delivery, while another four studies reported the same at 1 to 8 months post-delivery.
349 To eliminate the heterogeneity, these studies were adjusted by timepoints (Figure 5).

350

351 The estimated intercept for depression is 0.629 with a 95% CI of 0.455-0.804. This indicates the MH
352 assessment scores within the PTB group were significantly higher than full-term group at the birth.
353 The coefficient of the covariate time was -0.061 with a 95%CI of -0.094, -0.028 indicating that the
354 coefficients of time were significantly lower than 0. This is indicative of a reduction depression
355 symptoms post-delivery. Heterogeneity decreased from 82.69% to 79.82%, and the differences of
356 assessment timepoints could explain the 31.75% of the heterogeneity identified.

357

358 Nine studies that reported anxiety were included in the meta-regression (Figure 6). The estimated
359 intercept was 0.772 with a 95%CI of 0.500-1.045 which indicates the MH assessment scores of the
360 PTB group are significantly higher than the scores of full-term group. The coefficient of the covariate
361 time is -0.136 with 95%CI of -0.262, -0.010 indicating that the symptoms of anxiety gradually
362 disappeared among PTB group following birth. Heterogeneity reduced from 86.83% to 80.29%. The
363 differing timepoints in administering the MH assessment could explain 34.91% of the heterogeneity
364 (Figure 6).

365

366 Following the reduction of heterogeneity by way of the meta-regression method, the statistical
367 conclusions demonstrate a statistical significance where the prevalence of depression among BAME

368 women with PTB was higher in comparison to BAME women who delivered at full-term. The I^2 was
369 almost 80% which indicates a high heterogeneity.

370
371 The pooled SMD within the studies using PTB mothers from USA was 0.46 with a 95%CI of -0.43 –
372 1.35. The pooled SMD within Australia was 0.44 with a 95% CI of 0.07-0.81. I^2 of these two
373 subgroups indicated a high heterogeneity: 0.38 and 0.18 respectively. The assessment timepoints of
374 these two groups have a significant difference which could be the source of the high heterogeneity.
375 As there were only 2 studies, a meta-regression of the timepoints could not be completed.

376

377

378 3.3 Subgroup analysis

379

380 A subgroup analysis of depression and anxiety was completed using geographical location as
381 demonstrated in Supplementary Figures 1-3. For depression, the pooled SMD within Greece, Italy,
382 Israel and Turkey was 0.57 with a 95%CI of 0.4-0.74. The pooled SMD within UK was 0.12 with a 95%
383 CI of 0.03-0.21. I^2 was denoted to be indicating a lack of heterogeneity as demonstrated in
384 Supplementary Figure 1.

385

386 Although a meta-regression was not conducted for the pooled SMD within the studies with PTB
387 mothers from USA, a subgroup analysis demonstrated that the high heterogeneity could be attributed
388 to the differences of timepoints of the MH assessments.

389

390 Of the 39 studies included in the systematic review, thirteen studies were from North America
391 [1,3,6,8,12,19,21,25,27,29,34,35,39], thirteen from Europe [2,5,7,10,13,18,20,22,23,28,30,37,38], six
392 studies from Australia [9,11,17,24,31,32], three from Asia [15,16,33], three from the Middle East
393 [4,14,26] and one from South Africa [36]. These have been demonstrated in Table 1. Depression was
394 the most frequently reported theme across all the studies, followed by anxiety and stress (Table 6). A
395 variety of diagnostic tools were used across the studies, which reflects the diverse clinical practices
396 across different countries.

397

398 Based on the identified data, PTB women from the Mediterranean region (Greece, Italy, Turkey and
399 Israel) may be more prone to depressive symptoms in comparison to BAME women with PTB in
400 Australia and the US. The pooled OR and its respective 95% CIs appear credible for PTB BAME
401 women experiencing a significantly higher prevalence of depression post-parturition, although the MH
402 symptoms appear to reduce over time.

403

404 The pooled SMD of anxiety within USA was 1.12 with 95%CI of 0.58-1.66 whilst the pooled SMD of
405 the Mediterranean region (Greece, Italy, Turkey) was 0.66 with a 95%CI of 0.37-0.95. The pooled
406 SMD of Australia was 0.35 with a 95%CI of -0.54 -1.23 (Supplementary Figure 2). BAME women with
407 PTB from Australia appear to have less symptoms of anxiety and the main source of the high
408 heterogeneity in subgroup was still from the timepoints.

409

410 In relation to assessing stress, Gray and colleagues [28,29] conducted MH assessments at months 4
411 and 12, post-parturition. Whilst this appears to be useful follow-up data to evaluate, the outcome
412 measures were analysing 2 different MH variables of parenting stress and general stress. As shown
413 in Figure 12, four studies reported on parenting stress and 2 of them reported on the overall state of
414 stress. The subgroup analysis conducted indicated a lack of heterogeneity between these studies.
415 Mild heterogeneity ($I^2 = 60.69\%$) was identified within the studies included in the stress group alone.
416 The pooled SMD within the parenting group was 0.27 with a 95%CI of 0.15-0.39. In the stress group,
417 the pooled SMD was 1.07 with a 95%CI of 0.51-1.62. Additionally, the symptoms of parenting stress
418 were less severe within the PTB group (supplementary figures 4 & 5; Table 6).

419

420

421

422

423 3.3 Sensitivity analysis

424

425 Studies reporting depression [32] demonstrated women with severe PTB indicated a high SMD at
426 parturition indicating elevated levels of depressive symptoms (supplementary Figure 6). A
427 combination of worries about very premature babies and the trauma following parturition may further
428 attribute to elevated depressive symptoms. Only Pace and colleagues' study [32] conducted the
429 assessment of questionnaires among the very PTB women group at the birth. Women with a more
430 severe PTB may indicate higher scores of depression, therefore this study was excluded from the
431 sensitivity analysis. After removing Pace and colleagues' study [32], the heterogeneity in Australia
432 reduced from an I^2 of 87.79% to 52.99%. Therefore, conclusions were adjusted from a pooled SMD
433 of 0.42 (with 95%CI 0.28-0.56) to 0.34 (with 95%CI 0.22-0.46). Despite this numerical change, an
434 elevated level of depression among BAME PTB women were visible in comparison to those with a
435 full-term pregnancy (supplementary Figure 6).

436

437 Based on the anxiety studies, Gungor et al [35] in particular, reported extremely small OR and a
438 sensitivity analysis was conducted excluding one possible outlier study, as indicated by
439 supplementary Figure 7. The heterogeneity identified without Gungor et al [35] was 0%. Therefore,
440 this study in particular appears to have design and methodological issues limiting generalisability of
441 the findings. As a result, conclusions were amended from an SMD of 0.63 (with 95%CI 0.35-0.91) to
442 0.7 (with 95%CI 0.42-0.98). Therefore, despite the amendment [35], a significantly high prevalence
443 among BAME PTB women is observed (supplementary Figure 7).

444

445 3.4 Publication bias

446

447 For studies with a small sample size, the pooled OR is significantly higher based on the funnel plots,
448 therefore, these would be prone to publication bias. To assess this further, Egger's tests were
449 conducted for all studies included within the meta-analysis.

450

451 Funnel plots developed within this sample intuitively revealed publication bias (Supplementary
452 Figures 8-10). Egger's test of meta-analysis studies for depression (p -value =0.001), indicated the
453 small sample sizes are a source of publication bias (supplementary Figure 11). The pooled SMD 0.4
454 and associated CI (0.25-0.56) may have been overrated. Therefore, the *trim and fill* method was used
455 to further improve the statistical conclusions (as indicated in supplementary Figures 11 and 12). The
456 asymmetry of the funnel plot demonstrates the studies could minimally impact publication bias.

457

458 Based on the findings demonstrated in supplementary Figures 11, 3 further studies were imputed to
459 correct the effect size of small studies. The small study effect was eliminated with using the
460 imputation method, and publication bias was corrected (demonstrated in supplementary Figure 12).
461 The Hedge's g (supplementary Figure 12) was significantly higher than 0 among the meta-analysis
462 based and imputed studies. After imputing the 3 new studies and removing the publication bias, the
463 statistical conclusion was adjusted from a SMD of 0.4 with 95%CI of 0.25-0.56 to 0.32 (95%CI of
464 0.18-0.47). Despite the adjustments of publication bias, there was significant evidence that the
465 prevalence of depression among BAME PTB women were higher than those who gave birth at full-
466 term (supplementary Figures 12 and 13).

467 Egger's test p -value for anxiety was 0.198, indicating no publication bias exists (demonstrated in
468 supplementary Figure 14).

469

470 Egger's test p -value for stress was 0.036, indicating a slight publication bias among the studies
471 (demonstrated in supplementary Figure 15).

472

473 Ascertainment bias was considered within the context of the meta-analysis. Due to the lack of
474 required details such as the proportion of different ethnic groups and MH assessments, it was not
475 possible to assess this numerically. However, within the context of all the studies included in the
476 systematic review portion of the study, it is evident, there could be ascertainment bias as the sampling
477 methods used in the studies comprise of patients who may or may not have a higher or lower
478 probability of reporting MH symptomatology. These studies may be subjected to selection bias due
479 to the lack of consistency around frequency of administering the relevant MH instruments. In essence,
480 studies should have had samples with all ethnicities and races (including Caucasians) to better
481 evaluate the true MH impact due to PTB. Furthermore, the sample population should have received a
482 standardised set of MH assessments to determine anxiety, depression, PTSD and other mental
483 illnesses at specific time points during the pre and post-natal period since it is common to have
484 undiagnosed MH conditions. In addition to this, some studies have had attempted to evaluate the MH
485 impact after birth at 8 months although this lacks scientific justification and thereby, epidemiologically
486 insignificant. Furthermore, due to the lack of consistency in assessing and reporting MH outcomes
487 postnatally, attrition bias may be present. However, a definitive conclusion could not be attained
488 numerically due to limitations in the sample sizes reported.

489

490 **4 Discussion**

491

492 In this meta-analysis, the prevalence rate of depression among PTB BAME mothers was identified to
493 be significantly higher than in full-term mothers with an OR of 1.50 and 95%CI of 29%-74%.
494 Depressive symptoms were frequently reported postnatally in mothers and fathers of premature
495 infants [13]. The causes of this are likely multifactorial. Social support may influence this relationship.
496 Cheng et al [13] reported that mothers with non-resident fathers experienced higher rates of
497 depressive symptoms, as did the non-resident fathers included in this study. Lack of social support is
498 likely to be further exacerbated by prolonged hospitalisation of preterm infants and the unique
499 challenges faced by infants following hospital discharge. Additionally, mothers may be admitted to
500 hospital prior to delivery, in some cases for weeks, due to conditions like severe preeclampsia or
501 PROM associated with PTB and hence they may be more isolated than mothers of term infants.

502

503 This study defined three sub-groups; assessment timepoint <1 month, 1-8 months and >8 months,
504 and indicated that shorter the time after giving birth, the more significant was the depression.
505 Therefore, the provision of MH support following the immediate post-partum period would benefit
506 patients. Within the first month after delivery, depressive symptoms were significant among PTB
507 mothers; however, by 8 months and after 8 months, the prevalence of depression was only slightly
508 significant among PTB mothers (OR of 1.17 with 95% CI of 8%-27%; OR of 1.06 with a CI of 1%-
509 12%).

510

511 Separation of the infant and the mother is an important and frequent occurrence in PTB, which may
512 explain why mothers of preterm infants are at increased risk of depression. Furthermore, maternal co-
513 morbidities including preeclampsia or recovery from an obstetrics intervention such as a caesarean
514 section may also impact on a mother's ability to bond with her new-born who maybe in a neonatal
515 intensive care (NICU) or special care unit. One study from South Africa [31] demonstrated a high
516 prevalence of depression in mothers of both full term and preterm infants from lower socioeconomic
517 groups, which may have contributed to a greater incidence of depression. Women from lower
518 socioeconomic groups are likely exposed to greater stressors and less resources [31], affecting their
519 MH.

520

521 Adjusting to parenthood is important for all parents, in the case of PTB mothers may not have
522 sufficient time to prepare, which may lead to maternal stress [48]. Familiarity with the situation,
523 possibly by having had a previous preterm infant, and predictability have been found to reduce stress

524 and anxiety [48]. Medically indicated preterm delivery is maybe planned, for example, with multiple
525 pregnancies and maternal diabetes and thus, predictable. Therefore, it is possible that those mothers
526 experience less stress than those who give birth following acute spontaneous onset preterm labor. In
527 addition to mental preparation, the former group of parents of preterm infants may have had time to
528 visit the NICU and speak with neonatologists to gain further information and this may reduce anxiety
529 following birth.

530
531 Parenting stress is found to be higher in mothers of preterm infants at one year [29]. This relationship
532 may be predicted by maternal depression as well as impaired parent and infant interactions [29].
533 Interestingly, parenting stress is not significantly different in mothers of preterm or full-term infants in
534 early infancy [28], suggesting all mothers require support in the immediate post-partum period to
535 reduce parental MH but prolonged provision of such support is important in managing PTB mothers.

536
537 Increased and unexpected medical interventions associated with PTB, including painful corticosteroid
538 injections or the use of magnesium sulphate, as well as intimate examinations and the need for
539 emergency procedures such as caesarean sections may further negatively impact a mother's physical
540 and mental health. These may exacerbate the underlying stress faced by a preterm mother and her
541 partner, the feelings of anxiety, stress are compounded in some circumstances by the lack of
542 preparedness and loss of control. Together, these experiences may explain why mothers and fathers
543 of preterm infants have greater levels of stress [29] and depression [13].

544
545 Cheng et al [13] conducted the comparison between fathers and mothers suffering as a result of PTB
546 among Hispanic, Non-Hispanic White, Non-Hispanic Black and Non-Hispanic as well as other races.
547 Gueron et al [30] on the other hand focused on depression and stress symptomatology among
548 Bedouin and Jewish women. Based on Gueron and colleagues' findings, Bedouin women
549 experienced the highest level of depression. In comparison to these, Rogers et al [43] compared the
550 Caucasian and African American PTB patients that indicated a lack of significant differences between
551 the two groups. Ballantyne et al [37] conducted their study on Canadian PTB women which included
552 immigrant women. However, immigrant's status had no contribution to the differences in MH disorders
553 or symptomatology.

554
555 The MH impact on those with PTB could be exacerbated due to understandable feelings of
556 helplessness and hopelessness, and low mood is commonly reported by these women. On the
557 contrary, Jotzo and colleagues [14] demonstrated PTB could lead to traumatising effects on parents
558 with 49% of mothers reporting traumatic reactions even after a year. Muller-Nix and colleagues [15]
559 demonstrated this correlation of traumatic stress and psychological distress between mother and
560 child. Pierrehumbert and colleagues [16] indicated post-traumatic stress symptoms after PTB was a
561 predictor of a child's eating and sleeping problems. Similarly, Solhaugh and colleagues [17] found that
562 parents who had hospital stays following a PTB requiring neonatal intensive care, demonstrated high
563 levels of psychological reactions that required treatment.

564
565 Perinatal MH around suicidality or suicidal ideation, should be considered as a priority to be
566 addressed among BAME women, which is vital in particular within the UK. BAME women are at a
567 higher risk of suffering from MH disorder in comparison to Caucasian women in the UK and they are
568 less likely to access healthcare support. This is particularly true for women of Pakistani and Indian
569 background. Additionally, Anderson and colleagues [64] reported prevalence and risk of MH disorders
570 among migrant women. These factors should be considered by those treating clinical groups. In
571 addition to the timepoint, we also consider the impact of population. It remains unclear whether the
572 prevalence rate of depression varies after PTB in different ethnic groups. Gulamani et al [67] have
573 found the depressive symptoms of women with PTB may be associated with race and culture, but
574 further evidence is lacking. Due to the higher risk of MH symptoms around the time of PTB, this data

575 may help the health service providers to focus on delivering timely support to the BAME mothers with
576 PTB.

577

578 Interestingly, alcohol consumption and substance abuse that are linked to worsening of MH and poor
579 pregnancy outcomes were not identified within the BAME population literature within the scope of this
580 study, although, it would influence PTB and associated MH illness [68-73].

581

582 Similarly, substance abuse among pregnant women increases the risk of PTB and the association of
583 mental illness among the BAME population [74,75]. Holden et al [75] demonstrated self-reported
584 depressive symptomatology associated with 602 BAME and Caucasian pregnant women that had
585 substance abuse and were subjected to intimate partner violence. This study used the EPDMS which
586 demonstrated elevated levels of depressive illness that required clinical diagnoses and treatments at
587 a MH care facility. Additionally, women abuse screening tool (WAST) was used to evaluate
588 relationship issues and those needing appropriate support was referred to social services [74, 75].
589 There is limited information available around substance abuse and partner violence associated with
590 MH among BAME women. Research conducted within this area appears to lack consistency and
591 systematic evaluation of cultural paradigms relevant to BAME women and the direct association with
592 PTB and MH given the complexity of these issues.

593

594 **5 Limitations**

595

596 Heterogeneity of studies gathered within this review challenged the evidence synthesis. Studies
597 identified reported on MH outcomes without a clear distinction mostly between MH symptomatology
598 and psychiatric comorbidities. Timelines for administering MH instruments and other tools such as
599 talking therapies were not unified across all studies. Collectively, these are design and methodological
600 flaws influencing heterogeneity. Studies were excluded if they discussed QoL as this does not
601 demonstrate the identification or reporting of MH outcomes such as pre or postnatal depression,
602 anxiety, psychosis and other mood disorders.

603

604 **6 Comments & Conclusion**

605

606 PTB has a significant association with depression, anxiety and stress symptoms in new mothers
607 during the immediate postpartum period. The MH symptoms are more significant in very preterm
608 mothers than non-very preterm mothers. However, the effect of PTB on the incidence of depression
609 and other MH outcomes is unclear among different ethnic groups and therefore more studies are
610 needed to explore this.

611

612 This study identified a methodological gap to evaluate disease *sequelae* between PTB and MH
613 among BAME populations. This important facet should be considered in future research studies that
614 requires the involvement of multidisciplinary teams. Most included studies did not indicate a publicly
615 available protocol, and this would have assisted in reducing potential biases during selection to
616 improve sampling techniques and the subsequent data analysis. PICO based reporting may benefit
617 future researchers when conducting research within PTB to address true MH impact within BAME
618 populations. Addressing the multi-stakeholder evidence gap is crucial to improving patient care,
619 therefore, the development of a classification framework for healthcare systems to better assess
620 BAME women at risk with PTB and MH outcomes would be beneficial. Including cultural adaptation
621 methods as well as training of healthcare professionals will help to manage patients' expectations with
622 the required sensitivities. Similarly, cost-effectiveness and long-term sustainability should be
623 considered when developing a suitable framework.

624

625 It is also vital to acknowledge health inequalities and avoidable disparities should be addressed as a
626 matter of urgency. Maternal care should have integrated methods of working with MH care

627 professionals and possibly setup a specialist service for BAME women with a focus on culturally
628 adapted and sensitive ways to support women after a PTB. It is important to improve quality of care
629 received by BAME women with vulnerabilities such as those who are refugees or migrants and do not
630 speak English. Equally, MH services should work more cohesively within the women's health in the
631 community setting and training should be offered to all healthcare professionals to provide a
632 personalised care.

633
634
635
636
637
638
639
640

References

- 641 1. Misund AR, Nerdrum P, Diseth TH. Mental health in women experiencing preterm birth. *BMC*
642 *Pregnancy Childbirth*. 2014;14:263. <https://doi.org/10.1186/1471-2393-14-263>
- 643 2. Saigal S, Doyle LW. An overview of mortality and sequelae of preterm birth from infancy to
644 adulthood. *Lancet*. 2008;371(9608):261-269. [https://doi.org/10.1016/S0140-6736\(08\)60136-1](https://doi.org/10.1016/S0140-6736(08)60136-1)
- 645 3. Chen KH, Chen IC, Yang YC, Chen KT. The trends and associated factors of preterm
646 deliveries from 2001 to 2011 in Taiwan. *Medicine*. 2019;98(13):e15060.
647 <https://doi.org/10.1097/MD.000000000000150602393-14-263>
- 648 4. Manuck TA. Racial and ethnic differences in preterm birth: A complex, multifactorial problem.
649 *Semin in perinatol*. 2017;41(8):511-518. <https://doi.org/10.1053/j.semperi.2017.08.010>
- 650 5. Schaaf JM, Liem SM, Mol BW, Abu-Hanna A, Ravelli AC. Ethnic and racial disparities in the
651 risk of preterm birth: a systematic review and meta-analysis. *Am J Perinatol*. 2013;30(6):433-
652 450. <https://doi.org/10.1055/s-0032-1326988>
- 653 6. Romero R, Espinoza J, Kusanovic JP, Gotsch F, Hassan S, Erez O, Chaiworapongsa T,
654 Mazor M. The preterm parturition syndrome. *BJOG*. 2006;113 Suppl 3(Suppl 3):17-42.
655 <https://doi.org/10.1111/j.1471-0528.2006.01120.x>
- 656 7. Sheikh IA, Ahmad E, Jamal MS, Rehan M, Assidi M, Tayubi IA, AlBasri SF, Bajouh OS, Turki
657 RF, Abuzenadah AM, Damanhour GA, Beg MA, Al-Qahtani M. Spontaneous preterm birth
658 and single nucleotide gene polymorphisms: a recent update. *BMC Genom*. 2016;17(Suppl
659 9):759. <https://doi.org/10.1186/s12864-016-3089-0>
- 660 8. Ehn NL, Cooper ME, Orr K, Shi M, Johnson MK, Caprau D, Dagle J, Steffen K, Johnson K,
661 Marazita ML, Merrill D, Murray JC. Evaluation of fetal and maternal genetic variation in the
662 progesterone receptor gene for contributions to preterm birth. *Pediatr Res*. 2007;62(5):630-
663 635. <https://doi.org/10.1203/PDR.0b013e3181567bfc>
- 664 9. Manuck TA, Major HD, Varner MW, Chettier R, Nelson L, Esplin MS. Progesterone receptor
665 genotype, family history, and spontaneous preterm birth. *Obstet Gynecol*. 2010;115(4):765-
666 770. <https://doi.org/10.1097/AOG.0b013e3181d53b83>
- 667 10. Manuck TA, Lai Y, Meis PJ, Dombrowski MP, Sibai B, Spong CY, Rouse DJ, Durnwald CP,
668 Caritis SN, Wapner RJ, Mercer BM, Ramin SM. Progesterone receptor polymorphisms and
669 clinical response to 17-alpha-hydroxyprogesterone caproate. *Am J Obstet Gynecol*.
670 2011;205(2):135.e1-135.e1359. <https://doi.org/10.1016/j.ajog.2011.03.048>
- 671 11. Li Y, Quigley MA, Macfarlane A, Jayaweera H, Kurinczuk JJ, Hollowell J. Ethnic differences in
672 singleton preterm birth in England and Wales, 2006-12: Analysis of national routinely
673 collected data. *Paediatr Perinat Epidemiol*. 2019;33(6):449-458.
674 <https://doi.org/10.1111/ppe.12585>
- 675 12. Public Health England. Maternity high impact area: Reducing the inequality of outcomes for
676 women from Black, Asian and Minority Ethnic (BAME) communities and their babies. Public
677 Health England. 2020.
678 https://assets.publishing.service.gov.uk/government/uploads/system/uploads/attachment_data/file/942480/Maternity_high_impact_area_6_Reducing_the_inequality_of_outcomes_for_women
679

- 680 men_from_Black__Asian_and_Minority_Ethnic__BAME__communities_and_their_babies.pdf
681 . Accessed 8 April 2021.
- 682 13. Cheng ER, Kotelchuck M, Gerstein ED, Taveras EM, Poehlmann-Tynan J. Postnatal
683 Depressive Symptoms Among Mothers and Fathers of Infants Born Preterm: Prevalence and
684 Impacts on Children's Early Cognitive Function. *J Dev Behav Pediatr.* 2016;37(1):33-42.
685 <https://doi.org/10.1097/DBP.000000000000233>
- 686 14. Jotzo M, Poets CF. Helping parents cope with the trauma of premature birth: an evaluation of
687 a trauma-preventive psychological intervention. *Pediatr.* 2005;115(4):915-919.
688 <https://doi.org/10.1542/peds.2004-0370>
- 689 15. Muller-Nix C, Forcada-Guex M, Pierrehumbert B, Jaunin L, Borghini A, Ansermet F.
690 Prematurity, maternal stress and mother-child interactions. *Early Hum Dev.* 2004;79(2):145-
691 158. <https://doi.org/10.1016/j.earlhumdev.2004.05.002>
- 692 16. Pierrehumbert B, Nicole A, Muller-Nix C, Forcada-Guex M, Ansermet F. Parental post-
693 traumatic reactions after premature birth: implications for sleeping and eating problems in the
694 infant. *Arch Dis Child Fetal Neonatal Ed.* 2003;88(5):F400-F404.
695 <https://doi.org/10.1136/fn.88.5.f400>
- 696 17. Solhaug M, Bjørk IT, Sandtrø HP. Staff perception one year after implementation of the the
697 newborn individualized developmental care and assessment program (NIDCAP). *J Pediatr*
698 *Nurs.* 2010;25(2):89-97. <https://doi.org/10.1016/j.pedn.2009.11.004>
- 699 18. Grote NK, Bridge JA, Gavin AR, Melville JL, Iyengar S, Katon WJ. A meta-analysis of
700 depression during pregnancy and the risk of preterm birth, low birth weight, and intrauterine
701 growth restriction. *Arch Gen Psychiatry.* 2010;67(10):1012-1024.
702 <https://doi.org/10.1001/archgenpsychiatry.2010.111>
- 703 19. Sanchez SE, Puente GC, Atencio G, Qiu C, Yanez D, Gelave B, Williams MA. Risk of
704 spontaneous preterm birth in relation to maternal depressive, anxiety, and stress symptoms. *J*
705 *Reprod Med.* 2013;58(1-2):25-33.
- 706 20. Staneva A, Bogossian F, Pritchard M, Wittkowski A. The effects of maternal depression,
707 anxiety, and perceived stress during pregnancy on preterm birth: A systematic review.
708 *Women Birth.* 2015;28(3):179-193. <https://doi.org/10.1016/j.wombi.2015.02.003>
- 709 21. Grigoriadis S, Graves L, Peer M, Mamisashvili L, Tomlinson G, Vigod SN, Dennis CL, Steiner
710 M, Brown C, Cheung A, Dawson H, Rector NA, Guenette M, Richter M. Maternal Anxiety
711 During Pregnancy and the Association With Adverse Perinatal Outcomes: Systematic Review
712 and Meta-Analysis. *J Clin Psychiatry.* 2018;79(5):17r12011.
713 <https://doi.org/10.4088/JCP.17r12011>
- 714 22. Fekadu Dadi A, Miller ER, Mwanri L. Antenatal depression and its association with adverse
715 birth outcomes in low and middle-income countries: A systematic review and meta-analysis.
716 *PLoS One.* 2020;15(1):e0227323. <https://doi.org/10.1371/journal.pone.0227323>
- 717 23. Ghimire U, Papabathini SS, Kawuki J, Obore N, Musa TH. Depression during pregnancy and
718 the risk of low birth weight, preterm birth and intrauterine growth restriction- an updated meta-
719 analysis. *Early Hum Dev.* 2021;152:105243.
720 <https://doi.org/10.1016/j.earlhumdev.2020.105243>
- 721 24. Gulamani SS, Premji SS, Kanji Z, Azam SI. Preterm birth a risk factor for postpartum
722 depression in Pakistani women. *Open J Depress.* 2013;2(4):72-81.
- 723 25. Hedges LV. Distribution Theory for Glass's Estimator of Effect Size and Related Estimators. *J*
724 *Educ Stat.* 1981;6(2):107-128. <https://doi.org/10.2307/1164588>
- 725 26. Hedges LV. Estimation of effect size from a series of independent experiments. *Psychol Bull.*
726 1982;92(2):490-499. <https://doi.org/10.1037/0033-2909.92.2.490>
- 727 27. Hedges LV, Olkin I. Statistical methods for meta-analysis. San Diego, CA: Academic Press;
728 1985.
- 729 28. Gray PH, Edwards DM, O'Callaghan MJ, Cuskelly M. Parenting stress in mothers of preterm
730 infants during early infancy. *Early Hum Dev.* 2012;88(1):45-49.
731 <https://doi.org/10.1016/j.earlhumdev.2011.06.014>

- 732 29. Gray PH, Edwards DM, O'Callaghan MJ, Cuskelly M, Gibbons K. Parenting stress in mothers
733 of very preterm infants -- influence of development, temperament and maternal depression.
734 *Early Hum Dev.* 2013;89(9):625-629. <https://doi.org/10.1016/j.earlhumdev.2013.04.005>
- 735 30. Gueron-Sela N, Atzaba-Poria N, Meiri G, Marks K. Prematurity, ethnicity and personality: risk
736 for postpartum emotional distress among Bedouin-Arab and Jewish women. *J Reprod Infant*
737 *Psychol.* 2013;31(1):81-93. <https://doi.org/10.1080/02646838.2012.747195>
- 738 31. Madu SN, roos JJ. Depression among mothers with preterm infants and their stress-coping
739 strategies. *Soc Behav Personality: Int J.* 2006;34(7):877-890.
740 <https://doi.org/10.2224/sbp.2006.34.7.877>
- 741 32. Pace CC, Spittle AJ, Molesworth CM, Lee KJ, Northam EA, Cheong JL, Davis PG, Doyle LW,
742 Treyvaud K, Anderson PJ. Evolution of Depression and Anxiety Symptoms in Parents of Very
743 Preterm Infants During the Newborn Period. *JAMA Pediatr.* 2016;170(9):863-870.
744 <https://doi.org/10.1001/jamapediatrics.2016.0810>
- 745 33. Gambina I, Soldera G, Benevento B, Trivellato P, Visentin S, Cavallin F, Trevisanuto D,
746 Zanardo V. Postpartum psychosocial distress and late preterm delivery. *J Reprod Infant*
747 *Psychol.* 2011;29(5):472-479. <https://doi.org/10.1080/02646838.2011.653962>
- 748 34. Bouras G, Theofanopoulou N, Mexi-Bourna P, Poullos A, Michopoulos I, Tassiopoulou I,
749 Daskalaki A, Christodoulou C. Preterm birth and maternal psychological health. *J Health*
750 *Psychol.* 2015;20(11):1388-1396. <https://doi.org/10.1177/1359105313512353>
- 751 35. Gungor I, Oskay U, Beji NK. Biopsychosocial risk factors for preterm birth and postpartum
752 emotional well-being: a case-control study on Turkish women without chronic illnesses. *J Clin*
753 *Nurs.* 2011 Mar;20(5-6):653-665. <https://doi.org/10.1111/j.1365-2702.2010.03532.x>
- 754 36. Suttora C, Spinelli M, Monzani D. From prematurity to parenting stress: The mediating role of
755 perinatal post-traumatic stress disorder. *Eur J Dev Psychol.* 2014;11(4):478-493.
756 <https://doi.org/10.1080/17405629.2013.859574>
- 757 37. Ballantyne M, Benzies KM, Trute B. Depressive symptoms among immigrant and Canadian
758 born mothers of preterm infants at neonatal intensive care discharge: a cross sectional study.
759 *BMC Pregnancy Childbirth.* 2013;13 Suppl 1(Suppl 1):S11. <https://doi.org/10.1186/1471-2393-13-S1-S11>
- 760 38. Barroso NE, Hartley CM, Bagner DM, Pettit JW. The effect of preterm birth on infant negative
761 affect and maternal postpartum depressive symptoms: A preliminary examination in an
762 underrepresented minority sample. *Infant Behav Dev.* 2015;39:159-165.
763 <https://doi.org/10.1016/j.infbeh.2015.02.011>
- 764 39. Brandon DH, Tully KP, Silva SG, Malcolm WF, Murtha AP, Turner BS, Holditch-Davis D.
765 Emotional responses of mothers of late-preterm and term infants. *J Obstet Gynecol Neonatal*
766 *Nurs.* 2011;40(6):719-731. <https://doi.org/10.1111/j.1552-6909.2011.01290.x>
- 767 40. Fabiyi C, Rankin K, Norr K, Shapiro N, White-Traut R. Anxiety among Black and Latina
768 Mothers of Premature Infants at Social-Environmental Risk. *Newborn Infant Nurs Rev.*
769 2012;12(3):132-140. <https://doi.org/10.1053/j.nainr.2012.06.004>
- 770 41. Holditch-Davis D, Miles MS, Weaver MA, Black B, Beeber L, Thoyre S, Engelke S. Patterns
771 of distress in African-American mothers of preterm infants. *J Dev Behav Pediatr.*
772 2009;30(3):193-205.
- 773 42. Logsdon MC, Davis DW, Birkimer JC, Wilkerson SA. Predictors of Depression in Mothers of
774 Preterm Infants. *J Soc Behav Personality.* 1997;12(1):73-88.
- 775 43. Rogers CE, Kidokoro H, Wallendorf M, Inder TE. Identifying mothers of very preterm infants
776 at-risk for postpartum depression and anxiety before discharge. *J Perinatol.* 2013;33(3):171-
777 176. <https://doi.org/10.1038/jp.2012.75>
- 778 44. Shaw RJ, Sweester CJ, St John N, Lilo E, Corcoran JB, Jo B, Howell SH, Benitz WE,
779 Feinstein N, Melnyk B, Horwitz SM. Prevention of postpartum traumatic stress in mothers with
780 preterm infants: manual development and evaluation. *Issues Ment Health Nurs.*
781 2013;34(8):578-586. <https://doi.org/10.3109/01612840.2013.789943>
- 782 45. Holditch-Davis D, Santos H, Levy J, White-Traut R, O'Shea TM, Geraldo V, David R. Patterns
783 of psychological distress in mothers of preterm infants. *Infant Behav Dev.* 2015;41:154-163.
784

- 785 <https://doi.org/10.1016/j.infbeh.2015.10.004>
- 786 46. Miles MS, Holditch-Davis D, Schwartz TA, Scher M. Depressive symptoms in mothers of
787 prematurely born infants. *J Dev Behav Pediatr.* 2007;28(1):36-44.
788 <https://doi.org/10.1097/01.DBP.0000257517.52459.7a>
- 789 47. Mew AM, Holditch-Davis D, Belyea M, Miles MS, Fishel A. Correlates of depressive
790 symptoms in mothers of preterm infants. *Neonatal Netw.* 2003;22(5):51-60.
791 <https://doi.org/10.1891/0730-0832.22.5.51>
- 792 48. Younger JB, Kendell MJ, Pickler RH. Mastery of stress in mothers of preterm infants. *J Soc
793 Pediatr Nurs.* 1997;2(1):29-35. <https://doi.org/10.1111/j.1744-6155.1997.tb00197.x>
- 794 49. Baptista J, Moutinho V, Mateus V, Guimarães H, Clemente F, Almeida S, Andrade MA, Dias
795 CP, Freitas A, Martins C, Soares I. Being a mother of preterm multiples in the context of
796 socioeconomic disadvantage: perceived stress and psychological symptoms. *J Pediatr (Rio J).*
797 2018;94(5):491-497. <https://doi.org/10.1016/j.jped.2017.08.010>
- 798 50. Carson C, Redshaw M, Gray R, Quigley MA. Risk of psychological distress in parents of
799 preterm children in the first year: evidence from the UK Millennium Cohort Study. *BMJ Open.*
800 2015;5(12):e007942. <https://doi.org/10.1136/bmjopen-2015-007942>
- 801 51. Drewett R, Blair P, Emmett P, Emond A; ALSPAC Study Team. Failure to thrive in the term
802 and preterm infants of mothers depressed in the postnatal period: a population-based birth
803 cohort study. *J Child Psychol Psychiatry.* 2004;45(2):359-366. <https://doi.org/10.1111/j.1469-7610.2004.00226.x>
- 804 52. Henderson J, Carson C, Redshaw M. Impact of preterm birth on maternal well-being and
805 women's perceptions of their baby: a population-based survey. *BMJ Open.*
806 2016;6(10):e012676. <https://doi.org/10.1136/bmjopen-2016-012676>
- 807 53. Ionio C, Colombo C, Brazzoduro V, Mascheroni E, Confalonieri E, Castoldi F, Lista G.
808 Mothers and Fathers in NICU: The Impact of Preterm Birth on Parental Distress. *Eur J
809 Psychol.* 2016;12(4):604-621. <https://doi.org/10.5964/ejop.v12i4.1093>
- 810 54. Misund AR, Nerdrum P, Bråten S, Pripp AH, Diseth TH. Long-term risk of mental health
811 problems in women experiencing preterm birth: a longitudinal study of 29 mothers. *Ann Gen
812 Psychiatry.* 2013;12(1):33. <https://doi.org/10.1186/1744-859X-12-33>
- 813 55. Trumello C, Candelori C, Cofini M, Cimino S, Cerniglia L, Paciello M, Babore A. Mothers'
814 Depression, Anxiety, and Mental Representations After Preterm Birth: A Study During the
815 Infant's Hospitalization in a Neonatal Intensive Care Unit. *Front Public Health.* 2018;6:359.
816 <https://doi.org/10.3389/fpubh.2018.00359>
- 817 56. Mautner E, Greimel E, Trutnovsky G, Daghofer F, Egger JW, Lang U. Quality of life outcomes
818 in pregnancy and postpartum complicated by hypertensive disorders, gestational diabetes,
819 and preterm birth. *J Psychosom Obstet Gynaecol.* 2009;30(4):231-237.
820 <https://doi.org/10.3109/01674820903254757>
- 821 57. Korja R, Savonlahti E, Ahlqvist-Björkroth S, Stolt S, Haataja L, Lapinleimu H, Piha J,
822 Lehtonen L; PIPARI study group. Maternal depression is associated with mother-infant
823 interaction in preterm infants. *Acta Paediatr.* 2008;97(6):724-730.
824 <https://doi.org/10.1111/j.1651-2227.2008.00733.x>
- 825 58. Davis L, Edwards H, Mohay H, Wollin J. The impact of very premature birth on the
826 psychological health of mothers. *Early Hum Dev.* 2003;73(1-2):61-70.
827 [https://doi.org/10.1016/s0378-3782\(03\)00073-2](https://doi.org/10.1016/s0378-3782(03)00073-2)
- 828 59. Edwards DM, Gibbons K, Gray PH. Relationship quality for mothers of very preterm infants.
829 *Early Hum Dev.* 2016;92:13-18. <https://doi.org/10.1016/j.earlhumdev.2015.10.016>
- 830 60. Hagan R, Evans SF, Pope S. Preventing postnatal depression in mothers of very preterm
831 infants: a randomised controlled trial. *BJOG.* 2004;111(7):641-647.
832 <https://doi.org/10.1111/j.1471-0528.2004.00165.x>
- 833 61. Bener A. Psychological distress among postpartum mothers of preterm infants and
834 associated factors: a neglected public health problem. *Braz J Psychiatry.* 2013;35(3):231-236.
835 <https://doi.org/10.1590/1516-4446-2012-0821>
- 836 62. Sharan H, Kaplan B, Weizer N, Sulkes J, Merlob P. Early screening of postpartum depression
837

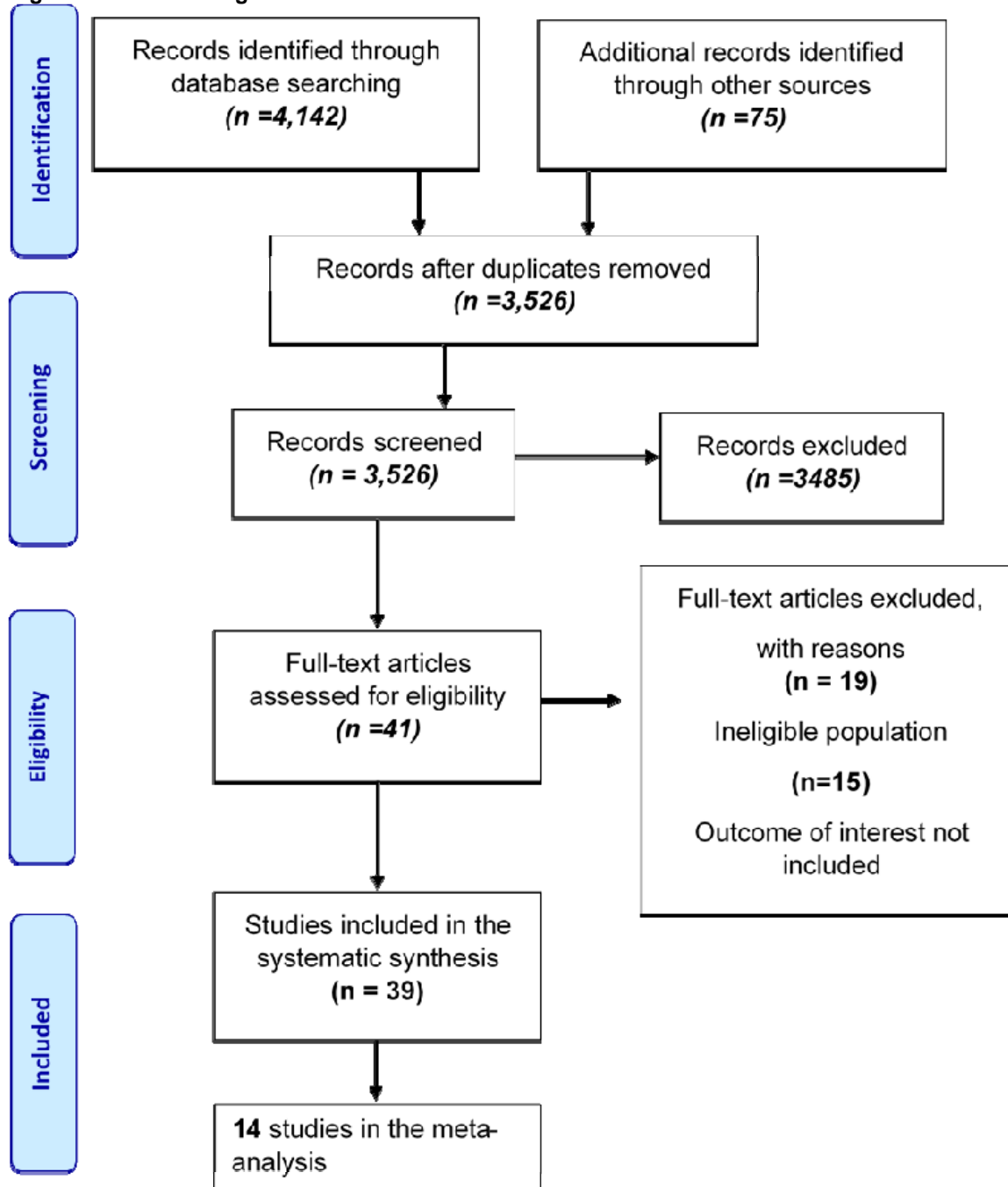
- 838 using the Edinburgh Postnatal Depression Scale. *Int J Risk Saf Med*. 2006;18(4):213-218.
- 839 63. Howe TH, Sheu CF, Wang TN, Hsu YW. Parenting stress in families with very low birth weight
840 preterm infants in early infancy. *Res Dev Disabil*. 2014;35(7):1748-1756.
841 <https://doi.org/10.1016/j.ridd.2014.02.015>
- 842 64. Anderson FM, Hatch SL, Comacchio C, Howard LM. Prevalence and risk of mental disorders
843 in the perinatal period among migrant women: a systematic review and meta-analysis. *Arch*
844 *Women's Ment Health*. 2017;20(3):449-462. <https://doi.org/10.1007/s00737-017-0723-z>
- 845 65. Bhari K, Salway S. Addressing ethnic inequalities in maternity service experiences and
846 outcomes: responding to women's needs and preferences. A Race Equality Better Health
847 Briefing Paper No. 11. Race Equality Foundation. 2008.
848 <https://raceequalityfoundation.org.uk/wp-content/uploads/2018/03/health-brief11.pdf>.
849 Accessed 8 April 2021.
- 850 66. McKenzie G. MBRRACE and the disproportionate number of BAME deaths: Why is this
851 happening and how do we tackle it? *AIMS J*. 2019;31(2):1-8.
- 852 67. Gulamani SS, Premji SS, Kanji Z, Azam SI. A review of postpartum depression, preterm birth,
853 and culture. *J Perinat Neonatal Nurs*. 2013;27(1):52-61.
854 <https://doi.org/10.1097/JPN.0b013e31827fcf24>
- 855 68. NHS Digital. Health Survey for England – 2012. NHS Digital. 2013. [https://digital.nhs.uk/data-](https://digital.nhs.uk/data-and-information/publications/statistical/health-survey-for-england/health-survey-for-england-2012)
856 [and-information/publications/statistical/health-survey-for-england/health-survey-for-england-](https://digital.nhs.uk/data-and-information/publications/statistical/health-survey-for-england/health-survey-for-england-2012)
857 [2012](https://digital.nhs.uk/data-and-information/publications/statistical/health-survey-for-england/health-survey-for-england-2012). Accessed 8 April 2021.
- 858 69. von Hinke Kessler Scholder S, Wehby GL, Lewis S, Zuccolo L. Alcohol Exposure *In Utero*
859 and Child Academic Achievement. *Econ J (London)*. 2014;124(576):634-667.
860 <https://doi.org/10.1111/ecoj.12144>
- 861 70. The Royal College of Midwives. Alcohol and pregnancy guidance paper. The Royal College
862 of Midwives. 2010.
- 863
- 864 71. Schölin, L., Watson, J., Dyson, J., & Smith, L. Alcohol Guidelines For Pregnant Women:
865 Barriers and enablers for Midwives to deliver advice. The Institute of Alcohol Studies. 2019.
866 <https://www.ias.org.uk/uploads/pdf/IAS%20reports/rp37092019.pdf>. Accessed 8 April 2021
- 867 72. U.S. Department of Health and Human Services. Results from the 2011 National Survey on
868 Drug Use and Health: Summary of National Findings. Substance Abuse and Mental Health
869 Services Administration Center for Behavioral Health Statistics and Quality. 2012.
870 [https://www.samhsa.gov/data/sites/default/files/Revised2k11NSDUHSummNatFindings/Revis](https://www.samhsa.gov/data/sites/default/files/Revised2k11NSDUHSummNatFindings/Revised2k11NSDUHSummNatFindings/NSDUHresults2011.htm)
871 [ed2k11NSDUHSummNatFindings/NSDUHresults2011.htm](https://www.samhsa.gov/data/sites/default/files/Revised2k11NSDUHSummNatFindings/Revised2k11NSDUHSummNatFindings/NSDUHresults2011.htm). Accessed 8 April 2021.
- 872 73. Stone R. Pregnant women and substance use: fear, stigma, and barriers to care. *Health*
873 *Justice*. 2015;3(2). <https://doi.org/10.1186/s40352-015-0015-5>
- 874 74. National Institute for Health and Clinical Excellence: National Collaborating Centre for
875 Women's and Children's Health. Descriptions of services for pregnant women with complex
876 social factors. National Institute for Health and Clinical Excellence. 2012.
877 <https://www.nice.org.uk/guidance/cg110/resources/service-descriptions-pdf-136153837>.
878 Accessed 8 April 2021.
- 879 75. Holden KB, McKenzie R, Pruitt V, Aaron K, Hall S. Depressive symptoms, substance abuse,
880 and intimate partner violence among pregnant women of diverse ethnicities. *J Health Care*
881 *Poor Underserved*. 2012;23(1):226-241. <https://doi.org/10.1353/hpu.2012.0022>
- 882 76. Wells GA, Shea B, O'Connell D, Peterson J, Welch V, Losos M, Tugwell P. The Newcastle-
883 Ottawa Scale (NOS) for assessing the quality of nonrandomised studies in meta-analyses.
884 Ottawa Hospital Research Institute, Ottawa, ON, Canada 2000
- 885 77. Modesti PA, Reboldi G, Cappuccio FP, Agyemang C, Remuzzi G, Rapi S, Perruolo E, Parati
886 G, ESH Working Group on CV Risk in Low Resource Settings. Panethnic differences in blood
887 pressure in Europe: a systematic review and meta-analysis. *PLoS one*. 2016 Jan
888 25;11(1):e0147601. <https://doi.org/10.1371/journal.pone.0147601>
- 889
- 890
- 891
- 892
- 893
- 894
- 895
- 896

897

898
899
900

Figures & Tables

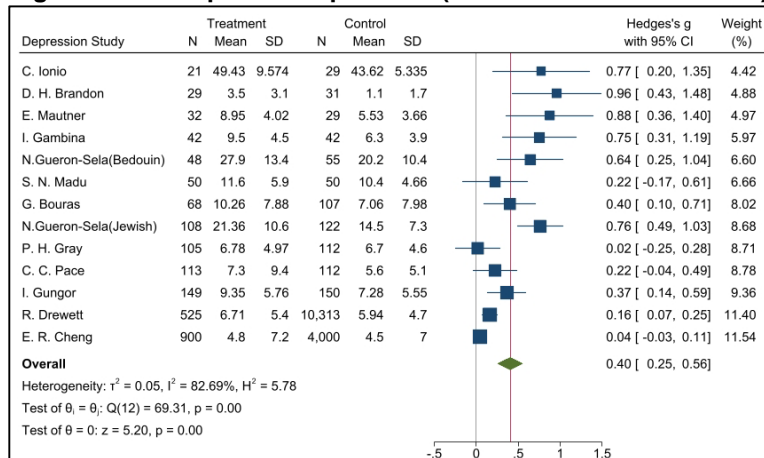
Figure 1: PRISMA Diagram



901
902
903
904
905
906
907
908
909
910
911

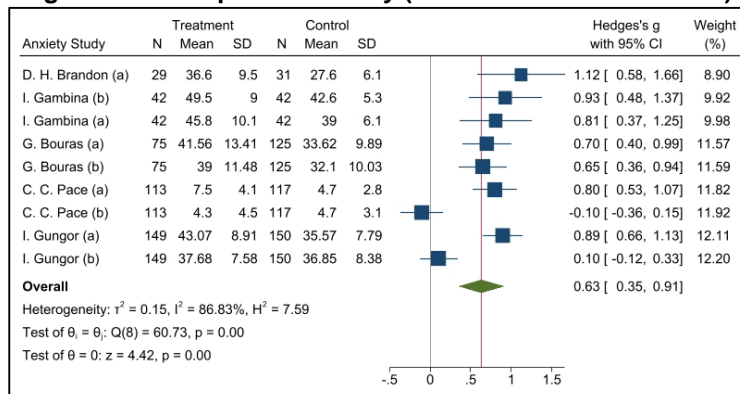
912
913

Figure 2: Forest plot for depression (Full term vs. Preterm birth)



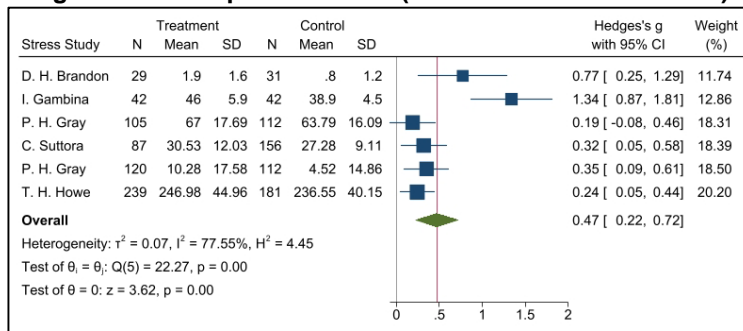
914
915
916

Figure 3: Forest plot for anxiety (Full term vs. Preterm birth)



917
918
919

Figure 4: Forest plot for stress (Full term vs. Preterm birth)



920
921
922

Figure 5: Meta regression conducted by time for depression

Random-effects meta-regression		Number of obs = 16				
Method: DerSimonian-Laird		Residual heterogeneity:				
		tau2 = .04072				
		I2 (%) = 79.82				
		H2 = 4.96				
		R-squared (%) = 31.75				
		Wald chi2(1) = 13.41				
		Prob > chi2 = 0.0002				
_meta_es	Coef.	Std. Err.	z	P> z	[95% Conf. Interval]	
tvalue	-.0609896	.0166533	-3.66	0.000	-.0936296	-.0283497
_cons	.6294887	.0889261	7.08	0.000	.4551968	.8037807
Test of residual homogeneity: Q_res = chi2(14) = 69.38 Prob > Q_res = 0.0000						

Figure 6: Meta regression conducted by time for anxiety

Random-effects meta-regression		Number of obs = 9				
Method: DerSimonian-Laird		Residual heterogeneity:				
		tau2 = .1002				
		I2 (%) = 80.29				
		H2 = 5.07				
		R-squared (%) = 34.91				
		Wald chi2(1) = 4.50				
		Prob > chi2 = 0.0338				
_meta_es	Coef.	Std. Err.	z	P> z	[95% Conf. Interval]	
tvalue	-.1359486	.0640626	-2.12	0.034	-.261509	-.0103882
_cons	.7723931	.1391725	5.55	0.000	.4996201	1.045166
Test of residual homogeneity: Q_res = chi2(7) = 35.51 Prob > Q_res = 0.0000						

923
924
925

926
927
928
929
930
931

Table 1 indicate key features of the studies included in the systematic review

ID	Author	Study type	Country	Symptoms			Outcome assessment
1	M. Ballantyne	Cross-sectional study	Canada	Depression		Stress	1)CES-D 2)PSS:NICU
2	J. Baptista	Cross-sectional study	Portugal	Psychologic al problem		Stress	1) BSI 2) Daily Hassles Questionnaire
3	N. E. Barroso	cross sectional study	US	Depression			1)EPD-S
4	A. Bener	Hospital-based study (Cross sectional study)	Qatar	Depression	Anxiety	Stress	1) DASS-21 2) DASS-21 3) DASS-21
5	G. Bouras	Cross-sectional study	Greece	Depression	Anxiety		1) BDI 2) STAI
6	D. H. Brandon	descriptive study	US	Depression	Anxiety	Stress	1) EPDS 2) STAI-S 3) PPQ 4) CHWS
7	C. Carson	Cohort study	UK	Psychologic al problem			Modified RMI
8	E. R. Cheng	Cohort study	US	Depression			CES-D
9	L. Davis	Cross-sectional study	Australia	Depression		Stress	1) EPDS 2) DASS
10	R. Drewett	Cross-sectional study	UK	Depression			EPDS
11	D. M. Edwards	Cohort study	Australia	Depression		Parentin g stress	1) EPDS 2) PSI
12	C. Fabiyi	Cross-sectional study	US		1) State anxiety 2) Trait anxiety		STAI
13	I. Gambina	Case-control study	Italy	Depression	1) State anxiety 2) Trait anxiety	Stress	1) EPDS 2) STAI-State& STAI-Trait 3) PSM
14	N. Gueron-Sela	Cross-sectional study	Israel	Depression		Stress	1) CES-D 2) PSS:NICU
15	S. S.	Cohort study	Pakistan	Depression			EPDS

	Gulamani						
16	I. Gungor	Case-control study	Turkey	Depression	1) State anxiety 2) Trait anxiety		1) BDI 2) STAI
17	R. Hagan	Prospective, randomised, controlled study	Australia	Depression	Anxiety		1) EPDS 2) BDI
18	J. Henderson	Cross-sectional study	UK	Depression			EPDS
19	D. Holditch-Davis	Cross-sectional study	US	Depression	Anxiety	Stress	1) CES-D 2) STAI 3) PSS:NICU
20	C. Ionio	Longitudinal study	Italy	Depression			Profile of mood states (POMS)
21	M. C. Logsdon	Descriptive study	US	Depression			CES-D
22	A. R. Misund	Longitudinal study	Norway	Psychological distress	Anxiety	Trauma-related stress	1) GHQ Likert Sum and Case Sum 2) STAI-X1 3) Impact of Event Scale (IES)
23	A. R. Misund	Cohort study	Norway	Psychological distress	Anxiety	Trauma-related stress	1) GHQ Likert Sum and Case Sum 2) STAI-X1 3) Impact of Event Scale (IES)
24	C. C. Pace	Longitudinal, prospective, follow-up cohort study	Australia	Depression	Anxiety		1) CES-D 2) Hospital Anxiety and Depression Scale
25	C. E. Rogers	Cohort study	US	Depression	Anxiety		1) EPDS 2) STAI
26	H. Sharan	Cross-sectional study	Israel	Depression			EPDS
27	R. J. Shaw	Cross-sectional study	US	Depression	Anxiety	Stress	1) BDI-II 2) BAI 3) SASRQ
28	C. Trumello	Longitudinal study	Italy	Depression	1) State anxiety 2) Trait anxiety		1) EPDS 2) STAI-State Y1& Y2
29	D. Holditch-Davis	Longitudinal study	US	Depression	1) State anxiety	Stress	1) CESD 2) STAI 3) PSS:NICU 3) PSS:PBC
30	E. Mautner	Prospective, longitudinal study	Austria	Depression			EPDS
31	P. H. Gray	Cross-sectional study	Australia	Depression		Parenting stress	1) EPDS 2) PSI-SF
32	P. H. Gray	Cross-sectional study	Australia	Depression		Parenting stress	1) EPDS 2) PSI-SF
33	T. H. Howe	Cross-sectional study	Taiwan			Parenting stress	PSI - Chinese version
34	M. S. Miles	Longitudinal, descriptive study	US	Depression			CES-D
35	A. M. Mew	Correlational analysis	US	Depression			CES-D
36	S. N. Madu	Cross-sectional study	South Africa	Depression			EPDS
37	C. Suttora	Descriptive study	Italy			1) PTSD 2) Parenting stress	1) PPQ - Modified version 2) PSI-SF
38	R. Korja	Cross-sectional study	Finland	Depression			EPDS
39	J. B. Younger	Descriptive correlational study	US	Depression		Stress	1) CES-D 2) MSI

932
933
934
935
936
937
938

Table 2 indicate the quality assessment outcomes using the Newcastle-Ottawa Scale

ID	Author	Study type	Country	Symptoms	Outcome assessment	NOS Score
----	--------	------------	---------	----------	--------------------	-----------

1	M. Ballantyne	Cross-sectional study	Canada	Depression		Stress	1)CES-D 2)PSS:NICU	***** (6)
2	J. Baptista	Cross-sectional study	Portugal	Psychological problem		Stress	1) BSI 2) Daily Hassles Questionnaire	***** (5)
3	N. E. Barroso	cross sectional study	US	Depression			1)EPD-S	***** (6)
4	A. Bener	Hospital-based study (Cross sectional study)	Qatar	Depression	Anxiety	Stress	1) DASS-21 2) DASS-21 3) DASS-21	***** (5)
5	G. Bouras	Cross-sectional study	Greece	Depression	Anxiety		1) BDI 2) STAI	***** (6)
6	D. H. Brandon	descriptive study	US	Depression	Anxiety	Stress	1) EPDS 2) STAI-S 3) PPQ 4) CHWS	***** (7)
7	C. Carson	Cohort study	UK	Psychological problem			Modified RMI	***** (5)
8	E. R. Cheng	Cohort study	US	Depression			CES-D	***** (5)
9	L. Davis	Cross-sectional study	Australia	Depression		Stress	1) EPDS 2) DASS	***** (5)
10	R. Drewett	Cross-sectional study	UK	Depression			EPDS	***** (5)
11	D. M. Edwards	Cohort study	Australia	Depression		Parenting stress	1) EPDS 2) PSI	***** (5)
12	C. Fabiyi	Cross-sectional study	US		1) State anxiety 2) Trait anxiety		STAI	***** (6)
13	I. Gambina	Case-control study	Italy	Depression	1) State anxiety 2) Trait anxiety	Stress	1) EPDS 2) STAI-State& STAI-Trait 3) PSM	***** (6)
14	N. Gueron-Sela	Cross-sectional study	Israel	Depression		Stress	1) CES-D 2) PSS:NICU	***** (7)
15	S. S. Gulamani	Cohort study	Pakistan	Depression			EPDS	**** (4)
16	I. Gungor	Case-control study	Turkey	Depression	1) State anxiety 2) Trait anxiety		1) BDI 2) STAI	***** (6)
17	R. Hagan	Prospective, randomized, controlled study	Australia	Depression	Anxiety		1) EPDS 2) BDI	***** (6)
18	J. Henderson	Cross-sectional study	UK	Depression			EPDS	***** (7)
19	D. Holditch-Davis	Cross-sectional study	US	Depression	Anxiety	Stress	1) CES-D 2) STAI 3) PSS:NICU	***** (6)
20	C. Ionio	Longitudinal study	Italy	Depression			Profile of mood states (POMS)	***** (5)
21	M. C. Logsdon	Descriptive study	US	Depression			CES-D	***** (6)
22	A. R. Misund	Longitudinal study	Norway	Psychological distress	Anxiety	Trauma-related stress	1) GHQ Likert Sum and Case Sum 2) STAI-X1 3) Impact of Event Scale (IES)	***** (6)
23	A. R. Misund	Cohort study	Norway	Psychological distress	Anxiety	Trauma-related stress	1) GHQ Likert Sum and Case Sum 2) STAI-X1 3) Impact of Event Scale (IES)	***** (5)
24	C. C. Pace	Longitudinal, prospective, follow-up cohort study	Australia	Depression	Anxiety		1) CES-D 2) Hospital Anxiety and Depression Scale	***** (6)
25	C. E. Rogers	Cohort study	US	Depression	Anxiety		1) EPDS 2) STAI	***** (5)
26	H. Sharan	Cross-sectional study	Israel	Depression			EPDS	***** (6)
27	R. J. Shaw	Cross-sectional study	US	Depression	Anxiety	Stress	1) BDI-II 2) BAI 3) SASRQ	***** (6)
28	C. Trumello	Longitudinal study	Italy	Depression	1) State anxiety 2) Trait anxiety		1) EPDS 2) STAI-State Y1& Y2	***** (7)
29	D. Holditch-Davis	Longitudinal study	US	Depression	1) State anxiety	Stress	1) CESD 2) STAI 3) PSS:NICU 3)	***** (6)

30	E. Mautner	Prospective, longitudinal study	Austria	Depression			PSS:PBC EPDS	***** (6)
31	P. H. Gray	Cross-sectional study	Australia	Depression		Parenting stress	1) EPDS 2) PSI-SF	***** (6)
32	P. H. Gray	Cross-sectional study	Australia	Depression		Parenting stress	1) EPDS 2) PSI-SF	***** (6)
33	T. H. Howe	Cross-sectional study	Taiwan			Parenting stress	PSI - Chinese version	***** (6)
34	M. S. Miles	Longitudinal, descriptive study	US	Depression			CES-D	***** (5)
35	A. M. Mew	Correlational analysis	US	Depression			CES-D	***** (5)
36	S. N. Madu	Cross-sectional study	South Africa	Depression			EPDS	***** (6)
37	C. Suttora	Decriptive study	Italy			1) PTSD 2)Parenting stress	1) PPQ - Modified version 2) PSI-SF	***** (5)
38	R. Korja	Cross-sectional study	Finland	Depression			EPDS	***** (6)
39	J. B. Younger	Decriptive correlational study	US	Depression		Stress	1) CES-D 2) MSI	***** (6)

* Quality of the included cross-sectional studies was measured using the modified Newcastle-Ottawa Measurement Scale specific for Cross-sectional studies. We rated the quality of the studies (good, fair and poor) by allocating each domain with stars in this manner:

- A Good quality score was awarded 3 or 4 stars in selection, 1 or 2 in comparability, and 2 or 3 stars in outcomes
- A Fair quality score was awarded 2 stars in selection, 1 or 2 stars in comparability, and 2 or 3 stars in outcomes.
- A Poor quality score was allocated 0 or 1 star(s) in selection, 0 stars in comparability, and 0 or 1 star(s) in outcomes domain in line with the NOS guidelines

939
940
941
942
943
944
945

	Selection (S)				Comparability (C)		Exposure/Outcome E/O			Sub Total assessment			Conclusion
	1	2	3	4	1a	1b	1	2	3	S ⁺	C ⁺	E/O ⁺	
M.Ballantyne	*	*	No	*	*	*	No	*	*	Good	Good	Good	Good
J. Baptista	*	*	No	*	*	*	*	*	*	Good	Good	Good	Good
N.E.Barroso	*	*	*	*	*	*	No	*	*	Good	Good	Good	Good
A.Bener	*	No	*	*	*	*	*	*	*	Good	Good	Good	Good
G.Bouras	*	*	*	*	*	*	*	*	*	Good	Good	Good	Good
D.H. Brandon	*	*	*	*	*	*	*	*	*	Good	Good	Good	Good
C.Carson	*	No	*	*	*	*	*	*	*	Good	Good	Good	Good
E.R.Cheng	*	*	No	*	No	*	*	*	*	Good	Good	Good	Good
L.Davis	*	*	No	No	*	*	*	*	*	Fair	Good	Good	Good
R.Drewett	*	*	*	*	No	*	*	*	*	Good	Good	Good	Good
D.M.Edwards	*	No	No	*	No	*	*	*	*	Fair	Good	Good	Fair
C.Fabiyi	*	No	*	No	No	*	*	*	*	Fair	Fair	Good	Fair
I.Gambina	*	No	*	*	*	*	*	*	*	Good	Good	Good	Good
N.Gueron-Sela	*	*	*	*	*	*	*	*	*	Good	Good	Good	Good
S.S.Gulamani	*	No	*	*	*	*	*	*	*	Good	Good	Good	Good
I.Gungor	*	*	*	*	*	*	*	*	*	Good	Good	Good	Good
R.Hagan	*	*	*	*	*	*	*	*	*	Good	Good	Good	Good
J.Henderson	*	*	*	*	*	*	*	*	*	Good	Good	Good	Good
D.Holdith Davis	*	*	No	*	No	*	*	*	*	Good	Good	Good	Good
C.Ionio	*	*	*	*	*	*	*	*	*	Good	Good	Good	Good
M.C.Logsdon	*	No	No	*	No	*	*	*	*	Fair	Fair	Good	Fair
A.R.Misund	No	*	*	*	*	*	*	*	*	Good	Good	Good	Good
A.R.Misund	*	*	*	*	*	*	*	*	*	Good	Good	Good	Good
C.C.Pace	*	*	*	*	*	*	*	*	*	Good	Good	Good	Good
C.E.Rogers	*	*	*	*	*	*	*	*	*	Good	Good	Good	Good
H.Sharan	No	*	*	*	*	*	*	*	*	Good	Good	Good	Good
R.J.Shaw	*	*	*	*	*	*	*	*	*	Good	Good	Good	Good
C.Trumello	*	*	*	*	*	*	*	*	*	Good	Good	Good	Good
D.Holditch-Davis	*	*	*	*	*	*	*	*	*	Good	Good	Good	Good
E.Mautner	*	No	*	*	*	*	*	*	*	Good	Good	Good	Good
P.H.Gray	*	*	No	*	No	*	*	*	*	Good	Good	Good	Good
P.H.Gray	*	*	No	*	No	*	*	*	*	Good	Good	Good	Good
T.H.Howe	*	*	*	*	*	*	*	*	*	Good	Good	Good	Good
M.S.Miles	*	No	No	*	No	*	*	*	*	Fair	Good	Good	Fair
A.M.Mew	*	No	No	*	No	*	*	No	*	Fair	Fair	Good	Fair
S.N.Madu	*	*	*	*	*	*	*	*	*	Good	Good	Good	Good

C.Suttora	*	*	*	*	*	*	*	*	*	Good	Good	Good	Good
R.Korja	*	*	No	*	No	*	*	*	*	Good	Good	Good	Good
J.B.Younger	*	No	No	*	No	*	*	*	*	Fair	Good	Good	Good

946 *Domain scored: 0-1 (Poor); 2 (Fair); 3+ (Good);

947 & Domain scored: 0 (Poor); 1 (Fair); 2+ (Good).

948 *Domain acceptable

949

950 **Table 3 indicates characteristics of the 12 studies included within the meta-analysis for**

951 **depression**

952

ID	Author	Study type	Country	Sample size	Outcome assessment
1	D. H. Brandon [39]	descriptive study	US	60	EPDS
2	G. Bouras [34]	Cross-sectional study	Greece	200	BDI
3	E. R. Cheng [13]	Cohort study	US	5350	CES-D
4	R. Drewett [51]	Cross-sectional study	UK	10838	EPDS
5	I. Gambina [33]	Case-control study	Italy	84	EPDS
6	P. H. Gray [28] [29]	Cross-sectional study	Australia	217	EPDS
7	N.Gueron-Sela [30]	Cross-sectional study	Israel	103(Bedouin) 230(Jewish)	CES-D
8	I. Gungor [35]	Case-control study	Turkey	299	BDI
9	C. Ionio [53]	Longitudinal study	Italy	50	Profile of mood states (POMS)
10	S. N. Madu [31]	Cross-sectional study	South Africa	100	EPDS
11	E. Mautner [56]	Prospective, longitudinal study	Australia	61	EPDS
12	C. C. Pace [32]	Longitudinal, prospective cohort study	Australia	230	CES-D

953

954 **Table 4 indicates characteristics of the 5 studies included within the meta-analysis for anxiety**

955

ID	Author	Study type	Country	Sample size	Outcome assessment
1	D. H. Brandon [39]	descriptive study	US	60	STAI-S
2	G. Bouras [34]	Cross-sectional study	Greece	200	(a) STAI-T (b) STAI-S
3	I. Gambina [33]	Case-control study	Italy	84	(a) STAI-T (b) STAI-S
4	I. Gungor [35]	Case-control study	Turkey	299	(a) STAI-T (b) STAI-S
5	C. C. Pace [32]	Longitudinal, prospective cohort study	Australia	230	HADS-A

956

957 **Table 5 indicates characteristics of the 5 studies included within the meta-analysis for Stress**

958

ID	Author	Study type	Country	Sample size	Outcome assessment
1	D. H. Brandon [39]	descriptive study	US	60	PPQ
2	I. Gambina [33]	Case-control study	Italy	84	PSM
3	P. H. Gray [28] [29]	Cross-sectional study	Australia	217	PSI-SF
4	T.H.Howe [63]	Cross-sectional study	Taiwan	420	PSI - Chinese version
5	C. Suttora [36]	Descriptive study	Italy	243	PSI-SF

959

960

961

962

963

Themes	Population Group
	Women who had a preterm birth

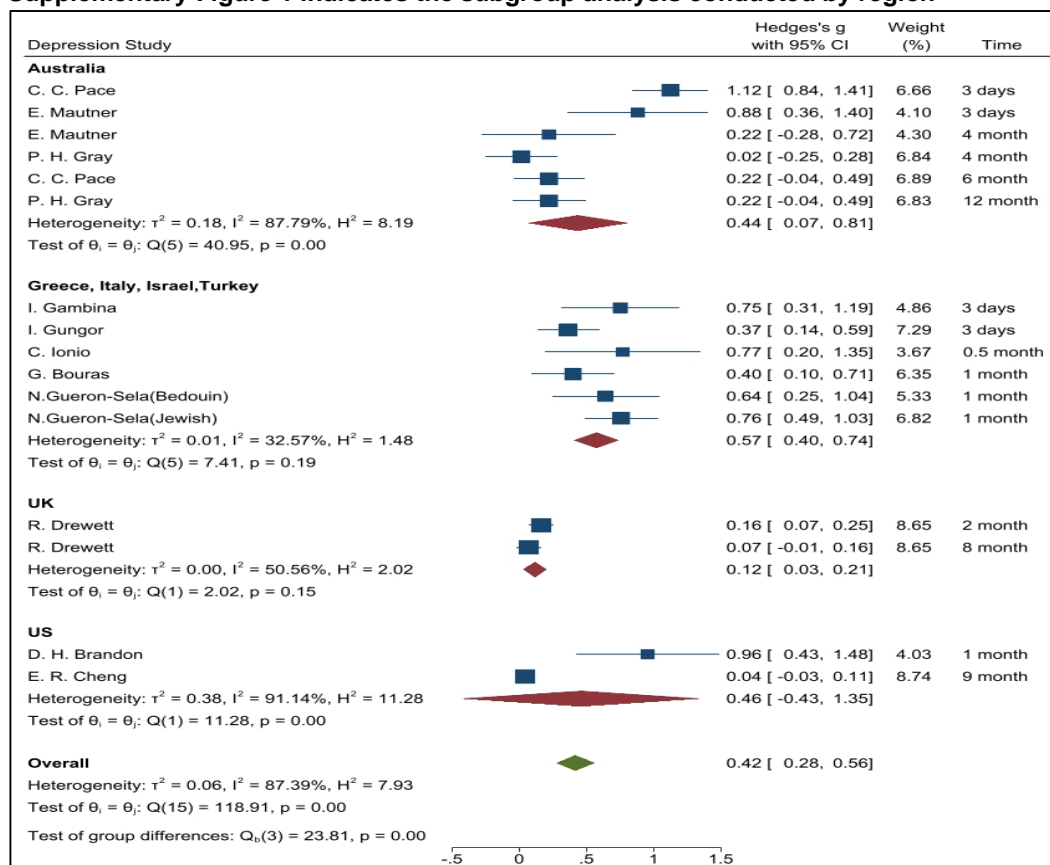
Depression	+++++
Stress	+++++
Anxiety	+++++
Parenting stress	+++++
State anxiety	+++++
Trait anxiety	+++++
Psychological distress	++
Trauma-related stress	++
Psychological Problem	++
Post-Traumatic Stress Disorder	+

Table 6 indicates the thematic synthesis

964
965
966
967
968
969
970

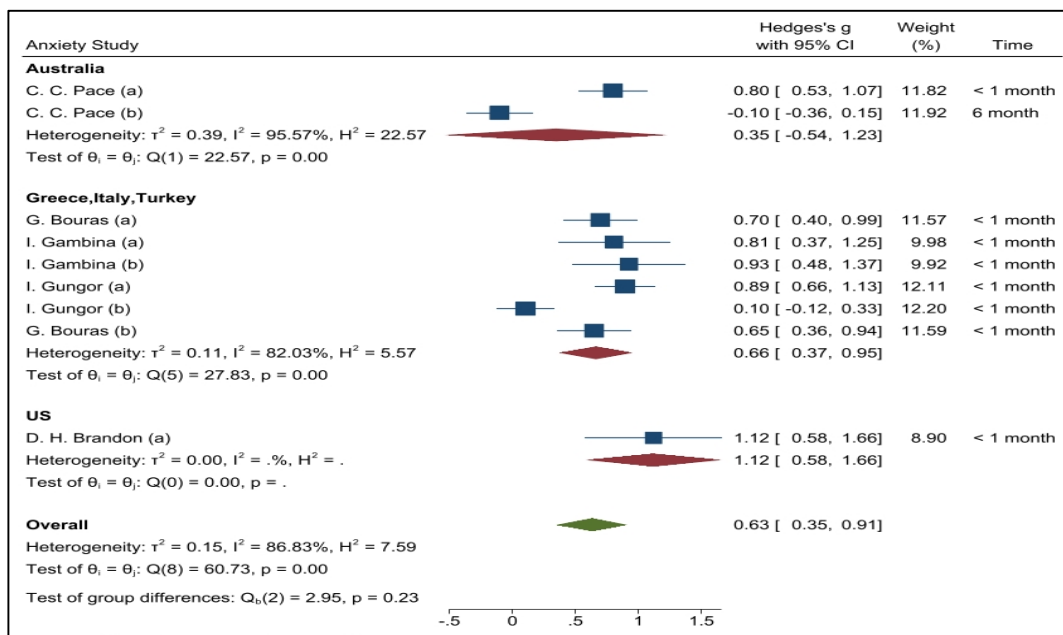
Supplementary Figures

Supplementary Figure 1 indicates the subgroup analysis conducted by region



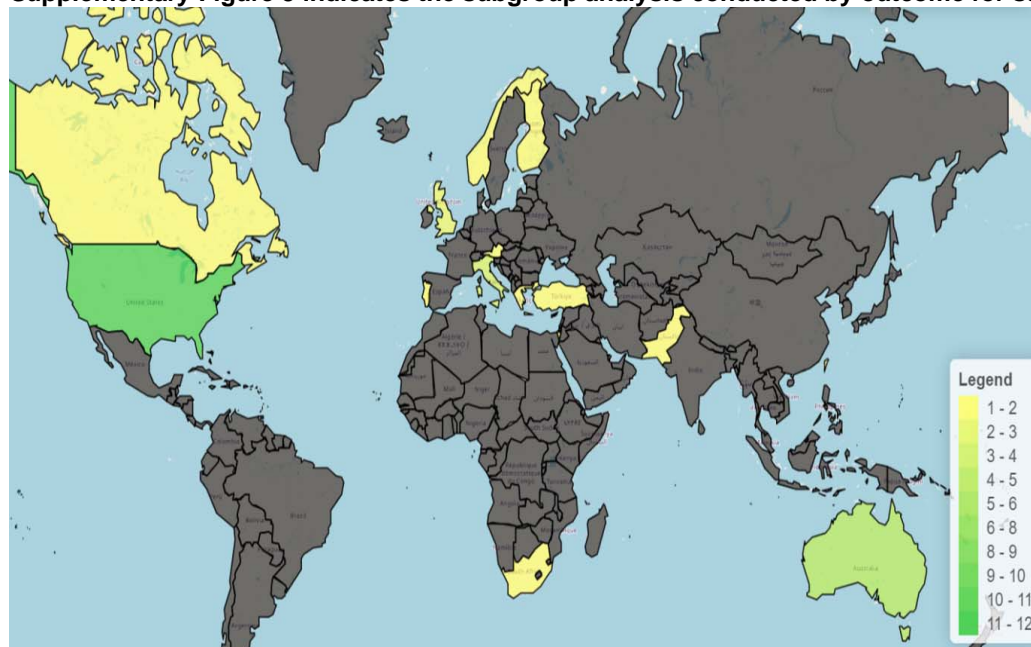
971
972
973
974
975
976
977
978
979
980
981
982
983

Supplementary Figure 2 indicates the subgroup analysis conducted by region for anxiety



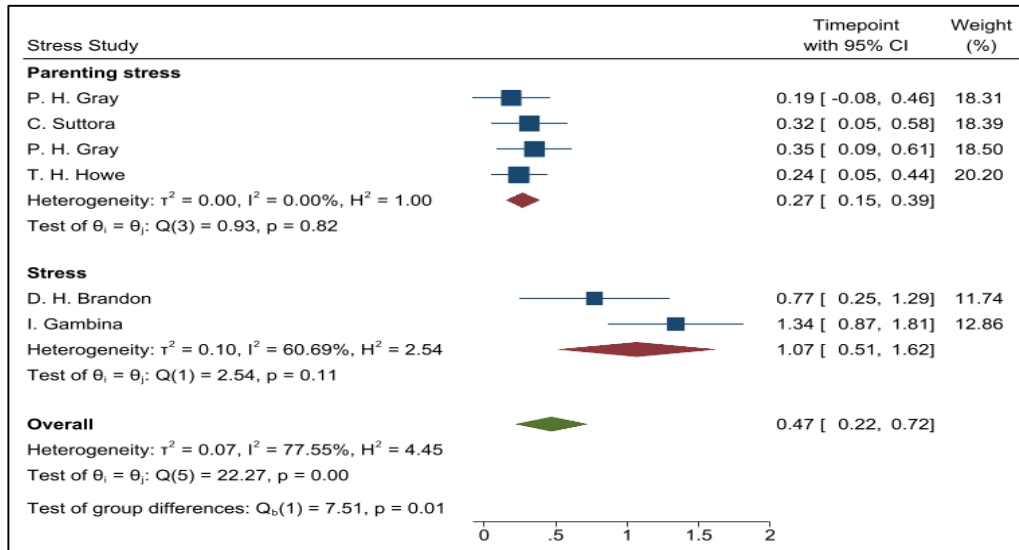
984
985
986
987
988

Supplementary Figure 3 indicates the subgroup analysis conducted by outcome for stress



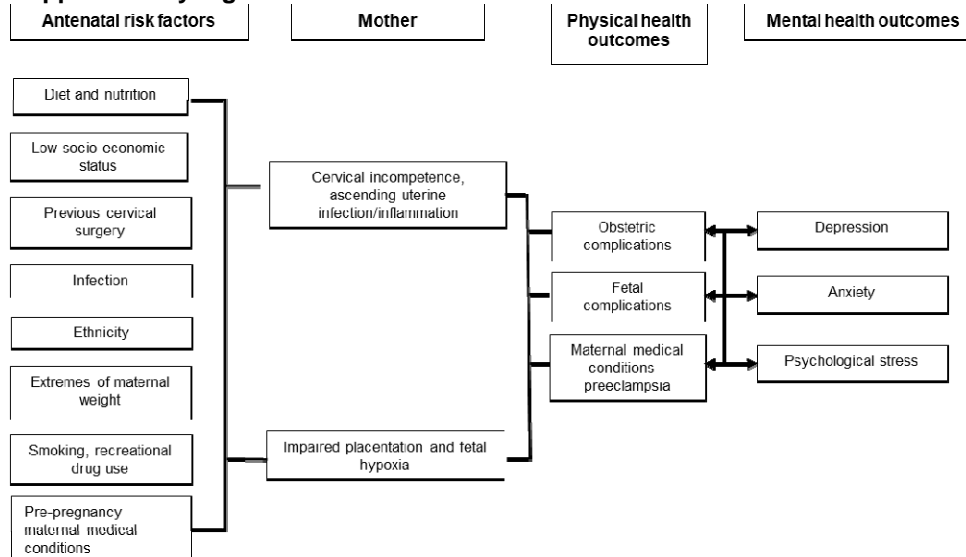
989
990
991
992
993
994
995
996
997
998
999
1000
1001

Supplementary Figure 4 indicates the subgroup analysis conducted by outcome for stress



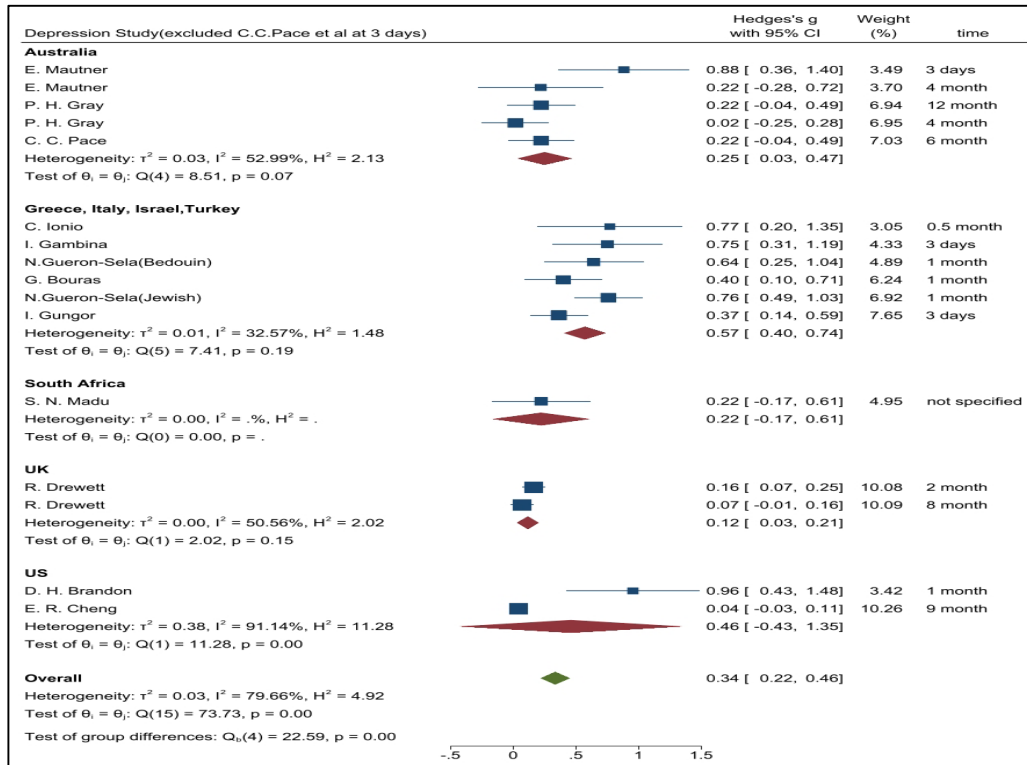
1002
1003
1004
1005
1006
1007

Supplementary Figure 5 indicates a Preterm birth and Mental Health 'Causation Tree'



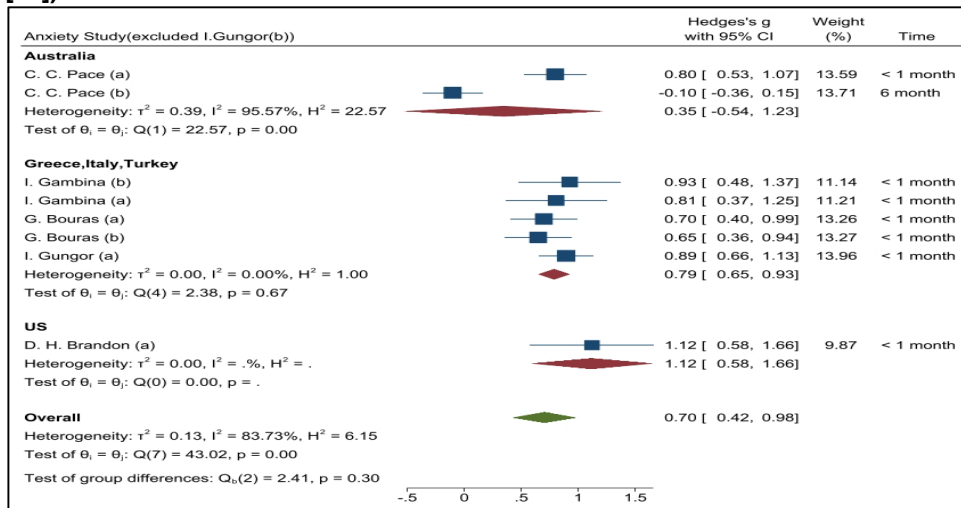
1008
1009
1010
1011
1012
1013
1014
1015
1016
1017
1018
1019
1020
1021
1022
1023
1024
1025

Supplementary Figure 6 indicates the sensitivity analysis excluded one depression study (C.C.Pace et al [32])



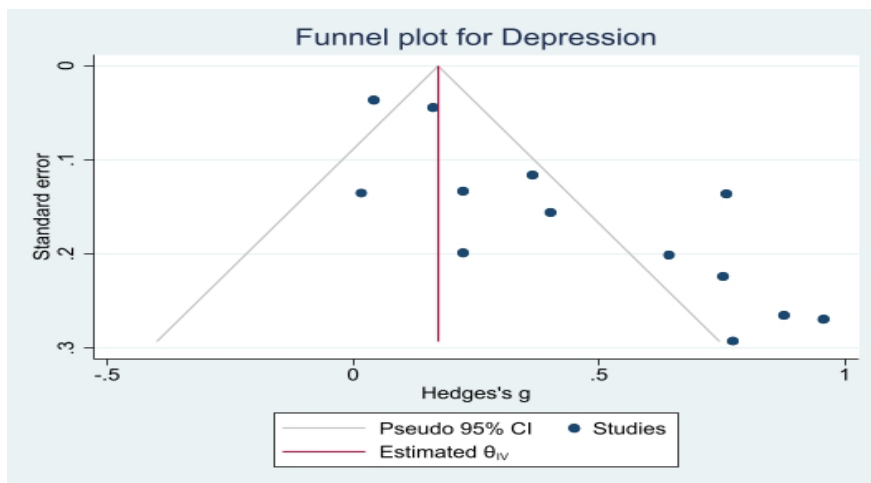
1026
1027
1028
1029
1030
1031

Supplementary Figure 7 indicates the sensitivity analysis excluded one study (Gungor (b) et al [35])



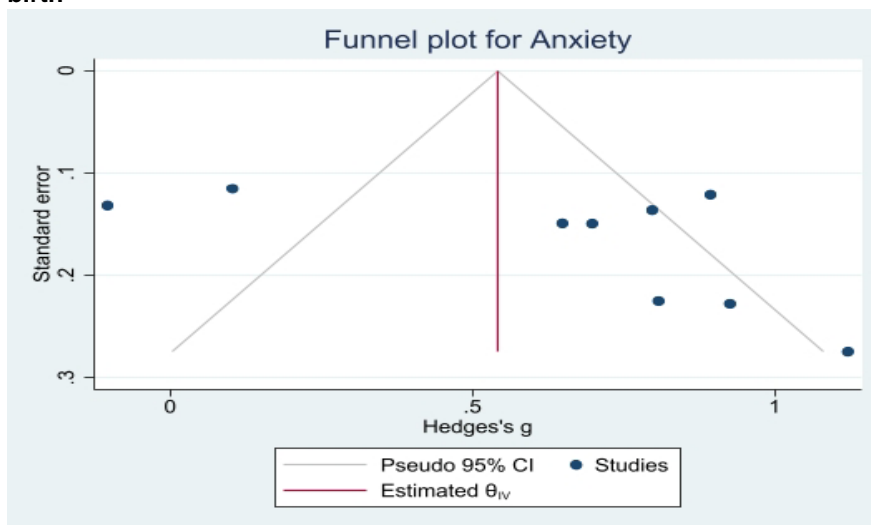
1032
1033
1034
1035
1036
1037
1038
1039
1040
1041
1042

Supplementary Figure 8: Funnel plot of studies for depression comparing full term vs preterm birth



1043
1044
1045
1046
1047
1048

Supplementary Figure 9: Funnel plot of studies for anxiety comparing full term vs preterm birth



1049
1050
1051
1052
1053
1054
1055
1056
1057
1058
1059
1060
1061
1062
1063
1064
1065
1066
1067
1068
1069
1070

Supplementary Figure 10: Funnel plot of studies for stress comparing full term vs preterm birth

