

1 **ASSOCIATION BETWEEN NUTRITIONAL STATE AND PHASE ANGLE IN SYMPTOMATIC AND**
2 **ASYMPTOMATIC HTLV-1 INFECTED PATIENTS**

3 Adriana Bacelo^{2,a}, Abelardo Araújo^{3a}, Paloma Torres^{4, a}, Patrícia Brito^{5a}, Cristiane Almeida^{6, a}, Clévio
4 Fonseca^{7,a}, Marcel Quintana^{8,a}, Cláudia dos S. Cople-Rodrigues^{9,b}, Pedro E. A. A. do Brasil^{10, a}, Naíse
5 Rocha^{1, a}.

6 *Affiliation*

- 7 1. Nutrition Service – Evandro Chagas National Institute of Infectious Diseases – Oswaldo Cruz
8 Foundation.
9 2. Nutrition Service – Evandro Chagas National Institute of Infectious Diseases – Oswaldo Cruz
10 Foundation.
11 3. Clinical Research Laboratory in Neuroinfections – Evandro Chagas National Institute of
12 Infectious Diseases – Oswaldo Cruz Foundation.
13 4. Nutrition Service – Evandro Chagas National Institute of Infectious Diseases – Oswaldo Cruz
14 Foundation
15 5. Nutrition Service – Evandro Chagas National Institute of Infectious Diseases – Oswaldo Cruz
16 Foundation.
17 6. Nutrition Service – Evandro Chagas National Institute of Infectious Diseases – Oswaldo Cruz
18 Foundation.
19 7. Clinical Research Platform – Evandro Chagas National Institute of Infectious Diseases –
20 Oswaldo Cruz Foundation.
21 8. Clinical Research Platform – Evandro Chagas National Institute of Infectious Diseases –
22 Oswaldo Cruz Foundation.
23 9. Nutrition Institute – Rio de Janeiro State University
24 10. Research Laboratory on Immunization and Health Surveillance – Evandro Chagas National
25 Institute of Infectious Diseases – Oswaldo Cruz Foundation.

26
27 *Electronic Address*

- 28 1. naise.rocha.rj@gmail.com
29 2. adriana.bacelo@ini.fiocruz.br
30 3. abelardo.araujo@gmail.com
31 4. paloma.torres@ini.fiocruz.br
32 5. patricia.brito@ini.fiocruz.br
33 6. cristiane.almeida@ini.fiocruz.br
34 7. clevio.fonseca@ini.fiocruz.br
35 8. marcel.quintana@ini.fiocruz.br
36 9. claudiacople@gmail.com
37 10. emmanuel.brasil@gmail.com

38 *Address*

- 39 a. Av. Brasil 4365, Rio de Janeiro/RJ – Brazil, ZIP code 21040-900
40 b. Rua São Francisco Xavier 524, Rio de Janeiro/RJ, ZIP code 20550-900
41

42 **Correspondence to: Naíse Rocha**
43 **Nutrition Service**
44 **National Institute of Infectious Diseases Evandro Chagas -Fiocruz**
45 **Av. Brasil 4365 – Manguinhos**
46 **Rio de Janeiro – ZIP: 21040-900**
47 **Mail to:** naise.rocha.rj@gmail.com
48

49 Abstract

50 **Introduction:** The nutritional status of symptomatic and asymptomatic human T-cell
51 lymphotropic virus type 1 (HTLV-1) infected patients is understudied. The phase angle
52 (PA) has been described in the scientific literature as a prognostic indicator of
53 nutritional status, but this has not been sufficiently discussed in the literature.
54 Therefore, neither the impact of the infection nor the disease's progression is
55 sufficiently known regarding the nutritional status, body condition or composition.
56 **Objective:** To compare the nutritional status of symptomatic and asymptomatic adult
57 individuals infected by HTLV-1, using the PA and anthropometric measures as a
58 prognostic indicator in the HTLV-1 infected population. **Methodology:** This was an
59 observational, cross-sectional study with symptomatic and asymptomatic HTLV-1
60 patients followed up at the Neurology outpatient clinic of the Evandro Chagas National
61 Institute of Infectious Diseases (INI-FIOCRUZ), Brazil, from September 2015 to
62 September 2019. Anthropometric measures and indices (body weight, height, body
63 mass index-BMI, mid-upper arm circumference-MUAC, triceps skinfold - TSF, and mid-
64 arm muscle circumference- MUAC), and bioimpedance (phase angle-PA, percentage
65 of lean mass-%LM, and percentage of fat mass-%FM) were checked to assess the
66 nutritional status. Anthropometric variables were classified according to reference
67 values and compared between groups (symptomatic and asymptomatic). Individuals
68 were considered malnourished when at least one of the nutritional assessment results
69 was outside the reference values. PA was correlated with the nutritional status, and
70 groups of symptomatic and asymptomatic were compared to each other. The R-
71 project® program version 3.0.2 was used to analyze the data. Differences were
72 considered significant when the p-value was ≤ 0.05 . **Results:** Ninety-one patients
73 were evaluated, 33 (36.3%) asymptomatic and 58 (63.7%) symptomatic. The majority
74 were female (61.5%) and the median age was 60 (55-58) years. Symptomatic
75 participants, compared to asymptomatic, had a lower proportion of overweight/obesity
76 (51.7% vs 78.8%; $p = 0.0171$), lower BMI ($25.47 \pm 5.06 \text{ kg/m}^2$ vs $30.08 \pm 5.61 \text{ kg/m}^2$; p
77 $= <0.001$), MUAC ($29.56 \pm 5.13 \text{ cm}$ vs $33.22 \pm 4.21 \text{ cm}$; $p = 0.0011$), and %FM (30.75%
78 vs 36.60%; $p = 0.0064$), however, had a higher %LM (68.95% vs 63.40%; $p = 0.0299$).
79 All participants presented PA, however there was no difference between symptomatic
80 ($5.74^\circ \pm 1.18$) and asymptomatic ($6.21^\circ \pm 1.16$). **Conclusion:** Overweight and obesity
81 were prevalent, especially among asymptomatic participants. Symptomatic
82 participants had lower BMI, MUAC and %FM. Mid-upper arm circumference was
83 considered a good parameter for monitoring the nutritional status of people with HTLV,
84 mainly in situations where weight measurement is not viable. PA was altered in both
85 groups, therefore, it cannot be used as a disease progression indicator, but it does
86 indicate that HTLV infection alone should be a risk of cellular membrane integrity
87 damage. Studies using PA assessment in HTLV-1 carriers are needed.

88 **Keywords:** Body composition. Human T-lymphotropic virus. Spastic paraparesis.
89 Malnutrition. Arm circumference

91 **AUTHOR'S SUMMARY**

92 HTLV is a disease very little explored, and in the scientific field of nutrition it is
93 no different, we found few studies that associate this population and their nutritional
94 status. In academic literature we can find the association of weight, height and BMI,
95 rare studies with bioimpedance assessments.

96 Until this moment, no study has associated nutritional status with the phase
97 angle, which is being used in several infectious diseases as a prognostic indicator of
98 cell membrane integrity.

99 In this study, we note that even though the phase angle values are not
100 significant, they show that, regardless of the symptoms, patients who are infected with
101 the HTLV virus are already considered to have damage to the membrane integrity,
102 which makes us emphasize the importance of new studies to a better understanding
103 of factors related to weight gain and probable nutritional deficiencies.

104

105

106

107

108

109

110

111

112

113 INTRODUCTION

114 In 1980 the T-cell lymphotropic virus (HTLV) was the first isolated human
115 retrovirus and was subsequently classified: as HTLV-1 and HTLV-2 (1). HTLV is a
116 neglected condition in such a way that it is not in the World Health Organization (WHO)
117 list of neglected diseases and it is not considered in the surveillance (2–4). It's very low
118 frequency of clinical manifestations is one of the main reasons why HTLV infection is
119 a neglected condition. Recent data suggests that only 5% of the HTLV-1 infected
120 patients are symptomatic (3,5).

121 Nevertheless, current estimation of HTLV-1's burden is approximately 20 million
122 of infected people worldwide (6). HTLV can be divided into two types: HTLV- 1 and
123 HTLV-2, and HTLV-1 is the most prevalent. HTLV-1 is related to a higher occurrence
124 of adult T-cell leukemia/lymphoma (ATLL) and it is also associated with
125 myelopathy/tropical spastic paraparesis (HAM/TSP). HAM/TSP is a chronic (lifelong)
126 and slow progressive neurological condition (7,6,3).

127 There is a health-disease binomial directly related to conditions that have an
128 impact on nutritional status, which in turn will impact immune status (8,9). Additionally,
129 nutritional issues, such as overweight/obesity, underweight, malnutrition and
130 micronutrient deficiency are a significant public health problem in developing countries
131 or in poor populations around the world. These nutrition issues may have important
132 repercussions on quality of life (10,11).

133 Nutritional status is relevant in every clinically ill patient. Alongside
134 anthropometric biomarkers, bioelectrical impedance analysis (BIA) is useful to assess

135 nutritional status in clinical practice. The phase angle (PA), one of BIA's parameters,
136 is related to cell function and integrity and there is evidence pointing to its ability to be
137 a prognostic marker in some health conditions: such as in critically ill patients, in
138 Crohn's disease, oncologic, cirrhotic, HIV patients and various other conditions (12–
139 15).

140 Lower PA values represent low reactance (X_c) and high resistance (R), which
141 can be associated with the presence of a health condition or more severe clinical
142 manifestations, cell death, or some change in the selective membrane permeability.
143 On the other hand, higher values represent high X_c and low R and may be associated
144 with a more significant amount of intact cell membranes, that is, greater body cell mass,
145 and with a good state of health (16). However, the phase angle's reference values and
146 decision thresholds are still debatable and there is no established universal normal
147 range (17).

148 The present study aimed to compare symptomatic and asymptomatic adults
149 infected with HTLV-1 regarding their PA and nutritional status in order to discuss the
150 potential use of PA as a prognostic marker.

151 **METHODS**

152 **Study design**

153 This was a cross-sectional study conducted at the outclinic of Evandro Chagas
154 National Institute of Infectious Disease (INI-Fiocruz), Rio de Janeiro city, Brazil. The
155 patients referenced to INI-Fiocruz or seeking medical attention regarding HTLV
156 infection at INI-Fiocruz were submitted to a diagnostic investigation including an ELISA
157 test with the anti HTLV I / II SYM Solution® kit. If there was confirmation of HTLV
158 infection from the serological test, an additional polymerase chain reaction (nested

159 PCR) test was performed. Standardized medical attention and follow-up by the
160 neurologists was offered to these patients at the outclinic.

161 From the patients already in follow-up at the institute, the study screened and
162 recruited from September 2015 to September 2019. All patients included met the
163 following eligibility criteria: age of 19 or older; serological evidence of HTLV, with
164 additional positive nested PCR; signed written Informed Consent Form (ICF). The
165 exclusion criteria were: concurrent conditions other than HTLV infection that could
166 impact the nutritional status such as hypermetabolic, malabsorptive, or
167 immunosuppressive clinical conditions (HIV, cancer, intestinal parasites, Crohn's
168 disease, pregnancy); use of chemotherapy in the previous six months; protein, caloric
169 or protein-calorie nutritional supplementation in the previous six months.

170 **Nutritional status and phase angle**

171 The following anthropometric parameters were performed in the nutritional
172 assessment: body weight, height, arm circumference (AC), triceps skinfold (TSF) and
173 mid-arm muscle circumference (MUAC). Gender and age were obtained to classify
174 anthropometric parameters according to the cutoff points established at the Food and
175 Nutrition Surveillance System (SISVAN) (18). Body weight and height measurements
176 were used to determine the Body Mass Index (BMI) as proposed by Lohman (16) and
177 adopted by the Ministry of Health (19) and the World Health Organization (20).

178 BIA was performed by the "Biodynamics BIA 450". It determines the body
179 composition by an alternating electrical current of low intensity (500 to 800 MA) and
180 high frequency (50KHZ), which travels through the body tissues and establishes the
181 body mass distribution through the measurement of tissue counter-positives. The PA
182 was measured in BIA by calculating the resistance: range from 200 to 1500 ohms,

183 resolution 0.1 ohm and accuracy 0.1 percent; reactance: Range from 0 to 300 ohms,
184 resolution 0.1 oh and accuracy 0.2 percent; phase Angle: range 0 to 20 degrees,
185 resolution 0.1-degree, accuracy 0.2 percent (X_c/R) $\times 180^\circ/\pi$) by calculating Impedance
186 (Z), the sum of the resistance (R) and X_c arc tangent (X_c/R) $\times 180^\circ/\pi$).

187 Before the BIA test, the team instructed participant to: discontinue the use of
188 diuretic drugs for 24 hours, be fasting for 4 to 6 hours, be in alcoholic withdrawal for at
189 least 24 hours, avoiding the consumption of foods rich in caffeine (coffee, dark teas,
190 cola-based soft drinks, chocolate) for at least 24 hours, be out of menstrual period, and
191 have not had a fever in the previous 24 hours, nor have practiced intense physical
192 activity in the same period. The team also asked the participant to urinate minutes prior
193 to the test. The researcher also emphasized that the patients were instructed to attend
194 the neurologist's appointment in fasting for blood tests. BIA was not performed if the
195 patient had a pacemaker, metal plates around the body, or was pregnant.

196 To perform the BIA, the participant was asked to previously remove all metallic
197 adornments before lying on a stretcher in a horizontal position at zero inclination
198 (supine position). Then four electrodes (tetrapolar model) were positioned on the same
199 side of the body - two in the hand close to the metacarpal-phalangeal articulation of
200 the dorsal surface on the wrist, between the distal prominences of the radius and the
201 ulna, and two on foot, in the transverse arch of the upper surface and on the ankle,
202 between the lateral and medial malleoli. All participant information necessary for the
203 examination, such as age, sex, weight, height, the habit of physical activity, including
204 its intensity and frequency, were inserted in the equipment.

205 The BIA has been identified as a more accurate method for assessing body
206 composition because, in addition to the description of body compartments, it informs
207 the PA (14).

208 PA is considered a prognostic indicator for critically ill patients because it is
209 related to membrane integrity (21,22).

210 **Analysis plan**

211 For descriptive analysis, categorical variables will be presented as counts and
212 frequencies, and continuous variables will be presented as mean variables (and
213 standard deviation) or median (and interquartile intervals) as appropriate. Dispersion
214 measures of PA and other nutritional biomarkers (LM%, FM%, weight, height, BMI,
215 AC, TSF and MUAC) were estimated among the HTLV clinical status, stratified by age
216 and sex. Whenever variables are compared between symptomatic and asymptomatic
217 HTLV groups, the hypothesis tests indicated in the results are used. Fisher, t-student
218 test or Wilcoxon test for continuous variables were used. For the variables already
219 categorized, the chi-square test was evaluated. At the end, an ordinary least square
220 regression was conducted to adjust the effect of HTLV symptoms for age and sex on
221 PA. Data were analyzed using the program R-project®.

222 **Ethical aspects**

223 The present work was approved by the National Institute of Infectious Diseases
224 (INI-FIOCRUZ) Research Ethics Committee (CAAE 16714219.4.0000.5262 on
225 10/25/2019).

226 **RESULTS**

227 One hundred and ten patients were recruited, 19 were excluded (17%), as they
228 did not meet the inclusion criteria, leaving a total of ninety-one participants with HTLV-
229 1 were included, 58 (63.7%) were symptomatic and 33 (36.3%) were asymptomatic.

230 Participants had a median age of 60 years, and were predominantly female. About
231 62% had BMI values indicating obesity or overweight, and BMI was higher among the
232 asymptomatic group. (Table 1). Symptomatic group also had lower values of MUAC,
233 and %FM, however, and higher values of %LM (Table 2).

234

235 **Table 1.** Descriptive characteristics of the HTLV population

Variable	Symptomatic	Asymptomatic	Total	Test stat.	P. Value
Total	n= 58	n= 33	n= 91		
Gender					
Male	26 (44.83)	9 (27.27)	35 (38.46)	Chisq. (1 df) = 2.047	0.1525
Female	32 (55.17)	24 (72.73)	56 (61.54)		
Age at evaluation (years)					
median (IQR)	59.00 (53.00 - 66.00)	65.00 (55.00 - 71.00)	60.00 (55.00 - 68.00)	Rank Sum test	0.1602
Current Weight (Kg)					
mean (SD)	68.85 (14.50)	78.57 (16.25)	72.37 (15.79)	t-test (89 df) = 2.941	0.0042
Height (cm)					
median (IQR)	1.67 (1.59 - 1.70)	1.66 (1.59 - 156.00)	1.67 (1.59 - 1.73)	Rank Sum test	0.2959
Body Mass Index (Kg/m ²)					
mean (SD)	25.47 (5.06)	30.08 (5.61)	27.14 (5.69)	t-test (89 df) = 4.014	< 0.001
Body Mass Indexes (Kg/m ²)					
(16,18.49)	4 (6.90)	0 (0.00)	4 (4.40)	Fisher's exact test	0.0171
(18.5,24,99)	24 (41.38)	7 (21.21)	31 (34.07)		
(25,29,99)	21 (36.21)	11 (33.33)	32 (35.16)		
(30,34,99)	5 (8.62)	7 (21.21)	12 (13.19)		
(35,45)	4 (6.90)	8 (24.24)	12 (13.19)		
Arm Circumference (cm)					
mean (SD)	29.56 (5.13)	33.22 (4.21)	30.81 (5.12)	t-test (86 df) = 3.368	0.0011
Mid-arm muscle circumference (MUAC) (cm)					
median (IQR)	23.35 (21.05 - 26.97)	23.81 (20.64 - 27.50)	23.53 (20.96 - 27.11)	Ranksum test	0.7505
Percentage of Fat Mass (%)					
median (IQR)	30.75 (24.07 - 36.15)	36.60 (29.30 - 42.40)	32.00 (27.00 - 39.80)	Rank Sum test	0.0064
Percentage of Lean Mass (%)					
median (IQR)	68.95 (63.02 - 75.00)	63.40 (57.60 - 71.20)	67.80 (59.05 - 73.00)	Rank Sum test	0.0299
Phase Angle (PA)					
mean (SD)	5.74 (1.18)	6.21 (1.16)	5.91 (1.19)	t-test (89 df) = 1.858	0.0665

236 Chisq = Chi-square Test, IQR = Interquartil range, Kg = Kilogram, SD = Standard Deviation, cm = centimeters, BMI = Body Mass Index, AC = Arm Circumference, MUAC= Mid
237 arm muscle circumference, PA = Phase Angle, Rank Sum test =wilcox test, BMI rating = 16,18.49 = underweight, 18.5, 24,99 = normal, 30,34,99 = people with obesity and 35,
238 45 = people extremely obese, %= Percentage

239

240

241 **Table 2.** Anthropometry biomarkers according to HTLV population symptoms, sex and age.

242

Variable	Sex Female / Male	Age Years	Symptomatic Mean \pm SD (min,max) [N]	Asymptomatic Mean \pm SD (min,max) [N]	Total Mean \pm SD (min,max) [N]	p valor
Arm circumference (AC - cm)	Female	27 - 59	28.62 \pm 5.37 (24.70,31.38) [16]	37.90 \pm 2.23 (36.75,39.50) [8]	31.44 \pm 6.33 (27.75,36.75) [24]	0.000736
Female - normal (23.0 - 38.0cm)	Female	60 - 81	27.82 \pm 3.81 (24.38,29.85) [16]	31.74 \pm 3.36 (29.25,34.75) [15]	29.42 \pm 4.07 (27.00,32.15) [31]	0.015465
Male - normal (26.2 - 36.9cm)	Male	27 - 59	31.18 \pm 6.82 (26.00,35.90) [14]	32.12 \pm 2.69 (30.88,33.25) [4]	31.40 \pm 6.03 (27.00,35.50) [18]	0.820739
	Male	60 - 81	31.63 \pm 3.83 (29.80,33.95) [12]	32.45 \pm 5.30 (29.48,34.62) [5]	31.85 \pm 4.08 (29.80,34.05) [17]	0.851282
Mid-arm muscle circumference (MUAC- cm)	Female	27 - 59	23.00 \pm 3.51 (20.99,25.48) [16]	22.28 \pm 9.25 (20.99,28.10) [8]	22.76 \pm 5.85 (20.99,25.80) [24]	0.528
Female - normal (18.8 - 26.6cm)	Female	60 - 81	22.00 \pm 2.75 (20.81,23.27) [16]	17.88 \pm 10.78 (10.82,24.34) [15]	20.01 \pm 7.90 (20.49,23.89) [31]	0.828
Male - normal (23.5 - 31.8cm)	Male	27 - 59	23.71 \pm 8.70 (19.93,29.31) [14]	25.70 \pm 1.47 (24.90,25.83) [4]	24.15 \pm 7.68 (21.28,28.16) [18]	0.645
	Male	60 - 81	25.09 \pm 8.15 (25.42,27.76) [12]	21.50 \pm 11.91 (21.35,27.50) [5]	24.04 \pm 9.16 (25.01,27.50) [17]	1.000
Tricipital skinfold (TSF - mm)	Female	27 - 59	17.91 \pm 7.80 (12.07,22.67) [16]	35.17 \pm 17.14 (31.45,41.05) [8]	23.66 \pm 14.08 (13.78,32.40) [24]	0.00451
Female - normal (12.0 - 39.0mm)	Female	60 - 81	18.53 \pm 8.09 (13.43,23.95) [16]	18.30 \pm 11.92 (9.30,26.60) [15]	18.42 \pm 9.95 (13.16,25.75) [31]	0.59318
Male - normal (05.0 - 20.8mm)	Male	27 - 59	17.01 \pm 6.91 (13.35,22.07) [14]	20.10 \pm 9.98 (12.62,25.42) [4]	17.69 \pm 7.47 (12.70,22.85) [18]	0.79052
	Male	60 - 81	12.75 \pm 7.22 (8.33,18.20) [12]	15.04 \pm 10.81 (8.90,18.00) [5]	13.42 \pm 8.14 (8.40,18.10) [17]	0.83293
Body mass index (BMI - Kg/m²)	Female	27 - 59	26.43 \pm 6.69 (21.88,30.80) [16]	36.30 \pm 3.24 (34.50,38.42) [8]	29.72 \pm 7.41 (22.66,36.03) [24]	0.00297
Adult - normal (18.5 - 24.9Kg/m ²)	Female	60 - 81	24.07 \pm 4.51 (20.42,26.80) [16]	27.21 \pm 4.62 (23.35,30.15) [15]	25.59 \pm 4.76 (21.95,28.80) [31]	0.07525
Elderly - normal (23.0 - 28.0Kg/m ²)	Male	27 - 59	26.20 \pm 4.99 (23.46,28.04) [14]	29.35 \pm 4.50 (26.93,30.92) [4]	26.90 \pm 4.94 (24.17,29.12) [18]	0.23268
	Male	60 - 81	25.21 \pm 3.10 (24.75,26.89) [12]	30.02 \pm 5.62 (25.60,31.70) [5]	26.62 \pm 4.43 (25.21,28.30) [17]	0.08177

243 AC= Arm circumference, MUAC= Mid-arm muscle circumference BMI = Body mass index, Max= Maximum, Min=Minimum, N= sample size, SD = Standard Deviation, TSF

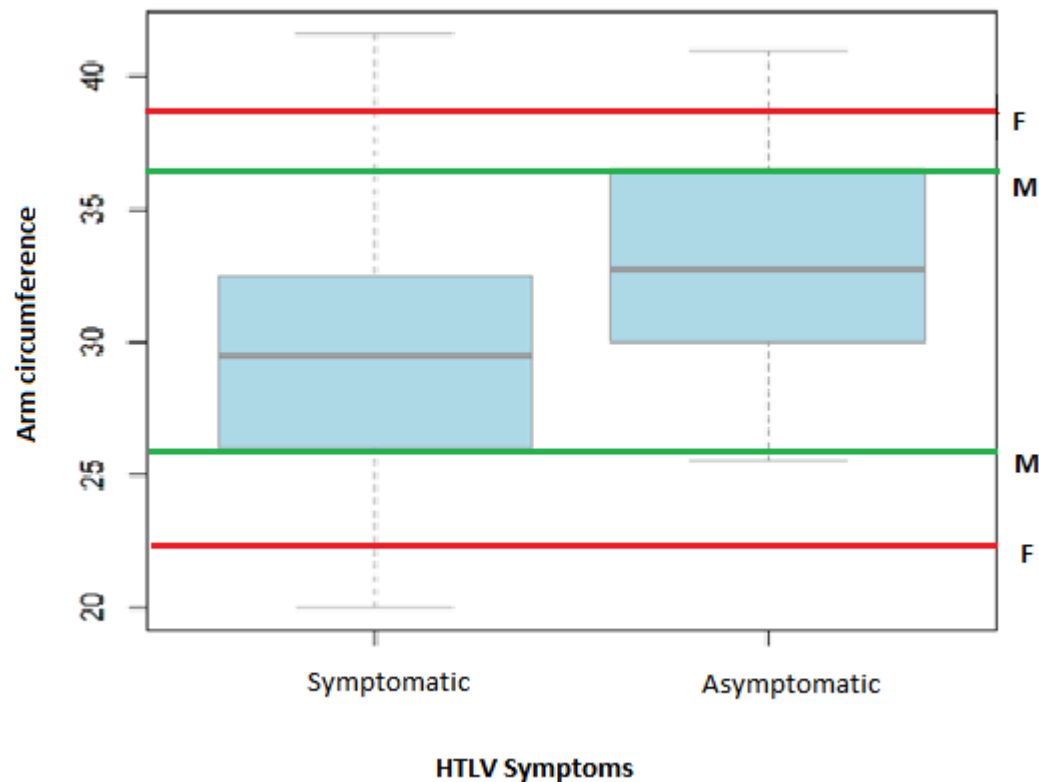
244 =Tricipital skinfold; p value for the wilcox test ; Source: AC, AMC and TSF - Frisancho (1990) (39) , BMI Adult - Who (1995) (40), BMI Seniors - OPAS (2002) (41)

245

246

247 Regarding the anthropometric measures, differences can be observed among
248 the symptomatic and asymptomatic group in some specific strata, such as differences
249 between the AC within the female participants, and differences between the TSF and
250 BMI within the younger females' participants (Table 2). And even in the AC regardless
251 of gender (figure 1).

252 **Figure 1.** Box plot of arm circumference comparison of symptomatic and asymptomatic HTLV
253 participants

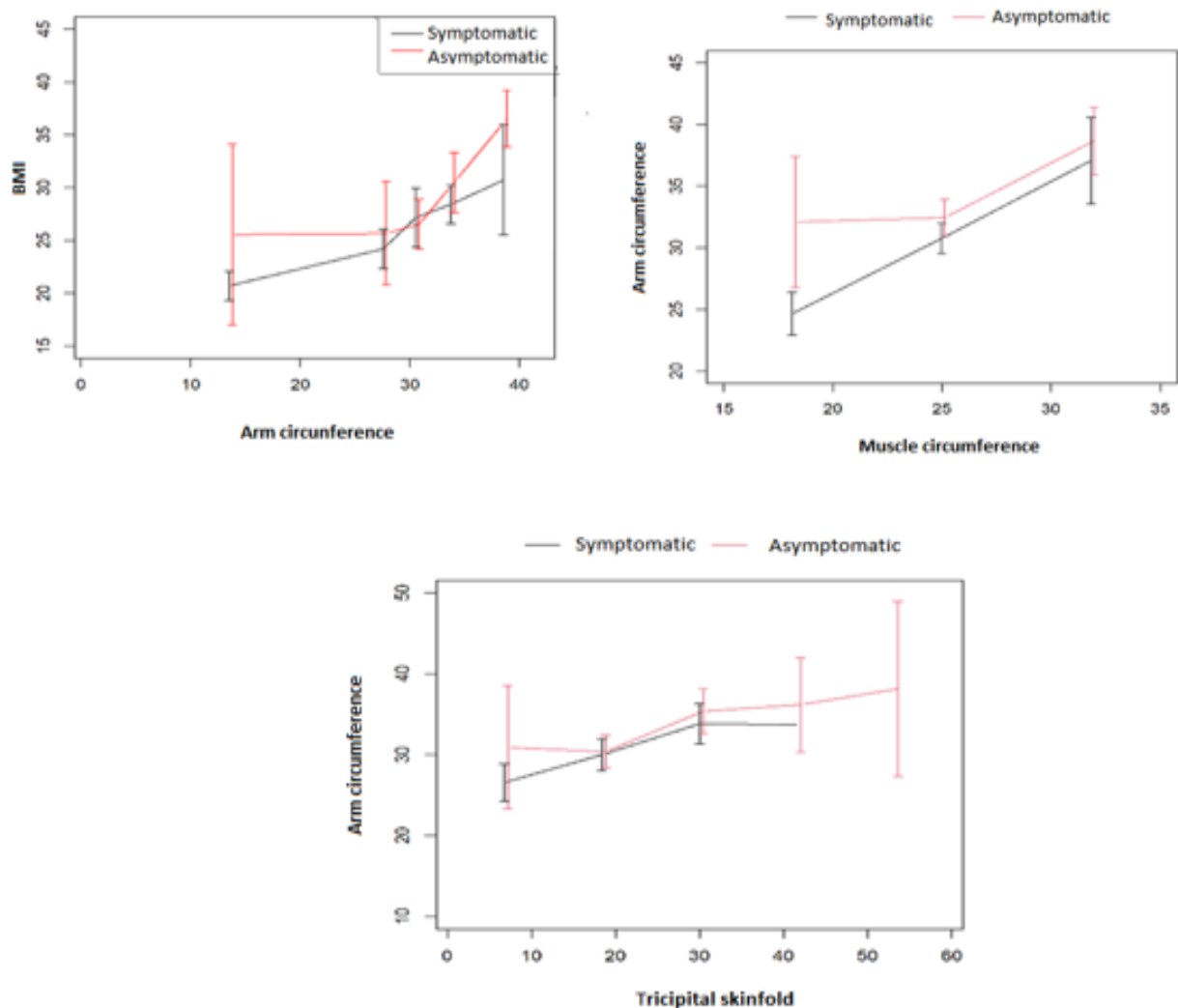


254

255 HTLV = Human T-cell Leukemia-lymphoma Virus, F = female normal range amplitude limits, M = male
256 normal range amplitude limits

257 The majority of symptomatic and asymptomatic had MUAC values within the
258 normal range, regardless of gender. AC seems to be positively correlated with MUAC
259 and BMI. (Figure 2). Additionally, asymptomatic tend to have higher AC values when
260 MUAC is kept fixed in lower values when compared to symptomatic.

261 **Figure 2.** Comparison of the anthropometric parameters between symptomatic and asymptomatic
262 HTLV



263

264 (Vertical bars are means and its 95% confidence interval of aggregate subset values).

265 The mean PA is slightly lower in the symptomatic group. Additionally, the same
266 patterns can be observed at most of the strata of sex and age, with a most evident
267 difference between groups of older females. In general, corroborating the BMI
268 interpretation, the asymptomatic group has lower mean %LM values and higher %FM
269 mean values. In the latter case it is more evident in the older male strata and regression
270 (Table 3 and Figure 3).

271 **Table 3.** Bioelectrical Impedance Analysis (BIA) for HTLV clinical status stratified by age and sex.

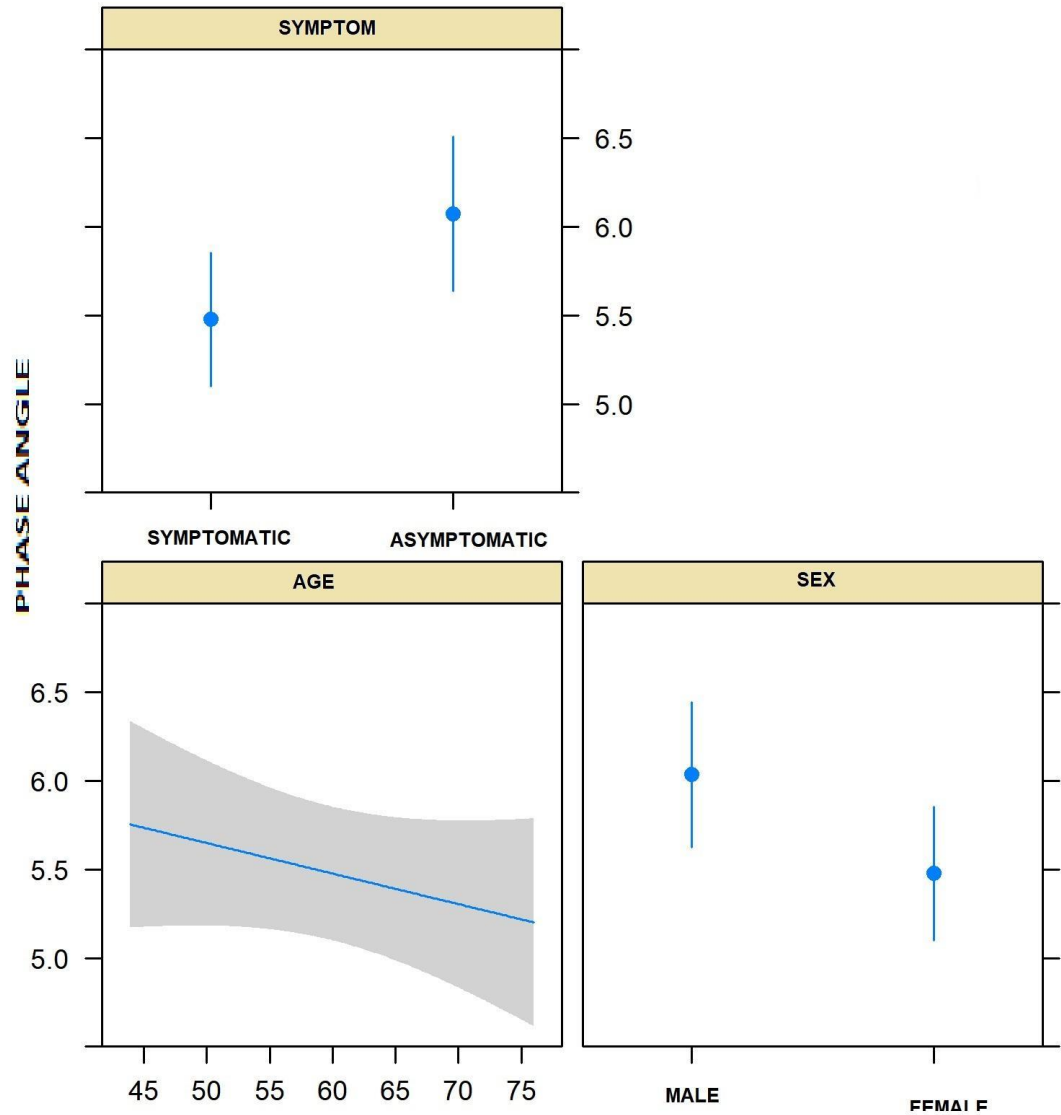
272

Variable	Sex Female/ Male	Age Years	Symptomatic Mean \pm SD (min,max) [N]	Asymptomatic Mean \pm SD (min,max) [N]	Total Mean \pm SD (min,max) [N]	P. value
Lean mass (%)	Female	27-59	61.54 \pm 12.36 (56.55,67.70) [16]	57.75 \pm 2.18 (56.85,57.83) [8]	60.28 \pm 10.22 (56.85,65.12) [24]	0.1332
	Female	60-81	66.49 \pm 8.10 (62.33,69.83) [16]	64.79 \pm 11.44 (59.05,70.80) [15]	65.67 \pm 9.73 (59.35,70.75) [31]	0.5453
	Male	27-59	68.85 \pm 15.60 (68.50,76.53) [14]	73.17 \pm 4.31 (70.50,76.12) [4]	69.81 \pm 13.88 (68.50,76.58) [18]	0.7980
	Male	60-81	75.95 \pm 6.14 (71.45,79.20) [12]	68.86 \pm 4.10 (66.70,72.80) [5]	73.86 \pm 6.42 (68.40,76.70) [17]	0.0365
Fat (%)	Female	27-59	35.02 \pm 12.27 (28.70,38.62) [16]	42.25 \pm 2.18 (42.17,43.15) [8]	37.43 \pm 10.57 (33.38,42.90) [24]	0.0131
	Female	60-81	34.14 \pm 6.57 (30.18,37.67) [16]	35.21 \pm 11.44 (29.20,40.95) [15]	34.65 \pm 9.11 (29.25,40.65) [31]	0.5717
	Male	27-59	29.44 \pm 10.11 (23.48,31.50) [14]	28.57 \pm 3.11 (27.62,29.95) [4]	29.24 \pm 8.95 (24.45,31.50) [18]	0.7209
	Male	60-81	23.43 \pm 6.79 (19.35,28.55) [12]	31.14 \pm 4.10 (27.20,33.30) [5]	25.70 \pm 7.00 (23.30,31.60) [17]	0.0365
Phase angle (PA)	Female	27-59	5.77 \pm 1.24 (5.00,6.55) [16]	6.53 \pm 0.74 (5.95,7.00) [8]	6.02 \pm 1.14 (5.47,6.78) [24]	0.1979
	Female	60-81	4.98 \pm 1.03 (4.55,5.55) [16]	6.00 \pm 1.50 (5.10,6.60) [15]	5.47 \pm 1.36 (4.75,6.15) [31]	0.0326
	Male	27-59	5.99 \pm 1.01 (5.53,6.47) [14]	6.75 \pm 0.44 (6.50,6.80) [4]	6.16 \pm 0.96 (5.62,6.57) [18]	0.0789
	Male	60-81	6.40 \pm 1.05 (5.83,6.62) [12]	5.74 \pm 0.79 (5.20,6.00) [5]	6.21 \pm 1.00 (5.40,6.60) [17]	0.2249

273 Max= Maximum, Min=Minimum, N= sample size, SD = Standard Deviation, %= Percentage; p value for the wilcox test

274 **Figure 3.** Linear regression adjusting the phase angle by symptomatology, age and sex.

275



276

277 When adjusting the effect of HTLV symptoms, for age and sex on PA (Figure
278 3), it seems the the PA deacreses slightly while age increases, female and symptomatic
279 groups have slightly lower meas effect on PA values but none of these states reached

280

281

282

283

284 **DISCUSSION**

285 The main findings of this study indicate that: a) BMI, MUAC and %FM were
286 lower in symptomatic than in asymptomatic patients; b) symptomatic group had a lower
287 proportion of overweight/obesity; c) MUAC can be considered an appropriate marker
288 to replace BMI in monitoring the nutritional status of patients with HTLV-1; d) all
289 patients which HTLV showed PA values below the cut-off point, suggesting damage to
290 the membrane integrity in both groups.

291 The literature regarding nutritional status of patients with HTLV-1 is scarce. This
292 was one of the few studies that described in detail the nutritional status of symptomatic
293 and asymptomatic people infected with HTLV-1. This study demonstrates that
294 overweight and obesity were prevalent in these HTLV patients, more evident among
295 the asymptomatic group, similarly to the situation observed in the general population,
296 corroborating what was observed in the few studies available (23–25).

297 As the symptomatic group has lower BMI, MUAC and %FM, and a lower
298 frequency of overweight and obesity, it is possible that chronic HTLV infection may
299 lead to a progressive and constant inflammatory response, increasing the energetic
300 protein catabolism (26).

301 This relation gains potential attention in this study since it was possible to
302 identify that BMI, MUAC, and the %FM were lower and the lean % LM was higher in
303 symptomatic individuals, who need assistive devices for displacement, than in
304 asymptomatic individuals. Therefore, although there seems to be a mobilization of lean
305 mass, we can suggest that there is also a large mobilization of fat mass. It is noteworthy
306 that the limitation of physical mobility to walk may have contributed to the preservation

307 of the muscle mass of upper limbs by physical stimulus with the use of crutches and
308 wheelchairs, which increases the uptake of amino acids by the tissue (27).

309 Thus, we are led to the discussion about the possibility of exchanging the
310 proportion of fat mass for lean mass in the symptomatic population, as a way of
311 adapting to the condition of need for strength for physical mobility (28). Considering
312 that symptomatic may require assistance to walk, such as walking stick or wheel chair,
313 increased values in MUAC suggests that the impact of some possible physical
314 limitations in the lower limbs creates the need for greater effort in the upper limbs; while
315 an asymptomatic population tends to be more sedentary (27,29).

316 The use of BMI may be harmed in populations with limited walking and
317 orthostatic positioning. In this setting, adequate equipment for reliable verification may
318 be required. However, it is satisfactory to identify that in the studied population, there
319 was an agreement between the measures of MUAC and BMI.

320 MUAC was previously suggested in elderly or in hospitalized patients to monitor
321 nutritional status (30,31). This evidence came up through the difficulties in verifying
322 weight and height in a low mobility population. An anthropometric tape is enough for
323 MUAC's verification, which seems to be an advantage over BMI due to price and easier
324 assessment (29,32,5). It is reasonable to suggest MUAC as a protocol for monitoring
325 nutritional status in HTLV-1, as it is an anthropometric indicator that can be used
326 longitudinally and it is correlated to other nutritional status biomarkers (32).

327 This study does not aim to describe the occurrence of metabolic changes
328 associated with weight gain in the HTLV-1 population. Nonetheless, chronic metabolic
329 diseases are positively related to being overweight, and this condition contributes to
330 increased inflammation (33,34).

331 The chronic inflammation impact on infectious diseases population is still
332 unknown; mainly considering the metabolic impact of stress induced by the viral
333 infection itself, which associated with senescence, as cellular aging, can trigger organic
334 failure related to degenerative diseases (35).

335 Therefore, the finding of higher BMI and MUAC in asymptomatic individuals,
336 and its relationship with the highest %FM, suggests the use of adipose reserves and
337 the preservation of LM, similar to that found in other studies with and without the
338 disease (32,35).

339 The %LM was proven to be a good indicator of nutritional status for this
340 population, corroborating studies that state that the BIA should be done whenever
341 possible in order to guarantee the correct interpretation of the individual's nutritional
342 status (32). As well as the finding of a %LM inversely proportional to BMI and TSF, as
343 well as the idea that the increase in MUAC and BMI in HTLV-1 patients tend to be the
344 result of adipose tissue is corroborated by studies of Bacelo (22).

345 The finding of a lower percentage of lean mass in symptomatic older men
346 suggests that senescence, a condition that promotes less able to preserve muscle
347 tissue, is potentiated in the male population (36).

348 As seen in this study, Barbosa Silva (2005) found no significant statistical
349 difference regarding PA (33); but, it is important to describe that in our studies the
350 relationship between PA and variables such as gender, age, race, and other body
351 composition indicators suggest a difference in symptomatic males and in adult
352 females. Which is extremely important, mainly, considering that higher PA values are
353 related to better cell membrane integrity (37).

354 Another important finding was that, regardless of symptoms, we found a
355 predominance of overweight and obesity associated with PA. Bopsy-Westphal (2006)
356 (38), who obtained a score between BMI and PA in qualifying in their results the young
357 population with lower BMI values in people living with obesity, but in our study the
358 younger are living with obesity with greater PA, and the older male population with
359 symptoms showed the best BMI.

360 It suggests that although it could be still early for any prognostic proposal for a
361 capacity of PA in this population, the systemic condition of the chronic infection points
362 out that: a) HTLV-1 infection alone is already capable of generating damage to the cell
363 membrane; b) the clinical evolution of the disease when associated with senescence
364 can aggravate the damage in the integrity of the cellular membrane, mainly in women,
365 c) patients, even asymptomatic, should be considered at nutritional risk.

366 **LIMITATIONS**

367 Our main limitation was the impossibility of a biochemical analysis in this group,
368 that could clarify the relationship between nutritional status and an eventual metabolic
369 illness. But it was not the object of our study.

370 The aim of the study was to compare the FA in symptomatic and asymptomatic
371 patients with HTLV, we aim in future studies to compare this population with a control
372 group. Since, there is an intrinsic limitation in its use regarding its interpretation in
373 different settings or populations (14).

374 **STRONG POINTS**

375 The main strong point of this study was comparing body composition and
376 population discrimination between symptoms and asymptomatics and larger sample
377 size than other nutrition studies with HTLV-1 participants.

378

379 **CONCLUSIONS**

380 Based on the data, it can be concluded that overweight and obesity were
381 predominant. However, the asymptomatic group is more obese than the symptomatic
382 group. The arm's circumference proved to be a good parameter to be used in the
383 population with HTLV-1. The phase angle cannot be used as a prognosis because it is
384 already altered in asymptomatic patients. This finding suggests that HTLV-1 infection
385 alone can be considered a nutritional risk and may promote damage to the membrane
386 integrity of asymptomatic HTLV-1 patients. So, further studies on the correlation
387 between the infectious conditions are needed.

388

389 **ACKNOWLEDGEMENTS**

390 We thank the support of the nutrition service, National Institute of Infectious
391 Diseases Evandro Chagas - Oswaldo Cruz Foundation the Research Support
392 Foundation of the State of Rio de Janeiro (Faperj) for the financing and the
393 neuroinfection laboratory - INI Fiocruz for the development of this study. Finally, our
394 most sincere thanks to all the volunteers who agreed to participate voluntarily in making
395 this study feasible.

396 **DECLARATION OF FUNDING**

397 This work was funded by the Foundation for Research Support of the State of
398 Rio de Janeiro (FAPERJ) (grant E-26/202.583/2017).

399 **CONFLICTS OF INTERESTS**

400 All authors declare to have no conflict of interest in the development of the study.

401 **DECLARATIONS OF AUTHORSHIP**

402 The data collection was extracted and checked by Rocha and Torrez, reviewed
403 by Bacelo, Almeida and Brito. Rocha wrote the first version of the article, which Araújo

404 and Fonseca initially reviewed. Cople-Rodrigues and Fonseca highlighted the most
405 relevant articles. Rocha, Brito and Bacelo did the second review. Rocha, Fonseca and
406 Cople-Rodrigues did the third review. Marcel contributed to the beginning of the
407 statistical analysis, Brasil revised and completed the statistical analysis. Bacelo, Araújo
408 and Cople-Rodrigues reviewed the latest versions of writing construction until the final
409 version. All authors contributed to the construction of the article. All authors declare to
410 have no conflict of interest.

411

412 **ABBREVIATIONS**

413 AC – Arm Circumference

414 AMC – Arm Muscle Circumference

415 ATL- Leucemia/linfoma de células T

416 BIA – Bioimpedance

417 BMI – Body Mass Index

418 ELISA- Enzyme Linked Immuno Sorbent Assay

419 FM- Fat mass

420 HTLV – Human T-cell Leukemia-lymphoma Virus

421 INI Fiocruz – (Instituto Nacional de Infectologia, in portuguese) Evandro Chagas

422 National Institute of Infectious

423 LBM – Lean Body Mass

424 LM- Lean mass

425 MUAC- Mid-arm muscle circumference

426 OMS - World Health Organization

427 PA – Phase Angle

428 PEM – Protein-energy malnutrition

429 R – Resistance

430 SISVAN – Vigilância alimentar e nutricional (Food and Nutrition Surveillance System)

431 TCLE – Termo de Consentimento Livre e Esclarecido (Free and Informed Consent
432 Term)

433 TSF – Tricipital Skinfold

434 TSP – Tropical spastic paraparesis

435 TSP/HAM – Tropical spastic paraparesis / Myelopathy

436 XC – Reactance

437 **REFERENCES**

438 1. Poiesz BJ, Ruscetti FW, Gazdar AF, Bunn PA, Minna JD, Gallo RC. Detection
439 and isolation of type C retrovirus particles from fresh and cultured lymphocytes
440 of a patient with cutaneous T-cell lymphoma. Proc Natl Acad Sci USA.
441 1980;77(12):7415–9.

442

443 2. Nascimento L, Moreira V, Cunha M, Mattos P, Cavalcante F, Santa Helena AA, i
444 in. Mielopatia Sinalizando o diagnóstico tardio da infecção por HtlV: Um relato
445 de caso. Jornal Brasileiro de Doenças Sexualmente Transmissíveis.

446 2012;24(4):267–71.

447

448 3. Araujo AQ-C. Neurologic complications of HTLV-1: a review. Rev bras neurol.
449 2019;5–10.

450

451 4. Filho B. Silencioso, desconhecido e negligenciado, HTLV requer investimento
452 maciço nas pesquisas, aponta Dr. Bernardo Galvão Filho. SBMT - Sociedade
453 Brasileira de Medicina Tropical. 2019.

454

455 5. Garcia IF da S, Hennington EA. HTLV: uma infecção estigmatizante? Cad
456 Saúde Pública.2019;35.

457

458 6. Bertazzoni U, Ciminale V, Romanelli MG. Editorial: Molecular Pathology of
459 HTLV-1. Front Microbio]. 2018;9.

460

461 7. Viana GM de C, Silva MACN da, Souza VL, Lopes NB da S, Silva DLF da,
462 Nascimento M do DSB, i in. Interferon beta-1a treatment in htlv-1-associated
463 myelopathy/tropical spastic paraparesis: a case report. Revista do Instituto de
464 Medicina Tropical de São Paulo.2014;56(5):443–5.

465

466 8. Pinto AF, Kauffmann LK de O, Penha HP da S, Rodrigues ELJ, Miranda R de
467 NA, Guterres A da S, i in. Estado nutricional e alterações gastrointestinais de
468 pacientes hospitalizados com HIV/aids no Hospital Universitário João de Barros
469 Barreto em Belém, Estado do Pará, Brasil. Revista Pan-Amazônica de Saúde.
470 2016;7(4):47–52.

471

472 9. Filho S, Dos JCL. Qualidade de vida e fatores associados em indivíduos com
473 doença de Chagas crônica. 2017.

474

475 10. Abreu ES de, Viana IC, Moreno RB, Torres EAF da S. Alimentação mundial:
476 uma reflexão sobre a história. Saude soc. 2001;10:3–14.

477

478 11. Monteiro CA. A dimensão da pobreza, da desnutrição e da fome no Brasil.
479 Estud av. 2003; 17:7–20.

480

481 12. Norman K, Stobäus N, Zocher D, Bosy-Westphal A, Szramek A, Scheufele R, i
482 in. Cutoff percentiles of bioelectrical phase angle predict functionality, quality of
483 life, and mortality in patients with cancer. Am J Clin Nutr. 2010;92(3):612–9.

484

485 13. Ellegård LH, Petersen P, Öhrn L, Bosaeus I. Longitudinal changes in phase
486 angle by bioimpedance in intensive care patients differ between survivors and
487 non-survivors. Clinical Nutrition ESPEN. 1;2018;24:170–2.

488

489 14. Edwick D, Hince D, Rawlins J, Wood F, Edgar D. Bioimpedance Spectroscopy Is
490 a Valid and Reliable Measure of Edema Following Hand Burn Injury (Part 1-
491 Method Validation). Journal of Burn Care & Research [Internet]. 9;2020;41.

492

493 15. Cioffi I, Marra M, Imperatore N, Pagano MC, Santarpia L, Alfonsi L, i in.
494 Assessment of bioelectrical phase angle as a predictor of nutritional status in
495 patients with Crohn's disease: A cross sectional study. Clin Nutr.

496 2020;39(5):1564–71

497 .

498 16. Lohman TG, Roche AF, Martorell R. Anthropometric standardization reference
499 manual [Internet]. Champaign, IL: Human Kinetics Books; 1988.

500

501 17. Oliveira PG de. Ângulo de fase como indicador de desfechos negativos em
502 pacientes cirúrgicos. [Tese de doutorado]. [Porto Alegre]: Universidade Federal
503 do Rio Grande do Sul; 2012.

504

505 18. Vigilância alimentar e nutricional - SISVAN: orientações básicas para a coleta, o
506 processamento, a análise de dados e a informação em serviços de saúde.

507 Brasília, DF: Ministério da Saúde, Secretaria de Atenção à Saúde,

508 Departamento de Atenção Básica, Coordenação-Geral da Política de

509 Alimentação e Nutrição; 2004.

510

511 19. Brazil, Ministério da Saúde. SUS 20 anos: a saúde do Brasil. Brasília, Brazil:
512 Editora MS; 2009.

513

514 20. MINISTÉRIO DA SAÚDE, ORGANIZAÇÃO PAN-AMERICANA DA SAÚDE.

515 Orientações básicas para a coleta, o processamento, a análise de dados e a
516 informação em serviços de saúde.

517

518 21. Eickemberg M, Oliveira CC de, Anna Karla Carneiro R, Sampaio LR.

519 Bioimpedância elétrica e sua aplicação em avaliação nutricional. Rev Nutr.

520 2011;24(6):883–93.

521

522 22. Rocha NO da, Araújo AQC, Silva PS, Torres PR, Santos R dos, Pinto LMC, i in.
523 Bioimpedância em doenças infecciosas: revisão crítica. Journal of Health &
524 Biological Sciences. 15;2021;9(1):1–5.

525

526 23. Toste FP, Bacelo A, de Carlos Capelli J, de Moraes VM, Porte A, Pereira SEA, i
527 in. A Contribuição da Nutrição nos casos de Paraparesia Espástica Tropical por
528 HTLV-I. 2007.

529

530 24. Gaspar G, Souza M, Masteguim T, Matta S, Casseb J, Olival G, i in. Medical
531 conditions, social and neurological patients of the T-lymphotropic virus
532 humanities-HTLV I. Retrovirology. 7;2014;11(Suppl 1):P35.

533

534 25. Bacelo AC, Cople-Rodrigues C dos S, Gonçalves JL, Borges Quintana M de S,
535 Torres PR, Cardoso CSDA, i in. Nutritional status of human T-lymphotropic virus
536 1 patients: A retrospective study. Clinical Nutrition ESPEN. 2019; 34:32–6.

537

538 26. Bresan D, Simon L, C, Haas F, Mitsuka M, Vieira G, I in. Comparação entre dois
539 métodos para o diagnóstico nutricional de pacientes hospitalizados. Rev Bras
540 Nutr Clin. 2009; 24-27: 4.

541

542 27. Grisante AI, Stanich P. Esclerose múltipla: aspectos nutricionais e o papel dos
543 nutrientes específicos. ConScientiae Saúde. 9; 2006;5(2):67–74.

544

545 28. Silva CP. Abordagem Nutricional na Esclerose Múltipla. U.porto. 2019;29.

546

547 29. Garcia AN de M, Romani S de AM, Lira PIC de. Indicadores antropométricos na
548 avaliação nutricional de idosos: um estudo comparativo. Revista de Nutrição.
549 2007;20(4):371–8.

550

551 30. Peralta L. HJ, Ramírez Alcántara OM, García M, Romero A. WR, Barranco
552 Ventura J. Valoración nutricional según indicadores clínicos, antropométricos y
553 bioquímicos en pacientes con cáncer del Instituto de Oncología „Dr. Heriberto
554 Pieter”. Rev méd domin. 1997;22–6.

555

556 31. Prado FLS do. Avaliação do perfil de risco cardiovascular em pacientes com
557 mielopatia associada ao HTLV-1 (HAM/TSP) [Dissertação de Mestrado]. Escola
558 Bahiana de Medicina e Saúde Pública 2016.

559 32. Neves EB, Ripka WL, Ulbricht L, Stadnik AMW. Comparação do percentual de
560 gordura obtido por bioimpedância, ultrassom e dobras cutâneas em adultos
561 jovens. Revista Brasileira de Medicina do Esporte. 2013;19(5):323–7.

562

563 33. Angrisani L, Santonicola A, Iovino P, Formisano G, Buchwald H, Scopinaro N.
564 Bariatric Surgery Worldwide 2013. OBES SURG. 1;2015;25(10):1822–32.

565

566 34. Dietz W, Santos-Burgoa C. Obesity and its Implications for COVID-19 Mortality.
567 Obesity. 1;2020.

568

569 35. Cabral CC, Ferreira E, Ragnini P, Massad J. Perfil nutricional de uma amostra
570 de indivíduos adultos residentes na região central do estado de Mato Grosso.

571 2019;6:16.

572

573 36. Silva TA de A, Frisoli Junior A, Pinheiro MM, Szejnfeld VL. Sarcopenia
574 associada ao envelhecimento: aspectos etiológicos e opções terapêuticas.
575 Revista Brasileira de Reumatologia. grudzień 2006;46(6):391–7.

576

577 37. Barbosa-Silva MCG, Barros AJD, Wang J, Heymsfield SB, Pierson RN.
578 Bioelectrical impedance analysis: population reference values for phase angle
579 by age and sex. Am J Clin Nutr. 2005;82(1):49–52.

580

581 38. Bosy-Westphal A, Danielzik S, Dörhöfer R-P, Later W, Wiese S, Müller MJ.
582 Phase angle from bioelectrical impedance analysis: population reference values
583 by age, sex, and body mass index. JPEN J Parenter Enteral Nutr. sierpień
584 2006;30(4):309–16.

585

586 39. Frisancho AR. Anthropometric Standards for the Assessment of Growth and
587 Nutritional Status. University of Michigan Press; 1990. 250 s.

588

589 40. WHO | The world health report 1995 - bridging the gaps [Internet]. WHO. World
590 Health Organization;

591

592 41. OPAS/OMS Brasil - Política de Recursos Humanos em Saúde Seminário
593 Internacional 2002.

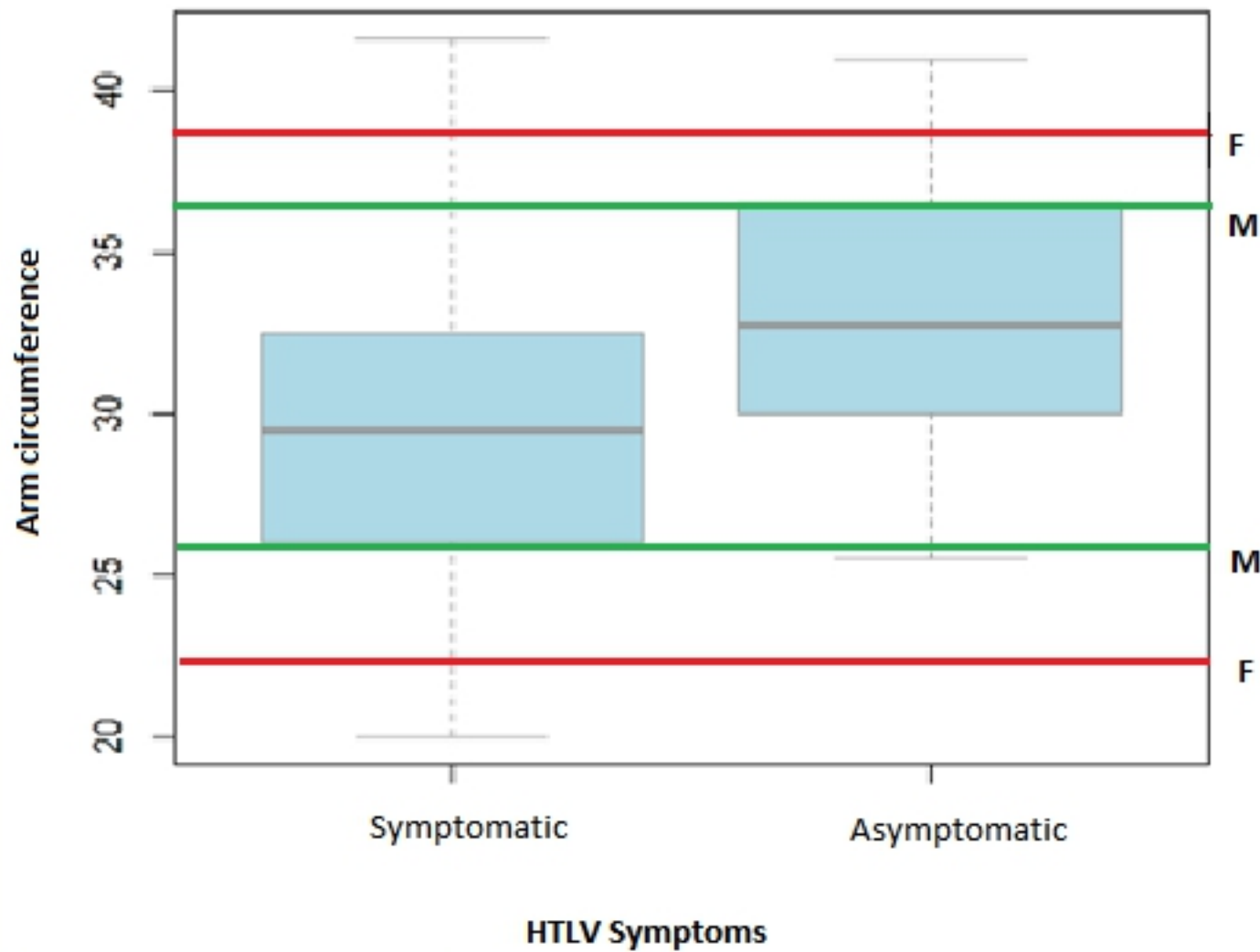


Figure 1

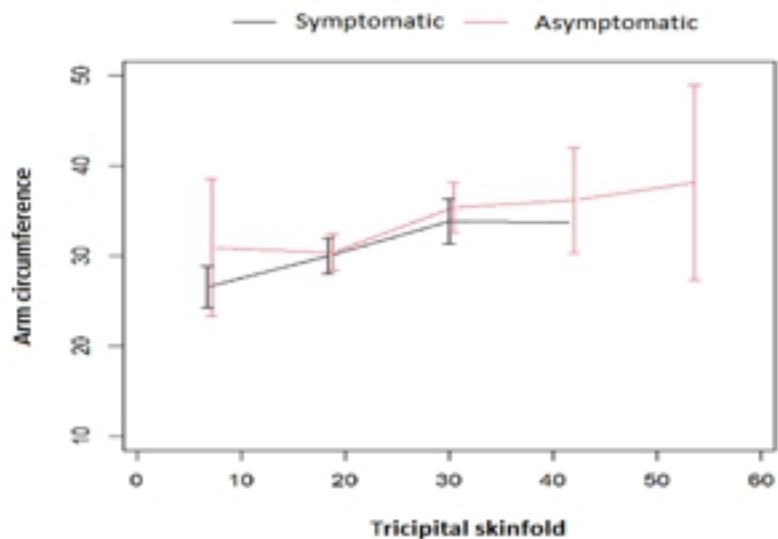
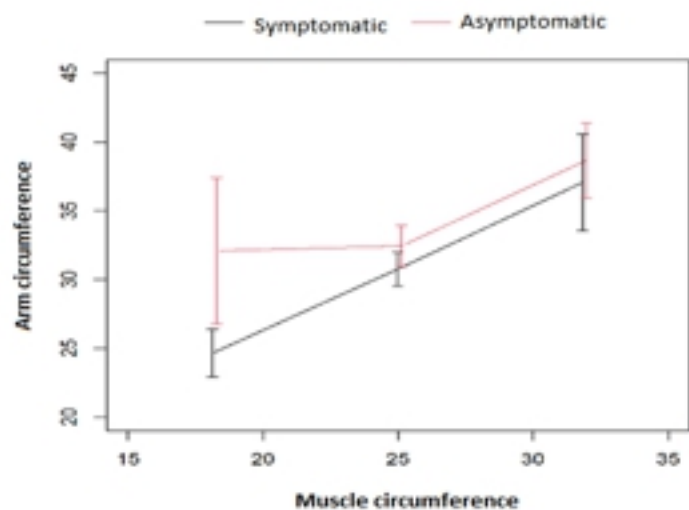
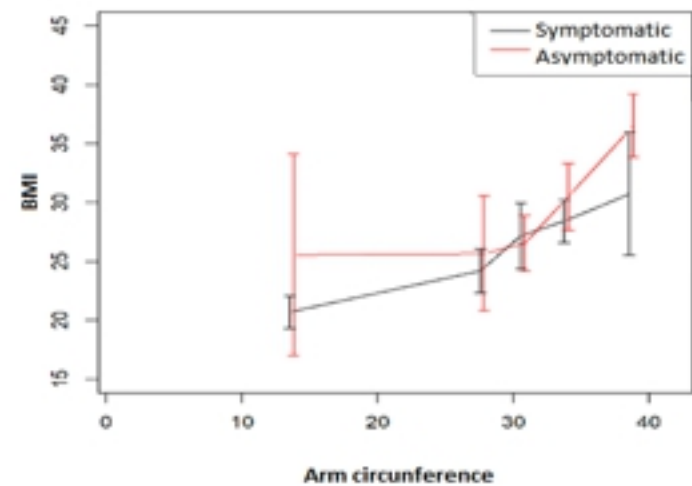


Figure 2

medRxiv preprint doi: <https://doi.org/10.1101/2022.03.22.22272740>; this version posted March 24, 2022. The copyright holder for this preprint (which was not certified by peer review) is the author/funder, who has granted medRxiv a license to display the preprint in perpetuity. It is made available under a [CC-BY 4.0 International license](https://creativecommons.org/licenses/by/4.0/).

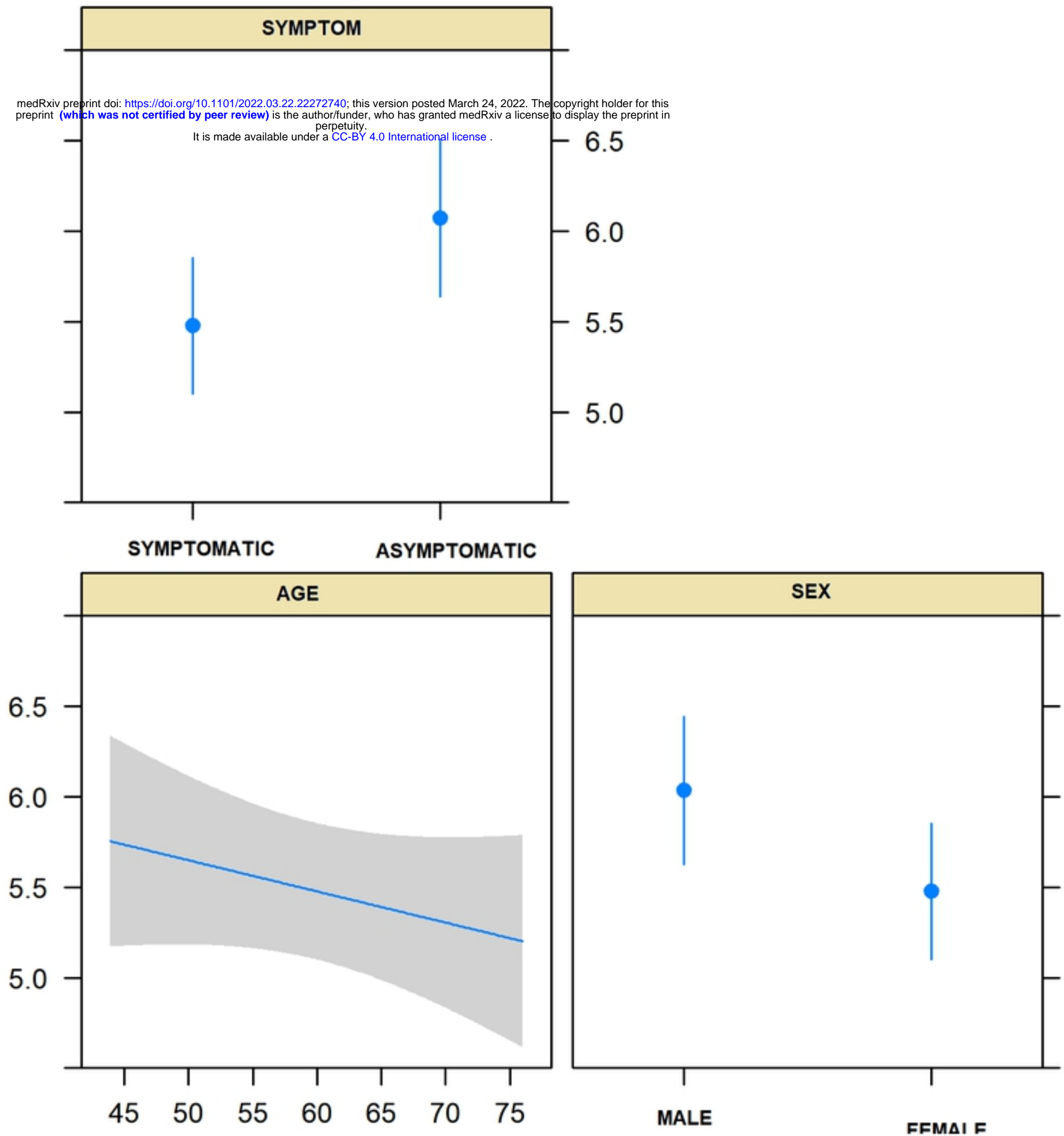


Figure 3