

1 **Genomic Epidemiology of SARS-CoV-2 in Seychelles, 2020-2021**

2

3 **Authors** John M. Morobe¹, Dwayne Didon², Brigitte Pool², Arnold W. Lambisia¹,
4 Timothy Makori¹, Khadija Said Mohammed¹, Zaydah R. de Laurent¹, Leonard
5 Ndwiga¹, Maureen W. Mburu¹, Edidah Moraa¹, Nickson Murunga¹, Jennifer Musyoki¹,
6 Jedida Mwacharo¹, Lydia Nyamako¹, Debra Riako¹, Pariken Ephnatus¹, Faith
7 Gambo¹, Josephine Naimani¹, Joyce Namulondo^{3,4}, Fred Athanasius Dratibi⁵, Yahaya
8 Ali Ahmed⁵, Nicksy Gumede⁵, Rachel A. Achilla⁵, Peter K. Borus⁶, Dorcas
9 Wanjohi⁷, Sofonias K. Tessema⁷, Joseph Mwangangi¹, Philip Bejon¹, D. James
10 Nokes^{1,8}, Lynette Isabella Ochola-Oyier¹, George Githinji^{1,9}, Leon Biscornet², Charles
11 N. Agoti^{1,10}

12

13 **Author Affiliations**

14 ¹Kenya Medical Research Institute - Wellcome Trust Research Programme (KWTRP),
15 Kilifi, Kenya.

16 ²Seychelles Public Health Laboratory, Public Health Authority, Seychelles.

17 ³ World Health Organization-Seychelles Country Office

18 ⁴Department of Arbovirology, Emerging and Re-emerging Infectious Diseases -
19 Uganda Virus Research Institution (UVRI), Entebbe, Uganda

20 ⁵World Health Organization Regional Center for Africa

21 ⁶ World Health Organization-Kenya Country Office

22 ⁷Africa Centres for Disease Control and Prevention (Africa CDC), Addis Ababa,
23 Ethiopia.

24 ⁸University of Warwick, Coventry, United Kingdom.

25 ⁹Department of Biochemistry and Biotechnology, Pwani University, Kilifi, Kenya

26 ¹⁰ Department of Public Health, Pwani University, Kilifi, Kenya.

27 **Corresponding author** : jmwita@kemri-wellcome.org

28

29 **Key words:** Seychelles, SARS-CoV-2, variants of concern

30 **ABSTRACT**

31 By 31st December 2021, Seychelles, an archipelago of 115 islands in the Indian
32 Ocean, had confirmed 24,788 cases of severe acute respiratory syndrome
33 coronavirus 2 (SARS-CoV-2). The first SARS-CoV-2 cases in Seychelles were
34 reported on 14th March 2020, but cases remained low until January 2021, when a
35 surge of SARS-CoV-2 cases was observed on the islands. Here, we investigated the
36 potential drivers of the surge by genomic analysis 1,056 SARS-CoV-2 positive
37 samples collected in Seychelles between 14th March 2020 and 31st December 2021.
38 The Seychelles genomes were classified into 32 Pango lineages, 1,042 of which fell
39 within four variants of concern i.e., Alpha, Beta, Delta and Omicron. Sporadic of SARS-
40 CoV-2 detected in Seychelles in 2020 were mainly of lineage B.1 (Europe origin) but
41 this lineage was rapidly replaced by Beta variant starting January 2021, and which
42 was also subsequently replaced by the Delta variant in May 2021 that dominated till
43 November 2021 when Omicron cases were identified. Using ancestral state
44 reconstruction approach, we estimated at least 78 independent SARS-CoV-2
45 introduction events into Seychelles during the study period. Majority of viral
46 introductions into Seychelles occurred in 2021, despite substantial COVID-19
47 restrictions in place during this period. We conclude that the surge of SARS-CoV-2
48 cases in Seychelles in January 2021 was primarily due to introduction of the more
49 transmissible SARS-CoV-2 variants into the islands.

50 **BACKGROUND**

51 Seychelles, an archipelago of 115 islands in the Indian Ocean with a population
52 size of approximately 98,347, confirmed its first cases of severe acute respiratory
53 syndrome coronavirus 2 (SARS-CoV-2), the aetiological agent of coronavirus disease
54 2019 (COVID-19), on 14th March 2020. This was shortly after the World Health
55 Organisation (WHO) declared COVID-19 a global pandemic on 11th March 2020.
56 However, the number of COVID-19 cases in Seychelles remained low (average of 1
57 case/day) until January 2021 when a surge was observed in the country (average of
58 72 cases/day). As of 31st December 2021, Seychelles had reported 24,788 laboratory-
59 confirmed COVID-19 cases, >98% of which were recorded in 2021¹. The surge of the
60 number of COVID-19 cases in Seychelles in 2021 could be due to 2 major factors: (a)
61 the relaxation of government COVID-19 stringency measures and (b) the arrival of
62 more transmissible SARS-CoV-2 variants on the islands. Our analysis looked at both
63 these two factors in an attempt to improve understanding of the COVID-19
64 transmission dynamics in Seychelles.

65 The first round of COVID-19 countermeasures by the Seychelles government
66 to curb introductions and spread of the virus were announced in March 2020. These
67 measures included: a 14-day quarantine for people returning from countries with
68 significant COVID-19 community transmission on 16th March 2020, closure of day care
69 centres and learning institutions, and ban on international arrivals and foreign travel
70 by Seychellois citizens, except for medical emergencies beginning 23rd March 2020,
71 a 21-day nationwide lockdown, tracing, isolation and monitoring of all persons who
72 had close contact with COVID-19 patients for 14 days beginning 6th April 2020,
73 closure of all shops except those that sell food items, groceries, pharmaceutical
74 products beginning 6th April 2020, workplace closures and restriction of outdoor
75 movement except for essential services on 9th April. On the 4th of May 2020, the
76 Seychelles government eased some of the COVID-19 restrictions, including opening
77 of all day care and learning institutions, opening of all shops, and lifting of the ban on
78 restrictions of movement of people. In June 2020, the Seychelles government lifted
79 the ban on international travel and allowed visitors (international tourists) from
80 perceived low-risk countries, however with a requirement to show a COVID-19
81 negative certificate (RT-PCR test). Despite this removal of many of the Government
82 restrictions, the number of SARS-CoV-2 in Seychelles throughout 2020 remained low.

83 Towards the end of 2020 and in 2021, in widely different geographical locations,
84 five SARS-CoV-2 variants of concern (VOC) - Alpha, Beta, Gamma, Delta and
85 Omicron, five variants of variants of interest (VOI) – Eta, Kappa, Iota, Epsilon and
86 Theta and over 10 variants under monitoring (VUM) - emerged that appeared to be
87 considerably more transmissible and with potential to escape pre-existing immunity ^{2,3}
88 Notably, the surge of COVID-19 cases in Seychelles in early 2021 coincided with their
89 emergence. Further, in the last quarter of 2021, the Omicron SARS-CoV-2 variants of
90 concern (VOCs) was detected globally ³. The emergence and spread of these variants
91 of concern globally, has exacerbated the effect of the COVID-19 pandemic ⁴. The
92 objective of this study was to describe the genomic epidemiology of SARS-CoV-2 in
93 Seychelles and in particular lineages coinciding with the surge of cases that began in
94 January 2021, with the aim of improving the understanding on the introduction and
95 transmission of SARS-CoV-2 in Seychelles.

96

97 **MATERIALS AND METHODS**

98

99 **Ethical statement**

100 The SARS-CoV-2 positive samples were sequenced at the Kenya Medical
101 Research Institute (KEMRI) - Wellcome Trust Research Programme (KWTRP) as part
102 of a regional collaborative COVID-19 public health rapid response initiative overseen
103 by WHO-AFRO and Africa-CDC. KWTRP Kilifi is one of the 12 designated WHO-
104 AFRO/Africa-CDC regional reference laboratories for SARS-CoV-2 genomic
105 surveillance in Africa. The whole genome sequencing study protocol was reviewed
106 and approved by the Scientific and Ethics Review Committee (SERU) at KEMRI,
107 (SERU #4035). Individual patient consent requirement was waived by the committee
108 as the sequenced samples were part of the public health emergency response.

109

110 **Study site and samples**

111 A total of 1,298 SARS-CoV-2 real-time polymerase chain reaction (qRT-PCR)-
112 confirmed nasopharyngeal and oropharyngeal (NP/OP) positive swab samples
113 collected between 14th March 2020 and 31st December 2021 were targeted for whole
114 genome sequencing. The samples received for sequencing at KWTRP for whole
115 genome sequencing were selected considering cycle threshold (Ct) value cut off <30.

116 The monthly temporal distribution of samples selected for whole genome sequencing
117 is shown in **Supplementary Figure 1**.

118

119 **Laboratory procedures**

120 **RNA extraction, cDNA synthesis and amplification**

121 The NP/OP swab samples on arrival at KWTRP laboratories were re-extracted
122 using the QIAamp Viral RNA Mini Kit (Qiagen, Manchester, UK) following the
123 manufacturer's instructions, starting volume 140 µl, and elution volume of 60 µl. The
124 RNA was then re-assayed to confirm SARS-CoV-2 genetic material using one of three
125 commercial kits namely, Da An Gene Co. Ltd.'s Detection Kit (targeting N gene or
126 ORF1ab), SD Biosensor's Standard M Real Time Detection Kit (targeting E gene and
127 ORF1ab) or KH Medical's RAD1 COVID-19 Detection Kit (targeting RdRp and S
128 genes) while following manufacturer's instructions. Samples with Ct values <33 were
129 selected for cDNA synthesis.

130 Extracted RNA was reverse transcribed using the LunaScript® RT SuperMix
131 Kit (New England Biolabs, US). For each of the selected sample, 2 µl of the
132 LunaScript® RT SuperMix was added to 8 µl of RNA template, incubated at 25°C for
133 2 minutes, 55°C for 10 minutes, held at 95°C for 1 minute and placed on ice for 1
134 minute. The generated viral cDNA was amplified using the Q5® Hot Start High-Fidelity
135 2X Master Mix (NEB, US) along with ARTIC nCoV-2019 version 3 primers (primer
136 pools A and B), as documented previously⁵. The thermocycling conditions involved a
137 touchdown PCR with the following conditions: heat activation at 98°C for 30 seconds,
138 followed by 40 amplification cycles (i.e., 25 cycles of 98°C for 15 seconds and 65°C
139 for 5 minutes, and 15 cycles of 62.5°C for 5 minutes and 98°C for 15 seconds and one
140 cycle at 62.5°C for 5 minutes), final extension at 62.5°C for 5 minutes, followed by a
141 final hold at 4°C. To overcome amplicon dropouts in regions 3, 9, 17, 26, 64, 66, 67,
142 68, 74, 88, 91 and 92 of the genomes⁵, primer pairs for the aforementioned regions
143 were constituted in an additional pool, named herein pool C. After the multiplex PCR,
144 an agarose gel electrophoresis step was included to exclude samples with no visible
145 bands from further processing.

146 **Oxford Nanopore library preparation and sequencing**

147 For each sample, the PCR products of primer pools A, B and C were combined
148 to make a total of 23µl (all of pool A (10µl), pool B (10µl) and pool C(3µl)) and cleaned

149 using 1x AMPure XP beads (Beckman Coulter, US), followed by two ethanol (80%)
150 washes. The pellet was resuspended in 20 µl nuclease-free water and 1 µl of the
151 eluted sample was quantified using the Qubit dsDNA HS Assay Kit (ThermoFisher
152 Scientific, US). End-prep reaction was performed according to the ARTIC nCoV-2019
153 sequencing protocol v3 (LoCost) with 200 fmol (50ng) of amplicons and the NEBNext
154 Ultra II End repair/dA-tailing Kit (NEB, US) and incubated at 20°C for 5 minutes and
155 65°C for 5 minutes. From this, 1µl of DNA was used for barcode ligation using Native
156 Barcoding Expansion 96 (Oxford Nanopore Technology, UK) and NEBNext Ultra II
157 Ligation Module reagents (NEB, US). Incubation was performed at 20°C for 20
158 minutes and at 65°C for 10 minutes. This step was eventually modified to employ
159 NEBNext Blunt/TA Ligase Master Mix (NEB, US) using the same barcodes and
160 incubation conditions.

161 The barcoded samples were pooled together. The pooled and barcoded DNA
162 samples were cleaned using 0.4X AMPure XP beads followed by two ethanol (80%)
163 washes and eluted in a 1/14 of the original volume of nuclease-free water. Adapter
164 ligation was performed using 50-100 ng of the barcoded amplicon pool, NEBNext
165 Quick Ligation Module reagents (NEB, US) and Adaptor Mix II (ONT, UK), and
166 incubated at room temperature for 20 minutes. Final clean-up was performed using
167 1X AMPure XP beads and 125 µl of Short Fragment Buffer (ONT, UK). The library
168 was eluted in 15 µl Elution Buffer (ONT, UK). The final library was normalised to 15-
169 70 ng, loaded on a SpotON R9 flow cell and sequenced on a MinION Mk1B or GridION
170 device⁵.

171

172 **SARS-CoV-2 genome consensus assembly**

173 The data generated via the MinION and GridION devices were processed using
174 the ARTIC bioinformatic protocol ([https://artic.network/ncov-2019/ncov2019-
175 bioinformatics-sop.html](https://artic.network/ncov-2019/ncov2019-bioinformatics-sop.html)). In brief, raw FAST5 files were base called and demultiplexed
176 using ONT's Guppy (version 4.0.5) in high accuracy mode using a minimum Q score
177 of 7. FASTQ reads between 300 bps and 750 bps were filtered using the guppyplex
178 module. The consensus sequences were generated by aligning base called reads
179 against the SARS-CoV-2 reference genome (GenBank accession MN908947.3) using
180 MiniMap2⁶. All positions with a genome coverage of less than 20 reads were masked
181 with Ns. The consensus sequences were then polished using Nanopolish toolkit
182 (version 0.13.3) using the raw signals.

183 **Lineage and VOC assignment**

184 Additional quality control, clade assignment and mutation profiles were
185 obtained using the NextClade tool v1.13.2 ⁷ using a SARS-CoV-2 reference genome
186 (accession NC_045512). All consensus sequences with a genome coverage >70%
187 were classified using the PANGO lineage assignment tool (Pangolin version 3.1.20
188 and PangoLearn v.02/02/2022)⁸.

189

190 **Global comparison sequences**

191 Seychelles sequences were analysed against a backdrop of globally
192 representative SARS-CoV-2 lineages. To ensure global representation of sequences,
193 we downloaded all the sequences (n= 8,916,634) from the Global Initiative on Sharing
194 All Influenza Data (GISAID) database collected before 31st December and used an in-
195 house R script to randomly select a sub-sample of 5,179 genomes while considering
196 Pango lineage (lineages detected in Seychelles only), continent and date of collection.
197 These global random genomes were collected from 150 countries and territories
198 between 2nd May 2020 and 31st December 2021.

199

200 **Phylogenetic reconstruction**

201 The retrieved global sequence dataset, the sequences from Seychelles were
202 aligned using Nextalign version 1.4.1. against the reference SARS-CoV-2 genome
203 (accession NC_045512). A maximum likelihood (ML) phylogeny was inferred using
204 IQTREE version 2.1.3 (<http://www.iqtree.org/>). The software initiates tree
205 reconstruction after assessment and selection of the best model of nucleotide
206 substitution for the alignment. TreeTime version 0.8.1 was used to transform the ML
207 tree topology into a time calibrated phylogenetic tree. The resulting trees were
208 visualized using the Bioconductor ggTree version 2.2.4 package⁹ in R¹⁰.

209

210 **Estimation of virus importations and exportations into Seychelles**

211 The global ML tree topology was used to estimate the number of viral
212 transmission events between Seychelles and the rest of the world as described
213 previously¹¹. TreeTime was used to transform the ML tree topology into a dated
214 phylogenetic tree. Outlier sequences (n=208) were identified by TreeTime and
215 excluded during this process. A migration model was fitted using the time-scaled
216 phylogenetic tree, mapping the location status of the genomes from Seychelles at both

217 the tips and internal nodes. Using the date and location annotated tree topology, we
218 counted the number of transitions between Seychelles and the rest of the world and
219 plotted this using ggplot2 version 3.3.3 ¹².

220

221 **Statistical analysis**

222 All statistical analyses were performed using R version 4.1.0 ¹⁰ .

223 RESULTS

224 Sequenced COVID-19 cases in Seychelles

225 The rise of COVID-19 cases in 2021 was preceded by a period of relaxed
226 countermeasures to curb the spread of the virus (**Figure 1 A and B**). Of 1,298 SARS-
227 CoV-2 positive samples received at KWTRP for genome sequencing, near complete
228 genomes (>70% genome coverage) were recovered from 1,056 samples, and these
229 were used in the subsequent lineage and phylogenetic analysis (**Supplementary**
230 **Figure 2**). A summary of the demographic details for the samples successfully
231 sequenced and those that failed are provided in **Table 1**.

232

233 SARS-CoV-2 lineages circulating in Seychelles

234 The recovered 1,056 genomes classified into 32 distinct Pango lineages, 28 of
235 which occurred within VOC, VOI or VUM: Alpha VOC (n=1), Beta VOC (n=1), Delta
236 VOC (n=21) and Omicron VOC (n=3) and Kappa VOI (n=1) and B.1.640.2 VUM (n=1)
237 (**Table 2**). A total four non-VOC/non-VOI/non-VUM lineages were detected among the
238 sequenced infections in Seychelles: B.1 (n=9), B.1.1 (n=1), B.1.1.50 (n=1) and lineage
239 B.1.1.277 (n=1). Lineage B.1 (predominantly detected in Europe) was the first to be
240 detected lineage in Seychelles in the sequenced sample in June 2020, followed by
241 lineage B.1.1.277 (predominantly detected in Europe) in October 2020, B.1.1.50
242 (Predominantly detected in Israel and Palestine) in January 2021 followed by B.1.1 in
243 May 2021. The non-VOC/VOI lineages were replaced by the Beta VOC (B.1.351) in
244 February 2021, and which was later subsequently replaced by the Delta VOC in May
245 2021 that dominated until November 2021 when Omicron cases were identified
246 (**Figure 1C and Figure 2**).

247 Detection of Beta VOC in February 2021 coincided with the start of surge of
248 COVID-19 cases, with a further sharp surge observed in May 2021 coinciding with
249 detection of Delta VOC in May 2021 (**Figure 1B and C**). Since emergence of Delta
250 VOC in Seychelles in May 2021, a total of 21 Delta VOC lineages co-circulated with
251 varying frequency. Lineage AY.122 (n= 742) was the most prevalent, with detections
252 until the end of the surveillance period covered in this analysis (**Figure 1D and Figure**
253 **2**). Other common Delta lineages were AY.43 (n=33) and B.1.617.2 (n=13). We
254 observed start of another surge in November 2021 due to Omicron (lineages BA.1

255 (n=126), BA.1.1 (n=18) and BA.2 (n=1) (**Figure 1B and Supplementary Figure 1A**)
256 which peaked in mid-January 2022 (not shown).

257

258 **SARS-CoV-2 diversity in Seychelles**

259 Genetic distance -resolved phylogeny of the Seychelles genomes, including
260 global reference sequences (n=5,179) revealed that most of the Seychelles
261 sequences were interspersed as clusters (>2 sequences) or singletons across the
262 phylogenetic trees suggesting multiple viral introductions into Seychelles (**Figure 3**).
263 In the VOC/non-VOC-specific phylogenies, Delta VOC (n=863) grouped into 14
264 clusters (>2 sequences) clusters and 12 singletons on the global phylogenetic tree
265 pointing to separate introductions of the Delta VOC into the country whereas Omicron
266 VOC (n=145) clustered into 10 clusters and 11 singletons (**Figures 3D and E**).
267 Seychelles' Beta (n=29) and Alpha (n=5) viruses clustered closely amongst
268 themselves suggesting few introductions that led to onward transmission in Seychelles
269 (**Figures 3B and C**). Seychelles B.1 viruses sampled in 2020 were dispersed on the
270 global phylogeny as singletons most likely pointing to multiple introductions into
271 Seychelles during the initial phase of the pandemic (**Figure 3A**). Sequences from
272 different locations (i.e., districts) in Seychelles clustered closely or together on the
273 phylogenetic tree, a feature suggesting rapid spread of the virus within the country
274 over a short period of time (not shown).

275 SARS-CoV-2 variant analysis comparing sequences from Seychelles'
276 sequences to the Wuhan reference sequence (NC_045512.2) detected a total of 703
277 amino acid mutations across different gene regions; however, focusing on the frequent
278 occurring mutations only, we identified a total of 27 amino acid mutations and two
279 deletions that had a prevalence of >50% in the sequenced cases (**Supplementary**
280 **Figure 3A and B**). The most prevalent amino acid mutation was D614G (A23403G)
281 (98.9%) occurring in the spike glycoprotein followed by P314L (C14408T) (93.3%) in
282 the open reading frame 1b (ORF1b) (**Supplementary Figure 3A**).

283

284 **Export and import of SARS-CoV-2 lineages in Seychelles**

285 Ancestral location state reconstruction of the dated global phylogeny (**Figure**
286 **4A**) was used to infer the number of viral importations and exportations. In total,
287 between 25th June 2020 and 31st December 2021, we inferred at least 78 importations
288 into Seychelles with 28 (35%) of the introductions coming from Europe, 21 separate

289 introductions from Africa, 15 separate introductions from Asia, 6 introductions from
290 North America, 5 separate introductions from Oceania and 3 introductions from South
291 America. (**Figure 4B**). Of the 78 detected viral imports into Seychelles, 66 occurred
292 between January and December 2021 after the rise in COVID-19 cases was
293 experienced in the Seychelles (**Figure 4C**). From the analysis, we also inferred 32
294 export events from Seychelles to the rest of the world, mainly Asia (n=10) Europe
295 (n=8) and Africa (n=6).

296

297 **DISCUSSION**

298 We estimated at least 78 independent introductions of SARS-CoV-2 into
299 Seychelles between 25th June 2020 to 31st December 2021, with the importations
300 likely originating from all the continents in the world. Notably, the surge of COVID-19
301 cases from January to December 2021 was characterised by detections of VOCs in
302 the country. The Beta variant of concern was the dominant strain in circulation from
303 February to April 2021 and probably responsible for the surge in cases in January
304 2021 (highest daily number of infections at 231, on 4th March 2021), but the
305 introduction and rapid spread of the Delta variant seen from May to December 2021
306 caused a further surge (highest daily number of infections at 484, on 6th May 2021).

307 The low number of cases detected for non-VOCs (B.1, B.1.1, B.1.1.50 and
308 B.1.1.277) lineages in 2020, could be explained by the fact that this islandic population
309 experienced very low importations due to the COVID-19 restriction countermeasures
310 that were in place in 2020 but also the non-VOCs were not highly transmissible. We
311 ascertain that the introduction of the VOCs with high transmissibility was probably the
312 cause of the surge of cases in Seychelles in 2021. However, these assertions should
313 be taken with caution since extensive genomic surveillance in the country began in
314 early 2021. To note, the detection of VOCs in the country preceded period of relaxed
315 COVID-19 restriction countermeasures, including allowing tourists into the country and
316 the resumption of in person school classes. This may have led to increased viral
317 importations, as detected in our dataset, and to spread in the country.

318 The detection of Delta VOCs in May 2021 coincided with a period of reduced
319 COVID-19 restriction countermeasures (Oxford stringency index < 50) and the surge
320 of cases during this time may have been due to multiple introductions and rapid spread

321 of the virus in the country. By December, a total of 21 different Delta lineages were
322 detected in Seychelles. The first Omicron detection in Seychelles was on 29th
323 November 2021. By 31st December 2021, three Omicron lineages had been detected
324 in Seychelles including BA.2 which has been noted to be rapidly growing across the
325 world^{13–15}

326 Unsurprisingly, the majority of the Seychelles sequences harboured important
327 spike mutations e.g., D614G mutation occurring in 98.2% of all the sequenced cases.
328 The D614G amino acid change has been associated with stronger interaction between
329 the virus and the angiotensin-converting enzyme 2 (ACE2) affinity, leading to higher
330 infectivity and transmissibility^{16,17}. Other important mutations included : i. Beta VOC;
331 K417N, E484K and N501Y occurring in the spike receptor binding domain (RBD),
332 which have been associated with reduced sensitivity to convalescent and post-
333 vaccination sera¹⁸; ii. Delta VOC, L452R, P681R and D950N mutations, which have
334 been linked to reduced sensitivity to neutralizing antibodies and higher
335 transmissibility¹⁹; iii. Alpha VOC; N501Y and P681H mutations and iv. Omicron VOC:
336 Q498R and N501Y occurring in the RBD have been linked to ACE2 binding affinity²⁰.
337 These RBD mutations coupled with four amino acid substitutions (i.e., A67V, T95I,
338 and L212) and three deletion (67-70, 142-144 and 211) and an insertion (EPE at
339 position 214) in the N-terminal domain (NTD) are linked to reduced sensitivity of
340 Omicron to reduced sensitivity to convalescent and post-vaccination sera^{21,22}. A
341 cluster of three mutations occurring at S1-S2 furin cleavage site (H655Y, N679K and
342 P681H) have been associated with increased transmissibility²³.

343 Our phylogenetic analysis showed that Seychelles sequences virus diversity
344 was nested within the global virus diversity (i.e., Seychelles sequences clustered with
345 sequences sampled from different countries, suggestive of global spread of SARS-
346 CoV-2 lineages). The close association between the viruses and those from other
347 countries reflects global transmission of the virus as a result of global migration,
348 increased connectivity, and social mixing. Further, focusing on the VOCs, we
349 observed patterns of SARS-CoV-2 viral diversity inside Seychelles; phylogenetic
350 clusters consisted of viruses which were derived from different geographic locations
351 and formed a deep hierarchical structure, indicating an extensive and persistent
352 nation-wide transmission of the virus.

353 Our findings are consistent with findings from Island countries such Comoros,
354 Reunion Islands and New Zealand, where this countries were able to contain the first
355 pandemic wave starting in March 2020, due COVID-19 strict countermeasures such
356 as ban on international arrivals, which may have led to limited viral introductions into
357 the islands, or perhaps viral introductions during the early phase of the pandemic did
358 not results to community transmission due to government countermeasure on COVID-
359 19 such as countrywide lockdown or self-isolation of the entire population^{24,25}. Surge
360 of COVID-19 cases in Islandic populations appears to be majorly driven by
361 introductions of VOCs. For example, Comoros seems to have experienced its first
362 surge of COVID-19 cases after introduction of Beta VOCs into the population in
363 January 2021²⁶, similar to the period when Seychelles saw its first surge also due Beta
364 VOC.

365 This study had some limitations. First, our import/export inferences can be
366 influenced by sampling biases and low rate of sequencing in Seychelles. Therefore,
367 the true number of international introductions are likely significantly higher than what
368 is reported here. Second, incomplete metadata for some samples limited the scope of
369 our analysis, for example, lack of location of sample collected disallowed us to
370 investigate the transmission pathway of viruses within the country. Third, SARS-CoV-
371 2 sequences from Seychelles are only available from a very small fraction of the
372 number of confirmed cases into the country.

373 These data reinforce the importance of genomic surveillance in Seychelles as
374 a tool for monitoring and providing real-time information on spread of emerging SARS-
375 CoV-2 variants in the population with important implications for public health and
376 immunization strategies. Surge of COVID-19 cases due VOCs during a period of
377 heightened COVID-19 countermeasures raises questions on the optimal timing of the
378 introduction of public health interventions. When the interventions are introduced after
379 a surge has started, it is often too late, and the control strategies should focus on local
380 transmission to understand characteristics and origins of locally circulating SARS-
381 CoV-2 diversity to prevent further spread. Moreover, studies on genomic surveillance
382 would also be useful in investigating vaccine effectiveness against circulating variants
383 which appear to have a high turnover.

384 **REFERENCES**

385

- 386 1. WHO. WHO Coronavirus (COVID-19) Dashboard.
- 387 2. Centres for Disease Control and Prevention. SARS-CoV-2 Variant
388 Classifications and Definitions.
- 389 3. WHO. Tracking SARS-CoV-2 variants. Published 2021. Accessed August 27,
390 2021. <https://www.who.int/en/activities/tracking-SARS-CoV-2-variants/>
- 391 4. Tao K, Tzou PL, Nouhin J, et al. The biological and clinical significance of
392 emerging SARS-CoV-2 variants. *Nature Reviews Genetics*. 2021;22(12):757-
393 773. doi:10.1038/s41576-021-00408-x
- 394 5. Tyson JR, James P, Stoddart D, et al. Improvements to the ARTIC multiplex
395 PCR method for SARS-CoV-2 genome sequencing using nanopore. *bioRxiv* :
396 the preprint server for biology. Published online September 4,
397 2020:2020.09.04.283077. doi:10.1101/2020.09.04.283077
- 398 6. Li H. Minimap2: pairwise alignment for nucleotide sequences. *Bioinformatics*.
399 2018;34(18):3094-3100. doi:10.1093/bioinformatics/bty191
- 400 7. Hadfield J, Megill C, Bell SM, et al. Nextstrain: real-time tracking of pathogen
401 evolution. *Bioinformatics* (Oxford, England). 2018;34(23):4121-4123.
402 doi:10.1093/bioinformatics/bty407
- 403 8. O'Toole Á, Scher E, Underwood A, et al. Assignment of epidemiological
404 lineages in an emerging pandemic using the pangolin tool. *Virus Evolution*.
405 2021;7(2):veab064. doi:10.1093/ve/veab064
- 406 9. Yu G, Smith DK, Zhu H, Guan Y, Lam TTY. ggtree: an r package for visualization
407 and annotation of phylogenetic trees with their covariates and other associated
408 data. *Methods in Ecology and Evolution*. 2017;8(1):28-36.
409 doi:<https://doi.org/10.1111/2041-210X.12628>
- 410 10. R Core Team. R: A language and environment for statistical computing.
411 Published online 2013. Accessed November 9, 2021. URL [http://www.R-](http://www.R-project.org/)
412 [project.org/](http://www.R-project.org/)
- 413 11. Eduan W, Marta G, Houriiyah T, et al. A year of genomic surveillance reveals
414 how the SARS-CoV-2 pandemic unfolded in Africa. *Science*.
415 2021;374(6566):423-431. doi:10.1126/science.abj4336
- 416 12. Hadley Wickham. *Ggplot2: Elegant Graphics for Data Analysis*. Springer-Verlag;
417 2016.

- 418 13. Yamasoba D, Kimura I, Nasser H, et al. Virological characteristics of SARS-
419 CoV-2 BA.2 variant. bioRxiv. Published online January 1,
420 2022:2022.02.14.480335. doi:10.1101/2022.02.14.480335
- 421 14. Lyngse FP, Kirkeby CT, Denwood M, et al. Transmission of SARS-CoV-2
422 Omicron VOC subvariants BA.1 and BA.2: Evidence from Danish Households.
423 medRxiv. Published online January 1, 2022:2022.01.28.22270044.
424 doi:10.1101/2022.01.28.22270044
- 425 15. Iketani S, Liu L, Guo Y, et al. Antibody Evasion Properties of SARS-CoV-2
426 Omicron Sublineages. bioRxiv. Published online January 1,
427 2022:2022.02.07.479306. doi:10.1101/2022.02.07.479306
- 428 16. Zhang L, Jackson CB, Mou H, et al. SARS-CoV-2 spike-protein D614G mutation
429 increases virion spike density and infectivity. Nature Communications.
430 2020;11(1):6013. doi:10.1038/s41467-020-19808-4
- 431 17. Ozono S, Zhang Y, Ode H, et al. SARS-CoV-2 D614G spike mutation increases
432 entry efficiency with enhanced ACE2-binding affinity. Nature Communications.
433 2021;12(1):848. doi:10.1038/s41467-021-21118-2
- 434 18. McCormick KD, Jacobs JL, Mellors JW. The emerging plasticity of SARS-CoV-
435 2. Science. 2021;371(6536):1306 LP - 1308. doi:10.1126/science.abg4493
- 436 19. Motozono C, Toyoda M, Zahradnik J, et al. SARS-CoV-2 spike L452R variant
437 evades cellular immunity and increases infectivity. Cell Host & Microbe.
438 Published online 2021. doi:<https://doi.org/10.1016/j.chom.2021.06.006>
- 439 20. Zahradník J, Marciano S, Shemesh M, et al. SARS-CoV-2 variant prediction and
440 antiviral drug design are enabled by RBD in vitro evolution. Nature Microbiology.
441 2021;6(9):1188-1198. doi:10.1038/s41564-021-00954-4
- 442 21. Iketani S, Liu L, Guo Y, et al. Antibody Evasion Properties of SARS-CoV-2
443 Omicron Sublineages. bioRxiv. Published online January 1,
444 2022:2022.02.07.479306. doi:10.1101/2022.02.07.479306
- 445 22. Cele S, Jackson L, Khoury DS, et al. Omicron extensively but incompletely
446 escapes Pfizer BNT162b2 neutralization. Nature. 2022;602(7898):654-656.
447 doi:10.1038/s41586-021-04387-1
- 448 23. Gong SY, Chatterjee D, Richard J, et al. Contribution of single mutations to
449 selected SARS-CoV-2 emerging variants Spike antigenicity. bioRxiv. Published
450 online January 1, 2021:2021.08.04.455140. doi:10.1101/2021.08.04.455140

- 451 24. Geoghegan JL, Ren X, Storey M, et al. Genomic epidemiology reveals
452 transmission patterns and dynamics of SARS-CoV-2 in Aotearoa New Zealand.
453 Nature Communications. 2020;11(1):6351. doi:10.1038/s41467-020-20235-8
- 454 25. Wilkinson DA, Lebarbenchon C, Atyame C, et al. Genomic insights into early
455 SARS-CoV-2 strains isolated in Reunion Island. medRxiv. Published online
456 January 1, 2021:2021.01.21.21249623. doi:10.1101/2021.01.21.21249623
- 457 26. N. Agoti C, Githinji G, S. Mohammed K, et al. Detection of SARS-CoV-2 variant
458 501Y.V2 in Comoros Islands in January 2021 [version 1; peer review: 1
459 approved] . Wellcome Open Research. 2021;6(192).
460 doi:10.12688/wellcomeopenres.16889.1
- 461 27. Hannah Ritchie, Esteban Ortiz-Ospina, Diana Beltekian, Edouard Mathieu, Joe
462 Hasell, Bobbie Macdonald, Charlie Giattino, Cameron Appel LRG and MR.
463 Coronavirus Pandemic (COVID-19). Our World in Data. Published 2020.
464 Accessed March 01, 2022. <https://ourworldindata.org/coronavirus>
465
466

467 **Acknowledgements**

468 We thank the Seychelles Ministry of Health, Public Health Laboratory, Africa-CDC,
469 WHO-Afro, WHO-Kenya Office, WHO-Seychelles Office for facilitating sharing of
470 SARS-CoV-2 samples that were sequenced. Further, we thanks all the laboratories
471 that have shared SARS-CoV-2 sequence data in GISAID that we included as
472 comparison data in our analysis (see list in appendix 1).

473

474 **Grant Information**

475 This works was supported by the National Institute for Health Research (NIHR)
476 (project references 17/63/82 and 16/136/33) using UK aid from the UK Government to
477 support global health research, The UK Foreign, Commonwealth and Development
478 Office and Wellcome Trust (grant# 220985/Z/20/Z) The views expressed in this
479 publication are those of the author (s) and not necessarily those of NIHR or the
480 Department of Health and Social Care, Foreign Commonwealth and Development
481 Office. This work was also supported by the Seychelles Public Health Laboratory
482 (Public Health Authority), Africa-CDC, WHO-Afro, WHO-Seychelles, ASLM, and
483 WHO-Kenya offices.

484

485 **Data availability**

486 All data generated and analysis script for this manuscript will be available from the
487 Virus Epidemiology and Control, Kenya Medical Research Institute (KEMRI)–
488 Wellcome Trust Research Programme data server,
489 <https://doi.org/10.7910/DVN/AYT2UA> . Whole genome sequences are available from
490 GISAID database accession number EPI_ISL_4880527 - EPI_ISL_4880796,
491 EPI_ISL_5942854 - EPI_ISL_6705093, EPI_ISL_8424404 - EPI_ISL_8424612 and
492 EPI_ISL_11060102 - EPI_ISL_11060407.

493 **TABLES**

494

495 **Table 1** Demographic characteristics of SARS-CoV-2 positive samples received for sequencing at KWTRP. Sample were collected
 496 between 14th March 2020 and 31st December 2021 (n = 1,298).

497

	Sample sequenced		Samples not sequenced		
	Number (n=1056)	population proportion (%)	Number (n=242)	population proportion (%)	Total
Sex					
Female	560	53.0	120	49.6	680
Male	473	44.8	102	42.1	575
Unknown	23	2.2	20	8.3	43
Age					
Mean	33.4 (18.3)	-	34.3 (20.4)	-	
Median	32	-	34	-	
Min, Max	0,98	-	0,89	-	
Missing	18	1.7	9	3.7	27
Age distribution					
0–9	106	10.0	37	15.3	143
10–19	132	12.5	28	11.6	160

20–29	215	20.4	30	12.4	245
30–39	225	21.3	42	17.4	267
40–49	146	13.8	45	18.6	191
50–59	127	12.0	21	8.7	148
60–69	58	5.5	19	7.9	77
70–79	14	1.3	6	2.5	20
>80	15	1.4	5	2.1	20
Travel information					
Yes	3	0.3	8	3.3	11
No	1053	99.7	234	96.7	1287
Symptoms					
Asymptomatic	37	3.5	31	12.8	68
Symptomatic	273	25.9	52	21.5	325
Deceased	3	0.3	4	1.7	7
Missing	738	69.9	155	64.0	893

498

499

500

501

502

503

504 **Table 2.** Description of SARS-CoV-2 lineages observed in Seychelles, their global history and VOC/VOI status

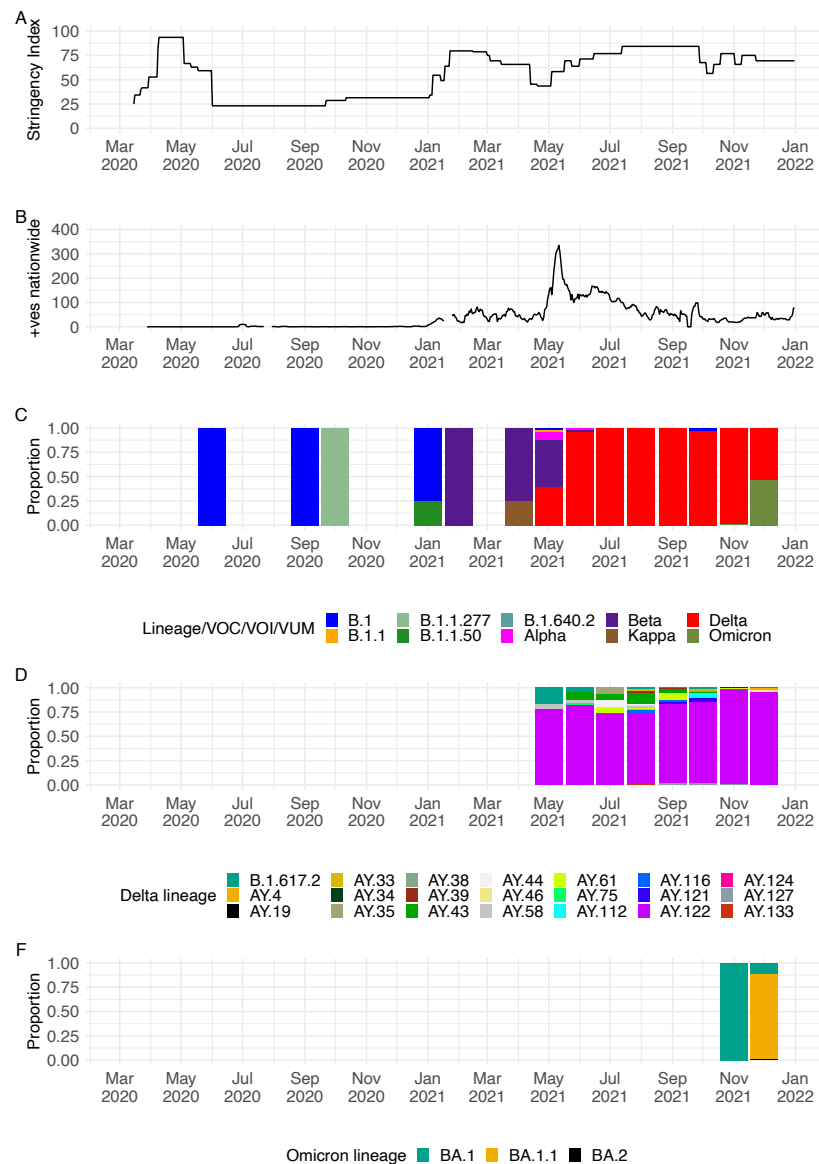
505

Non-VOC/VOI/VOC/VUM	Lineage	Freq	Proportion (%)	Earliest date	Description
Non-VOC/VOI	B.1	9	0.9	2020-01-01	European lineage
	B.1.1	1	0.1	2020-01-01	European lineage
	B.1.1.277	1	0.1	2020-03-07	European lineage
	B.1.1.50	1	0.1	2020-03-29	Predominantly found in Israel and Palestine
VUM	B.1.640.2	1	0.1	2021-10-15	Predominantly found in France
Kappa VOI	B.1.617.1	1	0.1	2020-03-03	Kappa variant of interest , Predominantly found in India lineage with 484Q
Alpha VOC	B.1.1.7	5	0.5	2020-02-07	Alpha variant of concern, first identified in UK
Beta VOC	B.1.351	29	2.7	2020-03-27	Beta variant of concern, first identified in South Africa
Delta VOC	B.1.617.2	13	1.2	2020-04-15	Predominantly found in India
	AY.4	2	0.2	2020-08-03	Predominantly found in UK
	AY.19	1	0.1	2021-04-07	Predominantly found in South Africa
	AY.33	4	0.4	2020-06-13	Lineage circulating mostly in Belgium, Denmark, France, Netherlands, Germany
	AY.34	1	0.1	2020-11-18	Predominantly found in UK
	AY.35	1	0.1	2020-08-21	Predominantly found in lineage with spike E484Q circulating in USA
	AY.38	1	0.1	2021-03-27	Predominantly found in in South Africa
	AY.39	4	0.4	2021-01-14	Predominantly found in USA
	AY.43	33	3.1	2021-08-21	Predominantly found in European
	AY.44	2	0.2	2020-05-11	Predominantly found in USA
	AY.46	8	0.8	2021-10-15	Predominantly found in Africa
	AY.58	5	0.5	2021-03-16	Predominantly found in Italy

	AY.61	15	1.4	2021-01-07	Predominantly found in Italy
	AY.75	1	0.1	2021-01-06	Predominantly found in USA
	AY.112	5	0.5	2020-12-05	Predominantly found in India
	AY.116	11	1.0	2021-01-21	Africa lineage
	AY.121	7	0.7	2021-01-24	Predominantly found in Turkey
	AY.122	742	70.3	2020-09-07	European lineage
	AY.124	1	0.1	2021-01-09	Predominantly found in Portugal and other European countries
	AY.127	4	0.4	2020-12-10	Predominantly found in India
	AY.133	2	0.2	2021-02-10	Predominantly found in France
Omicron VOC	BA.1	18	1.7	2021-09-10	Predominantly found in UK
	BA.1.1	126	11.9	2021-09-13	Predominantly found in USA
	BA.2	1	0.1	2021-11-17	Predominantly found in UK

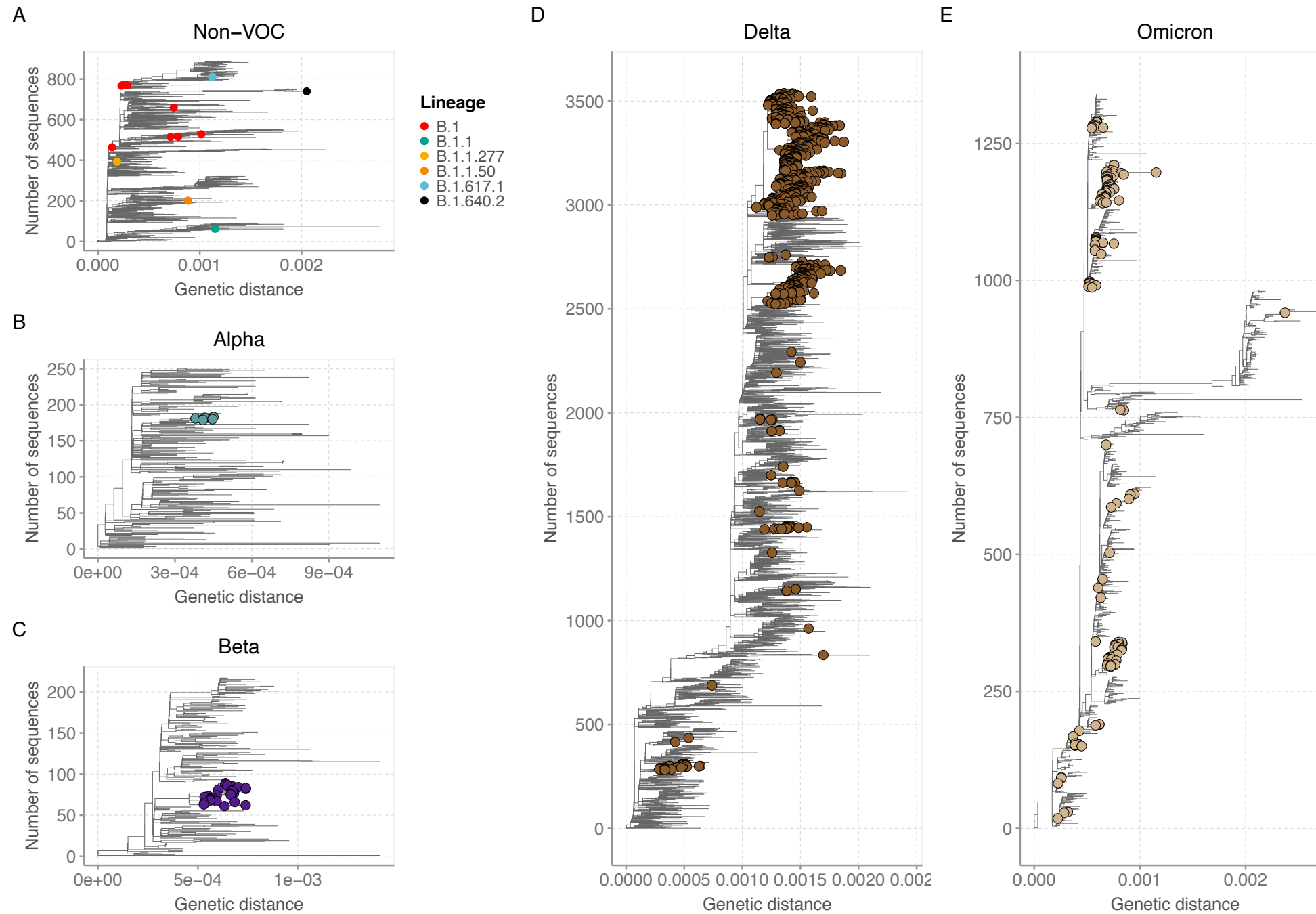
506

507 **FIGURE LEGENDS**



508

509 **Figure 1** **A** Seychelles government intervention levels as measured by the Oxford
 510 stringency index ²⁷. **B** An epidemic curve for Seychelles derived from the daily positive
 511 case numbers obtained from
 512 <https://ourworldindata.org/coronavirus/country/seychelles>. **C** Monthly temporal pattern
 513 of SARS-CoV-2 lineages and variants in Seychelles among the 1,056 samples
 514 sequenced from COVID-19 positive cases from the Seychelles (25th June 2020, to 31st
 515 December 2021). **D** Monthly temporal distribution of Delta VOC lineages among
 516 samples sequenced from COVID-19 positive cases from the Seychelles (25th June
 517 2020, to 31st December 2021). **E** Monthly temporal distribution of Omicron VOC
 518 lineages among samples sequenced from COVID-19 positive cases from the
 519 Seychelles (25th June 2020, to 31st December 2021).



523

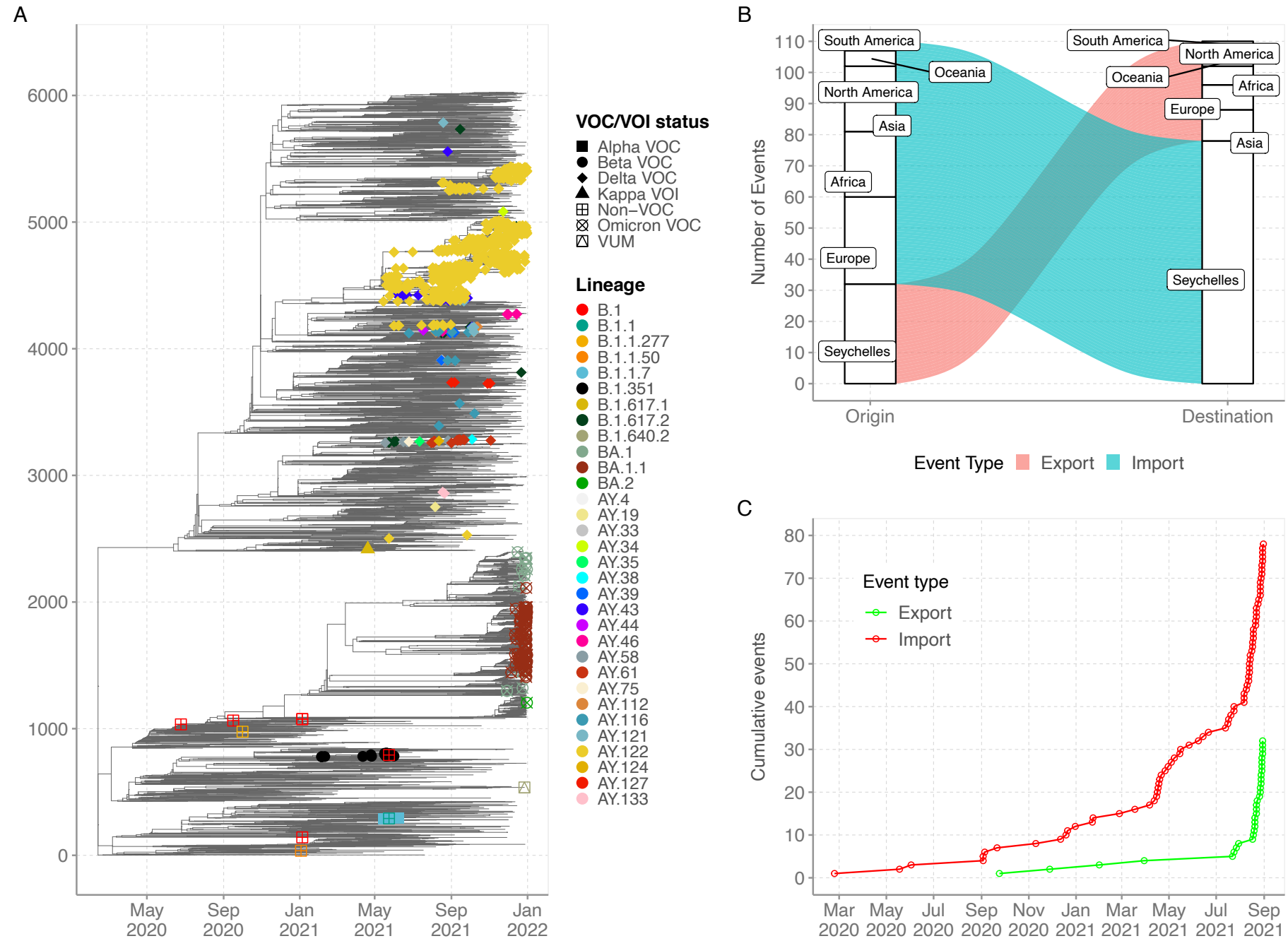
524 **Figure 3** Genetic distance-resolved lineage-specific phylogenetic trees for Omicron, Alpha, Beta, Delta VOC, and Non-VOC. Seychelles genomes are indicated with colored tip labels.

525 **A** Phylogeny of Delta VOC that combined 863 Seychelles sequences and 2,676 global sequences. **B** Phylogeny of Omicron VOC that combined 145 Seychelles sequences and 1,195

526 global sequences **C** Phylogeny of Alpha VOC that combined 5 Seychelles sequences and 246 global sequences. **D** Phylogeny of Beta VOC that combined 29 Seychelles sequences

527 and 187 global sequences. **E** Phylogeny of Non-VOC that combined 14 Seychelles sequences and 875 global sequences.

528



529

530 **Figure 4 A.** Time-resolved global phylogeny that combined 1,056 Seychelles sequences (coloured tip labels) and 5,179 global reference sequences. **B** The number of viral imports and

531 exports into and out of Seychelles. **C** Cumulative number of viral imports and export over time into Seychelles.

