

Comparison of accelerometry-based measures of physical activity

Authors

Marta Karas^{a,*}, John Muschelli^{a,*}, Andrew Leroux^b, Jacek K. Urbanek^c, Amal A. Wanigatunga^d, Jiawei Bai^a, Ciprian M. Crainiceanu^a, Jennifer A. Schrack^{c,d,+}

Affiliations

a: Department of Biostatistics, Bloomberg School of Public Health, Johns Hopkins University

b: Department of Biostatistics and Informatics, Colorado School of Public Health, University of Colorado

c: Center on Aging and Health, Division of Geriatric Medicine and Gerontology, Department of Medicine, School of Medicine, Johns Hopkins University

d: Department of Epidemiology, Bloomberg School of Public Health, Johns Hopkins University

*: Shared co-first authorship.

+: Corresponding author (jschrac1@jhu.edu).

Abstract

PURPOSE. To compare and harmonize accelerometry-based measures of physical activity (PA) to increase the comparability, generalizability, and translation of findings from studies using objective measures of PA. **METHODS.** High resolution accelerometry data were collected from 655 participants in the Baltimore Longitudinal Study on Aging who wore an ActiGraph GT9X device at wrist continuously for a week. Data were summarized at the minute-level as activity counts (AC; measure obtained from ActiGraph's ActiLife software) and MIMS, ENMO, MAD, and AI (open-source measures implemented in R). The correlation between AC and other measures was quantified both marginally and conditionally on age, sex and BMI. Next, each pair of measures were harmonized using nonparametric regression of minute-level measurements. A freely available SummarizedActigraphy R package with a unified interface for computation of the open-source measures from raw accelerometry data was developed. **RESULTS.** The study sample had the following characteristics: mean (sd) age of 69.8 (14.2), BMI of 27.3 (5.0) kg/m², 54.5% females, and 67.9% white. The marginal participant-specific correlation between AC and MIMS, ENMO, MAD, and AI were 0.988, 0.867, 0.913 and 0.970, respectively. After harmonization, the mean absolute percentage error for predicting TAC from MIMS, ENMO, MAD, and AI was 2.5, 14.3, 11.3 and 6.3, respectively. The accuracy for predicting sedentary minutes based on AC (AC > 1853) using MIMS, ENMO, MAD and AI was 0.981, 0.928, 0.904, and 0.960, respectively. **CONCLUSION.** Our comparison of accelerometry-based measures of PA enables us to extend the knowledge from the thousands of manuscripts that have been published using ActiGraph activity counts to MIMS and other metrics by demonstrating their high correlation and comparability.

Keywords: Accelerometry, Actigraphy, Activity counts, BLSA

Introduction

Accelerometer-based activity monitors have become increasingly popular in research studies because they provide non-invasive, objective measures of physical activity (PA) that can be collected continuously for extended periods of time (Karas et al., 2019). Modern wearable accelerometers measure acceleration of a body at high frequency (typically 10-100 Hz). These raw data are then typically aggregated into fixed-time epochs, e.g. 1 minute-long. Yet, the choice of epoch-based measures varies across studies. For example, the Baltimore Longitudinal Study on Aging (BLSA) used wrist-worn accelerometers and summarized data using activity counts (AC) (Neishabouri et al., 2022), a measure proposed and implemented by ActiGraph (ActiGraph LLC, Pensacola, FL, USA). The wrist-worn accelerometry data collection in the recent NHANES 2011-2014 opted for Monitor-Independent Movement Summary (MIMS) (John et al., 2019), an open-source summary characteristic of high-density accelerometry data. The UK Biobank study used wrist-worn accelerometers and chose Euclidean Norm Minus One (ENMO) (van Hees et al., 2013), a different open-source summary measure of high-density accelerometry data. Additional open-source summary measures of acceleration are Mean Amplitude Deviation (MAD) (Vähä-Ypyä et al., 2015) and Activity Intensity (AI) (Bai et al., 2014).

Given the evolution of processing and analyzing accelerometry data over the past decade, it is of utmost importance that we as a field understand how newer (e.g., MIMS) summary measures compare to long-established ones (e.g., ActiGraph AC). Further, we recognize the need to harmonize, or map, the values of any two PA summaries derived from different algorithms. This enables us to extend the knowledge from the thousands of manuscripts that have been published using ActiGraph AC (where no repository or access to raw accelerometry data remains available) to MIMS and other measures.

To address this problem, high resolution accelerometry data were examined from 655 participants in the Baltimore Longitudinal Study on Aging (BLSA) who wore an ActiGraph GT9X Link device at wrist continuously for a week. Data were summarized in 1-minute epochs as ActiGraph AC (obtained from ActiLife Software), MIMS, ENMO, MAD, and AI (open-source measures implemented in R). The correlations between AC and MIMS, ENMO, MAD, and AI were quantified both marginally and

conditionally on age, sex, and body mass index (BMI). This provides simple summaries of associations and a guide for the strength of these associations in subgroups defined by demographic information. Next, ActiGraph AC, one of the most widely used PA measures, was harmonized with each other measure using nonparametric smoothing of minute-level data. This allows to: (1) provide a mapping between any two PA summary measures; (2) derive cut-points of open-source PA measures that correspond to established cut-points to estimate time spent in different PA intensities for ActiGraph AC. Our analysis is especially timely given the recent release of physical activity data from NHANES 2011-2014 that uses the open-source MIMS measure. In the remaining part of the manuscript, "AC" alone is used to denote ActiGraph AC.

Methods

Study Design And Population

Data used in this manuscript were collected as part of the National Institute on Aging's Baltimore Longitudinal Study of Aging (BLSA). The study has been active since 1958 with the aim to describe longitudinal physical and cognitive changes related to aging. Participant enrollment criteria and a general description of the sample have been reported elsewhere (Kuo et al., 2020). Briefly, participants are community dwelling volunteers free of all major chronic conditions and cognitive and functional impairment at the time of enrollment. Participants undergo a comprehensive health and functional screening evaluation at baseline and are followed for life, attending follow-up visits and extensive health testing every 1-4 years depending on age. The study protocol was approved by the Internal Review Board of the Intramural Research Program of the National Institutes of Health. The data used in this work were collected in all participants who agreed to wear an accelerometer between July 2015 and January 2019.

Accelerometry Data Collection And Export

Data were collected with an ActiGraph GT9X Link device, a tri-axial accelerometer that measures time-varying body accelerations in magnitudes ranging $\pm 8 g$ ($g = 9.81 \text{ m/s}^2$). The devices were configured to record data at a frequency of 80 Hz. Participants were given the monitor on the last day of their clinic visit and were instructed to wear it at all times on their non-dominant wrist for 7 days, except

for periods of extended swimming or bathing. Devices were returned to the clinic via a pre-addressed envelope. The ActiGraph's ActiLife software (version 6.13.4) was used to: (a) export data into the "gt3x" file format¹; (b) derive minute-level AC and export them as CSV files; and (c) export raw acceleration data as three-dimensional time series in g units together with subsecond-level timestamps into CSV files. In AC derivation, the ActiGraph's low-frequency extension was used following the recommendation from Cain et al. (2013).

Raw Accelerometry Data Quality Control

Three raw data quality check flags were adapted from a set of nine flags recently introduced by the release of the NHANES 2011-2012 wave protocol (NHANES 2011-2012 Data Documentation, 2020). The selected flags subset represents intuitive flags that are meant to "determine signal patterns that were unlikely to be a result of human movement" but are not aimed at identifying non-wear. The flags definitions are given in Appendix A. A raw data observation was flagged as valid if it had none of the three flags triggered; otherwise, it was marked as invalid. The R script reference is provided in the footnote². Raw data observation flags were further used to mark data for exclusion at minute-level (see Sect. "Minute-level Accelerometry Data Preprocessing" below).

Open-source Summary Measures of Raw Accelerometry Data

The raw accelerometry data were used to derive a set of commonly used minute-level open-source summary measures: MIMS, ENMO, MAD, and AI. The R script reference is provided in the footnote³. Definitions of the measures are specified in Appendix B. The `calculate_measures` method from the `SummarizedActigraphy` R package (Muschelli, 2021) was used to compute the measures. The method's primary contribution is to provide a unified data interface to compute a range of open-source

¹ ActiGraph .gt3x file format specification: <https://bit.ly/34QIIYi>

² R code script to generate raw data quality check flags: <https://bit.ly/3wtHhnB>

³ R code script to compute MIMS, MAD, AI: <https://bit.ly/3MYgJ3m>; R code script to compute ENMO with calibration: <https://bit.ly/3CNcByw>

measures; it uses references to some of the measures' original software, e.g. the MIMSunit R package (Tang et al., 2020) to compute MIMS.

Minute-level Accelerometry Data Preprocessing

To define minute-level sensor wear/non-wear flags, the `get_wear_flag` method from the `arctools` R package (Karas et al., 2021) was used. The method implements a wear/non-wear detection algorithm proposed in Choi et al. (2011); it uses threshold of 0 for the number of nonzero counts allowed during a non-wear time interval, and it does not allow "artifactual movement" interval of nonzero counts during a non-wear time interval. A recommended value of 90 minutes was used for the minimum time of consecutive zero counts for a window to be flagged as non-wear. A minute had a valid raw data flag if no quality control flags at raw observation-level were triggered within that minute (see Sect. "Raw Accelerometry Data Quality Control" above). Finally, a minute was defined as a valid minute (overall) if it had both a wear flag and valid raw data flag positive; otherwise, it was defined as an invalid minute. A valid day was defined as a day (12:00am-11:59pm) with no more than 10% (144 minutes) invalid minutes (Wanigatunga et al., 2020). Only participants who had at least 3 valid days of data, and only their valid days data, were included in further preprocessing and analyses. The R script reference is provided in the footnote⁴.

Values of AC, MIMS, ENMO, MAD and AI were winsorized (Hastings Jr. et al., 1947) by first computing a measure-specific 0.999 quantile, and then using it to replace the measure's values exceeding the quantile's value. As a result, 0.1% of each measure's most extreme values were replaced in the dataset. The winsorization reduces the effect of extreme values.

Lastly, a separate data set was constructed where values of AC, MIMS, ENMO, MAD and AI were imputed for invalid minutes, following the imputation approach previously used in Leroux et al. (2020). This data set was used in the summary of daily sums of measure values and in our application example where data without missing values were needed. The imputation procedure was conducted

⁴ R code script to compute valid minute and valid day flags and to filter the participants: <https://bit.ly/3MWMHwX>

separately for each measure. The procedure started by computing a functional principal component analysis (FPCA) of functional observations made of all participant- and day-specific minute-level data parts, each sorted by time and arranged into a 1440-long vector. A fast implementation of the sandwich smoother (Xiao et al., 2013) from `fpca.face` method in the `refund` R package (Goldsmith et al., 2020) was used to allow for a quick FPCA computation given our dataset volume. The smoothed version of each functional observation was obtained from FPCA, and their values were used for data imputation. The R script reference is provided in the footnote.⁵

Statistical Data Analysis

A summary of minute-level measures: AC, MIMS, ENMO, MAD, and AI was computed in two different ways: (a) as average daily sum per participant, summarized across participants; (b) as average per minute, summarized across all participant-minutes.

A Pearson correlation coefficient between four pairs of measures: AC and MIMS, AC and ENMO, AC and MAD, and AC and AI, was computed for each participant. Mean correlation values and its standard error were quantified via intercept-only linear regression models in which participant-specific correlation between a pair of measures was set as an outcome. Next, the demographics effect on correlation was estimated via adjusted linear regression models. Participant-specific correlation between a pair of measures was set as an outcome, and age, BMI and sex (is male) indicator were set as covariates. Significance level $\alpha = 0.05$ was assumed in determining statistical significance of coefficients in the adjusted models. For both unadjusted and adjusted models, a separate fit was estimated for each four pairs of measures.

To derive the harmonization mapping, relationships between measures: AC and MIMS, AC and ENMO, AC and MAD, and AC and AI, were estimated with generalized additive models (GAMs) separately for each pair of measures. The GAMs were chosen to allow flexible adaptation to the data rather than imposing a particular functional form of the fit. In each model, the outcome consisted of

⁵ R code script to perform data imputation: <https://bit.ly/3tgApaY>

minute-level open-source measure, and predictors were a smooth term of minute-level AC. For the smooth term, cubic regression splines with a basis dimension equal to 30 were used to allow a flexible relationship between a measure and AC. Models were estimated with nonparametric smoothing implemented in gam method in the mgcv R package (Wood, 2021). Smoothness of the non-linear effects was enforced via a second derivative penalty with smoothing parameter selection done using cross-validation (Wood, 2011). Data from all participants' valid minutes were used in the model fitting except minutes which had AC values equal 0. The AC = 0 exclusion was motivated by a large proportion of zero values, and the need to estimate the relation for small AC values without it being inflated by the large number of zeros. All four relationships were estimated as strictly monotonic (without monotonicity having been constrained explicitly). The GAM model-fitted values were used to define two-way mappings between AC and each of the four open-source measures. All open-source measurements were mapped into AC. For the remainder of the manuscript, we denote $\widehat{AC}_{\text{measure}}(x)$ to be AC value estimated via the mapping from x value of a measure, where "measure" stands for one of: MIMS, ENMO, MAD, AI.

Several steps were taken to assess the mapping accuracy. First, to assess mapping accuracy in estimating PA volume statistics, total activity count (TAC; the sum of minute-level values from a day) was computed for each participant's day, using both true AC and $\widehat{AC}_{\text{measure}}$. The participant- and day-specific estimation error was defined as the difference between TAC derived from true AC and TAC derived from $\widehat{AC}_{\text{measure}}$. Participant-specific mean percentage error (MPE) and mean absolute percentage error (MAPE) were computed by averaging the error across participant's days. Second, to assess whether mapping accuracy depends on participant's activity level, participant-specific MPE were plotted against participant's average TAC (similar to a Bland-Altman plot). Third, the mapping utility in classifying minutes into sedentary versus active was assessed. In the classification task, for each minute, the minute's label was defined based on whether $AC > 1853$ (Koster et al., 2016) using true AC value, and the

prediction value was defined based on whether $\widehat{AC}_{\text{measure}} > 1853$. Accuracy, sensitivity and specificity of prediction were computed for each participant.

Minute-level AC and $\widehat{AC}_{\text{measure}}$ were used to estimate smoothed 24-hour median activity counts across the previously published (Schrack et al., 2013) age groups: < 60-year old, 60- to 67-year old, 68- to 74-year old, ≥ 75 -year old. The similarity between AC-based and $\widehat{AC}_{\text{measure}}$ -based estimates were summarized using MAPE (sum of absolute value of difference between estimates divided by sum of AC-based estimates) separately for each measure: MIMS, ENMO, MAD, AI.

The project repository containing all code for data preprocessing and analysis is publicly available and located on GitHub⁶.

Results

Population Characteristics

The final study sample consisted of n=655 individuals whose characteristics are detailed in Table 1. The mean age was 69.8 (sd = 14.2, range 22-97) years. There was a higher proportion of women (54.5%) compared to men (45.5%). The racial composition reflected that of the BLSA enrollment: 68% white, 24% black, 7% other (1% not reported). Almost 96% of participants self-reported good, very good or excellent health. The prevalence of hypertension, high blood cholesterol, and osteoarthritis was 44%, 53%, and 48%, respectively. All other chronic conditions were rare with a prevalence of < 15%. Participants had a median 6 (range 3-7) days of valid accelerometry data; within these, they had an average of 1438 (sd=8) out of 1440 valid minutes per day.

Table 1. Study sample (n = 655) characteristics. Abbreviations used: "qc" -- quality control, "BMI" -- body mass index, "MI" -- heart attack, "CHF" -- congestive heart failure, "angina" -- ischemic chest pain, "VP" -- vascular procedure, "PAD" -- peripheral artery disease, "TIA" -- transient ischemic attack.

⁶ Project GitHub repository: <https://bit.ly/3u35pun>

	Mean (sd)	Median [min, max]
Age	69.8 (14.2)	72.0 [22.0, 97.0]
Weight [kg]	77.4 (17.1)	76.3 [41.1, 142.7]
Height [cm]	168.0 (9.2)	167.3 [143.8, 196.2]
BMI	27.3 (5.0)	26.6 [17.1, 52.5]
Accelerometry sensor wear		
Valid days	5.9 (0.4)	6.0 [3.0, 7.0]
Non-wear minutes/day	2.0 (7.8)	0.0 [0.0, 77.0]
Invalid raw data qc minutes/day	0.2 (1.4)	0.0 [0.0, 19.2]
Valid minutes/day	1437.8 (8.0)	1440.0 [1361.7, 1440.0]
	n (% of n)	
Sex		
Female	357 (54.5)	
Male	298 (45.5)	
Race		
White	445 (67.9)	
Black	157 (24.0)	
Other	44 (6.7)	
Not reported	9 (1.4)	
Self-reported health		
Good/very good/excellent	628 (95.9)	
Fair/poor	22 (3.4)	
Not reported	5 (0.8)	
Medical history		
MI/CHF/angina/VP/PAD	55 (8.4)	
Hypertension	285 (43.5)	
High blood cholesterol	346 (52.8)	
Stroke/TIA	34 (5.2)	
Pulmonary disease	74 (11.3)	
Diabetes	95 (14.5)	
Cancer	191 (29.2)	
Osteoarthritis	316 (48.2)	

Table 2 describes minute-level measures: AC, MIMS, ENMO, MAD and AI, computed as an average daily sum per participant, and then summarized across participants. Daily AC had mean (sd) 2,204,169 (600,965), and MIMS, MAD, ENMO and AI had average (sd) 11,299.7 (2766.0), 47.7 (13.3), 30.9 (9.1) and 4157.6 (1068.8), respectively. Table C1 in Appendix C describes minute-level measures summarized as average per minute, across all participant-minutes.

Table 2. Summary of average daily sum of AC, MIMS, ENMO, MAD, and AI. Each value in the table is an aggregate -- mean, standard deviation, median, minimum and maximum -- of n = 655 participant-specific values of average daily sum. The summary was computed based on a data set of winsorized, invalid minutes-imputed measures.

Measure	Mean (sd)	Median [min, max]
AC	2204169 (600965)	2157496 [731945, 5071196]
MIMS	11299.7 (2766.0)	11195.2 [4252.3, 23931.5]
MAD	47.7 (13.3)	46.3 [16.1, 108.1]
ENMO	30.9 (9.1)	29.6 [11.8, 75.3]
AI	4157.6 (1068.8)	4085.5 [1529.7, 9418.6]

Correlations Between Minute-level Summary Statistics

Table 3 summarizes participant-specific correlation for pairs of minute-level measures: AC and MIMS, AC and ENMO, AC and MAD, AC and AI. Column 2 ("Model unadjusted") shows estimated intercept coefficient and its standard error from an unadjusted (intercept-only) regression model. Marginally, the AC measure had the highest correlation with MIMS -- estimated mean (se) 0.988 (0.0002), closely followed by that of AI -- 0.970 (0.0007). Correlation between AC and MAD had mean (se) 0.913 (0.0013), and correlation between AC and ENMO -- mean (se) 0.867 (0.0018).

Columns 3-6 ("Model adjusted") show coefficient estimates and standard errors from a conditional model where participant-specific correlations were quantified while adjusting for age, BMI and sex. The model summaries are presented in Code outputs C1-C4 in Appendix C. The estimated effect

of age on the correlation was not statistically significant ($\alpha = 0.05$) and had point estimates of magnitude less than 0.001 in models except the correlation between AC and ENMO (est. = -0.001, se = 0.0001, p-value < 0.0001). The estimated effect of BMI on the correlation was statistically significant in models for correlation between AC and MAD (est. = 0.001, se = 0.0003, p-value = 0.0013) and AC and AI (est. < 0.001, se = 0.0001, p-value = 0.0362). The estimated effect of male sex (compared to female -- reference level) was statistically significant in three models: model of correlation between AC and MIMS (est. = -0.002, se = 0.0005, p-value < 0.0001), AC and MAD (est. = -0.01, se = 0.0026, p-value < 0.0001), AC and AI (est. = -0.01, se = 0.0013, p-value < 0.0001).

Table 3. Summary of Pearson correlation for pairs of minute-level measures: AC, MIMS, ENMO, MAD, AI. Correlations were estimated with (a) intercept-only regression model (column 2) and (b) conditional regression model (columns 3-6). In all models, participant-specific value of correlation was set as an outcome. The "*" symbol is used to denote model coefficients (excluding intercept) for which the corresponding p-value was <0.05. Abbreviations used: "BMI" -- body mass index. "Response var." -- response variable in a model. "Coef. est." -- model coefficient estimate. "se" -- model coefficient standard error.

	Unadjusted model	Model adjusted for: age, BMI, sex			
	Intercept	Intercept	Age	BMI	Sex (is male)
Response var.	Coef. est. (se)	Coef. est. (se)	Coef. est. (se)	Coef. est. (se)	Coef. est. (se)
cor(AC, MIMS)	0.988 (0.0002)	0.988 (0.0017)	< 0.001 (<0.0001)	< 0.001 (<0.0001)	-0.002 (0.0005)*
cor(AC, ENMO)	0.867 (0.0018)	0.887 (0.0138)	-0.001 (0.0001)*	0.001 (0.0004)	> -0.001 (0.0037)
cor(AC, MAD)	0.913 (0.0013)	0.892 (0.0099)	< 0.001 (0.0001)	0.001 (0.0003)*	-0.010 (0.0026)*
cor(AC, AI)	0.970 (0.0007)	0.962 (0.0050)	< 0.001 (< 0.0001)	< 0.001 (0.0001)*	-0.010 (0.0013)*

Mapping Between Minute-level Summary Measures

Figure 1 shows estimated association between minute-level AC (x-axis) and minute-level MIMS, ENMO, MAD, and AI, respectively (y-axis). The black solid line shows GAM model-fitted values of each measure (MIMS, ENMO, MAD, AI) given the AC measure value. Here, the GAM estimates can be thought of as a smoothed mean across the points.

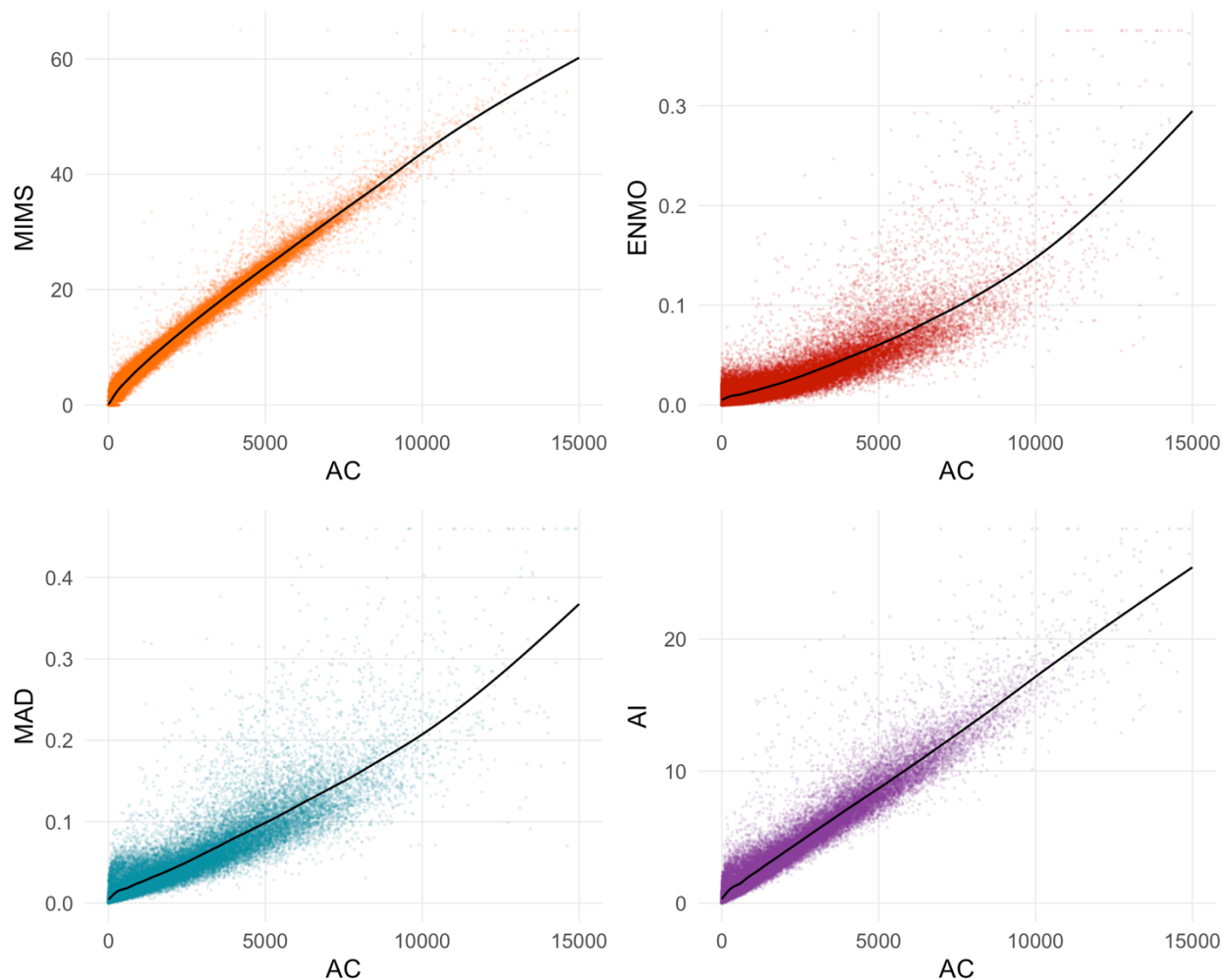


Figure 1. Estimated mapping between minute-level AC (x-axis) and minute-level MIMS, ENMO, MAD, and AI, respectively (y-axis). Black solid line shows GAM model-fitted values of a measure (MIMS, ENMO, MAD, AI) given the AC measure value. The points represent a subset of the data created by taking every 100-th observation from all participant- and minute-specific observations; this subset is the same across the four plots.

The CSV table with model-fitted values of MIMS, ENMO, MAD, and AI is publicly available on GitHub⁷. The results were used to implement fast R software that maps values of measure A to measure B that is available on GitHub⁸. Table 4 shows model-fitted values for selected published cut-off values of AC. Cut-off AC = 1853 was derived by Koster et al. (2016) to separate sedentary and active minutes from non-dominant wrist-worn sensor data collected in older adults. Cut-offs AC = 2860 and 3940 were derived by Montoye et al. (2020) to separate sedentary, light, and moderate-to-vigorous activity intensity levels from non-dominant wrist-worn sensor data collected in young to older adults. For a widely used cut-off AC = 1853, the fitted values were: MIMS = 10.558, ENMO = 0.022, MAD = 0.039, AI = 3.620.

Table 4. AC and fitted values of MIMS, ENMO, MAD and AI, respectively, for selected AC cut-off values.

AC	MIMS fitted	ENMO fitted	MAD fitted	AI fitted
1853	10.558	0.022	0.039	3.620
2860	15.047	0.033	0.057	5.273
3940	19.614	0.046	0.078	7.025

The mapping accuracy in estimating PA volume statistics was quantified by participant-specific mean percentage error (MPE) and mean absolute percentage error (MAPE) in estimating total activity count (TAC). Table C2 in Appendix C summarizes the MPE and MAPE across the participants. The MAPE was the smallest for MIMS and had mean (sd) of 2.5 (2.4), followed by that of AI (mean = 6.3, sd = 5.1), MAD (mean = 11.3, sd = 8.4) and ENMO (mean = 14.3, sd = 10.3). The MPE were equal for MIMS -- mean (sd) 0.2 (3.2), for AI -- 0.3 (7.6), for MAD -- (-0.3) (13.3), and for ENMO -- 4.6 (16.1). Figure C1 in Appendix C shows participant-specific MPE arranged according to the participant's average TAC. Based on visual inspection, there is a larger variability of MPE values among participants with

⁷ The CSV table with model-fitted values of MIMS, ENMO, MAD, and AI: <https://bit.ly/3CPuFYR>

⁸ R code script with fast mapping functions: <https://bit.ly/3qdS80V>

smaller average TAC values, but there is no apparent tendency for lower or higher MPE values depending on participant's average TAC.

The mapping utility in the task of classifying minutes into sedentary versus active using the AC = 1853 cut-off was also assessed. Table C3 in Appendix C summarizes participant-specific accuracy, sensitivity and specificity of predicting whether a minute is active, where the minute's label was based on true AC and the prediction was based on $\widehat{AC}_{\text{measure}}$. The participant-specific classification accuracy was the highest for MIMS and had mean (sd) of 0.981 (0.005), followed by that of AI (mean = 0.960, sd = 0.012), MAD (mean = 0.928, sd = 0.021) and ENMO (mean = 0.904, sd = 0.028).

Minute-level Patterns Of Daily Physical Activity

Previous work in the BLSA characterized age-related differences in daily patterns of physical activity using minute-level counts from Actiheart activity monitor (Schrack et al., 2013). Figure 2 shows the estimated smoothed 24-hour median activity counts across the previously published age groups: < 60-year old (green; n = 140), 60- to 67-year old (red; n = 102), 68- to 74-year old (blue; n = 129), \geq 75-year old (orange; n = 284). Solid semi-transparent colour lines represent results obtained with AC measure. Dashed colour lines represent results obtained with $\widehat{AC}_{\text{measure}}$ values mapped into AC from one of the four measures -- MIMS, ENMO, MAD, and AI -- per plot. Based on visual inspection, in each case, the $\widehat{AC}_{\text{measure}}$ -based curves yielded roughly the same information as the AC-based curves. The similarity between AC-based and $\widehat{AC}_{\text{measure}}$ -based estimates was summarized using mean absolute percentage error (MAPE). The measure-specific MAPE was the smallest for MIMS and equalled 3.2, followed by that of AI (6.7), MAD (11.1) and ENMO (12.5). Figure C2 in Appendix C shows smoothed 24-hour median activity counts per minute for each age group computed with the original values of MIMS, ENMO, MAD, and AI.

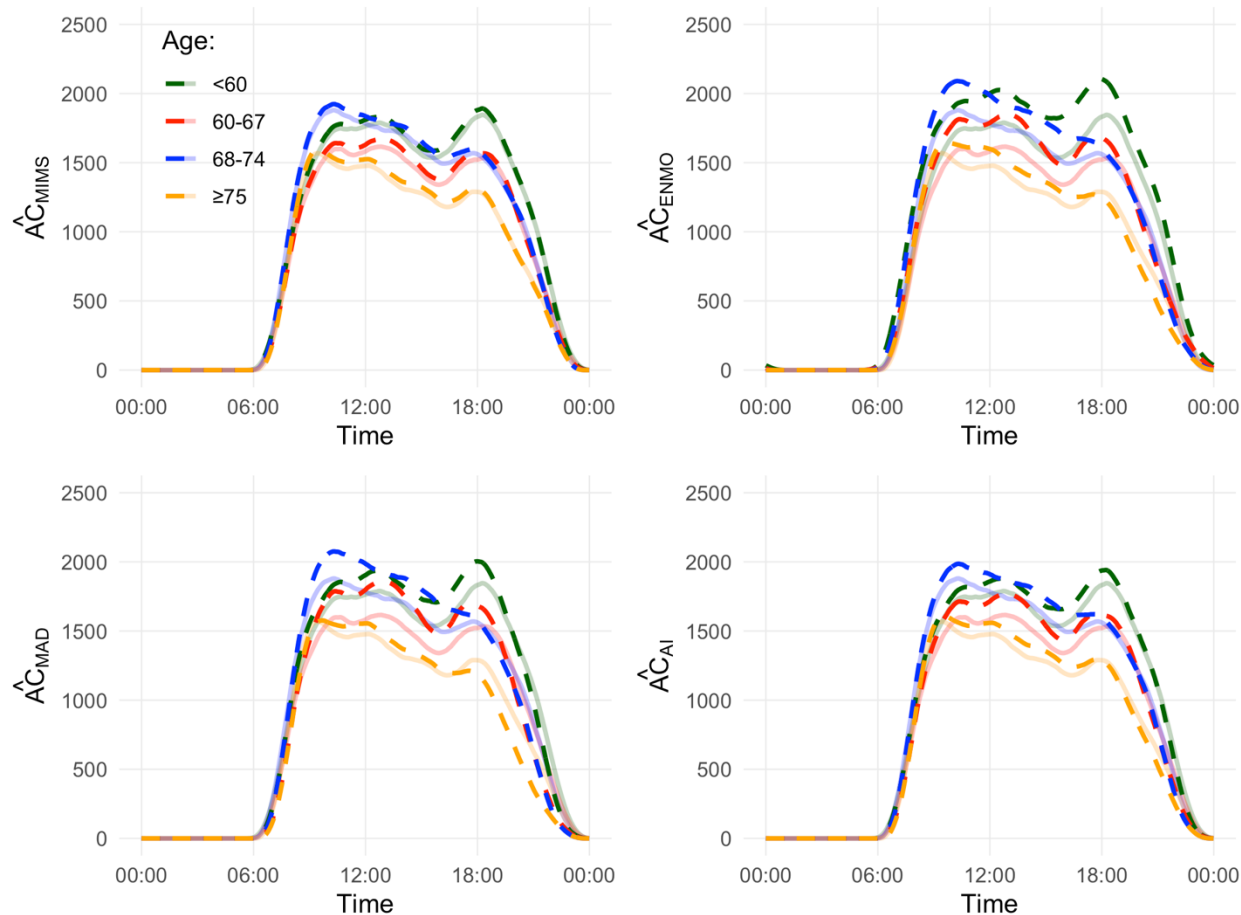


Figure 2. Smoothed 24-hour median activity counts per minute for each age group: < 60-year old (green), 60- to 67-year old (red), 68- to 74-year old (blue), ≥ 75 -year old (orange). Solid semi-transparent colour lines represent results obtained with AC measure; they are the same across the four plots. Dashed colour lines represent results obtained with \widehat{AC} values mapped into AC from one of the four measures -- MIMS, ENMO, MAD, and AI -- per plot.

Discussion

We used a large-size cohort of BLSA participants (age mean 69.8, range 22-97) to compute and compare minute-level accelerometry-derived measures of physical activity: AC and MIMS, ENMO, MAD, and AI. Results suggest that correlations between the widely published AC and the other raw data summary metrics are all large (≥ 0.87), and especially high for MIMS and AI (≥ 0.97). After the

harmonization, MIMS allowed for excellent accuracy in predicting TAC and predicting sedentary minutes with AC = 1853 cut-off. The observed differences in the correlations with AC between open-source measures should be considered when comparing historical results across the metrics.

Previously, the correlation between AC and MIMS in data collected during continuous monitoring in the free-living environment has not been explored. We computed participant-specific correlations between AC and MIMS, ENMO, MAD, and AI measures, and examined how the correlations differ across age, BMI and sex. The AC measure had the highest average participant-specific correlation with MIMS -- 0.988, closely followed by AI -- 0.97, and MAD (0.913) and ENMO (0.867). Both MIMS and AI are based on variability within each axis, whereas MAD and ENMO are based on the Euclidean norm of three-dimensional time-series of the raw data. Therefore, it is consistent with expectations to observe MIMS and AI behave similarly, and demonstrate similar correlations with AC. While we found statistically significant effects of age, BMI and sex on the correlations between AC and the other measures, the effect sizes were of very small magnitude. In particular, the analysis showed that MIMS had a correlation with AC that did not differ significantly across age nor BMI, and differed significantly between men and women by a magnitude of 0.002.

We estimated (and provided software to use) the harmonization mapping between minute-level measures -- AC and MIMS, AC and ENMO, AC and MAD, and AC and AI. The mapping allows us to extend the knowledge from the thousands of manuscripts that have been published using AC to MIMS and other measures in cases where the access to raw accelerometry data from a published work is no longer available. The mapping can be particularly useful to translate commonly used cut-off values of PA intensity levels from AC into open-source measures. The mapping was validated in the tasks of predicting TAC and predicting sedentary minutes based on AC = 1853 cut-off; we observed excellent accuracy for MIMS and AI of 0.981 and 0.96, respectively. The utility of the derived mapping was demonstrated in the example in which previous BLSA results were replicated. The PA volume daily trajectories across four age groups obtained with AC were closely matched with open-source measures, with MIMS yielding

visually almost identical results (MAPE = 3.2), followed by that of AI, MAD and ENMO (MAPE = 6.7, 11.1, and 12.5).

Lastly, we believe we are the first to provide freely available R software (SummarizedActigraphy R package) with a unified interface for computation of the four open-source measures from raw accelerometry data. This effort is accompanied by the Appendix material where we provide a description of the used PA measures that distills complicated mathematical formulas into a reader-friendly text.

Study Limitations

We identify the following limitations of our work. First, our study sample consists of predominantly middle-aged to older adults; specifically, < 30% of the sample is younger than 64 years and no children or adolescents below 22 years of age were included. However, we observed that: (a) the level of activity of adults in our study sample did range from sedentary to moderate and vigorous activity, (b) our mapping results did not exhibit any trend depending on average level of participant's PA, and (c) the measured variability along the estimated mapping is lower for higher activity values, which suggests the derived mapping could prove similarly useful in future studies including younger (more active) populations. Second, PA measures were computed using raw accelerometry data collected at frequency 80 Hz; while this frequency matches the frequency of raw accelerometry data collection in recent release of PA data from NHANES 2011-2014 that uses the MIMS measure, studies collecting raw data of different frequency should use caution in adapting our harmonization mapping. Third, our comparison is limited to data collected with a sensor worn on a non-dominant wrist. While we expect the results to translate to a dominant-wrist, we presume the correlations and mapping may not be applicable to e.g. chest- or hip-worn sensor, where the magnitude of PA volume is expected to be substantially lower than when measured at wrist. Fourth, our harmonization mapping was estimated using generalized additive models (GAMs) and does not offer an easy, closed-form formula of the transformation. While such a formula could be obtained e.g. with polynomial models, the choice of GAMs allowed for thorough estimation of a relationship between AC and other measures in a more flexible way. Finally, our results are conditional on the data preprocessing methods we have chosen. However, we believe that the steps we

performed are commonly done (we have cited studies who have previously used these) and are reasonable given the obtained data summary statistics and visual quality checks performed.

Conclusion

In conclusion, our comparison of AC and MIMS, ENMO, MAD and AI allowed to show their high correlation to enhance comparability across past and future research. The derived harmonization mapping is freely available and provides a way to harmonize accelerometry data sets where summary measures were derived using different methods. Further research is warranted to test the validity of the mapping with different frequency data and body locations.

Acknowledgements

This work was funded by National Institute on Aging (NIA) grant U01AG057545 and the Johns Hopkins Catalyst Award.

Conflict of Interest

The authors declare no conflict of interest.

References

- Bai, J., Di, C., Xiao, L., Evenson, K. R., LaCroix, A. Z., Crainiceanu, C. M., and Buchner, D. M. (2016). An Activity Index for raw accelerometry data and its comparison with other activity metrics. *PLOS ONE*, 11(8):1–14.
- Bai, J., He, B., Shou, H., Zipunnikov, V., Glass, T. A., and Crainiceanu, C. M. (2014). Normalization and extraction of interpretable metrics from raw accelerometry data. *Biostatistics*, 15(1):102–116.
- Cain, K. L., Conway, T. L., Adams, M. A., Husak, L. E., and Sallis, J. F. (2013). Comparison of older and newer generations of ActiGraph accelerometers with the normal filter and the low frequency extension. *International Journal of Behavioral Nutrition and Physical Activity*, 10(51).

- Choi, L., Liu, Z., Matthews, C. E., and Buchowski, M. S. (2011). Validation of accelerometer wear and nonwear time classification algorithm. *Medicine and Science in Sports and Exercise*, 43(2):357–364.
- Goldsmith, J., Scheipl, F., Huang, L., Wrobel, J., Di, C., Gellar, J., Harezlak, J., McLean, M. W., Swihart, B., Xiao, L., Crainiceanu, C., and Reiss, P. T. (2020). refund: Regression with Functional Data. R package version 0.1-23. Available from: <https://CRAN.R-project.org/package=refund>.
- Hastings Jr., C., Mosteller, F., Tukey, J. W., and Winsor, C. P. (1947). Low moments for small samples: a comparative study of order statistics. *The Annals of Mathematical Statistics*, 18(3):413–426.
- John, D., Tang, Q., Fahd, A., and Intille, S. (2019). An open-source Monitor-Independent Movement Summary for accelerometer data processing. *Journal of Measuring Physical Behaviors*, 2(4):268–281.
- Karas, M., Bai, J., Straczekiewicz, M., Harezlak, J., Glynn, N. W., Harris, T., Zipunnikov, V., Crainiceanu, C., and Urbanek, J. K. (2019). Accelerometry data in health research: challenges and opportunities. *Statistics in Biosciences*, 11(2):210–237.
- Karas, M., Schrack, J., and Urbanek, J. (2021). arctools: Processing and Physical Activity Summaries of Minute Level Activity Data. R package version 1.1.3. Available from: <https://CRAN.R-project.org/package=arctools>.
- Koster, A., Shiroma, E., Caserotti, P., Matthews, C., Chen, K., Glynn, N., and Harris, T. (2016). Comparison of sedentary estimates between activPAL and hip- and wrist-worn ActiGraph. *Medicine and Science in Sports and Exercise*, 48(8):1514–1522.
- Kuo, P.-L., Schrack, J. A., Shardell, M. D., Levine, M., Moore, A. Z., An, Y., Elango, P., Karikkineth, A., Tanaka, T., de Cabo, R., Zukley, L. M., AlGhatrif, M., Chia, C. W., Simonsick, E. M., Egan, J. M., Resnick, S. M., and Ferrucci, L. (2020). A roadmap to build a phenotypic metric of ageing: insights from the Baltimore Longitudinal Study of Aging. *Journal of Internal Medicine*, 287(4):373–394.

- Leroux, A., Xu, S., Kundu, P., Muschelli, J., Smirnova, E., Chatterjee, N., and Crainiceanu, C. (2020). Quantifying the predictive performance of objectively measured physical activity on mortality in the UK Biobank. *The Journals of Gerontology: Series A*, 76(8):1486–1494.
- Montoye, A. H. K., Clevenger, K. A., Pfeiffer, K. A., Nelson, M. B., Bock, J. M., Imboden, M. T., and Kaminsky, L. A. (2020). Development of cut-points for determining activity intensity from a wrist-worn ActiGraph accelerometer in free-living adults. *Journal of Sports Sciences*, 38(22):2569–2578.
- Muschelli, J. (2021). SummarizedActigraphy: Coerce ‘Actigraphy’ to Summarized Experiments. R package version 0.3.1. Available from: <https://github.com/muschellij2/SummarizedActigraphy>.
- Neishabouri, A., Nguyen, J., Samuelsson, J., Guthrie, T., Biggs, M., Wyatt, J., Cross, D., Karas, M., Migueles, J. H., Khan, S., Guo, C. C. (2022) Quantification of acceleration as activity counts in ActiGraph wearables. Research Square. <https://doi.org/10.21203/rs.3.rs-1370418/v1>
- NHANES 2011-2012 Data Documentation (2020). National Health and Nutrition Examination Survey 2011-2012. Data Documentation, Codebook, and Frequencies: Quality Assurance and Quality Control. Available from: <https://wwwn.cdc.gov/Nchs/Nhanes/2011-2012/PAXMIN G.htm>.
- Schrack, J. A., Zipunnikov, V., Goldsmith, J., Bai, J., Simonsick, E. M., Crainiceanu, C., and Ferrucci, L. (2013). Assessing the “physical cliff”: detailed quantification of age-related differences in daily patterns of physical activity. *The Journals of Gerontology: Series A*, 69(8):973–979.
- Tang, Q., John, D., Intille, S., and mHealth Research Group (2020). MIMSunit: Algorithm to Compute Monitor Independent Movement Summary Unit (MIMS-Unit). R package version 0.9.2. Available from: <https://CRAN.R-project.org/package=MIMSunit>.
- Vähä-Ypyä, H., Vasankari, T., Husu, P., Suni, J., and Sievänen, H. (2015). A universal, accurate intensity-based classification of different physical activities using raw data of accelerometer. *Clinical Physiology and Functional Imaging*, 35(1):64–70.
- van Hees, V. T., Fang, Z., Langford, J., Assah, F., Mohammad, A., da Silva, I. C. M., Trenell, M. I., White, T., Wareham, N. J., and Brage, S. (2014). Autocalibration of accelerometer data for free-living

- physical activity assessment using local gravity and temperature: an evaluation on four continents. *Journal of Applied Physiology*, 117(7):738–744.
- van Hees, V. T., Fang, Z., Zhao, J. H., Heywood, J., Mirkes, E., Sabia, S., and Migueles, J. H. (2021). GGIR: Raw Accelerometer Data Analysis. R package version 2.3-0.
- van Hees, V. T., Gorzelniak, L., Dean Le'on, E. C., Eder, M., Pias, M., Taherian, S., Ekelund, U., Renström, F., Franks, P. W., Horsch, A., and Brage, S. (2013). Separating movement and gravity components in an acceleration signal and implications for the assessment of human daily physical activity. *PLoS ONE*, 8(4):e61691.
- Wanigatunga, A. A., Wang, H., An, Y., Simonsick, E. M., Tian, Q., Davatzikos, C., Urbanek, J. K., Zipunnikov, V., Spira, A. P., Ferrucci, L., Resnick, S. M., and Schrack, J. A. (2020). Association between brain volumes and patterns of physical activity in community-dwelling older adults. *The Journals of Gerontology: Series A*, 76(8):1504–1511.
- Wijndaele, K., Westgate, K., Stephens, S., Blair, S., Bull, F., Chastin, S., Dunstan, D., Ekelund, U., Esliger, D., Freedson, P., Granat, M., Matthews, C., Owen, N., Rowlands, A., Sherar, L., Tremblay, M., Troiano, R., Brage, S., and Healy, G. (2015). Utilization and harmonization of adult accelerometry data: review and expert consensus. *Medicine and Science in Sports and Exercise*, 47(10):2129–2139.
- Wood, S. (2011). Fast stable restricted maximum likelihood and marginal likelihood estimation of semiparametric generalized linear models. *Journal of the Royal Statistical Society (B)*, 73(1):3–36.
- Wood, S. (2021). mgcv: Mixed GAM Computation Vehicle with Automatic Smoothness Estimation. R package version 1.8-35. Available from: <https://CRAN.R-project.org/package=mgcv>.
- Xiao, L., Li, Y., and Ruppert, D. (2013). Fast bivariate P-splines: the sandwich smoother. *Journal of the Royal Statistical Society: Series B (Statistical Methodology)*, 75(3):577–599.

Appendix A

Raw Accelerometry Data Quality Control

Three raw data quality check flags were adapted from a set of nine flags recently introduced by the release of the NHANES 2011-2012 wave protocol (NHANES 2011-2012 Data Documentation, 2020). The selected flags subset represents intuitive flags that are meant to "determine signal patterns that were unlikely to be a result of human movement" but are not aimed at identifying non-wear. To provide the flags definition, we denote a raw data observation as a vector $\mathbf{x}(t) = (x_1(t), x_2(t), x_3(t))$, where $x_m(t)$ is an acceleration measurement along axis $m = 1, 2, 3$ at time t .

First, large changes in acceleration values ("spikes") were identified. Specifically, an observation $\mathbf{x}(t)$ was flagged if for any axis $m = 1, 2, 3$, $x_m(t)$ had an adjacent observation, $x_m(t - 1)$ or $x_m(t + 1)$, with an absolute difference greater than a threshold of 14.7 g. The 14.7 g threshold was adapted from NHANES protocol (11 g), as the NHANES devices had a dynamic range of 12 g, and the BLSA devices had a range of 16 g, so our threshold is proportional (11/12) to our data. Second, an observation $\mathbf{x}(t)$ was flagged if any axis measurement $x_m(t)$ occurred near the device maximum limit (here: 8 g, NHANES protocol: 6 g) with a tolerance margin (0.05 g), which translates to $x_m(t)$ being equal to or greater than 7.95 g. Third, an observation $\mathbf{x}(t)$ was flagged if any axis measurement $x_m(t)$ occurred near the device minimum limit (here: -8 g, NHANES protocol: -6 g), including a tolerance margin (0.05 g), and had same-axis adjacent observation also near the device minimum limit. These three flags were combined and the raw data observation $\mathbf{x}(t)$ was flagged as valid if it had none of the three flags; otherwise it was invalid. The R script reference is provided in the footnote⁹.

⁹ R code script to generate raw data quality check flags: <https://bit.ly/3wtHhnB>

Appendix B

Open-source Summary Measures of Raw Accelerometry Data

The raw accelerometry data were used to derive a set of commonly used minute-level open-source summary measures: MIMS, ENMO, MAD, and AI. To provide the measures definition, we denote a raw data observation as a vector $\mathbf{x}(t) = (x_1(t), x_2(t), x_3(t))$, where $x_m(t)$ is an acceleration measurement along $m = 1,2,3$ axis collected at time t .

Monitor Independent Movement Summary (MIMS)

John et al. (2019) proposed Monitor-Independent Movement Summary unit (MIMS-unit). The MIMS-unit algorithm steps are conducted independently for each axis' univariate acceleration signal $x_m(t)$, $m = 1,2,3$ until a final aggregation step. First, an input signal $x_m(t)$ is extrapolated to address a possible case when detected acceleration exceeds a sensor's dynamic range; in this procedure, $x_m(t)$ is interpolated to 100 Hz, and then the extrapolation algorithm is applied to identify observations that hit the device limit (here: ± 8 g) and replace them with spline-interpolated points derived from the estimated extrapolation peak. The rest of the computations are done on this 100 Hz data. Second, a fourth-order Butterworth bandpass filter (0.2-5 Hz) is applied. Third, the interpolated, extrapolated, and filtered signal, $x_m^{(f)}(t)$, is aggregated within an epoch by computing area under curve via numerical integration; here, the epoch was set to 1 minute. Fourth, integrated values from each of the three axes are summed, yielding one value per epoch. Finally, the values less than or equal to $0.0001 * (\text{epoch in seconds}) * (\text{sample rate after interpolation})$ (here: $0.0001 * 60 * 100 = 0.6$) are truncated to zero.

The MIMS procedure may produce a negative value (-0.01), which indicates "the algorithm is unable to output a valid MIMS value for the given piece of the signal" (Tang et al., 2020). Negative MIMS output values were set to missing observations.

The algorithm implementation is provided in the MIMSunit R package (Tang et al., 2020). To compute MIMS, the package's method `mims_unit` was used with its default values of internal parameters (consistent with the manuscript recommendations).

Euclidean Norm Minus One (ENMO)

Van Hees et al. (2013) proposed Euclidean Norm Minus One (ENMO) summary measure.

ENMO calculation is based on Euclidean norm of $(x_1(t), x_2(t), x_3(t))$,

$$r(t) = \sqrt{x_1^2(t) + x_2^2(t) + x_3^2(t)},$$

where negative values after subtracting are set to zero. Explicitly, the ENMO measure per epoch of H observations starting at time t_0 is defined as

$$\text{ENMO}(t_0; H) = \frac{1}{H} \sum_{h=0}^{H-1} \max\{r(t_0 + h) - 1, 0\}.$$

Here, H of size $60 * 80 = 4800$ observations was used to match the number of observations in one minute with frequency of our raw accelerometry data. For each minute, t_0 was set to be the time of the first observation within that minute.

Following the recommendations from van Hees et al. (2014), raw data calibration was performed for each participant separately before computing the ENMO measure. The `g.calibrate` method from the GGIR R package (van Hees et al., 2021) was used to estimate calibration values that were further used to center and scale the data accordingly. No other measures used the post-calibrated data.

Mean Amplitude Deviation (MAD)

Vähä-Ypyä et al. (2015) introduced Mean Amplitude Deviation (MAD) as a summary measure for accelerometry data. MAD measure per epoch of H observations starting at time t_0 is defined as

$$\text{MAD}(t_0; H) = \frac{1}{H} \sum_{h=0}^{H-1} |r(t_0 + h) - \bar{r}(t_0; H)|,$$

where $\bar{r}(t_0; H)$ is defined as average Euclidean norm in the epoch, formally

$$\bar{r}(t_0; H) = \frac{1}{H} \sum_{h=0}^{H-1} r(t_0 + h).$$

Here, H and t_0 values were defined the same as for ENMO.

Activity Index (AI)

Bai et al. (2014) proposed the (unnormalized) Activity Index (AI) measure based on the combination of the three within-axis variance statistics. The variance of acceleration along m -th axis in the window of length H starting at time t_0 is defined as

$$\sigma_m^2(t_0; H) = \frac{1}{H} \sum_{h=0}^{H-1} [x_m(t_0 + h) - \mu_m(t_0; H)]^2, m = 1, 2, 3,$$

where $\mu_m(t_0; H)$ is axis-specific mean acceleration in the window, formally

$$\mu_m(t_0; H) = \frac{1}{H} \sum_{h=0}^{H-1} x_m(t_0 + h), m = 1, 2, 3.$$

Then AI measure per epoch of H observations starting at time t_0 is originally defined as

$$AI(t_0; H) = \sqrt{\max\{\frac{1}{3} [\sum_{m=1}^3 \sigma_m^2(t_0; H) - \bar{\sigma}^2], 0\}},$$

where $\bar{\sigma}^2$ is the systematic noise variance calculated using the data collected during some non-moving period. In our work, $\bar{\sigma}^2$ is not estimated and is set to zero in the above equation; hence, the AI formula used narrows down to

$$AI(t_0; H) = \sqrt{\max\{\frac{1}{3} \sum_{m=1}^3 \sigma_m^2(t_0; H), 0\}}.$$

In computation of AI, first, a window H of size $1 * 80 = 80$ was used to match the number of observations in one second with frequency of our raw accelerometry data, and t_0 was set to be the time of the first observation within each second. Next, the per-second AI values were summed up within each minute so as the final outcome is defined on the minute level. This procedure is consistent with the recommendations given in Bai et al. (2016).

Appendix C

Results

Table C1. Summary of minute-level measures: AC, MIMS, ENMO, MAD, AI. Each value in the table is an aggregate -- mean, standard deviation, median, minimum and maximum -- of all participant-minutes. The summary was computed based on a data set after winsorization and invalid minutes data imputation.

Measure name	Mean (sd)	Median [min, max]
AC	1530 (2176)	465 [0, 15709]
MIMS	7.842 (10.063)	3.642 [0, 64.908]
MAD	0.033 (0.048)	0.014 [0, 0.460]
ENMO	0.021 (0.032)	0.010 [0, 0.375]
AI	2.885 (3.811)	1.245 [0, 28.349]

Code output C1. Summary of linear regression model fit 1. The response variable is defined as the participant's correlation between minute-level measures AC and MIMS.

```
Call:
lm(formula = y ~ sex + bmi + age, data = dat)

Residuals:
    Min       1Q   Median       3Q      Max
-0.073302 -0.001046  0.001161  0.002984  0.006901

Coefficients:
            Estimate      Std. Error t value      Pr(>|t|)
(Intercept)  0.9879694754  0.0017443393  566.386 < 0.00000000000000002 ***
sexMale     -0.0018588979  0.0004659921  -3.989  0.0000738 ***
bmi         0.0000322338  0.0000460425   0.700    0.484
age         0.0000005471  0.0000162881   0.034    0.973
---
Signif. codes:  0 '***' 0.001 '**' 0.01 '*' 0.05 '.' 0.1 ' ' 1

Residual standard error: 0.00589 on 651 degrees of freedom
Multiple R-squared:  0.02413, Adjusted R-squared:  0.01963
F-statistic: 5.365 on 3 and 651 DF,  p-value: 0.001183
```

Code output C2. Summary of a linear regression model fit 2. The response variable is defined as the participant's correlation between minute-level measures AC and ENMO.

```
Call:
lm(formula = y ~ sex + bmi + age, data = dat)

Residuals:
    Min       1Q   Median       3Q      Max
-0.236999 -0.023625  0.007123  0.031915  0.092445

Coefficients:
            Estimate Std. Error t value      Pr(>|t|)
(Intercept)  0.8865661  0.0137661  64.402 < 0.00000000000000002 ***
sexMale     -0.0002062  0.0036775  -0.056    0.9553
bmi         0.0006530  0.0003634   1.797    0.0728 .
age         -0.0005325  0.0001285  -4.142    0.0000389 ***
---
Signif. codes:  0 '***' 0.001 '**' 0.01 '*' 0.05 '.' 0.1 ' ' 1

Residual standard error: 0.04648 on 651 degrees of freedom
Multiple R-squared:  0.03178, Adjusted R-squared:  0.02732
F-statistic: 7.123 on 3 and 651 DF,  p-value: 0.0001032

GCV = 0.0021345  Scale est. = 0.0021131  n = 655
```

Code output C3. Summary of a linear regression model fit 3. The response variable is defined as the participant's correlation between minute-level measures AC and MAD.

```
Call:
lm(formula = y ~ sex + bmi + age, data = dat)

Residuals:
    Min       1Q   Median       3Q      Max
-0.179410 -0.014196  0.006283  0.023250  0.060610

Coefficients:
            Estimate Std. Error t value Pr(>|t|)
(Intercept)  0.89217679  0.00985175  90.560 < 0.0000000000000002 ***
sexMale     -0.01041026  0.00263185  -3.955  0.0000848 ***
bmi          0.00083958  0.00026004   3.229  0.00131 **
age          0.00004359  0.00009199   0.474  0.63574
---
Signif. codes:  0 '***' 0.001 '**' 0.01 '*' 0.05 '.' 0.1 ' ' 1

Residual standard error: 0.03326 on 651 degrees of freedom
Multiple R-squared:  0.03511, Adjusted R-squared:  0.03066
F-statistic: 7.896 on 3 and 651 DF,  p-value: 0.00003521
```

Code output C4. Summary of a linear regression model fit 4. The response variable is defined as the participant's correlation between minute-level measures AC and AI.

```
Call:
lm(formula = y ~ sex + bmi + age, data = dat)

Residuals:
    Min       1Q   Median       3Q      Max
-0.164823 -0.003697  0.003584  0.008782  0.025173

Coefficients:
            Estimate Std. Error t value Pr(>|t|)
(Intercept)  0.96236434  0.00501616 191.853 < 0.0000000000000002 ***
sexMale     -0.00957592  0.00134004  -7.146  0.00000000000024 ***
bmi          0.00027797  0.00013240   2.099  0.0362 *
age          0.00006285  0.00004684   1.342  0.1802
---
Signif. codes:  0 '***' 0.001 '**' 0.01 '*' 0.05 '.' 0.1 ' ' 1

Residual standard error: 0.01694 on 651 degrees of freedom
Multiple R-squared:  0.07583, Adjusted R-squared:  0.07157
F-statistic: 17.81 on 3 and 651 DF,  p-value: 0.00000000004068
```

Table C2. Summary of participant-specific mean percentage error (MPE) and mean absolute percentage error (MAPE) in estimating total activity counts (TAC).

Measure name	MPE	MAPE
	Mean (sd)	Mean (sd)
MIMS	0.2 (3.2)	2.5 (2.4)
ENMO	4.6 (16.1)	14.3 (10.3)
MAD	-0.3 (13.3)	11.3 (8.4)
AI	0.3 (7.6)	6.3 (5.1)

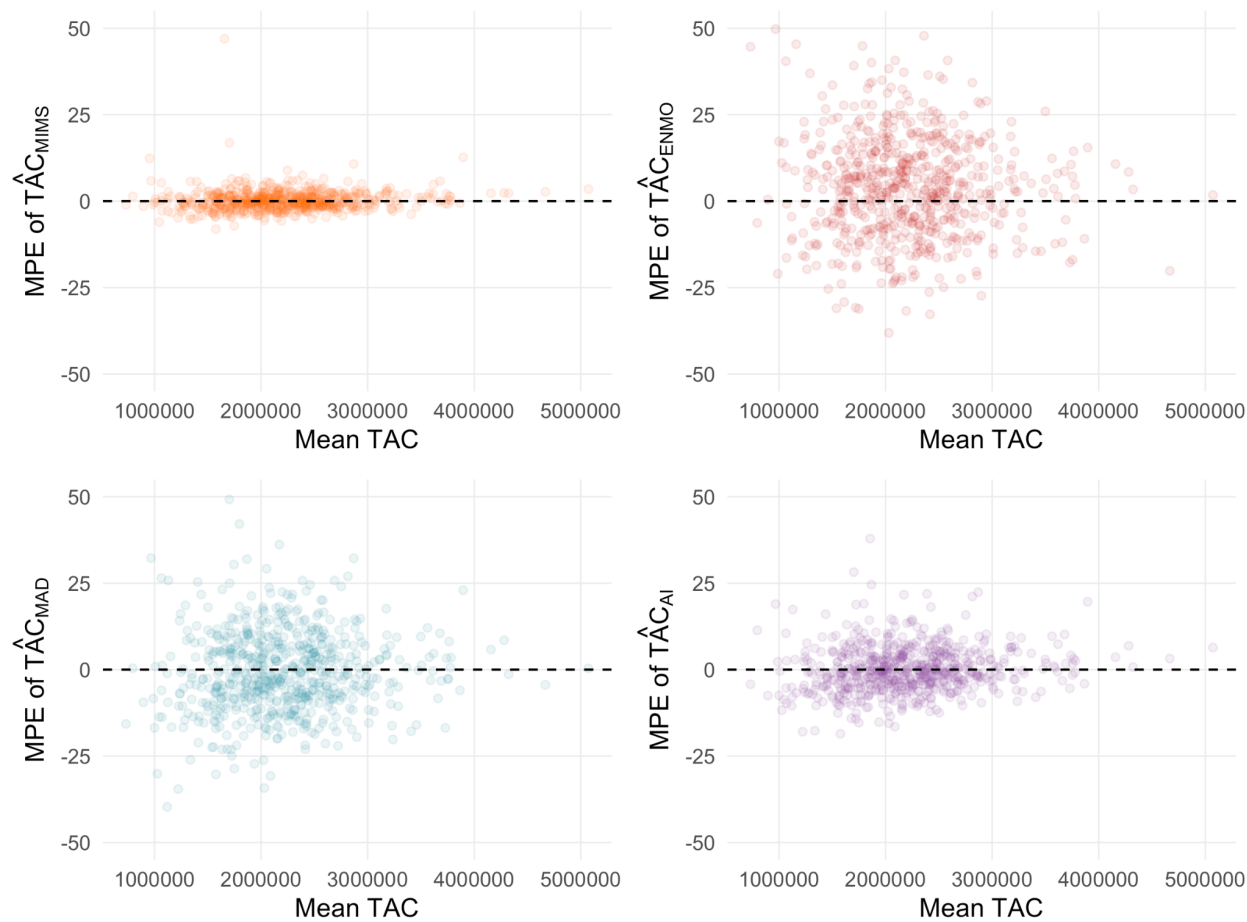


Figure C1. Participant-specific MPE in estimating TAC arranged according to the participant's average TAC. Each point represents one participant's MPE. A dashed vertical line represents ME equal 0.

Table C3. Summary of participant-specific accuracy, sensitivity and specificity of predicting whether a minute is active. The minute's label was based on true AC and the prediction was based on $\widehat{AC}_{\text{measure}}$. For each participant, performance metrics -- accuracy, sensitivity and specificity -- were computed across all participant's minutes. Columns 3-5 show mean and standard deviation of participant-specific performance metrics.

Minute's label	Minute's prediction	Accuracy	Sensitivity	Specificity
		Mean (sd)	Mean (sd)	Mean (sd)
AC > 1853	$\widehat{AC}_{\text{MIMS}} > 1853$	0.981 (0.005)	0.968 (0.012)	0.986 (0.007)
AC > 1853	$\widehat{AC}_{\text{ENMO}} > 1853$	0.904 (0.028)	0.856 (0.071)	0.921 (0.043)
AC > 1853	$\widehat{AC}_{\text{MAD}} > 1853$	0.928 (0.021)	0.879 (0.061)	0.945 (0.028)
AC > 1853	$\widehat{AC}_{\text{AI}} > 1853$	0.960 (0.012)	0.933 (0.030)	0.970 (0.018)

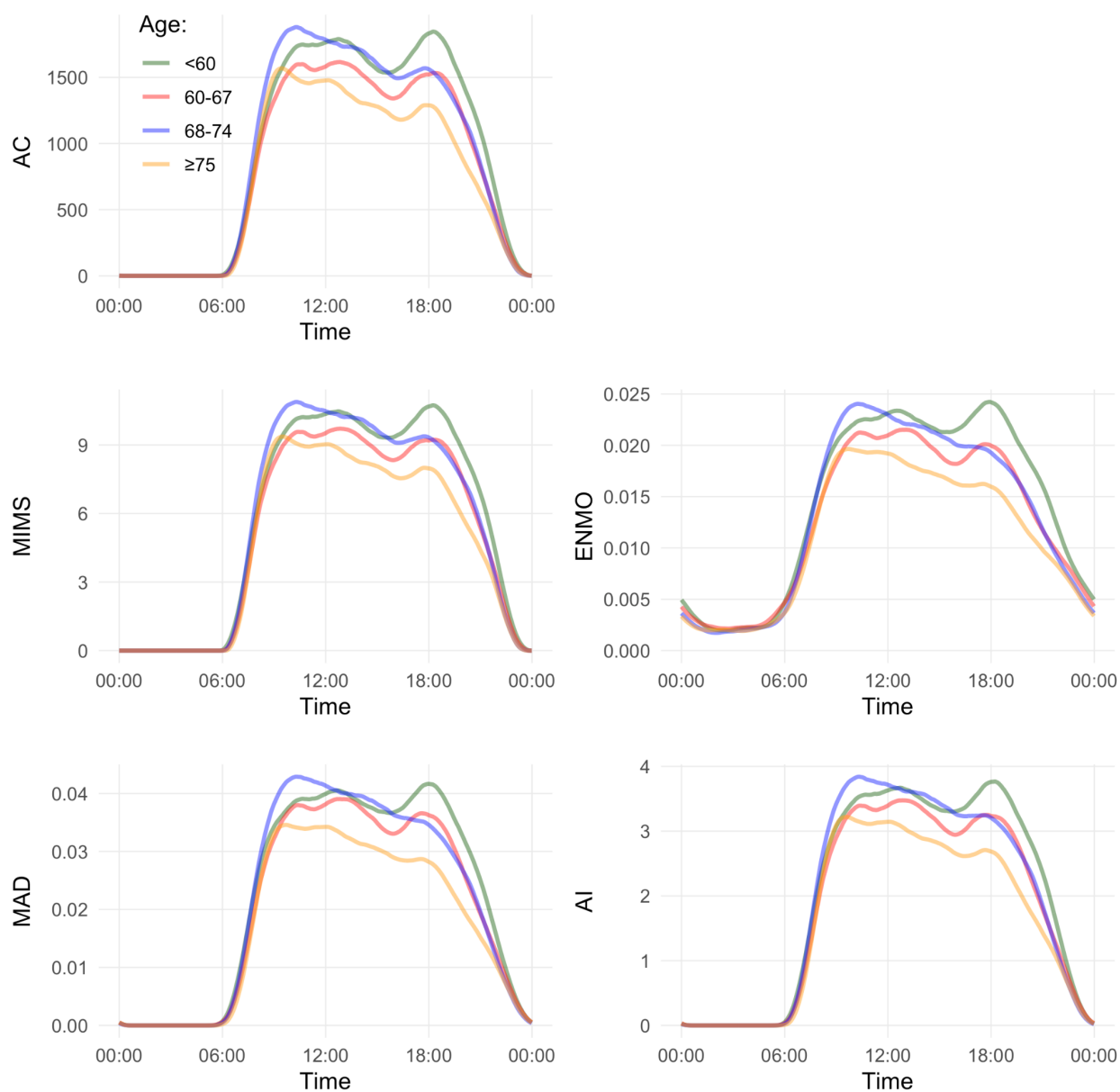


Figure C2. Smoothed 24-hour median activity counts per minute for each age group: <60-year old (green), 60- to 67-year old (red), 68- to 74-year old (blue), ≥75-year old (orange). Plots show results obtained with one of five measures -- AC, MIMS, ENMO, MAD, and AI -- per plot.