

Article

Performance Evaluation of VIDAS® Diagnostic Assays Detecting Dengue Virus NS1 Antigen, and Anti-Dengue Virus IgM and IgG Antibodies: a Multicenter, International Study

Alice F. Versiani ^{1, #, ‡}, Antoinette Kaboré ^{2, ‡}, Ludovic Brossault ³, Loïc Dromenq ³, Thayza M.I.L. dos Santos ¹, Bruno H.G.A. Milhim ¹, Cássia F. Estofolete ¹, Assana Cissé ⁴, Abel C. Sorgho ⁵, Florence Senot ³, Marie Tessonneau ^{3, *}, Serge Diabougou ^{4, †} and Mauricio L. Nogueira ^{1, †}

¹ Departamento de Doenças Infecciosas e Parasitárias, Faculdade de Medicina de São José do Rio Preto (FAMERP), São José do Rio Preto, SP, Brazil; afversiani@gmail.com (A.F.V.); Thayza@gmail.com (T.M.I.L.S.); brunohgam@hotmail.com (B.H.G.A.M.); cassiafestofolete@gmail.com (C.F.E.); mauricio.nogueira@edu.famerp.br (M.L.N.)

² Institut de Recherche en Sciences de la Santé (IRSS), Centre MURAZ, Ouagadougou, Burkina Faso; aswkabore@yahoo.fr

³ BioMérieux SA, 69280 Marcy-l'Étoile, France; ludovic.brossault@biomerieux.com (L.B.); loic.dromenq@biomerieux.com (L.D.); florence.senot@biomerieux.com (F.S.)

⁴ Institut de Recherche en Sciences de la Santé (IRSS), Ouagadougou, Burkina Faso; assanacisse@yahoo.fr (A.C.); diabougou.serge@gmail.com (S.D.)

⁵ Institut de Recherche en Sciences de la Santé (IRSS), Centre de Recherche Biomoléculaire Pietro Annigoni (CERBA), Ouagadougou, Burkina Faso; abelcyriac.sorgho@yahoo.fr

Current affiliation: Department of Pathology, University of Texas Medical Branch, Galveston, TX, USA

* Correspondence: marie.tessonneau@biomerieux.com; Tel.: +33-4-7887-3630

‡ These authors contributed equally to this work

† These authors contributed equally to this work

Abstract: Dengue is a serious mosquito-transmitted disease caused by the dengue virus (DENV). Rapid and reliable diagnosis of DENV infection is urgently needed in dengue-endemic regions. We describe here the performance evaluation of the CE-marked VIDAS® dengue immunoassays developed for the automated detection of DENV NS1 antigen, and anti-DENV IgM and IgG antibodies. A multicenter concordance study was conducted in 1296 patients from dengue-endemic regions in Asia, Latin America, and Africa. VIDAS® dengue results were compared to those of competitor enzyme-linked immunosorbent assays (ELISA). The VIDAS® dengue assays showed high precision (CV ≤ 10.7%) and limited cross-reactivity (≤ 15.4%) with other infections. VIDAS® DENGUE NS1 Ag showed high positive and negative percent agreement (92.8% PPA, 91.7% NPA) in acute patients within 0–5 days of symptom onset. VIDAS® Anti-DENGUE IgM and IgG showed a moderate to high concordance with ELISA (74.8% to 90.6%) in post-acute and recovery patients. PPA was further improved in combined VIDAS® NS1/IgM (96.4% in 0–5 days acute patients) and IgM/IgG (91.9% in post-acute patients) tests. Altogether, the VIDAS® dengue NS1, IgM and IgG assays performed well, either alone or in combination, and should be suitable for the accurate diagnosis of DENV infection in dengue-endemic regions.

Keywords: dengue diagnosis; DENV; NS1 antigen; IgM and IgG antibodies; ELISA; VIDAS®

1. Introduction

Dengue is a mosquito-transmitted disease caused by one of the four dengue virus (DENV) serotype (DENV-1 to DENV-4) [1,2]. With an estimated 96 million annual symptomatic infections, spreading mainly in Asia (70%), Africa (16%) and the Americas (14%), dengue disease is a major public health concern [2–5]. The course of the disease ranges from mild to severe, with an early febrile (acute) phase lasting 2–7 days followed by a critical phase that may either worsen, evolving to a life-threatening course (severe dengue), or improve to full recovery usually within 1–2 weeks [1,2,5]. In the absence of specific antiviral therapy, supportive care can effectively control severe dengue progression [1,2,5]. Administration of supportive care and other management protocols highly depend on early and reliable dengue diagnosis. Early dengue diagnosis based on clinical manifestations is challenging, as early symptoms do not differentiate between dengue and other febrile diseases [1,2,5,6]. Beside individual patient management, reliable and rapid DENV infection diagnosis is crucial to monitor and control dengue outbreaks in dengue-endemic regions [1,2,5,6]. Therefore, there is an urgent need for easy-to-use, rapid and accurate DENV-specific diagnostic assays.

Current guidelines recommend detecting circulating DENV RNA by reverse-transcription PCR (RT-PCR) and/or the secreted viral non-structural protein 1 (NS1) antigen by immunoassay within the first 5–7 days of illness (acute phase) to confirm DENV infection [5,7,8]. Following the acute phase, the detection of anti-DENV immunoglobulin M (IgM) and/or G (IgG) using an immunoassay, such as enzyme-linked immunosorbent assay (ELISA) or immuno-chromatographic rapid diagnostic test (RDT), is highly suggestive of a prior (primary or secondary) DENV infection [5,7,8]. Because of the kinetics of response of these different markers (DENV RNA, DENV NS1 antigen, anti-DENV IgM and IgG), their combined testing can increase the sensitivity of diagnosis, by extending the DENV diagnostic window [1,2,9–16].

RDT have been widely implemented in field settings. They are easy to use and rapid (about 20 minutes to interpretation). Their visual interpretation is however operator-dependent [17] and they lack in sensitivity [9,12,16,18–23]. ELISA are more sensitive than RDT [9,12,16,18–23] but their manual execution limits their routine implementation in field settings, notably at time of dengue outbreaks. We recently described the performance of three VIDAS® dengue prototype assays developed for the detection of DENV NS1 antigen and anti-DENV IgM and IgG antibodies [24]. VIDAS® dengue are fully automated immunoassays intended as an aid in the diagnosis of DENV infection. The three VIDAS® dengue assays can be tested in parallel or applied independently. They are rapid (40–60 minutes to result), easy to use, and easy to interpret (positive or negative) with no equivocal zone. Prototype performance was evaluated in 91 Lao patients with acute DENV infection. We showed that VIDAS® dengue prototypes performed well, in comparison to manual competitor ELISA, both in adults and children, and that they outperformed RDT in the diagnosis of acute DENV infection [24].

The aim of this international, multicenter study was to evaluate the clinical performance of the three CE-marked VIDAS® dengue immunoassays VIDAS® DENGUE NS1 Ag (DEAG), VIDAS® Anti-DENGUE IgM (DENM) and VIDAS® Anti-DENGUE IgG (DENG) in the main dengue-endemic regions of the world (Asia, Latin America and Africa). A total of 1296 samples of patients with suspected DENV infection, encompassing all stages of DENV infection (acute, post-acute and recovery) as well as naïve patients, were tested with the VIDAS® dengue assays and compared to manual competitor ELISA. Furthermore, we evaluated the analytical performance (precision, cross-reactivity) of the three VIDAS® dengue immunoassays.

The three VIDAS® dengue assays showed high precision (coefficients of variation $\leq 10.7\%$), cross-reactivity not exceeding 15.4% with samples of other infections, and high clinical specificity in naïve patients (86.9% to 100.0%). The VIDAS® DENGUE NS1 Ag assay showed a good clinical sensitivity toward RT-PCR set as gold standard (76.4%) and high positive and negative agreements with the competitor NS1 ELISA ($> 90\%$) in acute patients within the first 5 days of symptom onset. The VIDAS® Anti-DENGUE IgM and IgG assays showed a moderate to high concordance with competitor IgM and IgG ELISA (74.8% to 90.6%) in the post-acute and recovery stages of infection. Performance was further improved when combining NS1/IgM and IgM/IgG VIDAS® dengue test results. Altogether, this multicenter study demonstrates the good performance of the VIDAS® dengue NS1, IgM and IgG assays, either alone or in combination, and their suitability for the accurate diagnosis of DENV infection in dengue-endemic regions.

2. Materials and Methods

2.1. Patients and Samples

A total of 1636 sera were collected between September 2015 and October 2020 in patients with a suspected DENV infection, presenting at the hospital with one or more of the following symptoms: fever, headache, diarrhea, myalgia, arthralgia, retro-orbital pain, thrombocytopenia, edema, rash, and nausea (Figure 1). Samples were collected

prospectively or retrospectively in several dengue-endemic regions, including Asia (India, Vietnam, The Philippines), Latin America (Brazil, Peru, Honduras, Dominican Republic) and Africa (Burkina Faso) and tested in central laboratories at three distinct sites, as described in Table 1.

Table 1. Study samples

Site	Collection site	Samples	Collection time	Testing site
1	Hôpital Sainte Camille & Centre de Recherche Biomoléculaire Pietro Annigoni (CERBA), Ouagadougou, Burkina Faso	Prospective cohort Adults and children	June 2020 – October 2020	Institut de Recherche en Sciences de la Santé (IRSS), Ouagadougou, Burkina Faso
2	Centro Integrado de Pesquisa, Hospital de Base, São José do Rio Preto, Brazil	Retrospective & prospective cohorts ¹ Adults	February 2019 – August 2020	Laboratório de Pesquisas em Virologia, FAMERP, São José do Rio Preto, Brazil
3	India, Vietnam, The Philippines, Peru, Honduras, and Dominican Republic	Retrospective cohort ² Adults and children	September 2015 – September 2020	Clinical Affairs Laboratory, bioMérieux, Marcy l’Etoile, France

¹ Due to the COVID-19 pandemic, only two samples were collected prospectively; most samples were from a retrospective cohort collected during the 2019 dengue epidemic outbreak in Brazil. ² Samples purchased from Boca Biolistics (Pompano Beach, Florida, USA), Discovery Life Sciences (Huntsville, Alabama, USA) and Atreide Biosamples (Hannover, Germany).

All collected sera (≥ 1.5 ml) were aliquoted to allow testing with the different assays on the same freeze/thaw cycle, and aliquots were stored frozen at -20°C until testing. This study was conducted in adherence to the guidelines of the Declaration of Helsinki, and approved by the respective institutional review board at each institution (Comité d’Éthique pour la Recherche en Santé [CERS], Ministère de la Santé, Ministère de l’Enseignement Supérieur, de la Recherche Scientifique et de l’Innovation, Burkina Faso, No. 2020-4-076, dated 8 April 2020; Ethics Committee for Research on Human Beings of the Faculty of Medicine of São José do Rio Preto, FAMERP, Brazil, No. 4.032.814, dated 18 May 2020 for the prospective collection and No. 02078812.8.0000.5415, dated 27 May 2019 for the retrospective collection). Purchased samples were collected and approved for use for research purposes by the respective commercial providers (Boca Biolistics, Discovery Life Sciences and Atreide Biosamples). All participants, or a parent or legal guardian in case of children, gave informed consent before the start of the study.

Precision experiments were conducted using characterised negative and positive samples (bioMérieux collection). Cross-reactivity experiments were performed using samples collected from patients with other potentially interfering infections (bioMérieux collection) or from contrived samples generated from characterised negative samples. Negative samples were provided by the French blood bank (Etablissement Français du Sang [EFS], La Plaine Saint-Denis, France). Each volunteer donor signed a written informed consent for the use of blood for research purposes. EFS obtained from the French ministry of research the authorization to collect and transfer samples to partners (Ministère de l’Enseignement Supérieur, de la Recherche et de l’Innovation, reference AC-2017-2958).

2.2. Study Design and Definitions

This multicenter study aimed to evaluate the diagnostic performance of VIDAS® dengue assays (bioMérieux SA, Marcy-l’Étoile, France) detecting DENV NS1 antigen (VIDAS® DENGUE NS1 Ag) and anti-DENV IgM and IgG antibodies (VIDAS® Anti-DENGUE IgM and VIDAS® Anti-DENGUE IgG, respectively), in terms of positive percent agreement (PPA) and negative percent agreement (NPA) with competitor ELISA used as comparative method (Table 2).

Table 2. Competitor ELISA used for the concordance analysis with the VIDAS® Dengue assays

129

Competitor ELISA	Name of assay	Provider
NS1 ¹	Dengue NS1 Antigen DxSelect™ (EL1510; IfU Rev. C)	Focus Diagnostics, DiaSorin Molecular LLC, Cypress, CA, USA
	DENV Detect™ NS1 ELISA (DNS1-1; IfU No. 900109-02)	InBios International, Inc., Seattle, Washington, USA
IgM ²	Panbio Dengue IgM Capture ELISA (01PE20)	Abbott Laboratories, Abbott Park, IL, USA
	DENV Detect IgM Capture ELISA (DDMS-1)	InBios International, Inc., Seattle, Washington, USA
IgG	Panbio Dengue IgG Indirect ELISA (01PE30)	Abbott Laboratories, Abbott Park, IL, USA

¹ Both NS1 ELISA were considered as equivalent based on respective instructions for use (IfU) and thus used interchangeably. ² The results of both IgM ELISA were used to interpret the competitor IgM ELISA results (considered positive when both were positive, negative when both were negative, and undetermined when at least one was discordant or equivocal).

130
131
132
133
134

Quantitative RT-PCR and serotyping assays detecting all four DENV serotypes' RNA were performed using the CE-marked VIASURE Dengue Virus Real Time PCR Detection Kit (CerTest Biotec, Zaragoza, Spain; site 1), the CDC DENV TaqMan® RT-qPCR assay (Center for Disease Control and Prevention, USA; site 2; [25,26]), and the CE-marked RealStar Dengue RT-PCR (altona diagnostics GmbH, Hamburg, Germany; samples of site 3, outsourced to BIOMEX GmbH, Heidelberg, Germany).

135
136
137
138
139

The dengue NS1, IgM and IgG competitor ELISA test results, together with DENV RNA measurement by RT-PCR, were used to define the stage of DENV infection (Table 3). Samples positive for DENV RNA and/or NS1 antigen were defined as Acute DENV infection, regardless of the IgM and/or IgG ELISA results. Samples negative for both DENV RNA and NS1 antigen and positive for both IgM and IgG ELISA were defined as Post-Acute DENV infection. Samples negative for DENV RNA, NS1 antigen and IgM ELISA, but positive for IgG ELISA were defined as Recovery stage. Samples negative for all assays (RT-PCR and competitor ELISA) were defined as naïve. Samples that did not meet these criteria or yielded undetermined test results were labelled as Unclassified (Table 3).

140
141
142
143
144
145
146

Table 3. Definition of DENV infection stages according to the competitor ELISA and RT-PCR test results.

147

Stage of DENV infection	RT-PCR and/or NS1 competitor ELISA result ¹	IgM competitor ELISA results ²	IgG competitor ELISA result ³
Naïve	Negative ⁴	Negative	Negative
Acute	Positive ⁵	Positive or negative	Positive or negative
Post-Acute	Negative ⁴	Positive	Positive
Recovery	Negative ⁴	Negative	Positive
Unclassified	Negative ⁴ or Undetermined ⁶	Positive or Undetermined ⁷	Negative or Undetermined ⁶

¹ NS1 ELISA as described in Table 2. ² IgM ELISA as described in Table 2; both assays must be concordant (negative or positive); discordant competitor IgM ELISA results were excluded from the analysis (see Figure 1). ³ IgG ELISA as described in Table 2. ⁴ Negative for both RT-PCR and NS1 ELISA. ⁵ Positive for RT-PCR and/or NS1 ELISA. ⁶ Undetermined defined as equivocal ELISA (according to the manufacturer's definition). ⁷ Undetermined defined as either equivocal or discordant IgM ELISA (Panbio® Dengue IgM Capture ELISA and InBios DENV Detect IgM Capture ELISA).

148
149
150
151
152
153
154

Unclassified samples were excluded from analyses considering the stage of infection but were included in analyses based on the global population (Figure 1). Samples tested with all assays (VIDAS® dengue assays, competitor ELISA and RT-PCR) were included in the final analysis (Figure 1).

155
156
157
158
159
160

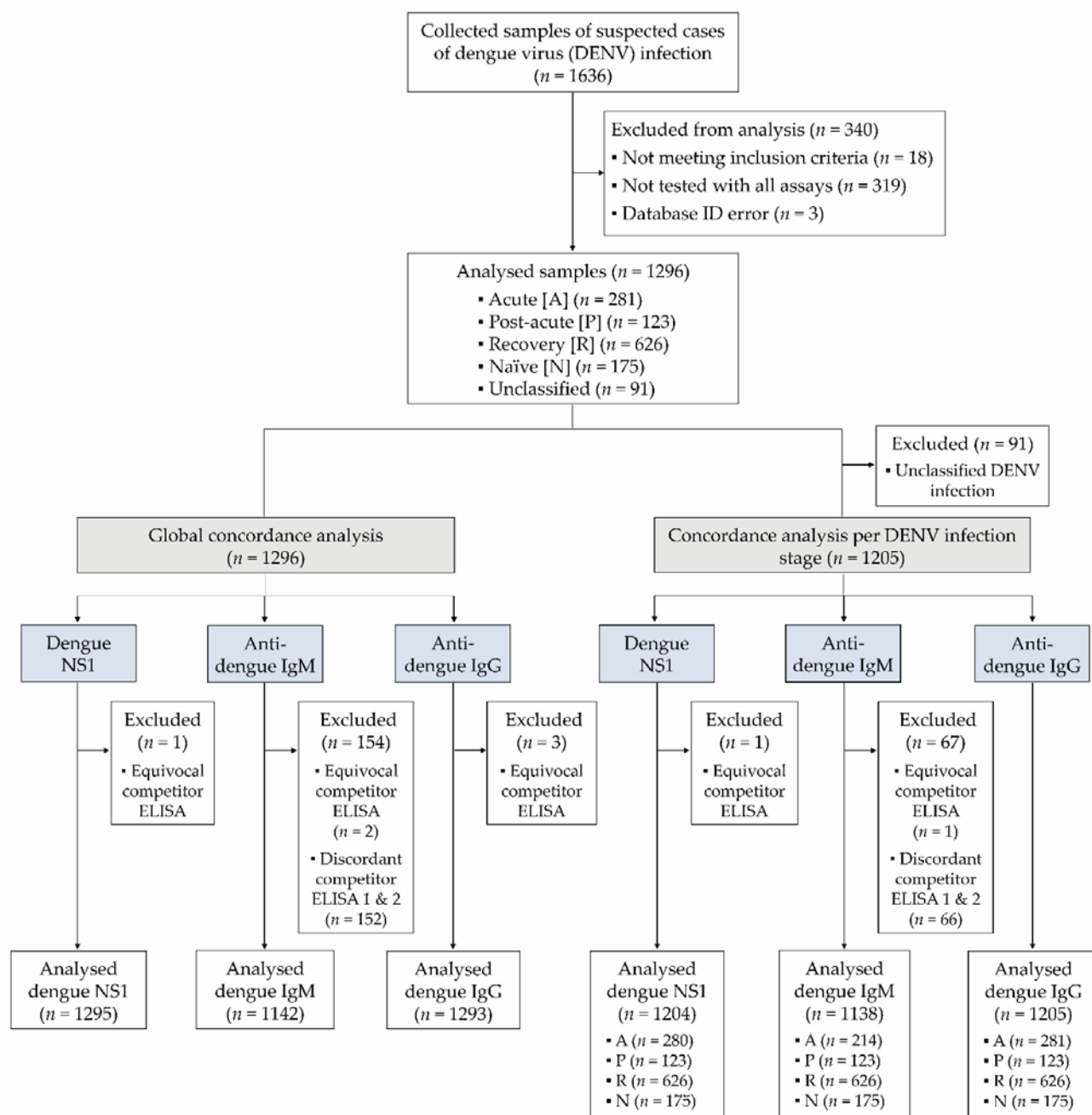


Figure 1. Study Flow diagram. A total of 1636 samples of suspected DENV infection were collected, of which 1296 eligible samples tested with all assays (competitor ELISA, VIDAS® and PCR) were included in the analysis. Concordance analyses were conducted in the total population ($n = 1296$) and according to the DENV infection stages defined in Table 3 ($n = 1205$). An additional analysis on samples common to all immunoassays ($n = 1138$) is shown in Figure S2 and Table S5.

2.3. VIDAS® Assays

The VIDAS® DENGUE NS1 Ag (DEAG; 423077), VIDAS® Anti-DENGUE IgM (DENM; 423078) and VIDAS® Anti-DENGUE IgG (DENG; 423079) assays (bioMérieux SA, Marcy-l'Étoile, France) are automated qualitative two-step immunoassays developed for VIDAS® instruments [24]. The VIDAS® DENGUE NS1 Ag assay detects the dengue NS1 antigen of the four DENV serotypes. The VIDAS® Anti-DENGUE IgM and IgG assays detect IgM and IgG antibodies, respectively, recognising antigens of the four DENV serotypes, owing to the use of a recombinant tetravalent EDIII2 protein composed of the antigenic DENV-specific envelope domain III of the four DENV serotypes [24,27]. The three VIDAS® dengue assays were performed and interpreted according to the instructions for use, as previously described [24]. A test was interpreted as negative when the index value (i) was < 1.0 and positive when $i \geq 1.0$. VIDAS® assays do not have equivocal test results.

161

162

163

164

165

166

167

168

169

170

171

172

173

174

175

2.4. Competitor Assays

Competitor ELISA (Table 2) were conducted and interpreted according to the manufacturers' recommendations. NS1 ELISA (FOCUS, InBios), IgM ELISA (Panbio) and IgG ELISA (Panbio) were interpreted as negative for result values (index or immune status ratio [ISR]) < 0.9, positive for values > 1.1 and equivocal for 0.9–1.1 result values. IgM ELISA (InBios) was interpreted as negative for $ISR \leq 1.65$, positive for $ISR \geq 2.84$ and equivocal for 1.65–2.84 ISR values. While one NS1 ELISA (either FOCUS EL1510, Rev. C or InBios DNS1-1, version 900228-01, both considered equivalent according to their respective package insert) and one IgG ELISA (Panbio) were used as reference for the comparative analysis, both IgM ELISA (Panbio and InBios) were performed and considered for the competitor test evaluation. Thus, the competitor IgM ELISA was interpreted as negative when both IgM ELISA (Panbio and InBios) were negative, positive when both IgM ELISA were positive and undetermined when the Panbio and InBios IgM ELISA were discordant or equivocal (Table 3). Samples with undetermined and equivocal competitor ELISA test results for a particular marker were excluded from the concordance analysis for that marker (Figure 1).

2.5. Precision Experiments

Assay precision was evaluated according to the Clinical and Laboratory Standards Institute (CLSI) EP05-A3 guideline [28], using characterised negative and positive (native or contrived) human sera that were aliquoted and had undergone one freeze-thaw cycle. Precision experiments were conducted at the Clinical Affairs Laboratory, bioMérieux (Marcy l'Etoile, France). Within-run precision (repeatability) and within-laboratory precision (between-lot reproducibility) of the VIDAS® Dengue NS1 Ag, Anti-IgM and Anti-IgG assays was determined using three samples each: one (high) negative and two (low and moderate) positive. Samples were run in duplicate on one VIDAS® instrument, twice a day over 10 days (with an instrument calibration every second day), using two assay lots, thus generating 80 measurement values per sample (240 measurement values per VIDAS® Dengue assay). A visual data integrity check was performed to identify possible outliers. Visually discordant results were confirmed to be statistical outliers using the Generalized Extreme Studentized Deviate (ESD) test with a 1% α risk. In case of confirmed outlier, the test was repeated, and the valid result was used for precision calculation only if a definite root cause was identified. Variance was expressed as standard deviation (SD) and coefficient of variation (CV).

2.6. Cross-reactivity Experiments

Cross-reactivity experiments were performed at the Clinical Affairs Laboratory, bioMérieux (Marcy l'Etoile, France) using either native samples from patients with other potentially interfering infections (i.e., tested positive with the respective pathogen-specific antigen, IgM or IgG assay) or contrived samples. Contrived samples were generated for evaluating cross-reactivity with the VIDAS® Dengue NS1 Ag assay, by spiking defined amounts (10, 25, 50 ng/ml final concentration) of commercially available recombinant or inactivated native antigens (The Native Antigen Company, Oxford, UK; Meridian Bioscience, Cincinnati, Ohio, USA) into samples tested negative with the competitor NS1 ELISA (InBios DENV Detect™ NS1 ELISA or FOCUS DENGUE NS1 Antigen DxSelect™). The dengue-negative status of all samples was determined using the respective competitor ELISA: NS1 ELISA for cross-reactivity with VIDAS® Dengue NS1 Ag, Panbio Dengue IgM ELISA for cross-reactivity with VIDAS® Anti-Dengue IgM, and Panbio Dengue IgG ELISA for cross-reactivity with VIDAS® Anti-Dengue IgG. Cross-reactivities were tested in singlicate using three lot each of the VIDAS® Dengue NS1 Ag, Anti-Dengue IgM and Anti-Dengue IgG assays, on three instruments of the VIDAS® family. In case of a positive test result, the assay was repeated in duplicate on one VIDAS® instrument. A total of 68, 259 and 167 samples with other potentially interfering infections were tested on the VIDAS® Dengue NS1 Ag, VIDAS® Anti-Dengue IgM, and VIDAS® Anti-Dengue IgG assays, respectively.

2.7. Statistical Analyses

Assay precision was assessed in adherence to the CLSI EP05-A3 guideline [28] by a component-of-variance analysis for nested design (Restricted Maximum Likelihood) using the SAS Enterprise Guide 7.12 software.

Concordance analyses were conducted between the VIDAS® assays and competitor ELISA used as comparative method. Accordingly, the terms "positive percent agreement" (PPA) and "negative percent agreement" (NPA) were used instead of "sensitivity" and "specificity", respectively. Concordance analyses (PPA, NPA and overall percent agreement) were performed in adherence to the CLSI EP12-A2 guideline [29]. The 95% confidence intervals (95% CI) were computed, either as Wilson Score Confidence Interval if the percentage agreement was in the range]5%, 95%[or as Exact Binomial Confidence Interval otherwise, using the SAS Enterprise Guide 7.12 software.

Positive agreement between the dengue NS1 assays (whether VIDAS® or competitor ELISA) and RT-PCR, corresponding to assay sensitivity relative to RT-PCR set as gold standard, was also evaluated, and the respective 95% CI

were computed as above. The sensitivity of both DENV NS1 assays were compared using a McNemar test as well as using 95% CI of the differences of these two sensitivity values; if 0 belonged to this 95% CI then both sensitivity values were not significantly different.

VIDAS® dengue index values were displayed as Tukey box plots, in the global population and according to the DENV infection stage, using GraphPad Prism 5.04 (GraphPad Software, San Diego, CA, USA).

3. Results

3.1. Patients' Characteristics

Out of 1636 patients with suspected DENV infection recruited at multiple dengue-endemic regions worldwide, 1296 eligible and tested with all assays (VIDAS® assays, competitor ELISA and RT-PCR) were included in the analysis (Figure 1). 1205/1296 (93.0%) samples were assigned a DENV infection stage (Table 4) based on the test results of RT-PCR and the competitor ELISA (Table 3) and were included in the analysis per DENV infection stage (Figure 1).

Between 392 and 480 samples were tested at each of the three testing sites (Table 4). Included patients were mainly adults (1258/1296 [97.1%] ≥ 18 years-old), with a median age of 32 years, and 57.2% were female (Table 4). Among the 154 patients with a positive dengue-specific RT-PCR test result, most were of the DENV-1 (74/154 [48.0%]) and DENV-2 (72/154 [46.8%]) serotype (Table 4). The distribution of patients according to the time post symptom onset at inclusion is shown for the global population (Table 4) and for each DENV infection stage (Table S1). As expected, most (258/281 [91.8%]) acute samples (NS1 ELISA- and/or RT-PCR-positive) had a documented time from symptom onset of 0–8 days and most (101/123 [82.1%]) post-acute samples (NS1 ELISA- and RT-PCR-negative, IgM and IgG ELISA-positive) of 6–8 days (Table S1). The observation that most (546/626 [87.2%]) recovery samples (NS1 ELISA- and RT-PCR-negative, IgM ELISA-negative, IgG ELISA-positive) and most (160/175 [91.4%]) naïve samples (negative for RT-PCR and all three dengue ELISA) were documented with an early time from symptom onset (0–8 days; Table S1) indicate that these patients were likely in an acute or post-acute phase for an infection unrelated to DENV.

Table 4. Patients' characteristics.

Study population, <i>N</i> (%)	1296 (100.0%)
Study population according to the testing site, <i>N</i> (%)	
Site 1 (Burkina Faso; sample collection and testing)	480 (37.0%)
Site 2 (Brazil; sample collection and testing)	392 (30.3%)
Site 3 (France; externally acquired sample testing)	424 (32.7%)
Age in years, median (range)	32.0 (5–88)
Sex, <i>N</i> (%)	
Female	741 (57.2%)
Male	555 (42.8%)
RT-PCR-positive samples, <i>N</i> (%)	154 (11.9%)
Serotype distribution among RT-PCR-positive samples, <i>N</i> (%)	
DENV-1	74/154 (48.0%)
DENV-2	72/154 (46.8%)
DENV-3	6/154 (3.9%)
DENV-4	2/154 (1.3%)
Sample distribution according to time from symptom onset, <i>N</i> (%)	
0 – 3 days	477 (36.8%)
4 – 5 days	228 (17.6%)
6 – 8 days	456 (35.2%)
9 – 15 days	78 (6.0%)
16 days – 1 month	34 (2.6%)
> 1 month	16 (1.2%)

Unknown	7 (0.6%)
DENV infection stage ¹ , N (%)	
Acute	281 (21.7%)
Post-Acute	123 (9.5%)
Recovery	626 (48.3%)
Näive	175 (13.5%)
Unclassified	91 (7.0%)

¹ According to the RT-PCR- and competitor ELISA-based algorithm (Table 3).

3.2. VIDAS® Dengue Test Result Description

Index distribution of the VIDAS® Dengue NS1 Ag, Anti-dengue IgM and Anti-dengue IgG assays is shown in Figure S1, and the respective index medians and interquartile ranges are presented in Table S2. In line with the ELISA-based infection classification (Table 3), higher VIDAS® Dengue NS1 Ag index values were observed in acute samples (Figure S1). VIDAS® Dengue NS1 Ag index values were also higher when considering the samples collected within the first five days post symptom onset (D0-5) compared to the whole acute category. Similarly, VIDAS® Anti-dengue IgM index values were highest in acute and post-acute samples, and VIDAS® Anti-dengue IgG index values were highest in acute, post-acute and recovery samples (Figure S1).

In agreement with these quantitative test results, evaluation of the qualitative VIDAS® Dengue test results showed a high proportion (80.4%) of positive VIDAS® Dengue NS1 Ag tests in acute samples within the first five days after symptom onset (D0-5), and a moderate to high proportion of positive VIDAS® Anti-dengue IgM and Anti-dengue IgG tests in post-acute samples (74.8% and 80.5%, respectively) (Table S3). Interestingly, the proportion of positive VIDAS® NS1 and/or IgM combined tests (NS1/IgM) raised to 86.5% in D0-5 acute samples and that of positive VIDAS® IgM and/or IgG combined tests (IgM/IgG) raised to 91.9% in post-acute samples (Table S3).

3.3. Analytical Performance of the VIDAS® Dengue Assays

3.3.1. Assay Precision

Assay precision of the three VIDAS® Dengue NS1 Ag, Anti-dengue IgM and Anti-dengue IgG assays was evaluated on negative and positive samples. The coefficient of variation (CV) did not exceed 7.5% for repeatability (within-run precision) and 10.7% for within-laboratory (between-lot) precision, across the three VIDAS® assays (Table 5).

Table 5. Precision of the VIDAS® Dengue NS1, IgM and IgG assays.

VIDAS® dengue assay	Sample	Total number of measurements	Mean index	Repeatability (within-run precision)		Within-laboratory precision ²	
				SD	CV (%)	SD	CV (%)
NS1	A (negative, high)	79 ¹	0.62	0.05	7.5	0.05	8.2
	B (positive, low)	80	1.26	0.06	5.1	0.07	5.4
	C (positive, moderate)	80	1.71	0.07	4.1	0.08	4.9
IgM	A (negative, high)	80	0.82	0.02	3.0	0.09	10.7
	B (positive, low)	80	1.16	0.03	2.7	0.09	8.1
	C (positive, moderate)	80	1.56	0.03	1.8	0.11	7.2
IgG	A (negative, high)	80	0.73	0.03	4.4	0.04	5.8
	B (positive, low)	80	1.28	0.05	4.1	0.07	5.7
	C (positive, moderate)	80	1.44	0.07	4.5	0.09	6.4

¹ An outlier was confirmed by a Generalized Extreme Studentized Deviate (ESD) test ($\alpha = 1\%$) and excluded from the precision calculation; ² Between-lot reproducibility. Abbreviations: SD, standard deviation; CV, coefficient of variation.

3.3.2. Assay Cross-reactivity

Analytical specificity of the three VIDAS® Dengue assays was evaluated using samples from patients with other proven infections and positive for the respective marker (pathogen-specific antigen, IgM or IgG) or using samples spiked-in with recombinant or inactivated pathogen-specific antigen. Samples were first confirmed to be negative with the respective dengue ELISA reference test. Cross-reactivity was measured as the proportion of positive VIDAS® Dengue NS1, IgM and IgG assays (Table 6).

Table 6. Cross-reactivity of human contrived samples or native samples from patients with other infections potentially interfering with the VIDAS® dengue NS1, IgM and IgG assays.

Potentially interfering infections	Proportion of cross-reactions with VIDAS®		
	NS1	IgM	IgG
Herpes simplex virus (HSV1/2)	0/6 ¹	2/13	3/14
Varicella zoster virus (VZV)	0/3 ¹	4/15	0/10
Cytomegalovirus (CMV)	0/3 ¹	4/17	0/10
Epstein-Barr virus (EBV)	0/3 ¹	3/14	2/15
Influenza virus (IAV/IBV)	nd	2/11	2/10
<i>Borrelia burgdorferi</i>	nd	2/14	nd
<i>Plasmodium falciparum</i>	0/3 ¹	3/10	0/10
Leptospira	nd	3/12	nd
Chikungunya virus (CHIKV)	0/3 ¹	0/13	0/7
West Nile virus (WNV)	0/3 ¹	1/18	2/9
Yellow fever virus (YFV)	0/3 ¹	2/21	0/14
Zika virus (ZIKV)	0/3 ¹	1/14	0/8
Hepatitis A virus (HAV)	nd	1/15	nd
Hepatitis B virus (HBV)	0/10	2/14	0/7
Hepatitis C Virus (HCV)	1/9	3/14	1/14
Parvovirus B19	nd	4/14	0/10
Human immunodeficiency virus (HIV)	nd	1/14	2/9
HIV P24 antigen	0/9	nd	nd
Severe acute respiratory syndrome coronavirus 2 (SARS-CoV-2)	0/10	2/16	1/20
Total (%)	1/68 (1.5%)	40/259 (15.4%)	13/167 (7.8%)

¹ Contrived samples generated using volunteer donor samples tested negative with the competitor NS1 ELISA and spiked-in with 10, 25 or 50 ng/ml recombinant or inactivated native antigens. Abbreviation: nd, not determined

Overall, cross-reactivity with the VIDAS® Dengue NS1 Ag assay was very low (1/68 [1.5%]), with one reactivity with a native sample positive for hepatitis C virus (HCV) antigen and none with other flaviviruses such as West Nile virus, yellow fever virus and Zika virus, and none with severe acute respiratory syndrome coronavirus 2 (SARS-CoV-2) (Table 6). Cross-reactivity with the VIDAS® Anti-dengue IgG assay was higher (13/167 [7.8%]) and involved mainly IgG-positive samples of patients infected with other viruses (HSV, EBV, influenza, HCV, HIV), including the flavivirus West Nile virus (2/9) and the coronavirus SARS-CoV-2 (1/20) (Table 6). Cross-reactivity with the VIDAS® Anti-dengue IgM assay was the highest (40/259 [15.4%]). It involved most pathogens investigated, notably IgM-positive samples of patients infected with other viruses (VZV, CMV, EBV, HCV, parvovirus B19), bacteria (leptospira) and parasites (*Plasmodium falciparum*), and to some extent with the flaviviruses West Nile virus (1/18), yellow fever virus (2/21) and Zika virus (1/14), as well as the coronavirus SARS-CoV-2 (2/16) (Table 6).

3.4. Clinical Performance of the VIDAS® Dengue Assays

3.4.1. Clinical Sensitivity

Quantitative RT-PCR is often used as gold standard for the detection of acute DENV infection [20,24,30]. To evaluate the sensitivity of the VIDAS® Dengue NS1 Ag assay, its positive agreement with DENV-specific RT-PCR set as gold standard was evaluated in acute samples and compared to that of the competitor NS1 ELISA (Table 7). No statistically significant differences were observed between the clinical sensitivity of VIDAS® DENGUE NS1 Ag assay and that of the NS1 ELISA, on all acute samples (McNemar, $p = 0.157$) and on acute samples collected within the first five days post onset of symptoms (D0-5) (McNemar, $p = 0.655$). Sensitivity of the VIDAS® Dengue NS1 Ag assay was higher in the D0-5 acute samples (81/106 [76.4%]) compared to all acute samples, regardless of the time from symptom onset (98/153 [64.1%]) (Table 7).

Table 7. Positive agreement of the VIDAS® and competitor ELISA NS1 antigen assays with RT-PCR.

Reference test	Population	VIDAS® NS1		NS1 ELISA ²	
		n/N ¹	% [95% CI]	n/N ¹	% [95% CI]
RT-PCR	All acute samples	98/153	64.1% [56.2-71.2]	102/153	66.7% [58.9-73.6]
	D0-5 acute samples	81/106	76.4% [67.5-83.5]	82/106	77.4% [68.5-84.3]

¹ n/N is the ratio of the number of samples positive for the respective immunoassays (VIDAS® NS1, NS1 ELISA) to the number of RT-PCR-positive samples. To calculate sensitivity on the same cohort, one sample equivocal with the NS1 ELISA was excluded from the analysis. ² InBios DENV Detect™ NS1 ELISA or FOCUS DENGUE NS1 Antigen DxSelect™. Abbreviations: CI, confidence interval; D0-5, 0-5 days post symptom onset.

3.4.2. Clinical Specificity

To estimate the true-negative rate (specificity) of the three VIDAS® Dengue assays, their negative agreement with the respective competitor ELISA was calculated in the population of naïve patients. Naïve patients are defined as subjects presenting clinical symptoms consistent with a DENV infection (i.e., the intended population of the VIDAS® Dengue assays) but tested negative by RT-PCR and for the three markers (NS1, IgM and IgG) by the competitor ELISA (Table 3). The negative agreement of the VIDAS® Dengue assays with the competitor ELISA was high in the naïve population, with 152/175 (86.9%) for VIDAS® Anti-dengue IgM, 156/175 (89.1%) for VIDAS® Anti-dengue IgG, and 175/175 (100.0%) for VIDAS® Dengue NS1 Ag (Table 8).

Table 8. Negative agreement of the VIDAS® Dengue assays with the competitor ELISA tested on study samples defined as naïve.

Population	VIDAS® NS1		VIDAS® IgM		VIDAS® IgG	
	n/N ¹	% [95% CI]	n/N ¹	% [95% CI]	n/N ¹	% [95% CI]
Naïve samples ²	175/175	100.0% [97.9-100.0]	152/175	86.9% [81.1-91.1]	156/175	89.1% [83.7-92.9]

¹ n/N is the ratio of the number of samples negative for the respective VIDAS® immunoassays (NS1, IgM, IgG) to the number of naïve samples. ² Tested negative by the NS1, IgM and IgG ELISA and by RT-PCR. Abbreviation: CI, confidence interval.

3.4.3. Concordance of DENV Infection Classification

Overall agreement of the DENV infection classification by the VIDAS® Dengue assays with that by the competitor ELISA (as defined in Table 3), is shown in Table 9. Acute classification by the VIDAS® Dengue test results was in strong agreement with the classification by the competitor ELISA, with up to 156/163 (95.7%) concordant classification for the early (D0-5) acute stage (Table 9). Classification of naïve samples was also highly concordant between VIDAS® and competitor ELISA (142/175 [81.1%]) (Table 9). Concordance of post-acute (78/123 [63.4%]) and recovery (430/626 [68.7%]) classifications by VIDAS® and competitor ELISA was moderate (Table 9). Since these stages are defined by IgM and/or IgG test positivity, partial concordance suggests differences in IgM and/or IgG test results between VIDAS® and competitor ELISA. This is supported by the observation that discordant post-acute and recovery classifications were mainly classified in the respective category (i.e., most discordant post-acute were classified as recovery and vice versa by VIDAS®) (Table S4). Concordance of unclassified samples was very low (2/91 [2.2%]; Table 9). This was expected given that equivocal and undetermined test interpretations by the competitor ELISA does not occur with the VIDAS® assays (which are interpreted as either positive or negative).

Table 9. Concordance of the infection stage classification by the VIDAS®-based *vs.* the competitor ELISA-based algorithm

Stage of DENV infection ²	Agreement	
	<i>n/N</i> ¹	% [95% CI]
Acute (all)	249/281	88.6% [84.4-91.8]
Acute (D0-5)	156/163	95.7% [91.4-98.3]
Post-Acute	78/123	63.4% [54.6-71.4]
Recovery	430/626	68.7% [65.0-72.2]
Naïve	142/175	81.1% [74.7-86.2]
Unclassified	2/91	2.2% [0.3-7.7]

¹ *n/N* is the ratio of the number of samples whose classification using the defined rules (Table 3) by the VIDAS® assays is concordant with that by the competitor ELISA, to the number of samples classified by the competitor ELISA. ² According to the RT-PCR- and competitor ELISA-based algorithm (Table 3). Abbreviations: CI, confidence interval; D0-5, 0-5 days post symptom onset.

3.4.4. Assay Concordance in the Total Study Population and per DENV Infection Stage

We next evaluated the positive (PPA) and negative (NPA) percent agreement of the three VIDAS® dengue assays with the respective competitor ELISA (Table 10).

The PPA (95% CI) of the VIDAS® Dengue NS1 Ag assay was 83.4% (78.0-87.7) in all acute samples, reaching 92.8% (87.2-96.0) in the D0-5 acute population (Table 10). The NPA (95% CI) of the VIDAS® Dengue NS1 Ag assay was 99.2% (98.5-99.7) in the total population, ranging from 91.7% (74.2-97.7) in D0-5 acute to 100.0% (97.0-100.0) in post-acute samples (Table 10).

The PPA (95% CI) of the VIDAS® Anti-dengue IgM assay was 80.1% (74.9-84.4) in the total population, ranging from 74.8% (66.5-81.6) in post-acute to 87.8% (78.5-93.5) in D0-5 acute samples. The NPA (95% CI) of the VIDAS® Anti-dengue IgM assay was 78.7% (75.8-81.2) in the total population, ranging from 75.6% (61.3-85.8) in D0-5 acute samples to 79.2% (68.4-86.9) in acute samples (Table 10).

The PPA (95% CI) of the VIDAS® Anti-dengue IgG assay was 85.8% (83.6-87.7) in the total population, ranging from 73.9% (68.2-78.8) in acute to 90.6% (88.0-92.6) in recovery samples. The NPA (95% CI) of the VIDAS® Anti-dengue IgG assay was 86.3% (80.8-90.4) in the total population, with a minimum of 40.0% (16.8-68.7) in D0-5 acute samples (Table 10).

Concordance analyses based on a cohort common to the three VIDAS® dengue assays (Figure S2) yielded comparable results (Table S5).

Table 10. Concordance of the VIDAS® dengue assays with the respective competitor ELISA, in the global population and per stage of DENV infection.

VIDAS® dengue assay	Population	Positive Agreement		Negative Agreement		Overall Agreement	
		<i>n/N</i> ¹	% [95% CI]	<i>n/N</i> ¹	% [95% CI]	<i>n/N</i> ¹	% [95% CI]
NS1	Total	191/229	83.4% [78.0-87.7]	1058/1066	99.2% [98.5-99.7]	1249/1295	96.4% [95.3-97.4]
	Acute (all)	191/229	83.4% [78.0-87.7]	49/51	96.1% [86.5-99.5]	240/280	85.7% [81.1-89.3]
	Acute (D0-5)	128/138	92.8% [87.2-96.0]	22/24	91.7% [74.2-97.7]	150/162	92.6% [87.5-95.7]
	Post-Acute	N/A	-	123/123	100.0% [97.0-100.0]	N/A	-
	Recovery	N/A	-	621/626	99.2% [98.1-99.7]	N/A	-
IgM	Total	213/266	80.1% [74.9-84.4]	689/876	78.7% [75.8-81.2]	902/1142	79.0% [76.5-81.2]
	Acute (all)	120/142	84.5% [77.7-89.5]	57/72	79.2% [68.4-86.9]	177/214	82.7% [77.1-87.2]
	Acute (D0-5)	65/74	87.8% [78.5-93.5]	34/45	75.6% [61.3-85.8]	99/119	83.2% [75.5-88.8]
	Post-Acute	92/123	74.8% [66.5-81.6]	N/A	-	N/A	-
	Recovery	N/A	-	477/626	76.2% [72.7-79.4]	N/A	-
IgG	Total	940/1096	85.8% [83.6-87.7]	170/197	86.3% [80.8-90.4]	1110/1293	85.8% [83.8-87.6]
	Acute (all)	195/264	73.9% [68.2-78.8]	10/17	58.8% [36.0-78.4]	205/281	73.0% [67.5-77.8]
	Acute (D0-5)	129/153	84.3% [77.7-89.2]	4/10	40.0% [16.8-68.7]	133/163	81.6% [74.9-86.8]
	Post-Acute	99/123	80.5% [72.6-86.5]	N/A	-	N/A	-
	Recovery	567/626	90.6% [88.0-92.6]	N/A	-	N/A	-

¹ n/N is the ratio of the number of samples for which VIDAS® assays are in agreement (positive, negative and overall) with the competitor ELISA (reference test) to the number of samples tested either positive or negative (and overall) with the competitor ELISA. Abbreviations: CI, confidence interval; D0-5, 0-5 days post symptom-onset; N/A, not applicable.

3.4.5. Positive Agreement of Combined NS1/IgM and IgM/IgG Tests

Combining NS1, IgM and IgG test results is known to improve both sensitivity and specificity of DENV infection diagnosis, especially when patients present at different time points after symptom onset [5,9,10,13,24]. Thus, we evaluated the positive agreement of combined VIDAS® NS1/IgM and IgM/IgG test results in the total population and at relevant infection stages, i.e., early (acute) stage for NS1/IgM and later (post-acute) stage for IgM/IgG (Table 11).

PPA (95% CI) of combined NS1/IgM in the total population was 87.3% (83.5-90.3) (Table 11) *vs.* 83.4% (78.0-87.7) for NS1 and 80.1% (74.9-84.4) for IgM (Table 10). PPA (95% CI) of combined NS1/IgM in acute samples was 93.7% (89.9-96.1), reaching 96.4% (91.8-98.8) in D0-5 acute samples (Table 11) (*vs.* 92.8% [87.2-96.0] for NS1 and 87.8% [78.5-93.5] for IgM; Table 10).

PPA (95% CI) of combined IgM/IgG in the total population was 91.9% (90.1-93.4) (Table 11) *vs.* 80.1% (74.9-84.4) for IgM and 85.8% (83.6-87.7) for IgG (Table 10). The PPA (95% CI) of combined IgM/IgG in post-acute samples was 91.9% (85.7-95.5) (Table 11) *vs.* 74.8% (66.5-81.6) for IgM and 80.5% (72.6-86.5) for IgG (Table 10).

Table 11. Positive agreement of combined NS1/IgM and IgM/IgG VIDAS® dengue assays with the respective competitor ELISA, in the total, acute (NS1/IgM) and post-acute (IgM/IgG) stage of DENV infection.

VIDAS® dengue assay	Population	Positive Agreement	
		n/N ¹	% [95% CI]
NS1/IgM ²	Total	316/362	87.3% [83.5-90.3]
	Total (D0-5)	145/152	95.4% [90.7-98.1]
	Acute (all)	223/238	93.7% [89.9-96.1]
	Acute (D0-5)	134/139	96.4% [91.8-98.8]
IgM/IgG ³	Total	1011/1100	91.9% [90.1-93.4]
	Post-Acute	113/123	91.9% [85.7-95.5]

¹ n/N is the ratio of the number of samples positive for the indicated combined VIDAS® Dengue assays (NS1- and/or IgM-positive; IgM- and/or IgG-positive) to the number of samples positive for the combined competitor ELISA. ² PPA of VIDAS® NS1 and/or IgM *vs.* competitor NS1 and/or IgM ELISA; ³ PPA of VIDAS® IgM and/or IgG *vs.* competitor IgM and/or IgG ELISA. Abbreviations: CI, confidence interval; D0-5, 0-5 days post symptom-onset.

4. Discussion

This multicenter study evaluated the diagnostic performance of three VIDAS® dengue immunoassays detecting DENV NS1 antigen and Anti-DENV IgM and IgG antibodies, in comparison with commercial competitor ELISA. This study is a follow-up of the recent performance evaluation study conducted in 91 Lao patients with acute dengue infection, using the respective VIDAS® dengue prototype assays [24]. A major strength of this study is the inclusion of a large number of samples ($n = 1296$) covering most dengue-endemic regions around the world, including Asia (India, Vietnam, The Philippines), Latin America (Brazil, Peru, Honduras, Dominican Republic) and Africa (Burkina Faso) [2,3].

The three VIDAS® dengue assays showed high within-run and within-laboratory precision (CV < 11.0%). The VIDAS® DENGUE NS1 Ag assay showed very low cross-reactivity (1.5%) with samples positive for other infection-specific antigens. The VIDAS® Anti-DENGUE IgM and IgG assays presented higher cross-reactivity (15.4% and 7.8%, respectively) with samples positive for IgM or IgG directed against other pathogen-specific antigens, as previously described for immunoassays [5,6,16,18,22,31–35]. These included cross-reactions with antibodies directed against other flaviviruses (4/53 [7.5%] for IgM and 2/31 [6.5%] for IgG). These cross-reactivity rates were however in range with or lower than those reported for other flavivirus IgM and IgG assays [33], including some of the competitor ELISA used in this study. Notably, cross-reactivity of the VIDAS® Anti-DENGUE IgM and IgG assays with West Nile Virus (WNV)-positive samples was lower than that reported by the competitor IgM and IgG ELISA manufacturers (1/18 [5.6%] for VIDAS® Anti-DENGUE IgM *vs.* 2/10 [20.0%] and 12/24 [50.0%] for IgM ELISA; 2/9 [22.2%] for VIDAS® Anti-DENGUE IgG *vs.* 2/5 [40.0%] for IgG ELISA). Cross-reactivity with samples from SARS-CoV-2-infected patients (2/16 [12.5%] for IgM and 1/20 [5.0%] for IgG) was also observed. Such cross-reactions were expected, in line with the recent demonstration of shared antigenic similarity between DENV and SARS-CoV-2, resulting in cross-reactivity of the antibody response to both viruses [36–43]. Cross-reactivity of antibodies against DENV and SARS-CoV-2 was shown to be

especially high using rapid diagnostic tests (RDT), as opposed to ELISA [36,38–43]. This might explain the relatively low cross-reactivity rates with SARS-CoV-2 samples observed in this study using the VIDAS® Anti-DENV IgM and IgG assays.

Nevertheless, such antigenic similarity and cross-reactivity of immune responses of DENV and SARS-CoV-2 raise new diagnostic challenges in DENV-endemic regions in this time of COVID-19 pandemics [37,41,44–46]. Indeed, the impact of antibody cross-reactivity and/or of co-infection with DENV and SARS-CoV-2 on misdiagnosis but also on the immune response of patients and consequently on the outcome of immunoassays, remains unexplored. Given the partial overlap of sample collection with the COVID-19 pandemics in our study, and without documented information on possible co-infections with SARS-CoV-2, the results presented here should be interpreted with caution, as a possible impact of the COVID-19 pandemics cannot be excluded. Future studies should specifically explore this question.

Clinical performance of the VIDAS® Dengue assays was assessed by measuring the sensitivity of the VIDAS® DENGUE NS1 Ag assay (positive agreement with RT-PCR set as gold standard), the specificity of the three VIDAS® Dengue assays (negative agreement with competitor ELISA set as reference standard in the naïve population), and by evaluating assay concordance (positive and negative agreement with competitor ELISA). Sensitivity of the VIDAS® DENGUE NS1 Ag assay in the D0-5 acute population (76.4%) was similar to that observed in the adult Lao population (79.5%) at a comparable time from symptom onset (median time of 4.5 days) [24]. Specificity of the three VIDAS® Dengue assays in the intended population (i.e., patients with suspected DENV infection but classified as naïve) was also comparable to that measured in an adult healthy population using the three VIDAS® Dengue prototypes (86.9–100.0% vs. 96.1–100.0%, respectively) [24].

Overall, concordance analyses revealed a good agreement of the VIDAS® Dengue assays with competitor ELISA. As to DENV infection classification, the strong agreement (95.7%) of D0-5 acute stage classification by VIDAS® Dengue assays is in line with the high PPA of the VIDAS® DENGUE NS1 Ag assay in the D0-5 acute population (92.8%) and the comparable sensitivity of the VIDAS® DENGUE NS1 Ag and competitor NS1 ELISA (76.4% vs. 77.4%) toward RT-PCR. The NPA of the VIDAS® DENGUE NS1 Ag assay was also very high, at all DENV infection stages (91.7%–100.0%). Of note, in the adult acute Lao population, the PPA of the VIDAS® DENGUE NS1 Ag prototype was slightly higher (98.0%) and the NPA slightly lower (87.5%) than in the current multicenter study [24]. This might be in part due to the difference in sample number between both studies.

On the other hand, the moderate agreement of post-acute (63.4%) and recovery (68.7%) stage classification by VIDAS® Dengue assays is in line with the partial concordance with competitor ELISA of the VIDAS® Anti-DENGUE IgM assay (PPA of 74.8% in post-acute samples, NPA of 76.2% in recovery samples) and to some extent of the VIDAS® Anti-DENGUE IgG assay (PPA of 80.5% in post-acute samples). These results indicate a higher discordance of IgM and/or IgG test results between VIDAS® and competitor ELISA. By contrast, the PPA of the VIDAS® Anti-DENGUE IgG assay was high in the recovery stage population (90.6%), indicating a good performance of the assay to detect late DENV infections.

Assay concordance was further improved in combined NS1/IgM test results at early stages (D0-5) of DENV infection (95.4% PPA in total population, 96.4% in acute population), and in combined IgM/IgG test results later on (91.9% PPA in total and post-acute populations), demonstrating the benefit of combining VIDAS® Dengue immunoassays to improve the sensitivity of diagnosis of DENV infection, as previously reported [5,9,10,13,24].

This study presents several limitations. First, despite the large number of collected samples (392 to 480 per site), heterogeneity between testing sites were observed, notably in the distribution of infection stage, time post symptom onset, and serotype distribution. This precluded subgroup analyses per site. Second, 146/154 (94.8%) samples were of DENV-1 and DENV-2 serotypes. While DENV-1 and DENV-2 serotypes are predominant in most dengue-endemic regions worldwide [4], it is possible that our performance evaluation study is not representative of DENV-3 and DENV-4 serotypes. Given that all four DENV serotypes are known to co-circulate in a spatial and/or temporal manner [47], and that assay performance might be serotype-dependent [6], additional studies should be conducted to confirm assay performance in patients infected with DENV-3 and DENV-4 serotypes. Third, the choice of considering two competitor IgM ELISA as comparator to the VIDAS® Anti-DENGUE IgM assay led to the exclusion of 152 samples from the IgM analysis (because discordant between the two competitor IgM ELISA), which might have introduced a bias in the analysis. Since the concordance analysis conducted on the common samples showed comparable performance results, such bias is however unlikely. Fourth, as mentioned above, we cannot exclude an effect of the COVID-19 pandemics (via cross-reactivity and/or co-infection interferences) on the VIDAS® Dengue assay performance evaluation, although the impact might be limited in the context of a concordance analysis (assuming a similar impact on both compared assays). Finally, the use of distinct and non-standardized RT-PCR and serotyping methods at the three testing sites might have introduced a bias in the acute infection stage definition, although this is unlikely given the high sensitivity and specificity (90–100%) of commercial RT-PCR assays [1,5,8,9,13].

5. Conclusions

Altogether, this multicenter study conducted on a large number of samples representative of several dengue-endemic regions demonstrated a strong performance of the VIDAS® DENGUE NS1 Ag assay, either alone or in combination with the VIDAS® Anti-DENGUE IgM assay, notably at the early stage of DENV infection (first five days post symptom onset), and a strong performance of the VIDAS® Anti-DENGUE IgG assay at later stages of infection, either alone or in combination with the VIDAS® Anti-DENGUE IgM assay. These results therefore further support the use of the three VIDAS® Dengue immunoassays as a complete solution for the rapid, automated and reliable diagnosis of DENV infection in dengue-endemic regions.

Supplementary Materials: The following are available online at www.mdpi.com/xxx/s1, Figure S1: Index values of the VIDAS® dengue assays, in the total population and per DENV infection stage, Figure S2: Extended study flow diagram describing the concordance analysis on common samples shown in Table S5, Table S1: Distribution of samples according to the time from symptom onset, per DENV infection stage, Table S2: Median and interquartile range (IQR) of VIDAS® dengue assays, in the total population and per DENV infection stage (see Figure S1), Table S3: Percentage of positive test results of combined NS1/IgM and IgM/IgG VIDAS® dengue assays *vs.* single assays, in the acute and post-acute stages of DENV infection, respectively, Table S4: Description of the discordant infection stage classifications between the VIDAS®-based and the competitor ELISA-based algorithm, Table S5: Concordance of the VIDAS® dengue assays with the respective competitor ELISA, in the global population and per stage of DENV infection (common samples; see Figure S2).

Author Contributions: Conceptualization, M.T., S.D. and M.L.N.; methodology, L.B. and L.D.; software, L.D.; validation, M.T., S.D. and M.L.N.; formal analysis, L.B.; investigation, A.F.V., A.K., T.M.I.L.S., B.H.G.A.M., A.C., A.C.S. and F.S.; resources, A.K., C.F.E., A.C., A.C.S. and F.S.; data curation, L.D.; writing—review and editing, M.T., L.B., S.D., A.F.V. and M.L.N.; supervision, S.D. and M.L.N.; project administration, M.T. All authors have read and agreed to the published version of the manuscript.

Funding: This study was funded by bioMérieux. The APC was funded by bioMérieux.

Institutional Review Board Statement: The study was conducted according to the guidelines of the Declaration of Helsinki, and approved by the respective institutional review boards (Comité d'Éthique pour la Recherche en Santé [CERS], Ministère de la Santé, Ministère de l'Enseignement Supérieur, de la Recherche Scientifique et de l'Innovation, Burkina Faso, No. 2020-4-076, dated 8 April 2020; Ethics Committee for Research on Human Beings of the Faculty of Medicine of São José do Rio Preto, FAMERP, Brazil, No. 4.032.814, dated 18 May 2020 for the prospective collection and No. 02078812.8.0000.5415, dated 27 May 2019 for the retrospective collection).

Informed Consent Statement: Written informed consent was obtained from all subjects involved in the study.

Data Availability Statement: The data presented in this study are available within the article and supplementary material.

Acknowledgments: The authors are grateful to Agnès Foussadier (bioMérieux) for her scientific contribution, Françoise Gay-Andrieu (bioMérieux) for her medical advisory support, Nafissatou Ilboudo, Fatoumata Maïga, Zoumana Bado, Adéline Sandwidi, Félix Lompo and Yacouba Barro (IRSS) for their contribution in patient enrolment and baseline data collection, and to Jacques simpore (CERBA), Théophile Yonli (CERBA) and Arthur Djibougou (IRSS/Centre MURAZ) for their support in the conduct of the clinical trial. A.F.V. was a postdoctoral fellow of the São Paulo Research Foundation (FAPESP #2018/17647-0) during the time of this research. The authors thank Anne Rasclé of AR Medical Writing (Regensburg, Germany) for providing medical writing support, which was funded by bioMérieux (Marcy L'Etoile, France), in accordance with Good Publication Practice (GPP3) guidelines (<http://www.ismpp.org/gpp3>; accessed 11 February 2022).

Conflicts of Interest: L.B., L.D., F.S. and M.T. are employees of bioMérieux. M.L.N. and S.D. received compensation fees from bioMérieux for this study, in the framework of the agreement signed with their employer entity. This study was funded by bioMérieux. The funder was involved in the design and execution of the study, in data interpretation and in writing of the manuscript.

References

1. Harapan, H.; Michie, A.; Sasmono, R.T.; Imrie, A. Dengue: A Minireview. *Viruses* **2020**, *12*, 829, doi:10.3390/v12080829. 514-515
2. Wilder-Smith, A.; Ooi, E.-E.; Horstick, O.; Wills, B. Dengue. *Lancet* **2019**, *393*, 350–363, doi:10.1016/S0140-6736(18)32560-1. 516-517
3. Bhatt, S.; Gething, P.W.; Brady, O.J.; Messina, J.P.; Farlow, A.W.; Moyes, C.L.; Drake, J.M.; Brownstein, J.S.; Hoen, A.G.; Sankoh, O.; et al. The Global Distribution and Burden of Dengue. *Nature* **2013**, *496*, 504–507, doi:10.1038/nature12060. 518-520
4. Cucunawangsih, null; Lugito, N.P.H. Trends of Dengue Disease Epidemiology. *Virology (Auckl)* **2017**, *8*, 1178122X17695836, doi:10.1177/1178122X17695836. 521-522
5. *Dengue: Guidelines for Diagnosis, Treatment, Prevention, and Control*; WHO, Ed.; New edition.; World Health Organization (WHO) and the Special Programme for Research and Training in Tropical Diseases (TDR): Geneva, Switzerland, 2009; ISBN 978-92-4-154787-1. 523-525
6. Raafat, N.; Blacksell, S.D.; Maude, R.J. A Review of Dengue Diagnostics and Implications for Surveillance and Control. *Transactions of The Royal Society of Tropical Medicine and Hygiene* **2019**, *113*, 653–660, doi:10.1093/trstmh/trz068. 526-528
7. Center for Disease Control and Prevention Testing for Dengue Virus | Dengue | CDC Available online: <https://www.cdc.gov/dengue/healthcare-providers/testing/index.html> (accessed on 27 October 2021). 529-530
8. Pan American Health Organization; World Health Organization *Dengue: Guidelines for Patient Care in the Region of the Americas*; 2016; ISBN 978-92-75-31890-4. 531-532
9. Peeling, R.W.; Artsob, H.; Pelegrino, J.L.; Buchy, P.; Cardoso, M.J.; Devi, S.; Enria, D.A.; Farrar, J.; Gubler, D.J.; Guzman, M.G.; et al. Evaluation of Diagnostic Tests: Dengue. *Nat Rev Microbiol* **2010**, *8*, S30-38, doi:10.1038/nrmicro2459. 533-535
10. Blacksell, S.D.; Jarman, R.G.; Gibbons, R.V.; Tanganuchitcharnchai, A.; Mammen, M.P.; Nisalak, A.; Kalayanarooj, S.; Bailey, M.S.; Premaratna, R.; de Silva, H.J.; et al. Comparison of Seven Commercial Antigen and Antibody Enzyme-Linked Immunosorbent Assays for Detection of Acute Dengue Infection. *Clin Vaccine Immunol* **2012**, *19*, 804–810, doi:10.1128/CVI.05717-11. 536-539
11. Blacksell, S.D. Commercial Dengue Rapid Diagnostic Tests for Point-of-Care Application: Recent Evaluations and Future Needs? *J Biomed Biotechnol* **2012**, *2012*, 151967, doi:10.1155/2012/151967. 540-541
12. Blacksell, S.D.; Jarman, R.G.; Bailey, M.S.; Tanganuchitcharnchai, A.; Jenjaroen, K.; Gibbons, R.V.; Paris, D.H.; Premaratna, R.; de Silva, H.J.; Lalloo, D.G.; et al. Evaluation of Six Commercial Point-of-Care Tests for Diagnosis of Acute Dengue Infections: The Need for Combining NS1 Antigen and IgM/IgG Antibody Detection to Achieve Acceptable Levels of Accuracy. *Clin Vaccine Immunol* **2011**, *18*, 2095–2101, doi:10.1128/CVI.05285-11. 542-545
13. Muller, D.A.; Depelseñaire, A.C.I.; Young, P.R. Clinical and Laboratory Diagnosis of Dengue Virus Infection. *J Infect Dis* **2017**, *215*, S89–S95, doi:10.1093/infdis/jiw649. 546-547
14. Fry, S.R.; Meyer, M.; Semple, M.G.; Simmons, C.P.; Sekaran, S.D.; Huang, J.X.; McElnea, C.; Huang, C.-Y.; Valks, A.; Young, P.R.; et al. The Diagnostic Sensitivity of Dengue Rapid Test Assays Is Significantly Enhanced by Using a Combined Antigen and Antibody Testing Approach. *PLoS Negl Trop Dis* **2011**, *5*, e1199, doi:10.1371/journal.pntd.0001199. 548-551
15. Pal, S.; Dauner, A.L.; Valks, A.; Forshey, B.M.; Long, K.C.; Thaisomboonsuk, B.; Sierra, G.; Picos, V.; Talmage, S.; Morrison, A.C.; et al. Multicountry Prospective Clinical Evaluation of Two Enzyme-Linked Immunosorbent Assays and Two Rapid Diagnostic Tests for Diagnosing Dengue Fever. *J Clin Microbiol* **2015**, *53*, 1092–1102, doi:10.1128/JCM.03042-14. 552-555
16. Blessmann, J.; Winkelmann, Y.; Keoviengkhone, L.; Sopraseuth, V.; Kann, S.; Hansen, J.; El Halas, H.; Emmerich, P.; Schmidt-Chanasit, J.; Schmitz, H.; et al. Assessment of Diagnostic and Analytic Performance of the SD Bioline Dengue Duo Test for Dengue Virus (DENV) Infections in an Endemic Area (Savannakhet Province, Lao People's Democratic Republic). *PLoS One* **2020**, *15*, e0230337, doi:10.1371/journal.pone.0230337. 556-559
17. Simonnet, C.; Okandze, A.; Matheus, S.; Djossou, F.; Nacher, M.; Mahamat, A. Prospective Evaluation of the SD BIOLINE Dengue Duo Rapid Test during a Dengue Virus Epidemic. *Eur J Clin Microbiol Infect Dis* **2017**, *36*, 2441–2447, doi:10.1007/s10096-017-3083-8. 560-562
18. Hunsperger, E.A.; Yoksan, S.; Buchy, P.; Nguyen, V.C.; Sekaran, S.D.; Enria, D.A.; Pelegrino, J.L.; Vázquez, S.; Artsob, H.; Drebot, M.; et al. Evaluation of Commercially Available Anti-Dengue Virus Immunoglobulin M Tests. *Emerg Infect Dis* **2009**, *15*, 436–440, doi:10.3201/eid1503.080923. 563-565

19. Pal, S.; Dauner, A.L.; Mitra, I.; Forshey, B.M.; Garcia, P.; Morrison, A.C.; Halsey, E.S.; Kochel, T.J.; Wu, S.-J.L. Evaluation of Dengue NS1 Antigen Rapid Tests and ELISA Kits Using Clinical Samples. *PLoS One* **2014**, *9*, e113411, doi:10.1371/journal.pone.0113411. 566
20. Gaikwad, S.; Sawant, S.S.; Shastri, J.S. Comparison of Nonstructural Protein-1 Antigen Detection by Rapid and Enzyme-Linked Immunosorbent Assay Test and Its Correlation with Polymerase Chain Reaction for Early Diagnosis of Dengue. *J Lab Physicians* **2017**, *9*, 177–181, doi:10.4103/0974-2727.208265. 567
21. Lee, H.; Ryu, J.H.; Park, H.S.; Park, K.H.; Bae, H.; Yun, S.; Choi, A.R.; Cho, S.Y.; Park, C.; Lee, D.G.; et al. Comparison of Six Commercial Diagnostic Tests for the Detection of Dengue Virus Non-Structural-1 Antigen and IgM/IgG Antibodies. *Ann Lab Med* **2019**, *39*, 566–571, doi:10.3343/alm.2019.39.6.566. 568
22. Hunsperger, E.A.; Yoksan, S.; Buchy, P.; Nguyen, V.C.; Sekaran, S.D.; Enria, D.A.; Vazquez, S.; Cartozian, E.; Pelegrino, J.L.; Artsob, H.; et al. Evaluation of Commercially Available Diagnostic Tests for the Detection of Dengue Virus NS1 Antigen and Anti-Dengue Virus IgM Antibody. *PLoS Negl Trop Dis* **2014**, *8*, e3171, doi:10.1371/journal.pntd.0003171. 569
23. Zhang, H.; Li, W.; Wang, J.; Peng, H.; Che, X.; Chen, X.; Zhou, Y. NS1-Based Tests with Diagnostic Utility for Confirming Dengue Infection: A Meta-Analysis. *Int J Infect Dis* **2014**, *26*, 57–66, doi:10.1016/j.ijid.2014.02.002. 570
24. Somlor, S.; Brossault, L.; Grandadam, M. Evaluation of VIDAS® Diagnostic Assay Prototypes Detecting Dengue Virus NS1 Antigen and Anti-Dengue Virus IgM and IgG Antibodies. *Diagnostics (Basel)* **2021**, *11*, 1228, doi:10.3390/diagnostics11071228. 571
25. Colombo, T.E.; Versiani, A.F.; Dutra, K.R.; Rubiato, J.G.D.; Galvão, T.M.; Negri Reis, A.F.; Nogueira, M.L. Performance of CDC Triplex QPCR during a Dengue Outbreak in Brazil. *J Clin Virol* **2019**, *121*, 104208, doi:10.1016/j.jcv.2019.104208. 572
26. Johnson, B.W.; Russell, B.J.; Lanciotti, R.S. Serotype-Specific Detection of Dengue Viruses in a Fourplex Real-Time Reverse Transcriptase PCR Assay. *J Clin Microbiol* **2005**, *43*, 4977–4983, doi:10.1128/JCM.43.10.4977-4983.2005. 573
27. Combe, M.; Lacoux, X.; Martinez, J.; Méjan, O.; Luciani, F.; Daniel, S. Expression, Refolding and Bio-Structural Analysis of a Tetraivalent Recombinant Dengue Envelope Domain III Protein for Serological Diagnosis. *Protein Expr Purif* **2017**, *133*, 57–65, doi:10.1016/j.pep.2017.03.004. 574
28. Clinical & Laboratory Standards Institute EP05-A3: Evaluating Quantitative Measurement Precision, 3rd Edition Available online: <https://clsi.org/standards/products/method-evaluation/documents/ep05/> (accessed on 27 October 2021). 575
29. Clinical & Laboratory Standards Institute EP12-A2: User Protocol for Evaluation of Qualitative Test Performance, 2nd Edition Available online: <https://clsi.org/standards/products/method-evaluation/documents/ep12/> (accessed on 27 October 2021). 576
30. Ambrose, J.H.; Sekaran, S.D.; Azizan, A. Dengue Virus NS1 Protein as a Diagnostic Marker: Commercially Available ELISA and Comparison to QRT-PCR and Serological Diagnostic Assays Currently Used by the State of Florida. *J Trop Med* **2017**, *2017*, 8072491, doi:10.1155/2017/8072491. 577
31. Tate, J.; Ward, G. Interferences in Immunoassay. *Clin Biochem Rev* **2004**, *25*, 105–120. 578
32. Piantadosi, A.; Kanjilal, S. Diagnostic Approach for Arboviral Infections in the United States. *J Clin Microbiol* **2020**, *58*, e01926-19, doi:10.1128/JCM.01926-19. 579
33. Endale, A.; Medhin, G.; Darfiro, K.; Kebede, N.; Legesse, M. Magnitude of Antibody Cross-Reactivity in Medically Important Mosquito-Borne Flaviviruses: A Systematic Review. *Infect Drug Resist* **2021**, *14*, 4291–4299, doi:10.2147/IDR.S336351. 580
34. Souza, N.C.S.E.; Félix, A.C.; de Paula, A.V.; Levi, J.E.; Pannuti, C.S.; Romano, C.M. Evaluation of Serological Cross-Reactivity between Yellow Fever and Other Flaviviruses. *Int J Infect Dis* **2019**, *81*, 4–5, doi:10.1016/j.ijid.2019.01.023. 581
35. Koraka, P.; Zeller, H.; Niedrig, M.; Osterhaus, A.D.M.E.; Groen, J. Reactivity of Serum Samples from Patients with a Flavivirus Infection Measured by Immunofluorescence Assay and ELISA. *Microbes Infect* **2002**, *4*, 1209–1215, doi:10.1016/s1286-4579(02)01647-7. 582
36. Lustig, Y.; Keler, S.; Kolodny, R.; Ben-Tal, N.; Atias-Varon, D.; Shlush, E.; Gerlic, M.; Munitz, A.; Doolman, R.; Asraf, K.; et al. Potential Antigenic Cross-Reactivity between SARS-CoV-2 and Dengue Viruses. *Clinical Infectious Diseases* **2020**, *ciaa1207*, doi:10.1093/cid/ciaa1207. 583
37. Nath, H.; Mallick, A.; Roy, S.; Sukla, S.; Biswas, S. Computational Modelling Supports That Dengue Virus Envelope Antibodies Can Bind to SARS-CoV-2 Receptor Binding Sites: Is Pre-Exposure to Dengue Virus Protective against COVID-19 Severity? *Comput Struct Biotechnol J* **2021**, *19*, 459–466, doi:10.1016/j.csbj.2020.12.037. 584
38. Spinicci, M.; Bartoloni, A.; Mantella, A.; Zammarchi, L.; Rossolini, G.M.; Antonelli, A. Low Risk of Serological Cross-Reactivity between Dengue and COVID-19. *Mem Inst Oswaldo Cruz* **2020**, *115*, e200225, doi:10.1590/0074-02760200225. 585

-
39. Nath, H.; Mallick, A.; Roy, S.; Sukla, S.; Basu, K.; De, A.; Biswas, S. Archived Dengue Serum Samples Produced False-Positive Results in SARS-CoV-2 Lateral Flow-Based Rapid Antibody Tests. *J Med Microbiol* **2021**, *70*, doi:10.1099/jmm.0.001369. 621
622
40. Vanroye, F.; Bossche, D.V. den; Brosius, I.; Tack, B.; Esbroeck, M.V.; Jacobs, J. COVID-19 Antibody Detecting Rapid Diagnostic Tests Show High Cross-Reactivity When Challenged with Pre-Pandemic Malaria, Schistosomiasis and Dengue Samples. *Diagnostics (Basel)* **2021**, *11*, 1163, doi:10.3390/diagnostics11071163. 624
625
626
41. Masyeni, S.; Santoso, M.S.; Widyaningsih, P.D.; Asmara, D.W.; Nainu, F.; Harapan, H.; Sasmono, R.T. Serological Cross-Reaction and Coinfection of Dengue and COVID-19 in Asia: Experience from Indonesia. *Int J Infect Dis* **2021**, *102*, 152–154, doi:10.1016/j.ijid.2020.10.043. 627
628
629
42. Santoso, M.S.; Masyeni, S.; Haryanto, S.; Yohan, B.; Hibberd, M.L.; Sasmono, R.T. Assessment of Dengue and COVID-19 Antibody Rapid Diagnostic Tests Cross-Reactivity in Indonesia. *Viol J* **2021**, *18*, 54, doi:10.1186/s12985-021-01522-2. 630
631
632
43. Khairunisa, S.Q.; Amarullah, I.H.; Churrotin, S.; Fitria, A.L.; Amin, M.; Lusida, M.I.; Soegijanto, S. Potential Misdiagnosis between COVID-19 and Dengue Infection Using Rapid Serological Test. *Infect Dis Rep* **2021**, *13*, 540–551, doi:10.3390/idr13020050. 633
634
635
44. Harapan, H.; Ryan, M.; Yohan, B.; Abidin, R.S.; Nainu, F.; Rakib, A.; Jahan, I.; Emran, T.B.; Ullah, I.; Panta, K.; et al. Covid-19 and Dengue: Double Punches for Dengue-Endemic Countries in Asia. *Rev Med Virol* **2021**, *31*, e2161, doi:10.1002/rmv.2161. 636
637
638
45. Schulte, H.L.; Brito-Sousa, J.D.; Lacerda, M.V.G.; Naves, L.A.; de Gois, E.T.; Fernandes, M.S.; Lima, V.P.; Rassi, C.H.R.E.; de Siracusa, C.C.; Sasaki, L.M.P.; et al. SARS-CoV-2/DENV Co-Infection: A Series of Cases from the Federal District, Midwestern Brazil. *BMC Infect Dis* **2021**, *21*, 727, doi:10.1186/s12879-021-06456-2. 639
640
641
46. Mejía-Parra, J.L.; Aguilar-Martinez, S.; Fernández-Mogollón, J.L.; Luna, C.; Bonilla-Aldana, D.K.; Rodríguez-Morales, A.J.; Díaz-Vélez, C. Characteristics of Patients Coinfected with Severe Acute Respiratory Syndrome Coronavirus 2 and Dengue Virus, Lambayeque, Peru, May-August 2020: A Retrospective Analysis. *Travel Med Infect Dis* **2021**, *43*, 102132, doi:10.1016/j.tmaid.2021.102132. 642
643
644
645
47. Messina, J.P.; Brady, O.J.; Scott, T.W.; Zou, C.; Pigott, D.M.; Duda, K.A.; Bhatt, S.; Katzelnick, L.; Howes, R.E.; Battle, K.E.; et al. Global Spread of Dengue Virus Types: Mapping the 70 Year History. *Trends Microbiol* **2014**, *22*, 138–146, doi:10.1016/j.tim.2013.12.011. 646
647
648
649
650

Supplementary Materials

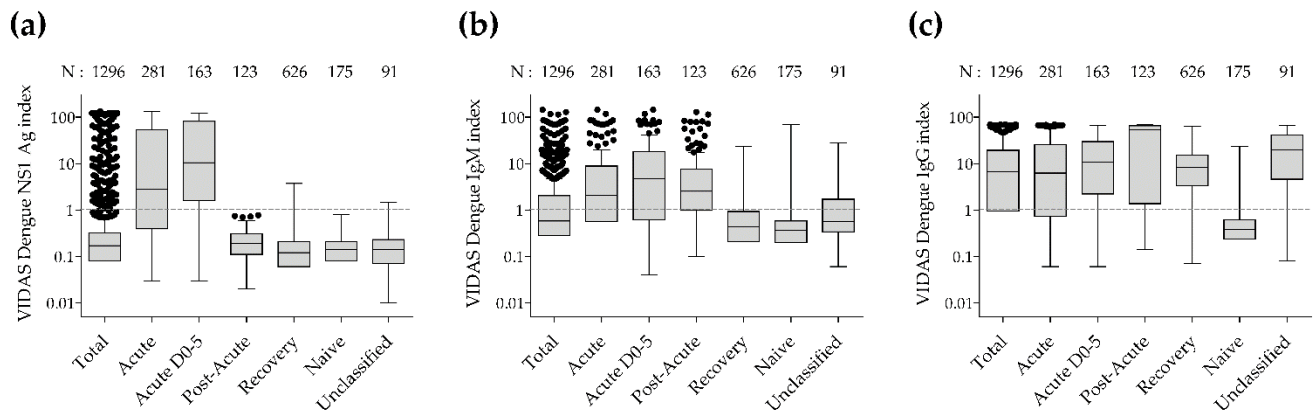


Figure S1. Index values of the VIDAS® dengue assays, in the total population and per DENV infection stage. VIDAS® Dengue NS1 Antigen (a), IgM (b) and IgG (c) assays were performed as described in the Methods section. Index values are depicted as Tukey boxplots in the whole study population (Total) and according to the DENV infection stages (Acute, Acute within 0 to 5 days post symptom onset [D0-5], Post-Acute, Recovery, Naive and Unclassified), as defined in Table 3. The grey dashed line indicates the positivity cutoff ($i = 1.0$). The number of samples (N) per group is shown above each box. Respective median (interquartile range) index values are shown in Table S2.

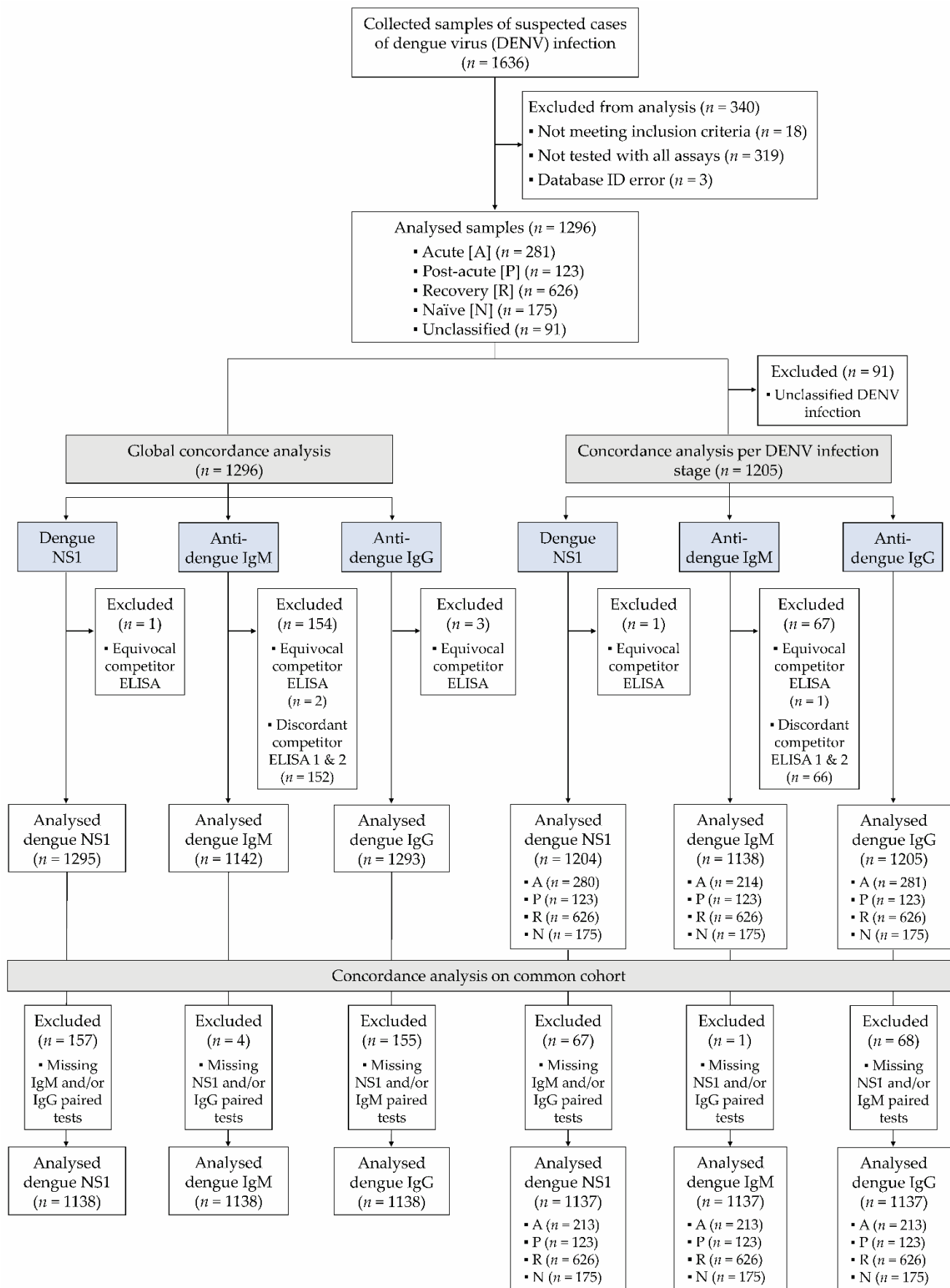


Figure S2. Extended study flow diagram describing the concordance analysis on common samples shown in Table S5.

Table S1. Distribution of samples according to the time from symptom onset, per DENV infection stage.

Days from symptom onset	Stage of DENV infection ¹ , N (%)					Total
	Acute	Post-Acute	Recovery	Naïve	Unclassified	
0 – 3 days	102 (36.3%)	6 (4.9%)	258 (41.2%)	88 (50.3%)	23 (25.3%)	477
4 – 5 days	61 (21.7%)	7 (5.7%)	119 (19.0%)	24 (13.7%)	17 (18.7%)	228
6 – 8 days	95 (33.8%)	101 (82.1%)	169 (27.0%)	48 (27.4%)	43 (47.2%)	456
9 – 15 days	11 (3.9%)	8 (6.5%)	43 (6.9%)	12 (6.9%)	4 (4.4%)	78
16 days – 1 month	7 (2.5%)	0 (0.0%)	23 (3.7%)	2 (1.1%)	2 (2.2%)	34
> 1 month	1 (0.4%)	0 (0.0%)	12 (1.9%)	1 (0.6%)	2 (2.2%)	16
Unknown	4 (1.4%)	1 (0.8%)	2 (0.3%)	0 (0.0%)	0 (0.0%)	7
Total	281	123	626	175	91	1296

¹ As defined in Table 3.

Table S2. Median and interquartile range (IQR) of VIDAS[®] dengue assays, in the total population and per DENV infection stage (see Figure S1).

VIDAS [®] dengue assay	variable	DENV infection stage						
		Total	Acute	Acute D0-5	Post-Acute	Recovery	Naïve	Unclassified
NS1	N	1296	281	163	123	626	175	91
	Median	0.2	2.8	10.5	0.2	0.1	0.1	0.1
	IQR	0.1-0.3	0.4-54.1	1.6-81.1	0.1-0.3	0.1-0.2	0.1-0.2	0.1-0.2
IgM	N	1296	281	163	123	626	175	91
	Median	0.6	2.1	4.7	2.5	0.4	0.4	0.6
	IQR	0.3-2.0	0.6-8.9	0.6-18.0	1.0-7.6	0.2-0.9	0.2-0.6	0.3-1.7
IgG	N	1296	281	163	123	626	175	91
	Median	6.7	6.2	10.7	53.0	8.2	0.4	19.6
	IQR	1.0-19.2	0.7-25.3	2.2-29.7	1.4-65.3	3.4-15.1	0.2-0.6	4.6-41.5

Table S3. Percentage of positive test results of combined NS1/IgM and IgM/IgG VIDAS[®] dengue assays *vs.* single assays, in the acute and post-acute stages of DENV infection, respectively.

Population	VIDAS [®] dengue assay	% positive test results	
		n/N ¹	% [95% CI]
Acute (all)	NS1	194/281	69.0% [63.4-74.2]
	IgM	175/281	62.3% [56.5-67.7]
	NS1/IgM ²	233/281	82.9% [78.1-86.9]
Acute (D0-5)	NS1	131/163	80.4% [73.6-85.7]
	IgM	108/163	66.3% [58.7-73.1]
	NS1/IgM ²	141/163	86.5% [80.4-90.9]
Post-Acute	IgM	92/123	74.8% [66.5-81.6]
	IgG	99/123	80.5% [72.6-86.5]
	IgM/IgG ³	113/123	91.9% [85.7-95.5]

¹ n/N is the ratio of the number of samples positive with the respective VIDAS[®] Dengue assays to the total number of samples in the indicated DENV infection stage. ² Percentage of tests positive for VIDAS[®] NS1 and/or IgM; ³ Percentage of tests positive for VIDAS[®] IgM and/or IgG. Abbreviations: CI, confidence interval; D0-5, 0-5 days post symptom-onset.

Table S4. Description of the discordant infection stage classifications between the VIDAS®-based and the competitor ELISA-based algorithm

Stage of DENV infection ³	Disagreement <i>n/N</i> ¹ (%)	VIDAS®-based classification (<i>n</i>) ²				
		Acute	Post-Acute	Recovery	Naïve	Unclassified
Acute (all)	32/281 (11.4%)	-	18	4	3	7
Acute (D0-5)	7/163 (4.3%)	-	5	1	0	1
Post-Acute	45/123 (36.6%)	0	-	21	10	14
Recovery	196/626 (31.3%)	5	132	-	46	13
Naïve	33/175 (18.9%)	0	9	10	-	14
Unclassified	89/91 (97.8%)	1	31	50	7	-

¹ *n/N* is the ratio of the number of samples whose classification using the defined rules (Table 3) by the VIDAS® assays was discordant with that by the competitor ELISA, to the number of samples classified by the competitor ELISA-based algorithm; ² *n* is the number of discordant samples per stage (according to VIDAS®-based classification). ³ According to the RT-PCR- and competitor ELISA-based algorithm (Table 3).

Table S5. Concordance of the VIDAS® dengue assays with the respective competitor ELISA, in the global population and per stage of DENV infection (common samples; see Figure S2)

VIDAS® dengue assay	Population	Positive Agreement		Negative Agreement		Overall Agreement	
		<i>n/N</i> ¹	% [95% CI]	<i>n/N</i> ¹	% [95% CI]	<i>n/N</i> ¹	% [95% CI]
NS1	Total	135/170	79.4% [72.7-84.8]	963/968	99.5% [98.8-99.8]	1098/1138	96.5% [95.2-97.5]
	Acute (all)	135/170	79.4% [72.7-84.8]	43/43	100.0% [91.8-100.0]	178/213	83.6% [78.0-87.9]
	Acute (D0-5)	89/98	90.8% [83.5-95.1]	20/20	100.0% [83.2-100.0]	109/118	92.4% [86.1-95.9]
	Post-Acute	N/A	-	123/123	100.0% [97.0-100.0]	N/A	-
	Recovery	N/A	-	621/626	99.2% [98.1-99.7]	N/A	-
IgM	Total	213/266	80.1% [74.9-84.4]	686/872	78.7% [75.8-81.3]	899/1138	79.0% [76.5-81.3]
	Acute (all)	120/142	84.5% [77.7-89.5]	57/71	80.3% [69.6-87.9]	177/213	83.1% [77.5-87.5]
	Acute (D0-5)	65/74	87.8% [78.5-93.5]	34/44	77.3% [63.0-87.2]	99/118	83.9% [76.2-89.4]
	Post-Acute	92/123	74.8% [66.5-81.6]	N/A	-	N/A	-
	Recovery	N/A	-	477/626	76.2% [72.7-79.4]	N/A	-
IgG	Total	811/948	85.5% [83.2-87.6]	164/190	86.3% [80.7-90.5]	975/1138	85.7% [83.5-87.6]
	Acute (all)	145/199	72.9% [66.3-78.6]	8/14	57.1% [32.6-78.6]	153/213	71.8% [65.4-77.4]
	Acute (D0-5)	91/110	82.7% [74.6-88.7]	2/8	25.0% [7.1-59.1]	93/118	78.8% [70.6-85.2]
	Post-Acute	99/123	80.5% [72.6-86.5]	N/A	-	N/A	-
	Recovery	567/626	90.6% [88.0-92.6]	N/A	-	N/A	-

¹ *n/N* is the ratio of the number of samples for which VIDAS® assays are in agreement (positive, negative and overall) with the competitor ELISA (reference test) to the number of samples tested either positive or negative (and overall) with the competitor ELISA. Abbreviations: CI, confidence interval; D0-5, 0-5 days post symptom-onset; N/A, not applicable.