

1 **Parapneumonic effusions related to *Streptococcus pneumoniae*: serotype and disease**
2 **severity trends from 2006 to 2018 in Bristol, UK**

3 Catherine Hyams MB PhD, Academic Respiratory Unit and Bristol Vaccine Centre,
4 University of Bristol, Bristol, UK. ORCID: 0000-0003-3923-1773
5 David T Arnold PhD, Academic Respiratory Unit, University of Bristol, Bristol, UK. ORCID
6 0000-0003-3158-7740
7 Robyn Heath, MA. Vaccine and Testing Research Team, Clinical Research Facility, St
8 Michael's Hill, Bristol Royal Infirmary, Bristol, United Kingdom
9 Zahin Amin-Chowdhury MSc. National Infection Service, UKHSA, London, United
10 Kingdom
11 David Hettle MBChB. Microbiology Services Bristol, Bristol Royal Infirmary and North
12 Bristol NHS Trust, Bristol, United Kingdom. ORCID: 0000-0002-7606-986X
13 Gabriella Ruffino MBChB, Academic Respiratory Unit and Bristol Vaccine Centre,
14 University of Bristol, Bristol, UK. ORCID: 0000-0002-1549-9364
15 Paul North BSc, Microbiology Services Bristol, Bristol Royal Infirmary and North Bristol
16 NHS Trust, Bristol, United Kingdom.
17 Charli Grimes BSc, Academic Respiratory Unit and Bristol Vaccine Centre, University of
18 Bristol, Bristol, UK. ORCID: 0000-0002-0171-0704
19 Norman K Fry PhD, National Infection Service, UKHSA, London, United Kingdom.
20 ORCID: 0000-0003-4862-6507
21 Philip Williams PhD, Microbiology Services Bristol, Bristol Royal Infirmary and North
22 Bristol NHS Trust, Bristol, United Kingdom.
23 Robert Challen PhD, Engineering Mathematics, University of Bristol, Bristol, United
24 Kingdom
25 Leon Danon PhD, Engineering Mathematics, University of Bristol, Bristol, United Kingdom
26 O Martin Williams PhD, Microbiology Services Bristol, Bristol Royal Infirmary and North
27 Bristol NHS Trust, Bristol, United Kingdom.
28 Shamez Ladhani PhD, National Infection Service, UKHSA, London, United Kingdom.
29 ORCID: 0000-0002-0856-2476
30 Adam Finn PhD, Bristol Vaccine Centre, University of Bristol, Bristol, UK. ORCID: 0000-
31 0003-1756-5668

32 Nick A Maskell MD, Academic Respiratory Unit, University of Bristol, Bristol, UK. ORCID:
33 0000-0002-1276-6500

34

35

36 **Corresponding address:** Dr Catherine Hyams, MBBS BSc(Hons) PhD MRCP
37 Academic Respiratory Unit, Learning & Research Building,
38 Southmead Hospital, Bristol, BS10 5NB
39 catherine.hyams@bristol.ac.uk

40 **Descriptor:** 9.31 Pleural Diseases/Mesothelioma

41 **Running head:** Pneumococcal related parapneumonic effusions

42 **Keywords:** Streptococcus pneumoniae; Empyema; Pleural disease;
43 bacterial infection; respiratory infection.

44 **Author Contributions:** CH, DA, AF, OMW and NM generated the research questions
45 and analysis plan. CH, RH, DH, GF, DA, PN, PW, ZAC
46 collected data. CH and DH verified the data. CH, RC, DA, RH,
47 AF and NM undertook the data analysis. AF, OMW and NM
48 provided oversight of the research. AF and CH verified the
49 data. All authors contributed to the preparation of the
50 manuscript and its revision for publication and had
51 responsibility for the decision to publish.

52

53 **Funding:** CH was funded by the National Institute for Health Research [NIHR
54 Academic Clinical Fellowship (ACF-2015-25-002). DTA was funded by an
55 NIHR Doctoral Research Fellowship (DRF-2018-11-ST2-065). The views
56 expressed are those of the author(s) and not necessarily those of the NIHR or
57 the Department of Health and Social Care.

58

59 **Declarations:** CH is Principal Investigator of the AvonCAP study which is an investigator-
60 led University of Bristol study funded by Pfizer. AF is a member of the Joint
61 Committee on Vaccination and Immunization (JCVI) and chair of the World
62 Health Organization European Technical Advisory Group of Experts on
63 Immunization (ETAGE) committee. In addition to receiving funding from
64 Pfizer as Chief Investigator of this study, he leads another project investigating
65 transmission of respiratory bacteria in families jointly funded by Pfizer and the

66 Gates Foundation. The other authors have no relevant conflicts of interest to
67 declare.

68 **Word Count:** 3,331

69 **ABSTRACT**

70 **Rationale**

71 *Streptococcus pneumoniae* epidemiology is changing in response to vaccination and some
72 data suggest empyema incidence is increasing. However, differences exist between UK and
73 USA studies. We describe trends in the clinical phenotype of adult pneumococcal pleural
74 infection, including simple parapneumonic effusions (SPE) in the pneumococcal conjugate
75 vaccination (PCV) era.

76 **Objectives:**

77 To determine whether there were differences in pneumococcal disease presentation and
78 severity associated with pleural infection.

79 **Methods**

80 A retrospective cohort study, all adults ≥ 16 years admitted to three large UK hospitals, 2006-
81 2018 with pneumococcal disease. 2477 invasive pneumococcal cases were identified: 459
82 SPE and 100 pleural infection cases. Medical records were reviewed for each clinical
83 episode. Serotype data were obtained from the UK Health Security Agency national reference
84 laboratory.

85 **Results**

86 Incidence increased over time, including non-PCV-serotype disease. PCV7-serotype disease
87 declined following paediatric PCV7 introduction, but the effect of PCV13 was less apparent
88 as disease caused by the additional six serotypes plateaued with serotypes 1 and 3 causing
89 such parapneumonic effusions from 2011 onwards.

90 Patients with pleural infection had a median survival 468 days (95% CI 340-590), versus 286
91 days (95% CI 274-335) in those with SPE. Pleural infection associated with frank pus had

92 lower 90-day mortality than pleural infection without pus (0% versus 29%, $P<0.0001$). 90-
93 day mortality could be predicted by baseline increased RAPID (Renal, Age, Purulence,
94 Infection source, and Dietary factors) score (HR15.01, 95% CI 1.24-40.06, $P=0.049$).

95 **Conclusions**

96 Pneumococcal infection continues to cause severe disease despite the introduction of PCVs.
97 The predominance of serotype 1 and 3 in this adult UK cohort is in keeping with previous
98 studies in paediatric and non-UK studies. Rising non-PCV serotype disease and limited
99 impact of PCV13 on cases caused by serotypes 1 and 3 offset the reductions in adult
100 pneumococcal parapneumonic effusion disease burden observed following introduction of the
101 childhood PCV7 programme.

102 **KEY MESSAGES**

103 **What is already known on this topic**

104 The epidemiology of pneumococcal infection is changing in both adults and children
105 following pneumococcal conjugate vaccine (PCV) introduction, as a result of direct and
106 indirect vaccine effects. Other studies have reported that serotypes 1 and 3 disproportionately
107 cause pneumococcal pleural disease; however, the clinical phenotype of parapneumonic
108 effusions associated with pneumococcal infection in adults following PCV introduction is not
109 well described.

110

111 **What this study adds**

112 In this study which presents the largest cohort of patients with a single-organism pleural
113 infection, we demonstrate an increasing incidence of parapneumonic effusions related to
114 *Streptococcus pneumoniae* in adults, attributable to serotype 1 and 3 disease, despite the
115 introduction of PCV13 in the UK childhood vaccination programme. Interestingly, our data
116 suggest that pneumococcal pleural infection is associated with improved survival up to one-
117 year compared to patients with pneumococcal simple parapneumonic effusions.

118

119 **How this study might affect research, practice or policy**

120 Careful assessment of the need for specialist respiratory and thoracic surgical intervention in
121 the context of increasing incidence of adult parapneumonic effusions related to *Streptococcus*
122 *pneumoniae* will be required, in addition to ongoing monitoring of the effect on serotype
123 distribution and clinical phenotype of current and future vaccines against pneumococcus.

124 **INTRODUCTION**

125 *Streptococcus pneumoniae* remains the leading bacterial cause of community-acquired
126 pneumonia (CAP), despite vaccine deployment. Approximately 15-20% hospitalised
127 pneumococcal CAP cases are associated with a pleural effusion^{1 2} and 6% with empyema^{1 3}.
128 The morbidity and mortality associated with simple parapneumonic effusion (SPE) are higher
129 than with uncomplicated pneumonia⁴. Several USA studies have shown that pneumococcal
130 conjugate vaccine (PCV, a vaccine comprised of pneumococcal polysaccharides conjugated
131 to a non-toxic diphtheria protein) introduction resulted in a significant reduction in both
132 carriage and invasive pneumococcal disease (IPD) due to vaccine serotypes, especially in
133 children^{5 6}. Increasing pneumococcal empyema rates in children have been reported⁷ although
134 the effect of paediatric PCV deployment on adult disease phenotype is debated⁸. Recent
135 evidence suggests that incidence of pneumococcal empyema, especially in adults aged >65
136 years, has increased following paediatric PCV deployment, possibly due to serotype 1 or 3
137 emergence⁹. Thus, vaccine-driven serotype replacement may be leading to changes in
138 pneumococcal disease phenotype and severity.

139

140 A dose of PPV-23 (unconjugated 23-valent polysaccharide vaccine) is offered to all adults
141 ≥65 years in the UK, and ≥2-year-olds with at least one clinical risk factor for pneumococcal
142 disease also receive this vaccine¹⁰. A 7-valent PCV was introduced into the UK childhood
143 vaccination programme in 2006, subsequently replaced in April 2010 with a 13-valent PCV
144 (PCV13) and the schedule was modified in 2020 so that only two vaccine doses are now
145 given (one at 12 weeks of age, followed by a booster at 12-13 months of age). By 2016/17 in
146 the UK, PCV7 serotype pneumococcal disease in children had virtually disappeared and
147 PCV7 disease significantly reduced in adults. In contrast, PCV13 serotype disease has not

148 disappeared, but plateaued, with a remaining residual incidence of 7.97 per 100,000 across all
149 age groups and disease attributable to non-PCV13 serotypes has increased, especially in the
150 elderly¹¹⁻¹³. Evidence from a large pneumococcal pneumonia patient cohort in Nottingham,
151 UK suggests that, aside from age, residential care status and some comorbidities, there are
152 relatively few differences between patients with respiratory infection caused by PCV13 and
153 those with non-PCV13 serotype infections¹⁴.

154

155 Here we present the largest cohort of patients with a single-organism pleural infection,
156 encompassing simple parapneumonic effusion (SPE)¹⁵ and pleural infection (complex
157 parapneumonic effusion (CPE) or empyema)^{3 15} attributable to pneumococcus, in this single-
158 centre observational study covering thirteen years during which PCVs were introduced into
159 the UK paediatric vaccination programme. We sought to determine the incidence of
160 parapneumonic effusions in adults, overall and by vaccine-serotype group. Additionally, we
161 aimed to describe differences in pneumococcal disease presentation and severity associated
162 with pleural infection, given concerns surrounding changing pneumococcal serotype
163 distribution and serotype 1 and 3 pleural infection.

164 **MATERIALS AND METHODS**

165 **Study Subjects**

166 Patients aged ≥ 16 years admitted to all three hospitals providing emergency care in Bristol
167 and Bath (University Hospitals Bristol and Weston, North Bristol and The Royal United
168 Hospital NHS Trusts) between January 2006 and December 2018, with a confirmed
169 microbiological diagnosis of pneumococcal infection were eligible for this study. This study
170 was approved by the Health Research Authority, UK (IRAS 265437).

171

172 **Study Design**

173 A retrospective cohort study at three large NHS hospitals in the UK.

174

175 **Patient and public involvement**

176 There was no patient or public involvement in the undertaking of this study.

177

178 **Methods**

179 Study-eligible cases were identified retrospectively by searching the Laboratory Information
180 Management System (LIMS) database (Clinisys WinPath Enterprise). *S. pneumoniae* was
181 confirmed on culture from sterile-site sampling at a central laboratory using standard
182 microbiological techniques combined with API®-20 Strep (BioMérieux, UK) or MALDI-
183 TOF (matrix-assisted laser desorption/ionisation/time of flight) mass spectrometry (Bruker,
184 UK)¹⁶. A positive pneumococcal urinary-antigen test (BinaxNOW®, Alere, UK) was also
185 considered confirmative of pneumococcal infection. Patients were included if they tested

186 positive on either or both tests. Any patient with pleural fluid which cultured a single-
187 organism which was not pneumococcus was excluded from this cohort; although, multi-
188 organism pleural infection including pneumococcus was included.

189

190 Confirmed cases were linked with the UK Health Security Agency (UKHSA) national
191 reference laboratory to obtain serotype data ¹⁷ which were collected separately from clinical
192 data to avoid any risk of bias in data collection. Pneumococcal serotypes were grouped by
193 PCV (PCV7; PCV13-7 representing the additional 6 serotypes in PCV13; and PCV13) or as
194 non-PCV (Supplementary Data 1).

195

196 Patients with pneumococcal infection and a pleural effusion on radiology were either
197 classified as:

198 (1) pleural infection: if pleural fluid was pus or bacterial culture positive (i.e. an empyema)³;
199 an effusion relating to a current pneumonia episode which necessitated definitive drainage
200 (e.g. thoracic surgery); or, there was an exudative effusion¹⁸ with $\text{pH} \leq 7.2^3$; or,

201 (2) SPE: an exudative effusion not classified as pleural infection in a patient with a clinical
202 and/or radiological diagnosis of pneumonia¹⁵.

203

204 Patients' clinical records were reviewed at each hospital and data, including clinical
205 outcomes, recorded. The vaccination status of each patient was established from
206 electronically linked GP records¹⁶. The CURB65 severity score on admission was calculated
207 for each clinical episode¹⁹. Patients with pleural infection had a RAPID (Renal, Age,

208 Purulence, Infection source, and Dietary factors) score calculated²⁰, which has been validated
209 to stratify adults with pleural infection according to increasing risk of mortality²¹.

210

211 **Study objectives**

212 The primary objective was to determine trends in pneumococcal pleural disease incidence
213 between 2006 and 2020, both overall and by vaccine-serotype groups, in the context of the
214 UK vaccination programme. Secondary objectives included determining if any changes in
215 disease incidence were attributable to emergence of either vaccine-serotype groups or
216 specific serotypes, as well as describing differences in pneumococcal disease presentation
217 and disease severity associated with pleural infection.

218

219 **Analysis**

220 Patient data are reported as medians and interquartile ranges (IQR) for continuous variables,
221 or means and standard deviations where their distribution was confirmed to be normal using
222 the Anderson Darling normality test. Categorical variables are presented as counts and
223 percentages. Baseline characteristics and comorbid risk factors for SPE and pleural infection
224 were compared using Fisher's exact tests for categorical variables, and the two-sample
225 Wilcoxon Rank Sum test for non-parametric continuous variables, or 2 sided student's t-test
226 for parametric continuous variables. Comparisons were not performed where missing data
227 was present. *P*-values are presented unadjusted but the level at which a result was considered
228 significant was reduced in recognition of the fact multiple comparisons were made. Patient
229 survival was assessed at two years (730 days) following hospital admission, with this being
230 the time of right censoring, and a median survival calculated. Time series trends for serotype
231 proportions were estimated using a 5-knot natural spline, fitted to a quasi-binomial model,

232 using a logistic link function in a maximum likelihood estimation framework, The Kaplan–
233 Meier (KM) method and Cox proportional hazard regression model were used for calculation
234 of survival at 30-, 90- and 365-days following first positive pneumococcal microbiological
235 test. Proportional hazard assumptions were tested by visual assessment of the KM survival
236 curve, log(-log) plots and Schoenfeld residuals. Survival differences were analyzed using the
237 log-rank test. Statistical analysis was performed using SPSS, version 28.0 (New York, IBM)
238 or with R v4.0.2. Graphs were generated in GraphPad PRISM, version 9.0.

239 **RESULTS**

240 2657 episodes of pneumococcal infection were identified, of which 2447 were respiratory
241 infections: 1888 pneumonia-only cases, 459 with SPE and 100 cases including pleural
242 infection (Supplementary Data 2). In total, 282/559 (50%) were male with a median age of
243 68y (IQR 50-78) (Table 1). Patients with pleural infection were younger than those with SPE
244 (median ages 55 vs 71y respectively, $P<0.001$), were more likely to have history of cardiac
245 disease ($P<0.015$) and less likely to develop bilateral effusions ($P<0.001$). On presentation to
246 hospital, neither clinical observations nor CURB65 score differed significantly between
247 patients with SPE and pleural infection ($P=0.024$); in contrast, patients with pleural infection
248 had significantly greater C-reactive protein levels, and other inflammatory markers including
249 white cell count and neutrophil count were tending towards elevation (Table 1).

250

251 **Table 1: Clinical features of patients with pneumococcal parapneumonic effusions**

252

Variable	Characteristic	All parapneumonic effusions	SPE	Pleural infection	P value *
		Value (N=559)	Value (N=459)	Value (N=100)	
<i>Streptococcus pneumoniae</i> diagnosis					
Micro confirmation**	Blood culture % (N)	50.6% (283)	52.1% (239)	44.0% (44)	0.15
	Urine antigen test % (N)	49.4% (276)	47.9% (220)	56.0% (56)	
Pleural culture	Negative % (N)	92.5% (517)	100.0% (459)	58.0% (58)	<0.001
	<i>S. pneumoniae</i> % (N)	4.8% (27)	0.0% (0)	27.0% (27)	
	Multi-organism % (N)	2.7% (15)	0.0% (0)	15.0% (15)	
Demographics and Comorbidities					
Gender	Male % (N)	50.4% (282)	50.1% (230)	52.0% (52)	0.74
	Female % (N)	49.6% (277)	49.9% (229)	48.0% (48)	
Age (years)	Median [IQR]	68 [50—80.5]	71 [54—82]	55 [45—73.2]	<0.001
Smoking status	Non-smoker % (N)	22.9% (128)	23.1% (106)	22.0% (22)	0.0068
	Current smoker % (N)	35.1% (196)	32.2% (148)	48.0% (48)	
	Ex-smoker % (N)	42.0% (235)	44.7% (205)	30.0% (30)	
Chronic lung disease	Rate % (N)	43.8% (245)	44.2% (203)	42.0% (42)	0.74
Cardiac disease	Rate % (N)	53.3% (298)	55.8% (256)	42.0% (42)	0.015
Upper GI	Rate % (N)	38.3% (214)	39.2% (180)	34.0% (34)	0.36
Cerebrovascular disease	Rate % (N)	7.0% (39)	7.4% (34)	5.0% (5)	0.52
Type 2 Diabetes	Rate % (N)	17.0% (95)	17.4% (80)	15.0% (15)	0.66
Chronic Liver Failure	Rate % (N)	4.5% (25)	4.6% (21)	4.0% (4)	1
Intravenous Drug Usage	Rate % (N)	4.3% (24)	3.7% (17)	7.0% (7)	0.17
Alcohol excess	Rate % (N)	9.5% (53)	8.3% (38)	15.0% (15)	0.057
BMI ≤17 or ≥35	Rate % (N)	4.1% (23)	3.3% (15)	8.0% (8)	0.047
CURB-65 Score					
CURB-65 on admission	0 % (N)	24.5% (137)	22.4% (103)	34.0% (34)	0.024
	1 % (N)	24.5% (137)	24.4% (112)	25.0% (25)	
	2 % (N)	26.1% (146)	28.3% (130)	16.0% (16)	
	3-5 % (N)	24.9% (139)	24.8% (114)	25.0% (25)	
Laboratory Tests and Radiological Features					
White cell count, ×10 ⁹ /L	Mean ± SD	17.9 ± 8.19	17.5 ± 8.02	19.9 ± 8.71	0.011
Neutrophil count, ×10 ⁹ /L	Median [IQR]	14.9 [10—20.2]	14.2 [9.9—20.1]	17.9 [10.4—23.9]	0.0028
C-reactive protein, mg/dL	Median [IQR]	215 [132—341]	200 [129—312]	338 [204—412]	—
Albumin, g/dL	Median [IQR]	30 [26—36]	31 [27—36]	28 [23—34]	<0.001
Urea, mmol/L	Median [IQR]	9.3 [6.4—13.2]	9.2 [6.5—13.3]	9.8 [5.97—12.8]	0.67
Bilateral effusion	Rate % (N)	24.9% (139)	28.1% (129)	10.0% (10)	<0.001
Outcomes					

Acute Renal Failure†	Rate % (N)	35.4% (198)	37.3% (171)	27.0% (27)	0.064
Liver dysfunction#	Rate % (N)	10.7% (60)	12.0% (55)	5.0% (5)	0.048
ITU admission	Rate % (N)	20.2% (113)	20.3% (93)	20.0% (20)	1
Increased care needed	Rate % (N)	35.4% (198)	38.3% (176)	22.0% (22)	0.0018
Admission days	Median [IQR]	11 [6—20]	10 [5—19.5]	15 [10—21]	<0.001
Mortality					
Inpatient mortality	Rate % (N)	12.7% (71)	13.1% (60)	11.0% (11)	0.74
30-day mortality	Rate % (N)	13.2% (74)	14.2% (65)	9.0% (9)	0.19
90-day mortality	Rate % (N)	19.0% (106)	20.5% (94)	12.0% (12)	0.05
1-year mortality	Rate % (N)	27.0% (151)	29.2% (134)	17.0% (17)	0.013

253

254

255 * Significance determined using Fisher's exact test (categorical variables) or 2 sample
 256 Wilcoxon Rank Sum test (continuous variables). Normality of distributions determined using
 257 Anderson-Darling normality test. Due to the fact multiple comparisons are made we consider
 258 the level of significance required to exclude the null hypothesis to be 0.0017 (0.05/30).

259 ** Patients were included if they tested positive for pneumococcus on sterile site culture
 260 and/or urinary antigen test. Therefore some patients tested positive for both tests.

261 † Acute renal failure was defined as a reduction in renal function (as measured by creatinine
 262 or eGFR), oliguria (<400ml urine per 24h) or clinical diagnosis of acute kidney injury

263 # Liver dysfunction was defined as a transient disorder of hepatic function characterized by
 264 either liver enzymes, or clinical diagnosis of acute liver dysfunction. Other features of acute
 265 liver failure may or may not be present, including jaundice, vomiting, coagulopathy,

266 hyperbilirubinemia, and increased serum lactate

267

268 Annual incidence of *S. pneumoniae* parapneumonic effusions increased throughout the study
 269 period (Figure 1A) with a 33% and 34% increase in unplanned hospital admissions and
 270 microbiological testing between 2006 and 2018 (Supplementary Data 4), indicating relative
 271 increase in hospital workload was not equivalent to the increase in disease incidence. The age
 272 of patients admitted throughout the study did not show any apparent trend (Supplementary
 273 Data 5). In 38% cases serotype was available, of which overall 52% were attributable to a
 274 PCV13 serotype while only 8% were caused by a non-vaccine serotype. There was an
 275 absolute and proportional decrease in disease caused by PCV7 serotypes (Figure 1). PCV13-7
 276 disease showed an initial rise, followed by a fall after PCV13 introduction with a gradual rise
 277 in disease over the last 5 study years (Figure 1B). The only PCV13-7 serotypes that caused
 278 pneumococcal pleural infections after 2010 were 1 and 3: 2 (17% of serotype known disease)

279 and 3 (25%) pre-2010 pleural infection cases versus 9 (30%) and 7 (23%) post-2010 pleural
 280 infection cases due to serotype 1 and 3 respectively (Supplementary Data 6). Serotype 1
 281 affected younger patients than serotype 3 but was associated with higher RAPID severity
 282 group (high RAPID severity group 36% versus 17%, $P<0.0001$) and a trend towards
 283 increased rates of renal failure (77% versus 43%, $P=0.023$) than seen in patients with
 284 serotype 3 parapneumonic effusions (Table 2). After 2011, all PCV7 disease was attributable
 285 to serotypes 14 and 19F, with all PCV7 disease being SPE and no cases of pleural infection.

286 **Table 2: Clinical features of patients with serotype 1 and 3 pneumococcal**
 287 **parapneumonic effusions**

Variable	Characteristic	Serotype 1	Serotype 3	P value *
		N=22	N=30	
Demographics and Comorbidities				
Gender	Male % (N)	59.1% (13)	53.3% (16)	0.78
	Female % (N)	40.9% (9)	46.7% (14)	
Age (years)	Mean \pm SD	53.4 \pm 18.9	72.5 \pm 15.9	<0.001
Smoking status	Non-smoker % (N)	27.3% (6)	23.3% (7)	0.45
	Current smoker % (N)	50.0% (11)	36.7% (11)	
	Ex-smoker % (N)	22.7% (5)	40.0% (12)	
Chronic lung disease	Rate % (N)	45.5% (10)	40.0% (12)	0.78
Cardiac disease	Rate % (N)	40.9% (9)	70.0% (21)	0.049
Upper GI	Rate % (N)	13.6% (3)	36.7% (11)	0.11
Cerebrovascular disease	Rate % (N)	0.0% (0)	10.0% (3)	0.25
Type 2 Diabetes	Rate % (N)	18.2% (4)	23.3% (7)	0.74
Chronic Liver Failure	Rate % (N)	0.0% (0)	6.7% (2)	0.5
Intravenous Drug Usage	Rate % (N)	4.5% (1)	3.3% (1)	1
Alcohol excess	Rate % (N)	9.1% (2)	13.3% (4)	1
Pleural Features				
Pleural infection	Rate % (N)	50.0% (11)	33.3% (10)	0.26
Loculation	Rate % (N)	22.7% (5)	10.0% (3)	0.26
Pus	Rate % (N)	18.2% (4)	20.0% (6)	1
RAPID Group	Low % (N)	50.0% (11)	16.7% (5)	<0.001
	Medium % (N)	13.6% (3)	66.7% (20)	
	High % (N)	36.4% (8)	16.7% (5)	
Outcomes				
Acute Renal Failure [†]	Rate % (N)	77.3% (17)	43.3% (13)	0.023
Liver dysfunction [#]	Rate % (N)	9.1% (2)	3.3% (1)	0.57
ITU admission	Rate % (N)	18.2% (4)	20.0% (6)	1
Increased care needed	Rate % (N)	27.3% (6)	33.3% (10)	0.76
Admission days	Median [IQR]	11 [5—20.5]	10 [4.25—18]	0.37
Inpatient mortality	Rate % (N)	4.5% (1)	23.3% (7)	0.12

30-day mortality	Rate % (N)	9.1% (2)	20.0% (6)	0.44
90-day mortality	Rate % (N)	13.6% (3)	36.7% (11)	0.11
1-year mortality	Rate % (N)	18.2% (4)	46.7% (14)	0.042

288

289 * Significance determined using Fisher's exact test (categorical variables) or 2 sample
290 Wilcoxon Rank Sum test, or student's t-tests (continuous variables). Normality of
291 distributions determined using Anderson-Darling normality test. *P*-values were considered
292 significant if they were under 0.002 (0,05/24).

293

294 † Acute renal failure was defined as a reduction in renal function (measured by creatinine or
295 eGFR), oliguria (<400ml urine per 24h) or clinical diagnosis of acute kidney injury

296

297 # Liver dysfunction was defined as a transient disorder of hepatic function characterized by
298 either liver enzymes, or clinical diagnosis of acute liver dysfunction. Other features of acute
299 liver failure may or may not be present.

300 Overall, 19% patients with pneumococcal parapneumonic effusions died within 90-days of
301 presentation (Table 1, Supplementary Table 7). Patients with pleural infections had higher
302 survival rates than those with SPE at 30-, 90- and 365-days ($P<0.01$) (Figure 2A). The
303 mortality rate among patients with pleural infection increased alongside RAPID score
304 severity at 30-, 90- and 365-days (Figure 2B, Table 3A), and a high RAPID score was
305 associated with a median survival of 56 days (20-154 days, 95% CI). Proportional hazards
306 regression analysis supported the earlier finding that more severe RAPID group was
307 associated with increased 90-day ($P=0.049$, 95% CI 1.24-40.06) and 365-day mortality
308 ($P=0.034$, 95% CI 1.09-51.2) (Table 3B).

309

310 Median survival was 468 days (340-590 days, 95% CI) in patients with pleural infection, vs
311 286 (274-335 days, 95% CI) in those with SPE. In total, 59/100 (59%) pleural infection
312 patients had pus and these patients had improved 30-, 90-, and 365-day mortality compared to
313 those without pus; in contrast, loculation was associated with reduced 30-, 90- and 365-day
314 mortality (Table 3B). Surgical management was associated with improved prognosis: no
315 deaths occurred within 1-year of presentation compared to 24% mortality in patients with
316 pleural infection who did not undergo surgery. Patients undergoing thoracic surgery were
317 younger than those who did not (median age 45 years, IQR40-52 versus 66 years, IQR53-78).

318

319 **Table 3: Mortality and Risk Analysis in patients with pleural infection cases**
 320 (A) Mortality among 100 pneumococcal pleural infection cases with different clinical
 321 features and RAPID severity Scores

Characteristic	Pleural Infection			
	Total Patients (N=100)	30 Day Mortality N (%)	90 Day Mortality N (%)	365 Day Mortality N (%)
Disease Characteristics				
Pus	59	0 (0)	0 (0)	1 (2)
No Pus	41	9 (22)	12 (29)	12 (29)
Loculation Present	49	8 (16)	10 (20)	12 (25)
No loculation Detected	51	1 (2)	2 (4)	5 (10)
Fibrinolytics used	33	4 (12)	6 (18)	11 (33)
Surgical Management *	29	0 (0)	0 (0)	0 (0)
- Loculation present	23	0 (0)	0 (0)	0 (0)
- No loculation	6	0 (0)	0 (0)	0 (0)
No Surgical Management	71	9 (13)	12 (17)	17 (24)
RAPID Risk Group				
Low	36	1 (3)	1 (3)	3 (8)
Medium	46	2 (4)	3 (7)	4 (9)
High	18	6 (33)	10 (55)	13 (72)

322

323 (B) Cox Regression Analysis for risk factors in patients with pleural infection

Analysis	Factor		Beta (β) estimate	HR	95% CI	P-value
30-day mortality	RAPID Group	Low	-	-	-	-
		Medium	13.52	12.04	0.23-39.87	0.674
		High	28.51	19.33	0.55-92.33	0.638
	Age	-0.002	0.998	0.96-1.05	0.921	
	Loculation	1.705	5.502	0.99-103	0.111	
90-day mortality	RAPID Group	Low	-	-	-	-
		Medium	0.573	1.773	0.19-38.77	0.642
		High	2.709	15.01	1.24-40.06	0.049
	Age	0.015	1.02	0.97-1.07	0.550	
	Loculation	1.582	4.86	1.27-31.87	0.043	
365-day mortality	RAPID Group	Low	-	-	-	-
		Medium	0.573	1.773	0.19-38.77	0.642
		High	2.709	15.01	1.24-40.06	0.049
	Age	0.027	1.028	0.99-1.07	0.188	
	Loculation	1.041	2.836	1.04-9.00	0.050	

324

325 * 18 patients underwent surgery after fibrinolytic usage

326 RAPID (Renal, Age, Purulence, Infection source, and Dietary factors) Score 0-2 represents
 327 low risk, 3-4 medium risk and 5-7 high risk

328 Proportional hazard assumptions were tested by visual assessment of the KM survival curve,
 329 log(-log) plots and Schoenfeld Residuals (Supplementary Data 8)

330 **DISCUSSION**

331 This observational cohort study, with data from a 13-year period spanning PCV introduction
332 into the UK childhood vaccination programme, presents data clearly showing increasing adult
333 pneumococcal parapneumonic effusion disease incidence. The proportion of disease
334 attributable to PCV7 serotypes fell after this vaccine was introduced into the UK childhood
335 vaccination programme; however, disease attributable serotypes 1 and 3 did not show decline
336 following PCV13 vaccine rollout. Further increase in non-vaccine serotype disease
337 contributed to increasing disease incidence. Both overall admissions and microbiological
338 testing at the study hospitals increased progressively during our study period, but not as much
339 as disease incidence, suggesting these did not solely account for the increasing incidence
340 observed. An increasing incidence of pneumococcal disease has also been reported by other
341 UK studies^{14 17 22 23}, with Pick *et al* reporting incidence of pneumococcal pneumonia of 32.2
342 and 48.2 per 100,000 population in 2013 and 2018 respectively¹⁴. Using previously
343 published estimates that up to 20% of adults hospitalised with pneumococcal pneumonia
344 develop a pleural effusion^{1 2}, estimates of parapneumonic effusion incidence from that study
345 would be 6.4 and 9.6 in 2013 and 2018, which are similar to the incidence rates of 5.0 and 9.8
346 observed in the same years in this study. Recent national epidemiological studies of pleural
347 infection from North America also show significant increases in pleural infection rates both
348 in children²⁴ and adults²⁵. Likewise, a Danish study from 1997-2001, showed steadily rising
349 pleural infection rates in the elderly²⁶ and a UK study showed annual rises in adult pleural
350 infections from 2008-17²⁷, most marked in over 60-year-old individuals with a 194% increase
351 over the decade.

352

353 The introduction of PCV7 into the UK childhood vaccination programme in 2006 was
354 followed by a decrease in adult pleural effusions attributable to PCV7 vaccine serotypes in
355 this study. Notably, all parapneumonic effusions due to PCV7 serotypes after 2011 were SPE

356 and due to serotypes 14 and 19F, with no cases of pleural infection. After 2010, all PCV13
357 pleural infection cases were attributable to serotypes 1 or 3, highlighting the predilection of
358 these serotypes for causing pleural disease. The inclusion of patients with a positive
359 pneumococcal urinary-antigen test permitted serotype identification although in only 38% of
360 cases, despite linkage with the UK Health Security Agency (UKHSA) national reference
361 laboratory. Nevertheless, the trends in serotype and vaccine-serotype group that we found in
362 this cohort are similar to those reported by other surveillance studies. Additionally, the trends
363 in serotype distribution partially align with national serotype trends, showing reductions in
364 both PCV7 serotype and serotype 1 adult IPD incidence¹¹, and both serotypes are prevalent in
365 studies of pleural infection in children²⁸. In the UK, large reductions in vaccine-serotype
366 adult IPD were offset by increases in non-PCV13 IPD^{11 17 22}, a trend also apparent in this
367 patient cohort, with non-PCV13 disease increasing from 30% to 60% of known serotype
368 disease. Pick *et al* showed an increase in non-PCV13 serotype pneumococcal pneumonia
369 from 2014/15 onwards¹⁴ as well as an overall increase in PCV13-7 serotype disease, in
370 contrast to trends reported in this study. However, Pick *et al* report all respiratory infection
371 and therefore as these are the first data on serotype trends in adult pneumococcal pleural
372 disease since paediatric PCV introduction in the UK, differences reported here may be
373 attributable to differences within patients with pleural infection. This comparison with other
374 UK surveillance studies provides some reassurance that the results here are representative of
375 parapneumonic effusions related to *Streptococcus pneumoniae*. This highlights the difficulty
376 in undertaking accurate disease surveillance, which cannot be conducted without thorough
377 microbiological testing of patients. However, such surveillance is critical for monitoring both
378 the direct and indirect effects of current pneumococcal vaccinations and predicting the effect
379 of novel vaccines before implementation.

380

381 Serotype affects pneumococcal resistance to innate immunity, duration of nasopharyngeal
382 colonisation, the number of episodes of invasive disease per colonisation event, mortality and
383 disease severity²⁹⁻³¹. The two PCV13-7 serotypes which continued to cause pneumococcal
384 pleural infection following PCV13 introduction are notable serotypes as they have unusual
385 polysaccharide capsules. Serotype 1 expresses a zwitterionic and structurally diverse
386 polysaccharide capsule, which uniquely may act as a T-cell dependent antigen³², is rarely
387 isolated in asymptomatic nasopharyngeal colonization but is commonly isolated in IPD²⁹,
388 frequently causing invasive pneumonia³³. Serotype 1 is more likely to be identified in young
389 patients, and some studies find it is the most frequent cause of pneumococcal pleural
390 infection and responsible for increasing disease incidence^{2,9}. Interestingly, in this cohort,
391 patients with serotype 1 pleural infection had a better survival rate despite higher RAPID
392 score than those with serotype 3. This may reflect the younger age and lower cardiac disease
393 rate in patients with serotype 1 pleural infection, as well as increased likelihood of surgical
394 intervention in these cases. In contrast, the serotype 3 polysaccharide capsule is large,
395 resulting in a highly mucoid appearance, and is one of a few capsules produced by synthase-
396 mediated synthesis³⁴. Serotype 3 also causes considerable disease burden^{2,28}, is the most
397 common overall cause of pneumonia in the USA³⁵, is highly invasive²⁹ and associated with
398 increased mortality³⁰. Distinct lineages exist within serotype 3 clonal complex 180, and
399 recent clade distributions shift has led to the emergence and expansion of clade II^{36,37}, which
400 now represents 50% serotype 3 IPD in the UK³⁸. We could not determine serotype 3 clade
401 grouping in this analysis, but clade II emergence may, at least in part, explain serotype 3
402 disease persistence.

403

404 Interestingly, our data suggest that pneumococcal pleural infection is associated with
405 improved survival up to one-year compared to patients with pneumococcal SPE. We found a

406 high burden of pre-existing medical comorbidity in patients with both SPE and pleural
407 infection, in keeping with a large systematic review which found that 72% of patients with
408 pleural infection had at least one significant comorbidity with high levels of pre-existing
409 cardiac and respiratory diseases³⁹. However, patients with SPE had a trend towards a high
410 burden of underlying cardiovascular disease, chronic obstructive pulmonary disease, solid-
411 organ and haematological malignancy (Supplementary Data 3), which may account for
412 differences in survival.

413 It should be noted that <30% of effusions are known to have more than one aetiology⁴⁰, with
414 many having a cardiac or renal component. Thus, it can be difficult to determine the full
415 aetiology of a pleural effusion, and pneumococcal SPEs may often be due to dual aetiology
416 e.g. infection, causing atrial fibrillation and cardiac failure. In this cohort, pre-existing cardiac
417 disease and bilateral effusions were more common in patients with SPE. Previous data
418 suggest individuals with pneumonia and cardiac failure have higher mortality rates⁴¹, and
419 bilateral effusions are associated with worse outcomes^{41 42}. Hence, whilst some effusions
420 reflect more severe lung inflammation, others may reflect concomitant comorbidity in the
421 host; either factor can account for worse outcome and may explain this finding in our cohort.
422 Further, the high proportion of patients undergoing surgical intervention, which is associated
423 with improved outcomes^{43 44}, may have improved patient survival in the pleural infection
424 patients. Of note, in our pleural infection group, no deaths occurred within 1-year of
425 presentation in those who underwent surgery compared to 24% mortality in patients who did
426 not. Although patients who did not undergo surgery were older than those who did, these data
427 highlight the importance of appropriate surgical intervention in patients with pleural
428 infection.

429

430 As shown in the initial validation and subsequent cohort studies of the RAPID score^{20,21}, a
431 high score was strongly associated with the risk of mortality by 3-months. Study patients in
432 the low-risk group had a 3% (95% C.I. 0.7 to 15%) risk of 90-day mortality compared to 57%
433 (95% C.I. 28% to 82% $P<0.01$), for those with a high risk score, while there was much less
434 difference in survival between those in low and medium RAPID groups, as reported by
435 others^{21,45}. There was a positive association between pleural fluid purulence and survival: this
436 relationship has been demonstrated in cohorts that were not restricted by causative organism,
437 suggesting it is disease and not pathogen specific²⁰.

438

439 This study identified patients with pneumococcal infection and parapneumonic effusions
440 within a defined geographical area, covering a population of approximately one million
441 adults, and encompassed 3 large hospitals with 100,000 unplanned adult admissions annually.
442 One of these hospitals is the regional thoracic surgery centre, whilst another has a specialist
443 pleural disease service, possibly increasing the accuracy of the clinical data presented here.
444 We captured disease and serotype trends over 13 years, spanning PCV introduction. By
445 linking with the UKHSA national reference laboratory we were able to report serotype where
446 it was available. Importantly, the epidemiological data were supported with detailed clinical
447 information for individual patients, including short- and long-term outcomes. However, this
448 study also has limitations in addition to those discussed above. This is a retrospective
449 observational study; therefore, only information documented in clinical records could be
450 included and patients were managed at the discretion of individual physicians. The
451 pneumococcal serotype data was only obtainable through standard-of-care testing and by
452 sterile site culture, as BinaxNOW does not derive serotype. Despite linkage with the national
453 reference service, we were only able to determine the serotype in 38% of pneumococcal cases
454 in this cohort. As a regional study, the findings here may not be representative of other

455 populations; although, our serotype trends are comparable to other UK national and regional
456 reports. We note an expanding total and older adult population in Bath and Bristol during the
457 study, which may affect disease incidence. Additionally, changes in patient or physician
458 treatment preferences, including threshold for referral to secondary care, diagnostic testing
459 and treatment which may have occurred and impacted disease incidence estimates⁴⁶. We
460 included patients who tested positive for pneumococcus using the BinaxNOW® urinary
461 antigen test, which has a known sensitivity of 65% and prolonged positive test result after
462 exposure to pneumococcus⁴⁷. Lastly, different methodologies were used to identify
463 pneumococcal serotypes during the study period; whole genomic sequencing was only
464 routinely used by UKHSA from October 2017, and therefore earlier isolates did not have this
465 performed.

466

467 Overall, we found an increasing incidence of pneumococcal parapneumonic effusion in this
468 UK population. The proportion of disease attributable to PCV7 serotypes fell after this
469 vaccine was introduced into the UK childhood vaccination programme; however, disease
470 attributable serotypes 1 and 3 did not show decline following PCV13 vaccine rollout. Further
471 increase in non-vaccine serotype disease contributed to increasing disease incidence. Patients
472 with SPE had reduced one-year survival compared to those with pleural infection, which may
473 be attributable to the burden of underlying pre-existing diseases. We also found reassuring
474 evidence that surgical management was associated with improved patient outcomes in
475 patients with pneumococcal pleural infection. Future research should aim to determine if *S.*
476 *pneumoniae* serotype is predictive of mortality risk in adults with pneumococcal
477 parapneumonic effusions.

478 **ACKNOWLEDGEMENTS**

479 The authors would like to acknowledge the research teams at The Royal United, North
480 Bristol and University Hospitals of Bristol and Weston NHS Trusts.

481

482 **DATA SHARING**

483 The data used in this study are sensitive and cannot be made publicly available without
484 breaching patient confidentiality rules. Therefore, individual participant data and a data
485 dictionary is not available to other researchers.

486 REFERENCES

- 487 1. Vallés X, Marcos A, Pinart M, et al. Hospitalized Community-Acquired Pneumonia Due to
488 *Streptococcus pneumoniae*: Has Resistance to Antibiotics Decreased? *Chest*
489 2006;130(3):800-06. doi: <https://doi.org/10.1378/chest.130.3.800>
- 490 2. Cillóniz C, Ewig S, Polverino E, et al. Pulmonary complications of pneumococcal community-
491 acquired pneumonia: incidence, predictors, and outcomes. *Clinical Microbiology and*
492 *Infection* 2012;18(11):1134-42. doi: <https://doi.org/10.1111/j.1469-0691.2011.03692.x>
- 493 3. Chalmers JD, Singanayagam A, Murray MP, et al. Risk factors for complicated parapneumonic
494 effusion and empyema on presentation to hospital with community-acquired pneumonia.
495 *Thorax* 2009;64(7):592. doi: 10.1136/thx.2008.105080
- 496 4. Falguera M, Carratalà J, Bielsa S, et al. Predictive factors, microbiology and outcome of patients
497 with parapneumonic effusion. *European Respiratory Journal* 2011;38(5):1173. doi:
498 10.1183/09031936.00000211
- 499 5. Whitney CG, Farley MM, Hadler J, et al. Decline in Invasive Pneumococcal Disease after the
500 Introduction of Protein–Polysaccharide Conjugate Vaccine. *New England Journal of Medicine*
501 2003;348(18):1737-46. doi: 10.1056/NEJMoa022823
- 502 6. Harboe ZB, Dalby T, Weinberger DM, et al. Impact of 13-Valent Pneumococcal Conjugate
503 Vaccination in Invasive Pneumococcal Disease Incidence and Mortality. *Clinical Infectious*
504 *Diseases* 2014;59(8):1066-73. doi: 10.1093/cid/ciu524
- 505 7. Kelly MM, Collier RJ, Kohler JE, et al. Trends in Hospital Treatment of Empyema in Children in the
506 United States. *The Journal of Pediatrics* 2018;202:245-51.e1. doi:
507 <https://doi.org/10.1016/j.jpeds.2018.07.004>
- 508 8. Weinberger DM, Harboe ZB, Shapiro ED. Developing Better Pneumococcal Vaccines for Adults.
509 *JAMA Internal Medicine* 2017;177(3):303-04. doi: 10.1001/jamainternmed.2016.8289
- 510 9. Wagenvoort GHJ, Sanders EAM, Vlamincx BJ, et al. Invasive pneumococcal disease: Clinical
511 outcomes and patient characteristics 2–6 years after introduction of 7-valent pneumococcal
512 conjugate vaccine compared to the pre-vaccine period, the Netherlands. *Vaccine*
513 2016;34(8):1077-85. doi: <https://doi.org/10.1016/j.vaccine.2015.12.066>
- 514 10. UKHSA. Pneumococcal: the Green book2020:1-13.
- 515 11. Ladhani SN, Collins S, Djennad A, et al. Rapid increase in non-vaccine serotypes causing invasive
516 pneumococcal disease in England and Wales, 2000-2013;17: a prospective national
517 observational cohort study. *The Lancet Infectious Diseases* 2018;18(4):441-51. doi:
518 10.1016/S1473-3099(18)30052-5
- 519 12. Miller E, Andrews NJ, Waight PA, et al. Herd immunity and serotype replacement 4 years after
520 seven-valent pneumococcal conjugate vaccination in England and Wales: an observational
521 cohort study. *Lancet Infect Dis* 2011;11(10):760-68. doi: 10.1016/S1473-3099(11)70090-1
522 [published Online First: 2011/05/27]
- 523 13. Waight PA, Andrews NJ, Ladhani SN, et al. Effect of the 13-valent pneumococcal conjugate
524 vaccine on invasive pneumococcal disease in England and Wales 4 years after its
525 introduction: an observational cohort study. *Lancet Infect Dis* 2015;15(5):535-43. doi:
526 10.1016/S1473-3099(15)70044-7 [published Online First: 2015/03/20]
- 527 14. Pick H, Daniel P, Rodrigo C, et al. Pneumococcal serotype trends, surveillance and risk factors in
528 UK adult pneumonia, 2013–18. *Thorax* 2020;75(1):38. doi: 10.1136/thoraxjnl-2019-213725
- 529 15. Shebl E PM. Parapneumonic Pleural Effusions And Empyema Thoracis. StatPearls [Internet]:
530 StatPearls Publishing 2022.
- 531 16. Hyams C, Amin-Chowdhury Z, Fry NK, et al. *Streptococcus Pneumoniae* septic arthritis in adults in
532 Bristol and Bath, United Kingdom, 2006–2018: a 13-year retrospective observational cohort
533 study. *Emerging Microbes & Infections* 2021;10(1):1369-77. doi:
534 10.1080/22221751.2021.1945955

- 535 17. Amin-Chowdhury Z, Collins S, Sheppard C, et al. Characteristics of Invasive Pneumococcal Disease
536 Caused by Emerging Serotypes After the Introduction of the 13-Valent Pneumococcal
537 Conjugate Vaccine in England: A Prospective Observational Cohort Study, 2014–2018.
538 *Clinical Infectious Diseases* 2020 doi: 10.1093/cid/ciaa043
- 539 18. Light RW, Girard WM, Jenkinson SG, et al. Parapneumonic effusions. *Am J Med* 1980;69(4):507-
540 12. doi: 10.1016/0002-9343(80)90460-x [published Online First: 1980/10/01]
- 541 19. Lim WS, van der Eerden MM, Laing R, et al. Defining community acquired pneumonia severity on
542 presentation to hospital: an international derivation and validation study. *Thorax*
543 2003;58(5):377. doi: 10.1136/thorax.58.5.377
- 544 20. Rahman NM, Kahan BC, Miller RF, et al. A Clinical Score (RAPID) to Identify Those at Risk for Poor
545 Outcome at Presentation in Patients With Pleural Infection. *Chest* 2014;145(4):848-55. doi:
546 <https://doi.org/10.1378/chest.13-1558>
- 547 21. Corcoran JP, Psallidas I, Gerry S, et al. Prospective validation of the RAPID clinical risk prediction
548 score in adult patients with pleural infection: the PILOT study. *European Respiratory Journal*
549 2020;2000130. doi: 10.1183/13993003.00130-2020
- 550 22. Houseman C, Hughes GJ, Chapman KE, et al. Increased Invasive Pneumococcal Disease, North
551 East England, UK. *Emerging infectious diseases* 2017;23(1):122-26. doi:
552 10.3201/eid2301.160897
- 553 23. Abram SGF, Alvand A, Judge A, et al. Mortality and adverse joint outcomes following septic
554 arthritis of the native knee: a longitudinal cohort study of patients receiving arthroscopic
555 washout. *The Lancet Infectious Diseases* 2020;20(3):341-49. doi:
556 [https://doi.org/10.1016/S1473-3099\(19\)30419-0](https://doi.org/10.1016/S1473-3099(19)30419-0)
- 557 24. Finley C, Clifton J, Fitzgerald JM, et al. Empyema: an increasing concern in Canada. *Canadian*
558 *respiratory journal* 2008;15(2):85-89. doi: 10.1155/2008/975312
- 559 25. Mummadi SR, Stoller JK, Lopez R, et al. Epidemiology of Adult Pleural Disease in the United
560 States. *Chest* 2021;160(4):1534-51. doi: <https://doi.org/10.1016/j.chest.2021.05.026>
- 561 26. Sogaard M, Nielsen RB, Nørgaard M, et al. Incidence, Length of Stay, and Prognosis of
562 Hospitalized Patients With Pleural Empyema: A 15-Year Danish Nationwide Cohort Study.
563 *Chest* 2014;145(1):189-92. doi: <https://doi.org/10.1378/chest.13-1912>
- 564 27. Arnold DT, Hamilton FW, Morris TT, et al. Epidemiology of pleural empyema in English hospitals
565 and the impact of influenza. *European Respiratory Journal* 2020;2003546. doi:
566 10.1183/13993003.03546-2020
- 567 28. Fletcher MA, Schmitt HJ, Syrochkina M, et al. Pneumococcal empyema and complicated
568 pneumonias: global trends in incidence, prevalence, and serotype epidemiology. *European*
569 *Journal of Clinical Microbiology & Infectious Diseases* 2014;33(6):879-910. doi:
570 10.1007/s10096-014-2062-6
- 571 29. Brueggemann AB, Griffiths DT, Meats E, et al. Clonal Relationships between Invasive and Carriage
572 *Streptococcus pneumoniae* and Serotype- and Clone-Specific Differences in Invasive Disease
573 Potential. *The Journal of Infectious Diseases* 2003;187(9):1424-32. doi: 10.1086/374624
- 574 30. Weinberger DM, Harboe ZB, Sanders EAM, et al. Association of Serotype with Risk of Death Due
575 to Pneumococcal Pneumonia: A Meta-Analysis. *Clinical Infectious Diseases* 2010;51(6):692-
576 99. doi: 10.1086/655828
- 577 31. Hyams C, Yuste J, Bax K, et al. *Streptococcus pneumoniae* resistance to complement-mediated
578 immunity is dependent on the capsular serotype. *Infect Immun* 2010;78(2):716-25. doi:
579 10.1128/IAI.01056-09 [published Online First: 2009/11/30]
- 580 32. Kaushal N, Kumari S, Jhelum H, et al. In vitro and in vivo characterization of the interaction,
581 proinflammatory, immunomodulatory and antigenic properties of capsular polysaccharide
582 from *Streptococcus pneumoniae* serotype 1. *International Journal of Biological*
583 *Macromolecules* 2020;143:521-32. doi: <https://doi.org/10.1016/j.ijbiomac.2019.12.022>

- 584 33. Bergman K, Härnqvist T, Backhaus E, et al. Invasive pneumococcal disease in persons with
585 predisposing factors is dominated by non-vaccine serotypes in Southwest Sweden. *BMC*
586 *Infectious Diseases* 2021;21(1):756. doi: 10.1186/s12879-021-06430-y
- 587 34. Luck JN, Tettelin H, Orihuela CJ. Sugar-Coated Killer: Serotype 3 Pneumococcal Disease. *Frontiers*
588 *in Cellular and Infection Microbiology* 2020;10
- 589 35. Pande A, Nasir S, Rueda AM, et al. The Incidence of Necrotizing Changes in Adults With
590 Pneumococcal Pneumonia. *Clinical Infectious Diseases* 2012;54(1):10-16. doi:
591 10.1093/cid/cir749
- 592 36. Azarian T, Mitchell PK, Georgieva M, et al. Global emergence and population dynamics of
593 divergent serotype 3 CC180 pneumococci. *PLOS Pathogens* 2018;14(11):e1007438. doi:
594 10.1371/journal.ppat.1007438
- 595 37. Croucher NJ, Mitchell AM, Gould KA, et al. Dominant Role of Nucleotide Substitution in the
596 Diversification of Serotype 3 Pneumococci over Decades and during a Single Infection. *PLOS*
597 *Genetics* 2013;9(10):e1003868. doi: 10.1371/journal.pgen.1003868
- 598 38. Groves N, Sheppard CL, Litt D, et al. Evolution of *Streptococcus pneumoniae* Serotype 3 in
599 England and Wales: A Major Vaccine Evader. *Genes* 2019;10(11) doi:
600 10.3390/genes10110845
- 601 39. Cargill TN, Hassan M, Corcoran JP, et al. A systematic review of comorbidities and outcomes of
602 adult patients with pleural infection. *European Respiratory Journal* 2019:1900541. doi:
603 10.1183/13993003.00541-2019
- 604 40. Bintcliffe OJ, Hooper CE, Rider IJ, et al. Unilateral Pleural Effusions with More Than One Apparent
605 Etiology. A Prospective Observational Study. *Annals of the American Thoracic Society*
606 2016;13(7):1050-56. doi: 10.1513/AnnalsATS.201601-082OC
- 607 41. Hasley PB, Albaum MN, Li YH, et al. Do pulmonary radiographic findings at presentation predict
608 mortality in patients with community-acquired pneumonia? *Arch Intern Med*
609 1996;156(19):2206-12. [published Online First: 1996/10/28]
- 610 42. Dean NC, Jones BE, Jones JP, et al. Impact of an Electronic Clinical Decision Support Tool for
611 Emergency Department Patients With Pneumonia. *Ann Emerg Med* 2015;66(5):511-20. doi:
612 10.1016/j.annemergmed.2015.02.003 [published Online First: 2015/03/03]
- 613 43. Federici S, Bédât B, Hayau J, et al. Outcome of parapneumonic empyema managed surgically or
614 by fibrinolysis: a multicenter study. *Journal of Thoracic Disease* 2021;13(11):6381-89.
- 615 44. Wait MA, Sharma S, Hohn J, et al. A randomized trial of empyema therapy. *Chest*
616 1997;111(6):1548-51. doi: 10.1378/chest.111.6.1548 [published Online First: 1997/06/01]
- 617 45. White HD, Henry C, Stock EM, et al. Predicting Long-Term Outcomes in Pleural Infections. RAPID
618 Score for Risk Stratification. *Annals of the American Thoracic Society* 2015;12(9):1310-16.
619 doi: 10.1513/AnnalsATS.201505-272OC
- 620 46. Maguire D, Dunn P, McKenna H. How hospital activity in the NHS in England has changed over
621 time. 2016
- 622 47. Hyams C, Williams OM, Williams P. Urinary antigen testing for pneumococcal pneumonia: is
623 there evidence to make its use uncommon in clinical practice? *ERJ Open Research*
624 2020;6(1):00223-2019. doi: 10.1183/23120541.00223-2019

625

626

627 **FIGURE LEGENDS**

628 **Figure 1: Vaccine group serotype trends in pneumococcal parapneumonic effusions in**
629 **Bristol, UK 2006-2018**

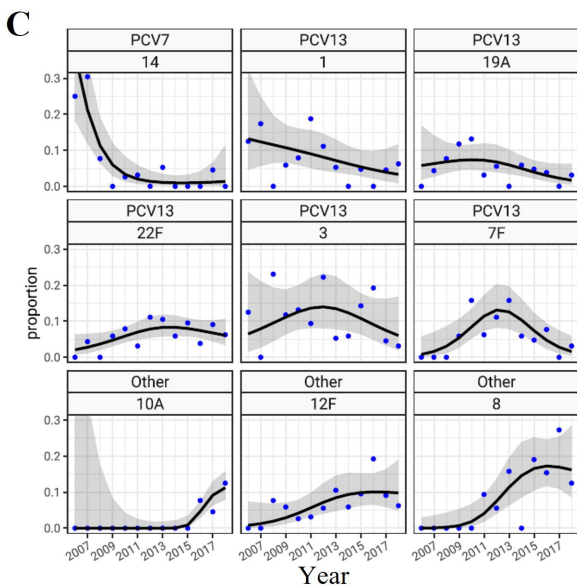
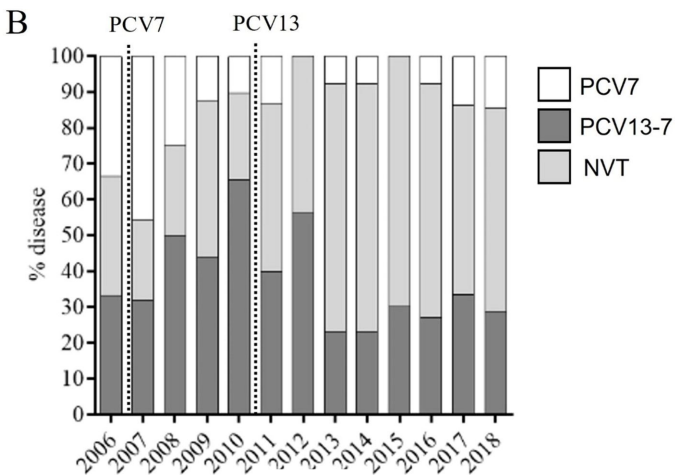
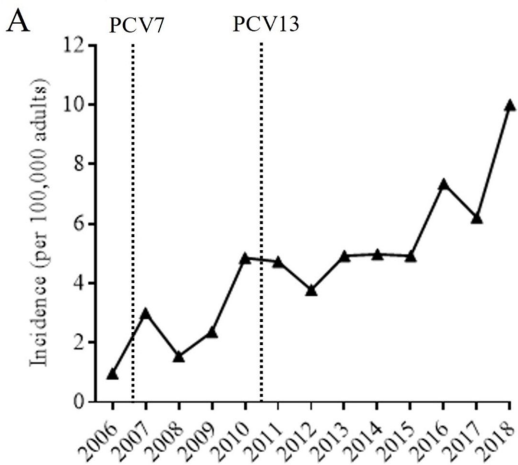
630 (A) Incidence of pneumococcal parapneumonic effusion (per 100,000 adults), calculated
631 using adult population data from the Office of National Statistics (Supplementary Data 5).
632 (B) proportion of serotyped disease caused by vaccine serotype group as shown from 2006-
633 18. Dashed lines show the introduction of paediatric PCV7 and PCV13.
634 (C) proportion of serotyped disease caused by the major individual serotypes from 2006-18.
635 The black line shows the trend in proportion of disease, with the grey area representing the
636 95% confidence interval.

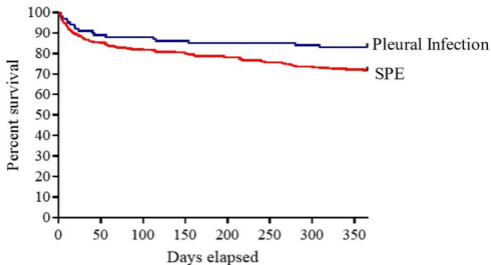
637

638 **Figure 2: 1-year survival in patients with pneumococcal parapneumonic effusions**

639 (A) Kaplan-Meier survival curve and number at risk for patients with simple parapneumonic
640 effusion (SPE) (red line) and pleural infection (blue line). (B) Kaplan-Meier survival curve
641 and number at risk for patients with pneumococcal pleural infection for low (red line),
642 medium (blue line) and high (black line) RAPID score groups. The number of subjects at risk
643 immediately before each time point is listed in a numbers-at-risk table.

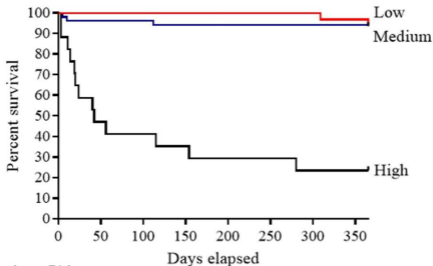
644





Number at Risk

Days	0	56	112	154	204	250	300	365
SPE	459	385	370	358	346	334	316	309
Pleural infection	100	89	86	85	84	83	82	80



Number at Risk

Days	0	50	112	154	280	310	365
Low	30	30	30	30	30	29	29
Medium	50	48	47	47	47	47	47
High	14	8	7	6	5	4	4