

1 **Parapneumonic effusions related to *Streptococcus pneumoniae*: serotype and disease**
2 **severity trends**

3 Catherine Hyams MB PhD, Academic Respiratory Unit and Bristol Vaccine Centre,
4 University of Bristol, Bristol, UK. ORCID: 0000-0003-3923-1773

5 David T Arnold PhD, Academic Respiratory Unit, University of Bristol, Bristol, UK. ORCID
6 0000-0003-3158-7740

7 Robyn Heath, MA. Vaccine and Testing Research Team, Clinical Research Facility, St
8 Michael's Hill, Bristol Royal Infirmary, Bristol, United Kingdom

9 Zahin Amin-Chowdhury MSc. National Infection Service, UKHSA, London, United
10 Kingdom

11 David Hettle MBChB. Microbiology Services Bristol, Bristol Royal Infirmary and North
12 Bristol NHS Trust, Bristol, United Kingdom. ORCID: 0000-0002-7606-986X

13 Gabriella Ruffino MBChB, Academic Respiratory Unit and Bristol Vaccine Centre,
14 University of Bristol, Bristol, UK. ORCID: 0000-0002-1549-9364

15 Paul North BSc, Microbiology Services Bristol, Bristol Royal Infirmary and North Bristol
16 NHS Trust, Bristol, United Kingdom.

17 Charli Grimes BSc, Academic Respiratory Unit and Bristol Vaccine Centre, University of
18 Bristol, Bristol, UK. ORCID: 0000-0002-0171-0704

19 Norman K Fry PhD, National Infection Service, UKHSA, London, United Kingdom.
20 ORCID: 0000-0003-4862-6507

21 Philip Williams PhD, Microbiology Services Bristol, Bristol Royal Infirmary and North
22 Bristol NHS Trust, Bristol, United Kingdom.

23 Leon Danon PhD, Engineering Mathematics, University of Bristol, Bristol, United Kingdom

24 O Martin Williams PhD, Microbiology Services Bristol, Bristol Royal Infirmary and North
25 Bristol NHS Trust, Bristol, United Kingdom.

26 Shamez Ladhani PhD, National Infection Service, UKHSA, London, United Kingdom.
27 ORCID: 0000-0002-0856-2476

28 Adam Finn PhD, Bristol Vaccine Centre, University of Bristol, Bristol, UK. ORCID: 0000-
29 0003-1756-5668

30 Nick A Maskell MD, Academic Respiratory Unit, University of Bristol, Bristol, UK. ORCID:
31 0000-0002-1276-6500

32

33 **Corresponding address:** Dr Catherine Hyams, MBBS BSc(Hons) PhD MRCP
34 Academic Respiratory Unit, Learning & Research Building,

35 Southmead Hospital, Bristol, BS10 5NB
36 catherine.hyams@bristol.ac.uk

37 **Descriptor:** 9.31 Pleural Diseases/Mesothelioma

38 **Running head:** Pneumococcal related parapneumonic effusions

39 **Keywords:** Streptococcus pneumoniae; Empyema; Pleural Effusion

40

41 **Author Contributions:** CH, DA, AF, OMW and NM generated the research questions
42 and analysis plan. CH, RH, DH, GF, DA, PN, PW, ZAC
43 collected data. CH and DH verified the data. CH, DA, RH, AF
44 and NM undertook the data analysis. AF, OMW and NM
45 provided oversight of the research. AF and CH verified the
46 data. All authors contributed to the preparation of the
47 manuscript and its revision for publication and had
48 responsibility for the decision to publish.

49

50 **Funding:** CH was funded by the National Institute for Health Research [NIHR
51 Academic Clinical Fellowship (ACF-2015-25-002). DTA was funded by an
52 NIHR Doctoral Research Fellowship (DRF-2018-11-ST2-065). The views
53 expressed are those of the author(s) and not necessarily those of the NIHR or
54 the Department of Health and Social Care.

55

56 **Declarations:** CH is Principal Investigator of the AvonCAP study which is an investigator-
57 led University of Bristol study funded by Pfizer. AF is a member of the Joint
58 Committee on Vaccination and Immunization (JCVI) and chair of the World
59 Health Organization European Technical Advisory Group of Experts on
60 Immunization (ETAGE) committee. In addition to receiving funding from
61 Pfizer as Chief Investigator of this study, he leads another project investigating
62 transmission of respiratory bacteria in families jointly funded by Pfizer and the
63 Gates Foundation. The other authors have no relevant conflicts of interest to
64 declare.

65

66 **Word Count:** 2938

67 **ABSTRACT**

68 **Rationale**

69 *Streptococcus pneumoniae* epidemiology is changing in response to vaccination and some
70 data suggest empyema incidence is increasing. However, differences exist between UK and
71 USA studies. We describe trends in the clinical phenotype of adult pneumococcal pleural
72 infection, including simple parapneumonic effusions (SPE) in the pneumococcal conjugate
73 vaccination (PCV) era.

74 **Objectives:**

75 To determine whether there were differences in pneumococcal disease presentation and
76 severity associated with pleural infection.

77 **Methods**

78 A retrospective cohort study, all adults ≥ 16 years admitted to three large UK hospitals, 2006-
79 2018 with pneumococcal disease. 2477 invasive pneumococcal cases were identified: 459
80 SPE and 100 pleural infection cases. Medical records were reviewed for each clinical
81 episode. Serotype data were obtained from the UK Health Security Agency national reference
82 laboratory.

83 **Results**

84 Incidence increased over time, including non-PCV-serotype disease. PCV7-serotype disease
85 declined following paediatric PCV7 introduction, but the effect of PCV13 was less apparent
86 as disease caused by the additional six serotypes plateaued with serotypes 1 and 3 causing
87 such parapneumonic effusions from 2011 onwards.

88 Patients with pleural infection had a median survival 468 days (95% CI 340-590) in, versus
89 286 days (95% CI 274-335) in those with SPE. Pleural infection associated with frank pus

90 had lower 90-day mortality than pleural infection without pus (0% versus 29%, $P<0.0001$).

91 90-day mortality could be predicted by baseline increased RAPID (Renal, Age, Purulence,

92 Infection source, and Dietary factors) score (HR15.01, 95% CI 1.24-40.06, $P=0.049$).

93 **Conclusions**

94 Pneumococcal infection continues to cause severe disease despite the introduction of PCVs.

95 The predominance of serotype 1 and 3 in this adult UK cohort is in keeping with previous

96 studies in paediatric and non-UK studies. Rising non-PCV serotype disease and limited

97 impact of PCV13 on cases caused by serotypes 1 and 3 offset the reductions in adult

98 pneumococcal parapneumonic effusion disease burden observed following introduction of the

99 childhood PCV7 programme.

100

101 **INTRODUCTION**

102 *Streptococcus pneumoniae* remains the leading bacterial cause of community-acquired
103 pneumonia (CAP), despite vaccine deployment. A dose of PneumoVax® (unconjugated 23-
104 valent polysaccharide vaccine, PPV23) is offered to all adults from age 65 years in the UK
105 and ≥ 2 -year-olds with at least one clinical risk factor for pneumococcal disease also receive
106 this vaccine (1). The 7-valent pneumococcal conjugate vaccine (PCV) (PCV7) was
107 introduced into the UK childhood vaccination programme in 2006 on a 2 priming dose
108 schedule with a booster following the first birthday (2+1) and subsequently replaced in April
109 2010 with a 13-valent PCV (PCV13). The schedule was modified to 1+1 in 2020. Several
110 USA studies have shown that PCV introduction resulted in a significant reduction in both
111 carriage and invasive pneumococcal disease (IPD) due to vaccine serotypes, especially in
112 children (2, 3) although an increase in pneumococcal empyema cases in children has been
113 reported (4) and the effect of paediatric PCV deployment on adult disease phenotype is
114 debated (5). By 2016/17, UK surveillance demonstrated that PCV7 serotype disease in
115 children had virtually disappeared, with significant reduction in PCV7 disease burden in
116 adults. In contrast, while PCV13 serotype disease incidence has not disappeared across all
117 age groups, but plateaued, with a remaining residual incidence of 7.97 per 100,000 across all
118 age groups. There has also been an increase in disease attributable to non-PCV13 serotypes,
119 especially in the elderly, which has reduced overall disease reduction resulting from vaccine
120 introduction (6-8). Evidence from a large pneumococcal pneumonia patient cohort in
121 Nottingham, UK suggests that, aside from age, residential care status and some
122 comorbidities, there are relatively few differences between patients with disease caused by
123 PCV13 and those with non-PCV13 serotype infections (9).

124

125 Approximately 15-20% hospitalised pneumococcal CAP cases are associated with a pleural
126 effusion (10, 11) and 6% with empyema (10, 12). However, recent evidence suggests that
127 incidence of pneumococcal empyema has increased following paediatric PCV deployment,
128 especially in adults aged >65 years, possibly due to serotype 1 emergence (13). Thus,
129 vaccine-driven serotype replacement may be leading to changes in pneumococcal disease
130 phenotype and severity. This is a concern as morbidity and mortality associated with simple
131 parapneumonic effusion (SPE) are higher than with uncomplicated pneumonia (14).

132

133 Here we present the largest cohort of patients with a single-organism pleural infection,
134 encompassing SPE and pleural infection (complex parapneumonic effusion (CPE) or
135 empyema) attributable to pneumococcus, in a single-centre observational study covering
136 thirteen years during which PCVs were introduced into the UK paediatric vaccination
137 programme. We sought to determine whether there were any differences in pneumococcal
138 disease presentation and severity associated with pleural infection, given concerns
139 surrounding changing pneumococcal serotype distribution.

140 MATERIALS AND METHODS

141 Study Subjects

142 Patients aged ≥ 16 years admitted to all three hospitals providing emergency care in Bristol
143 and Bath (University Hospitals Bristol and Weston, North Bristol and The Royal United
144 Hospital NHS Trusts) between January 2006 and December 2018, with a confirmed
145 microbiological diagnosis of pneumococcal infection were eligible for this study. This study
146 was approved by the Health Research Authority, UK (IRAS 265437).

147

148 Study Design

149 A retrospective cohort study at three large NHS hospitals in the UK.

150

151 Methods

152 Study-eligible cases were identified retrospectively by searching the Laboratory Information
153 Management System (LIMS) database (Clinisys WinPath Enterprise). *S. pneumoniae* was
154 confirmed on culture from sterile-site sampling at a central laboratory using standard
155 microbiological techniques combined with API®-20 Strep (BioMérieux, UK) or MALDI-
156 TOF (matrix-assisted laser desorption/ionisation/time of flight) mass spectrometry (Bruker,
157 UK) (15). A positive pneumococcal urinary-antigen test (BinaxNOW®, Alere, UK) was also
158 considered confirmative of pneumococcal infection. Any patient with pleural fluid which
159 cultured a single-organism which was not pneumococcus was excluded from this cohort;
160 although, multi-organism pleural infection including pneumococcus was included.

161

162 Confirmed cases were linked with the UK Health Security Agency (UKHSA) national
163 reference laboratory to obtain serotype data (16) which were collected separately from
164 clinical data to avoid any risk of bias in data collection. Pneumococcal serotypes were
165 grouped by PCV (PCV7; PCV13-7 representing the additional 6 serotypes in PCV13; and
166 PCV13) or as non-PCV (Supplementary Data 1).

167

168 Patients with pneumococcal infection and a pleural effusion on radiology were either
169 classified as:

170 (1) pleural infection: if pleural fluid was pus; bacterial culture positive pleural fluid; an
171 effusion relating to a current pneumonia episode which necessitated definitive drainage (e.g.
172 thoracic surgery); or, there was an exudative effusion with $\text{pH} \leq 7.2$; or,

173 (2) SPE: an exudative effusion not classified as pleural infection in a patient with a clinical
174 and/or radiological diagnosis of pneumonia.

175

176 Patients' clinical records were reviewed at each hospital and data, including clinical
177 outcomes, recorded. The vaccination status of each patient was established from
178 electronically linked GP records (15). The CURB65 severity score on admission was
179 calculated for each clinical episode (17). Patients with pleural infection had a RAPID (Renal,
180 Age, Purulence, Infection source, and Dietary factors) score calculated (18), which has been
181 validated to stratify adults with pleural infection according to increasing risk of mortality
182 (19).

183

184 **Analysis**

185 Patient data are reported as medians and interquartile ranges (IQR) for continuous variables.
186 Categorical variables are presented as counts and percentages. Baseline characteristics and
187 comorbid risk factors for SPE and pleural infection were compared using Fisher’s exact tests
188 for categorical variables, and the Mann-Whitney U-test for non-parametric continuous
189 variables. The Kaplan–Meier (KM) method and Cox proportional hazard regression model
190 were used for calculation of survival at 30-, 90- and 365-days following first positive
191 pneumococcal microbiological test. Proportional hazard assumptions were tested by visual
192 assessment of the KM survival curve, log(-log) plots and Schoenfeld residuals. Survival
193 differences were analyzed using the log-rank test. Statistical analysis was performed using
194 SPSS, version 28.0 (New York, IBM). Graphs were generated in GraphPad PRISM, version
195 9.0.

196 **RESULTS**

197 2657 IPD episodes were identified, of which 2447 were respiratory infections: 1888
198 pneumonia cases, 459 SPE and 100 cases of pleural infection (Figure 1). 283/559 (51%)
199 cases with parapneumonic effusion had *S. pneumoniae* confirmed on blood culture, and in 42
200 cases pneumococcus was isolated from pleural fluid. In total, 282/559 (50%) were male with
201 a median age of 68y (IQR 50-78) (Table 1, Supplementary Data 2). Pre-existing cardiac and
202 respiratory disease was common in patients with parapneumonic effusions. Patients with
203 pleural infection were younger than those with SPE (median ages 55 vs 69y respectively,
204 $P<0.001$), and were more likely to have history of alcohol misuse and/or intravenous drug
205 usage ($P<0.05$) and less likely to develop acute renal failure ($P<0.05$). On presentation to
206 hospital, neither clinical observations nor CURB65 score differed significantly between
207 patients with SPE and pleural infection ($P >0.05$); in contrast, patients with pleural infection
208 had both a significantly greater neutrophilia ($P<0.01$) and more elevated CRP levels
209 ($P<0.001$) (Table 1, Supplementary Data 2 and 3).

210
211 Annual incidence of *S. pneumoniae* parapneumonic effusions increased throughout the study
212 period (Figure 2A). There was a 33% and 34% increase in unplanned hospital admissions and
213 microbiological testing between 2006 and 2018 (Supplementary Data 4, indicating relative
214 increase in hospital workload was not equivalent to the increase in disease incidence. The age
215 of patients admitted throughout the study did not show any apparent trend (Supplementary
216 Data 5). In 38% cases serotype was available, of which overall 52% were attributable to a
217 PCV13 serotype while only 8% were caused by a non-vaccine serotype. Over the study
218 period, there was an absolute and proportional decrease in disease caused by PCV7 serotypes.
219 All parapneumonic effusions caused by a PCV7 serotype after 2011 were SPE (serotypes 14
220 and 19F), with no pleural infections caused by a PCV7 serotype after 2011. PCV13-7 disease

221 showed an initial rise, followed by a fall after PCV13 introduction with a gradual rise in
222 disease over the last 5 study years (Figure 2B). Following the introduction of PCV13 in 2010,
223 the only PCV13-7 serotypes that caused pneumococcal pleural infections were 1 and 3: 2
224 (17% of serotype known disease) and 3 (25%) pre-2010 pleural infection cases versus 9
225 (30%) and 7 (23%) post-2010 pleural infection cases due to serotype 1 and 3 respectively.
226 Serotype 1 affected younger patients than serotype 3, but was associated with increased rates
227 of renal failure (77% versus 43%, $P=0.007$), higher RAPID severity group (high RAPID
228 severity group 36% versus 17%, $P=0.024$) and a trend towards higher loculation rates (23%
229 versus 10%, $P=0.205$) than seen in patients with serotype 3 parapneumonic effusions (Table
230 2).

231

232 Overall, 19% patients with pneumococcal parapneumonic effusions died within 90-days of
233 presentation (Table 1, Supplementary Table 6). Patients with pleural infections had higher
234 survival rates than those with SPE at 30-, 90- and 365-days ($P<0.01$) (Figure 3A). Median
235 survival was 468 days (340-590 days, 95% CI) in patients with pleural infection, vs 286 (274-
236 335 days, 95% CI) in those with SPE. In total, 59/100 (59%) pleural infection patients had
237 pus and these patients had improved 30-, 90-, and 365-day mortality compared to those
238 without pus; in contrast, loculation was associated with reduced 30-, 90- and 365-day
239 mortality (Table 4). Surgical management was associated with improved prognosis: no deaths
240 occurred within 1-year of presentation compared to 24% mortality in patients with pleural
241 infection who did not undergo surgery. Patients undergoing thoracic surgery were younger
242 than those who did not (median age 45 years, IQR40-52 versus 66 years, IQR53-78).

243

244 The mortality rate among patients with pleural infection increased alongside RAPID score
245 severity at 30-, 90- and 365-days (Figure 3B, Table 3), and a high RAPID score was
246 associated with a median survival of 56 days (20-154 days, 95% CI). Proportional hazards
247 regression analysis confirmed that more severe RAPID group was associated with increased
248 90-day ($P=0.049$, 95% CI 1.24-40.06) and 365-day mortality ($P=0.034$, 95% CI 1.09-51.2)
249 (Table 4).

250

251 **DISCUSSION**

252 This observational cohort study, with data from a 13-year period spanning PCV introduction
253 into the UK childhood vaccination programme, shows an increasing incidence of adult
254 pneumococcal parapneumonic effusions. An increasing incidence of pneumococcal disease
255 has also been reported by other UK studies (9, 16, 20, 21), with Pick *et al* reporting incidence
256 of pneumococcal pneumonia of 32.2 and 48.2 per 100,000 population in 2013 and 2018
257 respectively (9). Using previously published estimates that up to 20% of adults hospitalised
258 with pneumococcal pneumonia develop a pleural effusion (10, 11), estimates of
259 parapneumonic effusion incidence from that study would be 6.4 and 9.6 in 2013 and 2018,
260 which are similar to the incidence rates of 5.0 and 9.8 observed in the same years in this
261 study. Recent national epidemiological studies of pleural infection from North America also
262 show significant increases in pleural infection rates both in children (22) and adults (23).
263 Likewise, a Danish study from 1997-2001, showed steadily rising pleural infection rates in
264 the elderly (24) and a UK study showed annual rises in adult pleural infections from 2008-17
265 (25), most marked in over 60-year-old individuals with a 194% increase over the decade.
266 Both overall admissions and microbiological testing at the study hospitals increased
267 progressively during our study period, but not as much as disease incidence, suggesting this
268 did not solely account for the increasing incidence observed. Whilst the study period
269 encompassed a time when the UK vaccination programme changed, there was also an
270 expanding total and older adult population in Bath and Bristol. Furthermore, there may have
271 been changes in patient or physician treatment preferences, including threshold for referral to
272 secondary care, diagnostic testing and treatment which may have impacted the incidence of
273 disease estimated throughout this study (26).

274

275 The introduction of PCV7 into the UK childhood vaccination programme in 2006 was
276 followed by a decrease in adult pneumococcal pleural effusions attributable to PCV7 vaccine
277 serotypes in this study. Notably, all parapneumonic effusions due to PCV7 serotypes after
278 2011 were SPE and due to serotypes 14 and 19F, with no cases of pleural infection. However,
279 PCV13 introduction in 2010 did not result in such a marked indirect reduction in disease
280 caused by the additional six serotypes in PCV13 due to the persistence of serotype 1 or 3
281 disease. This partially aligns with national serotype trends, showing reductions in both PCV7
282 serotype and serotype 1 adult IPD incidence (6), and both serotypes are prevalent in studies
283 of pleural infection in children (27). In the UK, large reductions in vaccine-serotype adult
284 IPD were offset by increases in non-PCV13 IPD (6, 16, 20), a trend also apparent in this
285 patient cohort, with non-PCV13 disease increasing from 30% to 60% of known serotype
286 disease. Pick *et al* showed an increase in non-PCV13 serotype pneumococcal pneumonia
287 from 2014/15 onwards (9) as well as an overall increase in PCV13-7 serotype disease, in
288 contrast to trends reported in this study. These are the first data on serotype trends in adult
289 pneumococcal pleural disease since paediatric PCV introduction in the UK.

290

291 Serotype affects pneumococcal resistance to innate immunity, duration of nasopharyngeal
292 colonisation, the number of episodes of invasive disease per colonisation event, mortality and
293 disease severity (28-30). The two PCV13-7 serotypes which continued to cause
294 pneumococcal pleural infection following PCV13 introduction are notable serotypes as they
295 have unusual polysaccharide capsules. Serotype 1 expresses a zwitterionic and structurally
296 diverse polysaccharide capsule, which uniquely may act as a T-cell dependent antigen (31).
297 This serotype rarely causes asymptomatic nasopharyngeal colonization but is a commonly
298 isolated in IPD (28), and frequently causes invasive pneumonia (32). Studies suggests
299 serotype 1 is more likely to be identified in young patients, and in some studies it is the most

300 frequent cause of pneumococcal pleural infection, with increasing pleural infection incidence
301 attributable to this serotype (11, 13). In contrast, the serotype 3 polysaccharide capsule is
302 large, resulting in a highly mucoid appearance, and is one of a few capsules produced by
303 synthase-mediated synthesis (33). Serotype 3 also causes considerable disease burden (11,
304 27) being the most common overall cause of pneumonia in the USA (34), is highly invasive
305 (28) and is associated with increased mortality (29). Distinct lineages exist within serotype 3
306 clonal complex 180, and recent clade distributions shift has led to the emergence and
307 expansion of clade II (35, 36), which now represents 50% serotype 3 IPD in the UK (37). We
308 could not determine serotype 3 clade grouping in this analysis, but clade II emergence may,
309 at least in part, explain serotype 3 disease persistence.

310

311 Overall, pre-existing medical conditions were commonly present amongst adults with
312 pneumococcal parapneumonic effusions, although the median patient age was lower than that
313 seen in other cohorts of parapneumonic effusions (12, 25). Uniquely, this cohort of
314 parapneumonic effusion cases were all attributable to pneumococcal infection, which may
315 cause the condition in younger patients than other pathogens (25, 38). Despite this, the
316 burden of pre-existing medical comorbidity was equivalent: both SPE and pleural infection
317 patients had significant cardiac (44%) and respiratory (43%) conditions predominating. A
318 large systematic review found that 72% of patients with pleural infection had at least one
319 significant comorbidity, with high levels of pre-existing cardiac (19%) and respiratory (20%)
320 diseases (38). Excessive alcohol consumption was significantly more common among pleural
321 infection cases, in line with other published cohort studies (14). Alcohol abuse may
322 predispose to the development of pleural infection through its general immunosuppressive
323 effect in addition to associated increases in risk of aspiration and delayed presentation to
324 medical services (12).

325

326 As shown in the initial validation and subsequent cohort studies of the RAPID score (18, 19),
327 a high score was strongly associated with the risk of mortality by 3-months. Study patients in
328 the low-risk group had a 3% (95% C.I 0.7 to 15%) risk of 90-day mortality compared to 57%
329 (95% C.I. 28% to 82% $P<0.01$), for those with a high risk score, while there was much less
330 difference in survival between those in low and medium RAPID groups, as reported by others
331 (19, 39). There was a positive association between pleural fluid purulence and survival: this
332 relationship has been demonstrated in cohorts that were not restricted by causative organism,
333 suggesting it is disease and not pathogen specific (18). Anecdotal report findings suggest
334 effusions comprised of frank pus tend to be non-loculated and therefore more readily drained.

335

336 Interestingly, our data suggests that patients with pneumococcal pleural infection have
337 improved survival up to one year compared to patients with pneumococcal SPE. It should be
338 noted that up to 30% of effusions are known to have more than one aetiology (40), with many
339 having a cardiac or renal component. It therefore can be difficult to determine the full
340 aetiology of a pleural effusion, and pneumococcal SPEs may be often due to dual aetiology
341 e.g. infection, causing atrial fibrillation and cardiac failure. In this cohort, pre-existing cardiac
342 disease and bilateral effusions were more common in patients with SPE. Previous data
343 suggests individuals with pneumonia and cardiac failure have higher mortality rates (41), and
344 bilateral effusions are associated with worse outcomes (41, 42). Hence, whilst some effusions
345 reflect more severe lung inflammation, others may reflect concomitant comorbidity in the
346 host; either factor can account for worse outcome and may explain this finding in our cohort.
347 Further, the high proportion of patients undergoing surgical intervention, which is associated

348 with improved outcomes (43, 44), may have improved patient survival in the pleural infection
349 patients.

350

351 This study identified patients with pneumococcal infection and parapneumonic effusions
352 within a defined geographical area, covering a population of approximately one million
353 adults, and encompassed 3 large hospitals with 100,000 unplanned adult admissions annually.

354 One of these hospitals is the regional thoracic surgery centre, whilst another has a specialist
355 pleural disease service, possibly increasing the accuracy of the clinical data presented here.

356 We captured disease and serotype trends over 13 years, spanning PCV introduction. By
357 linking with the UKHSA national reference laboratory we were able to report serotype where

358 it was available. Importantly, the epidemiological data were supported with detailed clinical
359 information for individual patients, including short- and long-term outcomes. However, this

360 study also has limitations. This is a retrospective observational study; therefore, only

361 information documented in clinical records could be included and patients were managed at
362 the discretion of individual physicians. As a regional study, the findings here may not be

363 representative of other populations; although, our serotype trends are comparable to other UK

364 national and regional reports. We included patients who tested positive for pneumococcus

365 using the BinaxNOW® urinary antigen test, which has a known sensitivity of 65% and

366 prolonged positive test result after exposure to pneumococcus (45). Lastly, different

367 methodologies were used to identify pneumococcal serotypes during the study period; whole

368 genomic sequencing was only routinely used by UKHSA from October 2017, and therefore

369 earlier isolates did not have this performed.

370

371 Overall, we found an increasing incidence of pneumococcal parapneumonic effusion in this
372 UK population. The proportion of disease attributable to PCV7 serotypes fell after 2006,
373 when the PCV7 vaccine was introduced into the UK childhood vaccination programme;
374 importantly, no cases of PCV7 pleural infection occurred in adults after 2011. However,
375 disease attributable serotypes 1 and 3 did not show decline following PCV13 vaccine rollout.
376 Further research is needed to determine if *S. pneumoniae* serotype is predictive of mortality
377 risk in adults with pneumococcal parapneumonic effusions.

378 **ACKNOWLEDGEMENTS**

379 The authors would like to acknowledge the research teams at The Royal United, North
380 Bristol and University Hospitals of Bristol and Weston NHS Trusts.

381

382 **DATA SHARING**

383 The data used in this study are sensitive and cannot be made publicly available without
384 breaching patient confidentiality rules. Therefore, individual participant data and a data
385 dictionary is not available to other researchers.

386 REFERENCES

- 387 1. UKHSA. Pneumococcal: The green book.2020. p. 1-13.
- 388 2. Whitney CG, Farley MM, Hadler J, Harrison LH, Bennett NM, Lynfield R, Reingold A, Cieslak
389 PR, Pilishvili T, Jackson D, et al. Decline in invasive pneumococcal disease after the introduction of
390 protein-polysaccharide conjugate vaccine. *New England Journal of Medicine* 2003;348(18):1737-
391 1746.
- 392 3. Harboe ZB, Dalby T, Weinberger DM, Benfield T, Mølbak K, Slotved HC, Suppli CH, Konradsen
393 HB, Valentiner-Branth P. Impact of 13-valent pneumococcal conjugate vaccination in invasive
394 pneumococcal disease incidence and mortality. *Clinical Infectious Diseases* 2014;59(8):1066-1073.
- 395 4. Kelly MM, Collier RJ, Kohler JE, Zhao Q, Sklansky DJ, Shadman KA, Thurber A, Barreda CB,
396 Edmonson MB. Trends in hospital treatment of empyema in children in the united states. *The*
397 *Journal of Pediatrics* 2018;202:245-251.e241.
- 398 5. Weinberger DM, Harboe ZB, Shapiro ED. Developing better pneumococcal vaccines for
399 adults. *JAMA Internal Medicine* 2017;177(3):303-304.
- 400 6. Ladhani SN, Collins S, Djennad A, Sheppard CL, Borrow R, Fry NK, Andrews NJ, Miller E,
401 Ramsay ME. Rapid increase in non-vaccine serotypes causing invasive pneumococcal disease in
402 england and wales, 2000-2013;17: A prospective national observational cohort study. *The Lancet*
403 *Infectious Diseases* 2018;18(4):441-451.
- 404 7. Miller E, Andrews NJ, Waight PA, Slack MP, George RC. Herd immunity and serotype
405 replacement 4 years after seven-valent pneumococcal conjugate vaccination in england and wales:
406 An observational cohort study. *Lancet Infect Dis* 2011;11(10):760-768.
- 407 8. Waight PA, Andrews NJ, Ladhani SN, Sheppard CL, Slack MPE, Miller E. Effect of the 13-
408 valent pneumococcal conjugate vaccine on invasive pneumococcal disease in england and wales 4
409 years after its introduction: An observational cohort study. *Lancet Infect Dis* 2015;15(5):535-543.
- 410 9. Pick H, Daniel P, Rodrigo C, Bewick T, Ashton D, Lawrence H, Baskaran V, Edwards-Pritchard
411 RC, Sheppard C, Eletu SD, et al. Pneumococcal serotype trends, surveillance and risk factors in uk
412 adult pneumonia, 2013–18. *Thorax* 2020;75(1):38.
- 413 10. Vallés X, Marcos A, Pinart M, Piñter R, Marco F, Mensa JM, Torres A. Hospitalized
414 community-acquired pneumonia due to streptococcus pneumoniae: Has resistance to antibiotics
415 decreased? *Chest* 2006;130(3):800-806.
- 416 11. Cillóniz C, Ewig S, Polverino E, Muñoz-Almagro C, Marco F, Gabarrús A, Menéndez R, Mensa
417 J, Torres A. Pulmonary complications of pneumococcal community-acquired pneumonia: Incidence,
418 predictors, and outcomes. *Clinical Microbiology and Infection* 2012;18(11):1134-1142.
- 419 12. Chalmers JD, Singanayagam A, Murray MP, Scally C, Fawzi A, Hill AT. Risk factors for
420 complicated parapneumonic effusion and empyema on presentation to hospital with community-
421 acquired pneumonia. *Thorax* 2009;64(7):592.
- 422 13. Wagenvoort GHJ, Sanders EAM, Vlamincx BJ, Elberse KE, de Melker HE, van der Ende A,
423 Knol MJ. Invasive pneumococcal disease: Clinical outcomes and patient characteristics 2–6 years
424 after introduction of 7-valent pneumococcal conjugate vaccine compared to the pre-vaccine period,
425 the netherlands. *Vaccine* 2016;34(8):1077-1085.
- 426 14. Falguera M, Carratalà J, Bielsa S, García-Vidal C, Ruiz-González A, Chica I, Gudiol F, Porcel JM.
427 Predictive factors, microbiology and outcome of patients with parapneumonic effusion. *European*
428 *Respiratory Journal* 2011;38(5):1173.
- 429 15. Hyams C, Amin-Chowdhury Z, Fry NK, North P, Finn A, Judge A, Ladhani SN, Williams OM.
430 Streptococcus pneumoniae septic arthritis in adults in bristol and bath, united kingdom, 2006–2018:
431 A 13-year retrospective observational cohort study. *Emerging Microbes & Infections*
432 2021;10(1):1369-1377.
- 433 16. Amin-Chowdhury Z, Collins S, Sheppard C, Litt D, Fry NK, Andrews N, Ladhani SN.
434 Characteristics of invasive pneumococcal disease caused by emerging serotypes after the

- 435 introduction of the 13-valent pneumococcal conjugate vaccine in england: A prospective
436 observational cohort study, 2014–2018. *Clinical Infectious Diseases* 2020.
- 437 17. Lim WS, van der Eerden MM, Laing R, Boersma WG, Karalus N, Town GI, Lewis SA,
438 Macfarlane JT. Defining community acquired pneumonia severity on presentation to hospital: An
439 international derivation and validation study. *Thorax* 2003;58(5):377.
- 440 18. Rahman NM, Kahan BC, Miller RF, Gleeson FV, Nunn AJ, Maskell NA. A clinical score (rapid)
441 to identify those at risk for poor outcome at presentation in patients with pleural infection. *Chest*
442 2014;145(4):848-855.
- 443 19. Corcoran JP, Psallidas I, Gerry S, Piccolo F, Koegelenberg CF, Saba T, Daneshvar C, Fairbairn I,
444 Heinink R, West A, et al. Prospective validation of the rapid clinical risk prediction score in adult
445 patients with pleural infection: The pilot study. *European Respiratory Journal* 2020:2000130.
- 446 20. Houseman C, Hughes GJ, Chapman KE, Wilson D, Gorton R. Increased invasive pneumococcal
447 disease, north east england, uk. *Emerging infectious diseases* 2017;23(1):122-126.
- 448 21. Abram SGF, Alvand A, Judge A, Beard DJ, Price AJ. Mortality and adverse joint outcomes
449 following septic arthritis of the native knee: A longitudinal cohort study of patients receiving
450 arthroscopic washout. *The Lancet Infectious Diseases* 2020;20(3):341-349.
- 451 22. Finley C, Clifton J, Fitzgerald JM, Yee J. Empyema: An increasing concern in canada. *Canadian*
452 *respiratory journal* 2008;15(2):85-89.
- 453 23. Mummadi SR, Stoller JK, Lopez R, Kailasam K, Gillespie CT, Hahn PY. Epidemiology of adult
454 pleural disease in the united states. *Chest* 2021;160(4):1534-1551.
- 455 24. Søggaard M, Nielsen RB, Nørgaard M, Kornum JB, Schønheyder HC, Thomsen RW. Incidence,
456 length of stay, and prognosis of hospitalized patients with pleural empyema: A 15-year danish
457 nationwide cohort study. *Chest* 2014;145(1):189-192.
- 458 25. Arnold DT, Hamilton FW, Morris TT, Suri T, Morley A, Frost V, Vipond IB, Medford AR, Payne
459 RA, Muir P, et al. Epidemiology of pleural empyema in english hospitals and the impact of influenza.
460 *European Respiratory Journal* 2020:2003546.
- 461 26. Maguire D, Dunn P, McKenna H. How hospital activity in the nhs in england has changed
462 over time. 2016.
- 463 27. Fletcher MA, Schmitt HJ, Syrochkina M, Sylvester G. Pneumococcal empyema and
464 complicated pneumonias: Global trends in incidence, prevalence, and serotype epidemiology.
465 *European Journal of Clinical Microbiology & Infectious Diseases* 2014;33(6):879-910.
- 466 28. Brueggemann AB, Griffiths DT, Meats E, Peto T, Crook DW, Spratt BG. Clonal relationships
467 between invasive and carriage streptococcus pneumoniae and serotype- and clone-specific
468 differences in invasive disease potential. *The Journal of Infectious Diseases* 2003;187(9):1424-1432.
- 469 29. Weinberger DM, Harboe ZB, Sanders EAM, Ndiritu M, Klugman KP, Rückinger S, Dagan R,
470 Adegbola R, Cutts F, Johnson HL, et al. Association of serotype with risk of death due to
471 pneumococcal pneumonia: A meta-analysis. *Clinical Infectious Diseases* 2010;51(6):692-699.
- 472 30. Hyams C, Yuste J, Bax K, Camberlein E, Weiser JN, Brown JS. Streptococcus pneumoniae
473 resistance to complement-mediated immunity is dependent on the capsular serotype. *Infect Immun*
474 2010;78(2):716-725.
- 475 31. Kaushal N, Kumari S, Jhelum H, Sehgal D. In vitro and in vivo characterization of the
476 interaction, proinflammatory, immunomodulatory and antigenic properties of capsular
477 polysaccharide from streptococcus pneumoniae serotype 1. *International Journal of Biological*
478 *Macromolecules* 2020;143:521-532.
- 479 32. Bergman K, Härnqvist T, Backhaus E, Trollfors B, Dahl MS, Kolberg H, Ockborn G, Andersson
480 R, Karlsson J, Mellgren Å, et al. Invasive pneumococcal disease in persons with predisposing factors is
481 dominated by non-vaccine serotypes in southwest sweden. *BMC Infectious Diseases* 2021;21(1):756.
- 482 33. Luck JN, Tettelin H, Orihuela CJ. Sugar-coated killer: Serotype 3 pneumococcal disease.
483 *Frontiers in Cellular and Infection Microbiology* 2020;10.

- 484 34. Pande A, Nasir S, Rueda AM, Matejowsky R, Ramos J, Doshi S, Kulkarni P, Musher DM. The
485 incidence of necrotizing changes in adults with pneumococcal pneumonia. *Clinical Infectious*
486 *Diseases* 2012;54(1):10-16.
- 487 35. Azarian T, Mitchell PK, Georgieva M, Thompson CM, Ghouila A, Pollard AJ, von Gottberg A,
488 du Plessis M, Antonio M, Kwambana-Adams BA, et al. Global emergence and population dynamics of
489 divergent serotype 3 cc180 pneumococci. *PLOS Pathogens* 2018;14(11):e1007438.
- 490 36. Croucher NJ, Mitchell AM, Gould KA, Inverarity D, Barquist L, Feltwell T, Fookes MC, Harris
491 SR, Dordel J, Salter SJ, et al. Dominant role of nucleotide substitution in the diversification of
492 serotype 3 pneumococci over decades and during a single infection. *PLOS Genetics*
493 2013;9(10):e1003868.
- 494 37. Groves N, Sheppard CL, Litt D, Rose S, Silva A, Njoku N, Rodrigues S, Amin-Chowdhury Z,
495 Andrews N, Ladhani S, et al. Evolution of streptococcus pneumoniae serotype 3 in england and
496 wales: A major vaccine evader. *Genes* 2019;10(11).
- 497 38. Cargill TN, Hassan M, Corcoran JP, Harriss E, Asciak R, Mercer RM, McCracken DJ, Bedawi EO,
498 Rahman NM. A systematic review of comorbidities and outcomes of adult patients with pleural
499 infection. *European Respiratory Journal* 2019:1900541.
- 500 39. White HD, Henry C, Stock EM, Arroliga AC, Ghamande S. Predicting long-term outcomes in
501 pleural infections. Rapid score for risk stratification. *Annals of the American Thoracic Society*
502 2015;12(9):1310-1316.
- 503 40. Bintcliffe OJ, Hooper CE, Rider IJ, Finn RS, Morley AJ, Zahan-Evans N, Harvey JE, Skyrme-
504 Jones AP, Maskell NA. Unilateral pleural effusions with more than one apparent etiology. A
505 prospective observational study. *Annals of the American Thoracic Society* 2016;13(7):1050-1056.
- 506 41. Hasley PB, Albaum MN, Li YH, Fuhrman CR, Britton CA, Marrie TJ, Singer DE, Coley CM,
507 Kapoor WN, Fine MJ. Do pulmonary radiographic findings at presentation predict mortality in
508 patients with community-acquired pneumonia? *Arch Intern Med* 1996;156(19):2206-2212.
- 509 42. Dean NC, Jones BE, Jones JP, Ferraro JP, Post HB, Aronsky D, Vines CG, Allen TL, Haug PJ.
510 Impact of an electronic clinical decision support tool for emergency department patients with
511 pneumonia. *Ann Emerg Med* 2015;66(5):511-520.
- 512 43. Federici S, Bédard B, Hayau J, Gonzalez M, Triponez F, Krueger T, Karenovics W, Perentes JY.
513 Outcome of parapneumonic empyema managed surgically or by fibrinolysis: A multicenter study.
514 *Journal of Thoracic Disease* 2021;13(11):6381-6389.
- 515 44. Wait MA, Sharma S, Hohn J, Dal Nogare A. A randomized trial of empyema therapy. *Chest*
516 1997;111(6):1548-1551.
- 517 45. Hyams C, Williams OM, Williams P. Urinary antigen testing for pneumococcal pneumonia: Is
518 there evidence to make its use uncommon in clinical practice? *ERJ Open Research* 2020;6(1):00223-
519 02019.

520

521

522 **FIGURE LEGENDS**

523 **Figure 1: Study Cohort**

524 Results from 3677 microbiology database occurrences of a positive blood or urine antigen
525 test were identified. There were 2657 cases of pneumococcal infection in adults, including
526 559 patients with parapneumonic effusions.

527 **Figure 2: Vaccine group serotype trends in pneumococcal parapneumonic effusions in**
528 **Bristol, UK 2006-2018**

529 (A) Incidence of pneumococcal parapneumonic effusion (per 100,000 adults), calculated
530 using adult population data from the Office of National Statistics (Supplementary Data 4).
531 (B) proportion of serotyped disease caused by vaccine serotype group as shown from 2006-
532 18. Dashed lines show the introduction of paediatric PCV7 and PCV13.

533 **Figure 3: 1-year survival in patients with pneumococcal parapneumonic effusions**

534 (A) Kaplan-Meier survival curve and number at risk for patients with simple parapneumonic
535 effusion (SPE) (red line) and pleural infection (blue line). (B) Kaplan-Meier survival curve
536 and number at risk for patients with pneumococcal pleural infection for low (red line),
537 medium (blue line) and high (black line) RAPID score groups. The number of subjects at risk
538 immediately before each time point is listed in a numbers-at-risk table.

539

540 TABLES

541 Table 1: Clinical features of patients with pneumococcal parapneumonic effusions

Characteristic	All parapneumonic effusions (N=559)	SPE (N=459)	Pleural infection (N=100)	P value *
Microbiological Confirmation of IPD - N (%)				
Blood culture	283 (51)	236 (51)	47 (47)	0.469
Urinary antigen test	276 (49)	223 (49)	55 (55)	0.277
Pleural Fluid Culture Results				
<i>S. pneumoniae</i> positive	42 (8)	0 (0)	42 (42)	<0.001
Multi-organism positive	15 (3)	0 (0)	15 (15)	<0.001
Demographics				
Male – N (%)	282 (50)	223 (49)	56 (56)	0.205
Female – N (%)	277 (50)	236 (51)	44 (44)	0.205
Age (years) – median (IQR)	68 (50-78)	69 (57-78)	55 (45-74)	<0.001
Smoking Status - N (%)				
Non-smoker	127 (23)	106 (23)	21 (21)	0.732
Current smoker	196 (35)	148 (32)	46 (46)	0.043
Ex-smoker	238 (43)	205 (45)	33 (33)	0.043
Comorbidities – N (%)				
Chronic Lung Disease	245 (44)	201 (43)	44 (44)	0.856
Cardiac Disease	304 (54)	261 (57)	43 (43)	0.011
Upper GI/Swallow Problem	214 (38)	180 (40)	34 (34)	0.265
Cerebrovascular Disease	39 (7)	29 (6)	10 (10)	0.148
Type 2 Diabetes	95 (17)	79 (17)	16 (16)	0.809
Chronic Liver Failure	25 (4)	21 (5)	4 (4)	0.672
Intravenous Drug Usage	24 (4)	17 (4)	7 (7)	0.192
Alcohol excess	53 (9)	38 (8)	15 (15)	0.028
BMI ≤17 or BMI ≥ 35	23 (4)	16 (3)	7 (7)	0.056
CURB65 Score on Admission				
0 N (%)	28 (5)	20 (4)	8 (8)	0.088
1 N (%)	107 (19)	83 (18)	24 (24)	0.167
2 N (%)	139 (25)	112 (24)	27 (27)	0.528
3-5 N (%)	285 (51)	244 (53)	42 (42)	0.046
Investigation Results – median (IQR)				
White cell count, ×10 ⁹ /L	17.8 (12.1-23.8)	17.0 (12.0-22.7)	20.8 (13.9-27.0)	0.005
Neutrophil count, ×10 ⁹ /L	14.9 (10.0-20.2)	14.2 (9.9-20.1)	18.5 (10.8-24.1)	0.003
C-reactive protein, mg/dL	215 (133-341)	200 (129-312)	331 (213-412)	<0.001
Albumin, g/L	30 (26-36)	31 (27-36)	29 (23-34.3)	0.666
Urea, mmol/L	9.3 (6.4-13.2)	9.2 (6.5-13.3)	9.7 (6.1-12.8)	0.666
Radiological features				
Bilateral effusion	139 (25)	129 (28)	10 (10)	0.001
Outcomes - N (%)				
Acute renal failure †	198 (35)	170 (37)	28 (28)	0.088
Liver dysfunction #	60 (11)	55 (12)	5 (5)	0.041
ITU admission	110 (20)	92 (20)	18 (18)	0.649
Increased care needed	198 (35)	176 (38)	22 (22)	0.002
Admission days – median (IQR)	11 (6-20)	10 (5-20)	14 (10-21)	<0.001
Mortality				
- Inpatient mortality	71 (13)	60 (13)	11 (11)	0.586
- 30-day mortality	74 (13)	65 (14)	9 (9)	0.180

- 90-day mortality	106 (19)	94 (21)	12 (12)	0.039
- 1-year mortality	150 (26)	134 (29)	16 (16)	0.008

542

543 * *P*-values represent the result of comparison between SPE and pleural infection groups with
544 either Fisher's exact test (categorical variables) or the Mann-Whitney U-test (non-parametric
545 continuous variables)

546 † Acute renal failure was defined as a reduction in renal function (as measured by creatinine
547 or eGFR), oliguria (<400ml urine per 24h) or clinical diagnosis of acute kidney injury

548 # Liver dysfunction was defined as a transient disorder of hepatic function characterized by
549 either liver enzymes, or clinical diagnosis of acute liver dysfunction. Other features of acute

550 liver failure may or may not be present, including jaundice, vomiting, coagulopathy,

551 hyperbilirubinemia, and increased serum lactate

552

553 **Table 2: Clinical features of patients with serotype 1 and 3 pneumococcal**
 554 **parapneumonic effusions**

Characteristic	Serotype 1 N = 22	Serotype 3 N = 30	P value
Demographics – N (%)			
Male	13 (59)	16 (53)	0.181
Smoking			
- Current	11 (50)	11 (37)	0.353
- Ex-Smoker	5 (23)	12 (40)	0.201
Age – median (IQR)			
Age (years)	45 (40-69)	75 (62-83)	0.023
Comorbidities – N (%)			
Chronic Lung Disease	10 (46)	12 (40)	0.669
Cardiac Disease	9 (41)	21 (70)	0.038
Upper GI/Swallow Problem	3 (14)	13 (43)	0.027
Cerebrovascular Disease	3 (14)	5 (17)	0.771
Type 2 Diabetes	3 (14)	7 (23)	0.420
Chronic Liver Failure	0 (0)	2 (7)	0.210
Intravenous Drug Usage	1 (5)	1 (3)	0.714
Alcohol excess	2 (9)	4 (13)	0.656
Pleural Features – N (%)			
Pleural Infection	11 (50)	10 (33)	0.221
Loculation	5 (23)	3 (10)	0.205
Pus	4 (18)	6 (20)	0.858
RAPID Group			
- Low	10 (45)	4 (13)	0.011
- Medium	2 (9)	20 (67)	10.001
- High	8 (36)	5 (17)	0.024
Outcomes – N (%)			
Acute renal failure †	17 (77)	13 (43)	0.007
Liver dysfunction #	2 (9)	1 (3)	0.355
ITU admission	4 (18)	6 (20)	0.858
Increased care needed	6 (27)	10 (33)	0.646
30-day mortality	2 (9)	6 (20)	0.282
90-day mortality	3 (14)	11 (37)	0.068
365-day mortality	3 (14)	14 (47)	0.019
Admission days – median (IQR)	11 (5-21)	10 (4-18)	0.368

555 † Acute renal failure was defined as a reduction in renal function (measured by creatinine or
 556 eGFR), oliguria (<400ml urine per 24h) or clinical diagnosis of acute kidney injury

557 # Liver dysfunction was defined as a transient disorder of hepatic function characterized by
 558 either liver enzymes, or clinical diagnosis of acute liver dysfunction. Other features of acute
 559 liver failure may or may not be present.

560 **Table 3: Mortality among 100 Pneumococcal Pleural Infection cases with different**
 561 **clinical features and RAPID severity Scores**

562

Characteristic	Pleural Infection			
	Total Patients (N=100)	30 Day Mortality N (%)	90 Day Mortality N (%)	365 Day Mortality N (%)
Disease Characteristics				
Pus	59	0 (0)	0 (0)	1 (2)
No Pus	41	9 (22)	12 (29)	12 (29)
Loculation Present	49	8 (16)	10 (20)	12 (25)
No loculation Detected	51	1 (2)	2 (4)	5 (10)
Fibrinolytics used	33	4 (12)	6 (18)	11 (33)
Surgical Management *	29	0 (0)	0 (0)	0 (0)
- Loculation present	23	0 (0)	0 (0)	0 (0)
- No loculation	6	0 (0)	0 (0)	0 (0)
No Surgical Management	71	9 (13)	12 (17)	17 (24)
RAPID Risk Group				
Low	36	1 (3)	1 (3)	3 (8)
Medium	46	2 (4)	3 (7)	4 (9)
High	18	6 (33)	10 (55)	13 (72)

563

564 RAPID (Renal, Age, Purulence, Infection source, and Dietary factors) Score 0-2 represents
 565 low risk, 3-4 medium risk and 5-7 high risk

566

567 * 18 patients underwent surgery after fibrinolytic usage

568 **Table 4: Cox Regression Analysis for risk factors in patients with pleural infection**

569

Analysis	Factor	Beta (β) estimate	HR	95% CI	P-value	
30-day mortality	Low	-	-	-	-	
	RAPID Group	Medium	13.52	12.04	0.23-39.87	0.674
		High	28.51	19.33	0.55-92.33	0.638
	Age		-0.002	0.998	0.96-1.05	0.921
	Loculation		1.705	5.502	0.99-103	0.111
90-day mortality	Low	-	-	-	-	
	RAPID Group	Medium	0.573	1.773	0.19-38.77	0.642
		High	2.709	15.01	1.24-40.06	0.049
	Age		0.015	1.02	0.97-1.07	0.550
	Loculation		1.582	4.86	1.27-31.87	0.043
365-day mortality	Low	-	-	-	-	
	RAPID Group	Medium	0.573	1.773	0.19-38.77	0.642
	Age	High	2.709	15.01	1.24-40.06	0.049
	Age		0.027	1.028	0.99-1.07	0.188
	Loculation		1.041	2.836	1.04-9.00	0.050

570

571 Proportional hazard assumptions were tested by visual assessment of the KM survival curve,

572 log(-log) plots and Schoenfeld Residuals (Supplementary Data 7)

3677 Pneumococcal positive blood cultures or urinary antigen tests

1020 Multiple positive results per clinical episode

2657 Pneumococcal Infection Cases

210 Pneumococcal Infections without Respiratory Infection

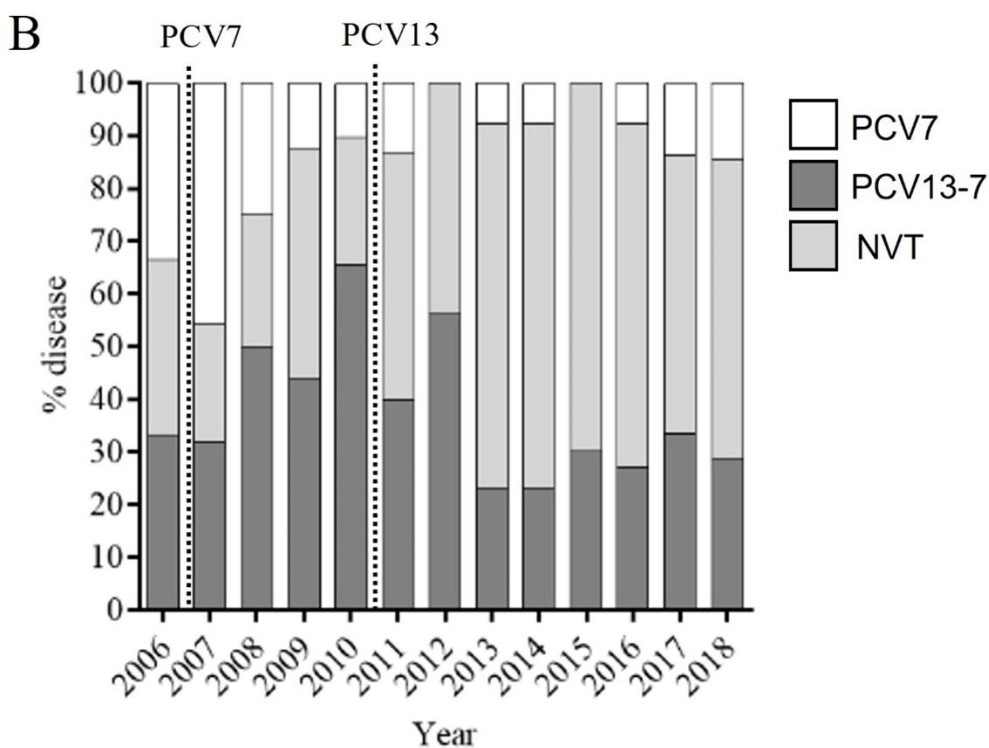
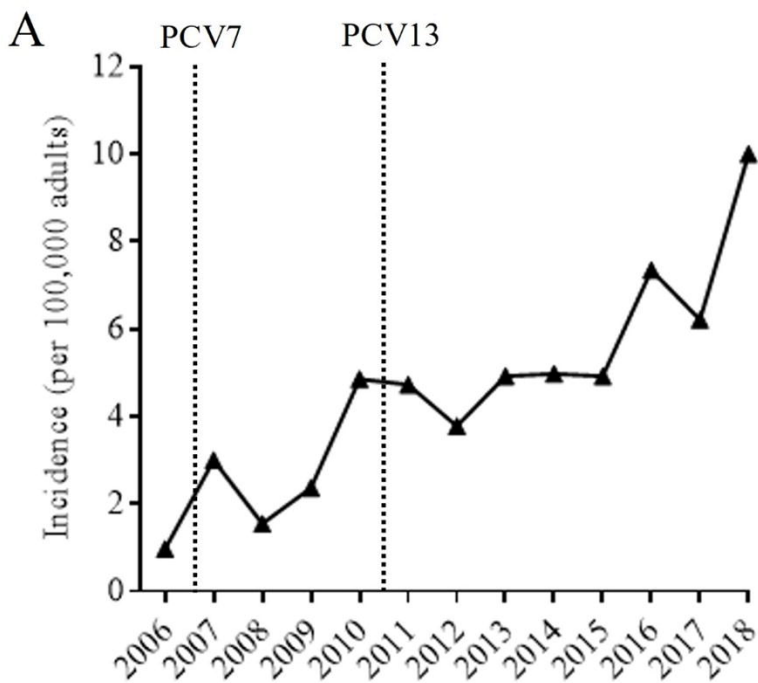
2447 Pneumococcal Respiratory Infection

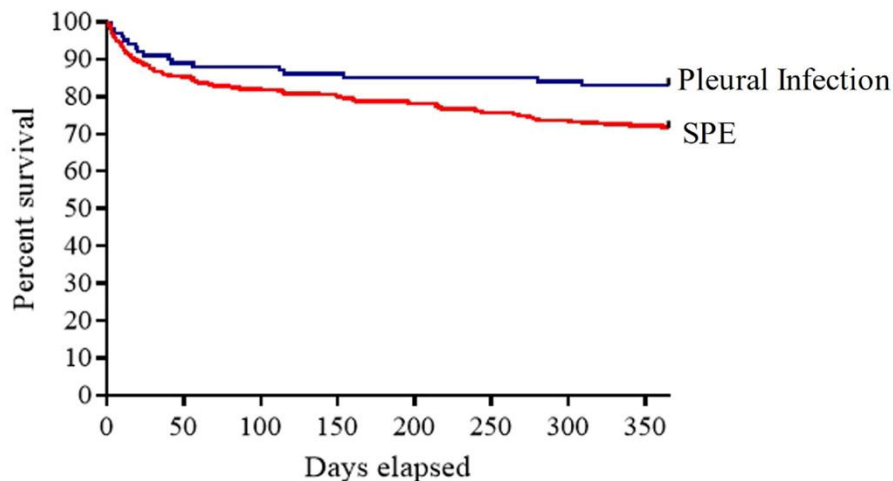
1888 Respiratory Pneumococcal Infections with no Pleural Infection

559 Pneumococcal Pleural Infection

459
SPE

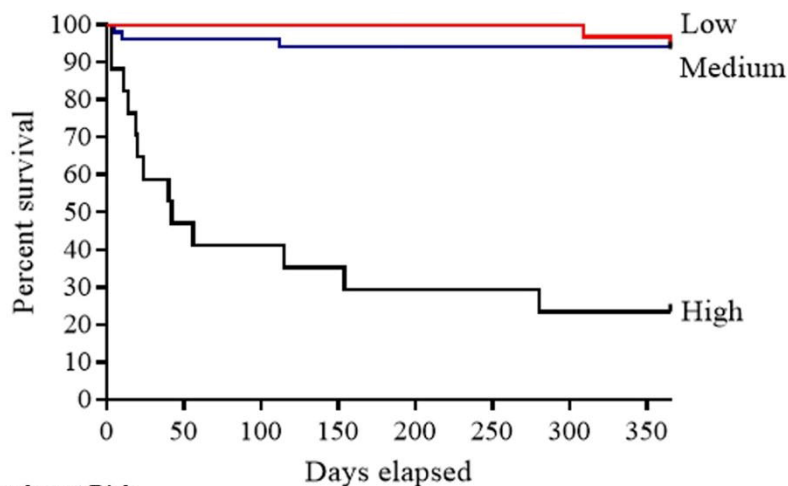
100 Pleural Infection





Number at Risk

	Days	0	56	112	154	204	250	300	365
SPE		459	385	370	358	346	334	316	309
Pleural infection		100	89	86	85	84	83	82	80



Number at Risk

	Days	0	50	112	154	280	310	365
Low		30	30	30	30	30	29	29
Medium		50	48	47	47	47	47	47
High		14	8	7	6	5	4	4