

1 **Parapneumonic effusions related to *Streptococcus pneumoniae*: serotype and disease**  
2 **severity trends**

3 Catherine Hyams<sup>1,2</sup>, David T Arnold<sup>1</sup>, Robyn Heath<sup>2</sup>, Zahin Amin-Chowdhury<sup>5</sup>, David  
4 Hettle<sup>3,4</sup>, Gabriella Ruffino<sup>1</sup>, Paul North<sup>3,4</sup>, Charlotte Grimes<sup>1</sup>, Norman K Fry<sup>5</sup>, Philip  
5 Williams<sup>3,4</sup>, Leon Danon<sup>6</sup>, O Martin Williams<sup>3,4</sup>, Shamez Ladhani<sup>5</sup>, Adam Finn<sup>6</sup>, Nick A  
6 Maskell<sup>1</sup>

7  
8 <sup>1</sup> Academic Respiratory Unit, Learning and Research, Southmead Hospital, Bristol BS10  
9 5NB, United Kingdom

10 <sup>2</sup> Vaccine and Testing Research Team, Clinical Research Facility, St Michael's Hill, Bristol  
11 Royal Infirmary, Bristol, United Kingdom

12 <sup>3</sup> Microbiology Services Bristol, Bristol Royal Infirmary, Bristol, United Kingdom

13 <sup>4</sup> Department of Microbiology, University Hospitals Bristol NHS Foundation Trust, Bristol  
14 Royal Infirmary, Bristol, UK, BS2 8HW

15 <sup>5</sup> National Infection Service, UKHSA, London, United Kingdom

16 <sup>6</sup> Engineering Mathematics, University of Bristol, Bristol, United Kingdom

17 <sup>7</sup> Bristol Vaccine Centre, Schools of Cellular and Molecular Medicine and of Population  
18 Health Sciences, University of Bristol, Bristol, BS2 8AE, United Kingdom

19

20 **Corresponding address:** Dr Catherine Hyams, MBBS BSc(Hons) PhD MRCP  
21 Academic Respiratory Unit,  
22 Learning & Research Building,  
23 Southmead Hospital, Bristol,  
24 BS10 5NB  
25 catherine.hyams@bristol.ac.uk

26 **Keywords:** *Streptococcus pneumoniae*, pneumococcus, respiratory  
27 infection, pleural disease, serotypes

28 **Take home message:** Pneumococcal parapneumonic effusions show increasing  
29 incidence despite PCV introduction, with serotype 1 and 3  
30 persisting and increase in non-PCV13 disease. Pleural infection  
31 showed lower mortality than SPE, and baseline RAPID score  
32 predicted 90-day mortality.

33

34 **ABSTRACT**

35 **Introduction**

36 *Streptococcus pneumoniae* epidemiology is changing in response to vaccination and some  
37 data suggest empyema incidence is increasing. However, differences exist between UK and  
38 USA studies. We describe trends in the clinical phenotype of adult pneumococcal pleural  
39 infection, including simple parapneumonic effusions (SPE) in the pneumococcal conjugate  
40 vaccination (PCV) era.

41 **Methods**

42 Retrospective cohort study, all adults  $\geq 16$  years admitted to three large UK hospitals, 2006-  
43 2018 with pneumococcal disease. Medical records were reviewed for each clinical episode.  
44 Serotype data were obtained from the UKHSA national reference laboratory.

45 **Results**

46 2477 invasive pneumococcal cases were identified: 459 SPE and 100 pleural infection cases.  
47 Incidence increased over time, including non-PCV-serotype disease. PCV7-serotype disease  
48 declined following paediatric PCV7 introduction, but the effect of PCV13 was less apparent  
49 as disease caused by the additional six serotypes plateaued with serotypes 1 and 3 causing  
50 such parapneumonic effusions from 2011 onwards.

51 Mortality was lower in pleural infection patients than SPE patients. Patients with frank pus  
52 had lower mortality than those without. 90-day mortality could be predicted by baseline  
53 increased RAPID score.

54 **Conclusion**

55 Pneumococcal infection continues to cause severe disease despite the introduction of PCVs.  
56 The predominance of serotype 1 and 3 in this adult UK cohort is in keeping with previous

57 studies in paediatric and non-UK studies. Rising non-PCV serotype disease and limited  
58 impact of PCV13 on cases caused by serotypes 1 and 3 offset the reductions in adult  
59 pneumococcal parapneumonic effusion disease burden observed following introduction of the  
60 childhood PCV7 programme.

61

## 62 INTRODUCTION

63 *Streptococcus pneumoniae* remains the leading bacterial cause of community-acquired  
64 pneumonia (CAP), despite vaccine deployment. A dose of PneumoVax® (unconjugated 23-  
65 valent polysaccharide vaccine, PPV23) is offered to all adults from age 65 years in the UK  
66 and  $\geq 2$ -year-olds with at least one clinical risk factor for pneumococcal disease also receive  
67 this vaccine [1]. The 7-valent pneumococcal conjugate vaccine (PCV) (PCV7) was  
68 introduced into the UK childhood vaccination programme in 2006 on a 2 priming dose  
69 schedule with a booster following the first birthday (2+1) and subsequently replaced in April  
70 2010 with a 13-valent PCV (PCV13). The schedule was modified to 1+1 in 2020. Several  
71 USA studies have shown that PCV introduction resulted in a significant reduction in both  
72 carriage and invasive pneumococcal disease (IPD) due to vaccine serotypes, especially in  
73 children [2, 3] although an increase in pneumococcal empyema cases in children has been  
74 reported [4] and the effect of paediatric PCV deployment on adult disease phenotype is  
75 debated [5]. By 2016/17, UK surveillance demonstrated that PCV7 serotype disease in  
76 children had virtually disappeared, with significant reduction in PCV7 disease burden in  
77 adults. In contrast, while PCV13 serotype disease incidence has not disappeared across all  
78 age groups, but plateaued, with a remaining residual incidence of 7.97 per 100,000 across all  
79 age groups. There has also been an increase in disease attributable to non-PCV13 serotypes,  
80 especially in the elderly, which has reduced overall disease reduction resulting from vaccine  
81 introduction [6-8]. Evidence from a large pneumococcal pneumonia patient cohort in  
82 Nottingham, UK suggests that, aside from age, residential care status and some  
83 comorbidities, there are relatively few differences between patients with disease caused by  
84 PCV13 and those with non-PCV13 serotype infections [9].

85

86 Approximately 15-20% hospitalised pneumococcal CAP cases are associated with a pleural  
87 effusion [10, 11] and 6% with empyema [10, 12]. However, recent evidence suggests that  
88 incidence of pneumococcal empyema has increased following paediatric PCV deployment,  
89 especially in adults aged >65 years, possibly due to serotype 1 emergence [13]. Thus,  
90 vaccine-driven serotype replacement may be leading to changes in pneumococcal disease  
91 phenotype and severity. This is a concern as morbidity and mortality associated with simple  
92 parapneumonic effusion (SPE) are higher than with uncomplicated pneumonia [14].

93

94 Here we present the largest cohort of patients with a single-organism pleural infection,  
95 encompassing SPE and pleural infection (complex parapneumonic effusion (CPE) or  
96 empyema) attributable to pneumococcus, in a single-centre observational study covering  
97 thirteen years during which PCVs were introduced into the UK paediatric vaccination  
98 programme. We sought to determine whether there were any differences in pneumococcal  
99 disease presentation and severity associated with empyema, given concerns surrounding  
100 changing pneumococcal serotype distribution.

## 101 **MATERIALS AND METHODS**

### 102 **Study Subjects**

103 Patients aged  $\geq 16$  years admitted to all three hospitals providing emergency care in Bristol  
104 and Bath (University Hospitals Bristol and Weston, North Bristol and The Royal United  
105 Hospital NHS Trusts) between January 2006 and December 2018, with a confirmed  
106 microbiological diagnosis of pneumococcal infection were eligible for this study. This study  
107 was approved by the Health Research Authority, UK (IRAS 265437).

108

### 109 **Study Design**

110 A retrospective cohort study at three large NHS hospitals in the UK.

111

### 112 **Methods**

113 Study-eligible cases were identified retrospectively by searching the Laboratory Information  
114 Management System (LIMS) database (Clinisys WinPath Enterprise). *S. pneumoniae* was  
115 confirmed on culture from blood at a central laboratory using standard microbiological  
116 techniques outlined in UK standards for microbiology investigations combined with API®-20  
117 Strep (BioMérieux, UK) or MALDI-TOF (matrix-assisted laser desorption/ionisation/time of  
118 flight) mass spectrometry (Bruker, UK) [15]. A positive pneumococcal urinary-antigen test  
119 (BinaxNOW®, Alere, UK) was also considered confirmative of pneumococcal infection.  
120 Confirmed cases were linked with the UK Health Security Agency (UKHSA) national  
121 reference laboratory to obtain serotype data [16] which were collected separately from  
122 clinical data to avoid any risk of bias in data collection. Pneumococcal serotypes were

123 grouped by PCV (PCV7; PCV13-7 representing the additional 6 serotypes in PCV13; and  
124 PCV13) or as non-PCV (Supplementary Data 1).

125

126 Patients with pneumococcal infection and a pleural effusion on radiology were either  
127 classified as: (1) pleural infection (empyema/CPE): if fluid was pus and/or bacterial culture  
128 positive, and/or there was an effusion relating to pneumonia and requiring definitive drainage  
129 (e.g. intercostal catheter insertion or thoracic surgery), and/or there was an exudative effusion  
130 with  $\text{pH} \leq 7.2$ ; or as, (2) SPE: an exudative effusion not classified as either an empyema or  
131 CPE in a patient with a clinical and/or radiological diagnosis of pneumonia.

132

133 Patients' clinical records were reviewed at each hospital and data, including clinical  
134 outcomes, recorded. The vaccination status of each patient was established from  
135 electronically linked GP records [15]. The CURB65 severity score on admission was  
136 calculated for each clinical episode [17]. Patients with pleural infection had a RAPID (Renal,  
137 Age, Purulence, Infection source, and Dietary factors) score calculated [18], which has been  
138 validated to stratify adults with pleural infection according to increasing risk of mortality  
139 [19].

140

## 141 **Analysis**

142 Patient data are reported as medians and interquartile ranges (IQR) for continuous variables.  
143 Categorical variables are presented as counts and percentages. Baseline characteristics and  
144 comorbid risk factors for SPE and pleural infection were compared using Fisher's exact tests  
145 for categorical variables, and the Mann-Whitney U-test for non-parametric continuous

146 variables. The Kaplan–Meier method and Cox proportional hazard regression model were  
147 used for calculation of survival over time, while survival differences were analyzed using the  
148 log-rank test. Statistical analysis was performed using SPSS, version 28.0 (New York, IBM).  
149 Graphs were generated in GraphPad PRISM, version 9.0.



## 150 RESULTS

151 2657 IPD episodes were identified, of which 2447 were respiratory infections: 1888  
152 pneumonia cases, 459 SPE and 100 cases of pleural infection (Figure 1). 283/559 (51%)  
153 cases with parapneumonic effusion had *S. pneumoniae* confirmed on blood culture. In total,  
154 282/559 (50%) were male with a median age of 68y (IQR 50-78) (Table 1, Supplementary  
155 Data 2). Pre-existing cardiac and respiratory disease was common in patients with  
156 parapneumonic effusions. Patients with pleural infection were younger than those with SPE  
157 (median ages 55 vs 69y respectively,  $P<0.001$ ), and were more likely to have history of  
158 alcohol misuse and/or intravenous drug usage ( $P<0.05$ ) and less likely to develop acute renal  
159 failure ( $P<0.05$ ). On presentation to hospital, neither clinical observations nor CURB65 score  
160 differed significantly between patients with SPE and pleural infection ( $P >0.05$ ); in contrast,  
161 patients with pleural infection had both a significantly greater neutrophilia ( $P<0.01$ ) and more  
162 elevated CRP levels ( $P<0.001$ ) (Table 1, Supplementary Data 2 and 3).

163  
164 Annual incidence of *S. pneumoniae* parapneumonic effusions increased throughout the study  
165 period (Figure 2A). There was a 33% and 34% increase in unplanned hospital admissions and  
166 microbiological testing between 2006 and 2018 (Supplementary Data 4, indicating relative  
167 increase in hospital workload was not equivalent to the increase in disease incidence. The age  
168 of patients admitted throughout the study did not show any apparent trend (Supplementary  
169 Data 5). In 38% cases serotype was available, of which overall 52% were attributable to a  
170 PCV13 serotype while only 8% were caused by a non-vaccine serotype. Over the study  
171 period, there was an absolute and proportional decrease in disease caused by PCV7 serotypes.  
172 All parapneumonic effusions caused by a PCV7 serotype after 2011 were SPE (serotypes 14  
173 and 19F), with no pleural infections caused by a PCV7 serotype after 2011. PCV13-7 disease  
174 showed an initial rise, followed by a fall after PCV13 introduction with a gradual rise in

175 disease over the last 5 study years (Figure 2B). Following the introduction of PCV13 in 2010,  
176 the only PCV13-7 serotypes that caused pneumococcal pleural infections were 1 and 3: 2  
177 (17% of serotype known disease) and 3 (25%) pre-2010 pleural infection cases versus 9  
178 (30%) and 7 (23%) post-2010 pleural infection cases due to serotype 1 and 3 respectively.  
179 Serotype 1 affected younger patients and was associated with a different RAPID severity  
180 group distribution than seen in patients with serotype 3 parapneumonic effusions (Table 2).

181  
182 Overall, 19% patients with pneumococcal parapneumonic effusions died within 90-days of  
183 presentation (Table 1, Supplementary Table 6). Patients with pleural infections had higher  
184 survival rates than those with SPE at 30-, 90- and 365-days ( $P<0.01$ ) (Figure 3A). Median  
185 survival was 468 days (340-590 days, 95% CI) in patients with pleural infection, vs 286 (274-  
186 335 days, 95% CI) in those with SPE. In total, 59/100 (59%) pleural infection patients had  
187 pus and these patients had improved 30-, 90-, and 365-day mortality compared to those  
188 without pus; in contrast, loculation was associated with reduced 30-, 90- and 365-day  
189 mortality (Table 4). Surgical management was associated with improved prognosis: no deaths  
190 occurred within 1-year of presentation compared to 24% mortality in patients with pleural  
191 infection who did not undergo surgery. Patients undergoing thoracic surgery were younger  
192 than those who did not (median age 45 years, IQR40-52 versus 66 years, IQR 53-78).

193  
194 The mortality rate among patients with pleural infection increased alongside RAPID score  
195 severity at 30-, 90- and 365-days (Figure 3B, Table 3), and a high RAPID score was  
196 associated with a median survival of 56 days (20-154 days, 95% CI). Proportional hazards  
197 regression analysis confirmed that more severe RAPID group was associated with increased  
198 90-day ( $P=0.046$ , 95% CI 1.02-16.54) and 365-day mortality ( $P=0.012$ , 95% CI 1.29-7.79)  
199 (Table 4).

## 200 **DISCUSSION**

201 This observational cohort study, with data from a 13-year period spanning PCV introduction  
202 into the UK childhood vaccination programme, shows an increasing incidence of adult  
203 pneumococcal parapneumonic effusions. An increasing incidence of pneumococcal disease  
204 has also been reported by other UK studies [9, 16, 20, 21], with Pick *et al* reporting incidence  
205 of pneumococcal pneumonia of 32.2 and 48.2 per 100,000 population in 2013 and 2018  
206 respectively [9]. Using previously published estimates that up to 20% of adults hospitalised  
207 with pneumococcal pneumonia develop a pleural effusion [10, 11], estimates of  
208 parapneumonic effusion incidence from that study would be 6.4 and 9.6 in 2013 and 2018,  
209 which are similar to the incidence rates of 5.0 and 9.8 observed in the same years in this  
210 study. Recent national epidemiological studies of pleural infection from North America also  
211 show significant increases in pleural infection rates both in children [22] and adults [23].  
212 Likewise, a Danish study from 1997-2001, showed steadily rising pleural infection rates in  
213 the elderly [24] and a UK study showed annual rises in adult pleural infections from 2008-17  
214 [25], most marked in over 60-year-old individuals with a 194% increase over the decade.  
215 Both overall admissions and microbiological testing at the study hospitals increased  
216 progressively during our study period, but not as much as disease incidence, suggesting this  
217 did not solely account for the increasing incidence observed. Whilst the study period  
218 encompassed a time when the UK vaccination programme changed, there was also an  
219 expanding total and older adult population in Bath and Bristol. Furthermore, there may have  
220 been changes in patient or physician treatment preferences, including threshold for referral to  
221 secondary care, diagnostic testing and treatment which may have impacted the incidence of  
222 disease estimated throughout this study [26].

223

224 The introduction of PCV7 into the UK childhood vaccination programme in 2006 was  
225 followed by a decrease in adult pneumococcal pleural effusions attributable to PCV7 vaccine  
226 serotypes in this study. Notably, all parapneumonic effusions due to PCV7 serotypes after  
227 2011 were SPE and due to serotypes 14 and 19F, with no cases of pleural infection. However,  
228 PCV13 introduction in 2010 did not result in such a marked indirect reduction in disease  
229 caused by the additional six serotypes in PCV13 due to the persistence of serotype 1 or 3  
230 disease. This partially aligns with national serotype trends, showing reductions in both PCV7  
231 serotype and serotype 1 adult IPD incidence [6], and both serotypes are prevalent in studies  
232 of pleural infection in children [27]. In the UK, large reductions in vaccine-serotype adult  
233 IPD were offset by increases in non-PCV13 IPD [6, 16, 20], a trend also apparent in this  
234 patient cohort, with non-PCV13 disease increasing from 30% to 60% of known serotype  
235 disease. Pick *et al* showed an increase in non-PCV13 serotype pneumococcal pneumonia  
236 from 2014/15 onwards [9] as well as an overall increase in PCV13-7 serotype disease, in  
237 contrast to trends reported in this study. These are the first data on serotype trends in adult  
238 pneumococcal pleural disease since paediatric PCV introduction in the UK.

239

240 Serotype affects pneumococcal resistance to innate immunity, duration of nasopharyngeal  
241 colonisation, the number of episodes of invasive disease per colonisation event, mortality and  
242 disease severity [28-30]. The two PCV13-7 serotypes which continued to cause  
243 pneumococcal pleural infection following PCV13 introduction are notable serotypes as they  
244 have unusual polysaccharide capsules. Serotype 1 expresses a zwitterionic and structurally  
245 diverse polysaccharide capsule, which uniquely may act as a T-cell dependent antigen [31].  
246 This serotype rarely causes asymptomatic nasopharyngeal colonization but is a commonly  
247 isolated in IPD [28], and frequently causes invasive pneumonia [32]. Studies suggests  
248 serotype 1 is more likely to be identified in young patients, and in some studies it is the most

249 frequent cause of pneumococcal pleural infection, with increasing empyema incidence  
250 attributable to this serotype [11, 13]. In contrast, the serotype 3 polysaccharide capsule is  
251 large, resulting in a highly mucoid appearance, and is one of a few capsules produced by  
252 synthase-mediated synthesis [33]. Serotype 3 also causes considerable disease burden [11,  
253 27] being the most common overall cause of pneumonia in the USA [34], is highly invasive  
254 [28] and is associated with increased mortality [29]. Distinct lineages exist within serotype 3  
255 clonal complex 180, and recent clade distributions shift has led to the emergence and  
256 expansion of clade II [35, 36], which now represents 50% serotype 3 IPD in the UK [37]. We  
257 could not determine serotype 3 clade grouping in this analysis, but clade II emergence may,  
258 at least in part, explain serotype 3 disease persistence.

259

260 Overall, pre-existing medical conditions were commonly present amongst adults with  
261 pneumococcal parapneumonic effusions, although the median patient age was lower than that  
262 seen in other cohorts of parapneumonic effusions [12, 25]. Uniquely, this cohort of  
263 parapneumonic effusion cases were all attributable to pneumococcal infection, which may  
264 cause the condition in younger patients than other pathogens [25, 38]. Despite this, the  
265 burden of pre-existing medical comorbidity was equivalent: both SPE and pleural infection  
266 patients had significant cardiac (44%) and respiratory (43%) conditions predominating. A  
267 large systematic review found that 72% of patients with pleural infection had at least one  
268 significant comorbidity, with high levels of pre-existing cardiac (19%) and respiratory (20%)  
269 diseases [38]. Excessive alcohol consumption was significantly more common among pleural  
270 infection cases, in line with other published cohort studies [14]. Alcohol abuse may  
271 predispose to the development of pleural infection through its general immunosuppressive  
272 effect in addition to associated increases in risk of aspiration and delayed presentation to  
273 medical services [12].

274

275 As shown in the initial validation and subsequent cohort studies of the RAPID score [18, 19],  
276 a high score was strongly associated with the risk of mortality by 3-months. Study patients in  
277 the low-risk group had a 3% (95% C.I 0.7 to 15%) risk of 90-day mortality compared to 57%  
278 (95% C.I. 28% to 82%  $P<0.01$ ), for those with a high risk score, while there was much less  
279 difference in survival between those in low and medium RAPID groups, as reported by others  
280 [19, 39]. There was a positive association between pleural fluid purulence and survival: this  
281 relationship has been demonstrated in cohorts that were not restricted by causative organism,  
282 suggesting it is disease and not pathogen specific [18]. Anecdotal report findings suggest  
283 effusions comprised of frank pus tend to be non-loculated and therefore more readily drained.

284

285 This study identified patients with pneumococcal infection and parapneumonic effusions  
286 within a defined geographical area, covering a population of approximately one million  
287 adults, and encompassed 3 large hospitals with 100,000 unplanned adult admissions annually.  
288 One of these hospitals is the regional thoracic surgery centre, whilst another has a specialist  
289 pleural disease service, possibly increasing the accuracy of the clinical data presented here.  
290 We captured disease and serotype trends over 13 years, spanning PCV introduction. By  
291 linking with the UKHSA national reference laboratory we were able to report serotype where  
292 it was available. Importantly, the epidemiological data were supported with detailed clinical  
293 information for individual patients, including short- and long-term outcomes. However, this  
294 study also has limitations. This is a retrospective observational study; therefore, only  
295 information documented in clinical records could be included and patients were managed at  
296 the discretion of individual physicians. As a regional study, the findings here may not be  
297 representative of other populations; although, our serotype trends are comparable to other UK

298 national and regional reports. We included patients who tested positive for pneumococcus  
299 using the BinaxNOW® urinary antigen test, which has a known sensitivity of 65% and  
300 prolonged positive test result after exposure to pneumococcus [40]. Lastly, different  
301 methodologies were used to identify pneumococcal serotypes during the study period; whole  
302 genomic sequencing was only routinely used by UKHSA from October 2017, and therefore  
303 earlier isolates did not have this performed.

304

305 Overall, we found an increasing incidence of pneumococcal parapneumonic effusion in  
306 Bristol and Bath, UK. The proportion of disease attributable to PCV7 serotypes fell after  
307 2006, when the PCV7 vaccine was introduced into the UK childhood vaccination  
308 programme; importantly, no cases of PCV7 pleural infection occurred in adults after 2011.  
309 However, disease attributable serotypes 1 and 3 did not show decline following PCV13  
310 vaccine rollout. Further research is needed to determine if *S. pneumoniae* serotype is  
311 predictive of mortality risk in adults with pneumococcal parapneumonic effusions.

312 **ACKNOWLEDGEMENTS**

313 The authors would like to acknowledge the research teams at The Royal United, North  
314 Bristol and University Hospitals of Bristol and Weston NHS Trusts.

315

316 **COMPETING INTERESTS**

317 CH is Principal Investigator of the AvonCAP study which is an investigator-led University of  
318 Bristol study funded by Pfizer. AF is a member of the Joint Committee on Vaccination and  
319 Immunization (JCVI) and chair of the World Health Organization European Technical  
320 Advisory Group of Experts on Immunization (ETAGE) committee. In addition to receiving  
321 funding from Pfizer as Chief Investigator of this study, he leads another project investigating  
322 transmission of respiratory bacteria in families jointly funded by Pfizer and the Gates  
323 Foundation. The other authors have no relevant conflicts of interest to declare.

324

325 **CONTRIBUTORSHIP STATEMENT**

326 CH, DA, AF, OMW and NM generated the research questions and analysis plan. CH, RH,  
327 DH, GF, DA, PN, PW, ZAC collected data. CH and DH verified the data. CH, DA, RH, AF  
328 and NM undertook the data analysis. AF, OMW and NM provided oversight of the research.  
329 All authors contributed to the preparation of the manuscript and its revision for publication  
330 and had responsibility for the decision to publish.

331

332 **FUNDING**

333 CH was funded by the National Institute for Health Research [NIHR Academic Clinical  
334 Fellowship (ACF-2015-25-002)]. DTA was funded by an NIHR Doctoral Research



335 Fellowship (DRF-2018-11-ST2-065). The views expressed are those of the author(s) and not  
336 necessarily those of the NIHR or the Department of Health and Social Care.

337

### 338 **DATA SHARING**

339 The data used in this study are sensitive and cannot be made publicly available without  
340 breaching patient confidentiality rules. Therefore, individual participant data and a data  
341 dictionary is not available to other researchers.

342

343

344 TABLES

345 Table 1: Clinical features of patients with pneumococcal parapneumonic effusions

Characteristic	All parapneumonic effusions (N=559)	SPE (N=459)	Pleural infection (N=100)	P value *
<b>Microbiological Confirmation of IPD - N (%)</b>				
Blood culture	283 (51)	236 (51)	47 (47)	0.469
Urinary antigen test	276 (49)	223 (49)	55 (55)	0.277
<b>Pleural Fluid Culture Results</b>				
<i>S. pneumoniae</i> positive	42 (8)	0 (0)	42 (42)	<0.001
Multi-organism positive	15 (3)	0 (0)	15 (15)	<0.001
<b>Demographics</b>				
Male – N (%)	282 (50)	223 (49)	56 (56)	0.205
Female – N (%)	277 (50)	236 (51)	44 (44)	0.205
Age (years) – median (IQR)	68 (50-78)	69 (57-78)	55 (45-74)	<0.001
<b>Smoking Status - N (%)</b>				
Non-smoker	127 (23)	106 (23)	21 (21)	0.732
Current smoker	196 (35)	148 (32)	46 (46)	0.043
Ex-smoker	238 (43)	205 (45)	33 (33)	0.043
<b>Comorbidities – N (%)</b>				
Chronic Lung Disease	245 (44)	201 (43)	44 (44)	0.856
Cardiac Disease	304 (54)	261 (57)	43 (43)	<b>0.011</b>
Upper GI/Swallow Problem	214 (38)	180 (40)	34 (34)	0.265
Cerebrovascular Disease	39 (7)	29 (6)	10 (10)	0.148
Type 2 Diabetes	95 (17)	79 (17)	16 (16)	0.809
Chronic Liver Failure	25 (4)	21 (5)	4 (4)	0.672
Intravenous Drug Usage	24 (4)	17 (4)	7 (7)	0.192
Alcohol excess	53 (9)	38 (8)	15 (15)	<b>0.028</b>
BMI ≤17 or BMI ≥ 35	23 (4)	16 (3)	7 (7)	0.056
<b>CURB65 Score on Admission</b>				
0 N (%)	28 (5)	20 (4)	8 (8)	0.088
1 N (%)	107 (19)	83 (18)	24 (24)	0.167
2 N (%)	139 (25)	112 (24)	27 (27)	0.528
3-5 N (%)	285 (51)	244 (53)	42 (42)	<b>0.046</b>
<b>Investigation Results – median (IQR)</b>				
White cell count, ×10 <sup>9</sup> /L	17.8 (12.1-23.8)	17.0 (12.0-22.7)	20.8 (13.9-27.0)	<b>0.005</b>
Neutrophil count, ×10 <sup>9</sup> /L	14.9 (10.0-20.2)	14.2 (9.9-20.1)	18.5 (10.8-24.1)	<b>0.003</b>
C-reactive protein, mg/dL	215 (133-341)	200 (129-312)	331 (213-412)	<0.001
Albumin, g/L	30 (26-36)	31 (27-36)	29 (23-34.3)	0.666
Urea, mmol/L	9.3 (6.4-13.2)	9.2 (6.5-13.3)	9.7 (6.1-12.8)	0.666
<b>Outcomes - N (%)</b>				
Acute renal failure †	198 (35)	170 (37)	28 (28)	0.088
Liver dysfunction #	60 (11)	55 (12)	5 (5)	<b>0.041</b>
ITU admission	110 (20)	92 (20)	18 (18)	0.649
Increased care needed	198 (35)	176 (38)	22 (22)	<b>0.002</b>
Admission days – median (IQR)	11 (6-20)	10 (5-20)	14 (10-21)	<0.001
<b>Mortality</b>				
- Inpatient mortality	71 (13)	60 (13)	11 (11)	0.586
- 30-day mortality	74 (13)	65 (14)	9 (9)	0.180
- 90-day mortality	106 (19)	94 (21)	12 (12)	<b>0.039</b>

- 1-year mortality	150 (26)	134 (29)	16 (16)	<b>0.008</b>
--------------------	----------	----------	---------	--------------

346

347 \* *P*-values represent the result of comparison between SPE and pleural infection groups with  
348 either Fisher's exact test (categorical variables) or the Mann-Whitney U-test (non-parametric  
349 continuous variables)

350 † Acute renal failure was defined as a reduction in renal function (as measured by creatinine  
351 or eGFR), oliguria (<400ml urine per 24h) or clinical diagnosis of acute kidney injury

352 # Liver dysfunction was defined as a transient disorder of hepatic function characterized by  
353 either liver enzymes, or clinical diagnosis of acute liver dysfunction. Other features of acute  
354 liver failure may or may not be present, including jaundice, vomiting, coagulopathy,  
355 hyperbilirubinemia, and increased serum lactate

356

357 **Table 2: Clinical features of patients with serotype 1 and 3 pneumococcal**  
 358 **parapneumonic effusions**

Characteristic	Serotype 1 N = 22	Serotype 3 N = 30	P value
<b>Demographics – N (%)</b>			
Male	13 (59)	16 (53)	0.181
Smoking			
- Current	11 (50)	11 (37)	0.353
- Ex-Smoker	5 (23)	12 (40)	0.201
<b>Age – median (IQR)</b>			
Age (years)	45 (40-69)	75 (62-83)	<b>0.023</b>
<b>Comorbidities – N (%)</b>			
Chronic Lung Disease	10 (46)	12 (40)	0.669
Cardiac Disease	9 (41)	21 (70)	<b>0.038</b>
Upper GI/Swallow Problem	3 (14)	13 (43)	<b>0.027</b>
Cerebrovascular Disease	3 (14)	5 (17)	0.771
Type 2 Diabetes	3 (14)	7 (23)	0.420
Chronic Liver Failure	0 (0)	2 (7)	0.210
Intravenous Drug Usage	1 (5)	1 (3)	0.714
Alcohol excess	2 (9)	4 (13)	0.656
<b>Pleural Features – N (%)</b>			
Pleural Infection	11 (50)	10 (33)	0.221
Loculation	5 (23)	3 (10)	0.205
Pus	4 (18)	6 (20)	0.858
RAPID Group			
- Low	10 (45)	4 (13)	<b>0.011</b>
- Medium	1 (5)	20 (67)	<b>&lt;0.001</b>
- High	9 (41)	3 (13)	<b>0.024</b>
<b>Outcomes – N (%)</b>			
Acute renal failure †	9 (41)	23 (78)	<b>0.007</b>
Liver dysfunction #	2 (9)	1 (3)	0.355
ITU admission	4 (18)	6 (20)	0.858
Increased care needed	6 (27)	10 (33)	0.646
<b>30-day mortality</b>	2 (9)	6 (20)	0.282
<b>90-day mortality</b>	3 (14)	11 (37)	0.068
365-day mortality	3 (14)	14 (47)	<b>0.019</b>
Admission days – median (IQR)	11 (5-21)	10 (4-18)	0.368

359 † Acute renal failure was defined as a reduction in renal function (measured by creatinine or  
 360 eGFR), oliguria (<400ml urine per 24h) or clinical diagnosis of acute kidney injury  
 361 # Liver dysfunction was defined as a transient disorder of hepatic function characterized by  
 362 either liver enzymes, or clinical diagnosis of acute liver dysfunction. Other features of acute  
 363 liver failure may or may not be present.

364 **Table 3: Mortality among 100 Pneumococcal Pleural Infection cases with different**  
 365 **clinical features and RAPID severity Scores**

Characteristic	Pleural Infection			
	Total Patients (N=100)	30 Day Mortality N (%)	90 Day Mortality N (%)	365 Day Mortality N (%)
<b>Disease Characteristics</b>				
Pus	59	0 (0)	0 (0)	1 (2)
No Pus	41	9 (22)	12 (29)	12 (29)
Loculation Present	49	8 (16)	10 (20)	12 (25)
No loculation Detected	51	1 (2)	2 (4)	5 (10)
Fibrinolytics used	33	4 (12)	6 (18)	11 (33)
Surgical Management	29	0 (0)	0 (0)	0 (0)
- Loculation present	23	0 (0)	0 (0)	0 (0)
- No loculation	6	0 (0)	0 (0)	0 (0)
No Surgical Management	71	9 (13)	12 (17)	17 (24)
<b>RAPID Risk Group</b>				
Low	36	1 (3)	1 (3)	3 (8)
Medium	46	2 (4)	3 (7)	4 (9)
High	18	6 (33)	10 (55)	13 (72)

366

367 RAPID (Renal, Age, Purulence, Infection source, and Dietary factors) Score 0-2 represents  
 368 low risk, 3-4 medium risk and 5-7 high risk

369

370

371 **Table 4: Cox Regression Analysis for risk factors in patients with pleural infection**

<b>Analysis</b>	<b>Factor</b>	<b>Wald</b>	<b>HR</b>	<b>P-value</b>	<b>95% CI</b>
<b>30-day mortality</b>	Age	0.167	0.99	0.683	0.95-1.03
	Loculation	2.214	2.86	0.181	0.52-33.2
	RAPID Group	1.790	4.15	0.137	0.72-11.37
<b>90-day mortality</b>	Age	0.092	0.99	0.761	0.956-1.03
	Loculation	3.965	2.92	0.172	0.63-13.53
	RAPID Group	1.865	4.11	0.046	1.02-16.54
<b>365-day mortality</b>	Age	0.167	0.99	0.713	0.96-1.03
	Loculation	2.214	1.44	0.505	0.50-4.16
	RAPID Group	1.790	3.17	0.012	1.29-7.79

372

373

## 374 REFERENCES

- 375 1. UKHSA. Pneumococcal: the Green book. 2020; pp. 1-13.
- 376 2. Whitney CG, Farley MM, Hadler J, Harrison LH, Bennett NM, Lynfield R, Reingold A, Cieslak  
377 PR, Pilishvili T, Jackson D, Facklam RR, Jorgensen JH, Schuchat A. Decline in Invasive Pneumococcal  
378 Disease after the Introduction of Protein–Polysaccharide Conjugate Vaccine. *New England Journal of*  
379 *Medicine* 2003; 348(18): 1737-1746.
- 380 3. Harboe ZB, Dalby T, Weinberger DM, Benfield T, Mølbak K, Slotved HC, Suppli CH, Konradsen  
381 HB, Valentiner-Branth P. Impact of 13-Valent Pneumococcal Conjugate Vaccination in Invasive  
382 Pneumococcal Disease Incidence and Mortality. *Clinical Infectious Diseases* 2014; 59(8): 1066-1073.
- 383 4. Kelly MM, Coller RJ, Kohler JE, Zhao Q, Sklansky DJ, Shadman KA, Thurber A, Barreda CB,  
384 Edmonson MB. Trends in Hospital Treatment of Empyema in Children in the United States. *The*  
385 *Journal of Pediatrics* 2018; 202: 245-251.e241.
- 386 5. Weinberger DM, Harboe ZB, Shapiro ED. Developing Better Pneumococcal Vaccines for  
387 Adults. *JAMA Internal Medicine* 2017; 177(3): 303-304.
- 388 6. Ladhani SN, Collins S, Djennad A, Sheppard CL, Borrow R, Fry NK, Andrews NJ, Miller E,  
389 Ramsay ME. Rapid increase in non-vaccine serotypes causing invasive pneumococcal disease in  
390 England and Wales, 2000-2013;17: a prospective national observational cohort study. *The Lancet*  
391 *Infectious Diseases* 2018; 18(4): 441-451.
- 392 7. Miller E, Andrews NJ, Waight PA, Slack MP, George RC. Herd immunity and serotype  
393 replacement 4 years after seven-valent pneumococcal conjugate vaccination in England and Wales:  
394 an observational cohort study. *Lancet Infect Dis* 2011; 11(10): 760-768.
- 395 8. Waight PA, Andrews NJ, Ladhani SN, Sheppard CL, Slack MPE, Miller E. Effect of the 13-  
396 valent pneumococcal conjugate vaccine on invasive pneumococcal disease in England and Wales 4  
397 years after its introduction: an observational cohort study. *Lancet Infect Dis* 2015; 15(5): 535-543.
- 398 9. Pick H, Daniel P, Rodrigo C, Bewick T, Ashton D, Lawrence H, Baskaran V, Edwards-Pritchard  
399 RC, Sheppard C, Eletu SD, Rose S, Litt D, Fry NK, Ladhani S, Chand M, Trotter C, McKeever TM, Lim  
400 WS. Pneumococcal serotype trends, surveillance and risk factors in UK adult pneumonia, 2013–18.  
401 *Thorax* 2020; 75(1): 38.
- 402 10. Vallés X, Marcos A, Pinart M, Piñer R, Marco F, Mensa JM, Torres A. Hospitalized  
403 Community-Acquired Pneumonia Due to *Streptococcus pneumoniae*: Has Resistance to Antibiotics  
404 Decreased? *Chest* 2006; 130(3): 800-806.
- 405 11. Cillóniz C, Ewig S, Polverino E, Muñoz-Almagro C, Marco F, Gabarrús A, Menéndez R, Mensa  
406 J, Torres A. Pulmonary complications of pneumococcal community-acquired pneumonia: incidence,  
407 predictors, and outcomes. *Clinical Microbiology and Infection* 2012; 18(11): 1134-1142.
- 408 12. Chalmers JD, Singanayagam A, Murray MP, Scally C, Fawzi A, Hill AT. Risk factors for  
409 complicated parapneumonic effusion and empyema on presentation to hospital with community-  
410 acquired pneumonia. *Thorax* 2009; 64(7): 592.
- 411 13. Wagenvoort GHJ, Sanders EAM, Vlaminckx BJ, Elberse KE, de Melker HE, van der Ende A,  
412 Knol MJ. Invasive pneumococcal disease: Clinical outcomes and patient characteristics 2–6 years  
413 after introduction of 7-valent pneumococcal conjugate vaccine compared to the pre-vaccine period,  
414 the Netherlands. *Vaccine* 2016; 34(8): 1077-1085.
- 415 14. Falguera M, Carratalà J, Bielsa S, García-Vidal C, Ruiz-González A, Chica I, Gudiol F, Porcel JM.  
416 Predictive factors, microbiology and outcome of patients with parapneumonic effusion. *European*  
417 *Respiratory Journal* 2011; 38(5): 1173.
- 418 15. Hyams C, Amin-Chowdhury Z, Fry NK, North P, Finn A, Judge A, Ladhani SN, Williams OM.  
419 *Streptococcus Pneumoniae* septic arthritis in adults in Bristol and Bath, United Kingdom, 2006–2018:  
420 a 13-year retrospective observational cohort study. *Emerging Microbes & Infections* 2021; 10(1):  
421 1369-1377.
- 422 16. Amin-Chowdhury Z, Collins S, Sheppard C, Litt D, Fry NK, Andrews N, Ladhani SN.  
423 Characteristics of Invasive Pneumococcal Disease Caused by Emerging Serotypes After the

- 424 Introduction of the 13-Valent Pneumococcal Conjugate Vaccine in England: A Prospective  
425 Observational Cohort Study, 2014–2018. *Clinical Infectious Diseases* 2020.
- 426 17. Lim WS, van der Eerden MM, Laing R, Boersma WG, Karalus N, Town GI, Lewis SA,  
427 Macfarlane JT. Defining community acquired pneumonia severity on presentation to hospital: an  
428 international derivation and validation study. *Thorax* 2003; 58(5): 377.
- 429 18. Rahman NM, Kahan BC, Miller RF, Gleeson FV, Nunn AJ, Maskell NA. A Clinical Score (RAPID)  
430 to Identify Those at Risk for Poor Outcome at Presentation in Patients With Pleural Infection. *Chest*  
431 2014; 145(4): 848-855.
- 432 19. Corcoran JP, Psallidas I, Gerry S, Piccolo F, Koegelenberg CF, Saba T, Daneshvar C, Fairbairn I,  
433 Heinink R, West A, Stanton AE, Holme J, Kastelik JA, Steer H, Downer NJ, Haris M, Baker EH, Everett  
434 CF, Pepperell J, Bewick T, Yarmus L, Maldonado F, Khan B, Hart-Thomas A, Hands G, Warwick G, De  
435 Fonseka D, Hassan M, Munavvar M, Guhan A, Shahidi M, Pogson Z, Dowson L, Popowicz ND, Saba J,  
436 Ward NR, Halifax RJ, Dobson M, Shaw R, Hedley EL, Sabia A, Robinson B, Collins GS, Davies HE, Yu L-  
437 M, Miller RF, Maskell NA, Rahman NM. Prospective validation of the RAPID clinical risk prediction  
438 score in adult patients with pleural infection: the PILOT study. *European Respiratory Journal* 2020:  
439 2000130.
- 440 20. Houseman C, Hughes GJ, Chapman KE, Wilson D, Gorton R. Increased Invasive Pneumococcal  
441 Disease, North East England, UK. *Emerg Infect Dis* 2017; 23(1): 122-126.
- 442 21. Abram SGF, Alvand A, Judge A, Beard DJ, Price AJ. Mortality and adverse joint outcomes  
443 following septic arthritis of the native knee: a longitudinal cohort study of patients receiving  
444 arthroscopic washout. *The Lancet Infectious Diseases* 2020; 20(3): 341-349.
- 445 22. Finley C, Clifton J, Fitzgerald JM, Yee J. Empyema: an increasing concern in Canada. *Can*  
446 *Respir J* 2008; 15(2): 85-89.
- 447 23. Mummadi SR, Stoller JK, Lopez R, Kailasam K, Gillespie CT, Hahn PY. Epidemiology of Adult  
448 Pleural Disease in the United States. *Chest* 2021; 160(4): 1534-1551.
- 449 24. Sogaard M, Nielsen RB, Nørgaard M, Kornum JB, Schönheyder HC, Thomsen RW. Incidence,  
450 Length of Stay, and Prognosis of Hospitalized Patients With Pleural Empyema: A 15-Year Danish  
451 Nationwide Cohort Study. *Chest* 2014; 145(1): 189-192.
- 452 25. Arnold DT, Hamilton FW, Morris TT, Suri T, Morley A, Frost V, Vipond IB, Medford AR, Payne  
453 RA, Muir P, Maskell NA. Epidemiology of pleural empyema in English hospitals and the impact of  
454 influenza. *European Respiratory Journal* 2020: 2003546.
- 455 26. Maguire D, Dunn P, McKenna H. How hospital activity in the NHS in England has changed  
456 over time. 2016.
- 457 27. Fletcher MA, Schmitt HJ, Syrochkina M, Sylvester G. Pneumococcal empyema and  
458 complicated pneumonias: global trends in incidence, prevalence, and serotype epidemiology.  
459 *European Journal of Clinical Microbiology & Infectious Diseases* 2014; 33(6): 879-910.
- 460 28. Brueggemann AB, Griffiths DT, Meats E, Peto T, Crook DW, Spratt BG. Clonal Relationships  
461 between Invasive and Carriage *Streptococcus pneumoniae* and Serotype- and Clone-Specific  
462 Differences in Invasive Disease Potential. *The Journal of Infectious Diseases* 2003; 187(9): 1424-1432.
- 463 29. Weinberger DM, Harboe ZB, Sanders EAM, Ndiritu M, Klugman KP, Rückinger S, Dagan R,  
464 Adegbola R, Cutts F, Johnson HL, O'Brien KL, Scott JA, Lipsitch M. Association of Serotype with Risk of  
465 Death Due to Pneumococcal Pneumonia: A Meta-Analysis. *Clinical Infectious Diseases* 2010; 51(6):  
466 692-699.
- 467 30. Hyams C, Yuste J, Bax K, Camberlein E, Weiser JN, Brown JS. *Streptococcus pneumoniae*  
468 resistance to complement-mediated immunity is dependent on the capsular serotype. *Infect Immun*  
469 2010; 78(2): 716-725.
- 470 31. Kaushal N, Kumari S, Jhelum H, Sehgal D. In vitro and in vivo characterization of the  
471 interaction, proinflammatory, immunomodulatory and antigenic properties of capsular  
472 polysaccharide from *Streptococcus pneumoniae* serotype 1. *International Journal of Biological*  
473 *Macromolecules* 2020; 143: 521-532.

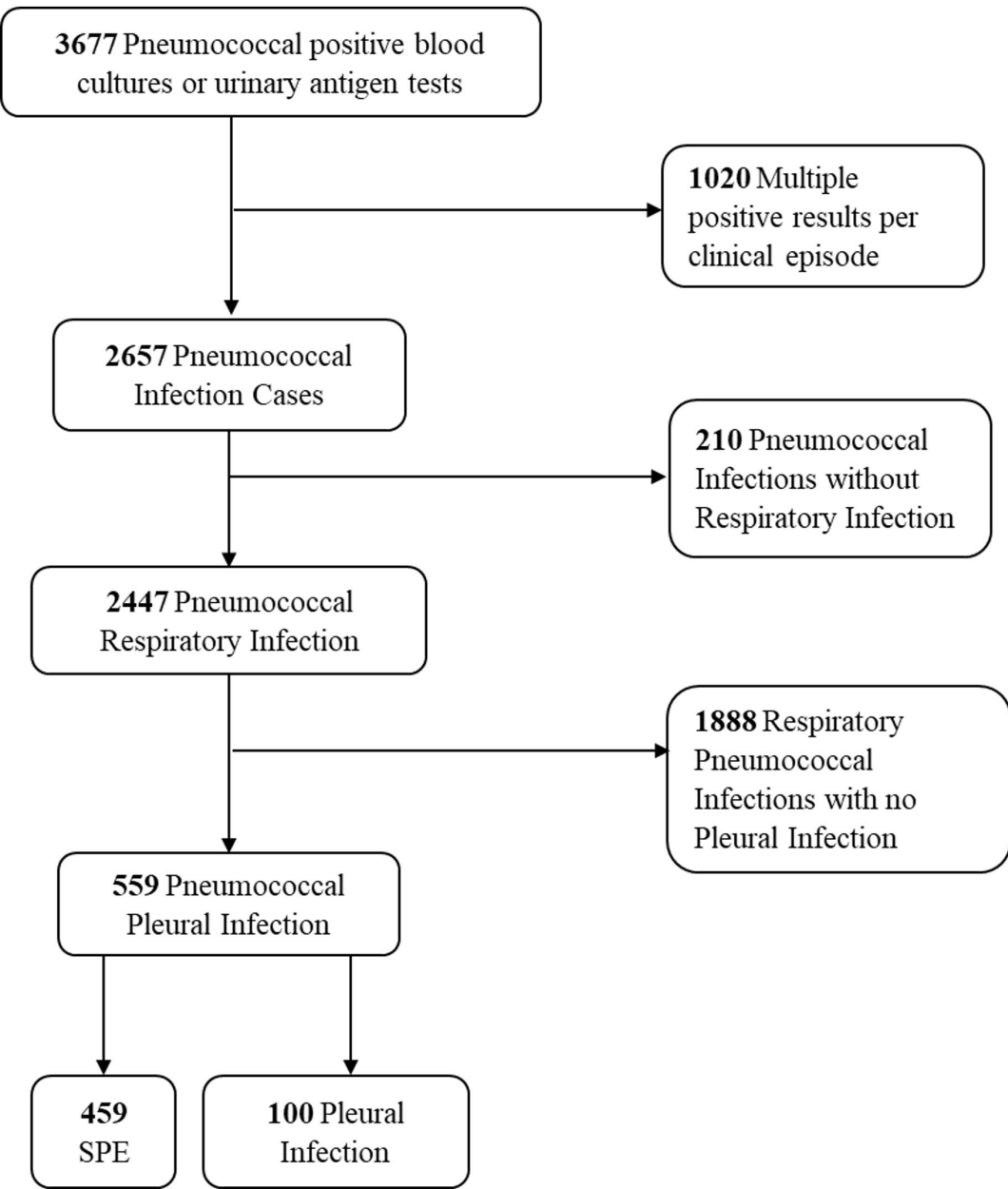


- 474 32. Bergman K, Härnqvist T, Backhaus E, Trollfors B, Dahl MS, Kolberg H, Ockborn G, Andersson  
475 R, Karlsson J, Mellgren Å, Skovbjerg S. Invasive pneumococcal disease in persons with predisposing  
476 factors is dominated by non-vaccine serotypes in Southwest Sweden. *BMC Infectious Diseases* 2021:  
477 21(1): 756.
- 478 33. Luck JN, Tettelin H, Orihuela CJ. Sugar-Coated Killer: Serotype 3 Pneumococcal Disease.  
479 *Frontiers in Cellular and Infection Microbiology* 2020: 10.
- 480 34. Pande A, Nasir S, Rueda AM, Matejowsky R, Ramos J, Doshi S, Kulkarni P, Musher DM. The  
481 Incidence of Necrotizing Changes in Adults With Pneumococcal Pneumonia. *Clinical Infectious*  
482 *Diseases* 2012: 54(1): 10-16.
- 483 35. Azarian T, Mitchell PK, Georgieva M, Thompson CM, Ghouila A, Pollard AJ, von Gottberg A,  
484 du Plessis M, Antonio M, Kwambana-Adams BA, Clarke SC, Everett D, Cornick J, Sadowy E,  
485 Hryniewicz W, Skoczynska A, Moisi JC, McGee L, Beall B, Metcalf BJ, Breiman RF, Ho PL, Reid R,  
486 O'Brien KL, Gladstone RA, Bentley SD, Hanage WP. Global emergence and population dynamics of  
487 divergent serotype 3 CC180 pneumococci. *PLOS Pathogens* 2018: 14(11): e1007438.
- 488 36. Croucher NJ, Mitchell AM, Gould KA, Inverarity D, Barquist L, Feltwell T, Fookes MC, Harris  
489 SR, Dordel J, Salter SJ, Browall S, Zemlickova H, Parkhill J, Normark S, Henriques-Normark B, Hinds J,  
490 Mitchell TJ, Bentley SD. Dominant Role of Nucleotide Substitution in the Diversification of Serotype 3  
491 Pneumococci over Decades and during a Single Infection. *PLOS Genetics* 2013: 9(10): e1003868.
- 492 37. Groves N, Sheppard CL, Litt D, Rose S, Silva A, Njoku N, Rodrigues S, Amin-Chowdhury Z,  
493 Andrews N, Ladhani S, Fry NK. Evolution of Streptococcus pneumoniae Serotype 3 in England and  
494 Wales: A Major Vaccine Evader. *Genes* 2019: 10(11).
- 495 38. Cargill TN, Hassan M, Corcoran JP, Harriss E, Asciak R, Mercer RM, McCracken DJ, Bedawi EO,  
496 Rahman NM. A systematic review of comorbidities and outcomes of adult patients with pleural  
497 infection. *European Respiratory Journal* 2019: 1900541.
- 498 39. White HD, Henry C, Stock EM, Arroliga AC, Ghamande S. Predicting Long-Term Outcomes in  
499 Pleural Infections. RAPID Score for Risk Stratification. *Annals of the American Thoracic Society* 2015:  
500 12(9): 1310-1316.
- 501 40. Hyams C, Williams OM, Williams P. Urinary antigen testing for pneumococcal pneumonia: is  
502 there evidence to make its use uncommon in clinical practice? *ERJ Open Research* 2020: 6(1): 00223-  
503 02019.

504

### Figure One: Study Cohort

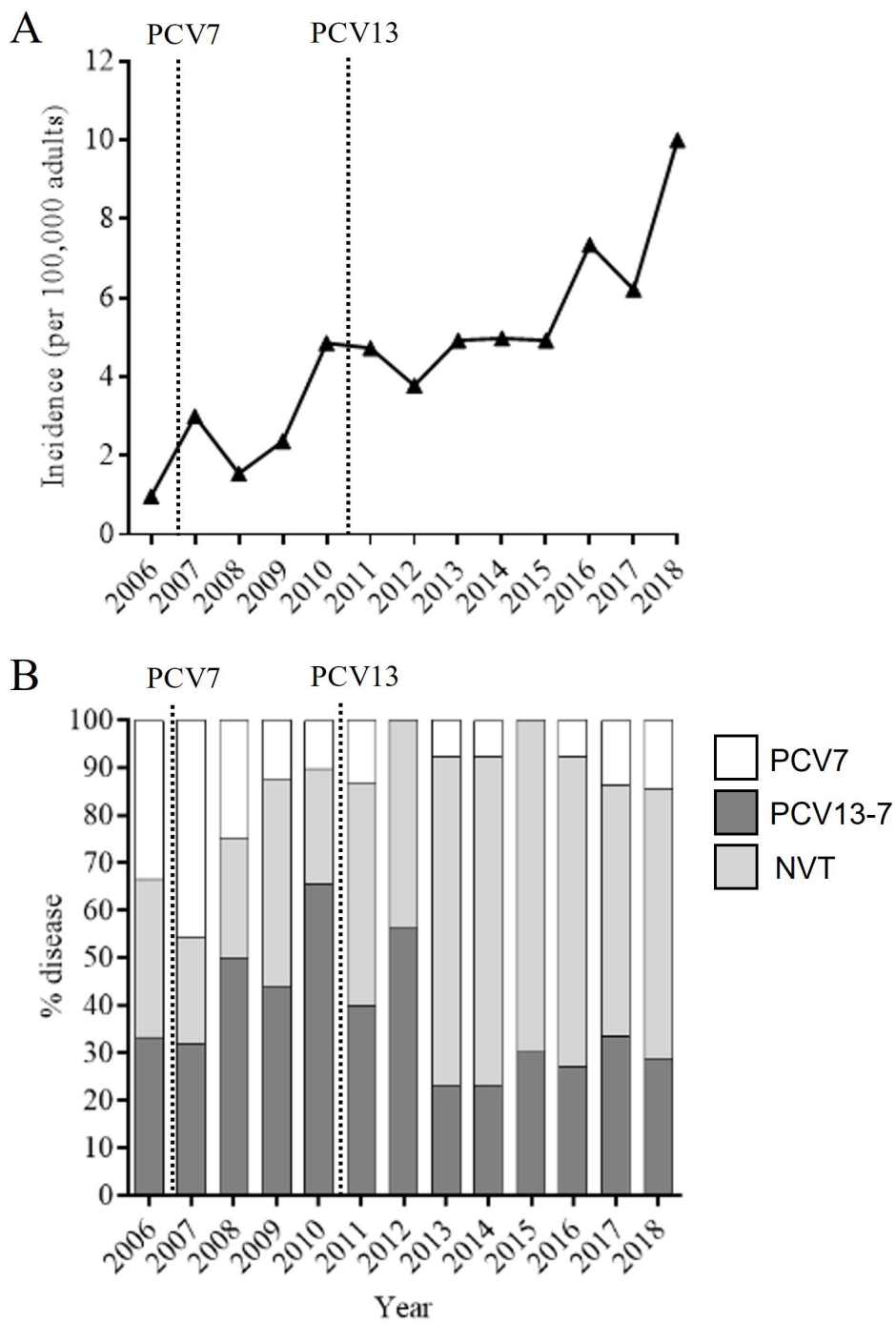
Results from 3677 microbiology database occurrences of a positive blood or urine antigen test were identified. There were 2657 cases of pneumococcal infection in adults, including 559 patients with parapneumonic effusions.



**Figure 2: Vaccine group serotype trends in pneumococcal parapneumonic effusions in Bristol, UK 2006-2018**

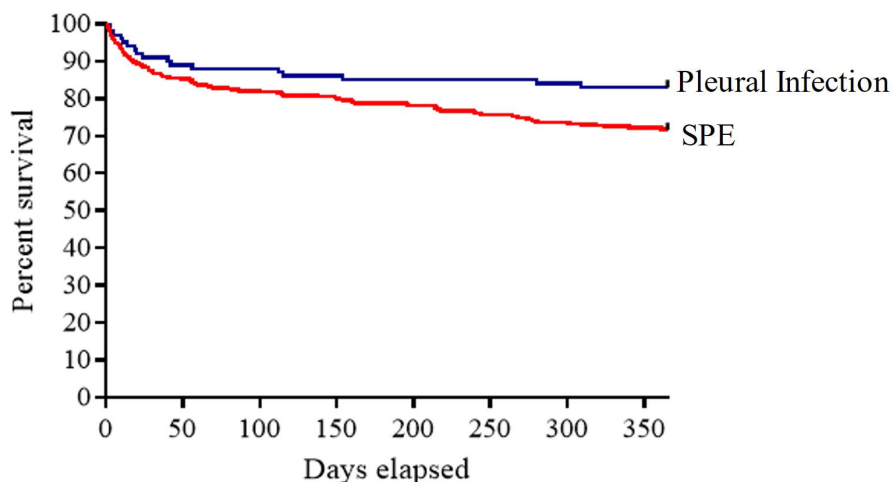
(A) Incidence\* of pneumococcal parapneumonic effusion, per 100,000 adults, and (B) proportions of serotyped disease caused by serotypes grouped by vaccine as shown from 2006-2018. Dashed lines show the introductions of paediatric PCV7 and PCV13.

\*Calculated using adult population data from the Office of National Statistics (Supplementary Data 4).



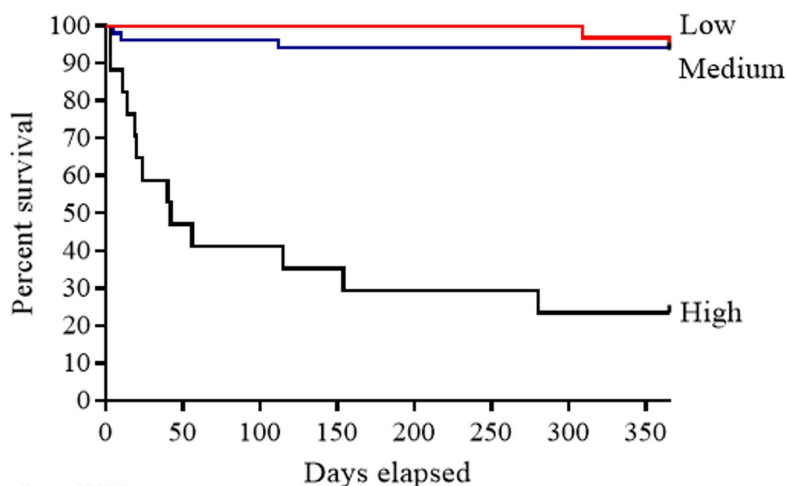
### Figure 3: 1-year survival in patients with pneumococcal parapneumonic effusions

(A) Kaplan-Meier survival curve and number at risk for patients with simple parapneumonic effusion (SPE) (red line) and pleural infection (blue line). (B) Kaplan-Meier survival curve and number at risk for patients with pneumococcal pleural infection for low (red line), medium (blue line) and high (black line) RAPID score groups. The number of subjects at risk immediately before each time point is listed in a numbers-at-risk table



Number at Risk

Days	0	56	112	154	204	250	300	365
SPE	459	385	370	358	346	334	316	309
Pleural infection	100	89	86	85	84	83	82	80



Number at Risk

Days	0	50	112	154	280	310	365
Low	30	30	30	30	30	29	29
Medium	50	48	47	47	47	47	47
High	14	8	7	6	5	4	4