

1 **Title: Enabling Health Outcomes of Nature-based**
2 **Interventions: A Systematic Scoping Review**

3 Short Title: Enabling Health Outcomes of Nature-based Interventions

4 Rachel Nejade¹, Daniel Grace², Leigh R. Bowman^{1*}

5 *1. Department of Infectious Disease Epidemiology, Imperial College London, UK*

6 *2. Abertawe Bro Morgannwg University Health Board, NHS Wales, UK*

7 *Corresponding author

8 leigh.bowman@gmail.com

9

10 **Abstract**

11 **Background**

12 The burden of poor mental health and non-communicable disease is increasing, and some
13 practitioners are turning to nature to provide the solution. Nature-based interventions could
14 offer cost-effective solutions that benefit both human health and the environment by
15 reconnecting individuals with nature. Importantly, the relative success of these interventions
16 depends upon the accessibility of green and blue spaces, and the way in which people
17 engage with them.

18 **Aims and Objectives**

19 A scoping review was conducted to establish the evidence base for nature-based
20 interventions as a treatment for poor mental and physical health, and to assess whether
21 and how enablers influence engagement with natural outdoor environments.

22 **Methods**

23 This scoping review followed the PRISMA-ScR and the associated Cochrane guidelines for
24 scoping reviews. A literature search was performed across five databases and the grey
25 literature, and articles were selected based on key inclusion and exclusion criteria.
26 Exposure was the active engagement with natural environments. The primary outcome was
27 mental health and the secondary outcome was physical health, both defined using
28 established metrics. All data was extracted to a charting table and reported as a narrative
29 synthesis.

30 **Results**

31 The final analysis included thirty-nine studies. Most of these focused on green spaces, with
32 only five dedicated to blue spaces. Six nature-based health intervention types were
33 identified: (i) educational interventions, (ii) physical activity in nature, (iii) wilderness
34 therapy, (iv) leisure activities, (v) gardening and (vi) changes to the built environment. Of
35 the 39 studies, 92.2% demonstrated consistent improvements across health outcomes
36 when individuals engaged with natural outdoor environments (NOEs). Furthermore, of 153
37 enablers that were found to influence engagement, 78% facilitated engagement while 22%
38 reduced engagement. Aspects such as the sense of wilderness, accessibility, opportunities
39 for physical activity and the absence of noise/ air pollution all increased engagement.

40 **Conclusion**

41 Further research is still needed to establish the magnitude and relative effect of nature-
42 based interventions, as well as to quantify the compounding effect of enablers on mental
43 and physical health. This must be accompanied by a global improvement in study design.
44 Nevertheless, this review has documented the increasing body of heterogeneous evidence
45 in support of NBIs as effective tools to improve mental, physical, and cognitive health
46 outcomes. Enablers that facilitate greater engagement with natural outdoor environments,
47 such as improved biodiversity, sense of wilderness and accessibility, as well as
48 opportunities for physical activity and an absence of pollution, will likely improve the impact
49 of nature-based interventions and further reduce public health inequalities.

50

51

52 Introduction

53 It is estimated that 10% of the global population live with a diagnosed mental health
54 disorder leading to negative health and economic impacts for both individuals and broader
55 society [1]. Of those affected, 10-20% are children – half of whom are already suffering by
56 the age of 14 [2, 3]. Neuropsychiatric and developmental disorders such as ADHD and ASD
57 are particularly common [4], while depression and anxiety are more prevalent among adults
58 [1]. As individuals age into retirement, the risk of mental ill health increases, in part due to
59 social exclusion, loneliness, changes to physical health and the passing of friends and
60 relatives [5]. If population estimates are correct, the global fraction of those >60yrs will have
61 increased from 12% to 22% by 2050 [5]. Therefore in the absence of effective interventions,
62 the global burden of poor mental health will continue to climb.

63 In financial terms, the combined direct and indirect cost of mental health disorders
64 across the UK in 2013 was estimated at between £70-100 billion annually [6]. Within the
65 European Union (EU), these costs were estimated to be around €798 billion each year [7].
66 Worldwide, governments and international agencies such as the World Health Organisation
67 (WHO) have responded to the mental health epidemic by increasing funding into mental
68 health research and services [8, 9], yet despite this, first-line treatment for conditions such
69 as depression, ADHD and Generalised Anxiety Disorder (GAD) still rely heavily on
70 medications and approaches such as cognitive behavioural therapy (CBT) [10, 11].
71 Although these strategies are often effective, medications come with a long list of potential
72 side effects [12, 13], not to mention the financial barriers to access [14, 15]; plus, there are
73 often shortages of skilled mental health practitioners to match the demand for long-term
74 individualised CBT.

75 In contrast to medicated interventions, there has been renewed interest in “natural”
76 therapies, which are seen as less intrusive and more cost-effective [16]. Meditation, lifestyle

77 changes such as increased physical exercise, community-based activities and engagement
78 with natural environments are emerging as potential alternatives to complement or replace
79 other forms of treatment [16-18]. Indeed, there is growing evidence to suggest that nature-
80 based health interventions (NBIs) can improve mental and physical health outcomes while
81 also addressing the growing patient demand for less intrusive and more cost-effective
82 treatments [16, 19]. That said, challenges exist; NBIs must take place in natural outdoor
83 environments (NOEs) - defined as “any environment in which green vegetation or blue
84 water resources can be found” – and access is becoming increasingly difficult [20, 21].
85 Indeed there are many geographical, financial and cultural barriers that affect the way we
86 interact with NOEs, and sadly, without significant changes to the way humans live, it is
87 likely that these factors will be compounded by increasing migration away from wild spaces,
88 and further concentration of human populations within urban areas - indeed 68% of the
89 world's population is expected to reside in urban areas by 2050 [22].

90 Accordingly, this scoping review attempts to set a baseline for the impact of NBIs on
91 mental and physical health outcomes, as well as better understand the enablers that
92 magnify or diminish engagement with natural outdoor environments.

93

94 **Aim**

95 This review aimed to collate and assess the evidence base for NBIs, and to define and
96 assess the effect of enablers on engagement with natural outdoor environments. More
97 specifically, to:

- 98 1. locate and review the evidence base for nature-based interventions for mental
99 and physical health outcomes;
- 100 2. identify the enablers of, and barriers to, engagement with natural outdoor
101 environments;
- 102 3. understand whether these enablers and barriers impact the effectiveness of
103 nature-based interventions on mental and physical health outcomes.

104

105 **Methods**

106 **Study Design**

107 This scoping review was conducted according to the Preferred Reporting Items for
108 Systematic Reviews and Meta-Analyses Extension for Scoping Reviews (PRISMA-ScR)
109 guidelines, and the Cochrane guidelines for scoping reviews [23, 24]. A scoping review was
110 considered the most appropriate method to answer the research question, due to capacity
111 to answer broad questions and summarise findings from a heterogeneous body of
112 knowledge [25].

113 **Study Protocol**

114 The protocol for this scoping review was drafted using the Preferred Reporting Items
115 for Systematic Reviews and Meta-analysis Protocols (PRISMAP) and was revised by the

116 academic team [26]. It was disseminated through MedRxiv, the preprint server for health
117 sciences on the 4th of July, 2020 [19].

118 **Search Strategy**

119 The search includes terms relating to NBIs: a) ‘green care’, b) ‘blue care’, c) mental
120 health, d) physical health, e) environmental determinants of NOE use and f) socio-
121 economic determinants of NOE use. The primary outcome of interest was mental health,
122 defined using a number of key metrics. The secondary outcome was physical health, based
123 on a number of physiological variables [27]. Several NBI studies have used physical health
124 measures either as their main outcome (e.g. obesity), or as an objective measure to confirm
125 mental health outcomes obtained from self-reporting (e.g. the link between stress and
126 cortisol) [28-50]. All the key words used for the literature search can be found in Supporting
127 Information 1 (S1_Fig 1).

128 The terminology used in the literature search for green and blue care reflects the
129 varied positions held by researchers and the lack of consensus surrounding their
130 application.

131 The search terms were used to identify studies from the following five databases: PubMed,
132 The Cochrane Library, Web of Science, Scopus, and OVID (including Embase, PsycINFO,
133 Global Health, MEDLINE, Health Management Information Consortium (HMIC), Transport
134 Database). All search terms were grouped using the Boolean “OR” and were then all
135 combined using the Boolean “AND”, to produce the final number of relevant studies
136 identified by each database. “Snowballing” – or the search of reference lists from included
137 articles – was also performed. To limit the effect of publication bias, grey literature was
138 searched through Google Scholar, governmental and institutional websites (e.g. Public
139 Health England – PHE). Mendeley and Covidence software were used to store, organise,

140 and manage all references. To promote transparency and reproducibility, the full search
141 strategy used for the database PubMed is available in S1_Table1.

142 **Study Selection Criteria**

143 The process of study selection was done based on the pre-defined inclusion and
144 exclusion criteria and conducted in two stages: 1) title and abstract screening, and 2) full-
145 text screening. Consensus among the three researchers was reached where a study was
146 deemed to sit on the border between inclusion and exclusion. Backtracking of existing
147 reviews was done so that any study included in this scoping review also found in selected
148 reviews was removed from analysis. Duplicates were removed from the search before
149 screening of the articles.

150 As this is an emerging field, the inclusion criteria for this scoping review were kept
151 intentionally broad. Included were human studies and peer-reviewed articles on green
152 spaces and blue spaces, with physical or mental health outcomes. Any study design was
153 accepted. NOE exposure was based on participants' presence in nature, whether that was
154 confirmed through participant's observation, interviews in nature, or through an intervention
155 using activities in NOEs. Any review including at least one study for which NOE exposure
156 was confirmed by these means was included in this review.

157 Considering the contemporary topic of this scoping review, the search included all
158 results from 1980 onwards. Studies written in both English and French were included. Any
159 studies or reviews not pertaining to health, green spaces and blue spaces, or that were
160 solely descriptive in nature (e.g. commentaries) were excluded. Additionally, studies that
161 only defined NOE exposure based on geospatial indicators were excluded (e.g. Normalized
162 Difference Vegetation Index (NDVI)). To avoid complexities associated with recall bias, we
163 excluded any study that used self-reported measures of engagement with nature (e.g.

164 “number of visits to parks in the last week”) [51, 52]. However, this restriction was not
165 applied to our main outcomes when these were found in studies using self-reporting scores
166 such as GAD-7 and GHQ, as the validity of these measures to assess mental or physical
167 health outcomes has been widely accepted within the scientific community. Additionally,
168 this exclusion criterion would also have greatly reduced the number of available studies [28-
169 50]. The full inclusion and exclusion criteria can be found in Table 1.

170 **Table 1. Inclusion and exclusion criteria.**

Inclusion Criteria	Exclusion Criteria
<ul style="list-style-type: none">▪ All studies and reviews that reported green and blue space exposure (passive or active <i>interaction</i> with nature) and physical or mental health outcome of interest, including:<ul style="list-style-type: none">· Peer-reviewed articles (e.g. original research and review articles)· Conference proceedings, dissertations/theses and abstracts published in peer-reviewed journals· Grey literature: Google Scholar, governmental, institutional websites, and local health authority publications▪ Published from year 1980 onwards▪ Any study designs and any study written in either English or French	<ul style="list-style-type: none">▪ All studies that reported only NOE exposure without physical or mental health outcomes.▪ All studies that reported NOE exposure only using aggregated data (e.g. NDVI) or using self-reports.▪ Literature including:<ul style="list-style-type: none">· Books, book chapters and book reviews· Websites and newspaper articles· Social media content· Commentaries, protocols, and opinion papers· Data not in public domain or unpublished▪ Published before 1980 and in any other language than English or French

171

172 **Data Extraction and Analysis**

173 Data extraction (or charting) was performed using a standardised data extraction
174 form, adapted for this scoping review to address the research questions and objectives
175 (S1_Table2). Content analysis was used to group findings in categories sharing similarities

176 to create a narrative synthesis of the existing evidence informed by the data charting
177 process.

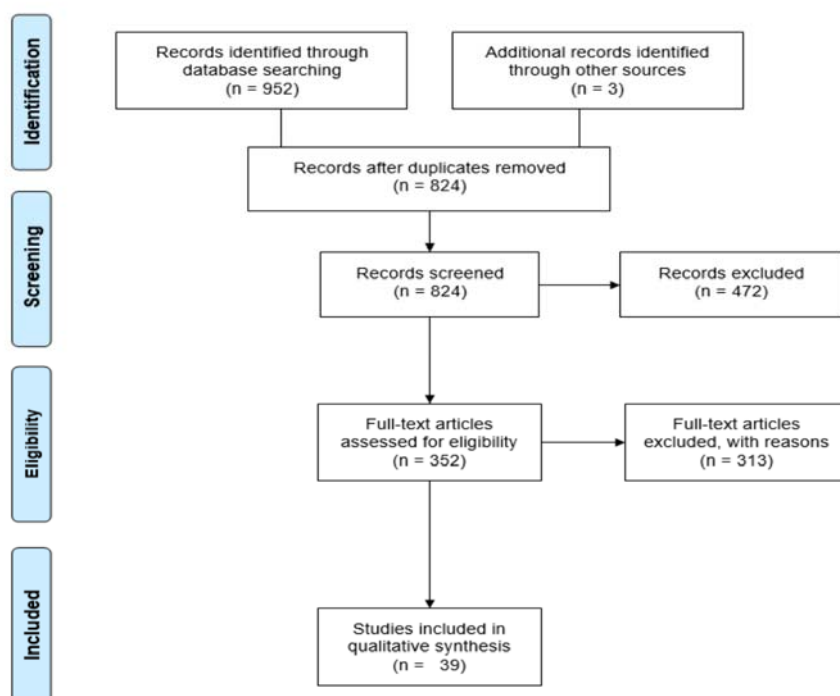
178

179 Results

180 Study Selection

181 The results of the literature search across the five databases and the grey literature
182 were reported using a PRISMA flow diagram (Fig 1). From the original 952 articles, 824
183 unique studies were identified for title and abstract screening, after the removal of 128
184 duplicates. Through title and abstract screening, 352 full-text articles were selected and
185 downloaded for a full-text review (i.e. eliminating 472 studies). 313 studies failed to meet
186 the inclusion criteria at full-text screening (reasons detailed in S1_Fig2). A total of 39
187 articles were selected for the final analysis of this scoping review [53-91].

188 Fig 1. PRISMA flow diagram.



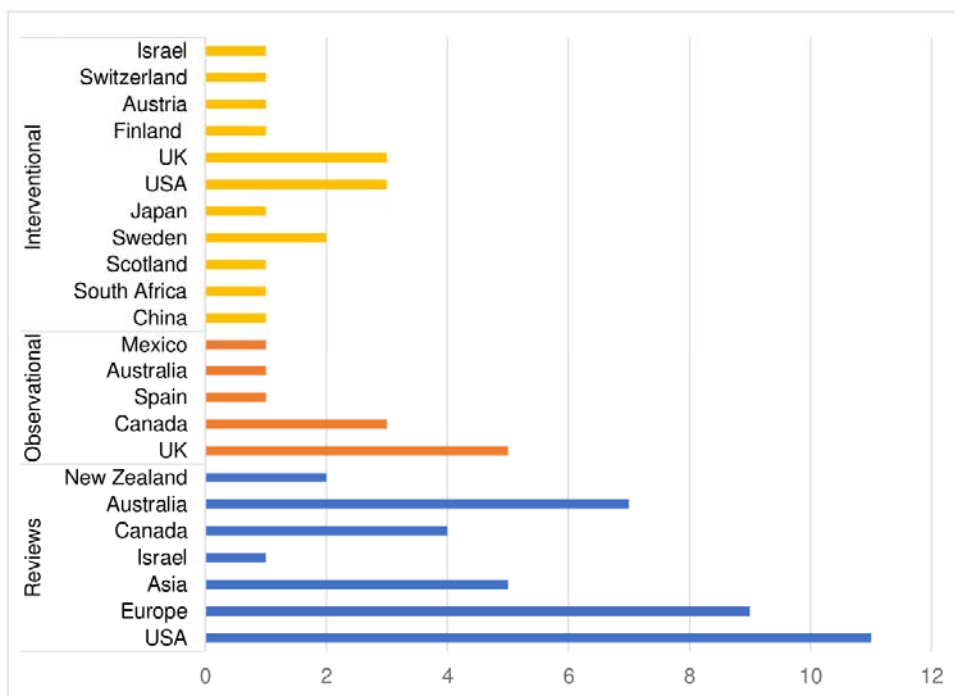
189

190 **Descriptive Characteristics**

191 A summary of each charted study can be found in S1_Table3. A total of thirty-nine
192 studies were included in the final analysis, among which eleven were observational, where
193 seven used qualitative methods [55-57, 60, 74, 83, 84], three used quantitative methods
194 [63, 85, 88] and only one used mixed methods [75]. Among the fourteen interventional
195 studies, only one used qualitative methods [66], nine used quantitative methods [58, 59, 61,
196 62, 64, 65, 67, 81, 91], and four used mixed methods [53, 54, 87, 89]. Finally, among the
197 remaining fourteen reviews, ten included systematic reviews [70-72, 76-79, 82, 86, 90], one
198 was a scoping review [80] and three were literature reviews [68, 69, 73]. All studies were
199 written in English, except for one that was written in French [82]. Additionally, all studies
200 were carried out in the past five years, with the oldest study dating back to 2015 [57].

201 Overall, the majority of studies (85%) were conducted in higher-income countries
202 (defined using the World Bank classification based on countries' Gross National Income
203 (GNI) per capita) [92]. Few studies were conducted in upper middle-income countries,
204 including one observational study in Mexico [88], two interventional studies from China [67]
205 and South Africa [61], as well as three reviews including Chinese [76, 82] and Bulgarian
206 studies [76,80] (Fig 2).

207 **Fig 2. Bar chart depicting the countries included in reviews, interventional and observational studies,**
208 **grouped by study design.**



209

210 Twenty out of the thirty-nine studies (51%) assessed the effects of engagement with
211 NOEs on mental and physical health across all age groups, with only ten studies (26%)
212 focusing specifically on adults (18-60 years) [54-56, 58, 59, 62, 63, 67, 81, 91], four (10%)
213 on the elderly (age 60+) [57, 73, 74, 83], as well as four (10%) on children [53, 66, 72, 88]
214 and one (3%) on adolescents (11 to 18 years) [61].

215 Overall, eight studies (20%) selected participants based on age group [53, 57, 61,
216 72, 74, 76, 86, 88], two (5%) based on sex (in favour of women) [62, 91], and six (15%)
217 from volunteering [54, 59, 63, 67, 81, 84]. Local residents were recruited in another four
218 studies (10%) [58, 60, 65, 75]. Moreover, eight studies (20%) included patient populations
219 with pre-existing conditions [90]. These looked at people with autism [66], neurological
220 disabilities [73, 78], mental disorders [75, 84, 87] or those undergoing stroke rehabilitation
221 [64]. Noteworthy are the studies that selected participants based on their existing use of
222 natural environments, such as regular swimmers or members of outdoor associations in

223 blue spaces [55, 56, 83], or through involvement in the conservation of green spaces [89].

224 Finally, eight reviews (20%) did not specify any sample populations [68-71, 77, 79, 80, 82].

225 **Taxonomy for NOEs**

226 Overall, there were three types of NOEs identified across all studies: (i) green
227 spaces: 51% (n=20), (ii) blue spaces: 13% (n=5), and (iii) a mix of both 36% (n=14).

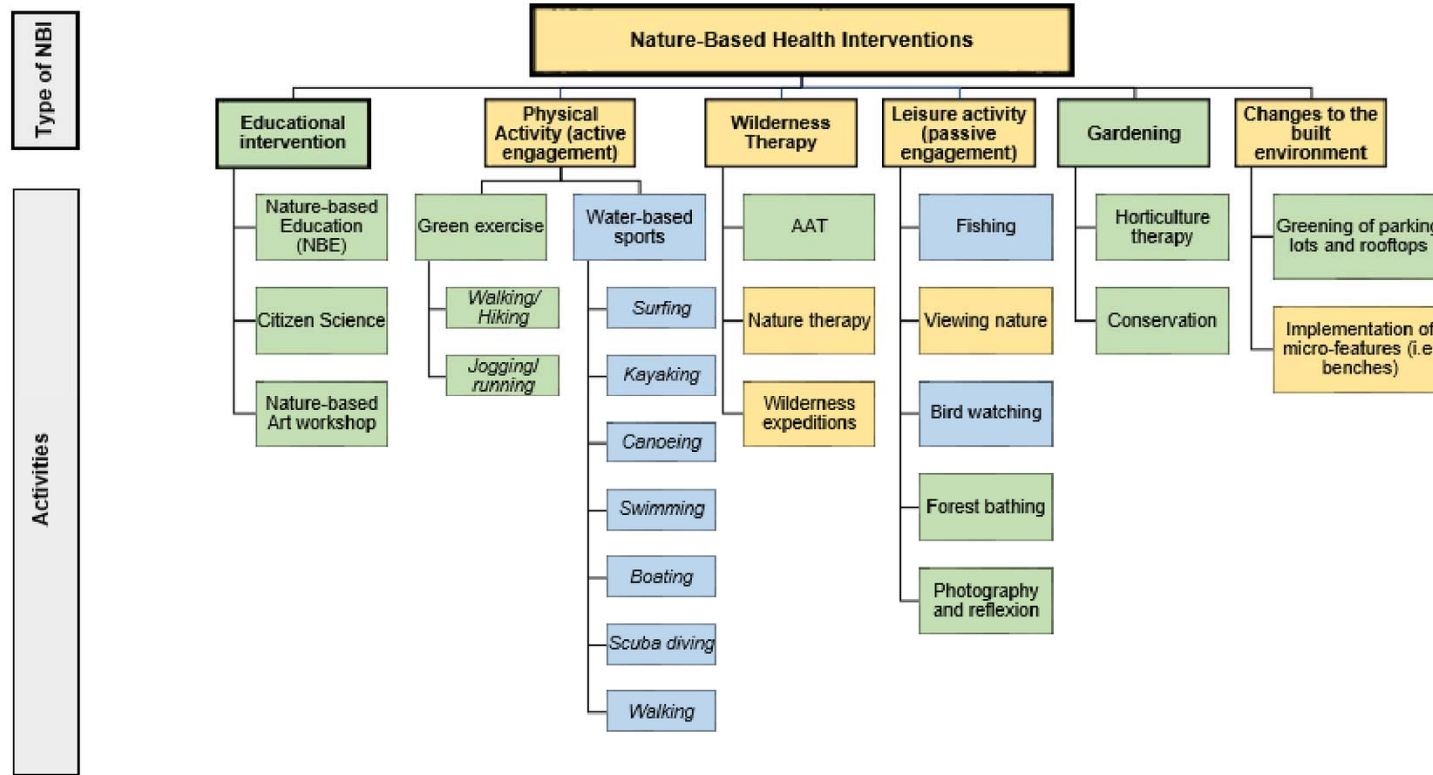
228 Green spaces encompassed both urban and rural environments, and most studies
229 described green spaces as urban parks [57, 62, 65, 69, 74, 82, 85, 88, 91], natural
230 environments [63, 68, 70, 72, 86] urban forests [53, 62, 78, 81] or as gardens [64, 73, 74,
231 78]. Other areas or features of green spaces were used less often, such as farms [53, 66,
232 78], micro-features of green spaces [57, 74], national parks or reserves [60, 89], a game
233 reserve [61], urban stream corridor [55], playground [72], meadows [54], bog [89], or
234 neighbourhood greenness [77]. Similarly, blue spaces also covered urban and rural
235 environments and were characterised by the terms: sea [56, 90], blue environments [70,
236 86], river [53], fountain/ seawall [74], coastal area [59], loch [61], wetlands [87], wilderness
237 [90], ocean and beaches [83]. Finally, grey areas were typically considered as urban
238 environments: urban city [54, 62, 65, 91], built environment [58, 79], urban sidewalk [59],
239 shopping mall [62], hospital [64], urban landscape [72], roadside [81], home [91], swimming
240 pools [83] and a field near a housing development [89].

241 **Nature-Based Health Interventions (NBIs)**

242 All NBIs and their related activities reported across the selected studies were
243 categorised, as illustrated in Fig 3. Six types of NBI were identified: (i) educational
244 intervention, (ii) physical activity, (iii) wilderness therapy, (iv) leisure activity, (v) gardening,
245 and (vi) changes to the built environment.

246 Fig 3. All types of nature-based health interventions found in the selected studies.

247 Green=green spaces, blue=blue spaces and yellow=both green and blues spaces.



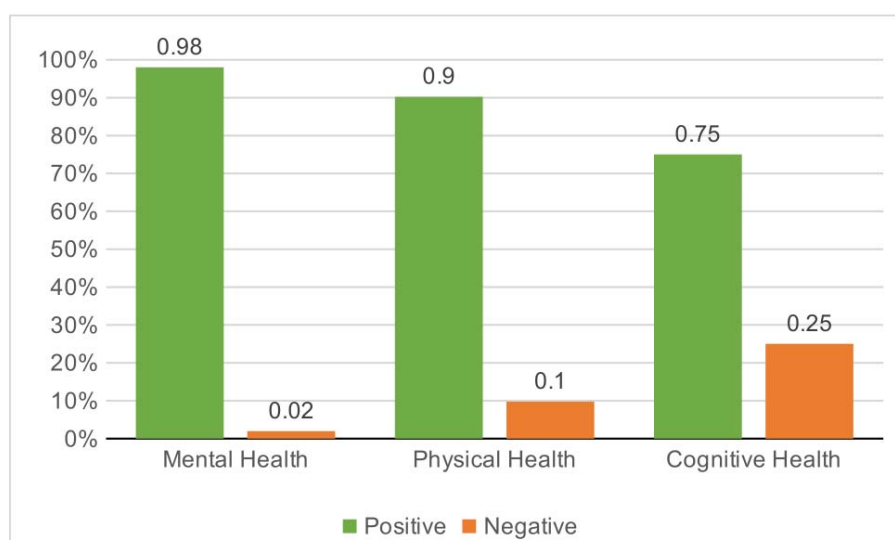
248

249 Health Outcomes and Nature-based Interventions

250 All reported outcomes and their associated enablers are listed in S1_Table4. Almost
251 all of the studies included at least one psychological health outcome [53, 54, 56-66, 68-87,
252 89-91], except for three that focused solely on physical activity [55, 88] and cardiovascular
253 outcomes [67]. Many studies used multiple outcomes, and each of these is reviewed and
254 discussed in the following order: (i) mental health outcomes, (ii) physical health outcomes,
255 (iii) physiological outcomes, and (iv) cognitive health outcomes.

256 Overall, there are clear positive trends between NOE engagement (through voluntary
257 participation or primary care intervention) and psychological, physical and cognitive health
258 outcomes. These data are described in Fig 4 by the bars labelled “positive findings”. Note
259 that in applicable studies [56, 73-75, 83, 87], a decrease in the measurable outcome was
260 considered a “positive finding” where this resulted in a gain for the individual e.g., a
261 reduction in social isolation. The studies displayed as “negative findings” refers to studies
262 where health outcomes led to mixed or no positive effects [59, 70, 71, 76, 81, 82, 87, 91].

263 **Fig 4. Proportion of positive and negative findings stratified by health outcomes.**



264

265 **Mental Health Outcomes**

266 Mental health was the most commonly studied outcome (62%) and was further
267 divided into four categories: (i) psychological health, (ii) emotional health, (iii) social health
268 and (iv) stress. There were improvements across all mental health outcomes when
269 engaging with nature (98%), with only one study reporting no effect (2%) [71]. No negative
270 effects were found.

271 **Psychological Health**

272 Overall, engagement with NOEs led to improvements in psychological health
273 outcomes (63%), and reduced depression and anxiety scores (31%). One study reported
274 no differences on wellbeing measures (6%) [71].

275 Engagement with NOEs led to an improved quality of life as assessed by measures
276 of HRQoL [53, 64] or QoL [69, 86]. Only one study reported improved “perceived mental
277 health” (e.g. restoration) of stream-corridor users, assessed using qualitative interviews
278 [57]. Regarding measures of wellbeing, these were the most studied outcome for
279 psychological health (50%) and was usually positively associated with NOE engagement. It
280 was measured differently across studies and relied on measures of hedonic and
281 eudaimonic wellbeing [71], perceived wellbeing [56, 73-75, 83, 90] and general wellbeing
282 [54, 58, 63, 68, 71, 76, 86, 87]. Only one systematic review reported mixed effects, which
283 the authors attributed to poor study design and quality [71]. Finally, measures of depression
284 [63, 65, 78, 80] and anxiety [64, 65, 78, 81, 87] decreased when engaging with NOEs.

285 **Emotional Health**

286 There was a positive effect of NOE engagement on emotional health outcomes
287 across all studies. Most reported improved affect [58, 64, 70, 73, 81-83, 86, 87], mood [62,
288 65, 79, 80, 89, 91], self-esteem [61, 73, 80, 84, 90], self-confidence [75] and vitality [79].
289 Others reported decreases in negative affect [63, 81, 83, 86], mood disturbances [65],

290 agitation [73, 78] and in behavioural problems (e.g. hyperactivity or violence) [72, 73, 80,
291 82], which all translated into improved emotional health.

292 **Social Health**

293 Overall, engagement in NOEs led to improved social health across 100% of the
294 fourteen studies that assessed their effects. Six studies reported reduced social isolation
295 [56, 73-75, 83, 87] and one found reduced social discomfort [91] following engagement in
296 natural environments; while seven noted increased social connectedness between
297 individuals [66, 68, 78, 82-84, 90].

298 **Stress**

299 Several studies assessed the effects of engagement with NOEs on stress. 100% of
300 studies reported positive associations with psychological resistance [54, 56, 90], perceived
301 restoration [59, 60, 62, 65, 82, 91] and stress reduction [54, 63, 66, 73, 81-84, 89]. Only one
302 study found a decrease in psychological distress [80], and three other studies found
303 decreases in perceived stress [63, 86, 87], which all translated into health benefits.

304 **Physical Health**

305 89% of studies that looked at physical health measures in relation to engagement
306 with NOEs found benefits across a range of outcomes, except for 11% that yielded no
307 effects for measures of obesity.

308 **Physical Activity**

309 All measures of physical activity in natural environments demonstrated that engaging
310 in NOEs led to increased physical activity. This was measured in several ways. Some
311 studies used measured of leisure-time physical activity [55] or reported use after urban
312 green spaces interventions [69, 74, 82]. Others focused on increased exertion post-
313 engagement with NOEs, using measures of moderate to vigorous physical activity [79, 88].

314 Increased use of NOEs for various activities like swimming [56] or walking in nature [60,
315 76], using measures of perceived physical activity [56, 57, 68] and physical fitness [90] as
316 another way to reach these conclusions, as well as using decreased sedentary time, in
317 children populations [88].

318 **Sleep and Recovery**

319 One systematic review assessed the effect of engagement with green spaces on
320 sleep during a walking intervention and found that engagement led to improvements in
321 sleep quality and quantity [77]. Similarly, one study reported improved recovery from mental
322 disorders after engaging in therapeutic horticulture as part of a recovery program [75].

323 **Motor Functioning**

324 Motor functioning was assessed differently by two studies [64, 74]. Ottoni et al.
325 (2016) reported improved mobility after walking interventions in green spaces (74)
326 compared with data from Pálsdóttir et al. (2020) that reported reductions in disability after
327 engaging in horticulture therapy for post-stroke patients [64]. Overall, improvements in
328 disability were reported, in both intervention and control groups, suggesting that the therapy
329 itself may facilitate recovery more than the type of environment [64].

330 **Overall Physical Health and Fatigue**

331 100% of those studies measuring physical health outcomes found a positive
332 association between physical health and NOE engagement when measured by General
333 Health Questionnaires (GHQ) [72, 80, 87]. Post-stroke fatigue (or PSF) was used by
334 Pálsdóttir et al. (2020) as their main outcome and decreased following horticulture therapy
335 [64]. Importantly, both the intervention and control group experienced decreases in PSF,
336 thereby reducing the importance of the intervention in this context over other mainstream
337 standards of care.

338 **Obesity and Mortality**

339 Four studies reported little to no effects on obesity (measured using BMI) after
340 engagement with NOEs [70, 76, 82, 88]. Regarding mortality, only two studies investigated
341 how NOE engagement affected all-cause mortality [70, 79]. Both studies found a decrease
342 in mortality following changes to the built environment [70] and after engaging in physical
343 activity in nature [79].

344 **Physiological Health**

345 Although physiological measures (8%) were often preferred over subjective
346 measures of health, only seven studies used physiological measures of cardiovascular
347 health (86%) [54, 62, 65, 67, 79, 91] and only two focused on stress (14%) [62, 82].

348 **Cardiovascular Health**

349 Cardiovascular health was measured using blood pressure (BP) [62, 65, 67],
350 baseline resting heart rate [54, 65, 67, 69] and heart rate variability [62, 79, 91]. Heart rate
351 was found to decrease in 80% of studies looking at this measure, except for one [65].
352 Similarly, BP was found to decrease in three studies except for one by Ana et al. (2019)
353 which found no changes in BP after forest bathing [67]. Results were inconclusive as well
354 for heart rate variability, which tended to increase after NOEs exposure in two studies [62,
355 91], but had no effects in another [79].

356 **Stress**

357 Physiological measures of stress were determined using cortisol samples, and in two
358 studies, there was a decrease in cortisol levels after engaging in NOEs [62, 82].

359 **Cognitive Health**

360 Although not initially included, cognitive health outcomes were identified on several
361 occasions (7%) during the analytical process and were therefore considered important for

362 this review. Overall, NOE engagement had positive effects on cognitive health, by
363 improving cognitive functioning and by reducing ADHD symptoms. Findings on memory
364 were inconclusive.

365 **Cognitive Functioning**

366 86% of studies focusing on cognitive functioning were positively associated with
367 NOE engagement, except for one study which reported no change in attention retention
368 [59]. However, attention retention was improved after exposure to natural environments in
369 three studies [66, 79, 82], along with attention restoration [54, 72]. One study also showed
370 an improvement in children's Science, Technology, Engineering, and Math (STEM)-
371 capacity following NBE intervention [53].

372 **Memory**

373 Memory was only assessed in four studies and yielded mixed findings. Indeed,
374 whereas one found a positive association between spatial working memory and engaging in
375 NOEs [72], the other found no effects [91]. Similarly, for executive functioning, one study
376 found no effects [81], while the other saw improvements in executive memory [78].

377 **Symptom Reduction**

378 Trained therapists during a wilderness expedition noticed a decrease in ADHD
379 symptoms for children living with autism after exposure to animals and the natural
380 environment [66] – which was supported by McCormick R. (2017) in her systematic review
381 [72].

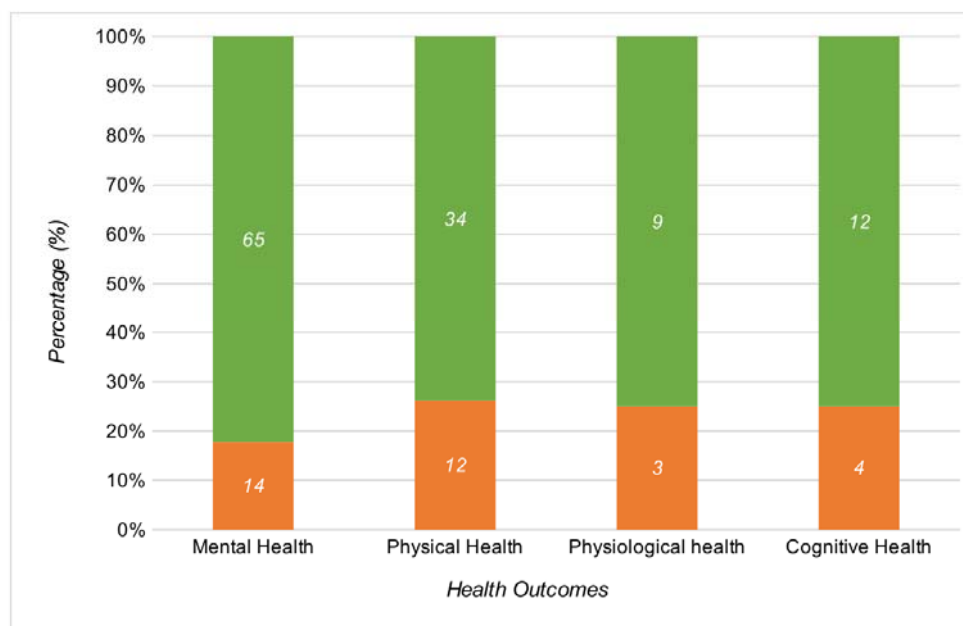
382 **Engagement with Natural Outdoor Environments: Barriers and** 383 **Enablers**

384 Overall, there were several types of enablers identified throughout the selected
385 studies. These included environmental, social, individual, and structural processes, along

386 with opportunities for physical activity and stress reduction. Poor study design and quality
387 were considered barriers across all studies. A description of each enablers' category can be
388 found in S1_Fig3.

389 Modulators were divided into those that facilitated engagement: enablers (~78%)
390 versus those that hindered engagement: barriers: (22%). A summary of all enablers and
391 barriers stratified by health category is shown in Fig 5.

392 **Fig 5. Number and proportion of enablers and barriers for each health outcome.** *Enablers in green;*
393 *barriers in orange.*



394

395 Environmental Processes

396 Most facilitators focused on environmental processes (38%), the most common
397 being the type of environment (66%), where natural environments facilitated health benefits
398 over built environments (i.e. swimming pools, city centres, shopping mall, etc.) [53-56, 58,
399 59, 62, 63, 65-67, 70, 72, 73, 77-84, 86-91]. Although the variety of green spaces and blue
400 spaces descriptors makes comparison between studies difficult, some studies have found
401 that urban forests were better than urban parks as they reduced cortisol levels [62], blood

402 pressure [54, 62, 65] and heart rate [62, 67, 79], while increasing heart rate variability [62,
403 91]. Interestingly, one study even found that heart rate benefits were amplified if that forest
404 was made of maple trees as opposed to birch or oak trees, while blood pressure would not
405 change if the temperature, humidity and light spectrum (i.e. green/blue light ratio) were too
406 high [67]. Similarly, users of blue spaces preferred wilder and more available water
407 environments (e.g. ocean) as they amplified psychological health benefits, through
408 increases in wellbeing, as well as social health benefits by reducing social isolation [56, 83].

409 Typically, biodiversity was shown to facilitate wellbeing [87], psychological
410 restoration [85], social connectedness [87], positive affect [83] and overall health [87], while
411 reducing anxiety [87] and stress [87]. It is important to note that biodiversity may also
412 present a barrier if perceived as threatening or harmful. The presence of sharks in blue
413 spaces is one such example of this [83]. Other environmental processes, such as good
414 weather [83], heat reduction [70], seasons [65], perceived aesthetics [68], nature
415 connectedness [58, 71], the presence of farm animals for autistic children [66] as well as
416 sensory qualities of the environment (i.e. sound) [59, 60] were all found to also improve
417 mental, physical, physiological and cognitive health, however other detrimental
418 environmental processes, such as air and noise-related pollution [62, 76], negated these
419 positive effects.

420 **Structural Processes**

421 Structural processes were the second most common enablers discussed in this
422 scoping review (37%). Among them, good accessibility was most commonly reported
423 (24%), as it facilitated improvements in perceived mental health [57], overall health [72],
424 positive affect [70], physical activity in NOEs [55, 57, 74, 82] and in attention restoration
425 [72], as well as reducing social isolation [74], motor disability [74], behavioural problems
426 and psychological distress [80]. Similarly, geographic proximity to NOEs was also

427 mentioned several times (11%) as facilitating wellbeing [76], physical activity [60, 69, 76],
428 cognitive functioning and spatial working memory [72].

429 The type of intervention was also reported by six studies (16%) as facilitating the
430 health benefits gained from engaging in NOEs. Britton et al. (2018) and Ottoni et al. (2016)
431 recognise that activities in blue spaces, such as surfing or swimming, contribute to
432 rehabilitation, stress reduction and health promotion [83, 90], and complementary evidence
433 demonstrates that therapeutic horticulture led to improvements in PSF [64] and reductions
434 in agitation for older adults [74]. Additionally, viewing nature decreased blood pressure [62]
435 and improved executive memory [78]. Interestingly, the longer the activity lasted, the better
436 the outcomes [53, 61, 87, 88]. One study found that activities performed in the afternoon
437 instead of the morning, improved sleep quality and quantity – believed to be caused by a
438 two-process model where sleep and waking are regulated by circadian rhythms and
439 homeostasis [77, 93]. Good group organisation, transportation, staff attitudes and
440 knowledge were also considered facilitators of the associations between health and nature
441 [87]. However, when NBIs have limited resources, the strength of these associations is
442 reduced [73, 90], and hence, good NBI quality and design can amplify the health benefits
443 gained from nature.

444 The quality and design of NOEs were also found to amplify health benefits when
445 engaging with nature, as the presence of micro-features of the environments (e.g. benches)
446 was found on several occasion to improve wellbeing, positive affect and self-esteem, while
447 reducing social isolation and stress in individuals with dementia [73]. Older adults also
448 found that benches could help decrease social isolation [74] and improve their mobility and
449 physical activity in NOEs [74]. Other studies also found general increases in physical
450 activity and positive affect when these features were present [55, 70, 80]. Overall, positive

451 changes to the environment through the implementation of micro-features were found to
452 facilitate engagement in NOEs.

453 **Individual Processes**

454 Most individual processes across the selected studies were considered barriers
455 (74%) as opposed to facilitators (26%).

456 Safety concerns were the most common barriers to engaging in NOEs (24%), as
457 they worsened perceived mental health [57], positive affect [70, 73], perceived restoration
458 [60], physical activity [55, 57], wellbeing and self-esteem [73] while increasing social
459 isolation and stress [73]. Stigma was another recurrent barrier found across studies (12%)
460 that diminished perceived wellbeing [73, 90], physical activity [56], physical fitness, social
461 connectedness and psychological resistance [90], as well as positive affect and self-esteem
462 [73], while increasing social isolation [73] and stress [73].

463 Other barriers such as social prejudice [73], fear [56, 90], negative self-perceptions
464 [57, 73], poor self-confidence [73], individual factors (e.g. time pressure, changing
465 identities) [74, 77] and deprivation [80, 84], were also detected. Conversely, some individual
466 processes were found to facilitate the relationship between nature and health. These
467 included cognitive functioning [72], some intrapersonal processes (i.e. individual
468 preferences) [68], gender – whereby women tended to benefit more than men [61, 74], and
469 age – since younger adults and children had increased health benefits from engaging in
470 NOEs due higher engagement in physical activity than older adults [82].

471 Lower socio-economic status (SES) and ethnicity were identified as both facilitators
472 and barriers. While one study found that being South Asian living in the UK led to worse
473 health outcomes than being British white [80], another found that Arab women benefited
474 more than Jewish women when engaging in NOEs [91]. The latter was thought to be
475 influenced by levels of comfort at home, where Jewish women reported feeling more

476 comfortable in their home than Arab women did and therefore gained fewer marginal
477 improvements than Arab women when engaging in NOEs [91]. Similarly, lower SES was
478 found to increase the health gains through NOE engagement [82], whereas another found it
479 led to worse health outcomes [76].

480 **Opportunities for Physical Activity**

481 Opportunities for physical activity were the third most frequent facilitators found
482 across studies (11%). They included physical activity (72%) and active engagement in
483 NOEs (18%) as both were found to magnify the benefits for mental health [56, 58, 63, 71-
484 73, 75, 79-82, 89], physical health [56, 72, 75, 80], physiological health [79] and even
485 cognitive health [72, 78, 79]. However, these benefits would be reduced if participants were
486 injured or had mobility difficulties [74, 78]. Physical activity could therefore be another
487 mechanism by which nature positively influences health.

488 **Social Processes**

489 Social processes were not as common as other enablers (7%) but were found
490 nonetheless to influence the impact of nature on health. The presence of other people was
491 the most common facilitator (29%) and barrier (29%) across studies considering social
492 processes. Indeed, two studies reported that sharing the experience of engaging in NOEs
493 with others could facilitate gains in physical activity [55], recovery from mental disorders
494 [75], social connectedness, self-esteem, and self-confidence [84], while reducing social
495 isolation [75]. However, if other individuals were perceived as safety risks, wellbeing and
496 physical activity would decrease while stress would increase [63].

497 Additionally, social interactions, interpersonal processes, group membership and the
498 presence of caregivers also facilitated positive gains in psychological [68, 78, 89], social

499 [68, 83] and physical [68, 89] health. Therefore, social processes are other mechanisms
500 through which health benefits can be gained from nature.

501 **Opportunities for Stress Reduction**

502 Despite abundant evidence from the literature review, only 1% of all enablers
503 focused on opportunities for stress reduction. Stressful life events were perceived as
504 barriers, as they caused decreased quality of life, wellbeing, positive affect, psychological
505 resistance, and STEM capacity for children [52, 63], while worsening depression in adults
506 [63], however, engaging in NOEs was shown to reduce stress in 100% of all studies looking
507 at stress-related outcomes, considered measures of psychological health in this review [53,
508 63, 66, 73, 81-84, 89]. Therefore, evidence for stress reduction as a mechanism in the
509 relationship between health and nature is moderate, but not as conclusive as other
510 enablers.

511 **Study Quality and Design**

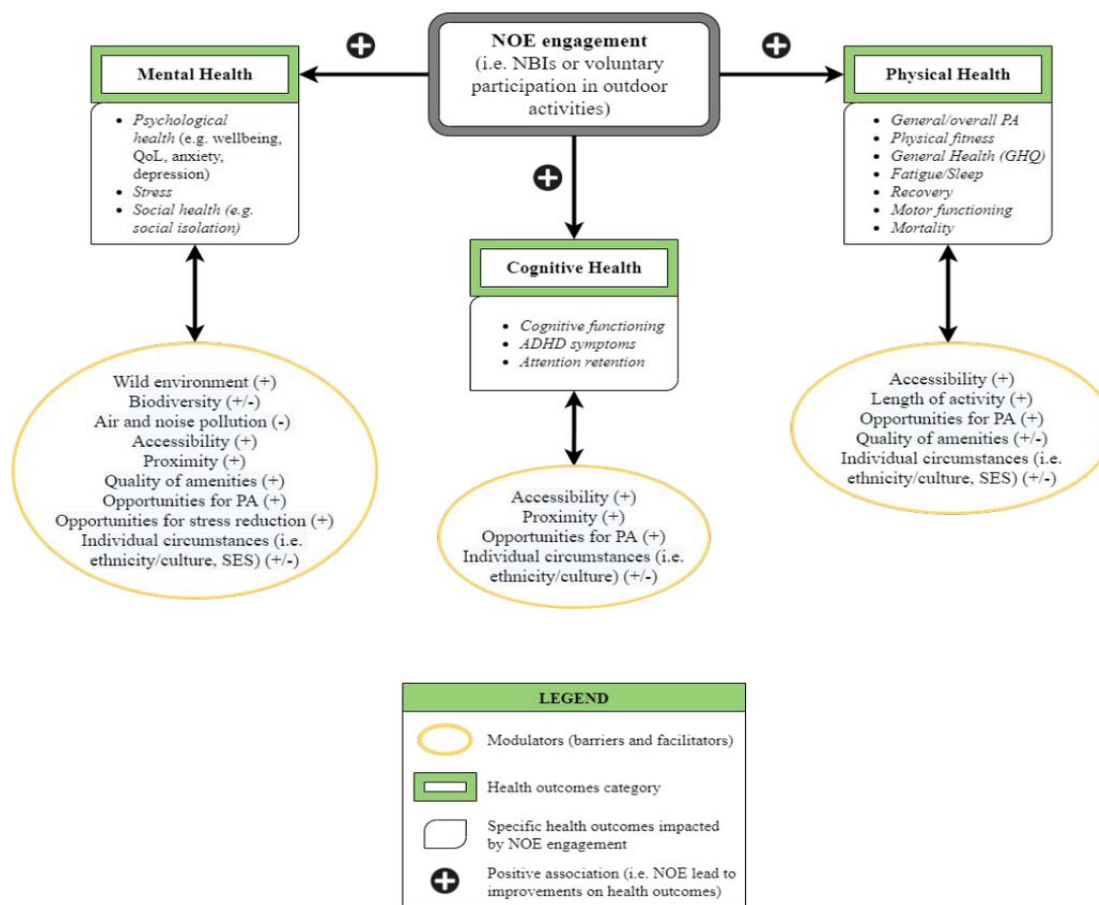
512 Methodological choices when conducting studies (9%), such as the study design
513 (44%), study quality (44%) or the choice of measurements (12%) were all found to negate
514 the relationship between health and nature across selected studies [59, 70, 71, 76, 81, 82].
515 They were responsible for the lack of evidence between NOE engagement and obesity [70,
516 76, 82], wellbeing [71], heart rate variability [79] and on measures of memory [81] and
517 cognitive functioning [59]. Therefore, the methods used within studies also act as a
518 potential mechanism on nature and health.

519

520 Discussion

521 The aim of this scoping review was to explore and document the evidence base for nature-
 522 based interventions, to identify factors that drive engagement with natural outdoor
 523 environments and to examine whether these impact the effectiveness of nature-based
 524 interventions. Of the 39 included studies, nature-based interventions were found to have
 525 improved physical, mental and cognitive health outcomes across 98%, 90% and 75% of
 526 articles respectively (Fig 4). In addition, the evidence suggests that enablers have a
 527 significant role in magnifying or diminishing interactions with NOEs - 78% facilitated
 528 engagement compared with 22% that reduced engagement (Fig 6).

529 **Fig 6. Impact of NOE engagement and enablers on health.**



530

531 **NBIs and Health Outcomes**

532 As a species, humans have become increasingly sedentary. Offices, schools, homes
533 and public spaces have been designed to optimize and prioritise efficiency. At least in part,
534 this is driving the increase in non-communicable diseases and poor mental health [94].
535 Moreover as individuals continue to seek work in urban areas - far from wild spaces - the
536 opportunity to interact with green and blues spaces is diminished. Indeed over 50% of
537 people worldwide currently live in urban areas, projected to increase to >68% by 2050 [22,
538 95].

539 Considering this, perhaps it is not surprising that the reintroduction of nature into a
540 person's life, irrespective of baseline physical and mental health characteristics, is often a
541 positive influence [96]. Research shows that, on average, individuals living in urban areas
542 with more green space have both lower mental distress and higher well-being scores [97].
543 'Forest-bathing' (shinrin-yoku) in Japan has been shown to significantly lower salivary and
544 serum cortisol levels when compared to control groups [98]. And data from Niedermeier et
545 al., 2017, found that hiking resulted in a statistically significant increase in "affective
546 valence" – i.e. pleasure, when compared to a sedentary control group and an indoor
547 exercise group [99]. In this scoping review, 98%, 90% and 75% of articles reported positive
548 outcomes across mental, physical and physiological outcomes respectively, demonstrating
549 a clear link between exposure to NOEs through NBIs to measureable improvements in
550 health. However, study design was a mix of observational, interventional and reviews,
551 indicating that further improvements in study design are required to better quantify the
552 relative effect of NBIs on health outcomes. Yet there are some known theories that might
553 begin to explain the mechanisms behind these results. Indeed it is postulated that when in
554 natural outdoor environments individuals experience a reduction in "rumination" – a
555 maladaptive pattern of self-referential thought that is associated with heightened risk for

556 depression and other mental illnesses [95]. Functional MRI scanning performed on
557 individuals who had spent 90 minutes on a nature walk showed reduced neural activity in
558 the subgenual prefrontal cortex (sgPFC) – an area of the brain that displays increased
559 activity during sadness and rumination. In contrast, participants who went on an urban walk
560 did not show these effects (95).

561 Such data makes clear the physiological responses that NBIs elicit in humans, and
562 while further granular data are required, the mounting body of evidence is generally in
563 support of nature-based interventions for the prevention and treatment of physical/ mental
564 health ailments. Indeed the science is now starting to inform national healthcare policy via
565 the introduction of ‘green prescriptions’, which are clinically prescribed NBIs used to prevent
566 and/ or treat physical and mental disorders [100, 101].

567 The broad evidence base uncovered by this scoping review continues to
568 demonstrate the effectiveness of NBIs to improve mental, physical and cognitive health
569 outcomes. Indeed the findings support national policies that integrate NBIs as effective
570 preventative and curative tools for public health [16, 19, 100, 101].

571 **Enablers and Barriers of NBIs**

572 **Biodiversity and Wilderness**

573 Our findings on the importance of biodiversity and wilderness as drivers of impactful
574 NOE engagement provide support for a broader interconnectedness between humans and
575 wild spaces. This applies to all projects at any scale, from school expeditions through urban
576 greening to broader rewilding. Enabling interaction with NOEs through accessibility (both
577 geographic proximity and improved infrastructure) magnifies the health benefits of NOEs
578 [55, 57, 60, 69, 70, 72, 74, 76, 80, 82], and at the same time facilitates interaction between
579 the public and natural ecological systems [102].

580 There exist a variety of example practices, for instance, the creation and
581 maintenance of long-distance trails [102], increasing the sense of ‘wild’ in urban green
582 spaces [83, 85, 87] and a departure from meticulous park management [55, 70, 73, 74, 80].
583 These approaches result in increased ‘quality’, accessibility and biodiversity, leading to
584 plausible health gains through greater NOE engagement [55, 70, 73, 74, 80, 83, 85, 87,
585 102]. Indeed this recommendation fits within the broader International Union for
586 Conservation of Nature (IUCN) vision for human interactions and ecosystem health to “[...]”
587 protect, sustainably manage, and restore natural or modified ecosystems, that address
588 societal challenges effectively and adaptively, simultaneously providing human well-being
589 and biodiversity benefits” [103].

590 **Air and Noise Pollution**

591 Our findings also support wider initiatives targeting reductions in air and noise
592 pollution, as these were found to negatively impact the time that users would spend
593 practicing physical activities in NOEs [62, 76]. Cleaner, greener environments would also
594 encourage physical exercise and contribute to national and global targets to mitigate
595 climate change [62, 76, 104]. Indeed nature-based initiatives, such as de-pollution and re-
596 naturalisation of urban sites, are currently under consideration by the EU Commission as
597 methods to achieve an increase in the number of publicly available green spaces and
598 reverse social inequalities [104, 105].

599 **Socio-economic Status and Stigma**

600 Cultural and ethnic differences, as well as deprivation, were found to limit the health
601 benefits gained from engagement with NOEs. Minority groups living in more deprived
602 areas, with lower access and quality of green spaces, had more behavioural difficulties than
603 non-minority groups [80, 91]. Despite mixed findings in this review [76, 82], there remain

604 existing inequalities concerning access to urban green infrastructure, as well as inequalities
605 in the exposure to health hazards (e.g. air and noise pollution), particularly for vulnerable
606 groups such as children, the elderly, and individuals of lower socio-economic status [106].
607 These inequalities are well documented in urban areas across many European countries,
608 and likely exist globally, highlighting the need for urban greening initiatives that work
609 towards reducing social barriers to access, and use of, green and blue environments [106,
610 107].

611 **Proximity and Opportunities for Physical Activity**

612 The sedentary lifestyle characterising modern society has also led to a clear
613 reduction in physical activity across age groups [102]. As regular physical activity has been
614 shown to reduce certain health risks such as cardiovascular diseases, or symptoms of
615 depression and anxiety, health agencies such as the WHO have urged governments to
616 promote physical activity to their populations as a way to limit the growing burden of ill
617 health [27, 108].

618 The results from this review support the need for enhanced engagement in physical
619 activity, and especially when practiced in green or blue environments – as the mental,
620 physical and cognitive benefits gained from such engagement were amplified in these
621 environments. This was also influenced by structural enablers, where good accessibility
622 [55, 57, 74, 82] and geographic proximity [60, 69, 76] led to increased physical activity in
623 NOEs.

624 This is an important finding for policy makers, as it highlights the need to consider
625 access and proximity to green and blue spaces when designing health interventions
626 promoting physical activity. For example, the establishment of free shuttle services for
627 individuals living further than a pre-determined distance to NOEs could reduce social
628 inequalities of access and use of these environments.

629 **Limitations**

630 Methodologically, the exclusion of studies based on self-reported measures of
631 exposure (e.g. number of visits in the last month) could have precluded the inclusion of
632 additional relevant studies to this review. However this was deemed necessary to limit the
633 inherent risk of recall bias in these studies, which could have impacted the strength of the
634 results. The absence of critical appraisal of individual sources of evidence precluded the
635 possibility for our results to lead to statistically significant conclusions. Nevertheless,
636 scoping reviews as per PRISMA-ScR guidelines do not necessarily require critical appraisal
637 of the evidence for structural integrity; as a minimum, they promote a stronger evidence-
638 base [23].

639 The comparison between health outcomes and types of green spaces or blue spaces was
640 made difficult due to the variety of terms used to describe these areas. Similarly, for nature-
641 based interventions, direct quantitative comparisons were difficult due to absence of
642 magnitudes, relative effects, varied heterogeneous study designs and sample sizes.

643

644 **Conclusion**

645 Further research is still needed to establish the magnitude and relative effect of
646 nature-based interventions, as well as to quantify the compounding effect of enablers on
647 mental and physical health. This must be accompanied by a global improvement in study
648 design. Nevertheless, this review has documented the increasing body of heterogeneous
649 evidence in support of NBIs as effective tools to improve mental, physical, and cognitive
650 health outcomes. Enablers that facilitate greater engagement with natural outdoor
651 environments, such as improved biodiversity, sense of wilderness and accessibility, as well

652 as opportunities for physical activity and an absence of pollution, will likely improve health
653 outcomes and further reduce public health inequalities.

654 Acknowledgments

655 Some of the work in this article was adapted from Nejade RM's Masters in Public
656 Health Thesis: *Reviewing the Evidence for Nature-Based Health Interventions and their*
657 *Modulators: A Scoping Review*. 2020, Imperial College University.

658

659 References

- 660 1. Ritchie H, Roser M. Mental Health. Our World In Data. Available from:
661 <https://ourworldindata.org/mental-health> [Online Resource]. Mental Health (London).
662 2018.
- 663 2. Kessler RC, Berglund P, Demler O, Jin R, Merikangas KR, Walters EE. (2005).
664 Lifetime Prevalence and Age-of-Onset Distributions of DSM-IV Disorders in the
665 National Comorbidity Survey Replication. *Archives of General Psychiatry*, 62 (6) pp.
666 593-602. doi:10.1001/archpsyc.62.6.593.
- 667 3. WHO | Child and adolescent mental health. [Online] WHO. Available from:
668 http://www.who.int/mental_health/maternal-child/child_adolescent/en/ [Accessed:
669 17th July 2020].
- 670 4. CDC. Data and statistics on children's mental health | cdc. [Online] Centres for
671 Disease Control and Prevention. Available from:
672 <https://www.cdc.gov/childrensmentalhealth/data.html> [Accessed: 17th July 2020].
- 673 5. Mental health of older adults. [Online] Available from: [https://www.who.int/news-](https://www.who.int/news-room/fact-sheets/detail/mental-health-of-older-adults)
674 [room/fact-sheets/detail/mental-health-of-older-adults](https://www.who.int/news-room/fact-sheets/detail/mental-health-of-older-adults) [Accessed: 17th July 2020]
- 675 6. Chief Medical Officer annual report 2013: public mental health. [Online] GOV.UK.
676 Available from: [https://www.gov.uk/government/publications/chief-medical-officer-](https://www.gov.uk/government/publications/chief-medical-officer-cmo-annual-report-public-mental-health)
677 [cmo-annual-report-public-mental-health](https://www.gov.uk/government/publications/chief-medical-officer-cmo-annual-report-public-mental-health) [Accessed: 17th July 2020]

- 678 7. Trautmann S, Rehm J, Wittchen H. The economic costs of mental disorders: Do our
679 societies react appropriately to the burden of mental disorders? EMBO reports.
680 [Online] 2016;17(9): 1245–1249. Available from: doi:10.15252/embr.201642951.
- 681 8. WHO. WHO urges more investments, services for mental health. [Online] WHO.
682 Available from: https://www.who.int/mental_health/who_urges_investment/en/
683 [Accessed: 17th July 2020]
- 684 9. Vigo D, Kestel D, Pendakur K, Thornicroft G, Atun R. Disease burden and
685 government spending on mental, neurological, and substance use disorders, and
686 self-harm: cross-sectional, ecological study of health system response in the
687 Americas. The Lancet Public Health. [Online] 2019; Available from:
688 doi:10.1016/S2468-2667(18)30203-2.
- 689 10. First MB. Treatment of Mental Illness - Mental Health Disorders - MSD Manual
690 Consumer Version [Internet]. MSD Manual Consumer Version. 2020. Available from:
691 [https://www.msmanuals.com/home/mental-health-disorders/overview-of-mental-](https://www.msmanuals.com/home/mental-health-disorders/overview-of-mental-health-care/treatment-of-mental-illness)
692 [health-care/treatment-of-mental-illness](https://www.msmanuals.com/home/mental-health-disorders/overview-of-mental-health-care/treatment-of-mental-illness) [Accessed: 17th July 2020].
- 693 11. Holland K. Mental Health Basics: Types of Mental Illness, Diagnosis, Treatment
694 [Internet]. Healthline. 2018. Available from:
695 <https://www.healthline.com/health/mental-health> [Accessed: 17th July 2020].
- 696 12. National Institute of Mental Health. Mental Health Medications: Antipsychotics
697 [Internet]. NIMH. 2016. Available from:
698 <https://www.nimh.nih.gov/health/topics/mental-health-medications/index.shtml>
699 [Accessed: 17th July 2020].
- 700 13. NHS. Treatment - Generalised anxiety disorder in adults - NHS [Internet]. NHS
701 Website. 2018. Available from: [https://www.nhs.uk/mental-](https://www.nhs.uk/mental-health/conditions/generalised-anxiety-disorder/self-help/)
702 [health/conditions/generalised-anxiety-disorder/self-help/](https://www.nhs.uk/mental-health/conditions/generalised-anxiety-disorder/self-help/) [Accessed: 17th July 2020]

- 703 14. Integrating clinical and mental health: challenges and opportunities | bipartisan policy
704 center. [Online] Available from: [https://bipartisanpolicy.org/report/integrating-clinical-](https://bipartisanpolicy.org/report/integrating-clinical-and-mental-health-challenges-and-opportunities/)
705 [and-mental-health-challenges-and-opportunities/](https://bipartisanpolicy.org/report/integrating-clinical-and-mental-health-challenges-and-opportunities/) [Accessed: 17th July 2020]
- 706 15. Dobrez D, Heinemann AW, Deutsch A, Durkin EM, Almagor O. Impact of mental
707 disorders on cost and reimbursement for patients in inpatient rehabilitation facilities.
708 Archives of Physical Medicine and Rehabilitation. [Online] 2010; 91(2): 184–188.
709 Available from: doi:10.1016/j.apmr.2009.10.020.
- 710 16. Robinson J, Breed M. Green Prescriptions and Their Co-Benefits: Integrative
711 Strategies for Public and Environmental Health. Challenges. 2019;10(1):9. Available
712 from: <https://doi.org/10.3390/challe10010009>.
- 713 17. Saizar M, Korman G. Interactions between alternative therapies and mental health
714 services in public hospitals of argentina. SAGE Open. [Online] 2012;2(3):
715 215824401245443. Available from: doi:10.1177/2158244012454438.
- 716 18. National Institute for Complementary and Integrative Health. Complementary,
717 alternative, or integrative health: what's in a name? [Online] NCCIH. Available from:
718 [https://www.nccih.nih.gov/health/complementary-alternative-or-integrative-health-](https://www.nccih.nih.gov/health/complementary-alternative-or-integrative-health-whats-in-a-name)
719 [whats-in-a-name](https://www.nccih.nih.gov/health/complementary-alternative-or-integrative-health-whats-in-a-name) [Accessed: 17th July 2020]
- 720 19. Nejade RM, Grace D, Bowman LR. How do structural barriers to green and blue
721 spaces influence the accessibility of nature-based interventions: a scoping review
722 protocol. medRxiv. [Online] 2020; 2020.07.03.20145946. Available from:
723 doi:10.1101/2020.07.03.20145946
- 724 20. Kondo MC, Triguero-Mas M, Donaire-Gonzalez D, Seto E, Valentín A, Hurst G, et al.
725 Momentary mood response to natural outdoor environments in four European cities.
726 Environment International. [Online] 2020;134: 105237. Available from:
727 doi:10.1016/j.envint.2019.105237

- 728 21. Zufferey J. Relations entre santé et espaces verts et bleus□: une synthèse de la
729 recherche empirique, 2003-2014. *Natures Sciences Sociétés*. [Online] 2015;23(4):
730 343–355. Available from: doi:10.1051/nss/2015057
- 731 22. Ritchie H, Roser M. Urbanization. *Our World in Data*. [Online] 2018; Available from:
732 <https://ourworldindata.org/urbanization> [Accessed: 21st July 2020]
- 733 23. Scoping reviews: what they are and how you can do them. [Online] Available from:
734 </resource/scoping-reviews-what-they-are-and-how-you-can-do-them> [Accessed: 10th
735 August 2020]
- 736 24. Tricco AC, Lillie E, Zarin W, O'Brien KK, Colquhoun H, Levac D, et al. Prisma
737 extension for scoping reviews (Prisma-scr): checklist and explanation. *Annals of*
738 *Internal Medicine*. [Online] 2018;169(7): 467. Available from: doi:10.7326/M18-0850
- 739 25. Sucharew H, Sucharew H. Methods for research evidence synthesis: the scoping
740 review approach. *Journal of Hospital Medicine*. [Online] 2019;14(7). Available from:
741 doi:10.12788/jhm.3248 [Accessed: 10th August 2020]
- 742 26. Shamseer L, Moher D, Clarke M, Ghersi D, Liberati A, Petticrew M, et al. Preferred
743 reporting items for systematic review and meta-analysis protocols (Prisma-p) 2015:
744 elaboration and explanation. *BMJ*. [Online] 2015;349(jan02 1): g7647–g7647.
745 Available from: doi:10.1136/bmj.g7647
- 746 27. World Health Organisation (WHO). Risks to mental health: an overview of
747 vulnerabilities and risk factors. [Online] *Journal of Psychiatric Research*. 2012.
748 Available from: doi:10.1016/j.jpsychires.2011.08.005
- 749 28. Triguero-Mas M, Dadvand P, Cirach M, Martínez D, Medina A, Mompert A, et al.
750 Natural outdoor environments and mental and physical health: Relationships and
751 mechanisms. *Environment International*. [Online] 2015;77: 35–41. Available from:
752 doi:10.1016/j.envint.2015.01.012

- 753 29. de Vries S, Verheij RA, Groenewegen PP, Spreeuwenberg P. Natural
754 environments—healthy environments? An exploratory analysis of the relationship
755 between greenspace and health: *Environment and Planning A*. [Online] 2003;
756 Available from: doi:10.1068/a35111 [Accessed: 21st July 2020]
- 757 30. White MP, Alcock I, Wheeler BW, Depledge MH. Would you be happier living in a
758 greener urban area? A fixed-effects analysis of panel data: *Psychological Science*.
759 [Online] 2013; Available from: doi:10.1177/0956797612464659 [Accessed: 21st July
760 2020]
- 761 31. Sugiyama T, Leslie E, Giles-Corti B, Owen N. Associations of neighbourhood
762 greenness with physical and mental health: do walking, social coherence and local
763 social interaction explain the relationships? *Journal of Epidemiology & Community
764 Health*. [Online] 2008;62(5): e9–e9. Available from: doi:10.1136/jech.2007.064287
- 765 32. Richardson EA, Pearce J, Mitchell R, Kingham S. Role of physical activity in the
766 relationship between urban green space and health. *Public Health*. [Online]
767 2013;127(4): 318–324. Available from: doi:10.1016/j.puhe.2013.01.004
- 768 33. Alcock I, White MP, Wheeler BW, Fleming LE, Depledge MH. Longitudinal effects on
769 mental health of moving to greener and less green urban areas. *Environmental
770 Science & Technology*. [Online] 2014;48(2): 1247–1255. Available from:
771 doi:10.1021/es403688w
- 772 34. de Vries S, van Dillen SME, Groenewegen PP, Spreeuwenberg P. Streetscape
773 greenery and health: Stress, social cohesion and physical activity as mediators.
774 *Social Science & Medicine*. [Online] 2013;94: 26–33. Available from:
775 doi:10.1016/j.socscimed.2013.06.030
- 776 35. Sturm R, Cohen D. Proximity to urban parks and mental health. *The journal of
777 mental health policy and economics*. 2014;17(1): 19–24.

- 778 36. Kaplan R. The nature of the view from home: psychological benefits. *Environment*
779 and *Behavior*. [Online] 2001;33(4): 507–542. Available from:
780 doi:10.1177/00139160121973115
- 781 37. Nutsford D, Pearson AL, Kingham S. An ecological study investigating the
782 association between access to urban green space and mental health. *Public Health*.
783 [Online] 2013;127(11): 1005–1011. Available from: doi:10.1016/j.puhe.2013.08.016
- 784 38. Grahn P, Stigsdotter UA. Landscape planning and stress. *Urban Forestry & Urban*
785 *Greening*. [Online] 2003;2(1): 1–18. Available from: doi:10.1078/1618-8667-00019
- 786 39. Reklaitiene R, Grazuleviciene R, Dedele A, Virviciute D, Vensloviene J, Tamosiunas
787 A, et al. The relationship of green space, depressive symptoms and perceived
788 general health in urban population. *Scandinavian Journal of Public Health*. [Online]
789 2014;42(7): 669–676. Available from: doi:10.1177/1403494814544494
- 790 40. Beyer KMM, Kaltenbach A, Szabo A, Bogar S, Nieto FJ, Malecki KM. Exposure to
791 neighborhood green space and mental health: evidence from the survey of the
792 health of Wisconsin. *International Journal of Environmental Research and Public*
793 *Health*. [Online] 2014;11(3): 3453–3472. Available from:
794 doi:10.3390/ijerph110303453
- 795 41. Maas J, Verheij RA, Groenewegen PP, Vries S de, Spreeuwenberg P. Green space,
796 urbanity, and health: how strong is the relation? *Journal of Epidemiology &*
797 *Community Health*. [Online] 2006;60(7): 587–592. Available from:
798 doi:10.1136/jech.2005.043125
- 799 42. Mitchell R, Popham F. Greenspace, urbanity and health: relationships in England.
800 *Journal of Epidemiology & Community Health*. [Online] 2007;61(8): 681–683.
801 Available from: doi:10.1136/jech.2006.053553

- 802 43. Wheeler BW, White M, Stahl-Timmins W, Depledge MH. Does living by the coast
803 improve health and wellbeing? *Health & Place*. [Online] 2012;18(5): 1198–1201.
804 Available from: doi:10.1016/j.healthplace.2012.06.015
- 805 44. Maas J, van Dillen SME, Verheij RA, Groenewegen PP. Social contacts as a
806 possible mechanism behind the relation between green space and health. *Health &*
807 *Place*. [Online] 2009;15(2): 586–595. Available from:
808 doi:10.1016/j.healthplace.2008.09.006
- 809 45. Mitchell R, Astell-Burt T, Richardson EA. A comparison of green space indicators for
810 epidemiological research. *J Epidemiol Community Health*. [Online] 2011;65(10):
811 853–858. Available from: doi:10.1136/jech.2010.119172
- 812 46. Mitchell R, Popham F. Effect of exposure to natural environment on health
813 inequalities: an observational population study. *The Lancet*. [Online]
814 2008;372(9650): 1655–1660. Available from: doi:10.1016/S0140-6736(08)61689-X
- 815 47. Tamosiunas A, Grazuleviciene R, Luksiene D, Dedele A, Reklaitiene R, Baceviciene
816 M, et al. Accessibility and use of urban green spaces, and cardiovascular health:
817 findings from a Kaunas cohort study. *Environmental Health*. [Online] 2014;13(1): 20.
818 Available from: doi:10.1186/1476-069X-13-20
- 819 48. Donovan GH, Michael YL, Butry DT, Sullivan AD, Chase JM. Urban trees and the
820 risk of poor birth outcomes. *Health & Place*. [Online] 2011;17(1): 390–393. Available
821 from: doi:10.1016/j.healthplace.2010.11.004
- 822 49. Dadvand P, Wright J, Martinez D, Basagaña X, McEachan RRC, Cirach M, et al.
823 Inequality, green spaces, and pregnant women: Roles of ethnicity and individual and
824 neighbourhood socioeconomic status. *Environment International*. [Online] 2014;71:
825 101–108. Available from: doi:10.1016/j.envint.2014.06.010

- 826 50. Ulrich RS. View through a window may influence recovery from surgery. *Science*.
827 [Online] 1984; 224(4647): 420–421. Available from: doi:10.1126/science.6143402
- 828 51. Su JG, Dadvand P, Nieuwenhuijsen MJ, Bartoll X, Jerrett M. Associations of green
829 space metrics with health and behavior outcomes at different buffer sizes and
830 remote sensing sensor resolutions. *Environment International*. [Online] 2019;126:
831 162–170. Available from: doi:10.1016/j.envint.2019.02.008
- 832 52. de Keijzer C, Tonne C, Sabia S, Basagaña X, Valentín A, Singh-Manoux A, et al.
833 Green and blue spaces and physical functioning in older adults: Longitudinal
834 analyses of the Whitehall II study. *Environment international*. [Online] 2019;122:
835 346–356. Available from: doi:10.1016/j.envint.2018.11.046
- 836 53. Sprague N, Berrigan D, Ekenga CC. An analysis of the educational and health-
837 related benefits of nature-based environmental education in low-income black and
838 hispanic children. *Health Equity*. [Online] 2020;4(1): 198–210. Available from:
839 doi:10.1089/heq.2019.0118
- 840 54. Arnberger A, Eder R, Alex B, Ebenberger M, Hutter H-P, Wallner P, et al. Health-
841 related effects of short stays at mountain meadows, a river and an urban site—
842 results from a field experiment. *International Journal of Environmental Research and
843 Public Health*. [Online] 2018;15(12): 2647. Available from:
844 doi:10.3390/ijerph15122647
- 845 55. Gargiulo I, Benages-Albert M, Garcia X, Vall-Casas P. Perception assessment of
846 environmental factors related to leisure-time physical activity in an urban stream
847 corridor. *Leisure Studies*. [Online] 2020;0(0): 1–18. Available from:
848 doi:10.1080/02614367.2020.1743742

- 849 56. Denton H, Aranda K. The wellbeing benefits of sea swimming. Is it time to revisit the
850 sea cure? *Qualitative Research in Sport, Exercise and Health*. [Online] 2019;0(0): 1–
851 17. Available from: doi:10.1080/2159676X.2019.1649714
- 852 57. Finlay J, Franke T, McKay H, Sims-Gould J. Therapeutic landscapes and wellbeing
853 in later life: Impacts of blue and green spaces for older adults. *Health & Place*.
854 [Online] 2015;34: 97–106. Available from: doi:10.1016/j.healthplace.2015.05.001
- 855 58. McEwan K, Richardson M, Sheffield D, Ferguson FJ, Brindley P. A smartphone app
856 for improving mental health through connecting with urban nature. *International*
857 *Journal of Environmental Research and Public Health*. [Online] 2019;16(18): 3373.
858 Available from: doi:10.3390/ijerph16183373
- 859 59. Nicolosi V, Wilson J, Yoshino A, Viren P. The restorative potential of coastal walks
860 and implications of sound. *Journal of Leisure Research*. [Online] 2020;0(0): 1–21.
861 Available from: doi:10.1080/00222216.2020.1741329
- 862 60. Cheesbrough AE, Garvin T, Nykiforuk CIJ. Everyday wild: Urban natural areas,
863 health, and well-being. *Health & Place*. [Online] 2019;56: 43–52. Available from:
864 doi:10.1016/j.healthplace.2019.01.005
- 865 61. Barton J, Bragg R, Pretty J, Roberts J, Wood C. The wilderness expedition: an
866 effective life course intervention to improve young people’s well-being and
867 connectedness to nature. *Journal of Experiential Education*. [Online] 2016; Available
868 from: doi:10.1177/1053825915626933 [Accessed: 11th August 2020]
- 869 62. Lanki T, Siponen T, Ojala A, Korpela K, Pennanen A, Tiittanen P, et al. Acute effects
870 of visits to urban green environments on cardiovascular physiology in women: A field
871 experiment. *Environmental Research*. [Online] 2017;159: 176–185. Available from:
872 doi:10.1016/j.envres.2017.07.039

- 873 63. Marselle MR, Warber SL, Irvine KN. Growing resilience through interaction with
874 nature: can group walks in nature buffer the effects of stressful life events on mental
875 health? *International Journal of Environmental Research and Public Health*. [Online]
876 2019;16(6): 986. Available from: doi:10.3390/ijerph16060986
- 877 64. The nature stroke study; NASTRU: A randomized controlled trial of nature-based
878 post-stroke fatigue rehabilitation. [Online] Available from: doi:10.2340/16501977-
879 2652 [Accessed: 11th August 2020]
- 880 65. Pratiwi PI, Xiang Q, Furuya K. Physiological and psychological effects of viewing
881 urban parks in different seasons in adults. *International Journal of Environmental
882 Research and Public Health*. [Online] 2019;16(21): 4279. Available from:
883 doi:10.3390/ijerph16214279
- 884 66. Byström K, Grahn P, Hägerhäll C. Vitality from experiences in nature and contact
885 with animals—a way to develop joint attention and social engagement in children
886 with autism? *International Journal of Environmental Research and Public Health*.
887 [Online] 2019;16(23): 4673. Available from: doi:10.3390/ijerph16234673
- 888 67. An B-Y, Wang D, Liu X-J, Guan H-M, Wei H-X, Ren Z-B. The effect of environmental
889 factors in urban forests on blood pressure and heart rate in university students.
890 *Journal of Forest Research*. [Online] 2019;24(1): 27–34. Available from:
891 doi:10.1080/13416979.2018.1540144
- 892 68. Leavell MA, Leiferman JA, Gascon M, Braddick F, Gonzalez JC, Litt JS. Nature-
893 based social prescribing in urban settings to improve social connectedness and
894 mental well-being: a review. *Current Environmental Health Reports*. [Online]
895 2019;6(4): 297–308. Available from: doi:10.1007/s40572-019-00251-7
- 896 69. Hunter RF, Cleland C, Cleary A, Droomers M, Wheeler BW, Sinnett D, et al.
897 Environmental, health, wellbeing, social and equity effects of urban green space

- 898 interventions: A meta-narrative evidence synthesis. *Environment International*.
899 [Online] 2019;130: 104923. Available from: doi:10.1016/j.envint.2019.104923
- 900 70. van den Bosch M, Ode Sang Å. Urban natural environments as nature-based
901 solutions for improved public health – A systematic review of reviews. *Environmental*
902 *Research*. [Online] 2017;158: 373–384. Available from:
903 doi:10.1016/j.envres.2017.05.040
- 904 71. Houlden V, Weich S, Albuquerque JP de, Jarvis S, Rees K. The relationship
905 between greenspace and the mental wellbeing of adults: A systematic review. *PLOS*
906 *ONE*. [Online] 2018;13(9): e0203000. Available from:
907 doi:10.1371/journal.pone.0203000
- 908 72. McCormick R. Does access to green space impact the mental well-being of children:
909 a systematic review. *Journal of Pediatric Nursing: Nursing Care of Children and*
910 *Families*. [Online] 2017;37: 3–7. Available from: doi:10.1016/j.pedn.2017.08.027
- 911 73. Barrett J, Evans S, Mapes N. Green dementia care in accommodation and care
912 settings: a literature review. *Housing, Care and Support*. [Online] 2019;22(4): 193–
913 206. Available from: doi:10.1108/HCS-04-2019-0010
- 914 74. Ottoni CA, Sims-Gould J, Winters M, Heijnen M, McKay HA. “Benches become like
915 porches”: Built and social environment influences on older adults’ experiences of
916 mobility and well-being. *Social Science & Medicine*. [Online] 2016;169: 33–41.
917 Available from: doi:10.1016/j.socscimed.2016.08.044
- 918 75. Howarth M, Rogers M, Withnell N, McQuarrie C. Growing spaces: an evaluation of
919 the mental health recovery programme using mixed methods: *Journal of Research in*
920 *Nursing*. [Online] 2018; Available from: doi:10.1177/1744987118766207 [Accessed:
921 11th August 2020]

- 922 76. Kabisch N, van den Bosch M, Laforteza R. The health benefits of nature-based
923 solutions to urbanization challenges for children and the elderly – A systematic
924 review. *Environmental Research*. [Online] 2017;159: 362–373. Available from:
925 doi:10.1016/j.envres.2017.08.004
- 926 77. Shin JC, Parab KV, An R, Grigsby-Toussaint DS. Greenspace exposure and sleep:
927 A systematic review. *Environmental Research*. [Online] 2020;182: 109081. Available
928 from: doi:10.1016/j.envres.2019.109081
- 929 78. Lakhani A, Norwood M, Watling DP, Zeeman H, Kendall E. Using the natural
930 environment to address the psychosocial impact of neurological disability: A
931 systematic review. *Health & Place*. [Online] 2019;55: 188–201. Available from:
932 doi:10.1016/j.healthplace.2018.12.002
- 933 79. Kondo MC, Fluehr JM, McKeon T, Branas CC. Urban green space and its impact on
934 human health. *International Journal of Environmental Research and Public Health*.
935 [Online] 2018;15(3): 445. Available from: doi:10.3390/ijerph15030445
- 936 80. Callaghan A, McCombe G, Harrold A, McMeel C, Mills G, Moore-Cherry N, et al. The
937 impact of green spaces on mental health in urban settings: a scoping review. *Journal*
938 *of Mental Health*. [Online] 2020;0(0): 1–15. Available from:
939 doi:10.1080/09638237.2020.1755027
- 940 81. Koselka EPD, Weidner LC, Minasov A, Berman MG, Leonard WR, Santoso MV, et
941 al. Walking green: developing an evidence base for nature prescriptions.
942 *International Journal of Environmental Research and Public Health*. [Online]
943 2019;16(22): 4338. Available from: doi:10.3390/ijerph16224338
- 944 82. Zufferey J. Relations entre santé et espaces verts et bleus: une synthèse de la
945 recherche empirique, 2003-2014. *Natures Sciences Sociétés*. [Online] 2015;23(4):
946 343–355. Available from: doi:10.1051/nss/2015057

- 947 83. Costello L, McDermott M-L, Patel P, Dare J. 'A lot better than medicine' - Self-
948 organised ocean swimming groups as facilitators for healthy ageing. *Health & Place*.
949 [Online] 2019;60: 102212. Available from: doi:10.1016/j.healthplace.2019.102212
- 950 84. Birch J, Rishbeth C, Payne SR. Nature doesn't judge you – how urban nature
951 supports young people's mental health and wellbeing in a diverse UK city. *Health &*
952 *Place*. [Online] 2020;62: 102296. Available from:
953 doi:10.1016/j.healthplace.2020.102296
- 954 85. Wood E, Harsant A, Dallimer M, Cronin de Chavez A, McEachan RRC, Hassall C.
955 Not all green space is created equal: biodiversity predicts psychological restorative
956 benefits from urban green space. *Frontiers in Psychology*. [Online] 2018;9. Available
957 from: doi:10.3389/fpsyg.2018.02320 [Accessed: 11th August 2020]
- 958 86. Corazon SS, Sidenius U, Poulsen DV, Gramkow MC, Stigsdotter UK. Psycho-
959 physiological stress recovery in outdoor nature-based interventions: a systematic
960 review of the past eight years of research. *International Journal of Environmental*
961 *Research and Public Health*. [Online] 2019;16(10): 1711. Available from:
962 doi:10.3390/ijerph16101711
- 963 87. Maund PR, Irvine KN, Reeves J, Strong E, Cromie R, Dallimer M, et al. Wetlands for
964 wellbeing: piloting a nature-based health intervention for the management of anxiety
965 and depression. *International Journal of Environmental Research and Public Health*.
966 [Online] 2019;16(22): 4413. Available from: doi:10.3390/ijerph16224413
- 967 88. Benjamin-Neelon SE, Platt A, Bacardi-Gascon M, Armstrong S, Neelon B, Jimenez-
968 Cruz A. Greenspace, physical activity, and BMI in children from two cities in northern
969 Mexico. *Preventive Medicine Reports*. [Online] 2019;14: 100870. Available from:
970 doi:10.1016/j.pmedr.2019.100870

- 971 89. Coventry PA, Neale C, Dyke A, Pateman R, Cinderby S. The mental health benefits
972 of purposeful activities in public green spaces in urban and semi-urban
973 neighbourhoods: a mixed-methods pilot and proof of concept study. *International*
974 *Journal of Environmental Research and Public Health*. [Online] 2019;16(15): 2712.
975 Available from: doi:10.3390/ijerph16152712
- 976 90. Britton E, Kindermann G, Domegan C, Carlin C. Blue care: a systematic review of
977 blue space interventions for health and wellbeing. *Health Promotion International*.
978 [Online] 2020;35(1): 50–69. Available from: doi:10.1093/heapro/day103
- 979 91. Saadi D, Schnell I, Tirosh E, Basagaña X, Agay-Shay K. There’s no place like
980 home? The psychological, physiological, and cognitive effects of short visits to
981 outdoor urban environments compared to staying in the indoor home environment, a
982 field experiment on women from two ethnic groups. *Environmental Research*.
983 [Online] 2020;187: 109687. Available from: doi:10.1016/j.envres.2020.109687
- 984 92. World Bank country and lending groups – world bank data help desk. [Online]
985 Available from: [https://datahelpdesk.worldbank.org/knowledgebase/articles/906519-](https://datahelpdesk.worldbank.org/knowledgebase/articles/906519-world-bank-country-and-lending-groups)
986 [world-bank-country-and-lending-groups](https://datahelpdesk.worldbank.org/knowledgebase/articles/906519-world-bank-country-and-lending-groups) [Accessed: 14th August 2020]
- 987 93. Morita E, Imai M, Okawa M, Miyaura T, Miyazaki S. A before and after comparison of
988 the effects of forest walking on the sleep of a community-based sample of people
989 with sleep complaints. *Biopsychosoc Med* [Internet]. 2011;5(1):13. Available from:
990 <https://doi.org/10.1186/1751-0759-5-13>
- 991 94. Owen N, Sparling PB, Healy GN, Dunstan DW, Matthews CE. Sedentary Behavior:
992 Emerging Evidence for a New Health Risk. *Mayo Clin Proc*. 2010 Dec;85(12):1138–
993 41.

- 994 95. Bratman GN, Hamilton JP, Hahn KS, Daily GC, Gross JJ. Nature experience
995 reduces rumination and subgenual prefrontal cortex activation. *PNAS*. 2015 Jul
996 14;112(28):8567–72.
- 997 96. Gladwell VF, Brown DK, Wood C, Sandercock GR, Barton JL. The great outdoors:
998 how a green exercise environment can benefit all. *Extrem Physiol Med*. 2013 Jan
999 3;2:3.
- 1000 97. White MP, Alcock I, Wheeler BW, Depledge MH. Would You Be Happier Living in a
1001 Greener Urban Area? A Fixed-Effects Analysis of Panel Data. *Psychol Sci*. 2013 Jun
1002 1;24(6):920–8.
- 1003 98. Antonelli M, Barbieri G, Donelli D. Effects of forest bathing (shinrin-yoku) on levels of
1004 cortisol as a stress biomarker: a systematic review and meta-analysis. *Int J*
1005 *Biometeorol*. 2019 Aug 1;63(8):1117–34.
- 1006 99. Niedermeier M, Einwanger J, Hartl A, Kopp M. Affective responses in mountain
1007 hiking—A randomized crossover trial focusing on differences between indoor and
1008 outdoor activity. *PLoS One* [Internet]. 2017 May 16 [cited 2018 Feb 21]; 12(5).
- 1009 100. Public Health England. Local action on health inequalities: Improving access to
1010 green spaces. [Online] Public Health England (PHE). Report number: 2014334, 2014
1011 p. 1–29. Available from:
1012 [https://assets.publishing.service.gov.uk/government/uploads/system/uploads/attach](https://assets.publishing.service.gov.uk/government/uploads/system/uploads/attachment_data/file/357411/Review8_Green_spaces_health_inequalities.pdf)
1013 [ment_data/file/357411/Review8 Green spaces health inequalities.pdf](https://assets.publishing.service.gov.uk/government/uploads/system/uploads/attachment_data/file/357411/Review8_Green_spaces_health_inequalities.pdf) [Accessed:
1014 21st July 2020]
- 1015 101. Patel A, Schofield GM, Kolt GS, Keogh JW. General practitioners' views and
1016 experiences of counselling for physical activity through the New Zealand Green
1017 Prescription program. *BMC Family Practice*. [Online] 2011;12(1): 119. Available
1018 from: doi:10.1186/1471-2296-12-119

- 1019 102. Weston P. 10 great city projects for nature – from vertical forests to a 'gangsta
1020 garden' [Internet]. The Guardian. Guardian News and Media; 2021 [cited 2021,
1021 Oct22]. Available from: [https://www.theguardian.com/environment/2021/oct/01/10-
1022 great-city-projects-for-nature-from-vertical-forests-to-pocket-farms-
1023 aoe?CMP=Share_AndroidApp_Other](https://www.theguardian.com/environment/2021/oct/01/10-great-city-projects-for-nature-from-vertical-forests-to-pocket-farms-aoe?CMP=Share_AndroidApp_Other)
- 1024 103. Nature-based solutions [Internet]. IUCN. 2020 [cited 2021, Sep17]. Available from:
1025 [https://www.iucn.org/commissions/commission-ecosystem-management/our-
1026 work/nature-based-solutions](https://www.iucn.org/commissions/commission-ecosystem-management/our-work/nature-based-solutions)
- 1027 104. Communication from the Commission to the European Parliament, the Council, the
1028 European Economic and Social Committee and the Committee of the Regions
1029 Pathway to a Healthy Planet for All EU Action Plan: 'Towards Zero Pollution for Air,
1030 Water and Soil' [Internet]. eur-lex.europa.eu. 2021 [cited 2021, Oct22]. Available
1031 from: [https://eur-lex.europa.eu/legal-
1032 content/EN/TXT/?uri=CELEX%3A52021DC0400&qid=1634912925521](https://eur-lex.europa.eu/legal-content/EN/TXT/?uri=CELEX%3A52021DC0400&qid=1634912925521)
- 1033 105. Updated zero draft of the post-2020 global biodiversity framework [Internet].
1034 Convention on Biological Diversity. [cited 2021, Sep17]. Available from:
1035 <https://www.cbd.int/article/zero-draft-update-august-2020>
- 1036 106. Unequal exposure and unequal impacts [Internet]. European Environment Agency.
1037 2018 [cited 2021, Oct22]. Available from:
1038 <https://www.eea.europa.eu/publications/unequal-exposure-and-unequal-impacts>
- 1039 107. Barney K. Residents fight proposal to give public access to private garden [Internet].
1040 London Evening Standard | Evening Standard. Evening Standard; 2012 [cited
1041 2021Oct22]. Available from: [https://www.standard.co.uk/hp/front/residents-fight-
1042 proposal-to-give-public-access-to-private-garden-squares-6806376.html](https://www.standard.co.uk/hp/front/residents-fight-proposal-to-give-public-access-to-private-garden-squares-6806376.html)

1043 108. Physical activity [Internet]. World Health Organization. World Health Organization;
1044 [cited 2022, Jan5]. Available from: [https://www.who.int/news-room/fact-](https://www.who.int/news-room/fact-sheets/detail/physical-activity)
1045 [sheets/detail/physical-activity](https://www.who.int/news-room/fact-sheets/detail/physical-activity)

1046

1047 **Supporting Information**

1048 **S1_Fig1. Key database search terms.**

1049 **S1_Table1. Search Strategy in PubMed.**

1050 **S1_Table2. Data extraction form (for original and review studies).**

1051 **S1_Fig2. PRSIMA flow diagram, with reasons for exclusion detailed among the 313**
1052 **excluded studies during full-text screening.**

1053 **S1_Table3. Charting table of each individual studies included in this scoping review.**

1054 Where cases highlighted in green=GS, blue=BS and yellow=both.

1055 **S1_Table4. All outcomes present in selected studies and categorised through**
1056 **content analysis.** Numbers highlighted green=GS, blue=BS and yellow=both.

1057 **S1_Fig3. Description of key modulators to NOE engagement.**