

1 **Obesity, hypertension and tobacco use associated with left ventricular remodelling and**
2 **hypertrophy in South African Women: Birth to Twenty Plus Cohort**

3 Andrea Kolkenbeck-Ruh ^a, Larske M. Soepnel* ^{a,b}, Simone H. Crouch ^a, Sanushka Naidoo ^a, Wayne
4 Smith ^{c,d}, Shane A. Norris ^{a,e}, Justine Davies ^{a,f}, Lisa J. Ware ^{a,g}

5

6 a SAMRC/Wits Developmental Pathways for Health Research Unit, Faculty of Health Sciences,
7 University of the Witwatersrand, Johannesburg 2000, South Africa

8 b Julius Global Health, Julius Centre for Health Sciences and Primary Care, University Medical
9 Centre. Utrecht, Utrecht University, Utrecht, The Netherlands.

10 c Hypertension in Africa Research Team (HART), North-West University, South Africa

11 d South African Medical Research Council: Unit for Hypertension and Cardiovascular Disease,
12 North-West University, South Africa

13 e School of Health and Human Development, University of Southampton, Southampton, UK

14 f Institute of Applied Health Research, University of Birmingham, Birmingham, UK

15 g DSI-NRF Centre of Excellence in Human Development, University of the Witwatersrand,
16 Johannesburg 2000, South Africa.

17

18 Correspondence and reprint to: *Larske M. Soepnel. Julius Global Health, Julius Centre for Health
19 Sciences and Primary Care, University Medical Centre Utrecht, Utrecht University, Utrecht, The
20 Netherlands. Postal address: Huispost number: STR 6.131. P.O. Box 85500, 3508 GA Utrecht. Email:
21 larske.soepnel@gmail.com

22 **Abstract**

23 *Background:* Left ventricular hypertrophy (LVH) is a known marker of increased risk in developing
24 future life-threatening CVD, though it is unclear how health risk factors, such as obesity, blood pressure

25 and tobacco use, associate with left ventricular (LV) remodelling and LVH across generations of
26 urban African populations.

27 *Methods:* Black female adults (n=123; age: 29-68 years) and their children (n=64; age: 4-10; 55%
28 female) were recruited from the Birth to Twenty Plus Cohort in Soweto, South Africa. Tobacco and
29 alcohol use, physical activity, presence of diabetes mellitus, heart disease and medication were self-
30 reported. Height, weight, and blood pressure were measured in triplicate. Echocardiography was used
31 to assess LV mass at end-diastole, perpendicular to the long axis of the LV and indexed to body
32 surface area to determine LVH.

33 *Results:* Hypertension and obesity prevalence were 35.8% and 59.3% for adults and 45.3% and 6.3%
34 for children. Self-reported tobacco use in adults was 22.8%. LVH prevalence was 35.8% (n=44) in
35 adults (75% eccentric; 25% concentric), and 6.3% (n=4) in children (all eccentric). Prevalence of
36 concentric remodelling was 15.4% (n=19) in adults and observed in one child. In adults, obesity (OR:
37 2.54 (1.07-6.02; p=0.02) and hypertension (3.39 (1.08-10.62; p=0.04) significantly increased the odds
38 of LVH, specifically eccentric LVH, while concentric LVH was associated with self-reported tobacco
39 use (OR: 4.58 (1.18-17.73; p=0.03; n=11). Although no logistic regression was run within children, of
40 the four children LVH, three had elevated blood pressure and the child with normal blood pressure
41 was overweight.

42 *Conclusions:* The association between obesity, hypertension, tobacco use and LVH in adults, and the
43 6% prevalence of LVH in children, calls for stronger public health efforts to control risk factors and
44 monitor children at who are risk.

45

46 Keywords: left ventricular hypertrophy; ventricular remodelling; Sub-Saharan Africa; Child health;
47 Women's health

48 **Background**

49 Despite medical advances, cardiovascular disease (CVD) remains a global health concern affecting
50 more than 37 million individuals [1]. CVD are a leading cause of death globally [2–4]. CVD risk
51 factors, such as hypertension, obesity, type II diabetes mellitus (T2DM), smoking, dyslipidaemia, a
52 sedentary lifestyle, unhealthy diets and excess alcohol intake [4, 5], are increasing in sub-Saharan
53 Africa. South Africa is no exception with rising prevalence of known CVD risk factors, largely as a
54 consequence of urbanisation and marked changes in health behaviour [6–8]. Thus prevention of CVD
55 is an important national public health goal.

56 Heart failure is the dominant form of CVD in South Africa, of which the main cause is hypertension [9].
57 Unlike high-income countries, in South Africa heart failure typically affects younger working
58 individuals, and has an in-hospital mortality rate of approximately 8.4%, while 6 months post hospital
59 discharge, fatality rate stands at approximately 26% [10]. As a result of the impact on young,
60 economically active individuals, as well as the high fatality rate, heart failure in South Africa has a
61 disproportional impact on an already fragile economy.

62 A key aspect of the pathological process of CVD, ultimately leading to heart failure and stroke [11,
63 12], is cardiac remodelling. The term is most commonly applied to the left ventricle (LV) in which the
64 chamber changes in size, shape or structure [13]. Left ventricular hypertrophy (LVH), defined as an
65 increase in muscle mass of the LV, is associated with a four-fold increase in heart failure [14–20]. As
66 a result, regression of LVH is a goal of cardiovascular risk reduction [21–24]. Many of the risk factors
67 contributing to the systemic and regional hemodynamic changes that drive the development of LVH
68 [25], are modifiable, including obesity [26], tobacco and alcohol use [27] and elevated blood pressure
69 and hypertension [26].

70 In South African adult women, there has been a sharp rise in prevalence of overweight/obesity (68%),
71 hypertension (46%), regular alcohol use (17%) [28] and current tobacco smokers (7.6%) [29]. Given
72 the increasing CVD rates, and the restricted access to echocardiography in the public health sector
73 [30], understanding the role of health risk factors in LVH development may have major implications for
74 preventing LVH or interventions for regression of LVH. Furthermore, the growing burden of
75 cardiovascular risk factors could lead to growing burden of LVH and potential increase the burden in

76 offspring. Therefore, the aim of the study was to identify the prevalence of LVH as well as the health
77 factors associated with LV remodelling and LVH, within black South African adult women and their
78 pre-pubescent children to inform public health efforts to promote cardiovascular health.

79 **Methods**

80 *Study population*

81 Data was collected during a cross-sectional study of vascular health in an existing birth cohort known
82 as the Birth to Twenty Plus (BT20+) Cohort, which started in 1990 (described previously [31]) and
83 now includes three generations. The aim of this study was to investigate the intergenerational
84 transmission of cardiovascular health; the BT20 index female (known as 2nd generation or 2G; aged
85 28-29 years); their birth children or 3rd generation (3G, aged 4-10 years, female or male); and their
86 biological mothers or 1st generation (1G, aged 43-68 years, female). For the purpose of the present
87 study, the first and second-generation participants were combined and classified as the “adult group”.
88 Thus, 79 families, 237 participants (n=158 adults and n=79 children) were invited to attend for
89 cardiovascular assessment where left ventricular remodelling and hypertrophy were assessed using
90 echocardiography. All data were collected at the Developmental Pathways for Health Research Unit,
91 at Chris Hani Baragwanath Academic Hospital in Soweto. Of the 237 participants recruited, n=187
92 (78.9%) were included in analysis (**Figure 1**). Trained researchers who spoke the participant’s home
93 language explained the study and all participants gave written informed consent (adults) or assent
94 (children aged 7-10 years) prior to data collection. The Human Research Ethics Committee (Medical)
95 of the University of the Witwatersrand approved the protocol (M190263).

96 *Health risk factors*

97 Tobacco use was assessed using the Global Adult Tobacco Survey [32], alcohol use with the WHO
98 Alcohol Use Disorders (WHO-AUDIT) test [33] and physical activity using the Global Physical Activity
99 Questionnaire (GPAQ) [34]. Self-reported medical history (diabetes mellitus [T2DM], hypertension,
100 high cholesterol, or previous heart disease] and current medication use) was assessed by
101 questionnaire. Thereafter, anthropometry, including height, weight and waist circumference, was
102 measured in triplicate using standardised World Health Organization measurement protocols [35].
103 Brachial blood pressure (BP) was measured using automated devices (MIT5 for adults; HBP-1300 for

104 children [36]; Omron Healthcare, Kyoto, Japan). Following the International Society of Hypertension
105 (ISH) measurement guidelines [37], participants were seated and asked to rest for at least 5-minutes
106 prior to measurement of BP in their right arm three times in a quiet room with the monitor facing away
107 from the participant; there was a 2-minute rest interval between the measurements. The first BP
108 measurement was discarded and the second and third measurements were averaged for analysis.

109 *Echocardiography*

110 Transthoracic echocardiography examination was performed by a single echocardiographer, with the
111 Mindray DC-70 Ultrasound system (Mindray, Shenzhen China). Measurements of chamber dimensions
112 were taken from 2D mode and left ventricular (LV) mass and relative wall thickness (RWT) were
113 calculated. Linear measurements were made according the American Society of Echocardiography
114 (ASE) Guidelines: Recommendations for Cardiac Chamber Quantification in Adults [38]. LV mass
115 was assessed at end-diastole perpendicular to the long axis of the LV. LVM was calculated according
116 to the Devereux formula: $LVM (g) = 0.8 \times 1.04 ((LVDd+IVSd+LVPWd)^3 - LVDd^3) + 0.6$ where LVDd =
117 left ventricular diastolic diameter; IVSd = intraventricular septal diameter, LVPWd = left ventricular
118 posterior wall thickness in diastole [38]. The left ventricular mass index (LVMI) was calculated as a
119 ratio of LVM indexed to body surface area [38]. The RWT was defined as: $2 \times LVPWd/LVDd$, where
120 LVPWd = left ventricular posterior wall thickness in diastole; LVDd = left ventricular diastolic diameter
121 [38]. RWT was used to categorise LV mass and the pattern of remodelling. Left ventricular
122 hypertrophy (LVH) was defined as LVMI >95 g/m² for adult women [38] and LVMI >95th percentile
123 (88.9 g/m²) for children [39], and eccentric LVH (LVH with RWT ≤0.42) and concentric LVH (LVH with
124 RWT >0.42) as well as concentric remodelling (normal LVMI with RWT >0.42) [38].

125 *Data Management*

126 In adults, body mass index (BMI; weight (kg)/height (m)²) was categorised according to the World
127 Health Organisation (WHO) classification as follows: <18.5 kg/m² as underweight; 18.5-24.9 kg/m² as
128 normal; 25-29.9 kg/m² as overweight; and ≥30 kg/m² as obese [40]. In children (>5 years), age
129 adjusted z-scores for BMI were calculated using the WHO reference and children were categorised as
130 overweight if their BMI z-score was between 1-2, and obese if their BMI z-score was >2 [40]. While in
131 children aged four years, age adjusted z-scores for BMI were categorised as overweight if their BMI z-

132 score was between 2-3, and obese if their BMI z-score was >3 [41]. In adults, hypertension was
133 defined as a BP ≥ 140 mmHg systolic or ≥ 90 mmHg diastolic or currently taking anti-hypertensive
134 medication; in those who were not on anti-hypertensive medication elevated BP was defined as a BP
135 130-139 mmHg systolic or 85-89 mmHg diastolic, following the International Society of Hypertension
136 (ISH) Global Hypertension Practice Guidelines [37]. For children, elevated BP was defined as BP
137 $\geq 90^{\text{th}}$ percentile for height and age, following the American Academy of Paediatrics Clinical Practice
138 2017 guidelines [42].

139 *Statistical analysis*

140 SPSS statistics 25.0 (IBM, Chicago, IL, USA) was used for statistical analysis. Non-normality of data
141 was confirmed using visual inspection of histograms and the Shapiro–Wilk test. Multivariable logistic
142 regression, after checking for multicollinearity by confirming a variance inflation factor of less than five
143 [43], was conducted to examine the relationship between LVH / LV remodelling and the following
144 health factors: age, moderate-vigorous physical activity, sedentary behaviour, obesity, hypertension,
145 previous diagnosis of T2DM, high cholesterol, ever tobacco use and alcohol use. Statistical
146 significance for all analyses was set at $p < 0.05$. Due to the low prevalence of LVH in children,
147 regression analysis was only performed in adults.

148 **Results**

149 *Characteristics of the participants*

150 The median age for adult women was 41 years (range 28 to 68 years, $n=123$) while for children it was
151 7 years (range 4 to 10 years, $n=64$, 54.7% female) (**Table 1**). Median BMI was 32.5 kg/m^2 (IQR: 26.6-
152 37.7 kg/m^2) and 15.8 kg/m^2 (IQR: 14.8-17.2 kg/m^2) for adults and children respectively, with 59.3% of
153 adults and 6.3% of children classified as obese. Elevated blood pressure (BP) on measurement was
154 found in 41.5% of adults. While 35.8% of adults were classified as hypertensive with 75% on
155 treatment, primarily a diuretic. Nearly sixty percent (59.4%) of children had elevated BP. Of the 123
156 adults, 22.8% were current or past tobacco users (smoking and smokeless tobacco) and 55.3%
157 regularly consumed alcohol. Three adults reported having previous heart disease. A small
158 percentage of adults reported having high cholesterol and T2DM (12.2% and 2.4% respectively).

159 While all participants with self-reported diabetes were on treatment, only 26.7% of adults with high
160 cholesterol were.

161 The median LVMI was 84.75 (IQR: 71.36-102.33) g/m² and 56.29 (IQR: 47.61-69.17) g/m² for adults
162 and children, respectively (**Table 1**). Within adults, 48.8% had normal LV geometry, while 15.4% had
163 concentric remodelling. The remaining 35.8% had LVH, of which 26.8% had eccentric LVH and 8.9%
164 had concentric LVH. In contrast, 92.2% of children had normal LV geometry, 1.6% had concentric
165 remodelling, 6.3% had eccentric remodelling only, and no concentric LVH was observed.

166 *Left ventricular (LV) remodelling and left ventricular hypertrophy (LVH) in adults*

167 **Table 2**, compares characteristics of adults with and without LVH. Overall, women with LVH were
168 significantly older (48 (min: 29, max 66) vs 29 (min: 28, max: 68) years, p=0.04), were more obese
169 (73% vs 52%, p=0.04), and were hypertensive (52% vs 27%, p=0.01) compared to those without
170 LVH. When considering LVH regardless of pattern, after adjusting for age, moderate-vigorous
171 physical activity, sedentary behaviour, obesity, hypertension, T2DM, high cholesterol, ever tobacco
172 use and regular alcohol use, hypertension (OR: 3.39 (1.08-10.62), p=0.04) and obesity (OR: 2.54
173 (1.07-6.02) were significantly associated with LVH. Obesity was the only factor significantly
174 associated with eccentric LVH (OR: 3.46 (1.28-9.37), p=0.02), and reported ever tobacco use was the
175 only factor significantly associated with concentric LVH (OR: 5.06 (1.24-20.69), p=0.02), although the
176 number of adults with this condition was small. No other significant associations were found with LV
177 remodelling in the multivariable logistic regression models (**Table 3**).

178 **Figure 2**, depicts those adults with LVH and the number of health factors. It was observed the
179 prevalence of LVH in adults significantly increased (p=0.002) with the number of health risk factors
180 reported.

181 *Left ventricular (LV) remodelling and left ventricular hypertrophy (LVH) in children*

182 Over 90% of children (median age 7 years, range 4-10, 59.3% female) had normal LV geometry
183 despite 59.4% (n=38) having elevated BP, 45.3% (n=26) being hypertensive and 23.4% (n=15) being
184 overweight or obese (**Table 1**). Of the four children with LVH (all eccentric LVH), three had elevated
185 BP and were normal weight, while the fourth child had normal BP, however, was overweight. **Figure**

186 **2**, depicts those children with LVH and the number of health factors, in which 3 out of the 4 children
187 with LVH has one health factor.

188

189 **Discussion**

190 In the present study, we assessed the prevalence of LVH in black South African women and their
191 children/grandchildren and health factors associated with LVH. We found a high prevalence of LVH in
192 South African black adult women (28-68 years), with over a quarter having eccentric LVH. Obesity
193 and hypertension, two modifiable health factors, were associated with eccentric LVH, while self-
194 reported tobacco use was related to concentric LVH. Of the women with LVH, half of the women had
195 three or four health risk factors. Despite the small sample size, 6% of children aged 4-10 years had
196 eccentric LVH, of which three had elevated blood pressure (BP). The current study highlights that
197 multiple factors significantly drive the development of LVH in adult women. In addition, although only
198 four children had LVH, the high prevalence of elevated BP and children is concerning and aids in
199 supporting ongoing calls for prevention efforts, particularly for youth.

200 In African countries, CVD is increasing rapidly. LVH is a known marker of increased risk for
201 developing future life-threatening CVD and there is evidence to suggest that LVH is higher in black
202 populations of African descent [44]. Various studies conducted over the past decade in Sub-Saharan
203 Africa have reported the prevalence of LVH among women (mean age range: 43-57 years) to vary
204 from 19.9% to 44.5% [19, 45–47], which is consistent with the current study's findings (35.8% of
205 South African women; mean age: 41.3 years). Our estimates are, however, higher than previously
206 reported South African data by Maseko et al and Libhaber et al (LVH prevalence of 19.9% and 21.7%
207 respectively, despite similar ages (44 years)) [45, 46]. This increase in LVH prevalence may be, in
208 part, due to increasing risk cardiovascular risk factors from 2013. However, although the populations
209 in both studies were similar to that of the current study (both black South African), the methodology
210 was different. Both studies used LVM indexed to height^{2.7} [45, 46], whilst the current study used LVM
211 indexed to body surface area. However, when indexing LVM to height^{2.7}, the current study's
212 prevalence increased slightly from 35.8% (n=44) to 38.2% (n=47) (data not shown). To date, there
213 remains controversy around the method to index LVM to accurately identify LVH within individuals in

214 the Southern African region. Due to the high prevalence of stunting observed within the South African
215 population [48, 49], and LVM indexed to body surface area was identified as the most appropriate
216 method so as not to under or overestimate LVH calculated by height^{2.7}. This, in conjunction with the
217 guidelines from *The American Society of Echocardiography Recommendations for Cardiac Chamber*
218 *Quantification in Adults* [38], further supports the use of body surface area over height^{2.7}.

219 LVH is a compensatory response to cardiac insult through interactions between pressure and/or
220 volume overload [50]. Increasing age, hypertension, and obesity are the three main cardiovascular
221 risk factors that drive pressure and volume overload within the heart [50, 51]. The current study found
222 that obesity and hypertension were associated with a two-fold and a three-fold respective risk of
223 developing LVH (irrespective of type), and a three-fold risk of developing eccentric LVH. This is in line
224 with results from the Framingham study that suggest a 7% increase for risk for developing LVH per
225 one unit increase of body mass index (BMI) in women [52, 53]. Furthermore, there is a three-fold risk
226 of developing CVD in individuals with BP \geq 130/90 mmHg compared to individuals with BP < 120/80
227 mmHg [54]. In South Africa, approximately 68% of women (\geq 15 years) are overweight or obese [55]
228 and hypertension is currently reported as one of the most common causes of CVD [19, 55]. Current
229 understanding of hemodynamic alterations accompanying obesity and hypertension suggests that
230 they drive an increase in LV filling and stroke volume, which specifically causes LV dilation and
231 eccentric, rather than concentric, LVH [26, 56–59]. However, studies by Woodiwiss et al [60] and
232 Avelar et al [61] found that adiposity was associated with concentric LVH, independently of BP. Our
233 smaller sample size (n=123, of which 11 had concentric LVH) may explain the lack of an association
234 between obesity and concentric LVH in our study. In addition, due to the confounding effects of both
235 hypertension and obesity, their interactions and duration within the same individual left ventricular
236 remodelling and hypertrophy may be different. Therefore, before definitive conclusions can be
237 reached, within this population, further studies investigating interactions of obesity and hypertension
238 are required.

239 Along with obesity and hypertension, smoking prevalence in South Africa is currently on the rise [55].
240 There is sound evidence that smoking impacts cardiac structure and function [62, 63], and results
241 from other studies suggest significant increases in LVMI, and thus LVH, in individuals who smoke

242 compared to those that don't [62, 64, 65]. Similarly, although our sample of women that had
243 concentric LVH was small, our data showed an association between smoking and concentric LVH.

244 The currently study found a high prevalence of elevated blood pressure (59.4%) in children. Despite
245 this high prevalence it may seem encouraging that only four children had LVH. However, of those four
246 children that had LVH, three had elevated blood pressure and the one child that was normotensive
247 was overweight. Thus, following the same pattern observed in adults, that the rising health risk
248 factors, namely elevated blood pressure and weight gain in children reflect more a pessimistic outlook
249 and are the driving factors behind CVD risk in children that also may persist into adulthood. Further
250 supporting calls for earlier identification of those that are at risk and interventions where necessary,
251 especially within children.

252 A strength of this study is the indexing of LVM to body surface area. Indexing LVM to body height may
253 result in error in LVH classification due to the prevalence of stunting in this population [48, 49]. A
254 limitation of the present study was the ages within the adult group. As this study recruited from within
255 an existing birth cohort with all index children recruited at birth in 1990, these 'children' were all 29
256 years old adults at the time of the measurements, resulting in a clustering of adults around 29 years
257 with their parents aged 45-65 years. Furthermore, we relied on self-reported data for medical history
258 and health behaviours. Given the potential association between self-reported tobacco use and LVH in
259 adults, analysing biomarkers of tobacco exposure could be a useful next step. As the low frequency of
260 children with LVH prevented further statistical analysis, additional studies with larger sample sizes are
261 needed to assess potential relationships between modifiable health behaviours and LVH.

262 **Conclusions**

263 In conclusion, the results have highlighted the need for specific call to action polices around obesity,
264 hypertension and tobacco in adult women and target intervention around weight management and
265 elevated BP in children. Due to the high risk of developing LVH due to obesity and hypertension,
266 specific interventions, prior to the development of obesity and hypertension (i.e. overweight and
267 elevated BP individuals), are needed to prevent the development of LVH, and in cases where LVH is
268 evident, regress LVH. As obesity and hypertension have both additive and interactive effects on LVH
269 development, **both** weight loss programs and BP lowering medications (such as hydrochlorothiazide

270 [66, 67]) are required to achieve appropriate LVH regression, particular in this population where
271 obesity and hypertension is prevalent.

272 **Abbreviations**

273 ASC, American Society of Echocardiography

274 BMI, body mass index

275 BT20+, Birth to Twenty Plus Cohort

276 BP, blood pressure

277 CI, confidence interval

278 CVD, cardiovascular disease

279 GPAQ, global physical activity questionnaire

280 IQR, interquartile range

281 ISH, International Society of Hypertension

282 IVSd, intraventricular septal diameter

283 LVDd, left ventricular diastolic diameter

284 LVPWd, left ventricular posterior wall thickness in diastole

285 LV, left ventricular

286 LVH, left ventricular hypertrophy

287 LVM, left ventricular mass

288 LVMI, left ventricular mass index

289 MVPA, moderate-vigorous physical activity

290 OR, odds ratio

291 RWT, relative wall thickness

292 T2DM, type II diabetes mellitus

293 WHO, world health organisation

294 WHO-AUDIT, WHO Alcohol Use Disorders

295 1G, first generation

296 2G, second generation

297 3G, third generation

298 **Declarations**

299 ***Ethical approval and consent to participate***

300 Written informed consent was provided by all women and their children / grandchildren prior to their
301 inclusion in the study and ethical approval was obtained from the University of the Witwatersrand's
302 Research Ethics Committee (Medical) with ethical clearance number **M190263**

303 ***Consent for publication***

304 Not applicable

305 ***Availability of data and materials***

306 The datasets used and/or analysed during the current study are available from the corresponding
307 author on reasonable request

308 ***Competing interest***

309 The authors declare that they have no competing interests.

310 ***Funding***

311 This study was supported by a Wellcome Trust Seed Award to Lisa Ware (214082/Z/18/Z)

312 ***Author's contributions***

313 AKR and LJW, conceptualised and designed the study. AKR was responsible for data management,
314 data analysis and wrote the original draft. AKR, LMS, SHC, SN, WS, SAN, JD, LJW, contributed to

315 interpretation of data and critical review of manuscript. LW was the Principal Investigator of the
316 project. All authors gave final approval of the version to be submitted.

317 **Acknowledgements**

318 Funding support from the South African Medical Research Council, Wellcome Trust, and DSI-NRF
319 Centre of Excellence in Human Development at the University of the Witwatersrand, Johannesburg,
320 South Africa for the Birth to Twenty Plus Cohort.

321 **References**

- 322 1. Ziaeeian B, Fonarow GC. Epidemiology and aetiology of heart failure. *Nature Reviews Cardiology*.
323 2016;13:368–78. doi:10.1038/nrcardio.2016.25.
- 324 2. Bradshaw D, Groenewald P, Laubscher R, Nannan N, Nojilana B, Norman R, et al. Initial burden of
325 disease estimates for South Africa, 2000□: original article. *Samj*. 2003.
- 326 3. Bhatia RS, Tu J V., Lee DS, Austin PC, Fang J, Haouzi A, et al. Outcome of heart failure with
327 preserved ejection fraction in a population-based study. *N Engl J Med*. 2006.
- 328 4. Mozaffarian D, Benjamin EJ, Go AS, Arnett DK, Blaha MJ, Cushman M, et al. Heart disease and
329 stroke statistics-2015 update □: A report from the American Heart Association. *Circulation*. 2015.
- 330 5. Lee DS, Gona P, Vasan RS, Larson MG, Benjamin EJ, Wang TJ, et al. Relation of disease
331 pathogenesis and risk factors to heart failure with preserved or reduced ejection fraction: Insights from
332 the framingham heart study of the national heart, lung, and blood institute. *Circulation*. 2009.
- 333 6. Steyn K, Damasceno A. Lifestyle and Related Risk Factors for Chronic Diseases. 2006.
- 334 7. Rayner B. Hypertension: Detection and management in South Africa. *Nephron - Clinical Practice*.
335 2010.
- 336 8. Maredza M, Bertram MY, Tollman SM. Disease burden of stroke in rural South Africa: An estimate
337 of incidence, mortality and disability adjusted life years. *BMC Neurol*. 2015.
- 338 9. Hitzeroth J, Mpe M, Klug E, Ranjith N, Sliwa K, Steingo L, et al. 2020 Heart Failure Society of
339 South Africa perspective on the 2016 European Society of Cardiology Chronic Heart Failure

- 340 Guidelines. S Afr Med J. 2020;110:13057.
- 341 10. Szymanski PZ, Badri M, Mayosi BM. Clinical characteristics and causes of heart failure,
342 adherence to treatment guidelines, and mortality of patients with acute heart failure: Experience at
343 Groote Schuur Hospital, Cape Town, South Africa. South African Med J. 2018;108:94–8.
- 344 11. Bots ML, Nikitin Y, Salonen JT, Elwood PC, Malyutina S, Freire de Concalves A, et al. Left
345 ventricular hypertrophy and risk of fatal and non-fatal stroke. EUROSTROKE: A collaborative study
346 among research centres in Europe. J Epidemiol Community Health. 2002;56 SUPPL. 1:i8.
347 doi:10.1136/jech.56.suppl_1.i8.
- 348 12. Ranganai E, Matizirofa L. An analysis of recent stroke cases in South Africa: Trend, seasonality
349 and predictors. South African Med J. 2020;110:92–9.
- 350 13. Alpert MA, Karthikeyan K, Abdullah O, Ghadban R. Obesity and Cardiac Remodeling in Adults:
351 Mechanisms and Clinical Implications. Prog Cardiovasc Dis. 2018;61:114–23.
352 doi:10.1016/j.pcad.2018.07.012.
- 353 14. Levy D, Garrison RJ, Savage DD, Kannel WB, Castelli WP. Prognostic Implications of
354 Echocardiographically Determined Left Ventricular Mass in the Framingham Heart Study. N Engl J
355 Med. 1990;322:1561–6. doi:10.1056/nejm199005313222203.
- 356 15. Levy D, Anderson KM, Savage DD, Kannel WB, Christiansen JC, Castelli WP.
357 Echocardiographically detected left ventricular hypertrophy: Prevalence and risk factors. The
358 Framingham heart study. Ann Intern Med. 1988;108:7–13.
- 359 16. Wright GA, Ang DS, Stonebridge PA, Belch JJ, Struthers AD. Left ventricular hypertrophy is
360 present in one-half of newly-diagnosed peripheral arterial disease patients. J Hypertens.
361 2007;25:463–9. doi:10.1097/HJH.0b013e328010d64b.
- 362 17. Katholi RE, Couri DM. Left ventricular hypertrophy: Major risk factor in patients with hypertension:
363 Update and practical clinical applications. International Journal of Hypertension. 2011;2011.
- 364 18. Schirmer H, Lunde P, Rasmussen K. Prevalence of left ventricular hypertrophy in a general
365 population. The Tromso Study. Eur Heart J. 1999;20:429–38. doi:10.1053/euhj.1998.1314.

- 366 19. Baldo MP, Gonçalves MA, Cappingana DP, Magalhães P, da Silva ABT, Mill JG. Prevalence and
367 Clinical Correlates of Left Ventricular Hypertrophy in Black Africans. *High Blood Press Cardiovasc*
368 *Prev.* 2018;25:283–9. doi:10.1007/s40292-018-0267-y.
- 369 20. Brady TM. The Role of Obesity in the Development of Left Ventricular Hypertrophy Among
370 Children and Adolescents. *Current Hypertension Reports.* 2016;18:1–7. doi:10.1007/s11906-015-
371 0608-3.
- 372 21. Devereux RB, Wachtell K, Gerds E, Boman K, Nieminen MS, Papademetriou V, et al. Prognostic
373 significance of left ventricular mass change during treatment of hypertension. *J Am Med Assoc.*
374 2004;292:2350–6. doi:10.1001/jama.292.19.2350.
- 375 22. Pierdomenico S, ... DL-A journal of, 2008 undefined. Regression of echocardiographic left
376 ventricular hypertrophy after 2 years of therapy reduces cardiovascular risk in patients with essential
377 hypertension. *academic.oup.com.* 2008. doi:10.1038/ajh.2008.2.
- 378 23. Fagard RH, Celis H, Thijs L, Wouters S. Regression of left ventricular mass by antihypertensive
379 treatment: A meta-analysis of randomized comparative studies. *Hypertension.* 2009;54:1084–91.
- 380 24. Lønnebakken MT, Izzo R, Mancusi C, Gerds E, Losi MA, Canciello G, et al. Left ventricular
381 hypertrophy regression during antihypertensive treatment in an outpatient clinic (the Campania salute
382 network). *J Am Heart Assoc.* 2017;6. doi:10.1161/JAHA.116.004152.
- 383 25. Messerli FH, Ketelhut R. Left ventricular hypertrophy: an independent risk factor - PubMed. *J*
384 *Cardiovasc Pharmacol.* 1991;;17 Suppl 4:S59-66; discussion S66-7.
385 <https://pubmed.ncbi.nlm.nih.gov/1726010/>. Accessed 26 Feb 2021.
- 386 26. Woodiwiss AJ, Norton GR. Obesity and Left Ventricular Hypertrophy: The Hypertension
387 Connection. *Curr Hypertens Rep.* 2015;17.
- 388 27. Park SK, Moon K, Ryoo JH, Oh CM, Choi JM, Kang JG, et al. The association between alcohol
389 consumption and left ventricular diastolic function and geometry change in general Korean population.
390 *Eur Heart J Cardiovasc Imaging.* 2018;19:271–8. doi:10.1093/ehjci/jex091.
- 391 28. National Department of Health (NDoH), Statistics South Africa (Stats SA), South African Medical
392 Research Council (SAMRC) and I, Survey H. South Africa Demographic and Health Survey 2016:

- 393 Key Indicators. 2017. www.statssa.gov.za. Accessed 19 May 2021.
- 394 29. Reddy P, Zuma K, Shisana O, Jonas K, Sewpaul R. Prevalence of tobacco use among adults in
395 South Africa: Results from the first South African national health and Nutrition Examination Survey.
396 South African Med J. 2015;105:648–55. doi:10.7196/SAMJnew.7932.
- 397 30. Bedeker WF, Lachman AS, Borkum M, Hellenberg D, Cupido CS. Impact of transthoracic
398 echocardiography at district hospital level. South African Med J. 2015;105:817–22.
- 399 31. Richter L, Norris S, Pettifor J, Yach D, Cameron N. Europe PMC Funders Group Cohort Profile □:
400 Mandela ’ s children □: The 1990 birth to twenty study in South Africa. Int J Epidemiol. 2007;36:504–
401 11.
- 402 32. Kalsbeek WD, Bowling JM, Hsia J, Mirza S, Palipudi KM, Asma S. The Global Adult Tobacco
403 Survey (GATS): Sample Design and Related Methods. 2010;:1–15. papers://c0f50874-1acc-4627-
404 879e-caecd2247efe/Paper/p711.
- 405 33. SAUNDERS JB, AASLAND OG, BABOR TF, DE LA FUENTE JR, GRANT M. Development of the
406 Alcohol Use Disorders Identification Test (AUDIT): WHO Collaborative Project on Early Detection of
407 Persons with Harmful Alcohol Consumption-II. Addiction. 1993;88:791–804.
- 408 34. Cleland CL, Hunter RF, Kee F, Cupples ME, Sallis JF, Tully MA. Validity of the Global Physical
409 Activity Questionnaire (GPAQ) in assessing levels and change in moderate-vigorous physical activity
410 and sedentary behaviour. BMC Public Heal 2014 141. 2014;14:1–11. doi:10.1186/1471-2458-14-
411 1255.
- 412 35. de Onis M, Garza C, Victora CG, Onyango AW, Frongillo EA, Martines J. The WHO Multicentre
413 Growth Reference Study: Planning, study design, and methodology. Food Nutr Bull. 2004;25 1
414 SUPPL. 1:15–26.
- 415 36. Meng L, Zhao D, Pan Y, Ding W, Wei Q, Li H, et al. Validation of Omron HBP-1300 professional
416 blood pressure monitor based on auscultation in children and adults. BMC Cardiovasc Disord.
417 2016;16:1–5. doi:10.1186/s12872-015-0177-z.
- 418 37. Unger T, Borghi C, Charchar F, Khan NA, Poulter NR, Prabhakaran D, et al. 2020 International

- 419 Society of Hypertension Global Hypertension Practice Guidelines. *Hypertension*. 2020;1334–57.
- 420 38. Orsinelli DA, Armour A, De Cara J, Fey B, Frommelt P, Lopez-Mattei J, et al. the American
421 Society of Echocardiography Recommendations for Cardiac Chamber Quantification in Adults. *J Am*
422 *Soc Echocardiogr*. 2015;28 July:1–39.
- 423 39. Simpson JM, Savis A, Rawlins D, Qureshi S, Sinha MD. Incidence of left ventricular hypertrophy
424 in children with kidney disease: Impact of method of indexation of left ventricular mass. *Eur J*
425 *Echocardiogr*. 2010;11:271–7.
- 426 40. WHO/Europe | Nutrition - Body mass index - BMI. [https://www.euro.who.int/en/health-](https://www.euro.who.int/en/health-topics/disease-prevention/nutrition/a-healthy-lifestyle/body-mass-index-bmi)
427 [topics/disease-prevention/nutrition/a-healthy-lifestyle/body-mass-index-bmi](https://www.euro.who.int/en/health-topics/disease-prevention/nutrition/a-healthy-lifestyle/body-mass-index-bmi). Accessed 1 Jul 2020.
- 428 41. WHO. Body mass index-for-age (BMI-for-age). [https://www.who.int/toolkits/child-growth-](https://www.who.int/toolkits/child-growth-standards/standards/body-mass-index-for-age-bmi-for-age)
429 [standards/standards/body-mass-index-for-age-bmi-for-age](https://www.who.int/toolkits/child-growth-standards/standards/body-mass-index-for-age-bmi-for-age). Accessed 17 Mar 2021.
- 430 42. Flynn JT, Falkner BE. New clinical practice guideline for the management of high blood pressure
431 in children and adolescents. *Hypertension*. 2017;70:683–6.
- 432 43. Kim JH. Multicollinearity and misleading statistical results. *Korean J Anesthesiol*. 2019;72:558–69.
- 433 44. Kamath S, Markham D, Drazner MH. Increased prevalence of concentric left ventricular
434 hypertrophy in African-Americans: Will an epidemic of heart failure follow? *Heart Fail Rev*.
435 2006;11:271–7.
- 436 45. Maseko MJ, Woodiwiss AJ, Libhaber CD, Brooksbank R, Majane OHI, Norton GR. Relations
437 between white coat effects and left ventricular mass index or arterial stiffness: role of nocturnal blood
438 pressure dipping. *Am J Hypertens*. 2013;26:1287–94.
- 439 46. Libhaber CD, Norton GR, Maseko MJ, Majane OHI, Millen AME, Maunganidze F, et al.
440 Relationship between inappropriate left ventricular hypertrophy and ejection fraction independent of
441 absolute or indexed mass in a community sample of black African ancestry. *J Hypertens*.
442 2013;31:169–76.
- 443 47. Isaac Kofi O, Emmanuel AA. Determinants of Left Ventricular Hypertrophy in Hypertensive
444 Patients seen in a Teaching Hospital in Ghana. *J Hypertens Open Access*. 2017;06:1–7.

- 445 48. Willey BA, Cameron N, Norris SA, Pettifor JM, Griffiths PL. Socio-economic predictors of stunting
446 in preschool children - A population-based study from Johannesburg and Soweto. *South African Med*
447 *J.* 2009.
- 448 49. Nyati LH, Pettifor JM, Norris SA. The prevalence of malnutrition and growth percentiles for urban
449 South African children. *BMC Public Health.* 2019;19:1–13.
- 450 50. Drazner MH. The progression of hypertensive heart disease. *Circulation.* 2011;123:327–34.
451 doi:10.1161/CIRCULATIONAHA.108.845792.
- 452 51. Aronow WS. Hypertension and left ventricular hypertrophy. *Annals of Translational Medicine.*
453 2017;5. doi:10.21037/atm.2017.06.14.
- 454 52. Horwich TB, Fonarow GC. Glucose, Obesity, Metabolic Syndrome, and Diabetes. Relevance to
455 Incidence of Heart Failure. *Journal of the American College of Cardiology.* 2010;55:283–93.
456 doi:10.1016/j.jacc.2009.07.029.
- 457 53. Hamzeh N, Ghadimi F, Farzaneh R, Hosseini SK. Obesity, heart failure, and obesity paradox.
458 *Journal of Tehran University Heart Center.* 2017;12:1–5. <http://jthc.tums.ac.ir>. Accessed 19 May 2021.
- 459 54. Vasan RS, Larson MG, Leip EP, Evans JC, O'Donnell CJ, Kannel WB, et al. Impact of High-
460 Normal Blood Pressure on the Risk of Cardiovascular Disease. *N Engl J Med.* 2001;345:1291–7.
461 doi:10.1056/nejmoa003417.
- 462 55. National Department of Health (NDoH), Statistics South Africa (Stats SA), South African Medical
463 Research Council (SAMRC) and I. South Africa Demographic and Health Survey 2016. 2019.
- 464 56. Alpert MA, Lavie CJ, Agrawal H, Aggarwal KB, Kumar SA. Obesity and heart failure:
465 Epidemiology, pathophysiology, clinical manifestations, and management. *Translational Research.*
466 2014;164:345–56.
- 467 57. Nauta JF, Hummel YM, Tromp J, Ouwerkerk W, van der Meer P, Jin X, et al. Concentric vs.
468 eccentric remodelling in heart failure with reduced ejection fraction: clinical characteristics,
469 pathophysiology and response to treatment. *Eur J Heart Fail.* 2019;:1–9.
- 470 58. Avelar E, Cloward T V., Walker JM, Farney RJ, Strong M, Pendleton RC, et al. Left ventricular

- 471 hypertrophy in severe obesity: Interactions among blood pressure, nocturnal hypoxemia, and body
472 mass. *Hypertension*. 2007;49:34–9. doi:10.1161/01.HYP.0000251711.92482.14.
- 473 59. Aurigemma GP, De Simone G, Fitzgibbons TP. Cardiac remodeling in obesity. *Circ Cardiovasc*
474 *Imaging*. 2013;6:142–52.
- 475 60. Woodiwiss AJ, Libhaber CD, Majane OHI, Libhaber E, Maseko M, Norton GR. Obesity promotes
476 left ventricular concentric rather than eccentric geometric remodeling and hypertrophy independent of
477 blood pressure. *Am J Hypertens*. 2008;21:1144–51.
- 478 61. Avelar E, Cloward T V., Walker JM, Farney RJ, Strong M, Pendleton RC, et al. Left ventricular
479 hypertrophy in severe obesity: Interactions among blood pressure, nocturnal hypoxemia, and body
480 mass. *Hypertension*. 2007;49:34–9. doi:10.1161/01.HYP.0000251711.92482.14.
- 481 62. Fidelix MP, Tanni SE, Roscani MG, Mesquita CB, Schelini KN de M, Polegato BF, et al. Vitamin D
482 role in smoking women and cardiac remodeling. *Nutrire*. 2016;41:1–7. doi:10.1186/s41110-016-0012-
483 z.
- 484 63. Bullen C. Impact of tobacco smoking and smoking cessation on cardiovascular risk and disease.
485 *Expert Review of Cardiovascular Therapy*. 2008;6:883–95. doi:10.1586/14779072.6.6.883.
- 486 64. Leigh JA, Kaplan RC, Swett K, Balfour P, Kansal MM, Talavera GA, et al. Smoking intensity and
487 duration is associated with cardiac structure and function: The ECHOCardiographic Study of
488 Hispanics/Latinos. *Open Hear*. 2017;4:1–12.
- 489 65. Kaplan A, Abidi E, Ghali R, Booz GW, Kobeissy F, Zouein FA. Functional, Cellular, and Molecular
490 Remodeling of the Heart under Influence of Oxidative Cigarette Tobacco Smoke. *Oxid Med Cell*
491 *Longev*. 2017;2017.
- 492 66. Roush GC, Abdelfattah R, Song S, Ernst ME, Sica DA, Kostis JB. Hydrochlorothiazide vs
493 chlorthalidone, indapamide, and potassium-sparing/hydrochlorothiazide diuretics for reducing left
494 ventricular hypertrophy: A systematic review and meta-analysis. *J Clin Hypertens*. 2018;20:1507–15.
495 doi:10.1111/jch.13386.
- 496 67. Pierdomenico SD, Cuccurullo F. Risk reduction after regression of echocardiographic left
497 ventricular hypertrophy in hypertension: A meta-analysis. *Am J Hypertens*. 2010;23:876–81.

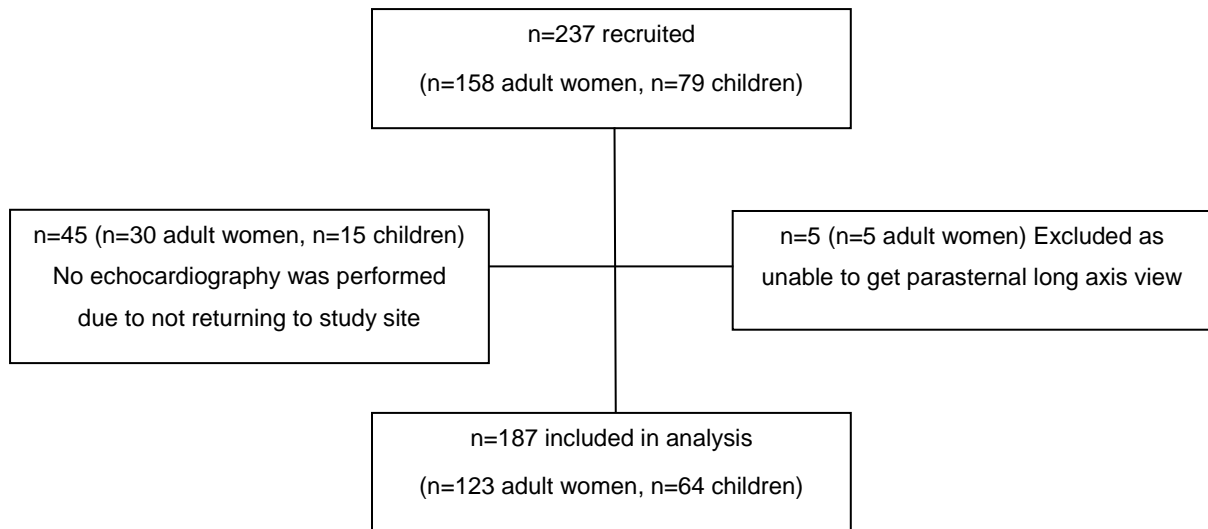


Figure 1. Study flow diagram

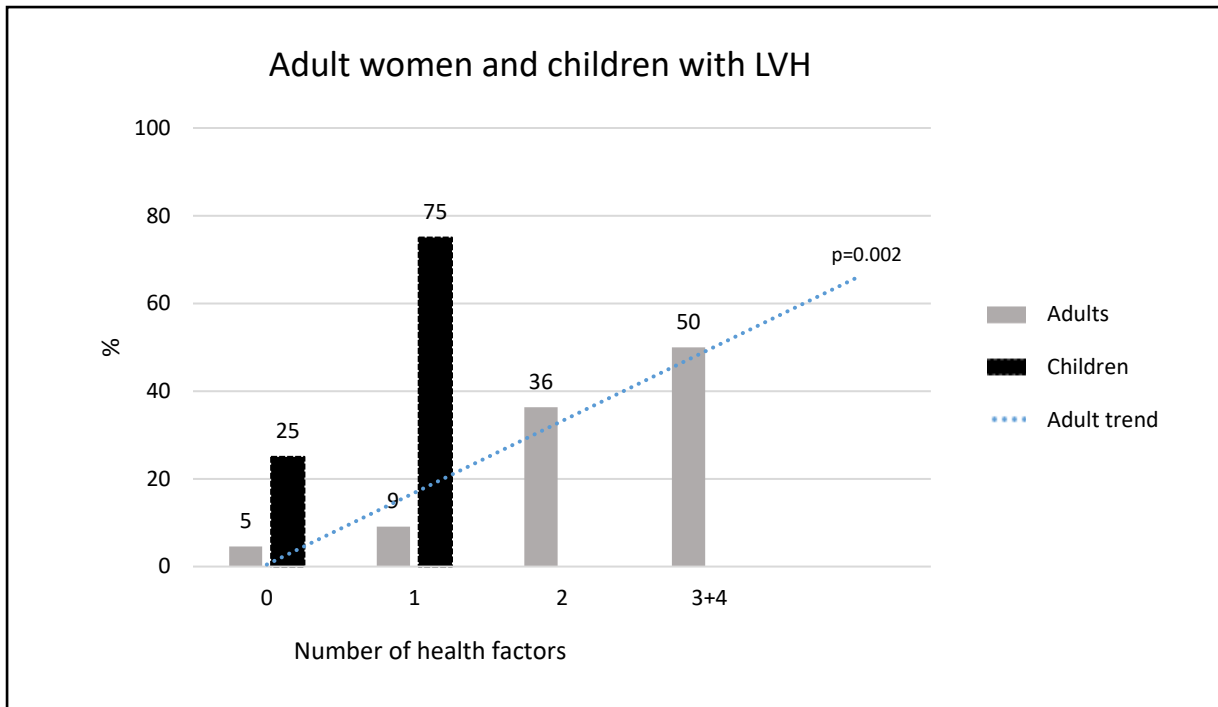


Figure 2. Percentage of South African adult women and children with left ventricular hypertrophy (LVH) according to the number of health factors. Health behaviours for women included: obesity, hypertension, self-reported type II diabetes mellitus, self-reported high cholesterol, tobacco use, and alcohol consumption. Health behaviours for children included: obesity, elevated blood pressure, whether their mother and or grandmother use tobacco.

Table 1. Characteristics of the adults and children (n=187)

	Adults (n=123)	Children (n=64)
Age (years), minimum and maximum	41.3 (28-68)	6.9 (4-10)
Females, n (%)	123 (100)	35 (55)
Anthropometry		
Body mass index (kg/m ²)	32.5 (26.6-37.7)	15.8 (14.8-17.2)
Underweight [#] (BMI≤18 or <-2SD in children), n (%)	1 (0.8)	8 (12.5)
Normal [#] (BMI: 18-25 or -2 to 1SD in children), n (%)	18 (14.6)	41 (64.1)
Overweight [#] (BMI: 25-30 or 1 to 2SD in children), n (%)	31 (25.2)	11 (17.2)
Obese [#] (BMI≥30 or >2SD in children), n (%)	73 (59.3)	4 (6.3)
Blood pressure		
Systolic BP (mmHg)	113 (106-125)	107 (99-113)
Diastolic BP (mmHg)	79 (73-86)	70 (64-75)
Heart rate (bpm)	73 (66-81)	88 (79-98)
Elevated BP*, n (%)	7 (5.7)	38 (59.4)
Hypertension*, n (%)	44 (35.8)	-
Of which, on medication	33 (75.0)	-
Hydrochlorothiazide, n (%)	20 (60.6)	-
Medical history		
Previously diagnosed diabetes mellitus, n (%)	3 (2.4)	-
Previously diagnosed high cholesterol, n (%)	15 (12.2)	-
Previous heart disease, n (%)	3 (2.4)	-
Tobacco & alcohol use, n (%)		
Ever used tobacco (smoke and/or smokeless)	28 (22.8)	-
Of which, currently smoke tobacco	9 (32.1)	-
Of which, currently use smokeless tobacco	18 (64.3)	-
Of which, previously smoked tobacco	1 (3.6)	-
Regular alcohol use	68 (55.3)	-
Of which, have ≥6 drinks/day		
Never	28 (41.2)	
Infrequently (monthly or less)	35 (51.5)	
Frequently (weekly or daily)	5 (7.4)	
Physical activity		
Moderate-vigorous physical activity (min/week)	525 (160-1605)	-
Sedentary behaviour (min/week)	690 (180-1140)	-
Left ventricular geometry		
Left ventricular mass (g)	155.9 (126.5-199.6)	51.6 (42.9-65.5)
Left ventricular mass indexed (LVMI) to BSA (g/m ²)	84.8 (71.4-102.3)	56.29 (47.6-69.2)
Relative wall thickness	0.35 (0.31-0.42)	0.27 (0.22-0.32)
Normal geometry	60 (48.8)	59 (92.2)
Concentric remodelling, n (%)	19 (15.4)	1 (1.6)
Left ventricular hypertrophy (LVH) – All, n (%)	44 (35.8)	4 (6.3)
Eccentric LVH, n (%)	33 (26.8)	4 (6.3)
Concentric LVH, n (%)	11 (8.9)	-

Data presented as median and interquartile range, unless otherwise indicated. BMI, body mass index; BP, blood pressure; bpm, beats per minute. LVMI, left ventricular mass index; BSA, body surface area; LVH, left ventricular hypertrophy.*Hypertension and elevated BP categories defined according to the ISH guidelines [37] for adults and the Academy of Pediatrics Clinical Practice 2017 guidelines [42] for children. [#]BMI categories classifies according to the WHO guidelines [40] for adults and children respectively.

Table 2. Sociodemographic characteristics of the women adults with and without left ventricular hypertrophy

	With LVH	Without LVH	p-value
n	44	79	-
Age (years), minimum and maximum	48 (29,66)	29 (28,68)	0.04
Anthropometry			
Body mass index (kg/m ²)	34.9 (28.9-40.4)	30.3 (25.9-34.6)	0.01
Underweight [#] (BMI≤18), n (%)	1 (2.3)	0	-
Normal [#] (BMI: 18-25) n (%)	5 (11.4)	13 (16.5)	0.10
Overweight [#] (BMI: 25-30), n (%)	6 (13.6)	25 (31.60)	0.03
Obese [#] (BMI≥30), n (%)	32 (72.7)	41 (51.9)	0.04
Blood pressure			
Systolic BP (mmHg)	119 (108-129)	111 (104-123)	0.16
Diastolic BP (mmHg)	74 (72-90)	79 (73-84)	0.99
Heart rate (bpm)	56 (65-81)	74 (66-82)	0.55
Elevated BP*, n (%)	3 (6.8)	4 (5.1)	0.70
Hypertension*, n (%)	23 (52.3)	21 (26.6)	0.01
Of which, on medication	16 (69.6)	17 (80.9)	0.001
Hydrochlorothiazide, n (%)	12 (75.0)	8 (47.1)	0.02
Medical history			
Previously diagnosed diabetes mellitus, n (%)	3 (6.8)	0	0.09
Previously diagnosed high cholesterol, n (%)	6 (13.6)	9 (11.4)	0.48
Previous heart disease, n (%)	1 (2.3)	0	-
Tobacco & alcohol use, n (%)			
Ever used tobacco (smoke and/or smokeless)	13 (29.5)	15 (19.0)	0.19
Of which, currently smoke tobacco	4 (9.1)	5 (6.30)	0.72
Of which, currently use smokeless tobacco	8 (18.2)	10 (12.7)	0.43
Of which, previously smoked tobacco	1 (2.5)	0	0.35
Ever used alcohol	23 (52.3)	45 (57.0)	0.71
Of which, have ≥6 drinks/day			
Never	11 (47.8)	17 (37.8)	0.04
Infrequently (monthly or less)	10 (43.5)	25 (55.6)	0.04
Frequently (weekly or daily)	2 (8.7)	3 (6.7)	0.06
Physical activity			
Moderate-vigorous physical activity (min/week)	600 (60-1823)	510 (180-1215)	
Sedentary behaviour (min/week)	509 (19-960)	720 (210-1320)	

Data presented as median and interquartile range, unless otherwise indicated. BMI, body mass index; BP, blood pressure; bpm, beats per minute; LVH, left ventricular hypertrophy. *Hypertension and elevated BP categories defined according to the ISH guidelines [37]. [#]BMI categories classified according to the WHO guidelines [40]. p<0.05 was considered significant.

Table 3. Multivariable adjusted associations between health risk factors and left ventricular remodelling and left ventricular hypertrophy in adults

Models with →	LV remodelling n=19		LVH (all patterns) n=44		Eccentric LVH n=33		Concentric LVH n=11	
	OR (95%CI)	p-value	OR (95%CI)	p-value	OR (95%CI)	p-value	OR (95%CI)	p-value
Age	0.99 (0.94-1.05)	0.77	0.99 (0.95-1.04)	0.76	0.98 (0.94-1.03)	0.37	1.03 (0.96-1.10)	0.46
MVPA	1.00 (0.99-1.00)	0.33	1.00 (1.00-1.00)	0.29	1.00 (1.00-1.00)	0.37	1.00 (1.00-1.001)	0.62
Sedentary behaviour	1.00 (1.00-1.001)	0.42	1.00 (0.99-1.00)	0.47	1.00 (0.99-1.00)	0.25	1.00 (1.00-1.001)	0.49
Obesity [*]	0.58 (0.19-1.73)	0.33	2.54 (1.07-6.02)	0.03*	3.46 (1.28-9.37)	0.02*	1.03 (0.24-4.32)	0.97
Hypertension [#]	3.44 (0.80-14.82)	0.09	3.39 (1.08-10.62)	0.04*	3.83 (1.10-13.31)	0.03	1.23 (0.17-8.96)	0.84
T2DM _{...}	1.92 (0.47-7.78)	0.36	1.05 (0.29-3.86)	0.94	0.82 (0.18-3.72)	0.79	1.41 (0.22-9.21)	0.72
High cholesterol _{...}	4.56 (0.50-41.24)	0.18	1.33 (0.39-4.55)	0.65	1.61 (0.42-6.20)	0.49	0.73 (1.00-5.40)	0.76
Tobacco [§] use _{...}	1.14 (0.34-3.84)	0.83	1.87 (0.73-4.80)	0.192	0.84 (0.29-2.41)	0.75	5.06 (1.24-20.69)	0.02*
Alcohol use _{...}	1.33 (0.44-3.99)	0.61	1.22 (0.51-2.94)	0.656	0.74 (0.29-1.92)	0.54	3.38 (0.68-16.79)	0.14

OR, odds ratio; CI, confidence interval; MVPA, moderate-vigorous physical activity; LV, left ventricular; LVH, left ventricular hypertrophy; T2DM, type 2 diabetes mellitus. ^{*} As defined as a body mass index (BMI) ≥ 30 kg/m² according to the WHO guidelines [40]. [#] Hypertension as defined by the ISH guidelines [37]. [§] Self-reported. [§] Smoking and smokeless tobacco. * p<0.05 was considered significant.