

1 **Estimating the burden of malaria and soil-transmitted helminth co-**
2 **infection in sub-Saharan Africa: a geospatial study**
3

4 Short title: Malaria and helminth co-infections

5
6 Muhammed O. Afolabi¹, Adekola Adebisi², Jorge Cano³, Benn Sartorius^{1,4,5}, Brian Greenwood¹,
7 Olatunji Johnson⁶, Oghenebrume Wariri^{7,8}

8 ¹Department of Disease Control, London School of Hygiene & Tropical Medicine, London, United
9 Kingdom

10 ²College of Agriculture, Engineering and Environmental Design, Legacy University, Banjul, The
11 Gambia

12 ³Expanded Special Project for Elimination of NTDs, World Health Organization Regional Office for
13 Africa, Brazzaville, Republic of the Congo

14 ⁴Centre for Tropical Medicine and Global Health, University of Oxford, Oxford, United Kingdom

15 ⁵Department of Health Metric Sciences, University of Washington, Seattle, USA

16 ⁶Department of Mathematics, University of Manchester, Manchester, United Kingdom

17 ⁷Department of Infectious Diseases Epidemiology, London School of Hygiene & Tropical Medicine,
18 London, United Kingdom

19 ⁸Vaccines and Immunity Theme, Medical Research Council Unit The Gambia at London School of
20 Hygiene & Tropical Medicine, Fajara, The Gambia

21

22 Corresponding author: Muhammed.Afolabi@lshtm.ac.uk

23

24 **NOTE: This preprint reports new research that has not been certified by peer review and should not be used to guide clinical practice.**

25 Abstract

26

27 **Background:** Limited understanding exists about the interactions between malaria and soil-
28 transmitted helminths (STH), their potential geographical overlap and the factors driving it. This study
29 characterised the geographical and co-clustered distribution patterns of malaria and STH infections
30 among vulnerable populations in sub-Saharan Africa (SSA).

31 **Methodology/Principal findings:** We obtained continuous estimates of malaria prevalence from the
32 Malaria Atlas Project and STH prevalence surveys from the WHO-driven Expanded Special Project
33 for the Elimination of NTDs (ESPEN) covering 2000-2018 and used spatial autocorrelation methods
34 to identify statistically significant clusters for both diseases across SSA. We used the inverse distance
35 weighted kriging (interpolation) methods to estimate STH prevalence. We calculated the population-
36 weighted prevalence of malaria and STH co-infection, and used the bivariate local indicator of spatial
37 association (LISA analysis) to explore potential co-clustering of both diseases at the implementation
38 unit levels.

39 Our analysis shows spatial variations in the estimates of the prevalence of *Plasmodium falciparum*-
40 STH co-infections and identified hotspots across many countries in SSA with inter-and intra-country
41 variations. High *P. falciparum* and high hookworm co-infections were more prevalent in West and
42 Central Africa, whereas high *P. falciparum*, high *Ascaris lumbricoides*, high *P. falciparum*, and high
43 *Trichuris trichiura* co-infections were more predominant in Central Africa, compared to other sub-
44 regions in SSA.

45 **Conclusions/Significance:** Wide spatial heterogeneity exists in the prevalence of malaria and STH
46 co-infection within the regions and within countries in SSA. The geographical overlap and spatial co-
47 existence of malaria and STH could be exploited to achieve effective control and elimination agendas
48 through the integration of the vertical programmes designed for malaria and STH into a more
49 comprehensive and sustainable community-based paradigm.

50 **Keyword:** malaria, geohelminths, spatial analysis, sub-Saharan Africa

51

52 Author Summary

53

54 Malaria and worms frequently co-exist together among children living in the poorest
55 countries of the world, but little is known about the specific locations of the combined
56 infections involving the two major parasitic diseases and how they interact and change over
57 the years.

58 We used open access data collected by two public registries, that is, the Malaria Atlas Project
59 and Expanded Special Project for the Elimination of NTDs, to understand the overlap of the
60 two diseases in different parts of Africa, where their burden are more predominant.

61 We found significant differences in the distributions of the combined diseases across different
62 parts of Africa, with large concentrations identified in Central and West Africa. For example,
63 double infections with malaria and hookworm were more common in West and Central
64 Africa, whereas malaria and roundworm, and malaria and whipworm were predominantly
65 found in Central Africa. A large collection of the dual infections was also found in some
66 localities within the countries which appeared to have low burden of the two diseases.

67 These findings provide a useful insight into the areas which could be serving as a reservoir to
68 propagating the transmission of the two diseases. The results of this study could also be used
69 to develop and implement integrated control programmes for malaria and worms, and this
70 could help to achieve the WHO NTD roadmap to ending the neglect to attain Sustainable
71 Development Goals by 2030.

72

73

74

75

76 Introduction

77

78 Due to environmental and host factors which favour transmission of multiple parasitic infections,
79 malaria and soil-transmitted helminths (STH), including *Ascaris lumbricoides*, *Trichuris trichiura*,
80 and hookworms, co-exist in many parts of the world, predominantly in sub-Saharan Africa (SSA) [1],
81 where they are most prevalent. An estimated 241 million cases of malaria were reported in 2021 in 85
82 malaria endemic countries, 29 of which accounted for 96% of malaria cases globally, and six SSA
83 countries (Nigeria, Democratic Republic of the Congo, Uganda, Mozambique, Angola and Burkina
84 Faso) carried more than half of this burden. [2]

85 Similarly, a disproportionately high burden of STH has been reported in many countries in SSA with
86 large concentrations of moderate-to-heavy intensity infections in Nigeria, Democratic Republic of the
87 Congo, Ethiopia, Cameroon, Angola, Mozambique, Madagascar, Equatorial Guinea, and Gabon. [3]

88 In these malaria-STH co-endemic countries, estimating the national burden of the co-infection poses a
89 public health challenge because national surveillance systems are often sub-optimal.[4] For example,
90 deworming through mass drug administration (MDA) of anthelmintics is widely regarded as a cost-
91 effective strategy. However, the impact of these MDA programmes on the changing prevalence and
92 intensity of STH in children, is often hindered by a lack of comprehensive baseline data before MDA
93 initiation, because of financial challenges or as a result of the administration of the drugs via
94 undocumented channels.[3] Nevertheless, recent WHO reports [1, 4] indicate that considerable
95 progress has been made in reducing the overall burden of malaria and STH in many countries
96 including some in SSA. To sustain the gains of past decades and move the control efforts towards
97 elimination, WHO has recommended a paradigm shift from disease-specific to an integrated
98 approach.[4]

99 Empirical studies conducted across co-endemic countries have shown that variations in the prevalence
100 of malaria and STH co-infections differed significantly across geographic locations.[5-9] Limited
101 understanding exists about the spatial distribution of these co-infections in vulnerable populations.
102 Majority of the published studies targeting malaria-STH co-infection have focused on describing the

103 transmission and burden among affected populations, [5, 6, 9, 10] and have paid little attention to
104 their concurrent spatial distribution and causes. Previous systematic reviews have also reported an
105 over-estimation of the relationship between malaria and helminths making it difficult to establish
106 conclusively the burden of malaria-STH dual infections. [11, 12] Consistent with findings of these
107 reviews, a recently conducted systemic review and meta-analysis of 55 studies which enrolled 37,559
108 children across low and middle- income countries (LMIC) found a wide variation in the prevalence of
109 malaria-helminth co-infections, ranging from 7-76% across LMICs.[13] These findings may be due to
110 the low sensitivity of the diagnostic methods employed for the detection of malaria-helminth co-
111 infections in the primary studies included in the systematic review.

112 The WHO road map for the control and elimination of NTDs for the 2021-2030 period defines STH
113 elimination as a public health problem (EPHP) when there is a prevalence of less than 2% of
114 moderate-to-heavy intensity infections.[14] However, as STH control accelerates and new detection
115 tools are developed, a significant number of people with clinical features outside high intensity
116 infection hotspots are now being seen. [15]

117 Reliable estimates of malaria-STH morbidity hotspots are needed to comply with the NTD roadmap
118 goal of intensifying cross-cutting approaches which integrate STH control with common delivery
119 platforms for diseases that share similar epidemiology such as malaria. Also, empirical evidence
120 shows that obtaining reliable estimates of the burden of STH-malaria co-infection would help address
121 the critical gaps in planning and implementation of integration of STH control strategies with other
122 interventions. [14]

123 We undertook a geospatial analysis on the datasets describing the prevalence of malaria and STH
124 infections among adults and children aged 5-14 years, obtained from the geospatial open-access data
125 generated from the Malaria Atlas Project (MAP)[16] and from the WHO-driven Expanded Special
126 Project to Eliminate NTDs (ESPEN) [17], to characterise the geographical and co-clustered
127 distribution patterns for malaria and STH co-infections among vulnerable populations in SSA.

128

129 Methods

130

131 Study design

132 We analysed the spatial relationships between STH and malaria using spatial autocorrelation methods
133 to identify statistically significant clusters over different regions in endemic countries in SSA. Based
134 on the classifications of the United Nations Geoscheme for Africa[18], we categorised SSA into west,
135 east, central and southern African sub-regions. These include 46 of Africa's 54 countries and territories
136 that are fully or partially south of the Sahara, excluding Algeria, Djibouti, Egypt, Libya, Morocco,
137 Somalia, Sudan and Tunisia.

138 We obtained datasets on the prevalence of *Plasmodium falciparum* from the MAP database (last
139 accessed September 2, 2021). MAP is a WHO collaborating platform for geospatial disease modelling
140 which was created for the purpose of determining spatial limits, prevalence and endemicity of *P.*
141 *falciparum* and *P. vivax*. MAP provides a database to obtain data on the estimated prevalence of *P.*
142 *falciparum* and *P. vivax* at 5km resolution for each year from 2000 onwards. We focused on *P.*
143 *falciparum* in this study because it is the predominant causative agent for more than 95% of malaria
144 cases in SSA[19]. We also obtained datasets on the prevalence of STH (*A. lumbricoides*, *T. trichiura*
145 and hookworms) from the WHO-driven ESPEN portal. ESPEN portal contains survey datasets on NTDs
146 in Africa. Survey datasets from both MAP and ESPEN were confined to surveys carried out from 2000
147 to 2018.

148 The *P. falciparum* prevalence data obtained from MAP were provided in a raster format for each year
149 covering the entire African continent. To make them usable, we combined the data into one raster file
150 using a mosaic tool. The description of the methodology used for generating the predicted prevalence
151 is available at <https://malariaatlas.org/api-docs/>

152 The prevalence datasets on STH (*A. lumbricoides*, *T. trichiura*, and hookworms) extracted from the
153 ESPEN portal were geolocated, that is, the data contains the geographic coordinates of the survey
154 locations which can be either a school or village location. The data consist of 25,274 data points from
155 2000 to 2018, of which 817 (3.2%) were without spatial reference. Of the remaining 24,457 (96.8%)

156 data points with spatial reference, 6,229 data points had prevalence rates above zero for *T. Trichiura*,
157 12,945 data points had prevalence rates above zero for hookworm and 9,728 for *A.lumbricoides*.
158 Incomplete data (those without spatial reference and explicit prevalence rates) were excluded from the
159 analyses.

160 [Statistical analysis](#)

161

162 **Spatial auto-correlation**

163 We used Moran's I statistics as the indicator of spatial auto-correlation. We plotted the prevalence of
164 *P. falciparum* on the x-axis against the spatially lagged variables of hookworm, *T. trichiura* and *A.*
165 *lumbricoides* on the y-axis. All points with values above the mean (i.e. above zero) were sites with
166 high prevalence while all points with values below the mean (i.e. below zero) were sites with low
167 prevalence. This holds true for the prevalence of *P. falciparum* plotted on the x-axis. The scatter plot
168 was divided into four quadrants. The values of *P. falciparum* and hookworm, *T. trichiura* and
169 *A.lumbricoides* that fell under the upper-right quadrant and the lower left quadrant were regarded as
170 high-high (hotspots) and low-low (coldspots) values, respectively. We used the bivariate Moran's I
171 algorithm in Geoda software (<https://geodacenter.github.io/>) to implement this analysis.

172 **Spatial interpolation**

173 To produce the prevalence surface of STH from the point referenced data, we used the inverse distance
174 weighted kriging (interpolation) methods.[20] Prediction by kriging is based on the assumption that
175 prevalence estimates at locations close together are correlated. Therefore, it allowed us to estimate the
176 value of STH prevalence at any point from the observed data. We carried out the Kriging using ArcGIS
177 version 10.3 software (<https://arcview-gis.software.informer.com/10.3/>). Our findings are virtualised
178 at implementation unit level (administrative level 2 for most of the SSA countries). By implementation
179 unit, WHO is considering the administrative division at which the preventive chemotherapy related
180 interventions are to be implemented. For most of countries in the African region, these areas correspond
181 with the second administrative level, although many countries have opted for using health district
182 division when this exists.

183

184 **Population-weighted prevalence by implementation unit**

185 We calculated the population-weighted prevalence of malaria and STH for each implementation unit
186 using the population density data obtained from the WorldPop database
187 (<https://www.worldpop.org/project/categories?id=14>) and the prevalence surfaces. Using 2020
188 Population raster of individual countries in SSA from the WorldPop database, estimated 165 million
189 people were in high-risk clusters of *P.falciparum*, hookworm and *A.lumbricoides*. For malaria-STH
190 co-infection, about 73 million, 21 million and 118 million people were in high risk clusters of
191 *P.falciparum* and hookworm; *P.falciparum* and *T. trichura*; *P.falciparum* and *A. lumbricoides*;
192 respectively. In most countries, administrative level 2 is the geographical area over which a particular
193 treatment strategy or intervention is applied; this could be a district, local government area, county, or
194 province. There were a total of 5,935 administrative level 2 in the study areas reported in this paper.

195 **Bivariate spatial clustering**

196 To identify the spatial clusters of an implementation unit, we used local Moran's I algorithm in Geoda
197 software (<https://geodacenter.github.io/>) to implement the bivariate local indicator of spatial
198 association (LISA).[21] LISA is a spatial autocorrelation used to assess the influence of individual
199 locations on the magnitude of other locations. It gives an indication of the extent of significant spatial
200 clustering of similar values around that observation. We used LISA to identify the hotspots and
201 coldspots, and areas endemic to malaria-STH co-infection across the study areas. We considered areas
202 with high malaria-STH co-infection and alpha level ≤ 0.001 as statistically significant hotspots.

203 **Results**

204

205 The spatial auto-correlation plot was a linear fit whose slope corresponds to Moran's I and its values
206 for *P. falciparum* against hookworm, *T. trichiura* and *A. lumbricoides* were 0.302, 0.054 and 0.118 ,
207 p-value <0.05, respectively (Fig 1A, B, C). High *P. falciparum* and high hookworm (HW) co-
208 infection were more prevalent in the West and Central African sub-regions compared to other sub-
209 regions of SSA (Figure 2A). The countries with high prevalence of *P. falciparum* and high HW co-
210 infections were Angola, Benin, Burundi, Cameroon, Central Africa Republic, Congo Brazzaville,

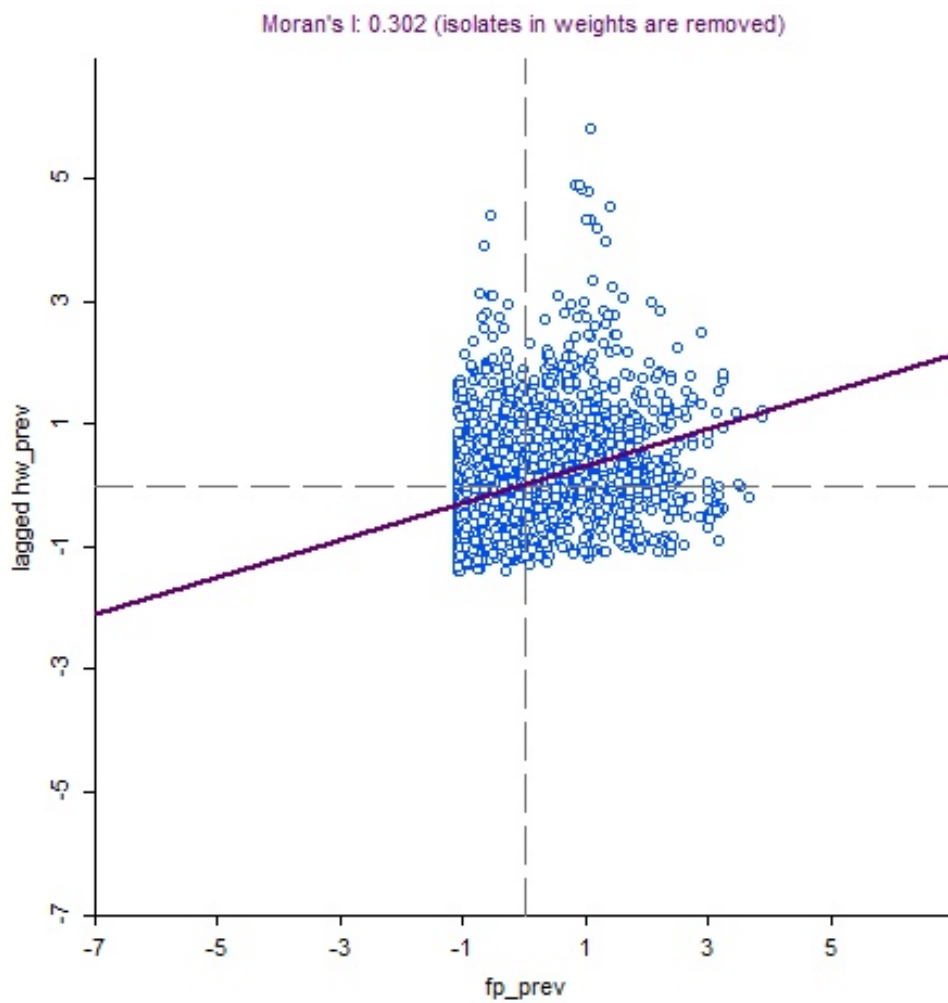
211 Cote d'Ivoire, Democratic Republic of the Congo (DRC), Ghana, Guinea, Kenya, Liberia, Mali,
212 Nigeria, Sierra Leone, South Sudan, Togo, and Uganda (Figure 2A). Within these countries with high
213 prevalence of *P.falciparum* and HW co-infection, there were specific areas (second administrative
214 unit) with statistically significant co-infection ($p < 0.001$) which can be considered as hotspots for the
215 co-infection.

216 The second administrative units with statistically significant *P.falciparum* and HW co-infection
217 ($p < 0.001$) included north-west Angola; south-west Cameroon; west-coastal communities in Congo
218 Brazzaville; south-central and east-central Cote d'Ivoire; and Kongo central province of DRC (Figure
219 2B). Other hotspots for co-infection with *P.falciparum* and HW were communities in western Kenya;
220 south-western Liberia; eastern, southern and northern Sierra Leone; central and north-central Togo;
221 districts in the Lake Victoria region and eastern Uganda (Figure 2B). In Nigeria, hotspots for co-
222 infection with *P. falciparum* and HW co-infection included coastal communities in the southern and
223 south-eastern parts of the country (Figure 2B, Table S1).

224

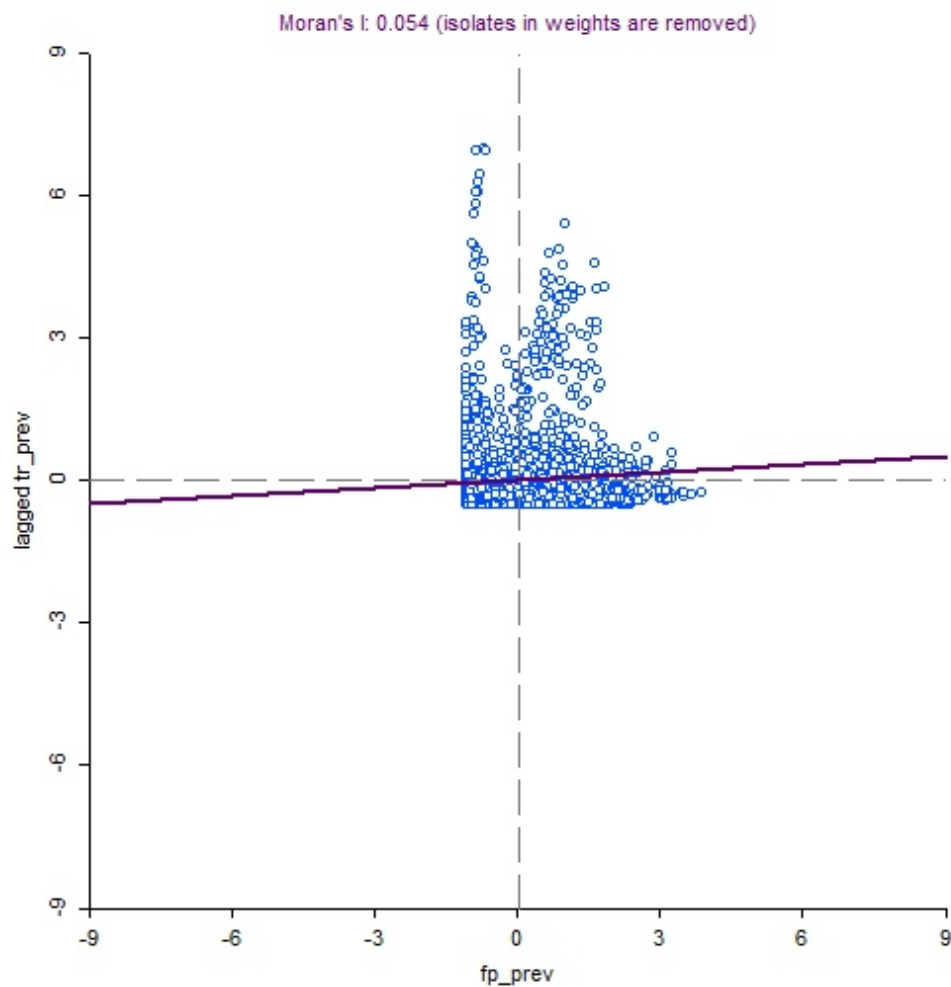
225

226



227

228 **Fig 1A: Moran's I statistic plot showing spatial auto-correlation for *P.falciparum* vs hookworm**
229 **co-infections in sub-Saharan Africa, 2000-2018**



230

231 **Fig 1B: Moran's I statistic plot showing spatial auto-correlation for *P.falciparum* vs *T. trichiura***
232 **co-infections in sub-Saharan Africa, 2000-2018**

233

234

235

236

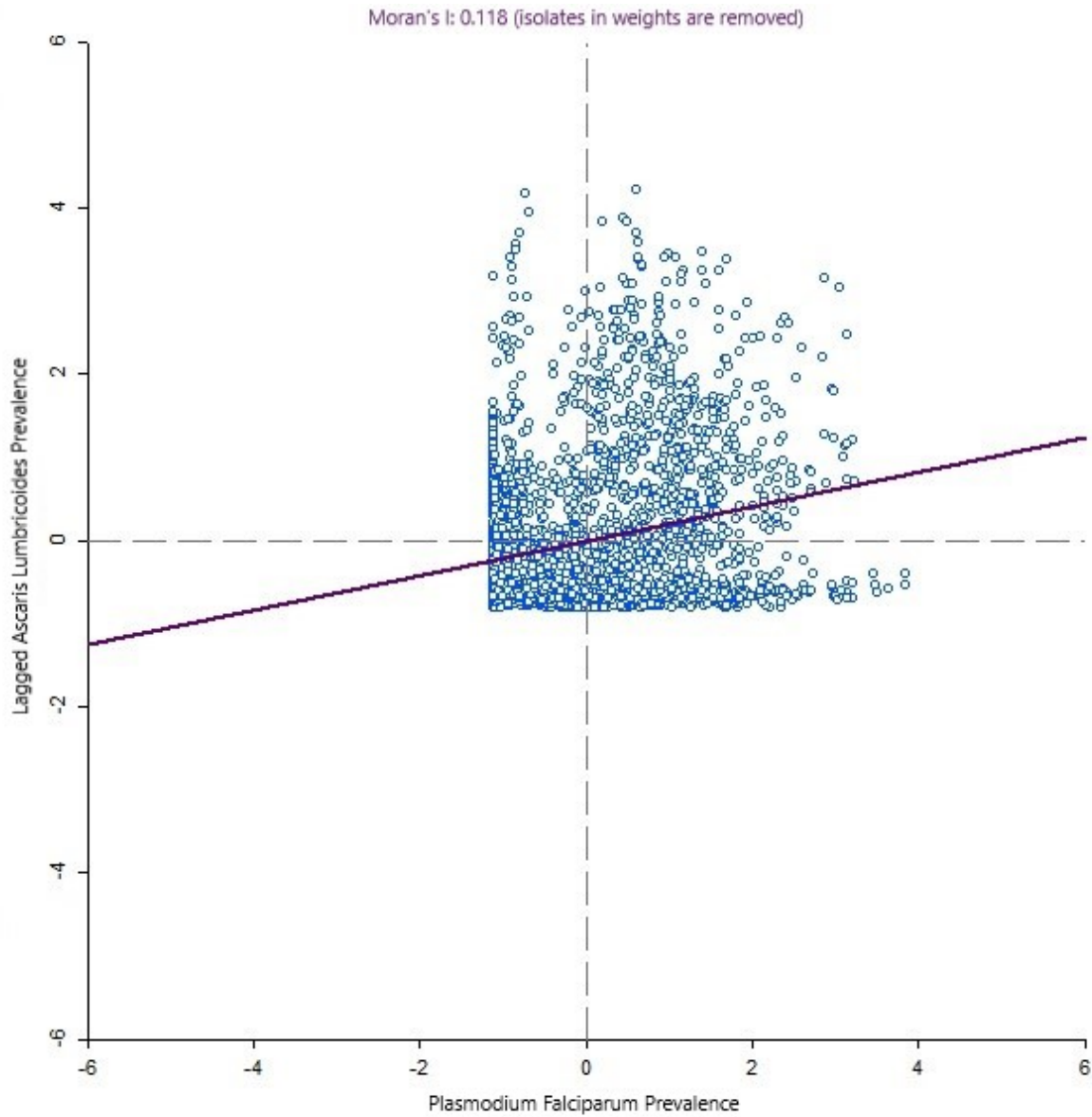
237

238

239

240

241



242

243 **Fig 1C: Moran's I statistic plot showing spatial auto-correlation for *P.falciparum* vs**
244 ***A.lumbricoides* co-infections in sub-Saharan Africa, 2000-2018**

245

246

247

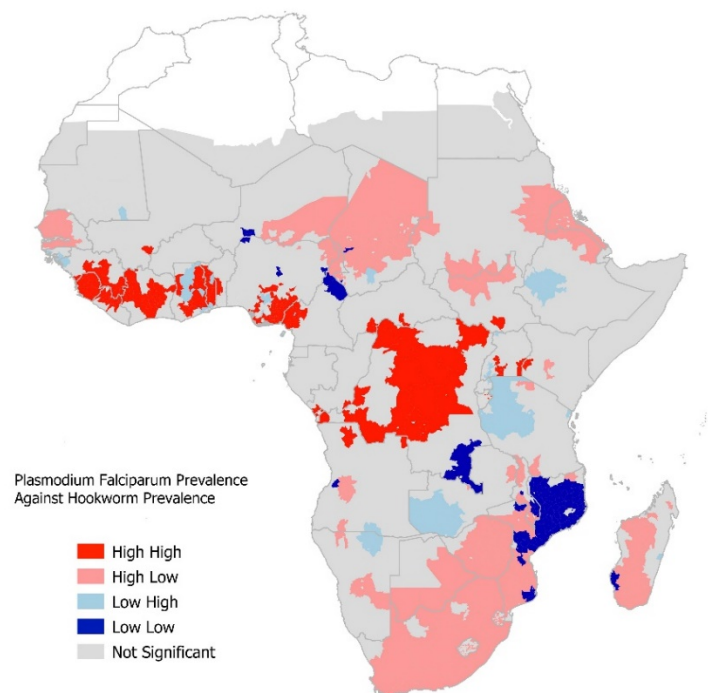
248

249

250

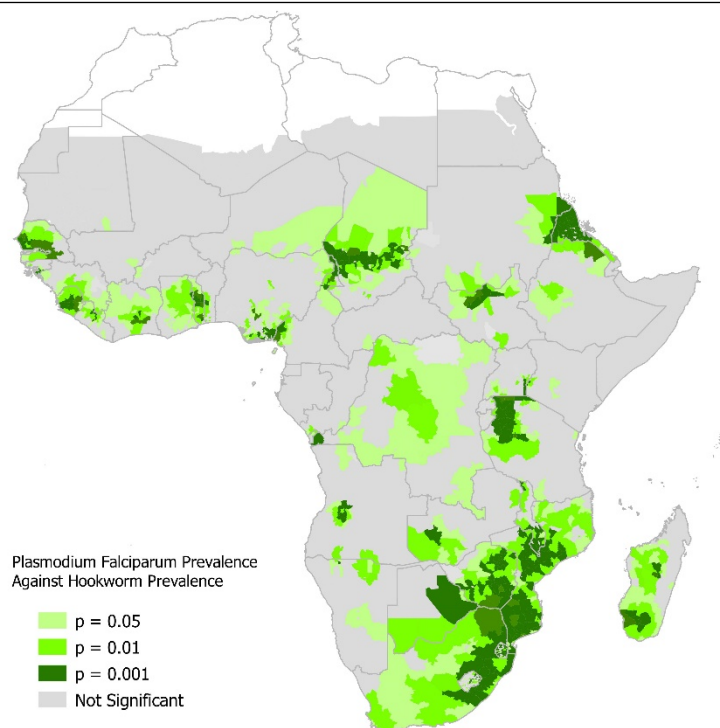
251

252 **Fig 2A: Local autocorrelation statistic interpretation of *P. falciparum* and hookworm co-**
253 **infection, SSA, 2000-2018**



254

Fig 2B: Probability that a given implementation unit is a hotspot for *P. falciparum* and hookworm co-infection in SSA, 2000 – 2018

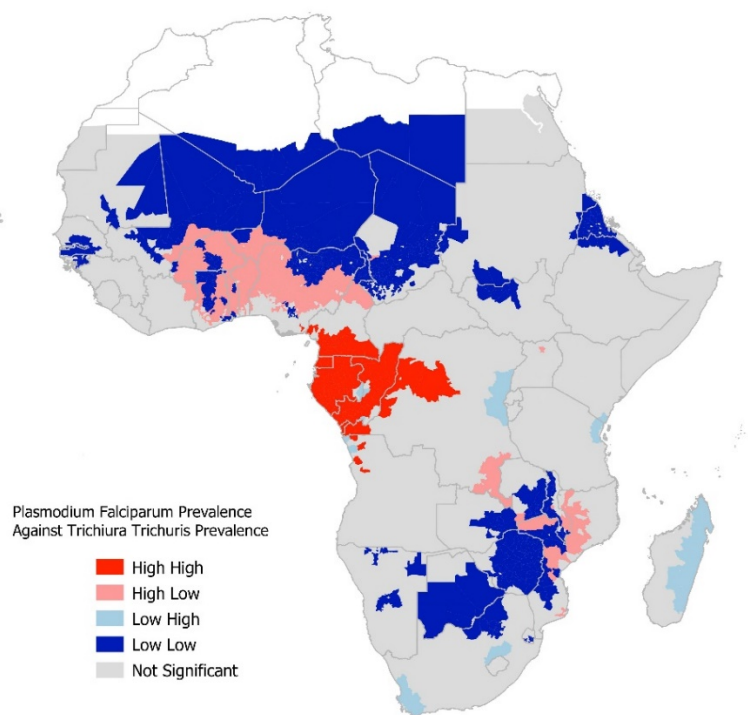


255

256 High *P. falciparum* and high *T. trichiura* co-infection were more prevalent in the Central African sub-
257 region compared to other sub-regions in SSA (Figure 3A). Angola, Cameroon, Congo Brazzaville,
258 DRC, Equatorial Guinea, Gabon, and coastal communities of southern Nigeria had a high prevalence
259 of *P. falciparum* and high *T. trichiura* co-infection (Figure 3A). Hotspots for *P. falciparum* and *T.*
260 *trichiura* co-infections included communities around the coast in Angola and several communities in
261 the central and southern Cameroon (Figure 3B). Other hotspots for co-infection with *P. falciparum*
262 and *T. trichiura* were communities spread across all districts of Congo Brazzaville; all districts in the
263 westernmost province of DRC; all regions in Equatorial Guinea and all districts except south-
264 eastern region of Gabon (Figure 3B, Table S1).

265
266
267
268
269
270
271
272
273
274
275
276

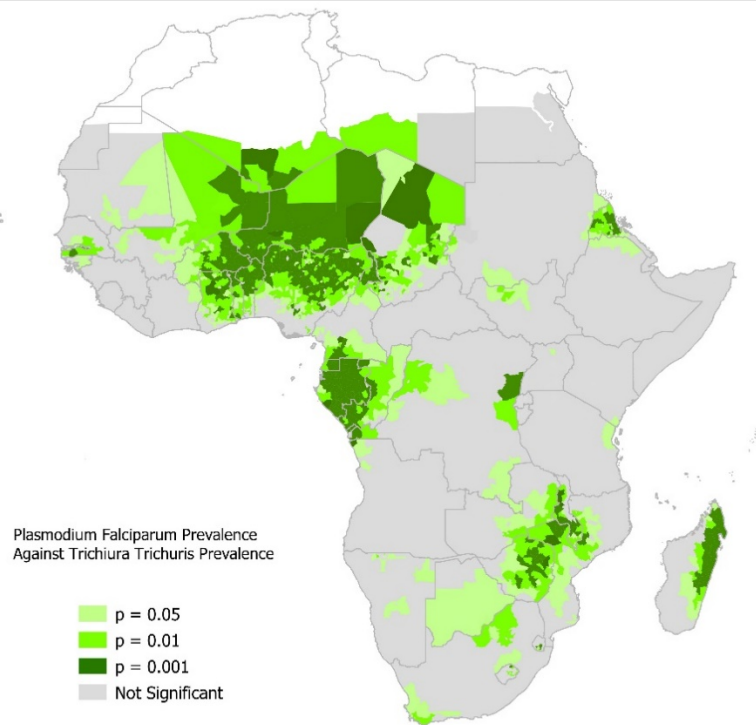
Fig 3A: Local autocorrelation statistic interpretation of *P. falciparum* and *T. trichiura* co-infection, SSA, 2000-2018



277

278

Fig 3B: Probability that a given implementation unit is a hotspot for *P.falciparum* and *T.trichiura* co-infection, SSA, 2000 – 2018



279

280 High *P.falciparum* and high *A. lumbricoides* (AS) co-infection was more prevalent in Central Africa
281 and parts of West Africa (Figure 4A). The countries with high prevalence of *P.falciparum* and high
282 *A. lumbricoides* co-infection were Angola, Burundi , Cameroon, Central African Republic, Congo
283 Brazzaville, Cote d'Ivoire , DRC, Equatorial Guinea, Gabon, Kenya , Liberia, and Nigeria (Figure
284 3A). However, hotspots for *P.falciparum* and *A. lumbricoides* co-infection were identified in only
285 seven countries: Angola, Congo Brazzaville, DRC, Equatorial Guinea, Gabon, Liberia, and Nigeria
286 (Figure 4B).

287 Hotspots for *P.falciparum* and *A. lumbricoides* in Angola included communities in the northeast and
288 northern exclave of Angola, on the west (Atlantic) coast and north of the Congo River (Figure 4B).
289 Other hotspots for *P.falciparum* and *A. lumbricoides* co-infections in SSA included north-western
290 and south-western regions in DRC; all regions in Equatorial Guinea, the Littoral region and
291 south-eastern counties of Liberia; and almost all regions in Gabon. In Nigeria, hotspots for
292 *P.falciparum* and *A. lumbricoides* co-infections were in 13 states located along the coastal lines of the
293 southern parts of the country (Figure 4B, Table S1).

294

295

296

297

298

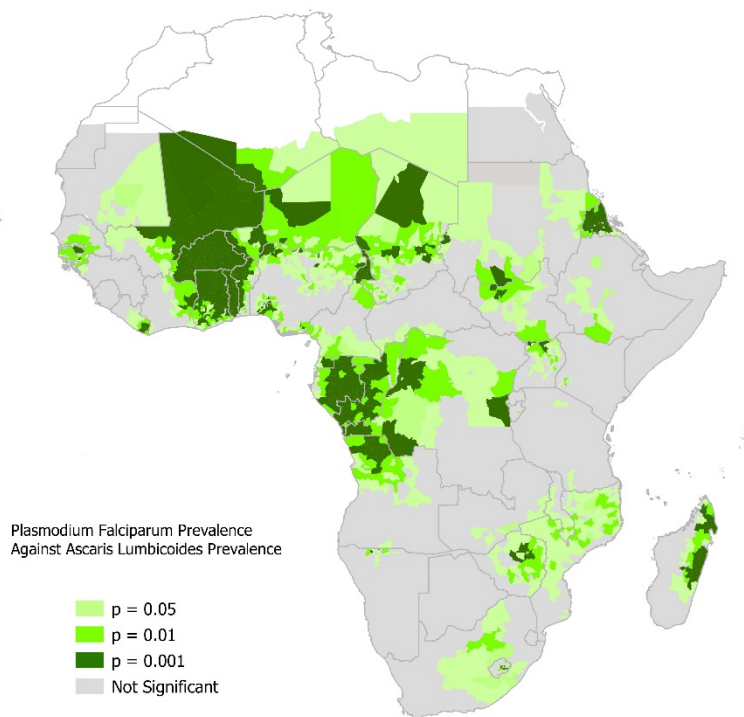
299

300

301

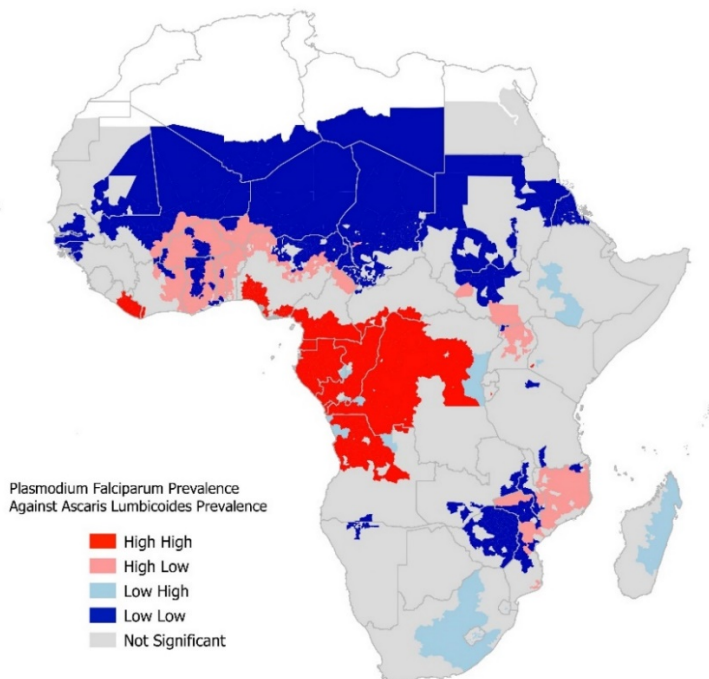
302

Figure 4A: Local autocorrelation statistic interpretation of *P. falciparum* and *A. lumbricoides* co-infection, SSA, 2000-2018



303

304 **Figure 4B: Probability that a given implementation unit is a hotspot for *P. falciparum* and *A. lumbricoides* co-infection, SSA, 2000 – 2018**



305

306 Discussion

307

308 Our analysis shows spatial variations in the estimates of prevalence of *P.falciparum*-STH co-
309 infections and identified hotspots across many countries in SSA where the co-infections were high.
310 Consistent with previous studies[3, 12, 22-24], our findings also highlight inter- and intra-country
311 variations in the prevalence of malaria-helminth co-infections. Across Central and West Africa sub-
312 regions, a high prevalence of *P.falciparum* and high hookworm co-infection was predominant, while
313 the burden of *P.falciparum-A.lumbricoides* and *P.falciparum-T.trichiura* co-infections was higher in
314 Central Africa than in neighbouring sub-regions. Although, recent reports have shown that a
315 considerable gain has been made in the control of malaria and STH in the last two decades[1, 14], our
316 findings suggest that a high burden of falciparum malaria and moderate-to-heavy infections for at
317 least one STH species are still occurring in the southern part of West Africa and extending to Central
318 Africa including Cameroon, Burundi and DRC. We observed similar patterns and trends in the
319 hotspot distributions for *P.falciparum* and any of the STH. While programmatic implementation of
320 preventive chemotherapy and seasonal malaria chemoprevention (SMC) have contributed to a
321 significant reduction in the burden of STH and malaria in many countries, inherent challenges such as
322 logistical burden, medication adherence, and incomplete coverage have been reported to be
323 responsible for the persistently high burden of malaria and STH in the spatial areas identified in our
324 study.[14, 15]

325 Taken together the geographical overlap and spatial co-existence of malaria and STH, favoured
326 largely by environmental factors[1, 3], could be exploited to achieve effective control and elimination
327 agendas through integration of the vertical programmes designed for malaria and STH into a more
328 comprehensive and sustainable community-based paradigm, that includes other preventive care such
329 as hand hygiene and water sanitation. The WHO 2030 NTD road map recommends concrete actions
330 within integrated platforms for delivery of the interventions needed to improve the cost-effectiveness,
331 coverage and geographical reach of these integrated programmes.[14] A successful integration of the
332 vertical control programmes aligns well with the global trend towards integrated, non-disease specific
333 approaches which have become an increasingly recognised strategy recommended by WHO.[25]

334 However, limited evidence is currently available on the feasibility and effectiveness of integrating
335 malaria with STH control at community level and evidence that this can be done effectively is needed.
336 Our study has some limitations. First, our study used secondary data obtained from two different
337 sources covering a period from 2000–2018, which may not fully capture the epidemiological status of
338 the burden of the co-infection during the period under review. Our analysis also showed some
339 inconsistencies with findings of empirical studies [23, 26], especially for STH prevalence. For
340 example, we observed high uncertainty around estimates in Central Africa and some parts of West
341 Africa, which corresponds to areas with a high burden of infection. Lack of survey data is a plausible
342 reason for this observation.[3] Additionally, a substantial proportion of the data we used for our
343 analysis was collected prior to the commencement of mass preventive treatments with albendazole
344 and SMC. Many countries have tailored the frequency of mass drug administration with preventive
345 chemotherapy to their STH prevalence, but annual SMC implementation during the period of high
346 malaria transmission is still being given as a single intervention.

347 The absence of survey data or inadequacy in definition of space-time contributes to the uncertainty
348 observed in our finding and these may have also introduced bias leading to over-estimation or under-
349 estimation of the prevalence of STH and malaria co-infection. Contributing further to the likely over
350 or under-estimation of the burden of STH and malaria could be empirical treatments of malaria and
351 STH outside the control programmes. Our findings could also be affected by the diagnostic
352 approaches involving malaria rapid testing [27] and Kato-Katz method [28] used to generate the data,
353 as these have been widely reported to be less sensitive than PCR, especially in low-transmission
354 settings.

355 In conclusion, we have demonstrated wide spatial heterogeneity within the SSA and within countries,
356 on the prevalence of malaria and STH infections. To consolidate on the encouraging progress made
357 in the reduction of the prevalence of malaria and STH in some SSA countries, it is crucial that
358 integrated control programmes target the regions with high-high burden of malaria and STH. Our
359 study may also have critical implications for policy-making and resource allocations based on the
360 needs of each region, as well as for the future of the implementation of integrated malaria-helminth

361 control programmes. Nevertheless, it is important that our findings are confirmed by further empirical
362 studies as this will provide the platform for research agenda that will lead to the establishment of the
363 much-needed platform for the implementation of the integrated programmes that are cost-effective,
364 and make optimum use of limited human resources frequently found in SSA.

365 **Acknowledgement:** We thank Mike Thorn of the Malaria Atlas Project and Ismaela Abubakar for
366 supporting the data curation for this study

367 **Author Contributions:** MOA conceptualised the study. BS and JCO provided support in data
368 curation and analysis. AA and OJ performed the statistical analysis of the datasets. MOA, OW, AA
369 and OJ drafted different sections of the manuscript. BG revised the manuscript critically for important
370 intellectual content. All authors reviewed and approved the final draft of the manuscript.

371 **Competing interests:** None declared

372 **Funding:** This work was implemented as part of a career development fellowship awarded to MOA,
373 which is funded under the UK Research and Innovation Future Leaders Fellowship scheme
374 (MR/S03286X/1). The funders had no role in the study design, data collection and analysis, decision
375 to publish, or preparation of the manuscript.

376

377

378

379

380

381

382

383

384 References

- 385 1. Brooker S, Akhwale W, Pullan R, Estambale B, Clarke SE, Snow RW, et al. Epidemiology of
386 Plasmodium-Helminth Co-Infection in Africa: Populations at Risk, Potential Impact on Anemia, and
387 Prospects for Combining Control. *The American journal of tropical medicine and hygiene*.
388 2007;77(6_Suppl):88-98. doi: <https://doi.org/10.4269/ajtmh.2007.77.88>.
- 389 2. World malaria report 2021. Geneva: World Health Organization; 2021. Licence: CC BY-NC-
390 SA 3.0 IGO. Retrieved from [https://www.who.int/teams/global-malaria-programme/reports/world-](https://www.who.int/teams/global-malaria-programme/reports/world-malaria-report-2021)
391 [malaria-report-2021](https://www.who.int/teams/global-malaria-programme/reports/world-malaria-report-2021). Accessed 7 Dec 2021.
- 392 3. Sartorius B, Cano J, Simpson H, Tusting LS, Marczak LB, Miller-Petrie MK, et al.
393 Prevalence and intensity of soil-transmitted helminth infections of children in sub-Saharan Africa,
394 2000-18: a geospatial analysis. *The Lancet Global health*. 2021;9(1):e52-e60. Epub 2020/12/19. doi:
395 10.1016/s2214-109x(20)30398-3. PubMed PMID: 33338459; PubMed Central PMCID:
396 PMCPMC7786448.
- 397 4. Ending the neglect to attain the Sustainable Development Goals: a road map for neglected
398 tropical diseases 2021–2030. Geneva: World Health Organization; 2020. Licence: CC BY-NC-SA 3.0
399 IGO.
- 400 5. Mulu A, Legesse M, Erko B, Belyhun Y, Nugussie D, Shimelis T, et al. Epidemiological and
401 clinical correlates of malaria-helminth co-infections in southern Ethiopia. *Malaria Journal*.
402 2013;12(1):227. doi: 10.1186/1475-2875-12-227.
- 403 6. Adedaja A, Tijani BD, Akanbi AA, 2nd, Ojurongbe TA, Adeyeba OA, Ojurongbe O. Co-
404 endemicity of Plasmodium falciparum and Intestinal Helminths Infection in School Age Children in
405 Rural Communities of Kwara State Nigeria. *PLoS neglected tropical diseases*. 2015;9(7):e0003940-e.
406 doi: 10.1371/journal.pntd.0003940. PubMed PMID: 26222743.
- 407 7. Kepha S, Nuwaha F, Nikolay B, Gichuki P, Edwards T, Allen E, et al. Epidemiology of
408 coinfection with soil transmitted helminths and Plasmodium falciparum among school children in
409 Bumula District in western Kenya. *Parasites & vectors*. 2015;8:314-. doi: 10.1186/s13071-015-0891-
410 5. PubMed PMID: 26063324.
- 411 8. Zeukeng F, Tchinda VHM, Bigoga JD, Seumen CHT, Ndzi ES, Abonweh G, et al. Co-
412 infections of malaria and geohelminthiasis in two rural communities of Nkassomo and Vian in the
413 Mfou health district, Cameroon. *PLoS neglected tropical diseases*. 2014;8(10):e3236-e. doi:
414 10.1371/journal.pntd.0003236. PubMed PMID: 25329479.
- 415 9. Kinung'hi SM, Magnussen P, Kaatano GM, Kishamawe C, Vennervald BJ. Malaria and
416 helminth co-infections in school and preschool children: a cross-sectional study in Magu district,
417 north-western Tanzania. *PloS one*. 2014;9(1):e86510-e. doi: 10.1371/journal.pone.0086510. PubMed
418 PMID: 24489732.
- 419 10. Achidi EA, Apinjoh TO, Mbunwe E, Besingi R, Yafi C, Wenjighe Awah N, et al. Febrile
420 status, malarial parasitaemia and gastro-intestinal helminthiasis in schoolchildren resident at different
421 altitudes, in south-western Cameroon. *Annals of Tropical Medicine & Parasitology*. 2008;102(2):103-
422 18. doi: 10.1179/136485908X252287.
- 423 11. Naing C, Whittaker MA, Nyunt-Wai V, Reid SA, Wong SF, Mak JW, et al. Malaria and soil-
424 transmitted intestinal helminth co-infection and its effect on anemia: a meta-analysis. *Transactions of*
425 *The Royal Society of Tropical Medicine and Hygiene*. 2013;107(11):672-83. doi:
426 10.1093/trstmh/trt086.
- 427 12. Degarege A, Erko B. Epidemiology of Plasmodium and Helminth Coinfection and Possible
428 Reasons for Heterogeneity. *Biomed Res Int*. 2016;2016:3083568. Epub 2016/04/20. doi:
429 10.1155/2016/3083568. PubMed PMID: 27092310; PubMed Central PMCID: PMCPMC4820611.
- 430 13. Afolabi MO, Ale BM, Dabira ED, Agbla SC, Bustinduy AL, Ndiaye JLA, et al. Malaria and
431 helminth co-infections in children living in endemic countries: A systematic review with meta-
432 analysis. *PLOS Neglected Tropical Diseases*. 2021;15(2):e0009138. doi:
433 10.1371/journal.pntd.0009138.
- 434 14. Degarege A, Veledar E, Degarege D, Erko B, Nacher M, Madhivanan P. Plasmodium
435 falciparum and soil-transmitted helminth co-infections among children in sub-Saharan Africa: a
436 systematic review and meta-analysis. *Parasites & vectors*. 2016;9(1):344. Epub 2016/06/17. doi:

- 437 10.1186/s13071-016-1594-2. PubMed PMID: 27306987; PubMed Central PMCID:
438 PMCPMC4908807.
- 439 15. Hotez PJ, Molyneux DH. Tropical anemia: one of Africa's great killers and a rationale for
440 linking malaria and neglected tropical disease control to achieve a common goal. *PLoS Negl Trop*
441 *Dis.* 2008;2(7):e270. Epub 2008/07/31. doi: 10.1371/journal.pntd.0000270. PubMed PMID:
442 18665256; PubMed Central PMCID: PMCPMC2474697.
- 443 16. Lyke KE, Dicko A, Dabo A, Sangare L, Kone A, Coulibaly D, et al. Association of
444 *Schistosoma haematobium* infection with protection against acute *Plasmodium falciparum* malaria in
445 Malian children. *The American journal of tropical medicine and hygiene.* 2005;73(6):1124-30. Epub
446 2005/12/16. PubMed PMID: 16354824; PubMed Central PMCID: PMCPMC2738948.
- 447 17. Expanded Special Project for Elimination of Neglected Tropical Diseases (ESPEN).
448 Available online at <https://espen.afro.who.int/>. Accessed 12 June 2020.
- 449 18. Adegnikaa AA, Kremsner PG. Epidemiology of malaria and helminth interaction: a review
450 from 2001 to 2011. *Curr Opin HIV AIDS.* 2012;7(3):221-4. Epub 2012/03/16. doi:
451 10.1097/COH.0b013e3283524d90. PubMed PMID: 22418449.
- 452 19. Hartgers FC, Yazdanbakhsh M. Co-infection of helminths and malaria: modulation of the
453 immune responses to malaria. *Parasite Immunol.* 2006;28(10):497-506. Epub 2006/09/13. doi:
454 10.1111/j.1365-3024.2006.00901.x. PubMed PMID: 16965285.
- 455 20. Nacher M. Interactions between worms and malaria: good worms or bad worms? *Malar J.*
456 2011;10:259. Epub 2011/09/14. doi: 10.1186/1475-2875-10-259. PubMed PMID: 21910854; PubMed
457 Central PMCID: PMCPMC3192711.
- 458 21. Tao R, Thill J-C. BiFlowLISA: Measuring spatial association for bivariate flow data.
459 *Computers, Environment and Urban Systems.* 2020;83:101519. doi:
460 <https://doi.org/10.1016/j.compenvurbsys.2020.101519>.
- 461 22. Owada K, Lau CL, Leonardo L, Clements ACA, Yakob L, Nielsen M, et al. Spatial
462 distribution and populations at risk of *A. lumbricoides* and *T. trichiura* co-infections and infection
463 intensity classes: an ecological study. *Parasites & vectors.* 2018;11(1):535. Epub 2018/10/05. doi:
464 10.1186/s13071-018-3107-y. PubMed PMID: 30285906; PubMed Central PMCID:
465 PMCPMC6171148.
- 466 23. Camara Y, Sanneh B, Joof E, Sanyang AM, Sambou SM, Sey AP, et al. Mapping survey of
467 schistosomiasis and soil-transmitted helminthiasis towards mass drug administration in The Gambia.
468 *PLoS neglected tropical diseases* [Internet]. 2021 2021/07//; 15(7):[e0009462 p.].
- 469 24. Kabatereine NB, Standley CJ, Sousa-Figueiredo JC, Fleming FM, Stothard JR, Talisuna A, et
470 al. Integrated prevalence mapping of schistosomiasis, soil-transmitted helminthiasis and malaria in
471 lakeside and island communities in Lake Victoria, Uganda. *Parasites & vectors.* 2011;4(1):232. doi:
472 10.1186/1756-3305-4-232.
- 473 25. Hotez PJ, Molyneux DH, Fenwick A, Ottesen E, Ehrlich Sachs S, Sachs JD. Incorporating a
474 rapid-impact package for neglected tropical diseases with programs for HIV/AIDS, tuberculosis, and
475 malaria. *PLoS Med.* 2006;3(5):e102. Epub 2006/01/27. doi: 10.1371/journal.pmed.0030102. PubMed
476 PMID: 16435908; PubMed Central PMCID: PMCPMC1351920.
- 477 26. Pullan RL, Kabatereine NB, Bukirwa H, Staedke SG, Brooker S. Heterogeneities and
478 consequences of *Plasmodium* species and hookworm coinfection: a population based study in
479 Uganda. *The Journal of infectious diseases.* 2011;203(3):406-17. Epub 2010/12/27. doi:
480 10.1093/infdis/jiq063. PubMed PMID: 21187338.
- 481 27. Mahende C, Ngasala B, Lusingu J, Yong TS, Lushino P, Lemnge M, et al. Performance of
482 rapid diagnostic test, blood-film microscopy and PCR for the diagnosis of malaria infection among
483 febrile children from Korogwe District, Tanzania. *Malar J.* 2016;15(1):391. Epub 2016/07/28. doi:
484 10.1186/s12936-016-1450-z. PubMed PMID: 27459856; PubMed Central PMCID:
485 PMCPMC4962396.
- 486 28. Cools P, Vlaminck J, Albonico M, Ame S, Ayana M, José Antonio BP, et al. Diagnostic
487 performance of a single and duplicate Kato-Katz, Mini-FLOTAC, FECPAKG2 and qPCR for the
488 detection and quantification of soil-transmitted helminths in three endemic countries. *PLOS*
489 *Neglected Tropical Diseases.* 2019;13(8):e0007446. doi: 10.1371/journal.pntd.0007446.

490