

1 **Title:** Integrative genomics analysis implicates decreased *FGD6* expression underlying risk of intracranial
2 aneurysm rupture

3

4 **Authors:** Andrew T. Hale MD, PhD,¹ Jing He MS,² and Jesse Jones MD¹

5

6 **Affiliations:** ¹Department of Neurosurgery, University of Alabama at Birmingham, Birmingham, AL;

7 ²Department of Biomedical Informatics, Vanderbilt University Medical Center, Nashville, TN.

8

9 **Corresponding Author:**

10 Andrew T Hale, MD, PhD

11 Department of Neurosurgery

12 University of Alabama at Birmingham

13 FOT Suite 1060, 1720 2nd Ave S.

14 Birmingham, AL 35294

15 Andrewthale20@gmail.com

16

17 The authors have declared that no conflict of interest exists.

18

19 **Word count:** 2,348

20

21 **Abstract**

22 **Importance:** The genetic determinants and mechanisms underlying intracranial aneurysm rupture (rIA)
23 are largely unknown. Given the ~50% mortality rate of rIA, approaches to identify patients at high-risk will
24 inform screening, diagnostic, and preventative measures.

25 **Objective:** To identify and characterize the genetic basis of rIA.

26 **Design:** We perform a genome-wide association study (GWAS) use functional genomics approaches to
27 identify and characterize rIA-associated loci and genes.

28 **Setting:** We perform a meta-analysis across 24 published GWAS of rIA.

29 **Participants:** Our cohort contains 84,353 individuals (7,843 rIA cases and 76,510 controls).

30 **Main Outcome and Measure:** Single nucleotide polymorphisms (SNP), gene-burden analysis, and
31 functional genomics identify and characterize genetic risk factors for rIA.

32 **Results:** We identify 5 independent genetic loci reaching genome-wide significance ($p < 5.0 \times 10^{-8}$) for rIA
33 including rs12310399 (*FGD6*, OR=1.16), which to our knowledge, has not been implicated in prior GWAS
34 of (r)IA. We then quantified gene-level mutation-burden across ~20,000 genes, and only *FGD6*
35 (containing 21 rIA-associated SNPs) reached transcriptome-wide significance. Expression quantitative
36 trait loci (eQTL) mapping indicates that rs12310399 causes decreased *FGD6* gene expression in arterial
37 tissue. Single-cell RNA sequencing of normal human cerebrovascular cells obtained during resection
38 surgery identified high expression of *FGD6* in 1 of 3 arterial lineages but absent in perivascular cells.
39 Patients with a Mendelian disease caused by *FGD6* mutations (Aarskog-Scott syndrome) have been
40 diagnosed with rIA, among other features, providing direct causal evidence for *FGD6* in rIA pathogenesis.

41 **Conclusions and Relevance:** We identify and characterize a previously unknown risk loci for rIA
42 containing *FGD6*. Variable expressivity of *FDG6* causes a range of clinical features from Mendelian
43 disease to sporadic rIA. Elucidation of high-risk genetic loci may instruct population-genetic screening and
44 clinical-genetic testing strategies to identify patients predisposed to rIA.

45

46 **Funding:** No funding sources were used for the material presented herein.

47 **Key Points**

48

49 **Question:** What are the genetic determinants of intracranial aneurysm rupture?

50

51 **Findings:** We identify *FGD6* as a new risk locus for rIA using GWAS and gene-burden approaches.

52 Characterization of the *FGD6* locus and gene-level function using integrative genomics elucidates

53 consequences of decreased *FGD6* expression.

54

55 **Meaning:** Elucidating the genetic risk factors for rIA will instruct population-screening, genetic testing, and

56 preventative measures aimed at reducing morbidity caused by rIA.

57 Introduction

58 Intracranial aneurysms (IA) are abnormal dilations of cerebral arteries that occur in response to
59 vessel wall dysfunction. Spontaneous rupture of an IA (rIA) causes severe neurological injury and
60 death.^{1,2} IA is estimated to affect around 5% of the world's population with lifetime rupture-risk of ~25%.³
61 However, the mortality of rIA is ~50%.⁴ While many rIA risk-factors including family history, female
62 gender, aneurysm location/size, cigarette smoking, and hypertension have been elucidated in large
63 epidemiological studies,⁵ these factors are largely non-specific. Thus, personalized genetic approaches to
64 1) identify patients with IA, and 2) predict which patients with IA are most likely to rupture are needed.

65 Elucidating causal genetic factors associated with rIA has direct implications for disease
66 prevention, diagnosis, and treatment. While rare inherited causes of IA have been described,⁶ these
67 patients comprise the minority of total IA disease burden.⁷ Family history of rIA in first-degree relatives,
68 even in the absence of a known IA-associated genetic syndrome, increases one's risk of being diagnosed
69 with rIA by nearly four-fold.⁸ Thus, a strong genetic component is thought to underlie IA,⁹ and unbiased,
70 genome-wide approaches to understand the germline-genetic determinants of IA formation and rupture
71 are critical to understanding IA pathophysiology. Since one's genetic information in large part does not
72 change over a lifetime (excluding somatic mutations), elucidating the genetic architecture of rIA can
73 inform screening, detection, and treatment (for patients at the highest risk) strategies. In this study, we
74 systematically delineate the genetic determinants of rIA using convergent human-genetic and functional
75 genomics approaches.

76

77 Results

78 Our cohort contained 84,353 individuals (7,843 rIA cases and 76,510 controls) across 24
79 published GWAS.¹⁰ Our GWAS identified 5 independent genetic loci reaching genome-wide significance
80 for rIA (Figure 1A): rs73392700 (*CDKN2B*, $p=4.84 \times 10^{-17}$, OR=1.12), rs6841581 (*EDNRA*, $p=3.52 \times 10^{-14}$,
81 OR=0.77), rs11661542 (*RBBP8*, $p=3.18 \times 10^{-13}$, OR=0.84), rs62516550 (*RP1*, $p=2.94 \times 10^{-11}$, OR=1.20),
82 and rs12310399 (*FGD6*, $p=3.19 \times 10^{-10}$, OR=1.16). The *FGD6* loci, to our knowledge, has not been
83 implicated in prior GWAS of (r)IA. We confirmed that population stratification and genomic control was

84 adequately achieved (i.e., no early deviation of p-values from expected) by generating a quantile-quantile
85 plot (Figure 1B).

86 Consistent with GWAS studies of complex and polygenic diseases, the vast majority of identified
87 genetic risk factors are located in non-coding regions of the genome, making causal inference of disease
88 mechanisms challenging.¹¹ To overcome these challenges and delineate the functional consequences of
89 rIA-associated single-nucleotide polymorphisms (SNPs), we analyzed the summative contribution of rIA
90 associated SNPs across ~20,000 individual genes using gene-burden analysis.¹² Determining gene-
91 based, rather than variant-based, associations with rIA will facilitate ease of biologic interpretation and
92 design/interpretation of mechanistic studies. Across all rIA-associated SNPs and genes tested, 958 genes
93 were associated with rIA ($p < 0.05$). However, after multiple-testing correction, only *FGD6* (harboring 21
94 rIA-associated SNPs) reached transcriptome-wide significance.

95 To visualize the *FGD6* locus for rIA-associated SNPs, we perform fine-mapping and present a
96 LocusZoom plot (Figure 2). These data demonstrate the extent to which multiple variants in this locus,
97 alone and in concert through linkage disequilibrium (LD), contribute to rIA risk. *FGD6* (FYVE RhoGef and
98 Ph domain containing protein 6) is a RhoGTPase that activates CDC42, a cell cycle-associated gene, and
99 *FGD6* has been shown to play a role in regulating angiogenesis and actin cytoskeleton rearrangement,¹³
100 functions consistent with (r)IA. Finally, mutations in *FGD6* are associated with Aarskog-Scott Syndrome, a
101 Mendelian disease characterized by faciogenital dysplasia, where some patients have also been
102 diagnosed with to (r)IA and other cerebrovascular anomalies.^{14,15} These data provide direct causal
103 evidence for *FGD6* dysfunction in rIA.

104 To delineate the effect of rIA-associated SNPs on gene expression, we utilize eQTL mapping
105 across 49 tissue types using the Genotype-Tissue Expression Project (GTEx) portal¹⁶ and demonstrate
106 that the most significant rIA-associated SNP in the *FGD6* loci (rs12310399) causes decreased *FGD6*
107 gene expression most-significantly in arterial tissue (Figure 3). In addition, rs12310399 overlaps splicing
108 QTLs for vezatin (*VEZT*, $p < 8.20 \times 10^{-9}$, skeletal muscle, gtexportal.org), a transmembrane protein in the
109 adherens junction that binds to myosin VIIA¹⁷ and NADH ubiquinone oxidoreductase subunit A12
110 (*NDUFA12*, $p < 8.20 \times 10^{-9}$, skeletal muscle, gtexportal.org), a gene previously implicated in IA biology.¹⁸

111 These data provide additional support for this locus and suggests that multiple mechanisms are likely
112 contributing to rIA risk.

113 While identification of new rIA-associated genes is important, it is the function of that gene in
114 relevant tissues/cells that will expand our pathophysiologic understanding of IA formation and rupture. To
115 further delineate the cellular origin and functional consequences of *FGD6* expression in the
116 cerebrovascular system, we utilize scRNA-seq data derived from normal adult human brain endothelial
117 and perivascular cells as previously described.¹⁹ We find that *FGD6* is highly expressed in 1 of 3 arterial
118 lineages, venules, and veins but *FGD6* expression is largely undetectable across 12 perivascular cell
119 lineages (Figure 5A-B). These findings will facilitate additional mechanistic studies aimed at
120 understanding the molecular basis of *FGD6* dysfunction underlying rIA.

121

122 Discussion

123 We identify 5 independent genetic loci reaching genome-wide significance for rIA, including a
124 novel locus containing *FGD6* not previously implicated in (r)IA biology. Gene-burden analysis provides
125 convergent evidence supporting the *FGD6* gene in rIA risk. Functional characterization indicates that
126 genetic variation in *FGD6* loci contributes to rIA risk by decreasing *FGD6* gene expression in arterial
127 tissue. Utilization of single-cell RNA sequencing analysis of human brain endothelial and perivascular
128 cells¹⁹ characterizes *FGD6* expression across rIA-relevant neurovascular cell types where alterations in
129 *FGD6* expression may alter cell identity and function. These data will inform detailed mechanistic analysis
130 of *FGD6* in rIA biology and perhaps even treatment strategies. Finally, analysis of the Online Mendelian
131 Inheritance in Man database (omim.org) identifies a Mendelian disease (Aarskog-Scott syndrome)
132 caused by *FGD6* loss-of-function, in whom rIA has been described, providing causal evidence for *FGD6*
133 dysfunction in rIA pathogenesis. These data suggest that variable expressivity of *FDG6* causes a range of
134 clinical features from Mendelian disease to sporadic rIA.

135 Functional analysis indicates that *FGD6* regulates angiogenesis and actin cytoskeleton
136 rearrangement.¹³ Thus, it is reasonable to posit that *FGD6*-dependent alterations in blood vessel integrity
137 and/or formation may, at least in part, contribute to rIA. *FGD6* mediated genetic susceptibility coupled
138 with clinical risk factors (hypertension, smoking, etc.) converge to contribute summative risk for rIA.

139 Whole-gene deletion or introduction of *FGD6* disease-causing mutations disrupts endothelial cell network
140 formation which could be rescued by introduction of the wild-type gene product. In addition, mutations in
141 *FGD6* have been previously identified in patients with a Mendelian disease Aarskog-Scott syndrome, of
142 which rIA is a component, as well as in patients with polypoidal choroidal vasculopathy.¹³⁻¹⁵ These data
143 provide causal evidence for *FGD6* dysfunction in rIA pathology and regulation of the human
144 cerebrovascular system. These data add to the growing body of evidence that Mendelian genes influence
145 common diseases²⁰ likely through a variable expressivity mechanism.

146 While the focus of this manuscript is on identification and characterization of the *FGD6* loci,
147 multiple genetic loci are contributing to rIA (Figure 1). Although the magnitude of effect is relatively small
148 for the lead SNP in the *FGD6* loci (OR= 1.16), the clinical consequences of genetic-testing underlying rIA
149 are more likely to be representing through assessment of polygenic risk score (PRS).²¹ The weighted
150 contribution of multiple loci through creation of a PRS will improve our understanding of rIA genetic
151 architecture.²² In addition, combining PRS with important clinical and radiologic features of patients with
152 (r)IA will improve translational of these genetic findings to clinical care. As our ability to acquire, analyze,
153 and interpret genetic information improves, we surmise that translating genetic information into clinical
154 practice will become streamlined.

155 Our cohort is the largest studies of rIA to date, but additional genetic data from diverse
156 populations will increase power to detect additional risk loci and improve applicability of the genetic
157 information across diverse populations. One limitation of array based GWAS is our relative inability to
158 include rare variants, although detailed analysis of IA rare variants has been performed elsewhere.^{23,24}
159 Multiple studies of (r)IA have implicated common variants underlying IA risk.^{10,18,25-30} Thus, it is likely that
160 both common and rare variants in both coding and non-coding regions confer risk to IA, alone and in
161 concert. In addition, recent studies suggest that somatic mutations may play a role in IA pathology,^{31,32}
162 which we did not assess herein, but may play a significant role in (r)IA pathogenesis. Analysis of lesional
163 tissue acquired through advances in endoluminal biopsy will promote our understanding of somatic
164 contribution to (r)IA biology.³³ Integration of clinical and aneurysm-specific factors (size, location, etc.) will
165 enable personalized medicine approaches to IA treatment and expand the clinician's armamentarium.

166 Here we perform a large genetic study of rIA and identify and characterize a previously unknown
167 risk locus for rIA containing *FGD6*. Since the genetic contribution to rIA risk does not change (excluding
168 somatic mutations), approaches to quantify genetic risk of rIA may be extremely valuable for clinical
169 treatment. Integration of clinical and radiologic IA factors with genetic data will further improve our ability
170 to comprehensively evaluate rIA risk. Understanding the genetic determinants of rIA may inform gene-
171 based therapies aimed at IA remodeling or obliteration. Strategies to incorporate genetic information into
172 clinical care will inform personalized medicine approaches to manage IA.

173

174 **Methods**

175 *Genome wide association study analysis*

176 Genetic data were obtained using the Cerebrovascular Disease Knowledge Portal
177 (cerebrovascularportal.org).¹⁰ GWAS was performed as previously described.^{34,35} Whole-genome
178 genotyping was performed using Illumina HumanOmniExpressExome BeadChip.¹⁰ Imputation was
179 performed using the 1000 genome reference panel,³⁶ Haplotype Reference Consortium, or the UK10K
180 using IMPUTE4 software.³⁷ Meta-analysis was performed using inverse-variance method and Cochran's
181 Q test (to estimate heterogeneity) with METAL.^{38,39} Age, sex, and the first twenty principal components
182 were included as covariates in logistic regression models to identify IA-associated SNPs as previously
183 described.⁴⁰ Threshold for genome-wide significance was defined after Bonferroni correction for the total
184 number of SNPs tested ($p \leq 5.0 \times 10^{-8}$). Our cohort contained patients of both European and East-Asian
185 ancestry. Assuming a disease prevalence for IA of 100 in 1,000,⁴¹ rs73392700 allele frequency of 0.12
186 (the most statistically-significant SNP identified in our GWAS), and genotype relative risk of 1.5, our study
187 is appropriately powered to 1.0 (GAS power calculator from the University of Michigan,
188 csg.sph.umich.edu). STREGA reporting guidelines for genetic association studies were followed.⁴²

189

190 *Functional genomics analysis*

191 The latest data release of GTEx (version 8) was used.⁴³ The GTEx portal (gtexportal.org) was
192 used for data visualization. Expression quantitative trait loci (eQTL) analysis, which estimates the
193 functional effect of a SNP/loci on neighboring gene expression, was performed as previously

194 described.^{34,43} Splicing quantitative trait loci (sQTL) was used to determine the potential impact of a SNP
195 on alternative splicing.⁴⁴ In addition, we used Haploreg,⁴⁵ a functional genomics tool to explore the
196 function of variants in non-coding regions of the genome. Haploreg combines data from the 1000
197 genomes project, Roadmap Epigenomics, and ENCODE projects to estimate the effect of SNPs on
198 functions such as chromatin state, protein-binding, and gene-expression. Data visualization was
199 performed using gtexportal.org. Finally, we utilized single-cell RNA sequencing analysis of adult human
200 brain endothelial and perivascular cells obtained from normal brain cortex biopsies obtained as previously
201 described.¹⁹

202

203 *Statistics*

204 Experiment-specific statistical methods are discussed above. Thresholds, controls, and statistical
205 tests are indicated in each Figure legend.

206

207 **Study approval**

208 All genetic and functional genomics data were acquired through publicly available sources, where
209 individual data-sharing policies and waivers of informed consent were obtained.

210

211 **Author contributions**

212 ATH, JH, and JJ were responsible for project design and analysis. ATH drafted the manuscript.
213 ATH and JH were responsible for statistical methods and analysis of the study. ATH, JH, and JJ
214 interpreted results. All authors engaged in critical review of the manuscript.

215

216 **Acknowledgements**

217 The authors would like to thank the creators of the Cerebrovascular Disease Knowledge Portal. In
218 addition, we would like to thank GTEx which is supported by the Common Fund of the Office of the
219 Director of the NIH, the National Cancer Institute (NCI), the National Human Genome Research Institute
220 (NHGRI), the National Heart, Lung, and Blood Institute (NHLBI), the National Institute on Drug Abuse
221 (NIDA), the National Institute of Mental Health (NIMH), and the National Institute of Neurological

222 Disorders and Stroke (NINDS). We would also like to thank Haploreg (Broad Institute) - which also utilizes

223 Roadmap Epigenomics, 1000 Genomes Project, and ENCODE data - for use of their resource.

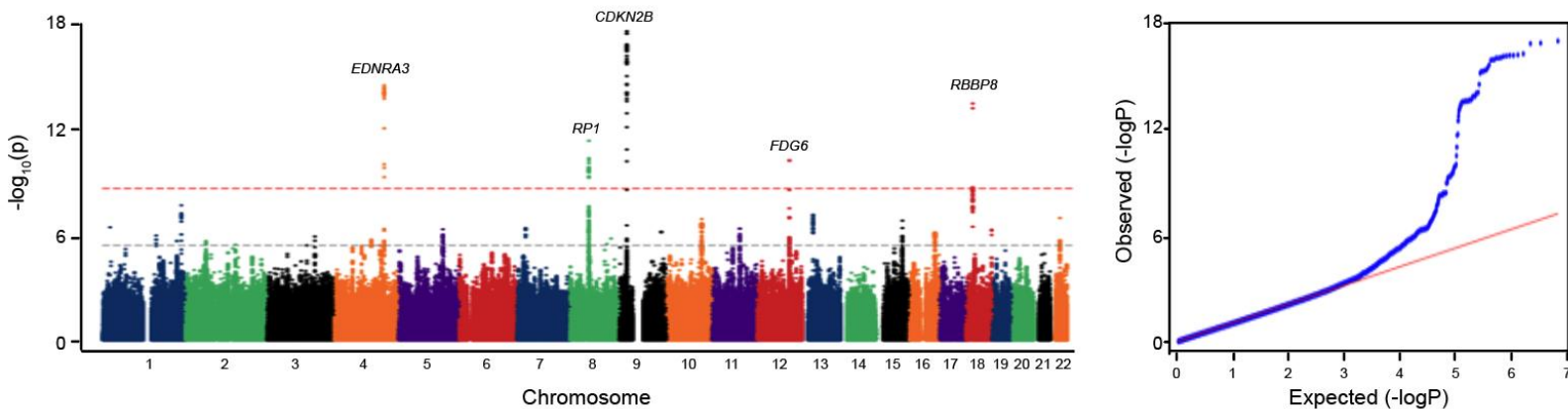
224

References

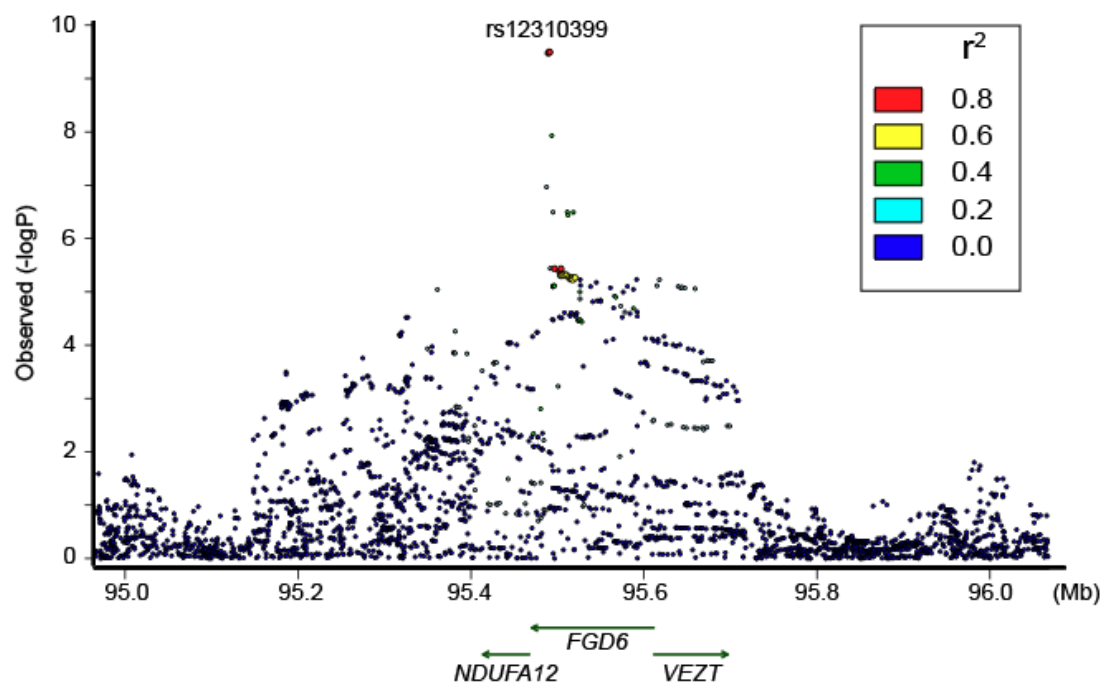
- 225
226
227 1. Lawton MT, Vates GE. Subarachnoid Hemorrhage. *N Engl J Med.* 2017;377(3):257-266.
- 228 2. Macdonald RL, Schweizer TA. Spontaneous subarachnoid haemorrhage. *Lancet.*
229 2017;389(10069):655-666.
- 230 3. Korja M, Kaprio J. Controversies in epidemiology of intracranial aneurysms and SAH. *Nat Rev*
231 *Neurol.* 2016;12(1):50-55.
- 232 4. Schievink WI. Intracranial Aneurysms. *New England Journal of Medicine.* 1997;336(1):28-40.
- 233 5. Teunissen LL, Rinkel GJ, Algra A, van Gijn J. Risk factors for subarachnoid hemorrhage: a
234 systematic review. *Stroke.* 1996;27(3):544-549.
- 235 6. Ilinca A, Samuelsson S, Piccinelli P, Soller M, Kristoffersson U, Lindgren AG. A stroke gene panel
236 for whole-exome sequencing. *European journal of human genetics : EJHG.* 2018.
- 237 7. Zhou S, Dion PA, Rouleau GA. Genetics of Intracranial Aneurysms. *Stroke.* 2018;49(3):780-787.
- 238 8. Vlak MH, Algra A, Brandenburg R, Rinkel GJ. Prevalence of unruptured intracranial aneurysms,
239 with emphasis on sex, age, comorbidity, country, and time period: a systematic review and meta-
240 analysis. *The Lancet Neurology.* 2011;10(7):626-636.
- 241 9. Kleinloog R, van 't Hof FN, Wolters FJ, et al. The association between genetic risk factors and the
242 size of intracranial aneurysms at time of rupture. *Neurosurgery.* 2013;73(4):705-708.
- 243 10. Bakker MK, van der Spek RAA, van Rheenen W, et al. Genome-wide association study of
244 intracranial aneurysms identifies 17 risk loci and genetic overlap with clinical risk factors. *Nat*
245 *Genet.* 2020;52(12):1303-1313.
- 246 11. Tak YG, Farnham PJ. Making sense of GWAS: using epigenomics and genome engineering to
247 understand the functional relevance of SNPs in non-coding regions of the human genome.
248 *Epigenetics Chromatin.* 2015;8:57.
- 249 12. de Leeuw CA, Mooij JM, Heskes T, Posthuma D. MAGMA: generalized gene-set analysis of
250 GWAS data. *PLoS Comput Biol.* 2015;11(4):e1004219.
- 251 13. Huang L, Zhang H, Cheng CY, et al. A missense variant in FGD6 confers increased risk of
252 polypoidal choroidal vasculopathy. *Nat Genet.* 2016;48(6):640-647.
- 253 14. Diluna ML, Amankulor NM, Johnson MH, Gunel M. Cerebrovascular disease associated with
254 Aarskog-Scott syndrome. *Neuroradiology.* 2007;49(5):457-461.
- 255 15. Cıkla U, Giampietro PF, Sadighi A, Başkaya MK. Ruptured Posterior Communicating Artery
256 Aneurysm Associated with Aarskog Syndrome. *NMC Case Rep J.* 2015;2(3):85-87.
- 257 16. Human genomics. The Genotype-Tissue Expression (GTEx) pilot analysis: multitissue gene
258 regulation in humans. *Science (New York, NY).* 2015;348(6235):648-660.
- 259 17. Guo X, Jing C, Li L, et al. Down-regulation of VEZT gene expression in human gastric cancer
260 involves promoter methylation and miR-43c. *Biochemical and biophysical research*
261 *communications.* 2011;404(2):622-627.

- 262 18. Yasuno K, Bakircioğlu M, Low SK, et al. Common variant near the endothelin receptor type A
263 (EDNRA) gene is associated with intracranial aneurysm risk. *Proc Natl Acad Sci U S A*.
264 2011;108(49):19707-19712.
- 265 19. Winkler EA, Kim CN, Ross JM, et al. A single-cell atlas of the normal and malformed human brain
266 vasculature. *Science (New York, NY)*. 2022:eabi7377.
- 267 20. Freund MK, Burch KS, Shi H, et al. Phenotype-Specific Enrichment of Mendelian Disorder Genes
268 near GWAS Regions across 62 Complex Traits. *Am J Hum Genet*. 2018;103(4):535-552.
- 269 21. GWAS to the people. *Nat Med*. 2018;24(10):1483.
- 270 22. Dudbridge F. Power and predictive accuracy of polygenic risk scores. *PLoS Genet*.
271 2013;9(3):e1003348.
- 272 23. Kurki MI, Gaál EI, Kettunen J, et al. High risk population isolate reveals low frequency variants
273 predisposing to intracranial aneurysms. *PLoS Genet*. 2014;10(1):e1004134.
- 274 24. Barak T, Ristori E, Ercan-Sencicek AG, et al. PPIL4 is essential for brain angiogenesis and
275 implicated in intracranial aneurysms in humans. *Nat Med*. 2021;27(12):2165-2175.
- 276 25. Bilguvar K, Yasuno K, Niemelä M, et al. Susceptibility loci for intracranial aneurysm in European
277 and Japanese populations. *Nat Genet*. 2008;40(12):1472-1477.
- 278 26. Yasuno K, Bilguvar K, Bijlenga P, et al. Genome-wide association study of intracranial aneurysm
279 identifies three new risk loci. *Nat Genet*. 2010;42(5):420-425.
- 280 27. Foroud T, Koller DL, Lai D, et al. Genome-wide association study of intracranial aneurysms
281 confirms role of Anril and SOX17 in disease risk. *Stroke*. 2012;43(11):2846-2852.
- 282 28. Low SK, Takahashi A, Cha PC, et al. Genome-wide association study for intracranial aneurysm in
283 the Japanese population identifies three candidate susceptible loci and a functional genetic
284 variant at EDNRA. *Human molecular genetics*. 2012;21(9):2102-2110.
- 285 29. Foroud T, Lai D, Koller D, et al. Genome-wide association study of intracranial aneurysm
286 identifies a new association on chromosome 7. *Stroke*. 2014;45(11):3194-3199.
- 287 30. Laarman MD, Vermunt MW, Kleinloog R, et al. Intracranial Aneurysm-Associated Single-
288 Nucleotide Polymorphisms Alter Regulatory DNA in the Human Circle of Willis. *Stroke*.
289 2018;49(2):447-453.
- 290 31. Chenbhanich J, Hu Y, Hetts S, et al. Segmental overgrowth and aneurysms due to mosaic
291 PDGFRB p.(Tyr562Cys). *Am J Med Genet A*. 2021;185(5):1430-1436.
- 292 32. Karasozen Y, Osbun JW, Parada CA, et al. Somatic PDGFRB Activating Variants in Fusiform
293 Cerebral Aneurysms. *Am J Hum Genet*. 2019;104(5):968-976.
- 294 33. Winkler EA, Wu D, Gil E, et al. Endoluminal Biopsy for Molecular Profiling of Human Brain
295 Vascular Malformations. *Neurology*. 2022.
- 296 34. Hale AT, Akinnusotu O, He J, et al. Genome-Wide Association Study Identifies Genetic Risk
297 Factors for Spastic Cerebral Palsy. *Neurosurgery*. 2021;89(3):435-442.
- 298 35. Hale AT, Bastarache L, Morales DM, Wellons JC, 3rd, Limbrick DD, Jr., Gamazon ER. Multi-omic
299 analysis elucidates the genetic basis of hydrocephalus. *Cell Rep*. 2021;35(5):109085.

- 300 36. Fairley S, Lowy-Gallego E, Perry E, Flicek P. The International Genome Sample Resource
301 (IGSR) collection of open human genomic variation resources. *Nucleic Acids Res.*
302 2020;48(D1):D941-d947.
- 303 37. Bycroft C, Freeman C, Petkova D, et al. The UK Biobank resource with deep phenotyping and
304 genomic data. *Nature.* 2018;562(7726):203-209.
- 305 38. Willer CJ, Li Y, Abecasis GR. METAL: fast and efficient meta-analysis of genomewide association
306 scans. *Bioinformatics.* 2010;26(17):2190-2191.
- 307 39. Hale AT, He J, Akinnusotu O, et al. Genome-wide association study reveals genetic risk factors
308 for trigeminal neuralgia. *medRxiv.* 2021:2021.2002.2008.21251349.
- 309 40. Hale AT, Zhou D, Sale RL, et al. The genetic architecture of human infectious diseases and
310 pathogen-induced cellular phenotypes. *medRxiv.* 2021:2020.2007.2019.20157404.
- 311 41. Caranci F, Briganti F, Cirillo L, Leonardi M, Muto M. Epidemiology and genetics of intracranial
312 aneurysms. *Eur J Radiol.* 2013;82(10):1598-1605.
- 313 42. Little J, Higgins JP, Ioannidis JP, et al. STrengthening the REporting of Genetic Association
314 Studies (STREGA): an extension of the STROBE statement. *PLoS medicine.* 2009;6(2):e22.
- 315 43. The GTEx Consortium atlas of genetic regulatory effects across human tissues. *Science (New
316 York, NY).* 2020;369(6509):1318-1330.
- 317 44. Li YI, Knowles DA, Humphrey J, et al. Annotation-free quantification of RNA splicing using
318 LeafCutter. *Nature genetics.* 2018;50(1):151-158.
- 319 45. Ward LD, Kellis M. HaploReg: a resource for exploring chromatin states, conservation, and
320 regulatory motif alterations within sets of genetically linked variants. *Nucleic Acids Res.*
321 2012;40(Database issue):D930-934.
322
- 323

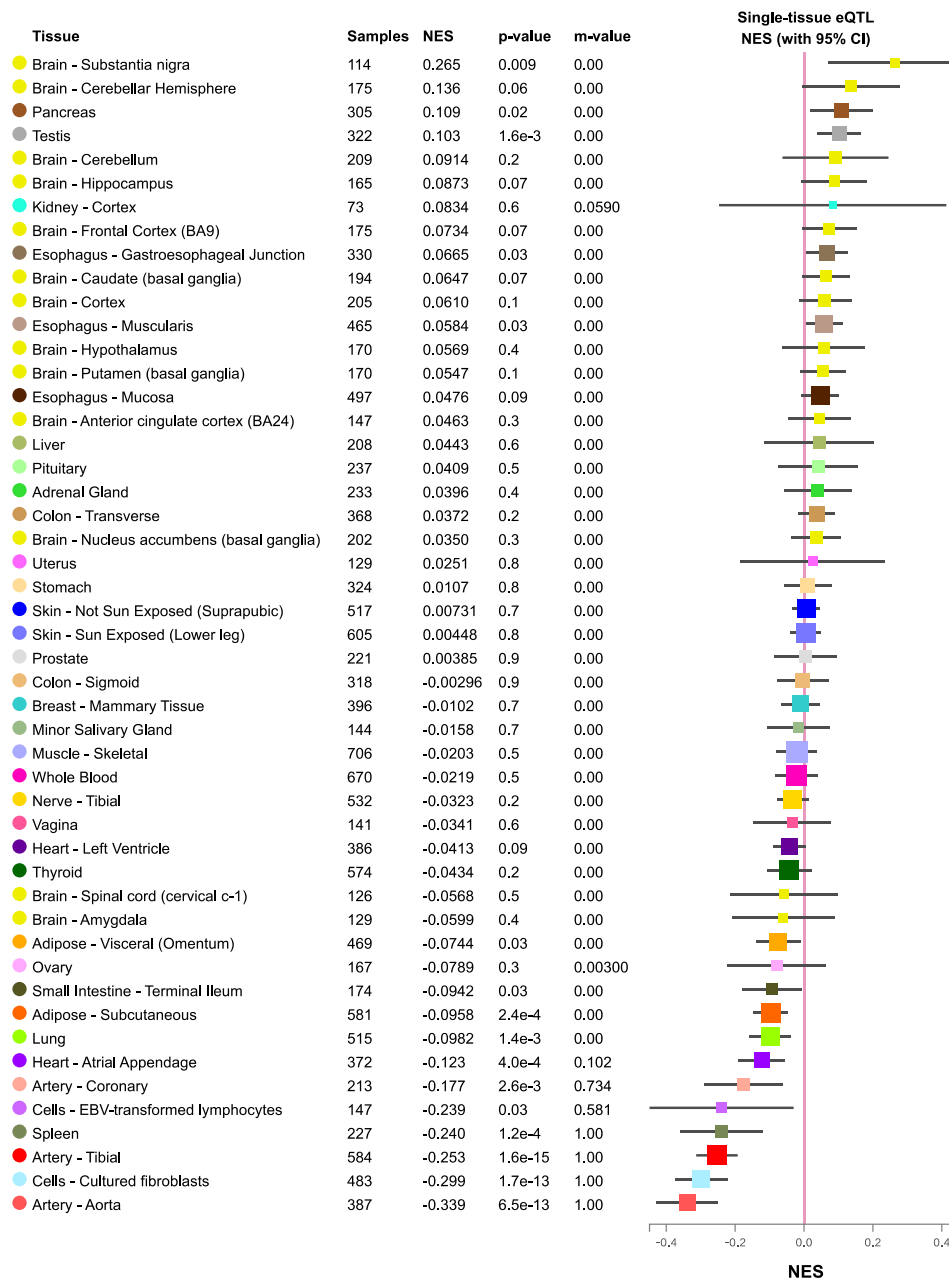


2 **Figure 1.** Genome-wide association study (GWAS) of ruptured intracranial aneurysms (rIA). (A)
3 Manhattan plot of our rIA GWAS containing 84,353 individuals (7,843 rIA cases and 76,510 controls) and
4 identify 5 independent genetic loci reaching genome-wide significance ($p < 5.0 \times 10^{-8}$) for rIA: rs73392700
5 (*CDKN2B*, OR=1.12), rs6841581 (*EDNRA*, OR=0.77), rs11661542 (*RBBP8*, OR=0.84), rs62516550
6 (*RP1*, OR=1.20), and rs12310399 (*FDG6*, OR=1.16). The horizontal red line delineates the threshold for
7 genome-wide significance ($p = 5.0 \times 10^{-8}$). (B) Quantile-Quantile (Q-Q) plot demonstrating adequate
8 genomic control for population stratification. These data are visualized using the cd.hugemap.org.
9



10
11
12

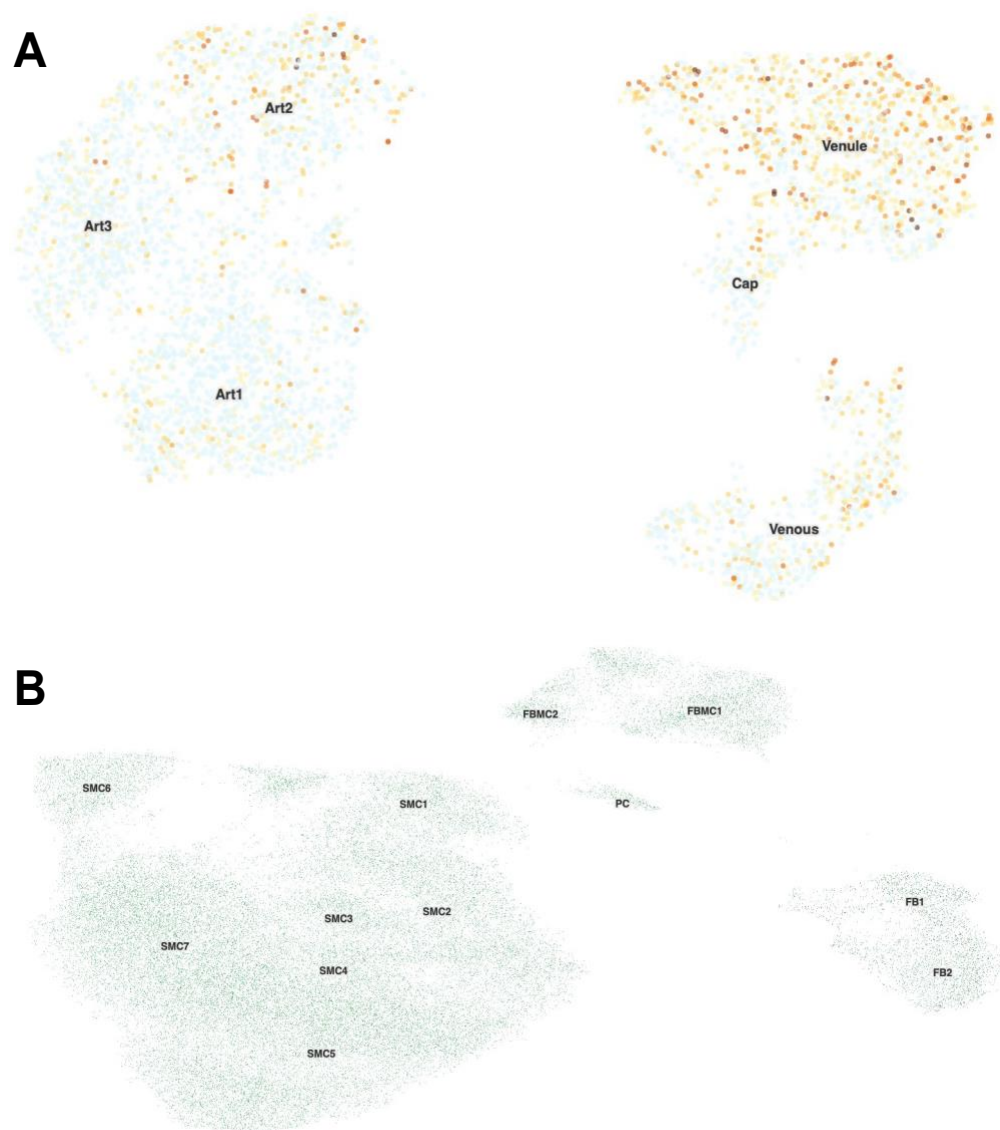
Figure 2. LocusZoom plot after fine-mapping of rIA-associated SNPs in the *FGD6* locus.



13
 14 **Figure 3.** Expression quantitative trait loci (eQTL) analysis of the *FGD6* locus sentinel variant
 15 (rs12310399) across 49 tissues in GTEx. NES = normalized enrichment score. The m-value is the
 16 posterior probability from MetaSoft which is the probability than an eQTL effect exists in the tested cross-
 17 tissue analysis ^{46,47}. A m-value < 0.01 is highly suggestive that an eQTL effect does not exist, whereas a
 18 m-value > 0.9 is highly predictive of an eQTL effect.
 19



21 **Figure 4.** Functional mapping of the *FGD6* locus in arterial tissue. Expression quantitative trait loci
22 (eQTL), splicing quantitative trait loci (sQTL), and linkage disequilibrium (LD) mapping of the *FGD6* locus.
23 Abbreviations are as follows: Transcription end site (TES), Transcription start site (TSS), Aortic artery
24 (ARTORT), Tibial artery (ARTTBL). Data were visualized using gtexportal.org.
25
26



27
28 **Figure 5.** Single-cell RNA sequencing (scRNA-seq) analysis of *FGD6* across adult human brain (A)
29 endothelial and (B) perivascular cells obtained from normal resected brain tissue. Endothelial cells were
30 characterized into 3 arterial lineages (Art1-3), capillary (cap), venous, and venule cell-lineages. Blue dots
31 indicate undetectable expression of *FGD6*, and increasingly dark shades of orange indicate higher
32 expression of *FGD6*. Perivascular cells were partitioned into 7 smooth muscle (SMC1-7), 2 fibroblast
33 (FB), 2 fibromyocyte (FbM1-2), and 1 pericyte (PC) lineage. Green dots indicate undetectable expression
34 of *FGD6* and red dots indicate higher expression of *FGD6*. UMAP data visualization and gene-
35 expression markers for cell populations was performed using the UCSC Cell Browser.