

1
2 **Association of frailty, age, and biological sex with SARS-CoV-2 mRNA vaccine-induced**
3 **immunity in older adults**
4

5 Janna R. Shapiro¹, Han-Sol Park², Tihitina Y. Aytenfisu³, Christopher Caputo², John Lee², Trevor
6 S. Johnston³, Huifen Li⁴, Pricila Hauk⁵, Henning Jacobsen², Yukang Li⁴, Engle Abrams⁴, Andrew J.
7 Kocot⁵, Tianrui Yang⁴, Yushu Huang⁴, Steven M. Cramer⁵, Michael J. Betenbaugh⁶, Amanda K.
8 Debes¹, Rosemary Morgan¹, Aaron M. Milstone^{7,8}, Andrew H. Karaba³, Sean X. Leng^{2,4,9}, and
9 Sabra L. Klein^{1,2}
10

11 ¹ Department of International Health, Johns Hopkins Bloomberg School of Public Health,
12 Baltimore, MD, USA.

13 ² W. Harry Feinstone Department of Molecular Microbiology and Immunology, Johns Hopkins
14 Bloomberg School of Public Health, Baltimore, MD, USA.

15 ³ Department of Medicine, Johns Hopkins University School of Medicine, Baltimore, MD, USA.

16 ⁴ Division of Geriatric Medicine and Gerontology, Department of Medicine, Johns Hopkins
17 University School of Medicine, Baltimore, MD, USA.

18 ⁵ Department of Chemical and Biological Engineering, Rensselaer Polytechnic Institute, Troy,
19 NY, US

20 ⁶ Department of Chemical and Biomolecular Engineering, Johns Hopkins Whiting School of
21 Engineering, Baltimore, MD, USA

22 ⁷ Department of Pediatrics, Johns Hopkins University School of Medicine, Baltimore, MD, USA.

23 ⁸ Department of Epidemiology, Johns Hopkins Bloomberg School of Public Health, Baltimore,
24 MD, USA

25 ⁹ Johns Hopkins Center on Aging and Immune Remodeling, Baltimore, MD, USA
26

27 **Key words:** antibody response, ACE2, sex differences, Delta, Omicron
28

29 **Running title:** COVID-19 vaccination in older adults

30 **Manuscript statistics:**

31 Abstract: 248

32 Main text: 3233

33 Figure: 5

34 Tables: 2

35 References: 49
36

37 **Contact information:** Address correspondence to Sabra L. Klein (sklein2@jhu.edu) or Sean X.
38 Leng (sleng1@jhmi.edu)
39

40 **Brief summary:** SARS-CoV-2 mRNA vaccination induces greater antibody response in older
41 females than males, and age and frailty reduce responses in males only. These effects are
42 eliminated by a third vaccine dose, highlighting the need for third dose coverage, especially in
43 older males.
44

45 **Abstract**

46 **Background:** Male sex and old age are risk factors for severe COVID-19, but the intersection of
47 sex and aging on antibody responses to SARS-CoV-2 vaccines has not been characterized.

48 **Methods:** Plasma samples were collected from older adults (75-98 years) before and after
49 three doses of SARS-CoV-2 mRNA vaccination, and from younger adults (18-74 years) post-dose
50 two, for comparison. Antibody binding to SARS-CoV-2 antigens (spike protein [S], S-receptor
51 binding domain [S-RBD], and nucleocapsid [N]) and functional activity against S were measured
52 against the vaccine virus and variants of concern (VOC).

53 **Results:** Vaccination induced greater antibody titers in older females than males, with both age
54 and frailty associated with reduced antibody responses to vaccine antigens in males, but not
55 females. ACE2 binding inhibition declined more than anti-S or anti-S-RBD IgG in the six months
56 following the second dose (28-fold vs. 12- and 11-fold decreases in titer). The third dose
57 restored functional antibody responses and eliminated disparities caused by sex, age, and
58 frailty in older adults. Responses to the VOC were significantly reduced relative to the vaccine
59 virus, with older males having lower titers to the VOC than females. Older adults had lower
60 responses to the vaccine and VOC viruses than younger adults, with disparities being greater in
61 males than females.

62 **Conclusion:** Older and frail males may be more vulnerable to breakthrough infections due to
63 low antibody responses before receipt of a third vaccine dose. Promoting third dose coverage
64 in older adults, especially males, is crucial to protecting this vulnerable population.

65 **Introduction**

66 The disproportionate burden of COVID-19 in older adults was recognized early in the
67 pandemic [1-3]. The phase III trials for the two mRNA vaccines (mRNA-1273 and BNT162b2)
68 revealed high efficacy in older adults [4, 5], for whom immunosenescence is thought to impair
69 vaccine-induced immune responses [6]. Clinical trials, however, often fail to represent the
70 oldest and frailest subset of the population. Accordingly, wide-spread use of the vaccine in
71 long-term care facility residents revealed that old age is a risk factor for poor antibody
72 responses [7-9].

73 Male sex also is a significant predictor of severe COVID-19 outcomes at older ages [10-
74 14]. There is extensive evidence that the effects of aging on the immune system differ between
75 the sexes, including that immunosenescence occurs at a slower rate in females than males [15,
76 16]. The implications of biological sex are evident in the response to repeated seasonal
77 influenza vaccination in older adults, where pre-vaccination titers decrease with age in males
78 but not in females, suggesting that older females enter each influenza season with greater
79 immunity than their male counterparts [17]. In the context of SARS-CoV-2 vaccines, however,
80 studies have failed to provide sex-disaggregated data within each age group [18, 19], and little
81 is known about how biological sex may modify the effects of age, and age-related factors like
82 frailty, on vaccine immunogenicity. Here, we investigate sex differences and sex-specific effects
83 of aging in the humoral immune response to the vaccine virus and variants of concern (VOC)
84 induced by three doses of a SARS-CoV-2 mRNA vaccine in a cohort of adults above 75 years of
85 age. We illustrate that the age- and frailty-associated declines in antibody responses occur to a
86 greater extent in males than females.

87

88 **Methods**

89 **Cohorts**

90 Older adults (75-98 years) were recruited from the Johns Hopkins Longitudinal Influenza

91 Immunization Study of Aging over 75 years of age (JH LIISA 75+) cohort [17] (**Table 1**).

92 Individuals who had worsening or new-onset of immune-modulating conditions (e.g.,

93 rheumatoid arthritis, hematologic malignancies, or other cancers) or a previous diagnosis of

94 COVID-19 were excluded. Participants came to the Johns Hopkins Bayview Medical Center, or

95 study visits were conducted at participants' homes, as needed. At pre-vaccination visits (Pre),

96 frailty status was assessed using the Fried Frailty Phenotype [20] and a baseline blood draw was

97 obtained. Subsequent receipt of two (primary vaccination series) or three doses of a SARS-CoV-

98 2 mRNA vaccine, either mRNA-1273 or BNT162b2, was confirmed via vaccination cards, and

99 blood samples were collected 14-30 days (i.e., average ≤ 1 month [M]) post dose 1 (<1M_PD1)),

100 14-30 days post dose 2 (<1M_PD2), 90 (± 15) days post dose 2 (3M_PD2), 180 (± 15) days post

101 dose 2 (6M_PD2), and 14-60 days post dose 3 (1M_PD3).

102 Younger adult healthcare workers from the Johns Hopkins Health System were also

103 sampled as a comparison group. Recruitment of these younger adults has been reported

104 elsewhere [21]. To be eligible for the present study, participants needed to be younger than 75

105 years, not have a history of COVID-19, and have two samples collected at least 90 days apart,

106 with the first one collected at least 14 days after receiving the second dose of a SARS-CoV-2

107 mRNA vaccine. Due to low plasma volumes, these samples were not tested for ACE2-inhibition,

108 and data are missing for antibody titration against antigens from VOC for some participants.

109 Exact sample sizes are included in figure legends. For both cohorts, written, informed consent
110 was obtained from all participants, and the study protocols were approved by the Johns
111 Hopkins School of Medicine Institutional Review Board.

112

113 **Laboratory methods**

114 Detailed ELISA and ACE2 inhibition methods can be found in the **Supplemental**
115 **materials**. Briefly, plasmids expressing recombinant nucleocapsid (N), Spike (S), or S receptor-
116 binding domain (S-RBD) of the vaccine strain and the Alpha, Delta, and Omicron variants of
117 SARS-CoV-2 were engineered at Johns Hopkins as described previously [22] or obtained through
118 the NCI Serological Sciences Network for COVID-19 [23] (**Supplemental Table 1**). Recombinant
119 proteins were used to coat plates for indirect ELISA measuring plasma IgG against N, S, or S-
120 RBD. Results were expressed as the \log_{10} -transformed area under the curve (AUC) generated
121 from ten three-fold serial plasma dilutions, as previously described [22]. The ability of plasma
122 antibodies to inhibit ACE2 binding to S was measured using Meso Scale Diagnostics (MSD) V-
123 PLEX SARS-CoV-2 ACE2 kits according to the manufacturer's protocol at a dilution of 1:100 [24].
124 Data were expressed as the \log_{10} -transformed concentration ($\mu\text{g}/\text{ml}$) of ACE2-inhibiting
125 antibodies (ACE2iAb), which are equivalent to anti-S monoclonal antibodies. IgG binding to
126 seasonal and epidemic β -coronavirus S proteins were measured using the multiplex
127 chemiluminescent MSD V-PLEX COVID-19 Coronavirus Panel 3 (IgG) Kit according to the
128 manufacturer's protocol at a dilution of 1:5000.

129

130 **Statistical methods**

131 Longitudinal data in the older adult cohort were analyzed using mixed-effects models
132 with random intercepts on the individual to account for repeated measures, and interaction
133 terms between study timepoint (categorical) and sex (self-report), age (categorized based on
134 terciles) and frailty status. Linear regression models including interaction terms between sex
135 and age or frailty were used to investigate sex-specific effects at individual timepoints. To
136 compare the older and younger cohorts, the number of days post-dose 2 was used as a
137 continuous predictor and cubic splines were included to study non-linear relationships [25].
138 Cubic spline knots were placed at 30-, 100-, and 160-days post-vaccination, points chosen to
139 approximately divide the data into quartiles. Mixed-effects models included an interaction term
140 between time and cohort and were repeated separately for males and females. Differences
141 between cohorts were tested at three sentinel points (14-, 90- and 180- days post dose 2). All
142 p-values <0.05 were considered statistically significant. Analyses were performed in Stata 15
143 (StataCorp).

144

145 **Results**

146 **Study population demographics**

147 Eighty-six older adults were recruited from the Baltimore area, with three participants
148 excluded from analysis due to high N titers (i.e., titer >180), suggesting prior infection
149 (**Supplemental figure 1**). One additional participant was excluded from analysis due to evidence
150 of severe immunosuppression, such that their responses could not be accurately captured in
151 population-level models. Characteristics of the 82 participants included in analysis are detailed

152 in **Table 1**. The population had more females (59%) than males, and a median age of 84 years.
153 Most participants were classified as pre-frail (64%) and a greater percentage of males than
154 females were frail. All participants received two doses of a SARS-CoV-2 mRNA vaccine, with the
155 majority (70%) receiving BNT162b2. Sixty participants (73%) received a third vaccine dose at
156 least six months after the second dose.

157 Demographic information for the younger adult cohort is provided in **Table 2**. Of 84
158 eligible participants from the affiliated study [21], three were excluded due to high anti-N titers
159 (**Supplemental figure 1**). In the younger population included in analysis, there were more
160 females than males (60% vs 40%), most participants were between 30 and 49 years of age, and
161 a majority of samples were collected 21-43 days and 125-150 days after receipt of the second
162 vaccine dose.

164 **Older females mount greater responses to vaccination than older males**

165 Among older adults, IgG binding to S and S-RBD of the vaccine strain increased
166 significantly in response to the first two vaccine doses and then decreased significantly in the 6
167 months following immunization ($p < 0.001$ for all comparisons; **Figure 1A-B & D**). Geometric
168 mean titers (GMT) decreased 11- and 12-fold, for S and S-RBD, respectively, from <1M_PD2 to
169 6M_PD2 (**Supplemental Table 2**). Females mounted greater IgG responses to S and S-RBD
170 relative to their baseline than males at all post-vaccination timepoints ($p < 0.02$ for all
171 comparisons, **Figure 1A-B & D**). Older females also had greater titers of IgG against S and S-RBD
172 at each visit, and this difference was significant for anti-S IgG at <1M_PD1 ($p = 0.020$) and at
173 3M_PD2 ($p = 0.026$). After receipt of a third vaccine dose, anti-S and S-RBD titers increased

174 significantly in both males and females ($p < 0.001$), leading to GMT that were 2- and 4-fold
175 greater than the post-dose 2 peak for S and S-RBD, respectively (**Supplemental Table 2**).

176 The functional ability of antibodies to inhibit S from binding to ACE2 followed similar
177 kinetics as anti-S IgG in response to the primary immunization series, but then decreased more
178 rapidly in the 6-months following immunization, resulting in a 28-fold decrease in GMT from
179 $< 1M_PD2$ to $6M_PD2$ (**Figure 1C & Supplemental Table 2**). By $6M_PD2$, 79% of males and 77%
180 of females had undetectable ACE2iAb. Sex differences were apparent at all timepoints and
181 were significant at $3M_PD2$, with females mounting stronger responses than males ($p = 0.046$).
182 Post dose 3, all but one participant had detectable ACE2iAb, and the geometric mean was 7-
183 fold higher than the post-dose 2 peak (**Supplemental Table 2**). Despite differences in kinetics
184 over time between the binding and functional assays, the three readouts of humoral immunity
185 correlated well with each other (**Supplemental figure 2**). As expected, correlations became
186 weaker at the lower range of the ACE2-inhibition assay. Taken together, these data suggest that
187 older females mount stronger response to SARS-CoV-2 vaccination than males, and that a third
188 vaccine dose is necessary to boost functional antibody responses in this population.

189

190 **The effects of age and frailty are greater in males than in females**

191 We next assessed the overall and sex-specific effects of age on the humoral response to
192 vaccination. Among all older participants, age was significantly associated with reduced anti-S
193 IgG, anti-S-RBD IgG, and ACE2iAb in the six months following the primary vaccination series
194 (**Figure 2A-C**). This effect was largely driven by the oldest tercile of the population (≥ 88 years).
195 The percent of participants with undetectable ACE2iAb by $6M_PD2$ increased from 67% in the

196 youngest tercile (75-82 years) to 85% in the oldest tercile. In sex-disaggregated analyses
197 focusing on the 3M_PD2 timepoint (i.e., a time point when all study participants were
198 represented), age significantly impaired responses in males, but not females, leading to
199 statistically significant sex differences in the effect of age for anti-S IgG ($p=0.025$) and ACE2iAb
200 ($p = 0.001$; **Figure 2D-F**). The trend of greater age effects in males than females was consistent
201 at other timepoints following the primary immunization series (**Supplemental figure 3A-F**), and
202 by 6M_PD2, 100% of males in the oldest age group, compared to 77% of females, had
203 undetectable ACE2iAB. After receipt of a third dose, the effect of age was no longer significant
204 in the overall population or within either sex, suggesting that a third vaccine dose eliminated
205 sex and age disparities in vaccine-induced immunity (**Figure 2A-C & Supplemental figure 3G-I**).

206 Frailty had an important overall effect, with frail participants mounting significantly
207 weaker responses to vaccination than robust and pre-frail participants (**Figure 2G-I**). By
208 6M_PD2, 90% of frail participants had undetectable ACE2iAb, compared to 75% of pre-frail and
209 robust participants. Like with age, the effect of frailty at 3M_PD2 was significant in males, but
210 not females for all assays (**Figure 2J-L**). No significant sex differences in the effect of frailty were
211 observed, however, and trends were less consistent over time (**Supplemental figure 3J-R**). The
212 effect of frailty was also attenuated by the third dose but remained significant for ACE2iAb
213 ($p=0.005$; **Figure 2I**). From these data, we conclude that the effects of age and frailty in older
214 adults are largely driven by males, not females.

215

216 **Antibody responses to VOC are reduced relative to the vaccine virus**

217 The breadth of vaccine-induced immunity in older adults was assessed by measuring
218 anti-S IgG to the Alpha, Delta, and Omicron variants. Antibody titers to the Alpha and Delta
219 variants were similar to each other and were both significantly reduced relative to the vaccine
220 virus (2-4-fold lower GMT, $p < 0.001$; **Figure 3A & Supplemental Table 3**). Titers to Omicron were
221 further reduced relative to the vaccine virus (>5 -fold difference in GMT) and the Alpha and
222 Delta variants ($p < 0.001$ for all comparisons; **Figure 3A & Supplemental Table 3**). Differences
223 between anti-S IgG to the vaccine virus and the VOC were attenuated at 1M_PD3 (fold
224 difference in GMT < 1.5 for Alpha and Delta and < 4 for Omicron) but remained significant
225 ($p < 0.0001$ for all comparisons). At 1M_PD3, anti-Alpha S IgG was significantly higher than anti-
226 Delta S IgG ($p < 0.001$). ACE2iAb to the Alpha and Delta variants also tended to be lower than to
227 the vaccine strain, but these differences were smaller in magnitude than for anti-S IgG and
228 were not statistically significant at all timepoints (**Figure 3B-C**). In sex-disaggregated analyses,
229 females had higher responses to the VOC than males, and this difference was significant for
230 anti-Delta S IgG ($p = 0.038$) and ACE2iAb against the Alpha variant ($p = 0.034$) at 3M_PD2 (**Figure**
231 **3D-E & Supplemental figure 4**).

232

233 **SARS-CoV-2 vaccination induces IgG responses to other β -coronaviruses**

234 To investigate the cross-reactivity of the vaccine-induced humoral response, IgG titers
235 to seasonal and epidemic β -coronaviruses were measured in the older adults. Anti-HKU1 IgG
236 titers increased in response to the primary vaccination series, but fell by 3M_PD2 (**Figure 4A**).
237 Titers of IgG recognizing OC43, MERS-CoV, and SARS-CoV-1 increased significantly in plasma

238 samples collected after SARS-CoV-2 vaccination and remained elevated above baseline levels
239 for 6 months (**Figure 4B-D**). Furthermore, titers to all four β -coronaviruses were significantly
240 elevated by the third vaccine dose (**Figure 4A-D**). Notably, IgG binding to the two seasonal β -
241 coronaviruses (HKU1 and OC43) was elevated at baseline, indicating widespread exposure to
242 these viruses in this population. Increased antibody titers against related β -coronaviruses
243 following SARS-CoV-2 vaccination suggests possible “back-boosting”, as observed for influenza
244 vaccines [26] and in response to SARS-CoV-2 vaccination in the general adult population [27,
245 28]. These results indicate that SARS-CoV-2 vaccination increases broad antibody responses to
246 diverse β -coronaviruses in older adults.

247

248 **Differences between older and younger cohorts are driven by males**

249 To further investigate the sex-specific effects of aging, antibody kinetics against vaccine,
250 Alpha, and Delta antigens were compared between the younger and older adult cohorts in the
251 six months following the primary vaccination series. In the whole population, anti-vaccine S IgG
252 was significantly lower in older than younger adults ($p < 0.001$ at 14 days post-vaccination,
253 $p = 0.004$ at 90 days, and $p = 0.026$ at 180 days) (**Figure 5A**). In sex-disaggregated analyses,
254 differences between the older and younger adults were significant among males at all three
255 sentinel points ($p = 0.004$ at 14 days post-vaccination, $p = 0.005$ at 90 days, and $p = 0.019$ at 180
256 days), but only significant among females at 14-days post vaccination ($p = 0.004$) (**Figure 5B-D**).
257 In addition, the magnitude of the difference between the mean of the older cohort and the
258 mean of younger cohort was consistently larger for males than for females across the three
259 sentinel points (**Figure 5D**). Similar results were observed for anti-Alpha and Delta S IgG (**Figure**

260 **5E-L).** There were no significant differences in the rate of waning between older and younger
261 adults, suggesting that antibody kinetics are not age-dependent.

262

263 **Discussion**

264 In this longitudinal study, older adult females mounted stronger antibody responses to
265 SARS-CoV-2 mRNA vaccination than older males, and age and frailty were associated with
266 reduced responses in males but not females. While the kinetics of antibody waning in the six
267 months following immunization were not age-dependent, older adults mounted weaker initial
268 responses to vaccination, such that their antibody titers remained lower than younger adults
269 throughout the follow-up period. A sex-specific effect of age was observed both within the
270 older cohort and when comparing younger and older adults, in which age-associated reductions
271 in humoral immunity were greater among males than females. In the older adult cohort, receipt
272 of a third vaccine dose largely eliminated disparities caused by sex, age, and frailty in antibody
273 responses, with the exception of ACE2iAb, which remained lower in frail compared to non-frail
274 or pre-frail participants. The effect of age on SARS-CoV-2 vaccine responses has been studied
275 [7-9, 29-33], but the sex differential impact of age has not been reported previously.
276 Furthermore, studies investigating frailty have not found an effect on antibody responses [34-
277 36], but have reported that frailty increases the risk of post-vaccination breakthrough infection
278 [37, 38], suggesting that the immunogenicity studies may have been under-powered to observe
279 an effect of frailty or that lack of consideration of biological sex obscured the effect.

280 The inclusion of three measures of humoral immunity and four SARS-CoV-2 viruses
281 allowed us to capture the breadth and depth of vaccine responses in this vulnerable population.

282 For measurement of functional antibodies, ACE2-inhibition assays are a strong surrogate of live
283 virus neutralization [24, 39]. In terms of responses to VOC, the reductions in anti-S IgG to the
284 Alpha and Delta variants observed in the older adults were similar to other reports in the
285 general population [40]. For the Omicron variant, while reductions in live-virus neutralization in
286 vaccinated serum from the general adult population have been reported, there were no
287 reductions in anti-Omicron S IgG [41, 42]. Given the importance of neutralizing and non-
288 neutralizing functions of IgG in conferring protection against SARS-CoV-2 [43, 44], the markedly
289 lower anti-Omicron S IgG level in older adults, that persisted after receipt of a third vaccine
290 dose, suggests that this population may be more vulnerable to disease caused by the Omicron
291 variant than younger adults, and that reformulation of vaccines to target the Omicron variant
292 would be beneficial.

293 Our study had several strengths and limitations. Some of the sex-specific effects
294 observed were differences among males that were absent among females, without statistical
295 evidence of a sex difference (i.e., non-significant sex interaction terms) [45]. It is important to
296 note that our findings were generated from *post-hoc* analyses that were not necessarily
297 powered to investigate sex differences, and conclusions are limited by small samples sizes in
298 certain sub-groups. Given the small sample sizes, it is not surprising that statistically significant
299 sex differences were not consistently observed. Particularly for age-based analyses, however,
300 the consistency of trends between assays and timepoints, coupled with statistically significant
301 sex differences in the effect of aging at 3M_PD2, lend credibility to the conclusion that the
302 effects of age on antiviral antibody responses are driven by males. Further supporting these
303 findings are similar sex-specific effects of age observed following seasonal influenza vaccination

304 in both younger and older adults [17, 46]. While it is important to not over-interpret ‘within-
305 sex’ differences as ‘between-sex’ differences [47], there is considerable value in studying
306 differences within males or females [48, 49]. This is particularly true given the uniqueness of
307 the community-dwelling older adult cohort, which represent the ‘oldest’ old subset, and are
308 distinct from the population of long-term care facility residents that has been the focus of much
309 of the SARS-CoV-2 research in older adults.

310 There also were missing data in the older adult cohort, particularly at the <1M_PD1
311 timepoint. These missing data did not, however, depart from the missing at random
312 assumption, and thus multi-level models were used to account for missingness. Second, the
313 timing of sample collection was different in the older and younger cohorts. To account for this,
314 analyses that compared the two groups used days post-vaccination as a continuous variable.
315 Finally, we have not investigated the functional antibody responses to the Omicron variant, nor
316 have we included measures of cellular immunity. These analyses are on-going.

317 In conclusion, we report that both age and frailty impair antibody responses to the
318 primary series of SARS-CoV-2 vaccination in older males, and that these disparities are largely
319 eliminated by receipt of a third vaccine dose. Given that male sex is an important risk factor for
320 severe outcomes from COVID-19 [10-14], the finding that older and frail males may be
321 vulnerable to breakthrough infections due to low antibody responses, particularly before a
322 third vaccine dose is administered, is of considerable public health importance. These findings
323 emphasize that increasing third dose coverage among older males is crucial to protecting this
324 vulnerable population from SARS-CoV-2.

325

326 **Funding**

327 This work was supported by the NIH/NIA Specialized Center of Research Excellence U54
328 AG062333 awarded to S.L.K. and the NIH/NCI COVID-19 Serology Center of Excellence (U54
329 CA260492 awarded to S.L.K. This work was also supported by funding from the Milstein Medical
330 Asian American Partnership (MMAAP) Foundation of USA as well as Howard and Abby Milstein
331 Foundation awarded to S.X.L, and by the generosity of the collective community of donors to
332 the Johns Hopkins University School of Medicine and the Johns Hopkins Health System for
333 Covid-19 research. J.R.S was supported by a training award from the Fonds de recherche du
334 Québec – Santé (File #287609).

335

336 **Acknowledgements**

337 The authors thank the participants, as well as Denise C. Kelly and Eileen Sheridan-Malone for
338 collection of samples. The authors thank Emily Egbert for coordination of samples and
339 healthcare worker patients, and Joseph Shiloach, David Quan, and Yesh Muralidharan for
340 technical assistance.

341

342 **References**

- 343 1. Kang S-J, Jung SI. Age-related morbidity and mortality among patients with COVID-19.
344 *Infection & chemotherapy* **2020**; 52(2): 154.
- 345 2. O’Driscoll M, Dos Santos GR, Wang L, et al. Age-specific mortality and immunity patterns
346 of SARS-CoV-2. *Nature* **2021**; 590(7844): 140-5.
- 347 3. Chen Y, Klein SL, Garibaldi BT, et al. Aging in COVID-19: Vulnerability, immunity and
348 intervention. *Ageing Res Rev* **2020**: 101205.
- 349 4. Polack FP, Thomas SJ, Kitchin N, et al. Safety and efficacy of the BNT162b2 mRNA covid-
350 19 vaccine. *New England Journal of Medicine* **2020**.
- 351 5. Baden LR, El Sahly HM, Essink B, et al. Efficacy and Safety of the mRNA-1273 SARS-CoV-2
352 Vaccine. *New England Journal of Medicine* **2020**.

- 353 6. Crooke SN, Ovsyannikova IG, Poland GA, Kennedy RB. Immunosenescence: A systems-
354 level overview of immune cell biology and strategies for improving vaccine responses.
355 *Exp Gerontol* **2019**; 124: 110632.
- 356 7. Abe KT, Hu Q, Mozafarihashjin M, et al. Neutralizing antibody responses to SARS-CoV-2
357 variants in vaccinated Ontario long-term care home residents and workers. *medRxiv*
358 **2021**: 2021.08.06.21261721.
- 359 8. Canaday DH, Carias L, Oyebanji O, et al. Reduced BNT162b2 mRNA vaccine response in
360 SARS-CoV-2-naive nursing home residents. *medRxiv* **2021**.
- 361 9. Causa R, Almagro-Nievas D, Rivera-Izquierdo M, et al. Antibody Response 3 Months
362 after 2 Doses of BNT162b2 mRNA COVID-19 Vaccine in Residents of Long-Term Care
363 Facilities. *Gerontology* **2021**: 1-7.
- 364 10. Salje H, Kiem CT, Lefrancq N, et al. Estimating the burden of SARS-CoV-2 in France.
365 *Science* **2020**; 369(6500): 208-11.
- 366 11. Richardson S, Hirsch JS, Narasimhan M, et al. Presenting Characteristics, Comorbidities,
367 and Outcomes Among 5700 Patients Hospitalized With COVID-19 in the New York City
368 Area. *JAMA* **2020**; 323(20): 2052-9.
- 369 12. Meng Y, Wu P, Lu W, et al. Sex-specific clinical characteristics and prognosis of
370 coronavirus disease-19 infection in Wuhan, China: A retrospective study of 168 severe
371 patients. *PLoS pathogens* **2020**; 16(4): e1008520.
- 372 13. Bauer P, Brugger J, Koenig F, Posch M. An international comparison of age and sex
373 dependency of COVID-19 Deaths in 2020—a descriptive analysis. *medRxiv* **2021**.
- 374 14. Scully EP, Haverfield J, Ursin RL, Tannenbaum C, Klein SL. Considering how biological sex
375 impacts immune responses and COVID-19 outcomes. *Nat Rev Immunol* **2020**: 1-6.
- 376 15. Gubbels Bupp MR, Potluri T, Fink AL, Klein SL. The Confluence of Sex Hormones and
377 Aging on Immunity. *Front Immunol* **2018**; 9: 1269.
- 378 16. Márquez EJ, Chung C-h, Marches R, et al. Sexual-dimorphism in human immune system
379 aging. *Nature communications* **2020**; 11(1): 1-17.
- 380 17. Shapiro JR, Li H, Morgan R, et al. Sex-specific effects of aging on humoral immune
381 responses to repeated influenza vaccination in older adults. *Npj Vaccines* **2021**; 6(1):
382 147.
- 383 18. Bischof E, Wolfe J, Klein SL. Clinical trials for COVID-19 should include sex as a variable.
384 *The Journal of Clinical Investigation* **2020**; 130(7).
- 385 19. Shapiro JR, Morgan R, Leng SX, Klein SL. Roadmap for sex-responsive influenza and
386 COVID-19 vaccine research in older adults. *Frontiers in Aging* **2022**; in press.
- 387 20. Fried LP, Tangen CM, Walston J, et al. Frailty in Older Adults: Evidence for a Phenotype.
388 *Journals Gerontology Ser Biological Sci Medical Sci* **2001**; 56(3): M146-M57.
- 389 21. Zhong D, Xiao S, Debes AK, et al. Durability of Antibody Levels After Vaccination With
390 mRNA SARS-CoV-2 Vaccine in Individuals With or Without Prior Infection. *JAMA* **2021**.
- 391 22. Klein SL, Pekosz A, Park H-S, et al. Sex, age, and hospitalization drive antibody responses
392 in a COVID-19 convalescent plasma donor population. *The Journal of Clinical*
393 *Investigation* **2020**.
- 394 23. NCI Serological Sciences Network for COVID-19 (SeroNet). Available at:
395 [https://www.cancer.gov/research/key-initiatives/covid-19/coronavirus-research-](https://www.cancer.gov/research/key-initiatives/covid-19/coronavirus-research-initiatives/serological-sciences-network)
396 [initiatives/serological-sciences-network](https://www.cancer.gov/research/key-initiatives/covid-19/coronavirus-research-initiatives/serological-sciences-network).

- 397 24. Karaba AH, Zhu X, Liang T, et al. A Third Dose of SARS-CoV-2 Vaccine Increases
398 Neutralizing Antibodies Against Variants of Concern in Solid Organ Transplant
399 Recipients. *American Journal of Transplantation* **2021**.
- 400 25. Newson RB. Sensible parameters for univariate and multivariate splines. *The Stata*
401 *Journal* **2012**; 12(3): 479-504.
- 402 26. Kohler H. Novel vaccine concept based on back-boost effect in viral infection. *Vaccine*
403 **2015**; 33(29): 3274-5.
- 404 27. Anderson EM, Eilola T, Goodwin E, et al. SARS-CoV-2 infections elicit higher levels of
405 original antigenic sin antibodies compared to SARS-CoV-2 mRNA vaccinations.
- 406 28. Grobben M, Straten Kvd, Brouwer PJM, et al. Cross-reactive antibodies after SARS-CoV-2
407 infection and vaccination. *eLife* **2021**; 10: e70330.
- 408 29. Bates TA, Leier HC, Lyski ZL, et al. Age-Dependent Neutralization of SARS-CoV-2 and P.1
409 Variant by Vaccine Immune Serum Samples. *JAMA* **2021**; 326(9).
- 410 30. Jabal KA, Ben-Amram H, Beiruti K, et al. Impact of age, ethnicity, sex and prior infection
411 status on immunogenicity following a single dose of the BNT162b2 mRNA COVID-19
412 vaccine: real-world evidence from healthcare workers, Israel, December 2020 to January
413 2021. *Eurosurveillance* **2021**; 26(6): 2100096.
- 414 31. Collier DA, Ferreira IATM, Kotagiri P, et al. Age-related immune response heterogeneity
415 to SARS-CoV-2 vaccine BNT162b2. *Nature* **2021**; 596(7872): 417-22.
- 416 32. Wang J, Tong Y, Li D, Li J, Li Y. The Impact of Age Difference on the Efficacy and Safety of
417 COVID-19 Vaccines: A Systematic Review and Meta-Analysis. *Front Immunol* **2021**; 12.
- 418 33. Mwimanzi F, Lapointe H, Cheung PK, et al. Older Adults Mount Less Durable Humoral
419 Responses to a Two-dose COVID-19 mRNA Vaccine Regimen, but Strong Initial
420 Responses to a Third Dose. *medRxiv* **2022**.
- 421 34. Ríos SS, Romero MM, Zamora EBC, et al. Immunogenicity of the BNT162b2 vaccine in
422 frail or disabled nursing home residents: COVID-A study. *J Am Geriatr Soc* **2021**; 69(6):
423 1441-7.
- 424 35. Seiffert P, Konka A, Kasperczyk J, et al. Immunogenicity of the BNT162b2 mRNA COVID-
425 19 vaccine in older residents of a long-term care facility: relation with age, frailty and
426 prior infection status. *Biogerontology* **2021**.
- 427 36. Demaret J, Corroyer-Simovic B, Alidjinou EK, et al. Impaired Functional T-Cell Response
428 to SARS-CoV-2 After Two Doses of BNT162b2 mRNA Vaccine in Older People. *Front*
429 *Immunol* **2021**; 12(4639).
- 430 37. Hollinghurst J, North L, Perry M, et al. COVID-19 infection risk amongst 14,104
431 vaccinated care home residents: a national observational longitudinal cohort study in
432 Wales, UK, December 2020–March 2021. *Age Ageing* **2021**.
- 433 38. Antonelli M, Penfold RS, Merino J, et al. Risk factors and disease profile of post-
434 vaccination SARS-CoV-2 infection in UK users of the COVID Symptom Study app: a
435 prospective, community-based, nested, case-control study. *Lancet Infect Dis* **2021**.
- 436 39. Tan CW, Chia WN, Qin X, et al. A SARS-CoV-2 surrogate virus neutralization test based
437 on antibody-mediated blockage of ACE2–spike protein–protein interaction. *Nat*
438 *Biotechnol* **2020**; 38(9): 1073-8.
- 439 40. Goldblatt D, Fiore-Gartland A, Johnson M, et al. Towards a population-based threshold
440 of protection for COVID-19 vaccines. *Vaccine* **2021**.

- 441 41. Carreño JM, Alshammary H, Tcheou J, et al. Activity of convalescent and vaccine serum
442 against SARS-CoV-2 Omicron. *Nature* **2021**.
- 443 42. Bartsch Y, Tong X, Kang J, et al. Preserved Omicron Spike specific antibody binding and
444 Fc-recognition across COVID-19 vaccine platforms. *medRxiv* **2021**.
- 445 43. Chan CEZ, Seah SGK, Chye DH, et al. The Fc-mediated effector functions of a potent
446 SARS-CoV-2 neutralizing antibody, SC31, isolated from an early convalescent COVID-19
447 patient, are essential for the optimal therapeutic efficacy of the antibody. *Plos One*
448 **2021**; 16(6): e0253487.
- 449 44. Gorman MJ, Patel N, Guebre-Xabier M, et al. Fab and Fc contribute to maximal
450 protection against SARS-CoV-2 following NVX-CoV2373 subunit vaccine with Matrix-M
451 vaccination. *Cell Reports Medicine* **2021**; 2(9).
- 452 45. Vorland CJ. Statistics: Sex difference analyses under scrutiny. *Elife* **2021**; 10: e74135.
- 453 46. Kuo H, Shapiro JR, Dhakal S, et al. Sex-specific effects of age and body mass index on
454 antibody responses to seasonal influenza vaccines in healthcare workers. *Vaccine* **2021**.
- 455 47. Shattuck-Heidorn H, Danielsen AC, Gompers A, et al. A finding of sex similarities rather
456 than differences in COVID-19 outcomes. *Nature* **2021**; 597(7877): E7-E9.
- 457 48. Shapiro JR, Klein SL, Morgan R. Stop 'controlling' for sex and gender in global health
458 research. *Bmj Global Heal* **2021**; 6(4): e005714.
- 459 49. Shapiro JR, Klein SL, Morgan R. COVID-19: use intersectional analyses to close gaps in
460 outcomes and vaccination. *Nature* **2021**; 591(7849): 202.
- 461

462

463 **Tables**

464 **Table 1. Older adult participant characteristics**

	All	Male	Female
Included in analysis - n (%)^a	82	34 (41)	48 (59)
Recruited - n	86	34	52
Excluded - n ^b	4	0	4
Age - median (IQR)	84 (81 - 88)	84 (82 - 88)	83 (81 - 89)
Categories - n (%)^c			
75-82	32 (39)	12 (35)	20 (42)
83-87	28 (34)	13 (38)	15 (31)
88-98	22 (27)	9 (26)	13 (27)
Frailty - n (%)^c			
Robust	18 (22)	8 (24)	10 (21)
Pre-frail	53 (64)	20 (59)	33 (67)
Frail	10 (12)	6 (18)	4 (8)
Missing	1 (1)	0 (0)	1 (2)
Vaccine type - n (%)^c			
mRNA-1273 (Moderna)	24 (30)	8 (24)	16 (33)
BNT162b2 (Pfizer)	58 (70)	26 (76)	32 (67)
Visit participation - n (%)^{c,d}			
Pre	82 (100)	34 (100)	48 (100)
<1M_PD1	23 (28)	11 (32)	12 (25)
<1M_PD2	69 (84)	28 (82)	41 (85)
3M_PD2	82 (100)	34 (100)	48 (100)
6M_PD2	80 (98)	33 (97)	47 (98)
1M_PD3	60 (73)	26 (76)	34 (71)

^a Subset of eligible participants without evidence of prior infection who were included in analysis

^b Participants with high (> 1:180) nucleocapsid titers, indicating prior infection, were excluded from analysis. One additional participant was excluded due to evidence of severe immunosuppression

^c Percents are based on the number included in analysis in each column

^d Study timepoints: Pre-vaccination (Pre); 14-30 days post dose 1 (<1M_PD1); 14-30 days post dose 2 (<1M_PD2); 75-105 days post dose 1 (3M_PD2); 165-195 days post dose 1 (6M_PD2); 75-105 days post dose 1 (3M_PD2); 14-60 days post dose 3 (1M_PD3)

466 **Table 2. Younger adult participant characteristics**

	All	Male	Female
Included in analysis - n (%)^a	81	32 (40)	49 (60)
Eligible - n ^b	84	32	52
Excluded - n ^c	3	0	3
Age at vaccination - n (%)^d			
≤29	14 (17)	4 (12)	10 (20)
30-39	32 (40)	11 (34)	21 (43)
40-49	18 (22)	8 (25)	10 (20)
50-59	7 (9)	4 (13)	3 (6)
60-74	10 (12)	5 (16)	5 (10)
Sample 1 - days post dose 2			
Mean (min-max)	33 (16-76)	31 (16-65)	34 (16-76)
Median (IQR)	29 (21-43)	27 (21-41)	29 (21-43)
Sample 2 - days post dose 2			
Mean (min-max)	138 (96-190)	142 (110 - 190)	136 (96-183)
Median (IQR)	137 (125-150)	139 (128-156)	137 (123-147)

^a Subset of eligible participants without evidence of prior infection who were included in analysis

^b Eligible participants from affiliated study (ref) were <75 years of age, had remaining serum from 2 samples collected at least 90 days apart 14-200 days following 2 doses of an mRNA SARS-CoV-2 vaccine who did not report prior SARS-CoV-2 infection

^c Participants with high (> 1:180) nucleocapsid titers, indicating prior infection, were excluded from analysis

^d Percents are based on the number included in analysis in each column

468 **Figure Legends**

469 **Figure 1. Older females mount greater humoral responses to SARS-CoV-2 mRNA vaccines than**
470 **older males.**

471 Anti-spike (S) IgG (**A**), S receptor-binding domain (S-RBD) IgG (**B**), and ACE2-inhibiting antibodies
472 (ACE2iAb) (**C**) against the vaccine strain of SARS-CoV-2 were measured at six timepoints: pre-
473 vaccination (n= 82: 48 females, n = 34 males), 14-30 days post dose 1 (<1M_PD1; n=23: 12
474 females, 11 males), 14-30 days post dose 2 (<1M_PD2; n=69: 41 females, 28 males), 3 months
475 post dose 2 (3M_PD2; n=82: 48 females, 34 males), 6 months post dose 2 (6M_PD2; n=80: 47
476 females, 33 males), and 14-30 days post dose 3 (1M_PD1; n=60: 34 females, 26 males).

477 Differences between timepoints were tested using mixed-effects models with study timepoint
478 as a dummy variable and random intercepts on the individual. Sex differences were tested
479 using an expanded mixed-effects model that included a main effect for sex and an interaction
480 term between sex and study timepoint. All point estimates are shown with error bars indicating
481 the 95% confidence interval. All p-values <0.05 are reported in **D**, where blank cells indicate a p-
482 value >0.05 and crossed out cells indicate that the comparison is reported elsewhere in the
483 table. Dashed lines show the limits of detection.

484

485 **Figure 2. Age and frailty impact the antibody response to SARS-CoV-2 mRNA vaccines in a sex-**
486 **specific manner among older adults.**

487 The effect of age on antibody kinetics is shown for Anti-spike (S) IgG (**A**), S receptor-binding
488 domain (S-RBD) IgG (**B**), and ACE2-inhibiting antibodies (ACE2iAb) (**C**) against the vaccine strain
489 of SARS-CoV-2. Data are shown for six timepoints: pre-vaccination (n=32 aged 75-82; n=28 aged

490 83-87; n=22 aged ≥ 88), <1M_PD1 (n=10 aged 75-82; n=8 aged 83-87; n = 5 aged ≥ 88), <1M_PD2
491 (n=24 aged 75-82; n=25 aged 83-87; n=20 aged ≥ 88), 3M_DP2 (n=32 aged 75-82; n=28 aged 83-
492 87; n=22 aged ≥ 88), 6M_PD2 (n=31 aged 75-82; n=28 aged 83-87; n=21 aged ≥ 88), and 1M_PD3
493 (n=22 aged 75-82; n=21 aged 83-87; n=17 aged ≥ 88) (**A-C**). Sex-specific effects of age at
494 3M_PD2 are shown separately for females (n=20 aged 75-82; n=15 aged 83-87; n=13 aged ≥ 88)
495 and males (n=12 aged 75-82; n=13 aged 83-87; n=9 aged ≥ 88) (**D-F**). The effect of frailty on
496 antibody kinetics is shown for the three assays at six timepoints: pre-vaccination (n=18 robust;
497 n=53 pre-frail; n=10 frail), <1M_PD1 (n=6 robust; n=12 pre-frail; n=5 frail), <1M_PD2 (n=15
498 robust; n=45 pre-frail; n=9 frail), 3M_PD2 (n=18 robust; n=53 pre-frail; n=10 frail), 6M_PD2
499 (n=18 robust; n=52 pre-frail; n=10 frail), and 1M_PD3 (n=14 robust; n=39 pre-frail; n=7 frail) (**G-**
500 **I**). are shown separately for females (n=10 robust; n=33 pre-frail; n=4 frail) and males (n=8
501 robust; n=20 pre-frail; n=6 frail) (**J-L**). The overall effects of age (**A-C**) or frailty (**H-I**) at each
502 timepoint were tested using mixed-effects models including a main effect for age/frailty, an
503 interaction term between age/frailty and study timepoint, and all p-values <0.05 are shown. At
504 3M_PD2, the effect of age (**D-F**) or frailty (**J-L**) in males and females, and sex-differences in
505 these effects, were tested using linear regression models with interaction terms between sex
506 and age or frailty, and all p-values are shown. Point estimates are shown with 95% confidence
507 intervals, and dashed lines indicate the limit of detection.

508

509 **Figure 3. Antibody responses to Alpha, Delta, and Omicron variants are reduced relative to**
510 **the vaccine virus in older adults.**

511 Anti-S (**A**), and ACE2-inhibiting (**B**) antibodies against the vaccine, Alpha and Delta strains of
512 SARS-CoV-2 were measured post-vaccination, with symbols indicating point estimates and error
513 bars indicating the 95% confidence interval. Differences in the responses between viral strains
514 were measured using paired t-tests, and all p-values <0.05 are shown in **C**, where empty cells
515 indicate p-value>0.05 and crossed-out cells indicate that the comparison was not tested. Sex-
516 disaggregated data from the 3-month timepoint are shown, and significant sex differences are
517 indicated by p-values (**D-E**).

518

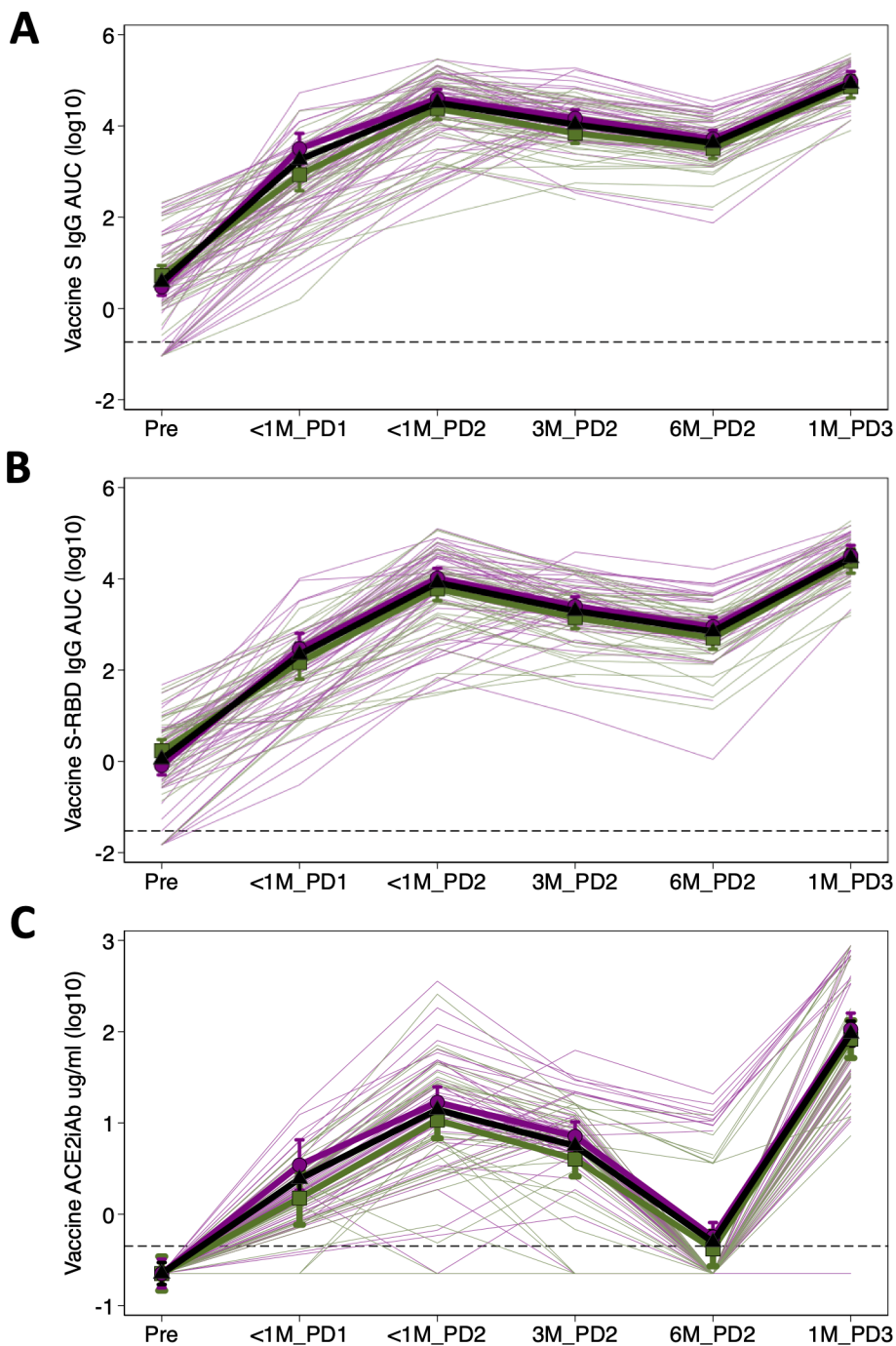
519 **Figure 4. Antibody responses against seasonal and pandemic β -coronaviruses are boosted by**
520 **SARS-CoV-2 vaccination in older adults.**

521 IgG specific to the spike proteins of the HKU1 (**A**), OC43 (**B**), MERS-CoV (**C**), and SARS-CoV-1 (**D**)
522 were measured before and at five timepoints after receipt of a SARS-CoV-2 mRNA vaccine.
523 Differences between timepoints were tested using multi-level models with study timepoint as a
524 dummy variable and random intercepts on the individual to account for repeat measures. All
525 point estimates are shown with error bars indicating the 95% confidence interval and asterisks
526 indicate significant ($p<0.05$) increases relative to the pre-vaccination vaccination timepoint.

527

528 **Figure 5. Differences between younger and older adults in antibody responses to the vaccine**
529 **strain of SARS-CoV-2 are sex-dependent.**

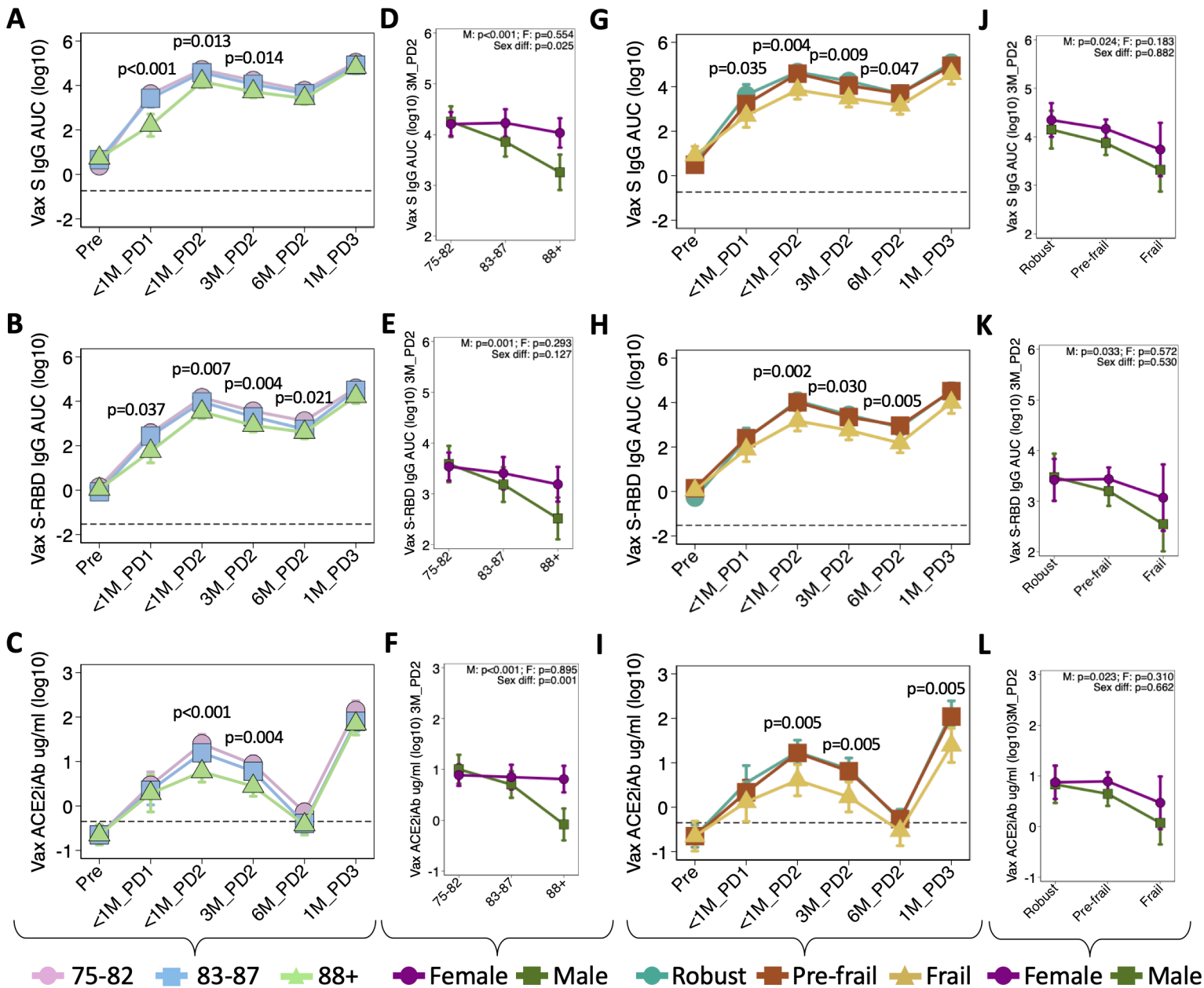
530 Plasma samples were collected from older adults at 3 timepoints after the primary vaccination
531 series and from younger adults at 2 post-vaccination timepoints: 16-76 days post dose 2 (early)
532 and 96-190 days post dose 2 (late). Differences in anti-vaccine strain S IgG levels over time were
533 compared between all younger and older adults (**A**), males (younger: n=27 early; n=30 late) (**B**),
534 and females (younger: n=48 early; n=48 late) (**C**), and summarized at three sentinel points (14-,
535 90- and 180-days post-vaccination) (**D**). Comparisons of the anti-Alpha S IgG response between
536 the younger and older groups are shown for the whole population (**E**), males (younger: n=27
537 early; n=26 late) (**F**), and females (younger: n=39 early; n=34 late) (**G**), with differences
538 summarized at 14-, 90- and 180-days post-dose 2 (**H**). Comparisons of the anti-Delta S IgG
539 response between the younger and older groups are shown for the whole population (**I**), males
540 (younger: n=27 early; n=26 late) (**J**), and females (younger: n=47 early; n=42 late) (**K**), with
541 differences at summarized 14-, 90- and 180-days post-dose 2 (**L**). Kinetics were analyzed using
542 mixed-effects models with fixed effects including days post-dose 2 as a continuous predictor
543 with cubic B-splines (knots at 30-, 100-, and 160-days post-vaccination). Shaded areas indicate
544 95% confidence intervals (**A-C**, **E-G**, **I-K**). In **D**, **H**, and **L**, point estimates for the difference
545 between cohorts are shown with 95% confidence intervals, such that confidence intervals that
546 do not span the null value of zero are statistically significant.

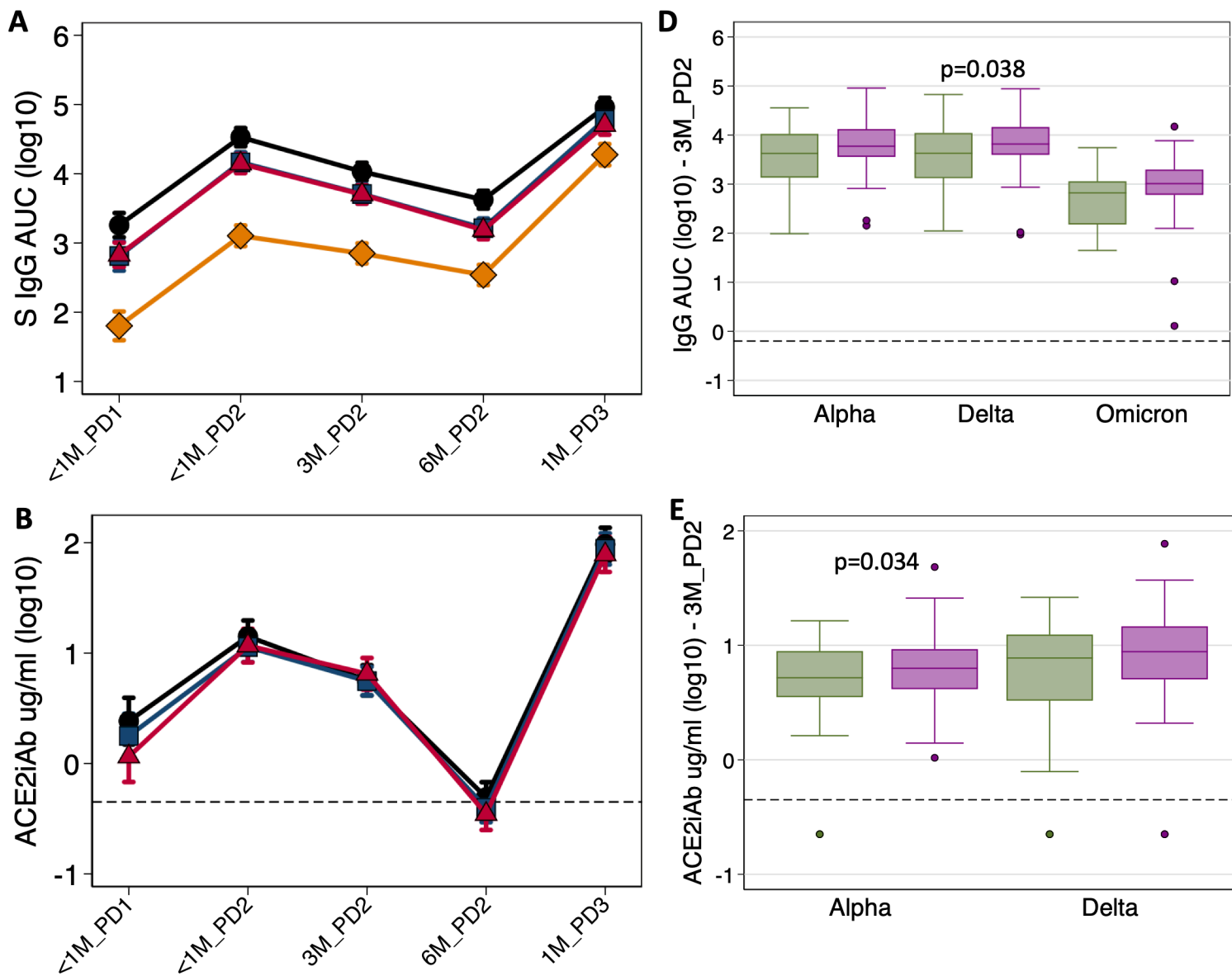


D

Significant difference between:	S IgG (A)					S-RBD IgG (B)					ACE2 inhibition (C)				
	<1M_PD1	<1M_PD2	3M_PD2	6M_PD2	<1M_PD3	<1M_PD1	<1M_PD2	3M_PD2	6M_PD2	<1M_PD3	<1M_PD1	<1M_PD2	3M_PD2	6M_PD2	<1M_PD3
Visit & baseline	<0.001	<0.001	<0.001	<0.001	<0.001	<0.001	<0.001	<0.001	<0.001	<0.001	<0.001	<0.001	<0.001	<0.001	<0.001
Visit & <1M_PD2	<0.001	/	<0.001	<0.001	<0.001	<0.001	/	<0.001	<0.001	<0.001	<0.001	/	<0.001	<0.001	<0.001
Visit & previous visit	/	/	/	<0.001	<0.001	/	/	/	<0.001	<0.001	/	/	/	<0.001	<0.001
Sexes at visit	0.020		0.026										0.046		
Sexes in change since baseline	0.002	0.008	0.001	0.007	0.048	0.013	0.001	0.000	0.000	0.014					

 All
  Female
  Male





C

Difference between:	S IgG (A)					ACE2iAb (B)				
	<1M_PD1	<1M_PD2	3M_PD2	6M_PD2	1M_PD3	<1M_PD1	<1M_PD2	3M_PD2	6M_PD2	1M_PD3
Vaccine & Alpha	<0.001	<0.001	<0.001	<0.001	<0.001		<0.001		0.026	
Vaccine & Delta	<0.001	<0.001	<0.001	<0.001	<0.001	0.002	0.005		0.010	0.050
Vaccine & Omicron	<0.001	<0.001	<0.001	<0.001	<0.001					
Alpha & Delta					<0.001	0.000		0.000		
Alpha & Omicron	<0.001	<0.001	<0.001	<0.001	<0.001					
Delta & Omicron	<0.001	<0.001	<0.001	<0.001	<0.001					

● Vaccine ■ Alpha ▲ Delta ◆ Omicron ■ Female ■ Male

