

Afucosylation of HLA-specific IgG1 as a potential predictor of antibody pathogenicity in kidney transplantation

1 Pranay Bharadwaj^{1*} (ORCID: 0000-0003-3768-3557), Sweta Shrestha^{1*} (ORCID: 0000-0002-5065-
2 3961), Tamas Pongracz^{2*} (ORCID: 0000-0002-8089-4352), Catalano Concetta^{3,4*} (ORCID: [0000-
3 0001-7858-1544](https://orcid.org/0000-0001-7858-1544)), Shilpee Sharma³(ORCID: 0000-0003-4645-9442), Alain Le Moine⁴ (ORCID: [0000-
4 0001-7575-9255](https://orcid.org/0000-0001-7575-9255)), Noortje de Haan^{2,5} (ORCID: 0000-0001-7026-6750), Naoka Murakami⁵ (ORCID:
5 0000-0001-8168-5811), Leonardo V. Riella^{6,7} (ORCID: 0000-0002-7636-3196), Vanda Holovska⁸
6 (ORCID: 0000-0002-2204-558X), Manfred Wuhrer² (ORCID: 0000-0002-0814-4995), Arnaud
7 Marchant³ (ORCID: 0000-0003-0578-0467), Margaret E. Ackerman^{1,9,#} (ORCID: 0000-0002-4253-
8 3476)

9

10

11 ¹Department of Microbiology and Immunology, Geisel School of Medicine at Dartmouth, Dartmouth
12 College, Hanover, NH, USA

13 ²Center for Proteomics and Metabolomics, Leiden University Medical Center, Leiden, The
14 Netherlands

15 ³Institute for Medical Immunology, Université libre de Bruxelles, Charleroi, Belgium

16 ⁴Department of Nephrology, Dialysis and Renal transplantation, Hôpital Erasme, Université libre de
17 Bruxelles, Bruxelles, Belgium

18 ⁵Renal Division, Brigham and Women's Hospital, Harvard Medical School, Boston, MA, USA

19 ⁶Division of Nephrology, Massachusetts General Hospital, Harvard Medical School, Boston, MA, USA

20 ⁷Center for Transplantation Sciences, Department of Surgery, Massachusetts General Hospital,
21 Boston, MA, USA

22 ⁸HLA laboratory, Laboratoire Hospitalier Universitaire de Bruxelles (LHUB), Hôpital Erasme ULB,
23 Brussels, Belgium

24 ⁹Thayer School of Engineering, Dartmouth College, Hanover, NH, USA

25 *Share first authorship

26 [§]Current affiliation: Department of Cellular and Molecular Medicine, Copenhagen Center for
27 Glycomics, University of Copenhagen, Copenhagen, Denmark

28 #Corresponding Author

29 Margaret E. Ackerman

30 14 Engineering Drive

31 Hanover, NH 03755

32 margaret.e.ackerman@dartmouth.edu

33 (ph) 603 646 9922

34 (fax) 603 646 3856

35 **Summary**

36 Antibody-mediated rejection (AMR) is the leading cause of graft failure. While donor-specific
37 antibodies (DSA) are associated with a higher risk of AMR, not all patients with DSA develop
38 rejection suggesting that the characteristics of alloantibodies that determine their pathogenicity
39 remain undefined. Using human leukocyte antigen (HLA)-A2-specific antibodies as a model, we
40 applied systems serology tools to investigate qualitative features of immunoglobulin G (IgG)
41 alloantibodies including Fc-glycosylation patterns and Fc γ R binding properties. The levels of
42 afucosylation of anti-A2 antibodies were elevated in all seropositive patients and were significantly
43 higher in AMR patients, suggesting potential cytotoxicity via Fc γ RIII-mediated mechanisms.
44 Afucosylation of both glycoengineered monoclonal and naturally glycovariant polyclonal serum IgG
45 specific to HLA-A2 exhibited potentiated binding to, slower dissociation from, and enhanced
46 signaling through Fc γ RIII, a receptor widely expressed on innate effector cells. Collectively, these
47 results suggest that afucosylated DSA may be a biomarker of AMR and could contribute to its
48 pathogenesis.

49 **Keywords**

50 IgG, effector function; donor-specific antibody; glycosylation; ADCC; antibody-mediated rejection;
51 afucosylation; transplantation

52

53 **Abstract word count: 150**

54 **Character count:**

55 Introduction

56 Antibody-mediated rejection (AMR), encompassing allograft rejection caused primarily by
57 antibodies directed against donor-specific human leukocyte antigen (HLA) molecules, is the leading
58 cause of solid organ transplant rejection and long-term graft loss (1-5). AMR is characterized by
59 histological manifestations of endothelial cell injury, mononuclear cell infiltration and complement-
60 dependent tissue damage. Additionally, the presence of circulating donor-specific antibodies (DSA)
61 poses challenges for transplant recipients by limiting access to available organs, prolonging wait
62 time, and in some cases, excluding the candidates from a possible transplantation altogether (6-8).
63 Solid phase assays using purified HLA antigens (Luminex® single bead antigen assays) have
64 significantly improved stratification and categorization of transplant candidates, because they can
65 detect very low levels of DSAs due to their high sensitivity. While this technique has been used to
66 update organ allocation and desensitization protocols, it has led to minimal benefits to improvement
67 in rejection treatment, as the presence and levels of DSA are not a reliable predictor of transplant
68 outcome (9-13). While graft survival is clearly poorer for individuals sensitized against donor organ
69 antigens (1, 2, 14-17), several studies have shown that not all DSAs carry the same risk of allograft
70 rejection, as they have been associated with a wide spectrum of effects ranging from a complete
71 absence of graft injury to the most severe form of AMR (18). Similarly, appearance of de novo DSA
72 implies the risk of graft deterioration but provides little to no information on their actual pathogenic
73 activities (3, 19-22).

74
75 Collectively, these observations point to the importance of factors other than the magnitude of the
76 DSA response as important drivers of pathology. Clinical practice is challenged by the lack of strong
77 relationships between antibody characteristics and patient outcomes. Given the profound
78 disproportion between available organs and the number of patients waiting for a transplant, the US
79 Food and Drug Administration (FDA) recently identified AMR and desensitization as two important
80 areas in transplantation for which no drugs have been specifically approved (1, 2, 23-25). Techniques
81 which better define DSAs properties may be required to first advance mechanistic understanding of
82 AMR and secondly to improve transplant recipient outcomes.

83

84 To this end, the antibody effector functions that may be responsible for AMR are influenced not
85 solely by titer, but by affinity, antigen availability and epitope, and antibody isotype, subclass, and
86 glycosylation (12, 26-31). In other disease settings, systematic tools for surveillance of this spectrum
87 of serum antibody features and their associated effector functions have identified reliable
88 associations and begun to support robust predictions of disease outcomes (32-39). While prior
89 research on the role of antibodies in transplant rejection was predominantly focused on estimation
90 and retrospective correlation of titer to better predict transplant outcomes (16, 17, 40-42), recent
91 studies have begun to interrogate other important factors governing antibody functionality, such as
92 subclass distribution and complement fixing ability (12, 27, 28, 43-51), and the evolution of these
93 features with the progression of disease (13, 48, 52-57).

94
95 Here, we report on the development and application of novel assays to characterize phenotypic and
96 functional aspects of HLA-specific antibodies. Among a group of individuals with antibodies against
97 HLA-A2, we observe altered Fc glycosylation profiles as compared to total serum IgG – most
98 notably, enrichment of afucosylated IgG1 antibodies, which are widely associated with potentiated
99 antibody-dependent cellular cytotoxicity (ADCC) (58-63). For both glycoengineered monoclonal as
100 well as polyclonal, human serum-derived HLA-A2-specific antibodies, binding to, and signaling via
101 FcγRIIIa, the receptor expressed on NK and other innate immune cells and responsible for mediating
102 ADCC, were negatively associated with fucosylation. Collectively, this work establishes the potential
103 importance of DSA Fc glycosylation in influencing the ADCC activity of DSA, and in turn, their ability
104 to contribute to graft rejection.

105

106 **Methods**

107 **Sample selection and study cohort**

108 Clinical sample collection and analysis were approved by the Ethics Review Board of the Hôpital
109 Erasme, Brussels, Belgium. Written informed consent was obtained from study participants. Clinical
110 characteristics were collected from the patient's electronic medical records (Transkid-RedCap).
111 **(Supplemental Tables 1, 2)**. Patients with detectable anti-HLA-A2 alloantibodies were included in

112 the study. Patients without detectable anti-A2 antibodies were included as controls. Anti-HLA-A2
113 antibodies were detected using clinical Luminex® single antigen bead assay according to the
114 manufacturer's instructions (Immucor® Lifecodes). Following incubation with serum, Mean
115 Fluorescence Intensity (MFI) of HLA antigen-coated beads was measured with a fluoroanalyser using
116 xPonent software for data acquisition and Match It! Software (Immucor®Lifecodes) for data analysis.
117 Positivity thresholds were defined according to the manufacturer's instructions. For individuals with
118 renal transplant, AMR was diagnosed based on clinical parameters (serum creatinine and proteinuria)
119 and renal transplant biopsy, when contributive. AMR histological characteristics were glomerulitis,
120 peritubular capillaritis, microvascular inflammation and C4d immunostaining positivity.

121

122 **Cloning and expression of recombinant HLA-A2 mAbs**

123 Variable domain gene sequences of the heavy and the light chain (V_H and V_L) of mouse HLA-A2
124 hybridoma cells (ATCC, HB-82 BB7.2) were defined to support recombinant production of a panel
125 of human subclass-switched chimeric antibodies. Briefly, mRNA was isolated from hybridoma cells
126 using the RNeasy kit (Qiagen, Cat No./ID: 74104), and cDNA generated using the VRSO cDNA kit
127 (ThermoFisher, AB1453A). This cDNA was then amplified using degenerate primers (65) to
128 selectively amplify V_H and V_L regions, which were sequenced and cross-referenced and annotated
129 using BLAST and IMGT-based tools. Verified V_H and V_L sequences were used to design gene blocks
130 (Twist Biosciences) that contained murine V_H , V_L , C_L and C_{H1} domains paired with human hinge and
131 C_{H2} and C_{H3} Fc domains for each IgG subtype (**Supplemental Table 3**). These gene blocks were
132 cloned by overlap extension into the pCMV expression plasmid.

133 Chimeric antibodies were transiently expressed via heavy and light chain plasmid co-transfection in
134 HEK-expi293 cells, and purified using Protein A (IgG1, IgG2, and IgG4) or Protein G (IgG3)
135 chromatography as previously reported (66, 67). Afucosylated IgG1 and IgG3 were produced by
136 adding 0.15 mM of 2-fluorofucose (2FF) substrate in the growth medium, as described (67).

137 **IgG subclass and titer measurements**

138 A custom multiplex assay was performed as previously described (68, 69) in order to define the total
139 levels and subclass profiles of HLA-A2-, HLA-A1- (NIH Tetramer Facility, HLA-A*02:01 complexed

140 with either CLGGLTMV peptide from Epstein Bar Virus membrane protein or GLCTLVAML peptide
141 from Epstein Bar Virus mRNA export factor ICP27, HLA-A*01:01 complexed with VTEHDTLLY from
142 cytomegalovirus pp50), and HSV-gD- (Immune Technology IT-005-055p) specific antibodies. Briefly,
143 antigen-coupled microspheres were diluted in Assay Buffer (PBS + 0.1% BSA + 0.05% Tween20),
144 and mAb or serum, followed by washing and detection with R-phycoerythrin (PE)-conjugated anti-
145 Human IgG (Southern Biotech #9040-09), anti-mouse IgG (Biolegend #405307) or anti-human IgG1
146 (#9054-09), IgG2 (Southern Biotech #9070-09), IgG3 (Southern Biotech # 1100-09) and IgG4
147 (Southern Biotech #9200-09), respectively. Median fluorescent intensities (MFI) were acquired on a
148 FlexMap 3D (Luminex).

149 **Affinity purification of HLA-A2-specific antibodies**

150 HLA-A2-specific antibodies were purified from human sera using magnetic, antigen-conjugated
151 beads (**Supplemental Table 4**). Magnetic streptavidin coated beads (NEB, S1420S) were incubated
152 with biotinylated HLA-A2. Briefly, 50 μ L streptavidin beads were washed with wash buffer (0.5M
153 NaCl, 20mM Tris-HCl (pH 7.5), 1mM EDTA) followed by incubation with 20 μ g biotinylated HLA-A2
154 for 2 hours at room temperature or overnight at 4°C. After washing five times, beads were blocked
155 using 200 μ L heat inactivated FBS for 2 hours. For purification, 150 μ L of beads were co-incubated
156 with 50 μ L of sera for 3 hours on a rotational mixer, followed by three washes using PBS-TBN (PBS-
157 1X, 0.1% BSA, 0.02% Tween 20, 0.05% sodium azide, pH 7.4). HLA-A2-specific antibodies were
158 eluted by resuspending beads in 50 μ L of 1% formic acid (pH 2.9) and incubating on a rotational
159 mixer for 10 min at room temperature. Supernatant was withdrawn and 20 μ L of 0.5 M sodium
160 phosphate dibasic was added to each tube to neutralize the pH. The resulting eluate was split into
161 two parts and used for LC-MS-based IgG Fc glycosylation analysis as well as for enrichment
162 confirmation analysis, as described above.

163 **Sample preparation for LC-MS based Fc glycosylation analysis**

164 Affinity purified HLA-A2-specific IgG were subjected to tryptic digestion overnight at 37 °C using
165 sequencing grade trypsin (overall 25 ng) (Promega Corporation, WI, Madison), after the addition of
166 7 μ L 1x PBS to each sample. Prior to LC-MS analysis, tryptic HLA-A2-specific IgG glycopeptides were
167 desalted by reverse-phase solid phase extraction, as described (70). Total IgG was captured from

168 plasma/serum using protein G Sepharose Fast Flow 4 beads (GE Healthcare, Uppsala, Sweden), as
169 previously described (71).

170 **LC-MS based Fc glycosylation analysis and data processing**

171 Glycopeptides were separated and detected with an Ultimate 3000 high-performance liquid
172 chromatography (HPLC) system (Thermo Fisher Scientific, Waltham, MA) coupled to a maXis
173 quadrupole time-of-flight mass spectrometer (Bruker Daltonics, Billerica, MA), as described (72).
174 Data processing was performed according to established procedures (73).

175 **FcγR binding assay**

176 The FcγR binding profiles of polyclonal HLA-A2-specific antibodies were defined using the Fc Array
177 assay described previously (74). Briefly, HLA-A2-coated microspheres were generated as described
178 above for the multiplex assay, but serum antibodies were detected with FcγRIIIa tetramers formed
179 by mixing biotinylated FcγRIIIa V158 (75) with a 1/4th molar ratio of Streptavidin-RPE (Agilent, PJ31S-
180 1).

181 **FcγRIIIa signaling assay**

182 As a surrogate for the ADCC potential of the serum-derived and recombinant HLA-A2-specific
183 antibodies, FcγRIIIa signaling was measured by using a Jurkat Lucia NFAT reporter cell line
184 (InvivoGen, jk1-nfat-cd16) (76, 77) in which cross-linking of antigen-bound antibodies and FcγRIIIa
185 leads to the secretion of luciferase into the cell culture supernatant. Levels of Lucia luciferase
186 secreted can then be directly measured by bioluminescence. Briefly, a clear flat bottom, high binding
187 96 well plate (Corning, 3361) was coated with either 1 μg/ml NeutrAvidin (ThermoFisher Scientific,
188 31000) or 1 μg/mL biotinylated HLA-A2 antigen via incubation at 4°C overnight. The plates were
189 then washed with 1X phosphate-buffered Saline (PBS) plus 0.05% Tween 20 and blocked with 1x
190 PBS plus 2.5% bovine serum albumin (BSA) for 1 hour at room temperature. HLA-A2 antigen coated
191 plates were directly used, whereas the plates coated first with NeutrAvidin were washed and
192 incubated with 2 μg/mL biotinylated HLA-A2 antigen for 1 hour at room temperature. After washing,
193 200 μL of serum diluted 1:100 and 100,000 cells/well in growth medium lacking antibiotics were
194 added and incubated at 37°C for 24 hours. Alternatively, for HLA-A2 mAbs, the plates were first

195 incubated with mAb for 3 hours at room temperature, washed and then was incubated with cells.
196 The following day, 25 μ L of supernatant was drawn from each well and then transferred to an
197 opaque, white, clear bottom 96-well plate (Thomas Scientific, 6916A05) to which 75 μ L of freshly
198 prepared QuantiLuc (InvivoGen, rep-qlc2) was added. Luminescent was measured immediately on a
199 SpectraMax Paradigm plate reader (Molecular Devices) using 1s of integration time for collecting
200 light. The reported values are the means of three kinetic readings collected at 0, 2.5 and 5 minutes.
201 Treatment of reporter cells with cell stimulation cocktail (ThermoFisher Scientific, 00-4970-93) was
202 used as a positive control, and an $\alpha 4\beta 7$ -specific mAb was used as a negative control. Baseline control
203 wells contained assay medium instead of antibody sample.

204 **Fc γ R affinity measurements**

205 High Precision Streptavidin 2.0 (SAX2) biosensor tips (Sartorius) were used to determine the kinetics
206 of HLA-A2-specific IgG binding to human Fc γ RIIIa and Fc γ RI by biolayer interferometry (BLI) on an
207 Octet (Forte Bio) instrument. Streptavidin (SA) biosensor tips were first loaded with HLA-A2 antigen,
208 followed by HLA-A2 antibody, and finally dipped into Fc γ R to study the antibody-receptor kinetics.
209 Biosensors were equilibrated with 0.05% Tween-PBS for 60s, loaded with 0.25 μ g/mL biotinylated
210 HLA-A2 antigen (in 0.05% Tween-PBS) until they reached the threshold of 1nm, and then dipped
211 into 0.05% Tween-PBS to reach baseline for 60s. After that, the biosensors were loaded with 3 μ g/mL
212 of recombinant HLA-A2 IgG (in 0.05% Tween-PBS) for 600s, dipped into 0.05% Tween-PBS to reach
213 baseline for 60s, and then dipped into 5 μ M monomeric Fc γ RIIIa for 180s or 292 nM Fc γ RI for 300s
214 for association. To improve signal to noise, serum IgG was purified using Melon gel (Thermo)
215 according to the manufacturer's instructions. Polyclonal serum IgG was loaded for 2400s. For Fc γ R
216 dissociation rate (k_d) determination, two SAX2 biosensor tips were used, one for the measurement
217 and one as a reference to subtract background signal changes due to dissociation of other
218 components, such as dissociation of HLA-A2-specific IgG from biotinylated HLA. Reference
219 biosensors loaded with IgGs were dipped into buffer (0.05% Tween-PBS) instead of receptors.
220 Finally, the sensors were dipped into 0.05% Tween-PBS for 180s and 300s for the dissociation of
221 Fc γ RIIIa and Fc γ RI, respectively. Data analysis

222 **Data analysis**

223 Statistical analysis was performed in GraphPad Prism version 9. Replicates and statistical tests used
224 are reported in figure legends. A nonlinear regression using a one phase exponential decay model
225 was used to fit the dissociation curve and calculate off-rate.

226

227 **Results**

228 HLA-specific antibody responses were investigated in a cohort consisting of individuals with
229 reported clinical HLA-A2 reactivity (n=32) as detected with a single bead antigen assay, and controls
230 (n=18) with no HLA-A2 reactivity. Among anti-A2 sensitized patients, 28 had received an organ
231 transplant, including 26 kidney transplants and 2 other organs, and 4 patients were on a transplant
232 waiting list (**Supplemental Table 1**). A2 sensitization was related to previous or current
233 transplantation in 13 patients (41%), pregnancy in 6, blood transfusion in 1 and left ventricular
234 assistance device in 1, whereas the sensitizing event was unknown in 4 patients. AMR was diagnosed
235 in 13/28 (46%) transplanted patients (**Supplemental Table 1**) and in 7/13 (54%) DSA-positive
236 patients (A2 sensitization in a patient transplanted with an HLA-A2 graft) (**Supplemental Table 2**).
237 Among controls, 9 patients had no detectable anti-HLA antibodies and 9 had detectable antibodies
238 against non-HLA-A2 antigens. Seventeen controls had received an organ transplant and one was on
239 a transplant waiting list.

240

241 **IgG subclass distribution of HLA-specific antibodies**

242 We first sought to characterize the subclasses of HLA-specific IgGs in HLA-A2 sensitized and control
243 subjects, using research grade single-antigen bead immunoassays. Briefly, single antigens (intact
244 HLA-A02:01 or HLA-A01:01 monomers) were captured on microspheres, and antigen binding of
245 sera samples were measured by multiplex assay. In contrast to the HIV-specific antibody VRC01
246 (negative control), the HLA-A2-specific monoclonal antibody BB7.2 (positive control), which was
247 evaluated in each human IgG subclass, showed specific binding to HLA-A2 (**Figure 1A**), and
248 appropriate staining by IgG subclass detection reagents (**Supplemental Figure 1**). In contrast to the
249 negative control mAb, both pooled human serum immunoglobulin (IVIG) and serum from individual

250 control subjects often showed signal considerably above background. While this profile may be
251 consistent with the widespread prevalence of anti-HLA antibodies among healthy individuals (78,
252 79), and responses among subjects clinically defined as HLA-A2 seropositive were significantly
253 elevated as compared to controls, there was a considerable overlap in distributions. Nonetheless,
254 there was a distinct difference observed in the subclass distribution between the two groups, with
255 the HLA-A2 seropositive group generally exhibiting a wide range of total HLA-A2 antibodies as
256 compared to the control samples, which tended to show lower levels (**Figure 1A**). The wide
257 distribution of HLA-A2 specific IgG signal was consistent with reported values from clinical testing
258 (**Supplemental Figure 2**), with some samples exhibiting moderate to very low HLA-A2 reactivity.
259 HLA-A2-reactive antibodies predominantly belonged to the IgG1 and IgG2 subclasses, but a few
260 subjects also exhibited higher levels of IgG3 and IgG4; these individuals typically had high levels of
261 total HLA-A2-specific IgG.

262

263 A similar analysis of HLA-A1-specific antibody levels was performed. The HLA-A2 seropositive group
264 also showed elevated levels of HLA-A1 antibodies as compared to the control group (**Figure 1B**),
265 again, consistent with clinical single-antigen bead assay results. Interestingly, HLA-A1-specific
266 antibodies predominantly belonged to the IgG2 subclass, with some samples exhibiting higher levels
267 of IgG1, IgG3, and IgG4 subclasses.

268 **Affinity-enrichment yields HLA-A2-specific antibodies**

269 A microscale purification method was successfully developed and employed for the purification of
270 a control murine HLA-A2 mAb spiked into IVIG (**Supplemental Figures 3, 4**). Purified antibodies
271 showed elevated reactivity to HLA-A2 antigen, but not to HLA-A1 or to an HSV antigen, which were
272 used as negative controls, confirming the purity of the antibodies. Having vetted the purification
273 process, HLA-A2-specific antibodies were then purified from serum of HLA-A2 antibody positive
274 patients. The purified antibody fractions showed elevated reactivity to HLA-A2, but not to HSV.
275 Despite generally being thought not to possess shared epitopes, the HLA-A2-enriched fraction
276 showed some cross-reactivity with HLA-A1 for a few subjects who were generally strongly positive
277 for both HLA-A1 and HLA-A2 antibodies (based on clinical single antigen bead assay) (**Supplemental**
278 **Figure 5**).

279 **HLA-A2 specific antibodies exhibit variable degree of afucosylation**

280 Having confirmed the largely selective enrichment of HLA-A2-reactive antibodies, next we analyzed
281 Fc glycosylation of both HLA-A2-specific and total serum IgG among HLA-A2 positive individuals.
282 Fc glycosylation analysis revealed differences both on the level of individual glycoforms (**Figure 2A,**
283 **B, C**), and overall glycosylation traits including levels of fucosylation, bisection, galactosylation and
284 sialylation (**Figure 2D**) between HLA-A2-specific and total serum IgG1. Of note, while HLA-A2-
285 specific antibody Fc fucosylation of some individuals was comparable to that of total IgG1, others
286 exhibited fucosylation levels reduced by 5-15%, or even 30% as compared to their total IgG1
287 counterpart (**Figure 2D**). HLA-A2 specific IgG2/3 was characterized by higher bisection,
288 galactosylation and sialylation than total serum IgG2/3, but no afucosylated IgG2/3 glycopeptides
289 were detected (**Figure 2D**). Consistent with multiplex assay data, antigen-specific IgG4 responses
290 were generally too low to be robustly characterized by LC-MS. While IgG2 and IgG3 glycopeptides
291 could not be distinguished by mass spectrometry due to their identical molecular mass, the high
292 levels of antigen-specific IgG2 and low levels of IgG3 observed suggest that the antigen-specific
293 IgG2/3 glycosylation signatures were dominated by IgG2.

294 **Afucosylated HLA-A2-specific mAbs exhibit enhanced FcγRIIIa signaling**

295 To study the FcγR signaling characteristics of HLA-A2-specific antibodies, we produced afucosylated
296 BB7.2 IgG1 and IgG3 mAbs and assessed signaling driven by ligation of FcγRIII, a receptor typically
297 expressed by NK cells, in a reporter cell line (77) as a surrogate for ADCC activity. IgG1 and IgG3
298 isotypes of BB7.2 were found to show FcγRIIIa ligation and signaling activity, whilst neither the
299 control IgG1 subclass nor IgG2 and IgG4 subclasses of BB7.2 showed activity above baseline (**Figure**
300 **3A**). As expected, afucosylated IgG1 and IgG3 demonstrated considerably enhanced FcγRIII
301 signaling activity as compared to their non-glycoengineered counterparts.

302 **Enhanced FcγRIII signaling is associated with slow antibody dissociation**

303 To address the mechanism of improved FcγRIIIa signaling activity, we next sought to characterize
304 the interaction between HLA-A2-specific antibodies and FcγRIIIa using Biolayer Interferometry (BLI)
305 (**Figure 3B, Supplemental Figure 6**), a label free technique commonly used to study the affinity and
306 kinetics of protein-protein interactions. Antibodies bound to HLA-A2 antigen were allowed to bind

307 (t = 0 to 120s) and then dissociate (t = 120-240s) from FcγRIIIa V158. All mAbs exhibited the fast on-
308 rate typical of FcγR and showed similar levels of FcγRIIIa binding signal (**Figure 3C**). In contrast,
309 dissociation rates (k_d) varied by more than an order of magnitude between fucosylated and
310 afucosylated mAbs (**Figure 3C**). We found that afucosylated IgG1 and IgG3 had slower dissociation
311 rates (mean $k_d = 0.021 \text{ s}^{-1}$) as compared to unmodified forms (mean $k_d = 0.46 \text{ s}^{-1}$). This difference in
312 dissociation rate was specific for FcγRIIIa, as fucosylation did not influence FcγRI binding
313 (**Supplemental Figure 7**), as expected (63).

314 **Serum HLA-A2 specific antibody fucosylation associates with FcγRIIIa dissociation and ligation**

315 Since afucosylated HLA-A2-specific mAbs had slower dissociation from FcγRIIIa as compared to their
316 unmodified counterparts, we next studied the dissociation profiles of polyclonal HLA-A2 specific
317 antibodies in human serum and found FcγRIIIa dissociation rate to be positively associated with
318 fucosylation (**Figure 4A**). The variable off-rates observed among differentially fucosylated serum-
319 derived HLA-A2-specific antibodies suggested that FcγRIIIa ligation and signaling profiles of these
320 HLA-A2 specific antibodies might also vary. To test this possibility, HLA-A2 seropositive subjects
321 were split into tertiles (high, medium, and low) based on their HLA-A2-specific antibody fucosylation
322 levels (**Figure 4B**). A multiplex assay was conducted, in which HLA-A2-specific antibodies were
323 evaluated for their ability to bind FcγRIIIa tetramers (74). Although there was no significant
324 difference in FcγRIIIa binding between high, medium, and low fucose tertiles, HLA-A2 specific
325 antibodies in each of these three categories had higher FcγRIIIa binding as compared to negative
326 controls, as exemplified by the observed negative correlations (**Figure 4B**). In line with observations
327 on variably fucosylated mAbs, these results demonstrate that human serum-derived HLA-A2-specific
328 antibodies with low fucosylation exhibit improved FcγRIIIa binding.

329 **Serum HLA-A2 specific antibody fucosylation associates with functional activity**

330 To understand how antibody fucosylation level was related to FcγRIIIa signaling, a limited correlation
331 analysis was performed. Both HLA-A2-specific antibody titers and the FcγRIIIa ligation activity
332 determined by multiplex assay were negatively associated with fucosylation (**Figure 4C**), and
333 positively associated with FcγRIIIa signaling (**Figure 4D**). Despite the low signaling activity observed
334 across experimental replicates in the reporter cell line assay (**Supplemental Figure 8A**), relationships

335 between FcγRIIIa signaling measured were consistently correlated to polyclonal HLA-A2-specific
336 antibody titer and FcγRIIIa binding (**Supplemental Figure 8B**).

337 **HLA-A2-specific antibody afucosylation was correlated with clinical AMR**

338 To explore how HLA-A2 specific antibody characteristics relate to transplantation outcomes, patient
339 data was analyzed based on AMR status. Subjects with AMR tended to have high HLA-A2 antibody
340 titer and low HLA-A2-specific IgG1 fucosylation, thereby showing high FcγRIIIa binding, high
341 signaling activity, and slower dissociation from FcγRIIIa (**Figure 4**). As a more direct test, we analyzed
342 HLA-A2 specific antibody features between subjects with and without AMR. Whether or not HLA-
343 A2 represented a DSA, individuals with AMR showed significantly lower levels of HLA-A2-specific
344 IgG1 fucosylation as compared to the individuals who did not have clinically defined AMR (**Figure**
345 **5A**), suggesting that a low level of HLA-A2-specific antibody fucosylation may be a marker of AMR
346 in kidney transplant patients. Other features, including HLA-A2-specific antibody titer, did not show
347 such differences according to AMR status (**Supplemental Figure 9**).

348
349 In order to further examine the correlation between afucosylation of DSA and clinical AMR outcomes
350 we analyzed subjects who had anti-HLA-A2 as a DSA. Patients who developed AMR had “low” and
351 “moderate” fucose content of HLA-A2-specific DSA, whereas patients who did not develop AMR
352 had “high” fucose content of HLA-A2-specific DSA. (**Figure 5B**). Collectively, this data suggests that
353 the phenotypic variability among anti-HLA-A2 antibody responses may have an important influence
354 on organ transplant outcomes.

355

356 **Discussion**

357 The last two decades have witnessed a considerable increase in understanding immunological
358 processes related to organ rejection, which has contributed to reduction in the incidence of acute
359 rejection and improvement in short-term graft survival (23, 80-82). Despite the advances in
360 immunosuppression strategies, HLA matching, and better management of acute rejection, the
361 prognosis for long-term graft outcome remains one of the biggest challenges in the field of organ

362 transplantation (2). Given the well-established importance of qualitative aspects of the antibody
363 response in other settings, consideration of antibody subclass, Fc glycosylation, and FcγR binding
364 in the context of renal transplant outcomes will define the importance of these features in mediating
365 functions that escalate the risk of organ rejection (2). Discovery of robust relationships between
366 features of DSA and transplant outcomes has the potential to drive revision of clinical strategies of
367 organ allocation as well as development of novel interventions.

368
369 To date, relatively few studies have looked at DSA subclass and Fc glycosylation in kidney transplant
370 recipients. Challenges in DSA purification from plasma/serum appear to have posed a major hurdle
371 to its glycosylation analysis, resulting in a focus on characterization of total serum IgG glycosylation
372 (83-85). In this study, we employed a microscale purification method to purify HLA-A2-specific
373 antibodies from patient sera and set out to evaluate IgG subclass and Fc glycosylation profiles
374 thereof. Both of these features regulate Fc-FcγR interactions, which in turn potentially relate to
375 pathogenicity and graft rejection.

376
377 Beyond the complexity of the many processes associated with allograft injury and rejection,
378 phenotypic changes in DSA over time have also been observed (43), complicating the understanding
379 of the pathophysiology of rejection. What has become clear is that DSA titers, subclass profiles or
380 C1q binding activity alone are insufficient to accurately predict the course of AMR, and the field
381 remains in need of reliable prognostic biomarkers to guide treatment, optimally allocate organs, and
382 reduce the risk of rejection in DSA-sensitized recipients.

383
384 Though not strongly associated with outcomes of organ rejection, IgG subclass is known to strongly
385 modify the ability of antibodies to drive complement deposition and recruit the innate immune
386 effector cells that mediate clearance of opsonized particles (5, 27, 29, 43, 86). HLA-A2-specific
387 responses in clinically seropositive subjects were predominantly IgG1 and IgG2. High levels of IgG1
388 antibodies suggest the possibility of elevated Fc mediated effector functions, such as phagocytosis,
389 ADCC and complement deposition (63), which might lead to severe graft injury and transplant
390 rejection. The prevalence of HLA-A1-specific IgG2 antibodies in this population suggests that the
391 IgG subclass profile can vary from one HLA antigen to another even within a given individual,

392 highlighting the potential importance of integrating profiles across diverse specificities and
393 characterizing features of anti-HLA antibodies beyond titer.

394

395 Antibody effector functions are highly affected by the composition of the *N*-glycan present at the
396 conserved *N*-glycosylation site in the Fc region (60, 61, 87-89). Hitherto, it has been repeatedly
397 shown that disease-specific antibodies can exhibit skewed glycosylation profiles, that in turn
398 associate with disease prognosis and outcome (73, 90-93). Historically, one of the key limitations of
399 glyco-profiling such antibodies is their low serum prevalence and high sample requirement. In order
400 to facilitate Fc glycosylation analysis of low abundant HLA-A2 specific antibodies, an antigen-specific
401 antibody purification approach was developed for reliable, sensitive, and specific capturing of HLA-
402 A2 specific antibodies from reactive sera. This platform was leveraged to support analysis of HLA-
403 A2-specific IgG Fc glycosylation profiles. As compared to the global serum IgG profiles, we observed
404 variable degree of HLA-A2 specific IgG1s afucosylation. This feature was associated with improved
405 Fc γ RIIIa binding as afucosylation has been described to lead to elevated Fc γ RIII binding (58, 63, 83-
406 86), we hypothesized that low HLA-A2-specific IgG1 fucosylation could cause elevated DSA
407 cytotoxicity via enhanced ADCC. Indeed, when tested in the context of a subclass-switched
408 recombinant antibody specific for HLA-A2, both subclass and fucosylation had a strong impact on
409 Fc γ RIIIa affinity and signaling. Specifically, afucosylated mAbs had slower dissociation from the
410 receptor, which could provide sufficient time for the receptors to cross-link and activate downstream
411 signaling pathways and modulate ADCC. This relationship was also observed among polyclonal
412 HLA-A2-specific antibodies purified from patient sera, and suggests that afucosylated antibodies to
413 HLA-A2 can exhibit elevated ADCC activity, as shown in other disease settings (70, 92, 94-96), and
414 raises the possibility that DSA glycosylation may provide prognostic value in predicting risk of AMR.
415 Indeed, individuals who had AMR exhibited low levels of HLA-A2 specific IgG1 fucosylation as
416 compared to the individuals who did not have AMR, suggesting that low HLA-A2 IgG1 fucosylation
417 may be a marker of AMR risk in kidney transplant patients. Despite small cohort size, among
418 individuals in whom HLA-A2 represented a DSA, low HLA-A2 specific IgG1 antibody fucosylation
419 was associated with AMR.

420

421 While this work suggests the potential role of IgG Fc fucosylation and its influence on DSA
422 pathogenicity, it is likely that more systematic serology data, considering antibody titer, subclass,
423 glycans, epitope specificity, antigen-specificity, and affinity, linked to clinical metadata and insights
424 into host- and graft-specific genetic and phenotypic factors will be needed for comprehensive
425 understanding. The experimental tools explored here will need to be broadened to cover the
426 diversity of DSA specificities that contribute to clinical outcomes. Similarly, analytical approaches
427 (97-99) that integrate across features of the humoral response, and that can robustly address
428 correlations among features, such as those observed here between titer and afucosylation, may
429 contribute to discovery of mechanisms underlying graft injury and AMR. To this end, the subclass-
430 switched and glycoengineered mAbs described herein may support dissection of the mechanistic
431 role of these features in AMR studies in animal models.

432
433 Limitations of this study include its focus on a single antigen-specificity and antibody function,
434 limited outcome data and reliance on a relatively small group of HLA-A2 seropositive subjects. The
435 lack of a clear boundary between seropositive and seronegative subjects based on clinical testing
436 suggests that positivity determinations may be quite sensitive to different reagents, tests, and
437 thresholds, as well as to differences in antigen density and loaded antigens between single antigen
438 beads and research microspheres applied by different clinical groups. A reporter cell line and
439 recombinant HLA-A2 antigen, as opposed to primary effector and HLA-A2-expressing target cells
440 were used to evaluate Fc γ R1IIa signaling as a proxy for cytotoxicity, degranulation, and release of
441 other inflammatory mediators that may be relevant to graft damage. Antibody clonality, fine epitope
442 specificity, and affinity for HLA-A2 were not assessed. Despite extensive condition testing, signals
443 in the reporter cell line assay were low for both mAbs and polyclonal sera samples, and despite their
444 correlations with other activities, were not always elevated in comparison to the control sera.
445 Similarly, while signals in the in-house multiplex assay were correlated with clinical test results,
446 agreement was less good than we have observed in other multiplexed assays, and distributions
447 overlapped with those observed among control sera, perhaps in association with the rate of
448 seropositivity in healthy populations (78, 79). While similar yields were observed to result from
449 affinity purification against HLA-A2 with each of two different peptides in a pilot experiment,
450 peptide occupancy and identity may also impact results of the assays used. Lastly, while a direct

451 association has been made between afucosylation of DSA and the occurrence of AMR, HLA-A2-
452 specific antibodies were first detected in most of the patients post-rejection, suggesting that
453 afucosylation of DSA may have occurred as a result of AMR. Future studies will benefit from larger
454 and longitudinal cohorts that include samples collected pre-AMR, that are more homogenous in
455 relevant clinical characteristics, and designs that are targeted to address relationships with
456 transplant outcomes.

457
458 Overall, despite considerable clinical heterogeneity of the study population, HLA-A2-specific IgG
459 fucosylation was associated with Fc γ RIIIa binding and function. Different HLA reactivities showed
460 distinct subclass profiles, and the dominant IgG1 fraction of HLA-A2-specific IgG showed reduced
461 fucosylation as compared to total serum IgG1. Along with antibody titer, reduced fucosylation was
462 associated with elevated binding to, and slower dissociation from Fc γ RIIIa. Afucosylation of HLA-
463 A2-specific antibodies was also associated with potentiated signaling through Fc γ RIIIa. HLA-A2-
464 specific IgG1 Fc fucose content was associated with AMR status among the subset of subjects for
465 whom this specificity represented a DSA as well among those where it did not, leaving important
466 questions unresolved about the importance of this antibody feature in mediating AMR. Further and
467 prospective studies will be needed to confirm the role of afucosylation in the pathophysiology of
468 AMR, and continued customization and broader deployment of these and other systems serology
469 approaches has the potential to shed light on the clinical impact of qualitative antibody features and
470 activities on graft damage.

471

472 **Author contributions**

473 **P.B.:** writing - original draft, investigation, data curation, visualization, methodology, validation; **S.S.:**
474 writing - original draft, investigation, data curation, validation, visualization; **T.P.:** writing – review &
475 editing, investigation, data curation, validation, visualization; **C.C.:** , **S.S.:** , **A.L.M.:** ; **N. de H.:** writing
476 – review & editing, supervision; **N.M.:** writing- review & editing, supervision; **L.V.R.:** ; **M.W.:** writing
477 – review & editing, funding acquisition, supervision; **A.M.:** , **M.E.A.:** conceptualization, supervision,
478 funding acquisition, writing – review & editing.

479

480 **Acknowledgements**

481 We want to thank Andreia Isabel Ferreira Verissimo and Emilie Shipman from bioMT- Institute for
482 Biomolecular Targeting at Dartmouth. The authors also thank Carolien Koeleman for expert
483 technical assistance. We thank all members of the HLA Laboratory, Laboratoire Hospitalier
484 Universitaire de Bruxelles (LHUB), and Dr Sanâa El Korchi, Erasme Hospital ULB, Brussels,
485 Belgium, for expert assistance in clinical data and sample management and in clinical
486 sample testing. We thank the NIH Tetramer Core Facility (contract number 75N93020D00005) for
487 providing HLA monomers.

488

489 **Funding**

490 Variably fucosylated IgG was produced by the Dartmouth bioMT- Institute for Biomolecular
491 Targeting (NIGMS COBRE award P20-GM113132). T. P. has received funding from the European
492 Union's Horizon 2020 Research and Innovation Programme, under H2020-MSCA-ITN grant
493 agreement number 721815. C.C has received funding from the *Fonds National de la Recherche*
494 *Scientifique (FNRS)*, Belgium, and from the *Fonds Erasme, Belgium*.

495

496 **Competing interests**

497 PB, SS, TP, ALM, NdeH, MW, AM, and MEA are named inventors on a provisional patent application
498 related to this work.

499

500 **Data availability statement**

501 The dataset generated for this study is available at (link pending).

502

503 **Abbreviations**

- 504 ADCC – Antibody-dependent cellular cytotoxicity
- 505 AMR – Acute-mediated rejection
- 506 BLI – Biolayer Interferometry
- 507 DSA – Donor specific antibody
- 508 Fc – Fragment crystallizable
- 509 HLA – Human leukocyte antigen
- 510 IgG – Immunoglobulin G
- 511 IVIG – Intravenous immunoglobulin G
- 512 MFI – Mean Fluorescent Intensity
- 513 R – receptor

514 **References**

- 515 1. Thongprayoon C, Hansrivijit P, Leeaphorn N, Acharya P, Torres-Ortiz A, Kaewput W et al. Recent
516 Advances and Clinical Outcomes of Kidney Transplantation. *Journal of Clinical Medicine*
517 2020;9(4):1193.
- 518 2. Chong AS, Rothstein DM, Safa K, Riella LV. Outstanding questions in transplantation: B cells,
519 alloantibodies, and humoral rejection. *American Journal of Transplantation* 2019;19(8):2155-
520 2163.
- 521 3. Cheng EY, Everly MJ, Kaneku H, Banuelos N, Wozniak LJ, Venick RS et al. Prevalence and Clinical
522 Impact of Donor-Specific Alloantibody Among Intestinal Transplant Recipients. *Transplantation*
523 2017;101(4):873-882.
- 524 4. Davis S, Cooper JE. Acute antibody-mediated rejection in kidney transplant recipients.
525 *Transplantation Reviews* 2017;31(1):47-54.
- 526 5. Valenzuela NM, Reed EF. Antibody-mediated rejection across solid organ transplants:
527 manifestations, mechanisms, and therapies. *The Journal of clinical investigation*
528 2017;127(7):2492-2504.
- 529 6. Black CK, Termanini KM, Aguirre O, Hawksworth JS, Sosin M. Solid organ transplantation in the
530 21st century. *Annals of Translational Medicine* 2018;6(20):409-409.
- 531 7. Gebel HM, Kasiske BL, Gustafson SK, Pyke J, Shteyn E, Israni AK et al. Allocating Deceased
532 Donor Kidneys to Candidates with High Panel-Reactive Antibodies. *Clinical journal of the*
533 *American Society of Nephrology : CJASN* 2016;11(3):505-511.
- 534 8. Cecka JM. Calculated PRA (CPRA): The New Measure of Sensitization for Transplant Candidates:
535 Sensitized Patients, PRA and CPRA. *American Journal of Transplantation* 2009;10(1):26-29.
- 536 9. Viglietti D, Loupy A, Vernerey D, Bentelejewski C, Gosset C, Aubert O et al. Value of Donor-
537 Specific Anti-HLA Antibody Monitoring and Characterization for Risk Stratification of Kidney
538 Allograft Loss. *Journal of the American Society of Nephrology : JASN* 2016;28(2):702-715.
- 539 10. Terasaki PI, Ozawa M. Predicting Kidney Graft Failure by HLA Antibodies: a Prospective Trial:
540 Prediction of Failure by Antibodies. *American Journal of Transplantation* 2004;4(3):438-443.
- 541 11. Timofeeva OA. Donor-Specific HLA Antibodies as Biomarkers of Transplant Rejection. *Clinics in*
542 *Laboratory Medicine* 2018;39(Am J Transplant 14 2 2014):45-60.
- 543 12. Ghandorah S, Yilmaz S, Abadi A, Rahmanian T, Wang J, Khan FM et al. Characteristics of donor-
544 specific anti-HLA antibodies in renal transplant recipients. *Human Immunology* 2015;76:163.
- 545 13. Visentin J, Marroc M, Guidicelli G, Bachelet T, Nong T, Moreau J-F et al. Clinical impact of
546 preformed donor-specific denatured class I HLA antibodies after kidney transplantation. *Clinical*
547 *Transplantation* 2015;29(5):393-402.
- 548 14. Böhmig GA, Eskandary F, Doberer K, Halloran PF. The therapeutic challenge of late antibody-
549 mediated kidney allograft rejection. *Transplant International* 2019;32(8):775-788.
- 550 15. Salvadori M, Bertoni E. Acute Antibody-Mediated Rejection in Kidney Transplantation: Clinical
551 and Therapeutic Aspects. *Journal of Nephrology & Therapeutics* 2013;04(01).
- 552 16. Sellarés J, Reeve J, Loupy A, Mengel M, Sis B, Skene A et al. Molecular Diagnosis of Antibody-
553 Mediated Rejection in Human Kidney Transplants. *American Journal of Transplantation*
554 2013;13(4):971-983.
- 555 17. Lefaucheur C, Loupy A, Vernerey D, Duong-Van-Huyen J-PP, Suberbielle C, Anglicheau D et al.
556 Antibody-mediated vascular rejection of kidney allografts: a population-based study. *Lancet*
557 (London, England) 2013;381(9863):313-319.

- 558 18. Butler CL, Valenzuela NM, Thomas KA, Reed EF. Not All Antibodies Are Created Equal: Factors
559 That Influence Antibody Mediated Rejection. *Journal of Immunology Research* 2017;2017:1-9.
- 560 19. Alelign T, Ahmed MM, Bobosha K, Tadesse Y, Howe R, Petros B. Kidney Transplantation: The
561 Challenge of Human Leukocyte Antigen and Its Therapeutic Strategies. *Journal of Immunology*
562 *Research* 2018;2018:1-18.
- 563 20. Bray RA, Gebel HM, Townsend R, Roberts ME, Polinsky M, Yang L et al. De Novo Donor-Specific
564 Antibodies in Belatacept-Treated vs. Cyclosporine-Treated Kidney Transplant Recipients: Post-
565 Hoc Analyses of the Randomized Phase III BENEFIT and BENEFIT-EXT Studies. *American journal*
566 *of transplantation : official journal of the American Society of Transplantation and the American*
567 *Society of Transplant Surgeons* 2018;18(7):1783-1789.
- 568 21. Severova G, Nikolov I, Sikole A, Cakalaroski K, Popov Z, Ivanovski N. Clinical Importance of Non-
569 Donor-Specific HLA Antibodies and Possible Impact on Graft Histology in Kidney Transplant
570 Recipients – 12 Months Protocol Biopsy Study. *Transplantation* 2018;102(&NA;):S484.
- 571 22. Everly MJ, Rebellato LM, Haisch CE, Ozawa M, Parker K, Briley KP et al. Incidence and Impact
572 of De Novo Donor-Specific Alloantibody in Primary Renal Allografts. *Transplantation Journal*
573 2013;95(3):410-417.
- 574 23. Hart A, Smith JM, Skeans MA, Gustafson SK, Wilk AR, Castro S et al. OPTN / SRTR 2018 Annual
575 Data Report: Kidney. *American Journal of Transplantation* 2020;20(s1):20-130.
- 576 24. Kwun J, Knechtle S. Experimental modeling of desensitization: What have we learned about
577 preventing AMR? *American Journal of Transplantation* 2020;20(S4):2-11.
- 578 25. Chandra A, Midtvedt K, Åsberg A, Eide IA. Immunosuppression and Reproductive Health After
579 Kidney Transplantation. *Transplantation* 2019;103(11):e325-e333.
- 580 26. Kramer CSM, Dijk MEIV, Priddey AJ, Pongrácz T, Gnudi E, Car H et al. Recombinant human
581 monoclonal HLA antibodies of different IgG subclasses recognising the same epitope: Excellent
582 tools to study differential effects of donor-specific antibodies. *HLA* 2019;94(5):415-424.
- 583 27. Lefaucheur C, Viglietti D, Bentejewski C, Huyen J-PDv, Vernerey D, Aubert O et al. IgG Donor-
584 Specific Anti-Human HLA Antibody Subclasses and Kidney Allograft Antibody-Mediated Injury.
585 *Journal of the American Society of Nephrology* 2016;27(1):293-304.
- 586 28. Valenzuela NM, Hickey MJ, Reed EF. Antibody Subclass Repertoire and Graft Outcome
587 Following Solid Organ Transplantation. *Frontiers in immunology* 2016;7:433.
- 588 29. O'Leary JG, Kaneku H, Banuelos N, Jennings LW, Klintmalm GB, Terasaki PI. Impact of IgG3
589 Subclass and C1q-Fixing Donor-Specific HLA Alloantibodies on Rejection and Survival in Liver
590 Transplantation. *American Journal of Transplantation* 2015;15(4):1003-1013.
- 591 30. Everly MJ, Rebellato LM, Haisch CE, Briley KP, Bolin P, Kendrick WT et al. Impact of IgM and
592 IgG3 Anti-HLA Alloantibodies in Primary Renal Allograft Recipients. *Transplantation*
593 2014;97(5):494-501.
- 594 31. Freitas MCS, Rebellato LM, Ozawa M, Nguyen A, Sasaki N, Everly M et al. The Role of
595 Immunoglobulin-G Subclasses and C1q in De Novo HLA-DQ Donor-Specific Antibody Kidney
596 Transplantation Outcomes. *Transplantation Journal* 2013;95(9):1113-1119.
- 597 32. Gunn BM, Roy V, Karim MM, Hartnett JN, Suscovich TJ, Goba A et al. Survivors of Ebola Virus
598 Disease Develop Polyfunctional Antibody Responses. *The Journal of Infectious Diseases*
599 2019;221(1):156-161.
- 600 33. Lu LL, Suscovich TJ, Fortune SM, Alter G. Beyond binding: antibody effector functions in
601 infectious diseases. *Nature Reviews Immunology* 2018;18(1):46-61.

- 602 34. Plomp R, Ruhaak RL, Uh H-W, Reiding KR, Selman M, Houwing-Duistermaat JJ et al. Subclass-
603 specific IgG glycosylation is associated with markers of inflammation and metabolic health.
604 *Scientific Reports* 2017;7(1):12325.
- 605 35. Wang TT, Sewatanon J, Memoli MJ, Wrammert J, Bournazos S, Bhaumik SK et al. IgG antibodies
606 to dengue enhanced for FcγRIIIA binding determine disease severity. *Science*
607 2017;355(6323):395-398.
- 608 36. Moore JS, Wu X, Kulhavy R, Tomana M, Novak J, Moldoveanu Z et al. Increased levels of
609 galactose-deficient IgG in sera of HIV-1-infected individuals. *AIDS* 2005;19(4):381-389.
- 610 37. Raux M, Finkielstejn L, Salmon-Cron D, Bouchez H, Excler JL, Dulioust E et al. IgG Subclass
611 Distribution in Serum and Various Mucosal Fluids of HIV Type 1-Infected Subjects. *AIDS Research*
612 *and Human Retroviruses* 2000;16(6):583-594.
- 613 38. Kapur R, Kustiawan I, Vestrheim A, Koeleman CA, Visser R, Einarsdottir HK et al. A prominent
614 lack of IgG1-Fc fucosylation of platelet alloantibodies in pregnancy. *Blood* 2014;123(4):471-480.
- 615 39. Bakchoul T, Greinacher A, Sachs UJ, Krautwurst A, Renz H, Harb H et al. Inhibition of HPA-1a
616 alloantibody-mediated platelet destruction by a deglycosylated anti-HPA-1a monoclonal
617 antibody in mice: toward targeted treatment of fetal-alloimmune thrombocytopenia. *Blood*
618 2013;122(3):321-327.
- 619 40. Sellarés J, Freitas DGd, Mengel M, Reeve J, Einecke G, Sis B et al. Understanding the causes of
620 kidney transplant failure: the dominant role of antibody-mediated rejection and nonadherence.
621 *American journal of transplantation : official journal of the American Society of Transplantation*
622 *and the American Society of Transplant Surgeons* 2011;12(2):388-399.
- 623 41. Lefaucheur C, Loupy A, Hill GS, Andrade J, Nochy D, Antoine C et al. Preexisting donor-specific
624 HLA antibodies predict outcome in kidney transplantation. *Journal of the American Society of*
625 *Nephrology : JASN* 2010;21(8):1398-1406.
- 626 42. Loupy A, Suberbielle-Boissel C, Hill GS, Lefaucheur C, Anglicheau D, Zuber J et al. Outcome of
627 subclinical antibody-mediated rejection in kidney transplant recipients with preformed donor-
628 specific antibodies. *American journal of transplantation : official journal of the American Society*
629 *of Transplantation and the American Society of Transplant Surgeons* 2009;9(11):2561-2570.
- 630 43. Khovanova N, Daga S, Shaikhina T, Krishnan N, Jones J, Zehnder D et al. Subclass analysis of
631 donor HLA-specific IgG in antibody-incompatible renal transplantation reveals a significant
632 association of IgG4 with rejection and graft failure. *Transplant International* 2015;28(12):1405-
633 1415.
- 634 44. Grafals M, Thurman JM. The Role of Complement in Organ Transplantation. *Frontiers in*
635 *Immunology* 2019;10:2380.
- 636 45. Navas A, Molina J, Agüera M-L, Guler I, Jurado A, Rodríguez-Benot A et al. Characterization of
637 the C1q-Binding Ability and the IgG1-4 Subclass Profile of Preformed Anti-HLA Antibodies by
638 Solid-Phase Assays. *Frontiers in Immunology* 2019;10:1712.
- 639 46. Thurman JM, Panzer SE, Quintrec ML. The role of complement in antibody mediated transplant
640 rejection. *Molecular Immunology* 2019;112:240-246.
- 641 47. Biglarnia A-R, Huber-Lang M, Mohlin C, Ekdahl KN, Nilsson B. The multifaceted role of
642 complement in kidney transplantation. *Nature Reviews Nephrology* 2018;14(12):767-781.
- 643 48. Lee H, Han E, Choi A-R, Ban T, Chung B, Yang C et al. Clinical impact of complement (C1q, C3d)
644 binding De Novo donor-specific HLA antibody in kidney transplant recipients. *PLOS ONE*
645 2018;13(11):e0207434.

- 646 49. Loupy A, Lefaucheur C, Vernerey D, Prugger C, Duong van Huyen JP, Mooney N et al.
647 Complement-binding anti-HLA antibodies and kidney-allograft survival. *N Engl J Med*
648 2013;369(13):1215-1226.
- 649 50. Guidicelli G, Guerville F, Lepreux S, Wiebe C, Thauinat O, Dubois V et al. Non-Complement-
650 Binding De Novo Donor-Specific Anti-HLA Antibodies and Kidney Allograft Survival. *J Am Soc*
651 *Nephrol* 2016;27(2):615-625.
- 652 51. Malheiro J, Tafulo S, Dias L, Martins S, Fonseca I, Beirao I et al. Determining donor-specific
653 antibody C1q-binding ability improves the prediction of antibody-mediated rejection in human
654 leucocyte antigen-incompatible kidney transplantation. *Transpl Int* 2017;30(4):347-359.
- 655 52. Wiebe C, Gibson IW, Blydt-Hansen TD, Pochinco D, Birk PE, Ho J et al. Rates and Determinants
656 of Progression to Graft Failure in Kidney Allograft Recipients With De Novo Donor-Specific
657 Antibody: Post- dn DSA Clinical Histologic Progression. *American Journal of Transplantation*
658 2015;15(11):2921-2930.
- 659 53. Wiebe C, Gibson IW, Blydt-Hansen TD, Karpinski M, Ho J, Storsley LJ et al. Evolution and Clinical
660 Pathologic Correlations of De Novo Donor-Specific HLA Antibody Post Kidney Transplant:
661 Clinical Pathologic Correlations of De Novo DSA. *American Journal of Transplantation*
662 2012;12(5):1157-1167.
- 663 54. Yamashita M, Haas M. Transplant Glomerulopathy with Glomerular C3 Deposits: Why the Worse
664 Outcome? *Kidney International Reports* 2019;4(Transplant glomerulopathy. *Am J Transplant* 8
665 2008):516-519.
- 666 55. Molina J, Navas A, Agüera M-L, Rodelo-Haad C, Alonso C, Rodríguez-Benot A et al. Impact of
667 Preformed Donor-Specific Anti-Human Leukocyte Antigen Antibody C1q-Binding Ability on
668 Kidney Allograft Outcome. *Frontiers in Immunology* 2017;8:1310.
- 669 56. Gupta G, Jawdeh BGA, Racusen LC, Bhasin B, Arend LJ, Trollinger B et al. Late antibody-
670 mediated rejection in renal allografts: outcome after conventional and novel therapies.
671 *Transplantation* 2014;97(12):1240-1246.
- 672 57. Piazza A, Poggi E, Ozzella G, Adorno D. Post-transplant development of C1q-positive HLA
673 antibodies and kidney graft survival. *Clinical transplants* 2013:367-375.
- 674 58. Wang TT, Ravetch JV. Functional diversification of IgGs through Fc glycosylation. *Journal of*
675 *Clinical Investigation* 2019;129(9):3492-3498.
- 676 59. Thomann M, Reckermann K, Reusch D, Prasser J, Tejada ML. Fc-galactosylation modulates
677 antibody-dependent cellular cytotoxicity of therapeutic antibodies. *Molecular Immunology*
678 2016;73:69-75.
- 679 60. Abès R, Teillaud J-L. Impact of Glycosylation on Effector Functions of Therapeutic IgG †.
680 *Pharmaceuticals* 2010;3(1):146-157.
- 681 61. Raju ST. Terminal sugars of Fc glycans influence antibody effector functions of IgGs. *Current*
682 *Opinion in Immunology* 2008;20(4):471-478.
- 683 62. Shinkawa T, Nakamura K, Yamane N, Shoji-Hosaka E, Kanda Y, Sakurada M et al. The Absence
684 of Fucose but Not the Presence of Galactose or Bisecting N -Acetylglucosamine of Human IgG1
685 Complex-type Oligosaccharides Shows the Critical Role of Enhancing Antibody-dependent
686 Cellular Cytotoxicity. *Journal of Biological Chemistry* 2002;278(5):3466-3473.
- 687 63. Dekkers G, Treffers L, Plomp R, Bentlage AEH, de Boer M, Koeleman CAM et al. Decoding the
688 Human Immunoglobulin G-Glycan Repertoire Reveals a Spectrum of Fc-Receptor- and
689 Complement-Mediated-Effector Activities. *Front Immunol* 2017;8:877.

- 690 64. Haas M, Loupy A, Lefaucheur C, Roufosse C, Glotz D, Seron D et al. The Banff 2017 Kidney
691 Meeting Report: Revised diagnostic criteria for chronic active T cell-mediated rejection,
692 antibody-mediated rejection, and prospects for integrative endpoints for next-generation clinical
693 trials. *Am J Transplant* 2018;18(2):293-307.
- 694 65. Babrak L, McGarvey JA, Stanker LH, Hnasko R. Identification and verification of hybridoma-
695 derived monoclonal antibody variable region sequences using recombinant DNA technology
696 and mass spectrometry. *Molecular Immunology* 2017;90:287-294.
- 697 66. Taeye SWd, Bentlage AEH, Mebius MM, Meesters JI, Lissenberg-Thunnissen S, Falck D et al.
698 FcγR Binding and ADCC Activity of Human IgG Allotypes. *Frontiers in Immunology* 2020;11:740.
- 699 67. Dekkers G, Plomp R, Koeleman CAM, Visser R, Horsten HHv, Sandig V et al. Multi-level glyco-
700 engineering techniques to generate IgG with defined Fc-glycans. *Scientific Reports*
701 2016;6(1):36964.
- 702 68. Brown EP, Normandin E, Osei-Owusu N, Mahan AE, Chan YN, Lai JI et al. Microscale purification
703 of antigen-specific antibodies. *Journal of Immunological Methods* 2015;425:27-36.
- 704 69. Brown EP, Licht AF, Dugast A-S, Choi I, Bailey-Kellogg C, Alter G et al. High-throughput,
705 multiplexed IgG subclassing of antigen-specific antibodies from clinical samples. *Journal of*
706 *immunological methods* 2012;386(1):117-123.
- 707 70. Kapur R, Della Valle L, Sonneveld M, Hipgrave Ederveen A, Visser R, Ligthart P et al. Low anti-
708 RhD IgG-Fc-fucosylation in pregnancy: a new variable predicting severity in haemolytic disease
709 of the fetus and newborn. *Br J Haematol* 2014;166(6):936-945.
- 710 71. Falck D, Jansen BC, de Haan N, Wuhrer M. High-Throughput Analysis of IgG Fc Glycopeptides
711 by LC-MS. *Methods Mol Biol* 2017;1503:31-47.
- 712 72. de Haan N, Reiding KR, Kristic J, Hipgrave Ederveen AL, Lauc G, Wuhrer M. The N-Glycosylation
713 of Mouse Immunoglobulin G (IgG)-Fragment Crystallizable Differs Between IgG Subclasses and
714 Strains. *Front Immunol* 2017;8:608.
- 715 73. Pongracz T, Nouta J, Wang W, van Meijgaarden KE, Linty F, Vidarsson G et al. Immunoglobulin
716 G1 Fc glycosylation as an early hallmark of severe COVID-19. *medRxiv* 2021.
- 717 74. Brown EP, Dowell KG, Boesch AW, Normandin E, Mahan AE, Chu T et al. Multiplexed Fc array
718 for evaluation of antigen-specific antibody effector profiles. *J Immunol Methods* 2017;443:33-
719 44.
- 720 75. Boesch AW, Brown EP, Cheng HD, Ofori MO, Normandin E, Nigrovic PA et al. Highly parallel
721 characterization of IgG Fc binding interactions. *MAbs* 2014;6(4):915-927.
- 722 76. Thulin NK, Brewer RC, Sherwood R, Bournazos S, Edwards KG, Ramadoss NS et al. Maternal
723 Anti-Dengue IgG Fucosylation Predicts Susceptibility to Dengue Disease in Infants. *Cell Reports*
724 2020;31(6):107642.
- 725 77. Butler SE, Crowley AR, Natarajan H, Xu S, Weiner JA, Bobak CA et al. Distinct Features and
726 Functions of Systemic and Mucosal Humoral Immunity Among SARS-CoV-2 Convalescent
727 Individuals. *Frontiers in Immunology* 2021;11:618685.
- 728 78. Elkhalfa MY, Alhababi D, Saleh SA, Khan A, Ashur Z, Alshaibi N. P221 "Naturally occurring" anti-
729 HLA antibodies. *Hum Immunol* 2017;78.
- 730 79. Morales-Buenrostro LE, Terasaki PI, Marino-Vazquez LA, Lee JH, El-Awar N, Alberu J. "Natural"
731 human leukocyte antigen antibodies found in nonalloimmunized healthy males. *Transplantation*
732 2008;86(8):1111-1115.
- 733 80. Beyar R. Challenges in organ transplantation. *Rambam Maimonides Med J* 2011;2(2):e0049-
734 e0049.

- 735 81. Laupacis A, Keown P, Pus N, Krueger H, Ferguson B, Wong C et al. A study of the quality of life
736 and cost-utility of renal transplantation. *Kidney Int* 1996;50(1):235-242.
- 737 82. Sethi S, Choi J, Toyoda M, Vo A, Peng A, Jordan SC. Desensitization: Overcoming the
738 Immunologic Barriers to Transplantation. *J Immunol Res* 2017;2017:6804678.
- 739 83. Tait BD. Detection of HLA Antibodies in Organ Transplant Recipients – Triumphs and Challenges
740 of the Solid Phase Bead Assay. *Frontiers in Immunology* 2016;7:570.
- 741 84. Zachary AA, Leffell MS. Detecting and monitoring human leukocyte antigen-specific antibodies.
742 *Hum Immunol* 2008;69(10):591-604.
- 743 85. Malard-Castagnet S, Dugast E, Degauque N, Pallier A, Soulillou JP, Cesbron A et al. Sialylation
744 of antibodies in kidney recipients with de novo donor specific antibody, with or without antibody
745 mediated rejection. *Hum Immunol* 2016;77(11):1076-1083.
- 746 86. Arnold ML, Ntokou IS, Doxiadis, II, Spriewald BM, Boletis JN, Iniotaki AG. Donor-specific HLA
747 antibodies: evaluating the risk for graft loss in renal transplant recipients with isotype switch from
748 complement fixing IgG1/IgG3 to noncomplement fixing IgG2/IgG4 anti-HLA alloantibodies.
749 *Transpl Int* 2014;27(3):253-261.
- 750 87. Jennewein MF, Alter G. The Immunoregulatory Roles of Antibody Glycosylation. *Trends Immunol*
751 2017;38(5):358-372.
- 752 88. Li T, DiLillo DJ, Bournazos S, Giddens JP, Ravetch JV, Wang LX. Modulating IgG effector function
753 by Fc glycan engineering. *Proc Natl Acad Sci U S A* 2017;114(13):3485-3490.
- 754 89. Vidarsson G, Dekkers G, Rispens T. IgG subclasses and allotypes: from structure to effector
755 functions. *Front Immunol* 2014;5:520.
- 756 90. Ackerman ME, Crispin M, Yu X, Baruah K, Boesch AW, Harvey DJ et al. Natural variation in Fc
757 glycosylation of HIV-specific antibodies impacts antiviral activity. *J Clin Invest* 2013;123(5):2183-
758 2192.
- 759 91. Bournazos S, Vo Hoa Thi M, Duong V, Auerswald H, Ly S, Sakuntabhai A et al. Antibody
760 fucosylation predicts disease severity in secondary dengue infection. *Science*
761 2021;372(6546):1102-1105.
- 762 92. Larsen MD, de Graaf EL, Sonneveld ME, Plomp HR, Nouta J, Hoepel W et al. Afucosylated IgG
763 characterizes enveloped viral responses and correlates with COVID-19 severity. *Science*
764 2021;371(6532).
- 765 93. Gudelj I, Lauc G, Pezer M. Immunoglobulin G glycosylation in aging and diseases. *Cell Immunol*
766 2018;333:65-79.
- 767 94. Hoepel W, Chen HJ, Geyer CE, Allahverdiyeva S, Manz XD, de Taeye SW et al. High titers and
768 low fucosylation of early human anti-SARS-CoV-2 IgG promote inflammation by alveolar
769 macrophages. *Sci Transl Med* 2021;13(596).
- 770 95. Kapur R, Kustiawan I, Vestrheim A, Koeleman CA, Visser R, Einarsdottir HK et al. A prominent
771 lack of IgG1-Fc fucosylation of platelet alloantibodies in pregnancy. *Blood* 2014;123(4):471-480.
- 772 96. Wang TT, Sewatanon J, Memoli MJ, Wrammert J, Bournazos S, Bhaumik SK et al. IgG antibodies
773 to dengue enhanced for FcγRIIIA binding determine disease severity. *Science*
774 2017;355(6323):395-398.
- 775 97. Ackerman ME, Barouch DH, Alter G. Systems serology for evaluation of HIV vaccine trials.
776 *Immunol Rev* 2017;275(1):262-270.
- 777 98. Alter G, Dowell KG, Brown EP, Suscovich TJ, Mikhailova A, Mahan AE et al. High-resolution
778 definition of humoral immune response correlates of effective immunity against HIV. *Mol Syst*
779 *Biol* 2018;14(3):e7881-e7881.

- 780 99. Loos C, Lauffenburger DA, Alter G. Dissecting the antibody-OME: past, present, and future.
781 Current Opinion in Immunology 2020;65:89-96.
782

Figures and Legends

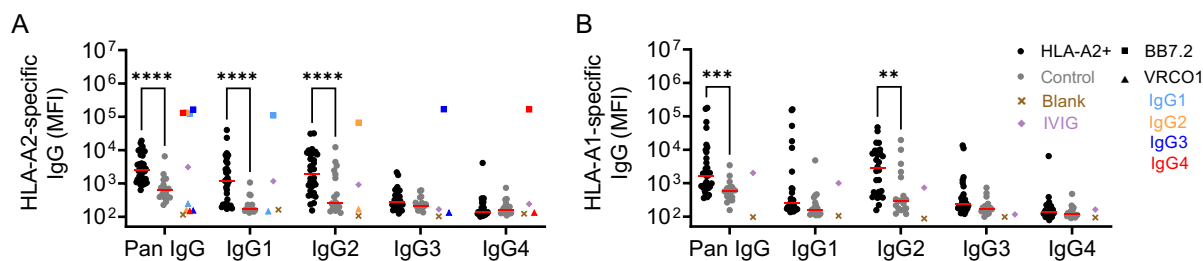


Figure 1. Subclass distribution of HLA specific antibodies. Characterization of HLA-specific antibodies binding to HLA-A2 (A) and HLA-A1 (B) antigens across IgG subclasses in HLA-A2 positive (black circles; n=30-32) and control (gray circles; n=18) individuals. HLA-A2-specific BB7.2 (square) and HIV-specific VRCO1 (triangle) mAb subclass controls for HLA-A2 reactivity are shown for each subclass: IgG1 (light blue), IgG2 (orange), IgG3 (dark blue) and IgG4 (red). Buffer only blank (cross) and pooled IVIG (diamond) are shown in brown and purple, respectively. Serum samples were tested at a 1:100 dilution. Data shown are representative of two technical replicates. Solid red lines indicate group median. Differences between groups were evaluated using Ordinary Two-way ANOVA adjusted for multiple comparisons using Bonferroni's test (** $p < 0.01$, *** $p < 0.001$, **** $p < 0.0001$, respectively).

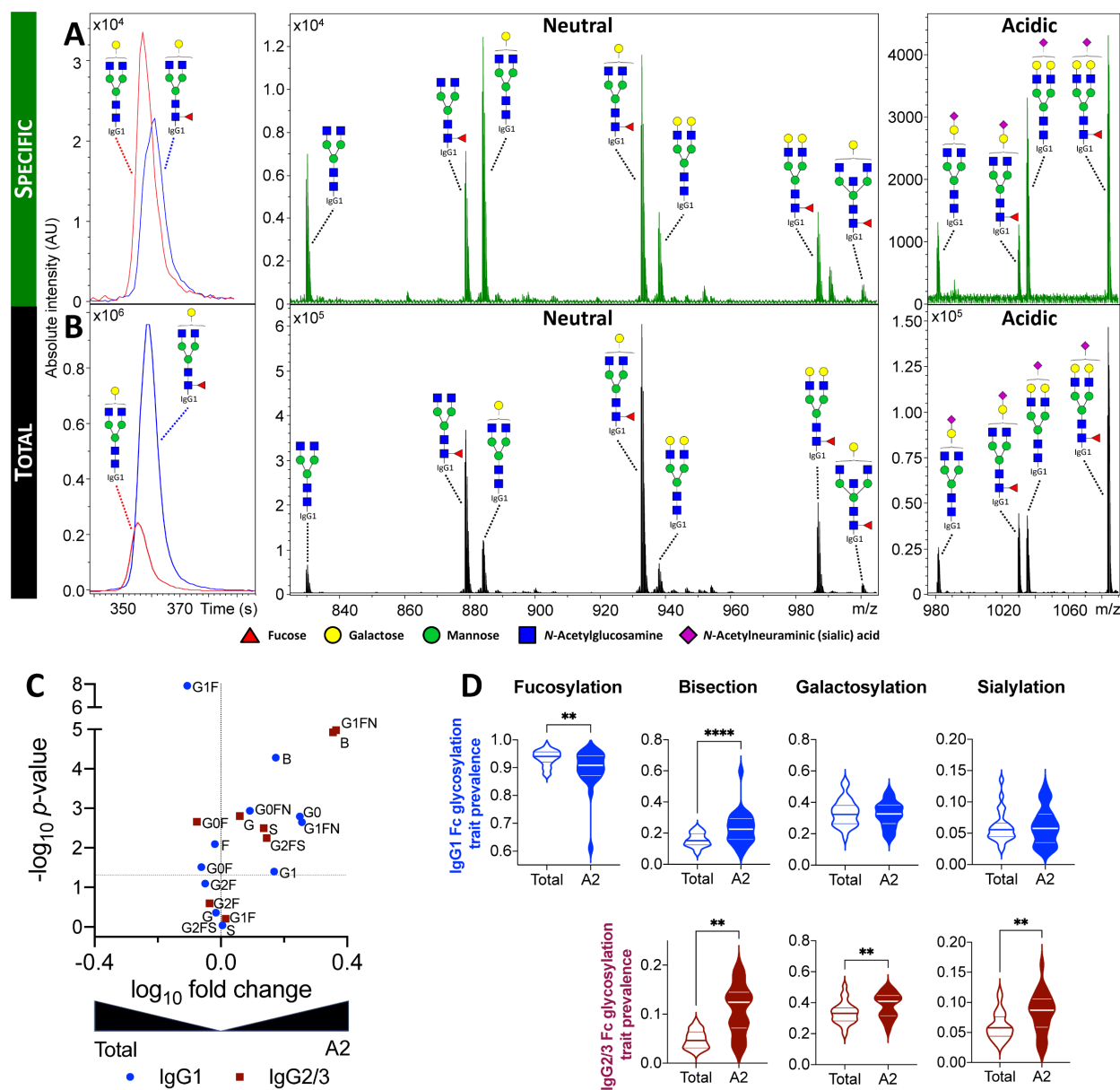


Figure 2. Fc glycosylation of HLA-A2-specific antibodies. Representative extracted ion chromatograms and mass spectra (**A, B**) illustrating the observed variability between HLA-A2-specific (**A**) and total (**B**) IgG1 Fc glycosylation patterns of the same patient. **C.** Volcano plot displaying the \log_{10} fold change (x-axis) and $-\log_{10} p\text{-value}$ (y-axis) of individual IgG1 (blue circle) and IgG2/3 (maroon square) glycoforms between total and HLA-A2-specific IgG1 and IgG2/3, respectively. **D.** Violin plots showing the relative prevalence of glycans on bulk and HLA-A2 specific IgG1 (top) and IgG2/3 (bottom), respectively. Statistical analysis was performed using a paired two-tailed Student's t-test (**: $p < 0.01$, ***: $p < 0.001$, ****: $p < 0.0001$, respectively).

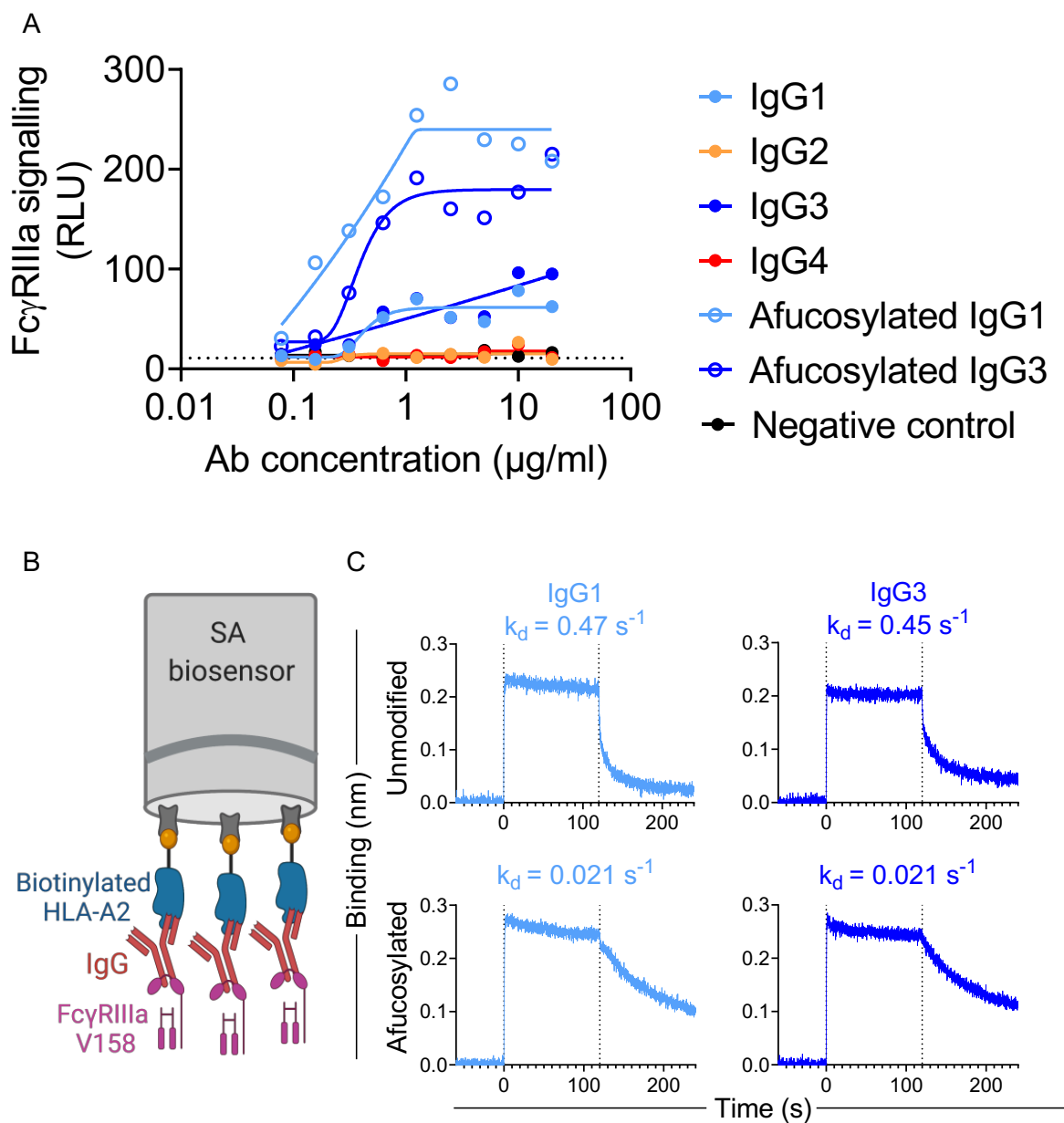


Figure 3. Impact of HLA-A2 specific mAb fucosylation on Fc γ RIIIa binding and signaling per subclass. **A.** Fc γ RIIIa signaling in a reporter cell line assay with unmodified and afucosylated HLA-A2 mAbs of varying subclasses. **B.** Schematic figure of the BLI experiment to define Fc γ RIIIa off-rates from HLA-A2-specific antibodies. Illustration created with <http://BioRender.com>. **C.** Fc γ RIIIa V158 association with and dissociation from unmodified and afucosylated HLA-A2 mAbs. Dissociation rate (k_d) values are shown in inset.

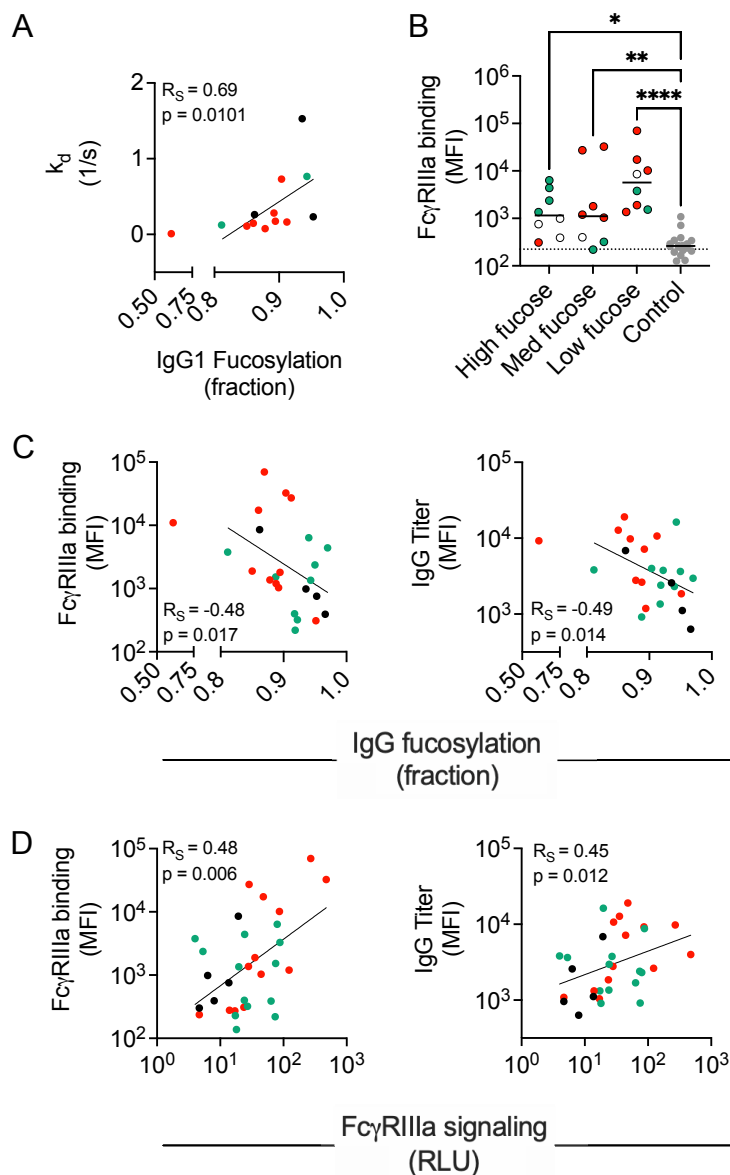


Figure 4. Associations of serum derived HLA-A2 specific antibody fucosylation with Fc γ RIIIa binding and signaling. **A.** Spearman's correlation (R_s) between IgG1 fucosylation and Fc γ RIIIa dissociation rate ($n=13$). **B.** Fc γ RIIIa binding characterization in high ($n=8$), medium ($n=8$), low ($n=8$) fucose samples and negative controls ($n=18$). Serum samples were tested at a 1:500 serum dilution. Statistical analysis was performed using Ordinary one-way ANOVA adjusted for multiple comparisons using Tukey's test. Solid lines indicate group median. Data shown is representative of two technical replicates. **C-D.** Spearman's correlations between IgG1 fucosylation ($n=24$) (**C**), and Fc γ RIIIa signaling ($n=31$) (**D**) with Fc γ RIIIa binding (left) and IgG titer (right). Patients with AMR (red), patients without AMR (green), and patients with no AMR information (black) are indicated in color.

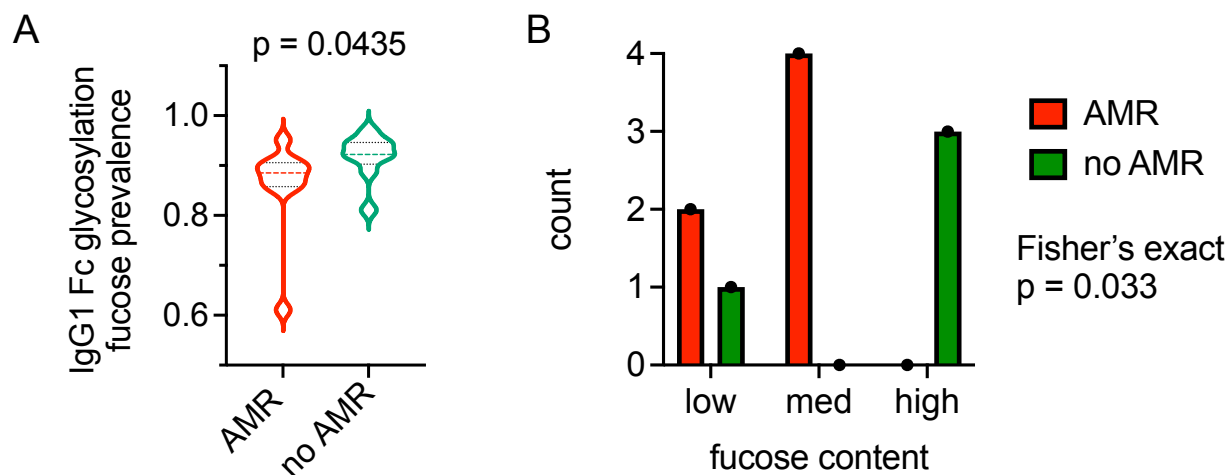
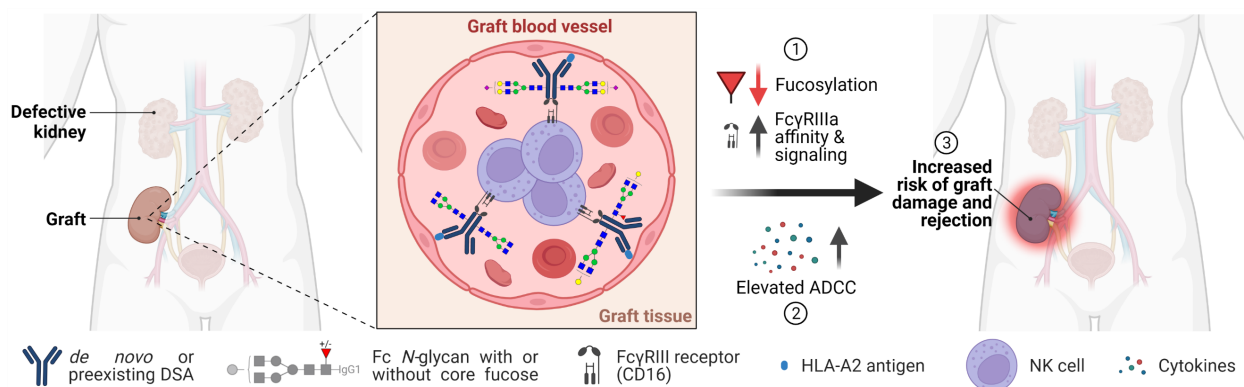


Figure 5. HLA-A2-specific IgG1 afucosylation is associated with AMR. A. Violin plot showing relative prevalence of fucose on HLA-A2-specific IgG1 in individuals with AMR (n=10) and without AMR (n=9). A Mann-Whitney U test was used to compare the two groups. **B.** Number of subjects in which HLA-A2-specific IgG1 comprise a DSA plotted by fucose content as tertiles (low, medium, high) and AMR status. Statistical significance defined by Fisher's exact test.



Graphical Abstract. Potential influence of HLA-A2-specific IgG1 afucosylation, FcγRIIIa binding and activation on ADCC and graft rejection. Illustration created with <https://BioRender.com>.